



25 Sep 1996

The Missouri Miner, September 25, 1996

Follow this and additional works at: https://scholarsmine.mst.edu/missouri_miner

These newspapers reflect the attitudes, perspectives, and beliefs of different times. Neither the library nor the university endorses the views expressed in these collections, some of which contain images and language which may be offensive to some readers.

Recommended Citation

"The Missouri Miner, September 25, 1996" (1996). *The Missouri Miner Newspaper*. 2733.
https://scholarsmine.mst.edu/missouri_miner/2733

This Newspaper is brought to you for free and open access by Scholars' Mine. It has been accepted for inclusion in The Missouri Miner Newspaper by an authorized administrator of Scholars' Mine. This work is protected by U. S. Copyright Law. Unauthorized use including reproduction for redistribution requires the permission of the copyright holder. For more information, please contact scholarsmine@mst.edu.



MISSOURI MINER



A publication of the students of the University of Missouri-Rolla

September 25, 1996

Volume 86, Number 4

Twenty-four pages

Open forum discusses St. Pat's Changes



Keith Missey
Staff Writer

One thing remained clear after squeezing into McNutt 204 last Tuesday for the St. Pat's Open Forum: "Alice is dead."

Stating reasons of liability, Chancellor John Park addressed those words to the 100 plus students who attended the forum. He went on to say, "You will have to find a new knighting ceremony."

The open forum was held by StuCo to address the many issues surrounding next year's St. Pat's Day Celebration. The event was held in a question and answer format. Questions were directed at three selected board members, Chancellor Park, the St. Pat's Committee President Chris Hart, and the Student Body President Josh Grove.

Many issues were addressed at the forum, but Alice was the focal point of the night. Some students wondered if Alice would be brought back in any form at all, or if a fraternity could hold it. Some students also wondered why Park felt Alice was a liability.

"Alice is a liability for the university," Park explained, "because we allow the students two days off of school. By doing this it looks like we're condoning what goes on during that time. Events have occurred that have put police in a bad position, and with the St. Pat's Committee down to 22 people, there isn't enough help to manage the event." Park did not state any specific cases of liability at the forum.

Park also stated he would not support Alice under any guise, and that no fraternity would take on the risk or liability of putting on an Alice. Inevitably, the next question was what could replace Alice.

"It should be an event that honors the student knights from all of the organizations on campus. Alice doesn't have that impact," Park commented. Grove suggested, "Maybe a formal dance in the gym," but noted, "nothing can replace Alice." Hart said, "You will just lessen it if you try to replace it. If it goes, it should be gone forever."

Park may want Alice gone, but his vision for the rest of the St. Pat's Day celebration is hopeful. "I'm taking the blue sky approach. This isn't the last year for St. Pat's. I hope the concept teams will open our brains up for the possibilities of what St. Pat's can be.

We need other activities that are fun for all groups."

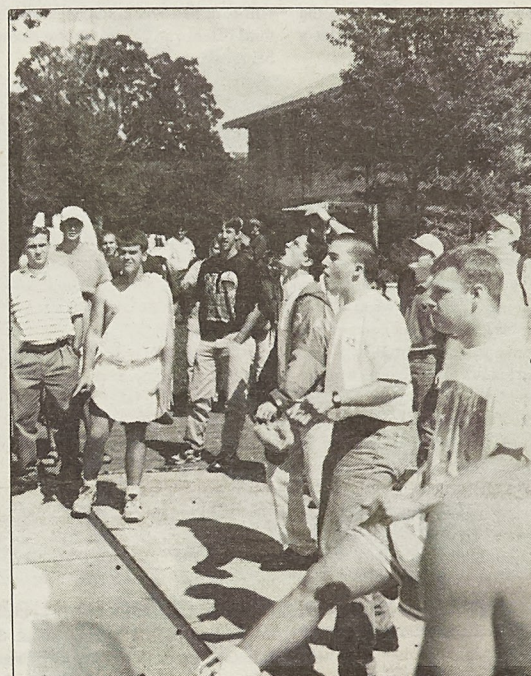
The concept teams to which Park is referring are the newly formed teams set up to evaluate each part of the St. Pat's Day Celebration. There are ten teams in all covering topics such as the events on campus, student knights, the parade, and the organization of the St. Pat's Committee.

"We want students to give their opinions to the concept teams. We want next year's celebration to represent the students who attend the university. We want something to do for everyone of all interests and backgrounds," Park explained.

Hart also expressed a desire to see more groups and activities represented at the celebration. "I'm interested in keeping the core events, but I hope other clubs can put on their own events. St. Pat's does appeal to certain people, but we're trying new ideas to appeal to more groups to draw more people in."

Students who are interested in presenting an idea to the St. Pat's Committee, expressing their opinion about St. Pat's, or finding out the current status of the celebration, can go to StuCo's or the St. Pat's Committee's web page at <http://www.UMR.edu/>

See Forum, page 17



Justin Ferguson

Members of UMR-IFC took part in Greek Week Games last Tuesday. Here, contestants try to catch grapes in their mouths.

University celebrates Unity Day today



Kevin Waldron
Staff Writer

Today, September 25, is Campus Unity Day. About 3,000 UMR students, faculty, and staff members are expected to show their support for a united campus.

Unity Day is UMR's celebration of National Campus Togetherness Day which is celebrated at campuses across the nation. The first Campus Unity Day was held three years ago.

The Association of Black Students held a unity day for several years around the beginning of the winter semester and were asked three years ago to combine their unity day with Chancellor Park's Togetherness Day. They agreed and ever since the event has continued to grow.

Events for the day include a free lunch compliments of Park, music, and a special guest speaker. People can show that they support Unity Day by wearing special silver and gold ribbons that will be available at the puck.

The lunch, which is free to anyone wearing a ribbon, will be served from 11:30 to 1:30 and will be provided by Marriott Dining Service. In addition, KMNR will be providing music on campus throughout the day.

Robert Henry, a 1979 graduate of UMR, is the special guest speaker. Henry is president of the St. Louis Board of Public Service and will speak at 2:00 in the Missouri Room located in University Center-East.

The UMR chancellor's office, the Campus Environment Committee and the Association for Black Students will sponsor the free lecture which is open to the public.

Industry Career Day set for tomorrow



Keith Missey
Staff Writer

The Career Opportunities Center (COC) is sponsoring the fall Industry Career Fair tomorrow, September 26, in the Multi-Purpose building. The career fair will run from 9:00 a.m. to 3:00 p.m. and will feature 116 companies looking for future employees.

The COC web page, <http://www.UMR.edu/~career/protect/careerday.html>, has a complete listing of the companies attending the Industry Career Fair. The list includes the name of the companies, the majors they are hiring, and the type of employment they are looking for such as summer, co-op, or full-time.

Two workshops were held by the COC to help job-lookers have a successful career fair. They advised students on everything from how to act to what to wear. Mrs. Chris Sowers, a

staff member in COC, explained, "When you talk to the recruiters, it's almost like a mini-interview. You need to not only look professional, but sound professional. It's important if you want to get a job."

The workshops advised students to dress in business attire and to prepare an infomercial about themselves which should include their name, major, education, activities, work experience, and the type of job they are looking for. They also advised fair goers to prepare a traditional resume which is not the type of resume many students use on the Internet.

In addition, COC gave these four keys for success to help students at the fair:

1) The earlier the better. Many students have classes in the morning so lines to meet the recruiters will be short.

2) Do not start with the most important employer. Sowers elaborated, "Watch other people talk to recruiters.

See Industry, page 17

In this issue

News



Astronaut scheduled as homecoming speaker.

■ Page 2

Features



Weather: the power of Mother Nature.

■ Page 4

Sports



Lady Miner soccer improves record to 3-3-1.

■ Page 9

Time Killers ■ Page 11

Comics ■ Page 10

From the University Police Desk



Roy Jacobs
Staff Writer

News from the University Police this week concerns bicycles: those ridden and those lost.

Over the past few semesters, UMRPD personnel have collected a number of ten speed bicycles and mountain bikes. If you have lost a bike, you need to go to the department and give a description, and any identifying marks that you can prove the bike is yours.

Any bike that remains unclaimed will eventually be turned over to the purchasing department and sold at a University auction.

In other news, rollerblading is becoming a serious problem. Faculty and students have complained to University Police that they have been nearly run over by rollerbladers, skateboarders and bicyclists.

Last semester a female student was injured when another student on a bike ran into her. Rumors are going around that it is permissible to rollerblade after 5:00 p.m. However, Chief Bleckman of the UMRPD states that rollerblading, skateboarding and bike riding on campus is forbidden at all times.

Students caught participating on any these activities will have their names taken down and will receive a verbal warning. Two time offenders will be turned over to student affairs. A third offense will result in the student being arrested for trespassing.

Homecoming events set to begin next week



Andy Tate
Staff Writer

Well students, it's that time of year again! The time when alumni come back to visit our campus and the time when the Student Union Board plans a lot of activities for the student body. That's right, Monday kicks off the Student Union Board's week of "fun-n-games" leading up to Homecoming Weekend. Homecoming this year will continue the spirit of the 1996 Summer Olympic Games with the theme of "An Olympic Homecoming".

The week full of festivities will begin on Monday, September 30 at 11:00 a.m. with a free barbecue and the homecoming queen candidates at the hockey puck. Some of the other events that will be happening throughout the week include a pie eating contest, jello wrestling, stupid engineering tricks, and a scavenger hunt.

The games will get started about 1:00 p.m. everyday next week except for Friday. On Friday, there will be an alumni/student golf tournament from 1:00 to 4:00 p.m. Then, of course, homecoming week will finish off with the UMR football team playing the Missouri

See Events, page 17

Astronaut Tom Akers scheduled to speak during Homecoming



Rajesh Bala
Staff Writer

As part of the Homecoming 1996 activities, astronaut Tom Akers, a UMR graduate, will be on campus and will speak at 10:30 a.m. Saturday October 5, in the Missouri Room of University Center-East.

Akers will be talking about the missions he has been a part of since becoming a NASA astronaut. Most recently these missions include being assigned as a mission specialist on STS-79. This is NASA's name for the fourth in a series of joint American-Russian missions which involved the docking of the space shuttle to the Russian space station Mir.

The public talk is free, but tickets should be picked up ahead of time. Tickets will be available in the MSM-

UMR Alumni Association office in Castleman Hall.

Akers, born in St. Louis, but raised in Eminence, Missouri, received his bachelor's and master's degrees in applied mathematics from UMR in 1973 and 1975. He is currently a colonel in the U.S. Air Force.

Akers says he suffers from acrophobia, or the fear of heights. Nevertheless, he holds the U.S. record for the

See Akers, page 17

Homecoming 1996 Schedule

An Olympic Homecoming

Monday, September 30

8:30 a.m. - 3:30 p.m. All campus queen voting begins; continues through Thursday

11:00 a.m. - 2:00 p.m. Free barbecue with the queen candidates

1:00 p.m. Games: Triathlon, Ancient Greek Miner Look-Alike

Tuesday, October 1

1:00 p.m. First scavenger hunt clues at the queens voting table

Games: Pie Eating Contest, Field Games

Wednesday, October 2

1:00 p.m. Second scavenger hunt clues at the queens voting table

Games: Belly Flop, Jello Wrestling

7:45 p.m. Queen intros at UC-East cafeteria

8:00 p.m. Comedian Frank King at UC-East cafeteria

Thursday, October 3

1:00 p.m. Scavenger hunt deadline at queens table

4:30 p.m. Banner due in SUB office

Friday, October 4

1:00 p.m. Pick-up banner entries from SUB office

1:00 - 4 p.m. Alumni/Student Golf Tourney

6:00 p.m. House displays judged

7:00 p.m. SUB movies: Billy Jack, Blade Runner

Saturday, October 5

12:30 p.m. Hang up banners

1:00 p.m. Queen Intros during pre-game

Halftime Banner competition winners, Queen Coronation, Overall Winners Announced

NPR President to speak at University



Kim Gerke
Staff Writer

On September 26, Delano E. Lewis, president and CEO of National Public Radio (NPR), will pay a visit to the University of Missouri-Rolla.

A former attorney and CEO of a Bell Atlantic subsidiary, Lewis became CEO of NPR in January of 1994. NPR is the leading public radio network in America. It produces and distributes original programming as well as service and support to more than 500 NPR member stations. University station KUMR is one such station.

See NPR, page 17

The Missouri Miner is the official publication of the students of the University of Missouri-Rolla. It is distributed each Wednesday in Rolla, Missouri and features activities of the students of UMR.

The Missouri Miner encourages comments from its readers, and will attempt to print all responsible letters and editorial material received. All submissions must have a name, student ID number, and phone number for verification. Names will be withheld upon request.

The Missouri Miner is operated by the students of UMR and the opinions expressed in it do not necessarily reflect those of the university, faculty, or student body.

Managing Editor-----Rachel Limbaugh
Asst. Managing Editor-----Brian Sharp

News Editor-----Casey Morris
Asst. News Editor-----Jeff Leong

Features Editor-----Amy Jones
Asst. Features Editor-----Sean Cordes

Copy Manager-----Ryan Shawgo

Staff Writers: Keith Missey, Kim Gerke, Andy Tate, Matt Ryan, Jim Schneider, Scott Mitchell, Bonnie Garrison, Chris Kulifay, Rajesh Bala, Kevin Waldron, Justin Sutherland, Roy Jacobs
Photographers: Adam Guss, Elizabeth Morris, Geoff Franks, Kristopher Potzmann, Moriah Peck

Missouri Miner

1996-97 Staff

Editor-in-Chief-----Doug Sobery

Business Manager-----Andrew Dooley
Asst. Bus. Manager-----Jennifer Schottel

103A Norwood Hall
University of Missouri-Rolla
Rolla, MO 65401-0249
Office: (573) 341-4312
Advertising Only: (573) 341-5235

Graphic Artist-----Omar Metwalli

All articles, features, photographs, and illustrations published are the property of the Missouri Miner and may not be reproduced or published without written permission.

Submissions for publication must be in our drop box (first floor of Norwood Hall, room 103) by 3:30 p.m. on the Thursday before publication. Submissions, not including personals, will be accepted through E-mail (Internet) at MINER@UMR.EDU. The Missouri Miner reserves the right to edit all submissions for style, grammar, punctuation, spelling, length, and matters of good taste.

Advertising Directory-----Karen Henderson

Sports Editor-----Nathan Erdman
Asst. Sports Editor-----Jon Erdman

Circulation-----Alex Laputz
Circulation-----Melanie Kostedt

Photo Editor-----Justin Ferguson

FEATURES

Creative Mooching: Old Ironworks Days at Meramec



Bonnie Garrison
Columnist

For those of you who were concerned about me since I confessed to not having any living friends, you can stop worrying. I received a note from an admirer who reads my column and who also practices the art of living on little or no money.

He is not a student at UMR, but he did say he was at an institution nearby and as soon as he is released he wants to meet me for coffee. I am flattered.

Have you ever visited Mystic Seaport in Connecticut, or Williamsburg, Virginia, or walked the streets of Old Sturbridge Village in Massachusetts?

If you have, you know what a fascinating experience it is to feel transported to a different time and to imagine what life must have been like for our forefathers (and our foremothers).

You can get that same experience right here in central Missouri. Saturday, October 12 from 10 a.m. to 5 p.m. and Sunday, October 13, from 12 p.m. to 5 p.m., Old Ironworks Days will be held at Meramec Springs Park, six miles south of St. James.

Forty-two artisans will be demonstrating life in Missouri in the 1860's. This will include beekeeping, apple butter and sorghum molasses making, blacksmithing, chair-caning, fiddle-making, flint-knapping, quilting and pottery making. There will also be an old survey camp.

Music from the period will be presented on stage throughout both days, as well as a clogging exhibition and a fiddling contest.

Meramec Springs is a beautiful park. You will be able to visit the museums that are a permanent part of the park and climb to the top of the fire tower. Bring a picnic lunch or buy a hotdog or hamburger from the stands

see Mooch, page 16

Why We're A NATION of Idiots... MAKING NEW FRIENDS AWAY FROM HOME



Scott Mitchell
Columnist

As always, I am Scott Mitchell, your personal desk calendar, presenting to you both the date (September 25, 1996) and (hopefully) a new word with an enlightening definition.

Today's word was chosen a little differently than the previous two words. The last two articles' words were chosen by randomly skimming a dictionary in the "P" section.

My parents felt a little nervous when they saw that the first word of the day was parricide (the crime of murdering one's parents), and feared that the word was not chosen completely at random.

Today, however, I decided to employ a different technique in choosing my word.

Rather than sheer randomness, I have decided to pick a word which will actually lend itself to the article! A novel idea, I know.

Without much ado, here is the word for the day. COMPATRIOT: an ally, associate, or friend, usually of the same nationality.

Like approximately one fourth of

Sweet, glorious freedom!). However, also like many of Rolla's freshmen, I had to leave a few really close friends at home.

It was hard; it still is hard. I think about them every day. I wonder what they are up to, and if they miss me as much as I miss them.

What can one do in a situation like this, though?

I have a very dear friend back home whom I think of like a sister. It was tough leaving, but it is even more difficult going back home every few weekends, seeing her, then having to leave once again.

I don't want to forget about her, I seriously doubt that I could ever truly forget her. But nor can I ever be as close of a friend with her now as I was with her previously.

Even if I went home every weekend and saw her, it would still not be enough; we do not have nearly

see World, page 16



the students on campus here at UMR, I am a freshman, experiencing new experiences, getting a taste of life away from home (freedom!

THE MINER MUSIC REVIEW



Jimbo
Music Reviewer

Sup' Peoples!

By now I am sure that everyone has been blasted with their first round of tests and may have a few problems sitting down. I for one have been plagued with this unsightly effect.

I am considering in future issues to add a poll here and there to see what you Miners would actually like to see reviewed. This may be a flop, but maybe not. I do most of my reviews mainly for the fact that a lot of people don't want to spend their hard-earned loan money on CD's that get sent right back to the re-sell-it shop.

I will keep everyone that is interested informed of what happens with this idea.

Just thought I would make a note that there was a Car Audio local soundoff over at Forum Video on September 15.

It turned out very well. I didn't win, but the fun was there anyway.

There were all kinds of cars with stereo systems ranging from zero to a bazillion watts.

There were nice installations, booming systems, and the local car club attendees from Pure and Simple.

Overall it was pretty cool. The main talk of the show was a car that hit 150.9 SPL. Pretty friggin' loud to say the least...

Now to the reviews...

Desultory
Swallow the Snake
Metalblade
Metal/Heavy Rock

Sound Quality: 6.5
Performance: 7

This new release by Desultory is something to hollar about. This band has put together everything that a heavy metal head craves and then some.

The first song "Mushroom Smile" is loaded with power chords, background solos and a quick rhythm section with drums to boot. When one first hears this song, one would mistake Desultory for a revamped Slayer. The vocals are raspy but are easily understood.

The album moves on with one of my favorites, "The Bitter Man." A song that is self-explanatory: a guy that wills ignorance on people due to his less than blissful

life, a great song. The album slows down a bit as you get further into the 11 songs, but it is still loaded with hard and heavy chords and vocals.

When listening to the album, I do hear influences of (or at least similarities to) bands like Slayer, Suicidal Tendencies (the background guitar wailing is very similar to that of Rocky George) and Montage.

It is pretty much a given that I like this album, a definite turn around

from the standard listening material in the home.

I had to bogart half a point on Sound Quality due to its recording level. The high level of recording screeeeeams at ya, but other than that, it's cool.

Guitar World Presents: Guitars that Rule the World Vol. 2: Smell the Fuzz
(The Superstar Guitar Album!)

Metalblade
Rock/Alternative

Sound Quality: 7
Performance: 8

Here is a compilation of extremely talented guitar extraordinaires from all forms of Rock. We've got Ace Frehley of Kiss, Billy Corgan of Smashing Pumpkins, J. Yuenger of White Zombie and Billy Sheehan of Mr. Big.

There are a total of ten songs, each one with someone different. The style of each guitarist is unique to himself and can be heard from his signature playing technique.

To mention songs of the more notorious guitar

ists, we have to start with Mr. Corgan. The song "Ascendo" is rather interesting with a rhythm section of what sounds like a pipe organ backed with drums. Billy's guitar wailing covering every level of the music spectrum is rather interesting, but he didn't impress me nearly as much as what I was to hear.

Everyone's favorite psycho rock group White Zombie is definitely a part of J. Yuenger's song, "Blues for 2-XL." This song is beyond cool. You are experiencing two guitar solos at the same time with the rhythm being louder than the lead and fading constantly from left to right channel. A definite ear experience. To make the song interesting, J. has added some space character as a narrator for parts of the song....Too Strange.

Moving on is Ace Frehley with his well known and godlike guitar solos. I personally was never a real Kiss fan, but I do respect Ace's guitar style. This song is typical rock and roll with a controlled solo substance. I hate it when the soloist is everywhere and when he finally is done, you have lost interest in the song.

For those that are more mellow but still love guitar talent, one must not forget Billy Sheehan. This guy is one of the most complex and intricate bass

see Music, page 16



Desultory

A Closer Look: Dr. Ralph Flori



Melanie Kostedt
Staff Writer

Have you ever wondered just what your professors do when they're not at school? Can you picture them anywhere other than behind their desks stacked with papers or at chalkboards deriving formulas? Do they ever have any fun at all?

Well, let's drop in on Dr. Ralph E. Flori, Assistant Professor in Basic Engineering, and catch a glimpse of his life.

Dr. Flori, born in St. Louis, was the second oldest of four children. When he attended high school in Cape Girardeau, Missouri, he was actively involved in football, track, speech contests, boy scouts and eagle scouts. He also enjoyed radio speaking and debating.

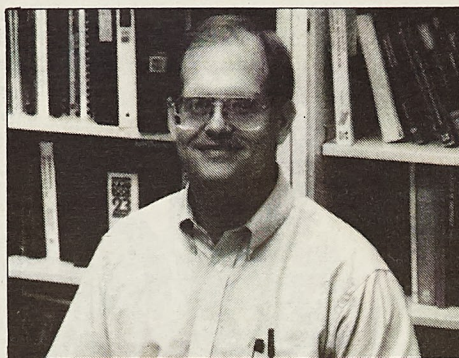
In 1974, Dr. Flori began his college experience at the University of Missouri-Rolla and within six years obtained a bachelor's and a master's degree in petroleum engineering.

After lecturing for two years full-time in the Petroleum Engineering Department, Dr. Flori was given an

Exxon Fellowship to begin his doctoral studies. And in 1987, he obtained his doctorate degree in petroleum engineering.

After 12 years of intense study, Dr. Flori needed a break from the university experience and accepted a material's engineering job with MO-SCI, a corporation here in Rolla.

He researched superconducting fibers, bioresorbable composites,



Dr. Ralph Flori

Justin Sutherland

microspheres, and glass fibers for specialized applications.

Although Dr. Flori had not entered college with an expectation to ever teach engineering courses, he soon realized that he loved to help other people learn. His college tutoring and lecturing experiences made this clear to him.

After four years of work with MO-SCI, Dr. Flori heard of a teaching position open in the Basic Engineering Department at UMR. Because this would give him an opportunity to teach and because this department is both student-oriented and foundational to engineering, the job appealed to him.

In 1990, Dr. Flori joined the Basic Engineering Department.

Dr. Flori has taught several classes, including statics, dynamics, and mechanics of materials.

His unique teaching style has benefited hundreds of students during the last six years.

He successfully removes barriers to understanding and presents concepts in a clear, organized, and systematic manner.

He also gets to know his students in order to make the subject material

relevant to them.

The impact he has had on his students is made apparent by the fact that he has acquired an Outstanding Teacher's Award every year. He has continually received this honor as a result of all the favorable student

see Flori, page 16

ROCKO'S REVIEWS: MAXIMUM RISK ON 42ND STREET



Justin Sutherland
Staff Writer

What do the musical comedy *42nd Street* and the new movie *Maximum Risk* have in common? Read on and let us find out.

Before we delve into this question, though, I have a small explanation to make. For anyone who actually paid attention last week, the column title seemed a little discontinuous with the rest of my article. Well, now I'm going to try to stem any confusion. (Assuming that you are confused or that you even care.)

Rocko is a friend of mine who loves movies about as much as I do. (Surely, you can feel the warmth coming from the page?) So I told him that he could help me out. Hence the title: "Rocko's Reviews." Still, he's a little hacked at me for not mentioning him anywhere but in the title. So I assured him that I would fix that minor oversight in the future.

I would, also, like to apologize to anyone who read last week's review and went to get *42nd Street* tickets. To the dismay of a few people, all of the free tickets had been given away

already. As a matter of fact, Rocko and his girlfriend wanted to see the play. They, then, found out that it would cost them \$30 for two tickets instead of being free, as I had claimed. Rocko was a wee bit peeved in my general direction for this, too.

His girlfriend was even more unhappy with me because of her genuine enthusiasm for stage performances. So to make it up to them, we went to see a movie the next night.

Maximum Risk with Jean-Claude Van Damme was our movie of choice. This worked out well in my favor due to Rocko's girlfriend's insatiable lust for Van Damme (Gag!), and whenever his girlfriend is happy, Rocko is happy too.

At any rate, here's the lowdown on *Maximum Risk*. Alain (Jean-Claude Van Damme) is a French detective who discovers he has a twin brother, Mikhail, after being shown an accident victim's corpse with his own face on it.

He decides to search for his brother's adoptive parents, only to find them murdered. This draws him deeper into the mystery surrounding his brother and ends up taking him to New York. Here, he uncovers

see Rocko, page 16

TECHnicalities



UMR TECHS
Source

UMR TECHS is a peer education group made up of students from the UMR campus.

The name of the group stands for Teaching Encouraging Caring Helping Students.

This group of twelve students organizes activities and gives presentations that deal with topics such as drugs and alcohol, self-esteem, sexual awareness, and healthy lifestyle choices.

In all their work, UMR TECHS strives to teach their audience about the issues at hand while not forcing any one point of view.

The goal of UMR TECHS is to educate not to preach. In pursuit of

this goal, UMR TECHS will print a weekly column for the remainder of the semester.

Each week a new topic that is relevant to the wellness of UMR students will be discussed.

In the past the group has given presentations for numerous fraternities, sororities, residence halls and other organizations. Most recently, UMR TECHS gave a presentation on stress management at the NRHH leadership convention.

Any group interested in a presentation can contact UMR TECHS by e-mail at umrtechs@umr.edu or by contacting either Stephanie Franklin or Camille Consolvo.

Members of UMR TECHS are paid for their work, and new members will be recruited soon. Any persons interested in applying can contact the organization in the aforementioned manner.

SUBCONSCIOUS



SUB
Source

On Wednesday, October 2, the Student Union Board will present the comedian, Frank King, "Slide-Show Guy." His hilarious slide show demonstrates

time and again that truth really is funnier than fiction. So be at UC-East Cafeteria 8 p.m. for the most fun you'll ever have with the lights off...well, almost.

The SUB movie this weekend is *Mission Impossible*. The movie starring Tom Cruise is an action/adventure film based on the popular television show. The movie will be shown at 7 and 9 p.m. in ME-104.

The Verbal Voyager, on weather...

by Sean Cordes

Weather: because the climate has been so particularly pleasant lately, one can't help but reflect on some of the properties possessed by this most tenuous of entities. Weather affects us all.

Our plans, moods, and attitudes to one degree or another may be predicted by the immediate climate.

The flood of camping trips, rendezvous and opportunities missed due to uncooperative weather may become a tornado-like list whipped up too thick to remember accurately.

But this is merely the tip of the iceberg. Too much rain and people become depressed.

This is thought by some psychologists to be a contributing factor in the high suicide rates of the Northwest, and also why Seattle is the hands down capital of melancholia in the U.S.

Alternatively, if there is too much heat, people get angry. 93 degrees Fahrenheit to be exact.

It is at this temperature that violent crimes reach their peak, after 93 degrees Fahrenheit it is "too hot to move."

Interpretations of geographic climate also help perpetuate derogatory stereotypes, such as those of the "cold hearted" Soviet or the "lackadaisical" South American. And to some biological extent this is true.

One must be stoic and rugged to survive the harsh sub zero winter. When I gaze over the icy glaze

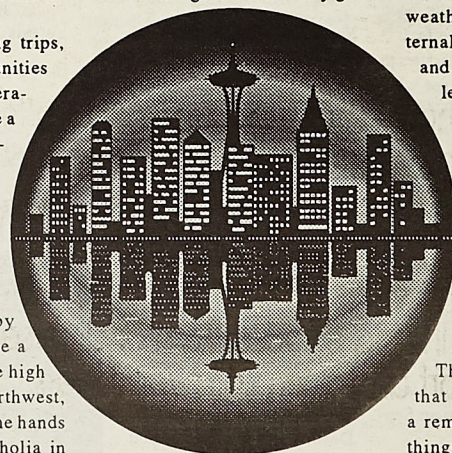
would wish to the condition. Likewise, I can remember more than one trip to Mexico where the 100 plus degree heat made any ambition beyond reaching for the A/C all but impossible.

In a sense, for better or worse in the eyes of all, we are who we are, because of the weather where we are. But weather not only affects our external actions, and our view of, and in the eyes of others: recollections of specific weather conditions become keystones of memory.

The glorious laughter inspired by unexpected vacation, granted to children through snow days in January. The enchanting smells of April evenings when you first hold love in your hands.

The cold rains of November that sadden and chill the heart, a reminder to everyone that all things linear must end.

Remembering moments such as these help me to realize that even as an adult with an overwhelming mindful of appointments, obligations and responsibilities, I indeed still need to take the time to laugh and love and grieve.



of a mid-Missouri, winter and realize that I must soon venture out into the frost, I must admit that it takes a certain amount of discipline and determination to venture forth.

Undoubtedly if I faced these conditions daily, my persona



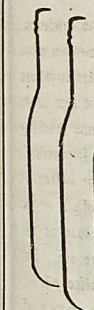
The UMR F
2001: A Space O
ber 1, at 7 p.m.
From the op
ing sequence sho
ing prehistoric m
struggling to co
with a hostile en
environment to t
terplanetary vo
age to Jupiter, t
film is an eleg

CogC



CogCon 4, spo
Enthusiasts of Rol
tember 27-29 in th
beginning at 4 p.m.
fee is \$12 which
entire weekend.
Available activ
Call of Chulhu, M

BELGIUM FRA



Rolla's co
the widest
If you are
rewards c
you are l
satisfying
selection

Southside Sh
(Next to Sec
Phone: (573)
CANADA SCOT

Science fiction classic next up on film series

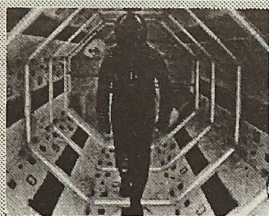


Film Festival

Source

The UMR Film Festival will play *2001: A Space Odyssey* Tuesday, October 1, at 7 p.m. in Castleman Hall.

From the opening sequence showing prehistoric man struggling to cope with a hostile environment to the interplanetary voyage to Jupiter, the film is an elegant



metaphor of man's attempts to master his fate.

The film's special effects are a quantum leap over anything that had gone before it, paving the way for the high-tech look in film and graphics.

2001: A Space Odyssey is a milestone in the history of films.

Starring Keir Dullea and Gary

Lockwood and directed by Stanley Kubrick.

This 1968 film is rated G.

Admission is \$3; student admission is free with a valid university ID.

CogCon 4: this weekend



GEAR

Source

CogCon 4, sponsored by the Gaming Enthusiasts of Rolla (GEAR), will be September 27-29 in the Miner Rec building, beginning at 4 p.m. on Friday. Onsite entry fee is \$12 which includes entry for the entire weekend.

Available activities include AD&D, Call of Cthulhu, Magic: The Gathering,

RPGA Living City, Warhammer Fantasy Battles, GURPS and Starfleet Battles.

There will also be networked computer gaming. There is an additional charge for the computer gaming, with proceeds to LOVE. Games will include Rise of Triad, Command & Conquer, Warcraft II, Quake and an advanced version of Diablo (single player only).

There will also be demos of products from Altec-Lansing and CH Products.

Questions may be addressed to CogCon4@aol.com. We will also accept questions by phone at 368-GAME(4263).

THE IRISH TIMES



St. Pat's

Source

The members of the St. Pat's Committee would like to thank those students who packed 204 McNutt for the Open Forum on September 19.

Suggestions are always welcome, let us know how you feel through the form on our homepage (www.umn.edu/~stpat) or e-mail us at stpat@umn.edu. Or go beyond the suggestions and join up!

Be your organization's representative on the St. Pat's Commit-

tee, help out on the BEST EVER and get your organization involved in the activities.

The 89th Annual Sweatshirt Design contest has come to an end.

Congratulations to Matt Clark of AEPI, Darin Kamman of Kappa Sigma and Joel Mikelionis of GDI for their winning entries. Be on the watch as their designs hit the Rolla streets. Thanks also to all those who submitted many outstanding entries.

This can only be paving the way for one thing, the arrival of the Green. Yes, it will be here soon: the one day of the year that truly signifies that another summer has come and gone.

Last Saturday the St. Pat's Committee sponsored the Annual Crop Walk. Thanks go out to all who came out and walked, donated or both.

Your support is greatly needed and appreciated. The proceeds go to LOVE, a combination of charities who provide emergency help to those who need it.

A new season just wound down for us, as our softball team finished 3-1 in the independent intramural softball division.

We had a great time, and look forward to an undefeated season next year.

Only 171 Daze til the Best Ever St. Pat's 1997!

The StuCo Minute



StuCo

Source

John Park, Chancellor; Chris Hart, Chair of the St. Pat's Committee and Josh Grove, Student Body President.

These three answered questions that the primarily student audience, which packed 204 McNutt, wrote down on paper and passed to the front to be read to the panel.

Student Council has received quite a bit of feedback from both students and administrators alike.

Many students have raised the point that they would like another chance to discuss this topic with a more open

format for questions and comments. Student Council will do its best to accommodate your wishes.

To better represent the students of UMR, Student Council would like to hear any comments or suggestions pertaining to the St. Pat's festivities in March. So, if you have any comments for Student Council, either e-mail stuco@umn.edu or come by our office in 202 UC-West.

As always, any questions, comments, or thoughts pertaining to any aspect of campus are always welcome.

UMR Computing Services

<http://www.umn.edu/~cchtml/>

OFFICE: M/CS 114 #341-4841; M-F 8:30pm - 4:30pm

CLC: M/CS 104/108

24 Hours Continuous: Sunday 8:00am - Saturday 2:00am

Saturday: 8:00am - Midnight

HELPDESK: <http://www.umn.edu/helpdesk/>

Help Desk Scheduled Hours

M/CS 104 #341-help(4357)

Monday-Thursday:

10:30am-12:30pm;

1:30pm-5:00pm;

6:00pm-6:00am

Friday: Midnight-6:00am;

1:30pm-5:00pm

Saturday: 5:00pm-Midnight

Sunday: 6:00pm-10:30pm

ME 119 #341-6039

Monday-Thursday:

6:30pm-1:30am

Friday: Midnight-1:30am;

4:30pm-8:30pm

Saturday: 12:30pm-5:30pm

Sunday: 6:30pm-1:30am

Free Short Courses Still Open

<http://www.umn.edu/~cchtml/training/>

Preregistration Required: Call Office

Instructor Taught Courses

WordPerfect THESIS

-Tuesday, Sept. 24, 3:30pm

Eudora Demonstration

-Wednesday, Sept. 25, 2:30pm

Windows Basics

-Thursday, Sept. 26, 2:30pm

Windows Internet Software

-Monday, Sept. 30, 2:30pm

Unix OS Basics

-Wednesday, Oct. 2, 2:30pm

Scanner Demonstration

-Tuesday, Oct. 15, 2:00pm

Windows WWW Development

-Wednesday, Oct. 16, 2:20pm

Video Tape Courses

WordPerfect for Windows 6.1

-Beginning

-Thursday, Oct. 3, 2:30pm

-Intermediate

-Tuesday, Oct. 8, 2:30pm

-Advanced

-Thursday, Oct. 10, 2:30pm

Quattro Pro for Windows 6.0

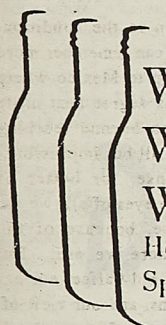
-Intermediate

-Wednesday, Nov. 6, 2:30pm

-Advanced

-Monday, Nov. 11, 2:30pm

BELGIUM FRANCE GERMANY ITALY IRELAND JAPAN MEXICO AUSTRALIA



Witt
Wort
Works

Homebrewing Supply &
Specialty Beer Emporium



Rolla's complete home brewing supplier now offers the widest selection of beers from around the world. If you are looking to start a hobby with satisfying rewards come in and give home brewing a try. If you are looking for something more immediately satisfying, come in and choose from or diverse selection of import and micro-brewed beers.

Southside Shoppers World, Rolla

(Next to Sears by JCPenny's)

Phone: (573)341-3311

Monday-Friday 10am-10pm

Saturday 8am-10pm

CANADA SCOTLAND INDIA POLAND NEW ZEALAND DENMARK THAILAND

Free
Gas!

Boatmen's Collegiate Options

Check out the benefits:

- Free use of any Boatmen's 1,200 ATMs with 4 locations in Rolla
- Personal checking with unlimited check-writing privileges and no minimum balance requirement
- Free ATM or MasterMoney™ card*
- 24-hour telephone banking

Special Limited Time Offer

Open a new Collegiate Options
account and receive a coupon for

\$5 in free gas

at participating merchants.

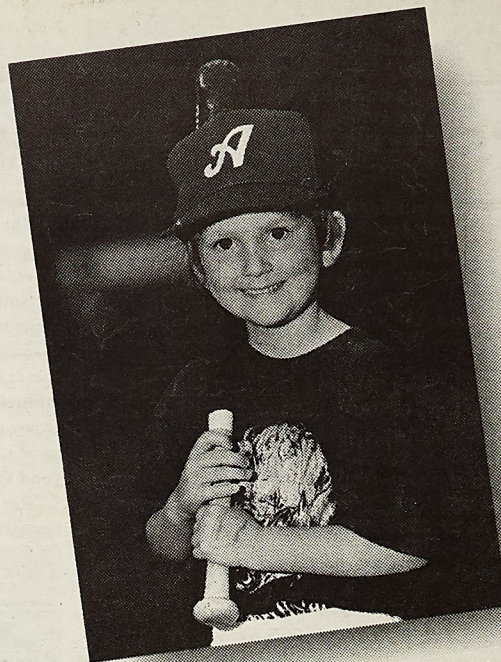
All this
for only
\$3
a month!

*Just one more way to get
more for your money at Boatmen's!*



**BOATMEN'S®
BANK OF
ROLLA**

Offer expires 12/31/96.
* Subject to approval
Member FDIC



Bethany Cartledge
In-line skater.
T-ball slugger.
Drunk driving victim.
January 18, 1994
Cheraw, SC

If you don't stop someone from driving drunk, who will? Do whatever it takes.

FRIENDS DON'T LET FRIENDS DRIVE DRUNK.



U.S. Department of Transportation

StuCo Teacher Evaluation Question Contest

3 questions will win a \$10 gift certificate for the UMR bookstore
complete this form: including name, email address, and your
idea for a question to be put on the StuCo Teaching Survey
Then return this form to 202 UCW

Deadline for entries is October 11, 1996

NAME: _____

EMAIL: _____

QUESTION(S): _____

*Winners will be notified by email. Students may enter
as many questions as they wish.



The Canterbury Club of
Christ Episcopal Church
invites you to Join them
for Evening Service
every Sunday
at 6:00 PM



SLUB Presents:

Comedian

FRANK KING

"SLIDE-SHOW GUY"

WED., OCTOBER 2 8:00 PM

UC-EAST CAFETERIA

Free w/Student ID

SPORTS

Miners lose to Truman in MIAA opener



Matt Ryan
Staff Writer

The football Miners showed just how much they have improved as they lost a tough game to Truman State University (formerly Northeast Missouri State). The Bulldogs, a perennial powerhouse, won by a score of 30-14, but, "The score was not indicative of the game," Miner head coach Jim Anderson commented.

UMR falls to a 2-1 (0-1 in the MIAA) while Truman State improves to 1-2 (1-0 in the MIAA) in what was the conference opener for both teams.

The game was very close throughout and the difference on the scoreboard was spelled out in a few key Miner mistakes. "We made a couple of mistakes that cost us 10 points," Anderson said. The game showed "a lot of progress," he added. Last year the Miners were thrashed by the Bulldogs 63-3.

UMR started the game off with Jeremy Markum returning the kickoff for 43 yards to the Truman State 46 yard line, giving the miners excellent field position. UMR drove to a first down on the Bulldog 28 yard line, only to be stopped there, after a sure touchdown pass was dropped. TSU took the ball over downs.

The Miner defense was able to force the Bulldogs to punt after a short drive of 23 yards. UMR received the punt on their 19 yard line. On the first play from scrimmage, an option exchange was lost to the Bulldogs, giving them the ball on the UMR 19.

Here the Miner defense came up big, not allowing the Bulldogs to score a touchdown, forcing them to kick a field goal to take the lead 3-0 with 6:30 left in the first quarter. UMR



Liz Morris

started from their own 20 on the kickoff and were able to drive to the TSU 26 yard line. On first down, UMR was penalized for holding, another key mistake that pushed them back to the 37 yard line. The Miners were able to get back to the 25 yard line, but Lance Privett's 42 yard field goal attempt was no good, giving the ball back to the Bulldogs.

At this point, Truman star Jarrett Anderson took over, helping the Bulldogs mount a 12 play, 75 yard drive capped by an Anderson touchdown to make the score 10-0. UMR got the ball back, was able to drive from their 20 to the TSU 45 before another fumble gave the ball back to Truman.

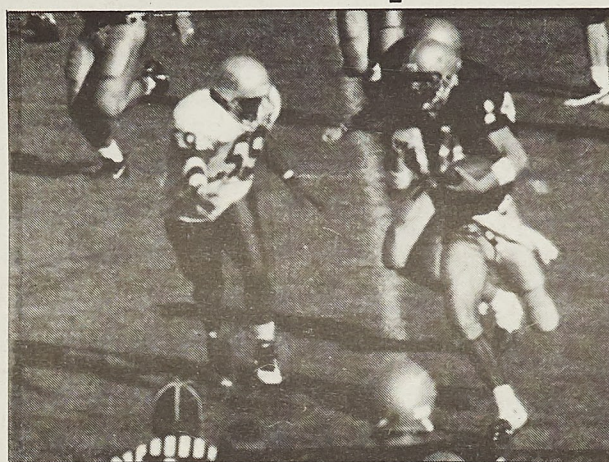
The Bulldogs took advantage of this mistake, with Anderson scoring

another touchdown to make the score 17-0 with 6:18 left in the first half. The Miners, on the strength of quarterback Dan Van Anne hooked up with receiver Elliott Jackson for a 32 yard touchdown reception.

The Miners defense, down by only three to play with 12:56 to play in the third quarter, was able to stop the Bulldogs after Truman drove to the UMR 38 yard line. The ensuing punt was down on the Miner two yard line.

With such horrible field position, the Miners were unable to do anything, forcing punter James Harden to punt. After one punt was nullified by offsetting penalties, Harden, working with only 11 yards instead of the usual 15, kicked a beautiful punt away from the Bulldog return man.

Courtney Porter intercepted the



Liz Morris

Left: Miner linebacker Ed Reichert wraps up Truman ballcarrier. Reicher had eight tackles on the day. Above: Quarterback Dan Van Anne scrambles for the Miners. Van Anne threw for 202 yards on the day. The Miners will travel to Maryville to take on the Northwest Missouri State Bearcats.

next Truman pass, but the Miners were unable to do anything with it and were forced to punt.

The two team traded punts back and forth, until the Bulldogs, wearing down the Miners with their superior size, were able to drive 76 yards to score a touchdown with 10:50 left on the clock. The Truman State two-point attempt was no good, so the score was TSU 23, UMR 14. Stopped on an unfortunate third down play where a Van Anne pass to an open Jackson hit the umpire, falling incomplete. Van Anne was sacked the next play, causing the Bulldogs to take over on downs.

Starting on the UMR 37 yard line, the Bulldogs were able to score another touchdown, making the score 30-14, which is how it ended.

The Miners were led on offense

by Van Anne, who threw for 202 yards and one touchdown pass. His favorite target was Jackson, who caught eight passes for 91 yards, while Brandon Risner, a forgotten man in the Miners' first two games, caught four passes for 44 yards.

In the backfield, Russell Zung had a huge game, gaining 53 yards on the ground, but more important was his excellent pass blocking. The Miner offensive line did an impressive job, giving Van Anne time despite physically smaller than the Bulldogs. James Harden did an excellent job punting, averaging 42.5 yards a kick on four punts.

On defense, linebackers Ed

see Football page 17

Miner Match-up

UMR Miners at NWMSU Bearcats

Site: Rickenbrode Stadium Maryville, MO

Date: September 28, 1996

Time: 1:30 pm CDT

Radio Coverage: KTTR 99.7 FM

1996 Records: Bearcats (3-0), Miners (2-1)

Series Record: 33-29-1 UMR leads

Head Coaches: Jim Anderson (13-31-1 5th year at UMR);

Mel Tjeerdsma (9-16 2nd year at NWMSU)

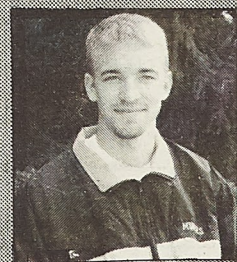
Players to watch: NWMSU: QB Greg Teale, LB Dante Combs

Miners: OL Mike McNery, DB Courtney Porter

Outlook: The Miners hope to pick up their first conference win in Maryville after an encouraging game with the Truman State Bulldogs. But they will face a stern test in the Bearcats who enter the game at 3-0. The Bearcats offense will be led by running back Derek Lane. Ken Gordan has been a force for the Bearcats on defense.

Sources: UMR and NWMSU Sports Information

M-Club Athlete



Ben Mulvaney

Ben was selected for his line performance in the Kansas Jayhawk Invitational which coach Sarah Preston called "the race of his college career."

of the week

Miners run at Southern



Nathan Erdman
Sports Editor

The Miner and Lady Miner cross country teams competed in the Southern Stampede at Missouri Southern

State College, last Saturday in Joplin, Mo. The men finished sixth in the nine team overall field, while

finishing fourth in the Division II field. The women finished seventh in their overall meet in a field of eight teams.

The Miners had to finish the race without Kevin Johnson who pulled out with a slight injury. "We're taking no chances, we need him late in the season," head coach Sarah Preston said.

The Miners were able however to run a respectable race without the freshman and despite Craig

McCauley being hampered by another minor injury. The Miners were able to beat out Missouri Southern, but finished well behind the Central Missouri State Mules.

"Central Missouri is typically

strong, they were second in Division II last season. It's encouraging they're not nearly as strong this season.

I was actually glad to beat Southern without Kevin or Craig in the top five, and beat Southern at home," Preston said.

The top finisher for the Miners for the third consecutive meet was Ben Mulvaney. Mulvaney brought in a 23rd place score for the Miners with an 8K time of 26:01.1. Other top Miner races were run by Matt

Hagen with a 26:50.8 time and Josh Sales with a 26:55.3 time. The top MIAA runner in the men's meet was CMSU's Marin Fysh, a national meet qualifier in 1995.

The women were once again led by freshman Sheri Lentz. Lentz led the Miner field with a fourth place

finish and a time of 18:11.1 in the 5K Division II race. Lentz came just in front of the Mid America

Intercollegiate Athletic Association's defending women's champion Sandy Thomas. Thomas a senior at

CMSU finished with a fifth place time of 18:14.6. Another threat in the conference race Missouri Southern's Sonia Blackleter

was the MIAA's top finisher. Blackleter came in third with a 17:58 time.

Other MIAA runners in the top ten included Missouri Southern's Amanda Harrison, Truman State runners Angie Meyer and Julie Lehmen and another CMSU runner Beth Cook.

"Sheri ran a real strong race. She didn't get out fast last week. This week she was in a much better

position and was able to run quite well. She beat all of CMS. And it was a milestone to beat Thomas after losing to her in high school,"

Preston added. Tracy Jones brought in the Lady Miner's second best time with an eighteenth place score.

Much of the rest of the Lady Miners once again finished in a pack toward the end of the race. "There is room for improvement on raceday. Everything is set to peak at the end.

We're working for regional and nationals," Preston said. "We all work together, we're all young. We've got several years to look forward too."

The Miners and Lady Miners will be competing in the Miner Invitational Oct. 5 at the UMR Golf

Golf team opens

Truman State Classic, Sept. 16-17 at Kirksville, Mo.

19. Brian Panka, 234;
37. Andy Laegler, 241;
49. Bill Kuess, 250;
52. Byron Bryant, 253;
55. Brian Billingsley 260.

**Next Meet: Ramada Inn-Missouri Miner Invitational
Sept. 30-Oct. 1**

Volleyball Club starts

The Miner and Lady Miner Volleyball Clubs are looking for people interested in playing power volleyball during the 1996-97 season. We need more players especially setters. Anyone is welcome to attend our open practices. This year the UMR-VBC hopes to improve upon what we did last year. We would like to

field two guys teams and ladies teams. Hosting tournaments here at

UMR us being investigated. More importantly we want to improve on the organization of the teams.

The men's teams practice at 9 p.m. Tuesday nights and at 8 p.m. Thursday nights in the multipurpose building. The ladies' practice begins at 5:30 on Tuesday nights and at 5:30 on Wednesday nights and at 3 p.m. on Friday afternoons, also in the multipurpose building.

Miner Scores & Stats

Football

Scores

Top 20

Grand Valley St. 36, 1. Ferris St. 17
3. Carson-Newman 28, Presbyterian 10
Northwestern St. 33, 4. Tex. A&M-Comm. 7
11. N. Colorado 21, 5. N. Dakota 6
Ft. Lewis 24, 6. Ft. Hays 21
7. N. Alabama 24, 9. Tex. A&M-Kings. 7
Delaware 24, 8. W. Chester 17
10. Pittsburg St. 14, CMSU 12
13. Valdosta St. 43, Ark. Tech 26
McNeese St. 37, 14. Angelo St. 23
Howard 31, 15. Virginia St. 7
18. Mo. Southern 22, Emporia St. 20
19. W. Georgia 48, Elon 14
20. Saginaw Valley St. 50 Mich. Tech 14
MIAA
Mo. Southern St. 22, Emporia St. 20
NW Mo. St. 47, Southwest Baptist 7
Pittsburg St. 14, Central Mo. St. 12
Truman St. 30, Missouri-Rolla 14
Washburn 21, Mo. Western St. 7

MIAA Standings

Conference	All Games
W L Pct.	W L Pct.
NWMSU 1 0 1.000	3 0 1.000
MSSC 1 0 1.000	2 0 1.000
Pittsburg St. 1 0 1.000	1 1 .500
Washburn 1 0 1.000	1 1 .500
Truman St. 1 0 1.000	1 2 .333
CMSU 0 1 .000	2 1 .666
UMR 0 1 .000	2 1 .666
MWSC 0 1 .000	2 1 .666
SBU 0 1 .000	0 2 .000
Emporia St. 0 1 .000	0 3 .000

Saturday's Boxscore

Truman St. 30 UMR 14

Truman St. 3 14 0 13- 30
Missouri-Rolla 0 7 7 0-14

First Quarter

TSU- FG Fischer 22, 6:30

Second Quarter

TSU- Anderson 16 run (Fischer kick), 10:21
TSU- Anderson 16 run (Fischer kick), 6:18
UMR- Van Anne 4 run (Privett kick), 1:18

Third Quarter

UMR- Jackson 32 pass from Van Anne (Privett kick), 12:40

Fourth Quarter

TSU- Anderson 3 run (run failed) 7:20
TSU- Johnson 14 run (Fischer kick) 3:47
A- 2,400

	TSU	UMR
First downs	30	16
Rushes-yards	44-314	34-74
Passing yards	155	202
Return yards	11	21
Comp-Att	17-30-2	18-29-0
Sacks-yards lost	1-5	5-31
Punts	4-154	4-170
Fumbles-lost	0-0	2-2
Penalties-yards	8-29	8-57
Time of Possession	33:02	26:58

Individual Leaders

RUSHING- UMR-Zung 8-53 TSU, Anderson 25-205, Johnson 6-61
PASSING- UMR, Van Anne 18-29-0, TSU, Minnis 17-30-2.
RECEIVING- UMR, Jackson 8-91, TSU, Bray 7-83
TACKLES- UMR, Gilmore 8, Reichert 8, Lindsey 8, TSU, Huff 6, Ludwig 4.

Soccer

PLAYER	GP	SHOTS	GOALS	ASSISTS	POINTS
--------	----	-------	-------	---------	--------

Gevan McCoy	7	16	2	0	4
Mike Kiefer	5	10	1	0	2
John Kwantes	7	6	1	0	2
Greg Schulte	7	6	1	0	2

Women's Soccer

PLAYER	GP	SHOTS	GOALS	ASSISTS	POINTS
--------	----	-------	-------	---------	--------

Natalie Sanders	7	35	6	2	14
Katie Marcum	7	10	3	0	6
Kate Masterman	7	15	2	0	4
Amber Fischer	7	9	1	2	4
Amanda Gilbertson	7	8	1	1	3

Cross Country

1995 Results At Southern Stampede Men

Arkansas- 37
Butler County- 55
Abilene Christian-91
Tulsa- 101
CMSU- 106
UMR- 172
MSSC- 173
Allen County- 259
SBU- 262

Women

Arkansas- 35
Abilene Christian- 72
Tulsa- 75
CMSU- 112
MSSC- 125
Truman St.- 148
UMR- 170
SBU- 187

Sources: NCAA Online, UMR Sports Information.

Unbeaten streak now at four Lady Miners will play host to SMSU tonight



Jonathan Erdman

Staff Writer

The UMR women's soccer team will face Southwest Missouri State tonight at 7:00 p.m. in Rolla, and will play Southwest Baptist Saturday September 28 in Bolivar, Mo.

Coach Mark Salisbury believes that the game will be tough. He thinks the game will be much different than the pre-season exhibition game, which had a score of 1-1.

"I think it will be a real challenge, and if we don't come out hard it's going to be a long night," Salisbury said. "They [Southwest Missouri State] played their whole roster. They're not going to do that this time. They're going to play their starters. They're going to look to win this game. Last time they were just looking to play everybody, that's not going to be the case this time. They're going to look to play their starters and to put their best team on the field for 90 minutes. So we're going to see an entirely different game."

Salisbury believes that the team will need to improve a few things to be successful in the Bolivar.

"[We need to improve] our work rate from our midfielders to forwards. We'd like to improve the way our team combines all around the field, and use each other to play as a team."

The Lady Miners defeated William Woods at Rolla's home opener with a score of two to zero. Salisbury was happy with the team's success. The Rolla out-shot William Woods 25 shots to two.

"It was nice to win. It was nice to dominate them like we did. I would like to have seen us finish more of our chances. It was a big step for us as a team. I think we made some progress," Salisbury said.

The starting team from the Lady Miners was made up of freshman Kim Hydeman, Katie Marcum, Sara Rudy, Heather Morgan, Lori Douglas, Kelly Thomas and Shauna Oppert, juniors Tami Bowman and Natalie Sanders, and senior Zachlyn Thomson, with senior Rachel Lewis in the goal.

The first goal scored by the Lady Miners was scored by Marcum with an assist from Morgan. The second was scored by Sanders who was assisted by Bowman. Sanders leads the Lady Miners in goals scored with a total of six. Salisbury thinks that Sanders and Rudy played well during the game.

"Natalie [Sanders] played pretty well, and Sara Rudy played quite well," Salisbury said. "They have a lot of ball skills, and they're able to beat players on the dribble."

Coach Salisbury attributes the teams win to its skill and size.

"We're a better team than they are. We have a fuller roster, and were just a better team, I think, all the way

see Lady Miners page 17



Liz Morris

Natalie Sanders and Amanda Gilbertson attempt to drive past a William Woods defender. The Lady Miners ran their record 3-3-1 this weekend after losing to two nationally ranked teams and a tough Wisconsin-Parkside squad. UMR will host the Lady Bears of Southwest Missouri State tonight at 7 p.m. at the UMR Soccer Complex.

Gilmore honored



Jonathan Erdman

Asst. Sports Editor

A senior University of Missouri-Rolla linebacker, Brian Gilmore, has been awarded the Burger King Corporation's "Scholar Athlete of the Week" award.

Because of this award, UMR will gain a \$10,000 scholarship that will be given in Gilmore's name. The scholarship is part of the \$1,000,000 in scholarship that Burger King is donating in the name of college football players to 100 colleges nationwide during the 1996 football season.

Gilmore is a ceramic engineering major. He has 296 career tackles which places him fourth on UMR's career tackle list, and for the past two he has led the Miners in tackles. He made 137 tackles and was a team captain in the 1995 season, and has won the GTE/CoSIDA first

team Academic All-America honors for two years in a row. Last year he had two blocks and one interception. As a sophomore he made 122 tackles, had one interception and two sacks.

In this season as of the Miner's second game, he was leading the Miners in tackles with 12, one was a quarterback sack, and three were for a loss. He earned honorable mention All-Mid America Intercollegiate Athletic Association as a linebacker for the past two years, and was on the conference's all academic team.

Gilmore has been an officer of the M-Club, a service club made up of UMR athletes and is a member of the Fellowship of Christian Athletes. He was also a member of Keramos and the American Ceramic Society.

All those who have won the "Scholar-Athlete of the Week" this year, will be announced on national television. The announcements will be made live during half-time in ABC's college football programming each Saturday.



Jonathan Erdman

Asst. Sports Editor

The Miner soccer team will play against Southwest Baptist in Bolivar on Saturday September 28 for its conference opener. It will be the Mid America Intercollegiate Athletic Association opener.

UMR shut out Southwest Baptist last season with a score of 1-0. Coach Mark Salisbury believes the team will have to work to win, and wants the team to improve.

"We generally have beaten them, but they have improved a great deal since a year ago. So, they will be tough, and it's at their place. It's always difficult to play away," Salisbury said.

"We want to play well as a team, and we want to beat them. Our goal is to play well and win, every time."

The team will need to improve a few things to win.

"[We need to] put the ball in the back of the net," Salisbury said. "We still need to play as a team more and be more consistent."

The Miners were shut out by Columbia College September 18. They took the field with freshman team members John Almeida, Pat Boyce, Matt Long and Dave Nauman, sophomores Greg Schulte, Tim Birch and Brian Koscielski, juniors Mike Kiefer, John Kwantes and Gevan McCoy, with sophomore Kevin Levey as goal keeper. Salisbury attributes the team's performance to its age.

"We didn't play very well. We showed a lot of youth. We were inconsistent. We lost our composure. We played pretty well in the first half, and in the second half we sort-of fell apart," Salisbury said. "We're going to take our lumps as a young team. Columbia has a good team every year. I think that Rolla has only beaten them once in the history of playing them. We've played them 11 times and have only beaten them once. They're a very good team, and we just weren't up to the task."

Salisbury thinks the team will need to improve during the season and will need to grow as a team. "We just need to get better. We need to play with more brains, we need to play with more heart and not get down when things don't go our way."

The Miners were playing

without senior Brian Marx, who was injured in the game against Bellevue. Coach Salisbury feels that the loss of one player didn't affect the team very much.

"We were missing Brian Marks, who broke his foot against Bellevue, but that's not an excuse. We are not a team in which one player is going to make that much of a difference."

Neither team scored a goal in the Miner's game against Central Methodist. The Miners out-shot CMC twenty-three shots to four.

"We out-shot them by quite a bit and just couldn't put the ball in the back of the net. Sometimes you get unlucky, and it was one of those days," Salisbury said.

According to Coach Salisbury, the team has improved its performance since the game with Columbia College.

"We played better. We just couldn't score, and that's a tough place to play, so we're better. We're still not all there, but we played better at times. We're still a really young team."

Salisbury thinks it will take a while, but he thinks the team will turn out well.

"We're very young, and it's going to take us a while to get into full stride."

TIME KILLERS

Super Crossword

ACROSS
1 It's tossed with sauce
6 Muttonous ship
11 Actress/singer Salonga
14 "Cheers" prop
17 "The Odyssey" goddess
19 Castor's twin
20 Out of sorts
21 Coach
22 Start of a remark by E.C.
23 McKenzie
25 Damp and chilly
26 Vane dir.
27 Carrot or parsnip
28 Independent sort
29 Question
30 Turn down
31 Unproductive
35 Rob of "Silk Stalkings"
37 Mall event
40 He's out of this world
41 Less punctual
44 Part 2 of remark
49 Stadium roar
50 Common contraction
51 Hawaiian harbor

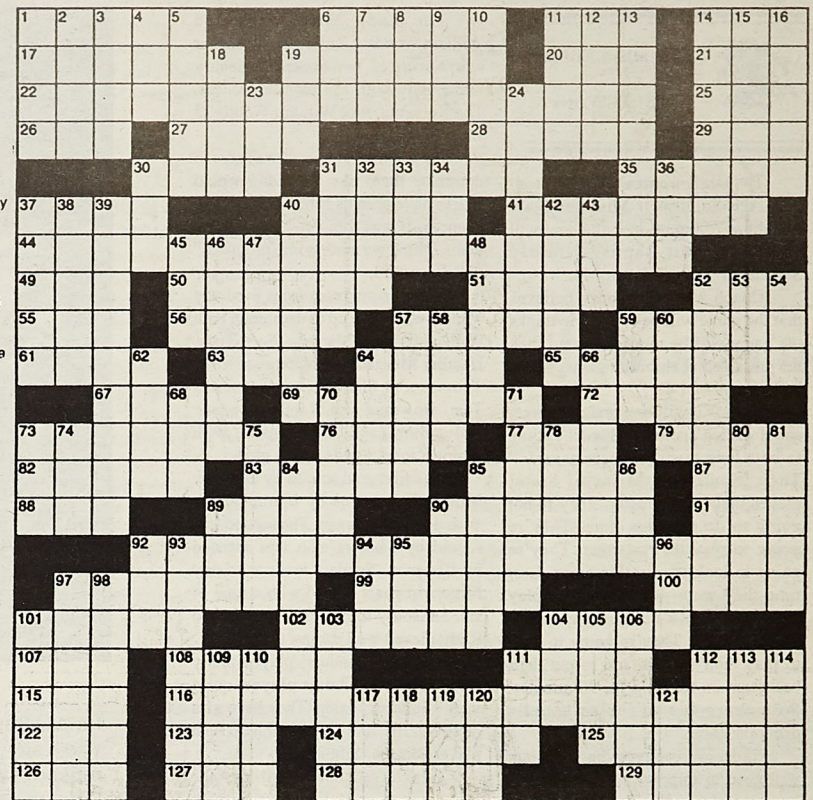
52 Large tub
55 Get by, with "out"
56 Hard on the nose
57 Soprano Mitchell
59 Sprightly
61 Left
63 Minnesota
64 Kids connect them
65 Lesser Antilles isle
67 Acquire
69 Proposition
72 Handy bit of Latin
73 Shows up
76 Or — (threat words)
77 Initials of interest?
79 Palliative
82 Crocheted item
83 Comic
85 Butts in
87 It's in the bag
88 "— Giovanni"
89 Breaker
90 Least naive
91 Fleming or Holm
92 Part 3 of remark
97 "The Faerie Queene" poet

99 Singer Bryant
100 Aware of
101 Office plants
102 Strauss opera
104 Sunscreen ingredient: abbr.
107 Wordsworth work
108 Twangy
111 Palo —, Calif.
112 "Kidnapped" monogram
115 Actor Liotta
116 End of remark
122 Godfrey's instrument
123 "The Crying Game" star
124 Some plays
125 Journalist
126 "— About You"
127 Corn serving
128 Author Thomas
129 Hold up
DOWN
1 Hostage
2 "This weighs —!"
3 Andrew of
4 "Melrose Place"
5 Aviv
6 Wrestling giant
7 Clerical garb

8 — du Diable
9 "Sister Act" extra
10 Napoleon's fate
11 Mortgage, for one
12 Nobel
13 "La Traviata" tenor
14 You'll get a kick out of it
15 School supply
16 Rubbernecks
18 Ever's partner
19 Quarry
23 Mini-pooch
24 Hold
30 Morning moisture
31 Lightheaded?
32 "— That a Shame"
33 Gun the engine
34 Heredity letters
36 Anger or envy
37 Scatter
38 Rouse
39 Wagner opera
40 Lend a hand
42 Reference volume
43 "Blame It on —"
45 Author Le

Shan
46 Geologic epoch
47 "Smoke Gets in Your Eyes" composer
48 Selected
52 Offense
53 Clay, today
54 John Ritter's dad
57 Baggy
58 Raison d'—
59 Pretense
60 Seize
62 Whippet's wag
64 Submarine base?
66 Wright of "Mrs. Miniver"
68 College growth
70 Chopped with an axe
71 Berenson or Tomei
73 Count up
74 Milne creature
75 Ignominy
78 Artist
80 Inclined
81 Chutney ingredient
84 Supervised
85 42 Down feature
86 Ave. crossers

89 Unsold of basketball
90 Willow
92 D.C. figure
93 Trap
94 Chess champion Mikhail
95 Lennon's lady
96 Mauna —
97 "Bad Blood" singer
98 Vicimized, with "on"
101 Cicero's spot
103 Up in the air
104 Ararat's grp.
105 Periodic-table abbr.
106 Get on
109 On the briny
110 Christmas-tree topper
111 Beast representing stupidity
112 Tabriz currency
113 Actress Olin
114 Remain
117 Violent card game?
118 Noun suffix
119 "Foucault's Pendulum" author
120 Grifley or Wahl
121 "— Fledermaus"



copyright 1996 by King Features Syndicate

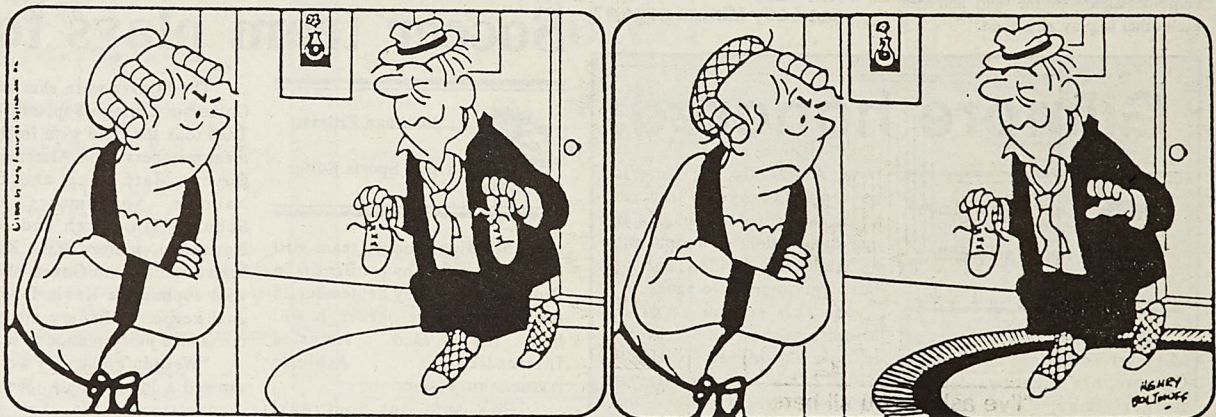
see Solutions, page 16

Sports Quiz by Larry Duncan

1. What is known as the "Most Exciting Two Minutes in Sports"?
2. What two schools played the first football game?
3. What two NFL stars were suspended for the 1963 season for gambling?
4. What averted an Arab boycott of the 1948 Summer Olympics?
5. In what sport do you throw "bombs"?
6. Who holds the career record for the most major league home runs?
7. What Asian city houses the world's biggest bowling alley?
8. Who was known as the "Louisville Lip"?

Vision Teaser

Find at least six differences in details between panels.



CAMPUS GOSSIP

Frosh of 3rd floor,
Start thinking now of DEAD
SNAKES!!

- your friendly senior

Kimbe,
Can't talk to a psycho...

Swanson,
You own the stupid bottle!

ZTA new members rule!

Colleen,
Who's your daddy?!

Our family is still the coolest (yes, the original "cool family"! I miss you guys!

ZLAM,
Jill

Mee,
Could I get some mild cheddar cheese, please?

DOL,
7 in the car, 7 going home.

Sink,
I hear you knockin' but you can't come in!

Stacy,
Oh my God! The fliers are attacking us!

ZLAM,
Shannon

Here's to Percle, the World's Best MOM!

Phatt Physch,
Hey, could I please have my hat back?!

Leigh -
You are doing a great job with Games!

I love you!
Jill

Carrie,
Nobody causes trouble like we do!
Ang

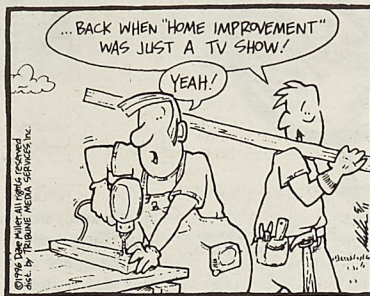
Miya,
Where's my caddy when I need her?
Ang

Shannon -
Seen any SN fliers at physics?
ZLAM,
Stacy

COMICS

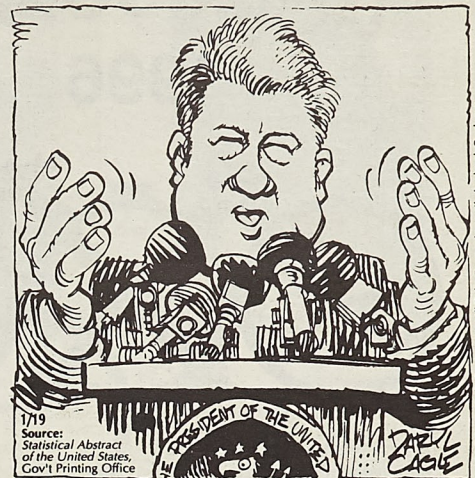
DAVE

by David Miller

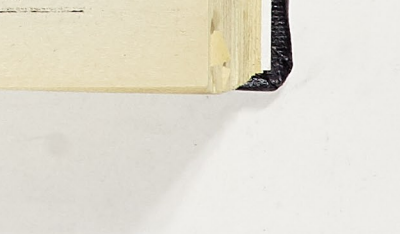
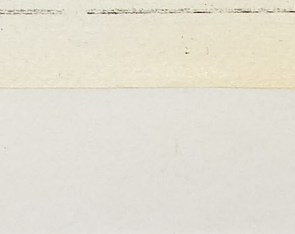
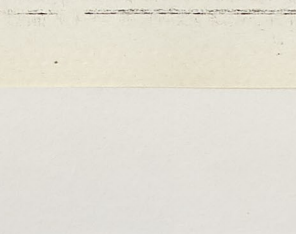
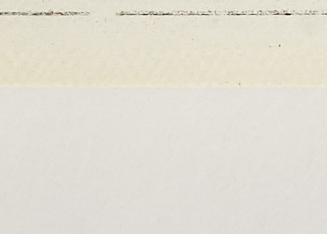
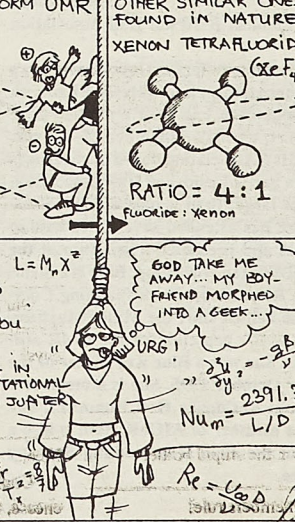
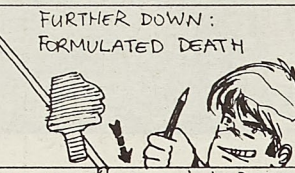
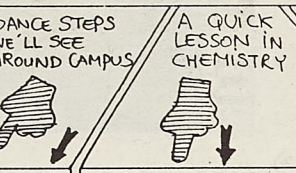
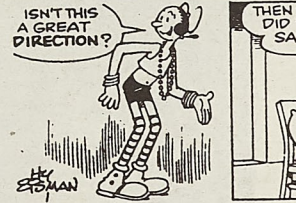
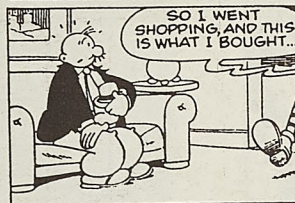
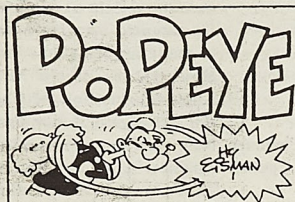
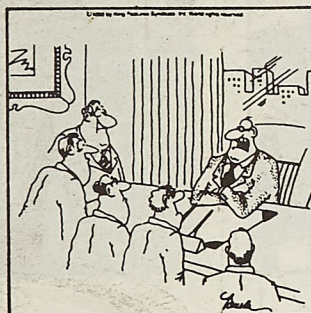


TRUE!

by Daryl Cagle



In 1992, Arkansas produced 444,000,000,000 cubic feet of natural gas.



#

Σ
Π



Amie Wood
Sigma Pi

The men of Sigma Pi are proud to present Amie Wood as our queen candidate for UMR Homecoming 1996. Amie is the daughter of Daniel and Janice Wood of Neosho. Amie is active in many organizations on campus including Zeta Tau Alpha, Intercollegiate Knights, Student Association of Management Systems, and the Career Opportunities Center Advisory Council. She is in charge of the Scholarship program for Zeta Tau Alpha. Amie has been awarded several scholarships including Curator's, University, Computer Science Department, and Mathematics Department scholarships. She has also received the honors of being nominated for Student Employee of the Year and as a 1996 St. Pat's Queen Candidate. Again Sigma Pi is honored to be represented by Amie Wood in UMR's 1996 Homecoming.

Σ
Φ
Ε



Kimberly Stewart
Sigma Phi Epsilon

Representing Sigma Phi Epsilon is Ms. Kimberly Lynn Stewart. She is a senior Geological Engineering student. Outside of class, she is a member of Zeta Tau Alpha sorority, Lambda Sigma Pi service organization, Sigma Gamma Epsilon honor society, and C.L. Dake society, an earth science organization. Her leadership roles include serving as Membership chair for Zeta Tau Alpha, Special Projects chair for Lambda Sigma Pi, Treasurer for Sigma Gamma Epsilon, and vice-president for C.L. Dake society.

Σ
Ν



Katie Alt
Sigma Nu

The brothers of Sigma Nu welcome everyone back for another year of school. The Brothers of Sigma Nu are proud to present, Katie Alt, as our Homecoming Queen candidate for the fall of 1996. Katie is in her second year at Rolla and plans to receive a degree in engineering management. The brothers of Sigma Nu are confident Katie possesses the enthusiasm and poise that characterizes Sigma Nu. We wish her and all the candidates the best of luck!

Σ
Χ

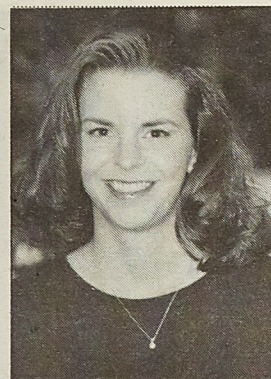


Julie Nowakowski
Sigma Chi

If one could take the enthusiasm of twenty people and bottle it up into one container, what that person would end up with is Ms. Julie Nowakowski. She takes great pride in her opportunities to assist in the Special Olympics as a member of the Service Over Self organization. As for campus volunteer work, Julie takes notes for a quadrapalegic and takes part in the Society of Women Engineers as the physics ambassador.

Julie is a prominent member of Theta Eta Sigma, a female service organization. Currently, she is the Public Relations Chairperson, because Sigma Chi's are proud of her recent election to president. The major reason that Sigma Chi has chosen Julie as our candidate for Homecoming Queen is simply her never ending spirit. Day in and day out, she spreads a smile from ear to ear just itching to tell or listen to a good story. Therefore, our support goes to Julie Nowakowski for Homecoming Queen, Fall 1996.

R
H
A



Diane Moellenhoff
Residence Hall Association

Diane Moellenhoff is representing Residence Hall Association as their Homecoming Queen Candidate. Diane is the daughter of Fred and Lola Moellenhoff of St. Louis, MO, and is the fourth person in her family to attend UMR. She is a junior majoring in Electrical Engineering. She has been the Resident Assistant of McNerny Hall for two years, and is involved in both the Quadrangle Hall Association and Residence Hall Association. She is a member of Society of Women Engineers, Omega Sigma Service Organization, Lutheran Student Fellowship, and Phi Eta Sigma. She is also active in intramural sports.

Φ
Κ
Θ



Michelle Phillips
Phi Kappa Theta

Michelle Phillips is the daughter of Mike and Sandy Phillips of Collinsville, IL. Her father graduated from Rolla in 1973 with a degree in Mechanical Engineering. She has one younger brother, John, who is 17. She is currently a junior in Mechanical Engineering and recently finished a second semester co-oping with Hussman in Bridgeton, MO. She is president of Omega Sigma, a campus service organization that promotes friendship and responsibility, while donating many hours to helping better our community and campus environment. She was a member of the women's varsity soccer team and was awarded a varsity letter. She is active in intramurals and enjoys weight training, basketball, and relaxing with friends.

Λ
Σ
Π



Jodie Courtin
Lambda Sigma Pi

The ladies of Lambda Sigma Pi are proud to present Jodie Courtin as their 1996 Homecoming Queen candidate. Jodie is the daughter of Gary and Roberta Courtin of Arnold, MO. She is a senior majoring in Electrical Engineering. As an active member of Lambda Sigma Pi, she has served two terms as their Treasurer and one term as their Vice President. She is also currently serving as Chi Omega's Rush Chairman. Some of her other activities include Kappa Mu Epsilon where she held the office of President, Vice-President, and Treasurer; IEEE serving as secretary; and Blue Key National Honor Fraternity. We wish Jodie the best of luck!

Λ
Χ
Α



Jessica Thomas
Lambda Chi Alpha

Miss Jessica Thomas has been chosen by the men of Lambda Chi Alpha Fraternity to be their nominee for Homecoming Queen for the 1996-97 school year. Miss Thomas has been a member of Kappa Delta Sorority for four years and is currently the fundraising chairman. She has been a member of Lambda Sigma Pi service organization for two years and currently holds the office of treasurer. Jessica is a senior representative from Kappa Delta for the Panhellenic Council and also served as a rush counselor this fall.

K
Σ



Valerie Green
Kappa Sigma

Valerie is the daughter of Wayne and Janice Green, of Joplin, Missouri. She is a junior Engineering Management major, with an emphasis in Management of Technology. Valerie is also earning minors in Psychology and Economics.

Among her many interests at UMR is the continuance of her thirteen year study of the violin, as well as participating in many activities such as the Student Activity Fee Board, the Association of Professional Societies, the American Society for Engineering Management, and the Society of Women Engineers. She is also a member of various honor societies and the recipient of several achievement awards.

After graduation, she plans to continue her engineering career as well as attend graduate school in Industrial Psychology.

K
A

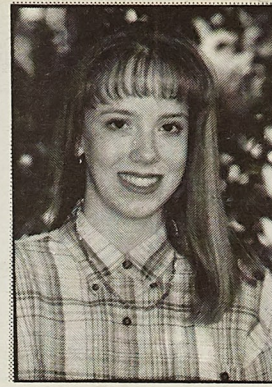


Heather Thompson
Kappa Alpha

Heather Thompson is a senior majoring in Civil Engineering. She is the daughter of Don and Darla Thompson of St. Louis, Missouri. Heather is a member of Zeta Tau Alpha, as well as Lambda Sigma Pi, American Society of Civil Engineers, and Alpha Phi Omega.

The brothers of Kappa Alpha would like to thank Heather for representing us in this year's Homecoming Celebration.

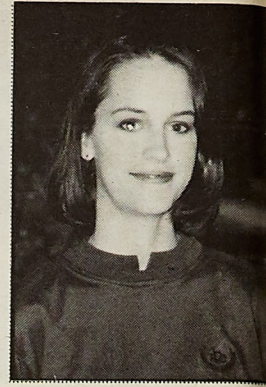
Γ
Β
Σ



Lynn R. Morak
Gamma Beta Sigma

Gamma Beta Sigma is proud to present Lynn Rene Morak as our 1996 Homecoming Queen Candidate. Lynn is a graduating senior in Engineering Management with an environmental emphasis. She is the daughter of Mary and John Morak of St. Charles, MO. A founding member of Gamma Beta Sigma, Lynn has been involved in GBS as past Treasurer, Rush, and Fundraising chair. She has also been extremely active in the Society of Women Engineers, serving as past President, Corresponding Secretary and Publicity Chair. Her other activities include the American Society for Engineering Management and being an American Red Cross volunteer. Gamma Beta Sigma wishes Lynn the best of luck!

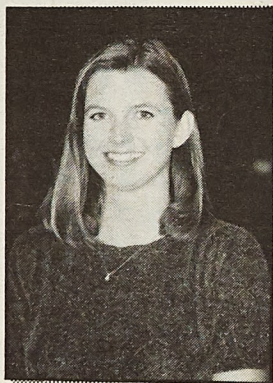
Δ
Τ
Δ



Laura Gwinnup
Delta Tau Delta

Laura Gwinnup is a ceramic engineering major with an interest in many other things. She enjoys reading, origami, singing, and playing volleyball. She currently holds the office of Assistant Scholarship in Chi Omega and the office of Public Relation in Wesley. She has just finished up her position as Historian for Acers and is now the new Treasurer. She is a member of Keramos and has done undergraduate research in her department. She is also a member of GAD.

X
Ω



Rachel Limbaugh
Chi Omega

The ladies of Chi Omega are proud to present Miss Rachel Limbaugh as their 1996 Homecoming Queen candidate. She is the daughter of Robert and Cathie Limbaugh and is from St. Louis, MO. Rachel is a super-senior in Electrical Engineering and will graduate in May of 1996. Currently, Rachel serves as the President of Chi Omega and the Managing Editor of the Missouri Miner. She is also a member of IEEE where she has served as President. We wish Rachel the best of luck this Homecoming.

B
l
u
e
K
e
y



Shannon Neimeyer
Blue Key

Shannon Neimeyer is the daughter of Phill and Donna Neimeyer of Kansas City, MO. She is a senior in Metallurgical Engineering and currently serves Blue Key as 2nd Vice-President. Shannon is also a member of Chi Omega Fraternity where she has served as Rush Chair, Panhellenic Council where she has served as Vice President, UMR TECHS, Tau Beta Pi, and Phi Eta Sigma. She is active in her department organizations as ASM Secretary and Alpha Sigma Mu Vice-President. Blue Key wishes Shannon the best of luck as our 1996 queen candidate.

A
Φ
Ω



Daphne Proffitt
Alpha Phi Omega

Alpha Phi Omega proudly nominates Daphne Proffitt as our 1996 Homecoming Queen Candidate. Within APO, Daphne has served as Vice-President, Treasurer, and Pledge Class Secretary. She is an active member of local sorority, Gamma Beta Sigma and has held numerous positions within GBS, including Vice-President NME, Ritual and Extension Chairs, Panhellenic Liaison, and received the Gamma Award for FS94. She was previously a member of service organization, Gamma Eta and the Psychology Club, was an International Student Mentor, and a St. Pat's Queen Candidate. Daphne will be graduation in December with a BA in Psychology. Good Luck and Best Wishes.

A
m
e
r
i
c
a
n
C
e
r
a
m
i
c
S
o
c
i
e
t
y



Daisie Hobson
American Ceramic Society

Daisie Hobson, daughter of Mary Riley, is a Ceramic Engineering major. Daisie has been actively trying to diversify the campus. Last year she was co-chair of Student Council's Intercultural Relations Committee, a member of the Campus Environment Committee, and a member of the African American Cultural Recognition Committee. She is a proud member of the Chi Omega Fraternity and the American Ceramic Society. She is also the current secretary of ACeRS and does undergraduate research in piezoelectric ceramics under the direction of Wayne Huebner. The American Ceramic Society wishes Daisie the best of luck.

A
E
Π



Karen Kremer
Alpha Epsilon Pi

A
I
C
h
E



Jennifer L. Geswein
American Institute of Chemical Engineers.

B
Σ
Ψ



Diana Alt
Beta Sigma Psi

K
Δ



Brandi Smith
Kappa Delta

Karen Kremer is the daughter of John and Rasalie Kremer of St. James, Missouri. She is pursuing a major in History and her secondary education certificate as well. Karen wishes to work with high school students, especially At-Risk students. Karen also has a position at the Boys and Girls Town of St. James Missouri. She is also a member of UMR TECHS, Phi Alpha Theta, a history Honor Society, and Student-Missouri State Teachers Association where she is in charge of the committee working to honor the St. James educators for National Education Week. She has also received National Collegiate Education Award and the All American Scholar Award.

Jennifer is the daughter of Fred Geswein of Jeffersonville, IN, and Karen Zipperich of Lincoln, NE. She transferred to UMR from Southeast Missouri State University for the winter semester of 1994. Since then, she has been active in AICHE and Omega Chi Epsilon, the Chemical Engineering Honors Society. She has served as Refreshment Coordinator for AICHE as well as Vice-President and Secretary of Omega Chi Epsilon. At Southeast Missouri State University, Jennifer was also a member of Alpha Phi Omega, a coed service fraternity.

The men of Beta Sigma Psi are proud to present Diana Alt as our 1996 Homecoming Queen Candidate. Diana is a graduation senior majoring in Chemistry. Her parents are Barbara Alt, an English instructor at East Central College, and Leroy Alt, an Electrical Engineering instructor here at UMR. Diana has been very active on campus, having served as VP-Pledge Education for Kappa Delta Sorority, Recorder for Student Council, Vice-President and MS Walk Chair for Blue Key, and Fund-raising Chair for Lambda Sigma Pi. She has also been involved with Alpha Phi Omega, Student Ambassadors and UMR Madrigal Singers, as well as being honored with Outstanding Service to Student Council Award, and being named a Student Knight in 1995. We wish Diana the best of luck as she helps us defend our 1995 Homecoming Champion title.

The ladies of Kappa Delta Sorority wish the best of luck to our Homecoming Queen Candidate, Brandi Smith. Brandi is a senior, majoring in Civil Engineering, from Lee's Summit, Missouri. She has been one of our most active members and has served as secretary, house manager, steward, and scholarship chairman. She is also active in many other organizations including Blue Key, Intercollegiate Knights, Chi Epsilon, Tau Beta Pi, and Intramurals.

Q
H
A



Jessica Marshall
Quadrangle Hall Association

Π
K
A



Amy Johnston
Pi Kappa Alpha

S
o
c
i
e
t
y
o
f
W
o
m
e
n
E
n
g
i
n
e
e
r
s



Kathleen Ritchey
Society of Women Engineers

S
M
S
T
A



Gayle Hoppe
Student Missouri State Teacher's Association

Jessica Marshall is originally from St. Louis, MO, and is currently a sophomore in Engineering Management. She is an active member in the American Society of Engineering Management, Newman Center, Omega Sigma, Gold Miners, Society of Women Engineers, Honors Academy, and Residence Hall Association. Also, she holds the position of Quadrangle Hall Association Vice-President and Circle K Projects and Fundraising Chair. When Jessica does get a moment of free time, she likes to spend it having fun with her friends and family.

The men of Pi Kappa Alpha Fraternity proudly present Miss Amy Johnston as their 1996 Homecoming Queen Candidate. Amy is a senior in Life Science. She is the daughter of Dale and Susan Johnston from St. Louis. She currently serves as treasurer for the Chi Omega Fraternity. Amy is also actively involved in Blue Key Honor Fraternity, Freshman Mentoring Program, Spanish Club, and Helix Club. We wish her the best of luck.

The Society of Women Engineers is proud to present Miss Kathleen Ritchey as their 1996 Homecoming Queen Candidate. A senior majoring in Chemical Engineering with a Biochemical emphasis, she is the daughter of Dave and Judy Ritchey of Waukesha, Wisconsin. While attaining a high academic stature, Kathleen is involved in a wide variety of campus organizations. She is the President of the Society of Women Engineers. Kathleen has also served as the secretary and treasurer for SWE. She has been involved in M-Club, varsity athletic club, as the secretary and publicity chairperson. She received the 1995-96 UMR Women's Intramural Athlete of the Year Award. Kathleen is also currently a member of Omega Chi Epsilon, AICHE, and SUB. She has also been involved in Varsity Softball, Chancellor's Leadership Group, Student Council, and Gamma Eta. The Society of Women Engineers would like to wish Kathleen the best of luck!

Gayle Hoppe is a senior majoring in math. She is also working towards Secondary Teacher's Certification. She has actively been involved with UMR Gold Miners, where she was co-captain for a year and a half and captain for a semester. Once again, Gayle is the co-captain of the Gold Miners. She is also the current President of Student Missouri State Teacher's Association. After graduation, Gayle plans to teach high school math.

Music

guitarists alive. He dazzles you with both technique and personality. I have seen this guy play and every time it is a spectacle.

The man enjoys and has fun while he plays. There are so many soloists that act like they are the god of guitarists, looking at the crowd with faces similar to that of spending an evening drinking too much and visiting that porcelain king.

This album is an awesome idea and giving credit to guitar soloists is something that hasn't been really thought of before. I definitely suggest someone who likes all types of Rock and wants to hear what is out there to get a copy of this. Definitely awesome.

Jimbo

Make em' Mokum Crazy
RoadRunner Records

Performance: Unnaturally flawless
Recording: Throbbing

Here's a compilation which is sure to send hordes of disco boys and girls bouncing off the edge of the world, or at least a bit off kilter.

The New Sound of Popcorn, presented by Mokum records displays a

jewelry box of syncopated sugar coated dance gems from "the warehouse raves of Holland to the top of the Euro pop charts."

Overall one must say that if these 16 tracks don't at least raise your heart rate, then you're probably in a coma. The rhythm tracks are thick, and shamelessly display the perquisite 100+ beats per minute ad infinitum, which for techno to work seems only fair given the generally thin nature of a genre that has all but forsaken the crunch of the electric guitar. And while the dance genre has provided us with a number of notable DJ's, their artists often seem to fall short in the originality department.

There are ways, however, to combat these sort of genre imposed limitations, and the artists here make noble attempts to do so, some with more success than others.

For instance, Technohead's digitized transformation of the stoner punk hit "I Wanna be a Hippie" holds up almost as well as the original, but then again, the song itself is fairly ridiculous anyway.

Likewise, the 60's classic "Aquarius" receives a similar facelift

but in this instance where the original has assumed an almost sickeningly campy nature in the somewhat futility ridden 90's, the updated treatment provides a realistically dippy counterpoint to the failed visions of the original songwriters.

More disturbing however is the influx of the use of pitch shifting devices to "enhance" vocal lines.

With the myriad of technological audio resources out there it's rather disheartening to know that the end result of the audio microchip revolution has amounted to a pulsing throng of chipmunks.

So, if you feel like dancing, then dance, there is nothing wrong with taking a break from reality occasionally, I just hope after an hour and a half of this, you make it back

Sean Cordes

Musical Note: "I think the worst it got was, we played a club in Mexico City and we shared the bill with a ventriloquist act." 70's revival rocker Kevin Cronin describing his band REO Speedwagon's descent into obscurity after selling out venues like the Houston Astrodome in the 1980's.

Concerts - St. Louis

September 26	Beck @ The American
September 27	Type O Negative with Life of Agony @ Mississippi Nights
September 28	RUN DMC @ The Galaxy
September 29	Fishbone @ The Galaxy
October 1	The Black Crowes @ The American
October 9	The Reverend Horton Heat w/ Voodoo Glow Skulls @ Mississippi Nights
October 12	Harry Connick Jr. @ The American

Flori

from page 4

evaluations of him. Not only does Dr. Flori gain the respect of his students, he also motivates them to set a high level of standards to reach for as they endeavor to learn.

In 1995, the University gave Dr. Flori the Faculty Excellence Award for his exceptional achievements in both teaching and research.

Aside from his teaching responsibilities, Dr. Flori is involved with other activities at the university. He is currently the secretary of the Mechanics Division of the American Society of Engineering Education (ASEE), and Chair of the New Engineering Educators Committee.

He also performs research with the goal to enhance education. His current project is to improve Dynamics BEST, computer software designed to assist students as they learn dynamics.

Outside of school, Dr. Flori is a husband, a father of two special, adopted children, and a member of a local church.

He and his wife, Beverly, were engaged two months after their first date. A year later, they were married. Beverly also graduated from UMR with bachelor's and master's degrees in chemistry.

Dr. and Mrs. Flori adopted a son in 1992. Now four years old and in

preschool, Andrew is a continual blessing to them.

Civil engineering may be in Andrew's future. He loves to build things with his father and already comments whether something is "stable" or "unstable."

In September of 1995, the Floris traveled to China to adopt their beautiful daughter, Aleisha. At 20 months, she possesses an infectious laugh and a sweet spirit.

So does Dr. Flori ever have any fun? Sure he does. He enjoys all sorts of sports—his favorite is golf.

Some of his other interests include cycling, backpacking, camping and working with tools as well as reading and photography.

Now that you've met Dr. Flori, here's some advice from him. He believes that it is very important to couple the ideas of mercy and truth.

He has observed that successful people have a high regard for truth, for principles, and for values and do all they can to attain them.

If you can strive for this truth and still have mercy on yourself when you don't measure up and mercy on others when they don't, you have achieved a great feat.

"To effectively balance these qualities is a divine gift."

Solutions

from page 10

Vision Teaser

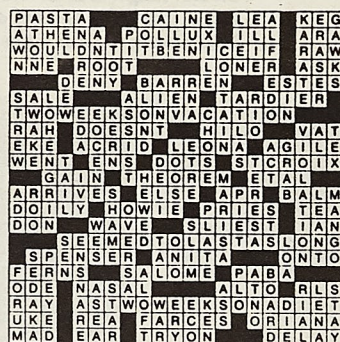
Differences:

- | | |
|-----------------------|----------------------|
| 1. Hair net is added. | 4. Shoe is missing. |
| 2. Curler is removed. | 5. Tie is longer. |
| 3. Rug is different. | 6. Picture is moved. |

Sports Quiz

Answers:

- | | |
|----------------------------------|-----------------|
| 1. the Kentucky Derby; | 5. football; |
| 2. Princeton and Rutgers; | 6. Hank Aaron; |
| 3. Paul Hornung and Alex Karras; | 7. Tokyo; |
| 4. Israel's exclusion; | 8. Cassius Clay |



Rocko

from page 4

Mikhail's Russian mob involvement, as well as Mikhail's girlfriend, Alex (Natasha Henstridge of *Species*).

Almost as soon as Alex and Alain meet, they are on the run from the Russian mob while still trying to unravel the mystery surrounding Mikhail's death.

Under the coercion of two mob corrupted Federal agents, Alex and Alain fly back to Nice, France, where Mikhail's plan is finally revealed.

Rocko, not being a very big Van Damme fan, believed, overall, *Maximum Risk* was probably one of his better films. Truthfully, I would have

to agree. Even though neither of us have ever been completely impressed with Van Damme as an actor, it's still the action scenes which draw us to the movie, of which the drool from Rocko's girlfriend is evidence. Nevertheless, this movie is definitely worth the student price for a ticket.

42nd Street was also well worth its price tag (even if you did have to pay \$15-\$20). The musical was truly an extraordinary experience. The entire cast was lively and energetic.

This energy of course was practically a prerequisite for the fast paced nature of the musical, which never

seemed to slow down after the opening curtain.

The only thing the show lacked was plot. This was no consequence, though, in light of the abundant yet riveting choreography, the uplifting music and the witty humor. Everyone associated with putting together this show has much to be proud of, as does the Campus Performing Arts Committee for bringing us this production.

But, now back to the original question of the article. Which I can answer rather quickly. It's elementary my dear Rocko: They have nothing in common! Better luck next time.

Mooch

from page 3

set up around the park. There is even a shuttle bus to pick you up at your car and take you into the park.

The cost for a day spent in the 1860's: \$2 per car for parking. The rest of the day's events are free. Try to be a part of history on the east coast for two bucks.

To get to Meramec Springs, follow Hwy 68 south from St. James. When Hwy 68 turns off, about three miles outside of St. James, continue straight on Hwy 8 another three miles.

Meramec Springs will be on the left.

World

from page 3

as much in common anymore. So what I am to do? Frankly, I do not have a clue.

I don't know what to do, so I do nothing. I trudge along in a limbo between wanting to be back home and wanting to be at college.

College is great. As I mentioned earlier, where else can one go to experience an unlimited, all-expenses-paid freedom?

College also presents an arena where one can grow intellectually, learning more in a week than they had in four years of high school—but home is great too.

It's the place where you grew up, where memories abound, where your roots are sown. It's the place where you had your first kiss, where you learned how to drive, where you got in your first automobile accident. It's the place where your friends, whom you hope you'll have for a lifetime, reside.

So what's the answer? There must be some great compromise, and unfortunately, I think that the compromise is to surrender your friends back home and to make new friends at college.

As painful as that idea seems, I think it is the idea which I must follow. So to those few great, great friends back home, I bid you farewell, and luck in life, wherever it takes you. I assure you that you will always be foremost in my thoughts.

I guess this is what college is all about in the long run. You are forced to compromise a steady, secure lifestyle for one which is not so secure, but vastly rewarding.

You are coerced into surrendering your friends back home for new friends, ones which you will keep for a lifetime.

As dismal as it may seem now, I have optimism that it will get better soon. Until then...

**Always keep a shovel,
rake and water nearby
when burning debris.**

**REMEMBER, ONLY YOU CAN
PREVENT FOREST FIRES.**

A Public Service of the USDA Forest
Service and Your State Forester.



See how it's done.
nies that are less in
can be comfortable
talk to the comp
you."

3) Be assertive
cards, and find out
in the process.

4) Project ent
Sowers suggest
"Take time out to
list on the web an
you in the program
will save you a lo
and it will help yo
panies you would
they are located.
will help each stu
ful day at the fair

Forum
-stucco and h
-staps respecti
Park summar
these words, "We
process of matchi
celebration to the
dent body and un
changing and evol
to be the same, bu
at it, St. Pat's car

NP
While on can
the guest of honor
breakfast hosted
Following this h
leaders and then
Engineering, Stu
noon.

At 7:30 that
hold a public fo
Lobby of Castle
speak about curr
broadcasting, suc
and will describe
future. This wi
question and ans
Lewis's visi
KUMR, 88.5 FM
Lebanon.

NP
While on can
the guest of honor
breakfast hosted
Following this h
leaders and then
Engineering, Stu
noon.

At 7:30 that
hold a public fo
Lobby of Castle
speak about curr
broadcasting, suc
and will describe
future. This wi
question and ans
Lewis's visi
KUMR, 88.5 FM
Lebanon.

At 7:30 that
hold a public fo
Lobby of Castle
speak about curr
broadcasting, suc
and will describe
future. This wi
question and ans
Lewis's visi
KUMR, 88.5 FM
Lebanon.

At 7:30 that
hold a public fo
Lobby of Castle
speak about curr
broadcasting, suc
and will describe
future. This wi
question and ans
Lewis's visi
KUMR, 88.5 FM
Lebanon.

At 7:30 that
hold a public fo
Lobby of Castle
speak about curr
broadcasting, suc
and will describe
future. This wi
question and ans
Lewis's visi
KUMR, 88.5 FM
Lebanon.

At 7:30 that
hold a public fo
Lobby of Castle
speak about curr
broadcasting, suc
and will describe
future. This wi
question and ans
Lewis's visi
KUMR, 88.5 FM
Lebanon.

At 7:30 that
hold a public fo
Lobby of Castle
speak about curr
broadcasting, suc
and will describe
future. This wi
question and ans
Lewis's visi
KUMR, 88.5 FM
Lebanon.

At 7:30 that
hold a public fo
Lobby of Castle
speak about curr
broadcasting, suc
and will describe
future. This wi
question and ans
Lewis's visi
KUMR, 88.5 FM
Lebanon.

Industry from page 1

See how it's done. Talk to the companies that are less important first so you can be comfortable when you want to talk to the companies important to you."

3) Be assertive, ask for business cards, and find out about the next step in the process.

4) Project enthusiasm. Sowers suggested that students, "Take time out to look at the company list on the web and the chart given to you in the program after you register. It will save you a lot of time at the fair, and it will help you decide which companies you would like to see and where they are located. All of these points will help each student have a successful day at the fair."

Forum from page 1

~stucio and <http://www.umn.edu/~stucio> respectively.

Park summarized his position in these words, "We need to continue the process of matching the St. Pat's Day celebration to the interests of the student body and university. St. Pat's is changing and evolving. It's not going to be the same, but if we keep working at it, St. Pat's can go on forever."

NPR from page 2

While on campus, Lewis will be the guest of honor at a corporate leaders breakfast hosted by Chancellor Park. Following this he will meet campus leaders and then speak at the Minority Engineering Student's luncheon at noon.

At 7:30 that evening, Lewis will hold a public forum in the Alumni Lobby of Castleman Hall. He will speak about current issues in public broadcasting, such as federal funding, and will describe his vision for NPR's future. This will be followed by a question and answer session.

Lewis's visit is sponsored by KUMR, 88.5 FM Rolla; 96.3 FM Lebanon.

Akers from page 2

accumulated space walk time—29 hours and 40 minutes.

He went on his first mission, the STS-41, in October, 1990 and helped deploy the interplanetary probe, Ulysses. This probe went on a 4-year journey to provide information about the polar regions of the sun.

Then, in May, 1992, he was on the maiden flight of the Space Shuttle Endeavour as part of the STS-49 mission, and helped capture the stranded International Telecommunication Satellite, INTELSAT. Akers' third mission, was STS-61 which took place in December, 1993. On this mission he broke the space walk record as he helped restore the Hubble Telescope.

Lady Miner from page 9

around the field," Salisbury said.

The Lady Miners brought their record to 3-3-1 with a 3-0 win over Central Methodist in Fayette Mo., September 21.

"We improved from William Woods. We did a little bit better, which is the whole key here for us, is to try to get a little bit better every game," Salisbury said.

The first goal was scored by Thomas, assisted by Sanders. The second was scored with ten minutes left in the half by sophomore Crissie Eckhoff with an assist from junior Amber Fischer. The third was scored by Kate Masterman in the second half.

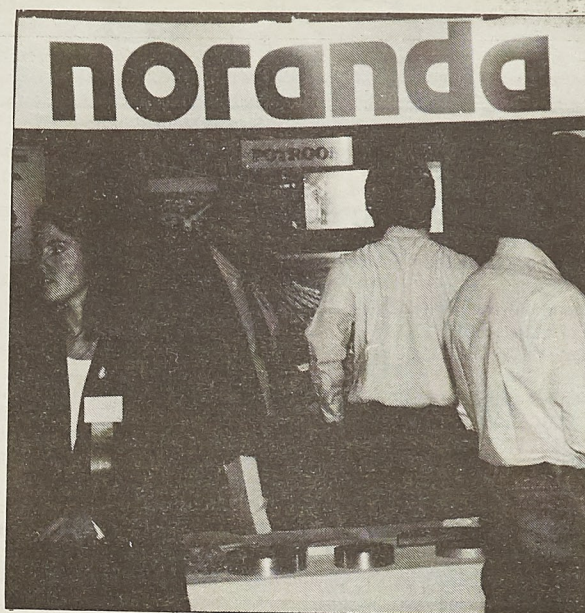


photo courtesy Career Opportunities Center

Students at last semester's Career Fair talk with representatives from MAGNUM Technologies and Noranda Aluminum. Both MAGNUM and Noranda will be present at tomorrow's Career Day along with 114 other companies. Magnum will be looking for full time employees, while Noranda will be hiring both full time and summer.

Events from page 2

Southern State College Lions at 1:30 p.m. on Saturday, October 5.

Feel free to stop by the hockey puck next week and catch some of the excitement of "An Olympic Homecoming." For more information, call the SUB office at 341-4220.

Football from page 7

Reichert and Brian Gilmore had big games, with eight tackles apiece, while safety Bret Lindsey also had eight tackles. Courtney Porter had four tackles and an interception. All this was despite playing Jarrett Anderson, whom Miner Jim Anderson said is, "hard tackle."

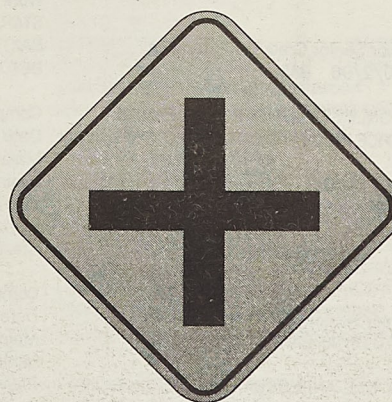
Next week, the Miners face the Beacats of Northwest Missouri State, who improved to 3-0 with a 47-7 pounding of Southwest Baptist on Saturday. "Northwest is an improved team who is scoring a lot of points," Anderson commented. "We've shown we can play with anybody in the conference. Truman is a physical team, probably the most physical in the conference." UMR travels to Northwest for what should be a very good game in the tough MIAA conference.

BUY RECYCLED.



AND SAVE.

Thanks to you, all sorts of everyday products are being made from recycled materials. But to keep recycling working to help protect the Earth, you need to buy those products. To receive a free brochure, call 1-800-CALL-EDF.



THE CROSSROADS

MDA is where help and hope meet for a million Americans with neuromuscular diseases.

MDA
Muscular Dystrophy Association
1-800-572-1717

**Education?
Retirement?
Peace of Mind?**

You have your reasons. For a recorded message of current rate information, call
1-800-4US BOND
1-800-487-2663



A public service of this newspaper

CO-OP EMPLOYMENT

Company: AB Chance Sign-up Method: PRS-OPEN
 Date of Interview: 10/18
 Majors: ELEC CHE MECH
 Minimum GPA: 2.000 Must be Sophomore Junior standing.
 Sign-up released 9/27/96 Deadline 10/4/96 8am
 Work Location: Centralia, Missouri
 start 1st co-op work session spring 1997

Company: Advanced Circuitry Div-Litton Sys. Sign-up Method: Open
 Date of Interview: 10/23
 Majors: MECH CHE ELEC
 Minimum GPA: 2.450 Must be Sophomore Junior standing.
 Sign-up released 10/9/96 Deadline 10/16/96 8am
 WORK LOCATION: SPRINGFIELD, MO
 START 1ST CO-OP WORK SESSION SPRING 1997

Company: Amsted Industries Sign-up Method: PRS-OPEN
 Date of Interview: 10/16
 Majors: MECH MET CIVL
 Minimum GPA: 2.450 Must be Sophomore standing.
 Sign-up released 9/25/96 Deadline 10/2/96 8am
 Work location: Nationwide
 START 1ST CO-OP WORK SESSION SPRING 1997
 MUST BE ABLE TO WORK A MINIMUM OF 3 WORK SESSIONS
 JOB DESCRIPTION AVAILABLE CO-OP OFFICE, 303D NORWOOD HALL

Company: Anh Busch-Power&EngDesign-ELEC Sign-up Method: Open
 Date of Interview: 10/09
 Majors: ELEC
 Minimum GPA: 2.450 Must be Junior Senior Grad Stu. standing.
 Sign-up released 9/25/96 DEADLINE 10/2/96 8:00AM
 WORK LOCATION: ST. LOUIS, MO
 *NOTE: COMPANY REQUESTED THAT A STUDENT SIGN-UP ON ONE SCHEDULE ONLY.
 JOB DESCRIPTIONS AVAILABLE IN THE CO-OP OFFICE.
 WORK PERIOD: JANUARY 1997 TO AUGUST 1997-INFO MTG OCT 8 6:30PM
 CENTENNIAL HALL ENGR & DESIGN, POWER & CONTROLS, ELEC

Company: Anh Busch-Syste Developme-ELEC,CMPS Sign-up Method: Open
 Date of Interview: 10/09
 Majors: ELEC CMPS
 Minimum GPA: 2.450 Must be Junior Senior Grad Stu. standing.
 Sign-up released 9/25/96. Deadline 10/2/96 8am
 Work Location: St. Louis, MO
 WORK SESSION JANUARY 1997 - AUGUST 1997
 *NOTE: COMPANY REQUESTED THAT STUDENTS ONLY SIGN-UP FOR ONE SCHEDULE.
 JOB DESCRIPTIONS AVAILABLE AT THE CO-OP OFFICE. INFO MTG OCT 8 6:30PM CENTENNIAL HALL UCE
 SYSTEM DEVELOPMENT GROUP - ELEC CMPS

Company: Anh Busch-Util Aff-ELEC,CIVL,CHE,ME Sign-up Method: Open
 Date of Interview: 10/09
 Majors: AERO CER CHE CIVL ELEC EMAN
 Minimum GPA: 2.450 Must be Junior Senior Grad Stu. standing.
 Sign-up released 9/25/96 DEADLINE 10/2/96 8AM
 Work Location: St. Louis, MO
 NOTE: COMPANY REQUESTED THAT STUDENTS ONLY SIGN-UP FOR 1 SCHEDULE
 JOB DESCRIPTIONS AVAILABLE AT THE CO-OP OFFICE-INFO MTG OCT 8 6:30 CENTENNIAL HALL
 UTILITY AFFAIRS GROUP-AERO CER CHE CIVL ELEC EMAN
 WORK SESSION: JANUARY 1997 TO AUGUST 1997

Company: Anh Busch-Util Aff-ELEC,CIVL,CHE,ME Sign-up Method: Open
 Date of Interview: 10/09
 Majors: GEE MECH MET MIN NUCL PETR
 Minimum GPA: 2.450 Must be Junior Senior Grad Stu. standing.
 Sign-up released 9/25/96 DEADLINE 10/2/96 8AM
 WORK LOCATION: ST. LOUIS, MISSOURI
 NOTE: STUDENTS MAY ONLY SIGN-UP FOR JUST ONE ANHEUSER BUSCH SCHEDULE
 JOB DESCRIPTIONS AVAILABLE AT THE CO-OP OFFICE, 303D NORWOOD HALL
 UTILITY AFFAIRS -GEE MECH MET MIN NUCL PETR-INFO MTG OCT 8 6:30 PM CENTENNIAL HALL
 HALL START 1ST CO-OP WORK SESSION JAN 1997 - AUGUST 1997

Company: ANHBUSCH-ENGR DESIGN-CIVL Sign-up Method: Open
 Date of Interview: 10/09
 Majors: CIVL
 Minimum GPA: 2.450 Must be Junior Senior Grad Stu. standing.
 Sign-up released 9/25/96 DEADLINE 10/2/96 8AM
 WORK LOCATION: ST. LOUIS, MISSOURI
 SIGN-UP FOR ONLY ONE ANHEUSER BUSCH SCHEDULE
 ENGR DESIGN - CIVL NOTE: STRUCTURAL/CIVIL NOT ENVIRONMENTAL
 JOB DESCRIPTION AVAILABLE AT THE CO-OP OFFICE
 INFO MTG OCT 8 6:30PM CENTENNIAL HALL
 WORK SESSION JANUARY 1997- AUGUST 1997

Company: ANHBUSCH-ENGR DESIGN-CMPS, MGMT Sign-up Method: Open
 Date of Interview: 10/09
 Majors: CMPS MGTS
 Minimum GPA: 2.450 Must be Junior Senior Grad Stu. standing.
 Sign-up released 9/25/96 DEADLINE 10/2/96 8AM
 WORK LOCATION: ST. LOUIS, MO
 SIGN-UP UP FOR ONLY ONE SCHEDULE - JOB DESCRIPTIONS AVAILABLE AT THE CO-OP
 OFFICE - INFORMATION MTG OCT 8, 6:30PM CENTENNIAL HALL UCE
 ENGR DESIGN - CMPS, MGTS
 WORK SESSION JANUARY 1997 - AUGUST 1997

Company: AnhBusch-Plan Group,MECH,CIVL,EMAN Sign-up Method: Open
 Date of Interview: 10/09
 Majors: MECH CIVL EMAN
 Minimum GPA: 2.450 Must be Junior Senior Grad Stu. standing.
 Sign-up released 9/25/96 - DEADLINE 10/2/96 8AM
 WORK LOCATION: ST. LOUIS, MO
 *NOTE - COMPANY REQUESTED THAT A STUDENT MAY SIGN-UP FOR ONLY ONE
 SCHEDULE. JOB DESCRIPTIONS AVAILABLE AT THE CO-OP OFFICE.
 WORK PERIOD FROM JANUARY, 1997 - AUG 97 - INFORMATION MTG OCT 8, 6:30 PM,
 CENTENNIAL HALL
 PLANNING GROUP- MECH, CIVL, EMAN

Company: AnhBusch-Productivity Improvement Sign-up Method: PRS-OPEN
 Date of Interview: 10/31
 Majors: EMAN
 Minimum GPA: 2.750 Must be Sophomore Junior Senior standing.
 Sign-up released 10/10/96 Deadline 10/17/96 8am
 Work Location: St. Louis, MO
 JOB DESCRIPTION AVAILABLE AT THE CO-OP OFFICE.
 CO-OP WORK SESSION JANUARY 6 - AUGUST 15, 1997
 MUST HAVE AT LEAST ONE MORE SEMESTER LEFT

Company: AnhBusch-Project Engineering Group Sign-up Method: Open
 Date of Interview: 10/09
 Majors: MECH CHE
 Minimum GPA: 2.450 Must be Junior Senior Grad Stu. standing.
 Sign-up released 9/25/96. DEADLINE 10/2/96 8AM
 WORK LOCATION: ST. LOUIS, MO
 COMPANY HAS REQUESTED THAT STUDENTS ONLY SIGN-UP FOR 1 SCHEDULE. JOB
 DESCRIPTIONS AVAILABLE AT THE CO-OP OFFICE -
 NOTE: INFORMATION MEETING OCT 8, 6:30PM CENTENNIAL HALL UCE
 WORK PERIOD: JANUARY 1997 TO AUGUST 1997
 PROJECT ENGINEERING: MECH CHE

Company: Baxter Healthcare Sign-up Method: PRS-OPEN
 Date of Interview: 10/17
 Majors: CHE ELEC EMAN MECH
 Minimum GPA: 2.450 Must be Sophomore Junior standing.
 Sign-up released 9/27/96 DEADLINE 10/4/96 8AM
 Work Location: Mountain Home, Arkansas
 START 1ST CO-OP WORK SESSION SPRING 1997
 BAXTER IS REQUIRING EACH STUDENT TO PICK UP A BROCHURE AND READ IT
 BEFORE INTERVIEW

Company: Bussmann Sign-up Method: Open
 Date of Interview: 10/11
 Majors: ELEC MECH EMAN
 Minimum GPA: 2.450 Must be Sophomore Junior standing.
 Sign-up released 9/20/96 Deadline 9/27/96 8am
 Work Location: St. Louis, Missouri (Ellisville) Division Headquarters
 Start work spring 1997

Company: Cargill Incorporated Sign-up Method: PRS-OPEN
 Date of Interview: 10/22
 Majors: CHE MECH
 Minimum GPA: 2.950 Must be Sophomore Junior Senior standing.
 Sign-up released 10/1/96 DEADLINE 10/8/96 8AM
 Work location: Midwest
 INFORMATION MEETING SCHEDULED FOR OCTOBER 21, 1996 6:30-7:30 UCE, MISSOURI
 ROOM START 1ST CO-OP WORK SESSION, SPRING 97, SUMMER 97
 NOT A SUMMER JOB - CO-OP POSITIONS

Company: Cerner Corporation Sign-up Method: PRS-OPEN
 Date of Interview: 10/11
 Majors: ELEC CMPS MGTS
 Minimum GPA: 2.950 Must be Sophomore Junior standing.
 Sign-up released 9/20/96 Deadline 9/27/96
 Work Location: Kansas City, MO start 1ST co-op work session summer 1997 -NOT A
 SUMMER JOB ONLY
 INFORMATION MEETING THURS., OCT.10, 7PM, 208 NORWOOD HALL PLEASE ATTEND

Company: D
 Date of Inter
 Majors: ELE
 Minimum GP
 Sign-up relea
 Work locatio
 Students mu
 Look up info

Company: E
 Date of Inter
 Majors: CM
 Minimum GP
 Sign-up relea
 Work Locatio
 start 1st co

Company: F
 Date of Inter
 Majors: ME
 Minimum GP
 Sign-up relea
 Work locatio
 Environment
 start 1st co
 NOTE - INTE

Company: G
 Date of Inter
 Majors: CH
 Minimum GP
 Sign-up relea
 WORK LOCA
 START 1ST
 LOOKING FO

Company: H
 Date of Inter
 Majors: CH
 Minimum GP
 Sign-up relea
 WORK LOCA
 INFORMATION
 START 1ST
 JOB DESCR

Company: I
 Date of Inter
 Majors: AE
 Minimum GP
 Sign-up relea
 Work Locati
 GE Aircraft
 GE Motors
 45 minute i

Company: J
 Date of Inter
 Majors: EL
 Minimum GP
 Sign-up relea
 Work locat
 1st co-op w

Company: K
 Date of Inter
 Majors: MI
 Minimum GP
 Sign-up relea
 Work Locat
 Start 1st co
 Prefer cand

Company: L
 Date of Inter
 Majors: EL
 Minimum GP
 Sign-up relea
 Work Locat
 start 1st co

Company: M
 Date of Inter
 Majors: EL
 Minimum GP
 Sign-up relea
 Work Locat
 START 1ST

Company: Deere and Company
Date of Interview: 10/23
Majors: ELEC MECH
Minimum GPA: 2.650
Sign-up released 10/2/96
Work location: Iowa, Illinois, Wisconsin
Students must be willing to complete 3-5 work sessions before graduation.
Look up information on Homepage Address: <http://www.deere.com>

Sign-up Method: PRS-OPEN

US/Perm

Must be Freshman Sophomore Junior standing.

Deadline 10/9/96 8am

Company: Magnum Technologies
Date of Interview: 10/15
Majors: ELEC CHE MECH
Minimum GPA: 2.000
Sign-up released 9/24/96
Work Location: Fairview Heights, IL; Houston, Tx; Los Angeles, CA
start 1st co-op work session spring 1997
Homepage - <http://www.magnumtech.com>

Sign-up Method: PRS-OPEN

Must be Sophomore Junior standing.

Deadline 10/1/96 8:00am

Company: Edward D. Jones & Co.
Date of Interview: 10/15
Majors: CMPS MGTS
Minimum GPA: 2.950
Sign-up released 9/24/96
Work Location: St. Louis, Missouri
start 1st co-op work session spring 1997

Sign-up Method: PRS-OPEN

US Only

Must be Junior Senior standing.

Deadline 10/1/96 8AM

Company: McEnery Automation Corporation
Date of Interview: 11/08
Majors: ELEC
Minimum GPA: 3.450
Sign-up released 10/18/96
Work Location: St. Louis, Missouri (West County)
start 1st co-op work session spring 1997

Sign-up Method: PRS-OPEN

US/Perm

Must be Junior Senior standing.

Deadline 10/25/96 8am

Company: Emerson Electric
Date of Interview: 10/16
Majors: MECH
Minimum GPA: 2.450
Sign-up released 9/25/96
Work location: Paragould, Arkansas, Office & Manufacturing
Environment - work in final assembly area
start 1st co-op work session spring 1997
NOTE - INTERVIEW DATE CHANGE

Sign-up Method: PRS-OPEN

Must be Junior Senior standing.

Deadline 10/2/96 8am

Company: Monsanto Company
Date of Interview: 10/23
Majors: CMPS MGTS ELEC
Minimum GPA: 2.950
Sign-up released 10-9-96
Work Location: St. Louis, Mo., Chicago, IL, Muscatine, Iowa Luling, LA and Alvin, Texas
INFORMATION MEETING-201 Norwood Hall 6-7PM ALL STUDENTS INTERVIEWING WITH MONSANTO ARE ASKED TO ATTEND, - 1 HOUR INTERVIEWS-JOB DESCRIPTION AVAILABLE 303D NORWOOD CO-OP OFC - PICK UP MONSANTO APPLICATION 303D NORWOOD, BEFORE INTERVIEW

Sign-up Method: Open

Date of

Must be Sophomore Junior Senior Grad Stu. standing.

DEADLINE 10/16/96 8AM

Company: Ethyl Corporation
Date of Interview: 10/10
Majors: CHE
Minimum GPA: 3.200
Sign-up released 9/19/96
WORK LOCATION: SAUGET, ILLINOIS
START 1ST CO-OP WORK SESSION SPRING 97
LOOKING FOR STUDENTS WHO ARE WILLING TO WORK 4-5 WORK TERMS

Sign-up Method: PRS-OPEN

Must be Freshman Sophomore standing.

DEADLINE 9/27/96 8AM

Company: Noranda Aluminum
Date of Interview: 09/27
Majors: ELEC MECH
Minimum GPA: 2.700
Sign-up released 9/13/96
Work location: New Madrid, MO
start 1st co-op work session spring 1997

Sign-up Method: Open

Must be Junior standing.

DEADLINE 9/27/96 8AM

Company: Fisher Controls
Date of Interview: 10/16
Majors: CHE ELEC EMAN MECH
Minimum GPA: 2.250
Sign-up released 9/25/96
WORK LOCATION: MARSHALLTOWN, IOWA
INFORMATION MEETING 10-14-96 6-7PM - 201 NORWOOD HALL
START 1ST CO-OP WORK SESSION SPRING 1997
JOB DESCRIPTION AVAILABLE CO-OP OFFICE, 303D NORWOOD HALL

Sign-up Method: PRS-OPEN

US/Perm

Must be Junior standing.

DEADLINE 10/2/96 8AM

Company: Northern Telecom (Nortel)
Date of Interview: 10/11
Majors: ELEC
Minimum GPA: 2.950
Sign-up released 9/20/96
Work Location: St. Louis, Missouri
start 1st co-op work session spring 1997
JOB DESCRIPTION AVAILABLE AT CO-OP OFFICE, 303D NORWOOD HALL

Sign-up Method: PRS-OPEN

Must be Senior Grad Stu. standing.

Deadline 9/27/96

Company: General Electric Company
Date of Interview: 10/11
Majors: AERO ELEC EMAN MECH MET CMPS CIVL
Minimum GPA: 2.950
Sign-up released 9/20/96
Work Locations: Fort Wayne, Indiana; Salem, Virginia; Cincinnati, Ohio
GE Aircraft Engines - aero, elec, eman, mech, met
GE Motors & Industrial Systems - mech, elec, eman, civl, cmpls, me
45 minute interviews

Sign-up Method: PRS-OPEN

Must be Sophomore Junior standing.

Deadline 9/27/96

Company: Olin Corporation
Date of Interview: 10/10
Majors: MECH EMAN MET CMPS
Minimum GPA: 2.650
Sign-up released 9/19/96
Work Location: E. Alton, Illinois (close to St. Louis)
1ST WORK JAN-AUGUST 1997
VIDEO CONFERENCING INTERVIEW - PICK UP SHEETS ON TIPS FOR VIDEO INTERVIEWING

Sign-up Method: PRS-OPEN

Must be Freshman Sophomore standing.

Deadline 9/27/96 8am

Company: Harmon Industries
Date of Interview: 10/30
Majors: ELEC CMPS
Minimum GPA: 3.150
Sign-up released 10/9/96
Work location Grain Valley, MO (KC metro area)
1st co-op work session spring 1997

Sign-up Method: PRS-OPEN

Must be Sophomore Junior standing.

Deadline 10/16/96 8am

Company: Sporian Valve
Date of Interview: 10/15
Majors: MECH ELEC
Minimum GPA: 2.750
Sign-up released 9/24/96
Work Location: Washington, Missouri
Start 1st co-op work session SPRING 1997

Sign-up Method: PRS-OPEN

Must be Junior Senior standing.

Deadline 10/1/96 8AM

Company: Hollister Incorporated
Date of Interview: 10/15
Majors: MECH
Minimum GPA: 2.000
Sign-up released 9/24/96
Work Location: Kirksville, Missouri
Start 1st co-op work session spring 1997
Prefer candidates have autocad or have auto cad experience and have computer experience.

Sign-up Method: PRS-OPEN

US/Perm

Must be Sophomore Junior standing.

Deadline 10/1/96 8am

Company: Union Electric
Date of Interview: 10/03
Majors: ELEC MECH
Minimum GPA: 2.450
Sign-up released 9/19/96
Work Location: St. Louis, MO and mid-Missouri
NOTE - NOTE VERY IMPORTANT (MUST BE COMPLETING OR HAVE COMPLETED 1ST SEMESTER OF JUNIOR LEVEL COURSES (IN YOUR MAJOR) MAJOR COURSES start 1st co-op work session SPRING 1997

Sign-up Method: Open

US/Perm

Must be Junior Senior standing.

Deadline 9/27/96 8am

Company: Jefferson Smurfit
Date of Interview: 10/11
Majors: ELEC
Minimum GPA: 2.950
Sign-up released 9/20/96
Work Location: Alton, Illinois
start 1st co-op work session SPRING 1997: must be able to work at least 2 work sessions

Sign-up Method: PRS-OPEN

Must be Sophomore Junior standing.

Deadline 9/27/96 8:00am

Company: V.A.W. Aluminum
Date of Interview: 10/10
Majors: MET MECH
Minimum GPA: 2.950
Sign-up released 9/25/96
Work Location: Phoenix, AZ, St. Augustine, FL
start 1st co-op work session spring 1997

Sign-up Method: Open

Must be Sophomore Junior Senior standing.

Deadline 10/2/96 8am

Company: Johnson Controls
Date of Interview: 10/16
Majors: ELEC MECH
Minimum GPA: 2.750
Sign-up released 9/25/96
Work Location: St. Louis, Missouri
START 1ST CO-OP WORK SESSION SPRING 1997

Sign-up Method: PRS-OPEN

Must be Sophomore Junior standing.

Deadline 10/2/96 8am

Company: Von Weise Gear Company
Date of Interview: 10/18
Majors: MECH
Minimum GPA: 2.000
Sign-up released 9/27/96
WORK LOCATION: ST. CLAIR, MISSOURI
START 1ST CO-OP WORK SESSION SPRING 1997

Sign-up Method: PRS-OPEN

Must be Sophomore Junior standing.

DEADLINE 10/4/96 8AM

Company: Waste Management, Inc.- Midwest Sign-up Method: PRS-OPEN
 Date of Interview: 10/17
 Majors: CIVL GEE
 Minimum GPA: 2.000 Must be Sophomore Junior Senior Grad Stu. standing.
 Sign-up released 9/27/96 DEADLINE 10/4/96 8AM
 START 1ST CO-OP WORK SESSION SPRING 1997
 INFORMATION MEETING 10/16/96, 7-8PM UCE 214 MARK TWAIN ROOM
 STUDENTS INTERVIEWING WITH WASTE MANAGEMENT TECHNOLOGY ARE ASKED TO ATTEND.

Company: Wells Manufacturing Company Sign-up Method: Open
 Date of Interview: 10/03
 Majors: MET ELEC US/Perm
 Minimum GPA: 2.650 Must be Sophomore Junior standing.
 Sign-up released 9/19/96 DEADLINE 9/27/96 8AM
 WORK LOCATION: WOODSTOCK, ILLINOIS
 START 1ST CO-OP WORK SESSION SPRING 1997

FULL-TIME EMPLOYMENT

A.B. CHANCE COMPANY Method: PRS-OPEN
 210 North Allen Interview Date: 10/18
 Centralia, MO 65240
 Attn: Ms. Areta Mayes, Manager of Human Resources
 Degree Level: B Minimum GPA: 2.000
 Majors: ELEC MECH
 Grad Dates: 0596 1296
 Position Available: Application Engineer
 Position Location: MO; SC; OH; CN; AL
 Deadline for submitting resumes: October 1
 Information on position available in 301 Norwood Hall

ADTRAN, INC. Method: PRS-OPEN
 901 Explorer Blvd. Interview Date: 10/18
 Huntsville, AL 35807
 Attn: Mr. Steve Turner, VP of Engineering
 Degree Level: B M D Minimum GPA: 2.950
 Majors: ELEC
 Grad Dates: 0596 1296 0597 0797 Citizenship: US/Perm
 Position Available: Design Engineer
 Position Location: Huntsville, AL
 Deadline for submitting resumes: October 2
 PRE-RECRUITMENT MEETING: Thursday, Oct 17 - 7:00 pm - Missouri Room-UCF

BAXTER HEALTHCARE CORP Method: PRS-OPEN
 1901 Highway 201 North Interview Date: 10/15, 10/16
 Mountain Home, AR 72653
 Attn: Mr. Stephen Smith, Assistant H.R. Manager
 Degree Level: B Minimum GPA: 2.450
 Majors: CHE ELEC EMAN MECH CHEM
 Grad Dates: 1296 0597 0797
 Position Available: Project Engr; Quality Engr; Supervisor
 Position Location: Mtn. Home, AR
 Deadline for submitting resumes: September 27

CATERPILLAR COMPANY Method: PRS-OPEN
 100 NE Adams Street Interview Date: 10/15
 Peoria, IL 61629-1490
 Attn: Ms. Jean Barker, Professional Employ Coord
 Degree Level: B M Minimum GPA: 2.750
 Majors: CHE ELEC MECH MET CMPS MGTS
 Grad Dates: 1296 0597 0797 Citizenship: US/Perm
 Position Available: Engineering & Research; Information Systems
 Position Location: Illinois
 Internet: www.cat.com
 Deadline for submitting resumes: September 27
 PRE-RECRUITMENT MEETING: Monday, Oct 14 - 7:00 pm-The Gallery-UCF
 Students selected to interview take completed company application and transcript to interview. Company applications available in 301 Norwood Hall.

EDWARD JONES Method: PRS-OPEN
 201 Progress Parkway Interview Date: 10/15
 Maryland Heights, MO 63043
 Attn: Mr. David A. Stucki, Department Leader
 Degree Level: B M Minimum GPA: 2.950
 Majors: CMPS MGTS
 Grad Dates: 0596 1296 0597 0797 Citizenship: US Only
 Position Available: Client Server - Various Openings
 Position Location: St. Louis
 Deadline for submitting resumes: September 30
 PRE-RECRUITMENT MEETING: Monday, Oct 14 - 6:30 pm-Mark Twain Room-UCF

FISHER CONTROLS/VALVE Method: PRS-OPEN
 205 S. Center Street Interview Date: 10/15
 Marshalltown, IA 50158-2823
 Attn: Ms. Sue L. Auer, Human Resources Manager
 Degree Level: B Minimum GPA: 2.450
 Majors: CHE ELEC EMAN MECH
 Grad Dates: 0596 1296 0597 0797 Citizenship: US/Perm
 Position Available: Applications Engineer
 Position Location: Marshalltown, Iowa
 Deadline for submitting resume: 27

HALLIBURTON ENERGY SERVICES Method: PRS-OPEN
 5151 San Felipe, Suite 1807 Interview Date: 10/16
 Houston, TX 77056
 Attn: Ms. Shellie Stone, HR Generalist
 Degree Level: B Minimum GPA: 2.000
 Majors: CHE CIVL ELEC MECH PETR
 Grad Dates: 0596 1296 Citizenship: US/Perm
 Position Available: Measurement While Drilling Engr.
 Position Location: Nationwide
 Deadline for submitting resumes: October 1
 PRE-RECRUITMENT MEETING: Tuesday, Oct 15 - 6:30 pm-Missouri Room-UCF
HALLIBURTON ENERGY SERVICES Method: PRS-OPEN
 5151 San Felipe, Suite 1807 Interview Date: 10/16
 Houston, TX 77056
 Attn: Ms. Shellie Stone, HR Generalist
 Degree Level: B M Minimum GPA: 2.000
 Majors: ELEC EMAN MECH
 Grad Dates: 0596 1296 Citizenship: US/Perm
 Position Available: Management Program Engineer
 Position Location: Nationwide
 Deadline for submitting resumes: October 1
 PRE-RECRUITMENT MEETING: Tuesday, Oct 15 - 6:30 pm - Missouri Room-UCF

HALLIBURTON ENERGY SERVICES Method: PRS-OPEN
 5151 San Felipe, Suite 1807 Interview Date: 10/17
 Houston, TX 77056
 Attn: Ms. Shellie Stone, HR Generalist
 Degree Level: B Minimum GPA: 2.000
 Majors: CHE CIVL ELEC MECH PETR
 Grad Dates: 0596 1296 Citizenship: US/Perm
 Position Available: Field Operations Engineer
 Position Location: Nationwide
 Deadline for submitting resumes: October 1
 PRE-RECRUITMENT MEETING: Tuesday, Oct 15, 6:30 pm-Missouri Room - UCF

HALLIBURTON ENERGY SERVICES Method: PRS-OPEN
 5151 San Felipe, Suite 1807 Interview Date: 10/16
 Houston, TX 77056
 Attn: Ms. Shellie Stone, HR Generalist
 Degree Level: B Minimum GPA: 2.000
 Majors: CHE CIVL ELEC MECH PETR
 Grad Dates: 1296 0596 Citizenship: US/Perm
 Position Available: Field Operations Engineer
 Position Location: Nationwide
 Deadline for submitting resumes: October 1
 PRE-RECRUITMENT MEETING: Tuesday, Oct 15 - 6:30 pm-Missouri Room-UCF

INTERNATIONAL PAPER CO Method: PRS-OPEN
 P. O. Box 7069 Interview Date: 10/15
 Pine Bluff, AR 71611
 Attn: Mr. Ray Holloway, Mgr. Management Development
 Degree Level: B M Minimum GPA: 2.950
 Majors: CHE ELEC EMAN MECH
 Grad Dates: 1296 0597 0797
 Position Available: Project Engineers
 Position Location: All International Paper locations nationwide
 Deadline for submitting resumes: September 27
 PRE-RECRUITMENT MEETING: Monday, Oct 14 - 7:00 pm-Missouri Room-UCF

KIMBERLY CLARK CORPORATION Method: PRS-OPEN
 2100 Winchester Road Interview Date: 10/16
 Neenah, WI 54956
 Attn: Ms. Kay Keberlein, Recruitment Assistant
 Degree Level: B Minimum GPA: 2.750
 Majors: CHE
 Grad Dates: 1296 0597 0797 Citizenship: US/Perm
 Position Available: Process Engineer I
 Position Location: Conway, AR + other U.S. Locations
 Deadline for submitting resumes: October 1
 PRE-RECRUITMENT MEETING: Tuesday, Oct 15 - 7:00 pm-201 Norwood Hall
 Information on position available in 301 Norwood Hall

Wednesday, Sep
 MARATHON OI
 P.O. Box 1200
 Robinson, IL
 Attn: Mr. John
 Degree Level:
 Majors:
 Grad Dates: 05
 Position Availa
 Position Locat
 Deadline for s
 PRE-RECRUIT

MCDONNELL
 Mailcode 276
 St. Louis, MO
 Attn: Mr. Mich
 Degree Level:
 Majors:
 Grad Dates: 05
 Position Availa
 Position Locat
 Deadline for s
 Information o
 Web Page Ad

MICROSOFT
 One Microsof
 Redmond, WA
 Attn: Ms. Ma
 Degree Level:
 Majors:
 Grad Dates: 05
 Position Availa
 Position Locat
 Deadline for s
 Information o
 Web Page Ad

EDWARD JOH
 201 Progress
 Maryland He
 Mr. Dave Stu
 Majors: CMP
 Minimum GP
 Position Avail
 Position Loca
 Deadline for
 PRE-RECRUIT

MARATHON
 P.O. Box 120
 Robinson, IL
 Mr. J. C. Far
 Majors: CHE
 Minimum GP
 No date set
 Marathon do
 MEETING: T

Easter 199



MARATHON OIL-REFINERY
P.O. Box 1200
Robinson, IL 62454
Attn: Mr. John Farrell, Human Resource Manager
Degree Level: B Minimum GPA: 2.650
Majors: CHE
Grad Dates: 0597 0797
Position Available: Chemical Engineer
Position Location: Robinson, IL
Deadline for submitting resumes: October 1
PRE-RECRUITMENT MEETING: Tuesday, Oct 15 - 6:00 pm - Silver & Gold Room - UCE

Method: PRS-OPEN
Interview Date: 10/16

MCDONNELL DOUGLAS AEROSPACE
Mailcode 276 1740 PO Box 516
St. Louis, MO 63166-0516
Attn: Mr. Michael Wilson, Staffing Specialist
Degree Level: B Minimum GPA: 2.950
Majors: AERO ELEC CMPS
Grad Dates: 0597 0797
Citizenship: US Only
Position Available: Engr positions in Mission Systems & Flight & Lab
Position Location: St. Louis
Deadline for submitting resumes: September 26
Information on position available in 301 Norwood Hall
Web Page Address: www.mdc.com

Method: PRS-OPEN
Interview Date: 10/08

MICROSOFT
One Microsoft Way
Redmond, WA 98052
Attn: Ms. Mary Blain, Recruiting Coordinator
Degree Level: B M D Minimum GPA: 2.000
Majors: ELEC AMTH PHYS CMPS
Grad Dates: 0596 1296 0597 0797
Position Available: Design Engr; Test Engr; Program Manager
Position Location: Redmond, WA
Deadline for submitting resumes: September 26
Information on position available in 301 Norwood Hall
Web Page Address: www.microsoft.com

Method: PRS-OPEN
Interview Date: 10/14, 10/15

MONSANTO CHEMICAL COMP
800 North Lindbergh, MZ C3ND
St. Louis, MO 63167
Attn: Mr. Raymond Kleeman, Staffing
Degree Level: B Minimum GPA: 2.950
Majors: CHE ELEC MECH
Grad Dates: 0597 0797
Position Available: Engineers
Position Location: Varied
Deadline for submitting resumes: September 30
PRE-RECRUITMENT MEETING: Tuesday, Oct 15 - 6:00 pm - Mark Twain Room-UC
Information on position available in 301 Norwood Hall.

Method: PRS-OPEN
Interview Date: 10/16, 10/17

NOOTER CORPORATION
PO Box 451 1400 S 3rd St.
St. Louis, MO 63166
Attn: Ms. Sheila Y. Adams, H.R. Administrator
Degree Level: B Minimum GPA: 2.000
Majors: CIVL EMAN MECH MET
Grad Dates: 1296
Position Available: Entry level engineers
Position Location: St. Louis, MO
Deadline for submitting resumes: September 27

Method: PRS-OPEN
Interview Date: 10/15

PRAXAIR, INC.
P.O. Box 44
Tonawanda, NY 14151-0044
Attn: Ms. Charlene Miragliam, HR Consultant
Degree Level: M D Minimum GPA: 2.950
Majors: CHE MET
Grad Dates: 0596 1296 0597 0797
Position Available: Dev. Assoc/Project Engr - Process Metallurgy
Position Location: Tarrytown, NY & Tonawanda, NY
Deadline for submitting resumes: September 26
Information on position available in 301 Norwood Hall
Web Page Address: www.praxair.com

Method: PRS-OPEN
Interview Date: 10/17

ADDITIONS: Contech Construction Products, Inc.
Monday, October 7 - 7:00 p.m.

PRE-RECRUITMENT MEETING:
201 Norwood Hall

SUMMER EMPLOYMENT

EDWARD JONES
201 Progress Parkway
Maryland Heights, MO 63043
Mr. Dave Stucki
Majors: CMPS MGTS
Minimum GPA: 2.950
Position Available: Summer Intern
Position Location: St. Louis
Deadline for submitting resumes: September 30
PRE-RECRUITMENT MEETING: Monday, Oct 14 - 6:30 pm - Mark Twain Room -UCE

Method: PRS-OPEN
Date of Interview: 10/15

Must be at least Senior standing.

MICROSOFT
One Microsoft Way
Redmond, WA 98052
Ms. Mary Blain
Majors: ELEC AMTH PHYS CMPS
Minimum GPA: 2.000
Position Available: Summer Intern
Position Location: Redmond, WA
Deadline for submitting resumes: September 26

Method: PRS-OPEN
Date of Interview: 10/14, 10/15

Must be at least Freshman standing.

MARATHON PETROLEUM COMPANY
P.O. Box 1200
Robinson, IL 62454
Mr. J. C. Farrell, HR Manager
Majors: CHE
Minimum GPA: 2.650
No date set for interview - collecting resumes to be sent to company only.
Marathon does urge anyone interested in the company to attend the PRE-RECRUITMENT MEETING: Tuesday, October 15 - 6:00 p.m. in the Silver & Gold Room - UCE

Method: PRS-OPEN
Date of Interview:

Must be at least Junior standing.

Easter 1987, Age 5



Easter 1988, Age 6



Easter 1989, Age 7



**FRIENDS
DON'T LET
FRIENDS
DRIVE
DRUNK.**

Lorien Lea Denham.

Killed by a drunk driver on Good Friday, March 29, 1991, at
College Park Drive and Hwy. 19 North in Meridian, Miss.

If you haven't told your
family you're an
organ and tissue donor,

you're not.

WHAT'S UP AT UMR

All organizational meeting times and places are provided by the Student Activity Center, 218 UCW. Please send all changes to the aforementioned office.

Wednesday

2:00 pm: UMR Unity Day Lecture with guest speaker Robert Henry, Missouri, UCE

6:00 pm: A. S. M. E., 104 ME

6:00 pm: Christian Campus Fellowship, Mark Twain, UCE

6:00 pm: Spelunkers Club New Member's Meeting, 204 McNutt

6:00 - 10:00 pm: Chess Club, Cafeteria, UCE

6:30 pm: Blue Key, 216 ME

7:00 pm: IEEE, 114 CE

7:00 pm: UMR Amateur Radio Club, 110 Buehler

7:30 pm: Society of Mining Engineers, 204 McNutt

7:30 pm: Bahai Club, Walnut, UCW

7:30 - 10:30 pm: Tau Beta Sigma, 126 Schrenk

7:30 - 10:30 pm: Kappa Kappa Psi, 125 Schrenk

9:00 - 11:00 pm: Residence Hall Association, 209 and 209A MCS

Thursday

9:00 am - 3:00 pm: UMR Industry Career Day, Multi-Purpose Building

10:00 am - 2:30 pm: Alpha Phi Alpha, Basketball Tourney, Puck

2:30 pm: Student Council, StuCo Lawyer, Walnut Rm, UCW

4:30 pm: Civil Engineering Graduate Seminar- "Practical Problems of Slope Failure & Stabilization in Urban Environment," 217 CE

4:30 pm: American Ceramic Society, 206 McNutt

5:30 pm: Assoc. of the U S Army, 302 Harris

5:30 pm: Pi Tau Sigma, 107C ME Annex

6:00 - 11:45 pm: Gaming Association, CE 314

6:00 pm: Christian Campus Fellowship, Mark Twain, UCE

6:00 pm: Toastmasters, CSF 109

6:15 pm: Intercollegiate Knights, G-5 HSS

6:30 pm: American Nuclear Society, 227 Fulton

7:00 pm: Intersociety Christian Fellowship, Meramec Rm, UCE

7:00 pm: Society of Hispanic Professional Engineers, 212 McNutt

7:00 pm: Sigma Phi Epsilon, 140 Schrenk

7:30 pm: UMR public lecture- Delano E. Lewis, president of National Public Radio, Alumni Lobby, Castleman Hall

7:30 pm: St. Pats Celebration Committee, 107C ME Annex

7:30 pm: Circle K Club, 206 McNutt

8:00 pm: Solar Car Team, 103 EMgt

8:00 pm: Academic Competition Organization, CE 312

Friday

10:00 am - 2:30 pm: Alpha Phi Alpha, Basketball Tourney, Puck

4:00 - 10:00 pm: Student Council Conference, UCE

5:30 pm: Pi Tau Sigma, 107C ME Annex

6:00 pm: Christian Campus Fellowship, Mark Twain Rm, UCE

7:00 pm: Show-Me Anime, 204 McNutt

Saturday

10:00 am - 11:00 pm: Student Council Conference, Missouri Rm, UCE

10:00 am: Sigma Phi Epsilon Retreat, 204 McNutt

2:00 - 6:00 pm: Chess Club, Carver/ Turner Rm, UCE

5:30 pm: Pi Tau Sigma, 107C ME Annex

6:00 pm: Christian Campus Fellowship, Mark Twain Rm, UCE

Sunday

9:00 am: Student Council Conference, Meramec, Miner Lounge, UCE

11:00 am - 9:00 pm: Gaming Association, 231 McNutt

2:00 pm: Chinese Student Association, ME Building

3:00 pm: Performance (Family Series) - "Sleeping Beauty," Leach Theatre, Castleman

4:00 pm: Alpha Phi Alpha, Walnut Rm, UCW

5:30 pm: Pi Tau Sigma, 107C ME Annex

6:00 pm: Christian Campus Fellowship, Mark Twain Rm, UCE

8:30 pm: Omega Sigma Service Organization, 204 McNutt

9:00 pm: Blue Sabres, 208 Harris

Monday

10:00 am: Alpha Phi Alpha, Black and Gold ticket sales, Puck

11:30 am: SUB special event, Homecoming Games, Puck

12:00 pm: Chemistry Seminar - "NMR Diffusion Studies of Complex Systems," by Peter Stilbs, G-3 Schrenk

12:00 pm: University Orators Chapter of Toastmasters International, Missouri Rm, UCE

5:30 pm: Pi Tau Sigma, 107C ME Annex

6:00 pm: Christian Campus Fellowship, Mark Twain Rm, UCE

6:00 pm: UMR Independents, Walnut Rm, UCW

6:30 pm: Association of Black Students, 204 McNutt

7:00 pm: Sigma Phi Epsilon, 140 Schrenk

8:00 pm: Academic Competition Organization, 312 CE

Tuesday

11:30 am - 5:30 pm: Student Council Blood Drive, Centennial, UCE

11:30 am: SUB special event, Homecoming Games, Puck

1:30 pm: Christian Science Organization, Sunrise Rm, UCE

3:00 pm: 1996 Fall Career Opportunities Center Resume Writing Workshop, 201 Norwood

5:30 pm: Solar Car Team, 104 EMgt

5:30 pm: Pi Tau Sigma, 107C ME Annex

6:00 pm: Christian Campus Fellowship, Mark Twain, UCE

7:00 pm: College Democrats, 216 McNutt

7:00 pm: NSPE, 117 CE

7:00 pm: Sigma Phi Epsilon, 140 Schrenk

7:00 pm: Koinonia, Walnut Rm, UCW

7:00 pm: Tau Beta Pi, G-3 Schrenk

7:00 pm: Film Festival - 2001: A Space Odyssey, Leach Theatre, Castleman

7:30 pm: Alpha Phi Omega, 114 CE

9:00 pm: Arnold Air Society, 208 Harris

9:30 pm: Juggling Club, Miner Rec Building

Next Wednesday

11:30 am - 5:30 pm: Student Council Blood Drive, Centennial UCE

11:30 am: SUB special event, Homecoming Games, Puck

2:30 pm: Student Council, StuCo Lawyer, Walnut Rm, UCW

5:00 pm: Sigma Gamma Epsilon, 206 McNutt

5:30 pm: Pi Tau Sigma, 107C ME Annex

6:00 pm: Spelunkers Club, 204 McNutt

6:00 pm: Christian Campus Fellowship, Mark Twain Rm, UCE

6:20 pm: ASCE, AGC, ACI, CE 114, 117, & 118

6:30 pm: Blue Key, 216 ME

7:00 pm: UMR Amateur Radio Club, 110 Buehler

7:30 pm: Society of Mining Engineers, 204 McNutt

7:30 pm: Bahai Club, Walnut Rm, UCW

7:30 pm: Tau Beta Sigma, 126 Schrenk

7:30 pm: Kappa Kappa Psi, 125 Schrenk

8:00 pm: SUB Homecoming, Comedian, Cafeteria, UCE

Announcements

Civil Engineering Department holding CE 410 graduate seminar

The CE Department is holding a graduate seminar entitled, "Practical Problems of Slope Failure and Stabilization in Urban Environment." It will be presented by Lok Sharma of Terracon Consultants in Lenexa, Kansas on Thursday, September 26 at 4:30-5:30 pm in 217 CE. Refreshments will precede the seminar at 4:00 pm. For more information, contact Dr. S. Prakash at 341-4489.

Center for Personal and Professional Development announces counseling sessions

The Center for Personal and Professional Development is announcing the Fall 1996 group counseling sessions that will be open to the UMR community. The focus areas include: Self-Esteem, Sexual Abuse Survivors, Career Planning, Family Based Issues, General Therapy/Support, and Stress Management. All groups are confidential and are open to UMR staff, students, and faculty. Members are pre-screened individually. Please contact Kevin Gaw or Diane Stutts at 204 Norwood Hall, 341-4211 for more information.

Course Equivalency Database

The University of Missouri-Rolla has a course equivalency database located on the World Wide Web. UMR-Rolla's home page is at <http://www.umsr.edu/> and you can get to this database by clicking on the Registrar's Office and looking under Course Equivalencies. If a course or college is not listed, that does not mean the course will not transfer to UMR-Rolla, it means the course has not yet been evaluated. If you plan to take that course that is not listed, you will need to bring a copy of the course description (available from the catalog of the college you plan to attend) to the Admissions Office, Room 106 Parker Hall and give it to Jennie or Julie for evaluation.

Graduating in December?

The Class of '96 is having an informal "zero hour" reunion at Homecoming! Come to the Fieldhouse Feed Reunion Luncheon on Saturday, October 5, and sit with your classmates for lunch. Then join in the class picture at 12:15 p.m. and show those other reunion classes your spirit. Those of your class who graduated in May were invited

back to join you for the reunion. It hasn't been a really long time since you've seen each other. It's fun to find out what everyone is doing since they left. (\$9 per person for all-inclusive food), stop by the Castleman Hall (the side of the building).

Unity Day

Unity Day will be September 25. A Chancellor John T. P. to all students, faculty, and staff. Unity Day ribbon lunch will be held from 12:00 pm to 2:00 pm on the mall north of the building. The Board of Public Service will be holding the Unity Day lecture in the Room of UCE. The open to the public. will be available from 12:00 pm to 2:00 pm. Representatives of the UMR community will be available prior to Unity Day. Luncheon also are available in the lunch

Private pilot ground school offered

A short course to prepare for the FAA Private Pilot Examination. The course consists of 16 hours of instruction, 6:30 to 8:30 a.m. and Wednesday, October 23, in the UCE. The course is the first 20 paid registrants. For more information, contact the continuing education office. Mechanical Engineering or

UMR Family Series on sale

Season tickets to the UMR Family Series are available -- "Sleeping Beauty" September 29, "Beauty and the Beast" November 16, "A Christmas Carol" December 21, and "The Nutcracker" on April 13, 1997, 7:30 p.m. in Leach Theatre. Tickets are



back to join you for this event. Maybe it hasn't been a really long time since you've seen each other, but wouldn't it be fun to find out what they've been doing since they left Rolla? For tickets (\$9 per person for all-you-can-eat picnic food), stop by the Alumni Office in Castleman Hall (the doors on the east side of the building).

Unity Day

Unity Day will be held Wednesday, September 25. A lunch, courtesy of Chancellor John T. Park, will be served to all students, faculty and staff wearing Unity Day ribbons on that day. The lunch will be held from 11:30 am - 1:30 pm on the mall north of the UCW. At 2:00 pm, Robert Henry, a UMR graduate and the president of the St. Louis Board of Public Service, will deliver the Unity Day lecture in the Missouri Room of UCE. The lecture is free and open to the public. Unity Day ribbons will be available from various campus representatives the day of the luncheon and prior to Unity Day. Tickets for the luncheon also are required and till be available in the luncheon venue.

Private pilot ground school short course offered

A short course to help student pilots prepare for the Federal Aviation Administration's private pilot written examination. The course will offer 24 hours of instruction in three hour blocks, from 6:30 to 9:30 p.m. on Mondays and Wednesdays, September 30 - October 23, in the Meramec Room of UCE. The course fee is \$100 and the first 20 paid registrants will be accepted. For more information, contact the continuing education program, 103 Mechanical Engineering Building Annex or call 341-4200.

UMR Family Series season tickets go on sale

Season tickets to all four shows are available -- "Sleeping Beauty," on September 29, "Beauty and the Beast," on November 16, "A Christmas Carol," on December 21, and "The Wizard of Oz," on April 13, 1997. All shows begin at 3 p.m. in Leach Theatre of Castleman Hall. Tickets are \$24 for adults and

\$16 for youths age 18 and under. They may be purchased at the UMR Ticket Window in UCW. For more information call 341-4219.

Awards for evaluation questions

Student Council is now accepting questions for its student run teacher evaluation. Students may submit questions via e-mailing stuco@umr.edu with the subject "Teacher Evaluation Question Contest" and include your email address and name, or you can pick up a form in the Student Council office (202 UCW). Three questions will be selected from all questions submitted, and winners will receive a \$10 gift certificate from the UMR Bookstore. All questions must be received by October 11, 1996. Winners will be notified by email on October 25, 1996. Enter as many times as you wish. Any inappropriate questions will be disqualified.

Attention Co-op Applicants

Please return your completed disc to the co-op office immediately. Interview sign-ups are available now.

1996-97 Rollamo Refunds

Forms are available in the StuCo Office (202 UCW), SUB Office (218 UCW), Student Activities Office (113 UCW), as well as on the WWW from <http://www.umn.edu/~stuco>. Forms must be returned to the StuCo Office by October 4, 1996. Those who paid a 95-96 Rollamo fee WILL receive a Rollamo THIS year.

Financial Aid Information

ROTARY CLUB OF FLORISSANT LOAN PROGRAM

The Florissant Rotary Club is offering a loan program which is available for eligible students through the Flo-Ro Trust. This program is part of an overall effort by the Florissant Rotary Club to assist in the education of qualified students within the Florissant Rotary's service area. The requirements for qualification for the loans are as follows:

1. A candidate must reside in the Florissant Rotary Club service area. (North St. Louis County, north of Highway 270)

2. A candidate must have completed a minimum of 60 semester hours at an accredited college or university.

3. A candidate must have a cumulative grade point average not less than 2.50.

4. A candidate must complete the Flo-Ro Trust Loan application and provide all required materials.

5. A candidate must be enrolled for a minimum of 12 semester credit hours during the semester of the loan period for a bachelor's degree, or 10 semester credit hours for a graduate degree.

6. A candidate may not borrow more than \$2,000.00 per application.

7. The total cumulative loans to any one applicant may not exceed the sum of \$6,000.00.

8. A candidate may not apply more than twice during an academic year.

9. A candidate must present him or herself for an interview by the Flo-Ro Trust Board.

10. A candidate shall repay the loan rate at a minimum of \$50.00 per month. The interest rate shall be the prevailing student loan rate at the time of graduation. Payments shall begin no later than 6 months after graduation, however, no interest shall be charged during the time that the borrower is a student.

If you are interested in this program and would qualify, you are encouraged to contact Mr. Ronald Schmidt at 801 St. Francis Street, Florissant, MO 63031 or call (314)921-5100.

RURAL MISSOURI, INC

If you have been employed as a farmworker in the past two years, you may be eligible to receive free tuition assistance for your education. If you have worked as a farm, orchard, greenhouse or poultry/egg production employee, you may qualify. To obtain details and the field representative closest to you call 1-800-234-4971.

THE JOHN GYLES EDUCATION FUND SCHOLARSHIP

The John Gyles Education Fund is a

private, benevolent endeavor established six years ago with the help of a Canadian/American benefactor. Each year financial assistance is available to students in both Canada and the United States. Full Canadian or American citizenship is a requirement. Awards are available to both male and female students for all areas of post-secondary study. A minimum GPA of 2.7 is required. Criteria other than strictly academic ability and financial need are considered in the selection process. Selected students will receive up to \$2,500.00. Deadline is November 15. Applications must be mailed by this date. To receive an application please send a stamped *** (US 32 cents), self-addressed, standard letter size (No. 10) envelope to the following address: The John Gyles Education Fund, Attention: R. James Cogle, Administrator, P. O. Box 4808, 712 Riverside Drive, Fredericton, New Brunswick Canada E5B 5G4.

CHRYSLER ANNOUNCES NEW SCHOLARSHIP PROGRAM

With an eye toward assisting outstanding college bound students, Chrysler Corporation recently awarded 1,000 grants to 40 recipients through its new Junior Golf Scholarship Program. Even though the majority of the winners play golf, all selections were based upon their academic and extra-curricular effort. For more information on this exciting program, call 1-800-856-0764.

ROLLA AREA BUSINESS AND PROFESSIONAL WOMEN

The Rolla Area Business and Professional Women's Club is offering two scholarships of \$500.00 each to women enrolled for the 1997 Spring semester. The scholarship is designed to encourage women to advance their career goals through continuing education -- whether they are currently pursuing a degree, returning to the work force after a long-term absence, or are in the process of changing careers.

1. Must be a woman 25 years of age or older and a citizen of the United States, and a resident of Phelps, Dent, Maries, or Pulaski Counties.
2. Must be officially accepted into an accredited program or course of study

at a United States institution.

3. Must demonstrate need for financial assistance to upgrade skills or complete education for career advancement.

4. Must have definite plans to use this desired training to improve chances for advancement, to train for a new career field, or to enter or re-enter the job market.

Applications available in the Student Financial Aid Office, G-1 Parker Hall. Application must be received by the Selection Committee no later than September 30, 1996.

PETER D. COURTOIS CONCRETE CONSTRUCTION SCHOLARSHIP

These awards are open to any undergraduate student in the United States of Canada. The student shall have achieved senior status in a four year or longer undergraduate program in engineering, construction, or technology during the year for which awards are presenter. The awards will be made on the basis of demonstrated interest and ability to work in the field of concrete construction.

* The student must have a course load of 6 or more credit hours each semester during the period for which the award is made.

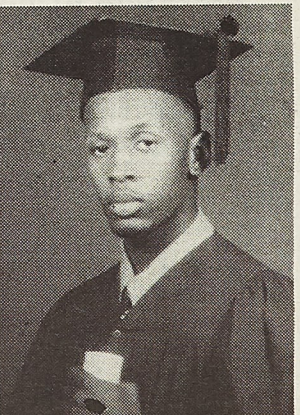
* The student must be a senior during the year for which the award is made (not necessarily at the time of application).

* Transcripts, recommendations, and an essay must be submitted as outlined on the application form.

Applications available in the Student Financial Aid Office, G-1 Parker Hall. Application must be received by February 1, 1997.

RHODES SCHOLARSHIPS

Information of the Rhodes Scholarship is available in the Student Financial Aid Office, G-1 Parker Hall. Application deadline is October 11, 1996.



Willie "Sunnie" Prevo
Graduating: June 4, 1992.
Killed: May 28, 1992
Cleveland, OH

If you don't stop someone from driving drunk, who will? Do whatever it takes.

FRIENDS DON'T LET FRIENDS DRIVE DRUNK.



If you need information on how to request an *absentee ballot* or need to have your ballot notarized stop by the ASUM office, UCW, Room 212 from 8:30-3:00.

Note: If you have not registered to vote in the November General Election, stop by the ASUM office. The deadline to register is **October 9th!**



NO RUNNING

Neuromuscular disease can say no running, walking -- even breathing. Help MDA help people.

MDA
Muscular Dystrophy Association
1-800-572-1717

CPR

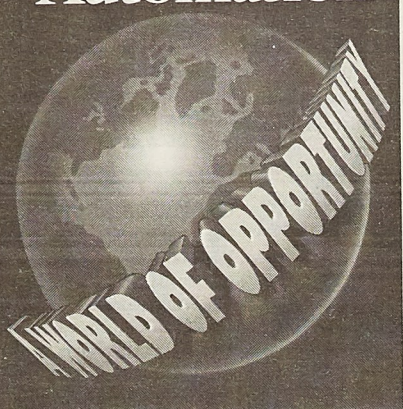
can keep your love alive

American Heart Association

Fighting Heart Disease and Stroke

E N G I N E E R S

Rockwell Automation



Allen-Bradley
RELIANCE ELECTRIC
DODGE
ROCKWELL SOFTWARE
sprecher+schuh
Electro-Craft
KATO
DataMyte

See Rockwell Automation at: University of MO - Rolla
On Campus Presentation: October 7, 1996
On Campus Interview: October 8, 1996
Check your placement office for locations.
Explore a world of opportunity... <http://www.ra.rockwell.com/careers/college>
Rockwell Automation

5 Pine St.
Rolla, MO

Eclipse

Ph. 364-4301

SCIENCE FICTION • FANTASY • COMICS • GAMES

RESEARCH REPORTS
Largest Library of Information in U.S.
19,278 TOPICS - ALL SUBJECTS
Order Catalog Today with Visa / MC or C/D
ORDERING HOT LINE 800-351-0222
Or, rush \$2.00 to: Research Assistance
11322 Idaho Ave., #206-RR, Los Angeles, CA 90025

*** EARN EXTRA INCOME***
Earn \$200-\$500 weekly mailing phone cards. For information send a self-addressed stamped envelope to: Inc., P.O. Box 0887, Miami, FL 33164

The Time Is Limited. The Savings Aren't.

Make the most of our special discounts all month.

3¢ Copies • 49¢ Fax • \$2.00 Off UPS Overnight



MAIL BOXES ETC.

It's NOT WHAT WE DO.
It's HOW WE DO IT.

Restrictions apply. Services may vary. Limit 100 back and white copies on 8 1/2" x 11" white bond only, sending and receiving domestic fax transmissions per page. UPS Overnight only per customer per day. ©1996 Mail Boxes Etc. Franchised Centers are independently owned and operated. Offer valid from October 1 to October 31, 1996.

21 and Older IDs Required

--Wednesday 9 p.m. to 1 a.m.
LADIES NIGHT
Well Drinks and Draft Specials
D.J. Dance
Rock and Country

Rolla City Limits
1701 Martin Springs Dr.
In the Ramada Inn

**If
you
Co-op
jobs
will
come!**

Check out the UMR Co-op Program
40 years and still growing!
Carve Opportunity's Center • 3rd Floor Hardwood Hall
See Dave or Sharon

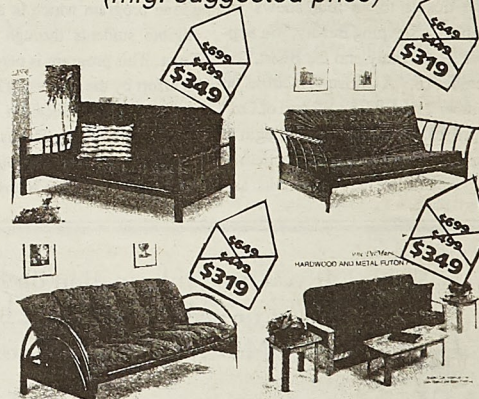
Futon Frank says...
"Welcome back, students!"



All futons, daybeds
and Restonic mat-
tresses at sizzlin'
summer savings

Complete Futons
Starting at \$199.00

(mfg. suggested price)



Present student I.D.
and receive a FREE
futon cover!
(value \$59.99)



RESTONIC
Crafting the best mattress since 1938.



Rest E-Z

Dedicated to Your Comfort

Southside Shoppers World, Hwy 63 S • 364-0506

September
day when the
Three boxes of
Titanic's hull
Wednesday in the
McNitt Hall

The steel liner was sent to
ies by Dr. Phil
lurgical Depart
help explain an
to why the unth
unsinkable Titan

Leighly said
how to make st
If the studies sh
fact brittle, it w
sank so fast
passengers to l

Leighly's
comprehensive
formed on the h
test will be a
impurities suc
phosphorous, c
the steel, then
steel was brittl
show that not

UMR



The 19
UMR prove
fact the sec
tion. A sur
1995 fresh
est academ
public sch
following
Technology
The sur
Institutiona
tion Inc. of
organization
services for
out the Un
surveying 1
colleges an
1,000 of the
schools.