



09 Mar 1994

The Missouri Miner, March 09, 1994

Follow this and additional works at: https://scholarsmine.mst.edu/missouri_miner

These newspapers reflect the attitudes, perspectives, and beliefs of different times. Neither the library nor the university endorses the views expressed in these collections, some of which contain images and language which may be offensive to some readers.

Recommended Citation

"The Missouri Miner, March 09, 1994" (1994). *The Missouri Miner Newspaper*. 2664.
https://scholarsmine.mst.edu/missouri_miner/2664

This Newspaper is brought to you for free and open access by Scholars' Mine. It has been accepted for inclusion in The Missouri Miner Newspaper by an authorized administrator of Scholars' Mine. This work is protected by U. S. Copyright Law. Unauthorized use including reproduction for redistribution requires the permission of the copyright holder. For more information, please contact scholarsmine@mst.edu.

Opinions
page 3

Features
page 5

Sports
page 7

St. Patrick's
Queens
page 10

St. Patrick's
Knights
page 13



Missouri Miner

A publication of the students of the University of Missouri-Rolla



March 9, 1994

Volume 83, Number 22

Twenty Four pages

STUCO brings proposal for new Student Union before students



Andrew Sears
Staff Writer

Earlier this semester Student Council endorsed a proposal that asks the University to look into the possibility of building a Student Union. The first step in this process is to solicit feedback from the student body on whether this is something they want. The body of the proposal is as follows:

Likely the most common complaint of students about UMR is that there is not enough recreation. One step to remedy this problem has been taken with the addition to the Multi-Purpose Building. Undoubtedly, the next step is to construct a Student Union Building.

The ideal location for this building would be adjacent to UCE. This building along with UCW is currently functioning as a focal point for students, but it falls short of providing the services of a modern college union. The problem is that the University Center is geared more for serving the University rather than students. This can be seen by the old style cafeteria, and expensive meeting rooms, and style of interior decorations. While these may do much to

impress alumni, they do not impress students. Most students would prefer a simple environment which provides the necessary services than an extravagant environment that does not.

In building a Student Union, it is necessary to keep in close contact with what the current students want because their needs will change even before the building is completed. That makes it very hard to pinpoint the exact services that students will want in five years. For example, if the University made plans for a Union in the 70's, it might have included a disco. In this example, now everyone knows that a disco would not see much use after the 70's. This is just like the arcade which was included in the plans made in the 80's for UCE, and now it is not used much. Keeping this in mind, probably a key feature of the Union would be flexibility.

There are certain services that will always be useful in a Union. These include dining facilities, recreation, meeting rooms, and offices for student organizations. In building these, it is important to realize that students want the most for their money. For example, they would rather have many simple meeting rooms than a few extravagant rooms. They would rather have food that is quick and inexpensive than fine dining. With this in mind, it is probably fairly safe to say that the long-term trend is going toward fast food and

away from institutionalized cafeterias.

With these points in mind, the Student Union could be constructed by remodeling the UCE to provide new services, and adding an additional building adjacent to it. Hopefully these two buildings could be connected by a walkway. UCE could continue to serve its dual function to both students and the general University, but the new addition would be designed primarily for students. The reason for this is simple: students will not be willing to pay for a building that is not for them. In fact, there is some resentment among students over paying a student activity fee for the UCE when the services there are not meeting students needs.

In addition to providing new services, the Student Union would act as a central point on campus for students. Right now student organizations have their offices scattered across the campus. It would greatly improve communication and cooperation among these organizations to have their offices in the same area. Recreation is very limited on campus, and dining facilities are outdated. The new student Union could solve these problems by adding new services and providing a central loca-

see Union, page 22

UMR student dies in accident



News Services
SOURCE

ROLLA, Mo. — A UMR student died early last Friday morning from injuries sustained in an automobile accident North of Rolla. One other UMR student was injured.

Po-Wei Juan, 26, was driving his 1987 Toyota Southbound on U.S. Highway 63 near the junction of MO Highway 28 when the car ran off the road and hit a tree, according to Troop

I of the Missouri Highway Patrol. The accident occurred at 1:40 a.m. today.

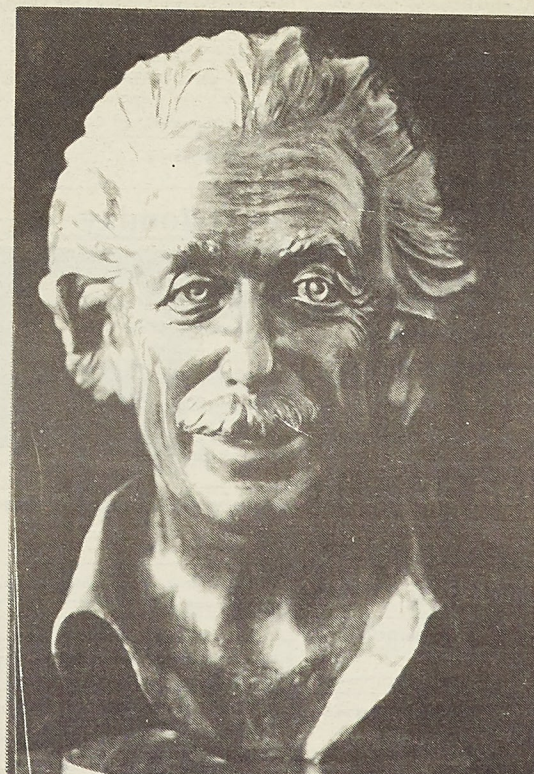
Juan was taken to the Birmingham-Martin Funeral Chapel in Vienna, Mo. A passenger, Jian Ding, 20, of St. Louis, sustained moderate injuries. She was taken to the Phelps County Medical Center in Rolla for treatment.

Both Juan and Ding were wearing seatbelts, the Highway Patrol said. The car was demolished.

Juan, of Taichung, Taiwan, was a graduate student in chemical engineering at UMR. He began his studies at UMR last fall.

Ding is a senior majoring in computer science at UMR.

Come see our new bust!



Jason Hansen

This new statue of Albert Einstein was recently purchased by the university and is now on display in the library. Go see it - you paid for it. And be sure to check out who the "Friends of Einstein" are!

Bids for new Multi-purpose Building revealed



News Services
SOURCE

ROLLA, Mo. — The University of Missouri-Rolla today opened sealed bids for construction of its Recreation and Intramural Center. UMR received even bids by today's 2 p.m. deadline. The bids were opened at 2:05 p.m. in the conference room of the UMR General Services Building. The Recreation and Intramural Center will be adjacent to the UMR Gale Bullman Multi-Pur-

pose Building at 10th Street and Bishop Avenue. Construction is expected to begin in late May and to be completed by the fall 1995 semester. The University of Missouri Board of Curators is expected to award a contract for construction of the project at its meeting Thursday, March 31, and Friday, April 1, at the University of Missouri-Kansas City. The bids were let in four parts: for construction of the new building (base bid); construction of a parking lot south of the building (alternate No. 1); completion of a rifle range (alternate No. 2); and construction of a canopy on the east entrance of the UMR Gale Bullman Multi-Pur-

pose Building (alternate No. 3). The following companies bid on the project: Hogan Construction Co. of Rolla, \$3,380,943 (base bid), \$147,638 (alternate No. 1), \$185,000 (alternate No. 2), and \$73,000 (alternate No. 3). Total bid: \$3,786,581. Baumgartner General Contractors Inc. of Springfield, Mo., \$3,825,000 (base bid), \$140,000 (alternate No. 1), \$213,000 (alternate No. 2) and \$51,000 (alternate No. 3). Total bid: \$4,229,000. Sieve Contractors Inc. of Washington, Mo., \$3,699,308 (base bid), \$168,789 (alternate No. 1),

see Recreation, page 22

What's Up at UMR

Wednesday

11:30-5:30: Blood Drive, Centennial Hall UCE

3:30pm: UMR T.E.C.H.S. mtg., 208 Norwood

Noon: Christian Campus Fellowship Meeting, Walnut Room, UC-East.

4:00pm: CHE Graduate seminar, "New Microporous Membrane-Based Separation Techniques", 125 Shrenk Hall

6:00pm: MSM Spelunkers Club mtg., 204 McNutt

7:00pm: Down To Earth meeting, McNutt 210

8:00pm: College Republicans mtg., 205 H-SS

8:00pm: Kappa Kappa Psi mtg., 321 Chem. Eng.

8:00pm: Tau Beta Sigma mtg., 315 Chem. Eng.

9:00pm: Arnold Air Society mtg., 208 Harris

Thursday

UMR swimming begins

11:30-5:30: Red Cross Blood Drive, Centennial Hall, UC-East

11:30am: CE graduate Seminar Series, 114 Civil

Noon: Christian Campus Fellowship Meeting, Walnut Room, UC-East.

12:30pm: Newman Scripture

4:45pm: Toastmasters mtg., Missouri Room, UC-East

6:00pm: Pi Tau Sigma, Test 2 and Pledge Meeting ME 216

6:30pm: Alpha Phi Omega mtg., 206 McNutt

7:30pm: Lutheran Student Center Bible Study

8:00pm: SUB presents Barbara Bailey Hutchison, UCE Cafeteria

8:00pm: St. Pat's Committee mtg., 107C ME annex

8:00pm: Solar Car Team mtg., G-4A Basic Engineering

Friday

UMR indoor track, NCAA Division II Championships, Fargo N.D.

UMR baseball, Gulf Coast Classic, times to be announced, Panama City, Fla.

Noon: Christian Campus Fellowship Meeting, Walnut Room, UC-East.

3:00pm: Gaming Association open gaming, Chem. Eng.

3:30pm: Trap & Skeet mtg., T-2 building

6:00pm: Intervarsity Christian Fellowship mtg., Missouri Room, UC-East

SUB movie, "American Graffiti"

6:30pm: International Coffee Hour, Immanuel Lutheran Church, free admission.

6:30pm: Show-Me Anime mtg., 204 McNutt

11:00pm: SUB Night Bowling Tournament, Coachlite Lanes

Saturday

8:00am: Tau Beta Pi Workday EE Lobby

SUB movie "American Graffiti"

Sunday

UMR golf, Missouri Miner-Ramada Inn Tourney, Fort Leonard Wood

UMR softball, Florida Spring Fling, Pensacola, Fla.

10:00am: Baha'i Club children's class, 125 Chem. Eng.

2:00pm: Chinese Student Association Chinese class

3:30pm: UMR Orchestra, "Prelude to Hansel and Gretel" and "Peter and the Wolf," Leach Theatre, Castleman Hall.

6:30pm: Voices of Inspiration mtg., TJ South Lounge

9:00pm: Blue Sabres mtg.

Monday

10:00am: Midgrade sheets due in Registrar's office.

Noon: University Orators Chapter of Toastmasters International, Missouri Room, UCE.

Noon: Christian Campus Fellowship Bible Reading, Walnut Room, UC-East.

12:30pm: St. Pat's Follies, UCE.

7:30pm: Alcoholics Anonymous mtg., Walnut Room, UC-East

2:30pm: UMR tennis, Central Methodist College, UMR tennis courts.

4:30pm: Chemistry seminar, G-3 Shrenk Hall

8:00pm: Koinonia mtg., Meramec Room, UC-East

Tuesday

Noon: Christian Campus Fellowship Bible Reading, Walnut Room, UC-East.

Latter-day Saint Student Association class, 243 McNutt

12:30pm: St. Pat's Follies, UC-West

6:30pm: Koinonia Bible Study, 305 Chem. Eng.

7:00pm: UMR Spring Film Series, "I Love You To Death," Miles Auditorium, ME

8:00pm: Chi Alpha mtg., Missouri room, UC-East

9:30pm: SUB Concerts Committee meeting

Next Wednesday

St. Pat and his court arrive.

Noon: Christian Campus Fellowship Meeting, Walnut Room, UC-East.

6:00pm: MSM Spelunker's Club mtg., 204 McNutt

8:00pm: College Republicans mtg., 205 H-SS

8:00pm: Kappa Kappa Psi mtg., 321 Chem. Eng.

8:00pm: Tau Beta Sigma mtg., 315 Chem. Eng.

9:00pm: Arnold Air Society mtg., 208 Harris

Financial Aid

SUMMER 1994 FINANCIAL AID APPLICATIONS NOW AVAILABLE Students wishing to apply for Summer 94 Financial Aid (University Loans and/or Work-study) need to complete a Summer Application. Starting March 15, 1994 through April 15, 1994. Applications are available in the Student Financial Aid office, G-1 Parker Hall.

FEDERAL FINANCIAL AID APPLICATION FOR THE 94/95 ACADEMIC YEAR.

All students who applied for federal financial assistance (i.e.: Pell Grant, Stafford Loan, Work Study, etc.) for the 93/94 academic year by completing a "Free Application for Federal Student Aid (FAFSA)" will be sent very soon a 94/95 Renewal FAFSA to complete. Students are encouraged to complete the renewal FAFSA after January 1, 1994, but by March 31, 1994, to apply for federal financial assistance for the 94/95 academic year.

The Student Financial Aid Office, G-1 Parker Hall would be glad to answer any questions concerning how to apply for financial assistance for the 94/95 academic year.

BRIGHT FLIGHT CHECKS

Bright Flight checks are now available for the Winter 94 semester at the Cashiers Office, G-4 Parker Hall.

1994-95 ORVILLE REDENBACHER'S SECOND START SCHOLARSHIP PROGRAM

Thirty \$1,000 scholarships will be distributed to qualified adults for the 1994-95 school year. This unique program is designed to assist the growing number of adults who are returning to college or beginning for the first time. To be eligible for an Orville Redenbacher's Second Start Scholarship, you must be 30 years or older at the time of application and be enrolled or planning to enroll part-time in an undergraduate or graduate degree program at an ac-

credited college or university.

APPLICATIONS AVAILABLE IN THE STUDENT FINANCIAL AID OFFICE, G-1 PARKER HALL. ALL APPLICATIONS MUST BE POST-MARKED BY MAY 2, 1994.

YOUNG ENGINEERS OF ST. LOUIS SCHOLARSHIP

The Young Engineers of St. Louis are offering two \$1,000 scholarships. One will be awarded to an engineering student who will be a sophomore in the Fall of 1994 and the other to an engineering student who will be a junior in the fall of 1994. The application for this scholarship is open to students of all engineering disciplines.

To qualify for the scholarship, the student must be registered in an approved engineering curriculum, must currently be a freshman or sophomore, must be a citizen of the U.S.A. or possess a permanent visa, and should intend to live and work in the St. Louis area after graduation.

APPLICATIONS AVAILABLE IN THE STUDENT FINANCIAL AID OFFICE, G-1 PARKER HALL. DEADLINE MUST BE POSTMARKED NO LATER THAN APRIL 15, 1994

CRANE FUND FOR WIDOWS AND CHILDREN

The Admissions/Student Financial Aid Office wishes to make students aware for the Winter 94 semester of the Crane Fund for Widows and Children. This program is:

- 1) for needy and deserving widows and children of men who, at their death, have left their widows and children without adequate means of support or
- 2) deserving wives and/or children of men upon whom they are dependent for support by, because of age or other disability, are unable or for other reasons, fails or neglect to adequately support their respective wives and/or children.

If you meet the above terms for this program you must complete a **Crane Fund for Widows and Children** Application to be considered for funding. This application can be received in the Student Financial Aid Office, G-1 Parker Hall. Applications for this program for the Winter 94 semester will be accepted through March 25, 1994.

NATIONAL ASSOCIATION OF WOMEN IN CONSTRUCTION—GREATER KANSAS CITY, MO. The Greater Kansas City, Missouri Scholarship Foundation offers scholarships to stu-

See AID, page 21

Missouri Miner

The *Missouri Miner* is the official publication of the students of the University of Missouri-Rolla. It is distributed each Wednesday afternoon at Rolla, Missouri and features activities of the students of UMR.

All articles, features, photographs, and illustrations published are the property of the *Missouri Miner* and may not be reproduced or published without written permission.

The *Missouri Miner* encourages comments from its readers, and will attempt to print all responsible letters and editorial material received. All submissions must have a name, student ID number, and phone number for verification. Names will be withheld upon request.

Submissions for publication must be in our drop box (first floor of the Norwood Hall, Room 103) by 3:30 p.m. on the Thursday before publication. Submissions, not including personals, will be accepted through E-mail (Internet) at MINER@UMR.EDU. The *Missouri Miner* reserves the right to edit all submissions for style, grammar, punctuation, spelling, length, and matters of good taste.

The *Missouri Miner* is operated by the students of UMR and the opinions expressed in it do not necessarily reflect those of the university, faculty, or student body.

Editor-in-Chief Jeff Lucavich (341-8436)

Managing Editor Francine Belaska (364-0290)

Asst. Managing Editor Mike Fridley

Business Manager Christopher Goo (364-8247)

Advertising Director Scott Davidson (364-7970)

Asst. Advertising Director Billy Mittenmeyer (341-2931)

Circulation Bob Bohmak (364-1433)

News Editor Mike Matthews (341-8915)

Asst. News Editor Andy Dooley

Features Editor Jody Lukatch (364-0290)

Asst. Features Editor Elizabeth Klaudon

Sports Editor Joe Hamburg (368-3557)

Asst. Sports Editor Brian Fortelka

Photo Editor Jason Hansen (341-8662)

Copy Manager Jim Ockers (364-1207)

Asst. Copy Manager Chad Slaughter

Staff Writers: James Barnes, Bill Broyles, Jon Steltenpohl, Laura Wilman, Dawn Sharp, Ian Roadlsky, Gennitt Leefunk, Aaron Boyll, Travis Dunnigton, Shawn Erdmann, Bryan Fortelka, Mark Crawford, Lee Hill, Mike Overfelt, Angela Passanise

Typesetters: Carmenza Gutierrez, Amy Ruhland, Jen Gruss

Graphic Artists: Ming, John Stork, David Tattershall, Omar Metwalli, Craig Brewer

Advertising Representatives: Josh Beudel

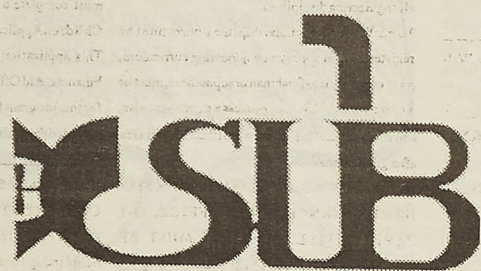
Photographers: Doug Sobrey, Brett Saunter

103A Norwood Hall
University of Missouri-Rolla
Rolla, MO 65401-0249
(314) 341-4285
(314) 341-4312

Oh yes,
we do recycle!
Please do the same!

Opinions

Congratulations Tom Mee Student Union Board Member of the Month



March

Letter to the Editor...

The recent response by Professor Leighly was very revealing about his thoughts and thought processes on Conservatism. Unfortunately his thoughts on Conservatism are misguided.

His first grievance with Mr. Otto concerns orders and classes. As a fellow conservative I understand what Mr. Otto meant, and I hope to convey that meaning to Professor Leighly. Professor Leighly quickly quoted the sentence on "order and classes", but forgot to include the following sentences, which provide the context of Mr. Otto's statements. "These classes are not rigid plateaus of one caste looking down on another, rather they are a blending of levels through people's abilities and leadership abilities. A person decides what his own abilities are, they are not assigned through the government." Professor Leighly, this is not similar to the rigid order of French Nobles (who received their title through blood, not ability), that you used to compare the conservative's definition of order and classes to.

Professor Leighly feels that "all men and women are created equal". I disagree with this. I believe Professor Leighly would agree that somewhere there is someone who is smarter, stronger, and more wealthy than him. I also believe this does not bother Professor Leighly. Why? Because he knows that what is important is that a person works with his or her own abilities to become the best person he or she can be. Professor Leighly gives a good example of this by talking about first

generation college students. These students struggled and used their abilities to become the first in their families to go to college and will no doubt advance upward through society because of their determination. This sentence from Otto's paper sums up the idea: "While everyone has equal rights, not everyone has equal abilities." No sane person would say that all people are actually created equal, BUT a sane and logical person would say they are equal under the law. This is the view of a Conservative.

The reason I was compelled to write was Professor Leighly's suggestion that conservative ideas and slavery are "cut from the same cloth". No doubt Professor Leighly is a very intelligent man, but his statement was absurd, ludicrous, and could not be further from the truth. I suggest that Professor Leighly read a book written by George Fitzhugh called Cannibals All. This book is a two hundred and seventy page justification of slavery. The proof was given using a form of socialism. To have slavery you must first believe people have a right to be cared for, individualism is evil, and free market economies are wrong. This is the exact opposite of what conservatives believe. Slavery is one of the most evil things that can be done to a group of people and I hate it when someone suggests conservatism and slavery are even remotely related since that suggestion is a lie. I hope this explanation will help clear up the misunderstandings about Mr. Otto's article on conservatism.

MONEY for COLLEGE!

Every Student is ELIGIBLE for Some Type of Financial Aid Regardless of Grades or Family Income

SCHOLARSHIPS, FELLOWSHIPS, GRANTS and LOANS

CALL Toll-FREE 24 Hours for a Brochure:
1-800-457-0089 Ext. 917

RESULTS GUARANTEED! STUDENT SERVICES, Inc. has a databank of over 180,000 listings for scholarships, fellowships, grants and loans, representing BILLIONS of dollars in private sector funding. We can provide you with a list of funding sources most appropriate to your background and educational goals.

Student Services, Inc. 6124 North Milwaukee Avenue • Chicago, IL 60646

How is STUDENT SERVICES, Inc. Different from a Financial Aid Office?

STUDENT SERVICES, Inc. specializes in private sector funding from corporations, memorials, trusts, foundations, religious groups, and many other philanthropic organizations.

As state and federal funding sources continue to face serious cutbacks, private sector funding is expected to grow even faster than in the past.

STUDENT SERVICES, Inc. has current, up-to-date information that provides an intelligent alternative to traditional state and federal funding sources; at the very least, they represent a significant supplement to government funding.



Copying

A single copy or 1000s!

MAIL BOXES ETC.®

1028 Highway 63 South
[Southside Shoppers World]

Phone 364-0006

Receive/Send FAX 364-0007

You know, with this new information Super Highway, we could bring back True democracy

Yeah, We could all vote by computer, on all issues, no more evil politicians

power back to the people
All the money and time we'd save

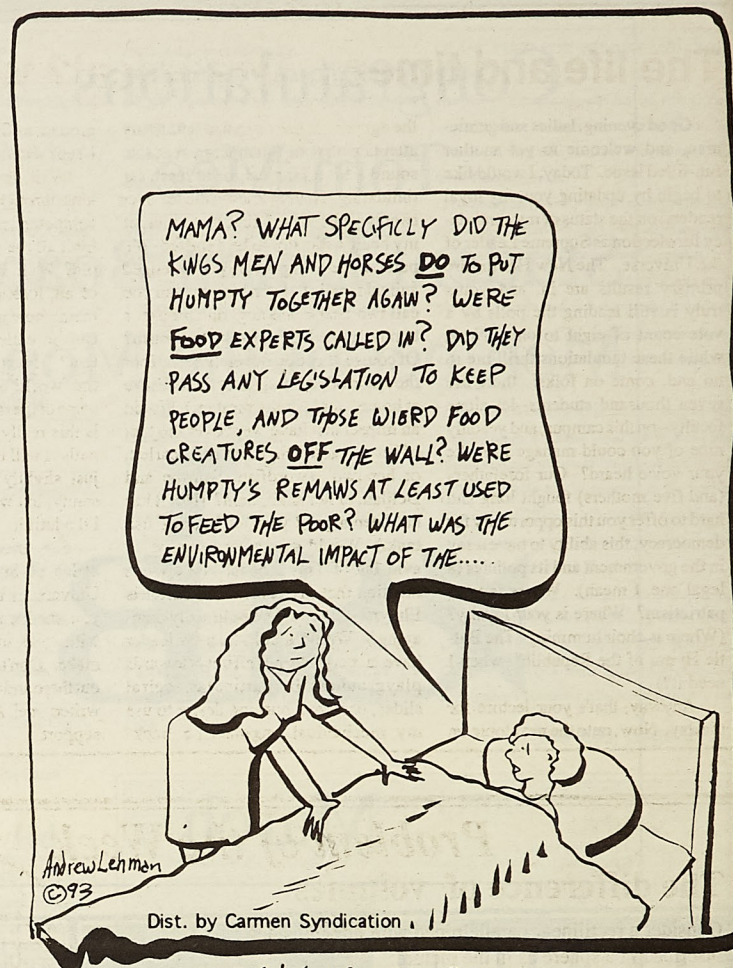
oh well, Toss me another brew, man

LEHMAN

by Andrew Lehman



COWSPIRACY



A YOUNG AL GORE

BARBARA BAILEY HUTCHISON

"Hallmark has a way to say you care."



She's coming March 10

UCE Cafeteria at 8pm

SINGER

SONGWRITER

ENTERTAINER



THE MINER'S MINOR

By:
Dave Taylor, AEC Student Assistant

***Find out information on how to obtain a Minor from UMR, and how close you are to currently having one

Sponsored By:
Academic Enhancement Center

WHEN: Tuesday, March 8 @ 7:00pm
WHERE: Thomas Jefferson Residence Hall Room G-3

The life

Good evening, man, and welcome to this fun-filled issue. To begin by updating readers, on the state of the Union. The primary results are truly still leading, while these tabular vote count of eight no end, come on seven thousand st faculty--on this can nine of you could your voice heard? (and five mothers, hard to offer you the democracy, this ab in the government legal one, I mean, patriotism? Where (Where is choir hu the Hymn of the R need it?) Anyway, that's the day. Now, onto

The differ

Consider a recti inscribed in a sp

Suppose that AD

Submit your sol

Casin

Theta Tau C Source

For each of the past annual St. Pat's Celebr off with Theta Tau C Night. Casino Night b at 7:00p.m. and ends an event will be held a Guard Armory on We 16th. The ticket price vance and \$5 at the do be purchased at the U Cashier's Office, Key Dave's Barber Shop evening of Casino Nigh

Features

Laurie Wilman

The life and times... Tyrannical? Who Me?

Good evening, ladies and gentlemen, and welcome to yet another fun-filled issue. Today, I would like to begin by updating you, my loyal readers, on the status of my candidacy for election as Supreme Leader of the Universe. The New Hampshire primary results are in, and yours truly is still leading the polls by a vote count of eight to one. Now, while these tabulations thrill me to no end, come on folks: there are seven thousand students--let alone faculty--on this campus, and yet only nine of you could manage to make your voice heard? Our forefathers (and five mothers) fought long and hard to offer you this opportunity for democracy, this ability to have a say in the government and its policies (a legal one, I mean). Where is your patriotism? Where is your loyalty? (Where is choir humming "The Battle Hymn of the Republic" when I need it?)

Anyway, that's your lecture for the day. Now, onto the next topic on

the agenda. It has been brought to my attention that my campaign tends to sound a bit tyrannical, or at least, intimidating. Having known me for over twenty years now, I find the notion of my being a dictator to be a stuffed--oh, pardon me--organically challenged animal fanatic? (I don't know: can you call two bears, one dog, one mouse, a bunny, and a fish signs of fanaticism? Of course, those do not include the four thousand other relatives of theirs I have at home...just ask my mother.) Would an impecialist have wept over the loss of her two goldfish, Rhett and Scarlett, or her two swordfish, Samson and Delilah, or her snail, Sam? (No, it has not been a good year for Laurie's fish tank.) Would a ruthless tyrant be an avid fan of Tiny Toons? (We won't mention that my favorite character is Elmyra--that could be politically damaging.) Would a cold-hearted leader have a very strong affinity towards playgrounds, in particular, spiral slides, or have a burning desire to use my mechanical engineering back-

ground to design Technic sets for Lego? Hmmm?

Well, now I can hear what's running through your mind: would a competent, rational, sane leader exhibit all the qualities of a five year old? Well, I can answer that. First of all, look at our current government: how many of those involved can be called completely competent? Next, take a gander at how the world leaders are handling some of the raging battles right now: is this really entirely rational? Finally, I will be the first to admit I'm just slightly off the path to pure sanity, but who isn't? Hey, at least I'll admit it.

See, then, electing me to the office of Supreme Leader of the Universe is truly the best decision you, the loyal voter, whom I entertain, week in and week out, could make. Don't you agree? So get on out there and vote for your favorite writer: me! And thank you for your support.

SUBConscious

The Gin Blossoms are coming March 19 so get your tickets now. Student tickets are available for \$7 in front of the Bookstore (one per student ID). All other tickets are \$15. Tickets will be \$15 on the day of the concert at the door. Don't miss out--get them while they're still around.

Barbara Bailey Hutchison will be here on March 10 in the UCE Cafe. She is an entertainer and song writer whose voice you may recognize from various TV and radio jingles.

The SUB Bowling Tournament will be March 11 at Coachlites Lanes.

Teams of four can compete for 1st, 2nd, and 3rd place prizes. If you are a night owl, then come join us for some midnight fun 11pm to 2am.

It's that time of the year again, Second City is coming to Rolla. The six comedian troupe travels around the country, enlivening an empty stage with original topical sketches. There will be two shows again this year, but don't be fooled, tickets will sell out. Tickets will be available to students on March 9 in the SUB Office free of charge. Get yours now.

St. Pat's Update

Help keep the legend alive



Rob Wilson
Staff Writer

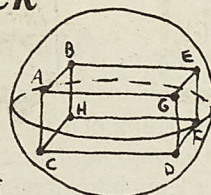
Watch out UMR! As you may have noticed by now, those pesky snakes have reared their ugly heads and only freshmen weilding shillelaghs seem

to follow. Rolla's great 86 year tradition is upon us, and as true Rolla students, it is our duty to party over Pat's as much as we can, because we do it better than any other campus can. Help keep the legend alive, and get out there and have good time. Get all your studying out of the way now so you have plenty of time to catch the Follies and Court arrival. Then relax and party

Problem of the Week

The difference of volumes

Consider a rectilinear parallelepiped with integral sides inscribed in a sphere as in the picture:



Suppose that $AD = CG = 17$ and $GF = ED = 10$

Find the volume of
 $V = (\text{volume of sphere}) - (\text{volume of parallelepiped})$

Submit your solutions by Wednesday, March 16 @ 2:30 pm outside M-CS 326.

Casino Night gears up for 1994

Theta Tau Omega
Source

For each of the past 20 years UMR's annual St. Pat's Celebration has kicked off with Theta Tau Omega's Casino Night. Casino Night begins promptly at 7:00p.m. and ends at midnight. The event will be held at the National Guard Armory on Wednesday March 16th. The ticket prices are \$4 in advance and \$5 at the door. Tickets may be purchased at the University West Cashier's Office, Key Sport Shop, or Dave's Barber Shop up until the evening of Casino Night.

The Rolla, St. Louis, and Kansas City areas have been generous in donating hundreds of prizes to make Casino Night a success. Some of the prizes include a \$800 mountain bike, cellular phone, Cardinals and Royals baseball tickets, free float trips, beer lights and signs, and many more. All prizes will be on display at Casino Night.

There are many opportunities to gamble the play money that you receive at the door. Games include a hoop shot, blackjack, craps, roulette, over and under, plinko, and others. Event goers can also purchase more play money if they have a tough time at the tables.

As usual, we will have the sexiest girls in Rolla as "Bunnies" to assist with the events of the evening. Theta Tau will also be sponsoring a party at Kappa Sigma from 10:00 p.m.-2:00 a.m. on the Wednesday of Casino Night. The band providing the tunes will be Curious George. There will be a \$2 cover with a Casino Night ticket stub and a \$3 charge without. All proceeds from the two events will be donated to the Rolla Area United Way.

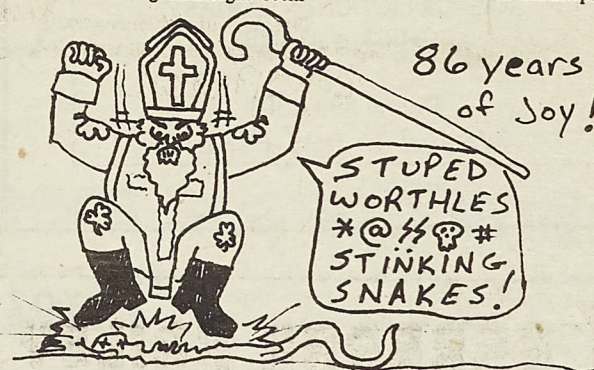
If anyone needs more information about Casino Night feel free to contact Joe Hornburg at 368-3557. Thank you for your support of the Rolla area charities.

able to stop them from invading campus. That's right, Snake Invasion is in full force once again, bringing in St. Pat's 1994! It's here and it's going to be the Best Ever! No more waiting, anticipating, wishing it would come. After the Snake Invasion of this weed comes Follies on Monday, and the rest is soon

it up over Spring Recess at Gonzo and Games.

Don't forget to show your support for the Best Ever by wearing your 1994 Green every Friday, and get ready to have the time of your life!

Are you psyched yet?! It's only 8 Daze away!



All You Can Eat For Charity

It's Sunday afternoon, and there is nothing to eat in the house, so what do you do? Go to Chi Omega for their annual All You Can Eat Spaghetti Dinner on March 13, from 1:00p.m. to 7:00p.m. The dinner includes spaghetti, Italian salad, garlic bread, drink, and dessert.

Tickets are \$3.50 in advance and \$4.00 at the door. You may call Chi Omega at 364-8989 to reserve your tickets. All proceeds go to charity. So instead of ordering pizza again go to Chi Omega for a good home cooked spaghetti dinner.

Chi Omega's
Annual
Spaghetti Dinner

All You Can Eat!!!

Sunday, March 13, 1994

1:00 to 7:00 p.m.

Chi Omega
1607 North Pine

Tickets: \$3.50 in advance
\$4.00 at the door

Call 364-8989 to reserve tickets

Meal Includes:
Spaghetti, Italian Salad, Garlic Bread,
Drink & Dessert

** All Proceeds Go To Charity **

Moved to 905 Pine!



SCIENCE FICTION • FANTASY
COMICS • GAMES

Phone 364-4301

Moved to 905 Pine!

The Missouri Miner Presents:

"SPOT THE SPOT"

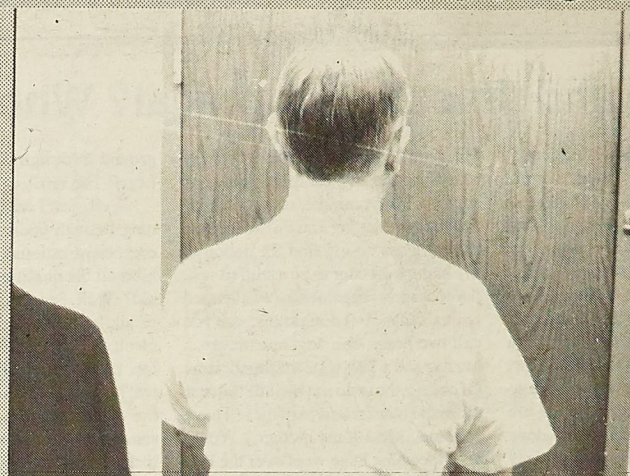


Photo by Brett Saunier

Take a good look at the above picture of a prominent UMR faculty member. Recognize him? If you do, you can be the winner of the Missouri Miner "Spot the Spot" contest. Just write down your guess, along with your name and phone number, and bring it to room 103 Norwood Hall. The first person to correctly identify our subject will win a Miner T-shirt. Enter as often as you'd like, but be sure to get your entries in soon, because if we don't get a winner within 2 weeks, we'll award the prize to our faculty member. Good luck!

Previous Photo:

This weeks prize goes to Chris Wood, who was one of the many entrants to correctly identify our photo of Professor Sparlin. Stop by the Miner office Thursday at 5:00 to claim your prize, and thanks to everyone who participated!

Attention faculty members!

We are looking for volunteers for future editions of the "spot the spot" contest. Our only requirement is that you have a good sense of humor and a distinctive head (when viewed from the back). If you are interested, send us a note via campus mail or E-mail (miner@umr.edu). This is a great opportunity to win fame and notoriety, and probably a free T-shirt as well!

Theta Tau Omega

presents their

20th Annual Casino Night

March 16, 1994

7:00p.m.- midnight

@

National Guard Armory

Prizes include a mountain bike, Cardinal and Royal Baseball tickets, a cellular telephone, beer signs and lights, gift certificates from area stores and restaurants, autographed sporting goods, and many other prizes from the Rolla, St. Louis, and K.C. areas

Tickets available at the Cashier's Window by the University Bookstore starting March 4th
Ticket Prices are \$4 in advance and \$5 at the door

All Proceeds go to Rolla Area United Way

Sports



Jason Hansen

Miner Kevin Fort shows perfect form as he nails the long range bomb for three points.

Miners End Difficult Season

UMR Basketball

Source

It was a difficult season for the UMR men's basketball team, as a young lineup went through growing pains this year as it ended up the season Saturday with a loss to Southwest Baptist.

The Miners, out of the MIAA Post-Season Tournament for the first time since 1991, finished the year with an overall record of 11-15 and a 3-13 conference record. UMR was in 11th place in the MIAA, its lowest finish since the league expanded to 12 teams in 1990.

UMR's difficulties this season were wide-ranging, but the team managed to have several positive moments during the course of the season. James Sinner (Mattoon, Ill.) returned from a redshirt season to tie for the team scoring lead with an average of 12.6 points a game. He finished even with sophomore center Jamie Brueggeman

(Centralia, Ill.), a player who also led UMR in rebounding with 6.8 per game and in blocked shots with 51.

Freshman guard Tim Holloway (St. Louis/ McCluer) also had a good first season in Miner uniform, averaging 11.4 points a game and winning most valuable player honors at the Pepsi-Cola Shootout. Holloway did this while playing at point guard, a spot he was moved to after Rod Jackson's (Little Rock, Ark.) season-ending injury in December.

The Miners also got good play over the course of the season from sophomores Ryan Wade (St. Peters/DeSmet) and Mark Matthews (Springfield/Hillcrest), and freshman Jeff Kikal (St. Louis/Oakville) and Kevin Fort (Kansas City, Kan.).

UMR opened the season with nine wins in its first 11 games, but struggled once the MIAA season got started. The Miners did not win a road game in league play for the first time in eight years and ended the year with seven consecutive losses, their longest losing streak since early in the 1989-90 season.

M-Club Athlete of the Week

Picture Not Available

This weeks M-Club athlete of the week is Kim Finke, a member of the UMR Womens Track Team. In a recent meet, Kim set the school record in the high jump when she cleared 5' 5 3/4".

Congratulations Kim and good luck during the rest of the season.

Lady Miners season ends

Angela Passanise

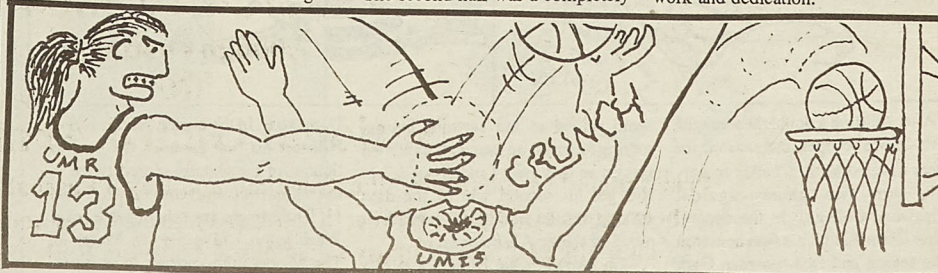
Staff Writer

In the first round of the MIAA Post-Season Tournament the Lady Miners were defeated after leading in the first half by 15 points. Missouri Southern came back in the second half beating

However, this did not get the Lady Miners down. Erika Nelson and Christie Williams shot well leading the first half in scoring. Joe Kvetensky did return in the half but obviously not at full strength. The Lady Miners never allowed Missouri Southern to gain the lead in the first half.

The second half was a completely

Christie Williams were the leading scorers with 16 points each. Defensively Joe Kvetensky, Erika Nelson, and Christie Williams led in rebounds. Although this was an upsetting loss for the Lady Miners they had a great season. Congratulations to the seniors Joe Kvetensky, Erika Nelson, and Amy Geisler for four years of hard work and dedication.



the Lady Miners by the score of 60-65. UMR women's basketball season ends. The Lady Miners finished 17-10 for the 1993-94 season.

The Lady Miners rallied to a big lead even though leading scorer and hopeful All-American Joe Kvetensky went down with a hyper-extended knee with 16:39 remaining in the first half.

different story. The Missouri Southern's offense came out with a bang and the defense was successful at keeping UMR out of the game. The Lions took the lead with 7:14 remaining in the game never allowing the Lady Miners to move ahead again. The final score of 60-65 was quite an upset for the Lady Miners. Erika Nelson and

"We had a great year," said Coach Roberts. "We won 17 games and finished in the conference where they picked us. And we were competitive with everybody in the league, except the game at Missouri Western. This program is getting there. And we honestly felt Joe had an All-American year."

UMR tennis team rocks

UMR Tennis

Source

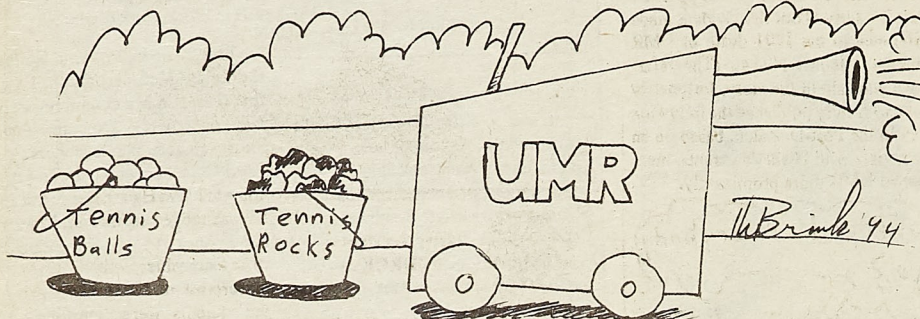
After a .500 season a year ago UMR tennis coach Todd Franklin is

season. Only one of the seven players on the roster, sophomore Ryan Saffels (Harrisonville), is back this year.

Heading into the season, the Miners' top player appears to be Methi Bengisu, a freshman who is originally from Turkey but attended high school

of the top players a year ago at Johnson County Community College. Cezus will play No.2 doubles with the team's lone senior, Jorge Valle (Paducah, Ky.). Valle will likely play No.4 singles.

The final spots will probably be



hoping the Miners can climb the ladder some more and get over the .500 mark this season. The trek starts on March 8 when the Miners take on Westminster in a home contest at the UMR Tennis Courts.

Franklin hopes the Miners can get this accomplished despite the fact that the lineup will be entirely new this

in St. Petersburg, Fla. He will also play in doubles competition with fellow freshman Matt Hamlin (Billings, Mont.), who will likely fill the No.5 spot in the lineup.

Playing in No.2 singled will probably be junior college transfer Steve Cezus (Shawnee, Kan.), who was one

filled by John-Mark Gardner (Ash Grove), a transfer from Missouri Southern, and freshman William Zung (Rolla). Gardner is slated for No.3 singles while Zung will play No.6 singles, and the two will pair up on the No.3 doubles team. Saffels will likely fill in at a singles spot on occasion.

UMR baseball starts season

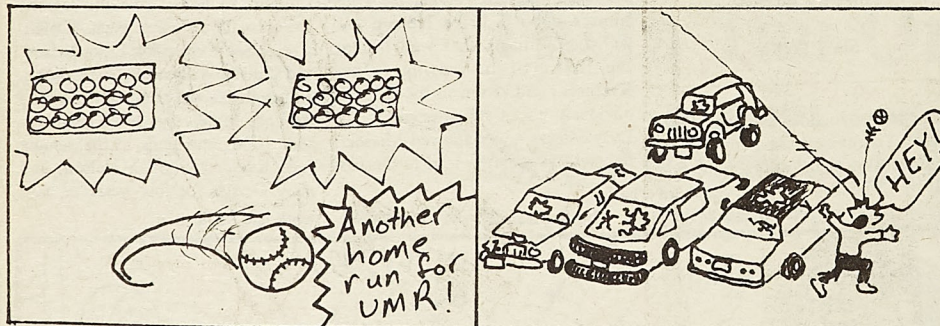
Scott Burkemper Staff Writer

The 1994 Miner baseball season got underway last week with the Miners posting a 3-3 record in their first six games.

RBI in the seventh inning to give the Miners a 3-2 victory. Kevin Hill got the win in relief of starter Scott Nierman as he pitched the Miners out of a bases loaded jam in the top of the seventh.

In the second game, the Miners

Point Lookout, MO. Pitcher Geoff Seavey suffered the 4-2 loss in the first game despite striking out nine batters while throwing a complete game. The Miners scored both of their runs in the fifth on consecutive hits by third baseman Eric Kearbey and catcher



After splitting a doubleheader with Harris-Stowe to open the season, the Miners traveled to St. Charles to narrowly win two games against Lindenwood College. In the opener, catcher Darin Nix hit his first homerun of the season and first baseman Gary Hubbard knocked in the game-winning

again rallied in the seventh inning, scoring four runs on four walks and two singles as they beat Lindenwood 7-6. Hill got his second win of the day, striking out the side in the seventh in relief of starter Allen Jones.

On March 5, the Miners lost two close games to College of the Ozarks in

Darin Nix. In the closer, reliever Kevin Hill lost his first game of the year as School of the Ozarks scored twice in the bottom of the seventh for a 6-5 win.

The Miners are scheduled to play Washington University on March 6. The Miners home opener is on Tuesday, March 8, against Quincy College.

UMR INTRAMURAL ATHLETE OF THE WEEK

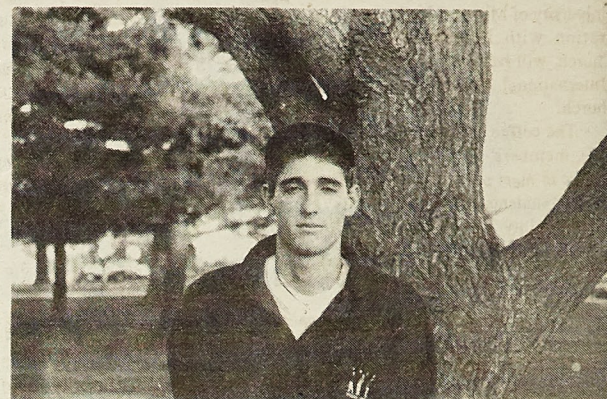


Photo by: Jason Hansen

Jeff Lacavich

Jeff plays basketball for Sigma Nu fraternity. He played a good defensive game and is averaging 23 points per game.

Sorenson Paces Tracksters

UMR Indoor Track

Source

As a team, the University of Missouri-Rolla men's and women's indoor track and field teams did not fare as well as they had hoped in Sunday's Mid-America Intercollegiate Athletics Association Championships, but the teams did have some strong showings.

Leading the way was Becky Wilson (Kirkwood), who was the lone women's 5000-meters in a time of 17:58.72. Wilson, who was the lone conference champion among the UMR competitors and first women's champ in school history, scored all 10 of the Lady Miner points in the meet with her victory.

The Lady Miners finished in eighth place as a team, one point ahead of Southwest Baptist.

The men's team also defeated Southeast Baptist in finishing eighth,

but scored 24 points in the meet. Craig Sorensen (Bonner Springs, Kan.) had the top finish among the UMR individuals as he took second in the high jump with a top mark of 6-6 1/4.

Kevin Schwalje (Rolla) finished third in the 1000-meters in a time of 2:33.1, while Brandon Graham (Wyandotte, Okla.) was third in the 600-meters, in the time of 1:15.18. Schwalje and Graham were part of the Miners' two-mile relay team that took fourth in 8:16.84. They were joined on the relay team by Ryan Unterreiner (St. Louis/Parkway North) and Steve Young (House Springs/Northwest).

The Miners will have a select group of athletes taking part in the Iowa State Invitational on Saturday as they make a last attempt to improve qualifying times for the NCAA Division II national meet which begins March 11. As of today, only Sorensen, Wilson and high jumper Kim Finke (Montgomery City) had met the provisional qualifying standards for nationals.

UMR co-sponsors "in-Hazing and ternational coffee hour" UMR



News Services
SOURCE

Rolla, Mo. - The Center for International Students and Programs at the University of Missouri-Rolla, in cooperation with Immanuel Lutheran Church, will begin hosting a monthly "International Coffee Hour" at the church.

The coffee hours are designed to give members of the community a chance to meet some of UMR's international students, according to the Rev. Mark McIntyre, campus pastor for

Immanuel Lutheran Church, and Eunice French, director of international students and programs at UMR. The meetings are free and open to the public.

The first International Coffee Hour, to be held at 6:30 p.m. Friday, March 11, at the church, will feature members of the UMR Turkish Students Association and UMR faculty members from Turkey. Turkish coffee will be served, and the students and faculty will give a slide presentation about their homeland.

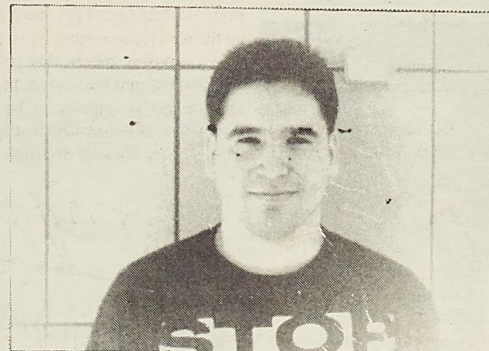
The church is located at Spring and 11th streets. For more information about the program, contact McIntyre at 364-4525 or French at 341-4208.



News Services
SOURCE

The hazing-related death of a Southeast Missouri State University student opened some old wounds for UMR. The St. Louis Post-Dispatch's Feb. 17 story about the incident made reference to the 1991 death of UMR student Michael Nisbet. (The reference was late in the story, fortunately for us.) A story published the following day in the Post-Dispatch, based on an interview with Nisbet's parents, mentioned UMR more prominently.

UMR Life Science student wins fellowship



News Services
SOURCE

according to Floyd Harris, director of UMR's Minority Engineering Program.

The national recognition comes as no surprise to Harris. Irizarry-Robles' talents were recognized early at UMR, Harris says. As a high school junior, Irizarry-Robles was named "most likely to succeed" in UMR's MEP two-week Introduction to Engineering Program for high school sophomores and juniors. He plans to conduct research in plant molecular genetics and is now selecting a university.

ROLLA, Mo. — Manuel A. Irizarry-Robles of Florissant, Mo., a senior life sciences major at the University of Missouri-Rolla, has been awarded a GEM fellowship to pursue a Ph.D. degree in life sciences and molecular biology.

GEM, the National Consortium for Graduate Degrees for Minorities in Engineering and Science Inc., selected 267 GEM graduate fellows from more than 800 minority applicants. Irizarry-Robles is one of 28 Ph.D. science candidates selected.

Irizarry-Robles, the son of Hector M. and Aimee R. Irizarry is the first UMR student to win the award,

The GEM fellowship program, a link between corporate and academic communities, provides fellows with paid summer internships at Fortune 500 companies and government laboratories.

GEM's 78 corporate sponsors and 75 university members strive to increase the number of minority students who pursue graduate degrees.

UMR Orchestra concert re-scheduled for a new time



News Services
SOURCE

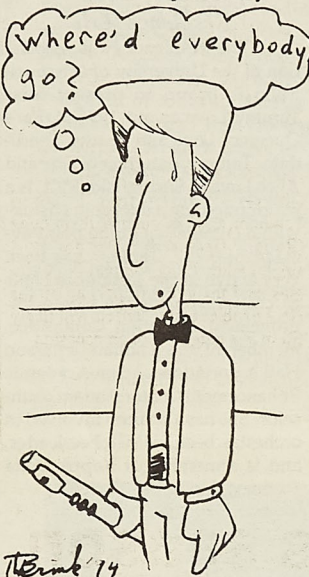
The University of Missouri-Rolla's University Orchestra concert originally scheduled for 3 p.m. Sunday, March 13, has been changed to 3:30 p.m. that same date.

The youth concert will be performed in Leach Theatre of Castleman Hall, 10th and Main streets. The concert is free and open to the public; however, tickets are necessary for admission. Tickets will become available Monday, March 7, at the ticket office in University Center-West on campus.

The orchestra, under the direction of Joel Kramme, assistant professor of music, will perform "Peter and the Wolf, Op. 67," by Sergei Prokofiev (1891-1953); "Prelude to Hansel and Gretel," by Engelbert Humperdinck (1854-1921); and "I Got Rhythm," variations for piano and orchestra, by George Gershwin (1898-1937).

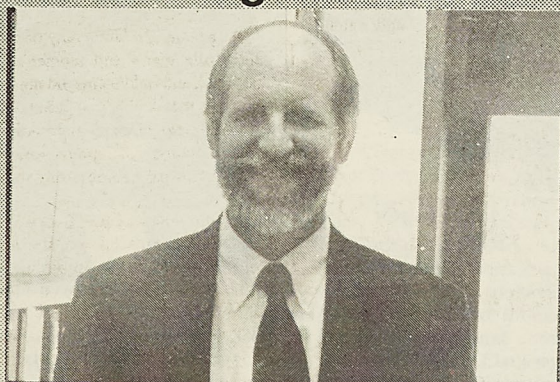
John Woodfin, director of theater, will narrate "Peter and the Wolf." Dr. Doug Stotter, director of bands at UMR, will conduct "Prelude to Hansel and Gretel," and Dr. Terry Martin, associate professor of music and head of the music department at Lindenwood College in St. Charles, Mo., will serve as guest pianosoloist for "I Got Rhythm."

For more information contact Kramme at 341-4109.



The Brink '94

Faculty Spotlight on: Dr. Douglas Carroll



Ian Rozdilsky
Staff Writer

Dr. Carroll is a reasonably recent edition to the faculty who is currently teaching Mechanics of Materials. Dr. Carroll is a Missouri native born in Springfield where he attended Hillcrest High. He at-

tended college at SMS where he received a BA in math and physics. He then went on to attend Texas A&M where he received his masters in Mechanical Engineering. SMS did not offer Mechanical Engineering then. After receiving his masters, Dr. Carroll worked for the Air Force in Oklahoma City for 6 years. He then came back to school at Rolla where he intended to get his PhD

see spotlight, page 22



The Brink '94



The Brink '94

St. Pat's Queens



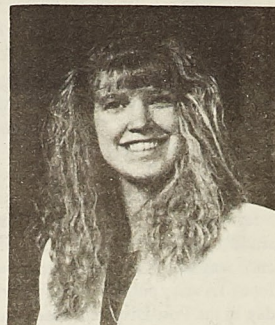
Jodi Courtin
Missouri Miner

The Missouri Miner is proud to present Miss Jodie Courtin as their 1994 St. Pat's Queen of Love and Beauty candidate. Jodie, the daughter of Gary and Roberta Courtin of Arnold, Mo, is a sophomore in Electrical Engineering. She is currently part of the Advertising Department for the Missouri Miner. She is also an active member in Chi Omega where she serves as their historian. Some of her other activities include the Gold Miners Dance Squad in which she held the position of co-captain, IEEE, and Lambda Sigma Pi in which she was the public-relations chairman and is currently the membership chairman. The Miner wishes Jodie the best of luck as their St. Pat's Queen candidate.



Susan Koeller
Alpha Epsilon Pi

The men of Alpha Epsilon Pi fraternity are proud to announce Miss Susan Koeller as their candidate for the St. Pat's Queen of Love and Beauty. Susan is the daughter of Alvin and Mary Koeller of Belleville, Illinois. She is a sophomore majoring in geological engineering. Susan is currently the assistant corresponding secretary of Chi Omega Sorority and has served the past two semesters as the secretary for the Daughters of the Lion. Miss Koeller is also active in other campus activities including Alpha Phi Omega and intramurals. The Brothers of Alpha Epsilon Pi wish Susan the best of luck this year.



Tammy Love
Residence Hall

The Residence Hall Association of the University of Missouri-Rolla is proud to present Miss Tammy Love as our 1994 St. Pat's Queen of Love and Beauty Candidate. Tammy, daughter of Doy and Alice Love of Springfield, MO., is a junior pursuing a degree in History with a cumulative grade point average of 3.75. Tammy has been very active in the Residence Halls as chairperson for the Home Improvement Retention Committee, member of the Thomas Jefferson Hall Association, and an Academic Enhancement Center student counselor. She has also been involved in orchestra, been a UMR cheerleader, and is a member of Kappa Delta Sorority, Alpha Psi Chapter.



Missy McMurray
Lambda Sigma Pi

The ladies of Lambda Sigma Pi are very proud to present Miss Mary Melissa McMurray as our 1994 St. Pat's Queen of Love and Beauty candidate. Missy is from Warsaw, MO, is the daughter of Raymond and Helen McMurray and is a junior pursuing a degree in engineering management. She is currently Lambda Sigma Pi's vice-president, and has held the committee's of assistant pledge trainer and alumni relations. Missy is also an active member of Chi Omega, Tau Beta Pi, American Society of Engineering Management, Society of Packaging Engineers, Omega Sigma and is currently the president of Institute of Packaging Professionals. We at Lambda Sigma Pi think that Missy is an excellent choice and we wish her the best of luck.



Kasie Kay Keeling
Sigma Phi Epsilon

Sigma Phi Epsilon is proud to have Kasie Kay Keeling representing them as their St. Pat's Queen Candidate. Kasie, daughter of Tamarah and Micheal Keeling, is a Freshman majoring in Nuclear Engineering. Ms. Keeling has quickly become active at UMR; she is involved in organizations such as MSM Spelunkers, Thomas Jefferson Hall Basketball team, and Gamma Eta. Kasie has also recently been accepted to the UMR Gold Miners Dance Squad. In addition to these extracurricular commitments, she has also done a great job academically. Sigma Phi Epsilon wishes you the best of luck Kasie!



Kim Bridges
Kappa Alpha Order

The men of Kappa Alpha Order have selected Kim Bridges as the St. Pat's Queen entry. The daughter of Royce and Edna Bridges, Kim is on the Student Union Board, and a member of the Psychology Club. Kim, a native to Rolla, is currently a Senior pursuing a degree in Psychology. As a Daughter of Lee, Kim embodies the outstanding qualities of a true Southern Belle.



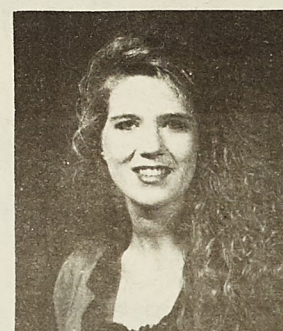
Karen Murphy
Phi Kappa Theta

The brothers of Phi Kappa Theta Fraternity are pleased to announce that Karen Murphy has been selected as our St. Pat's Queen of Love and Beauty candidate for the 1993-1994 school year. Karen is a senior chemical engineering student from St. Louis, MO. She is actively involved in Lambda Sigma Pi, Omega Sigma, and the American Institute of Chemical Engineers. We wish her the best of luck this year as she represents us in the St. Pat's Queen competition.



Janet Roper
Kappa Sigma

Kappa Sigma is proud to present our candidate for the 1994 Queen of Love and Beauty, Janet Roper. Janet is the daughter of Roger and Darlene Roper of West Frankfort, Illinois. She is a senior majoring in Petroleum Engineering. Janet has been very active at UMR through her participation in the Society of Petroleum Engineers, where she served as Treasurer, and the Society of Women Engineers. As a member of Zeta Tau Alpha sorority, Janet is very active in intramurals. The men of Kappa Sigma would like to wish Janet the best of luck in this year's competition.



Sandra Eftink
Quadrangle Hall

The Quadrangle Hall Association proudly presents Miss Sandra Eftink as their candidate for St. Pat's Queen of Love and Beauty. Sandy is a senior RA at the Quad, involved in both the Quadrangle Hall Association and the Residence Hall Association. She is a member of the UMR Cheerleading Squad, as well as an Alumni member of the Daughters of the Lion. Sandy is a Junior pursuing a degree in electrical engineering. She is a bright and charming young lady, and we wish her the best of luck in the contest.



Andrea Budnik
Acacia

The men of Acacia Fraternity are happy to announce Ms. Andrea Budnik as their queen candidate for the 1994 St. Pat's "Queen of Love and Beauty" contest. Andrea is a senior majoring in Engineering Management and has kept busy at UMR. In addition to her student obligations, Andrea works in the Chancellor's Office as an assistant secretary. She was also a Varsity Cheerleader for three years and was captain in 1991. She has served as secretary of the UMR Solar Car Team and is an active member of IEEE and ASEM. Andrea is very excited about being out queen candidate and we know she will do well.



Nina Woods
Beta Sigma Psi

The men of Beta Sigma Psi proudly present Nina Marie Woods as our 1994 St. Pat's Queen of love and beauty Candidate. Nina, the daughter of Ray and Shirley Woods of Florissant, MO, is currently a sophomore majoring in Biochemical Engineering. She is Actively involved in Chi Omega as the Intramural manager. For two seasons, she has been a cheerleader for the Miner basketball team. As a member of the University Orchestra. Nina has contributed her time and talent and has been honored as Principal Chair. Nina is also a member of Intercollegiate Knights and the American Institute of Chemical Engineers. We wish Nina the best of luck during this year's St. Pat's festivities.



Amy Denise Kozlowicz
GDI

Amy Denise Kozlowicz is the daughter of David and Nedra Kozlowicz of Kansas City, Missouri. She is currently a sophomore at the University of Missouri-Rolla and is majoring in Life Sciences. She has been a member of the General Delegation of Independents for two years and was a facilitator for the EXCEL UMR program for one semester.



Angie Herzog
Panhellenic

The ladies of UMR Panhellenic are proud to introduce Angie Herzog as their candidate for St. Pat's Queen of Love and Beauty. Angie is a junior majoring in Civil Engineering. She is also the daughter of Cheryl Herzog of Hannibal, MO and Tom Herzog of Quincy, IL. Angie is active in Chi Omega where she has served her sisters as Social Chairman and Assistant Rush. She is also a very active member of Panhellenic and was recently elected President. We believe Angie's exquisite charm and warm personality make her an excellent choice for this year's Queen of Love and Beauty. Panhellenic council would like to wish all of the candidates good luck.



Karen Griesel
Zeta Tau Alpha

Zeta Tau Alpha proudly presents Miss Karen A. Griesel as our 1994 St. Pat's Queen Candidate. Karen, the daughter of Mr. and Mrs. John Griesel of Kansas City, Missouri, is a senior majoring in electrical engineering. She is Zeta's former President, Secretary and Scholarship chairman. Karen has also been active in Eta Kappa Nu, Tau Beta Pi, Phi Kappa Phi, Newman Center, Phi Eta Sigma, and Alpha Phi Omega. We feel Karen's dedication and enthusiasm make her an excellent candidate for the Queen of Love and Beauty.



Mindy Monique Gardner
Lambda Chi Alpha

Lambda Chi Alpha is proud to present Mindy M. Gardner, daughter of April and Michael Gardner of Raymore, Missouri, as their St. Patrick's Day Queen Candidate.

Mindy has been an extremely active part of University of Missouri-Rolla. She is a Kappa Delta and has held various appointed offices in Kappa Delta, as well as served as Vice-President/Public Relations. She has been an active member of the Student Union's Board's Leisure and Recreation and Concerts Committees. Mindy has done work to benefit the community through her membership in service related organizations such as Blue Key and Lambda Sigma Pi. She has served as Alumni Secretary in Blue Key National Honor Society and Treasurer in Lambda Sigma Pi. Currently, Mindy is president of Sigma Gamma Epsilon. She has also worked for the Environmental Protection Agency.



Rachel Dougherty
Interfraternity Council

The UMR Interfraternity Council is proud to present Miss Rachel Dougherty as their 1994 St. Pat's Queen candidate. Rachel is a sophomore studying Geological Engineering and a member of Zeta Tau Alpha. As an active participant, she currently holds the position of Assistant Membership Chair. Miss Dougherty is also a member of the UMR Panhellenic in which she serves as Public Relations/Historian chairman. We are proud to have her represent our organization and wish her the best of luck in the upcoming competition!



Rachel Limbaugh
Tau Kappa Epsilon

The Men of Tau Kappa Epsilon Fraternity are pleased to announce Rachel Limbaugh will represent us in the queen competition for St. Pat's 1994. Rachel is the daughter of Robert and Cathie Limbaugh of Spanish Lake, Missouri where she attended Hazelwood East High School. She is a sophomore, majoring in electrical engineering and has already cooped for McDonald Douglas Corporation. Along with a semester of co-op experience she is also very active on campus. She is a member of Chi Omega Sorority, Intercollegiate Knights, Society of Woman Engineers, IEEE, and Delta Delta Service Organization. We believe Rachel is the perfect selection to represent the St. Pat's Court and all students at UMR.



Kelly Peck
Sigma Chi

Sigma Chi has selected Kelly Peck as the St. Pat's Queen entry. The daughter of Robert and Donna Peck, Kelly's activities include being the 2nd Vice President of Zeta, a member of A.P.O., a member of American Society of Mechanical Engineers, Air Force R.O.T.C. and Blue Sabers. A native of St. Louis there she attended Cor Jesu Academy. Now she is currently pursuing a degree in mechanical engineering and scheduled to graduate December of 1996. Possessing both beauty and grace Sigma Chi is proud to have Kelly as their St. Pat's Queen entry.



Sandra E. Junge
Sigma Nu

The men of Sigma Nu Fraternity are proud to present Ms. Sandra Junge as our 1994 St. Pat's Queen of Love and Beauty Candidate. Sandra will graduate in May with a BS in Mechanical Engineering after four activity filled years at UMR. As a member of Chi Omega, Sandra served as both Pledge Trainer and House Manager. She has also been extremely active on campus as a Society of Women Engineers member, Transfer Student Association President, A KMN disc jockey, and a TECHS peer counselor. Sandra has also excelled in her studies as well as in the honor societies of Tau Beta Pi, Phi Eta Sigma, and Phi Kappa Phi. Best of Luck Sandy!



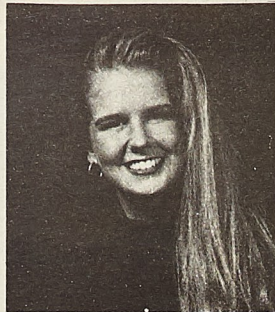
Amanda McBane
Theta Xi

Theta Xi is proud to announce Amanda McBane as our candidate for the annual St. Pat's Queen contest. The daughter of Lawrence and Sherry McBane, she lives in St. Joseph, MO. Amanda is a sophomore majoring in Life Sciences and carries a 3.5 GPA. She is a member of Kappa Delta Sorority where she is serving as Vice President, and is Kappa Delta's representative to the Panhellenic Council. As a member of AICHE, she serves as Secretary. Additionally, Amanda is a member of the Helix club and SWE. Apart from her extensive extracurricular involvement, she was named ΘΤΧ's freshman of the year.



Laura Donley
Kappa Delta

The ladies of Kappa Delta Sorority present Laura Donley as our Queen Candidate for St. Pat's "Queen of Love and Beauty." Laura is the daughter of Mr. and Mrs. Robert Donley of Belleville, ILL. She is a senior in Chemical Engineering with an emphasis in Bio-Chemical Engineering. Laura has held the positions of Social Chairman, Activities, and Historian for Kappa Delta. She is also involved in Omega Chi Epsilon, the American Institute for Chemical Engineers, and Alpha Phi Omega. Laura enjoys playing sports and participating in intramural games such as flag football, softball, and golf. We wish Laura the best of luck.



Jennifer Dionne Little
Thomas Jefferson

The Thomas Jefferson Hall Association of the University of Missouri-Rolla is proud to present Jennifer Dionne Little as its 1994 St. Pat's "Queen of Love and Beauty" candidate. Jennifer, daughter of John and Sudie Little of New Haven, Missouri, is a freshman pursuing a major in Chemical Engineering and a minor in Economics. She currently holds the secretarial position for Omega Sigma and is an active member of the Society of Women Engineers. She also serves as her floor governor and chairs several Thomas Jefferson Hall Association committees. Jennifer is an excellent leader and a very enthusiastic person. We at TJ are honored to have her as our St. Pat's Queen candidate.



Michelle Occhipinti
Triangle

The Brothers of Triangle Fraternity are proud to present Michelle Occhipinti as their 1994 St. Pat's Queen Candidate. Michelle is a senior majoring in Psychology and minoring in Technical Writing. She is a member of Chi Omega where she has served as assistant house manager and safety marshal. She is also a member of Intercollegiate Knights, Psi Club, and is active in intramurals. Michelle is from Huntington Beach, California. Her parents are John and Grace Occhipinti. We would like to wish Michelle and all other candidates the best of luck.



Shonie Christine Maxwell
Sigma Tau Gamma

Shonie Christine Maxwell is currently a senior majoring in Computer Science, and will escape from UMR with a 3.5 GPA in May. She was born the daughter of her mother and father in the year of our Lord nineteen hundred and seventy-one. She had a philosophy on life that goes a little like this: Why worry? You're either healthy or sick.

If you're healthy, you have nothing to worry about.

If you're sick, you have only two things to worry about. You'll either get better, or you'll die.

If you get better, you'll have nothing to worry about.

If you die, you'll only have two things to worry about. You'll either go to Heaven or Hell.

If you go to Heaven, you'll have nothing to worry about.

If you go to Hell, you'll be too busy shaking hands with old friends to worry.

So why worry?

Shonie has never had a problem drinking green beer, foreign or domestic. She has never missed a St. Pat's, and last year won the Sig Tau 110% award in the alcohol consumption category. Becoming the 1994 Queen of Love and Beauty is an honor for both Shonie and her beloved Sig Tau house, who have killed many a brain cell together. On a serious note, Ms. Maxwell has put forth a great effort in obtaining her degree in Computer Science, had been involved in campus activities, and still finds time to socialize with her favorite fraternity, Sigma Tau Gamma.



Karlynn Herman
Pi Kappa Phi

The Brothers of Pi Kappa Phi proudly introduce Karlynn Herman to be our candidate for the 1994 St. Pat's Queen of Love and Beauty Contest. Karlynn is the daughter of Mary and L.D. Herman from Gladstone Missouri. She is a Life Science and English major. She intends to graduate from the University of Missouri at Rolla in the fall of 1995. She is active in many organizations including Kappa Delta sorority, the English Club, Sigma Tau Delta, Phi Kappa Phi, Intercollegiate Knights, and Phi Eta Sigma.



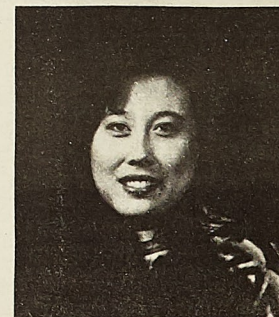
Beth Shaw
Chi Omega

The sisters of Chi Omega proudly present Miss Beth Shaw, daughter of Mr. John Shaw of Ellisville, Missouri, and Ms. Jan Reineke of Delores, Colorado, as our 1994 St. Pat's Queen Candidate. Beth is a senior majoring in Chemical Engineering, and is very active in Chi Omega as well as on campus. She is a member of American Institute of Chemical Engineers, Alpha Phi Omega, Omega Chi Epsilon, Kappa Mu Epsilon, and Phi Eta Sigma. We feel Beth is the ideal choice for St. Pat's Queen with her outgoing and sincere personality. Chi Omega wishes Beth the best of luck.



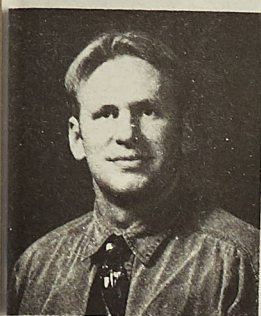
Leslie Ann Harris
Pi Kappa Alpha

The men of Pi Kappa Alpha are pleased to introduce Leslie Ann Harris as their queen candidate for the 1994 St. Pat's "Queen of Love and Beauty" competition. Leslie, currently a sophomore in Civil Engineering, is the daughter of Jack and Barbara Harris of Rolla. Before coming to UMR, Leslie attended the University of Missouri - Columbia for two years where she was very active on campus and Kappa Alpha Theta Sorority. At Rolla, Leslie is involved in the American Society of Civil Engineers and Gamma Eta social organization. The men of Pi Kappa Alpha are looking forward to this year's St. Pat's festivities and wish Leslie the best of luck in the queen's competition.



Sabrina Voshel
Sigma Pi

Student Knights



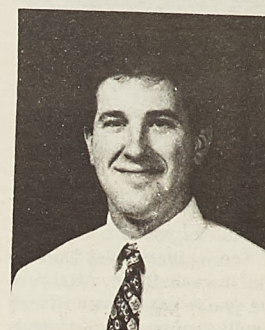
Brian Clark
Lambda Chi Alpha
Son of Dick and Mary Rouyer from Kansas City, Missouri. Also, son of David and Connie Clark, from Raymore, Missouri. "I like lice better than Rolla women because she weighs less, smells better, and is always wet!"



Julie Schroer
Kappa Delta
Daughter of Joseph and Janet Schroer, from Jefferson City, Missouri. "Alice what's your secret? You come out once a year and you get more men than anyone I know!"



Terry Bjerken
Theta Xi
Son of John and Judy Bjerken, from Kansas City, Missouri. "I hope my girlfriend doesn't find out about Alice."



Brian Himstedt
RHA
Son of Michael and Carol Himstedt from Big Rock, Illinois. "You've had quite a reputation over the years, Alice, It's about time you settled down and got a husband."



Darren Walters
Interfraternity Council
Son of Ken and Mary Lou Walters, from Sikeston, Missouri. here's nothing more pleasant than turning a little green into a lot of RAY!"



Kelly Jones
General Delegation of Independents
Daughter of William and Sharon Jones, from Florissant, Missouri.



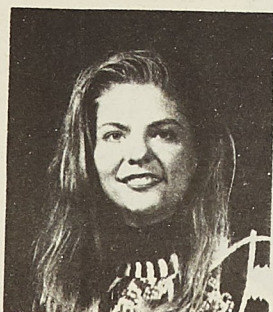
Ryan Buschjost
Phi Kappa Theta
Son of Larry and Pat Buschjost, from Jefferson City, Missouri. "Being a Student Knight sucks, but at least ALICE swallows."



Jeff Lacavich
Missouri Miner
Son of Rich and Janet Lacavich, from Manchester, Missouri. "Alice might be one hard core Bitch, but I have no fear, so saddle up and lets go dance'n."



TJ Davenport
Panhellenic
Daughter of Gene and Geni Davenport of Weston, Missouri. "Alice is Alice anyway...the ultimate import!"



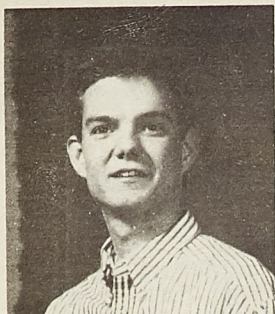
Jill Sandifer
Zeta Tau Alpha
Daughter of Donald and Frankie Sandifer, from Raytown, Missouri. "Alice, you can't be as disgusting as I can be."



Doug Schieszer
Alpha Chi Sigma
Son of Fred and Kathy Schieszer, from Lee's Summit, Missouri. "Alice, finally a gal in Rolla I can get into."



Emre Tuskal
Acacia
Son of Delores Sarmas, from Highbridge, Missouri. "Alice, Blow Me, I'm too hard to digest."



Larry Cook
Sigma Pi

Son of Walter and Dorothy Cook, from Ballwin, Missouri. "Alice, you've got to love a woman who will let you and all your friends take a quick dip."



Noelle Puckett
Lambda Sigma Pi

Daughter of Barry and Carole Puckett, from Fenton, Missouri. "Alice, I'm prepared, I've got my own flotation devices!"



Christine M. Boyer
Chi Omega

Daughter of Richard and Freda Boyer, from Potosi, Missouri. "Nowhere else but Rolla is it considered an honor to be dunked in slime!"



Neil Monson
Sigma Tau Gamma

Son of Roland and Jean Monson, from Maryland Heights, Missouri. "Alice, I'll need a body condom before I even think of touching you!"



Avi Schmerer
Triangle

Son of Hal and Miriam Schmerer, from Manchester, Missouri. Sir Schmerer says, "Alice, Alice, you're so neat; I want to rub you on my meat!"



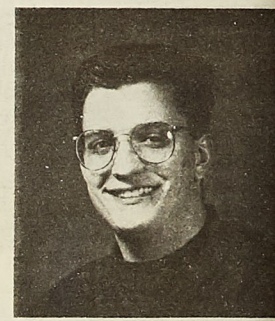
Jennifer Zung
Student Union Board

Daughter of Natalie Zung, from Rolla, Missouri. "Alice, welcome my soul to your filthy embrace, and make it look kind of neat!"



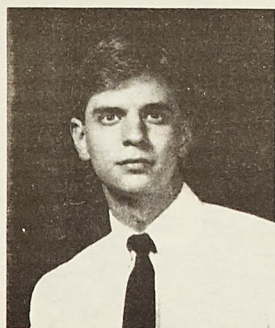
Tim Faenger
Theta Tau Omega

Son of Gene and Barb Faenger, from St. Louis, Missouri. "I'll try to keep an open mind, but not an open mouth."



Brian H. Hunnius
Sigma Nu

Son of Fred and Janet Hunnius, from St. Louis, Missouri. "Alice looked at me...She wants me!"



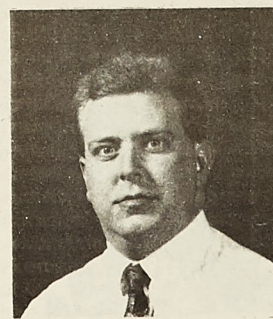
Anthony L. Edwards
TJ RHA

Son of Melvin and Rita Edwards, from St. Charles, Missouri. "You're gonna be licked, hugged, tickled, bitten, nibbled, fondled, sucked, and really well massaged. Alice, meet Sigma Epsilon Chi."



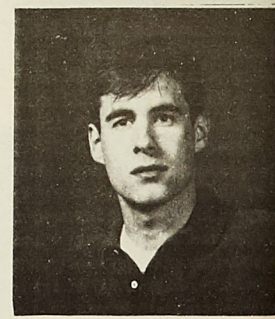
Todd S. Oppeau
Kappa Sigma

Son of Al and Lee Oppeau, from Wentzville, Missouri. "Keep your nose to the grindstone, it sharpens your boogers."



Brian A. Maier
Pi Kappa Phi

Son of George and Mary Maier, from St. Louis, Missouri. "Hey, Alice, 15 minutes no problem! You are putty in my hands."



Robert Bockhorst
Pi Kappa Alpha

Son of Bob and Vicki Bockhorst, from St. Clair, Missouri. "Alice, I love her, I LOVE HER!"



Jonathon D. Schmidt
Beta Sigma Psi
Son of Dennis and Jane Schmidt, from St. Louis, Missouri."



Bill Avise
Kappa Alpha Order
Son of Bill Avise and Anne Maschgir, from Lee's Summit, Missouri. "Thear she tastes like chicken, I can't wait to dive in."



Eric Johnson
KMNR
Son of Mr. and Mrs. Jeff Johnson, from St. Louis, Missouri. "Hey Alice, I believe love comes in spurts!"



Jim Steinkoetter
Tau Kappa Epsilon
Son of Leigh Ann Steinkoetter, from St. Louis, Missouri. "In - Out - Done - I'm snoozin'!!"



Bob Lowe
Alpha Epsilon Pi
Son of Dan and Dee Lowe, from Boonville, Missouri. "Alice is big, wet and nasty-just the way I like it!"



Chris Schafer
Quad RHA
Son of Harold C. Schafer, from Overland Park, Kansas. "Alice: I'm gonna slap your thigh and Ride the wave in!! P.S. Ronald Platz, thisis how its done!!



Robert J. Bohnak
Sigma Chi
Son of Marion and Laverne Bohnak, from Highland, Illinois.



Brett Goodman
Sigma Phi Epsilon
Son of Jim and Betty Goodman, from Texarkana, Texas. "At least she looks better, I just hope Alice smells better than Peg."



Andrew Sears
Student Council
Son of Ron and Joyce Sears, from Blue Springs, Missouri. "I really, really, really want Alice."

Monson
Tau Gamma
Roland and Jean
Maryland Heights
ice, I'll need a body
re I even think of

H. Hunnius
gma Nu
Fred and Jane
in St. Louis, Missouri
at me...She wants me

Bockhorst
ppa Alpha
Bob and Vicki
in St. Clair, Missouri
er, I LOVE HER!

Captain Goatee's Weekly Review



Captain Goatee
Staff Writer

A Special Captain Goatee Report

Two sides of UMR's music scene

Sidio and Hall do folk...

Some of you might have had Dr. Richard Hall for a Psychology class or sat next to Maureen Sidio-Hall in class before. You might even know that Dr. Hall likes to wear Hawaiian shirts. And if you're really up on your UMR trivia, you'll know that Rich and Maureen play together in a group called Sidio and Hall.

The first time I saw Sidio and Hall play was about 2 years ago at Brewsters. Back then, they weren't too hot. They fell into the category of a local musicians who wouldn't really make it anywhere else, but were good enough because they were from the area. Well, I'm pleased to say that since then, Sidio and Hall have made progress by leaps and bounds. They've become tight knit, started writing great songs, and got married. In the three years that Rich Hall has been playing music, he's went from knowing a few chords on his guitar to playing solos, singing tight harmonies, and blowing harp. It's been an amazing transition, and every time I see them play, Sidio and Hall have added something new to their sound.

Maureen Sidio-Hall was a bar musician for years who played cover music on a B-3 Hammond organ with her ex-husband in over 20 states. Somehow they ended up in Rolla playing places like the old Pubmobile. Only five years ago, her marriage and her career as a bar musician weren't going anywhere, and she was working at Foods for Health.

As Maureen explains, "I had dropped out of high school with ulcers at 14 and had never gone back. And here I was in my 30's working over here at the health food store, and the owner, Diana Price, said 'Well, why don't you just get your GED just for the fun of it.' So I went and took classes and got my GED and figured, 'OK, I'll hang it on the wall and that's the end of it.'"

Diana then encouraged Maureen to take a few classes at UMR. Maureen stalled, and eventually Diana had to take Maureen by her hand over to the administrators building, walked her in, introduced her and said "Now, she wants to take a few classes." What classes did she take? "I took Richard's General Psychology class and Lance Haynes' Interpersonal Communications," said Maureen. "But since Iaced those two," she continued, "I figured 'What the heck?'" She's now a senior in Psychology.

And that was how Rich and Maureen met. Says Rich, "Yeah, she was one of those unusually dedicated students. She was always asking questions like 'Why is this such and such.'"

You know, like she actually cared about this stuff. It was crazy!" Maureen added, "And that was before I liked him. He was just a professor." Rich had another version. "We've always disagreed about that," he countered, "Well, you were in love with me from the beginning."

Rich eventually found out that Maureen was a musician, and he asked her about buying a used guitar. She gave him some pointers, and he came back with a good Yamaha. With guitar in hand, Rich then asked if Maureen would give him lessons. Maureen recalled, "So I thought, 'Well, ok, I can do that. I can give him lessons.' And boy, he was bad. He was very, very bad." Rich had never played before.

After Maureen taught him everything she knew, they went their separate ways musically for a bit. Rich started writing songs at home, and eventually he took one to Maureen to see what she thought. They ended up rewriting the song together, and Sidio and Hall, the group, was formed.

The music was rough at the start, but Rich learned how to play solos from John Knox of Woolf Music, how to blow harp, how to sing harmony, and how to write songs. When he first started three years ago, his early efforts weren't so great. One song about Jefferson city had the lyrics "Like a tick needs to suck blood / Like a pig needs to wallow in the mud / Like the postman needs to deliver / I'm back to the city by the river."

But Rich's silly side has mixed with Maureen's serious style. Once Rich caught up with Maureen musically, the two grew immensely as writers and performers. The simple three chord songs and sour harmonies of the early years have made way for more intelligent songs and cohesive performances. Maureen plays rhythm on acoustic guitar while Rich trades off between lead acoustic guitar and harmonica or electric guitar. Sidio and Hall have come into their own.

Not only did Rich and Maureen grow together musically, they also fell in love and got married this summer. The two had an ongoing challenge where Rich was supposed to write a sappy love song and Maureen was to write a song that wasn't a sappy love song. Maureen came up with "Front Porch Toad" quickly, but it took Rich a while longer.

Rich said, "I actually started writing this song, and I was kind of thinking about proposing to her. And so then, for some weird reason, I came up with this idea, 'When I finish this song, then it will be time to propose to her.' Which made it start drawing itself out." He finally finished a year ago. So Rich sang the song by the banks of the Little Piney where the two used to practice. It contained the line "I was wondering if you'd spend the rest of your life with me. And if I said, 'I do,' would you agree." Once Maureen figured out he was serious, her only question was "When?". They were married this summer in a lovely outdoor ceremony with plenty of music and Ha-

waiian shirts substituted for tuxedo jackets.

When they're on stage, Rich wears his standard Hawaiian shirt, and Maureen wears something nice. She keeps her lyrics on a music stand on stage and ceremoniously throws them on the floor at the end of each song. By the end of the show, there are lyric sheets everywhere. A typical set ranges from mellow love songs (Rich calls them "floofy.") like "Starcrossed Lovers" and "My Baby Loves Me" to silly ones such as "Life's Just Something to Do While You're Drinking Beer" and their trademark tune, "Spam." In addition to the music, Rich often adds his own choreographed interpretations to a few songs.

If you have never seen Sidio and Hall play before, then you better do something about it. They play for tips every first and third Thursday five miles out of Rolla at the Blue Heron Rookery. In addition to their regular week night shows, Sidio and Hall have finally recorded an album. Right now it's being printed, and there will be an album release party on April 29th. Sidio and Hall will be joined on stage by cellist and bassist Greg Spillman and percussionist Blake Travis. For more information or reservations, call the Blue Heron at 762-BIRD.

...and Stale Fish do punk or (...Punk rock with Stale Fish)

One or two times a semester, you can find Stale Fish putting on a concert at the Knights of Columbus Hall. Usually the opening acts are a few crummy high school cover bands doing Jimi Hendrix and Metallica. But if you last through that torture, on comes Stale Fish. They turn the sound up another notch or two and the real show begins. A few disenchanted Rolla High guys with too much pubescent testosterone start to mosh for a bit, and everyone starts bobbing their heads or tapping their feet.

Everything goes great unless the cops come and shut down the show.



Last Friday they came after just one set. The neighbors were complaining about the noise. After a few words between drummer Doug Mesko and one of Rolla's finest, the band decided to play 3 more songs and then quit. They finished with a cover of "Micky" by Toni Basil. The Stale Fish version was fast and loud and fun, but unfortunately, it was also the end of the show.

Fast surf Punk in Rolla was shut down until some other Friday night.

"We're just normal guys."
- Doug Mesko

Years ago, there were two guys from Rolla, Doug Mesko and James Barnes, who started a band called Stale Fish. They named it after a skate trick. After a while, James left the band to pursue, among other things, a distinguished career as a writer for the Missouri Miner, and Doug stayed with the band. After a few more personnel changes, Stale Fish has found a stable line-up with Eric Johnson on guitar and Greg Poettgen on bass.

Doug still plays the drums, sings back-up, and writes the music (because none of the other guys do). Just recently, they added Mike Huffman on lead vocals. "It's better that way," Doug said, "it's easier to play drums than to play drums and sing."

I asked the guys to describe their sound. Greg and Eric piped up with comments from reviews such as "a garage sort of pop hardcore with a surfy thing" and "sort of Mr. T-ish and Gear-ish." Doug added, "I say it's like punk rock, but more talented punk rock. Punk rock for people who know how to play music. Like, one of our songs is definitely a surf song, and the other songs, I guess, sort of have a surf kind of beat to them. Fast rock and roll." Then he adds, "With pissed-off, angry, youthful lyrics."

Well, maybe not that youthful. The lyrics on their first 7 inch, "110," are actually rather good. The words on the instrumental "110" don't really stand out, and "Time's Up, George" is a classic punk rant on how George Burns should be dead by now. But the B-side reveals some great lyrics. "Mealtime" is definitely the standout of the 7 inch. It's a clever tale of food and love and ends up with Doug singing "Now I'm dining, dining alone / No girl, who cares, there's food, and I'm full."

600 copies of "110" were pressed, and Stale Fish sells them at their shows or whenever you can track them down. KMNRR is the best place to look for the band. (Call and request some Stale Fish!) If you can't get to KMNRR somehow, then write to Sour Note Records, 72 Huffman, Rolla, MO 65401 with info on how the guys can get ahold of you. (The band is also saving up for a CD that they plan to record later this year.)

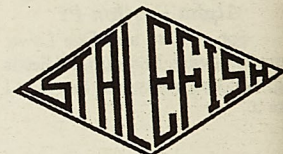
They say they've sold a few copies everywhere they play. Just what kind of places does Stale Fish play at? "Dives," said Doug, "We exclusively play dives and peoples living rooms." Eric added, "Especially if they give us beer." But they usually play shows for some money. And although they've done a few tours, the guys say it's hard. They have to contact people through a whole underground scene where bands like Stale Fish trade phone numbers of dives that book unknown bands.

Stale Fish opened for Helmet and Jawbox a few years ago before the two headliners were "famous." They had a

people in the audience who came up to them afterwards and said they liked Stale Fish better than Helmet and Jawbox. The worst band they ever shared the stage with was a group called "Crewshadows." Eric said, "They were this Goth type of band. The singer did these really cool Egyptian types of moves while he sang. In between songs, he'd read really deep poetry and play the violin or something." Greg added, "It was one of the bands where you sat there going, 'Boy, I'm really embarrassed for this guy. I wonder if he is [embarrassed].'" The next night they stole a plastic chicken in Orlando, Florida.

Usually, the band plays original material, but Stale Fish also likes to do a few cover songs. Their favorite covers are what Doug describes as "my early 80's girl rock bands." They once did an all Go-go's cover show. When asked to explain how the Go-go's have influenced their style, Eric asks Doug "Didn't you used to go out with Belinda Carlisle?" "Actually," Doug offered, "if you, like, made their singer have a really deep, gruff voice, and you gave them like a lot of caffeine before they played, and put distortion boxes on their guitar, that's kind of what we sound like."

When asked what the future of Stale Fish after they graduate, the future seemed bleak for the guys. Like the rest of our generation, real jobs seem hard to come by, and the band is something they plan to keep working



at. Greg stated halfheartedly, "I'm happily unemployed right now." Doug proclaimed that "I'd just like to say that I'm a janitor." Eric chimed in that he had been a janitor, and Greg said that he was going to deliver telephone books, but the position was filled.

So in the end, what else is there for them to do but play music? While the rest of Rolla is home moaning about another boring Rolla weekend, Stale Fish are having fun making fast, surf, Go-go's, punkish rock. Luckily, their fun can be yours too. So the next time you see some flyers posted on campus for a Stale fish concert, mark your calendar, leave your thermodynamics problems at home, and have some fun for once.



SUB & St. Pat's Committee Present

Gin Blossoms



Bill Leen

Phillip Rhodes

Robin Wilson

Jesse Valenzuela

Scott Johnson

Coming:

Saturday, March 19, 1994

7:00 PM - Gale Bullman Multipurpose Building, UMR Campus

TICKETS: \$7 - STUDENT

\$15 - ALL OTHERS

*(One per Valid UMR ID)

All Ticket Prices Include Taxes.

Tickets \$15 at door, March 19, 1994 at 5pm.

Advance Tickets available in front of the UMR Bookstore,
University Center West on March 1 to March 18.

Tickets also available at:

**** Woolf Music, Forum Video, Sound Tracks - Rolla ****

**** Poppingo Video - Jefferson City ** Cool Stuff - Columbia ****

**** Sound Revolution - Hazelwood & Manchester Rd. in St. Louis ****

**** Springfield Music - Springfield ** Car Tunes - Waynesville ****

FOR MORE INFORMATION CALL: (314)341-4220



NUCLEAR POWER OPENINGS

Navy representatives will interview engineering, physics, chemistry, and math majors with a 3.0 or better for selection into the Navy Nuclear Propulsion Officer Candidate Program.

Hear more about this Program. Come to the Engineering Presentation Thursday, March 10, 1994 at 6:30 p.m. at 227 Fulton Hall. Post presentation refreshments provided.

Interviews are Friday, March 11, 1994 between 9:30 a.m. and 2:30 p.m. at the Placement Office. If you are unable to attend either meeting, please call 1-800-777-NAVY for further information.

NAVY OFFICER. You and the Navy. Full Speed Ahead.

Extended Hours in Math-CS CLC's

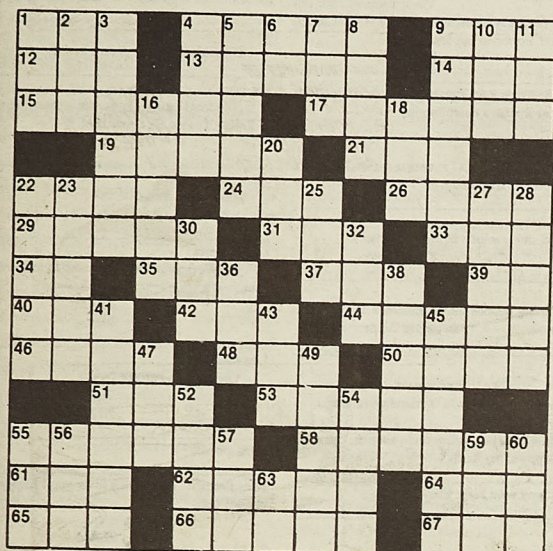
MCS 206, 207, 213

**February 27 - May 8
Continuous 24 Hour Service**

**Sun. 8:00 am - 1:45 am Sat.
Sat. 8:00 am - 11:45 pm**

Time Killers

Crossword Companion



ACROSS

1. Friend
4. Frighten
9. Republican party
12. Since
13. Edict
14. Owns
15. Ten years
17. Absorb
19. Shame
21. Dine
22. Indonesian island
24. Small amount
26. Do not move
29. Mouthpieces
31. Resolution (abbr.)
33. Iron
34. Silver symbol
35. Age
37. Child's place
39. Near
40. Viscount (abbr.)
42. Mean
44. Rasp
46. Catch sight of
48. Pot
50. American (abbr.)
51. Soak flax
53. The same
55. Prayer
58. Red fruit

61. Cotter
62. Strain
64. Had supper
65. Coat (Informal)
66. Harsh
67. Allow

DOWN

1. Cushion
2. Era
3. Place
4. Pop
5. Peak
6. Tennis term
7. Color
8. Great lake
9. Slum
10. Organization of American States (abbr.)
11. Time zone (abbr.)
16. Go along with
18. Fuel
20. Auricle
22. Bold
23. Shield (Zeus)
25. NE state (abbr.)
27. Speak
28. An apostle
30. Cry
32. Droop

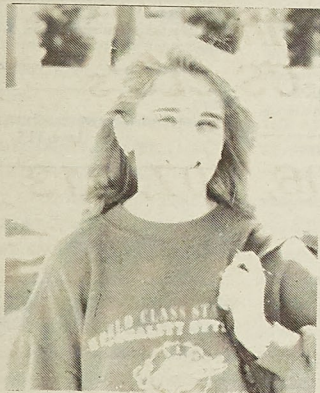
36. Short sleep
38. Chatter
41. Spa
43. Father
45. Without morals
47. Affirmative
49. French seaport
52. Lids
54. Awhile ago
55. Make a choice
56. — Grande
57. Squirrel's food
59. Route (abbr.)
60. So
63. Concerning

Puzzle No. 212

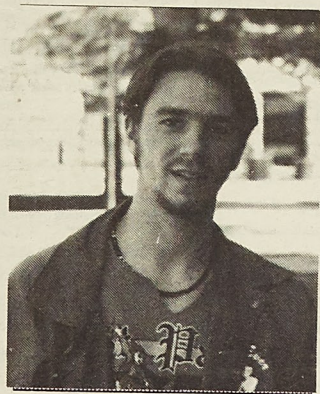
see Solutions, page 20

UMR opinions on campus

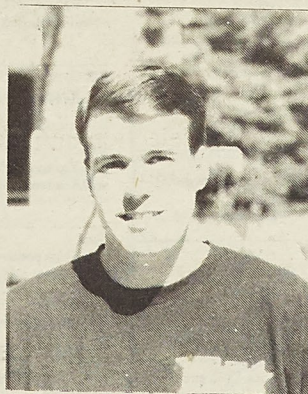
This week's question: "If you could leave Rolla for any one thing, what would it be?"



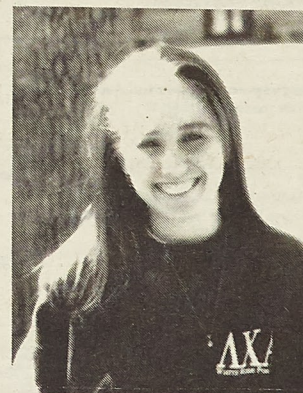
Lisa Webb
Junior
"To go skydiving in South America."



Brian Gibson
Freshman
"Nikki Taylor in the nude."



Don Harker
Grad student
"A job."



Leia King
Freshman
"To be a Senator."

Photos by: Doug Sobrey
Interviews by: Andy Dooley

Have a question for UMR Opinions on Campus? Put it in the Miner Dropbox, room 103 Norwood Hall, with your name (if you'd like it published).

Campus Gossip

Miscellaneous

FOR SALE
AIR CONDITIONER (8000 BTU)
CALL 341-5201

ROOM FOR RENT
1701 N. PINE
\$200 A MONTH
364-4050

Personals

Thanx Lambda Chi Alpha for an awesome Mardi Gras Party!

Kappa Delta

TJ Women's I-M Basketball Team,
Thanks for the awesome season! It was a lot of fun! You ladies are the greatest!
Thanks Again
Barry

Good Luck Joe Weil with Kappa Delta Campus Man!

Fireplace,
Sunporch Room is #1!
Face & Rectangle

Karen
You're a great Jelly Bean Buddy.
Face

Jessica,
You're a cool Big Sis. Can't wait until we have another Sunday Kitchen Talk.
YLS

Sean,
Good Luck in Kappa Delta Campus Man
Jessica & Becky

GDI, buy tickets to support your Kappa Delta Campus Man!

Stacy Face,
Now you know what toothbrushes are for.
Love, YBS

Karla,
Nobody's going to litter on our lawn!
Jessica

Jen
We think you're doing a great job!
Lico
Rachel & Andrea

Linda
How long is a snooze supposed to last? And how many times are you supposed to hit it?
Lico
YR

Michelle O
Last Friday night was a blast. We'll have to go party more often. Next time we'll have to drag Lena, too.
Lico
YLS

Christy
Thanx for everything! If you ever need statics help again, just let me know!
Lico
Rachel

Linda
I just can't take you anywhere, can I? Next time I'll take a muzzle!
Lico
YR

Michelle O
Congratulations!
Lico
YLS

Linda
Thanks for the help this weekend! You're and awesome roomie.
Lico
Susan

Elizabeth
Thanks for always being there to let me bug you with my stories! I think in a couple of weeks we'll have enough for that soap opera.
Lico, S

Ken
My feet are getting better. Thanks!
Lico
YN-->

Nina
Into the freezer with you.
Lico
Juliebird

Bebina
There's no frogs in your bed- You just don't want to get up!!!!
Lico
Julie

Shannon
Quit hogging - You need to learn to share.
Lico
Julie

Hey Chi Omega,
You guys are awesome!!!!!!

Sonya
Saturday night was a blast at Theta Xi! We'll have to go partying again sometime soon!
Lico
Becky

Becky
Not till St. Pat's or maybe it'll depend on?
Lico
Sonya

Angela
You are so wonderful! Thanks for those study tips and what about moving those houses
Lico
YLS

Vanessa
Aren't you studying? I sure am.
Lico
The Big Ol' Nerd

Becky
Do you like being locked up? It depends
Lico
Lisa & Sonya

Nina
You are a pool goddess! When do you want to go play?
Lico
Becky

Lisa
Congratulations on your Laura lie.
Lico,
Becky & Sonya

Becky
Have you ever played the irrelevant game?
Lico
Lisa & Sonya

Jen H
You're a great big sis!
Lico
YLS

Tara, TJ, Kelly, Diane, & Elizabeth,
Thanks for listening to me. You guys are the greatest!

Paul K
You're an awesome little Bro!
YBS

Tam C
Just remember I'm always here for you and I'll always support your decisions!
ZLAM
YLS

Jason P
You're a GIMP!
The other diver

Congrats! UMR Swimming and Diving Regional Champions!

Hey Swimmers
Love the hair!

Zeta loves Doris!

EENA!
While the cat's away....
ZLAM
Itty bitty living space!

Carolyn
Do what makes You happy!
ZLAM
YLS

Aaron
Thanks for protecting against psychos!
YLS

Lisa
I'm glad you're still a part of things!
ZLAM
YLS

Hymie
Let's go to Montana!
Millie

Cass
Oh, look at the llamas!
ZLAM
Ang

Poopy
You look like hell!

Droopy
Aw Hell!
Ang

Amy R
I sure do miss those 6am phone calls
ZLAM
Your roomie

Jeanne
Thanks for the LC You're the best!
ZLAM
YRM

Kim
Go Big or Go HOME!
Your-X-Kville Buddy!

Amy Rancho Cordova _____!

Zeta bowlers
Beware of Coughing, sneezing, or hiccups while in an angled position!
Your Coach

Hey Convict Joe
It's okay, you can still drive your old car!
Your Buddies at Zeta

Jeff
You know, when 1 o'clock comes around, dating an RA can really suck! *grin*
Love, B

Sheri
Think positively! Things can only get better!
B

Sarah
Not that we're all junk food....

Dempsey
Thanks for having long meaningful talks with me! *wink*
B

Mark
How does 'Butterfinger' fit my personality?
Butterfinger

Nat, Jeff, Sheri, Dempsey, Tammy
Is NACURH gonna be great, or what?
Bug

Mark,
Your Donut, Cupcake, & Butterfinger love you!

The Missouri Extravaganza was awesome! Congrats to all who helped.

NACURH is on its way.
Get psyched

Hey B
Should I make bartending my back up career?
Nat

Sheri
Whatever would I do without you? Shrivel up & die I guess!
B

Christy
Yeah, I know... but I'm sure there are guys in there & my hair's a mess! Sound familiar? For cryin' out loud!
B

Wanted: A new RA. Turn applications into rm. 951. Must know what a quiet floor is.

Nat
Don't you just HATE reverse sexism? It makes me sick to my stomach.

Jeff
Oh, never mind. I'll show you later.
Love Puppy

Sarah
Flirting lessons shall commence ASAP
Field Guide

Joe
So... you like to look at stars...
a friend of a friend

Mymama loves me, and loves me a bunch, 'cause she put "Skippy in my lunch."

Hey Skippy want some Mo?

Wookie
How much shampoo does it take to wash all that fur?

Hey Steve
Keep fiddling, maybe someday you'll be able to play that thing

Tony
I heard even your imaginary date was a bomb! Better luck next time
S & E

Alex B & Brian R
After your done with my victoria secrets. I don't want them back!

Hitched
Can you say the sweet smell of victory? I didn't think so
Tony

Clueless
Watchout! Now that Jeph has been snatched Amy is going to try to set you up next. HIDE
A fellow tortured Person

Banjo music sucks & you can't play bluegrass

Amy
You just *think* * you know anything about romance. Everything you do is kind of bland.
Your Big Bro

Hellooooooooooooo-3N Nws
(Nurse Watching Staff)

Collin
What WAS that story you told that cop?

Dudowski
Why does your room always smell like peanut butter?
3S- We've got Peanut Butter - but we want some Mo

Jeph
How is that ultimate frisbee injury healing?

Hey Sheri
How come when you watch basketball games you always are sitting in a puddle of drool

Hey 5N aerobiscists
I rely think Cindy should be shot!
Amy the RA

Katie 'The Fish Killer' cooper

Come on Frances
Only 15 more minutes on the stair master!
A friendly Morning Person

Hey Mac Daddy
You are whipped - NO REALLY

Brian
You are right for the first time in your life! I am the sexiest on the planet - so what's your point?

Josh
If you don't kill the gnome I will!

Big Bro
Now that I can't get you a date in the whole town of Rolla - it's time for a road trip!
Hitched

Jill
Answer the phone!!!
Me

Lisa & Anica
Hi! We have to watch Wayne's World soon! We haven't in a while.
ZLAM
Wayne

Lisa Madison
Great job on Parent's Day!
ZLAM
ZTA

Jill is a dork!
Amy Bremer: Your family loves you!! Happy Surprise Week.

ZLAM
YBBS

Rachel
Need to charge \$40 for nothing at Wally-World?
ZLAM
Your Neighbor

Deena
Congrats! P.S. Please inform your friends of your new phone number!
ZLAM
Your ex-roomies & their insignificant other

Amy
Keep studying hard, you're a great big sis. We can save our partying for Spring Break
Love YLS (Tracy)

Lambda Sigma Pi
This is the coolest organization. We love our actives
Love- your pledges

Kimmy
Always remember you can tell me anything!
Love- YLS

Solutions

from page 19

PAL SCARE GOLF
AGO ORDER HAS
DECADE DIGEST
ABASE EAT
BALI TAD STOP
REEDS RES ORE
AGE ON LAP AT
VIS BAD GRATE
ESPY PAM AMER
RET DITTO
ORISON CHERRY
PIN PUREE ATE
TOG STERN LET

Aid

dentals pursuing a career
Applications will be re
point average, interest
lar activities, employme
viser evaluation and fin
Applications available
Office, G-1 Parker Hall
Applications must be
March 31, 1994.

THE HEAVY CON
GREATER KANSAS
Constructors Associat
Fund (HCA-IAF) Scho
individuals pursuing d
construction manage
computer science, ma
tems, mathematics, or
prerequisite is that the
ment to wards a caree
ally, the students will
mer construction while
each scholarship is \$2,
of the scholarships sha
demonstrate financial
given to well rounded
classmen, to Kansas Ci
or daughters of constru
Applications available
Office, G-1, Parker Hal
Applications must be s
financial Aid Office by

GRADUATING HI
One \$500 Scholarship
Women Engineers' K
awarded on the basis o
graduating from high s
ship is awarded and wh
engineering.
ELIGIBILITY
1. Female graduating
ship is awarded
2. Accepted for enroll
engineering school or
engineering curriculum
meeting accredited by a
3. U.S. Citizen
APPLICATION DEAR
MARKED ON OR BE
AND SHOULD BE AD
SOCIETY OF WOM
OWEN-GEHRT, SCH
2M BOX 475, EXCEL
THE MIDWEST CO
BOARD, INC. SCHO
Concrete Industry Boun
fund known as the Mi
Board Education Fund.
fund that will provide fir
engineering students pur
or higher degree that inc
design courses as an in
program.

Requirements:
* Applicant's permanen
college records or the b
within the state of Kans
within a 150 mile radiu
Missouri state line at high
mile radius of the mai
mailing address of a cur
* Applicant must be pure
or higher degree than incl

Aid

from page 2

dents pursuing a career in the construction industry. Applications will be reviewed on the basis of grade point average, interest in construction, extracurricular activities, employment experience, academic advisor evaluation and financial need.

Applications available in the Student Financial Aid Office, G-1 Parker Hall.

Applications must be postmarked on or before March 31, 1994.

THE HEAVY CONSTRUCTORS OF THE GREATER KANSAS CITY AREA.

The Heavy Constructors Association Industry Advancement Fund (HCA-IAF) Scholarship is directed towards individuals pursuing degrees in civil engineering, construction management, business administration, computer science, management information systems, mathematics, or any other technical field. The prerequisite is that the students demonstrate a commitment towards a career in construction. Additionally, the students will also be required to work in summer construction while in school. The amount of each scholarship is \$2,500.00, per year. Recipients of the scholarships shall be full-time students who demonstrate financial need. Preference shall be given to well rounded persons who are upper classmen, to Kansas City area residents, and to sons or daughters of construction employees.

Applications available in the Student Financial Aid Office, G-1, Parker Hall.

Applications must be submitted to the Student Financial Aid Office by April 15, 1994.

GRADUATING HIGH SCHOOL SENIOR

One \$500 Scholarship sponsored by the Society of Women Engineers' Kansas City Section will be awarded on the basis of merit to a qualified woman graduating from high school in the year the scholarship is awarded and who intends to pursue a career in engineering.

ELIGIBILITY

1. Female graduating senior in the year the scholarship is awarded
2. Accepted for enrollment in an ABET accredited engineering school or in a school which has an engineering curriculum leading to a degree in engineering accredited by a regional association.
3. U.S. Citizen

APPLICATION DEADLINE MUST BE POST-MARKED ON OR BEFORE APRIL 1 1994, AND SHOULD BE ADDRESSED TO:

SOCIETY OF WOMEN ENGINEERS, SUE OWEN-GEHRT, SCHOLARSHIP CHAIR, PR 2M BOX 475, EXCELSIOR SPRINGS, MO 64024

THE MIDWEST CONCRETE INDUSTRY BOARD, INC. SCHOLARSHIP

The Midwest Concrete Industry Board has established a perpetual fund known as the Mid-West Concrete Industry Board Education Fund. The Fund is an endowment fund that will provide financial assistance to college engineering students pursuing a Bachelor of Science or higher degree that includes concrete and concrete design courses as an integral part of their degree program.

Requirements:

- * Applicant's permanent residence as indicated on college records or the high school record must be within the state of Kansas or Missouri and either (a) within a 150 mile radius from a point on the Kansas/Missouri state line at highway I-35; or (b) within a 25 mile radius of the main U.S. Post Office at the mailing address of a current MCIB member.
- * Applicant must be pursuing a Bachelor of Science or higher degree that includes concrete and concrete

design courses as an integral part of their degree program at an accredited college or university.

- * Applicant must be enrolled in or have completed concrete or concrete design courses.

- * Applicant must not be a son, daughter, grandson, granddaughter, niece, or nephew of an advisory Committee member.

- * Part-time student applicants will be limited to junior class status or above. The scholarship award to part-time students will be commensurate with the costs.

Applications available in the Student Financial Aid Office, G-1 Parker Hall.

Deadline: Application receipt date will be closed on April 30, 1994.

FORT LEONARD WOOD CHAPTER, THE RETIRED OFFICERS ASSOCIATION.

- * \$500 scholarship to defray educational expenses.

- * For dependents of active duty, retired, or deceased officers.

- * Must be recommended by a member in good standing of the FLW Chapter, TROA

- * For undergraduate or graduate students

- * High school and UMR transcripts required

- * Must be at least a half-time student

- * Completed application must be received on or before May 15, 1994.

For more information and application contact MAJ Don White, Room 310, Harris Hall, 341-4738.

ARMY EMERGENCY ASSOCIATION SCHOLARSHIP

- * A \$1,000 award given to the best qualified son, daughter, or spouse of an Association member working towards a baccalaureate degree, entering their 2nd, 3rd, or 4th year.

- * Two \$500 awards give to the best qualified applicants

- * Only one award per family.

- * Must be a full-time student.

- * Previous award recipients are not eligible.

- * Deadline March 31, 1994

For more information and application contact MAJ Don White, Room 310 Harris Hall, 341-4738.

THE AFCEA EDUCATIONAL FOUNDATION POSTGRADUATE FELLOWSHIPS

- * \$3,000 Fellowship

- * Fields of study encompass but are not limited to electronics, electrical or communications engineering, mathematics, physics, photometrics, computer science or technology, and information management photometrics, computers science or technology, and information management.

- * Must be a US citizen

- * Must identify or establish thesis subject if applicable, and is possible, an abstract or precis of the intended area and nature of investigation.

- * Applications must be received not later than May 1, 1994.

For more information and application contact MAJ Don White, Room 310 Harris Hall, 341-4738.

ROLLA LIONS CLUB SCHOLARSHIP

The Rolla Lions Club is offering at least one \$1,000 scholarship for the 94/95 academic year for a UMR student. To be considered for this scholarship a student:

- * must have a cum GPA of 3.0 or higher

- * be classified as a sophomore or junior

- * have graduated from a Phelps County High School

(Newburg, Rolla, St. James)

- * complete scholarship application and return to the Rolla Lions Club Chairman by April 1, 1994.

APPLICATION AVAILABLE IN THE STUDENT FINANCIAL AID OFFICE, G-1 PARKER HALL, ROLLA, MO. 65401

\$1,000 SCHOLARSHIP OFFERED BY COTERIE OF FACULTY WIVES FOR 94/95 ELIGIBILITY:

- * The recipient must be a female student at UMR.

- * She must have completed 50% of the hours necessary for completion of her degree from UMR.

- * She must be enrolled with a minimum of 9 hours in a degree program at the time of the scholarship payment, and must show evidence of satisfactory progress toward that degree.

- * She must demonstrate financial need.

- * She must submit a written statement outlining her reasons for application to the Coterie Scholarship Committee.

- * She must not be a member of the family of any UMR faculty, full-time staff, or other personnel. (She may be an employee herself.)

PREFERENCE WILL BE GIVEN TO:

- * The women with added personal obligations (i.e. children, invalid dependents, physical disabilities, etc.)

- * The women who had her college education interrupted and is returning to complete her graduate or undergraduate degree at UMR.

- * Grade point average will be taken into consideration.

Please send a letter of application explaining your qualifications to:

Coterie, P.O. Box 1638, Rolla, MO 65401

DEADLINE: FRIDAY, APRIL 1, 1994.

AMERICAN ELECTROPLATERS AND SURFACE FINISHERS SOCIETY

The American Electroplaters and Surface Finishers Society offers separate scholarships for university or college undergraduates and graduates who demonstrate that their training (or research) is related to plating and surface finishing technologies.

A undergraduate student may apply for any academic year when he or she will be an undergraduate of at least junior standing in a chemistry, chemical engineering, environmental engineering, metallurgy or materials science program where the focus of the curriculum is in surface science subjects. A award are not necessarily based on financial need.

A graduate student may be eligible for an AESF scholarship award if he or she has completed an accredited undergraduate program and is enrolled in a graduate program leading to a master's or Ph.D. degree. A award are not necessarily based on financial need.

The submission deadline is April 15, 1994.

EMERSON CONGRESSIONAL SCHOLARSHIP:

This scholarship is awarded each year by U.S. Rep. Bill Emerson, who represents Missouri's 8th District, which encompasses 25 counties and the City of Sullivan in Southeast Missouri.

REQUIREMENTS:

- * Permanent home residence in the Eighth District.

- * Full-time undergraduate status.

- * completion of at least one semester of college level work with at least a 2.5 cumulative grade point average.

- * Education-related financial need in excess of Pell

Grant assistance.

Applications available in the Student Financial Aid Office, G-1 Parker Hall.

DEADLINE: MARCH 25, 1994

ARMY ENGINEER ASSOCIATION SCHOLARSHIP

A \$1,000 award given to the best qualified son, daughter, or spouse of an Association member working towards a baccalaureate degree, entering their 2nd, 3rd, or 4th year. Two \$500 awards give to the best qualified applicants.

Requirements:

- * Only one award per family.

- * Must be a full-time student.

- * Previous award recipients are not eligible.

- * Deadline is March 31, 1994.

For more information and application contact MAJ. Don White, Room 310, Harris Hall, 341-4738.

THE MIDWEST CONCRETE INDUSTRY BOARD, INC. SCHOLARSHIP

The Midwest Concrete Industry Board has established a perpetual fund known as the Mid-West Concrete Industry Board Education Fund. The fund is an endowment fund that will provide financial assistance to college engineering students pursuing a Bachelor of Science or higher degree that includes concrete and concrete design courses as an integral part of their degree program.

REQUIREMENT:

- * Applicant's permanent residence as indicated on college records or the high school or record must be within the state of Kansas or Missouri and either (a) within a 150 mile radius from a point on the Kansas/Missouri state line at highway I-35; or (b) within a 25 mile radius of the main U.S. Post Office at the mailing address of a current MCIB member.

- * Applicant must be pursuing a Bachelor of Science or higher degree that includes concrete and concrete design courses as an integral part of their degree program at an accredited college or university.

- * Applicant must be enrolled in or have completed

concrete or concrete design courses.

- * Applicant must not be a son, daughter, grandson, granddaughter, niece, or nephew of an Advisory Committee member.

- * Part-time student applicants will be limited to junior class status or above. The scholarship award to part-time students will be commensurate with the costs.

Applications available in the Student Financial Aid Office, G-1 Parker Hall.

Deadline: THE APPLICATION RECEIPT DATE WILL CLOSE ON APRIL 30, 1994.

1993-1994 UNDERGRADUATE RESEARCH AWARDS Sponsored by Sigma Xi

Cash Prizes: \$100, \$80, \$60, \$50

Sigma Xi is offering cash awards to undergraduate students who do outstanding research at UMR during the 93-94 academic year.

Guidelines:

1. The research paper must cover original work performed at UMR by the student author and must have been completed while the student was an undergraduate at UMR.

2. If the paper submitted to Sigma Xi has or will be submitted to other competitions, this information should be listed on the cover page of the paper. If there was a faculty member who supervised the research, his or her name should also appear on the cover or in the acknowledgments.

3. A letter accompanying the submission should include the student's full name, local address and phone number, and a brief description of contributions to the paper by coauthors or supervising faculty.
4. Four copies of the paper must be received by the chair of the awards committee on or before Friday, April 1, 1994. Authors of the four most outstanding papers will be invited to receive their awards at the annual Sigma Xi banquet in mid-April.

Please submit your paper to:

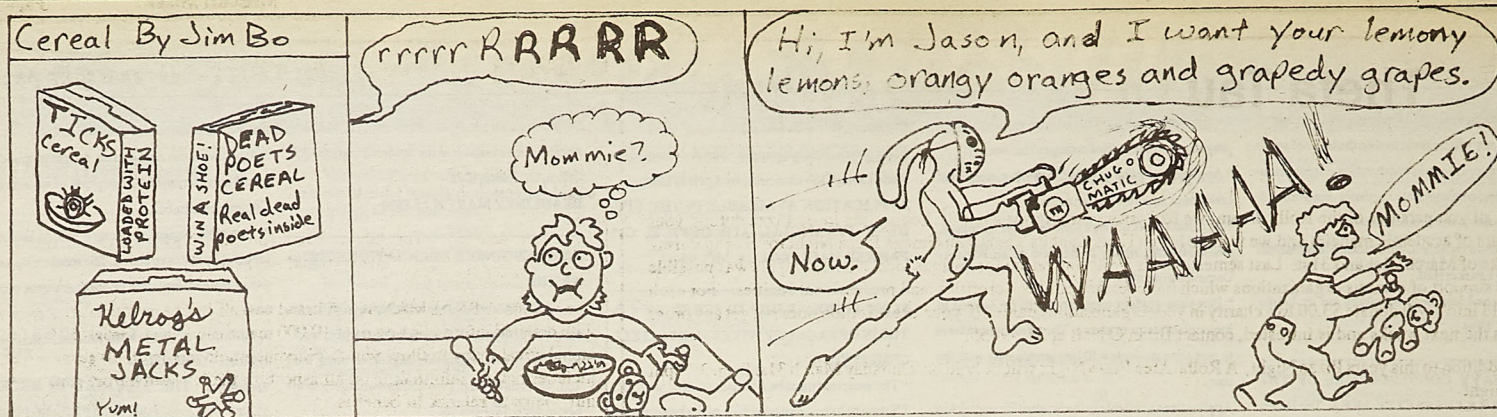
Dr. Donald R. Askeland, Chair

Awards Committee of SIGMA XI

Department of Metallurgical Engineering

See AID, page 22



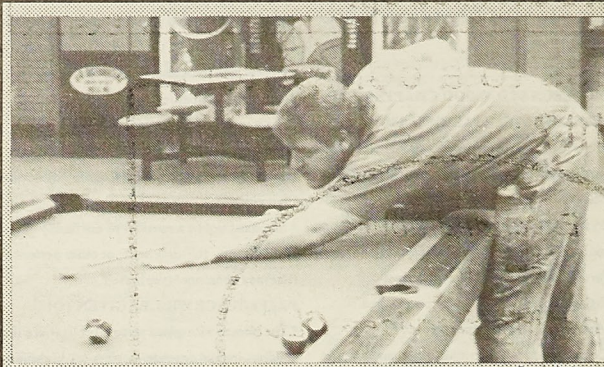
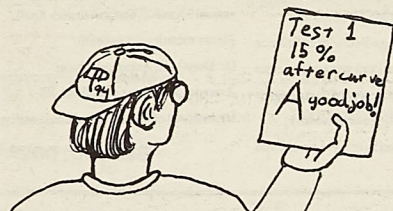


Recreation

from page 1

\$233,895 (alternate No. 2), and \$52,230 (alternate No. 3). Total bid: \$4,154,222. Ludwig and Associates of Jefferson City, \$3,508,000 (base bid), \$165,000 (alternate No. 1), \$225,000 (alternate No. 2), and \$60,000 (alternate No. 3). Total bid: \$3,958,000. Hankins Construction Co. of St. Louis, \$3,563,000 (base bid), \$146,000 (alternate No. 1), \$150,000 (alternate No. 2), and \$44,000 (alternate No. 3). Total bid: \$3,903,000. Kloster Co. Inc. of St. Louis, \$3,396,000 (base bid), \$176,000 (alternate No. 1), \$199,000 (alternate No. 2), and \$34,500 (alternate No. 3). Total bid: \$3,805,500. Curtiss-Manes Construction Co. Inc. of Eldon, Mo., \$3,274,984 (base bid), \$143,990 (alternate No. 1), \$68,285 (alternate No. 2), and \$41,686 (alternate No. 3). Total bid: \$3,528,945. The Recreation and Intramural Center is designed to provide additional campus facilities for intramural and other recreational fitness activities, such as rac-

quetball, aerobics and weight training. Students currently use facilities in the Gale Bullman Multi-Purpose Building, which also is used for intercollegiate athletics. The facility will include an indoor suspended track, four racquetball courts, a squash court, three multi-purpose courts, an aerobics and martial arts room and a weight training room, as well as an entrance lobby, offices and locker rooms. Ground-breaking ceremonies for the center were held on UMR Parents Day Saturday, Oct. 16. Construction will be paid through \$1.25 million raised from student fees and \$1.59 million from campus and private funds. The campus plans to raise the remaining funds from private sources. The UMR Parents Association is leading fund-raising efforts through a "buy-a-brick" campaign. For more information about that project, contact Marylou Shomaker, UMR Phonathon coordinator, at 341-6376. -30-314-AC R



Pictured above: A UMR student trying to enjoy himself in our outmoded University Center.

Union

from page 1

tion for student activities, recreation, and dining.

The funding for construction of a Student Union would most likely work similar to the funding for the Multi-Purpose Building expansion. Student Activity Fees could pay for a portion of the building and the University would try to find funds for the rest (i.e. alumni, parent's association, bonds).

The timing for this plan would be up to the University. One thing to consider is that students are already paying fees for the Multi-Purpose

Building Expansion. It is highly recommended that students would not start paying the fee for the Union until the semester its construction is completed. It is hardly fair for students to pay for a building they will never use. Another item of resistance will be losing the parking lot by UCE. This is a favorite parking lot, and students will not appreciate losing a lot especially if they graduate before the building is completed. However, once the Union is opened, students would have no problem seeing that it is worth the trade for a parking lot.

Spotlight from page 21

and stay to teach. He began teaching here in 1991. The courses Dr. Carroll has taught include the Basic Engineering core courses of Statics and Mechanics of Materials.

Dr. Carroll stays very busy from the research he is working on, the work he does for the younger age groups in the local area, and his family. Dr. Carroll is involved with several research projects. He is helping to develop ways in which plastic can be recycled to reinforce concrete, and also on paper recycling with Dr. Durani. A third materials related project that he is working on is the development of Ceramic Composites with Silicon Carbide reinforcements. Dr. Carroll does demonstrations for younger students in the local area by helping the students actually build their own structurally stable bridge capable of supporting their own weight. Some of his other hobbies include coaching little league soccer and baseball for his two younger sons, and going on float trips. When Dr. Carroll was asked why he decided to come and teach at Rolla, he replied that he did not like the big city atmosphere of Oklahoma City and wanted to come to a smaller town. He also thinks this is a great place to raise a family.

Aid

244K McNutt Hall
341-4730

SOCIETY OF WOMEN ENGINEERS KANSAS CITY SECTION SCHOLARSHIP

The Kansas City Section of the Society of Women Engineers is pleased to announce our 1994 Scholarship Program. NONTRADITIONAL STUDENT SCHOLARSHIP

One \$500 Scholarship sponsored by the Society of Women Engineers Kansas City section will be awarded on the basis of merit to a qualified nontraditional student pursuing an undergraduate course of study in a qualifying engineering program.

ELIGIBILITY

1. Qualify as either a Reentry Student or a Junior College Transfer as defined below:

Reentry student-Women students who have been out of the engineering job market for a minimum of 5 years, or women students from a non-engineering background who are returning to school to seek a degree in engineering.

Junior College Transfer-Women students transferring from a community junior college to an undergraduate engineering program at a four year univer-

sity.

2. Accepted for enrollment in an ABET accredited engineering school or in a school which has an engineering curriculum leading to a degree in engineering accredited by a regional accrediting association.

3. U.S. Citizen

APPLICATION DEADLINE MUST BE POSTMARKED ON OR BEFORE APRIL 1, 1994, AND SHOULD BE ADDRESSED TO: SOCIETY OF WOMEN ENGINEERS, SUE OWEN-GEHRT, SCHOLARSHIP CHAIR, PR2M BOX 475, EXCELSIOR SPRINGS, MO 64024

The American Electroplaters and Surface Finishers Society offers separate scholarships for university or college undergraduates and graduates who demonstrate that their training (or research) is related to plating and surface finishing technologies. An undergraduate student may apply for any academic year when he or she will be an undergraduate of at least junior standing in chemistry, chemical engineering, environmental engineering, metallurgy

or materials science program where the focus of the curriculum is in surface science subjects. A ward are not necessary based on financial need.

A graduate student may be eligible for an AESF scholarship award if he or she has completed an accredited undergraduate program and is enrolled in a graduate program leading to a master's or Ph.D. degree. A ward are not necessary based on financial need.

The submission deadline is April 15, 1994.

ENGINEER REGIMENTAL ASSOCIATION SCHOLARSHIP

* A \$1,000 award given to the best qualified son, daughter, or spouse of an Association member working towards a baccalaureate degree, entering their 2nd, 3rd, or 4th year.

* Two \$500 awards given to the best qualified applicants.

* Only one award per family.

* Must be a full-time student.

* Previous award recipients are not eligible.

* Deadline is March 31, 1994.

For more information and application contact MAJ. Don White, Room 310, Harris Hall, 341-

4738.

FORT LEONARD WOOD POST, SOCIETY OF AMERICAN MILITARY ENGINEERS (SAME)

* One \$500 award to a UMR student member of SAME.

* Must be a U.S. Citizen majoring in engineering or an engineering-related field.

* Must not have received a four year ROTC scholarship

* Award must be used by a full-time student during the 94/95 school year.

* Award may be used toward room and board, tuition, fees or books at the discretion of the recipient.

* Deadline is March 31, 1994.

For more information and application contact MAJ. Don White, Room 310, Harris Hall, 341-4738

NEW YORK CITY POST, SOCIETY OF AMERICAN MILITARY ENGINEERS (SAME)

* One \$1,000 award to a UMR student member of

SAME.

* Must be a U.S. Citizen majoring in engineering or an engineering-related field.

* Award must be used by a full-time student during the 94/95 school year.

* Deadline is April 30, 1994.

For more information and application contact MAJ. Don White, Room 310, Harris Hall, 341-4738.

BUDWEISER USO SCHOLARSHIP PROGRAM

* limited to undergraduate students.

* ROTC scholarship students are ineligible.

* Must be an immediate family member of an Active duty member of the U.S. Armed Forces.

* Must have completed high school within the last four years.

* Need is not a principal criterion.

* Applicant's scholastic record will be considered a major indicator.

* Applications must be postmarked not later than March 1, 1994.

For more information and application contact MAJ. Don White, Room 310, Harris Hall, 341-4738

from page 21

Theta Tau Omega Pizza Night

March 21st-31st

Hey all you pursuers of the Rolla dream, we feel your yearning for a hot St. Louis-style Imo's Pizza during your long hours of academic maheim and we want to help. That's right its Theta Tau Omega Pizza Night for charity during the weeks of March 21st and 31st. Last semester over \$900 was raised for various local charities. This was possible with the support of campus organizations which include: fraternities, sororities, and professional societies. For each pizza sold Imo's will donate \$3.00 to a charity in your organizations name. If your organization does not get any order forms in the next weeks and is intrested, contact Brian O'Neil at 341-9055.

In addition to this years Pizza Night, A Rolla-Area Pizza Night will be held on Thursday March 31st from 3:00pm to midnight

Let's Get Fired Up!

Need access to a computer late at night?

Extended hours
in
Computing Services CLCs

Math-CS 104 & 108

have

Apollo workstations, Macintoshes,
PCs, & mainframe access
available.

Extended Open Hours

Winter 1994:
January 18 - May 8

Mon - Fri 24 hours / day
Midnight - midnight
Saturday 8:00 am - 11:45 pm
Sunday 8:00 am - midnight

Holiday weekends and other times
Mon - Fri 6:00 am - 1:45 am
Saturday 8:00 am - 5:45 pm
Sunday 8:00 am - 1:45 am

Help Desk Available
During Posted Hours

Room 104 Math-CS
Email: helpdesk@umr.edu
Phone: 341-HELP (4357)

For Your Safety

A phone is available in Room 104, so call ahead
and make sure the room is open.
Dial 341-HELP (341-4357).

Lab monitors on duty during the late night shift
will escort you to your car in lot 36, if you wish -
Just ask.

24 hour sign list 93 UMR Computing Services

Does your job search need a boost?

Two new publications have arrived in the Career Opportunities Center which could be very helpful to your job search:

The Adams JOBS Almanac 1994
"The National Ad Search"

The Adams JOBS ALMANAC. A brand new all-in-one national career guide with detailed information on over 10,000 major employers. Geographical and alphabetical indexes allow you to pinpoint employers in all 50 states. Also includes helpful information on all aspects of the job search from resumes to interviews to salaries to benefits.

"The National Job Search". "America's Help Wanted Newspaper" is published weekly with new job listings from a variety of career paths: Accounting, Advertising, Banking & Finance, Communications, Computer Data Processing, Design & Drafting, Education, Engineering, Executive, Government, Hospital-Medical Health, Human Resource Personnel, Insurance, Legal, Management, Marketing, Production Management, Quality Control, Sales, Technical, Telecommunications. This week's issue included engineering positions in Chemical, Civil, Electrical, Industrial/Manufacturing, and Mechanical.

Don't forget several other regular weekly and bi-weekly publications that are worth looking into: "The UMC Job Hunter", "The Chronicle of Higher Education" and "The National Business Employment Weekly" from "The Wall Street Journal".

Personal Resource Development



UPCOMING
PROGRAMS

See Flier for
Further Details

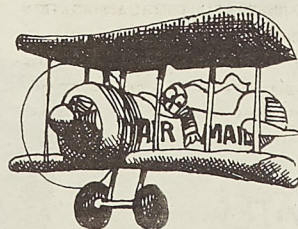
LONG DISTANCE RELATIONSHIPS
Thursday, March 10; 4:30-5:30 pm
209 Norwood Hall
Facilitator: Ms. Angela DiNunzio

Sponsored by
Counseling & Career Development
204 Norwood Hall; 341-4025

Free Academic Help!

The Freshman Arts and Science Program offers free tutoring to improve your grades in Arts and Sciences basic courses.

Although funds are limited, tutors are currently available for basic Chemistry, History, Economics, Math, Philosophy, Political Science, Life Science, French, German, and Spanish courses. For information call 341-4869 or come by G-4 H/SS.



THE GROTTO

CORNER OF 12TH & PINE 364-3311

Right Next to Campus

NEW OWNERSHIP

TAKE ADVANTAGE OF OUR SPECIAL PRICES
ON YOUR FAVORITE BEVERAGES & SNACKS

ENJOY OUR LARGE SELECTION OF GAMES & MUSIC

Daily Lunch Specials

Mon & Thurs	Chili	\$1.25
	Chili Dog	\$1.75
Tue & Fri	Taco	\$.75
	Burrito	\$1.50
Wed	Beef Stew	\$2.00

Bring this ad in for Discount!

IF LIFE'S A BEACH, MAKE SURE YOU'RE ON IT.

NO ANNUAL FEE,
A \$1,000 CREDIT LIMIT
AND LOW RATES.
OKAY, NOW HIT THE BEACH!



IF YOU DON'T CAT IT

Opinions
page 3



Intern



Washington, D.C....Re
headlines can be dish
downright depressing
you are entering the jo
first time. The last few
shrinking opportunit
graduates. At the sa
increasingly globalize
expectations are greater
professional entering the v
narrow, complex job m
ate who can bring som
ive to the table stands
of landing the job and
One way to take
professional future an
self more competitive
"real" experience of
And if this experience
one of the world's inte
er" cities, the reward
greater. Washington,
city and with hundre
opportunities.

BA
You ma
anytime s
Master at
PHD
Please
Bookstor
We can
placed at
The UM
10am to 4
All rent
House aft
Monday M