



17 Mar 1993

The Missouri Miner, March 17, 1993

Follow this and additional works at: https://scholarsmine.mst.edu/missouri_miner

Comments: Two issues in a row published as Number 21

These newspapers reflect the attitudes, perspectives, and beliefs of different times. Neither the library nor the university endorses the views expressed in these collections, some of which contain images and language which may be offensive to some readers.

Recommended Citation

"The Missouri Miner, March 17, 1993" (1993). *The Missouri Miner Newspaper*. 2635.
https://scholarsmine.mst.edu/missouri_miner/2635

This Newspaper is brought to you for free and open access by Scholars' Mine. It has been accepted for inclusion in The Missouri Miner Newspaper by an authorized administrator of Scholars' Mine. This work is protected by U. S. Copyright Law. Unauthorized use including reproduction for redistribution requires the permission of the copyright holder. For more information, please contact scholarsmine@mst.edu.

Opinions
pg. 3

Features
pg. 5

Sports
pg. 7

St. Pats
pg. 9

Comix
pg. 18



Missouri Miner



A publication of the students of the University of Missouri-Rolla

March 17, 1993

Volume 81, Number 21

Twenty pages

Tips on low-risk drinking

1. Keep in mind that drinking should not be the primary focus of any activity.

2. Recognize another's right to drink or not to drink. Offer non-alcoholic beverages, also.

3. Know Your Limit - Stay Within It. Many factors affect how much you can safely drink: how much you weigh; whether or not you are in good health; if you've had something to eat; whether you are tired or refreshed; and how fast you drink.

4. Avoid encouraging or reinforcing irresponsible behaviour.

Set a limit on how many drinks you are going to have when you drink, and stick to it.

5. Know what you are drinking. Different drinks contain different amounts of alcohol. Measure the beverage alcohol when you are mixing a drink.

6. Food for thought. Food slows down alcohol absorption. So, if you host a party, serve plenty of food - the higher in protein and carbohydrates the better. Cheese and nuts are good choices.

7. Last call for Alcohol ... But the party isn't over.

As the host, you control the bar. Close it at least an hour before the end of the party and offer your guests a new round of interesting food and alcohol-free drinks before they leave.

8. A good host is a good friend. You may have to provide transportation for guests who need it. If that isn't practical, offer a place for guests to spend the night.

9. Designate a driver. Then rely only on that non-drinking person to provide transportation for the evening.

10. Don't let a friend drive drunk. If a friend has been drinking too much, don't let him or her drive. You may have to take away the keys. He/She may get angry. But you might save your friend's life.

11. Care enough to save a life. If you have a friend who appears to have a drinking problem, talk to him or her ... when sober. Offer your support and friendship, and urge that he or she seek professional help. Substance Abuse Prevention Program, 106 Norwood Hall, 341-4292.

Applications for the Planetary Society's scholarships available



The Planetary
Society
SOURCE

Applications for the Planetary Society's 1993 scholarships are now available. In the past seven years, The Planetary Society has awarded over \$50,000 to outstanding high school and college students, and has over \$5,000 in scholarships and awards available this year.

To maintain a healthy space exploration program and manage the

resources of our own planet, well trained planetary scientists and engineers must emerge from present and future generations of students. The Planetary Society has designed its scholarship programs to encourage and assist students entering those fields of study. Our scholarship recipients may one day be the researchers and mission planners for a Mars expedition, the astronomers who detect planets circling distant stars, or the scientists who discover how to save the earth's fragile ozone layer.

see Scholarships, page 4

Explore economic growth in the 90s



News
Services
SOURCE

Collegiate and high school students can explore the possibilities for economic growth in the 1990s during the Central Missouri Economics Conference to be held Friday, April 23, at the University of Missouri-Rolla.

Daniel L. Thornton, an assistant vice president and research economist at the St. Louis Federal Reserve Bank, will be the keynote speaker.

The conference provides "a unique opportunity for students to interact with faculty and professionals

from the economics profession," says Dr. Linda Manning, an assistant professor of economics at UMR and co-coordinator of the conference.

Students and professionals will discuss how government influences the economy, job opportunities in the field of economics, and the effect of telecommunications on the economy. Students also have the chance to present research papers at the conference.

In addition, high school teachers and college faculty will hold panel discussions on ways to stimulate more interest in the study of economics in high schools and to improve the teaching of economics in high schools.

"Although economics education in secondary schools is mandated in Missouri, the resources for this program have never been allocated," says Manning. "An important goal of the

conference is to assist high schools in bridging this gap."

In addition, a campus tour and banquet will be offered.

Two other speakers will also address attendees. They are:

John Blum, an economic development specialist with the U. S. Small Business Administration's district office in St. Louis. Blum also teaches finance, economics and entrepreneurship in the master of business administration program at Webster University in St. Louis.

Phil Thompson, a chief economist for the Missouri office of the Public Counsel, the state office that represents the public in public utility

see Conference, page 4

Jamie Archer named new director of placement and co-op office

Jamie Archer has been named director of placement and cooperative training at the University of Missouri-Rolla.

Archer, who has been interim director of the program since September 1992, replaces former director Mariano Trujillo. Her appointment took effect Feb. 22.

"All of the people involved in the search for a new director were very impressed with what Jamie has done as an interim director," says Dr. Wendell R. Ogrosky, vice chan-



Brett Saunier

Jamie Archer, has been named the new director of placement and cooperative training at the University of Missouri-Rolla.

cellor for student affairs at UMR. "She has a lot of enthusiasm for the job and great leadership capabilities."

Archer joined UMR in 1991 as assistant director of placement and co-

operative training. She was a placement counselor at Southern Illinois University at Edwardsville from 1988 to 1991 and project manager of the Early School Leaver Program at Lewis and

Clark Community College in Godfrey, Ill., from 1984 to 1988.

Archer holds bachelor's and master's degrees from Eastern Illinois University in Charleston, Ill.

What's Up at UMR

Wednesday

Black History Month Program, UMR KMNR Radio Station. All day on KMNR
Sponsor: National Society of Black Engineers

INTRAMURAL MANAGER'S MTG.

2:30 pm StuCo Lawyer/Walnut

5:00 pm Student Activity Fee Board/Walnut

6:00 pm Spelunker's Club / 204 McNutt Hall

6:00 pm Eta Kappa Nu Meeting / 103 EE

6:00 pm Omega Chi Epsilon Meeting / 140 ChemEng.

6:15 pm Blue Key Meeting/216 ME

6:30 pm ASQC/201 Eng. Mtg.

6:30 pm American Society of Civil Engineers Mtg./114 CE

6:30 pm Society of Automotive Eng./104 ME

7:00 pm College Republicans 204 H.S.S

7:00 pm Tau Beta Sigma Mtg./139 ChE

7:00 pm Eta Kappa Nu Help Session/213 EE

7:00 pm Alpha Chi Sigma Meeting/139 ChE

7:00 pm AIChE/G-3 Chem

7:30 pm Society of Mining Eng./204 McNutt

7:30 pm Tau Beta Sigma Meeting/139 ChE

8:00 pm Kappa Kappa Psi Meeting

8:00 pm Cycling Club Mtgs./G-1 Rolla Bldg.

9:00 pm Newman Mass

Thursday

9:30 am Juggling Club at Miner Recreation

12:30 pm Newman Scripture

1:30 pm Adult Children of Alcoholics Mtg.
201 Norwood Hall

4:45 pm Toastmasters Mtg./ Mark Twain

5:30 pm Chi Epsilon Meeting/117 CE

6:00 pm Intercollegiate Knights Meeting / 204 McNutt

6:00 pm Pi Tau Sigma Meeting/216 ME

6:30 pm Hang Gliding Club meeting / 105 ME

6:30 pm BSU Worship

6:30 pm Alpha Phi Omega Mtg./Mark Twain

6:30 pm American Nuclear Soc.

7:00 EIT Revue Session - Engineering Econ

7:00 pm St. Pat's Committee

7:30 pm Lutheran Bible Class

8:00 pm Gaming Association Gaming/311 CE

8:00 pm Starfleet / Mark Twain

Friday

SUB Movie /104 ME

1:30 pm Muslim Student Assoc.

3:30 pm Gaming Association Gaming/UCE

3:30 pm UMR Trap and Skeet Club. Need to do something to relieve some stress? Want to learn how to shoot a gun safely? Come join us! in T-2 (the white building behind the library). You don't have to have a your own gun.

Call Jeffrey W. Spencer at 341-8420 or Jim David at 364-5684 for more information.
Everyone is welcome!

6:00 - 9:00 pm InterVarsity Christian Fellowship Meeting/Maramec

6:30 pm InterVarsity Christian Fellowship Mtg.

7:00 pm Show-Me Anime/212 McNutt

Saturday

SUB Movie /104 ME

Sunday

5:00 pm Student Mass

Monday

6:00 pm Christian Campus Fellowship Mtg./Missouri

6:00 pm GDI Governors

6:30 pm BSU Bible Study

7:00 pm Alcoholics Anonymous Mtg./Walnut

8:00 pm Koinonia/UCE

Tuesday

9:30 pm Juggling Club at Miner Recreation

Association of Engineering Geologists Mtg.
204 McNutt

2:30 pm StuCo Lawyer/Walnut

5:30 pm Soc. of Women Eng./Missouri

6:30 pm Chi Epsilon Smoker/114 CE

6:30 pm Interfraternity Council Meeting/216 McN

6:30 pm Student Council Mtg./McNutt

7:00 pm American Society of Mechanical Eng. Mtg./G-3 ChE

7:00 pm Tau Beta Pi Mtg./G-3 Chem E

7:00 pm EIT Revue Session - Mechanics of Materials

Next Wednesday

noon University Orators Chapter of Toastmasters International
Missouri Room - University Center East. For more information
call Steve Watkins at 341-6321

2:30 pm StuCo Lawyer/Walnut

5:00 pm Student Activity Fee Board/Walnut

6:00 pm Spelunker's Club/ 204 McNutt Hall

6:00 pm Eta Kappa Nu Meeting / 103 EE

6:00 pm Omega Chi Epsilon Meeting / 140 ChemEng.

6:15 pm Blue Key Meeting/216 ME

6:30 pm ASQC/201 Eng. Mtg.

6:30 pm American Society of Civil Engineers Mtg. / 114 CE

6:30 pm Society of Automotive Eng./104 ME

7:00 pm College Republicans 204 H.S.S

7:00 pm Tau Beta Sigma Mtg./139 ChE

7:00 pm Eta Kappa Nu Help Session/213 EE

7:00 pm Alpha Chi Sigma Meeting/139 ChE

7:00 pm AIChE/G-3 Chem

7:30 pm Society of Mining Eng./204 McNutt

7:30 pm Tau Beta Sigma Meeting/139 ChE

8:00 pm Kappa Kappa Psi Meeting

9:00 pm Newman Mass

Noday

1993-94 NEED ANALYSIS FORM NOW AVAILABLE. The Admissions/Student Financial Aid Office wishes to inform students that the 1993-94 academic year need analysis form (Free Application for Federal Student Aid) is now available to receive and complete. The need analysis form must be completed to determine a student's

eligibility for the Federal Pell Grant, (For Missouri residents only), Federal Perkins Loan, University Loans, Federal Stafford Loan (subsidized and unsubsidized) the Federal PLUS/SLS Loan, and the Federal College Work Study Program. First priority for the 1993-94 academic year will be given to those students whose need analysis form is received by the processing center by **March 31, 1993.**

The need analysis form can be received outside the front door of the Student Financial Aid Office, G-1 Parker Hall.

SUMMER EMPLOYMENT: Indian Springs Lodge is now taking applications for summer employment, located approximately 30 minutes from Rolla. Various positions available, such as canoe and raft work, grounds, housekeeping, store staff, etc... A season commitment from mid-May through Labor Day is required and reliable transportation a must. Possible camper-cabin style lodging may be available to a few. Call for application at 800-392-1110.

Financial Aid

THE RETIRED OFFICERS ASSOCIATION (TROA) FORT LEONARD WOOD CHAPTER

offers scholarship for 1993 in the amount of \$500 . Eligibility:

- * Undergraduate or graduate students
 - * Must be military officer or dependent of the same
 - * Must be recommended by a FLW TROA Chapter member
 - * High school and UMR transcripts required
 - * Must be at least a half-time student
- See Ctp. White , 310 Harris Hall, for details and application forms,
Application deadline: June 30, 1993

SOCIETY OF AMERICAN MILITARY ENGINEERS FORT LEONARD WOOD POST SCHOLARSHIP 1993, offers \$500 scholarship
Eligibility:

- * U.S. citizen
- * Majoring in engineering or an engineering-related field
- * Previous winners are ineligible
- * Must be a full-time student during 93-94 school year
- * Money to be used toward room and board, tuition fees, or books

see Aid, page 14

Missouri Miner

The *Missouri Miner* is the official publication of the students of the University of Missouri-Rolla. It is distributed each Wednesday afternoon at Rolla, Missouri and features activities of the students of UMR.

All articles, features, photographs, and illustrations published are the property of the *Missouri Miner* and may not be reproduced or published without written permission.

The *Missouri Miner* encourages comments from its readers, and will attempt to print all responsible letters and editorial material received. All submissions must have a name, student ID number, and phone number for verification. Names will be withheld upon request.

Submissions for publication must be in our drop box (first floor of the Norwood Hall, Room 103) by 3:30 p.m. on the Thursday before publication. The *Missouri Miner* reserves the right to edit all submissions for style, grammar, punctuation, spelling, length, and matters of good taste.

The *Missouri Miner* is operated by the students of UMR and the opinions expressed in it do not necessarily reflect those of the university, faculty, or student body.

Editor-in-Chief	Tom Brown (341-4312)
Managing Editor	Jeff Lacavich (364-0502)
Business Manager	Jason Boles (364-8968)
Advertising Director	Dan DeArmond (364-9783)
Asst. Advertising Director	Scott Davidson
Layout and Subscriptions	Keith Jenicek
Circulation	Bob Bohnak (364-1433)
News Editor	Francine Belaska (364-7485)
Asst. News Editor	Mike Matthews (341-2915)
Features Editor	Jody Luksich (364-2553)
Asst. Features Editor	Elizabeth Kladuson (341-9054)
Sports Editor (Jock Tock)	Christopher Goo (364-6989)
Asst. Sports Editor	Joe Hornburg (341-5277)
Photo Editor	Kevin Biggers (364-8968)
Copy Manager	Jim Ockers (364-1207)

Staff Writers: Elliot Clavin, Bill Broyles, Roger Amann, K.C. Snyder, Heather Sphar, James Barnes, Mark Crawford, Lee Hill, Andy Dooley
Typesetters: Wenhui Song, Mutan Chen, Kingshook Ghosh, Carmenza Gutierrez
Graphic Artists: Ming, John Stork, David Tattershall, Mike Welland, Omar Metwalli
Advertising Representatives: Jeremy Buchanan, Keith Jenicek
Photographers: Jason Hansen, Mike Veneconi, Brett Saunier

103A Norwood Hall
University of Missouri-Rolla
Rolla, MO 65401-0249
(314) 341-4235
(314) 341-4312

Oh yes,
we do recycle!
Please do the same!

Opinions

Conservatives corner by Rob Hobart

Young people are often told that their generation will be the most important ever seen. In our case, unfortunately, this is true. The next fifty years will determine whether mankind will be able to achieve a truly tolerable life, or will be condemned to the cycles of misery which have been our fate for so long.

Human civilization is dependent on energy. In primitive societies the only source of energy is muscle, and surplus energy can be generated only by ruthlessly squeezing the bulk of the population. Hence the callousness and brutality of primitive subsistence-agriculture civilizations, their tiny ruling elites and huge slave/peasant masses, and above all their fragility. Rome was only one of the myriad ancient empires which failed.

A series of historical accidents enabled Western Europe to escape the endless cycles of subsistence agriculture. The division of Europe into highly competitive nation-states forced adaptation and creativity; the states which could not keep up were devoured by their more innovative neighbors. The divorce between religion and the state meant that there was room for original thinking; and Christianity's own emphases on individual morality encouraged men to think for themselves. The great mass of Russia shielded Europe from the worst of the outside invasions which had crushed so many civilizations. And all of this led up to the harnessing of new energy sources: first water and wind, then coal and oil.

It is energy -- specifically, energy cheaper and more efficient than human muscle -- which has made Western Civilization something new in human history. Because of energy, the average modern human being lives better than an ancient slave. But energy is also our Achilles heel. Coal and oil are dirty power sources, and also limited in quantity. We cannot clean up the pollution of our current system without more energy; we cannot extend our standards of living to the poorer nations of the world without more energy. Energy is the bottleneck of civilization.

We can break the bottleneck. One of the tools we have already: nuclear fission power. If we can expand into space we have another possibility: orbital solar microwave satellites. Theory suggests that we can eventually attain controlled fusion power. All these sources can solve our energy problem. BUT...

But there is a large and politically powerful group of people in the West who oppose advanced power sources and space travel. The "Greens" claim to be concerned about the environment, but they are actually nothing more or less than technophobes, proposing policies on the basis of irrational prejudices. Unfortunately, irrational policies with good salesmen can do a lot of damage... and the Greens are very good salesmen.

The next fifty years represents our best chance -- quite possibly, our last chance -- to escape for good the subsistence agriculture trap. If we fail, our civilization will inevitably slowly decay back to the primitive norm: grinding poverty, senseless cruelty, oppression, slavery, endless war.

It's our choice.

Some hard facts on Homosexuality

Many articles have appeared in the Missouri Miner this year addressing the pros and cons of homosexuality. Some of these articles were based solely on opinion, others were just accusing rebuttals, few however addressed the health side of the issue.

As a group, homosexuals:

- * Comprise at least two-thirds of the current Aids cases.(1)
- * Are far more likely to suffer from and spread infectious diseases such as Hepatitis A and B than the general population.(2)
- * On the average, have hundreds of sexual partners during a lifetime, with many having over 1,000.(3)
- * Continue to engage in Male-male sex without condoms in dangerous numbers.(4)
- * Continue to commit other unhealthy sexual acts in dangerous numbers and subsequently are more likely to suffer from intestinal disorders known collectively as "gay bowel syndrome."(5,6)

Before you dismiss these statements as the ravings of another right-wing fanatic, please check the sources of this data.

I want to make it clear that I am not suggesting violent acts against homosexuals. However, I do not want homosexuality to become a common and encouraged aspect of our society, partially because the above mentioned reasons.

AIDS is a killer. It is not politically correct, or prejudice. It kills without concern for how the victim contracted the disease. If we as a society are willing to ban a behavior like cigarette smoking in certain areas due to the effects of second hand smoke, shouldn't we also protect innocent people from the effects of others sexual behavior?

My great-uncle died March fourth (less than three weeks ago) from AIDS; he was a practicing homosexual. When the family found out about his disease we did not condemn or try to judge him but we rallied around to help in any way possible. We did this despite the fact that we were opposed to his life style. Those who are quick to cry "homophobe" and "hate monger" need to take another look and see who is prejudging whom.

We need to remember that this is America; we can disagree with a persons position without necessarily hating that person. As citizens we have a right to raise our voice. Some of our forefathers gave up their lives to give us this right. We must not let them down by keeping silent.

The references are available
by Larry Lacy

More Opinions Pg. 16

Only In Rolla



Monthly pains-- they might not be what you think



**Endometriosis
Association
SOURCE**

I felt so different from my friends. Because I was in so much pain all the time, I didn't have the same type of college experience they did. They were focusing on college, careers and achieving their goals, and I was too sick to even think about studying for my classes."

Sarah Hillmert was a sophomore at Marquette University in Milwaukee when she started having more painful periods. Her family physician told her it was just "female problems." But what started out as tolerable became, by her junior year, almost three weeks of pain every month. Even with a lighter class load, she watched in dismay as her grade point dropped.

Sarah was eventually diagnosed with endometriosis, a puzzling disease that affects women in their reproductive years. Tissue normally found in the uterus is also found in other areas such as on the ovaries, the bowel and the bladder, causing internal bleeding. Scar tissue, inflammation and other problems then develop which can cause severe pain, infertility and even bowel obstruction.

An estimated 5 million women-- from teenagers to college students to middle-aged women-- suffer from this disease in the United States alone. As Sarah found out, endometriosis is not an easy disease to diagnose or treat. Continuously fighting pain left her too exhausted to attend classes or her part-time job. One physician suggested she get psychological counseling; another told her that her two emergency trips to the hospital in the middle of the night

because she was literally doubled over in pain, was not that unusual.

"All too often women are told that monthly pain is acceptable; it's part of being female," says Mary Lou Ballweg, executive director of the International Endometriosis Association, sponsors of Endometriosis Awareness Week March 21-27. "We have to break through the stigma that still surrounds menstruation," Ballweg continues. "We shouldn't be reluctant to talk about it, and we must be unwilling to accept pain as normal."

According to Ballweg, college-age women often don't want to accept the fact that things can go wrong with their bodies. But statistics show that 41% of diagnosed sufferers had symptoms of endometriosis before age 20. "Women of any age have to be and persistent to get a diagnosis so they can start exploring treatment options."

If pain is continual, interfering with classes and everyday activities, women may have to see more than one doctor before getting answers to their questions or before getting a definite diagnosis. Sarah went to one physician after another before finding one who had experience dealing with endometriosis and who didn't brush off her complaints. "It was terrible. I often felt so lost and misunderstood."

Some women with endometriosis may experience fairly mild problems, not even realizing they have it until they have difficulty becoming pregnant. For others, however, it can be a debilitating, frustrating disease.

"Women with endometriosis need to be assertive," says Ballweg, "because the road to diagnosis can be long and frustrating." She recommends women be familiar with the most common symptoms: chronic pelvic

pain, painful periods, pain during sex, ongoing fatigue, painful urination or bowel movements during periods, and extensive allergies.

"College students in particular," she maintains, "should be able to look ahead to bright, exciting futures instead of having a disease like endometriosis slow them down."

Sarah Hillmert still struggles with endometriosis, at times wishing she'd pushed harder earlier for answers and solutions. But she continues to pursue treatment options and has made lifestyle changes to help her cope with the disease and allow her to enjoy her favorite pursuits.

Contact the Endometriosis Association for more information, including how to order a diagnostic kit, by writing 8585 N. 76th Place, Milwaukee, Wisconsin 53223. Or call 1-800-992-3636.

Students selected to Who's Who



**News
Services
SOURCE**

Eight University of Missouri-Rolla students have been selected to the 1993 edition of "Who's Who Among Students in American Universities and Colleges."

The students join an elite group of students selected from more than 1,400 institutions of higher learning in all 50 states, the District of Columbia and several foreign countries.

Students named this year from MISSOURI
Florissant: Lynne Sanick, a senior in engineering management.
Grandview: Mindy Gardner, a junior in geological engineering.

High Ridge: Jeffrey Feltz, a senior in mechanical engineering.

Holts Summit: Craig Rackers, a senior in mechanical engineering.

Jefferson City: Julie Schroer, a senior in mechanical engineering.

Do: Patrick Winkelman, a senior in mechanical engineering.

St. Louis: Stephanie Leon, a senior in geological engineering.
NEBRASKA

Bellevue: Scott Palmtag, a senior in nuclear engineering.

Students were selected by the campus nominating committees and editors of the annual directory on the basis of their academic achievement, service to the community, leadership in extracurricular activities and potential for continued success.

Outstanding students have been honored in the annual directory since it was first published in 1934.

PREREGISTRATION

Preregistration for the 1993 Summer and Fall semesters will be April 19 through 23. Students should obtain their preregistration materials and schedule of classes from the Registrar's Office starting April 15th. Detailed information regarding preregistration will be found in the front section of the Fall Schedule of Classes.

CAPS reports will be run on April 9, 1993, with copies available through your advising department April 13th. If you are considering changing majors, please complete the major change applications available in the Registrar's office by April 1, 1993, to ensure that the correct department will receive your CAPS report in time for preregistration.

Conference

from page 1

matters before the Public Service Commission. Thompson provides advice on the regulation of electric, natural gas, telecommunications and water utilities.

Directors for the conference are Manning and Dr. David Hentzel, professor of economics at UMR and director of UMR's Center for Economic education, which is hosting the conference.

Additional support for the conference is being provided by the UMR economics department; the UMR College of Arts and Sciences; UMR's Recruiting Services; South-Western Publishing, Cincinnati, Ohio; D. C. Health and Company, Boston, Mass.;

Prentice-Hall, Englewood Cliff, N. J.; First Bank, Hermann, Mo.; Jefferson Bank of Missouri, Jefferson City; Bank of Plato in Plato, Mo.; Phelps County Bank, Rolla, Mo.; Boatmen's Bank of Rolla; Boatmen's Bank of Lebanon; Boatmen's Bank of Richland; Boatmen's Bank of Pulaski County; Farmers and Merchants, St. Clair, Mo.; Three Rivers Corp., Linn, Mo.; Waynesville; and First Bank of St. Louis.

To register for the conference, contact Manning at the economics department, 110 Harris Hall, University of Missouri-Rolla, Rolla, MO 65401, before April 16. Or call (314) 341-4828 or fax at (314) 341-4866.

Scholarships

from page 1

The Planetary Society offers two awards for college students. Undergraduates are eligible for the College Fellowship Awards, and any college student may enter the Mars Institute Student Contest.

The College Fellowship Awards

Undergraduates majoring in science or engineering may apply for one of up to five grants of up to \$1,000 each. Each applicant must be a member of The Planetary Society or be nominated by a member. Fellowships will be awarded on the basis of scholastic achievement, commitment to a

career in engineering or a planetary-related science, and a 2,500-word essay on a relevant topic.

The Mars Institute Student Contest
All high school and college students are eligible to enter the Mars Institute Student Contest. The prize in 1993 is \$500, and an all-expenses paid trip to a Mars related conference, awarded to the best essay on this year's designated topic.

This year's topic asks students to discuss the possibility that spacecraft landing and moving about on the surface of the planet Mars could contaminate the surface or atmosphere of that planet, and to propose procedures to prevent it from occurring.

Entries to these programs must be received by The Planetary Society no later than May 17, 1993. Additional information, and application forms, may be obtained by writing: **The Planetary Society, Scholarships Department, 65 N. Catalina Avenue, Pasadena, CA 91106.**

The Planetary Society, founded in 1980 by Carl Sagan, Bruce Murray and Louis Friedman, is a non-profit organization whose members share the goals of encouraging the exploration of the solar system and continuing the search for extraterrestrial intelligence. With over 100,000 members in more than 100 countries, it is the largest space-interest group in the world.

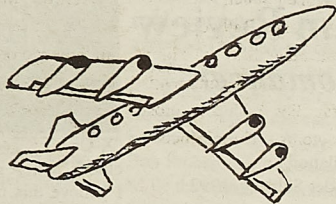
Features

SUBConscious



SUB
SOURCE

SHOWING THIS WEEKEND
Friday & Saturday in ME104 --
7 & 9 PM PASSENGER 57



It's the story of a cop with a bad attitude, who makes a group of hijackers wish they had never boarded the plane. Don't miss this action flick!

Looking to pick up a few extra bucks and have some fun? How about entering the Leisure & Rec-

reation Committee's 3 on 3 Basketball Tournament. It's a coed, single elimination tournament. It will take place at the multipurpose building on Saturday, March 20 and Sunday, March 21. The top team will get \$60, \$45 for Second place and \$30 for Third. Applications are available in the SUB office NOW!!!!!!

Do you hate everything SUB does? Well, you can change it! Just show up for the committee meetings and you can help decide what comes to campus. Everyone is always welcome at our meetings. Here's what's coming up: 3/17 Wed. Films & Video 6:30 SUB office.

Blue Sabres on way to success



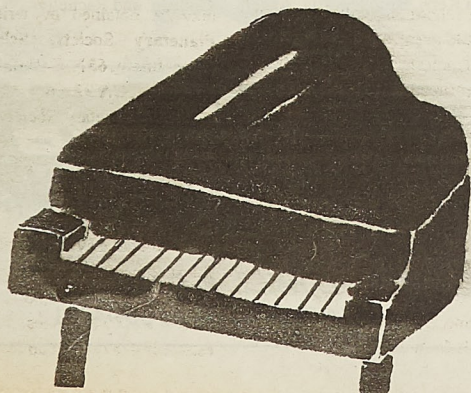
AFROTC
SOURCE

Blue Sabres, the 442nd AFROTC Cadet Group's precision drill and ceremonies team, is well on their way with another successful semester here at UMR. In the coming semester, Blue Sabres will continue their role of providing color guard ceremonies for various University activities and those of the surrounding community. Besides the usual activities, Blue Sabres hopes to eventually compete in the drill competitions around the country. Ten Air Force Academy Sabres obtained from the Student Council last

year will help them look even more professional.

In keeping with a quality program, Blue Sabres is preparing their new cadets to become active members of the organization. After successful completion of a semester-long training period, nine AFROTC cadets will have the opportunity to become Blue Sabres. This training period is made up of activities involving leadership, drill and ceremonies, military bearing, and most important of all, teamwork. Only after mastering these professional qualities can one become part of the Blue Sabres team. For more information contact C/1st LT Jeff Black at 209 Harris Hall or call 341-6438.

C/3rd Class Martin D. Vaughan



Student Union Board

SUB?No, we are not an underwater vessel. We are the Student Union Board, activities programmer for the UMR campus. We are a volunteer organization of about 100 students with seven committees: Concerts, Films & Video, Fine Arts, Leisure & Recreation, Special Events, Technical Services and Variet Entertainment. The committees plan a variety of activities for the social, recreational and cultural benefit of all UMR students. Almost all of our activities are free to UMR students. Committee members work together to find, contact, contract organize and publicize the myriad of activities and entertainers SUB brings to UMR. Every student is eligible to be a member of The Student Union Board, every student is invited to have an impact on the movies, comedians, lecturers and theater groups that visit UMR. Joining SUB is a great way to get involved, be a leader, have an impact and meet new friends. SUB also supports On The Loose, a complete outdoor recreation rental facility exclusively for UMR student and staff. Everything SUB does is planned and executed by students. For more information, check out UMRINFO, read our weekly Missouri Miner column - SUBConscious, look for our monthly newsletter, CALL US at 341-4220 or stop by the office in room 218 University Center - West, just above the Butcher Baker Deli. Hope we see you enjoying a great SUB event soon!

Blue Key

The Blue Key National Honor Fraternity serves the University of Missouri-Rolla campus and commu-

nity. Blue Key publishes the annual student directory and manages several school activities. Blue Key in the community assists the civic organizations in their various health and welfare drives and fund raising campaigns on and off the campus.

The honor of membership in Blue Key is limited to 40 outstanding UMR students. Blue Key members are selected for this honor because they have shown character, outstanding ability, and recognized potential as future citizens and deserve the special attention of the faculty. Membership is limited to students who have completed at least 60 credit hour, maintained at least a 2.75 grade point average, and have a minimum of 40 points on the approved point system of the chapter. Interested candidates should watch for the announcement, appearing in the *Missouri Miner*, indicating that applications are being accepted.

Rollamo

The *Rollamo* is the official yearbook of the University of Missouri-Rolla. The purpose of the yearbook is to compose a pictorial rendition of the campus and its students and to document the year's major events. The yearbook is created on a computer using desktop publishing techniques. Anyone who is willing to learn about or has experience with layouts, photography, or desktop publishing can join. Meetings are usually held on Wednesdays at 5:30 in 103G Norwood Hall. The office phone number is 341-4279.

UMR Cycling Club

Riding a bicycle has been a favorite past-time for young and old alike. The purpose of the Cycling Club at

UMR is to meet the needs of anyone interested in riding in any way, shape, or form. We serve as a source of both information and technical repair skills for all interested. This semester we plan to hold our 2nd Annual Spring ride in which anyone may attend. The club has bi-monthly meetings on the 2nd & 4th Wednesdays of the month in G-1, Rolla building at 8:00 p.m. Anyone is welcome to attend the meeting and membership dues are \$5.00/yr.

Society of Manufacturing Engineers

The Society of Manufacturing Engineers is a diverse and well established organization nationally. SME celebrated its 60th anniversary this past year as one of the largest Engineering Societies in the country. Our student chapter is a small group that is making a strong effort to be a 1st class organization. We strive to be professionals and are seeking a new level of professionalism. One way our chapter is achieving this goal is by establishing and organizing the first campus wide National Engineers Week presentation. This Program now includes many other organizations, and we hope will become an annual event. Other very important projects include the development of two new student chapters. The Missouri society of Professional Engineers and the Society of Plastics Engineers are both being coordinated by SME student members. The Society of Manufacturing Engineers includes Mechanical, Electrical, Industrial, and Engineering

see Campus, page 19

Piano recital, March 19

Frank Schindler will perform at Castleman



News
Services
SOURCE

Rolla, MO. — The University of Missouri-Rolla presents a piano recital by Frank Schindler at 8 p.m. Friday, March 19, in Room 138 of Castleman Hall, 10th and Main streets.

Schindler, who studied in Italy under German pianist Wilhelm Kempff, is the music director of Union United Methodist Church in St. Louis. He also studied and taught in and

currently teaches piano to students from pre-school to grade 12 at the Clayton Academy of Music in St. Louis.

Schindler's performance is free and open to the public. Tickets are required, however, due to limited seating.

Tickets are available on a first-come, first-serve basis from 8 a.m. to 4:30 p.m. at the ticket window in the University Center-West. For more information call 341-4219.

The recital will feature the following works: "Sonata in E Flat Major,"

by F. J. Haydn; "Four Impromptus, Opus 90," by F. Schubert; "Impromptu in A Flat Major, Opus 29," "Scherzo No. 3 in C sharp Minor, Opus 39" and "Scherzo No. 2 in B Flat Minor, Opus 31," all by F. Chopin; "L'Isle Joyeuse," by Debussy; and "Hungarian Rhapsodie No. 12," by F. Liszt.

Schindler has lectured around the state of Missouri and has conducted master's level classes on the Beethoven sonatas.

Japanese All-Girl Power Pop Punk



Captain Goatee
Staff Writer

Hello silly Rolla types. It's Captain Goatee time again. This week features stuff to do in Rolla and reviews of Shonen Knife's *Let's Knife* and the rave compilation, *Technomancer*.

Saturday March 6, Randy E. Tyree opened his exhibit of 40 original paintings at the Blue Heron Rookery. I took a look at his art and was very impressed. Tyree paints with brilliant colors and great detail. Scenes composed of a red or blue swirling tree is a common motif in his work. He layers the paint on some of his works and makes the scene come out of the canvas. This added dimension brings a life to the scenes he creates. One work detailing three horse heads appears as if in motion. Tyree also explores a style of placing exotic animals a bit larger than life in landscape scenes. His work is very appealing. The exhibit will last until March 27th. I would highly suggest discovering the art of Randy E. Tyree. Call 762-BIRD for more information.

Prividing the music at the Blue Heron for Tyree's opening was solo folk artist Carrie Newcome. I only had the opportunity to see the last 8 songs of her show, but the part I did see was wonderful, funny, touching, and sincere. Carrie Newcome is simply a joy of a person and her music is just a part of that. The crowd even got her back

on stage for an honest encore. (Not one of those pre-planned ones.) She seemed very shy and overwhelmed from the response of the audience. But it was an honor certainly earned by the beauty, simplicity, and depth of her music. I enjoyed Carrie Newcome very much.

Also playing that weekend at the New Beat were The Missionaries. They were on the Captain Goatee radio show Friday afternoon and just went crazy in the studio. I wasn't exactly sure what to expect of their music, but when I popped in their tape and heard a few songs I was hooked. These guys are great. The band consists of Greg Krutsinger (lead vocals, guitar), Jacques Garoutte (Lead guitar, vocals), Jason Jones (Drums), and Scott Eastman (Bass guitar, vocals). for the New Beat shows, Rob Rollins, a former bassist who reminded us all somewhat of Gilligan, sat in for Eastman.

The Missionaries hail from Miama, OK (same town as the Victros). They play music which sounded very much like some band I knew. I thought and thought all night and just couldn't place exactly who it was. Their sound is a cross between old R.E.M., Smithereens, and as lead singer Greg clued me into, the Hoodoo Gurus. Basically, the Missionaries play rock with a slight country twinge (ala R.E.M.). The songs were very well written and I enjoyed the Missionaries a lot. One of Saturday's highlights was reported to be some guy named Captain Goatee joining the band for his rendition of "Louie, Louie". (Thank God they didn't make a copy!)

Album Review *Let's Knife*

Shonen Knife
Virgin Records, 1992
8 goat-ees

"Riding on the rocket I wanna go to Pluto/Space foods are marshmallows, asparagus, ice cream, ooh" - "Riding on the Rocket"

Imagine if you will, the Ramones being transformed into three innocent looking girls from Japan. After getting over the shock, they would form a new band I'm sure. And I'm sure they would sound something like Shonen Knife.

"Blue eyes, blond hair/tight body, long legs/She's very smart/She can dance well/ Ohh... ahh... ahh... / Bang, bang, bang, Twist Barbie/Oh! Sexy girl!" - "Twist Barbie"

Naoko Yamano, Michie Nakatani, and Atsuko Yamano have been making music for years, and *Let's Knife* is their first all English, U. S. release album. *Let's Knife* is a collection of rerecorded greatest hits from what I can tell. Their music is plain fun. It ranges from Ramones like punk to almost a Bangles sound.

I discover whiskers of a cat in a timeless zone/ And I put them on my face/ In a moment I become a sweet little cat/ And I dance on a flying saucer? I am a Cat" - "I am a cat"

The lyrics are fun and simple. They range from songs about bison, bass, and cats to insect collectors,

Barbie, and flying through space. "Devil House" seems as if it were written after catching Rocky Horror on late night TV.

"I'm gonna eat jelly jelly jelly jelly / Jelly jelly jelly jelly beans/ You're gonna eat cherry cherry cherry cherry/ Cherry cherry cherry drops/Oh, flying jelly beans, throwing them to you/Ooh, crashing cherry drops, breaking right in two." - "Flying Jelly Attack"

Need a good drive home, cheer you up, act silly album? If that's what you're looking for, I'd give it 10 goat-ees. *Let's Knife* by Shonen Knife is one of those must have albums.

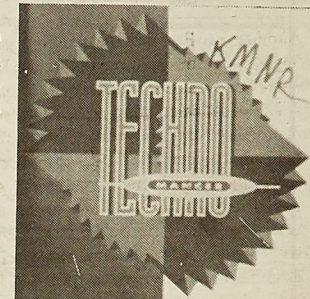
Album Review *Technomancer*

Rave Compilation
Caroline/Antler Subway, 1992
8 goat-ees

Technomancer is almost 76 minutes of rave on one disc. It features groups such as Lords of Acid, Channel X, Eccentric, Oxy, Digital Orgasm, Jade 4 U, Atomizer 2, and Dust Club to name a few. However, closer inspection shows that most of the groups are simply different combinations of the

same 5 or 6 people. Most notable are Oliver Adams, C. Van Lierop, and Somora of Lords of Acid fame. Adams is on 11 of the album's 16 tracks. Also featured are Praga Kahn, Jade 4 U, and Krimson.

Technomancer starts out really lame. The remix of the Lords of Acid song "Rough Sex" is boring and "Free the World" is terrible. However, after the first four tracks, the hour of music still left on the disc is great. Highlights include Oxy "The Felling", Jade 4 U "Messenger of Love", Channel X "A Million Colours", Digital Orgasm "Startouchers", Zafari "Jungle People (It Began in Africa)", and Dust Club



"X-One." *Technomancer* also includes "Where is God" by Parametric. I believe this track has been played some on KMNR.

Technomancer is a worthwhile collection of dance rave music. There is at least 45 minutes of stellar music on this disc. If you're really into it, you might even like all of the tracks. Considering all 76 minutes, it's still a decent collection that will keep you dancing.

Coming soon: Reviews of The Judybats and Belly.

Also: Listen to Sidio and Hall with Rich Myers live on KMNR 89.7 from 5 to 6 on Friday. This time I won't screw it up. Trust me.

Campus Gossip

Miscellaneous

MOVING SALE LEAVING IN MAY
QUEEN SIZE BED-ASKING \$200
SANYO 25 IN. TV-ASKING \$225
BOOKCASE -ASKING \$50
BOSTON SPEAKERS ASKING

\$125

ANSWERING MACHINE ASKING \$50

PLUS SOME MORE
341-8033

\$200-\$500 WEEKLY

Assemble products at home.
Easy! No selling. You're paid direct.
Fully guaranteed.
FREE info-24 hour hotline
801-379-2900 copyright #Mo035050

SPRING BREAK '93

Party with the best!
S. Padre Island from \$99
Cancun Mexico from \$424
Bahamas/Cruise from \$269
Joun over 1 million parties!
Call Student Express Vacations at
1-800-TOUR-USA

CHEAP! FBI/U.S. SEIZED

89 Mercedes.....\$200
86 VW.....\$50
87 Mercedes.....\$100
65 Mustang.....\$50
Choose from thousands starting \$50
FREE Information-24 hour hotline
801-379-2929 copyright#Mo035010

Personals

Top 10 Reasons to Party at 419

10. Overhang
9. Larino home alone
8. 5 units at a glance
7. Ray gettin' busy
6. 69 at midnight
5. 5 kegs and then some
4. "You are the most beautiful girl in the room."
3. Fatties anyone?
2. Sebex on the toilet x2
1. Its all fun snd games until someone breaks the sink

9 South,

I don't understand the commotion about my top 10 list. It was a joke meant to be taken lightly because of your top 10 list. Ans another thing, I am not a man. I am a woman; a woman who LIVES ON 9 South.

UNFORGIVEN

Lips of night
Kiss the sky
And the darkness flows
As black as the ink of life
So much so
That the blood refuses to flow
Terror screams with the
Chill of the piercing wind
Fighting to be free
The last one stands alone
Raising his fist up to the sky
Lighting quickly fires its
arrows
And he is doomed to die

Time Rider

Rob,

You are a jerk. You do not know how to treat a lady. We hate you.

Carolyn, Kim, Christina, Jennifer, Maris, Karen, Sue, Sandra, Deborah, Lynn, Rebecca, Dawn, Gabriel, Shannon, Stephanie, Joann, Elizabeth, Melissa, Ann, Stacey, April, Catherine, Shanna, Amy, Eleanor, Deena, Lura, Anne, Lori, Jane, Stephanie, Renee, Denise, Julie, Amelia, Tamra, Rhonda, Kerri, Brooke Karla, Angela,

Gail, Teresa, Michelle, Darlene, Tanya, Cynthia, Tina, Gretchen, Mary, Heather, Joan, Linda, Holly, Connie, Sue, Jessica, Sabrina, Margaret, Lisa, Beth, Nicole, Anita, Jacqueline, Camille, Carol, Polly, Vanessa, Kelly, Cori, Carrie, Louise, Janice, Dana, Regina, Brenda, Sarah, Colleen, and Rachelle.



SCIENCE FICTION • FANTASY
COMICS • GAMES
1014 Pine St. Phone 364-4301

Sports

Blues gearing up for playoffs

Travis Dunnington

Staff Writer

Another St. Pats has passed by leaving us with nothing more than the remnants of an alcohol induced stupor. The cold, calculating so-called "professors" of the University have finished giving there little St. Patrick's Day present, too, and after a grueling round of tests you settle back into your easy chair for a little R&R. So there you sit on your sofa, popping Bon-Bons one after the other and exhibiting general sloth-like characteristics while reliving the good times vicariously through an old but, nevertheless, classic episode of the Rockford files. Although Jim has put on another masterful performance, the show still seems to falls hort of your entertainment threshold. Finally, you exhibit some good sense and turn on ESPN for a little sports action. To your dismay you are informed of the fact that the whining boys of summer are either holding out or experiencing the dreaded "visa problems" in leaving some Caribbean Isle. The NBA will be holding its playoffs some time this year but you don't have until August, you need to be entertained now. Oh

yeah, I almost forgot to mention the PGA tour is in full swing. This week the tour stops in Mississippi for the Greater Biloxi. Exclude All Minorities Open while the Pro Bowlers are in Rapid City South Dakota for the Bowl Till You Make the Home Viewers Sick tournament. I'll give you some credit, however, and assume that these sporting events, while thrill a minute for most people, just aren't good enough for you. You need to find a sport on TV which not only condones drinking and violence, but encourages it. Well, look no further than Blues Hockey. Where ele can you watch hammerheads like Kelly Chase and Bob Probert battle it out at center ice while thousands of drunken St. Louisans are whipped into a frenzy by the ruckus? In order to enjoy Blues Hockey, however, you must keep in mind a few things. First of all, never sit down to watch a game without a fresh supply of your favorite beverage. Those not imbibing have been known to characterize Kelly Chases's goon tactics as mindless violence and turn the TV off in disgust. Secondly, do not attempt to follow the hockey puck's path around the ice, this cannot be done by the human eye. Instead, watch the players on the ice, when a goal is scored they will raise their arms, sig-

naling you to rise to your feet as quickly as possible, while being careful not to spill the aforementioned beverage, and proceed to high-five everyone within sight. Also, there is no need to watch closely for fights or cheap-shots, as this is what instant replay was invented for. Any knock-down punches or blood-drawing stick fouls will be replayed several times for your viewing enjoyment. Finally, don't invest any time in learning the complicated rules of hockey since most of the referees have not learned them or manage to swallow their whistles once the game starts. (Are those really paid referees or just three renegade Footlocker employees?)

But seriously, Blues Hockey is something that can be experienced and enjoyed by everyone. The Blues have a lot of offensive skill in players such as Brett Hull and Craig Janney, some world class skaters in Nelson Emerson and Brett Hedican, and plenty of tough guys like Kelly Chase and Brendan Shanahan who are always willing to stick up for their teammates. Hockey is a fast-paced game with plenty of physical contact and the festive atmosphere of the people watching it only adds to the experience.

Thank you from the editor

Christopher Goo

Sports Editor

St. Pat's is over and now it is that time of season that most die-hard sports fans enjoy the most. We've got the NCAA Tournament, Cardinal/Royal baseball, NHL and NBA playoffs all right around the corner. We are still looking for writers to cover some of these sports so if you are interested give Joe or myself a call (341-4235).

On the local front, men's baseball and women's softball are about to begin as well as track and field. Ditto on the writers.

Thank you and goodbye to Bill Jolly, UMR's all-time leading scorer, who provided plenty of offense for four years. We'd like to say thanks to Donnie Brown, Jon Huecker, Chris Dawson, and Eric Kearbey as well. You provided some serious excitement on this campus. It was a good buzz.

Special Congratulations to the UMR swim team, who had the most success but got the least notoriety of all the campus sports. We just didn't have any writers that wanted to cover it. Maybe next year.

The NCAA Division two National swim meet was held last weekend. Mark Cresswell of UMR was our only qualifier and his highest finish was 13th in the 1650 yard freestyle. Overall the team finished 10-2 in dual meets, while placing three first place finishes in different invitational, including the Mideast Regional Championship. Once again, sorry swim fans for the lack of press.

How about those Missouri Tigers? With their backs against the wall, impressive victories over Oklahoma State, Iowa State, and Kansas State landed them in the NCAA tournament. Good job Norm, and good luck against Temple.

Kudos (and not the candy bar) are also in order for Charlie Spoonhour and the SLU Billikens. They showed that they could play at the end of the season, which could help with recruiting.

You heard it here first, five or six years from now, SLU will be the team to beat from Missouri. The new arena, Spoonball, and expansion of the Great Midwest will put the Billikens in the Top 25 again.

Brian Jordan, Are you for real? I hope so because if he is the Cards should bring home the pennant in the NL Least I mean East.



M-Club Athlete of the Week

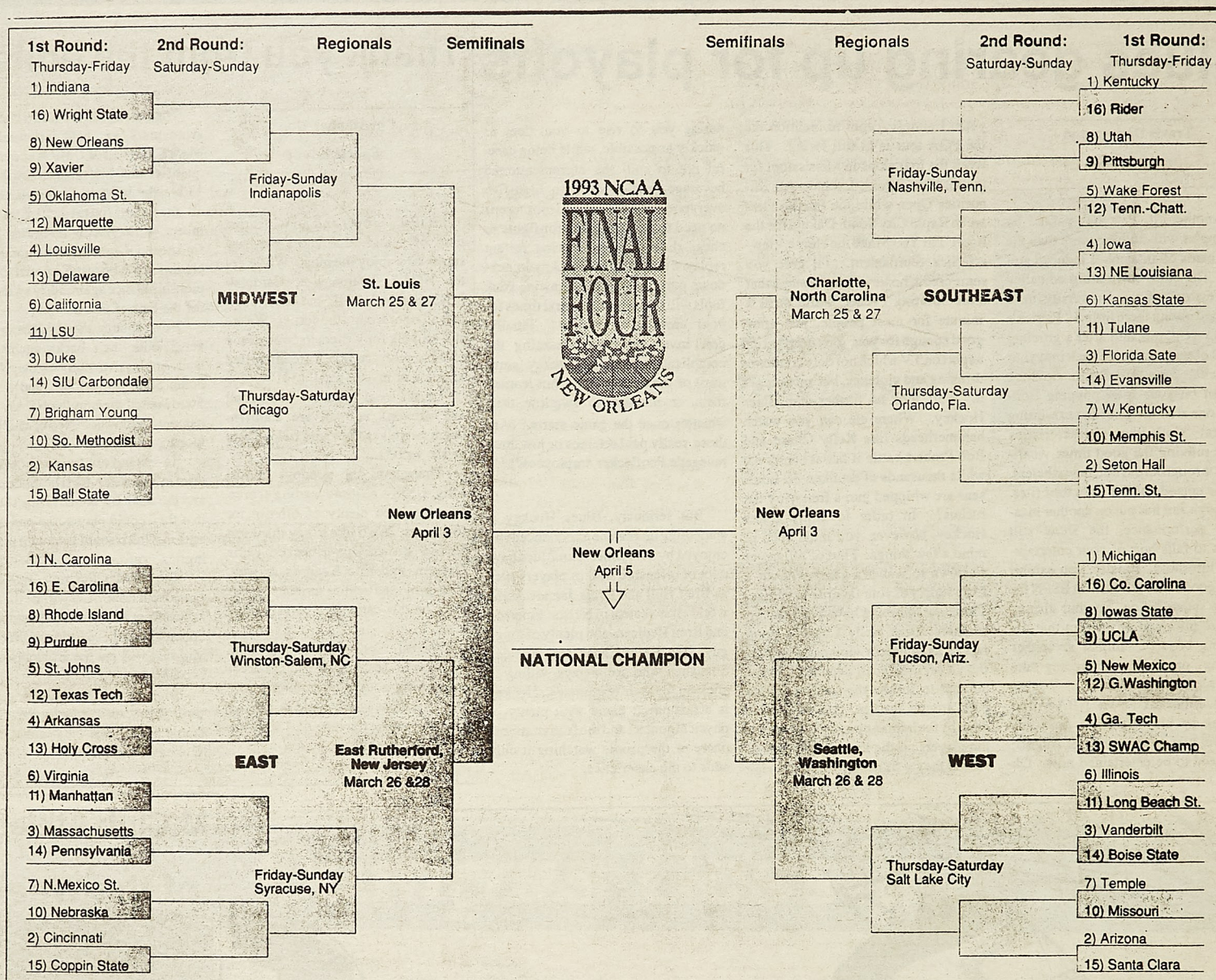


For week of
March 1- March 7

Stacy Mathes
Women's Basketball

For the second time this semester Stacy Mathes of the Women's Basketball team has been named the M-CLUB ATHLETE of the WEEK. Tuesday night in the Lady Miners' last game of the season at Pitt. St. Stacy had 16 points with 8 of 10 shooting from the field and 6 rebounds. In the game, which was Stacy's last as a Lady Miner, she scored her 1,000th career point. Congratulations on a fine career Stacy and good luck in the future!

1993 NCAA Tournament Bracket



ATTENTION

Cycling Club Members and Interested Riders: Our March meeting will be held on Wednesday, the 17th at 8:00pm in G-1 of the Rolla Building. The club T-shirts are in, please attend if you ordered a shirt to pick it up. There remains one extra-large short-

sleeve shirt; first come, first serve. The agenda will consist of collegiate racing, the Tour de Rolla stage race, the UMR fun ride, a presentation on buying a new road bike, and a weekend mountain bike trip. Hope to see you there.

YOU HAVE FRIENDS WHO CARE
AT...

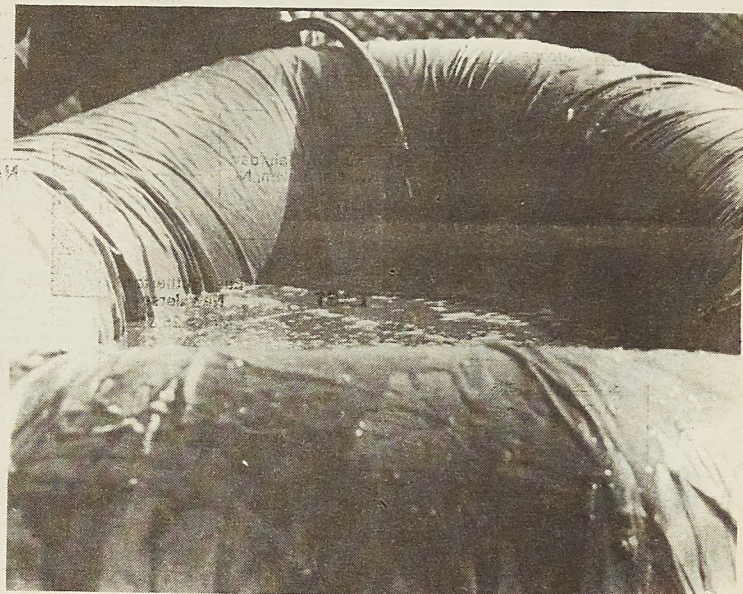
BIRTHRIGHT
PHON

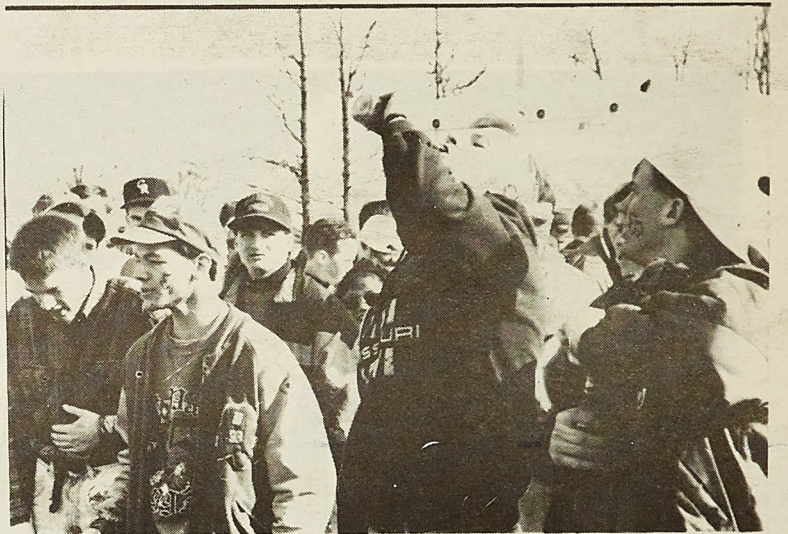
PHONE: 364-0066

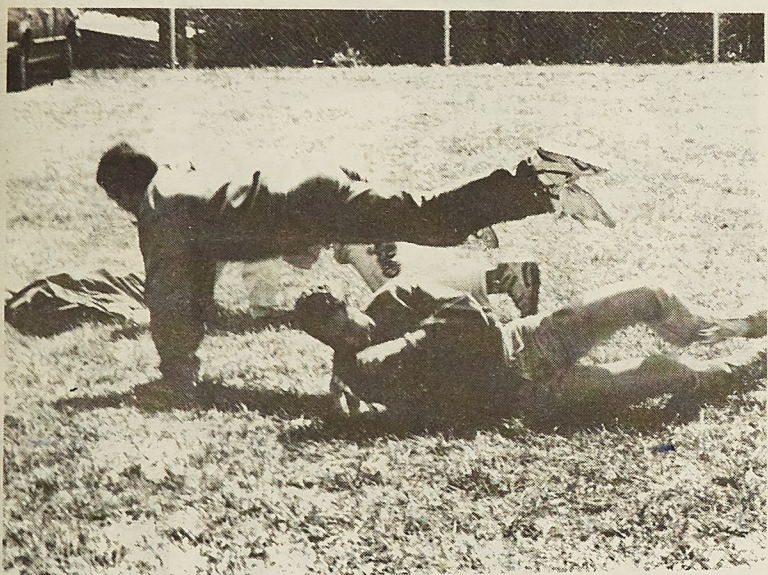
215 WEST 8th STREET
P.O. BOX 832
ROLLA, MISSOURI 65401

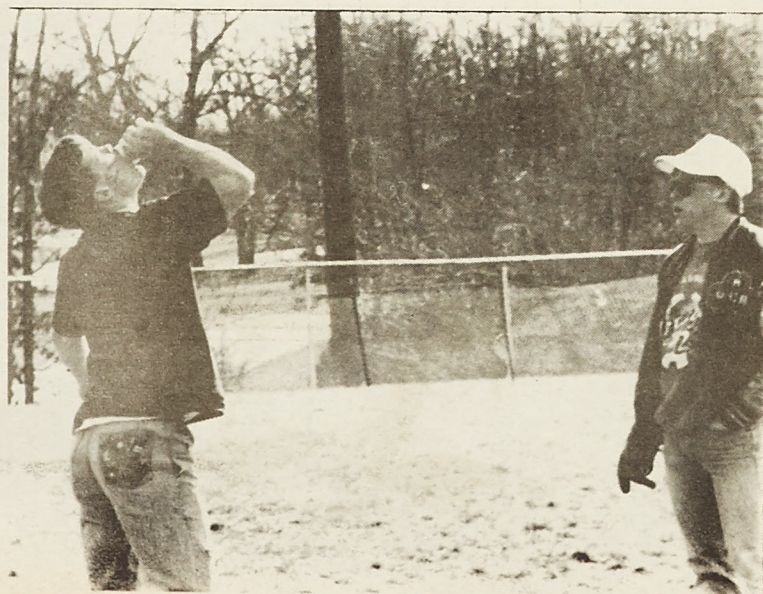
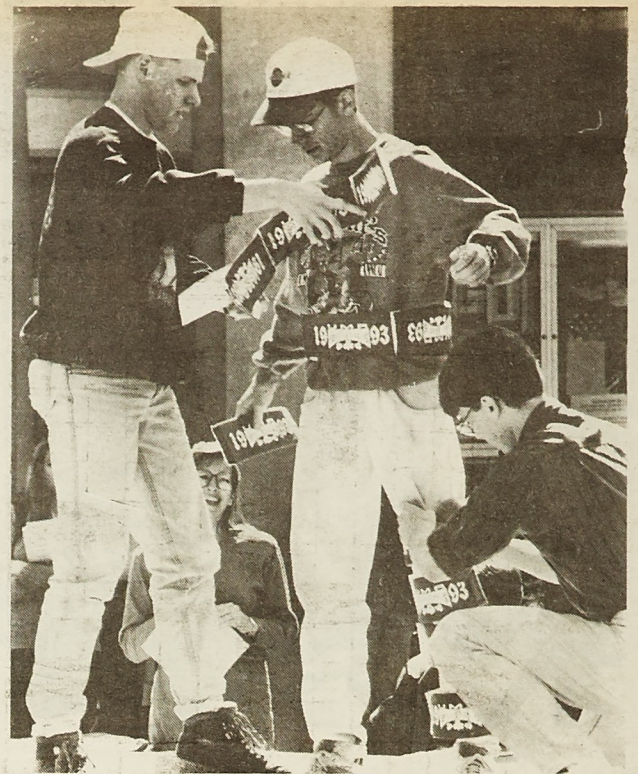
FOR HELP
DURING UNPLANNED PREGNANCY
FREE PREGNANCY TESTING
NEW EARLY DETECTION METHOD

Some St. Pat's Action



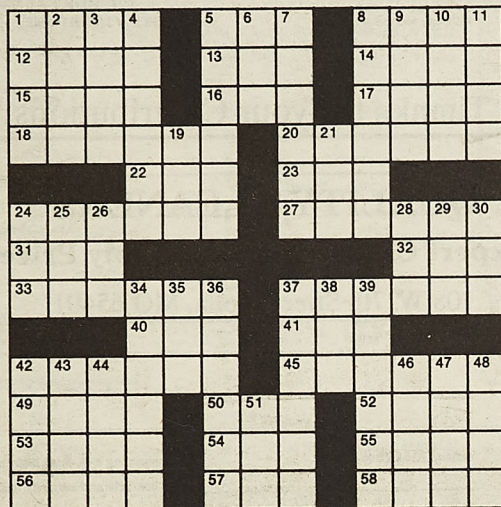






Time Killers

CROSSWORD PUZZLER



© 1987 United Feature Syndicate

ACROSS

- 1 Helmond series
- 5 Negative
- 8 Frolics
- 12 Eye
- 13 amorously
- 14 Toward
- 15 Island off
- 16 Contend
- 17 Chestnut with white interspersed
- 18 Save
- 20 Father or mother
- 22 Sick
- 23 Mature
- 24 Shoulder wraps
- 27 Discern
- 31 Soft food
- 32 Period of time

DOWN

- 33 Preposterous
- 37 Tell
- 40 Born
- 41 Actor
- 42 "Five Easy"
- 45 Run easily
- 49 Sea in Asia
- 50 Anger
- 52 Comfort
- 53 Unusual
- 54 Staff
- 55 Ascend
- 56 Hostelrys
- 57 Female sheep
- 58 Winter vehicle

- 6 French affirmative
- 7 Surgical saw
- 8 Attic
- 9 Medicinal plant
- 10 Richard
- 11 Dispatched
- 19 Rubber tree
- 21 Time gone by
- 24 Health resort
- 25 Flap
- 26 Harvest goddess
- 28 Mountain on Crete
- 29 Household pet
- 30 Sight organ
- 34 Male relatives
- 35 Female ruff
- 36 "A Streetcar Named"
- 37 Retreat
- 38 Guido's high note

- 39 Seagoing vessels
- 42 Equal: comb. form
- 43 Country o Asia
- 44 Merit
- 46 Caudal appendage
- 47 Actual being
- 48 Musical instrument
- 51 Brawl: colloq.

SCRABBLE® BRAND

Licensed by Selchow and Righter Co., owner of the registered trademark SCRABBLE.

L ₁	L ₁	H ₄	M ₃	M ₃	P ₃	Y ₄	Triple Word Score	
T ₁	G ₂	R ₁	E ₁	M ₃	A ₁	N ₁		
H ₄	L ₁	O ₁	O ₁	A ₁	C ₃	L ₁	3rd Letter Triple	
N ₁	I ₁	A ₁	O ₁	D ₂	M ₃	D ₂		

PAR SCORE 155-165

by JUDD

FOUR RACK TOTAL
TIME LIMIT: 20 MIN

DIRECTIONS: Rearrange each row of letters to form a 2- to 7-letter word. To total points of *your words*, use scoring directions to right of each row. 7-letter words get 50-point bonus. "Blanks" used as any letter have no point value. All Judd's words can be found in The Official Scrabble Players Dictionary.

11-12-87

© 1987, United Feature Syndicate, Inc.

SCRABBLE® BRAND

Licensed by Selchow and Righter Co., owner of the registered trademark SCRABBLE.

F ₄	D ₂	A ₁	S ₁	O ₁	E ₁	O ₁	4th Letter Double	
T ₁	S ₁	L ₁	A ₁	E ₁	P ₃	N ₁		
Y ₄	R ₁	L ₁	A ₁	T ₁	A ₁	E ₁		
L ₁	F ₄	E ₁	I ₁	R ₁	E ₁	T ₁	4th Letter Triple	

PAR SCORE 130-140

by JUDD

FOUR RACK TOTAL
TIME LIMIT: 20 MIN

DIRECTIONS: Rearrange each row of letters to form a 2- to 7-letter word. To total points of *your words*, use scoring directions to right of each row. 7-letter words get 50-point bonus. "Blanks" used as any letter have no point value. All Judd's words can be found in The Official Scrabble Players Dictionary. **JUDD'S SOLUTION TOMORROW**

11-14-87

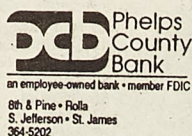
© 1987, United Feature Syndicate, Inc.

see Solutions, page 19



Our checking accounts help keep your balance.

Keep things tipped in your favor by opening one of our interest bearing checking accounts. Choose from either our Money Market Checking Account or our NOW Checking Account and make your money work for you. Contact a PCB employee-owner today to find out how you can ride the wave of financial success.



MONEY MARKET ACCOUNT NOW CHECKING ACCOUNT MONEY MARKET ACCOUNT NOW CHECKING ACCOUNT



A Theta-Tau/Casino Night Sponsor

RAMSEY FURNITURE
215 WEST 8TH STREET
ROLLA, MISSOURI 65401
314-364-7787

RAMSEY FURNITURE
NEW & USED OUTLET
801 N. ROLLA STREET
ROLLA, MISSOURI 65401
314-364-3440

MARVIN & NORMA BUSCH
OWNERS

BUSCH FURNITURE INC.
P. O. BOX 2027
ROLLA, MO 65401

WE BUY
USED FURNITURE

Thanks for your Contributions

QUALITY CLEANERS

*Expert Cleaning *Reasonably Priced

108 W. 7th Street Rolla, MO 65401

Aid

from page 2

* Member if the UMR SAME student chapter See Cpt White, 310 Harris Hall, for details and application forms.

Application Deadline: April 15, 1993

SOCIETY OF AMERICAN MILITARY ENGINEERS NEW YORK CITY POST SCHOLARSHIP PROGRAM 1993, offers \$1,000 scholarship.

Eligibility:

- * U.S. citizen
- * Majoring in engineering or an engineering-related field
- * Previous winners are ineligible
- * Must be a full-time student during 93-94 school year
- * Money to be used toward room and board, tuition fees, or books
- * Member if the UMR SAME student chapter See Cpt White, 310 Harris Hall, for details and application forms.

Application Deadline: April 15, 1993

ASM INTERNATIONAL COSTAL BEND CHAPTER, The Costal Bend Chapter of ASAM International (American Society for Materials) will award a \$1,000 scholarship to a second of higher year student pursuing a four-year Bachelor of Science Degree in materials, science, metallurgical engineering, or a materials science option to mechanical engineering. This scholarship will be awarded for the 93-94 academic year.

Applications available in the Student Financial Aid Office.

Deadline: April 1, 1993

AMERICAN INSTITUTE FOR FOREIGN STUDY, College Division Minority Scholarship, applications for the fall 1993 semester are now being accepted. The scholarship is being offered in an effort to help increase the participation of ethnic minority college students in study abroad programs.

The scholarship which is applicable on fall 1993 semester AIFS programs in Austria, Britain, France, Italy, Mexico and Spain, includes tuition, room, board and round trip fare.

Applications for the scholarship will be accepted from African-Americans, Hispanic-Americans, Native-Americans, Asian-Americans and Pacific Islanders who are currently enrolled as undergraduates. Selection of the scholarship winner will be made based on the fulfillment of the program requirements, financial need, academic accomplishment, demonstrated leadership ability, extracurricular activities and a written statement by the applicant concerning the objectives for wanting to study abroad.

The College Division of the American Institute For Foreign Study is a nationwide organization that provides comprehensive overseas study and travel programs. Since the company was founded in 1964, over 500,000 students and teachers have participated in programs in Europe, Australia, Asia, Mexico and Russia.

Applications forms and further information may be obtained by writing: Minority Scholarship, American Institute For Foreign Study, College Division, 102 Greenwich, CT 06830 or by calling (800) 727-2437.

Application deadline: April 15, 1993.

THE JOHN P. EAGER EDUCATION TRUST FUND SCHOLARSHIP, This scholarship is to honor John P. Eager, he was a pioneer in the development of modern microfilm technology as applied by business. The Eager Scholarship is a minimum 2,500-word essay contest with a \$5,000 prize. The essay topic, chosen each year on an aspect of the field of information and image management, requires significant commitment on the part of the student to research and write. A minimum grade point average of 3.0 is required, and there are some limitations in the range of a college major. Otherwise, the contest is open to full-time students, from high schools seniors to college.

The scholarship recipient is honored at the Annual AIIM Banquet. For more information on the John P. Eager Scholarship, contact Maureen Heffernan, Manager, Chapter Relations at AIIM headquarters, 1100 Wayne Avenue, Suite 1100, Silver Spring, Maryland 20910, 301/587-8202, FAX 301/587-2711.

AMERICAN ELECTROPLATERS AND SURFACE FINISHERS SOCIETY (AESF), offers scholarship programs. The AESF is offering separate scholarships for university or college undergraduates and graduates. An undergraduate student may apply for any academic year when he or she will be of at least junior standing in a chemistry, chemical engineering, environmental engineering, metallurgy or materials science, program where the focus of the curriculum is in surface science subjects. A graduate student may be eligible for an AESF scholarship award if he or she has completed an accredited undergraduate program in chemistry, chemical engineering, environmental engineering, metallurgy or materials science and is enrolled in a graduate program leading to a master's or Ph. D. degree. Award selections will be based on, but not limited to: career interest in surface finishing technologies, scholarship, achievement, motivation and potential.

Awards are not necessarily based upon financial need. Applications must be postmarked by April 15, 1993 in order to be considered for the 1993-94 academic year.

For more information and/or applications contact the Student Financial Aid Office, G-1 Parker Hall.

NATIONAL ASSOCIATION OF WOMEN IN CONSTRUCTION ST. LOUIS, MISSOURI CHAPTER 38, The St. Louis NAWIC is offering a scholarship to women and men who are pursuing degrees in fields related to the construction industry. This scholarship does not apply to first year students.

Application must be postmarked by April 2, 1993. Applications available in the Student Financial Aid Office.

NATIONAL ASSOCIATION OF WOMEN IN CONSTRUCTION THE GREATER KANSAS CITY, MO, The Greater Kansas City, Missouri Scholarship Foundation is offering scholarships to students pursuing a career in the construction industry.

Application must be postmarked by March 31, 1993. Applications available in the Student Financial Aid Office.

nancial Aid Office.

ROLLA LIONS CLUB/VANCE SCHOLARSHIP FUND, This Scholarship will be awarded to a student who has attended UMR for at least one year and who is from Rolla, Missouri area (Phelps and adjacent counties). This scholarship is in the amount of \$1,000.

* a minimum of a 3.0 grade point average must have been attained

- * applicants must be a full-time student at UMR
- * financial need will be considered
- * other monetary awards or scholarships earned by the applicant will be considered
- * this scholarship is renewable

Applications available in the Student Financial Aid Office.

Application Deadline: April 2, 1993.

MISSOURI BOTANICAL GARDEN DR. ERNEST E. JUST SCHOLARSHIP PROGRAM, The Missouri Botanical Garden will award a \$5000 renewable college scholarship in 1993 in honor of noted scientist Dr. Ernest E. Just.

The Just Scholarship is open to St. Louis area students. The preferred recipient will be a St. Louis African-American studying science. The award is based upon academic record and extracurricular activities pertaining to science. Undergraduates who have successfully completed their college sophomore year will be eligible for the award. Applications and Reference forms available in the Student Financial Aid Office.

Application Deadline: April 15, 1993.

WINTER 93 MISSOURI HIGHER EDUCATION ACADEMIC (BRIGHT FLIGHT) SCHOLARSHIPS, The Winter 93 "Bright Flight" check are now available in the Cashier's office, basement of Parker Hall. If you are a "Bright Flight" recipient, please go to the Cashier's office, Cashier's hours are from 8:15 a. m. to 3:15 p. m.

THE MID-WEST CONCRETE INDUSTRY BOARD EDUCATIONAL FUND, The MCIB Educational Fund was established to provide financial assistance to college engineering students

pursuing a B. S. or higher degree that includes a concrete and concrete design courses as an integral part of their degree program. Note should be taken of the residency requirements as shown on the application. The Fund will grant one \$2000 scholarship this fall.

Application deadline: April 30, 1993.

WOMEN IN ENERGY, INC SCHOLARSHIP.

Two awards of \$250 each will be made to a junior/senior enrolled full-time in a Missouri college or University. The student should be majoring in business, education, engineering, home economics, journalism, science or other energy related field. Minimum overall GPA of 3.0.

Application Deadline: April 1, 1993.

1993-95 SECOND START SCHOLARSHIP (ORVILLE REDENBACHER'S SCHOLARSHIP), Thirty \$1000 scholarships will be distributed to qualified adults for the 1993-94 school year.

Eligibility criteria:

- * age 30 or older.
- * enrolled or planning to enroll in a degree program at an accredited college or university.
- * pursuing part-time or full-time studies on an undergraduate or graduate level.

Application deadline: May 1, 1993.

TAU BETA PI FRESHMAN SCHOLARSHIPS

The Missouri-Beta (UMR) Chapter of the Tau Beta Pi Association, a national engineering honor society, is currently accepting applications for its fall scholarships. These scholarships are awarded to students who have demonstrated outstanding potential during their freshman year in the field of engineering. Applicants should meet the following criteria:

- *Be currently enrolled at UMR.
- *Be a full-time undergraduate engineering student (including Engineering Management and Engineering Mechanics)
- *Have completed between 30 and 59 credit hours.
- *Have a minimum 3.5 cumulative GPA.

Forms are available at the Financial Aid Office. Application deadline: Monday March 22

Rock and mineral auction



News
Services
SOURCE

Students, professors, amateur mineral collectors and professional rock dealers throughout Missouri have the opportunity to attend a rock and mineral auction Sunday evening, March 28, at the University of Missouri-Rolla.

Students in the UMR geology and geophysics department's student chapter of the Dake Geological Society will coordinate the auction, which is being held as part of a meeting of the Geological Society of America March 29 and 30 at UMR.

"A rock and mineral auction is a great way to attract attention to geology within a community," says Dr. Robert C. Laudon, UMR associate professor of geology and geophysics. "UMR has conducted a rock and mineral auction annually for nearly 25 years. It is a friendly environment to swap rocks, minerals and stories," he adds.

The event also includes a children's auction. "The children's auction is a place for kids to learn about rocks and minerals and to buy something they might otherwise never have a chance to own," Laudon says.

UMR's student chapter of the Dake Geological Society receives 15 percent of all transactions during the auction.

DEAF keeping Rolla educated

Sign language classes offered

DEAF workshop



DEAF
SOURCE

DEAF INC. OF ROLLA WILL BE CONDUCTING SIGN LANGUAGE CLASSES BEGINNING APRIL 15 — MAY 27TH. BEGINNER CLASSES WILL BE HELD ON THURSDAY EVENINGS 6:30 — 8:00 PM. FOR MORE INFOR-

MATION, CALL 341-3442 (V/TDD) ON MONDAYS AND WEDNESDAYS BETWEEN 8:00 am AND 2:00 pm.

DEAF Inc. is still accepting registration for Beginner Sign Language Classes being held Thursday evenings from 6:30 pm to 8:00 pm.

Fees for Sign Language Classes are \$30.00 per person, \$40.00 per family, with group rates available. Two scholarships are available, call for an application. All classes are held at DEAF Inc., located in the First Baptist Church of Rolla at 9th and Cedar Streets.

DEAF Inc. is sponsoring Jay Wolf, from the Missouri Commission of the Deaf in Fulton, Mo. to present a workshop on Becoming An Interpreter. In this workshop, scheduled for Saturday, March 20, 1993 from 1:00 to 4:00 pm, Jay will discuss the process for becoming a licensed interpreter and the great need for interpreters in the state of Missouri. The workshop will be held at the first Baptist Church, 9th & Cedar in Rolla, Mo. For more information, call DEAF Inc. at 341-3442 M-W from 8:00 to 2:00. There is no fee for this workshop.

UMR student receives grant



News
Services
SOURCE

Timothy E. Harster of St. Louis, a graduate student in ceramic engineering at the University of Missouri-Rolla, has received a \$6,000 Educational Foundation grant from the International Society for Hybrid Microelectronics (ISHM).

According to Dr. Douglas M.

Mattox, UMR professor of ceramic engineering and academic advisor to Harster, this is the second year Harster has received the award for his research work in "A/N-Compatible Thick Film Systems."

Harster received a bachelor of science degree in ceramic engineering with a minor in communications from UMR in 1991.

ISHM supports and encourages graduate level research in materials science, engineering, and related microelectronic technologies.

UMR International Day



News
Services
SOURCE

The International Students Club at UMR will be holding its annual INTERNATIONAL DAY Celebration on Sunday, March 21, 1993, in University Center East.

International Day includes an International Dinner, Exhibits and displays from around the world, and an International Talent Show.

The dinner will be held in the University Center Cafeteria from

11:30 to 1:00 PM. Tickets for this event are available at the Ticket office in University Center West or from International Student Club members. Price is \$7.00 for adults, \$5.00 for students, and includes a many-course international meal.

Exhibits from countries around the world will be in the Miner Lounge from 10:00 AM until after the talent show.

The Talent Show starts at 2:00 in Centennial Hall. This year, the show will feature music, drama, dancing, and humor from around the world! This is a FAMILY event and all members of the University and Rolla communities are warmly invited to attend.



Dr. White to speak at UMR



News
Services
SOURCE

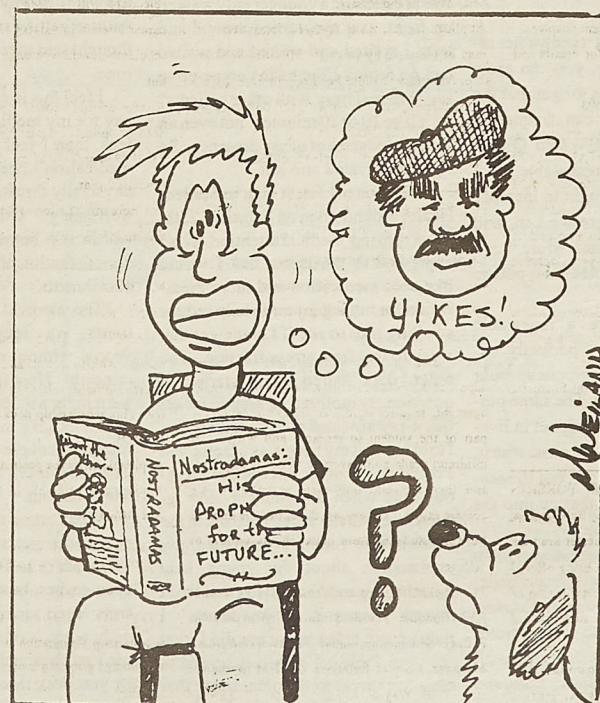
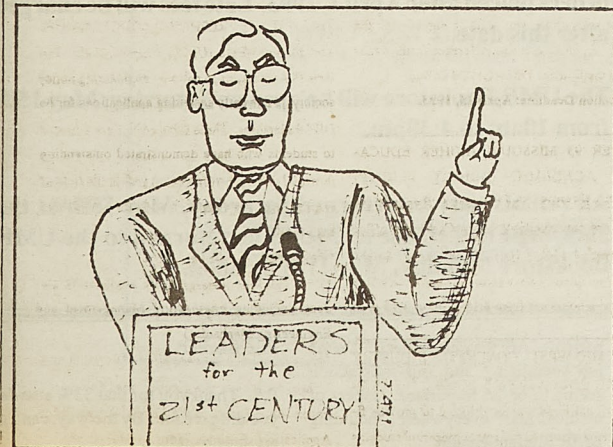
Dr. John A. White, regent's professor and Dean of the College of Engineering at the Georgia Institute of Technology, is the speaker for the next "Leaders for the Twenty-First Century" lecture series at the University of Missouri-Rolla. He will speak at 7:00 p.m. Monday, April 19, in Centennial

Hall of the University Center-East at UMR.

His talk, "TQM in Academe," is free and open to the public. A reception will follow the lecture.

White has been a member of the Georgia Tech faculty since 1975, becoming the dean of engineering in 1991.

He is a member of the Institute of Industrial Engineers, the National Academy of Engineering and numerous other professional and honorary organizations.



SPRING FILM SERIES

MARCH 16 - THE TIN DRUM

DAVID BENNETT. Directed by Volker Schlöndorff. R-1979. This Oscar-winning film tells the story of a boy who is terrified by the adult world of sex, violence, and Nazism, and refuses to grow up. From the novel by Günter Grass. German with English subtitles.

MARCH 23 - PROSPERO'S BOOKS

JOHN GIELGUD, MICHAEL CLARK. Directed by Peter Greenaway. R-1991. This free-flowing interpretation of Shakespeare's *Tempest* features a thrilling performance by John Gielgud as the exiled Prospero, who turns to his beloved books and magical powers to conquer his enemies.

APRIL 6 - THE DOUBLE LIFE OF VERONIQUE

IRENE JACOB, PHILIPPE VOLTER. Directed by Krzysztof Kieslowski. R-1991. Radiant newcomer Irene Jacob won the Best Actress Award at Cannes for her stunning dual portrait of two identical young women, one Polish and one French, who share a mystical bond they themselves can never understand. French and Polish with English subtitles.



TUESDAYS 7:00 P.M.
MILES AUDITORIUM

Take a bite of this burger

Dear Editor:

This letter is in response to the article in the 3-3-93 Miner entitled "Beef destroys our Planet".

Where did this article come from? The whole price is based on opinion instead of facts. One statement says "family farm groups are launching the first worldwide campaign to reduce the ... overconsumption of beef". I challenge you to find one farmer that is for the idea of selling less of his cattle. No way! That's his livelihood headed to market!

The article also says "aside from smoking, there is no greater personal health risk than eating meat". Give me a break, here's a few greater health hazards:

1. Driving your car.
2. Drinking alcoholic beverages.
3. Drugs.
4. Unprotected sex.

I would like to know why someone is always telling everyone else how to live their lives. Should I tell the author of that article met to

drive their car because of the pollution it causes? Should I tell him or her not to play golf because I don't or because of the wildlife habitat the course destroyed? No, because if that's what I think, then I should do what I feel is best and keep it at that.

And finally I just bet that with my list of reasons that we should utilize cattle there will be a few double standards uncovered. Here's the list.

1. Cattle is a renewable resource.
2. Cattle provides American jobs.
3. Each cow processed is totally used for

- a. Food.
- b. Leather - here's one, I bet the author has leather shoes, car seats, etc!
- c. Fat tuned into lard, grease etc.
- d. Dairy products - here's another I bet the author drinks milk, eats cheese etc!
4. Finally, I like meat and no one is going to keep me from taking a big bite of this burger - mmm good!

Sincerely,
Robin Parks

Come down to earth Student Health, what a joke

This is too much...

Down to earth needs to take some advice from its namesake, and come back down here from somewhere outside the orbit of Mars. I agree that forests should be conserved, and what is removed should be replaced, but that's about all I agree with them on.

Trees are a renewable resource. That is to say, you can grow more. It certainly takes longer, but the beauty of it is, you can frequently replace more than is harvested. Oil, on the other hand, is not renewable. So, I would offer that we ought to increase the use of wood where we can, and curtail our use of plastics. More wood products can be recycled than plastic products, anyway.

Animals are a renewable resource. Animals are perfectly edible, and no more dangerous to your health than vegetables. The same pesticides, etc. that you condemn in livestock fodder goes into the same wheat, soy, and corn that we get, not to mention the preservatives that go into the final packaged products.

So you can see, all you folks are doing is jumping on the symbolic, feel-good liberal bandwagon. Conservation, yes. We need to make certain that the ecosystem is not being abused. But the planet is not in dire trouble, and your environmentalist tactics are not welcome nor heeded at this institution.

Chris Penningroth

I recently went to Student Health for medical attention concerning an injured leg and cold related illnesses. The 19th of February was my first visit and I was treated fairly, the Doctor was helpful and courteous. Then on a later visit I went in to seek more medication for the cold. This time no doctor was present and a younger lady walked up front, saw me, turned around and left. I waited and waited and waited and no return. She hadn't come up to say "I'm real busy with other patients" or "I'll be 10 or 20 minutes" not even an acknowledgement of my presence. So I got aggravated and left.

Then on my latest visit to Student Health around noon on February 25th, I was refused medical attention. I had expressed to the ladies that I would like cold medication and more medication for my leg injury to help reduce swelling plus to see if I could get that x-ray to test for a stress fracture. The older, dark haired nurse started to question my motives, as why do I want this x-ray now and didn't get it earlier. I told her that my time was a factor and I couldn't get away, except that previous time when the younger lady ignored me. As she asked me back to the examination room, I continued my explanation about the young lady ignoring me and I said to her that I told myself "screw it, I'll just leave." I didn't curse at the nurse nor did I treat them as fools. I was just trying to plainly express to the older nurse that my previous visit was unsuccessful in getting medical attention and that I hadn't been ignoring my medical

needs, as she had expressed I was doing. At this time she refused my medical needs and said I must return later to see the doctor. Her excuse was that I seem dissatisfied with their service and I had told a nurse to "screw off."

I did no such thing! I was thinking to myself of why should I stick around without getting service and my train of thought said to leave and not waist my time.

I feel this is a great disservice. If I pay for my medical attention through fees, then I feel I should receive the medication I need, unless of course I physically threaten a doctor or nurses well-being. Otherwise, I was well within my bounds to express some dissatisfaction of their service without banishment.

The medical world acts like patients are second-class citizens. People without obligations, feelings, or needs. How many times have you went in for a 9:30 appointment and got in at 9:30, it's more like 10:45, a few squeezes, couple checks some medical jargon, a prescription and five minutes later your out.

What takes up all the time? Or even better yet, the Emergency room. You walk in and there are people with open gashes, busted jaws, and broken arms layed around in the lobby. Finally when a relative gets called you can't go back and sit with them, why? Or you peek through the door and 20 nurses, technicians and doctors are gathered around the Emergency room station. What about those bleeding

Cap and Gown Information

Students receiving Masters' and Bachelors' degrees may purchase their caps and gowns at the UMR Bookstore anytime starting May 6, 1993 from 8:30am to 4:00pm. Masters' and Bachelors' attire do not need to be ordered in advance.

Cap and gown orders for faculty, staff, and PHD students will have a deadline of April 1, 1993 and may be picked up starting May 6, 1993.

We CAN NOT guarantee any delivery of cap and gown orders placed after April 1, 1993. Late fees will be charged after this date.

The UMR Bookstore will be open on Saturday, May 15th from 10am to 4:30pm.

All rentals may be returned Saturday, May 15th at the Jackling Field House or MUST be returned to the UMR Bookstore Monday, May 17th by noon.

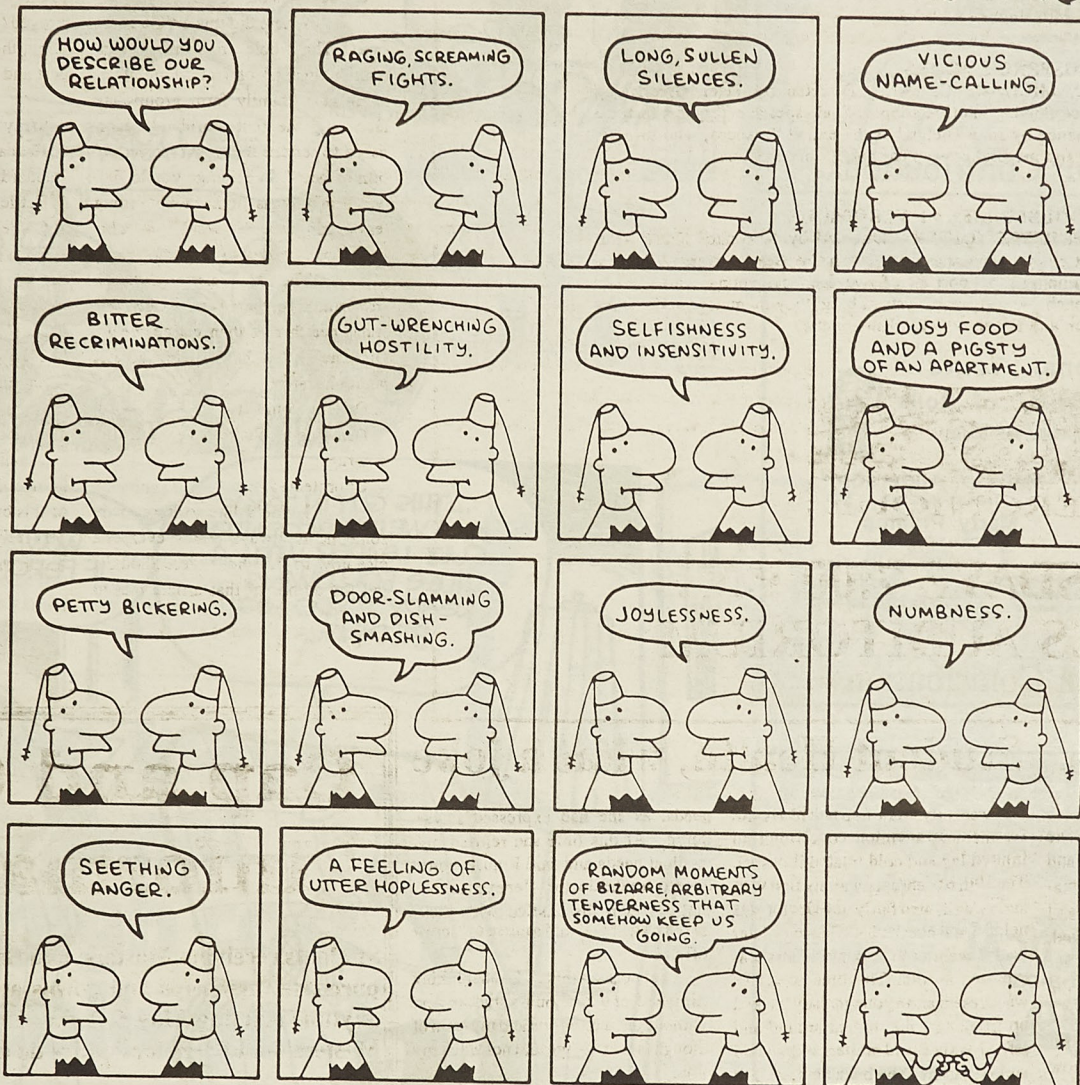
patients. Are they not in need? On the job socializing and self-satisfaction seems to be an important aspect of medical staff everywhere, including UMR Student Health.

Eric Barnhill

P.S. Thankyou for that 33% attention you did give me. By the way, can I get my fees back?

LIFE IN HELL

©1993
BY MATT
GREENING



A Theta-Tau/Casino Night Sponsor

MULLALLY DIST. CO., INC.

Hwy. 19 & I-44 • Cuba, MO 65453 • (314) 885-3371



Thanks for your Contributions



A Theta-Tau/Casino Night Sponsor

Voss Enterprises, Inc.

WHOLESALE DISTRIBUTOR

Fred Voss
314-364-3676

2500 Commerce • P.O. Box 745
Rolla, Missouri 65401

Thanks for your Contributions



A Theta-Tau/Casino Night Sponsor

SELLERS-SEXTON



KEVIN JOHNSON
General Manager

Hwy. 63 South
Rolla, MO 65401

(314) 364-2020

Thanks for your Contributions



A Theta-Tau/Casino Night Sponsor



International Tours
Travel Agency of Rolla

1106 N. Bishop, Rolla, MO 65401

Rick E. Westhues

Melissa Anderson

Chris Roskilly
Manager

Marty Phillips
Cruise Dept.

Mon - Fri 8am - 6pm
Sat 10am - 4pm

Your one stop
for complete travel planning
Foreign or domestic
Business or pleasure

(314) 341-3300
1-800-876-3331
FAX (314) 364-3780

Thanks for your Contributions



A Theta-Tau/Casino Night Sponsor

Rick Westhues



1106 N. Bishop Ave.
Rolla, MO 65401

314-341-8101
800-876-3331

FOR OTHER U.S. LOCATIONS 1-800-233-1663

Thanks for your Contributions



A Theta-Tau/Casino Night Sponsor

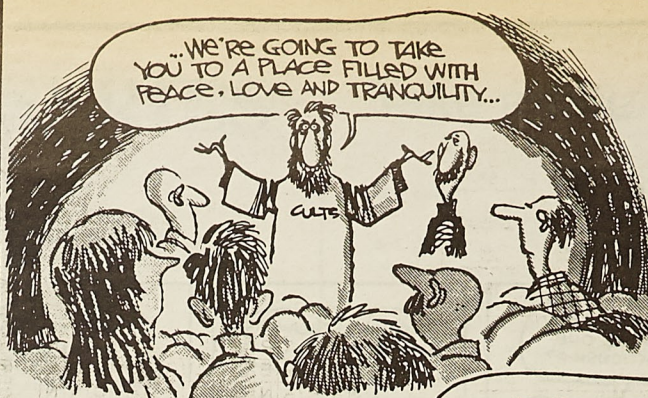


Daystop - Rolla
1207 Kings Highway, Rolla Missouri 65401

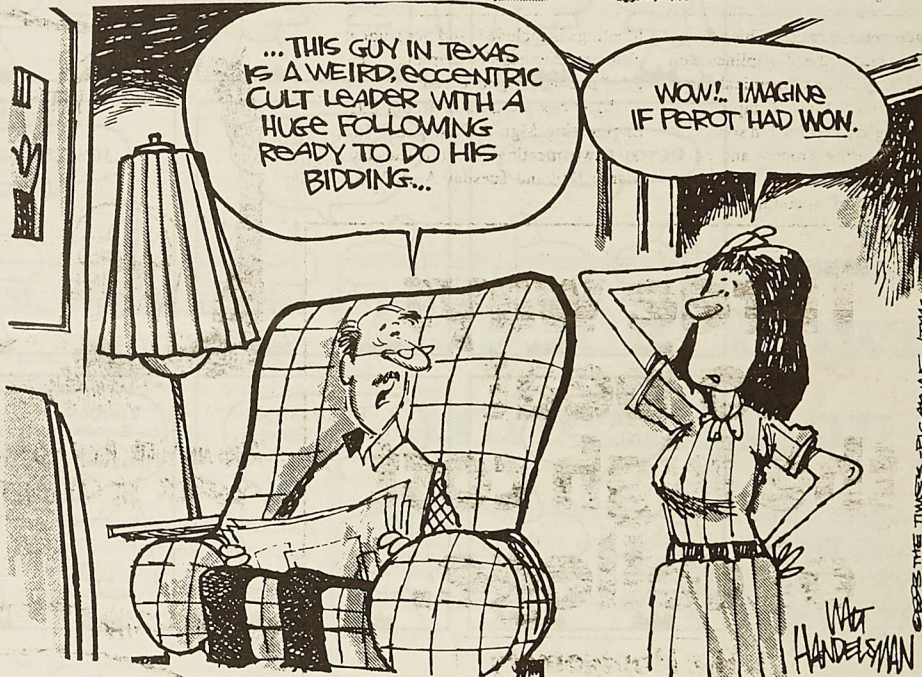
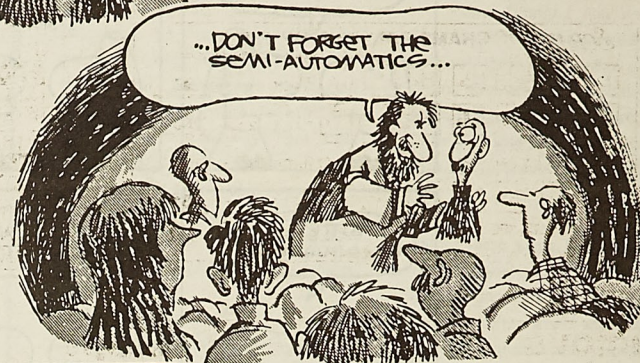
ROBERT R. ANDERSON
General Manager

(314) 341-3700
Reservations 1-800-325-2525

Thanks for your Contributions



©1995 THE TIMES-PICTURE / TMS
WAT HANDLSMAN



©1995 THE TIMES-PICTURE / TMS
WAT HANDLSMAN

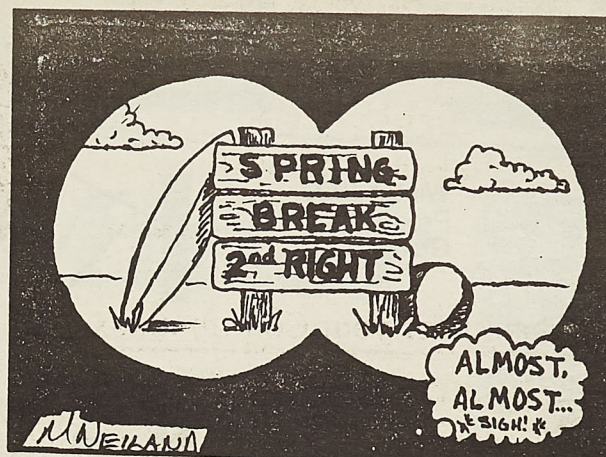


©1995 Tribune Media Services
Distributed by Tribune Media Services

SCRABBLE® GRAMS SOLUTION BY JUDD									
© 1987, United Feature Syndicate, Inc.									
S ₁	E ₁	A ₁	F ₄	O ₁	O ₁	D ₂	RACK 1 =	65	
P ₃	L ₁	A ₁	N ₁	E ₁	T ₁	S ₁	RACK 2 =	59	
R ₁	E ₁	A ₁	L ₁	T ₁	Y ₄		RACK 3 =	9	
F ₄	E ₁	R ₁	T ₁	I ₁	L ₁	E ₁	RACK 4 =	62	
PAR SCORE 130-140							JUDD'S TOTAL		195
11-14-87 Licensed by Selchow and Righter Co., owner of the registered trademark SCRABBLE.									

Solutions

S	O	A	P	N	O	T	G	A	D	S
O	G	L	E	O	U	R	A	L	E	E
A	R	A	N	V	I	E	R	O	A	N
R	E	S	C	U	E	P	A	R	E	N
S	T	O	L	E	S	N	O	T	I	C
P	A	P								D
A	B	S	U	R	D	R	E	L	A	T
P	I	E	C	E	S	C	A	N	T	E
A	R	A	L	I	R	E	E	A	S	E
R	A	R	E	R	O	D	R	I	S	E
I	N	N	S	E	W	E	S	L	E	D



SCRABBLE®									
GRAMS SOLUTION BY JUDD									
© 1987, United Feature Syndicate, Inc.									
L ₁	Y ₄	M ₃	P ₃	H ₄			RACK 1 =	<u>45</u>	
G ₂	A ₁	R ₁	M ₃	E ₁	N ₁	T ₁	RACK 2 =	<u>60</u>	
A ₁	L ₁	C ₃	O ₁	H ₄	O ₁	L ₁	RACK 3 =	<u>68</u>	
D ₂	I ₁	A ₁	M ₃	O ₁	N ₁	D ₂	RACK 4 =	<u>61</u>	
PAR SCORE 155-165							JUDD'S TOTAL		234
11-13-87									
Licensed by Selchow and Righter Co., owner of the registered trademark SCRABBLE.									

Campus

from page 5

Management personnel. This society welcomes many other disciplines such as Metallurgical and Chemical Engineers as well. Most disciplines of engineering are involved in some sort of Manufacturing Process and could benefit from an organization such as ours. A list of upcoming General

Meetings is included, and our student chapter welcomes all disciplines interested in becoming involved.

Meetings are held in Room 201, Engineering Mgt. at 7:30 p.m. The next two meetings are on Tuesday, March 23rd and Tuesday April 27th.

Three ways to beat the high cost of college.

1. The Montgomery GI Bill
2. Student loan repayment
3. Part-time income

The Army Reserve Alternate Training Program is a smart way to pay for college.

First, if you qualify, the Montgomery GI Bill can provide you with up to \$5,040 for current college expenses or approved Vo/Tech Training.

Second, if you have or obtain a qualified student loan not in default, you can get it paid off at the rate of 15% per year or \$500, whichever is greater, up to a maximum of \$10,000. Selected military skills can double that maximum.

Third, you can earn part-time money in college, and here's how it works: One summer, you take Basic Training, and the next summer, you receive skill training at an Army school. You'll earn over \$1,400 for Basic and even more for skill training. Then you'll attend monthly meetings at an Army Reserve unit near your college, usually one weekend a month plus two weeks a year. You'll be paid over \$95 a weekend to start. It's worth thinking about. Give us a call:

364-4551

BE ALL YOU CAN BE.
ARMY RESERVE



"AFRO AND WHITE, RICH AND POOR, EDUCATED AND ILLITERATE... OUR FUTURES ARE BOUND TOGETHER. WE CAN RUN FROM EACH OTHER, BUT WE CANNOT ESCAPE EACH OTHER."

WAT HANDS MAN DES THE TIMES-PICTURE TMS



Winter 1993
Program
Guide

KMNR

341-4272
210 H-SS
UMR
Rolla, MO
65401



	Sunday	Monday	Tuesday	Wednesday	Thursday	Friday	Saturday
	SM. Really Soft. As Much As I Can Play SM. hard, fast, nasty as I want Brian Swift	MONKEY PUCK HEAD MAGIC (TOTAL SHIT) ERIC (AND HIS MAGIC) JOHNSON	Music To Live By (Various Rock and Roll) Jeff Daniels	"That's Not My Bellybutton!" "That's Not My Finger!" (Eric Music) Mr. Go + Kevin Burkett	The Spirit of Radio (Classic Rock and Roll) Andrew W. Grover	Purple's Playhouse The Anti-Alternative Show 60's, 70's, 80's, and 90's Rock Laura Luther	Broken Machine Show Derrick Jensen
		The FCC (Music With No Socially Redeeming Value) Jim Burnette			Not Just for The Dead Dan Farmer		
	Phil's Jazz Show Phil Wentz	Jeff + Angle say "Joke them if they can't take a Classic + Alternative Rock Jeff Berry	New Toxic Music John Dynam	2 Old Ladies, a Gay Guy + a Minor (mellow (or not- grungy-new-move your butt music) Sean Murphy	Just About Anything Sandy Junge	Cool and Constipated (Hard Rock) (Rock Hard?) Arvy Meyers	"Some Meat for Your Grill" with K-Bob (Rap + Whatever else I feel like at the time) Simon Crafts
	The Radio Dick Show (A Musical Grab-Bag) Dick 'Van' Falkenrath	Don't Listen if You Don't Like It (Classic Rock, Weird Stuff) Martina Schallmayer	Musings of a Neurotic Hamster (Transcendental) Randy Berry	Set Them Free (Contemporary Rock on the Graduate Level) Craig Blair	Too Much Honky Tonk Will Kill You (Country and Southern Rock) Libby Perkins	Horny for Evil The 12" King and The Naked Guy	Is This Real-Real Reggae (Reggae) Bruce 'J.C.' Helmlich
	Anticipation Can Wait (till I grajimate) (Classic Rock/Metal/ Alternative/Blues/ Classical) Jay. F. Winkler	I Play What I Like So Shut Up (My Music (My Show) Alternative/College Music) Brian Kincaid	Alletta	PUNK AS (Classic Punk) Woody Delp	The Hair Lipped Dog Show (Variety Rock) Mark Simecek	Margin Walk (ing/er) [some- thinglike that] (Most things Alternative/ Industrial/ Acoustic) Benjamin Steltenpohl	The Vagaries of Young Lust (Alternative) Jim Murphy
	VIRUS (Self-Replicating) Destin Leblanc	Pop that Coochie Hour (Rap and R&B) Dominic Lenor	Consider Me An Alternative to Suicide (Angst-Mellow Alternative and Other) Angie Haines	In One Ear and Out The Other (Alternative) Karen Goetz	Caught Between Led Zeppelin and Garth Brooks Country/Rock Eric Hardin	Addicted To PEZ Alternative Folk Poetry Captain Gaster	I know you are but what am I (hum-able) Melissa Mesko
	When your guizillionth grandchild is nothing but a stack of grey matter in a box Politically Correct and Culturally Diverse Jennifer Zung	Artist Feature Missouri Five - O (Gleeful) J. Bee Tom Erb author of: The Camping Diet for Everyday Eating	A Study Break for Professional Students (Stuff) Rhonda Brown	TOFU CRUNCH GREG POETTIGEN	You Can Still Rock in America (Classic Rock) Darren Hunt	Request Show 341-4272	Eating Dirty Socks Makes for Really Bad Breath (Non- Denominational) Tom Tyrey
	Trout and the 2nd Coming of Stach (Shame as a Sex Tool) Chad Dunnagan		Classic Rock -No (Type of Music: AB) Brian Gullodge	Conservatives Coroner Brian McCurren	Drain Drained Alternative / Punk Tobin Roberts	Public Enemy # 1 (You Can Still Rap in Amerikkka) DJ Base	The Vengeance of Psycho Dave (Alternate Styles to Reality) Dave McCown