



30 Oct 1991

The Missouri Miner, October 30, 1991

Follow this and additional works at: https://scholarsmine.mst.edu/missouri_miner

These newspapers reflect the attitudes, perspectives, and beliefs of different times. Neither the library nor the university endorses the views expressed in these collections, some of which contain images and language which may be offensive to some readers.

Recommended Citation

"The Missouri Miner, October 30, 1991" (1991). *The Missouri Miner Newspaper*. 2591.
https://scholarsmine.mst.edu/missouri_miner/2591

This Newspaper is brought to you for free and open access by Scholars' Mine. It has been accepted for inclusion in The Missouri Miner Newspaper by an authorized administrator of Scholars' Mine. This work is protected by U. S. Copyright Law. Unauthorized use including reproduction for redistribution requires the permission of the copyright holder. For more information, please contact scholarsmine@mst.edu.



Missouri Miner



A publication of the students of the University of Missouri-Rolla

October 30, 1991

Volume 80, Number 9

Sixteen pages

University denies recognition of St. Pat's Board

By Rob Wilkerson
STAFF WRITER

Tragedy once again strikes the University of Missouri-Rolla and its student body. Approximately one month ago UMR lost an honor student, Tristan Pinzke, to an automobile accident in Illinois.

Another UMR student is dead resulting from asphyxiation complicated by acute alcohol intoxication. Michael W. Nisbet of Vinita Park died following a function of the St. Pat's Board. Nisbet was pronounced dead on October 21, 1991.

Nisbet had had prior problems with the consumption of alcohol. His mother, Cloc Nisbet, said he was a member of Alcoholics Anonymous for 3 years before leaving for Rolla. Four years ago Nisbet was involved in a motorcycle accident that was also alcohol related.

A funeral mass was held for Michael Nisbet at St. Rita's Catholic Church on October 24, 1991 in Vinita Park. He was interred following this funeral at Resurrection Cemetery.

The Board function, despite having taken place at a fraternity, was not a fraternity activity as some local tele-

vision stations had erroneously reported.

In 1988 the university imposed sanctions upon the Board due to the death of a St. Pat's board member that was also alcohol related. The sanctions were:

1. Any formal meeting must be held on campus
2. No alcohol at any Board meeting
3. The off campus events that involved beer, drinking games and kegs of beer were cancelled.



Jason Boles

Interim Chancellor John T. Park announces the disbanding of the St. Pat's Board.

The death of Mr. Nisbet resulted in an investigation by the University Police, Rolla police and University officials. This investigation has resulted in a withdrawal of recognition of the St. Pat's Board by the University. The withdrawal prevents the organization from using University facilities, and using the university name and official seal in its activities. The withdrawal also prevents the St. Pat's Board from acquiring Student Activity funds.

Charges were brought against three students of the university. They are Eric J. Boyer (Board president), 21 from St. Louis; Steven Hunt, 22 of Cairo, Missouri; and Kenneth W. Smiley, 26 from Shell Knob, Missouri. The charges are for involuntary manslaughter and carry a felony punishable by up to seven years in prison and a fine of \$5,000 dollars. Prosecuting Attorney, John D. Berger stated that hazing charges would be filed against several other members of the St. Pat's Board later in the week, but not all Board members would be charged because some had cooperated fully with the investigation.

Although the function was held at Sigma Nu and Sigma Pi Fraternities, the university states that the fraterni-

ties were not directly involved in Nisbet's death.

Berger added, "Neither of these fraternities is implicated by the investigation and I am convinced they are not involved in Mr. Nisbet's demise."

Nisbet's blood alcohol content was at 0.29 percent which is almost three times the legal intoxication rate of Missouri.

The press release from the Rolla police department said that Nisbet was unconscious when officers arrived at the scene of the incident. Several individuals were administering cardio-pulmonary resuscitation (CPR). He was transported to the Phelps County Regional Medical Center after emergency medical treatment was rendered by paramedics. Nisbet was pronounced dead on October 21, 1991 at 12:15 p.m. by Phelps County coroner, Dr. Neal Granne-man.

The University launched an investigation into the death Nisbet. Several implications are resulting from the investigation. Interim Chancellor John T. Park stated, "The investigation does indicate that the St. Pat's Board fla-

See Board, page 4

Voting on Proposition B is on November 5

StuCo
SOURCE

On Tuesday, November 5, people across the state will go to the polls and vote on Proposition B. How they vote will have an impact on education in Missouri for decades to come. However, you cannot vote correctly if you do not know the facts. The following summary of Proposition B will hopefully allow you to make the right choice on November 5.

What is Proposition B?

Proposition B is an education and reform package that will provide \$385 million per year for elementary and secondary education, higher education (UMR!), and job development programs in Missouri. All the money raised from Proposition B will go into special education trust funds and cannot be spent for any other purpose.

\$190 million for the state's colleges and universities

- to fund financial aid and scholarship programs for students
- to purchase up-to-date lab and computer equipment
- to repair and maintain buildings
- to improve statewide coordination of programs
- \$190 million for elementary and secondary education
- to lower student-teacher ratios
- to fund programs to improve learning
- to fund the allocation formula for the state's school districts

Where Will the Money Come From?

- a 3/8 cent sales tax increase
- a five-cent per pack increase in the cigarette tax, and a ten percent tax on other tobacco products
- a 1.5 percent increase in the state corporate tax
- a cap of \$7500 on the amount of federal income tax individuals can deduct when calculating state taxes. Joint filers would have a cap of \$15,000. This has little impact on households with total incomes below \$60,000; most of the revenue would

come from households with income levels over \$200,000.

- for a family of four with a household income below \$50,000, Proposition B would actually lower state taxes by doubling the dependent deduction from \$400 to \$800.

What Does It Mean For UMR?

Proposition B will fund financial aid and scholarship programs for students. (25,000 students in Missouri who qualified for aid last year were denied that help due to lack of funds. Many scholarship programs received NO funding from the state, resulting in no scholarships for qualified Missouri students.)

Proposition B will provide funds to repair and maintain buildings on campus; retain and recruit top faculty as present faculty retire in significant numbers over the next ten years; and purchase up-to-date laboratory and computer equipment for engineering, science, and liberal arts classes.

See Prop. B, page 4

Wiedenbaum to speak at UMR

News Services
SOURCE

Dr. Murray Wiedenbaum, Mallinckrodt Distinguished University Professor and director of the Center for the Study of American Business at Washington University in St. Louis, will speak at 7 p.m. Thursday, Nov. 7, in Centennial Hall, University Center-East, at the University of Missouri-Rolla.

His talk, "American Business and the Global Marketplace," is part of UMR's "Leaders for the Twenty-First Century" lecture series and is free and open to the public.

Wiedenbaum has served as an economist in business, government and academia. From 1981 to 1982, he served as President Ronald Reagan's first chairman of the Council of Economic Advisers. In that capacity, he helped formulate the economic policy of the Reagan Administration and was spokesman for that administration on economic policy of the Reagan Ad-

ministration and was spokesman for that administration on economic and financial issues.

He was the first assistant secretary of the Treasury for Economic Policy. Wiedenbaum also served as a fiscal economist in the U.S. Bureau of the Budget and as a corporate economist at the Boeing Company.

Wiedenbaum received a B.B.A. degree from City College of New York (1948), an M.A. degree from Columbia University (1949), a Ph.D. degree from Princeton University (1958), an LL.D. degree from Baruch College (1981) and an LL.D. degree from the University of Evansville (1983).

Wiedenbaum, who is the author of five books and who has written numerous scholarly articles for various publications, has served on the faculty at Washington University since 1964. He also served as chairman of the economics department at that institution from 1966 to 1969.

In 1984, Wiedenbaum received the national Order of Merit from France in recognition of his contributions to foreign policy.

Calendar of Events

Wednesday

Preregistration

SUB: Pumpkin Carving Contest, 12:00 pm., Hockey Puck.

Student Lawyer, 2:30 pm., Walnut

Time management seminar, 3:30 pm., 208 Norwood

Spelunkers Club Mtg., 6:00 pm., 204 McNutt

Juggling Club meets at 6:00 - 9:00 p.m. at the Miner Rec. As always beginners are welcome.

Wesley Mtg., 6:00 pm.

Blue Key Mtg., 6:15 pm., 216 ME

American Society of Civil Engineers Mtg., 7:00 pm., 114 CE

Alpha Chi Sigma Mtg., 7:00 pm., G-3 Schrenk

Down to Earth Mtg., 7:30 pm., EMGT Rm. 201.

Newman Mass, 9:00 pm.

Thursday

Preregistration

Anyone wishing to develop and improve:

- * Good speaking and presentation skills
- * Ability to think quickly and clearly on your feet
- * Better listening talents
- * Strong leadership skills

TOASTMASTERS CAN HELP!

Regular meetings are held very Thursday at 4:45 in Fulton. For more information contact Kay at 341-5987

Newman Scripture Study, 12:30 pm.

Turkish Founder's Day Mtg., 5:00 pm., Mark Twain

Eta Kappa Nu Mtg., 6:00 pm., 103 EE

Intercollegiate Knights Mtg., 6:00 pm., 204 McNutt

Alpha Phi Omega mtg., 6:30 pm.

American Nuclear Society mtg., 6:30 pm., 227 Fulton

KME Math Help session, 7:00 pm., 203 M-CS

UMR Fall Film Series, "Nosferatu: The Vampire", 7:00 pm., Miles Auditorium, ME. Admission season ticket or \$3 at door.

Friday

Preregistration

Muslim Students Assoc. Mtg., 1:30 pm.

The UMR Trap and Skeet Club will hold meetings every Friday at 3:30 in T2 (the white building behind the library). The club will go out and shoot after the meeting. All interested persons are welcome to attend. For more information, contact Mike Giboney at 364-6991 or Jim Miller at 341-2892, Jeff Spencer at 341-8420 or Eric McVicker at 341-8016.

Chemistry seminar, Jim Laramée, "Analytical Mass Spectrometry of Biomolecules: DNA to Dioxins," 4:30 am., G-3 Schrenk

UMR Library book sale

A used-book sale will be held Friday, Nov. 1, and Saturday, Nov. 2, at the UMR library. Sale hours are from 9 a.m. - 6 p.m. on Friday and 9 a.m. - 4 p.m. Saturday. The sale is open to the public. Proceeds will be used to purchase needed library materials. For more information, call Janet McKean at 341-4007.

University Theatre production, "Cyrano de Bergerac," 8 p.m., Leach Theatre, Castleman Hall. Free admission; Complementary tickets needed and maybe picked up at Room 129, Castleman Hall. For more information, call Brenda at 341-4185.

Saturday

Parents Day

Rugby Game

UMR Bookstore open, 9:00 a.m.

Miners vs. CMSU, 1:30 p.m.

University Theatre production, "Cyrano de Bergerac," 8 p.m., Leach Theatre, Castleman Hall. Free admission; Complementary tickets needed and maybe picked up at Room 129, Castleman Hall. For more information, call Brenda at 341-4185.

Sunday

MIA-POW Week

Student Mass, 5:00 pm.

Wesley Chapel, 7:00 pm.

KMNR Mtg., 8:00 p.m., 107C ME Annex

Monday

MIA-POW Week

GDI BOG, 6:00 pm., 114 CE

Christian Campus Fellowship Mtg., 6:00 pm., Missouri

BSU Bible Study, 6:30 pm.,

Chi Epsilon Mtg., 6:30 pm., 114 CE

National Society of Black Engineers Mtg., 7:00 pm., 204 McN

Eta Kappa Nu Help Session., 7:00 pm., 101 EE

Tuesday

MIA-POW Week

Student Lawyer, 2:30 pm., Walnut

Test Anxiety Seminar, 3:30 p.m., 208 Norwood

Sport Parachute Club Mtg., 5:30 p.m., 212 McNutt

Society of Automotive Engineers Mtg., 6:00 p.m., 104 ME

Hang Gliding Club Mtg., 6:30 p.m., 105 ME

Student Council Mtg., 6:30 pm., 204 McNutt

Chi Alpha Mtg., 7:00 pm., Maramec

KME Math Help Sessions, 7:00 pm., 203 M-CS

IEEE Mtg., 7:00 p.m., 114 CE

Panhellenic Car Trouble Program, 7:00 p.m., G-3 Schrenk

Christian Science Mtg., 7:15 pm., Sunrise

Next Wednesday

MIA-POW Week

Spelunkers Club Mtg., 6:00 pm., 204 McNutt

Wesley Mtg., 6:00 pm.

Phi Tau Sigma Mtg., 6:00 pm., 105 ME

Hackers Mtg., 6:00 pm., 220 Fulton

Blue Key Mtg., 6:15 pm., 216 ME

Alpha Chi Sigma Mtg., 7:00 pm., G-3 Schrenk

Associated Genral Contractors mtg., 7:00 pm., 114 CE

Society of Mining Engineers mtg., 7:30 pm., 204 McNutt

College Republicans Mtg., today and every two weeks hereafter, 8:00 pm., G-8, H-SS

Newman Mass, 9:00 pm.

Noday

Cap and Gown information

Students receiving masters and bachelors degrees may purchase their cap and gown at the UMR Bookstore anytime after Dec. 12. Masters and bachelors attire need not be ordered in advance. Cap and gown orders for faculty, staff, and PhD students will have a deadline of Nov. 27 and may be picked up after Dec. 12. The UMR Bookstore will remain open on Saturday Dec. 21 from 9:30 to 4:30 pm.

Preregistration Oct. 28 - Nov. 1

Preregistration for the Winter semester will be Oct. 28 through Nov. 1. Students should obtain their preregistration materials and schedule of classes from the Registrars office starting Oct. 24. Detailed information regarding preregistration will be found in the front section of the Winter Schedule of Classes.

December Graduates - If you will be completing requirements for a degree next December, you should make application for that degree by going to the Registrar's office at your earliest convenience.

The Phonathon office has moved to the first floor of Buehler Bldg., Mailing Address is 101 Buehler Bldg., Calling Facilities are in rooms 102, 103, 104

Financial Aid

For more information and/or applications pertaining to the following scholarships, contact the Student Financial Aid office, G-1 Parker Hall.

National Academy For Nuclear Training Scholarships are awarded to college students who have demonstrated outstanding academic achievement and who are interested in pursuing careers in the U.S. nuclear utility industry. For the 1992-93 academic year, 275 new and renewal merit-based scholarships of \$2,250 each will be awarded. Eligibility requirements are:

- * be a U.S. citizen or U.S. national
 - * be considering a career in the nuclear utility industry
 - * be enrolled at an accredited U.S. college/university in an approved curriculum related to a career in the nuclear utility industry, such as: nuclear, chemical, mechanical, electrical engineering, power generation, health physics
 - * have a minimum GPA of 3.0 as of Jan 1, 1992
 - * be free of post college obligations
 - * must have remaining at least one but no more than three academic years of study
- Early in Oct., information and application materials will be mailed to the faculty representative appointed by the dean of engineering. Students may also request application materials directly from the program. Applications must be postmarked by February 3, 1992.

The St. Louis Chapter of the Missouri Society of Professional Engineers Auxiliary is once again awarding \$1500 scholarships to engineering students for the 1992-93 academic year. In the past at least one scholarship was awarded to a UMR student. The requirements are that the student be a junior or senior engineering student in the 1992 fall semester, good scholastic achievements, and financial need. Former recipients are eligible to apply for a renewal and students and parents must reside in the metropolitan St. Louis area or in the state of Missouri. Deadline: Turned in to the Student Financial Aid office by November 19, 1991.

Fall 1991 Missouri Higher Education Academic(BRIGHT FLIGHT) Scholarship checks are here!

The Fall 1991 "Bright Flight" checks are now available in the Cashier's office, basement of Parker Hall. If you are a "Bright Flight" recipient, please go to the Cashier's office. Cashier's hours are from 8:15 am. to 3:15 pm.

Society for the Advancement of Material and Process engineering, SAMPE is kicking off their 1992 Undergraduate Awards Program for Engineering Students. The 1992 awards are: 1st place - \$3000, 2nd place - \$1500 and upto 25- \$1000 awards. Eligibility requirements are:

* Those pursuing a BS in engineering

- * Must be a full time student in one of the accredited EAC or CAB programs listed for the attended institution.
- * Must be recommended by his or her department head.
- * Applicant must have a 3.3 minimum cumulative GPA based on 4.0
- * High school and college seniors are not eligible.

Deadline: Feb 1, 1992

National Scholarship Program of the Printing, Publishing and Packing Industries

The trustees of the National scholarship Trust Fund take pleasure in announcing the annual national competition for approximately 100 scholarships to be awarded for professional and executive careers in the graphic communications industry.

Eligibility requirements:

- * Interested in a career in graphic communications.
- * A high school senior or a high school graduate who has not yet started college, or
- * A college freshman, sophomore, or junior who is enrolled in a two or four year college program.
- * Must be a full time student.

Deadline: March 15, 1992

Tylenol Scholarship Fund

The TYLENOL Scholarship Fund will award ten \$10,000 and five hundred \$1000 scholarships to deserving students next year. The scholarships will be awarded on the basis of leadership activities, academic record and a clear statement of educational and career goals. They will go to outstanding students who will be enrolled in an accredited two or four year college, university of

vocational school in the fall of 1992. Application forms are available at participating TYLENOL retailers or by mail: TYLENOL Scholarship Program, P.O. Box 5707, Clinton, IA 52736. Deadline: December 1, 1991

Undergraduate Scholarships

Twenty-five scholarships are available for undergraduate students majoring in engineering and science disciplines. Sponsored by the U.S. Department of Energy (DOE) and administered by Oak Ridge Associated Universities, the scholarships are designated for those students interested in pursuing careers in environmental restoration or waste management (ER/WM).

Applicants must be U.S. citizens and currently pursuing an Associate of Science or Bachelor of Science degree full time. The Environmental Restoration/Waste management Scholarship program includes full payment of tuition and fees at a DOE approved institution, a \$600 monthly stipend, and a three-month practicum assignment at a DOE facility engaged in environmental restoration and waste management.

Selection is based on academic performance, recommendations, background, and a statement of career goals by the applicants. The competition is nationwide although four year institutions and two-year institutions will compete in separate categories.

Scholarship applications are being taken through Jan. 31, 1992, and awards will be announced in May 1992. For applications or more information contact Peggy Gibson, Environmental Restoration/Waste management Scholarship Program, Oak Ridge Associated Universities, Science/Engineering Education Division, P.O. Box 117, Oak Ridge, TN 37831-0117, or call (615) 576-9278.

Missouri Miner

The Missouri Miner is the official publication of the students of the University of Missouri-Rolla. It is distributed each Wednesday afternoon at Rolla, Missouri and features activities of the students of UMR.

All articles, features, photographs, and illustrations published are the property of the Missouri Miner and may not be reproduced or published without written permission.

The Missouri Miner encourages comments from its readers, and will attempt to print all responsible letters and editorial material received. All submissions must have a name, student ID number, and phone number for verification. Names will be withheld upon request.

Submissions for publication must be in our drop box (first floor of the Norwood Hall, Room 103) by 3:30 p.m. on the Thursday before publication. The Missouri Miner reserves the right to edit all submissions for style, grammar, punctuation, spelling, length, and matters of good taste.

The Missouri Miner is operated by the students of UMR and the opinions expressed in it do not necessarily reflect those of the university, faculty, or student body.

Editor-in-Chief	Matt Licklider (364-4841)
Managing Editor	Tom Brown (364-4481)
Business Manager	Connie Crossen
Advertising Director	Dan DeArmond (364-9783)
Asst. Advertising Director	Dave Carpenter
Subscriptions and Tearsheets	Kari Mittenzwey
Circulation	Mike Matthews (364-1433)
News Editor	Steve Puljak (364-8968)
Asst. News Editor	Francine Belaska
Features Editor	Greg Denzer (364-8968)
Asst. Features Editor	John Humphrey
Sports Editor	Jeff Lacavich (364-7583)
Asst. Sports Editor	Jim Beard
Photo Editor	Brett Goodman (364-1257)
Copy Manager	

Staff Writers: Eric Hardin, Fred Steinkuehler, Elliot Clavin, Tim Gungoll, Gary Meyer, Kelly Bernal, Susan Middaugh, James Barnes, Chris Goo, Squiggy, A.T. Goo

Typesetters: Kelly Bernal, Rajesh Shinde, Susan Middaugh

Graphic Artists: Joe Jones, Michael Weiland

Advertising Representatives: Jeremy Buchanan, Kevin Miller, Larry Williams

Photographers: Tony Roungon

103A Norwood Hall
University of Missouri-Rolla
Rolla, MO 65401-0249
(314) 341-4235
(314) 341-4312

Comments

A view from the right

Comments
by: Tim Gungoll

Perhaps the most disturbing trend that is gaining momentum in our country is the acceptance and moral justification of weakness and cowardice. Rather than taking the stand that is clearly correct on the basis of rationality, too many decisions are being made on the basis of their lack of "obvious" effect on the taxpayer. If the taxpayer knows that he must pay his taxes every year, and knows that as an individual he will have little effect on saying where tax revenues will be spent, and knows that taxes are like time and must increase every year, then it should not be shocking to us that Congressional Democrats throw our tax dollars down the toilet. If we, as individuals, feel like we cannot change things anyway, then why should our elected officials respect our hard-earned tax-dollars? We continue to elect members of Congress who spend our country into deeper deficits year after year. The Democrats refuse to enact a budget-balancing Amendment to the Constitution; their reasons for this are lost in their intangible social-spending ideals. Their social-spending programs are their pork-barrel power base. If individual members of Congress can obtain more government-paying jobs in their district, more tax-payer financed free housing for their constituents, and more welfare benefits for those that refuse to work, then they will continue to be elected by the recipients of such benefits. The retrograde effects of such programs on the economy are dismissed, as the illusion of righteousness of millions of "pork eaters" cloud any attempts at a rational solution. It does not matter that as more such benefits are received, in the name of fulfilling the happiness of these clients, that the more it will take for these individuals to perceive themselves as happy.

Where will this trend lead if it continues unchecked? More and more non-workers will receive more and more for doing less and less. Who pays for this, Taxpayers, who will have to work harder and harder to stay above the line that exists between socialism and capitalism in our country. As the line continues to rise, the richer become richer, in the sense that they earn much more "before taxes" than those that have fallen into socialism (welfarism). Those that do not work, obviously, will have no income; therefore as the line rises, the poor become poorer. Thus, we have the popular phrase which the Democrats like to sneer with disgust, "The rich are becoming richer, and the poor are becoming poorer." However, beneath these sneers the prudent will realize that certain suppositions have been taken out of context! The middle class and wealthy will now have much higher tax rates, because they must now support not only themselves, but anyone who has decided that it would be much easier to live in the non-working realm of socialism, than to try to pay for the guys who were living at their same status by doing nothing. It is this group of individuals that the Democrats will be trying to court in the 1992 Presidential Election. Watch for lots of promises of allegedly free programs to lift the lower middle classes. They will be raining from the sky like the large loans to farmers that led to so many farmers demise; they will be as plentiful as the junk-mail fliers that promise us thousands of dollars of prizes if we only call the 1-900 number; they will be more numerous than bounced checks written by Congress not on their personal accounts, but on the Public Account that represents our deficit. The lower-middle class will be the battlefield of 1992 as the Republicans try to hold down the line of socialism, and the Democrats try to put their grandparents in nursing homes so that they can spend their life-savings and pension funds. The public stands forewarned!

It has been suggested by Susan Middaugh that Conservatives bring about "a fear of intolerance, book burnings, and visions of the Dachau concentration camps." To the rational mind, this is clearly false association. For the rational mind knows that it was Conservatism that "broke the back" of the communist world. When in the Soviet Union, mothers were being sent to the Gulag's (Russian concentration camps for the purposes of controlling freedom and democracy) for ten year sentences for teaching their children religious verses, it was the Conservatives that escalated the Cold War to where the Soviets could no longer economically function. It was the Conservatives that felt that we should stay in South East Asia to prevent Pol Pot and the Khmer Rouge (another Left-Wing regime) from slaughtering over a third of the Cambodian population. It is the conservative that has been outraged when individual freedoms have been stolen by brutal governments. The "Dachau concentration camps" were more like the Left-Wing regimes that the Liberals felt that we should unilaterally disarm before the collapse of Communism.

Conservatives will tolerate anything in the public square of ideas; we want no limitation of freedom of expression, unlike the citation that we support "book burnings," this is false. We will publicly disagree with many positions because they promote weakness, cowardice, and insecurity. But, we know that these bad ideas will eventually drop out of the mainstream on their own because of their lack of rationale foundation. So, we patiently wait for this day to come while exposing their illogic. We will not immediately accept a political position because it is "cool" to be a part of a "fad," instead we base our decisions on the historical implication of past actions. It is only in this way that we can move forward without risking threats to the freedoms that we as Americans hold so dear.

Comments
by: Tim Gungoll

Clarification by Tim Gungoll

NOTE: Due to my error this article failed to be printed in last week's paper. It is in regards to the article that he wrote in the October 16th issue of the Miner. This article was written directly after his original article, for clarification.

Tom Brown, Managing Editor

The feminist movement includes women such as former Secretary of Transportation Elizabeth Dole, Former Ambassador to the United Nations Jeane Kirkpatrick, Supreme Court Justice Sandra Day O'Connor, Mother Theresa, Margaret Thatcher and author Ayn Rand. These women have been beacons to what is attainable by hard work and responsible behavior. These and countless other women have set examples far above reproach.

At the other end of the spectrum, as I stated in my article, is "the radical sector of feminist movement led by the Lesbians." These women have, by example, led the movement to raise children without the presence of a positive male role model. These women are breeding hate and hostility; it is this behavior which I condemned. I have not blanketly condemned women; I have condemned irresponsible behavior on the part of certain women. These women have encouraged inner-city women to produce children out of wed-lock, because by doing so, they receive increased welfare checks. The example set by the Lesbians encouraged these women to increase their dependence on the federal government, which is reflected in the continual increase in income taxes. It is by this trend that welfare programs promote a rising poverty rate. I stand behind all other arguments, though falsely drawn conclusions by readers may flourish.

Middle of the road

Comments By: Susan Middaugh

Once again, Mr. Gungoll has taken some valid, but seemingly different issues, and for some reason tried to steep them together.

I agree with him on the issues of men who neglect their responsibilities, although I question his terming them as the "most detestable, imperfect creatures who live for short-term satisfaction."

By this statement he has made it sound as if it is only the man who "leaves his family with his failures," who live for short-term satisfaction, though I am sure that there are many others who enjoy this "short-term" status who never have the enjoyment of a family to "dump when things become heated," as he has stated.

It seems he has made a very narrow margin for this prestigious category, but I assume that by "short-term satisfaction," he is implying short-term sexual gratification, which he did not state clearly.

In this situation, I feel that he has narrowly made this accusation at men alone, but what about the women who live for the same desired ends?

I also agree that there are sometimes objectionable things within the press, theatre and movies, but I should think twice about blaming these things for the downfall of the American family, and it seems unreasonable to me to label everything one sees as disagreeable in this country as "Liberal."

To say that "we begin to lower our standards as to what is attainable" when the media begins to exclude the reality of the solid family, seems undefined. Just what exactly does this statement mean, and what does Mr. Gungoll propose? Censorship maybe! Should we maybe have a "Bureau for Questionable Media," to make sure the "proper propaganda" is placed into the minds of citizens?

My question to Mr. Gungoll, once again, is why is it that there seem to be certain individuals in this country who continually want to take away the rights and freedom of others?

Why should one not have the freedom to write, speak, and believe what he would like? And, do not those who feel that there may be some things that are objectionable or offensive to them also have the right not to read what has been written, not to watch what they consider questionable, and to not believe like another if he so desires?

I agree, that parents should take responsibility for the care and nurture of their children, after all, they are our future.

I also agree that parents should set a proper example, but I don't believe that anyone has the right to tell another what that proper example should be, and I make strong objection to Mr Gungoll's view that "they live the values of victimization or Conservatism."

Is this to imply that if one is not a conservative then he is a victim? "A victim of what," may I ask? Maybe a victim of free-thinking, or freedom.

Letter to the Editor

In reference to the letter from Tom Brown on Wednesday, October 16, 1991.

After reading Tom Brown's opening remarks concerning a possible derivation of the word "harass" (which he said would be pronounced as "herass"), seemed offensive and irrelevant to the issue of sexual harassment; This and his sarcastic apology to the females he has "sexually harassed" made it extremely difficult to take the rest of his remarks seriously; although I do feel it necessary to respond to his views.

First, let's examine the Cliches he has used so abundantly:

He states, "Women must come down off the pedestal that men have placed them on throughout history." In truth women have been suppressed throughout history. They have fought every step of the way just to attain the same basic rights men have always enjoyed; the right to vote, equal pay, choice of career when in a male dominated field. These are just a few examples.

Tom Brown says that IN A MAN'S WORLD the telling of crude jokes and vulgar language is used and women had better get used to it. Something is definitely wrong with this statement. Whether instigated by male or female "Locker room" behavior should not have to be tolerated in public, especially in a working environment. How can you believe that it does?

He believes that sacrifices are a changed for the better.

As to his last remark, he has not established reasonable doubts in my beliefs. He has reaffirmed by belief that people of either sex should treat each other with respect and to have sensitivity toward the feelings of others. His apparent hostile attitude toward women caused his statements to lose even more credibility with me. Men and women do have differences but the fact remains we share this planet. Let's treat each other with some dignity.

Equality for all
S.H.

International news headlines--update on current events

By Rob Wilkerson
STAFF WRITER

United States

The former governor of California Edmund G. "Jerry" Brown, Jr. has thrown his hat into the ring for the Democratic presidential nomination. He began his campaign with an attack on the American political system. He called it captive to the wealthy and "corrupted by the powerful forces of greed".

This is Brown's third attempt to gain the Democratic nomination. He offered himself as the heir to Washington, Jefferson and Lincoln.

He staged his rally outside Independence Hall in Philadelphia, where the Declaration of Independence was signed on July 4, 1776.

Brown has become the sixth major candidate in the Democratic field. He is the outsider of a group of candidates attacking both the Democratic Congress and the Republican White House.

Among the other candidates for the Democratic nomination are Tom Harkin of Iowa, Bob Kerry of Nebraska, Governor Bill Clinton of Arkansas, Governor L. Douglas Wilder of Virginia and former Massachusetts Senator Paul Tsongas.

Brown quoted Jefferson, Lincoln and Thomas Paine and several episodes of the Revolutionary War. He also claimed that millions of Americans had given up on the politics of the United States and given up in disgust their right to vote.

Brown also sought the Democratic nomination in 1976, and 1980. He also waged an unsuccessful bid for the California Senate in 1982. Brown

proposes scrapping the current campaign law and pledged to limit campaign contributions to his campaign to \$100. He promises to prevent further erosion of the middle class and to campaign for national health insurance, improved public education, abortion rights and help for the inner city poor. Brown also wants a limit to congressional terms.

Brown, the son of the former California Governor Edmund G. "Pat" Brown, was himself governor from 1975-1983.

Later, Brown has traveled studying Zen Buddhism, working with the hungry in Bangladesh, and helping the missionary work of Mother Teresa.

Brown has a history of traveling extensively and doing work for the poor and underprivileged. He claims this enables him to help the impoverished in the United States. He believes he can reverse the sliding situation of the internal United States. He plans on attacking crime and returning the United States back to the people. Brown claims that criminals and drug dealers now control the streets. Brown also has a plan for improving the impoverished which is what he sees at the source of crime.

India and Tibet

Estimates of deaths as high as 670 are circulating from the earthquake that tore the Himalayan foothills. The official death toll continues to remain lower though. The quake hit along the Tibetan border in a remote and rugged corner off Uttar Pradesh state, where lush valleys are dominant between the foothills that rise into the Himalayas. The roads in this area are torturous and many are reported to be

blocked by landslides.

Officials expect the death toll to rise as the damage continues to be determined.

The earthquake was measured at 6.1 on the Richter scale while the United States Geological survey measured the magnitude at 7.1, almost 10 times stronger. A reading of 6 is considered to be a severe earthquake while 7 or more is considered to be a major earthquake.

People now are beginning to cremate their dead, mourn their losses, and assess their damage.

Along the road beyond Uttarkashi 25 people with broken limbs were lying on the ground waiting transportation for medical help. Army helicopters and trucks did their best to bring medical supplies and relief to the suffering people. Most of Uttarkashi's 50,000 residents were camped along the region's roads. Almost 90 percent of the town's concrete and brick homes and buildings sustained severe to moderate damage. Most of the deaths resulted from collapsing buildings.

The earthquake ripped out powerlines, destroyed bridges and roads as the Hindus, who represent over 80 percent of India's population were celebrating festivals of their religious year. The earthquake sent people fleeing into the streets and was felt as far away as Nepal and New Delhi.

Many nations are now organizing relief missions to aid the ravaged area. India is asking different nations, especially the United States and Western Europe to help. The Indian government is asking for financial help along with food and medical supplies.

Fear of aftershocks are also ema-

nating from the area. The army is trying to evacuate the wounded to prevent disease and more death from the possible aftershocks. The spread of disease isn't near as imminent in India as it was following the earthquakes in Mexico City and Armenia. The main reason is that the Hindus of India believe in cremation of their dead.

Many experts believe it will be years before the area is ever rebuilt to its prior status. Another added problem is the poor conditions of the area such as the poorly constructed roads and bridges. These conditions existed long before the earthquake. Now the entire system is in shambles. The government of India is extremely short funded and will take awhile before it begins construction.

Soviet Union

The New Union Treaty is seen by Mikhail Gorbachev as the only way to pull his faltering nation from the brink of economic and political chaos. Of the 12 republics, only seven have sent delegates to the Supreme Soviet. The Soviet's authority has been doubted because of the rapid shifts of power. Since the attempted coup in August power has shifted from the central government to the republics.

Even now Gorbachev is acknowledging the power shifts from Moscow, but continues to urge the republics to sign the Union Treaty and regroup as a loose confederation.

Gorbachev states that action was needed to speed up the privatization of the Soviet industrial base and government price controls must be eased.

A sign of the difficulties lying

ahead for the Union Treaty was shown Monday. The independence-minded republics of the Ukraine, Georgia, and Armenia sent no delegates to the Supreme Soviet. Moldavia and Azerbaijan sent only observers.

The Ukrainian Prime Minister said Monday in Malta that the Ukraine would sign an economic accord adopted by eight other republics last week. Until last week the Ukraine had announced Thursday it would not sign it, claiming the economic treaty contained too much of the old Soviet central control.

Folklin stated Monday, after talks in Malta with the Economic Affairs Minister of Malta, that the Ukraine would sign the economic accord. He also accepted that all nuclear weapons in the Ukraine would remain under central Soviet control.

The Ukraine, the second most powerful republic after Russia, and the five delegates that were missing from the Soviet on Monday represent around one third of the Soviet Union's 280 million people.

The old Supreme Soviet was humiliated by its failure to oppose the hardline coup to overthrow Gorbachev. Since then the Republics have changed their delegations and have even elected new members.

The central government contends to keep all Soviet armies under their control. He also contends to keep the Republics from "privatizing" Soviet bases and soldiers and from forming their own armies.

Gorbachev views the economic accords as the basis for the new Union Treaty. An aide to Gorbachev said the Union Treaty was unlikely to be signed until next year, at the very earliest.

Board

grantly violated the sanctions placed on the organization in 1988." He has also asked the Office of Student Affairs to initiate the campus disciplinary process to deal with individuals who may have violated University regulations. Besides the withdrawal of University recognition, the Board faces additional discipline from the university.

Park added that the university extended sympathy to the Nisbet family and the campus would assist them in any way it could in this time of sorrow. He also said that the University has confronted the issue of alcohol abuse for several years through its alcohol and substance abuse programs. He stated, "Although substance abuse is a problem of society at large, UMR has and does accept responsibility for educating its community about the risk involved with abuse of chemical substances."

The investigation of the death of Michael Nisbet by the University has caused members of the Alpha Iota Chapter of Sigma Pi Fraternity to respond. Chapter president, Alan Smith, said, "It was important to us as a group and as individuals to have the investi-

gation conclude with the statement by Dr. John T. Park, Interim Chancellor at UMR, that neither individual members were implicated in the unfortunate death of Michael Nisbet."

UMR faculty advisor to Sigma Pi, Richard Miller, echoed the members' sympathy to Nisbet's family and friends, and expressed support for campus officials in dealing with this incident quickly and decisively. Miller stated, "One of the goals of Sigma Pi is the prevention of substance abuse, and to promote activities such as those that are presently taking place during UMR's I.M.P.A.C.T. (Intelligent Minors Promoting Alcohol Concern Together) Week."

UMR has a very active and prominent substance abuse prevention program with several events sponsored every semester.

Two press conferences were held on Friday, October 25, 1991 to release information about the investigation and the results stemming from it. The first press conference was held by the Rolla Police department and the prosecuting attorney. The second was held at the UMR campus and given by

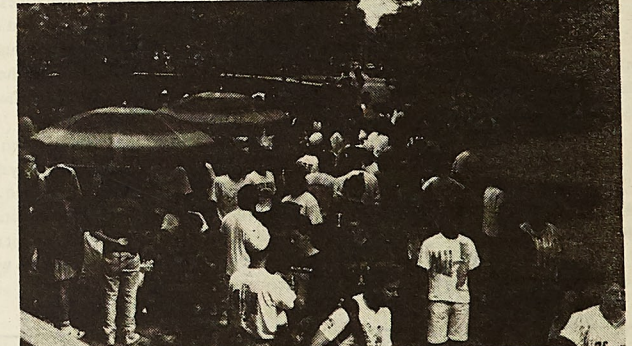
Interim Chancellor John T. Park.

Many local television and newspapers covered both conferences. They also conducted interviews with the students about the incident, drinking and drinking problems on the Rolla campus, and how the decision about the Board will affect Rolla and the St. Pat's celebration.

Student opinions on drinking and the drinking problem in Rolla varied from students saying "the problems is terrible and needs to have something done" to the other extreme of "it isn't any worse here than anywhere else and the media just wants to dwell on it."

History

The first celebration of St. Patrick's Day as a campus holiday was at the University of Missouri—Columbia in 1903 when engineering students skipped class to honor Saint Patrick as the patron saint of engineering. The first Rolla observance of the holiday took place in 1908 when the Rolla students decided to hold their own Saint Patrick's Day celebration. The students formed an organization



Students react to press conference.

from page 1

to plan the event—the forerunner of today's St. Pat's Board. Preparations for the celebration were organized by the juniors until 1930 when the St. Pat's Board was founded to organize the celebration.

As well as continuing the tradition of St. Patrick's Day, the Board was actively involved in community and fund raising activities. There were 33 members this year. Any recognized organization was allowed to elect a representative to the St. Pat's Board.

Prop. B from page 1

If you have any further questions about Proposition B, please talk to your Student Council representative or call the Student Council Office (341-4280) or the Associated Students of the University of Missouri Office (341-4970). And remember, if you are registered to vote, please do so on November 5. If you don't vote, who will?

Features

SUB to present the Smithereens

By Connie Crossen
SUB

If you haven't heard people talking it up, seen the posters or heard it on the radio stations, the Student Union Board Concerts Committee is hard at work to bring to you The Smithereens. The Smithereens will be in concert on Friday, Nov 8th at the Multipurpose building.

The Smithereens believe in honest rock 'n' roll, using two guitars bass and drums. They don't believe in gimmicks. Their powerful live performances are of the best quality. They strive to be the type of band that they would pay to see and whose records they would buy. Drummer Dennis Diken states, "...We're one of the fortunate bands that believe in what we're doing and do good work. People dig it for that reason, really nothing else."

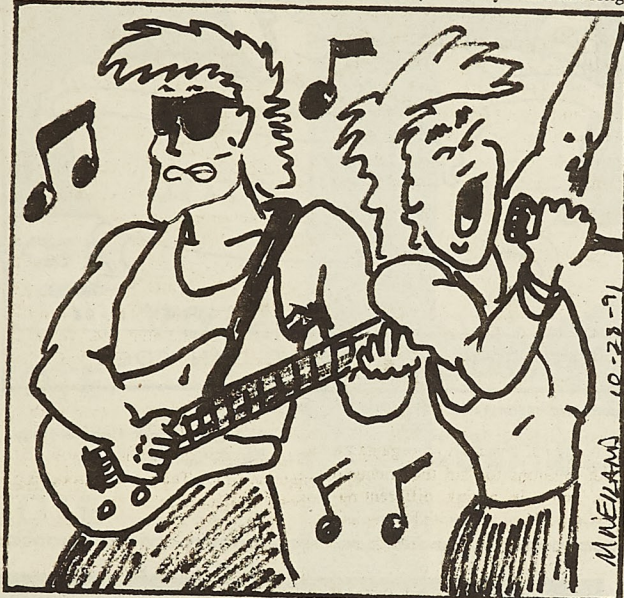
The tour is featuring their new Blow Up album full of rocking songs with some inspiring ballads: "Top of the Pops," "Indigo Blues," and "Evening Dress" are just a few. "Tell Me When Did Things Go So Wrong" is their first political song of society's weaknesses. The group worked with several other artists on this album. Lead singer Pat DiNizio worked with Julian Lennon on "If You Want The Sun To Shine." Julian is the heir to

the musical sensibility of his father," says DiNizio. "I think his forte is pop and I hope that's what I brought out of him on that particular song."

The band's first gold album Smithereens 11 earned a four-star review from Rolling Stone and featured: "A Girl Like You," "Blues Before and After," "Room Without A View," and "Yesterday's Girl." It is a

sure thing that these hits will be played.

We are offering you a safe night of entertainment to cut loose and enjoy some good music with some good friends. Come take advantage of it. Tickets are already on sale at various locations. Students tickets are limited and at only \$ 5, they won't last long.



An environmental look at the ozone layer

Down to Earth
SOURCE

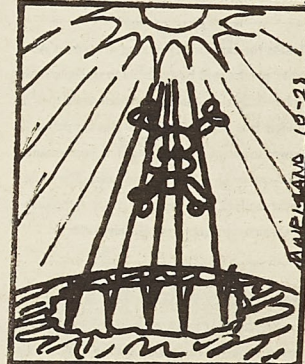
When you were in grade school, your teacher always told you that there were nine planets in our solar system, but that only one would sustain human life. This planet, you were told, was unique because it had an atmosphere with oxygen we could breathe, and was just the right distance from the sun. What they didn't tell you was the third factor that makes our planet livable - the ozone layer.

Until recently, the ozone layer was something that only scientists talked about. The ozone layer is a region in the upper atmosphere that has the duty of blocking out the sun's harmful ultraviolet rays. Without it, our sensitive environment wouldn't last long, not to mention our sensitive skin. Today, the ozone layer has been thrown into the forefront. Why? Because it is depleting.

A few years ago, scientist discovered a huge hole in the ozone layer around the North Pole. This opened the eyes of the international community, and now 60 countries have agreed to ban chlorofluorocarbons (CFC's) by the end of the century. CFC's are the main culprit in ozone depletion. Unfortunately, they are

used in refrigerants, and can be found just about anywhere. Right now, the scientific community is working frantically to develop a safe alternative to CFCs. But will it be truly safe, or will it create a new problem for our grandchildren to discover? We can only hope that a truly safe solution can be found.

This is only one of the many problems facing our environment today.



We all want our environment to be nice and healthy, but don't wait for someone else to make a difference. This is everyone's planet, and everyone is responsible. Get involved to make this planet a better place to live--your life may someday depend on it.

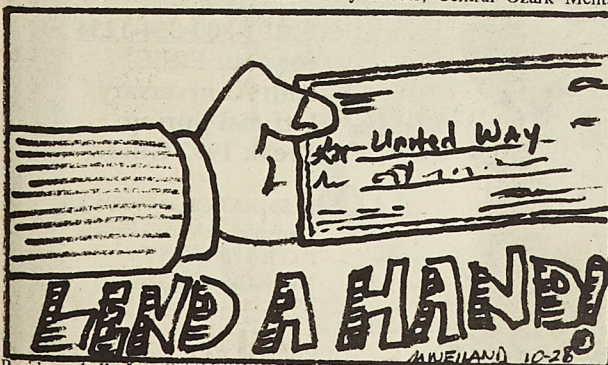
Stuco asks for participation with the United Way Fund

By Luke Peterson
President of Student Council

Attention all student organizations! The United Way Fund campaign is getting underway and your help is needed. Student organizations have been split between Karen Brents-

Monday, November 4, at the Hockey Puck at 11:20 a.m. We need the contact person for your organization to talk to us by Friday, November 1.

The United Fund supports the American Red Cross, area VII Special Olympics, Big Brothers/Big Sisters, Boy Scouts, Central Ozark Mental



Residence halls, Lenell Allen - minority organizations, Lindsay Bagnall - Greek organizations and myself, Luke Peterson - all other student organizations. I encourage the presidents of the organizations to contact one of us so that you may participate in the fund raising campaign. The kick off is

Health Services, Inc., DEAF, Inc., Girl Scouts, Mental Health Association - Phelps County, Phelps county 4-H Council, Rolla Benevolent Fund, Rolla Nutrition Site, Salvation Army, and United Ministries in Higher Education. Start gearing up for fund raisers as we look to raise \$21,000 in 1991.

Student organizations promote service

APO keeps busy with cleanup and taco dinner

Lambda Chi to hold Chicken Dinner

By Karen Griesel
Alpha Phi Omega

Alpha Phi Omega held its highway clean-up on October 19. Members of this service fraternity volunteered their time to clean their two mile strip on Highway 72. After a morning of

work, the members enjoyed a chance to relax at a Big Brother/Big Sister social held that afternoon. At the social, this semester's pledges got acquainted with their own big brother/big sister. There was an impressive showing at both events.

A.P.O.'s next service project will be held on October 31. The members who attend will be steam cleaning the rugs at the Gingerbread House.

For those who may be interested in joining A.P.O. next semester, please watch for more information in future articles of the Miner.

Alpha Phi Omega
SOURCE

Alpha Phi Omega is sponsoring a Taco Dinner held on November 5, 6, and 7th. The cost of the tacos are 59 cents each, 10 cents of which will be donated to the Gingerbread House.



Each fraternity and sorority should receive information pertaining to this dinner but if not or you are a member of an organization that is interested call Pat Winkelman at 364-9792.

By Doug Fischer
Lambda Chi Alpha

The Lambda Chi Alpha Fraternity will be hosting its 30th Annual Chicken Benefit Dinner of November 3. The dinner will be served from 11:00 a.m to 7:00 p.m. at the fraternity house, which is located at 1705 Pine Street.

Tickets are available now at the Lambda Chi Alpha House and at Key Sport for \$3.50 for adults, and \$2.50 for children 12 and under. Tickets will be \$4 at the door.

All proceeds will benefit Rolla's Cerebral Palsy Center, the Gingerbread House--a home for severely handicapped children and L.O.V.E.

Last year over \$1300 was raised and this year's goal has been set at \$1500. The dinner has always been well supported by the community, with many pleased citizens returning year after year.

For any information about group ticket sales or donations please call Jeff Feltz at 364-4424 or 364-9901.

Classifieds

Miscellaneous

WHO'S WHO AMONG STUDENTS IN AMERICAN UNIVERSITIES AND COLLEGES Applications are available in Student Activities, 113 University Center West. Junior and Seniors who have good grades and have been in organizations should apply. Completed applications are due by November 4th.

Earn \$2000. + FREE SPRING BREAK TRIPS! North America's #1 Student Tour Operator seeking motivated students, organizations, fraternities and sororities as campus representatives promoting Cancun, Bahamas Daytona, and Panama City. Call 1-800-724-1555.

Tickets for campus performing arts series Alan Chow, pianist, will be available to students starting November 4. Students have one week to pick up their free tickets before the general public is allowed to purchase the tickets. The performance is November 22 at 8:00 p.m. in Leach Theatre of Castleman Hall. Pick up your ticket at the cashier's window in University Center West.

PANAMA CITY BEACH: This Spring Break earn free trips and make the most money. Sell the best location on the beach next to the world's largest night clubs. Campus reps/organizations needed to promote Spring Break. Call Kim at 1-800-558-3002.

The campus is in need of copies of the UMR Undergraduate Catalog, 1990-91, 1991-92 and the UMR Graduate Catalog, 1989-90, 1990-91, for distribution to visitors and prospective students. Students can "donate" extra catalogs returning them to the Registrar's Office, 103 Parker Hall, or receive a \$1.00 discount on any purchase at the bookstore in exchange for the return of an appropriate "clean" catalog through November 30th.

Financial Aid available immediately! Special grants program. Every student eligible. No one turned down. Simple application. Send name, address, and \$1 P & H fee (refundable) to: Student Services, P.O. Box 22-4026, Hollywood, FL 33022.

STARTING OCTOBER 21: Student JOBS. Student callers needed Monday through Thursday evenings 6:30 - 9:30 p.m. Requirements: 1. pleasing phone voice 2. good clear English 3. enthusiasm and friendliness 4. promptness and dependability 5. callers must be able to talk to alumni and parents, visit with them over the phone, verify addresses and business information and ask for and negotiate gifts. CALLING HOURS: 6:30 - 9:30 p.m. Monday through Thursday. Calling Place: Room 102 Buchler Building (Rolla and Ninth Streets). Time Commitment: You will be asked to schedule yourself for one to four evenings a week. SALARY: \$4.75 per hour. For more information or to apply call: 341-6376.

Going to see the St. Louis Symphony on November 10th? I am looking for someone to trade tickets with, so I can sit with a friend. do you have seat: K-36, K-38, I-33 or I-35? Call Kevin....341-2306.

Personals

Sleepy,

I can't believe that you are still typing this trash. Let's have lunch.

Boz

Heather S.,

Thanks, but no thanks. I am not a farmer so I didn't want to raise those critters.

M.R.

Grumpy,

Do you think that we will every be able to treat each other as friends? May be I'm the problem. Let's talk.

You know who

Sig Ep Fright Nite. Friday, November 1, 9:00 p.m. until ? with the Memphis Hipsnakes! The only party Friday night! Be there! \$3 admission \$2 with a good costume! All proceeds benefit the Cerebral Palsy Association.

Kim T. at Chi-O,

3 Months, NOT!! Shouldn't HE be sending YOU Flowers?

Mindy,

Congratulations on getting back together with Mike. I know he means the world to you. Perhaps you two were meant to be together after all!

Love in Kappa Delta,
Stephanie

To Whom It May Concern,

Are there any attractive women in Rolla interested in a possible relationship with an intelligent, sensitive, and attractive guy? If so, respond to this personal.

Wondering

The Beast Room by Jones and Griff



BATH TIME FOR YOUNG VAN QOQH

Students and Student groups: EARN \$\$\$ working with Famous Barr department store on your campus. Call Christine at 1-800-932-0528 ext. 20.

Stan the Man,

Sorry that you were sick. I hope that you get to feeling better.

Warrior

Planned Parenthood of the Central Ozarks

1032 B Kingshighway, Rolla 364-1509

Mon & Wed 8 - 7
Tues & Fri 8 - 5
Thur 8 - 12

Medical services and contraceptive methods provided include:

- * Pap Smears
- * Pregnancy Tests
- * STD Testing
- * Condoms
- * Foam
- * Birth Control Pills

Serves All Women and Men

Confidential * Professional * Affordable

HOT, FAST DELIVERY



Large Pizza for medium price
Delivered to you for no extra price

(expires 11-30-91)

341-9944



Soft drinks available. Limited delivery area.
Our drivers carry no more than \$20.

FOR CARRYOUT 364-7213

1024 KINGSHIGHWAY - ROLLA

FREE GUIDE TO SPRING BREAK '92



You're Invited to the 30th Anniversary Party at the World's #1 Spring Break Destination, on the Hottest beach on earth, Feb. 22 - April 19, 1992!

Call 1-800-854-1234 for your FREE 30th Anniversary Official Spring Break 1992 Guide!

DESTINATION DAYTONA!
Convention & Visitor's Bureau
P. O. Box 910
Daytona Beach, FL 32115



VOTE ON NOVEMBER 5, 1991

UMR General Services Bldg, El Bosq Nova Lane

Bruno's

Banquet Facilities Available
Men's Night - Wednesday
Ladies' Night - Thursday
9:30 - 1:00

341-2110 2001 Forum Drive

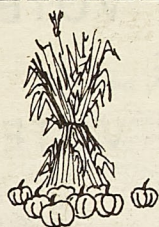


SCIENCE FICTION • FANTASY
COMICS • GAMES
1014 Pine St. Phone 364-4301

**Medi-Value
 Pharmacy**
 Tenth and Pine



**We now offer Fax &
 American Express money grams**
**Rolla's almost on Campus Pharmacy & photo
 center. For all your health & photo needs.**
Phone: 364-7077



October Specials

*pumpkins
 corn shocks
 fall leaves
 Halloween arrangements*

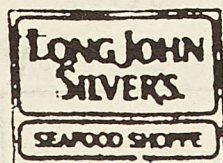
**50¢ off per rose
 with this coupon**

**BLOSSOM BASKET
 FLORIST**
**910 Cedar St.
 364-7101**



Daily 10% Discount For UMR Students*

*offer not valid with other coupons or discounts



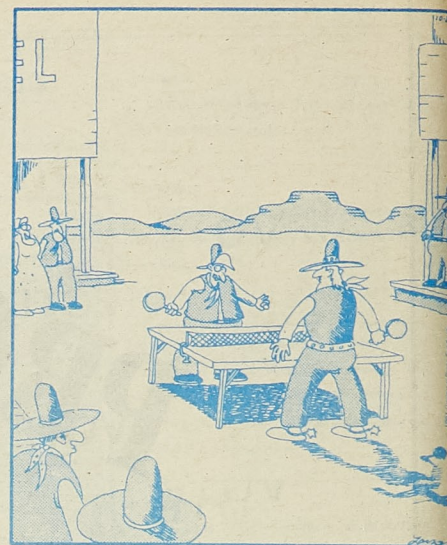
**We accept Mastercard,
 Visa, Diners & Discover**
1009 Kingshighway

THE FAR SIDE

By GARY LARSON



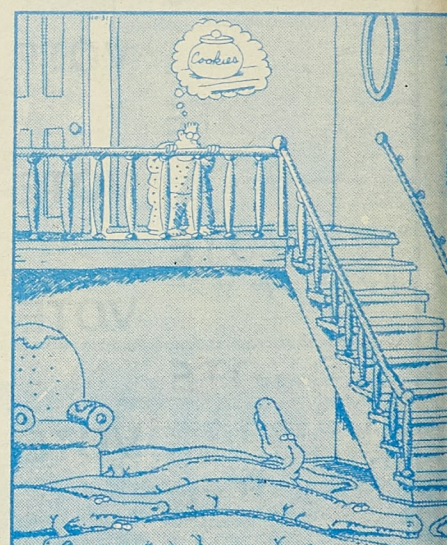
Dog ventriloquists



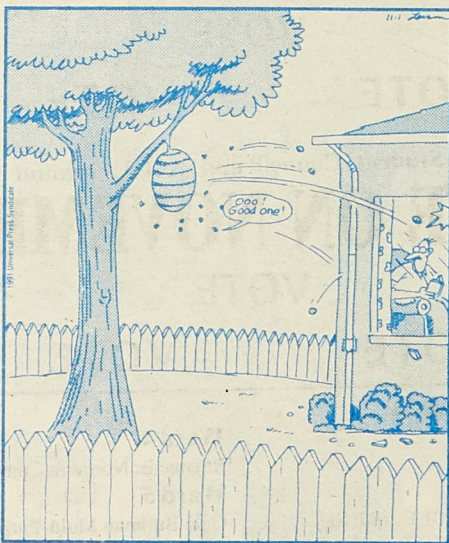
Stumpy didn't know how he got in this situation, but with the whole town watching, he knew he'd have to play it out.



Social morays



The nightly crisis of Todd's stomach vs. Todd's imagination



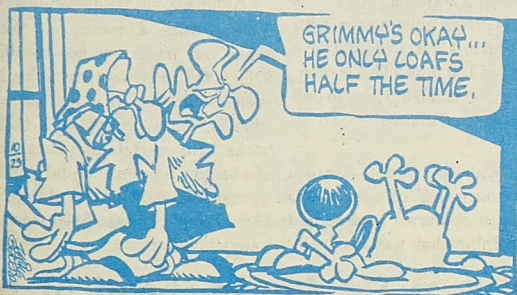
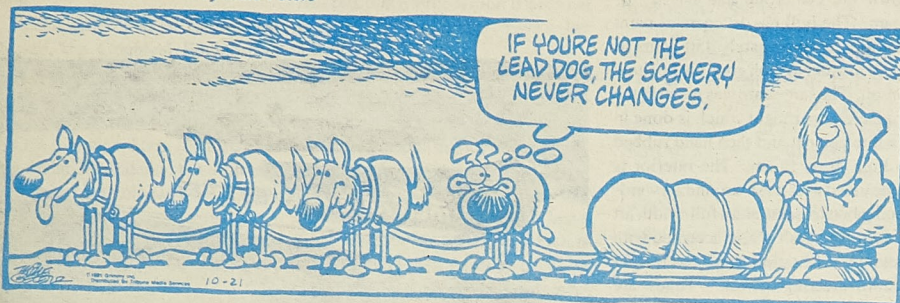
For many weeks, the two species had lived in mutual tolerance of one another. And then, without provocation, the hornets began throwing rocks at Ned's house.



Flora practical jokes

Mother Goose & Grimm

by Mike Peters



QUALITY CLEANERS

* Expert Cleaning * Reasonably priced
108 W. 7th Street Rolla, Mo 65401 364-3650

YOU HAVE FRIENDS WHO CARE AT...

BIRTHRIGHT

PHONE: 364-0066

215 WEST 8th STREET
P.O. BOX 832
ROLLA, MISSOURI 65401

FOR HELP
DURING UNPLANNED PREGNANCY
FREE PREGNANCY TESTING
NEW EARLY DETECTION METHOD

ALEX'S PIZZA PALACE
Real Italian Pizza
122 W. 8th St.



Open 7 Days a week

11:00 AM - 2:00 AM Fri & Sat

11:00 AM - midnight Sun - Thur

Call For Delivery
or Take Out

364-2669 or 364-9878

Salads Sandwiches Pasta

5% Beer on Sunday

SPECIALITIES

Gyros Souvlaki Steak

Greek Salad Spinach Pie Baklava

SUBWAY FALL SPECIALS

SUNDAY	FREE MED. SODA w/Purchase of Super Sub
MONDAY	Footlong Combo \$2.99
TUESDAY	Buy 1 Footlong Get 1 for 99¢ After 4 p.m. <small>99¢ Sub must be of equal or lesser value</small>
WEDNESDAY	\$1.00 OFF Any Footlong
THURSDAY	\$5.00 OFF Any 6' Party Sub
FRIDAY	\$1.00 OFF Any Large Salad
SATURDAY	Buy Two Footlongs Get One FREE <small>Free Sub must be of equal or lesser value</small>

Open 10 a.m. - midnight

CORNER OF 9TH & PINE

364-3395

Limited Time Only
Not Good in Combination With Any Other Offer
Not Valid On Delivery
Limit: One Special Per Visit

A corvette in the water? Take a look at this monster

By Erich Elmer
STAFF WRITER

Once in a while the old saying, "the dumb have all the luck" actually comes true. Let me explain. Wednesday night when I went to Fairground Chevrolet to show them my review of the Beretta, I was told to come back later that evening if I wanted a "good scoop" for my next article.

It turns out that Mercruiser, Chevrolet, and Baja Boats got together to build a boat show crowd-stopper, and it was to be housed in Rolla for the night on its way to a convention in Oklahoma. What luck!

Since Mercruiser builds the venerable LT-5 engine that powers the legendary ZR-1 Corvette, they needed to

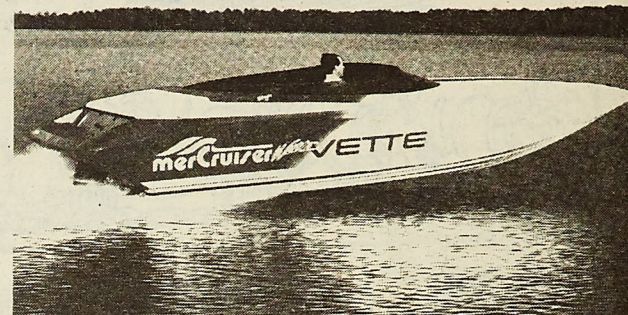
publicity from this as possible. The result? An LT-5 powered Baja 223 Bandit accompanied by a 1991 ZR-1 tow car.

This is one impressive combination. Let me begin by describing the boat. Since the LT-5 was never meant for maritime operation, extensive modifications had to be made to the powerplant. For example, it took six weeks just to make headers for the engine and the propeller had to be hand crafted for the project. Also, boats need much more low-end torque than cars so a specially programmed computer chip and massaged intake ports were added. This brought the LT-5 up to around 420 horsepower as compared to the stock 375 horse version found in the Corvette. Top speed of the Wette Vette is an impressive 80 mph.

The boat itself is a custom version

of Baja's 223 Bandit. It measures 24'4" down the centerline and has a 96" beam. The hull has 12 coats of paint that took approximately 450 hours to apply in order to look good on the show circuit. The same care was taken in the engine compartment which is done in a white gelcoat and then hand rubbed to high gloss finish. The interior is done in red with wrap-around forward-facing bucket seats and a full-width aft couch. The dash is also accented with full instrumentation and a red leather Momo steering wheel. Tunes are handled by a very capable Clarion sound system which consists of an AM/FM surround sound CD player complete with 640 watts of power and 9 speakers. A special trailer was made for the Wette Vette using the wheels, sidemarkers and taillights from a ZR-1.

The ZR-1 is one of the few world class sports cars that are a "bargain."



The new Wette Vette proudly displays the power and style that have made its land counterpart so popular.

For around \$60,000 (more or less), you can get a machine that equals the performance and handling of several cars that cost \$100,000 plus. Its 32-valve, 5.7 liter aluminum engine has an 11:1 compression ratio and produces 375 horsepower at 5,800 rpm. All of this adds up to enough guts to propel the car from 0-60 in 4.3 seconds and have a top speed of 160 mph. This is obviously more than enough power to pull the boat from time to time!

I spoke with Dick Hodoff (the man with the rough job of taking this combo across country!) and he told me this combination was originally

planned to be on the show circuit for only one year. However, it has proven to be so popular that the ZR-1 and Wette Vette will be shown next year also and another combination is already in the works as a replacement.

Although the entire combination (pulling truck, Corvette, and Wette Vette and trailer) comes to about \$200,000, the powers that be say the Wette Vette combo is not for sale, "that is, unless you have a billion bucks." However if this is not enough of a bargain for you, they did mention a package deal on the two of them for \$1.5 billion! I'll take \$100 worth of lottery tickets please!

A look at Dr. Rosen, head of the Chemical Engineering Department

by: Susan Middaugh
STAFF WRITER

Dr. Stephen Rosen, the Chairman of the Department of Chemical Engineering at the University of Missouri-Rolla, has been at UMR since the fall semester of 1990. Before coming to Rolla, he spent 17 years at Carnegie University in Pittsburgh, and 10 years at the University of Toledo.

When asked if he felt there were any major differences between UMR and the other universities where he has taught, Rosen stated, "There is a similarity between Carnegie and UMR, in that they are both technical schools." He feels there is "quite a contrast between UMR and the University of Toledo."

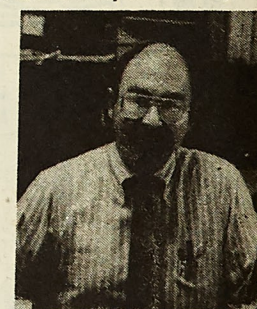
He feels the best way he can describe his coming to UMR is to make the baseball analogy of a "ball player who has been called up from a Class-A team to the major leagues."

Rosen says that it is great to be at a school where the emphasis is on engineering and science. He feels there are better students at UMR, and believes UMR has a much better reputation in industry.

He was happy to report news from the Placement office of 54 companies this fall who were interested in Chemical Engineering majors. This is a

major increase from his previous schools.

Rosen is very happy with the support the department gets here, and states, "This is the first school I have been at where individual departments could solicit funds," and he feels this really helps. He is also quite impressed with the tremendous support from the companies the department



Tony Roungon

Dr. Rosen, head of the Chemical Engineering Department.

works with.

He states that in the annual report recently written, the department has received \$50,000 from alumni in matching gift funds, and approximately \$90,000 from industry, which is a good thing, considering the state.

See Rosen, page 11

ME class to hold design competition

By Sally Prakash
SOURCE

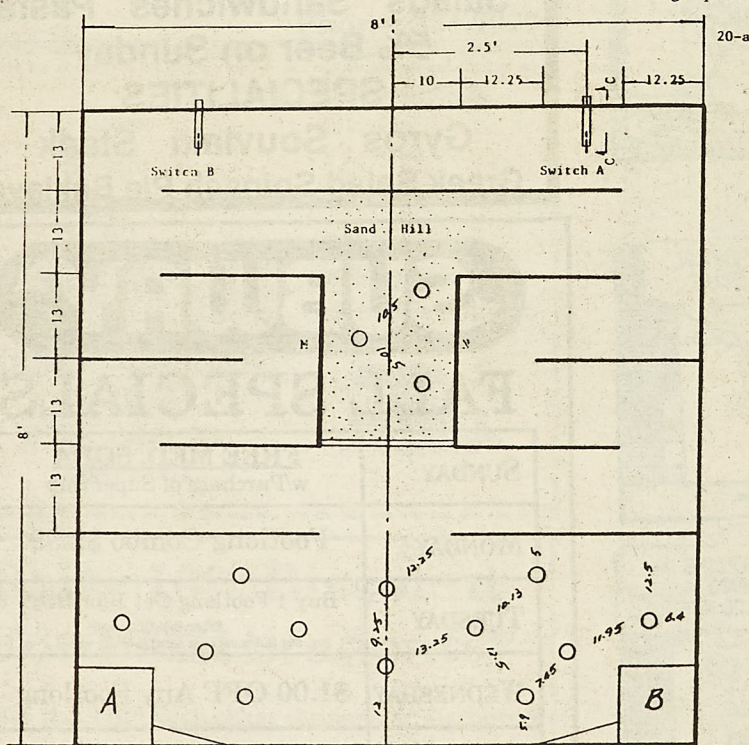
The ME 161 Design competition will be held on November 6, 6:30 p.m. in ME Building, room 104.

The competition has been newly designed. Due to the nature of this new

competition, each remote control vehicle will have a variety of ways to win the contest. The winner is the one who first hits the switch and turns on the light or is the one closest to the switch

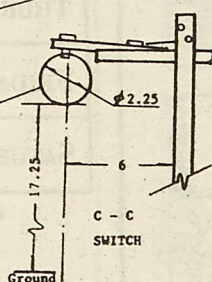
at the end of the contest. There will be 28 very different vehicles competing in a double elimination.

ME 161 students have worked very hard to find the best strategy and get the best design. The competition will be very exciting. Come and join this fun learning experience.



- * All units are in inches except the ones marked in ft.
- * The height of:
 - outer walls 3.5"
 - walls M & N 3.5"
 - poles in the sand hill 6"
 - other poles 3.5"
 - other walls 2.5"

TRACK LAYOUT FOR
THE PROJECT COMPETITION



budget cuts. Because of the cuts, the department has had to cut a faculty position.

Rosen states that in figures just released, the Chemical Engineering Department enrollment is up 22 percent over last year, and with a cut in faculty positions this really hurts. He says they like to keep their section sizes under 30 students, but with this cut, they are not going to be able to do this.

"Two years ago we had \$32,000 in equipment funds," Rosen states, "last year \$16,000, and this year nothing." he is happy to report, however, that they can survive the cut at this time, because they have \$40,000 in an equipment fund which was donated by industry, but he is proceeding cau-

tiously considering he does not know how long this money will have to last. He feels that if Proposition B does not pass, it will most probably have to last a long while.

Rosen says he is amazed that since being made chairman of the department how much time he must spend "worrying about money—either getting it, thanking people for it, or giving it out in scholarships and such." Needless to say, this does not leave much time for his first love which is teaching, although he does insist on teaching at least one course per semester. Where he has felt the greatest regret, however, is in the fact that he is

left very little time to do research personally, but feels that his objective at this point is to try to keep the money

coming in for the students to do research, which he feels is a chairman's main responsibility.

When asked about the strengths of the department Rosen says he feels they are the tremendous support received from industry, the great students, and the state of the art equipment within the department.

"Kids encounter things in our laboratories that you won't see in too many industries yet," Rosen states. "We develop a very professional attitude in our students," he continued. He says a good example of this attitude is our student chapter of the American Institute of Chemical Engineers. "At our first meeting, there was a turn out of over 100 students, and at most

places you might have 20" he said. And was proud to announce that the student chapter won the national Outstanding Chapter Award for the eighth consecutive year.

When asked about the department's weaknesses, he stated, "No question that it is the graduate program." He said they presently have 22 or 23 full-time graduate students, and it should be at least twice that number. He feels they have not done the amount of research that should have been done, and have not really contributed the money to support that research, but says they are working hard to correct this situation. One of Rosen's goals, however, is to build an outstanding

Chemical Engineering graduate program.

One of the points of interest within the department is the availability of a Bio-chemical Engineering option. He feels that this is a very hot area in engineering, and there are a lot of places for a chemical engineer in this field.

In the future, Rosen says he would like to see the department expand its graduate department, to be able to hire someone in the area of environment, and to further emphasize waste management, and plant safety, and to try to insure the update of labs and computer systems.

Rosen feels that in an area on the cutting edge of technology you can not afford to let yourself get behind.

10th ANNIVERSARY

LAST CHANCE!

JANUARY 2-14 ★ 5, 6 OR 7 NIGHTS **STEAMBOAT BRECKENRIDGE** **\$187**

JANUARY 2-9 ★ 5, 6 OR 7 NIGHTS **VAIL/BEAVER CREEK** **\$193**

JANUARY 3-12 ★ 5 OR 7 NIGHTS **\$221**

Call Today!

LODGING • LIFTS **PICKUPS • PARTY • MORE!**

Sunchase

10TH ANNUAL COLLEGIATE WINTER SKI BREAKS

1992

MORE WINTER COLLEGIATE SKI BREAK SPACE ADDED!

Whew, just when you thought you might be left out in the cold during January break — Sunchase comes through again! Your response to our quality and low priced 10th Annual Collegiate Winter Ski Breaks has been overwhelming. So, we've been able to add limited additional space at each destination, but don't wait too much longer as in year's past, it's sure to be a sell out soon.

Ski Break by yourself, with your friends or organize a group of 19 and you'll get a FREE SKI TRIP! Winter ski breaks include your choice of Fully Equipped Condominium or Hotel Lodging for 5, 6 or 7 nights; all Lift Tickets, Welcome Goodie Bag full of participating corporate sponsor product samples and area information.

Steamboat, Breckenridge or Vail/Beaver Creek. The hardest part is choosing which destination to "conquer" this coming season!

10th ANNUAL COLLEGIATE WINTER SKI BREAKS

TOLL FREE INFORMATION & RESERVATIONS

1-800-321-5911

Sunchase BREAKS

DISCOVER

VISA

MasterCard

KMNR FREAKERS BALL

- Open Campus Costume Party -

Nov. 1 **FRIDAY, 8:00 pm**

Sigma Tau Gamma

*5 Fraternity Drive

BYO.

*** BONUS ***

LIVE BAND from

St. Louis

Neverminas

PRIZES For BEST COSTUMES

See
What's In
It For You

What Does PC Mean to You
Dating Drought
R.E.M.
Body Piercing
Rollerblades
Get-Rich-Quick
Scams



PERSONAL RESOURCE DEVELOPMENT PRESENTATIONS



Sponsored by Counseling & Career Development
A Division of Student Affairs
341-4211 204 Norwood Hall

STOP BY COUNSELING & CAREER DEVELOPMENT FOR
MORE INFORMATION AND A COMPLETE LISTING OF
PROGRAMS OFFERED THIS SEMESTER!

Test Anxiety

Tuesday, November 5 3:30 - 4:30pm; 208 Norwood Hall
Facilitator: Dr. Gene Van Matre

* THE PROFESSIONAL * HAIR CRAFTERS

Student Discounts & Walk-ins Welcome
1720 N. Bishop (Across from TJ)
call for appointment 341-3800

Joy Sullivan: Owner/Stylist

Dolores Vega: Stylist

If you believe that lowering taxes leads to
economic growth, and that government
bureaucracies lead to excessive restrictions
on freedom: then join the

College Republicans

Meeting Wednesday night, October 23, 1991
and every two weeks thereafter
in Room G-8 Humanities and Social Sciences Building
Time: 8:00 p.m.

A SPECIAL "THANKS" TO THE STUDENTS AND
SPONSORS WHO MADE I.M.P.A.C.T. WEEK A SUCCESS:

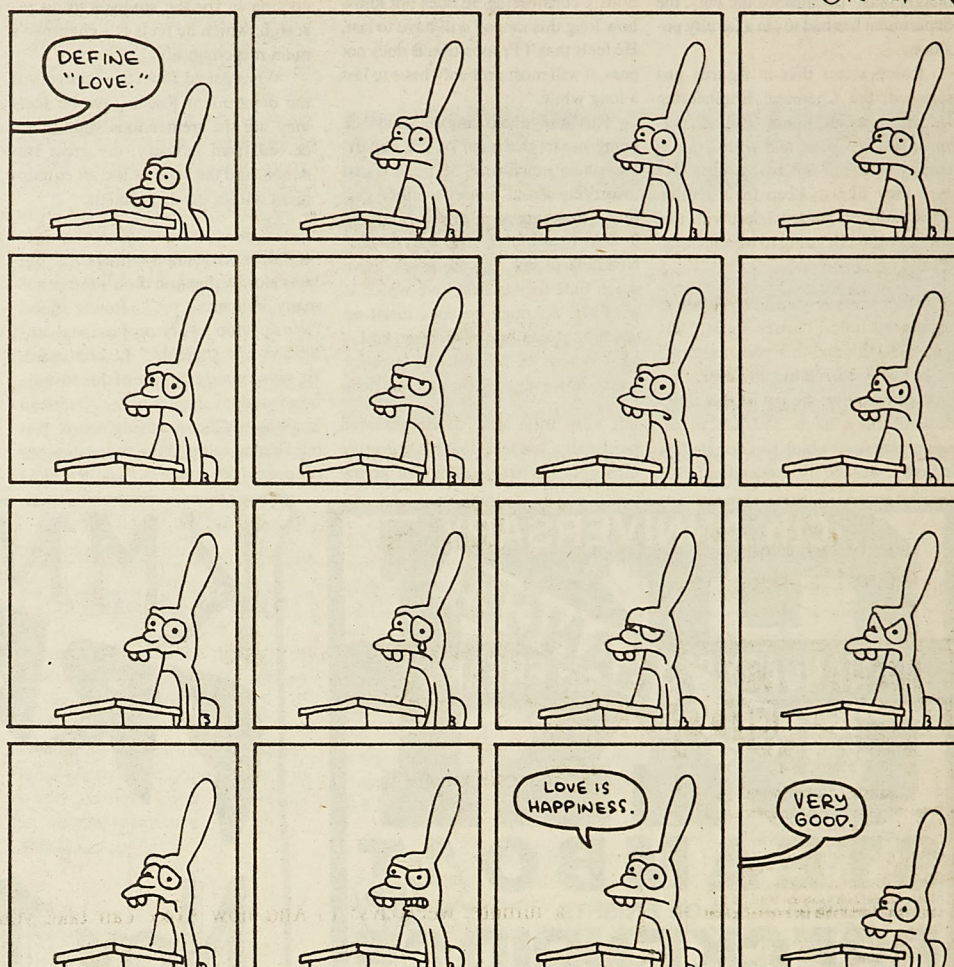
Sponsors

Anheuser-Busch, Inc.	McDonald's
Amy ROTC	NCAA
Bruno's	Natl. Res. Hall Honorary
Gamma Pi Epsilon	Quadrangle Hall Assoc.
Grellner Sales	St. Pat's Board
Hebbeler Bottling Co.	StuCo
Interfraternity Council	Student Union Board
Kent Stained Glass	UMR Bookstore
Marriott Dining Service	Voss Enterprises

I.M.P.A.C.T. Steering Committee

Janet Alfermann	Brad Harvey
Justin Apperson	David Hockanson
Sarah Blunt	Laura Hubert
Chris Case	John Iverson
Brian Clark	Greg Maes
Sheila Connors	Barbara Meder
Stacy Dedic	Jason Peters
Jeff Decker	Doug Radloff
Brian Durand	Bill Saguto
Rick Finley	Julie Schroer
John Geels	Vicki Wallis
Brian Harris	Jeff Zawila
John Hartleroad	

LIFE IN HELL



©1991
BY MATT
GROENING



\$3.00 Admission
\$2.00 W/Costume

WITH THE
MEMPHIS HIPSNAKES
LIVE CLASSIC ROCK BAND

9 p.m. until ?

ALL PROCEEDS BENEFIT THE
CEREBRAL PALSY ASSOCIATION

GARFIELD SAYS:



Go out in daylight.
Carry a flashlight in case
of delay returning home.

Safety Tips From
the National Safety Council

MARKETING OPPORTUNITY

WITH A MAJOR FINANCIAL SERVICES
CORPORATION

STUDENT MARKETING MANAGER

Outgoing, sales oriented student needed
for marketing/promotion position.
Responsible for hiring, coordinating and
managing campus organization.
Opportunity to work as Promotions
Representative. Excellent pay. Flexible
hours. All work on campus. Must be on
campus and available for several school
days each month.

AMERICAN PASSAGE MEDIA CORPORATION
FINANCIAL SERVICES MARKETING
215 West Harrison
Seattle, WA 98119-4107

For more information, call Mr. Diers today:
(800) 358-6676



Sunday Night Special

Stockade Burger,
Fries & Drink

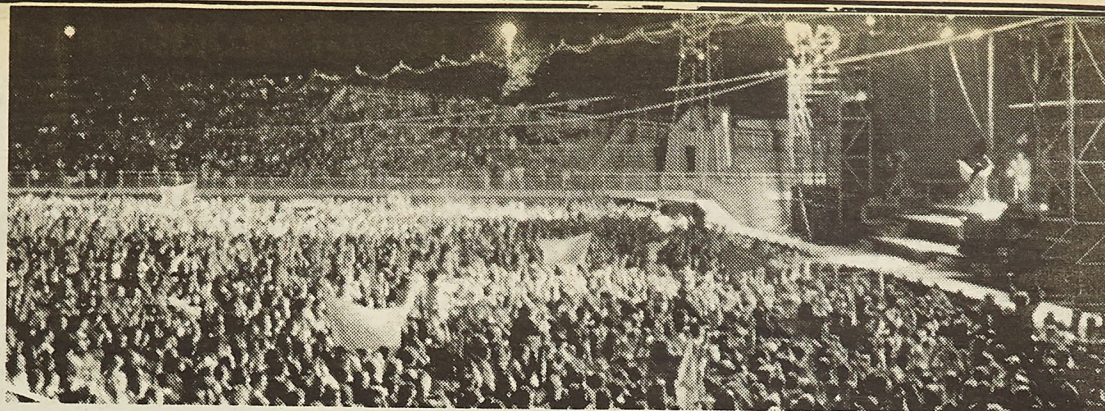
\$2.99

Every Sunday from
5:00 p.m. to close.
Includes FREE dessert

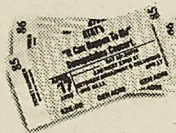
1401 Martin Spring Dr.
Rolla, MO 65401



**SIRLOIN
STOCKADE**



AT&T's long distance savings plan can take you to this location.



AT&T has always helped college students call the places they want to call. In fact, one of our

savings plans for off-campus students, the *SelectSaverSM Plan*, lets you direct-dial the one out-of-state area code

you call most often. For just \$1.90 a month, and 12 cents a minute, evenings, nights and weekends. 20 cents

a minute, weekdays.* ☐ And now AT&T can take you to another place you've always wanted to go. Just

enter the AT&T "It Can Happen to Me" Sweepstakes. You could win a trip for you and a guest to any U.S. and any

European rock concert. All you have to do is fill out the coupon below. ☐ So let us help you choose the

savings plan that's right for you. And then try your luck at our Sweepstakes. Both will be music to your ears.

To sign up for an AT&T savings plan for off-campus students, call
1 800 654-0471, Ext. 7437. To enter the AT&T "It Can Happen to Me"
Sweepstakes, fill out the coupon below.



*Includes continental U.S., Alaska, Hawaii, Puerto Rico and the U.S. Virgin Islands. Savings based on calls over 56 miles. Actual savings potential depends on subscriber calling patterns. Processing fee of \$2.00 applies. Day rates apply from 8 am to 5 pm.
© 1991 AT&T

OFFICIAL RULES—NO PURCHASE NECESSARY

1. To enter, handprint your name, address, phone number and zip code on an official entry form or a plain piece of paper. Official entry forms can be found in the October 31st, 1991 issue of Rolling Stone, the October 18th, 1991 issue of Entertainment Weekly, the November 1991 issue of US magazine, the November/December 1991 issue of U. The National College Newspaper and the Fall issue of Directory of Classes. You may enter as often as you wish, but each entry must be mailed separately to: AT&T "IT CAN HAPPEN TO ME" SWEEPSTAKES, P.O. Box 4870, Grand Central Station, New York, NY 10163. All entries must be received by December 30, 1991.
2. Winners will be selected in a random drawing from among all entries received. Drawing will be conducted on or about January 15, 1992 by MediaAmerica, Inc., an independent organization whose decisions are final on all matters relating to this sweepstakes. (1) Grand Prize: A 4-day/3-night trip for two to see the concert of winner's choice anywhere in the continental U.S., including roundtrip coach air transfers, tickets to the concert, backstage/VIP passes, limousine service to and from the concert, meal allowance and sightseeing, plus one year's worth of AT&T Long Distance Service awarded as \$800 in AT&T Long Distance Gift Certificates and an AT&T Cordless Phone (total approximate retail value of Grand Prize = \$18,640.00); (2) First Prize: An AT&T Cordless Phone, \$25 in AT&T Long Distance Gift Certificates and five compact discs of winner's choice (total retail value = \$200). All prizes will be awarded and winner notified by mail. Trips subject to availability and confirmation of reservations and must be taken by December 31, 1992. Choice of concert locations is subject to artist's performance schedule, availability of tickets and backstage/VIP passes, and final approval by MediaAmerica, Inc. Limit of one prize per person. Prizes are nontransferable and no substitutions or cash equivalents are allowed. Taxes, if any, are the responsibility of the individual winners. Grand Prize Winner and travel companion consent to the use of their names and likenesses for publicity or trade purposes without further compensation. No responsibility is assumed for lost, misdirected or late entries or mail.
3. Sweepstakes open to residents of the U.S., 18 years of age or older, except employees and their families of AT&T, its affiliates, subsidiaries, advertising agencies, MEDIAAMERICA, INC. and their program suppliers. This offer is void wherever prohibited, and subject to all federal, state and local laws.
4. For a list of winners, send a stamped, self-addressed envelope to: AT&T "IT CAN HAPPEN TO ME" WINNERS LIST, P.O. Box 5019, Grand Central Station, New York, NY 10163 by January 30th, 1992.

Enter the AT&T "It Can Happen To Me" Sweepstakes.

To enter, complete this form and mail to:
AT&T "It Can Happen To Me" Sweepstakes,
Box 2501, Cedar Grove, New Jersey 07009-2501

Name (Please Print) _____
College _____ Year in school _____
Address _____
City _____ State _____ Zip _____
Phone () _____

Current Long Distance Company AT&T — MCI — SPRINT — OTHER —
Current Calling Card Company AT&T — MCI — SPRINT — OTHER —
☐ On Campus Student ☐ Off Campus Student (7437)

All entries must be received by 12/30/91. No purchase necessary. Void where prohibited.
You must be 18 years of age or older to enter.
© 1991 AT&T

Sports

Football Miners Beat Washburn for First Road Victory

By Christopher Goo
STAFF WRITER

Our Miners travelled to Topeka, Kansas and came away with their first road victory of the season. Actually, it was their first road victory in the last three years. They received the breaks in the game, and most importantly, the Miners took advantage of them. Our Miners defeated the Washburn Ichabods 28-13 to spoil Washburn's homecoming.

The game began with Washburn driving to the Miner-22 and facing a 4th and 2, but the defense held, and the Miners took over the ball. The Miners drive was cut short with the help of a holding penalty and the Ichabods took the lead on their next possession.

Talmadge Graham ran over right tackle for a gain of 36 yards, which put the ball on the Miner 3-yard line. Next play, Graham took the ball into the endzone for a Washburn lead of 7-0.

Things got better for UMR on the Ichabod's next possession. Corey Smith fumbled on his own 7-yard line and linebacker Sky Lupo recovered it. Two plays later, Rick Henry rumbled up the middle for three yards and the

field. Quarterback Mike Wise ran over right tackle for a 1-yard touchdown run. The key play in the drive was a 25-yard completion to tight end Chris Kennedy from Wise. This put the Miners up 14-7 until the half.

touchdown reception and the Miners were up 21-7.

The Ichabods struck back in the fourth quarter as Washburn quarterback Dan Holloway began completing passes at will. Holloway found Tracey

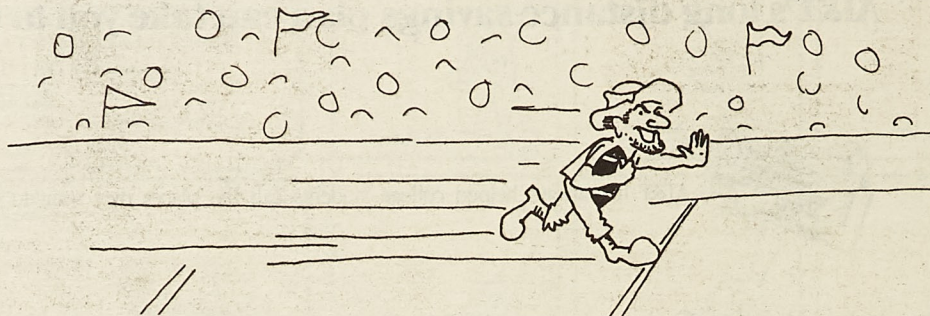
6:46 of the fourth quarter, and drove the ball down to the Miner 6-yard line. Dan Holloway fumbled the ball, and once again, linebacker Mike Swinford recovered the ball.

Three plays later, Mike Wise ran 88 yards for the longest touchdown from scrimmage this year. This iced the game as the Miners won 28-13.

The offense was led by Mike Wise (134 yards rushing, 126 yards passing, 2TDs), Chris Alverson (9 receptions, 78 yards) and Carlos Cain (18 rushes for 99 yards). Defensively, senior Mike Swinford had 10 tackles and two key fumble recoveries.

The Miners play here next week versus CMSU. Both teams have similar records, so it should be a close game. The Miners improved their record to 3-4-1 while Washburn improved their losing record to 0-8.

Score By Quarters	1	2	3	4	F
UMR	0	14	7	7	28
WU	7	0	0	6	13



touchdown. Eivind Listerud's extra point tied the score at 7-7.

After an unsuccessful drive by the Ichabods, the Miners once again had the ball. This time they started from their own 27 and drove the length of

Five minutes into the second half, Chris Shore punted the ball to Carl Johnson at the Ichabod-10, who, promptly fumbled, and Mike Swinford recovered. Three plays later, Wise found Kevin Hug for a 10-yard

Hoffman in the endzone for a 19-yard touchdown completion which cut the lead to 21-13. Placekicker/chokemaster Dave Ruder came on and muffed the extra point.

Washburn took over the ball at

Stop!!!!!! Squiggy Time

By Squiggy
STAFF WRITER

- 8) Nebraska 6-1
- 9) California 6-1
- 10) Alabama 5-1

For the first time since I started this crazy poll it finally held out for a whole week. That's right, Squiggy's Top Ten didn't suffer a single loss. Before we start the story of who did what, let's round up the Big Eight and Big Ten. First off No. 8 Nebraska reamed Missouri 63-6, but Missouri did lead 3-0 though that was very shortlived. Colorado is starting to roll along and Kansas State is turning some heads. Colorado won 10-0 but for the second week in a row Kansas State played outstanding against a nationally ranked opponent. Oklahoma belted Kansas 41-3 and Oklahoma State and Iowa State played a 6-6 tie. In the Big Ten Northwestern upset Illinois 17-11. Indiana beat Wisconsin 28-20. Iowa beat Purdue 31-21 and Ohio State beat Michigan State 27-17.

Only one of my Top Ten teams even got a scare that was No. 5 Notre Dame versus archrival USC. Notre Dame triumphed 24-20 in a major squeaker for the Irish.

Here is the stable Squiggy's Top Ten:

Squiggy's Top Ten

- 1) Florida State 8-0
- 2) Washington 7-0
- 3) Miami 7-0
- 4) Michigan 6-1
- 5) Notre Dame 7-1
- 6) Florida 6-1
- 7) Penn State 7-2

This weekend was anything but stellar. It actually was very boring. Florida State again, however, looked weak against an average team as they beat LSU 27-16. Washington beat Oregon 29-7 in a typically rough defensive game for the Huskies. Miami again beat up their opponent as they won 36-9 over Arizona. Michigan play the Minnesota Gophers and trounced the little rodents 52-7. Florida and Alabama didn't play this week. Penn State hammered West Virginia 51-6. California rolled up 41 points against San Jose State's 20.

This week's big players compiling some outstanding stats were Notre Dame's Jerome Bettis who had 178 yards rushing and two touchdowns. Billy Joe Hobert had 256 yards passing for Washington. Desmond Howard had more Heisman like numbers for Michigan with two touchdowns and 150 plus yards receiving. Casey Weldon, however, had a poor day for FSU.

Up next for the Top Ten are: FSU versus Louisville, Washington versus Arizona State, Miami versus West Virginia on November 9, Michigan versus Purdue, Notre Dame versus Navy, Florida versus Auburn, Penn State versus Maryland, Nebraska versus Colorado for the big game in the Big Eight, California versus USC for a big PAC-10 game, Alabama versus Mississippi state.

Wake Up! It's the World Series!

By A.T. Goon
STAFF WRITER

The World Series has come down to a final and deciding seventh game, but has anybody noticed? I don't know about everyone, but I would be willing to bet that I am not alone in my believing that this has definitely been one of the most boring World Series in memory. I rest assured that I am not

ing, the Minnesota Twins are the biggest bunch of noncharismatic, no-personality players in all of baseball. They went from last place in their division to pennant winners but the press never really jumped on their bandwagon. Why? Because when a journalist writes a story, he wants it to be something interesting that people want to read about. The Twins are boring, plain and simple. As a matter of fact, it's boring to write an article on



alone because of the fact that it has been reported that this World Series has had some of the lowest ratings in recent World Series memory.

Maybe this is due to the fact that the teams are bland. The Atlanta Braves are 9 very good players who play very well together. They, however, don't have anyone outstanding that gives a feeling of excitement or that something is going to happen at anytime. On the other hand, aside from Kirby Puckett, who is barely interest-

how boring they are.

And, unfortunately, for the World Series sponsors, the Braves are not much more exciting. What little excitement they do have is greatly overshadowed in the media by their egomaniac owner Ted Turner and his communist sidekick Jane Fonda. Even though we are going to have a game seven about the only thing I will watch it for is to see those cruel Braves fans making a mockery of Indian culture.

Ruggers Report

The UMR Rugby team attended the 24th Annual Heart of America Tournament in Kansas City last weekend. The young UMR squad led by veteran players Chris and Marcus Chichura took an impressive 5th place by beating Kansas University (16-8). Attending the tournament were 31 other men's teams and 8 women's teams. The UMR team was very happy with the performance of its new members. They played extremely well causing a couple of upsets for other veteran teams.

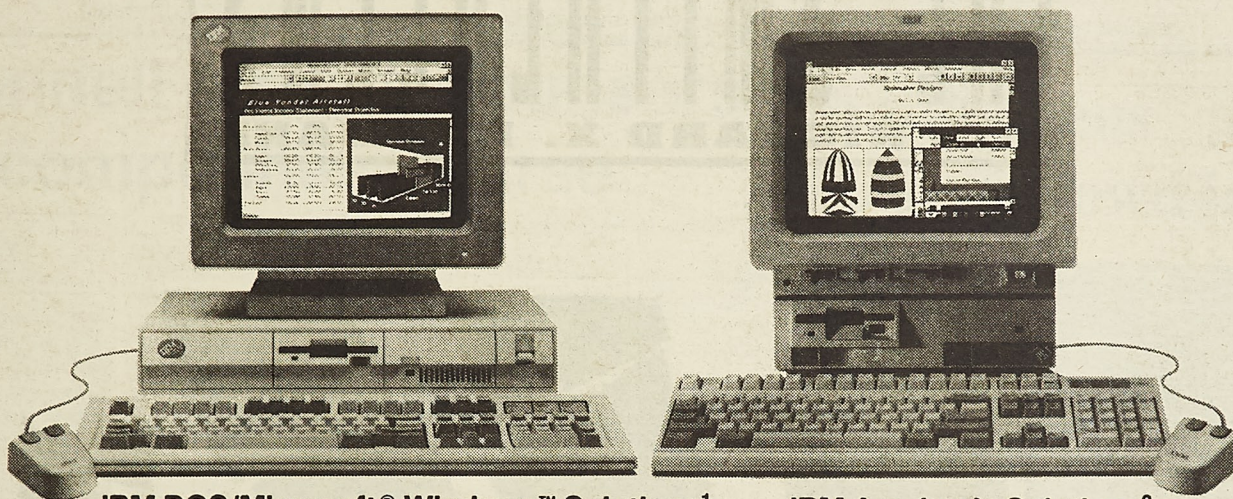
The UMR Rugger's' next tournament will be the Ozark Tournament at Fayetteville, Arkansas on November 9 and 10. The hopes are high for an even higher place finish.

For anyone interested in playing Rugby for UMR this semester or next please contact: President Pat Winkelman 364-9792. The practices are every Tuesday, Wednesday, and Thursday night at 5:00 on the Fraternity Row Rugby Fields.

M-CLUB
Source

M-Club "athlete of the week" is Pat Risner. Pat, a junior in the Mining engineering department, was a key element in the Miners' 27-21 upset of the Emporia State Hornets on October 29th. Pat not only had two interceptions, six tackles, and two breakups, but he was also named MIAA Player of the Week. Congratulations Pat!!

First choose your major. Then choose your weapon.



IBM DOS/Microsoft® Windows™ Solutions ¹						IBM Academic Solutions ²					
MODEL	PS/1 2011-T35	PS/2 8555-T81	PS/2 8557-3T1	PS/2 8570-T81	PS/2 LAPTOP 8543-3T1	PS/1 2011-U35	PS/2 8530-U42	PS/2 8555-U41	PS/2 ¹ 8555-W81	PS/2 ¹ 8557-3W1	PS/2 ¹ 8570-W81
MEMORY	2.5MB	4MB	4MB	4MB	2MB	2.5MB	2MB	4MB	4MB	4MB	4MB
PROCESSOR SPEED	10 MHz	16 MHz	20 MHz	25 MHz	20 MHz	10 MHz	10 MHz	16 MHz	16 MHz	20 MHz	25 MHz
FIXED DISK DRIVE	30MB	80MB	80MB	80MB	60MB	30MB	45MB	40MB	80MB	80MB	80MB
DISPLAY	VGA Mono	8515 Color	8515 Color	8515 Color	LCD	VGA Color	8513 Color	8513 Color	8515 Color	8515 Color	8515 Color
PRICE*	\$1,099	\$2,549	\$3,299	\$4,199	\$3,599	\$1,249	\$1,699	\$1,999	\$2,599	\$3,349	\$5,499

¹All models include an IBM mouse and are preloaded with DOS 5.0, Microsoft Windows 3.0, Microsoft Entertainment Pack for Windows and ToolBook™ (runtime version). Laptop Model 3T1 includes an IBM Trackpoint instead of an IBM mouse.

²These models also include Microsoft Word for Windows, # METZ™ File F/X, Reference Software Grammatik™, hDC MicroApps™ and Formula Editor.

^{††}These models also include Microsoft Excel® 3.0.

In the battle that's called "academics," you must choose your path carefully. Luckily, IBM offers a range of PS/2® and PS/1™ Selected Academic Solutions* that can help you now, and down the road as well. IBM makes it all possible with special

student prices and affordable loan payments.** Buy now, and you'll get a special Bonus Pack† worth over \$1,000 in savings on air travel, phone calls, software and more. Visit your campus outlet to find out how to *make an IBM Personal System click for you.*

For More Information Contact:

David Fannin

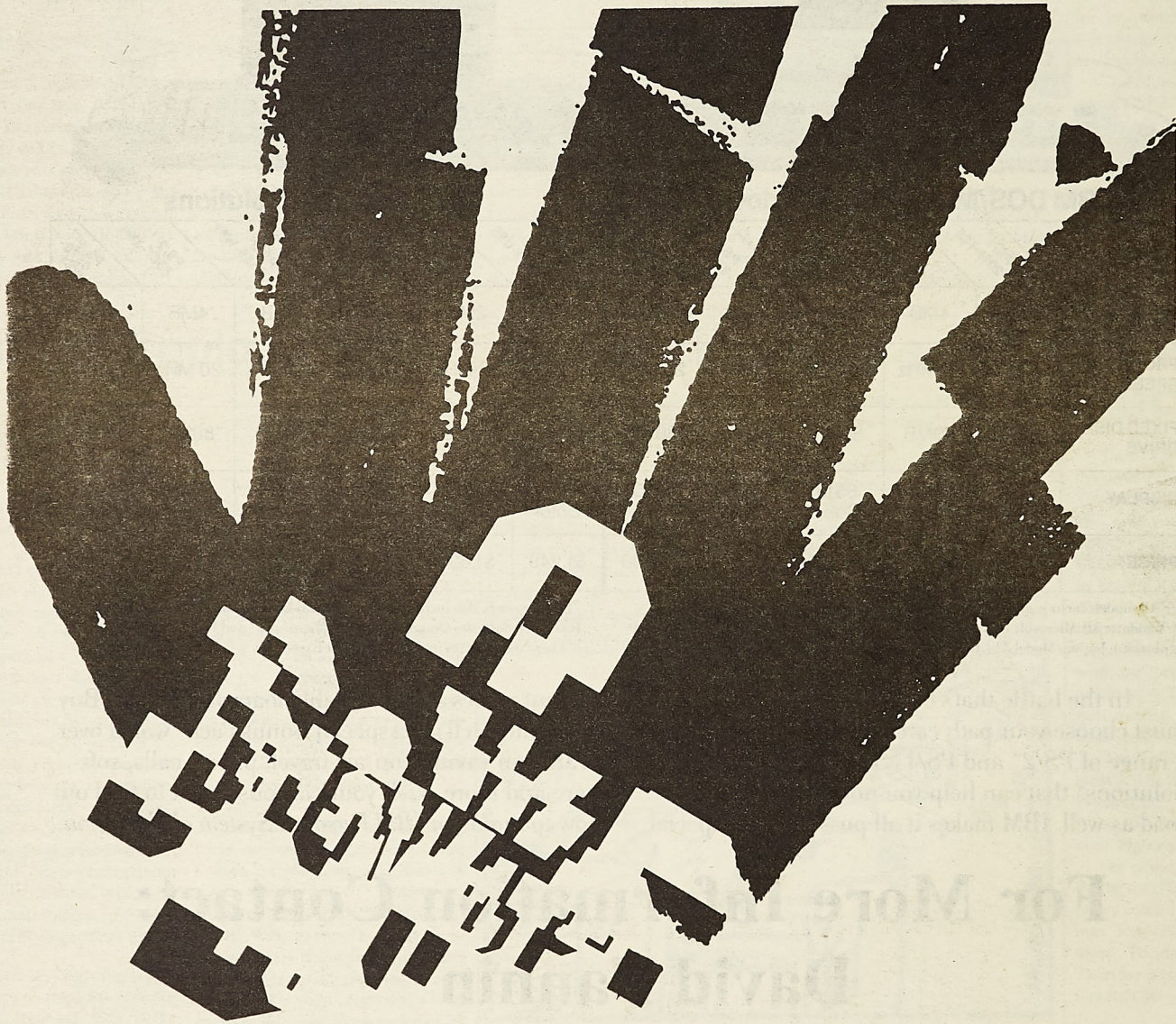
114 Math/Comp Sci

341-4841



*This offer is available to nonprofit higher education institutions, their students, faculty and staff, as well as to nonprofit K-12 institutions, their faculty and staff. These IBM Selected Academic Solutions are available through participating campus outlets. IBM Authorized PC Dealers certified to remarket Selected Academic Solutions or IBM 1 800 222-7257. Prices quoted do not include sales tax, handling and/or processing charges. Check with your campus outlet regarding these charges. Orders are subject to availability. Prices are subject to change. IBM may withdraw the offer at any time without notice. **PS/2 Loan for Learning lets you borrow \$1,500-\$8,000. †The Bonus Pack expires December 31, 1991. ††Microsoft Word for Windows and Microsoft Excel are the Academic Editions. IBM and PS/2 are registered trademarks and PS/1 is a trademark of International Business Machines Corporation. All other brand and product names are registered trademarks or trademarks of their respective owners. © 1991 IBM Corp.

Student Union Board presents
THE SMITHEREENS
with **RICHARD X. HEYMANN**



Friday • November 8, 1991 • 8:00 pm • Gale Bullman • Multi-Purpose Building

Advance tickets go on sale in front of the UMR Bookstore, University Center West Monday, Oct. 21, 1991
Tickets also available at: Woolf Music, Forum Video, Key Sport, charge by phone DIALTIX 314-291-7600

TICKETS: \$5* ADVANCE STUDENT W/ VALID UMR ID (ONE PER ID) • \$10* GENERAL ADMISSION

All tickets will be \$10 day of show • Ticket quantities are LIMITED • Ticket prices include taxes • For more information call 314- 341- 4220



McD
UMF

News
50

The University
and McDonnell
Louis have teamed
about composites
have a number
because of their
strength.

"The course
information about
ies in the aerosp
plans Dr. Lokesh
professor of engi
"It has been expa
use of composite
ented products su
sporting goods, b
building and brid
ents also are ins
composites, which
cial limbs and den

This is the thir
laborative course
senior and grad
UMR's mechanic
engineering and en
is department. Th
students in all eng
science disciplines

Intern

By Rob V
STAFF V

United
(Louis

A political ma
in Louisiana. Dav
Ku Klux Klan Im
feared, defeated the
nor in an open prim
the sole candidate
ticket for govern
claim he is not an
nominee and the pa
to deal with him. T
Louisiana has a no
The GOP fears that
cally shifted to the
many back to the De
extremely popular
working class in the
party opposes him t
port also. A no-win
faces the Republican
a critical time for