



16 Oct 1991

The Missouri Miner, October 16, 1991

Follow this and additional works at: https://scholarsmine.mst.edu/missouri_miner

These newspapers reflect the attitudes, perspectives, and beliefs of different times. Neither the library nor the university endorses the views expressed in these collections, some of which contain images and language which may be offensive to some readers.

Recommended Citation

"The Missouri Miner, October 16, 1991" (1991). *The Missouri Miner Newspaper*. 2589.
https://scholarsmine.mst.edu/missouri_miner/2589

This Newspaper is brought to you for free and open access by Scholars' Mine. It has been accepted for inclusion in The Missouri Miner Newspaper by an authorized administrator of Scholars' Mine. This work is protected by U. S. Copyright Law. Unauthorized use including reproduction for redistribution requires the permission of the copyright holder. For more information, please contact scholarsmine@mst.edu.



Missouri Miner



A publication of the students of the University of Missouri-Rolla

October 16, 1991

Volume 80, Number 7

Sixteen pages

Lucky to deliver 1991 UMR Porth Lecture

News Services
SOURCE

Robert W. Lucky of AT&T Bell Laboratories will deliver the 1991 Porth Lecture at the University of Missouri-Rolla Wednesday, Oct. 23.

His talk, titled "Modern Communications and Ancient Dreams," will begin at 3 p.m. in Room 114 of the Civil Engineering Building. The lecture is free and the public is invited to attend.

Lucky, who received B.S., M.S. and Ph.D. degrees from Purdue University, joined AT&T Bell Laboratories in Holmdel, NJ, after graduation. He was initially involved in studying ways of sending digital information over telephone lines. The best known outcome of this work was his invention of the adaptive equalizer—a technique for correcting distortion in telephone signals which is used in all high-speed data transmission today.

A textbook on data communications which he co-authored became the most cited reference in the communications field over the period of a decade.

Lucky is currently the executive director of the Communications Sciences Research Division. The division conducts research on the methods and technologies for future communication systems, including optical fiber technology, data networks, mobile communication, image processing and broadband communications technologies and services.

He has been a guest on a number of network television shows, including Bill Moyers' "A World of Ideas," where he discussed the impacts of future technology advances. He is the author of "Silicon Dreams," a discussion of the ways humans and computers deal with information.

The Porth Lectureship was established at UMR by Virginia Lee Porth in memory of her father, Harry William Lee Porth, who received a bachelor's degree in mining engineering in 1911 and the professional degree of mechanical engineer in 1924 from

UMR, then known as the University of Missouri School of Mines and Metallurgy.

While at UMR, he was a member of Kappa Sigma social fraternity and Tau Beta Pi, engineering honor fraternity. He played with the basketball teams of 1907, 1908, 1909 and 1911.

Porth worked for the Nevada Hills Mining Co. and then went to work for Swift and Co. in Chicago. He served in several engineering assignments in the Swift plant at the Union Stock Yards and was in charge of the railway car department until his death in 1925.

The lecture is sponsored by UMR's School of Engineering.

Current poll shows support for Thomas

By Bob Ross
STAFF WRITER

These new attacks on Judge Clarence Thomas would seem to have a negative effect on his popularity with the American people. Not so says a recent New York Times/CBS poll. Even though Anita Hill has made some serious accusations about Thomas, it has not eroded public support of him.

In several claims made earlier this week Hill charged that Thomas had subjected her to sexual harassment when she worked at the Equal Employment Opportunity Commission in the early 1980's.

Fierce political debate has sparked from these accusations, but it has not substantially affected support for Thomas. The Times/CBS Poll shows that 38 percent of people still believe

that Thomas should be confirmed—almost double the amount of people who believe that he shouldn't be confirmed. Thirty-nine percent of the people who were polled still do not have an opinion.

A great many people don't believe Hill's accusations. Almost 50% believe that these charges were not true. Only 21% believe that the charges were true.

Thomas' support is higher among men than among women. Almost forty-three percent of men believe that Thomas should be confirmed. A mere thirty-three percent of the women polled believe that Thomas should be confirmed. Twenty-two percent of the men believed that Thomas should not be confirmed along with eighteen percent of the women.

A separate poll conducted to women who suffered sexual harass-

ment, thirty-three percent said they supported Thomas' confirmation as a supreme court justice. A surprisingly low twenty-three percent said they opposed it.

A poll taken in September before the hearings began showed fifty-nine percent of respondents were either undecided on whether he should be confirmed. Of those who had an opinion twenty-four percent said he should be confirmed—twice the amount of people who believed that Thomas should not be confirmed.

The latest poll conducted Wednesday questioned almost 512 people. The poll had a plus or minus error of 5 percentage points.

Two percent of the respondents interviewed again in the same week had shifted support. An equal number of people shifted from opposition to support.

Portrait of Mrs. V. H. McNutt unveiled at recent ceremony

News Services
SOURCE

A formal unveiling of a portrait of Mrs. Vachel H. McNutt, which will be permanently displayed in McNutt Hall at the University of Missouri-Rolla, was recently held in the commons area on the second floor of the building. The event was hosted by UMR's School of Mines and Metallurgy.

Mrs. McNutt, who died in 1983, was the widow of Vachel H. McNutt for whom UMR's mineral engineering building is named.

Vachel H. McNutt, a UMR alumnus and former geology instructor, was a pioneer economic geologist who discovered numerous oil and gas deposits and the first commercial deposits of potash in the Western Hemisphere.

V.H. McNutt received a B.S. degree in mining engineering (1910), an M.S. (1912), and an engineer of mines degree (1915) from UMR. While teaching geology at UMR, he developed the first course in petroleum geology taught in any institution west of the Allegheny Mountains.

During the last years of McNutt's life when he was seriously ill, Mrs. McNutt took over much of the handling of McNutt's business operations

and carried on this work after his death in 1936.

In 1961, Mrs. McNutt established the V. H. McNutt Foundation at UMR, naming the department of geology and

geophysics as beneficiary. The income is used for the needs of the department with most of it given to students in the form of scholarships. The V.H. McNutt Memorial Foundation

contributed \$2 million in 1983 toward the construction of McNutt Hall.

In 1964, UMR awarded Mrs. McNutt the institution's first honorary doctor of humane letters degree.



News Services

Special guests at the ceremonies were Bill McNutt, Mrs. McNutt's son (left), Dr. Ray Morgan, professor emeritus of geology and geophysics (center), and Mrs. McNutt's friend, Ruthie Johnson (right).

Calendar of Events

Wednesday

Student Lawyer, 2:30 pm., Walnut

Test Anxiety Seminar, 3:30 pm., 208 Norwood

Spelunkers Club Mtg., 6:00 pm., 204 McNutt

Wesley Mtg., 6:00 pm.

Blue Key Mtg., 6:15 pm., 216 ME

Amer. Soc. of Civil Eng. Mtg., 7:00 pm., 114 CE

Alpha Chi Sigma Mtg., G-3, Schrenk

Phi Eta Sigma Mtg., 8:00 pm., G-5, II-SS

Chemical engineering seminar, Robert L. Santi, "Numerical Modeling of Flow and Transport in Systems with Free, Moving and Open Boundaries," 4 pm., Rm. 125, Schrenk Hall

Juggling Club meets at 5:00 p.m. at the Hockey Puck. As always beginners are welcome.

Thursday

Anyone wishing to develop and improve:

* Good speaking and presentation skills
* Ability to think quickly and clearly on your feet

* Better listening talents

* Strong leadership skills

TOASTMASTERS CAN HELP!

Regular meetings are held every Thursday at 4:45 in UCE.

For more information contact Kay at 341-5987

Newman Scripture Study, 12:30 pm.

Chi Epsilon Mtg., 4:00 pm., 117 CE

Eta Kappa Nu Mtg., 6:00 pm., 103 EE

Pi Tau Sigma mtg., 6:00 pm., 107 ME Annex

Intercollegiate Knights Mtg., 6:00 pm., 204 McNutt

Alpha Phi Omega mtg., 6:30 pm.

American Nuclear Societ mtg., 6:30 pm., 227 Fulton.

KME Math Help session, 7:00 pm., 203 M-CS

W. T. Schrenk Soc. Mtg., 7:00 pm., 121 ChemE

GDI mtg., 7:00 pm., 114 CE

EIT Review Session, "Engineering Economics," 7:00 pm, Rm. 117, Civil Eng. Bldg.

UMR Fall Film Series, "Hamlet," 7:00 pm, Miles Auditorium, ME. Admission season ticket or \$3 at door.

Gaming Assoc. mtg., 8:00 pm., 208 ME

Ceramic eng. seminar, Wayne Huebner, "Analysis and Development of Piezoelectric Composites for Medical Ultrasound Transducer Applications," 3:30 pm., T.J. Planje Lecture Hall

Friday

Muslim Students Assoc. Mtg., 1:30 pm.

The UMR Trap and Skeet Club will hold meetings every Friday at 3:30 in T2 (the white building behind the library). The club will go out and snoot after the meeting. All interested persons are welcome to attend. For more information, contact Mike Giboney at 364-6991 or Jim Miller at 341-2892, Jeff Spencer at 341-8420 or Eric McVicker at 341-8016.

Campus Performing Arts Series "Burning Feet Dance", 8:00 pm, Leach Theatre, Castleman Hall, Admission free to UMR students. Tickets to be picked up at the ticket office in UCW. The office is open from 8:00 am to noon and 12:30-4:30 pm, Monday through Friday. For more information call 341-4219

Burning Feet Dance, a modern dance troupe led by artistic director Suzanne Grace, is known for its sense of humor, inventiveness, diligent work and use of the human form to express ideas, emotions and environments.

Society of Women Engineers conference, "Exploring Horizons in Engineering," for high school students, 8:00 am., UCE

Mathematics and Statics department colloquium, David Sarowski, "Play to the Death!", 3:30 pm., Rm. 209-209A, Math-Comp. Sci.

University of Missouri Board of Curators meeting in Columbia

Saturday

UM-Rolla Day

Mid Semester

Hall of Fame Brunch, 10 am, UCE. Eight people will be inducted into the MSM/UMR Hall of Fame and will be honored at the UMR Football game vs. Emporia State. For more information call Edith Newberry 341-4175.

UM-Rolla Day, open house for high school and junior college students, registration 8:30-11:30 am., UCE

UMR Miner Football, Emporia State College, 1:30 pm., football stadium.

UMR Bookstore open 9:00 am.

Army ROTC 5K Run/Walk, Red Ribbon Campaign Kickoff, Ber Juan Park, 9:00 am

Sunday

Student Mass, 5:00 pm.

Wesley Chapel, 7:00 pm.

University Orchestra performance, 2:00 pm, in Leach Theatre, Castleman Hall. For more information call 341-4219. Free admission.

UMR Men's Soccer, Northeast Missouri State University, Kirksville, 1:00 pm., UMR Soccer Complex. Free admission.

Monday

Study Skills seminar, Gene Van Matre, 3:30 pm., Rm. 208 Norwood Hall

Women's Soccer vs. Lindenwood

GDI BOG, 6:00 pm., 114 CE

Christian Campus Fellowship Mtg., 6:00 pm., Missouri

BSU Bible Study, 6:30 pm.,

Eta Kappa Nu Help Session, 7:00 pm., 101 EE

National Society of Black Engineers mtg., 7:00 pm., 204 McN

Chemistry seminar, Eric Peterson, 4:30 pm., Rm. G-3, Schrenk Hall

"Mock" Road Block, state and 11th, 1:30 am. 12:30 pm.

Mary Peterson, University of Iowa, A.S.S. (Alcohol, Sex & Stress), 8:00 pm., 104 ME

Tuesday

Student Lawyer, 2:30 pm., Walnut

Sport Parachute Club mtg., 5:30 pm., 212 McNutt

SAE, 6:00 pm., 104 ME

Hang Gliding Club mtg., 6:30 pm., 104 ME

IEEE mtg., 7:00 pm., 114 CE

Tau Beta Pi mtg., G-3, Schrenk Hall.

Student Council Mtg., 6:30 pm., 204 McNutt

Chi Alpha Mtg., 7:00 pm., Maramce

KME Math Help Sessions, 7:00 pm., 203 M-CS

Christian Science Mtg., 7:15 pm., Sunrise

Chemistry seminar, David n. Harpp, "Aspects of Organo Sulfur Chemistry," 4:30 pm., Rm. G-3, Schrenk Hall

EIT Review Session, "Mechanics of Materials" 7:00 pm, Rm. 117, Civil Eng. Bldg.

"Mocktail" Competition, 12:00 pm., Hockey Puck, (Winner to be announced at 8:00 pm.)

SUB presents Alan Ross, Comedian/Musician IFC and the St. Pat's Board will be serving "Mock-tails", 8:00 pm., UCE cafeteria.

Next Wednesday

Spelunkers Club Mtg., 6:00 pm., 204 McNutt

Wesley Mtg., 6:00 pm.

Phi Tau Sigma Mtg., 6:00 pm., 105 ME

Cycling Club Mtg., 8:00 pm., 210 McNutt

Newman Mass, 9:00 pm.

Chemical engineering seminar, Wayne Huebner, "Processing Opportunities in Advanced Electronic Ceramics-Powders and Thin Films," 4 pm., Rm. 125, Schrenk Hall

Juggling Club meets at 5:00 p.m. at the Hockey Puck. As always beginners are welcome.

American Institute of Chemical Eng. mtg., 7 pm., G-3 Schrenk Hall.

Associated Genral Contractors mtg., 7:00 pm., 114 CE

Society of Mining Engineers mtg., 7:30 pm., 204 McNutt

Controlled Drinking Demonstration, 7:00 pm., 104 ME

Noday

Cap and Gown information

Students receiving masters and bachelors degrees may purchase their cap and gown at the UMR Bookstore anytime after Dec. 12. Masters and bachelors attire need not be ordered in advance. Cap and gown orders for faculty, staff, and PhD students will have a deadline of Nov. 27 and may be picked up after Dec. 12.

The UMR Bookstore will remain open on Saturday Dec. 21 from 9:30 to 4:30 pm.

Preregistration Oct. 28 - Nov. 1

Preregistration for the Winter semester will be Oct. 28 through Nov. 1. Students should obtain their preregistration materials and schedule of classes from the Registrars office starting Oct. 24. Detailed information regarding preregistration will be found in the front section of the Winter Schedule of Classes.

December Graduates - If you will be completing requirements for a degree next December, you should make application for that degree by going to the Registrar's office at your earliest convenience.

The University's Recruiting Service Department will begin accepting applications for the Student Ambassador group on Sept. 1.

If you are interested, you can pick up an application form in 102 or 106 Parker Hall. Applications will be accepted from Sept. 1 to Oct. 1.

All levels from Freshmen to Seniors may apply. You must have a cumulative GPA of 2.4 to apply and you must maintain that average to remain

in the program.

Interviews will begin in early Oct. You will be notified by mail if you are qualified for an interview. Five new ambassadors will be selected. If you have any questions about the Ambassador program, call 341-4904 and ask for Lynn. All deadlines are final, no exceptions will be made.

The Phonathon office has moved to the first floor of Buehler Bldg., Mailing Address is 101 Buehler Bldg., Calling Facilities are in rooms 102, 103, 104

Want to help usher in the premier performing-arts season at Castleman Hall?

You can, by volunteering as an usher for the performances. As an usher, you'll greet people, show them to their seats and take in some fine entertainment. And as a bonus, after you've ushered for a certain number of performances, you'll receive two complimentary tickets to a future performance at Leach Theatre. (Or, if you prefer, a gift certificate from a local eating establishment.)

An organizational meeting for ushers will be held at 7:00 pm, Wednesday, Oct. 9, in Leach Theatre at Castleman Hall. For more information about becoming an usher, contact Sue Krogsdale at 341-6985.

Financial Aid

For more information and/or applications pertaining to the following scholarships, contact the Student Financial Aid office, G-1 Parker Hall.

National Academy For Nuclear Training Scholarships are awarded to college students who

have demonstrated outstanding academic achievement and who are interested in pursuing careers in the U.S. nuclear utility industry. For the 1992-93 academic year, 275 new and renewal merit-based scholarships of \$2,250 each will be awarded. Eligibility requirements are:

- * be a U.S. citizen or U.S. national
- * be considering a career in the nuclear utility industry
- * be enrolled at an accredited U.S. college/university in an approved curriculum related to a career in the nuclear utility industry, such as: nuclear, chemical, mechanical,

electrical engineering, power generation, health physics

- * have a minimum GPA of 3.0 as of Jan 1, 1992
- * be free of post college obligations
- * must have remaining at least one but no more than three academic years of study

Early in Oct., information and application materials will be mailed to the faculty representative appointed by the dean of engineering. Students may also request application materials directly from the program. Applications must be postmarked by February 3, 1992.

The St. Louis Chapter of the Missouri Society of Professional Engineers Auxiliary is once again awarding \$1500 scholarships to engineering students for the 1992-93 academic year. In the past at least onescholarship was awarded to a UMR student. The requirements are that the student be a junior or senior engineering student in the 1992 Fall semester, good scholastic achievements, and financial need. Former recipients are eligible to apply for a renewal and students and parents must

See Financial Aid, page 3

Missouri Miner

The **Missouri Miner** is the official publication of the students of the University of Missouri-Rolla. It is distributed each Wednesday afternoon at Rolla, Missouri and features activities of the students of UMR.

All articles, features, photographs, and illustrations published are the property of the **Missouri Miner** and may not be reproduced or published without written permission.

The **Missouri Miner** encourages comments from its readers, and will attempt to print all responsible letters and editorial material received. All submissions must have a name, student ID number, and phone number for verification. Names will be withheld upon request.

Submissions for publication must be in our drop box (first floor of the Norwood Hall, Room 103) by 3:30 p.m. on the Thursday before publication. The **Missouri Miner** reserves the right to edit all submissions for style, grammar, punctuation, spelling, length, and matters of good taste.

The **Missouri Miner** is operated by the students of UMR and the opinions expressed in it do not necessarily reflect those of the university, faculty, or student body.

Editor-in-ChiefMatt Licklider (364-4841)

Business ManagerConnie Crossen

Asst. Business Manager

Advertising DirectorDan DeArmond (364-9783)

Asst. Advertising DirectorDave Carpenter

Subscriptions and Tearsheets

Managing EditorTom Brown (364-4481)

CirculationMike Matthews (364-1433)

News EditorSteve Puljak (364-8968)

Asst. News EditorFrancine Belaska

Features EditorGreg Denzer (364-8968)

Asst. Features EditorJohn Humphrey

Sports EditorJeff Lacavich (364-7583)

Asst. Sports Editor

Photo EditorBrett Goodman (364-1433)

Copy M.....

Staff Writers: Eric Hardin, Eric S. ...r, Matt McNett, Tom Brown, Gary Meyer, Kelly Bernal, Jeff Lacavich, ...
Typesetters: Kelly Bernal, Rajesh Shinde
Graphic Artists: Joe Jones, Michael Weiland
Advertising Representatives: Jeremy Buchanan, Kevin Miller, Barb Meder
Proofreaders: Tom Harris, Brooke Sander

103A Norwood Hall
University of Missouri-Rolla
Rolla, MO 65401-0249
(314) 341-1235
(314) 341-1312

New organization I.M.P.A.C.T. is coming

By Ricky Finley
I.M.P.A.C.T. Steering Committee

I.M.P.A.C.T. is coming. No, it is not Christian Okoye running over those poor defenseless Bills, and it is not Steven Segal in his latest blockbuster. It is I.M.P.A.C.T. Week, Saturday October 19 to Friday October 25. I.M.P.A.C.T. is indeed smashing into UMR.

I.M.P.A.C.T. signifies an acronym for:

I ntelligent
M iners
P romoting
A lcohol
C oncern
T ogether.

The purpose lies in the idea that in this over-stressed and overworked environment there are positive alternatives to getting baked.

A steering committee consisting of students in the Greek system, residential halls, and off-campus put together this program, I.M.P.A.C.T.



Week, for that purpose. Each day, kicking off on Saturday morning, there will be a different even promoting our theme.

Here is a brief schedule of the events we have planned for the week:

Saturday, Oct. 19:

ROTC 5k Run/Walk, 9:00 A.M. at the Ber Juan Park and also the Red Ribbon Campaign kickoff.

Monday Oct. 21:

A.S.S. (Alcohol, Sex, Stress) program at 8:00 P.M. in ME 104.

Tuesday, Oct 22:

"Mocktail" competition at 12:00 P.M. at the Hockey Puck and later that night, 8:00 P.M. U.C.E. cafeteria, Alan Ross, comedian/singer stars in the I.M.P.A.C.T. Night Club.

Wednesday Oct. 23:

Controlled Drinking Demonstration at 7:00 P.M. ME 104 (starring our own faculty).

Thursday Oct. 24:

"Punch Bowl" Trivia Competition, 7:00 P.M., CE 114 (cash prizes!).

Friday Oct. 25:

T.G.I.F. BBQ, 11:30 A.M. - ? Hockey Puck.

LOOK FOR SCHEDULES ALL AROUND CAMPUS!

Explosives seminar offered

News Services
SOURCE

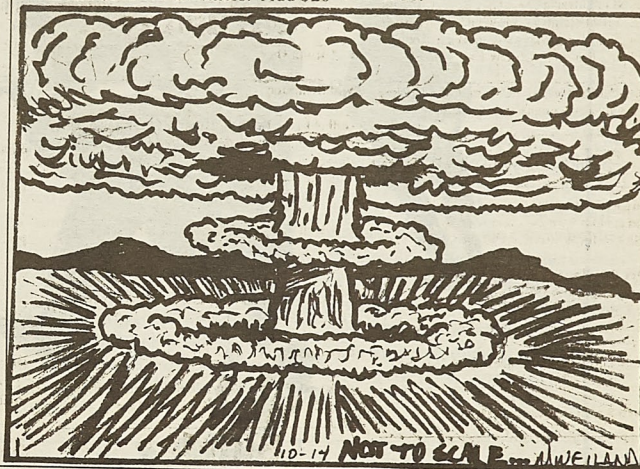
The University of Missouri-Rolla's Continuing Education Unit in 1992 will offer two short courses for people who handle, store or transport explosives.

A blasters training seminar will be held Feb. 24-26 on campus. The program, which is the Missouri Limestone Producers Association's voluntary program for blaster certification, is intended for those who use explosives in the quarrying and construction industries. The course involves 20 hours of instruction and costs \$335 for members of the Missouri Limestone Producers Association and \$375 for all others. Add \$20

to take a blasters certification examination after the workshop.

A short course on explosives handling and safety will be held May 20-22 at Fort Leonard Wood. This program is intended for people who supervise the handling, storage or transportation of explosives; government regulators, and emergency response and law-enforcement personnel. The course will cover such areas as explosives definition and classification for explosives initiation sensitivity; storm and lightning hazards and accidents. The course involves 16 hours of instruction (1.6 continuing education units) and costs \$595.

To enroll in either course or for more information, contact UMR's Continuing Education Unit at 314-341-4200.



Pennario to perform at UMR

News Services
SOURCE

Classical pianist Leonard Pennario will perform at the University of Missouri-Rolla Oct. 25 as the 16th presenter in the campus's Remmers Special Artist/Lecture Series. The performance begins at 8 p.m. in Leach Theatre of Castleman Hall, 10th and Main streets.

Pennario will give the dedication performance on a Steinway piano that he selected especially for Leach Theatre. The piano is a private gift to UMR.

The performance is free and open to the public, but seating is reserved

and tickets are required for admission.

Tickets will be available beginning Monday (Oct. 7) at the reservationist's desk in the University Center-West at UMR. The office is open from 8 a.m. to noon and 12:30-4:30 p.m. Monday through Friday. For more ticket information, call 341-4219.

Pennario's career began in 1936 when, at age 12, he was called in to replace the pianist of the Dallas Symphony Orchestra. Pennario has since appeared with every major orchestra in the United States.

The UMR Remmers Special Artist/Lecture Series is supported by a fund established by UMR alumnus Walter E. Remmers; his wife, Miriam, and other members of the family.

Freshman Engineering awarded

News Services
SOURCE

The University of Missouri-Rolla's Freshman Engineering Program will receive an Outstanding Institutional Advising Program Award from the National Recognition Program for Academic Advising.

The award, a Certificate of Merit, will be presented in October at the National Academic Advising Association Annual Conference in Louisville, KY.

"UMR's Freshman Engineering Program is designed to provide first-rate academic advice to freshman students studying engineering and to provide career information to help make informed career choices," according to the program's director, Dr.

D. Ronald Fannin. "The goal of the program is to enhance student success.

"Thirty-two UMR faculty members advise from 900 to 1,000 students this time of the year," says Fannin. He adds that prior to this year, approximately 4,000 students have participated in the program, which started during the 1986-87 academic term.

Awards are presented to college and university programs which represent new approaches to effective academic advising, use resources creatively, demonstrate positive results and are applicable to a variety of universities. To be eligible, programs must have been implemented within the past three to four years.

The competition was sponsored by American College Testing and the National Academic Advising Association.

Financial Aid

from page 2

reside in the metropolitan St. Louis area or in the state of Missouri.

Deadline: Turned in to the Student Financial Aid office by November 19, 1991.

Fall 1991 Missouri Higher Education Academic (BRIGHT FLIGHT) Scholarships

The Fall 1991 "Bright Flight" checks are now available in the Cashier's office, basement of Parker Hall. If you are a "Bright Flight" recipient, please go to the Cashier's office. Cashier's hours are from 8:15 a.m. to 3:15 p.m.

Society for the Advancement of Material and Process Engineering

SAMPE is kicking off their 1992 Undergraduate Awards Program for Engineering Students. The 1992 awards are: 1st place - \$3000, 2nd place - \$1500 and upto 25 - \$1000 awards. Eligibility requirements are:

- * Those pursuing a BS in engineering
- * Must be a full time student in one of the accredited EAC or CAB programs listed for the attended institution.
- * Must be recommended by his or her department head.
- * Applicant must have a 3.3 minimum cumulative GPA based on 4.0
- * High school and college seniors are not eligible.

Deadline: Feb 1, 1992

National Scholarship Program of the Printing, Publishing and Packing Industries

The trustees of the National Scholarship Trust Fund take pleasure in announcing the annual national competition for approximately 100 scholarships to be awarded for professional and executive careers in the graphic communications industry. Eligibility requirements:

- * Interested in a career in graphic communications.
- * A high school senior or a high school graduate who has not yet started college, or
- * A college freshman, sophomore, or junior who is enrolled in a two or four year college

program.

* Must be a full time student.
Deadline: March 15, 1992

Tylenol Scholarship Fund

The TYLENOL Scholarship Fund will award ten \$10,000 and five hundred \$1000 scholarships to deserving students next year. The scholarships will be awarded on the basis of leadership activities, academic record and a clear statement of educational and career goals. They will go to outstanding students who will be enrolled in an accredited two or four year college, university or vocational school in the Fall of 1992. Application forms are available at participating TYLENOL retailers or by mail: TYLENOL Scholarship Program, P.O. Box 5707, Clinton, IA 52736.

Deadline: December 1, 1991

Undergraduate Scholarships

Twenty-five scholarships are available for undergraduate students majoring in engineering and science disciplines. Sponsored by the U.S. Department of Energy (DOE) and administered by Oak Ridge Associated Universities, the scholarships are designated for those students interested in pursuing careers in environmental restoration or waste management (ER/WM).

Applicants must be U.S. citizens and currently pursuing an Associate of Science or Bachelor of Science degree full time. The Environmental Restoration/Waste management Scholarship program includes full payment of tuition and fees at a DOE approved institution, a \$600 monthly stipend, and a three-month practicum assignment at a DOE facility engaged in environmental restoration and waste management.

Selection is based on academic performance, recommendations, background, and a statement of career goals by the applicants. The competition is nationwide although four year institutions and two-year institutions will compete in separate categories.

Scholarship applications are being taken through Jan. 31, 1992, and awards will be announced in May 1992. For applications or more information contact Peggy Gibson, Environmental Restoration/Waste management Scholarship Program,

Oak Ridge Associated Universities, Science/Engineering Education Division, P.O. Box 117, Oak Ridge, TN 37831-0117, or call (615) 576-9278.

In 1975 the U.S. Congress established the Harry S. Truman Scholarship Foundation as a memorial to Missouri's native son. The Foundation grants scholarships to college students who are committed to public service. The Foundation defines public service as "government at any level, uniformed services, public-interest organizations, nongovernmental research and/or educational organizations, and public-service oriented non-profit organizations such as those whose primary purposes are to help needy or disadvantaged persons or to protect the environment."

The scholarships are monetarily generous but limited in number. Students eligible to be nominated by their colleges and universities must be Juniors who are full time students.

They must be ranked in the upper third of their class. And they have to be U.S. citizens. Ninety-two scholarships will be awarded in 1992, one from each state and from other territories, and the Foundation will also select at-large winners. Students awarded scholarships will receive up to \$3,000 for their senior year of undergraduate education and as much as \$27,000 for graduate studies.

Despite nominating some quality students over the years, the University of Missouri-Rolla student body has never won a Truman Foundation Scholarship. Perhaps this is the year.

The campus faculty representative is Donald B. Oster, Associate professor of History. He is actively soliciting possible nominations from the faculty. In addition, prospective

nominees can contact Oster directly. Oster's address is: Department of History and Political Science, H-SS Building. His phone number is 341-4817.

Since any nomination package must be in the hands of the Truman Scholarship Foundation, Princeton, New Jersey, no later than Monday, December 2, 1991, names for possible nomination must be submitted to Oster no later than October 15.

DAVID AIKMAN

TIME Magazine
Chief Foreign Correspondent

COMMUNISM, A GRAND FAILURE



Tues, Oct. 29

8:00 p.m.

Centennial Hall

brought to you by....
The Student Union Board

Eastern Europe, China
and Central America

EXCLUSIVE REPRESENTATION



Who

By Jan
STAFF

The Toe Pick
much like a toe
know a handful of
you couldn't, the
Picker. He (a girl
this low) is about
an always slightly
brown hair. All
normal, in that re
down the street y
from any other pe
know the Toe Pick
most never susp
that lurks behind
really cool swing
but get to know h
new perception.

The reason he
simple—he picks
to what you are th
sit in the comfort
do it, he waits unt
friends' apartmen
won't start pickin
the apartment's
But man, the so
leaves, watch out

It is a really
disgusting thing

The M

By Er
STAFF

Well I'm back
other auto review
week's review is
The manage
Chevrolet here
enough to lend
morning.

What a mon
to be. As a matter
car made my v
should I begin de

I think I will s
The car was pain
tallie color and w
lace aluminum w
rear spoilers. Jus
leaves no doubt in
this car means bu
and white photos
great injustice. V
ing the "head tur
scale of 1-10, I w
95.

The interior v
the exterior. It wa
with no accent stri
to insult the taste.
very comfortable
climbing buckets w
could comfortably
Convenience feat
folding rear seat
through feature, t

Features

Who is this person they call the Toe Picker? Cup project helps curb waste

By James Barnes
STAFF WRITER

The Toe Picker doesn't look that much like a toe picker; not like you know a handful of them or anything, you couldn't, there is only one Toe Picker. He (a girl could never stoop this low) is about average height with an always slightly uncombed head of brown hair. All of his features are normal, in that respect, and walking down the street you couldn't tell him from any other person. A lot of people know the Toe Picker by his real name, most never suspect the hidden habit that lurks behind his front. He is a really cool swinger guy on the outside, but get to know him, and you'll have a new perception.

The reason he is the Toe Picker is simple—he picks them. But, contrary to what you are thinking, he does not sit in the comfort of his own home and do it, he waits until he goes over to his friends' apartment. The Toe Picker won't start picking if anybody besides the apartment's occupants are there. But man, the second the company leaves, watch out.

It is a really fantastic, as well as disgusting thing to observe. As soon

as the door shuts behind the last of the evening's guests, he slowly reaches down and pulls off his Nike low tops. His colored socks are eased off, and then each is placed in its respective shoe for easy access later—if somebody knocked at the door, for instance. The entire foot gets massaged gently at first, but eventually the fingers find their way to the toes and he is gone. He picks for awhile, throws a rub in here and there, and then pretty soon he'll stop to smoke a cigarette.

The thing that sets the Toe Picker apart, is that he is totally and completely composed, and functional during his ritual. While he sits, seeming to be occupied, he will carry on a conversation with the apartment's occupants, not always an intelligent conversation, but a conversation none the less. Typical questions and comments along these lines pop out at him, "Have you seen *Driving Miss Daisy*? or, "I saw a really cool Mustang up at Wal-Mart today." His fingers are at work even as the sentences leave his mouth.

Now, the Toe Picker can't be confused with the Toenail Man, they each have their own unique method. While the former prefers to do his thing over at his friends' house, the latter enjoys

his art while at work—a liquor store. Also, the Toenail Man refrains from physical interaction with his toes, he prefers the matter to be verbal. Toenail Man gets his name from his habit of discussing in-grown toenails with customers. Not really a discussion, more of a commentary of sorts, because it is hard to find somebody buying liquor that is willing to engage in an in-grown toenail tete-a-tete.

The Toenail Man looks more like a toe person. He comes across as a short, unpleasantly plump man of about 53 or 54. Most of his hair seems to have been misplaced somewhere back around the age of 40. His eyes are almost the color of an albino's and will stare right thorough you. One of them is lazy, always keeping you on the edge with the question of which eye to look at. The liquor store is his den. When somebody comes in, he jumps off his stool (from which he has been watching TV) and stands at the counter register, attentive and ready to please the customer. His attentiveness is not like the attentiveness of a young 16 year old McDonald's worker, however, the Toenail Man moves slowly and with an absurd purpose; always looking, always smiling. The secret

he hides is of a home in-grown toenail remedy. If you cut, he says, a V in a toenail that is in-grown it will go away. The logic there is unbelievable, and Toenail Man will tell you as if he has written a dissertation on the subject. His comments on in-grown toenails often come unprovoked and without reason. Each customer is a different mark, vulnerable to attack.

Alas, I come to the third and final toe personality—it is me. Mixing both methods, physical and verbal, I prefer to engage in my activity while dinging at a fine eating establishment such as Red Lobster. After I have placed my order, I inconspicuously remove my shoes—I wear no socks—and prepare. Sometimes this is difficult to do without being noticed by the other patrons, especially if I don't get a booth. After my food comes I light a cigarette, clear my voice, and recite my lines at a raised volume: This little piggy went to market, this little piggy stayed home, this little piggy had roast beef, this little piggy had none, and this little piggy cried wee, wee, wee all the way home." Quickly replacing my foot to the floor, I take a smooth draw off of my Winston, and the proceed to break apart the crab legs so I can dip the meat in hot butter.

helps curb waste

UMR Student Environmental Group
SOURCE

Have you heard of the City Cup Project? The City of Rolla, the MRPC Solid Waste Committee, and the UMR Student Environmental Group are sponsoring an effort to help reduce solid waste in the Rolla area in conjunction with several local Rolla businesses. People interested in participating can acquire a special green City Cup '91 sticker from the student environmental group representatives on campus by the Hockey Puck for the small cost of \$.50. The participants in the project help reduce waste by placing the sticker on a reusable plastic cup and then using the cup when they visit local fast food restaurants instead of wasting a disposable cup. The restaurants offer reduced prices to fill the cup; some as low as 25 cents.

For more information about the project call Becky Wilson at 341-8801 or Tim O'Hearn at 364-8889 (or 341-6407).

The Miner takes a look at the impressive 1991 Chevrolet Beretta GT

By Erich Elmer
STAFF WRITER

Well I'm back and it is time for another auto review! The subject of this week's review is the 1991 Beretta GT. The management of Fairgrounds Chevrolet here in Rolla was kind enough to lend me the GT for the morning.

What a morning it turned out to be. As a matter of fact, driving this car made my whole day. Where should I begin describing this car?

I think I will start with the exterior. The car was painted a Turquoise Metallic color and was equipped with 15" laec aluminum wheels and front and rear spoilers. Just one look at this car leaves no doubt in anyone's mind that this car means business. These black and white photos really do the car a great injustice. When it comes to rating the "head turning quotient" on a scale of 1-10, I would give this car a 9.5.

The interior was just as sporty as the exterior. It was done in black cloth with no accent stripes or gaudy badges to insult the taste. The front seats were very comfortable and supportive reclining buckets while the rear bench could comfortably carry three adults. Convenience features included a split-folding rear seat with a trunk pass-through feature, trunk cargo net, cup

holders, electric doors, electric windows, and an electric trunk opener, just to name a few. There was also a driver's side air bag that is thankfully making it's way into the new cars.

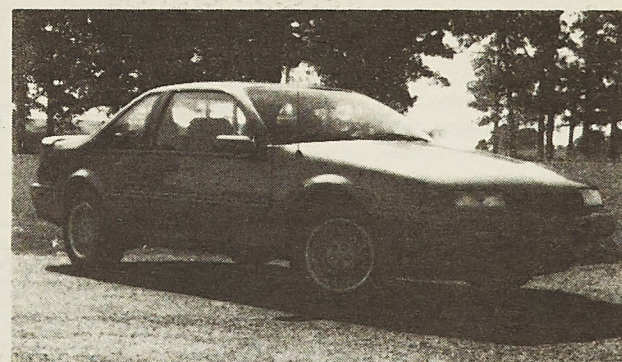
All too often, today's cars come equipped with so many complicated (and most of the time useless) gadgets that it almost requires a Ph.D. to drive them. The Beretta was refreshing in this category, with the controls being very easy to see, reach and understand. The instrumentation was complete with bold, white-on-black numerals. The tilt wheel makes sure that no matter the size of the driver, no instruments are blocked. The lights were controlled by a dial to the left of the steering wheel while the wipers were controlled by a dial to the right of the wheel.

The sound system was very capable with a Bose AM-FM cassette player with auto-reverse and music search pumping the tunes through four speakers. There is also an optional CD player available.

Enough of the boring stuff and on to the good part: driving impressions! Power was supplied by a 3.1 liter V6 that's good for 140 horsepower. Couple that engine with the Level II Sport Suspension and you are in for a fun ride indeed! Even though the car I drove was equipped with the optional three speed automatic transmission (a five speed manual is standard), the car

still had a lot of torque and accelerated smartly. This car is made for twisty, curvy roads! The suspension kept the car level through all but the sharpest turns and even then, the body roll was minimal. Feedback through the steering wheel was excellent and it kept me aware of what the car was doing at all times. The only complaint that I have is that the tires weren't as sticky as they should have been. There is always a trade off between ride and handling when car makers choose tires. The Beretta was shod with P205/60R-15 Touring tires that didn't let the chassis and suspension reach their full potential. This probably could be easily cured by the addition of Performance tires instead. I found the braking to be adequate with stopping power provided by an anti-lock braking system (ABS) with discs up front and drums in the rear. I think Chevrolet could improve on this, however, by replacing the rear drums with discs. In the city the sport suspension had the car feel a little nervous, but that's a given in a sports coupe.

The Beretta had a sticker price of \$15,586 dollars and was pretty well loaded with options. The GT is the middle car in the three models offered. There is a cheaper Beretta Coupe and a more expensive Beretta GTZ Coupe which comes with a 180 horsepower Quad-4 engine and an even stiffer suspension package.



Tony Rougon

1991 Chevrolet Beretta GT Data:

Engine: 3.1 liter Multi-Port Fuel Injected V6 (140 H.P.)

Transmission: 5 speed manual (3 speed automatic optional)

Price as tested: \$15,586

Wheelbase: 103.4 inches

Height: 53.0 inches

Width: 68.2 inches

Fuel Tank Capacity: 15.6 gallons

MPG: 20 city, 27 highway

Overall, I was very impressed with the Beretta GT for its looks, performance, and reasonable price (GM also offers a first time buyer's rebate to make the price even more reasonable).

If you are interested in the Beretta GT or any other Beretta model, go see the folks at Fairgrounds Chevrolet and they will be more than happy to talk to you.

"Life is but a dream of reality", or is it?

By Elliot Clavin
STAFF WRITER

Part III: Ch 1

TAKE ME

Life is but a dream of reality
But mine is that of a nightmare
That shan't end 'till my
Life stops to awaken to the
New place of my un-Soul
Steve Conway
Death of A Pen

He was a scrawny boy of twelve and all the kids picked on him in school, calling him a geek or dork. He was five feet tall, sandy blonde hair, deep blue eyes which made him attractive, but everything was missed because of his big brown glasses and his bright shiny braces. Few friends he had and even those made fun of him when the "cooler" kids were around. He was shy and did average as far as junior high went. He could have done better but he never studied or put much effort into his schooling. What

he did do is read-- a lot. He read every book in his little house and just about every book in the school library. His favorite writer was Lovecraft and his tales of the macabre. He was very interested in the mystics and unknown, he even tried a little witchcraft he had found in a dusty book in the back of the public library. Nothing came of it except the feeling of stupidity that he got from staring at himself in a moonlit pond, throwing dead frogs and bugs in the air reciting weird words that were supposed to make him big and strong.

It started in gym class, (which he hated the most because he always got teased about how skinny he was,) --after another try at his "get strong quick" witchcraft. It was just a sore throat with a husky cough. By the end of the day he thought he was going to die, he didn't realize just how true that was. He went home and waited for his mom to get home from her secretary job at some no-name place so she could take him. After his dad died,



they stuck together more than anything in the whole world.

He laid down in front of the small black and white television and watched something. He didn't know what because all he could think about was how much his head and chest hurt. At some time he had fallen asleep and was having some very strange dreams. There were people all around him as he swam in an ocean. They seemed to float just above him and were talking too faint for him to hear. The water was cold and he swore

an iceberg could be seen in the distance. He looked at the people above him and they moved and changed shape and grew hideous looking, like a story he read of a painter who painted grotesque pictures of things so lifelike that he could not even show them and they turned out to be real animals or humans or something.

Then he saw it, a huge hunk of ice floating toward him. It was as big as a mountain and he could feel the chill coming off of it in the water and the air as it got closer. He turned to swim away from it when it suddenly changed into a large ice hand. He saw

and felt the hand get closer and closer, finally holding him in its monstrous palm. It went upward, he felt the air rush past him. He moved to the side of the hand and looked as the water kept getting further and further. He lay in the ice palm naked and he felt numb from cold. The hand jerked to a stop and he almost slipped over the side. The water looked miles away and it felt hard for him to breathe. The hand went down and he felt his stomach rise in his throat. The hand dropped faster and faster like some weird rollercoaster. He tried to look over the side but the air tore at his face when he did so. He caught a glimpse of the water before he hit. The hand went straight into the water and as he looked up he saw the water wall about to crash in on him. The hand closed, blocking out all light and the water never touched him.

The cold was replaced by heat. A warmth that is not only external but internal as well. He felt no pain and he was very relaxed. A light was all he could see in this place of emptiness.

Classifieds

Miscellaneous

SPRING BREAK: Cancun, Bahamas from \$259.00 includes roundtrip air, 7 nights hotel, parties, free admission, hotel taxes and more! Organize a small group. Earn a free trip. 1 (800) BEACH IT.

Financial Aid available immediately! Special grants program. Every student eligible. No one turned down. Simple application. Send name, address and \$1 P & H fee (refundable) to: Student Services, P.O. Box 22-4026, Hollywood, FL 33022.

Don't be an A.S.S! Come to ME 104, Monday Oct. 21, 8 p.m. to find out how.

For Sale: PC software:
Rise of the Dragon game by Dynamix, 256 color version, 3.5" disk format. \$25.
MathCad Student Edition 2.0, 3.5" disk format, \$15.
Call Alex at 341-3951.

"Run For Your Life" and make an IMPACT. Intelligent Miners Promoting Alcohol Concern Together. 5K Run, October 19th at 9:00 a.m. at Ber Juan Pavillion.

Yearbooks are in,
1990-1991 Rollamo distribution will be held in front of UCW-Bookstore, Oct. 21-25. Students who were enrolled in the 1990-91 year are eligible to pick up their book.

How many does it take to put YOU under the

table? **"Controlled Drinking Demonstration,"**
7:00 p.m. October 23, ME 104.

T.G.I.F. BBQ - OCTOBER 25th, starting 11:30 a.m. Free food and refreshments. Be a part of IMPACT!

Personals

Kappa Delta is #1!!

Jon G,
Long time no hear>

Mindy G.

Social,

You are a great roommate, sorry for the mess. Here is to you having a date for a Kappa Delta dance.

Love in AOT,

Of relating to, caused by, or moving at a speed greater than that of sound.

Boz,

Thanks for the InfoWorld mag. Don't work too hard.

Sleepy

Stan the Man,

Are you used to "being inflicted upon"? You are holding up quite well.

Your Tribulation

Pat (the really tall guy),

Believe it or not there were very few classifieds or personals so I you got lucky again. By the way have you been getting lucky anywhere else in Rolla?

Just Curious

Gazelle,

We are gonna miss you elmo.

Bung

Hey Neemann,

Great Hog call!!

Hey Ketch,

Clocked a pledge alately?!

My sisters are the BEST!!

Luv,

A Kappa Delta

Hey Mud Queen,

ESPN called, they want to enter you in the mud bog championship.

Your friends at the Temp. Building.

Nature Boy,

Miss you! Wish you were diggin' up my tree.

Babydoll

Donatello,

Please don't hurt those new recruits!!!

Steve S. at KA,

Thanks for dinner!!

Mindy

Congrats Amy on becoming one of us. You are finally an honorary! Hope the wait was worth it.

In KD love,

The Giiiirls

Bungee,

Sorry I left my stuff in the middle of the floor so you could trip on it. But isn't it "neat" to have a cracked mirror all over the floor?.....NOT!!

Luv Ya,

Stephanie

Sig Ep,

Thanks for a great Homecoming! You guys are the best!

Love,

Leslie

Mark at Lambda Chi,

What a spectacle you made!

Mindy

Pat,

How long has it been since you have had two attractive women pick you up and take you home from one of Rolla's finest social establishments?

Just Curious

Thanks to Sigma Chi for a great Derby Days.

KD

Studmuffin,

Happy Anniversary! I love you !!!

Babydoll

The Beast Room by Jones and Griff

BUD LIGHT \$15.00	MILWAUKEE'S BEST \$9.00	OLD MILWAUKEE \$7.00
BUD LIGHT \$15.00	MIL BEST LIGHT \$9.00	OLD MIL LIGHT \$7.00
MICHE \$15.00	COORS \$12.00	BLAZ \$4.00
COORS LIGHT \$12.00		

THIS STUFF CAN'T BE THAT BAD!!

HEMLOCK
\$2.79/CASE

SOCRATES' LAST WEEKEND

J. Jones 10-14

Comments

A view from the conservative right

COMMENTS

By Tim Gungoll

(These views do not necessarily reflect the views of all members of the College Republicans.)

There are essentially two forms of government currently operating in the United States. Under one form, there lives a relatively free people who take responsibility for themselves; the benefits that are naturally derived from these actions go to give these individuals a good quality of life. The level of their quality of life depends on their priorities, and on what they spend the majority of their time. While some individuals hold wealth as that which gives the greatest quality of life, others view their families and friendships as that which gives the greater quality, while most of us fall somewhere in between. In another system within our government, there is a large group of individuals whose freedom has been surrendered; they no longer take responsibility for themselves. They look to the government to be their keeper. They depend on the government to feed them, house them, and pay the expenses of raising their children. In return, the government gets nothing, except the keys to the shackles that will forever bind these individual's freedoms; this form of our government seriously restricts the rights of these individuals.

I must now make some important distinctions that are both enlightening and troubling. There is a group within our country that has become and permanent "underclass". These individuals are not self-reliant in any way. They expect the government to pro-

vide everything they need for sustenance and are unwilling to give anything back. The majority of these individuals are heavily involved in drugs; they come from highly unstable families; and their educations are remedial. For these reasons, they have essentially lost all hope; they have ceased to try to be productive; they have given up. This group of individuals has become a permanent "underclass". There is a very important distinction between this group and the poor. The poor in our country have not given up hope; they have not given up their spirit and the values that accompany it. These individuals are still willing to work for a living; they are willing to take any job necessary to feed their families; they still take pride in themselves. Thus, we now have a definite and necessary distinction between the poor and the "underclass".

If we ask ourselves why a large portion of our society could have fallen so far, we must refer to the moral liberalism of the Sixties. Before the Sixties, a very small fraction of individuals used drugs; they were, in fact, unthinkable even to the poorest sectors of society. This was before moral liberalism felt that it had to come out of the closet; it was before it became trendy to try to dismantle the traditional American family and its ethics. A large part of the success of this counterculture crusade was due to the introduction of drugs to middle class youth. In this, the counterculture gained new allies and began to spread their values like a cultic ritual. The tragedy of it all was that it even spread to the poorest poor. While the infected middle class had the family support and financial ability to eventually bring their children back to the mainstream, many of the poor had neither.

They were left with the counterculture values of disbelief in families, disbelief in capitalism, belief in drug use to discover one's purpose (while drug use is, in fact, antithetical to purpose), and the acceptance of all the other moral perversions that sought acceptance during this period.

Another such perversion of the Sixties was the radical sector of the feminist movement led by the Lesbians. Women in female-female relationships had the miscalculated belief that they could raise children as well as a man and a woman; they, of course, were wrong. The current poverty rate among married couples is only 5.6%, but for female headed households, it is 32.6%. Studies also show that males that have not been raised with a male presence lack a proper respect for women, and can never learn self-discipline. A young male needs a fatherly figure to teach him these things by setting the proper example. Similarly, a young woman needs a positive male presence in order to properly develop emotionally and socially; she needs to see a man who respects and encourages the best from her. This produces a strong self-reliant woman who will not allow herself to fall into a state of victimization; this produces an individual capable of fulfillment.

Sadly, nothing stopped the deviants from marching to influence the mainstream. Large percentages of the population listened to Liberal teachings that anything and everything was moral, lawful, and acceptable. However, once again those who were affected the worst were the poorest of the poor. These women took the lesbian idea that children could best be raised by women alone. They began to produce children out of wedlock at alarming rates. In the Bronx, the born

out of wedlock rate is, currently 82%. The national average is as high as 30-40% for some sectors of the population. Once again the ideas of moral liberalism filter down to those least able to handle them. The Great Society envisioned by the Liberals to give everyone their basic needs, quickly began to take away the few things that kept the poor from losing all hope. This is revealed by the fact that from 1950-1968 the poverty rate was cut from more than 30% to about 12%. After President Johnson's Great Society social spending programs took effect, federal social spending as a share of the gross national product doubled. This caused the poverty rate to stop falling and begin its new climb. The bottom line is that these programs have promoted a rising poverty rate.

In essence, we have a very small government for the majority which holds the values of a free market system; the rest of society has fallen into the trappings of big government welfare. There is a famous biblical quote, "To those who have, even more will be given. To those who have not, even what they have will be taken from them." There has been many interpretations as to what this is referring to, but I believe it refers to the freedom of conscience that forces an individual to be responsible for themselves. Those that possess this freedom in our country can climb as high as the mountain that they want to build. Those that do not possess freedom of conscience will end up caught in the nets of law which the more than willing bureaucrats of big government will mete out without conscience. Bureaucrats thrive on the sense of power given to them to hold peoples lives in the balance, usually because they are

not in a position that gives them the respect that they feel they deserve. Thus, the recipients of alleged big government benefits end up doing exactly as the bureaucrats wish. If they don't, their benefits will be terminated. Welfare recipients are faced with the choice of either having their basic needs fulfilled for them by the government, or of maintaining their freedom. The racist liberals who once controlled individuals by the labor of slavery, now control individuals through the shackles of welfare. For in these shackles an individual can biologically survive, but their freedoms are controlled by government bureaucrats whose attitudes could easily be confused with that of plantation owners. They have changed what was supposed to be a temporary life-preserver, for the purpose of getting those with poor employment luck back on their feet, into a spiritually denigrating straight-jacket.

The role of Conservatism in general, and the college Republicans of the University of Missouri at Rolla in particular, is to expose these fallacies of moral liberalism for what they really are: nonsense. We believe that every individual should be judged not by shallow observations, but by the content of their character; not by how they fit into society, but by how they wish to serve society; not by what they lack, but by what they have the desire to honestly gain. We seek to reduce the taxpayers burden in paying for demoralizing social programs; we seek to reduce the size of distant federal bureaucracies; we seek to give back the freedom that these bureaucracies, that by their nature, can only restrict. We seek the spread of self-reliance and the turning away from victimization; this is our task.

Write in...

Do you have any complaints about life, people or pets? Is it possible that nobody at UMR has an opinions on controversial topics?

Do any of the following topics really tick you off:

Racial slurs,
Faggots,
Feminists,
Male chauvinists,
Independent/Greek bashers,
Abortion,
Reverse discrimination,
Unfair partial credit,
Conservative fascists,
Liberal pot smokers,
Flag burners,
Board Rep's in general,
Foreigners,
Flag totin', truck driving, gun slinging, Guns'n'Roses listening, Dukes of Hazzard watching, skoal chewing Hoosiers.

Sexual harassment: Case or Crutch?

Let me take this time to formally extend my apologies to all of the females that I have "sexually harassed" throughout my existence on this planet. Again, let me express my sincere regret in having been the instigator of such actions. Whew! I'm glad I finally got that off my chest.

Although I apologize for my actions, I'm doing it just to protect my a--. Excuse me, but I have a hard time with this harassment stuff. Yes, I agree that there is no spot for it in the work place. My question arises on the definition of sexual harassment.

I asked Cliff Claven a member of the U.S. Postal Service of the origin of the word. He explained to me that "it is a derivation from the Greek language combining the prefix "her" and the Latin word of "ass" hence we get the pronunciation of herass which was transformed into harass."

But seriously, I believe that in no uncertain terms should the suggestion of sexual blackmail concerning ones job be allowed or tolerated. The threat of missing out on promotions or an alienated treatment due to the refusal of an employee to have a personal relationship with a superior is unjust and illegal and should be treated with swift and severe punishment.

The flip side is the abuse of the claim of sexual harassment. Women right now are screaming at me and how I don't understand. Well, men can get sexually harassed also, we don't worry about it. Women scream equality, yet still want preferential treatment. What's wrong with this picture. To be equal, women must come down off the pedestal that men have place them on throughout history. I agree that it is disrespectful to use vulgar language or tell crude jokes in the presence of a lady, but in a man's world this language is sometimes used and to be a part of a man's world you better learn to except it. Sacrifices are a part of life so if you want to play, you got to pay.

I am not a chauvinist by any means, I am just putting forth a view that I have. If you are offended by this, I'm sorry. Wait, no I'm not. I have nothing to be sorry for. This is my opinion and I stand behind it 100%. People normally do not react favorably to opposing views that establishes reasonable doubt in their beliefs, so they lash out instead of keeping an open mind. If you disagree with these opinions, why don't you write in and express your own. Don't just sit there and gripe, do something about it.

Tom Brown; equalist

Race relations

Letter to Missouri Miner

I have become very offended by the shirts that some individuals are wearing on campus. I do not mean to deny their right of free speech under the First Amendment, but I think the shirts are in poor taste.

The shirts depict a black Bart and with the words, "black is a dominate color." I do not go around wearing a shirt that says "white is a pure color," and if I did I would be labeled a bigot. It seems to me that this Bart shirt is in bad taste: mine and only mine seems to add to the racial tensions on campus. If the individuals that wear this shirt really want to help race relations, then they should stop wearing this shirt.

A Person From the Conservative Right.

QUALITY CLEANERS

* Expert Cleaning * Reasonably priced
108 W. 7th Street Rolla, Mo 65401 364-3650

SUBWAY® FALL SPECIALS

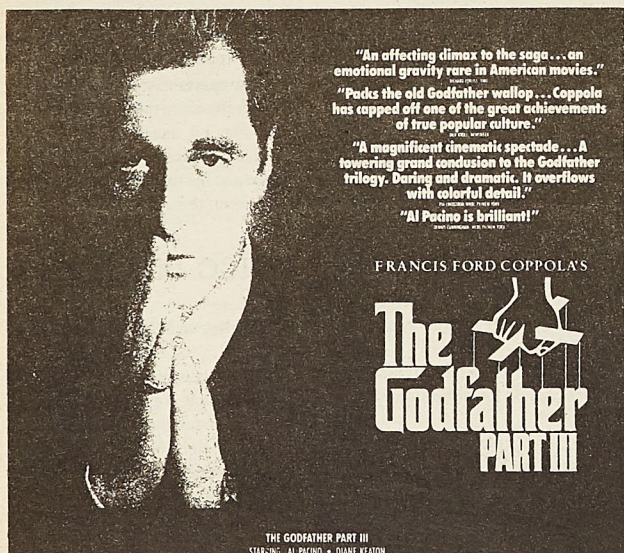
SUNDAY	FREE MED. SODA w/Purchase of Super Sub
MONDAY	Footlong Combo \$2.99
TUESDAY	Buy 1 Footlong Get 1 for 99¢ After 4 p.m. <small>99¢ Sub must be of equal or lesser value</small>
WEDNESDAY	\$1.00 OFF Any Footlong
THURSDAY	\$5.00 OFF Any 6' Party Sub
FRIDAY	\$1.00 OFF Any Large Salad
SATURDAY	Buy Two Footlongs Get One FREE <small>Free Sub must be of equal or lesser value</small>

Open 10 a.m. - midnight

CORNER OF 9TH & PINE
364-3395

Limited Time Only
Not Good in Combination With Any Other Offer
Not Valid On Delivery
Limit: One Special Per Visit

The Student Union Board Presents

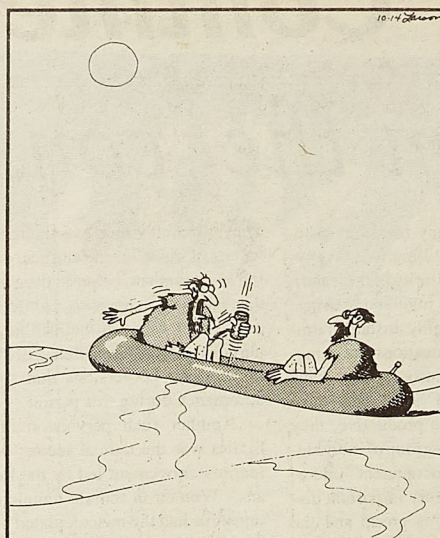


Showing @ 7:00pm and 9:45 pm
Friday and Saturday (October 18 & 19) in ME 104
Free to students with a UMR Student ID
(Be sure to bring it!)

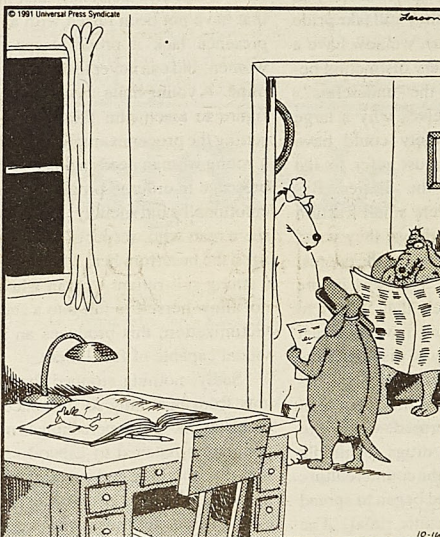
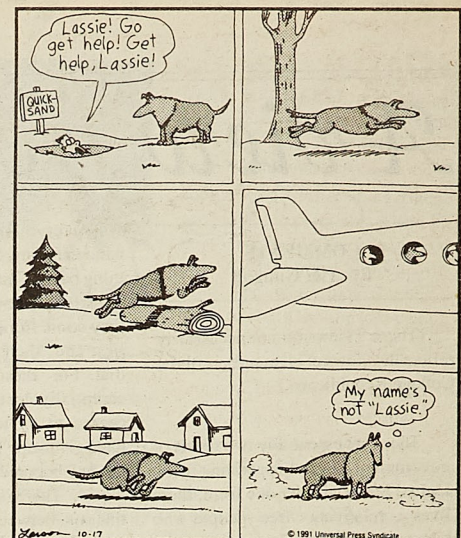
Free popcorn this week at movie!!

THE FAR SIDE

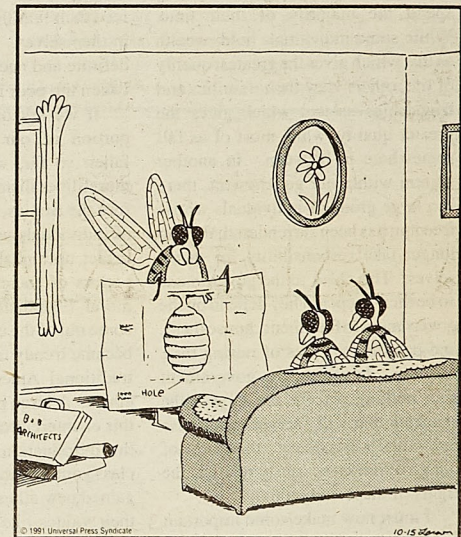
By GARY LARSON



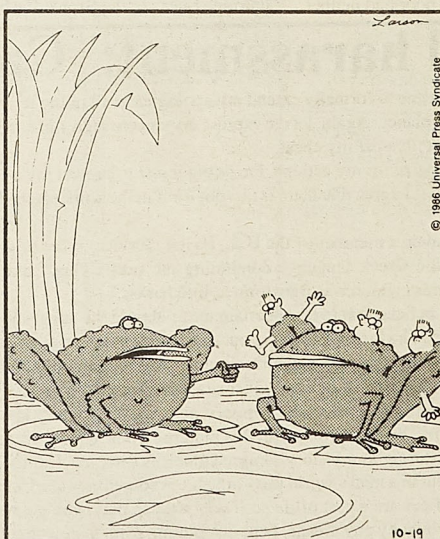
"OK, crybaby! You want the last soda?
Well, let me GET IT READY FOR YOU!"



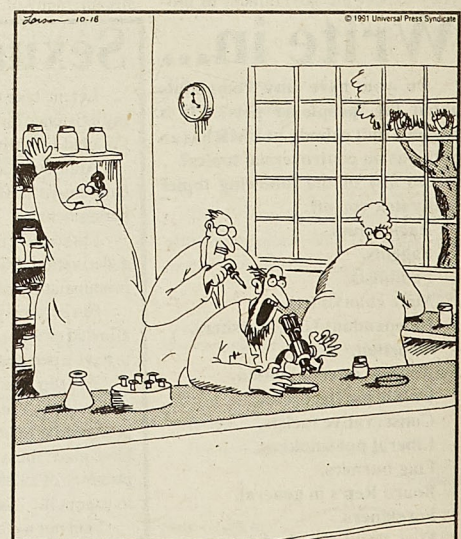
"You gotta help me, Mom. ... This assignment is due tomorrow, and Gramps doesn't understand the new tricks."



"Voila! ... Your new dream home! If you like it, I can get a crew mixing wood fibers and saliva as early as tomorrow."



"Wait a minute, Vince! Last summer — remember? Some little kid caught you, handed you, and tossed you back in the swamp. ... That's where you got 'em."



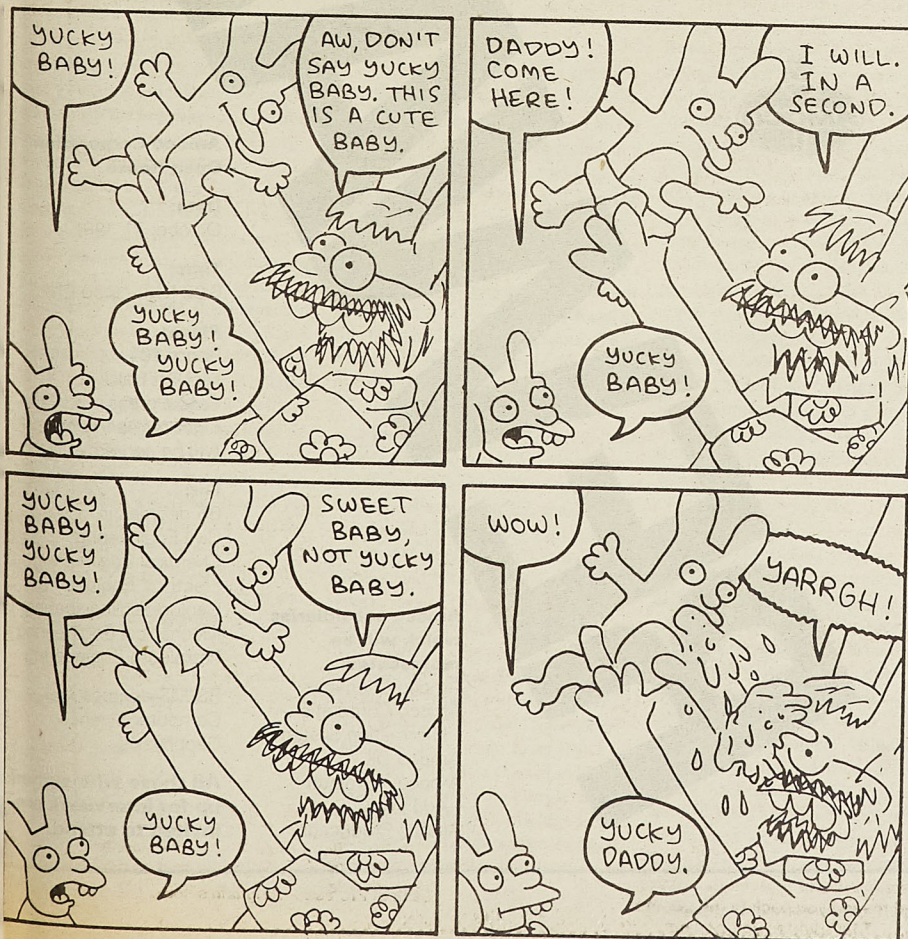
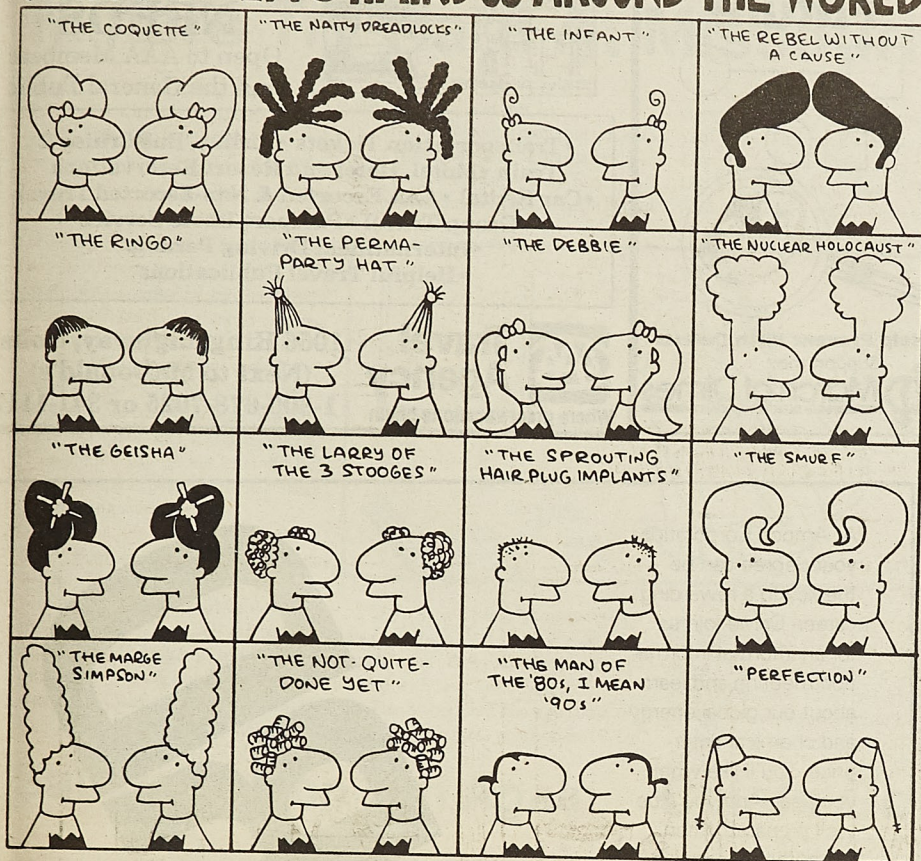
Professor Glickman, the lab practical joker, deftly places a single drop of hydrochloric acid on the back of Professor Bingham's neck.

LIFE IN HELL

WITH HELP FROM MILI SMYTHE, BARBARA McADAMS, PETER ALEXANDER & LISA PINEBIRD

AKBAR & JEFF'S HAIRDOS AROUND THE WORLD

©1991 BY MATT GROENING



Eclipse

SCIENCE FICTION • FANTASY
COMICS • GAMES
1014 Pine St. Phone 364-4301

Miners Needn't Dig for Gold...

just to pay for school. A student loan from Phelps County Bank is processed efficiently to help keep you in class, and out of the hole!

Phelps County Bank 364-5102 • Eighth & Pine • FDIC Insured

October Specials

pumpkins
corn shocks
fall leaves
Halloween arrangements

50¢ off per rose with this coupon

BLOSSOM BASKET FLORIST
910 Cedar St.
364-7101

ALEX'S PIZZA PALACE


Real Italian Pizza
122 W. 8th St.

Open 7 Days a week
11:00 AM - 2:00 AM Fri & Sat
11:00 AM - midnight Sun - Thur

Call For Delivery or Take Out

364-2669 or 364-9878

Salads Sandwiches Pasta
5% Beer on Sunday
SPECIALITIES
Gyros Souvlaki Steak
Greek Salad Spinach Pie Baklava



FEATURING...



ALLEN ROSS

Musican/Comedian

TUESDAY, OCTOBER 22
UCE CAFETERIA
8 PM

MOCKTAILS SERVED BY THE ST. PAT'S BOARD & IFC

WINNER OF THE MOCKTAILS CONTEST ANNOUNCED

October 19, Saturday
Army ROTC 5K Run/Walk
Red Ribbon Campaign Kickoff
BerJuan Park, 9:00 am

October 21, Monday
"Mock" Road Block
State & 11th, 11:30 am - 12:30 pm
Mary Peterson, University of Iowa
A.S.S. (Alcohol, Sex & Stress)
104 Mechanical Engineering, 8:00 pm

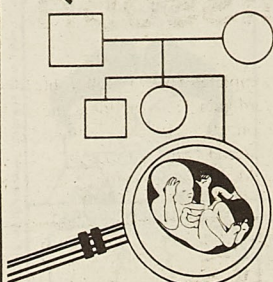
October 22, Tuesday
"Mocktail" Competition (Winner announced at 8:00 pm)
Hockey Puck, 12:00 pm
SUB presents Alan Ross, Comedian/Musican
IFC and the St. Pat's Board will be serving "Mocktails"
UCE Cafeteria, 8:00 pm

October 23, Wednesday
Controlled Drinking Demonstration
104 Mechanical Engineering, 7:00 pm

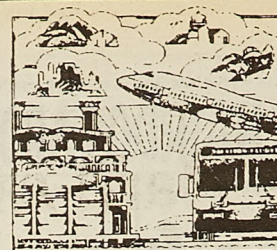
October 24, Thursday
"Punch Bowl" Alcohol Trivia Team Competition
114 Civil Engineering, 7:00 pm

October 25, Friday
T.G.I.F. BBQ
Hockey Puck, 11:30am - 1:00pm
All Students, Faculty and Staff are Welcome!

Focus on America's Future



Help Prevent Birth Defects
Support the
March of Dimes
BIRTH DEFECTS FOUNDATION



FOR ALL YOUR TRAVEL NEEDS

Open to AAA Members and the General Public

- Transportation Tickets • Airline, Bus Cruise & Train • Motel, Hotel and Resort Reservations
- Car Rental • AAA Escorted & Non-Escorted Travel
- Group Travel • Passport Photo Service
- International Driving Permits
- Helpful Travel Publications



Travel Agency

Where great vacations begin

1056 Kingshighway, Rolla
(Next to McDonald's)
1-800-678-7025 or 341-1117

At Amoco Corporation, your degree can be the key to a rewarding career. Come join us for an informal information meeting and learn about our global energy and chemical enterprise. You'll like what you hear. And you'll be well prepared when we come on campus to interview.



RENEWARD

Amoco Corporation Open House

Date:
October 21, 1991

Time:
6:00 P.M. - 8:30 P.M.

Place:
Room 204
McNutt Hall
Casual dress
Light refreshments will be served.

For:
BS degrees in:
Civil Engineering
Chemical Engineering
Electrical Engineering
Geological Engineering
Mechanical Engineering
Petroleum Engineering

BS/MS degrees in:
Computer Science
Geophysics

All those who signed up for interviews are invited to attend.

Amoco subsidiaries which will be represented:

Amoco Chemicals
Amoco Corporation—Information Systems
Amoco Oil
Amoco Petroleum Additives
Amoco Production

Our Miners Missouri Southern day afternoon game was dominated by established and running attack. The Miners throwing the ball. Wise completed Chris Alverson. This put the ball two incomplete passes in a punting situation. After a 36-yard Shore, Southern began. The Lion own 49-yard line the Miner 10. Marquez Rodgers pick up the first play, Matt Cook Rod Smith for a

Squigg

This season has interesting to say the past you could count but the last two weeks. Two weeks whipped Clemson defeated and looking for a national title. This the top three all week. Virginia Tech 33-7 slaughtered Toledo. 23 big plays to squeeze Tennessee got hampered 35-18. Notre Dame rushing as they annihilated the team 42-7. Ohio tradition by losing Michigan whipped 45-28 as Michigan spectacularly. Baylor Miners could beat Rice 20-17. And due spills of the week locally new Squigg this week at least).

Squigg's Top Ten

1. Florida State 6-0
2. Washington 5-0
3. Miami 5-0
4. Michigan 4-1
5. Notre Dame 5-1
6. Florida 5-1
7. California 5-0

Sports

Miners Try Hard At Missouri Southern

By Christopher Goo
STAFF WRITER

Our Miners fell once again to the Missouri Southern Lions 42-6 Saturday afternoon in Joplin, MO. The game was dominated by the Lions, who established a balanced passing and running attack.

The Miners came out quickly, by throwing the ball. Quarterback Mike Wise completed two straight passes to Chris Alverson and Chris Kennedy. This put the ball on the Lion 40, but two incomplete passes put the Miners in a punting situation.

After a 36-yard punt by Chris Shore, Southern took over and the rout began. The Lions took over on their own 49-yard line and drove down to the Miner 10. Then, on 4th and 1, Marquez Rodgers ran off left tackle to pick up the first down. On the next play, Matt Cook completed a pass to Rod Smith for a 9-yard touchdown.

This put the Lions up 7-0.

The Miners took over, but couldn't do anything and after three plays Shore had to punt again. This time Matt Cook completed a pass to Heath Helsel to put the Lions up 14-0.

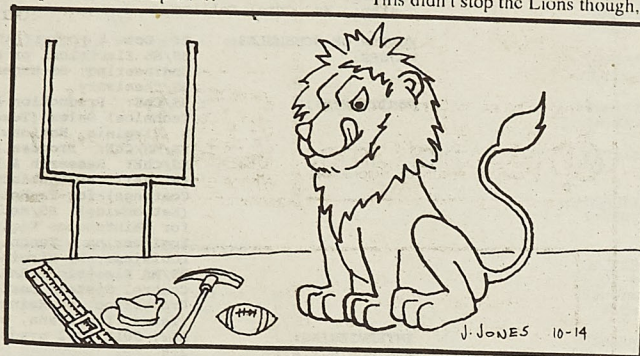
completed a pass to Rob Noble for a 19 yard gain. This put the Miners on the Lion 19. Three plays later, Eivind Listerud came on to kick a 29 yard field goal which cut the lead to 21-3. This didn't stop the Lions though,

Shore came onto punt again. After a 42-yard punt, a 19-yard return, and a 15-yard penalty, the Lions regained the ball on the Miner 31. Two plays later, Rodgers took a draw play 26 yards for their third touchdown in seven minutes. This put the Lions up 35-3 at halftime.

The second half featured the teams trading possessions and turnovers. The Miners added another field goal and Southern added another touchdown. The final score was 42-6.

Captain Rob Noble had four receptions for 86 yards and linebacker Sky Lupo had 13 tackles.

The road doesn't get any easier for the Miners as they take on nationally ranked Emporia State this Saturday in Rolla.



Two series later, Marquez Rodgers ran around left end for a 19-yard touchdown. This gave the Lions a 21-0 lead with nine minutes left.

The Miners did manage some offense on their next possession. Wise

as one minute later, Matt Cook kept the ball and ran 11 yards for a touchdown. The score was set up on a 53-yard completion to Helsel from Rod Smith. This made the score 28-3.

After three unsuccessful plays,

Score by Quarters

	1	2	3	4	T
UMR	0	3	3	0	6
MSSC	14	21	7	0	42

M CLUB

ATHLETE OF THE WEEK



M-Club Athlete of the Week is Becky Wilson. Becky, a sophomore in Geological Engineering, led the women's cross country team at the Miner Invitational on October 5th. Becky set a personal best with a time of 19:24 and placed 21st in the race. Congratulations, Becky! Good luck at conference.

Squiggy's Top Ten Again

By Squiggy
STAFF WRITER

8. Nebraska 4-1
9. Penn State 5-2
10. Tennessee 4-1

This season has been very interesting to say the least. In years past you could count on a few upsets, but the last two weeks have been unbelievable. Two weeks ago Georgia whipped Clemson who was undefeated and looking like a darkhorse for a national title. This week we see that the top three all won rather convincingly. Florida State sloppily defeated Virginia Tech 33-20. Washington slaughtered Toledo 48-0. Miami used 3 big plays to squeak by Penn State. Tennessee got hammered by Florida 35-18. Notre Dame poured on the rushing as they annihilated a 5-0 Pittsburgh team 42-7. Oklahoma lined up to tradition by losing to Texas 10-7. Michigan whipped Michigan State 45-28 as Michigan State played respectably. Baylor lost to a team the Miners could beat when they lost to Rice 20-17. And due to the chills and spills of the weekend we have the totally new Squiggy's Top Ten (for this week at least):

Squiggy's Top Ten

1. Florida State 6-0
2. Washington 5-0
3. Miami 5-0
4. Michigan 4-1
5. Notre Dame 5-1
6. Florida 5-1
7. California 5-0

There are a few surprises in the top ten this week. The return to Florida as a great team they remain in the hunt for the title with one loss to Syracuse in a close game. California cracks the top ten with a 5-0 record and playing Washington this week. Nebraska has lost to Washington in a game where Nebraska couldn't hold on to win in the fourth quarter. Even though Penn State lost, they lost to Miami in the Orange Bowl by 6 points. Tennessee got beat by Florida but still is one of the top ten teams.

Florida State remains on top, but their last two games are against Miami and at Florida the rest of their schedule is easy. Washington has California, Oregon, and USC all big games coming up. Michigan has to watch out for Illinois, and Ohio St. in the last two weeks. Notre Dame has USC, Tennessee and Penn State as the meat of their schedule. Any team can win it but look for Florida State to lose to Florida and Miami to lose to Florida State. Washington should finish undefeated, but lose in the Rose Bowl to Michigan. When it is all said and done it will come down to Florida State, Washington, Miami, Michigan and Notre Dame. The others should prove to open the doors for one or more of these teams.

Chiefs Go On Midseason Warpath!!!

By A.T. Goon
STAFF WRITER

It is a trend in the National Football League that, in order to win a Super Bowl championship, a team must go on a convincing winning streak in the middle of the regular season. Well, it looks as if the Kansas City Chiefs are beginning to put such a streak together. After the first five games, it was beginning to look as if the Chiefs were going to accomplish only one thing during the 1991 season: Underachievement. After five weeks, their record stood at 3-2, with their only convincing win coming at the hands of the Seattle Seahawks. They also defeated the Atlanta Falcons in week one and the San Diego Chargers in week five. Although they did come away with victories in these games, they did so in hardly championship-caliber fashion.

Then came week six. The Chiefs entered a nationally televised Monday night contest against the then undefeated Buffalo Bills. They entered this game six-point underdogs. But this game was the game that turned the 1991 season around for Kansas City. The Chiefs defense stymied the Bills' high-powered offense by sacking quarterback Jim Kelly six times, four of them forcing fumbles. Linebacker Derrick Thomas had four sacks and forced three fumbles, while defensive end Bill Maas had one unassisted sack and teamed with defensive end Neil Smith for the other. Linebackers Chris Martin and Tracy Simien neutralized Buffalo's offensive weapon Thurman

Thomas, holding him to under forty yards rushing.

On the other side of the ball, the Chiefs offense played to their potential (finally) as Christian Okoye gained 130 yards rushing on tough, up the gut, running. And, in perhaps the most impressive statistic of the ball game, rookie Harvey Williams broke the 100-yard barrier for the first time in his professional career. These two backs got more help as the Chiefs' offense finished the game with more than four hundred total yards, and defeated the Bills 33-6.

However, after this victory, some doubters still remained, and, I must admit, I was one of them. But, after this week's showing, the number of such doubters has most certainly been decreased.

On Sunday, the Miami Dolphins brought to Arrowhead Stadium another of the National Football League's highest powered offenses. Once again, the defense rose to the occasion, forcing five punts and a fumble on Miami's first six possessions. When the halftime gun sounded, the score stood 28-0. Christian Okoye had already piled up 120 yards rushing, and wasn't looking to slow down anytime soon. When the game ended, the scoreboard read 42-7 and the Chiefs looked like one of the best teams in the National Football League.

Note: I feel it is my duty as a "journalist" to inform my readers that last week I was captured by Palestinian freedom fighters and forced to write an article in which I made certain predictions about the Major League Baseball

playoffs. In my true opinion, I feel that the Twins and Braves are the teams we will be watching in this year's fall classic.

Intramurals

By Craig Rackers
Corresponding Secretary

Intramural Swimming competition was held Oct. 3rd and 8th at the Multipurpose center. Congratulations to the top five overall finishers in the swim meet.

- | | |
|--------|----------------|
| First | Pi Kappa Alpha |
| Second | Sig Nu |
| Third | Phi Kappa |
| Fourth | Sigma Pi |
| Fifth | Kappa Alpha |

The results from the swim meet have changed a few of the top 5 in overall Intramural competition:

First	Sig Nu	864 pts
Second	Pi Kappa	815
Third	Phi Kap	771.5
Fourth	Sig Ep	767
Fifth	Lambda Chi	750

The intramural athlete of the week, as elected by the Intramural managers, is Pat Smith. Pat dominated his singles racquetball matches to take first place. Team of the week goes to Sig Nu for their first Place finish in Intramural Football.

The next intramural manager's meeting will be October 23, at the Multipurpose Building at 5:30. Cross Country and Billiards entry forms will be due at this meeting. I would like to encourage everyone to come out and support their Intramural team.

Placement

UNIVERSITY OF MISSOURI-ROLLA
OFFICE OF CAREER PLACEMENT
301 Norwood Hall

PERMANENT EMPLOYMENT

WEEKLY DETAIL LIST #8 - SCHEDULED INTERVIEWS FOR REMAINDER OF THE SEMESTER

WEEK OF NOVEMBER 4-8, 1991
WEEK OF NOVEMBER 11-15, 1991
WEEK OF NOVEMBER 18-22, 1991

PRESCREENED INTERVIEWS

BIBB & ASSOCIATES

6750 Antioch
Shawnee Mission, KS 66204
attn: Ms. Betty Curley

NUMBER OF SCHEDULES: 1
MAJORS: BS/Electrical, Mechanical or Civil/Structural Engineering
POSITION: Looking for strong course work in power, instruments and controls, HVAC, and structural design
LOCATION: Shawnee Mission, KS
INTERVIEWING: December 1991 or May 1992 grads
MINIMUM G.P.A.: 2.8
CITIZENSHIP: U.S. Citizenship or Permanent Work Permit

DEADLINE FOR TURNING IN RESUMES: Wednesday, Oct. 16, 1991
INTERVIEW DATE: November 4, 1991

Note: There is a possibility additional companies will schedule interviews for the Fall 1991 semester. Please watch Placement Office bulletin boards and The Miner for any additions, etc.

FISHER CONTROLS

8301 Cameron Road
Austin, TX 78753
attn: Ms. Nicole Chastang

NUMBER OF SCHEDULES: 2
MAJORS: BS/Computer Science or Electrical Engineering
POSITION: BS/Engineering Management, Mechanical or Chemical Engineering
LOCATION: Marshalltown, IA
INTERVIEWING: December 1991 or May 1992 grads
MINIMUM G.P.A.: 3.0
CITIZENSHIP: U.S. Citizen

DEADLINE FOR TURNING IN RESUMES: Wednesday, Oct. 16, 1991
INTERVIEW DATE: November 5, 1991

FIRST BRANDS CORPORATION

88 Long Hill St.
P.O. Box 280414
East Hartford, CT 06128-0414
Attn: Mr. Doug Bobay

NUMBER OF SCHEDULES: 1 ea day, Nov. 5-6
MAJORS: BS/Mechanical Engineering or Engineering Management
POSITION: Manufacturing
LOCATION: Nationwide (7 states)
INTERVIEWING: December 1991 or May 1992 grads

DEADLINE FOR TURNING IN RESUMES: Wednesday, Oct. 16, 1991
INTERVIEW DATES: November 5 & 6, 1991

MARATHON OIL COMPANY

P.O. Box 4814
Houston, TX 77210
attn: Mr. Steven Bridgford

MAJORS: BS/MS Petroleum Engineering
POSITION: Production & Petroleum Engineering
LOCATION: Bridgeport, IL; Cody, WI; Lafayette, LA; Midland, TX; Oklahoma City, OK; Tyler, TX
INTERVIEWING: December 1991 or May, July 1992 grads
MINIMUM G.P.A.: NONE
CITIZENSHIP: Must be eligible to legally work in the U.S.

NOTE: INTERVIEW DATE FOR MARATHON OIL COMPANY HAS BEEN CANCELLED; THEY WILL ACCEPT RESUMES ONLY.

DEADLINE FOR TURNING IN RESUMES: Wednesday, Oct. 16, 1991

SPORLAN VALVE

7525 Sussex Ave.
St. Louis, MO 64506-3069
attn: Mr. Dick Buck

NUMBER OF SCHEDULES: 1
MAJORS: BS/Chemical or Mechanical Engineering
POSITION: Information not available

DEADLINE FOR TURNING IN RESUMES: Wednesday, Oct. 16, 1991
INTERVIEW DATE: November 7, 1991

UNION CARBIDE CORP. CHEMICALS & PLASTICS COMPANY, INC.

39 Old Ridgebury Rd., M4556
Danbury, CT 06817
attn: Ms. Carol Collins

NUMBER OF SCHEDULES: 1: Oct. 6
MAJORS: BS/MS Electrical or Chemical Engineering; BS Mechanical Engineering
POSITION(S): BS/Chemistry
BS/ChE: Production Engineering, Technical Sales (Texas, Louisiana, W. Virginia, Nationwide);
BS/MS/ChE: Process Design (W. VA)
MS/ChE: Research & Development (W. VA); BS/Chemistry (Polymers & Coatings) for Technical Sales (Nationwide); BS/Mechanical Engineering for Maintenance Engineering, Production Engineering & Technical Sales (Texas, Louisiana, W. Virginia, & Nationwide)
BS/MS Electrical Engineering: Control Systems Design, Energy Systems Production, or Maintenance Engineering (Texas, Louisiana, or W. Virginia)
INTERVIEWING: MAY, JULY 1992 grads
MINIMUM G.P.A.: 2.8
CITIZENSHIP: U.S. Citizens or Permanent Residents

NOTE: STUDENTS MUST BRING THE FOLLOWING TO THE INTERVIEW:
1. A photocopy of their course transcript.
2. The Union Carbide Chemicals & Plastics Brochure

DEADLINE FOR TURNING IN RESUMES: Wednesday, Oct. 16, 1991
INTERVIEW DATE: November 6, 1991

LAW ENVIRONMENTAL

114 Town Park Drive
Kennesaw, GA 30144
attn: Mr. Randy Nipp

NUMBER OF SCHEDULES: 1
MAJORS: BS/MS Civil or Geological Engineering
POSITION: Geology
ENTRY LEVEL Environmental Engineers & Scientists
LOCATION: Nationwide
INTERVIEWING: December 1991 grads
MINIMUM G.P.A.: 2.5

DEADLINE FOR TURNING IN RESUMES: Wednesday, Oct. 16, 1991
INTERVIEW DATE: November 6, 1991

COLONIAL PIPELINE

P.O. Box 18855
Atlanta, GA 30326
attn: Mr. Charles Crider

NUMBER OF SCHEDULES: 1
MAJORS: BS/Civil (Environmental) or BS/Mechanical Engineering
POSITION: Associate Engineer
LOCATION: Atlanta, GA
INTERVIEWING: December 1991 or May 1992 grads
CITIZENSHIP: U.S. Citizenship or Green Card

DEADLINE FOR TURNING IN RESUMES: Wednesday, Oct. 16, 1991
INTERVIEW DATE: November 7, 1991

ATLAS WIRELINE

P.O. Box 1407
Houston, TX 77251-2407
attn: Ms. Renee Moliter

NUMBER OF SCHEDULES: 1
MAJORS: BS/Aerospace, Chemical, Civil, Geological, Mechanical, Nuclear, Petroleum & Electrical Engineering, Computer Science, & Physics
POSITION: Junior Field Engineer
LOCATION: Throughout the U.S.
INTERVIEWING: December 1991 or May, July 1992 grads
MINIMUM G.P.A.: 2.5
CITIZENSHIP: Authorization to work in the U.S.

DEADLINE FOR TURNING IN RESUMES: Wednesday, Oct. 16, 1991
INTERVIEW DATE: November 12, 1991

BROWN & ROOT

P.O. Drawer 160689
Mobile, AL 36616
attn: Mr. Kellar Nevill

NUMBER OF SCHEDULES: 1
MAJORS: BS/Chemical, Metallurgical, Electrical, Civil or Mechanical Engineering
POSITION: Details will be posted with signups.
LOCATION: Mobile, AL
INTERVIEWING: December 1991 or May 1992 grads
MINIMUM G.P.A.: 2.5
CITIZENSHIP: U.S.

DEADLINE FOR TURNING IN RESUMES: Wednesday, Oct. 16, 1991
INTERVIEW DATE: November 12, 1991

STONE & WEBSTER
245 Summers Street
Houston, TX 02210
attn: Ms. Nancy Chamberlain

NUMBER OF SCHEDULES: 2
MAJORS: BS/MS Civil, Electrical or Mechanical Engineering
POSITION: Opportunities in the areas of engineering, design, cost/scheduling, engineering procurement, and field engineering.
LOCATION: Boston office & field locations
INTERVIEWING: December 1991 or May 1992 grads
MINIMUM G.P.A.: 2.5
CITIZENSHIP: Permanent Resident Visa required

DEADLINE FOR TURNING IN RESUMES: Wednesday, Oct. 16, 1991
INTERVIEW DATE: November 12, 1991

MATHES COMPANIES
210 W. Sand Bank Rd.
P.O. Box 330
Columbia, IL 62236
attn: Mr. Allen Boggs

Information is not available at this time.

DEADLINE FOR TURNING IN RESUMES: Wednesday, Oct. 16, 1991
INTERVIEW DATE: November 13, 1991

LAST MINUTE ADD-INS:

FMC
P.O. Box 872
Green River, WY 82953
attn: Ms. JoAnn Maser

NUMBER OF SCHEDULES: 1
MAJORS: BS/MS Mining Engineering
POSITION: Mine Engineer
LOCATION: Green River, WY
INTERVIEWING: Recent, December 1991 or May, July 1992 grads

DEADLINE FOR TURNING IN RESUMES: Wednesday, Oct. 16, 1991
INTERVIEW DATE: October 29, 1991

KANSAS CITY POWER & LIGHT
P.O. Box 679
Kansas City, MO 64141
attn: Mr. George Crump

NUMBER OF SCHEDULES: 1
MAJORS: BS/Electrical Engineering (Power classes)
LOCATION: Kansas City
INTERVIEWING: December 1991 or May 1992 grads
MINIMUM G.P.A.: 2.8

DEADLINE FOR TURNING IN RESUMES: Wednesday, Oct. 16, 1991
INTERVIEW DATE: October 30, 1991

NOTE: The following companies have scheduled interviews; information is not available at this time.

James River Corp.: Interview date: November 13, 1991
U.S. Gypsum: Interview date: November 14, 1991

Cura Corp. will interview on Nov. 8.
Ford Electrical & Fuel Handling Div. will interview on Nov. 14.

KERR MCGEE COAL
P.O. Box 25861
Oklahoma City, OK 73125
attn: Mr. Al Chandler

NUMBER OF SCHEDULES: 1
MAJORS: BS/MS Mining Engineering
POSITION: Galatia, IL
LOCATION: December 1991 or May, July 1992 grads
INTERVIEWING: 2.5
MINIMUM G.P.A.:

DEADLINE FOR TURNING IN RESUMES: Wednesday, Oct. 16, 1991
INTERVIEW DATE: October 30, 1991

INTERNATIONAL BUSINESS
Two Riverway
Houston, TX 77251
attn: Mr. Phil Palese

NUMBER OF SCHEDULES: 1
MAJORS: BS/MS Computer Science or Electrical Engineering
POSITION: Houston, TX
INTERVIEWING: December 1991 or May, July 1992 grads
CITIZENSHIP: Must be able to remain in the U.S. on a permanent basis

DEADLINE FOR TURNING IN RESUMES: Wednesday, Oct. 16, 1991
INTERVIEW DATE: November 19, 1991

COOPER
P.O. Box 4446
Houston, TX 77210
attn: Ms. Julie DeBoni

NUMBER OF SCHEDULES: 2
MAJORS: BS/MS Mechanical, Electrical Engineering, or Engineering Management
POSITION: Additional information is not available.
LOCATION: Nationwide

DEADLINE FOR TURNING IN RESUMES: Wednesday, Oct. 16, 1991
INTERVIEW DATE: November 22, 1991

NON-PRESCREENED INTERVIEWS

HARRIS CORPORATION
1025 W. Nasa Blvd.
Melbourne, FL 32919
Attn: Ms. Kathy Leigl

NUMBER OF SCHEDULES: 1
MAJORS: BS/Electrical Engineering
POSITION: Product development or sustaining engineering in Quincy, IL
INTERVIEWING: December 1991 grads
MINIMUM G.P.A.: 3.0

INTERVIEW SIGNUP DATE: Thursday, Oct. 24, 1991
INTERVIEW DATE: November 7, 1991

Co-op Placement

October, 1991 Sign-ups

CO-OP EMPLOYMENT OPPORTUNITIES

Sign-up location: 303D Norwood Hall
Co-op Office

Sign-up hours: 7:45 am - 11:00 am
1:00 pm - 3:00 pm
Monday - Friday

Additions and/or changes to the Co-op interview schedule will be posted in the Co-op Office.

Interview date: Tuesday, Oct. 15, 1991

ANHEUSER BUSCH
St. Louis, Missouri

Interviewing: E.E.
Project management & construction
Equipment Expediter
Job description available in the co-op office.

Requirements: 2.8 GPA or above. Academic level of applicants: at least 4-5 semesters completed at the end of the present semester.

Sign-up date: Tuesday, Oct. 1, 1991

1 schedule - 13 interview openings

work Jan-Aug 1992

Interview date: Tues., Oct. 15, 1991

UNION PACIFIC RAILROAD
Omaha, Nebraska

Interviewing: C.E., E.E., M.E.

Requirements: 3.0 GPA or above. Academic level of applicants: at least 30-59 credit hours completed at the end of the present semester. Must be able to work in US legally.

Sign-up date: Tues., Oct. 1, 1991

3 schedules - 39 interview openings
(2 schedules for M.E., C.E., E.E. for the operating department-1 schedule for E.E. for the communications, radio, fiber optics, or microwave dept.) total 3

start work spring 92

Informational meeting - Monday, Oct. 14, 1991
6:30 - 7:30 - 202A Centennial Hall Univ Ctr.
East. All students interested in Union Pacific Railroad for Co-op employment are asked to attend.

IBM CORPORATION
Boca Raton, Florida

Interviewing: C.Sc., E.E.

Requirements: 3.0 GPA or above. American Citizenship required. No student visas. Academic level of applicants: at least 45 credit hour completed at the end of the present semester.

start work spring 92

Turn in resumes: Wed., Oct. 2, 1991

RESUMES ONLY. IF YOU WOULD LIKE TO BE CONSIDERED FOR CO-OP EMPLOYMENT WITH THE ABOVE COMPANY, PLEASE TURN IN A COPY OF YOUR CO-OP RESUME TO THE CO-OP OFFICE ON THE ABOVE DATE.

Interview date: Thurs., Oct. 17, 1991

PRC ENVIRONMENTAL MANAGEMENT
Work locations: Kansas City, MO and Chicago, IL

Interviewing: Ch.E., C.E., Geology, Geo.E., Geophysics

Requirements: 2.5 GPA or above. Academic level of applicants: at least 50 credit hours completed at the end of the present semester.

Sign-up date: Wed., Oct. 2, 1991

1 schedule - 12 interview openings

Interview date: Wed., Oct. 16, 1991

HUNTER ENGINEERING CO.
St. Louis, Missouri

Interviewing: M.E.

Requirements: 3.0 GPA or above. US Citizenship.
Academic level of applicants: at least 60-75 hours
completed at the end of the present semester.

start work spring 92

Sign-up date: Wed., Oct. 2, 1991

1 schedule - 13 interview openings

Interview date: Wed., Oct. 23, 1991

BROWN SHOE COMPANY
Work locations: Various locations throughout
Missouri

Interviewing: E.E., M.E.

Requirements: 2.0 GPA or above. Academic
level of applicants: at least 30-59 credit
hours completed at the end of the present
semester.

start work spring 1992

Sign-up date: Wed., Oct. 9, 1991

2 schedules - 26 interview openings

Interview date: Wed., Oct. 23, 1991

ANHEUSER BUSCH
St. Louis, Missouri

Interviewing: E.E. (Power and Control Systems)

Requirements: 2.8 GPA or above. Academic level
of applicants: at least 4-5 semesters completed
at the end of the present semester.

Sign-up date: Wed., Oct. 9, 1991

1 schedule - 13 interview openings

work Jan - Aug 1992

Interview date: Thurs., Oct. 24, 1991

ANHEUSER BUSCH
St. Louis, Missouri

Interviewing: M.E. (Corporate Engineering
Department - Process Engineering Group)

Requirements: 2.8 GPA or above. Academic
level of applicants: at least 4-5 semester
completed at the end of the present semester.

Sign-up date: Thurs., Oct. 10, 1991

work Jan - Aug 1992

1 schedule - 13 interview openings

Interview date: Thurs., Oct. 24, 1991

ANHEUSER BUSCH
St. Louis, Missouri

Interviewing: M.E. (Corporate packaging
and shipping dept.)

Requirements: 2.8 GPA or above. Academic
level of applicants: at least 4-5 semesters
completed at the end of the present semester.

Work Jan - Aug 1992

Sign-up date: Thurs., Oct. 10, 1991

1 schedule - 13 interview openings

Interview date: Friday, Oct. 25, 1991

HUTCHINSON TECH. INC.
Hutchinson, MN

Interviewing: Ch.E., E.E., M.E.

Requirements: 2.8 GPA or above. Academic
level of applicants: at least 76 credit
hours completed at the end of the present
semester.

start work spring 92

Sign-up date: Thurs., Oct. 10, 1991

2 schedules - 20 interview openings

Information meeting scheduled for
Thurs., Oct. 24, 1991 in the UCE 213
Missouri Room, Time 7:00 pm to 9:00 pm.
All students interviewing or interested
in Hutchinson Technology must attend.

MCCLURE ENGINEERING ASSOC.
E. Moline, Illinois

Interviewing: C.E.

Requirements: 2.5 GPA or above. Academic
level of applicants: at least 29 credit
hours completed at the end of the present
semester. Equal opportunity employer.

Turn in resumes: Thurs., Oct. 10, 1991

RESUMES ONLY. IF YOU WOULD LIKE TO BE
CONSIDERED FOR CO-OP EMPLOYMENT WITH THE
ABOVE EMPLOYERS, PLEASE TURN IN A COPY
OF YOUR CO-OP RESUME TO THE CO-OP OFFICE
ON THE ABOVE DATE.

Interview date: Tues., Oct. 29, 1991

OLIN CORPORATION
E. Alton, Illinois

Interviewing: M.E., Met.E.

Requirements: 2.25 GPA or above. US Citizenship
or visa to work in states. Academic level of
applicants: at least 30 credit hours completed
at the end of the present semester.

start work spring 92

Sign-up date: Tues., Oct. 15, 1991

1 schedule - 13 interview openings

IBM CORPORATION
Charlotte, NC

Interviewing: Chem, C.Sc.

Requirements: 2.0 GPA or above. US Citizenship
or national perm. resident. Academic level of
applicants: at least sophomore level completed
at the end of the present semester.

Turn in resumes: Tues., Oct. 15, 1991

RESUMES ONLY. IF YOU WOULD LIKE TO BE CONSIDERED
FOR CO-OP EMPLOYMENT WITH THE ABOVE COMPANY, PLEASE
TURN IN A COPY OF YOUR CO-OP RESUME TO THE CO-OP
OFFICE ON THE ABOVE DATE.

VULCAN MATERIALS
Countryside, Illinois

Interviewing: C.E., Geology, Geo.E., Mining

Requirements: 2.0 GPA or above. US Citizenship.

Turn in resumes: Thurs., Oct. 17, 1991

start work spring 92

RESUMES ONLY. IF YOU WOULD LIKE TO BE CONSIDERED
FOR CO-OP EMPLOYMENT WITH THE ABOVE COMPANY, PLEASE
TURN IN A COPY OF YOUR CO-OP RESUME TO THE CO-OP
OFFICE ON THE ABOVE DATE.

AMOCO CORPORATION
Naperville, Illinois

Interviewing: Chem., Ch.E.

Requirements: 3.0 GPA or above. Academic level
of applicants: at least 30-59 credit hours
completed at the end of the present semester.
Must show proof of authorization to work in US.

start work spring 92

Turn in resumes: Thurs., Oct. 17, 1991

RESUMES ONLY. IF YOU WOULD LIKE TO BE
CONSIDERED FOR CO-OP EMPLOYMENT WITH THE
ABOVE COMPANY, PLEASE TURN IN A COPY OF
YOUR CO-OP RESUME TO THE CO-OP OFFICE ON
THE ABOVE DATE.

JACOBS ENGINEERING
Lakeland, Florida

Interviewing: Ch.E., C.E., E.E., M.E.

Requirements: 2.5 GPA or above. Academic
level of applicants: at least 60 credit
hours completed at the end of the present
semester. American Citizenship required.

Turn in resumes: Friday, Oct. 18, 1991

RESUMES ONLY. IF YOU WOULD LIKE TO BE
CONSIDERED FOR CO-OP EMPLOYMENT WITH THE
ABOVE COMPANY, PLEASE TURN IN A COPY OF
YOUR CO-OP RESUME TO THE CO-OP OFFICE ON
THE ABOVE DATE.

GENERAL SERVICES ADMINISTRATION
REGION 6
Kansas City, Missouri

Interviewing: C.Sc.

Requirements: 2.0 GPA or above.

Turn in resumes: Monday, Oct. 21, 1991

RESUMES ONLY. IF YOU WOULD LIKE TO BE
CONSIDERED FOR CO-OP EMPLOYMENT WITH THE
ABOVE COMPANY, PLEASE TURN IN A COPY OF
YOUR CO-OP RESUME TO THE CO-OP OFFICE ON
THE ABOVE DATE.

LITTELFUSE INC.
Centralia, IL

Interviewing: M.E., E.E.

Requirements: 2.8 GPA or above. Academic
level of applicants: at least 75 credit
hours completed at the end of the present
semester.

Start work spring 92

Turn in resumes: Monday, Oct. 21, 1991

RESUMES ONLY. IF YOU WOULD LIKE TO BE
CONSIDERED FOR CO-OP EMPLOYMENT WITH THE
ABOVE COMPANY, PLEASE TURN IN A COPY OF
YOUR CO-OP RESUME TO THE CO-OP OFFICE
ON THE ABOVE DATE.

ISLAND CREEK COAL
Madisonville, KY

Interviewing: E.E., Mining

Requirements: 2.0 GPA or above. Academic level
of applicants: at least 30 credit hour completed
at the end of the present semester.

Turn in resumes: Monday, Oct. 21, 1991

RESUMES ONLY. IF YOU WOULD LIKE TO BE
CONSIDERED FOR CO-OP EMPLOYMENT WITH THE
ABOVE COMPANY, PLEASE TURN IN A COPY OF
YOUR CO-OP RESUME TO THE CO-OP OFFICE
ON THE ABOVE DATE.

GENERAL MOTORS CPC FAIRFAX
Kansas City, KS

Interviewing: E.E., Mgmt.

Requirements: 3.0 GPA or above. American
Citizenship required.

start work spring 92

Turn in resumes: Tues., Oct. 22, 1991

RESUMES ONLY. IF YOU WOULD LIKE TO BE CONSIDERED
FOR CO-OP EMPLOYMENT WITH THE ABOVE COMPANY,
PLEASE TURN IN A COPY OF YOUR CO-OP RESUME TO THE
CO-OP OFFICE ON THE ABOVE DATE.

NOTE: The ones that indicate RESUMES ONLY.
This means the company will not be on campus
interviewing, but they want resumes to review
and should contact you if they are interested
in employing you.

Please let the Co-op Office know immediately
of any acceptance of an offer.

Please check with the Co-op Office period-
ically to see if additional companies have
scheduled interviews. These will be
available in the Co-op Office, 303D Norwood
Hall.

ADDITION TO OCTOBER CO-OP LIST

SPECIAL NOTICE - PRESCREENING (OPENINGS STILL AVAILABLE)

SIGN-UP FOR SMITH & NEPHEW RICHARDS INC. CO-OP INTERVIEWS

TURN IN RESUMES: THURSDAY, OCT. 3, 1991

WHERE: 303D NORWOOD, CO-OP OFFICE

TIMES: 7:45 AM - 11:00 AM, 1:00 PM - 3:00 PM

INTERVIEWING: M.E., ENGR. MECHANICS

REQUIREMENTS: 3.0 GPA OR ABOVE. FRESHMAN THRU GRAD STUDENT LEVEL

JOB DESCRIPTION AVAILABLE IN THE CO-OP OFFICE

THE ACTUAL INTERVIEW DATE WILL BE WED., OCT. 16, 1991

SMITH & NEPHEW RICHARDS INC., MEMPHIS, TENNESSEE, HAS REQUESTED THAT WE FURNISH THEM RESUMES FOR PRE-SCREENING. WE WILL ACCEPT AS MANY CO-OP RESUMES AS WE CAN COLLECT. JUST DROP OFF A COPY OF YOUR CO-OP RESUME ON THE ABOVE SIGN-UP DATE. AFTER PRE-SCREENING, SMITH & NEPHEW RICHARDS, INC. WILL SEND THE CO-OP OFFICE A LIST OF STUDENTS THEY ARE INTERESTED IN INTERVIEWING. THE LIST SHOULD BE AVAILABLE AT THE CO-OP OFFICE BY THURS., OCT. 10. CHECK WITH THE CO-OP OFFICE NO LATER THAN OCT. 10.

CO-OP EMPLOYMENTPRESCREENING

SIGN UP FOR SPORLAN VALVE CO-OP INTERVIEWS

TURN IN RESUMES: MONDAY, OCTOBER 14, 1991

WHERE: 303D NORWOOD HALL, CO-OP OFFICE

TIMES: 7:45 AM - 11:00 AM, 1:00 PM - 3:00 PM

INTERVIEWING: M.E.

REQUIREMENTS: 2.5 GPA OR ABOVE.

THE ACTUAL INTERVIEW DATE WILL BE WED., OCT. 30, 1991

SPORLAN VALVE, ST. LOUIS, MISSOURI HAS REQUESTED THAT WE FURNISH THEM WITH RESUMES FOR PRE-SCREENING. WE WILL ACCEPT AS MANY CO-OP RESUMES AS WE CAN COLLECT. JUST DROP OFF A COPY OF YOUR CO-OP RESUME ON THE ABOVE SIGN-UP DATE. AFTER PRE-SCREENING, SPORLAN VALVE WILL SEND THE CO-OP OFFICE A LIST OF STUDENTS THEY ARE INTERESTED IN INTERVIEWING. THE LIST SHOULD BE AVAILABLE AT THE CO-OP OFFICE BY FRIDAY, OCT. 25, 1991. PLEASE CHECK WITH THE CO-OP OFFICE NO LATER THAN OCT. 25.

ATTENTION POTENTIAL CO-OP STUDENTS

GENERAL MOTORS WILL BE INTERVIEWING ON CAMPUS

OCTOBER 15 & OCTOBER 16 FOR THE FOLLOWING MAJORS:

MECHANICAL ENGINEERS
ELECTRICAL ENGINEERS
METALLURGICAL ENGINEERS
ENGINEERING MANAGEMENT

2.7 GPA OR ABOVE.

SEE SHARON, 303D NORWOOD HALL, CO-OP OFFICE

TO SCHEDULE AN INTERVIEW TIME.

Interview date: Friday, Oct. 25, 1991

FEDERAL AVIATION ADMINISTRATION
Monroney Aeronautical Center
Oklahoma City, Oklahoma

Interviewing: E.E.

Requirements: 2.0 At least
30 credit hrs co

Pick up 171 government form on sign-up day

Sign-up date: Thurs., Oct. 10, 1991

1 schedule - 10 interview openings

Interview date: Thursday, Oct. 24, 1991

DOW CORNING CORPORATION
Work Locations: Midland, Michigan and
Carrollton, KY

Interviewing: Primarily Ch.E., but will
also interview M.E., E.E.

Requirements: 2.8 GPA or above. US Citizenship
or permanent resident visa

Sign-up date: Thurs., Oct. 10, 1991

1/2 schedule - 7 interview openings am only

start work spring 92

Addition to October Co-op Interview list

Interview date: Monday, Oct. 21, 1991

MOOG AUTOMOTIVE
St. Louis, Missouri

Interviewing: M.E.

Requirements: 2.8 GPA or above. US Citizenship.
Academic level of applicants: at least 30 credit
hours completed at the end of the present semester.

Sign-up date: Monday, Oct. 7, 1991

1 schedule - 12 interview openings

KOHLER COMPANY
Kohler, Wisconsin

Interviewing: Ceramic E., Eng. Mgmt., M.E.,
E.E., Met.E., C.Sc.

Requirements: 2.0 GPA or above

Turn in resumes: Friday, Oct. 4, 1991

KOHLER COMPANY HAS A GROWING CO-OP PROGRAM. KOHLER
WILL CONTACT YOU WHEN MORE INFORMATION IS DESIRED.

THEY WILL NOT BE INTERVIEWING ON CAMPUS, BUT DESIRE
RESUMES TO REVIEW AND WILL CONTACT YOU DIRECTLY.

PLEASE POST

SPECIAL NOTICE - PRESCREENING

CO-OP EMPLOYMENT

SIGN UP FOR IBM CORPORATION, CO-OP INTERVIEWS

TURN IN RESUMES: TUESDAY, OCT. 29, 1991

WHERE: 303D NORWOOD HALL, CO-OP OFFICE

TIMES: 7:45 AM - 11:00 AM, 1:00 PM - 3:00 PM

INTERVIEWING: C.SC. (HOUSTON AND DETROIT) AND
E.E. (HOUSTON ONLY)

REQUIREMENTS: 2.0 GPA OR ABOVE.

THE ACTUAL INTERVIEW DATE WILL BE TUESDAY,
NOVEMBER 19, 1991.

IBM Corporation, Houston, TX & Detroit, MI.,
has requested that we furnish them with resumes
for pre-screening. We will accept as many co-op
resumes as we can collect. Just drop off a copy
of your co-op resume on the above sign-up date.
After pre-screening, IBM will send the Co-op office
a list of students they are interested in
interviewing. The list should be posted in the
UMR Co-op Office by Wed., Nov. 13, 1991.
Check with the Co-op Office no later than Wed.,
Nov. 13.

PLEASE POST

SPECIAL NOTICE - PRESCREENING

CO-OP EMPLOYMENT

SIGN UP FOR AMSTED IND. INCORPORATED, CO-OP
INTERVIEWS

TURN IN RESUMES: Wed., Oct. 9, 1991

WHERE: 303D Norwood Hall, Co-op Office

TIMES: 7:45 am - 11:00 am, 1:00 pm - 3:00 pm

INTERVIEWING: MET., M.E.

REQUIREMENTS: 2.7 GPA or above. Citizens of
US or authorized to work in US

start work spring 92

THE ACTUAL INTERVIEW DATE WILL BE WEDNESDAY,
OCTOBER 30, 1991.

Amsted Industries, Chicago, Illinois has requested
that we furnish them with resumes for pre-screening.
We will accept as many CO-OP resumes as we can
collect. Just drop off a copy of your CO-OP
resume on the above sign-up date. After pre-
screening, AMSTED will send the Co-op Office a list
of students they are interested in interviewing.
The list should be posted in the UMR Co-op Office
by Wed., Oct. 23. Check with the Co-op Office
no later than Wed., Oct. 23.

Summer Employment

UNIVERSITY OF MISSOURI-ROLLA
OFFICE OF CAREER PLACEMENT
301 Norwood Hall

SUMMER EMPLOYMENTWEEKLY DETAIL LIST #6

Covers Weeks of November 4, 11, & 18, 1991

PRESCREENED INTERVIEWSMARATHON OIL COMPANY

P.O. Box 4814
Houston, TX 77210
attn: Mr. Steven Bridgford

NOTE: Marathon Oil Company has cancelled interviews for
November 5 and November 6. Resumes will be accepted only.

MAJORS: Freshman, Sophomore & Junior Petroleum
Engineering
POSITION: College Intern
LOCATION: Bridgeport, IL; Cody, WI; Lafayette, LA;
Midland, TX; Oklahoma City, OK; Tyler, TX

DEADLINE FOR TURNING IN RESUMES: Wednesday, October 16, 1991

UNION CARBIDE CORP. CHEMICALS & PLASTICS
39 Old Ridgebury Rd., M4556
Danbury, CT 06817
attn: Ms. Carol Collins

NUMBER OF SCHEDULES: 1/2-November 7
MAJORS: Chemical Engineering
POSITION: Production Engineering Interns
Process Design Interns
LOCATION: Texas City, TX; Charleston, WV
INTERVIEWING: 1993 OR 1994 GRADS
MINIMUM G.P.A.: 3.0

DEADLINE FOR TURNING IN RESUMES: Wednesday, October 16, 1991
INTERVIEW DATE: November 7, 1991

THE FORD FOUNDATION HAS ANNOUNCED A SUMMER INTERNSHIP PROGRAM FOR 1992.

The program is for current graduate students who are planning to return to school in the fall of 1992. Twenty-nine internships are available, starting June 3. Twelve of the internships will be overseas in the developing country program offices; seventeen of the internships will be based in New York. Application forms/information will be available in Room 301 Norwood Hall. Students are requested to apply for only two jobs that closely match their experience. Students should submit a neatly typewritten and complete application.

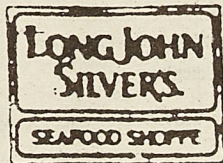
MATERIALS ACCEPTED AFTER THE POSTMARK DEADLINE OF NOVEMBER 29, 1991, WILL NOT BE CONSIDERED.

Finalists are called for interviews to be held in New York City; all other applicants will receive rejection letters as soon as finalists are chosen.

Note: Positions exist for economics & social science majors.

Daily 10% Discount For UMR Students*

*offer not valid with other coupons or discounts



We accept Mastercard,
Visa, Diners & Discover
1009 Kingshighway

**Medi-Value
Pharmacy**
Tenth and Pine



We now offer Fax &
American Express money grams

Rolla's almost on Campus Pharmacy & photo
center. For all your health & photo needs.

Phone: 364-7077

YOU HAVE FRIENDS WHO CARE
AT...



PHONE: 364-0066

215 WEST 8th STREET
P.O. BOX 832
ROLLA, MISSOURI 65401

FOR HELP
DURING UNPLANNED PREGNANCY
FREE PREGNANCY TESTING
NEW EARLY DETECTION METHOD

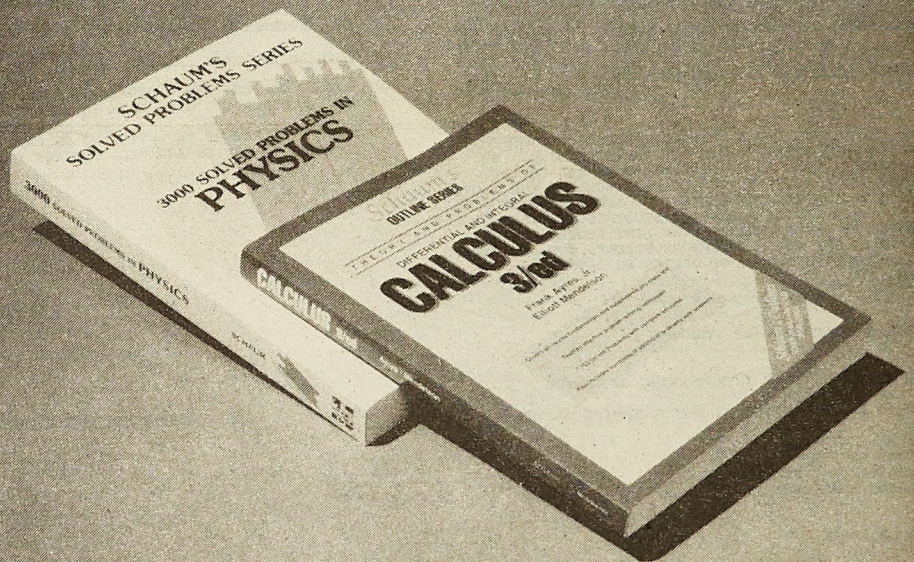
Bruno's

Banquet Facilities Available
Men's Night - Wednesday
Ladies' Night - Thursday
9:30 - 1:00

341-2110

2001 Forum Drive

WHO SAID YOU CAN'T GET STUDENT AID?



There are times when being able to get the answer isn't enough. Sometimes, like midterms, understanding the question and recognizing the solution becomes more a matter of speed. Working with Schaum's Outlines prepares you for the rapid recognition of problems and solutions. The more problems you solve and the more ways you see how to solve the problem, the more confidence and ability you will bring with you to your exam.

SCHAUM

