



13 Feb 1991

## The Missouri Miner, February 13, 1991

Follow this and additional works at: [https://scholarsmine.mst.edu/missouri\\_miner](https://scholarsmine.mst.edu/missouri_miner)

These newspapers reflect the attitudes, perspectives, and beliefs of different times. Neither the library nor the university endorses the views expressed in these collections, some of which contain images and language which may be offensive to some readers.

---

### Recommended Citation

"The Missouri Miner, February 13, 1991" (1991). *The Missouri Miner Newspaper*. 2571.  
[https://scholarsmine.mst.edu/missouri\\_miner/2571](https://scholarsmine.mst.edu/missouri_miner/2571)

This Newspaper is brought to you for free and open access by Scholars' Mine. It has been accepted for inclusion in The Missouri Miner Newspaper by an authorized administrator of Scholars' Mine. This work is protected by U. S. Copyright Law. Unauthorized use including reproduction for redistribution requires the permission of the copyright holder. For more information, please contact [scholarsmine@mst.edu](mailto:scholarsmine@mst.edu).





# Missouri Miner



A publication of the students of the University of Missouri-Rolla

February 13, 1991

Volume 79, Number 19

Twenty-four pages

## Suggestions on how to avoid rape

By Kelly Bernal  
STAFF WRITER

As continuation of the articles concerning crime, I wanted to write about a subject that has been in the forefront of the media for the last year. The subject is rape and acquaintance rape—more commonly known as "date rape." Rape has always been a controversial topic, even more so with both reports and occurrences on the rise. Recent studies show that rape is one of the highest underreported crimes. "Only 90,434 rapes were reported to United States law enforcement agencies in 1986, a number that is conservatively believed to represent a minority of the actual rape of all types taking place. Government estimates find that anywhere from three to ten rapes are committed for every one rape reported. And while rapes by strangers are still underreported, rapes by acquaintances

are virtually nonreported. Yet, based on intake observations made by staff at various rape-counseling centers (where victims come for treatment, but do not have to file police reports), 70-80 percent of all rape crimes are acquaintance rapes."

Rolla being a small sized, Midwestern community does not have the crime rate that larger metropolises do, but even we are not unaware of the issue or the problems it involves. The several on campus groups have responded to the needs and fears of the campus body. Two semesters ago after a rape in the community, an escort to your vehicle was provided for those desiring it and the first part of a two part self defense and assertiveness training seminar titled "Don't be a victim" was offered free of charge on February 9 in the Miner Rec at 9:00-11:00 a.m. with the continuation on February 16 at the Multipurpose 9:00-11:30 a.m.

One of the reasons often given for

not reporting a rape is that the victim does not know actually what to do or who to contact. In order to make the public more aware and to aid an individual should she/he unfortunately be in of this information, I interviewed Michael W. Snively, Rolla Chief of Police and asked him what a victim should do when confronted with the situation. Chief Snively stated that one should:

DO: 1. Contact the local police department.

2. Call someone close to you that you can lean on.

DON'T: 1. Shower or change clothes—they provide crucial needed evidence to be able to convict the assailant.

When a police officer arrives one should be prepared for rather intense questions; the details are necessary for the investigation. The officer will want to collect the clothing. Most po-

See Rape, page 4

## Chancellor urges students to be tolerant

"A Time for Knowledge, Understanding, Tolerance"

On the University of Missouri-Rolla campus, you are a member of a diverse family. Your classes are filled with students of different ages, races, sexes, national origins, philosophies, religions and interests.

At this time in our lives, when the Persian Gulf War is one everyone's minds, it is particularly important to nurture knowledge, understanding, and tolerance of diversity. While there are no Iraqi students on campus, it is well to remember that we do not discriminate at UMR on the basis of na-

tional origin or race. Differences in appearance are part of the richness of our diverse community and are to be celebrated with understanding.

It is a time, indeed, to nurture and encourage those qualities for which UMR students are known—an appreciation of individuals, a tolerance for differences, and a capacity of looking beyond the superficial.

Sincerely,

Martin C. Jischke  
Chancellor

## International News Headlines---the week's events in review

Gary Meyer  
STAFF WRITER

**THE GULF WAR**—The aerial bombing of Iraq by allied forces continued through another week. But it has not yet disabled the Iraqi war machine to the extent U.S. commanders would like before committing troops to a ground war. Strict military censorship of the press has limited the dissemination of information on the success of the bombing efforts leading to much speculation and mixed reports. According to Lieutenant Colonel Thomas Kelly, director of operations for the Joint Chiefs of Staff, "The Iraqi army remains a capable force". Other sources state that "Iraqi troop activity has all but ceased". Although congressmen, analysts, and the general public alike are at odds about the correct timing of a ground war, the Bush administration officials insist the pace of the allied campaign is guided only by progress of target destruction.

**James Baker:**  
"tough times lie ahead."

Current allied bombing efforts have been focused on the Republican Guard, the elite military units in the rear of Iraq's three tiered defensive system. Throughout the week, allied aircraft highlighted by American B-52's, deluged Guard units with a nearly constant

shower of bombs. Reports early last week indicated that approximately 15 percent the Guard's dug-in tanks had been destroyed. The bombardment temporarily severed communications between Iraqi generals and army divisions on the Iraq-Kuwaiti border,

however, it is thought that Saddam Hussein can still communicate with his generals.

Also partially destroyed are the oil and gas facilities and underground fuel depots of army units in and near Kuwait. Iraq banned the sale of heating

oil, gasoline, and other fuels to citizens and diverted all such supplies to the military. In further attempts to mitigate the scarcity of fuels, Iraq has been importing fuel from Jordan. The United States has responded to this violation of United Nations sanctions by bombing

Jordanian fuel trucks before they can reach their destinations in Iraq. United Nations Chief, Javier Perez de Cuellar has called these actions "too tough". The U.S. responded to his charges by claiming that Iraq is using the fuel convoys to disguise Scud missiles being transferred to their launch sites.

Apparently the allied efforts to eliminate the Scud missile threat are succeeding. Last week, only three Scuds were launched causing no casualties.

Iraq evacuated 10 more aircraft to Iran, raising the total number of planes grounded there to 110. Iranian air controllers were heard refusing the Iraqi planes permission to land, however, the planes disregarded the refusal and landed without being fired upon. It is unknown whether Iran is cooperating with Iraq in this safeguarding of Iraqi planes.

Baghdad cut diplomatic ties with major nations in the anti-Iraq coalition, indicating their desire to solve the Persian Gulf crisis in an Arab framework. Within Arab countries there is a growing tide of sympathy for Saddam Hussein. These, in addition to rising domestic problems, some stemming from the effects of sanctions against Iraq, are creating pressure to begin a ground war before the Arab coalition

See News, page 4





# Calendar of Events

## Wednesday

**Juggling Club**, meeting at Multi-Purpose, south balcony at 6 p.m. (Bring clubs, maces, silverware, checkbooks, or whatever else you think can be juggled.) As always, beginners are welcome.

**Bible Study Club**, 12:30 p.m.

**Lady Miners vs. Southern**, 5:30 p.m.

**Wesley Mtg.**, 6 p.m.

**ASCE Mtg.**, CE 114, 7 p.m.

**Miners vs. Southern**, 7:30 p.m.

**Newman Mass.**, 9 p.m.

## Thursday

**UMR Junior High School Band Festival.**

**Stepping out with Confidence**, 3 p.m.

**Toastmasters**, 220 Fulton, 4:30 p.m.

**Chi Epsilon Mtg.**, 117 CE, 5 p.m.

**Omega Chi Epsilon Mtg.**, 126 Schrenk, 6 p.m.

**IK**, 204 McNitt, 6:30 p.m.

**Climbing Club**, 6:30 p.m.

**Kappa Kappa Psi**, 101 Old Cafe., 6:30 p.m.

**Film Series**, ME, 7 p.m.

**American Nuclear Society**, 227 Fulton, 6:30 p.m.

**GDI**, 114 CE, 7 p.m.

**Math Help Sessions**, 203 M-CS, 7 p.m.

**Chess Club**, 7:30 p.m.

**M-Club Mtg.**, 114 CE, 7:30 p.m.

**Campus Crusade for Christ Program**, 125 Schrenk, 7:30 p.m.

**Gaming Mtg.**, 8 p.m., ME

**BACCHUS Mtg.**, Walnut, 8 p.m.

## Friday

**UMR Junior High School Band Festival.**

**SUB Movie: The Freshman**, 104 ME

**Pakistan Student Assoc.**, 3:30 p.m., Maramec

**IVCF Mtg.**, 138 Schrenk, 7 p.m.

## Saturday

**African-American Heritage Month Event**, Gospel Extravaganza, 2:30 p.m., First Assembly of God Church.

**Miners at Pittsburg State**

**Jazz Festival**

**SUB Movie: The Freshman**, 104 ME

**SUB: College Bowl Competition**

**Open Gaming**, 9 a.m., 317 CE

**Self Defense Seminar**, Multipurpose, 9 a.m.

**Chinese Student Assoc. Movie**, G-3 Schrenk

## Sunday

**Kappa Kappa Psi Initiation**, Centennial

**Wesley Chapel**, 7 p.m.

**Omega Sigma Mtg.**, 125 ChE

## Monday

**Life Talks**, 7:45 p.m., 414 Holtman. Sponsored by Koinonia.

**STUDY SKILLS**, 201 Norwood, 3:30 p.m.

**Christian Campus Fellowship Mtg.**, Missouri, 6 p.m.

**GDI BOG**, Maramec, 7 p.m.

## Tuesday

**Tau Beta Pi**, Electee quiz, 7 p.m., Phys. 104

**SWE**, UCE, 5:30 p.m.

**Student Council Mtg.**, 103 Eng. Mgt., 6:30 p.m.

**Math Help Sessions**, 203 M-CS, 7 p.m.

**Tau Beta Pi Mtg.**, 114 CE, 7 p.m.

## Next Wednesday

**Sigma Xi Luncheon Meeting**, noon, Mark Twain Room, University Center-East. Topic and speaker to be announced. Bring your own lunch.

**African-American Heritage Month Event**, live teleconference, "The Rise in Campus Racism: Causes and Solutions," noon, Missouri Room, University Center-East. Brown bag lunch provided - 11:30. Registrations for the lunch may be made by contacting Minority Engineering Program office, 107 Norwood, phone: 314-341-4212 by Feb. 15.

**Chemical Engineering Seminar**, "Material Selection for Membrane-Based Gas Separations," William J. Koros, Chemical Engineering Department, University of Texas at Austin, 4 p.m., Room 125, Schrenk Hall. Free.

**UMR Women's Basketball**, Southeast Missouri State, 5:30 p.m., Bullman Multi-Purpose Bldg. Free.

**UMR Men's Basketball**, Southeast Missouri State, 7:30 p.m., Bullman Multi-Purpose Bldg. Admission charged. UMR students admitted free with a valid UMR I.D.

**Bible Study Club**, 12:30 p.m.

**Wesley Mtg.**, 6 p.m.

**Blue Key Mtg.**, 216 ME, 6 p.m.

**AGC Mtg.**, 114 CE, 7 p.m.

**SME**, McN., 7:30 p.m.

**Amer. Found. Soc.**, 7:30 p.m.

**Alpha Chi Sigma Mtg.**, G-3 Schrenk, 7:30 p.m.

**Newman Mass.**, 9 p.m.

## Noday

**Attention Grad Students:** Did you know that you can join Tau Beta Pi? If you are a grad student in high standing with outstanding character, have finished half of your degree work, and are interested in joining Tau Beta Pi, contact Bill Headrick at 341-8329 ASAP.

## Financial Aid

**NAVY ENGINEER** Each year the United States Navy selects approximately 300 of the top students in engineering, math, physics and chemistry from around the nation, for its highly prestigious Nuclear Propulsion Officer Candidate program.

Minimum qualifications are:

- completed 2 semesters of calculus and calculus based physics
- grade point average of 3.3 or better (3.0 for seniors)
- U.S. Citizenship

For more information contact the Student Financial Aid office, G-1 Parker Hall.

**The Student Financial Aid office is available to give presentations on Financial Aid to any interested parties. For more information or to make arrangements, call 341-4282 or come by G-1 Parker Hall.**

**SOCIETY OF PROFESSIONAL WELL LOG ANALYSTS FOUNDATION** The Society of Professional Well Log Analysts Foundation provides financial assistance to eligible and qualified recipients pursuing a degree program related to oil, gas or other mineral formation evaluation. Scholarships are available for undergraduate and graduate students and are awarded on a competitive basis which takes into account academic achievement, career objectives, and financial need. Grants are available to undergraduate and graduate students and to faculty members to support research studies and educational projects related to formation evaluation.

**Deadline dates for submitting applications for SPWL A scholarships and grants are March 18, 1991.**

For more information and application forms contact the Student Financial Aid office, G-1 Parker Hall.

**AMERICAN ELECTROPLATER AND SURFACE FINISHERS SOCIETY SCHOLARSHIP PROGRAMS** The American Electroplaters and Surface Finishers Society offers separate scholarships for university or college undergraduates and graduates who demonstrate that their training (or research) is related to plating and surface finishing technologies.

Eligibility for Undergraduate Scholarship Program:

A student may apply for any academic year when he or she will be an undergraduate of at least junior standing in a chemistry, chemical engineering, environmental engineering, metallurgy or material science program where the focus of the curriculum is in surface science subjects.

**Eligibility for Graduate Scholarship Program:** A student may be eligible if he or she has completed an accredited undergraduate program and is enrolled in a graduate program leading to a master's or Ph.D. degree.

Award selections will be based on, but not limited to: career interest in surface finishing, scholarship, achievement, motivation and potential. Awards are not necessarily based on financial need.

Application materials may be acquired in the Student Financial Aid office, G-1 Parker Hall. **Deadline is April 15, 1991.**

**WILLIAM E. WEISEL SCHOLARSHIP FUND** The William E. Weisel Scholarship, through the SME Foundation, will be awarded annually to a worthy full-time student seeking a career in robotics/automated systems.

Eligibility requirements are:

- must be a full-time students attending a regionally accredited school in engineering or technology, seeking a career in robotics/automated systems and having completed a minimum of 30 credit hours in a manufacturing/robotic/automated systems curriculum. (Graduate students will not be eligible for this scholarship)
- must possess a minimum gpa of 2.75

**Deadline is March 1, 1991.**

Information on how to apply may be acquired in the Student Financial Aid office, G-1 Parker Hall.

**MYRTLE AND EARL WALKER SCHOLARSHIP FUND** The Myrtle and Earl Walker Scholarship, through the SME Foundation, will be awarded annually to worthy students seeking a career in manufacturing engineering and manufacturing engineering technology. Eligibility requirements are:

- must be a full-time student attending an engineering, technology or accredited trade school, seeking a career in manufacturing engineering and have completed a minimum of 30 credit hours in a manufacturing

engineering or technology curriculum. (Grad students not eligible).

- must possess a minimum gpa of 2.75

**Deadline is March 1, 1991.**

Information on how to apply may be acquired in the Student Financial Aid office, G-1 Parker Hall.

**NATIONAL ASSOCIATION OF WOMEN IN CONSTRUCTION GREATER KANSAS CITY** The Greater Kansas City, Missouri NAWIC Scholarship Foundation offers scholarships to students pursuing a career in the construction industry. Applications must be postmarked on or before March 31, 1991, to be eligible or considered for a scholarship award.

Additionally, we have applications for scholarship grants awarded by the National Association of NAWIC. Those applications must be postmarked by February 1, 1991.

For applications and information, contact the Student Financial Aid office, G-1 Parker Hall.

**THE HEAVY CONSTRUCTORS ASSOCIATION OF THE GREATER KANSAS CITY AREA** The Heavy Constructors Association of Greater Kansas City is making two scholarships available, each in the amount of \$2,500 for students pursuing careers in construction sciences. Requirements are:

- Shall be full-time students who demonstrate financial aid.
- Preference given to well rounded persons who are upper classmen, to Kansas City area residents, and to sons or daughters of construction employees.
- Applicants will be required to demonstrate their commitment to obtaining careers in construction.
- Recipients will be required to seek summer employment in construction.

**Deadline: April 15, 1990**

Applications may be obtained in the Student Financial Aid office, G-1 Parker Hall. The application is to be turned in to the SFA office by April 15, 1990.

**THE RALPH J. BUNCHE HUMAN RIGHTS FELLOWSHIP PROGRAM, AMNESTY INTERNATIONAL USA** Since its inception in 1961, Amnesty International has been at the forefront of the international struggle for human rights. Basing its work on internationally recognized standards, the organization works impartially for the release of prisoners of conscience, fair and prompt trials for political prisoners, and an end to torture and executions. In the last decade, Amnesty International has become a worldwide movement attracting the support of over 1,100,000 members in more than 150 countries.

Applicants for the Ralph J. Bunche Human Rights Fellowship should be members of traditionally recognized American "minority" groups, including African, Arab, Asian, Latino and Native Americans. Most applicants are college or graduate-level students in varied academic fields.

**Application Deadline: March 15, 1991.**

For more information and application materials contact the Student Financial Aid office, G-1 Parker Hall.

**NATIONAL ASSOCIATION OF WOMEN IN CONSTRUCTION ST. LOUIS CHAPTER** The St. Louis, Missouri Chapter of the National Association of Women in Construction awards several stipends each year to young women and men pursuing degrees from universities and vocational colleges in fields related to the construction industry. **Applications must be postmarked no later than April 15, 1991 to be considered.**

Please note that the scholarship does not apply to first year students.

**See Financial Aid, page 5**

## Missouri Miner

The **Missouri Miner** is the official publication of the students of the University of Missouri-Rolla. It is distributed each Wednesday afternoon at Rolla, Missouri and features activities of the students of UMR.

All articles, features, photographs, and illustrations published are the property of the **Missouri Miner** and may not be reproduced or published without written permission.

The **Missouri Miner** encourages comments from its readers, and will attempt to print all responsible letters and editorial material received. All submissions must have a name, student ID number, and phone number for verification. Names will be withheld upon request.

Submissions for publication must be in our drop box (first floor of the Norwood Hall, Room 103) by 3:30 p.m. on the Thursday before publication. The **Missouri Miner** reserves the right to edit all submissions for style, grammar, punctuation, spelling, length, and matters of good taste.

The **Missouri Miner** is operated by the students of UMR and the opinions expressed in it do not necessarily reflect those of the university, faculty, or student body.

Editor-in-Chief	Larry Williams (364-1433)
Business Manager	Shelly Kaller (341-3394)
Asst. Business Manager	Connie Crossen
Advertising Director	Leslie Vigna (341-5386)
Asst. Advertising Director	Dan DeArmond
Subscriptions and Tearsheets	Dave Carpenter
Managing Editor	Matt Licklider (364-4841)
Circulation	Mike Matthews (364-1433)
News Editor	Steve Puljak (364-8968)
Asst. News Editor	Francine Belaska
Features Editor	Greg Denzer (364-8968)
Asst. Features Editor	Carl Bruce
Sports Editor	Tom Hughes (341-8360)
Asst. Sports Editor	Tom Brown
Photo Editor	Dave Libetz (364-5226)
Copy Manager	Tim Emmerich (341-3951)

**Staff Writers:** Eric Hardin, Fred Steinkuehler, Matt McNett, Tom Brown, Gary Meyer, Kelly Bernal, Matt Tobey, Jeff Lacavich.  
**Typesetters:** Sylvia Avula, Kelly Bernal, Rachel Kong  
**Graphic Artists:** Joe Jones, Michael Wetland  
**Advertising Representatives:** Jeremy Buchanan, Kevin Miller, Barb Meder

103A Norwood Hall  
 University of Missouri-Rolla  
 Rolla, MO 65401-0249  
 (314) 341-4235  
 (314) 341-4312



# Comments

## Continue to fight the good fight

The actuality of war is upon us with all its distressing realities. It seems as if our nation has been the victim of some sort of specter who has, with the wave of his wand, deprived us of all our moral sensitivities. We, who claim to be a Christian nation, are killing people; is not killing in direct contradiction of both our legal and religious standards? Is not the sanity of the world in question by our presence in the Persian Gulf? This sort of questioning is a natural response when the burden of war is placed upon the soul of a nation. It seems as if we are moving into a deeper and darker abyss with each night of sorties; it appears as if we have lost our way. Yet, we must remember that the killing started before our troops entered the Gulf. The insanity is the result of Saddam Hussein's imperialistic ambitions, not our defiance of them. Saddam Hussein thinks he can defeat us because he believes the above questions will keep our country from acting assertively; he is trying to hold Kuwait hostage by relying on the world's belief in the immorality of war.

When we feel ourselves slipping into the angst of moral responsibility, we will end up in one of two ways. We will become dominated by fear and apathy and cease to be a nation of productive citizens, or we will find the courage of character. The courage of character is found when, under stress, we rationally and unemotionally examine our consciences, and realize that defending others who are being violated is more important than our regard for ourselves. It is this question of character that has brought to the war with Iraq, for Saddam Hussein has violated the basic human rights of Kuwaiti citizens.

Let us examine a scenario; to do this is helpful to think of nations as individuals. As individuals we have to know ourselves and how we are going to respond to difficult situations. To do this we have to have thought about all the different things that can happen to us in following a certain course, and thus be better prepared for them. I will now ask the reader to think about how they would respond if they were to come across a stranger whose life is being threatened by another? There are three possible ways to respond. One

could pretend it isn't happening; one could go to get help from others who are better equipped to take on the aggressor; or one could attempt to intervene verbally, and forcefully if necessary. It is a matter of one's moral character in how they respond. The individual that lacks the intestinal fortitude will duck down their head and not acknowledge the brutality; they will only think of themselves and be glad that it is not happening to them. This individual lacks moral character and has no Christian conscience. The other two types of individuals do possess conscience; they know without thinking that they must intervene on behalf of any victim of aggression. To not be able to intervene would cause great distress to such individuals.

To give names to the individuals in the scenario, Iraq is the aggressor who raped and pillaged the victim Kuwait. The United Nations is the one who went to get someone better equipped to take on the aggressor, and the United States is the main one intervening, first verbally now forcefully. President Bush decided that it was time to put an end to the Viet Nam complex that has kept our country from realizing its duties and responsibilities; he rejected the appeasement of aggression.

To better understand where Saddam Hussein derived this imperialistic aggressiveness, it is helpful to look at Iraqi history. Iraq was once the center of a great Islamic empire. Saddam Hussein seeks to reestablish Baghdad to its days of glory. From 750 to 1258 AD, Baghdad was considered to be the jewel of the Middle East; it was the Islamic center of power and learning. All of Islam looked to Baghdad for guidance until it was finally sacked by the Mongols. Saddam Hussein wants to be the leader who brings back and supercedes this glory; he wants to unite all Arab peoples into one nation.

Let us examine some of his political motives; he is a member of the Party of the Arab Ba'ath. This socialist political party seeks to bring all of North Africa and the Near Eastern countries under one state. Article 6 of the Constitution of the Arab Ba'ath Party calls for revolution to, "overthrow the present faulty structure," an overthrow which will include all sectors of intellectual, economic, social and political life. Article 27 goes on to

state, "the present distribution of wealth in the Arab Fatherland is unjust. Therefore a review and a just redistribution of wealth will become necessary." It is these goals which Hussein has been attempting to attain in the invasion and devastation of his neighbor states. His military first seized the Shatt al Arab waterway from Iran in 1980; Iran is ethnically Persian and not Arab, therefore it qualified as an enemy of the proposed Arab State. Hussein's occupation and attempted absorption of Kuwait is a socialist attempt to redistribute Arab wealth. In essence, the goals of the Arab Ba'athist State (the goals of Iraq) are similar to those of the Bolsheviks of 1917 Russia. Through military revolution and domination they seek to remove personal property rights from their neighbors. We have seen how this was done by the raping and looting during the invasion of Kuwait. However, these goals do not stop with the occupation of Kuwait; they include the occupation and pillaging of all other wealthy Arab states. Saddam Hussein desires to be the leader of this centralized state acquired by his sword; the self-determination of the other Arab states would be sacrificed in the process.

When we realize that these ambitions are combined with the fifth largest military complex in

the world, it becomes readily apparent our troops are fighting for a worthy cause. After World War I, the heinousness of the use of chemical weapons was discovered to be too great to ever be used again. The majority of the International Community has agreed to this and has not used them. The same was true for nuclear weapons after World War II through the principles of deterrence and mutually assured destruction. Iraq, however, under Saddam Hussein, has repeatedly not acknowledged these international agreements. Hussein has shown that he makes no differentiation between conventional and nonconventional weaponry. He repeatedly used chemical weapons in his eight year war with Iran. This is very disturbing considering the London Times reported before the war that Iraq was less than two years from the ability to produce nuclear weapons.

Hussein would have, in all probability, used nuclear weapons as readily as he has all other nonconventional weapons. In following his tradition of supporting international terrorism, he could have held the entire world hostage with nuclear capability. This is why the fighting men and women of the United States military have destroyed the many years of work that had gone into Saddam Hussein's preparation to produce

nuclear weapons. The repeated bombing sorties over the past few weeks have destroyed the nuclear, chemical, and biological weapons of this terrorist head of state. This is why the United States forces have been deployed to Saudi Arabia. This is why they are willing to put their lives on the line. If he isn't stopped now, Saddam Hussein's power will be too great to control in the near future. It is hard for us as Americans to understand how thousands of citizens, who are suspected of having different views than their leaders, could be executed en masse. Yet, Saddam Hussein has proven time and again that he has this small of a regard for human life. This is the man that the protestors, who chant "No blood for Oil", would have allowed to complete his development of nuclear weapons.

It is time for us as Americans to think about the future without letting fear and apathy overtake our conscience. We, and the Allied Forces, are taking a stand because the rest of the world is not properly equipped to do it. Iraq has been an aggressor towards Kuwait; the world community came to us for help. In keeping with the burdens of the responsibility of leadership, we have followed this call from the nations of the world to contain and dismantle the terrorist dictatorship in Iraq. The troops of the United States military deserve our full support; we must continue to fight the good fight with faith and a good conscience; it is our duty.





# News

destabilizes.

If and when a ground war begins, U.S. officials expect to take 40,000 prisoners in the first two weeks and have constructed barbed wire compounds to house them.

United States Secretary of State, James Baker, announced the administration has started thinking about post-war plans but no blueprints have been drawn up. He indicated that money for post-war reconstruction would have to be raised among Arab oil states. Regarding Saddam Hussein, senior administration officials said that the U.S. intends to ensure that he does not emerge as a hero. Secretary of Defense, Dick Cheney suggested that maintaining large amounts of U.S. military hardware in the Gulf region would ensure the stability that the United States has always declared to be one of its primary objectives. James Baker, commenting on the nature of the impending ground war said, "tough times lie ahead".

**SOVIET UNION**—Soviet president Michail Gorbachev announced a referendum that will be held next month that will pose this question to citizens throughout the Soviet Union: "Do you think it necessary to preserve the Union of Soviet Socialist Republics as a renewed federation of equal sovereign republics, in which the rights and freedoms of people of all nationalities will be fully guaranteed?" Gorbachev called for a strong Soviet Union and argued that its status as a superpower is dependent upon it. Such an opinion poll will be the first of its kind in a nation that for 73 years has given scant regard to the wishes of its people.

Six of the Union's 15 republics have announced that they will not participate in the referendum, stating that they disagree with its wording. Three republics, Estonia, Lithuania, and Georgia announced that they will be their own referendums. The Lithuanian's poll addresses directly the question of secession from the Soviet Union. Mr. Gorbachev declared this independence vote illegal, but Lithuanians claim they are merely complying with the Kremlin's procedure for withdrawing from

the Union which mandates such a referendum. Lithuanian officials estimate that 85 percent of the voters will endorse independence.

Leading officials in the Soviet Union are calling for firm control of the press, return to party management of the economy, and an end to "bourgeois morality". The Kremlin released a political statement saying that the current situation "has reached the danger limit, beyond which destructive social upheavals are possible". The statement came after a meeting in which the commanders of all military districts took part, an unprecedented attendance. Such actions indicate that the Kremlin is now firmly in the grasp of the hardliners and a return to Cold War era paranoia and propaganda may be eminent.

## Kremlin: "destructive social upheavals are possible."

Secretary of State James Baker recommended a delay in ratification of a landmark arms reduction treaty citing the instability in the Soviet system.

Tensions in the Baltic republics, Latvia, Lithuania, and Estonia, have eased somewhat after last month's invasion by army and KGB military units that left 19 dead. However, Lithuanian president Vitautas Landsbergis complained the Moscow was not releasing all soldiers as planned and was actually replacing some.

**SOUTH AFRICA**—President F.W. DeKlerk proposed a repeal of major pillars of apartheid. He urged the elimination of the Group Areas and Lands Act and the Population Registration Act. However, Nelson Mandela, leader of the African National Congress (ANC), appealed for continued sanctions against South Africa pointing out that the actions still do not give blacks voting rights and that police are still killing blacks in the townships around Johannesburg. An ANC statement did, however, admit that the action "constitutes a fundamental departure from apartheid framework".

African heads of state held a two day summit in which they concluded that DeKlerk's actions fell short of what would be necessary to relax the sanctions. The United States reviewed its actions at the request of South Africa's capitol, Pretoria, but concluded that, based on the U.S. Comprehensive Anti-Apartheid Act of 1986, sanctions can not end until all political prisoners are released. Approximately 3000 political prisoners remained jailed in South Africa.

**COLUMBIA**—The Colombian government convened a specially elected assembly to review its constitution and incorporate changes such as the legalization of extraditing alleged criminals. Drug traffickers protested the actions and their exclusion from the assembly. Guerrillas

launched dozens of explosion throughout the country killing 35. The government called out the army to halt the uprising, the largest of its kind in thirty years.

Compiled from the Wall Street Journal.

from page 1

# Rape

from page 1

lice officers have received pertinent training dealing with crisis/intervention. A majority of the officers on the Rolla force (75 percent) and anyone after 1985 have received training through the academy. The victim will be taken to the hospital for there are several hospital tests required. The hospital also has a lot of training in crisis response and sensitivity to the victim. "Another point is of primary importance is to attend to physical injuries," stated Snavelly.

Several things that the individual can do to help minimize the risk of rape are:

1. When walking or outside stay in



well lighted areas.

2. Stay with other people and use well traveled areas. Don't take shortcuts or back ways.

3. In the community, it is best to make sure that someone always knows where you are at.

4. When you have to be by yourself stay visible and in well populated areas.

5. If you suspect that someone is following you, just scream.

Chief Snavelly says that the Rolla Police endorse the policy of "Defuse Tactics". They suggest that one reduce the risk of crime first, not be confrontational. If you are by yourself, try to walk with self assurance and appear confident—act like you know where you are going. The UMR Police also have personnel specifically trained in crisis response—for more information call 341-4300.

If one acts to minimize the risks and follows the recommended course of action one may be able to prevent this crime of violence from happening to someone else and have a better chance of conviction.

## MARRIOTT DINING SERVICE

### Weekly Menu - February 14 - 20, 1991

#### UCE- LUNCH

THURSDAY 14	FRIDAY 15	MONDAY 18	TUESDAY 19	WEDNESDAY 20
Ham & Swiss Croissant	Veal Parmesan	Spaghetti & Meat Sauce	Meat Loaf	Liver & Onion
Chicken Stir Fry	Grilled Pollock w/sauteed vegetables	Broccoli & Cheddar Quiche	Carved Turkey	Oven Browned Chicken
Ground Beef Potato Pie	Polish Sausage & kraut	Country Fried Steak	BBQ Brisket	Meatball Sandwich

#### Rayl and TJ Cafeteria

Thursday (14)	Friday (15)	Saturday (16)	Sunday (17)	Monday (18)	Tuesday (19)	Wednesday (20)
<b>LUNCH:</b>						
Hot Turkey Sandwich Tuna Ala King Egg Stuffed tomato	Assorted Pizzas Macaroni & Cheese Tuna Salad on Pils	Meatball Hoagies Beef Noodle Casserole Scrambled Eggs w/ ham	Turkey & Dressing BBQ Rib Sandwich French Toast	Hot Dogs Chicken Noodle Casserole Chef Salad	Pita Sandwich Spanish Macaroni Cheese Omelets	Fishwich Beef Noodle Casserole Egg Foo Yung
<b>DINNER:</b>						
Valentine's Day Buffet	Pork Steaks Chicken Sandwich Beef Tips & Rice	Carved Roast Beef Burritos Ravioli		Chicken Supreme Spaghetti Macaroni & cheese w/ham	Turkey Cutlets Beef Stir Fry BBQ sausage	Tacos Hot Beef Sandwich Liver and Onions

## Gifts from the

Classy Wrap

The Fun Way to giftwrap!

Delicious Chocolates

Beatiful Heart Boxes!

Carton Valentines

Plus Boxed Kids Cards

Balloons, Gifts & More!

For Sweethearts of All Ages!

Carlton  
CARDS

Apple Tree

M-S  
9:30-8:00

Southside Shoppers World  
Hwy. 63 S. Rolla

Partis  
MOBILE

Sun  
12:30-5:00

You Never Forget the Great Taste of

# Steak 'n Shake®

## ONE DOLLAR OFF SALE!

I-44 & Hwy. 63 Rolla

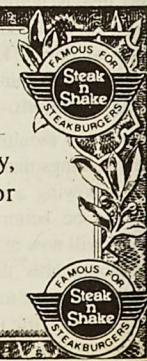


# Steak 'n Shake®

## ONE DOLLAR OFF SALE!

This coupon good for one dollar off any Sandwich, Fry, Drink Combo - Platter Special - Large salad - or Delicious Dinner Choice.

Not valid when used in conjunction with other special offer.  
Not redeemable for cash. Limit 1 per customer.  
Offer expires: February 28, 1991



# ONE DOLLAR OFF SALE!



# Board of Curators discuss tuition hike

## Financial Aid

from page 2

News Services  
SOURCE

The Board of Curators welcomed three new members, was addressed by its new president and heard a task force appointed to study the University System's student fees significantly.

The meeting was the first for curators Cynthia B. Thompson, John C. Cozad and James L. McHugh, who were appointed earlier this month by Gov. John Ashcroft.

Board President Webb R. Gilmore opened the meeting by outlining his priorities for the year. He emphasized the need for board members to focus on key policy issues and work together once board policies are established. He also stressed the importance of clear communication between the board and the administration campuses, and the significance of inter-campus initiatives, which not only save money but lead to higher-quality education.

The Student Fee Task Force, which was appointed by President C. Peter Magrath in 1989 to develop a uniform student fee policy, delivered an interim report on undergraduate fees. The panel, which contrasted other states' funding of higher education with Missouri's, recommended that the University adopt a policy of moderate tuition

rather than the low-tuition policy of the past. It said the percentage of family income required for tuition and fees for a student is near an all-time low and that at present levels of state funding, educational fees at all levels should be increased.

Magrath said the University likely will have to raise fees more than previously announced next year to deal with a decrease in state funding and in increase in operating costs. He said reduced state appropriations mean the University will have about \$500,000 less to spend in fiscal 1992, while medical insurance and Social Security costs, new buildings and inflationary increases will cause operating costs to rise. Magrath said student fees likely will need to be increased as much as 12 percent.

The board welcomed several speakers to the meeting, only the second time it has gathered in Jefferson City. The guest speaker included:

- Sen. James Mathewson, D-Sedalia, who described the Economic Survival Act, his legislation for reform and increased funding of higher education. Mathewson said the Senate will begin hearings on his legislation Feb. 5, and he encouraged board members, education officials and the public to participate in the debate.

- Higher Education Commissioner Charles McClain, who discussed the work of the Missouri Business and Education Partnership. The panel, which was led by Curator Sam B. Cook, calls for increased planning and coordination on a statewide basis for reform and funding of institutions.

- Wendell Rayburn, president of Lincoln University, who welcomed the board to Jefferson City and described the challenges his institution currently faces. Rayburn said Lincoln has recovered from its funding crisis of the late 1980's but still does not have the money to offer competitive faculty salaries.

In other action during the two-day meeting, the board:

- authorized construction of a computer center on the St. Louis campus. The low bid for the 62,000-square-foot building was \$4,592,000, submitted by K&S Associates of St. Louis.

- approved new residence hall rates for UMC, UMKC and UMR. Rates will increase by 5.5 percent at UMR, 5.1 percent at UMKC and 1.2 percent at UMR.

- approved increases of facility and activity fees of 16.5 percent at UMC, 19.5 percent at UMKC, 0.5 percent at UMR and 5 percent at UMSL.

To receive an application, contact the Student Financial Aid Office, G-1 Parker Hall.

**1991-91 ACT/FFS Available** The ACT Family Financial Statements for the 1991-92 academic year (Fall 1991 and Winter 1992) are available for students in the foyer outside the Student Financial Aid Office (G-1 Parker Hall). This form must be completed in order for a student to be considered for a Pell Grant, College Work Study, Perkins Loan, University Loans, Missouri Grants, the Stafford Student Loan Program, The Income Contingent Loan program and for the PLUS/SLS Loan Program for the 1991-92 academic year. First consideration will be given to those students whose ACT-FFS is received by the processing agency by **March 31, 1991.**

**WOMEN IN ENERGY, INC.** The Missouri Chapter of Women in Energy, Inc. has established a scholarship to be awarded each year to a full-time student of junior and/or senior standing attending a Missouri college or university. The recipients must be enrolled in a field leading to an energy-related career and show demonstrated professional potential. The award will be \$500.

Eligibility requirements: Junior or senior standing as of the following September, enrolled full-time in business, education, engineering, home economics, journalism, science or other field leading to an energy-related career, minimum overall GPA of 3.0

**Deadline: March 1, 1991.**

**INTEREST FREE LOANS FROM THE SCHOLARSHIP FOUNDATION OF ST. LOUIS** Qualified applicants who can demonstrate financial need will be considered for an interest-free loan. Applicants must be citizens of the United States or in possession of an Alien Registration Card and permanent residents of St. Louis, St. Louis County, or the Fox C-6, Francis Howell, Orchard Farm or St. Charles school districts. Interest-free loans are awarded in amounts up to \$3,000 per year.

For more information and applications, contact the Student Financial Aid Office, G-1 Parker Hall.

**Application Deadline is: April 15, 1991.**

YOU HAVE FRIENDS WHO CARE  
AT...

**BIRTHRIGHT**  
PHONE: 364-0066

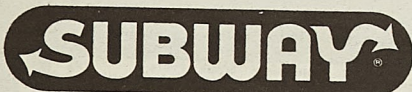
215 WEST 8th STREET  
P.O. BOX 832  
ROLLA, MISSOURI 65401

FOR HELP  
DURING UNPLANNED PREGNANCY  
FREE PREGNANCY TESTING  
NEW EARLY DETECTION METHOD

## QUALITY CLEANERS

\*Expert Cleaning \* Reasonably Priced

108 W. 7th Street Rolla, MO 65401 364-3650



## WINTER SPECIALS

**MONDAY: ANY REGULAR 6" FOR \$2.29**

**TUESDAY: BUY ONE GET ONE FREE**  
AFTER 4 P.M.  
Free Sub Must Be of Equal or Lesser Value

**WEDNESDAY: \$1.00 OFF ANY**  
FOOTLONG OR LARGE SALAD

**THURSDAY: \$5.00 OFF ANY 6 FT. PARTY SUB**  
FOR FRI OR SAT. PICK-UP

**FRIDAY: FREE SODA**  
WITH  
PURCHASE OF ANY SUPER SUB

**SATURDAY: LATE NIGHT SPECIAL:**  
BUY ONE GET ONE FREE AFTER 9 P.M.  
Free Sub Must Be of Equal or Lesser Value

**SUNDAY: CLUB CARD DOUBLE STAMP DAY**

*Not good in combination with any other offer.  
Limit: One Special Per Customer Per Visit*

819 Pine St.

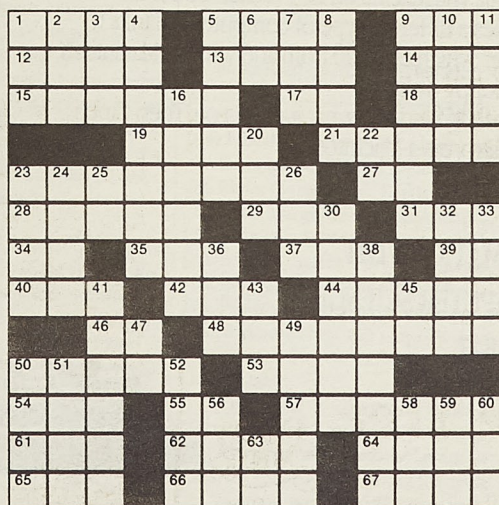
phone 364-3395

### ACROSS

- 1 Portend
- 5 Twist
- 9 Uncooked
- 12 First man
- 13 Great Lake
- 14 Sudy brew
- 15 Lures
- 17 Symbol for tellurium
- 18 Seed container
- 19 Country of Asia
- 21 Lassos
- 23 Newspaperman
- 27 Exist
- 28 Follows orders
- 29 Armed conflict
- 31 Condensed moisture
- 34 Hebrew month
- 35 Eat
- 37 Obtain
- 39 Concerning
- 40 Manuscripts: abbr.
- 42 Mournful
- 44 Rent
- 46 As far as
- 48 Classified
- 50 Atmospheric disturbance
- 53 Gasp for breath
- 54 That woman
- 55 Latin conjunction
- 57 Chores
- 61 Native metal
- 62 Dinner course
- 64 Christmas carol
- 65 Goal
- 66 Deposits
- 67 Color

### DOWN

- 2 Poem
- 3 Obstruct
- 4 Uses
- 5 Stupefy
- 6 Teutonic deity
- 1 Cudgel



COLLEGE PRESS SERVICE

The  
Weekly  
Crossword  
Puzzle

- 7 Insect egg
- 8 Antlered animal
- 9 Knocked
- 10 Century plant
- 11 Marries
- 16 Ankle
- 20 Stitch
- 22 River in Siberia
- 23 Wander
- 24 Recedes
- 25 Hebrew letter
- 26 Tattered cloth
- 30 Soften in temper
- 32 Gaelic
- 33 Unwanted plant
- 36 Cushion
- 38 Trying
- 41 Accumulated
- 43 Plunge
- 45 Near
- 47 Either
- 49 Strains for breath
- 50 Footwear
- 51 Gull-like bird
- 52 Army meal
- 56 Pedal digit
- 58 Neither
- 59 Oolong
- 60 Crafty
- 63 Guido's low note

See Solutions, page 20



# Race-based scholarships against public policy

The recent Department of Education ruling which sent the so-called civil rights leadership into a frenzy should have become one of the cornerstones of the United States education policy. The Department's ruling only reaffirmed what the language of Title VI of the Civil Rights Act of 1964 so clearly states: that discrimination on the basis of race, color or national origin is against the law. Why then would so-called minority leaders come out so strongly against the application of a law which many of them (are you listening Ben Hooks?) helped to enact?

The Department of Education via Assistant Secretary Williams recently declared that the practice of awarding race-based scholarships was against public policy. Many legal scholars, including Derrick Bell of the Harvard Law School, have declared that the Department of Education's ruling could easily have withstood judicial scrutiny. Similarly, there has been no outcry from the legal community attacking the legality of Williams' policy statement. It seems that the legal community understands the concept of applying the various laws of our coun-

try equally to all people, not just to specific groups. I would call the application of the Civil Rights Act of 1964 to all Americans as being a type of intellectual honesty. What defines intellectual honesty? It means that one group shouldn't ask for the protection of its rights under a law unless it is willing to submit itself to the possible detriments that may occur within application of that same law. Does it not seem unusual then that civil rights leaders such as Benjamin Hooks of the NAACP cry foul when one of the arguably more important laws of our country is simply applied to blacks in the same fashion that it would apply to whites?

It seems that Dr. Hooks is leading minority students down a yellow brick road of resentment and perhaps increased racial hostility on the nation's college campuses. This resentment will undoubtedly result as a by-product of the President's decision not to follow Mr. Williams' findings. This resentment and animosity may manifest itself in the form of racial hostilities at college campuses where race relations were somewhat amicable. However, if Hooks truly be-

lieved in bettering the racial climate in the United States, he could have spoken a thousand words simply by uttering nine, "I support the ruling of the Department of Education." Yes, uttering these nine words may have altered the college plans of hundreds if not thousands of black and other minority college students, but it would have also sent a message. The message sent to millions of Americans would have read "blacks and other minorities can be intellectually honest even when it hurts." Hooks, however, chose not to send this message.

President Bush also failed to seize this opportunity to stand up for fairness. The result of the President's lack of leadership means that for the next four years minority students would be able to receive scholarship monies for which the non-minority population on most college campuses will not have a chance to compete. If I were a non-minority college student, I would be madly upset at the fact that I did not have the opportunity to compete for the same scholarship that was awarded to a minority solely based upon race. Do you want to get a clearer

picture of what non-minority students may be feeling? Put yourself in the shoes of the non-minority college student. Your family has realized that it cannot afford to continue financing your education. Imagine walking into the financial aid office of the university that you now attend. Upon inquiring about financial aid opportunities, you are told that the only financial aid that remains is designated specifically for minority students. Wouldn't you feel a certain amount of animosity towards the next minority student that you came in contact with?

The so-called civil rights leadership regularly issues inflammatory statements detailing how either public or private actions and/or policies will result in a backlash of racism. One should wonder whether the so-called civil rights leadership has recognized that its actions will cause a backlash of racism. Many Americans, who genuinely want to provide equal access to education for all, and who believed, if not participated, in the civil rights movement, will stop supporting the traditional civil rights organizations such as the NAACP, PUSH, and the Urban

League. I believe that many God-fearing Americans will do just this because now it is clear that these so-called civil rights leaders no longer want equality. Now these so-called leaders want to have their respective groups placed above the law. The American people, college students including, will not stand for this.

Civil rights leaders have used the Civil Rights Act to protect myriad Americans from the "vestiges of racism which pervade this country." However, these leaders now feel that minorities should be excluded from the class of Americans to which the act applies. Benjamin Hooks and others are making a mockery of the system and are certainly diminishing the earnest efforts of leaders across the country who truly want equal rights for all. Many thanks go to Ben Hooks and to other so-called civil rights leaders for showing Americans that people of color don't want to be judged by the content of our character but rather by the color of our skin.

Thomas A. Perry  
The Forum Syndicate

## Now you can afford to dream in color.

Apple introduces the Macintosh LC.


If you thought that finding a color Macintosh\* system you could afford was just a dream, then the new, affordable Macintosh LC is a dream come true.

The Macintosh LC is rich in color. Unlike many computers that can display only 16 colors at once, the Macintosh LC expands your palette to 256 colors. It also comes with a microphone and new sound-input technology that lets you personalize your work by adding voice or other sounds.

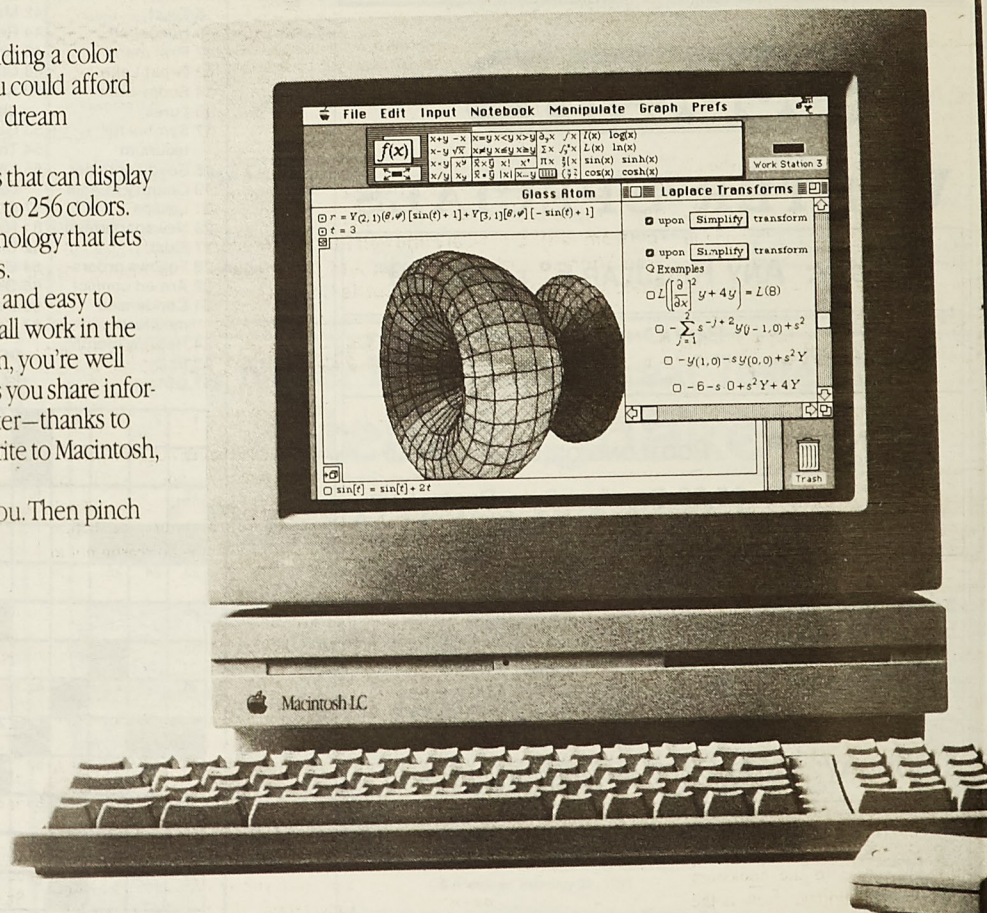
Like every Macintosh computer, the LC is easy to set up and easy to master. And it runs thousands of available applications that all work in the same, consistent way—so once you've learned one program, you're well on your way to learning them all. The Macintosh LC even lets you share information with someone who uses a different type of computer—thanks to the versatile Apple® SuperDrive™, which can read from and write to Macintosh, MS-DOS, OS/2, and Apple II floppy disks.

Take a look at the Macintosh LC and see what it gives you. Then pinch yourself. It's better than a dream—it's a Macintosh.

FOR FURTHER INFORMATION VISIT  
114 MATHEMATIC COMPUTER SCIENCE  
BLDG 341-4841

 The power to be your best.™

© 1990 Apple Computer, Inc. Apple, the Apple logo, and Macintosh are registered trademarks of Apple Computer, Inc. SuperDrive and "The power to be your best" are trademarks of Apple Computer, Inc. MS-DOS is a registered trademark of Microsoft Corporation. OS/2 is a registered trademark of International Business Machines Corporation.





# Features

## UMR students prepare for Formula SAE competition

News Services  
SOURCE

A team of University of Missouri-Rolla students is designing and constructing a small formula-style racing car which will put them on track for Formula SAE, an annual competition which emphasizes engineering rather than racing skills.

The UMR students will compete with approximately 50 teams from engineering schools throughout the United States during the event May 17-19 at the General Motors Tech Center in Milford, Mich. The competition is sponsored by the Society for Automotive Engineers (SAE).

A unique feature of the car entered by the UMR team will be its weight, according to Dave Cary, a senior in mechanical engineering and the leader of the group which is designing and producing the car's body. "We expect the completed car to be under 450 pounds, which is lighter than any car that was entered in the competition last year," says Cary.

"We are also turbocharging the engine which will increase its power from 60 to about 85 horsepower," he explains.

"One of the challenges is to design the frame so that each of the car's sections, such as the engine and suspension, will fit within that frame," says Cary. "We are building the car using drawings we have prepared for each section and we know exactly what the car will look like when it is finished."

Cary adds that the project has helped the team learn more about design. "It is also helpful in learning to work with other people," he says. "The project is somewhat like a small busi-



News Services

University of Missouri-Rolla students preparing for the annual Formula SAE competition, which tests engineering skills, include (first row from left): Dave Cary and Jeff Putnam; (second row): Dave Mikels, Fred Thomas and Wes Hodge; and (third row): Kyle Tucker, Mark Stielow, Greg Schreiber and Curtis Droege.

ness. We use public relations skills and learn to work within a budget."

For purposed of the competition, the students assume that a manufacturer has asked the team to design a prototype of an autocross racer, according to Wes Hodge, a UMR junior in mechanical engineering and the leader of the management group.

"Under the rules of the competition, the manufacturer should be able to produce 1,000 cars a year for less than \$7,000," explains Hodge. "However, there is no limitation on the amount of money we can spend designing and building the competition model."

"The funds to build the car are provided by sponsors and we are still raising some money to cover our costs," says Hodge. He adds that the group has a number of sponsors with the main supporter being General Motors Chevrolet-Pontiac of Canada.

The winner will be determined by several performance events in three categories — static inspection and engineering design, solo performance trials and high-performance track endurance.

There are regulations from the car's engine and frame although the requirements are such that student's can use their knowledge and imagination. The car must also meet safety requirements.

"The UMR team has group leaders for management, drivetrain, chassis/suspension, controls and body," explains Curtis Droege, a UMR junior in mechanical engineering and a member of the management engineering team. "Each group is composed of three to five students."

"The UMR team is currently working on two cars," says Droege. "We

probably will race one car in this year's competition and both cars next year. We are still doing some design work for the second car."

The group's adviser is Dr. James Drallmeier, UMR assistant professor of mechanical and aerospace engineering and engineering mechanics. Students enrolled in Mechanical Engineering 300 will receive one hour of credit for the project.

UMR students working on the project are:

GEORGIA

Atlanta: Greg Storm, junior in mechanical engineering

ILLINOIS

Belleville: Steven Needles, junior in mechanical engineering; Herman Smith III, freshman in engineering

Centralia: Curtis Droege, junior in mechanical engineering

Patoka: John T. Wheritt, junior in mechanical engineering

KANSAS

Hutchinson: Dave Mikels, senior in ceramic engineering and leader of the drivetrain group

MISSOURI

Bloomsdale: Kevin Hollander, junior in mechanical engineering

Columbia: Fred Thomas, senior in mechanical engineering

Farmington: Kyle Tucker, junior in mechanical engineering

Hannibal: Gregg Teel, junior in mechanical engineering

High Ridge: Craig Hindle, senior in mechanical engineering

Joplin: Mike Mann, senior in mechanical engineering

See Competition page 8

## Get ready, St. Pat's will be here soon

Matt Tobey  
St. Pat's Board

It's time once again, UMR, to be thinking ahead. TWENTY-NINE DAZE ahead, to be exact. That is when the fun begins! In just 29 Daze, this campus is going to once again be the home of the traditional, yet Best Ever, St. Pat's Celebration. The St. Pat's Board wants everybody to show your green spirit by wearing as much 1991 St. Pat's Green as you can fit on your body this coming Friday! So make sure you get your St. Pat's Green by this Friday, February 15, so you don't get left out!

In case you haven't noticed, this year's St. Pat's Green is available at the hockey puck next to the bookstore Monday through Friday. Now is the time to buy, in order to assure that your sizes are available. Sweatshirts and sweatpants are \$15 each, while the few



remaining limited edition sweatshirts are \$20. Other items available at the puck include hats, can huggers, garters, souvenir buttons, shot glasses, and mugs. St. Pat's is getting closer every day, so be sure to get your Green before it's too late. There is no reason not to stop by the hockey puck and purchase YOUR green!! Remember, it's inexpensive, and not only keeps you warm, but also looks cool!

Freshman need to start digging out and decorating their shillelaghs (if they haven't already), and float construction must be well underway. Also, be sure to practice those follies Events. A complete schedule for this year's St. Pat's Festivities will be in the next edition of the Miner. St. Pat's will be here before you know it, so buy your green and brace yourself for another rockin' Celebration. There's only 29 Daze left, so get crazy and WEAR YOUR '91 GREEN THIS FRIDAY!!!

## SAFB looking for students to help

SAFB  
Submitted by Mark Strickland

Each semester students receive and pay bills that register them for classes. Included on the bills is a student activity fee for the semester. This fee covers activities and groups such as Athletics, Intramurals, Student Council, Missouri Miner, St. Pat's Board, Rollamo, and several others. The Student Activity Fee Board (SAFB) makes recommendations on how this money will be allocated among the various activities and groups.

The SAFB is a panel of students that reviews each organization's budgets and presents recommendations to Student Council concerning the level of funding for the following year. During this Winter semester, the SAFB will send out a survey to one thousand

randomly-selected students. This year the SAFB will focus its survey on a few designated organizations to begin a cycle of yearly programming review. Each year the focus will be on different organizations so that in three to five years each organization will be reviewed.

This begins the third year for the SAFB; however, it is still in a growing stage and needs students willing to help shape and form it. There is a need now for associate members who could become members of the board for the 1991 Fall semester. Those interested in serving on the SAFB may obtain an application from the Student Council office, 203 University Center West, on Monday through Friday from 9:00 a.m. to 3:30 p.m. The deadline for turning in applications is February 22. Associate members will be selected by February 28.



# UMR delegates to spend spring break in Nicaragua

Wesley Foundation  
Submitted by Cleo Kottwitz

A group of students, faculty and other interested persons from the UMR campus and community will invest their "spring break" in an international work project in Nicaragua. The project has been initiated by the Newman Center (Dr. Virgil Flanigan, member of the Newman Board) and the Wesley Foundation (Rev. Cleo Kottwitz, Campus Pastor); and they invite the entire campus and community to join in supporting the project. Tuesday evening the UMR Student Council endorsed the project and contributed a small amount to enable students to participate.

The goal of the project is to work with the families of the Carlos Fonseca Amador Agricultural Cooperative to construct two houses using pre-fabricated fibre cement panels. Each house will have a living room, two bedrooms, two doors and three windows and will be built to meet earthquake standards.

The families of the cooperative currently live in San Juan de la Concepcion, a town about 25 miles from the farm land which they have secured. Their plan is to build homes on the land so they will be able to live there and care for it more productively. The houses they presently live in will be given to the homeless families in the community.

The process of inviting work project groups to assist the cooperative in

the home construction is being coordinated by The Antonio Valdivieso Ecuemical Center, a Christian mission agency. The contact person who has introduced the UMR

the UMR group to the project is Rev. Max Marble, a former campus pastor of the Rolla Wesley Foundation, who now lives in Dallas, TX and serves as Coordinator of Volunteers in Mission for the Southcentral Jurisdiction of the United Methodist Church.

The UMR group is seeking to enlist 10-15 persons, half students and half faculty or other interested persons. The group will fly from St. Louis to Managua on March 29 and return April 7. Cost is estimated at \$1200 each, including \$650 for air fare and \$200 for building materials. It is anticipated that non-students will need to pay their own way or secure sponsors on their own. However, efforts are underway to secure financial support for participating students with the goal being that they will only need to raise \$200-\$300 on their own.

There are numerous beneficial returns on this investment of time, talent and money. One is the incredible learning experience of the group participants. They will learn about their neighbors in another land... their problems... their hopes... their way of life. They will learn new skills not only in construction, but in working as a group and relating to people in another language and culture. They will return to campus with new insights into them-

selves and with new goals for their lives.

Obviously, another benefit will be the home construction, and all that means for a family to live in a decent house... on their own land... to have the opportunity to produce food and income so their children can have adequate clothing and food, medical care and education... and in addition

a sense of pride and self-esteem and hope for the future.

A long range benefit will be the impact of the group on the campus and community as they tell their story and lay the foundation for this kind of international work project experience to be available on a regular basis at UMR. When Dr. Charles McClain, Missouri Commissioner of Higher Education spoke on campus last fall, he noted the need for universities to provide an international outlook, a global perspective as part of the educational process. This work project to Nicaragua will be an important step in that direction.

Anyone interested in participating in the "spring break" international work project, either by going along with the group or by making contribution to enable others to attend, is invited to contact Dr. Flanigan at 341-4612 or 364-3473 or Rev. Cleo Kottwitz, 364-1061. Application forms and detailed information may be secured from the Newman Center, 2 Vichy Road, or Wesley Foundation, 8th and Main.

## What's currently going on with SUB?

### SUB SOURCE

The Student Union Board... We've got... There's... Well...

MAHLATHINI AND THE MAHOTELLA QUEENS, with their new sound: mbaqanga, an elemental, earthy and highly-charged body of music analogous to urban blues in America, are on a massive forty-city North American Tour and will be stopping in Rolla Feb. 21.

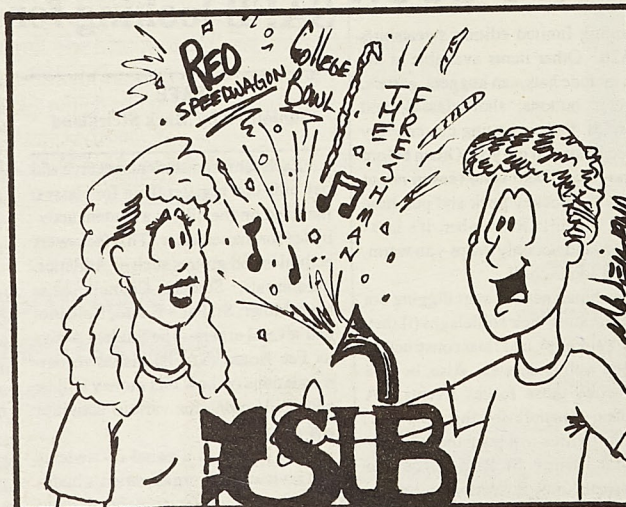
#### College Bowl

Do you like history, religion literature, science, geography, social sciences and the arts? Then U should enter the UMR College Bowl. College Bowl '91 will be held at McNutt Hall on Feb. 16 beginning at 10 a.m.

An awesome concert for an awesome crowd, REO SPEEDWAGON, will be here at UMR for the St. Pat's Concert on Saturday, March 16 in the

Multi-Purpose Building at 7 p.m. Advance tickets available in front of the UMR Bookstore Feb. 18 - March

THE FRESHMAN will be the SUB movie for Feb. 15 & 16 at 7 p.m. & 9 p.m. Marlon Brando and Matthew



15. Ticket prices will remain their usual affordable price: \$5.00 - Students w/valid UMR ID (ONE PER ID), \$10.00 - All other tickets.

Broderick star in this action-packed, thrill-seeking adventure into the realm of fantasy that we all long and yearn for in our hidden little sheltered worlds.

## Recycling: A look at chemical disposal

Leslie Vigna  
Advertising Director

When You Can't Recycle...  
Chemicals Make Some Common Items Hazardous

Many materials found around the house are non-recyclable and considered hazardous because they contain chemicals that irritate the skin or are toxic.

In many cases, the best way to dispose of these products is to use them as they were intended.

### HOUSEHOLD HAZARDOUS WASTE DISPOSAL

Chemical Products	Hazardous Ingredients	Hazardous Properties	Disposal
Abrasive cleaners	trisodiumphosphate, ammonia, ethanol	Corrosive, toxic irritant	2
Ammonia-based cleaners	ammonia, ethanol	corrosive, toxic irritant	2
Bleach cleaners	sodium or potassium hydroxide, hydrogen peroxide, sodium, or calcium hypochlorite	corrosive, toxic	2
Disinfectants	diethylene or methylene glycol, sodium hypochlorite, phenols	corrosive, toxic	2
Drain cleaners	sodium or potassium hydroxide, sodium hypochlorite, hydrochloric acid petroleum distillates	corrosive, toxic	3
Floor and furniture polish	diethylene glycol, petroleum distillates, nitrobenzene	flammable, toxic	3
Household batteries	mercury, zinc, silver, lithium, cadmium	toxic	1, 3
Mothballs	naphthalenes, paradichlorobenzene	toxic	2, 4
Oven cleaners	potassium or sodium hydroxide, ammonia	toxic	2, 4
Photographic chemicals	silver, acetic acid, hydroquinone, sodium sulfite	corrosive, toxic	3
Pool chemicals	muratic acid, sodium hypochlorite, algicide	corrosive, toxic	3
Rug and upholstery cleaners	naphthalene, perchloroethylene, oxalic acid, diethylene glycol	corrosive, toxic	3
Toilet cleaners	muratic (hydrochloric) or oxalic acid, paradichlorobenzene calcium hypochlorite	corrosive, toxic irritant	2, 3

#### Disposal Notes:

- 1 Recyclable. Take to a service station, reclamation center or household hazardous-waste collection center. Partially used products such as paints may be exchanged.
- 2 Fully use these products so that no waste remains except residuals attached to the container. Containers should be rinsed with water. The container may then be disposed of at the municipal landfill; the rinse water may be reused or poured down the drain and flushed with great quantities of water.
- 3 These wastes should be safely stored until a hazardous-waste program is organized in your community. Fully spent currently available pesticide containers may, however, be triple rinsed and the rinse water reused according to instructions on the label.
- 4 Waste can be disposed of at some waste-water treatment plants where bacteria can detoxify the chemical. (Call your local treatment plant.) Do not pour on the ground.

SOURCE: Environmental Hazards Management Institute, Durham, N.H.

## Competition

from page 7

Kansas City: Greg Schreiber, senior in mechanical engineering; Keith A. Sigg, junior in mechanical engineering; Toen Starkweather, sophomore in mechanical engineering; Mark Stielow, senior in mechanical engineering and leader of the chassis/suspension group; Monica Williams, senior in engineering management.

Palmyra: Clement Goodin Jr., senior in mechanical engineering

Pierce City: Kathy Clapper, senior in aerospace engineering

Pleasant Hope: Dave Cary, senior in mechanical engineering and leader of the group designing and producing the car's body

Rogersville: Ben Bridges, graduate student in electrical engineering  
Rolla: Wes Hodge, junior in mechanical engineering and leader of the management group

Springfield: Lisa Nemecek, senior in mechanical engineering; Jeff Putnam, senior in mechanical engineering and leader of the controls group

St. Louis: Jim Papin, senior in aerospace engineering  
WISCONSIN

West Allis: Andy Johnston, senior in aerospace engineering



# Classifieds

## Miscellaneous

**M. E. T-Shirt Design Contest:** Sponsored by ASME. Design must be associated with mechanical engineering. Design should be no larger than 8 1/2" x 11". Turn in entries at M.E. 129 (the main office) Dead line: Friday, March 1st, at 3:00 p.m. First prize is \$60.

**HEY YA! Get your Valentine's Day Flowergrams!!** Fresh roses and a card delivered near campus for a special Valentine's Day gift. They are on sale now at the Hockey Puck for only \$2.50! There is limited number, and they come in red and assorted colors. Get 'Em while the last!!

**Hey, GET WITH THE PROGRAM!!** Chip-pendales '91 tickets and sweatshirts are on sale now! They are available from any Little Sigma, or call 364-0813 for information.

**Cruise Ship Jobs:** Hiring Men- Women. Summer/YearRound. PHOTOGRAPHERS, TOUR GUIDES, RECREATION PERSONNEL. Excellent pay plus FREE travel. Caribbean, Hawaii, Bahamas, South Pacific Mexico. Call NOW! Call refundable. 1-206-736-7000. Ext. C479.

**Domino's Pizza of Rollins** now accepting applications for Customer Service Representatives. Applicants must be willing to work 10-15 hours per week. Apply in person during Business hours at 704 N. Bishop. 364-7110.

**FAST FUNDRAISING Program.** \$1000 in just one week. Earn up to \$1000 for your campus organization. Plus a chance at \$5000 more! This program works! No investment needed. Call 1-800-932-0528. Ext. 50.

## Personals

**Jim Kerns,**  
Ay evol!!

**Hey Chi-O girlies,**  
28 days til Formal! Better get on a date!  
Lico,  
Social Committee

**Kar Ash,**  
Found a new pup to corrupt yet?  
K

**Congratulations to Karen, Tricia, Marck, & Kristi!**  
Let's get this thing on the road & out of hand!  
Lambda Sigma Pi

**Sheila,**  
All night long? Party?  
KA

**Hey Al,**  
Let's try not to break anything else!  
Leo's

**Idiot,**  
No pain, No gain, huh?  
Just curious

**Tommy,**  
Happy Valentine's Day! I can't wait til Saturday. I love you.  
Sue

**Lady,**  
Here's to relaxing, here's to enjoying each other. Here's to love.  
The Tramp

**Cyrano,**  
Come out of the closet and show yourself.  
Lanie

**Jorgen**  
Just want to wish you a Happy Valentine's Day. Get psyched for White Rose at the Lake! I love you and miss you.  
Your baby

**GWM,**  
So you read St. Louis personals? Do you like lots and lots of oil?????

Just Curious

**Dear Billy-Willy,**  
I love You!  
P.S. I suppose Houston is not that far away....

**To my berry-best friend,**  
You have always been there for me & you mean a lot to me. I couldn't make it without you. Happy Valentine's Day!

LICO,  
YBBF

**Debbie,**  
Happy Valentine's Day!

**Quenched,**  
Now I know why you're always at the Multi-purpose.  
Thirsty

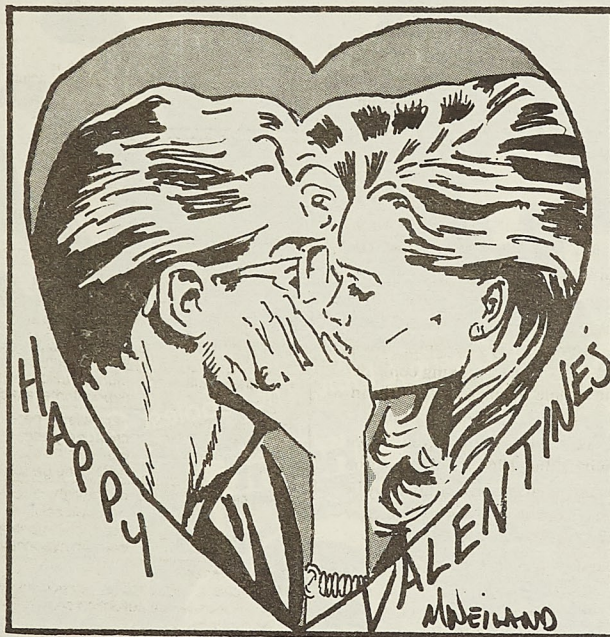
**Quenched**  
Tetris Geek. Who are you kidding, you suck at Tetris.  
Thirsty

**Quenched,**  
Let the personal wars begin.  
Thirsty

**Ruggers,**  
Tune up those voices for the Rugby "songs" party.  
Hooker.

**Lisa**  
Could you please give us lessons on how to get out of some of our classes. How do you do it?  
Karen & Susan

See Classifieds, page 10



**Dena,**  
How much does "doggie" meat go for now-a-days?  
Love in AOT,  
Goo Goo Girls

**Nicole**  
Happy Valentine's day and Happy 20th.  
Guess who....? I do!  
Love ya,  
Mark

## SPECIAL RATES FOR \*STUDENTS\*GREEKS\*

6 color printed Russell Tee Shirts  
24-50 \$7.50\*/shirt  
51-75 \$7.00\*/shirt  
76- \$6.50\*/shirt  
\*Tax included

Prices good thru March 12, 1991  
Student Representatives thru KEY SPORT

Tom Hughes 341-8360  
Steve Vukceovich 364-4424

## SCHLUMBERGER FIELD ENGINEERS

### DON'T:

- wear suits and ties
- shuffle papers
- answer phones all day
- sit at a desk

### DO:

- take charge
- work long hours
- assume heavy responsibility
- work outdoors
- make decisions
- face many challenges and risks
- perform data acquisitions and measurements of physical properties of subsurface formations
- interpret that information

### ENJOY:

- working with a great deal of autonomy
- acting on an idea and risk carrying it to fruition
- taking pride in a job well done

**MECHANICAL ENGINEERING  
ELECTRICAL ENGINEERING**  
(and other engineering disciplines)

**GEOSCIENCES  
APPLIED SCIENCES**

### INFORMATION MEETING:

**Date:** March 4, 1991  
**Time:** 7:00 pm — 9:00 pm  
**Place:** McNutt Hall, Room 204

### INTERVIEWING:

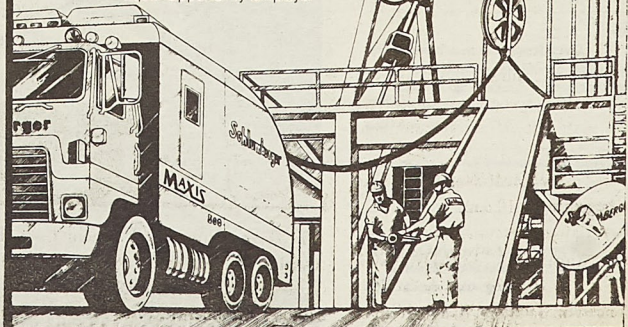
**Date:** March 5 — 6, 1991  
**Place:** Please check with Placement Office

PLEASE NOTE: Open to all interested students. Your attendance at the Information Meeting is a prerequisite to our interviewing process. Please attend. Casual attire.

**Exceptional People.  
Exceptional Technology.  
Worldwide.**

**Schlumberger**

An Equal Opportunity Employer





from page 9

# Classifieds

Quenched,

You always complain about being tired. Maybe after your homework is finished, you should just go to bed instead of doing the BD. Maybe the you wouldn't be so tired.

Thirsty

Quenched,

Wiped out going to Chem SI lately!

Thirsty

Scott,

I know the real reason you got so little sleep this past weekend. It wasn't the alcohol, it was Tessa!

T & Q

Quenched,

I'd hate to meet you in a dark alley now that you have protection.

Thirsty

Scott,

What? A girl's class ring on your finger. You're whipped.

Thirsty and Quenched

Nina,

Did you do any Ahren's lately?

Goo Goo Girls

To Pit Bull,

Happy Valentines Day.

Love,  
Isabelle

Melissa,

You're special.....I'm here if you need me.

YBBBS

MasterSPoo,

What? Nothing to say?

Daddy

WANTED: A woman, only qualifications are that she must be perfect and have no family problems. Must also be able to listen to my problems for hours on end. If you know her or are her call Todd (IKE) on the loveline.

WANTED: A good woman who knows Calculus and Diffy-Q and owns an HP 15C or Better. Please send photo of calculator.

SKIP

Jody and Craig,

Happy Valentine's Day! Give us a call when you make sweet, wild love. We want to watch! (and watch where you lose your lust letters.)

We were touched.

Dena,

Do you know the words to B.I.N.G.O.?

Love in AOT,  
Goo Goo Girls

Gazelle,

So far Hunan Gardens has been the highest bidder. Should we give St. Louis Chinese restaurants a change to bid match?

Love in AOT,  
Goo Goo Girls

Startwabbils

Engergizer

MLII,

Where have you been hiding lately? Did you enjoy White Castles over Christmas? Enquiring minds want to know

Kappa Deltas are AWESOME!

Girls!!!!

Peace Babes!

Abner

Kevin,

I love you! Happy Valentine's day!

Love,  
Steph

Niki,

Sure will miss roomin' with ya !

Abner

Girl!

I'm so psyched to finally be back!

Abner

Jon G.,

Where are you?!?!?!?

Mindy G.

Jami and Megg,

You guys are the greatest!

Lady Miners,

Basketball was great !

Rugby team

Ruggers,

Good luck in your season opener against Jefferson City. When is your first home match?

Rugby Fans

Amy M.

We're finally roomies!!

Love in AOT,  
YIS

Eddie Spaghetti,

Are your meatballs ready?

From an Italian Connoisseur

Nina,

How's the air in your life now?

Love in AOT  
Goo Goo Girls

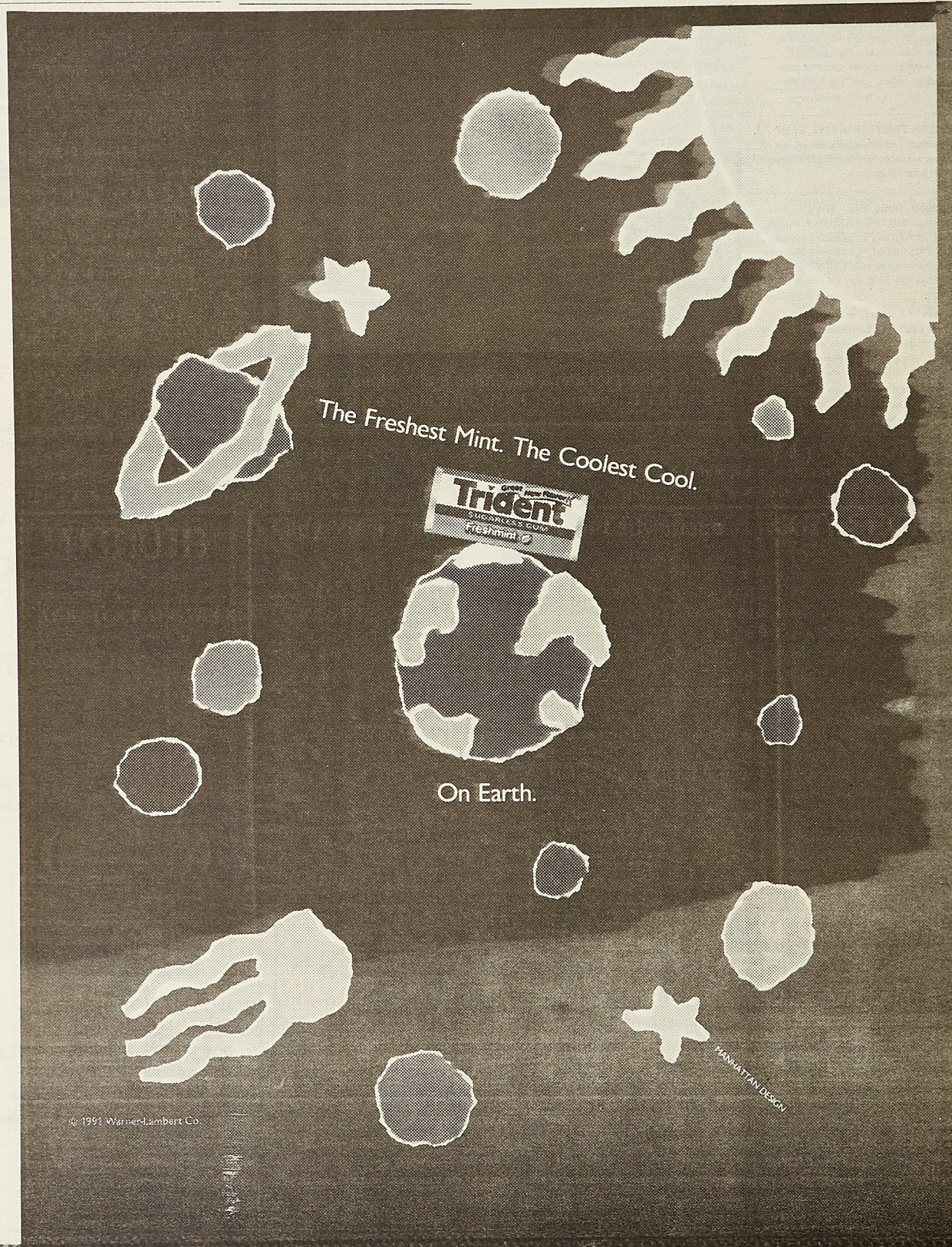
Bob,

The ZR-1 is on its way. You did say lime green right?

Quenched,

Nice way to start off the semester: skipping classes on a Wednesday. What, were you doing the BD, or did you just not have a change of clothes with you!

Thirsty





# Uncle Sam can help you find your Valentine

## Information USA, Inc. SOURCE

Whether you are looking for an old lover, or even a new one this Valentine's Day, your Uncle Sam can help. Not only will the government tell you where your old boyfriends, girlfriends, ex-wives, husbands or lovers are, it will also tell you if these lovers are worth seeing again. Government offices can reveal what kind of car someone drives, what's the value of their house, and even provide you with a list of the people they owe money to. Matthew Lesko, "The King of Government Freebies and Cheapies", and the author of the 5 pound sourcebook, Lesko's **Info-Power**, has compiled some of the best government offices that will help you in your quest for locating your lover.

Your Lover's Current Address for \$1.00

\* You can contact your local post office for the last known address for anyone. Change of address records going back 18 months are on file and a \$1.00 search will provide you with a new address.

Also for \$2.00 your full service Division of Motor Vehicles located in your state capitol can dig up a person's cur-

rent address if you have their full name and last known address.

Social Security Will Forward Your Love Letter Forever:

\* The Social Security Administration has the largest database for where people are. This office will forward letters to lost loved ones if you can supply the name and social security number, or the person's date and place of birth. The letter you want forwarded must be sent unsealed, and you must enclose a letter explaining why the

enclosed letter should be sent. Contact your local Social Security Administration office or Office of Public Inquiry, Room 4100, Annex Building, Attention: Del Dowling, Social Security Administration, Baltimore, MD 21235, 301-965-2736.

Is Your Lover Doing Time?

\* The government's Inmate Locator Hotline will give you the address of a loved one who is incarcerated in a federal correctional institution. Contact: Public Information, Bureau of Prisons, US Dept. of Justice, 320 First St NW, Room 640, Washington, DC 20536, 202-307-3196.

Find Your Lover in Rush Hour Traffic.

\* Want to know who that good looking

driver who pulls up next to you in a traffic jam? Jot down their license plate number and then contact the Divisions of Motor Vehicles in state capitol. Most states will pass along the name Anne address of the person who owns the car.

Having Trouble With a Foreign Affair

\* If it's an emergency, the government will search will search for your lover in any foreign country. Contact: Overseas Citizens Service, US Dept. of State, 2201 C St, NW, Room 4800, Washington, DC 20520, 202-647-5225.

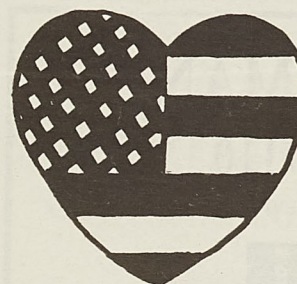
Find a Lover in the Desert

\* The Defense Department will help you find a new lover lover among the men and women serving in the Persian Gulf. Send your letter to: Any Single Serviceman (or Servicewoman), Operation Desert Storm, APO NY, 09848-0006.

A Mailing List of Rich Men (or Women) in Your Zip Code:

\* You can receive a mailing list from your state Department of Motor Vehicles which includes information on single men or women in your zip code who own BMW's and Mercedes Benzs. This information is available for a fee in 47 states. Contact the De-

Reserve and Retiree Locator, St. Louis, MO 314-538-3421; **AIRFORCE**: Airforce Worldwide Locator, San Antonio, TX, 512-652-5774; **COAST GUARD**: Coast Guard Commandant, Washington, DC, 202-267-1615.



Who Does Your Lover Owe Money To? Is Your Lover Rich?

\* The answers to these questions can also be found in the government. The Office of Uniform Commercial Code in your state capitol will tell you who people owe money to. It's public information if they place an asset as collateral for a loan. Also, at the Recorder of Deeds at the county level you can find out if your lover owns a home and how much he or she paid for it.

The IRS and Census Will Tell You

partment of Motor Vehicles in your state Capitol.

Searching For a Man (or Women) in Uniform?

\* If you are looking for someone who is in the military or is now in the Reserves, the Department of Defense has set up locator services to help if you can provide the Pentagon with the name and last known address or social security number. Most of the services are free except for the Army which charges \$3.50 if you are not a member of the immediate family. Here's who to contact: **ARMY**: Army Active Personnel Locator, Ft Benjamin Harrison, 317-542-4211 (recorded message), 317-542-4198; **NAVY**: Navy Worldwide Locator, Washington, DC, 703-614-3155; Retired & Reserve: US Army Where to Marry a Millionaire.

\* The IRS analyzes tax returns to identify where the millionaires live. Contact: Statistics of Income, IRS, PO Box 2608, Washington, DC 20013, 202-233-1758. You can also get data on which towns have the highest concentration of single men and women and the highest per capita income. Contact: Bureau of the Census, Public Information Office, Bldg. 3, Room 2705, Washington, DC, 20233, 301-763-4040.

## PAID VOLUNTEERS ARE NEEDED

For Current Medical Research Studies Under the Direction of Drs. Wes Stricker, Mark Vandewalker, Eamil Stricker, and William Van Stoecker

### BRONCHITIS OR PNEUMONIA

- \* Testing two antibiotics for ten days, Augmentin or Cefprozil
- \* Participants must be ages 18 or older
- \* Participants must have a productive cough and produce a sputum sample

### PSORIASIS

- \* Testing a new Hydrocortisone cream, Pandel cream, against a placebo or fake preparation, for 14 days
- \* Participants must be between the ages of 18 and 70 years
- \* Participants must currently have mild to moderate psoriasis

### ASTHMA

- \* Testing a new aerosol bronchodilator, Fluticasone, for 3 months
- \* Participants must be ages 12 or older
- \* Participants must have mild to moderate asthma or suspected asthma (Off and on coughing, sheezing, or shortness of breath)
- \* All medications are approved and maintained for testing by the Federal Drug Administration
- \* All medications and projects monitored by a Medical Review Committee
- \* All medical examinations, medications, tests and office visits are at no charge to participants.

Participants will receive a monetary stipend for their participation.

CLINICAL RESEARCH OF THE OZARKS, INC.  
509 E. 10th STREET, ROLLA, MISSOURI 65401  
364-7777 ASK FOR VICKI OR ROBIN





SCIENCE FICTION • FANTASY  
COMICS • GAMES

1014 Pine St. Phone 364-4301

## MINER MANIA

364-7110

704 Bishop Ave.



IT'S TIME FOR DOMINO'S PIZZA.®

**\$5.99** plus tax

Get an 11" single topping  
pizza for only \$5.99 plus tax.



Expires 2/28/91

Valid at participating locations only. Not good with any other offer. Prices may vary. Customer pays sales tax and bottle deposit where applicable. Our drivers carry less than \$20.00. Delivery areas limited to ensure safe driving. Our drivers are not penalized for late deliveries. © 1990 Domino's Pizza, Inc.

**Valentine's Day Special**

Get an 11" single topping pizza and 2 Coca-Cola  
classics or Diet Cokes for only \$4.99 + tax.



Offer valid only on 2/14/91 and 2/15/91.  
Not valid with any other coupon.

**Sunday Spectacular**

Get one 11" Pepperoni Pizza  
for only \$4.99 plus tax.

Good Sundays only  
from 11am-12pm.



Expires: 2/28/91

Valid at participating locations only. Not good with any other offer. Prices may vary. Customer pays sales tax and bottle deposit where applicable. Our drivers carry less than \$20.00. Delivery areas limited to ensure safe driving. Our drivers are not penalized for late deliveries. © 1990 Domino's Pizza, Inc.

**Late Night Special**

**\$7.99**

Get a large single topping pizza for  
only \$7.99 plus tax after 9 pm everyday.

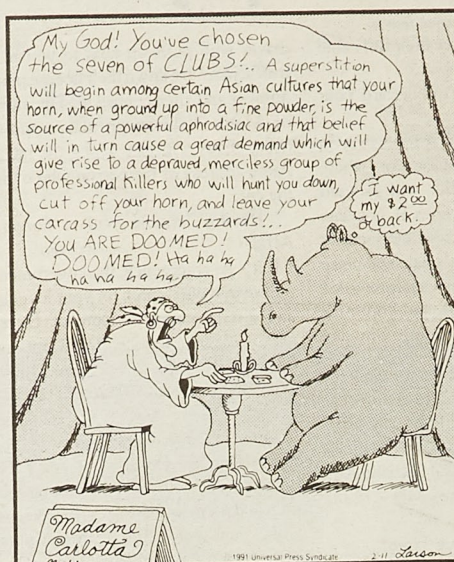


Expires 2/28/91

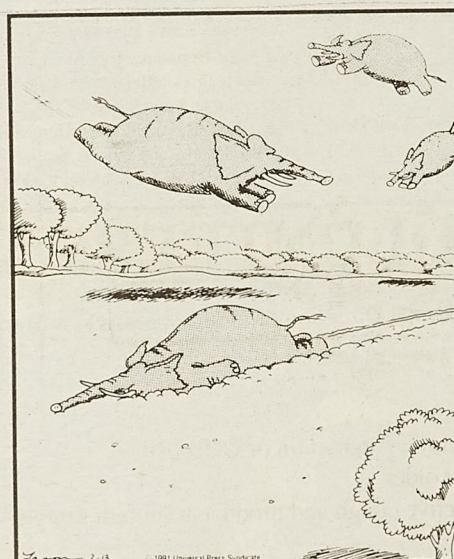
Valid at participating locations only. Not good with any other offer. Prices may vary. Customer pays sales tax and bottle deposit where applicable. Our drivers carry less than \$20.00. Delivery areas limited to ensure safe driving. Our drivers are not penalized for late deliveries. © 1990 Domino's Pizza, Inc.

## THE FAR FAR SIDE SIDE SIDE

By GARY LARSON



"Aaaaaaa! There goes another batch of eggs, Frank! ... No wonder this nest was such a deal."



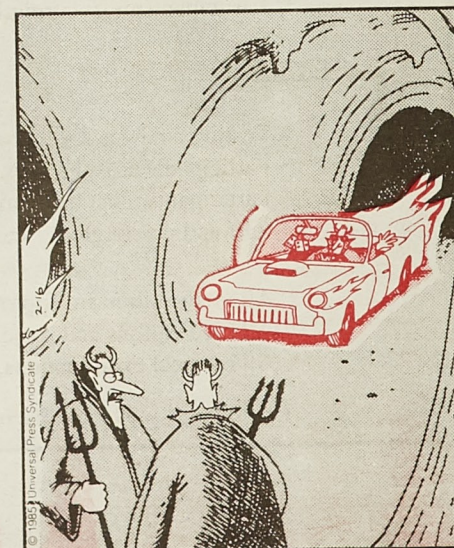
The Secret Elephant Aerial Grounds



In the days before feathers



"Whoa! Whoa! Whoa! ... You're in my favorite chair again, Carl."

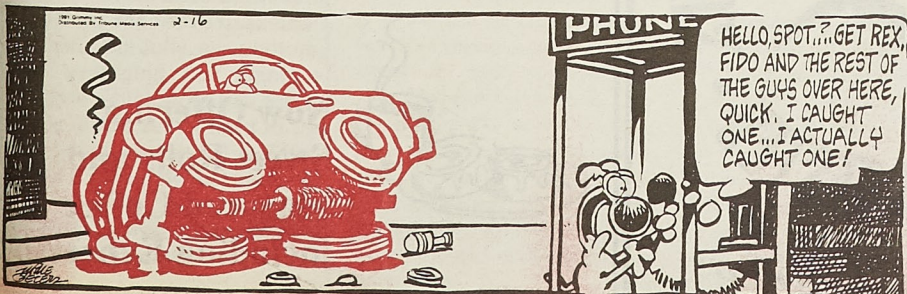
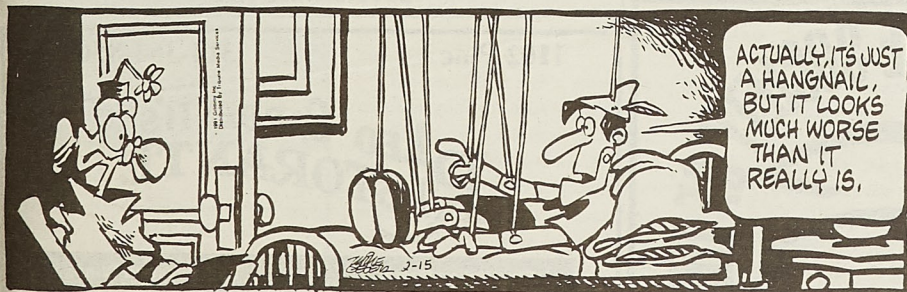
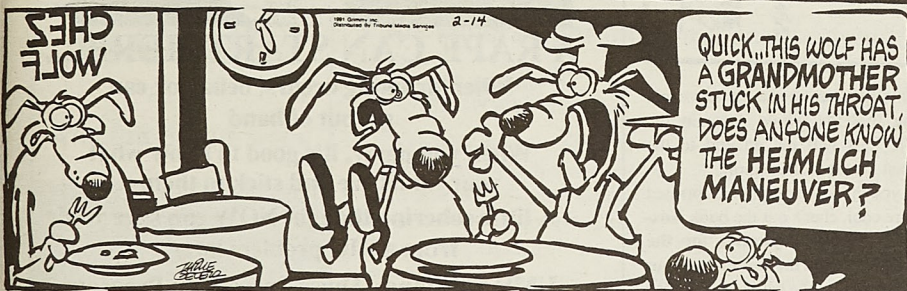
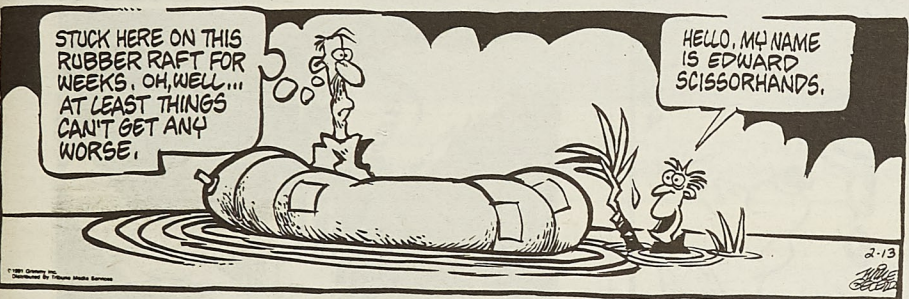
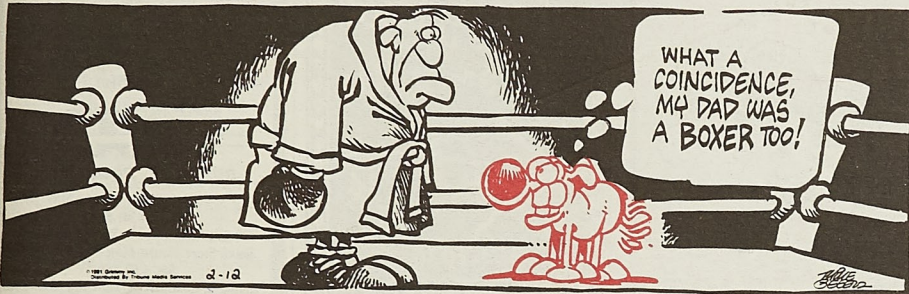


"Well, here comes Roy again. He sure does think he's Hell on Wheels."



# Mother Goose & Grimm

by Mike Peters



## STAGE ONE

the hair school  
"Nationally Accredited"

**Haircuts Only \$3.50**

Phone 364-1383

1304 N. Pine All work done by Students

**\$2.00 off any cash and carry purchase with this coupon.**

offer good thru Feb 14

**Blossom Basket Florist**

910 Cedar St.

364-7101

**The Last Great American Hotdog Stand & Tavern**

209 w. 8th Street

**Lunch & Beer Specials Daily**

**T.V. Sports**

**BBQ Saturdays**

11:00 a.m. to 1:00 a.m. Mon. thru Sat.

Wed. St. Pat's "Green" Nite

364-7464

**\$.50 Coupon**

Good for food only

Ends 4-31-91

**ALL YOU CAN EAT**

**\$4.19 Sunday Special after 5 PM**

Homestyle Fish

includes fries, slaw, hush puppies

Just show your UMR ID

**Plus Daily 10% Discount**

For UMR Students\*

with a student ID

\* offer not valid with other coupons or discounts



We accept Mastercard, Visa, Diners & Discover  
1009 Kingshighway



# Nostradamus prophecies applied to the Middle East

By James Barnes  
STAFF WRITER

*When Saturn is in Aquarius  
And Sagittarius is ascendant  
Disease, famine, and death by war  
As the century approaches re-  
newal.*

The above quatrain can be interpreted many different ways. I see its discussion of death and war as the century gets ready to end applying directly to the war that is taking place in the Mid-east today. Aquarius comes during the month of February, and there is plenty of death and famine taking place in the war torn country of Iraq. The quatrain was written during the middle of the sixteenth century by Nostradamus. Most people know Nostradamus was, but for those of you who don't here is a brief.

Nostradamus was born in 1503 in France. When he became old enough to make his way in life—as it must have been seen back then—he chose to be a doctor, but enjoyed astronomy and astrology on the side. In 1555, he published his first set of prophetic quatrains. The quatrains were originally written and published in French. The ones that appear on this page have been translated into English and do not rhyme, but the originals all held a distinct rhyming pattern. Over the years, many different authors have examined the quatrains and given their personal interpretation. Quite a few of the 1000 quatrains he wrote have appeared to be fulfilled over the years. A few examples include the rise to power of Hitler, and the friendship—of sorts—that is developing between the United States and the Soviet Union. The ones that will be dealt with here all seem to pertain to the current tension in the Middle East. Each is followed by an assessment. Read them, and then make your own judgements.

*On the fields of Media, Arabia,  
Armenia*

*Two great armies meet three times  
The host near the shore of Araxes  
Will fall in the land of Solomon.*

The book I found this quatrain in seems to see a battle in the near east with Jews suffering. The word that stands out the most is Arabia. At present, everybody know there is a battle raging in the geographic area stated.

*The invention of aimed flying fire  
Will greatly trouble the besieged  
chief*

*There will be much sedition within  
The abandoned will despair.*

This quatrain is one of the more interesting ones I found. The first line is undoubtedly speaking of guided missiles, which are playing a very crucial role in the current war. Imagine thinking about guided missiles in the sixteenth century. The next quatrain seems to be directly related to missiles also.

*The dart from heaven ends its cir-  
cuit*

*Some die in mid-speech, a great  
killing*

*Stone in the tree, a proud nation  
humbled*

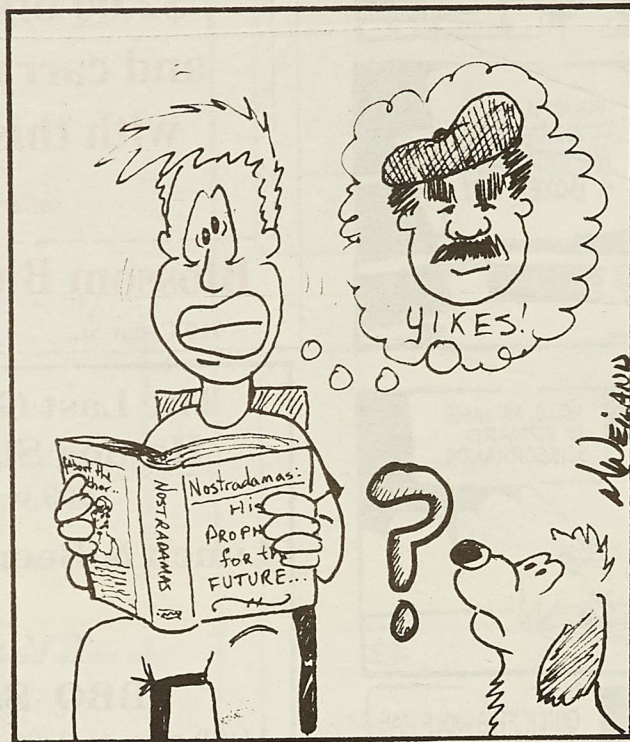
*Noise, a human monster, purged by  
expiation.*

*New law will prevail in the new  
land*

*Towards Syria, Judea, and Pales-  
tine*

*The great barbarian empire de-  
clines*

*Before the moon completes its  
cycle.*



This quatrain can be interpreted as speaking about the current war. From

the United States' point of view, we have certainly killed quite a few Iraqis in mid-speech, but will their proud

nation be humbled? Or are we the proud nation to be humbled? Maybe this next quatrain will help.

This quatrain seems to leave me hoping that the whole mess in the Middle East will put an end to the constant unrest in the region.

If you think the prophecies printed here are cool, check out the book Nostradamus: His Prophecies for the Future, located in the basement of our fabulous library: the call number is BF 1815.N8 A3.



**V.D.**  
Gifts for  
Your  
Sweetie  
Party Glasses  
110 W. 8th - Rolla  
Kent  
364-1030

**Mr. Speedee  
Copy Center**  
Fast, Professional  
Service

Only  
**5¢**

with student I.D.

Black and white, 8 1/2 x 11,  
copies on 20# bond, for only 5¢  
each. Need we say less?

Quality copies, with fast, expert  
assistance.

Binding, collating and other  
finishing services available.

Brilliant color papers  
available.

**TRIAD**  
BUSINESS PRODUCTS

314-364-2485 • 1-800-888-2485  
Fax 314-341-8372

630 South Bishop Rolla, MO 65401  
Retail Store Hours: Mon.-Fri. 8:00-5:30;  
Sat. 9:00-4:00

Printing & Commercial: Mon.-Fri. 8:00-4:30



**A RAPE CAN START HERE....**

When drinking occurs, behavior can  
get out of hand

When you party, it's good to know what  
your limits are and stick to them

A little sobering thought NOW can save you  
from a BIG problem later.

**UMR Substance Abuse Prevention Program**  
204 Norwood Hall

1102 Pine

314-364-8500

**LEO CARDETTI'S  
RISTORANTE**

Fine Italian Pasta  
Steaks

Seafood

Fine Missouri Wines  
Cocktails



Now Offering  
Sweet Rolls and  
Flavored Coffee  
including Espresso



# Sports

## Miners battle for birth in the MIAA conference tournament

By Jeff Lacavich  
STAFF WRITER

Last Wednesday UMR tried to tie up the series with Missouri-St. Louis at the Bullman Multi-Purpose Building. The Miners lost to UMSL in St. Louis but we were playing on our ground and feelings were high for a win.

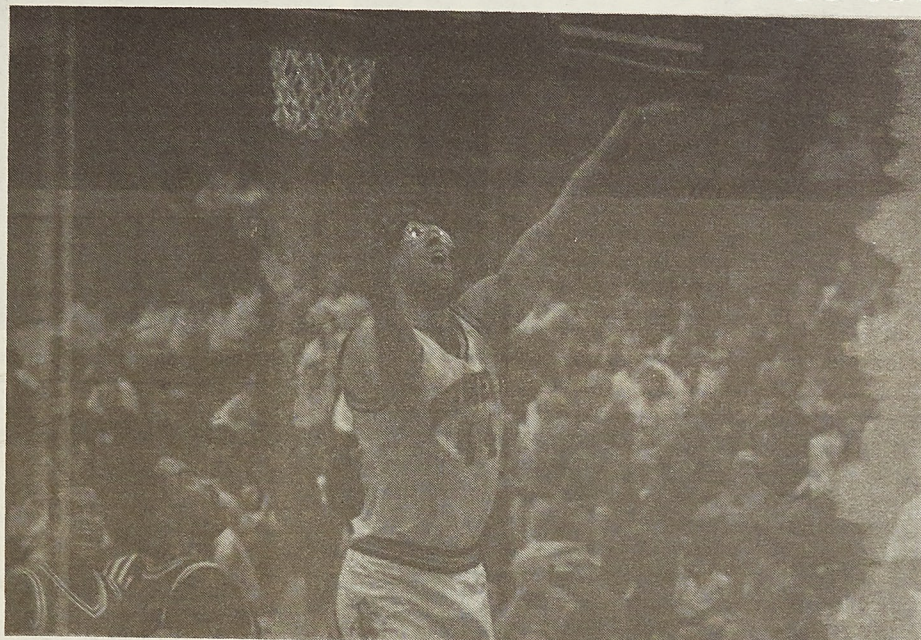
The tip was won by UMR and Chris Dawson was fouled on his shot. He sunk both foul shots to put UMR on top 2-0 at 19:31. That would be the biggest lead UMR would have.

UMR would not see the lead again. They had to play catch-up ball for the rest of the game. The first half was close until the 5:17 mark when UMSL canned a 3-pointer. UMSL stretched its lead to 10 at the 2:42 mark.

UMR played tough for the rest of the half and cut the lead to five. At the end of the half the score was UMR 22, UMSL 27.

The second half was a repeat of the first. UMR scored first to close the gap to three but UMSL came right back to stretch the lead to seven at the 16:26 mark of the second half.

UMSL then went on a 9-0 scoring run to give them the biggest lead of the



Brett Goodman

Senior center Chris Schneider fights for position under the basket during last Wednesday's game against the UMSL Rivermen. The Miners came up short, 61-58.

game at 14 points. The game looked to be out of reach with 11:00 minutes to go and UMR was playing under its

capabilities.

UMR would not die. It only took 5 minutes before UMSL saw the lead

pulled out from under them. At the 6:15 mark the game was dead locked at 52.

The last 6 minutes was a very close game with the lead bouncing up and down but when the game was over UMSL came out on top by three. The final score was UMSL 61, UMR 58.

Chris Dawson scored 18 and Chris Schneider scored 13 to lead the scoring for UMR.

After the tough loss on Wednesday UMR hosted Washburn on Saturday night. The Miners played a very good game and looked like a completed team.

The first half was exciting and very closely played. UMR fell behind by 3 at the 17:13 mark but they would fight back to capture the lead for good at the 10:52.

UMR would stretch a lead of 8 at the 3:05 mark but then slacked off a little to only have a 4 point advantage at the end of the first half. The first half score was UMR 40, Washburn 36.

The second half was an up and down battle throughout but UMR would not give up its lead. Washburn cut the lead to 1 at the 15:55 mark, but the game was all UMR after that.

UMR went on a 16-7 run to enjoy a lead of 10 at the 9:34 mark of the

See Men, page 16

## M CLUB

### ATHLETE OF THE WEEK



M-Club  
SOURCE

This week the athlete is from the Men's basketball team. Bill Jolly, a sophomore, is averaging 17.7 points a game which puts him 6th in the MIAA. Bill is third in the conference with 2.8 3-pointers a game. He just came off a 29 point outing against Washburn on Saturday night. Congratulations Bill!

## Lady Miners fight for home court advantage

By Tom Brown  
ASST. SPORTS EDITOR

With only 4 games remaining in the regular season, the Lady Miners are no longer able to cruise into post season play as they now are struggling to gain the home court advantage in the conference tourney. The Lady Miners dropped their national ranking this past week as they have lost their last three games, two of which have been at home.

The top eight teams in the conference will go to the MIAA tournament to see who will advance on to post season play. The top four teams will receive the much cherished home court advantage. The Lady Miners have fallen to fourth place in the MIAA behind Central, Southeast and Washburn.

In the final stretch of the season, it is obvious that the Lady Miners are lacking a dominant go-to player to take charge in the closing minutes of a ball game. Earlier in the season the Lady Miners were able to win the close games and easily defeat the weaker opponents without having a day-in, day-out leading scorer. Now, with the action being much more intense the inconsistent play of the Lady Miners is hurting them.

The Lady Miners suffered an overtime loss at home on Wednesday at the hands of the University of Missouri-St. Louis. After trailing for most of the game, the Lady Miners battled back from a six point deficit to tie the game on a Casy Engstrom lay up.

In overtime, UMSL drew first blood as an UMSL layer corralled an offensive rebound and put it back in for the bucket. The two teams then exchanged baskets before UMR took the lead. A free throw by Suzanne Spencer with 21 seconds left put them up by four. A jumper and a made free throw brought UMSL right back into the game as they trailed by one with eight seconds left. On the second free throw there was a scramble for the ball and a jump ball was called. As luck would have it, the arrow was pointed towards UMSL.

It was a 15 foot jumper at the buzzer that gave UMSL a 84-83 victory. The Lady Miners struggle from the charity stripe all night as they shot only 50% for the game. Three players were in double figures for UMR> Stacy Mathes scored 17 points and hauled in 9 boards before fouling out in the closing seconds of the game. Jennifer Schnur and Trish Van Diggelen had 15 and 14 points respectively.

## KEY SPORT FAN IN THE STANDS



Brett Goodman

This week's Fan in the Stands attended the Miner's basketball game Saturday vs. UMSL. If this is you, come claim your prize at the Miner office, 103 Norwood, on Thursday at 4:30.

The game on Saturday pitted the two teams tied for third in the MIAA. UMR and Washburn had identical conference records going into the game at 8-3, but at the end of the game the Lady Miners were on the short end of

the stick again.

The Lady Miners came out ready to play as they jumped out to an early 9 point lead and it looked like they were going to make short work of Wash-

See Ladies, page 16



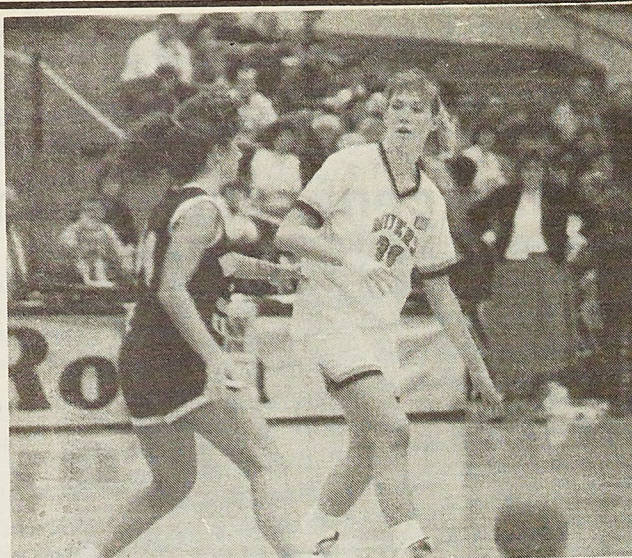
## Ladies

from page 15

burn. But Washburn, fresh from a victory over league leading Central, fought back proving that they are a power in the MIAA. The Lady Miners took a mere one point lead into halftime.

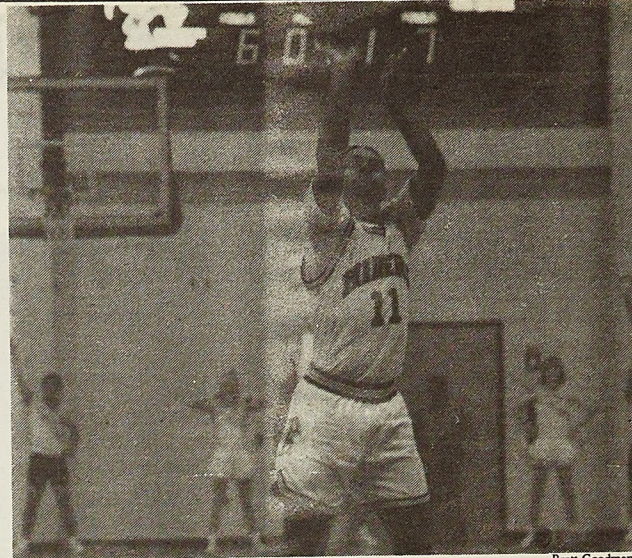
The second half was all Washburn as they took control early and never looked back. A 12-0 run broke the back of the Lady Miners as the game ended with a 64-50 loss to another MIAA opponent.

The Lady Miners next home game will be Wednesday the 13th as they will take on Missouri Southern. After a road game, they will return home on the 20th to host Southeast which should be one of the best games of the year. The Lady Miners needs the support of the fans if they are to take the conference crown. So come on out and support the team!



Brett Goodman

Senior forward Jen Schnur looks for an open hole.



Brett Goodman

Sophomore guard Bill Jolly shows concentration at the line.

## Men

from page 15

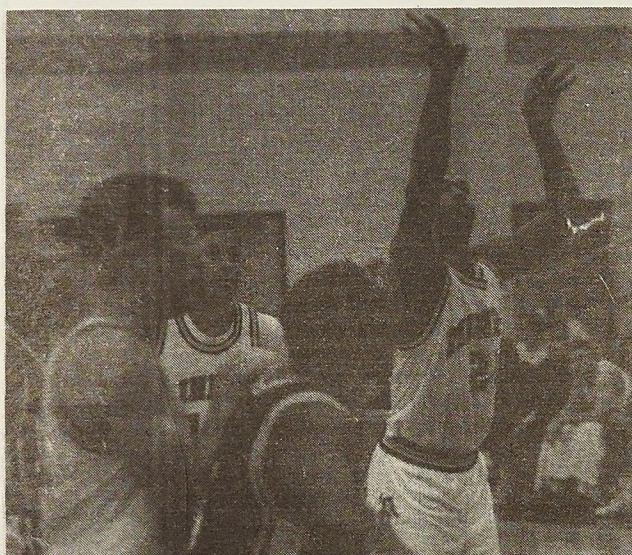
second period. UMR enjoyed this lead for the rest of the game. UMR had its biggest lead of 16 at the 2:31 mark, but would win the game by 13. The final score was UMR 76, Washburn 63.

Scoring was handled by Bill Jolly with 29 and Chris Dawson with 15.

The Miners are currently 11-10 and tied for 8th place in conference play. The top 8 teams go on and UMR has 3 more conference games left. It's crunch time so go support the team and don't just sit back and relax.

The next games are the 13th against Missouri Southern at Rolla, and the 16th against Pittsburg State there.

Good luck with the rest of the season!



Brett Goodman

Will McCauley, a senior guard, cans a 15 foot jumper Wed.

## M-CLUB MEETING

Thursday Feb. 14

## Rugby Schedule

Rugby Club  
SOURCE

M-Club  
SOURCE

The M-CLUB members would like to extend an invitation to all varsity athletes interested in joining or learning more about M-CLUB activities to attend the meeting on Thursday Feb. 14 at 7:30 in room 117 of the Civil building. For more information concerning the meeting contact Jon Purgason at 341-5564 or Chris Schneider at 364-1834.

February

Sat. 16

Sat. 23

March

Sat. 2

Sat. 9

Sat. 16

Sat. 23

April

Sat. 13 & 14

Sat. 20 & 21

Sat. 27 & 28

May

Sat. 4

@ Jeff City

Home 1:00, 2:30

@ St. Louis

Home 1:00

Home 1:00

@ St. Louis

@ St. Louis

@ Arkansas

@ Mizzou

Championship @ Texas

## TECH MAJORS 3.0 = \$36,000

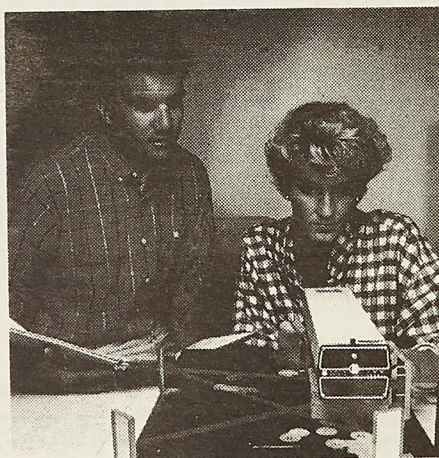
If you're holding a grade point average of 3.0 or higher you may be eligible for up to \$1,200 a month plus bonuses, while you're still a student, through the Navy Nuclear Propulsion Officer Candidate Program.

If you meet the requirements outlined below you could get your start in nuclear power where nuclear power got started -- the Navy.

- United States citizen.
- Have completed sophomore year, majoring in engineering, math, physics or chemistry.
- Minimum 3.0 GPA.
- Have completed one year of calculus and calculus-based physics.
- No more than 26 1/2 years old at time of commissioning.
- Meet Navy's physical standards.

FOR MORE INFORMATION:

Sign up for an informal interview February 26th at the Placement Office or stop by our booth at the Career Fair February 28th



# NAVY OFFICER

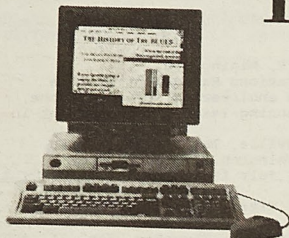
You and the Navy.  
Full Speed Ahead.

## The Interfraternity Council supports the men and women serving the United States in the Middle East





# We kept our ears open.



*And we heard you loud and clear. You asked for a computer that's real college material. Our IBM Personal System/2s® can handle your college needs—and they're affordable!¹*

## THE PS/2s MADE FOR YOU

### IBM PS/2® Model 30 286 (T31)

- 1MB memory
- 80286 (10 MHz) processor
- 30MB fixed disk drive
- One 3.5-inch diskette drive (1.44MB)
- 8512 Color Display
- IBM Mouse
- DOS 4.0
- Microsoft® Windows™ 3.0

**\$1,649**

### IBM PS/2 Model 30 286 (U31)

- 1MB memory
- 80286 (10 MHz) processor
- 30MB fixed disk drive
- One 3.5-inch diskette drive (1.44MB)
- 8513 Color Display
- IBM Mouse
- DOS 4.0
- Microsoft Windows 3.0
- Microsoft Word for Windows™\*
- hDC Windows Utilities™\*
- ZSoft SoftType™\*\*

**\$1,799**

### IBM PS/2 Model 55 SX (U31)

- 2MB memory
- 80386SX™ (16 MHz) processor
- 30MB fixed disk drive
- One 3.5-inch diskette drive (1.44MB)
- 8513 Color Display
- Micro Channel® architecture
- IBM Mouse
- DOS 4.0
- Microsoft Windows 3.0
- Microsoft Word for Windows\*
- hDC Windows Utilities\*
- ZSoft SoftType\*\*

**\$2,349**

### IBM PS/2 Model 55 SX (T61)

- 2MB memory
- 80386SX (16 MHz) processor
- 60MB fixed disk drive
- One 3.5-inch diskette drive (1.44MB)
- 8515 Color Display
- Micro Channel architecture
- IBM Mouse
- DOS 4.0
- Microsoft Windows 3.0

**\$2,699**

### IBM PS/2 Model 55 SX (W61)

- 2MB memory
- 80386SX (16 MHz) processor
- 60MB fixed disk drive
- One 3.5-inch diskette drive (1.44MB)
- 8515 Color Display
- Micro Channel architecture
- IBM Mouse
- DOS 4.0
- Microsoft Windows 3.0
- Microsoft Word for Windows\*
- Microsoft Excel™\*
- hDC Windows Utilities\*
- ZSoft SoftType\*\*

**\$2,799**

### IBM PS/2 Model 70 (T61)

- 4MB memory
- 80386™ (16 MHz) processor
- 60MB fixed disk drive
- One 3.5-inch diskette drive (1.44MB)
- 8515 Color Display
- Micro Channel architecture
- IBM Mouse
- DOS 4.0
- Microsoft Windows 3.0

**\$3,899**

### IBM PS/2 Model 70 (W61)

- 4MB memory
- 80386 (16 MHz) processor
- 60MB fixed disk drive
- One 3.5-inch diskette drive (1.44MB)
- 8515 Color Display
- Micro Channel architecture
- IBM Mouse
- DOS 4.0
- Microsoft Windows 3.0
- Microsoft Word for Windows\*
- Microsoft Excel\*
- hDC Windows Utilities\*
- ZSoft SoftType\*\*

**\$3,999**

### Roland Desktop Music System

Introducing the all-in-one music system that transforms an IBM PS/2 with Micro Channel into an exciting and powerful music composition environment for education, entertainment and personal creativity.

The Roland® Desktop Music System, complete with cables, includes:

- MPU-IMC MIDI Interface Card
- CM-32L Sound Module
- Ballade® Software from Dynaware

**\$599**

### Check out our printers

- IBM Proprinter™ III w/cable (4201 Model 3)  
**\$349**
- IBM Proprinter X24E w/cable (4207 Model 2)  
**\$499**
- IBM Proprinter XL24E w/cable (4208 Model 2)  
**\$679**
- IBM LaserPrinter E w/cable (4019 Model E01)  
**\$1,039**
- Hewlett-Packard PaintJet color graphics printer w/cable (Model HP 3630-A)  
**\$799**

For more information contact

Michael Riggs  
110 M-CS  
341-4841

**IBM**

¹ This offer is available only to qualified college students, faculty and staff that purchase IBM Selected Academic Solutions through participating campus outlets or IBM 1 800 222-7257. Prices quoted do not include sales tax, handling and/or processing charges. Check with your institution regarding these charges. Orders are subject to availability. Prices are subject to change, and IBM may withdraw this offer at any time without notice. \* Microsoft Word for Windows, hDC Windows Utilities and Microsoft Excel are the registered trademarks of the Microsoft Corporation. \*\* ZSoft SoftType is the Academic Version. ® IBM, Personal System/2, PS/2 and Micro Channel are registered trademarks of International Business Machines Corporation. Microsoft is a registered trademark of Microsoft Corporation. Roland is a registered trademark of the Roland Corporation. US. Ballade is a registered trademark of Dynaware Corporation. \* Proprinter is a trademark of International Business Machines Corporation. Windows, Word for Windows, and Excel are trademarks of Microsoft Corporation. hDC Windows Utilities is a trademark of hDC Computer Corporation. ZSoft SoftType is a trademark of the ZSoft Corporation. 80386SX and 80386 are trademarks of Intel Corporation. © IBM Corporation 1991



# Placement

## UNIVERSITY OF MISSOURI-ROLLA PLACEMENT OFFICE

Buehler Building, 9th & Rolla St.  
Rolla, MO 65401

### PERMANENT EMPLOYMENT

#### WEEKLY DETAIL LIST #6

Additions - week of February 25 - March 1, 1991  
Week of March 4-8, 1991

Week of March 11-15, 1991  
Week of March 18-22, 1991  
Week of March 25-29, 1991

### PRESCREENED INTERVIEWS

EFCO, INC.  
P.O. Box 609  
Monett, MO 65708  
attn: Mr. Bob Berger

NUMBER OF SCHEDULES: 1  
MAJORS: BS/CE  
POSITION: Civil Engineer (Structural)  
LOCATION: Monett, MO  
INTERVIEWING: May, July 1991 grads  
MINIMUM G.P.A.: 2.8  
CITIZENSHIP: U.S. Citizenship required.

DEADLINE FOR TURNING IN RESUMES: Thursday, Feb. 21, 1991  
INTERVIEW DATE: March 1, 1991

NOOTER CORPORATION  
P.O. Box 451  
St. Louis, MO 63166  
attn: Ms. Sheila Adams

NUMBER OF SCHEDULES: 1  
MAJORS: BS/MS Mechanical Engineering  
POSITION: Sales and Shop Fabricating Eng.  
LOCATION: St. Louis  
INTERVIEWING: May, July 1991 grads  
CITIZENSHIP: U.S. Citizenship required

DEADLINE FOR TURNING IN RESUMES: Thursday, Feb. 21, 1991  
INTERVIEW DATE: March 8, 1991

ENVIRONMENTAL SCIENCE & ENGINEERING, INC.  
sub. of CILCORP  
8901 Industrial Road  
Peoria, IL 61615  
attn: Ms. Lynda Kentner

NUMBER OF SCHEDULES: 1  
MAJORS: BS/MS CE, Environmental or  
Structural, ME, EE, or Architectural Eng.;  
Scientists or Chemists  
POSITION: Entry level Engineers for the  
above degrees  
LOCATION: Most in Peoria; all of Midwest  
in the Office; Chicago, IL; Davenport, IA;  
Dayton, OH; Cadillac, MI; Des Moines, IA; Lenexa, KS or  
St. Louis, MO; Greenville, SC  
INTERVIEWING: recent grads, May, July 1991 grads  
MINIMUM G.P.A.: 3.0  
CITIZENSHIP: U.S. Citizenship or work permit

DEADLINE FOR TURNING IN RESUMES: Thursday, Feb. 21, 1991  
INTERVIEW DATE: March 8, 1991

SPARTAN ALUMINUM PRODUCTS, INC.  
P.O. Box 310  
Sparta, IL 62286  
attn: Mr. Mike Dierks, Vice Pres. Engineering

NUMBER OF SCHEDULES: 1  
MAJORS: BS/Engineering Management or  
Mechanical Engineering. Engineering Management  
degree should have most of its electives filled  
from the Mechanical Engineering program.  
Applicant should have some type of practical  
experience in industry. (Coop, summers or  
previously worked in some type of maintenance area.)

POSITION: Industrial/Manufacturing Engineer  
(Complete details will be posted.)  
LOCATION: Sparta, IL  
INTERVIEWING: May, July 1991 grads  
MINIMUM G.P.A.: 2.5  
CITIZENSHIP: U.S. CITIZENSHIP REQUIRED

INTERVIEWS WILL BE ONE HOUR IN LENGTH.

DEADLINE FOR TURNING IN RESUMES: Thursday, Feb. 21, 1991  
INTERVIEW DATE: March 11, 1991

ROGERS GROUP, INC.  
P.O. Box 25250  
Nashville, TN 37202  
attn: Mr. Kye Hudson

NUMBER OF SCHEDULES: 1  
MAJORS: BS/CE, Mining Eng.  
POSITION: Operations Management Trainee  
(Rotating assignments in engineering, crushed stone,  
sales/marketing, and planning leading to placement in  
operations management)  
LOCATION: Nashville, TN; Louisville, KY  
Bloomington, IN  
INTERVIEWING: May, July 1991 grads  
MINIMUM G.P.A.: 2.7  
CITIZENSHIP: U.S. Citizenship required

DEADLINE FOR TURNING IN RESUMES: Thursday, Feb. 21, 1991  
INTERVIEW DATE: March 11, 1991

MISSOURI PUBLIC SERVICE COMPANY  
10700 E. 350th Highway  
Kansas City, MO 64138  
attn: Cynthia Smith

NUMBER OF SCHEDULES: 1  
MAJORS: BS/EE  
POSITION: Staff & Field Engineer  
LOCATION: Kansas City area, Western Missouri  
INTERVIEWING: May or July 1991 grads  
MINIMUM G.P.A.: 2.5  
CITIZENSHIP: U.S. Citizenship or Authorization  
to work in the U.S.

DEADLINE FOR TURNING IN RESUMES: Thursday, Feb. 21, 1991  
INTERVIEW DATE: March 12, 1991

PANHANDLE EASTERN  
5400 Westheimer Ct.  
Houston, TX 77056-5310  
attn: Mr. Mark Scuzzarella, Sr. Employment Rep.

NUMBER OF SCHEDULES: 2  
MAJORS: BS/ChE, EE, ME, CE  
POSITION: Associate Engineer. This  
position is entry-level - performing all duties.  
LOCATION: Houston  
INTERVIEWING: May, July 1991 grads

DEADLINE FOR TURNING IN RESUMES: Thursday, Feb. 21, 1991  
INTERVIEW DATE: March 13, 1991

DILLARDS  
1600 Cantrell  
Little Rock, AR 72201  
attn: Ms. Carolyn Vest

NUMBER OF SCHEDULES: 3  
MAJORS: BS/EE, CompSci  
POSITION: MIS: Systems Programming, Appli-  
cations Programming, Operations  
LOCATION: Little Rock, AR  
INTERVIEWING: Recent grads, Dec. 1991, or May,  
July 1991 grads  
MINIMUM G.P.A.: 2.5  
CITIZENSHIP: Must have Permanent Resident Visa

DEADLINE FOR TURNING IN RESUMES: Thursday, Feb. 21, 1991  
INTERVIEW DATE: March 12, 1991

HANSON ENGINEERS  
1525 South Sixth Street  
Springfield, IL 62703  
attn: Mr. Curt Krueger

NUMBER OF SCHEDULES: 1  
MAJORS: BS/MS/PhD in ChE, CE, GeolE,  
Geology  
POSITION: Environmental Sciences and  
Environmental and Civil Engineers  
LOCATION: Springfield, IL and Rockford,  
IL (CE only)  
INTERVIEWING: December 1990 or May, July 1991  
grads  
MINIMUM G.P.A.: 2.5  
CITIZENSHIP: U.S. Citizenship

DEADLINE FOR TURNING IN RESUMES: Thursday, Feb. 21, 1991  
INTERVIEW DATE: March 13, 1991



**KANSAS CITY POWER & LIGHT CO.**  
P.O. Box 679  
Kansas City, MO 64141  
attn: Mr. George Crump, Supv. of Employment Services

NUMBER OF SCHEDULES: 1  
MAJORS: BS/EE, ME (power courses)  
POSITION: In the power engineering department which consists of Transmission & Distribution and Construction Engineering  
LOCATION: Metropolitan Kansas City, MO  
INTERVIEWING: May 1991 grads  
MINIMUM G.P.A.: 2.8  
CITIZENSHIP:

DEADLINE FOR TURNING IN RESUMES: Thursday, Feb. 28, 1991  
INTERVIEW DATE: March 26, 1991

**HALLIBURTON SERVICES**  
210 W. Park Ave., Suite 2000  
Oklahoma City, OK 73102  
attn: Mr. Larry Harlow

NUMBER OF SCHEDULES: 1  
MAJORS: BS/MS Engineering (all), Physics, or Math  
POSITION: Field Engineer  
LOCATION: OK, TX, KS, AR, NE U.S.  
INTERVIEWING: May, July 1991 grads  
MINIMUM G.P.A.: 2.5  
CITIZENSHIP: U.S. Citizenship or Permanent Resident Visa Required

DEADLINE FOR TURNING IN RESUMES: Thurs., Feb. 28, 1991  
INTERVIEW DATE: March 19, 1991

**SVERDRUP CORPORATION**  
801 N. 11th St.  
St. Louis, MO  
attn: Ms. Janice Evans

NUMBER OF SCHEDULES: 1 - BS/MS CE, Structural  
1 - BS/MS EE, ME, ChE  
POSITION: Details are not available.  
LOCATION: St. Louis, MO  
MINIMUM G.P.A.: 2.8  
CITIZENSHIP: U.S. Citizenship or Permanent Resident Visa

INTERVIEW SIGNUP DATE: Friday, February 22, 1991  
INTERVIEW DATE: March 8, 1991

**STATE FARM INSURANCE COMPANIES**  
One State Farm Plaza  
Bloomington, IL 61710-0001  
attn: Mr. Tyrome Williams, Personnel Specialist

NUMBER OF SCHEDULES: 1  
MAJORS: BS/Computer Science  
POSITION: Programmer/Analyst Trainee  
Accounting Trainee

LOCATION: Various  
INTERVIEWING: May, July 1991 grads

INTERVIEW SIGNUP DATE: Monday, March 4, 1991  
INTERVIEW DATE: March 18, 1991

NOTE: STATE FARM REQUESTS THAT STUDENTS BRING COPY OF THEIR TRANSCRIPT TO THE INTERVIEW.

**LIBERTY MUTUAL INSURANCE**  
P.O. Box 8509-A  
St. Louis, MO 63126-0509  
attn: Mr. James Kahfeldt, Asst. Loss Prevention Mgr.

NUMBER OF SCHEDULES: 1  
MAJORS: BS/Engineering Management, ME  
POSITION: Loss Prevention Representative  
Under the close supervision and guidance of the Loss Prevention Manager or Assistant Loss Prevention Manager, evaluates Policyholders' potential and actual sources or loss. More details will be available at time of interview signups.

LOCATION: St. Louis

DEADLINE FOR TURNING IN RESUMES: Thurs., Feb. 28, 1991  
INTERVIEW DATE: March 22, 1991

#### NON-PRESCREENED INTERVIEWS

**KIMBERLY CLARK CORP.**  
401 N. Lake Street  
Neenah, WI 54956  
attn: Ms. Kay Keberlein

NUMBER OF SCHEDULES: 1  
MAJORS: BS/EE, ME, ChE  
POSITION: Electrical, Chemical & Mechanical Engineers  
LOCATION: Conway, AR  
INTERVIEWING: May, July 1991 grads  
MINIMUM G.P.A.: 2.8  
CITIZENSHIP: Applicants must be presently authorized to work in the U.S. on a full-time, regular basis

INTERVIEW SIGNUP DATE: Friday, February 22, 1991  
INTERVIEW DATE: March 1, 1991

#### NON-PRESCREENED INTERVIEWS

**BROWN & ROOT**  
P.O. Box 3  
Houston, TX 77001  
attn: Ms. Leigh Arnold

NUMBER OF SCHEDULES: 1  
MAJORS: BS/MS/Civil Engineering  
POSITION:  
LOCATION: Houston, TX  
INTERVIEWING: May, July 1991 grads  
MINIMUM G.P.A.: 2.5  
CITIZENSHIP: U.S. Citizenship or Permanent Resident Visa

INTERVIEW SIGNUP DATE: Wednesday, March 6, 1991  
INTERVIEW DATE: March 21, 1991

CANCELLATIONS: ADM - February 21, 1991  
NOAA - March 26, 1991

ADDITIONS: Wells Manufacturing - March 1, 1991

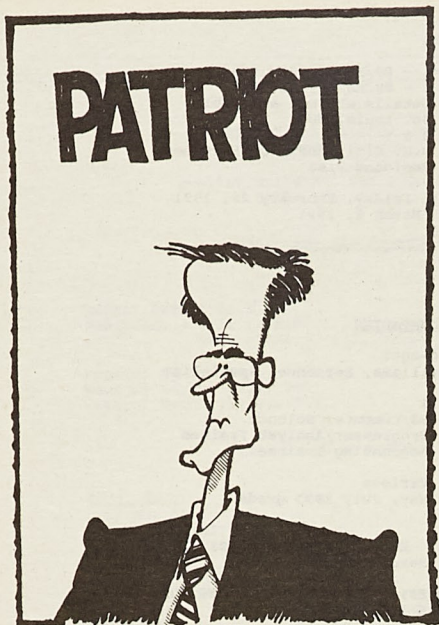
U.S. Air Force Civilian Personnel  
Randall AFB, Texas - March 8, 1991

Union Pacific Technology - March 20, 1991

ABB Combustion Engineering - March 28, 1991

Information is not available for these companies at this time. Please watch for details!





WALT HANDELSMAN

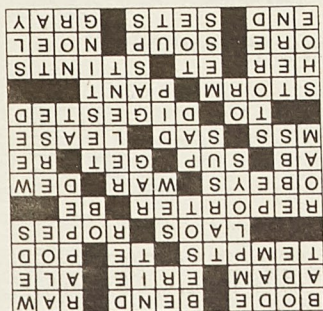
THE TIMES-PICAYUNE / TRIBUNE MEDIA SERV.

SCUD



Solutions

from page 5



## Sexual assault in Rolla

## Notice:

### Rolla Police Department SOURCE

On February 10, 1991 at approximately 4:15 a.m. officers of the Rolla Police Department were notified of a Sexual Assault that had just occurred in the 1400 block of Ozark in Rolla.

Investigation revealed that a white male subject, believed to be in his early 20's forcibly entered a residence on Ozark Street and attacked a white female age: 26, who was home alone. During the attack, the victim received

numerous facial injuries, bruises and contusions. The suspect then left the victim bound in her residence and fled. After a short time, the victim freed herself and went to a neighbors residence where the police were summoned. The victim was transported to Phelps County Regional Medical Center where she was treated for her injuries and later released.

Any further information will be released by the Phelps County Prosecutor John Beger at: 364-3331. Investigation continues.

Dear students,

During this past weekend, a female University of Missouri-Rolla student was allegedly assaulted near campus in the Schuman Park area near the railroad tracks. At the present time the alleged assailant has not been identified or apprehended. This notice is intended to heighten student awareness. Vice Chancellor Wendall Ogrosky has stated that "campus officials are concerned about this incident and about the welfare of our students....we would like students to continue to exercise their usual carefulness.

## IF THE EARTH ISN'T WORTH SAVING, CONSIDER THE ALTERNATIVES.



Saturn: Raindrops are liquified methane gas.



Uranus: Blanketed in radioactive smog.



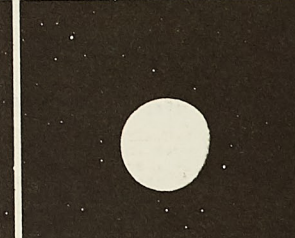
Mercury: The temperature here reaches 780°F.



Pluto: Frozen solid.



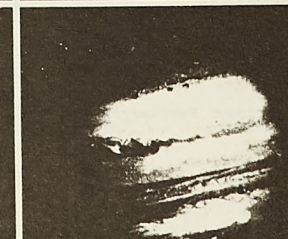
Venus: The clouds drip pure sulphuric acid.



Neptune: One hemisphere won't see sunshine until 2030 A.D.



Mars: The atmosphere is like car exhaust.



Jupiter: Sulphur and phosphorus make it one giant match head.



Earth: Perhaps we should take better care of it.

One way to take better care of our planet is to contribute to The Environmental Challenge Fund, sponsored by Time Magazine. All funds will be distributed as scholarships, enabling students to acquire the skills and training needed to protect the environment. To make a contribution, or to get more information, write: The Environmental Challenge Fund, Radio City Station, P.O. Box 1138, New York, New York 10101-1138.

**THE ENVIRONMENTAL CHALLENGE FUND.**



# Co-op Employment

February, 1991

## CO-OP EMPLOYMENT OPPORTUNITIES

**Sign-up location:** 101 Buehler Bldg.  
Co-op Office  
9th & Rolla Sts.

**Sign-up hours:** 7:45 am - 11:00 am  
1:00 pm - 3:00 pm

\*\*\*\*\*

**Interview date:** Wed., Feb. 6, 1991

MONSANTO CHEMICAL COMPANY  
Locations: Nationwide

Interviewing: Ch.E.

Requirements: 2.5 GPA or above. Prefer authorization to work full time in US. Academic level of applicants: at least 30 credit hours completed at the end of the present semester.

**Sign-up date:** Wed., Jan. 23, 1991

start work summer or fall 91

1 schedule - 12 interview openings

\*\*\*\*\*

**Interview date:** Thurs., Feb. 7, 1991

UNION ELECTRIC  
St. Louis, Missouri

Interviewing: C.E., M.E., E.E., Nuc., Ch.E., Mgmt.  
Ch.E.

Requirements: 2.5 GPA or above. Must be legally eligible to work in US. Academic level of applicants: at least 70 credit hours completed at the end of the present semester. Must have completed some of the 1st semester junior courses.

**Sign-up date:** Thurs., Jan. 24, 1991

2 schedules - 26 interview openings

\*\*\*\*\*

**Interview date:** Tues., Feb. 11, 1991

ASSOCIATED ELECTRIC C.I. MINING DIVISION  
Clifton Hill, MO

Interviewing: C.E., Geology, Geo.E.,  
M.E., Mining

Requirements: 2.0 GPA or above. Eligible to work in the US. Academic level of applicants: at least 29 credit hours completed at the end of the present semester.

**Sign-up date:** Monday, Jan. 28, 1991

1 schedule - 13 interview openings

start work: summer 91, fall 91, or spring 92

\*\*\*\*\*

**Interview date:** Tuesday, Feb. 12, 1991

BROWN SHOE COMPANY  
Work locations: Primary - Fredericktown, MO  
and Pocahontas, AR; Secondary - Cabool, MO.,  
Houston, MO., Mountain Grove, MO., Dixon, MO.,  
Owensville, MO., Fredericktown, MO., Charleston, MO.,  
Bernie, MO., Caruthersville, MO., Pocahontas, AR.,  
Union City, TN., Dyer, TN., Lexington, TN., Selmer, TN.,  
Savannah, TN.

Interviewing: E.E., Mgmt., M.E.

Requirements: 2.0 GPA or above. Academic level of applicants: at least 45 credit hours completed at the end of the present semester.

**Sign-up date:** Tuesday, January 29, 1991

start work - summer 91, fall 91, spring 92

2 schedules - 22 interview openings

\*\*\*\*\*

**Interview date:** Tuesday, Feb. 12, 1991

DOW CHEMICAL  
Texas, Michigan and Louisiana

Interviewing: Ch.E.

Requirements: 2.8 GPA or above. Permanent resident visa. Academic level of applicants: at least 29 credit hours completed at the end of the semester. 45 hours minimum for Texas location.

**Sign-up date:** Monday, January 28, 1991

1/2 schedule - 7 interview openings

\*\*\*\*\*

**Interview date:** Tuesday, Feb. 12, 1991

CENTRAL INTELLIGENCE AGENCY  
Work locations: Northern Virginia/Washington, DC area

Interviewing: A.E., Math., C.E., C.Sc., E.E.,  
M.E., Physics

Requirements: 2.75 gpa or above. US Citizenship required. Academic level of applicants: at least 45 credit hours completed at the end of the present semester.

**Sign-up date:** Wed., January 30, 1991

Start work: fall 91

2 schedules - 24 interview openings

\*\*\*\*\*

**Interview date:** Thurs., Feb. 14, 1991

ANHEUSER BUSCH  
St. Louis, MO

Interviewing: E.E., M.E.

Requirements: 2.8 GPA or above. Permanent Resident status. Academic level of applicants: 4-5 semesters completed at the end of the present semester.

**Sign-up date:** Thurs., Jan. 31, 1991

1 schedule - M.E. 13 interview openings

1 schedule - E.E. 13 interview openings

\*\*\*\*\*

**Interview date:** Friday, Feb. 15, 1991

LITTON INDUSTRIES  
Springfield, Missouri

Interviewing: Ch.E., Chem., E.E., M.E.

Requirements: 2.5 GPA or above. Academic level of applicants: at least 30 credit hours completed at the end of the present semester.

**Sign-up date:** Friday, Feb. 1, 1991

start work summer 91

1 schedule - 10 interview openings

\*\*\*\*\*

**Interview date:** Tuesday, Feb. 19, 1991

ANHEUSER BUSCH  
St. Louis, Missouri

Interviewing: C.E., M.E., Eng.Mgmt., C.Sc., E.E.

Requirements: 2.8 GPA or above. Permanent Resident status. Academic level of applicants: at least 4-5 semester completed at the end of the present semester.

**Sign-up date:** Tues., Feb. 5, 1991

2 schedules - 26 interview openings



Interview date: Friday, Feb. 15, 1991

BUSSMANN  
Ellisville (St. Louis County), MO

Interviewing: E.E.

Requirements: 2.5 GPA or above. U.S. Citizenship.  
Academic level of applicants: at least 45 credit  
hours completed at the end of the present semester.

Sign-up date: Friday, Feb. 1, 1991

1 schedule - 13 interview openings

start work fall 91

\*\*\*\*\*

Interview date: Friday, Feb. 15, 1991

CHEVRON USA INC.  
New Orleans and Lafayette, Louisiana

Interviewing: Ch.E., C.E., E.E., M.E.

Requirements: 2.7 GPA or above. US Citizenship  
required. Academic level of applicants: at  
least 30 credit hours completed at the end of  
the present semester.

Sign-up date: Friday, Feb. 1, 1991

start work summer 91 or fall 91

1 schedule - 12 interview openings

\*\*\*\*\*

Interview date: Tues., Feb. 19, 1991

GENCORP AUTOMOTIVE  
Batesville, Arkansas

Interviewing: M.E.

Requirements: 2.5 GPA or above. American  
Citizenship required. Academic level of  
applicants: at least 59 credit hours  
completed at the end of the present semester.

Sign-up date: Tues., Feb. 5, 1991

1 schedule - 14 interview openings

1 hour interviews

start work fall 91.

\*\*\*\*\*

Interview date: Wed., Feb. 20, 1991

INLAND STEEL  
E. Chicago, Indiana

Interviewing: M.E., Met., E.E.

Requirements: 2.4 or above. sophomores or juniors.  
must be able to work at least 3 work sessions.

Sign-up date: Wed., Feb. 6, 1991

1 schedule - 13 interview openings

\*\*\*\*\*

Interview date: Wed., Feb. 20, 1991

MONSANTO COMPANY  
Work locations: St. Louis, MO., Cincinnati, OH.,  
Chicago, IL., New Orleans, LA

Interviewing: C.Sc.

Requirements: 3.0 GPA or above. US Citizenship.  
Academic level of applicants: at least 60 credit  
hours completed at the end of the present semester.

Sign-up date: Wed., Feb. 6, 1991

start work july-dec. 1991

1 hour interviews

1 schedule - 12 interview openings

Monsanto will hold an informational meeting  
on Tuesday, Feb. 19, 1991 in the Univ. Center  
east - 214 Mark Twain Room. 6:00 pm - 7:00 pm.  
All student interviewing with Monsanto must  
attend.

\*\*\*\*\*

Interview date: Thurs., Feb. 21, 1991

ALCO CONTROLS  
St. Louis, Missouri

Interviewing: Eng.Mgmt.

Requirements: 2.75 GPA or above. Academic  
level of applicants: at least 59 credit hours  
completed at the end of the present semester.

Sign-up date: Thurs., Feb. 7, 1991

start work summer 91

1 schedule - 10 interview openings

\*\*\*\*\*

Interview date: Wed., Feb. 20, 1991

OLIN CORPORATION  
E. Alton, Illinois

Interviewing: C.Sc., M.E., Met.E.

Requirements: 2.5 GPA or above. Permanent  
resident visa. Academic level of applicants:  
at least 59 credit hours completed at the end  
of the present semester.

Sign-up date: Friday, Feb. 8, 1991

start work summer 91

1 schedule - 13 interview openings

\*\*\*\*\*

SQUARE D COMPANY  
Cedar Rapids, Iowa

Interviewing: Mgmt., M.E., E.E.  
(Manufacturing and high tech lab)

Requirements: 2.0 GPA or above.

Turn in resumes: Monday, Feb. 11, 1991

RESUMES ONLY. IF YOU WOULD LIKE TO BE CON-  
SIDERED FOR CO-OP EMPLOYMENT WITH THE ABOVE  
COMPANY, PLEASE TURN IN A COPY OF YOUR CO-OP  
RESUME TO THE CO-OP OFFICE ON THE ABOVE DATE.

Interview date: Monday, Feb. 25, 1991

PSI ENERGY (formerly Public Service Indiana)  
Plainfield, Indiana

Interviewing: E.E., M.E.

Requirements: 2.75 GPA or above. Academic level  
of applicants: at least 45 credit hours completed  
at the end of the present semester.

Sign-up date: Monday, Feb. 11, 1991

start work summer 91

1 schedule - 12 interview openings

\*\*\*\*\*

Interview date: Wed., Feb. 27, 1991

HUSSMANN CORPORATION  
Bridgeton, MO (Suburb of St. Louis)

Interviewing: M.E.

Requirements: 2.8 GPA or above. Academic level  
of applicants: at least 30 credit hours completed  
at the end of the present semester. American  
Citizenship open: valid work permit required if  
non-U.S. citizen.

Sign-up date: Wed., Feb. 13, 1991

start work fall 91

1 scheule - 12 interview openings

\*\*\*\*\*

## PERSONAL RESOURCE DEVELOPMENT

Sponsored by Counseling & Career Development  
A Division of Student Affairs

341-4211 204 Norwood Hall  
**INTERVIEWING SKILLS**

Thursday, February 7 3:30 - 4:30 pm; 201 Norwood Hall  
Facilitator: Dr. Sam Burton

This presentation is designed to help you prepare for interviews.  
Representatives from industry who recruit on the UMR campus will be  
invited as special guest speakers for the workshop.

### MAKING THOSE "MAJOR" DECISIONS

Tuesday, March 5 3:00-4:30 pm: Location to be announced

Facilitator: Dr. Carl Burns

Are you confused about what to major in, or what type of career to pur-  
sue? Too many choices and not enough information? You may find  
that discovering more about your interests and preferences helps in  
establishing a direction. Preregistration and completion of the Self  
Directed Search (SDS) is necessary at least a week in advance. Enrollment  
is limited, so sign up early!

## Sunday Night Special

Stockade Burger,  
Fries & Drink

**\$2.99**

Every Sunday from  
5:00 p.m. to close.  
Includes FREE dessert.

1401 Martin Springs Dr.  
Rolla, MO 65401

**SIRLOIN  
STOCKADE**

© 1990 Sirloin Stockade International



Open 24 Hours a Day  
Seven Days a Week

**Pepsi**

12-12 oz cans

**\$2.99**

Rolla Kroger

**Ground  
Beef**

**\$.50 off**

with this coupon  
Rolla Kroger

expires 2-17-91

**Kroger Bread**

**\$.50 off**

Any Variety Kroger Bread or Buns  
With This Coupon expires 2-17-91



## Informational Meetings

<u>UNION PACIFIC</u>	February 12, 1991 MO Rm 6:30 pm
<u>CONOCO</u>	February 12, 1991 Mark Twain Rm 6:30 - 8:00 pm
<u>DILLARDS</u>	February 19, 1991 MO Rm 4:30 - 6:00 pm
<u>COOPER INDUSTRIES</u>	February 20, 1991 Mark Twain Rm 7:00 pm
<u>FBI</u>	February 19, 1991 Mark Twain 7:30 pm
<u>INLAND STEEL</u>	February 20, 1991 Maramec Rm 6:00 pm
<u>GENERAL MOTORS</u>	February 21, 1991 Centennial Hall
<u>CHEVRON</u>	February 25, 1991 Mark Twain Rm 7:00 pm
<u>HALLIBURTON SERVICES</u>	February 26, 1991 Mark Twain Rm 7:00 pm
<u>U. S. DEPT. OF ENERGY - IDAHO FALLS</u>	February 28, 1991 Maramec Rm. 7:00 pm

## Summer Employment

UNIVERSITY OF MISSOURI-ROLLA  
Placement Office  
Buehler Building, 9th & Rolla St.

### SUMMER EMPLOYMENT

WEEKLY DETAIL LIST #6  
Week of March 4-8, 1991

The following companies will not be interviewing on campus; they are interested in receiving resumes. Please turn your resume in to Jane, G-3 Buehler Bldg. prior to the deadline outlined in this detail list.

CYBER TEL  
150 N. Meramec, Suite 620  
St. Louis, MO 63105-3753  
attn: Ms. Ann B. Prenatt

INTERVIEWING: Electrical Engineering students interested in summer employment.  
POSITION: Candidate will spend time working with System Engineers and Technicians.  
LOCATION: St. Louis

DEADLINE FOR TURNING IN RESUMES: Thursday, Feb. 21

SUMMER INTERNSHIP WITH AMERICAN ELECTRIC POWER  
The American Electric Power Service Corp. has an opening for a summer intern in its System Planning Dept., Bulk Transmission Planning Division.  
Qualifications: Major in EE (power preferred). Complete junior year by Summer 1991 with min. of 2.8 G.P.A.

Send resume, current transcript and statement of why you want an AEP Summer Internship to:  
E.L. Strutner, Administrator  
Co-op and Internship Programs  
AMERICAN ELECTRIC POWER SERVICE CORPORATION  
#1 Riverside Plaza  
Columbus, OH 43215

Application Deadline: March 9, 1991. Applicants will be notified by AEP by March 28, 1991.

The following company will interview on campus:

GRAIN PROCESSING  
1600 Oregon St.  
Muscatine, IA 52761  
attn: Mr. Jerry Flakne

NUMBER OF SCHEDULES: 1 - SUMMER INTERNSHIP  
MAJORS: Must have completed junior year by Summer 1991.  
LOCATION: Muscatine, IA (quad cities area)

DEADLINE FOR TURNING IN RESUMES: Thursday, Feb. 21, 1991  
INTERVIEW DATE: March 18, 1991



International Tours, Travel Agency of Rolla  
1023 Kingshighway Rolla, MO 65401  
Call Rick, Chris, or Melissa

MON-FRI  
8 AM - 6 PM  
SAT  
10 AM - 4 PM

Your one stop!  
For complete travel Planning (314) 341-3300  
Foreign or domestic! → Business or pleasure! 1-800-876-3331



Medi-Value  
Pharmacy  
Tenth and Pine

Rolla's almost on Campus pharmacy & photo center.  
For all your health & photo needs.

Phone 364-7077

## Bruno's

Banquet Facilities Available  
Men's Night - Wednesday  
Ladies' Night - Thursday  
9:30 - 1:00

341-2110

2001 Forum Drive

## LA POSADA

### MEXICAN RESTAURANT

- \* Delicious Mexican Food (Mexico City Style)
- \* Daily Lunch & Dinner Specials
- \* 1024 types of Nachos
- \* Reasonable prices

YES, we are having a movie on Feb. 15 and 16

MARLON BRANDO

MATTHEW BRODERICK



ME 104 7:00 pm and 9:00 pm  
Free with Student ID





**A CUT ABOVE**  
Hair & Tanning Salon  
209 West 11th St.  
364-6866

*Wolff Tan Beds*

**SCOTT'S HALLMARK**  
For Your VALENTINE

8th & Pine Rolla, MO 65401 364-1446

**Russell's Town & College Shoppe**  
"MEN'S CLOTHING EXCLUSIVELY"



713 Pine Street  
Rolla, Missouri 65401

Phone 364-2323

This Ad Good for a 10% Discount

1 Mylar and  
7 Red Balloons  
w/ Valentine Mug  
Filled with  
Candy Kisses  
only \$12.95  
with  
coupon  
expires 2/15/91



"I Love you"  
7 Balloon Bunch  
with attractive  
weight  
only \$6.95 with  
coupon  
expires 2/15/91  
WE DELIVER  
Small Extra Charge



812 Pine, Rolla, Mo 341-2300



**SWEET HEART  
OF A SPECIAL**





**Heart Shaped  
Pizza**

Feb 13  
ONLY

AVAILABLE IN  
MEDIUM PAN  
CRUST ONLY

\$10.35 MAXIMUM  
THREE  
TOPPINGS

CALL AHEAD FOR FASTER SERVICE

265-8904 364-7213

**PLANNED PARENTHOOD  
OF THE CENTRAL  
OZARKS**  
Family Planning  
free pregnancy testing  
reproductive health exams  
referral services available  
birth control supplies  
evening hours available  
sliding scale fee  
All Services Confidential  
MON & WED 8-7  
TUES & FRI 8-5 THUR 8-12  
364-1509  
1032 - B Kingshighway

**Carolyn's Coiffures**  
Welcomes Beverly Duncan  
STUDENT SPECIAL

Shampoo, Cut, and Blowdry  
only \$9.00



200 E. 7th 364-8350

**IMO'S PIZZA**  
364-8484  
632 S. Bishop Rolla MO

**Sweetheart Special**

We think enough for two

12" Two toppings  
(your choice)  
Heart shaped pizza  
2 House Salads  
2 glasses of wine  
or soda  
Free Tosted Ravioli

Spaghetti w/ Meatballs  
2 House Salads  
2 glasses of wine  
or soda  
Free Tosted Ravioli

Reservations Recommended  
Offer good Feb 14 & 15, Not good w/ any other offer  
TAX NOT included. DINE IN ONLY

**Sunnywall Flowers**  
1107 Pine 364-3161

"FLOWERS & KISSES"  
chocolate kisses tucked  
into a beautiful bouquet  
\$12.50 up

"HIGH FLYIN' LOVE"  
3 Foot Heart Balloon  
only \$14.95

**Set A Heart  
Twirling.**

You've never seen anything  
like it! The colorful  
TwirlingTune Bouquet features  
an oversized Valentine that  
actually twirls and plays  
"Let Me Call You Sweetheart."  
To send one anywhere  
in the U.S. or Canada,  
call or visit our  
shop today.

**"SUPER LOVE"**  
Lovely Rose  
Heart Box Candy  
Stuffed Animal  
Mylar Balloon  
Perfume  
\$29.95 up

**"LOLLIPOP LOVE"**  
Bright Valentine Flowers  
with Candy Lollipop  
\$12.50 up



The  
Twirling  
Tune  
Bouquet

T-H642