



26 Sep 1990

## The Missouri Miner, September 26, 1990

Follow this and additional works at: [https://scholarsmine.mst.edu/missouri\\_miner](https://scholarsmine.mst.edu/missouri_miner)

These newspapers reflect the attitudes, perspectives, and beliefs of different times. Neither the library nor the university endorses the views expressed in these collections, some of which contain images and language which may be offensive to some readers.

---

### Recommended Citation

"The Missouri Miner, September 26, 1990" (1990). *The Missouri Miner Newspaper*. 2558.  
[https://scholarsmine.mst.edu/missouri\\_miner/2558](https://scholarsmine.mst.edu/missouri_miner/2558)

This Newspaper is brought to you for free and open access by Scholars' Mine. It has been accepted for inclusion in The Missouri Miner Newspaper by an authorized administrator of Scholars' Mine. This work is protected by U. S. Copyright Law. Unauthorized use including reproduction for redistribution requires the permission of the copyright holder. For more information, please contact [scholarsmine@mst.edu](mailto:scholarsmine@mst.edu).





# Missouri Miner



A publication of the students of the University of Missouri-Rolla

September 26, 1990

Volume 79, Number 6

Twenty-eight pages

## Highfill receives teaching award

### News & Publications SOURCE

James K. Highfill, lecturer in engineering management at the University of Missouri-Rolla, received an outstanding teacher award from the National Technological University (NTU) at an awards banquet held recently at UMR.

He was one of five teachers selected from approximately 280 faculty members at NTU institutions to receive the award, based on high evaluation marks by students.

The award was presented to Highfill by Dr. Roy H. Mattson, academic vice president of NTU, who also was the keynote speaker at the banquet. Other speakers included UMR Chancellor Martin C. Jischke; Dr. Lionel V. Baldwin, NTU president; Dr. Ginny Pearson, director of UMR's media-based programs; Dr. John T. Park, UMR vice chancellor for academic affairs; and Dr. Robert L. Davis,

dean of the UMR School of Engineering.

Highfill received bachelor's and master's degrees in civil engineering from UMR and the University of Illinois, respectively. He is pursuing a Ph.D. degree in engineering management at UMR.

He retired with the rank of colonel after 29 years of active duty in the U.S. Army. His most recent duties included deputy commander of the U.S. Army Combat Development Agency; assistant chief of staff, engineer, Eighth U.S. Army and United Nations Command in Seoul, Korea; and commander, Second Training Brigade at Fort Leonard Wood.

In addition, NTU teaching certificates were presented to Dr. Colin Benjamin, UMR associate professor of engineering management; Dr. Madison Daily, UMR assistant professor of engineering management; Robert Laney, UMR lecturer in engineering management; Dr. Henry Metzner, UMR associate professor of

engineering management; Dr. Donald Myers, UMR professor of engineering management and director of research services; Bernard Sarchet, UMR professor emeritus of engineering management; and Dr. Henry Wiebe, UMR professor of engineering management.

They received the certificates in recognition of their outstanding contributions through UMR's participation with the NTU.

This semester UMR is presenting eight courses in engineering management through NTU, which delivers courses by satellite to engineers and professionals at 311 sites in the United States. During the last five academic years, UMR presented courses to students at 109 NTU sites.

Other recipients of the NTU outstanding teacher award were H. Charles Baker, Southern Methodist University; C. Wrangle Barth, University of Maryland; Douglas Dankel, University of Florida; and Allan Hambley, Michigan Technological University.

## Baum first to speak in UMR lecture series

### News & Publications SOURCE

Dr. Eleanor Baum, dean of the Albert Nerken School of Engineering at Cooper Union in New York City, will present the first lecture in the 1990-91 "Engineering Education in the 21st Century" special lecture series on Tuesday, October 9, at the University of Missouri-Rolla.

She will speak on "Student Diversity: A Challenge for Engineering Education" at 7 p.m. in Miles Auditorium, Mechanical Engineering Building.

A reception will be held following the lecture. The public is invited to attend the lecture and reception and there is no admission charge.

"This lecture series was initiated during the 1989-90 academic year to enhance campuswide discussions about the future of engineering," says UMR Chancellor Martin C. Jischke.

"Dr. Baum's topic is one of a number of issues which could have a profound impact on engineering education during the 21st century," he adds.

Baum received a Ph. D. in electrical engineering from Polytechnic University and a B.A. degree from City College of New York. She has worked in the aerospace industry and is a consultant for government and private industry.

She is active in recruitment and retention efforts to increase the number of women and minorities in the engineering profession.

## International News Headlines--the week's events in review

### Gary Meyer Staff Writer

**PERSIAN GULF** — "Let me say clearly, there is no way Iraq can win." These are the words of President Bush as broadcast over Iraqi television in a videotape message to the Iraqi people. He went on to say, later in the same message, "... as conflict is thrust upon us, there is no nation on earth with greater resolve." These words accompany a U.S. military force in the Persian Gulf that has grown to 140,000 troops and naval personnel throughout Saudi Arabia and the waters of the Middle East.

The United Nations Security Council voted unanimously (15-0) to condemn Iraq for its raids on the French, Belgian, and Canadian embassies last week that involved the seizure of French diplomats. Since this incident, the five permanent members of the Security Council, the United States, the Soviet Union, France, Britain, and China have been preparing a new resolution banning all passenger and cargo flights to and from Iraq and occupied Kuwait. The air embargo would exclude shipments of medicine and food approved for humanitarian

purposes but would require inspection of such cargos prior to entrance into Iraq. Difficulties of enforcing the air embargo are admitted, as the United Nations does not allow the shooting down of planes as a means of enforcement. Therefore, the proposal would be more symbolic than substantive,

closing a gap in international law that has allowed countries to assume a broad definition of the original trade embargo. Libya has reportedly flown aircraft into Iraq.

Iraq has opened a border section between Kuwait and Saudi Arabia, and is encouraging the exodus of Kuwaitis

out of their homeland. The chief motive for this action is considered by many to be the elimination of resistance to the Kuwaiti occupation. As the Kuwaitis cross the border, a percentage of the men between the ages of 17 and 35 are being taken by Iraqi guards, presumably for military serv-

ice. Those that have arrived in Saudi Arabia tell dismal tales of torture, execution, and looting by the Iraqi soldiers in Kuwait. Apparently, Kuwaitis hiding foreigners or expressing any form of resistance are being hunted down and executed on an arbitrary basis, in public, with the dead bodies left in the streets for substantial periods of time.

**RELATED NEWS** — Michael J. Dugan, the Air Force Chief of Staff, has been dismissed by Defense Secretary Dick Cheney on grounds of endangering national security, demeaning other branches of the military, and a showing of a lack of discretion and tact "at a very sensitive time". Dugan, in an interview with three reporters, speculated about potential military targets, implied that the Army and Navy would play secondary roles to the air force in the event of military action, and spoke with candor about the desirability of eliminating Saddam Hussein. The removal of a top-ranking general was the first since President Harry S. Truman ousted General Douglas A. MacArthur in 1951.

- At a meeting in Damascus, Syria, leaders of the Palestinian Liberation

See World, page 5

© 1990 THE TIMES-PICAYUNE / TRIBUNE MEDIA SERVICES

WALT HANDELSMAN

I'VE HAD IT  
UP TO HERE  
WITH THE  
OIL EMBARGO!





# Calendar of Events

## Wednesday

**Chemical Engineering Graduate Seminar Program**, "Stochastic Estimation of Large Eddy Structure in the Turbulent Wall Layer," Prof. Ronald J. Adrian, Theoretical and Applied Mechanics Department, University of Illinois, Urbana-Champaign, 4 p.m.-5 p.m., Room 125, Schrenk Hall. Free.

**Bible Study Club**, 12:30 p.m., Maramec

**Sigma Chi Balloon Launch**, 1:00 p.m.

**Wesley Mtg.**, 6 p.m.

**Spelunkers Mtg.**, 206 McNutt, 6 p.m.

**NSBE/AMOCO Pizza Party**, UCE, 6 p.m.

**Blue Key Mtg.**, 216 ME, 6:15 p.m.

**HKN EE Help Sessions**, 102 EE, 6:30 p.m.

**AGC Mtg.**, 114 CE, 7 p.m.

**ASHRAE Mtg.**, 114 CE, 7 p.m.

**SME Mtg.**, McNutt, 7:30 p.m.

**Newman Mass**, 9 p.m.

**Juggling Club**, Hockey Puck, 6 p.m. Beginners/ Spectators welcome.

## Thursday

**INDUSTRY DAY** for UMR students, 10 a.m. - 4 p.m., Bullman Multi-Purpose Building.

**Ceramic Engineering Seminar**, "Electrical Conductivity in the LaCrO<sub>3</sub>-LaMnO<sub>3</sub> System", Ryan Raffaele, UMR, 3:30 p.m., Planje Auditorium, McNutt Hall. Free.

**Physics Colloquium**, "Anomalous X-Ray Crystallography Applied to Materials Science," Dr. Ravi Kumar, Oak Ridge National Laboratory, Oak Ridge, Tenn., 4 p.m., Room 104 Physics Building. Free.

**UMR Film Series**, "Yaaba," 7 p.m., Miles Auditorium, Mechanical Engineering Bldg. Admission by season ticket or \$3 at the door.

**Toastmasters Mtg.**, 220 Fulton, 4:30 p.m.

**Chi Epsilon Mtg.**, 117 CE, 4:30 p.m.

**Pi Tau Sigma**, 216 ME, 6 p.m.

**Climbing Club**, 206 McNutt, 6:30 p.m.

**IK**, 204 McNutt, 6:30 p.m.

**American Nuclear Soc. Mtg.**, 227 Fulton, 6:30 p.m.

**INTERVIEWING SKILLS**, G-3, Schrenk, 7 p.m.

**IVCF Bible Study**, 101 EE, 7 p.m.

**KME Math Help Session**, 203 M-CS, 7 p.m.

**EIT Review Session**, 114 CE, 7 p.m.

**Chess Club**, UCE, 7:30 p.m.

**SUB Homecoming Committee**, 217 UCW, 7:30 p.m.

**SUB: Theatre Grottesco**, Cedar St. Center, 8 p.m.

## Friday

**UMR Astronomy Club Visitors' Night**, 7:30 p.m., UMR Observatory. The observatory will be open to the public at that time and the moon and Saturn can be viewed with the 16-inch telescope. There is no admission charge.

The observatory is adjacent to UMR's replica of Stonehenge near Highway 63 North, north of V.H. McNutt Hall and west of St. Patrick's Lane.

**Movies**: Highlander, Logan's Run, Planet of the Apes, 104 ME, 7 p.m.

**IVCF**, 139 Schrenk, 7 p.m.

**Tau Beta Pi**, Bent Polishing, 7 p.m., at Sigma Tau Gamma

**Triangle Charity Party**, \$1 at door to benefit Rolla C.P. School, B.Y.O.

## Saturday

**UMR Cross Country**, "Miner Invitational," women's race, 10:15 a.m., men's race, 11 a.m., UMR golf course. Free.

**MERIT BADGE UNIVERSITY**

**Movies**: Highlander, Logan's Run, Planet Ape, 104 ME, 7 p.m.

**Marching Band Festival**

**YOM KIPPER**

**Tau Beta Pi Workday**, EE Lobby, 7:30 a.m.

**Chinese Student Assoc. Movie Series**, G-3 Schrenk, 7 p.m.

## Sunday

**UMR Men's Soccer vs. University of Missouri-Kansas City**, 1 p.m., UMR soccer complex. Free.

**Open Gaming**, Sunrise, 12 p.m.

**CROP WALK**, 1 p.m.

**Men's Soccer vs. UMKC**, 1 p.m.

**Council of Grad. Students Picnic**, Schuman, 3:30 p.m. Sponsored by the Council of Grad. Students.

**Wesley Chapel**, 7 p.m.

## Monday

**Chemistry Department Seminar**, "Enantiomeric Separation by Capillary Gas Chromatography Using Derivatized Cyclodextrin Stationary Phases," Weiyong Li, UMR, 4:30 p.m., Room G-3, Schrenk Hall. Free.

**Movies at the Brechmacher House**: The Bear and Gross Anatomy, 8 p.m.

**LAST DAY DROP WITHOUT W/D!**

**Test Anxiety**, 201 Norwood, 3:30 p.m.

**Independents BOG**, Maramec, 7 p.m.

**Christian Campus Fellowship**, Missouri Room in UCE, 6 p.m. A time of prayer and praise! Everyone is welcome.

**Women's Bible Study** Maramec Room, 2:30 p.m. Sponsored by Koinonia.

**Life Talk**, 414 Holtman, 7:45 p.m. Sponsored by Koinonia.

## Tuesday

**StuCo Lawyer**, Walnut, 2:30 p.m.

**PASSAGES**, 201 Norwood, 3 p.m.

**Student Council Mtg.**, 103 Eng. Mgt., 6:30 p.m.

**AEG Mtg.**, 204 McNutt, 6:30 p.m.

**KME Math Help Session**, 203 M-CS, 7 p.m.

**EIT Review Session**, 114 CE, 7 p.m.

**Homecoming Parade Entry Mtg.**, Missouri, 7 p.m.

**Chi Alpha Mtg.**, 210 McNutt, 7:30 p.m.

**Association for Black Students**, 211 McNutt, 8 p.m.

## Next Wednesday

**Bible Study Club**, Maramec, 12:30 p.m.

**Wesley Mtg.**, 6 p.m.

**Spelunkers Mtg.**, 206 McNutt, 6 p.m.

**Pi Tau Sigma Mtg.**, 105 ME, 6 p.m.

**HKN EE Help Sessions**, 102 EE, 6:30 p.m.

**Alpha Chi Sigma**, G-3 Schrenk, 7 p.m.

**ASCE Mtg.**, 114 Ce, 7 p.m.

**APO Mtg.**, 7 p.m.

**Met. Soc.**, 211 McNutt, 7:30 p.m.

**Newman Mass**, 9 p.m.

**Juggling Club**, hockey puck, 6 p.m. Beginners/ Spectators welcome.

## Noday

The Center for International Programs and Studies is currently involved with a community program entitled "International Friends," in which International Students from UMR are paired with host families from the Rolla area for the purpose of intercultural friendship and exchange.

UMR Internationals who are interested in participating in this program may apply to the Center for International Programs and Studies, 101 ME Annex, UMR, Rolla, MO 65401, in person or by mail. For more information please contact the Center at 341-4208.



## Missouri Miner

The **Missouri Miner** is the official publication of the students of the University of Missouri-Rolla. It is distributed each Wednesday afternoon at Rolla, Missouri and features activities of the students of UMR.

All articles, features, photographs, and illustrations published are the property of the **Missouri Miner** and may not be reproduced or published without written permission.

The **Missouri Miner** encourages comments from its readers, and will attempt to print all responsible letters and editorial material received. All submissions must have a name, student ID number, and phone number for verification. Names will be withheld upon request.

Submissions for publication must be in our drop box (first floor of the Norwood Hall, Room 103) by 3:30 p.m. on the Thursday before publication. The **Missouri Miner** reserves the right to edit all submissions for style, grammar, punctuation, spelling, length, and matters of good taste.

The **Missouri Miner** is operated by the students of UMR and the opinions expressed in it do not necessarily reflect those of the university, faculty, or student body.

Editor-in-Chief	Larry Williams (364-1433)
Business Manager	Shelly Kaller (341-4312)
Asst. Business Manager	Connie Crossen
Advertising Director	Leslie Vigna (364-3935)
Asst. Advertising Director	Dan DeArmond
Managing Editor	Matt Licklider (364-4841)
Circulation	Carl Bruce (364-8968)
News Editor	Steve Puljak (364-8968)
Asst. News Editor	Kelly Bernal
Features Editor	Greg Denzer (364-8968)
Asst. Features Editor	Carl Bruce
Sports Editor	Tom Hughes (341-8360)
Asst. Sports Editor	Tom Brown
Photo Editor	Dave Libez (364-5226)
Copy Manager	Tim Emmerich (341-3951)

**Staff Writers:** Eric Hardin, David Martin, Nora Okong'o, Chris Reynolds, Kevin Webb, Matt McNett, Mark Kasinskis, Tom Brown, Gary Meyer.  
**Typesetters:** Sylvia Avula, Kelly Bernal, Rich Chear.  
**Photographers:** Susan Lowe, Michael Tolbert.  
**Graphic Artists:** Tiffany Huenefeldt, Joe Jones.  
**Advertising Representatives:** Iris Brinegar, Mike Munsell, Kiki Shelton.

103A Norwood Hall  
 University of Missouri-Rolla  
 Rolla, MO 65401-0249  
 (314) 341-4235





## Medi-Value Pharmacy

Tenth and Pine

Rolla's almost on Campus pharmacy & photo center.  
For all your health & photo needs.  
Phone 364-7077

SUM AIR SERVICES, INC.  
Flight Instruction - Aircraft Rental  
Pilot Service - Maintenance  
Rolla National Airport at Vichy  
(314) 299-4291



SCIENCE FICTION • FANTASY  
COMICS • GAMES  
1014 Pine St. Phone 364-4301

## PLANNED PARENTHOOD OF THE CENTRAL OZARKS

free pregnancy testing  
educational workshops  
reproductive health exams  
referral services available  
birth control supplies  
evening hours available  
sliding scale fee

All Services Confidential

MON & WED 8-7  
TUES & FRI 8-5 THUR 8-12  
364-1509

1032-B Kingshighway

### PERSONAL RESOURCE DEVELOPMENT

Counseling & Career Development

204 Norwood Hall 341-4211

A Division of Student Affairs

\* A PROGRAM LISTING FOR OCTOBER, 1990 \*

#### TEST ANXIETY

Monday, October 1  
3:30-4:30 pm  
201 Norwood Hall

#### PASSAGES

Tuesday, October 2  
3:00-4:30 pm  
201 Norwood Hall

#### UNDERSTANDING YOUR PARTNER \*

Thursday, October 11  
3:30-4:30 pm  
Location to be announced  
\*Pre-registration and testing  
required by Oct. 4

#### CAREER PLANNING (Part I) \*

Tuesday, October 16  
3:30-4:30 pm  
Location to be announced  
\*Pre-registration by Oct. 1  
\*Testing Complete by Oct. 8

#### ASSERTIVENESS TRAINING\*

Beginning Thursday, October 18  
3:00-4:30 pm  
Location to be announced  
\*Pre-registration and a scheduled  
interview are required  
\*Participants must attend all 5 sessions

#### STUDY SKILLS

Monday, October 22  
3:30-4:30 pm  
201 Norwood Hall

#### CAREER PLANNING (Part II) \*

Tuesday, October 23  
3:30-4:30 pm  
Location to be announced  
\*Participation in Part I required

#### STAYING SHARP BUT OFF THE EDGE

Tuesday, October 30  
3:00-4:30 pm  
201 Norwood Hall

### Birthday Celebration Sale Thursday, Friday & Saturday

October 4, 5 & 6

### Super Cash Sale

Many items drastically reduced:

CD Players and Changers

Stereo Systems

Speakers

Bunkbeds

Apartment Size Dryer

Home Entertainment Center Cabinets

Lots of "odds & ends"

### Saturday!

10 • 10 • 10 • Special

10 cents Hot dogs, 10 cents Pepsi  
\$10 pays the first weeks rental and delivers  
any item to your home when you choose to  
rent-to-own.

★ Be sure to register for free CD player ★

★ to be given away on Saturday ★

**RENTAL WORLD  
OF ROLLA**  
115 N. BISHOP  
ROLLA, MO 65401  
341-5573

**COUPON**  
Good for 24 hrs.  
free rental  
Your choice  
VCR or Nintendo  
Action Set MM

## HERE'S WHY THE SMART MONEY AT UNIVERSITY OF MISSOURI IS GOING WITH TIAA-CREF AS IF THE FUTURE DEPENDED ON IT.

**B**ecause it does. Smart investors know that your future depends on how well your retirement system performs. TIAA-CREF has been the premier retirement system for people in education and research for over 70 years. We have enabled over 200,000 people like you to enjoy a comfortable retirement. And over 1,000,000 more are now planning for the future with TIAA-CREF.

### SMART MONEY LOOKS FOR SECURITY, GROWTH AND DIVERSITY FOR RETIREMENT SAVINGS.

Security—so the resources are there when it is time to retire. Growth—so you'll have enough income for the kind of retirement you want. And diversity—to help protect you against market volatility and to let you benefit from several types of investments.

### THAT'S EXACTLY WHAT YOU GET WITH TIAA-CREF.

TIAA offers you the safety of a traditional annuity that guarantees your principal plus a specified rate of interest, and provides for additional

growth through dividends. CREF's variable annuity offers opportunities for growth through four different investment accounts, each managed with the long-term perspective essential to sound retirement planning:

The CREF Stock Account  
The CREF Money Market Account  
The CREF Bond Market Account\*  
The CREF Social Choice Account\*

CALL 1-800-842-2776  
TO FIND OUT MORE

Our experienced retirement counselors will be happy to answer your questions and tell you more about retirement annuities from TIAA-CREF.

**Experience. Performance. Strength.**  
Your future is protected by the largest private retirement system in the world. We have done so well, for so many, for so long, that we currently manage some \$85 billion in assets.



Ensuring the future  
for those who shape it. <sup>sm</sup>

\* The CREF Bond Market and Social Choice Accounts may not be available under all institutional retirement plans, but are available for all Supplemental Retirement Annuity plans.

For more complete information, including charges and expenses, call 1 800 842-2733, ext 5509 for a prospectus. Read the prospectus carefully before you invest or send money.



# You don't have to be cut out for corporate life to get ahead.

---

Not at Chevron.

We believe there is strength in diversity. And that unique, innovative work comes from unique, innovative people. Like you.

We tailor assignments as much as possible to take advantage of your particular combination of talents and experience.

You'll have plenty of opportunity to develop your own professional objectives and to integrate them with ours.

So, don't worry about being cut out for corporate life. At Chevron, individuality counts and you're already in great shape.

All PE, ChE, EE, CE, and ME majors are welcome to learn more about a future with us. Please speak to our recruiters at our **Information Night on Monday, October 1st, 7 - 9 pm, in the Missouri Room of the University Center.** For further information, please contact your placement office.

An equal opportunity employer.

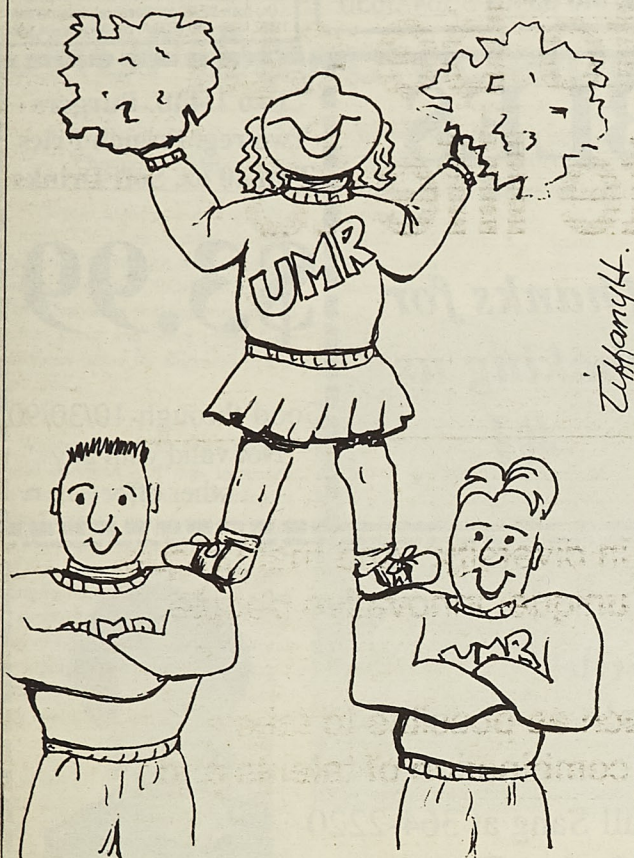
---



More than a company...more than a job.



## Student Activity Fee Board



### UMR Cheerleaders

#### UMR Cheerleaders SOURCE

The UMR Cheerleaders squad consists of up to 12 members and Joe Miner. They cheer at all home football and men's basketball games and as many out-of-town games as their schedules will allow. Clinics and try-outs are held each semester and new participants are always welcome. They also encourage interested students to attend practices throughout the semester to improve their skills so that they're more confident when trying out.

The cheerleaders utilize their student activity fee money by the purchase and upkeep of uniforms, shoes, travel to away games, athletic insurance, and summer cheerleader camp. The cheerleaders ride the team bus to away games when possible.

The UMR Cheerleaders' primary objective is to represent the University of Missouri-Rolla to the best of their ability.

For more information on the UMR Cheerleaders, contact Linda Martin, 218 University Center West, 341-4286.

### Rollamo

#### Rollamo SOURCE

The intent, in publishing a yearbook, is to provide a pictorial rendition of the year's events, activities, personalities. The end product is the result of efforts by students, with the exception of senior portrait photography, enrolled on campus who undertake the task as an extra-curricular activity. The expectation is that those who read the yearbook will have a visual identifier, memorabilia of their experiences while enrolled.

Funding for the Rollamo is provided by a line-item Student Activity Fee (\$9.50 in 1990-91), paid by full-time students in the Fall semester's fees. The bulk of the money goes to pay for printing the book produced by UMR-Rolla students, by a national yearbook publisher. Other funds cover film, paper, chemicals for photographic production; office supplies for editing; telephone, reproduction, type-printing equipment and services needed to produce the book; and modest remuneration of editors and photographers — twenty to thirty students — after successful completion of their assignments. The Rollamo made available to students is a hardcover, nine-by-twelve inch book printed on high quality paper, with some color pages, in a durable, embossed binding.

## World

Organization (PLO) vowed to avenge western involvement in the Persian Gulf crisis with a plan to "strike against American interests everywhere, and by all means, at the same moment." The young terrorists that make themselves into human bombs, killing 241 U.S. Marines in Lebanon seven years ago, were upheld as paradigms of behavior to be copied by those loyal to the cause of the PLO.

A proposed arms deal to Saudi Arabia, involving \$22 billion worth of F-15 fighter aircraft, Apache attack helicopters, Patriot anti-missile missiles, and M-1A tanks, has aroused concern in Israel that this formidable array may be ultimately turned against them. But Israel, unlike Saudi Arabia, is dependent on U.S. financing to purchase military equipment and is prompting Washington for \$1 billion in military aid this year with expedited sales of high technology equipment to maintain a competitive position with Arabian countries.

While previous weeks have seen little but bipartisan support for President Bush's Persian Gulf policy, qualms are arising in Capitol Hill about plans for spending the money contributing by allies; the American policy toward President Saddam Hussein of Iraq before the invasion on August 2; the sale of major weapon systems to Saudi Arabia; and on the forgiveness of Egyptian military-aid debt. The policy toward Saddam

Hussein before the invasion was an increasingly conciliatory and almost patronizing.

**SOVIET UNION** — Early last week saw one of the largest rallies in Moscow since the Bolshevik revolution in 1917. Thirty thousand Muscovites gathered at the Kremlin to demand the resignation of Nikolai Ryzhkov, Gorbachev's prime minister, and urge rapid introduction of a free market economy. The rally was prompted by still deteriorating conditions that have left 57 percent of all meat shops without meat, and many of the others with only cuts and scraps. Gavril Popov, the mayor of Moscow, was particularly vocal with his opinions, stating that Ryzhkov does not see the need for radical changes because he is "radically freed from waiting in lines". Some of the demonstrators also urged the resignation of Gorbachev, but many feel that Gorbachev is, as expressed by one individual, "a buffer between right and left" that is necessary to hold the Union together.

With three proposals for economic change on the table, a free-market-in-500-days plan, a conservative plan maintaining the governments stronghold on the economic system, and Gorbachev's middle-of-the-road plan, Gorbachev compounded confusion amongst Supreme Soviet members by proposing a national referendum on the question of whether the private ownership of land should be legalized.

Mr. Gorbachev told the national Parliament that this is too critical an issue "to be decided in offices or at forums, even such a high one as this." Such a referendum may have an unpredictable outcome because while many activists propose radical changes, a great many Soviet citizens are scared in the uncertainty of what a free market will bring.

**WORLD-WIDE...** Ghanaian planes attacked rebel strongholds in Monrovia, Liberia, indicating an abandonment of the neutral role that the West African peacekeeping force had previously assumed. The bombing was in retaliation of the attack on the peacekeeping force headquarters by rebels led by Charles Taylor that left president Samuel Doe dead. The remainder of Doe's followers and army are reportedly being evacuated, leaving the rebel groups led by Taylor and Prince Johnson and the West African peacekeeping force to vie for control as the civil war in Liberia progressed through its ninth month.

President F.W. DeKlerk of South Africa has offered rewards of up to \$40,000 for information on arms shipments to black tribal groups or on those involved in killings that have plagued the pursuit of improved relations between the white supremacist government and the mostly black population.

(Compiled from St. Louis Post-Dispatch and New York Times)

## UMR Industry Day scheduled for September 27

#### News & Publications SOURCE

Industry Day for students of the University of Missouri-Rolla will be held from 9:30 a.m. to 3:30 p.m. Thursday, September 27, at the Gale Bullman Multi-Purpose Building, 10th Street and Bishop Avenue in Rolla.

According to Dr. Mariano Trujillo, director of Placement and Cooperative Training at UMR, a variety of companies and organizations will be on hand to promote summer, co-op, full-time employment and to discuss career opportunities in general with UMR students.

"The number of companies and organizations taking part have nearly doubled over last year," Trujillo explains.

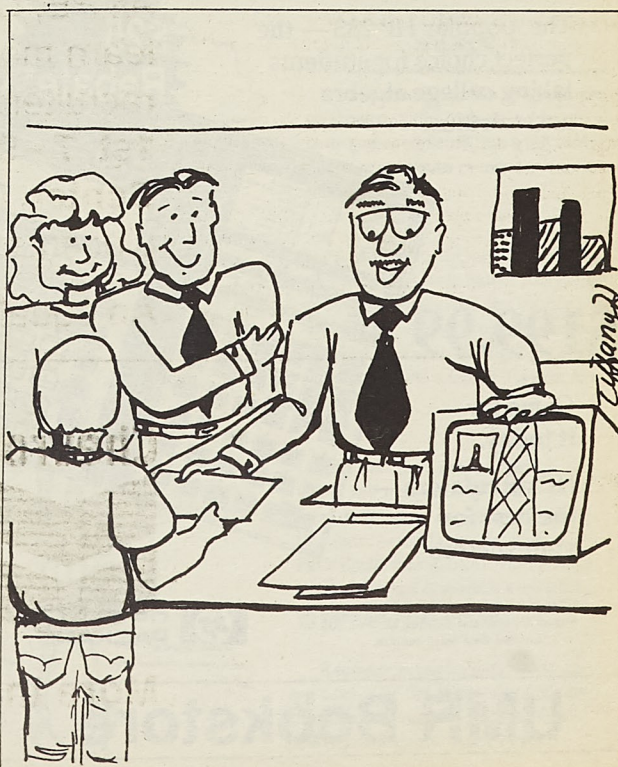
He indicates that the purpose of this annual job fair is to exchange information regarding all types of employment. "It is not just for graduating seniors. All UMR students are invited to attend."

"In addition," he states, "representatives from those businesses will be on hand to discuss their products and

employment opportunities."

Industry Day at UMR is open to all currently enrolled UMR students and

UMR faculty. Admission is free, and door prizes are awarded periodically throughout the day.





## HP 48SX Scientific Expandable Calculator

HP's quantum leap into the 21st century

**\$299.99**

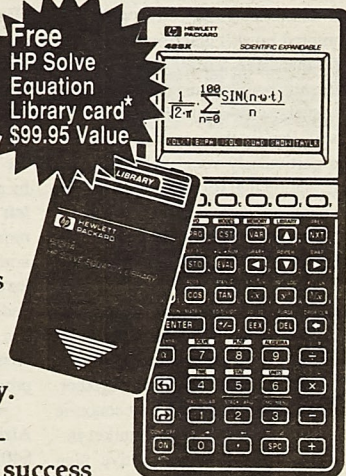
Move 10 years ahead of the class with the new HP 48SX.

Come try it today.

HP calculators — the best for your success

\* This offer is good on purchases made between August 15, 1990 and October 15, 1990. Ask for HP's "Limited time only" coupon.

Free HP Solve Equation Library card\* \$99.95 Value



**hp** HEWLETT PACKARD

## UMR Bookstore

## HP 28S Advanced Scientific Calculator

The popular HP 28S — the perfect choice for students taking college algebra and calculus.

**\$199.99**

Come try it today.

HP calculators — the best for your success

\* When you purchase an HP 28S between August 15, 1990 and October 15, 1990. Ask for HP's "Limited time only" coupon.

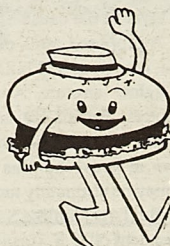
**hp** HEWLETT PACKARD

## UMR Bookstore

## QUALITY CLEANERS

\* Expert Cleaning \* Reasonably priced  
108 W. 7th Street Rolla, Mo 65401 364-3650

## DUBBLES



Thanks for making us #1

Two 1/4 lb. Burgers  
Two reg. French Fries  
Two 20 oz. Soft Drinks

**\$3.99**

Good through 10/30/90  
Not valid with any other offer 152-12

Clip & Save  
**SPECIAL!**  
**\$10.00 Cut & Style!**  
**\$28.00 Perm!**  
at Mr. Z's

Call Sang at 364-2220  
12 years Experience

111 S. Rucker (behind Piggly Wiggly)  
Coupon Expires December 31, 1990

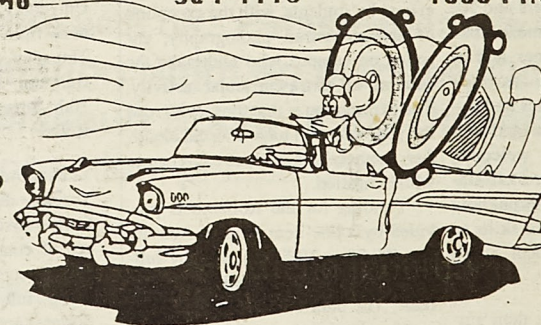


## SHOW-ME'S AUDIO-VIDEO

HIGH PERFORMANCE SPECIALIST

ROLLA, MO 364-7715 1006 PINE STREET

NINTENDO  
RENTALS



VIDEO  
RENTALS

AS HOME AND CAR STEREO SYSTEMS BECOME BETTER AND MORE TECHNICAL, YOU NEED TO BUY FROM A SOURCE YOU CAN TRUST. HERE AT SHOW-ME ELECTRONICS, WE'VE BEEN IN EXISTENCE SINCE 1956 AND HAVE BEEN DEALING WITH HOME STEREO SYSTEMS FOR 35 YEARS AND CAR STEREO SYSTEMS FOR MORE THAN 20 YEARS. SHOW-ME'S IS ALSO THE PLACE TO SHOP FOR ALL YOUR VIDEO, COMMERCIAL SOUND, AND ELECTRONIC PARTS NEEDS. OUR VIDEO DEPT. HAS A LARGE SELECTION OF MOVIES AND NINTENDO GAMES AVAILABLE TO RENT. SO FOR ALL OF YOUR ENTERTAINMENT NEEDS, NO MATTER WHAT THEY ARE, WE CAN HELP. GIVE US A CALL AT SHOW-ME ELECTRONICS.



# Features

## CROP Day proclaimed in Rolla

By Martin Jischke  
Chancellor UMR

Whereas, at the end of World War II many Christians wanted to share America's abundance with European war victims, and CROP and Church World Service's first purpose was to gather wheat and other crops from American farms for shipment to Europe, and

Whereas, over the years Church World Service/CROP has increased its urban appeals while remaining in contact with its rural constituents, and

Whereas, Church World Service/CROP has moved from primarily providing resources for emergency relief to supporting long-range self-help programs emphasizing agricultural development, appropriate technology, water resource development, and primary health care, and

Whereas, the Annual Fall CROP Walk will be held on September 30, 1990, in support of this organization to help our community become aware of and concerned about global hunger and its causes, and its effects on all of us, and

Whereas, one-fourth of the monies raised will remain in Phelps County to be used for hunger through the LOVE organization:

Now, Therefore, I, Martin Jischke, Chancellor of University of Missouri-Rolla, do hereby proclaim

Sunday, September 30, 1990 CROP Day in Phelps County, and do urge the students, faculty, and staff of UMR to walk with the citizens of Phelps County to participate with the Phelps County CROP committee to support this walk.



News and Publications

Campus CROP Walk coordinator, Martina Schollmeyer, and Chancellor Martin Jischke sign the CROP Walk proclamation

## Intercollegiate Knights reorganize

By Vicki Scamacca  
Intercollegiate Knights

The Intercollegiate Knights of Missouri was established in August of 1990 on the University of Missouri-Rolla campus. This service organization stems from the national organization, Intercollegiate Knights, and it upholds the tradition of service, sacrifice, and loyalty.

IK's membership is comprised of both male and female students of any social affiliation (Greek or Independent). Members commit to one "page" semester during which they perform ten hours of community service, learn the history of the organization, and make a plaque. Following initiation, active members are required to per-

form at least five hours of community service a semester.

Already this semester, IK has provided assistance to the Red Cross Bloodmobile and raised money for charity through a car wash. Other projects that IK supports throughout the year are Halloween and Easter parties at Boys' Town, picnics with Big Brothers and Big Sisters of Rolla, volunteer tutoring at Rolla High School, March of Dimes Walkathon and highway cleanup. IK supports the local charities as well as providing service to the community.

Any person requiring the assistance of the Intercollegiate Knights of Missouri, or anyone interested in applying for membership may contact Ted Ferkenhoff at 364-7176.

## Recycled paper is now available

Paul Mack  
UMR EPA

Copy desk when placing your next order.

Do your part to help preserve our forests. Now, for the first time, Quick-Copy is offering recycled paper to you at **NO EXTRA COST**. This high-quality sheet is an ideal replacement for the ordinary bond (copy) paper that you are currently using. To participate in this program, simply ask for the EPA's Recycled Paper Offer at the Quick-

This offer is available to all students, faculty, and staff. Additionally, **ALL STUDENT GROUPS, DEPARTMENTS and ADMINISTRATIONS ARE ENCOURAGED TO PARTICIPATE**. Remember, there is no obligation and no extra cost.

For more information, call give Quick-Copy a call. Take advantage of this offer today!!!

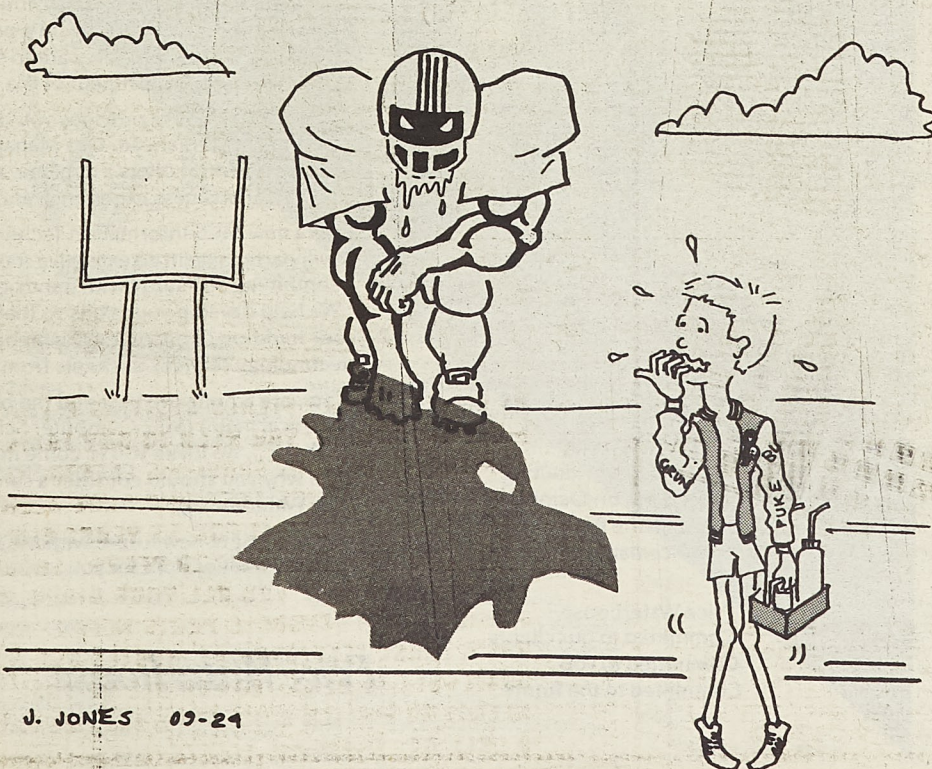
## IFC and St. Pat's Board to square off in annual Green-Gray game

By St. Pat's Board  
SOURCE

We, the unmistakable forces of green-ness, do once again invite those poultry loving gentlemen, known as the I.F.C., to attempt to endure another physical beating. The game chosen is one of grace, skill, and most of all your nests, we assure complete and utter devastation. Although we do not expect you to show your beaks, the place is Fraternity Row and the time is 3:00, October 12.

To the I.F.C. fans, if they have any, please clean the feathers and bones off the field afterwards. To all those that know the truth and follow the green path, you are invited to come and watch the St. Pat's Board systematically pluck all hope from their ugly gray bodies.

The Green Lords of Discipline promise not to only clip your wings and ruffle you feathers, but to humiliate the greeks off your back. This event will prove to be a hard-boiled nightmare for those egg-hatching, bed-sheet wearing, fowl mouthed, worm-eating feathered fiends.



J. JONES 09-24

IFC  
SOURCE

As usual, the geeks in green are concerned with nothing more than petty games while IFC has a full calendar of worthwhile events for the fall semester.

In October, IFC opens with our annual Pajama Race before the Homecoming football game on October 13. The benefit movie is set for October 29. And, of course, the highlight of the semester is IFC's Greek Sing on November 17.

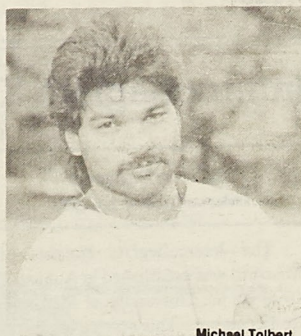
By the time you're reading this you'll see many newly jacketed IFC reps. on campus. Be sure to congratulate them—and keep this in mind St. Pat's Bored (no mistake)—our Jr. reps got their jackets first and it's too late to do anything about that now.

Keep an eye out for the Homecoming edition of the Hermes and watch this space for more IFC information—199 days till Greek Week 1991!



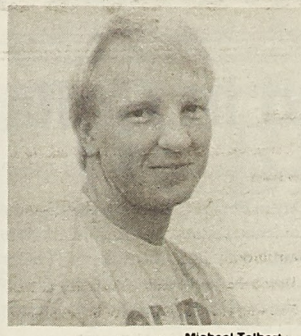
# Students try to define Rolla's Black Hole description

What do you think is the origin of the term "Black Hole" in referring to our campus? Are you opposed to, for, or indifferent about this?



Michael Tolbert

**Paul Somerscales**  
Senior, Eng. Management



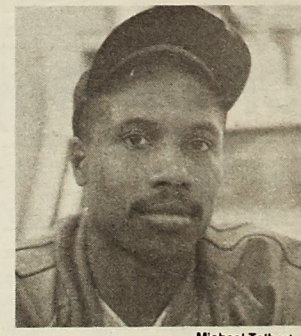
Michael Tolbert

**Tim Oligmueller**  
Senior, Eng. Management



Michael Tolbert

**Tammy Gibson**  
Super Senior, C. Sc.



Michael Tolbert

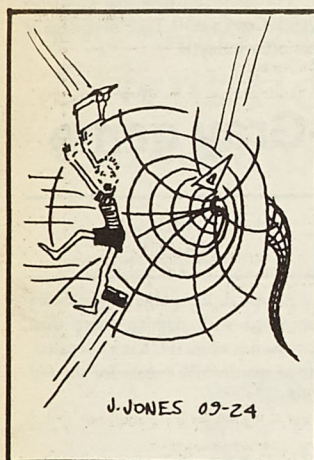
**"Campus" Ken Rice**  
Senior, Mechanical Eng.

## Paul Somerscales

"I had heard it before and assumed it was in reference to the closed environment and lack of diversity. I think it's fitting."

## Tim Oligmueller

"I thought the chancellor said it was banned, so when I saw it, I was shocked and thought they would object. But it's just a joke. The University is not known for being the black hole. It's known for being a top engineering school."



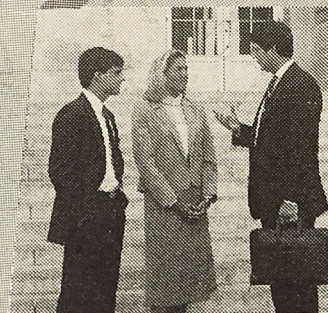
## Tammy Gibson

"Black Hole=Bottomless pit of no return"

## Ken Rice

"It's a simile because of the use of the words 'like' and 'as'. But Rolla is the type of school that sucks one in deeper and deeper, and the whole time they never know what lies beyond."

## Discover A Career In Management Consulting With Price Waterhouse



We will hold an information session at the University of Missouri - Rolla

October 7, 1990, 6:30PM-8:30PM at the Multipurpose Building in the Missouri Room.

We will be conducting interviews on October 8-9, 1990. Contact the Placement Office for information.

Price Waterhouse  
Committed to our clients  
Committed to you  
Committed to the future

Graduation is approaching. You're caught up in the excitement of embarking on a promising and challenging career. You want to succeed in the competitive environment of the nineties and beyond.

Price Waterhouse provides you the opportunity to excel in the decades ahead. Our Management Consulting Services (MCS) offers a dynamic atmosphere for gaining practical business experience and technical knowledge.

As a new MCS Information Technology consultant, you will participate in an extensive training program, combining self-study with hands-on experience. We help develop your skills so that you may continue our tradition of providing the highest quality information technology services to clients from Boston to Bangkok.

If you are among the best and the brightest in an analytical major (MIS, Computer Science, Engineering, Math, etc.), we invite you to come meet with us and learn why you should consider a career with Price Waterhouse.

Look to a bright new future with MCS and discover what the nineties hold for you.

**Price Waterhouse**





# Classifieds

## Miscellaneous

**Part-time help wanted.** Taking Party Pics \$5-8/hr. Should have a 35mm. Camera and transportation. Call Kabance Photo Services at 1-800-736-8084.

**Do you like rock-n-roll? Do you know how to type? We need a short term typesetter.** Call 364-2564.

**Opened Cave,** 17 miles west of Rolla. ONYX Mountain Caverns, Natural, Scenic, Historical. West on I-44, Exit 172 D, West on North Outer Road. Call 762-3341 for more information.

**For Sale:** Bicycles. 1 Men's 27" 10 Speed blue Schwinn. \$45.00. In good condition. 1 Women's 26" 3 speed brown AMC Roadmaster. \$35.00 Good Condition. After 3:30 p.m. call 364-5248.

**RESISTER TO VOTE AT ASUM OFFICE,** Rm. 212 University Center West, 9AM-2PM.

**Fraternalities, sororities, campus organizations, highly motivated individuals—Travel free plus earn up to \$3000+ selling SPRING BREAK trips to:** Cancun-South Padre Island-Orlando/Daytona Beach: 1-800-258-9191.

### Student Organizations:

It is time to begin scheduling group photos for the yearbook, ROLLAMO. Please discuss a time and place, and contact Angela at 341-4279 or 364-2550 with the date, time and place you want your photograph taken.

### Apple IIc Plus Color System Includes:

- 1- Apple IIc Plus CPU with builtin 3.5" disk drive and 128k memory
- 1-Apple Color Composite Monitor
- 1-Apple II Monitor Stand
- 1-System Disk
- 1-Tutorial Disk
- 1-Apple Works Software

Make you bia to the Children's Learning Center in Percy Mo. (still in Carton). Retail at \$1,050, make your bia! Contact Tammy Gibbs 1-314-479-3629

**CANOE the Big Piney River. \$2 Coupon in the Gold Book.** 45 minutes from school. Call Rich's Last Resort: 314-435-6669. We have Rafts too!

### Help Preserve Our Forests and Keep Our Environment Clean:

Now, for the first time ever, recycled paper is available at Quick-Copy at NO EXTRA COST to you. This is high-quality paper that is an ideal substitution for ordinary bond (copy) paper. Simply ask for the EPA's Recycled Paper Offer at the Quick-Copy desk when placing your next order.

This offer is available to all students, faculty, staff of UMR. Additionally, ALL student groups, departments, and administrations are encouraged to participate. For more info, call Quick-Copy, or Gregg Sander (EPA Pres.) at 341-5903. Take advantage of this offer!

**For Sale:** J.V.C. TD-V66 Cassette Deck. 3 Head, 1 year old, good condition. Asking \$225 or Best offer. Call Paul at 364-8123.

**For Sale:** Over 500 Compact Discs. \$8.00 each for singles, \$12.00 for doubles. Entire Zeppelin, Aerosmith, Van Halen, Journey, Bon Jovi, Collections. Queen's Greatest Hits. Hundreds of Pop and Rock available. Call for more information at 364-2564.

**Must sell!** New, from Sears: Beautiful white sofa, loveseat, and wing recliner. Scotchguard fabric. Also, three small glass and brass tables and two brass finish lamps. Will sacrifice all for \$1000. Call (314) 341-3214 after 5:00 p.m. weekdays or anytime weekends.

### Diskettes for sale:

\*5.25" 360k (DS/DD) - \$.50 each or 10 for \$4.75.

\*5.25" 1.2MB (DS/HD) - \$.80 each or 10 for \$7.50.

\*3.5" 720k (DS/DD) - \$1.25 each or 10 for \$10.00

\*3.5" 1.44MB (DS/HD) - \$1.75 each or 5 for \$8.00.

All diskettes come with 2 user labels (5.25" includes WP tab and sleeves) and are UNCONDITIONALLY guaranteed against defects. Call Marty at 364-6991 - Leave a message.

Schonda,

You are such a doll! No one could ask for a better sister,

A member of your AOT family

Swiggr Buck,

How come you weren't on the corner of 16th and Pine with your stash? Better be there the next time or else the Columbian Mafia will be on your tail.

Phillipe Gonzales Ramirez (Bud)

T-Ball,

I'm so glad you still party with us. You are the best. I'll miss you in December.

Love in AOT,  
YLLS

Cooler,

What an awesome football player you are!! Way to make a touchdown.

Get It Girls!!!!

Sean & Ted,

My newest little brothers are awesome! Thanks for dinner and let's party.

Love,  
Julie

Zan,

Thanks for the M & M's, teddy bear and ear last Monday. Lord knows I wouldn't have made it through next week (also known as Tuesday) with out you.

Love ya!

LaChelle,

Well, I see you're still alive from your personals in last weeks Miner. How come I don't fit into your life anymore? I miss you let's talk .. soon!

Nay

Pat & Kelly,

Prepare yourselves for a Saturday you'll never remember!

K & J

Big Zero,

I love you more today than yesterday, but not as much as tomorrow!

The smaller zero

M,

Let's go out for ice cream again soon, after I recover from that \$10 parking ticket.

S

Larry David,

Was the chili too hot (or is that a sunburn)?

Bermuda Triangle

J JONES 09-24

Tod,

Do you think anyone else knows that cobalt is radioactive?

Bermuda Triangle

Kirk,

Cellardoor, Cellardoor, Cellardoor. Got your attention yet?

Love,  
The Bucket

Annette,

Can I borrow about 3 ID's? I need to buy some forks. You're busted.

Nightmare

Marsha & Angel,

What great roomies! It's going to be a awesome semester.

Love in AOT,  
LaChelle

Jenny (alias Barbie),

What a weekend we have ahead of us—TGIF, wine-touring, hayride... Let's hope we are alive Sunday!

LUSH

Cheryl,

If I have to be a grandma then I'm glad that you're the one that's making me feel so old. You're the best.

Love in KD,  
Your grand ma

Deb (el prez),

You are the greatest big sis and a wonderful president.

Love in AOT,  
YLS

HV,

Why can't I make them squeak like that? Must be the touch.

Love,  
TB

Nicosin,

Our 25% giirr! We miss partying with you! Swing by and see us sometime.

Love,  
The Giirrils

Eddie Spaghetti,

It's a shame you stopped taking ballet lessons—we might have had more to talk about.....?????????

C.E.

Eight months as of Tuesday. I'm still counting....

Love,  
3M

Nina,

How about those AFS functions?

See Classifieds, page 13



I WONDER HOW YOU PUT THESE DANG THINGS ON?

## Personals

Just Curious,

Conservative, sophisticated, ambitious, adorable, ravishing, carefree, radical, hilarious, intelligent, savy, and eloquent.

Not Just A.L.

Study Buddy F. H. #2,

All three of us need to go shopping sometime. And the two of us need to apply ourselves and get the proper mind set.

Eavesdropper

Lambda Chi Alpha,

Thanks for an awesome initiation party! Let's party together more often!

The Ladies of Kappa Delta

Kappa Delta welcomes our eight wonderful new I's! Congrats to Tracy, Lynne, Denise, Heather, Madra, Mary Helen, Marsha, and Yvonne! You gals are the best!

Love in AOT,  
Your Sisters

LaChelle,

Now you expect me to buy you dinner, be your social secretary, (he loves you) and bye your personal typist, too!!!! Give me a break!

KD Love,  
Mary Helen

The war between the sexes is the only one in which both sides regularly sleep with the enemy.

Q.C.

Giirr,

You are my best friend, roomie, and party buddy. And hey, don't forget to laugh—we love to laugh!!!

in AOT,  
Giirr

Hey Susan and Sandy!

How about those stings? Welcome to the family!

Love in KD,  
LaChelle

Doug,

When's the family reunion?

Interested



## BEFORE YOU CAN FOLLOW YOUR DREAMS, YOU'VE GOT TO FOLLOW THE RULES.

Men who don't register with Selective Service aren't eligible for federal student aid, job training, and most federal employment. So register at the post office within a month of your 18th birthday. It only takes five minutes to fill out a simple card.



**Register With Selective Service.  
It's Quick. It's Easy. And It's The Law.**

A public service of this publication.

## CONSUMER CORNER

**That's DAT**

Sounds like a good idea: a better-than-ever type of tape recorder called a Digital Audio Tape recorder. Actually, report the experts at the Home Recording Rights Coalition (HRRC), the DAT, as it's called, has been around for a while. Most Americans, however, have not been able to get one and hear its better quality and clarity and crisp digital sound in a conventional cassette tape format because of legal wrangling.



**A new form of tape recording can make your favorite music sound better than ever—if Congress lets you get one.**

Now, however, the problem may soon be solved. Congress is currently considering a bill that would standardize the DAT format and allow direct digital recording from Compact Discs but prevent digital copying of the copies.

The experts at HRRC say this bill is a step forward in bringing advanced technology to consumers and consider it a positive, pro-consumer approach to DAT. You can learn what you can do to encourage passage of the DAT bill by calling, 1-800-282-TAPE. You can also let your legislators know what you think by writing to the U.S. Senate, Washington, D.C. 20510 and the House of Representatives, Washington, D.C. 20515.

## Free Makeover With This Coupon!



As a leader in the skin care and glamour industry, Mary Kay Cosmetics offers the finest quality products on the market today. Contact one of the Beauty Consultants below to set an appointment for your private consultation -

**Carla Koch**  
658 Salem Ave.  
Rolla, MO 65401  
364-2568

**Debbie May**  
704 Wakefield #A  
Rolla, MO 65401  
364-1021

**Rhonda Shelden**  
2401 Vichy Rd. #C2  
Rolla, MO 65401  
364-9353

**Sherry Phelps**  
Rt. 7 Box 161  
Rolla, MO 65401  
341-5495



## International Tours Travel Agency of Rolla

1023 Kingshighway Rolla, MO 65401

Call Rick, Chris, or Melissa

MON-FRI

8 AM - 6 PM

SAT

10 AM - 4 PM

**Your one stop!**

**For complete travel Planning**

**Foreign or domestic**

**Business or pleasure!**

(314) 341-3300

1-800-876-3331



In college, men and women face crucial questions, sometimes for the first time.  
*Who am I? Where do I fit in? Can I be loved?*

We are a group of faculty and staff who have found intellectually and spiritually satisfying answers to life's important questions through our relationship with Jesus Christ.

Ask us if you would like to talk about your own questions.

Dr. Thomas Baird (x4859)  
Computer Science

Jeff Dalton (x6557)  
Intelligent Systems Center

Dr. Ron Fannin (x4974)  
Freshman Engineering

Ken Haas (x4510)  
Computer Center

Jeff Jenness (x4610)  
Computer Science

Dr. Ron Kellogg (x4822)  
Psychology

Dr. Terry Lehnhoff (x4632)  
M & AS Eng. & Eng. Mech.

Dr. Douglas Mattox (x4402)  
Ceramic Engineering

Dr. J. Keith Nisbett (x6499)  
Mechanical Engineering

Mary Ann Pulley (x4753)  
Mining Engineering

Dr. XB Reed Jr. (x4423)  
Chemical Engineering

Frank Senter (x4500)  
Civil Engineering

Myrlen D. Troutt (341-4421)  
Chemical Engineering

Jim Williams (x4849)  
Computer Center

Dr. Bob Betten (x4506)  
Electrical Engineering

Terry D'Aria (x4156)  
Academic Extension

Norma Fleming (x6061)  
Continuing Education

Ross Haselhorst (x6490)  
Media Based Programs

Vinod G. John (x4151)  
Electrical Engineering

Dr. Frank J. Kern (x4519)  
Electrical Engineering

Jo Ann Light (x4306)  
Telephone Services

Dr. H. O. McDonald (x4420)  
Chemistry

Gerry O'Brennan (x4841)  
Computer Center

Dr. Howard Pyron (x4495)  
Computer Science

Walter L. Ries (x4132)  
Engr. Continuing Education

Dr. Dale St. Gemme (x4944)  
School of Mines & Metallurgy

Sue Turner (x4550)  
Academic Extension

Fred Worth (x4641)  
Mathematics

Dr. John Carstens (x4361)  
Physics

Dr. Bob Davis (x4151)  
Engineering

Don Green (364-5436)  
Marriott Food Service

Dr. Troy L. Hicks (x4654)  
Mathematics and Statistics

Dr. James Joiner (x4650)  
Mathematics

Dr. Ron Kosher (x4734)  
Metallurgical Engineering

Wayne Little (x4546)  
Electrical Engineering

Lou Moss (x4285)  
Student Activities

Charlena Ousley (x4470)  
Civil Engineering

Dr. Kenneth Ragsdell (x4158)  
Engineering Management

Dr. Bernard Sarchet (x4688)  
Engineering Management

Ramona Taylor (x4446)  
Civil Engineering

Thomas Mark Walter (x6526)  
M & AS Eng. & Eng. Mech.

Dr. D.S. Wulfman (x4431)  
Chemistry

Dr. Harvest Collier (x4390)  
Chemistry

Dr. Charles Edwards (x4674)  
Engineering Mechanics

Carle Gustavison (x4526)  
Media Based Programs

Tom Holt (x6064)  
Design Productivity Center

Dr. Dean Keith (x4555)  
Center for Technology Transfer

Dr. Evalee Lasater (x4144)  
Continuing Education

Thomas Mathai (x6526)  
Mechanical Engineering

Dr. Randy H. Moss (x4518)  
Electrical Engineering

Sharon Powell (x4305)  
Environ. Health & Risk Mgmt.

Dr. Dick Rechten (x4665)  
Geology & Geophysics

Martina Schollmeyer (x4350)  
Intelligent Systems Center

Dr. Bill Tranter (x4514)  
Electrical Engineering

Brad Williams (x6579)  
Electrical Engineering

Faculty and Staff wishing to affiliate with us, may contact:

**Faculty/Staff Christian Fellowship**  
c/o Wayne Little  
UMR, EE Dept, Rolla, MO 65401



from page 9

KD New 1's,

Congratulations! You guys are the greatest!  
A member of your AOT family

Brooke,

Jay nay swee pah intelligente, n'cest-ce pas  
Jay swee tray stupide!

Old Tennessee

Lamda Chi Alpha,

Thanks for the greatest initiation party! You  
guys did a wonderful job! We can't wait to party  
with you again soon!

Love always,  
Ladies of KD

Paula Giliir,

You're a super cool and hysterical big sis  
(and you're completely.....) We have to get to  
gether and \_\_\_\_ on your friend's table again soon

Love,  
Girl

Tricia,

I swear roomie, if you'r not bringing hom  
men in the middle of the night, it's wild animals

KD love,  
Your awesome roomie

Janita,

Could you give me a hand?

Stranded at the bowl

Delbert,

Thanks for the Chinese night out Tuesday.  
The waitress was snide, the cat was a little spoiled,  
and I ate too much, but the crunchy noodles were  
good and the company was GREAT!

Delberta

Chi-O's and Hayride dates:

Get psyched for Hayride '90. Be ready to  
party, square dance, & be wild!

Emy,

I'm glad we got a chance to talk. I hope it  
helped you, it helped me.

Orka Lover,

We know who's big brother is going down  
now and it's pretty south if you ask me.

Love,  
Food Lover

Becky,

You are doing a great job as VP. WRW was  
very special. What an awesome sister!

Love in AOT,  
An admiring KD

Mary Helen, Mary Helen,

So did you get your chocolate fix? And was it  
nice and cooled? Brrr.....!

Betsy,

Had any horses bite you lately?

Brooke

Kirk,

Do I still come between .... Anheiser Busch  
and .... Westinghouse?

Love,  
T.B.

Suz,

After all these weeks, why are we still organ-  
ized? What happened to our promise we made!  
Hah hah! I knew it wouldn't work maybe next  
round!!

Your roomie

C.E.,

Up and down, up and down. Will you even  
choose a mood and stick with it? I forgive you  
anyway.

Me, who else?

Cyrano,

A grave mental disease you hold for this  
"beauty." Don't you know that love is just another  
four letter word?!

The Cynic

Karen,

You are the perfect lil sis! I'm so glad you are  
in our family, but we still need to party sometime  
together.

LICO,  
DIA

Devon,

Ed. Ed. Ed. Ed. Ed. Ed. Ed. Ed. Ed.  
Ed.....It's driving me crazy driving me  
crazy!!!!

It is nice to see Kappa Deltas' take their turn at the  
personals!

Hey Sigma Pi,

Thanks for breakfast & an awesome party  
after initiation!

Some Chi-O's

Neen,

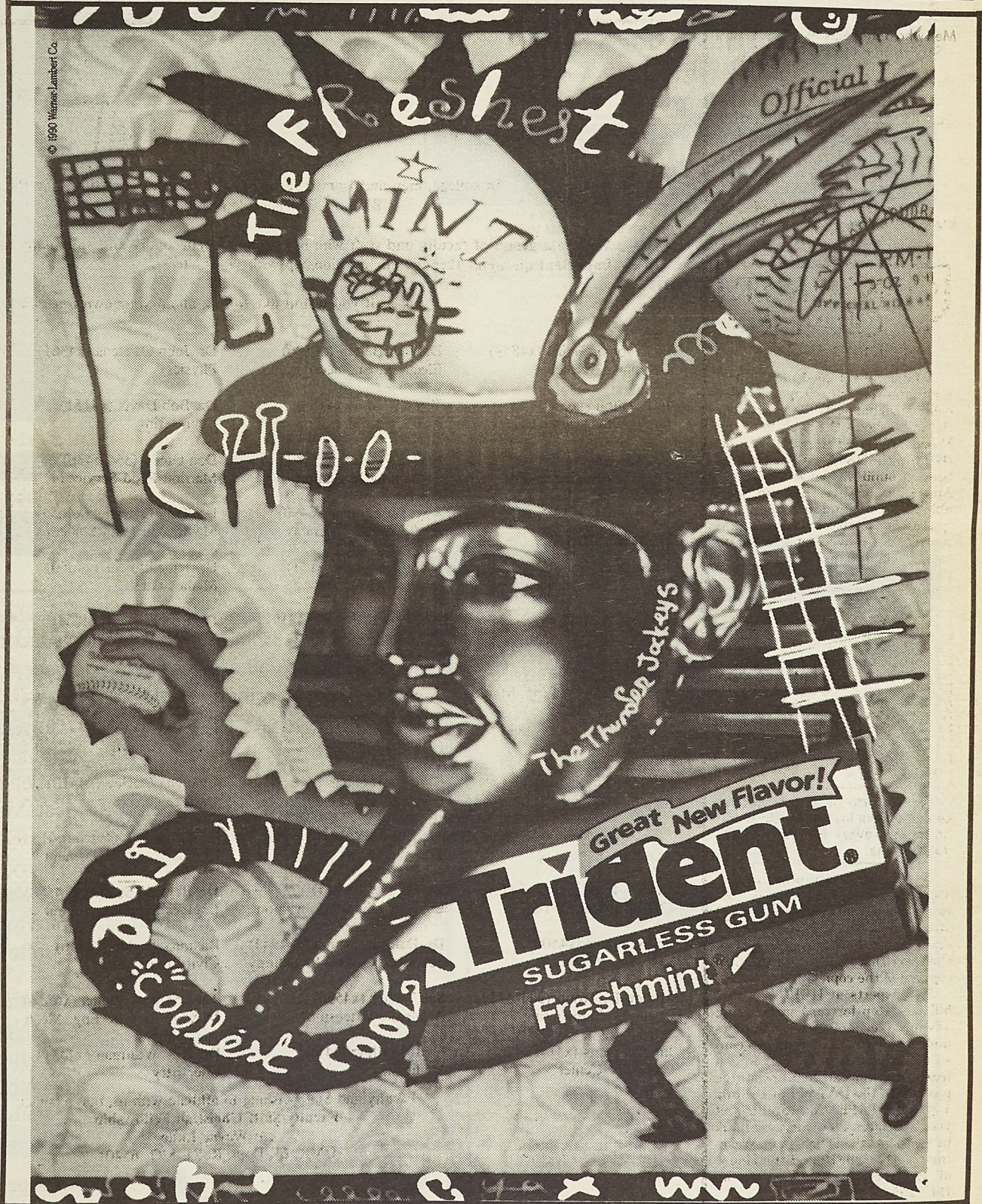
I'm glad you are not too old that you can't go  
out and party with your young roommates! Don't  
stress. Everything will work out. I'm always  
here fore you!

Love in AOT,  
Millie

Dena & Shelly,

Just thought we'd let you know that Orka is a  
WHALE!!

LOVE,  
Two Orka fans





YOU HAVE FRIENDS WHO CARE  
AT...

**BIRTHRIGHT**

PHONE: 364-0066

215 WEST 8th STREET  
P.O. BOX 832  
ROLLA, MISSOURI 65401

FOR HELP  
DURING UNPLANNED PREGNANCY  
FREE PREGNANCY TESTING  
NEW EARLY DETECTION METHOD



**A CUT ABOVE**  
HAIR SALON

**TAN Special 10 for \$17.50**  
209 West 11th St.  
364-6866

**THE UNIVERSITY OF TULSA**  
Graduate Business Programs

The University of Tulsa MBA is designed for students with degrees in the arts, Humanities, and Behavioral & Technical Sciences as well as Business who wish to prepare for professional managerial careers.

Visit with a representative:

**Thursday, October 4**  
**10:00 a.m. to 2:00 p.m.**  
**University Center East • Hallway**

or contact: Shelly Holly, Director, Graduate Admissions and Advising, 600 South College Avenue, Tulsa, Oklahoma 74104  
(918) 631-2242

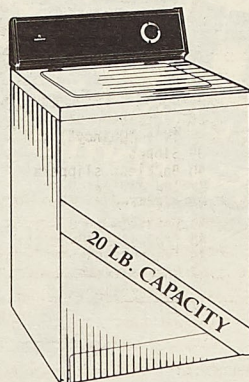
Scholarship, Fellowships, and Assistantships are available.

Master of Business Administration  
Master of Accountancy • Master of Taxation

**BROWN'S APPLIANCE CENTER**  
110 E. 7th Street  
364-2694

**Admiral**  
20 LB. CAPACITY NEW  
GENERATION WASHER

- 3/4 HP. Motor
- 3-Position Water Level
- Bleach Dispenser
- Automatic Self-Cleaning Filter System
- Permanent Press Cycle
- White Dura 10" Wash Basket



NOW ONLY  
**\$377.00**  
Mastercard  
&  
Visa

Earn a commission while still in school!

**M A R I N E S**



**Respect.**

*A good man earns it every day. One look tells you this man is someone to be reckoned with. You can sense his unwavering conviction to excellence. Men look up to him because he has earned their respect. He's one of the few who measure up to our tough standards. He is an officer of Marines.*

*If measuring up to our standards is the kind of challenge you've been looking for, call toll-free 1-800-MARINES. Who knows, maybe you too can be one of us, a Marine.*

**Marines**  
*The Few. The Proud. The Marines.*

See Captain Redmon at the Hockey Puck,

26-28 Sept or call collect (816) 931-7150

Representatives from Marathon Oil Company, Marathon Petroleum Company, and Marathon Pipe Line Company will be on campus Thursday, September 27, 1990, to present an Informational Meeting to all interested University of Missouri-Rolla students. The meeting will be held at 7 p.m. in Centennial Hall West, Room 202B, and will include an overview of Marathon, as well as presentations by Engineers from the



Production, Refining and Pipe Line components. Refreshments will also be served. All students, as well as faculty, are invited to attend this meeting, in particular those students enrolled in the Chemical, Civil, Electrical, Mechanical and Petroleum Engineering disciplines who would like to interview for Summer and Regular Engineering positions. Marathon will return to campus for interviews on the following dates:

Marathon Oil Company (Production) November 5, 6, 1990

Marathon Pipe Line Company  
November 5, 1990

Marathon Petroleum Company  
(refining) November 5, 6, & 7, 1990

We hope to see you there!



# Classifieds

**BEK,**  
So when are we going to settle that debt? How about dinner at my place?  
An Old Friend

**Sorry Sheila,**  
I already loaned out all my boyfriends.  
Yvonne,  
Congrats on your new I status!  
Love in AOT,  
YBS

**Tori,**  
Let's go shopping more!  
The Other Tori

**Chris,**  
I'm so glad you're my little sis! Thanks for the little "wompy" thing! I love it!  
YBS

**Just Curious,**  
The happiness of man is: I will. The happiness of woman is: he will.  
TheCynic

**Cynic,**  
Me thinkst that thou sounds more than a tad chauvinistic. Is that why she did what she did?  
J.C.

**Marcie,**  
Does this make up for last week and the week before? Hope so.

**Jen,**  
Thanks for everything you did throughout initiation! You're the best big sis ever!  
LICO,  
YLS

**Cyndi,**  
Welcome to the family. You're a great addition. We're gonna have so much fun!  
Your Grandma,  
Social

**JWC,**  
You have a very sexy radio voice.....I love your show.... Do you take requests at KMNR??

**Robin,**  
You can quit the un-candlelight jokes now! You may get to wear the dress yet (but not too soon—being free is too much fun) Skiing is a must.  
Julie

**Kirk,**  
Lizzy says Hi! and that she loves you!  
Love,  
Me

**Big and little Zero,**  
You guys are the greatest. Thanks for all the help and for beign my mom and dad. And for the RB.

**Sandy-Face,**  
Someone claims they saw you on campus this semester, but we didn't believe it!  
J & B

**Julie,**  
Welcome to our family. I'm so glad to have you!  
Love,  
YBS

**Hey Heater,**  
Thanks for everything! Will you be my personal secretary forever and ever! Just kidding!  
Love in AOT,  
Champagne

**Co-author,**  
We must be getting stupid in our old age. Our novel used to be racy but now it's a tear jerker.  
Co-author

**Madea,**  
CRUNCH, CRUNCH, SLURP! CRUNCH, SLURP, GULP!

**Renee,**  
Your best friend (not your roommate) is very annoying. Try to keep her under control.  
B.

**In-training,**  
Since we'll all be home on Thursday, should we work on "breaking those mugs" on Tuesday?  
LUSH  
P.S. That wasn't a typo!

**Ann,**  
Even though you haze me, I love you anyway.  
KD love,  
Scary Helen

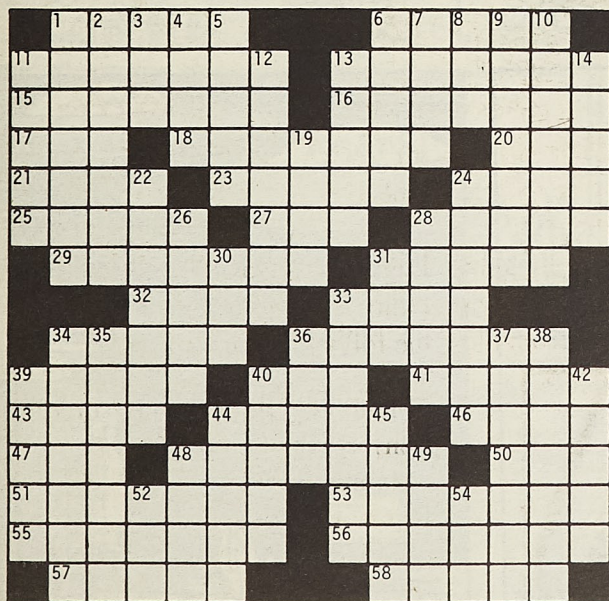
**Tricia R.,**  
Wait, I'm confused. If your car was parked in Lamda Chi Alpha's driveway Thursday morning, where does that mean you were?  
in AOT,  
ybs

**Denise,**  
Congratulations! Welcome to our sisterhood!  
Love in AOT,  
Kim

**To the girls on the first floor,**  
Watch out for attack hair dryers lurking outside your window!

## Fun & Games

### collegiate crossword



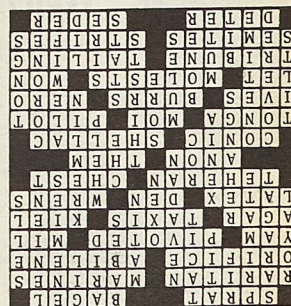
© Edward Julius Collegiate CW8711

#### ACROSS

- 1 Jack of nursery rhyme
- 6 Food with lox
- 11 River adjacent to Rutgers College
- 13 Branch of the military
- 15 Mouthlike opening
- 16 City in Texas
- 17 Sweet potato
- 18 Whirled around on one foot
- 20 Wire measure
- 21 Actor John —
- 23 Cabs
- 24 German port
- 25 Paint substance
- 27 — mother
- 28 Small brown birds
- 29 Capital of Iran
- 31 Part of the body
- 32 No one specified (abbr.)
- 33 Movie sci-fi thriller
- 34 — section, in math
- 36 Defeat soundly
- 39 South Pacific kingdom
- 40 "L'etat, c'est —"
- 41 Sample TV show
- 43 Burl —
- 44 VP Aaron, and family
- 46 Emperor or pianist
- 47 Tennis call
- 48 Attacks
- 50 Was victorious
- 51 Chicago newspaper
- 53 Following closely behind
- 55 Certain Asians
- 56 Bitter conflicts
- 57 Hinder
- 58 Passover dinner

#### DOWN

- 1 Former Italian president
- 2 Man or monkey
- 3 Hilly region of Morocco
- 4 "Take — from me"
- 5 Unspoken, but understood
- 6 " — in Arms"
- 7 Like the Gobi
- 8 Actor Gerard
- 9 Foes
- 10 Permissive
- 11 Kingly
- 12 From Carson City
- 13 Morning, in Marseilles
- 14 Disposes of
- 19 Draft animals
- 22 Puts up a picture again
- 24 Soviet government
- 26 City in Ohio
- 28 Young animal
- 30 Mythical bird
- 31 — Guevara
- 33 Desires, as for knowledge
- 34 — wagon
- 35 Former
- 36 Angry
- 37 Shad-like fish
- 38 Profession of TV's "Quincy"
- 39 Slopes
- 40 Backless slippers
- 42 Ice device
- 44 Mistake
- 45 Data, for short
- 48 Trumpet attachment
- 49 "Your majesty"
- 52 Unit of computer information
- 54 Jar part





## Don's ProShop Inc.

202 W. 9th St. Rolla 314/364-6792

**With This Ad Only!!!**

Jerzees T-Shirts \$3.75ea\*

Irregular T-Shirts \$2.25ea\*

\*Prices do not include printing or Screen/Art charges and limited to items currently in stock. Offer expires 10/13/90.

## WAFFLE HOUSE

ALL YOU CAN EAT MENU  
SERVED 2 P.M. TO 9 P.M.  
SEVEN DAYS A WEEK

# \$4.49

CHOOSE FROM ANY OF THE FOLLOWING  
(ONE ENTRE AT A TIME PLEASE)

Waffle	1/4 lb. Hamburger
Eggs	1/4 lb. Cheeseburger
Bacon	Bacon 1/4 lb. Cheeseburger
Sausage	Bacon, Lettuce & Tomato
Grits	Bacon & Egg Sandwich
Hashbrowns	Grilled Cheese Sandwich
Egg Sandwich	Sausage & Egg Sandwich
Plain Omelet	Tossed Salad
Cheese Omelet	Vegetable Beef Soup
Scuttlebutt	Toast

No other promotions or discounts with this menu.  
Available only at this location.  
Drinks not included - No substitutions.  
No carry out orders allowed with this menu.

### KEY SPORT SHOP

1200 PINE ROLLA

364-5495

Tom Hughes

Student Sales Representative

341-8360

### KEY SPORTS

PRINTING DIVISION

1300 S. BISHOP ROLLA

364-3216

FREE  
2  
COLOR  
ART

Welcome back  
UMR

Sale Ends September 30, 1990

FREE  
PRINTED  
2 COLOR  
DESIGN

Tee Shirts: \$5.35 ea. Crew Neck Sweatshirts:  
Minimum order 24

Dunbrooke Lt. Lined Polo Style Shirts:  
Minimum order 24

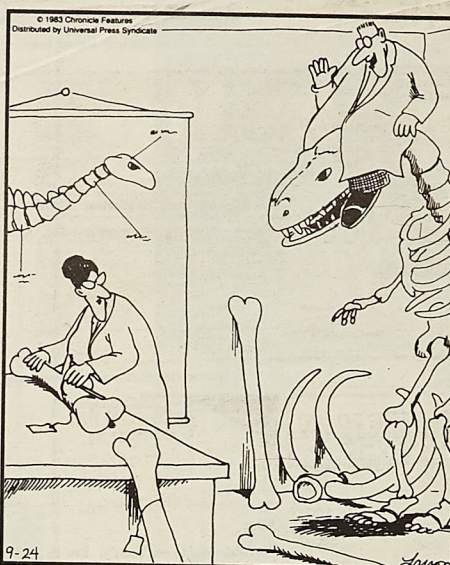
Satin Jackets: Hartwell \$11.50 ea.  
Minimum order 12 \$28.50 ea. Pro Celebrity \$13.00 ea.

Golf Style Hats: Golf Towels 16"x25":  
Minimum order 24 \$3.85 ea. Minimum order 48 - white or beige  
1 color only \$2.95 ea.

Summer Mesh Hats: Aprons 17"x 21":  
Minimum order 24 \$3.10 ea. Minimum order 24 \$3.00 ea.

## THE classic FAR SIDE

By GARY LARSON



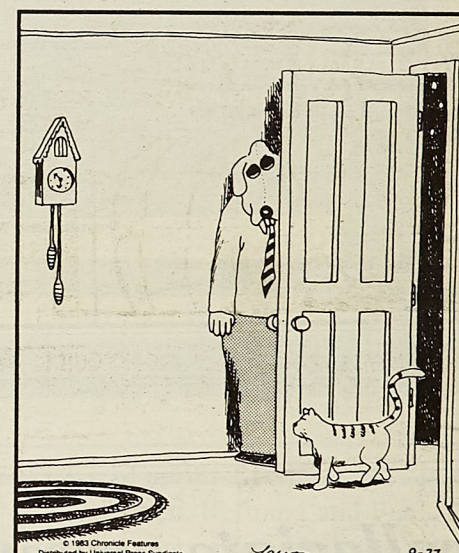
"Hi... Hi, Miss Collins."



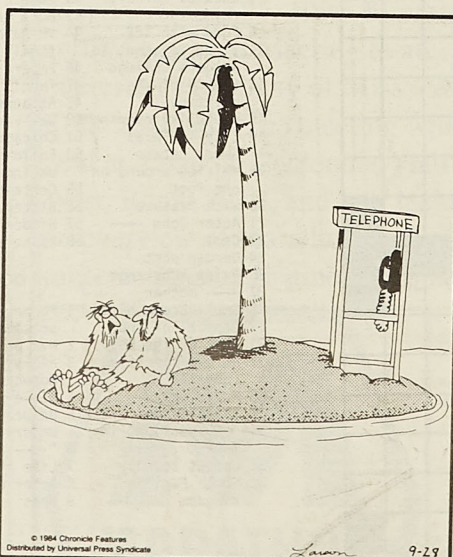
"Oh no, Elliott! Why? ... Why? ..."



Time's up!



Games you can play with your cat.



"For the hundredth time in as many days! ...  
I haven't got a quarter!"



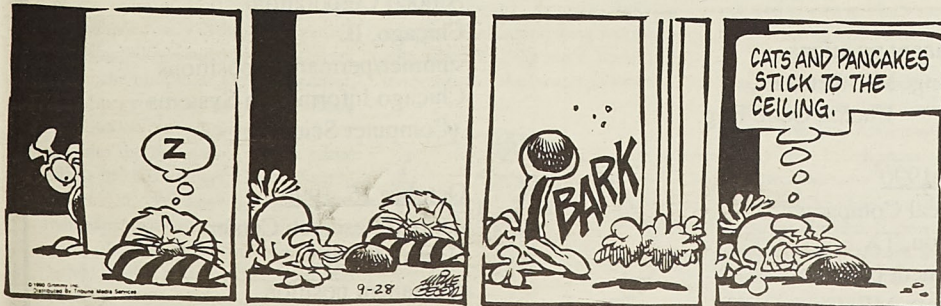
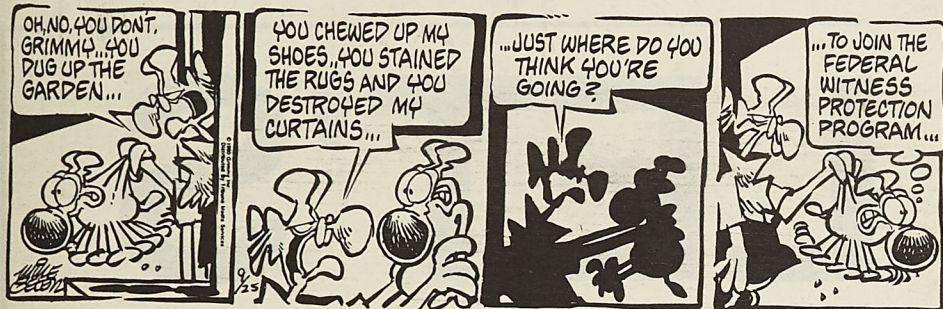
"Well, they finally came ... But before I go, let's see  
you roll over a couple of times."





# Mother Goose & Grimm

by Mike Peters



KENT KNOWS GIFTS ...  
KENT KNOWS ETCHING ...  
KENT KNOWS AWARDS ...  
KENT KNOWS ENGRAVING ...  
KENT KNOWS PARTY GLASSES ...

**JUST  
BUY  
IT!**

(314) 364-1030

110 W. 8th St. • Rolla, MO 65401

**Kent**

**Jim Papin  
wins free food**

## MINER DOMINO'S MANIA

IT'S TIME FOR DOMINO'S PIZZA.®

**\$5.99** plus tax

Get an 11" single topping  
pizza for only \$5.99 plus tax.

364-7110



Expires: 12/31/90

Late Night Special

**\$7.99**

Get a large single topping pizza for  
only \$7.99 plus tax after 9 pm everyday.

364-7110



Expires: 12/31/90

Valid at participating locations only. Not good with any other offer. Prices may vary. Customer pays sales tax and bottle deposit (where applicable). Our drivers carry less than \$20.00. Delivery areas limited to ensure safe driving. Our drivers are not penalized for late deliveries. ©1990 Domino's Pizza, Inc.

## The Music Station

Also New Releases

From:

Jane's Addiction  
Warrant  
George Michael  
LL Cool J  
Too Short



1023 Kingshighway Suite (Across from Burger King)

364-2497



## CAR WASH

Sponsored By:  
KEY SPORT  
&

THE UMR LADY MINER SOFTBALL TEAM  
20% OFF STOREWIDE THESE DAYS ONLY  
EXCLUDING SHOES

Saturday, September 22nd &  
Saturday, September 29th  
@ the Key Sport Parking Lot from 9AM - 3PM  
Your support will be greatly appreciated!



**CRATE**

**KORG**

KEYBOARDS  
GUITARS



## WOOLF MUSIC SOUND CENTER

Complete Sound Reinforcement Systems  
DESIGN • INSTALLATION • RENTALS



Your Authorized Dealer

**314 - 341-3020**

Hwy. 63 South (Southside Shoppers World) Rolla

AMPS  
DRUMS

**Alvarez**

**Pearl**

**Roland**

## Sunday Night Special

Stockade Burger,  
Fries & Drink

**\$2.99**

Every Sunday from  
5:00 p.m. to close.  
Includes FREE dessert.

1401 Martin Springs Dr.  
Rolla, MO 65401



**SIRLOIN  
STOCKADE**

© 1990 Sirloin Stockade International

Amoco Corporation,  
the global energy and  
chemical company,  
is interviewing on  
campus for talented  
Engineers & Computer  
Science Majors.  
Come tell us about  
yourself, and discover  
the big business  
where you can make  
a difference.

# LET'S TALK

### Amoco Corporation On-Campus Interviews:

October 23-24, 1990

Amoco Production Company  
Houston, TX  
summer/permanent positions  
B.S. Engineering: ME, Petro E.,  
Chem., Geol. Eng.

October 23-24 1990

Amoco Chemical Company  
Chocolate Bayou, TX  
summer/permanent positions  
B.S. Engineering: ME, Chem., EE

October 23-24, 1990

Amoco Oil Company  
Whiting, IN  
permanent positions  
B.S. Engineering: ME, Chem., Civil

Sign up now in the  
placement office.

October 23-24, 1990

Amoco Corporation  
Chicago, IL  
summer/permanent positions  
Chicago Information Systems  
(Computer Science)

October 26, 1990

Amoco Research Center  
Naperville, IL  
permanent position  
Engineering: ME (B.S. & MBA)

## 5¢ Copies.

The One of a Kind Copy  
Sale.

Must Present Student I.D. For This Price

Black and white, 8 1/2 x 11, copies on 20#  
bond, for only 5¢ each. Need we say less?

Quality copies, with fast, expert  
assistance.

Binding, collating and other finishing  
services available.

Brilliant color papers available.



314-364-2485 • 1-800-888-2485  
Fax 314-341-8372  
630 South Bishop Rolla, MO 65401  
Retail Store Hours:  
Monday-Friday 8:00-5:30;  
Saturday 9:00-4:00  
Printing & Commercial Monday-Friday  
8:00-4:30

**Amoco Corporation**  
Choose the big business that makes a big difference.



# Sports

## Ladies Soccer enjoys a success

By Tom Hughes  
SPORTS EDITOR

The women's soccer team enjoyed a very encouraging week. On Thursday, the Ladies lost a hard fought match to Missouri Baptist. A penalty kick was the measure of defeat as the ladies lost 1-0.

The team was determined to get their first goal of the season against Rhodes College from Arkansas. The women had several good chances in the opening 45 minutes, but came up empty. The best of these chances came on a drive by Kim Dale. Leslie Sawyer made several saves to keep the game even at 0-0.

In the second half, the Ladies did it. Stephanie Swift scored 18 minutes into the half, to give UMR a 1-0. Swift scored after a sustained attack to open the half. Rhodes battled back to tie the game and send it into overtime.

In the second overtime, the Ladies had the better of the play. They were however, unable to put the ball in the net. The Ladies did gain their first point of the season with a 1-1 tie.

These Ladies should be com-

**Defenders Melissa Moore, left, and Jennifer Ryczek battle for the ball during the Ladies 1 - 0 lose to Missouri Baptist.**

Mike Tolbert

mended on their effort. We have a team here at UMR with probably the most heart of any team anywhere. To

play every game with 12 girls (that is only one extra player) is just incredible. Good job ladies!

## Football team suffers disappointing loss at the hands of Illinois State

By Tom Brown  
ASST. SPORTS EDITOR

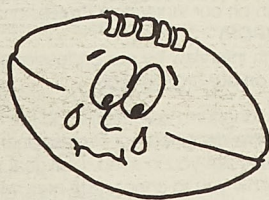
The Miner football team traveled to Normal, Illinois on Saturday where they suffered a disappointing loss to the Division I Illinois State Redbirds by the score of 46-0. The Redbirds scored twice early in the game, getting the Miners down and they didn't let up.

In the middle of the first quarter, the Miner coaches made a quarterback substitution putting junior Greg Dennis into the ball game. When asked about the QB change, Coach Keeton responded, "We knew going into the ball game that we needed to give Greg some playing time in case of an injury to Mike (Wise). He's worked hard and deserves to play. Mike has been frustrated and has had trouble in the past with throwing the football. When he started to have problems, we put Greg in the game. He caused a spark for a time, but wasn't throwing the ball better so we put Mike back in."

Coach Keeton was very disappointed in the loss, specifically to the degree of the loss. The Miners faced a massive offensive line of 270 plus pounds per player with a second string just as big. They just kept running players at them, wearing down the

Miners on both sides of the line. The last touchdown of the game was scored by a fullback that is bigger than any player on the Miner roster.

The Miners, as a team were outmanned. "In every aspect of the game, they played better and had better personnel," said Coach Keeton. "We took a step backwards Saturday, but anything worth accomplishing will be met with adversity. So we'll come back next time and take two steps forward."



The Miners will be off this coming weekend, giving them a chance to recuperate and prepare for the upcoming conference game with Southeast Missouri State at Cape Girardeau on October 6.

The next Miner home game is on the 13th of October against Northwest Missouri State, which will be our Homecoming game. Come on out and support the Miners!

## Cross Country prepares for Miner Invitational on Sat.

By Tom Hughes  
SPORTS EDITOR

The 11th Annual Miner Invitational takes place this Saturday at the UMR golf course. The women's race is slated to start at 10:15 a.m., with the men's race at 11:00 a.m.

This year's field is extremely tough. Of the 18 women's entries and 17 men's entries, four teams are Division I. Mizzou, Arkansas State, University of MO-Kansas City, and Southwest Missouri, are all Division I opponents. In addition to those teams, perennial division II powers Central Missouri, and Southern Indiana, and Southern Illinois—Edwardsville will be in attendance.

The Miners hope to use the home field advantage to place high in the meet. Jeanne Jackson and Becky Wilson will lead the Lady Miners, while John Conrad and Steve Hostetter will lead the men.

Hostetter is coming off of an injury, but he will be healthy for the invitational. The Ladies have an incomplete team. They only have 4 runners on the team and a complete team consist of 5.

## Men's team gains a tie 2 -2 with SEMO

By Jeff Lacavich  
STAFF WRITER

After a win in overtime last week, the Miner Soccer Team went on the road to play the Southeast Missouri State Indians. The field conditions were great and the kickers were ready to play.

The first half was a very physical contest. The game wasn't a very controlled one. Lots of deep sent balls, and there was a great amount of pressure on both ends of the field. The ball was all over the field.

The game's first goal was tallied by the kickers. The goal came with about three minutes left in the first half. The ball was crossed from the corner and headed into the mesh. There were many other chances in the half for both teams, but neither could capitalize.

The second half was a brutal affair. The Indians scored their first goal on a corner kick. The ball was hit low to the near post where an Indian redirected the ball into the net with a head.

The Miners had a big scare in the second half. Aaron Basham went to the right sideline for a head ball where he collided heads with the opponent. Aaron was knocked out for about 3-5 minutes. He was taken to the hospital with a concussion.

The game went into overtime tied at one a piece. The Indians went on top quickly. They scored at the eight minute mark. They dribbled down the field and dished the ball off, where it was placed just under the rushing, sliding Bill Faherty.

The kickers regrouped and evened the count with eight minutes left. Mike Balassi chipped a ball over the defender's head where Chris Sulincevski

**"The kickers regrouped and evened the count with eight minutes left...Chris Sulincevski connected with a cannon from the left side of the field..."**

connected with a a cannon from the left side of the field and hit the left side of the net.

The game ended at two a piece. The Miners' next home is Sunday, September 30th at 1:00 p.m. against University of Missouri—Kansas City.

## KEY SPORT FAN IN THE STANDS



**This week's Fan in the Stands attended the Miner football game versus MO Western. If this is you, come claim your prize at the Miner office, 103 Norwood, on Thursday at 4:30.**

Last year at the Miner Invitational, both teams preformed excellently. It will be difficult to match last year achievements, but the teams have been training hard.

The Cross Country team will try and use fresh legs from this past weekend off and the home crowd to bring a trophy to UMR. Your support is greatly appreciated.



## SMIIRT tournament is slated for this Saturday at the Rugby Field

### Rugby Club SOURCE

The UMR Rugby Club will be hosting its 18th Annual Smiirt Tournament on September 29th at the Fraternity Row fields. This year's tournament will prove to be one of the roughest and toughest yet.

This year the round-robin tournament will include teams from Washington University, Southwest Missouri State University, St. Louis University, Central Missouri State University, Southwest Missouri State University, and the University of Missouri—Rolla. The tournament begins at 10:00 a.m. Saturday with UMR hosting Washington U. and SMSU taking on CMSU. At 11:30 SLU will oppose Washington U. and SEMO will play CMSU, followed by the 1:00 p.m. matches of UMR against SLU and SMSU battling SEMO.

Following these scrimmages the matches for 3rd, 4th, 5th, and 6th places will be played. Then at 4:00 p.m. the tournament will be highlighted by the first place match.

The UMR Rugby Club has been preparing hard the past four weeks for this tournament. The practices have consisted of two hour work-outs three times a week. They have also competed against the team from Fort Leonardwood in three scrimmages.

The team consists of 28 members with over half of the team returning from last year's season. The UMR Rugby Club took a second place finish in the state meet last year and has their goals set on first for this year.

The competition at Smiirt always proves to be exciting and invigorating. The UMR Rugby Club would like to see all the faculty and students out at Fraternity Row fields on September 29, to cheer us on.

Smiirt will provide a chance to learn a little about an old English sport played among gentlemen. There will be programs at the fields that contain everything you need to know about Rugby. This will allow even the first time viewer to understand what is going on. And if you are lucky, maybe you will find out if Rugby players really do eat their dead!

## Quality Customer Service Experience It!



### Phelps County Bank

*A Locally Owned Community Bank*

Main Office, 8th & Pine, Rolla 364-5202

Drive-In Facility-Hwy. 72 & Salem Ave., Rolla 364-5202

University Center East-UMR 364-5202

100 S. Jefferson, St. James 265-3222

Member F.D.I.C.

### Illusions

Welcome Back Students!

Where the cut counts!



Owners:  
Linda Constable-Bowling & Michelle Constable

- Creative Hair Coloring
- Nail Artistry
- Latest Perming Techniques
- In-Depth Consultations
- Student Discounts

1037 Kingshighway  
Walk-Ins Welcome Mon.-Sat.  
364-6965

## FIRE UP YOUR JOB SEARCH!

Register now with your

PLACEMENT & CO-OP OFFICE

to interview for the job you want.

What is keeping you from acting on your  
best interests in pursuing the work you want?

Come to the Buehler Building  
9th & Rolla Streets.

## ALL THE **mox-ie** OF A START-UP COMPANY WITH ALL THE STABILITY OF A FORTUNE 100.

**mox-ie** \māk-sē\ n (1930)  
1: ENERGY. PEP 2: COURAGE.  
DETERMINATION  
3: KNOW-HOW. EXPERTISE

Come see and hear what BASF has to offer. We'll provide you with:

- Information on our innovative Professional Development Program (PDP)
- An in-depth interview by our professional staff
- Literature on our organization

BASF has a long-term commitment to the continuous development of our employees. We designed our Professional Development Program, (PDP), with new graduates like you in mind. Our goal is to develop highly flexible career paths and allow you to choose the area where you'll excel. So, if you have a degree in chemistry, engineering, business or the liberal arts, you owe it to yourself to explore the options at BASF.

For more details, contact your placement office. Or, write directly to Manager, Professional Employment, BASF Corporation, 100 Cherry Hill Road, Parsippany, New Jersey 07054. We are an equal opportunity employer.

## BASF



# Placement

## UNIVERSITY OF MISSOURI-ROLLA

Placement Office  
Buehler Building, 9th & Rolla St.

**FALL WEEKLY DETAIL LIST #6**  
Week of October 22-26, 1990

SIGNUP LOCATION: G-3 Buehler Building  
SIGNUP HOURS: 7:45 to 11:15 a.m.  
1:00 to 4:15 p.m.

### PRESCREENED INTERVIEWS

#### ARKANSAS BEST CORPORATION

P.O. Box 48  
Ft. Smith, AR 72902  
attn: Mr. Chris Burton

NUMBER OF SCHEDULES: 1  
MAJORS: BS/MS Computer Science  
POSITION: Systems Analyst/Programmer  
LOCATION: Fort Smith, AR  
DECEMBER 1990 or MAY 1991 GRADS  
PLACEMENT IN UPPER THIRD OF CLASS PREFERRED  
MUST HAVE U.S. EMPLOYMENT STATUS

**DEADLINE FOR TURNING IN RESUMES: Friday, Sept. 28**  
INTERVIEW DATE: October 22, 1990

#### PAYNE-HUBER ENGINEERING, INC.

7030 South Yale, Suite 301  
Tulsa, OK 74136  
attn: Mr. Tom C. Payne

NUMBER OF SCHEDULES: 1  
MAJORS: BS/CE  
POSITION: Design Engineer  
LOCATION: Tulsa, OK  
DECEMBER 1990 GRADS  
3.0 G.P.A. (major); 2.5 G.P.A. (overall)  
U.S. CITIZENSHIP REQUIRED

**DEADLINE FOR TURNING IN RESUMES: Friday, Sept. 28**  
INTERVIEW DATE: October 22, 1990

#### DOW CORNING CORPORATION

Dow Corning Center  
P.O. Box 994  
Midland, MI 48686-0994  
attn: Mr. Dan Latal

NUMBER OF SCHEDULES: 1 ea day, Oct. 23-24  
MAJORS: BS/ChE, ME, EE  
POSITION: Process Engineering, Project Development, Project Engineering, Power Dist., Plant Engineering, Technical Services Development  
LOCATION: Midland, MI; Carrollton, KY  
U.S. CITIZENSHIP OR PERMANENT RESIDENT VISA REQUIRED  
2.75 G.P.A. REQUIRED

**DEADLINE FOR TURNING IN RESUMES: Friday, Sept. 28**  
INTERVIEW DATES: October 23-24

#### PHILLIPS PETROLEUM COMPANY

180 Plaza Office Bldg.  
Bartlesville, OK 74004  
attn: Mr. W.F. Dausses

NUMBER OF SCHEDULES: 1-BS/ChE  
BS/CE with Environmental Emph.  
BS/ME, BS/EE  
PhD/Chemical Eng.  
PhD/Chemistry  
POSITIONS: Engineering Design & Construction, R&D, Technical Sales & Serv., Refining, Natural Gas & Natural Gasoline Products, Programming, Operations Research & Engineering Computer Simulation, Supply & Transportation  
LOCATION: Southwest - Bartlesville, OK  
3.0 G.P.A. PREFERRED  
MUST BE PRESENTLY AUTHORIZED TO WORK IN THE U.S. ON A FULL-TIME BASIS  
DECEMBER 1990, MAY 1991 GRADS

**DEADLINE FOR TURNING IN RESUMES: Friday, Sept. 28**  
INTERVIEW DATES: October 23, 24, 1990

#### AMOCO CHEMICAL COMPANY (Chocolate Bayou)

Chocolate Bayou Plant  
P.O. Box 1488  
Alvin, TX 77511  
attn: Mr. Neal Squires

NUMBER OF SCHEDULES: 1-ChE, 1-ME, EE (BS level)  
POSITION: Process ChE; ME & EE in petrochemical plant  
LOCATION: Chocolate & Cedar Bayou Plant  
DECEMBER 1990, MAY, JULY 1991 GRADS  
U.S. CITIZENSHIP OR GREEN CARD REQUIRED

**DEADLINE FOR TURNING IN RESUMES: Friday, Sept. 28**  
INTERVIEW DATES: October 23, 24, 1990

#### AMOCO PRODUCTION

200 E. Randolph Dr., MC 4301  
Chicago, IL 60601  
attn: Mr. Don Foster

NUMBER OF SCHEDULES: 1 (Don Foster, recruiter)  
MAJORS: BS/MS Computer Science  
POSITION: Applications Programmer/Analyst  
Software Programmer Analyst  
LOCATION: Chicago corp. HQ; Tulsa; Houston  
(90% of positions are Chicago)  
DECEMBER 1990 or MAY, JULY 1991 GRADS  
PREFER TOP HALF OF CLASS

**DEADLINE FOR TURNING IN RESUMES: Friday, Sept. 28**  
INTERVIEW DATES: October 23, 24, 1990

#### AMOCO PRODUCTION

501 Westlake Park Blvd.  
Houston, TX 77079  
attn: Ms. M.J. Hinn

NUMBER OF SCHEDULES: 1 ea day, Oct. 23-24  
MAJORS: BS/ME, ChE, PE, GeolE  
POSITION: Various Engineering Opportunities  
LOCATION: Houston, TX  
DECEMBER 1990 or MAY, JULY 1991 GRADS  
2.5 G.P.A. REQUIRED  
SHOULD BE LEGALLY AUTHORIZED TO BE EMPLOYED IN THE U.S. AS SET FORTH IN THE IM. REFORM & CONTROL ACT OF 1986. INCLUDE YOUR SS# IN RIGHT CORNER OF RESUME  
INTERVIEWS WILL BE 45 MIN. IN LENGTH.

**DEADLINE FOR TURNING IN RESUMES: Friday, Sept. 28**  
INTERVIEW DATES: October 23-24, 1990

#### AMOCO OIL COMPANY (Whiting Refinery)

Whiting Refinery  
2815 Indianapolis Blvd.  
Whiting, IN 46394  
attn: Mr. Richard Paul

NUMBER OF SCHEDULES: 1 ea day, Oct. 23, 24  
MAJORS: BS/MS ME, CE, ChE  
POSITION: Refinery Engineering or Refinery Technical Projects Engineering  
(Details will be available at time of interview signups)  
LOCATION: Whiting, IN  
DECEMBER 1990 or MAY 1991 GRADS  
MUST HAVE SOLID ACADEMIC PERFORMANCE  
MUST BE ABLE TO DOCUMENT ELIGIBILITY TO ACCEPT INDEFINITE EMPLOYMENT IN THE U.S.

**INTERVIEW SIGNUP DATE: Monday, Oct. 8, 1990**  
INTERVIEW DATES: October 23, 24, 1990

#### AMERICAN CYANAMID

Agricultural Division  
P.O. Box 817  
Hannibal, MO 63401  
attn: Mr. Doug Bickel

NUMBER OF SCHEDULES: 2  
MAJORS: BS/ChE, ME  
POSITION: Process or Project Engineer  
LOCATION: Hannibal, MO  
DECEMBER 1990 or MAY 1991 GRADS  
2.8 G.P.A. REQUIRED  
U.S. CITIZENSHIP REQUIRED

**DEADLINE FOR TURNING IN RESUMES: Friday, Sept. 28**  
INTERVIEW DATE: October 23, 1990

#### B&V WASTE SCIENCE & TECHNOLOGY

P.O. Box 7960  
Kansas City, MO 62207-0960  
attn: Ms. Brooke Cranston

NUMBER OF SCHEDULES: 1  
MAJORS: BS/MS CE, GeolE, or ChE  
POSITION: Civil, Chemical or Geological Engineers  
LOCATION: Chicago, Kansas City or Philadelphia  
DECEMBER 1990 GRADS  
2.75 G.P.A. REQUIRED  
MUST BE LEGALLY AUTHORIZED FOR U.S. EMPLOYMENT

**DEADLINE FOR TURNING IN RESUMES: Friday, Sept. 28**  
INTERVIEW DATES: October 23-24, 1990

#### OLIN CORPORATION

427 N. Shamrock Street  
East Alton, IL 62024  
attn: Ms. Cheryl Bednar

NUMBER OF SCHEDULES: 1-BS/MS ChE  
1-BS/ME or BS/EngMgt  
POSITION: Complete details will be posted with interview signups -- too lengthy to list  
LOCATION: Will be provided later  
DECEMBER 1990 or MAY 1991 GRADS  
PREFER "B" G.P.A.  
INDIVIDUALS MUST PRESENTLY BE AUTHORIZED TO WORK IN THE U.S. ON A FULL-TIME BASIS.

**DEADLINE FOR TURNING IN RESUMES: Friday, Sept. 28**  
INTERVIEW DATE: October 23, 1990



ILLINOIS POWER COMPANY  
500 South 27th Street  
Decatur, IL 62525  
attn: Mr. Robert Teel

NUMBER OF SCHEDULES: 1-BS/EE  
1-BS/EE, NE, ME  
POSITION: Electrical, Mechanical, or  
Nuclear Engineer  
LOCATION: Central & Southern Illinois  
recent grads, DECEMBER 1990 GRADS  
2.5 G.P.A. REQUIRED  
U.S. CITIZENSHIP, PERM. RES. VISA OR UNLIMITED RIGHT  
TO WORK

DEADLINE FOR TURNING IN RESUMES: Friday, Sept. 28  
INTERVIEW DATE: October 23, 1990

ABERDEEN PROVING GROUND  
Civ. Personnel Office Bldg. 305  
Aberdeen Proving Ground, MD 21005-5001  
attn: Ms. Quinette Henderson

NUMBER OF SCHEDULES: 1  
MAJORS/POSITION: BS/ChE, CE, Environ.Eng., Phys.  
Scientists  
LOCATION: Edgewood, MD  
DECEMBER 1990 or MAY 1991 GRADS  
2.0 G.P.A. REQUIRED  
U.S. CITIZENSHIP REQUIRED

DEADLINE FOR TURNING IN RESUMES: Friday, Sept. 28  
INTERVIEW DATE: October 23, 1990

UNION CAMP CORPORATION  
P.O. Box 570  
Savannah, GA 31402  
attn: Ms. M.C. Fawcett

NUMBER OF SCHEDULES: 1  
MAJORS: BS/MS ChE  
POSITION: Process Engineering  
LOCATION: Southeast  
DECEMBER 1990 GRADS  
2.8 G.P.A. REQUIRED  
PERMANENT VISA REQUIRED

DEADLINE FOR TURNING IN RESUMES: Friday, Sept. 28  
INTERVIEW DATE: October 23, 1990

FACTORY MUTUAL  
3300 Rider Trail Rd./Suite 600  
Earth City, MO 63045  
attn: Mr. Charlie Pruitt

NUMBER OF SCHEDULES: 1  
MAJORS: BS/ChE, EE, ME, CE  
POSITION: Loss Prevention Consultant  
LOCATION: St. Louis, MO  
DECEMBER 1990, MAY 1991 GRADS

DEADLINE FOR TURNING IN RESUMES: Friday, Sept. 28  
INTERVIEW DATE: October 23, 1990

TEXAS INSTRUMENTS, INC. SEMICONDUCTOR SALES  
P.O. Box 650311, MS 3951  
Dallas, TX 75265  
attn: Mr. George Berryman

NUMBER OF SCHEDULES: 1  
MAJORS: BS/EE, Comp Sci, or MBA with  
technical undergrad  
POSITION: Technical Sales Associate  
LOCATION: Nationwide  
DECEMBER 1990 or MAY 1991 GRADS  
3.0 G.P.A. REQUIRED  
APPLICANTS MUST BE AUTHORIZED TO WORK FULL-TIME  
IN THE U.S.

DEADLINE FOR TURNING IN RESUMES: Friday, Sept. 28  
INTERVIEW DATE: October 23, 1990

TEXAS INSTRUMENTS, INC./INFORMATION SYSTEMS & SERVICES  
P.O. Box 650311, MS 3951  
Dallas, TX 75265  
attn: Mr. George Berryman

NUMBER OF SCHEDULES: 1 ea day, Oct. 23-24  
MAJORS: BS/MS Comp Sci, MIS, CIS  
POSITION: Software Programmer/Analyst,  
Systems Support Analyst, Software Programmer/Analyst  
LOCATION: Dallas, TX  
DECEMBER 1990 or MAY 1991 GRADS  
3.0 G.P.A. PREFERRED  
MUST BE PRESENTLY AUTHORIZED TO WORK FULL-TIME IN  
U.S. -- (More details available)

DEADLINE FOR TURNING IN RESUMES: Friday, Sept. 28  
INTERVIEW DATE: October 23-24, 1990

#### GENERAL ELECTRIC-AEROSPACE

20545 Center Ridge Road  
Suite #135  
Rocky River, OH 44116  
attn: Mr. Michael Shinn

NUMBER OF SCHEDULES: 3 ea day, Oct. 24-25  
MAJORS: BS/MS EE, CSC, Math, Physics  
POSITION: Systems, Design, Test, Hardware &  
Software Eng., Software Programmer, Edison Program  
Engr.  
LOCATION: Various  
MAY, JULY 1990 GRADS  
MUST BE U.S. CITIZENS WHO HAVE EVIDENCE OF AUTHORIZA-  
TION TO WORK IN THE U.S.

DEADLINE FOR TURNING IN RESUMES: Friday, Sept. 28  
INTERVIEW DATE: Oct. 24-25, 1990

#### GENERAL ELECTRIC AIRCRAFT ENGINES

20545 Center Ridge Road  
Suite #135  
Rocky River, OH 44116  
attn: Mr. Michael Shinn

NUMBER OF SCHEDULES: 2 ea day, Oct. 24-25  
MAJORS: BS/MS AE, ME, EngMech, EE,  
MetE, Eng. Mgt.  
POSITION(S): Engineering Development Program;  
Manufacturing Development Program.  
(Complete job description will be available at time  
of interview signups.)  
LOCATION: Cincinnati, OH  
DECEMBER 1990 or MAY 1991 GRADS  
U.S. CITIZENS OR PERSONS OTHERWISE LEGALLY PERMITTED  
TO WORK IN THE U.S.  
MIN. 3.0 G.P.A. WITH STRONG COMMUNICATION SKILLS.  
PREFER RELATED CO-OP OR SUMMER EXPERIENCE.

DEADLINE FOR TURNING IN RESUMES: Friday, Sept. 28  
INTERVIEW DATE: October 24-25, 1990

#### GENERAL ELECTRIC INDUSTRIAL & POWER

20545 Center Ridge Road, Suite 135  
Rocky River, OH 44116  
attn: Mr. Michael Shinn

NUMBER OF SCHEDULES: 1 ea day, Oct. 24-25  
MAJORS: BS/ME, EE, ChE, NE, AE or  
General Eng. for Nuclear Operations Program;  
BS/MS/ME, EE, NE, Health Physics, Chemistry for  
Field Engineering Program or Radiological Controls  
Training Program;  
BS/MS/EE, EE, ChE, Chemistry, NE, AE, Physics,  
CE, MetE for Design/Development Engineer  
Complete details will be posted at time of interview  
signups.

LOCATION: Various  
DECEMBER 1990 or MAY 1991 GRADS  
U.S. CITIZENS WHO HAVE EVIDENCE OF THEIR  
AUTHORIZATION TO WORK IN THE U.S.  
3.0 G.P.A. REQUIRED FOR ALL POSITIONS

DEADLINE FOR TURNING IN RESUMES: Friday, Sept. 28  
INTERVIEW DATE: October 24-25, 1990

#### GENERAL ELECTRIC MANUFACTURING MANAGEMENT PROGRAM

20545 Center Ridge Road, Suite 135  
Rocky River, OH 44116  
attn: Mr. Michael Shinn

NUMBER OF SCHEDULES: 2 ea day for Oct. 24-25  
MAJORS: BS/MS EE, ME  
POSITION: Engineer-Manufacturing Mgt.  
Program - two year entry level program. More  
details will be available at time of signups.  
LOCATION: Various throughout the U.S.  
Geographic moves on Program required  
MUST BE IN TOP QUARTER OF CLASS. PREFER MFG.  
ENGINEERING WORK EXPERIENCE.  
MUST HAVE EVIDENCE OF AUTHORIZATION TO WORK  
IN THE U.S.  
DECEMBER 1990 or MAY 1991 GRADS

DEADLINE FOR TURNING IN RESUMES: Friday, Sept. 28  
INTERVIEW DATE: October 24-25, 1990

#### GENERAL ELECTRIC TECHNICAL SALES PROGRAM

20545 Center Ridge Road  
Suite #135  
Rocky River, OH 44116  
attn: Mr. Michael Shinn

NUMBER OF SCHEDULES: 1 ea day, Oct. 24-25  
MAJORS: BS/EE, ME or Power Eng.  
POSITION: Sales Engineer Trainee  
LOCATION: Various  
ACADEMIC STANDING MUST BE IN UPPER THIRD OF CLASS  
MUST HAVE AUTHORIZATION TO WORK IN THE U.S.  
DECEMBER 1990, MAY, JULY 1991 GRADS

DEADLINE FOR TURNING IN RESUMES: Friday, Sept. 28  
INTERVIEW DATE: October 24-25, 1990

#### CAP GEMINI AMERICA

5122 Spencer Road  
Lyndhurst, OH 44124  
attn: Ms. Fran Willis

NUMBER OF SCHEDULES: 2  
MAJORS: MS/EE with emphasis in software  
engineering; MS/CompSci or any masters with  
programming exp. in C or COBOL  
POSITION: Systems Consultant  
LOCATION: Nationwide with heavy Midwest or  
East  
DECEMBER 1990, MAY OR JULY 1991 GRADS  
2.8 G.P.A. (INCLUDE TRANSCRIPT WITH RESUME)  
U.S. CITIZENSHIP OR PERMANENT RES. VISA REQUIRED

DEADLINE FOR TURNING IN RESUMES: Friday, Sept. 28  
INTERVIEW DATE: October 24, 1990

CANCELLATIONS -- Pars Services - Oct. 15  
Remington Arms - Oct. 4  
Northern Ind. Public Serv. - Sept. 26

CHANGE OF INTERVIEW DATE:  
Unocal will interview on Oct. 30;  
originally scheduled for Oct. 26

CORRECTION: WEEK OF OCT. 15-19  
Graduation dates for Motorola, Commu-  
nications Sector should be Dec. 1990,  
May 1991. (Weekly Detail List #5)



**AMOCO RESEARCH CENTER**  
P.O. Box 3011-MS J-7  
Naperville, IL 60566  
attn: Mr. Jim Callison

NUMBER OF SCHEDULES: 1  
MAJORS: MS/PhD in ME  
POSITION: Engineer in R&D  
LOCATION: Naperville Research Center  
DECEMBER 1990 or MAY, JULY 1991 GRADS  
U.S. CITIZENSHIP OR AUTHORIZATION TO WORK REQUIRED  
PREFER "B" AVERAGE OR ABOVE

DEADLINE FOR TURNING IN RESUMES: Friday, Sept. 28  
INTERVIEW DATE: October 26, 1990

**ASARCO**  
P.O. Box 7  
Glover, MO 63646  
attn: Mr. Bill Womble

NUMBER OF SCHEDULES: 1  
MAJORS: BS/MS MetE, ChE, ME, EE, CE, GeoE  
POSITIONS: MetE & ChE: Operations  
ME, EE: General Plant Engr.  
CE, GeoE: Environ. Engineers  
Position is for work in lead refining & smelting.  
LOCATION: Glover, MO  
DEC. 1990, MAY 1991 GRADS  
3.0 G.P.A. REQUIRED

DEADLINE FOR TURNING IN RESUMES: Friday, Sept. 28  
INTERVIEW DATE: October 26, 1990

**LIBERTY MUTUAL INSURANCE**  
P.O. Box 8509-A  
St. Louis, MO 63126-0509  
attn: Mr. James Kahfeldt

NUMBER OF SCHEDULES: 1  
MAJORS: Any (Most past hires have had a  
BS in Engineering Management or Mechanical Engineering)  
POSITION: Loss Prevention Representative  
LOCATION: Must be open to relocate to the  
following: Kansas City, St. Louis, Chicago, Indianapolis,  
Detroit, Milwaukee, or Minneapolis  
recent grads, DECEMBER 1990 GRADS

INTERVIEW SIGNUP DATE: Thursday, Oct. 4, 1990  
INTERVIEW DATE: October 19, 1990

#### NON-PRESCREENED INTERVIEWS

**U.S. NAVAL WEAPONS STATION**  
Naval Weapons Station  
CO 62  
Corona, CA 91720-5000  
attn: Ms. Penny Campbell

NUMBER OF SCHEDULES: 1  
MAJORS: BS/MS EE, ME, Physics, Comp Sci  
POSITION: Electronics or Mechanical Eng.;  
Physicists or Computer Scientists  
(Details will be posted with interview signups)  
LOCATION: Corona, Seal Beach, Pomona, and  
Fall Brook, CA  
DECEMBER 1990 GRADS  
U.S. CITIZENSHIP REQUIRED

INTERVIEW SIGNUP DATE: Monday, October 1, 1990  
INTERVIEW DATE: October 15, 1990

**GENERAL MOTORS CORPORATION**  
77 W. Center  
Saginaw, MI 48605  
attn: Mr. Gene Wistehuff

NUMBER OF SCHEDULES: (Oct. 16) - 2-ME; 1-EE;  
1-MetE; 1-Eng.Mgt; (Oct. 17) - 2-ME; 2-EE; 1-ChE, Chem  
POSITION(S): ME/AE: Product design, product testing,  
manufacturing engineering, process engineering, plant  
engineering quality and reliability;  
EE: Product design, product testing, manufacturing,  
process engineering, plant engineering quality &  
reliability; EngMgt: Supervision, industrial engineer-  
ing, reliability & quality control and financial &  
business planning; MetE: Product design, testing, mfg.,  
mfg. eng., production supervision, and quality & reli-  
ability; ChE/Chem: Product design, testing, mfg. engin-  
eering supervision, and quality & reliability.  
Additional description will be available at time of  
interview signups.  
LOCATION: Midwest  
DECEMBER 1990, MAY 1991 GRADS  
U.S. CITIZENSHIP OR PERM. RES. VISA RQUIRED  
2.7 G.P.A. REQUIRED  
(2.6 G.P.A. MAY SIGN ON BACK-UP LISTS)

INTERVIEW SIGNUP DATE: Tuesday, October 2, 1990  
INTERVIEW DATES: October 16-17, 1990

**TEXAS UTILITIES COMPANY SYSTEMS (TEXAS UTILITIES MINING CO.)**  
400 N. Olive  
LB 81  
Dallas, TX 75201  
attn: Mr. Bobby Arrington

NUMBER OF SCHEDULES: 2-BS/Mine, BS/ME, BS/EE, BS/CE  
1-BS/EE, ME  
POSITION: Associate Engineer  
LOCATION: Central & Northeast  
DECEMBER 1990 GRADS  
MUST HAVE AUTHORIZATION TO WORK IN THE U.S.

INTERVIEW SIGNUP DATE: Thursday, Oct. 4, 1990  
INTERVIEW DATE: October 19, 1990

**MOTOROLA INC./CELLULAR**  
1303 E. Algonquin Rd.  
M D IL01-5th Floor  
Schaumburg, IL 60196  
attn: Ms. Pam Back

NUMBER OF SCHEDULES: 1  
MAJORS: BS/MS/PhD EE, Comp Sci, Software Eng.  
POSITION: Electrical Engineer, Software Engineer  
LOCATION: Arlington Heights, IL; Ft. Worth, TX  
DECEMBER 1990 GRADS  
2.7 G.P.A. REQUIRED  
MUST BE AUTHORIZED TO WORK FULL TIME IN THE U.S.

INTERVIEW SIGNUP DATE: Thursday, Oct. 4, 1990  
INTERVIEW DATE: October 19, 1990

#### NON-PRESCREENED INTERVIEWS

**USS**  
600 Grant Street  
Pittsburgh, PA 15219-4776  
attn: Mr. Richard Schinagl

NUMBER OF SCHEDULES: 1  
MAJORS: BS in MetEng  
POSITION: Management Associate  
LOCATION: (Details will be available.)  
DECEMBER 1990 or MAY 1991 GRADS  
APPLICANTS MUST BE AUTHORIZED TO WORK IN THE  
INTERVIEW SIGNUP DATE: Tuesday, Oct. 10, 1990  
INTERVIEW DATE: October 24, 1990

NOTE: Interviews for USS will be held in 231 McNutt  
Hall - UMR.

**AMSTED INDUSTRIES**  
44th Floor Blvd., Tower S.  
205 N. Michigan Ave.  
Chicago, IL 60601  
attn: Ms. Shirley Whitesell

NUMBER OF SCHEDULES: 2  
MAJORS: BS/ME, MetE, or Engineering Mgt.  
POSITION: Manufacturing Engineer  
Design Engineer  
Marketing Engineer  
LOCATION: Various  
DECEMBER 1990 or MAY 1991 GRADS  
2.8 G.P.A. REQUIRED

INTERVIEW SIGNUP DATE: Monday, Oct. 8, 1990  
INTERVIEW DATE: October 22, 1990

## UMR INDUSTRY CAREER DAY

9:30 A.M. - 3:30 P.M.  
September 27, 1990  
Multi-Purpose Building

A variety of companies and organizations will be on hand  
to promote summer, co-op, full-time employment and to  
discuss opportunities in general



- ✓ Explore and develop employment options
- ✓ Talk to employers even if you already have a job
- ✓ Meet company representatives
- ✓ Learn where your skills and knowledge fit into the current employment scene

Bring your resume and your questions!

Door Prizes



# Co-op Employment

## LA POSADA

### MEXICAN RESTAURANT

- Delicious Mexican Food (Mexico City Style)
- Daily Lunch & Dinner Specials
- Sundays all you can eat
- 1024 types of Nachos
- Pleasant atmosphere

Hwy. 63 So.  
364-1971

Rolla, Mo.  
Closed Monday



## PERSONAL RESOURCE DEVELOPMENT

Sponsored by Counseling & Career Development  
A Division of Student Affairs



### INTERVIEWING SKILLS

Thursday, September 27 6:30-8:00 pm; G3 Chemical Engineering  
Facilitator: Dr. Sam Burton

This presentation is designed to help you prepare for interviews. Representatives from industry who recruit on the UMR campus will be invited as special guest speakers for the evening.

\*\*\*\*\*

### TEST ANXIETY

Monday, October 1 3:30-4:30 pm; 201 Norwood Hall  
Facilitator: Dr. Gene Van Matre

Learn how you can reduce the anxiety that causes you to forget critical facts and figures when you take tests only to remember them on the way to your room later.

\*\*\*\*\*

### PASSAGES

Tuesday, October 2 3:00-4:30 pm; 201 Norwood Hall  
Facilitator: Ms. Sandra Terry

Life transitions such as beginning a college education, transferring to a new school, changing jobs, and beginning or ending a significant relationship often present unique challenges. Plan to attend this workshop and learn how to more comfortably adjust with these or similar stressors.

\*\*\*\*\*

### UNDERSTANDING YOUR PARTNER

Thursday, October 11 3:30-4:30 pm; Location to be announced  
Facilitator: Dr. Carl Burns

Have you noticed that you and your spouse, boyfriend, or girlfriend often look at things somewhat differently? Or so much alike that it's almost frightening? You may be able to find some reasons for these similarities and differences in this workshop. Pre-registration and completion of the Myers-Briggs Type Indicator (MBTI) by both members of the couple must be done by no later than October 4. Stop by Room 204 Norwood to sign up. Open to students, faculty, and staff. Enrollment is limited.

\*\*\*\*\*

### CAREER PLANNING (Part I)

Tuesday, October 16 3:30-4:30 pm; Location to be announced  
Facilitator: Dr. Sam Burton

Would you like to explore career options in a small group setting? We will look at personal assessment, the world of work, and decision-making as it relates to career choices. Divided into two sessions (participation required at both), the activities will include self-assessment, interest and personality assessment, and planning a career. You must register by October 1 and complete some of the assessment instruments by October 8. Stop by Room 203 Norwood to sign up. Part II is scheduled for October 23.

### ASSERTIVENESS TRAINING

5 Consecutive Thursdays beginning October 18  
3:00-4:30 pm; Location to be announced  
Facilitators: Dr. Carl Burns & Ms. Sandra Terry

If you are not pleased with how you interact with others, this five-week program may be helpful for you. Pre-registration and a brief interview with a facilitator is required to be included in the training sequence. Enrollment is limited. Participants are required to attend all five sessions. Stop by Room 204 Norwood Hall, or phone 341-4211 to set up an interview.

## CO-OP EMPLOYMENT OPPORTUNITIES

Sign-up location: 101 Buehler Bldg.  
9th & Rolla Sts.  
Co-op Office

Sign-up hours: 7:45 am - 11:00 am  
1:00 pm - 3:00 pm

\*\*\*\*\*

Interview date: Tuesday, Oct. 2, 1990

SEMS (Sachs Energy Management Systems)  
Chesterfield, MO (St. Louis area)

Interviewing: E.E., M.E.

Requirements: 3.0 GPA or above. American Citizenship required. Academic level of applicants: at least 30 credit hours completed at the end of the present semester.

Sign-up date: Tuesday, Sept. 18, 1990

start work spring 91

2 schedules - 26 interview openings

\*\*\*\*\*

Interview date: Tuesday, Oct. 2, 1990

BAXTER HEALTHCARE INC.  
Mountain Home, Arkansas (close to Bull Shoals Lake)

Interviewing: Math., Ch.E., Chem., E.E.,  
Mgmt., M.E., Pet.E.

Requirements: 2.5 GPA or above. Academic level of applicants: at least 50 credit hours completed at the end of the present semester.

Sign-up date: Tuesday, Sept. 18, 1990

start work spring 91

1 schedule - 12 interview openings

\*\*\*\*\*

Interview date: Tuesday, October 2, 1990

JOHNSON CONTROLS  
St. Louis, Missouri

Interviewing: E.E., M.E.

Requirements: 3.0 GPA or above. American Citizenship required. Academic level of applicants: 2nd semester freshmen or above.

Sign-up date: Tuesday, Sept. 18, 1990

start work spring 91

1 schedule - 13 interview openings

\*\*\*\*\*

Interview date: Wed., October 3, 1990

INTERNATIONAL PAPER  
Pine Bluff, Arkansas (south of N. Little Rock)

Interviewing: Ch.E.

Requirements: 2.7 GPA or above. American Citizenship or permanent work visa. Academic level of applicants: at least 59 credit hours completed at the end of the present semester.

Sign-up date: Wed., Sept. 19, 1990

start work spring or summer 91

1 schedule - 13 interview openings

\*\*\*\*\*

Interview date: Wednesday, Oct. 3, 1990

THE DURHAM COMPANY  
Lebanon, Missouri

Interviewing: E.E. with emphasis on power and distribution

Requirements: 2.5 GPA or above. Entering junior year.

Sign-up date: Wed., Sept. 19, 1990

1 schedule - 13 interview openings

\*\*\*\*\*

Interview date: Thurs., Oct. 4, 1990

LITTON ADVANCED CIRCUITRY DIVISION  
Springfield, Missouri

Interviewing: Ch.E., Chem., E.E., M.E.

Requirements: 2.8 GPA or above. American Citizenship not required. Academic level of applicants: at least 45 credit hours completed at the end of the present semester.

Sign-up date: Thurs., Sept. 20, 1990

start work spring 91

2 schedules - 22 interview openings

\*\*\*\*\*

Interview date: Monday, October 8, 1990

DOW CHEMICAL USA  
Work locations: Texas, Louisiana, and Michigan

Interviewing: Ch.E., E.E. (power option),  
M.E.

Requirements: 2.8 GPA or above. Permanent Resident Visa. Academic level of applicants: at least 29 credit hours completed at the end of the present semester.

Sign-up date: Monday, Sept. 24, 1990

start work spring 91

1 schedule - 13 interview openings

\*\*\*\*\*

AERONAUTICAL SYSTEMS DIVISION  
Wright Patterson Air Force Base, Ohio

Interviewing: A.E., C.Sc., E.E., M.E.

Requirements: 2.5 GPA or above. American Citizenship required. Academic level of applicants: at least 30 credit hours completed at the end of the present semester.

Turn in resumes: Monday, Sept. 24, 1990

RESUMES ONLY. IF YOU WOULD LIKE TO BE CONSIDERED FOR CO-OP EMPLOYMENT WITH THE ABOVE COMPANY, PLEASE TURN IN A COPY OF YOUR CO-OP RESUME TO THE CO-OP OFFICE ON THE ABOVE DATE.

\*\*\*\*\*

Interview date: Thursday, Oct. 4, 1990

ANHEUSER BUSCH  
St. Louis, Missouri

Interviewing: C.E., M.E., Mgmt.  
(Engineering Planning Dept.)

C.Sc., E.E.  
(Engineering Development Group)  
job descriptions available in Co-op Ofc.

Requirements: 2.8 GPA or above. Permanent resident status. Academic level of applicants: 4-5 semesters completed at the end of the present semester.

Sign-up date: Thurs., Sept. 20, 1990

1 schedule for C.E., M.E., Mgmt. - 13 interview openings

1 schedule for C.Sc., E.E. - 13 interview openings

work Jan-Aug, 1991

\*\*\*\*\*

Interview date: Tuesday, Oct. 9, 1990

ANHEUSER BUSCH  
St. Louis, Missouri

Interviewing: C.E. (Equipment Expediter)  
Job description available in Co-op Ofc.

M.E. (Process Engineering Group)  
job description available in Co-op Ofc.

Requirements: 2.8 GPA or above. Permanent resident status. Academic level of applicants: 4-5 semester completed at the end of the present semester.

Sign-up date: Tuesday, Sept. 25, 1990

work Jan-Aug 1991

1 schedule - 13 interview openings

\*\*\*\*\*



NAVAL WEAPONS SUPPORT CENTER  
Crane, Indiana

Interviewing: Math, Chem, C.Sc., E.E.,  
M.E.

Requirements: 2.0 GPA or above. American  
Citizenship required. Academic level of  
applicants: 2nd semester freshmen or above.

Turn in resumes: Tuesday, Sept. 25, 1990

start work spring 91

RESUMES ONLY. IF YOU WOULD LIKE TO BE  
CONSIDERED FOR CO-OP EMPLOYMENT WITH THE  
ABOVE COMPANY, PLEASE TURN IN A COPY OF YOUR  
CO-OP RESUME TO THE CO-OP OFFICE ON THE ABOVE  
DATE.

\*\*\*\*\*

Interview date: Tuesday, Oct. 9, 1990

BROWN SHOE COMPANY  
Work locations: Fredericktown, MO, Cabool, MO  
Houston, MO, Mountain Grove, MO, Dixon, MO,  
Owensville, MO, Charleston, MO, Bernie, MO,  
Caruthersville, MO, Pocahontas, Arkansas,  
Union City, Tennessee, Dyer, Tennessee, Lexington,  
Tennessee, Selmer, Tennessee, Savannah, Tennessee

Interviewing: M.E., E.E.

Requirements: 2.0 GPA or above.

Sign-up date: Monday, Oct. 1, 1990

1 schedule - 13 interview openings

\*\*\*\*\*

Interview date: Monday, October 15, 1990

COMMONWEALTH ALUMINUM CORPORATION  
Lewisport, Kentucky

Interviewing: Engr. Mgmt.

Requirements: 3.0 GPA or above. Academic  
level of applicants: at least 30 credit  
hours completed at the end of the present  
semester.

Sign-up date: Monday, October 1, 1990

start work spring 91

1 schedule - 13 interview openings

\*\*\*\*\*

ARKANSAS BEST  
Ft. Smith, Arkansas

Interviewing: C.Sc.

Requirements: none listed

Turn in resumes: Monday, Oct. 1, 1990

RESUMES ONLY. IF YOU WOULD LIKE TO BE  
CONSIDERED FOR CO-OP EMPLOYMENT WITH THE ABOVE  
COMPANY, PLEASE BRING A COPY OF YOUR CO-OP  
RESUME TO THE CO-OP OFFICE ON THE ABOVE DATE.

\*\*\*\*\*

NASA - LANGLEY  
Hampton, Virginia

Interviewing: A.E., C.Sc., E.E., M.E.

Requirements: 3.0 GPA or above. American  
Citizenship required. Academic level of  
applicants: at least 30-60 credit hours  
completed at the end of the present semester.

Turn in resumes: Tuesday, Oct. 1, 1990  
PICK UP GOVERNMENT FORM 171 ON OCT. 1.

start work spring 91

RESUMES ONLY. IF YOU WOULD LIKE TO BE  
CONSIDERED FOR CO-OP EMPLOYMENT WITH THE  
ABOVE COMPANY, PLEASE TURN IN A COPY OF YOUR  
CO-OP RESUME TO THE CO-OP OFFICE ON THE  
ABOVE DATE.

\*\*\*\*\*

Interview date: Wed., Oct. 17, 1990

ETHYL CORPORATION - ETHYL PETROLEUM ADDITIVES  
Sauget, Illinois (St. Louis area)

Interviewing: Ch.E.

Requirements: 3.0 GPA or above. Academic  
level of applicants: at least 59 credit  
hours completed at the end of the present  
semester.

Sign-up date: Wed., Oct. 3, 1990

start work spring 91

1 schedule - 12 interview openings

\*\*\*\*\*

Interview date: Wednesday, Oct. 17, 1990

SUNRISE INDUSTRIAL AUTOMATION & DESIGN  
Kansas City, Missouri

Interviewing: E.E., Eng.Mgmt.

Requirements: 3.2 gpa or above. American  
Citizenship required. Academic level of  
applicants: at least 50 credit hours completed  
at the end of the present semester.

Sign-up date: Wed., Oct 3, 1990

start work spring, summer, or fall 1991

1 schedule - 10 interview openings

\*\*\*\*\*

Interview date: Friday, Oct. 19, 1990

ALCO CONTROLS  
St. Louis, Missouri

Interviewing: M.E.

Requirements: 2.0 GPA or above. 1 schedule  
for juniors - 1 schedule for 2nd semester  
freshmen or sophomores

Sign-up date: Thurs., Oct. 4, 1990

2 schedules - 20 interview openings

\*\*\*\*\*

Interview date: Monday, October 15, 1990

USDA - SOIL CONSERVATION SERVICE  
Columbia, Missouri

Interviewing: C.E.

Requirements: 2.0 GPA or above. American  
Citizenship required. Academic level of  
applicants: at least 30-59 credit hours  
completed at the end of the present semester.

Sign-up date: Tuesday, Oct. 2, 1990

1/2 schedule - 6 interview openings

\*\*\*\*\*

OKLAHOMA AIR LOGISTICS CENTER  
Tinker Air Force Base, Okla.

Interviewing: C.Sc. and all Engineering  
majors

Requirements: 2.0 GPA or above. Academic  
level of applicants: at least 60 credit  
hours completed at the end of the present  
semester.

Turn in resumes: Thurs., Oct. 4, 1990  
Pick up government form 171 on Oct. 4

RESUMES ONLY. IF YOU WOULD LIKE TO BE  
CONSIDERED FOR CO-OP EMPLOYMENT WITH THE  
ABOVE COMPANY, PLEASE TURN IN A COPY OF YOUR  
CO-OP RESUME TO THE CO-OP OFFICE ON THE  
ABOVE DATE.

\*\*\*\*\*

# NOTICE

The Associated Students of the University of  
Missouri will be electing one undergraduate  
for a full term to its Board of Directors

- \* Attend monthly meetings
- \* Provide direction for ASUM, state-wide
- \* Set legislative priorities
- \* Assist with programming at UMR

Board member will be elected at  
the Student Council meeting on October 2

For more information, call

ASUM 341-4970

Student Council 341-4280



Interview date: Thurs., Oct. 18, 1990

GENERAL MOTORS CPC  
Oklahoma City, OK

Interviewing: E.E.

Requirements: 2.9 GPA or above. American  
Citizenship required. Academic level of  
applicants: at least 29 credit hours  
completed at the end of the present semester.

Sign-up date: Thurs., Oct. 4, 1990

start work spring 91

1/2 schedule - 7 interview openings

\*\*\*\*\*

UNION CARBIDE  
Texas City, Texas

Interviewing: Ch.E., E.E., M.E.

Requirements: 2.6 GPA or above.

Turn in resumes: Monday, Oct. 8, 1990

start work spring 91

RESUMES ONLY. IF YOU WOULD LIKE TO BE CONSIDERED  
FOR CO-OP EMPLOYMENT WITH THE ABOVE COMPANY,  
PLEASE TURN IN A COPY OF YOUR CO-OP RESUME TO  
THE CO-OP OFFICE ON THE ABOVE DATE.

\*\*\*\*\*

PAUL MUELLER COMPANY  
Springfield, Missouri

Interviewing: Ch.E., E.E., M.E.

Requirements: 2.0 GPA or above

Turn in resumes: Tuesday, Oct. 9, 1990

RESUMES ONLY. IF YOU WOULD LIKE TO BE  
CONSIDERED FOR CO-OP EMPLOYMENT WITH THE  
ABOVE COMPANY, PLEASE TURN IN A COPY OF  
YOUR CO-OP RESUME TO THE CO-OP OFFICE  
ON THE ABOVE DATE.

\*\*\*\*\*

Interview date: Tuesday, Oct. 23, 1990

AMSTED INDUSTRIES  
Chicago, Illinois

Interviewing: M.E., Met.E.

Requirements: 2.8 GPA or above, Permanent  
Visa, Sophomores or Juniors

Sign-up date: Tues., Oct. 9, 1990

\*\*\*\*\*

IBM CORPORATION  
Boca Raton, Florida

Interviewing: C.Sc., E.E., M.E.

Requirements: 2.0 GPA or above. American  
Citizenship required

Turn in resumes: Tuesday, Oct. 9, 1990

RESUMES ONLY. IF YOU WOULD LIKE TO BE  
CONSIDERED FOR CO-OP EMPLOYMENT WITH THE  
ABOVE COMPANY, PLEASE TURN IN A COPY OF  
YOUR CO-OP RESUME TO THE CO-OP OFFICE ON  
THE ABOVE DATE.

\*\*\*\*\*

Interview date: Tuesday, Oct. 23, 1990

PERMEA (MONSANTO COMPANY)  
St. Louis, Missouri

Interviewing: Ch.E., M.E.

Requirements: 3.25 gpa or above. American  
Citizenship not required. Academic level  
of applicants: at least 60 credit hours  
completed at the end of the present semester.

Sign-up date: Tuesday, Oct. 9, 1990

work spring 91 or fall 91

1 schedule - 12 interview openings

\*\*\*\*\*

Interview date: Wednesday, Oct. 24, 1990

UNION PACIFIC RAILROAD  
Omaha, Nebraska

Interviewing: C.E., E.E., M.E. (add Engr. Mgmt.)

Requirements: 3.0 GPA or above. Must be  
able to work in US. Academic level of  
applicants: at least 30 credit hours  
completed at the end of the semester.

Sign-up date: Wednesday, Oct. 10, 1990

start work summer 91

1 schedule - 13 interview openings

UNION PACIFIC RAILROAD WILL HOLD AN  
ORIENTATION ON TUESDAY, OCT. 23 IN THE  
MISSOURI ROOM, UNIVERSITY CENTER EAST  
FROM 7:00 TO 8:00 PM. ALL STUDENTS  
INTERVIEWING WITH UNION PACIFIC ARE  
ASKED TO ATTEND.

\*\*\*\*\*

Interview date: Wed., Oct. 24, 1990

OLIN CORPORATION  
E. Alton, Illinois

Interviewing: Ch.E., C.Sc., M.E.

Requirements: 3.0 gpa or above. American  
Citizenship required. Academic level of  
applicants: at least 30 credit hours  
completed at the end of the semester.

Sign-up date: Wed., Oct. 10, 1990

work spring 91

1 schedule - 13 interview openings

\*\*\*\*\*

Interview date: Thurs., Oct. 25, 1990

MARATHON REFINERY  
Robinson, Illinois

Interviewing: Ch.E., M.E.

Requirements: 2.75 gpa or above. American  
Citizenship or permanent resident visa.  
Academic level of applicants: at least 30  
credit hours completed at the end of the  
present semester.

Sign-up date: Thurs., Oct. 11, 1990

start work spring, summer, or fall 1991

1 schedule - 13 interview openings

\*\*\*\*\*

NATIONAL SECURITY AGENCY  
Ft. George Meade, Maryland

Interviewing: E.E., C.Sc., Math, Physics

Requirements: 3.0 GPA or above and maintain  
a 3.0 throughout school.

Turn In Resumes: Thurs., Oct. 11, 1990  
Pick up government form 171 on Oct. 11

Must work a minimum of 12 months prior to  
graduation

RESUMES ONLY. IF YOU WOULD LIKE TO BE CON-  
SIDERED FOR CO-OP EMPLOYMENT WITH THE ABOVE  
COMPANY, PLEASE TURN IN A COPY OF YOUR CO-OP  
RESUME TO THE CO-OP OFFICE ON THE ABOVE DATE.

\*\*\*\*\*



OLD BEN COAL COMPANY  
Benton, Illinois

Interviewing: E.E., M.E., Mining

Requirements: 2.25 gpa or above. American  
Citizenship required. Academic level of  
applicants: at least 59 credit hours completed  
at the end of the present semester.

Turn in resumes: Thurs., Oct. 11, 1990

start work spring or summer 91

RESUMES ONLY. IF YOU WOULD LIKE TO BE CON-  
SIDERED FOR CO-OP EMPLOYMENT WITH THE ABOVE  
COMPANY, PLEASE TURN IN A COPY OF YOUR CO-OP  
RESUME TO THE CO-OP OFFICE ON THE ABOVE DATE.

\*\*\*\*\*

Interview date: Thurs., Oct. 25, 1990

GENERAL ELECTRIC AIRCRAFT  
Cincinnati, Ohio

Interviewing: Met.E.

Requirements: 3.0 GPA or above.

Sign-up date: Thurs., Oct. 11, 1990

4 interview openings

\*\*\*\*\*

Interview date: Tuesday, November 6, 1990

PRC ENVIRONMENTAL MANAGEMENT INC.  
Work locations: Kansas City, Kansas,  
Chicago, Illinois,  
Dallas, Texas

Interviewing: Ch.E., C.E., Geology, Geo.E.

Requirements: 2.5 GPA or above. Academic  
level of applicants: at least 45 credit  
hours completed at the end of the present  
semester.

Sign-up date: Tuesday, Oct. 23, 1990

start work spring 91

1 schedule - 9 interview openings

\*\*\*\*\*

OMAHA PUBLIC POWER DISTRICT  
Omaha, Nebraska

Interviewing: C.E., E.E., M.E., Nuc.

Requirements: 2.5 GPA or above. American  
Citizenship required. Academic level of  
applicants: at least 59 credit hours completed  
at the end of the present semester.

Turn in resumes: Thurs., Oct. 25, 1990

RESUMES ONLY. IF YOU WOULD LIKE TO BE CON-  
SIDERED FOR CO-OP EMPLOYMENT WITH THE ABOVE  
COMPANY, PLEASE TURN IN A COPY OF YOUR CO-OP  
RESUME TO THE CO-OP OFFICE ON THE ABOVE DATE.

\*\*\*\*\*

Addition to October Co-op list

Interview date: Friday, Oct. 12, 1990

GENERAL ELECTRIC LAMP PLANT  
St. Louis, Missouri

Interviewing: M.E., E.E.

Requirements: 2.8 GPA or above

Sign-up date: Friday, Sept. 28, 1990

1 schedule - 11 interview openings

\*\*\*\*\*

Interview date: Tuesday, Oct. 23, 1990

NORANDA ALUMINUM  
New Madrid, Missouri

Interviewing: (4) M.E., (2) Met.E., (3) Eng.Mgmt.

Requirements: 2.8 GPA or above.

Sign-up date: Tues., Oct. 9, 1990

1 schedule - 9 interview openings

\*\*\*\*\*

Interview date: Wed., Oct. 10, 1990

MOOG AUTOMOTIVE  
St. Louis, Missouri

Interviewing: M.E., Met.E.

Requirements: 2.8 GPA or above. US Citizenship,  
Must have at least 30 credit hours completed at  
the end of the present semester.

Sign-up date: Wed., Sept. 26, 1990

1 schedule M.E. - 12 interview openings  
1 schedule Met.E.-12 interview openings

\*\*\*\*\*

GENERAL MOTORS PROVING GROUND  
Milford, Michigan

Interviewing: M.E., E.E.

Turn-in resumes: Monday, Oct. 15, 1990

RESUMES ONLY. IF YOU WOULD LIKE TO BE  
CONSIDERED FOR CO-OP EMPLOYMENT WITH  
THE ABOVE COMPANY, PLEASE TURN IN A  
COPY OF YOUR CO-OP RESUME TO THE CO-OP  
OFFICE ON THE ABOVE DATE.

NOTE: The ones that indicate RESUMES ONLY.  
This means the company will not be on campus  
interviewing, but they want resumes to review  
and should contact you if they are interested  
in employing you.

Please let the Co-op Office know immediately  
of any acceptance of an offer.

Please check with the Co-op Office period-  
ically to see if additional companies have  
scheduled interviews. These will be posted on  
the bulletin board by the Co-op Office and  
printed in the Miner Newspaper.

#### SPECIAL NOTICE - PRESCREENING

SIGN-UP FOR NASA, JOHN F. KENNEDY SPACE CENTER, CO-OP  
INTERVIEWS

TURN IN RESUMES: Monday, October 1, 1990

WHERE: Co-op Office, 101 Buehler Bldg.

TIMES: 7:45 am - 11:30 am - 1:00 pm - 4:00 pm

INTERVIEWING: E.E., M.E.

REQUIREMENTS: 3.0 gpa or above. Finishing sophomore  
year. US Citizen. must be able to work at least 3  
work terms

THE ACTUAL INTERVIEW DATE WILL BE THURSDAY, OCT. 18, 1990.

Nasa, John F. Kennedy Space Center, Florida has requested  
that we furnish them with resumes for pre-screening. We  
will accept as many Co-op resumes as we can collect. Just  
drop off a copy of your Co-op resume on the above turn in  
date. After pre-screening, NASA will send the Co-op  
office a list of those students they are interested in  
interviewing. The list should be posted in the UMR  
Co-op Office by Friday, Oct. 12. Check with the Co-op  
office no later than Oct. 12.



## SPECIAL NOTICE - PRESCREENING

SIGN-UP FOR DEPARTMENT OF THE NAVY, NAVAL WEAPONS CENTER, CHINA LAKE, CALIFORNIA

TURN IN RESUMES: Monday, Oct. 22, 1990

WHERE: Co-op Office, 101 Buehler Bldg.

TIMES: 7:45 AM - 11:30 AM - 1:00 PM - 4:00 PM

INTERVIEWING: A declared major in the science and engineering fields

REQUIREMENTS: 2.7 GPA or above. Must have sophomore or junior standing.

THE ACTUAL INTERVIEW DATE WILL BE TUESDAY, NOVEMBER 13, 1990

Naval Weapons Center, China Lake, CA has requested that we furnish them with resumes for prescreening. We will accept as many Co-op resumes as we can collect. Just drop off a copy of your Co-op resume on the above turn in resume date. After pre-screening, Naval Weapons Center will send the Co-op Office a list of those students they are interested in interviewing. The list should be posted in the UMR Co-op Office by Friday, November 2, 1990. Check with the Co-op Office no later than Nov. 2.

For those students outside NWC's local commuting area, the Professional Recruiting Office will assist in locating affordable housing. Successful co-op applicants will receive assistance with books and tuition as well as a co-op job assignment.

## SPECIAL NOTICE - PRESCREENING

SIGN-UP FOR ALUMINUM COMPANY OF AMERICA, CO-OP INTERVIEWS

TURN IN RESUMES: Wednesday, Sept. 26, 1990

WHERE: Co-op Office, 101 Buehler Bldg.

TIME: 7:45 am - 11:30 am - 1:00 pm - 4:00 pm

INTERVIEWING: M.E.

REQUIREMENTS: 2.4 gpa or above, American Citizenship required. Academic level of applicants: at least 15 credit hours completed at the end of the present semester toward bs degree.

THE ACTUAL INTERVIEW DATE WILL BE TUESDAY, OCTOBER 16, 1990.

Aluminum Company of American (ALCOA) of Davenport, Iowa has requested that we furnish them with resumes for pre-screening. We will accept as many CO-OP resumes as we can collect. Just drop off a copy of your CO-OP resume on the above sign-up date. After pre-screening, ALCOA will send the Co-op Office a list of those students they are interested in interviewing. The list should be posted in the UMR Co-op Office by Wednesday, Oct. 10. Check with the Co-op Office no later than Oct. 10.

IBM CORPORATION CO-OP INTERVIEWS, NOVEMBER, 1990

IBM WILL HOLD AN INFORMAL INFORMATION AND SIGNUP DAY ON WEDNESDAY, NOVEMBER 7, 1990, IN THE CENTENNIAL HALL, UNIVERSITY CENTER-EAST. HOURS WILL BE FROM 12:00 - 5:00 PM. (STOP BY ANYTIME) STUDENTS INTERESTED IN CO-OPING WITH THE IBM CORPORATION ARE INVITED. ACTUAL INTERVIEW DATE WILL BE ON THURSDAY, NOVEMBER 8, 1990.

DISCIPLINES: CO-OP OPPORTUNITIES INCLUDE BUT ARE NOT LIMITED TO SOFTWARE DEVELOPMENT, TECHNICAL MARKETING AND ENGINEERING.

POSITION(S): REPRESENTATIVES FROM VARIOUS U.S. LOCATIONS & LOCATIONS: WILL CONDUCT AN INFORMAL INFORMATION SESSION ON NOV. 8. STUDENTS INTERESTED IN INTERVIEWING WITH IBM SHOULD ATTEND. DETAILED INFORMATION WILL BE PROVIDED AT A LATER DATE.

ALL STUDENTS MUST HAVE A RESUME AND TRANSCRIPT ON FILE AT THE CO-OP OFFICE BEFORE YOU WILL BE CONSIDERED FOR CO-OP EMPLOYMENT.

YOU MUST SUBMIT (4) COPIES OF YOUR CO-OP RESUME FORM TO IBM ON THE INFORMAL INFORMATION AND SIGNUP DAY, NOV. 8.

Note: IBM will consider U.S. Citizens, Permanent Residents or "Intending Citizens" as defined by the 1986 Immigration Reform and Control Act.

# Summer Employment

UNIVERSITY OF MISSOURI-ROLLA  
PLACEMENT OFFICE  
Buehler Building, 9th & Rolla St.

## SUMMER EMPLOYMENT

FALL WEEKLY DETAIL LIST #6  
Week of October 22-26, 1990

SIGNUP LOCATION: G-3 Buehler Building  
SIGNUP HOURS: 7:45 to 11:15 a.m.  
1:00 to 4:15 p.m.

## PRESCREENED INTERVIEWS

AMOCO CHEMICAL COMPANY  
Chocolate Bayou Plant  
P.O. Box 1488  
Alvin, TX 77511  
attn: Mr. Neal Squyres

NUMBER OF SCHEDULES: 1 ea day: Oct. 23-24  
MAJORS: Senior & 2nd Semester Juniors  
ChE, EE, ME - for Interns  
LOCATION: Chocolate Bayou & Cedar Bayou  
Plants  
MUST BE U.S. CITIZEN OR HOLD GREEN CARD

DEADLINE FOR TURNING IN RESUMES: Friday, Sept. 28  
INTERVIEW DATES: October 23-24, 1990

AMOCO PRODUCTION  
200 E. Randolph Dr., MC 4301  
Chicago, IL 60601  
attn: Mr. D.A. Foster

NUMBER OF SCHEDULES: 1 ea day, Oct. 23-24  
MAJORS: Junior standing Computer Science  
POSITION: Programmer/Analyst  
LOCATION: Chicago  
PREFER TOP HALF OF CLASS

DEADLINE FOR TURNING IN RESUMES: Friday, Sept. 28  
INTERVIEW DATES: October 23-24, 1990

AMOCO PRODUCTION  
501 Westlake Park Blvd.  
Houston, TX 77079  
attn: Ms. M.J. Hinn

NUMBER OF SCHEDULES: 1 ea day, Oct. 23-24  
MAJORS: Freshman, Sophomore, or Junior  
degrees in ME, ChE, PE, Geol.Eng.  
POSITION: Field Technician & Production  
Technologist -- Engineer Trainee opportunities  
LOCATION: Houston, TX  
SHOULD BE LEGALLY AUTHORIZED TO BE EMPLOYED IN  
THE U.S. AS SET FORTH IN THE IMMIGRATION REFORM  
& CONTROL ACT OF 1986  
PLEASE BE SURE TO INCLUDE SS# OF STUDENT IN UPPER  
RIGHT CORNER OF RESUME.

DEADLINE FOR TURNING IN RESUMES: Friday, Sept. 28  
INTERVIEW DATES: October 23-24, 1990



"...GO AHEAD...TAKE YOUR BEST SHOT!"



## Informational Meetings

PLACEMENT OFFICE  
REVISED RECRUITMENT INFORMATIONAL MEETINGS  
9/23/90 thru 10/19/90

September 23	Burns & McDonnell	101 EE Bldg.	7:00 pm
September 24	Mobil Oil (Mobil Oil has changed location of meeting to CHE Bldg. G-3)	Chemical Engr.-G3	7:00 pm
September 26	U. S. Marines Procter & Gamble	Hockey Puck ME Aud.-Room 104ME	9 am-3pm 8 pm
September 27	Lever Bros. Marathon Oil Union Pacific Vista Chemical U. S. Marines	Mark Twain Rm-UCE Cent. Hall -202B Missouri Room-UCE Meramec Rm.-UCE Hockey Puck	7:00 pm 7:00 pm 6:30 pm 6:00 pm 9 am-3pm
October 1	Chevron	Missouri Rm-UCE	6:30 pm
October 4	Univ. of Tulsa Grad School Anderson Consulting	UCE-Hallway McNutt Hall-Rm 206	10 am-2 6:30 pm
October 7	Schlumberger Well Services	Mark Twain Rm-UCE	7:30 pm
October 8	ARCO Oil & Gas U. S. Patent & Trademark	104 ME Bldg. Mark Twain Rm-UCE	7:00 pm 7:00 pm
October 9	BHP Utah Int'l Dillards LTV Steel Ethyl Corporation	Missouri Rm-UCE Math-Sci Bldg-Rm209 Mark Twain Rm-UCE CHE Bldg. Rm. 125	7:00 pm 7:00 pm 7:30 pm 6:30 pm
October 15	U. S. Dept of Energy Conoco, C&TSD(Comput) Conoco, S&T&E Div. Conoco, RNE-RNA Div Conoco, EPNA	Maramec Rm-UCE Mark Twain Rm-UCE 202B Cent. Hall-UCE 202A Cent. Hall-UCE Sunrise Room-UCE	7:00 pm 8:00 pm 8:00 pm 7:00 pm 7:00 pm
October 16	U.S.Naval Air Systems	Mark Twain Rm-UCE	6:00 pm
October 18	Air Force Luncheon FMC - Wyoming	Missouri Rm-UCE Meramec Room-UCE	11am-1pm 7:00 pm

## EIT Review Sessions Schedule

Room	Time	Date	Instructor	Topic
CE 114	7:00pm	9/27	Dr. White (Bas. E.)	Statics & Dynamics
CE 114	7:00	10/2	Dr. Munger (CE)	Eng. Economics
CE 114	7:00	10/4	Dr. Morris (CE)	Fluid Mechanics
CE 114	7:00	10/9	Dr. Cunningham (EE)	Elec. Circuits
CE 117	7:00	10/11	Dr. Sheffield (ME)	Thermodynamics
CE 117	7:00	10/16	Dr. Herring (Math)	Mathematics
CE 114	7:00	10/18	??	Mech. of Materials

EIT Exam - Thursday, October 25, 1990

Review session handouts will be available at the review sessions.

Those taking the EIT are encouraged to attend these review sessions.

They should be very beneficial.

Organized by the American Society of Civil Engineers Student Chapter.



**FORCE**  
HAIR  
Gina Rinck  
Owner/Operator

314-341-5828

1421 H Forum Dr. Rolla, MO 65401

**\$8 Guys**  
**\$10 Girls**  
**Long Hair X-tra**

**ALEX'S** PIZZA PALACE  
Real Italian Pizza  
122 W. 8th St.



Open 7 Days a week  
11:00 AM - 2:00 AM  
Call For Delivery  
or Take Out

**364-2669 or 364-9878**

**Salads Sandwiches Pasta**

**5% Beer on Sunday**

**SPECIALITIES**

**Gyros Souvlaki Steak**

**Greek Salad Spinich Pie Barlava**



**WENOMADMER**

8:00 pm Cedar Street Center

Free with Student ID

See article for more information



# There's an IBM PS/2 made for every student body.

## IBM PS/2 Model 30 286 (U31)

1MB memory  
30MB fixed disk drive  
8513 Color Display

### Preloaded software:

IBM DOS 4.0  
Microsoft® Windows™ 3.0,  
Word for Windows™,\*  
hDC Windows Utilities™\*  
ZSoft SoftType™†

\$1,799

## IBM PS/2 Model 55 SX (U31)

2MB memory  
30MB fixed disk drive  
8513 Color Display

### Preloaded software:

IBM DOS 4.0  
Microsoft Windows 3.0,  
Word for Windows™,\*  
hDC Windows Utilities™\*  
ZSoft SoftType™†

\$2,349

## IBM PS/2 Model 55 SX (W61)

2MB memory  
60MB fixed disk drive  
8515 Color Display

### Preloaded software:

IBM DOS 4.0  
Microsoft Windows 3.0,  
Word for Windows and Excel™,\*  
hDC Windows Utilities™\*  
ZSoft SoftType™†

\$2,799

## IBM PS/2 Model 70 (W61)

4MB memory  
60MB fixed disk drive  
8515 Color Display

### Preloaded software:

IBM DOS 4.0  
Microsoft Windows 3.0,  
Word for Windows and Excel™,\*  
hDC Windows Utilities™\*  
ZSoft SoftType™†

\$4,499

## Printers

IBM Proprinter™ III  
w/cable (Model 4201-003) \$ 349

IBM Proprinter X24E  
w/cable (Model 4207-002) \$ 499

IBM Proprinter XL24E  
w/cable (Model 4208-002) \$ 679

IBM LaserPrinter E  
w/cable (Model 4019-E01) \$1,039

Hewlett-Packard PaintJet®  
color graphics printer  
(Model HP 3630-A) \$ 799

## IBM PS/2 Model 30 286 (T31)

\$1,649

## Model 55 SX (T61)

\$2,699

## Model 70 (T61)

\$4,399

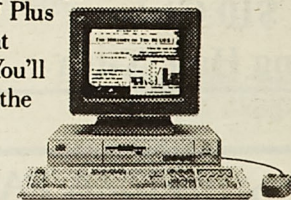
Preloaded  
with IBM DOS 4.0  
and Microsoft Windows 3.0

Whether you need a computer to write papers or create graphics, charts and spreadsheets, there's an IBM Personal System/2® that's right for you.

The IBM PS/2® family of computers has everything you asked for...including preloaded software, a special student price and affordable loan payments.\*\* All models come with IBM DOS 4.0, Microsoft Windows 3.0, 3.5-inch diskette drive and an IBM Mouse.

Try one on for size. We're sure you'll find one that fits just right.

And if you buy before December 31, 1990, you'll receive a **TWA®** Certificate entitling you to a round-trip ticket for \$149<sup>††</sup>/\$249<sup>††</sup> Plus a free **TWA Getaway®** Student Discount Card application. You'll also get a great low price on the **PRODIGY®** service.



**For ordering information contact the  
computer center (341-4841) or stop by  
Room 114 Math-Computer Science**

**IBM®**

\*\* This offer is available only to qualified students, faculty, staff and institutions that purchase IBM Selected Academic Solutions through participating campus locations. Prices quoted do not include sales tax, handling and/or processing charges. Check with your institution regarding these charges. Orders are subject to availability. Prices are subject to change and IBM may withdraw the offer at any time without written notice. † Microsoft Word for Windows, Microsoft Excel and hDC Windows Utilities are the Academic Editions. † ZSoft SoftType is the Academic Version. † Valid for any TWA destination in the continental U.S. or Puerto Rico for travel September 16, 1990, through December 19, 1991, at the following round-trip fares: \$149.00 round-trip for travel from September 16, 1990, through June 14, 1991, and September 16, 1991, through December 19, 1991; \$249.00 round-trip for travel June 15, 1991, through September 15, 1991. Seats are limited. Fare is non-refundable. 14 day advance purchase, blackout dates and certain other restrictions apply. Complete details will be shown on certificate. Applicants for TWA's Getaway Student Discount Card must be full-time students between the ages of 16-26. © IBM, Personal System/2 and PS/2 are registered trademarks of International Business Machines Corporation. Microsoft is a registered trademark of Microsoft Corporation. PaintJet is a registered trademark of Hewlett-Packard Company. TWA is a registered service mark of Trans World Airlines, Inc. TWA Getaway is a registered trademark of Trans World Airlines, Inc. PRODIGY is a registered service mark and trademark of Prodigy Services Company, a partnership of IBM and Sears. \* IBM Proprinter is a registered trademark of Trans World Airlines, Inc. PRODIGY is a registered service mark and Windows and Excel are trademarks of Microsoft Corporation. hDC Windows Utilities (hDC Windows and hDC FirstApps) are trademarks of the hDC Computer Corporation. ZSoft SoftType is a trademark of ZSoft Corporation. © IBM Corporation 1990