



28 Feb 1990

## The Missouri Miner, February 28, 1990

Follow this and additional works at: [https://scholarsmine.mst.edu/missouri\\_miner](https://scholarsmine.mst.edu/missouri_miner)

These newspapers reflect the attitudes, perspectives, and beliefs of different times. Neither the library nor the university endorses the views expressed in these collections, some of which contain images and language which may be offensive to some readers.

---

### Recommended Citation

"The Missouri Miner, February 28, 1990" (1990). *The Missouri Miner Newspaper*. 2543.  
[https://scholarsmine.mst.edu/missouri\\_miner/2543](https://scholarsmine.mst.edu/missouri_miner/2543)

This Newspaper is brought to you for free and open access by Scholars' Mine. It has been accepted for inclusion in The Missouri Miner Newspaper by an authorized administrator of Scholars' Mine. This work is protected by U. S. Copyright Law. Unauthorized use including reproduction for redistribution requires the permission of the copyright holder. For more information, please contact [scholarsmine@mst.edu](mailto:scholarsmine@mst.edu).



# Missouri Miner

A publication of the students of the University of Missouri-Rolla

February 28, 1990

Volume 78, Number 22

Twenty-four pages



## Assessment procedure underway at UMR

Mark Kasinskas  
STAFF WRITER

Lately, UMR students have received mailings with colorful postcards that mention something about an "assessment." The average student might have initially scoffed at the mailing and the information contained within, but it turns out that UMR's Institutional Assessment Program is a program that can only help both students and the University. This "systematic process of gathering and using data for evaluating and improving programs and services," as the brochure phrases it, helps determine just how good UMR and its students really are. Dr. John Park, Vice-Chancellor of Academic Affairs says the major goal of assessment at UMR is to see if students are "reaching the educational goals" set by the University.

### UMR Assessment Policy

1. All graduating seniors must fulfill the assessment requirements, as determined by the major field department and consistent with the Office of Institutional Assessment and the Board of Curators' guidelines, before graduating.

2. All other full-time students must fulfill the assessment requirements, as determined by the UMR Office of Institutional Assessment and consistent with the Board of Curators' guidelines, before registering for further course work.

About 75% of institutions of higher education in the U.S. have some form of standardized assessment program. The remaining schools have expressed interest in standardized assessments.

Dr. Park sees assessment as "an ongoing process. [Students] learn a lot that's not in books... and it's impossible to measure all learning with a single test."

1990 is the fourth year an assessment will be administered at UMR. The first assessment drew less than 100 students, so results were rather inconclusive. The following year, the Board of Curators wanted the assessment to become compulsory, but efforts by StuCo kept it at a voluntary level. Despite an extensive publicity campaign, only 44% of the student body participated. This turnout left the Assessment Office concerned that they were not getting "typical" information. Last year, assessment participation became compulsory.

Dr. Park sees obvious benefits of this. By having 100% student participation, he notes, the University can get statistical models that are accurate. And, he adds, assessing over many years can allow the University to "look at things from many angles."

Assessment sessions are scheduled to take about two hours, although the

actual time to go through the process is a bit less than that. Students are supposed to return a card indicating which session they would like to participate in. Usually, all request can be met, so no one has to go to a session they don't want.

At the assessment session, students receive a packet that contains all the materials they will need to participate in the assessment (except writing implements). Standardized instructions will be given when necessary, especially to remind students to include their student ID number on the forms. Without the ID number, it is very difficult to use much of the assessment information for the research purposes intended.

The actual content of the assessments to be administered this Spring will vary by student level. Each level takes a thematic assessment, but all have many instruments that cover a wide range. Through the use of multi-instruments, Dr. Park says, the University is trying to assess as many areas as possible. Each assessment also has some form of opinion survey. Some specifics:

Freshmen will be taking an opinion and skills survey - not tests - which are useful in determining a student's satisfaction with UMR. Similar exercises can be administered in the future to see if or how the student's opinions

changed during their UMR career.

Sophomores will participate in a writing essay and writing skills survey. Information from this assessment can help the University determine how well UMR students (and also potential graduates) can write. "Are they minimally adequate? Does the University need to do more?"

An advising survey given to last year's juniors has proven to be very useful. New information is being learned, and changes are resulting. [The advising survey is actually one of several surveys and tests (the other two covering writing, and then math) in which national services such as ETS and ACT are involved and interested. These latter two will be at a future date.]

Seniors will have an assessment that concentrates on their major field. According to Dr. Park, each department wants to know "how well [their graduates] have mastered their goals."

Assessment is conducted at all grade levels because, as Dr. Park notes, assessing just at the beginning and the end of a student's college career is not enough. By assessing during inbetween years, much more can be learned.

## EIT applications due soon

The Fundamentals of Engineering Examination will be given on the UMR campus on Saturday, April 21, 1990. Applications may be picked up in Room 111 Butler-Carlton Civil Engineering Building on the UMR campus and must be returned to the office of the Missouri Board for Architects, Professional Engineers, and Land Surveyors in Jefferson City NO later than **March 7, 1990**.

Review Sessions on topics covered on the examination will not be conducted this year due to declining attendance over the last several years. Handouts to guide students in reviewing for the exam will be available in Room 111 Butler-Carlton Civil Engineering Building after **March 1**. Topics covered are: Fluid Mechanics; Engineering Economy; Electrical Circuits; Mathematics; Strength of Materials; Statics; Dynamics; and Heat, Power and Mechanical Engineering.

## Lab bill introduced in state senate

By Kevin van Haaren  
STAFF WRITER

The Associated Students of the University of Missouri (ASUM) is currently lobbying the state senate in support of Senate Bill 521, introduced by Senator Lybyer. This bill proposes to provide the accredited engineering colleges of the University of Missouri with money to be used to purchase teaching or research laboratory equipment.

The amount of money that would be granted is based on the number of bachelor degrees awarded in the previous year. The proposal calls for \$1200 per degree to be given to the University each year (until 1997.) The appro-

priation would come from the Capital Improvements section of the budget.

The bill will replace the current law which expires this year. The money granted to UMR in the past has been used to extensively upgrade many of the labs on campus. The Electrical Engineering department has used part of the money to computerize the Emerson Electric Machines and Drives lab. The Basic Engineering department has used the funds to replace equipment, some of which was 60 years old. And the Mechanical Engineering/Aerospace Engineering Department used some of the funds to update their labs with such equipment as oscilloscopes, voltmeters, ammeters, and computer workstations.

Current predictions of the amount of money required to keep the labs up to date in state of the art equipment is around 3 million dollars. This estimate is based on equipment being replaced every 10 years. The money provided by the state is approximately half the estimated amount, with the other half being provided by non-state funds, such as private or corporate grants.

The outlook for the future of the bill is bright. It has passed the perfection stage and is currently in the Capital Budget. The bill is being lobbied for by Tom Brown of the UMR ASUM office and has the support of many senators. Unless heavily amended, it should pass without much debate.

## Students prepare for St. Pat's



Steve Keutzer and Tim Dalton work on Sigma Tau Gamma's cudgel.

Susan Lowe



# Calendar of Events

## Wednesday

### ASU WEDNESDAY!

**TIME MANAGEMENT**, 3:30p.m., in room 201 Norwood Hall. How do you manage to have enough time to get all your school work done and have some time left over to do other important things in your life?

**ISC Meeting**, 5:15p.m., in room G-8 H-SS.

**Wesley Meeting**, 6p.m., at the Wesley Foundation.

**ITE Meeting**, 6:30p.m., in room 114 CE.

**Kappa Alpha Psi Greek Forum**, 7p.m., in room G-5 H-SS.

**Tau Beta Sigma Meeting**, 7p.m., in Old Cafe.

**ASHRAE Meeting**, 7p.m., in room 209 McNutt Hall.

**Pi Tau Sigma Meeting**, 7:30p.m., in room 209 ME.

**UMR Men's Basketball**, 7:30p.m., at Lincoln University.

**SME Meeting**, 7:30p.m., in room 204 McNutt Hall.

**Mass**, 9p.m., at the Newman Center.

## Thursday

**AF ROTC Leadership Lab**, 12:30p.m., in room 216 McNutt Hall.

**SETTING A CAREER COURSE**, 3:30p.m., in room 201 Norwood. Are you confused about what to major in, or what type of career to pursue? Too many choices and not enough information? You may find that discovering more about your interests is one way to get a direction established. \* Pre-registration and completion of the Strong-Campbell Interest Inventory (SCII) is required. Limited enrollment - contact Counseling & Career Development by February 20, 1990.

**Bible Study Club Meeting**, 4p.m., in Maramec Room.

**Physics Colloquium**, 4p.m., in room 104 Physics Building. "An Atomic Clock with 10<sup>-16</sup> Second Accuracy," Dr. Horst Schmidt-Böcking, University of Frankfurt, West Germany. FREE!!

**Toastmasters Meeting**, 4:45p.m., in room 220 Fulton Hall. Toastmasters is an international organization devoted to helping its members develop their public speaking, listening, and critical evaluation skills.

**Campus Crusade for Christ**, 6p.m., in room 125 Schrenk.

**IK Meeting**, 6:30p.m., in room 204 McNutt Hall.

**Eta Kappa Nu Meeting**, 6:30p.m., in room 102 EE.

**Climbing Club**, 6:30p.m., in room 206 McNutt Hall. Anyone interested in the thrill of rock climbing is invited. All equipment is provided by the club and no experience is necessary.

**KME Help Session**, 7p.m., in room 203 M-CS.

**UMR Hangliding Club**, 7p.m., in room 210 McNutt Hall. Gliding weather will be here soon, so come on by so we can plan for some fun and exciting activities. Anyone interested in Hangliding is invited. Let's get off the ground and into the air this spring.

**APQ Meeting**, 7p.m., in room G-5 H-SS.

**ACM Meeting**, 7p.m., in room G-5 H-SS.

**Alpha Chi Sigma Meeting**, 7p.m., in room 140 Schrenk.

**UMR Film Series**, 7:30p.m. with a personal appearance by filmmaker Les Blank and screening of three of his documentaries, in Miles Auditorium, Mechanical Engineering Building. Admission by season ticket or \$3 at the door.

## Friday

**Collegium Musicum Workshop**, in the University Center-East.

**Juggling Club**, 4:30p.m. to 6p.m. and 7 to 8p.m. at the Miner Rec. Contact Ed Carstens at 364-7536 for details.

**SUB Presents: The Gong Show**, 7p.m., at the Cedar Street Center.

**SUB Movie Series**, 7p.m., John Cusack Double Feature "Better Off Dead" & "One Crazy Summer" in room 104 ME.

**IVCF Meeting**, 7p.m., in room 202 in the Library. Movie "Strained Images."

**Korean Student Association Meeting**, 7p.m., in the Maramec Room.

**Tau Beta Pi Meeting**, 7p.m., in room G-3 Schrenk.

## Saturday

### MID-SEMESTER!

**Lane Springs Clean Up Day** sponsored by G.D.I.

**Collegium Musicum Workshop**, in the University Center-East.

**UMR Baseball**, 1p.m. and 3p.m., versus Washington University. UMR Baseball Diamond south of Bullman Multi-Purpose Building. FREE!!

**SUB Movie Series**, 7p.m., John Cusack Double Feature "Better Off Dead" & "One Crazy Summer" in room 104 ME.

**AAPG Mineral Auction**, mineral registration at 9a.m. to noon and auction at 1p.m., in room 204 McNutt Hall. This auction is sponsored by UMR's C.L. Dake Society and the student chapter of American Association of Petroleum Geologists.

**UMR Men's Basketball**, 7:30p.m., versus Northeast Missouri State University (NEMO). In the Gale Bullman Multi-Purpose Building. Admission charged.

**Concert sponsored by UMR Collegium Musicum**, 8p.m., at the Cedar Street Center. Paul Elliot, vocalist; Wendy Gillespie, violi; "Ayres and Francies," viol consort, Fort Worth, Texas. FREE!

## Sunday

**Collegium Musicum Workshop**, in the University Center-East.

**KMR Station Meeting**, 7:30p.m., in room 107C ME Annex (or Mining).

## Monday

**Eta Kappa Nu Help Session**, 6:30p.m., in room 102 EE.

**Independents Meeting**, 6:30p.m., in Maramec Room.

**Christian Campus Fellowship Meeting**, 7p.m., in the Missouri room in the University Center-East. Everyone is invited!

**Chi Alpha Bible Study**, 7p.m., in room 210 McNutt Hall.

**ASME, Pi Tau Sigma, IEEE, Eta Kappa Nu, ASEM, NSBE, & SWE with General Electric**, 7p.m., in room G-5 H-SS. Sponsored by Joseph Cleveland on the "Information Technology and Its Impact on the Engineering Process."

**NSBE Meeting**, 7p.m., in room 204 McNutt Hall.

## Tuesday

**SWE Meeting**, 5:45p.m., in the Ozark Room.

**StuCo Meeting**, 6:30p.m., in the Eng. Mgt. Aud.

**KME Help Session**, 7p.m., in 203 M-CS.

**KME Meeting**, 8:15p.m., in room G-5 H-SS.

## Next Wednesday

**TEST ANXIETY**, 3:30p.m., in room 201 Norwood. What causes you clutch of forget very important information on a test then remember it on the way home? What causes you to sleep poorly the night before a test? These and other symptoms of anxiety will be discussed.

**ISC Meeting**, 5:15p.m., in room 114 CE.

**Wesley Meeting**, 6p.m., at the Wesley Foundation.

**Alpha Chi Sigma Meeting**, 6:30p.m., in room G-3 Schrenk.

**Tau Beta Sigma Meeting**, 7p.m., in Old Cafe.

**ASCE Meeting**, 7p.m., in room 114 CE.

**Met Society Meeting**, 7:30p.m., in room 204 McNutt Hall.

**Mass**, 9p.m., at the Newman Center.

## Noday

**Preregistration for Summer-Fall** is April 16-20, 1990.

**Class Schedules** available April 12, 1990.

**Dec Grads** go to 103 Parker Hall today to apply.

**All International Students:** March 25 is the International Day. The ISC needs cooperation from all international students with the costume show, the exhibit, and especially your native food recipes, so come to the meeting on every Wednesday at 5:15p.m., in room 213 University Center West.

For more information call Melissa at 364-6963.

**Kappa Alpha Psi Celebrates 10th Year Anniversary.** Members of the Iota Omega chapter of Kappa Alpha Psi Fraternity Inc. will be celebrating their 10th year anniversary on UMR's campus this week. Iota Omega chapter was chartered February 23, 1980 after UMR students pledged the Fraternity at Delta Omega chapter (University of Missouri-Columbia).

The week's activities include a Greek Forum, Bowling tournament, Neophyte Party, Pro-test show, and Ball/banquet. All are invited to attend. The times and places of all events will be posted.

**Undergraduate Engineering Majors** with approximately 32 to 64 hours completed in the curriculum are eligible to apply for Tau Beta I Freshman Scholarships. For more information please contact Martina Schollmeyer at 364-9282 ASAP.

**NO Graduation checks** will be made during preregistration April 16-20, 1990. Please come Registrar's Office before April 13, 1990.

## Missouri Miner

The **Missouri Miner** is the official publication of the students of the University of Missouri-Rolla. It is distributed each Wednesday afternoon at Rolla, Missouri and features activities of the students of UMR.

All articles, features, photographs, and illustrations published are the property of the **Missouri Miner** and may not be reproduced or published without written permission.

The **Missouri Miner** encourages comments from its readers, and will attempt to print all responsible letters and editorial material received. All submissions must have a name, student ID number, and phone number for verification. Names will be withheld upon request.

Submissions for publication must be in our drop box (first floor of the Rolla Building) by 3:30 p.m. on the Thursday before publication. The **Missouri Miner** reserves the right to edit all submissions for style, grammar, punctuation, spelling, length, and matters of good taste.

The **Missouri Miner** is operated by the students of UMR and the opinions expressed in it do not necessarily reflect those of the university, faculty, or student body.

Editor-in-Chief	Nikki Pagano (341-4312)
Business Manager	Shelly Kaller (341-4312)
Advertising Director	Terry Brackett (364-1137)
Asst. Advertising Director	Leslie Vigna
Managing Editor	Larry Williams (364-1433)
Asst. Managing Editor	Scott Konersmann
Circulation	Carl Bruce (364-8968)
News Editor	Steve Puljak (364-8968)
Asst. News Editor	Greg Denzer
Features Editor	Amy Nash (364-7612)
Asst. Features Editor	Matt Licklider
Sports Editor	Chip McDaniel (341-2108)
Asst. Sports Editor	Tom Hughes
Photo Editor	Dave Libiez (364-5226)
Copy Manager	Dan Gualtieri (341-8263)

**Staff Writers:** Babu Barat, Eric Hardin, Matt Licklider, David Martin, Chip McDaniel, Nora Okong'o, Chris Reynolds, Buck Simpson, Kevin Webb, Mindy Gardner  
**Typesetters:** Babu Barat, Tim Emmerich, Bill Rodewald.  
**Photographers:** Bill Booth, Brett Goodman, Susan Lowe.  
**Graphic Artists:** Tiffany Huenefeldt, Michael Weiland.

103A Norwood Hall  
 University of Missouri-Rolla  
 Rolla, MO 65401-0249  
 (314) 341-4235



# Opinion

## Student discusses use of multi-purpose facility

Dear Students, Faculty, and Staff:

Recently, I have become aware of two situations, involving the multi-purpose facility, that have made me very upset. The first situation is the use of the UMR gym by non-UMR affiliates. The second situation involves intramural basketball.

As a frequent user of the multi-purpose building, I have noticed increasing numbers of non-UMR personnel using the basketball courts and weight rooms. Personally, I feel that these facilities should be used by only the people who financially support them — the students, faculty and staff of UMR. Surely some policy can be devised to restrict this facility to UMR personnel, especially during peak hours. Billy Key assured me, on February 12, that the facility was for the primary use of the students. On Sunday, February 18, I was informed by Dennis Hammett that this is not true. He stated that he has no authority to remove non-students from the gym. In other words, anyone can use the gym.

If this is the case, I propose some type of membership fee be charged to help offset our activity fee and the construction cost for the "badly needed" new gym.

The second issue that concerns me involves intramural basketball. I am an intramural manager of a team that was eligible to compete in the Division II basketball playoffs. I attended the manager's meeting on Wednesday, February 14. At the meeting, it was announced that the basketball playoff meeting would be held on Thursday, February 22. On Wednesday, February 21, I learned that the Division II playoff meeting was held on Tuesday, February 20. I was told by Dewey Allgood and Dennis Hammett that everyone was informed of this meeting and everyone else attended. I asked a representative that attended the Tuesday night meeting how he found out about it. This representative stated that he was called by someone from the gym. After mentioning this to Dennis, he explained that some

people were called to be "reminded" about the meeting. At the Tuesday night meeting, someone decided to pick one team from our league to be in the playoffs. In actuality, there was a three way tie for second-place. The team that was originally chosen made the playoffs on a coin-flip. Our team

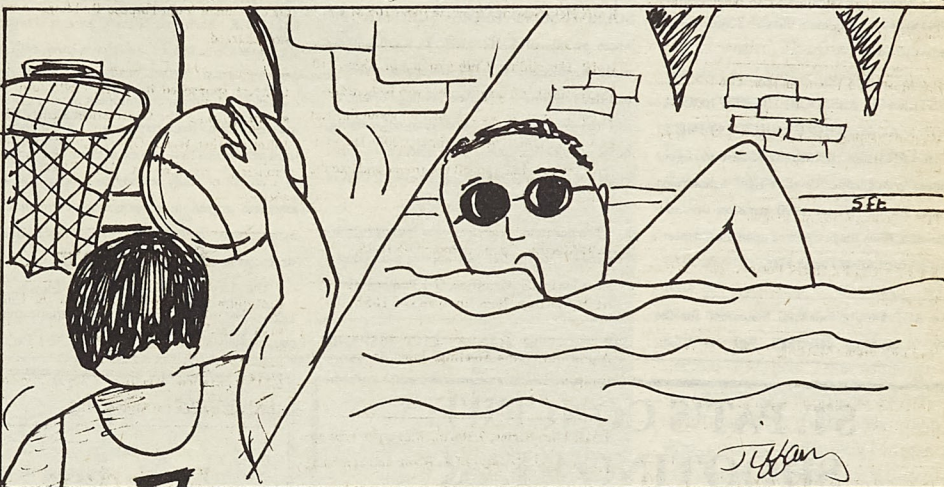
did not. The third team was completely ignored. They were not informed that they qualified for the playoffs.

I realize that intramural basketball and the use of the gym are not the most pressing issues in the world. However, the deceit and lack of concern with

which these situations were handled appalls me. I am shocked at the amount of politics involved with the multi-purpose facility.

Sincerely,

Donald W. Mueller



**WEDDINGS, ETC.**

**East Germany to Wed Successful Industrialist**

East Germany, daughter of the late Joseph Stalin of Moscow, has announced her engagement to West Germany of Bonn.

The bride, 40, is a former Marxist ideologue who was active in Olympic shotputting and weight lifting. A resident of Berlin and Leipzig, Ms. Germany made her debut in 1968, riding a tank into Prague.

The bride's father, Mr. Stalin, was a founding partner of Hitler & Stalin, a major mergers and acquisitions firm in the early forties.

The bridegroom, 40, is a distant cousin of the bride.

East Germany was a Marshall Plan Scholar and received an M.B.A. from NATO.

Mr. Germany's father was a prominent National Socialist who lost a bid for world domination in 1945.

**ILLUSIONS** introduces **LOLA WRIGHT**  
Formerly of **Have-A-Shear**

\* call for an appointment today  
available evenings **364-6965**  
1037 Kingshighway

**Sunday Night Student Special**



**SIRLOIN STOCKADE**

**Chopped Sirloin Chicken Fried Steak**  
each only

**\$4.99**

Sundays  
4 p.m.-Closing

**Includes: Potato, toast, salad & hot food bar, and drink.**

1401 Martin Spring Drive  
364-7168

Open: Sun-Thurs 11 am-10 pm  
Fri-Sat 11 am-11 pm

**80,000 PEOPLE GAVE SOMETHING TO THE IRS THIS YEAR. AND THEY CAN'T WAIT TILL NEXT YEAR TO GIVE AGAIN.**



Volunteer now.  
And you'll make someone's taxes less taxing later.

They volunteered their skills to people who needed help doing their taxes. And it made them feel great.

They weren't necessarily accountants. They were people like you and your club or group members, who have a basic aptitude for math and a desire to help others.

You know, you can help people with what taxes them. And feel great, too.

To find out about the free IRS training program call 1-800-424-1040 now.

A Public Service of This Publication &





## Financial Aid

UMR Receives Grant from McDonnell Douglas The University of Missouri-Rolla has received a grant from McDonnell Douglas totaling \$40,000. The grant will provide support for UMR's Faculty Excellence Award Program and UMR's Minority Engineering Program.

"On behalf of the campus, our faculty and students, I want to thank McDonnell Douglas for its generous grant to UMR," said UMR Chancellor Martin C. Jischke. "This grant will assist our outstanding faculty members in their teaching and research efforts and will strengthen our programs to support minority students."

UM-Rolla has received grants from McDonnell Douglas totaling more than \$1.8 million over the last 10 years.

WINTER 1990 MISSOURI HIGHER EDUCATION ACADEMIC "BRIGHT FLIGHT" SCHOLARSHIP CHECKS The Missouri Higher Education Academic "Bright Flight" Scholarship checks for the Winter 1990 semester are now available. They may be picked up in the Cashier's Office, basement of Parker Hall.

The ACT Family Financial Statement for the 1990-91 academic year (Fall 1990 and Winter

1991) are available for students in the foyer outside the Student Financial Aid Office (G-1 Parker Hall). This form must be completed in order for a student to be considered for a Pell Grant, College Work Study, Perkins, Loan, university loans, Missouri Grant, the Stafford Student Loan Program (formerly Guaranteed Student Loan Program), the Income Contingent Loan Program, and for the PLUS/SLS Loan Program, for the 1990-91 academic year. First consideration will be given to those students whose ACT-FFS is received by the processing agency by March 31, 1990.

MISSOURI WOMEN IN ENERGY SCHOLARSHIP Women in Energy, Inc. is pleased to announce the third annual competition for the MISSOURI WOMEN IN ENERGY SCHOLARSHIP. Three awards of \$750, \$500, and \$250 will be made. Requirements are: 1) Junior and/or seniors enrolled full-time in a Missouri college or university majoring in business, education engineering, home economics journalism, science or other energy-related field, 2) Minimum overall GPA of 3.0.

The deadline for applicants is March 1, 1990. For more information and applications contact Student Financial Aid office, G-1 Parker Hall.

THE GREATER KANSAS CITY HISPANIC

SCHOLARSHIP FUND The Hispanic Scholarship Fund awards approximately \$60,000 in scholarships annually. The Scholarships are designed to supplement the student's financial resources from family, government, and other sources. It is the express intent of the Hispanic Scholarship Fund that scholarship recipients make use of the scholarships to graduate from college and return to the Greater Kansas City Area to contribute to the local Hispanic community.

The deadline for applications is March 2, 1990. For more information, eligibility requirements and applications contact the Student Financial Aid Office, G-1 Parker Hall.

NATIONAL ASSOCIATION OF WOMEN IN CONSTRUCTION ST. LOUIS, MISSOURI CHAPTER Each year NAWIC awards scholarships to students in a construction related, college degree program. NAWIC seeks scholarship candidates with a similar commitment to their career in construction. Requirements are: 1) Applicant must be enrolled first, second or third year student in a course of study leading to a degree or an associate degree in construction, construction management architecture, civil, mechanical, structural or electrical engineering.

The deadline for applicants is March 31, 1990. For more information and applications contact Student Financial Aid Office, G-1 Parker

Hall.

TAU BETA PI SCHOLARSHIPS Qualifications: 1) Must be an undergraduate engineering major with 32-46 hours completed in their curriculum, 2) Should have a cumulative GPA of 3.5. The deadline is March 30, 1990. Applications available in the Student Financial Aid Office, G-1 Parker Hall.

UM-ROLLA/FORD ENDOWED SCHOLARSHIP Ford Scholarship are designated for minorities and women with preference given to Ford employees, their spouses and children. The Ford Scholarship is open to any discipline. Ford Scholarships for undergraduate students may be renewed up to three times but may be renewed only once for graduate students. Renewability of scholarship is based upon a student achieving a Cum GPA of 3.0 and completing at least 24 credit hours.

EMERSON CONGRESSIONAL SCHOLARSHIP Congressman Bill Emerson has used his salary increase for 1987-88 and a portion of his speaking engagement honoraria to endow the Emerson Congressional Scholarship Fund for needy college students.

Any student who will be attending any four-

year or two-year public university in the Fifth Congressional District, which includes UMR, is eligible to apply.

Applicants must meet the following criteria:

1) Reside in the Fifth District (permanent home residence), 2) Be a full-time undergraduate student, 3) Have completed at least one semester of college level work and have achieved at least a 2.5 cum GPA, and 4) Have education-related financial need in excess of Pell Grant assistance.

Application Deadline is April 1, 1990.

For applications, contact the Student Financial Aid Office, G-1 Parker Hall.

AMERICAN SOCIETY OF MECHANICAL ENGINEERS The ASME wishes to announce its Student Assistance Loan Program for Fall 1990. Qualifications necessary for participation in the program are: 1) Must be a U.S. citizen, 2) Must have 2.2/4.0 if an undergraduate, or 3.2/4.0 if a graduate student, 3) Must be a full-time student enrolled in a recognized ME program, 4) Must be a member of an ASME Student Section recognized by ASME.

Applications must be postmarked no later than March 31, 1990.

For further information and application forms, please contact Dr. Bassem Armaly, Chairman Mechanical & Aerospace Engineering.

## ST. PAT'S CONCERT: SHOOTING STAR

OPENING ACT: GARY RICHRATH BAND

(Formerly REO Speedwagon guitarist)

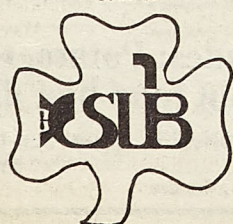
Saturday March 17 at 7 pm  
Multipurpose Building

\$3 Student tickets available  
in front of bookstore (w/ID)

\$5 General admission  
tickets available

- In front of bookstore
- Woolf Music
- Key Sport
- Pump Handle
- Forum Video
- The Music Station

Sponsored by:  
The St. Pat's Board  
and



## Computer

# Training and Support !

## Rent Training Videos!

Simple as:

1. Rent Training Video on topics shown at \$5.00 per night \*
2. Watch the video (copyright forbids copying!) and learn!
3. Check it back in not later than 5:00 pm the next business day. (Yes, there is a penalty. More important is that someone may have reserved it for the next day.)

### Titles

Beginning Mac (1)  
Beginning Mac (2)  
Advanced Mac  
Beginning Adobe III.  
Beginning Pagemaker  
Intermed. Pagemaker  
Advanced Pagemaker  
Beginning Excel 2.2  
Intermed. Excel 2.2  
Advanced Excel 2.2  
Beginning Word 4.0  
Advanced Word 4.0  
Beginning Quark Express  
Intermed. Quark Express  
Advanced Quark Express  
Works: Integration  
Works: Word Processing  
Works: Data Bases  
Works: Spread Sheets  
Hypercard Basics

Reserve ahead !

\*\$4 nightly with student ID (ID is required for rentals)

## New DataPro Classes

Prices include course materials, some free and near-free software and diskette, course book, and all fees.

Level 1 .....\$85

Level 2 .....\$115

(Most courses are one-night, three-hour. All classes are hands on.)

Among topics offered are Wingz, Works, Ready-Set-Go, Quark Express, Pagemaker, MacWrite II, Word 4.0, and others.

If you have a specific software package in mind, ask about it!

See the Macintosh II "30" series: 68030 chips in the Macintosh II CI, II CX, 2X, and the SE 30. (An SE 30 is four times faster than a standard Macintosh SE)

II CX pictured !

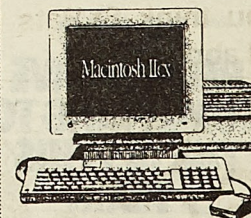
All with one meg of memory, built-in 1.4 meg drives (which read DOS 720 and 1.4 3.5" disks with software included with each CPU)

Macintosh...Here's where it's at!

## Tech-Link !

24 hr "Tech-Link" permits you to telephone a question at anytime of the day or night.

"Tech-Link" is a full time electronic voice-mail system. You are assigned a "mailbox" and given the support mailbox number at DataPro Computers. DataPro personnel are assigned to monitor "Tech-Link" hourly from 8 am-8 pm, Monday-Friday. Responses are placed in your private, secure, electronic voice mailbox. \$20 per month for 50 calls per month, payable annually. You can place a call any hour of any day. If the question is placed outside DataPro regular office hours, it will be checked the next business day morning.



DataPro Computer Systems, Inc.

1024 South Bishop  
Rolla, Mo. 65401  
314-364-0035

"Any computer or program is only worth what you can learn to produce with it."  
We'll help you learn!

Authorized Apple Dealer



# Features

## Second City brings comedy to Rolla

By Nora Okong'o  
STAFF WRITER

Second City played on Friday night, February 23, 1990, to a packed house. The first show at 7:00 p.m. was standing room only. Those who have watched Second City before need no further introduction, those who haven't got a good one last Friday. Second City is a Chicago based touring company featuring mainly comedy routines. They celebrated their thirtieth anniversary in December of last year. Past Second City cast members include such comedy greats as Dan Ackroyd, John Belushi, Robert Klein, Shelly Long, Rick Moranis, Bill Murray, Gilda Radner, Joan Rivers, Martin Short, and George Wendt. The team that performed in Rolla was made up of Jimmy Doyle, Bob Fisher, John Theis, Richard Labed, Aliza Shalowitz and Nancy Schmind, with Mark Levenson doing a great job at the piano. They claimed their repertoire was the best of thirty years of Second City's acts, but it all seemed too current to be anywhere near that old.

They started the night with a skit of a man going home who meets a bum (the irredeemable, purest kind). They get to talking about things as varied as Salmon Rushdie, former President Ronald Reagan's inking about the Iran-Contra affair, legislation for a state meet, the latest drug summit (you get the world's largest producers with the world's largest consumer and you have the makings of a business deal), and what comedy act would be com-



plete without a jab at Dan Quayle? When you read last week's front page story in the *Miner* about an interactive video system to help engineering education you probably didn't think it was funny - Second City changed the audience's mind about that. Then there was a song about our fast and troubled times. My only sympathies were with the front row spectators, who had to endure clouds of cigarette smoke.

The next skit depicted a young woman who goes to an art gallery and runs into a guitarist-cum-poet-cum-

bum. He helps her to appreciate art and get rid of her inhibitions - at least until he asks to go home with her. Then another electric song about fast living - the applause spoke for the quality of the act.

One of Second City's trademarks is audience participation, in this case to suggest topics to improvise on. Can anyone come up with, in just two minutes, jokes about Donald Trump, foreign professors, the fine young women of Rolla, Exxon, and MTV? Well, sort of. The one's about Exxon

on campus to hire were the only ones that really took off. This was followed by a man-meets-woman, man-and-woman-play-poker, woman-kills-man skit that bore an uncanny resemblance to those fifties style lottery ads; you know, sharp hat, sharp suit, running commentary by the principal character.... Next, our Second City doctor taught us passionate phrases; there were probably too few women in the audience to make that work.

After intermission (10 minutes? more like 20) three car salesman tried

to sell a couple of cars, describing in gory detail the excruciating funny torture their under paying (by \$8,000) would be. The woman replied in kind. And what about the one where the girlfriend hires a male stripper for their married friend whose husband is out of work? The friend doesn't like the gift and kicks him out. The husband returns with good news; he's found a job. And to prove it, he starts to demonstrate what he'll be doing...stripping, like the guy she just kicked out.

Another improvisation (with the ever-appropriate audience of eggnog) had the audience in stitches. What does a parody of the "Nutcracker Ballet" have to do with eggnog? Ask Second City, you'll die laughing.

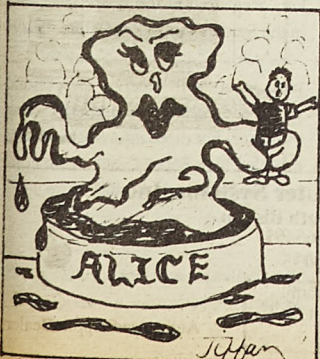
To wind up the evening we met the wierd family to rival Frankenstein's, who protested at the lack of signs on everything. Why else would they play frisbee with a saw blade or hang an arm out of a moving truck? Was it not the ultimate strategy to thus have a head dropped off and an arm amputated at the elbow?

A rousing song about authority rounded off the evening and sent us home in good spirits, after our eckless driver convinced the police officer to take the day off and not even bother to issue a speeding ticket.

As always, thanks to the Student Union Board for bringing Second City to Rolla, which "is not the center of the earth" to quote from Friday's act. Look for Second City next year for another dynamic and hilarious group of young comedians.

## The Missouri Miner question of the week

This week students were asked: What do you think "Alice" is and what do you think St.Pats is all about?



All photos by Susan Lowe



Phil Kesel  
Sophomore, Computer Science  
Terre Haute, IN

"I think Alice is that little short fat woman that works in the dining hall, or is that Debbie? St.Pat's is the patron saint of engineering so it's kind of a worship ceremony."



Noelle Pucket  
Freshman, ME  
Fenton, MO

"Alice is a big tub of stuff that's supposed to be puke, that they throw people in. I guess it's just a gross habit. St.Pat's is celebrated because he was the patron saint of engineering, and it's a good excuse to party here."



Robert  
Freshman, Physics  
Jefferson City, MO

"Alice is everything imaginable that could be put into a liquid. St. Pat's is about getting drunk and having a good time."



Kelly Kalmer  
Freshman, EE  
Redbud, IL

"Alice is that icky stuff that they throw seniors in at St.Pat's. They do it because it's a tradition and it's really gross. St.Pat's celebration is a tradition, and like Carbondale has Halloween, Rolla has St.Pat's. It's just become part of what University of Missouri - Rolla really is."



## T.I.P.S. received well

Dr. Camille Consolvo  
SOURCE

On February 7, 1990, the UMR Substance Abuse Prevention Program and Anheuser-Busch Co-Sponsored T.I.P.S. (Training Intervention Procedures for Servers of Alcohol). Presented on campuses nationwide, the T.I.P.S. program teaches students how to identify and deal with people in various stages of intoxication.

Dave Bernhard, St. Pat's President, and Jeff Tottleben, Interfraternity Council President, worked with Dr. Camille Consolvo, Coordinator of UMR's Substance Abuse Prevention Program to bring the T.I.P.S. program to UMR. The program at UMR was

geared towards those groups who sponsor social functions.

IFC requires new members, presidents, and social chairmen of each fraternity to attend. The St. Pat's Board suggested the new Baby Reps attend and the Board was well represented. Panhellenic also sent representatives.

John Haney at Anheuser-Busch Inc., presented factual information about the physiological and psychological effects of alcohol to two capacity audiences. Participants then watched videotaped vignettes and were asked to label people at various stages of intoxication. Students were then shown a second series of vignettes and had to decide how they

would intervene in each situation. An alcohol "quiz" was given at the end to test participants knowledge about alcohol and its effects.

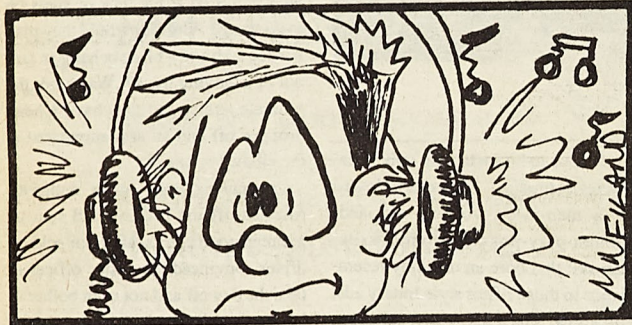
Students raised many good questions regarding social host liability, dealing with underage drinkers, myths about alcohol's effects, and how to

prevent people from abusing alcohol at social functions.

Those attending enjoyed the experience and commented on what new information they had gained. One

student even remarked that he expected to be bored and that he was surprised at how entertaining the T.I.P.S. program turned out to be!

## KMNR takes look at 'The Damned'



KMNR  
SOURCE

Every Monday night at 6:00 p.m. KMNR brings you the Artist Feature, a weekly three-hour retrospective in which we single out the work of one particular group or performer who has strongly influenced the world of music. Monday, March 5th, KMNR takes a look at punk rock with the music of The Damned.

The Damned has gone through sixteen musicians, seven record la-

bels, and countless managers. They have released eight studio albums and many live bootlegs and have officially disbanded four times. Lead singer Dave Vanion annoyed people at his job as a grave digger "by singing Alice Cooper songs like 'I Love the Dead' and 'Dead Babies' at the top of his voice."

Like them or not, they've outlived all other punk bands. Hear the complete audio history of The Damned on Monday evening, March 5th, at six o'clock on the KMNR Artist Feature.

## New organization on campus

UMR E.P.A.  
SOURCE

Last month Student Council officially recognized the Environmental Protection Advocates (E.P.A.), a new campus organization. The purpose of the E.P.A. is to actively support the issues that relate to the protection of environment. The E.P.A.'s aim is educating it's members and others about important environmental issues.

Hopefully, this will provide the people of our society and industry with an awareness of the need to be advocates for the protection of the environment.

This new organization is open to all students in good standing and has an associate membership for faculty and non-students. The meeting are at 4:30 p.m. in Room 130 of the Physics Building on the second and fourth Tuesdays of the month.

## Tau Beta Pi holds second election

By Mind Gardner  
STAFF WRITER

Congratulations come from Tau Beta Pi to prospective joiners. Membership in Tau Beta Pi is an honor that is recognized by all types of engineers nationwide. Membership also indicates academic excellence and exemplary character.

By accident, people who were eligible to join Tau Beta Pi this semester received their invitations too late. This belatedness was an accident and Tom Sovar, Tau Beta Pi President presents his apologies for this situation.

ation.

A second election should be held this semester. This election will be for graduate students and the election of an eminent engineer candidate. Undergraduates may still be able to join Tau Beta Pi this semester.

UMR's Missouri Beta chapter of Tau Beta Pi has approximately 170 members. However several are away from UMR due to co-ops. Tau Beta Pi is a student run organization that provides opportunities to gain leadership experience and participate in chapter projects. Tau Beta Pi also sponsors social events for its members that

provide an excellent opportunity to meet other people of higher caliber.

Those people that received invitations to join Tau Beta Pi are sincerely welcome. Take advantage of all Tau Beta Pi has to offer. If the one-time joining fee is not possible at this time arrangements for payments at a later date are possible.

Those that have received invitations and turned them down are encouraged to reconsider before March 2. Contact Tom Sovar, President, at 364-1909.

ST. PAT'S IS HERE!!!

## Blue Key sponsors Super City Walk

By Mind Gardner  
STAFF WRITER

This year several towns in Missouri and Illinois will participate in the Super Cities Walk. Blue Key is joining this effort to support research for Multiple Sclerosis by sponsoring a Super Cities Walk here in Rolla. Chairman Tim Scott is the head of this sponsorship. The Super Cities Walks are to raise money to support research by the National Multiple Sclerosis Society. Multiple Sclerosis affects approximately 250,000 people between twenty and forty years of age. This estimate is for the United States alone. Multiple Sclerosis is a disabling neurological disease that is chronic.

There is no known cure for MS, however biomedical research supported by the National Multiple Sclerosis Society could bring results. Blue

Key recognizes the importance of this research and this is why it will sponsor a Super Cities Walk right here in



Rolla, March 24. Leisure strollers, as well as race walkers are encouraged to

participate. Blue Key would appreciate campus organizations participation.

Blue Key's Super Cities Walk will be in Ber Juan Park. Registration begins at 9:00 a.m. and the route is 3.2 km. Registration forms are available in the Student Activities Office. Each

participant will receive an official walk bandana and refreshments along the route. For more information about the Blue Key Super Cities Walk contact Tim Scott at 364-1490. Step up to

the challenge and make UMR's MS Walk a big success.

## 15 DAZE LEFT!!!

By Kevin Webb  
STAFF WRITER

With only 15 DAZE LEFT til the BEST EVER. preparations are drawing to a close and the festivities are just about to get underway. Everyone should have their green and be wearing it. We're running out of supplies fast and once they're gone, they're gone!

This year's celebration kicks off on Monday with the massive snake invasion. All freshmen should start carrying their shillelaghs Monday morning to rid the campus snakes! The St. Pats Board is fired up for the invasion and I hope all of the freshmen are too.

In order to get into GONZO and GAMES a GONZO button will be needed and they're on sale now at the

hockey puck for \$3.00. This button provides you with transportation to and from both events as well as a great time guaranteed.

The participation trophy committee will also start visiting the following organizations at these times: On Monday March 5th: 7:00 - Acacia, 7:20 - Sig Nu; 7:40 - Sig Pi; 8:00 - Zeta; 8:20 - Lambda Chi; 8:40 - Pi Kapp; 9:00 - Sig Chi; 9:20 - TJHA.

On Tuesday, March 6th: 7:00 - AEPI; 7:20 - Beta Sig; 7:40 - KA; 8:00 - Sig Tau; 8:20 - Kappa Sig; 8:40 - KD; 9:00 - Delta Tau; 9:20 - GDI. On Wednesday, March 7th: 7:00 - TKE, 7:20 - PiKA; 7:40 - Triangle; 8:00 - Phi Kapp; 8:20 - Sig Ep; 8:40 - ChiO; 9:00 - Theta Xi; 9:20 - A PhiA.

ST. PAT'S IS HERE!!!



# Classifieds

## Miscellaneous

**RESEARCH PAPERS**  
19,278 to choose from — all subjects  
Order Catalog Today with Visa/MC or COD  
Toll Free **800-351-0222**  
Or, rush \$2.00 to: **Research Assistance**  
11322 Idaho Ave. #206-SN, Los Angeles, CA 90025  
Custom research also available—all levels

**CD Player:** Yamaha CDX-720. I just bought this a month ago. Has 1 year warranty from the Sound Room transferable to new owner. Remote Control, 18-bit digital filter, 3 beam laser, 3" CD capability, 5 way repeat play, 24 track random access programmable play, 4 mode program (random, tape edit, delete, manual), has fiber optic hookup capability. Great future investment. Paid \$550, will sacrifice \$375. This price is firm. Will not go any lower! Call 364-2564 and leave message.

**Receiver:** Sony STR-AV67, Audio/video receiver. 80 watts per channel. Edit feature. 3 video & 4 audio inputs. Excellent condition! Fully remote control. 6 months left on 2 year warranty. \$175! What a deal! Call 364-2564.

**Speakers:** JBL-82T. Incredible sounding 2-way speaker system. 8" woofer, 1/2" tweeter. 125 watts. 5 year JBL factory warranty. Don't miss this! Call 364-2564.

**Interested in a Bible Study?** Koinonia is sponsoring one in 333 TJ on Monday evenings at 6:30. Everyone is invited.

**Looking for a fraternity, sorority or student organization** that would like to make \$500-\$1,000 for a one week on-campus marketing. Must be organized and hardworking. Call Elizabeth K. or Myra at (800) 592-2121.

**For rent:** 3-4 bedroom house, refrigerator & stove included. Close to campus. \$400/mo. Call 364-7565 evenings.

**Peugeot,** 12 speed road bike 3 yrs old, good cond. \$150; bicycle trainer-cycle pro rollers-like new \$95; small truck camper shell, blue aluminum, \$85; mid-a-bed sofa, good condition, \$75. Call 364-7115 day, 364-7009. Ask for John.

**Mechanical Engineering T-shirt Design Contest:** \$60 prize for best design promoting mechanical engineering at UMR. Sponsored by IUTS, ASME, ASHRAE, and SAE. Turn in entries at ME Office (Rm. 129) by March 1, 3:00 PM. Winner to be announced March 14.

**For Sale:** Pioneer stereo receiver. Excellent condition. For more information call 341-2721.

Now accepting poetry, short stories, photographs and drawings. Bring your submissions to the English Department...3rd floor Humanities Building before March 2!!

**For Sale:** 1962 Ford Falcon Window Van. Lots of new parts. Reasonable. Call after 7 p.m. 364-0922.



**Wanted:** Gamers House, located 0.3 mile away from campus on 12th Street, is looking for one addition non-smoking, mature male roommate. Rent would average \$160/month (including all utilities, except phone). For more information, contact Bruce, Curt, Keil, or Max at 364-7556.

**For Sale:** 1980 Pontiac Bonneville Broughn, excellent condition, loaded, PS, PB, PW, Auto PSeat, AM FM, P Door locks, 4 Dr, 350 V-8 Diesel, Dark Blue with Vinyl Top. 364-2678 or 341-4773.

**ATTENTION: EARN MONEY READING BOOKS!** \$32,000/year income potential. Details: (1) 602-838-8885 Ext. Bk 18559.

**ATTENTION - HIRING!** Government jobs - your area. Many immediate openings without waiting list or test. \$17,840 - \$69,485. Call 1-602-838-8885 Ext. R 18559.

## Personals

**Campbell Soup Kid,**  
You'd better not eat too much pizza! You'll get pepperoni eyes! Don't forget the LT on Mondays. Congrats on the great b-ball playing. Your "boy?"

**Krissy & Mary,**  
Next time I'll bake the cake!

**Hey Everyone!**  
When is the best time for a study break? It's simple, on Monday night, at 7:00 pm in the MO Room, UCE. Sponsored by Christian Campus Fellowship. Give yourself a break!

**Julie,**  
I want Thor!!

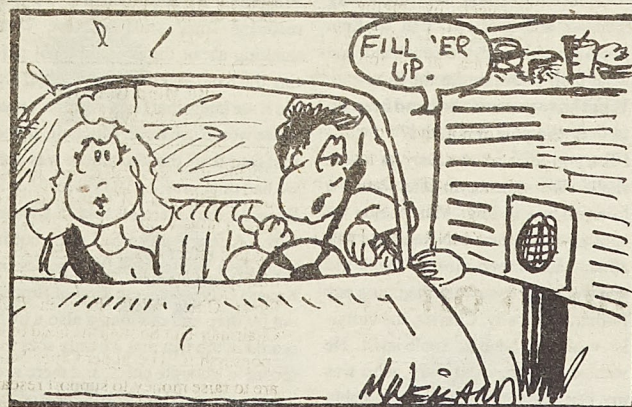
**Jorge,**  
So how was that night? See any animals in any caves lately?

**Kris,**  
You should have just let me do your H.D. for you. -What would I do without you?

**Ayako,**  
Don't forget Karia's rules to live by. They fit in this case.

**Michelle Squared,**  
Knots is the best!!

**Mindy,**  
You're a great little sis.



**Megg,**  
Welcome to our family!  
Les, Anne, Angela, Melissa

**Kerri,**  
You look great at the Chi Omega b-ball game against TKE, etc., even on the floor with a beat red face.

You know who

**P-**  
How are your parents doing?

**MW**  
I'll never forget the way we met-

**Leann,**  
Thanks for being a great supportive friend.

**Pencil-neck Geek,**  
You're a great DJ.

**Joe D.,**  
I miss shawny!!

**Chrissy,**  
You're a great little sister!

**Nikki & Maria,**  
I miss u!

**Dube,**  
You're my here!

**Weird Woman,**  
Time to start getting psyched for St. Pat's! and Greek Week!!

**Renee,**  
I know where things in my closet belong, but I guess you don't!

**Mike S.,**  
You were the greatest theme party date!  
Thanks! HaHaHeeHee.

**A-A-Archie,**  
You're a great little Bro! Happy Birthday!

**Megg,**  
You'll be an awesome little sis!

**Sig Pi,**  
Orchid Ball was a blast!! Hope you liked the composite!!

**Brooke,**  
Let's wake Renee up at 4:00. Sound good? How's your buddy?

**Tex,**  
You spur me on!

**Weird Woman,**  
You're a great roommate, thanks for being you!

**Eric,**  
Don't ever let me play aces again. Let's get together for some brain fuel.

**Kelley,**  
Thanks for all your help. You're the greatest!

**Terminator,**  
Are you ready for the Best Ever? I sure would like my big bro back!!

**Hey Stereotypers,**  
You are the most unsterotypical stereotypes we've ever met. The hot seat is still hot, and the cake is out of the oven, rent on the couches? You mean complimentary guest rates are over? It must have been the mushrooms or the fact that we are crazy nuts.

Cactus Chair Maker and the Dreamer  
P.S. It is time to either identify those magnets or rid your refrigerator of them!

**Chris H,**  
We love you!

**Men are pigs! Pigs are men!**  
**Chim Chim,**  
What was it that you were going to do last weekend?

**What about the so-called sow of the pig race?**  
Intercessor

**Renee,**  
I lost sixteen dollars. Will you give me some money too?

see, Classifieds page 17



# Shooting Star to appear at St. Pat's bash

After several years of non-existence, Shooting Star reforms sounding bigger and better than ever before. And even though you can't buy their old albums on CD, you can buy their incredible greatest hits compilation, *Touch Me Tonight: The Best of Shooting Star*.

By Babu Barat  
STAFF WRITER

If you're like many of us who appreciate good rock 'n' roll, and have spent many years here in the midwest, then you are surely familiar with the music of Shooting Star. Shooting Star hails from Kansas City, Missouri and is probably one of the world's greatest bands who never received all of the recognition they deserved. They gave us such anthems as "Last Chance" and "Hang On For Your Life," which have lived on through the magic of our old, scratched up, played to death, LP's. If you go to the music store you probably weren't very successful in finding these old treasures on album, not to mention compact disc or cassette. That was an unfortunate situation for those of us who have been loyal to this band over the years.

But, FINALLY, last summer, help came our way. Original members, Van McLain and Ron Verlin put together an independent release of Shooting Star's greatest hits which they released only in Kansas City. Much to their surprise all 10,000 sold out within a week. After that they signed with Enigma Entertainment, who knew a good thing when they heard it, and now is producing additional copies of this hot record. Enigma has released *Touch Me Tonight: The Best Of Shooting Star* on compact disc and cassette only. So now you can replace your old records with their greatest on the digital compact disc. For those of you who don't own a CD player or a cassette deck, this treasure

is surely worth the money in investing in a decent player. This record has it all: "Last Chance," "Hollywood," "Breakout," "Tonight," "Hang On For Your Life," and many other classics. Also included is the single "Touch Me Tonight" which did some serious

Virgin Records, who was our english record company. And because of our problems with them they had stopped putting our stuff in the stores. So we formed a little record company called V & R Records, standing for Ron and Van Records. Ron Verlin being the

happened so fast, and we are excited about it. In the meantime we have put a new band together. Ron and I are the original members. We've added Keith Mitchell on vocals, Dennis Laffon is playing keyboards, and Rod Lincoln is playing drums. Rod is from Nashville.

Oh yeah! This new band is as good or better than the old one. I think better. The new singer, Keith Mitchell, is just fantastic. Gary and I are going to continue to write songs together. So for die-hard Shooting Star fans it's really not all that different. The only difference is that instead of Gary singing it will be Keith. And they sound a lot alike. We are going after it. The amount of attention we are getting right now is probably the high point in Shooting Star's existence.

**What do you think kept the previous Shooting Star from really breaking out?**

I don't have the answer. I wish I did. A lot of it was politics and radio and record company mess-ups that shouldn't have to do with the success of a band, but it does. In a perfect world, good stuff would be what everyone would listen to, but that's not the way it is. We had a really good band, but it just didn't pop. I could tell you a lot of reasons as to why I didn't think it happened, but I don't know if that was the real reason. It was funny. I ran into Vince Neil of Motley Crue and he was going on and on about how big of an influence Shooting Star was on him. I just said o.k. (laughing). Some of these guys are older than I am and they are saying how this band was big influence on them which I find surprising.

**How do you write?**

Sometimes I just get an idea. Those are my favorite ones. I'm just driving along and a song pops in my head. That's really rare. Usually I just sit down and say what am I going to write. And usually I write musical ideas first and then fit the lyrics to the music. It was fun writing with Gary because he was a great writer. I really enjoyed writing with Gary.

**Do you think that you are shying away from the old hard rock feel on albums like "Hang On For Your Life" and the first album? The new song doesn't seem to be as hard as some of the older stuff?**

Personally, being a guitar player, I like the hard stuff. I think this band is at it's best when it's kicking. I would like to see us do that again. And since I'm producing and writing the album I would guess it might be harder. Don't get me wrong, I still like the soft side too. One thing about heavy metal music that I don't care for is the fact that a lot of the new heavy metal bands never let up. The first heavy metal bands to me were like Zeppelin, and those types of bands. When they rocked they rocked, but they also had a soft side.

Shooting Star will be appearing at the Multi-Purpose Center on March 17, 1990 for the St. Pat's Party. So make sure you thank the St. Pats Board and SUB for bringing another great concert to town.



Courtesy Enigma Records

Shooting Star (pictured from l. to r.: Rod Lincoln, Van McLain, Keith Mitchell, Ron Verlin and Dennis Laffon) are originally from Kansas City, Missouri.

damage on the charts last year, and was played on every radio station around. "Touch Me Tonight" features the band's new vocalist, Keith Mitchell, who sounds a lot like their old singer, Gary West. Regardless, you've got to get this record!!!

I recently spoke with founding member and guitarist Van McLain about the old band, the new band, and what their plans are for the future.

**What have you and the band been up to over the past few years?**

I'll try to tell you the story in a nutshell. We split up in after doing a farewell tour in 1987. The reason we split up was because we had done five albums and toured most of the world and we felt like we weren't getting any farther. Basically, Charles, the violinist, wanted to become a solo artist. He wanted to sing. And Gary, who was my partner, songwriter and probably the main lead singer, didn't want to tour anymore. He had a family and things like that, but he didn't want to go on the road. He still wanted to work in the studio and get more into producing and stuff like that. We all went our separate ways, but I had had hundreds of phone calls from fans and friends asking why in the world they couldn't buy our stuff. The reason is because we had a lot of legal differences with

original bass player. We did it for licensing of and to put together a best of record. On the best of we put a song called "Christmas Together" which was never released and we thought we could also put on "Touch Me Tonight" with our new singer Keith Mitchell. We put it on there because we had recorded some stuff and we were thinking about the possibility of getting the band together again, and if we did it we knew that Gary wouldn't tour so we would use Keith Mitchell. In the first four days that the album was out, we had only pressed 10,000 for V & R Records, they were all sold in Kansas City. A few went to St. Louis, but in four days we sold 8,000 peices in Kansas City. We were kind of flipped out by that, and obviously also a little scared in the fact that we only sold the record in a couple cities, and there was no way we could get it to the rest of the country. It would just bury us. We got about four calls right away from record companies wanting to get involved and take it to the next level. At the same time "Touch Me Tonight" was going on about five or six radio stations without us prompting it. KXXR and KY102 in Kansas City started playing the heck out of it. And all of a sudden it had become a big hit. Then everyone started playing it. It all

He's a great session drummer. Dennis had played around Kansas City in a band called Powerglide. We have kind of reformed the band and we're having a blast. We've been playing live and people are going nuts. The songs that we've been playing for a long time are fresh again, and we're having a great time.

**Are we going to see any of the old albums re-released?**

There's a possibility. They're trying to get the rights from Virgin. Whether Virgin cooperates or not, I don't know. They've been such a pain in our butt for so long. I tell you, though, we feel very fortunate to get out with what we did. If people had any idea of the hours and hours that people worked just to get that done. Obviously if this is as successful as it looks it might be, Virgin is going to want to put that stuff out.

**Do you have any plans for doing an entirely new album?**

Yes, that's definately going to happen. We have started it already. We signed with Enigma for a seven album deal. We're definately going to have a whole new record out soon. We hope to have it out sometime early this year, we hope.

**So this is obviously a long-term thing?**



# Queen Candidates



**Kappa Alpha**  
**Donna Neal**

The gentlemen of Kappa Alpha are proudly represented by Miss Donna Neal as their candidate for St. Pat's Queen 1990. Miss Neal is an active member of the Daughters of Lee and is currently vice president of that organization. She is also a recently activate member of Chi Omega.

Now in her junior year, Miss Neal is working toward a Bachelors of Science degree in psychology.

Our congratulations and heart felt thanks go out to Miss Neal, as well as our wish to her for the best of luck in her pursuit of the title of St. Pat's Queen 1990.



**SUB**  
**Katayoun Shorabi**

The Student Union Board proudly presents Katayoun Shorabi as their candidate for this year's St. Pat's Queen of Love and Beauty. Katayoun is the daughter of Mr. and Mrs. Shorabi of Tehran, Iran. She is currently a senior majoring in electrical engineering, with a minor in physics. She will be graduating in May of 1991.

Kathy has been active on the Student Union Board for the past two years as a member of the Fine Arts Committee. Other organizations she is currently involved in are: Chi Omega, APO, Toastmasters, International Students Club, Phi Eta Sigma, and more. We feel she will represent us, and the UMR campus, well.



**Kappa Delta**  
**Cynthia Gereau**

The ladies of Kappa Delta sorority present Cynthia Gereau, daughter of Lawrence and Patricia Gereau of St. Peters, Missouri. Cynthia, a graduating senior in engineering management, is an active member of Kappa Delta, ASEM/ITE, and Daughters of Lee. Cynthia has served as Kappa Delta's House Manager, Alumnae Relations, Social Chairman, and Special Events Coordinator. In the past, Cynthia has served as Green Representative, worked on our cudgel, and organized and participated in Kappa Delta's non-float entries. Kappa Delta feels Cynthia's time, effort, and enthusiasm for St. Pat's and Kappa Delta make her an excellent choice for St. Pat's Queen!

**Delta Sigma Phi**  
**Donna Jean Baker**

Donna Baker is representing Delta Sigma Phi this year in the Queen of Love and Beauty contest. Donna is the daughter of Don and Judy Baker of Paducah, Kentucky. Coming from "The Bluegrass State," she speaks with a very charming, soft southern drawl. Donna enjoys a variety of activities, especially dancing. Her love for dancing is shown by her involvement with the UMR Jazz Choir where she choreographs and signs for the group. She has also taught aerobics classes at home as well as in Rolla, and has fun instructing the men of Delta Sig. Donna is majoring in mining engineering here at UMR.



**Sigma Phi Epsilon**  
**Noeida Castro**

Sigma Phi Epsilon's candidate for St. Pat's Queen 1990 is Noe Castro. Noe is the daughter of Othoniel and Noeida Castro, who resides in Kansas City Missouri. She is a member of Zeta Tau Alpha where she serves as historian and public relations. This semester she is also president of Friends of the Golden Heart, where last semester she held the office of historian. Also last semester, she was in charge of Homecoming Queen candidates' interviews for the Student Union Board. As a Panhellenic junior representative, she is in charge of sorority relations, and she is also on the rush committee for SWE.



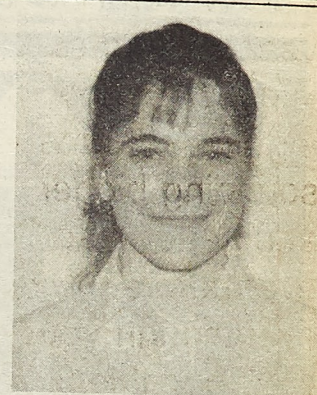
**TJHA**  
**Dana Lynn Salzman**

The Thomas Jefferson Hall Association is proud to nominate Dana Lynn Salzman as their candidate for the 1990 St. Pat's Queen of Love and Beauty. Since Dana, a senior, in metallurgical engineering, transferred to UMR in the Fall of 1988, from Lewis and Clark Community College, she has been actively involved within Thomas Jefferson Residence Hall, the American Society of Metals, American Society of Foundrymen's, and the Society of Women Engineers. She is also a CAT Coop, where she coordinated the toys for tots program, was a tutor, and worked on several charity events. Her parents, Mrs. Carol Elliot and Mr. Gary Salzman are both from Alton, IL.

**Pi Kappa Phi**  
**Devon Sample**

Devon Sample, the daughter of Ms. Nelda Harbin of Puxico, has been nominated a St. Pat's Queen candidate by the Pi Kappa Phi fraternity.

Devon is a sophomore at the University of Missouri-Rolla. She is an applied mathematics major with a minor in computer science. Devon's hobbies include swimming, running, reading, and dancing. After receiving a bachelors degree at UMR, Devon's future plans are to continue her education with a masters degree in mathematics with an emphasis on statistics, then possibly to be employed by the federal government as a statistician.



**Delta Tau Delta**  
**Elizabeth Colleen Everett**

Elizabeth Colleen Everett is the 1990 UMR St. Pat's Queen candidate for Delta Tau Delta fraternity. Liz has a diverse range of pursuits along both artistic and academic lines. She has great interest as well as experience in ballet, having studied the art for the past twelve years. Liz, having been instructed by the former director of the New York Ballet, has trained with San Antonio Ballet Company and the New York City Ballet. Particularly notable among her achievements is a performance of the Nutcracker Suite with the San Antonio City Ballet in Texas.



**Student Council**  
**Ellen Brown**

The UMR Student Council is proud to present Miss Ellen Brown as their 1990 St. Pat's Queen of Love and Beauty Candidate. She is the daughter of Bill and Martha Brown of Webster Groves, MO. She is a junior majoring in engineering management with a mechanical preference. This is Ellen's second year as a representative for Student Council and she has served on three committees along with this position, one which she received Outstanding Committee Member for FS 89. She is also a member of Angel Flight where she has held positions as Vice-Commander, and Parliamentarian. She is also a member of RHA's Intellectual/Emotional Committee and is a pledge for Daughter's of the Emerald where she served as Intramural Manager. With all her involvement and fantastic personality, we think she's the perfect choice for St. Pat's Queen.





**A CUT ABOVE**  
209 West 11th St. HAIR SALON  
364-6866 Now Have Wolff Tanning Beds!

**MAKE A T**  
Bring answer in for \$2.00 off Items Below, While Supplies Last

<b>Mug of the Week</b> RALEIGH	<b>Stems of the Week</b> WES-FLT Pair
<b>Kent</b> ENGRAVING & ARCHITECTURAL STAINED GLASS	(314) 364-1030 110 W. 8th St. Rolla, Mo 65401

Engraving	Glass	Door Signs
Party Glasses	Juggling Equipment	Jo Jo Jack Jewelry
Plaques	Name Badges	Stained Glass
Etched Glass & Crystal	Gifts	Doors
Awards	Mirrors	Mugs

**SUB PRESENTS THE GONG SHOW**  
Friday, March 2 at 7 pm  
Cedar St. Center  
**First place prize \$50**  
Obtain entry blanks and rules in sub office

**SUB**

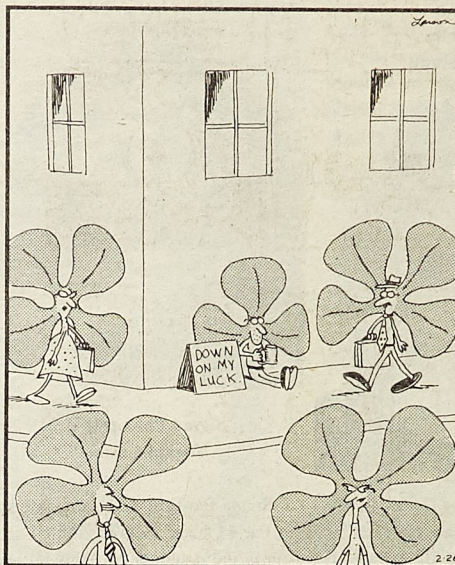
**USA CONVENIENCE MALL**  
1601 N. Bishop Rolla 364-0077

<b>Frito's Corn Chips</b> \$1.69	<b>Schaefer Beer</b> 24-pack \$6.25
For every fill up with gas (8 gallon min.) 1 FREE LOTTERY TICKET	<b>Country Style Potatoe Chips</b> \$1.19

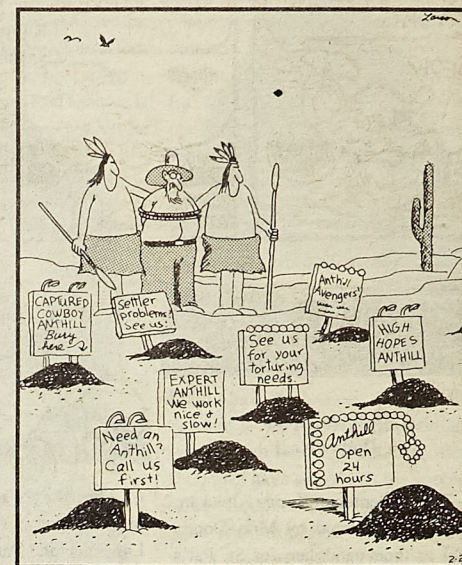
24 Hours a Day, 7 Days a Week

**THE FAR SIDE**

By GARY LARSON



Life among the clover



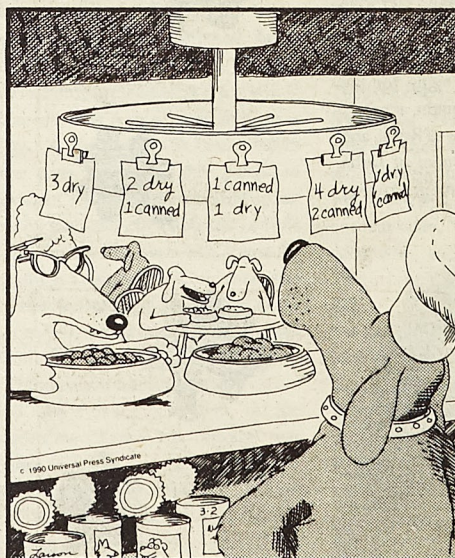
Competition in nature



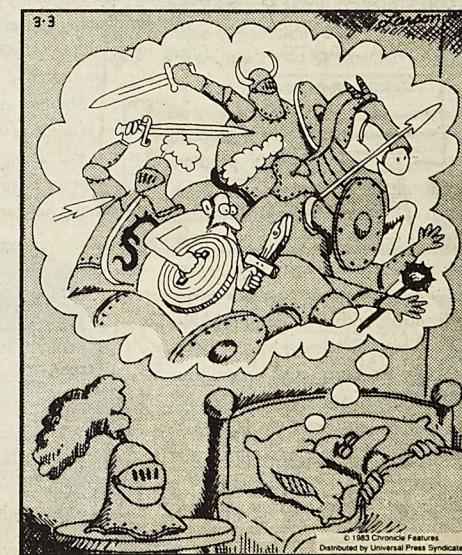
"OK, Frank, that's enough. I'm sure the Jeffersons are quite amazed at your car headlight device."



"Coast, Dad, coast!"



Dog restaurants



Common medieval nightmare





**DUBBLES**



Thanks for making us  
**#1**

Two 1/4 lb. Burgers  
Two reg. French Fries  
Two 20 oz. Soft Drinks

**\$3.99**

Good through 4/1/90.  
Not valid with any other offer. 152-12

YOU HAVE FRIENDS WHO CARE  
AT...

**BIRTHRIGHT**

PHONE: 364-0066

215 WEST 8th STREET  
P.O. BOX 832  
ROLLA, MISSOURI 65401

FOR HELP  
DURING UNPLANNED PREGNANCY  
FREE PREGNANCY TESTING  
NEW EARLY DETECTION METHOD

**Bruno's**

Banquet Facilities Available

Wednesday Night - Student Night  
9:30 - 1:00

341-2110

2001 Forum Drive



**International Tours  
Travel Agency of Rolla**  
1023 Kingshighway Rolla, MO 65401

Call Rick, Chris, or Melissa

MON-FRI

Your one stop!

8 AM - 6 PM For complete travel Planning

SAT

Foreign or domestic

(314)341-3300

10 AM - 4 PM

Business or pleasure!

1-800-876-3331

**TAN-FASTIC  
TAN CENTER**

**SPRING  
BREAK**

**SPECIAL**

Coupon

**\$2 OFF**

Single Visit

Expires 3-31

Coupon

**\$3 OFF**

Any Pkg

Expires 3-31

Limit one coupon per person per visit

1043 Kingshighway 364-5773



# St. Pat's



**Tau Kappa Epsilon**  
Robin D. Meyer

The men of Tau Kappa Epsilon are proud to present Miss Robin Meyer as their candidate for St. Pat's Queen of Love and Beauty 1990. Robin, daughter of Mr. and Mrs. Daniel Meyer of Washington, Missouri, is a senior in Civil Engineering. She is a sister of Chi Omega sorority, chairing St. Pat's Coordinator and Career Development committees, and an active member of Tau Kappa Epsilon's Daughters of Diana. Robin is also vice president of Chi Epsilon Honor Society and a member of the American Society of Civil Engineers. Possessing a love for the outdoors, her hobbies include camping, canoeing, and skiing. We feel that Robin's enthusiasm and warm personality make her the ideal candidate for St. Pat's Queen.

**GDI**  
Tracey Crusinberry

GDI is proud to present Tracey Crusinberry as our candidate for St. Pat's Queen of Love and Beauty.

Tracey is the daughter of David and Nancy Granzin of Farmington, Mo. She is working towards a double major in architectural engineering and education. She has been a member of GDI for two semesters and has become a member of GDI's Board of Governors in charge of Independents Weekend Committee.

Her outgoing personality will make her an excellent Queen of Love and Beauty.



**Acacia**  
Cyndy Stover



The brothers of the Missouri School of Mines chapter of ACACIA fraternity are proud to present Cyndy Stover as our candidate for the 1990 Queen of Love and Beauty. Cyndy is the daughter of Mr. and Mrs. Dennis Stover of Marion, Illinois. She is a senior in the Civil Engineering Department where she is active in the American Society of Civil Engineers as well as the Institute of Transportation Engineers in which she has held the office of secretary. She is also a member of the Society of Women Engineers and Phi Theta Kappa Honor fraternity.

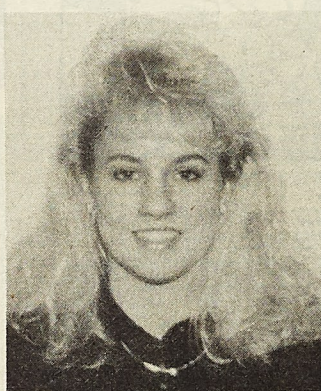
Cynthia J. Patterson is Triangle fraternity's 1990 St. Pat's Queen candidate. She is the daughter of Stephen and Jane Patterson of St. Louis, Missouri. Cynthia is currently completing her fourth and final year in the Electrical Engineering Department at the University of Missouri-Rolla. She has been actively involved in the following organizations: Kappa Delta sorority, Alpha Phi Omega, I.E.E.E., UMR Tae Kwon Do Club, and Friends of the Heart.



**Triangle**  
Cynthia J. Patterson

**Pi Kappa Alpha**  
Sue Burrows

The St. Pat's Queen candidate for Pi Kappa Alpha is Sue Burrows. She is the daughter of Ronald and Reta Burrows of Florissant Missouri. She is a sophomore majoring in electrical engineering and a member of Chi Omega sorority, The Gold Miners Pompon Squad and the Intercollegiate Knights. She is currently secretary of Chi Omega. We wish Sue lots of luck, and we know she'll do well.



**Sigma Chi**  
Natalie McCune

The men of Sigma Chi are proud to present our St. Pat's Queen candidate, Natalie Lynn McCune. Natalie is the daughter of Jim and Sharon McCune of O'Fallen, Mo. She is receiving the curators, chancellor, and Bright Flight Scholarships, and is in the second semester of her freshman year. She is majoring in metallurgical engineering, and was on the honor roll her first semester. She is an active member in Chi Omega sorority, and is a little sister of the Sigma Chi fraternity. She is also a member of the National Society of Women's Engineers. We would like to wish Natalie the best of luck throughout the St. Pat's activities.

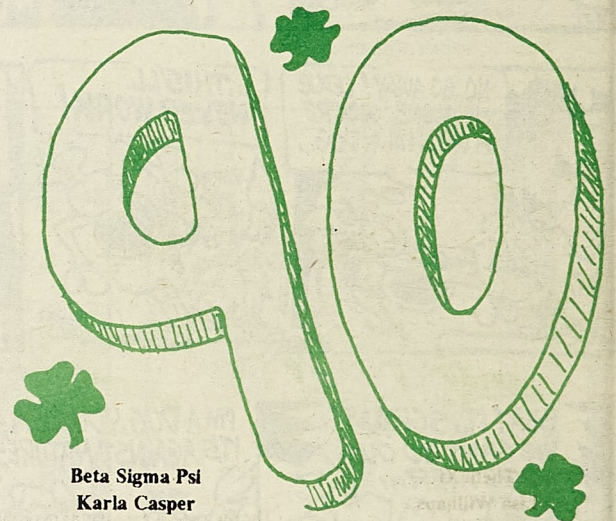


**Chi Omega**  
Nancy Meyer



The sisters of Chi Omega are proud and happy to present Miss Nancy Meyer as their candidate for the 1990 St. Pat's Queen of Love and Beauty. She is the daughter of James and Audrey Meyer of Marthasville, Mo. Miss Meyer is a senior in metallurgical engineering and a member of the Metallurgical Society and the American Foundrymen's Society. Nancy is presently Informations Chairman at Chi Omega. She has also held the positions of Green Rep., Assistant Treasurer and Fraternal Relations. We feel her vivacious personality and great sense of humor make her an excellent choice.

Good luck, Nantz!



**Beta Sigma Psi**  
Karla Casper

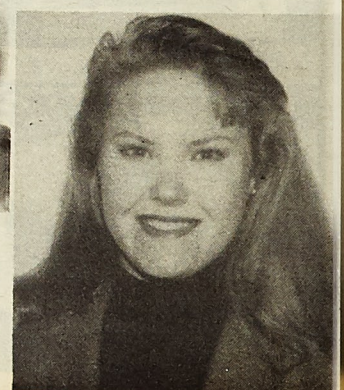
The men of Beta Sigma Psi proudly present Miss Karla Casper as our 1990 St. Pat's Queen candidate. Karla is the daughter of Mrs. Lynn Lowe of Monett, Mo. Karla is currently a senior in electrical engineering. She has been very active in Zeta Tau Alpha serving as scholarship chairman, ritual chairman, and assistant treasurer. Karla also is also active in Tau Beta Pi, Eta



Kappa Nu, Kappa Mu Epsilon, and Phi Eta Sigma. We feel that her good looks along with her great personality make her an excellent candidate for the Queen of Love and Beauty.

**Alpha Epsilon Pi**  
Mary Elizabeth Bernard

The men of Alpha Epsilon Pi would like to present Mary Elizabeth Bernard as our St. Pat's Queen candidate for 1990. Mary, the daughter of Davis A. and Cynthia S. Bernard, is a junior in Geophysics. Miss Bernard serves as president for the Daughters of the Lion and is a member of the Society of Engineering Geophysicists. We feel that Mary is a worth candidate for the 1990 St. Pat's Queen.





# Queen Candidates

The men of the Missouri Mu chapter of Phi Kappa Theta are both proud and honored to present Miss Leanne Tippet as their candidate for St. Pat's Queen, 1990. Miss Tippet has displayed the utmost concern and assistance to the fraternity through personal dedication as well as service through the little sister program, the Order of the Sun. Miss Tippet is a senior at the University of Missouri-Rolla, majoring in Life Sciences. She is the daughter of Mr. and Mrs. Earl Tippet of St. Louis. On behalf of all of the men of the Missouri Mu chapter of Phi Kappa Theta, we would like to thank Miss Tippet for her commitment to the fraternity and congratulate her on achieving this honor.

**Phi Kappa Theta**  
**Leanne Tippet**



**Missouri Miner**  
**Nicole Pagano**

The Missouri Miner proudly presents Miss Nicole Pagano as their candidate for the Queen of Love and Beauty. Miss Pagano is the daughter of Prof. and Mrs. S. J. Pagano of Rolla. She is a senior in geological engineering. Miss Pagano is editor-in-chief of the Miner and active on the Chancellor's Student Cabinet, a member of Chi Omega and AEG. With her campus activities and her friendly personality, the Miner feels that she is an excellent choice.



**Sigma Nu**  
**Anne Chapman**



**Zeta Tau Alpha**  
**Michelle Sievers**

The ladies of Zeta Tau Alpha proudly present Miss Michelle Sievers as our 1990 St. Pat's Queen candidate.

Michelle, daughter of Mr. and Mrs. Don Sievers of Jackson, Missouri, is a junior majoring in engineering management. She has been active in ZTA holding various chairmanships and is currently holding the office of Ritual chairman. Michelle's campus activities include: American Society of Engineering Management, Society of Women Engineers, Student Council, and Student Union Board.

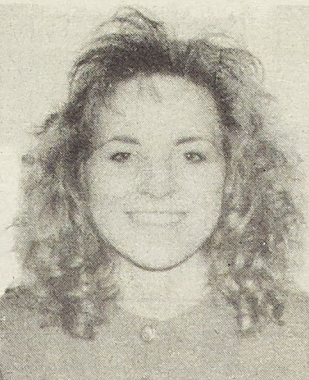
We feel Michelle is an excellent choice for the "Queen of Love and Beauty," shown by her outgoing personality and love for others.

The men of Sigma Nu fraternity would like to present Miss Anne Chapman, daughter of John and Juanita Chapman as our St. Pat's Queen candidate. Anne is currently a sophomore from St. Louis majoring in engineering management. She is a member of Zeta Tau Alpha sorority holding the office of Assistant Treasurer and she is Green Representative of her house. Other activities include Secretary for Sigma Nu's Little Sister of the White Star and membership in the Society of Women Engineers.

Sigma Nu fraternity would like to wish our beautiful candidate good luck!

**Sigma Pi**  
**Laura Vrabel**

The men of the Alpha Iota chapter of Sigma Pi proudly present Miss Laura Vrabel as our 1990 St. Pat's Queen candidate. Laura is the daughter of Steve and Carol Vrabel of Morton, Illinois. Laura is a freshman in ceramic engineering and is very involved in the Daughters of the Emerald, Sigma Pi's Little Sister Organization. She has served as co-chairman for the Spring Rush and been extremely supportive of the Sigma Pi and DOE intramural teams. We think Laura's vibrant personality, great sense of humor, and excellent character will make her the ideal Queen for the Best Ever St. Pat's 1990.



**Sigma Tau Gamma**  
**Jill Goetges**

**Lambda Chi Alpha**  
**Kristi Anne Heinemann**

The men of Lambda Chi Alpha are proud to present Kristi Anne Heinemann as their 1990 St. Pat's Queen candidate. She is the daughter of Kirk and Nancy Heinemann of St. Charles, Missouri. She is a freshman at University of Missouri at Rolla majoring in metallurgical engineering. Kristi is currently receiving scholarships from U.S. Curators, Missouri Bright Flight program, and the department of Metallurgy. She was placed on the academic honor roll last semester and is currently active in Chi Omega sorority and in the American Society of Materials (ASM).



**Theta Xi**  
**Lisa Willhaus**

The men of Theta Xi fraternity are honored to present Miss Lisa Willhaus as our 1990 St. Pat's queen candidate. Lisa is the daughter of Mr. and Mrs. William Willhaus of Kansas City, Missouri, and she is a freshman majoring in chemical engineering. Lisa is involved in many organizations such as Chi Omega sorority, Intercollegiate Knights, Society of Women Engineers, Phi Eta Sigma, and the UMR Women's Track team. We at Theta Xi are confident that Lisa's outgoing personality and charming smile make her the best choice for Saint Pat's Queen 1990. Good luck Lisa!



**Kappa Sigma**  
**Holly D. Langston**





# Fun & Games

## ACROSS

- 1 Prospector's land
- 6 Better half
- 10 Story or sister
- 13 Rascals
- 19 Way to a man's heart?
- 20 Not care —
- 21 Mauna —
- 22 Succeed
- 23 Cage-Hunter film
- 26 Egypt. sun god
- 27 Not Dem. or Rep.
- 28 Poetic time of day
- 29 Actor George
- 30 Consumed
- 31 Confesses
- 34 Jot
- 35 Yogi in Cooperstown

- 37 — d'Alene
- 38 Fonda-Shields film
- 42 Sgt. e.g.
- 45 Pyromaniac's crime
- 46 Where Van Gogh painted
- 47 NBA's Thurmond
- 48 Cheers
- 49 60's gp.
- 50 Story starter
- 51 Curtain fabric
- 52 Rose's love
- 53 Wayne-Kovacs film
- 57 State: abbr.
- 58 New doctor
- 61 Slant
- 62 Cecil B. De —
- 64 Stuck together

- 65 Uncle Miltie
- 66 Nautical plank
- 68 Sorority members
- 69 Rocketry acronym
- 70 Moon features
- 71 506
- 72 Scott-Dunaway film
- 77 "I cannot tell —"
- 78 Carlo Menotti and namesakes
- 79 Run away
- 80 Suitable
- 83 Earl — Biggers (Chan creator)
- 84 US historian
- 85 Toot
- 87 Of a bone
- 89 Food enhancer

- 90 MacMurray-Martin film
- 92 Carpathian range
- 93 Actress Massey
- 95 Makes tracks
- 96 Elk
- 97 King of Crete
- 99 Take the helm
- 101 Before: pref.
- 103 Spruce juice
- 104 Egypt. god
- 106 "The —" (Arthur Penn film)
- 110 Venus e.g.
- 111 Old Fr. coin
- 112 Monogram part: abbr.
- 113 Gift recipient
- 114 Of six
- 115 Curved letter
- 116 Titled lady
- 117 "With the jawbone of —"

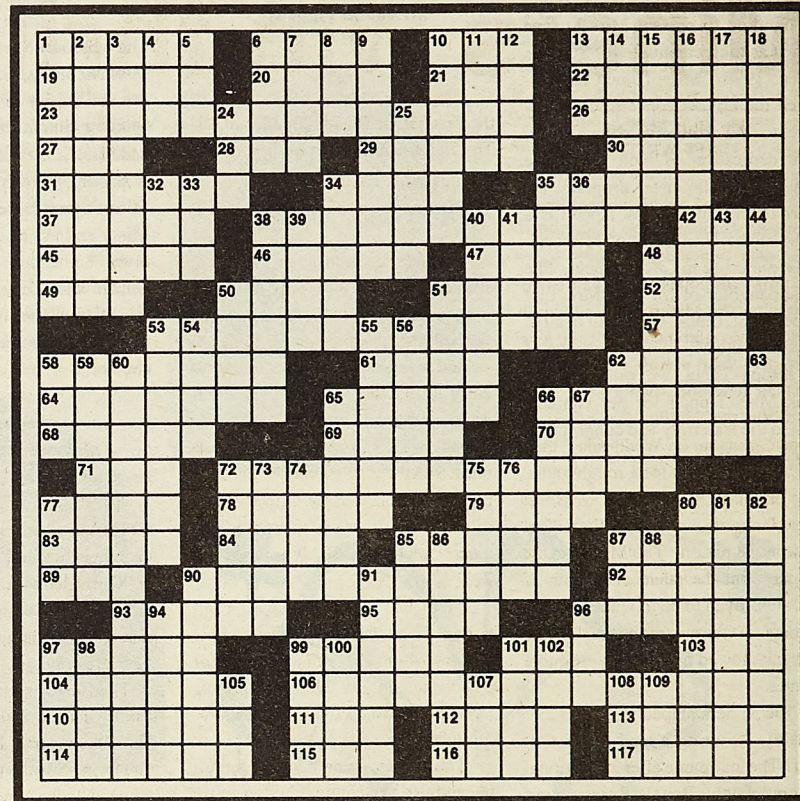
## DOWN

- 1 Rio de Janeiro natives
- 2 Language adoption
- 3 Dry condition
- 4 Possessive
- 5 — tal (rum concoction)
- 6 Carry on
- 7 Qum's land
- 8 Distant
- 9 Serial segment
- 10 Catch phrase
- 11 Chaplin's widow
- 12 Idol
- 13 Health resort
- 14 Picture taker
- 15 Keep — to the ground
- 16 Jane Russell film
- 17 Untainted

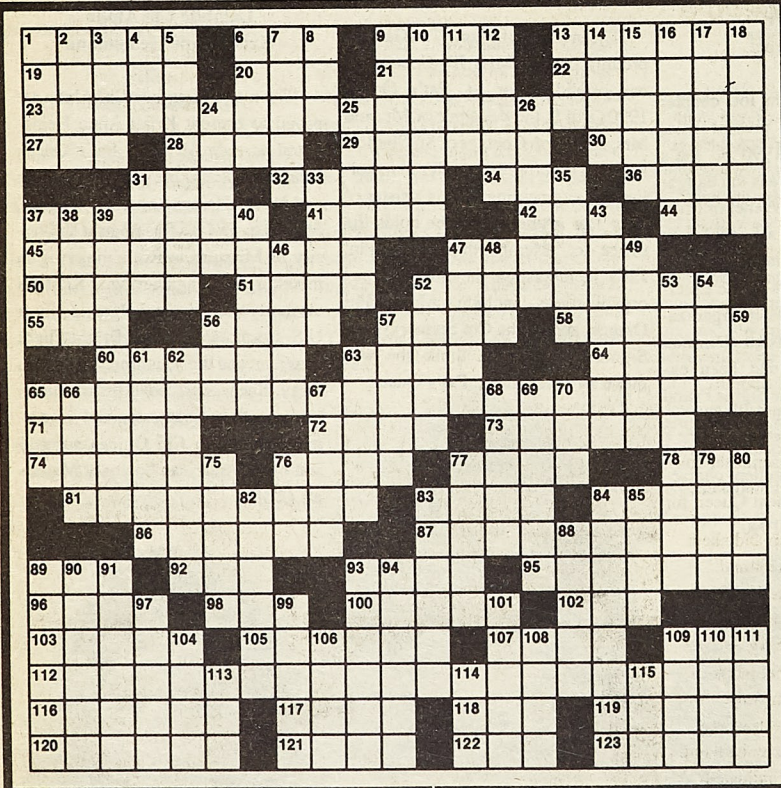
- 18 Freberg
- 24 Fiber cluster
- 25 Letters from Greece
- 32 — jure (in one's right)
- 33 Samovar
- 34 Cove
- 35 Dyeing method
- 36 Plant swelling
- 38 Word on a poster
- 39 Ogee or ogive
- 40 Wrap
- 41 Certain electric units
- 43 Spooky movie
- 44 Full of: suff.
- 48 Shine
- 50 Writer Sarah — Jewett
- 51 Skiing race
- 53 More indigent

- 54 Hockey great's family
- 55 Tallsmans
- 56 —ground missile
- 58 US org.
- 59 Pasta
- 60 Gary Cooper film
- 62 Hoover Dam lake
- 63 Hesitation sounds
- 65 Actor in 106A
- 68 Place for films
- 67 "— Grit"
- 72 Poet Nash
- 73 Plains Indian
- 74 Woman
- 75 Haldos
- 76 Ball of yarn
- 77 Fleet cmdr.
- 80 Ecua. volcano
- 81 Shares

- 82 Wanders
- 85 Hits high
- 86 Winglike
- 87 Actress Hagen
- 88 Circuit
- 90 More snoopy
- 91 Monkey
- 94 Blackmore's Doone
- 96 Network
- 97 Swabs
- 98 Land in the water
- 99 Capt. Hook's sidekick
- 100 Twitches
- 101 Decorous
- 102 Ceremony
- 105 Hog home
- 107 Actress Merkel
- 108 Letters on a vitamin label
- 109 Eternity



see Solutions, page 20



see Solutions, page 20

## ACROSS

- 1 Roof feature
- 6 "I — Camera"
- 9 Pronoun
- 13 Formal argument
- 19 Synthetic fabric
- 20 Joke
- 21 Spy name
- 22 Prayer
- 23 Start of an epigram
- 27 Wonderment
- 28 Comedian King
- 29 Ticked pink
- 30 Loudness units
- 31 Asia Minor mount
- 32 US president
- 34 Kinsman: abbr.
- 36 Treasury agent
- 37 Devastating

- 41 Take — it comes
- 42 Make public
- 44 — Canals
- 45 Gate or house
- 47 Made notes
- 50 Gaze fixedly
- 51 Aspect
- 52 Without clout
- 55 Criticize
- 56 Gels
- 57 Cold wind
- 58 Abate
- 60 Abominate
- 63 Storm
- 64 Renee's aunt
- 65 Epigram continued
- 71 Semites
- 72 Time gone by
- 73 Card game

- 74 Most sage
- 76 Gambling game
- 77 Gossip
- 78 Priest's wear
- 81 Pennants
- 83 College building
- 84 Not as many
- 86 Hooky player
- 87 Coarse
- 89 Fair grade
- 92 Formicary dweller
- 93 Custard pastry
- 95 "The Time of Your Life" author
- 96 Deer
- 98 Sesame plant
- 100 Sidekicks

- 102 Gibson or Blanc
- 103 Miss Kett and namesakes
- 105 Irk
- 107 Moby Dick's pursuer
- 109 Shakespeare title word
- 112 Epigram concluded
- 116 More scary
- 117 Hercules' captive
- 118 — whiz!
- 119 Deceit
- 120 Woolgatherer does
- 121 Became a plaintiff
- 122 Calif. fort
- 123 Gibe

## DOWN

- 1 Spanish painter
- 2 Lined up
- 3 Melancholy
- 4 Chaney
- 5 Swiss resort valley
- 6 Taj Mahal city
- 7 — cum laude
- 8 Era
- 9 Ritter or Todd
- 10 Torment
- 11 QED part
- 12 Bishop's headdress
- 13 Scooby—
- 14 Ocean flyers
- 15 Oxlike beast
- 16 Yoga postures
- 17 Corrida loser
- 18 Composer Georges

- 24 Antelope
- 25 Make trig
- 26 Get a brainstorm
- 31 Roman road
- 33 Chops in a way
- 35 Br. metric measure
- 37 Stinger
- 38 — boy!
- 39 Refuse to budge
- 40 Most heroic
- 43 Storyteller
- 46 It. statesman
- 47 Franz — (Aus. emperor)
- 48 Be short
- 49 Make sea water drinkable
- 52 Flier
- 53 Dismisses
- 54 Flock of mallards
- 56 Wine word

- 57 Opera singer
- 59 — diem
- 61 Colo. mount
- 62 Mosaic piece
- 63 Growls
- 65 Uncooked
- 66 Goddess of discord
- 67 Painting genre
- 68 Rate or rail
- 69 Messenger of the gods
- 70 Nosh
- 75 Mock
- 76 Marsh
- 77 "Catch a falling star" poet
- 79 "— smile be your —"
- 80 Br. gun
- 82 Morning Prayer
- 83 Crown
- 84 Arsonists
- 85 Branch of biol.

- 88 Tibetan monks
- 89 Masticated
- 90 One or the other
- 91 Whole
- 93 Femme —
- 94 Sang with spirit
- 97 Ancient land near the Danube
- 99 Comic Jerry
- 101 Falcon
- 104 Noah's eldest
- 106 Commandment word
- 108 Listen to
- 109 Parisian friend
- 110 Hill's partner
- 111 Ger. river
- 113 Tax org.
- 114 Gone by
- 115 Star



# Sports

## Miners win thriller in overtime

By Matt McNett  
STAFF WRITER

Once again the Missouri Miners captured a win and a loss in conference play last week to barely keep their play-off hopes alive. These two games put the Miners at 8-15 overall and 5-9 in conference play. The loss also gave them a must win situation for their remaining two games.

When the Miners showed up in Cape Girardeau on Wednesday, they knew they were in for a rough game. The Indians of Southeast Missouri State University are currently ranked 13th in the nation. The Miners came to play, but the talent and depth of SEMO proved to be too much for the Miners. At the end of the contest, the Indians showed five players in double figures.

The Miners helped to quiet 5,228 fans by capturing a lead in the first half. The lead came after a traditional 3 point play by Donnie Brown to put the Miners on top with 7:45 left to play in the half.

The game was tied five times in the first half at 16, 18, 20, 22, and 29. The Indians finally broke free of the Miners with a nine point run late in the first half, putting the score at 38-29.

The Miners didn't fair as well in the second half. With only five minutes gone in the half, Paul Neeman fouled out of the game. Neeman started in place of the regular starter Billy Jolly, who was out with an abscess under his arm. The Miners stayed within reasonable distance until SEMO's Dewayne Rutherford popped in three consecutive tri-fectos to put the game out of reach. The game ended with SEMO on top 84-72.

"We just weren't able to reach down" Coach Dale Martin said of his players after the game. Wofford paced the Miners with 25 points. Donnie Brown also had a good showing with 13 points.

The Miners came home Saturday to capture a very intense and exciting over-time victory from the Northwest Missouri State Bearcats. The game

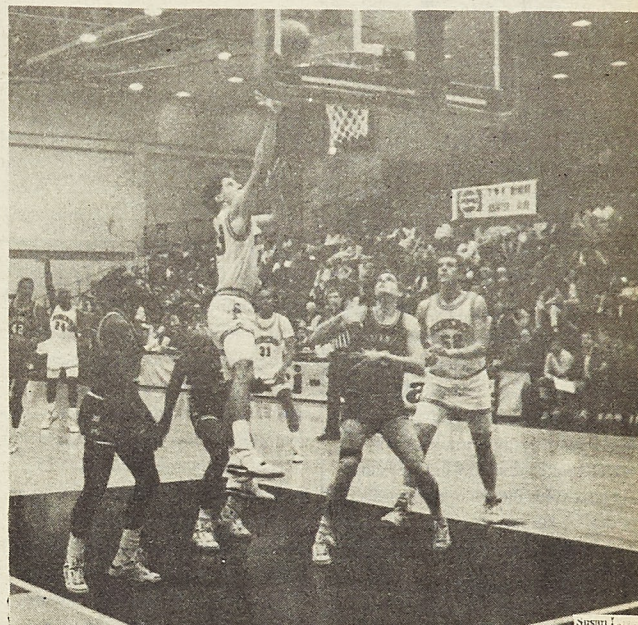
was full of ups and downs and outstanding clutch plays.

A back and forth first half, which ended with the Miners on top 29-24, did not come close to preparing the fans for what was to come in the second half.

The Miners tossed in a quick nine unanswered points early in the second half to give the impression that they were going to dominate. Following a Northwest time out, the Bearcats answered with a six point run of their own to put them back in the game.

UMR held off Northwest until 4:20 left to play. The Bearcats took a lead on a steal and a three point play by Kurtis Downing. Steve Wands later canned a heart stopping 3-pointer to tie the game at 49-49 with 1:20 left to play.

The Bearcats once again took the lead by netting a pair of free throws. Steve Wands once again made the big play by making a great pass to Donnie Brown who bucketed the jumper with 22 ties left on the clock to tie the game at 51.



Paul Neeman goes up for two points during UMR's 66-58 victory over Northwest Missouri on Saturday.

## Lady Miners head into playoffs on winning note

By Tom Brown  
STAFF WRITER

A 1-13 record against SEMO in the last six years, was hanging over the heads of the Lady Miners as they entered the Show-Me Center on Wednesday. The Lady Miners went on to suffer a 20 point loss to the Otakhians, 73-53.

In the first half, it was a battle with the lead changing hands several times. A SEMO time out with 6:15 left in the first half showed UMR on top 27-24. A 14-2 run by SEMO in the final minutes placed the Lady Miners in a hold to start the second half.

The second half was a continuation of the hot and cold shooting of the first half - SEMO hot, UMR cold. For the game, the Lady Miners were 19 of 53 from the field and 6 of 19 from "trey land." This, plus the fact that SEMO shot 14 more free throws, proved to be too much for the Lady Miners to overcome.

A bright spot in the loss was Jennifer Cordes breaking the school scoring record of 1,388 points held by last season's leader Tanya Hough. Cordes has scored a total of 1,397 during her four year career.

Saturday pitted the Lady Miners

against the Bearkittens of Northwest Missouri State in UMR's final regular season game. A win would allow us to host a first round play-off game, while a loss would make our girls travel for their first game. Seniors Jennifer Cordes and Colette Neal decided that they wanted one more home game. They led UMR to a thrilling one-point victory.

The Lady Miners started off on fire scoring seven unanswered points. UMR then broke away carrying a 35-27 lead into the locker room.

In the final period, UMR's lead was as much as fourteen. With six minutes left in the game, a lid was placed on the basket as the Lady Miners were held scoreless until the four second mark. Through that time the Bearkitten's scored 12 points to take a 59-58 lead. Cordes showed why she is a potential All-American as she took control of the ball game. She penetrated the defense to put up a leaning jumper that won the game.

The two seniors led UMR in scoring - Neal with 16 points and eight rebounds and Cordes with 13 points and 10 rebounds. The Lady Miners host Missouri Western on Tuesday in the first round of the MIAA Tournament. A big crowd is expected and urged to cheer on our Lady Miners.

## Trap and Skeet: a sport for all people

UMR Trap and Skeet Club  
SOURCE

Our club activities center around preparation for shooting at a variety of trap and skeet events. A meet is currently being schedule to be held at Warrensburg in April as well as hosting an event in the spring. Many university teams are active throughout the state, including teams from the University of Missouri, Central Missouri State and Southwest Missouri State to name a few. The club has invited the U.S. Olympic team coach to Rolla during the spring semester for a seminar on proper trap and skeet shooting techniques.

The club uses the trap and skeet facilities at the Rolla Skeet and Trap range located at Rt. 4 in Rolla. "We feel very fortunate to have use of the range at any time for practice. Mr. J. T. Harris, who owns the range, has been very agreeable when it comes to using the range. As students we need and appreciate that option," indicated president Travis Emery.

The intent of the club is to: 1) learn proper shooting techniques, 2) learn the ins and outs of the sport, 3) cleaning and learning the

See Skeet, page 16

## Intramurals

UMR Intramurals  
SOURCE

Just a brief review of last semester's point totals show Sigma Nu still in first place in the overall standings. Pi Kappa Alpha follows closely behind in second place, while Phi Kappa Theta and Sigma Epsilon are still within striking distance.

PiKA is making a move during the basketball season, as they are this week's Team of the Week. Matt Konjveich of AFROTC was elected Athlete of the Week, as he led his team to victory on the court. Some teams to watch this year in basketball are the undefeated M-Club and TJ-North teams.

Wrestling is scheduled to begin Sunday, March 4 with weigh-ins and the first day of matches. Look for another update in two weeks.

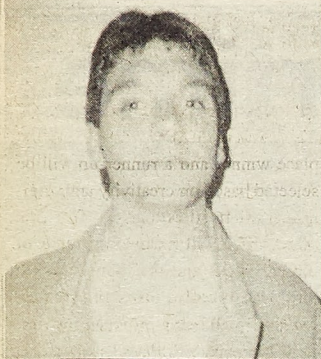
## KEY SPORT FAN IN THE STANDS



This week's Fan in the Stands attended the Miner basketball game versus Northwest Mo. last Saturday. If this is you, come claim your prize at the Miner office, 103 Norwood, on Thursday at 4:30.



## M-Club Athlete of the Week



**M-Club  
SOURCE**

M-Club's Athlete of the Week for the week of February 15 to 22nd is Scott Musgrave, a member of the UMR track team. At the Missouri Invitational, Scott placed 2nd in the triple jump with a mark of 47' 8", which broke the school indoor record. He also holds the out door record and is one of the top five jumpers in the nation in Division II. Congratulations Scott!

## Skeet

mechanics and proper handling of a variety of shotguns, and 4) identifying proper reloading supplies and techniques. Shooting skills can be learned from one of the club's advisor/trainers, Dr. Glendon "Jake" Stevens from Civil Engineering.

The object in both sports is to break a moving target by hitting it with one or more pellets. The moving target is a four ounce clay disk about four inches in diameter that is painted either white, yellow or orange. This bird, as it is called, is thrown into the air by machines housed in sheds (traps).

In trapshooting, the birds are pitched from an oscillating machine anywhere within a forty-four degree angle from the trap. Contestants are positioned sixteen yards back of the trap (or as far as twenty-seven yards if they are good enough to have earned a handicap). Each contestant shoots five times from each of five lateral positions—25 shots to a round. The birds fly up at a speed of 60 miles per hour and out for a distance of about 50 yards. The trick is to break the clay target before it hits the ground—preferably as it is still rising (about 31 yards from the shooter). Each hit is a

point and, in a tournament, the winner is the individual with the most points after a predetermined number of rounds.

In skeet shooting, the birds are launched across the field - one from the high house and one in the opposite direction from a low house. These targets are traveling 60 miles per hour, and the apex of their 68 yard flight is 20 yards from the house. Contestants shoot from eight positions. They shoot a high bird first then a low bird and, from four of the positions, they shoot a high and a low bird that are launched at the same time. A round is 25 shots. As in trapshooting, the high score at the end of a predetermined number of rounds is the winner.

Variations are seen in the sport. In the traditional posture a shooter positions themselves with their gun at their shoulder and then calls "pull." At that time a bird is released from a trap house immediately. A variation referred to as "International" trap and skeet is being used more and more and has the shooter begins with the gun at their hip. When the contestant calls "pull" the bird may come from the house from one to three seconds

later. The shooter must wait for the release then bring the gun to their shoulder. "This is much more difficult and more like a reaction to a quail covey rise," says Emery.

The club currently owns four shotguns, a reloader, several cases of clay birds and enough reloading supplies for the year. Members can reload their own shells at a cost of \$3/box. An additional \$2 per round of 25 birds is assessed by the club and pays for birds and the use of the range. "We do our best to keep the expenses at a minimum by providing guns for student use and equipment for reloading our own shells," says Emery. "Students do need to understand these costs before they make a commitment."

Professor Bob Nau, Professor of Electrical Engineering, is another of the group's advisors. "Shooting is a sport for anyone," Nau says. "It depends on hand-eye coordination rather than strength. Participants can be any age. Many hunters use the sport to warm up and familiarize themselves with their favorite field gun for a trip to the field - but it is of particular interest to those who love guns and the challenge of hitting a moving target but who either can't hunt very often or

doesn't like to shoot live animals or birds." Dr. Nau has been for nine years an ATA Hall of Fame certified student instructor.

The club is currently housed in building T-2. More information can be obtained by calling Emery at 341-4751 or club advisor John Molchan in Human Resource Service can assist you at 341-4920. Meetings and events are posted on the door of the club headquarters in T-2. Membership space is available and the club is very much interested in increasing their membership.



**PERSONAL RESOURCE  
DEVELOPMENT  
COUNSELING &  
CAREER DEVELOPMENT**  
204 Norwood Hall  
341-4211



## TEST ANXIETY

What causes you to clutch or forget very important information on a test then remember it on the way home? What causes you to sleep poorly the night before a test? These and other symptoms of anxiety will be discussed.

Wednesday, March 7  
3:30-4:30 pm; 201 Norwood Hall  
Facilitator: Dr. Gene Van Matre

## HELPING A FRIEND WITH AN ALCOHOL PROBLEM

Do you wonder if someone in your peer group has an alcohol problem? Learn to identify if a problem exists and how to deal with a friend's drinking.

Wednesday, March 7  
6:30-7:30 pm; TJ South Lounge  
Facilitator: Dr. Camille Consolvo

## STRESS AND ALCOHOL

Students often choose alcohol as a method of relaxing and relieving stress. Find out what stress is and positive alternatives for managing stress.

Thursday, March 8  
3:30-4:30 pm; 201 Norwood Hall  
Facilitator: Dr. Camille Consolvo

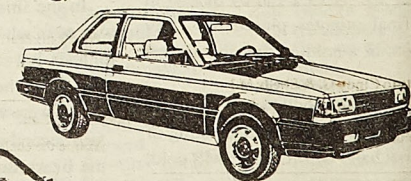
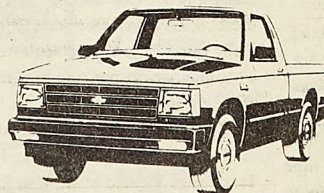
*You don't need rich parents  
to get a car for graduation.*

**GEORGE WALSH**

**CHEVROLET**

**Geo**

**NISSAN**



**CAR WASH**  
*Walsh O'Matic*  
**CAR SALON**

*THE Heart*  
of Missouri  
**TRUCK CENTER**  
1 800 BUY TRUX

**Budget**  
RENT A CAR

100 Fairground Road • Rolla, Missouri • 314-364-1002





# Who and what are the Raiders? St. Pat's Board gets faculty involved

## Raiders Organization SOURCE

My name is Robert Everson, I am an Assistant Professor of Military Science at the US Army Stonehenge ROTC Battalion, here at UMR. I found this article in the Missouri Miner dated Thursday, March 13, 1975, reference the University's student RAIDER organization.

Although almost fifteen years have elapsed, the article remains as true now, as it was then.

What are the RAIDERS? If your answer does not include such things as: Responsibility, leadership,

accomplishment, adventure, challenge, and FUN: then you have the wrong definition of what a RAIDER is, and does.

The RAIDERS are a non-military organization that uses many of the methods of the U.S. Army to teach the art of leadership. Training of a person to take command and know how to handle himself and those around him, in an emergency situation.

Besides leadership the RAIDERS teach courses in patrolling, orienteering, rappelling, survival, first aid, and more. All of these are things that we can use and enjoy everyday and which can give us the confidence we need in

order to succeed in life. Complementing these classes are Field Exercises, which are merely hypothetical situations designed to test your ability in the skills taught in class. The Field Exercises this semester will include leadership reaction courses, escape and evasion, survival, orienteering, bridging, first aid, etc. Leadership means a lot these days and it is one of the prime goals of the ROTC college program. It is also one of the things that every RAIDER possesses, which is why the ROTC department supports the RAIDER Organization. ROTC tells you how to be a leader and we SHOW you how.

By Kevin Webb  
STAFF WRITER

To get the faculty and administration more involved in St. Pat's 1990, the UMR Staff Council is sponsoring a St. Pat's Office Decorating Contest. This contest will be held during the week of St. Pat's (March 12-16), with the judging taking place on Wednesday, March 14. The theme of the

contest will be "Building of America," the theme of St. Pat's 1990. A first place winner and a runner-up will be selected based on creativity and originality of the decorating. The first place office will receive one week of coffee breaks and the runner-up will receive coffee break of Monday, March 19, all being provided by Marriott. Show your St. Pat's spirit and get those decorations up. Any questions can be directed to Allison Holdaway at 341-4014.

## Classifieds

from page 7

J, Happy 21st Birthday!  Me	Dave R. at TKE, Hope you can apply some of that Physics you learned on me.  Love, Your Secret Admirer	Michelle & Anne, "Oh year! Dude! I'm sure!"  ZLAM, Amy	Pi Kappa Alpha,  Beach Party was great! Thanks for the Blue Hawaiians! Let's party again soon!  Love, KD	Alex, You certainly made Nissan happy! Hope you enjoy the car, but no tickets! OK?  Chauffeur
Kerri, Thanks for listening to "pointless" stories. -Your Pest.		Zetas and SigNus, Get psyched for Shot in the Dark!		Tommy H., Roses or wine coolers?  Your Choice!
Nancy, Holy Guacamole!  ZLAM, S	"Oh No, it's those Kappa Sigmas!"  Ayako & Ray, How 'bout that banana clip!!  Aim	Kappa Sigma, Stop rhyming, I mean it! Does anybody want a peanut?  ZTA	Zeta Loves the Board!! Lee T., Missed you Friday night. How was home?  YourPrez	
Lilly, The refrigerator door was locked wasn't it? Can you believe the things we do for ketchup? -Aim	Nancy, "Oh my gosh, oh, oh my gosh. Oh oh oh oh oh my gosh!"  Sues	Sig Nu, Only 10 more days 'til the theme party! Whose cup will YOU choose?!	Kappa Sigs, You're too cool!  YLS	Wanted: Any Lady attending UMR please respond via the Miner.  Qualifications: Intelligent, funny, fun-loving, independent. Decorum and modesty are plusses. Crude speech patterns or crude behavior will not be tolerated.
Weird Woman, Wouldn't it be exciting if we both made it to the final competition!! Get slim and trim for your bathing suit!  N	To: Julie S. Roses are red Violets are blue One of these days I want to meet you!  A Friendly Admirer	Julie, So, how was the weekend? What was it that happened on Saturday night? Tell me more about the gift you got for your B-day.  from a Phi Kap P.S. We now have buckets in a wide variety of sizes.	HIPPY designates February to be the month when Hell rose and shat on him!!! P.S. You can print "shat", it is a nonexistent word.	
Hey Wiltshire, Is your nose feeling a little brown these days? Give it a rest!!  The management Dept.	Sig Chi, Thanks for the TGIF! We had a great time!  Love, KD	Lilly, Thanks for the road trip!  ZLAM	Les & Jules, Cancun-here we come!  ZLAM, Iris	To the unknown Sig Pi, i miss our talks! Did you lose my number again?
Jim, Thanks for the Bart!  Susan	Twin, What's his deal?!	To: Wiltshire, Shut Up! You're driving all of us crazy!!  Your management peers	Frankie, Board Reps are so cool! Green's your color!	Too Tall & Twinky, Boy, I sure could use a Clint night soon. I hope classes are going well for you. Take care. Wake me up if you see me.  Love, Hacker
Congrats to Cindy G. & Shelly M.! Kappa Delta Blue Ribbon Award Winners! Keep up the good work!	Sue, Zan & Cat, You're the coolest owl pals!  LiCO, Cindy	Tricia, How's peek-a-boo?  Aim	Todd M., Hang in there buddy! Keep on working for the Lord.  YourPrez	
Kerri- The green trim on your black coat really makes your eyes sparkle.  I'm Watching You!	J- Happy 21st Birthday!	Yo Anyone, Please come by 333 TJ at 6:30 on Monday nights in order to hear something about God. Don't let school interfere with what's important.  Koinonia	Pi Kappa Alpha, A original little sis still thinks you are awesome!  Love, i	Erin, You'll find a flower. I know you will.
Spence, Good luck on court elections!  S	Sleepy Slave Tim, Just think, if you would drop EE415, you could work more.  Boz	Deanna, Hello ... Hello?	N, you want to go make a phone call.  C	Dube, Formal was tons of fun! Thanks!





They're the last bunch  
in the world  
you'd expect to  
win anything...  
But with this crowd  
anything can happen!

**ONE  
CRAZY  
SUMMER**

PG

**SUB Spring Film Series Presents a  
John Cusack Double Feature  
Friday & Saturday March 2 & 3  
7 pm - Better Off Dead  
9 pm - One Crazy Summer**

Shown in ME 104 Free w/Student ID

**SUB**

You've blown up your neighbor's mom.  
Your seven-year-old brother  
has better luck with women than you do.  
Your girlfriend has a new boyfriend.

Relax, you're never...



**BETTER OFF  
DEAD**

PRODUCTIONS PRESENTATION  
DISTRIBUTED BY WARNER BROS.  
A WARNER COMMUNICATIONS COMPANY

PG

## SOMETIMES IT TAKES AN ARMY TO PAY BACK YOUR COLLEGE LOAN.

Paying back your college loan can be a long, uphill battle. But the Army's Loan Repayment Program makes it easy.

Each year you serve as a soldier, the Army will reduce your college debt by 1/3 or \$1,500, whichever amount is greater. So after serving just 3 years, your college loan will be completely paid off.

You're eligible for this program with a National Direct Student Loan or a Guaranteed Student Loan or a Federally Insured Student Loan made after October 1, 1975. And the loan can't be in default.

And just because you've left college, don't think you'll stop learning in the Army. Our skill training offers a wealth of valuable high-tech, career-oriented skills. Call your local Army Recruiter to find out more.

Sergeant Wentland

100 W. 10th St. 364-4551

**ARMY. BE ALL YOU CAN BE.**

**NEW!! ILLUSIONS**



Linda Constable, Michelle Constable, Lola Wright

**COUPON**  
\$3 off Haircuts  
\$5 off Perms

**364-6965**  
1037 Kingshighway  
walkins welcome  
evening available



**CRATE**



**Ibanez**



KEYBOARDS  
GUITARS



Your Authorized Dealer

AMPS  
DRUMS

Alvarez

Pearl

Roland

## WOOLF MUSIC SOUND CENTER

**Complete Sound  
Reinforcement Systems**  
DESIGN • INSTALLATION • RENTALS

**314 - 341-3020**

Hwy. 63 South (Southside Shoppers World) Rolla  
Easy Layaway/90 Days Same As Cash

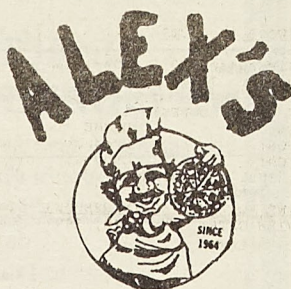
### Private Rooms Across the Street from UMR

Now taking contracts for  
next semester

- Air Conditioned
- Electric Heat
- Rent includes Water Electricity Sewage
- Cafeteria Across Street
- Excellent Study Environment
- Guys and Gals

**Charles Johnson  
Rentals**

1102-1104 N. Rolla Street



**PIZZA PALACE**  
Real Italian Pizza  
122 W. 8th St.

Open 7 Days a week  
11:00 AM - 2:00 AM  
Call For Delivery  
or Take Out

**364-2669 or 364-9878**

**Salads Sandwiches Pasta**

**5% Beer on Sunday**

**SPECIALITIES**

**Gyros Souvlaki Steak  
Greek Salad Spinich Pie Barlava**



**BUSINESS PRODUCTS**  
630 S. Bishop Rolla, MO  
Store Hours: Mon.-Fri. 8-5:30  
314-364-2485  
1-800-888-2485

- Printing
- Furniture
- Supplies
- Xerox Machines
- Copy Service
- Commercial Designer on Staff
- Fax Service
- Bridal & Reception Accessories

### FILE CABINETS

2 Drawer - Letter  
#1621TL

**\$99**

4 Drawer - Lett  
#1641

**\$129**



**Globe #980**  
Available in: Pewter, Mushroom, Steel  
Blue, Blush



**\$130<sup>50</sup>**

**Chairmat**  
45x53 #4060



**\$29<sup>9</sup>**



# Placement

UNIVERSITY OF MISSOURI-ROLLA  
Placement Office  
Buehler Building, 9th & Rolla St.

**WEEKLY DETAIL LIST #7**  
Weeks of March 5, 12, 19, 26, 1990

## PERMANENT EMPLOYMENT

**AMERICAN CYANAMID**  
Agricultural Division  
P.O. Box 817  
Hannibal, MO 63401  
attn: Ms. Sandi Fessenden

NUMBER OF SCHEDULES: 1  
MAJORS: BS/ChE  
POSITION: Process Engineering  
LOCATION: Hannibal, MO  
MAY, JULY 1990 GRADS  
MUST HAVE AUTHORIZATION TO WORK IN THE U.S.

INTERVIEW SIGNUP DATE: Thursday, March 1, 1990  
INTERVIEW DATE: March 8, 1990

**SQUARE D-NORTH CAROLINA**  
P.O. Box 5002  
Monroe, NC 28110  
attn: Mr. Jim Roach

NUMBER OF SCHEDULES: 1  
MAJORS: BS/MS EngMgt, ME  
POSITION: Operations Production Management  
LOCATION: Monroe, NC; Oshkosh, WI  
MAY, JULY 1990 GRADS  
U.S. CITIZENSHIP REQUIRED

DEADLINE FOR TURNING IN RESUMES: Thursday, Feb. 22, 1990  
INTERVIEW DATE: March 13, 1990  
(Send resume directly to company if you missed deadline)

**FINA OIL**  
P.O. Box 2159  
Dallas, TX 75221  
attn: Ms. Paula Green

NUMBER OF SCHEDULES: 1  
MAJORS: BS/ChE  
POSITION: Entry Level Process Engineer  
LOCATION: LaPorte, TX; Carville, LA  
MUST BE AVAILABLE FOR FULL-TIME EMPLOYMENT  
MAY, JULY 1990 GRADS  
INTERVIEW SIGNUP DATE: Thursday, March 1, 1990  
INTERVIEW DATE: March 12, 1990

**U.S. GYPSUM**  
P.O. Box 298  
Shoals, IN 47581  
attn: Mr. Randy Siepler

NUMBER OF SCHEDULES: 1  
MAJORS: BS ME for Project Eng.  
BS MinE for Project Evaluation, etc.  
LOCATION: Shoals, IN  
MAY, JULY 1990 GRADS

INTERVIEW SIGNUP DATE: Thursday, March 1, 1990  
INTERVIEW DATE: March 13, 1990

**LCC INCORPORATED**  
Attn: Mr. Jose Rodriguez  
Director of International Business Development  
1835 K Street, NW Suite 900  
Washington, DC 20006

NUMBER OF SCHEDULES: 1  
MAJORS: BS/MS EE  
POSITION: Cellular Design Engineers  
Radio Frequency Engineers  
Telecommunications Engineers  
Project Management Engineers  
Software Engineers  
LOCATION: Washington, DC  
Interest in travel opportunities  
Preferably proficient in the German Language, and other foreign languages  
MAY, JULY 1990 GRADS

INTERVIEW SIGNUP DATE: Monday, March 5, 1990  
INTERVIEW DATE: March 19, 1990

**U.S. AIR FORCE - CPMC & RANDOLPH**  
Randolph Air Force Base  
TX 78150-6421  
attn: Mr. Greg Cooper

NUMBER OF SCHEDULES: 2  
MAJORS: BS/EE, ME, CE, EngMgt, Environ.Eng.  
POSITION: Not available at this time  
LOCATION: Nationwide  
recent grads, MAY, JULY 1990 GRADS  
3.0 G.P.A. IS REQUIRED; U.S. CITIZENSHIP REQUIRED

INTERVIEW SIGNUP DATE: Tuesday, March 6, 1990  
INTERVIEW DATE: March 20, 1990

**SUNDSTRAND TUBULAR PRODUCTS**  
P.O. Box 636  
Camdenton, MO 65020  
attn: Ms. Julie Norris

NUMBER OF SCHEDULES: 1  
MAJORS: BS/MS ME  
POSITION: Mechanical Engineer  
LOCATION: Camdenton, MO  
recent grads, MAY, JULY 1990 GRADS  
2.5 G.P.A. REQUIRED  
U.S. CITIZENSHIP REQUIRED

DEADLINE FOR TURNING IN RESUME: Thursday, March 1, 1990  
INTERVIEW DATE: March 20, 1990

**NAVAL AIR SYSTEMS COMMAND (LOGISTICS PROGRAM)**  
CCPO-42, Crystal City  
Washington, DC 20376  
attn: Mr. Mark Russell

NUMBER OF SCHEDULES: 1  
MAJORS: BS/MS AE, EE, ME  
POSITION: Logistics Intern Program  
LOCATION: Washington, DC  
MAY, JULY 1990 GRADS  
U.S. CITIZENS ONLY

DEADLINE FOR TURNING IN RESUMES: Thursday, March 1, 1990  
INTERVIEW DATE: March 20, 1990

**BECKAERT STEEL**  
P.O. Box 1407  
Dyersburg, TN 38025-1407  
attn: Mr. Keith Guthrie

NUMBER OF SCHEDULES: 1  
MAJORS: BS/MS EngMgt  
POSITION: Manufacturing Environment -  
Management Training, Plant Layout  
LOCATION: Dyersburg, TN  
MAY, JULY 1990 GRADS

DEADLINE FOR TURNING IN RESUMES: Thursday, March 1, 1990  
INTERVIEW DATE: March 20, 1990

**STANLEY CONSULTANTS**  
Stanley Building  
Muscatine, IA 52761  
attn: Ms. Karen Diercks

NUMBER OF SCHEDULES: 1  
MAJORS: BS/CE, EE (POWER), ME  
POSITION: Entry level: CE, ME, EE  
LOCATION: Muscatine  
MAY 1990 GRADS  
U.S. CITIZENSHIP AND ALIEN AUTHORIZED TO WORK ON AN UNLIMITED BASIS

INTERVIEW SIGNUP DATE: Tuesday, March 6, 1990  
INTERVIEW DATE: March 20, 1990

**HAVCO WOOD PRODUCTS**  
P.O. Box 1342  
Cape Girardeau, MO 63702-1342  
attn: Mr. James Vangilder

NUMBER OF SCHEDULES: 1  
MAJORS: BS/ME  
POSITION: Product-Project Eng.  
LOCATION: Cape Girardeau, MO  
MAY, JULY 1990 GRADS

DEADLINE FOR TURNING IN RESUMES: Thursday, March 1, 1990  
INTERVIEW DATE: March 20, 1990

**ASARCO**  
P.O. Box 7  
Glover, MO 63646  
attn: Mr. Bill Womble

NUMBER OF SCHEDULES: 1  
MAJORS: BS/MetE or ChE for Process Eng.  
BS/ME, EE for Project Eng.  
Construction Design or Maintenance  
LOCATION: Arizona, Colorado, Illinois, Missouri, Montana, Nebraska, Texas  
MAY, JULY 1990 GRADS

DEADLINE FOR TURNING IN RESUMES: Thursday, March 1, 1990  
INTERVIEW DATE: March 21, 1990



CLEVELAND CLIFFS, INC.  
1100 Superior Avenue  
Cleveland, OH 44114  
attn: Mr. Wayne Speicher

NUMBER OF SCHEDULES: 1  
MAJORS: BS/CE, EE, ME, Mete (Extractive),  
Geology, ME, Mining Eng.  
POSITION: (Company is producer of iron ore  
pellets, manager of several state of the art mining  
operations)  
LOCATION: Upper Peninsula of Michigan, N. MN  
recent grads, MAY, JULY 1990 GRADS  
U.S. CITIZENSHIP REQUIRED

INTERVIEW SIGNUP DATE: Wednesday, March 7, 1990  
INTERVIEW DATE: March 21, 1990

U.S. DEPT. OF TRANS./F.A.A.  
601 E. 12th St. (ACE-450A)  
Kansas City, KS 64106  
attn: Mr. Mark Einhellig

NUMBER OF SCHEDULES: 1  
MAJORS: BS/CE  
POSITION: Civil Engineer  
LOCATION: Kansas City, MO  
DEC. 89, MAY, JULY 90 GRADS  
PREFER 3.0 G.P.A.  
U.S. CITIZENSHIP REQUIRED

DEADLINE FOR TURNING IN RESUMES: Thursday, March 1, 1990  
INTERVIEW DATE: March 22, 1990

PERMEA  
11444 Lackland Rd.  
St. Louis, MO 63146  
attn: Mr. Eric Hartlen

NUMBER OF SCHEDULES: 1  
MAJORS: BS/ME, ChE - Mfg. Process Engineer  
know various codes and standards and fundamentals of  
chemistry mechanics (More details will be available at  
time of interview signups.)  
Entry level position  
LOCATION: St. Louis

DEADLINE FOR TURNING IN RESUMES: Thursday, March 1, 1990  
INTERVIEW DATE: March 22, 1990

SCHREIBER FOODS  
P.O. Box 557  
Carthage, MO 64836  
attn: Mr. Dean Orem

NUMBER OF SCHEDULES: 1  
MAJORS: BS/EE, ME or EngMgt  
POSITION: Production Supervisor  
Project Manager  
LOCATION: Carthage, MO  
MAY, JULY 1990 GRADS

DEADLINE FOR TURNING IN RESUMES: Thursday, March 1, 1990  
INTERVIEW DATE: March 28, 1990

# Co-op Employment

March, 1990

## CO-OP EMPLOYMENT OPPORTUNITIES

Sign-up location: 101 Buehler Bldg.  
Co-op Office  
9th & Rolla Sts.  
Sign-up hours: 7:45 am - 11:00 am  
1:00 pm - 3:00 pm

Interview date: Monday, March 5, 1990

ASSOCIATED ELECTRIC  
Clifton Hill, MO (near Moberly, MO)  
Interviewing: M.E., C.E., Mining

Requirements: 2.0 GPA or above

start work summer 90

Sign-up date: Wed., Feb. 21, 1990

1 schedule - 13 interview openings

A T & T  
Kansas City, Missouri

Interviewing: C.Sc.

Requirements: 3.0 GPA or above. Must have  
right to work in the US.

Turn-in-resumes: Wed., Feb. 21, 1990

start work summer or fall 90

RESUMES ONLY. IF YOU WOULD LIKE TO BE CON-  
SIDERED FOR CO-OP EMPLOYMENT WITH THE ABOVE  
COMPANY, PLEASE TURN IN A COPY OF YOUR CO-OP  
RESUME TO THE CO-OP OFFICE ON THE ABOVE DATE.

\*\*\*\*\*

Interview date: Wed., March 7, 1990

EMERSON ELECTRIC  
Ava, Missouri

Interviewing: M.E.

Requirements: 2.5 GPA or above, Sophomore  
level or junior level

start work fall 90

Sign-up date: Wed., Feb. 21, 1990

1 schedule - 13 interview openings

\*\*\*\*\*

IBM CORPORATION  
Endicott/Owego, NY

Interviewing: Ch.E., Chem., C.Sc., E.E.,  
M.E., Met.E.

Requirements: 3.0 GPA or above. US Citizen-  
ship or permanent resident. Academic level  
of applicants: at least 60-89 credit hours  
completed at the end of the present semester.

Turn-in-resumes: Thurs., Feb. 22, 1990

start work summer or fall 90

RESUMES ONLY. IF YOU WOULD LIKE TO BE  
CONSIDERED FOR CO-OP EMPLOYMENT WITH THE  
ABOVE COMPANY, PLEASE TURN IN A COPY OF YOUR  
CO-OP RESUME TO THE CO-OP OFFICE ON THE  
ABOVE DATE.

\*\*\*\*\*

IBM CORPORATION  
Boca Raton, Florida

Interviewing: Math., C.Sc., E.E., M.E. (limited  
number of openings for M.E.'s)

Requirements: 3.5 GPA or above. American  
Citizenship or intending citizen.

Turn-in-resumes: Thurs. Feb. 22, 1990

start work summer or fall 90

RESUMES ONLY. IF YOU WOULD LIKE TO BE  
CONSIDERED FOR CO-OP EMPLOYMENT WITH THE  
ABOVE COMPANY, PLEASE TURN IN A COPY OF  
YOUR CO-OP RESUME TO THE CO-OP OFFICE ON  
THE ABOVE DATE.

\*\*\*\*\*

AMERICAN ELECTRIC  
Columbus, Ohio

Interviewing: C.E., E.E. (start work sum 90),  
M.E. (start work fall 90)

Requirements: 2.8 gpa or above. freshmen or  
above can apply.

Turn-in resumes: Friday, Feb. 23, 1990

RESUMES ONLY. IF YOU WOULD LIKE TO BE CON-  
SIDERED FOR CO-OP EMPLOYMENT WITH THE ABOVE  
COMPANY, PLEASE TURN IN A COPY OF YOUR CO-OP  
RESUME TO THE CO-OP OFFICE ON THE ABOVE DATE.

\*\*\*\*\*

Interview date: Friday, March 2, 1990

MONSANTO AGRICULTURAL  
St. Louis, Missouri

Interviewing: E.E.

Requirements: 2.5 GPA OR ABOVE

1 HOUR INTERVIEWS

Sign-up date: Fri., Feb. 23, 1990

1 schedule - 6 interview openings

\*\*\*\*\*

## Solutions

from page 14

CLAIM WIFE SOB SCAMPS  
AORTA ARAP IQA PANOUT  
RAISING ARIZONA AMENRA  
IND EEN SEGAL EATEN  
OWNSUP IQTA BERRA  
COEUR WANDAREVADA NCO  
ARSON ARLES WATE RAHS  
SDS ONCE SCRIM ABLE  
NORTH TO ALASKA DEL  
INTERME BIAS MILLE  
COVERED BERLE STEALER  
COEDS RATO CRATERS  
DIVI OKLAHOMACRUDE  
ALLIE GIANS FLEA APT  
DERR DODD SPREE WILMAN  
MSG NEWYORKTOWN TADRA  
ILLONA WIES WAPITI  
MINOS STEER PRE SAP  
OSTARS MISSOURIDREAKS  
PLANET ECU UNIT DOWIE  
SENIARY ESS DAME ANAIS

GARLE AMA THEM DEBATE  
ORION GAG HARI ORISON  
YOUNGER GENERATIONS ARE  
AWE ALAN ELATED SONES  
IDA ADAMS REL NARC  
WASTING ITAS AIR SOO  
ATTENDANCE JOTTED  
STARE MIEN POWERLESS  
PLAN SETS BISE EASEUP  
DETEST GALE TIANTE  
REFLECTIONS OF THE OLDER  
ARABS PAST HEARTS  
WISEST FIARO DIRT ALB  
STREAMERS DORM FEWER  
TRUANT INDELICATE  
GEE ANT FLAM SAROVAN  
HOLD THE AIDS MEL  
ETIAS NETTLE AHAB ADO  
WHICH IS WHAT MAKES US MAD  
REARER IOLE GEE GUILLE  
DREAMS SWEED ORD SNEER



DIEMAKERS INC.  
Monroe City, MO

Interviewing: M.E.

Requirements: 2.0 GPA or above. Prefer applicants to be from northeast Missouri - such as Hannibal, MO, Paris, MO, Monroe City, Mo area.

Turn-in resumes: Friday, Feb. 23, 1990

RESUMES ONLY. IF YOU WOULD LIKE TO BE CONSIDERED FOR CO-OP EMPLOYMENT WITH THE ABOVE COMPANY, PLEASE TURN IN A COPY OF YOUR CO-OP RESUME TO THE CO-OP OFFICE ON THE ABOVE DATE.

TENNESSEE VALLEY AUTHORITY  
Work Location: Chattanooga, Tennessee

Interviewing: E.E., M.E.

Requirements: 2.0 GPA or above. Freshmen can apply.

Turn-in-resumes: Monday, Feb. 26, 1990

START WORK SUMMER 90

RESUMES ONLY. IF YOU ARE INTERESTED IN CO-OP EMPLOYMENT WITH THE ABOVE COMPANY, PLEASE TURN IN A COPY OF YOUR CO-OP RESUME TO THE CO-OP OFFICE ON THE ABOVE DATE.

VA ENGINEERING SERVICE CENTER  
St. Louis, Missouri

Interviewing: E.E. (provide assistance to the Engineering Section for the purpose of technical analysis, and technical report writing on state-of-the-art subject matter as assigned. Topics that may be addressed range from office automation computers, with emphasis on personal computers and peripherals, to technically complex engineering subjects. More detailed job description available at the co-op office.

Requirements: 2.0 gpa or above.

Turn-in-Resumes: Mon., Feb. 26, 1990

RESUMES ONLY. IF YOU WOULD LIKE TO BE CONSIDERED FOR CO-OP EMPLOYMENT WITH THE ABOVE COMPANY, PLEASE BRING A COPY OF YOUR CO-OP RESUME FORM TO THE CO-OP OFFICE ON THE ABOVE DATE.

Interview date: Mon., March 12, 1990

NORANDA ALUMINUM  
New Madrid, MO

Interviewing: (2) M.E., (4) Eng.Mgmt.

Requirements: 3.0 GPA or above, students must be sophomore level this semester.

start work summer 90

Sign-up date: Monday, Feb. 26, 1990

1/2 schedule - 6 interview times

Interview date: Fri., March 9, 1990

GENERAL ELECTRIC LAMP PLANT  
St. Louis, Missouri

Interviewing: M.E., E.E.

Requirements: 2.8 GPA or above.

Sign-up date: Tues., Feb. 27, 1990

1 schedule - 11 interview openings

NASA LANGLEY  
Houston, Texas

Interviewing: A.E., Math., M.E., E.E., C.Sc.

Requirements: 3.0 GPA or above, American Citizenship required. Must be able to become accustomed to a new climate. (Houston, TX)

Turn in resumes- Tues., Feb. 27, 1990

pick up government form 171 on Feb. 27th.

RESUMES ONLY. IF YOU WOULD LIKE TO BE CONSIDERED FOR CO-OP EMPLOYMENT WITH THE ABOVE COMPANY, PLEASE TURN IN A COPY OF YOUR CO-OP RESUME TO THE CO-OP OFFICE ON THE ABOVE DATE.

JOHN DEERE COMPANY  
Waterloo, Iowa

Interviewing: Met.E. (heat testing dept.)

Requirements: 2.7 GPA or above, freshmen or sophomore level. requires a minimum of 4 work periods.

Turn-in resumes: Wed., Feb. 28, 1990

RESUMES ONLY. IF YOU WOULD LIKE TO BE CONSIDERED FOR CO-OP EMPLOYMENT WITH THE ABOVE COMPANY, PLEASE TURN IN A COPY OF YOUR CO-OP RESUME TO THE CO-OP OFFICE ON THE ABOVE DATE.

COOPER POWER SYSTEMS  
Franksville, Wisconsin

Interviewing: E.E.

Requirements: 3.5 GPA or above. Academic level of applicants: at least 35 hrs completed at the end of the present semester.

Turn-in resumes: Thurs., March 1, 1990

RESUMES ONLY. IF YOU WOULD LIKE TO BE CONSIDERED FOR CO-OP EMPLOYMENT WITH THE ABOVE COMPANY, PLEASE TURN IN A COPY OF YOUR CO-OP RESUME TO THE CO-OP OFFICE ON THE ABOVE DATE.

GENERAL ELECTRIC AIRCRAFT ENGINES  
Cincinnati, Ohio

Interviewing: A.E., Ch.E., Ch.E., C.Sc., E.E., M.E., Met.E.

Requirements: 3.0 GPA or above. American Citizenship required. Academic level of applicants: at least 29 credit hours completed at the end of the present semester toward bs degree.

start work summer 90

Turn-in-resumes: Tues., March 6, 1990

RESUMES ONLY. IF YOU WOULD LIKE TO BE CONSIDERED FOR CO-OP EMPLOYMENT WITH THE ABOVE COMPANY, PLEASE BRING A COPY OF YOUR CO-OP RESUME TO THE CO-OP OFFICE ON THE ABOVE DATE.

Interview date: Wed., March 28, 1990

UNION CARBIDE CHEMICALS & PLASTICS CO.  
Texas City, TX

Interviewing: Ch.E., E.E., M.E.

Requirements: 3.0 GPA or above. American Citizenship required or permanent resident. Academic level of applicants: at least 30 credit hours completed at the end of the present semester.

start work fall 90

Sign-up date: Monday, March 12, 1990

1/2 schedule for Ch.E. = 7 interview openings  
1/2 schedule for E.E., & M.E. = 6 interview openings

PAUL MUELLER COMPANY  
Springfield, Missouri

Interviewing: Eng.Mgmt., M.E., Met.E.

Requirements: 2.0 GPA or above

Turn-in-Resumes: Tues., March 13, 1990

RESUMES ONLY. IF YOU WOULD LIKE TO BE CONSIDERED FOR CO-OP EMPLOYMENT WITH THE ABOVE COMPANY, PLEASE BRING A COPY OF YOUR CO-OP RESUME TO THE CO-OP OFFICE ON THE ABOVE DATE.



KOHLER COMPANY  
Kohler, Wisconsin

Interviewing: Cer., Eng.Mgmt., M.E.,  
E.E., Met.E., C.Sc.

Requirements: 2.0 GPA or above

Turn-in Resumes: Wed., March 7, 1990

RESUMES ONLY. IF YOU WOULD LIKE TO BE  
CONSIDERED FOR CO-OP EMPLOYMENT WITH THE  
ABOVE COMPANY, PLEASE TURN IN A COPY OF  
YOUR CO-OP RESUME TO THE CO-OP OFFICE ON  
THE ABOVE DATE.

\*\*\*\*\*

Interview date: Thurs., March 22 and Fri., March  
23, 1990

JACOBS ENGINEERING GROUP INC.  
Lakeland, Florida

Interviewing: Ch.E., C.E., E.E., Geology,  
Geo.E., M.E., Mining

Requirements: 2.2 GPA or above, American Citizenship  
required. Academic level of applicants: at least  
60 credit hours completed at the end of the present  
semester.

start work summer or fall 90

Sign-up date: Thurs., March 8, 1990

1-1/2 schedules - 20 interview openings

\*\*\*\*\*

GENERAL ELECTRIC  
Cincinnati, Ohio

Interviewing: Eng.Mgmt., M.E., C.Sc.

Requirements: 3.0 GPA or above. Freshmen  
can apply.

start work summer 90

Turn-in Resumes: Tues., March 13, 1990

RESUMES ONLY. IF YOU WOULD LIKE TO BE  
CONSIDERED FOR CO-OP EMPLOYMENT WITH THE  
ABOVE COMPANY, PLEASE BRING A COPY OF YOUR  
CO-OP RESUME FORM TO THE CO-OP OFFICE ON  
THE ABOVE DATE.

\*\*\*\*\*

NOTE: The ones that indicate RESUMES ONLY.  
This means the company will not be on campus  
interviewing, but they would like resumes to  
review and should contact you if they are  
interested in interviewing you.

Please let the Co-op Office know immediately  
of any acceptance of an offer.

Please check with the Co-op Office period-  
ically to see if additional companies have  
scheduled interviews. These will be posted  
on the bulletin board outside the Co-op Office  
and printed in the Miner Newspaper.

\*\*\*\*\*

Interview date: Monday, March 12, 1990

AMSTED INDUSTRIES  
Chicago, Illinois

Interviewing: E.E., M.E., Met.E.

Requirements: 2.0 GPA or above

Sign-up date: Monday, Feb. 26, 1990

1 schedule - 12 interview openings

\*\*\*\*\*

US DEPARTMENT OF COMMERCE  
Mountain Administrative Support Center  
Boulder, Colorado

Interviewing: C.Sc., Math., Chem., Physics,  
E.E., M.E., Ch.E.

Requirements: 2.0 GPA or above.  
need to pick up government form 171, work/school  
schedule at the co-op office on the turn-in-resume  
date.

Turn-in - resumes: Thurs., March 8, 1990

RESUMES ONLY. IF YOU WOULD LIKE TO BE  
CONSIDERED FOR CO-OP EMPLOYMENT WITH THE  
ABOVE COMPANY, PLEASE BRING A COPY OF YOUR  
CO-OP RESUME TO THE CO-OP OFFICE ON THE  
ABOVE DATE.

\*\*\*\*\*

#### CO-OP

#### PLEASE POST

IBM CORPORATION, CHICAGO, ILLINOIS CO-OP INTERVIEWS, MARCH,  
1990

IBM WILL HOLD AN INFORMAL INFORMATION AND SIGNUP  
DAY ON TUESDAY, MARCH 6, 1990, IN THE CENTENNIAL  
HALL, UNIVERSITY CENTER-EAST. HOURS WILL BE FROM  
12:00 NOON - 5:00 PM. (STOP BY ANYTIME) STUDENTS  
INTERESTED IN CO-OPING WITH THE IBM CORPORATION ARE  
INVITED. ACTUAL INTERVIEW DATE WILL BE ON WEDNESDAY,  
MARCH 7, 1990.

DISCIPLINES: CO-OP OPPORTUNITIES INCLUDE BUT ARE  
NOT LIMITED TO SOFTWARE DEVELOPMENT,  
TECHNICAL MARKETING AND ENGINEERING.

POSITION(S) & LOCATIONS: REPRESENTATIVES FROM VARIOUS U.S. LOCATIONS  
WILL CONDUCT AN INFORMAL INFORMATION SESSION  
ON MARCH 6. STUDENTS INTERESTED IN INTER-  
VIEWING WITH IBM SHOULD ATTEND. DETAILED  
INFORMATION WILL BE PROVIDED AT A LATER DATE.

ALL STUDENTS MUST HAVE A RESUME AND TRANSCRIPT ON FILE AT THE  
CO-OP OFFICE BEFORE YOU WILL BE CONSIDERED FOR CO-OP EMPLOYMENT.

YOU MUST SUBMIT (4) COPIES OF YOUR CO-OP RESUME FORM TO IBM ON  
THE INFORMAL INFORMATION AND SIGNUP DAY, MARCH 6.

Note: IBM will consider U.S. Citizens, Permanent Residents or  
"Intending Citizens" as defined by the 1986 Immigration Reform  
and Control Act.



# Summer Employment

UNIVERSITY OF MISSOURI-ROLLA  
Placement Office  
Buehler Building, 9th & Rolla St.

## SUMMER EMPLOYMENT

**SPRING 1990 WEEKLY DETAIL LIST #7**  
WEEK OF MARCH 19-23, 1990

**DEPARTMENT OF THE ARMY**  
KANSAS CITY DIST. CORPS OF ENGINEERS  
700 Federal Building  
Kansas City, MO 64106-2896  
attn: Ms. Kathy Duffy

POSITION OPEN FOR ENGINEERING AID OR ENGINEERING TECHNICIAN  
Qualified candidates are currently being recruited for temporary federal employment for the positions listed above.  
Engineering Aid, GS-2-3, \$6.22 per hour  
Engineering Technician, GS-2-4, \$6.98 per hour  
Positions are in various locations - closing date will be April 15, 1990

COMPLETE DETAILS WILL BE AVAILABLE IN SUMMER JOB NOTE BOOK, PLACEMENT OFFICE, 201 BUEHLER BUILDING. APPLICATIONS ARE AVAILABLE IN SIGNUP AREA (BASEMENT, BUEHLER BUILDING) IF YOU DESIRE FURTHER INFORMATION, AND FORMS, CONTACT:  
Staffing Specialist  
U.S. ARMY ENGINEER DISTRICT, PERSONNEL OFFICE  
601 E. 12th Street, Room 609  
Attn: CEMRK POE-Duffy  
Kansas City, MO 64106-2896  
Telephone: 816-426-3751

APPLICATIONS MUST BE POSTMARKED NO LATER THAN APRIL 15, 1990.

**INTERNSHIP WITH MISSOURI HIGHWAY & TRANSPORTATION**  
Summer internships are available in Construction, Highway Design, Bridge Design.

CONTACT: Placement Office (UMR) or the  
MISSOURI HIGHWAY AND TRANSPORTATION DEPARTMENT  
Personnel Division  
P.O. Box 270  
Jefferson City, MO 65102  
314-751-2551

Poster listing details available in SUMMER JOB NOTEBOOK, Placement Office, 201 Buehler Bldg.

**DOE RUN COMPANY**  
881 Main St.  
Herculaneum, MO 63048  
attn: Mr. Rick Batts

NUMBER OF SCHEDULES: 1  
MAJORS: BS/METE or ChE  
POSITION: Summer Engineer  
LOCATION: Herculaneum  
MUST BE IN 2ND, 3RD OR 4TH YEAR  
U.S. CITIZENSHIP REQUIRED

**DEADLINE FOR TURNING IN RESUMES:** Thursday, March 1, 1990  
**INTERVIEW DATE:** March 23, 1990

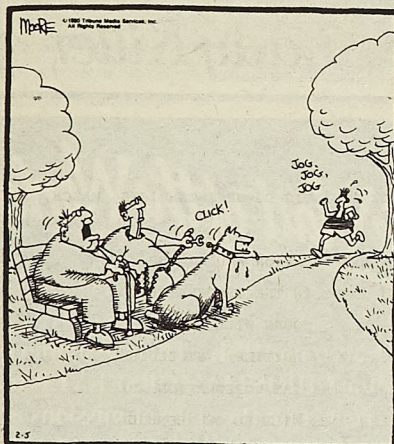
**SCHREIBER FOODS**  
P.O. Box 557  
Carthage, MO 64836  
attn: Mr. Dean Orem

RESUMES WILL BE ACCEPTED FROM JUNIORS OR ABOVE IN EE, ME FOR SUMMER EMPLOYMENT.

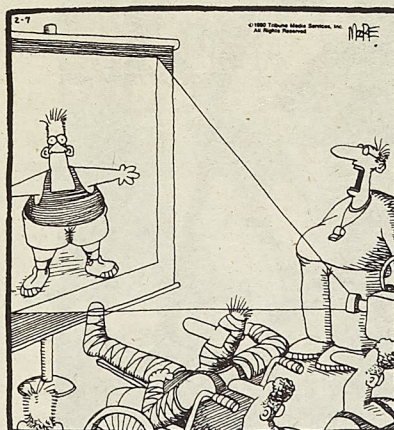
**DEADLINE FOR TURNING IN RESUMES:** Thursday, March 1, 1990  
**INTERVIEW DATE:** March 28, 1990

## IN THE BLEACHERS

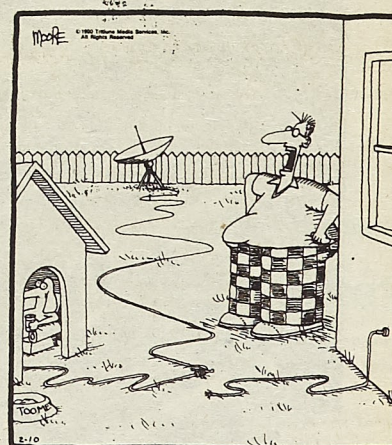
by Steve Moore



"Now ..."



"... And notice, gentlemen, Leonard's feet are firmly planted, his body squared away in a textbook example of how to draw a charging foul."



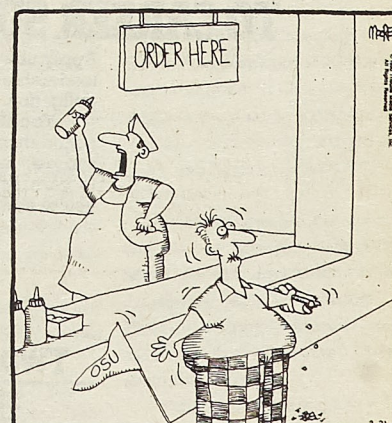
"Toomer! Get your tail out here!!"



"A message from the barbarians, majesty. It says: 'We've got spirit, yes we do. We've got spirit, how 'bout you?' ..."



"Keep it up Ethel. You can make deep, threatening guttural sounds until you're blue in the face. I'm not going to let it ruin my game"



"Yo, Wayne! I think I figured out why that bottle of drain opener was full of mustard!!"



# Make A Run For The Border With These Money-Saving Coupons!

**Burrito Supreme®**  
**\$1.29**

A delicious combination of pinto beans, ground beef, secret red sauce, sour cream, onions, lettuce, cheese and tomatoes, wrapped in a flour tortilla.

Please present coupon when ordering.  
Limit: one coupon per person per visit.  
Not good with any other offer. Cash redemption value is 1/20th cent.  
Good only at participating Taco Bell restaurants. Tax not included. Offer expires May 31, 1990.



**Taco Salad**  
**\$2.49**

The meal in a bowl you can eat! Beans, lettuce, ground beef, cheese, tomatoes, sour cream, olive and green onion in a light, crispy flour tortilla.

Please present coupon when ordering.  
Limit: one coupon per person per visit.  
Not good with any other offer. Cash redemption value is 1/20th cent.  
Good only at participating Taco Bell restaurants. Tax not included. Offer expires May 31, 1990.



**Nachos BellGrande®**  
**\$1.99**

Crispy chips with beans, ground beef, sour cream, cheese sauce, tomatoes, green onion and olive.

Please present coupon when ordering.  
Limit: one coupon per person per visit.  
Not good with any other offer. Cash redemption value is 1/20th cent.  
Good only at participating Taco Bell restaurants. Tax not included. Offer expires May 31, 1990.



**Mexican Pizza**  
**\$1.49**

A special pizza shell topped with beans, ground beef, special pizza sauce, tomatoes, American and Pepper Jack cheese - melted and garnished with green onion and black olive.

Please present coupon when ordering.  
Limit: one coupon per person per visit.  
Not good with any other offer. Cash redemption value is 1/20th cent.  
Good only at participating Taco Bell restaurants. Tax not included. Offer expires May 31, 1990.



**1201 Bishop, Rolla, MO**

## RESERVE OFFICERS' TRAINING CORPS



## START YOUR CLIMB TO CAREER SUCCESS THIS SUMMER.

Apply now for six weeks of Army ROTC leadership training. With pay, without obligation.

You'll develop the discipline, confidence and decisiveness it takes to succeed in any career. And you'll qualify to earn Army officer credentials while you're completing your college studies.



**ARMY ROTC  
TWO-YEAR PROGRAM**

THE SMARTEST COLLEGE  
COURSE YOU CAN TAKE.

Find out more. Contact Captain Everson  
308 Harris Hall or call 341-4738 today.

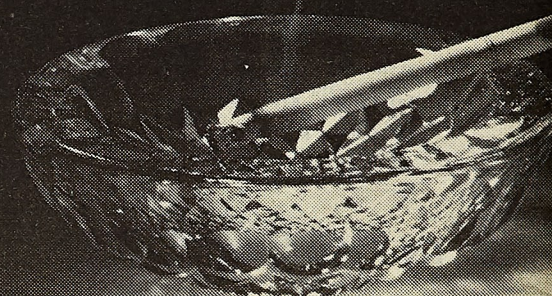
## QUALITY CLEANERS

\* Expert Cleaning \* Reasonably priced  
108 W. 7th Street Rolla, Mo 65401 364-3650

*Nobuko's*  
**HAIR  
BOUTIQUE**

details make the  
difference

across from TJ Maxx 341-3800



*Lady Killer*



## The Wait of the World

Brian, Karen and T.J. - Their assignment as writers for CHRISTIAN OBSERVER magazine: to report on the state of missions activity in three different parts of the world, using the latest in advanced computer technology. They were expecting it to be a routine job - What they weren't expecting is that it would change their lives forever.

A John Schmidt Production

TO BE SHOWN AT:  
Mark Twain Room, UCE  
7 pm, Monday, March 5  
Sponsored by CCF  
FREE ADMISSION



Gospel Films  
Muskegon, Michigan