



04 Oct 1989

## The Missouri Miner, October 04, 1989

Follow this and additional works at: [https://scholarsmine.mst.edu/missouri\\_miner](https://scholarsmine.mst.edu/missouri_miner)

These newspapers reflect the attitudes, perspectives, and beliefs of different times. Neither the library nor the university endorses the views expressed in these collections, some of which contain images and language which may be offensive to some readers.

---

### Recommended Citation

"The Missouri Miner, October 04, 1989" (1989). *The Missouri Miner Newspaper*. 2528.  
[https://scholarsmine.mst.edu/missouri\\_miner/2528](https://scholarsmine.mst.edu/missouri_miner/2528)

This Newspaper is brought to you for free and open access by Scholars' Mine. It has been accepted for inclusion in The Missouri Miner Newspaper by an authorized administrator of Scholars' Mine. This work is protected by U. S. Copyright Law. Unauthorized use including reproduction for redistribution requires the permission of the copyright holder. For more information, please contact [scholarsmine@mst.edu](mailto:scholarsmine@mst.edu).



# Missouri Miner



A publication of the students of the University of Missouri-Rolla

October 4, 1989

Volume 78, Number 7

Thirty-two pages

## New housing rule begins in fall

By Chris Reynolds  
Staff Writer

UMR has put the Freshman / Sophomore Residency Requirement into effect. The policy will affect the freshman class entering UMR in the fall of 1990. The main purpose of initiating this policy is to improve the student environment through maintaining a desirable residential population.

According to Dr. Ogrosky the policy will only effect a few people because the majority of the sophomores on campus are living in the dormitories anyway.

The policy is as follows: freshmen and sophomores attending UMR are required to reside in university approved housing. Exceptions to the policy may be granted under special conditions.

"I think it is a good way for everybody to maintain good study habits, instead of giving them rope to hang themselves," replied Keith Jenich. Many others in the UMR community share the same feelings. "I think it may increase the number of people in fraternities and sororities because we will have students looking for an alternative to the dorms after their freshman year," Interfraternity Council Representative Carl Bruce stated. "Since students cannot move out of university housing after their first year, Greek housing is basically their only option, besides the dorms."

This issue will be one of much debate this semester and throughout next year.



Bill Booth

Chancellor welcomes guests to a open house at his residence. The open house commemorates the 100th anniversary of his residence.

## Faculty members serve on MSPE committees

Submitted by  
News and Publications

Three members of the UMR faculty are among 16 members of the Missouri Society of Professional Engineers (MSPE) who recently were appointed to serve on committees of the National Society of Professional Engineers.

Dr. Donald Modesitt, UMR associate professor of civil engineering, was named to serve on the Professional Development awards Committee. This committee annually evaluates and selects individuals who have shown outstanding advancement and improvement in the development and application of modern engineering practices.

Dr. Paul Munger, UMR professor of civil engineering, was appointed to the National Institute of Engineering Ethics. The institute promotes the development and understanding of

ethics within the engineering profession. Munger co-directs the UMR "Ethics for Engineers Seminar" which was developed with funding from a National Science Foundation Ethics and Values Studies Program grant.

Dr. Harry Sauer, Jr., UMR dean of graduate study and professor of mechanical and aerospace engineering, became a member of the Publications Committee, which provides general direction to the major NSPE publications. Dean Sauer also chairs the MSPE Publications Committee.

According to Dr. Charles Morris, UMR associate professor of civil engineering and president of MSPE's Rolla Chapter, NSPE is a voluntary association of engineering professionals which strives to ensure the application of engineering knowledge and skills in the public interest and to foster public understanding of the role of engineering in society.

## Schedule of events for Homecoming Weekend

### Friday, October 6:

Ice Cream Social	12:30 p.m.
Games at the Puck	12:30 p.m.
Student/Alumni Golf Tournament	1:00 to 4:00 p.m.
Parade	8:00 p.m.
Bonfire and Pep Rally	8:30 p.m.

### Saturday, October 7:

Football Game, vs. SEMO	1:30 p.m.
Soccer Game, vs. UMSL	7:30 p.m.

## Tank found on auditorium site

Submitted by  
News & Publications

Workers excavating at the construction site for Castleman Hall (auditorium-music-Alumni Building) at the University of Missouri-Rolla Monday discovered an abandoned propane storage tank.

According to Neil Smith, UMR vice chancellor for administrative services, the tank has a capacity of about 1,000 gallons. Smith said it appeared that all the propane had evaporated and only a residue of chemicals that are added to propane to give it its characteristic smell was left in the tank.

"All necessary safety precautions were taken in removing the tank. The Rolla Fire Department flushed out the tank so that it will be ready for safe disposal," Smith said.

Ray Bono, UMR director of Health/Risk Management, said that all proper governmental agencies have been notified of the incident.

The tank was found near Main and 11th streets, the former site of the Sigma Nu fraternity annex.



# Calendar of Events

## Wednesday

Study Skills, 3:30p.m., in Mark Twain Room.

Wesley Foundation Meeting, 6p.m.

Spelunkers Meeting, 6p.m., in 206 McNutt Hall.

Alpha Chi Sigma Meeting, 6:30p.m., in G-3 Schrenk.

Kappa Kappa Psi/ Tau Beta Sigma Meeting, 7p.m., in 101 OldCafe.

Beta Chi Sigma Meeting, 7p.m., in 117 ME.

ASCE Meeting, 7p.m., in room 114 CE.

Society of Metallurgical Engineers Meeting, 7:30p.m., in room 204 McNutt Hall.

Mass Newman, 9p.m.

## Thursday

INDUSTRY DAY!!!

Stress Management, 3:30p.m., in 103 Rolla Bldg.

Bible Study, 4p.m., in Maramec room.

Toastmasters Meeting, 5:30p.m., in 220 Fulton Hall.

Eta Kappa Nu Meeting, 6:30p.m., in room 102 EE.

Climbing Club Meeting, 6:30p.m., in 206 McNutt Hall.

ASEM Meeting, 6:30p.m., in G-3 Schrenk.

TNT, Thursday Night Together, 6:30p.m., at the Baptist Student Union.

Math Help Session, 7p.m., in 203 M-CS.

SL Pat's Meeting, 7p.m., in room 107C Mining.

ACM Meeting, 7p.m., in G-5 H-SS.

EIT Review, 7-9p.m., Dynamics in room 114 CE.

ANS Meeting, 7p.m., in room 227 Fulton.

Rolla Association of Guitar Enthusiasts Meeting, 7p.m., in room 212 McNutt Hall.

UMR Film Series, 7:30p.m., "Skyline," in Miles Auditorium, 104 ME. Admission by season ticket or \$3 at the door.

Gaming Association Meeting, 8p.m., in room 208 ME.

## Friday

Homecoming Registration, 9a.m. - 4:30p.m., Miner Lounge, in the University Center-East.

Ice Cream Social, 12:30p.m., in the mall between University Center-East and Library. FREE!!!!

Student-Alumni Golf Tournament, 1-4p.m., at the UMR Golf Course.

Educational Seminars, 1:30-4:30p.m., check at the registration desk for information.

Electrical Engineering-Physics Seminar, 4p.m., on "Semiconductor Quantum Wave Devices," by Thomas K. Gaylord, Georgia Institute of Technology, in room 104 Physics Building. FREE!

Silver and Gold Reception, 5:30-8p.m., in Centennial Hall, University Center-East.

IVCF Meeting, 7p.m., in 139 Chem.Eng.

## HOME COMING PARADE, 8P.M.

HOME COMING BONFIRE, 8:30p.m., at the Multipurpose Bldg.

## Saturday

Tau Beta Pi Work Day.

Homecoming Registration, 8-11:15a.m., in the Miner Lounge, University Center-East.

Educational Seminars, 9a.m.-noon, check at registration desk for information.

Open Gaming Session, 9a.m., in room 317 CE.

CSA Language Study, 9:30a.m., in Ozark Room.

Collegium Musicum, 10a.m., at the Hockey Puck.

Fieldhouse Feed, 11:30a.m.-1:30p.m., at Gale Bullman Multi-Purpose Building.

UMR Football, 1:30p.m., versus Southeast Missouri State University (SEMO) at New Jackling Field. Admission Charged. HOME COMING

UMR Soccer, 7p.m., versus UMSL at UMR Soccer complex.

CSA Movies, 7:30p.m., in G-3 Schrenk.

## Sunday

Women's Soccer, 2p.m., versus UMSL at UMR Soccer complex.

Jazz Ensemble, 2:30p.m., at the Cedar Street Center.

## Monday

Chem. Seminar, 4:30p.m., in G-3 Schrenk.

Student Activity Fee Board Meeting, 4:30p.m., in Walnut Room.

Independents, 6:30p.m., in Maramec room.

Life Talks, 7:30 p.m., at 1052 TJ, sponsored by Koinonia.

Bible Study, 7:30p.m., at the Baptist Student Union.

## Tuesday

Surviving Chemistry, 3:30p.m., in room 125 Schrenk.

Environmental Protection Advocates Meeting, 5p.m., in room 104 Physics.

SWE Meeting, 5:45p.m., in the Ozark Room.

Student Council Meeting, 6:30p.m., in Eng. Mgt. Auditorium.

AEG Meeting, 7p.m., in 204 McNutt Hall.

Math Help Session, 7p.m., in 203 M-CS.

EIT Review, 7-10p.m., Electrical Circuits, in room 104 ME.

AGC Meeting, 7p.m., in room 114 CE.

Koinonia Meeting, 7:30p.m., in 125 Chem. Eng. Building.

KME Meeting, 8:15p.m., in room 107C Mining.

## Wednesday

Sigma Xi luncheon meeting, noon, Mark Twain Room, University Center-East. Dutch treat.

UMR Men's Soccer, Washington University, 7 p.m., UMR soccer complex. Free.

Text Anxiety, Mark Twain, 3:30 p.m.

Spelunker's Mtg., 206 McNutt, 6 pm.

Blue Key Mtg., Ozark Room, 6:15 pm.

IEEE Mtg., 104 Eng. Mgt., 7 pm.

Kappa Kappa Psi/Tau Beta Sigma Mtg., 101 Old Cafe, 7 pm.

Beta Chi Sigma Mtg., 117 ME, 7 pm.

APO Mtg., H-SS, 7 pm.

ITM Mtg., 114 CE, 7 pm.

SME Mtg., 104 McNutt, 7:30 pm.

Newman Mass, 9 pm.

## Noday

The UMR Bookstore will be open on the following Saturdays from 8:30 to 12:30: Homecoming, Oct. 7; University Day, October 21; Parents' Day, Nov. 11.

Preregistration October 23-27, Preregistration for the 1990 Winter semester will be October 23 through October 27. Students should obtain their preregistration materials and schedule of classes from the Registrar's Office starting October 19th. Detailed information regarding preregistration will be found in the front section of the Winter Schedule of Classes. Signed Lauren A. Peterson, Associate Registrar.

## Financial Aid

Scholarship Opportunities in Metallurgical Engineering, (Met is looking for a few good students) The Department of Metallurgical Engineering has close to 100 undergraduate students, and almost half of these students receive scholarship support of some kind through the department. Each year the departmental scholarship budget is in the order of \$45,000. This level of funding reflects the degree of industrial and alumni support for departmental scholarships. Further evidence of the excellent relationship between industry and the department is illustrated by the availability of co-op positions. Currently 23 students are co-oping in metallurgical engineering, and there

are positions available in the program.

At the present time there are scholarship funds available at the freshman and sophomore level for students with a good academic record and a demonstrable interest in metallurgical engineering. Interested students should contact department chairman, Dr. John L. Watson, McNutt Hall, to discuss scholarship awards, opportunities, co-op positions, summer job reasons why "it pays to be a met."

Fulbright Grants: Application forms and information for Fulbright Grants for students currently enrolled at UMR may be obtained from Fulbright Program Adviser Dean Harry S. who is located in 210 Parker Hall. The deadline for filling an application on this campus is October 1, 1989.

ORSERS: The Oak Ridge Science and Engineering Research Semester (ORSERS) is offering college juniors and seniors an opportunity to hands-on research at Oak Ridge National Laboratory (ORNL) in Tennessee during the academic year. For more information on the ORSERS program, contact Ernestine Friedman, ORSERS Program Manager, Science/Engineering Education Division, Oak Ridge Associated Universities, P. Box 117, Oak Ridge, TN 37831-0117. Application deadline for the 1990 spring semester is October 20. The 1990 fall term deadline is March 15, 1990.

Missouri Higher Education Academic "Bright Flight" Scholarships: The Fall '89 Bright Flight Scholarship checks are now available in the Cashier's Office, G-2 Parker Hall (basement). If your check is NOT here, you can contact the Student Financial Aid Office.

## Missouri Miner

The **Missouri Miner** is the official publication of the students of the University of Missouri-Rolla. It is distributed each Wednesday afternoon at Rolla, Missouri and features activities of the students of UMR.

All articles, features, photographs, and illustrations published are the property of the **Missouri Miner** and may not be reproduced or published without written permission.

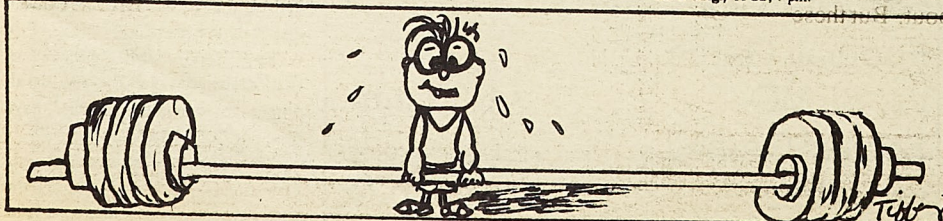
The **Missouri Miner** encourages comments from its readers, and will attempt to print all responsible letters and editorial material received. All submissions must have a name, student ID number, and phone number for verification. Names will be withheld upon request.

Submissions for publication must be in our drop box (first floor of the Rolla Building) by 3:30 p.m. on the Thursday before publication. The **Missouri Miner** reserves the right to edit all submissions for style, grammar, punctuation, spelling, length, and matters of good taste.

The **Missouri Miner** is operated by the students of UMR and the opinions expressed in it do not necessarily reflect those of the university, faculty, or student body.

Editor-in-Chief	Nikki Pagano 341-8068
Business Manager	Shelly Kaller 364-6463
Advertising Director	Terry Brackett 364-1137
Asst. Advertising Director	Leslie Vigna 364-1433
Managing Editor	Larry Williams 364-1433
Circulation	Erich Elmer 364-8968
News Editor	Steve Puljak 364-8968
Asst. News Editor	Steve Atkinson 364-7612
Features Editor	Amy Nash 364-1433
Asst. Features Editor	David Freeman 364-5226
Sports Editor	Jeffrey Esparrago 364-1433
Photo Editor	Dave Lubitz 364-5226
Copy Manager	Dan Gualtieri 341-8263

302 Rolla Building  
University of Missouri-Rolla  
Rolla, MO 65401-0249  
(314)341-4235





# Letters to the Editor

## Student Council President discusses athletic proposal

Dear Editor:

The open forum on the athletic department's proposal to drop men's and women's soccer, men's tennis and rifle took place Wednesday, September 27 with probably better than half to the UMR's student athletes and coaches in attendance. Unfortunately, only about six or seven non-athletes came to express their views.

The Chancellor addressed the forum and fielded questions before yielding the floor to Athletic Director Billy Key to attend a previously scheduled engagement. Coach Key made a brief presentation but spent most of the evening answering questions.

It was explained that of the \$1.2 million that makes up the athletic budget, \$900,000 came from the University's general operating budget, \$100,000 from donations, \$100,000 from gate receipts and leasing of athletic facilities, and \$429,000 from student activity fees.

This money goes to support about 350 varsity athletes and up to 3500 intramural athletes. Yes, the athletic fee does support intramurals! The Athletic Department has run a deficit for several years now and the reserve fund has been all but depleted. Private donations were up 50% last year but, even so, the budget still did not meet what was need. The decision to drop sports was based on the need to operate without a deficit, the need to make our athletic programs more competitive by improving operations financing and grant-in-aid amounts (UMR currently offers only 55 grants-in-aid compared to the 99 allowed), and the need to emphasize the intramural program at UMR. The sports to be dropped were selected, in part, because the: 1) MIAA Conference requires that four of UMR's sports be conference competition sports (soccer, tennis, and rifle are not); 2) chronological order of addition (soccer is the newest sport); and, 3) on the basis of how many schools have the sports programs that UMR has (only 52 schools sponsor intercollegiate rifle programs).

I presented the resolution passed by the Student Council Tuesday, September 26 which stated, furthermore, that the council was opposed to the dropping of the proposed sports and encouraged the Athletic Department to retain them

and "pursue an increased level of funding as a more acceptable alternative" (#8990R2).

I also asked Athletic Director Key, if he could develop an athletic for increase figure that would enable the department to retain all of the sports programs and operate with a desirable financial base. The Student Activity Fee Board which advises StuCo has made a similar request and have been told it will be developed. The proposal combined with some retirements within the department was to eventually free \$128,000 to be put back into the other sports programs and into financing a full-time intramurals director position so a fee increase could be substantial if it was to meet this figure.

It is now up to the students of UMR to give an opinion on how the needed money should be raised. The Chancellor has said that he wants student input before a decision is made but it is important that this issue reach a conclusion soon. Student Council will be distributing referendums in the next couple of weeks that give students an opportunity to indicate how their student activity fees should be set and allocated. It is important that StuCo receive back as many of the referendums as possible and that the student representatives be informed of how they should vote on the activity fee recommendations. To vote, stop by the Student Council office above Butcher, Baker, Ice Cream Maker or see your representative.

The Activity Fee Open Forum will be November 7 in Centennial Hall at 6:30 and StuCo will be voting on the recommendations November 28. It is VERY important that StuCo receive student input. We are lucky to have such a large say in the setting of our fee level. I hope we can do so with a strong voice this year!

Respectfully,

Bob Phillips  
President of Student Council

## Are UMR students willing to pay for varsity athletic teams?

Dear Editor:

On Wednesday, September 27, the open forum on the dropping of four varsity sports was held. What I observed were members of both soccer teams, the rifle team, and the tennis team making pleas for their sports not to be eliminated. I also observed Bill Key blaming the entire affair on Student Council. Let me clear this matter up.

Last year, the Athletic Department was not granted the raise in student activity fees they had requested. The reasons for this were:

According to referendums filled out by the student body, athletics was actually voted a decrease.

Most of the Student Council members voiced that their constituents were also for a decrease.

Now, here is the problem. An open forum was held for the athletic department to argue this decision last year. Very few people actually showed up to debate against the athletic department. This could be a sign that very few students on this campus care about athletics, but also don't care enough to debate paying for them.

It is my opinion that when people think of athletics, they think mostly of football; and since most students don't care enough about football to ever actually attend a home game, they fell all athletics should be cut. This attitude is not fair, because there are many diverse organizations funded by student activity fees, most of which most students don't seem to care about. But these

organizations and activities are very important to those that are involved with them. For example, if the Miner was cut, a lot of people would miss it, a lot of people wouldn't. Who is more important? Right now, the people that might get cut are the soccer players, rifle team members, and tennis players.

Someone at last week's forum mentioned that a lot of people would rather go up to St. Louis than stay around for a home game. Freedom of choice? Is the riverfront really more exciting than a UMR soccer game? I suppose quite a few students think so, or else stands would be packed every Saturday. This is not the 1950's; students don't ride the train to Rolla in late August, then out again in December, remaining in Rolla for four straight months. This is the late 1980's; most students, in my opinion, are here for an engineering degree and then, hopefully, a good job. If this wasn't true, I don't think the GPA's and starting salaries would be discussed as much as they are. School spirit is probably close to the last thing on most student's minds. The Gipper's dead, you know, and Notre Dame already used his "one free win" coupon. Also, most students have easy access to rides home.

Students aren't buying, or wanting to buy, varsity sports for entertainment. Whose problem is it and what can be done?

Sincerely,

Brent Jones

in the program.  
me there are scholars  
freshman and sophom  
a good academic re  
erest in metallurgical  
students should contact  
Dr. John L. Waters  
scholarship awards co  
positions, summer job  
be a met."

lication forms and f  
Grants for students  
may be obtained from  
r Dean Harry Sta  
arker Hall. The de  
on this campus is O

ge Science and Eng  
ORSERS) is offering  
s an opportunity  
Ridge National Lab  
see during the acad  
on on the ORSERS  
Friedman, ORSERS  
(Engineering, Educ  
sociated University  
TN 37831-0117.  
he 1990 spring sem  
90 fall term de

tion Academic "B  
he Fall '89 Bright  
w available in the C  
Hall (basement). I  
can contact the Stu

the University of  
lla, Missouri and  
the property of the  
ritten permission.  
all attempt to pri  
tions must have  
es will be withdr

the Rolla Building  
iner reserves the  
illing, length, and  
ditions expressed  
udent body:  
Nikki Pagano  
341-8008  
Shelly Ralier  
364-6463  
Terry Brackett  
364-1117  
Leslie Vigna  
Larry Williams  
364-1433  
Erch Elmer  
364-8989  
Steve Pujala  
364-8989  
Steve Aldinger  
Amy Nash  
364-7617  
David Freeman  
Jeffrey Esparrago  
364-1433  
Dave Libon  
364-5228  
Dan Gualbert  
341-8983

J. M. B. LIBRARY



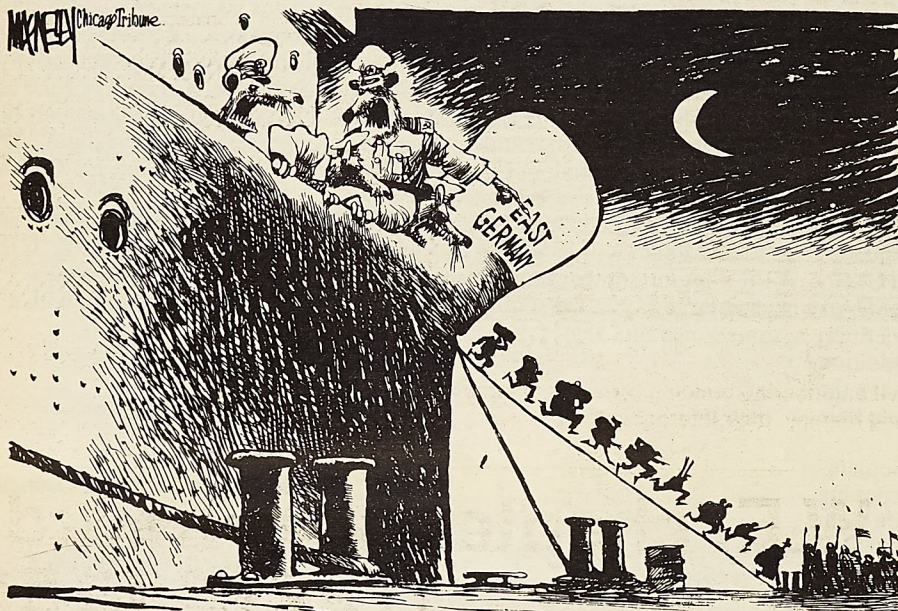
# Should our activity fees be increased?

Dear Editor:

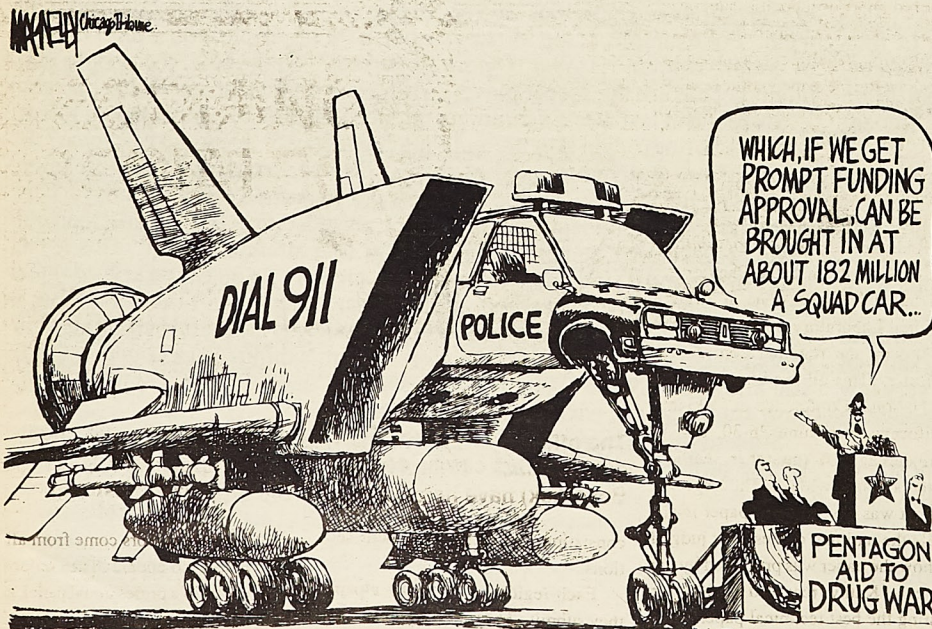
Tuesday night the Student Council voted that they found a thirty dollar increase in the Student Activity Fee acceptable. That is not three dollars, but thirty dollar bills. In the resolution they passed concerning the varsity sports, StuCo said that they encouraged athletics to seek an increase level of funding to cover the cost. They were told that it would cost the Athletic Department \$30 per student on their activity fee to do this. They were also told that it would cost only \$5 per student to carry the sports as non-varsity sports like Rugby and Tae Kwon Doe. After forty-five minutes of debate, they passed the resolution. My Student Council Representative voted against it. I'm glad he did because I don't want to pay an extra \$60 per year for athletic programs. Student Council is supposed to control the activity fee, but this \$30 is the greatest increase since I have been here. I know my representative did a good job, but what about the other? Do the students in living in Greek housing want that fee? Maybe everyone in the residence halls think they have a lot of money, but I don't.

Signed,

Poor in Rolla



Ship Deserting Sinking Rats.



**Nobuko's**  
details make the difference  
**HAIR BOUTIQUE**  
across from TJ Mall 341-3800

**WELCOME ALUMNI!** VISIT THE Newly Remodeled Bookstore

Located in the  
University Center East  
Open Saturday October 7  
8:30 - 12:30

**HOMECOMING SPECIALS**

Phone 341-4705

**DUBBLES BURGERS**

**HOMECOMING SPECIAL**

Two 1/4 lb. Burgers,  
two 20 oz. Drinks, and  
two orders of Fries

**\$3.99**

**DUBBLES**

Not valid with any other offer • Rolla location only • Expires 10/18/89

**1804 N. BISHOP IN ROLLA**

S.C.

Submitted by  
Student Chapl  
There is a ne  
engineering dep  
Chapter Office.  
enclosed Show  
with entrance  
Student Chapter  
project that be  
1988. It was rec  
was not being us  
the need for an  
dent organization  
ment, a group of  
gently to establish  
Office.

A committee  
students was for  
project. The co  
formal proposa  
project to the C  
ality at their first  
1989 semester.  
approval and imm  
on the project. T  
of constructing  
ing filing and sto  
ing curtains along  
ing chapter logo

Quit

By Matt Lickl  
Staff Writer  
"Put out that  
you smoke, you  
than once. Mayb  
quit-but feel like

WA  
ST  
QU  
W



# Features

## S.C.O. brings together C.E. organizations

Submitted by  
Student Chapter Office

There is a new attraction in the civil engineering department, the Student Chapter Office. Located in the glass-enclosed Showcase Room near the south entrance to the C.E. building, the Student Chapter Office is a result of a project that began in December of 1988. It was recognized that the room was not being used efficiently. Seeing the need for an office for the four student organizations in the C.E. department, a group of students worked diligently to establish the Student Chapter Office.

A committee comprised of four students was formed to spearhead the project. The committee presented a formal proposal for the renovation project to the Civil Engineering faculty at their first meeting of the Winter 1989 semester. They received approval and immediately began work on the project. The proposal consisted of constructing a display case, obtaining filing and storage cabinets, installing curtains along the west wall, painting chapter logos on the inside win-

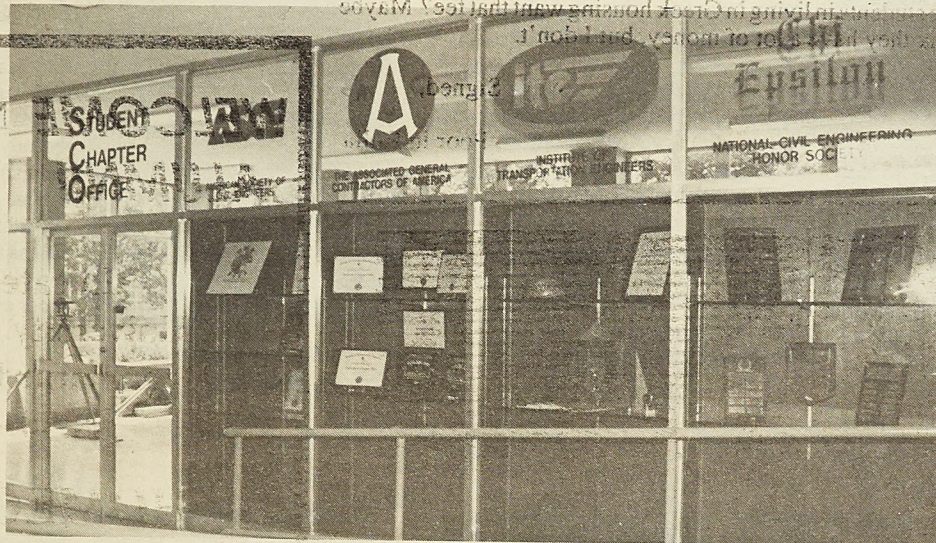
dows, and purchasing a conference table and chairs. Financing for the Student Chapter

Office has come entirely from donations from current students, alumni, engineering faculty, and corporate gifts. The Academy of

Civil Engineers and the Civil Engineering faculty were especially supportive of the project. In order to recognize contributors and express appreciation for their generosity, plaques have been purchased on which the names of those contributing \$20 or more have been engraved.

Additional renovations have been planned for the future to be made as the funds become available. Anyone wishing to contribute to the project may inquire in the civil engineering main office.

In establishing the Student Chapter Office, three objectives have been met. First, the organizations have been provided with vital office space. Second, an area which was previously considered dead space has been converted into a useful and attractive office. Finally, the prestige and attractiveness of the four student chapters as well as the Civil Engineering Department has been enhanced by providing a highly visible, professional type setting for the organizations.



courtesy of SCO

The Student Chapter Office in the civil engineering building provides an area for the four department organizations to work and display their interest.

## Quit smoking today

By Matt Licklider  
Staff Writer

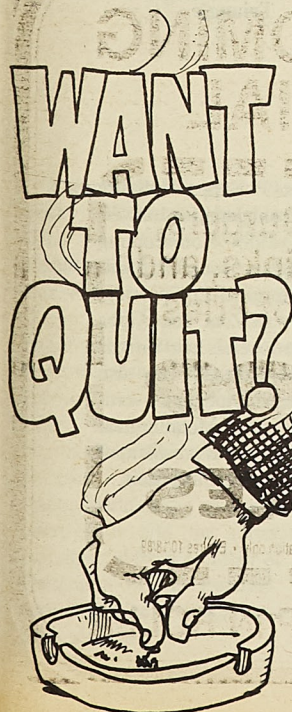
"Put out that filthy cigarette!" If you smoke, you have heard this more than once. Maybe you really do want quit, but feel like you don't have the

will power. If you have thought about quitting, help is now being offered at UMR.

Counseling and Career Development, Human Resource Services are co-sponsoring the American Lung Association's "Freedom From Smoking Clinic." The nine week clinic beginning on October 16, provides anyone who has ever thought of quitting smoking an opportunity to do so.

In a group setting, participants will learn why they smoke, what events trigger smoking behavior, coping strategies for not smoking, and will

plan a "quit day" during the clinic. The clinic is open to all interested students, faculty and staff. Although a fee of \$25 is required to cover the cost of materials, any smoker realizes that by stopping, they will save this money in less than a month's time. Enrollment is limited and preregistration is required. For more information contact Dr. Camille Consolvo or Dr. Gene Van Matre, Counseling and Career Development, 106 Rolla Building, 341-4211.



## S.W.E. chapter wins award

Submitted by S.W.E.

This past summer at the Society of Women Engineers National Conference, the UMR student section was honored in two separate categories. Kathy Stone, a senior in the nuclear engineering department, won the national technical paper contest while the entire UMR section won the best student section in their region.

Kathy Stone's paper, "The Calibration of Phoswic Detectors for Various Radionuclides and the Determination of Activity in Lung Phantoms," was based on work done at Argonne National Laboratory in Illinois. This paper won the regional contest last semester. This allowed her to attend the National Conference in Oakland, California from June 26-30, and to compete against the other regional winners nationwide. The regional contest was based on the paper itself, while the national contest was judged on how the paper was presented by the writer. Kathy received \$1000 for writing the best technical paper.

UMR was also honored at the National Convention when the student SWE section was awarded \$200 for having the best section in its region. This region encompasses six states



Susan Lowe

The officers of SWE (front: Connie Cicero and Kathy Gunderson; back: Donna Kraus, Dawn Campbell, and Missy Benedick) have helped to make the organization strong.

consisting of seventeen student sections.

Each region is judged by a paper they submit. They are judged on various criteria such as involvement of members and the activities of the section. The UMR SWE section organizes several major projects throughout the year. The largest one is their high school conference. Over 100 students,

parents and counselors come from all over Missouri to attend. The conference consists of a professional panel, a UMR student panel, a keynote speaker, and several presentations by campus departments. SWE also helps with Merit Badge Day and they hold a Christmas party for the Big Brother and Big Sisters of Rolla.



# 1989 HOMECOMING



**Anna Berra**  
Sigma Nu

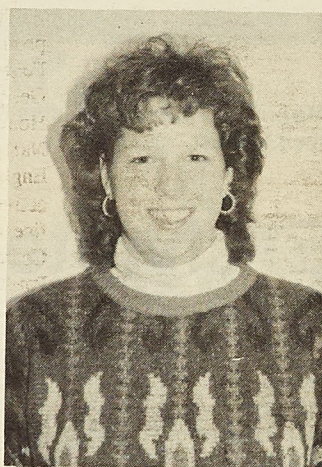
The men of Sigma Nu Fraternity would like to present Miss Anna Berra, the daughter of Frank and Judy Berra, from St. Louis, Missouri, as our Homecoming Queen candidate. She is a sophomore majoring in Chemical Engineering. Anna has been actively involved with the Sigma Nu Little Sisters of the White Star, the Spelunkers' Club, AICHE, Student Council, and the UMR Tae Kwon Do Club. She has held the office of Rush Chairman for the Sigma Nu Little Sisters and is currently their secretary. She is also the secretary/treasurer of the Spelunkers' Club. We would like to wish our lovely candidate good luck!



**Wendy Jutte**  
Blue Key

The members of the Blue Key National Honor Fraternity have selected Miss Wendy Jutte as our candidate for Homecoming Queen. Wendy is a graduating senior in Electrical Engineering and is a member of Kappa Delta Sorority. She has been elected the honor organizations of Tau Beta Pi, Eta Kappa Nu, and Blue Key and was recently selected as Panhellenic Woman of the Year. The members of Blue Key feel that her outstanding achievements on campus, as well as her charm and personality, deserve our nomination for the honor of Homecoming Queen.

Thomas Jefferson Hall Association is proud to present Miss Amy Pharr as our candidate for the 1989 Homecoming Queen. Amy is the daughter of Mr. and Mrs. Douglas Pharr of Blue Springs, MO. She is a junior majoring in Electrical Engineering. She has been active in a number of organizations around campus. Amy is a former TJHA President, Inter-Residence Council Secretary, and floor president. She is currently a resident assistance at T.J. Amy is also an active member in the Sigma Chi Little Sister organization. We are honored to have Amy as our candidate for 1989 Homecoming Queen.

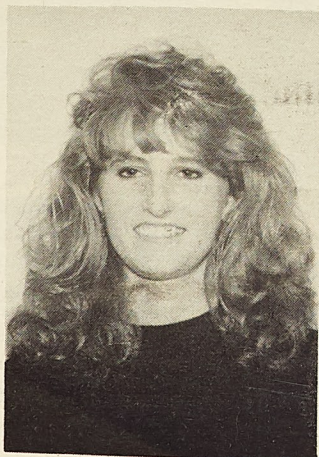


**Amy Pharr**  
TJHA

The men of Triangle are proud to present Miss Suzanne Metzner as our 1989 Homecoming Queen Candidate. With her varied interests and activities on campus, we feel Suzanne exemplifies the spirit of UMR. Some of her current involvements are Chi Omega Personnel Chairman, Chancellor's Leadership Class, Student Council Fee Board, I.K., SWE, and IEEE. With Suzanne's extraordinary involvement on campus, charming personality, and outstanding scholarship, we feel she would represent UMR well as our Homecoming Queen.



**Suzanne Metzner**  
Triangle



**Lynette Brunner**  
StuCo

The UMR Student Council is proud to present Miss Lynette Brunner as their 1989 Homecoming Queen Candidate. Lynette is the daughter of Clay and Ann Brunner of Marion, IL, and is a Sophomore in Mechanical Engineering. Lynette is currently the Secretary/Recorder for the UMR Student Council. She is also involved in Chi Omega, Little Sisters of the White Star, The Society of Women Engineers, and Tae Kwon Do. The UMR Student Council feels that Lynette's involvement, charm, and poise make her the best choice for UMR's 1989 Homecoming Queen.



**Jennifer Llewellyn**  
Pi Kappa Alpha

The men of Pi Kappa Alpha are proud to present Jennifer Llewellyn as our 1989 Homecoming Queen Candidate. Jennifer, a junior in Metallurgical Engineering, is a member of Zeta Tau Alpha sorority where she has held various committee positions. She has also been involved in Student Government, SWE, the Metallurgical Society, and served as president of Pi Kappa Alpha's Little Sisters.



# QUEEN CANDIDATES

The brothers of Lambda Chi Alpha are proud to present Miss Vicki Betlach as our candidate for Homecoming Queen. A Senior in Mechanical Engineering, Vicki is the daughter of Patricia and Edward Betlach of Overland, MO. She is a member of Zeta Tau Alpha where she served as House Manager, and was in charge of music and alumni relations. Vicki served as Recording Secretary of Alpha Phi Omega and was a member of the Daughters of the Blue Iris, serving as Second Vice President and Social Chairman. She was in the University Orchestra and is a member of the UMR Miner Pom Squad. We wish her the best of luck and feel she would make an excellent Homecoming Queen.



**Vicki Betlach**  
Lambda Chi Alpha

Theta Xi presents Miss Stephanie Reiter as a candidate for UMR Homecoming Queen. Stephanie is a Freshman majoring in Chemistry and is the daughter of Arthur and Judy Reiter of Kansas City, Missouri. Stephanie has already distinguished herself by obtaining positions on campus such as Chi Omega pledge class treasurer, chancellor's leadership class, UMR cheerleader, and a member of ACE. These qualities and her glowing personality make Stephanie the ideal choice for UMR Homecoming Queen.



**Stephanie Reiter**  
Theta Xi



**Schonda Briggs**  
Beta Sigma Psi

The men of Beta Sigma Psi are proud to present Miss Schonda Briggs as our 1989 Homecoming Queen Candidate. Schonda is the daughter of Mr. and Mrs. William Briggs of Cedar Hill, MO. In addition to being a senior in Aerospace Engineering, Schonda is active in AIAA, Society of Women Engineers, Intercollegiate Knights, Kappa Delta Sorority, and is pledging Tau Beta Pi.

We feel that Schonda's outgoing personality is a perfect complement to her campus involvement. We also believe that Schonda is an outstanding candidate for UMR 1989 Homecoming Queen.

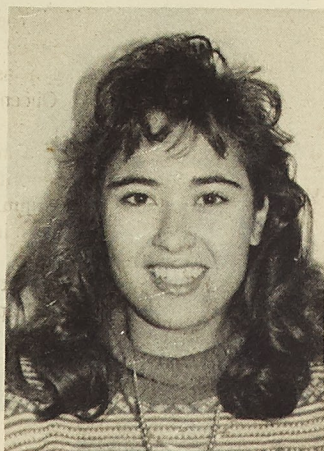


**Nancy Fettes**  
Chi Omega

The sisters of Chi Omega proudly present Miss Nancy Fettes, daughter of Mr. and Mrs. George E. Fettes, as our 1989 Homecoming Queen Candidate. Nancy is a senior in Aerospace Engineering. She has been very active in Chi Omega holding offices of Assistant Rush Chairman, Corresponding Secretary, and St. Pats Green Rep. Nancy's campus activities include: APO, AIAA, Tau Beta Pi, and treasurer of Sigma Gamma Tau.

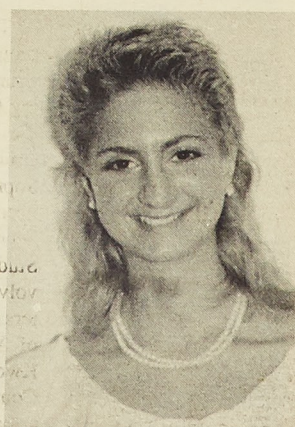
We feel that Nancy's bubbly personality, cheerful smile, and warmth make her the ideal choice for UMR's Homecoming Queen. Chi Omega wishes you the best of luck!

Kappa Delta is proud to present Becky Workman, daughter of Dana And Prancee Workman of Midwest City, OK, as our candidate for the 1989 Homecoming Queen. A junior in Electrical Engineering, Becky has consistently maintained a high scholastic average. As a member of Kappa Delta, Becky is currently the membership chairman, a council position. She has also served Kappa Delta as the special events coordinator and the intramural manager. Also a member of The Daughters of the Emerald, she served as vice-president for them for a semester.



**Becky Workman**  
Kappa Delta

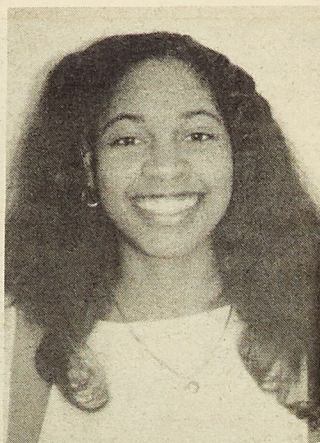
Debbie Sinow is a graduate student in Aerospace Engineering. She received her B.S. in AE from the school. Her involvements include the Newman Center AIAA, and Climbing Club. She is the daughter of Arlene and Russell Sinow of Grandview, MO.



**Deborah Sinow**  
Pi Kappa Phi



# 1989 HOMECOMING



**Joelle Hubbard**  
Alpha Phi Alpha

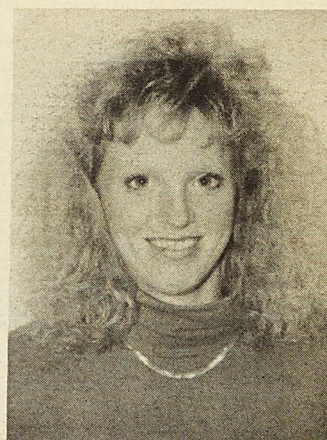
Joelle Yvonne Hubbard is a senior majoring in Electrical Engineering. She is the daughter of Annie S. White and is a native of St. Louis, MO. Joelle is extremely active on campus as well as in the community. Currently, Joelle serves as President of Alpha Kappa Alpha Sorority, Inc. In the community, Joelle is an Executive Committee member for the Phelps County NAACP chapter. Over the three years of education here at UMR, Joelle has successfully maintained a balance between her academics and her campus involvement. Alpha Phi Alpha Fraternity, Inc. is proud to present Miss Joelle Yvonne Hubbard to UMR's campus as their 1989 Homecoming Queen candidate.



**Debbie Walton**  
Sigma Chi

The Men of Sigma Chi would like to present Debbie Walton as their 1989 Homecoming Queen candidate. She is the daughter of John and Martha Walton of Warson Woods, MO. Debbie is a Senior majoring in Aerospace Engineering. Her activities include being a Little Sigma, AIAA, and the spirit leader of Chi Omega. As Sec./Treas. of the UMR Cheerleading Squad, she is frequently seen cheering for the Miner athletic teams. Her other interests include water skiing, sewing, softball, and volleyball. Due to her overwhelming beauty, outstanding personality, and exceptional spirit, we feel she is an excellent choice for Homecoming Queen and we wish her the BEST OF LUCK!

The ladies of Zeta Tau Alpha are proud to present Miss Leslie Vigna as our 1989 Homecoming Queen Candidate. Leslie, the daughter of Mr. and Mrs. Bill Vigna of Festus, MO, is a senior in Chemical Engineering. She presently holds the office of Public Relations/Historian at ZTA. We feel that Leslie's involvement on campus through her many activities which include Tau Beta Pi, AICHE, Phi Eta Sigma, Omega Chi Epsilon pledge, UMR Co-op Program, UMR Co-op Association, intramurals, and the Missouri Miner where she is the Assistant Advertising Director exemplifies the spirit of UMR and qualifies her for the ideal choice for 1989 Homecoming Queen.



**Leslie Vigna**  
Zeta Tau Alpha

The men of Phi Kappa Theta are proud to present our Candidate for Homecoming Queen, Miss Angie Honse. Miss Honse is a senior majoring in Aerospace Engineering. She currently serves as secretary of M-Club and president of Sigma Gamma Tau. She has been treasurer of Order of the Sun and very active in intramurals through our Little Sister organization, always showing exemplary support for them and Phi Kappa Theta. Angie has been active in other campus organizations such as AIAA, Tau Beta Pi, Phi Eta Sigma and has just recently been accepted as a member of Blue Key. She has participated on the women's varsity softball team, lettering four years and serving as captain two of those years. She is the daughter of Mr. and Mrs. David and Rebecca Honse of Vienna, Missouri. Good Luck, Angie!



**Angie Honse**  
Phi Kappa Theta



**Linda Pluschke**  
Independents

The General Delegation of Independents proudly present Linda Pluschke, as our Homecoming Queen Candidate. Linda is a freshman from Columbia, Missouri, majoring in mathematics. Linda is an active member in GDI and enjoys blowing bubbles and camping in her spare time.



**Jeanne Jackson**  
Kappa Alpha

Kappa Alpha Order presents the lovely Miss Jeanne Jackson for Homecoming Queen. Jeanne is a sophomore majoring in Metallurgical Engineering, and is the daughter of Jerry and Jacalyn Jackson of St. Louis, MO. Jeanne excels as a student and a leader on the UMR campus as an active member of Chi Omega Sorority (Alumni Relations Chairman), the Daughters of Lee (rush chairman), varsity cross country, and M-Club. Jeanne has distinguished herself with many honors as well, which include Phi Eta Sigma Freshman Honor Society and a Nevins Scholarship.



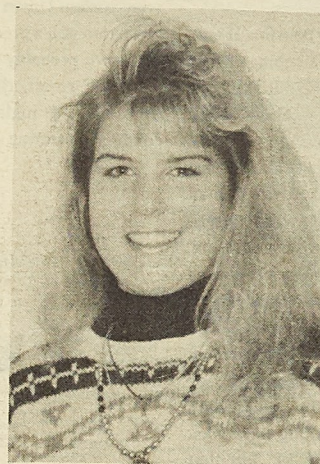
# QUEEN CANDIDATES

Sigma Pi Fraternity has the pleasure to present Miss Elaine Yonker as our Homecoming Queen candidate. She is the daughter of Richard and Kathie Yonker of Bowling Green, MO. and is currently a sophomore in mathematics. Miss Yonker is an involved member of Chi Omega, Phi Eta Sigma, Panhellenic, Golph Miners, and the Daughters of the Emerald. She is also a math tutor for the Honors Program. These credentials along with her warm personality have convinced the men of Sigma Pi that Elaine is an exemplary candidate for Homecoming Queen.



**Elaine Yonker**  
Sigma Pi

The theme for this year's Homecoming is the Farther Side of UMR, well the Brothers of the Beta-Chi Chapter of the Kappa Sigma Fraternity have found the Blonder Side. We proudly present Miss Susan Kay Anyan as our Homecoming Queen Candidate. Sue, who is a junior in electrical engineering, is the daughter of Thomas Anyan of Washington, MO, and Sandra Anyan of St. Petersburg Beach, FL. She is an outstanding member of the Kappa Delta sorority as well as the UMR Panhellenic Board. She is an editor of the UMR-Rollamo, an officer in Phi Eta Sigma, and a member of IEEE, Society of Women Engineers, and the Daughters of Lee. All of us here wish Sue the best this Homecoming.



**Susan Anyan**  
Kappa Sigma



**Ellen Brown**  
RHA

We are proud to present RHA's candidate for 1989's Homecoming Queen, Ellen Brown. This is Ellen's third year living in the Quad and she has been an active member of RHA life since her freshman year. From being Lt. Governor of her house freshman year to starting her second year of being a member of the Intellectual/Emotional Committee and McAnemey Hall's Student Council representative, it's obvious she's involved. Outside of RHA, she is also a member of Angel Flight and Daughters of the Emerald. Ellen is a junior majoring in Engineering Management with a Mechanical preference. She's from Webster Groves, MO and is the daughter of Bill and Martha Brown. We think she'd make a fantastic queen!



**Jean Obernuefemann**  
Sigma Phi Epsilon

We the men of Sigma Phi Epsilon are very proud to present the lovely Miss Jean Obernuefemann as our 1989 Homecoming Queen Candidate. Jean is the daughter of Ray and Angeline Obernuefemann of O'Fallon, IL. She is a graduating senior in Mechanical Engineering. She has been actively involved in our little sister program, Student Union Board, American Society of Mechanical Engineers, and Society of Manufacturing Engineers. This year Jean was awarded Outstanding Young Woman of America for her combined scholastic achievements and past accomplishments. For these reasons we feel that Jean possesses great qualifications for UMR's 1989 Homecoming Queen.

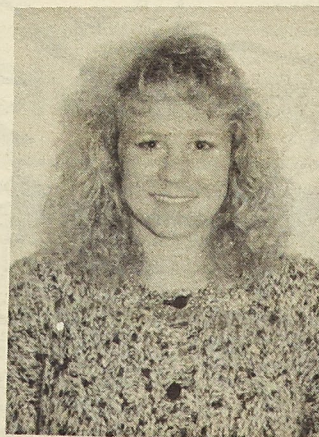
Beth is the daughter of Charlas and Jane Dare of Rolla, MO. She is a Sophomore in Civil Engineering, and is an active member of Chi Omega sorority. She is also a member of the Daughters of the Lion of Alpha Epsilon Pi and Phi Eta Sigma freshman honor society. Beth is a member of the Marching Miners and is currently pledging Tau Beta Sigma, and Kappa Mu Epsilon. The men of Alpha Epsilon Pi give Beth our Best Wishes.



**Beth Dare**  
Alpha Epsilon Pi

We have chosen Tricia Kuhne because we feel that she would represent Tau Kappa Epsilon very well. Tricia has shown an overwhelming interest in our organization and has become very involved in our Little Sister program. She presently holds the office of secretary in Daughters of Diana and participates in many activities having to do with our house or the Little Sisters.

Tricia enjoys participating in athletics. She is presently a member of the varsity soccer team and has previously played softball for UMR. Tricia is also an active member of M-Club.



**Tricia Kuhne**  
Tau Kappa Epsilon

J. M. E. LIBRARY



# Campus Organizations

## S.U.B. promotes ski trip

Submitted by SUB

Hey people! How bout that Homecoming!!!! Are you all going out and having a good time at all the great events going on this week???? No!! Well come on people, get with the program, get off of your caboeses and have some fun. Yes, FUN! You all remember what that word means, right? So close that physics book, blow off that lab write up, and there is always time to do your laundry next week, and join in the fun. Please consult your local Homecoming schedule for the fun nearest you.

O.K. so now that that is taken care of and you all are thinking about what you want to do this week, lets start thinking about what you might do this winter as well. O.K. all of you readers who like skiing in the beautiful Rocky Mountains raise your hand. Very good, now that evrybody else in the room is wondering what you are doing with your hand in the air, you can put it back down. For those who fall in the fore-mentioned category of ski buffs,

your Student Union Board is proud to present to you a great deal. If you ski you have probably heard of Crested Butte ski resort, right? Now, how about this, 5 nights in Timberline condo's featuring ski-in walk-out



convenience, a fireplace, color television, outdoor hot tubs, and a beautiful view of the mountains. Add to that four days of lift tickets for the many Crested Butte ski runs. The cost of this outstanding vacation is a mere \$235.00. Rooms are running out as

you read this so don't delay. If you delay in signing up you may not be signing up at all. A deposit of \$150.00 is due when you sign up and the balance is due by November 15. Trans-

portation to and from the resort is NOT included in this offer. For more information call the SUB office at 341-4220, and ask for Scott Quackenbush. The dates for the vacation are from January 2-7, 1990. What a way to bring in the new year.

## Cycling clubs begins new year

By Matt Licklider  
Staff Writer

Nothing is more relaxing than a pleasant bicycle ride across the rolling hills of southern Missouri on a Saturday morning. Even more enhancing is making this ride with friends. The UMR Cycling Club sponsors such rides nearly every weekend. We invite you to join us, the UMR Cycling Club.

After nearly a year of virtual non-existence, the cycling club is back and looking forward to a promising future. With large interests now developing in both road bikes and mountain bikes,

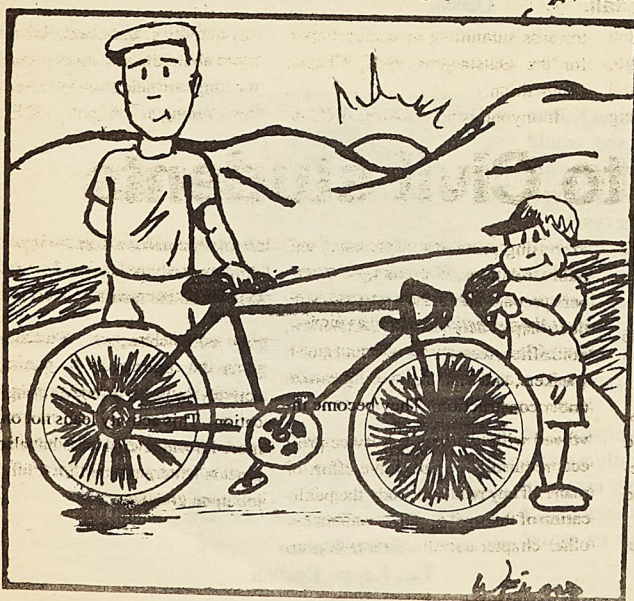
the club is divided into two factions to cater to each individuals riding preferences. And with new tools funded largely in part by Student Council, tune ups can be made by any club member.

Sunday, October 1, the club participated in the St. James Winery Tour. The ride offered options for both road and mountain bikes with lengths varying from 16 to 41 miles. It was sponsored by the St. Louis Bicycle Touring Society, which provided a sag wagon for tired riders.

Coming up on October 21, the club

is sponsoring a ride to Meramac Springs where we will have lunch and social time for all riders. There will be an nominal fee to cover food and drinks. All faculty, staff and students are invited to attend.

The next meeting of the club is on October 10, in 206 McNutt Hall at 7:30 p.m. Again anyone interested in the club or just the October ride is welcome to attend. For more information, contact Matt Licklider at 364-2977 or 364-4841.



## St. Pats Board Reps to defeat I.F.C.?

By Kevin Webb  
Staff Writer

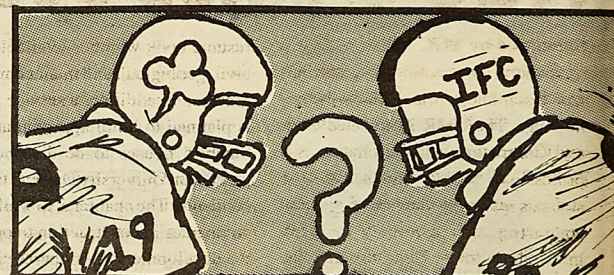
The results of Septemberfest '89 are finally in. The winners are as follows: 1st - Phi Kappa Theta (27 points), 2nd - Sigma Pi (25 points), and 3rd - a tie - with Lambda Chi Alpha and Alpha Epsilon Pi each with 22 points.

On Thursday, September 21st, the St. Pats Board voted on the winning design for the St. Pats 1990 Sweatshirt Design Contest. The first place winner, Terry Fall, a senior in electrical engineering and a member of Tau Kappa Epsilon, submitted the winning design and received \$100 for his effort. Second place was submitted by Tim Dickey, a sophomore in mechani-

cal engineering and a member of Phi Epsilon Pi, who took home \$ Third place won \$25, and was submitted by Gary Meyer, a senior in Aerospace Engineering and a member Beta Sigma Psi.

The new sweatshirts will be in so and green sales will start on campus right away. So lets get psyched St. Pats 1990! There's only 162 days left!

Remember, Friday, October 6th the 14th annual Green-Slaughter-Gr Classic. So lets see all you green fa out at the fraternity row fields at 3: to watch us stomp some IFC reps in the ground.



## I.F.C. to defeat St. Pats Board Reps?

Submitted by I.F.C.

I.F.C. is getting started early this year. On the 11th of October we will be participating in the Knights of Columbus Tootsie Roll Drive. The members of I.F.C. will be going around the community collecting donations and giving away delicious

Tootsie Rolls. The donations will be given to a needy cause.

I.F.C. will also be sponsoring an all greek clean-up on October 21.

On another "on the Move" note, we are going to move and stomp all over the St. Pats Board in the Green-Grey Classic football game.

## ITE is "on the move"

Submitted by ITE

Civil engineering offers many different areas of specialty to its undergraduate and graduate students. The Institute of Transportation Engineers (ITE) is a professional society for students interested in specializing in the safe and efficient movement of passengers, freight, and materials. Transportation engineers are primarily concerned with highways, airports, sea ports, inland waterways, pipelines and railroads. Interdisciplinary aspects include environmental impact, influence on economic development, safety and injury consequences, impact on aquatic life, impact on social structure of a community, energy consumption, and movement of hazardous materials.

The UMR ITE student chapter activities include arranging for guest speakers dealing with contemporary projects and issues in transportation, taking field trips, and public service projects. The speaker schedule for this semester include professionals discussing proper preparations for a job interview, transportation considerations with respect to various alternatives for improving Lambert Airport in St. Louis, and the design and construction of the I-270 / I-64 interchange currently under construction in St. Louis.

In the past, the chapter has conducted traffic engineering studies for the City of Rolla and the Missouri Highway and Transportation Department. The UMR ITE student chapter

collected the traffic data supporting the need for the installation of traffic

signals at the intersections of 10th Street and Rolla Street, as well as the Pine Street and Highway 63 intersection. The ITE student chapter also conducted a study to determine the feasibility and desirability of reversing the Rolla Street - Pine Street one-way pair in downtown Rolla, the conclusion being to keep the streets as they are presently.

Field trips are usually highway construction sites, but also have included such locations as Lambert Field in St. Louis, and the Missouri Highway and Transportation Department Headquarters and the materials lab and sign shop in Jefferson City.

Submitted by  
Chi Epsilon  
Chi Epsilon  
dedicated to  
ing and prom  
engineering a  
Scholarships,  
and sociability  
that its memb  
Epsilon was  
the characteri  
civil engineer  
aid in the deve  
acteristics,  
The UMR  
has been an  
campus since  
upholding its  
silon has becom  
engineering de  
University Day  
gives scholarsh

AGC

Submitted by  
General com  
ized discipline,  
neering. The U  
eral Contractors  
professional soc  
students pursui  
contracting an  
more about the  
industry. The m  
is to make peop  
able about wha  
construction ind  
dents the opport  
leadership skill  
plished by inviti  
speakers for ge  
arranging field  
sites and relate  
with the various  
Throughout t  
has a number of  
soring AGC chap  
mer barbeque, an  
state convention  
Resort on the Lal  
The local ch  
of its own activi  
piles and distri

ASC

Submitted by  
Nearly ever  
campus has a pr  
helps students  
business world.  
there are sever  
being the Amer  
Engineering. T  
society is to enc  
study civil engin  
the civil engineer

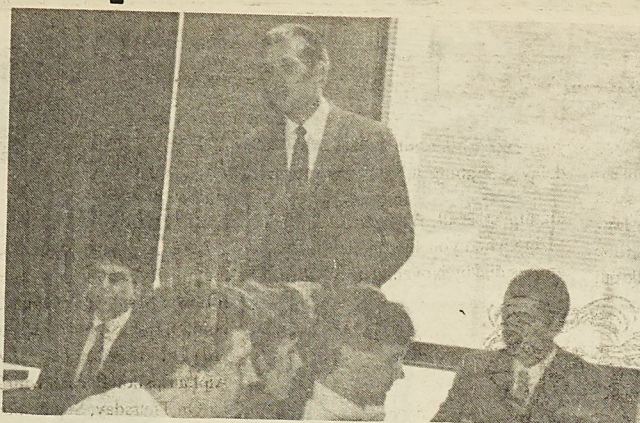


# XE develops character

Submitted by  
Chi Epsilon

Chi Epsilon honor fraternity is dedicated to the purpose of maintaining and promoting the status of civil engineering as an ideal profession. Scholarships, character, practicality and sociability are four of the criteria that its membership is based on. Chi Epsilon was organized to recognize the characteristics of the individual civil engineer aimed for success and to aid in the development of those characteristics.

The UMR chapter of Chi Epsilon has been an active organization on campus since 1950. In addition to upholding its high standards, Chi Epsilon has become an asset to the civil engineering department. It assists in University Day by giving tours. It also gives scholarships to outstanding civil



Paul Ridlen, president of Chi Epsilon, presents a speech at an earlier meeting this semester.

engineering students every semester. To raise this money Chi Epsilon writes to all of their alumni and asks for one dollar for every year that they have

been out of school. These activities along with its high standards are what make Chi Epsilon the successful organization that it is.



# AGC creates special interest for its members

Submitted by AGC

General contracting is a specialized discipline, a branch of civil engineering. The UMR Associated General Contractors student chapter is a professional society intended to give students pursuing careers in general contracting an opportunity to learn more about their field through the industry. The main objective of AGC is to make people more knowledgeable about what is happening in the construction industry and to give students the opportunity to develop their leadership skills. This is accomplished by inviting a wide range of speakers for general meetings, and arranging field trips to construction sites and related companies dealing with the various civil disciplines.

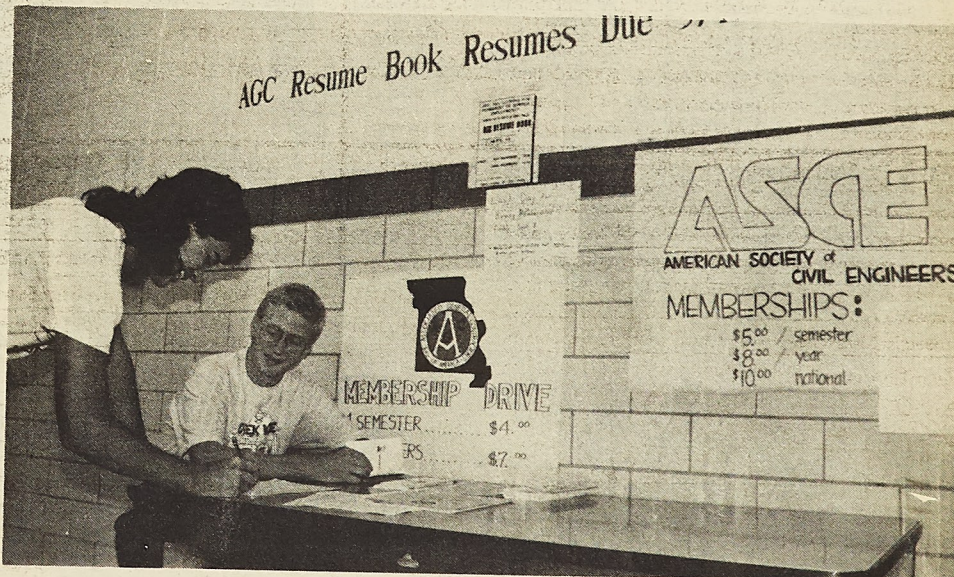
Throughout the year, the chapter has a number of events with the sponsoring AGC chapter including a summer barbeque, an annual banquet and a state convention held at Tan-Tar-A Resort on the Lake of the Ozarks.

The local chapter also hosts some of its own activities. The chapter compiles and distributes a semi-annual

resume book which is available to all civil, geological, and management engineers. In addition, a service project is planned to build approximately 85 bluebird houses to be distributed to parents on University Day and to Rolla residents. The chapter also works with companies in construction to promote the development of cooperative training programs with these companies.

A civil engineering picnic is held every semester for faculty, students and prospective civil engineering students. The AGC chapter helps in the organization and execution of this picnic. The chapter also offers a number of scholarships from the construction industry to the students.

In the future, there are plans to organize some small construction projects for the Forest Service at Lane Springs, south of Rolla, and for a nature park in Salem. In addition, the chapter is working with alumni and other civil department organizations in trying to set a program to find summer employment for civil engineering students. They are also look-



Tim McConnell sells Dan Shipley a membership for Associated General Contractor during their membership rush this fall.

ing into sending representatives to the AGC Regional Conference in Fargo, North Dakota this coming spring, and for the first time, they are working

towards submitting an annual report for the Outstanding AGC Chapter competition.

If anyone is interested in AGC or

any activities, and would like to learn more about the construction industry, meetings are held on every other Tuesday evening at 7:00 p.m. in C.E. 114.

# ASCE provide opportunities to Civil students

Submitted by ASCE

Nearly every major offered on campus has a professional society that helps students relate their field to the business world. For civil engineers there are several such societies, one

being the American Society of Civil Engineering. The objectives of the society is to encourage its members to study civil engineering and to advance the civil engineering profession.

As is well known, students must master the principles and techniques of engineering to earn their degrees. There are, in addition, important non-technical subjects, generally referred to as professional matters, which are not usually covered in class work. Many aspects of these professional matters lend themselves to student chapter programs. And technically, a chapter program may encourage presentation of a topic specialized or broad

for presentation in a structured course. In this respect, the chapter acts as a supplement to classroom education.

Student chapters of the American Society of Civil Engineers help civil engineering students begin those professional contacts and associations. Such associations, if continued through life, are valuable to the practicing engineer in serving people and the engineering profession.

The chapter is a good medium for

exercising principles of personal and public relations. For example, members prepare and present papers, conduct chapter activities such as picnics, hold office, request and entertain guest speakers, and visit engineering works under construction. They become involved with community service projects requiring the collective effort of many. They read and study the publication of the society. These and many other chapter activities contribute to

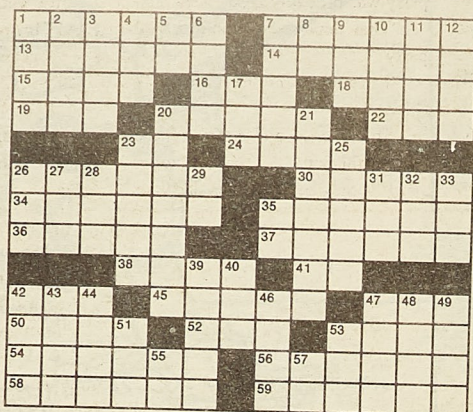
broad personal development by stimulating an early professional consciousness while the student is still preoccupied with techniques. Students are given the opportunity to participate actively in the civil engineering education. This activity leads not only to more informed engineers but also engineers better prepared for a full time job upon graduation.



## Fun &amp; Games

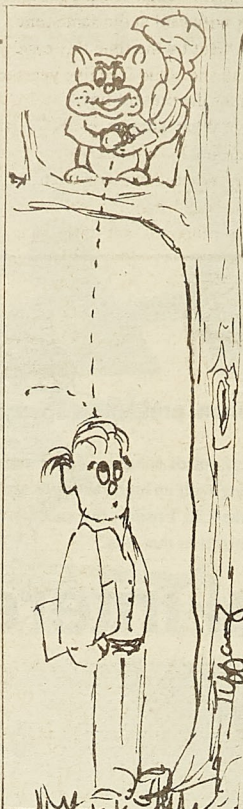
## ACROSS

- 1 Famous ex-Jet  
7 He was Buck Rogers  
13 She was Miss Kitty  
14 Swimming Williams  
15 Helmond role  
16 K-O linkup  
18 She's Fallon  
19 Vetch  
20 — Brown is Molly Dodd  
22 N.Y. time  
23 Rae monogram  
24 "A — At The Top"  
26 Was lenient  
30 Ache  
34 Untamed  
35 Spain & Portugal  
36 A fabric  
37 Author Jacqueline  
38 — Storm  
41 Concerning  
42 Traffic sign  
45 Late actor David  
47 British medal  
50 Mrs. Charles  
52 — Buddhism  
53 Paint layer  
54 Brian Patrick —  
56 "The — Bureau"  
58 Eddie —  
59 Ryan and Tatum



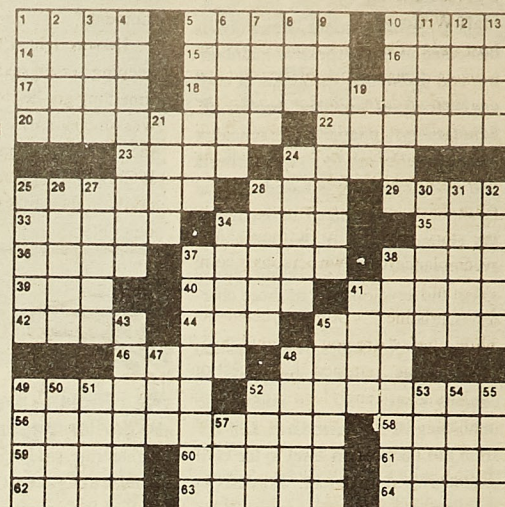
## DOWN

- 1 " — That Tune"  
2 Love god  
3 "One — Family"  
4 — Alicia  
5 Score for Montana  
6 Jessie on "Our House"  
7 Miss Francis  
8 Sullivan monogram  
9 Hwy.  
10 Alas!  
11 Radiation units  
12 Mild expletive  
17 Elaine —  
20 Tracey E. —  
21 Gene or Sam  
23 William Daniels role  
25 Della or PeeWee  
26 Draft org.  
27 Boot  
28 Normal: abbr.  
29 Elcar monogram  
31 Coach  
32 — Tin Tin  
33 Ms. Fabray, for short  
35 "This — Your Life"  
39 Karl —  
40 Ms. Arden  
42 Civil Rts. Grp.  
43 She gets what she wants  
44 Algerian port  
46 Within: comb form  
47 — Chemical compound  
48 Mort —  
49 Mr. Birdsong  
51 Mr. Garfunkel  
53 Suffix  
55 Bout ender for Rocky  
57 Printing measure



## ACROSS

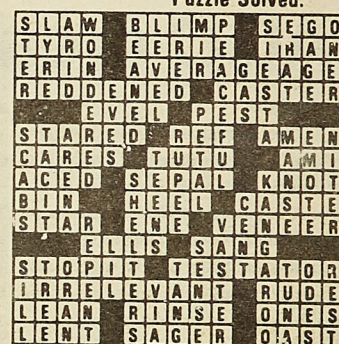
- 1 Cabbage dish  
5 Aircraft  
10 Kind of illy  
14 Novice  
15 Strange  
16 Abadan's land  
17 — go bragh  
18 Norm of a kind  
20 Blushed  
22 Wheel  
23 — Knivel  
24 Nuisance  
25 Gazed rudely  
26 Game off.  
29 Church word  
33 Worries  
34 Ballet skirt  
35 " — my brother's keeper?"  
36 Hit a fine serve  
37 Flower part  
38 Tie  
39 Storage place  
40 Cad  
41 Social division  
42 Headliner  
44 Vane dir.  
45 'Wood cover  
46 Building additions  
48 Caroled  
49 Dasist!  
52 Will maker  
56 Not germane  
58 Uncivil  
59 Tilt  
60 Wash  
61 Small bills  
62 Pre-Easter season  
63 Having more wisdom  
64 Drying oven



© 1989 Tribune Media Services, Inc.  
All Rights Reserved

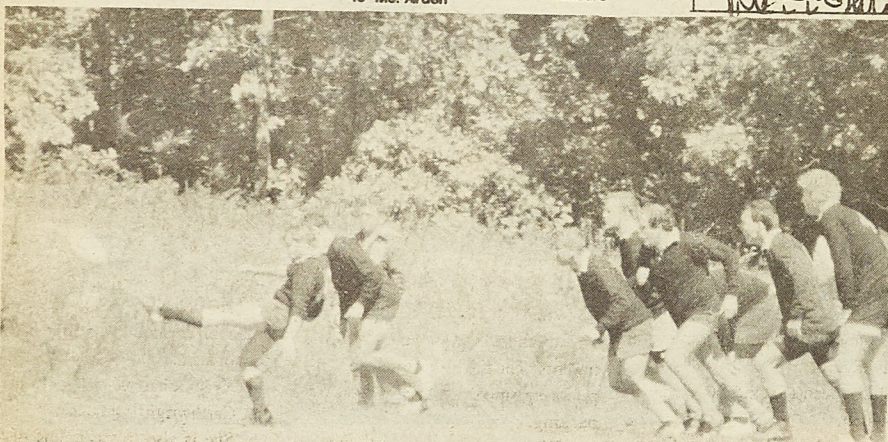
06/27/89

## Puzzle Solved:



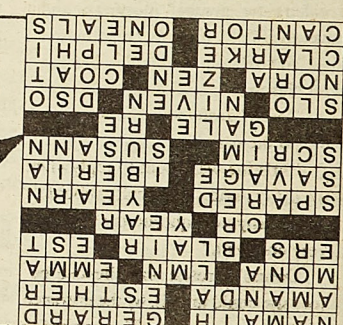
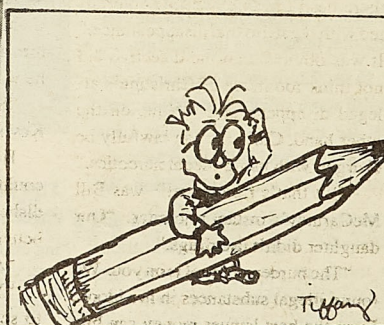
06/27/89

- DOWN  
1 After gang or young  
2 Harp kin  
3 Saharan  
4 Mused  
5 Hit with a baseball  
6 Even  
7 Angered  
8 Russ. village  
9 Serene  
10 Afternoon snooze  
11 QED word  
12 Kind of plum  
13 Lulu  
19 Fuel  
21 Holiday times  
24 Flower part  
25 Strikebreakers  
26 Unspoken  
27 Sphere of action  
28 Indian money  
30 Parson's house  
31 Act the ham  
32 Saltpeter  
34 Young years  
37 Havens  
38 Marsupial  
41 Coin  
43 Feel remorse  
45 More expansive  
47 "Diamond —"  
48 Logic  
49 Window part  
50 Oak or ash  
51 Afr. port  
52 Zesty taste  
53 Salad fish  
54 Poems  
55 Relax  
57 By way of



Rugby players head for the woods.

Susan Lowe



## COMMANDO WAR GAMES

The action packed paint pellet survival game. Come play the game that's sweeping the nation. Open weekends. Just 30 min. from campus. Call for Information and Reservations Mon.-Fri., 894-8543.

## Quality Cleaners

\* Expert Cleaning \* Reasonably Priced

108 W. 7th Street Rolla, MO 65401 364-3650

## G and D STEAK HOUSE

7 oz. Ribeye 3.99

8 oz. Ground Chuck Steak 3.49

Dinners include Potato, Texas Toast & Ice Cream  
Hwy 63 South Next to Wal-Mart

SPI AH Games

D&amp;D Supplies

## ROLLA CRAFT &amp; HOBBY

1009 Pine

Rolla, MO 65401

364-5581

## MEDI-VALUE PHARMACY

Rolla's Only Downtown Pharmacy  
1000 Pine Street Rolla 364-7077

Mon.-Fri. 8:30-8 Sat. 8:30-6

Sunday 11-5

7 DAYS A WEEK

Full Line of Drug Store and Pharmacy Items Plus!

If you have questions about the prescriptions you take, ask Bill Wuenschel, your friendly pharmacist, for the answers!



# Hiding a bad habit can lead to a lot of trouble

By Nora Okong'o  
Staff Writer

Last week: The police found Christine walking along the side of the road in a drugged-up daze. Donna rushes to the police station to see her friend. What happened to Christine? This week the surprising conclusion.

(The characters and events depicted in the story are entirely fictional. Any resemblance to known persons is coincidental.)

"Christine!" Donna greeted her with relief. "Are you all right?"

Christine returned her question with a vacant stare. Her mind might as well have been in a different universe.

Turning to the police officer, Donna asked, "Can I take her home?"

He shook his head. "Not just yet. She's probably better off in the hospital right now."

Donna reluctantly agreed. Christine did not seem capable of walking without some substantial support.

"Her parents should be here in a little while," the officer added. He was watching her reaction carefully.

Donna sighed. "At least we've found her," she said. "They'll be glad to see her. She took Christine's hand and gently asked, "Christine, who did this to you?"

Christine gave her a heart-wrenched look and burst into tears. Donna sat uncomfortably for a few seconds and then finally decided to give her roommate a shoulder to cry on.

"Why did he do it?" Christine asked between sobs. "Why? Didn't he like me?"

"Who?"

"Jason."

"Jason? Jason who? Did you meet him at the party?"

Christine was about to reply when the officer said, "You really shouldn't ask her anymore questions. She's not very coherent."

Donna's protest was silenced before she could utter it, by the entrance of Christine's parents. They rushed to their daughter's side. It was more than just concern for her health, Donna sensed there was an element of snatching from the lion's mouth. The lion, was of course, Donna.

"Why did you let her talk to our daughter?" Susan McCartney demanded. "How could you have let her near her?"

"Susan, calm down. Don't talk to the police like that," Bill McCartney said.

"She came here as a concerned roommate," the officer replied. He glanced nervously at the door, Donna had just left through, as though she might reappear any moment. "If I were you," he suggested, "I would stop worrying about the roommate and get the young lady to the hospital. She

looks like she could pass out any moment."

He was right. Christine was barely keeping herself seated upright. By the time they got her to the hospital, she was unconscious. The McCartney's faces were set in grim determination. If Christine didn't make it, there was no doubt in their minds as to who would be to blame.

"Our daughter isn't going to jail!" his wife said at the same time.

"But by the time this case goes to trial, she could face five years and ten times the present fine."

"What do you mean?" Bill McCartney looked puzzled.

"Where have you been? Haven't you been listening to the news? Under the proposed anti-drug plan, drug-

would be no trace of it now."

"What about her neighbors?" The party was probably pretty loud."

"That depends. Where was the party?"

"I'm not sure. I think it was on Park Street."

"In that case, either the neighbors were at the party, or they were out at a party somewhere else, or they don't

Mr. and Mrs. McCartney said no more, but stood up to leave.

"Are you out on bail?" Donna asked Christine, as soon as they were alone together.

"Yes," Christine sounded ready to cry. "The lawyer told me to plead guilty. He talked like I'm definitely going to jail."

"Well, you don't have much of a case, do you?"

"I guess not. But I can't go to jail! I just can't! It would ruin everything."

"I tell you what Christine. Sometimes they let you off easy the first time around if you agree to go into a drug rehab program."

"But I'm not an addict."

"Don't be stupid. It may be your only chance to stay out of jail." And may keep you from becoming an addict, she added to herself. "Anyway, what really happened?"

"Well, Nancy called me to tell me that she was having a party, and did I need a ride? I said yes, so she came and picked me up. There were lots of people there and— Anyway I met this guy, Jason. He seemed really nice. He gave me some stuff, and the next thing I remember was walking along the road, where they found me."

Donna tried to look sympathetic, as opposed to showing the sardonic expression that came more naturally. Christine was obviously hiding some-

thing.

"The defendant is sentenced to five years in the county jail," the judge pronounced.

Christine had pleaded guilty, as per Mr. Carthwright's advice.

"She is also to pay a fine of five thousand dollars."

"Your honor, the maximum sentence for first time offenders is only—"

"You seem to be unaware of this, counsel, but your client is not a first time offender. She has a previous conviction and similar charges have been brought against her several times before. In fact, I considered my sentence to be rather lenient."

Christine's parents were numb with shock. Donna wanted to laugh, scream and cry at the same time.

She thought she was beyond being surprised by anything Christine could do, when she learned that it was Christine who had brought the drugs in question to Nancy's party. There were, of course, no witnesses. But why did she feel guilty about having left Christine at home alone that Saturday night.

The End





PERSONAL RESOURCE DEVELOPMENT  
SERIES COUNSELING &  
CAREER DEVELOPMENT

## SURVIVING CHEMISTRY PRESENTATION

Tuesday, October 10  
3:30-4:30 pm  
125 Chemistry Bldg.  
Facilitator: Dr. B. Ken Robertson

PERSONAL RESOURCE DEVELOPMENT  
SERIES COUNSELING &  
CAREER DEVELOPMENT

## KEEPING A RELATIONSHIP ALIVE

Thursday, October 12  
6:30-7:30 pm  
South Lounge  
Thomas Jefferson  
Facilitator: Dr. Camille Consolvo

## SHEAR PERFECTION



Now's the time to sharpen your look for interviews  
We work around your schedule.  
Appointments and Walk-ins available.  
Just wanted to remind you, we're right behind Phi Kappa Theta  
in Copperfield Square. Open 6 days a week.  
602 W. 6th  
364-3558

## NAVY HIRING EXECUTIVE TRAINEES

You can do a lot more with your degree than just get a job. As a Navy officer, you can lead the adventure!

- No experience necessary
- ALL majors considered

Today's Navy is top-flight people working with the best in their field. It's also sophisticated technical and management training in executive, managerial, professional, scientific and technical positions.

You don't have to wait until you graduate! Navy Officer representatives will be on campus conducting an exclusive testing session. All interested students who are within 3 years of graduating are encouraged to take advantage of this opportunity. Testing takes approximately 3½ hours and seats are limited.



Navy Officers will be on campus October 9-10, 1989.  
For appointment and test location contact  
1-800-446-6289 or your Placement Office.

### FLIGHT OFFICER:

Start at \$21,200 (\$35,000 after 4 years). 20/20 correctable vision. Ages 19-26. Operate the electronics & computers in the Navy's newest aircraft.

### BUSINESS MANAGER:

Start at \$21,200 (\$35,000 after 4 years). Finance, personnel, logistics. Ages 19-28

### ENGINEER:

Start at \$23,500 (\$45,000 after 4 years). Bonus when selected. Project management. Engineering/Science/Technical major. Ages 19-28.

## SOPHOMORES & JUNIORS:

### NAVAL AVIATION CADET:

Sophomores from 4-year or Community College that are undecided about continuing college may qualify for immediate Pilot training. Requirements: 60 semester hours, 2.5 GPA, and pass the aptitude test. Single/no dependents.

### AVIATION RESERVE OFFICER CANDIDATE:

Guaranteed Pilot/Flight Officer Training at AOCS (Pensacola, FL) during Junior year summer break and upon completion of BS/BA degree.

### BACCALAUREATE DEGREE COMPLETION PROGRAM:

An Affirmative Action program for students with a "B" average, or better. Selected students will receive \$1000 a month until graduation. No drilling or meetings required.

### EXCEPTIONAL ENGINEERING STUDENT PROGRAM:

Sophomores & Juniors-majoring in Engineering, Math, Physics, or Chemistry. Must maintain a 3.3/4.0 GPA. Selected students will receive \$1100 a month until graduation, plus additional bonuses. No drilling or meetings required.

Must be a U.S. citizen & in good health.



**NAVY OFFICER**  
You are Tomorrow.  
You are the Navy.



Student Aid #5

1005 Kingshighway, Sharon Young Manager, Rolla  
Ft. Wood Spur, Audrey Scott Manager, Waynesville

ARBY'S® NO NONSENSE AD.

NO HYPE - JUST GREAT SAVINGS -

TAKE A FRIEND TO LUNCH



BUY ONE ARBY'S® REGULAR  
ROAST BEEF SANDWICH  
AT REGULAR PRICE  
GET ONE FREE

COUPON NOT VALID WITH ANY OTHER OFFER.  
EXPIRES OCTOBER 31, 1989.

TAKE ANOTHER FRIEND TO LUNCH



BUY ANY SANDWICH  
AT REGULAR PRICE  
GET A SECOND ONE  
(SAME TYPE) FOR \$1

COUPON NOT VALID WITH ANY OTHER OFFER.  
EXPIRES OCTOBER 31, 1989.

## SUB CHRISTMAS SKI TRIP

January 2-7, 1990  
Ski Beautiful Crested Butte  
**ONLY \$235**

\* Includes

- 5 Nights Lodging
- 4 Days Lift Tickets



For more info  
call the  
**SUB OFFICE**  
341-4220





# Steve Stevens releases Atomic Playboys

By Babu Barat  
Staff Writer

The state of rock 'n' roll in the late '80's is rather depressing as far as individual musicianship is concerned. Everybody is trying to copy everybody else. There hasn't been much to get excited about. Focusing in even closer and considering the modern rock guitarist, the outlook is even dimmer. Today's guitar players seem to be classified by how fast they play rather than how well they play. Does that make any sense? And to top that off, the amazing licks on the album can't even be reproduced live.

Fortunately there stands one incredible guitar virtuoso. Claiming his influences to be as diverse as James Brown, Jimi Hendrix, and Prince, and playing music that always seems to be on the cutting edge, Steve Stevens has engraved his name in the annals of great guitar legends. His unique style has been raved as being the direction where rock guitar is headed. What is most interesting is that he has only just begun.

Stevens has left the grip of Billy Idol to explore a wider range of sound. He has put together a band called Steve Stevens Atomic Playboys and they have just released their first self-titled release on Warner Brothers Records. Don't stop reading just yet. You're probably thinking "Great! Another guitar player showing off. That's all we need." Stevens didn't want to make it that easy. So you've seen the video for "Atomic Playboys." It rocks pretty hard, doesn't it? Well, if you think the entire album sounds like that you will be in for a big surprise. Steve Stevens Atomic Playboys is the most inventive recording to come out of the music industry in years. It combines all the elements that have been missing from the hard rock scene in the past decade. Sure it showcases Stevens' talent, but not just on the guitar, but in the lyrics and the grooves as well. This is the only album done by a guitar player that actually incorporates the guitar into the songs rather than blowing the listener away with fancy fretwork. The album isn't just for the guitarist, but for the avid music fan as well. Just check out tracks like "Power of Suggestion" and "Evening Eye" which have that George Benson-ish feel. "Soul On Ice" is a fast teeth-gritting song written about James Brown. "Action" has that large Queen sound with the melodic background vocals and Brian May guitar sound. And then there's the nasty down-and-out "Pet The Hot Kitty" which has a killer groove. Not only does the music sound good, but the lyrical content is excellent as well. This album is a trend-setter in its sound and musicianship. Hopefully others will follow suit. I highly recommend it!

Recently, Stevens took the time to talk about Atomic Playboys.

**Everybody has been anticipating this record for so long. Did you have a lot of material going into the studio?**

I did, but largely I found that a lot of the stuff I had accumulated wasn't even used. With the exception of "Atomic Playboys" and "Crackdown," everything was written after I met with Perry

Fine Malibus. We knew each other from back then. So I brought up Beau's name to Ted. I said listen I really need somebody in there to help me out. I need another pair of ears. Ted said he thought that was a great idea. So what I did was work with both of them, individually. Ted wasn't involved in the actual recording. He was more involved in selecting the proper songs and suggesting lyrical

Overall, this is one of the few records that after I finished recording it I can listen to and enjoy and be able to say "Hey, this is o.k." This is due in large to the fact that I didn't spend that much time recording it. I was used to spending a year and three months per record when I recorded with Billy Idol. I think the most critical thing was that I wanted to avoid the situation where a guitarist goes off and does a record and

video is that a lot of groups become successful because they look good visually, but musically there is absolutely nothing happening. But who's to say? I think younger kids approach music on a different level. They've been buying records since videos were a major part of an artist's career. So they don't know any different. I am trying to establish myself as an artist more in the mold of groups that didn't utilize video quite as much. I would much rather spend eighty days out on the road to promote a record than do it just through video. Video is an easy way out for the record company and it alleviates stressful touring for a lot of bands. But then a lot of bands aren't great live acts and hopefully this will evolve into a great live act.

**Where did you gain all the knowledge about recording and the music business? Obviously the Billy Idol stint had to have helped. But is that where the production ability and senquitting capabilities came from?**

I was fortunate. A lot of it did happen and grow with Billy Idol. But I was lucky because they let me experiment a lot and find myself. Especially with "Rebel Yell." On the first record I did with Billy I was basically hired hand. I went in and played my guitar parts. After that Keith Torsey, Billy's producer, allowed me full reign in the studio as did Chrysalis Records, Billy's record company. So at times when Billy wouldn't be in the studio, I would just be in there experimenting. Rebel Yell was also very inspiring because it was recorded at Electric Lady Studios where Jimi Hendrix recorded all his records. For a guitar player who was on the verge of making a name for himself, it was an incredible opportunity. Also the engineer, who also engineered my record, Dave Wittman, has worked with the likes of Led Zeppelin and other great bands. He really took the time to help me develop a guitar sound and leave me to it. All this put together has helped me learn what I know until now.

**Why did you choose the path you took putting together a song oriented album rather than maybe a guitar oriented record?**

I think it was a matter of a process of elimination more than anything. There were things that I definitely didn't want to do. I didn't want to be able to put this record on the air after it was released and somebody listen to it and go "Oh, this was definitely done by a guitar player." I think that is very one-sided. I can appreciate great guitar playing, but I don't buy guitar records. I love Jeff Beck, and all that kind of stuff. I was also out to show people

see Playboys, page 24



Courtesy Warner Brothers Records

**Steve Stevens (pictured) Atomic Playboys are currently on a world-wide concert tour.**

McCarty. I really wanted to avoid the situation where you write a bunch of songs and then a singer comes in and it is like "Oh, do this...and it goes like that;" like an assembly line. I knew exactly what I was looking for in a singer. So I had musical ideas, but I didn't actually write melodies and lyrical things until Perry came into the picture. I wanted him to give me a hand in co-writing some stuff.

**How long did the album actually take to record?**

Six weeks in New York and twelve weeks in Los Angeles.

**You have some pretty heavy hitters, including yourself, as far as the production team is concerned. Beau Hill and Ted Templeman working on the same project. You don't usually see that. How did that work out?**

They didn't actually work in the same room together. Originally it was Ted's idea that he wanted me to produce the record on my own and I really didn't feel I was ready to do that, especially on this first record. I had known Beau Hill even before I was with Billy Idol. He was in a band in New York called Spider. I was in a group called The

ideas and melodies. He was instrumental in keeping the other wolves at the record company off my back. They can get pretty nervous when an artist who has never produced anything before is suddenly producing; co-producing in this case. Beau was the one who I was closely involved with in the studio.

**I read you were given complete freedom as far as the album is concerned?**

Yeah so if I hang myself, I have nobody to blame. (laughs)

**Did this freedom continue as far as choosing the first single and video?**

To a lesser extent. Obviously the record company has their choices as far as what they want to release. As of yet we haven't released a single. "Atomic Playboys" was released as a video and as an album track which is almost six minutes long. The record company really wanted to release "Action" as the first single, but I didn't want to release a cover tune initially. It will be the next single, but I wanted people to get a vibe for "Atomic Playboys" first.

**How did you feel about the completed record?**

all the guitar stuff is great but lyrically it is absolute c.l.p. I really took time out to write the best lyrics that I possibly could at this point in time.

**Did you know what kind of video you wanted for "Atomic Playboys" after the song was recorded?**

I knew I wanted to incorporate animation in it somehow. It seemed appropriate to use the cover as the basis for that. I really didn't realize how expensive animation is so we could only do it at the beginning and at the end.

**How do you feel about the whole video concept?**

There are some videos which are really entertaining. The first two videos done for the Queensryche record were really good and different for that kind of group. They were very well done and very interesting and followed through the idea of the record well. But it can hinder in a way because of that age-old argument that it doesn't leave your imagination to roam wild and to make up your own story lines. I usually like to stick to a performance oriented video. Even with Billy there wasn't much concept stuff, except for "Don't Need A Gun," that had a story line. The only real problem I have with



**Need Something New & Special  
For Birthdays, Get Well, I Love You,  
and All Occasions?**

Try our unusual balloon bouquets  
starting at \$10

**THEY WILL MAKE A HIT!!**

Something Special Florist 6th & Park, Rolla 364-8181

**Johnny's Smoke Stak**

**HICKORY PIT BARBECUE**

Hickory Smoked Ribs  
Our Specialty

Steaks Shrimp Cocktails  
Catering Private Parties  
Banquet Rooms Salad Bar  
Saturday & Sunday Buffet  
Open Daily at 11:00 A.M.

AT VISA MC DISCERS CLUB  
HWY 72 & Rolla St.  
Rolla, Missouri 65401  
**314-364-4838**  
HOME OF MISSOURI CLASSIC BAR B QUE SAUCE

**International Tours  
Travel Agency of Rolla**

1023 Kingshighway Rolla, MO 65401

**Call Rick, Chris, or Melissa**

MON-FRI **Your one stop!**  
8 AM - 6 PM **For complete travel Planning**

SAT **Foreign or domestic** (314)341-3300  
10 AM - 4 PM **Business or pleasure!** 1-800-876-3337

**VAVOOM!**

**SAY FAREWELL TO FLAT HAIR.**

Get the VaVoom Volume Generators.<sup>™</sup>  
Sensational, body-building hair care.  
For high-energy hair with absolute ease.  
VaVoom. It's for today's active men and  
women. It'll help you say farewell to flat  
hair. And generate lots of styling excite-  
ment. Stop in today.

**A CUT ABOVE 209 W. 11th**  
**364-6866 Wolff Tan Beds**

**Matrix**

**ALEX'S PIZZA PALACE**

Real Italian Pizza  
122 W. 8th St.

Open 7 Days a week  
11:00 AM - 2:00 AM  
Call For Delivery  
or Take Out

**364-2669 or 364-9878**

Salads Sandwiches Pasta  
5% Beer on Sunday  
**SPECIALITIES**  
Gyros Souvlaki Steak  
Greek Salad Spinich Pie Barlava

**THE FAR SIDE THE FAR SIDE THE FAR SIDE**

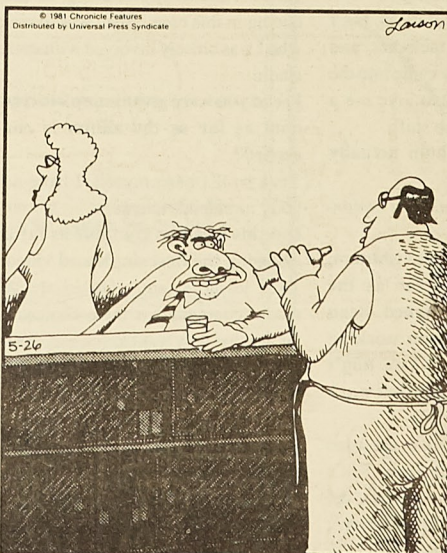
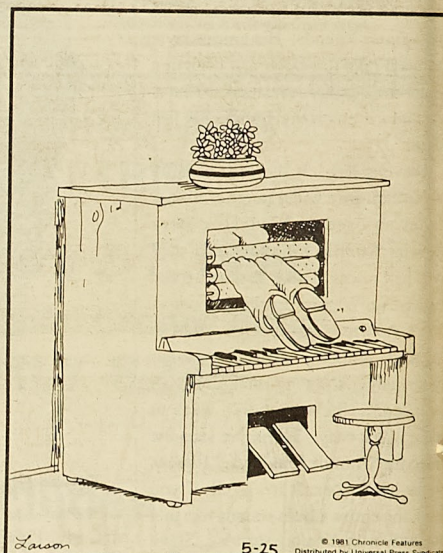
By GARY LARSON



"Hey, c'mon! Don't put your mouth on it!"



"Doesn't have buck teeth, doesn't have buck teeth, doesn't have ...."



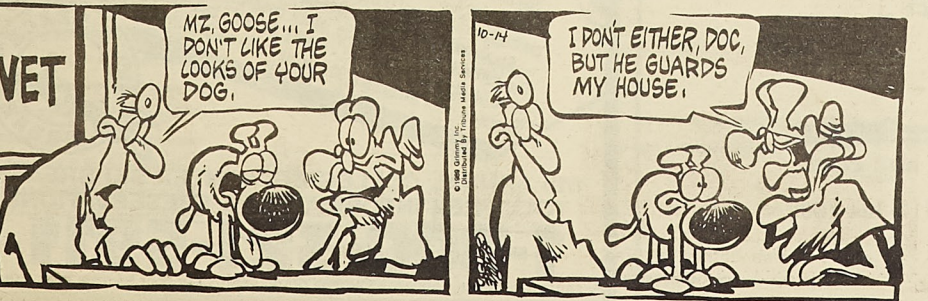
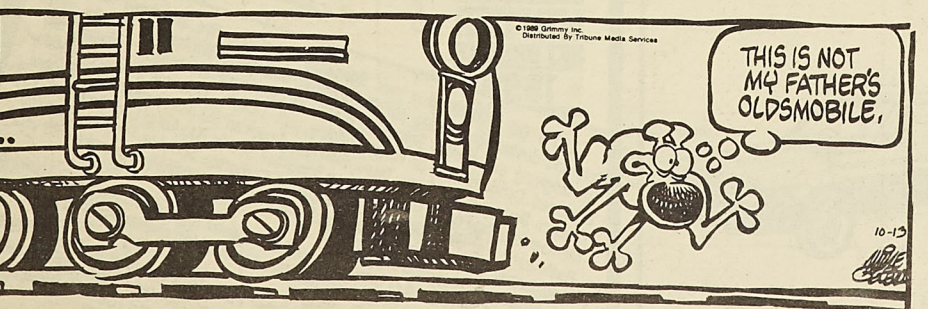
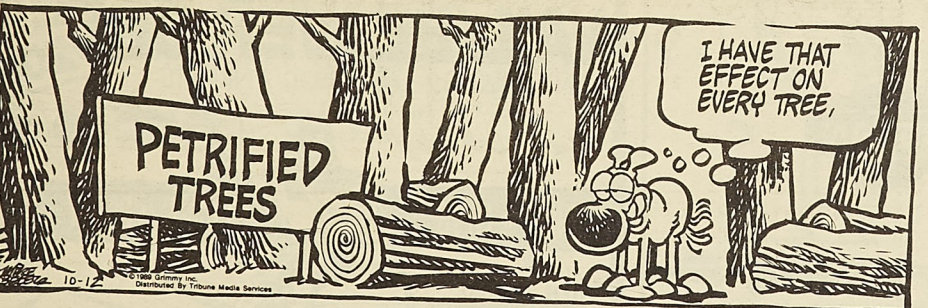
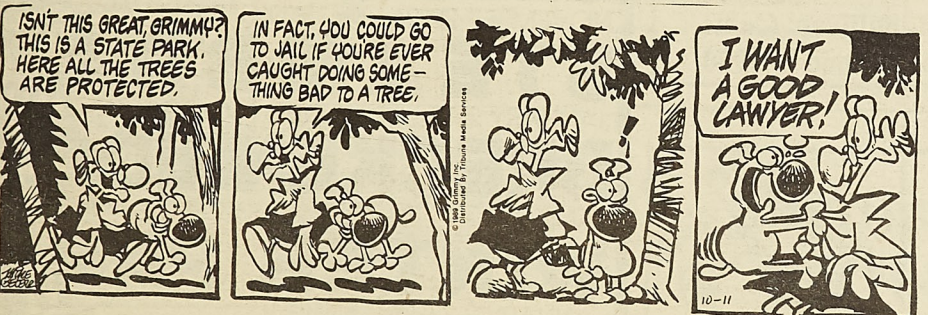
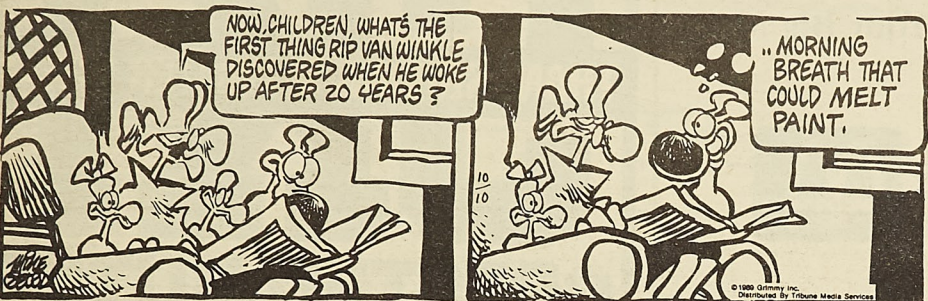
"Rejected again, huh, Murray? ... Have you heard about this new breath-freshening toothpaste?"





# Mother Goose & GRIMM

by Mike Peters



## Foods For Health

Complete line of vitamins, supplements, herb teas, natural foods, bulk spices, body building products, books, etc.



10% Discount  
with this coupon &  
student I.D.  
Valid October 4 - 10

Hours: 9-6 M-F  
10-5 Sat  
707 S. Bishop(Hwy 63S)  
364-7860

## Do You Want VISA & MasterCard Credit Cards?

Now You can have two of the most recognized and accepted credit cards in the world - VISA® and MasterCard® credit cards - in your name! EVEN IF YOU ARE NEW IN CREDIT OR HAVE BEEN TURNED DOWN BEFORE!

VISA® and MasterCard® the credit cards you deserve and need for:

- ID • BOOKS
- DEPARTMENT STORES • TUITION
- ENTERTAINMENT • EMERGENCY CASH
- TICKETS • RESTAURANTS
- HOTELS • GAS • CAR RENTALS
- REPAIRS • AND TO BUILD YOUR CREDIT RATING

**GUARANTEED!**  
GOLD CARD  
VISA/MasterCard  
GUARANTEED ISSUE  
OR MONEY BACK

Approval absolutely guaranteed so hurry! Fill out this card today. Your credit cards are waiting!

A. GARSEAU, Student Services  
P.O. BOX 130336, SUNRISE, FL 33313

**YES!** I want VISA®/MasterCard® credit cards. Enclosed find \$15.00 which is 100% refundable if not approved immediately.

NAME \_\_\_\_\_

ADDRESS \_\_\_\_\_

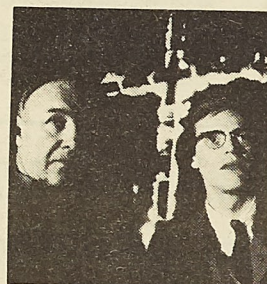
CITY \_\_\_\_\_ STATE \_\_\_\_\_ ZIP \_\_\_\_\_

PHONE # \_\_\_\_\_

SOC SECURITY # \_\_\_\_\_

SIGNATURE \_\_\_\_\_

**CUT THIS COUPON TODAY!**



GENE HACKMAN • WILLEM DAFOE  
1964. WHEN AMERICA WAS AT WAR WITH ITSELF.

**MISSISSIPPI BURNING**

An ORION PICTURES Release  
© 1988 Orion Pictures Corporation. All Rights Reserved.

October 6th & 7th ME 104  
Mississippi Burning Fri 7 & 9; Sat 7  
Escape From New York Fri 11; Sat 9  
Free w/ID SUB

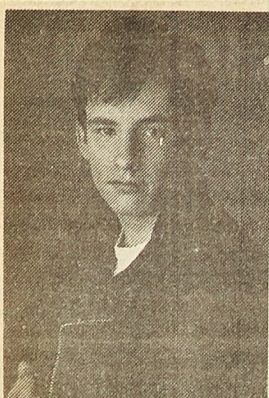
## WAFFLE HOUSE.

Good Food Fast  
ALWAYS OPEN  
ALL YOU CAN EAT  
2 pm to 9 pm Seven Days a Week  
only \$3.99

Hamburgers  
Omelets  
Sandwiches  
Soup & Salads  
Complete Breakfasts  
Open 24 Hours

Hwy 63 & I-44, Rolla





All young men have one responsibility in common. They have to register with Selective Service within 30 days of their 18th birthday. *It's quick. It's easy. And it's the law.*

A public service message of this publication and Selective Service System

## Banquet Facilities Available

Wednesday Night - Student Night  
9:30 - 1:00

341-2110      2001 Forum Drive

**Dear Alumni - Welcome Back!**  
**We're Ready - So's Your Big Mac.**

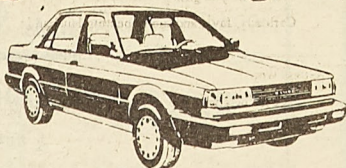
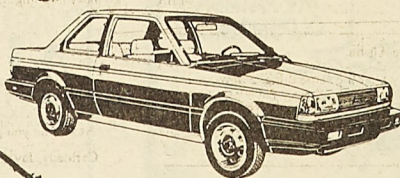
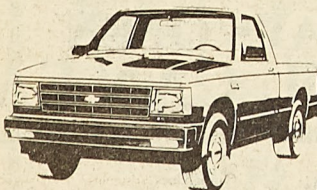
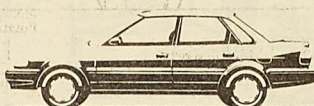
**GOOD TIME.  
GREAT TASTE.™**



Rolla, Salem, St. Robert, Sullivan, Cuba  
& St. James\*, MO \*to be opened in 1990

*You don't need rich parents  
to get a car for graduation.*

# GOVERNANCE



CAR WASH  
*Walsh O'Matic*  
CAR SALON

**THE**  
*Heart*  
**of Missouri**  
**TRUCK CENTER**  
1 800 BUY TRUX

## Budget

100 Fairground Road • Rolla, Missouri • 314-364-1002

**YOU HAVE FRIENDS WHO CARE**  
**AT**


**B**IRTHRIGHT

**PHONE: 364-0066**

215 WEST 8th STREET  
P.O. BOX 832  
ROLLA, MISSOURI 65401

FOR HELP  
DURING UNPLANNED PREGNANCY  
FREE PREGNANCY TESTING

# THANKSGIVING & WINTER BREAK

**CRESTED BUTTE**  
NOVEMBER 22-26  4 NIGHTS *from* **\$144**

# STEAMBOAT

JANUARY 2-12  5 OR 6 NIGHTS *from* **\$168**

**BRECKENRIDGE**  
JANUARY 2-7  5 NIGHTS  \$173 *from*

**WINTER PARK**  
JANUARY 2-7 5 NIGHTS **\$176**  
from

## VAIL/BEAVER CREEK


Harry - Call Today!



## LODGING • LIFTS

PICNICS • PARTY • MORE

*Surchase*  
8TH ANNUAL  
**COLLEGIATE  
WINTER  
SKI BREAKS**  
**1990**



**COLLEGIATE  
WINTER  
SKI BREAKS**

**1990**

**LET'S GO SKING!** This year, Sunchase is offering five affordable fun-tastic Colorado destinations during our **8th Annual Collegiate Winter Ski Breaks** over Thanksgiving and Winter Semester Break. All Sunchase ski breaks include: Fully Equipped Condominium or Hotel Lodging, Lift Tickets, Welcome Party, Mountain Chicken Barbecue, Ski Race, Taxes, Full Year American Ski Association SkiAmericard Membership and Pocket Directory and a Sunchase Goodie Bag full of Local Information, Restaurant and Bar Guide and Participating Corporate Sponsor Product Samples. Additionally, our experienced on site staff will be at each destination to make sure your ski break goes according to your plan.

Ski break by yourself or bring your friends! Organize a group and ski **FREE!** Thinking of flying - we'll arrange for the best fare. Need a round trip charter bus for your group? We'll secure the lowest possible price.

**Steamboat, Vail/Beaver Creek, Winter Park, Breckenridge or Crested Butte.** The hardest part is choosing which destination to "conquer" this coming season! Available space is limited - **DON'T DELAY** - call Sunchase TODAY Toll free for your complete color Ski Breaks '90 brochure with all the fun-tastic details!

**SKI & BEACH**  
**Sunchase**  
**TRIPS**

**8th ANNUAL COLLEGIATE WINTER SKI BREAKS**  
**TOLL FREE INFORMATION & RESERVATIONS**

**1-800-321-5911**

or contact our local SunChase campus representative or your favorite travel agency.



# Classifieds

## Miscellaneous

All classifieds **MUST** be submitted on a FULL 8.5 x 11 sheet of paper.

Thank you,  
Features Editor

## RESEARCH PAPERS

19,278 to choose from — all subjects  
Order Catalog Today with Visa/MC or COD  
Toll Free Hot Line **800-351-0222**  
in Calif. (213) 477-8228  
Or, rush \$2.00 to: **Research Assistance**  
11322 Idaho Ave. #206-SN, Los Angeles, CA 90025  
Custom research also available—all levels

## Cruise Ship Jobs

**HIRING** Men - Women. Summer/  
Year Round. PHOTOGRAPHERS,  
TOUR GUIDES, RECREATION PERSONNEL.  
Excellent pay plus FREE travel. Caribbean,  
Hawaii, Bahamas, South Pacific, Mexico.  
**CALL NOW!** Call refundable.  
1-206-736-0775, Ext. 483J

## A FREE GIFT JUST FOR CALLING PLUS RAISE UP TO \$1,700 IN ONLY TEN DAYS!

Student groups, fraternities and sororities needed for marketing project on campus. For details plus a FREE GIFT group officers call 1-800-950-8472, ext. 20

## ATTENTION-GOVERNMENT SEIZED VEHICLES

from \$100. Fords, Mercedes, Corvettes, Chevys. Surplus Buyers Guide. 1-602-838-8885, ext. A18559.

## ATTENTION: EARN \$\$\$ READING BOOKS!

\$32,000/year income potential. Details, 1-602-838-8885, ext. Bk18559.

## For Sale:

1977 Chrysler Newport, 127,000 miles, Excellent condition, clean, no rust. Call 341-3890.

## For Sale:

Mustang, 1977 "GT" 302 V-8 (5.0), Automatic, Aluminum Wheels, good tires. All the options, new paint, no rust ever. All Original. Make an offer, 70,000 miles. 364-6294. Ask for Kris M.

## ISC SOCCER TOURNAMENT

International Student Club (ISC) is going to have its annual soccer tournament this October! Competition is open all teams and a \$25 entry fee per team will be charged. Pick up application forms and information sheets from ISC's mailbox at Student Activities Office. Application Deadline: Oct. 6, First games: Oct. 13. For more information call Clarence 364-0649.

## Free Legal Advice

One of many services provided by the Student Council is FREE legal advice. Last year, as a result of student need, Student Council began providing a lawyer for free legal advice every Tuesday from 2:30 to 3:30 for your convenience. If you would like to visit with him you need to stop by the Student Council office, in 202 University Center-West, between these times.

## Looking for

a fraternity, sorority, or student organization that would like to make \$500-\$1000 for a one week on campus marketing project. Must be hardworking and organized. Call Lisa Carta or Myra. 1-800-592-2121.

**Sunchase Tour** is currently recruiting Campus representatives to promote our Collegiate Winter Ski Trips & Spring Break Ski & Beach Trips. Earn top commissions and free trips! Call 1-800-321-5911 for additional information. Campus organizations welcome!

## Ski Steamboat Free!

Inter campus programs is looking for an individual, organization, or club to promote our Christmas break ski trip. Work with the nation's leading college tour operator. We provide all marketing materials, free trips, and cash commissions. Call now for details: 1-800-327-6013, ext. 300.

## ATTENTION-HIRING!

Government jobs-your area. Many immediate openings without waiting list or test. \$17,840 - \$69,185. Call 1-602-838-8885, ext. R18559.

## Free Bible Study via Correspondence:

Lessons available in both English & Spanish. Please write to World Bible School, Rt.2 Box 626, Rolla, MO 65401.

**For Sale:** A King Size Waterbed mattress. Call 341-2689.

## ATTENTION-GOVERNMENT HOMES

from \$1 (u-repair). Delinquent tax property. Repossessions. Call 1-602-838-8885, ext. GH18559.

## Personals

### Bozz (or Tim B.)-

Well, what do you know.. A classified for you. Thanks so much for the job! I really appreciate it. I'm glad to see you in a better mood. Good luck with the house.

Sleepy

### A&M,

Stay away! Seeing you guys 4 days in a row is too often especially when you are both in the same place at the same time. By the way-I did get a date!

Zan

### Fortman,

Shut up & dance!

Your fav. dance partner

### Deanna,

Who is Marty He-Tiger??

Flem

### Dee & Mari,

I wish you lots of love and happiness this semester!

Nan

### Benjamin,

Does this mean you can't be my #1 dance choice now? Take care & keep smilin'.

YBS,

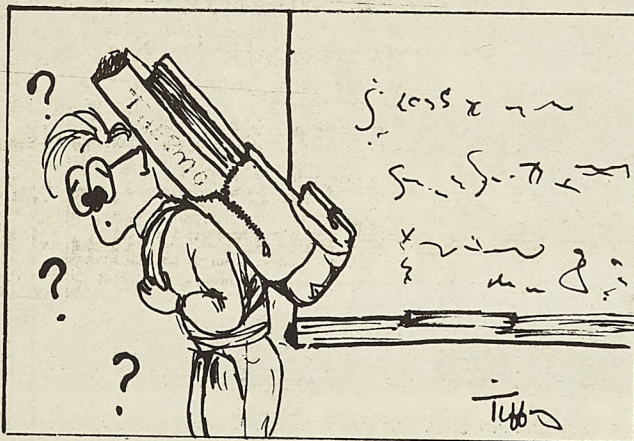
(BUGGIN')

### Susan,

Thanks for the adorable stuffed animal and the M&M's - how did you know they're my favorite? It was a bright spot in a rotten day!

LICO,

ZAN



### Fudd,

Is the monster back to stay?

Dan Akroyd

### Kristy,

Who WERE those guys that Friday afternoon?

YBS

### Mike, the Alpha,

Every year the same thing, a new freshman girl for a quickie, leave her alone.

You're Busted

### D.k.d.

Glad your back from St. Louis and are feeling better.

SFL

### Mari,

Let's try not to repeat last year's hayride incident! Let's have a blast!

Roomie

### T.W.A.,

So, when are YOU going to supply the popcorn for our intense study session???

You Know Who

### Ray C.,

Ain't you uggggly?

Mirror

### KD, ChiO, ZTA,

Rise and Shine for the Homecoming Beer for Breakfast! Escorts to class included!

The Men of Triangle

### Aaron S.

Here's to milk in your eye, & wrestling. Let's Celebrate!

Cat

### To the President nextdoor,

You are really HOT!!

A neighbor girl

NN

### Stephanie,

If it weren't for you I would have gone 5 years without ever being invited to a Sorority "activity", thanks? If you need any more favors, check me out I'll try to help!

Super Senior

P.S. I think we're gonna have fun this year!

### Beav,

Eat me!

Hostess

### Esther W.

Did you thought that was a ticket on your car last Thursday at 2:15 pm.

You're Busted

### To our great Social Chairman,

You did an awesome job on Reggae/M.D.

A Zeta

### Chris,

How's Harriet doing? When do I get a piece?

### Hey Stock!

I heard that you can drink beer through your nose while standing on your head! Doesn't it run out your ears then?

YSNA

### Cent! but Dreamy,

It must be something kinky. Your Big Knuckle Finger? Your Big Noodle Fan? I'm very puzzled

Sniff, sniff,  
Why yes it is

### Pumpkin lover,

I hope you keep doing well in school & your relationships. I value our friendship. Thanks.

Pecan Preferred

### Kris,

Yes, I know your first name even if no one else does.

We Know!  
Your roomies

### Everyone,

Greater Awareness Meeting, 3 AM, Sunday, Oct. 1st. We don't know where.

Ice & Mort

### Deryni,

Are you up for another round of Kamikazes? Or Ice Cream? All my tests are over, let's party! (Herb's?)!!

Kitten

### Nina-

Chicago for Christmas? Sako is waiting.

-Kim

### Thanks

to everyone who helped out with Greek Acres

### Terminator,

What's been going on? Not that-again!!

YLS

### Tony,

It's about time!!

NJM

see Classifieds, page 24



## RESERVE OFFICERS' TRAINING CORPS



## BELIEVE IT OR NOT, THIS GUY IS IN CLASS.

Excitement and adventure is the course description, and Army ROTC is the name. It's the one college elective that builds your self-confidence, develops your leadership potential and helps you take on the challenges of command.

There's no obligation until your junior year, and that means there's no reason not to try it out right now.



### ARMY ROTC

**THE SMARTEST COLLEGE  
COURSE YOU CAN TAKE.**

**Find out more. Contact Major Hoskins  
308 Harris Hall or call 341-4738 today.**

Wednesday, Oct  
PERSONAL RESOURCE  
SERIES COUNSELOR  
CAREER DEVELOPMENT

Test An  
Present

Wednesday, Oct  
3:30-4:30  
Mark Twain Ro  
Facilitator: Dr. Gen

Key Sp  
Custom Print  
Embroidery  
Business  
Organization

• T-SHIR  
• CAPS  
• JACKETS

1300 S. Bishop 12  
364-3216 36  
Rolla



Gina  
Cut, Sty  
and Blow

Guy's Hairc  
Girl's Hairc

341-5  
Offer good for G

Sunday  
Student  
Special

Cho  
Chick  
each only

Incl  
salad & h  
401 Martin Spring  
364-7168



PERSONAL RESOURCE DEVELOPMENT  
SERIES COUNSELING &  
CAREER DEVELOPMENT

## Test Anxiety Presentation

Wednesday, October 11  
3:30-4:30 pm  
Mark Twain Room, UCE  
Facilitator: Dr. Gene Van Matre

### Key Sport

Custom Printing &  
Embroidery for  
Business &  
Organizations on

- T-SHIRTS
- CAPS
- JACKETS

1300 S. Bishop 1200 Pine  
364-3216 364-5495  
Rolla

## Did You Know ...

- ... Apple Tree is Rolla's #1 Art Supply Store
- ... We make our own Creamy Fudge
- ... Our Professional Framing Department can drymount or Custom Frame your favorite print
- ... Apple Tree even has Sorority Gifts
- ... You'll find Drafting Supplies at Apple Tree
- ... We're more than just a gift store
- ... Bring in your parents on October 7 for a 10% discount

## APPLE TREE

Crafts, Gifts, Art, Framing  
Hwy. 63 S. Rolla

OPEN Mon-Sat 9:30-8:00 PM Sun 12:30-5:00PM

## START YOUR ENGINEERING CAREER NOW AND EARN \$1,200 A MONTH UNTIL YOU GRADUATE

The Navy is accepting applications now for its Nuclear Engineering Program. If you qualify, you could earn as much as \$30,000 before graduation.

### YOU MUST

- Be at least a junior engineering, chemistry, science or math major at a 4-year college or university.
- Have a minimum 3.0 GPA.
- Have completed a mathematics sequence through integral calculus.
- Have completed one year of calculus based physics.
- Meet the Navy's physical standards.
- Be no more than 26½ years old at the time of commissioning.
- Be a United States citizen.

Informational meeting Monday 10/2/89, 6:30 PM in the Meremac Room.  
Personal interviews Tuesday 10/3/89, sign up at the Bueler Building  
(314) 331-4307 Collect.

**NAVY OFFICER** You are Tomorrow.  
You are the Navy.



Gina

Cut, Style  
and Blow Dry

Guy's Haircuts \$8  
Girl's Haircuts \$10

341-5828

Offer good for Gina and Michelle

For that Perfect  
Interview Haircut!

**HAIR  
FORCE**

1421 Forum Dr.

Michelle

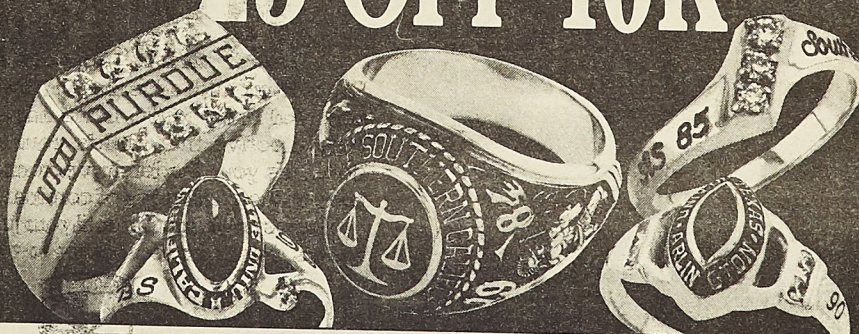


## GOLD RING SALE

\$75 OFF 18K

\$50 OFF 14K

\$25 OFF 10K



Order your college ring NOW.

**JOSTENS**

AMERICA'S COLLEGE RING™

Date: Oct. 9 & 10 Time: 10AM - 3PM Deposit Required: \$25

Place: At the UMR Bookstore

Meet with your Jostens representative for full details. See our complete ring selection on display in your college bookstore.



88-7702(CP-001-00)

Sunday Night  
Student  
Special



**SIRLOIN  
STOCKADE**

Chopped Sirloin  
Chicken Fried Steak  
each only

**\$4.99**

Sundays  
4 p.m.-Closing

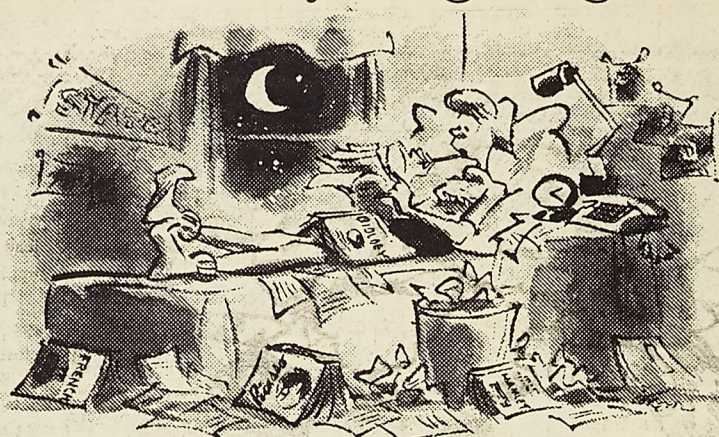
Includes: Potato, toast,  
salad & hot food bar, and drink.

401 Martin Spring Drive  
64-7168

Open: Sun-Thurs 11 am-10 pm  
Fri-Sat 11 am-11 pm



# How're you going to do it?

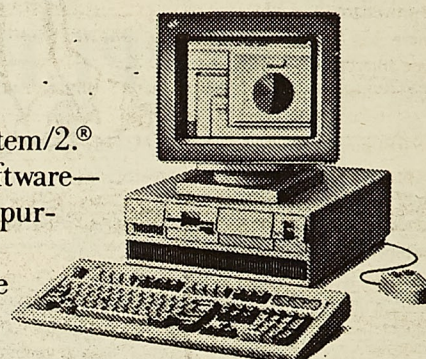


"My chem lab report is due Monday.  
My English lit. paper is due Tuesday.  
My economics paper is due on Wednesday.  
And the big game's tomorrow."

## PS/2 it!

### Now, super savings on PS/2's.

Be ready for this semester with the IBM Personal System/2.<sup>®</sup> Choose from five complete packages of hardware and software—all at special low student prices. What's more, when you purchase a PS/2,<sup>®</sup> you can get the exciting new PRODIGY<sup>®</sup> service at less than half the retail price.\* Strike while the prices are hot. Pick the PS/2 that's right for you.



	Model 25 8525-001	Model 30 286 8530-E21	Model 50 Z 8550-031	Model 55 SX 8555-061	Model 70 386 8570-E61
<b>Memory</b>	640Kb	1Mb	1Mb	2Mb	4Mb
<b>Processor</b>	8086 (8 MHz)	80286 (10 MHz)	80286 (10 MHz)	80386SX™ (16 MHz)	80386™ (16 MHz)
<b>3.5" diskette drive</b>	720Kb	1.44Mb	1.44Mb	1.44Mb	1.44Mb
<b>Fixed disk drive</b>	20Mb	20Mb	30Mb	60Mb	60Mb
<b>Micro Channel™ architecture</b>	—	—	Yes	Yes	Yes
<b>Display</b>	Monochrome	8513 Color	8513 Color	8513 Color	8513 Color
<b>Mouse</b>	Yes	Yes	Yes	Yes	Yes
<b>Software</b>	DOS 4.0 Microsoft® Windows/286 hDC Windows Express™	DOS 4.0 Microsoft Windows/286 Word 5.0* hDC Windows Express hDC Windows Manager™ hDC Windows Color™	DOS 4.0 Microsoft Windows/286 Word 5.0* Excel* hDC Windows Express hDC Windows Manager hDC Windows Color	DOS 4.0 Microsoft Windows/386 Word 5.0* Excel* hDC Windows Express hDC Windows Manager hDC Windows Color	DOS 4.0 Microsoft Windows/386 Word 5.0* Excel* hDC Windows Express hDC Windows Manager hDC Windows Color
<b>Price</b>	<b>\$1,499</b>	<b>\$2,299</b>	<b>\$2,799</b>	<b>\$3,499</b>	<b>\$4,699</b>

**IBM Printers** Proprinter™ III w/Cable (4201/003) **\$369**  
Proprinter X24E w/Cable (4207/002) **\$499**  
Proprinter XL24E w/Cable (4208/002) **\$669**

Stop by 114 Math/Computer Science for a PS/2 demo and to sign up for a Sony Discman to be given away.

\*Microsoft Word and Excel are the Academic Editions. This offer is limited to qualified students, faculty and staff who order an IBM PS/2 Model 8525-001, 8530-E21, 8550-031, 8555-061 or 8570-E61 on or before October 31, 1989. Prices quoted do not include sales tax, handling and/or processing charges. Check with your institution regarding these charges. Orders are subject to availability. IBM may withdraw the promotion at any time without written notice.

IBM, Personal System/2 and PS/2 are registered trademarks, and Proprinter and Micro Channel are trademarks, of International Business Machines Corporation. Microsoft is a registered trademark of Microsoft Corporation. PRODIGY is a registered trademark of Prodigy Services Company, a partnership of IBM and Sears. hDC Windows Express, hDC Windows Manager and hDC Windows Color are trademarks of hDC Computer Corporation. 80386SX and 80386 are trademarks of Intel Corporation. © IBM Corp. 1989



# Sports

## Miners could not put Blue Tigers away

By Jeff Zawila  
Staff Writer

The Miners of Rolla had a rough game this past Saturday against Lincoln University, big plays and mistakes meant the difference between a win and the eventual loss. The Blue Tigers of Lincoln defeated UMR, which brings the Miner record to 1-3 in conference and overall play.

A sloppy game was played by both sides, but Miner errors proved to aid in the loss. The Miners lost three fumbles and threw one interception while the Blue Tigers lost two fumbles.

The Miners put the first points on the board when senior quarterback Tom Minnick threw an 18-yard touchdown pass to freshman split end Chris Alverson. The extra point was kicked through the uprights by Dave Belloli.

Lincoln came back to tie the game seven-all with seven and a half minutes remaining in the first quarter.

The Miners missed an excellent chance to score in the first quarter.



They faced first and goal at the Blue Tigers nine yardline. The Miners pushed the ball to the one, but since they were not able to punch the ball in the endzone, they settled for a 21 yard field goal attempt. A bad snap caused the attempt to be unsuccessful.

Another costly mistake by the Miners in the second helped Lincoln

win. After the Miner defense recovered a fumble at the blue devils 30 yardline and the offense drove to the blue devils 3 yardline, the offense threw an interception which ended the Miner drive.

Both teams went into the locker room at halftime tied 7-7. After each side changed possessions a few times,

Lincoln took the lead 14-7 by a 51 yard touchdown run with twelve and a half minutes remaining in the game.

The Miners retaliated right away with their own offensive weapon - Miner freshman tailback Vincent Banks dashed past Lincoln's defense for a 57-yard touchdown run with eleven and a half minutes remaining in

the fourth quarter. Belloli tied the game 14-all with the extra point.

The Blue Tigers next drive proved to be the game winner. They took the lead 21-14 with eight minutes remaining in the game.

The Miner offense just could not put any points on the board as the closing minutes ticked off the clock.

Senior fullback Randy Mullinax lead the Miner rushing attack with 85 yards on 10 carries while Banks had 78 yards on 12 carries and Ron Harmon had 58 yards on 11 carries.

Minnick lead the Miner passing with six completions out of the 19 attempts for 101 yards with a touchdown and an interception.

Miner Chris Alverson lead the receivers with two catches for 31 yards and a touchdown. Freshman Chris Kennedy also had two receptions.

The next Miner game is Homecoming weekend against Southeast Missouri State on October 7th. Kick-off is at 1:30 p.m.

## Record times set by freshman duo

By Buck Simpson  
Staff Writer

Last Saturday, in the sixteen team Tenth Annual Miner Invite, the UMR Men's Cross Country Team made the first step to becoming a contender in the MIAA.

Running a fantastic team race, the Miners overcame the loss of their sick number four man, John Conrad. First, Junior Tim Bauer started off the rally for the "Young Guns," as he finished third overall with a new personal best of 26:00 on the 8K course. However, the fast times did not end there. The freshman duo of Robbie Vanderwall and Steve Hostetter both ran record times of 26:37 and 26:49 for 13th and 22nd respectively. Then the Miner's

MVP, Keith Schoby, crossed the line. Schoby busted out early to record his fastest time this year of 26:54, a personal best by almost two minutes. Eric Powers closed out UMR's top five with another personal best time for 35th place. This gave the Miners 3rd overall behind the champions, CMSU.

Even with this solid team improvement, the Miners still feel as if they have a lot more to give. However, with only three weeks till conference, they have only the Springfield Invitational this weekend to make their move. Coach Dewey Allgood believes that this race will be the key to the season's success. Hopefully, the young team will be able to respond in the stretch.

## Soccer team kicks McKendred

By Eric Hardin  
Staff Writer

The UMR Men's Soccer Team met with McKendree College Tuesday night, September 26. The Miners defeated nationally-ranked McKendree College by a score of 3-1. The win gave the team their 3rd win of the season, raising their record to 3-2-3.

The first half ended with the score of 2-1. The Miner goal came from Kurt O'Brien.

Junior forward Steve Campbell scored two goals the second half to give the Miners the win. Mike Balassi, a junior midfielder, finished the game

with two assists. Tim Saunders is credited with assisting Campbell's second goal.

Steve Temme made a strong showing in the goal for the Miners making four saves and holding the strong McKendree offense to only one goal.

After playing in a slump for the past few weeks, the Miners made a large improvement in beating an undefeated team like McKendree, who came to Rolla with a 6-0 record. The win was a definite confidence booster for the team who traveled to Tulsa, Oklahoma this weekend to play Tulsa and Oral Robert's University.

## Rugby team eliminates MU, but yields to Falcons

By Matt Licklider  
Staff Writer

Saturday, September 23rd, was a rather brisk autumn day, as eight rugby teams converged in Rolla for the 17th annual Southern Missouri Invitational Intercollegiate Rugby Tournament (SMIIRT). The tournament was held on the Fraternity Row fields with games beginning at 9:00 AM, and the championship game being played at 4:30 PM. The teams present were the St. Louis Falcons, St. Louis Bombers, Kansas University - A side and B side, Missouri University, SMSU, Washington University, and UMR the host team.

Although rugby seems confusing to those who grew up watching and playing football and soccer, it has a relatively simple object. The object is that two teams should be carrying, passing, and kicking the ball score as many points as possible. Obviously, the team scoring the greater number of points wins.

UMR started the day against Missouri as a hard fought match with UMR's team emerging victorious. The next match was against the St. Louis Falcons, a much more experienced team. Although the team played hard, the Falcons demonstrated



how important experience is in rugby, beating UMR.

The final match for UMR started at 3:00. Faced against Kansas University's A side, UMR decided to play its B side as opposed to wearing its A side which had already played two matches. UMR played a tough game losing in the last 30 seconds by a score of 10 to 4.

The championship game at 4:30, pitted the two St. Louis teams against each other. The Falcons scored early against the Bombers, and never let up. The Falcons clearly had the advantage and emerged victors not only of the match but also of the entire tournament. After playing three games in one day, though, most of them were glad it was over.

Trophies were given out at 6:00 with the Falcons taking first, the

Bombers second, and the KU - a side winning third. Celebrations had already started, and lasted well into the night. Unfortunately, many of the teams had long drives ahead of them, and had to leave immediately following the tournament.

The UMR Rugby Club wished to extend thanks to all those who showed up to watch the games, including, but not limited to, the ladies of Chi Omega, and the students and faculty of UMR. Thanks also go out to those businesses who support the Rugby Club. Anyone interested in playing rugby should call Dan Redington at 364-7495, or Chip McDaniel at 341-2108 or just come out to the Fraternity Row fields at 4:30 on Monday through Thursday. For those interested merely as spectators, our next match in Rolla is over Homecoming weekend against alumni.



## Playboys

from page 15

things other than guitar playing. I wanted to show lyrical ideas and production value. So I really recorded the guitars rather quickly. It was already off to other aspects of the record. I played bass on the record as well. It didn't leave me a lot of time to fool around with the guitar stuff. It was go for what you know works and the don't f!k around kind of attitude.

**Did the bass playing come easily to you?**

No, it didn't actually. It was more difficult than I anticipated. It helped in guitar playing because I did the bass tracks first. It's a more beefy instrument to play so by the time I came to do the guitar I was in good shape.

**You did the vocals on "Woman of 1000 Years." I thought you sounded great! Did you ever consider doing all the vocals?**

Thanks. My range is pretty limited. If it is a song like that, then yes, because it is a pretty descriptive song. It's almost in poem form. Just look at it on paper. But I didn't want to fool myself in the studio where you can just put down your guitar part and then go back in and sing the vocals and it all sounds great. But then you go out and sing it live and it sounds terrible. I have a really difficult time singing and playing guitar at the same time. Doing "Woman" in the set is a little tough for me. It is a bit rag-tag and loose. I'm taking the attitude of f!k it, I'm just going to go for it. But to do that for a whole show, I could never do it.

**Did you purposely put the instrumental, "Run Across Desert Sands" on the album?**

I did because the first time I was on the cover of Guitar World magazine we had an instrumental track that was available. It was a cassette you sent away for. They only did a limited run because they didn't realize after the

issue was off the stands that people would be writing for this cassette which was no longer available. I started getting fan letters asking me to put an instrumental on the record. The majority of the Guitar World cassette was acoustic guitar so I decided to do an acoustic-type piece. I felt that if there was one thing I do considerably better than all the other guitar players that are out there, is play acoustic guitar. I'm not trying to blow my own horn because there are a lot of guitar players who can play rings around me on electric guitar, but I have found it pretty difficult to find someone who plays acoustic better than me. That is only because the acoustic guitar is what I started on and I played it for seven years before ever getting an electric guitar.

**You played flamenco guitar on the instrumental. Tell me about that particular type of guitar?**

It is a nylon string guitar someone like Segovia would have played. There is a whole different style and approach to playing it. Usually with flamenco guitar music there are three or four guitars playing at the same time to maybe a dancer who dances out the rhythms. A dance code. Then there is a guy who sings over the top. It is all rhythm music. The guitar is designed to project the bottom end. It is a percussive sounding instrument. I'm taking a big fan of flamenco guitarists. I can't sit down and listen to classical guitar like Bach and whatever else. It bores me. I can sit down and listen to flamenco or go see it live. It's like the heavy metal of classical music. Flamenco music was started by gypsies, so most of them weren't trained musicians; much like many heavy metal musicians. There are a lot of similarities.

**You obviously have had quite a bit of**

**training. When did you first pick up the guitar?**

I started very young. When I was six or seven years old. I saw Little Richard on "The Tonight Show." I also had a cousin who stocked juke boxes. When the records were pulled after their popularity died off, he would give them to me. The only thing was that he stocked juke boxes in Harlem and the South Bronx so they were all R & B records. Sure there were a couple of Creedence things in there, and then something like "Snoopy vs. the Red Baron." That was my view of white music. I knew who The Beatles were, but I really didn't like The Beatles as a kid. But I did love all of the R & B stuff because I had them all on '45. I also had an older brother who was into the blues as well as folk music. That rubbed off. I really didn't get into a rock band until Tommy came out by The Who. Also The White Album by The Beatles. I remember thinking "that isn't The Beatles?" I thought things like "Love Me Do" and "Tax Man" was The Beatles. To me they completely changed their sound on The White Album. I got that record and learned everything. I was taking folk lessons from Phil Oaks' sister at the time. The Beatles had stuff like "Blackbird" and "Rocky Racoon." A lot of folksy things. I went Beatles crazy at that point. I also like "Why Don't We Do It In The Road" which to me was kind of James Brown-ish. So from that time on I wanted to learn everything by The Beatles.

**I heard you were a rebel as a kid. Is that true?**

Only because I grew up with a lot of people whose parents were kind of alternative thinking. Not my parents per-se. At that time it was kind of post-hippie. Right after the flower-power thing died out. Many of my

friends parents would let them smoke grass and things like that. We are talking when I was 10 years old which is pretty wild. And also things like when we would get pissed off or something we wouldn't salute the flag in school. We thought we were being rebellious little ass\*#!\$.

**What is your favorite track on the record?**

I would have to say "Evening Eye." Why?

It has a great groove to it. It's really like a little opera. It's very late night, kind of George Benson-ish. It goes from that to this neo-funk heavy metal bit, and then it trails off again. It tells a story. It takes you somewhere.

**In the break on "Slipping Into Friction" there are voices in the background. What is that?**

Those are trailers from B-movies. There are three different ones on there. I'm really into B-movies. The woman's scream is Mia Farrow. The other two are just short clips from those movies.

**What did you want the listener to get out of the album and from "Atomic Playboys?"**

The main overriding factor was a sense of imagination. This is the first album I've really made. It was a matter of an exorcism where you want to get all this stuff out and there are many different styles. It's like opening Pandora's Box and showing people all the different elements that make up Atomic Playboys music. I was fortunate because the record company understood that. It can be confusing to people, but it can also build an incredible career. We did it as a long-term career move rather than to sell a commercial quantity of records. I think if enough people are hip to this record and open to this kind of experimentalism, it can be a really refreshing scene in the

music scene right now.

**It isn't so much a change as it is going back ten or fifteen years?**

Exactly. For me it is back to albums like Hendrix would do or when Keith Emerson first did "The Nice," or early Yes or Genesis records. Those are the direct things I was influenced by. I was heavily into progressive rock. All of my friends I grew up with who were largely black and Puerto Rican and they were into R & B. I think when you mix those two elements you have a pretty good approximation of where this record is coming from. All the kind of Curtis Mayfield, Marvin Gaye, Albert King, references; mixed with a kind of neo-progressive hard rock.

**What would you consider vintage Steve Stevens?**

That's tough. It would probably be something like "Eyes Without a Face." That incorporates all the things about me that are different.

**What do your parents think about your success?**

They were excited when I was with Billy, but I think they are more excited now. The best compliment I got was when my dad heard the record and he said "beyond the music, the words are great." So I think they are proud on that level because it is me getting to express my self. As far as I'm concerned I just do what I love. That doesn't mean getting a big head. I owe my success to many different people as well as to the many fans who have supported me from the beginning.

I would like to thank Steve Stevens for taking time out of his busy schedule to do this interview. Also to Lori Russell at Warner Brothers who made it all happen. Steve Stevens Atomic Playboys will be at Mississippi Nights on Wednesday, September 27.

## Classifieds

from page 19

**Bech,**  
You must be doing something right!!

**Bonnie,**  
Hi! 10.

**T&H,**  
No kissing on the dance floor!

**Robin & Donna,**  
You two are the best! Without you I don't think I could have made it. Thanks for everything.

**Beth**

**Flem,**  
I told you I would.

**John Belushi (Desperate),**  
How much do you have?

**UMR,**  
Get spyced for the Triangle open House and Housewarming Party October 28th, 1989. The "Old Rock House" is rockin' again!

**Chi O,**  
Sorry I've been in such a bad mood lately, I'll try to be better!

**Toadmonster,**  
I miss my buddy-where are you?

**Susan,**  
Where are you?

**Chim Chim,**  
How did you ever get that name? And don't call me Trixie!

**Michael C.,**  
You are a very special person in my life.

**Supersonic,**  
How's that "fill" these days? SLAM!

**Boyce,**  
Who will your \*\*\*\* buddy be?? Inquiring minds want to know

**Ralph M.**  
Thanks for dinner Sunday!

**Clara,**  
Your Aura lights up the whole campus!

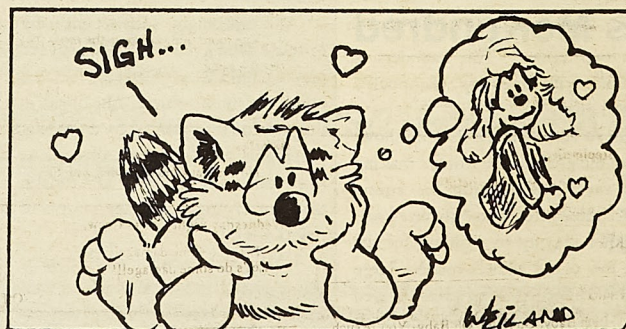
**Curtis, who lives in the valley,**  
You sho was good last week. Guess what? Can you say 'I'm itching and I don't know why'?

**Love,**  
Champagne

**Bonnie,**  
Hi! 20, 30, 40, 50, etc.

**YLS**

**JSU**



see Classifieds, page 25



# Classifieds

from page 24

**Bird,**  
I never needed love, like I need you, I  
never lived for nobody, but I live for you ...  
Your Little Girl

**Renee,**  
Without you, we wouldn't have known so  
much about SEX, THANKS. Maybe someday  
we can return the favor.  
Kevin, Tim, Steve, & Chris

**Angela C.,**  
You have been voted as Miss Ex-Weave.  
Cut the String

**Good luck, Becky!**  
To us, you're already a Queen!  
Love in A.O.T.,  
Your Kappa Delta Sisters

**Yo Figurehead,**  
Nice earplugs!

**Tom M.**  
I want the iceberg salad.  
Luwanda

**Kelley,**  
You're always the last to know!  
Flem

**Kappa Delta**  
You look Marvelous! Especially Clara-  
she glows.

**Brian & Tim,**  
You're the Hottest Escorts!  
J&L

**Hey Ram-Woman,**  
Did we have fun Thursday evening? You  
know which one. Well, we wrote you  
something to help you remember everything:  
The next time you need to hit the can, do us all  
a favor and don't hit the fan. You grossed us  
all out when you made the place smell. We  
unexpectedly walked into a living hell. When  
asked if you want more, don't say yes. Or else  
the next morning, YOU clean up the mess! To  
discover who put you in such a fix, simply call  
364-9796. Don't worry, it will all BLOW  
over someday? Here is where we live, can you  
find us?  
111010333

**Go Miners!**  
Best of luck Saturday-Homcoming '89.  
We're cheering for you!  
KD love

**Froggie,**  
What is the peri-whatever? Are you going  
to actually demonstrate next time. Please  
don't! What is castration?  
Your loving roomie,  
George

**Susan H.**  
You're a cool LLS!  
LiCO,  
YBBS

**Kat,**  
8 more months engaged in bliss until that  
final veiled kiss.  
Elsker Dei

**Stephanie,**  
Best of luck this weekend. We know who  
the BEST Queen Candidate is! Let's hope  
everyone else does too.  
Theta Xi

P.S. Thank You!

**Tricia-**  
Welcome to our awesome family. You'll  
make a great addition.  
Love in A.O.T.  
YBS, Danne

**C-**  
I'm Sorry! (I can't help that I'm a  
psycho!)  
I Love You!

**Dugalugas,**  
Sleep, eat, sex, sleep, smoke, sex, sleep,  
eat, etc... What else are weekends made of?

**Lisa C.**  
I'm back. I'm a hamster and I'm looking  
for you.  
-Buford

**D.K.D.,**  
Just when you least expect it we'll get you  
back! (We haven't forgot)  
S.F.L.

**Clara-**  
I like it at the level it is - besides mine on  
high doesn't even compare to yours!  
Stacy

**Lewis,**  
Just how big were these "little" girls that  
were blocking you way? I'm sure the  
pavement tastes better than Dave's cooking.  
Be more careful-you'll get Lil' Debbie  
worried.  
Hacker

**Tricia, Heather, Evelyn,**  
What awesome football players. You  
really made the team lively!  
Love in KD

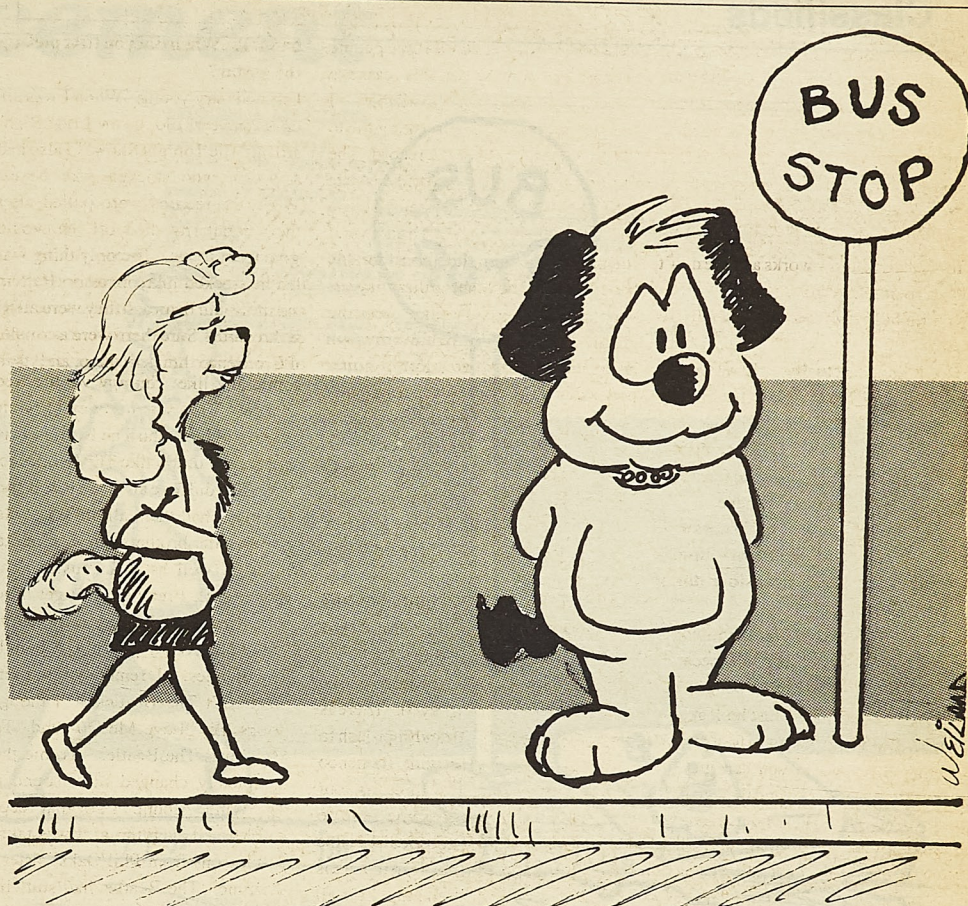
**Zan,**  
Anytime you need a walk I'll be there.

**KD-**  
Get psyched!

**Stephanie,**  
Thanks for all the help!  
Zeta Love,  
Kris

**Chia a**  
Oh Baby, Oh Baby, Oh Baby- You're such  
a babe!  
Tuna,  
You can't ignore us forever!  
Love in AOT,  
Champagne

Lori & Kris



**To Teanne, Alonna, Alisha,**  
Why don't you have any money?  
The Boys

**To the EITers,**  
Good luck to everyone who will be taking  
the 8 hour drudgery on Oct. 26.

**Deb, Rob, and (whoever else we invite),**  
Get psyched for Chicago! Best Studco  
free day ever.  
Beth

**Bush-Hog,**  
I've got \$20 and a free room.  
Rhea

**Chas,**  
CONGRATS!  
YBS

**Joe,**  
The more things change the more they  
stay the same.  
I Love you

**D.K.D.,**  
How about some croutons with that?

**Wednesday night Chi-O Crew,**  
Let's do some damage!!!  
-Off

**Rainbow Brite,**  
BIG DOGS! Landing on my face!  
SMILE! You're an awesome new!!  
Love in AOT,  
Champagne

**Tall, Tan & Brilliant young man**  
(Indian - hence the tan) looking for a  
woman friend. Tall (at least 5'5") warm (min.  
75 degrees) attractive, sensitive (enjoys poetry  
of William Blake, Music of Rachmaninov and  
Stevie Ray Vaughn, and can appreciate  
practical jokes), highly intelligent (IQ greater  
than 175, preferably member MENSA). Write  
to: T Square B, 31 Southbrook, Rolla, MO  
65401.

**Jermy,**  
You've been the greatest little sis! We'll  
have to party lost the rest of the semester!  
In AOT,  
YBS

**Amy G.**  
You're one cool chick also!!

**Stacy-**  
Wine coolers & ding dongs, anyone?  
YKW

**Sig Ep & Kappa Sig,**  
Even though the boat cruise was the cruise  
from Hell! I still had fun.

**La Chelle-**  
Oh, How I want you.

**Charlie,**  
CONGRATULATIONS on finally getting  
initiated. Now we'll have to find something  
other than pledge duties to fill your spare time.  
D.

**Al C.**  
Are you still drinking?  
AA

**Kimmie-**  
Has Dior put out a new line of men's  
clothing lately?  
In A.O.T.,  
The Best Dressed KD

**House B Sex Bowl Team,**  
Thanks, I had such a good time, even  
though we didn't win. There's always a next  
time and I suppose we could brush up on the  
biology.  
Vicki

**Michelle S.**  
It is good to have you back!! Now I have  
someone to watch "Knots" with!  
ZLAM,  
Kris

**Spaghetti Chef-**  
Wow! Another personal-just for you!  
-Kathy  
P.S. I'm going for a drive later so don't plan  
on going biking soon.

**Alonna,**  
I no! Why don't you tell Cedric instead of  
telling US.  
We're tired of hearing it

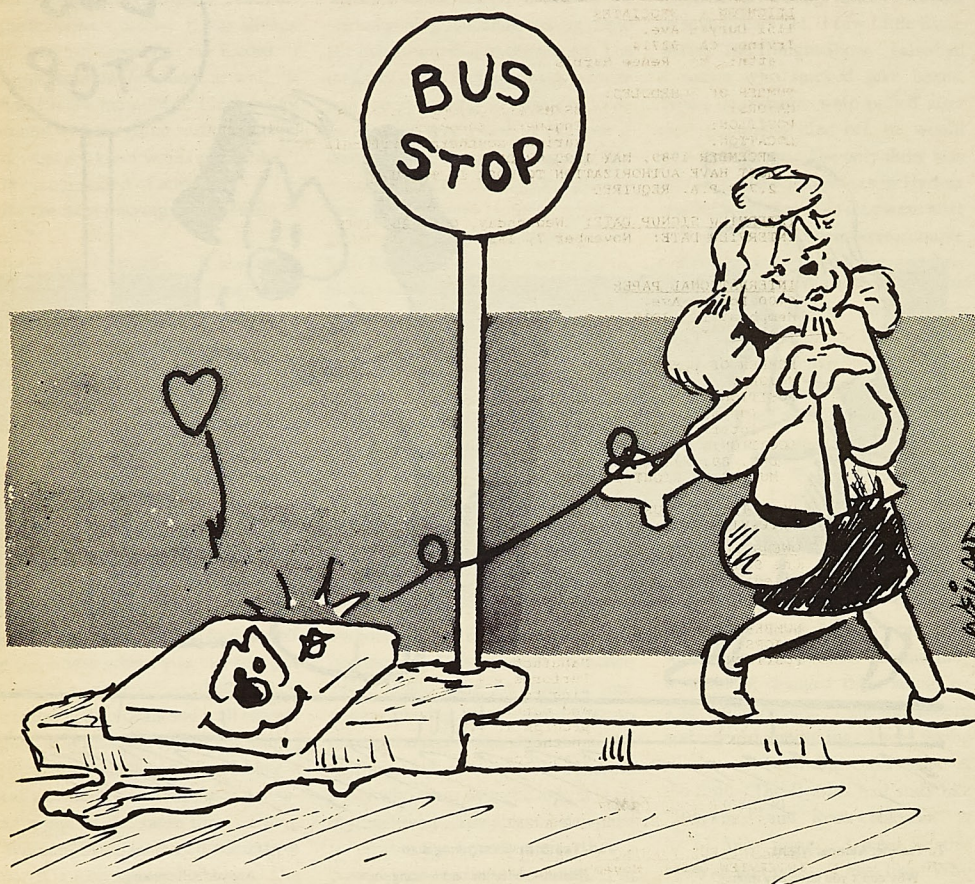
**Richard (i.e. Jim)**  
I feel neglected.  
-An Onay Pledge

see Classifieds, page 26



# Classifieds

from page 25



**Leneir J.**  
Did hair coming off in your hand help you make your decision.

The Hair Doctor

**Evelyn,**  
Way to win those tennis matches!! Keep up the good work!

Love in KD

**Lorie T. (KD),**  
Formal?

Guess who!

**Bill,**  
September is over, and after this weekend your ass is gonna be wasted!

**Rainbow Brite,**  
Maybe I'll once again be

A lady in Red.  
(Pi Formal)

**To Zeta's Football Coaches,**  
We didn't do so good but we had fun playing.

Thanks,  
The Team

**So Big Sub Chief,**  
Did you get an A on that Drop Slip?

**Bud,**  
Here's to HOT big brothers!

Love,  
Champagne

**Colette,**  
Can you say, "its not even the same color."

The Weave Committee

**Lady Wild;**  
How about some pancakes with that maple syrup??

252

**Heather,**  
Welcome to our family tree! You're a great addition!

Love in KD,  
Your grandma

**John H. & Steve P.,**  
We love you two to death!

The Women of Rolla

**F. Grimley,**  
Congrats! Keep it up!

YBS

**Richard (i.e. Jim)**  
I hope your test was wonderful. Engr.  
Mgmt needs wonderful people.

-1/6 ONAY

**Susan,**  
Watch out for those beer bottles!!

The Movie Goers

**Letty,**  
When its Boon's fam, time all the guy go

Hhhuuuuh

Frankly on it?

**Vicki,**  
Thanks for being there during hell week especially wehn I was so down.

LICO,  
ZAN

**Janet,**  
Thanks for your assistance, the next time I need to write something. I'll yell. Something like, "Watch out for that tree!"

George

**Corey,**  
Been in any ice fights lately?

Flem

**Robin R.,**  
You're the best little sis I've ever had.

YBS

**Nikki-**  
Maybe you won't top my record! Wait and see!

LICO,  
YLS

**To the Public:**  
The Fools Committee must give the people what they want, the results are in. This is the first time in this committee's history that there has been a 3 way tie. The results are: Teanne 92, alonna 92, Alisha 92. Can you believe this? And the first runner up is Patti with 91 votes.

Fools Committee

**Doreen,**  
Thanks for the cookies! They were gone before they got crunchy-

Harry

P.S. Glad to see you're making it to Dr. K's class & especially that fun filled lab. Are you 3 for 7 now?

**Everyone,**  
You are invited to a Bible Study on Monday nights, 1052 TJ @ 7:30 PM. Everyone welcome.  
Sponsored by Koinonia

**Heather,**  
Welcome to the family! You are the best little sis. Let's go out and party soon! Can I have your leftovers?

Love in A.O.T.,  
YBS

**WJ, TC, & NL-**  
You guys are awesome!

Love in AOT,  
CG

**Daualamor-**  
You are so wonderful! Here's to two years past and a lifetime ahead.

I Love You

**Bind,**  
You're a Great Little Sis,  
Your Big Sis,  
Kim

**Dawn,**  
See if we tell you anything, anymore!!

Done

**Nat & Tim,**  
I just felt like sending you guys a personal. Remember me?

YLS

**Hey KD's**  
Congrats! We already have 26 A's & 22 B's!! Keep up the good work, and go get 'em girls!

in A.O.T.,  
Your Scholarship Chairwoman

**My Little Red Fox,**  
I'm so thankful for you. I hope you've gotten over you flu and are getting along better with your roomies. I love you.

Your Sad Hound

**Goldie and Lady in Red,**  
How about them Board Reps?! Ooh  
Bab! LiR, just a little more mashin'!

Love,  
Champagne

**Nancy,**  
Never knew you had that Killer Instinct

Flem

**Stacy-**  
You started it!

CHBFH

**Weenie Welhaus,**  
That name ought to stick! Glad you're around, you make Rolla more fun. Just get crazy every now and then.

No Nickname

**Did you know...**  
The pledge class with the highest GPA last spring came from Kappa Delta?

**Sig Tau,**  
Beer tastes better when it's free. We'll get you next time. (Hope you like the Beast!)

Triangle

**Doug,**  
Roses, roses are everywhere but PLEASE keep them out of the couch!

Your girlfriend's roomie

**Eskimo-**  
Thanks for being a friend!

Butterfly

**P.S. I love you**

**Julie,**  
Tomato, tomato, grape!

Signed,  
Orange

**Nikki, Tim, Jeff,**  
You all are the greatest! It's going to be a good year at UMR.

Get involved

**Heather,**  
You're the greatest granddaughter!  
Welcome to our family tree.

Love in KD,  
Your grandma

**Skitz,**  
Bullfrogs? I've still got some left from last semester. If makes a great conversation piece (if we could catch it). On second thought I need something to kill the taste of Rayl "food", how 'bout tonight?

Kevin

**Hey Kay-Dees-**  
Get psyched for the games-Homcoming '89!

**Nantz,**  
We survived!

LiCO,  
Nikki

**Shawn S.,**  
Did you wash your soles this week?

**Noid,**  
No more reading the paper in class.

The 12th St. Gang

**Deb & Pat,**  
B52's all around-son.

Love in AOT

**Clara,**  
Remember to look both ways before parking, next time I might dent you car!

The Airborn Bicyclist



# Placement

UNIVERSITY OF MISSOURI-ROLLA  
PLACEMENT OFFICE  
Buehler Building, 9th & Rolla St.

Fall Weekly Detail List #6  
Week of November 6-10, 1989

## PERMANENT EMPLOYMENT

Signup Hours: 7:45 to 11:30 a.m.  
1:00 to 4:15 p.m.

Signup Location: G-3 Buehler Bldg.

COMPANIES ARE LISTED IN DATE ORDER - INCLUDES BOTH  
PRESCREENED AND NON-PRESCREENED INTERVIEWS

**ETHYL PETROLEUM ADDITIVES**  
Sauget, IL 62201

NUMBER OF SCHEDULES: 1  
MAJORS: BS/ChE  
POSITION: Process Engineer (entry level)  
LOCATION: Sauget, IL  
U.S. CITIZENSHIP OR PERMANENT RESIDENT VISA REQUIRED

DEADLINE FOR TURNING IN RESUMES: Monday, Oct. 9, 1989  
INTERVIEW DATE: Nov. 6, 1989

**FRU-CON CONSTRUCTION CO.**  
15933 Clayton Road, P.O. Box 100  
Ballwin, MO 63022-0100  
attn: Mr. James Coleman, Jr.

NUMBER OF SCHEDULES: 2 ea day, Nov. 6, 7, 1989  
MAJORS: BS/CE, ME, EE or ChE  
POSITION(S): Field Engineer I, Estimator I,  
Cost Engineer I, Scheduling Engineer I

LOCATION: St. Louis or Project locations  
throughout U.S.

2.5 G.P.A.  
U.S. CITIZENSHIP OR LEGAL RESIDENT  
MUST BE AUTHORIZED TO WORK IN U.S.

DEADLINE FOR TURNING IN RESUMES: Monday, Oct. 9, 1989  
INTERVIEW DATES: Nov. 6, 7, 1989

**ALLIANCE SEMICONDUCTOR**  
1101 N.W. Blue Parkway  
Lee Summit, MO 64063  
attn: Ms. Diana Engeman

NUMBER OF SCHEDULES: 2  
MAJORS: BS/MS/PhD EE, ChE, ME, Physics,  
MetE, CerE, Eng. Mgt.  
POSITION: failure mode analysis, test engineering, and production  
supervision  
LOCATION: Lee's Summit  
2.5 G.P.A. REQUIRED  
MUST HAVE PERMANENT VISA STATUS  
DECEMBER 1989 GRADS ONLY

DEADLINE FOR TURNING IN RESUMES: Monday, Oct. 9, 1989  
INTERVIEW DATE: Nov. 6, 1989

**INTERNATIONAL BUSINESS MACHINES (IBM)**  
One IBM Plaza  
Chicago, IL 60611  
attn: Mr. Dario DeMaria

NUMBER OF SCHEDULES: Will be determined at information day  
on November 7, 1989  
MAJORS: Computer Science, EE, ME, ChE, MetE,  
Eng. Mgt.  
POSITION: Will be announced at a later date  
LOCATION: Throughout U.S.  
DECEMBER 1989, MAY 1990 GRADS  
2.0 G.P.A. REQUIRED  
MUST BE U.S. CITIZEN, PERMANENT RESIDENT OR "INTENDING  
CITIZEN" UNDER 1986 IMMIGRATION REFORM & CONTROL

INTERESTED STUDENTS SHOULD ATTEND ONLY FROM 12:00 noon  
TO 5:00 P.M. ON NOV. 7, 1989, AT THE UNIVERSITY CENTER  
WEST. STUDENTS SELECTED BY IBM WILL INTERVIEW ON  
NOV. 8, 1989, AT THE UNIVERSITY CENTER EAST.  
(BRING RESUMES AND COPIES OF YOUR TRANSCRIPT ON NOV. 7)

**DOWELL SCHLUMBERGER**  
P.O. Box 4378  
Houston, TX 77210  
attn: Mr. William Gallacher

NUMBER OF SCHEDULES: 2  
MAJORS: BS-ALL ENGINEERING  
POSITION: Field Engineer Trainee  
LOCATION: U.S. Locations  
2.5 G.P.A. REQUIRED  
U.S. CITIZENSHIP OR PERMANENT RESIDENT VISA REQUIRED  
recent grads, DECEMBER 1989, MAY, JULY 1990 GRADS

DEADLINE FOR TURNING IN RESUMES: Monday, Oct. 9, 1989  
INTERVIEW DATE: November 7, 1989

**LEIGHTON & ASSOCIATES**  
1151 Duryea Ave.  
Irvine, CA 92714  
attn: Ms. Renee Harris

NUMBER OF SCHEDULES: 1  
MAJORS: BS/MS/PhD/Geology, Geol. Eng.  
POSITION: Engineers, (Geotechnical), or Geologists  
LOCATION: various southern California  
DECEMBER 1989, MAY 1990 GRADS  
MUST HAVE AUTHORIZATION TO WORK IN THE U.S.  
2.7 G.P.A. REQUIRED

INTERVIEW SIGNUP DATE: Wednesday, Oct. 25, 1989  
INTERVIEW DATE: November 7, 1989

**INTERNATIONAL PAPER**  
6400 Poplar Ave.  
Memphis, TN 38197  
attn: Mr. John Beck

NUMBER OF SCHEDULES: 1  
MAJORS: BS/Eng. Mgt.  
POSITION: Manufacturing Engineer  
(detailed job description to be available at time of  
interview signups)  
LOCATION: Nationwide  
DEC. 89, MAY, JULY 1990 GRADS  
MUST HAVE RIGHT TO WORK IN U.S.

DEADLINE FOR TURNING IN RESUMES: Tuesday, Oct. 10, 1989  
INTERVIEW DATE: November 7, 1989

**OWENS ILLINOIS**  
One Seagate  
Toledo, OH 43666  
attn: Ms. Sally Georgeson

NUMBER OF SCHEDULES: 1  
MAJORS: BS/ME  
POSITION: Manufacturing Service  
Performs engineering assignments rela-  
ting to specific machines, processes  
and materials. Two year training  
program in Illinois with relocation to  
another plant nationwide. Company is  
glass container mfg.

LOCATION:

DECEMBER 1989 GRADS  
U.S. CITIZENSHIP OR PERMANENT RESIDENT VISA REQUIRED

DEADLINE FOR TURNING IN RESUMES: Tuesday, Oct. 10, 1989  
INTERVIEW DATE: November 7, 1989

**THE PITTSBURG & MIDWAY COAL MINING CO**  
6400 S. Fiddler's Green Circle  
Englewood, CO 80111  
attn: Mr. Fred Gatewood

NUMBER OF SCHEDULES: 1  
MAJORS: BS/MS Mining Eng.  
POSITION: Entry level Mining Eng. for western  
surface mine with possible initial assignment in corp.  
office  
LOCATION: Western U.S.  
DECEMBER 1989, MAY 1990 GRADS  
U.S. CITIZENSHIP REQUIRED

DEADLINE FOR TURNING IN RESUMES: Tuesday, Oct. 10, 1989  
INTERVIEW DATE: November 7, 1989

**U.S. DEPT. OF TRANS./F.A.A.**  
601 E. 12th St. (ACE - 450A)  
Kansas City, MO 64106  
attn: Ms. Vera Shinn

NUMBER OF SCHEDULES: 1  
MAJORS: BS/EE (Electronics option)  
POSITION: Field Engineers  
LOCATION: Kansas City, MO  
3.0 G.P.A. REQUIRED  
U.S. CITIZENSHIP REQUIRED TO WORK FOR FED. GOVERNMENT  
DECEMBER 1989 GRADS

DEADLINE FOR TURNING IN RESUMES: Tuesday, Oct. 10, 1989  
INTERVIEW DATE: November 7, 1989

**HARRIS CORPORATION**  
1025 W. NASA Blvd.  
Melbourne, FL 32919  
attn: Ms. Marilnette Thompson

NUMBER OF SCHEDULES: 1  
MAJORS: BS/EE  
POSITION: Antenna Eng. or Component Eng.  
LOCATION: Kansas City, MO  
DEC. 89 or MAY 1990 GRADS  
PREFER 3.0 G.P.A.  
U.S. CITIZENSHIP OR PERMANENT RESIDENT VISA REQUIRED

INTERVIEW SIGNUP DATE: Wednesday, Oct. 25, 1989  
INTERVIEW DATE: November 7, 1989

**METROPOLITAN UTILITY DISTRICT**  
1723 Harney St.  
Omaha, NE 68102  
attn: Mr. John Conley

NUMBER OF SCHEDULES: 1 ea day, Nov. 7-8  
MAJORS: BS/CE, ME  
POSITION: Engineer II  
LOCATION: Omaha, NE  
DECEMBER 1989, MAY 1990 GRADS  
3.0 G.P.A. REQUIRED

DEADLINE FOR TURNING IN RESUMES: Tuesday, Oct. 10, 1989  
INTERVIEW DATES: November 7, 8, 1989



**MALLINCKRODT**  
P.O. Box 5439  
St. Louis, MO 63147  
attn: Mr. Jonathan Hale

NUMBER OF SCHEDULES: 1 ea day, Nov. 8-10  
MAJORS: BS/ChE, Chemistry  
POSITION: Process Eng. in diverse chemical  
mfg. facility in downtown St. Louis

DECEMBER 1989, MAY 1990 GRADS  
U.S. CITIZENSHIP REQUIRED

INTERVIEW SIGNUP DATE: Wednesday, Oct. 25, 1989  
INTERVIEW DATES: Nov. 8, 9, 10, 1989

**ELI LILLY & COMPANY**  
Lilly Corp. Center  
Indianapolis, IN 46285  
attn: Ms. Joyce Foster

NUMBER OF SCHEDULES: 2  
MAJORS: BS/EE, ME, Eng. Mgt., ChE  
POSITION: Staff Eng.  
LOCATION: Indianapolis, IN  
DECEMBER 1989, MAY 1990 GRADS  
U.S. CITIZENSHIP REQUIRED; WILL NOT ACCEPT STUDENT VISAS  
BRING COPY OF TRANSCRIPT TO INTERVIEW

DEADLINE FOR TURNING IN RESUMES: Tuesday, Oct. 10, 1989  
INTERVIEW DATE: November 9, 1989

**EVERREADY BATTERY**  
1205 Broadway  
Red Oak, IA 51566  
attn: Mr. Earl Jungermann

NUMBER OF SCHEDULES: 1 ea day, Nov. 8-9  
MAJORS: BS/ME for Plant Eng.  
BS/Chem, Math, ChE for Quality Control  
Eng.

LOCATION: Any MO, VT, OH, IA, NC  
MAY, JULY 1990 GRADS  
2.5 G.P.A. REQUIRED  
MUST HAVE AUTHORIZATION TO WORK IN U.S.

DEADLINE FOR TURNING IN RESUMES: Tuesday, Oct. 10, 1989  
INTERVIEW DATES: November 8, 9, 1989

Note: VHS video will be available in Room 201 Buehler  
Bldg. for viewing prior to the interview.

**BURLINGTON NORTHERN RAILWAY**  
3000 Continental Plaza  
777 Main St.  
Ft. Worth, TX 76102  
attn: Ms. Kim Kolodge

NUMBER OF SCHEDULES: 1  
MAJORS: BS/MS Comp Sci  
POSITION: Information Systems Associate  
LOCATION: St. Paul, MN  
DEC. 89, MAY 90 GRADS  
APPLICANTS MUST BE PRESENTLY AUTHORIZED TO WORK IN  
THE U.S. ON A FULL TIME BASIS. COMPANY DOES NOT  
SPONSOR INDIVIDUALS FOR THE PURPOSE OF OBTAINING  
H-1 VISAS

PLEASE BRING RESUME AND COPY OF TRANSCRIPT TO INTERVIEW.

DEADLINE FOR TURNING IN RESUMES: Tuesday, Oct. 10, 1989  
INTERVIEW DATE: Nov. 8, 1989

**JOHN MATHES & ASSOCIATES, INC.**  
210 W. Sand Bank Rd.  
Columbia, IL 62236-0330  
attn: Mr. Allen Boggs

NUMBER OF SCHEDULES: 1  
MAJORS: MS ONLY in the following:  
Geotechnical or Geological Eng.  
CE - Environmental or Geology  
Project Eng. or Project Scientist  
POSITION: Columbia, IL or Seattle, WA  
LOCATION: SHOULD HAVE PRIOR SUMMER OR CO-OP EXP. IN CONSULTING

DEADLINE FOR TURNING IN RESUMES: Tuesday, Oct. 10, 1989  
INTERVIEW DATE: November 9, 1989

**MARATHON PETROLEUM COMPANY**  
Illinois Refining Div.  
Reg. Office Bldg.  
Robinson, IL 62454  
attn: Ms. Kris Krendel

NUMBER OF SCHEDULES: 1  
MAJORS: BS/ChE  
POSITION: Associate Refining Eng.  
LOCATION: Robinson, IL  
DECEMBER 1989, MAY 1990 GRADS  
U.S. CITIZENSHIP OR PERMANENT RESIDENT VISA REQUIRED

DEADLINE FOR TURNING IN RESUMES: Tuesday, Oct. 10, 1989  
INTERVIEW DATE: November 9, 1989

**U.S. NAVAL ORDNANCE STATION**  
Code 0632A  
Indianhead, MD 20640  
attn: Ms. Sandra Morton

NUMBER OF SCHEDULES: 1  
MAJORS: BS/MS/ChE  
POSITION: Chemical engineering positions  
in production, test, and engineering organizations  
LOCATION: Indian Head, MD  
DECEMBER 1989, MAY 1990 GRADS  
2.0 G.P.A. REQUIRED  
U.S. CITIZENSHIP REQUIRED

DEADLINE FOR TURNING IN RESUMES: Tuesday, Oct. 10, 1989  
INTERVIEW DATE: November 9, 1989

**MADISON GAS & ELECTRIC COMPANY**  
P.O. Box 1231  
Madison, WI 53701  
attn: Ma. Debra Loeks

NUMBER OF SCHEDULES: 1  
MAJORS: BS/EE  
POSITION: Transmission Planning  
LOCATION: Madison  
DECEMBER 1989, MAY 1990 GRADS  
MUST HAVE RIGHT TO WORK PERMIT

INTERVIEW SIGNUP DATE: Wednesday, Oct. 25, 1989  
INTERVIEW DATE: November 9, 1989

**MONSANTO AGRICULTURAL COMPANY**  
800 N. Lindbergh Blvd.  
St. Louis, MO 63167  
attn: Ms. Marty Einkle

NUMBER OF SCHEDULES: 1  
MAJORS: BS/MS ChE, EE, ME  
POSITION: Process Eng.  
LOCATION: Nationwide  
DECEMBER 1989, MAY 1990 GRADS  
U.S. CITIZENSHIP OR PERMANENT RES. VISA REQUIRED

DEADLINE FOR TURNING IN RESUMES: Tuesday, Oct. 10, 1989  
INTERVIEW DATE: November 10, 1989

**MONSANTO AGRICULTURAL RESEARCH**  
800 N. Lindbergh Blvd.  
St. Louis, MO 63167  
attn: Mr. Lou Briscoe

THIS DIVISION OF MONSANTO WILL ACCEPT RESUMES ONLY -  
PLEASE TURN IN BY DEADLINE AND WE WILL FORWARD  
THEM TO THE COMPANY.

REQUIREMENTS: BS/Comp Sci for Inst. Systems Mgr.  
Micro VAX 8600, cluster that supports  
lab instruments  
Location: St. Louis

DEADLINE FOR TURNING IN RESUMES: Tuesday, Oct. 10, 1989

**EDS**  
One Forest Plaza  
12200 Park Central  
Dallas, TX 75251  
attn: Ms. Elena Raymond

NUMBER OF SCHEDULES: 1  
MAJORS: BS/MS Mfg., Eng. Mgt, ME, EE, or ChE  
POSITION: Engineering Systems Development  
Program  
LOCATION: ANY - continental U.S.  
recent grads, DEC. 89 grads  
2.8 G.P.A. REQUIRED  
U.S. CITIZENSHIP OR PERMANENT RESIDENT VISA REQUIRED  
PLEASE BRING UNOFFICIAL TRANSCRIPT TO INTERVIEW.

DEADLINE FOR TURNING IN RESUMES: Tuesday, Oct. 10, 1989  
INTERVIEW DATE: Nov. 10, 1989

CANCELLATIONS:  
U.S. VETERANS ADMINISTRATION: Interview date: Oct. 12  
TEXACO-Houston: Interview date: Nov. 8, 1989

ADDITIONS:  
**STAR ENTERPRISE**  
P.O. Box 712  
Port Arthur, TX 77641-0712  
attn: Mr. Chris Burnett

NUMBER OF SCHEDULES: 1  
MAJORS: BS/MS ChE, CE, EE, ME, Environ. Eng.  
POSITION: Detailed job descriptions will be  
available at time of interview signups.  
LOCATION: Port Arthur, TX or Convent, LA  
U.S. CITIZENSHIP REQUIRED  
2.5 G.P.A. REQUIRED  
DECEMBER 1989, MAY, JULY 1990 GRADS

DEADLINE FOR TURNING IN RESUMES: Monday, Oct. 9, 1989  
INTERVIEW DATE: November 2, 1989

**PPG INDUSTRIES, INC.**  
One PPG Place  
Pittsburgh, PA 15272  
attn: Ms. Linda Robson

NUMBER OF SCHEDULES: 1 ea day, Oct. 31-Nov. 2, 1989  
MAJORS: BS/MS Chemistry, ChE, EE, ME  
MS/Dev. Chem or ChE  
POSITION: ChE: Mfg. & Process Eng.  
ME/EE: Prod. & Plant  
LOCATION: Nationwide  
DECEMBER 1989, MAY 1990 GRADS  
U.S. CITIZENSHIP OR PERMANENT RES. VISA REQUIRED

DEADLINE FOR TURNING IN RESUMES: Tuesday, Oct. 10, 1989  
INTERVIEW DATE: Oct. 31-Nov. 2, 1989

**PETROLITE**  
P.O. Box 21538  
Tulsa, OK 74121  
attn: Mr. Howard Slaff

NUMBER OF SCHEDULES: 1  
MAJORS: BS/ChE, Chem  
POSITION: Sales  
LOCATION: Starting in Tulsa  
U.S. CITIZENSHIP REQUIRED  
DECEMBER 1989, MAY 1990 GRADS

INTERVIEW SIGNUP DATE: Monday, Oct. 9, 1989  
INTERVIEW DATE: October 23, 1989



DEFENSE MAPPING  
3300 S. 2nd St.  
St. Louis, MO 63118-3399

THE FOLLOWING COMPANY WILL BE REPRESENTED ON CAMPUS - UNIVERSITY CENTER WEST ON OCT. 23, 1989. They are interested in receiving resumes from the following degrees: Geology, Geophysics, Math or Physics

INTERVIEWS WILL NOT BE HELD. Please refer to the Miner for further details.

HILCO TECHNOLOGIES  
3015 S. Brentwood Code UR11SE  
St. Louis, MO 63144  
attn: Ms. Paula Farnen

NUMBER OF SCHEDULES: 1  
MAJORS: BS/Comp Sci & EE  
or any BS Eng./Computer Science with working knowledge of Unix, C, Fortran & Pascal; would also consider co-op experience in computer automation

DEADLINE FOR TURNING IN RESUMES: Tuesday, Oct. 10, 1989  
INTERVIEW DATE: November 6, 1989

## Co-op Employment

OCTOBER, 1989

### CO-OP EMPLOYMENT

Sign-up location: 101 Buehler Bldg.  
Co-op Office  
9th & Rolla Sts.

Sign-up hours: 7:45 am - 11:00 am  
1:00 pm - 3:00 pm

\*\*\*\*\*

Erns & McDonnell  
Kansas City, Missouri

Interviewing: M.E. for their Nofsinger vision. Nofsinger does chemical, tro and food processing.

Candidates should have completed at least 75 hours with an overall gpa of 2.6 or above. Candidates should have good oral and written communication skills and be active campus organizations.

See Sharon, UMR Co-op Office as soon as possible for further information.

\*\*\*\*\*

Interview date: Friday, Oct. 6, 1989

ERICAN ELECTRIC POWER  
Lumbua, Ohio

Interviewing: E.E., Geo.E., M.E., Nuc.E.

Requirements: 2.8 GPA or above, Academic level of applicants: at least 30 hours completed at the end of the present semester.

Sign-up date: Friday, Sept. 22, 1989

Schedule - 13 interview openings

\*\*\*\*\*

Interview date: Mon., Oct. 16, 1989

HYL CORPORATION  
Duquet, IL (Near St. Louis)

Interviewing: Ch.E.

Requirements: 3.0 GPA or above, Academic level of applicants: at least 59 hours completed at the end of the present semester.

Sign-up date: Mon., Oct. 9, 1989

Schedule - 12 interview openings

\*\*\*\*\*

Interview date: Tues., Oct. 17, 1989

GENERAL ELECTRIC COMPANY  
Kansas City, Kansas

Interviewing: A.E., Ch.E., E.E., M.E., Mgmt.

Requirements: 3.0 GPA or above, Academic level of applicants: at least 30 credit hours completed at the end of the present semester. Proper employment authorization.

Sign-up date: Mon., Oct. 9, 1989

Schedule - 12 interview openings

\*\*\*\*\*

Interview date: Thurs., Oct. 19, 1989

INTERNATIONAL PAPER COMPANY  
Kansas City, Kansas

Interviewing: E.E., M.E.

Requirements: 2.5 GPA or above. American Citizenship required. Academic level of applicants: at least 60 number of credit hours completed at the end of the present semester toward bs degree.

Sign-up date: Tuesday, Oct. 10, 1989

1 schedule - 11 interview openings

\*\*\*\*\*

Wednesday, Oct. 25, 1989

UNION PACIFIC RAILROAD  
Omaha, Nebraska

Interviewing: C.E., E.E., M.E.

Requirements: 2.8 GPA or above, Must be able to work in the US legally. Academic Level of applicants: At least 30-59 number of credit hours completed at the end of the present semester toward bs degree.

Sign-up date: Wed., Oct. 11, 1989

1 schedule - 13 interview openings

Union Pacific will hold an Orientation on Tues., Oct. 24 in the Mark Twain Room. All students interviewing with Union Pacific RR are invited to attend

\*\*\*\*\*

MONSANTO CHEMICAL COMPANY  
Addyston, Ohio

Interviewing: Ch.E., E.E.

Sign-up date: Wed., Oct. 11, 1989

RESUMES ONLY. IF YOU WOULD LIKE TO BE CONSIDERED FOR CO-OP EMPLOYMENT WITH THE ABOVE COMPANY, PLEASE BRING A COPY OF YOUR CO-OP RESUME TO THE CO-OP OFFICE ON THE ABOVE DATE.

\*\*\*\*\*

Interview date: Thurs., Oct. 26, 1989

OLIN CORPORATION  
E. Alton, Illinois

Interviewing: M.E., Ch.E.

Requirements: 2.75 GPA or above, Academic level of applicants: at least 29 credit hours completed at the end of the present semester.

Sign-up date: Thurs., Oct. 12, 1989

1 schedule - 12 interview openings

\*\*\*\*\*

IBM CORPORATION  
Essex Junction, Vermont

Interviewing: Ch.E., E.E., M.E.

Requirements: 3.0 GPA or above, American Citizenship or permanent visa. Academic level of applicants: at least 59 number of credit hours completed at the end of the present semester toward bs degree.

Sign-up date: Tues., Oct. 17, 1989

RESUMES ONLY. IF YOU WOULD LIKE TO BE CONSIDERED FOR CO-OP EMPLOYMENT WITH THE ABOVE COMPANY, PLEASE BRING A COPY OF YOUR CO-OP RESUME TO THE CO-OP OFFICE ON THE ABOVE DATE.

\*\*\*\*\*

BETZ INDUSTRIAL  
Work Locations: St. Louis, MO and Paducah, KY

Interviewing: Ch.E., Chem., M.E.

Requirements: 3.0 GPA or above, American Citizenship required. Academic level of applicants: at least 60-89 number of credit hours completed at the end of the present semester toward bs degree.

Sign-up date: Tues., Oct. 17, 1989

RESUMES ONLY. IF YOU WOULD LIKE TO BE CONSIDERED FOR CO-OP EMPLOYMENT WITH THE ABOVE COMPANY, PLEASE BRING A COPY OF YOUR CO-OP RESUME TO THE CO-OP OFFICE ON THE ABOVE DATE.

\*\*\*\*\*

IBM CORPORATION  
Boca Raton, Florida

Interviewing: Math., C.Sc., E.E.

Requirements: 3.2 GPA or above, American Citizenship required. Academic level of applicants: at least 30-59 credit hours completed at the end of the present semester.

Sign-up date: Wed., Oct. 18, 1989

RESUMES ONLY. IF YOU WOULD LIKE TO BE CONSIDERED FOR CO-OP EMPLOYMENT WITH THE ABOVE COMPANY, PLEASE BRING A COPY OF YOUR CO-OP RESUME TO THE CO-OP OFFICE ON THE ABOVE DATE.

\*\*\*\*\*

Interview date: Wed., Nov. 1, 1989

INTERNATIONAL PAPER  
Pine Bluff, Arkansas

Interviewing: Ch.E., E.E., M.E.

Requirements: 3.0 GPA or above, American Citizenship required. Academic level of applicants: at least 59 hours completed at the end of the present semester.

Sign-up date: Wed., Oct. 18, 1989

1 schedule - 12 interview openings

\*\*\*\*\*



IBM CORPORATION  
San Jose, Calif.

Interviewing: C.Sc., E.E., M.E., Eng.Mgmt.  
Ch.E., English

Requirements: permanent resident

Sign-up date: Thurs., Oct. 19, 1989

RESUMES ONLY. IF YOU WOULD LIKE TO BE CONSIDERED FOR CO-OP EMPLOYMENT WITH THE ABOVE COMPANY, PLEASE BRING A COPY OF YOUR CO-OP RESUME TO THE CO-OP OFFICE ON THE ABOVE DATE.

IBM CORPORATION  
Manassas, Virginia

Interviewing: E.E., C.Sc.

Requirements: None listed.

Detailed job descriptions available in the co-op office.

Sign-up date: Tues., Oct. 24, 1989

RESUMES ONLY. IF YOU WOULD LIKE TO BE CONSIDERED FOR CO-OP EMPLOYMENT WITH THE ABOVE COMPANY, PLEASE BRING A COPY OF YOUR CO-OP RESUME TO THE CO-OP OFFICE ON THE ABOVE DATE.

WRIGHT PATTERSON AIR FORCE BASE  
AERONAUTICAL SYSTEMS DIVISION  
Ohio

Interviewing: A.E., C.Sc., E.E.,  
M.E., Physics, Business Majors

Requirements: 2.5 GPA or above, American Citizenship required. Academic level of applicants: at least 30 number of credit hours completed at the end of the present semester.

Sign-up date: Tues., Oct. 24, 1989

RESUMES ONLY. IF YOU WOULD LIKE TO BE CONSIDERED FOR CO-OP EMPLOYMENT WITH THE ABOVE COMPANY, PLEASE BRING A COPY OF YOUR CO-OP RESUME TO THE CO-OP OFFICE ON THE ABOVE DATE.

ATR WIRE AND CABLE  
Danville, Kentucky

Interviewing: Chem., C.Sc., Met., Mgmt.

Requirements: 2.85 GPA or above, American Citizenship required, Academic level of applicants: at least 65 hours completed at the end of the present semester.

Sign-up date: Wed., Oct. 25, 1989.

RESUMES ONLY. IF YOU WOULD LIKE TO BE CONSIDERED FOR CO-OP EMPLOYMENT WITH THE ABOVE COMPANY, PLEASE BRING A COPY OF YOUR CO-OP RESUME TO THE CO-OP OFFICE ON THE ABOVE DATE.

NOTE: The ones that indicate RESUMES ONLY. This means the company will not be on campus interviewing, but they want resumes to review and should contact you if they are interested in employing you.

Please let the Co-op Office know immediately of any acceptance of an offer.

Please check with the Co-op Office periodically to see if additional companies have scheduled interviews. These will be posted on the bulletin board by the Co-op Office and printed in the Miner Newspaper.

#### Addition to October Co-op List

Interview date: Thurs., Oct. 12, 1989

LITTON INDUSTRIES  
Springfield, Missouri

Interviewing: M.E., Ch.E.

Requirements: 2.0 GPA or above

Sign-up date: Wed., Oct. 4, 1989

1 schedule - 10 interview openings

#### Addition to October Co-op List

IBM CORPORATION  
Charlotte, North Carolina

Interviewing: Chem., C.Sc., E.E., M.E.

Requirements: 3.0 GPA or above, Permanent Resident Status ok, No student Visas  
Academic level of applicants: at least 30 credit hours completed at the end of the present semester.

Sign-up date: Thurs., Oct. 26, 1989

RESUMES ONLY. IF YOU WOULD LIKE TO BE CONSIDERED FOR CO-OP EMPLOYMENT WITH THE ABOVE COMPANY, PLEASE BRING A COPY OF YOUR CO-OP RESUME TO THE CO-OP OFFICE ON THE ABOVE DATE.

Interview date: Monday, Oct. 16, 1989

NORANDA ALUMINUM COMPANY  
New Madrid, Missouri

Interviewing: E.E., M.E., Eng.Mgmt.

Requirements: 2.7 GPA or above

Sign-up date: Monday, Oct. 2, 1989

1 schedule - 6 interview openings

#### Addition to Co-op October List

Interview date: Tues., Oct. 17, 1989

LEONARDS METALS  
St. Charles, Missouri

Interviewing: M.E.

Requirements: 2.0 GPA or above, US Citizenship not required.

Start Work: Spring, 1990

Sign-up date: Tuesday, Oct. 3, 1989

1 schedule - 11 interview openings

#### Addition to October Co-op List

Interview date: Tues., Oct. 10, 1989

JOHNSON CONTROLS  
St. Louis, Missouri

Interviewing: M.E., E.E.

Requirements: 3.0 GPA or above, American Citizenship required. Academic Level of Applicants: at least 30-59 credit hours completed at the end of the present semester.

Sign-up date: Tues., Sept. 26, 1989

One schedule - 12 interview openings

DELTA ENVIRONMENTAL CONSULTANTS, INC.  
Charlotte, North Carolina

Interviewing: Ch.E. with environmental emphasis, and C.E. with environmental emphasis

Requirements: 2.9 GPA or above, American Citizenship not required. Academic level of applicants: at least 60 hours completed at the end of the present semester.

Sign-up date: Thurs., Oct. 26, 1989

RESUMES ONLY. IF YOU WOULD LIKE TO BE CONSIDERED FOR CO-OP EMPLOYMENT WITH THE ABOVE COMPANY, PLEASE BRING A COPY OF YOUR CO-OP RESUME TO THE CO-OP OFFICE ON THE ABOVE DATE.

#### Supplement to October Co-op List

Interview date: Tues., Oct. 17, 1989

HUSSMANN COMPANY  
St. Louis, Missouri

Interviewing: M.E. (1 for Research & Development  
(1 for Manufacturing)

Requirements: 2.8 GPA or above

Sign-up date: Tues., Oct. 3, 1989

1 schedule - 13 interview openings

Interview date: Thurs., Oct. 19, 1989

GENERAL MOTORS BOC  
Work Locations: Flint, Michigan and  
Wentzville, Missouri

Interviewing: Mgmt., M.E., E.E.

Requirements: 2.8 GPA or above, Sophomore level only,

Sign-up date: Thurs., Oct. 5, 1989

1 schedule 11 interview openings.

#### PLEASE POST

#### SPECIAL NOTICE - PREScreening

#### SIGN-UP FOR DAMES & MOORE CO-OP INTERVIEWS

TURN IN RESUMES: Tues., Oct. 10, 1989

WHERE: Co-op Office, 101 Buehler Bldg.

TIMES: 7:45 am - 11:30 am - 1:00 pm - 4:00 pm

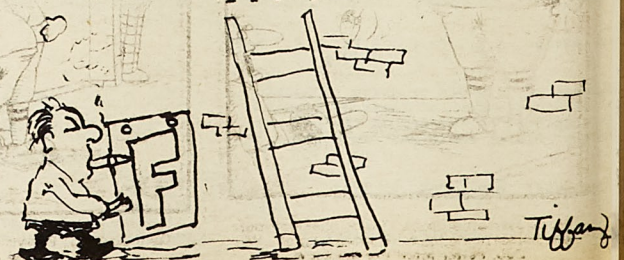
INTERVIEWING: Ch.E., Chem., C.E., Geology,  
Geo.E., Pet.E.

REQUIREMENTS: 2.0 GPA or above, Academic level of applicants: at least 30 credit hours completed at the end of the present semester.

THE ACTUAL INTERVIEW DATE WILL BE MONDAY, OCTOBER 23, 1989.

Dames & Moore, St. Louis, Missouri has requested that we furnish them with resumes for pre-screening. We will accept as many Co-op resumes as we can collect. Just drop off a copy of your Co-op resume on the above sign-up date. After pre-screening, Dames & Moore will send the Co-op Office a list of those students they are interested in interviewing. The list should be posted in the UMR Co-op Office by Thurs., Oct. 19. Check with the Co-op Office no later than Oct. 19.

# NOW HIRING





## CO-OP INTERVIEW INFORMATION SHEET

Company and Location: IBM, Nationwide

Information Day: Co-ops should attend the November 7th IBM Information Day. This event runs from 12:00 noon til 5:00pm and will be held in the University Center East - Centennial Room East.

Interviews: Co-op interviews will be set up during the IBM Information Day. They will held on November 8th and start at 8:00am in the above location. These two events will be for both graduating students and co-ops.

Interview Length: 30 minutes

Academic Level: At least 29 credit hours completed

Starting Work Dates: Spring 90, Summer 90

Citizenship: IBM will consider Citizens, Permanent Residents and "Intending Citizens" as defined by the 1986 Immigration Reform and Control Act.

G.P.A.: 2.0/4.0 (Competitive Screening during Information Day)

Disciplines Needed:

Ceramics	Computer Science
Chemical Eng.	Chemistry
Electrical Eng.	Industrial Eng.
Mechanical Eng.	Metallurgical Eng.

Contact: Dario J. DeMaria  
National College Recruiting Representative  
07/864  
One IBM Plaza  
Chicago, IL 60611

Note: All students must have a resume and transcript on file at the Co-op Office before you will be considered for Co-op employment.

You must submit (4) copies of your co-op resume form to IBM on the informal information and sign up day, November 7.

## DOING TAXES CAN MAKE YOU FEEL GREAT. ESPECIALLY WHEN THEY'RE SOMEONE ELSE'S.

If you have a basic aptitude for math and the desire to help others, you can get a lot of satisfaction by volunteering your time and skills to people who

need help doing their taxes. 80,000 people already have. Join them.

To find out about the free IRS training program, call 1-800-424-1040 now.



Internal Revenue Service

A Public Service of This Publication &amp; Ad Council

Volunteer now. And you'll make someone's taxes less taxing later.

## Homecoming Schedule - 1989

### Theme:

### The Farther Side of UMR

Thursday, October 5:

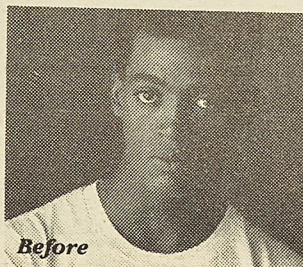
9 AM - 2 PM	All Campus Queen Voting Ends
11 AM	Bake-Off
Noon - 2 PM	Varsity Athlete Reception
1 PM	Scavenger Hunt Ends
2 PM	Carnival on Campus:
	Food Eating Contests:
	1) Saltines
	2) Popsicles
8 PM	Concert: 38 Special

Friday, October 6:

12:30 PM	Ice Cream Social
12:30 PM	Games at the Hockey Puck:
	Team Twister Competition
	Joe Miner Look-A-Like
8 PM	Parade
8:30 PM	Bonfire

Saturday, October 7:

1 PM	IFC Pajama Race
1:15 PM	Queen Candidate Procession
1:30 PM	UMR Miners vs. SEMO Indians
1st Quarter	Attendance Competition
	Banner Competition
	Queen Crowning
Halftime	Marching Miners



Before



After

*You won't notice any difference, but your country will.*

The five minutes you spend registering with Selective Service at the post office won't change you. But it *will* make a difference to your country. So when you turn 18, register with Selective Service. *It's quick. It's easy. And it's the law.*

A public service message of this publication and Selective Service System.

## IN THE BLEACHERS

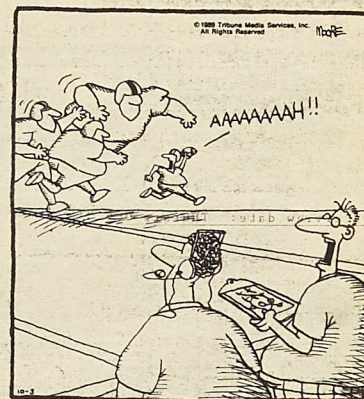
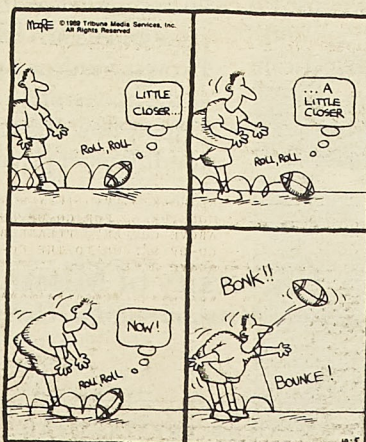
by Steve Moore



"Now just settle down, Dokie. Shaking your head is just going to get it more tangled... Yo, Bob, better fetch the hacksaw."



"Quit giggling, Darryl. Here comes another one..."



"Dang! I wish he'd learn to stay in the pocket."





Amelia Earhart

Edith Wharton

Isadora Duncan

Marie Curie

# How to meet great women.

## Now You Can Use The Card At The Bookstore.

It's easier than ever to introduce yourself to Edith Wharton, discover Marie Curie, or kick off your shoes with Isadora Duncan. Just choose the books you like best at the bookstore and pay for them with the American Express® Card.

And while you're finding your books, you can also shop for collegiate

sportswear, supplies, stationery—whatever you need—all with the Card.

## If You Don't Have The American Express Card, Don't Miss Out.

To become a Cardmember, just complete and return one of the American Express Student Applications available at the bookstore.

Apply now and enjoy added student Cardmember privileges like discount-

ed roundtrip airfares on Northwest Airlines.

So shop your bookstore today. From Dickinson to diskettes, use the Card for everything you buy.



Membership Has Its Privileges®



**University of Missouri—Rolla Bookstore**  
University of Missouri—Rolla, University Center West, Rolla, MO 65401

THE AMERICAN EXPRESS CARD. FOR STUDENTS MORE THAN EVER.

M

October 1

Sanford

Mc  
lect

By Chris Reyno

Staff Writer

Sanford McD

speak in the Univ

Education Lectu

Mr. McDonn

cating Ethical E

heavily on the fir

renewal which w

1) Strategic

Training

2) Human Res

matching people

3) Participati

utilizing everyon

Ridley

Submitted by

News and Publica

Dr. Jack Ridle

story here at UMR

chairman of the de

and political scien

Dr. Lawrence

served as depart

three years, has re

teaching and resear

UMR department

history.

"Dr. Ridley has

of teaching, reasear

well-qualified to

ibilities of chairm