



13 Sep 1989

The Missouri Miner, September 13, 1989

Follow this and additional works at: https://scholarsmine.mst.edu/missouri_miner

These newspapers reflect the attitudes, perspectives, and beliefs of different times. Neither the library nor the university endorses the views expressed in these collections, some of which contain images and language which may be offensive to some readers.

Recommended Citation

"The Missouri Miner, September 13, 1989" (1989). *The Missouri Miner Newspaper*. 2525.
https://scholarsmine.mst.edu/missouri_miner/2525

This Newspaper is brought to you for free and open access by Scholars' Mine. It has been accepted for inclusion in The Missouri Miner Newspaper by an authorized administrator of Scholars' Mine. This work is protected by U. S. Copyright Law. Unauthorized use including reproduction for redistribution requires the permission of the copyright holder. For more information, please contact scholarsmine@mst.edu.

Missouri Miner

A publication of the students of the University of Missouri-Rolla

September 13, 1989

Volume 78, Number 4

Twenty-eight pages



Hatheway serves on EPA

Submitted by News and Publications

Dr. Allen W. Hatheway, professor of geological engineering here at UMR, recently served as a member of the United States Environmental Protection Agency (EPA) team.

The team, which worked in conjunction with the U.S. Department of Energy, took part in the review of the "No-Migration Variance Petition" documentation for operation of the Waste Isolation Pilot Plant (WIPP), at Carlsbad, N.M. The results of the review will be presented in the Federal Register as documentation of the agency's regulatory response.

As part of the team, Hatheway was assigned the responsibility of rock engineering associated with stability and long-term behavior of caverns and associated seals designed to meet operational objectives.

"WIPP is designed to receive transuranic radioactive wastes in a mined repository located at a 660-meter depth in Permian Basin halite of the Salado Formation," Hatheway said.

"Because much of the radioactive waste contains small amounts of hazardous substances, the facility design and operation is subject to review by the EPA," Hatheway added. "In addition, the No-Migration Variance Petition must be filed by DOE in accordance with the Federal Court determination."

Hatheway explained that the WIPP is located in the area where UMR

alumnus Vachel H. McNutt discovered the first commercial deposits of potash in 1925.

Hatheway joined the UMR faculty in 1981. He received an A.B. in geology from the University of California at Los Angeles in 1961, an M.S. in geological engineering from the University of Arizona in 1966 and a Ph.D. in geological engineering with a civil engineering minor from the University of Arizona in 1971.

Stichnote named coordinator

Submitted by News and Publications

Lynn Stichnote, has been named alumni/admissions coordinator here at UMR.

"Stichnote will coordinate UMR's Admissions Ambassador Program," said Robert B. Lewis, director of UMR's admissions office. "She will work with alumni, parents, students and other volunteers to identify bright and talented prospective students. She will represent UMR at college fairs and other occasions where informa-

tion about UMR has been requested.

Stichnote was with Brewer Science of Rolla for three years where she served as East Coast sales representative for chemicals for the microelectronics industry. Prior to working for Brewer, she was supervisor of an endocrinology laboratory for the animal science department at Kansas State University.

Stichnote received a B.S. degree in animal science from the University of Missouri - Columbia.

Bookstore renovated

By Chris Reynolds
Staff Writer

The UMR Bookstore has undergone many changes; new carpeting, fixtures and blinds for the windows just to name a few. "Basically the whole store has been renovated," said Leland Chrisco, bookstore manager.

The Grand Opening was held on Tuesday, August 29 to celebrate these changes. Among those attending were UMR Chancellor Martin Jischke; Barnes & Noble Vice-President, Ben Dixon; Barnes and Noble regional manager, Mike Webb, and several members of the UMR faculty and student body.

For the past year the bookstore has been leased by Barnes & Noble, a New York based bookselling company, making it one of approximately 210

college and university bookstores

During the past week, as a part of the Grand Opening, the bookstore held an electronic's festival in which over 1,000 prizes were given away. On Tuesday, this occasion was marked with free popcorn and soda, a performance by the viola section of the College Musicum, and the presence of D.J., the Conductor man, an inflatable promotion for Eveready, located on the top of the University Center. Several of the winners of the College Festival scratch and win game were as follows: G.J. Hauntz - Sound Jacket; Cedric Portis - Bicycle; Christopher Derner - CD player/recorder; Michael Connell - Walkman; Gary Drikow - Calculator; and the Grand Prize winner of the Honda Spree Scooter was Randy Reichard.

UMR receives grant

Submitted by News and Publications

UMR's department of computer science has received a grant from the National Science Foundation (NSF) and Intel Scientific Computers. The grant, along with financial support from UMR's computer science alumni, will provide funding for an Intel iPSC/2 d4-8 Multicomputer parallel processing system.

"The availability of a parallel processing system at UMR fulfills a major portion of the Computer Research Initiative as described in the campus's five-year plan for academic computing," said UMR Chancellor Martin C. Jischke.

Dr. Marvin W. Barker, dean of UMR's College of Arts and Science, said, "This new computer system may be accessed by researchers within the UM system as well as all over the world via computer networks.

"We currently have research use of this system from Purdue University and the University of Iowa and research contracts from McDonnell Douglas, the National Science Foundation and the Missouri Manufacturing Research and Training Center," Barker said.

"This facility not only will allow UMR researchers to 'stay on campus'

for their supercomputing needs but also will allow UMR to attract and retain high quality graduate students."

According to Dr. Bruce M. McMillin, UMR assistant professor of computer science and director of UMR's Experimental Computation Laboratory, which will house the new system, the interest in parallel computing stems from the need to find solutions to complex problems more quickly or, alternately, solutions to larger problems.

"The idea behind parallel computing is to bring a number of slower, less expensive processors to bear on a problem. These computers work together to solve a single problem much faster than if only one computer did the work," McMillin added.

"For example, to find out the heat distribution in a slab subjected to varying temperatures requires either building the slab and measuring it or simulating it on a computer," McMillin said. "Simulation, however, takes a great deal of time."

"Ideally, the processors in the Intel could solve a one-hour problem in three or four minutes. This allows many more simulations to be done than would otherwise be possible," McMillin added.

Dr. Arlan R. DeKock, chairman
see Grant, page 2

Castleman fundraising nears completion

Submitted by News and Publications

A committee of area residents interested in the advancement of the performing arts at UMR has been formed to spearhead a campaign to raise the remaining necessary private funds for Castleman Hall.

Phase II of the construction of an auditorium/music/alumni building, which has been named in honor of Rolla businessman Donald L. Castleman, will begin this month. The facility is expected to be completed in the fall of 1991.

The committee is headed by Tom and Chris Sowers of Rolla. Other members include Jonathan and Jane Delano, John and Mary Sheffield and Bob and Sharon Wilson from St. James; Jean Bass Dean from Salem; Bill and Louise Morgan from Waynesville; Dennis and Kim Roede-meier from Cuba; and Jim and Annie Bass, Gale Bullman, Bud and Linda Falkenhain, Bob and Ellie Moore, Tim

and Susie Rupp, Tom and Janet Schef-fer and Joe and Elaine Watskey from Rolla.

Funds from the State of Missouri have been provided more than two-thirds of the nearly \$10 million total cost of building. UMR has pledged to raise the final one-third. According to Kittie Robertson, UMR director of Annual Funds and Donor/Community Relations, private donations from individuals and corporations have provided 98 percent of the funding, and only \$200,000 remains to be raised.

"Because of the positive impact this facility will have for the residents of south-central Missouri, the committee hopes to raise the balance through support of those who will benefit directly," Tom Sowers said. "The 660-seat auditorium in Castleman Hall will be the only facility of its kind between St. Louis and Springfield and will be the site of many outstanding performances for years to come," Tom Sowers said.

According to Chris Sowers, residents are being invited to join the list of supporters by becoming Premier Patrons of Castleman Hall through the sponsorship of seats in the auditorium as well as other larger naming opportunities.

"With a minimum tax-deductible contribution of \$1,000 for each seat which can be pledged over a three year period, the name of the Patron or a commemorative will be inscribed on the arm of the seat," Chris Sowers said. "Patrons will also be invited as honored guests to the opening black-tie gala being planned for the fall of 1991 which will feature world-renowned entertainment," Chris Sowers added.

Patron invitations are being mailed this week. For further information as to how you can become a Patron contact any committee member or Kittie Robertson, UMR Alumni/Development Office, 105 Harris Hall, Rolla, MO 65401, phone (314) 341-4002.

Calendar of Events

Wednesday

Southwinds, UMR's Literary magazine, 12p.m. (noon), will hold it's first meeting, on the 3rd floor of H-SS. Bring lunch!

Spelunkers Meeting, 6p.m., in 206 McNutt Hall.

Blue Key Meeting, 6:15p.m., in Ozark room.

Resume Writing, 6:30p.m., in 104 ME.

IEEE Meeting, 7p.m., in 104 Eng Mgt.

AIAA Meeting, 7p.m., in 107 Mining. Speaker from McDonnell Douglas to talk on the National Aerospace Plane (NASP).

Kappa Kappa Psi/ Tau Beta Sigma Meeting, 7p.m., in 101 OldCafe.

APO Meeting, 7p.m., in G-5 H-SS.

SME Meeting, 7:30p.m., in 204 McNutt Hall.

MSA Movie, 8p.m., in 104 ME.

Mass Newman, 9p.m.

Thursday

Bible Study, 4p.m., in Maramec room.

Eta Kappa Nu Meeting, 6:30p.m., in 102 EE.

Climbing Club, 6:30p.m., in 206 McNutt Hall.

Intercollegiate Knights, 6:30p.m., in Eng.Mgt. Aud.

Alpha Chi Sigma Meeting, 6:30p.m., in G-3 Schrenk.

Math Help Session, 7p.m., in 203 M-CS.

Econ Club Meeting, 7p.m., in 104 ME.

Women's Soccer, 7p.m., versus Missouri Baptist.

UMR Film Series, 7:30p.m., in Miles Auditorium, 104 ME. Admission by season ticket or \$3 at the door.

M-Club Meeting, 8p.m., in 114 CE.

Friday

IVCF Meeting, 7p.m., in 139 Chem.Eng.

Saturday

NRHH Leadership Forum, 9a.m., in McNutt Hall.

CSA Language Study, 9:30a.m., in the Ozark room.

UMR Football, 7p.m., at Missouri Western.

Hang Gliding Club Reforming Meeting, 7p.m. in 210 McNutt Hall.

CSA Movies, 7:30p.m., in G-3 Schrenk.

Monday

Test Anxiety, 3:30p.m., in Maramec room.

Chem. Seminar, 4:30p.m., in G-3 Schrenk.

Student Activity Fee Board Meeting, 4:30p.m., in Walnut.

Independents, 6:30p.m., in Maramec room.

Life Talks, 1052 TJ at 7:30. Sponsored by Koinonia. All invited.

Tuesday

BLOOD DRIVE, Centennial Hall.

Life Talks, ChemE 125 at 7:30. Sponsored by Koinonia. All invited.

Campus Crusade, 6:30p.m., Maramec room.

AEG Meeting, 7p.m., in 204 McNutt Hall.

UMR Cycling Club Meeting, 7p.m., in 206 McNutt Hall.

Math Help Session, 7p.m., in 203 M-CS.

Procedures Workshop, 7p.m., in 204 McNutt Hall.

Tau Beta Pi Meeting, 7p.m., in G-3 Schrenk.

UMR Soccer, 7p.m., versus Fontbonne.

Koinonia Meeting, 7:30p.m., in 125 Chem. Eng. Building.

Noday

May Graduates, If you will be completing requirements for a degree next May, you should make application for that degree by going to the Registrar's Office at your earliest convenience. Signed Lauren A. Peterson.

Financial Aid

Additional Financial Aid Available; Students wishing to be considered for additional "Need Based" financial assistance (loans and/or college work study) for the Fall 89 semester, can sign up in the Student Financial Aid Office, G-1 Parker Hall, from Monday, August 28th through Friday, September 15th. Students wishing to be considered for additional assistance must have a remaining need as determined by the 1989-90 ACT Family Financial Statement.

National Roofing Foundation; The National Roofing Foundation (NRF) is offering three \$4000 scholarship awards for the 1990-91 school year. To be eligible for the scholarships, candidates must be high school seniors planning to attend college, undergraduate or graduate students. They must be full-time students and be enrolled in architecture, engineering or other curriculum related to the roofing industry. The first scholarship award is given by the National Roofing Foundation to students attending accredited colleges or universities in the United States. All application, transcripts and reference forms must be postmarked by February 1, 1990. Additional information is available in the Student Financial Aid Office, G-1 Parker Hall.

Grant

from page 1

and professor of computer science at UMR, said, "Because the Intel architecture can provide approximately the power of a Cray 2 at 10 percent of the cost, the Intel system not only will provide us with a cost effective way to make certain applications run faster, but the availability of the machine will also enable us to gain new insights into the creation of parallel algorithms."

According to McMillin, the new computer system will be used for teaching and research. Among the areas that will be studied are: the properties of automated reasoning, fault-tolerant systems, graph algorithms, programming environments, intelligent manufacturing, operations research methods, programming languages and computational mathematics in parallel environment.

"The computer will provide meaningful laboratory experiences to illustrate classroom concepts," McMillin said. "Moreover, learning how to use this system will enable our students to find new ways of using the parallel computer to solve difficult problems."

McMillin said that the teaching use of a parallel computer is fundamentally different than the teaching use of a conventional computer.

"Parallelism, or the expression of parts of a program which may be run independently, is the key issue," McMillin said. "Ideally, programmers don't want to be concerned with

the details of getting the speed out of the parallel machine."

"This is the so-called 'dusty-deck' syndrome in which old existing programs are made to run faster just by moving them to parallel machine," he added. "However, the promise for the success of this method is bleak as some programs are written in such a way that any parallelism in the original problem is lost."

McMillin explained that programmers who use the parallel machines must be trained to look at problems from a perspective that retains the natural parallelism of the problem.

"This requires that programmers free themselves from the sequential mindset and think in terms of parallelism from the start," McMillin said. "This turns out to be non-trivial, as traditionally, by the time a programmer first encounters a parallel program in school, it is usually at the advance graduate level."

"After years of experience in sequential programming, thinking in parallel is extremely difficult," he added. "Through our curriculum as well as short courses we can bring these concepts to the university and to the industrial community."

"With UMR providing this training, we can ensure that the United States will be able to compete in the world technological theater," McMillin said.

Continuing Education offers pilot's course

Submitted by News and Publications

A short course to prepare participants for the Federal Aviation Administration (FAA) private pilot written examination will be offered by UMR this fall.

Classes will be held from 6:30 - 9:30 p.m. Mondays from September 18 through November 13 in Centennial Hall, University Center-East.

Topics to be covered include: theory of flight, communication procedure, use of flight computer/calculator, aviation weather, visual and radio navigation and federal aviation regulations.

Instructors for the course is Dr. Robert B. Oetting, UMR professor of

mechanical and aerospace engineering. Oetting is licensed by the FAA as a ground school instructor with advanced rating and has been designated by the FAA to administer its written examination for private, instrument and commercial pilots.

Fee for the course is \$90. The course's textbook, "Private Pilot Air-

plane T-Book," can be purchased for \$7 on the first night of class.

Enrollment will be limited to the first 35 paid registrants. To register or for further information contact Continuing Education, 111 Engineering Research Laboratory, UMR, Rolla, MO 65401, phone 314-341-4200.

Missouri Miner

The **Missouri Miner** is the official publication of the students of the University of Missouri-Rolla. It is distributed each Wednesday afternoon at Rolla, Missouri and features activities of the students of UMR.

All articles, features, photographs, and illustrations published are the property of the **Missouri Miner** and may not be reproduced or published without written permission.

The **Missouri Miner** encourages comments from its readers, and will attempt to print all responsible letters and editorial material received. All submissions must have a name, student ID number, and phone number for verification. Names will be withheld upon request.

Submissions for publication must be in our drop box (first floor of the Rolla Building) by 3:30 p.m. on the Thursday before publication. The **Missouri Miner** reserves the right to edit all submissions for style, grammar, punctuation, spelling, length, and matters of good taste.

The **Missouri Miner** is operated by the students of UMR and the opinions expressed in it do not necessarily reflect those of the university, faculty, or student body.

Editor in Chief	Nikki Pagano 341 8068
Business Manager	Shelly Kaller 364 6463
Advertising Director	Terry Brackett 364 1137
Managing Editor	Larry Williams 364 1433
Circulation	Erich Elmer 364 8968
News Editor	Steve Puljak 364 8968
Asst. News Editor	Steve Atkinson
Features Editor	Amy Nash 364 7612
Asst. Features Editor	David Freeman
Sports Editor	Jeffrey Esparrago 364 1433
Photo Editor	Dave Libler 364 5226
Copy Manager	Dan Gualtieri 341 8263

302 Rolla Building
University of Missouri-Rolla
Rolla, MO 65401-0249
(314)341-4235

**UNITED ARTIST
THEATRES OF
ROLLA
24 - hr movie
information
Call the movie
HOT LINE!
341-2418**

Letters to the Editor

Chancellor awaiting student input

Dear Editor:

For the last three years the Athletic Department has operated with a deficit, and for three years they have drawn on reserve funds that were built up in the early 1980's to cover this deficit. According to the Athletic Department, this reserve fund is rapidly depleting and because of low enrollment, their student activity fee funding will again be too low to adequately finance the existing varsity programs. The A.D. also claims that low funding is affecting the competitiveness of the existing programs because the department is unable to fund as many scholarships as the MIAA conference allows. The Chancellor stated that there are fundamentally three options in this case:

1. Continue the current program with each sport having increasingly inadequate funding
2. Reduce the number of intercollegiate sports to a level consistent with the likely level of funding
3. Reduce the cost of intercollegiate athletics by going to Division III for some or all of the sports

I would add a fourth option that would have to come from the student body: to increase the student activity fee for athletics. I am not necessarily recommending this but feel that it is another option that should be considered.

Athletic Director Billy Key has recommended the second option and has asked that the following sports be dropped:

1. Men's soccer - effective 1990-1991
2. Women's soccer - effective 1990-1991
3. Men's tennis - effective May, 1989
4. Rifle - effective May, 1989

This reduction would eliminate approximately 62 student athletes (about 1/4 of the total program). According to A. D. figures, combined with the coaching staff eliminations and rearrangements, this

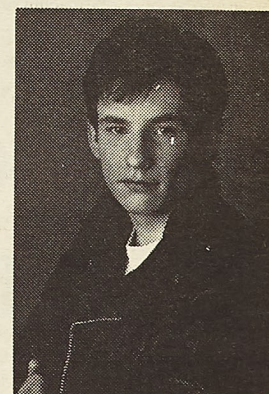
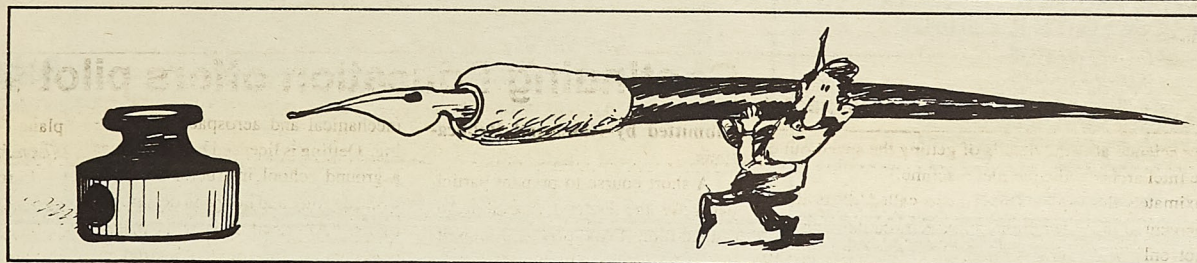
would generate approximately \$128,000 (\$43,000 of which is grants-in-aid) to redistribute to the other programs.

Students should be aware that these sports, if dropped, will have the option of applying for non-varsity sport status and funding. This could amount to a great deal if approved as the four existing non-varsity sports are currently funded at a total of \$13,000 per year. Another point that should be made is that from the information that Student Council received last year and from the debate at last year's student activity fee's forum, I believe that these four sports would not be the student body's choice for dropping or changing. Students should also consider the consequences of all three of the Chancellor's listed options and understand that the first is not a viable option at all.

Student Council will be sponsoring an open forum to allow students and the Athletic Department to discuss these recommendations and the possible repercussions. The tentative date is September 27 and more information will be appearing in the *Miner* and around campus soon. I would encourage any and all interested students to attend this forum, to talk to their Student Council representative, or write letters to the *Miner* and to drop comments by StuCo or in any of our suggestion boxes. The Chancellor has said that he is waiting for student input before taking any action on this recommendation, so get involved!

Respectfully submitted,

Bob Phillips
Student Council President



A Man's Gotta Do What A Man's Gotta Do

All young men have one responsibility in common. They have to register with Selective Service within 30 days of their 18th birthday. *It's quick. It's easy. And it's the law.*

A public service message of this publication and Selective Service System

Do You Want VISA & MasterCard Credit Cards?

Now You Can Have Two of the Most Recognized and Accepted Credit Cards in the World - VISA® and MasterCard® Credit Cards - in your name. EVEN IF YOU ARE NEW IN CREDIT OR HAVE BEEN TURNED DOWN BEFORE.



A. GARSEAU, Student Services
P.O. BOX 130336 SUNRISE FL 33313

YES!

I want VISA/MasterCard credit cards. Enclosed find \$15.00 which is 100% refundable if not approved immediately.

NAME _____
ADDRESS _____
CITY _____ STATE _____ ZIP _____
PHONE # _____
SOC SECURITY # _____
SIGNATURE _____
CUT THIS COUPON TODAY

AIM HIGH

SOPHOMORES — FORMULATE YOUR FUTURE

If you're a Math, Physics, Architecture, Computer Science, Nursing or Flight Major — take note. Your degree + Air Force ROTC = a commission as an Air Force Officer. It's your formula for success.

The AFROTC two-year program is designed for those who did not take the first two years of ROTC.

Take a close look at Air Force ROTC now. Don't let technology pass you by. Be a part of it. Call today.

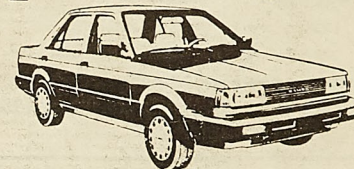
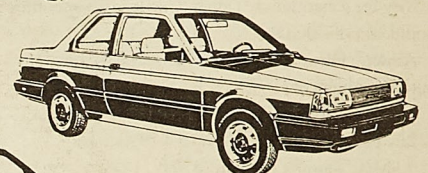
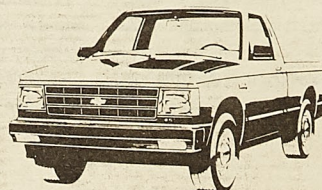
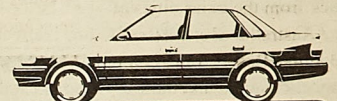
CAPT EDWARDS
314-341-4925



Leadership Excellence Starts Here

You don't need rich parents to get a car for graduation.

GEORGE WALSH



CAR WASH
Walsh & Matic
CAR SALON

THE Heart
of Missouri
TRUCK CENTER
1 800 BUY TRUX

Budget
RENT A CAR

100 Fairground Road • Rolla, Missouri • 314-364-1002

An ASUM Public Service:

Lunch With A Legislator

Guest Speaker:

Charles R. Miller (Chief Legal Counsel to Governor John Ashcroft)

Date: Wednesday, September 20, 1989

Time: 12:30 - 1:30 pm

Location: Missouri Room, 213 University Center East

RSVP in person or by phone (206 University Center West, 341-4970) by September 18



Features

Stage Dolls bring Norwegian rock 'n' roll state-side

By Babu Barat
Staff Writer

There have been a variety of different overseas musicians and bands that have been very influential in the music industry over the years. The majority seem to flock from the inner-cities of England and Australia. But 1989 sees a new band, **Stage Dolls**, from a country, Norway, that would seem the least likely to produce a solid melodic pop-rock outfit. Their music, although vaguely familiar, is yet new and bolstered with a touch of America. "We grew up listening to music from America, so naturally that's reflected in the music we make," states Torstein Flakne, singer guitarist, and main songwriter of the band.

The locals are ranting and raving about how spectacular this their third LP, the first to be released in the U.S. on a major label. The self-titled record shows how the band has evolved through various creative periods in their musical careers. You could hardly classify their first release as rock. But with the latest record, this band has really come of age.

What initially sparked my interest was the fact that this band is a trio, which is a rarity these days. Despite the fact they put on a flawless show at Mississippi Nights in St. Louis. This to be expected from any band that has been together for almost six years. But what made their debut appearance in St. Louis so unusual was the fact that it was also their debut live performance in the United States as well. "We were very nervous," stated drummer Steinar Krokstad. "This was something we had always looked forward to doing," he added. Flakne and Krokstad, along with bass player Terje Storli, played through the entire record, covering the songs with amazing perfection, much to the delight of the crowd who came to see the show. Of the many acts that have played at Mississippi Nights, Stage Dolls attracted an almost capacity crowd who were vaguely familiar with their mu-

sic. But by the end of the show, Stage Dolls had won quite a lot of new fans.

The album stands alone. Digitally recorded, every song has a feel of its own, and a very positive meaning. The album was produced by Norwegian producer Bjorn Nessjoe, who the tremendous potential of this band onto

Love," a song that was already a hit in their home Norway.

I had a chance to speak with drummer Steinar Krokstad prior to the shooting of their video.

How do you like the U.S.?

It's great! It's a lot like we expected. It's so big! There are only 4



Courtesy Neil Ziozower

Stage Dolls (l to r: Terje Storli, Torstein Flakne and Steinar Krokstad) will begin a U.S. tour opening for Blue Murder.

the record. Their first single "Love Cries" has been a smash on MTV and radio stations across the country. To follow-up the band is currently filming their second video for "Still In

million people in Norway, so you can imagine how we feel here. Norway has the same amount of people as the Bronx and Harlem put together.

How does the music differ in Norway than here in the U.S.?

I think the music around the world is very much the same. You see many artists on the Norwegian charts that are on the charts over here as well. I would say only about ten percent of the acts on the Norwegian charts are local. The charts are very similar.

Were you popular in Norway?

About six-foot five. No, but seriously, this is our third album in Norway so you can say that we pretty much got as far as a rock band could in Norway.

How did you all get on Chrysalis Records?

We are on Polydor in Norway, but their counterparts over here turned us down. We had some friends who put the record in the hands of the right person and he liked it. Not being too modest, I feel this is a good album and it can become big given the chance.

Yes, the album is great! Has the band shot a previous video or was "Love Cries" the first?

It was the first on that big of a scale. We shot a video in the U.K. for the last album which was very bad, and we made one in Norway for the same song, but it was not all that good either. We really didn't have a big budget to work with then.

Do you like recording videos?

It is fun, a part of the music business. It just comes with the job. It is one of the reasons I like the music business so much.

Are videos important to the success of Norwegian bands?

No because bands over there don't normally make videos. We only have one Norwegian channel. And it is such a small country.

So when will you continue your tour?

This week we will join Blue Murder as their opening act for about six weeks, and then hopefully we will be able to join another tour. I think it is very important for people to come out and see us because we are a live

band. That is where we come across the best.

I agree! I noticed that you had a keyboard player when you played live. Is there a reason why you did not go to a four-man band?

A trio is the ultimate democracy. The band was, is, and always will be a guitar oriented three piece band. We actually toured Norway as a trio, but since we came over here we decided to add a keyboard player for a few songs. Just so we would come across a little fuller to the American audience who is seeing us for the first time.

Was it always the bands intention to come to the U.S.?

Well, as far as the music industry is concerned no matter where you are. The feeling is that if you make it in the U.S., you can make it anywhere.

Has the album been released in any other countries?

No, not yet. Polydor in Europe is just sitting back and waiting to see how the album does here in the U.S. They are trying to get a semi-free ride. They are kind of waiting to see what happens. So we will see what happens.

How did you decide what material to put on the record?

The songs that stood out made it. I don't think there was ever a discussion about the songs that made it. We feel the album is very strong, and each song could make it on its own.

So what can we expect from Stage Dolls in the meantime?

We want to get ourselves out to the people. The music business is about people enjoying what you have to offer. We want to play as much as we can. Hopefully the album will do well and people will like us, and we will be able to continue to play in America.

College roommates aren't always compatible

By Nora Okong'o
Staff Writer

"This is going to be an exciting semester," Christine said, as she and Donna unloaded Donna's station wagon.

Donna, much less enthusiastic, replied, "Let's wait and see."

It was Christine's first semester in college; for Donna, it would be the last year, she hoped. She and Christine were going to be roommates for at

least one semester, maybe two if things worked out. Donna had declined to commit herself. Her apprehension resulted from the fact that she hardly knew Christine. True, she and Christine's older sister, Carol, had been best friends in high school. But she had never paid much attention to Christine, until she had found out that she would be going to the same college in the fall. She had been talked, or rather trapped, into taking her on as a

roommate. And what excuse could she have. She had told just about everyone that her roommate of the year before had graduated and that she was looking for a replacement. Christine had only been a logical answer to the problem of finding a new roommate and she to that of getting someone to keep an eye on Christine.

"I'll take this bedroom," Christine called.

Donna, struggling with an armful of clothes, entered her room and set the clothes down on her bed before speaking.

"Which room?" she asked.

"This one, if it's alright with you that is."

"No, it isn't alright with me," she thought, "and I wasn't aware that you had a choice." Aloud she said, "I've had this room ever since I moved into this apartment, and I'd really like to

keep it, if you don't mind, that is."

"Okay." It was obvious that her reply did not echo her true sentiments. She slowly carried her bag to the other room.

Donna sighed. Would this be the end of the weeks to come?

The first week passed by fairly uneventfully. They had finally worked out a scheme of paying gro-

see Roommates, page 11

Campus Organizations

KMNR spins their tunes

Submitted by KMNR

Hello, for those of you who don't know about us, we are KMNR 89.7 FM, a non-commercial - educational broadcast station. We are located on campus behind the Mechanical Engineering Annex (old Mining Building) next to the eight foot tall hippie.

The purpose of KMNR is to familiarize students with the operations of a FM radio station. However in the process of familiarization, the Dee Jays get to know each other and usually end up having fun.

Approximately 60 Dee Jays volunteer their time to keep KMNR on the

air twenty-four hours a day. Along with this round-the-clock effort, many Dee Jays put in quite a bit of time administrating KMNR. This gives Dee Jays the chance to learn the business end of keeping a station on the air.

KMNR is unique in that Dee Jays are allowed to play whatever they want during their weekly show. In other words, we are one of the few radio stations that has a free-format.

We at KMNR are very happy to now be operating with a new transmitter. This has resulted in a boost in our power to 450 watts. We are also pleased to have a new antenna which is

mounted on the United Telephone Systems tower which is located at 11th and Elm in Rolla. This has expanded our listening area to a radius of approximately twenty-five miles.

Besides great listening enjoyment, KMNR provides the student body with the KMNR Roadshow. The Roadshow is a portable 500-watt sound system that can be hired out complete with Dee Jays for parties and other events.

In closing I would like to thank all who stopped by for our 89.7 Day and remind you to look for the KMNR Roadshow on campus on Mondays.

StuCo blood drive to top the banks again

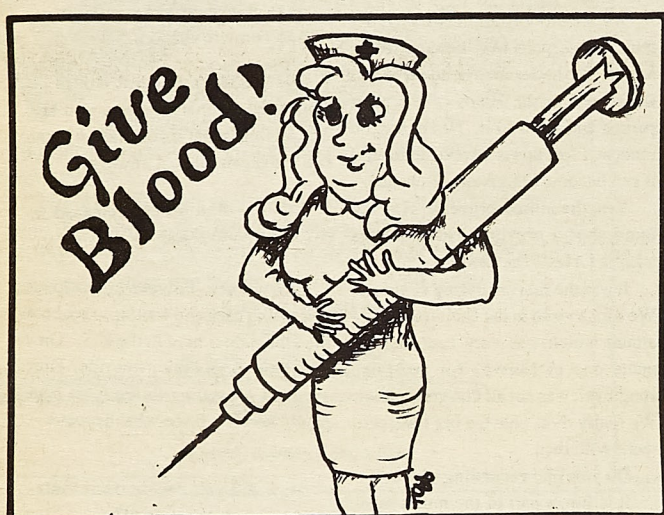
Submitted by Kyle Corum
StuCo Blood Drive Coordinator

They're back! And they need your help! The American Red Cross Bloodmobile is once again coming to our fine campus with free cookies, soda, and coffee for all donors. There will be prizes to the organization with the highest percentage of donors and the organization with the most donors.

UMR has led the Springfield region in donations for the past nine

years, and with your help, we will continue to hold that honor. The Blood Drive will take place in Centennial Hall, University Center-East from 11:00 a.m. to 5:00 p.m. on September 19 and 20.

Donating blood is fast, easy and it saves lives, so please come out and join us next Tuesday and Wednesday and help make this a record year for Blood Drives at UMR!



StuCo lends a helping wallet

Submitted by StuCo

The purpose of the Equipment Fund is to enable organizations to make one-time purchases that would normally be beyond their budget resources. Any Student Council-Recognized organization is eligible, as are all organizations receiving Student Activity Fees.

Organizations need to provide to Student Council the following:

- 1) A copy of their constitution
- 2) Documentation of their financial position
- 3) Copies of their projected and

actual budgets for the past three years

- 4) A summary of the request
- 5) At least two price estimates

As stated in the August 30 issue of the Miner, these materials need to be in the Student Council office by 3:30 p.m., September 13 (Wednesday).

These requests will be reviewed by the External Funding Committee of StuCo, and that committee, along with financial representatives of the requesting organizations, will hold hearings Wednesday evening, September 20.

Each organization will make its

presentation to the Student Council at the September 26 Student Council meeting, where StuCo will discuss and vote on the requests. The money for the approved Equipment Fund requests will become available in Fall

1989, at which point each organization would be required to go through the standard bidding process. When the bids are reviewed and one is accepted, the equipment will immediately be bought for the organization.

Alpha Phi Omega invites you to join their organization

Submitted by Alpha Phi Omega

Alpha Phi Omega, a service fraternity at UMR, would like to extend an invitation to you to join our organization. All UMR students are eligible for membership.

In APO you will not only be able to do service for your community, but

will also be given an invaluable opportunity to expand your leadership and organizational skills. If you enjoy doing service then we know you'll enjoy being in APO. Formal pledging was held on September 6, but we will have another pledging on September 20, in the Mark Twain Room-University

Center East, at 6:30 p.m. for new pledges who could not make the first one and for anyone else interested in pledging APO. If you would like more information concerning our pledging and pledge program, please contact Chad Gerard at 364-8255.

Angel Flight hosts charity rock-a-thon

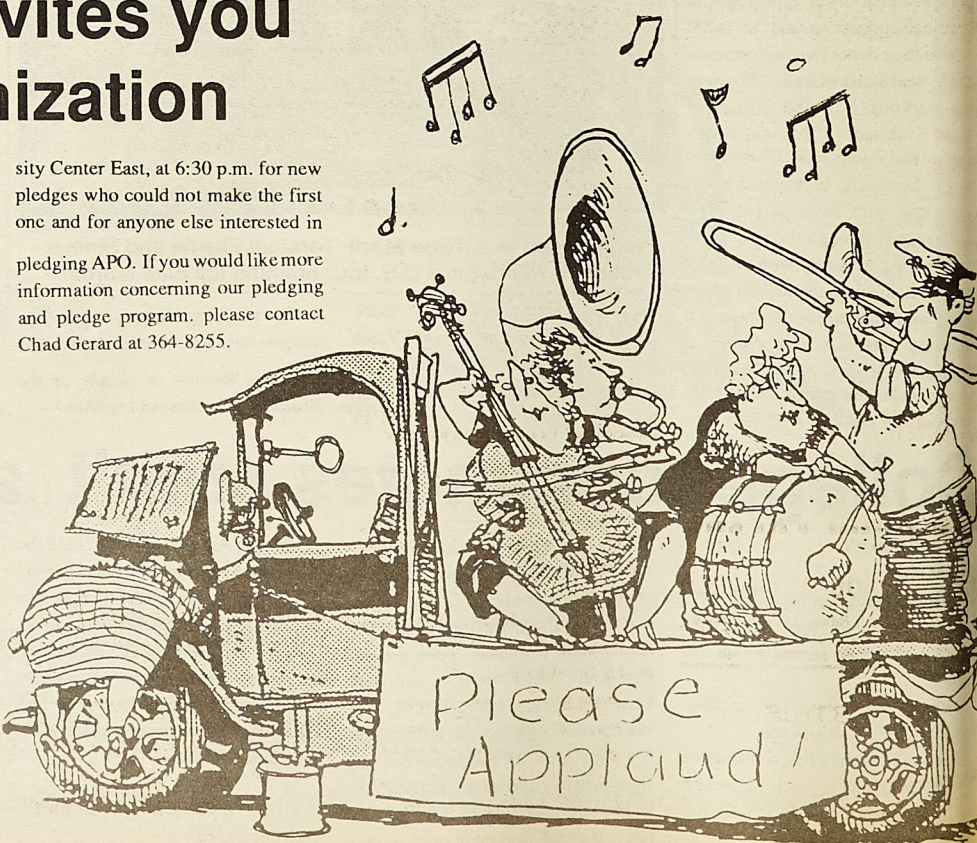
Submitted by Angel Flight

Angel Flight would like to welcome all students back for another year here in Rolla. We Angels hope you've settled in because in one week

is the great event of the semester, the Rock-A-Thon! This year's Rock-A-Thon will be held from Friday night, September 22, till Saturday morning, September 23. We'll be rocking the

night away to raise money for the St. Louis Alzheimer's Association, a research group.

All students, student organizations, fraternities and sororities are invited to get a team together to participate or to pledge donations. Let's make this year's Rock-A-Thon the best ever! For more information, contact Angel Flight at 341-4925 or 364-9517.



Classifieds

Miscellaneous

Ski Steamboat Free!

Inter campus programs is looking for an individual, organization, or club to promote our Christmas break ski trip. Work with the nation's leading college tour operator. We provide all marketing materials, free trips, and cash commissions. Call now for details: 1-800-327-6013 ext. 300.

ATTENTION Juniors & Seniors-

Who's Who Among Students in American Universities and Colleges applications are available in the Student Activities & University Center office, 113 University Center-West. Completed applications are due by September 22, 1989. This would be Great on your resume!

College Rep Wanted

to distribute "Student Rate" subscription cards on campus. Good income, NO selling involved. For information and applications write to: Campus Service, 1024 W. Solar Drive, Phoenix, AZ 85021.

ATTENTION all Student Clubs & Organizations:

If you are a new group, please contact Angela at the Rollamo so that you will be covered in the yearbook. Call the Rollamo office at 341-4279. Please leave a message if no one is there.

Economical Student Transportation!

'73 VW Superbeetle, call 341-8856 after 5 pm on Tuesdays & Thursdays.

To all UMR Bicyclists:

The UMR Cycling Club is back. First meeting will be Sept. 12, 7 pm at 206 McNutt. Be there!

Free Bible Study via Correspondence:

Lessons available in both English & Spanish. Please write to World Bible School, Rt:2 Box 626, Rolla, MO 65401.

For Sale: A King Size Waterbed mattress. Call 341-2689.

For Sale: 1975 Kawasaki Z-1 (900 cc) motorcycle, Good condition, Asking \$700, call nights 341-3535.

RESEARCH PAPERS
19,278 to choose from — all subjects
Order Catalog Today with Visa/MC or COD
Toll Free Hot Line **800-351-0222**
In Calif. (213) 477-8226
Or, rush \$2.00 to: **Research Assistance**
11322 Idaho Ave. #206-SN, Los Angeles, CA 90025
Custom research also available—all levels

Personals

Susan & Lori,
We weren't meant to have fish!

Flem

Tina C.

You're doing an excellent job as social. I know this is going to be the Best Boat Cruise ever!!

Love,
yLs

Mindy,

Get excited for boat cruise! It's gonna be a blast!

Tina,
yPs

Jeremy & Jeff,

Congrats on your initiation!! You two are great EIs and awesome little boys!!

P.S. I'm everywhere

Luv,
YBS

D. of D.K.D.,

So how is farm life?

Ms. Stone,

Gei Elsker Dei - only 8 more months.

D's Friend

My Little Red Fox,

Don't get grumpy. Only 8 months left. Please take care of yourself. Are you sure that you want to become a CUB-by? Your Teddy Bear

KO,

I hope you saved those golden Rocker Dude locks!

The Rocker Chick

Traci,

How is Simon doing??

ZLAM,
Renee

Lewis,

Moving away isn't going to help. We know your bike route. One of these days ...

She-BO

Jules,

I'm so excited you're getting to go on Boat Cruise this year! We are going to have so much fun with our two Fabulous dates.

Tina

Zeta Tau Awesome

Triangle Legs,

My side is messier!!

Triangle Head

Vince,

Thanks for the lesson. I'm looking forward to the next one.

Love,
Heather

Pretty-Boy,

So you are 0 for 4 this year. Too bad. Should we put you up on the open market yet? Thanks for the help with 221.

Hacker

Bud,

I can't wait for Boat Cruise. You are gonna look so hot in that BURGANDY shirt.

YBNF,
Julie

Dorie & Deanna,

What do you guys do for fun? Refinish chairs!!

ZLAM,
Flem

Michelle,

Thank you. Thank you. Thank you.

Nina,

How 'bout them probes!?!? Hmmmm...

K

DANNE,

You're the Best lil'sis.

AOT,
Sherry

Deanna,

The ΔZ are still around.

ZLAM,
The Prez

Be a swim-team fan!

Come see the Nationally Ranked UMR Swim Team compete this fall! And, swimmers - get psyched for Boca Raton!

Distance Man

Beth,

I think he's hot - hit me!

The Noid,

We can get through Thermo!

ZLAM,
Flem

Nick,

Can I borrow your neck brace for the next time we head bang?

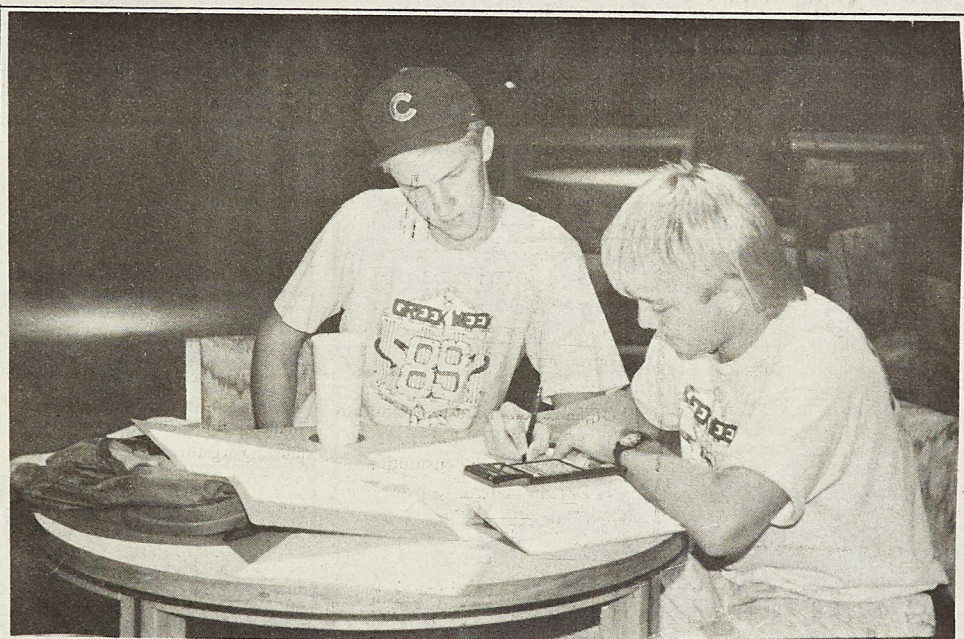
Your groupie till the end!

Nick,

I want to know how many have rode the Ninja?

Meiba

see Classifieds, page 8



Dave Libiez and Brent Green studying at University Center-East.

Susan Lowe

Kevin,

I hope you're getting excited about Boat Cruise. We are going to have an awesome time!

Tina

IMPORTANT ANNOUNCEMENT:

"You're" is an abbreviation for "you are" and should be used as such. "Your" is possessive and is used with physical objects or characteristics. Please remember this in the future.

Sick of your being used for you're

Watson,

What ever happened to those white shorts we all dream of ... ?

The Fluorescent Hi-Tops

Hey Big-Tim-SUB-Chief,

Campus Showcase is over - let's play some volleyball! StuCo vs. SUBhumans. And tell Dawn that we do too have a cool office!

Your Speech-given partner

Pumpkin Lover,

I hope that you are staying caught up with school so you can get your well-deserved 4.0! Only 8 months before I'm gone.

Pecan Preferred

Jackye,

Don't you like our new shirts!

ZLAM,
Anne

Julie,

Call Brian!!

ZLAM,
The Cool Table

Lawrence,

Game, set, match - goes to Oehlschlaeger. I like how that sounds! It's a challenge!

B.B.

Toan,

Please come back. We miss you! We need you to motivate us.

The Dying BrEEd (senior EEs)

Andy & J.D.,

I promise I won't tell anyone about the telephone poll.

Flem

Betty,

Would you please quit singing, its bothering but-wheat!

Your roomie

To All the Secretaries at UMR,

You all are the BEST! Keep up the great work!

A student

Nick & Debbie,

Let's get psyched for our new family member!

Tammy

Watson,

When are you going to hang out with the gals again?

Your ex-roomie

P.S. I'll bring over the Sound of Music!

Classifieds

from page 7

Angel Flight Rock-A-Thon:

12 hours of hard Rocking & Rolling.

Ju Ra,

You're doing a great job as President!

ZLAM,
A Zeta

Dan,

Next time we should duke it out! Do you think Nick would referee?

Your new sparring Partner

Deb, Deb & Pat,

What awesome roomies! It's gonna' be a great semester!

AOT,
LaChelle

Melba,

Do you think Bu'Wheat missed us? He probably couldn't see out to tell we weren't even here last weekend.

Roomie

Tony,

Get psyched for Boat Cruise! I am! Let's party! KA -n- ΣII!

LaChelle

Lenny,

Did you grow a mustache!!

The Zetas

Jeffy,

Don't you ever stay at home?

Roomie

Koinonia,

Only a couple days until the "Advance" Don't forget to bring your toothbrush.

YourPres

D.K.D.

No wimps allowed on our phone line!!

ZLAM,
S.F.L.

Coach Meyer, Costello and Mears:

You're doing a great job as coaches.

The Zetas

Tommy,

I think the poet is dead!

The one who loves you

Flounder,

Can't wait til Boat Cruise and Sept 19th. You're the greatest love panda.

Your favorite roomie

To the 1801 Vichy Actives-

From what we've heard, we should be very grateful we got initiated before you time. Afterall, 90 seconds is our bare minimum requirement, not our maximum.

Lil' Sis Pin No. 1 and No. 2

Hey Zetas!

Only 16 more days to find a date!



Family Fitness 341-2237
NO Membership Fee
Student Rates \$60/semester \$99/2 Semesters

G and D STEAK HOUSE

7 oz. Ribeye 3.99

8 oz. Ground Chuck Steak 3.49

Dinners include Potato, Texas Toast & Ice Cream

Hwy 63 South Next to Wal-Mart



Gina
Cut, Style and Blow Dry

Guy's Haircuts \$8
Girl's Haircuts \$10

341-5828

Offer good for Gina and Michelle

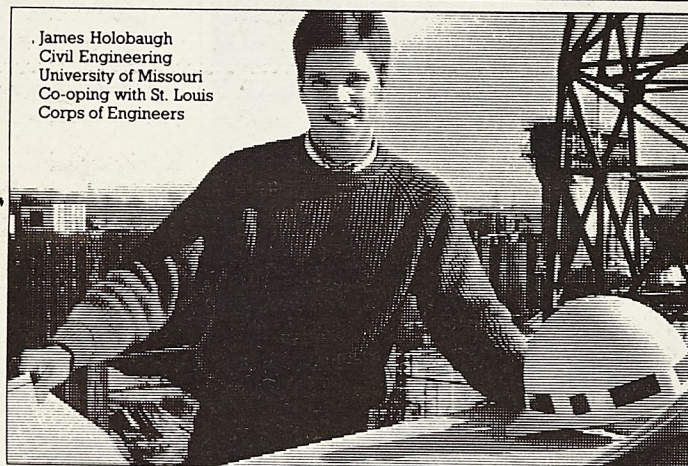
WELCOME BACK FROM HAIR FORCE

1421 Forum Dr.

Michelle



RESERVE OFFICERS' TRAINING CORPS



James Holobaugh
Civil Engineering
University of Missouri
Co-oping with St. Louis
Corps of Engineers

"THE DASE CO-OP PROGRAM IS LIKE A COURSE IN REAL LIFE."

"The big thing it offers is experience, and that's what companies look for. There are things I've learned on the job that I couldn't learn in school."

The Department of Army Scientific and Engineering (DASE) Co-op Program provides ROTC students the opportunity to work in a Department of the Army facility while still in college. Each is paid while getting practical work experience in a high-tech facility. Selected students also receive up to \$5,000 tuition assistance per year and the opportunity for continued employment after graduation.

To be eligible, you must be a freshman in a baccalaureate program leading to a degree in science or engineering. For more information on application procedures, contact the Chairman of the Co-op Department, or the Professor of Military Science.

Students are selected on a competitive basis.



ARMY ROTC
THE SMARTEST COLLEGE
COURSE YOU CAN TAKE.

**Find out more. Contact Major Hoskins
308 Harris Hall or call 341-4738 today.**

Consider The News From A Whole New Perspective.

Journey beyond the headlines to a world of news and knowledge on National Public Radio's All Things Considered.

All Things Considered Explores the events and personalities that shape our world--stopping along the way to examine each story. You'll find commentary that challenges and ideas that energize.

It's a journey you won't want to miss.

We Think You'll Find The Difference Considerable.

Weekdays at 4:30
Weekends at 4:00



ALL THINGS CONSIDERED

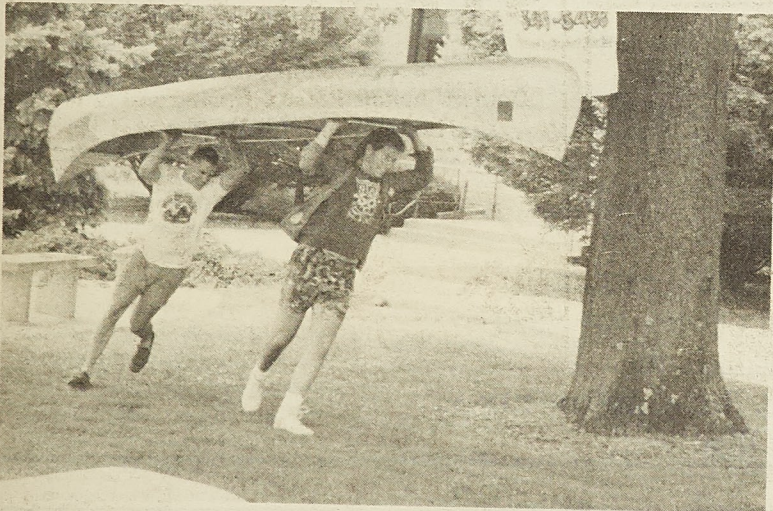
S U B Week gets many students involved



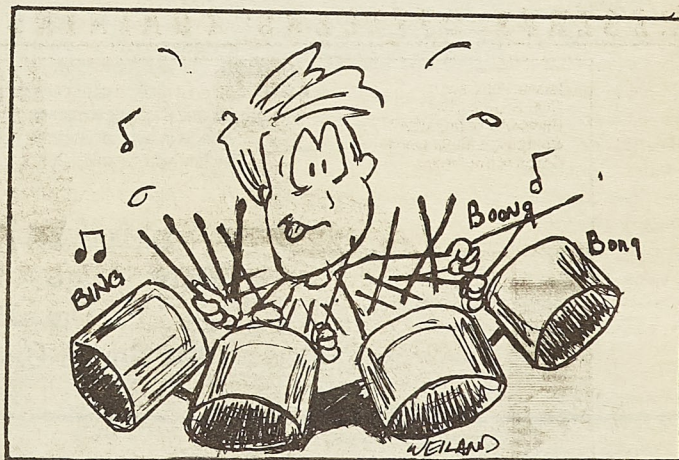
Susan Lowe



Susan Lowe



Bill Booth



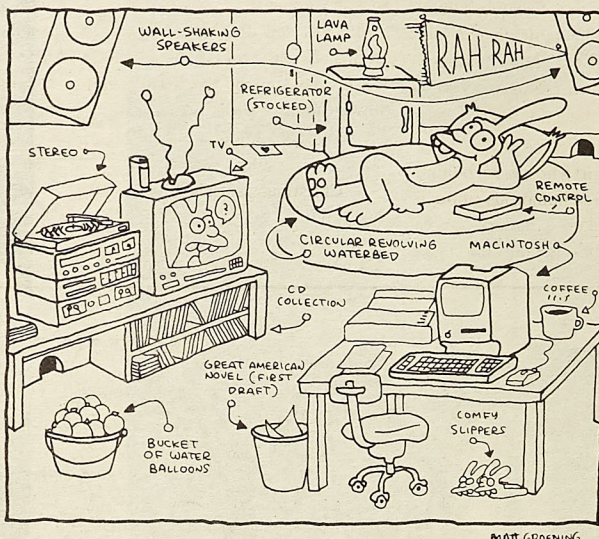
ST. M. H. LIBRARY

Top left: The 21st Century Steel Drum Band from Trinidad playing Friday in Centennial Hall. Top right: Derrick Elledge camping "On the Loose." Middle: Derrick Elledge and Mark Kelly maneuvering obstacles in the Canoe Race. Right: The John Watkins Band performed on campus Thursday afternoon.



Susan Lowe

If you can find a Macintosh in this room, we might put one in yours. Free.



In what will surely be the easiest test of your intellect this term, Apple invites you to try winning a free Apple* Macintosh* Plus personal computer merely by finding it in this drawing.

We'll even give you a hint: It's not the table, the lamp, or the chair.

Now you're on your own.

To register, look for contest details where Macintosh computers are sold on your campus. Oh, all right, we'll give you a hint for that, too: Look at the bottom of this ad.

But do it really, really fast. Because only one Macintosh is being given away on this campus, and it's going to happen soon.

Soon, as in right away. Pronto. Quick-like.

But hey, you can take a hint.

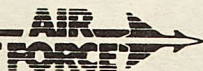


Somebody's going to win a free Macintosh.
Enter August 23rd - September 23rd
DataPro Computer
1024 South Bishop, Rolla, MO 65401
364-0035

AIM HIGH PUT YOUR COLLEGE DEGREE TO WORK.

Air Force Officer Training School is an excellent start to a challenging career as an Air Force Officer. We offer great starting pay, medical care, 30 days of vacation with pay each year and management opportunities. Contact an Air Force recruiter. Find out what Officer Training School can mean for you. Call

USAF OFFICER PROGRAMS
618-624-4321
COLLECT



Prepared for the future. Yours and ours.

ARCO is meeting the challenges of today's petroleum industry through creative engineering and a drive for excellence. Coupled with one of the largest domestic liquid reserve bases in the industry, our quest to be the best has prepared us for a bright future.

We invite you to investigate making our future yours when our representatives are on campus. Please contact your placement office for details.

ARCO Oil and Gas Company ◆

ARCO Alaska, Inc. ◆

Divisions of AtlanticRichfieldCompany

An Equal Opportunity Employer M/F



Roommates

from page 5

cery bills and doing the cooking and cleaning, although Christine never seemed to want to cooperate when it came to her turn. Books had been bought, the first classes attended, the first new friends made. Christine's parents had called twice to make sure that she had enough money, that she was getting plenty to eat, and to express other such like parental concerns. All in all, everything was going pretty well.

It was six o'clock on that first Saturday. Christine was sitting on her bed wondering what plans Donna had for the evening. Maybe they could go and watch a movie. Or Donna might take her out to introduce her to some of her friends.

"Christine," Donna called, right on cue.

Christine got up hurriedly from the bed and went into the living room. "What's up?"

"Do you have to play that music so loudly? Anyway, a bunch of us are going over to a fraternity party." The expected "Do you want to come?" never came. Instead she continue, "I'll see you later tonight, if you're still awake when I get back." And with that, she left.

Christine stared after her blankly for a few moments, and then turned and went back into her room. She had to find something to do, or this would be a very dull evening. Who could she call? She hardly knew anyone. There was probably a party somewhere she could go to, but without a car, it would be neither safe nor practical to do so. How she wished her car hadn't broken down the week before she came down! But she had taken it for granted that Donna would show her around, break her in to college life, as it were. Donna had done anything but that. It was amazing how highly you could think of someone until you had to live with that person. Donna had always seemed so sweet and caring, but during the past week she had gotten the distinct impression that Donna didn't like her much. Maybe the fact that she was a freshman made Donna view her as a burden. Or maybe she just was no fun to be around. Whatever the reason, it appeared that Donna was not going to be the friend she had hoped for.

The loud ring of the phone interrupted her train of thought.

"Hi, could I speak to Christine?" a girl's voice asked.

"This is Christine," she replied, pleasantly surprised. She didn't think that anyone had remembered her name, much less her phone number.

"Hi, Christine. This is Nancy, from your algebra class."

She remembered Nancy, a short, slightly plump girl who had sat behind her and whispered humorous (though not complimentary) remarks about the instructor throughout the class period.

parties, but she had not yet caught on to the "just-say-no philosophy. Finally, the door opened. The door to Christine's room was wide open--and the room was empty. She decided not to worry about it.

It was ten that morning when Donna awoke groggily from sleep. Her head pulsating. She hastily swallowed some aspirin (she hadn't let those Tylenol commercials influence her).

"Christine!" she shouted from the bathroom.

quite possible. If she had it meant Christine had been out all night, and

Christine hadn't once made it since she had arrived. Come to think of it, she had thought that the room was empty when she had gotten back last night, but considering the heap of clothes stacked on the bed, it was hard to tell. Had she mistaken her roommate for a heap of her clothes? It was anyone, she had thought. Yet, there must be someone.

"I'll trust her to have gone with someone she knows," Donna thought, "and stop worrying like I'm her mother."

After all, there was little else that she could do.

up and act as though she hadn't done anything unusual, and would declare that she had a right to go where she wanted, when she wanted and with whoever she chose.

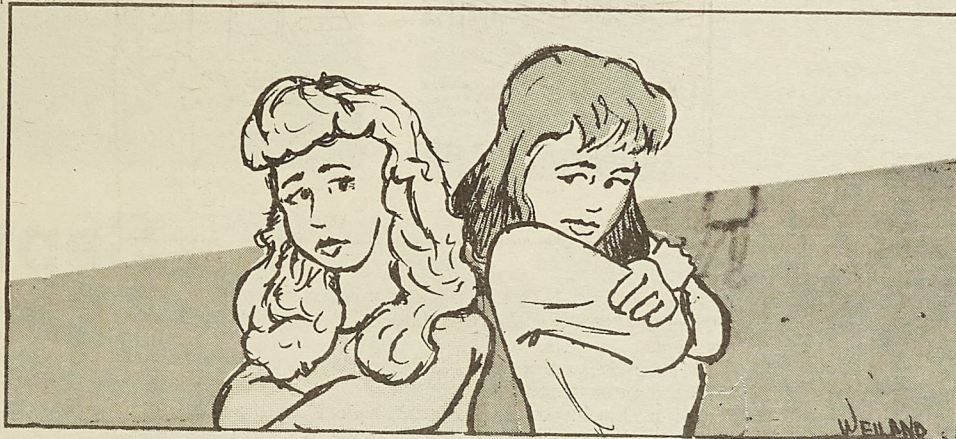
Absent-mindedly, she tossed the wrapper of the candy bar she had been eating into the trash can. That reminded her: tomorrow was Monday and that was the day they picked up the trash. She tied up the bag and took it outside. She was sure to forget if she left that chore until morning. Morning. What if Christine did not show up the next morning? In fact, what if she never showed up at all? Well, at the least, she would come back for her clothes. That might be a clue--she could check whether she had taken any of her clothes with her, perhaps a weekend stay. The only problem was, she had lived with Christine for only one week, and would have absolutely no way of knowing for sure if any of her clothes were missing.

She tried the address book again, and this time called everyone who lived within thirty miles. There weren't many listed. She was picking her books for class the next morning when she had a flash of inspiration. Maybe it was someone she had met in class. Christine might have jotted down a name and phone number in her notebook. She certainly hadn't taken any meaningful notes. There was Suzanne, and Tricia, and Bill and Tracy, all apparently from the algebra class, since that was the section in which their names and phone numbers appeared. None of them, it turned out, had seen Christine since their last class on Friday.

Donna hurried out. She would be late for class as it was. She was just glad that Christine's mother had not called again.

Next week: Christine reappears under mysterious circumstances, and some startling accusations are made against Donna.

Disclaimer: The characters and events depicted in this story are entirely fictitious. Any resemblance to know persons is coincidental.



"Hi, Nancy. What's up?"

"Nothing much. Well, that's not exactly true. We're having a party over here, and I was wondering if you might like to come over."

"Sure, I'd love to."

"Do you need a ride?"

"Yeah, I guess so." She gave Nancy her address and scribbled a note to let Donna know where she had gone. Then, on second thoughts, she tore up the note. Let Donna worry! It would do her some good.

Donna opened the door as quietly as she could. It was three in the morning, and Christine would not appreciate being woken up, and would make a big deal of it. She was tired, and for some reason the key didn't want to go into the lock. Giving up, she banged on the door. No answer. Christine must be sleeping like a log. And then of course, all that loud music had probably deafened her. She tried the key again, her hand unsteady. She had overdone it again. She should have stopped when they had changed

that she had no idea where.

Donna searched the room frantically for some sign of Christine's whereabouts. Had she left a note? Maybe a phone number? What about her address book? Could there be a clue there? She found nothing. Who did Christine know in town? Hardly

No answer. That was surprising. Christine must have gone to bed early, so she should be wide awake by now. She had debated taking her along last night, but had decided against it. Her parents would kill her for dragging her along with an over-twenty-one crowd. Besides, her obvious immaturity would have made her the brunt of jokes and unkind intentions.

She walked to Christine's room while wondering whether she had been in there last night. For some reason, she couldn't quite remember. From the door, she could tell that the room was empty. In fact, it was soon clear that she was the only person in the apartment. It was hard to tell whether or not the bed had been slept in--

It was later that evening as she was finishing an assignment that the phone rang. Christine's mother wanted to talk to her.

"Hold on, I'll get her," Donna said, out of habit.

Then she realized that Christine wasn't back yet.

"Oh, I'm sorry. I'd forgotten that she went out."

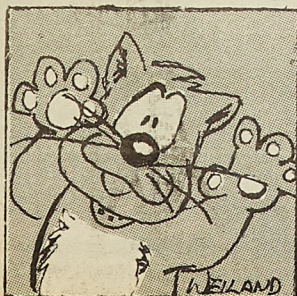
"Do you know where she went or when she'll be back?"

She could either tell the truth or lie. She opted for a compromise that could not technically be called a lie. "I'm not sure," she said, hoping that Christine's mom wouldn't want to investigate.

"Well, have her call me when she gets back."

"Okay. I will."

She had handled that pretty well, Donna thought. But if Christine didn't show up soon, they would both be in deep trouble. She was sure that Christine was just doing this to spite her. Any moment now, she would turn



Bruno's

Banquet Facilities Available
Men's Night - Wednesday
Ladies' Night - Thursday
9:30 - 1:00

341-2110

2001 Forum Drive

VAVOOM!

SAY FAREWELL TO FLAT HAIR.

Get the VaVoom Volume Generators™ Sensational, body-building hair care. For high-energy hair with absolute ease. VaVoom. It's for today's active men and women. It'll help you say farewell to flat hair. And generate lots of styling excitement. Stop in today.

A CUT ABOVE 209 W. 11th
364-6866 Wolff Tan Beds

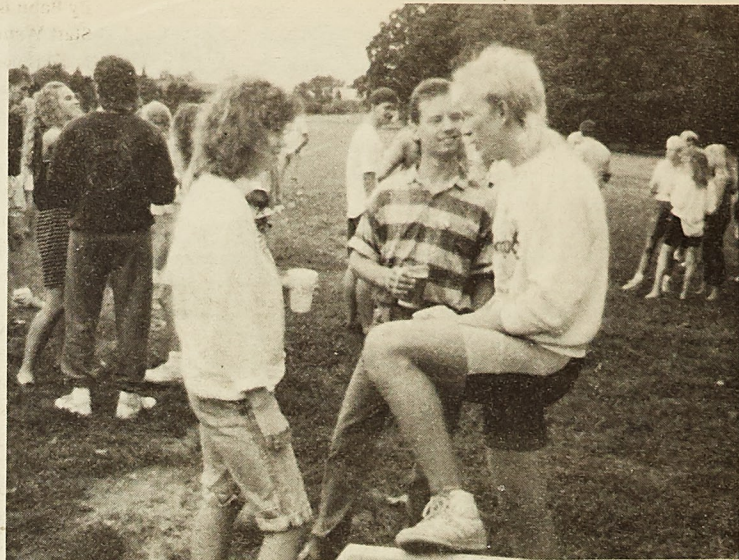


Matrix

St. Pat's Board hosts another successful



Bill Booth



Bill Booth



Susan Lowe



Susan Lowe

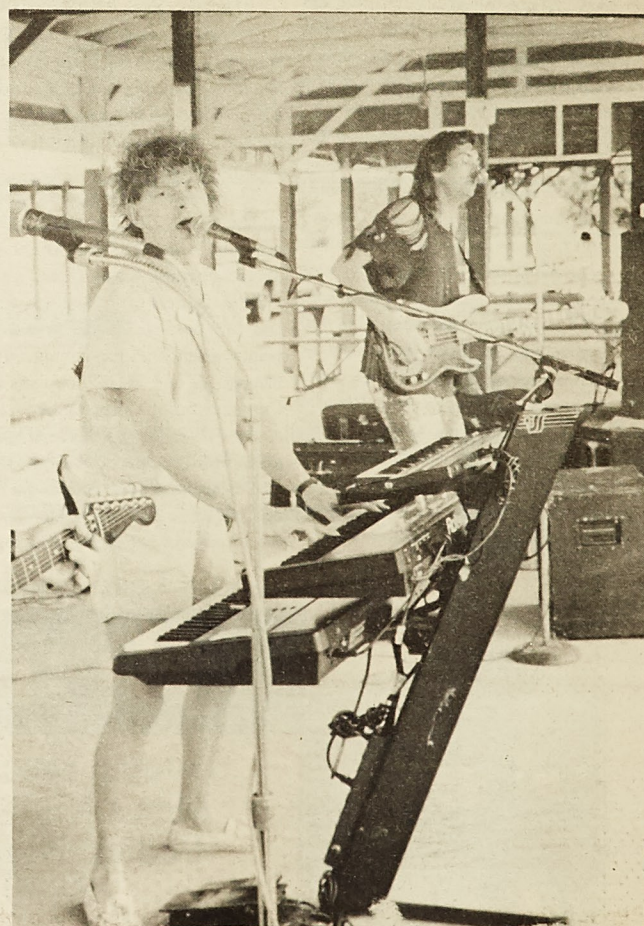
Above: Septemberfest was enjoyed by all who participated in the festivities, whether it was walking around drinking beer and listening to the music of Tic-Toc Boom, watching the games, or just practicing "safe sex".

... Septemberfest

By Kevin Webb
Staff Writer

Once again, this year's Septemberfest proved to be a big success. Everybody had a blast whether they were rocking out with "Tic-Toc-Boom", participating in the games and contests, just hanging out, or doing all of the above.

Everybody had "I can't wait until St. Pats!" written all over their faces. Many people were asking how many daze? Well, I'll tell you. As of today, the "BEST EVER" is only 183 daze away!!! That's not too far away. Only a couple of weeks. So let's see some green spirit in every one of you and get FIRED UP!!!



Susan Lowe

Although the
had more tha

Flourescent Hightops rocks Summerfest

By Babu Barat
Staff Writer

This past weekend marked the return of the annual Theta Tau Omega Summerfest held at Lion's Club Park. And as usual, the party turned out quite a number of people. For a while it looked as if the weather wasn't going to cooperate, but in the end nobody got wet, that is, except for the students who were brave enough to take a dip in the lake.

Anyhow, Summerfest was highlighted by the performance of UMR's own "Flourescent Hightops." The "Hightops" have been a band for the past two years who have played at numerous functions on and off campus. Many of you are probably familiar with their playing. "Our intentions are to be a college party band," said guitarist and vocalist Dan

Lumma. "We really enjoy what we do and have a lot of fun playing for people."

The "Flourescent Hightops" are Dan Lumma and Rob Dechant of Kappa Sigma fraternity, Dave Auehmheimer of Sigma Nu fraternity, and Eric Hauser a former student here at UMR. The band has been through a line-up change since its formation, but all in all they sound pretty good. As far as I could tell this quartet is primarily a cover-band which plays a variety a music. "We each have a wide range of influences," says Lumma. "I really like Steve Morse as far as guitar is concerned, and Steve Walsh is one of my favorite singers. But the other guys like everything from thrash metal to prograssive kinds of stuff," he added.

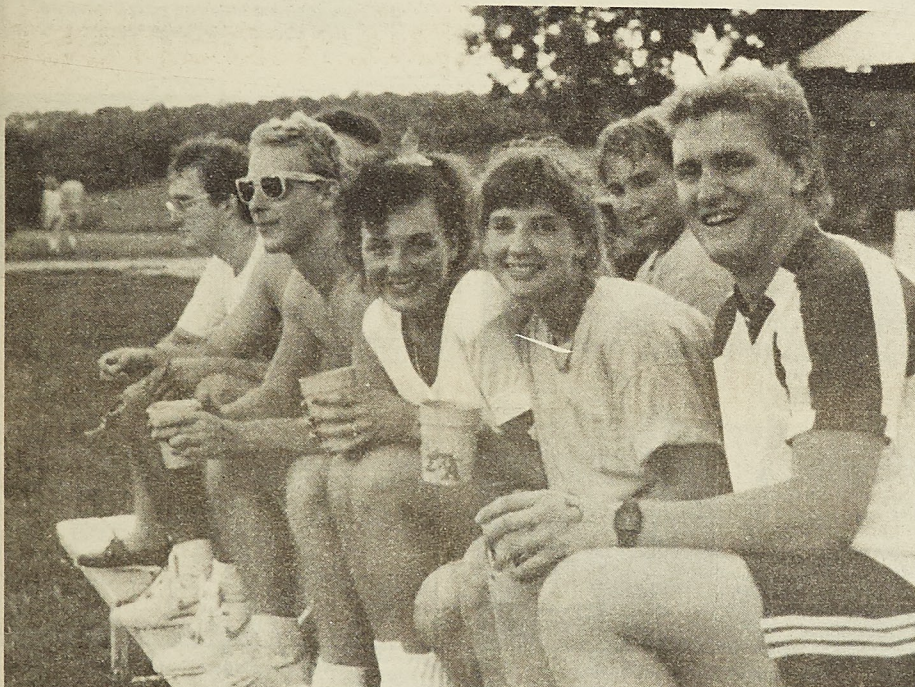
I caught the band during their sec-

ond set which drew a large crowd to the stage. The set featured covers of Living Colour's, "Cult of Personality;" Tommy Conwell's, "I'm Not Your Man"; and an inspired version of AC/DC's, "You Shook Me All Night Long." Most importantly the crowd seemed to enjoy what the band was all about. If there were any criticisms to be made it was a rather fouled sound coordination which probably could have been helped, but for a young and talented band sometimes comes to be expected.

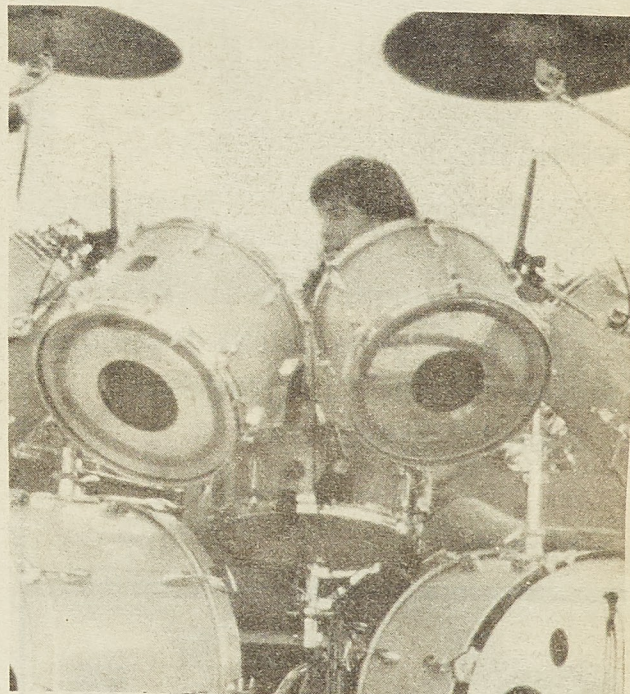
This band is ideal for any type of function you or your organization might be having. So if you want some great live music for your next function get ahold of Dan Lumma at the Kappa Sigma fraternity house 364-2314.



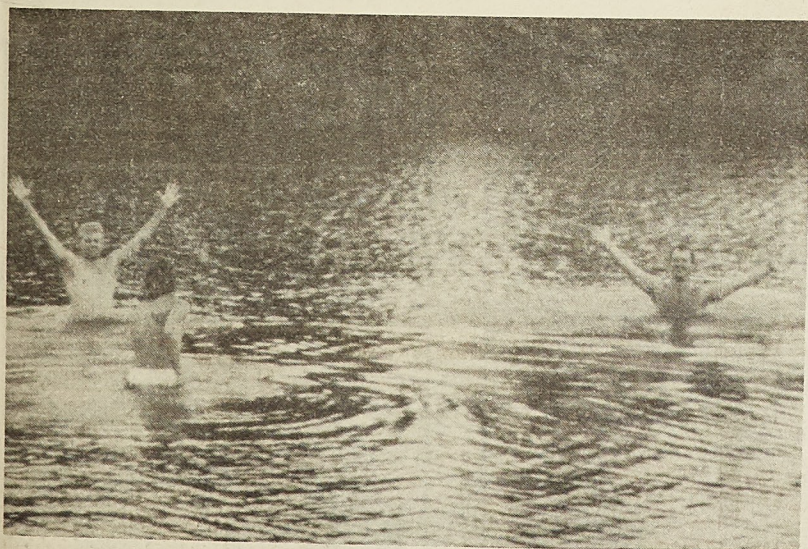
Bill Booth



Bill Booth

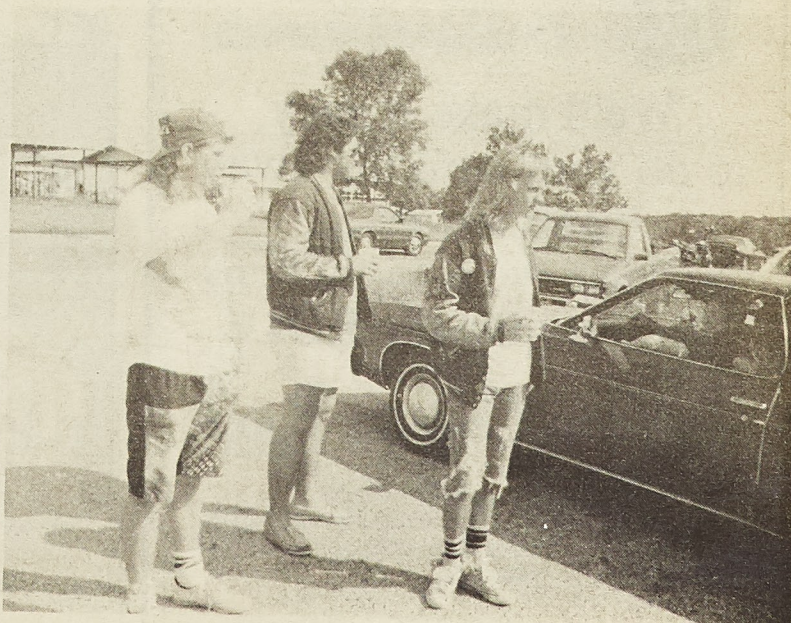


Bill Booth



Bill Booth

Although the crowds weren't huge at Summerfest, all those who attended had more than enough fun for those who missed out.



Bill Booth

YOU HAVE FRIENDS WHO CARE
AT ...

BIRTHRIGHT

PHONE: 364-0066

215 WEST 8th STREET
P.O. BOX 832
ROLLA, MISSOURI 65401

FOR HELP
DURING UNPLANNED PREGNANCY
FREE PREGNANCY TESTING

Muslim Student Association
will present a movie

The Message

Wed. Sept. 13, 8:15 pm

ME 104

Admission Free

APPLE TREE

Next to Wal-Mart, Rolla

- Drafting tools & supplies
- Mid-Missouri's Most Complete Arts & Crafts Supplier
- New Shipment of Sorority Gifts Paddle Tramps Letters & Paddles
- Mid-Missouri's Largest Poster Supplier

Mon-Sat

9:30-8:00



We'll make it easy
to do your banking away
from home.....
because we're right here
on Campus for YOU.

Phelps County Bank

Rolla - UMR Campus
8th & Pine Hwy. 72 & Salem Ave. 364-5202
St. James - Jefferson & Washington 265-3222
Member F. D. I. C.

THE FAR SIDE

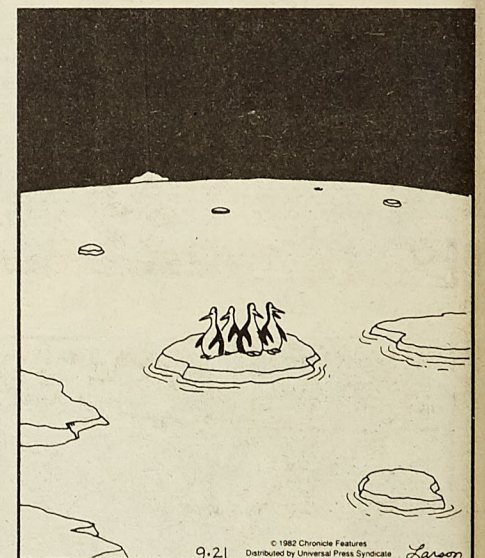
By GARY LARSON



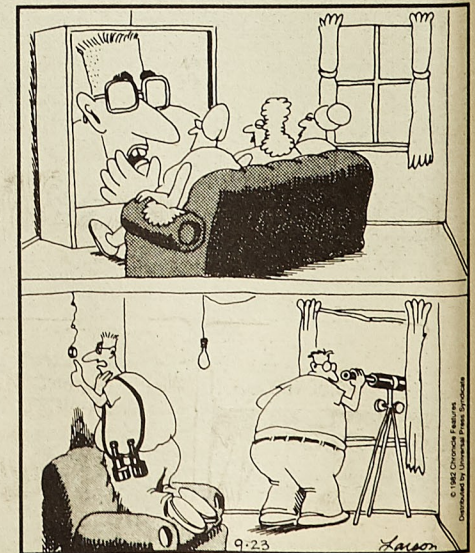
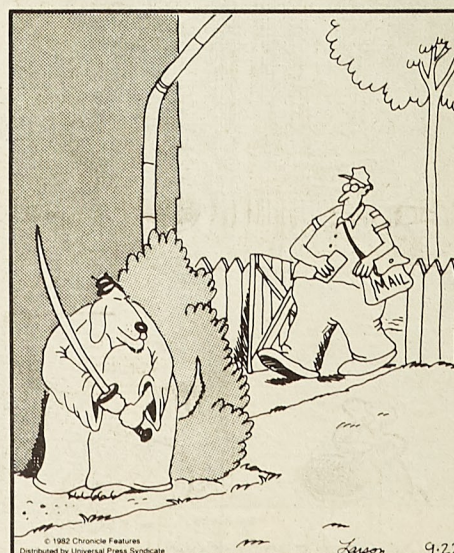
"Arnold, it's Mr. Wimberly on the phone. ...
He says the next time you buzz his house,
he'll have his 12-gauge ready."



"See, Agnes? ... It's just Kevin."



"Well, once again, here we are."



"Say, Carl ... Forget the Hendersons for a
second and come look at this thing."

Mother Goose & Grimm
by Mike Peters

DOES TED KOPPEL KNOW ABOUT THIS?!!

CHINA.

AND SO DO I.

WHERE'S JUNE LOCKHART WHEN YOU NEED HER?

NO, THAT ONE'S NOT POISON.

GULP

International Tours Travel Agency of Rolla
1023 Kingshighway Rolla, MO 65401
Call Rick, Chris, or Melissa

MON-FRI 8 AM - 6 PM
SAT 10 AM - 4 PM

Your one stop!
For complete travel Planning
Foreign or domestic
Business or pleasure!

(314)341-3300
1-800-876-3331

Johnny's Smoke Stak
HICKORY PIT BARBECUE

Hickory Smoked Ribs
Our Specialty

Steaks Shrimp Cocktails
Catering Private Parties
Banquet Rooms Salad Bar

Saturday & Sunday Buffet
Open Daily at 11:00 A.M.

A.E. VISA M.C. DINER'S CLUB
HWY 72 & Rolla St.
Rolla, Missouri 65401
HOME OF MISSOURI CLASSIC BAR B QUE SAUCE

314-364-4838

STAGE ONE
the hair school

There's a Little Bit of Hollywood in Every Stage One Graduate

Back to School! SPECIALS

- Haircuts \$3.50
- Color • Frosts • Weaves
- Acrylic Nails • Facials
- Shampoo & Sets • Manicures

Our students are supervised by instructors 1304 N. Pine, Rolla 364-1383

USA CONVENIENCE MALL
1601 N. Bishop Rolla 364-0077

WELCOME BACK MINERS!

Cass Twin Packs \$1.09
Busch 12-pack \$5.35

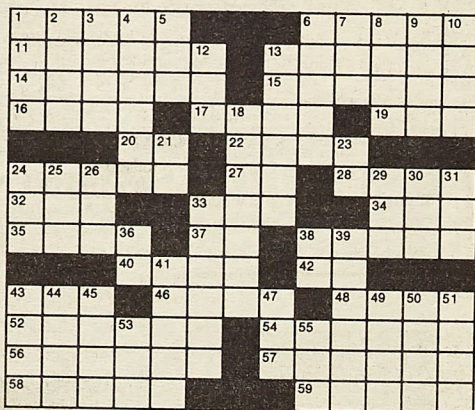
Orval Brooks

24 Hours A Day, 7 Days A Week

Fun & Games

ACROSS

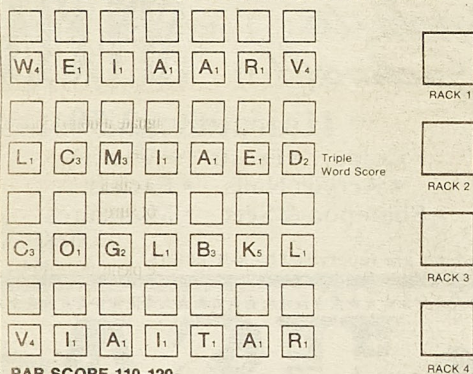
- 1 "— Smith and Jones"
6 Restrict
11 He was Gilligan
13 Ms. Loring
14 Russian river
15 Ella —
16 Upset
17 Belgian river
19 Can. Prov.
20 Welles monogram
22 "— of the Class"
24 Abby on "Knots Landing"
27 Dr.'s asst.
28 "Then — Bronson"
32 "— Life to Live"
33 Hurry
34 Roman household god
35 "— Times"
37 "— Our Own"
38 Sales' assistant
40 Hockey great
42 Spanish agreement
43 Old English letter
46 Rubber: prefix
48 Bone: prefix
52 Shoe style
54 James Stacy role
56 He's "The Equalizer"
57 Ms. Hughes
58 She spins the "Wheel of Fortune"
59 Cries weakly



DOWN

- 1 Aleutian island
2 Unstressed
3 Amer. playwright
4 Frankie —
5 Sun. talk
6 Mrs. Peller
7 French king
8 Sig —
9 Demeanor
10 Blown over
12 Mr. Charles
13 Lorne or Sheky
18 Comedian Wil —
21 ID for Abel
23 Capital locale
24 Canine
25 Yoko —
26 Recent: comb. form
29 "— My Children"
30 Ms. West
31 Sin
33 James B. Sicking role
36 Hartman monogram
38 "— the World Turns"
39 Singer Warwick
41 "— Cameos"
43 Height: abbr.
44 Antelope
45 Goldie —
47 Melmac visitor
49 Barge
50 "To — the Truth"
51 Time periods
53 Rooter
55 Goal

SCRABBLE® BRAND
Licensed by Selchow and Righter Co., owner of the registered trademark SCRABBLE.



PAR SCORE 110-120

by JUDD

FOUR RACK TOTAL
TIME LIMIT: 20 MIN

DIRECTIONS: Rearrange each row of letters to form a 2- to 7-letter word. To total points of **your words**, use scoring directions to right of each row. 7-letter words get 50-point bonus. "Blanks" used as any letter have no point value. All Judd's words can be found in The Official Scrabble Players Dictionary.

11-10-87

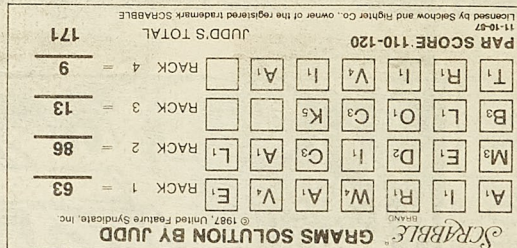
© 1987, United Feature Syndicate, Inc.

JOIN US at THE MOVIES

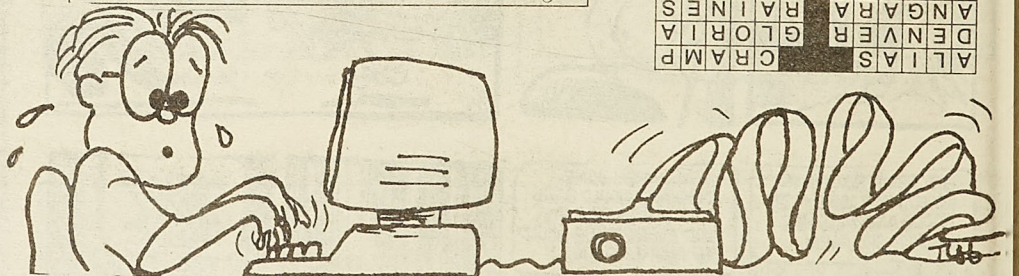
SEPT. 14 THIN BLUE LINE

Directed by ERROL MORRIS. Music by PHILIP GLASS. PG-1988. Documentarian Errol Morris breaks cinematic ground with his shocking non-fiction feature film about a seemingly innocent man trapped in a justice system that has gone awry. Morris, in the behind-the-scenes role of director / detective, combines investigative reporting with brilliant filmmaking to make this compelling reconstruction of a brutal murder and the events that

followed it. Viewers become detectives, jury members, and ultimately judges in this true story about a man who has been imprisoned for over twelve years for a crime he swears he did not commit. The power of film to bring about social change is vividly illustrated by *The Thin Blue Line*. As a result of evidence uncovered by Morris, the conviction of Randall Adams has been overturned and he has been freed.



PAR SCORE 110-120
JUDD'S TOTAL
171
9
13
86
63
© 1987, United Feature Syndicate, Inc.



Quality Cleaners

* Expert Cleaning * Reasonably Priced

108 W. 7th Street Rolla, MO 65401 364-3650

Foods For Health

Complete line of vitamins, supplements, herb teas, natural foods, bulk spices, body building products, books, etc.



10% Discount
with this coupon &
student I.D.
Valid Sept. 13-19

Hours: 9-6 M-F
10-5 Sat
707 S. Bishop (Hwy 63S)
364-7860

SPI AH Games

D&D Supplies

ROLLA CRAFT & HOBBY

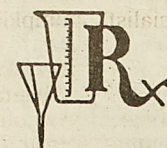
1009 Pine Rolla, MO 65401 364-5581

MEDI - VALUE PHARMACY

Rolla's Only Downtown Pharmacy
1000 Pine Street Rolla 364-7077
Mon.-Fri. 8:30-8 Sat. 8:30-6
Sunday 11-5
7 DAYS A WEEK

Full Line of Drug Store and Pharmacy Items Plus!

If you have questions about the prescriptions you take,
ask Bill Wuenschel, your friendly pharmacist, for the answers!



COMMANDO WAR GAMES

The action packed paint pellet survival game. Come play the game that's sweeping the nation. Open weekends. Just 30 min. from campus. Call for Information and Reservations Mon.-Fri., 894-8543.

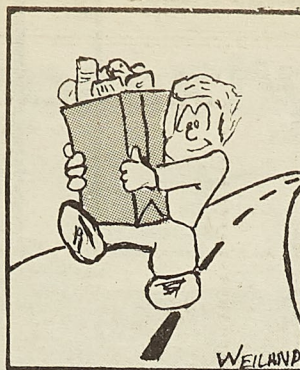
Students support Phelps County Walk for Hungry

Submitted by Margaret Miller

Hunger. It's what you feel during late-night study sessions, right? Well, yes, but hunger was also a reason that 1500 kids died in the past hour. You can help disaster victims all over the world, including farm families in the United States, by participating in the Phelps County Walk for the Hungry, which will assemble at the UMR Hockey Puck at 1:00 p.m., Sunday, September 22th. The ten kilometer (six-mile) walk will begin at 2:00 p.m.(rain or shine).

The first step is to obtain a sponsor record. Stop by the Newman Center, 2 Vichy Road, or the Wesley House, 403 W. 8th (across the street from the Rolla Post Office). Or arrange to get a sponsor record on campus by calling one of these students: Michael Barnett 341-2630; Michael Hurst 364-4841; Joelle Hubbard 364-9298.

To register to walk turn in the first page of your sponsor record at 1:00 p.m. the day of the walk. If you have \$100 in cash and/or pledges, you will



be given a free t-shirt to wear during the walk to keep.

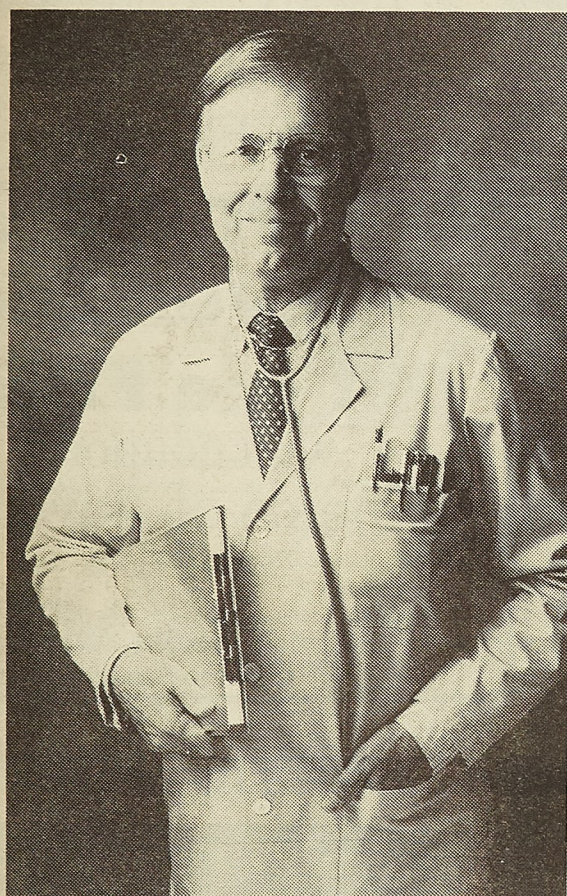
(100 will be distributed to the first 100 registrants who qualify). The person who turns in the most money after pledges have been collected will win the coveted Golden Sneaker Trophy. The fraternity and the sorority that turns in the most money will each receive a travelling plaque.

If you are confined to a wheelchair, you can join the crowd too. Call Jim Joiner at 364-3343. He has a lis of

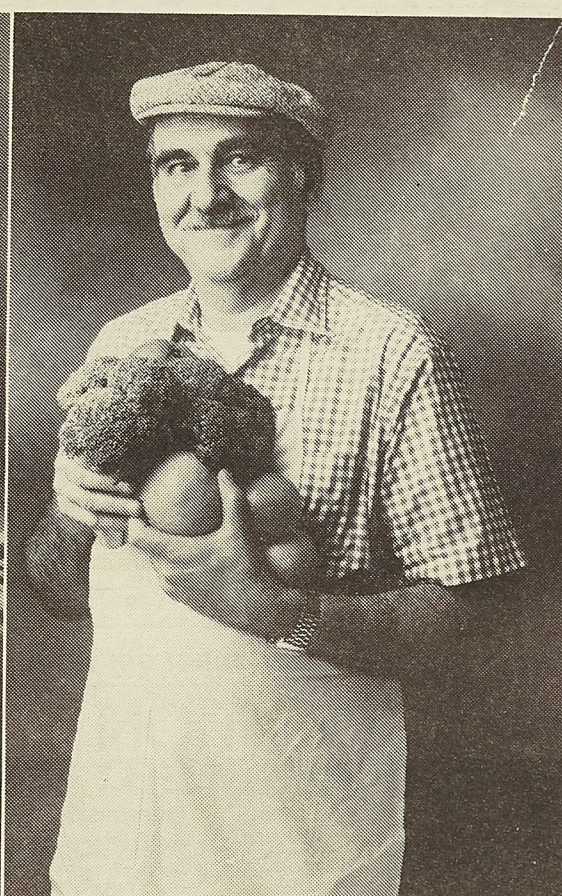
Optimists who are eager to walk and
also push a new friend.

Water will be available before, after, and in the middle of the walk. Although most students enjoy completing the walk, nobody is required to. A rescue van will patrol the walk route.

While you're testing your fitness and enjoying stress reducing exercise with your friends, millions around the world will be walking to find sources of food and clean water. You will be walking with them and for them.



**FOR THE BEST DEFENSE
AGAINST CANCER, SEE HIM
ONCE A YEAR.**



AND HIM ONCE A WEEK.

He may not look like everybody's idea of a cancer specialist.

But there's strong evidence that your greengrocer has access to cancer protection you won't find in any doctor's office.

Like broccoli, Peaches, Canteloupes, Spinach. And other sources of Vitamin A related to lowering the risk of cancer of the larynx and esophagus. Not to

mention sweet potatoes, carrots, pumpkin, winter squash, tomatoes, citrus fruits and brussels sprouts.

Vegetables such as cabbage, broccoli, brussels sprouts, kohlrabi and cauliflower may help reduce the risk of gastrointestinal and respiratory tract cancer.

Fruits and vegetables (and whole grain cereals such as

oatmeal, bran and wheat) may help lower the risk of colorectal cancer.

In short, make sure you do what your mother always told you to do. Eat your vegetables.

**AMERICAN
CANCER
SOCIETY**

**When you party,
remember to...**



**It's as easy as counting
from 1 to 10.**

Guests:

1. Know your limit—stay within it.
2. Know what you're drinking.
3. Designate a non-drinking driver.
4. Don't let a friend drive drunk.
5. Call a cab if you're not sober—or not sure.

Hosts:

6. Serve plenty of food.
7. Be responsible for friends' safety.
8. Stop serving alcohol as the party winds down.
9. Help a problem drinker by offering your support.
10. Set a good example.



150 Paularino Ave., Suite 190,
Costa Mesa, CA 92626
1-800-441-2337

Beer Drinkers of America is a non-profit consumer membership organization open only to persons over the age of 21.



Autocraft Muffler Shop

Complete Exhaust & Tailpipe Service
Car - Truck & Foreign
***Brake Service *Shocks**

Bill Franklin
 120 S. Bishop (Jct 63 & 72)
 Rolla, Missouri 65401

Telephone:
 Area Code 314
 341-3434

Nobuko's

details make the
 difference

HAIR BOUTIQUE

across from TJ Hall

341-3800

PERSONAL RESOURCE DEVELOPMENT
 SERIES COUNSELING &
 CAREER DEVELOPMENT

Test Anxiety Presentation

Monday, September 18
 3:30-4:30 pm
 Maramec Room, UCE
 Facilitator: Dr. Gene Van Matre

PERSONAL RESOURCE DEVELOPMENT
 SERIES COUNSELING &
 CAREER DEVELOPMENT

Study Skills/ Test Preparation Presentation

Thursday, September 21
 6:30-7:30 pm
 South Lounge, Thom. Jefferson
 Facilitator:
 Dr. Camille Consolvo

PERSONAL RESOURCE DEVELOPMENT
 SERIES COUNSELING &
 CAREER DEVELOPMENT

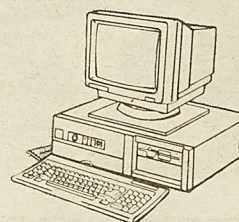
Interviewing Skills Presentation

Wednesday, September 20
 6:30-8:00 pm
 Miles Auditorium, Mch Engr
 Facilitator: Dr. Sam Burton

ENGINEERING STUDENT SPECIAL!

SPS 286/12
IBM COMPATIBLE SYSTEM
 with
MAGNAVOX VGA MONITOR

- 80286 Processor
- 6/10/12 MHZ Clock Speed
- 1 meg RAM
- Seagate 40MB Hard Drive
- 1.2 meg Floppy
- 2 Serial Ports
- 1 Parallel Port
- 1 Game Port
- 101 Key Enhanced Keyboard
- Magnavox VGA Monitor
- Paradise VGA Graphics Card
- 1 Year Warranty



Your 6% Solution Price

\$1775

GOOD THROUGH
 SEPTEMBER 30, 1989

Everything you need to get started!

6% SOLUTION

INCORPORATED
 The only solution for all your computer needs.

ROLLA
 Copperfield Square
 602 W. 6th
 Rolla, Mo 65401
 (314) 364-7133

KANSAS CITY
 Pine Ridge Business Park
 10327 W. 84th Terrace
 Lenexa, Ks. 66214
 (913) 888-5353

JEFFERSON CITY
 Capital Plaza West
 3702 W. Truman Blvd.
 Jefferson City, Mo 65109
 (314) 893-7133

ATTENTION SOPHOMORES & JUNIORS

If you're a Math, Engineering, Physics, or Chemistry major &
 your GPA is 3.3/4.0 (or better), the Navy would like to give you:

- \$1,100 a month until graduation
- Paid graduate-level training

A Navy Engineering Representative will be on campus.
 Informational Meeting, Monday October 2, 1989, 6:30 pm
 in Meremac Room. Personal interviews Tuesday
 October 3, 1989. Sign up at the Buehler Bldg.

NAVY OFFICER.

You are Tomorrow
 You are the Navy.

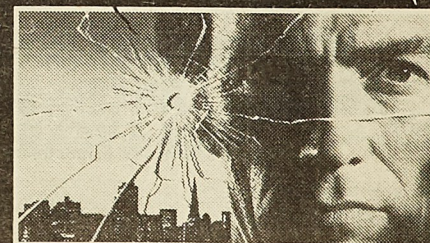
TROPICAL SNO

Shaved Ice &
 Frozen Yogurt
 35 Flavors
Buy One 8 Oz
Shaved Ice
Get one FREE
 with coupon
 (Choice of flavors)

Expires 9/30/89

112 S. Bishop
Rolla, Missouri
 (Next to Autocraft Mufflers)

CLINT EASTWOOD



DIRTY HARRY IS AT IT AGAIN

SUDDEN IMPACT



FROM WARNER BROS.
 A WARNER COMMUNICATIONS COMPANY

Dirty Harry Double Feature
Sudden Impact 7 pm Fri & Sat
Magnum Force 9 pm Fri & Sat
September 15 & 16

ME 104

Free w/Student ID

Sports

Time let a victory pass by the football team

By Jeff Zawila
Staff Writer

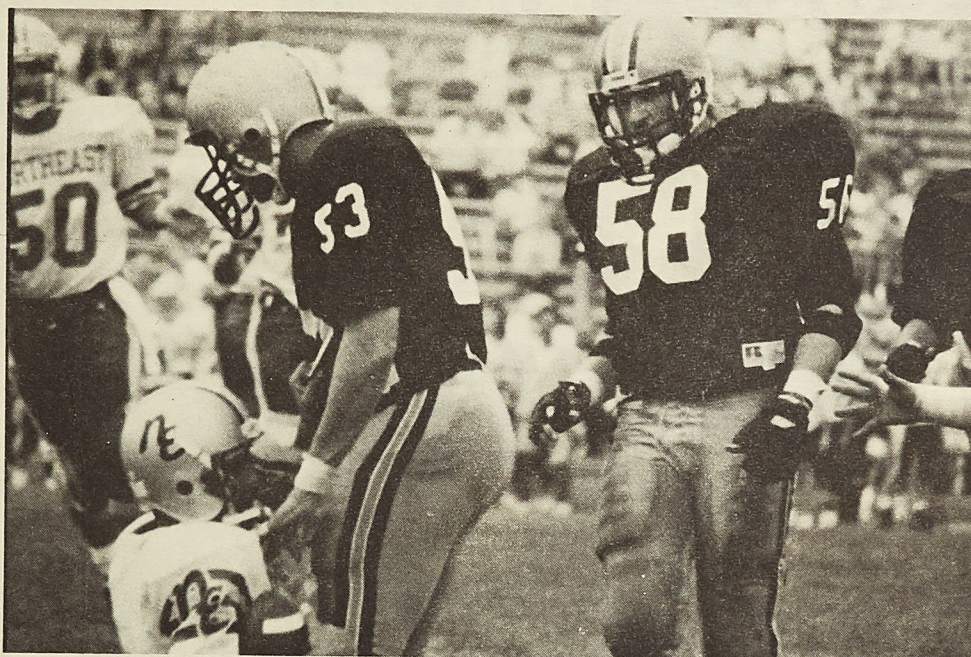
The UMR football team lost a heart-breaking game against the Northeast Missouri State Bulldogs 19-17. This past Saturday, September 9th. The loss brought the Miner's record to 1-1.

The game started with both the Miners and Bulldogs unable to do anything offensively. The Bulldogs broke the dead-lock by 9-play, 69 yard drive that ended in a touchdown with 4:16 left in the first quarter. The extra point was good. The Bulldogs commanded a 7-0 lead. Neither team was able to move the football through the rest of the first quarter and the beginning of the second quarter.

The Bulldogs made a 27 yard fieldgoal with two and a half minutes remaining in the half after recovering a fumble on the Miners 38 yard line.

The Miner offense finally came alive on the next drive. With key passes for first downs from quarterback Tom Minnick to wide receiver Chris Kennedy, and running backs Ron Harmon and Vincent Banks, the Miners drove to the Bulldogs 20. AS time ran out in the first half, kicker Dave Belloli booted a 37 yard field goal.

The Miner came out for the second half all fired up and it showed by Ron Harmon's outstanding kickoff return to the Bulldogs 46 yard line. On the



Susan Lowe

Mike Chadler (93) knocks down his opposition with Mike Swinford (58) ready to assist.

following play, Randy Mullinax kept the Miners rolling with an excellent 28-yard run. The impressive drive continued until Tom Minnick crossed the goal line for the touchdown. The Miners tied the score at ten each when Dave Belloli split the uprights on the PAT.

The Bulldogs took the lead 13-10

with a 35 yard field goal. The Miners countered with another impressive drive only to fumble on the Bulldogs 30. The Bulldogs drove the length of the field and scored a touchdown to start the fourth quarter off. The extra point attempt failed. The Bulldogs led 19-10.

After a few possession changes by

both sides, the Miners recovered a fumble on the Bulldogs 31. Freshman running back Vincent Banks took the pigskin around the left end and streaked down the sideline into the endzone. Belloli's extra point was good. The Miners trailed 19-17 with five and a half minutes left in the game.

The next possession of the Miners left them on their 20 yard line with 28 seconds remaining trailing 19-17. After a few long pass attempts, the Miners were on the short end of the score as the final seconds ticked off the clock.

Head coach Charlie Finley summed up the game with a few remarks, "we were two different teams today. The first half team was uninteresting. We can't win a game by playing just one half." He also commented on getting some of the younger players more involved in the game. Coach Finley finally concluded, "some good things are going to happen in the future for us."

Randy Mullinax led Miner rushers with 62 yards in 15 carries. Tom Minnick completed 12 of 18 passes for 131 yards. Ron Harmon and Randy Mullinax caught three passes each for 40 and 19 yards respectively. Carl Roth and Mark Diamond led the defense with 12 tackles each.

The Miners other game was a 20-7 win against Washburn University on September second. The team was much more consistent against Washburn than Northeast. Ron Harmon gained 163 yards on the ground while the defense completely dominated Washburn.

The next game is on September 16th at Missouri Western. Kickoff is at 7 pm.

Men's soccer team remains undefeated with a shut out

By Dave Swarts
Staff Writer

In the most significant victory in this young '89 men's varsity soccer season, the UMR team soundly defeated the always tough squad of Lewis University in a 2-0 shutout on a slippery field this past Saturday. After a scoreless first half filled with fouls, the Miners dominated the second forty-five minutes of play. The offensive pressure resulted in a text-book head ball goal by Steve Campbell 20 minutes into the last half. Ten minutes later, the men in gold 'n' black moved the ball nicely up the side line with short, well-practiced, passing and found Chris Sod in the corner. Sod

then dribbled through two defenders and beat the Lewis goalkeeper with a shot from a bad angle.

The air-tight defense, missing senior defender and team captain Jim Saunders for the last two games due to a hyper-extended knee, made it easy for Steve Temme to record his first shutout of the season. But Temme earned his title of goal keeper by keeping approximately six ripping shots from entering any part of the 96 square feet goal mouth.

The next game for the UMR Kickers is Wednesday, September 13 at Missouri Southern in Joplin, MO. The team is not exactly looking forward to the 3:30 game time. Joplin is a tough

place to play. The fans really back up. The Missouri-Southern squad is a talented, well-conditioned group, and sometimes the referees could be called biased by some people. But you can be sure that our guys will be up for the test.

In closing, the UMR men's varsity soccer team will be playing the University of Southern Indiana this Saturday the 16th. The next home game is Tuesday, September 19th, against Fontbonne College. In women's varsity soccer, the Lady Miners lost to the Lewis women's team 7-0 just prior to the men's game.

"Young Guns" bag second

By Buck Simpson
Staff Writer

Last Saturday, the UMR "Young Guns" through their first test of fire unscathed. In the SIUE Cross Country Classic, the Miner men powered past the rest of the field to finish second behind nationally ranked Southern Indiana.

At the start of the race, the Harriers went out smart. Led by Junior Tim Bauer, the pack cruised through the first mile around five minutes. Then, they pulled the trigger. At the halfway point (2.5 miles), the Miners had powered up into contention with Bauer in tenth, Hostetter and Van Derwall in the twenties and John Conrad on their heels. However, the surge was far from over. In the end Bauer battled home in 27:28 for tenth place, but the

freshman duo came through. Steve Hostetter and Robbie Van Derwall moved up ten more places to finish in eleventh (27:36) and 12th (27:43) respectively. John Conrad was next in a sound 28:01 for seventeenth place, and Eric Powers finished out the score for the Miners with a 28:26 effort in twenty-seventh place.

"The men came through. After a tough week of practice and the muddy conditions they really ran well," commented Coach Dewey Allgood. He will now direct his pack to the Missouri Invitational in Columbia next Saturday. Against a Deep Division I field, the Miners will get to run with the big dogs. With a little more effort the Miners could be a threat regionally.

IN SEARCH OF EXCELLENCE



End of the Rainbow
THE AUDIO AUTHORITIES
1808 N. Bishop, Rolla

Placement

UNIVERSITY OF MISSOURI-ROLLA
PLACEMENT OFFICE
Buehler Building, 9th & Rolla St.

PRE RECRUITMENT MEETINGS, FALL, 1989

September 5	U.S. Marines	9am-5pm	Hockey Puck
September 6	U.S. Marines	9am-5pm	Hockey Puck
September 13	Procter & Gamble	8pm	Centennial Hall West
September 14	Procter & Gamble	8am-3pm	Hockey Puck
September 18	Marathon Oil Co.	7pm	Centennial Hall East
October 2	U.S. Navy ARCO	6:30pm 7:00pm	Meramec Room Centennial Hall West
October 3	U.S. Navy Interviews	8am-5pm	Sunrise Room
	General Dynamics	7pm	Missouri Room
October 4	Conoco-CSC U.S. Marines	7pm 9am-5pm	Meramec Room Hockey Puck
October 5	Conoco-Gen. Meeting	7pm	Centennial Hall
	Anderson Consulting	5pm	Mark Twain Room
	U.S. Marines	9am-5pm	Hockey Puck
October 9	Amoco Oil	7pm	ME Auditorium
	United Telephone	7pm	Meramec Room
October 10	Union Pacific	6:30 pm	Meramec Room
	Schlumberger Well	7pm	101 EE
October 11	Citicorp U.S. Card	7pm	Meramec Room
	Compaq Computers	7pm	Centennial West
October 16	Chevron	7pm	Mark Twain Room
October 19	BHP International	5pm	Mark Twain Room

UNIVERSITY OF MISSOURI-ROLLA
PLACEMENT OFFICE
Buehler Building
9th & Rolla St.

PERMANENT EMPLOYMENT

FALL WEEKLY DETAIL LIST #3 Week of October 16-20, 1989

SIGNUP LOCATION: Ground level (G-5 Buehler Building)
SIGNUP HOURS: 7:45 to 11:30 a.m.
1:00 to 4:15 p.m.

PRESCREENED INTERVIEWS

For prescreening companies, qualified students must submit their resumes in Room G-3, Buehler Bldg., prior to the deadline outlined. Resumes will be mailed to participating companies three weeks prior to the interview date, and they will select the students they wish to interview. Selectee's names and backups will be posted on the bulletin boards in the signup area and in the appropriate departments. Posting of names will be done approximately two weeks before the interview date with a four day deadline for signing.

WILLIAMS NATURAL GAS COMPANY-TULSA
P.O. Box 3288
Tulsa, OK 74101
attn: Ms. Retha Oliver

NUMBER OF SCHEDULES: 1
MAJORS: BS/CE, ME
POSITION: Engineer I
LOCATION: Tulsa, OK
DECEMBER 1989, MAY 1990 GRADS
U.S. CITIZENSHIP OR MUST HAVE GREEN CARD
3.0 G.P.A. PREFERRED

DEADLINE FOR TURNING IN RESUMES: Monday, Sept. 18, 1989
INTERVIEW DATE: October 16, 1989

Note: 1 schedule = 12 interview openings, depending upon beginning and ending times of interviews. Number of schedules and interview openings will vary by companies.

PETERBILT MOTORS COMPANY
38801 Cherry St.
Newark, CA 94560
attn: Ms. Jenny Hall

NUMBER OF SCHEDULES: 2
MAJORS: BS/ME
POSITION: Associate Design Engineers - design integration of components for heavy duty custom trucks.
LOCATION: Newark, CA (San Francisco Bay area)
DECEMBER 1989 GRADS
U.S. CITIZENSHIP OR PERMANENT RESIDENT VISA REQUIRED
3.0 G.P.A. REQUIRED

DEADLINE FOR TURNING IN RESUMES: Monday, Sept. 18, 1989
INTERVIEW DATE: October 16, 1989

STANDARD TESTING & ENGINEERING CO.
3400 N. Lincoln
Oklahoma City, OK 73105
attn: Mr. Richard Mudd

NUMBER OF SCHEDULES: 1
MAJORS: BS/MS CE
POSITION: Geotech. Engr.; Bridge Inspector
LOCATION: Oklahoma City, OK
recent grads, DECEMBER 1989 or MAY 1990 GRADS
2.8 G.P.A. REQUIRED
MUST BE PERMANENT RESIDENT

DEADLINE FOR TURNING IN RESUMES: Monday, Sept. 18, 1989
INTERVIEW DATE: October 16, 1989

VISTA CHEMICAL COMPANY
P.O. Box 19029
Houston, TX 77224
attn: Ms. Maureen Bittick

NUMBER OF SCHEDULES: 1
MAJORS: BS/MS ChE
POSITION: Process Engineer - Design & trouble-shoot for plants across U.S., prepare economics & evaluate investment opportunities.
LOCATION: Houston, TX
DECEMBER 1989, MAY 1990 GRADS
MUST BE PERMANENT RESIDENT OR HAVE U.S. CITIZENSHIP
2.5 G.P.A. REQUIRED

DEADLINE FOR TURNING IN RESUMES: Monday, Sept. 18, 1989
INTERVIEW DATE: October 16, 1989

NOOTER CORPORATION
P.O. Box 451
St. Louis, MO 63166
attn: Mr. Robert Arb

NUMBER OF SCHEDULES: 2
MAJORS: BS/ME, CE
POSITION: Contracting (Sales) Engineer, Shop Fabrication (Engineer), Project Engineer, Machine Design Development Engineer
LOCATION: St. Louis, MO
DECEMBER 1989 GRADS
U.S. CITIZENSHIP REQUIRED

DEADLINE FOR TURNING IN RESUMES: Monday, Sept. 18, 1989
INTERVIEW DATE: October 16, 1989

CHEVRON CORPORATION
P.O. Box 7137
San Francisco, CA 94120-7137
attn: Mr. Don Langewish

NUMBER OF SCHEDULES: 2: Oct. 17; 1: Oct. 18
MAJORS: BS/MS ChE, CE, EE, ME, PE
POSITION: Professional Engineers
LOCATION: Positions for Professional Engineers are available nationwide, but mainly on the Gulf and West Coasts.
STUDENTS SHOULD BRING AN UNOFFICIAL TRANSCRIPT TO THE INTERVIEW.
U.S. CITIZENSHIP OR PERMANENT RESIDENT VISA HOLDER

DEADLINE FOR TURNING IN RESUMES: Tuesday, Sept. 19, 1989
INTERVIEW DATES: October 17, 18, 1989

INTERVIEWS FOR PETROLEUM ENGINEERS WILL BE ON OCT. 18 ONLY.

PHILLIPS PETROLEUM COMPANY
180 Plaza Office Bldg.
Bartlesville, OK 74004
attn: Mr. W.F. Dausses

NUMBER OF SCHEDULES: 2-PhD ChE, Chemistry
2-BS/Comp Sci
2-BS/ME, EE
2-BS/ChE

POSITIONS: PhD Chemist: Polymer Chemistry/
Organic Chemistry - synthesis and characterization
of polymers for high temperature and other specialty
applications.

PhD Chemist: Inorganic/Physical
Chemistry - The development of new catalyst systems
for conversion of olefin hydrocarbons to polyolefin
resins that lead the industry in performance and
quality.

PhD Chemical Eng.: Interest in
kinetics, catalysts and chemical reactor engineering.
BS/Comp Sci.: Formal entry level
orientation and one to three months training in
computer state-of-the-art, followed by project team
assignments in system design and development.

BS/EE: Downstream Organization -
general plant electrical engineering work; also
Exploration & Production - year-long training program
provides employee an overview of upstream operations
by field exposure to drilling, production, reservoir
and process engineering.

BS/ME: Downstream Organization -
Mechanical design to include piping, vessels, rotating
equipment and foundations. Engineering Development Prog.

BS/ME: Exploration & Production -
Year-long training program with overview of upstream
operations by field exposure to drilling, production,
reservoir and process engineering.

BS/ME: Downstream Organization -
Transportation Engineering Representative (ME).

BS/ChE: Downstream Organization -
Heat material balances, material balances, thermodynamics
data systems, heat transfer, etc.; Exploration &
Production - Year-long training program with overview of
upstream operations by field exposure to drilling,
production, reservoir & process engineering.

LOCATION: Southwest - Bartlesville, OK
3.0 G.P.A. PREFERRED
DECEMBER 1989, MAY 1990 GRADS

DEADLINE FOR TURNING IN RESUMES: Tuesday, Sept. 19, 1989
INTERVIEW DATES: Oct. 17, 18, 1989

PHILLIPS PETROLEUM COMPANY - Continued from page 4

INTERVIEWS FOR BS/MS CANDIDATES WILL BE 1/2 HOUR IN LENGTH.
PHD INTERVIEWS WILL BE ONE HOUR IN LENGTH.

Interviewees must be presently authorized to work in the U.S.
on a full-time basis. For the positions Phillips are
interviewing, will not sponsor for the purpose of obtaining
H-1 Visas.

STUDENTS ARE REQUESTED TO VIEW THE PHILLIPS VIDEO, "THE
PERFORMANCE COMPANY-PHILLIPS 66" PRIOR TO THEIR INTERVIEW.

GENERAL ELECTRIC COMPANY
20545 Center Ridge Road
Suite 135
Rocky River, OH 44116
attn: Mr. Michael Shinn

THE FOLLOWING DIVISIONS WILL BE INTERVIEWING ON OCT. 17-18:

PLEASE SPECIFY APPROPRIATE DIVISION ON RESUME.

Considerations for employment under the Immigration Reform
and Control Act of 1986 are determined by the position;
please refer to job descriptions (available at time of
interview signups.)

FALL 1989, SPRING 1990 GRADS
STUDENTS MUST FILL OUT GE APPLICATION PRIOR TO INTERVIEW.

GE AEROSPACE - interviewing BS/MS EE, ME, Computer Science
AE, Math & Physics. Positions in variety of high
technology areas. Various locations.

GE AIRCRAFT ENGINES-EVENDALE - interviewing BS/MS AE, ME,
EE, Eng. Mech., Comp Sci, MetE for Eng. Dev. Program;
interviewing BS/MS ME, EE or Eng. Mgt. for Manufacturing
Development Program. Location: Cincinnati, OH
Requires 3.0 G.P.A.
Prefer related co-op or summer experience

KNOLLS ATOMIC POWER LABORATORY - interviewing BS ME, EE, ChE,
NE or AE for Nuclear Operations Program in Orlando, FL, then
Schenectady, N.Y. or Windsor, CT; BS/MS ME, EE, NE, Health,
Physics or Chemistry for Field Engineering Program or
Radiological Controls Training Program in Schenectady, N.Y.;
or BS/MS ME, EE, ChE, Chemistry, NE, AE, Physics, CE, MetE
for Design, Development Engineer in Schenectady, N.Y.
Requires 3.0 G.P.A.

GE FIELD ENGINEERING PROGRAM - Requires BS ME or BS EE for
12-18 Month Training Program. Provides Business and Techni-
cal skills for engineers to operate confidentially and
independently as Field Engineers for GE Industrial & Power
Systems. Willingness to travel required. Various locations
throughout the U.S.

MANUFACTURING MANAGEMENT PROGRAM - Requires BS/MS, EE, ME
for MMP - two-year entry level program will expand the
competence of outstanding engineers desiring a career in
technical leadership. (Details will be posted with inter-
view signups.) Various positions throughout continental
U.S. - Geographical moves on program required.
MUST BE IN TOP QUARTER OF CLASS; AND MUST HAVE
MANUFACTURING/ENGINEERING WORK EXPERIENCE.

TECHNICAL SALES PROGRAM - Requires BS EE, ME or Power Eng.
for Technical Sales Program. Program prepares engineers for
careers in engineering sales in the industrial, electric
utility, distribution and construction markets. Various
locations. ACADEMIC STANDING MUST BE UPPER THIRD OF CLASS.

DEADLINE FOR TURNING IN ALL GE RESUMES: Tuesday, Sept. 19
INTERVIEW DATES: Oct. 17, 18, 1989

SOUTH WESTERN BELL CORPORATION
#1 Bell Center
Room 3600
St. Louis, MO 63101
attn: Ms. Lynn Wogtech

NUMBER OF SCHEDULES: 1 ea day, Oct. 19, 20, 1989
MAJORS: BS/Comp Sci or any Engineering
POSITION: Supervisory/Technical Management/
Design Eng./Computer Hardware/Software
Missouri, Texas, Arkansas, Kansas

LOCATION: Oklahoma
MUST BE IN TOP HALF OF CLASS
MUST HAVE LEGAL AUTHORIZATION TO PERMANENTLY WORK IN U.S.
DECEMBER 1989, MAY 1990 GRADS

DEADLINE FOR TURNING IN RESUMES: Wednesday, Sept. 20, 1989
INTERVIEW DATES: Oct. 19, 20, 1989

TEXAS OIL & GAS
First City Center
1700 Pacific Ave., Lock Box 10
Dallas, TX 75201-4696

NUMBER OF SCHEDULES: 1
MAJORS: BS/PE, BS/ME
POSITION: Gas Gathering/Processing for a pipeline
company
LOCATION: Tyler, TX; Corpus Christi, TX; Pecos,
TX; Canton, OK; Ft. Smith, AR

3.0 G.P.A. REQUIRED
U.S. CITIZENSHIP REQUIRED
DECEMBER 1989 OR MAY 1990 GRADS

DEADLINE FOR TURNING IN RESUMES: Wednesday, Sept. 20, 1989
INTERVIEW DATE: October 19, 1989

NASA JOHN F. KENNEDY SPACE CENTER
RM-STF
Kennedy Space Ctr., FL 32899
attn: Mr. Michael Hill

NUMBER OF SCHEDULES: 1
MAJORS: BS/AE, ChE, ME, EE, Eng. Mech.
POSITION: Aerospace Technologists - details to
be available at time of interview signups.
LOCATION: Kennedy Space Ctr., FL
DECEMBER 1989 OR MAY 1990 GRADS
MUST BE U.S. CITIZEN
2.9 G.P.A. REQUIRED

DEADLINE FOR TURNING IN RESUMES: Wednesday, Sept. 20, 1989
INTERVIEW DATE: October 19, 1989

ANHEUSER-BUSCH, INC.

#1 Busch Place
St. Louis, MO 63128
attn: Ms. Kathy Brummit

NUMBER OF SCHEDULES: 2-BS/ChE for Experimental Brewer and/
or Brewing Supervisor Trainer
This is a 18-month training program that will be held at
the St. Louis Headquarters. Will be assigned to the Re-
search Pilot Brewery with Corp. Brewing Dept.

1-BS/ME for Engineering and design ac-
tivities in fields such as: material handling, brewing
process, high speed bottle and can packaging, steam
generation, ammonia refrigeration, etc. Position is in
Corporate Engineering Department.

2.8 G.P.A. REQUIRED
U.S. CITIZENSHIP OR PERMANENT RESIDENT STATUS
DECEMBER 1989 GRADS

DEADLINE FOR TURNING IN RESUMES: Wednesday, Sept. 20, 1989
INTERVIEW DATE: October 20, 1989

BURNS & MCDONNELL ENGINEERING
4600 East 63rd St. Trafficway
P.O. Box 419173
Kansas City, MO 64141
attn: Mr. John Rice

NUMBER OF SCHEDULES: 1
MAJORS: BS/MS/CE, BS/EE (POWER), BS/ME, BS/ChE
POSITION: Various - to be listed at time of
interview signups
LOCATION: Kansas City, MO
DECEMBER 1989, MAY 1990 GRADS
2.8 G.P.A. REQUIRED
U.S. CITIZENSHIP OR PERMANENT RESIDENT VISA REQUIRED

DEADLINE FOR TURNING IN RESUMES: Wednesday, Sept. 20, 1989
INTERVIEW DATE: October 20, 1989

NOTE: CANDIDATES SHOULD BRING A TRANSCRIPT TO THE
INTERVIEW.

DEERE AND COMPANY
John Deere Road
Moline, IL 61265
attn: Ms. Sandy Bishop

NUMBER OF SCHEDULES: 2
MAJORS: BS/ME, EE, ChE, MetE
POSITION: ME: Manufacturing, Plant, and Quality
Engineering
EE: Includes lighting design and
installation follow-up, cabling design and installation
follow-up, etc. Will also consider EE with Computer
Science background - to be trained on CADAM, PLC's and
DEC equipment.

ChE: Work in areas of inorganic,
organic, instrumental, or process control.
MetE: Work in ferrous metallurgy.
Detailed job listing will be available at time of signing
for interviews.

3.0 G.P.A. REQUIRED
U.S. CITIZENSHIP OR PERMANENT RESIDENT VISA
DECEMBER 1989 OR MAY 1990 GRADS

DEADLINE FOR TURNING IN RESUMES: Wednesday, Sept. 20, 1989
INTERVIEW DATE: October 20, 1989

WELLS MANUFACTURING COMPANY
7800 North Austin Avenue
Skokie, IL 60077

NUMBER OF SCHEDULES: 1
MAJORS: BS/Met Eng. or BS/ME (I.E.)
POSITION: Process, Project, Industrial Engineer
LOCATION: Skokie, IL (N. Suburb. Chicago)
DECEMBER 1989, MAY 1990 GRADS
U.S. CITIZENSHIP OR PERMANENT RESIDENT VISA REQUIRED

DEADLINE FOR TURNING IN RESUMES: Wednesday, Sept. 20, 1989
INTERVIEW DATE: October 20, 1989

ILLINOIS POWER COMPANY
500 South 27th Street
Decatur, IL 62525
attn: Mr. G. Robert Teel

NUMBER OF SCHEDULES: 2
MAJORS: BS/ME, EE, NE
POSITION: Entry-level Service Area Eng.
LOCATION: Metro-East Central Illinois
DECEMBER 1989 OR MAY 1990 GRADS
U.S. CITIZENSHIP OR RIGHT TO WORK IN U.S. REQUIRED

DEADLINE FOR TURNING IN RESUMES: Wednesday, Sept. 20, 1989
INTERVIEW DATE: October 20, 1989

FISHER CONTROLS
8301 Cameron Road
Austin, TX 78753
attn: Ms. B. Kreisman

NUMBER OF SCHEDULES: 1-BS/ME, Eng. Mech. or Eng. Mgt.
for Final Control Systems Application Engineering
(located in Marshalltown, IA)

1-BS/ME for Final Control Systems
Design Engineering (Marshalltown, IA)

1-BS/MS EE, Comp Sci for Process
Instrumentation Engineering Training Program (Dallas, TX)

U.S. CITIZENSHIP OR PERMANENT RESIDENT VISA REQUIRED
DECEMBER 1989 OR MAY 1990 GRADS

DEADLINE FOR TURNING IN RESUMES: Thursday, Sept. 21, 1989
INTERVIEW DATE: October 20, 1989

LYONDELL PETROCHEMICAL CO.
P.O. Box 777
Channelview, TX 77530-0777
attn: Mr. Don Powers

NUMBER OF SCHEDULES: 3
MAJORS: BS/MS ChE, ME
POSITION: Chemical or Mechanical Engineer
LOCATION: Houston, TX
recent grads, DECEMBER 1989, MAY, JULY 1990 GRADS
2.5 G.P.A. REQUIRED

DEADLINE FOR TURNING IN RESUMES: Thursday, Sept. 21, 1989
INTERVIEW DATE: October 20, 1989

VISTA CHEMICAL
P.O. Box 605
Westlake, IA 70669
attn: Mr. Richard Hillman

NUMBER OF SCHEDULES: 1
MAJORS: BS/ChE
POSITION: Regular full-time Process Engineering
positions in a Vinyl Chloride Monomer (VCM) Plant
LOCATION: Lake Charles, LA
MUST BE AUTHORIZED TO WORK IN THE U.S. ON A FULL-TIME
BASIS.
DECEMBER 1989, MAY 1990 GRADS

DEADLINE FOR TURNING IN RESUMES: Thursday, Sept. 21, 1989
INTERVIEW DATE: October 20, 1989

NON-PRESCREENED INTERVIEWS

For non-prescreened companies, signups will be held approx-
imately two weeks prior to the interview date. Dates will
be published in the Weekly Detail Lists. Signups will be
on a first-come, first-served basis. Back-up lists will be
available for those students unavailable to interview.
Bring a resume with you at time of signing for back-up list.

U.S. DEPT. DEFENSE NAVAL WEAPONS CENTER
Naval Weapons Station
CO 62
Corona, CA 91720-5000
attn: Ms. Penny Campbell

NUMBER OF SCHEDULES: 1
MAJORS: BS/MS EE, ME or Eng. Mgt.
POSITION: Electronics, Mechanical & Industrial
Engineers
LOCATION: Corona, Seal Beach, Pomona, and Fall-
brook, CA
3.0 G.P.A. REQUIRED
U.S. CITIZENSHIP REQUIRED-OFFICE OF PERSONNEL MGT. REG.
1 1989 GRADS

INTERVIEW SIGNUP DATE: Monday, Oct. 2, 1989
INTERVIEW DATE: October 16, 1989

BHP UTAH INTERNATIONAL
550 California St.
San Francisco, CA 94104
attn: Mr. Raymond Tosioe

NUMBER OF SCHEDULES: 2
MAJORS: BS/CE, ME, Geol. Eng., Mine
POSITION: (Company is an exploration/
mining company.)
LOCATION: New Mexico
DECEMBER 1989 GRADS
U.S. CITIZENSHIP REQUIRED

INTERVIEW SIGNUP DATE: October 2, 1989
INTERVIEW DATE: October 20, 1989

GENERAL MOTORS CORPORATION
3044 West Grand Blvd.
Detroit, MI 48202
attn: Mr. Gene Wistehuf

NUMBER OF SCHEDULES: OCTOBER 17, 1989
2-ME
1-EE
1-MetE
1-Eng. Mgt.

OCTOBER 18, 1989
1-ME
2-EE
AM ONLY ChE
PM ONLY Chemistry

POSITION: Plant, Project, Quality Control,
Reliability, Sales
LOCATION: Midwest

U.S. CITIZENSHIP OR PERMANENT RESIDENT VISA REQUIRED
2.8 G.P.A. REQUIRED
2.6 G.P.A. AND ABOVE MAY SIGN ON OVERFLOW (BACK-UP LIST)

INTERVIEW SIGNUP DATE: Tuesday, Oct. 3, 1989

INTERVIEW DATES: October 17, 18, 1989

INFORMATION IS NOT AVAILABLE FOR THE FOLLOWING COMPANY

HALLMARK - interviewing Oct. 20, 1989
(Note change in interview date from Oct. 23 to Oct. 20.)

INFORMATION IS AVAILABLE FOR THE FOLLOWING COMPANIES:

A.B. CHANCE COMPANY
210 N. Allen
Centralia, MO 65240
attn: Mr. Bob Irish

NUMBER OF SCHEDULES: 1
MAJORS: BS/EE, ME
POSITION: Product Assistant
LOCATION: Centralia, MO
DECEMBER 1989, MAY 1990 GRADS
MUST BE ABLE TO WORK IN U.S.

DEADLINE FOR TURNING IN RESUMES: (EXTENDED TO SEPT. 15)
INTERVIEW DATE: October 2, 1989

EDISON BROTHERS STORES, INC.
501 North Broadway
St. Louis, MO 63178-4020
attn: Mr. Charles Marsh

NUMBER OF SCHEDULES: 1
MAJORS: BS/Comp Sci
POSITION: Programmer Analyst
LOCATION: St. Louis
DECEMBER 1989 GRADS

INTERVIEW SIGNUP DATE: Thursday, Sept. 21, 1989
INTERVIEW DATE: October 6, 1989

LEVER BROTHERS
1400 N. Pennsylvania
St. Louis, MO 63133
attn: Mr. Robert Wentzel

NUMBER OF SCHEDULES: 2
MAJORS: BS/ChE, ME, EE
POSITION: Product Supv., Project,
Process Eng.
LOCATION: St. Louis
DECEMBER 1989, MAY 1990 GRADS
U.S. CITIZENSHIP OR PERMANENT RESIDENT VISA REQUIRED

DEADLINE FOR TURNING IN RESUMES: Friday, Sept. 15, 1989
INTERVIEW DATE: October 9, 1989

HIMONT, INC.
P.O. Box 15439
Wilmington, DE 19850-5439
attn: Mr. Jim Kline

NUMBER OF SCHEDULES: 1
MAJORS: BS/ChE, ME for Plant Operations
BS/ChE, ME or Chemistry for
Tech Sales
BS/ChE for Process, Production &
Project
BS/ME for Production or Project Eng.
LOCATION: Nationwide: Jackson, TN; Bayport, TX;
Gahanna, OH; East Brunswick, NJ
DECEMBER 1989 or MAY 1990 GRADS
U.S. CITIZENSHIP OR PERMANENT RESIDENT VISA REQUIRED

DEADLINE FOR TURNING IN RESUMES: Friday, Sept. 15, 1989
INTERVIEW DATE: October 9, 1989

INLAND STEEL COMPANY
3210 Watling St.
East Chicago, IN 46312
attn: Mr. Dewey Conoes

NUMBER OF SCHEDULES: 3
MAJORS: BS/EE, MetE
POSITION: Associate Engineer
LOCATION: Chicago plant - Indiana Harbor
Works

2.8 G.P.A. REQUIRED
U.S. CITIZENSHIP REQUIRED
DECEMBER 1989 OR MAY 1990 GRADS

DEADLINE FOR TURNING IN RESUMES: Thursday, Sept. 21, 1989
INTERVIEW DATE: October 12, 1989

CITICORP DISTRIBUTION SERVICES DIV.
5th Floor, 200 International Circle
Hunt Valley, MD 21030
attn: Mr. Rich Lakis

NUMBER OF SCHEDULES: 2
MAJORS: BS/MS Eng. Mgt.
POSITION: Management Associate
LOCATION: Sioux Falls, SD & The Lakes, NV
DECEMBER 1989, MAY,
JULY 1990 GRADS
3.0 G.P.A. REQUIRED
APPLICANTS MUST BE PRESENTLY AUTHORIZED TO WORK IN
THE U.S. ON A FULL-TIME BASIS. THE COMPANY DOES
NOT SPONSOR INDIVIDUALS FOR THE PURPOSE OF OBTAINING
H-1 VISAS.

DEADLINE FOR TURNING IN RESUMES: Thursday, Sept. 21, 1989
INTERVIEW DATE: October 12, 1989

NOTE: Hewlett Packard has cancelled all interview
schedules for October 10, 11, 1989. H.P. DOES NOT
PLAN TO RE-SCHEDULE INTERVIEWS.

FINA OIL CO.
P.O. Box 215
Dallas, TX 75221
attn: Ms. Paula Green

NUMBER OF SCHEDULES: 3
MAJORS: 1-BS PE for Exploration & Production
1-BS/ME for Refining or Petrochemical
or Exploration & Production
1-BS/ChE for Refining or Petrochemical
LOCATION: Various
U.S. CITIZENSHIP OR PERMANENT RESIDENT VISA REQUIRED

DEADLINE FOR TURNING IN RESUMES: Thursday, Sept. 21, 1989
INTERVIEW DATE: October 20, 1989

Co-op Employment

September, 1989

CO-OP EMPLOYMENT

Sign-up location: 101 Buehler Bldg.
Co-op Office
9th & Rolla Sts.

Sign-up hours: 7:45 am - 11:00 am
1:00 pm - 3:00 pm

Interview date: Monday, Sept. 18, Tuesday, Sept.
19, & Wednesday, Sept. 20, 1989

CENTRAL INTELLIGENCE AGENCY (interview openings
Washington, DC still available)

Interviewing: A.E., Math., Chem., C.Sc., E.E.,
M.E., Physics

Requirements: 3.0 GPA or above, American Citizenship
required. Academic Level of Applicants: At least 29
number of credit hours completed at the end of the
present semester toward BS degree.

Sign-up date: Tuesday, September 5, 1989

Starting Work Date: Summer 1990 or Fall 1990

1 schedule each day - 39 interview openings

Interview date: Tuesday, Sept. 19, 1989

GENCORP AUTOMOTIVE (interview openings
Batesville, Arkansas still available)

Interviewing: M.E.

Requirements: 2.5 GPA or above, American Citizenship
Required. Academic Level of Applicants: At least
59 number of credit hours completed at the end of the
present semester toward BS degree.

1 hour interviews

Starting Work Date: Spring, 1990 or Summer 1990

Sign-up date: Tuesday, Sept. 5, 1989

2 schedules - 14 interview times

Interview date: Tuesday, Sept. 19, 1989

ANHEUSER BUSCH (interview openings
St. Louis, Missouri still available)

Interviewing: 1 schedule - M.E.
1 schedule - E.E.
1 schedule - Eng.Mgmt.

Requirements: 2.8 GPA or above, Must be completing
4 or 5 semesters toward BS degree.

Sign-up date: Tuesday, Sept. 5, 1989

3 schedules - 12 interview openings on each schedule.

Detailed job descriptions are available in the co-op
office.

Interview date: Thurs., Sept. 21, 1989

Anheuser Busch (interview openings
St. Louis, Missouri still available)

Interviewing: 1 schedule - E.E.
1 schedule - C.E., M.E., Mgmt.
1 schedule - C.Sc., E.E.

Requirements: 2.8 GPA or above, must be completing
4 or semesters toward BS degree program.

Sign-up date: Tuesday, Sept. 5, 1989

3 schedules - 12 interview openings on each schedule

Interview date: Friday, September 22, 1989

MONSANTO COMPANY (interview openings
St. Louis, Missouri still available)

Interviewing: Preferred Major - C.Sc., E.E.
(will interview 8 C.Sc., and 4 E.E.)

Requirements: 3.0 GPA or above, American Citizenship
not required, Academic Level of Applicants: At least
59 number of credit hours completed at the end of the
present semester toward BS degree.

Starting Work Date: Spring 1990 Term Jan-June

Sign-up date: Thursday, September 7, 1989

2 schedules - 12 interview times

Monsanto will hold an Orientation on Thurs., Sept. 21
at 3:30 - 5:00 in the Mark Twain Room, Univ. Center.
All students interviewing with Monsanto must attend
this orientation. You must bring your Monsanto
application with you to the orientation.

Interview date: Monday Sept. 25, 1989BROWN SHOE COMPANY
Work Locations: Steelville, MO, Union, MO,
& Caruthersville, MO

Interviewing: Eng.Mgmt., M.E.

Requirements: 2.25 or above, Academic Level of
Applicants: At least 60 number of credit hours
completed at the end of the present semester
toward BS degree

Starting Work Date: Spring, 1990

Sign-up date: Monday, Sept. 11, 1989

1 schedule - 13 interview times

Interview date: Monday, Sept. 25, 1989DORRIS COMPANY
St. Louis, Missouri

Interviewing: M.E.

Requirements: 2.8 GPA or above, American
Citizenship not required. Academic Level
of Applicants: At least 50 number of credit
hours completed at the end of the present
semester toward bs degree.Sign-up date: Monday, Sept. 11, 1989

Start work date: Spring 90

1 schedule - 10 interview times

Interview date: Tuesday, Sept. 26, 1989BUSSMANN
St. Louis, Missouri

Interviewing: E.E., M.E., Eng.Mgmt., Physics

Requirements: 2.5 GPA or above, American
Citizenship not required, must have completed at
least 59 credit hours or above at the end of the
present semester.Sign-up date: Tuesday, Sept. 12, 1989

1 schedule - 13 interview openings

Interview date: Thursday, Sept. 28, 1989SEMS(Sachs Energy Management Systems)
Chesterfield, Missouri (St. Louis)

Interviewing: M.E., E.E.

Requirements: 3.0 GPA or above, American Citizenship
Required. Academic Level of Applicants: At least
30 number of credit hours completed at the end of the
present semester toward BS degree.

Starting Work Date: Spring, 1990

Sign-up date: Thurs., Sept. 14, 1989

2 schedules - 26 interview openings

KOCH INDUSTRIES RESEARCH AND DEVELOPMENT
Wichita, Kansas

Interviewing: Ch.E., M.E., Nuc., Pet., Met.E.

Requirements: 3.0 GPA or above, Permanent Resident
or US Citizen. Academic Level of Applicants:
At least 45 number of credit hours completed at
the end of the present semester toward bs degree.

Starting Work Date: Spring 1990

Turn in Resumes: Tuesday, Sept. 26, 1989RESUMES ONLY. IF YOU WOULD LIKE TO BE CONSIDERED
FOR CO-OP EMPLOYMENT WITH THE ABOVE COMPANY, PLEASE
BRING A COPY OF YOUR CO-OP RESUME TO THE CO-OP OFFICE
ON THE ABOVE DATE.Interview date: Tuesday, Oct. 10, 1989SPARTAN ALUMINUM PRODUCTS
Sparta, Illinois

Interviewing: Eng.Mgmt., M.E.

Requirements: 2.0 GPA or above, American Citizenship
Required. Academic Level of Applicants: At least
44 credit hours completed at the end of the present
semester toward bs degree.

Starting Work Date: Spring 1990

Sign-up date: Tuesday, Sept. 26, 1989

1/2 schedule - 4 interview times

Interview date: Tuesday, Oct. 10, 1989
Wednesday, Oct. 11, 1989JOHNSON CONTROLS INC.
Kansas City, Kansas

Interviewing: E.E., M.E.

Requirements: 3.0 GPA or above. Academic Level
of Applicants: At least 29 number of credit hours
completed at the end of the present semester toward
bs degree

Starting Work Date: Spring 1990

Sign-up date: Tuesday, Sept. 26, 1989

1 schedule each day - 24 interview openings

AT&T
Kansas City, Missouri

Interviewing: C.Sc., E.E., Eng.Mgmt.

Requirements: 3.0 GPA or above, American Citizenship
required. Academic Level of Applicants: At least
60 number of credit hours completed at the end of
the present semester toward bs degree

Starting Work Date: Spring 1990

Turn in Resumes: Wed., Sept. 27, 1989RESUMES ONLY. IF YOU WOULD LIKE TO BE CONSIDERED
FOR CO-OP EMPLOYMENT WITH THE ABOVE COMPANY, PLEASE
BRING A COPY OF YOUR CO-OP RESUME TO THE CO-OP OFFICE
ON THE ABOVE DATE.Interview date: Monday, Oct. 2, 1989ANHEUSER BUSCH
St. Louis, Missouri

Interviewing: Eng.Mgmt.

Requirements: 2.8 GPA or above, Must be completing
4 or 5 semesters toward bs degree.Sign-up date: Mon., Sept. 18, 1989

6 month term work session, beginning January

1 schedule - 12 interview openings

Interview date: Wednesday, Oct. 4, 1989PUBLIC SERVICE OF INDIANA
Plainfield, Indiana (Near Indianapolis)

Interviewing: E.E., M.E.

Requirements: 2.7 GPA or above, American Citizenship
preferred but not required. Academic Level of
Applicants: At least 30 number of credit hours
completed at the end of the present semester toward
bs degree.

Starting Work Date: Spring 1990

Sign-up date: Wed., Sept. 20, 1989

1 schedule - 12 interview openings

CO-OP EMPLOYMENT

Addition to September Co-op List

Interview date: Friday, Sept. 29, 1989SVERDRUP CORPORATION
St. Louis, Missouri

Interviewing: Ch.E., E.E., M.E.

Requirements: 2.8 GPA or above, 3.0 Preferred,
American Citizenship preferred. Academic level of applicants: Must
have completed at least 30 credit
hours at the end of the present semester
toward bs degree.Sign-up date: Thursday, Sept. 14, 1989

2 schedules - 28 interview openings

Interview date: Tuesday, Oct. 3, 1989MOOG AUTOMOTIVE
St. Louis, MissouriInterviewing: 1 - Schedule - M.E.
1 - Schedule - Met.E.Requirements: 2.8 on the M.E. Schedule - 2.5 on the
Met.E. Schedule, American Citizenship
required. Sophomore or Junior LevelSign-up date: Tues, Sept. 19, 19891 schedule - 12 interview times
1 schedule - 12 interview timesNOTE: The ones that indicate RESUMES ONLY.
This means the company will not be on campus
interviewing, but they want resumes to review
and should contact you if they are interested
in employing you.Please let the Co-op Office know immediately
of any acceptance of an offer.THE REMAINDER OF THE OCTOBER LIST AND NOVEMBER
LIST WILL BE AVAILABLE ON FRIDAY, SEPT. 15.Please check with the Co-op Office periodically
to see if additional companies have scheduled
interviews. These will be posted on the bulletin
board by the Co-op Office and printed in the
Miner Newspaper.

SPECIAL NOTICE - PRESCREENING

SIGN-UP FOR MCDONNELL DOUGLAS CORP. CO-OP INTERVIEWS

TURN IN RESUMES: Thursday, September 21, 1989

WHERE: Co-op Office, 101 Buehler Bldg.

TIMES: 7:45 am - 11:30 am - 1:00 pm - 4:00 pm

INTERVIEWING: A.E., C.Sc., E.E., M.E.

REQUIREMENTS: 3.0 GPA or above, American Citizenship
required, 45 credit hours completed at the
end of the present semester toward bs degree.THE ACTUAL INTERVIEW DATE WILL BE TUESDAY, OCTOBER
24, 1989McDonnell Douglas, St. Louis, Missouri has requested
that we furnish them with resumes for pre-screening.
We will accept as many CO-OP resumes as we can col-
lect. Just drop off a copy of your CO-OP resume on
the above sign-up date. After pre-screening, McDon-
nell will send the Co-op Office a list of those stu-
dents they are interested in interviewing. The list
should be posted in the UMR Co-op Office by Thursday,
October 12th. Check with the Co-op Office no later
than Oct. 12.

OCTOBER, 1989

CO-OP EMPLOYMENT

Sign-up location: 101 Buehler Bldg.
Co-op Office
9th & Rolla Sts.Sign-up hours: 7:45 am - 11:00 am
1:00 pm - 3:00 pmBurns & McDonnell
Kansas City, MissouriInterviewing: M.E. for their Nofsinger
Division. Nofsinger does chemical,
petro and food processing.Candidates should have completed at least
45-75 hours with an overall gpa of 2.6 or
above. Candidates should have good oral and
written communication skills and be active
in campus organizations.See Sharon, UMR Co-op Office as soon as
possible for further information.

Addition to the September list

Interview date: Wed., Sept. 27, 1989

ROWN SHOE COMPANY

Work Locations: Fredericktown, MO, Cabool, MO, Houston, MO, Mountain Grove, MO, Dixon, MO, Owensville, MO, Charleston, MO, Bernie, MO, Caruthersville, MO, Pocahontas, ARK, Union City, TN, Dyer, TN, Lexington, TN, Selmer, TN, Savannah, TN

Interviewing: M.E., E.E.

Requirements: 2.0 GPA or above,

Sign-up date: Wed., Sept. 13, 1989

Schedule - 13 interview openings

Interview date: Tues., Oct. 3, 1989

MSTED INDUSTRIES

Work Locations: St. Louis, MO, Keokuk, Iowa, Council Bluffs, Iowa, Chicago, IL

Interviewing: M.E., Met.E., Eng.Mgmt.

Requirements: 2.5 GPA or above, Sophomores or above

Sign-up date: Tues., Sept. 19, 1989

Schedule - 13 interview openings

RIGHT PATTERSON AIR FORCE BASE
ERONAUTICAL SYSTEMS DIVISION

Interviewing: A.E., C.Sc., E.E., E.E., Physics, Business Majors

Requirements: 2.5 GPA or above, American Citizenship required. Academic level of applicants: at least 30 number of credit hours completed at the end of the present semester.

Sign-up date: Tues., Oct. 24, 1989

RESUMES ONLY. IF YOU WOULD LIKE TO BE CONSIDERED FOR CO-OP EMPLOYMENT WITH THE ABOVE COMPANY, PLEASE BRING A COPY OF YOUR CO-OP RESUME TO THE CO-OP OFFICE ON THE ABOVE DATE.

TR WIRE AND CABLE

Interviewing: Chem., C.Sc., Met., Mgmt.

Requirements: 2.85 GPA or above, American Citizenship required, Academic level of applicants: at least 5 hours completed at the end of the present semester.

Sign-up date: Wed., Oct. 25, 1989.

RESUMES ONLY. IF YOU WOULD LIKE TO BE CONSIDERED FOR CO-OP EMPLOYMENT WITH THE ABOVE COMPANY, PLEASE BRING A COPY OF YOUR CO-OP RESUME TO THE CO-OP OFFICE ON THE ABOVE DATE.

IBM CORPORATION

Interviewing: C.Sc., E.E., M.E., Eng.Mgmt. h.E., English

Requirements: permanent resident

Sign-up date: Thurs., Oct. 19, 1989

RESUMES ONLY. IF YOU WOULD LIKE TO BE CONSIDERED FOR CO-OP EMPLOYMENT WITH THE ABOVE COMPANY, PLEASE BRING A COPY OF YOUR CO-OP RESUME TO THE CO-OP OFFICE ON THE ABOVE DATE.

IBM CORPORATION
Manassas, Virginia

Interviewing: E.E., C.Sc.

Requirements: None listed.

Detailed job descriptions available in the co-op office.

Sign-up date: Tues., Oct. 24, 1989

RESUMES ONLY. IF YOU WOULD LIKE TO BE CONSIDERED FOR CO-OP EMPLOYMENT WITH THE ABOVE COMPANY, PLEASE BRING A COPY OF YOUR CO-OP RESUME TO THE CO-OP OFFICE ON THE ABOVE DATE.

SPECIAL NOTICE - PRESCREENING

SIGN-UP FOR DAMES & MOORE CO-OP INTERVIEWS

TURN IN RESUMES: Tues., Oct. 10, 1989

WHERE: Co-op Office, 101 Buehler Bldg.

TIMES: 7:45 am - 11:30 am - 1:00 pm - 4:00 pm

INTERVIEWING: Ch.E., Chem., C.E., Geology, Geo.E., Pet.E.

REQUIREMENTS: 2.0 GPA or above, Academic level of applicants: at least 30 credit hours completed at the end of the present semester.

THE ACTUAL INTERVIEW DATE WILL BE MONDAY, OCTOBER 23, 1989.

Dames & Moore, St. Louis, Missouri has requested that we furnish them with resumes for pre-screening. We will accept as many Co-op resumes as we can collect. Just drop off a copy of your Co-op resume on the above sign-up date. After pre-screening, Dames & Moore will send the Co-op Office a list of those students they are interested in interviewing. The list should be posted in the UMR Co-op Office by Thurs., Oct. 19. Check with the Co-op Office no later than Oct. 19.

IBM CORPORATION
Essex Junction, Vermont

Interviewing: Ch.E., E.E., M.E.

Requirements: 3.0 GPA or above, American Citizenship or permanent visa. Academic level of applicants: at least 59 number of credit hours completed at the end of the present semester toward bs degree.

Sign-up date: Tues., Oct. 17, 1989

RESUMES ONLY. IF YOU WOULD LIKE TO BE CONSIDERED FOR CO-OP EMPLOYMENT WITH THE ABOVE COMPANY, PLEASE BRING A COPY OF YOUR CO-OP RESUME TO THE CO-OP OFFICE ON THE ABOVE DATE.

BETZ INDUSTRIAL

Work Locations: St. Louis, MO and Paducah, KY

Interviewing: Ch.E., Chem., M.E.

Requirements: 3.0 GPA or above. American Citizenship required. Academic level of applicants: at least 60-89 number of credit hours completed at the end of the present semester toward bs degree.

Sign-up date: Tues., Oct. 17, 1989

RESUMES ONLY. IF YOU WOULD LIKE TO BE CONSIDERED FOR CO-OP EMPLOYMENT WITH THE ABOVE COMPANY, PLEASE BRING A COPY OF YOUR CO-OP RESUME TO THE CO-OP OFFICE ON THE ABOVE DATE.

Sign-up date: Tues., Oct. 17, 1989

RESUMES ONLY. IF YOU WOULD LIKE TO BE CONSIDERED FOR CO-OP EMPLOYMENT WITH THE ABOVE COMPANY, PLEASE BRING A COPY OF YOUR CO-OP RESUME TO THE CO-OP OFFICE ON THE ABOVE DATE.

MONSANTO CHEMICAL COMPANY
Addyston, Ohio

Interviewing: Ch.E., E.E.

Sign-up date: Wed., Oct. 11, 1989

RESUMES ONLY. IF YOU WOULD LIKE TO BE CONSIDERED FOR CO-OP EMPLOYMENT WITH THE ABOVE COMPANY, PLEASE BRING A COPY OF YOUR CO-OP RESUME TO THE CO-OP OFFICE ON THE ABOVE DATE.

Interview date: Thurs., Oct. 26, 1989

OLIN CORPORATION
E. Alton, Illinois

Interviewing: M.E., Ch.E.

Requirements: will be posted later in the Co-op Office

Sign-up date: Thurs., Oct. 12, 1989

1 schedule - 12 interview openings

Interview date: Thurs., Oct. 19, 1989

INTERNATIONAL PAPER COMPANY
Kansas City, Kansas

Interviewing: E.E., M.E.

Requirements: 2.5 GPA or above. American Citizenship required. Academic level of applicants: at least 60 number of credit hours completed at the end of the present semester toward bs degree.

Sign-up date: Tuesday, Oct. 10, 1989

1 schedule - 11 interview openings

Wednesday, Oct. 25, 1989

UNION PACIFIC RAILROAD
Omaha, Nebraska

Interviewing: C.E., E.E., M.E.

Requirements: 2.8 GPA or above, Must be able to work in the US legally. Academic Level of applicants: At least 30-59 number of credit hours completed at the end of the present semester toward bs degree.

Sign-up date: Wed., Oct. 11, 1989

1 schedule - 13 interview openings

Union Pacific will hold an Orientation on Tues., Oct. 24 in the Mark Twain Room. All students interviewing with Union Pacific RR are invited to attend

Interview date: Mon., Oct. 16, 1989

ETHYL CORPORATION
Sauget, IL (Near St. Louis)

Interviewing: Ch.E.

Requirements: 3.0 GPA or above, Academic level of applicants: at least 59 hours completed at the end of the present semester.

Sign-up date: Mon., Oct. 9, 1989

1 schedule - 12 interview openings

Interview date: Tues., Oct. 17, 1989

GENERAL ELECTRIC COMPANY
Arkansas City, Kansas

Interviewing: A.E., Ch.E., E.E., M.E., Mgmt.

Requirements: 3.0 GPA or above, Academic level of applicants: at least 30 credit hours completed at the end of the present semester. Proper employment authorization.

Sign-up date: Mon., Oct. 9, 1989

1 schedule - 12 interview openings

Interview date: Thurs., Oct. 5, 1989

SUNNEN PRODUCTS
St. Louis, Missouri

Interviewing: E.E., M.E.

Requirements: 3.0 GPA or above, Must be able to work in the US. Academic Level of applicants: At least 30-59 number of credit hours completed at the end of the present semester toward bs degree

Sign-up date: Thurs., Sept. 21, 1989

1 schedule - 13 interview openings

Interview date: Friday, Oct. 6, 1989

AMERICAN ELECTRIC POWER
Columbus, Ohio

Interviewing: E.E., Geo.E., M.E., Nuc.E.

Requirements: 2.8 GPA or above, Academic level of applicants: at least 30 hours completed at the end of the present semester.

Sign-up date: Friday, Sept. 22, 1989

1 schedule - 13 interview openings

IBM CORPORATION
Boca Raton, Florida

Interviewing: Math., C.Sc., E.E.

Requirements: 3.2 GPA or above, American Citizenship required. Academic level of applicants: at least 30-59 credit hours completed at the end of the present semester.

Sign-up date: Wed., Oct. 18, 1989

RESUMES ONLY. IF YOU WOULD LIKE TO BE CONSIDERED FOR CO-OP EMPLOYMENT WITH THE ABOVE COMPANY, PLEASE BRING A COPY OF YOUR CO-OP RESUME TO THE CO-OP OFFICE ON THE ABOVE DATE.

Interview date: Wed., Nov. 1, 1989

INTERNATIONAL PAPER
Pine Bluff, Arkansas

Interviewing: Ch.E., E.E., M.E.

Requirements: 3.0 GPA or above, American Citizenship required. Academic level of applicants: at least 59 hours completed at the end of the present semester.

Sign-up date: Wed., Oct. 18, 1989

1 schedule - 12 interview openings

NOTE: The ones that indicate RESUMES ONLY. This means the company will not be on campus interviewing, but they want resumes to review and should contact you if they are interested in employing you.

Please let the Co-op Office know immediately of any acceptance of an offer.

Please check with the Co-op Office periodically to see if additional companies have scheduled interviews. These will be posted on the bulletin board by the Co-op Office and printed in the Miner Newspaper.

CO-OP INTERVIEW INFORMATION SHEET

Company and Location: IBM, Nationwide

Information Day: Co-ops should attend the November 7th IBM Information Day. This event runs from 12:00 noon til 5:00pm and will be held in the University Center East - Centennial Room East.

Interviews: Co-op interviews will be set up during the IBM Information Day. They will held on November 8th and start at 8:00am in the above location. These two events will be for both graduating students and co-ops.

Interview Length: 30 minutes

Academic Level: At least 29 credit hours completed

Starting Work Dates: Spring 90, Summer 90

Citizenship: IBM will consider Citizens, Permanent Residents and "Intending Citizens" as defined by the 1986 Immigration Reform and Control Act.

G.P.A.: 2.0/4.0 (Competitive Screening during Information Day)

Disciplines Needed:

Ceramics	Computer Science
Chemical Eng.	Chemistry
Electrical Eng.	Industrial Eng.
Mechanical Eng.	Metallurgical Eng.

Contact: Dario J. DeMaria
National College Recruiting Representative
07/864
One IBM Plaza
Chicago, IL 60611

Note: All students must have a resume and transcript on file at the Co-op Office before you will be considered for Co-op employment.

You must submit (4) copies of your co-op resume form to IBM on the informal information and sign-up day, November 7.

Summer Employment

UNIVERSITY OF MISSOURI-ROLLA
PLACEMENT OFFICE
Buehler Building, 9th & Rolla St.

SUMMER EMPLOYMENT

FALL WEEKLY DETAIL LIST #2
Week of October 16-20, 1989SIGNUP LOCATION: Ground level (G-5 Buehler Bldg.)
7:45 to 11:30 a.m.
1:00 to 4:15 p.m.

PRESCREENED INTERVIEWS

For prescreening companies, qualified students must submit their resumes in Room G-3 Buehler Bldg., prior to the deadline outlined. Resumes will be mailed to participating companies three weeks prior to their interview date, and they will select the students they wish to interview. Selectee's names and backups will be posted on the bulletin boards in the sign-up area and in the appropriate departments. Posting of names will be done approximately two weeks before the interview date with a four-day deadline for signing.

CHEVRON CORPORATION
P.O. Box 7137
San Francisco, CA 94120-7137
attn: Mr. Don LangewishNUMBER OF SCHEDULES: 1
MAJORS: Sophomores & Juniors in ChE, CE, EE, ME, PE
POSITION: Summer employment
LOCATION: Nationwide
U.S. CITIZENSHIP OR PERMANENT RESIDENT VISA REQUIREDDEADLINE FOR TURNING IN RESUMES: Tuesday, Sept. 19, 1989
INTERVIEW DATE: October 18, 1989

STUDENTS SHOULD BRING A COPY OF THEIR TRANSCRIPT (OFFICIAL OR UNOFFICIAL) TO INTERVIEW. (OBTAIN TRANSCRIPT FROM THE REGISTRAR'S OFFICE).

INTERVIEWS FOR PETROLEUM ENGINEERS WILL BE ON OCT. 18 ONLY.

TEXAS OIL AND GAS
First City Center
1700 Pacific Ave., Lock Box 10
Dallas, TX 75201-4696
attn: Mr. Keith HuffmanNUMBER OF SCHEDULES: 1
MAJORS: Junior or Senior PE or ME
POSITION: Gas gathering/processing for a pipeline company. Will work with experienced engineers.
LOCATION: Tyler, TX; Corpus Christi, TX; Pecos, TX; Canton, OK; Ft. Smith, AR.3.0 G.P.A. REQUIRED
U.S. CITIZENSHIP REQUIREDDEADLINE FOR TURNING IN RESUMES: Wednesday, Sept. 20, 1989
INTERVIEW DATE: October 20, 1989FINA OIL CO.
P.O. Box 215
Dallas, TX 75221
attn: Ms. Paula GreenNUMBER OF SCHEDULES: 1
MAJORS: Must have 90 hours by May 1990 in ME, PE or ChE.
POSITION: Summer employment
LOCATION: Various
MUST HAVE U.S. CITIZENSHIP OR PERMANENT RESIDENT VISADEADLINE FOR TURNING IN RESUMES: Thursday, Sept. 21, 1989
INTERVIEW DATE: October 20, 1989

This space contributed as a public service.

LUMP BETWEEN LOWER LIP AND GUM.

BAD BREATH.

STAINED FINGERS.

TOBACCO-STAINED TEETH.

WHITE PATCHES AND SORES.

Leukoplakia. In time, could lead to oral cancer.

RECEDING GUMS.

TOBACCO JUICE.

TWITCHY, WIRED LOOK CAUSED BY NICOTINE.

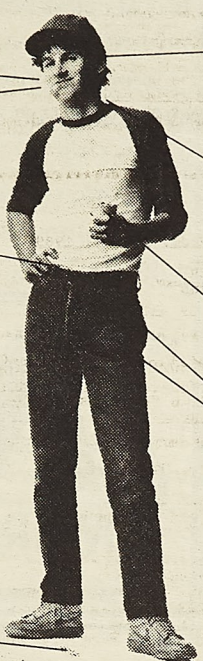
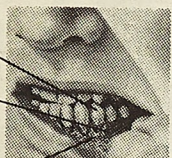
A high nicotine content makes smokeless tobacco just as addicting as cigarettes.

STUBBORN ATTITUDE. WON'T LISTEN TO SOUND MEDICAL ADVICE.

DRIBBLE CUP.

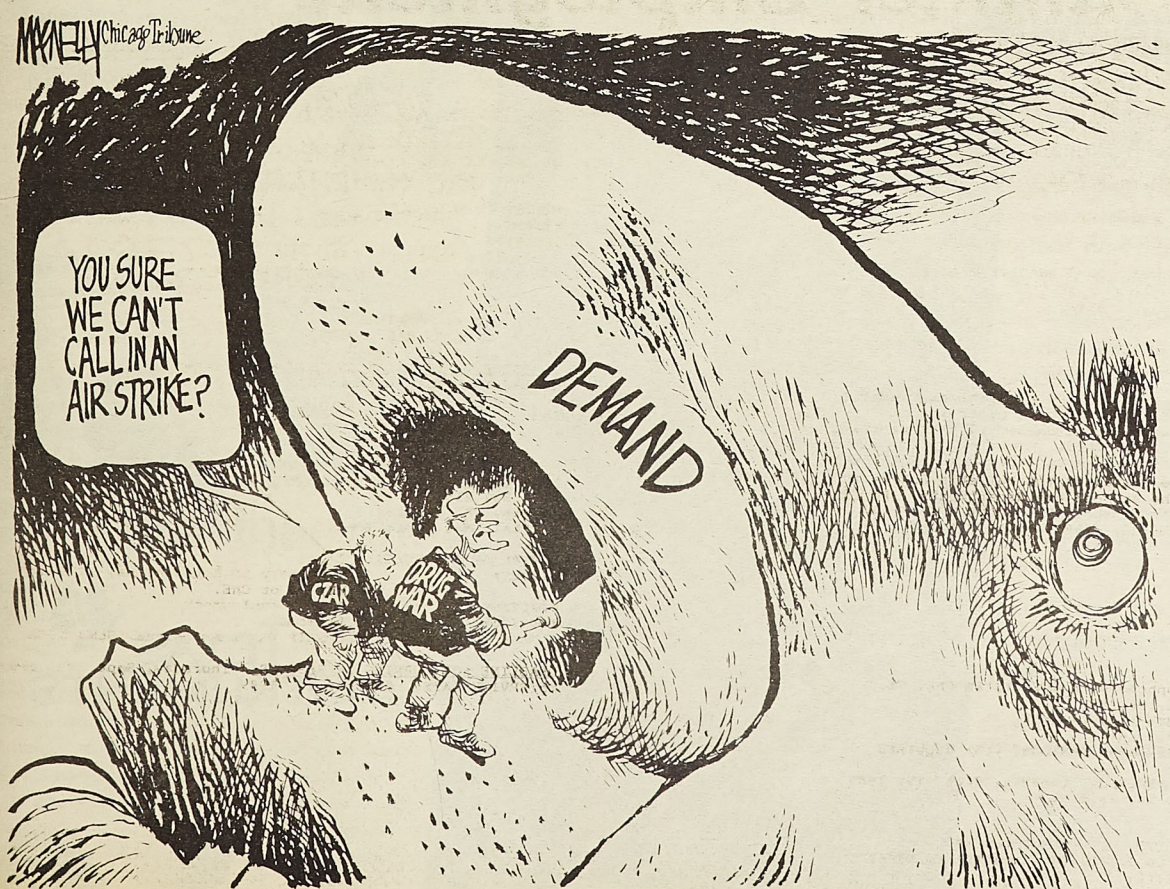
TIN BULGES AND RING.

NO FRIENDS.

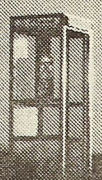


HOW TO SPOT A DIP.

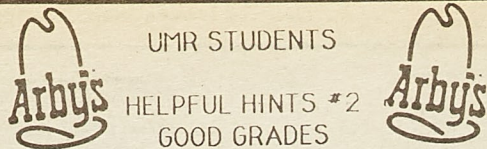
DIPPING IS FOR DIPS.
DON'T USE SNUFF OR CHEWING TOBACCO.



If you're worried about cancer, remember this. Wherever you are, if you want to talk to us about cancer, call us. We're here to help you.



2,500,000 people fighting cancer.



- (A.) Happy Professors Usually Teach More Efficiently and More successfully.
- (B.) Lets Make Them Happy.
- (C.) Use these coupons at Arby's® to enjoy Lean and Tender Roast Beef and save money while doing so. Use that savings to do something nice for your favorite professor - (example: Give them an order of Curly Fries instead of an apple. We use Cholesterol Free Oil - That apple might have Alar on it.) We have nothing against apples, but we definitely know that Arby's® Lean and Tender Roast Beef, Curly Fries and Pepsi can't be beat.

Anyway, when the Professor sees how intelligent his or her students are, (A.) follows naturally. You graduate with honors, and become a government contractor or something like that.

TRY ONE OF THESE COUPONS

<p>1 Super Roast Beef 1 Curly Fry cholesterol free shortening used \$2.75 Normal Gov't Contractor Price for this meal is \$6.488 12 Not valid with any other offer. Offer expires 12/31/89</p>	<p>CHICKEN SANDWICH BAG OF FRIES cholesterol free shortening used \$2.75 Normal Gov't contractor price for this meal is \$7.032 14 Not valid with any other offer. Offer expires 12/31/89</p>
--	---

1005 Kingshighway Rolla, Ft. Wood Spur, Waynesville

Representatives from Marathon Oil Company, Marathon Petroleum Company, and Marathon Pipe Line Company will be on campus Monday, September 18, 1989, to present an Informational Meeting to all interested University of Missouri-Rolla students. The meeting will be held at 7 p.m. in Centennial Hall East, and will include an overview of Marathon as well as presentations by Engineers from the Produc-



tion, Refining and Pipe Line components. Refreshments will also be served. All students, as well as faculty, are invited to attend this meeting, in particular those students enrolled in the Chemical, Civil, Electrical, Mechanical and Petroleum Engineering disciplines who would like to interview for Summer and Regular Engineering positions. Marathon will return to campus for interviews on the following dates:

Marathon Oil Company (Production) October 11-12, 1989

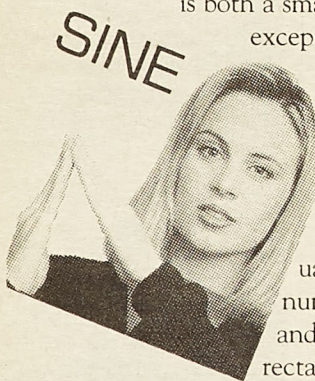
Marathon Pipe Line Company
November 2-3, 1989

Marathon Petroleum Company (refining) November 9, 1989

We hope to see you there!

A higher form of engineering and science requires a higher form of calculator.

The further you go in engineering, math and other technical courses, the more you need a scientific calculator that speeds you through complex problems. With 254 powerful advanced scientific functions, the TI-68 from Texas Instruments is both a smart choice and an exceptional value.

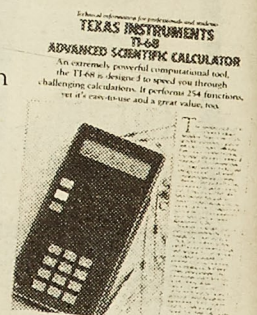


A convenient feature lets you last equation replay check your

answers without re-entering them. Formula programming provides up to 440 program steps for as many as 12

user-generated formulas. Perform operations in four number bases, one- and two-variable statistics, and Boolean logic operations. The polynomial root finder calculates real and complex roots of quadratic, cubic or quartic equations.

Only the TI-68 delivers so much functionality, value and ease in one compact, advanced scientific tool. For more information on the TI-68's features and functions, pick up a free copy of the TI-68 technical brochure at your bookstore.



TEXAS INSTRUMENTS