



06 Sep 1989

The Missouri Miner, September 06, 1989

Follow this and additional works at: https://scholarsmine.mst.edu/missouri_miner

These newspapers reflect the attitudes, perspectives, and beliefs of different times. Neither the library nor the university endorses the views expressed in these collections, some of which contain images and language which may be offensive to some readers.

Recommended Citation

"The Missouri Miner, September 06, 1989" (1989). *The Missouri Miner Newspaper*. 2524.
https://scholarsmine.mst.edu/missouri_miner/2524

This Newspaper is brought to you for free and open access by Scholars' Mine. It has been accepted for inclusion in The Missouri Miner Newspaper by an authorized administrator of Scholars' Mine. This work is protected by U. S. Copyright Law. Unauthorized use including reproduction for redistribution requires the permission of the copyright holder. For more information, please contact scholarsmine@mst.edu.

Missouri Miner

A publication of the students of the University of Missouri-Rolla

September 6, 1989

Volume 78, Number 3

Twenty-four pages



Governor acts on state university legislation

Submitted by StuCo and ASUM

This summer some important things happened for the students of the University of Missouri on the state government level. First, Missouri universities will not lose the \$23 million that Governor Ashcroft promised to cut if the state legislators did not approve a plan to make up the \$150 million plus owed to federal pensioners. Also, on the state level, two pieces of legislation lobbied for by the Associated Students of the University of Missouri (ASUM) were signed into law:

House Bill 602, which forces leasing agents to disclose information about property owners to leasees, will help student renters who wish to make claims against the owners of their rental housing.

Senate Bill 209 allows the sale of personalized license plates bearing official university or college emblems to raise money for scholarships or other academic purposes.

Unfortunately, four pieces of ASUM-lobbied legislation were vetoed by the Governor. House Bill 641 and Senate Bill 52 contained a continuation of past legislation mandating that the state set aside money for engineering equipment. HB 641 also provided an extension of Missouri's "bright flight" money to graduate students, created new scholarships for artistically talented students, a new scholarship for minorities going into teaching, and a new entrepreneurial scholarship, but was vetoed because of a last minute amendment. SB 52 was vetoed for similar reasons. This is very unfortunate in view of the fact that funding for engineering lab equipment is no longer law. When the bill funding engineering equipment was law, it, at least, required that the legislators consider funding for this bill each year. However, in the past, Governor Ashcroft has repeatedly vetoed funding for this bill by using his line item veto in order to "balance the budget." None the less, SB 52 re-

mained law, there was a chance that much needed money for UMR's engineering labs would be forthcoming. HB 200 which was to allow voter registration in public places (such as university campuses), was also vetoed on the basis of discrepancies in the validity of registration in metropolitan areas.

A fourth bill, HB 372, dealt with nursing loans and would have had little or no impact on UMR. However, its failure will be felt on other University of Missouri campuses.

Concerning state capital appropriations: Of the \$224 million the Board of Curators had requested for 1990 capital appropriations (new buildings, repair and maintenance, etc.), the legislature appropriated \$7 million! The curators went ahead and approved a capitol appropriations request of \$284 million for 1991.

The operations budget received an 8.5% (\$34 million) increase from the

see ASUM, page 2

KMNR Groundwaves

Submitted by KMNR

KMNR, your full-spectrum, student operated campus radio station has been blessed with a NEW TRANSMITTER! Since activated in June, this transmitter and a new antenna mounted atop Rolla's UTS tower has significantly expanded our listening area to a radius of approximately twenty-five miles. All at KMNR wish to thank everyone who helped out with our upgrade.

As such developments do not occur on a regular basis, KMNR is planning a special day, Tuesday, September 12: 89.7 Day! It so happens that on that day the year 1989 will be seven-tenths complete, hence 89.7 Day. To bring some significance to this otherwise

trivial coincidence, KMNR will be holding an OPEN HOUSE all day long. Anyone who is curious about KMNR is strongly encouraged to drop by the station, located at the north end of the old cafeteria (that white building north of the smokestacks).

Remember, KMNR is one of a relatively small number of radio stations in the country with a totally free format. In other words, what a disc jockey chooses to air on his show is completely up to his or her own discretion. To let you, the KMNR listener, know who plays what at what time, programming guides will soon be available at the station and the library. Meanwhile, enjoy our new, stronger signal and drop by September 12, 89.7 day.

Davis appointed Vice-President of MSPE

Submitted by News and Publications

Dr. Robert L. Davis, dean of the School of Engineering here at UMR, has been named vice-president of the Missouri Society of Professional Engineers (MSPE) by the organization's board of directors.

Davis served as MSPE's treasurer in 1987 and was named secretary of the organization in 1988. He is a past president of the MSPE Rolla Chapter. Davis also was appointed chairman of the Graduate Studies Division of the American Society for Engineering Education.

Davis joined the UMR faculty in 1965. He received his B.S. degree in mechanical engineering from the University of Evansville and his M.S. and Ph.D. degrees in mechanical engineer-

ing from the University of Maryland.

He is a member of the American Society of Mechanical Engineers, the American Society for Engineering Education and the executive committee of the U.S. Engineering Deans Council. He is a registered professional engineer in Missouri and is a participant in the IBM Academic Information Systems Consulting Scholar Program.

Davis is a member of Phi Kappa Phi, Tau Beta Pi, Pi Tau Sigma and Sigma Xi honoraries. He also received the Citizenship Award, the Beneficial Suggestion Award and the Patent Award (from the Navy), the American Society of Materials Testing National Award, and Outstanding Teacher Awards at UMR.

He is the author of numerous articles and scholarly publications.

Trujillo named Director of Placement

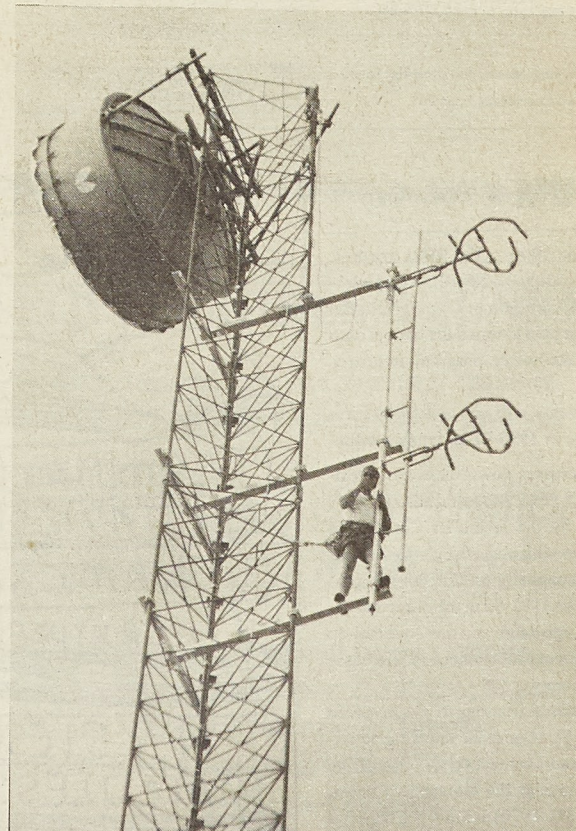
Submitted by News and Publications

Dr. Mariano Trujillo, coordinator of business industry, professional training and development, Houston Community College System, Houston, Texas, has been appointed director of the Placement and Cooperative Training Program here at UMR.

According to Dr. Wendell R. Ogrosky, vice chancellor for Student Affairs on campus, Trujillo will assume responsibilities for UMR's efforts to assist students in their search for employment, strengthen relationships between UMR and potential employers, and locate cooperative training opportunities for students.

Trujillo previously served as director of the Career Planning and Placement Center at the University of Houston-Downtown. He also served as a

see Trujillo, page 16



Vito Biundo

KMNR's new transmitter

Calendar of Events

Wednesday

Spelunkers Meeting, 6p.m., in 206 McNutt Hall.

ASCE, 7p.m., in 114 CE.

Gold Miners Tryout Practice, 7p.m., in the Miner Rec.

Kappa Kappa Psi/ Tau Beta Sigma Meeting, 7p.m., in 101 OldCafe.

Sport Parachute Club Meeting, 7p.m., in 206 McNutt Hall.

Met Soc, 7:30p.m., in 204 McNutt Hall.

Mass Newman, 9p.m.

Thursday

SUB-John Watkins, 3p.m., at the Hockey Puck.

Bible Study, 4p.m., Maramec room.

Toastmasters Open House, 5p.m., in 103 EngMgt.

Climbing Club, 6:30p.m., in 206 McNutt Hall.

ASEM, 6:30p.m., G-3 Schrenk.

St. Pat's Meeting, 7p.m., 107C Mining.

Gold Miners Tryouts Practice, 7p.m., in the Miner Rec.

ANS Meeting, 7p.m., in room 227 Fulton.

UMR Gaming Association Meeting, 8p.m., in Mechanical Engineering room 208.

Engineering Management Seminar, "New Pathways in Engineering Education," Dr. Brian Lloyd and Michael Rice, Victoria, Australia, 3:30p.m. in Room 203 Engineering Management Building. Free.

UMR Film Series, 7:30p.m., "The Adventures of Baron Munchausen," in Miles Auditorium, Mechanical Engineering Building room 104. Admission by season ticket or \$3 at the door.

Friday

SUMMERFEST!

Board of Curators Meeting, at Kansas City.

SUB-21st Century Steel Band, 12p.m., at the Hockey Puck.

UMR Women's Soccer, 7p.m., versus Mo. Valley, UMR Soccer Field. FREE!

Gold Miners Tryout Practice, 7p.m., in the Miner Rec.

IVCF Meeting, 7p.m., in 139 ChemEng.

Saturday

SEPTEMBERFEST!

CSA Language Study, 9:30a.m., in the Ozark room.

UMR Women's Soccer, 10a.m., versus Lewis University, UMR Soccer Field. FREE!

UMR Men's Soccer, 12p.m., versus Lewis University, UMR Soccer Field. FREE!

UMR Football, 1:30p.m., versus Northeast Missouri State, at New Jackling Field. Admission charged. HALL OF FAME GAME!

UMR Gaming Association, will be having an Open Gaming Session (OGS) in Civil Engineering room 317 from 9a.m. to 5p.m.

CSA Movies, 7:30p.m., in G-3 Schrenk.

MSA Lecture, 7:30p.m., G-5 H-SS.

Monday

Study Skills, 3:30p.m., in Maramec room.

Chem. Seminar, 4:30p.m., in G-3 Schrenk.

Student Activity Fee Board Meeting, 4:30p.m., in Walnut.

Independents, 6:30p.m., in Maramec room.

Gold Miners Tryouts, 7p.m., in the Miner Rec.

Tuesday

SWE Meeting, 5:45p.m., in Ozark room.

Campus Crusade, 6:30p.m., Maramec room.

StuCo Meeting, 6:30p.m., Eng. Mgt. Aud.

AEG Meeting, 7p.m., 204 McNutt Hall.

ITE Meeting, 7p.m., in 114 CE.

AGC Meeting, 7p.m., in 114 CE.

K.M.E. Informational Meeting, 8:15p.m., in room G-5 H-SS.

SAE Student Night Meeting, Topic is 1990 Chevrolet Corvette, speaker Doug Robinson, Corvette Tech. Manager, place Parks College, The Kittyhawk Lounge. The schedule of events is as follows, from 5-6p.m. Social, 6-7p.m. Dinner, and 7-9p.m. Meeting. Cost is \$5 for students, \$10 for members, and \$11 for non-members. Reservation required by Thursday, September 7, 1989. For reservations call Chris Hull (314)234-1047 or Prof. Frank Liou (314) 341-4603.

Noday

K.M.E. Math Help Sessions; These sessions begin September 5th. They are every Tuesday and Thursday from 7-8p.m. in room 203 M-CS. Free tutoring in Algebra, Trig, Calculus and Diff. Eq.

December Grads; See L. Peterson in the Registrar's Office if you DID NOT get a letter from him telling you your name is on the December list.

Engineering-In-Training (EIT) Exam; Applications for enrollment for the Engineering-In-Training (EIT) examination at the University of Missouri-Rolla are now available to qualified students. Students who are graduating with a degree from an accredited engineering program in December 1989 or May 1990 are eligible to apply for enrollment as an Engineer-In-Training. Applications for enrollment are available in Room 111 of the Civil Engineering Building. The deadline for applications to reach Jefferson City is September 12, 1989. Enrollment requires passing an eight-hour examination which will be given Thursday, October 26, 1989. Because of space limitations, this examination site is available only to UMR students and Rolla residents. Review sessions will be held on campus with dates and topics to be announced later. All applicants are welcome to

attend. For further information, contact Dr. Paul R. Munger, 111 Civil Engineering, University of Missouri-Rolla, Rolla, Mo. 65401, phone 341-4477.

Financial Aid

Additional Financial Aid Available; Students wishing to be considered for additional "Based" financial assistance (loans and/or college work study) for the Fall 89 semester, can sign up at the Student Financial Aid Office, G-1 Parker Hall from Monday, August 28th through Friday, September 15th. Students wishing to be considered for additional assistance must have a remaining need as determined by the 1989-90 ACT Family Financial Statement.

Foundation of the Wall and Ceiling Industry; The foundation of the Wall and Ceiling Industry offers 15 scholarships to students pursuing careers in fields such as construction, architecture and industrial technology for the 1990 academic year. The deadline for submitting applications is December 1, 1989. Further information and applications are available in the Student Financial Aid Office, G-1 Parker Hall.

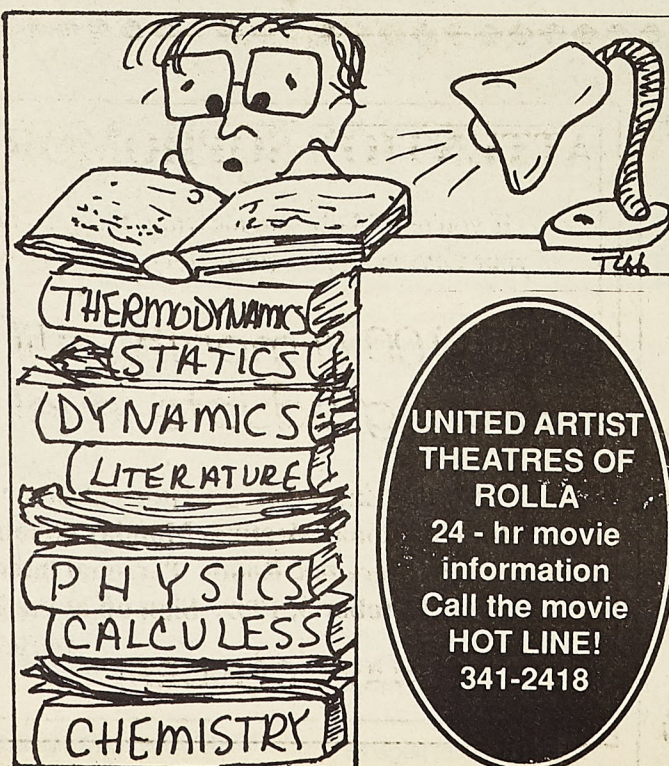
Rolla Area Business and Professional Women's Club; The Rolla Area Business and Professional Women's Club is offering a scholarship of \$250.00 to a woman enrolled for the 1990 Spring semester. Applicants must be a resident of either Phelps, Dent, Maries or Pulaski Counties and at least 25 years of age. Applications are available at the Student Financial Aid Office, G-1 Parker Hall and must be received by the Scholarship Selection Committee no later than September 30, 1989. For further information you may contact Judi Aaro (364-4084) or Joy Bostic (341-3668) after 7p.m.

ASUM from page 1

state for 1990. The 1991 request, approved July 27-28, calls for an additional \$70 million in keeping with the five year plan to repair the budget base and make select program improvements.

Students will see a 6.5% tuition increase in 1990-91 and may see further increases down the road. President C. Peter Magrath has been directed by the Board of Curators to come up with plans for increasing tuition dramatically and/or cutting programs for 1991-92 in the event that the State Legislature and the Governor do not allocate much needed increases next year.

Students wanting to get involved with ASUM or other lobbying activities should contact the ASUM office on campus at 206 University Center-West (341-4970) or Student Council at 202 University Center-West (341-4280).



UNITED ARTIST THEATRES OF ROLLA
24 - hr movie information
Call the movie HOT LINE!
341-2418

Missouri Miner

The **Missouri Miner** is the official publication of the students of the University of Missouri-Rolla. It is distributed each Wednesday afternoon at Rolla, Missouri and features activities of the students of UMR.

All articles, features, photographs, and illustrations published are the property of the **Missouri Miner** and may not be reproduced or published without written permission.

The **Missouri Miner** encourages comments from its readers, and will attempt to print all responsible letters and editorial material received. All submissions must have a name, student ID number, and phone number for verification. Names will be withheld upon request.

Submissions for publication must be in our drop box (first floor of the Rolla Building) by 3:30 p.m. on the Thursday before publication. The **Missouri Miner** reserves the right to edit all submissions for style, grammar, punctuation, spelling, length, and matters of good taste.

The **Missouri Miner** is operated by the students of UMR and the opinions expressed in it do not necessarily reflect those of the university, faculty, or student body.

Editor-in-Chief	Nikki Pagano 341-8068
Business Manager	Shelly Kaller 364-6463
Advertising Director	Terry Brackett 364-1137
Managing Editor	Larry Williams 364-1433
Circulation	Erich Elmer 364-8968
News Editor	Steve Puljak 364-8968
Asst. News Editor	Steve Atkinson
Features Editor	Amy Nash 364-7612
Asst. Features Editor	David Freeman
Sports Editor	Jeffrey Esparrago 364-1433
Photo Editor	Dave Libiez 364-5226
Copy Manager	Dan Gualtieri 341-8263

302 Rolla Building
University of Missouri-Rolla
Rolla, MO 65401-0249
(314)341-4235

Editorials

Events in Poland set the stage for future of eastern Europe

By Chip McDaniel
Staff Writer

We're hearing a lot about Poland lately; multi-party elections, Communist leaders stepping aside, President Bush's visit and offer of economic aid. Last week's election of Polish prime minister Tadeusz Mazowiecki as the first non-Communist government leader in the Eastern bloc was only the latest in a remarkable series of events that a short time ago would have been thought impossible.

For many of us, however, the foremost question about these Polish developments is "So what?" What relevance do changes in an impoverished East European state have to do with the United States? To explore this question, let's look at a few aspects of the situation.

The United States has some definite interests in Poland. Philosophically, we have an interest in seeing and aiding the dissolution of a Communist regime, particularly one in the Eastern bloc. Strategically, we can pursue a geopolitical advantage by strengthening the anti-Communist pincer movement across eastern Europe consisting of Poland, Hungary and Yugoslavia. And politically we have much to gain on at least two fronts: our system represents a viable political alternative to a nation rejecting communism, and we can use the opportunity to maintain

our position as leader of the western alliance.

With incentives like these, it is tempting to rush in and immediately try extracting the Poles from the Communist camp, coming to the rescue of an "enslaved people" in true American style. Such a course would be a short-term folly. Poland is a symptom of a larger international situation. As strange as it may sound for a nation that has occupied its post-WWII years in opposing the Soviet Union, our primary interest in eastern Europe lies in helping the Soviets ease themselves out of a precarious position without resorting to violence. For in relaxing control over their satellites and internal affairs the Soviets are exposing themselves to revolt and instability. Polish events put them in precisely this position. They are confronted with a very public repudiation of a communist government on their own front step, an act requiring nothing less from Moscow than abandonment of the Brezhnev doctrine. This situation risks military intervention to maintain or reestablish Communist order, to say nothing of international loss of face. Our strategic linkages to western Europe and our nuclear presence there mean the real possibility of East-West military confrontation. In that possibility rests the significance of Polish events in the United States. It is a possibility that must be mini-

mized. Accordingly, we must structure our response to avoid moves that would unduly inflate Soviet embarrassment. We must find ways to accomplish our goals while helping the Soviets avoid necessity of armed intervention.

How then should the United States respond to the events in Poland? Too much too fast could easily back the Soviets into a corner we'd rather they weren't in. Too little, on the other hand, would send the wrong message to the Poles and other east European nations trying to extricate themselves from the Soviet shadow.

To accomplish a balanced, middle-ground approach, we should proceed along two paths, economic and political. Economic strategies offer the most viable strategies with the minimum risk of provoking negative Soviet reaction. Rapidly expanding trade links between Poland and the West should be a priority. This expansion should include providing preferential access to Western markets for Polish producers. Doing so would stimulate the Polish economy, lending credibility and support to the effectiveness of the new non-Communist government. And it would encourage trade policy independence from Moscow, offering a measure of economic autonomy and diversity for the Polish people.

Linking our economic policies

toward Poland with those of our western European allies is crucial. Establishing a consistent policy across the board would avoid exposing the United States to the often-heard criticism that it acts unilaterally on European turf without consulting its allies. Policy linkage could also preempt later attempts to politically divide the U.S. and western Europe should something go wrong. In this time of transition, we cannot afford division among the NATO countries.

As a final precaution, we should be wary of large loans to the Polish government. It would be senseless if Poland's attempt to move away from the Soviet camp drove it into that of desperate Third World debtors.

Politically, our actions are much more restricted. President Pshuh's wait-and-see policy may not be exciting, but it's not far off the mark. We must allow political change to be internally led. We must allow time for people to become familiar with representative processes and a multi-party system. We must allow features of democratic government to become institutionalized into a permanent fixture of the Polish political process. And we must be willing to accept a continued Communist party presence in Poland as we do other European nations. These things may be difficult for us.

In formulating our response to the changes shaping Poland, we must ask

ourselves what our goal is. We cannot reasonably expect that Poland will become completely free from Soviet influence; its proximity makes that impossible. For the same reason it is unrealistic to expect Poland to become an outright opponent of the Soviet Union. It certainly cannot become part of the NATO alliance. What we should be helping the Polish people work toward is not an antagonistic position with respect to the Soviets, but a neutrality like that of Austria, Sweden or Norway.

Poland is a test case for both sides. Actions taken both by ourselves and the Soviet Union here will establish the tone and direction for future developments in eastern Europe. Our policy toward Poland will tell the entire region what they can expect from us as eastern nations explore avenues away from communism. Similarly, Soviet action will convey what we can expect from them. Eastern Europe will be the telling point for Mr. Gorbachev's transformed communism. Sensible and consistent actions on our part will convey the message that we are prepared to help these nations move away from Communistic systems, without being irresponsibly provocative or impatient.

Nobody Brews The News Like Morning Edition.

If the daily roll call of disasters is getting a little stale, take a fresh approach to the news with Morning Edition from National Public Radio. Morning Edition is a stimulating blend of the day's most important stories, along with news analysis, sports, business, and features on science and the arts.



So get up on the Morning Edition side of the bed. Before long, you won't want to start your day any other way.

Drink It In ...

This Is Radio News

The Way It's Meant To Be Brewed.

Monday-Friday
5-8 a.m.



ATTENTION SOPHOMORES & JUNIORS

If you're a Math, Engineering, Physics, or Chemistry major & your GPA is 3.3/4.0 (or better), the Navy would like to give you:

- \$1,100 a month until graduation
- Paid graduate-level training

A Navy Engineering Representative will be on campus.
Informational Meeting, Monday October 2, 1989, 6:30 pm
in Meremac Room. Personal interviews Tuesday
October 3, 1989. Sign up at the Buehler Bldg.

NAVY OFFICER.

You are Tomorrow
You are the Navy.

Preventing Problems on the Road

The U.S. travel and tourism industry may be busy this year, a recent survey by Champion Spark Plug Company finds, but, unfortunately for motorists, it may also be a busy summer for car repair outlets and emergency service organizations.

The Champion survey found that nearly one out of every five American families —19.4 percent—expect to do more vacation and weekend driving in 1987 than in recent

years. However, if last year's auto maintenance record persists, there will be millions of car breakdowns en route.

Last year, the survey showed, 5.1 percent — or about one out of every 20 families who took to the roads for vacation—experienced a mechanical failure during their trips. This equates to 4.3 million family vacations or weekend recreational activities that were interrupted last year by vehicle problems.

Why? James Kretzinger, Champion's senior market research analyst, explained that, although much pre-va-

cation maintenance was performed by Americans on their cars, large numbers of motorists neglected routine service prior to departing.

The Champion survey found that, before leaving on a vacation or other trip of more than 150 miles:

- 28.5% will not change oil
- 36.1% will not change oil

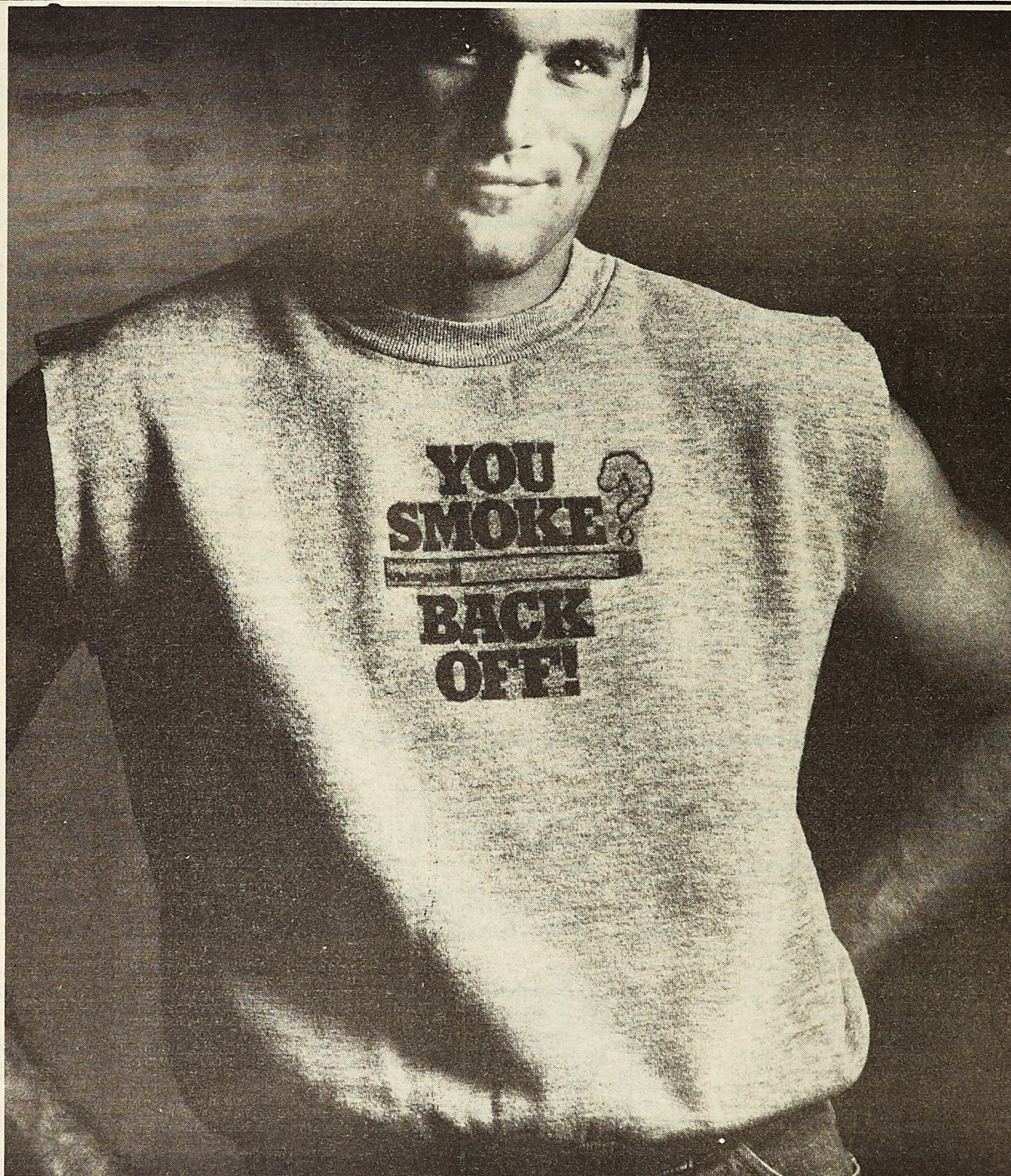


filters

- 31.0% will not check safety items (like brakes, lights, wipers, etc.)
- 61.3% will not replace air filters
- 80.8% will not replace spark plugs
- 83.1% will not replace fuel filters
- 71.9% will not have engines tuned
- 11.6% will not check condition of tires
- 40.9% will not check the cooling system
- 37.7% will not check transmission fluid
- 45.6% will not check power steering fluid

"While all of these items may not have a direct responsibility for a vehicle breakdown, all are important in assuring safe, dependable and economical motoring," Mr. Kretzinger said. "For example, tests have shown that cars in need of tune-ups can waste about 10 percent of the fuel they use. On a long trip, that can equate to a sizable dollar savings."

Champion's survey involved interviews with a nationally representative sample of 3,163 persons.



The student body has spoken.

U.S. Department of Health & Human Services

In a genre
rock 'n' roll
have what it
ful. In this
technology
why does it
music sound
is a band wh
Zeppelin, Ba
and many o
lands has e
with their se
nium/Atlanti
fretwork of
the precisio
Singer; thun
Chaisson; a
Sabbath voc
sesses one o
Badlands ha
cluded hard
Bringing bac
rock 'n' roll
what this cri
1989, and on
of the 1980
Wire" whic
vocals of Gil
portraying L
the undulat
guishes this
glomeration
The diversity
from the op
first track tr
crash on the
need not wor

The Stud
accepting ap
ship on all co
is a great way
pus life, meet
make lastinf
get to say ha
silly me! So,
offer me if I jo
First and fore
rect say in the
movies, conc
ers, etc., tha
Student Unio
important sin
have in the
better idea of
voice counts
Some of the
offers to its m
t-shirts, chan
face to face, th
the 2nd floor

Features

Badlands prove to be best debut in '89

By Babu Barat
Staff Writer

In a genre of high-tech, high-speed rock 'n' roll, many new bands rarely have what it takes to be truly successful. In this day and time, with all the technology that we have available, why does it seem as if the majority of music sounds the same. But now there is a band who breaks all the rules. Like Zeppelin, Bad Company, Grand Funk, and many others before them, **Badlands** has exploded onto the scene with their self-titled debut on Titanium/Atlantic Records. Boasting the fretwork of axe-master Jake E. Lee; the precision drumming of Eric Singer; thunderous basslines of Greg Chaisson; and fronted by ex-Black Sabbath vocalist Ray Gillen, who possesses one of the best voices in rock; Badlands have rekindled the furor that eluded hard rock during this decade. Bringing back the blues-based roots of rock 'n' roll, this quartet has created what this critic feels is the best debut of 1989, and one of the best of the 1980's. Tracks like "High Wire" which features the soaring vocals of Gillen, and "Winters Call" portraying Lee at his finest, epitomize the undulating power that distinguishes this foursome from the conglomeration of pseudo-hard rock acts. The diversity on this recording ranges from the opening guitar lick on the first track to the last cymbal crash on the final track. This band need not worry about success rather

wonder how successful they will be. The potential exists to become a huge success. And with the proper amount of airplay and quality exposure on MTV, who knows where this band may be headed. It is rock 'n' roll at its very finest

idea of what type of band he wanted to form. He did not want to be in a situation where one person was pulling all the strings. This was going to be a group effort with input from the entire band. Finally, Lee brought together the members of Badlands,

weeks. After releasing their highly successful video for the single "Dreams In The Dark", Badlands is currently blitzing the U.S. in the opening slot for the Great White/Tesla tour. They plan on continuing to tour through the rest

be rocking the gateway to the west in the coming months.

Recently I spoke with bass player extraordinaire Greg Chaisson and he told me a little about the band.

Babu: Congratulations on the great album!

Greg: Thanks, we are really excited that it is doing so well.

B: How is the tour going?

G: It's really great! We are having a lot of fun, and really enjoying it.

B: How come your club gigs came to a halt and you joined the Great White/Tesla tour?

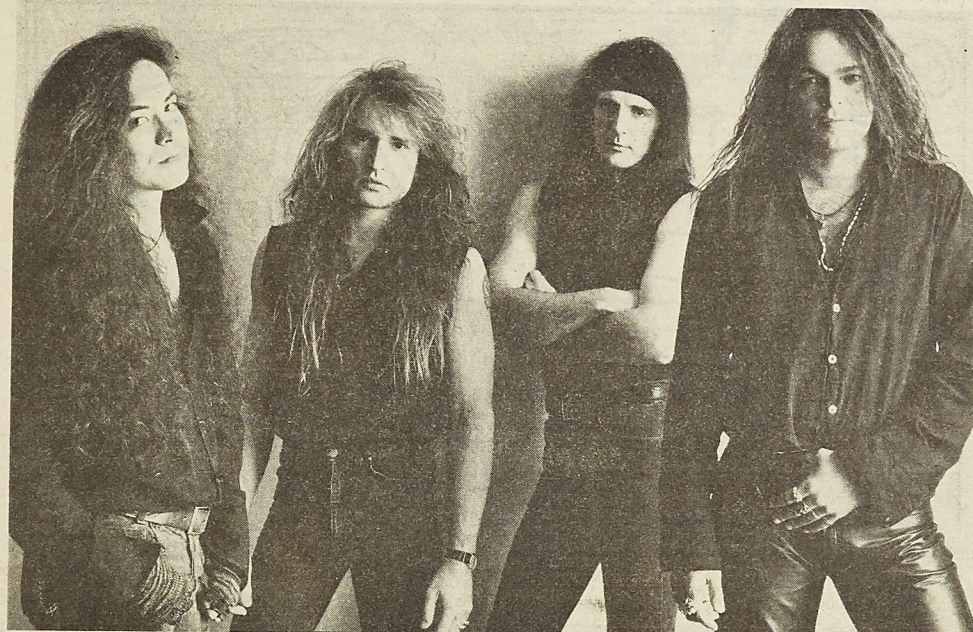
G: We felt that we could reach a lot more people this way. We want people who really haven't heard of the band, or have just seen our video, to find out what we're all about. They have really accepted us very well. We are surprised how many people have actually heard the album and get into our entire set. We plan on touring for a while so hopefully people will like what they hear.

B: I really liked the sound on the record. Was the band happy with the final product?

G: Yes, we really were. We wanted to get a live feeling on the record. We didn't want to have to hire a keyboard player for the road or anything like that. We wanted to be able to pull the album off live without any special tricks.

B: How did you all write the material

see Badlands, page 8



Courtesy of Atlantic Records

Badlands (l to r: Jake E. Lee, Eric Singer, Greg Chaisson and Ray Gillen) will be touring the United States throughout the coming year.

The vision of Badlands began with Jake E. Lee who had a short stint with Ozzy Osbourne in the mid-eighties. Claiming creative differences Lee was forced to pave his own path. He had an

who he was previously acquainted with. Based in Los Angeles, they played together for a short period of time before heading for the studio. The album was recorded in a matter of

of this year and on into 1990. They will be appearing in Hannibal and Lampe this coming week. The St. Louis date was cancelled, but the band says to rest assured that they will

SUB is a great way to get yourself involved

Submitted by SUB

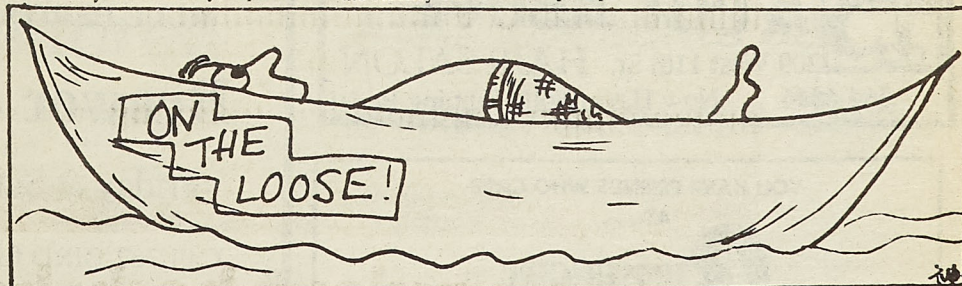
The Student Union Board is now accepting applications for membership on all committees. Joining SUB is a great way to get involved in campus life, meet a lot of new people and make lasting friends, oh and did I forget to say have a hell of a lot of fun, silly me! So, you say, what does SUB offer me if I join? Well let me tell you. First and foremost you will have direct say in the many campus activities; movies, concerts, contests, performers, etc., that are presented by the Student Union Board. This is very important since the more people we have in the organization gives us a better idea of what to program. Your voice counts when you are a member. Some of the other benefits that SUB offers to its members are membership t-shirts, chances to meet performers face to face, the SUB office located on the 2nd floor of the U.C. West pro-

vides a quiet place for members to relax between classes, members of SUB come from all different departments, and grade levels, help with a nasty Thermo problem or Calc. problem is easy to find. That my friends is what SUB offers you. For more information about the individual SUB committees please stop by the office located in room 217 of the U.C. West. We are all looking forward to meeting you. O.K. I can hear you out there, "I'll join, I'll join, but what's coming up in SUB activities???" O.K., that's a fair enough question. The week of September, 5th through the 8th is SUB week here at UMR. Tuesday, September 5th is On the Loose Day. The On the Loose Department of SUB will be showing their stock of camping and recreational equipment that can be rented for use by the students and faculty of UMR for great low rates. They've got canoes, life jackets, and

ahuge assortment of camping gear. So check'em out. They will be at the Hockey Puck on the forementioned date from 9:00 a.m. to 1:00 p.m. There will also be all sorts of contests and great prizes given to contestants. Wednesday and Thursday, September

UMR at 3:00 p.m. on Thursday at the Hockey Puck. This is one rockin' blues band you don't want to miss. Admission is, of course, free to all UMR students. The 21st Century Steel Drum Band will be appearing live at the Hockey Puck on Friday, Septem-

comedy, "Dirty Rotten Scoundrels". Starring Michael Caine, and that wild and crazy guy, Steve Martin. Showtimes on Friday night will be at 7:00 p.m. & 9:00 p.m. Showtime on Saturday will be at 7:00 p.m. only. Admission to all SUB movies is free to



ber 8th, mark the dates of the UMR All Campus Showcase. Come out and see the many varied campus organizations. Showcase will run from 9:00 a.m. till 1:00 p.m. both days. The James Watkins Blues Band will hit

ber 8th. These guys have got a really cool island sound that will make you want to head for Tahiti, as if this place doesn't already. Admission is free to all UMR students. The SUB Cinema returns this weekend with the crazy

all UMR students. That my fellow inmates at the Missouri School of Minds & Mental Lethargy, is what is coming up.

Differences between choices and decisions

By Nora Okong'o
Staff Writer

"You can either stick with Chemical Engineering or change your major and start all over again," Ken's advisor said.

Ken could tell that his advisor was trying to be sympathetic while tactfully pointing out what only seemed to be the reasonable choice.

"I guess I'll think about it some more," Ken replied, trying not to be confrontational.

He left his advisor's office rather depressed. It was not that he was not a good student. He had just been disillusioned. His summer internship was supposed to have been the doorway to an exciting career, a few months of first-hand experience with a company on the cutting edge of chemical technology. It had been, it now appeared, little more than a series of routine tasks. But then, what more could he have reasonably expected? Had he changed? Had his goals and expectations changed? Looking back, he recalled his job with the same company in the summer after his sophomore year had been mundane. Then he had reckoned that he didn't know enough about chemical engineering to make a qualified judgement. It would get better, he had thought. Had those been the warning signs that that was not the field for him?

"Are you still a Chem E?" was his roommate's greeting as Ken entered their apartment.

Subtlety had never been one of Bill's strong points.

"Yes, I am," Ken snapped, unusually irritated.

"Hey, cool it. Just asking."

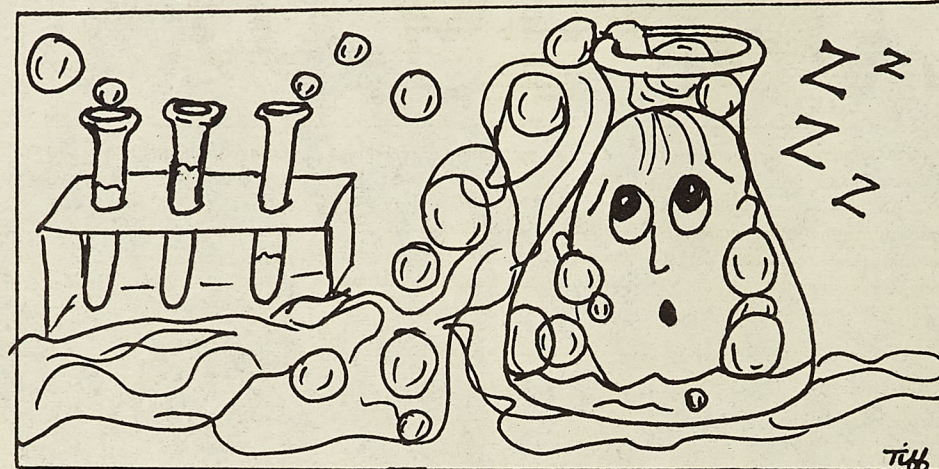
"Well, I wish everyone would be more considerate. I'm entitled to change my mind."

"Sure, I mean, get serious, Ken.

You're practically a senior. What on earth have you been thinking about all this time?"

"I don't know. I mean, I never expected class to be easy. I just thought I would get more enthusiasm once I got out into the industry. Why should I have doubted that I could make it as a Chem E? I've made pretty decent grades, you know."

"I say, better something you know and hate than something you don't know anything about. So, what were you thinking of majoring in-- English, medieval art, or maybe ancient Peruvian history?"



vian history?"

Ken smiled thinly. Bill's sarcasm was always annoying, especially to the person who was its target.

"No," he said shortly.

"Then what's your problem? There are lots of professionals out there who have highly successful careers, and they're not exactly crazy about their jobs. You don't have to be constantly bubbling with enthusiasm to do a good job."

"Well, you have to be dedicated and motivated, and the way things are right now, I just can't be."

"What makes you so sure of that?"

"This was supposed to be an exciting job, but I was bored stiff all summer long."

"Everyone gets bored sometimes. You just need to look for challenges, and then meet them."

"I tried that. It didn't work."

"Hey, this is a free country. If you want to sacrifice what could be a great career on the altar of stupidity, go ahead. It's your funeral. In my opinion, you're just scared of leaving school and committing to a career."

was he perhaps bored with life in general? But changing majors would involve a major investment in time, money and effort. Could he be sure that it would be worth it?

It had been a long time since he had even considered field besides chemical engineering. In fact, he had decided on it during his junior year in high school. What had been on his short list then? He had seriously contemplated a future as a car mechanic. That no longer seemed enticing. Come to think of it, nothing did.

Ken laid his head on the table and

They want to talk to you."

Ken groaned. He had dozed off and had wasted an hour of precious studying time. He wondered what his parents wanted. They didn't usually call in the middle of the week. Was something wrong at home?

"No, no, everything is fine," was his mother's hasty reply.

After a few minutes of small talk, his father asked, "How are classes going?"

"Just fine," he lied. He wondered if this was the right time to tell them that he was considering changing his major. "It just seems that I'm not as keen on chemical engineering as I once was," he tried.

"What do you mean, dear?" his mother asked.

His father got the hint much faster: "You mean you're thinking about changing majors?"

"Now why would he want to go and do something like that?" his mother queried.

"I don't like it as much as I thought I did," Ken replied.

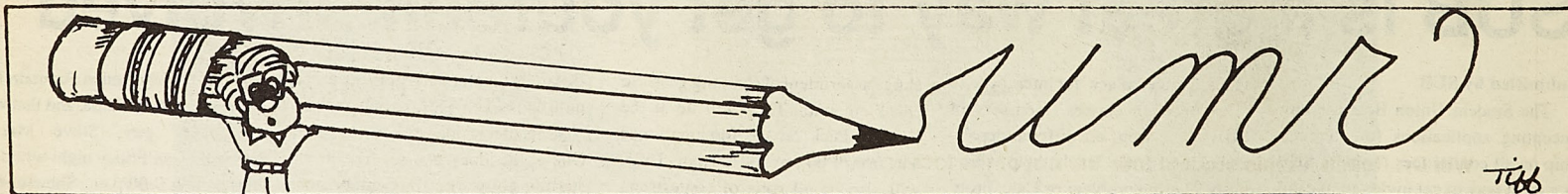
"I think you'd better ask yourself some hard questions," his father continued, as though Ken had not uttered a word. "Who's going to pay for another four years in college? I doubt that you could even get a loan, let alone a scholarship."

"It wouldn't be another four years," Ken protested, "Probably just two."

At least they hadn't asked him what his intended field would be, he thought in relief. But they would, sooner or later.

"And how come it took you so long to realize that you were in the wrong field? You've had a job at the company two summers in a row."

see Differences page 8



A CUT ABOVE
209 West 11th St. HAIR SALON
364-6866 Now Have Wolff Tanning Beds!

YOU HAVE FRIENDS WHO CARE
AT...
BIRTHRIGHT
PHONE: 364-0066
215 WEST 8th STREET
P.O. BOX 832
ROLLA, MISSOURI 65401
FOR HELP
DURING UNPLANNED PREGNANCY
FREE PREGNANCY TESTING

THE
BLUE HERON ROOKERY CAFE
presents
Brewer & Shipley
in concert
Friday & Saturday, Sept. 8-9
Call 762-BIRD for Dinner Reservations
Tickets \$7.50 in advance, \$9 at the door
Available at Books 'N Things at Forum Plaza, Woolf Music at
Southside Shoppers World and Blue Heron Rookery Cafe, 6 mi.
west of Rolla off I-44, exit 179, 1/2 mi. east on north outer road.

COMMANDO WAR GAMES
The action packed
paint pellet survival
game. Come play the
game that's sweeping
the nation. Open
weekends. Just 30
min. from campus.
Call for Information
and Reservations
Mon.-Fri., 894-8543.

Student Council needs student input

By Matt McLaughlin
Staff Writer

StuCo needs your input! In response to concerns voiced by many students last year, Student Council passed two resolutions during the spring semester addressing the assessment process. These resolutions, in addition to direct student input, caused the Academic Council to take another look at UMR's current assessment program.

The Assessment Committee of the Academic Council came up with a plan which was outlined in a memo which was addressed to Student Council and which is reproduced here. This plan was tabled in the Academic Council Pending Student input.

This is where you come in. At their regular meeting on September 12, the Student Council will be voting on whether or not to endorse this plan. Like all StuCo meetings, this will be open to all students to come and voice an opinion. Or, if you can't make it, make sure you let your StuCo rep

know your opinion. If you don't have a rep, just leave a note in the StuCo Bitch Box in the library.

The meeting will be in the Engineering Management Auditorium at 6:30p.m. on September 12.

In the Academic Council meeting of June 15, 1989, the Academic As-

essment Committee recommended to the Council that:

1. An "Assessment day off" be granted during the Spring semester in return for mandatory student participation in Assessment.

2. It was understood that "Assessment day off" is not the same as Assessment Day. Students may choose to fulfill the Assessment requirements on either Assessment Day, which would precede "Assessment day off" or on "Assessment day off."

3. "Assessment day off" was to occur during the Spring semester on

This recommendation was in response to the resolution passed by the

Student Council dated March 21, 1989, and in response to open letters received during assessment proceedings of 1989.

To make certain that there was no

ter.

2. Because "Assessment day off" is not truly a day off, it was not clear that this arrangement would satisfy the Student Council or the student body regarding a "day off."

3. The granting of a "true day off," that is, a day off that is not replaced during the semester, would be difficult because of faculty "time on task" considerations.

The motion in the Academic Council was tabled pending certification that such an "Assessment day off" would satisfy the Student Council and student body request.

This letter is to request that the Student Council consider this proposal to determine whether it would satisfy your "Assessment day off" request. I would be happy to attend the meeting to attempt to answer any questions.

Signed Robert C. Laudon, Chairman Academic Assessment Committee.

? a day off ?

the Friday preceding fall preregistration.

4. "Assessment day off" was to be replaced by an additional day during the semester. The position of the additional day would be determined by the Calendar Committee.

misunderstanding on the part of the Academic Council I pointed out that:

1. "Assessment day off" is not truly a day off. It would simply be a rearrangement of the spring schedule to allow for a "day off" near the end of an already badly fragmented semester.

Psi club elections

Submitted by Psi Club

Psi Club has gotten off to a great start already this semester and we want to keep up the momentum. Sunday, August 27, Psi Club had an informal picnic at Schumann Park. A number of students and most of the psychology faculty attended. Everyone had a great time playing or watching others play volleyball, and getting to know everyone else. The faculty and students had a terrific time.

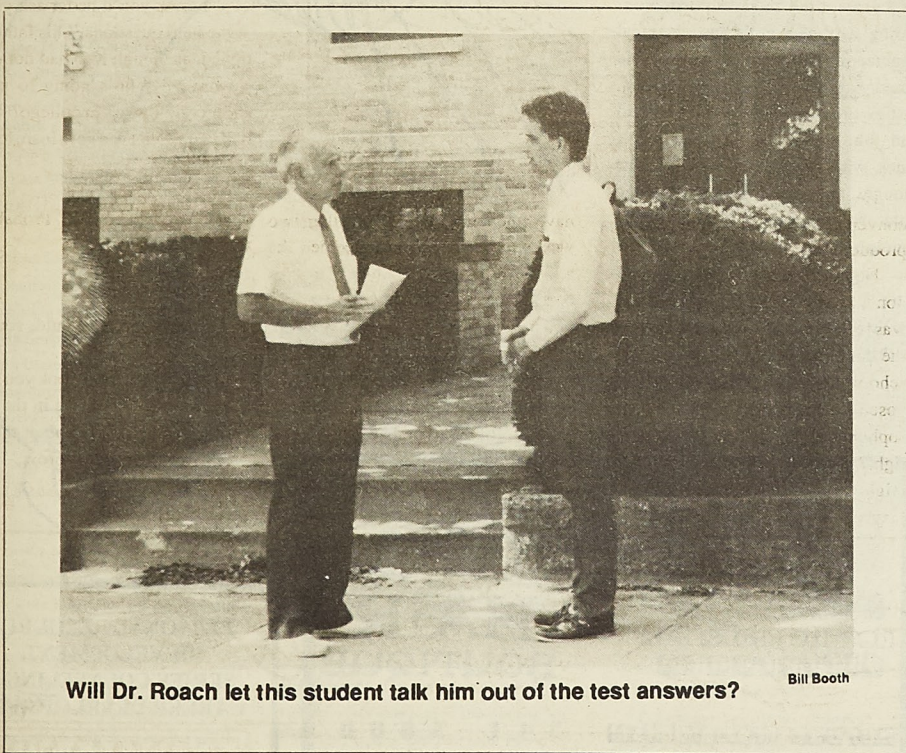
On Tuesday, August 29, the first meeting of the semester was held and new officers were elected. These officers are Earl Brown - President; Rose Blair - Vice-President; Mona Brown - Secretary; Sherri Hawkins - Treasurer; and Lucy Bell - Public Relations. The election for the office of Student Council representative was postponed until the next meeting.

Lots of new ideas were brought up. One of the ideas discussed dealt with starting a bi-semester newsletter to be sent to all psychology majors and Psi

Club members. Included in it will be articles by the students and the psychology faculty. Also included will be the news of upcoming gatherings, meetings, and activities. Another idea considered was what topics students would like to see presentations on which pertain to psychology. In the past we have had visiting professors speak on hypnosis, dream interpretation, talking backwards, and career opportunities available for a B.S. or a B.A. in psychology and liberal arts.

All in all we look forward to having a wonderful year. If you are interested in joining Psi Club, you are more than

welcome to come to our next meeting, the week of September 18. You don't need to be a psychology major to join, all you need is an interest in psychology. By the way, we have no membership fees! If you have any questions please contact one of the officers or our Faculty Advisor, Dr. Riordan, stop by the Psychology Department in



Will Dr. Roach let this student talk him out of the test answers?

Bill Booth

Phi Kappa Theta honored

Submitted by Pi Kappa Phi

Gamma Lambda Chapter of Pi Kappa Phi Fraternity here at UMR was one of the 28 chapters to receive the Fraternity's Master Chapter Award. The awards were presented at the Fraternity's biennial convention, Supreme Chapter, held August 5-9, at the Hyatt Crystal City Hotel in Washington, D.C.

The award is given to those chap-

ters of Pi Kappa Phi Fraternity that have successfully completed all paperwork to the National Fraternity's Administrative Offices, including a financial budget, pre-initiation and initiation cards, membership reports, election of officer forms, alumni publications, member education program and risk management policy. In addition, a chapter must have members in attendance at the fraternity's three

annual leadership conferences and have accounts receivable with the Administrative Office equal to zero to receive the award.

Pi Kappa Phi Fraternity is a non-profit organization with over 130 chapters located on college campuses throughout the United States. The National Fraternity, which has over 55,000 initiated members, was founded in Charleston, S.C., in 1904.

AGC presents 8th annual Resume Book

Submitted by AGC

The Associated General Contractors Student Chapter or UMR is publishing the 8th Annual "Resume Book." The "Resume Book" is distributed to over 200 general Contractors in Missouri and Illinois. Contractors should receive the book by Octo-

ber.

Any student who is seeking permanent or summer employment should submit their resume to Marsha in the Civil Engineering Office by September 13, 1989. For further information contact

Chris Layton at 341-2923.

Badlands

from page 5

for the record?

G: Well Jake had some stuff that he had collected prior to Badlands, when he was with Ozzy, so we worked with some of that. A Couple of those songs made it on the record. But we did all the final touch ups. Basically, for the majority of the tracks Jake would come up with a riff and then we would just jam it until we put something together.

B: How does the band get along?

G: We are great freinds. We share a lot of the same interests and there always seems to be something going on. We seem to learn from one another and there is a mutual respect for every-

B: What are some of those interests?

G: Three of us have muscle cars we like to toy around with. Jake is always working on his car. Whenever mine breaks down, I always take it over to his place. We also like radio controlled cars. As a matter of fact we are all going to go up to the mall today and hopefully making a major purchase on some of those cars for the band and crew. And of course there is always girls!

B: Are all of you single?

G: Yes.

B: I was told that you just shot your second video. What song is it for?

G: It is for "Winter's Call," which if it turns out the way we saw it, then it

should be really great. Hopefully this will push us over the top of the hill. We hope to do another video or two in the future.

B: Do you have a favorite track on the album?

G: I think the general census of the band is for the song "Devils Stomp." We really like that song.

B: How about you, who were some of your influences?

G: I like bands from the 70's like Grand Funk and Procol Harum. The whole band has many of the same influences. We do a lot of in-store appearances and they let us each pick a CD, so we are trying to build up our 70's collection. But we do listen to

new music as well.

B: Does the band do any covers live or do you basically stick to the material on the album?

G: When we were playing clubs we did quite a few different covers, but as an opening act we just don't have the time. We also do a song that didn't make it onto the album.

B: If you had to put a label on Badlands, what type of music would you label the band?

G: We are definately not heavy metal. More like hard rock. I like to say that we play music of the 70's with an edge of the 80's.

B: Yeah that kind of sums it up. What can we expect from Badlands in the

future?

G: We don't want to fall into any click. We made this album with different kinds of songs and the next album will be a step up. We want to make our type of music and we don't want to make sacrifices to do that. We are not neccessarily concerned with becoming a mega-platinum band, rather just letting people enjoy our music. As far as the present is concerned, we want to keep playing live and making music. We look forward to a long and prosperous future.

Differences

from 6

"I thought it would get better."

"You mean, easier. Nothing's easy, young man."

"I can't believe you, Ken," his mother interjected.

Ken could sense some emotional blackmail on its way.

She continued, "You basically have a guaranteed job, and now you're going to throw it away on some spur-of-the-moment whim."

"Mum, there's no such thing as a guaranteed job."

"You're about as close to it as anyone can get."

"Oh, what makes you so sure?"

"When a major company offers you a scholarship and a place in its corporate training program, that's a guaranteed job," was his father's defi-

nition.

"Dad, would you stop talking in riddles? No major company has--"

"The company you just spent your last two summers with just did," his mother said, before his father could.

Ken could imagine her gloating at saying that first.

"I haven't got any letter from them."

"They sent it here."

That his parents had opened and read his mail was beside the point, he supposed. He would be crazy to change majors and kill a career, wouldn't he?

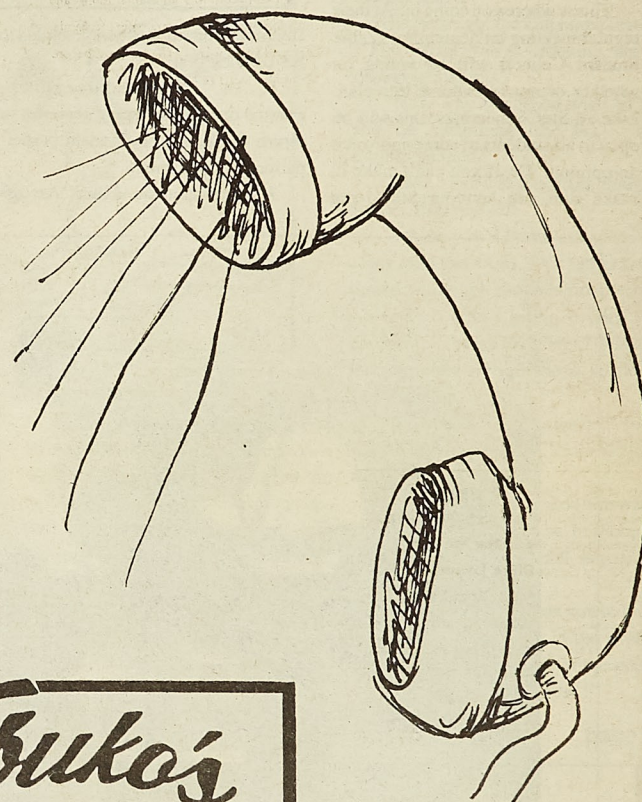
"Mum, Dad, I need time to think. I'll call you back when I've decided what I'm going to do."

His father's retort was instant:

"There's no decision to be made here, Ken--"

Ken gently replaced the receiver and went off and finished his homework.

He could envision himself in fifteen years, tired and frustrated, wondering why he hadn't quit chemical engineering while he had a chance. He could equally well picture himself, just as tired and frustrated in a dead end job, wondering why he hadn't stuck with it. Life wasn't fair, he thought, as he drafted his acceptance letter for the chemical engineering scholarship. Life wasn't fair, because the biggest choices weren't choices after all. In fifteen years time, he would know for sure. Would he then be thinking of changing careers?



**Sunday Night
Student
Special**



**SIRLOIN
STOCKADE**

**Chopped Sirloin
Chicken Fried Steak**
each only

\$4.99

Sundays
4 p.m.-Closing

**Includes: Potato, toast,
salad & hot food bar, and drink.**

1401 Martin Spring Drive
364-7168

Open: Sun-Thurs 11 am-10 pm
Fri-Sat 11 am-11 pm

Nobuko's
details make the
difference
**HAIR
BOUTIQUE**
across from TJ Maxx 341-3800

BRUNO'S

Banquet Facilities Available

Wednesday Night - Student Night
9:30 - 1:00

341-2110

2001 Forum Drive

**PERSONAL RESOURCE
DEVELOPMENT
SERIES COUNSELING &
CAREER DEVELOPMENT**

STUDY SKILLS PRESENTATION
Monday, September 11
3:30-4:30; Maramee Room, UCE
Facilitator: Dr. Gene Van Matre

**RESUME WRITING
PRESENTATION**
Wednesday, September 13
6:30-8:00 pm; Miles Auditorium,
Mch Engr
Facilitator: Dr. Sam Burton

Get classified ads and welcome) to the Missouri Miner. Thursdays in the back of the Rolia Building. All individuals are encouraged to place their ads. Thank you.

R.A.G.E. (Rolla Area Graduate Enthusiasts), Gear, technique, and assistance for totally inexperienced. Bring together the campus. Contact: David Martin (364-2689).

Help Wanted: Student organization project on campus. organized. Call List.

For Sale: A King Call 341-2689.

Now Hiring: Waiters and Waitresses. Partime 4 to 20 hours.

Help Wanted: Enthusiasts, Gear, technique, and assistance for totally inexperienced. Bring together the campus. Contact: David Martin (364-2689).

Attention All Students: are campus mailboxes. organizations in the University Center. University Center. your members check once a week because being put in them. excellent way for your activities to other or

Do you need a part-time job? Where you can have fun. When you can work. On nights & weekends. Where you get paid. Kabane Photo. highly motivated and would like to work in the surrounding area. have a 35 mm camera. necessary equipment. have to be a "pro." you if you have an interest. 1-773-0088 or write: Louis, MO 63116. patrol."

For Sale: 1975 Kawasaki motorcycle. Good condition. evenings 341-3355.

Wanted: Ride to Joplin and holidays. 364-6464.

Classifieds

Miscellaneous

Get classifieds and other submissions (all are welcome) to the *Miner* by 3:30 pm on Thursdays in the box on the first floor of the Rolla Building. All organizations and individuals are encouraged to submit club news, etc. Thank you.

R.A.G.E. (Rolla Association of Guitar Enthusiasts), Geared towards the exchange of technique, and assistance for all in the endless quest for totally terrifying licks! A chance to bring together the guitar players of this campus. Contact Steve Bryant (364-4289) or David Martin (364-8422).

Help Wanted: Make up to \$500 in one week! Student organization need for marketing project on campus. Must be motivated and organized. Call Lisa Catts at 1-800-592-2121.

For Sale: A King Size Waterbed mattress. Call 341-2689.

Now Hiring: Walsh-O-Matic Carwash, Partime 4 to 20 hours per week. See Charles.

Help Wanted: Energetic, Positive, Reliable Waiters and Waitresses needed. Blue Heron Rookery Cafe. Please call Luce or Rich at 762-BIRD(2473).

Attention All Student Organizations: There are campus mailboxes assigned to all student organizations in the Student Activities/University Center Office, Located in 113 University Center West. Please have one of your members check your mailbox at least once a week because important notices are being put in them. This will also be an excellent way for you to advertise your activities to other organizations.

Do you need a part-time job?

- Where you can have fun while you work
- When you can work when you are available. On nights & weekends (usually)
- Where you get paid for going to parties

Kabance Photo Services is looking for two highly motivated and outgoing people who would like to work with us on campus and in the surrounding area. All we ask is that you have a 35 mm camera. We provide all other necessary equipment & training. You don't have to be a "pro." We are willing to train you if you have an incentive. Please call us at 1-773-0088 or write us at P.O. Box 2754, St. Louis, MO 63116. Come join our "party patrol."

For Sale: 1975 Kawasaki Z-1 (900 cc) motorcycle. Good condition, Asking \$700, call evenings 341-3535.

Wanted: Ride to Joplin on some weekends and holidays. 364-6402.

Wanted: A one hundred percent woman. Must be intelligent, creative, funny, and capable of intense intimacy and joy. Should want to share all thoughts, ideas, and emotions. No smoking. No drugs. Must be curious about everything and love learning. Sensitive, gentle, loving, affectionate are all attributes definitely required. Must be emotionally stable, honest, trustworthy, and a positive constructive person. Should be highly spiritual (and I don't mean religious), independent, adventurous, fearless, and willing to take all risks to change, to learn, to feel, to grow, and to live.

SUNSETS MATTER

Attention All Student Organizations: Please remember to turn in your annual report and recognition compliance statement to Linda Martin, 113 University Center West before September 22, 1989.

Congratulations

to our newly initiated sisters: Marijo O., Clara E., Shelly M., Kim B., and Jennifer T. Welcome to our sisterhood!

Love in AOT,
Your Kappa Delta Sisters

McKeown,

I thought I'd say "Hi" publicly since you're never home when I come around. No need to fear though, I'm not after you

Da-Da

Gabby,

I hope school is going better for you. Please stay motivated (so that you can motivate me too). Looking forward to lunch.

Your buddy,
Sleepy

Happy Birthday

to Dena B., Heather G., and Amy M. Hope all your wishes come true.

Love in KA,
Your Kappa Delta Sisters

Kappa Deltas love their pledges!

Jacqueline,

Can you believe it! Less than 80 days left. I love you!

Mc

Dave,

It seems you better do a lot of thinking & praying about Sherry. I wish you the best.

Hacker

Koinonia,

The Retreat is coming up! Sept. 15&16. Plan on attending as Terry will bring us a new insight on Jesus our Lord. Don't forget the Life Talks on Mondays & Tuesdays at 7:30.

Your Pres.

To the men of Triangle,

Thanks so much for a lovely afternoon at the TGIF - Can't wait til Boat Cruise!

The Ladies of Kappa Delta

Dena,

You're a great roomie and #1 Big Sis!

Love in AOT,
Shelly

Angel Flight Rock-A-Thon:

12 hours of Hard Rocking & Rolling.

Question?

What does "Get Psyched" refer to? Does it mean to have a meeting with a psychiatrist or simply enroll in Psychology 50?

Confused & Un-psyched

To the men of Sigma Pi,

What a party! You really know how to treat the ladies.

Sincerely,
The Kappa Delta new initiates

Rock the Night Away:

Angel Flight Rock-A-Thon, Sept. 22-23!

Kappa Deltas-

Derby Days are here - get psyched!

Do you like Winger, Skid Row, Warrant, White Lion? For the very best in contemporary Rock 'n' Roll, set your radio dial at 89.7, KMN, on Monday afternoons from 3:00 to 6:00 p.m. for the SLOW TRAFFIC KEEP RIGHT show!

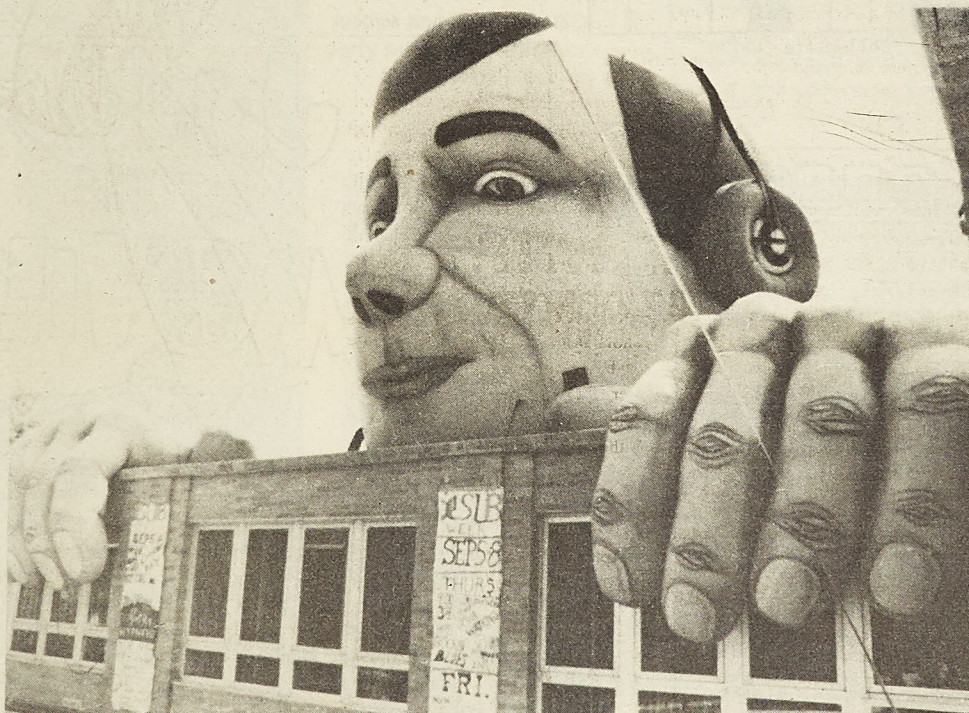
Nancy,

Thanks for the "wally" run!
"Howdy" Welcome



RESEARCH PAPERS

19,278 to choose from — all subjects
Order Catalog Today with Visa/MC or COD
Toll Free Hot Line **800-351-0222**
in Calif. (213) 477-8226
Or, rush \$2.00 to: **Research Assistance**
11322 Idaho Ave. #206-SN, Los Angeles, CA 90025
Custom research also available — all levels



Bill Booth

Help Needed: If you're a faculty or staff member who's interested in cheerleading, the UMR Cheerleaders need your help. Please contact Cookie - 364-8989, Linda - 341-4286, or Carol - 341-4209.

For Sale: Hang Gliders - used but in good condition. 2 available. Best offer. Contact Carol Molchan at 341-4209.

Personals

Get Psyched Now for Rock-A-Thon, Sept. 22-23!!

Akira is coming!

To the men of Beta Sigma Psi,

Did someone say dinner? Thursday?
Sounds great - see you then!
The ladies of Kappa Delta

Alfred

Batman,

Its good to have you back. I hope you can get the newsletter out soon. These people of Gotham have to know what we are doing!

Spend the night with an Angel

Angel Flight Rock-A-Thon, Sept. 22-23.

Bud,

No ... You're the big dumb!

-Slash

At Kappa Delta-

We love our pledges! Congratulations to Patricia R., Angela S., Nadra H., Dawn K., Bind S., Heather G., Stephanie L., Evelyn S., Christina W., and Mindy G. who are Kappa Delta's new pledges. Get ready for a great semester!

Love in KA,
The sisters of Kappa Delta

Lewis & Jeffy,

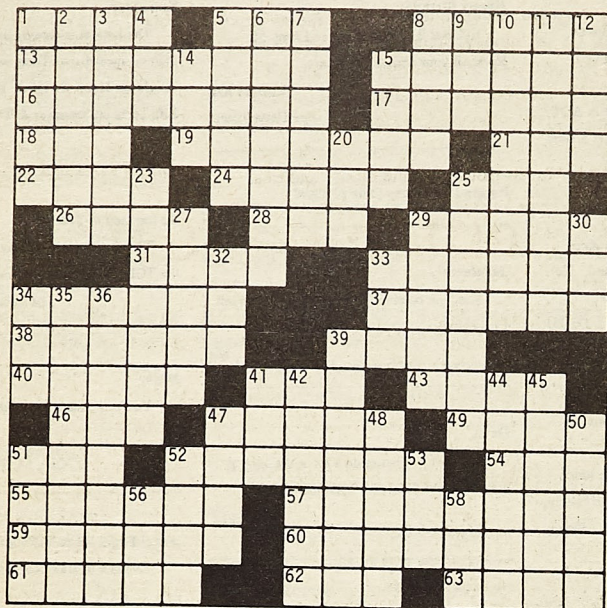
Don't ya'll overkill yourselves with all of this "healthy exercise" junk!

Hacker

My Little Red Fox,

I miss you bunches! Happy Anniversary.
Your Teddy Bear

Fun & Games



© Edward Julius Collegiate CW8730

ACROSS

- 1 Wander
5 Outfit
8 Rich Little, e.g.
13 Take without right
15 Fair
16 From Kingston
17 Did Housework
18 loss for words
19 In a cold manner
21 Physicians (abbr.)
22 Mason's equipment
24 Actress Keaton
25 Country of 1932 Olympics
26 Sloping passage
28 king
29 Greek island
31 Merit
33 Requested from God
34 Empty
37 Like Abe
38 Doted on
39 Not yet final, in law
40 Stephen Sondheim output
41 Geller
43 Hoagies
46 Eye cover

- 47 Famous dummy
49 Sea birds
51 Clumsy fellow
52 Beaver
54 Tiny
55 Sound system
57 Fence of stakes
59 Word before Highness
60 Inflamed with love
61 Anything of value
62 Golfer Floyd
63 Gainsay

- 15 Wretchedly bad
20 Key to heredity
23 Smudged
25 Atomic-bomb substance
27 Hors d'oeuvre spreads
29 See 32-Down
30 N.Y. time (abbr.)
32 With 29-Down, Clara Barton's find
33 Greek letter
34 Cauldron
35 Flatters
36 Class of trees
39 Buddhist supreme happiness
41 French number
42 Cyrus McCormick invention
44 Watch out for
45 Country of 1912 Olympics
47 gin
48 Procrastination
50 Like watermelon
51 Greek peak
52 Part of %
53 Edge
56 Sandpiper
58 Turf

DOWN

- 1 Type of ruler
2 Speechmaker
3 Fleet
4 Bygone bird
5 Went speedily
6 bread
7 Kindly
8 Name in Cohan song
9 Ending for dom
10 Imagination (2 wds)
11 Repeats
12 Miss Charisse, et al.
14 Mr. Young

SCRABBLE® BRAND

Licensed by Selchow and Righter Co., owner of the registered trademark SCRABBLE.

N ₁	A ₁	A ₁	O ₁	E ₁	S ₁	C ₃	2nd Letter Double	
G ₂	N ₁	I ₁	S ₁	A ₁	T ₁	Y ₄	4th Letter Double	
S ₁	S ₁	S ₁	E ₁	I ₁	U ₁	T ₁		
R ₁	N ₁	E ₁	E ₁	E ₁	V ₄	A ₁		

PAR SCORE 90-100

by JUDD

FOUR RACK TOTAL
TIME LIMIT: 20 MIN

DIRECTIONS: Rearrange each row of letters to form a 2- to 7-letter word. To total points of *your words*, use scoring directions to right of each row. 7-letter words get 50-point bonus. "Blanks" used as any letter have no point value. All Judd's words can be found in The Official Scrabble Players Dictionary.

11-8-87

© 1987, United Feature Syndicate, Inc.



SEPT. 7 THE ADVENTURES OF BARON MUNCHAUSEN
JONATHAN PRICE, ROBIN WILLIAMS. Directed by TERRY GILLIAM. PG-1989. Adapting the handed-down stories of Baron von Munchausen, an 18th-century weaver of tall tales, erstwhile Monty Python animator Terry Gilliam, a similar weaver himself (*The Time Bandits*,

Brazil), creates a brilliantly inventive hot-air fantasy of castle sieges, sea-creature tussles and trips to the moon. John Neville exudes quixotic and world-weary charm as the baron, and the cast is uniformly funny, including an uncredited Robin Williams as the King of the Moon, whose highly cerebral head is constantly trying to free itself from its sex-crazed body.

see Answers

page 14



Bill Booth



Bill Booth

Cars for kids

Submitted by Pi Kappa Alpha

The men of Pi Kappa Alpha Fraternity and the lovely ladies of Zeta Tau Alpha are holding a charity car wash. on Sunday, September 10 from 9a.m. to 3p.m. in the Kroger parking lot. We are asking for donations only, so come give what you can. All proceeds will go to help the children of the Gingerbread House. Come on out and treat

those dirty, bug splattered cars to the best car wash of the decade! Afterward, you will not only look good in your clean and shiny car, but you will feel even better since you helped such a worthy cause. Come out and help us help the kids. For more information contact Barb Meder at Zeta Tau Alpha (364-6463) or Steve Neilds at Pi Kappa Alpha (364-1490).

Septemberfest

By Kevin Webb
Staff Writer

With only 3 daze left until the 12th annual Septemberfest, evryone better get crackin' on those studies so they'll be free on September 9th. You had also better get those buttons now for only \$3.50 at the puck, because on the 9th they'll be \$4.00.

Get a button and head on out to Lions Club Park from 11:00 - 6:00 on Saturday aboard a free shuttlebus. They will be running from the EE building, the Quad and Fraternity Row starting at 11:00. Out there, you and

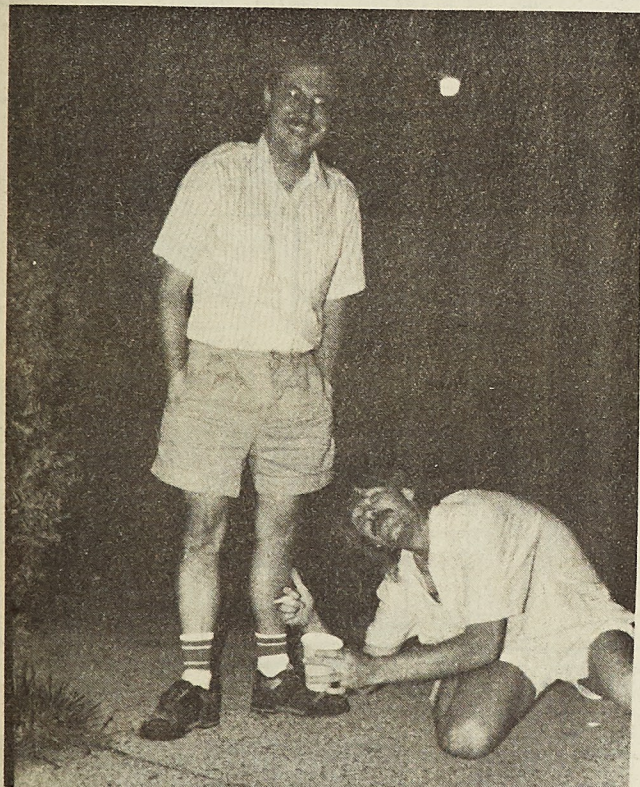
your friends can hang out, catch some rays, play some sports, get involved in contests, and of course ROCK OUT to the tunes of "Tic-Toc-Boom"!!!

So go out and get your favorite beverage and head out for the Biggest party of the semester!!!

Also remember that the deadline for the St. Pat's sweatshirt design contest is Friday, September 8th. So let's get those entries turned in at the hockey ouck or contact Rick Crump at 364-9818. There's only 190 daze until the "BEST EVER", St. Pat's 1990.



Bill Booth



Bill Booth

Above and left: The GDI party produces a plethora of participants.



Bill Booth



Bill Booth

Above: Triangle and KA(left) have their Little Sister Rushes.



QUALITY CLEANERS

* Expert Cleaning * Reasonably priced
108 W. 7th Street Rolla, Mo 65401 364-3650

Do You Want VISA & MasterCard Credit Cards?

Now You can have two of the most recognized and accepted credit cards in the world VISA and MasterCard credit cards in your name EVEN IF YOU ARE NEW IN CREDIT or HAVE BEEN TURNED DOWN BEFORE!

VISA and MasterCard the credit cards you deserve and need for:

- ID • BOOKS
- DEPARTMENT STORES • TUITION
- ENTERTAINMENT • EMERGENCY CASH
- TICKETS • RESTAURANTS
- HOTELS • GAS • CAR RENTALS
- REPAIRS • AND TO BUILD YOUR CREDIT RATING

10th Year! **GUARANTEED! GOLD CARD**
VISA/MasterCard
GUARANTEED ISSUE
OR MONEY BACK

Approval absolutely guaranteed so hurry fill out this card today! Your credit cards are waiting!

A. GARSEAU, Student Services
P.O. BOX 130336 SUNRISE FL 33313

YES! I want VISA/MasterCard credit cards. Enclosed find \$15.00 which is 100% refundable if not approved immediately.

NAME _____

ADDRESS _____

CITY _____ STATE _____ ZIP _____

PHONE # _____

SOC SECURITY # _____

SIGNATURE _____

MAIL THIS NO RISK COUPON TODAY


AIM HIGH

SOPHOMORES — FORMULATE YOUR FUTURE

If you're a Math, Physics, Architecture, Computer Science, Nursing or Flight Major — take note.
Your degree + Air Force ROTC = a commission as an Air Force Officer. It's your formula for success.

The AFROTC two-year program is designed for those who did not take the first two years of ROTC.
Take a close look at Air Force ROTC now. Don't let technology pass you by. Be a part of it. Call today.

CAPT EDWARDS
314-341-4925



AIR FORCE ROTC

Leadership Excellence Starts Here

STEVE MARTIN MICHAEL CAINE
NICE GUYS FINISH LAST. MEET THE WINNERS.



DIRTY ROTTEN SCOUNDRELS

PG PARENTAL GUIDANCE SUGGESTED

ORION PICTURES PRESENTS

SUB FALL FILM SERIES

Friday Sept 8 at 7 & 9

Saturday Sept 9 at 7

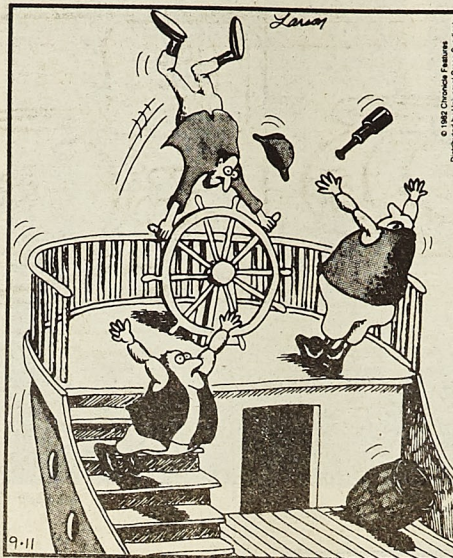
ME 104

Free with Student ID

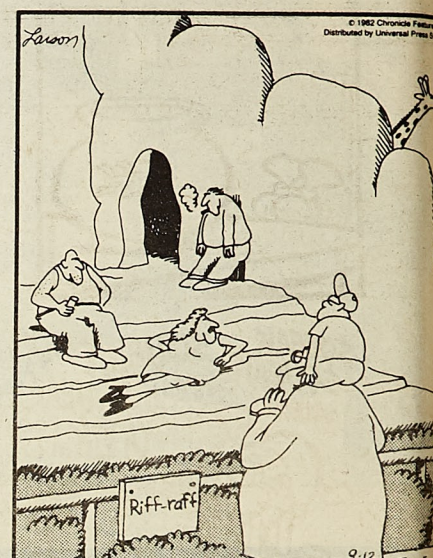


THE FAR SIDE

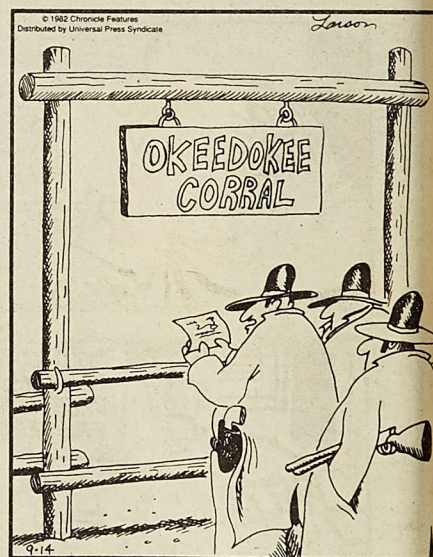
By GARY LARSON



Columbus discovers America



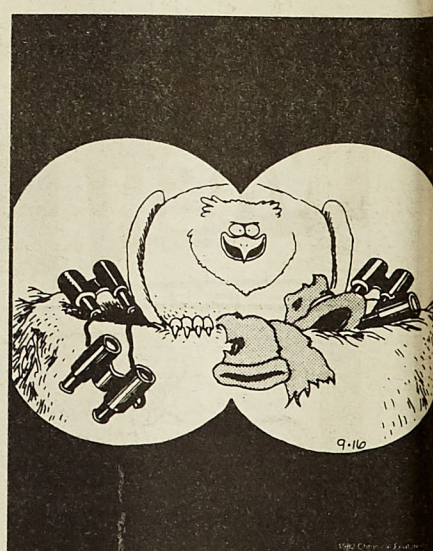
"Sorry to bother you, Sylvia, but your Henry's over here ... and he's got my cat treed again."



"Well, no wonder! This ain't the place."

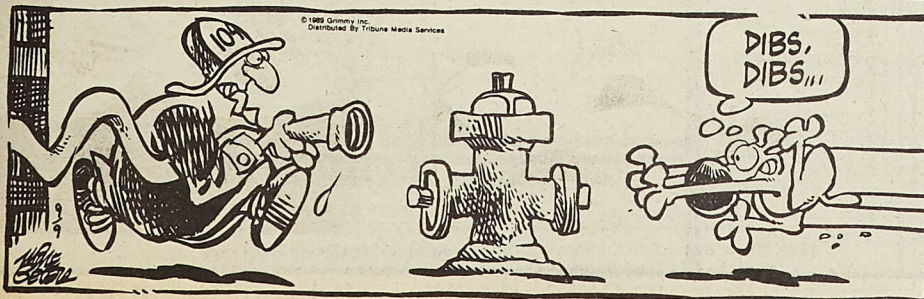
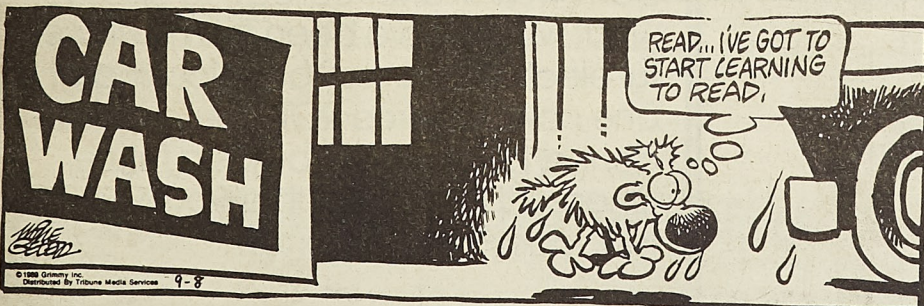
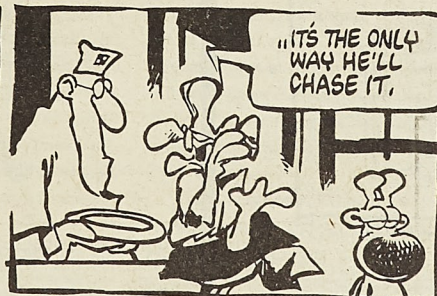
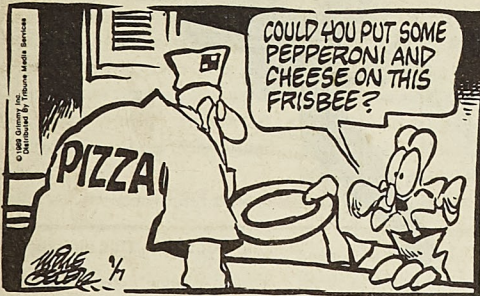
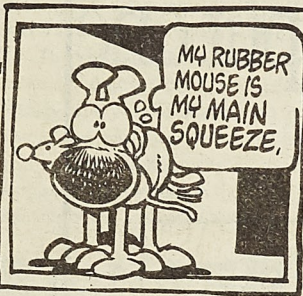
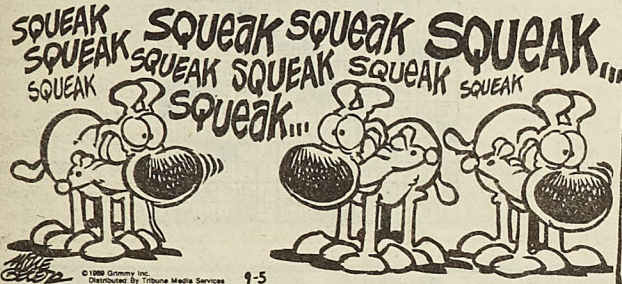
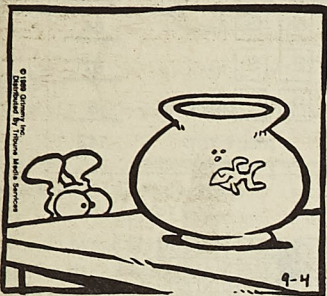


"Now this end is called the thagomizer ... after the late Thag Simmons."



Mother Goose & GRIMM

by Mike Peters



SPI AH Games

D&D Supplies

ROLLA CRAFT & HOBBY

1009 Pine

Rolla, MO 65401

364-5581



International Tours Travel Agency of Rolla

1023 Kingshighway Rolla, MO 65401

Call Rick, Chris, or Melissa

MON-FRI

Your one stop!

8 AM - 6 PM

For complete travel Planning

SAT

Foreign or domestic

10 AM - 4 PM

Business or pleasure!

(314)341-3300

1-800-876-3331



STAGE
ONE
the hair school



There's a Little Bit of Hollywood
in Every Stage One Graduate

Back to School!

SPECIALS

- Haircuts \$3.50
- Color • Frosts • Weaves
- Acrylic Nails • Facials
- Shampoo & Sets • Manicures

Our students are supervised by instructors

1304 N. Pine, Rolla
364-1383

WELCOME BACK UMR STUDENTS

MOM KNOWS BEST!

SHE PROBABLY TOLD YOU



- #1 STUDY HARD
- #2 DRESS WELL
- #3 EAT WELL



We are going to help you with #3.

You can eat well at Arby's®.

Arby's® Lean, Tender Roast Beef can't be beat

Use these coupons, and with the money you save, buy two or three new outfits to help #2. This will make you feel so much better that #1 will come along naturally.

Then you'll become president of some big corporation when you graduate.

Of course, we can't promise this, but Arby's® Lean and Tender Roast Beef has been known to do a lot of positive things for a lot of people.

Are you one of the lucky ones?

GO AHEAD AND USE THESE COUPONS.

Take a friend to lunch.

Eat alone and pig out!

Buy one Arby's® Regular Roast Beef at Regular Price and Get One

1 GIANT Roast Beef, Large Fry and Large Drink only



FREE




\$3.35 (82¢ off)

Not valid with any other offer. Offer expires 12/31/89.

Not valid with any other offer. Offer expires 12/31/89.

**Need Something New & Special
For Birthdays, Get Well, I Love You,
and All Occasions?**



Try our unusual balloon bouquets
starting at \$10

THEY WILL MAKE A HIT!!

Something Special Florist 6th & Park, Rolla 364-8181

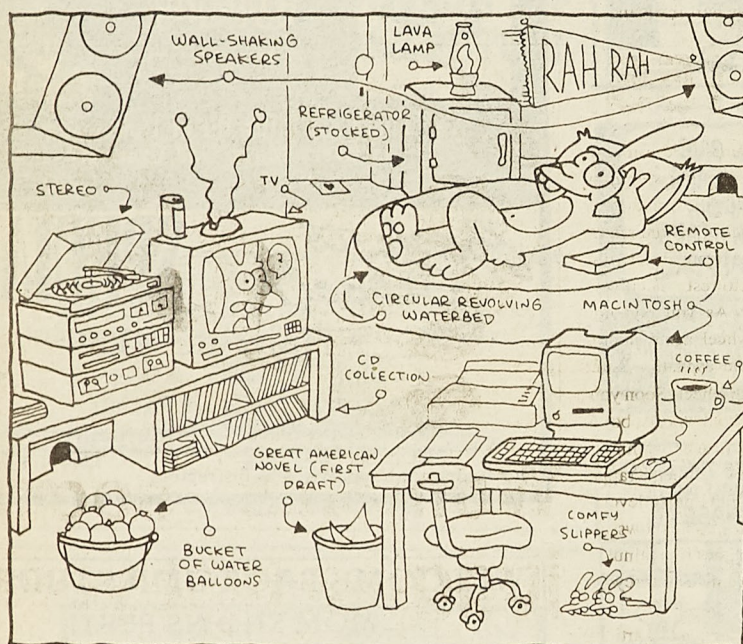
Answers

from 10

SCRAMBLE BRAND GRAMS SOLUTION BY JUDD									
© 1987, United Feature Syndicate, Inc.									
O ₁	C ₃	E ₁	A ₁	N ₁	S ₁		RACK 1 =	11	
S ₁	T ₁	A ₁	Y ₄	I ₁	N ₁	G ₂	RACK 2 =	65	
T ₁	I ₁	S ₁	S ₁	U ₁	E ₁	S ₁	RACK 3 =	57	
V ₄	E ₁	N ₁	E ₁	E ₁	R ₁		RACK 4 =	9	
PAR SCORE 90-100								JUDD'S TOTAL	142
Licensed by Selchow and Righter Co., owner of the registered trademark SCRAMBLE.									

ROAM	RIG	MIMIC
ARROGATE	VANITY	
JAMAICAN	IRONED	
ATA	GELIDLY	DRS
HODS	DIANE	USA
RAMP	ALA	CRETE
EARN	PRAYED	
VACATE	HONEST	
ADORED	NISI	
TUNES	URI	SUBS
LID	SNERD	MEWS
OAF	CLEAVER	WEE
STEREO	PALISADE	
SERENE	ENAMORED	
ASSET	RAY	DENY

If you can find a Macintosh
in this room, we might put one
in yours. Free.



MATT GROENING

In what will surely be the easiest test of your intellect this term, Apple invites you to try winning a free Apple® Macintosh® Plus personal computer merely by finding it in this drawing.

We'll even give you a hint: It's not the table, the lamp, or the chair.

Now you're on your own.

To register, look for contest details where Macintosh computers are sold on your campus. Oh, all right, we'll give you a hint for that, too: Look at the bottom of this ad.

But do it really, really fast. Because only one Macintosh is being given away on this campus, and it's going to happen soon.

Soon, as in right away. Pronto. Quick-like.

But hey, you can take a hint.



Somebody's going to win a free Macintosh.

Enter August 23rd - September 23rd

DataPro Computer

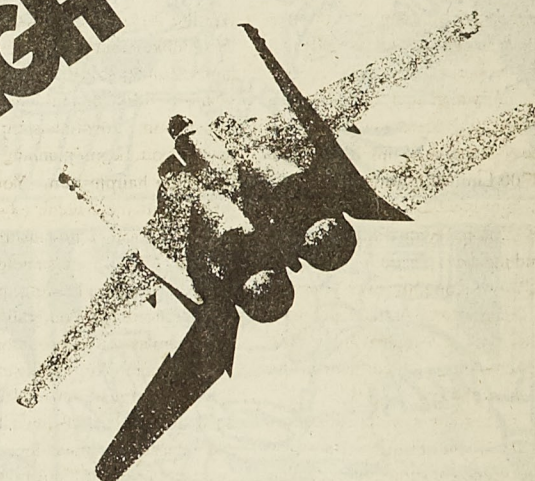
1024 South Bishop, Rolla, MO 65401

364-0035

© 1989 Apple Computer, Inc. Apple, the Apple logo, and Macintosh are registered trademarks of Apple Computer, Inc. Illustration © 1989 Matt Groening. One entry per person, please. Only fulltime students, faculty, and staff are eligible to win.

**AIM
HIGH**

Be selective about
your electives.



Don't wait 'til after college to discover what would have been the most useful elective courses. You're looking at one now. Air Force ROTC builds confidence, builds ability, builds a future. Choose the elective that'll put you on top, today and tomorrow.

CAPT EDWARDS
314-341-4925

**AIR FORCE
ROTC**

Leadership Excellence Starts Here

Sports

Men's soccer team kicks off last season?

By Jeff Zawila
Staff Writer

The men's soccer team is looking to have one of its most successful seasons ever. After reaching a top ten national ranking in the Midwest region last year, Coach Boucher's Miners are ranked eight nationally by a pre-season poll for the Midwest area. The reason for the high pick is due to their experience. They are returning twelve players, eight of which were starters for last year's team.

The team is lead in its national rank by last year's leading Conference scorer Kurt O'Brien, a senior, and junior Michael Balaffi. Both made first team All-Conference and first team All-Midwest, which is one step

below the All-National team. Also, seniors Carl Jung and Tim Saunders made second team All-Conference last year.

Seeing action in the backfield are senior Tom Hughes, who was out with mono last year, sophomore Bob Schneider, and goalies Steve Temme and Bill Faherty.

Starting at mid-field along with O'Brien and Balaffi is junior Larry Farans. Also getting playing time are juniors Doug Tieber, Tim Koscielski, and sophomore Jeff Schaefer.

Since O'Brien was sometimes double and triple teamed last year, Coach Boucher is developing other potential scoring threats in junior Steve Campbell, a competitor who

gets the job done, freshman Pat Snider, most valuable player at West Point Prep. School, and Yugoslavian freshman transfer student Chris Sulincski, who has excellent skills but has to learn the American soccer style of play.

The men's first game was the Gardner Cup Classic this past weekend at Valperiaso University. In the first game of the tournament, the Miners beat Valperiaso, a Division I team, 7-1. The second game featured the Miners dominating Kentucky Wesleyan only to end up with a 1-1 tie. The Miners had 34 shots against the goal compared to Kentucky's 2 shots. A missed penalty shot in the closing minutes of the game hurt the Miners.

Overall, they took second place in the tournament.

The Miners first home game starts at noon on September 9 against Lewis University.

Coach Boucher believes the team will need more experience since they play six Division I teams this year. "The team feels that we have a good chance for a great season," Boucher remarked, "It will be tough in the beginning since we play three teams above us in the ranking. We will have to be mentally and physically prepared at every game. All we can do is give it our best shot!"

The only problem against a winning season will be key injuries. The depth of the squad consists mainly of

freshman who do not have any collegiate experience.

The team is hoping to put together the best team that UMR has ever seen. It is a shame that this may be their last year to compete for us. Since the University is cutting funds, the most successful athletic program on campus is getting axed after this year. According to Boucher, the only way for the soccer team to be saved is for the Chancellor to see what the student body will do.

So let the team make this year the best ever and the student body certainly make sure this year is not the last.

Living on the edge at 155

By Dave Swartz
Staff Writer

Please join me in a literary excerpt from my favorite hobby. Picture yourself on a deserted two-lane highway in rural Missouri. The scenery is beautiful but it's whipping by too fast to see. Between your knees revs the potent 700cc V-4 engine of this 1987 Honda VFR700 Limited Edition Interceptor. Your right hand has the throttle wide open. You're laying on the gas tank, behind the clear plastic fairing, as the wind flows smoothly over your helmet. Inches from your face the speedometer reads 155 mph. Your Walkman is cranking out your favorite tune in your earphones.

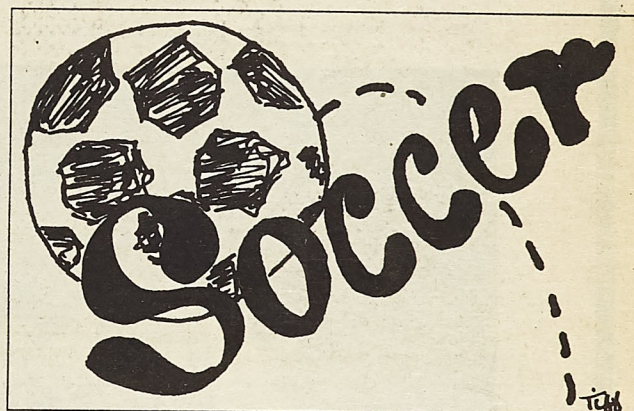
Suddenly, the road ahead curves! You let off the throttle. The turn is tighter than you remembered! You slam the throttle shut. You click down three gears with your left foot. The engine compression slows you down quickly. Your Super Trapp high performance exhaust system cracks and pops from back pressure. Down to 70 mph, you slide lateral on your seat to the inside of the turn. The bike gracefully and effortlessly leans into the

turn. Your knee, hanging very low, brushes the pavement briefly. The exit to the turn appears. You crank the throttle. Tachometer shows the engine at 10,000 revolutions per minute - 100 mph. You up shift to 4th. You tuck yourself back behind the fairing. Accelerating down this short straightaway, you begin planning for the upcoming hairpin turn. You let the bike run to the outside edge of the pavement. 130 mph reads the speedometer. You see the same dead oak tree you used as a braking point last Sunday morning. You grab the front brake hard as you pop your torso up as a big air brake. You quickly click back down to third gear. 130 mph to 40 mph in 185 feet. You click down to second and release the brake lever. Once again you hang off the bike on the inside of the turn. This curve necessitates the using of the on coming lane. No cars coming...yet. You hold the curve. Not only does your knee touch the ground, but your footpeg and boot. No harm done.

Straight away ahead. You flatten the curve out as you straighten the bike to vertical. Back in your own lane, you

twist the throttle hard. The force of acceleration shifts all of the weight to the rear wheel. Slowly the front wheel raises about two feet off of the pavement. As you accelerate faster, the wheel comes back to rest. Then you click up to third. As you pop the clutch, the front wheel again jumps about a foot off the asphalt. Your doing 70 mph on one wheel. Soon you resume riding with both wheels, body tucked in tight, sixth gear whinning out at 11,000 r.p.m. Super Trapps screaming out at illegal noise levels, and once again 155 m.p.h. shows on the speedo. And so goes five minutes in the life of a race-replica motorcycle Cafe' racer.

The events described in this article are very possible and very dangerous. Please do not attempt them without proper riding experience, proper leather riding attire, and properly maintained equipment. If you are interested in Cafe' racing, contact Glen Hyman at Easton Tire Company 1500 New Florissant, St. Louis, MO 63033...(314) 838-4900 or me, Dave Swartz Pi Kappa Alpha P.O. Box 156, Rolla, MO 65401...(314)364-1490.



Women's soccer juggles last year

By Jeff Zawila
Staff Writer

The ladies soccer team, under second year coach Boucher, is looking at a more competitive, improved team from last year. The strength of the team lies in its defense, where Gina Dressel, sophomore Tracey Kuhne, senior Wingback Denna Weil, freshman Melisa Moore and junior Stephanie Swift defend the Miners goal. Vising (competing) for the goalie positioning are underclasswomen Leslie Sawyer, sophomore, and freshman Cathy Carlisle.

At midfield is the deadly combination of seniors Sally Puhlik, last year's most valuable player and team leading scorer, and Gene Gardiner. Also contributing to the team are freshmen Cynthia Peters, Jennifer Ryczek, and quick-footed sophomore Kim Dale.

Experience leads the Lady Miners

offense and front line. Seniors Lisa Tieber, a natural at her position, Lisa Burwell, and Mary Eise, will help put points on the board. Also contributing from the bench are sophomore Mari Jo Dimmick, and junior Cathy Wessing.

According to Coach Boucher there are seventeen dedicated, highly-spirited soccer ladies fighting for the Miners. Coach Boucher remarked, "we lost two good soccer players when they heard about the University's decision to drop the soccer program."

The Lady Miners soccer team had a tough season last year. They are hoping to be more competitive and improved from last year.

Come out and cheer the dedicated Lady Miners soccer team at their first home game on September 8th against Missouri Valley.

"Young Guns" shoot up SBU

By Buck Simpson
Staff Writer

It is the year of the Miners. Powered by a solid new group of freshmen, the UMR Cross Country Team, known as the "Young Guns," is looking like a strong MIAA Conference contender.

In pre-season practice, the young team has looked formidable. Junior John Conrad, a key for the success of the team, has returned in fine shaped plus junior Tim Bauer and sophomore Eric Powers have both returned

greatest factor in the new team is the addition of three new gunslingers: Robbie Vanderwall, Steve Hostetter, and Brent Ward. Hostetter and Vanderwall both placed high in last year's high school 4A State Cross Country meet, and Ward was the 1A-2A champion. With this new potential and solid depth the Miner men took a little target practice on Southwest Baptist in a pre-season meet last Friday.

At the start of the five mile race the team depth was obvious. UMR's top

mark with six of the top seven places. And the pack never broke as the UMR Harriers finished 2, 3, 4, 5, 6 at the end of the race. The Harriers were led by the come from behind performance of freshmen Vanderwall and Hostetter. Vanderwall, a Rolla native, finished first for UMR in 27:34. Hostetter was not far behind after kicking the last half mile to finish in 27:37. Veteran runners Tim Bauer, Eric Powers, and John Conrad crossed the line next to round out UMR's top five men.

Audobon Society sponsors workshop

Submitted by National Audobon Society

Dr. Michael Cohen, an environmental psychologist with the National Audobon Society, will lead an outdoor workshop dealing with the relationship of individuals to nature. The Ozark Rivers Chapter of the National Audobon Society is sponsoring the workshop which will take place on Sunday afternoon, September 10.

The public is invited. Although there is no specific fee, a modest donation would be appreciated. Those attending should meet to carpool at 1:00 p.m. at the northeast corner of the

Rolla Kroger parking lot. For more information contact Alex Primm at 341-2464.

Steve Gough, a Streams Specialist with the Missouri Department of Conservation, will speak about the general decline of Missouri rivers at the next meeting of the Ozarks Rivers Chapter of the National Audobon Society. Mr. Gough's presentation will include a multi-projector slide show and time for questions afterwards. The meeting will take place on Monday, September 11th, at 7:30 p.m. in Room 216 of the Math-Computer Science Building. There is no charge and the public is invited.

Trujillo from page 1

corporate recruiter for the Arabian American Oil Company (ARAMCO) and as an in-training corporate recruiter for Exxon.

He received a B.A. degree from Ithica College, New York. He received master's and doctoral degrees from the University of Massachusetts.

Trujillo, who is married and has two children, is succeeding professor Charles R. Remington, who is retiring after 39 years of service to UMR.

Most Americans: At Nutrition Risk?

GROUPS WITH PROVEN NUTRIENT NEEDS	MILLIONS OF AMERICANS AFFECTED ANNUALLY
TAKING PRESCRIPTION DRUG(S)	125.0
DIETERS	95.4
PRE-MENOPAUSAL WOMEN OF CHILD BEARING AGE	55.0
SMOKERS	54.0
SPECIFIC GASTROINTESTINAL DISEASE / DISORDER	40.0
POST-MENOPAUSAL WOMEN	39.0
CHRONIC OR INFECTIOUS DISEASE(S), CHRONIC PHYSICAL STRESS	UNKNOWN MILLIONS
ELDERLY	28.0
TEENAGERS	25.9
ALCOHOLICS	25.0
OSTEOPOROSIS	20.0

Studies show millions of Americans may not be getting the nutrients they need, due to health and lifestyle.

By J.B. Cordaro
President,
Council For Responsible Nutrition

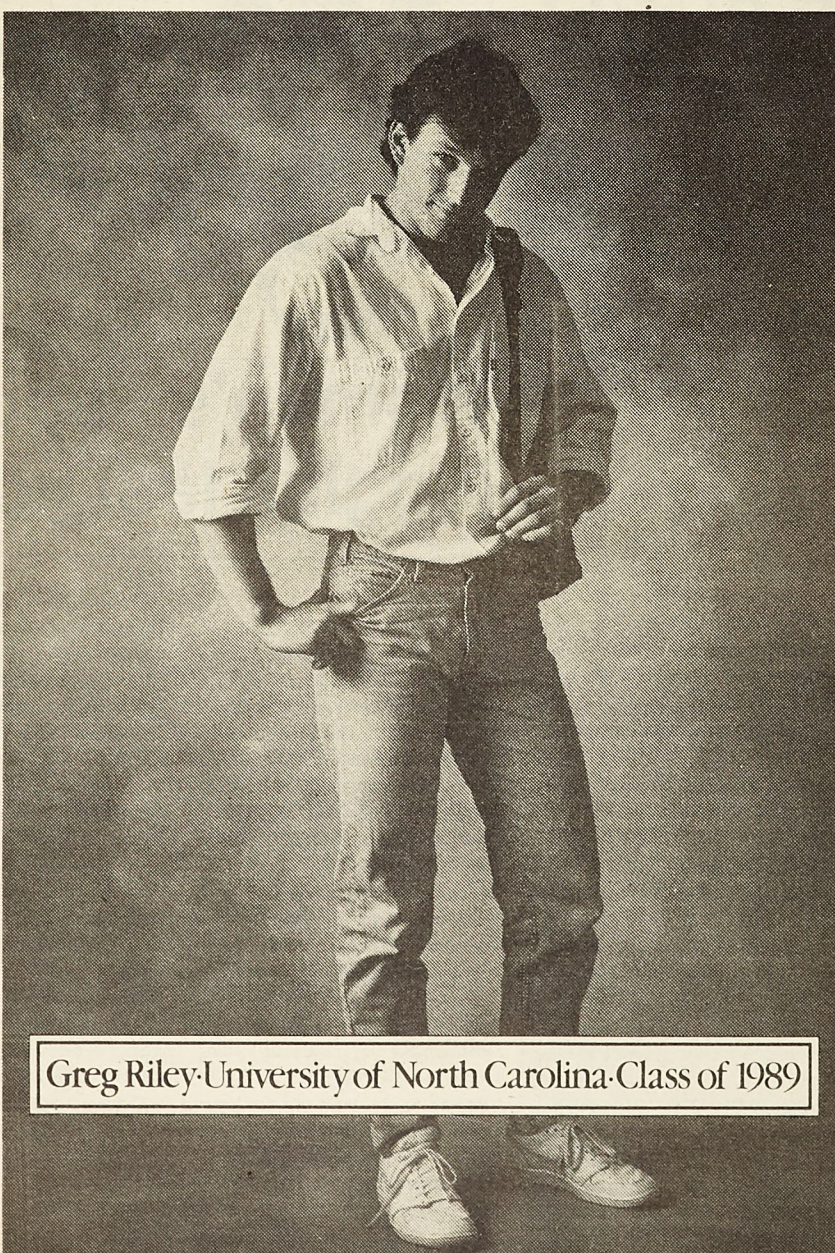
An analysis of the U.S. Department of Agriculture's Food Consumption Survey indicates that none of the 20,000 people studied achieved an intake of 100 percent of the Recommended Dietary Allowance (RDA) of all ten nutrients analyzed, including iron, calcium, vitamins A, C, B12, thiamine, riboflavin, B6 and magnesium. Virtually all Americans, therefore, may require dietary supplementation for nutrition insurance.

Many large segments of the population, such as teenagers and the elderly, are known to have poor eating habits. Millions of others, such as dieters, may be at risk of deficiency in specific nutrients because they deliberately exclude certain foods from their diet. Health professionals often recommend supplements for these people and others with proven nutrient needs—pregnant or lactating women, women taking birth control pills or post-menopausal estrogen, many persons taking prescription drugs, smokers, alcoholics and people under chronic physical stress. Some 60 percent of registered dietitians take supplements themselves.

The issue is not "pills vs. food," because abundant survey data show supplement users do not substitute them for dietary improvements. Rather, supplement users' interest in optimum health motivates them to adopt multiple healthy habits such as exercise, sufficient sleep, no smoking and moderate or no alcohol intake.

Each American spends an average of \$1,723 annually—\$425 billion total—to treat sickness. Studies have concluded proper nutrition can mean better health for newborn babies, fewer illnesses, improved IQ and scholastic achievement, an enhanced quality of life for the elderly and protection against many diseases. In short, optimum nutrition saves taxpayers' money as well as health. Nutritional supplements, sold for 75 years, are an economical, convenient, safe and dependable way to support society's other health promotion and disease prevention efforts.

"I don't want a lot of hype. I just want something I can count on."



Greg Riley-University of North Carolina-Class of 1989

Some long distance companies promise you the moon, but what you really want is dependable, high-quality service. That's just what you'll get when you choose AT&T Long Distance Service, at a cost that's a lot less than you think. You can expect low long distance rates, 24-hour operator assistance, clear connections and immediate credit for wrong numbers. And the assurance that virtually all of your calls will go through the first time. That's the genius of the AT&T Worldwide Intelligent Network.

When it's time to choose, forget the gimmicks and make the intelligent choice—AT&T.

If you'd like to know more about our products or services, like International Calling and the AT&T Card, call us at 1 800 222-0300.



AT&T
The right choice.

Placement

CATERPILLAR, INC.
100 N.E. Adams St.
Peoria, IL 61629-1490
attn: Mr. Charles A. Williams

THE FOLLOWING SCHEDULES WILL BE AVAILABLE FOR CATERPILLAR:
OCTOBER 1, 1989

Two Schedules for Engineering-Research-Tech Facilities
BS or MS in Comp Sci, Ceramic Eng., ChE, EE, ME, METE
ChE - Engineers interested in fuels, lubricants, emissions, rubber/plastic materials and chemical processes
EE - Engineers interested in electronic design, micro-processor applications and/or control system development
ME - Engineers interested in control systems, analysis, dynamics, design and development

One Schedule for Engineering-Research-Tech Facilities
Bachelor's/Masters in ChE

One Schedule for Logistics
Bachelor's/Masters in ChE, EE, Eng. Mgt., ME, MetE
Engineers and Logistics graduates interested in combining technical, management, and interpersonal skills in materials management, purchasing, quality and related assignments.

One Schedule for Manufacturing Engineering/Computer Integrated Manufacturing Technology
Bachelor's/Master's in EE, ME

One Schedule for Data Processing (Information Services)
Bachelor's and/or Master's in Computer Science

One Schedule for Materials Technology
BS and/or MS in ChE, MetE

OCTOBER 3, 1989

Three Schedules for Engineering Research-Research-Tech. Fac.
BS/MS in Comp Sci, Ceramic Eng., ChE, EE, ME, MetE

One Schedule for Logistics
Bachelor's and/or Master's in EE, Eng. Mgt., ME

One Schedule for Manufacturing Engineering/Computer Integrated Manufacturing Technology
Bachelor's and/or Master's in EE, ME

One Schedule for Materials Technology
Bachelor's and/or Master's in ChE, MetE
CATERPILLAR- CONTINUED ON PAG.

CATERPILLAR, INC. - CONTINUED FROM PAGE 18
OCTOBER 3, 1989

ONE SCHEDULE FOR MARKETING

Bachelor's and/or Master's in CE, EE, ME, MinE
Specific requirements include a demonstrated interest in commercial and mechanical or electrical activities.

CATERPILLAR WILL INTERVIEW ALL STUDENTS WHO ARE U.S. CITIZENS OR INTENDING CITIZENS AS DEFINED UNDER THE IMMIGRATION REFORM AND CONTROL ACT OF 1986.
CATERPILLAR DOES NOT SPONSOR INDIVIDUALS FOR H1 OR PERMANENT VISAS.

CATERPILLAR WOULD LIKE TO HAVE COPY OF COLLEGE TRANSCRIPT AT TIME OF INTERVIEW. (OBTAIN FROM REGISTRAR)

WILL INTERVIEW DECEMBER 1989 AND MAY/JUNE 1990 GRADS WITH 2.8 G.P.A. OR ABOVE.

INTERVIEWEES SHOULD SIGN UP ON ONE SCHEDULE ONLY.

INTERVIEW SIGNUP DATE: Tuesday, September 19, 1989
INTERVIEW DATES: October 2, 3, 1989

ARCO OIL & GAS EXPLORATION & PRODUCTION
1601 Bryan Street
Dallas, TX 75221
attn: Ms. Ronel Atkins

NUMBER OF SCHEDULES: 1
MAJORS: MS/PhD Chemical Engineering
POSITION: Materials Engineering
LOCATION: Plano, TX
DEC. 89, MAY, JULY 90 GRADS
APPLICANTS SHOULD BE PRESENTLY AUTHORIZED TO WORK IN THE U.S. ON A FULL-TIME BASIS.

COMPANY PREFERENCES COMPLETE, UNOFFICIAL TRANSCRIPTS FOR CAMPUS INTERVIEW.

ARCO OIL & GAS CONDUCTS PRE-EMPLOYMENT DRUG SCREENING.
INTERVIEW SIGNUP DATE: Tuesday, September 19, 1989
INTERVIEW DATE: October 3, 1989

ARCO OIL & GAS EXPLORATION & PRODUCTION
1601 Bryan Street
Dallas, TX 75221
attn: Ms. Ronel Atkins

NUMBER OF SCHEDULES: 1
MAJORS: BS/MS Metallurgical Engineering
POSITION: Operations Engineer
LOCATION: Anchorage/North Slope, Alaska
DECEMBER 1989, MAY, JULY 1990 GRADS
APPLICANTS SHOULD BE PRESENTLY AUTHORIZED TO WORK IN THE U.S. ON A FULL-TIME BASIS.
ARCO CONDUCTS PRE-EMPLOYMENT DRUG SCREENING
ARCO PREFERENCES COMPLETE, UNOFFICIAL TRANSCRIPTS FOR CAMPUS INTERVIEW.

INTERVIEW SIGNUP DATE: Tuesday, September 19, 1989
INTERVIEW DATE: October 3, 1989

U.S. DEPT. DEFENSE-NAVY NUCLEAR PROPULSION
1222 Spruce St.
10th Floor
St. Louis, MO 63103-2814
attn: Lt. Kent Custer

NUMBER OF SCHEDULES: 1
MAJORS: All (1 year of Calculus based Physics required)
POSITION: Nuclear Propulsion Managers, Engineers, Navy Nuclear Power School Instructors
LOCATION: East/West Coast, Orlando, FL (Instructors)
RECENT, DECEMBER 1989, MAY, JULY 1990 GRADS
3.0 G.P.A. IS A FIRM REQUIREMENT
U.S. CITIZENSHIP REQUIRED

The Nuclear Propulsion Officer Candidate Officer Program pays over \$1200 per month through graduation. 3.0 required for seniors, 3.3 if more than 12 months from graduation.

INTERVIEW SIGNUP DATE: Tuesday, September 19, 1989
INTERVIEW DATE: October 3, 1989

CONSOLIDATED COAL COMPANY (CONSOL)
CONSOL Plaza
Pittsburgh, PA 15241
attn: Mr. Ivan B. Rahn

NUMBER OF SCHEDULES: 1
MAJORS: Mining Engineering
POSITION: Production Management
LOCATION: Central and Eastern U.S.
DECEMBER 1989, MAY, JULY 1990 GRADS
U.S. CITIZENSHIP REQUIRED
2.0 G.P.A. REQUIRED

INTERVIEW SIGNUP DATE: Wednesday, Sept. 20, 1989
INTERVIEW DATE: October 3, 1989

PROFESSIONAL SERVICES, INC.
510 E. 22nd St.
Lombard, IL 60148
attn: Mr. John Costello

NUMBER OF SCHEDULES: 1 ea day, Oct. 4, 5, 1989
MAJORS: BS/MS CE
POSITION: Staff Engineer/Manager in Training
LOCATION: Nationwide
DECEMBER 1989 GRADS

INTERVIEW SIGNUP DATE: Wednesday, Sept. 20, 1989
INTERVIEW DATE: October 3, 1989

UNITED DATA SERVICES, INC.
5454 W. 110th St.
Overland Park, KS 66211
attn: Ms. Angela Webster

NUMBER OF SCHEDULES: 1
MAJORS: BS/Comp Sci or Engineering
Management with Comp Sci. Must have 2 classes of Information Systems - FORTRAN, JCL, ETC.
3.0 G.P.A. REQUIRED
POSITION: Programmer Analyst Dev. Program
LOCATION: Kansas City metro area
DECEMBER 1989 GRADS
3.0 G.P.A. REQUIRED

INTERVIEW SIGNUP DATE: Wednesday, September 20, 1989
INTERVIEW DATE: October 4, 1989

A.E. STALEY COMPANY
2200 E. Eldorado
P.O. Box 151
Decatur, IL 62525
attn: Ms. Jenny Stuckey

NUMBER OF SCHEDULES: 2
MAJORS: BS/ChE
POSITION: Staff Process Engineer
LOCATION: Midwest
DECEMBER 1989, MAY 1990 GRADS
MUST HAVE AUTHORIZATION TO WORK IN THE U.S. FOR OTHER THAN PRACTICAL TRAINING

INTERVIEW SIGNUP DATE: Wednesday, September 20, 1989
INTERVIEW DATE: October 6, 1989

ARMCO RESEARCH & TECHNOLOGY
703 Curtis Street
Middletown, OH 45043
attn: Mr. David Britton

NUMBER OF SCHEDULES: 1
MAJORS: BS/MS/PhD Metallurgical Eng.
POSITION: Research Engineer in Corp. Research Center conducting steel research
LOCATION: Middletown, OH
DECEMBER 1989, MAY, JULY 1990 GRADS
U.S. CITIZENSHIP OR PERMANENT RESIDENT VISA REQUIRED

INTERVIEW SIGNUP DATE: Thursday, September 21, 1989
INTERVIEW DATE: October 6, 1989

UNIVERSITY OF MISSOURI-ROLLA
PLACEMENT OFFICE
Buehler Building, 9th & Rolla St.

PERMANENT EMPLOYMENT

FALL WEEKLY DETAIL LIST #2
Week of October 9-13, 1989

SIGNUP LOCATION: Ground level (G-5 Buehler Bldg.)
SIGNUP HOURS: 7:45 to 11:30 a.m.
1:00 to 4:15 p.m.

PRESCREENED INTERVIEWS

For prescreening companies, qualified students must submit their resumes in Room G-3, Buehler Building, prior to the deadline outlined. Resumes will be mailed to participating companies three weeks prior to the interview date, and they will select the students they wish to interview. Selectee's names and backups will be posted on the bulletin boards in the sign-up area and in the appropriate departments. Posting of names will be done approximately two weeks before the interview date with a four day deadline for signing.

U.S. DIRECTORATE OF INTELLIGENCE (CIA)
Rt. 5, Box 283
Mexico, MO 65265
attn: Mr. Bob Bell

NUMBER OF SCHEDULES: 1 ea day, Oct. 9-10, 1989
MAJORS: BS/AE, EE, ME, Comp Sci, Math
Physics, Chemistry
POSITION: unknown at this time
LOCATION: Washington, D.C. area
DECEMBER 1989, MAY, JULY 1990 GRADS
U.S. CITIZENSHIP REQUIRED
3.0 G.P.A. REQUIRED

DEADLINE FOR TURNING IN RESUMES: Friday, Sept. 15, 1989
INTERVIEW DATES: October 9, 10, 1989

PLEASE NOTE: 1 SCHEDULE = 12 INTERVIEW OPENINGS DEPENDING UPON BEGINNING AND ENDING TIMES OF EACH COMPANY'S INTERVIEW SCHEDULE. NUMBER OF SCHEDULES PER COMPANY VARIES.

KOCH INDUSTRIES, INC.
P.O. Box 2256
Wichita, KS 67201
attn: Ms. Becky Bates

NUMBER OF SCHEDULES: 1-BS/MS ChE or ME
POSITION: Process or Project Eng. at one of Koch's refineries; Project Engineers in fuels/asphalts terminal operations; Process Engineers for chemical technology manufacturing group; Project Engineers in pipeline group; or Project Engineers in carbon/petroleum coke group
LOCATION: Corpus Christi, TX; St. Paul, MN; and Wichita, KS. Other locations available in pipeline group
3.0 G.P.A. MIN.
Koch will interview any student who currently has the legal right to live and work in the U.S.
DECEMBER 89, MAY, JULY 90 GRADS

DEADLINE FOR TURNING IN RESUMES: Friday, Sept. 15, 1989
INTERVIEW DATE: October 9, 1989

KOCH INDUSTRIES, INC. R&D CENTER
P.O. Box 8127
Wichita, KS 67208
attn: Mr. Paul Ladnier

NUMBER OF SCHEDULES: 1
MAJORS: BS/MS Chemistry (organic), Ph.D. (Organic), Post Doc. Chemical Eng.-BS/MS/PhD
POSITION: Research Engineer/Development Engineers. Analytical Chemists, Product Development Chemists
LOCATION: Wichita, KS
DECEMBER 1989 or MAY, JULY 1990 GRADS
3.0 G.P.A.
Koch will interview any student who currently has the legal right to live and work in the U.S.

DEADLINE FOR TURNING IN RESUMES: Friday, Sept. 15, 1989
INTERVIEW DATE: October 9, 1989

Zeta
Tau
Alpha
204 E. 12th

Garage Sale

7 Am
to
Noon

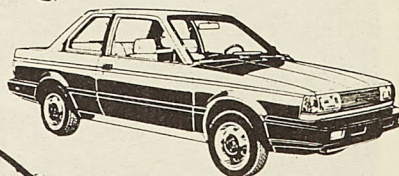
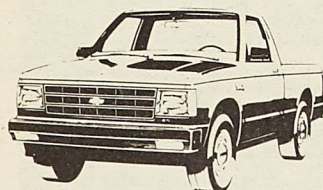
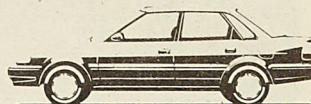
-Furniture
-Appliances
-Chandliers
-Clothes, etc.

September 9th

proceeds go to ARC

*You don't need rich parents
to get a car for graduation.*

GEORGE WALSH



CAR WASH
Walsh-O-Matic
CAR SALON

The Heart
of Missouri
TRUCK CENTER
1 800 BUY TRUX

Budget
RENT A CAR

100 Fairground Road • Rolla, Missouri • 314-364-1002



Rob Dechant Eric Hauser Dan Lumma Dave Auchmheimer

THETA TAU OMEGA
Presents

SummerFest '89

Friday, Sept. 8 1-6 pm
At Lion's Club Park

Featuring
Fluorescent Hightops

Cups \$5.00 in Advance at
Hockey Puck

Bus rides
home provided

AT&T TECHNOLOGIES-KANSAS CITY WORKS

777 North Blue Parkway
Lee's Summit, MO 64063
attn: Mr. Bob Hart

NUMBER OF SCHEDULES: 1
MAJORS: BS/MS ChE, EE, Comp Sci
POSITION(S): Not available at this time
LOCATION: All locations
DECEMBER 1989, MAY 1990 GRADS
3.2 G.P.A. REQUIRED
U.S. CITIZENSHIP OR PERMANENT RESIDENT VISA REQUIRED

DEADLINE FOR TURNING IN RESUMES: Friday, Sept. 15, 1989
INTERVIEW DATE: October 9, 1989

RAISTON PURINA COMPANY

P.O. Box 3588
Davenport, IA 52808
attn: Mr. Kerry Garman

NUMBER OF SCHEDULES: 1
MAJORS: Mechanical, Electrical, Chemical
Engineering or Engineering
Management
POSITION: Production Management Trainee
Engineering Management Trainee
LOCATION: Davenport, IA
AUGUST 89, DECEMBER 1989, MAY 1990 GRADS
2.5 G.P.A. REQUIRED
CITIZENSHIP: IRCA 1986

DEADLINE FOR TURNING IN RESUMES: Friday, Sept. 15, 1989
INTERVIEW DATE: October 9, 1989

AMOCO CHEMICAL COMPANY

Chocolate Bayou Plant
P.O. Box 1488
Alvin, TX 77511
attn: Mr. Bob Dempsey

NUMBER OF SCHEDULES: 1
MAJORS: BS/EE, ME
POSITION: Project Engineers in Mfg. Plant
producing olefins and polypropylene resins
LOCATION: Alvin, TX
DECEMBER 1989 GRADS
MUST BE PERMANENT RESIDENT
DEADLINE FOR TURNING IN RESUMES: Friday, Sept. 15, 1989
INTERVIEW DATES: October 10, 11, 1989

DOW CHEMICAL, USA

P.O. Box 150
Plaquemine, LA 70765-0150
attn: Mr. Joe W. Bristol

NUMBER OF SCHEDULES: 1-BS/MS ChE, ME, EE
1-BS/MS/PhD Chemistry
1-BS/MS Metallurgical Eng.
POSITION: Entry-level positions in manufacturing,
process engineering, technical sales,
technical services, R&D
LOCATION: Texas, Louisiana, Ohio, Michigan
3.5 G.P.A. REQUIRED
U.S. CITIZENSHIP OR PERMANENT RESIDENT VISA REQUIRED
DECEMBER 1989, MAY 1990 GRADS

DEADLINE FOR TURNING IN RESUMES: Monday, Sept. 18, 1989
INTERVIEW DATE: October 10, 1989

OKLAHOMA GAS & ELECTRIC

321 N. Harvey
P.O. Box 321
Oklahoma City, OK 73101
attn: Ms. Millie J. Tibbits

NUMBER OF SCHEDULES: 1
MAJORS: BS/EE, ME
POSITION: Power Plant Eng. & Transmission &
Distribution Eng.
LOCATION: various Oklahoma
DECEMBER 1989 GRADS
U.S. CITIZENSHIP OR PERMANENT RESIDENT VISA REQUIRED

DEADLINE FOR TURNING IN RESUMES: Monday, Sept. 18, 1989
INTERVIEW DATE: October 10, 1989

AMOCO PETROLEUM ADDITIVES

301 Evans
P.O. Box 182
Wood River, IL 62095
attn: Mr. Tim Winnard

NUMBER OF SCHEDULES: 2
MAJORS: BS/ChE, ME
POSITION: Entry level: Manufacturing
environment
LOCATION: Wood River, IL
DECEMBER 1989 GRADS
U.S. CITIZENSHIP REQUIRED
2.85 G.P.A. REQUIRED

DEADLINE FOR TURNING IN RESUMES: Friday, Sept. 15, 1989
INTERVIEW DATE: October 10, 1989

MCI TELECOMMUNICATIONS

8283 Greensboro Dr.
Dept. 1122-625
McLean, VA 22102
attn: Mr. Richard Kennedy

NUMBER OF SCHEDULES: 2
MAJORS: BS/Electrical, Mechanical Engineering,
or BS Computer Science
POSITION: Entry Level Engineer
LOCATION: Richardson, TX; short assignment in N.
VA possible
DECEMBER 1989 GRADS

DEADLINE FOR TURNING IN RESUMES: Monday, Sept. 18, 1989
INTERVIEW DATE: October 10, 1989

TEXAS EASTMAN COMPANY

P.O. Box 7444
Longview, TX 75607
attn: Mr. Nick Nabours

NUMBER OF SCHEDULES: 2
MAJORS: BS/MS ChE, Engineering Management,
Computer Science
POSITION: Chemical Engineer, Industrial Engineer
or Systems Analyst
LOCATION: Longview, TX
DECEMBER 1989, MAY, JULY 1990 GRADS
PREFER 3.0 G.P.A. OR ABOVE
APPLICANTS FOR TEXAS EASTMAN COMPANY MUST BE
PRESENTLY AUTHORIZED TO WORK IN THE U.S. ON A FULL-
TIME BASIS. TEXAS EASTMAN COMPANY DOES NOT SPONSOR
INDIVIDUALS FOR THE PURPOSE OF OBTAINING H-1 VISAS.

DEADLINE FOR TURNING IN RESUMES: Monday, Sept. 18, 1989
INTERVIEW DATES: October 10, 11, 1989

DEPT. OF ARMY CORPS OF ENGINEERS

601 East 12th St.
Kansas City, MO 64106
attn: Ms. Kathy Duffy

NUMBER OF SCHEDULES: 1
MAJORS: BS/MS CE, Environmental, ChE
POSITION: Entry-Level
LOCATION: Kansas City, MO
DECEMBER 1989, MAY 1990 GRADS
2.5 G.P.A. REQUIRED
U.S. CITIZENSHIP REQUIRED

DEADLINE FOR TURNING IN RESUMES: Monday, Sept. 18, 1989
INTERVIEW DATE: October 10, 1989

UNITED TELEPHONE

5454 W. 110th St.
Overland Park, KS 66211
attn: Ms. Linda Bell

NUMBER OF SCHEDULES: 1
MAJORS: BS/MS EE, ME
POSITION: Management Trainee Program
LOCATION: Overland Park, KS, a suburb of KC
DECEMBER 1989, MAY, JULY 1990 GRADS
MUST MEET ELIGIBILITY REQUIREMENTS TO WORK IN THE U.S.
3.0 G.P.A. REQUIRED

DEADLINE FOR TURNING IN RESUMES: Monday, Sept. 18, 1989
INTERVIEW DATE: October 10, 1989

MISSOURI PUBLIC SERVICE COMPANY

10700 E. 350th Highway
Kansas City, MO 64138
attn: Ms. Cynthia Smith

NUMBER OF SCHEDULES: 1
MAJORS: BS/EE
POSITION: Staff & Field Engineer
LOCATION: Kansas City area, Western Missouri
DECEMBER 1989 GRADS
U.S. CITIZENS ONLY

DEADLINE FOR TURNING IN RESUMES: Monday, Sept. 18, 1989
INTERVIEW DATE: October 10, 1989

B&V WASTE SCIENCE & TECHNOLOGY

P.O. Box 7960
Overland Park, KS 66207-0960
attn: Ms. Beth Vaughan

NUMBER OF SCHEDULES: 1
MAJORS: BS/MS CE or Geological Engineering
POSITION: Civil/Environmental Engineers or
Geological Engineers
LOCATION: Overland Park, KS; Chicago, IL
DECEMBER 1989 OR MAY 1990 GRADS
2.75 G.P.A. REQUIRED
MUST BE LEGALLY AUTHORIZED FOR U.S. EMPLOYMENT

DEADLINE FOR TURNING IN RESUMES: Tuesday, Sept. 19, 1989
INTERVIEW DATE: October 11, 1989

UNION PACIFIC RAILROAD

1416 Dodge Street
Omaha, NE 68179
attn: Mr. Roger Dillon

NUMBER OF SCHEDULES: 1
MAJORS: BS/CE, ME, EE, Eng. Mgt.
POSITION: Service Operation Careers
LOCATION: Omaha, NE
DECEMBER 1989, MAY, JULY 1990 GRADS
2.8 G.P.A. REQUIRED
MUST BE ABLE TO WORK IN THE U.S. LEGALLY

DEADLINE FOR TURNING IN RESUMES: Tuesday, Sept. 19, 1989
INTERVIEW DATE: October 11, 1989

BASF CORPORATION

Chemicals Division
100 Cherry Hill Road
Parsippany, NJ 07054
attn: Mr. James Fletcher

NUMBER OF SCHEDULES: 1
MAJORS: BS/ChE
POSITION: New Professional Program (TDPD) -
2 year training program in various
disciplines of Chemical Engineering
dependent upon area of interest.
LOCATION: LA, MI, NJ, NY, NC, TX, and W. VA.
DECEMBER 1989, MAY, JULY 1989 GRADS
2.75 G.P.A.

MUST BE LEGALLY ELIGIBLE TO WORK IN THE U.S.
DEADLINE FOR TURNING IN RESUMES: Tuesday, Sept. 19, 1989
INTERVIEW DATE: October 11, 1989

SCHLUMBERGER WELL SERVICES
Suite 2400
365 Canal Street
New Orleans, LA 70130
attn: Ms. Janice Parker

NUMBER OF SCHEDULES: 2
MAJORS: BS/EE, ME, Physics
POSITION: Field Engineers
LOCATION: Louisiana and Texas Gulf Coast
recent grads, DECEMBER 1989 GRADS
2.7 G.P.A. REQUIRED
U.S. CITIZENSHIP OR PERMANENT RESIDENT VISA REQUIRED
DEADLINE FOR TURNING IN RESUMES: Tuesday, Sept. 19, 1989
INTERVIEW DATE: October 11, 1989

MOTOROLA, INC.-CELLULAR GROUP
4250 East Camelback Road
Suite 360K
Phoenix, AZ 85018
attn: Ms. Robin Kreider

NUMBER OF SCHEDULES: 1
MAJORS: BS/CS, EE, CE
POSITION: Design & development of high capacity cellular radio telephone systems & equipment
LOCATION: Arlington Heights, IL
DECEMBER 1989 GRADS
U.S. CITIZENSHIP OR PERMANENT RESIDENT VISA REQUIRED

DEADLINE FOR TURNING IN RESUMES: Tuesday, Sept. 19, 1989
INTERVIEW DATE: October 11, 1989
MOTOROLA, INC.
4250 East Camelback Road
Suite 310K
Phoenix, AZ 85018
attn: Ms. Robin Kreider

The following schedules will be available for Motorola, Inc.

PLEASE SPECIFY APPROPRIATE DIVISION ON RESUME.

MOTOROLA, INC.-CORPORATE R&D
NUMBER OF SCHEDULES: 1
MAJORS: MS/PhD Computer Science
POSITION: Opportunities in Computer Support Dept.
LOCATION: Chicago, IL
DECEMBER 1989 GRADS
U.S. CITIZENSHIP OR PERMANENT RESIDENT VISA REQUIRED
3.2 G.P.A. REQUIRED

DEADLINE FOR TURNING IN RESUMES: Tuesday, Sept. 19, 1989
INTERVIEW DATE: October 11, 1989

MOTOROLA, INC.-GOVERNMENT ELECTRONICS GROUP
4250 East Camelback Road
Suite 310K
Phoenix, AZ 85018
attn: Ms. Robin Kreider

NUMBER OF SCHEDULES: 1
MAJORS: BS/MS EE
POSITION: Engineering Training Program - first program to begin January 5, 1990. The 24-week Engineering Training Program prepares newly graduated engineers for a wide variety of challenges in applied research, development, and production.
LOCATION: Phoenix, AZ
DECEMBER 1989 GRADS
U.S. CITIZENS ONLY

DEADLINE FOR TURNING IN RESUMES: Tuesday, Sept. 19, 1989
INTERVIEW DATE: October 11, 1989

MOTOROLA, INC.-MOBILE PRODUCTS DIVISION
4250 East Camelback Road
Suite 360K
Phoenix, AZ 85018
attn: Ms. Robin Kreider

NUMBER OF SCHEDULES: 1
MAJORS: BS/MS/PhD in EE or Software Eng.
POSITION: Electrical Engineer/Software Engineer - Design, develop, and manufacture two-way communication products
LOCATION: Fort Worth, TX
U.S. CITIZENSHIP OR PERMANENT RESIDENT VISA REQUIRED
BRING RESUME AND UNOFFICIAL TRANSCRIPT TO INTERVIEW
DEADLINE FOR TURNING IN RESUMES: Tuesday, Sept. 19, 1989
INTERVIEW DATE: October 11, 1989

MOTOROLA, INC.-COMMUNICATIONS SECTOR
1301 E. Algonquin Rd.
Schaumburg, IL 60196
attn: Ms. Rebecca Lotsoff

NUMBER OF SCHEDULES: 1
MAJORS: BS/MS EE
POSITION: Electrical Engineer
LOCATION: Schaumburg, IL
WILL CONSIDER PERSONS FOR EMPLOYMENT WHO ARE U.S. CITIZENS, PERMANENT RESIDENTS, NATIONALS, INTENDING CITIZENS AND OTHERS WHO ARE LAWFULLY AUTHORIZED FOR EMPLOYMENT BY MOTOROLA FOR MORE THAN ONE YEAR PURSUANT TO U.S. IMMIGRATION LAWS. UNOFFICIAL TRANSCRIPT IS REQUIRED AT TIME OF INTERVIEW.
DECEMBER 1989, MAY, JULY 1990 GRADS

DEADLINE FOR TURNING IN RESUMES: Tuesday, Sept. 19, 1989
INTERVIEW DATE: October 11, 1989
MARATHON OIL COMPANY
P.O. Box 3128
Houston, TX 77253
attn: Mr. John Feigal

NUMBER OF SCHEDULES: 2
MAJORS: BS/MS PE, CHE
POSITION: Petroleum Eng.: Performs a variety of engineering duties associated with oil & gas recovery and production.
LOCATION: TX, LA, WY, IL
MUST BE ELIGIBLE TO LEGALLY WORK IN THE U.S.
DECEMBER 1989, MAY, JULY 1990 GRADS

DEADLINE FOR TURNING IN RESUMES: Thursday, Sept. 21, 1989
INTERVIEW DATE: October 12, 1989

HURLINGTON NORTHERN RAILWAY
3000 Continental Plaza
777 Main St.
Ft. Worth, TX 76102
attn: Mr. Russell Wood

NUMBER OF SCHEDULES: 1
MAJORS: BS/EE
POSITION: Corporate Management Training Program in Communications & Signals Division
LOCATION: Nationwide
DECEMBER 1989 OR MAY 1990 GRADS
APPLICANTS MUST BE PRESENTLY AUTHORIZED TO WORK IN THE U.S. ON A FULL-TIME BASIS. THE COMPANY DOES NOT SPONSOR INDIVIDUALS FOR THE PURPOSE OF OBTAINING H-1 VISAS.

DEADLINE FOR TURNING IN RESUMES: Thursday, Sept. 21, 1989
INTERVIEW DATE: October 12, 1989

ARKANSAS BEST CORPORATION
P.O. Box 48
Ft. Smith, AR 72902
attn: Mr. Chris Burton

NUMBER OF SCHEDULES: 1
MAJORS: BS/MS Comp Science
POSITION: Systems Analyst/Programmer
LOCATION: Ft. Smith, AR
DECEMBER 1989, MAY 1990 GRADS
PLACEMENT IN UPPER THIRD OF CLASS PREFERRED
MUST HAVE U.S. EMPLOYMENT STATUS

DEADLINE FOR TURNING IN RESUMES: Thursday, Sept. 21, 1989
INTERVIEW DATE: October 12, 1989

COMPAQ COMPUTER CORPORATION
P.O. Box 692000
MS 97
Houston, TX 77269-2000
attn: Ms. Jackie Sharp

NUMBER OF SCHEDULES: 2
MAJORS: Computer Science, EE
POSITION(S): Hardware Design Engineer, Systems Engineer, Test Engineer, Industrial Engineer, Manufacturing Engineer, or Quality Engineer
LOCATION: Houston, TX
DECEMBER 1989 GRADS
3.0 G.P.A. REQUIRED; U.S. CITIZENSHIP REQUIRED
DEADLINE FOR TURNING IN RESUMES: Thursday, Sept. 21, 1989
INTERVIEW DATE: October 12, 1989

CENTRAL ILLINOIS PUBLIC SERVICE
General Offices
607 E. Adams Street
Springfield, IL 62701
attn: Mr. H.L. Gaffney

NUMBER OF SCHEDULES: 1
MAJORS: BS/MS EE
POSITION: Field Engineer (BS) - (Beardstown, Marion, Mattoon) Distribution, Transmission, Substation/Relay
BS/MS (Springfield) - Distribution Engineer, Substation; Relay or System Planning Engineer
DEADLINE FOR TURNING IN RESUMES: Thursday, Sept. 21, 1989
INTERVIEW DATE: October 12, 1989

AMCO RESEARCH CENTER
P.O. Box 3011
Naperville, IL 60566
attn: Ms. Betty Nelson

NUMBER OF SCHEDULES: 1
MAJORS: MS/PhD ME
POSITION: Research & Development
LOCATION: Naperville, IL
DECEMBER 1989 OR MAY 1990 GRADS
U.S. CITIZENSHIP OR PERMANENT RESIDENT VISA REQUIRED

DEADLINE FOR TURNING IN RESUMES: Thursday, Sept. 21, 1989
INTERVIEW DATE: October 12, 1989

OSCAR MAYER
P.O. Box 7188
Madison, WI 53707
attn: Mr. Name Salter

NUMBER OF SCHEDULES: 1
MAJORS: BS/ME/EE
POSITION: Engineering Development Program - entry level position is based at Corporate Headquarters for six (6) months, with subsequent assignment to one of Oscar Mayer's manufacturing facilities. Seek individuals whose career objective is in Plant Engineering Management as opposed to Machine Design.
LOCATION: Based in Madison
DECEMBER 1989 GRADS; 2.75 G.P.A. REQUIRED
U.S. CITIZENSHIP OR PERMANENT VISA - (refer to the Immigration Reform and Control Act of 1986).

DEADLINE FOR TURNING IN RESUMES: Thursday, Sept. 21, 1989
INTERVIEW DATE: October 12, 1989

SQUARE D COMPANY
4800 Paris Road
Columbia, MD 65201
attn: Mr. Tom Fix

NUMBER OF SCHEDULES: 2
MAJORS: BS/EE, ME, Eng. Mgt.
POSITION: Industrial Engineer, Manufacturing Engineer, Product Engineer, or Production Facilities
LOCATION: Columbia, MD
recent grads, DECEMBER 1989 OR MAY 1990 GRADS
PERMANENT RESIDENT VISA REQUIRED

INTERVIEW SIGNUP DATE: Monday, Sept. 25, 1989
INTERVIEW DATE: October 9, 1989

FRITO LAY, INC.
P.O. Box 660634
Dallas, TX 75266
attn: Ms. Tina Phillis

NUMBER OF SCHEDULES: 2
MAJORS: BS/MS ME, EE, ChE, Eng. Mgt.
POSITION: Associate Manufacturing Engineer
LOCATION: Topeka, KS/Nationwide
DECEMBER 1989, MAY 1990 GRADS
2.8 G.P.A. REQUIRED
STUDENTS ARE TO BRING TRANSCRIPTS TO INTERVIEW.

INTERVIEW SIGNUP DATE: Monday, Sept. 25, 1989
INTERVIEW DATE: October 9, 1989

AMCO CORPORATION
MC 3801
200 East Randolph
Chicago, IL 60601
attn: Ms. Ralene Lyons

NUMBER OF SCHEDULES: 1 ea day, Oct. 9, 10
MAJORS: BS/MS ChE, ME
POSITION: ME, EE: Refinery Engineering
ChE: Refinery Tech. Projects Eng.
LOCATION: Whiting Refinery, Whiting, IN
(located 1/2 hour south of downtown Chicago)
DECEMBER 1989, MAY 1990 GRADS
3.0 G.P.A. REQUIRED
U.S. CITIZENSHIP OR PERMANENT RESIDENT VISA REQUIRED
MUST BRING TRANSCRIPTS TO INTERVIEW.

INTERVIEW SIGNUP DATE: Monday, Sept. 25, 1989
INTERVIEW DATES: October 9, 10, 1989

COLONIAL PIPELINE CO
3390 Peachtree Rd. NE
P.O. Box 18855
Atlanta, GA 30326
attn: Mr. C.W. Crider

NUMBER OF SCHEDULES: 1
MAJORS: BS/ME, Comp Science
POSITION: ME: Associate Engineer - Design additions to pipeline systems;
Comp Sci: Associate Programmer - Includes work with a variety of computers. Systems include Unisys (mainframe), Stratus (fault tolerant) and other minicomputers.

DEADLINE FOR TURNING IN RESUMES: Thursday, Sept. 21, 1989
INTERVIEW DATE: October 12, 1989

VETERANS ADMINISTRATION
810 Vermont Ave., N.W.
Washington, D.C. 20420
attn: Mr. Hank Ciatto

NUMBER OF SCHEDULES: 1
MAJORS: BS/CE, ME, EE
POSITION: Resident Engineer
LOCATION: Nationwide
U.S. CITIZENSHIP REQUIRED
DEADLINE FOR TURNING IN RESUMES: Thursday, Sept. 21, 1989
INTERVIEW DATE: October 12, 1989

NON-PRESCREENED COMPANIES

Signups are held approximately two weeks prior to the interview date. Signups will be on a first-come, first-served basis; no priorities. Backup lists will be available for those students unable to interview. BRING A RESUME WITH YOU AT TIME OF SIGNING FOR BACKUP LIST. DON'T FORGET TO REGISTER WITH PLACEMENT OFFICE (FORMS ARE LOCATED ON SECOND FLOOR, BUEHLER BLDG.)

MOBIL OIL CORPORATION
Suite 400
1515 Woodfield Drive
Schaumburg, IL 60173
attn: Ms. Janet Hickey

The following schedules will be available for MOBIL:
INTERVIEW DATE FOR ALL MOBIL SCHEDULES: October 12, 1989
INTERVIEW SIGNUP DATE FOR ALL MOBIL SCHEDULES: WEDNESDAY, SEPTEMBER 27, 1989

MOBIL OIL CORPORATION

NUMBER OF SCHEDULES: 1
MAJORS: BS/ChE, ME
POSITION: Project or Process Engineer
LOCATION: Beaumont, TX
DECEMBER 1989, MAY 1990 GRADS
MUST BE AVAILABLE TO WORK ON A FULL-TIME BASIS
STUDENTS MUST BRING TRANSCRIPT TO INTERVIEW.

MOBIL OIL CORPORATION

NUMBER OF SCHEDULES: 1
MAJORS: BS/CE, ME
POSITION: Construction Management
LOCATION: Nationwide - Must be willing to relocate
DECEMBER 1989 GRADS
MUST BE AVAILABLE TO WORK ON A FULL-TIME BASIS
PLEASE VIEW VIDEO PRIOR TO INTERVIEW.

MOBIL OIL CORPORATION

NUMBER OF SCHEDULES: 1
MAJORS: BS/MS ChE, ME, PE
POSITION: Production Engineer/Operations Eng.
LOCATION: Midland, TX
DECEMBER 1989 GRADS
MUST BE AVAILABLE TO WORK ON A FULL-TIME BASIS
STUDENTS MUST BRING COPY OF THEIR TRANSCRIPTS TO INTERVIEW

FRITO LAY, INC.
4236 Kirkclawn Ave.
Topeka, KS 66609
attn: Mr. Brian Hellmann

NUMBER OF SCHEDULES: 2
MAJORS: Mechanical, Civil, Chemical, Electrical
or Agricultural Engineering
POSITION: Manufacturing Engineer
LOCATION: Nationwide
DECEMBER 1989 GRADS
Position is available to those individuals who are
authorized for permanent employment in the U.S.

DEADLINE FOR TURNING IN RESUMES: Friday, Sept. 15, 1989
INTERVIEW DATE: October 9, 1989

IOWA ELECTRIC LIGHT & POWER COMPANY
P.O. Box 351
Cedar Rapids, IA 52406
attn: Ms. Patricia Lusted

NUMBER OF SCHEDULES: 1
MAJORS: BS/EE, ME
POSITION: Engineer
LOCATION: Design Engineering Department located
at Nuclear power plant site near Cedar Rapids, IA
MAY 1990 GRADS
U.S. CITIZENSHIP OR LIA
2.5 G.P.A.
INTERVIEW SIGNUP DATE: Tuesday, Sept. 26, 1989
INTERVIEW DATE: October 10, 1989

BEKAERT STEEL WIRE CORPORATION
P.O. Box 1407
Dyersburg, TN 38024
attn: Mr. Howard Fikes

NUMBER OF SCHEDULES: 1
MAJORS: BS/ME, EE, ChE, MetE, Eng. Mgt.
POSITION: One year formal training program to
give experience in all processes of steel wire mfg.
Train for permanent placement in one of the manufactur-
ing locations in process, project and maintenance engin-
eering in manufacturing.
LOCATION: Dyersburg, TN; Muskegon, MI;
Van Buren, AR; Rome, GA; Rogers, AR;
Shelbyville, KY
DECEMBER 1989, MAY 1990 GRADS
WORK VISA REQUIRED

INTERVIEW SIGNUP DATE: Tuesday, Sept. 26, 1989
INTERVIEW DATE: October 10, 1989

MAYTAG COMPANY
403 W. 4th Street North
Newton, IA 50208
attn: Mr. Martin Smith

NUMBER OF SCHEDULES: 2
MAJORS: BS/EE, ME
POSITION: Design & Manufacturing
LOCATION: Newton, IA
DECEMBER 1989 GRADS
U.S. CITIZENSHIP OR PERMANENT VISA REQUIRED

INTERVIEW SIGNUP DATE: Tuesday, Sept. 26, 1989
INTERVIEW DATE: October 12, 1989

MOBIL OIL CORPORATION
Suite 400
1515 Woodfield Dr.
Schaumburg, IL 60173
attn: Ms. Janet Hickey

NUMBER OF SCHEDULES: 1
MAJORS: BS/Comp Sci, Management Info. Systems
POSITION: Programmer Analyst
LOCATION: Kansas City, MO
DECEMBER 1989, MAY, JULY 1990 GRADS
MUST BE AVAILABLE TO WORK ON A FULL-TIME BASIS

INTERVIEW DATE FOR ALL MOBIL SCHEDULES: OCTOBER 12, 1989
INTERVIEW SIGNUP DATE: Wednesday, Sept. 27, 1989

ATLANTA TESTING & ENGINEERING
11420 Johns Creek Parkway
Duluth, GA 30136
attn: Mr. Scott Fletcher

NUMBER OF SCHEDULES: 1 ea day, Oct. 10, 11, 1989
MAJORS: BS/MS CE, Geol. Eng.
POSITION: Staff Geotechnical Engineer
Staff Hydrogeologist
LOCATION: Georgia, South Carolina, Florida
DECEMBER 1989, MAY 1990 GRADS
2.75 G.P.A. REQUIRED
U.S. CITIZENSHIP REQUIRED

INTERVIEW SIGNUP DATE: Thursday, Sept. 28, 1989
INTERVIEW DATES: October 10, 11, 1989

The following companies have scheduled interviews. Infor-
mation is not available at this time.

LEVER BROTHERS - INTERVIEWING OCT. 9, 1989
HIMONT - INTERVIEWING OCT. 9, 1989
HEWLETT PACKARD - INTERVIEWING OCT. 10, 11, 1989
CITICORP-DIST.
SERVICES DIV. - INTERVIEWING OCT. 12, 1989
INLAND STEEL - INTERVIEWING OCT. 12, 1989

Following is a list of additions/cancellations:

NOTE: THE MARINES WILL BE ON CAMPUS (HOCKEY PUCK)
on Sept. 5, 6; Oct. 4, 5 & Nov. 1, 2, 1989

WEEK OF OCT. 2-6

Wisconsin Power & Light - Oct. 2 ADDITION
Anheuser Busch - Oct. 2 ADDITION
Laclede Steel - Oct. 2, 3 ADDITION
change from Nov. 1, 2, 1989

WEEK OF OCT. 10-13

McDonnell Douglas Aircraft - Oct. 10, 11 (change to
interview dates of Oct. 30, 31, 1989)
McDonnell Douglas Information Systems - Oct. 10, 11 - CANCEL
Marathon Oil - Oct. 11, 12 ADDITION
change from Nov. 1, 2, 1989

WEEK OF OCT. 16-20

Nooter Corp. - Oct. 16 ADDITION
Fina Oil - Oct. 20 ADDITION
Wells Mfg. Co. - Oct. 20 ADDITION

WEEK OF OCT. 24-26

Honeywell-Albuquerque - Oct. 24 CANCEL
Burlington Northern Info. Systems - Oct. 24 CANCEL
Amoco Production Geophysics - Oct. 25 - ADDITION

WEEK OF NOV. 1-7

Quantum Chemical - Nov. 2 CANCEL
Fru-Con - Nov. 6, 7 ADDITION
International Paper - Nov. 7, 8 ADDITION
Owens Illinois - Nov. 7 ADDITION
Burlington Northern - Nov. 8 ADDITION
P&M Coal Co. - Nov. 11 ADDITION

Following is a listing of companies that have scheduled
information meetings. Attendance at these meetings is
highly recommended.

Co-op Employment

UNIVERSITY OF MISSOURI-ROLLA
Placement Office
Buehler Building, 9th & Rolla St.

SUMMER EMPLOYMENT

FALL WEEKLY DETAIL LIST #1

WEEK OF OCTOBER 2-6, 1989

WEEK OF OCTOBER 9-13, 1989

Note: Detail lists will be printed weekly in the Miner.

SIGNUP LOCATION: Ground level (G-5 Buehler Bldg.)
SIGNUP HOURS: 7:45 to 11:30 a.m.
1:00 to 4:15 p.m.

PRESCREENED INTERVIEWS

For prescreening companies, qualified students must submit
their resumes in Room G-3 Buehler Bldg., prior to the
deadline outlined. Resumes will be mailed to participating
companies three weeks prior to their interview date, and they
will select the students they wish to interview. Selectee's
names and backups will be posted on the bulletin boards in
the signup area and in the appropriate departments. Posting
of names will be done approximately two weeks before the
interview date with a four day deadline for signing.

ALUMINUM COMPANY OF AMERICA-WARRICK

P.O. Box 356
Davenport, IA 52808
attn: Ms. Judy Shook

NUMBER OF SCHEDULES: 1 (AFTERNOON ONLY)
MAJORS: Metallurgical Engineering
POSITION: Metallurgical Engineer
LOCATION: Nationwide
DECEMBER 1990, MAY 1991 GRADS
IT IS REQUESTED THAT STUDENTS BRING A COPY OF THEIR
TRANSCRIPT, OFFICIAL OR UNOFFICIAL, TO THEIR INTERVIEW.
MUST HAVE U.S. CITIZENSHIP OR PERMANENT RESIDENT VISA

DEADLINE FOR TURNING IN RESUMES: Wednesday, Sept. 13, 1989
INTERVIEW DATE: October 4, 1989

Note: 1 schedule = 12 interview openings, depending on
beginning and ending times of interview schedules. Number
of schedules and interviews will vary by companies.

PRE RECRUITMENT MEETING, FALL, 1989

Date	Company	Time	Location
September 5	U. S. Marines	9am-5pm	Hockey Puck
September 6	U. S. Marines	9am-5pm	Hockey Puck
September 13	Procter & Gamble	8pm	Centennial Hall-West
September 14	Procter & Gamble	8am-3pm	Hockey Puck
September 18	Marathon Oil Co.	7:00pm	Centennial Hall-East

Date	Company	Time	Location
October 2	U. S. Navy	6:30pm	Meramec Room
	ARCO	7:00pm	Centennial Hall-West
October 3	U. S. Navy Interviews	8am-5pm	Sunrise Room
	General Dynamics	7:00pm	Missouri Room
October 4	Conoco-OSC	7:00pm	Meramec Room
	U. S. Marines	9am-5pm	Hockey Puck
October 5	Conoco-Gen. Meeting	7:00pm	Centennial Hall
	Andersen Consulting	5:00pm	Mark Twain Room
	U. S. Marines	9am-5pm	Hockey Puck
October 9	Amoco Oil	7:00pm	ME Auditorium
	United Telephone	7:00pm	Meramec Room
October 10	Union Pacific	6:30pm	Meramec Room
	Schlumberger Well Ser	7:00pm	101 EE (need to reserve & pickup vcr)
	MCI Interviews	8am-5pm	Meramec Room
	Missouri Publ Serv	8am-5pm	Sunrise Room
October 11	Citicorp-U. S. Card	7:00pm	Meramec Room
	Compaq Computers	7:00pm	Centennial West
October 16	Chevron	7:00pm	Mark Twain Room
October 19	BHP International	5:00pm	Mark Twain Room
October 23	Amoco Production	5:30pm	Ozark Room
	Conoco, Inc. EPNA	5:30pm	Meramec Room
October 24	Union Pacific	6:30pm	Mark Twain
	U. S. Patent & Trademark	7:00pm	Missouri Room
October 29	Conoco, NG&GP	7:00pm	Missouri Room
October 30	Schlumberger	7:00pm	Missouri Room
	International Paper	7:00pm	Meramec Room
October 31	Pepsi Cola	6:00pm	Missouri Room
	LTV Steel	7:00pm	Mark Twain Room
November 1	Marathon Oil	7:00pm	Mark Twain
	U. S. Marines	9am-5pm	Hockey Puck
November 2	U. S. Dept of Energy	7:00pm	Mark Twain
	U. S. Marines	9am-5pm	Hockey Puck
November 6	Schlumberger	7:00pm	Meramec Rm
	International Paper	7:00pm	Centennial Hall-East
November 7	IBM Interviews	8am-5pm	Centennial Hall
November 8	IBM Interviews	8am-5pm	Centennial Hall
	Marathon Oil- Robinson	4:30pm	Mark Twain
November 9	EDS	7:00pm	Mark Twain
November 16	U.S. Naval Seas Systems Command	6:00pm	101 EE Bldg.
	U. S. Naval Sea Systems Command-Logistics	7:00pm	Mark Twain Room

ARCO-U.S. OIL & GAS EXPLORATION & PRODUCTION

1601 Bryan Street
Dallas, TX 75221
attn: Ms. Ronel Atkins

NUMBER OF SCHEDULES: 1 - Schedule #3
MAJORS: BS/MS ChE, ME, PE
POSITION: Summer Engineer-Junior/Seniors
graduating Fall 1990/Spring Summer 1991
LOCATION: Alaska, Midland, Houston, TX;
Bakersfield, CA; Lafayette, LA
APPLICANTS SHOULD BE PRESENTLY AUTHORIZED TO WORK IN THE
U.S. ON A FULL-TIME BASIS.

INTERVIEWER: Gerald Suellentrop
(PLEASE LIST INTERVIEWER'S NAME ON RIGHT HAND CORNER OF
RESUME.)

DEADLINE FOR TURNING IN RESUME: Wednesday, Sept. 13, 1989
INTERVIEW DATE: October 3, 1989

ARCO U.S. OIL EXPLORATION & PRODUCTION

1601 Bryan Street
Dallas, TX 75221
attn: Ms. Ronel Atkins

NUMBER OF SCHEDULES: 1 - Schedule #4
BS/MS ChE, ME
POSITION: SUMMER ENGINEER
LOCATION: Alaska, Midland, Houston, TX;
Bakersfield, CA; Lafayette, LA
APPLICANTS SHOULD BE PRESENTLY AUTHORIZED TO WORK IN
THE U.S. ON A FULL-TIME BASIS
FALL 1990 AND SPRING/SUMMER 1991 GRADS

INTERVIEWER: unknown
(Please indicate schedule # on resume.)
DEADLINE FOR TURNING IN RESUMES: Wednesday, Sept. 13, 1989
INTERVIEW DATE: October 3, 1989

ARCO OIL & GAS EXPLORATION & PRODUCTION

1601 Bryan Street
Dallas, TX 75221
attn: Ms. Ronel Atkins

NUMBER OF SCHEDULES: 1 - Schedule #1
MAJORS: BS/MS ChE, ME or PE
POSITION: Summer Engineer
LOCATION: Alaska, Midland, Houston, TX;
Bakersfield, CA; Lafayette, LA
FALL 1990 OR SPRING/SUMMER 1991 GRADS
APPLICANTS SHOULD BE PRESENTLY AUTHORIZED TO WORK IN
THE U.S. ON A FULL-TIME BASIS.
INTERVIEWER: Von Cawvey
(LIST NAME OF RECRUITER ON RESUME)

DEADLINE FOR TURNING IN RESUME: Wednesday, Sept. 13, 1989
INTERVIEW DATE: October 4, 1989

ARCO OIL & GAS EXPLORATION & PRODUCTION
1601 Bryan Street
Dallas, TX 75221
attn: Ms. Ronel Atkins

NUMBER OF SCHEDULES: 1 - Schedule #5 - Oct. 4
BS/MS PE ONLY
Fall 1990/Spring/Summer 1992 grads
1 - Schedule #5 - Oct. 5
BS/MS ChE, ME ONLY
Fall 1990/Spring/Summer 1991 grads
Summer Engineer
POSITION: Alaska, Midland, Houston, TX;
LOCATION: Bakersfield, CA; Lafayette, LA
APPLICANTS SHOULD BE PRESENTLY AUTHORIZED TO WORK IN
THE U.S. ON A FULL-TIME BASIS.
INTERVIEWER: Ron Johnston
(LIST NAME OF RECRUITER ON RESUME)

DEADLINE FOR TURNING IN RESUME: Wednesday, Sept. 13, 1989
INTERVIEW DATES: October 4, 5, 1989

ARCO U.S. OIL AND GAS EXPL. AND PRODUCTION
1601 Bryan Street
Dallas, TX 75221
attn: Ms. Ronel Atkins

NUMBER OF SCHEDULES: 1 - Schedule #1
MAJORS: BS/MS ChE, ME, PE
POSITION: Summer Engineer
LOCATION: Alaska, Midland, Houston, TX;
Bakersfield, CA; Lafayette, LA
APPLICANTS SHOULD BE PRESENTLY AUTHORIZED TO WORK IN
THE U.S. ON A FULL-TIME BASIS
FALL 1990 AND SPRING/SUMMER 1991 GRADS

INTERVIEWER: Barry Sheldon
(Please indicate recruiter's name on resume.)
DEADLINE FOR TURNING IN RESUMES: Wednesday, Sept. 13, 1989
INTERVIEW DATE: October 5, 1989

ARCO U.S. OIL & GAS EXPLORATION & PRODUCTION
1601 Bryan Street
Dallas, TX 75221
attn: Ms. Ronel Atkins

NUMBER OF SCHEDULES: 1 - Schedule #6
MAJORS: BS/MS ChE, ME, PE
POSITION: Summer Engineer
LOCATION: Alaska, Midland, Houston, TX;
Bakersfield, CA; Lafayette, LA
FALL 1990 OR SPRING/SUMMER 1991 GRADS
APPLICANTS SHOULD BE PRESENTLY AUTHORIZED TO WORK
IN THE U.S. ON A FULL-TIME BASIS.

INTERVIEWER: Judy Roper
(Please indicate name of recruiter on resume.)
DEADLINE FOR TURNING IN RESUMES: Wednesday, Sept. 13, 1989
INTERVIEW DATE: October 5, 1989

ARCO U.S. OIL AND GAS EXP. & PRODUCTION
1601 Bryan Street
Dallas, TX 75221
attn: Ms. Ronel Atkins

NUMBER OF SCHEDULES: 1 - Schedule #6
MAJORS: Under graduate working toward BS
BS graduate working toward MS
MS/PhD candidate in Materials Science/
Metallurgical Engineering
POSITION: Summer Materials Engineer
LOCATION: Plano, TX
APPLICANTS SHOULD BE PRESENTLY AUTHORIZED TO WORK IN
THE U.S. ON A FULL-TIME BASIS.
INTERVIEWER: Kenneth Riggs
INTERVIEW SIGNUP DATE: Tuesday, Sept. 19, 1989
INTERVIEW DATE: October 4, 1989

MOBIL OIL CORPORATION
Suite 400
1515 Woodfield Dr.
Schaumburg, IL 60173
attn: Ms. Janet Hickey

NUMBER OF SCHEDULES: 1
MAJORS: Sophomores & Juniors in ChE, ME, PE
POSITION: Summer Production Engineer/
Operations Engineer Assistant
LOCATION: Midland, TX
PLEASE BRING COPY OF TRANSCRIPT TO INTERVIEW
MUST BE AVAILABLE TO WORK ON A FULL-TIME BASIS.

INTERVIEW SIGNUP DATE: Wednesday, Sept. 27, 1989
INTERVIEW DATE: October 12, 1989

MARATHON OIL COMPANY
P.O. Box 3128
Houston, TX 77253
attn: Mr. John Feigal

NUMBER OF SCHEDULES: 1
MAJORS: Freshman, Sophomore, and Junior
level Petroleum or Chemical Engineers
POSITION: College Intern
LOCATION: TX, LA, WY, KY
MUST BE ELIGIBLE TO LEGALLY WORK IN THE U.S.

DEADLINE FOR TURNING IN RESUMES: Thursday, Sept. 21, 1989
INTERVIEW DATE: October 11, 1989

NONPRESCREENED INTERVIEWS

For nonprescreened companies, signups will be held approximately two weeks prior to the interview date. Dates will be published in the Weekly Detail Lists. Signups will be on a first-come, first-served basis. Back-up lists will be available for those students unable to interview. SUMMER STUDENTS MUST BRING RESUME WITH THEM AT TIME OF SIGNING FOR INTERVIEW AND BACK-UP LISTS. (SUMMER STUDENTS MUST REGISTER WITH THE PLACEMENT OFFICE PRIOR TO INTERVIEWING.)

ARCO U.S. OIL AND GAS EXP. & PRODUCTION
1601 Bryan Street
Dallas, TX 75221
attn: Ms. Ronel Atkins

NUMBER OF SCHEDULES: 1 - Schedule #7
MAJORS: Under graduate working toward BS
BS graduate working toward MS
MS/PhD candidate in Materials Science/
Metallurgical Engineering
POSITION: Summer Materials Engineer
LOCATION: Plano, TX
APPLICANTS SHOULD BE PRESENTLY AUTHORIZED TO WORK IN
THE U.S. ON A FULL-TIME BASIS.
INTERVIEWER: George Williamson
INTERVIEW SIGNUP DATE: Tuesday, Sept. 19, 1989
INTERVIEW DATE: October 4, 1989
Interview date: Tuesday, Sept. 19, 1989

GENCORP AUTOMOTIVE
Batesville, Arkansas

Interviewing: M.E.

Requirements: 2.5 GPA or above, American Citizenship
Required. Academic Level of Applicants: At least
59 number of credit hours completed at the end of the
present semester toward BS degree.

1 hour interviews

Starting Work Date: Spring, 1990 or Summer 1990

Sign-up date: Tuesday, Sept. 5, 1989

2 schedules - 14 interview times

Interview date: Tuesday, Sept. 19, 1989

ANHEUSER BUSCH
St. Louis, Missouri

Interviewing: 1 schedule - M.E.
1 schedule - E.E.
1 schedule - Eng.Mgmt.

Requirements: 2.8 GPA or above, Must be completing
4 or 5 semesters toward bs degree.

Sign-up date: Tuesday, Sept. 5, 1989

3 schedules - 12 interview openings on each schedule.

Detailed job descriptions are available in the co-op
office.

Interview date: Thurs., Sept. 21, 1989

Anheuser Busch
St. Louis, Missouri

Interviewing: 1 schedule - E.E.
1 schedule - C.E., M.E., Mgmt.
1 schedule - C.Sc., E.E.

Requirements: 2.8 GPA or above, must be completing
4 or semesters toward bs degree progra

Sign-up date: Tuesday, Sept. 5, 1989

3 schedules - 12 interview openings on each schedule

Interview date: Friday, September 22, 1989

MONSANTO COMPANY
St. Louis, Missouri

Interviewing: Preferred Major - C.Sc., E.E.
(will interview 8 C.Sc., and 4 E.E.)

Requirements: 3.0 GPA or above, American Citizenship
not required, Academic Level of Applicants: At least
59 number of credit hours completed at the end of the
present semester toward BS degree.

Starting Work Date: Spring 1990 Term Jan-June

Sign-up date: Thursday, September 7, 1989

2 schedules - 12 interview times

Monsanto will hold an Orientation on Thurs., Sept. 21
at 3:30 - 5:00 in the Mark Twain Room, Univ. Center.
All students interviewing with Monsanto must attend
this orientation. You must bring your Monsanto
application with you to the orientation.

Interview date: Monday, Sept. 18, Tuesday, Sept.
19, & Wednesday, Sept. 20, 1989

CENTRAL INTELLIGENCE AGENCY
Washington, DC

Interviewing: A.E., Math., Chem., C.Sc., E.E.,
M.E., Physics

Requirements: 3.0 GPA or above, American Citizenship
required. Academic Level of Applicants: At least 29
number of credit hours completed at the end of the
present semester toward BS degree.

Sign-up date: Tuesday, September 5, 1989

Starting Work Date: Summer 1990 or Fall 1990

1 schedule each day - 39 interview openings

Interview date: Monday Sept. 25, 1989

BROWN SHOE COMPANY
Work Locations: Steelville, MO, Union, MO,
& Caruthersville, MO

Interviewing: Eng.Mgmt., M.E.

Requirements: 2.25 or above, Academic Level of
Applicants: At least 60 number of credit hours
completed at the end of the present semester
toward BS degree

Starting Work Date: Spring, 1990

Sign-up date: Monday, Sept. 11, 1989

1 schedule - 13 interview times

September, 1989

CO-OP EMPLOYMENT

Sign-up location: 101 Buehler Bldg.
Co-op Office
9th & Rolla Sts.

Sign-up hours: 7:45 am - 11:00 am
1:00 pm - 3:00 pm

Interview date: Monday, Sept. 25, 1989

DORRIS COMPANY
St. Louis, Missouri

Interviewing: M.E.

Requirements: 2.8 GPA or above, American
Citizenship not required. Academic Level
of Applicants: At least 50 number of credit
hours completed at the end of the present
semester toward bs degree.

Sign-up date: Monday, Sept. 11, 1989

Start work date: Spring 90

1 schedule - 10 interview times

Interview date: Tuesday, Oct. 10, 1989
Wednesday, Oct. 11, 1989

JOHNSON CONTROLS INC.
Kansas City, Kansas

Interviewing: E.E., M.E.

Requirements: 3.0 GPA or above. Academic Level
of Applicants: At least 29 number of credit hours
completed at the end of the present semester toward
bs degree

Starting Work Date: Spring 1990

Sign-up date: Tuesday, Sept. 26, 1989

1 schedule each day - 24 interview openings

AT&T
Kansas City, Missouri

Interviewing: C.Sc., E.E., Eng.Mgmt.

Requirements: 3.0 GPA or above, American Citizenship
required. Academic Level of Applicants: At least
60 number of credit hours completed at the end of
the present semester toward bs degree

Starting Work Date: Spring 1990

Turn in Resumes: Wed., Sept. 27, 1989

RESUMES ONLY. IF YOU WOULD LIKE TO BE CONSIDERED
FOR CO-OP EMPLOYMENT WITH THE ABOVE COMPANY, PLEASE
BRING A COPY OF YOUR CO-OP RESUME TO THE CO-OP OFFICE
ON THE ABOVE DATE.

KOCH INDUSTRIES RESEARCH AND DEVELOPMENT
Wichita, Kansas

Interviewing: Ch.E., M.E., Nuc., Pet., Met.E.

Requirements: 3.0 GPA or above, Permanent Resident
or US Citizen. Academic Level of Applicants:
At least 45 number of credit hours completed at
the end of the present semester toward bs degree.

Starting Work Date: Spring 1990

Turn in Resumes: Tuesday, Sept. 26, 1989

RESUMES ONLY. IF YOU WOULD LIKE TO BE CONSIDERED
FOR CO-OP EMPLOYMENT WITH THE ABOVE COMPANY, PLEASE
BRING A COPY OF YOUR CO-OP RESUME TO THE CO-OP OFFICE
ON THE ABOVE DATE.

Interview date: Tuesday, Oct. 10, 1989

SPARTAN ALUMINUM PRODUCTS
Sparta, Illinois

Interviewing: Eng.Mgmt., M.E.

Requirements: 2.0 GPA or above, American Citizenship Required. Academic Level of Applicants: At least 44 credit hours completed at the end of the present semester toward bs degree.

Starting Work Date: Spring 1990

Sign-up date: Tuesday, Sept. 26, 1989

1/2 schedule - 4 interview times

Interview date: Monday, Oct. 2, 1989

ANHEUSER BUSCH
St. Louis, Missouri

Interviewing: Eng.Mgmt.

Requirements: 2.8 GPA or above, Must be completing 4 or 5 semesters toward bs degree.

Sign-up date: Mon., Sept. 18, 1989

6 month term work session, beginning January

1 schedule - 12 interview openings

Interview date: Wednesday, Oct. 4, 1989

PUBLIC SERVICE OF INDIANA
Plainfield, Indiana (Near Indianapolis)

Interviewing: E.E., M.E.

Requirements: 2.7 GPA or above, American Citizenship preferred but not required. Academic Level of Applicants: At least 30 number of credit hours completed at the end of the present semester toward bs degree.

Starting Work Date: Spring 1990

Sign-up date: Wed., Sept. 20, 1989

1 schedule - 12 interview openings

Interview date: Tuesday, Sept. 26, 1989

BUSSMANN
St. Louis, Missouri

Interviewing: E.E., M.E., Eng.Mgmt., Physics

Requirements: 2.5 GPA or above, American Citizenship not required, must have completed at least 59 credit hours or above at the end of the present semester.

Sign-up date: Tuesday, Sept. 12, 1989

1 schedule - 13 interview openings

Interview date: Thursday, Sept. 28, 1989

SEMS(Sachs Energy Management Systems)
Chesterfield, Missouri (St. Louis)

Interviewing: M.E., E.E.

Requirements: 3.0 GPA or above, American Citizenship Required. Academic Level of Applicants: At least 30 number of credit hours completed at the end of the present semester toward BS degree.

Starting Work Date: Spring, 1990

Sign-up date: Thurs., Sept. 14, 1989

2 schedules - 26 interview openings

Addition to September Co-op List

Interview date: Friday, Sept. 29, 1989

SVERDRUP CORPORATION
St. Louis, Missouri

Interviewing: Ch.E., E.E., M.E.

Requirements: 2.8 GPA or above, 3.0 Preferred, American Citizenship preferred, Academic level of applicants: Must have completed at least 30 credit hours at the end of the present semester toward bs degree.

Sign-up date: Thursday, Sept. 14, 1989

2 schedules - 28 interview openings

Interview date: Tuesday, Oct. 3, 1989

MOOG AUTOMOTIVE
St. Louis, Missouri

Interviewing: 1 - Schedule - M.E.
1 - Schedule - Met.E.

Requirements: 2.8 on the M.E. Schedule - 2.5 on the Met.E. Schedule, American Citizenship required. Sophomore or Junior Level

Sign-up date: Tues, Sept. 19, 1989

1 schedule - 12 interview times
1 schedule - 12 interview times

SIGN-UP FOR DEERE AND COMPANY CO-OP INTERVIEWS

TURN IN RESUMES: Wednesday, Sept. 6, 1989

WHERE: Co-op Office, 101 Buehler Bldg.

TIMES: 7:45 am - 11:30 am - 1:00 pm - 4:00 pm

INTERVIEWING: Ch.E., E.E., M.E., Met.E.

REQUIREMENTS: Prerequisites are second semester freshman status with cumulative GPA of 2.7/4.0, or sophomore status with cumulative GPA of 2.5/4.0.

THE ACTUAL INTERVIEW DATE WILL BE THURSDAY, SEPTEMBER 28, 1989.

Deere and Company, Moline, Illinois has requested that we furnish them with resumes for pre-screening. We will accept as many CO-OP resumes as we can collect. Just drop off a copy of your CO-OP resume on the above sign-up date. After pre-screening, Deere and Co. will send the Co-op Office a list of those students they are interested in interviewing. The list should be posted in the UMR Co-op Office by Thursday, September 21. Check with the Co-op Office no later than Sept. 21.

SIGN-UP FOR MCDONNELL DOUGLAS CORP. CO-OP INTERVIEWS

TURN IN RESUMES: Thursday, September 21, 1989

WHERE: Co-op Office, 101 Buehler Bldg.

TIMES: 7:45 am - 11:30 am - 1:00 pm - 4:00 pm

INTERVIEWING: A.E., C.Sc., E.E., M.E.

REQUIREMENTS: 3.0 GPA or above, American Citizenship required, 45 credit hours completed at the end of the present semester toward bs degree.

THE ACTUAL INTERVIEW DATE WILL BE TUESDAY, OCTOBER 24, 1989

McDonnell Douglas, St. Louis, Missouri has requested that we furnish them with resumes for pre-screening. We will accept as many CO-OP resumes as we can collect. Just drop off a copy of your CO-OP resume on the above sign-up date. After pre-screening, McDonnell will send the Co-op Office a list of those students they are interested in interviewing. The list should be posted in the UMR Co-op Office by Thursday, October 12th. Check with the Co-op Office no later than Oct. 12.

Interview date: Wed., Sept. 27, 1989

BROWN SHOE COMPANY

Work Locations: Fredericktown, MO, Cabool, MO, Houston, MO, Mountain Grove, MO, Dixon, MO, Owensville, MO, Charleston, MO, Bernie, MO, Caruthersville, MO, Pocahontas, ARK, Union City, TN, Dyer, TN, Lexington, TN, Selmer, TN, Savannah, TN

Interviewing: M.E., E.E.

Requirements: 2.0 GPA or above,

Sign-up date: Wed., Sept. 13, 1989

1 schedule - 13 interview openings

Addition to September Co-op List

Interview date: Thursday, Sept. 21, 1989

UNION ELECTRIC
St. Louis, Missouri

Interviewing: E.E., M.E., Ch.E., C.E., Eng.Mgmt., Nuc.

Requirements: 2.5 GPA or above, Must be able to work in the US, Academic Level of Applicants: Must have completed at least 60-89 credit hours at the end of the present semester toward bs degree. Would prefer students to have completed the 1st semester of junior year completed at the end of the present semester.

Sign-up date: Thursday, Sept. 7, 1989

2 schedules - 26 Interview Openings

SPECIAL NOTICE - PRE-SCREENING

PLEASE POST

SIGN-UP FOR CATERPILLAR TRACTOR COMPANY CO-OP INTERVIEWS

TURN IN RESUMES: Thursday, September 7, 1989

WHERE: Co-op Office, 101 Buehler Bldg.

TIMES: 7:45 am - 11:30 am - 1:00 pm - 4:00 pm

INTERVIEWING: Cer.E., Ch.E., E.E., Eng.Mgmt., M.E., Met.E.,

REQUIREMENTS: 2.8 GPA or above, American Citizenship required or Permanent Resident Visa

THE ACTUAL INTERVIEW DATE WILL BE Thursday, October 5, 1989. 1 hour interviews.

Caterpillar Inc., Peoria, Illinois has requested that we furnish them with resumes for pre-screening. We will accept as many CO-OP resumes as we can collect. Just drop off a copy of your CO-OP resume on the above sign-up date. After pre-screening, Caterpillar will correspond with you indicating if they are interested in interviewing you.

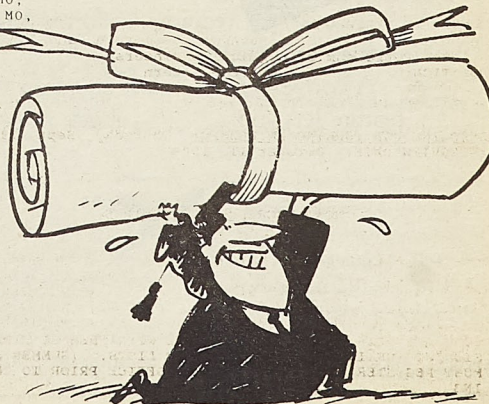
Caterpillar will have an orientation on Wednesday, Oct 4 in the University Center East - Mark Twain Room from 7:30 pm 9:30 pm. All students that are selected to interview with Caterpillar must attend.

NOTE: The ones that indicate RESUMES ONLY. This means the company will not be on campus interviewing, but they want resumes to review and should contact you if they are interested in employing you.

Please let the Co-op Office know immediately of any acceptance of an offer.

THE REMAINDER OF THE OCTOBER LIST AND NOVEMBER LIST WILL BE AVAILABLE ON FRIDAY, SEPT. 15.

Please check with the Co-op Office periodically to see if additional companies have scheduled interviews. These will be posted on the bulletin board by the Co-op Office and printed in the Miner Newspaper.



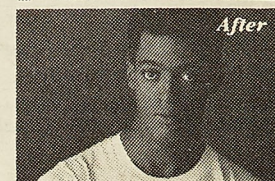
Prepared for the future. Yours and ours.

ARCO is meeting the challenges of today's petroleum industry through creative engineering and a drive for excellence. Coupled with one of the largest domestic liquid reserve bases in the industry, our quest to be the best has prepared us for a bright future.

We invite you to investigate making our future yours when our representatives are on campus. Please contact your placement office for details.

ARCO Oil and Gas Company ♦
ARCO Alaska, Inc. ♦

Divisions of AtlanticRichfieldCompany
An Equal Opportunity Employer M/F



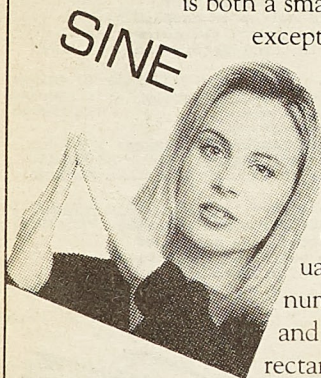
**You won't notice
any difference,
but your country will.**

The five minutes you spend registering with Selective Service at the post office won't change you. But it *will* make a difference to your country. So when you turn 18, register with Selective Service. *It's quick. It's easy. And it's the law.*

A public service message of this publication and Selective Service System.

A higher form of engineering and science requires a higher form of calculator.

The further you go in engineering, math and other technical courses, the more you need a scientific calculator that speeds you through complex problems. With 254 powerful advanced scientific functions, the TI-68 from Texas Instruments is both a smart choice and an exceptional value.



entries and results.

A convenient
feature lets you

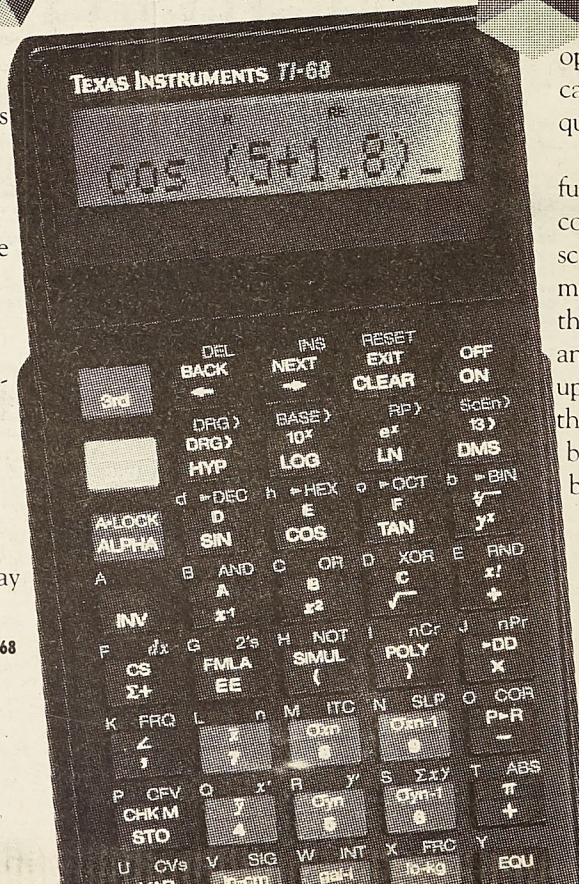
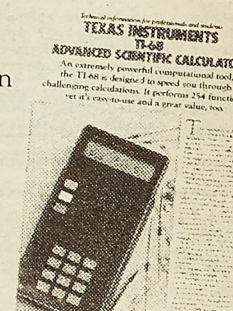
The TI-68 easily solves up to five simultaneous equations with real or complex coefficients... evaluates 40 complex number functions... and allows polar and rectangular forms for

last equation replay
check your

answers without re-entering them. Formula programming provides up to 440 program steps for as many as 12

user-generated formulas. Perform operations in four number bases, one- and two-variable statistics, and Boolean logic operations. The polynomial root finder calculates real and complex roots of quadratic, cubic or quartic equations.

Only the TI-68 delivers so much functionality, value and ease in one compact, advanced scientific tool. For more information on the TI-68's features and functions, pick up a free copy of the TI-68 technical brochure at your bookstore.



**TEXAS
INSTRUMENTS**