



28 Sep 1988

## The Missouri Miner, September 28, 1988

Follow this and additional works at: [https://scholarsmine.mst.edu/missouri\\_miner](https://scholarsmine.mst.edu/missouri_miner)

These newspapers reflect the attitudes, perspectives, and beliefs of different times. Neither the library nor the university endorses the views expressed in these collections, some of which contain images and language which may be offensive to some readers.

---

### Recommended Citation

"The Missouri Miner, September 28, 1988" (1988). *The Missouri Miner Newspaper*. 2497.  
[https://scholarsmine.mst.edu/missouri\\_miner/2497](https://scholarsmine.mst.edu/missouri_miner/2497)

This Newspaper is brought to you for free and open access by Scholars' Mine. It has been accepted for inclusion in The Missouri Miner Newspaper by an authorized administrator of Scholars' Mine. This work is protected by U. S. Copyright Law. Unauthorized use including reproduction for redistribution requires the permission of the copyright holder. For more information, please contact [scholarsmine@mst.edu](mailto:scholarsmine@mst.edu).



# Missouri Miner

A publication of the students of the University of Missouri-Rolla

September 28, 1988

Volume 77, Number 6

Twenty-Four Pages



## News Feature

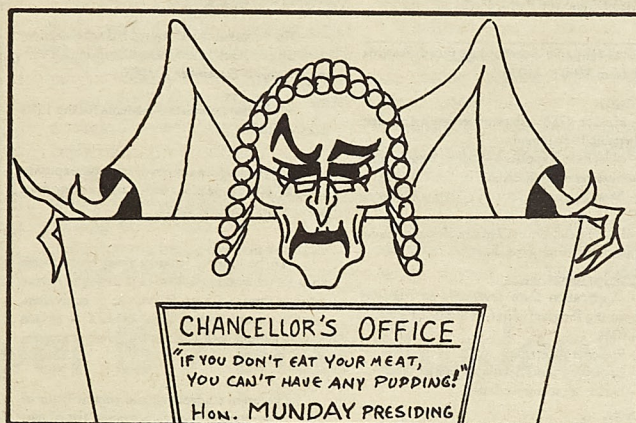
# University - organization relations examined

By Scott Martin  
Staff Writer

In the past three years most of us have felt a conservative trend overtake the official policies regarding the University relations with campus organizations. As we feel the restrictive effects of this conservatism slowly undermining the liberties we were allowed three years ago, it is time to examine what is and is not true about the University's position as well as those of Student Council and other organizations.

Vice Chancellor Wendall Ogrosky, Student Council President Kevin Edwards, and former St. Patrick's Board President Mike Gross were all questioned regarding the above issues. It is important to recognize that alcohol control and the St. Pat's celebration are only two issues among several.

According to Ogrosky, there have been no substantial written changes in policies regarding organizational misconduct. There has however been an increased administrative inclination to enforce regulations which have been more lax in the past. Specifically, those which regard alcohol. The position of the University is that the laws of the State of Missouri will be upheld, period. Why now?



Last year, when the St. Pat's board came under fire, one popular opinion described a University fearing liable suits, a reasonable excuse to begin stricter regulation. That idea is untrue.

The University has sufficient cushioning in its policies to absolve itself of direct responsibility for death or injury during an organizational event. In the unlikely event that a lawsuit could be raised, the University would still stand a very slim chance of losing the court battle. The threat of legal suits, then, are not the reason for the re-birth of conservatism by the University. What is the reason? Keep reading.

As students we do have a means of representation to which many of us pay little attention, the Student Council. However, it was unable to present any resistance to the University last year simply because the laws were already established. The Student Council did support the continuation of the St. Pat's celebration and the allowance of the two free days observed in the past. This year's StuCo has new membership and a new president, Kevin Edwards. As yet the Council has not been in a position to act on events concerning student regulations. However, the Council has

passed a resolution that deserves attention. The resolution is the formalization of an unwritten process by which organizations get funding from the student activities fee.

The council is able to change its recommendations for the appropriation of funds according to how the organizations intend to spend the money and the validity of those intentions. Is this a restriction? According

to the StuCo president, the resolution "just allows us to avoid the old system which only led to antagonism and arguments. The resolution gives the Council no extra power. It only defines the control and makes the process more efficient." Some other organizations on campus

See Relations, page 23

## Parents of Year named

Source: News & Publications

William and Dortha O'Connell, 1929 O'Connell Avenue, St. Louis, have been named the UMR Parents' Association's "Parents of the Year" for 1988. The O'Connells were nominated by their daughter Carol, a UMR senior in English.

The O'Connells were honored during halftime activities at the Parents' Day football game Saturday, September 17. They were presented with a special award from the UMR Parents' Association.

"In her nomination, Carol cited the many ways her parents have supported and encouraged their four children," said Don Brackhahn, executive director of Alumni and Constituent Relations at UMR and coordinator for the

UMR Parents' Association. "She is particularly proud of the encouragement that they gave to each of their children to pursue their own interests and to be good citizens."

O'Connell currently serves as a counselor for Disability Determinations in St. Louis. Mrs. O'Connell, who currently is retired, previously served as a dental receptionist.

The O'Connells also actively participated as school board members, athletic coaches and in their church as well as in various community programs.

Carol said she is the youngest of the family's four children; she has two brothers and a sister. "I imagine

See Parents, page 23

## Highfill named outstanding GTA

Source: News & Publications

James K. Highfill has been named the UMR Parents' Association Outstanding Graduate Teaching Assistant for 1987. Highfill, who is working on his Ph.D. degree in engineering management at UMR, teaches human relations in technical management and personnel management courses to UMR students.

Highfill was presented a \$500 grant during the UMR Parents' Association Luncheon on UMR Parents' Day Saturday, September 17.

According to the UMR Parents' Association, the award was established in 1982 by the association to show its appreciation for the work of UMR's graduate teaching assistants.

UMR's students selected Highfill for the honor as part of the campus' Outstanding Teacher award program.

See GTA, page 23

## News Feature

# UMR Director of Police has a killer grip

By David Freeman  
Staff Writer

Who is Dick Boulware? Don't know, do ya? This man with a killer grip is UMR's Director of Police. He oversees the hardworking staff of University Police that watches over our campus and he has done so for thirteen years.

Most of us really don't hear much out of the Campus Police until we pick the ticket off of our window and stamp into their office to get an explanation. Well, it's about time you heard more.

The first watchman on a UM campus was in the late 1800's on the Columbia campus. There have been campus police on the Rolla campus since 1965. Campus police are trained with a minimum of 120 formal academy hours and are constantly being sent to seminars to continue their training. They must qualify twice a year with the range specialist in order to even carry a University weapon.

Campus police have the same authority on university property as other authorities have in their jurisdictions. This is provided by a state statute. But the campus police also carry a few other duties as well. They constantly check all university buildings and property and, of course, write parking tickets.

Believe it or not, writing tickets is one of their least favorite things to do, but they don't do it without reason. They don't just go out, find a car, and cite a violation. They go out, find a violation, and then write a ticket. This is in an effort to make everyone happy and provide parking on campus. If you paid for a red lot and a car with a silver

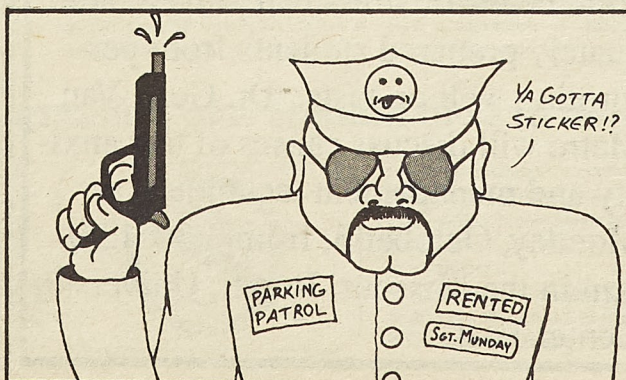
sticker has rushed in right ahead of you, and taken the last space, chances are the offender will get a ticket.

But where, you ask, does the money from lot fees and parking violations go? You park on it. Each year the money is brought together and put back into upgrading lots.

You might ask (and you might not) how many officers do we have for protecting our campus and ourselves. There are eleven university officers (blue uniforms) that are spread over a 24-hour day to patrol the campus, usually two officers on a shift. There are also five security guards (brown uniforms) that patrol the campus and check the buildings from 7 p.m. to 3 a.m.

One of the most serious incidents has occurred recently. That was the

See Grip, page 23





# Calendar of Events

## Wednesday

Southwinds, UMR's literary magazine, will be having their first meeting of the year at 3:30 on the 3rd floor of H-SS. Anyone interested is encouraged to attend.

Spelunkers Club Meeting, 6 p.m., 212 McNutt.

## Thursday

Climbing Club Meeting, 7 p.m. 243 McNutt.

Math Help Sessions, 6:45 p.m., 203 M-CS.

Eta Kappa Nu Meeting, 6:30 p.m., 102 EE.

Phi Eta Sigma Orientation Meeting, 6:30 p.m., G-5, H-SS. Phi Eta Sigma is the Freshman Honor Society.

Sports Car Club Meeting, 7 p.m., 105 ME.

GDI General Membership Meeting, 7 p.m., CE 114. Party afterward. All are welcome.

Toastmasters table topics and humorous speech contest, 4:30 p.m., G-9, H-SS.

Brazilian Poet Max Martins will present a reading from his latest book 60/35 with translations by James Bogan, 12:30 p.m., Eng. Mgt.

## Friday

Inter-Varsity Christian Fellowship Meeting, 7 p.m., weekly in Chem. Eng. 139. Come check us out!

Campus Crusade for Christ Meeting, 7 p.m., 202 M-CS.

## Saturday

SUB Triathlon

## Next Monday

Come study the Bible weekly at 6:30 at the Baptist Student Union. Learn how God's Word can enrich your life.

Personal Resource Development Series—Test Anxiety, 3:30 p.m., Missouri Room.

SUB Comedy Series, Funny Bone on Tour, 7:30 p.m., Hockey Puck.

Omega Chi Epsilon Meeting, 4:30 p.m., 126 ChE.

## Next Tuesday

Association of General Contractors Meeting, 7 p.m., 114 CE.

Math Help Session, 6:45 p.m., 203 M-CS.

Zeta Tau Alpha Seesaw Marathon, 10:30 a.m.-3:30 p.m.

Econ Club Meeting, 4:30 p.m., 106 H-SS. We would like some new members. Several trips and activities planned. We are open to people from all departments. \$5 membership fee. Pictures for yearbook will be taken; if you are interested, show up.

## Next Wednesday

Zeta Tau Alpha Seesaw Marathon, 10:30 a.m.-3:30 p.m.

Spelunkers Club Meeting, 6 p.m., 212 McNutt.

## Next Thursday

UMR Gaming Association Meeting, 8 p.m., ME 208. Mike Kraemer will be speaking on the Modified Advanced Dungeons and Dragons system that will be used at the Books 'N' Things Dungeons and Dragons seminar on Saturday, October 8. Visitors always welcome. 2nd Annual miniatures painting seminar (figures provided; limited number go home with painter), 9 a.m.-4 p.m. on Saturday, October 21, CE 317.

## Noday

The Associated General Contractors (AGC) Student Chapter of UMR is publishing its Fall 1988 edition of its "Resume Book." The "Resume Book" is distributed to over 200 companies in Missouri, Illinois, and Kansas that are involved in all phases of the construction industry. Any student who is seeking permanent or summer employment should submit their resume to Marsha in room 119 in the Civil Engineering building. The fees are \$8.00 for members of AGC and \$11.00 for non-members. DEADLINE: OCTOBER 6, 1988!

## Financial Aid

### Coor's Veterans' Memorial Scholarship:

- Must be an undergraduate enrolled full-time at UMR.

- Parent must have been honorably discharged from armed forces or is presently on active duty (including National Guard/Reserves) or who was killed or missing in action.

- Must be under 22 years of age by July 1, 1988.

- Must complete and return application to Fred Voss Enterprises, Inc. by October 1, 1988.

- Applications available in the Student Financial Aid Office, 106 Parker Hall.

National Hispanic Scholarship Fund, Awards range from \$500 to \$1000:

### Eligibility:

- Must be a U.S. citizen or permanent resident of Hispanic background.

- Must have completed at least 15 hours prior to submission of application.

- Must be enrolled for Fall 1988 and Spring 1989.

- Must be full-time (12 hours for undergraduates and 6 hours for graduates).

### Application requirements:

- Application form (available in Minority Engineering Program office or Student Financial Aid office).

- Personal statement.

- Transcript (unofficial accepted).

- Letter of recommendation.

### Deadline:

Application package must be postmarked by October 5, 1988.

Consulting Engineers Council of Missouri (CECMo), Award amount: three \$1000 scholarships:

### Requirements:

- Must be entering the junior, senior, or fifth year (in a 5-year program) in the fall of 1989.

- Not eligible if graduating December, 1989.

- Attending an ABET-accredited university or college working toward BS degree in engineering.

- In the upper half of his/her engineering class.

- Interested in pursuing a career in consulting engineering.

- U.S. citizen.

### Deadline:

January 20, 1989

### Harry S. Truman Scholarship:

- Established by Congress in 1975, the Harry S. Truman Scholarship Foundation operates an ongoing educational scholarship program designed to provide opportunities for outstanding U.S. students with potential leadership ability to prepare for careers in government service.

- UMR sophomores interested in a career in government service at the federal, state, or local level are invited to apply.

- The Foundation will award 105 scholarships nationally in April, 1989. Deadline for all 1989 applications is December 1, 1988.

- UMR can nominate 3 students for the 1989 competition.

- Scholarship award covers eligible expenses up to \$7,000 per year for junior year, senior year, and 2 years graduate study.

- To be eligible, student must be full-time sophomore working toward or planning to pursue a baccalaureate degree, B average or equivalent, stand in upper fourth of class, and be U.S. citizen or U.S. national heading toward career in government.

- Interested students should submit letter of application, statement of career plans, list of past public service activities or other leadership positions, current transcript, and 600-word essay discussing a public policy issue of their choice to Donald B. Oster, Truman Scholarship Faculty Representative, Dept. of History/PSci, 136 H-SS Bldg., by October 31, 1988.

## Commonwealth

### FORUM TWIN

Starts Friday  
Evenings 7:10 & 9  
Sat & Sun Matinee 2:10 & 4

TUCKER  
PG

Held Over  
Evenings 7 & 9  
Sat & Sun Matinee 2 (Sun 2:10 & 4)

COCKTAIL  
PG

### UPTOWN

Held Over  
Evenings 7 & 9  
Sat & Sun Matinee 2

A RSH CALLED  
WANDA  
R

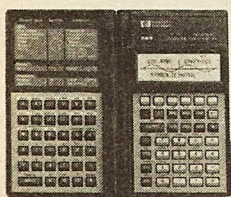
### RITZ

Starts Friday  
Evenings 7 & 9  
Sat & Sun Matinee 2

BETRAYED  
R

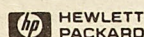
MOVIE HOT LINE 341-2418

**NEW from Hewlett-Packard**  
The HP-28S Advanced Scientific Calculator



Unparalleled in science and engineering.

And the broadest range of numeric and symbolic solutions available on a calculator. Come in today. And see for yourself.



University of Missouri-Rolla Bookstore  
University Center-West  
364-3710

## A CUT ABOVE HAIR SALON

364-6866

209 West 11th St.

## SPI AH Games D&D Supplies ROLLA CRAFT & HOBBY

1009 Pine Rolla, MO 65401 364-5581

## TEST ANXIETY

High levels of stress can prevent adequately prepared students from performing well on tests. Dr. Gene Van Matre will discuss causes of test anxiety and management techniques on Monday, October 3, from 3:30-4:30 p.m. in the Missouri Room, University Center-East.

## COMMANDO WAR GAMES

The action packed paint pellet survival game. Come play the game that's sweeping the nation. Open weekends. Just 30 min. from campus. Call for Information and Reservations Mon.-Fri., 894-8543.

## Missouri Miner

Editor-in-Chief  
Liz Trimble  
(417) 967-3428

Business Manager  
Stephanie Dinwiddie

Managing Editor  
Cheryl Tefft  
364-8612

Assistant Managing Editor  
Marcia Waggoner

Advertising Director  
Maria Lahm  
364-9502

News Editor  
John Pope  
364-8968

Assistant News Editor  
Nikki Pagano

Features Editor  
Joann Girard  
364-8989

Sports Editor  
Jim Reed

Assistant Sports Editor  
Jim Fechter

Photo Director  
Dave Libiez  
364-5226

Copy Manager  
Judy Allen

Distribution Director  
Rick Cwiklowski

### Writers

Scott Martin  
David Freeman  
Suzy Garrett  
Buck Simpson

### Photographers

Jim Breitbarth  
Michael Tolbert  
Glynda Winkler

### Graphics

Marcus Adkins  
Steve Munday

### Typesetters

Babu Barat  
Dan Gualtieri

All articles, features, photographs, and illustrations published are the property of the **Missouri Miner** and may not be reproduced or published without written permission.

Submissions for publication must be in our drop box (first floor of the Rolla Building) by 4:30 p.m. on the Thursday before publication. The **Missouri Miner** reserves the right to edit all submissions for style, grammar, punctuation, spelling, length, and matters of good taste.

The **Missouri Miner** is operated by the students of UMR and the opinions expressed in it do not necessarily reflect those of the university, faculty, or student body.

302 Rolla Building  
University of Missouri-Rolla  
Rolla, MO 65401-0249  
Advertising office: (314) 341-4235  
Business office: (314) 341-4312



# Letters to the Editor

## Student responds to article about "The Wall"

Dear Editor,

I'm writing in response to Marcia Waggoner's article "Reminiscing about The Wall." Being a tremendous fan of The Wall myself, I eagerly dove into your article, expecting the topic of the album or the movie. I was desperately hoping to read somewhere of the underlying meanings weaving themselves throughout, or the way the gloomy, brooding writing style of Roger Waters meshes so completely with the dreamier style of David Gilmour (who co-wrote Young Lust, Comfortably Numb and Run Like Hell), or the painful, agonizing vocal effort by Waters on tracks such as Don't Leave Me Now, and The Trial, as well as his soothing vocals on songs such as Mother, Goodbye Blue Sky, and Hey You. Also left out was the

exceptional guitar soloing done by Gilmour whose tastier emotional work completes such songs as Mother, Wall Part II and Comfortably Numb, while tracks such as Young Lust and Run Like Hell serve up Gilmour's scorching rhythm style. Nowhere was the mention of the flawless production by Waters and Bob Ezrin, or even the way sides 1 and 2 tell of building of The Wall, ending with Goodbye Cruel World, and sides 3 and 4 take you deep into his insanity behind The Wall only to end with Outside The Wall, oddly enough, the very song that the album begins with (listen closely!).

Instead, I was treated to a brief outline of your adolescent years. Including your album collection! I'm real sorry you had what you describe as a rough childhood, (not as if we all

didn't have problems of our own) but I don't believe you should use the school's newspaper, or a topic such as The Wall to tell the student body of UMR.

I regret not being able to locate the first issue of this semester's Missouri Miner, for in it was an article dealing with the students giving the "townies" a hard time. In this article (written by a qualified source because he/she spent a single summer in St. Louis), the author explains how dull city people are because we do not have to work at being entertained, and how we like a good time served to us on a silver platter. In the current issue another local resident (maybe the same one) stands back and takes cheap shots at us. This time it is directed towards our Greek system. "...Those kids with

"HATE" on their T-shirts. It's spelled in Greek letters today, but it means the same thing." Being from Rolla, I assume (again—I assume) you are not part of a Greek organization. However, you have probably attended a few Greek parties and therefore feel you are a qualified source. I am part of a Greek organization and believe I speak for many when I say to you that I do not appreciate your abusive remarks directed toward us. I am appalled that the Assistant Managing Editor would PRINT, let alone WRITE such slanderous prejudice. Once again I stress the fact that you hid all of this in an article "loosely" based on The Wall. I understand you were not doing an album review such as I have half-heartedly attempted, but in the future I sincerely hope you use

better judgement in your subject material.

Steve Bryant

*Marcia Waggoner's Response: Don't take this personally, but I love you. Your letter-article complements mine perfectly. It is the other side of my article's coin. No one person today has a monopoly on truth. I know that at times I sound like I think that I do. All my articles are imperfect, but some are more imperfect than others. You picked out two of my articles, tied together a common but imperfect theme in them, and said in your letter what I could not say on my own. You completed my statement and you flipped my coin to show the other side. I love you for it.*

## Debate over S-7 and Student Council bill rages on

Dear Editor,

This is a response to the letter by Cordell Smith which appeared in the September 14 issue of the Miner. We would like to address this to Cordell personally. It is now nearly five months since Chris Huffman's letter was printed. Several people were shown Chris' letter before he submitted it. We agreed with his submission of it on the basis of information he presented us. We are gratified to see that the recommendation was not unsound. We take exception with your response, for several reasons:

1) Your letter lost most of its effect and credibility (if it ever had any)

when you attacked Chris' character. It seems that you had a negative comment for nearly every paragraph. Does it give you some sort of power rush to attack a person who is not around to defend himself?

2) We will now consider the 5% statistic. Granted, you state that it is only an estimate. There are methods that could have made that statistic more meaningful, but those methods would have probably pared an already almost meaningless statistic to nothingness. For example, a simple count of the number of mining (and related) majors applied to the 5% statistic would have probably cut that number

so low as to make it nearly non-existent. But, we are not out to argue the point of S.7.

3) We, the undersigned, feel that the attacks on the Sixth Floor North which you made in your letter were unfair, and unwarranted. Chris Huffman was elected as our representative and, had he not been representing us well, that would be our problem, not yours. As for your assertion that Chris has earned the repudiation (repudiate: 1. to reject as having no authority or binding force; 2. to cast off or disown; 3. to refuse to acknowledge) of Six North, that is simply ludicrous. We suggest that, the next

time you wish to make a statement about Six North, you actually consult with the members of Six North. We don't appreciate unsubstantiated claims against us.

This could probably continue for pages and pages, but our major points have been made. To continue would be to hurl gratuitous insults at you, which would make this letter no more credible than yours. There is a saying that goes, "Man will occasionally stumble over the Truth, but most of the time, he will pick himself up and continue on." Maybe, Cordell, you should lie where you are and ponder the truth for a while. One has to wonder why the

information on S.7 found in the September 21 Miner was not included to support your arguments.

Respectfully submitted,

Christopher J. Talbott  
Richard James  
Richard Bell  
Michael W. Kraemer  
Curt Schroeder  
Richard J. Huizinga  
Patrick A. Lepski

*Editor's response: We regret to inform you that since Cordell Smith has graduated and does not have a subscription to the Miner, it is unlikely that he will be reading your response to his letter.*

## Student Union Board defends rationale behind Homecoming

Dear Editor:

For the past three years, the Student Union Board has acted as the coordinating organization for the annual UMR-MSM Homecoming. We have put much effort and many resources into insuring that Homecoming at UMR provides an enjoyable event for the alumni and the present students at UMR. We feel that, this year, Homecoming could be an even bigger success than in the past. It is for this reason that we feel there were a few short-sighted remarks included in the

article written by Marcia Waggoner for the September 21 issue of the Miner.

Every year, Homecoming draws in 800 to 1000 alumni to the UMR campus. This figure only includes those alumni who register; those who come to the ballgame and other events, without registering, are not included. It may seem "ridiculous" to participate in your Alma Mater's Homecoming while still involved with the less enjoyable elements of your university education, however, it is apparent that

many alumni do find Homecoming worth attending. We must have some foresight as to the value of the education we are working so hard to achieve.

St. Pat's is a very big part of the traditions at UMR. It is an event which has always had the purpose of being a time to relax, blow off steam, and celebrate the uniqueness of this school. Since 1908, we have had the "best-ever" St. Pat's celebration each sequential year; a remarkable feat, to say the least. However, St. Pat's is a very different event than our annual

Homecoming. Homecoming is a time for the past students of UMR and MSM to participate with the present students at UMR in an event which puts the school's traditions and value into perspective.

The 1988 UMR-MSM Homecoming will be the week of October 3 through 8. Homecoming, like St. Pat's, is organized and run by student volunteers. Wendy Francis, the 1988 Homecoming Chairman, has worked with a committee of students from many different campus organizations

to plan a wide variety of events for that week. Some of this year's events are a comedy show of two "Funny-Bone" comics, the Homecoming games, a scavenger hunt, a golf tournament, the carnival, a team twister tournament, the M-Club bonfire, and the game-day activities. A complete list of the events will be publicized more in the next few weeks. As you can see, Homecoming is a valuable part of UMR's past and future; its significance should not be diminished.

The Student Union Board

## Student Council discusses the formation of a student club to de-emphasize alcohol

Dear Editor:

One idea that came out of the Student Council-directed student Task Force on Alcohol last year was that of starting a Student Club with the desired goal of taking emphasis off of "just drinking" to have a good time.

I am interested in working with

other students in developing a proposal for a student-run club here at UMR. The Student Club would provide entertainment for our student body and would be located on or near campus. The primary reason for organizing a Club is not to alleviate alcohol but to decentralize it as a



source of diversion. A secondary goal would be to provide a place central to campus life where students could go to meet friends and enjoy a variety of entertainment.

If anyone is interested in working with me on this project, or if anyone is just interested in hearing more about it

they can call StuCo (341-4280) or stop by the office between 9:30 and 3:30 to sign up and find out our first meeting time and location.

Sincerely,

Bob Phillips  
VP Internal Affairs  
Student Council



# GRAND OPENING

At NEW LOCATION in COPPERFIELD SQUARE

## 6% SOLUTION

INCORPORATED

Formerly

COMPUTER CONNECTION  
October 6th, 7th, & 8th

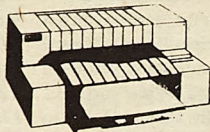
**FREE! FREE! FREE! FREE! FREE! FREE! FREE! FREE! FREE!**

Sign up for a FREE-

ENJOY

WIN

\* Hewlett Packard  
Desk Jet Printer



**\$1000 Value**

DRAWING SATURDAY, 4:00 pm

Saturday-  
Hot Dogs  
Pepsi  
Radio Remote  
Ribbon Cutting

October 8, 9:00 am

\* A Free Box of  
Diskettes  
Every Hour

\* US Sprint

30 Minutes Free  
Long Distance  
with Sign-Up

FEATURE FOR FEATURE

**COMPARE**

PRICE FOR PRICE

6% Solution

6% Solution

6% Solution

**SPS XT  
COMPUTER SYSTEM**

10 MHz Motherboard,  
640K Memory,  
360K 5.25" Floppy Drive,  
Clock/Calendar/Battery Back-up,  
Multi I/O Card,  
Monochrome Monitor/ MGA Card  
101 Key Keyboard

**"WE BEAT  
ANY  
WRITTEN  
QUOTE!"**

**SPS XT KIT  
BUILD YOUR OWN  
COMPUTER SYSTEM**

The Kit contains  
everything you need  
to build a 10MHz, 256K  
SPS XT System, including  
Monochrome Monitor,  
MGA Card, Keyboard  
(Includes instructions.)

**\$ 874.-** 6%  
PRICE

**COMPARE**

**\$ 595.-** 6%  
PRICE

**STAR NX 1000  
PRINTER**

Near Letter-Quality Printer  
144 cps draft, 36 cps NLQ  
Auto paper feed, 80 column car-  
riage, 3-part handling, 4 resident  
fonts. Cable included.

**NOVELL**

**GOLD-LEVEL  
AUTHORIZED  
DEALER**

**LASER 128  
APPLE COMPATIBLE**

100% Software compatible at 1/2  
the price of an Apple IIe or IIc,  
128K Ram, 5.25" disk drive,  
Parallel printer port, and ports for  
modem/joystick/mouse.

**\$ 249.-** 6%  
PRICE

**COMPARE**

**\$ 449.-** 6%  
PRICE

### THE 6% SOLUTION STORY

The 6% SOLUTION brings you quality computer equipment at 6% over cost, and we provide technical support for everything we sell. Volume discounts direct from the manufacturers make it possible for the 6% SOLUTION to sell you the finest quality equipment, reviewed by our technical staff, at only 6% over our cost. The 6% SOLUTION: low price, high quality, and the best technical support.

**JEFFERSON CITY**

3702 W. Truman Blvd. Suite 215  
Jefferson City, Mo. 65109

**ROLLA**

Copperfield Square, 602 W. 6th.  
Rolla, Mo. 65401

**KANSAS CITY**

10327 W. 84th Terrace  
Lenexa, Ks. 66214



# Features

## Student vacation becomes spy-filled nightmare

**By Nora Okong'o**  
Staff Writer

"The flight from New York will be here at four," Fredrico told Carletta.

"What's the number?"

"285. Don't forget."

"Usual plan?"

"Usual. Get hold of some tourists. Anita, our stewardess, knows the ones that have extra insurance. She'll show them to you. Be careful, okay?"

"I will."

"Keep them talking and Adolpho will get their luggage."

"You trust him?"

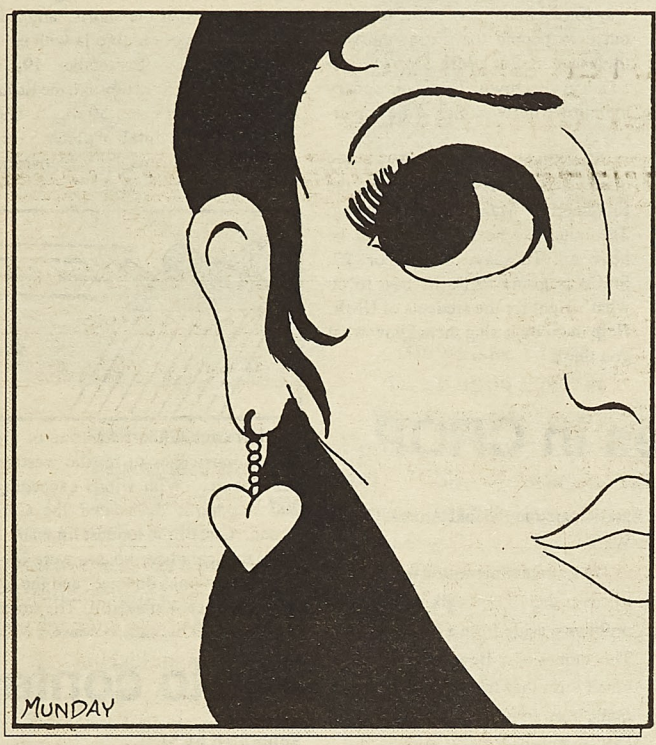
"He's old, but...he doesn't arouse suspicions."

"Okay. We can meet here at five."

They parted, comrades in crime. Carletta had worked with Fredrico for five years. It was hard work at times, but paid well. The airport, though, was usually easy. Her good looks and easy manner always got her the attention she wanted. She laughed at the foolishness of travellers, and headed to the airport for another afternoon's work.

\*\*\*\*\*

"Final call for passengers departing on Flight 285. Final call..."



"Hurry up, man, or we'll miss the flight!"

The three young men rushed anxiously toward the gate as the ground hostess made to shut the door. They made it, with seconds to spare. Europe, here they come!

"Don't you guys have stuff to read or something?" Bill demanded of a stewardess.

She smiled stiffly, and handed him a pile of magazines to choose from. A waste of time, too—they were dozing off minutes later, courtesy of the in-flight movie. It could have been worse; at least there was music to listen to.

Several hours later, they landed in Rome. Bill, Tim and Pete (our three all-American friends) stretched out and got out like everyone else. They were changing flights. The baggage

claim was packed with people.

"Where on earth's our luggage?" Tim demanded.

"Over there. By those girls."

They walked briskly toward some young girls who were giggling over nothing. The signboard on the carousel read "Flight 285." The baggage, as might be expected, was from a different flight.

"We have thirty minutes to catch our flight," Pete stated.

"The lady at the desk said we'd be through Customs in about ten minutes." - Bill, bad-temperedly.

"If we get our bags, that is." - Tim, even more bad-temperedly.

There was a rumble and a shake, and the conveyor belt creaked as it started. A man in blue overalls came

See Spy, page 6

## Sororities host self-defense seminar

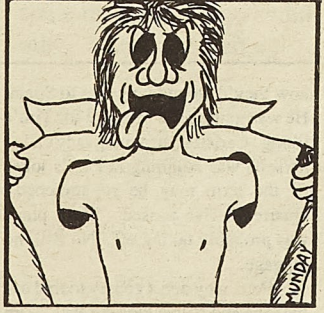
**By Kathy Rahmer**  
Panhellenic Correspondent

On Monday, September 19, the three sororities sponsored a personal safety seminar to discuss defense strategies. This seminar was organized as a result of the upswing in violent crime in and around Rolla, and the prevailing attitude that "nothing happens here." Especially disturbing to law enforcement officials is the increase in reported sexual assaults in the last three months. The seminar, hosted by Sgt. Mike Orlando of the UMR police and Lt. Maria Watson of the Rolla police department, included a film followed by a question-and-answer period. The seminar stressed that while no self-defense technique is applicable in every situation, a few

precautions can prevent the need for defense.

The most common precautions are:

- 1) Make sure all doors and windows securely latch. Lock them when leaving or if alone.
- 2) Do not leave potential weapons



in easily accessible places.

- 3) If suspicious of a caller, do not allow them inside until you have called and verified their credentials.
- 4) Always park vehicles in lighted areas, and lock them. Before getting into a car, check the back seat—and have your keys ready before you get to the car.
- 5) Avoid predictable habits and routines.
- 6) If stopped by a person, keep your distance.
- 7) Never feel invincible. There is always someone bigger or stronger.

The seminar also stressed the need for a change in attitude. In Rolla, students tend to be quite trusting. People need to realize that they can easily become victims.

## SUB triathalon deadline is September 28

**Submitted by SUB**

Intro, intro, intro, intro, etc. Why? Intro, intro, intro, intro. Incredibly original comment goes here. So, etc. Sex! Yes, etc.

Please excuse the above paragraph. Due to an entire lack of creativity this week, the writer's brain has been disconnected. However, his motor skills are still operable. Thus, the article goes on.

Remember, (this is a last minute warning) the last day for entry into the SUB Triathlon is September 28. The Triathlon takes place on Saturday, October 1 and consists of a 5 kilometer

run, a 15 mile bike ride, and a 500 yard swim. Anyone still wishing to enter may pick up forms at the SUB office.

Showing at the SUB Cinema this weekend in the feature film slot is the original *Caddyshack*. This film stars Bill Murray and Chevy Chase, quite possibly two of the funniest men alive. If you haven't seen this film, you're missing a hilarious evening. If you have seen it, I know you'll be there. Showtimes are 7 & 9 p.m. Friday and 7 p.m. Saturday. The Late Nite Classic this week is Pink Floyd's *The Wall*. This film is quite an experience. Combining the best of animation and

incredible music with great production, *The Wall* is truly devastatingly effective. Showtimes are 11 p.m. Friday and 9 p.m. Saturday. All shows are in ME 104 this weekend.

Next week begins the wonderful array of SUB sponsored Homecoming activities. Monday evening at 7:30 p.m., Michael A. Smith and Joe Marlotti will be appearing at the Hockey Puck. These two comedians are sure to be a blast. Drop by and check out the show. Afterward we can all stay and watch the impressive Lighting Ceremony at the Puck also. Be there.

see Triathalon, page 6

## St. Pat's Facts: Rademan wins contest

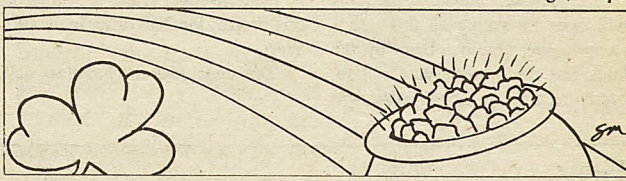
**By Mike Hurst**  
Staff Writer

The St. Pat's Board has chosen the winner of the sweatshirt design contest. There were many good designs, but after close judging and inspection, the best three designs were finally decided upon.

The third best design and winner of \$50 was submitted by Tim Dickey, a freshman from Alpha Epsilon Pi. Second place and \$75 went to Joe

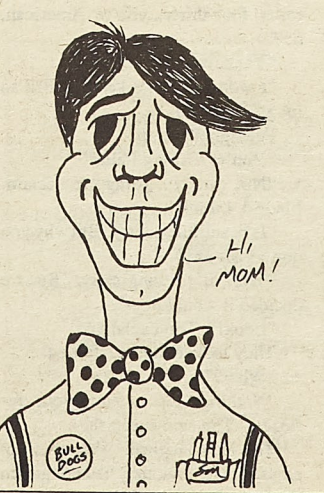
Jones, a sophomore from Phi Kappa Theta. Finally, the first place design, the one that will go on all St. Pat's '89 sweatshirts and sweatpants, was submitted by Tracy Rademan from Phi Kappa Theta. The first place design was worth \$100.

Now that we have a design, campus



sales of St. Pat's '89 Green will be starting soon. With only 170 days til the "Best Ever," it's time to start getting psyched for St. Pat's '89.

## StuCo chooses Member of the Week



**Submitted by Kurt VanHoogstrate**  
Internal Morale Chairman

Matt McLaughlin, Chairman of Public Relations, was chosen as the outstanding StuCo member of the week for his efforts and devotion of time to his job. As quoted by Kevin Edwards, President of Student Council, "When we set out goals for StuCo for this year, we added a lot of new responsibilities to the PR Committee. Student Council has improved and we are working hard to better represent the student body. Matt's job is to see that we communicate this to the campus. His energy, ideas and leadership have contributed even more than we expected to our success so far. We all appreciate his committee's hard work."



## Radio Open Forum airs gripes

Submitted by: StuCo

Students all over the campus are wondering how they can get involved in the workings of the school, and are looking for ways in which they can let people know how they feel about certain things. They sometimes aren't sure exactly how to go about it. Student Council is trying to make it easy for students to let their voice be heard. They really want to know what you think. Help them to help you.

The students of UMR will get their chance to ask any questions they may have of the executive officers of Student Council on September 29. KMNR will carry a live Radio Open Forum, where callers will get the opportunity to ask about things that are

happening around our campus.

It is important that each student do his best to make his wishes known, whether it be directly through things such as the Radio Open Forum, or indirectly by telling their representatives how they feel on certain issues. As a matter of fact, it is each student's duty to do so. Students should make it their business to know what is going on and should try and change the things they disagree with. The main purpose of Student Council is to act in the student's best interests.

The upcoming Radio Open Forum will be held from approximately 6-8 p.m. on September 29. Listeners who wish to ask questions or make a comment should call KMNR at 341-4272

and let the Student Council officers know how they feel. The officers will do their best to answer the questions anyone may have. This is an excellent way for the members of StuCo to find out how people feel about the way things are here at UMR. Don't be just a face in the crowd! Speak out and try to improve the workings of the university.

The Student Council meets every other Tuesday in Room 103 in the Engineering Management building. The council's next meeting will be held on Tuesday, September 27. StuCo is going to do its best to do what's right for the students of UMR. Help them by letting them know what you think.

## Hurricane Gilbert races across United States

Submitted by Shams Chughtai

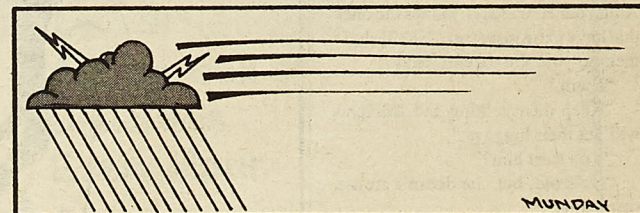
Most of us attending UMR rarely pay any attention to the weather. If it is cold, we wear our St. Pat's green; if it is hot, we wear our shorts; and if it rains, we take our umbrella with us.

On Monday, September 19, a storm system moved through the Rolla area with winds up to 50 m.p.h. and over an inch of rainfall in places. This was the remnants of Hurricane Gilbert.

foot Cuban freighter to be thrown inland where it damaged buildings on Cancun beach.

The storm spared the U.S. for the most part, but devastated our neighbor Mexico. There are parts of Mexico where the storm flooded entire villages and turned roads into rivers, isolating many villagers, who needed food, fresh water, and medical supplies.

Although Hurricane Gilbert was



Hurricane Gilbert was one of the largest hurricanes to hit the western hemisphere. With winds exceeding 200 m.p.h., it devastated the Caribbean. One of the hardest hit islands was Jamaica where houses were leveled, power lines downed, and the island brought to a standstill. The storm was powerful enough to cause a 300-

one of the most powerful storms in the century, it took relatively few lives. To date, there have been over 200 bodies found. This was largely the result of early warnings given to most people in the direct path of the storm. However, the storm left thousands of people homeless and caused billions of dollars worth of damages.

## Photo contest planned

Submitted by SUB

This semester the Student Union Board will sponsor a photo contest with the theme "Autumn in the Ozarks." The contest is open to all UMR students with cash prizes to be awarded for the top four photos. Judging will be based on photographic technique, subject originality, and general appearance. Each contestant is limited to three photos. All photos

must be 5x7 inches or larger, framed or dry-mounted on cardboard backing. The content of the photo is the decision of the contestant, but it must come from the Missouri/Arkansas Ozark area. Prizes awarded will be \$100, \$75, \$50, and \$35. Deadline for entry is Thursday, November 10, at the Student Union Board office. For further information, please call the SUB office at 341-4220.

## St. Pat's Board participates in CROP

By Mike Hurst  
Staff Writer

Sunday, September 25, the members of St. Pat's Board, along with some other organizations from campus and the town, helped out charity and got some exercise at the same time. Over 15 members of the Board



participated in the 2nd Annual CROP Walk.

The weather permitted the walkers to cover the 10 km walk without any problems, aside from a blister or two. The money the Board raised, combined with that from other organizations, goes to help stop hunger in the U.S. and abroad.

## Triathlon

On Tuesday, October 4, the polls will open for voting on this year's Homecoming Queen. Drop by the Puck and put in your vote. Also, beginning at 9 a.m. the same day, will

be the Scavenger Hunt. For info on this, drop by the SUB office in the UC-West.

This concludes the mindless del-

uge of information for the present. However, more activities have been planned, so stay tuned to this column for other important announcements.

from page 5

## Spy

around and shoved the suitcases left on the conveyor belt onto the ground, to make room for the Flight 285 baggage. The lock came off one of them. He looked around furtively, noticed the three watching him and walked away sulking. It was obvious what ulterior motives he had had for the suitcase.

Fifteen minutes later, no baggage. "Bill, you'd better go and check on our flight. We may have to get a different one." - Pete.

"Why me?"

"Why not?"

"You do it."

"At the rate you're getting things done, the plane will go to Spain while you're still arguing." - Tim.

"Okay. I'll go." Bill protested.

He walked off cursing.

"Excuse me, is this luggage of Flight 285?" a woman with a heavy European accent asked.

Pete and Tim turned to face a young woman of about twenty-three. She had large eyes and a full mouth. "Kind of inviting..." Pete thought. Beautiful wasn't quite the word—how about stunning?

Apparently thinking she had been misunderstood, she repeated, "Is this luggage of Flight 285?"

"Yeah, yeah, sure," Pete said hastily.

Tim looked at him strangely.

"I have to be in town by five o'clock," she continued, "and it's already four-thirty...you're American, no?"

"Yeah, we are."

"I wonder what's keeping Bill so long," Tim said.

Pete ignored him.

"You're visiting Italia?"

"No, we're going to Spain. Madrid, I think."

"Is beautiful country. But why you don't visit us?"

"Well, it's a long story. But we decided it would be—"

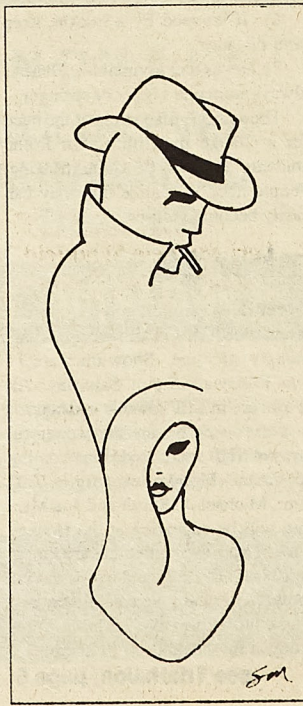
"Look!" Tim exclaimed.

They looked at him, startled.

"What?"

"Nothing, just testing your reflexes," Tim said sheepishly.

The lady laughed. Pete was not amused. He obviously had not gotten the hint—he proceeded to tell the girl



how they'd wound up going to Spain. He was getting too intimate for Tim's liking. Carletta (the young lady called herself) was laughing at Pete's jokes (if the term may be so stretched). Quarter-to-five passed. Their plane was probably taking off. No Bill, no luggage.

"Pete, why don't you try to find our luggage and I'll go look for Bill," Tim suggested and walked off in the direction Bill had gone.

Their flight to Spain hadn't quite left. Bill seemed not to have gotten anything done about it, but Tim got them on a seven o'clock flight which he was pretty sure they'd be ready for. They'd better be.

He walked quickly back to the baggage claim area. No Pete, no Carletta, no luggage. And still no Bill.

"There you are!" Bill exclaimed. "I've been looking all over for you guys! Where have you been?"

"I'd like to ask you that. You were supposed to get our flight changed—"

"Where's Pete?"

"I don't know. I left him here talking to some girl. He went to look

for our luggage, I guess."

"Look," Bill said, with his 32-tooth smile.

For the first time, Tim noticed the cart next to Bill.

"Is that our luggage?"

"Yep! I found some old man wheeling it around near the main doors."

"Where did he find them?"

"I don't know."

"Well, let's get Pete and then we're out of here."

Pete and Carletta were on the other side of Customs. The Customs officers gave the contents of their luggage no more than a passing glance. Bill and Tim dragged their stuff over to where Pete was standing.

"Here's our luggage," Bill said.

"Great!" Pete exclaimed.

"Did you find yours?"

"Yes, thank you. Well, I must be gone." - Carletta.

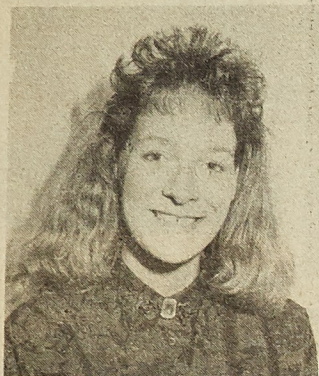
"Us too, bye."

They walked off toward the departure lounge, oblivious to the dark malicious looks Carletta bade them farewell with.

from page 5



# Homecoming Queen Candidates



**Alice Netzer**  
**Kappa Alpha**

The brothers of Kappa Alpha Order proudly present Alice Netzer as our candidate for Homecoming Queen. Alice is the daughter of Mr. and Mrs. Roland Lee Netzer of Springfield, MO.

She is a senior in Nuclear Engineering and is currently treasurer of the American Nuclear Society. As a member of the Daughters of Lee, she has been actively involved as Rush Chairman and continues to support the ideals of Kappa Alpha by serving as President of our Little Sister organization. Alice can best represent UMR as Homecoming Queen because of her undying devotion, charitable nature, and loving spirit.



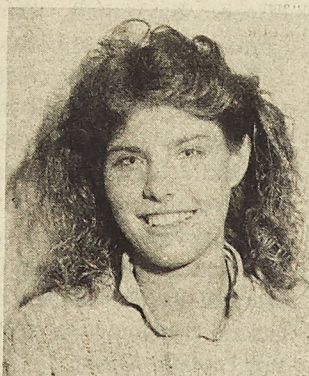
**Lynne Hackman**  
**Pi Kappa Phi**

We, the men of Pi Kappa Phi, proudly nominate Lynne Hackman as our candidate for Homecoming Queen. Lynne is the daughter of Vernon and Patricia Hackman of Manchester. She is a junior in Chemical Engineering. She is a member of AICHE, Tau Beta Pi, IRC, the Lutheran Student Center, and Phi Eta Sigma where she served as secretary and historian. She is also the president of BACCHUS, a Resident Assistant and is currently pledging Omega Chi Sigma. In her spare time, she enjoys swimming, tennis and reading.



**DawnRae Clark**  
**Tau Kappa Epsilon**

We, the men of Tau Kappa Epsilon, are proud to present our 1988 Homecoming Queen candidate, Miss DawnRae Clark. DawnRae is the daughter of Mr. and Mrs. Lyle W. Clark of Geneva, IL. DawnRae is a senior in Civil Engineering and is currently serving as Vice-President of the Daughters of Diana. We feel DawnRae's eagerness and outward personality would represent UMR well as Homecoming Queen.



**Teri Michele Schofield**  
**Lambda Chi Alpha**

Teri Michele Schofield is representing Lambda Chi Alpha. Teri is the daughter of Daniel and Martha Schofield of St. Louis. She is currently attending UMR on a softball scholarship. Her hobbies include softball, soccer and scuba diving. The men of Lambda Chi Alpha feel that she is the best choice for Homecoming Queen.



**Michelle DePriest**  
**Sigma Pi**

The men of Sigma Pi proudly present Miss Michelle DePriest as our representative in the Homecoming Queen competition. Michelle is presently a sophomore here at UMR. Originally from Springfield, MO, she is here to attain a Math major.

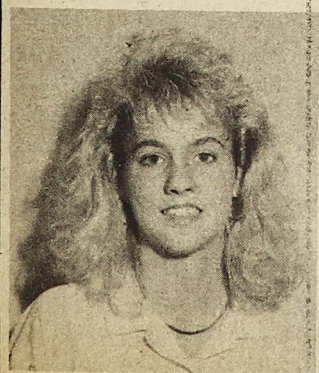
Along with her studying, she has engaged herself in many activities. She is a member of Chi Omega, treasurer of the Daughters of the Emerald, the little sister organization of Sigma Pi, a member of Panhellenic, and also a student advisor for the mathematics department.

Michelle's hobbies include waterskiing, horseback riding, and having fun in the sun.



**Dana Brewer**  
**TJHA**

The men of Delta Tau Delta happily announce the selection of Miss Dana Brewer as our Homecoming Queen candidate. Dana, the daughter of Lois and David Brewer of Independence, MO, is a sophomore majoring in Electrical Engineering. She has served as floor president, and has been on the Historian Committee at TJHA. This year she is actively involved in the General Honors program, where she is serving as a mentor. Her love of music apparent, as she plays the piano and was active in the Pep and Marching Bands. She also enjoys playing volleyball. We are confident in Dana's qualifications for Homecoming Queen of this campus and proudly present her as our candidate for this prestigious honor.



**Suzanne Burrows**  
**RHA**

Suzanne Burrows, a freshman in Electrical Engineering from Florissant, represents RHA. Suzanne is a member of the RHA Social and Entertainment Committee. She is interested in many sports, such as volleyball, softball, swimming and tennis. She is also a pledge at Chi Omega.

**Cynthia Farrington**  
**Sigma Nu**

The men of Sigma Nu are proud to present Ms. Cynthia Farrington as their Homecoming Queen candidate.

Cynthia is the daughter of Albert and Patricia Farrington of Kansas City, MO. Cynthia is active in the White Stars of Sigma Nu and plays varsity basketball. Cynthia also enjoys waterskiing and travelling.







**Christi James**  
**Sigma Phi Epsilon**

The men of Sigma Phi Epsilon proudly present Miss Christi James as their 1988 Homecoming Queen candidate. Christi is the daughter of Dr. and Mrs. Don James of Rolla. She is a senior pursuing a dual degree in Education and Geology. Christi is a SigEp "Friend of the Heart" where she presently holds the office of Historian. She is pledging Zeta Tau Alpha and is a member of UMR's Miner Chords. Good luck, Christi!!!



**Donnita Simpson**  
**TJHA**

Thomas Jefferson Hall is proud to present Donnita Simpson as their 1988 Homecoming Queen candidate. Donnita is a senior in Engineering Management. Her parents are Mr. and Mrs. Walter Simpson of Alton, MO. While at UMR, Donnita has been actively involved in American Society for Engineering Management, Thomas Jefferson Hall Association, Inter-Residence Council, National Residence Hall Honorary, and Society of Women Engineers.



**Jenni Peterson**  
**Pi Kappa Alpha**

Pi Kappa Alpha is proud to present Jenni Peterson as their 1988 Homecoming Queen candidate. Jenni is the daughter of Janet Jones of Roxana, IL. She is a member of Zeta Tau Alpha serving as a Panhellenic representative. She is presently the captain of the UMR Cheerleading Squad. Jenni is also very active in campus organizations such as AFROTC and Sisters of the Shield and Diamond. We wish Jenni the very best of luck!



**Suzanne Metzner**  
**Chi Omega**

The Sisters of Chi Omega would like to present our candidate, Suzanne Metzner. She is a sophomore in Electrical Engineering, an active member in many campus organizations such as IEEE, SWE, and is an advisor for the Chancellor's Leadership Class. We, the Sisters of Chi Omega, chose Suzanne to represent us because of her honesty and sincerity.



**Jennifer Cordes**  
**Sigma Chi**

The men of Sigma Chi are proud to introduce Miss Jennifer Cordes as their 1988 Homecoming Queen candidate. Jennifer is from St. Louis and is the daughter of Glenn and Shirley Cordes. Jennifer is currently a junior at UMR and is studying in the field of Mechanical Engineering. She is a member of Tau Beta Pi and Phi Eta Sigma, has been on the Honor Roll for three semesters, and is an active participant in UMR's Mentor Program. Jennifer is also an outstanding member of the Lady Miners Basketball team, earning all-MIAA honors.

Because of her fine representation, both on and off campus, of Sigma Chi and our Little Sigma organization, we, the men of Sigma Chi, believe Jennifer to be an excellent choice as our candidate and wish her the best of luck in becoming the 1988 Homecoming Queen.



**Carrie Hock**  
**Angel Flight**

Angel Flight is excited to introduce their first Homecoming Queen candidate, Carrie Hock. Carrie, a founding member and former public affairs officer, is currently the Commander of the flight and officer in charge of campus relations. We feel that she portrays the attitude and image that we would like our Homecoming Queen to possess. She is a senior in Engineering Management/CE preference, has been active in Phi Eta Sigma and Gold Miners, and is interested in swimming and dance.

The daughter of Louise and Melvin Hock of Davenport, Iowa and sister to three UMR alumni will be escorted by Joe Miner.



**Doreen Schulz**  
**Zeta Tau Alpha**

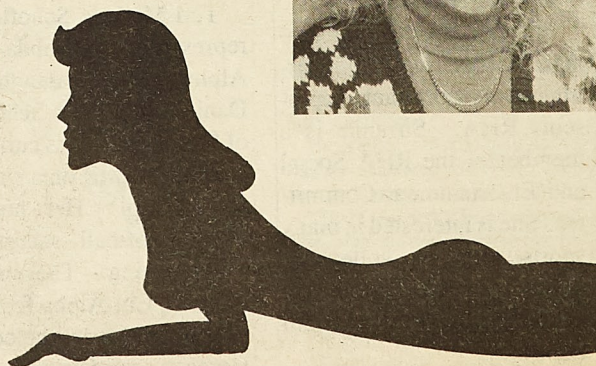
The women of Zeta Tau Alpha proudly present Doreen Schulz as our 1988 Homecoming Queen candidate. She is the daughter of Mr. Donald Schulz of St. Louis and is majoring in Life Sciences.

Dorie is very active in ZTA. She is currently serving as our house manager and Derby Days chairman. In addition, she has held several other committee positions. She is also President of the Pi Kappa Alpha Sister of the Shield and Diamond. Dorie also loves to support the UMR Miner football team by being a ball girl.

We feel that Dorie's outgoing personality, campus involvement, and charming smile greatly qualify her for this nomination.

**Sheila Cochran**  
**Phi Kappa Theta**

The men of Phi Kappa Theta are proud and honored to present Sheila Cochran as their Homecoming Queen candidate. Sheila is currently a senior in Mechanical Engineering with a minor in Mathematics. She is a transfer student from the state of Georgia where she received an Associates of Arts degree in Mathematics. Sheila is one of the most active little sisters of Phi Kappa Theta and has recently served on the Social Committee for the Little Sisters. Sheila currently holds the office of Vice President for the Order of the Sun.







**Chris Hayes**  
**Sigma Tau Gamma**

The men of Sigma Tau Gamma are pleased to present Christina Maria Hayes, daughter of Patricia Hayes, as our 1988 Homecoming Queen candidate. Chris, from Osceola, MO, is a sophomore majoring in Life Sciences. She is active in Zeta Tau Alpha, the White Roses of Sigma Tau Gamma, and Helix. Chris is presently secretary of the White Roses and Scholarship chairman of Zeta Tau Alpha. We have selected Chris to represent Sigma Tau Gamma because of her energetic and cheerful approach to school and all of her activities. The men of Sigma Tau Gamma would like to wish Chris the best of luck as our 1988 Homecoming Queen candidate.

**Kim Hoffmeister**  
**Kappa Delta**

Kappa Delta Sorority proudly announces Kim Hoffmeister, the daughter of Mr. and Mrs. Bill Hoffmeister of Cape Girardeau, as our 1988 Homecoming Queen candidate. Kim, a senior in Mechanical Engineering, currently holds the offices of secretary and Standards Board chairperson at Kappa Delta and is secretary/treasurer of UMR Panhellenic Council. She has been editor and special events chairperson at Kappa Delta. Kim has also been active in Little Sisters of White Star and Phi Eta Sigma.



**Joyce Replogle**  
**Christian Campus Fellowship**

Christian Campus Fellowship is honored to have Joyce Replogle, daughter of Dr. C. Dale and Jean Replogle of Higginsville, MO, as their Homecoming Queen candidate. She is a senior in Computer Science and will be graduating in December.

Joyce is presently active in Christian Campus Fellowship, Blue Key National Honor Fraternity and Little Sigmas. She has previously been active in TJHA and IRC and is a member of ACM. Joyce is also a past recipient of Who's Who award. We think she is an excellent candidate because of her campus activities and involvement and want to wish her the best of luck.



**Maureen Flick**  
**Theta Xi**

The men of Theta Xi proudly present Miss Maureen Flick as our 1988 Homecoming Queen candidate. Maureen, a senior in Chemical Engineering, and the daughter of Mr. and Mrs. Mark Flick of St. Louis, would be an excellent representative. She is currently personnel chairman at Chi Omega, and has held the office of assistant pledge trainer. Maureen is active in AIChE, and has been secretary and assistant Master of Ceremonies of Alpha Chi Sigma. She was president and vice-president for the White Roses of Sigma Tau Gamma. She has also been a member of SWE and a staff writer for the Missouri Miner.



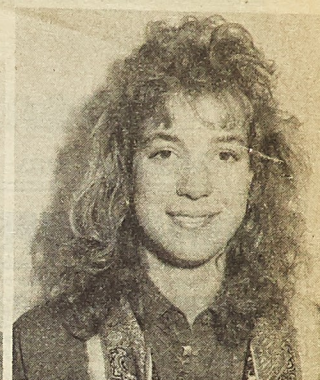
**Stephanie Reeder**  
**Acacia**

The men of Acacia are proud to present Stephanie Reeder as our candidate for Homecoming Queen '88. Stephanie is a sophomore in Mathematics. She has been active in BSU and OCF. She is a cadet in AFROTC and has held several leadership positions as well as being active in their projects. Stephanie has helped Acacia in several of our projects. We feel that because of her distinct personality and good looks she would make a great Homecoming Queen.



**Dianne Moyer**  
**GDI**

We of GDI are really proud to present Dianne Moyer as our 1988 Homecoming Queen candidate. Dianne has been an active member of GDI for three years and on the Board of Governors for two. Well, heck, as well as being responsible, she's just tons of fun to be around. We believe she can handle the incredibly huge chore of being Homecoming Queen.



**Tiffany Huenefeldt**  
**Wesley Foundation**

Tiffany is the 18-year-old daughter of Charles and Virginia Huenefeldt. Tiffany is a member of both the University Orchestra and Choir. She is a freshman representative of the Wesley Council. She is also serving on the special events committee for RHA. Her hobbies include drawing, painting in watercolor, reading books, playing the piano, singing, and shopping. Tiffany is majoring in Chemical Engineering and plans to work for a major corporation.



**Kathy Clapper**  
**Alpha Epsilon Pi**

The men of Alpha Epsilon Pi fraternity are proud to present Miss Kathy Clapper as our Homecoming Queen candidate. Kathy, the daughter of Joseph and Helen Clapper, is a junior majoring in Aerospace Engineering and currently is an active member of AIAA, while also holding the office of president in SWE, AWS, and AEPi Little Sisters. We believe that Kathy's charm, personality, and style make her the best candidate to be the next Homecoming Queen.



SM



# Classifieds

## Miscellaneous

### RESEARCH PAPERS

16,278 to choose from—all subjects  
Order Catalog Today with Visa/MC or COD  
Toll Free **800-351-0222**  
Hot Line in Calif. (213) 477-8226  
Or, rush \$2.00 to: **Research Assistance**  
11322 Idaho Ave. #206-SN, Los Angeles, CA 90025  
Custom research also available—all levels

**For Sale: Apple IIe, two disk drives, Epson printer and software—\$750. Phone 341-5573.**

If you're going to be out of town on election day—Be sure to pick up an absentee ballot at the ASUM office, 206 UCW. Or call 341-4970 for information on voter registration.

"If you want to drink, that's your business,  
"If you want to stop, that's ours."  
Alcoholics Anonymous—IT WORKS. Weekly meetings open to the public, Monday, 7 p.m., Ozark Room, UC-West.

Applications for Who's Who Among Students in American Universities and Colleges, the Annual Honors Program that honors the nation's leading college students, are now available in the Student Activities Office, 113 UC-West. If you are a junior, senior, or graduate student who has excelled in academics and participated in co-curricular activities, you should apply for nomination into this select group. Completed applications are due October 5, 1988.

### MEDI-VALUE PHARMACY

Rolla's only Downtown Pharmacy  
1000 Pine Street, Rolla 364-7077  
Mon.-Fri. 8:30-8 Sat. 8:30-6  
Sunday 11-5

7 DAYS A WEEK  
Full Line of Drug Store  
and Pharmacy Items  
Plus!

If you have any questions about the prescriptions you take, ask Bill Wuenschel, your friendly pharmacist, for the answers!



### Complete Camera Store

Only factory sales & service for Nikon, Contax, Yashica & Pentax in Rolla area.  
ONE-HOUR PHOTO PROCESSING

Available 7 - days a week

# THE WALL

### LATE NIGHT MOVIE

Friday, September 30, 11 p.m.  
Saturday, October 1, 9 p.m.  
\* ME 104

Sponsored by  
SUB

FREE WITH STUDENT ID

College Rep Wanted to distribute "Student Rate" subscription cards on campus. Good income, no selling involved. For information and application write to: Campus Service, 1024 West Solar Drive, Phoenix, Arizona 85021.

**Help Wanted: Manager of Men's Basketball Team.** Responsibility includes working directly with the Men's Varsity Program. Flexible hours, no experience necessary. High School Degree required. Must be willing to assist with practice and have good attitude.

**Found:** One fraternity composite. If lost, please call and identify at 341-8581 or 364-8470 after 5 p.m. So many men, so little time.

**Toastmasters** displays quick-thinking and invokes mounds of laughter this Thursday, September 29. It's the table-topics and humorous speech contest. H-SS, G-9, 4:30 p.m.

**BAE Computer** is seeking responsible student to represent our computer on campus. Incentive bonus plan. Interested persons, please contact us at: 3563 Ryder Street, Santa Clara, California 95051.

It is not too late to be an Angel. If you are interested in joining Angel Flight, please leave your name and address at Harris Hall, AFROTC office, 2nd floor.

### Army "Football Team,"

Hope to see you this year at the football game (providing your team shows up)!!! Your team members may want to bring along a few towels to wipe off the tears of defeat!!!!!!

Air Force PTO

## Personal

**Deanna,**  
You're the best big sis!

Love,  
Your lil brother #1

**World Wide Steel,**  
Don't worry! I'll handle with care!

Love you,  
City Hall

**Dave,**  
Sorry! I'm all booked up.

Susan

**Julie,**  
Get psyched for mystery date!!

Love,  
Your roommate

P.S. Bring a bag for his head.

**To the Men of Delta Tau:** You guys were really up to par!

-- The Sisters of Chi Omega

**Renee,**  
Breakfast was a great idea but a little early. Thanks anyway!

LICO,  
YBS

**Tech-Engine Club—Street Dance 89,**  
It's your turn Pins.

**EBB,**  
Chili & beer.

**Paul,**  
All are welcome! Come join us Thursday.  
Your GDI Friend

**Mike U. (You big stud),**  
3 down 11 to go!

The Bru's

**How To:**  
Yes, I laugh when he gives it to me!

**Steed,**  
I haven't an honorable bone in my body. How about you? By the way, since when have you and Joan, the Uzi-toting RA been insulting sheep together?

ATD

**Tarzan,**  
Swing by anytime. I could use some exercise.

Cupcake

**TECsters,**  
Thanks for all the help on the street dance. It was a big success, but best of all—I didn't go to jail!!

Zippy

**Cupcake,**  
Tarzan want to play!

Tarzan

**Doug & Di,**  
You did it again. Thanks for the eye catching board.

GDI

**Tara,**  
Welcome to the Daughters of the Blue Iris!!

DBI

**Kiki,**  
Who do you think is hot?

**Iggy,**  
How's the float trip coming?

Zippy

**Dorie,**  
Good luck with your mystery date. Hopefully this will be a time he can talk to you.

**Slim,**  
I think you are hot!

**Lil Stir-Fry,**  
I really miss your vegetables. Let's get together and do some cooking real soon.

Wok Man

**Ishmael,**  
Egomania does not equal "DEEP."  
P.S. All in all, you're just another brick in the wall.

MD

**CB,**  
Let me get this straight. Someone who goes on blind dates is in charge of escorts?! Give me a break!

PP

**Hey babe,**  
You're too good to me. Thanks for the flowers, you goof!

Cupcake

**Blade,**  
I'm just a wienie, take it or leave it.

ATD

**Diane,**  
What does it take to make you green! A bottle of Seagrams or just a shot?

**Dorie,**  
Nice picture!!

**To whomever sent me the flowers—**  
Thank you very much! Please identify yourself to me and I'll thank you in person.

Sharon D.

**Dear Geek,**  
Big Sis still isn't home, so you can come over to play for another year.

Love,

Four-Eyes

P.S. Yeesh! A year's worth of bad germs!

**Congratulations to the 7 new TKE Lil' Sister**  
Pledges: Christy, Marybeth, Tricia, Jami, Deanna, Mary, and Nancy. We're glad to have you! Get psyched!

TKE & Daughters of Diana

**Hey Slaughterhouse!**  
What have you guys been up to?? We miss you!

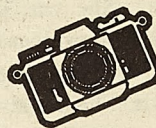
Charlene & Robin

**Steve,**  
I want my NOID!

**Zetas,** get psyched for mystery date!!

**Slim,**  
Whose bed do you want to sleep in?

## S.U.B.



### ANNUAL PHOTO CONTEST

Theme: "Autumn in the Ozarks"

\$100 for top photo  
\$75 for second  
\$50 for third  
\$35 for fourth

3 Photos per contestant  
Photos must be 5x7 inches  
Deadline for entries:  
November 10, 1988

For more info,  
call S.U.B.  
341-4220

1421-H Forum Drive

Phone 341-5828



Gina Rinck  
Linda Constable

Diane Rollins  
Lynn Smith

Becky Tate-Alderson

### THE SNOBS AGAINST THE SLOBs.



### Caddyshack

A Jon Peters Production  
"CADDYSHACK"  
CHEVY CHASE-RODNEY DANGERFIELD  
TED KNIGHT-MICHAEL O'KEEFE  
and BILL MURRAY-Carl  
Original Songs by KENNY LOGGINS-Music Composed by JOHNNY MANDEL  
Written by BRIAN DOYLE-MURRAY & HAROLD RAMIS & DOUGLAS KENNEY  
Executive Producer JON PETERS-Produced by DOUGLAS KENNEY  
Directed by HAROLD RAMIS

Friday, September 30 7 & 9 p.m.  
Saturday, October 1 7 p.m.

ME 104

Free with Student ID  
Sponsored by SUB



# Sports

## Athletic Department could be a good investment!

By Jim Reed  
Sports Editor

Just imagine for a moment if you will, what the students of the University of Oklahoma or Nebraska would be doing if their football team had started off with a 0-3 record. It would be mass hysteria. It would be a total disgrace to the school and the entire state. People would probably lose their jobs because of it. But this isn't Oklahoma or Nebraska, and nobody seems to care.

Very few people go to football games now, not even in the past few years when the Miners have been pretty good. This wasn't the case in the fifties and sixties. The students packed the stands and the team did well.

Because of our reputation as a quality school we could have recruited a lot of great athletes, and could have built a strong sports program. With a good program we might have been

able to turn a profit in the more popular sports such as football, baseball, and basketball, the way many other schools do. Not just the big universities. So what happened?

The major stumbling block was probably the incorporation of the school into the University of Missouri system. The Board of Curators are not about to let any of the other campuses catch up to Columbia and take the spotlight away from the mother school in the system. This association with UM has done some good for Rolla, but has had repercussions as well. The Board of Curators has tried to even the level of education at the different UM schools, but this has meant taking money from Rolla and giving it to Columbia in some cases. Rolla is not progressing at the rate it once did.

Another problem for UMR is the town of Rolla. It would be difficult to get much interest for sports from a town this small, but it might have been

possible to stimulate growth in the community and the University as well.

You might think that is a dead issue, something too late to change. But look at Southwest Missouri State University. They have built a top 30, Division 1 basketball team in as few as 10 years. It is not only increasing their revenue, but has increased enrollment as well. Not to mention it hasn't hurt the reputation of the school. SMSU is the only school in Missouri that has significantly increased enrollment to the point where they are having problems accepting all the new people. Wouldn't that be a nice problem for UMR.

It would be a difficult task, but I think it would be worth the work and cost for UMR to improve their major sports programs. We would like to hear your opinion on this. If you agree or disagree please write a letter to the editor.



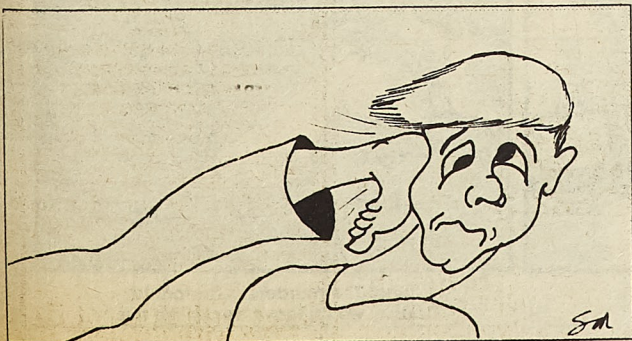
## TKD Club striving for the next level

Submitted by TKD Club

The UMR TKD Club would like to welcome all of the new members and wish them success in the months to come. The club is looking forward to a good semester of training and competition, with the first tournament being scheduled on Oct. 8 in Kansas City. The members of the TKD Club should keep this date open if possible since this is one of the few tournaments open to all belt levels. Scheduled for Oct. 29 is the National Collegiate Championships which will also be held in Kansas City; this tournament is open to only brown belts and above.

The TKD Club would like to take this opportunity to congratulate the members of the club who tested and competed this past summer. Seven members of the TKD Club traveled to Kansas City to test for their next belt rank. Everyone did well in their testing, proving what hard work and dedication can do in a short period of time.

In June, Thanh Melick, a Rolla High School sophomore and a brown belt in the TKD Club, competed in the Junior Olympics held in Tampa, Florida. Thanh trained throughout the spring and early summer in preparation for the tournament. Thanh fought two matches, the first against a taller opponent which placed Thanh at an immediate disadvantage due to the longer reach of his opponent. However, Thanh overcame this disadvantage through a combination of better techniques and overall skill and won the match. His next opponent however, proved to be a tougher match. Thanh fought his best match of the day, repeatedly demonstrating his technique and skills against his opponent. In the end, the controversial decision. Despite the loss, Thanh feels that he fought a very good match and did the best that he could, and overall is pleased with his performance. Thanh's overall standing in the tournament was fifth.



## Dewey disappointed; dashers dull

By Buck Simpson  
Staff Writer

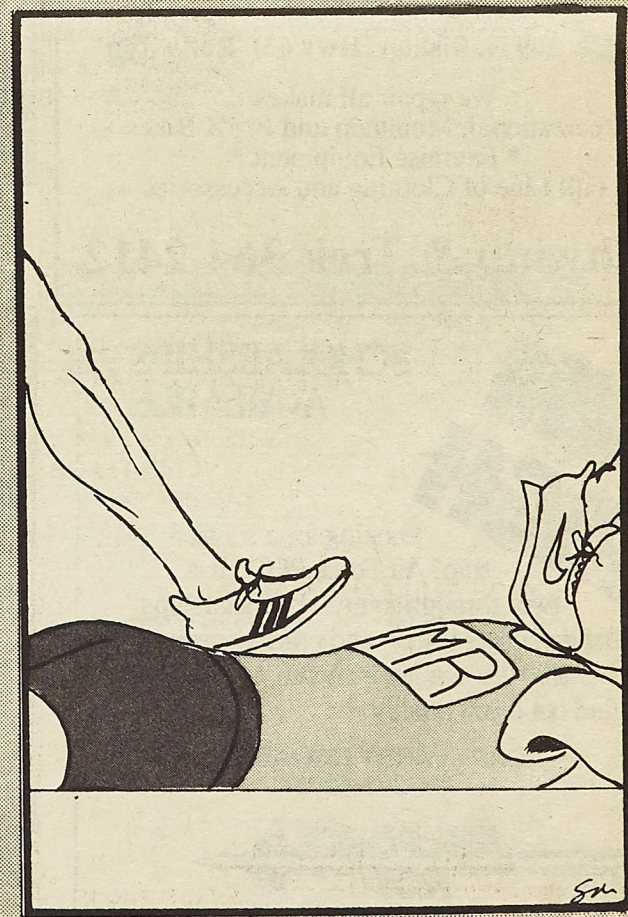
The UMR men's cross country team fell a little short of their capabilities this past weekend at the Jayhawk Invitational in Lawrence, Kansas. On a course where the Alpine Climbing Team should train, the Miners placed fourth overall behind Pittsburgh State, North Texas University, and the eventual champions Kansas University.

Senior, Ron Rosner, led the Miners at the meet placing 18th out of a field of seventy runners. Then, John Conrad entered the finish chute in 21st followed by Tim Bauer in 22nd place. Joe Stemmler and Willie Jacobs sealed up the Miners scoring, placing 23rd and 24th respectively.

Overall, coach Dewey Allgood was not pleased with this past weekend's performance. Giving them the benefit of a doubt, the effort by Rosner and Jacobs were solid ones in the five mile race. However, the others, led by Bauer's pedestrian "walk through" of the course, were a little flat. Nevertheless, the talent is there for the UMR harriers to become a factor in the MIAA. All coach Allgood needs is a small spark to ignite the team.

That "spark" will most likely occur at the Miner Invitational held this coming Saturday on the UMR Golf Course at 10 a.m. Sports Fans (or just you ladies

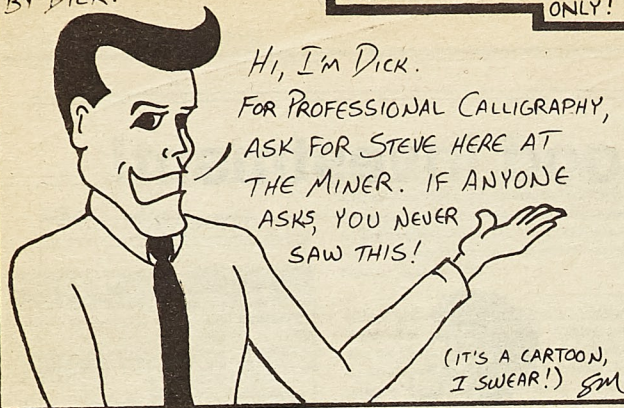
out there interested in over a hundred sweaty men in shorts), if you want to see the Miner harriers turn it on, come out this weekend and support the Miners. You won't regret it.





A PAID ENDORSEMENT  
BY DICK:

NOT AN ADVERTISEMENT.  
FOR INFORMATIONAL PURPOSES  
ONLY!



## RENTAL WORLD OF ROLLA

**Rent to Own**  
Kenwood Audio, T.V.'s VCR's and  
Home Appliances

On Campus at  
1109 N. Bishop  
Phone: 314-341-5573

**THE RENTAL PROFESSIONALS**

**PEDAL  
POWER  
CYCLERY**



OPEN  
10-6  
Tuesday -  
Saturday

109 N. Bishop (Hwy 63) Rolla

We repair all makes  
Recreational, Mountain and BMX Bikes  
\* Exercise Equipment \*  
Full Line of Clothing and Accessories

**Schwinn & Trek 364-2412**

# AIM HIGH

**SCHOLARSHIPS  
AVAILABLE**

Looking for a scholar-  
ship? Air Force ROTC has  
two- through four-year scholarships  
that can cover tuition and other expenses,  
plus \$100 per academic month, tax free.  
Find out if you qualify.

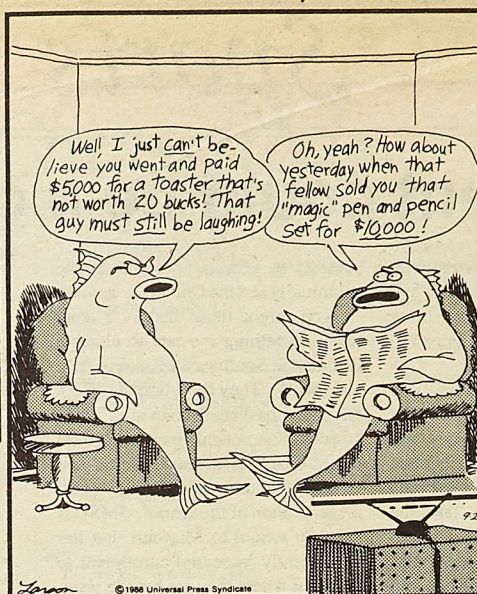
**CAPT LARRY EDWARDS**  
314-341-4203

**AIR FORCE  
ROTC**

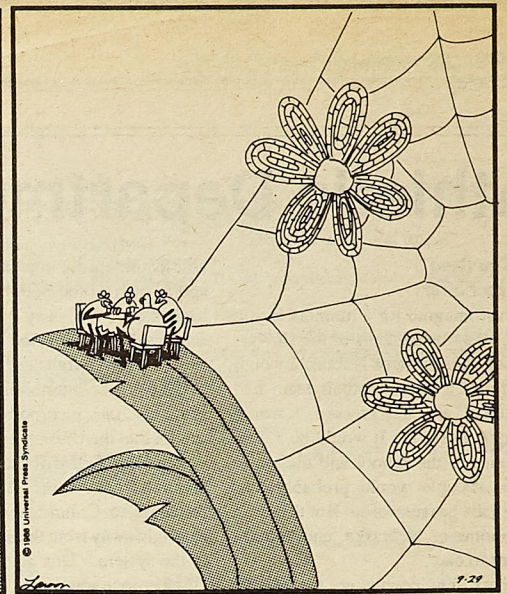
Leadership Excellence Starts Here

## THE FAR SIDE

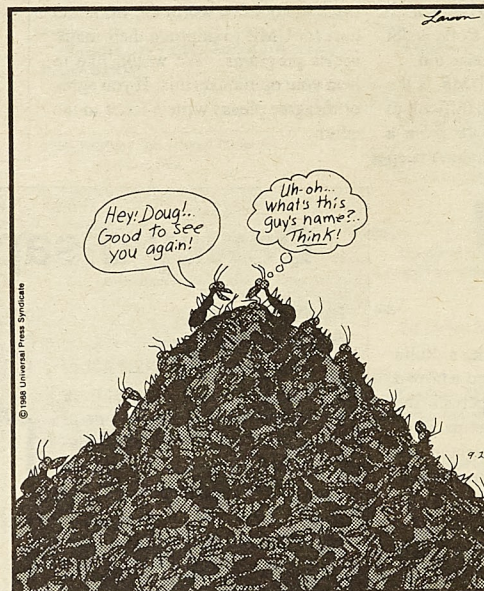
By GARY LARSON



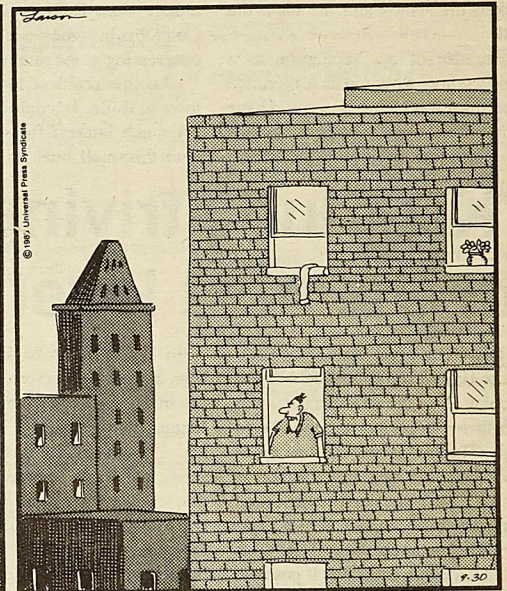
Sucker fish at home



"You and Fred have such a lovely web, Edna — and I love what you've done with those fly wings."



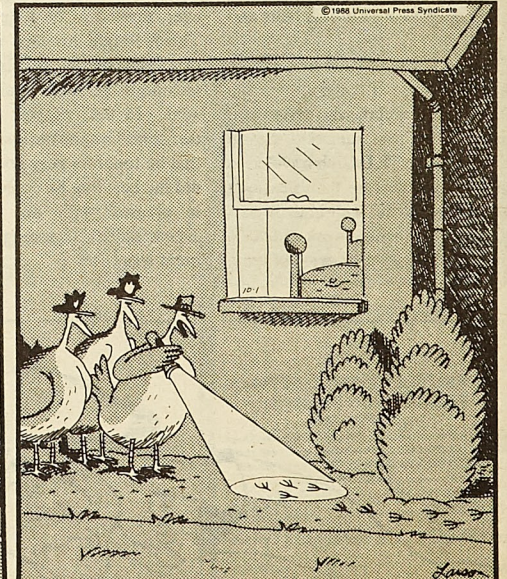
Awkward moments in the ant world



On a clear day, Eugene rose and looked around him and, regrettably, saw who he was.



Pygmies on vacation

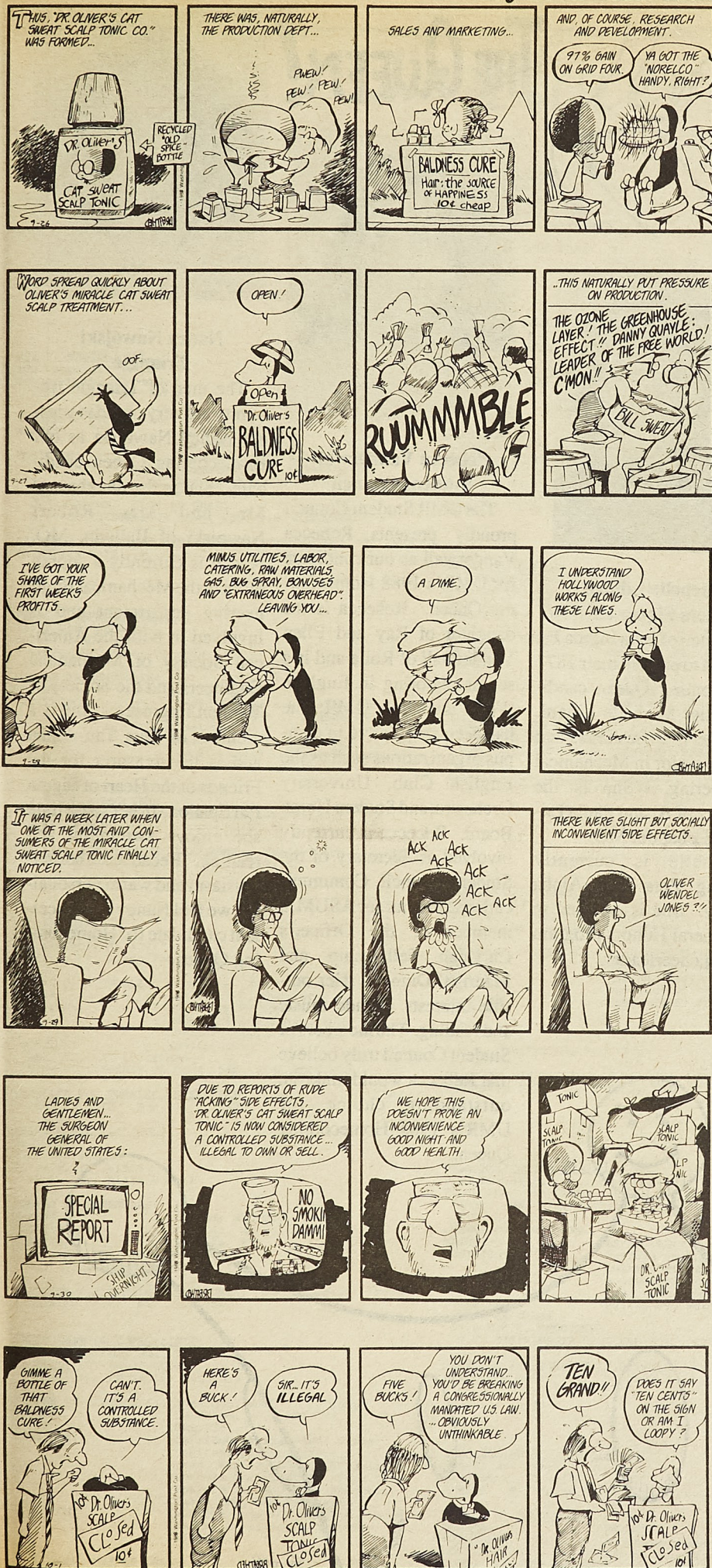


"Aha! The murderer's footprints! 'Course, we all leave tracks like this."



**BLOOM COUNTY**

by Berke Breathed



# LOOK WHO'S NEW IN TOWN



If you want fresh sandwiches and salads—served with fresh baked bread, then you'll love the new Subway. We're fresh and fast— but we're not "fast food".

*The Fresh Alternative*

**SUBWAY**  
Sandwiches & Salads

**SANDWICHES** WHOLE WHEAT OR ITALIAN BREAD

BMT (ham, genoa, pepperoni, bologna)

SUBWAY CLUB (roast beef, turkey, ham)

TUNA TUNA TUNA

SEAFOOD & CRAB

STEAK & CHEESE (100% sirloin)

ROAST BEEF

TURKEY BREAST

HAM & CHEESE

MEATBALL

TO DOUBLE THE VALUE... DOUBLE THE MEAT

Any Sandwich also available as a custom salad plate.  
ALL SERVED WITH YOUR CHOICE OF • AMERICAN CHEESE • ONIONS • LETTUCE • TOMATOES  
DILL PICKLES • GREEN PEPPERS • BLACK OLIVES • SALT • PEPPER & OIL

CORNER OF  
9<sup>th</sup> and Pine





**Teresa Hamm**  
**Kappa Sigma**

The men of Kappa Sigma are proud to present Miss Teresa Hamm, daughter of Mary and David Langston of St. Louis, as our Homecoming Queen candidate. Teresa is a graduating senior majoring in Metallurgical Engineering. In her long four years here at Rolla, Teresa has been involved in numerous organizations. As an outstanding member of Kappa Delta, Teresa was Secretary and PR Chairperson. As a Phi Kappa Theta Little Sis', she was Vice President and Secretary. In the AFS, Teresa is presently Secretary. She also belongs to the Met Society and to Alpha Phi Omega. All of us here know that Teresa is a natural choice for Homecoming Queen '88!

**GOD SAVE**



**Maria Lahm**  
**Missouri Miner**

The Missouri Miner proudly presents Maria Lahm as our candidate for Homecoming Queen 1988. Maria, daughter of Dolores and Frank Lahm of St. Louis is a senior in Electrical Engineering. Maria is currently the Advertising Director of the Missouri Miner and has previously been an advertising representative.

While attending UMR, Maria has been extremely active in several organizations. She has shown her fantastic leadership qualities as President and Vice President of Sigma Nu Little Sisters, and Social Chairman of Zeta Tau Alpha. Maria also enthusiastically plays Intramural Sports.

We feel that these qualities along with Maria's outgoing personality make her an ideal representative of UMR as our 1988 Homecoming Queen. We wish her the best of luck.



**Michelle Lillard**  
**Beta Sigma Psi**

The men of Beta Sigma Psi are proud to present their 1877 Homecoming Queen candidate, Miss Michelle Lillard. Michelle is a freshman and plans to major in Mechanical Engineering. She is the daughter of Al and Paula Lillard of Lebanon, MO.

Michelle is currently pledging Zeta Tau Alpha sorority. She is enrolled in the General Honors program and is a cheerleader.

**THE QUEEN!**



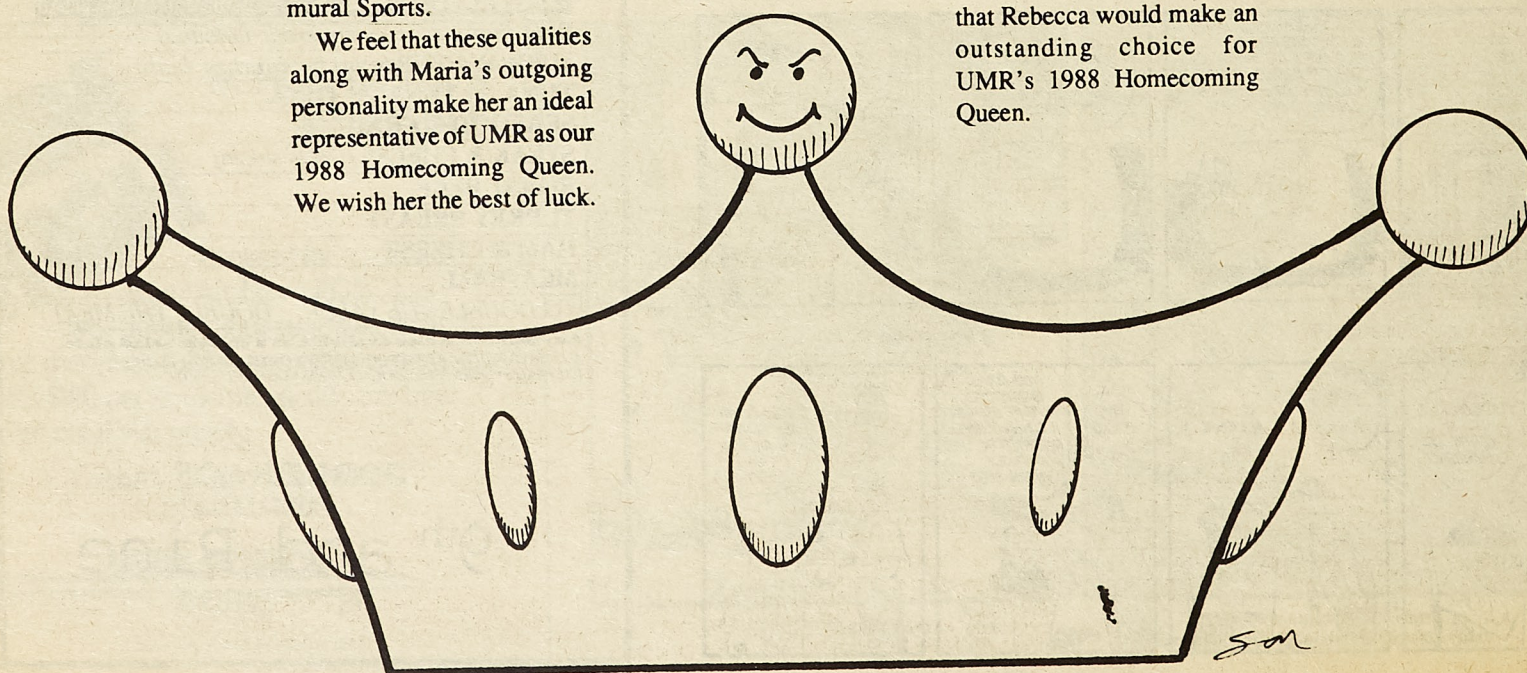
**Rebecca Vanderwall**  
**Student Council**

The UMR Student Council proudly presents Rebecca Vanderwall as our candidate for UMR's 1988 Homecoming Queen. Rebecca is the daughter of Ray and Ellen Vanderwall of Rolla and is a senior majoring in English. While attending UMR, she has been very active in campus organizations such as the English Club, University Orchestra, and Student Union Board. Rebecca is currently involved as Secretary of the Student Council, Communications Director for ASUM, a member of the Officer's Christian Fellowship and Madrigal Dinners. Her outside interests include music and reading. The members of Student Council truly believe that Rebecca would make an outstanding choice for UMR's 1988 Homecoming Queen.



**Nancy Nawojski**  
**Triangle**

The men of Triangle fraternity are very proud to present Nancy Nawojski as our Homecoming Queen candidate. She is the daughter of Mr. and Mrs. Robert Nawojski of Ballwin, MO. Nancy is currently a sophomore in the Mechanical Engineering department and is involved in both the American Society of Mechanical Engineers and the Society of Women Engineers. She is a member of Zeta Tau Alpha and is the treasurer for the Friends of the Heart of Sigma Phi Epsilon. In her spare time she enjoys swimming and reading. Because of her enthusiasm and warm personality, we feel Nancy is an excellent candidate for Homecoming Queen.





# Placement

## SIGNUPS AND RESUME PRE-SCREENING

**LOCATED:** Ground level (G-5 Buehler Bldg.) Use door on Southeast corner by Center Bank Drive-up)

**HOURS:** 7:45 TO 11:30 a.m.; 1:00 to 4:15 p.m.

## PRESCREENED INTERVIEWS

**ROY F. WESTON, INC.**  
100 Corporate North  
Bannockburn, IL 60015  
attn: Mr. Jim Burton

**NUMBER OF SCHEDULES:** 1  
**MAJORS:** BS/MS in CE, ChE  
Geotechnical Eng.  
**POSITION:** Remedial investigation, feasibility studies relating to hazardous waste sites  
**LOCATION:** Bannockburn, IL  
DEC. 88, MAY, JULY 89 GRADS  
U.S. CITIZENSHIP OR PERM. RES. VISA REQUIRED

**DEADLINE FOR TURNING IN RESUMES:** Monday, Oct. 3, 1988  
**INTERVIEW DATE:** Monday, Oct. 31, 1988

**FRU-CON CONSTRUCTION CO.**  
15933 Clayton Road  
Ballwin, MO 63011  
attn: Mr. James Coleman, Jr.

**NUMBER OF SCHEDULES:** 1  
**MAJORS:** BS in CE, ME  
**POSITION(S):** Field Engineer I, Estimator I; Cost Engineer I; Scheduling Engineer I  
**LOCATION:** Probably initially corp. office in St. Louis, then reassignment to construction projects.

DEC. 88, MAY, JULY 89 GRADS  
2.5 G.P.A. REQUIRED  
U.S. CITIZEN OR LEGAL RESIDENT AUTHORIZED TO WORK IN U.S.

**DEADLINE FOR TURNING IN RESUMES:** Monday, Oct. 3, 1988  
**INTERVIEW DATE:** Monday, Oct. 31, 1988

**PPG INDUSTRIES**  
One PPG Place  
Pittsburgh, PA 15272  
attn: Ms. Linda Robson

**NUMBER OF SCHEDULES:** 1 ea day, Nov. 1, 2, 1988  
**MAJORS:** BS ChE, ME, Chemistry  
**POSITION:** Development Chemists  
Mfg. & Process Eng. (ChE)  
Production & Plant Eng. (ME)  
Nationwide  
**LOCATION:** DEC. 88, MAY 89 grads  
U.S. CITIZENSHIP OR PERM. RES. VISA REQUIRED

**DEADLINE FOR TURNING IN RESUMES:** Tues., Oct. 4, 1988  
**INTERVIEW DATE:** Nov. 1, 2, 1988

**QUANTUM CHEMICAL CORP.**  
USI DIV.  
P.O. Box 218  
Tuscola, IL 61953  
attn: Mr. Blake Hubert

**NUMBER OF SCHEDULES:** 1  
**MAJORS:** BS ChE, ME, EE  
**POSITION(S):** ChE, EE, ME  
**LOCATION:** Tuscola, IL  
Dec. 88; MAY, JULY 89 GRADS  
U.S. CITIZENSHIP REQUIRED

**DEADLINE FOR TURNING IN RESUMES:** Tues., Oct. 4, 1988  
**INTERVIEW DATE:** Nov. 1, 1988

**UNION CARBIDE CORP.-LINDE DIV.**  
39 Old Ridgebury Rd., R-416  
Danbury, CT 06817-0001  
attn: Ms. Christine Misuraca

**NUMBER OF SCHEDULES:** 1 ea day, Nov. 1, 2, 1988  
**MAJORS:** BS/MS ME, Met, EE, ChE, Mat. Sci.  
**POSITION:** Development Eng.-Ind. Gases; Engineer-Coatings Serv.; Prod. Eng.-Bulk Gas Operations; Process Eng.-Coatings Serv.; Engineering Rep.-Gas Products; Sales Rep.-Gas Products  
**LOCATION:** VARIOUS--see job listing (to be posted at time of interview signups.)

DEC. 88, MAY 89 GRADS  
MUST BE U.S. CITIZEN OR PERMANENT RESIDENT

**DEADLINE FOR TURNING IN RESUMES:** Tues., Oct. 4, 1988  
**INTERVIEW DATES:** Nov. 1, 2, 1988

**BLACK & VEATCH**  
1500 Meadow Lake Parkway  
P.O. Box 8405  
Kansas City, MO 64114  
attn: Ms. Julie Qualls

**NUMBER OF SCHEDULES:** 5  
**MAJORS:** BS/MS CE, EE, ME, ChE, Geol. E.  
**POSITION:** Detailed job listing will be available at time of signup for interviews  
**LOCATION:** Kansas City, MO or Overland Park, KS  
DEC. 88 grads  
2.75 G.P.A.  
MUST BE LEGALLY AUTHORIZED FOR U.S. EMPLOYMENT

**DEADLINE FOR TURNING IN RESUMES:** Tues., Oct. 4, 1988  
**INTERVIEW DATE:** Nov. 1, 1988

**CANCELLATIONS:**  
BOEING COMPANY-HUNTSVILLE - interview date of Nov. 1.  
No plans at this time to re-schedule their interview.  
ILLINOIS POWER COMPANY - interview date of Oct. 21, 1988.  
No plans at this time to re-schedule their interviews.  
RESUMES COLLECTED FOR ILLINOIS POWER WILL NOT BE MAILED TO COMPANY - PER THEIR REQUEST.

**OLIN CORPORATION**  
427 North Shamrock Street  
College Relations Department  
East Alton, IL 62024  
attn: Ms. Cheryl Bednar

**NUMBER OF SCHEDULES:** 2  
**MAJORS:** BS MetE, ME, ChE, Eng. Mgt.  
**POSITIONS:** To be listed at time of interview signups.  
**LOCATION:** East Alton, IL; New Haven, CT; Stamford, CT

DEC. 88, MAY 89 GRADS  
PREFER B GRADE AVERAGE  
U.S. CITIZENSHIP OR PERMANENT RES. REQUIRED

**DEADLINE FOR TURNING IN RESUMES:** Tues., Oct. 4, 1988  
**INTERVIEW DATE:** Nov. 1, 1988

**NORTHERN ILLINOIS GAS**  
P.O. Box 190  
Aurora, IL 60057  
attn: Ms. Marcia Fridenbergs

**NUMBER OF SCHEDULES:** 1 ea day, Nov. 2, 3, 1988  
**MAJORS:** BS/ME, CE, ChE, PE, Eng. Mgt.  
**POSITION:** Engineering - an in-depth overview of company operations  
**LOCATION:** Naperville, IL

DEC. 88 grads  
3.0 G.P.A.  
U.S. CITIZENSHIP REQUIRED

**DEADLINE FOR TURNING IN RESUMES:** Wed., Oct. 5, 1988  
**INTERVIEW DATE:** Nov. 2, 3, 1988

**BELL HELICOPTER TEXTRON, INC.**  
P.O. Box 901014  
Ft. Worth, TX 76101  
attn: Ms. Jimmy Tallal

**NUMBER OF SCHEDULES:** 1  
**MAJORS:** BS/MS/PhD AE, ME  
**POSITION:** Various engineering positions related to helicopter design & development, including the V-22 tiltrotor.  
**LOCATION:** Dallas/Ft. Worth, TX  
DEC. 88 GRADS  
3.0 G.P.A. REQUIRED  
U.S. CITIZENSHIP REQUIRED-GOVT. CONTRACT

**DEADLINE FOR TURNING IN RESUMES:** Wed., Oct. 5, 1988  
**INTERVIEW DATE:** Nov. 2, 1988

**IOWA ILLINOIS GAS & ELECTRIC**  
206 E. 2nd Street  
Davenport, IA 52801  
attn: Ms. Donna Harbottle

**NUMBER OF SCHEDULES:** 1  
**MAJORS:** BS/EE  
**POSITION:** Electrical Design Div.  
**LOCATION:** Davenport, IA  
DEC. 88, MAY 89 GRADS  
U.S. CITIZENSHIP OR PERM. RES. VISA REQUIRED

**DEADLINE FOR TURNING IN RESUME:** Wed., Oct. 5, 1988  
**INTERVIEW DATE:** Nov. 2, 1988

**LYONDELL PETRO CHEMICAL, DIV. OF ARCO**  
1200 Lawgale, P.O. Box 2451  
Houston, TX 77252-2451  
attn: Ms. Joyce Watson, Empl. Rel. Supv.

**NUMBER OF SCHEDULES:** 1: EE; 1: ChE; 1: ME  
**POSITION:** Description not available  
**LOCATION:** Houston, TX  
DEC. 88, MAY 89 GRADS  
U.S. CITIZEN OR ALIEN AUTHORIZED TO WORK IN U.S.

**DEADLINE FOR TURNING IN RESUMES:** Wed., Oct. 5, 1988  
**INTERVIEW DATE:** Nov. 2, 1988

**VULCAN CHEMICAL**  
P.O. Box 12283  
Wichita, KS 67277  
attn: Mr. Brian Johnson

**NUMBER OF SCHEDULES:** 1  
**MAJORS:** BS/ChE  
**POSITION:** Process Eng.  
**LOCATION:** Wichita, KS  
DEC. 88 GRADS  
U.S. CITIZENSHIP OR PERM. RES. VISA REQUIRED

**DEADLINE FOR TURNING IN RESUME:** Wed., Oct. 5, 1988  
**INTERVIEW DATE:** Nov. 2, 1988

**MISSOURI PRECISION CASTINGS**  
P.O. Box 460  
Joplin, MO 64801  
attn: Mr. Richard Grote

**NUMBER OF SCHEDULES:** 1  
**MAJORS:** BS in Met. Engineering  
**POSITION:** Process/Plant Metallurgist-  
Directly involved in foundry manufacturing operations.  
**LOCATION:** Joplin, MO

recent grads, DEC. 88, MAY, JULY 89 GRADS  
2.5 G.P.A. REQUIRED  
U.S. CITIZENSHIP REQUIRED

**DEADLINE FOR TURNING IN RESUMES:** Wed., Oct. 5, 1988  
**INTERVIEW DATE:** Nov. 2, 1988

**U.S. DEPT. OF DEFENSE-OK CITY AIR LOGISTICS**  
2854 ABG-DPCSE-2  
Tinker AFB, OK 73145-5990  
attn: Mr. James McGough

**NUMBER OF SCHEDULES:** 2  
**MAJORS:** BS EE, ME, AE, Met. E; also computer option under EE; BS level on all except Metallurgical (MS)  
**POSITION:** Work on variety of Air Force weapon systems  
**LOCATION:** Tinker AFB, Oklahoma City, OK  
recent grads, DEC. 88 grads  
2.2 G.P.A. REQUIRED  
U.S. CITIZENSHIP REQUIRED BY LAW

**DEADLINE FOR TURNING IN RESUMES:** Wed., Oct. 5, 1988  
**INTERVIEW DATE:** Nov. 2, 1988

**NAVAL ORDNANCE STATION**  
Recruitment Branch, Code 0632  
Naval Ordnance Station  
Indian Head, MD 20640-5000  
attn: Mr. Kevin Selock

**NUMBER OF SCHEDULES:** 1  
**MAJORS:** BS/ChE  
**POSITION:** Chemical Engineer  
**LOCATION:** Naval Ordnance Station  
recent grads, DEC. 1988 or MAY 89 grads  
U.S. CITIZENSHIP REQUIRED

**DEADLINE FOR TURNING IN RESUMES:** Wed., Oct. 5, 1988  
**INTERVIEW DATE:** Nov. 2, 1988

**FIRST BRANDS CORPORATION**  
88 Long Hill St.  
East Hartford, CT 06108  
attn: Mr. R.M. McKee

**NUMBER OF SCHEDULES:** 1 ea day: Nov. 2, 3, 1988  
**MAJORS:** BS ME, Eng. Mgt., EE  
**POSITION:** Project (manufacturing) engineering or production supervision (optional) positions within consumer products mfg. facilities  
**LOCATION:** AR, GA, IL, CT, NJ  
DEC. 88 or MAY, JULY 89 GRADS  
2.5 G.P.A. REQUIRED  
U.S. CITIZEN OR PERMANENT VISA ONLY

**DEADLINE FOR TURNING IN RESUME:** Wed., Oct. 5, 1988  
**INTERVIEW DATES:** Nov. 2, 3, 1988



# HOW TO ENRICH YOUR EDUCATION BY \$1,000 A MONTH.

If you're a math, engineering or physical sciences major, you could be earning \$1,000 a month during your junior and senior years.

This excellent opportunity is part of the Navy Nuclear Propulsion Officer Candidate Program. It's one of the most prestigious ways of entering the nuclear field - and rewarding, too. You get a \$4,000 bonus upon entrance into the program, and \$2,000 more when you complete your Naval studies.

You also receive a year of paid graduate-level training that's the most comprehensive in the world. And you'll acquire expertise with state-of-the-art nuclear reactor and propulsion plant technology.

**NAVY CAREER PRESENTATION**  
WEDNESDAY 10/5/88, 6:30 PM  
UC WEST, OZARK ROOM

As a Navy officer, you'll lead the adventure while gaining high-level experience that will help make you a leader in one of the world's high-tech industries.

In addition to the professional advantages, nuclear-trained officers get an unbeatable benefits package, travel opportunities, promotions and a solid salary.

Find out more about the Navy Nuclear Propulsion Officer Candidate Program, and make your education start paying off today.

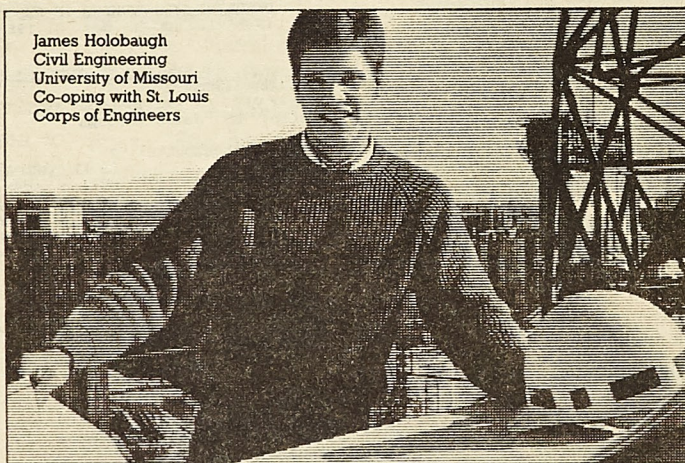
Call toll free: 1-800-446-6289 in Missouri.

**PERSONAL INTERVIEWS**  
THURSDAY 10/6/88  
SIGN UP AT CAREER DEVELOPMENT  
(BASEMENT, BUEHLER BUILDING)

## NAVY OFFICER.

## RESERVE OFFICERS' TRAINING CORPS

James Holobaugh  
Civil Engineering  
University of Missouri  
Co-opting with St. Louis  
Corps of Engineers



### "THE DASE CO-OP PROGRAM IS LIKE A COURSE IN REAL LIFE."

"The big thing it offers is experience, and that's what companies look for. There are things I've learned on the job that I couldn't learn in school."

The Department of Army Scientific and Engineering (DASE) Co-op Program provides ROTC students the opportunity to work in a Department of the Army facility while still in college. Each is paid while getting practical work experience in a high-tech facility. Selected students also receive up to \$5,000 tuition assistance per year and the opportunity for continued employment after graduation.

To be eligible, you must be a freshman in a baccalaureate program leading to a degree in science or engineering. For more information on application procedures, contact the Chairman of the Co-op Department, or the Professor of Military Science.

Students are selected on a competitive basis.



**ARMY ROTC**  
THE SMARTEST COLLEGE  
COURSE YOU CAN TAKE.

Harris Hall, Room 303

314-341-4744

LTC Dent



## ALEX'S PIZZA

122 West 8th St., Rolla, MO  
11 a.m. to 2 a.m., 7 days a week  
For Carry Out or Delivery, Call  
364-2669 or 364-9878

Real Italian

### PIZZA

Salads • Sandwiches  
Pasta

5% Beer on Sunday

### SPECIALTIES

- Gyros
- Souvlaki
- Diples
- Greek Salad
- Spinach Pie
- Baklava

### STEAK SPECIALS

Served Daily Until 10 pm

5 oz. Steak Sandwich	\$3.95
Special Mon.-Sat. until 4 pm	
Sunday Special 11-3 pm	
8 oz. Top Sirloin	\$4.95
Soft drink included	
9 oz. KC Strip	\$5.95
8 oz. Top Sirloin	\$4.95
10 oz. Top Sirloin	\$5.95

All steak specials come with Garden Salad,  
Baked Potato or French Fries & Texas Toast

## ARTHUR ANDERSEN & CO. ATTENTION

JUNIORS, SENIORS, AND GRADUATE STUDENTS  
WHO ARE MAJORING IN THE FOLLOWING AREAS:

**Chemical Engineering**  
**Civil Engineering**  
**Computer Science**  
**Electrical Engineering**  
**Engineering Management**  
**Mathematics and Statistics**  
**Mechanical Engineering**

You are cordially invited to attend a presentation/reception to discuss career opportunities in the Management Information Consulting Division of Arthur Andersen & Co.


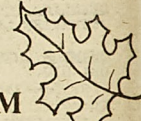
Some areas of our practice are:  
CIM; JIT; System Design & Installation;  
Strategic Information Planning and Advanced Technologies

October 4, 1988  
6:00 p.m.  
Centennial Hall, East  
At University Center

Arthur Andersen & Co.





## OCTOBERFEST '88

 Family Picnic  
St. Patrick's Parish  
Rolla, MO 12-7 PM 

**Sunday, October 2, 1988**  
**Buffet Style Dinner**

**All You Can Eat!**

 Adults \$4.50   
Children (12 & under) \$2.50  
**UMR Students & Military Personnel**  
**\$1.00 off with valid I.D.**

**Everyone Welcome!**



## Placement

from page 15

**CECO CORPORATION**  
121 Hunter Ave.  
St. Louis, MO 63124  
attn: Ms. Suzanne Wendell

NUMBER OF SCHEDULES: 1  
MAJORS: BS CE  
POSITION: Sales-Engineering  
LOCATION: Nationwide-Midwest  
DEC. 88 GRADS

DEADLINE FOR TURNING IN RESUMES: Thurs., Oct. 6, 1988  
INTERVIEW DATE: Nov. 3, 1988

**MISSOURI PUBLIC SERVICE COMPANY**  
10700 E. 350th Highway  
Kansas City, MO 64138  
attn: Ms. Cynthia Smith

NUMBER OF SCHEDULES: 1  
MAJORS: BS/EE  
POSITION: Staff & Field Eng.  
LOCATION: Kansas City area, Western MO  
DEC. 88 GRADS  
U.S. CITIZENS ONLY

DEADLINE FOR TURNING IN RESUMES: Thurs., Oct. 6, 1988  
INTERVIEW DATE: Nov. 3, 1988

**SQUARE D/ST. LOUIS**  
9735 Landmark Parkway  
Suite 101  
Sunset Hills, MO 63127  
attn: Mr. Larry Bonhaus

NUMBER OF SCHEDULES: 1  
MAJORS: BS Econ, EE, ME, Eng. Mgt.  
POSITION: Technical Sales  
LOCATION: National  
recent grads, DEC. 88 GRADS  
2.5 G.P.A. REQUIRED

DEADLINE FOR TURNING IN RESUMES: Thurs., Oct. 6, 1988  
INTERVIEW DATE: Nov. 3, 1988

**CONTEL**  
P.O. Box 307  
Wentzville, MO 63385  
attn: Ms. Sharon Zajac

NUMBER OF SCHEDULES: 1  
MAJORS: BS/ME, EE  
POSITION: unknown  
LOCATION: Potosi, Missouri, area  
DEC. 88 GRADS  
2.5 G.P.A.  
U.S. CITIZENSHIP PREFERRED

DEADLINE FOR TURNING IN RESUMES: Thurs., Oct. 6, 1988  
INTERVIEW DATE: Nov. 3, 1988

**MARATHON PETROLEUM**  
Illinois Refining-Refining Office Bldg.  
Marathon Ave.  
Robinson, IL 62454  
attn: Ms. Janice Kwiatkowski

NUMBER OF SCHEDULES: 1  
MAJORS: BS/ChE  
POSITION: Associate Refining Engineer to provide technical support to the process units.  
LOCATION: Robinson, IL  
Dec. 88, MAY, JULY 89 GRADS  
3.0 G.P.A. REQUIRED  
U.S. CITIZENSHIP REQUIRED

DEADLINE FOR TURNING IN RESUMES: Thurs., Oct. 6, 1988  
INTERVIEW DATE: Nov. 3, 1988

MARATHON PETROLEUM CO. WILL HOLD AN INFORMATIONAL MEETING ON NOV. 2, 1988, 7:00 P.M. IN THE MERAMEC ROOM.

**SVERDRUP CORPORATION**  
801 N. 11th St.  
St. Louis, MO 63101  
attn: Mr. Jim O'Daniel

NUMBER OF SCHEDULES: 2  
MAJORS: BS/MS, ME, EE, Eng. Mgt.,  
ChE, AE  
POSITION: Structural Design, Civil Eng., Sys. Eng./Power, HVAC Mechanicals, Chem. Process Eng., ME  
LOCATION: St. Louis, MO

recent grads, DEC. 88 grads  
2.8 G.P.A. REQUIRED  
U.S. CITIZENSHIP PREFERRED

DEADLINE FOR TURNING IN RESUMES: Thurs., Oct. 6, 1988  
INTERVIEW DATE: Nov. 4, 1988

## NON-PRESCREENED INTERVIEWS

**WISCONSIN POWER & LIGHT**  
P.O. Box 192  
Madison, WI 53701  
attn: Ms. Carolyn Creager

NUMBER OF SCHEDULES: 1 ea day, Oct. 31; Nov. 1  
MAJORS: BS EE (Power)  
POSITION: Training Program and Specific vacancies to be identified  
LOCATION: So Central Wisconsin

recent grads, DEC. 88 GRADS  
2.5 G.P.A. REQUIRED  
U.S. CITIZENSHIP OR EMPLOYMENT ELIGIBILITY FOR NON-CITIZEN

INTERVIEW SIGNUP DATE: Monday, Oct. 17, 1988  
INTERVIEW DATES: Oct. 31; Nov. 1, 1988

**U.S. DEPT. OF DEFENSE ARMY MATERIEL COMMAND**  
Sacramento Army Depot  
Sacramento, CA 95813-5057  
attn: Mr. David Browne

NUMBER OF SCHEDULES: 1  
MAJORS: BS EE, ChE, ME, Eng. Mgt.,  
Met E, AE, Comp Sci, Economics,  
Math, Science, Chemistry  
POSITION: General Engineer or Management  
(Career Intern)  
LOCATION: Nationwide  
recent grads or DEC. 88 GRADS  
2.5 G.P.A. REQUIRED  
U.S. CITIZENSHIP REQUIRED

NOTE: ENGINEERING INTERVIEW OPENINGS WILL BE IN THE MORNING ONLY; NON-ENGINEERING INTERVIEW OPENINGS WILL BE IN THE AFTERNOON ONLY.

SIGNUP DATE: Monday, Oct. 17, 1988  
INTERVIEW DATE: Oct. 31, 1988

**AFG INDUSTRIES**  
P.O. Box 929  
Kingsport, TN 37662  
attn: Mr. Ron Blevins

NUMBER OF SCHEDULES: 1  
MAJORS: BS ChE, CerE, ME, EE  
POSITION: Production Supv. or EE  
LOCATION: Springhill, TN; NJ, W VA, CA  
DEC. 88 GRADS

SIGNUP DATE: Monday, Oct. 17, 1988  
INTERVIEW DATE: Oct. 31, 1988

**CONOCO, INC./PROCESS ENGINEERING DIV.**  
P.O. Box 2197  
Houston, TX 77252  
attn: Ms. Ingrid Yiannois

NUMBER OF SCHEDULES: 2  
MAJORS: BS or MS ChE  
POSITION: Chemical Engineer  
LOCATION: Ponca City, OK  
recent grads, DEC. 88, MAY, JULY 89 GRADS  
MUST HAVE AUTHORIZATION TO WORK IN U.S.

SIGNUP DATE: Tuesday, Oct. 18, 1988  
INTERVIEW DATE: Nov. 1, 1988

**UNION PACIFIC TECHNOLOGIES**  
7930 Clayton Rd.  
St. Louis, MO 63117-1368  
attn: Mr. Ron Stockman

NUMBER OF SCHEDULES: 2  
MAJORS: BS/Comp Sci  
POSITION: Asst. Computer Programmer  
LOCATION: St. Louis  
DEC. 88 GRADS ONLY  
U.S. CITIZENSHIP OR PERM. RES. VISA REQUIRED  
3.0 G.P.A. PREFERRED

SIGNUP DATE: Tues., Oct. 18, 1988  
INTERVIEW DATE: Nov. 2, 1988

AN INFORMATIONAL MEETING WILL BE HELD ON NOV. 1 7:00 P.M. IN THE MERAMEC ROOM.

**DOE RUN COMPANY**  
P.O. Box 500  
Viburnum, MO 65566  
attn: Mr. John Kennedy

NUMBER OF SCHEDULES: 1  
MAJORS: BS in Mining Eng.  
POSITION: Entry level Mining Eng.  
LOCATION: Viburnum  
DEC. 88 GRADS  
Ventilation survey, rock mechanics, supervision

SIGNUP DATE: Tues., Oct. 18, 1988  
INTERVIEW DATE: Nov. 3, 1988

**R.A. BEHRMANN**  
4173 Hoffmeister Ave.  
St. Louis, MO 63125  
attn: Mr. Donald Behrmann

NUMBER OF SCHEDULES: 1  
MAJORS: BS in ME, Systems Sci., & Math,  
Eng. Mgt. with coursework in  
Fluid Mechanics, Heat Transfer &  
2 semesters of thermodynamics  
POSITION: Outside Sales Engineer  
LOCATION: St. Louis, MO  
recent grads, DEC. 88 grads, MAY, JULY 89 grads  
2.3 G.P.A. REQUIRED  
U.S. CITIZENSHIP REQUIRED

SIGNUP DATE: Wed., Oct. 19, 1988  
INTERVIEW DATE: Nov. 3, 1988

**EMPIRE DISTRICT ELECTRIC COMPANY**  
P.O. Box 127  
Joplin, MO 64802  
attn: Mr. George Dorsey

NUMBER OF SCHEDULES: 1  
MAJORS: BS in EE  
POSITION: Electrical Engineer  
LOCATION: Joplin  
DEC. 88 GRADS; WILL CONSIDER MAY 89 GRADS  
2.5 G.P.A.  
U.S. CITIZENSHIP OR PERM. RES. VISA REQUIRED

SIGNUP DATE: Wed., Oct. 19, 1988  
INTERVIEW DATE: Nov. 3, 1988

## NON-PRESCREENED INTERVIEWS

**U.S. FEDERAL BUREAU OF INVESTIGATION**  
1520 Market St.  
St. Louis, MO 63103  
attn: Mr. Richard Herman

NUMBER OF SCHEDULES: 1  
MAJORS: Any-prefer EE, AE, ME, Met.Eng.  
POSITION: Special Agents & Laboratory  
LOCATION: anywhere in U.S.  
DEC. 88, MAY, JULY 89 GRADS  
U.S. CITIZENSHIP REQUIRED

SIGNUP DATE: Thurs., Oct. 20, 1988  
INTERVIEW DATE: Nov. 3, 4, 1988

NOTE: AN INFORMATIONAL MEETING WILL BE HELD ON NOV. 3, 1988, MISSOURI ROOM - 7:00 P.M.

**HOWARD NEEDLES TAMMEN & BERGENDOFF**  
P.O. Box 419299  
9200 Ward Parkway  
Kansas City, MO 64141  
attn: Mr. Richard Schwab

NUMBER OF SCHEDULES: 1  
MAJORS: BS CE (Structural, Transportation,  
Water Resources)  
POSITION: Engineer  
LOCATION: open  
DEC. 88, MAY 89 GRADS

SIGNUP DATE: Thurs., Oct. 20, 1988  
INTERVIEW DATES: Nov. 3, 4, 1988

**INDIANA DEPT. OF HIGHWAY**  
100 N. Senate, Rm. 1304  
Indianapolis, IN 46204  
attn: Ms. Amy Phillips

NUMBER OF SCHEDULES: 2  
MAJORS: BS or MS in CE  
POSITION: Graduate Engineer Development  
Positions or Direct Hire positions:  
Construction, design, traffic, maint.  
development - STATE AGENCY  
U.S. CITIZENSHIP OR PERM. RES. VISA REQUIRED

SIGNUP DATE: Thurs., Oct. 20, 1988  
INTERVIEW DATE: Nov. 3, 1988

## CHANGE IN INFORMATION FOR WEEK OF OCT. 24-28, 1988

**FISHER CONTROLS-SCADA DIV.**  
RECRUITING COORDINATOR HAS ANNOUNCED THAT SCADA DIVISION WILL NOT BE INTERVIEWING ON OCT. 24, 1988 - DIVISION LISTED BELOW WILL INTERVIEW:

**FISHER CONTROLS/FINAL CONTROLS SYSTEMS GROUP**  
8301 Cameron Road  
Austin, TX 78753  
attn: Ms. Barbara Kreisman

NUMBER OF SCHEDULES: 1  
MAJORS: BS ChE, ME, Eng. Mgt.  
POSITION: Final Controls Systems  
Applications Engineer  
LOCATION: Marshalltown, IA  
DEC. 88 GRADS PREFERRED  
U.S. CITIZENSHIP OR PERMANENT RES. VISA REQUIRED

DEADLINE FOR TURNING IN RESUMES: Monday, Oct. 3, 1988  
INTERVIEW DATE: Oct. 24, 1988

**ATEC ASSOCIATES, INC.**  
Corporate Office  
5150 E. 65th St.  
Indianapolis, IN 46220  
attn: Mr. Billy Logue

ATEC ASSOCIATES, INC. is looking for Chemists, Engineers, Geologists, Geological Engineers, Industrial Hygienists, Geotechnical Engineers, and Environmental Engineers for 36 locations in the U.S. Call collect or send resume to: Mr. Billy Logue, above address  
Phone # 317-849-4990

see Co-op Employment, page 1



YOU HAVE FRIENDS WHO CARE  
AT . . .

**BIRTHRIGHT**

PHONE: 364-0066

215 WEST 8th STREET  
P.O. BOX 832  
ROLLA, MISSOURI 65401

FOR HELP  
DURING UNPLANNED PREGNANCY  
FREE PREGNANCY TESTING

**HAIR  
MASTERS**

**364-0707**  
NEW LOCATION  
817 PINE  
DOWNTOWN ROLLA

## Quality Cleaners

\* Expert Cleaning \* Reasonably Priced

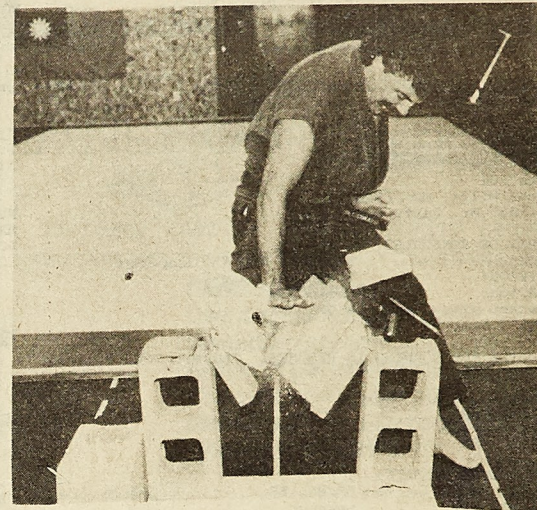
108 W. 7th Street Rolla, MO 65401 364-3650

## KENSHORYU KARATE

WITH

4<sup>TH</sup> DEGREE SENSEI WILLIAM CROCKER  
18 YEARS TRAINING; 10 YEARS TEACHING

118 WEST 8TH ST. ROLLA, MO  
341-3433 or 364-3259



**CLASSES MONDAY-FRIDAY**  
No Contracts

Kids 4:30-5:30 \$25.00 per month  
Adults 6:00-8:00 \$35.00 per month

## M.S.M./U.M.R. HOMECOMING 1988

### "DAYS OF OLD AND FUTURE GOLD"

- Monday, October 3**
- 7:30 p.m. Comedy Night at the Hockey Puck, Featuring: Michael A. Smith & Joe Marlotti.
  - 8:30 p.m. Lighting Ceremony, also at the Hockey Puck.
- Tuesday, October 4**
- 9:00 a.m. - All-campus queen voting begins.
  - S.U.B. Scavenger Hunt begins at the Hockey Puck.
  - 12:30 p.m. Games begin at the Hockey Puck:
    - Unusual Instruments songs
    - Joe Miner Look-Alike Contest
  - 2:00 p.m. All-campus queen voting ends.
- Wednesday, October 5**
- 9:00 a.m. All-campus queen voting continues.
  - 12:30 p.m. Games continue:
    - Stupid Engineering Tricks
    - Egg Catapult
  - 2:00 p.m. All-campus queen voting ends.
- Thursday, October 6**
- 9:00 a.m. All-campus queen voting continues.
  - 11:00 a.m. Carnival on the campus mall begins.
  - 12:00 p.m. Varsity Athlete reception.
  - 1:00 p.m. S.U.B. Scavenger Hunt ends at Hockey Puck.
- Friday, October 7**
- 12:30 p.m. Team Twister Tournament at Hockey Puck.
  - 1:00 p.m. Silver & Gold Golf Classic at UMR golf course.
  - 3:30 p.m. Green vs. Gray Football Classic, Fraternity Row Fields.
  - 8:00 p.m. Parade in the Shade
  - 8:30 p.m. M-Club Bonfire, Intramural Fields.
- Saturday, October 8**
- 1:00 p.m. Miner football. Miners vs. Southwest Baptist University, UMR Stadium.

## NEW NAVAL AVIATION ACTIVE DUTY PROGRAMS WITH GUARANTEED FLIGHT TRAINING

NAVY RECRUITING DISTRICT  
ST. LOUIS, MO

NAVCAD - (Naval Aviation Cadet Programs) Sophomores from 4-year or Community College undecided about continuing college may qualify for immediate Pilot training. REQUIREMENTS: 60 semester hours, 2.5 GPA, and pass the aptitude test. 19-24 years old.

AVROC - (Aviation Reserve Officer Candidate) Guaranteed Pilot/Flight Officer Training at AOCs Pensacola, Florida during Sophomore or Junior year summer breaks and/or upon completion of BS/BA degree. NO DRILLING or MEETINGS REQUIRED. 19-26 years old.

BDCP - (Baccalaureate Degree Completion Program) Exceptional students can earn \$1100 a month, up to \$40,000 before graduation. NO DRILLS/UNIFORMS or MEETINGS. GPA must be a 3.0 or higher to qualify.

Immediate openings for all Officer's Commissioning Programs. 18-25 years old. Call:

1-800-446-6289 in MO

1-800-322-6289 in IL

**NAVY OFFICER.**



# Co-op Employment

from page 17

October, 1988

## CO-OP EMPLOYMENT

**Sign-up location:** 101 Buehler Bldg., Co-op Office  
9th & Rolla Sts.

**Sign-up hours:** 7:45 am - 11:30 am  
1:00 pm - 4:00 pm

\*\*\*\*\*

**Interview date:** Tuesday, Oct. 4, 1988

UNION PACIFIC RAILROAD  
Omaha, Nebraska (sign-ups still available)

Interviewing: E.E., C.E.

Requirements: 2.5 GPA or above, American Citizenship required, must be in Junior status.

**Sign-up date:** Tues., Sept. 20, 1988

1 schedule - 13 interview times.

There will be an Information meeting on 10-3-88 6:30 pm University Center Room 202A Centennial Hall. Students interviewing with Union Pacific must attend.

\*\*\*\*\*

**Interview date:** Wed., Oct. 5, 1988

MOOG AUTOMOTIVE (sign-ups still available)  
St. Louis, Missouri

Interviewing: M.E.

Requirements: 2.8 GPA or above, American Citizenship required, must have taken or taking EG 10.  
Academic Level of Applicants: at least 30 number of credit hours completed at the end of the present semester toward B.S. degree.

**Sign-up date:** Wed., Sept. 21, 1988

Start work date: Spring, 1989

1 schedule - 12 interview times

\*\*\*\*\*

**Interview date:** Friday, Oct. 7, 1988

SOIL CONSULTANTS, INC.  
St. Peters, Missouri

Interviewing: C.E., Geo.E., Geology (C.E. most preferred)  
Would like to interview 9-10  
C.E. out of 12 interviews

Requirements: 2.8 GPA or above, American Citizenship not required  
Academic Level of applicants: must have completed at least 45 number of credit hours at the end of the present semester toward B.S. degree.

**Sign-up date:** Friday, Sept. 23, 1988

1 schedule - 12 interview times

**Interview date:** Wed., October 12, 1988

MOBIL OIL  
Schaumburg, Illinois

Interviewing: C.Sc.

Requirements: none indicated

**Sign-up date:** Tues., Sept. 27, 1988

MOTOROLA COMMUNICATIONS  
Dallas, Texas

Interviewing: E.E.

Requirements: 2.8 GPA or above, American Citizenship required, must have completed at least 64 credit hours at the end of the present period toward B.S. degree program.

**Sign-up date:** Tues., Sept. 27, 1988

Start Work: Spring, 1989

RESUMES ONLY. IF YOU WOULD LIKE TO BE CONSIDERED FOR CO-OP EMPLOYMENT WITH THE ABOVE COMPANY, PLEASE BRING A COPY OF YOUR CO-OP RESUME TO THE CO-OP OFFICE ON THE ABOVE SIGN-UP DATE.

\*\*\*\*\*

IOWA DEPT. OF TRANSPORTATION  
Ames, Iowa

Interviewing: C.E.

Requirements: 2.5 GPA or above

**Sign-up date:** Wed., Sept. 28, 1988

Start Work: Summer, 1989

RESUMES ONLY. IF YOU WOULD LIKE TO BE CONSIDERED FOR CO-OP EMPLOYMENT WITH THE ABOVE COMPANY, PLEASE BRING A COPY OF YOUR CO-OP RESUME TO THE CO-OP OFFICE ON ABOVE SIGN-UP DATE.

**Interview date:** Thurs., Oct. 13, 1988

GENERAL MOTORS CPC  
Oklahoma City, Okla.

Interviewing: E.E., Mgmt., M.E.

Requirements: 3.0 GPA or above, American Citizenship required

Start work: Spring, 1989

**Sign-up date:** Thurs., Sept. 29, 1988

1/2 schedule - 7 interview times

\*\*\*\*\*

**Interview date:** Thurs., Oct. 13, 1988

GE-AIRCRAFT ENGINE BUSINESS GROUP  
Arkansas City, Kansas

Interviewing: A.E., Math., Ch.E., C.Sc., E.E., Eng.Mgmt., M.E.

Requirements: 3.0 GPA or above, American Citizenship not required - must have proper employment authorization, Academic Level of applicants: at least 30 credit hours completed at the end of the present semester toward B.S. degree.

**Sign-up date:** Thurs., Sept. 29, 1988

1 hour interviews

Start work: Spring, 1989

1 schedules - 14 interview times

\*\*\*\*\*

PROGRAMMING MANAGEMENT & SYSTEMS INC.  
St. Louis, Missouri

Interviewing: C.Sc.

Start Work: Spring, 1989

**Sign-up date:** Mon., Oct. 3, 1988

RESUMES ONLY. IF YOU WOULD LIKE TO BE CONSIDERED FOR CO-OP EMPLOYMENT WITH THE ABOVE COMPANY, PLEASE BRING A COPY OF YOUR CO-OP RESUME TO THE CO-OP OFFICE ON THE ABOVE SIGN-UP DATE.

\*\*\*\*\*

BLACK AND DECKER  
Towson, MD

Interviewing: E.E. prefer  
Motors/electromagnetics

**Sign-up date:** Wed., Oct. 5, 1988

Start Work: Spring, 1989, Summer, 1989

RESUMES ONLY. IF YOU WOULD LIKE TO BE CONSIDERED FOR CO-OP EMPLOYMENT WITH THE ABOVE COMPANY, PLEASE BRING A COPY OF YOUR CO-OP RESUME TO THE CO-OP OFFICE ON THE ABOVE SIGN-UP DATE.

\*\*\*\*\*

**Interview date:** Thurs., Oct. 20, 1988

FEDERAL AVIATION ADM.  
Kansas City, Missouri

Interviewing: Math., C.Sc. (Air Traffic Controller)

Requirements: 2.0 GPA or above, American Citizenship required, sophomores or above,

Will conduct the Air Traffic Cont. test in the evening or the afternoon.

**Sign-up date:** Thurs., Oct. 6, 1988

1 schedule - 12 interview times

E-SYSTEMS  
Greenville, Texas

Interviewing: A.E., Math., C.Sc., E.E., M.E., Physics

Requirements: 3.0 GPA or above, American Citizenship required

**Sign-up date:** Tues., Oct. 11, 1988

Start work: Spring, 1989

Please pick up E-Systems application on the day of sign-ups.

RESUMES ONLY. IF YOU WOULD LIKE TO BE CONSIDERED FOR CO-OP EMPLOYMENT WITH THE ABOVE COMPANY, PLEASE BRING A COPY OF YOUR CO-OP RESUME TO THE CO-OP OFFICE ON THE ABOVE SIGN-UP DATE.

**Interview date:** Wed., Oct. 26, 1988

ANHEUSER BUSCH COMPANIES  
St. Louis, Missouri

Interviewing: E.E., Eng.Mgmt., M.E.

Requirements: 2.8 GPA or above, American Citizenship or permanent resident, must have 4-5 semesters of school completed at the end of the present semester

**Sign-up date:** Wed., Oct. 12, 1988

Start work: Spring, 1989

1 schedule - E.E. - 12 interview times  
1 schedule - Eng.Mgmt. - 12 interview times  
1 schedule - M.E. - 12 interview times

\*\*\*\*\*

AERONAUTICAL SYSTEMS DIVISION  
Wright Patterson AFB, OH

Interviewing: A.E., C.Sc., E.E., M.E.,

Requirements: 2.9 GPA or above, American Citizenship required

**Sign-up date:** Wed., Oct. 12, 1988

RESUMES ONLY. IF YOU WOULD LIKE TO BE CONSIDERED FOR CO-OP EMPLOYMENT WITH THE ABOVE COMPANY, PLEASE BRING A COPY OF YOUR CO-OP RESUME TO THE CO-OP OFFICE ON THE ABOVE SIGN-UP DATE.

\*\*\*\*\*

see Placement, page 21



**Nobuko's**  
**HAIR**  
**BOUTIQUE**

details make the difference

across from TJ Maxx 341-3800

Flowers of Quality  
 with Distinction

Darrell Martin  
 Blossom Basket  
 910 Cedar Street  
 Rolla, Mo. 65401  
 314-364-7101

"Historically Known"  
 in Beautiful Downtown Rolla

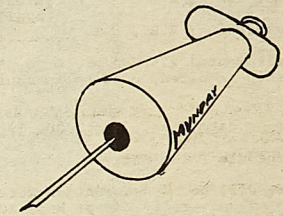
*Blossom Basket Florist*

## Blood Bank needs donations

**Source: Community Bloodmobile**

The answer to having enough blood for hospital patient needs, is for every blood donor to give two or more times a year. The average donor in the Red Cross Regional Blood Services gives one and a half times a year, so just another time would provide an adequate blood supply.

All healthy citizens in Rolla, 17 to 70 years of age and weighing at least 110 pounds are urged to share the "Gift of Life" and visit the Red Cross Bloodmobile Tuesday, October 4, from 11 a.m. to 5 p.m. It will be located at the 1st Christian Church.



When a hospital patient needs blood, several things must have already happened or blood will not be available. First, the blood has to be given, then the blood must be tested and processed to provide the safest blood possible. Finally, the blood is distributed to hospitals for transfusion. This all takes at least 24 to 36 hours.

The availability of blood at all times demands continual donation of blood, because blood is continually being needed by patients. The goal for this bloodmobile is 125 units. It will be easily reached and surpassed if all eligible donors accept their community responsibility of neighbor helping neighbor.

# There's never been a better time to buy a Macintosh.

## The good and bad news:

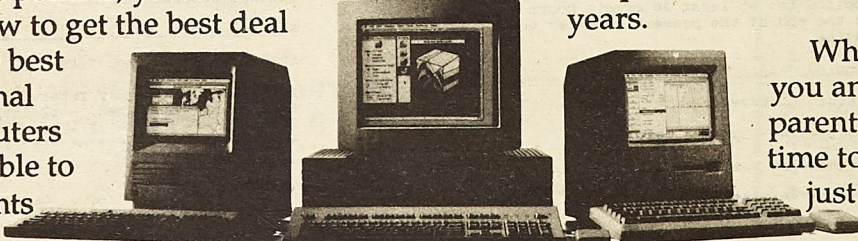
### Prices are going up.

The bad news is that Macintosh computers will cost more money. Because of the high cost of integrated circuits, Apple has decided to raise the price of the Macintosh line. Even with the higher education discounts available to students and faculty, prices will rise 5-30%.

For example, a Macintosh SE is going up from \$1890 to \$2102. And a Macintosh II CPU will go up from \$2450 to \$3092.

The good news is that you still have time to take advantage of the old prices. Apple's new, higher prices go into effect on October 15.

The point is, you should act now to get the best deal on the best personal computers available to students



Contact your local Apple Authorized Dealer at  
**DataPro Computer Systems • 364-0035**  
 1024 S. Hwy 63 (South Side Shopper's World)

## The great news:

### Now you can Loan-to-Own.

The great news is that Apple has arranged a new program to make it as easy and fun to buy a Macintosh as it is to use one. It's called the Student Loan-to-Own Program.

Macs are nice, but Mom and Dad have never been too thrilled about paying for one, right?

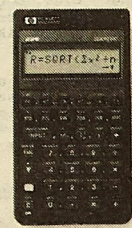
Now your parents can get you a Macintosh for the price of a signature. Apple will loan you the money to buy a new Macintosh.

And with this loan there's no collateral. No need to prove financial hardship. No application fee.

Best of all, the loan payments can be spread over as many as 10 years.

Which gives you and your parents lots of time to decide just who pays for it all.

## NEW from Hewlett-Packard The HP-22S Scientific Calculator for Students



Don't waste study time studying your calculator.

Try a calculator that's easy to use. Come in and try the HP-22S today.



University of Missouri-Rolla Bookstore  
 University Center-West  
 364-3710



## Placement

from page 19

**Interview date: Thurs., Oct. 27, 1988****AMERICAN ELECTRIC POWER SERV. CORP.**  
Columbus, Ohio**Interviewing: E.E., M.E., Nuc.E.****Requirements: 2.8 GPA or above, American Citizenship or permanent residency, must have completed at least 66 hours at the end of the present semester toward B.S. degree program****Sign-up date: Thurs., Oct. 13, 1988****AM interviews only**  
**2 schedules - 14 interview times**  
\*\*\*\*\***Interview date: Friday, Oct. 28, 1988****BEKAERT CORPORATION**  
Dyersburg, Tennessee**Interviewing: E.E., M.E., Met.E.****Requirements: 3.0 GPA or above, American Citizenship required, must have completed at least 30 credit hours toward B.S. degree program at the end of the present semester****Sign-up date: Thurs., Oct. 13, 1988****Start work: Spring, 1989****1 schedule - 13 interview times**  
\*\*\*\*\***A TEC ASSOC. INC.**  
St. Louis, Missouri**Interviewing: C.E., Geology, Geo.E., M.E.****Requirements: 2.5 GPA or above, American Citizenship not required. Must have completed at least 60 hours at the end of the present semester toward B.S. degree program.****Sign-up date: Thurs., Oct. 13, 1988****Start work: Summer, 1989 through Fall, 1989****RESUMES ONLY. IF YOU WOULD LIKE TO BE CONSIDERED FOR CO-OP EMPLOYMENT WITH THE ABOVE COMPANY, PLEASE BRING A COPY OF YOUR CO-OP RESUME TO THE CO-OP OFFICE ON THE ABOVE SIGN-UP DATE.****DEFENSE MAPPING AGENCY AEROSPACE CTR/POR**  
St. Louis, Missouri**Interviewing: Math., C.Sc., Geology, Geophysics, Physics****Requirements: 2.0 GPA or above, American Citizenship required****Sign-up date: Tues., Oct. 18, 1988****RESUMES ONLY. IF YOU WOULD LIKE TO BE CONSIDERED FOR CO-OP EMPLOYMENT WITH THE ABOVE COMPANY, PLEASE BRING A COPY OF YOUR CO-OP RESUME TO THE CO-OP OFFICE ON THE ABOVE SIGN-UP DATE.**  
\*\*\*\*\***USDA - FOREST SERVICE**  
Milwaukee, Wisconsin**Interviewing: C.E.****Requirements: 2.0 GPA or above, American Citizenship required, sophomores or above****Sign-up date: Tues., Oct. 18, 1988****RESUMES ONLY. IF YOU WOULD LIKE TO BE CONSIDERED FOR CO-OP EMPLOYMENT WITH THE ABOVE COMPANY, PLEASE BRING A COPY OF YOUR CO-OP RESUME TO THE CO-OP OFFICE ON THE ABOVE SIGN-UP DATE.**  
\*\*\*\*\***BELL NORTHERN RESEARCH INC.**  
Research Triangle Park, NC**Interviewing: C.Sc., E.E., M.E., Math.****Requirements: 3.0 GPA or above****Sign-up date Wed., Oct. 19, 1988****RESUMES ONLY. IF YOU WOULD LIKE TO BE CONSIDERED FOR CO-OP EMPLOYMENT WITH THE ABOVE, PLEASE BRING A COPY OF YOUR CO-OP RESUME TO THE CO-OP OFFICE ON THE ABOVE SIGN-UP DATE.**  
\*\*\*\*\***US DEPARTMENT OF AGRICULTURE-FOREST SERVICE**  
Milwaukee, Wisconsin**Interviewing: C.E.****Requirements: 2.0 GPA or above, American Citizenship of permanent resident. Academic level of applicants: completing at least 30 credit hours at the end of the present semester.****Pick up Government form #171 on day of sign-ups.****Sign-up date: Wed., Oct. 19, 1988****RESUMES ONLY. IF YOU WOULD LIKE TO BE CONSIDERED FOR CO-OP EMPLOYMENT WITH THE ABOVE COMPANY, PLEASE BRING A COPY OF YOUR CO-OP RESUME TO THE CO-OP OFFICE ON THE ABOVE SIGN-UP DATE.**  
\*\*\*\*\***NOTE: The ones that indicate RESUMES ONLY. This means the company will not be on campus interviewing, but they want resumes to review and should contact you if they are interested in interviewing you.****Please let the Co-op Office know immediately of any acceptance of an offer.****Please check with the Co-op Office periodically to check if additional companies have scheduled interviews.**

\*\*\*\*\*

**IBM CORPORATION**  
San Jose, California**Interviewing: C.Sc., E.E., M.E., Eng.Mgmt.****SIGN UP DATE: THURSDAY, OCT. 27, 1988****Resumes only. If you would like to be considered for co-op employment with the above company, please bring a copy of your co-op resume to the co-op office on the above sign-up date.****ALL STUDENTS MUST HAVE A RESUME AND TRANSCRIPT ON FILE AT THE CO-OP OFFICE BEFORE YOU WILL BE CONSIDERED FOR CO-OP EMPLOYMENT.****YOU MUST SUBMIT (4) COPIES OF YOUR CO-OP RESUME FORM TO IBM ON THE INFORMAL INFORMATION AND SIGNUP DAY, OCTOBER 20.****Note: IBM will consider U.S. Citizens, Permanent Residents or "Intending Citizens" as defined by the 1986 Immigration Reform and Control Act.****SPECIAL NOTICE - PRESCREENING****SIGN-UP FOR NORANDA ALUMINUM, CO-OP INTERVIEWS****TURN IN RESUMES: TUESDAY, OCT. 4, 1988****WHERE: Co-op Office, 101 Buehler Bldg.****TIMES: 7:45 am - 11:30 am - 1:00 pm - 4:00 pm****INTERVIEWING: M.E., E.E., Met.E., Eng.Mgmt.****REQUIREMENTS: 3.0 GPA or above, Sophomores or above, American Citizenship required.****THE ACTUAL INTERVIEW DATE WILL BE THURSDAY, OCTOBER 20.****Noranda Aluminum, New Madrid, Missouri has requested that we furnish them with resumes for pre-screening. We will accept as many Co-op resumes as we can collect. Just drop off a copy of your Co-op resume on the above sign-up date. After pre-screening, Noranda Aluminum will send the Co-op Office a list of those students they are interested in interviewing. The list should be available at the Co-op Office on Tuesday, Oct. 11. Check with the Co-op Office no later than Oct. 11.a****CO-OP****PLEASE POST****IBM CORPORATION, CHICAGO, ILLINOIS CO-OP INTERVIEWS, OCTOBER, 1988****IBM WILL HOLD AN INFORMAL INFORMATION AND SIGNUP****DAY ON THURSDAY, OCTOBER 20, 1988 IN THE CENTENNIAL****HALL, UNIVERSITY CENTER-EAST. HOURS WILL BE FROM****12:00 NOON - 5:00 PM. (STOP BY ANYTIME) STUDENTS****INTERESTED IN CO-OPING WITH THE IBM CORPORATION ARE****INVITED. ACTUAL INTERVIEW DATE WILL BE ON FRIDAY,****OCT. 21, 1988.****DISCIPLINES: CO-OP OPPORTUNITIES INCLUDE BUT ARE NOT LIMITED TO SOFTWARE DEVELOPMENT, TECHNICAL MARKETING AND ENGINEERING.****POSITION(S) REPRESENTATIVES FROM VARIOUS U.S. LOCATIONS & LOCATIONS: WILL CONDUCT AN INFORMAL INFORMATION SESSION ON OCT. 20. STUDENTS INTERESTED IN INTERVIEWING WITH IBM SHOULD ATTEND. DETAILED INFORMATION WILL BE PROVIDED AT A LATER DATE.****SPECIAL NOTICE - PRESCREENING****SIGN-UP FOR OLIN CORPORATION, E. ALTON, ILLINOIS CO-OP INTERVIEWS****TURN IN RESUMES: Thursday, Oct. 27, 1988****WHERE: Co-op Office, 101 Buehler Bldg.****TIMES: 7:45 am- 11:30 am - 1:00 pm - 4:00 pm****INTERVIEWING: Met.E., C.Sc., Eng.Mgmt.****REQUIREMENTS: 2.5 GPA or above, Permanent Visa****THE ACTUAL INTERVIEW DATE WILL BE THURSDAY, NOVEMBER 17.****Olin Corporation, E. Alton, IL has requested that we furnish them with resumes for pre-screening. We will accept as many Co-op resumes as we can collect. Just drop off a copy of your Co-op resume on the above sign-up date. After pre-screening, Olin will send the Co-op Office a list of those students they are interested in interviewing. The list should be available in the Co-op Office on Thurs., Nov. 10. Check with the Co-op Office no later than Nov. 10.**

see Placement, page 23



# **MAKING FRIENDS/ DEVELOPING A SENSE OF BELONGING**

Do you sometimes feel left out or that you don't "belong" at UMR? On Thursday, October 6, Mr. Lou Moss will discuss the importance of building a social network and ways to meet new people in the Maramec Room, University Center-East, from 3:30-4:30 p.m.



# the **CAVERN**

12th & Pine

Only 5 minutes walking distance from campus.

OPEN from 11:00 a.m.-1:30 a.m.  
Monday-Saturday

**Serving your favorite Beverages**

Nightly Specials  
Daily Food Specials  
Friday Tacos & Burritos



10 p.m.-close  
11 a.m.-6 p.m.  
11 a.m.-2 p.m.



DARTS / PINBALL  
VIDEO GAMES / POOL TABLES

# **Oktoberfest '88 is underway**

Submitted by Maria Lahm  
Advertising Director

It's time again to spend an enjoyable Sunday afternoon with your family and friends, rain or shine, at Oktoberfest '88. The annual event is being held at St. Pat's Catholic Church, Highway 63 North, from 12 to 7 p.m. on Sunday, October 2.

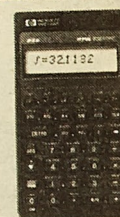
There will be musical and dancing entertainment throughout the afternoon. Young and old alike will be able to participate in various games and children's booths. Other attractions include a beer garden, wooden and handmade soft crafts, plants, flea market, raffles and a silent auction.



No Oktoberfest would be complete without beautiful handmade quilts for sale and a delicious home-cooked meal. This year's dinner will be served buffet style, all you can eat. It features roast beef and pork, mashed potatoes and gravy, hot rolls, cole slaw, applesauce, vegetables, dessert and beverages. The price is \$4.50 for adults and \$2.50 for children 12 and under. All UMR students and military personnel will receive \$1 off with a valid ID. For those with a less hearty appetite there will be a barbeque stand outside on the grounds.

For more information about Oktoberfest, call 341-3602.

# **NEW from Hewlett-Packard The HP-32S RPN Scientific Calculator**



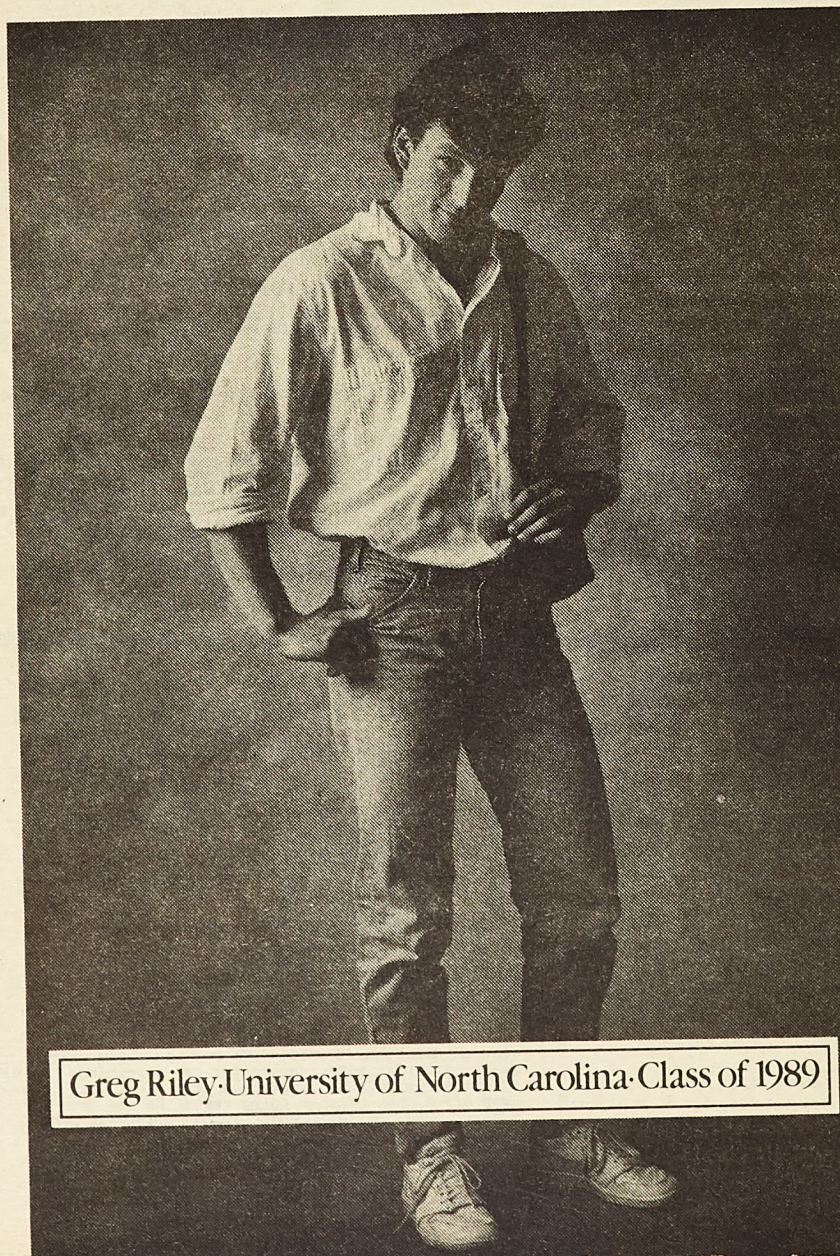
**The perfect solution  
when you need  
a little more.**

All the functions you need  
plus the efficiency of RPN.  
Come in and try it today.



University of Missouri-Rolla Bookstore  
University Center-West  
364-3710

**"I don't want  
a lot of hype.  
I just want  
something I  
can count on."**



Greg Riley-University of North Carolina-Class of 1989

Some long distance companies promise you the moon, but what you really want is dependable, high-quality service. That's just what you'll get when you choose AT&T Long Distance Service, at a cost that's a lot less than you think. You can expect low long distance rates, 24-hour operator assistance, clear connections and immediate credit for wrong numbers. And the assurance that virtually all of your calls will go through the first time. That's the genius of the AT&T Worldwide Intelligent Network.

When it's time to choose, forget the gimmicks and make the intelligent choice—AT&T.

If you'd like to know more about our products or services, like International Calling and the AT&T Card, call us at 1 800 222-0300.



**AT&T**  
The right choice.



# Phi Kappas awarded cup Relations

from page 1

**Submitted by Phi Kappa Theta Fraternity**

The Missouri Mu Chapter of Phi Kappa Theta Fraternity located on the campus of the University of Missouri-Rolla has recently been awarded the highest award in Phi Kappa Theta Fraternity's awards program. At the recent National Leadership Congress held on the campus of Lehigh University in Bethlehem, PA, chapter delegates received the Founder's Cup award, honoring the local Phi Kappa Theta Chapter as the best chapter of

the National Fraternity for the school year ending June 30, 1988.

Missouri Mu Chapter of Phi Kappa Theta has consistently maintained high standards of excellence and fraternity operations, resulting in the chapter winning the Founder's Cup trophy numerous times in its 51 years of existence.

Phi Kappa Theta is a men's college fraternity founded in 1889 with current membership of over 40,000 worldwide. Its national headquarters are located in Indianapolis.

## Parents

from page 1

my parents felt pulled in many directions at the same time between my brothers' sports activities and my drama and music shows," she said. "But they never failed to attend each of our activities and they never showed a preference among our cho-

sen areas of interest."

"My parents also were especially supportive of our schooling," Carol said. "Financially they made sure that all four of us could go to school if we wanted to."

## GTA

from page 1

Highfill received a BS degree in civil engineering from UMR in 1954. He received an MS degree in civil engineering from the University of Illinois-Urbana-Champaign in 1960.

Highfill, who retired with the rank of colonel after 29 years of active duty

in the United States Army, currently resides in St. James. He is active in the United Methodist Church, the Kiwanis Club and also is an avid racquetball player.

The UMR Parents' Association was established in 1977.

## Grip

from page 1

officer being fired upon at the beginning of school. During the 1987 calendar year, there were 546 incidents which required a report. These included thefts, accidents and burglaries.

Director Boulware says that the vast majority of the thefts are because of carelessness with valuables. If people would take it with them or lock it up, thefts could be reduced.

## Placement

from page 21



# IBM!



IBM will be in Centennial Hall on October 20 & 21, 1988. Oct. 20 will be an informational day. Interviews for the 21st will be scheduled on the 20th.

Positions available at various locations include, but are not limited to, software development, technical marketing and engineering. IBM's business is information technology with a broad range of products designed to record, process, store, retrieve & communicate information.

Representatives from various U.S. locations will conduct an informal information session on Oct. 20. Students interested in interviewing with IBM should attend.

## The Munday Blues

By Steve Munday

#1 JANUARY, 1986  
SHORTLY AFTER THE  
CHALLENGER DISASTER:



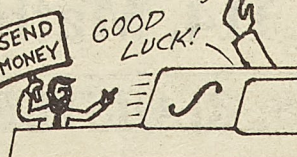
AND NOW...  
**THE NEWS**



ON THE EVE OF THE  
LAUNCH OF DISCOVERY,  
A BRIEF LOOK AT  
REAGAN'S VISITS TO  
JOHNSON SPACE CENTER  
IN HOUSTON



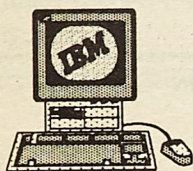
#2 SEPTEMBER, 1988  
TWO YEARS, EIGHT MONTHS  
LATER... (ON THE WAY  
TO THE AIRPORT FROM  
A BUSH RALLY):



AT THE RALLY, BUSH  
PROMISED TO CONTINUE  
THE REAGAN ADMINISTRATION'S  
"SUPPORT" OF NASA.





**UMR**UNIVERSITY OF  
MISSOURI-ROLLA*Announcing: The IBM*  
**PS/2 CAMPUS SALE***September 12th thru October 12th 1988***IBM****PS/2 Model 25:**

8086 processor (8 MHZ), 640 KB Memory, 2-3.5" diskette drive (720KB), serial and parallel port, multicolor graphics array (MCGA), mono display, enhanced keyboard, Mouse. (1 year hardware warranty). DOS 4.0, Microsoft Windows 2.1 and Word 4.0

**Suggested  
Retail  
Price**

\$2418

**IBM  
Special  
Price**

\$1181

**PS/2 Model 30:**

8086 processor (8 MHZ), 640 KB Memory, 20MB Hard drive, one-3.5" diskette drive (720KB), serial and parallel port, multicolor graphics array (MCGA), mono or color display, enhanced keyboard, Mouse. (1 year hardware warranty). DOS 4.0, Microsoft Windows 2.1 and Word 4.0



Mono

\$3339

\$1675



Color

\$3774

\$1935

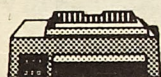
**PS/2 Model 50Z:**

80286 processor (10 MHZ), 1 MB Memory, 30MB hard disk, one-3.5" diskette drive (1.44MB), Microchannel Architecture, serial and parallel port, video graphics array (VGA) 12" Color display, enhanced keyboard, Mouse. DOS 4.0, Microsoft Windows 2.1, Microsoft Word, Microsoft Excel. (1 year hardware warranty)



\$5969

\$3010

**Proprinter X24:**High-speed **letter quality** 24 pin Dot Matrix. Single sheet, and continuous forms feed. Automatic sheet feed. (optional) (1 year hardware warranty)

X24

\$844

\$395

**Proprinter II:**High speed **near letter quality** 9-pin Dot Matrix. Single sheet and envelope feed, continuous forms feed. (1 year hardware warranty)

II

\$594

\$332

All printer prices include cable

**IBM PS/2 DEMOS****Mondays, Wednesdays, and Fridays****9:30 AM - Noon****Room 114, Math/ Computer Science Building****STUDENTS: REGISTER TO WIN A FREE PS/2 MODEL 25!**