



30 Aug 1984

## The Missouri Miner, August 30, 1984

Follow this and additional works at: [https://scholarsmine.mst.edu/missouri\\_miner](https://scholarsmine.mst.edu/missouri_miner)

These newspapers reflect the attitudes, perspectives, and beliefs of different times. Neither the library nor the university endorses the views expressed in these collections, some of which contain images and language which may be offensive to some readers.

---

### Recommended Citation

"The Missouri Miner, August 30, 1984" (1984). *The Missouri Miner Newspaper*. 2374.  
[https://scholarsmine.mst.edu/missouri\\_miner/2374](https://scholarsmine.mst.edu/missouri_miner/2374)

This Newspaper is brought to you for free and open access by Scholars' Mine. It has been accepted for inclusion in The Missouri Miner Newspaper by an authorized administrator of Scholars' Mine. This work is protected by U. S. Copyright Law. Unauthorized use including reproduction for redistribution requires the permission of the copyright holder. For more information, please contact [scholarsmine@mst.edu](mailto:scholarsmine@mst.edu).



st 23, 1984  
n  
of his All-  
knew I was in  
didn't expect  
d. "Being the  
H athlete rec-  
nor."  
of Mr. and  
3201 North  
on, Kan.

# MISSOURI MINER

For the students of UMR

Copyright © 1984 MISSOURI MINER

Thursday, August 30, 1984

Volume 73, Number 2 Twelve Pages

## UMR to purchase Holsum property

by Cameron Coursey

The University of Missouri-Rolla has agreed to purchase the Holsum

Bakery property and two adjoining lots in Rolla on February 1, 1985. The building will be used for both storage and recreation for the

students, according to Neil Smith, UMR vice-chancellor for administrative services.

The purchase of the property, which is located immediately north of the Gale Bullman Multi-Purpose Building, is good news for those students interested in physical recreation. Some of the activities that will take place in the Holsum facilities will include student fitness centers, dance fitness, physical club events such as karate and fencing, cheerleading and pom pom practice, table tennis, shuffle board, badminton, archery, and practice at batting cages and golf nets.

According to UMR athletic director Billy Key, the volume of students participating in physical recreation has grown to such a large proportion that additional space is

needed. Key added that the new acquisition "will not only serve as a recreational center for students, but will not be restrictive as to community use."

One piece of good news for UMR students is that the Holsum acquisition will be funded with non-state and non-student fee moneys. Instead, financing will come from auxiliary funds and gift moneys will be available for initial renovations.

An interim rental contract for a portion of the property is giving UMR immediate access to the two-story section of the bakery at 10th Street and Bishop Avenue, but UMR is now sharing the building with Holsum. Smith hopes UMR will have the entire facility by October 1.

The building will provide space for storage of vending machines,

geology rock collections, items for the bookstore and library, and ROTC uniforms. In the future, this use of the facility for ROTC could enable the campus to eliminate temporary buildings on the north edge of the campus.

Still another use for the building will be as a meeting place for campus and community organizations, according to Jess Zink, UMR director of auxiliary services. "General meeting room space requests from student organizations cannot always be met through the University Center because it is used so heavily," said Zink.

Holsum Bakers will be moving their business to a new building on Highway 63 South near Tapjac Home Center on September 19, as UMR takes over the building at 10th & Bishop.



Future UMR property. When move-in is complete, the Holsum Baker property will house recreational activities.

## Guaranteed Student Loans increase in number

by Ken Shelton

"How will I pay my college costs?" This is done by many UMR students by getting a Guaranteed Student Loan (GSL). In fact, the GSL is

replacing the Pell Grant as a main source of financial aid.

Bob Whites, director of Student Financial Aid at UMR, thinks the reason for this loss for Pell is the publicity given to

the GSL. He thinks many students apply for the GSL without applying for a Pell Grant.

From 1977 to 1980, the ratio of students at UMR receiving

the Pell Grant to those with the GSL was an average of 2.4:1. From 1981 to 1983, the ratio switched to .74:1. According to **National On-Campus Report**, the private school

ratio for the nation went from 2.9:1 to .58:1. This shows the Pell losing 1.7 recipients for every GSL student at UMR and 2.3 nationwide.

At UMR, the advised method is to apply for the Pell first. If the student fails to get one, he should apply for a GSL. Says Whites, "It [GSL] is an excellent loan, but you have to pay it back."

Whites also thinks the regulations tend to be easier for a loan. To get a GSL, the adjusted gross income for the student and his parents are the factors looked at. But, for the Pell, those plus home equity, college costs, level of need, and checking account balances are audited.

Money amounts received don't seem to be a large factor see GSLs, page 2

## New Health, Info., & Security Building to replace antiquated facilities

by Cameron Coursey

A new campus building, the Health, Information, and Security (HIS) Building, will in the near future replace the remodeled residences now

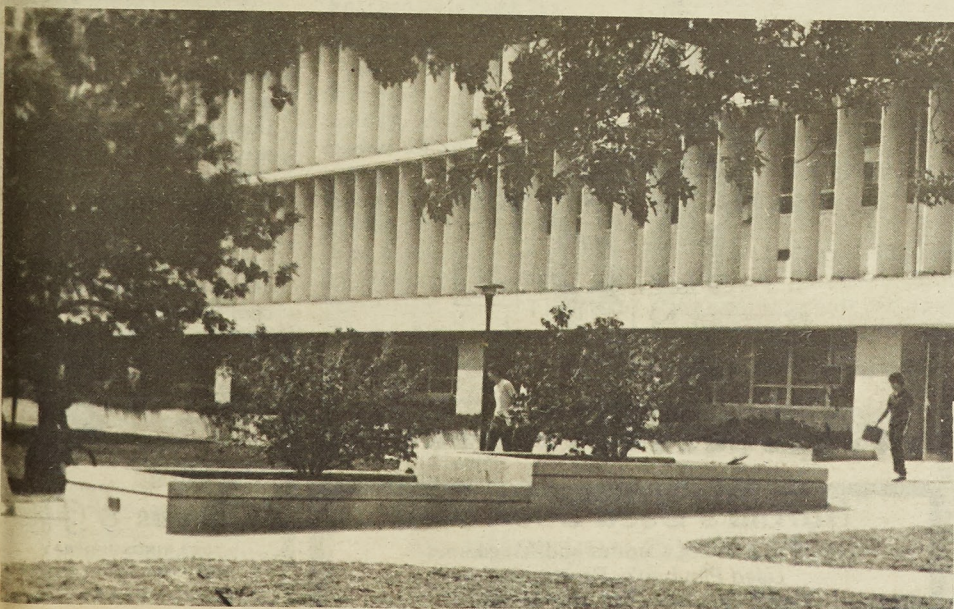
housing the UMR police and student health services, according to Neil Smith, UMR vice chancellor for administrative services.

An architectural firm from

St. Louis, Fraser Thomas & Associates, Inc., will design the 7500-square foot building. The firm's fee will be 7.5 percent of the construction costs, estimated at \$1 million.

Smith hopes the architectural design will be completed in November and construction can begin in the summer of 1985. The building will be located at 14th Street and Bishop Avenue and space will be available inside for the display of collections, exhibits, and information about the campus for visitors.

Smith said the project started with the need to meet see HIS Building, page 2



The Trace Seating Area was dedicated last Thursday. It is provided by the UMR Student Council for development of the Trace and for campus beautification.

## Blood Drive set for Sept. 5, 6

submitted by Student Council

The Blood Drive sponsored by Student Council will be held on Wednesday, September 5th and Thursday, September 6th from 10 a.m. to 4 p.m. at the University Center East.

One of the special features of the Blood Drive is a traveling trophy. Anyone who gives blood marks up a point for the organization that he is representing. When the blood drive is over each group's points are tallied and the

organization with the greatest percent of its members giving blood receives the traveling trophy to keep until the next blood drive. Any University sponsored organization is eligible.

So whether you give blood for the trophy, the humanity, or for the cookies afterwards, remember the drive is September 5th and 6th from 10 a.m. to 4 p.m. at the University Center East. And bring a friend.



# CALENDAR OF EVENTS

## THURSDAY

### Trap and Skeet Club

The UMR Trap and Skeet Club will have a meeting at 6:30 p.m. in Room 103 EE. Officer elections and discussion of upcoming tournaments will take place. For more information, call Chris Johnson at 364-4134.

### Rolla Association of Microcomputers

The Rolla Association of Microcomputers (RAM) will be having a general meeting at 7:00 p.m. Thursday, Aug. 30. Computer room hours will be discussed. A Macintosh demonstration will be made.

### Men's Tennis

There will be an organizational meeting for anyone interested in playing varsity men's tennis tonight (Aug. 30) at 8 p.m. in a classroom of the Gale Bullman Multi-Purpose Building.

### Women's Tennis

There will be a meeting for women interested in the women's tennis team at 4 p.m. tonight (Aug. 30). The meeting will be held in a classroom of the Gale Bullman Multi-Purpose Building.

### Target Pistol Club

There will be a meeting of the Target Pistol club at 6:30 p.m. today at the UMR rifle range (in the ROTC Building). Targets and pistols are provided and all are invited to attend.

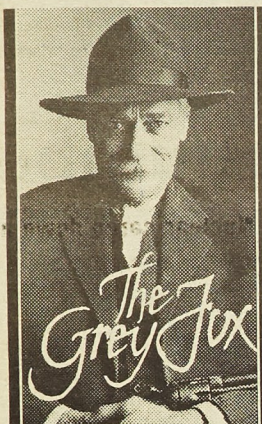
### Chi Alpha Christian Fellowship

We, the members of Chi Alpha Christian Fellowship, invite you to join us in a time of worship of our Lord Jesus Christ and a time of fellowship with some of His believers here on campus. We would like to introduce you to our wonderful Savior. We meet every Thursday evening at 7 p.m. in the Ozark Room, University Center-West (upstairs). We look forward to seeing you there.

### GDI

GDI general membership meeting Thursday, August 30, at 7 p.m., Civil Engineering Auditorium (C.E. 114). Memberships available. Float trip signups. Door prizes! Refreshments after meeting.

## UMR Film Series



### The Gray Fox

In 1901, after 33 years in San Quentin, Bill Miner, "The Gentleman Bandit," was released into the Twentieth Century. Miner soon discovers stage coaches have vanished, but perceives train robberies as a new beginning.

Thursday, Aug. 30 7:30 p.m.  
Miles Aud.

## Missouri Miner

The Missouri Miner is the official publication of the students of the University of Missouri at Rolla. It is published weekly at Rolla, Missouri. The Missouri Miner features activities of the students and faculty of UMR.

Editor-in-Chief.....Pat Van Ryckeghem.....364-0018  
Business Manager.....Dawn Nash.....364-8989  
Advertising Director.....Carol Suit.....364-8989  
Local Ads Director (billing info): Helen Heuman (364-5824 or 364-3181)  
Ads Salesmen: Julie Garret (364-1653), Gary Grannemann (364-2637), Vicki Lapp (364-8989)  
Ads Typesetters: Roberta Bateman, Kathy Fulhorst  
Managing Editor.....Larry Tipton.....341-2331  
News Editor.....Paul McLaughlin.....364-5812  
Cameron Coursey (Asst.), Mark Holden, Ann Oeding, Mella Sage, Ken Shelton, Jane Sheputis  
World News Summary writer: Pam DuBios  
Special Report Force: Ed Bartel, Larry Farrar, Mike Woodward  
Features Editor.....Kevin Thornberry.....364-3354  
Rajpal Abeynayake (Asst.), Foin Clancy, Jan Dawdy, Jeff Dawdy, Eric Grannemann, Angela Gutierrez, Mike Himmelberg, Aruna Katragadda, Sally Love, John Schlitt, Mike Walsh  
Cartoonists: Dave Thomas, Rob Woodruff  
Sports Editor.....Chris DeGonia.....341-5576  
Mark Buckner, Jim Harter, Dan Lichtenwalner, Anne Werner  
Photo Editor.....Karen Olsen.....341-2107  
Woody Delp, Karl Gress, Ellen Hendricks, Karen Nimmo, Mark Privett, Tom Roth, Eric Topp  
Typesetting Staff.....Jan Dawdy, Karen Corbin, Lynn Dickison, Ed Nobus, Diane Bottonis (proofreader)

Subscriptions are available to the general readership at a rate of \$7.00 per semester. Articles and photos for publication in the Miner must be in by 8 p.m. on the Sunday before distribution on Thursday.

### THE MISSOURI MINER

303 Rolla Building  
University of Missouri-Rolla  
Rolla, MO 65401  
(314) 341-4312

### Wargamers' Association of Rolla

The Wargamers' Association of Rolla will be holding an organizational meeting at 8 p.m. in M-CS 206. Anyone who plays or is interested in learning board wargames, miniatures systems or fantasy role-playing games is welcome. New memberships will be taken, as well as scheduling this semester's tournaments.

### MSM Rock Climbing Club

Come and find out about rock climbing! The MSM Rock Climbing Club will have its first meeting Thursday, Aug. 30 at 6:30 p.m. in Room 305, Norwood Hall. Beginners, novice, and experienced are welcome.

### UMR Theatre Auditions

UMR students are invited to come to T-4 (by the wooden bridge near the library) Thursday, Aug. 30, at 6:30 p.m. to audition for the production to be performed November 15, 16, 17 at the Cedar Street Center. Plays being considered for performance include *Fools*, a comic fable by Neil Simon, and *Lu Ann Hampton Laverly Oberlander*, a comedy-drama by Preston Jones. For further information, see Margie Boston, G-9, Harris hall, 241-4958.

## FRIDAY

### Muslim Students Association

The Muslim Students Association of UMR holds regular Friday prayers at 1:30 p.m. in the Mosque at Apt. 3, 102 E 12th St. (Town and Campus V). All muslim students are invited to join this congregation as well as the daily prayers. A calender of prayer timings can be picked up at the Mosque.

## WEDNESDAY

### Alpha-Omega Players to Present 'California Suite'

The Alpha-Omega Players will present Neil Simon's *California Suite* at 8 p.m. Wednesday, Sept. 5, in the University of Missouri-Rolla's Cedar Street Center. The play, which is sponsored by the UMR Student Union Board, is free and open to the public.

## NODAY

### M-Club

Anyone who has lettered in a varsity sport and is interested in pledging M-Club: There will be a meeting for pledges on Sept. 6 at 8 p.m. in the Civil Engineering auditorium (CE 114). If interested in pledging but unable to attend, contact Jan Wilkerson at 341-3581.

### M-Club Members

Be at the next M-Club meeting on Sept. 6, 8:30 p.m. in C.E. 114. The meeting will have sign-ups for the M-Club float trip being held on Sept. 16. Cost will only be \$5 per person as M-Club will pick up the remaining cost.

### Rolla Camera Club

The Rolla Camera Club will hold its regular monthly meeting on Thursday evening, September 6, at 7:30 p.m. in the Courtesy Room of the Phelps County Bank. Larry Gray of the Photographic Society of America will present an illustrated program on composition. Beginners and newcomers are welcome, and everyone is urged to bring his or her best photograph taken this summer. For additional information, call 341-2932 or 729-5961, evenings.

### Wrestlers

If you wrestled in high school and are interested in wrestling for UMR but missed Tuesday night's meeting, contact Jim Sieckman at 364-0341.

## GSLs

from page 1

in the choice. The Pell has a range of \$200-1900 for the year 1984-85. The GSL has a maximum of \$2500, adjusted by the class level.

The Director also thinks the loan system is favored by congress because it is paid back. Since the Pell is free Congress tends to be tighter with money in that area.

In addition to the Pell Whites was suprised by recent cutback of 20 percent in the Work Study funds. In fact from 1980 to 1983, the Work Study expenditures dropped nearly 25 percent while enrollment in the program increased by nine students. Congress lowered the fund even though they say Work Study is a popular program. "They [Congress] can't imagine how much affect it has on the students," says Whites.

Many students apply for financial aid on the first day of classes or late in the summer. Whites says this is too late, and he wishes students would apply earlier.

If you have questions about the Pell, GSL, or any financial aid, contact the Student Financial Aid office in Park Hall. Do it early to be safe.

## HIS Building

from page 1

codes designed to help the handicapped. "The original plan was to put an elevator on the outside of the infirmary building, but we found we would have to replace the entire roof in the process," said Smith.

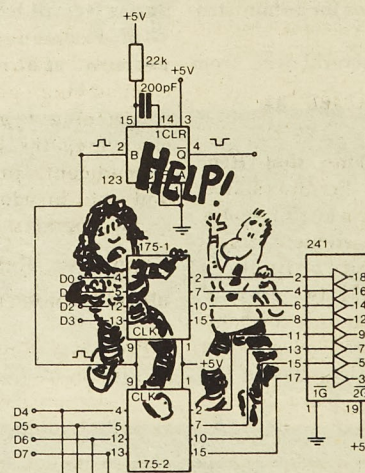
The remodeled residence now housing the student health service and UMR police were built more than 40 years ago and are now "inefficient, inadequate, and obsolete according to UMR officials.

When the HIS Building completed, the residences now housing the infirmary and police will probably be demolished and temporarily used for parking.

Sally Jensen  
Owner

Sally's  
Flowers & Gifts

1023 KINGSHIGHWAY  
ROLLA, MISSOURI 65401  
SHOP - 314-364-1777





# Student Council

## StuCo accepting applications for unaffiliated representatives

submitted by Student Council  
The Student Council is now accepting applications for unaffiliated representatives to serve on council for the 1984-85 school year.  
In order to qualify as an unaffiliated rep., an applicant cannot be a member of any organization that is already represented. Furthermore, he must obtain signatures of 50 full-time students of UMR who do not belong to a fraternity or sorority, residence hall, eating

club, or other organization represented on council.  
Forms are available in the Student Council office, 202 University Center-West and must be returned no later than noon on Friday, September 28. Office hours are 8:00 a.m. - 12:00 p.m. Monday through Friday.  
If there are any questions, call the office at 341-4280, or contact Bill Kovacich, Vice-President of External Affairs, at 364-2314.

## Appropriations applications available

submitted by Student Council  
Each semester the Student Council makes appropriations to campus organizations. The intent of these appropriations is to help new organizations get started, to help organizations which have deteriorated to get started again or to assist organizations which are inherently unable to support themselves.  
If your organization is interested in a Student Council appropriation, an application may be obtained from the door of the Student Council Office, 202 University Center West. The application must be  
see StuCo, page 4

## SCUBA certification offered

source: OPI  
Rolla, Mo.—An open water SCUBA certification program will be offered at the University of Missouri-Rolla Sept. 14-23 for persons 12 years or older who are interested in learning SCUBA skills.  
No previous certificates are required, but students should be average or better swimmers. Upon successful completion of the course, students will receive open water certificates which qualify them to rent SCUBA equipment and have tanks filled anywhere in the world.  
Classes begin at 6:30 p.m. Sept. 14 in the Gale Bullman Multi-Purpose Building. Subsequent class dates are Sept. 15, 16, 22 and 23. Each class will consist of three pool hours of instruction and three hours of classroom instruction. Open water dives will be at Jordan's Landing on Lake Norfolk, Ark., on Sept. 29-30.  
Course fee is \$115, which includes textbook, diving log and all equipment. The cost of the open water

dives, which is not included in the course fee, is \$75 and should be paid directly to the dive shop prior to the dive. It includes all equipment except mask, fins and snorkel.  
An advanced course is open to those who have open water certificates or the equivalent. A lecture session will be held from 6:30-9:30 p.m. beginning Sept. 14, a pool session on Sept. 22 and five open water dives on Sept. 29-30.  
The open water dives, also conducted at Jordan's Landing, will consist of natural navigation, underwater distance measuring, compass navigation, search and recovery, limited visibility, night dive, deep dive and simulated decompression.  
Students must furnish their own equipment. The text is furnished and rental gear is available. The advanced course fee, \$125 for classroom instruction and the open water dives, should be paid directly to the  
see SCUBA, page 4

# World News Summary

source: St. Louis Post-Dispatch  
information used by permission

The World News Summary is a new feature of the news section. It is intended for its readers, who have gone to college for education, to keep them from being ignorant of world events.  
The source for the Summary is the St. Louis Post-Dispatch. The information is used by its permission. The Post-Dispatch is not to be held responsible for any incorrect information we may print here.

## Republican National Convention

Vice-President George Bush arrived in the convention city Sunday, August 19, declaring that "those so-called malaise days" for America are over.  
Bush gave President Ronald Reagan the credit for restoring confidence in the United States at home and overseas and many of his comments followed the theme that the Democrats are the party of gloom and doom, while the Republicans are the party of upbeat confidence.  
This past week provided Bush as well as others with a starting point for what is expected to be his own campaign for the presidency in 1988.  
Monday marked the beginning of four days of speech making at the convention, and top on the list was criticism for Mondale and great praise for President Ronald Reagan.  
Three themes emerged from this first day of speaking. The first theme revealed the desire of the GOP to hang the Carter-Mondale Administration on Mondale.  
The second involves trying to get Democrats who voted with the Republicans in 1980 to remain with the GOP in 1984, by convincing them that Mondale and Rep. Geraldine Ferraro are too liberal and are lacking leadership ability.  
Finally, the third major theme is that Reagan's record of lowering inflation, standing tough before America's enemies, and adding life to the dying economy deserves his re-election.  
The second night of the convention was centered around former President Gerald R. Ford's speech, during which he continued in the

path of other Republican leaders by describing Mondale as a candidate of fear and failure.  
Tuesday night the convention also voted in one of the most conservative platforms in years, and it was done without formal dissent.  
President Ronald Reagan arrived for the convention in Dallas to a victorious renomination.  
During a rally Wednesday afternoon Reagan spoke of the need to simplify the nation's system of taxation, and in response to the recent political trouble surrounding Ferraro's tax returns the president suggested that the government should bill individuals instead of requiring the taxpayer to figure their taxes up for themselves.  
As the Republican National Convention came to an end Thursday night, August 23, Reagan and Bush both accepted their nomination to the Republican party's presidential ticket. During their respective speeches both Reagan and Bush portrayed the Republican party as the party of hope in the future.

## Ferraro releases tax documents

The documents that Rep. Geraldine A. Ferraro stated Sunday, August 19, would answer all questions concerning her family's finances revealed a 1978 tax error of \$53,459. She and her husband John A. Zaccaro made amends for this error by sending the government a check for the amount due.

The records also revealed a \$130,000 loan to Ferraro from her husband and his children to help finance her campaign. According to the Federal Elections Commission, Ms. Ferraro must also return this money.  
On Tuesday, August 21, the day after Ms. Ferraro's financial disclosure she was called upon to defend her financial activities, and those of her husband during a 90-minute news conference held in her home district.  
Ms. Ferraro declared that the financial disclosure given by her and her husband was greater than any other ever received from a candidate in the history of the United States.  
On Wednesday, when Ms. Ferraro returned to her campaigning, she began by condemning Reagan's policies concerning the Equal Rights Amendment, taxes, deficits and cuts in educational and social programs.  
Reagan vs. Congress on marine conservation

President Ronald Reagan continues in his battle with Congress concerning the use of federal monies to finance

marine conservation programs.  
According to Joseph R. Wright, Jr., deputy director of the Office of Management and Budget, the question involves whether or not federal funds should be used to support programs that involve mainly state and local interests.  
The attitude of the Reagan administration is clear on this subject. For the past four years they have tried to cut spending in this area. However, more times than not Congress has restored money to these programs.  
Populist ticket  
On Sunday, August 19 the Populist Party ended their convention supporting a presidential ticket of Olympic gold medalist Bob Richards, and Maureen Salaman.  
With the help of the nation's women, tax protesters, and young people the Populists feel they could pose a serious challenge to the Democratic and Republican candidates.

## Reagan attends Missouri State Fair

President Ronald Reagan, while campaigning at the Missouri State Fair on Sunday, August 19, was presented with the fact that farmers in the state are in serious trouble. During his two and a half hour stay farmers were given the opportunity to share with the President the reasons for their problems, and appeal

to him for federal help.  
The farmers urged Reagan for an extension on loan payment schedules, lower interest rates on federally backed loans, and federal assistance to halt soil erosion.  
The president said his new farm program would ease their concerns, although he offered no specifics.  
Nuclear cargo down at sea  
A French cargo ship carrying 450 tons of radioactive material sank off the coast of Belgium after colliding with a ferry.  
The Mont Louis was en route to the Soviet Union Saturday, carrying 15 containers of a radioactive gas known to be uranium hexafluoride.  
Before the crew abandoned ship they determined that the containers were undamaged. These vessels were built to remain under water for up to a year without leaking.  
The ship's owners are beginning to investigate the possibility of recovering the Mont Louis and its cargo.  
Soviet missile tested  
Saturday, August 18, the Soviet Defense Ministry reported successful testing of their long-range cruise missiles. According to western diplomats in Moscow, the Soviets seem to be implying through their announcement that they now have an effective cruise missile that could be deployed.  
The Soviet Union claims that they reinstated the missile testing in response to the growing strength of the United States in this area.



**Godfather's Pizza®**

welcomes you back, Miners, with  
an offer you can't refuse  
come and see the surprise  
we have for you!

**Forum II Hair Designs**

Perm.....\$25.00  
(Includes shampoo, cut, & style)  
Hair cut.....\$5.00

Call Jennie White at 341-2668  
1431 Hauck Next Door to Bruno's

**COUPON EXPIRES SEPTEMBER 30**



## Gold Books available free

Gold Books are available to UMR faculty, staff and students at the receptionist's window in the University Center-West from 8 a.m. to 4:30 p.m. weekdays. The Gold Book, which is sponsored by McDonald's, contains coupons for McDonald's, K-Mart, National, the UMR Bookstore, Key Sport Shop, Commonwealth Theatres, B-L Office Machines, Dr. Henry Antolak (dentist), Estey Jewelry, Rich's Last Resort and the Rolla Daily News.

There is no charge!

## 1984-85 grads eligible for 'engineer in training'

source: OPI

Rolla, Mo. — University of Missouri-Rolla students who will graduate from an engineering curriculum in December 1984 or May 1985 are eligible to apply for enrollment as an "engineer in training" (EIT). The Fundamentals of Engineering examination will be given on Thursday, Oct. 25, in Jefferson

# NEWS BRIEFS

City.

Applications for enrollment are available in room 111 of the Butler-Carlton Civil Engineering Hall at UMR. The application and a \$20 check must be mailed to the Missouri Board for Architects, Professional Engineers and Land Surveyors, P.O. Box 184, Jefferson City, Mo. 65102. Transcripts of grades need not be sent until after graduation.

Applications must reach Jefferson City by Sept. 10. Applicants will be notified as to the time and location of the test by the board after acceptance of the application.

Review sessions will not be held on the UMR campus as they are in the spring.

## Basic photo class offered

source: OPI

Rolla, Mo. — The University of Missouri-Rolla will offer a three-

credit-hour course in basic photography this fall. Classes will meet from 6-9 p.m. each Tuesday Sept. 4 through Dec. 11 in room G-4 of the UMR Curtis Wilson Library.

Speech and Media 221, the Study of Photography, is an introduction to photographic communication. It includes a study of basic camera techniques, black and white film and print processing, the use of 35mm and large format cameras and photographic history and aesthetics.

Instructor for the course is Ernie Gutierrez, senior photographer for the UMR Office of Public Information.

Fee for the course is \$138. Full-time UMR students enrolled in 14 or more hours may take the course at no additional cost. UMR staff may use the educational assistance program.

For information on course content call Gutierrez at 341-4262. To obtain a registration form contact Dr. Stephen Douglas, Arts and Sciences Continuing Education, G7 Humanities-Social Sciences Building, UMR, phone 341-4131.

Enrollment is limited to the first 24 paid registrants and early registration is advised.

**Registrar Says:** Last day to add a class or register is tomorrow, Aug. 31.

Also, Tuesday, Sept. 4, is the last day for graduates to notify the Registrar of intent to graduate.

## Professional engineering fraternity interviews for new members

Theta Tau Omega Professional Engineering Fraternity will be holding this semester's interviews for new members on Wednesday, September 5th, 1984, at the TKE house.

Applications can be picked up at the candy counter in the University Center-East and can be turned in there when completed. Applicants should have completed at least 50 credit hours.

Theta Tau Omega is a charitable as well as a social organization and contributes over \$5000 annually to local Rolla charities.

Its events include Casino

Night, Hoedown, Pizza Night, Homecoming Mums, "Freshman of the Year" award, Annual Calendar, and the sponsorship of the Theta Tau Omega Ugly Man Contest. For any questions regarding interviews contact Sam Gladis, 364-8115.

## Fall 1984 Chi Epsilon officers elected

Rolla, Mo. — Officers for the 1984 fall semester have been elected by the University of Missouri-Rolla chapter of Chi Epsilon, national civil engineering honor society.

They are: president, Todd Welz; vice-president, Steve Kimes; secretary, Joe DeRuntz; treasurer, Sharri Riggs; pledge marshal, Gene Eagle; and associate editor of The Transit, Anne Werner.

**Blue Key Says:** If you have changed your address or phone number and want this change made in this year's Blue Key telephone directory, you must get the information in to the Registrar's office by Friday, Sept. 7.

## SCUBA

from page 3

Instructors for the courses will be Gary Hailey and Bill Kratzer, with several assistants to be announced later.

For more information or to register, contact Kratzer at Engineering Continuing Education, 111 Engineering Research Laboratory, UMR, phone 341-4200.

## StuCo

from page 3

completed and returned to the Student Council Office by 4:00 p.m., Friday, September 21, 1984. Some organizations may also be requested to send a representative for an interview with the Campus Organizations Committee to answer questions about their application.

## Isn't Dinner Ready Yet?

I knew we should have gotten a UMR MEAL CONTRACT! A DINNER AT UMR FEATURES

SOUP OR JUICE  
5 SALADS  
3 ENTREES  
2 POTATOES, PASTA OR RICE  
2 VEGETABLES  
VARIETY OF BREADS  
4 DESSERTS  
2 FRESH FRUITS

AND NO WAIT!  
IS IT TOO LATE?



What'll it be tonight boys  
Peanut Butter & Jelly or  
Macaroni & Cheese?

We could have had STEAK once a month and 8 SPECIAL THEME DINNERS throughout the year not to mention COFFEE & DOUGHNUTS DURING FINALS

With a UMR MEAL CONTRACT there's NO COOKING, NO SHOPPING & NO MESS!  
FOR ONLY \$5.20 A DAY ON THE 20 MEAL PLAN OR \$6.21 ON THE 14 MEAL PLAN!

RAYL, THOMAS JEFFERSON AND THE UNIVERSITY CENTER CAFETERIAS WILL PREPARE A WIDE VARIETY OF FOODS WITH UNLIMITED SECONDS, WITH A FEW EXCEPTIONS.

UMR FEATURES TWO DIFFERENT MEAL PLANS TO MEET YOUR INDIVIDUAL NEEDS. INSTALLMENT PAYMENTS ARE AVAILABLE.

LET US DO THE WORK!

SIGN UP FOR A UMR MEAL CONTRACT TODAY!

BREAKFAST FEATURES A VARIETY OF EGGS, MEAT AND MEATLESS ENTREES EVERY MORNING. A CONTINENTAL BREAKFAST IS ALSO PREPARED AFTER 8:00am.

HIGHLIGHTS OF THE LUNCH MEAL INCLUDE 3 ENTREES, POTATOES, PASTA OR RICE, AND 2 VEGETABLES ALONG WITH ALL THE EXTRAS.

FOR MORE INFORMATION STOP BY THE HOUSING OFFICE, 212 UNIVERSITY CENTER WEST, OR CALL 341-4218



August 30, 1984  
n, Pizza Night  
Mums, "Fresh  
Year" award  
adar, and the  
the Theta Tau  
an Contest. For  
s regarding  
act Sam Gladis

Chi Epsilon  
ed  
Officers for the 1984  
been elected by  
Missouri-Rolla  
Epsilon, national  
onor society.  
ent, Todd Welz;  
eve Kimes; secre-  
treasurer, Sharr  
shall, Gene Eagle-  
or of The Transi-

ys: If you have  
dress or phone  
nt this change  
ear's Blue Key  
ry, you must get  
in to the  
by Friday, Sept.

g

ght boys  
elly or  
e?

EAK once  
AL THEME  
the year  
FFEE &  
FINALS

CONTRACT  
NG,  
MESS!

DAY  
LAN OR  
MEAL

MEAT AND  
FINETAL

ENTREES,  
LES ALONG

4218

# Features

MISSOURI MINER

Thursday, August 30, 1984

Page 5

Student Life:

## UMR students overcome obstacles

by Sally Love

by Sally Love

Extrinsic handicaps. We all have them and for some UMR students the list includes spouses, families, age and jobs, not to include poverty or poor educational background, to list just a few.

To deal with the day by day delights of good grade gathering requires the best of one's ability in most cases. To balance that struggle with one or a combination of the above complicating factors takes courage, determination, ability and occasional lapses of rationality. This reporter interviewed only two of the many students with external handicaps.

Lois Highfill, a sophomore in psychology, carrying 16 hours

and married to James Highfill, a Ph.D. candidate in engineering, finds age a complication. As a mother of two and grandmother of one, her weekends are full of family events.

Now entering her third semester, she finds her greatest struggle "is discipline of time for studying." She said, "finding time to do the usual work at home." Highfill has enjoyed the communication with the younger student, although she was concerned at the beginning that she might not "fit in." She appreciates the supportiveness of her children, both former UMR students. Her daughter prepares the Wednesday evening meal so she can participate in church activities. And she has reached

a point of deciding to "entertain by candlelight, so the dust won't show." Overall, she enjoys school.

John Parson, a graduating senior in life sciences, returned to UMR two years ago after marrying and starting a family. His wife, Susan, and three small children share his time with school and a full-time job as paramedic and course coordinator for the paramedic program at the Phelps County Regional Medical Center.

Pearson says that having a family has improved his grade point and does not feel it has been a handicap at all. Unlike the more affluent, non-working, single students, he does not have a need to "socialize" outside his home. He and his wife have "a good

working relationship," he said. "She handles the bookkeeping and takes up slack, like a domestic engineer." This includes times when he has to pull time away from the family, he said.

Pearson manages his study time by "trying to keep his studies divided into small, manageable chunks. One item at a time, and slip it in when things are quiet."

He would advise the beginning student with a family to "get his priorities straight. Just because he's in school doesn't mean that he has the right to stop providing for his family. That he has the right to ignore his family. He

has to give up time that he would consider his own."

Both of these students are carrying a heavy load, but are not overwhelmed by it. Pearson plans to enter medical school this fall and Highfill is considering graduate school.

This reporter is also a returning student with two years to go, a husband and a baby, and a lot of determination. For myself and the rest of you "handicapped" people, I say, "go for it."

Watch for next weeks article in the Miner on "Surviving life with a Student," written with the spouse's point of view in mind.

## 'California Suite' coming

by John Schlitt

Next Wednesday, September 5th, The Student Union Board's Fine Arts Committee will present the Alpha-Omega Player's in the Neil Simon play "California Suite". The play will begin at 8 p.m. at the Cedar Street Center, 7th and Cedar Street.

"California Suite" is Neil Simon's 15th comedy hit and consists of the posh Beverly Hills Hotel.

The first playlet features a visitor from New York who has gone West to confront her divorced husband about the problems of their liberated 17 year old daughter. They are brittle and sophisticated people whose sparring becomes more

acidulous as they try to hide past wounds.

The second playlet shows a couple from Philadelphia who came to LA for a barmitzvah. He has arrived first, and wakes up with a comatose blond quite in bed beside him. He can't remember how she got there, and discovers it to be impossible to dispose of the passed-out body before his wife arrives at the door.

Play number three has a British actress on her way to the Academy Awards sober and edgy, and returning drunk and Oscarless with her much abused, sexually-ambiguous husband.

see SUB, page 9

## UMR stands alone

The University of Missouri-Rolla has a new addition to its growing list of student activities - its own Toastmasters Club. The unique aspect concerning this addition is that UMR is the only university in the entire nation that boasts its own Toastmasters Club.

Toastmasters International is an international organization geared toward aiding individuals' oral communication skills through various club activities, such as prepared speeches, impromptu speeches, and oral evaluations. The club has, in fact, been meeting regularly on campus since the beginning of the 1982 Spring Semester, but has only been

recognized since last May as an on-campus organization.

The main reason the UMR Toastmasters Club is a campus-approved organization today is a result of the hard work and determination of Steve Watkins, a graduate Electrical Engineering student here at UMR, who served as president of the club during the Fall 1983 school semester. "Getting the (Toastmaster Club) constitution written, copied, and approved was what it all amounted to," says Watkins. "In order to do this, our constitution had to be approved by two groups, whose meetings I attended and answered all questions on behalf of the club. The two

groups were the Student Activities Committee and another committee headed by Chief Faculty." After attending these meetings, and with the approval of the constitution, Steve saw to it that a membership list and an officers' list was promptly filled out and turned in. As a result of Watkins' hard work, UMR can be proud to recognize that it is the only university in the entire nation that has its own Toastmasters Club.

Todd E. Russom  
Administrative Vice-  
President  
Toastmasters Club  
No. 4850 (UMR)



Our Own  
Homemade  
Ice Cream

Made Daily  
In Our  
Store

**28 Flavors**  
Shakes, Malts, Sundaes  
Ice Cream Sodas  
Hours: Mon.-Sat. 11-10; Sunday 1-10  
1005 N. Pine, Rolla MO



**HARBELL**  
ATHLETIC GOODS  
904 Pine 341-2666  
HARBELL Welcomes everyone  
back to to school with a  
giant shoe sale!!!!!!  
Pony #1 Other Brand Names  
Leather High Top NIKE-ADIDAS-ETONIC  
Reg. \$64.95 Shop Harbell All Year for Greater Savings  
Now \$35.00 Steve Richards Manager

**Quality Cleaners**  
Expert cleaning Reasonably Priced  
108 W. 7th Street Rolla, MO 65401



# Classifieds ★ ★ Classifieds

## Septemberfest is on its way

Each semester the Student Council makes appropriations to campus organizations. The intent of these appropriations is to help new organizations get started, to help organizations which have deteriorated to get started again or to assist organizations which are inherently unable to support themselves.

If your organization is interested in a Student Council appropriation, an application may be obtained from the door of the Student Council Office, 202 University Center West. The application must be completed and returned to the Student Council Office by 4:00 p.m., Friday, September 14, 1984. Some organizations may also be requested to send a representative for an interview with the Campus Organizations Committee to answer questions about their application.

The Epsilon Alpha Chapter of Kappa Delta is proud to announce the names of their new pledges. Those taking their first degree pledge this fall are: Beth, Becky, Tracey, Linda, Shelly, Lisa, Lisa, Janet, Lori, Laura, Kim, Lisa, Laura, Julie, Stacy, Lisa, and JoAnn. We welcome wholeheartedly each and every pledge into our circle of friendship. Congratulations, ladies!

To Grant's Waitress

Missing you already: Hope we can stay close and go from there!

One Who Really Cares

Regional & Local Reps wanted to distribute posters on college campuses. Part time work or more. Requires no sales. Commission plus piece work. Average earnings \$6.00 per hour. Contact:

American Passage  
500 Third Ave. West  
Seattle, Wa. 98119  
1-800-426-2836, Network

Post advertising materials on campus write: College Distributors, 33 Pebblewood Trail, Naperville, IL 60540.

### Male Roommate Wanted

To share 2-bedroom apt. Rent \$90. per month & 1/2 utilities. Bed and desk furnished, kitchen, A.C. 1.5 miles from campus on Highway 63 (near WalMart). If interested contact Walt at 341-3831.

The Wesley Foundation has meetings at 6:00 p.m. each Wednesday night. Everyone is invited to attend as we are a non-denominational organization. Wesley activities include Bible studies, wood cuts, potluck dinners, peer groups, and intramural sports. Drop by our house at 403 W. 8th for more information.

This Wednesday (9-5), we will be discussing the subject of stress management.

### For Sale

#### For Sale

1982 Datsun 200-SX, blue color, 5-speed, 24,000 miles, AM-FM cassette stereo, A/C, sunroof, much more. Just had major tune-up - runs perfect. \$8,000.00 or B/O. 364-3402.

### Theta Tau Omega

Interviews will be held Wed., Sept. 5th. Call Sam @ 364-8115 for details.

### Boatcum,

How is the Holiday weather forecast? If you are ever at our elevation drop in on us (before 3 a.m.).

### Your Cute Short Friends

Welcome to the tenth pledge class of the Eta Kappa Chapter of Chi Omega — Congratulations on becoming a Chi O girl — Anita, Mary, Jo, Lynn, Maureen, Michelle, Jill, Chris, Alisa, Terri, Natalie, Tanya, Sarah, Susan, Judy, Cindy, Lori, Nora, Lynn, Dawn, Kim, and Rhonda.

FOR SALE: Ladies 26", 5-speed bike. Asking \$50. Call 364-6342.

Are you tired of those low-class parties? If you are, how about dinner with me? I'm an intellectual, handsome, well-behaved, graduate student. Call R.S. at 364-1526.

FOR RENT: Used teaching aids for Physics, in good condition, 1K of memory, wears thick glasses. \$10/day. 341-4780.

Sept. 6, 7:00 p.m. M-CS 209A

"Kennedy and the Camelot Image"

Nick Knight

Refreshments served.

Council of Graduate Students.

Department of Physics - Ballet Club Party

Friday, August 31 at Cedar Street Center 9 p.m. - 1 a.m.

Everyone must wear tights, but not green ones.

On Saturday, September 15, members will participate in a picnic outing at Montauk State Park. Participants take their own picnics, and can either meet to carpool at 1:00 p.m. at the Rolla Kroger parking lot (NE corner) or meet the group at the park lodge. For more information or directions, call Ilse Heilbrunn on 341-2710 or 341-2800.

TETE	PIVOT	CAIN
OPAL	AMEBA	OLDY
DEMOCRATIC	SWEEP	
DESPOITS	TOPSEED	
ELI	MOM	
REPRESENTATIVES		
ERR	ALIA	LYLE
CROW	NIXIE	KIEV
AONE	DONT	NNE
PRESIDENT	TREAGAN	
TBA	URN	
ERASERS	ASININE	
POLITICAL	CAUCUS	
IBID	NADIA	LAMP
CEDE	GREEN	SLAY

### NEWMAN CENTER-UMR

#### Schedule for Labor Day Weekend

Sunday 10:00 am St. Patrick's Hall

The Saturday 6:30 PM & Sunday 5:00 PM  
schedule will resume the weekend  
of September 8 & 9

908 Main  
Office: 364-2133

Rolla, Mo 65401  
Students: 364-5809

The UMR Cooperative Education Association will have its 1st meeting Wed., Aug. 29th in CE 217 at 6:30 p.m. New officers will be elected.

by UMR

Sports Car Club  
Autocross

When: Sept. 9 Noon  
Where: Multi-Purpose lot  
How much: Free  
Bring your car and try it.

### AD #1: CLASSIFIED

Travel! FREE! Travel! Earn high commissions & FREE trips promoting Winter and Spring Break ski and sun trips. Sunchase Tours Campus Rep. positions available. CALL TOLL FREE 800-321-5911.

To the ZETA's

Congrats on Rush. Looking forward to a great year with the Towne and Campus ZETA's...

The People Below Carmodini

SPECIAL EDITION OF ROCK 'N' ROLL BOWL - All you can bowl for only \$3.50. Tonight 8:30-12:00 p.m. Take a break from studying and come out to Colonial Lanes, Business Loop I-44 West near McDonald's.

ATTENTION BOWLERS!! The U.M.R. Bowling Club is looking for new members interested in participating in intercollegiate competition. Scholarships will be given to the best new male and female bowlers. You don't have to be a pro to come out and join us Wednesday, Sept. 5, 1984 at 9:00 p.m. at Colonial Lanes.

This fall, the Counseling Center staff is offering a variety of presentations including study skills, personal relationships, stress management, etc., as outreach activities through our Personal Resources Development Program. We actively encourage all students interested in one or more of these areas to attend, and all sessions are free of charge.

Should your organization desire a workshop in a special area of interest that is not going to be offered this semester, please call at 341-4211 to arrange a presentation. There are only a limited amount of times available, so contact should be made early.

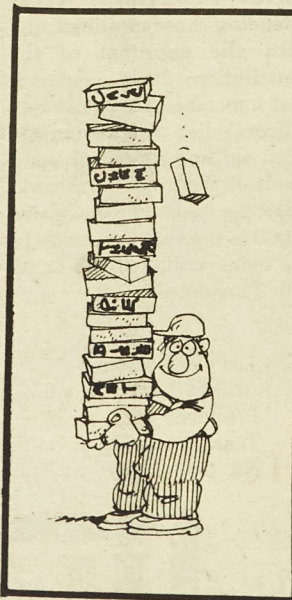
Pi Kappa Alpha will be giving away approximately 2000 of their annual calendars on Sept. 4, 5, 6 on a first come, first served basis. The times will run from 10:30-12:30 each day.

The calendar girls all attended UMR last year with the exception of the cover girl, Terri Garcia. Pi Kappa Alpha would like to thank all the advertisers for without them the calendar would not exist.

Work on next year's calendar has already begun, along with the search for the 9 lovely ladies who will grace its pages.

The Ozark Rivers Chapter of the National Audubon Society plans two events for the month of September. Both activities are free and open to the public.

On Monday, September 10, the chapter's general meeting will feature a slide lecture by University of Missouri-Rolla History professor Wayne Bledsoe titled "The Australian Aborigine Today," based on Professor Bledsoe's one year sabbatical in Australia. The meeting will be held at 7:30 p.m. in Room 327, Mathematics-Computer Science Building, on the UMR campus in Rolla. For more information or directions, call Lyle Pursell at 364-6589.



SPI, AH Games • D&D Supplies

**ROLLA CRAFT & HOBBY**

1009 Pine Rolla, MO 364-5581

Someone still cares about Quality

*We Deliver The Best*  
**Pantera's**  
PIZZA

Pizza  
Sandwiches  
Soup

Garlic Toast  
Salads  
Sodas

Now Serving  
Crispy Thin-Crust Pizza

On Sundays-Free Soda with Eat-In Pizza  
Free delivery to Rolla  
(Min. orders \$5.00)

Fri, Sat 11 am-1 am., Sun 12 pm-11 pm

Open 7 days a week  
1101 Hauck Drive  
Mon-Thurs 11 am-11 pm



KMNR:

## Groundwaves

Also look for the new KMNR Weekday Album Feature, Monday through Friday at 5 p.m., where you'll hear the newest albums in town, with no interruptions. New music also comes your way via "New Cuts" (3-5 p.m. Wednesday) and England's "U.K. Buzz" (twice monthly, when I don't have the foggiest). The KMNR Artist Feature has become a daily event, the honored artist coming up once an hour all day, and part of the night, long.

I'd love to tell you more, but as our Program Director is still wrestling with the complexities of programming, scheduling, and toilet training, I'm afraid you'll just have to listen and learn for the time being.

**II. KMNR Road Show 500 Watts**, fully operational, and waiting to add professionally spun tunes to your party, mixer, or other function. The Road Show has pleased thousands at such events as the '84 Greek Games, "Sigma Nu-Wave", "Glitterball '84", ten KMNR Weekend Late Movies (see III. below), and countless GDI functions. Shouldn't you hire the Road Show for your next party?? It's easy, just call us a week in advance at 341-4272 to reserve Missouri's finest mobile rock 'n' roll. (Ask for D.L., Road Show Boss and semi-professional Step-Van driver.)

**III. KMNR Weekend Late Movies** Yet another semester of the best in alternative late-night cinema awaits you at the Ritz Theatre. Our first flick of the Fall shows September 7 & 8, the one, the only "Blues Broth-

ers", starring Dan Aykroyd, John Belushi, and a cast of thousands, mostly stuntmen. The KMNR Road Show will be there to drown out the crowd noise, as will the classic comedy team of Howard, Fine, and Howard. **DON'T MISS IT!!**

**IV. KMNR Concert Line** The latest in area concert information can be had by dialing or punching our new concert line at 364-6161. It's totally free, and sponsored by our good buddies at End Of The Rainbow. Recent negotiations with Contemporary Productions in St. Louis has made us Rolla's exclusive promotional ticket source. All you have to do is listen, and you could win freebies to some of St. Louie's greatest live shows. So far, we've sent dozens of lucky folks to see Aerosmith, Orion The Hunter, Marshall Tucker, Billy Idol, Ratt and Billy Squier. **YOU** could be next! Just stay tuned to 89.7 FM. (oh, it does help to have a phone, or a KMNR bumpersticker on your car.)

**V. Conclusion** Questions or comments about our programming? Our Special Events? Our Chief Engineer's personal habits? Feel free to drop us a line at:

KMNR-FM  
203A Mining Bldg.  
Folla, MO 65401

Attn: Public Relations

We do read our mail, honestly. We don't always understand it....

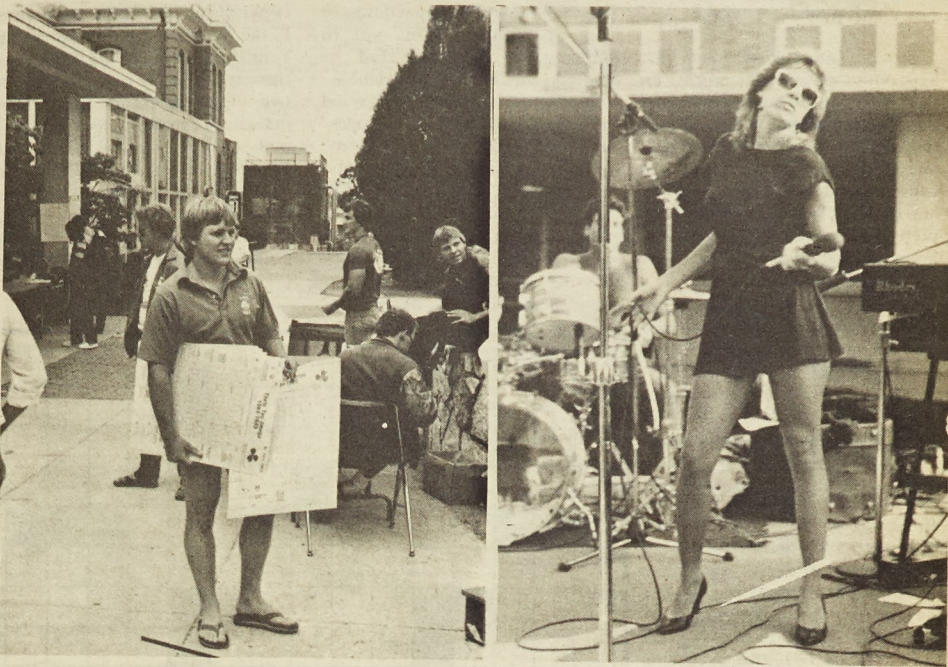
Till next week,

Same time,

Same column,

D.L.

## Students sink SUB



**SUBstandard Weekend.** The Campus Showcase which was held last week at the Hockey Puck was a great success. Pictured above is a member of Theta Tau Fraternity at the Theta Tau Calendar handouts. However, we are sad we cannot report the same measure of success for the much hyped SUBstantial Weekend put on by the Student Union Board (SUB). The Video dance was a flop, mostly because it coincided with the Street Dance put on by Tech Engine Club featuring Trik Shot. The all-campus picnic was hardly attended, and the showing at the various SUB sponsored games on Friday was poor, to say the least. The parties that went on at various frats probably didn't help the attendance either. One thing that clicked, however, was "Deliverance," who played live and in concert at the Hockey Puck on Saturday night. Here is the group's lead singer belting out one for the appreciative crowd.



**Tonight  
Friday**

-- Bottle Nite  
-- Happy Hour  
3 PM - 6 PM

**Monday  
Tuesday**

-- Greek Nite  
-- Men's Nite

**Wednesday** -- Lady's Nite

Under Sunnywall flower on Pine St.  
364-5339 Chuck Martin (Manager)

### Campus Vending Services office coffee products

PH. 341-4238

COFFEE ORDER

DATE ORDERED \_\_\_\_\_ DATE NEEDED \_\_\_\_\_

OFFICE ADDRESS \_\_\_\_\_

TELEPHONE \_\_\_\_\_ PICK UP \_\_\_\_\_ DELIVER \_\_\_\_\_

TO BE PAID BY: CASH \_\_\_\_\_ CHECK \_\_\_\_\_ IDO \_\_\_\_\_

# \_\_\_\_\_ PRODUCTS

- |   |    |
|---|----|
| 1. DeCaf, individuals, box of 100 pks., \$6 ea.   | \$ |
| 2. Reg. grind coffee, 1.5 oz. bags, \$.40 ea.     | \$ |
| 3. Drip grind coffee, 1# bags, \$2.95/ea.         | \$ |
| 4. Sugar pkts., individual, 100/bag, \$1.00/ea.   | \$ |
| 5. Sugar substitute, individual, 100/bag, \$1/ea. | \$ |
| 6. 8 oz. styrofoam cups, 50/tube, \$1.00 ea.      | \$ |
| 7. Cream Substitute, individual, 100/bag, \$2/ea. | \$ |
| 8. A-10 Filters, 100/box, 75c each.               | \$ |
| 9. Sugar, Box, 16 oz., \$1.00 each.               | \$ |
| 10. Cream canister, 12 oz. each, \$1.25 each.     | \$ |
| 11. Tea, box of 100, \$2.50 each.                 | \$ |
| 12. Stir sticks, box of 100, \$1.50 each.         | \$ |

TOTAL PRICE OF ALL PRODUCTS: \$ \_\_\_\_\_

DELIVERED/RECEIVED BY: \_\_\_\_\_

RETURN ORDERS TO: CAMPUS VENDING OFFICE

212 UNIVERSITY CENTER WEST

341-4238



# Stonehenge lives again

by Rajpal Abeynayake

In case your digital watch just gave out on you and the dog ate up your calendar for hors d'oeuvre, just don't worry about it. Stroll over towards the east end of campus, refer to UMR Stonehenge, and you will find out what day it is--no hassles. (Just one thing, though: Be there at 1 p.m. sharp. How do you know when it's 1 p.m.? Ask UMR Stonehenge.)

The imposing if not eerie configuration of sheer granite coming into view as you drive along Bishop Avenue is UMR's version of Stonehenge, the well-known historical monument located about eight miles north of Salisbury, Wiltshire, England. Even though UMR Stonehenge is a half-scale partial reconstruction of the final stages of Stonehenge, it even incorporates features that are not in the original. For instance, the conspicuous time-telling feature was actually the invention of Anasazi Indians in New Mexico (950-1150 A.D.) who used this method to maintain a calendar and observe lunar phenomena. UMR Stonehenge also incorporates a feature to locate and observe Polaris, the North Star.

The original Stonehenge had 29½ fourteen-foot tall Sarsen stones around the five "trillithons" in the center (of which 24½ now exist.). The UMR Stonehenge has all 29½ in neatly cut rock but in a much smaller version of granite slabs about two feet tall. Apparently the summer sunrise and winter moonrise was observed with the aid of the original Stonehenge, the latter observation helping to determine whether an eclipse was imminent. The original purpose of Stonehenge is, however, obscure, and is now probably rightly assumed that it was constructed as a place of worship (the nature of the religion unknown). The supposed connection of Stonehenge with the Druids have been discounted as having no basis. The solstitial alignment of the axis of symmetry of the Stonehenge configuration has reinforced the popular belief that Stonehenge was probably a temple of worship.

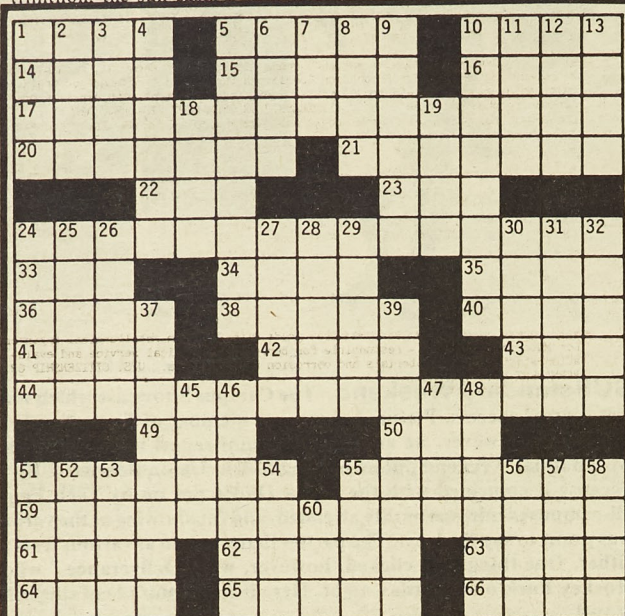
In which case, we might ask, what is a model of an ancient temple of celestial worship doing in this temple of high-tech that is UMR? The answer is that temple of sky-worship though it may be, Stonehenge is a marvel of engineering, and probably one of the world's first computers of its kind.

The shaping and transportation of tons of granite rocks, not to mention the science behind the configuration is almost incredible.

The UMR Stonehenge, as did Stonehenge, has 29½ "heel stones" surrounding the five "trillithons" and the vertical and horizontal "altar stones" in the middle. The "altar stone" has an "analema," an elongated figure of eight etched into it. As the rays from the sun pass through a hole in the "analema plate" below the lintel of the south trillithon, the sun casts a spot on

either the verticle or horizontal face of the "analema stone." During the course of the year the casting of these spots on the analema provide two pieces of information. They indicate Central Standard time (1 p.m. daylight savings time) each day, and show the day of the year. Naturally the configuration does not recognize the extra day of leap years, so provision has been made in the design of the analema plate

see Stonehenge, page 9



© Edward Julius

## ACROSS

- 1 French head
- 5 Basketball move
- 10 Raise
- 14 October's birth-stone
- 15 One-celled animal
- 16 '50s song, e.g. (var.)
- 17 Republican election nightmare (2 wds.)
- 20 Tyrants
- 21 Tennis tournament favorite (2 wds.)
- 22 Mr. Whitney
- 23 Common tattoo word
- 24 House of
- 33 Be human
- 34 Inter (Lat.)
- 35 Mr. Waggoner
- 36 Eat
- 38 Undeliverable mail or water sprite
- 40 Chicken
- 41 First-rate
- 42 Word of warning
- 43 Compass point
- 44 Former Time Magazine "Man of the Year" (2 wds.)
- 49 To be announced: abbr.

## DOWN

- 50 Grecian
- 51 Classroom need
- 55 Stupid
- 59 Party meeting of sorts (2 wds.)
- 61 Footnote abbreviation
- 62 Miss Comaneci
- 63 Neon
- 64 Yield
- 65 Inexperienced
- 66 Do in, as a dragon
- 18 Mr. Porter
- 19 "Out, damned
- 24 Part of some newscasts
- 25 Diamond bungle
- 26 Lying flat
- 27 Omit in pronunciation
- 28 VP in '53
- 29 Tarnish, as a reputation
- 30 Competing
- 31 Actress Verdugo
- 32 The Sisters
- 37 "Story"
- 39 Of ancient W. Italy
- 45 Casino words
- 46 Adventurous
- 47 Assam silkworm
- 48 Invalidates
- 51 The Odyssey, for one
- 52 Ceremonial garment
- 53 Put on (cover up)
- 54 Dermatological mark
- 55 "I cannot tell"
- 56 Suffix for poet
- 57 Legendary Roman king
- 58 Catch sight of
- 60 Suffix for block

Answers on page 6

## Chancellor and Mrs. Marchello open their doors to students and faculty

by Angela Gutierrez

Students were recently given the opportunity to meet faculty and administrators at the annual open house given by Chancellor Joseph Marchello and his wife Louise. Approximately 800 students attended the event which took place, Sunday, August 26.

According to Caherine Jenks, Director of University Relations and Affirmative Action, the open house is, "something the chancellor and his wife want to do. We hear alums saying that they always wanted to come to the chancellor's home, but were

never given an opportunity to do so."

Students were greeted at the door by Mrs. Marchello and then led to the living room and sun-porch area. Refreshments were served in the dining room as well as outside on the tent-covered patio.

Mark Stuntzner, president of the Student Union Board, summed up the afternoon by saying, "This is a great opportunity for students to come and meet the administrators. I've been here four years and the invitation has been extended to me for four years and I'd never had a chance to see the chancellor's house, which is very beautiful. I'm glad I came."



Tom Roth

**Open House.** Chancellor Joseph Marchello and his wife greet a student on their front porch of their home at last week's open house. Inside, the students were later greeted with light snacks. The event lasted from 3 p.m. to 6 p.m. The Chancellor's open house is a yearly event at UMR.



**BEST PIZZA  
IN TOWN**

**PASTAS, PIZZA, SALAD,  
COLD BEER AND WINE**

Free party room WE 1901 N. Bishop  
is available DELIVER Rolla, MO

for the  
ultimate  
adventure  
in video...

**FORUM VIDEO**

1105 Hauck Drive  
(Next to Pantera's)  
364-3010



....the nations fastest growing  
long distance service

- \* Bell quality transmission - GUARANTEED
- \* No monthly service charge - GUARANTEED
- \* No long-term contract - GUARANTEED
- \* Special travel code \* Detailed call record

**OUR SERVICE INCLUDES:**  
Calls To Local (341-364) Toll Call Numbers!!!  
**CALL ANYWHERE!!**  
(U.S.A., Alaska, Hawaii, Puerto Rico  
and U.S. Virgin Islands)

1352 Forum Dr.  
Rolla, MO  
364-8594

20% to 60%  
Guaranteed  
Savings

**STUDENTS-Half Price!**  
Call now and start saving  
One-time enrollment fee  
Business \$55  
Residential \$30  
**364-8594**



# Placement

CAREER DEVELOPMENT WEEKLY DETAIL SHEET  
PERMANENT EMPLOYMENT

## Campus interviewing for week of September 24-28, 1984

Signups for the following companies are located in the basement of the Buehler Building, 9th & Rolla Streets, (use door on the southeast corner). Signup hours: 8:00-11:00 a.m. for morning interviews; 1:00-3:30 p.m. for afternoon interviews.

### DOW CHEMICAL U.S.A.-MARKETING DIVISION, Midland, MI

Will interview DECEMBER 1984 grads with BS/MS in Chemical Engineering, Chemistry, Civil Engineering, Mechanical Engineering for Marketing Development Program leading to sales and careers in marketing management. Sales include industrial chemicals, ag chemicals, plastics and consumer products. Minimum of two months of training in Midland, MI. Following training, assignment to one of 23 sales offices nationwide. Must be willing to relocate. U.S. CITIZENSHIP OR PERMANENT RESIDENT VISA REQUIRED BY COMPANY.  
Location: 23 sales offices nationwide  
Interviewers: unknown  
Interview dates: September 24, 25, 1984  
Number of schedules: 1 ea day  
Priority signup: September 7, 1984  
Regular signup: September 10, 1984

Note: May 1985 grads may sign on overflow list - will be called in event schedule does not fill with December 1984 grads.

### ADDITIONAL INFORMATION FOR WEEK OF SEPT. 19-21, 1984

#### AT&T INFORMATION SYSTEMS, Lincoln, NJ

Will interview DECEMBER 1984, MAY 1985 grads with MS in Computer Science, Electrical Engineering for software and systems engineering in communications industry. Will also include some hardware and physical design. (Students with BS/Comp Science, EE may sign on overflow list only.) U.S. CITIZENSHIP OR PERMANENT VISA REQUIRED.  
G.P.A. REQUIREMENT: MUST BE IN TOP HALF OF CLASS  
Interviewer: Denise Courson  
Interview dates: September 20, 21, 1984  
Number of schedules: 1  
Priority signup: September 5, 1984  
Regular signup: September 6, 1984

#### TEXAS OIL & GAS CORP., Dallas, TX (Interview date: September 24, 1984)

Will interview MAY 1985 grads ONLY with BS in Petroleum and Mechanical Engineering for entry level engineering position. Receive on-the-job training. Works closely with experienced engineer in drilling or reservoir engineering. MUST BE U.S. CITIZEN. PLEASE NOTE: ORIGINAL SCHEDULE SET UP FOR 2 SCHEDULES IN PETROLEUM ENGINEERING; CHANGED TO: PETROLEUM AND MECHANICAL ENGINEERING; COMPANY PREFERENCES 3.0 G.P.A. OR HIGHER  
Location: Texas, Arkansas, Kansas, Oklahoma, Louisiana  
Interview: unknown  
Interview date: September 24, 1984  
Number of schedules: 1

#### DOW CHEMICAL USA, Freeport, TX

Will interview DECEMBER 1984, MAY 1985 grads with BS/MS/PhD in Chemistry for entry level positions of responsibility in research & development, analytical, product development, process development & technical services and development; BS/MS in Chemical Engineering for entry level positions in research & development, product development & production manufacturing operations, technical service & development; BS/MS in Mechanical Engineering for entry level positions in maintenance support, project engineering, engineering services, process control, instrumentation, power generation and distribution and chemical production operations; BS/MS in Electrical Engineering for entry level positions in maintenance support, engineering services, process control, instrumentation, computer systems, power generation & distribution, and project engineer; BS/MS/PhD in Metallurgical Engineering. STUDENTS WITH PERMANENT RESIDENT VISA MUST HAVE VISA IN HAND AT TIME OF INTERVIEW  
Location: Freeport, TX  
Interviewers: unknown  
Interview dates: September 25, 1984  
Number of schedules: 2  
Priority signup: September 10, 1984  
Regular signup: September 11, 1984  
NOTE: ONE (1) OF THE 2 SCHEDULES WITH DOW CHEMICAL WILL HAVE A GPA REQUIREMENT GREATER THAN 3.0.

#### E-SYSTEMS, INC., Greenville, TX

Will interview DECEMBER 1984, MAY 1985 grads with BS/MS in Aerospace, Mechanical, Civil Engineering, BS/MS/PhD in Electrical Engineering, Physics for the following opportunities: Structural Design Engineers, Mechanical Design Engineers, Stress Engineers, Electronic Systems Engineers, and Software Engineer. Description of the organization will be available at time of signups for E-Systems, Inc. U.S. CITIZENSHIP REQUIRED FOR SECURITY CLEARANCE.  
Location: Greenville, TX (50 miles NE of Dallas)  
Interviewer: unknown  
Interview date: September 25, 1984  
Number of schedules: 1  
Priority signup: September 10, 1984  
Regular signup: September 11, 1984

#### INTERNATIONAL PAPER COMPANY, Mobile, AL

Will interview MAY 1985 grads with BS/Chemical, Electrical, Mechanical Engineering for the following areas: Plant Engineering-Paper Mill, Industrial & Converting Engineering, Design Engineering, and Construction. U.S. CITIZENSHIP OR PERMANENT VISA REQUIRED.  
Location: Southwest, Southeast, Northeast, Nationwide  
Interviewers: unknown  
Interview date: September 25, 1984  
Number of schedules: 2  
Priority signup: September 10, 1984  
Regular signup: September 11, 1984

#### KANSAS CITY POWER & LIGHT COMPANY, Kansas City, MO

Will interview DECEMBER 1984 grads with BS/MS in Electrical Engineering for design overhead, underground, and substation distribution systems. Includes field work, construction, and maintenance supervision. U.S. CITIZENS ONLY.  
G.P.A. REQUIREMENT: 2.8 AND ABOVE.  
Location: Metro K.C.  
Interviewers: unknown  
Interview date: September 26, 27, 1984  
Number of schedules: 2 per day  
Priority signup: September 11, 1984  
Regular signup: September 12, 1984

#### U.S. GYPSUM, North Kansas City, MO

Will interview DECEMBER 1984 grads with BS in Electrical, Mechanical, Chemical Engineering, Mining Engineering, Engineering Management for Project Engineer. PERMANENT RESIDENT VISA REQUIRED.  
Location: open; acceptable candidates must be open to geographic relocation  
Interviewers: unknown  
Interview date: September 26, 1984  
Number of schedules: 2  
Priority signup: September 11, 1984  
Regular signup: September 12, 1984

**Student Rooms for Rent  
Available YEAR ROUND**  
Doubles, singles, Kitchenettes  
Community Kitchens, Private  
Baths and Community Baths,  
Supervised Housing.  
**QUIET HOURS**  
24 Hours a Day  
Seven Days a Week  
**RollaMo OFFICE: 1204 Pine**

## L.T.V. STEEL COMPANY, Cleveland, OH

Will interview DECEMBER 1984, MAY 1985 grads with BS in Mechanical, Electrical, Civil Engineering for Steel Product Management Training Program; BS/MS in Metallurgical Engineering for Quality Control Management Training Program; BS/MS in Mechanical, Electrical, Chemical, Civil Engineering for Engineering Management Training Program; BS/MS/PhD in Metallurgical, Chemical Engineering, BS/MS in Mechanical, Electrical Engineering for Research Management Training.  
NOTE: PER COMPANY REQUEST, CIVIL ENGINEERING GRADS WILL BE ALLOTTED ONLY 3 SIGNUPS FOR INTERVIEW OPENINGS IN STEEL PRODUCT MANAGEMENT TRAINING PROGRAM; WILL BE ALLOTTED ONLY 3 SIGNUPS FOR INTERVIEW OPENINGS IN ENGINEERING MANAGEMENT TRAINING PROGRAM; 2 INTERVIEW OPENINGS WILL BE DESIGNATED FOR MORNING SIGNUPS; 1 INTERVIEW OPENING WILL BE DESIGNATED FOR AFTERNOON SIGNUPS PER SCHEDULE REQUESTING CIVIL ENGINEERING. U.S. CITIZENSHIP OR PERMANENT VISA REQUIRED  
G.P.A. REQUIREMENT: COMPANY PREFERENCES 3.0  
Location: various: IL, IN, OH, & PA  
Interviewers: unknown  
Interview date: September 25, 1984  
Number of schedules: 1-Steel Prod. Mgt. Training  
1-Q.C. Mgt. Training Program  
1-Eng. Mgt. Training Program  
1-Research Mgt. Training

Priority signup: September 10, 1984  
Regular signup: September 11, 1984

## ATLANTIC RICHFIELD COMPANY, Los Angeles, CA

Will interview DECEMBER 1984, MAY 1985 grads with BS/MS in Petroleum Engineering ONLY for Engineer - twelve-month Engineering Development Program leading to assignments in drilling, facilities, production, project and reservoir engineering. Location: Alaska, California, Colorado, Louisiana, New Mexico, Oklahoma, Texas and Wyoming. U.S. CITIZENSHIP OR PERMANENT VISA REQUIRED.  
Interviewers: unknown  
Interview date: September 26-27, 1984  
Number of schedules: 1 ea day  
Priority signup: September 11, 1984  
Regular signup: September 12, 1984

Will interview December 1984, May 1985 grads with BS/MS in Chemical, Mechanical, Petroleum Engineering for Production Operations Supervision - on-the-job training involves exposure to field production and drilling operations with emphasis on foreman responsibilities. U.S. CITIZENSHIP OR PERMANENT VISA REQUIRED  
Location: Colorado, California, Louisiana, New Mexico, Oklahoma, Texas and Wyoming  
Interviewer: unknown  
Interview date: September 26, 1984  
Number of schedules: 1  
Priority signup: September 11, 1984  
Regular signup: September 12, 1984

Will interview DECEMBER 1984, MAY 1985 grads with BS/MS in Chemical, Mechanical Engineering for Engineer - twelve-month Engineering Development Program leading to assignments in drilling, facilities, production, project and reservoir engineering. U.S. CITIZENSHIP OR PERMANENT VISA REQUIRED.  
Location: Alaska, California, Colorado, Louisiana, New Mexico, Oklahoma, Texas and Wyoming  
Interviewer: unknown  
Interview date: September 26, 1984  
Number of schedules: 1  
Priority signup: September 11, 1984  
Regular signup: September 12, 1984

Will interview DECEMBER 1984, MAY 1985 grads with BS/MS in Metallurgical Engineering for Materials Engineer - responsible for performing technical service and evaluation studies in the materials and corrosion related areas. U.S. CITIZENSHIP OR PERMANENT VISA REQUIRED.  
Location: Plano, TX  
Interviewer: unknown  
Interview date: September 27, 1984  
Number of schedules: 1  
Priority signup: September 11, 1984  
Regular signup: September 12, 1984

PLEASE NOTE: COMPANY PREFERENCES THAT EMPLOYMENT CANDIDATES BRING COMPLETE, UNOFFICIAL TRANSCRIPT TO THE INTERVIEW. THESE MUST BE OBTAINED FROM THE REGISTRAR'S OFFICE.

## BENDIX CORPORATION, Kansas City, MO

Will interview DECEMBER 1984, MAY 1985 grads with BS in Electrical, Mechanical Engineering for Engineer (Associate); MS ONLY in Mechanical, Electrical Engineering for Engineer. U.S. CITIZENSHIP REQUIRED.  
G.P.A. REQUIREMENT: 2.8 OR ABOVE  
Location: Kansas City  
Interviewers: unknown  
Interview dates: September 26-28, 1984  
Number of schedules: 1 per day: BS/EE, ME  
1 per day: MS/EE, ME  
Priority signup: September 11, 1984  
Regular signup: September 12, 1984

NOTE: One (1) schedule consists of approx. 14 interviews (depending on beginning and ending times of schedules). A morning signup for each individual company can have as many as 8 interview openings; an afternoon signup can have as many as 6 interview openings.

STUDENTS MUST MEET G.P.A. REQUIREMENTS AS REQUESTED BY INDIVIDUAL COMPANIES. STUDENTS NOT MEETING THOSE REQUIREMENTS WILL BE REMOVED FROM INTERVIEW SCHEDULE WITHOUT NOTICE.

see Placement, page 12

## St. Pat's from page 6

Entries are now being accepted for the St. Pat's 85 sweatshirt design contest. Entries should be made on an 8 1/2" by 11" piece of paper and should incorporate "St. Pat's 1985" and UMR in some way. Prizes will be as follows:

\$40.00 First Prize  
\$25.00 Second Prize  
\$10.00 Third Prize

This is going to be the 77th Best Ever, so create the design accordingly, and get it to your local board rep. before the September 6 deadline.

## SUB from page 5

The last play has two couples from Chicago bringing their three-week Hollywood vacation together to a hostile, flamboyant finale in a flurry of flying glass, cut fingers consussions and hammerlock holds.

Showtime is 8 p.m. at Cedar Street Center, Sept. 5th.

## Stonehenge

from page 8

for the adjustment necessary to compensate for the difference between solar and calendar years.

The other trillions in the center of Stonehenge have uses of their own. For example, the true position of winter sunrise (December 21) at the horizon is located by standing over the UMR Stonehenge marker and looking between the inner faces of the southeast trillithon. The true position of the summer sunrise, the

see Stonehenge, page 12

## END OF THE RAINBOW Car Stereo Specialists



We've got more  
than just  
good music  
for your  
car!

RECORD  
RENTAL  
CLUB  
MEMBERSHIP

Just  
\$10

Join our Record Club NOW and  
receive 2 TDK SA 90's FREE!  
Members receive 10% discounts  
on our low tape prices.

**EXPANDED RECORD SELECTION  
FOR RENTAL and SALES!!!!**

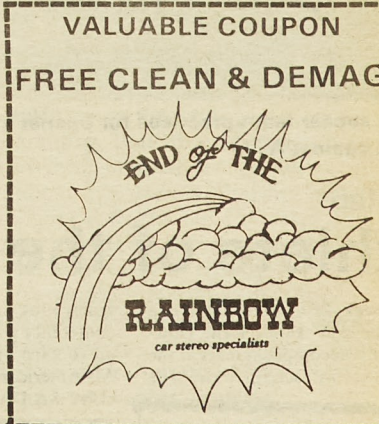
MAXELL  
UD-XL II-90  
Blank cassette  
\$2.49

SONY  
MDR-20T  
Stereo  
Headphones  
OUR LOW  
\$19.95

SONY  
UCX-90  
Blank  
Cassette  
\$2.59 ea.

Top Brands  
Expert installation  
Blank Tapes & Accessories  
Good Record Selection

1808 N. Bishop  
364-4191  
Across from Mr. Donut





## All-Conference men lead team

by Brett Giddens

A talented group of linemen from both sides of the line of scrimmage, have returned to the Miner football team this fall after a highly successful year in 1983. Seven of these players won some type of All-Conference honor last year. The offensive unit opened huge holes for league-leading runner Randy Shed, and it's pass protection enabled quarterback Chris Nisbet to throw for 864 yards and eleven touchdowns. The defensive performers were among the best in the MIAA, giving up only 66.2 yards rushing per contest, and ranked high in several national categories.

Tackle Jeff Heger and guard Eric Wiegand head the offensive list, both being awarded first team all-league accolades last season. Heger, a 6-3, 245 lb. senior, is a solid, dependable lineman who has emerged as a team leader. A starter the previous two seasons for the Miners, Heger

will serve as co-captain in 1984. Wiegand, also 6-3, 245 lbs., was a starter as a freshman and improved immensely last year. Miner coaches feel he has unlimited potential at his position and look for him to have another fine campaign.

The other guard, Junior Jerry Hirlinger was a starter last season and had a great year. Gifted with excellent natural ability, it is felt that he can become one of the best linemen in the conference. Another promising junior is center Russ Pogue. Quickness and a keen football mind earmark him as potentially one of the finest to ever play this position at U.M.R. He was second team MIAA last year as a sophomore.

Chris Kramer a starter last season, had a great spring and is expected to be in the thick of the competition for a starting position this fall. Two-year letterman Jim Gilliam was a solid special teams performer as well as back-up center. He

will continue to serve in this capacity, providing added depth behind Pogue.

Senior guard David Elsenrath went down with a knee injury last year after making a strong early showing. He sat out spring practice in hopes of making a complete recovery. Another senior, Scott Cramer played as a reserve last season but was slowed by an injury during spring ball. It is hoped that both will be able to come back at full strength and help the Miners this season.

Tough defense has become a tradition at U.M.R. and this season will be no exception. The heart of the Miners defensive unit will be the down linemen. All five starters return with a very capable group of players behind them in reserve. Juniors Bob Gorham and John Frerking were All-MIAA last season and will anchor the unit this year. Gorham (6-2, 255) proved that he can dominate action on the line of scrimmage as well as

any player in the league. His size and exceptional quickness can create many problems for an opposing team. Look for him to have another exceptional year. Frerking (6-2, 195) has great football instincts and a nose for the ball.

Stepping into the noseguard slot from linebacker last year, Dan Goldner made the adjustment in outstanding fashion. The 6-3, 219 lb. sophomore was named honorable mention All-Conference and gave every indication that he will be a force to be reckoned with in the future. Senior tackle George Stock (6-2, 228) is a consistent player who makes very few mistakes while on the field. He also proves that versatility is not limited to one man on the defensive line, as he takes care of the place-kicking duties for the Miners.

Rickie Caruthers played hurt most of last year yet still had a fine season. A mainstay in the

U.M.R. defensive line for some time now, the 6-2, 219 lb. senior intercepted two passes last year, one of which he returned 72 yards for a touchdown. He was named to the second team MIAA defensive squad in 1983. His twin brother Randy started a few games last season, seeing action at both end spots as well as performing on special teams. Also a senior, he will be in contention for a starting position in 1984.

Other candidates for possible starting assignments are senior Tim Knollmeyer and junior Scott Finke. A hard worker, Knollmeyer is coming off an impressive spring session while Finke, who has fine speed, was a reserve last year at defensive end. Seniors Matt Pitsch and Al Odom, both injured last year, will help out if fully recovered.

Barring a rash of injuries or an outbreak of the plague, these men should be the cream of the MIAA in 1984.



Miner soccer team practices for opener at home on Sept 1 against Avila

### M-Club

## Athlete of the Week

This week, M-Club would like to honor the golf team's Kent Dinsdale for his accomplishments at the end of the last school year. The

senior took first place in the MIAA conference golf meet. He then went on to earn an honorable mention All-American award from his play at NCAA Division II finals in Erie,

The 12th Man Award will again be presented by the M-Club to the organization which best supports the Miner's football team at home games.

This award originated at Texas A&M University approximately 80 years ago. During a home football game, their star player was injured and had to be removed from the field on a stretcher. The team only had 11 players on the roster, so they were one man

short. A man was pulled out of the stands and was suited up to play in the rest of the game at this point, the fans stood up and began cheering and yelling, trying to support their team. The man from the stands (The 12th Man) was inspired by the wild enthusiasm of the fans, and sparked the team to an exciting 4th quarter, come-

from-behind victory.

It is the result of this incident that The 12th Man Award was started. The award is in recognition of the fans who are ready to support their team.

The intent of the M-Club in giving this award at the UMR campus is to recognize the club or organization which best exemplifies school spirit and enthusiasm. The one which best fulfills the following

requirements will be declared the winner of the award.

The judging criterion has been divided into sections. At each home game, points will be given in 5 categories. These are:

see award

page 12

**Christopher Jewelers**  
Diamonds and Watches  
903 Pine Rolla, MO 364-2264

MC  
VISA  
AMERICAN  
EXPRESS

**Italo's**

HWY  
Rolla  
364-0212

**Sunday Night University Special**

**5 PM - 9 PM**  
**ALL YOU CAN EAT**  
Spaghetti or Mostaccioli  
&

**Homemade Meat Sauce**  
**\$3.75**

**(Soup & Salad Bar \$1.00 Extra)**

SHOW ID CARD for SPECIAL

### Student Council Blood Drive

Come out and donate or  
just come out and work!

**Wednesday Sept 5**  
**Thursday Sept 6**  
**10 a.m. - 4:30 p.m.**

**University Center East**

**20,000 Books, Records,  
Tapes & Comics  
Buttons & Posters**

**One Horse Books & Records**  
**808 Pine in Downtown Rolla**  
**364-2244**



## Cross country

# Women open at Maryville

by C.DeGonia

The UMR women's cross country team will be opening their season on Sept. 8th at the Maryville College Invitational. This is one of seven meets for the women.

Coach Sarah Preston feels that the times this year will be improved as a team. There are eight women on the team this year with two of them returning lettermen. Karen Olson a sophomore, and Amy

Noel, a senior, were last year's number four and five runners. Laura Ford and Anne Werner, seniors will be going out for the team for the first time this year.

Four freshman are also joining the team this season. The most promising seem to be

Amy Vollmert from Vienna, Mo. and Julie Board from

Kansas City. Vollmert took fifth in the state 3A two mile run. She has also run under 20

minutes for 5000 meters. Board placed 27th in last falls state cross country meet. In addition she took seventh in the state 4A two mile run.

Other freshmen making up the team are Debbie Saver from Rolla and Samantha Moss from St. Louis. With these new additions and the returning girls, Coach Preston hopes that the team can finish better this year than the fifth place they took last year.

## New runners add strength

by C. DeGonia

A strong men's cross country team will open their season August 31 against SIU-Edwardsville at Rolla. Returning lettermen include seniors Jim Bullard, who was All-MIAA in 1983, Kurt Elmore, Dan Lichtenwalner, and Keith Smith. Coach Dewey Allgood is counting heavily on these four seniors to lead the team. New additions to the team include transfer students Mike Deamer from Wisconsin and Jeff Balmer from Vanderbilt. Both of these men were cross country runners at their respective universities before coming to UMR.

Other new additions are freshmen Mike Held from St. Louis, Mike Reed, Eureka, Jeff Nolan, St. Louis, John Anderson, New York, David Vonax, St. Louis, Bob Jackson, St. Louis, Rodney Collins, Springfield, and Dave Porter, Independence.

Mike Held from Pattonville High School helped that school's track team place third in the state 4A track meet. He was one of their top distance men and cross country runners. Mike Reed was Eureka's number one cross country runner. He also had an excellent summer in various road races. Coach Allgood is looking forward to seeing what these new runners and his returning runners will do this coming season.

The men's second meet will be September 8th at Maryville, which is also the site of the women's opener. Both teams will have the same schedule beginning with this meet.



Cross country

## Rugby Club needs you

The Miner Rugby Club started the season Aug. 27 with practice beginning at 4:30 at Lions Club Park. Anyone who is interested in joining and/or needs a ride to practice, meet at the Multi-purpose Building's parking lot at 4:15 p.m.

For further information about playing please call Dave Shipley at 364-6511.

### 1984 Fall Rugby Schedule

Sept. 8 — Scrimmage  
Sept. 15 — St. Louis U. — Home (1:00)

Sept. 22 — Washington U — Home (1:00)

Sept. 29 — Southeast Mo. — Home (1:00)

Oct. 6 — Blacksheep — Home (1:00)

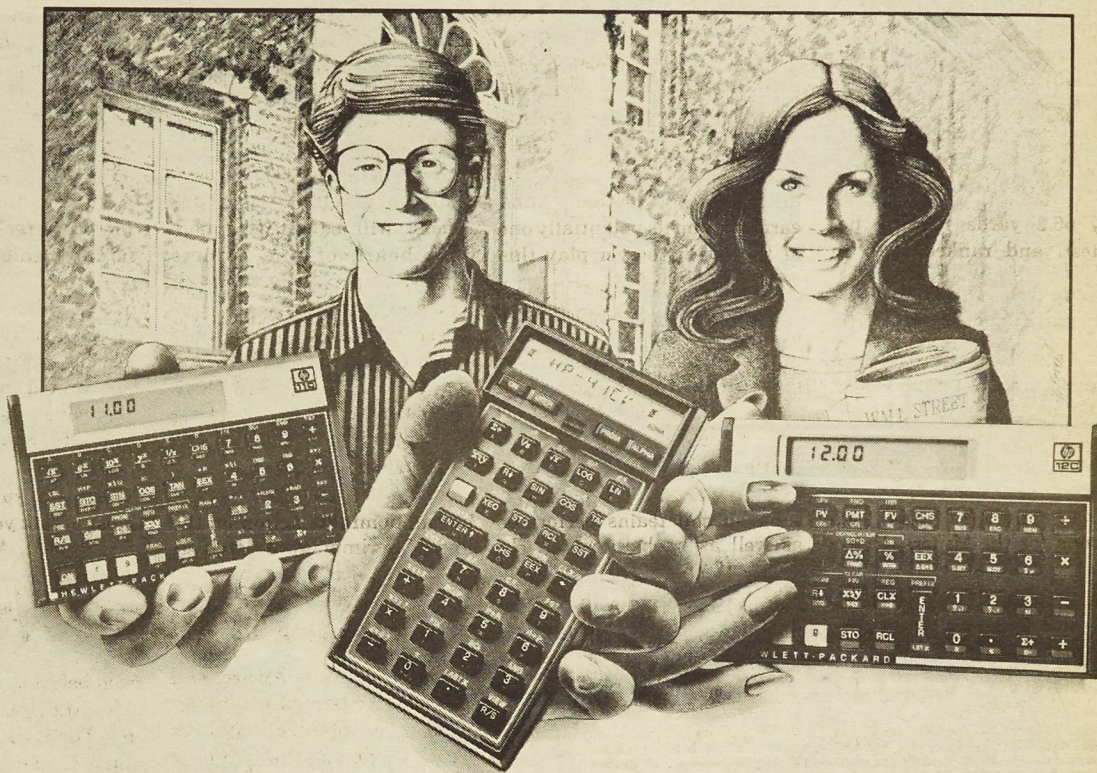
Oct. 20 — Bombers — Away (1:00)

Oct. 27 — Alumni Game — Home (1:00)

Nov. 3 — Mizzou — Home (1:00)

Nov. 10 — Arkansas Tourney Away

Nov. 17 SMS — Home (1:00)



## Students! Work Smart. Work Simply...With Hewlett-Packard.

Take a good look at your class schedule.

If you're in Science or Engineering, chances are your classes include Calculus, Physics, or Chemistry. Engineering Statics, or Dynamics. You're running up against some tough calculations, with statistics problems, hyperbolics, and logs. The HP-11C calculator helps you breeze through those problems with a few simple keystrokes.

Need to simplify problems that are even more complex? The HP-41CV gives you 128 built-in functions—and the HP-41CX over 200—to simplify your long homework assignments. Use up to 6,437 bytes of memory to save the programs and formulas you use often. And there are thousands of software programs, so you don't have to start from scratch next term.

If you're in Business or Finance, you're probably taking Accounting, Statistical Methods, Finance, and Investment Analysis. Classes loaded with tedious calculations. End the pencil-and-paper drudgery with the HP-12C. The most powerful decision-maker on the market! Dedicated keys make time value of money calculations, amortization, Net Present Value (NPV), Internal Rate of Return (IRR), and statistics solutions as simple as a single keystroke. And it's easy to change values or correct mistakes without reentering your entire problem.

Hewlett-Packard calculators. They help you work smart this term. And next term. And even later on the job. Get your HP today from your local HP dealer.

For the location of the dealer nearest you, call TOLL FREE 1-800-FOR-HPPC.

**hp** HEWLETT  
PACKARD

3902401 658A



# Award

from page 10

1. Members present and group identification - points will be in proportion to the percentage of the participating organization present and recognized.
2. Cheers - the initiation and originality of organized cheers is of importance. However, a group that enthusiastically joins with a cheer already in progress (including those by the official UMR cheerleaders),

rather than starting a competitive yell, will gain more. Cheers including obscenities will result in the deduction of points.

3. Noise and enthusiasm - The organizations making noise, using noisemakers, and showing originality are given points here.
4. Visual Effects - very readily noticed is the use of visual aids, flash cards, signs, banners and anything else

you can think of to show enthusiasm will be considered in point awarding.

5. Opinion - additional points may be added or deducted on the basis of a judges overall impression of an organization.

Finally there are several ways to earn extra points during the Homecoming festivities. The group that buys the most Homecoming buttons (as a percentage of people in the organization) will gain points. Also, there will be opportunities at the Homecoming Bonfire. Any organization

helping in the collection of burnable materials will get points for each truckload supplied. Also, the group that most visibly and most enthusiastically attends and

supports the bonfire will earn more points.

Lastly, M-Club would like to encourage every organization to participate and support the Miner football team.

## Intramurals

## Flag football

Flag football begins September 4. Sigma Phi Epsilon returns as last years football champions along with Phi Kappa Theta and Sigma Nu who took second and third places consecutively. This years competition is already growing and looks very competitive.

If your organization of thirty or more people has not signed up to participate in intramurals

be sure to attend one of the intramural manager meetings. Also, anyone interested in being an official for flag football please sign up in the Multi-purpose Building.

NOTES: Next intramural managers meeting will be Wednesday, September 12 at 5:30 in the Multi-purpose Building, at which time, entries are due for tennis and golf.

## Stonehenge

from page 9

winter sunset (December 21) and the summer sunset are some of the other natural phenomena that can be observed with the aid of UMR Stonehenge.

Stonehenge was built during the Late Neolithic Period and the Early Bronze Age (1800-1400 B.C.), doubtless laboriously. In contrast,

The UMR Stonehenge was constructed in almost no time; the rocks were cut with high-pressure water jets reaching up to 15,000 psi, courtesy of the Department of Rock Mechanics. It is probably the greatest modern-day tribute to the ancient marvel that was.

## Placement

from page 9

UNION CARBIDE CORPORATION, Danbury, CT  
Will interview DECEMBER 1984, MAY 1985 grads with BS in Chemical Engineering for Manufacturing, BS/MS in Chemical Engineering for Engineering, MS in Chemical Engineering for R&D, BS in Chemical Engineering for Tech Sales; BS in Mechanical Engineering for Manufacturing (note: 6 interview openings in the afternoon only for BS/ME schedule for M'g.). PERMANENT VISA OR U.S. CITIZENSHIP ONLY.  
Location: WV, TX, LA, Nationwide  
Interviewer: Mr. David J. Bradt  
Interview date: September 26-27, 1984  
Number of schedules: 1 ea day

Priority sign-up: September 11, 1984  
Regular sign-up: September 12, 1984

BUTLER MANUFACTURING COMPANY, Kansas City, MO  
Will interview DECEMBER 1984, MAY 1985 grads with BS/MS in Civil Engineering for structural design and analysis of single or multiple story buildings.  
C.P.A. REQUIREMENT: MIN. 2.75  
Location: Kansas City, MO  
Interviewer: unknown  
Interview date: September 26, 1984  
Number of schedules: 1

Priority sign-up: September 11, 1984  
Regular sign-up: September 12, 1984

WESTINGHOUSE ELECTRIC CORPORATION, Pittsburgh, PA  
Will interview DECEMBER 1984, MAY 1985 grads with BS/MS in Electrical Engineering for research, design, development, applications, system/test engr. in the areas of microprocessors, hardware, software, electronics, circuits, controls, communications. U.S. CITIZENSHIP REQUIRED; G.P.A. REQUIREMENT: 3.0 OR BETTER  
Location: Middle Atlantic  
Interviewer: unknown  
Interview date: September 26, 1984  
Number of schedules: 1

Priority sign-up: September 11, 1984  
Regular sign-up: September 12, 1984

## ROBIN'S NEST

Luxurious Spacious Dorm Next to China Garden

Upstairs room (no kitchen)

Double, \$95/mo.; single \$180/mo.

Downstairs room (w/ kitchen)

Double, \$150/mo.; single, \$270/mo.

\*Wall-to-wall carpet

\*Private bath

\*Central air

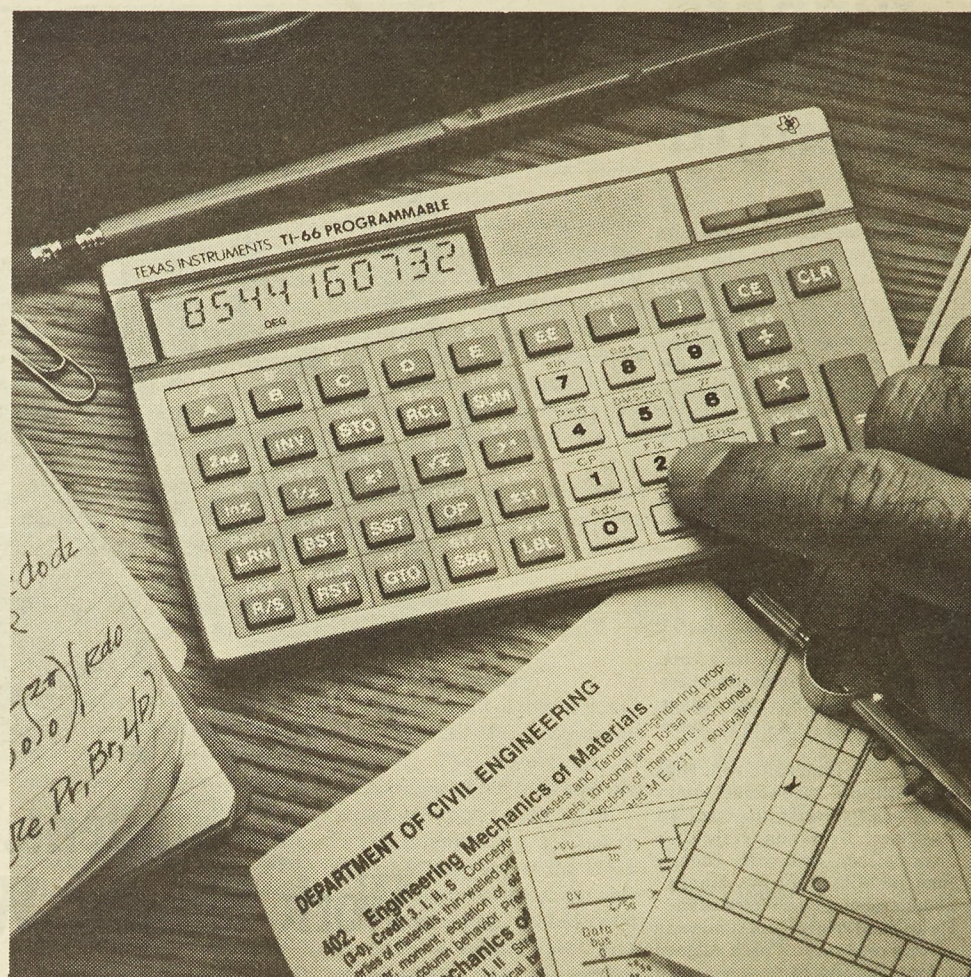
\*Laundry available

\*One minute to UMR Library

\*Summer rate reduced

341-2731; 341-4478; 364-2807

364-3865; 341-4485



## Is your calculator in the same class you are?

Move up to the TI-66. The easy 512 step programmable.

You're into higher math and your old calculator helped get you there.

But now it's time for something more. The TI-66 from Texas Instruments. The TI-66 offers full programming power and flexibility so you can solve complex and repetitive math problems quickly, easily and with fewer keystrokes than you thought possible. Its 512 merged program steps and over 170 built-in scientific, engineering and statistical functions make for powerful programming. And the sleek, streamlined design makes for easy use.

Its Algebraic Operating System makes it easy on your brain by allowing you to key in problems as they are written, left to right. And a 10-digit angled Liquid Crystal Display not only makes it

easy on your eyes but provides alphanumeric notation of your program steps so you can make easy modifications as you go along.

There are large, readable keys for your fingers, and an easy-to-follow guidebook so you shouldn't get confused. And last, but certainly not least, at a suggested retail of \$69.95, there's a price that's easy on your pocketbook.

All in all, if we made the TI-66 programmable calculator any easier to use, it would deserve its own degree.

**TEXAS INSTRUMENTS**  
Creating useful products and services for you.