



14 Mar 1984

## The Missouri Miner, March 14, 1984 – St. Pat's 1984 The Best Ever!

Follow this and additional works at: [https://scholarsmine.mst.edu/missouri\\_miner](https://scholarsmine.mst.edu/missouri_miner)

These newspapers reflect the attitudes, perspectives, and beliefs of different times. Neither the library nor the university endorses the views expressed in these collections, some of which contain images and language which may be offensive to some readers.

---

### Recommended Citation

"The Missouri Miner, March 14, 1984 – St. Pat's 1984 The Best Ever!" (1984). *The Missouri Miner Newspaper*. 2366.  
[https://scholarsmine.mst.edu/missouri\\_miner/2366](https://scholarsmine.mst.edu/missouri_miner/2366)

This Newspaper is brought to you for free and open access by Scholars' Mine. It has been accepted for inclusion in The Missouri Miner Newspaper by an authorized administrator of Scholars' Mine. This work is protected by U. S. Copyright Law. Unauthorized use including reproduction for redistribution requires the permission of the copyright holder. For more information, please contact [scholarsmine@mst.edu](mailto:scholarsmine@mst.edu).

# MISSOURY MINER

*For the students of UMR*

Volume 72, Number 22

Wednesday, March 14, 1984

Twenty Pages

## St. Pat's 1984 The Best Ever!\*



\*The unofficial St. Pat's celebration  
of the 1984 Olympics.

PJVR

# CALENDAR OF EVENTS

**Editor's Note:** If your organization is having a meeting, turn in details to the **Miner** office in the Rolla Building before Sunday at 8 p.m., and we will list it in the Calendar of Events section of the paper.

No articles submitted will be printed unless written in complete sentences with proper grammar. No schedules or flyers will be rewritten and published by the staff for Calendar of Events.

If you want something published in more than one issue, please submit it just prior to each issue (and before the Sunday deadline).

If your organization is sponsoring a campus-wide event for the benefit of charity, get us details before Sunday at 8 p.m. We will advertise the event free of charge in this space.

The **Miner** reserves the right to edit any notices or ads for this page before publication.

## THURSDAY

**Chi Alpha Christian Fellowship**

We, the members of Chi Alpha Christian Fellowship, invite you to join us in a time of worship of our Lord Jesus Christ and a time of fellowship with some of His believers here on campus. We would like to introduce you to our wonderful Saviour. We meet every Thursday evening at 7 p.m. in the Ozark Room, Univ. Center-West (upstairs). We look forward to seeing you there.

## TUESDAY

**Sigma Gamma Epsilon**

Sigma Gamma Epsilon, the Earth Science honorary, will hold its meeting March 20. Spring initiation will be discussed, all members should attend. Meeting time is 6:30 p.m. in Norwood Hall room 305.

## NODAY

**ASEM meeting**

ASEM meeting March 22 at 6:30 Phys. 104. The speaker will be Marc De Saulniers of Cheesburrel Pond. There will also be nominations for office.

**Belleville, Ill. Scholarships**

William M. Reiss Foundation Scholarship Fund scholarship applications are available in the Financial Aid Office and are due by May 1. Award amount is usually \$600/yr. and is limited to graduates of publicly supported high schools in Belleville, Ill. Return applications to:

The William M. Reiss Foundation Scholarship Committee  
Trust Department  
Belleville National Bank  
23 Public Square  
Belleville, Ill. 62222

**December Graduates**

If you will be completing requirements for a degree at the end of the fall semester, you should make application for that degree by going to the Registrar's Office before April 13.

## Missouri Miner

The **Missouri Miner** is the official publication of the students of the University of Missouri at Rolla. It is published weekly at Rolla, Missouri. The **Missouri Miner** features activities of the students and faculty of UMR.

Editor-in-Chief ..... Karen Penney ..... 364-3561  
Business Manager ..... Tracey Gerhold ..... 364-8989  
Dawn Nash (Asst.)  
Advertising Director ..... Carol Suit ..... 364-8989  
Sheila Courtway (Asst.)  
Managing Editor ..... Laura Pagano ..... 364-3019  
News Editor ..... Pat Van Ryckeghem ..... 364-0018  
Paul McLaughlin (Asst.)  
Cameron Coursey, Mark Holden,  
Brian Ruhmann, Kevin Thornsberry  
Features Editor ..... Heraldeen Sprenger ..... 364-5369  
Larry Tipton (Asst.)  
Rajpal Abelnayake, Phyllis J. Harster,  
Darren Haverstick, Diane Heuring,  
Aruna Katragadda, Sandy Nugent,  
Jane Sheputis  
Sports Editor ..... Scott White ..... 364-1490  
Bob Gayner (Asst.), Chris Colona,  
Brett Giddens, Dan Lichtenwalner,  
Bob Lynch, Anne Werner  
Photo Editor ..... Rich Bee ..... 364-9885  
Karen Olsen (Asst.), Barb Thomas,  
Dave Stanfield, Nancy Winkler  
Distribution ..... John Brendal ..... 364-9792  
Harry Frank ..... 364-9885

Subscriptions are available to the general readership at a rate of \$7.00 per semester. Articles and photos for publication in the **Miner** must be in by 8 p.m. on the Sunday before distribution on Thursday.

### THE MISSOURI MINER

303 Rolla Building  
University of Missouri-Rolla  
Rolla, MO 65401  
(314) 341-4312

### Financial Aid Possibilities

Do you have questions regarding financial aid possibilities at UMR? If so, the Student Financial Aid office would like to explain these possibilities to any campus club, organization or group in a presentation. Contact Student Financial Aid at 106 Parker Hall or telephone 341-4282.

### Guaranteed Student Loan Deadline For WS 1984

GSL applications for the Winter Semester 1984 (Jan.-May '84) must be submitted to the Student Financial Aid Office by March 30, 1984. In order to have these loan requests processed in time, this due date must be complied with!

## St. Pat's Celebration schedule of events

**Source: OPI**

Rolla, Mo. — Public events schedules for the 1984 St. Pat's celebration at the University of Missouri-Rolla include:

### Wednesday, March 14

- 11 a.m. • St. Pat and his court (in full costume), riding on railroad handcar, arrive at depot.
- 12:30 a.m. • Contests: (Hockey Puck on Mall) Leprechaun look-alikes (male & female); novelty beards; greenest person (male & female); most garters put on in one minute.
- 7:30 p.m.-midnight • Theta Tau Casino Night, Pennant Hall, Manor Inn. Admission \$3. Proceeds go to Cerebral Palsy School.

### Thursday, March 15

- 5:30 p.m. • Town beard contest, Dave's Barber Shop (first prize \$30, second prize \$20, third prize \$10).
- Judging of window displays.

### Friday, March 16

- 9 p.m. • Coronation and knighting ceremony, Gale Bullman Multi-Purpose Building.

### Saturday, March 17

- 8:30 a.m. • Floats assemble in their sections. Green stripe painted down Pine Street.
- 9 a.m. • Non-floats and special units assemble in their sections.
- 10 a.m. • St. Pat starts down Pine Street.
- 11 a.m.-1:30 p.m. • St. Pat's Parade: East to Pine St. on 6th, north to 12th St. on Pine, west to Rolla St. on 12th, south to 6th St. on Rolla St.
- 8 p.m. • St. Pat Concert, "Greg Kihn Band," Gale Bullman Multi-Purpose Building. General admission \$5 per person.

### Preregistration Details

Preregistration for the Summer and/or Fall semester will be April 16-20. Students should obtain their preregistration materials and schedule of classes from the Registrar's Office starting April 12. Detailed information regarding preregistration will be found in the front section of the Fall schedule of classes. Students should contact their department the week of April 9 for an advising appointment.

### Sigma Gamma Epsilon

Initiation will be held March 22 at 6, Norwood Hall room 305. All members, both active and inactive, should attend. The banquet will follow at 7 and will be held at the Deli. Tickets should be bought in advance from Sue or Robert, Norwood 306.

### Student Financial Aid

Guaranteed Student Loan forms for Fall '84 semester / Winter '85 semester will be available in the Student Financial Aid Office on April 1. The Student Financial Aid Office recommends that students complete the ACT Need Analysis Form (for grants, other loans, and College Work Study) before submitting Guaranteed Student Loan forms. The Student Financial aid office also would like to recommend to students who will be applying for a Guaranteed Student Loan to borrow no more than is absolutely necessary and to give thought to the matter of repayment.

Remember: The 1984-85 ACT Need Analysis Form should be completed before April 30. First preference is given to those applicants whose ACT Need Analysis Form is received by ACT by April 30.

### SUB Table Tennis Tournament

Sign up in Univ. Center-East March 8-13. Brackets posted on March 14. Play begins March 19. Players must be in agreement on location and rules of games.

## Fundamentals of Engineering Exam for Engineers in Training (EIT)

### Evening Review Schedule — Spring 1984

Each year members of the UMR faculty volunteer their services to review the various areas covered on the EIT Exam.

Sessions will be held at UMR 7-10 p.m. these nights:

Tues Mar. 20	ME 104	Electrical Eng.	—Prof. Nau
Thurs Mar. 22	G-3 Chem	Fluid Mechanics	—Prof. Bayless
Tues Mar. 27	ME 104	Heat, Power & M.E.	—Dr. Sauer
Thurs Mar. 29	G-3 Chem	Statics & Dynamics	—Dr. Hornsey
Mon Apr. 9	ME 104	Engineering Econ.	—Prof. Roberts
Thurs Apr. 10	ME 104	Strength of Materials	—Dr. Oster
Wed Apr. 11	ME 104	Mathematics	—Dr. Johnson

The Examinations will be given on Saturday, April 14.

A list stating each applicant's name and room number for the exam will be posted near Civil Eng. room 111 on Friday evening prior to the exam. Copies of this schedule are available in CE 111.

## Cash awards given for undergraduate research

**source: Dale Elifrits**

The UMR Chapter of the Society of Sigma Xi of offering cash awards to undergraduate students who do the most outstanding research at UMR during the academic year 1983-84.

There are four cash prizes: \$100, \$75, \$50, and \$25. Copies of papers from previous years may be seen in the Social Sciences Department Office.

The rules are:

1. The research paper must cover original work performed at UMR and must be completed while the student is an undergraduate student at UMR.
2. If the paper submitted to Sigma Xi has, or will be, submitted to other competitions, this information, along with any previous cash awards, should be listed on the cover page of the paper.
3. Four copies must be

received by the chairman of the awards committee on or before March 25, 1984.

For more information contact C. Dale Elifrits, chairman of the awards committee of Sigma Xi, Department of Geological Engineering, 125 Mining Building, phone 341-4847.

**LA POSADA**  
Mexican Restaurant  
Hwy. 63 So. Rolla, Mo.  
364-1791 Closed Monday

Pleasing the Rolla  
Area with Mexico  
City style cooking  
and reasonable prices  
since 1972

**Sally's**  
Flowers & Gifts  
707  
Hwy 63 S  
364-1777

### TUTORING

#### ALPHA CHI SIGMA

Freshman and Analytical Chemistry  
7:00-9:00 PM Tuesday and Thursday  
Room 126 Chemistry Building

#### CHI EPSILON

Statics, Dynamics and Mech. of Materials  
Tuesday and Thursday 7 - 8:30 PM  
Room 119 Civil Engineering Bldg.

#### ETA KAPPA NU

EE Help Sessions, Room 105 EE Bldg.  
Mondays 7-9:00 PM

#### KAPPA MU EPSILON

Trig, Algebra and Calculus  
Monday and Thursday 6:30-8:00 PM  
Room 202 Math-Comp Sci Building

#### MINORITY AND Women Engr.

Physics, Math, EE, CHE, EM  
Chemistry, English and Computer Sci  
A complete schedule of times and dates is available in Room 204-Rolla Building

#### SOCIETY OF PHYSICS STUDENTS

Physics 21-25 and 107  
7-9:00 PM each Tuesday  
Room 130 Physics Building

## StuCo expresses concern over student space

by Brian Ruhmann

At a recent meeting of the University Center Board, Al Royal, vice-president of Student Council, raised some concerns of students about the University Center. The major thrust of the concerns was the loss of student space and decreased availability for student use.

At the focus of the loss of student space was the inadequate study facilities in the University Center. When the University Center was designed, it was not designed with an emphasis on studying space. However, as the student population increased, the University Center became an alternate study area.

According to Jess Zink, director of Auxiliary Services, Auxiliary Services has tried to accommodate this need. On a trial basis the cafeteria was opened for studying. Insufficient usage and security problems indicated opening The Gallery for studying. This area is used extensively for studying; on any given night 15-20 students can be found there.

The possibility also exists, if a student or group of students absolutely must have a place to study, for them to reserve a meeting room in the University Center or a classroom elsewhere on campus. These reservations may be made through the reservationist, Kathie Laue. Admittedly, some forethought must be

given, but arrangements can be made.

If study space in the University Center is critical, the University Center Board and Auxiliary Services will consider proposals to better the University Center studying facilities. One such improvement would be the installation of a second lighting system intense enough for studying in the Miner Lounge and The Gallery.

The second concern expressed by Royal was the loss of student space. The biggest example of this is the conversion of the St. Pat's Ballroom to the Bookstore. More recent is the construction of two offices into the lounge area of University Center West.

Zink says that the expansion of the Bookstore into St. Pat's Ballroom was done to insure that the student would always have a bookstore available to them and also as a revenue generating move to pay off student loans on the University Center. The Bookstore generates a significant amount of profit that goes toward the loans and expansion of programs.

The expansion of the two offices also represents a revenue generating move in that it allows better conference planning and room reservations. Conferences and room reservations generate almost 100% profit that goes toward programs and toward paying off the loans on the University Center. These programs decrease the amount of Student Activity Fee increases. The expansion of the offices did not decrease student space significantly, the amount of furniture remained the same.

It is true that sometimes facilities of the University Center are not available to students, but this just reflects that planning by the students was not done in advance. The majority of the time, though, alternate space is available on campus through the reservationist.

Any suggestions, comments and complaints may be deposited in the Student Council "Bitch Box" across from the Bookstore.

## Banners fly again — — under SUB supervision

by Brian Ruhmann

Last week Jess Zink, director of Auxiliary Services, suspended the practice of hanging banners on the exterior of the University Center-West. This suspension was due to the determination that students walking on the roof caused damage to the roof that allowed water leakage into the Bookstore.

An ad hoc committee consisting of representatives from Student Council, Student Union Board, Physical Facilities, University Center Board and Auxiliary Services was formed. They met on Wednesday, March 7 to discuss possible solutions.

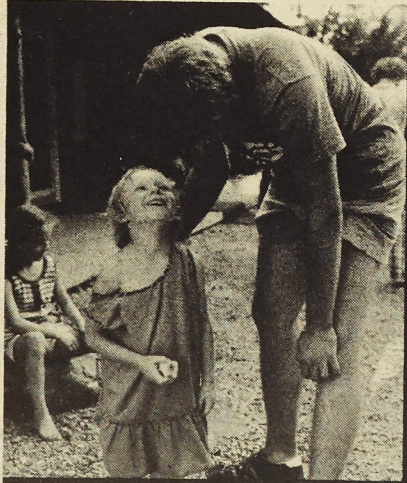
The following procedure was adopted until a permanent access to the roof can be constructed:

1. Banners must be approved at the Student Activities Office, 202 Rolla Building.
2. Access to the roof is gained

from Sherry Romine in the Student Union Board Office, 217 University Center-West, who will also explain the boundaries of the roof.

3. Banners will be hung under SUB's supervision from 8-10:30 a.m., Monday-Friday. The banner may be hung no longer than one week prior to the event and must be removed one school day after the event or a \$5 removal fee will be charged to the organization. No more banners will be hung for that organization until the removal fee is paid.

4. You must supply your own tape and paper. Oil base paint is recommended to avoid damage to the banner from the rain. A ladder will be provided for the hanging of banners.



### Serve in Appalachia

This summer the Glenmary Home Missioners, a society of Catholic priests and Brothers, are offering opportunities for Catholic men to serve the poor of Appalachia. These volunteer programs will enhance your perception of those in need. Come and learn with Glenmary. Your choice of week-long sessions is available as follows:

May 19-25, 1984  
June 9-15, 1984  
July 21-27, 1984  
August 4-10, 1984



For more information, please complete the coupon below and forward it to: Reverend Jerry Dorn, Glenmary Home Missioners, Box 46404, Cincinnati, Ohio 45246.

Name \_\_\_\_\_ Age \_\_\_\_\_  
College \_\_\_\_\_ Year of Study \_\_\_\_\_  
Address \_\_\_\_\_  
City \_\_\_\_\_ State \_\_\_\_\_ Zip \_\_\_\_\_  
Telephone (\_\_\_\_\_) \_\_\_\_\_



Happy St. Pat's To The Missouri Miners and Alumni  
Specials Daily at Chum's and the "Office Lounge" 1102 Pine

## Attention: May & August '84 Graduates Data Systems Group Openings in Austin & Houston, Texas

Find out about careers at the leading edge of technology. If you'd like to work with a company that's dedicated to innovation and growth, TI wants to talk to you.

The Data Systems Group is responsible for the designing, manufacturing, marketing and servicing of digital equipment, mini-microcomputers and peripheral devices. State-of-the-art software acquisition and evaluation including artificial intelligence, conventional applications, graphics and LAN are also involved.

Texas Instruments Data Systems Group is hiring for the following positions:

- Hardware & Software Engineers
- Programmers
- Marketing Representatives
- Strategic Planners
- Production Engineers

To qualify, you must have a BSEE, MSEE, BSCS, MSCS, BSME, BSIE, BBA or MBA (marketing emphasis) with technical undergraduate degree. GPA of at least 3.0 (4.0 scale) is preferred.

At Texas Instruments our growth is dependent on your success. That's why we offer advancement, plus an attractive benefits package including an educational assistance program, a stock option purchase plan, company-paid insurance and more!

Apply Today. Send your resume to: Texas Instruments/Staffing Manager/P.O. Box 2909, M.S. 2208/Austin, Texas 78769 or Texas Instruments/Staffing Manager/P.O. Box 1444, M.S. 7814/Houston, Texas 77251.

An Equal Opportunity  
Employer M/F



## TEXAS INSTRUMENTS

Creating useful products  
and services for you.



The Greg Kihn Band: Steve Wright, Larry Lynch, Greg Kihn, Gary Phillips, Dave Carpenters.

SUB presents the

## Greg Kihn Band

By Sandy Nugent

The Student Union Board presents the Greg Kihn Band as the 1984 St. Pat's Concert. Greg Kihn will perform live in concert Saturday, March 17 at 8:00 p.m. in the Gale Bullman Multi-Purpose Building. Tickets are \$3.00 for UMR students and \$5.00 for the public. Champion will perform as the warm-up band.

The Greg Kihn Band, most famous for the song "Jeopardy," has had a long history of success. The following is a letter written by Greg Kihn:

"I had always intended to form a band. Music has been my main interest since I first saw a rock'n'roll band on stage when I was growing up in Baltimore.

"My first appearances on stage in Berkeley, California were done unaccompanied on acoustic guitar. I met bassist Steve Wright and we expanded to include Larry Lynch on drums and Gary Phillips on keyboard and guitars. And in '82, guitarist extraordinaire Greg Douglass became our new member.

"The past year has been one of almost 'Kihntinuuous' travel. Our favorite two tours were with Journey and Rick Springfield. Traveling by bus has really impressed all of us with the enormity of our country and the number of people who really rock.

"During the past eight years, the band has made every kind of record we could, using the classical rock guitar lineup. We completed 'Kihnspiracy,' our seventh album, in 1983. Possibilities for the future could include anything from geometric progression of musicians to solo acoustic work. Having

fun recording good songs in rock'n'roll configurations is my present goal.

"On my songwriting—I've changed a little for this record by prerecording many of the songs at home using my multi-track cassette deck and rhythm machine.

"The most-asked question lately has been: 'Have things changed since the success of 'Jeopardy?'" Obviously, they have. We now play in front of more people and have access to more opportunities.

"I look forward to the future."

Greg Kihn

SPI, AH Games • D&D Supplies  
**ROLLA CRAFT & HOBBY**  
1009 Pine Rolla, MO 364-5581

**Christopher Jewelers**  
Diamonds and Watches  
903 Pine Rolla, MO 364-2264

## St. Pat's Facts

Just in case someone out there hasn't noticed yet, St. Pat's 1984 is just ONE DAY away. That's right, the Best Ever starts tomorrow. The whole campus looks psyched today with their Green Sweatsuits on, and hopefully you'll all get on PM Magazine. For those of you who haven't got a schedule, here are the events for the rest of the week:

Thursday, March 15:  
11:00 Shuttle buses start  
Sig Ep sponsors

## Ladies mud-wrestling

Only two weeks are left before Rolla's first professional Ladies' Mud-Wrestling exhibition. The Southern Illinois Slammers will be bringing their beauty and strength to Pennant Hall behind Manor Inn on Saturday, March 24, at 8 p.m. for a two-to-three-hour show.

The mud-wrestling exhibition is being sponsored by Sigma Phi Epsilon to benefit the recently destroyed Rolla Cerebral Palsy School.

Kirk Boese, organizer of

running to Lions Club Park from Frat Row, Comp Sci, Multi-Purpose

11:15 Extravaganza '84 starts

12:30 Quarter-Barrel Chug starts

5:30 Town Beard and Window Display judging

Friday, March 16:

1:00 St. Pat's Games—Lions Club

9:00 St. Pat's Coronation and Knighting Ceremony at

Gym

9-1 Coronation Dance with Circus at Pennant Hall.

Saturday, March 17

9:30 St. Pat and his court start down Pine Street

11:00 St. Pat's Parade '84

2:30 Knighting Ceremony at football field

7:30 Presentation of Participation Trophy

8:00 St. Pat's concert with Greg Kihn Band

the event, says he was very impressed with the support shown by area residents. "I was amazed at the enthusiasm we've received already," he said. "We have already begun receiving mail orders for tickets." Sales are expected to increase now that several Rolla merchants have agreed to sell tickets.

Enthusiasm is being shown in areas besides ticket sales as well. According to Boese, "KCLU Radio is organizing their 'Mad Masked Mud-

Wrestlers of KCLU' to take on any challengers after the professional show." There will hopefully be another station to challenge them for the title of "Mud Queens of 1984."

Tickets may be purchased for \$3 each at Key Sports, 509 Liquor, or Radio Shack, all of Rolla. If any seating remains on the night of the exhibition, tickets will be sold at the door for \$3.50. Persons wanting more information are asked to contact Boese at 364-8577.

## Buses provided

Source: OPI

Rolla, Mo. —Nine buses will run continuously from 10:45 a.m. through closing, for participants attending the St. Pat's Extravaganza on Thursday, March 15. This free service is provided by the UMR St. Pat's Board.

To encourage use of the bus service, there will be a \$5 fee for parking individual vehicles at the Lions Club facilities.

In keeping with the increased public emphasis on promoting highway safety

and the increased use of DWI citations, the Missouri Highway Patrol has informed the St. Pat's Board that several Highway patrol cars will be stationed along the Lions Club Park-campus route on Thursday. Rolla police will be making spot checks.

Buses will run from three locations: midway along the

north side of the Multi-Purpose Building parking lot; at the State Street entrance to the silver parking lot across the street from the Math-Computer Science Building parking lot; and the street opposite Delta Sigma Phi on Fraternity Row. They will run to the park and return to the same points. Bus waits should not be more than 15 minutes.

**Quality Cleaners**  
Expert cleaning Reasonably Priced  
108 W. 7th Street Rolla, MO 65401



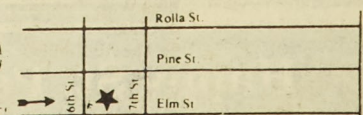
THE **HAIRBERDASHERY**

OPEN Monday-Saturday 9:00 to 6:00  
**Excellent Haircuts & Soft Natural Perms**  
**364-6416**

COUPON  
\$2.00 off  
with I.D.  
Any Service  
Expires 3-30-84  
COUPON



THIS IS IT!



University

Rolla St

Pine St

Elm St

24th St

# ISC brings part of the world to UMR

By Aruna Katragadda

On March 4, the International Student Club (ISC) organized a program which showed the people of Rolla that its not a small world after all.

The program turned Centennial Hall into an illusion of the different parts of the world. Students from UMR represented such countries as Greece, India, Libya, Malaysia, Peru, Taiwan, Thailand, Turkey, Venezuela, and Vietnam. Members of each country provided a large display of their nation's art work, clothing, jewelry, and handmade accessories. Items exhibited ranged from pictures carved out of seashells, handwoven rugs, sandalwood statues, stone necklaces, and handmade dolls.

Behind each table participants, dressed in their native clothes, answered questions about their country from the curious visitors. The variation of clothing was quite apparent from one country to another. The girls from Vietnam and

Taiwan wore long silk shirts and silk pants. Less extravagant were the representatives from Venezuela. They wore straw hats, brightly colored ponchos and wooden sandals. The ladies from India wore long, silk saris and the traditional "dot" on their forehead. To clarify the significance of the dot, it seems long ago that it meant the lady was married. However, now ladies of all ages wear it whether they are married or not. No, the dot is not engraved in the forehead when the woman is born, but rather it is like liquid paint that can be put on and taken off repeatedly. The only time a woman does not wear this "dot" is after her husband dies, to show her grief and respect for him. Across from the ladies of India, the men from Malaysia were dressed in clothes that resembled Karate outfits.

One visitor commented, "Passing by each table was like passing through the country itself."

Although the physical appearances of each country and

its people are distinct, the way of life has become somewhat similar among the people because of European influence in their countries.

Fixed marriages, what once used to be a popular custom in many of the countries is not practiced as much. Women and men are now given the freedom to choose their own spouse. Although dating is allowed the rules of dating are very strict and conservative.

Western influence has also changed the women's roles among the countries. Before a woman was a housewife and mother, and that was how far her career went. However, now many are attending college and stepping into the career world. In the career world, the most common selection among many women is to either be a secretary, teacher or doctor.

After the visitors toured the

exhibition, lunch was served at the price of six dollars for each person. The money collected was donated to the Coterie of Faculty Wives and ISC. The food served was from each country.

Said one elderly woman referring to the food, "I didn't think I would like the food at first, but after trying it, I was surprised to discover how tasty it really was."

During the meal, entertain-

ment was provided as young dancers from different countries dazzled the audience.

The exhibition, the enthusiasm and participation of the international students, food and the boldness of the young performing artists all added to create a colorful and unique atmosphere.

One person commented, "I enjoyed the program, it was a really good idea. I'll be sure to come next year again."

## Townpeople express Opinions on St. Pat's

By Jane Sheputis

When you think of St. Pat's do you see it as a UMR campus event or regional holiday that takes place in Rolla, Missouri? Most people students and Rolla residents alike would probably view it as a campus event. In reality, however, the St. Patrick's Day celebration in Rolla is both.

Not all the strangers you will see this weekend are other students' friends, reminiscing former UMR graduates or just examples of the drifting beer drinkers of America. Some Rolla residents celebrate St. Patrick's Day, too. However, other townspeople feel the universal drunkenness "defiles Rolla".

The people who live here have different opinions on the value of the St. Pat's celebration.

Some of the faculty members here think St. Pat's is a great idea. For instance, Dr. Max Anderson, a faculty member in the EE department thinks that St. Pat's "is good for University spirit" and improves campus morale. Dr. Anderson also thinks that most of the alumni he's acquainted with favor the St. Pat's celebration because they feel it is a characteristic or traditional UMR activity.

However, Dr. Anderson's wife Mrs. Tina Anderson, believes many Rolla residents feel that all the drinking done at this time "gives Rolla a bad name".

Many residents seem aware of the revenue Rolla receives during St. Pat's weekend. Donna Van Trieese, who co-owns the Manor Inn with her husband says, "The St. Pat's celebration is a happy and profitable activity for the entire

business community."

Rolla residents are aware of the risk of having property damaged or stolen during this time. University police are not permitted to use their vacation time during St. Pat's. Sargent Willis Hall of the University Police claimed that all of the campus policemen will be patrolling University property, (the campus, Fraternity row, the Multi-purpose building, etc.), during this time and that they will be enforcing the open container law.

"People are more careful about locking their doors and guarding their property around St. Pat's because students steal trees to make shillags and get rowdy and vandalize things", says Mark Anderson, who's lived in Rolla for the past seven years. He also indicated that the "townies" are on guard because of the great influx of strangers during this weekend.

It is hard to blame residents if they seem overly cautious in view of some of the things that happen during each St. Pat's celebration. Last year the bell on top of the Taco Bell building was stolen. Three years ago one UMR professor came home and found several of the pine trees in his yard had been dug up and stolen.

Despite these sort of incidents though there never seems to be any lack of townspeople watching or participating in the St. Pat's day parade. Although the Rolla Daily News prints letters from people who wish that there were more restrictions on the festivities each year, the city council has not made a move to ban any of the traditional activities. Rolla and the UMR campus will probably be celebrating St. Pat's the same way for many more years to come.

## Take Charge At 22.



In most jobs, at 22 you're near the bottom of the ladder.

In the Navy, at 22 you can be a leader. After just 16 weeks of leadership training, you're an officer. You'll have the kind of job your education and training prepared you for, and the decision-making authority you need to make the most of it.

As a college graduate and officer candidate, your Navy training is geared to making you a leader. There is no boot camp. Instead, you receive professional training to help you build the technical and management skills you'll need as a Navy officer.

This training is designed to instill confidence by first-hand experience. You learn by doing. On your first sea tour, you're responsible for managing the work of up to 30 men and the

care of sophisticated equipment worth millions of dollars.

It's a bigger challenge and a lot more responsibility than most corporations give you at 22. The rewards are bigger, too. There's

a comprehensive package of benefits, including special duty pay. The starting salary is \$17,000—more than most companies would pay you right out of college. After four years, with regular promotions and pay increases, your salary will have increased to as much as \$31,000.

As a Navy officer, you grow, through new challenges, new tests of your skills,

and new opportunities to advance your education, including the possibility of attending graduate school while you're in the Navy.

Don't just take a job. Become a Navy officer, and take charge. Even at 22.

NAVY OPPORTUNITY INFORMATION CENTER  
P.O. Box 5000, Clifton, NJ 07015

W 341

☐ I'm ready to take charge. Tell me more about the Navy's officer programs. (OG)

Name \_\_\_\_\_ First \_\_\_\_\_ (Please Print) Last \_\_\_\_\_

Address \_\_\_\_\_ Apt. # \_\_\_\_\_

City \_\_\_\_\_

State \_\_\_\_\_ Zip \_\_\_\_\_

+College/University \_\_\_\_\_

Age \_\_\_\_\_ Year in College \_\_\_\_\_ GPA \_\_\_\_\_

▲Major/Minor \_\_\_\_\_

Phone Number \_\_\_\_\_ (Area Code) \_\_\_\_\_ Best Time to Call \_\_\_\_\_

This is for general recruitment information. You do not have to furnish any of the information requested. Of course, the more we know, the more we can help to determine the kinds of Navy positions for which you qualify.

## Navy Officers Get Responsibility Fast.

# ★ ★ Classifieds ★ ★ Classifieds ★ ★

Classifieds are offered free of charge as a service and source of entertainment to the readers.

- The **Miner** will not print the combination of first and last names.
- The **Miner** will print phone numbers only in business-related ads.

The **Missouri Miner** reserves the right to edit or refuse publication of any classifieds that the staff find offensive or libelous.

Classifieds should be submitted (placed in the **Miner** box, first floor of the Rolla Bldg) by 4:30 p.m. the Friday before the issue in which it is to appear.

## FOR SALE

For Sale: 1979 Kawasaki KZ-750, good condition, good gas mileage. Must sell Call John 341-2821

## WANTED

Are you interested in participating in psychological research? The study, entitled "Personal Opinions and Personality traits of College Students" requires females majoring in Engineering of Computer Science. Sign up sheet is in H-SS 2nd floor on the Psychology Bulletin Board.

Do you drive to Tulsa, Oklahoma City, Amarillo, or some place in the vicinity of these cities? Would you be willing to take a passenger? CONTACT CURT AT 364-9816.

Looking for studious roommate for Fall 1984. Three bedroom House, 3 blocks from Campus. Call 364-1402. Ask for Lisa or Nancy.

Wanted:

I need a ride to St. Louis on Wed., March 28, for the Adam Ant concert. If you can help, call Dave at 364-9768, Rm. 851.

## St. Pat--The man behind the legend

At the heart of this green holiday of St. Patrick's Day is a man. Separating fact from fiction about who he was is a task that many scholars and historical researchers have sought to do. Although steeped in legend and tradition, the story of St. Patrick comes to the surface when his own writings are examined, revealing a man devoted to serving Christ and spreading the Gospel to a heathen people.

St. Patrick's own testimony of his life and faith can be found in his **Confessions**. In this book, Patrick states that he was born in Britain (not Ireland) in 389 A.D. at Bonavem Taberniae. He was captured at the age of 16 and taken to Ireland as a slave.

It was there, in captivity in Ireland, that he spent six years of his life and decided to serve Christ as the way to salvation.

"I can't keep quiet about how God blessed me in my captivity," confesses Patrick. And keep quiet he didn't, for

after escaping back to Britain he heard God calling him back to Ireland, once the land of his captivity, to proclaim the gospel of Jesus Christ.

During his first year in Ireland, Patrick faced intense opposition. About a year after his arrival, King Leogaire and his princes summoned him to celebrate a Druid festival at Tara. The Druid priests were filled with rage against him, but Patrick was undaunted. He continued to preach the gospel amid the heathen festival, resulting in the conversion of King Leogaire himself.

Patrick continued his missionary efforts and helped many come to Jesus Christ until his death in 465.

"Everyone great and small, consider the Christ who roused me, a fool, from amid those wise and skillful in the law and inspired me to serve this nation faithfully." St. Patrick's challenge to enjoy the best ever still stands today.

## PARTY LINE

Kappa Sigma's annual White Castle Party Thursday, March 15, 8:30-1:00. No imitations, real White Castles from St. Louis. Bud Light will be served.

Theta Tau Casino Night

Theta Tau Omega's Casino Night will be held tonight at Penant Hall, (behind Manor Inn), from 7:30-12. Admission is \$2.75 in advance and \$3.00 at the door. There will also be a party at the Manor Inn ballroom. All proceeds will be donated to the Cerebral Palsy School in Rolla.

## MISC.

Sports Car Club

Autocross Results from March 4th:

#1 TORU NAKANE (DATSUN 240Z) 1:20.74  
#2 TIM O'SULLIVAN (MAZDA RX-7) 1:25.85  
#3 PAUL COX (MGB) 1:27.02

Our next autocross will be held at noon, March 25, on the parking lot by the multi-purpose building. Anyone may enter. There is no entry fee.

Lost:

Men's winter coat at Multi-purpose building during wrestling on Wed., March 7. If found please call Everett at 364-1490. Reward.

Lost:

One pair of wire-frame glasses, with tinted plastic lenses. I lost them on Monday, Feb. 27, somewhere between the 12th Street railroad tracks and the Physics building. Call Larry at 364-0881

Lost: Casio Calculator. Lost in the Chem Building. If found, please call 364-2385 or 364-0652.

## PERSONALS

Congratulations to our new brothers on your initiation into the bonds of Phi Kappa Alpha. It's been a long road, but you finally made it. We are proud to be able to call you brothers and always remember, once a Pike, always a Pike.

Words to live by from a man who knows: It's not how deep you plow, it's how long you stay in the field.

To Wild Bill,

'Heard about your trip to Doolittle. Nice place to visit when it's raining, isn't it? Did you retrieve all of your clothes out of the backseat? 'Heard you had difficulty s handling the girls, but isn't attempting to jump out the car door a bit drastic?

the Sheriff

Congrats to our new pledges: Rich, Craig, Todd, Jeff, Jim, Joe, Fred, Chip, Mark, Rick, Barry, John, and Jim. Welcome to Pi Kappa Alpha, and remember, always listen to Papa Smurf. Hope your first St. Pat's as Pike's is the Best Ever! Get Psyched!

Sandy,

I am waiting for the right opportunity. Don't give up on me yet!  
The "Fox"

Bear,

You're wrong. I love you more. Bunny

Tami Jo,

Welcome to Rolla! Did you bring your homework? Can't wait to show you the library! Think we could squeeze in a party or two? Maybe a thousand? I've missed ya, girl!! We're gonna have a swingin' weekend!!!

Your old roomie

Love,

To a computer Science Friend (Advisor):

Dinner sounds great,  
And the movie too.  
But before we go,

WHO ARE YOU!!!

L.F.

To those responsible for the library reforms: THANK YOU

69084

Continued next page

## Name Brand Merchandise Ready, Set, PARTY

Get your Party Supplies here. Tablecloths, Napkins, Cups, Paper Plates, Invitations, St. Pat's Buttons, Stickers, Buttonaires, Green silk Carnations, and

### SAVE 50%

2400 square feet of Gifts, Stationery, Cards, Candles, and many items not available in other Rolla stores.

NOW THROUGH MARCH 17th-GET AN ADDITIONAL 10% OFF OUR ALREADY 50% SALE PRICE BY SHOWING A UMR STUDENT ID CARD.

Holiday 50% OFF Store

1109 Forum Drive Rolla

(Across from the Forum, Next to Delano's Station)

Mon-Fri 9:30 - 6:30

Saturday 9:30 - 5:30

VISA & MASTERCAR ACCEPTED

# ★ ★ Classifieds ★ ★ Classifieds ★ ★ Classifieds ★ ★

Many thanks to Blue Key for the student directory. However, there is an 11th floor in T.J. South.

To the flasher at Triangle:

Whoever gave you the shade for your window should be shot! Have you no modesty? From our vantage point we see EVERYTHING! Keep up the good work.

The Wenches

P.S. The view is still great.  
P.P.S. Imba-nuke kthe coat!

The International Festival Committee of the UMR Coterie wishes to thankfully acknowledge the support and assistance of Sally's Flowers, Blossom Basket, International Foods and Gifts, Books and Things, and Fletcher's Ice Cream Parlor. Without their cooperation and contributions, the Festival would not have been as accessible to the Rolla Community and not as festively decorated.

A special thanks to Professional Foodservice Management at UMR. Overseeing the students of eight nations preparing dishes for 250 guests in the UMR kitchens requires patience, understanding and good humor. Without their help, this event would be impossible.

Dishes for 250 guests in the UMR kitchens requires patience, understanding and good humor. Without their help, this event would be impossible.

Thanks also to those who came and participated in our celebration of the richness and variety of cultures from all over the globe.

Anita Metzner

Bunny.

Life in Spring time is wonderful. Let's share the woods together.

Bear

Robert.

THANKS!

Owner of the lost vest.

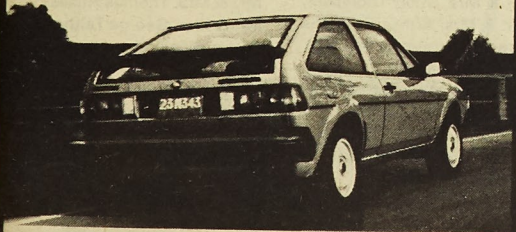
Due to the less than PG responses received to the last Question of the Week ("What is the — — — est thing you've ever seen at St. Pat's"), we have decided not to print the answers. We have also reported all of you to the proper authorities. Shame, shame, shame!

## The price will move you, too.

1984 Scirocco \$11,750\* includes air, sunroof, and AM-FM cassette



It's not a car.  
It's a Volkswagen.



CHRYSLER

Plymouth

Dodge Trucks

**AL WEST CHRYSLER**  
Hwy 63 South  
364-1233

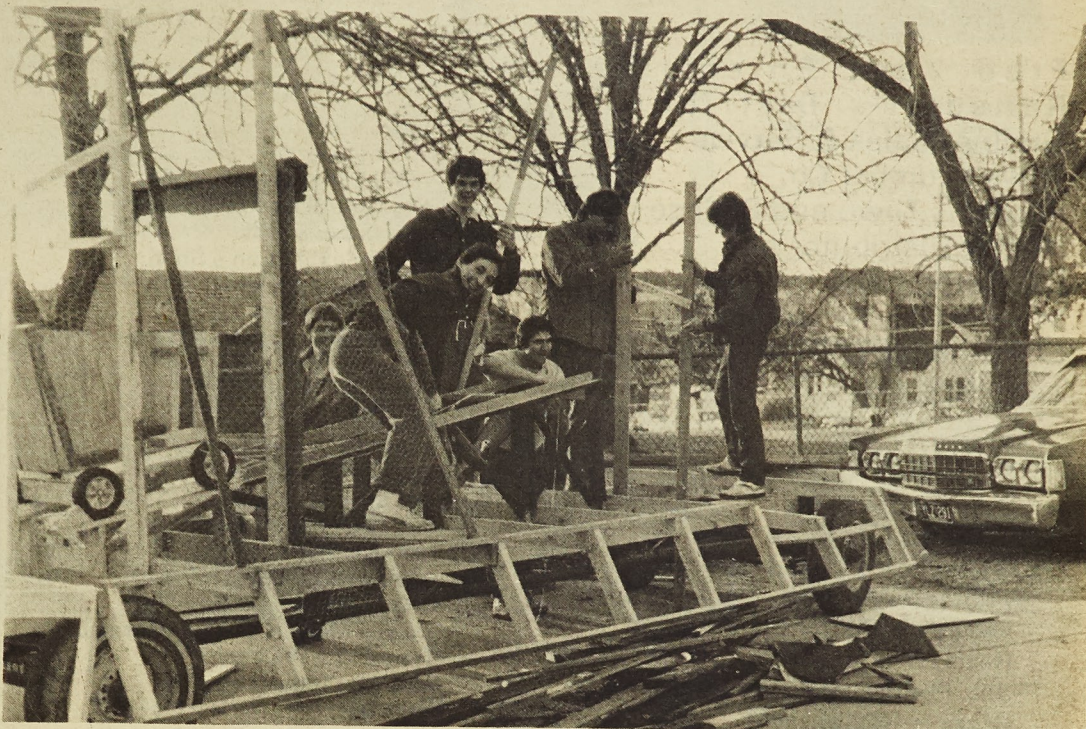
Angi, Sweetie!

You done good!! In the play, too. I hope that everything works out for next year, be it U. of A., Wash U. or the big one. Spitfire, you deserve the best! Stay "cool" and just let things ride. Remember, resilience is our middle names.

Love Always,

"The Serpent Master", protector of all serpents has been alerted for his need in the UMR area. Beware shillelagh owners. "The Serpent Master" will have his revenge. If you see a masked stranger in a dark cloak, armed with a chainsaw, make sure you know where your shillelagh is....

signed  
"Guardian of the Serpent"



Members of Phi Kappa Theta obviously enjoy working on their float entry for the St. Pat's Parade.

## BURROUGHS

# ASG

## ADVANCED SYSTEMS GROUP

## WHAT

The information systems industry is evolving at an astonishing pace. To meet the challenge, Burroughs has established a new Advanced Systems Group.

The purpose is to develop methods to interconnect all of our computer products and to open new doors to discovery in advanced networking. Ultimately, Burroughs will set the standards for the workplace of the future.

## WHY

Design and implementation teams will work on diversified assignments designing and implementing state-of-the-art local area network systems, integrating voice and data, and utilizing new and existing hardware and software to create a complete distributed processing system.

The projects are challenging. The pace is fast and stimulating. The rewards are great.

## WHEN

Now. We're creating a product family for the future. We need Spring '84 graduates with career interests in the following categories: • Computer Science • Computer Engineering • Electrical Engineering • Data Communications Engineering • Local Area Networks • Compilers • Operating Systems • Language Development • Program Generators • Data Base • Generation of technical documentation, both off-line (human written) and on-line (machine generated/interactive).

## WHERE

Our beautiful new facility in Boulder, Colorado is just minutes from the excitement of the city life in Denver. You can ski and hike the Rocky Mountains while enjoying peace and spacious living. The University of Colorado, Boulder offers advanced degree training opportunity, and with our liberal tuition benefits, you can continue forward with your academic plans.

If you meet the qualifications and accept the challenge, sign up for an **on campus interview** on **March 20** at your career placement office, or send your resume to: Jim Krug, Manager of Human Resources, Burroughs Corporation, Advanced Systems Group, 6655 Lookout Road, Boulder, Colorado 80301.

An Affirmative Action Employer M/F.

## Burroughs

## The St. Pat's Board would like to thank the following for their support:

Fred Voss Enterprises  
Ransdall's Distributors  
Grellner Sales & Service  
Powell Lumber Co.  
Russell's Town and College  
Horner Distributor's  
BCI Corporation  
Mulally Distributors  
O'Donnell Distributing Co.  
Taco Bell

Andy's Lounge  
Poe's Rural Gas Co.  
Alex's Pizza Palace  
509 Package Store  
Bradford and Fitzsimmons  
Photographers  
Pantera's Pizza  
Revco Drugs  
J.C. Penney and Co.  
Bruno's Restaurant  
American Bank  
Hillcrest Drug  
209 Tavern  
Centerre Bank  
Key Sports Shop  
The PUB  
Beverage Mart  
Colonial Lanes  
McDonald's Hamburgers  
George Walsh Chevrolet  
Howard Johnson's Motel  
Rolla Daily News  
Top Hat

Pizza Inn  
Nod-a-Way Motel  
Rolla Bus Center  
Mr. Donut  
Tim's Pizza  
End of the Rainbow Car  
Stereo  
Faulkner Package Store  
Oriental Palace  
Pub Mobile Lounge  
KCLU AM-FM  
Thrifty Lodge Motel  
Stevens Distributor, Inc.  
Barnes Engine Rebuilders  
Phillips and Co.  
Appliance Mart  
State Beauty Supply  
Hart's Appliance Center  
Quality Cleaners  
Herrman Lumber Co.  
MFA Farmer's Exchange  
Countryside Realty  
Phil's Marine Sales  
What-U-Call-It Shop  
Air-Con Engr. Co.  
G. & D. Steak House  
That Extra Size Shop  
Radio Shack  
Books and Things  
The Strawberry Patch  
Missouri Ozark Upholstery  
Dairy Queen  
Harold Mace Insurance

McCall's Carpet Store  
Duncan Moving and Storage  
Electric Motor Works  
Rolla Western Wear  
John Brown Realty  
Montgomery Ward  
Wayfarer Inn  
Interstate Motel  
William's Auto Service  
Sellers-Sexton Mazda  
Rolla Equipment Co., Inc.  
Mule Trading Post  
Judy's Wayfarer Restaurant  
Sirloin Stockade  
Ranco Electronics, Inc.  
Curtis Mathes T.V.  
Ozark Fiddlin' Shop  
(Rolla Shell)  
Rolla Welders' Supply  
Zeno's  
Bassett Realty (Century 21)  
Hiland Dairy  
O'Reilly Automotive Parts  
Top Dollar Pawn Shop  
Auto Craft Muffler Shop  
The Deli  
Bowlin Tire and Muffler  
Golden Rule Life Insurance  
Wal-Mart Inc.  
Tenco Drilling and Pump  
Co.  
Miners Town Equipment  
China Garden Restaurant

Sid's Custom Upholstery  
Diehl-Montgomery  
Ford/Lincoln Mercury  
Crow and Burlingame Auto  
Parts  
B. M. Bahr & Son Furniture  
Kroger  
Cooper Honda Inc.  
LaPosada Mexican  
Restaurant  
Neil's Custom Meats  
Foster's Bakery  
Callen Grocery  
Hillcrest Big Star Super Mkt.  
Darr's Dept. Store  
Robin's Ceramics  
ABC Bowling Lanes  
Printing Plus  
Arnold's Toys and Hobbies  
Jack Roach Insurance  
H & R Block Tax Service  
Triad Printing  
Emporium  
Chub & Joe's Restaurant  
Billie Jack's  
Dave's Barber Shop  
Needlecraft Shop  
Estey Jewelry  
Last Great American Hot  
Dog Stand  
Ramsey Furniture Store  
Genny's House of Fashion

Bishop's Store  
Charon Fabrics  
Copper Tree  
Medi-Value Pharmacy  
John Twitty Realty  
Rolla Sewing Center  
Vern's Men's Clothing  
Downtown Barber Shop  
Merle Norman Cosmetics  
Donald E. Baxter  
& Associates  
A Cut Above  
Dotty's Beauty Salon  
John's Firestone Store  
Powell Insurance Agency  
Bixler Printing Co.  
Finch's Jewelry Store  
Jett Datsun  
Wendy's Restaurant  
Dietzman's Realty  
Maid-Rite Drive-In  
State Farm Insurance Co.  
Dishman's Mobil Service  
Lilindsay Water Conditioning  
Larry's Flowers Ltd.  
Golden Corral Steak House  
Rolla Cable System  
K-Mart  
Norman Dee Inn Motel  
Town House Motel  
& Pancake House  
Missouri Engineering Corp.  
Ozark Retail Sales

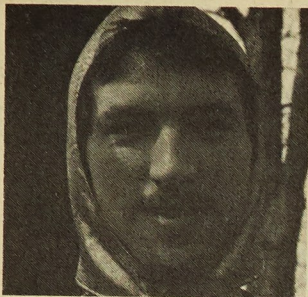
## Coronation Dance Friday, March 16 9:00 PM-1:00 AM Pennant Hall

Free Set-ups Free Admission  
With College I.D.

*Music by "Circus"*

## Blarney Club '84

Missouri Marketing Services	Joseph W. Carlo
Eugene & Eleanor Northern	Frank J. Werner
Carthage Foundary and	Jerome T. Berry
Machine Company, Inc.	Robert & Therese Brady
Marjorie T. Edwards	Robert L. Stevenson
Tom & Chris Sowers	Mr. & Mrs. W. T. Kratzer
Mrs. Edward Sowers	Col. & Mrs. Ed Owsley
William & Catherine Jenks	Mr. & Mrs. James Buckholz
James Grimm	Mr. & Mrs. Jerry Berry
John & Doreas Park	Mr. & Mrs. James Anderson
Joseph W. Mooney	Fred & Rhea Kisslinger
Robert H., Jr. & Sandra	Mr. & Mrs. Lucien M. Bolon, Jr.
Gardner	Mr. & Mrs. Denise E. Muskopf
Richard & Shirley Bauer	Mrs. Esther Stringer
Lynn H. Waggoner	Mr. & Mrs. David Hubbard
Allan & Ruth Gullborg	Mr. & Mrs. David Peterson
Mr. & Mrs. O. K. Crosser	Donald & Bettie Carroll
Mr. & Mrs. D. C. Look, Jr.	Howard E. Kilroy
Joseph M. Marchello,	Keith E. Bailey
Chancellor, UMR	Mr. & Mrs. David Ju-Sheng
Louise Marchello	Huang
James C. Olson	Marvin & Alice Barker
Don & Patricia Warner	C. Dale Elifrits
Willis L. Brown	Mr. & Mrs. Donald McGovern
Charles & Frances Beasley	Hon. Bill Emerson, M.C.
Ed & Beth Lore	Ken Lanning Real Estate
James C. Kirkpatrick	Louis H. Keil
Arthur & Marilyn Michalak	Mr. & Mrs. Gerald Triller
Paul & Eleanor Dowling	Mrs. Gale Bullman
Miriam L. Planje	Steven J. Emmendorfer
Jim & Marilyn Pogue	Mr. & Mrs. David Dearth
Rex Z. Williams	Dr. & Mrs. Bobby Wixson
E.E. Feind, M.D.	Mr. & Mrs. James "Clesie"
Dr. & Mrs. Leonard F. Koederitz	Moore, II
Weldon & Roberta Moore	Alton Packaging Corporation
John D. Powell	Robert & Ethel Roach
Mr. & Mrs. Frank Lange	Ronan & Una Gaynor
Bob & Dottie Wolf	H. Neal Grannemann, M.D.
James & Barbara Gammill	Steven & Diana Cortopassi
Dr. & Mrs. Dudley Thompson	Mr. & Mrs. Thomas Hussey
Mr. & Mrs. Arthur E. Morris	Mr. & Mrs. George Telthorst
Town and Country Realtors	Payton Wieland
A.B. Needham	Nancy R. Millar
Richard & Mary Alice Anderson	Mr. & Mrs. Daniel Hinkle
Adrian & Jean Daane	Mr. & Mrs. Robert Davis
Milton & Sandra Litzinger	Mr. & Mrs. James Halligan
Mr. & Mrs. Kent Roberts	Sally White
Donald L. Grimes	Brad & Kathleen Bryan
Mr. & Mrs. Hans Schmoldt	Mr. & Mrs. F. H. Mackaman
Jerry McBride	Jess & Nancy Zink
Mr. & Mrs. David Lewis	George & Peggy Loelkes
Neil K. Smith	Michael & Nancy Kovack
Susan M. Smith	Mr. & Mrs. B. R. Sarchet
Frank J. Bonastia Insurance	Mr. & Mrs. Henry Voss
Kittie Robertson	Mr. & Mrs. Raymond Drury
B. Ken Robertson	Mr. & Mrs. Stanley Rand
George & Evelyn Stites	Mr. & Mrs. Peter Mattei
Mr. & Mrs. Wm. Cocos	Mr. & Mrs. Tom Herrmann
Robert & Linda Laudon	John & Jeanne Epple
David & Janet Simily	Mrs. Homer A. Tucker
Agnes & Charles Remington	Mr. & Mrs. David L. Oakley
Ralph E. Meuser	Joe Tobin
James R. Sowers	Keith Killian
Rowena Westerhaus	Mr. & Mrs. Thomas J. O'Keefe
Richard & Sandra Gnecco	The Keane Team
Steve & Bette Douglass	Mr. & Mrs. Robert Lewis
Mr. & Mrs. Donald Castleman	Norman J. De Leo



*John Voss*

Son of Henry and Betty Voss of Cape Girardeau, MO. John is a junior in Engineering Management, has a GPA of 3.0, and is representing Sigma Phi Epsilon fraternity. Served the Board as Treasurer and sweat-shirt chairman. Vice-president of Sig Ep. and a member of Theta Tau Omega.

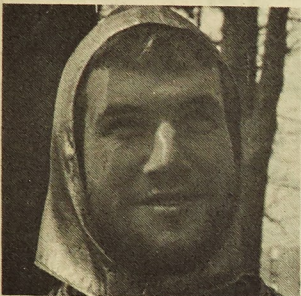


Standing from left to right: Christopher L. Woods, Thomas A. Michalak, John Voss, Scott Muskopf, Douglas Millar, James Telthorst. Kneeling from left to right: Greg Bolon, Pete Gullborg, Rich Gnecco, Dan Triller. Sitting: St. Pat, Michael J. Simms.



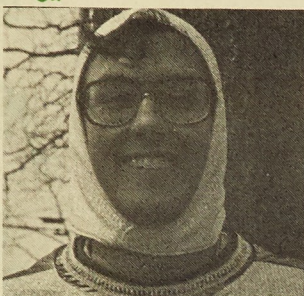
*Michael J. Simms*

Son of Donald H. Simms of Glendale, MO. Mike is a graduate student in Chemical Engineering with a GPA of 3.5. He represents Pi Kappa Alpha Fraternity. He has served the Board as President and publicity chairman, as well as being Treasurer for Pi Kappa Alpha.



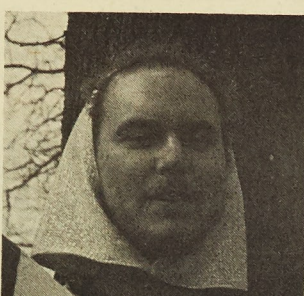
*Scott Muskopf*

Son of Duane and Denny Muskopf of Belleville, IL. Scott is a senior in Electrical Engineering. From Delta Tau Fraternity. Scott was sales manager this year and glasses and huggers last year. Served Delta Tau Delta as Sargeant at Arms.



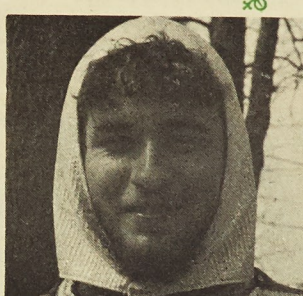
*James Telthorst*

Son of George and Lea Anne Telthorst of St. Louis, MO., is a senior in Mechanical Engineering. Representing Kappa Sigma Fraternity. Jim was Parade Fund Chairman for this year and was in charge of Decorations last year. Jim served Kappa Sigma as Secretary and Grand Master of Ceremonies.



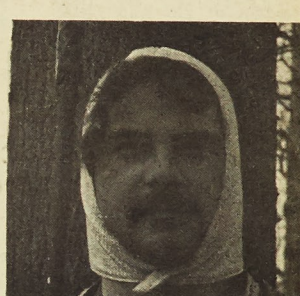
*Thomas A. Michalak*

Son of Arthur and Marilyn Michalak of Winchester, MO., Tom is a senior in Electrical Engineering. Representing Thomas Jefferson Hall Association. Tom was in charge of Functions this year and Ways and Means as well. He was trophies chairman last year.



*Christopher L. Woods*

Son of Jim and Barbara Gammill of Springfield, MO., is a junior in Engineering Management. Representing TKE. Chris has been Secretary of the Board, and also was in charge of the Knighting Ceremony. He is also a member of Theta Tau Omega.



*Doug Millar*

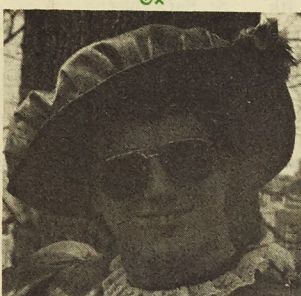
Son of Nancy Millar of Va. Beach, Va., and James Millar of High Point, N.C., Doug is a junior in Electrical Engineering. Representing Sigma Nu Fraternity. Doug has served the Board as Vice-president this year and Costumes chairman last year.

St. Pat and



*Dan Triller*

Son of Mr. and Mrs. Gerald Triller of Perryville, MO., is a senior in Civil Engineering. Representing Phi Kappa Theta. Danny has been active as Charity Chairman, Intramural Rep., and Executive Council. Danny has held positions such as head of National Publicity and Blarney Club for the St. Pat's Board.



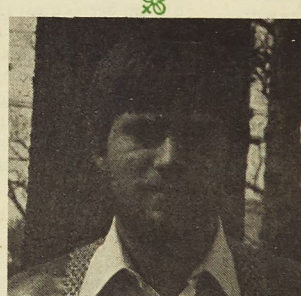
*Rich Gnecco*

Son of Richard and Sandra Gnecco of Manchester, MO., is a senior in Engineering Management. Representing Acacia. Rich has held the offices of President and Secretary. Rich has also served the Board as head of Ceremonies.



*Pete Gullborg*

Son of Allan and Ruth Gullborg of Kirkwood, MO., is a senior in Engineering Management and also Mining Engineering. Representing Beta Sigma Psi. Pete is active in SUB, ASEM, SME, and has been in charge of Special Projects, Town Coordination, and Dance & Bands for the St. Pat's Board.



*Greg Bolon*

Son of Mr. and Mrs. Lucien M. Bolon of Lee's Summit, MO., is a junior in Civil Engineering. Representing Kappa Alpha. Greg is a member of Theta Tau Omega and has participated in varsity football. Greg has been committee head of Follies and Participation Trophy.

His Court

Someone still cares about quality

Pizza & Sandwiches

**Pantera's**

Monday thru Friday  
5-min Express Lunch Specials

Beer & Wine  
7 days A Week

FREE DELIVERY

Sun-Thurs 1-10PM Fri-Sat 1-12PM

364-2050

1101 Hauck Dr. Rolla

Birthright at Rolla is now offering  
free pregnancy testing

If you are distressed by an unwanted pregnancy call us.

We can help

Office hours: noon-4 P.m. M W F S  
or by appointment 364-0066  
Come by 215 W. 8th

**Birthright**

**Brano's**

Banquet Facilities Available

Men's Night-Wednesday  
Ladies Night-Thursday

9:30 to 1:00

341-2110

1435 Hauck Drive Rolla, MO



*Lisa Delong*

The Men of Phi Kappa Theta are proud to present Lisa Delong as their St. Pat's queen candidate. Lisa, a Chemical Engineering sophomore, is very active on campus. She is a member of Kappa Delta and she has served as student council representative where she holds the office of secretary. She's currently vice-president of Phi Kap Little Sisters, a member of Phi Eta Sigma, AICHE, and received Theta Tau Omega's "Freshman of the Year" Award.



*Kenna Roberson*

The Men of Delta Sigma Phi would like to present Kenna Roberson as their candidate for the honor of St. Pat's Queen of Love and Beauty.

Currently, Kenna is a senior in Geological Engineering, and is actively involved in the Daughters of the Nile, AEG, and the Sigma Gamma Epsilon Honorary Society.



*Cheryl Barris*

The Men of Sigma Phi Epsilon proudly present Cheryl Barris as their 1984 St. Pat's queen candidate. Cheryl is a freshman majoring in Computer Science. She is a member of the Golden Hearts, the Association of Computing Machinery, and the Gold Miner Pom Pon Squad.

We feel she will represent UMR well as the Queen of Love and Beauty of St. Pat's 1984.



*Melanie Major*

Chi Omega proudly presents Miss Melanie Major as their 1984 St. Pat's queen candidate. Mel is a sophomore majoring in Engineering Management. Mel has held the office of activities chairman, and is currently the assistant pledge trainer. Her campus activities include APO, ASEM, AIEE, and Daughters of Lee.

We feel that Melanie's outstanding qualities make her an ideal choice for St. Pat's queen.

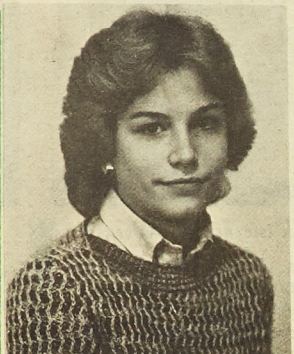
Who will be

St. Pat's



*Leticia Gonzales*

We the Men of Missouri Mines Chapter of Triangle Fraternity, proudly present Leticia Gonzales as their St. Pat's queen candidate. Leticia attended Shawnee Mission South High School and was active in varsity cheerleading, tennis, student council, and class offices. Her activities at UMR include varsity cheerleading, SHPE, MEP, SWE, and ASEM.



*Denise Whittet*

The Men of Sigma Tau Gamma Fraternity proudly present Denise Whittet as their St. Pat's Board Queen candidate. She has been a great asset to our fraternity through her affiliation with the White Roses of Sigma Tau Gamma of which she holds the office of vice-president. Because of her charismatic personality, we feel she is the best candidate for St. Pat's Queen 1984.



*Jeanne Davis*

RHA is proud to present Jeanne Davis as their 1984 St. Pat's Queen candidate. She is a transfer student from UMSL and she is presently in her 4th semester at UMR majoring in Comp. Sci. with plans to graduate in December 1984.

Jeanne has been a member of SUB, SWE, and the UMR Marching Band. Also Jeanne has contributed by being governor of her house, and a chairman of Rayl Cafeteria.



*Suzanne Hale*

The Men of Delta Tau Delta are psyched to present the beautiful Miss Suzanne Hale as the "Best Ever" candidate for the St. Pat's Queen.

Suzi is a sophomore majoring in Chemical Engineering. She is a member of AICHE, SWE, and Phi Eta Sigma. Outside of her busy schedule, Suzi has many energetic hobbies which include swimming, dancing, horseback riding, and biking.



Love and



*Cindy Koller*

The Men of Pi Kappa Alpha proudly present Miss Cindy Koller as their 1984 St. Pat's Queen candidate. Standing at 5'2" tall, Cindy is a very attractive girl with brown hair and brown eyes. She is currently a sophomore majoring in Chem. Eng. and is a member of AICHE, SUB, and the Sisters of the Shield and Diamond. Her hobbies include traveling, snow skiing, and participating in the annual St. Pat's festivities.



*Denise Cunningham*

The Brothers of Pi Kappa Phi Fraternity are proud to present Denise Cunningham as their candidate for the St. Pat's Queen of Love and Beauty. Denise enjoys school and is active on campus, currently president of the Crescents of Lambda Chi Alpha. Her interests include spelunking, water sports, racquetball and volleyball. We feel that Denise's attractiveness, charm and dynamic personality, make her the best candidate for this year's St. Pat's Queen.



*Jennifer Ann Krah*

Jennifer Krah is a sophomore majoring in Petroleum Engineering. She is intramural manager and secretary for Little Sisters of the White Star. In her spare time, she coaches gymnastics at the Rolla Gymnastic Center. She also teaches aerobic classes during the week to students living in the Quadrangle. Jennifer is from Florissant, MO., and graduated from Hazelwood West High School, receiving an undergraduate scholarship to UMR. She was a member of NHS and was a varsity cheerleader.



*Barbara Moore*

We, the Men of Kappa Sigma present Barbara Moore as our candidate for St. Pat's queen of Love and Beauty. The daughter of Prof. R. E. and Carol L. Moore of Rolla, MO., she's been an active member of the Stardusters for the past 4 years. Currently, she's a senior in Engineering Management with a preference in Civil Engineering.

We feel that she is most deserving and has all the qualities necessary for St. Pat's Queen.



*Gail Ahrens*

The Brothers of Theta Xi are proud to present Mrs. Gail Ahrens as their St. Pat's queen candidate. She is currently secretary of AACE and social chairman of ASEM-IIIE. Gail is also a member of SWE and Tau Beta Sigma, an honorary band society. She is a member of the Blue Irises of Theta Xi and a past president.

We believe that Gail's outstanding personality and her accomplishments make her a deserving candidate.



*Traci Soehlke*

The Men of Acacia Fraternity are proud to present Miss Traci Soehlke as their St. Pat's queen candidate for 1984. Traci is the daughter of Mr. and Mrs. James Soehlke of O'Fallon, IL. As a sophomore, Traci plans major in Petroleum Engineering. She's also active in many campus organizations, including Lambda Chi Alpha's Little Sisters and Alpha Phi Omega.

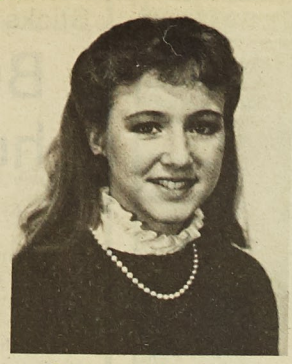


*Cissi Meade*

The Men of Sigma Phi would like to present Miss Cissi Meade as their St. Pat's queen candidate for 1984. Cissi is a freshman majoring in Engineering Management. She is very active in many campus organizations, including the Emory photography club, and "meeting people".



# Pat's Queen



**Catherine M. Driver**  
The Men of Tau Kappa Epsilon take great pride in presenting Cathy Driver as their St. Pat's 1984 queen candidate. Miss Driver is presently historian for Chi Omega and holds the office of treasurer for the Daughters of Diana. She is an active member of SWE and as a Mechanical Engineer, she maintains a 3.0 GPA. Cathy's special interests include downhill skiing and playing guitar.



**Monica Bishop**  
Monica Bishop, daughter of Mr. and Mrs. Roy L. Bishop of Kansas City, MO, has been nominated for Queen of St. Pat's of 1984. Monica attended Winnetonka High School where she was active in Stu. Co., track and gymnastic teams, band and the journalism staff. She was also a cheerleader, on the pompon squad, and was on the honor roll. Monica is currently a freshman and a member of ASEM and the IIE.



**Barbara McClenahan**  
We, the members of Tech Eng. Club, are proud to present Barbara McClenahan as their 1984 St. Pat's queen candidate. She's a sophomore majoring in Comp. Sci. Barb has been a member of Tech for 2 years and has been very active in the club, as well as the Independent's Council and AWS. Because of her outgoing personality and spirit we feel she is the best choice to represent an independent organization.



**Carol Maxeiner**  
Carol Maxeiner has been nominated for St. Pat's queen by the Brothers of Alpha Epsilon Pi. She plans to receive her B.S. degree in Chemistry in December of 1984. Besides her studies, she is currently president of Little Sisters of AEPi, Master of Ceremonies of Alpha Chi Sigma, the professional Chemistry Fraternity and she also belongs to ACS, affiliated with SMSU.



# Round Beauty ?



**Rene Ogier**  
We, the Brothers and Associates of Lambda Chi Alpha, are proud to present Rene Ogier as their 1984 St. Pat's queen candidate. Presently a freshman in Computer Science, Rene is active in the Crescents of Lambda Chi Alpha and is also interested in swimming, music and dancing. We feel Rene's dynamic personality and refined features would make her an excellent choice as the 1984 St. Pat's Queen.



**Krischael Duncan**  
St. Pat's Queen candidate Krischael Erica Duncan was born in Belleville, IL., on Feb. 26, 1965. Kris is a freshman majoring in Aerospace Engineering. She chose UMR because of its high standards and its curriculum. Her activities include the Association of Black Students and disc jockey trainee at KMNR Radio Station. She also enjoys sewing.



**Ann Hoefer**  
The Sisters of Zeta Tau Alpha are proud to present Ann Hoefer as their candidate for the 1984 St. Pat's Queen. Ann is a junior majoring in Computer Science and is very active on campus. Her activities include president of Zeta, the Daughters of Diana, ACM, and is a Kappa Mu Epsilon pledge. We feel Ann's poise, outgoing personality, and involvement on campus, constitutes the ideal candidate for 1984 St. Pat's Queen.



**Anita Bhatia**  
The Men of Kappa Alpha proudly present Miss Anita Bhatia as their candidate for St. Pat's Queen of 1984. This 5'3" beautiful brunette has sparkling green eyes and a winning smile. Anita is currently pursuing a degree in Chemical Engineering. She is a talented violinist and a member of the all-Missouri orchestra. Anita has traveled throughout Germany, England, Austria, and Italy. She is an active member of the Daughters of Lee and AIChi.



**Cissi Meaux**  
The Men of Sigma Pi Fraternity would like to introduce Miss Cissi Meaux as their St. Pat's 1984 Queen. Miss Meaux is a freshman majoring in Engineering Management. She is very active in the Daughters of the Emerald. She enjoys photography, tennis, sailing, and "meeting all sorts of people".



**Sharon Berger**  
The members of Campus Club are proud to present Sharon Berger as their 1984 St. Pat's queen candidate. Majoring in Petroleum Engineering, Sharon is the vice-president of SWE, and has presently take the position as regional representative for National SWE. Sharon is an active member of Campus Club and SPE. We feel Sharon is a superb candidate for the 1984 St. Pat's Queen.



**Linda Capone**  
We, the Men of Beta Sigma Psi, proudly present Linda Capone as our queen candidate for the 1984 St. Pat's celebration. Her outgoing and spirited personality has presented itself in a number of ways. After graduating from Cor Jesu Academy in the top of her class, she came to UMR with both a Curator's and Women in Engineering Scholarship. Linda is active in Kappa Delta, Daughters of Diana, and APO.



**Marla Greer**  
The Sisters of Kappa Delta proudly present Marla Greer as their candidate for St. Pat's Queen. Marla has served the sorority in the offices of steward, social chairman, and special events chairman. Her other activities at UMR has included karate club and Little Sisters of Alpha Epsilon Pi, for which she served as treasurer. We feel that Marla would be an excellent choice for St. Pat's Queen.



**Ann E. Bender**  
The Men of Sigma Chi are proud to announce Ann Elizabeth Bender as their candidate for St. Pat's Queen. She is a member of several honor fraternities, including Tau Beta Pi, Phi Kappa Phi, and past vice-president of Phi Eta Sigma. Ann is presently president of the Little Sigmas, a student teaching assistant, member of IEEE, and vice-president of the Co-op Association. Ann enjoys biking, swimming, sewing, and crafts.



**Carolyn Herman**  
Carolyn Herman, GDI Queen candidate is a sophomore in Life Sciences. As a member of the GDI Board of Governors, she has served as women's intramurals manager, and assisted in the production of the organization's monthly newsletter. Carolyn enjoys hiking, snow skiing, and canoeing in her leisure time. GDI is proud to have her as their queen candidate.

# BLOOM COUNTY

by Berke Breathed



Sticks & stones may break my bones

## But words can hurt you worse

by Jan Dawdy

"A man's stomach shall be satisfied by the fruit of his mouth, and from the produce of his lips he shall be filled." So says the writer of Proverbs 18:20. It is, therefore, not just a safeguard to say, "You may have to eat those words," it is a spiritual principle!

There is much practical advice to be found in the Bible concerning our words, for, indeed, words themselves are a force to be reckoned with. "Death and life are in the power of the tongue," and those who love it will eat its fruit (Prov. 18:21), and "Pleasant words are like a honeycomb, sweetness to the soul and health to the bones (Prov. 16:24)."

Since our words are a force, we are advised to use them wisely and even sparingly, for their effects are very real. Life, death, health, destruction, success, failure—these things are brought into being for or against us by our words! (Prov. 18:7, 10:11, 12:6)

"Do you see a man hasty in his words? There is more hope for a fool than for him (Prov. 29:20). Why? In being careless with his words, he will unwittingly speak disaster into his life. "I'll never

understand thermo." You won't. "That just makes me sick"—you may not get sick today, but you've just sent out a general invitation to ulcers, headaches, high blood pressure, etc.

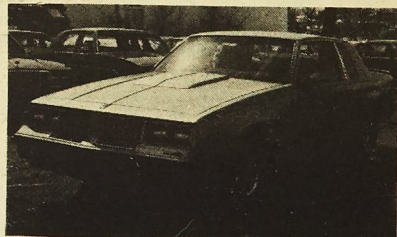
On the other hand, the wise spare their words. Again, why? For benefit and profit! "In all labor there is profit, but idle chatter leads only to poverty (Prov. 14:23)."

What other advice is there for us who have fallen into misuse of the mouth? 1. If it's not true and of good report, don't say it. 2. If you must say something, make it beneficial—to yourself or to others. To paraphrase Proverbs 12:25: "Test anxiety in the heart of a student causes depression, but a good word makes it glad." Also, "A word fitly spoken is like apples of gold in settings of silver (Prov. 25:11)."

To demonstrate again the importance of words, Jesus Christ said, "For every idle (unproductive, barren) word that men speak, they will give account of it in the day of judgment, for by your words you will be justified and by your words you will be condemned (Matt. 13:36-37)

Now, what were you saying about thermo?

## Commando performance.



1984 Hurst Oldsmobile Limited Edition

- \*High Performance V-8 Engine
- \*Firm Ride & Handling Suspension
- \*Dual Exhaust
- \*Hurst "Lightning Rod" Shifter
- \*Hood Scoop & Deck Lid Spoiler
- \*Goodyear Eagle GT Radial Tires
- \*Plus many other performance extras



AMC Jeep

Schweiss Motor Co., Inc.

Old Buick-AMC-Jeep  
500 Hwy 63 S. Rolla  
Open 8 to 6 Sat. till 4 p.m.  
364-1323

Source: OPI

Spectators may expect to see a spacecraft with two astronauts suspended in space created by members of the Sigma Tau Gamma fraternity. Pi Kappa Alpha fraternity will offer General Patton riding on an M-18 tank. "The Wright Brothers with the Right Stuff" is the theme of Beta Sigma Psi fraternity's float. Kappa Sigma's float will feature two trains meeting at Promontory Point in Utah, with Joe Miner hammering in the spike to complete the first transcontinental railroad. The Battleship Missouri, built by Sigma Pi, will depict the signing of the peace treaty with Japan which ended World War II. Another ship, a Dartmouth cargo vessel created by Sigma Nu fraternity, will feature the first major act of rebellion by the American colonies in 1773, the Boston Tea Party. Sutter's Mill mine and Joe Miner panning for gold is the theme of Phi Kappa Theta's float of "The Gold Rush of 1849." Sigma Pi Epsilon fraternity will present a salute to the American pioneers with a giant covered wagon being pulled by an ox, and Delta Sigma Phi's float will be a replica of George Washington crossing the Delaware. The Queen's float, built by Tau Kappa Epsilon, winner of last year's float competition, will

Among the non-float entries will be Kazoo Bands from Triangle fraternity and KTTR-KZNN Radio Stations, The Lewis and Clark Expedition by Kappa Delta, Junior Bird Man by Sisters of the Gold Rose of Beta Sig, Fruit of the Loom Guys Support America's Great Heroes by Phi Kappa Theta, the Spirit of '76 by Tau Kappa Epsilon, the Roaring Twenties by Zeta Tau Alpha, the Stagdales by Delta Tau Delta, the Cloddsdales by Kappa Sigma antique cars, a train from Burlington Northern Railroad, Shrine units and many others.



Pictured are the Theta Tau bunnies for tonight's Casino Night.

photo by Dave Zimmer

**NOW RENTING**  
\*\*\*\*\*New\*\*\*\*\*  
**2 Bedroom**  
**apartments**  
\*energy efficient  
\*appliances included  
**LANNY FOSTER**  
**RJOLYNN 364-6635**  
**Evenings**  
**LANNY 364-6205**  
**Office-Stoltz Realtors**  
**825 S. Bishop**

 CANOE TRIPS  
ON THE  
CURRENT RIVER  
**10 % Discount**  
until May 15  
Canoe Trips on the Upper Current River  
One Hour South of Rolla—Complete Service  
contact:  
**JADWIN CANOE RENTAL**  
Jadwin, MO 65550 Ph. 314-729-5229  
Used canoes for sale—shuttle service

# TK's Pizza Express

## TK's Super Deal

Get any 2-item medium size  
pizza plus one quart soda  
for **ONLY \$5.00**

**Offer Expires  
March 31, 1984**

## FAST, FREE DELIVERY

Phone 364-FAST

1806 N. Bishop-Rolla  
Next to  
Faulkner's Mini Mart

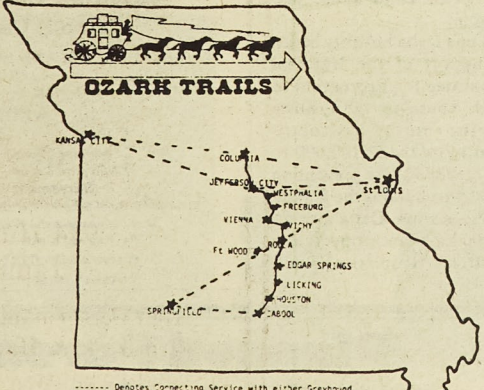
**AMBROSIA**  
Florist and  
Garden Center  
622 Hwy 63 S  
364-8411

*Green Carnations*  
99¢ each  
cash and carry

*Corsages*  
\$5.50 and up

**When it's from  
AMBROSIA  
it is sent  
with LOVE**

★★★★ALL ABOARD PLEASE!★★★★

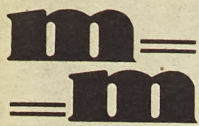


----- Denotes Connecting Service with either Greyhound or Trailways

- \* Please Note that fares are good only for passage on the OZARK TRAILS BUS and that a separate ticket must be purchased at the connecting point from the connecting carrier.

TIME SCHEDULE

<div> <div>Read</div> <div>Sum</div> </div> <div> <div>arrive</div> <div>leave</div> </div>		<div> <div>Read</div> <div>Sum</div> </div> <div> <div>arrive</div> <div>leave</div> </div>	
8:00 AM	CABOL	Dairy Krome Trailways	CABOL
8:20 AM	HOUSTON	Lezy L'Hotel & Cafe	HOUSTON
8:50 AM	9:00 AM	Town & Country	
9:20 AM	EDGAR SPRINGS	Dinner House	LICKING
9:45 AM	11:30 AM	ROLLA	EDGAR SPRINGS
11:45 AM	VICTY	James Grocery & Comaco	ROLLA
12:00 PM	VIENNA	Plaza Service Station	VICTY
12:12 PM	FREEBURG	Loane & Pistol	VIENNA
12:25 PM	WESTPALMIA	Besten Service Station	FREEBURG
12:45 PM	JEFFERSON CITY	city bus station	WESTPALMIA
1:40 PM	COLUMBIA	Red Center - VA Hospital South Bus Terminals	JEFFERSON CITY
			COLUMBIA



# Comments

MISSOURI MINER

Wednesday, March 14, 1984

Page 14

## Experts perceive Iran as booming

For five years, the Islamic Republic has defied all the predictions of the doomsayers.

Soon after the establishment of the Islamic Republic, newly instituted revolutionary organizations embarked upon an intensive social program to fulfill the needs of millions of deprived people. In less than five years, water supply facilities and pipelines have been constructed in about 6,000 villages, and about 8,500 villages have been supplied with electricity (whereas only 4,000 were given electricity during the entire reign of the ex-shah's regime). During the same period, extensive housing projects were begun to provide shelter to thousands of families.

Education and combatting illiteracy have received equal attention. About 4.8 million people have participated in literacy campaign classes, with an estimated 1.5 million to participate in the coming year (March 1984-March 1985). No less than 3,500 schools, more than what the past regime built during its entire reign, have been built throughout

the country. The government has also allocated sufficient funds for the construction of an additional 1,300 schools and 35 technical and agricultural institutes in the coming year. After closing briefly to restructure and reorganize curricula in all disciplines, the universities have reopened, offering under graduate studies to more than 146,000 students.

In a desperate world economy, the remnants of Iran's ravaged pre-revolution economy have been turned into one with a hopeful and promising economic outlook. Of about \$10 billion in foreign debts, almost all are repaid. With no outstanding foreign debt and a rise in foreign reserves from a low of \$1 billion to about \$10 billion, Iran is perceived by some experts as the Middle East's next booming economy. In spite of an unwanted war which continues to consume 30% of the budget, the government's ability to reduce inflation by half to 20%, is well indicative of the shrewdness of the present policy-makers.

If an increase in gross national product is any indication, a 5.6% growth rate in the GNP confirms that economic recovery is indeed underway.

Politically, the Islamic Republic is more stable than ever. Coup attempts, ethnic troubles, economic sanctions, assassination campaigns and a full-scale war have all, astonishingly, strengthened the country. What was hoped to be a quick victory for Saddam Hussein turned into a quagmire for him and his Western supporters. Overt French aid to Iraq has multiplied and covert U.S. support for Iraq was publicized by Reagan's special envoy to the Middle East. However, none of this has changed the prospect of a humiliating Iraqi defeat.

Having realized that the foundations of the present system are unshakable, the West embarked upon a massive and coordinated misinformation campaign designed to

discredit Iran with a final objective of preparing the grounds for a potential military strike against the Islamic Republic. Wherever a bomb explodes, the West blames it on Iran, yet all the sophisticated intelligence agencies of the West cannot produce even the weakest of documents to support its claim. As a commentator stated in the *Los Angeles Times*, "The policy of attributing recent bombings to Tehran - or to any outside force - is a way to resist dealing with the fact that the perpetrators, far from being puppets, have good reasons of their own for attacking the United States..."

The Islamic Republic has withstood a series of destabilizing plots and misinformation campaigns for five years now and, with the help of God Almighty, will do so in the years to come. Sooner or later, the West and the East have to discover its sublime ideas and

learn to respect them, if not fully accept them. Until then, both should realize that God helps those who advance his

cause.

Muslim Students' Association of Rolla

### Comments

We welcome comments and letters to the editor from our readers. The *Miner* staff does, however, reserve the right to edit letters for tastefulness, obscenity or libel. Letters may also be edited for space limitations.

All letters must be signed. Anonymous letters will not be printed. Address, telephone number, social security number and/or student number should be included, but will not be printed.



"Come on in and try our brand of Mexican Food"

1011 Kingshighway 341-3422  
Sun, Mon, Wed, Thur 11 am-9 pm  
Tues, Fri, Sat 11 am-10 pm

## Placement

WASH. STATE, Bellingham, WA  
WILL interview MAY, 1984. GRADE with 100% in Engineering Management (Industrial Technology background) for Section Mgr. U.S. CITIZENSHIP REQUIRED.  
Location: Bellingham, WA  
Interviewers: Steven Elorain  
Interview dates: March 21, 1984  
Number of scheduled interviews: 1  
Priority sign-up: March 13, 1984  
Regular sign-up: March 14, 1984

OSWEGO, SUNBURT BRANDS DIVISION, ST. LOUIS, MO  
WILL interview MAY 1984. GRADE with 100% in Engineering Management (Industrial Technology background) for Section Mgr. U.S. CITIZENSHIP REQUIRED.  
Location: St. Louis, MO  
Interviewers: Jim Galt  
Interview dates: March 21, 1984  
Number of scheduled interviews: 1  
Priority sign-up: March 13, 1984  
Regular sign-up: March 14, 1984

ST. LOUIS, MO  
WILL interview MAY, 1984. GRADE with 100% in Engineering Management (Industrial Technology background) for Section Mgr. U.S. CITIZENSHIP REQUIRED.  
Location: St. Louis, MO  
Interviewers: Jim Galt  
Interview dates: March 21, 1984  
Number of scheduled interviews: 1  
Priority sign-up: March 13, 1984  
Regular sign-up: March 14, 1984

BILLMARK, Kansas City, MO  
WILL interview MAY, 1984. GRADE with 100% in Engineering Management (Industrial Technology background) for Section Mgr. U.S. CITIZENSHIP REQUIRED.  
Location: KC, MO; KS plants  
Interviewers: unknown  
Interview dates: March 29, 1984  
Number of scheduled interviews: 1  
Priority sign-up: March 13, 1984  
Regular sign-up: March 14, 1984

## KD raises funds

Local community efforts to prevent child abuse will benefit from a St. Patrick's Day fund raising effort being conducted in Rolla by members of UMR chapter and Alumnae Association of Kappa Association of Kappa Delta Sorority.

The Epsilon Alpha Chapter will be joining thousands of Kappa Delta collegiate and alumnae members across the country in raising funds for local affiliates and chapters of the National Committee for Prevention of Child Abuse, the sorority's newest national philanthropy.

Kappa Delta members from Epsilon Alpha and Alumnae Association will be collecting donations from area businesses and residents on St. Patrick's Day, Saturday, March 17, at the intersection of 10th and

Bishop and also at the local Kroger store. Of the funds collected, 80 percent will be presented to the local child abuse prevention organizations to be used in community public education and prevention programs. The balance will be given to the National Committee for the Prevention of Child Abuse to be used in orthopedic child abuse prevention.

Kappa Delta Sorority began its support of the National Committee for Prevention of Child Abuse in 1981. Since then the sorority has contributed more than \$100,000 to support child abuse prevention efforts throughout the United States. Kappa Delta's other national philanthropy is the Children's Hospital of Richmond, Va.

## Johnny's Smoke Stak

Hwy. 72 & Rolla Street  
Rolla, Mo.

We are FAMOUS for our RIBS  
ENJOY ST. PAT'S &  
DINE WITH US

## Planned Parenthood Central Ozarks

SERVICES FOR ALL MEN & WOMEN

BIRTH CONTROL exams, supplies, instruction. NATURAL FAMILY PLANNING. PREGNANCY TESTING and exams. PROBLEM PREGNANCY COUNSELING on all options: parenthood, adoption, abortion. VENEREAL DISEASE TESTING. STERILIZATION COUNSELING & referrals. COUNSELING on problems related to sexuality and reproduction. EDUCATION, FILMS, PAMPHLETS.

SERVICES ARE CONFIDENTIAL

REPRODUCTIVE FREEDOM—the fundamental right of every individual to decide freely and responsibly when and whether to have children—is a reaffirmation of the principles of individual liberty upon which this country was founded.

ROLLA CLINIC

1032 B Kingshighway (314)

# Honorary Knights dubbed

Rolla, Mo. — Eight Honorary Knights of St. Patrick will be dubbed at the University of Missouri-Rolla formal St. Pat's ceremonies at 9 p.m. Friday, March 16, in the Gale Bullman Multipurpose Building.

This year's honorees are: Keith E. Bailey, class of 1964, chairman of the board of Williams Pipe Line Co. and president of Northwestern Central Pipeline Co. (both Williams companies), Tulsa, Okla.; Norman DeLeo, D.D.S., Cuba; Catherine G. Jenks, director of University Relations, UMR; William Jenks Jr., president, Long Insurance Agency Inc., Rolla; Howard E. Kilroy, chief operations director, Jefferson Smurfit Group Ltd., Dublin, Ireland; Mike Lybyer, Missouri senator, 16th senatorial district, Huggins; Robert L. Roach, customer service representative, Burlington Northern Railroad Co., Cuba; and Neil K. Smith, vice chancellor for administrative services, UMR.

Bailey, who was St. Pat at UMR in 1964 when he was a student, received a B.S. degree in mechanical engineering from UMR. He completed Harvard University's

Graduate School of Business PMD Program in 1978 and was awarded the professional degree of mechanical engineer by UMR in 1981.

He was with Continental Oil Co. pipe lines for a number of years before joining the Williams Companies in 1973. He was elected president of Williams Pipe Line Co. in 1979 and was promoted to his present positions in 1983.

Dr. DeLeo received his dental degree from St. Louis University. Following graduation, he served in the U.S. Army Dental Corps where he had two years of oral surgery training, became dental surgeon of the 82nd Airborne Division, was a senior parachutist, jumpmaster and taught in the U.S. Army Special Warfare Medical Training Center. Returning to civilian practice, Dr. DeLeo bought and operated a wholesale distributorship for 15 years which served the Phelps, Pulaski and Crawford County areas.

Catherine (Key) Jenks is a native of Rolla—she was a flower girl for St. Pat's Queen of Love and Beauty when she was a child. She attended Stephens College and earned her B.S. and M.S. degrees from

Washington University.

Mrs. Jenks joined the UMR faculty in 1967 and taught psychology classes—continuing to teach after she moved to the chancellor's office as assistant to the chancellor for affirmative action and public events in 1979. She was promoted to her present position in 1981.

William (Bill) Jenks Jr. is a native of Michigan. He is a graduate of the University of Minnesota and was in the U.S. Army when he met Kay. Before returning to Rolla to join the Long Insurance Agency, Bill was with the Veterans Administration.

Bill Jenks has also been active in community affairs in Rolla for many years. He is a long-time member of the Rolla Area Chamber of Commerce, Rotary, Masons and Shrine, and is active in support of UMR. He is president of the UMR Booster Club, and a long-time member of the Blarney Club.

Howard E. Kilroy is a native of Ireland. Before joining the Jefferson Smurfit Group in 1973 as financial controller, he was with Corn Products Corp. in Dublin, the United Kingdom and Belgium and with J.A. Kinnear & Co.,

chartered accountants.

Kilroy was appointed to his present position with Smurfit in 1977 and also serves as a director of several Smurfit subsidiaries as well as MacDonagh and Boland Ltd. and Aran Energy.

Mike Lybyer was elected state senator in 1982 representing the citizens of Phelps, Crawford, Dent, Texas, Wright, Howell and Oregon Counties. Prior to that election, he was a member of the Missouri House of Representatives for four years.

Lybyer attended UMR for a year (1965-66) and holds a B.S. degree in agricultural chemistry from the University of Missouri-Columbia.

In the senate he serves on the Committee on Apportionment, Elections, Military and Veterans Affairs (chairman); and committees on agriculture; banks, banking and financial institutions; conservation, parks and tourism; corrections; miscellaneous bills; roads, highways, industrial development, energy and environment; and state departments and governmental affairs.

Robert L. Roach was born in Cuba, Mo. He began his career as a telegrapher with the Frisco Railroad. After

service in the U.S. Air force in Japan, he became telegrapher and ticket agent for Frisco in Newburg.

In 1961, Roach was transferred to Rolla as station agent, a position he held until the station was closed last year. In his present position he services nine communities in the surrounding area.

Roach has served as an alderman and municipal court judge in Newburg and is a member of Masonic and Shrine Lodges.

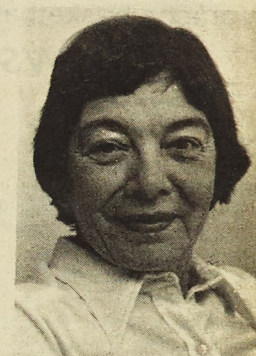
Neil K. Smith earned his B.A. in business from the University of Notre Dame and an M.B.A. from Washington University in St. Louis.

Before joining the UMR administrative staff in 1971, Smith was with St. Louis banks and investment firms. At UMR he has served as grants and contracts officer, director of institutional studies, director of the office of business services and assumed his current position in July 1983.

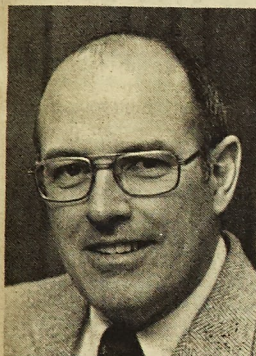
Smith has a record of active community service in Rolla. He is a member of the Rolla Rotary Club, served on the Rolla City Board of Variance and Adjustment for two years, is a member of the Planning and Zoning Commission, the Rolla Area Chamber of Commerce



William Jenks, Jr.



Catherine Jenks



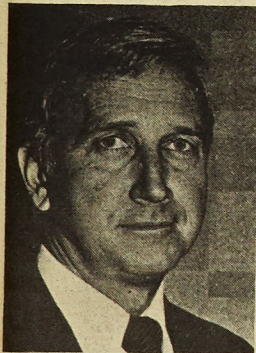
Neil Smith



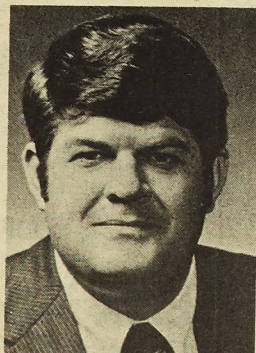
Howard Kilroy



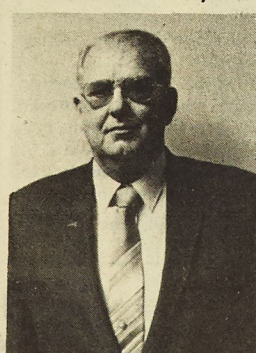
Keith Bailey



Norman DeLeo



Mike Lybyer



Robert Roach



1720 N. Bishop  
Across from TJ Hall

**Tim's Homestyle Pizza**

**BEST PIZZA IN TOWN**

PASTAS, PIZZA, SALAD, COLD BEER AND WINE

Free party room WE 1901 N. Bishop is available DELIVER Rolla, MO

**U S A Convenience Mall**  
(Formerly Sports Palace)

**OPEN 24 HOURS** **OPEN 24 HOURS**

Fully stocked convenience store  
"Convenient, yet not expensive"

**St. Pat's Specials**

<b>STROH'S</b> 12 pack <b>\$4.39</b>	We have Regular, unleaded, premium and diesel FUEL	<b>BUSCH</b> 12 pack <b>\$5.15</b>
--	--	--

**ROLLA MEAT SHOPPE**  
New Location

8 Oz. Bacon Wrapped FILETS <b>\$2.09</b>	Whole Pork Butts PORK STEAKS <b>99¢/lb</b> Sliced FREE
---	--

**Video Games**  
Watch for our new Lazer games, coming soon!

Mastercard—Visa Business 63, Rolla



## Mens basketball

# Basketball highlights

Source: OPI

Rolla, Mo. —The University of Missouri-Rolla men's basketball team ended the season with a 14-9 overall record, 4-8 in MIAA action, as three members of the 1983-84 squad were honored with all-conference recognition.

Curtis Gibson, UMR's top scorer and rebounder for the

second straight season, was named to the All-MIAA First-Team. This was the second straight first-team selection for the junior from Kansas City, Mo. (O'Hara High School).

Stan Shuemaker ended his senior season as the second leading Miner scorer and was rewarded with an All-MIAA Second-Team selection.

Miner senior guard Todd Wentz was named an honorable mention selection by the conference's coaches.

"Curtis, Stan and Todd all had tremendous seasons for us," said UMR head coach Billy Key. "All scored in double figures and led our team in shooting a very good percentage."

The Miners shot .513 from

the field and .708 from the free throw line in 1983-84. They outrebounded their opponents by a slim 35.3-34.6 edge per game.

Scoring leaders were: Gibson, 17.3; Shuemaker, 14.4; Wentz, 12.8; Mark Zarr, 8.0; and Tyree Hall, 5.8. Gibson's 6.5 rebounds per game paced the Miners with Hall, 5.1, and Zarr, 4.8, next in line.

Highlights for the season included UMR's quick 8-1 start as the Miners attained a 14th-place national ranking in the NCAA Division II. Gibson became the 11th player in Miner history to score 1,000 career points when he scored 31 points in a late season game against Central Missouri.

Wentz played in 99 career games in a Miner uniform, placing him second on the all-time list behind Royce Vessell (100). Shuemaker became only the ninth player in UMR history to score at least 500 points in a two-year career.

"It was a great group of young men to work with," Key said. "Coach Dale Martin and myself couldn't have asked for a better contingent of players to deal with."

"They worked very hard, gave us some real thrills and did well enough to give our program some national exposure early in the season."

The Miners finished fifth in the MIAA, losing a chance at fourth place and a possible

spot in the conference playoffs when they dropped the season finale at Northeast Missouri.

Wentz, Shuemaker and forward John Pfannkuch are the only seniors lost from the 1983-84 squad, as Key looks ahead to next season.

"We'll have to pick up some scoring along the way and hopefully add someone to our squad who is a solid rebounder," he said. "We have a good group returning, however, and I'm sure we'll put an exciting team on the floor."

Gibson enters his senior season needing 329 points to break the all-time Miner scoring record of 1,367 set by Richard Peters from 1969-73.

## Womens basketball ...

### Shows marked improvement

Source: OPI

Rolla, Mo. —On the surface, the University of Missouri-Rolla's 7-17 record in women's basketball would appear to be nothing to take note of. That record, however, tells little of the story.

The 1983-84 season was a breakthrough for the young Miners, as they finished 4-8 in MIAA play and made the

conference tournament for the first time. UMR finished 7-16 last season, but suffered through a 0-12 record in league play.

"Winning four games in the MIAA, after going winless in the conference last season, was indeed the high point of the year," said Coach Cathie Schulte. "It is a start, and we have to improve from this season and look ahead."

UMR's tourney appearance was short-lived, however, as the Central Missouri Jennies pounded UMR 83-38. Laurie Behm, who ended the season as the Lady Miners top career scorer, paced UMR with 10 points.

Behm, a senior from Florissant, Mo., ended her four-year career as the leader in points (1,065) and games played (92). The old record for points scored was 1,035 set by Karen Peacock from 1978-82.

Behm ended the season as UMR's only double figure scorer, averaging 11.9 points per game. She also paced the team in steals with 57.

Other pleasant surprises of the season included freshmen Sandra Vaughn and Susan Mullins. Vaughn asserted herself as one of the top rebounders in the conference, averaging 7.7 per game. Mullins was second on the team in scoring with an 8.8 average.

Other top Miner averages were: Vaughn, 8.5; Kim Murphy, 7.6; Terry Bond, 7.6; Cecilia Gutierrez, 6.2; Gail Halsey, 5.6; and Kelly Stewart, 3.7.

Behm and Vaughn each gained MIAA "Honorable Mention" laurels.

See  
Basketball  
page 17

## Ruggers extend streak to eleven

Over the weekend, Rolla extended their winning streak to 11 games by beating SMSU 9-8. The highlight of the game was a five-yard plunge by Bones Stevens into the end zone with 15 minutes left in the ball game. Mike Eversman added to the attack with a three point penalty kick and a two point conversion kick. Rolla is now 4-0 for the spring season and 12-1 for the '83-84 season. Due to false data, Rolla will not be going to Colorado, but instead to College Station, TX for westerns.

Now for the "Zip Shipler Awards":  
**Hit of the Week** goes to Eric Davis who thought he broke his nose but found out that really his face is crooked.  
**Referee of the Week** goes to "KQ" Smith who blew more calls than he did the whistle.

**Kick of the Week** goes to Mike Del'orco who, while attempting a drop kick for three points ended up punting the ball through the goal posts for zero points.  
Mike also won the **Trog Award** which we will not reveal due to extenuating circumstances.  
**The Baseball Award** goes to RipCord who struck out

eight times the night before the game in Springfield.  
**The Skoal Bandit Award** goes to Mike Eversman for being a sawed-off little runt and spitting on a player.  
And that's all for the Zip Shipler Awards. Stay tuned next week for who will win the "Trog Award." Rolla's next game is Saturday up at Mizzou.

## Wentz honored as academic All-American

Source: OPI

Rolla, Mo. University of Missouri-Rolla senior guard Todd Wentz had been named the NCAA Division II Basketball Academic All-American Second-Team. The squad is sponsored by the College Sports Information Directors of America (CoSIDA).

Wentz, who has maintained a 3.6 grade-point average in pre-dentistry at UMR, has been on the Dean's List for five straight semesters and recently had two semesters with a perfect 4.0 average.

A spokesman for CoSIDA said Wentz was one of the top 10 vote recipients in the United States.

In addition to his academic success, Wentz captained the 1983-84 UMR basketball team, scored in double figures (12.8) and lead the team in steals (42). He was recently named to the All-MIAA Honorable Mention Team.

"This honor is only fitting and helps wind up a very fine career for Todd," said UMR head basketball coach Billy Key. "He is a tremendous young man, and no one is more deserving of this honor."

Wentz finished his varsity career last month, playing in his 99th career basketball game. That figure places him second on the all-time list, one behind former Miner Royce Vessell's career record.

**COUPON**

**FLOAT THE NORTH FORK!**

**\$5 OFF PER CANOE**  
5 Canoe Minimum  
Offer not good on Memorial Day Weekend

Jct. of Hwys. 181 & 14  
**TWIN BRIDGES CANOE RENTAL**  
55 Rt. Box 230 West Plains, MO 65775  
(417) 256-7507

**COUPON**

**HAIR IT IS**

**Wants you to look your best for Spring Break and SAVE with this SPECIAL!**

**Haircut.....\$6.00**

**CALL 364-7130**

**Ask for Alan, Debby, Regina, or Tammy**

**OFFER GOOD THROUGH APRIL 14**

**G&D STEAK HOUSE**

7 oz. Top Sirloin Special.....	\$4.72
8 oz. Chuck.....	\$3.89
6 oz. Ribeye.....	\$4.20
7 oz. Ham Steak.....	\$4.16
8 oz. Filet.....	\$4.77
10 oz. Top Sirloin.....	\$6.08
12 oz. T-Bone.....	\$7.97
12 oz. K.C. steak.....	\$6.61

**All steak dinners include bake potato, Texas toast, and salad bar**

**FREE ICE CREAM WITH EVERY MEAL**

Open 7 days a week, 11:00 am - 9:00 pm  
Forum Plaza Shopping Center

# Tennis team sees bright 1984

Source: OPI

Rolla, Mo. —A new season brings renewed promise for the men's and women's tennis teams at the University of Missouri-Rolla as some key veterans and talented new-

comers give both squads reason for optimism.

The men's program, under the direction of Coach Paul McNally, returns lettermen Jeff Sacre and Paul Isakson with freshman Bill Golliday expected to step in and help the team immediately.

"It will be a rebuilding year to some degree," McNally said. "We will be very young, but there will be some fine talent available to us."

The women return number-one singles player Lorna Platt, along with letterwomen Laurie Behm, Janet Wickey

and Jane Bokerman. Top newcomers include freshman Letesia Gonzalez and junior Tia Sargent. Sargent transfers in from the U.S. Military Academy, where she was a member of the tennis team.

"We should be improved from last season," said Coach

Cathie Schulte. "Some of our top people are returning, and Gonzalez and Sargent should be able to really give us a boost."

The men open the 1984 season March 16, hosting Evangel College in a 3 p.m. match. The Lady Miners travel to

Evangel March 17, opening their season with an 11 a.m. contest.

Both squads will try to refine their games in time for a strong showing in this year's MIAA Tournament. The conference event is set April 27-28 at Warrensburg.

## Golf team led by veterans

Source: OPI

Rolla, Mo. —If potential has anything to do with it, University of Missouri-Rolla golf coach Bud Mercier feels the 1984 Miners could be one of the top teams in the state.

With Kent Dinsdale, a three-time performer at nationals, entering his senior season, the Miners have a chance to put a very solid season together.

"There is a huge difference between potential and performance, but I feel we can be very good this season," Mercier said. "We had a pretty good squad last year, but we should improve this season."

UMR finished third in the MIAA in 1983 and won sev-

eral tournaments. Mercier knows a lot of the team's success this year rests with his senior leader.

"Kent was honorable mention All-American as a sophomore, went to the national tournament again last year and gained some valuable experience," Mercier said. "He won the University of Missouri-St. Louis Tournament in 1983 and set a new Oak Meadows course record. He should be one of the premier golfers in the state."

Other lettermen returning include junior Jerry Daues and sophomore Tim Hennessey. Top newcomers are Rolla native Rob Lorey, a junior transfer from Kansas State who has looked good in spring practice, and freshman

Scott Peterson.

Peterson was the number-one player at Lindbergh High School in St. Louis the past two seasons, and finished sixth in the 1983 Missouri

High School State Tournament.

UMR opens the season March 5 at Springfield, battling Southwest Missouri State and Drury at 1 p.m.

Houses, 2 bedroom apartments, 1 bedroom apartments, efficiency apartments, and student rooms available for summer and the following school year  
**JOHN KELLER**  
after 7 PM 364-6886

## Basketball

from page 16

Mullins had the highest individual games point total for the season, scoring 23 against Northeast Missouri in the final regular season game. Vaughn set the high for rebounding, grabbing 16 boards against Southeast Missouri. Halsey ended her career second behind Behm in games played with 91.

Behm and Halsey are the

only seniors on the squad, leaving Schulte with some talented underclassmen for next season.

"If we can have a good recruiting year, I think we can continue to make progress with women's basketball," Schulte said. "Winning some MIAA games this season has given us something to build on."

Green Carnation in a Bud Vase.....\$2.75

Green Mum Centerpiece

with Leprechaun.....\$6.50

.....\$9.50

.....\$12.50

Green Carnation Corsage....\$2.95 and up

Green Sale

20% off Foliage plants

and Hanging Plants

Cash and Carry through March 23

**sunny wall**

1107 Pine Rolla

364-3161

COORS TO YOU,  
UMR  
ALL ST. PAT'S THROUGH!



THE BEST OF THE ROCKIES IS YOURS.



# IM News

by Bob Lynch

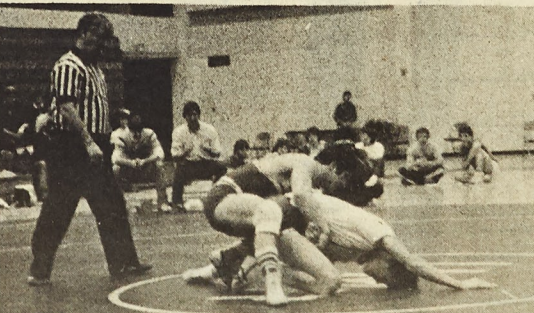
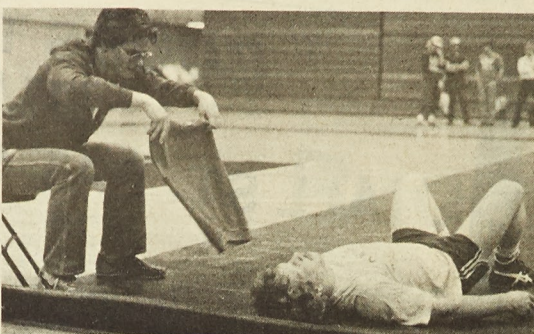
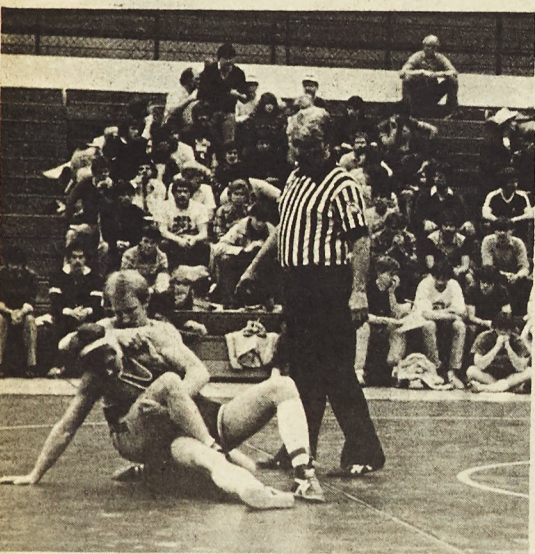
The finals of intramural wrestling were held last Thursday night, March 8. Sigma Nu once again won the team competition, barely defeating Pi Kappa Alpha 116-113. Tau Kappa Epsilon came in third place. Individual winners were as follows: at 123, Fahrenkrog of Sigma Nu defeated Fahey of Sigma Chi, at 130, Cantley of BSU defeated Kiehne of Alpha Epsilon Pi, at 137, Howard of RHA defeated Copeland of Wesley, at 145, Lambing of Pi Kappa Alpha defeated Mueller of Sigma Pi, at 152, Mathews of GDI defeated Pugh, at 160, Wolfe of Sigma Nu defeated Dougherty

of Campus Club, at 167, Schlitt of Sigma Nu defeated Nauman of RHA, at 177, Mitchell of Campus Club defeated Thompson of Kappa Alpha, at 191, Fizer of Pi Kappa Alpha defeated Chervek of RHA, at heavyweight Hasuk of Sigma Pi defeated Kientzy of Sigma Phi Epsilon.

Consolation winners are at 123, Cuccotti of Sigma Pi, at 130, Erickson of Sigma Nu, at 137, Martin of Sigma Nu, at 145, Eswine of GDI, at 152, Mathews of GDI, at 160, Miller of Pi Kappa Alpha, at 167, Moore of Pi Kappa Alpha, at 177, Bess of Pi Kappa Alpha, at 190, Goedell of Sigma Nu, at heavyweight, Cathey of Pi Kappa Alpha.

The winner of the most valuable wrestler award went to two people, Fahrenkrog of Sigma Nu and Fizer of Pi Kappa Alpha. Both guys won all their matches by pinning their opponents in the first round. Fizer had the quick pin which was 18 seconds in his championship match.

Notes: Badminton has been changed to be played on March 23, 24, and 25. Horseshoes will be played also at a later date. Softball will start Tuesday, March 20. Intramural athlete of the week went to Larry Payne of Sigma Nu for his outstanding play in basketball. Team of the Week went to FELA for capturing the Division II basketball title.



## I. M. handball results

TEAM	SINGLES	DOUBLES	TOTAL	POINTS
1. Sig Ep	3	1	4	103.5
TKE	2	2	4	103.5
3. Lam Chi	1	4	5	99
4. Phi Kap	5	5	10	96
5. Sig Pi	4	7	11	93
6. Kap Sig	9	3	12	90
7. Sig Chi	9	5	14	87
8. Sig Nu	7	9	16	81
KA	9	7	16	81
PKA	7	9	16	81
11. AE Pi	5	13	18	73.5
Triangle	9	9	18	73.5
13. GDI	13	9	22	69
14. Delta Tau	13	-	-	64.5
AF Rotc	13	-	-	64.5

**Student Rooms for Rent**  
**Available YEAR ROUND**  
Doubles, singles, Kitchenettes  
Community Kitchens, Private  
Baths and Community Baths,  
Supervised Housing.  
**QUIET HOURS**  
**24 Hours a Day**  
**Seven Days a Week**  
**RollaMo OFFICE: 1204 Pine**

Theta Tau Omega

Casino Night

March 14, 1984  
7:30 PM - Midnight \$2.75 ADV  
Pennant Hall \$3.00 DOOR

# HARBELL

ATHLETIC GOODS  
904 Pine 341-2666  
Har-Bell-your one stop basketball center

**Wear your green in on Saturday  
and get 10% OFF**

Custom Screen Printing Available

# Alex Pizza Palace

122 W. 8th Street Rolla  
Open six days a week 11 a.m.-1 a.m. Sunday 4 p.m.-2 a.m.

•SANDWICHES •SALADS •SPAGHETTI  
•BEER •GYROS SANDWICH

For FREE DELIVERY over \$5.00

**364-2669 or 364-9878**

# USFL round-up: Western

by Bob Gaynor

Here's a look at the USFL Western Conference.

## Central Division

Michigan Panthers—Last year's champs have done little to change their winning combination. The leagues' top passer, Bobby Hebert, has the leagues' best pair of dynamic receivers in Derek Holloway and Anthony Carter. Ken Lacy (1,180 yds.) and John Williams (624 yds. in 153 carries) lead an excellent running game while Cleo Miller is a fine backup. While there are injuries in their Steeler connection on the line, the depth is there to back them up. Novo Bojovic provides a gold toe to the Panther Vicking game. While the offense has made many mistakes so far (mostly interceptions), their 2-0 start beats the 1-4 beginning that their championship season had.

Talent isn't lacking on the Michigan defense. John "Jack Man" Carter, last year's Defensive Player of the Year, and Veteran Robert Pennywell lead the linebacking corp. Ex-Cowboy Larry Bethe has joined the front line, adding to its potency. In the backfield, former Wisconsin Badger David Greenwood (also their punter) had an excellent rookie season and should only get better.

To sum it up, the 18-game season will be very kind to the Panthers.

Chicago Blitz—In spite of Coach Marv Levy (you remember him with the K.C. Chiefs maybe), the transplanted Arizona Wranglers will finish in second place. With ex-Bear Quarterback Vince Evans tossing and scrambling, the offense is in good hands. Evans has several capable hands to throw into, including rookie standout Mike Keel and receiver Jackie Flowers. The running game, however, is not good. Memphis, an expansion team, held their runners to 33 total yards last Sunday. Larry Canada and Company should file for bankruptcy. They have an adequate line of former Bears and a second-team all-leaguer to block, but the backfield talent is lacking.

The Blitz defense is fine against the pass, with Doug Plank leading the backfield. However, it seems like they're trying to make up for the lack of leg-work on their own offense. Memphis ran for 178 yards and Michigan did much the same a week earlier. Another Dallas defector, Bruce Thornton, tries to lead the defensive line, along with Larry White, a player with the Gold last year. Outside of those two, Plank, and safety Tommy Wilcox, inexperience reigns. But, with three expansion teams in their division, second place is theirs

Houston Gamblers—Ex-Bear coach Jack Pardee leads this most talented of expansion teams. Jim Kelly, an All-American from Miami, has let the pigskin fly 85 times with good success. Sam Harrell and Richard Johnson have major roles in the running game plus NFL experience, but the team rarely runs (30% of their plays are on the ground). The line was built through the expansion draft.

Linebacking is the Gamblers' defensive pride. Former Texas Longhorn Kiki DeAyala joins 7-year NGL vet Kevin McClain and ex-Panther Ricky Young as linebackers. Elsewhere, the draft and rookies fill the line and the backfield. In spite of the lack of balance, they may give Chicago some trouble.

Oklahoma Outlaws—With Doug Williams at quarterback, you know the Outlaws will be exciting. But Lonnie Turner and Jack Septoe are no stars, so he'll need all the help he can get. Derrick Huges is a good all-around running back, so he'll be all over the field. On the front line, 9-year vet Sam Adams leads an experienced but mediocre group.

The defense leads this team, having given up only 20 points in 2 games. Terry Beeson, an ex-Seahawk, plus draftees lead a strong linebacking corps. The draft also built a solid backfield and line, with two Panthers joining the team. They are a respectable group and should remain a fighting team

San Antonio Gunslingers—It'll be a tough year for this new team. Only Nick Mike Mayer, their kicker, running back Doug Banks, and center Gary Anderson have much experience on offense. The team averages 75 yards per game rushing and is unsettled at quarterback.

The defense can't stop the pass. Fortunately, former Detroit Lion Ernest Price can stop the run along with his inexperienced linemen. Overall, this team needs help all over.

## Pacific Division

Arizona Wranglers—Last year's Chicago Blitz should enjoy not having the Panthers in their division. Ancient Greg Landry will pass, Kevin Long and Tim Spencer will set another tandem rushing record (2,179 yards last year), and Trumaine Johnson will beat his top rookie catching mark. Joining Johnson, Wyman Buggs and Lenny Willis have returned with a vengeance. Ex-Pro Bowler Frank Corral is the Wrangler kicking game.

George Allen's solid defense has done well so far. Veterans Luther Bradley (safety), Junior Ah You (linebacker), and line-men Frank Giddons and Gerry Sullivan have given up just 27 points in two games. Though only 1-1, this team's talent will rise to the top by June.

Denver Gold—Coach Craig Morton has done well. Craig Penrose leads a decent passing attack with rookies on the other end. The running game has old-timers Harry Sydney and Bo Matthews (heard of 'em? Try Canada) doing an adequate job.

The defense has been a tough unit to score against. Former Super Bowl players Dave Stalls and Pat Ogrin anchor a fine defensive line. All-USFL'er Calvin Turner also holds up the front wall. Putt Choate and Greg Gerkin were 1-2 tackles for the team as linebackers last year and will probably repeat. The secondary is young.

but Nate Miller and Tom Sullivan played well enough to earn all-league honors. Having given up 17 points per game last year and 12 per game this year, the defense will have to pull a so-so offense. They just might do it.

Los Angeles Express—Ex-quarterback John leads this rag-tag group, so it figures that their quarterback is their only real performer. Tom Ramsey, ex-UCLA All-American, should shine in his second pro season. The leagues' worst rushing game is worse (about 65 yards per game). Ramsey is passing, however, to former teammate Jojo Townsell, wide receiver Anthony Allen, and tight end All-USFL'er Tony Ellis for substantial yardage. Mike Sherrad has filled in well for Ellis, catching 8 passes for 63 yards. Offense is not a problem, assuming the game is 100% passing. It's not 100% passing, so it is a problem.

The L.A. defense is talented, but it is currently one of the worst in the league. All-USFL tackle Eddie "Meat Cleaver" Weaver has two former All-Americans with him to make what should be a formidable front line. The secondary is strong, with former CFL all-star Alvin Burleson and Mike Fox stopping the passes. Injuries have hurt their "D", but they hope to come back. It's up to the offense for now.

Oakland Invaders—For two games, here are the stats—146 total rushing yards, 72 total passing yards, 17 first downs, and 7 total points. These totals stink for one game, let alone two! Even with QB Fred Besana and running back Arthur Whittington, this team has one sad, inept offense.

The defense isn't much better. Former Chief Frank Manumaleuga is a top-notch linebacker, but the rest of the defense is no notch. It's a good thing they have the leagues best punter in Stan Talley. He's getting lots of practice!

## UMR Baseball

Date	Opponent	Time	Games	Site
March 11	Marietta College	9 a.m.	1	Panama City, Fl.
	Ripon College	3 p.m.	1	Panama City, Fl.
March 12	Troy State	9 a.m.	1	Panama City, Fl.
March 13	Ripon College	12 noon	1	Panama City, Fl.
	Valparaiso Univ.	3 p.m.	1	Panama City, Fl.
March 14	Northern Kentucky	9 a.m.	1	Panama City, Fl.
March 15	Mineral Area C.C.	12 noon	1	Panama City, Fl.
	Valparaiso Univ.	3 p.m.	1	Panama City, Fl.
March 16	Olivet College	9 a.m.	1	Panama City, Fl.
	Marietta College	12 noon	1	Panama City, Fl.
March 20	*Missouri-St. Louis	1 p.m.	2	Rolla
March 24	*Southeast Missouri	1 p.m.	2	Cape Girardeau
March 31	*Lincoln Univ.	1 p.m.	2	Rolla
April 3	*Missouri-Columbia	7 p.m.	1 (9 inn.)	Columbia
April 7	*Missouri-St. Louis	1 p.m.	2	St. Louis
April 8	*Southwest Missouri	1 p.m.	2	Springfield
April 14	*Southeast Missouri	1 p.m.	2	Rolla
April 18	Washington Univ.	2:30 p.m.	2	St. Louis
April 21	*Lincoln Univ.	1 p.m.	2	Jefferson City
April 23	St. Louis Univ.	1 p.m.	2	Rolla
April 28	MIAA Playoffs at home of the northern division champion			

Head Coach: Jerry Maulin  
Grad. Assist.: Craig Thomas  
Trainer: John Belich  
Sports Info.: Gene Green

Affiliation: NCAA II  
Conference: MIAA  
Colors: Silver & Gold  
Nickname: Miners

\* (Indicates contest is a Missouri Intercollegiate Athletic Association [MIAA] game.)

WE'RE TAKING CHARGE



GEORGE WALSH  
CHEVROLET

PUTS UMR GRADS  
IN THE DRIVER'S SEAT

Doug Sharp - Celebrity Jay Immele - Z-28  
Clint Campbell - S-10 Pickup  
John R. Miller - S-10 Pickup

UMR/George Walsh/GMAC  
Financing Plan:

1. UMR Graduate (or near grad)
2. Verifiable Job Commitment
3. LOW Down Payment
4. Delayed Payments

Special rates given on Rental Cars for interview trips



Keep That Great GM Feeling  
With Genuine GM Parts.

GEORGE WALSH CHEVROLET  
PHONE: 364-USA-1

## ROTOCRAFT

Experimental rotor-blades (10' long, 7" chord, aluminum, flush rivets) for gyrocopters. Rotorblade info pack \$3.00 (overseas \$4.00). Offset Gimbal head plans \$8.00 (overseas \$10.00). Ferrous metals, magna-fluxed.



## FOREIGN CAR

Machine shop, parts, service and remanufactured V.W. air-cooled engines for airboats, aircraft, automobiles and gyrocopters. Also, a complete stock of standard and performance parts for V.W. engines, wholesale and retail.

Recordak film card viewer, model # PFC 66 Used \$105.00  
VW Piston & Cylinder Kits (85.5 MM 1600 cc) New \$89.50 Rebuilt \$45.00  
Bosch '009' Centrifugal Advance Distributor, Cap, Rotor, Cond. & Points \$29.95  
VW 1200, 1300, 1500, 1600 cc Engine Overhaul Gasket Sets  
Reg \$9.95 Now \$5.95 NO PERSONAL CHECKS

SUB  
PRESENTS

David Willis  
Magician

8:00 PM  
March 23, 1984  
Cedar Street  
Center

ADMISSION  
FREE

# IM Basketball

## DIVISION I

TEAM	RECORD	POINTS
1. Sig Nu	8-1	350
2. Sig Ep	8-1	340
3. Tech	7-2	330
4. Pi KA	6-4	320
5. Ka Psi	6-3	310
6. GDI	5-2	300
7. Campus	5-3	290
8. TJ-North	4-3	280
9. Beta Sig	3-4	265
RHA	3-4	265
11. Kap Sig	2-5	245
Lam Chi	2-5	245
13. TKE	1-6	220
BSU	1-6	220
ABS	1-6	220
16. Wesley	0-7	200

## DIVISION II

1. Pela	7-2	265
2. AF Notc	7-2	260
3. KA	7-2	255
4. Phi Kap	7-2	250
5. Sig FI	5-2	245
6. Sig Chi	5-3	235
Triangle	5-3	235
TJ-S	5-3	235
9. Sig Tau	4-3	225
10. AE Pi	3-4	217.5
CCH	3-4	217.5
12. Delta Tau	3-5	210
13. Pi Kappa Phi	2-5	205
14. Delta Sig	2-6	200
15. CSA	1-7	187.5
Vets	1-7	187.5
17. Theta XI	0-7	180

## Rebuilding year for softball

Rolla, Mo. —With four of the five top hitters from 1983 having graduated, this year's University of Missouri-Rolla women's team faces a rebuilding season under first-year coach Cindy Maulin.

Also missing will be UMR's top two starters from last season, leaving the pitcher's mound wide open to several veterans and newcomers.

Top UMR returnee is All-MIAA second-team selection Cecilia Gutierrez. Gutierrez, who is expected to anchor the infield at second base, is coming off a sophomore season that found her finishing third in the MIAA in runs scored (16), triples (three) and stolen bases (six).

Judy Redel, who has co-captained the team the past three seasons, will move from shortstop to catcher this year filling the void left by the graduation of all-conference selection Anita Tikey. Redel

played in every Miner game last year.

Other letterwomen returning are first baseman Terry Bond; outfielders Donna Agers, Kelly Stewart and Leslie Behm; shortstop Renee Poloway; and second baseman Cheryl Caudle.

UMR, 8-16 overall last season and 5-4 in its first year in the MIAA, also must look to building a pitching staff.

"Losing both Leta Judd

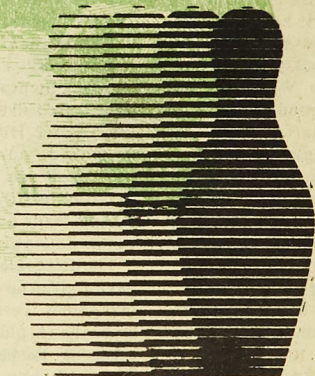
and Susan Appelbaum from last season is a big blow to us," Maulin said. "Much of our pre-season practice has centered on finding the right personnel to do the bulk of our

pitching."

The Lady Miners open the 1984 season with a challenge, hosting NCAA Division I foe St. Louis University March 14 in a 2 p.m. doubleheader.

## The 1984 St. Pat's Celebration

## A Legend In Its Own Time



EVERY PIN THAT FALLS  
PUTS A SMILE  
ON A KID'S FACE

Support Big Brothers/Big Sisters by sponsoring one of the 40 celebrity bowlers from UMR. You may pledge 5¢-10¢ per pin. For more information about "Bowl for Kids' Sake" or about becoming a Big Brother or Big Sister

CALL: 341-2600



Shift into high fidelity.

Infinity

State of the art car audio systems

For the driver  
who'll take any route  
except compromise.

END OF THE RAINBOW

where the good stuff is.

1808 N. Bishop 364-4191  
Movie & Album Rentals  
Blank Tapes & accessories

Faulkner's  
Beverage &  
Mini Mart

Rolla's Coldest Beer  
Ice-Gas-Snacks  
DOMESTIC &  
IMPORTED WINES

364-6762  
1808 N. Bishop