



20 Oct 1983

The Missouri Miner, October 20, 1983

Follow this and additional works at: https://scholarsmine.mst.edu/missouri_miner

These newspapers reflect the attitudes, perspectives, and beliefs of different times. Neither the library nor the university endorses the views expressed in these collections, some of which contain images and language which may be offensive to some readers.

Recommended Citation

"The Missouri Miner, October 20, 1983" (1983). *The Missouri Miner Newspaper*. 2351.
https://scholarsmine.mst.edu/missouri_miner/2351

This Newspaper is brought to you for free and open access by Scholars' Mine. It has been accepted for inclusion in The Missouri Miner Newspaper by an authorized administrator of Scholars' Mine. This work is protected by U. S. Copyright Law. Unauthorized use including reproduction for redistribution requires the permission of the copyright holder. For more information, please contact scholarsmine@mst.edu.

MISSOURI MINER

For the students of UMR

Volume 72, Number 8

Thursday, October 20, 1983

Twenty-four pages

Homecoming festivities set

Source: OPI

Rolla, Mo. —The University of Missouri-Rolla homecoming festivities are set for Oct. 21-22.

Alumni registration, with coffee and donuts, will be held on Friday, Oct. 21, in the Miner Lounge, University Center-East from 9 a.m. to 4:30 p.m. On Saturday, Oct. 22, registration moves to the Gale Bullman Multi-Purpose Building, and the hours are 9 a.m. to 1:15 p.m.

Homecoming buttons (\$1 each) will be sold at registration by members of the M-Club. This year's button says "Kick the Mules" and depicts the Miner doing just that. Proceeds from the sale of buttons support M-Club's Junior Olympics held each spring.

The Silver and Gold Reception will be held from 5:30-8 p.m. Friday, Oct. 21, in the St. Pat's Church Parish Hall. Music will be furnished by a UMR Jazz Ensemble. Also that evening, the M-Club will sponsor a bonfire at the intramural field on fraternity row, beginning at 7. The pep band and members of the pep club will be there. The Homecoming Dance for students and alumni begins at 9 p.m. in Centennial Hall, University Center-East. Introduction of the 10 homecoming queen finalists is a major event at the dance.

The Fieldhouse Feed, open to everyone, begins at 11:30 a.m., Saturday, Oct. 22, in the Gale Bullman Multi-Purpose Building. Members of the honor classes (1933 and before,

1938, 1943, 1948, 1953, 1958, 1963, 1968, 1973, and 1978) will be recognized and pose for class pictures.

Pre-game festivities on Saturday, Oct. 22, at the football field include a pajama race sponsored by the Interfraternity Council. The Miner Band pre-game program includes "Memory" from the Broadway musical "Cats," "America the Beautiful," the Miner "Fight Song," and the National Anthem, sung by John Watson, manager of UMR's Cedar Street Center.

Kickoff for the football game between the Miners and the Central Missouri State University Mules is 1:30 p.m.

Halftime ceremonies include a program by the Miner Band directed by David Oakley, professor of music and chairman of the applied arts and cultural studies department, and Nathan Wisdom, UMR music faculty. Musical selections at halftime will be "Caravan," a percussion feature; "Czardas;" and the Latin American "Sun Cat." Members of the alumni board will join the Marching Miners for certain portions of the program.

Winners of the homecoming queen contest will be presented at halftime and the queen will be crowned by UMR Chancellor Joseph M. Marchello assisted by MSM-UMR Alumni Association president, Lawrence Spanier, Class of 1950.

Also on Saturday, fans are invited to attend two soccer games. The contest between the Lady Miners and University of Missouri-St. Louis will

be held at 5:30 p.m. at the soccer complex. The men's game versus UMSL will be held at 7:30 p.m.

Final events of the homecoming weekend are the annual Alumni Awards Banquet at 7 p.m. Oct. 22, in Centennial Hall, University Center-East, followed by the annual meeting of the MSM-UMR Alumni Association. The Student Union Board-sponsored Homecoming Concert will be held at 8 p.m. in the Bullman Multi-Purpose Building featuring Gary U.S. Bonds.

Tickets for the following homecoming events may be purchased from 8 a.m. through 4:30 p.m., Monday through Friday, until Oct. 20, at the Alumni Office, 101 Harris Hall, University of Missouri-Rolla, Rolla, Mo. 65401 (phone: 314-341-4172): Silver and Gold Party (\$6.50 each); Fieldhouse Feed (\$5 each); Alumni Awards Banquet (\$9.50 each). On Oct. 21-22, tickets will be available at homecoming registration.

Tickets for the Homecoming Concert (\$2 each for students—limit two per I.D.—or \$5 general admission) may be purchased at the Student Union Ticket Table in the University Center from Monday, Oct. 17, through Friday, Oct. 21. On Saturday, Oct. 22, tickets will be available at the door between 7 and 8 p.m.

Tickets for soccer and football games will be available at the gate or by contacting the UMR athletic department, Gale Bullman Multi-Purpose Building, (phone: 314-341-4175) for further ticket information.



One of UMR's Mine Rescue teams practicing for the MSHA sponsored Mine Rescue competition last weekend in which they placed 4th and 8th in a field of 15 professional teams.

Ashcroft speaks at COPHE meeting

BY PAUL MCLAUGHLIN

Attorney General John Ashcroft spoke to the Council on Public Higher Education (COPHE) about education issues on Tuesday. Topics discussed included the status of education in Missouri and ways to solve existing problems.

Ashcroft, who received his pre-college education in Missouri and who taught at Southwest Missouri State University, said, "I have a great affinity and affection for a public education system in Missouri. I think we're at a great time for education. It's

just short of spectacular."

He pointed out, however, that Missouri must remain "competitive." He said Missouri is beginning to notice that there is regional competition for industry and jobs. The way to give Missouri an edge is to educate her upcoming adults.

Ashcroft said that in spite of vigorous opposition from the education community toward the paper, he approved of the way President Reagan addressed the education issue in his "Nation at Risk" report. Reagan used language that implied that education is a matter of national defense and

security.

One of the key problems higher education faces is the fact that the public sees it as a liability, not an asset. For this reason, U.S. schools in places are lacking. Ashcroft differs saying, "Education is an investment, not an expense. One of the most important investments any society makes is its educational resource."

Ashcroft says that people need to be made to understand that "education is not to

see

Attorney General
page 17

"Why can't the dead plant be moved?"

BY KOLA AGAGU

We got a letter from a student (student number 68141) wanting to know why the university couldn't spend a little more money and move the dead plant blocking the Humanities and Social Sciences building ramp. "If the university is spending all that money to provide handicapped access to the physics and EE buildings via elevators," he

wrote, "why couldn't the dead plant be moved?"

Well, I took up the case with Dr. Charles Dare, chairman of the Parking Security and Traffic Committee. He wants you to know that the planter sitting in front of the H-SS building was strategically located between the two ramps.

It was installed for the benefit of handicapped people especially those in wheelchairs.

Believe it or not, these people run the risk of being run over by bicyclists "flying" down the ramp. "People have been hit," Dare said. "There have been close calls, too," he added.

Dr. Dare agrees that a dead plant offers no appeal to the eye and also believes that it should be replaced.

Even though Dr. Dare believes that the dead plant should be replaced with a liv-

ing substitute, he sees no chance of the planter being removed in the foreseeable future. "Till we find an alternate method of slowing down bikes," he stressed, "the planter has to stay there—with a new plant, of course," he humorously added.

With assurance that all it takes is a phone call, Dare picked up the phone to talk to Mr. Hugh Jesse in charge of the General Service building

(at the physical facility) who wasn't in the office by then. However, he spoke with Mr. Lowell Wynn and requested a new plant. Wynn promised (according to Dare) to take care of this complaint. You can look forward to having a living plant in front of the H-SS building soon.

As an addition to this, walking past the H-SS building around 4 p.m. on Monday (Oct. 17), I noticed that the

planter was gone. It could be assumed, then, that it's either being cleaned out so as to install a new plant, or else moved off permanently.

Just as a reminder to the student body, if you have any complaints about dissatisfied service, or things you wished could be changed, etc., get in touch with us at the Missouri Miner. We'll be more than willing to investigate these things for you.

Pi Kappa Alpha Rockin' and Ridin' with the Red Party. . . . Sigma Chi
Music by "Amber," Castle of America Burgers,
buses available 3:30-12 p.m. Lion's Club Park.

CALENDAR OF EVENTS

Editor's Note: If your organization is having a meeting, turn in details to the MINER office in the Rolla Building before Sunday at 8 p.m., and we will list it in the Activities Section of the paper. No articles submitted will be printed unless written in complete sentences with proper grammar. No schedule or flyers will be rewritten and published by the staff for the Activities Section.

If your organization is sponsoring a campus-wide event for the benefit of charity, get us details before Sunday at 8 p.m. We will advertise the event free of charge in this space.

The MINER reserves the right to edit any notices or ads for this page before publication.

Thursday

COLLEGE REPUBLICANS

College Republicans will meet Thursday night, Oct. 20 at 8 p.m. in H-SS G-4. Everyone is welcome.

INDEPENDENTS

There will be a General Membership Meeting on Thursday, Oct. 20. The meeting will be held at 7 p.m. in the CE bldg. rm. 114. Memberships, door prizes, and refreshments will be available. Everyone is welcome to attend.

M-CLUB SMOKER

There will be a smoker on Thursday, Oct. 20 at Sig-Ep. The meeting will begin at 6:30 p.m., and all M-Club members should attend.

PHYSICS COLLOQUIUM

"Studies of Excitation in Simple Collision Systems," Nils Anderson, H.C. Orsted Institute, Copenhagen, Denmark, 4 p.m., 104 Physics. Free.

VETS CLUB

The Vet's Club will have a meeting this afternoon at 4:30 in the ROTC bldg. All UMR veterans are invited to attend.

Friday

Green-Gray classic

Green-Gray Classic, Fraternity Row Field, 3:30 Friday, October 21. Refreshments provided.

M-CLUB HOMECOMING BONFIRE

Spirit-raising bonfire 7:00 p.m. Friday, October 21, at Intramural Fields. 12th man points awarded. Help get the Football Miners psyched for the Homecoming game.

Missouri Miner

The **Missouri Miner** is the official publication of the students of the University of Missouri at Rolla. It is published weekly at Rolla, Missouri. The **Missouri Miner** features activities of the students and faculty of UMR.

Editor-In-Chief	Karen Penney	364-3561
Business Manager	Tracy Gerhold	364-8989
Advertising Director	Carol Suit	364-8989
	Sheila Courtway, Heidi Fluegel	
Managing Editor	Laura Pagano	364-3019
News Editor	Pat Van Ryckeghem	364-0018
	Paul McLaughlin, Kola Agagu,	
	Phyllis J. Harster, Jane Sheputis	
Features Editor	Heraleen Sprenger	364-5369
	Chris De Gonia, Darren	
	Haverstick, Diane Heuring	
	John Roberts, Mike Stroder	
Sports Editor	Scott White	364-1490
	Bob Gaynor, Tracy Boland,	
	Chris Colona, Dan Lichtenwalner,	
	Anne Werner	
Photo Editor	Rich Bee	364-9885
	Eric Gieseke, Rick Bennett,	
	Dave Stanfield, Nancy Winkler	
Distribution	John Macke	364-9783

Subscriptions are available to the general readership at a rate of \$7.00 per semester. Articles and photos for publication in the **Miner** must be in by 8 p.m. on the Sunday before distribution on Thursday.

THE MISSOURI MINER

303 Rolla Building
University of Missouri-Rolla
Rolla, MO 65401
(314) 341-4312

"ROCKIN' AND RIDIN' THE RED" PARTY

Pi Kappa Alpha and Sigma Chi will host the "Rockin' and Ridin' the Red" Party on Friday, Oct. 21 from 3:30-12 p.m. at Lion's Club Park. "Amber" will provide the music, Castle of America hamburgers will be sold, and buses are available.

FRIDAY-SATURDAY-SUNDAY SPORT PARACHUTE CLUB

The UMR Sport Parachute Club will be holding a Collegiate skydiving meet during the weekend of Oct. 21-23 at the Cuba Municipal Airport. Take the north outer road one mile west at the Cuba exit off I-44 to reach the airport. Activities begin at 3 p.m. Friday afternoon. There is a \$2 entry fee which also covers dinner Saturday night. People interested in learning about sport parachuting are most welcome.

SNAKE DANCE

Snake dance to M-P bldg. starting at 6 p.m. at TJ Towers. Will go to Multi-Purpose bldg. for M-Club Bonfire which starts at 7 at the intramural field.

UMR SPORTS CAR CLUB

UMR Sports Car Club Autocross Saturday, October 22, 10:30 a.m., Lot 26 across from Comp. Sci. All are welcome.

Monday

AMATEUR RADIO CLUB

The UMR Amateur Radio Club will hold its next meeting on Oct. 24 at 6:30 p.m. it will be held in EE 101, and anyone interested is welcome.

CHEMISTRY SEMINAR

"Thin Surfactant Liquid Film Phenomena in Foam and Emulsion Systems," D.T. Wasan, Illinois Institute of Tech., 4:30 p.m., 125 Schrenk Hall. Free.

SCUBA CLUB

UMR Scuba Club underwater hockey game on Monday, Oct. 24, 7 p.m. at the Multi-Purpose Bldg. pool. All you need are mask, fins, and snorkel. Everyone welcome—you don't have to be a member or have experience to play.

WOMEN'S COUNCIL

Women's Council will meet Oct. 24 at 4:30 p.m. in Library Conference Rm. 202. The lecture will be on Women and Good Health with representatives from different health agencies. Everyone is encouraged to attend. There is no charge for the lectures and membership dues are scaled.

Tuesday

WOMEN AT WORK SERIES

"Directions in the '80s: Women and Education," Dr. Barbara Uehling, chancellor, UMR-Columbia, noon, Missouri Rm., Univ. Center-East. Fee of \$3 for series.

State your opinion—fill out a StuCo referendum

Do you know where that \$90.35 of Student Activity Fees goes? Pick up a referendum and find out! And since you've got it in your hands, why not fill it out? The Student Council-sponsored referendum is used to determine student opinions and suggestions concerning the usage of your activity fees. Until October 25th, forms will be available at the Hockey Puck or from your StuCo representative. Completed forms may be returned to your StuCo rep., Hockey Puck, 'Bitch Box' at University Center-West, or boxes by dormitory eating facilities.

The referendum results are used as a tool by the Chancellor in his decision to determine activity fees. This is your BEST opportunity to make your opinions known. Don't pass it up.

Gopher Baroque at

Logos

books & music

*books *cards
*gifts *posters
*records & sheet music

Use this coupon to get a FREE cute ballpoint pen with a \$5.00 purchase.

Offer good until Oct. 31
Mon.-Fri 9 - 5:30
708 Pine Rolla

THE BEST FROM HOLLYWOOD! COMMONWEALTH THEATRES

MOVIE MARQUEE

FORUM

I. NEVER SAY NEVER AGAIN

Rated P.G.

Evenings 7 & 9:25 p.m.
Matinees Sat. & Sun. 2 p.m.

II. GETTING IT ON

Rated R

Evenings 7 & 9 p.m.
Matinees Sat. & Sun. 2 p.m.

SWE MEETING

The Society of Women Engineers will be holding a meeting at 5:45 p.m., Tuesday, Oct. 25, in the Mark Twain Rm. The speaker is Miss Lynne Puetz from the Dept. of the Army Corps of Engineers. Also scheduled: nominations. Refreshments will be served following the meeting. Everyone is welcome.

Wednesday

AMERICAN SOCIETY OF CIVIL ENGINEERS

The fourth meeting of the fall semester will be held at 7 p.m. in CE 114 on Oct. 26. Jon Govreau of Massman Const. Co. will be the guest speaker. Nominations for new officers will be held.

SUB CONCERT

Student Union Bd. Concert, Los Angeles Piano Quartet, 8 p.m., Cedar Street Center. Free.

Noday

HKN HELP SESSIONS

HKN holds help sessions for EE 61/63 every Monday night 7-9 p.m. in EE 105.

KME MATH HELP SESSIONS

Need help? KME offers free tutoring in algebra, trigonometry, calculus, and diff. eq. Help sessions are held every Monday and Thursday from 6:30-8 p.m. in M-CS 202.

MISSOURI GRANTS FOR 1983-84

As Oct. 10, 1983, the Student Financial Aid office has not been notified by the Missouri Dept. Of Higher Education on whom the recipients of the Missouri Grant will be for the 1983-84 academic year. The Student Financial Aid Office will keep all students abreast of future information received regarding this particular financial aid program.

Upcoming

APO DANCE-A-THON

Alpha Phi Omega presents the sixth annual dance-a-thon for muscular dystrophy on Nov. 4, 5. If you are interested in dancing, dancing applications are available at the candy counter. For information on the dance-a-thon, call either Mike Dobson at 364-1292 or Brad Thompson at 364-8115.

HAUNTED HOUSE

The Newman Center is sponsoring a haunted house on Halloween weekend, Oct. 28-31. It will be open 7-11 p.m. Friday-Monday with all proceeds to be donated to a local charity. The house will be run in cooperation with members of Sigma Nu and Sigma Chi fraternities and is located one block from Campus at 10th and Main Streets.

UMR FILM SERIES

Thursday, Oct. 27, "My Dinner with Andre," 7:30 p.m., Miles Aud., ME bldg. Season ticket or \$2.50 at the door.

TUTORING

ALPHA CHI SIGMA

Freshman and Analytical Chemistry
7:00 - 9:00 p.m. Tuesday and Thursday
Room 126 Chemistry Building

Society of Physics

Physics 21-25 & 107
7:30 - 9:00 p.m. each Tuesday
Room 130 Physics Building

KAPPA MU EPSILON

Trig, Algebra and Calculus
Monday and Thursday 6:30 - 8:00
Room 209 Math-Computer Science Building

Minority & Women Eng. Program

Areas covered: Physics, Math, EE, ChE, E.M., Chemistry, English and Computer Science
A complete schedule of times and dates is available in Room 302 Rolla Building.

UM Pres
Se
BY PAUL Mc

On May 6, 1984, James announced his July 1, 1984 as p four-campus Missouri system Olson said "By the end of t mic year I wil eight years as UMKC] and President, and I have con wish to try new a different way are still younger that possible." When he to ency in 1976, C that he would r is now 66.

Since then, Curators, led by dent William has set up a pro dule for selectin ing the presi Olson's place.

The selectio volves three Campus Sear (one from eac Presidential S mittee, and Selection Com work with incr wer bases. Th takes the name and nominees, probables, and the next high

The Presiden Committee tak ther narrows it up to the Pres tion Committee mittee makes a of three to five of the Board of C will make the f At this point at the Campus mittee stage. Haddock, who Rolla's Search says, "At the m reviewing nomi cans for the jo So far, sa

Zeta n Crow Source: Zeta

The Eta Ch Tau Alpha of recipient of th blished Crown This award is el by the National Collegiates of 2 The selectio five areas of cha membership, fi nes, programm nity operations These five specific criteria

UM President retires

Search continues

BY PAUL McLAUGHLIN

On May 6, 1983, UM President James C. Olson announced his plans to retire July 1, 1984 as president of the four-campus University of Missouri system.

Olson said upon retiring, "By the end of the next academic year I will have served eight years as Chancellor [of UMKC] and eight years as President, and Vera [his wife] and I have concluded that we wish to try new challenges and a different way of life while we are still young enough to make that possible."

When he took the presidency in 1976, Olson indicated that he would retire at 65. He is now 66.

Since then, the Board of Curators, led by board President William G. Cocos, Jr., has set up a process and schedule for selecting and appointing the president to take Olson's place.

The selection process involves three committees: a Campus Search Committee (one from each campus), a Presidential Screening Committee, and a Presidential Selection Committee. They work with increasingly narrower bases. The first actually takes the names of applicants and nominees, makes a list of probabilities, and submits it to the next higher committee. The Presidential Screening Committee takes the list, further narrows it, and passes it up to the Presidential Selection Committee. This last committee makes a recommendation of three to five candidates to the Board of Curators which will make the final choice.

At this point, the process is at the Campus Search Committee stage. Dr. A. Glen Haddock, who is chairman of Rolla's Search Committee, says, "At the moment we are reviewing nominees and applicants for the job."

So far, says Haddock,

between 50 and 100 nominations and applications have been received, and he says he is "reasonably pleased." More will be accepted through the end of October.

His committee, as well as the other Campus Search Committees, is to make a submission of eight to fifteen names by December 1, 1983. Considering that there are four committees looking at the same list of candidates, the actual list that reaches the Presidential Screening Committee may be as short as eight names or as long as sixty.

The eleven-member Presidential Screening Committee, which has not yet gotten into action, will investigate the background of the candidates submitted. According to the Board of Curators report, they "shall obtain from secondary sources—not from interviews with the nominees themselves—detailed information on the ability and character of nominees. Teams of two or three committee members might be assigned to visit the home base of prospective candidates."

The Screening Committee is to pass a list of five to eight names to the Presidential Selection Committee by February 1, 1983.

The eight-member Presidential Selection Committee will make a list of three to five candidates for presidency. The Board of Curators will make the decision.

Haddock says that there is no way at the moment of telling who are the hopefuls or who is likely to become president. "We wouldn't want anyone to consider themselves a candidate yet." He says that later on in the process will be the time to watch.

For now, the Campus Search Committees are performing a weeding out routine. Haddock says that areas his committee examine are academic credentials, research accomplish-

ments, and academic and administrative experience. "We like to see evidence of success in what the individual has been doing."

The Campus Search Committee is composed of 11 people, as specified by the Board of Curators. These 11 include "four full-time faculty selected by the campus faculty governing body, three deans selected by the chancellor, two students selected by the campus student government, one non-academic representative selected by the chancellor, and one alumnus selected by the campus alumni organization."

The members of the Rolla committee are:

A. Glen Haddock, chairman, professor of mathematics
Robert V. Wolf, assistant dean of the School of Mines and Metallurgy;
Bobby G. Wixson, director of the Center for International Programs and Studies;

Marvin W. Barker, dean of the College of Arts and Sciences;
B. Ken Robertson, dean of students;
Don L. Warner, dean of the School of Mines and metallurgy;

Samir B. Hanna, professor of chemistry, representing the Academic Council;
John C. Vaughn, director of resource management and administrative planning;
James M. McKelvey, alumni representative;

Kevin Renfro, president of the Student Council;
Heidi Fuegel, Student Council representative.

† Certain issues of *Spectrum*, the publication of the University of Missouri System, were the source of some facts in this article. They were Vol. 10, No. 8 and 10.



Bicycles are still being parked unlawfully. The problem is not due entirely to lack of space. Note that ample space is available on bike-rack in the background.

Bicycle infractions continue

BY KOLA AGAGU

Chances are you've had some encounters with unidentified flying bicycles before. Well, a lot of students have, and they've complained about it. The risk becomes magnified at night when visibility is extremely low. But believe it or not, people do ride their bicycles at night.

Our biggest concern is not the student who rides down highway 63 at night. Rather, we're concerned about those who ride (at any time of the day for that matter) in the forbidden areas on the campus. There are signs just before entering the campus walks, but they are either ignored or grossly defaced or converted into rather obscene information by smart alecks.

The problem goes further in the area of bicycle parking. It is not unusual to find a bicycle "wrapped" around a tree or lamp post. This gets a little annoying when one realizes that there are ample spaces available on the bike rack nearby.

There are so many reasons why students park their bikes in areas other than approved for such. These reasons range from a desire to be different, desire to reach the bicycle as soon as one jumps out of class and the willingness to preserve

the looks of one's bike.

I talked to a few of the students I found parking next to a tree. One student argued, "I paid \$475 for my bike. I'm not gonna let some jerk scratch it."

Whatever the reasons are, something has to be done about the bicycle problems. Suggestions have been made to register bicycles for easy identification. Other means of identification might even be devised so that students violating parking laws could be tracked down.

The Popcorn Factory

Flavored Popcorn:

St. Pat Spearmint
Bulldog Banana
Pine Street Pizza
Charlie Cheese
Bouncy Bubble Gum
Craklin Carmel
Spicy Cinnamon

And lots more! Come in and sample the flavors.

Different Sizes-- Different Prices
Great for Parties

Just Opened: 815 Pine Street
Downtown Rolla
341-2990

Faulkner's Beverage & Mini Mart

Rolla's Coldest Beer
Ice - Gas - Snacks
DOMESTIC & IMPORTED WINES
364-6762
1808 N. Bishop

HOW MANY DAYS 'TIL ST. PAT'S?

Zeta receives Crown Chapter Award

Source: Zeta Tau Alpha

The Eta Chapter of Zeta Tau Alpha of UMR is the recipient of the newly established Crown Chapter Award. This award is chosen annually by the National Vice Presidents Collegiate of Zeta Tau Alpha

The selection is based on five areas of chapter excellence: membership, finances, activities, programming, and fraternity operations.

These five areas include specific criteria such as attain-

ing maximum chapter size, initiating 84 percent of those pledged, meeting financial responsibilities, achieving a minimum of 85 percent participation by individual members in other organizations, maintaining Commendable scholastic achievement, and exhibiting a positive attitude of cooperation with the national Fraternity.

The award is financed by the Crown Development Trust Fund from monies contributed by Zeta Alumnae members and friends of the fraternity.

StuCo sent out referendum

BY KOLA AGAGU

The Student Council met on Oct. 11, 1983. The following are items that came up for discussion:

Interviews will be held on Tuesday, Wednesday and Thursday of this week for fund appropriations to organizations. These are organizations that have submitted applications for appropriation. Representatives of the organizations will be interviewed as an extra step in justification of their appropriations.

A referendum on the student activity fee increase has

been sent out to representatives of organizations. Copies will also be made available to students in the library and other designated areas. Your response is highly encouraged since this will form the basis of all decisions made on fee increases.

Steve Kuess of the Student Council made the motion about the Rollamo Yearbook

distribution. A resolution was then passed by the floor to make Student Council help available to the Rollamo staff during the yearbook distribution period. After the regular three days of Rollamo distribution by the Rollamo staff, extra copies could be kept in the Student Council office so that students could pick them up. This will facilitate distribution beyond the regular

three-day period of normal distribution. This suggestion has yet to be presented to the Rollamo staff and could alter future yearbook distribution.

Steve Phillips, an executive Committee member, suggested the establishment of a special "School Spirit Committee." This committee will develop ideas to promote more school

spirit on the UMR campus.

The date for the next blood drive was established as being November 8, 9. Efforts are being made to increase the participation in the dorms especially the Quad and T.J. The special emphasis on the dorms is due to their low turnout in the past. The StuCo is hoping that this time, they'll be able to reach the dorms with

their appeal. Every Student Council Representative is volunteering one hour of his or her time for this blood drive. "Please come give some blood," they plead. They're trying to reach the goal of 600 pints. Thanks also to those who have so generously given in the past. What little blood you give could save someone's life.

Amy Shelton McNutt dies

Source: OPI

Rolla, Mo. — Amy Shelton McNutt of San Antonio, Texas, formerly of Rolla, died Friday, Oct. 14, in San Antonio. She was 94.

A memorial service will be held at 2:30 p.m. Monday, Oct. 17, in the chapel of the Southwest Craft Center in San Antonio.

Mrs. McNutt was the widow of Vachel H. McNutt for whom the University of Missouri-Rolla's planned new mineral engineering building will be named. She participated in a ceremony in Rolla Tuesday, Oct. 4, designating the building as Vachel H. McNutt Hall. She spoke briefly, crediting the education her late husband had received at UMR as enabling him to identify potash when he discovered potash-bearing deposits in 1925, the first in the western hemisphere.

Mrs. McNutt was a graduate of William Woods College, and in 1964, UMR granted her this institution's first honorary degree of humane letters. She was an honorary Knight of St. Patrick, a member of UMR's Order of the Golden Shillelagh, and a recipient of alumni and other awards.

She maintained close ties with UMR, where her late husband had taught after receiving his M.S. degree in 1912. In 1961, "in gratitude for what the geology department had given Mac," Mrs. McNutt established the V.H. McNutt Foundation at UMR, naming the department of geology and geophysics as beneficiary. More than 500 students have been helped by the Foundation. "Mamma Mac," as she was affectionately called, took a personal interest in each of the scholarship recipients, and visited with them on her frequent trips to Rolla.

Mrs. McNutt worked closely with her husband during his successful career as petroleum geologist. After his death in 1936, she managed the com-

see McNutt
page 5

E-Systems continues the tradition of the world's great problem solvers.

Unquestionably, Leonardo da Vinci possessed one of the world's great minds. Not only renowned as a painter and sculptor, da Vinci also applied his exceptional talents to the mechanics of flight, to cartography for planning military campaigns, and even astronomy.

Today, scientists and engineers at E-Systems continue the tradition by expanding the practical application of advanced technology. E-Systems uses the principles of flight mechanics as the basis for major modifications to aircraft, expands basic cartography to encompass highly

sophisticated guidance and command and control systems, and has designed and built a system that greatly expands man's ability to study the universe.

That's only a small segment of the tough problems E-Systems engineers solve in the area of antennas, communications, data acquisition, processing, storage and retrieval systems and other systems applications for intelligence and reconnaissance — systems which are often the first of a kind in the world.

For a reprint of the da Vinci illustration and information on career opportunities with E-Systems in Texas, Florida, Indiana, Utah, and Virginia, write: Dr. Lloyd K. Lauderdale, Vice President Research and Engineering, E-Systems, Inc., Corporate Headquarters, P. O. Box 226030, Dallas, Texas 75266.



E-SYSTEMS

The problem solvers.

An equal opportunity employer M.F.H.V.



news briefs

University Day

BY PHYLLIS J. HARSTER

All prospective college students and their parents, teachers and counselors are invited to learn about the University of Missouri-Rolla at University Day on campus, Saturday, Oct. 29.

The annual open house gives visitors an opportunity to get acquainted with the UM-Rolla campus and to familiarize themselves with UMR's academic programs and campus life in general.

Registration will be from 8 a.m. to noon in the Miner Lounge on the second floor of the University Center-East. UMR-Rolla faculty, students and staff will be available to answer questions on matters

such as academic programs, student activities, housing, financial aid and admissions.

Guided tours of the campus will leave periodically from the University Center between 9 a.m. and 1 p.m. All academic departments on campus will have an open house during those hours with demonstrations and displays in most departments. Faculty members and students from each department also will be on hand in their respective units to answer questions about specific academic programs.

PSI Boss' Night

BY JANE SHEPUTIS

Tuesday, October 18, the Rolla Chapter of the Professional Secretaries International held its annual Boss' Night. This year the dinner was held

from 6:30-9 p.m. in Centennial Hall.

Each year Boss' Night is a "semi-formal" affair, according to Professional Secretaries International member Helen Baird, at which secretaries honor their bosses. It is one of the two major PSI functions, the other event being Secretary's Day in April.

About 27 people total, PSI members and their bosses, attended that evening, although the event was open to all secretaries and their bosses.

The Boss of the Year was named and a speech was given customarily. Dr. Joan McPherson gave her speech "You are the Greatest." This year Margeret Cossette from the non-profit organization Missouri Home Care received the Boss of the Year title. Last year the winner was Dr. James Johnson, head of the UMR Chemical Engineering

Department.

Baird says that any secretary may nominate her boss for Boss of the Year, but for fairness, each candidate's merits are evaluated by people not associated with PSI.

Women at Work Series

By Phyllis J. Harster

Dr. Cathy Bond spoke on 'Hormone Cycles in Women' at the second Women-at-Work Series. Dr. Bond is a pediatric physician with the James Clinic in Rolla.

She discussed in detail the current debate about premenstrual syndrome (PMS). This disease has many social as well as legal implications. It has been used as a defense in Britain when a woman was on trial for acts of violence

committed during the time when PMS might have been a factor. So far it has not been used as a defense in the United States.

The possible causes of PMS are numerous. 'Everything has been blamed, and everything has been tried,' said Dr. Bond.

Women-at-Work, a continuing education activity of the College of Arts and Sciences, began in 1981 and regularly has had about 80 women and men enrolled. The program received an award from the National University Continuing Education Association in a competition for continuing education programs for women. The program's creativity and innovation received special mention.

The program continues each Tuesday, from 12:00 p.m. to 1:00 p.m., in the Mark Twain Room. There is a \$3.00 fee for the series.

Fletcher to present paper on noise

Source: OPI

Rolla, Mo. —Dr. John Fletcher, University of Missouri-Rolla professor and chairman of psychology, will present a paper at an American Industrial Hygiene Association symposium on "The OSHA Noise Standard and Hearing Conservation Amendment" to be held Oct. 25-26 in Arlington, Va.

The symposium will assist individuals who have company responsibilities for program planning and development associated with evaluation and control of noise and hearing conservation.

Fletcher will present a paper on "Motivation and Training."

Institute of Applied Mathematics established

Source: OPI

Rolla, Mo. —The Institute of Applied Mathematics has been established at the University of Missouri-Rolla with Dr. Louis J. Grimm, chairman of the department of mathematics and statistics, as director.

Dr. Marvin W. Barker, dean of the College of Arts and Sciences, said that formation of the institute establishes a mechanism for interdisciplinary research involving applied mathematics.

"The institute will promote research directed toward the solution of important mathematics problems which are

interdisciplinary in nature. Personnel of the institute will participate in graduate and undergraduate programs in mathematics, physical science and engineering. It will provide educational opportunities and serve as a resource for the state in support of high-technology industrial development," he said.

UMR, with its long tradition of applied mathematics and its extensive computer facilities, is an ideal place for such an institute, Grimm pointed out.

"Such computer facilities as the computer graphics equipment and the new array processor, provide powerful sup-

port for research," he said. "These give us a 'state of the art' facility for doing experimental work in mathematics. The array processor, a special computing device adapted to high-speed numerical computations, makes it possible for mathematicians to more efficiently carry out experiments or work out involved examples. These will be more and more important as technology develops."

The institute will build on UMR's strong commitment to applied mathematics, Grimm added.

"By 'applied' I mean mathematics directly connected with problems arising in other

fields," Grimm said. "The B.S. degree is a degree in applied mathematics, and a sizable percentage of our B.S. graduates have taken industrial positions. In recent years the department has increased the emphasis on applied mathematics in its graduate programs by setting up a special option for the M.S. degree for students interested in careers in industry, and by broadening the requirements for the Ph.D. degree. Many of the department's M.S. and Ph.D. grad-

uates have had strong interests in applied areas and have gone on to successful careers in government and industry."

The initial activity of the institute is a weekly interdisciplinary seminar. Speakers for the fall semester will include faculty members from the departments of mechanical engineering, computer science and engineering mechanics as well as mathematics and statistics. In addition, one graduate student in mathematics will be doing his thesis work

under the direction of a mechanical engineering professor, and Grimm expects several other graduate students to be involved in interdisciplinary research programs.

"As interaction between departments grows in fields involving applied mathematics, the institute can attract external support for research

see Applied Math page 17

McNutt

from page 4

plex McNutt operations, including the Gallagher Ranch, a 10,000-acre ranch near San Antonio.

UMR Chancellor Joseph Marchello said, "UMR has

suffered a great loss in the death of Amy Shelton McNutt. Mrs. McNutt will be greatly missed. Her memory will live on here at Rolla, in the hearts of her many friends who knew

her and the many students who will benefit from her help in the form of her scholarships and the education they will receive in the Vachel H. McNutt Hall."

HAR BELL

ATHLETIC GOODS

904 Pine 341-2666

Har-Bell-your one stop basketball center

We carry the largest selection of basketball shoes in the area. And now until October 29th

All Adidas basketball shoes in stock 20% OFF

All Converse in stock 10% OFF

We feature: Adidas, Nike, Pony, Converse
Spot Bilt, Avia, New Balance

ENGINEERS

November 1

SUNDSTRAND ON CAMPUS

Sundstrand, a leading high technology company, is involved in the design, manufacture and sale of advanced electrical and mechanical aerospace systems for commercial and military jet aircraft as well as missiles and space applications.

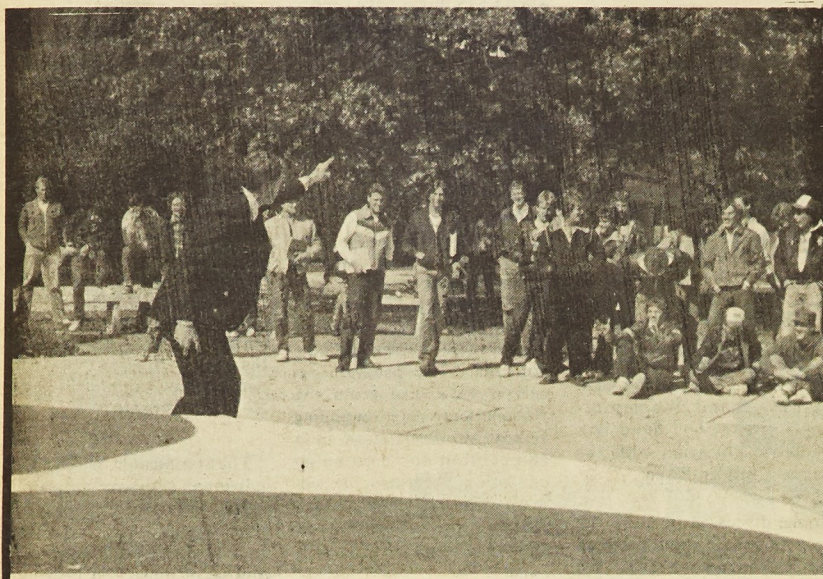
Sundstrand is a Fortune 500 company headquartered in Rockford, Illinois with annual sales over \$960 million. We have manufacturing and service locations worldwide and use state-of-the-art technologies to design, manufacture and deliver our products.

We offer a competitive salary, a solid benefit package including health and dental, an educational reimbursement program and a liberal holiday schedule.



Sundstrand Corporation
4747 Harrison Avenue
P.O. Box 7002
Rockford, IL 61125

An Equal Opportunity Employer



Brother Jim, a self-described former "sex-drugs-rock and roll-freak" born again during a Van Halen concert, spread his message to UMR students Monday. The crowd responded with jeers to the insults he directed at the students' lifestyles.

Subscripts

By Sandy Nugent

Homecoming is finally upon us. The polls close today at 3:00 for campus voting on the Homecoming Queen candidates. Tomorrow night, SUB will sponsor a Homecoming Dance featuring the band, 'The Mistakes' and of course the Queen candidates. Admission is free with UMR I.D. The dance will be held in Centennial Hall from 8 p.m. to 1 a.m.

October 26, 1983, the Fine Arts Committee will host the Los Angeles Piano Quartet at 8:00 p.m. at UMR's Cedar Street Center. Admission is free.

The Los Angeles Piano Quartet, formerly known as

Ko-Kela, 'gives a performance that positively dances with you!' James Bonn, pianist; Clayton Haslap, violinist; Ronald Copes, violinist; and Peter Rejto, cellist, give an exciting new interpretation to chamber music.

The special musical vitality

Theta Tau sponsors

Hoedown

BY JIM BERNDT

Tonight's the night and I'm sure that by now everyone has their Homecoming Hoedown cups. If not, there might still be time to get one from any Theta Tau member. Otherwise, they're only \$3.50 at the door. After all, you don't want to miss all the games as well as all

of the Los Angeles Piano Quartet is a result of the members' extraordinary talent and unique friendship. It is this along with their dedication to 'the rare art of piano and strings' which make the Quartet 'one of the country's top chamber ensembles'.

the unscheduled activities. Also EXPOLOIT will be rocking the night away while everyone is consuming unlimited quantities of refreshment. Start the Homecoming weekend off right and come out to the Hoedown at Lions' Club Park from 7:00 till midnight. Get down at the Hoedown!

Alumni honor 11

Source: OPI

Rolla, Mo. —The University of Missouri-Rolla's MSM-UMR Alumni Association will honor 11 persons at its annual Homecoming Awards Banquet at 7 p.m. Saturday, Oct. 22, in Centennial Hall, University Center-East.

Achievement Award recipients are: J. Lewis Andrews, Class of 1924, retired engineer, inventor, manager and college professor, Oxly, Mo.; Vernon G. Berkey, Class of 1950, retired president, Midwestern Steel Division, Armco Inc., Hilton Head Island, S.C.; and Victor J. Hoffmann, Class of 1960, president and chairman of the board, Industrial Mineral Products Inc., Kent, Wash.

Those receiving Merit Awards are: James M. Forgotson, Class of 1922, part owner and consultant, Gulf Coast Ventures and several pipeline companies, Shreveport, La.; Harold A. Krueger, Class of 1942, vice president, underground mining, Kennecott Corp., Salt Lake City, Utah; and Carlow H. Tieron, Class of 1954, executive vice president, International Metals & Machines, and chairman of the board, Deister Concentrator Co., Lincolnshire, Ill.

The Service Award will be given to: Rex Alford, Class of 1940, manager, industry, conservation and environmental affairs, Oil and Gas Production, Conoco Inc., Houston, Texas; George W. Axmacher, Class of 1942, area manager, Sample Brothers Inc., Oklahoma City, Okla.; and John H. Livingston, Class of 1939, retired, Elm Grove, La.

Lifetime memberships in the

MSM-UMR Alumni Association will be awarded to UMR-Rolla Chancellor Joseph M. Marchello and Mrs. Miriam L. Planje, wife of the late Theodore J. Planje, Class of 1940.

Alumni, faculty, staff and

friends of the honorees are invited to the banquet. Tickets are \$9.50 each and may be purchased at the Alumni Office, 101 Harris Hall, University of Missouri-Rolla, Rolla, Mo. 65401 (Telephone: 341-4171).

FRIDAY, OCT. 21 - SATURDAY, OCT. 22: UMR HOMECOMING

FRIDAY

- Homecoming registration, Miner Lounge, Univ. Center-East, 9 a.m.-4:30 p.m.
- UMR Cross Country MIAA Championship, 10:30 a.m., UMR Golf Course.
- Silver and Gold Reception, St. Pat's Church Parish Hall, 5:30 p.m., tickets available through the Alumni Office, phone 341-4172.
- M-Club Bonfire, intramural field next to Bullman Multi-Purpose Bldg., 7 p.m. Free.

SATURDAY

- UMR Homecoming, Fieldhouse Feed, Bullman Multi-Purpose Bldg., 11:30 a.m., tickets required; Alumni Awards Banquet, 7 p.m., Centennial Hall, Univ. Center-East, tickets required. Tickets for both events available through the Alumni Office, phone 341-4172.
- UMR Women's Soccer, UMR-St. Louis, 5:30 p.m., soccer complex. Admission charged.
- UMR Men's Soccer, UMR-St. Louis, 7:30 p.m., soccer complex. Admission charged.
- Homecoming Concert, Gary "U.S." Bonds, 8 p.m., Bullman Multi-Purpose Bldg. Tickets—\$2 each for students (limit two per I.D.) or \$5 general admission—available at Student Union Board ticket table in Univ. Center from Oct. 17-21. Tickets also will be available at the door between 7 and 8 on the night of the concert.
- UMR Football, Central Missouri State Univ., 1:30 p.m., football stadium. Admission charged.

The Beat PRESENTS

Fri. 10/21

&

Fri. 10/28

CK THUNDER

Sat. 10/22

FOOLS FACE

Sat. 10/29



Everyday Prices

Pitchers.....\$2.40
14 oz. draws....75¢

Now serving wine

Hours-6:00pm to 1:30pm

Location - 505 B. Hwy. 72, beside Aldi's
For more information call 364-5065

WELCOME
BACK
ALUMNI

KEY
SPORT
SHOP

1200 Pine
Rolla, Mo.
314-364-5494

"Specializing in custom silkscreening"
Custom printed sportswear
Computer Monograming

For all your School needs
Greek, Fraternity or Sorority
Official Joe Miner clothing

Clip the Coupon for **10% OFF**
anything in the store for
the weekend of 21 & 22nd
of October

MUST HAVE COUPON!
EXCLUDES any sale items

★ ★ Classifieds ★ ★ Classifieds ★ ★

Dear Pookie,

Happy Anniversary!!! I'll make Friday a red-letter day. Think your celibate roommates would mind hay on the floor? Don't forget, Asti on ice!

Love,

The Good-Looking Chick Between Your Ziggies

P.S. No books... we'll learn heat transfer my way

To: Double Trouble and their Sometimes Sidekick, whether thrown or eaten,

CROUTONS KILL!!!

Yours Truly,
A Victim

NEEDED: 1 or 2 people to share a large house with 2 other students for the spring semester. Rent is \$100 per month. Location: 1108 N. Rolla, directly across from University Center East. Phone 364-1875.

Rosie, Joyce, Regina, Meredith, & Floretta:

Welcome to the Realm of Kappa Alpha Psi. May all of your experiences by pleasant ones. May I commend you also on your achievements thus far. Keep up the good work.

Your Dean

WANTED: Small apartment for one student with kitchen, bedroom, bathroom. Preferably within walking distance to campus, for January, 1984, spring semester. Would be willing to take over lease. CONTACT: Heidi 343-1776.

Anyone interested in forming a Timex/Sinclair users group, please contact Rick Chadwell at 364-1750 after 5:00 p.m.

CAMPUS REPS NEEDED - SKI FREE: Position involves marketing and selling quality ski and beach trips on campus. Earn FREE TRIPS AND HIGH COMMISSIONS. Call Summit Tours 800-325-0439.

To a certain Senior Chemical Engineer:

You're playing with my mind. When can we talk?

LOST: Men's silver Pulsar watch with black face. If found please call 364-7242.

LOST: Set of keys with about 10 keys on ring. If found contact Doug 364-3124.

K.S.S. Kharisma,

Congratulations and good luck in the future. We love you all!

Ghandi and El Pole

WANTED: Tutor for ME 221. Must be patient with slightly slow learner. Fee negotiable. Call Dave E. 364-3172 after 10:30 p.m. weekdays.

Pi Kappa Alpha and Sigma Chi will host the 'Rockin' and Ridin' the Red' Party on Friday, Oct. 21 from 3:30 p.m.-12:00 p.m. at Lion's Club Park. 'Amber' will provide the music, Castle of America hamburgers will be sold, and buses are available.

Dear Forum Knights and Lord Stroeker,

Welcome to the ongoing battle against the unholy druids. Last year, they were bold enough to appear on campus on Witch's Eve with their chosen victim in chains. They even claimed Stonehenge as a place of sacrifice. This year, they hide from us and make idle threats that they are much too weak to carry out. United, we shall end their reign of terror forever!

The Knights of the Realm

P.S. Druids beware, The Knights are everywhere!

Dear Knights,

We the Druids commend you on your new-found chivalry. We felt that by observing the Druid holiday wholeheartedly we would scare prospective virgins into losing their current status.

Signed,
The Druids

CDL,

It's been a great 1 1/2 years. Let's see if we can make it a lifetime.
I love you!

JMW

Come to a Toga Party, October 21, 8:00 p.m., at JB, MG, and AB's. Greek dress required. Come celebrate the Odyssey of Rolla!

Rene,

I love you and 28. Happy 16th and many more.

Your Womprat

Imperial Dorm Troupers:

Remember the quote from the Good Book, Book 4, page 116, 'The more you tighten your grip, the more people will slip through your fingers.'
Long live rebellion and the South.

Jefferson Davis

Our recent campus evangelists have shown us a one-sided view of God. Consider this.

It is true that we are condemned to eternal separation from God because of our sins (Romans 6:23). But there is GOOD NEWS! God is love (1 John 4:8) and He loves all of us, Greek or independent (John 3:16). If we will ask God to forgive us of our sins, and if we ask Him to be in control of our lives, He will forgive us and give us eternal life with Him (1 John 1:8-9).

Don Dutton

Sigma Pi and Joe Miner say 'Brand the Mules!' We want to see more than just a few fraternities at the homecoming game. How many remember last season, getting psyched and leaving early for the game just to be sure to find a seat? Get it together and see if you can out-cheer us!

Get PSYCHED!,
The Sigma Pi Pledge Class

P.S. Congratulations Delta Sigma Phi, you've been out there with us each game.

IFC accepts!

We, the Interfraternity Council graciously accept the meager challenge of the green plague on our land. We wish it to be known that the public menace commonly called the St. Pat's Board will be publicly humiliated on Friday the Twenty-first (hereafter to be known as "Gray Friday") by the football champions of the IFC.

Your previous victories mean nothing, for this is our year, the year of your ultimate degradation. The mindless mass in green will be cunningly trounced and the IFC will be rightfully avenged. Be prepared, vermin in sheep's cloth-

ing, for nothing was thought to be more humiliating than wearing a green dung sack, but there is one thing--defeat at the hands of your Lords and Masters.

If it is possible for you questionable offspring of the most holy St. Pat to read this acceptance, then do so and be afraid. For the time has come for the green filth that slithers across our campus to be put in their proper place--at the feet of the illustrious Interfraternity Council.

P.S.: How did the Miner staff ever read your crayon-scrawled copy of your mindless challenge?

THETA TAU HOEDOWN

Thurs, Oct. 20th
7:00 - 12:00, Lions Club
MUSIC BY EXPLOIT

GAMES: Skoal Spitting
Beer Chug, Milk - Can Toss
Horshoes, Barnyard Calls

Bar Lights as Prizes

\$3.00/Cup \$3.50 at the Door

**All you can drink
BUSCH BEER**

All proceeds go to charity!

Johnny's Smoke Stak

Hwy. 72 & Rolla Street
Rolla, Mo.

Open 11:00 a.m. Daily
Hickory Smoked Ribs
Our Specialty
Shrimp - Deep Fried Chicken
Ribeye Steak

Fine Dining at its Best

**Great Sunday Buffet
ONLY \$5.95.**

Curators honor

UMR's Dr. Laird Schearer

Source: OPI

Rolla, Mo.- Dr. Laird Schearer, professor of physics at the University of Missouri-Rolla, was named a University of Missouri Curators' Professor today (Oct. 14) at the UM Board of Curators meeting in Columbia. The appointment is effective Jan. 1, 1984.

The professorship is awarded to outstanding scholars with established reputations in their profession. Previous UMR recipients are: Dr. Stig Friberg, chemistry; Dr. David Summers, mining engineering; Dr. Delbert Day, ceramic engineering; and Dr. Wei-Wen Yu, civil engineering.

Schearer is an internationally recognized atomic physicist whose work has centered on understanding the properties of electrical discharges in gaseous media. Much of his work at UMR has been long-range exploratory research involving the interaction of atoms with optical radiation and other atoms in a gaseous electrical discharge.

Schearer joined the UMR-Rolla faculty in 1971. In 1980, he was awarded UM's second annual \$10,000 Presidential Research Award. In 1982, an intercampus research project involving Schearer and Dr.

Jacob Leventhal of the University of Missouri-St. Louis also received support from UM's research award program. That project dealt with laser-dependant atomic energy transfer processes.

He received a B.S. degree in physics from Muhlenberg College in 1954, an M.S. in physics from Leigh University in 1958 and a Ph. D. in physics from Rice University in 1966. He also was awarded an

honorary doctor of science degree from Muhlenberg College in 1980.

He has also served as a program associate with the National Science Foundation and is presently a member of the National Research Council's Subcommittee on Basic Army Research.

Prior to coming to UMR, Schearer served as a test engineer with Hughes Aircraft Company and was a member

of the technical staff and a senior scientist at Texas Instruments.

At Texas Instruments, Schearer began his study of the quantum mechanical properties of helium atoms and their interaction with other atomic and molecular systems. His early work in this area led to the development of the helium magnetometer, a device capable of measuring extremely

small variations in the Earth's magnetic field.

The U.S. Navy currently uses the helium magnetometer to detect submarines. Other applications of the device include overland oil exploration and detection of magnetic storms. It also has been used in deep space probes by NASA to measure the magnetic fields of Jupiter and Saturn.

According to Schearer, there

has been a recent resurrection of interest in his work in this area. "It's rewarding to know that work you did 20 years ago is still considered valuable and relevant," he said. "Scientists are currently interested in studying quantum properties of spin-polarized helium-3 using optical pumping techniques I helped to develop."

see Curators' page 15

Freaker's Ball

Just so everyone has time to organize their costume ideas, the radio station KMNR and the fraternity Theta Xi would like to announce their upcoming Halloween costume party which will be open to one and all!

The third annual Freaker's Ball will begin at 8:00 p.m. on Saturday, Oct. 29 and will be held at Theta Xi, 1605 Pine. First, second, and third place costume prizes will be given away. The all-new KMNR Road Show, featured at the past two late night movies ('The Wall' and 'Heavy Metal'), will be bringing the party participants the best in audio entertainment. The funds raised by the Freaker's Ball, through sales of beverages, will be donated to the Multiple Sclerosis Foundation. If you are in charge of organizing the music for a future party, or you know someone who is, you will want to make it to the Freaker's Ball so as to experience KMNR's Road Show, which is available to any organized party in action.

If you are looking for something to do this Friday night, the band C. K. Thunder, recently established by musicians who have performed with the likes of John Cougar, Uriah Heep, and Head East, will be performing their first gig together at The Beat, located near Hwy. 63 on Hwy. 72.

RIDE THE RED.

KILLIAN'S RED

© 1983 Adolph Coors Company, Golden Colorado 80401 - A Brewer of Fine Quality Beers Since 1873.

It is my pleasure to you this first Mike's Scientist where I present facts about engineering principles and the people.

Not only were and Neils Bohr were philosophers. One day they did their scientific behind and settle burning issues of free will-determinism. Einstein defended that man's action were pre-determined on the other hand that men had free argument escalated. Einstein suggested outside and se will-determinism and for all. Bohr had free will and fight, but a hard Einstein wrapped.

Authors

Wor

BY PHYLLIS

Dr. J. Riddle Christenson, of Department, interesting lecture of women in MSM/UMR/R of Mines/U Missouri-Rolla the present. Dr. Christenson of the book T MSM-UMR.

Dr. Christenson the years of 1 while Dr. Riddle WWI to the p from their lecture follow.

The number any phase of engineering WWI could be one hand. Never students constitute percent of the MSM in its field. These women to special or pre dents, rather engineering pr young women mitted to come for attending lectures, and not allowed to jo in the chapel. Finding, how young women

!! WAN Loc for hig play and prefer seeking

Test your trivia knowledge

By Mike Stroder

It is my pleasure to present to you this first installment in Mike's Scientific Trivia, where I present little known facts about engineering principles and the people behind them.

Not only were Albert Einstein and Neils Bohr scientists, they were philosophers as well. One day they decided to put their scientific endeavors behind and settle one of the burning issues of the day - the free will-determinism problem.

Einstein defended the view that man's actions and thoughts were pre-determined. Bohr, on the other hand, believed that men had free will. The argument escalated and Einstein suggested that they step outside and settle this free will-determinism business once and for all. Bohr said that he had free will and chose not to fight, but a hard right from Einstein wrapped it up for

determinism.

In the 1930's, a circus troupe had a curious entry in its freak show. Named 'Magneto - The Human Dipole', his act consisted of having magnetic fields applied to him so he would line up accordingly. Scientists examined him and found that he did possess a large north pole around his head and a south pole around his feet. 'Made it awful easy to do situps' he used to chuckle. He died in 1947 in a freak accident. Two freaks passed by him with magnets and he spun himself to death.

In the small and now defunct Communist Block country of Upper Slobbovia, the government decided that engineering was a 'tool of the capitalists' and should therefore be destroyed. All engineers were soon exterminated, but were first beaten, tortured, and forced to write bad checks. Meanwhile, all of the buildings in Upper Slobbovia made after

the extermination fell down within a day or two after completion. The government immediately blamed the CIA and sent agents to Rolla, hoping to lure new engineers with promises of glamorous lifestyles and free beer. Fortunately for those who accepted, the government collapsed shortly before their arrival.

Few folks realize that Albert Einstein was an irrepressible practical joker as

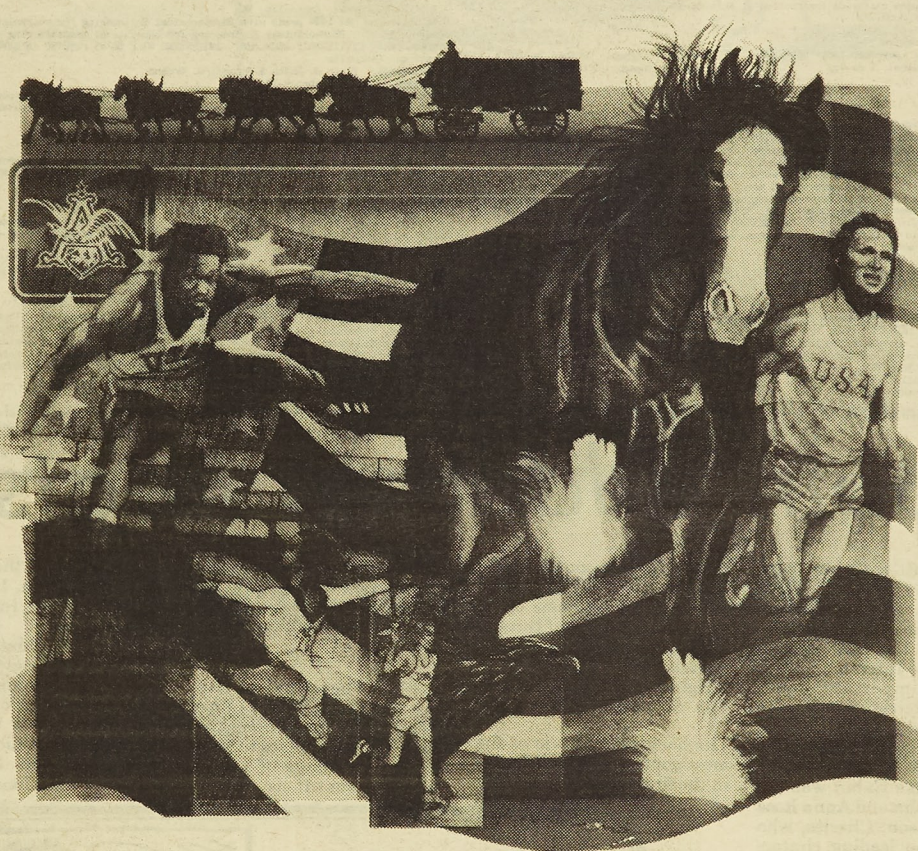
well as a brilliant scientist. A colleague of his once said, 'Yeah, Al was a real gas. The guy owned lots of joy buzzers and whoopee cushions and wasn't shy about using them. I remember the time when he first formulated the theory of relativity. He sent me a paper which he said explained his theory. It was a wild tale about how demons, wizards, and Greek gods ruled the universe! I thought Al had finally gone around the bend until I

reached the last page. It said 'I'll send you a copy of the theory later. You didn't really buy that, did you?' Yes, that Al Einstein was a real hoot!

Several years back, some of the greatest scientific minds discovered that they shared not only scientific interests but a great interest in heavy metal rock-and-roll as well. A group was quickly formed and dubbed 'The Subatomic Particles'. The group featured William Stockley on drums,

Edward Teller on lead guitar and vocals, Werner Von Braun on the bass guitar, and Linus Pauling on the rhythm guitar and backup vocals. They played several bar circuits across the Eastern Coast until their scientific obligations called them back. However, they did cut a vastly underrated album, 'Goin' Fission', which may be found occasionally in the cheap rack at Wal-Marts across the nation.

Bring Out Your Best...



Authors lecture on

Women's roles

BY PHYLLIS J. HARSTER

Dr. J. Ridley and Dr. L. Christenson, of the History Department, presented an interesting lecture on the roles of women in the history of MSM/UMR (Missouri School of Mines/University of Missouri-Rolla) from 1871 to the present. Dr. Ridley and Dr. Christensen are co-authors of the book *The History of MSM-UMR*.

Dr. Christenson researched the years of 1871 to WWI, while Dr. Ridley dealt with WWI to the present. Notes from their lecture and book follow.

The number of women in any phase of engineering before WWI could be counted on one hand. Nevertheless, women students constituted about 25 percent of the student body of MSM in its first 20 years. These women took courses as special or preparatory students, rather than the engineering programs. The young women were not permitted to come to the university for attending recitations or lectures, and certainly were not allowed to join the worship in the chapel.

Finding, however, that the young women did no harm,

they were "very cautiously admitted to some of the recitations and lectures in the university building itself," explained then-president James Reed. And, finally, there was another advance. The young women were permitted to enter the Chapel. And, eventually they were even allowed to join their voices in prayer and praise during services.

Eventually, "by degrees, and carefully feeling our way, as though explosive material were all around us, we have come to admit women to all classes and departments, just as young men are admitted." So with the first class of students in 1871, Miss C.C. Smith joined the student body at MSM. No woman earned a degree at MSM until 1891, however. In that year Sallie Millard received a bachelor of science degree in general science. In 1893, Mary Page Basket earned the same degree.

Before the conferring of Millard's degree, other women had earned certificates of proficiency, in some cases the equivalent of the "male-only" bachelor of science degrees.

see Women
page 15

!! WANTED: SPORTS MOUTH!!

Local radio station has opening for high school basketball play - by - play and color announcers. Experience preferred, but not necessary. Also seeking future part-time air talent.

Contact Renee or Andy
at 364-1590.

That's our philosophy at Anheuser-Busch, and that's the opportunity we're offering you in terms of a meaningful and rewarding career to look forward to. Bringing out the best in our people demands creative management, well-defined career objectives, reasons to succeed, and tangible rewards for doing so. Some call it winning. We call it tradition. If you'd like the opportunity to bring out your best, consider the following fast track challenges.

B.S.M.E. - CENTRAL ENGINEERING
If you're on your way to a B.S.M.E. degree, we'll provide you with the opportunity to advance in such diverse fields as material handling, equipment layout, piping system development, steam generation, compressed air systems, ventilation, heating and air conditioning, and high speed bottle and can packaging.

And You'll Come Out A Winner.

B.S.E.E. - CENTRAL ENGINEERING
Individuals graduating with a B.S.E.E. degree can expect involvement in such areas as electrical machine design and application, power distribution, substation layout along with industrial and commercial lighting, electrical control circuits and systems control.

Both of these CENTRAL ENGINEERING opportunities are project-oriented, and present the challenge of taking the project from conception through completion.

HOW TO BRING OUT YOUR BEST
Anheuser-Busch representatives will be interviewing on campus:

Wednesday, November 2, 1983

To reserve your personal interview time, sign up at the campus Placement Office. We'll take you further. Faster.



ANHEUSER-BUSCH COMPANIES
St. Louis, Missouri

An Equal Opportunity Employer M/F

Placement Office

Permanent

Campus interviewing for week of November 7-11, 1983

SQUARE D COMPANY, Columbia, MO
Will interview DECEMBER 1983 grads ONLY with BS/MS/Engineering Management for Industrial Engineer (Circuit Breaker Div., Columbia, MO; Lexington, KY)
1-Schedule
Will interview DECEMBER 1983 grads ONLY with BS/MS/Engineering Management, Electrical, Mechanical Engineering for Sales Engineer in 200 sales offices with locations in most states. 1-schedule
Will interview DECEMBER 1983 grads ONLY with BS/MS/Electrical Engineering (POWER OPTION) for electro-mechanical design as applied to the design, development and production of circuit breakers (Cedar Rapids, IA). 1-schedule
Interviewers: unknown
Interview date: November 7, 1983
Priority sign-up: October 21, 1983
Regular sign-up: October 24, 1983

NL INDUSTRIES, INC., Houston, TX
Will interview DECEMBER 1983, MAY 1984 GRADS with BS/Mechanical, Electrical, Petroleum Engineering for field engineering positions within NL's Petroleum Services Divisions. Job duties include the operation of electronic equipment at the well site. The engineering graduate will enter a nine month training program which includes classroom instruction at NL's Career Development Center. U.S. CITIZENSHIP REQUIRED.
Location: Oilfield areas throughout the U.S.
Interviewers: unknown
Interview dates: November 7-8, 1983
Number of schedules: 1 ea day
Priority sign-up: October 21, 1983
Regular sign-up: October 24, 1983

U.S. PATENT & TRADEMARK OFFICE, Washington, DC
Will interview DECEMBER 1983, MAY, JULY 1984 GRADS with BS/MS/Chemical, Civil, Electrical, Mechanical Engineering; Aerospace, Ceramic, Geological, Metallurgical, Mining, Nuclear, Petroleum Engineering, Engineering Physics for entry level positions examining applications for patents. After an application for a patent is filed, examiners search prior patents and publications to determine whether the application presents something patentable. The patent must be requested for something that is new, etc. Specific career opportunities available will be posted with signups. U.S. CITIZENSHIP REQUIRED BY FEDERAL REGULATION.
Location: all in Arlington, VA (Washington, DC commuting area).
Interviewers: unknown
Interview date: November 8, 1983
Number of schedules: 1
Priority sign-up: October 24, 1983
Regular sign-up: October 25, 1983

MARATHON OIL COMPANY (COMPUTER SERVICES ORGANIZATION), Findlay, OH
Will interview DECEMBER 1983, MAY 1984 GRADS with BS/MS/Computer Science with a minor or concentration in Geology, Geophysics; BS/MS/Geology/Geophysics with a minor or concentration in Computer Science. U.S. CITIZENSHIP OR PERMANENT VISA REQUIRED.
Location: Findlay, OH
Interviewers: unknown
Interview date: November 8, 1983
Number of schedules: 1
Priority sign-up: October 24, 1983
Regular sign-up: October 25, 1983

TIM-ELECTRONICS & DEFENSE DIVISION, Redondo Beach, CA
Will interview DECEMBER 1983, MAY 1984 GRADS with BS/Electrical Engineering for reliability engineering; majority of work in laser system design. U.S. CITIZENSHIP REQUIRED.
Location: Redondo Beach, CA
Interviewers: unknown
Interview date: November 8, 1983
Number of schedules: 2
Priority sign-up: October 24, 1983
Regular sign-up: October 25, 1983

TIM WILL HAVE A PRE-RECRUITING MEETING ON THE EVENING OF NOVEMBER 7, 1983, IN THE MISSOURI ROOM (UNIVERSITY CENTER EAST), 6:30-9:00 p.m.

MODINE MANUFACTURING COMPANY, Racine, WI
Will interview DECEMBER 1983 grads ONLY with BS/Mechanical Engineering for Process/Manufacturing Engineer (Corporate Headquarters in Racine, WI. Manufacturing facilities in IL, MO, KS, OH, IN, and TN); Design Engineer (Corporate Headquarters in Racine, WI). Additional details will be posted with sign-ups.
Interviewers: A.O. Bixler
Interview date: November 9, 1983
Number of schedules: 1
Priority sign-up: October 25, 1983
Regular sign-up: October 26, 1983

IOWA ELECTRIC LIGHT & POWER COMPANY, Cedar Rapids, IA
Will interview DECEMBER 1983, MAY 1984 GRADS with BS/Mechanical, Electrical, Nuclear Engineering for controls systems design work as well as boiler and generator design work. Strong technical & communication skills are needed for these positions.
Location: Cedar Rapids
Interviewers: unknown
Interview date: November 9, 1983
Number of schedules: 1
Priority sign-up: October 25, 1983
Regular sign-up: October 26, 1983

A.B. CHANCE COMPANY, Centralia, MO
Will interview MAY 1984 grads with BS/Electrical Engineering for entry level design engineer; BS/Mechanical Engineering for entry level manufacturing engineer. U.S. CITIZENSHIP REQUIRED. INTERVIEWS WILL BE 45 MINUTES IN LENGTH.
Interviewers: Blair J. Smith & Russell C. Greene
Interview date: November 9-10, 1983
Number of schedules: 1-EE (Nov. 10)
1-ME (Nov. 9)
Priority sign-up: October 25, 1983
Regular sign-up: October 26, 1983

U.S. ARMY RECRUITING, Rolla, MO
Will interview DECEMBER 1983 GRADS with BS/MS/PhD - all engineering degrees for officer candidate in engineering field. 2.5 OR BETTER GPA. U.S. CITIZENSHIP REQUIRED
Location: worldwide
Interviewers: CPT. Rader
Interview date: November 9, 1983
Number of schedules: 1
Priority sign-up: October 25, 1983
Regular sign-up: October 26, 1983

DOWELL DIVISION OF DOW CHEMICAL U.S.A., Houston, TX
Will interview DECEMBER 1983, MAY, JULY 1984 GRADS with BS/Chemical, Electrical, Geological, Mechanical, Mining, Petroleum Engineering, Engineering Management, Engineering Mechanics, Geology for Field Engineering Representative Training Program. Dowell field engineer trainees throughout the U.S. provide well stimulation and cementing services for oil, gas and other mineral extraction industries. MUST BE U.S. CITIZEN.
Location: throughout U.S.
Interviewers: P.J. (Pat) Hohl
Interview date: November 10-11, 1983
Number of schedules: 1 ea day
Priority sign-up: October 26, 1983
Regular sign-up: October 28, 1983

AMERICAN ELECTRIC POWER SERVICE CORP., Columbus, OH
Will interview DECEMBER 1983, MAY 1984 grads with BS/MS/Electrical, Nuclear, Mechanical Engineering, Computer Science. Job details will be posted with signups (taken from 1981 Peterson's Guide). U.S. CITIZENSHIP OR PERMANENT VISA REQUIRED BY COMPANY.
Location: Columbus, OH
Interviewers: unknown
Interview date: November 10, 1983
Number of schedules: 1-EE ONLY
1-ME, NE, Comp Science
Priority sign-up: October 26, 1983
Regular sign-up: October 28, 1983

*Note: We will not have regular or priority signups on October 27 due to the Fundamentals of Engineering Examination being given on that day.

PACIFIC MISSILE TEST CENTER, Point Mugu, CA
Will interview DECEMBER 1983, MAY 1984 GRADS ONLY with BS/Electrical Engineering for electrical engineer. U.S. CITIZENSHIP REQUIRED.
Location: Point Mugu, CA
Interviewers: unknown
Interview date: November 10, 1983
Number of schedules: 1
Priority sign-up: October 26, 1983
Regular sign-up: October 28, 1983

STANDARD OIL COMPANY (Refining & Transportation Engineering Dept.), Chicago, IL
Will interview DECEMBER 1983, MAY 1984 GRADS with BS/MS/Chemical, Electrical Engineering for transportation & marketing engineering projects (SE); process engineering (CE). Details will be posted with signups. PREFER STUDENTS WITH GPA OF 3.0 OR BETTER. U.S. CITIZENSHIP OR PERMANENT VISA REQUIRED BY COMPANY.
Location: Chicago
Interviewers: R. Kile
Interview dates: November 10, 11, 1983
Number of schedules: 1 ea day
Priority sign-up: October 26, 1983
Regular sign-up: October 28, 1983

VOUGHT CORP., Dallas, TX
Will interview DECEMBER 1983 GRADS ONLY with BS/MS/Mechanical, Electrical, Aerospace Engineering, Ceramic, Metallurgical Engineering. EE: digital design, logic design, CAD/CAM; AE, ME: missile & airplane design (structures); aerodynamics for design; guidance & control of missiles. Ceramic, Met: entry metal processing, bonding, carbon, carbon composite, mfg. process & R&D exp. More complete job description will be posted with signups. U.S. CITIZENSHIP REQUIRED. MUST HAVE 2.7 OR ABOVE. COMPANY WOULD ALSO LIKE TO HAVE COMPUTER SCIENCE AND ENGINEERING MANAGEMENT GRADS SIGN ON BACK-UP LIST FOR REVIEW OF RESUMES.
Location: Dallas, TX
Interviewers: Dick Dolejal
Interview date: November 10, 1983
Number of schedules: 1
Priority sign-up: October 26, 1983
Regular sign-up: October 28, 1983

FOLLOWING IS A LIST OF COMPANIES THAT WILL BE INTERVIEWING DURING THE WEEK OF NOVEMBER 14-18, 1983. (list subject to change)

NOVEMBER 14 Petro-Lewis (SUMMER) Microm Tech, Inc.	NOVEMBER 17 National Security Agency David Taylor Naval Shipyard
NOVEMBER 15 Johnston Meco DuPont Duracell Central Illinois Light Ingersoll Rand	NOVEMBER 18 Summark, Inc.
NOVEMBER 16 Johnston Meco DuPont	

NOTE: THERE WILL BE NO SUMMER INTERVIEWS DURING THE WEEK OF NOVEMBER 7-11, 1983. NO SUMMER SIGNUPS AT UNIVERSITY CENTER WEST ON TUESDAY, OCT. 25, 1983.

Cabin added to Register

Old Matt's Cabin near Branson, Missouri, was recently added to the National Register of Historic Places by the U.S. Department of the Interior.

An all-important landmark so interesting to local as well as out-of-state tourists, the old cabin has stood on its original site for 99 years.

Old Matt's Cabin was the home of John and Anna Ross and their son, Charles, who became the leading characters in Harold Bell Wright's famous novel, *The Shepherd of the Hills*.

According to the Department of the Interior report, the Ross home has historical significance for three reasons.

First, at the time it was built it was one of the finest examples of a pioneer home in existence. The Ozarks were very remote at the time and there were no supply lines to bring construction material. So the cabin was built with materials that could be taken from the land. The cabin was constructed of hand-hewn oak logs using handmade square nails and wooden pegs. It was built on a foundation of carefully fitted field stones with a simple fruit cellar as a basement. The original room of the log structure shows atypical frontier craftsmanship and is almost precisely square. This is attributed to the fact that Ross had previously worked as a skilled carpenter before choosing to homestead in the Ozarks.

Second, it is associated

with a major popular writer, Harold Bell Wright, who visited the Ross home often, and was the home of three of the people who served as models for characters in Wright's most popular novel, *The Shepherd of the Hills*.

The book became one of the most popular works of fiction in the first half of the century

and remains one of the most widely read works in publishing history today with over 18 million copies sold.

Third, because of its association with *The Shepherd of the Hills*, the house became a place to visit in the early days of Ozark auto tourism. It is closely

associated with the development of tourism, the state's second most important industry.

Today, Old Matt's Cabin stands in its original sturdy dignity and is maintained as an historic point of interest. The old cabin is toured by over a quarter million tourists each year and has been visited by millions since it

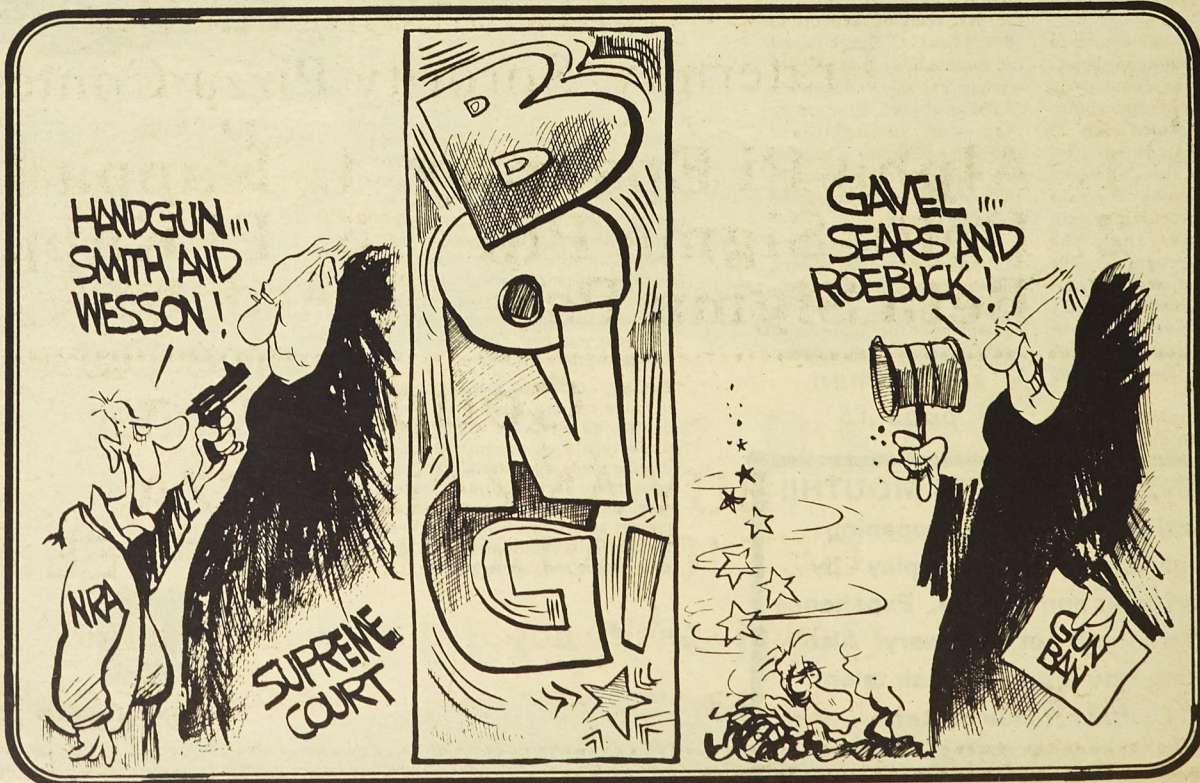
was first opened to the public in 1926.

Old Matt's Cabin has been the subject of movies, TV shows, magazine and newspaper articles, and is the most widely photographed building in mid-America.

The cabin can be toured free of charge late April through October.

The "Shepherd of the Hills" story is dramatized nightly at the site of Old Matt's grist and saw mill, a few hundred feet from Old Matt's Cabin, and is the nation's #1 outdoor drama in attendance.

Old Matt's Cabin is located on the Shepherd of the Hills Farm, 7 miles west of Branson, Missouri.



Christianity is the "Love of God"

To the Student Body,

We are Christians and are not ashamed of the Gospel of Christ, for it is the power of God unto salvation to everyone that believeth (Romans 1:16).

Recently we have had several evangelists visit our campus and talk about sin and the wrath of God upon the children of disobedience. It is true that portions of the viewpoint presented by these people are valid and in harmony with the Bible, for it is a fearful thing to fall into the hands of the living God (Hebrews 10:31) without the precious love of the Lord. Some of the things they said were indeed untrue in the light

of the scriptures; however, it is not our intent to dwell upon these points. It is our intent to tell you of a more excellent way (1 Corinthians 12:31).

In the Gospel of John 3:17 we are told that God did not send His Son into the world to condemn it. In II Peter 3:9 we are also told that the Lord does not wish any to perish, but instead wants all to come to repentance. In essence, much of the Bible talks about the love of God. The love of God cannot be fully understood by the human mind, but it is described very well in I John 4 (especially verse 10).

There are a lot of Christians on this campus who would

rejoice in the opportunity to share this wonderful love with you. Notwithstanding, we do not feel we should force it down someone's throat since some of us have had this experience and found it less than edifying.

If you wish to know more about the love spoken about all through the Bible, talk to someone you know who is a Christian or drop by one of the Christian organizations on campus.

John Schudy, Jr.
Arthur C. Smith, Jr.

St. Pat's celebration draws recognition

BY JIM BERNDT

I noticed in the last Miner that at the last Student Council open forum there was much criticism that part of the student fees went to the St. Pat's Board. Did you know that the St. Pat's Board has

not requested an increase since 1965? Did you also know that the St. Pat's activities bring down several members of the Missouri Congress as well as the Secretary of State and Governor Bond? For your information, it is these people who greatly influence the appropriations made to our

university for projects such as the Mineral Engineering Building. St. Pat's also draws support from alumni who continually donate money to our university. Next time some of you get upset with your 55 cents going to St. Pat's, think of it as an investment in your future.



Litzler
CPS

"IN THIS SEMINAR WE TEACH YOU HOW TO BEG, PLEAD, KICK AND SCRATCH... IN GREY FLANNEL SUITS."

TK's

Pizza Express



1806 N. Bishop

PHONE 364-FAST

Current Standings in Our Fraternity/Sorority Pizza Contest

- | | |
|---------------------|-------------------|
| 1. Alpha Pi Epsilon | 4. Kappa Delta |
| 2. Delta Sigma Phi | 5. Pi Kappa Alpha |
| 3. Beta Sigma Psi | |

Coupon

BUY ANY SIZE PIZZA,
GET IDENTICAL ONE FREE.

must specify coupon use when ordering

EXPIRES 10-30-83

ONE COUPON PER ORDER

1983 Homecoming



Janet Westcott

The Brothers of the Alpha Psi chapter of Theta Xi Fraternity are pleased to present Miss Janet Westcott as their 1983 Homecoming Queen candidate. Janet, originally from St. Louis, resides here in Rolla and works at Phelps County Regional Medical Center. She is a May 1983 graduate of Deaconess Hospital School of Nursing and is currently studying for a bachelor's degree in nursing here at UMR. The Brothers wish to give a warm thanks to Janet for being our 1983 Homecoming Queen candidate.



Liz Lee

The General Delegation of Independents would like to present their candidate for Homecoming Queen, Elizabeth Anne Lee. Liz is a sophomore majoring in Computer Science at UMR. She is originally from St. Louis and has been a member of GDI for the past year. Liz enjoys horticulture, water sports and bowling.



Marsha Cox

The men of Pi Kappa Alpha proudly present our Homecoming Queen candidate, Miss Marsha Cox. Marsha, the daughter of Mr. and Mrs. James Cox of Louisiana, Mo., is a junior majoring in geological engineering. She is currently active in Zeta Tau Alpha Sorority and has served as Membership Chairman and Activities Chairman. Phi Eta Sigma, Panhellenic Rush Committee and AEG are some of Marsha's other campus activities. We feel our Sister of the Shield and Diamond, Marsha Cox, is an excellent candidate to be UMR's next Homecoming Queen.



Julie Stevenson

The men of Alpha Epsilon Pi Fraternity are proud to present Miss Julie Stevenson as their Homecoming Queen Candidate. Julie is a member of the Little Sisters of Alpha Epsilon Pi and now resides in Thomas Jefferson Hall. We feel that Julie's personality makes her the perfect Homecoming Queen candidate.



Kami Crane

The men of the Missouri Mu Chapter of Phi Kappa Theta proudly present their Homecoming Queen Candidate, Kami Crane. Kami is the daughter of UMR alumnus Harold and Peggy Crane and is a junior majoring in Civil Engineering. Kami is active in Kappa Delta Sorority, Interfraternity Council, Order of the Sun, and is a varsity cheerleader for the Miners. We especially feel that Kami's dynamic personality truly earns her the distinguished honor.



Janet Jansen

Zeta Tau Alpha is proud to present Miss Janet Jansen as our candidate for 1983 Homecoming Queen. Janet is a senior at UMR, majoring in Chemical Engineering. In addition to holding the office of first Vice President at Zeta, she is very active in Blue Key, Omega Chi Epsilon, Student Union board, and Pi Kappa Alpha Little Sisters. Janet's poise, personality and charm, as well as her involvement on campus, make her a true representative of UMR and the ideal choice for 1983 Homecoming Queen.



Peggy Boefer

The Residence Hall Association is proud to present Miss Peggy Lynn Boefer for the 1983 Homecoming Queen candidacy. Peggy, a sophomore chemistry major, is from Ballwin, Mo. and is the daughter of Mr. and Mrs. Ralph E. Boefer. Peggy's warm personality and radiant charm make her the obvious choice for UMR's 1983 Homecoming Queen.



Kammie Akers

The men of Triangle Fraternity are proud to present Kammie Akers as their 1983 Homecoming Queen candidate. Kammie is the daughter of Mr. and Mrs. Frank Akers of Albany, Mo. A senior in Life Sciences, Kammie has been very active during her UMR career. She is a member of Kappa Delta Sorority and has shown her fine leadership abilities in many campus organizations, including Alpha Chi Sigma, Helix, the Interfraternity Council, and the Student Union Board. She was a member of the UMR pep, jazz, chamber and Marching Band and danced in the pom-pom squad. Leisure time for Kammie is seldom spent at leisure, as she enjoys intramural sports, dancing, and is always on the go. We feel that she would be an excellent candidate to represent UMR as the 1983 Homecoming Queen.



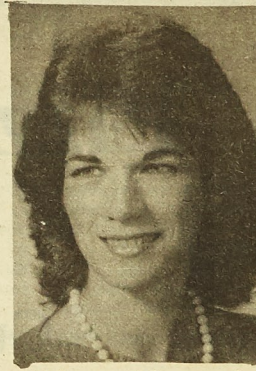
Cheryl Smith

The ABS is proud to announce their Homecoming Queen candidate, Cheryl Smith, a junior in Electrical Engineering. Cheryl is a co-op student with McDonnell Douglas, a member of the Agape Christian Fellowship, and the Voices of Inspiration Gospel Choir. Cheryl has been a recipient of several scholarships and awards, including scholarships from the Minority Engineering Program and the National Action Council for Minorities in Engineering. Currently, Cheryl is the vice-chairman of the Missouri Federation of College Republicans. Cheryl also enjoys football, basketball, and softball. She spends the remainder of her free time interacting with others, such as visiting senior citizen homes.



Patty Droste

The Men of Delta Sigma Phi proudly present Miss Patty Droste for Homecoming Queen candidate. Patty is a sophomore majoring in Mechanical Engineering. She is currently the vice-president of the Daughters of the Nile. We feel that Patty exemplifies the principles of Delta Sigma Phi, and would be an excellent choice for UMR Homecoming Queen.



Monica Vineyard

We, the men and women of the Baptist Student Union, have joyfully chosen Miss Monica L. Vineyard to represent us in the 1983 Homecoming festivities. Miss Vineyard is from St. James and is a junior in Life Science. Monica, a blue-eyed brunette, plays an active role in many of the BSU ministries. She currently serves as Missions Chairman on the BSU Council, and is on the Buildings and Grounds Committee. She has recently returned from Taiwan after spending one month there as part of a team of twelve student missionaries from Missouri. We are proud of Monica, and feel that she will make a bright addition to the Homecoming celebration.



Julia Compton

The Sisters of Kappa Delta are proud to present Miss Julie Compton as our 1983 Homecoming Queen candidate. Her warm personality and enthusiasm make her an outstanding candidate. Julie, a senior in Mechanical Engineering, has contributed her talents to KD as President and Vice President. She is also involved in other campus organizations including the UMR Band and Pom-Pom Squad, Pi Tau Sigma, Phi Eta Sigma, Alpha Phi Omega, Blue Key, SAE and TKE little sister. We feel her natural charm and beauty would make her an excellent choice for Homecoming Queen.



Lisa McClenahan

Tech-Engine Club proudly presents Lisa McClenahan for 1983 Homecoming Queen candidacy. She is presently a senior in Mechanical Engineering and is a co-employee with Olin Brass. Lisa serves on the Executive Board of Tech-Engine Club and is also active in intramural sports. For these reasons, we feel Lisa would be an excellent choice for Homecoming Queen.



Debbie Porter

The men of Sigma Tau Gamma proudly present Miss Debbie Porter as their Homecoming Queen candidate for 1983. Miss Porter is a freshman from Riverview Gardens High School in St. Louis majoring in Computer Science at UMR. Besides being a member of the UMR Marching Miners, Debbie is also a pledge of Zeta Tau Alpha Sorority where she is serving as pledge class president.

Queen Candidates



Sue Wieting

The sisters of Chi Omega proudly present Susan Wieting as their 1983 Homecoming Queen candidate. Sue, a senior in the Mechanical Engineering Department, is actively involved in Blue Key, Alpha Phi Omega, Student Union Board, intramurals, and other various scholastic honorary organizations. Currently Sue is Chi Omega's pledge trainer and she previously held the office of treasurer. With these outstanding achievements and sparkling personality, we feel that Sue would represent UMR well as Homecoming Queen.



Colean Thaler

The Brothers of the Gamma Xi Chapter of Sigma Nu Fraternity proudly present Miss Colean Thaler as their 1983 Homecoming Queen candidate. The beautiful daughter of Joseph and Beryl Thaler from Oakville, Mo. is a junior studying civil engineering. Colean has been very active the past two years in the Little Sisters of the White Star, of which she is currently president. We feel that Colean's outgoing personality and beauty make her an excellent choice for UMR's 1983 Homecoming Queen.



Laurie Voss

Sigma Pi presents Miss Laurie Voss as their Homecoming Queen candidate. Laurie is a junior majoring in Computer Science, and during her sophomore year helped teach Fortran to Comp. Sci. 63 students. She is currently a co-op student, working with GMAD Leeds plant in Kansas City. She is actively involved in the Daughters of the Emerald, the little sisters organization of Sigma Pi.



Elizabeth Metzler

The Men of Beta Sigma Psi are proud to present the lovely Miss Elizabeth Metzler as their 1983 Homecoming Queen candidate. Beth is active as Vice-President of Kappa Delta Sorority, President of the UMR Panhellenic, Secretary of Blue Key National Honor Fraternity, and a member of ACM and Alpha Phi Omega. She has also been involved as a Pike Little Sister and in various other campus organizations. These accomplishments and her outgoing personality make her an outstanding candidate for the 1983 Homecoming Queen.



Jeannie Carmody

The men of Sigma Phi Epsilon proudly present Miss Jeannie Carmody as their Homecoming Queen candidate. She is the daughter of Mr. and Mrs. Bob Carmody, of Kirkwood, Mo. Jeannie is a junior in Mechanical Engineering, and has been very active in the Golden Hearts, Zeta Tau Alpha, and Alpha Phi Omega. We feel that she would be a fine choice as the 1983 Homecoming Queen.



Suzanne Manda

Tau Kappa Epsilon presents Miss Suzanne Manda as their candidate for Homecoming Queen. Sue is presently enrolled as a sophomore pursuing a degree in Chemical Engineering here at UMR. She is involved in many organizations and activities including pledge class president at Kappa Delta, American Institute of Chemical Engineers, and the Little Sisters of Tau Kappa Epsilon. Sue was a member of the UMR Cheerleading Squad and played a part in UMR's production of "Desk Set." In her free time, Sue lends herself to various intramural sports.



Janet Waeckerle

The Brothers of Lambda Chi Alpha are proud to present Miss Janet Waeckerle as their Homecoming Queen candidate. Janet is the daughter of Mr. and Mrs. Gordon Waeckerle of St. Louis, Missouri, and attended Du Bourg High School. Miss Waeckerle is a 5'8" blonde, blue-eyed freshman majoring in engineering. She is also a member of the UMR varsity soccer team and also enjoys horseback riding and water skiing.



Cheryl Barris

The brothers of Pi Kappa Phi present Cheryl Barris as their candidate for the 1983 Homecoming Queen. Cheryl is a freshman majoring in Computer Science, and she is a member of ACM, the professional society for Computer Science. Originally from Atlanta, Georgia, she moved to St. Louis in 1982. She was Salutatorian of her class at Lafayette High School. Her other interests include tennis, jogging, horseback riding, and other outdoor activities. Her outgoing personality and charming southern beauty make her an excellent choice for 1983 Homecoming Queen.



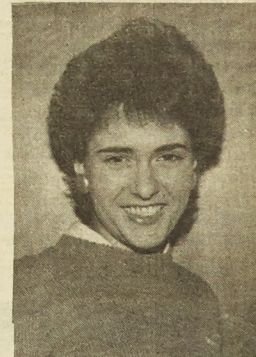
Mindy Snodgrass

We, the men of Sigma Chi, proudly present Miss Melinda Snodgrass as our Homecoming Queen candidate. Mindy is a sophomore in Engineering Management. She is active in the Society of Women Engineers, the American Society of Engineering Management, and is a Student Council Representative. Mindy is also the treasurer of our little sister organization, the Little Sigmas.



Sally Schwieder

We, the men of Kappa Sigma, are very honored and pleased to present our Homecoming Queen candidate, Miss Sally Schwieder. Sally is a senior English major from Steelville, Mo. With her radiant beauty and vivacious personality, we feel that she is a perfect choice to reign over the Homecoming festivities of 1983.



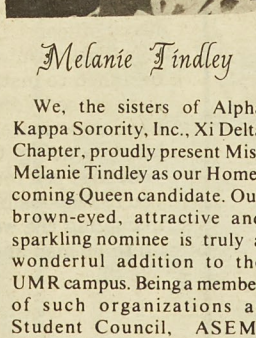
Heraleen Sprenger

The Brothers of the Beta Alpha Chapter of the Kappa Alpha Order are proud to present Miss Heraleen Sprenger as their 1983 Homecoming Queen candidate. Heraleen is the daughter of Mr. and Mrs. Harold Sprenger and is majoring in electrical engineering at UMR. The 5'6" brunette has many interests and hobbies, including reading, playing piano, and dancing. A leader in campus activities, Heraleen is Features Editor for the Missouri Miner and a member of Tau Beta Pi, Eta Kappa Nu, and Phi Kappa Phi. She is also the rush chairman for Kappa Alpha's little sister group, the Daughters of Lee. The Southern Gentlemen of Kappa Alpha feel Heraleen displays the charm, beauty and grace of a true Homecoming Queen.



Sara Flint

We, the men of Delta Tau Delta, are proud to present Miss Sara Flint as our candidate for Homecoming Queen. Sara, a junior in Computer Science, is an active member of Zeta Tau Alpha Sorority. She enjoys a variety of intramural sports, snow skiing, and dancing. We feel that with Sara's blond hair and blue eyes, her dazzling beauty, splendid personality and radiating charm make her the superior choice for Homecoming Queen.



Melanie Tindley

We, the sisters of Alpha Kappa Sorority, Inc., Xi Delta Chapter, proudly present Miss Melanie Tindley as our Homecoming Queen candidate. Our brown-eyed, attractive and sparkling nominee is truly a wonderful addition to the UMR campus. Being a member of such organizations as Student Council, ASEM, UMR Gospel Choir, Agape Fellowship, the UMR Equal Employment Opportunity/Affirmative Action Committee, and an Outstanding Young Woman of America (1982), Melanie leads an active and fulfilling life. Melanie is a senior majoring in engineering management and a native of Columbia, Mo., and the daughter of Norman and Syrdia Sallee. Make Melanie your choice for Homecoming Queen.



Judy Anderson

Miss Judith Louise Anderson is being presented by the Thomas Jefferson Hall Association. She is the daughter of Richard and Dorothy Anderson of Ballwin, Mo., and is a freshman here at UMR majoring in Chemical Engineering. Judy is a pledge at Zeta Tau Alpha and a member of American Institute of Chemical Engineers. Her hobbies are gymnastics, dancing and jogging and she plans on a career in biomedical engineering.

Will Reagan run again?

BY LARRY BECK

We get to, or have to, vote for our national leaders next year. Many people view this prospect with dread and disdain. We'll get to suffer through ten months of meaningless accusations, empty promises, and boring commercials. We'll hear ten months of predictable "political analysis." We'll find out what everybody in Iowa and New Hampshire thinks, and have to watch back-to-back conventions featuring all the spontaneity of a Soviet peace demonstration.

Still, the whole process is worth examining. As always, next year's elections will determine the government's behavior over at least the following two years and, doing so, these elections will exert a powerful influence upon each of us. This being the case, we should already be considering what the elections' outcomes could be.

Regarding the Presidential race, Ronald Reagan will almost certainly run. Walter Mondale will probably get the Democratic nomination, only to lose in November.

Reagan will run again because he likes being President. He also feels that he hasn't completed his modifications of economic and social policies.

He'll win because a lot of people like the things that he has tried to do. In addition, many of the people who tend to disagree with Reagan's policies tend, at the same time, not to hold them against him.

Despite the fact that John Glenn is a "genuine American hero," despite the fact that he is more appealing to the public at large, Glenn will lose the Democratic nomination to Walter Mondale. There is a

simple reason for this: the views of party activists are usually more extreme than those of the general public. Unlike Reagan and Mondale, Glenn doesn't realize that a candidate must capture the nomination first, staking out fairly extreme positions to do so. Only then can he or she advocate more moderate views.

Mondale will be nominated and he will have formidable backing. All of the people who find the Reagan administration's policies personally harmful or generally distasteful, the poor, organized labor, blacks, hispanics (except the Cubans), many women, environmentalists, government employees, liberals, and probably a fair number of retired people, will vote for Mondale. Still, barring a glaring foreign policy blunder or failing health, Reagan will be re-elected.

Now, if you're a big Reagan fan, don't start gloating. If Reagan disgusts you (as he does me), don't despair. In 1980, Reagan appeared to draw a host of glassy-eyed Hitler Youth types into Congress to help him. That won't happen this time.

Things were much different in 1980. In the first place, a lot of people voted against their old Senators and Representatives because they were mad about inflation. This anger, coupled with a continuing Watergate inspired "throw the rascals out" sentiment, led to the election of many new Congresspersons. Since the old ones had most recently been Democrats, the new ones were mostly Republicans.

Last year, angry about both the recession and the callous attitudes exhibited toward it by their representatives, the

voters replaced most of these "Reagan robots" they had elected two years earlier.

With the economy improving and inflation still low, next year should be a good one for incumbents. People just won't vote against an abstract "threat" like the government's huge deficit the way they voted against inflation.

The House of Representatives will remain overwhelmingly Democratic. The Senate will

probably retain its Republican majority. This is likely to be so even though more Republican Senate seats will be up for grabs than Democratic ones. The Republicans only have a four vote majority in the Senate and two veteran Republicans, John Tower and Howard Baker, are retiring. Still, the late Henry Jackson's seat is about to be taken by a Republican and that party has lots of money. I think they'll

keep their majority.

In other words, next year's elections will leave the federal government in the same stalemated condition it's been in since last year. The famous "silent majority" probably feels safest this way. They like having Reagan as President. He talks tough to the commies and the bureaucrats and unions, just as they would. At the same time, they've seen two years of Reagan without

restraint and it scared them a little. Consequently, they'll let the liberals keep control of the House and pretty much leave the Senate alone, maybe pushing it a little bit leftward to dead center.

This is what I think will happen: you've been warned in advance. If you don't like what I've described, you've got plenty of time to go out and try to do something about it.

Take Charge At 22.



In most jobs, at 22 you're near the bottom of the ladder.

In the Navy, at 22 you can be a leader. After just 16 weeks of leadership training, you're an officer. You'll have the kind of job your education and training prepared you for, and the decision-making authority you need to make the most of it.

As a college graduate and officer candidate, your Navy training is geared to making you a leader. There is no boot camp. Instead, you receive professional training to help you build the technical and management skills you'll need as a Navy officer.

This training is designed to instill confidence by first-hand experience. You learn by doing. On your first sea tour, you're responsible for managing the work of up to 30 men and the

care of sophisticated equipment worth millions of dollars.

It's a bigger challenge and a lot more responsibility than most corporations give you at 22. The rewards are bigger, too. There's

a comprehensive package of benefits, including special duty pay. The starting salary is \$17,000—more than most companies would pay you right out of college. After four years, with regular promotions and pay increases, your salary will have increased to as much as \$31,000.

As a Navy officer, you grow, through new challenges, new tests of your skills,

and new opportunities to advance your education, including the possibility of attending graduate school while you're in the Navy.

Don't just take a job. Become a Navy officer, and take charge. Even at 22.

NAVY OPPORTUNITY INFORMATION CENTER
P.O. Box 5000, Clifton, NJ 07015

W 341

☐ I'm ready to take charge. Tell me more about the Navy's officer programs. (QG)

Name _____

Address _____

City _____

State _____ Zip _____

+College/University _____

Age _____ Year in College _____ GPA _____

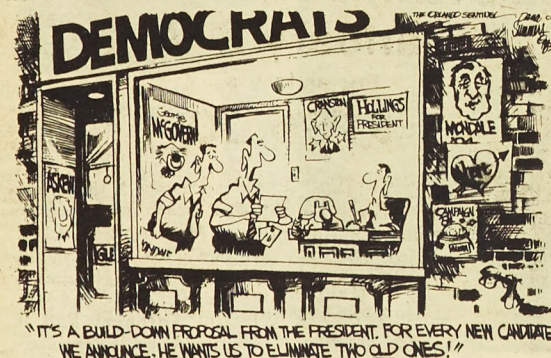
Major/Minor _____

Phone Number _____

(Area Code) _____ Best Time to Call _____

This is for general recruitment information. You do not have to furnish any of the information requested. Of course, the more we know, the more we can help to determine the kinds of Navy positions for which you qualify.

Navy Officers Get Responsibility Fast.



Forum II Hairstyling
Reconditioning, highlighting,
Body Wave of just shaped up.
**We give you the look
you want!**
Long or Short



1431 Hauck Dr.

341-2668

Authors lecture on women's roles

from page 9

For example, Florence E. Whiting completed her initial work in 1875 and received a faculty appointment in 1878. Yet, she was listed in the commencement program as a licensee, rather than a graduate. Similarly, her faculty title was assistant rather than professor or instructor.

Enrollment slumps in the 1870's caused a concerned professor named R.W. Douthat to create a new program called the "Girl's Course" in Arts in 1881-82. In 1883, the school's

Professor discovers

technical faculty revolted against this trend of allowing women in their school. Douthat was forced to resign.

In 1894, the city of Rolla opened a two-year high school in place of the University prep school. In 1895, the number of women at MSM declined from 34 to 17 and by 1897 only four women attended MSM. The same year, a new president, George E. Ladd, came to Rolla. Ladd was shocked to find women taking courses at MSM. He even attempted to

expurge the record of women ever having attended the school. Ladd left in 1907 and in 1909 a young woman came to campus who would become the first practicing woman engineer from MSM. Her name as Eva Endurance Hirdler (Green).

Hirdler graduated in 1911 with a B.S. in general science, although she had taken the necessary courses to pursue a career as a mining engineer. It was 1972 before the UMR faculty voted to award her

with her much deserved degree in mining engineering.

The first woman to graduate with an engineering degree was Jean McCaw Lloyd in 1944. Though she graduated with honors, she could only be listed as an honorary member of the engineering honor society, Tau Beta Pi. Nationally, she was only the 13th woman to be so honored.

In 1945 there were 900 students at MSM, with 28 women. In 1946 there were 2565 students with 33 women. 1950

had 13 women. 1961 showed a record of 40 women. By 1964, when MSM became UMR, there were 57 women. In 1969 enrollment figures for women reached 261, and in 1973, 469 women were enrolled—almost ten percent of the student body then.

The appearance of Women's Organizations mirrored the new significance of women at UMR. In 1966 SWE was reactivated (it was originally activated in 1960). In 1972 the

first sorority appeared—Kappa Delta, followed by Zeta Tau Alpha in 1973, Chi Omega in 1979, and Alpha Kappa Alpha in 1981. In 1969 women's intercollegiate athletics began with track and today most sports are offered. Today over 1600 women attend UMR.

If anyone is interested in more information on the history of MSM/UMR, the book is available in the bookstore for \$25. There is also a copy on file at the UMR library.

Source: OPI

Rolla, Mo. —According to Dr. W. Nicholas Knight, University of Missouri-Rolla professor of English, his March 1983 discovery of a Shakespeare signature at the Folger Shakespeare Library in Washington, D.C., has yielded double literary dividends.

"The signature which I found in a copy of John Florio's 1603 translation of the French essayist Montaigne's, I believe, authentic," Knight explained. "The discovery of this signature also makes it possible to verify another signature as genuine. That autograph, which also appears in a copy of Florio, is in the possession of the British Library."

In comparing the two Florio autographs with the other seven known authentic Shakespeare signatures, Knight noticed numerous and striking similarities.

"The form and execution of four of the six letters in the first name of the Florio signatures also can be found in the other seven signatures," Knight said. "With the last name, the similarities and identification become even more obvious."

Knight's study of the two Florio signatures also led him to characterize them as "not identical but similar to each other."

"There are subtle differences in the two signatures, but differences also exist among

the seven other signatures," Knight said. "No one, including Shakespeare, signs their name exactly the same every time. In fact, the three signatures that appear on Shakespeare's will, which are believed to have been signed at the same time, exhibit more differences than the Florio signatures."

"The two signatures are not tracings or copies of each other," he added. "The indications are that they are both by the same hand and were signed in the same place in each book only moments apart."

Knight maintains that another important factor in determining the authenticity of the signature in the Folger Library's copy of Florio is the ownership of the book, which

he has traced to a 17th-century descendant by marriage of ROTC unit visits

Shakespeare's and possibly

see Signature page 16

Redstone Arsenal

Source: OPI

Rolla, Mo.—Thirty-four students and two professors from the University of Missouri-Rolla Army ROTC unit made an army orientation visit to Redstone Arsenal, Huntsville, Ala., Oct. 12-15.

The visit was designed to show students what ROTC-trained engineers do in the army. Students learned how the Army designs, tests, procures and fields systems such as the Chaparral missile, multi-launched rocket systems, the new Bradley infantry fighting vehicle, and the Pershing missile. They also saw demon-

strations of laser optics, computer systems software design, and advanced simulation graphics design, and toured headquarters of the National Aeronautics and Space Administration and the Space Museum.

During their visit, each student lived with a lieutenant who is currently at Redstone Arsenal in an officers' basic course. Host for the visit was

Col. Joseph R. Cote, commander, Missile and Munitions Command School.

The students were accompanied by Capt. Bobby L. Martin and James Grim, assistant professors of military science; Dr. Joseph Senne, chairman, department of civil engineering; and Dr. Stanley V. Marshall, professor of electrical engineering.

Curators' professor from page 8

"They feel that this sort of study will give them insight into a new form of matter and a better understanding of how matter is put together at a very fundamental level," he added.

"The applications of such knowledge would be extremely important from a scientific and technological standpoint."

Scheerer also is credited with developing the world's first polarized gas target for nuclear scattering experiments in the field of nuclear physics.

For Scheerer the attraction of research remains "the intellectual excitement of treading where no one has gone before." His current research involves an investigation of

dissociative collisions of metastable atoms and molecules with molecular systems. In an unrelated research program he

also is investigating spectral line shifts of Rydberg levels of alkali atoms resulting from collisions with electrons and dense buffer gases.

In addition to his research, Scheerer teaches undergraduate and graduate physics courses each semester. The

key to teaching, he believes, is "communication."

"Teaching forces you to think along fundamental lines and in a very logical way," he said. "You must constantly

reorder your thoughts so that they will be understandable to your students as well as to yourself."

Alex Pizza Palace

122 W. 8th Street Rolla

NOW OPEN FOR LUNCH 11 A.M.-2 P.M.

•SANDWICHES •SALADS

•SPAGHETTI

•BEER •GYROS SANDWICH

For FREE DELIVERY of Pizzas

364-2669 or 364-9878

Sally's
Flowers & Gifts
707
Hwy 63S
364-1777

One Horse Books and Records
We Buy, Sell & Trade
Records, Cassettes, Paperbacks and
Rent Records.
Posters For Sale
808 Pine in Downtown Rolla
364-2244

Ski Steamboat Springs January 2-7

For as low as
\$156.00

Your January Great Ski Escape includes:

Six days/five nights lodging in either hotel or condominium accommodations. Full 4 day laminated souvenir picture ID lift ticket for use Tuesday through Friday. Welcome orientation meeting for all trip participants.

Welcome and mid-week exclusive group parties in expanded facilities including entertainment, complimentary 3.2 beer, pop and drawings for Great Ski Escape souvenirs.

All taxes for included services.

24 hour availability of Sunchase Tours staff.

Limited space on trip, so sign up today!

1023 Kingshighway, Rolla, MO



**International
Tours**

341-3300

Shakespeare signature

from page 15

even to the dramatist's eldest daughter.

"The owner of the book, at one point, was 'Cath: Barnard' as indicated by her 17th-century signature in the upper right hand corner of the title page of the book," he said. "Knowing this it is possible to trace this 'Cath: Barnard' back

to Shakespeare's eldest daughter, Susanna."

Knight explained that Susanna married the noted physician Dr. John Hall in 1607. Their only daughter,

Elizabeth, married Thomas Nash in 1626. Nash died in 1647, and in 1649, Elizabeth married John Bernard or Barnard.

Following their marriage, Knight continued, John and Elizabeth moved to the seat of the Bernard family at Abington Manor in Northamptonshire in 1661. The Abington Bernards included several Catherine's. The first of these

was Catherine Barnsdale Bernard, who married a Thomas and had a son named Charles in 1615.

Charles married Elizabeth Sheppard and their third son, Philip, married a Catherine Bambrick Bernard. Catherine

and Philip, in turn, had a daughter named Catherine Bernard.

Knight suggests that there are several ways in which the book may have become the possession of 'Cath: Barnard.' "The copy of Florio now in the possession of the Folger

may have been a gift to Susanna from her father," he said. "The two were particularly close and the gift may

have been given to celebrate Susanna's birthday or wedding or the birth of Shakespeare's granddaughter, Elizabeth, who ultimately came to possess the book.

"Elizabeth Bernard died on Feb. 17 of either 1669 or 1670 and that is the latest that the Folger copy of Florio could have been possessed by a blood relative of Shakespeare's," he added. "Following that the book remained in the Bernard line and ultimately was passed

on to 'Cath: Barnard.' " Shakespeare's interest in Florio's translation of Mon-

taigne is attested to by his use of the book as a source for "The Tempest." "It has been known since 1780 that Gonzalo's description of an ideal

state in 'The Tempest' had its origin in Florio's 1603 translation of Montaigne's essays," Knight said.

Since 1917 researchers have believed the Florio signature in the British Museum to be a "superior forgery," according to Knight.

The discovery of the second and similar Florio signature, however, seems to indicate otherwise, he said. "The fact

that a forgery exists that apparently was copied from

one of the Florio signatures shows that this forger presumed at least one of the Florios to be authentic."

The Folger has been in possession of its copy of Florio since 1921, while the British Museum has had its copy since 1838.

In 1971 Knight also discovered the seventh known Shakespeare signature. He found that signature in a copy of a legal textbook entitled "Archaeionomia" at the Folger

Shakespeare Library. The book, which was edited by William Lambarde in 1568, contains ancient statutes in Anglo-Saxon, Latin translations and commentary.

College Press Service



"...I FINALLY FIGURED OUT HOW TO CURE MY INSOMNIA...I LISTEN TO TAPES OF MY PROFESSOR'S LECTURES BEFORE I GO TO BED..."

sunny wall
1107 Pine Rolla 364-3161

**HOMECOMING
CORSAGES**

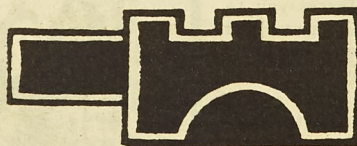
\$5.00 - \$25.00

October-

MYLOR BALLOON

SPECIAL

10 % OFF



CASTLE OF AMERICA

Hamburgers - 29¢

Castle Dog - 59¢

Concrete Custard - 99¢

**Ham & Cheese
on honey & egg bun - \$1.89**

1202 N. BISHOP ROLLA

PHONE: 364-1040

**YOU CAN CALL IN
ORDERS, OR USE THE
DRIVE UP WINDOW
OR COME EAT INSIDE.**

**Just a short walk
from TJ, QUAD, and Campus**



**BEST PIZZA
IN TOWN**

WE DELIVER

- * 13 Topping Supreme Pizza
- * Italian Dishes
- * Super Sealeg Salad (An unusual seafood treat)
- * Stinky Special Pizza (Anchovies, Shrimp, Smoked Oysters)
- * Deli Sandwiches
- * Many more tasty treats the other's don't offer.

Free Party Room Available Phone 364-8661 1901 N. Bishop Rolla, Mo.

Thursday, C
At
benefit a na
people who
school.
He points
American ind
to gear up to
distance Jap
also must
augmented.
At this poin
the groundw
America the
it ought to b
"Education c
benefit."
Turning to
Ashcroft exp
souri is 49th
spending. He
this has a dou
one considers
tion center o
"only miles fr
now [UMR]
the focal poi
place," he sai
to be last."
Ashcroft re
ics to two of
nant problem
schools and
general. The
gation and la
cash flow pro
Phill
gr
Sour
Rolla, Mo.
Foundation I
\$5,000 grant
of Missouri-
company's
Development
According
cials, the Phi
ports and enc
sional growth
of students
engineering,
sciences, and
study that are
to the petro
chemical indu
Presentation
UMR was ma
Phillips repre
non T. McGhe
and project an
Exploration
Group, and R
kinson, senior
Corporate Pr
ing. They said
Appl
Math
from
that crosses
lines," Grimm
He said tha
already exists
basis, with s
faculty memb
neering and
departments
their colleagu
matics and s
ment.
"Several
faculty memb
lished research
including phy
matics, chemi
cal engineeri

Attorney General

from page 1

benefit a narrow group of people who have kids in school."

He points out that just as American industry is groping to gear up to keep up and out-distance Japanese trade, so also must education be augmented.

At this point, he maintains, the groundwork for "making America the kind of America it ought to be" is being laid. "Education can, at this time, benefit."

Turning to hard statistics, Ashcroft explained that Missouri is 49th in education spending. He indicated that this has a double impact when one considers that the population center of the Union is "only miles from where we are now [UMR]." "Missouri is the focal point of the whole place," he said. "I don't want to be last."

Ashcroft referred in specifics to two of the more poignant problems facing Missouri schools and schooling in general. These were desegregation and lack of funds and cash flow problems.

Ashcroft said that now and within the next few days the legislature is going to consider some important items, among which is a desegregation rule for St. Louis. He said that he is opposed to the rule noting that "it's... a counterproductive exercise."

He said that when such measures are taken, during the first eight years the students' educational achievement goes down "moderately." Another result is that it seems to "sour people." "It does have a serious impact relating to disenchantment," he added.

If the legislature approves the busing, Ashcroft said he hoped to hold it in court. St. Louis already has ten percent of the funds for six percent of the state population. It is estimated that the desegregation will cost an additional \$1 million annually.

As to funding for education, Ashcroft said that the system must be allowed to grow. If its funds are choked, it will resort to using its long-term funds for short-term projects such as maintenance. This

leaves the schools ill-equipped for future needs.

He noted that Missouri can not choke the utilities. If such were done in that area, the utilities would deplete their long-term funds and we might expect brown-outs in the future.

Charles McClain, a member of COPHE and President of Northeast Missouri State, Kirksville, concurred during discussion that followed Ashcroft's speech saying that we need resources. He said that the education system's need is on a decline, "but [funding is] inadequate right now!"

All present seemed to agree that education needs more dollars. UM President James Olson pointed out that that is not all. "There's more than throwing money at it."

Ashcroft agreed saying, "Trying to lay the declining test scores at the school house door is successful, but it's wrong."

During the subsequent discussion, a few of the educators tried to get a commitment from Ashcroft toward increas-

ing education spending. He was not able to give absolute confirmation, but he was intrigued when UMR Chancellor Joseph Marchello brought out some Missouri higher education statistics.

According to Marchello, Missourians attend college at a low rate. He said, "If we attended at the national average, there would be 34,000 more Missourians in college."

Questions were raised about the demographic validity (when the statistics are broken down by age group) of these figures. Marchello said that for 18-year-olds alone, there would be 7,000 more.

The Council on Public Higher Education is a group interested in advancing higher education in Missouri. It is comprised of presidents and chancellors of four-year public institutions in Missouri. It meets every other month.

Members in attendance at Tuesday's meeting were B.D. Owens, president of COPHE and President of Northwest Missouri State, Maryville;

UMR Chancellor Joseph M. Marchello; UM President James C. Olson; Joe Simmons, Provost of Lincoln University; Henry Givens, President of Harris-Stowe State College; Marshall Gordon, President

of Southwest Missouri State University; Julio Leon, President of Missouri Southern; and Charles McClain, President of Northeast Missouri State, Kirksville.

Newman Community - UMR Catholic Campus Ministry

MASS SCHEDULE

SUNDAY

10:00 a.m. Parish Hall 5:15 p.m. Parish Church

WEDNESDAY

7:30 Newman Center

Monday Tuesday Thursday Friday

12:30 p.m. Center -- as scheduled in bulletin

Sacrament of Reconciliation

Saturday 3:30-4:30 p.m. Parish Church. Anytime by appointment.

One hour before the Wednesday and Sunday Masses.

Fr. Steve Faletti 364-1036
Newman Center 908 Main 364-2133

Phillips Petroleum presents \$5,000 grant to UMR

Source: OPI

Rolla, Mo. —The Phillips Foundation Inc. has made a \$5,000 grant to the University of Missouri-Rolla from the company's Professional Development Fund.

According to company officials, the Phillips fund supports and encourages professional growth and development of students and faculty in engineering, the physical sciences, and related fields of study that are of importance to the petroleum and petrochemical industries.

Presentation of the grant to UMR was made through two Phillips representatives, Vernon T. McGhee, capital budget and project analysis manager, Exploration & Production Group, and Risdon W. Han-kinson, senior staff associate, Corporate Process Engineering. They said the company's

desire is for both faculty members and students to benefit professionally from the award. The representatives, both UMR alumni, said the grant is for use during the 1983-84 academic year.

Individual grants will be administered by deans and

department heads in areas of greatest need for students and faculty awards, traveling expenses and fees for off-campus professional society members, visiting speakers and programs, reference books, and professional publications for departmental use.

The Professional Development Fund was established in 1966 by Phillips and this is the eighteenth annual award made to UMR. It is in addition to scholarships and other financial support programs.



CHUM'S

"The Office" Lounge

- *Happy Hour Daily 4-6:30 p.m.
- *Tuesdays -- Miner Night (not Minor)
Half Price for Students with UMR I.D.'s
- *Wednesdays -- Men's Night
We Love Men! Come see us for half price cocktails
- *Thursdays -- Ladies Night
Come On Ladies! Bring your man & drink for half price!
Free appetizers!
- *Saturdays -- "Greek Happy Hour" 4-6:30 p.m.
Students, wear your greek t-shirts and drink for half price!
- *We also have special dinners for your parents on "Parents Day"

Stay late at
"The Office"
and still have fun!!!

1102 Pine 364-0737
(next to Uptown Theatre)

Applied Math

from page 4

that crosses departmental lines," Grimm added.

He said that such research already exists on an informal basis, with some individual faculty members from engineering and other science departments working with their colleagues in the mathematics and statistics department.

"Several mathematics faculty members have published research in other fields, including physics, biomathematics, chemistry and electrical engineering," he reported.

COME ROCK WITH THE RED!
WATCH FOR DETAILS!

KILLIAN'S RED
©1983 Adolph Coors Company, Golden, Colorado 80401 • Brewer of Fine Quality Beers Since 1873.

LIONS CLUB PARK: 3:30-12:00

Castle of America Hamburgers Available

Band

ΣX Amber 251 TKA

Gateway Energy Conference to be held

Source: OPI

The Gateway Energy Conference, sponsored by the University of Missouri-Rolla and Southern Illinois University, will be held Wednesday through Friday, November 2-4, at the Sheraton St. Louis Hotel at Convention Plaza, 910 N. 7th St., St. Louis.

The conference will provide a forum for the exchange of energy information between leaders in business, industry, labor, government and education.

Sessions have been scheduled on economics of energy, energy conservation, solar energy, building energy use, coal, wood/waste fuels and nuclear energy. A panel discussion on "Perspectives on Energy" will be presented by the Missouri Society of Professional Engineers.

In addition, the conference will include a number of invited speakers for special sessions. These are: William J. "Jack" Silvey, associate director, policy, planning and analysis, for the U.S. Department of Energy, who will speak on "National Energy Plan IV"; Richard E. Wainerdi, president of Gulf Research & Development Co., Gulf Oil Corp., who will discuss "Technological Developments in Oil and Gas"; Wayne Ewing, president of Peabody Coal Co.; Raymond L. Copeland, assistant general manager, Project Management Corp.—"Clinch River Breeder Reactor Progress Update"; George H. Miley, chairman of the Nuclear Engineering Program, University of Illinois—"Fusion Power-Status and Challenge"; and Maj. Gen. Charles J. Fiala, commanding general, U.S. Army Engineering Training Center—"Biomass at Fort Leonard Wood."

The conference is the successor to the annual UMR-Department of Natural Resources Conference on Energy which was held for the eighth time in November 1981. The change in scheduling was made to allow more time for information worthy of dissemination to occur in the field of energy.

The conference is sponsored by UM-Rolla and SIU in cooperation with 17 other agencies. These are: American Society of Mechanical Engineers; Missouri Industrial Development Council; Institute of Electrical and Electronics Engineers—St. Louis Section; Missouri Division of Community & Economic Development; Army Corps of Engineers—St. Louis District; Institute of Electrical and Electronics Engineers—Kansas City Section; Consulting Engineers—Council of Missouri; Illuminating Engineering Society—St. Louis Section; American Association of Petroleum Geologists; Missouri Academy of Science; Missouri Society of Professional Engineers; American Society for Engineering Management—St. Louis Section; Public Service Electric & Gas Co.;

American Society of Heating, Refrigerating and Air Conditioning Engineers—St. Louis Chapter; St. Louis Electrical Board of Trade; St. Louis Regional Commerce and Growth Association; and the Missouri Department of Natural Resources.

The conference registration fee for individuals is \$200 and includes extended abstracts and conference proceedings.

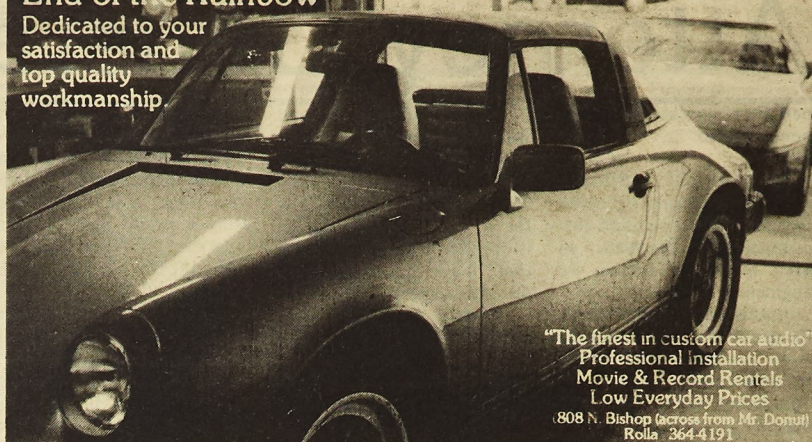
Short courses on "Reducing Electrical Energy Costs and Inefficiencies"; "Heating, Ventilating and Air Condi-

tioning Systems: Sizing & Design"; and "An Introduction to Solar Photovoltaic Power Systems" are being offered in conjunction with the conference. The cost of these courses is not covered in the conference registration fee.

For technical information about the conference contact Burns E. Hegler, conference director, 118 Electrical Engineering Building, University of Missouri-Rolla, Rolla, Mo. 65401 (phone: 314-341-4532 or 4718).

End of the Rainbow

Dedicated to your satisfaction and top quality workmanship



"The finest in custom car audio"
Professional installation
Movie & Record Rentals
Low Everyday Prices
808 N. Bishop (across from Mr. Donut)
Rolla 364-4191

LADIES & GENTLEMEN, START YOUR TURTLES!

Announcing the Coors Light Turtle Race. Here's your chance to challenge "Silver Bullet"!

COMING TO YOUR CAMPUS SOON!



© 1982 Adolph Coors Co., Golden, Colorado 80401.

Schafer's Homecoming

Source: OPI

Rolla, Mo. — It might have been "Parents' Day" on the University of Missouri-Rolla football schedule, but last Saturday's 35-21 victory over Northwest Missouri was more like "homecoming" for fullback

Mike Schafer.

Schafer, last year's leading rusher in the MIAA, broke free for 83 yards rushing and three touchdowns to lead the Miners past the Bearcats and even their conference record at 1-1. Prior to Saturday, the 1983 season had been a lost

one for the St. Louis Chamade graduate.

"He played the game with a flak-jacket on to protect a broken rib," said Miner head coach Charley Finley. "Injuries and other things have plagued Mike this season—but not Saturday."

Schafer scored on two runs of two yards and a burst from one yard out to pace the Miners to their fourth win of the season against two losses. The other Miner scoring came on a three-yard run by Keenan Curry and a 56-yard interception return by safety Ken Zerkel.

Northwest Missouri, though at one point 21-0, stayed in the game thanks to reserve quarterback Doug Ruse. Ruse threw for 257 yards on the afternoon, including scoring passes of 62 and 29 yards to Steve Hansley and a 36-yard strike to Keith Nelson.

The biggest factor in the Miner win?

"No turnovers," Finley smiled. "And that has been a real problem for us this season."

The visitors, however, lost two fumbles and threw four interceptions in suffering their fourth loss in six outings and their second defeat in as many MIAA games.

Miner running back Randy Shed kept his conference leading rushing average above the 85-yard mark, gaining 83 yards on the day. Bearcat speedster Ivory Griffin, second to Shed in the MIAA rushing race,

was held to 36 yards by the UM-Rolla defense.

The Miners will enjoy a week off before hosting Central Missouri State in a 1:30 p.m. homecoming contest Oct. 22. Finley is hopeful the rest will allow a few players to bounce back from injury.

"Some of our backs are still a little banged up, and we also have the regular assortment of bumps and bruises experienced by many players," he said. "We will certainly hope to have our best team on the field when the Mules hit town, as they are one of the best teams in the league."

UMR to host 1983 MIAA Conference Meet

Source: OPI

Rolla, Mo. — The University of Missouri-Rolla will host the 1983 MIAA men and women's cross country championships Oct. 21 at the UMR Golf Course.

The women will run at 10:30 a.m., with the men set for an 11:15 a.m. start. Southwest Missouri State track and field coach Richard Clark will serve as the meet's referee.

"We are looking for an excellent meet," said Miner men's head coach Dewey Allgood. "Some of the best talent in the nation is within the MIAA, and many conference schools have improved dramatically."

UM-Rolla's men fall under that category. The Miner harriers finished second to MIAA defending champion Central Missouri State in last week's 1983 Miner Invitational, and Allgood is blunt about his squad's ability.

"It is the best team I've ever had," he said. "We have more depth and ability than any Miner cross country team has ever been blessed with."

The Miners, however, will face a tough test.

Central Missouri will be joined by Northeast Missouri and Southeast Missouri in the chase for the title. Both Northeast and Southeast are nationally ranked this week.

"You also can't discount Northwest Missouri," Allgood predicted. "They have been doing very well in running in the Nebraska-Iowa area."

UMR will be paced by Jim Bullard, a junior who has finished first for the Miners in every meet this year. His 25:42 in the Miner Invitational placed him fourth overall behind a trio of Central Missouri runners.

The defending champion Mules will be led by junior Rick Schmid (second in the MIAA last year at 32:28.7) and senior John Miller (fifth in the MIAA in 1982 at

32:29.3). Southeast will feature talented freshmen Joe Leuchtmann and Arthur Waddle, who have been leading the Indians to some fine finishes against Division I competition.

The Bulldogs boast junior Marty Sprague (first in two of Northeast's four meets this season), while Northwest Missouri has senior Jim Ryan returning to help bolster a young squad.

The UMR women's team will look to Jill Cameron and Karen Penney in the MIAA chase, with the 1982 star Jan Hierholzer having graduated. Hierholzer finished third in the MIAA last season before representing UMR at national competition.

Defending champion Sou-

theast Missouri returns all-American Chris Ridenour, who placed 13th in the NCAA last season and second in the MIAA with a time of 18:15.5. Debra Kilpatrick, fifth in last year's meet (18:43.3) will be the number two runner for the Otahkians. Northeast Missouri will be paced by top runner Cindy Trickey, a senior who has led the Bulldogs in each meet she has participated in. Trickey set a course record earlier this season at Southern Illinois University-Edwardsville.

"It will be a real challenge for us to do well, as the MIAA offers some of the top competition in the NCAA Division II," said Miner women's cross country coach Sarah Preston. "We hope to give it our best shot."

Men's basketball begins

Source: OPI

Rolla, Mo. — The University of Missouri-Rolla men's basketball team returns seven lettermen Oct. 15 when practice for the 1983-84 season officially gets under way.

UM-Rolla's first competition will be a Nov. 12 exhibition game against the Norwegian National Team at the Gale Bullman Multi-Purpose Building in a 7:30 p.m. game. The regular season gets under way Nov. 19-20, when the Miners travel to the Bellarmine Tournament in Louisville, Ky. In addition to UMR and Bellarmine, other schools

in the tourney will be Arkansas-Pine Bluff and Mississippi College.

"We have some new players we hope will assist us quickly," said veteran Miner coach Billy Key. "And of course we return some good players from last year."

Heading that list will be MIAA scoring champion Curtis Gibson, a 20.5 points-per-game performer as a sophomore. Bolstering the newcomer corps will be 6-5 forward Tyree Hall, a strong junior college rebounder from Imokalee, Fla.

UMR, 14-12 last season,

opens the home portion of the regular season Nov. 28 when it hosts Northeast Oklahoma at 7:30 p.m.

M-CLUB

ATHLETE OF THE WEEK

The M-Club is proud to present this week's award to Kenny Zerkel of the UMR Football Team. Kenny helped lead the Miner's to victory over the Northwest Missouri Bearcats by making nine tackles and intercepting two passes. Kenny returned one of his interceptions for a 56 yard touchdown. Congratulations Kenny!

HAIR IT IS

For your Homecoming/Halloween Celebration, take time out to spruce up your appearance with one of our 5 qualified hair designers. During this celebration we will offer price reductions on our most popular services. A precision cut with style now \$2 off. Any type of wave, now \$5 off. Stop by for hair care products plus our Halloween 'temporary' haircolor spray. Walk-ins welcome or call for an appointment at 364-7130. Close to campus (601 Kingshighway, Plaza Laundrama building.) Expires October 31, 1983.



364-7130

1001 Kingshighway Rolla, Mo. (Plaza Laundramat Building-downstairs)

UNIVERSITY OF MISSOURI-ROLLA
1983-84 Men's Basketball Schedule

DATE	OPPONENT	PLACE	TIME
Nov. 12	Norwegian National Team	Rolla, MO	7:30
Nov. 19-20	Bellarmine Tournament	Louisville, KY	TBA
Nov. 25	Maryville College	St. Louis, MO	7:30
Nov. 28	Northeastern Oklahoma State Univ.	Rolla, MO	7:30
Dec. 1	Harris Stowe College	Rolla, MO	7:30
Dec. 3	Illinois College	Rolla, MO	7:30
*Dec. 10	Evangel College	Springfield, MO	7:30
Jan. 3	Arkansas State	Jonesboro, AR	7:30
Jan. 7	Indiana State at Evansville	Evansville, IN	7:30
*Jan. 11	Northeast Missouri State Univ.	Rolla, MO	8:00
*Jan. 14	Lincoln University	Rolla, MO	8:00
Jan. 18	University of Missouri-St. Louis	St. Louis, MO	8:00
*Jan. 21	Northwest Missouri State Univ.	Rolla, MO	8:00
Jan. 25	Southeast Missouri State Univ.	Cape Girardeau, MO	8:00
Jan. 28	Parks College	Rolla, MO	7:30
Feb. 1	Central Missouri State Univ.	Warrensburg, MO	8:00
Feb. 4	Lincoln University	Jefferson City, MO	8:00
*Feb. 8	University of Missouri-St. Louis	Rolla, MO	8:00
Feb. 11	Northwest Missouri State Univ.	Maryville, MO	8:00
*Feb. 15	Southeast Missouri State Univ.	Rolla, MO	8:00
*Feb. 18	Evangel College	Rolla, MO	8:00
*Feb. 22	Central Missouri State Univ.	Rolla, MO	8:00
Feb. 25	Northeast Missouri State Univ.	Kirkville, MO	8:00

*Conference women's games will start at 5:45. Men's games will start 30 minutes after the women's games—at approximately 8:00. All other home games start at 7:30.

1983-1984
UNIVERSITY OF MISSOURI-ROLLA
WOMEN'S BASKETBALL SCHEDULE

Mon.	Nov. 21	Maryville	St. Louis	7:00
Fri.	Nov. 25	SIU-Edwardsville	Edwardsville	7:00
Mon.	Nov. 28	Lindenwood	Rolla	5:30
Wed.	Nov. 30	William Woods	Rolla	7:00
Fri.	Dec. 2	Southwest Baptist	Bolivar	6:30
Mon.	Dec. 5	School of the Ozarks	Rolla	6:30
Sat.	Dec. 10	Evangel	Springfield	5:15
Sat.	Jan. 7	School of the Ozarks	Pt. Lookout	6:30
Wed.	Jan. 11	NEMO	Rolla	5:45
Sat.	Jan. 14	Lincoln	Rolla	5:45
Mon.	Jan. 16	William Woods	Fulton	7:30
Wed.	Jan. 18	UMSL	St. Louis	5:30
Sat.	Jan. 21	NWMS	Rolla	5:45
Wed.	Jan. 25	SEMO	Cape Girardeau	5:30
Wed.	Feb. 1	CMS	Warrensburg	5:45
Sat.	Feb. 4	Lincoln	Jefferson City	5:30
Mon.	Feb. 6	Southwest Baptist	Rolla	6:30
Wed.	Feb. 8	UMSL	Rolla	5:45
Sat.	Feb. 11	NWMS	Maryville	6:00
Wed.	Feb. 15	SEMO	Rolla	5:45
Sat.	Feb. 18	Evangel	Rolla	5:45
Wed.	Feb. 22	CMS	Rolla	5:45
Sat.	Feb. 25	NEMO	Kirkville	5:30

Rayner wins

The IM raquetball season ended last Tuesday morning after a month of activity. After Rich Henry of the Pi KEs beat Greg Rarmer of Kappa Sigma the week before, the two faced off again to crown a champ. Raymer, after going undefeated before his first match-up against Henry, came

out victorious. Thus ends the IM raquetball tournament.

Correction:

Oops!! Somehow, Mr. IM Writer got some goofy information and printed it last week. In men's tennis doubles, Delta Sig Beat Kappa Sig in the finals. Disregard previous report.

Friendly, Interesting People

are waiting to meet you...

Maybe someone special!

- * Profile exchange and letter forwarding services.
- * Choose your own dates from selected profiles.
- * Members encouraged to keep in touch to maintain integrity of club.
- * send self addressed, stamped envelope to; NEXUS, P.O. box 550, Rolla, Mo. 65401.

Listed in yellow pages under 'Dating Service'



call Neline 364-8639
Confidential, no obligation.

Miner cross-country travels to Wash. U.

By DAN LICHTENWALNER

This weekend the Miners sent seven runners to the Washington U. Invitational. The meet featured 20 teams, including such teams as Murray State, Augusta, NEMSU, and Wash. U. among others.

NEMSU ran exceptionally well, winning the meet with only 29 points. Murray State was the second place team with 36 points.

Bruce Berwick was the Miners top finisher, coming in

46th out of the 140 runners, in a time of 27:05. Dan Lichtenwalner came across in 50th place, running the course in 27:15. Curt Elmore was close behind with a time of 27:28. The other Miner finishers were: Joe Henze (27:45), Dan Ray (27:55), Scott Giltner (28:10), and John Borthwick (28:21).

The top five Miner runners (Jim Bullard, Pete Lichtenwalner, Dan Marley, Keith Smith, and Bob Sauer) got the week off to build up mentally and physically for the conference meet.

Three other Miners will complete the varsity team which will go to conference. The conference meet is going to be held at the UMR golf course Friday morning, Oct. 21, at 11:15. The conference has some tough cross country teams, so it should prove to be a real battle. If anyone is free Friday morning (or if you don't have any tests), be sure to come down and watch the action. Admission is free, of course, so bring a friend or two along.

Trap and Skeet

On Saturday, October 8, the UMR trap team travelled to Des Moines, Iowa to compete in the Cyclone Invitational Trap and Skeet Tournament. The event was hosted by the Iowa State Hawkeyes from Ames, Iowa. The squad was lead to a third place finish by senior Alan Corzine and junior Glen Weeks. Alan Corzine paced the team with a second place finish overall, and Glen Weeks boosted their efforts with a top place finish in his respective class. Also aiding the team in their finish were other team members; Chris Johnson, Randy Brazier, and Bill Zumwalt.

The club will host its annual fall tournament at the shooting range east of town on Saturday, October 29. The following Sunday, the trap team will travel to Springfield, Mo. to compete in Southwest Missouri State's fall tournament.

The trap and skeet club practices every Saturday from 9:00 a.m. until noon at the range in Rolla. If you are seriously interested in shooting either trap or skeet, or if you would like directions to the shooting range in order to watch the October 29 tournament, please feel free to contact Chris Johnson, Club President, at 364-4134.

Christopher Jewelers
Diamonds and Watches
903 Pine Rolla, MO 364-2264

Brano's

Banquet Facilities Available
Men's Night-Wednesday
Ladies Night-Thursday
9:30 to 1:00
341-2110
1435 Hauck Drive Rolla, MO

ROTOCRAFT
Experimental rotor-blades (10' long, 7" chord, aluminum, flush rivets) for gyrocopters. Rotorblade info pack \$3.00 (overseas \$4.00). Offset Gimbal head plans \$8.00 (overseas \$10.00). Ferrous metals magna-fluxed.

TELE ENTERPRISES
Rolla, Mo. 65401 (USA) - (314) 364-3376

FOREIGN CAR
Machine shop, parts, service and remanufactured V.W. air-cooled engines for airboats, aircraft, automobiles and gyrocopters. Also, a complete stock of standard and performance parts for V.W. engines, wholesale and retail.

Recordak Microfilm Viewers, (24 power) New \$350.00 Used \$105.00
V.W. Piston and Cylinder Kits (85.5 MM) 1600 cc New \$89.50 Rebuilt \$45.00 Bosch "009" Centrifugal Advance Distributor, Cap, Rotor, Cond. & Points \$29.95 V.W. 1200, 1300, 1500, 1600 cc Engine Overhaul Gasket Sets Reg. \$9.95 Now \$5.95 No Personal Checks

Holiday Inn

presents for your pleasure:

A MIDNIGHT BREAKFAST BUFFET

just \$3.95

12:00 A.M. to 2:00 A.M.
Fri., Oct. 21 & Sat., Oct. 22

DON'T MISS OUR
HALLOWEEN COSTUME PARTY!

Martin Springs Drive
Rolla, Missouri 65401
(314) 364-5200

Maulin on fitness

BY PHYLLIS HARSTER

Coach Cindy Maulin presented a lecture giving the times that the Multi-Purpose Building is open. She also gave simple tests which a person can take to show their physical condition with ratings from superior to very poor. Before anyone attempts any physical fitness program, Coach Maulin stresses the need to have a complete physical, even if they feel fine.

The Multi-Purpose Bldg. schedules for gym, pool, and weight room follow:

Gym floor: Open to students Monday-Friday: 8:00-11:30 a.m.; 1-3:30 p.m., 7:30-9:45 p.m. (except during home varsity basketball games) Saturday: 10:00-7:45 p.m. (except during games when

the gym closes at 3:00 p.m. and other facilities at 5:00 p.m.)

Sunday: 1:00-4:45 p.m. from August 28-November 6, and 1:00-7:45 from November 13-May 6.

Pool schedule: Open to students August-March, Monday-Friday: 11:30 a.m.-3:30 p.m.,

Monday-Thursday: 7:00 p.m.-9:00 p.m.

Saturday: 12 p.m.-7:45 p.m. Sunday: 1:00-4:45 p.m. August 28-November 6, and 1:00-7:45 p.m. November 13-May 6.

Weight room: There are now two weight rooms. Monday-Friday: 9:00-11:00 a.m., 1:00-3:00 p.m., 7:30-9:00 p.m.

Take A Daybreak

Take a break from your daily studies and bowl your tensions away

Mon. thru Fri.

9:30am to 5:00pm

Bowl every other game

FREE with this ad.

Expires Oct. 31, 1983

Join Us For
Rock N' Roll Bowl
Sat. Oct. 22, 1983

10:30pm to 1:30am

Room for 1 to 6 people per lane

Cost per lane for the 3 hours is \$12.00.

Bowl all or part of the three hours

Pro-rated to a sliding scale.
Bowl to your favorite music.

Qualify for prizes Special beer prices

Colonial Lanes, Inc.

Bus. Loop I-44 West Rolla MO
364-4124

call and reserve your lane now

Water-polo on the road

BY ANNE WERNER

The UMR waterpolo team traveled to Chicago, Illinois over the weekend of October 14-15 for the Loyola Invitational Waterpolo Tournament. The Miners were up against some tough competition, including Loyola which is ranked 10th in the country. Bob Chambers, one of the six starters, was absent from the tournament, causing a gap in the Miner's lineup. The Miners were able to defeat Notre Dame with an impressive score of 20-8. Two games were lost, one to Loyola and the other to Iowa State.

Next weekend, October 21-22, the Miners will be in Indianapolis for the Indiana invitational. The Miners will once again challenge Loyola as well as Indiana University. The Air Force Academy, ranked 12th in the country, will also play against the Miners in the tournament.

Don't forget
pre-registration
Oct. 24-28

ADD SOME
EXCITEMENT
TO YOUR SEMESTER



ARMY ROTC

Coors

THE BEST OF THE
ROCKIES IS YOURS

Coors

9. What is Coors doing to protect the environment?

At a time when other brewers were using steel cans, Coors, in 1959, became the first beverage maker in the world to market its product in recyclable aluminum cans.

Then, in 1970, Coors introduced a comprehensive recycling program called "Cash for Cans". Through this program Coors distributors pay individuals and organizations for their aluminum cans, regardless of brand. Since 1970, Coors has recycled more than 715 million pounds of aluminum! As an energy-saving effort, recycling is next to perfect since cans produced from recycled aluminum require 95 percent less energy to produce than those made from new aluminum.

The company also has other programs which conserve energy and precious resources, such as the use of coal in place of natural gas. In addition, the company internally recycles waste heat, carbon dioxide, used wood and paper products and spent crankcase oil.

Because of its commitment to the environment, Coors has received notable environmental awards, including the Environmental Protection Agency Award and the Energy Conservation Excellence Award from the Federal Energy Administration.

Ransdall Distributing

For any questions please contact
Bryan Blackford or Lisa Jones

Your "Coors on Campus", Campus Representatives
at 341-3838

Volleyball begins

With summer and the IM football season at an end, the indoor sports are back in action. Volleyball began Tuesday, and

four full days of playing each week along with it. The up-coming schedule looks like this:

Court 1			
ABS vs. KD	Oct. 20	7:45	
ZTA vs. Wesley/BSU		8:45	
KS vs. Sigma Chi		9:45	
Sigma Pi vs. Triangle		10:45	
ChiO vs. White Stars	Oct. 24	7:45	
FELA vs. Delta Sigma		8:45	
ACACIA vs. Vets		9:45	
ISC vs. Campus		10:45	
Sigma Nu vs. Triangle	Oct. 25	7:45	
TKE vs. Sigma Epsilon		8:45	
AEPi vs. Wesley		9:45	
White Stars vs. KD		10:45	
TJHA vs. Stardusters	Oct. 26	7:45	
Sigma Nu vs. Delta Sigma		8:45	
TJ-N vs. Vets		9:45	
Delta Tau vs. ABS		10:45	
Court 2			
TJHA vs. AWS	Oct. 20	7:45	
TJHA vs. RHA (women)		8:45	
Delta Tau vs. Campus		9:45	
TJ-S vs. ABS		10:45	
AWS vs. RHA	Oct. 24	7:45	
Sigma Tau vs. Beta Sigma		8:45	
AF vs. BSU		9:45	
ZTA vs. ABS		10:45	
Independents vs. Phi Kappa	Oct. 25	7:45	
Tech vs. Kappa Sigma		8:45	
TJ-N vs. Theta Xi		9:45	
PiKA vs. Lambda Chi		10:45	
ChiO vs. Wesley/BSU	Oct. 26	7:45	
Independents vs. KapSig		8:45	
TJ-S vs. BSU		9:45	
Phi Kappa vs. Lambda Chi		10:45	

Men's Top 15 Women's IM IM point totals Point Totals

1 PiKA	2983.5	1 AWS	698.5
2 Sigma Nu	2976.5	2 TJHA	698
3 TKE	2807.5		
4 Sigma Epsilon	2086	3 KD	697
5 Beta Sigma	2660	4 RHA	684.5
6 Kappa Sigma	2610		
7 MHA-East	2449.5	5 ChiO	643
8 Sigma Pi	2391.5	6 Stardusters	538
9 Phi Kappa	2367		
10 Lambda Chi	2330	7 ZTA	458
11 Tech Eng	2310	8 Wesley	326
12 Independents	2246		
13 Triangle	2178	9 AWS	300.5
14 Campus	2101	10 Independents	229
15 TJHA	2066.5	11 WhiteStars	194

Howard Johnson's Restaurant

Kingshighway and Hwy 44 Open 24 hours

SPECIAL SUNDAY DINNER

Featuring home-style cooking
Meatloaf and Pan-fried Chicken
will include vegetable, potato, dinner roll
and apple or cream pie.

Shutter's Lounge

Halloween Party
&
Costume Contest

1st prize-One night's free lodging at Howard Johnson
Motel in Rolla with free breakfast.
2nd prize-Dinner for two at Howard Johnson's
Restaurant in Rolla.

Hours **Late Happy Hours**
3:00p.m.-1:30a.m. Sat. & Sun.
Mon. - Sat. 9:00 - close
1:00p.m.-12:30a.m.
Sunday

Women's Basketball

'Seven Back'

Source: OPI

Rolla, Mo.- Seven returning letter-winners, including last year's top scorer, will grace the University of Missouri-Rolla women's basketball roster when practice officially begins Oct. 15.

Top scorer Laurie Behm will be joined by last year's Most-Valuable-Player Gail

Halsey, Terry Bond, Cecilia Gutierrez, Linda Hill, Kim Murphy and Kelly Stewart.

The Miners will be trying to rebound from last season's 7-17 record. "We need to cut down on some of the mistakes we made last season," said UMR coach Cathie Schulte. "If we can improve defensively, it will really bolster our game."

Joining the Miner roster

this season will be Springfield (Parkview) native Susan Mullins, Brentwood's Sandra Vaughn and 5-5 sharpshooter Melissa Warfield from Pueblo, Colo.

The Miners open the season Nov. 21 at Maryville College in St. Louis, before hosting Lindenwood College in the season home opener Nov. 28 at 5:30 p.m.

Planned Parenthood Central Ozarks

SERVICES FOR ALL MEN & WOMEN

BIRTH CONTROL exams, supplies, instruction. NATURAL FAMILY PLANNING. PREGNANCY TESTING and exams. PROBLEM PREGNANCY COUNSELING on all options: parenthood, adoption, abortion. VENEREAL DISEASE TESTING. STERILIZATION COUNSELING & referrals. COUNSELING on problems related to sexuality and reproduction. EDUCATION, FILMS, PAMPHLETS.

SERVICES ARE CONFIDENTIAL

REPRODUCTIVE FREEDOM—the fundamental right of every individual to decide freely and responsibly when and whether to have children—is a reaffirmation of the principles of individual liberty upon which this country was founded.

ROLLA CLINIC

1032 B Kingshighway (314) 364-1509

ENGINEERING MAJORS HAVE ENOUGH STRESS WITHOUT HAVING TO WORRY ABOUT TUITION.



If one of the angles you've been studying lately is a way to pay your tuition costs, Army ROTC would like to offer some sound advice.

Apply for an Army ROTC scholarship.

Recently, we set aside hundreds of scholarships solely for engineering majors like yourself.

Each one covers full tuition, books and other supplies, and pays you up to \$1,000 each school year it's in effect.

So if the stress of worrying about tuition is bending you out of shape, get some financial support. Apply for an Army ROTC scholarship today.

For more information, contact your Professor of Military Science.

**ARMY ROTC.
BE ALL YOU CAN BE.**

**CONTACT
MAJ. DAN GIFFORD**

**BLDG. T-2
ARMY ROTC**

STUDENT UNION BOARD PRESENTS Homecoming Entertainment

Gary U.S. Bonds

in concert



Sat. Oct. 22 at 8 p.m.
MULTI—PURPOSE BUILDING

ADMISSION: \$2.00 STUDENTS
\$5.00 General Admission

Homecoming Dance with:

The Misstakes

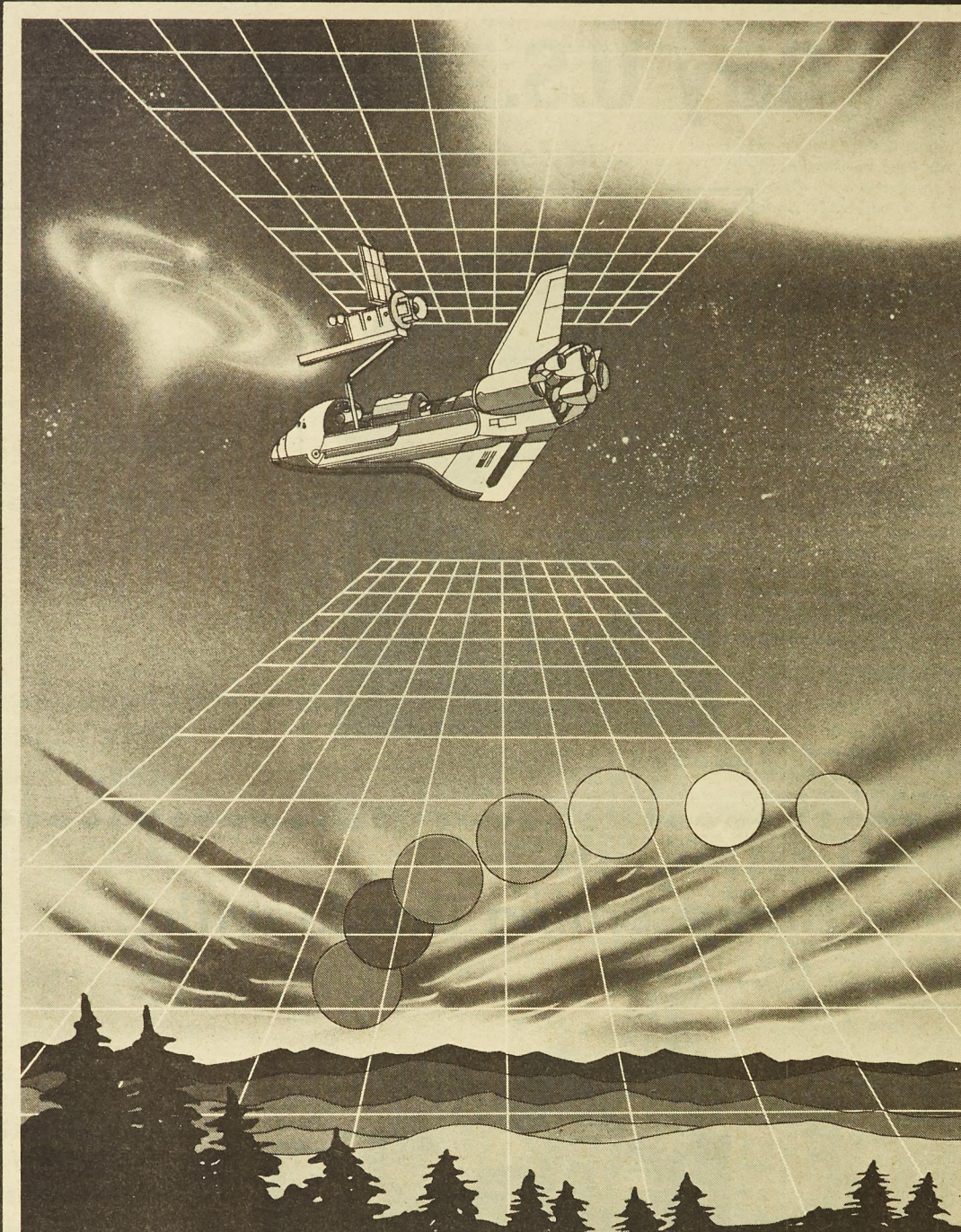


THE MISSTAKES are an energetic dance rock band that accents on an exciting live performance. That's what live entertainment is all about! An image and sound that conveys a feeling of flawless taste and peer-less rhythm. A youthful new energy that combines classic rock n' roll with an upbeat modern tempo. A modern tempo that creates excitement from the first note to the last.

Fri. Oct. 21 9:00-12:00 CENTENNIAL HALL FREE ADMISSION TO UMR STUDENTS

GRADUATING ENGINEERS

REACH FOR TOMORROW WITH MARTIN MARIETTA AEROSPACE



There are three important things every graduating engineer should know about Martin Marietta Aerospace:

1. Our unique organizational structure gives you unusual flexibility in determining your career path and accomplishing your personal goals. Unlike most other aerospace firms, Martin Marietta uses a matrix organizational system that gives you a "technical home" rather than placing you in a single program or product area.
2. Martin Marietta will provide you with a stimulating environment through challenging assignments. We have hundreds of long-term contracts that require imagination and creativity. And we have some of the world's most sophisticated equipment and facilities to assist you in your efforts.
3. And finally, we want to talk to YOU. We will be holding on-campus interviews very soon. Arrange to talk with us and we'll give you more

information about Martin Marietta Aerospace and its opportunities. And remember, if you enjoy reaching for the challenges of tomorrow, look into a career with Martin Marietta today. Martin Marietta Aerospace has many new opportunities awaiting college graduates. Major facilities are located in Denver, Colorado, New Orleans, Louisiana, and at Vandenberg AFB, California.

See our representative on campus
November 2

If unable to arrange for an interview at this time, please contact Martin Marietta Denver Aerospace, College Relations Department, P.O. Box 179, Mail #L1311, Denver, CO 80201.

Martin Marietta is an Affirmative Action Employer Actively Seeking the Handicapped and Veteran.

U.S. Citizenship is required.

MARTIN MARIETTA

Volume 72, No.

Che
198

ROLLA, Mo.—
Smith, 4287 Ho
Louis, and a juni
cal engineering a
city of Missouri-R
chosen UMR's
coming Queen fro



The ten Homecom
left to right, Kam
Cox, Sue Wieting,

Roll

BY KOLA A

Part I of se

Once upon a tim
iversity of Missou
Missouri School
Those were the da
were the "vandalis
especially on Hallo
townsfolk remem
things used to be a
ween season in
believe me—not
kindness.
One of our an
ween pranks was
ic burning of a
right in front of
Mansion (we had
then instead of a
Another was the
waping of window
bles and building
Some people a
remember very we
were most helpfu
together these
memory for your
Before going on