



18 Nov 1982

The Missouri Miner, November 18, 1982

Follow this and additional works at: https://scholarsmine.mst.edu/missouri_miner

These newspapers reflect the attitudes, perspectives, and beliefs of different times. Neither the library nor the university endorses the views expressed in these collections, some of which contain images and language which may be offensive to some readers.

Recommended Citation

"The Missouri Miner, November 18, 1982" (1982). *The Missouri Miner Newspaper*. 2326.
https://scholarsmine.mst.edu/missouri_miner/2326

This Newspaper is brought to you for free and open access by Scholars' Mine. It has been accepted for inclusion in The Missouri Miner Newspaper by an authorized administrator of Scholars' Mine. This work is protected by U. S. Copyright Law. Unauthorized use including reproduction for redistribution requires the permission of the copyright holder. For more information, please contact scholarsmine@mst.edu.

MISSOURY MINER

For the students of UMR

Volume 71, Number 13

Thursday, Nov. 18, 1982

Sixteen Pages

T.J. on schedule

By AMY E. BOYD

"The \$7 million addition to Thomas Jefferson Hall is coming along slightly ahead of schedule, with the underground walkway being completed in 3-4 weeks," reports Paul Bauch, TJ assistant housing manager. The project is scheduled for completion some time next summer, ready for occupation by the fall. No major problems have been reported, although a small labor dispute held up work for about two days earlier this fall. Also for a couple of weeks in October, parking in the front was prohibited because the exterior of the new building was being cleaned with acid which might have found its way into the parking lot.

The new addition has now

reached its full height — 11 floors. Along with the housing manager's apartment, the first floor will have utilities, vending machines, and its own TV lounge. A "formal lounge" separated from the television lounge by a sliding door will also be provided.

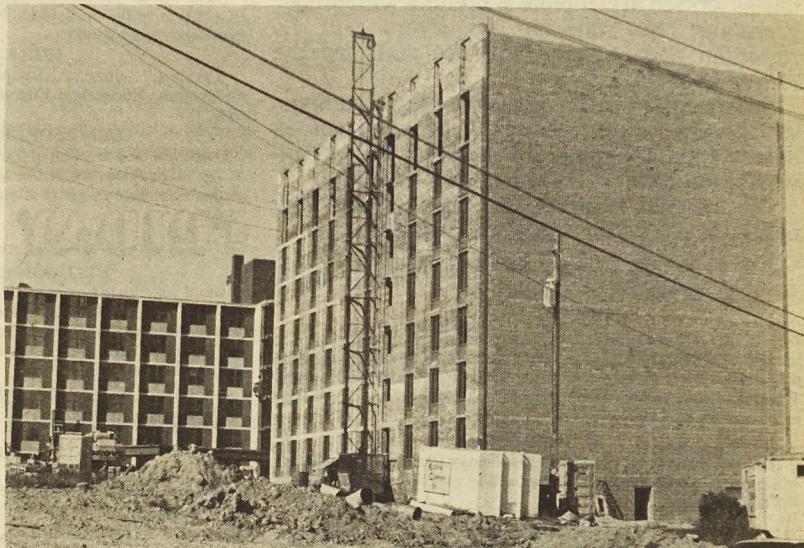
The second through 11th floors contain the students rooms. This new wing will hold a total of 410 people. Most of the new rooms will be identical to the double rooms presently occupied at TJ, with the exception of a few new triple rooms. The only difference is that the new rooms will have sheet rock (a type of drywall) with soundproofing in between instead of concrete blocks as in the older rooms.

Floors 2-5 are being

reserved for girls, with men's rooms on remaining floors 6-11. This all depends on demand, however. "It now looks as if there aren't enough girls to fill up four floors, so we'll only use three for them and seven for the boys," said housing manager Jack Bennet, "we can't tell right now."

Leased housing is going to be shut down next year, and those people currently living in hotels and motels will be moved to the TJ addition.

Although a new lot is being constructed, finding a parking place will still be a challenge. TJ is gaining about 400 new residents and only 100 new parking spaces. Reserving a parking space is run on a first-come, first-serve basis so get those applications in early.



The new T.J. Addition, coming along ahead of schedule.

Mark Vollmer

Paving the campus

By DAVE DONOVAN

The UMR Department of Administrative Services is continually furthering the development of our campus, and always has new ideas to

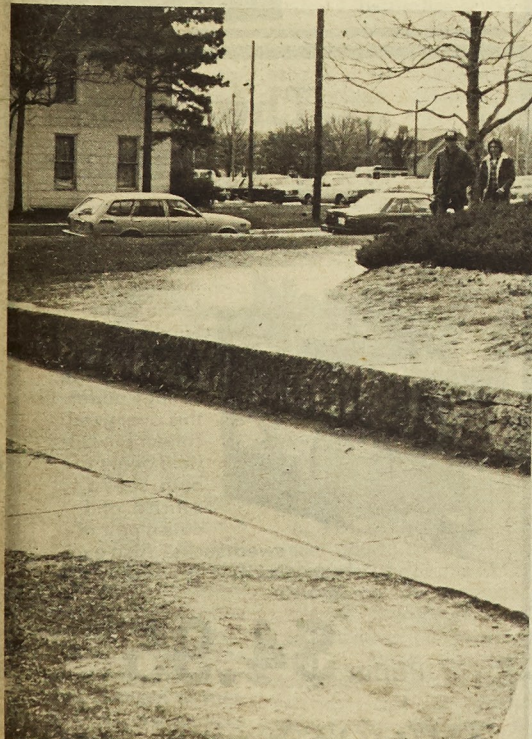
consider. Several major propositions are to be implemented soon, and others still await approval.

The most publicized of these are, of course, the Minerals Engineering

Building and Engineering Management Building, each to be located on the west side of the campus, along 14th Street. Construction for these could begin next fall.

There is, however, a project that is to begin this spring that most students don't know about. Since the number of students at UMR is increasing, a well defined sidewalk system is to be completed in places where there are presently no sidewalks, but most students walk. The first area to be paved is the well-beaten path in front of the Chemistry Building. This is but the tip of the iceberg, for other places to be refined are the parking lot between Parker Hall and the Physics Building, the path from the library to the Civil Engineering parking lot, a U.S. 63 underpass, for students walking west toward Nagogami Terrace and Fraternity Drive, a wider vehicle entrance to the west side of campus, and paving of a few other paths beaten on campus.

Director of Administrative Services, Joseph D. Wollard, says that the system will not only move people more effi-



Rick Bennett

The dirt path outside the Chemistry Building will be the first area to be paved.

By JENNIFER BARTON

The members of the General Honors Council have announced their plans to develop curricula for the General Honors Program and have asked for student and faculty suggestions.

Associate Dean of the College of Arts and Sciences, Wayne Cogell said, "My purpose is improving the general honors program by working out a variety of course options that the students may select from to complete a general honors program."

To be eligible for the general honors program incoming freshmen must rank in the upper 10 percent of their high school graduating class. Or, students must have scored in no less than the 95th percentile on a standardized test (ACT, SAT, SCAT).

Once a student has completed 15 hours here, then

they must maintain a 3.5 gpa.

Dean Cogell prepared a draft modeled from UCLA's honor program which was suggested solely as a method to stimulate discussion.

This draft suggested that students who want to participate apply, including those freshmen who have been invited. A freshman class would be selected. This would be an improvement, Cogell thought, since it would set up the system in groups identifying with each other.

Dean Cogell has worked up this idea just for discussionary purposes. These are tentative and subject to change.

The General Honors Council has asked for suggestions by faculty and students.

Those suggestions were to be sent to Wayne Cogell, G-7 H/SS.

The Council will consider

all suggestions and develop a draft that will be sent to students and faculty.

After reviewing the responses to the first draft, the Council will prepare a second draft to be submitted for review by faculty and students.

After reviewing the responses to the second draft, the Council will prepare a final draft to submit to the appropriate committees of the schools.

Then, the procedures for curriculum review for the schools, college and campus will be followed from this point.

Dean Cogell stressed that the General Honors Program is a college program NOT an arts and sciences program and NOT a liberal arts program.

Drafts will be presented to student organizations. If interested, contact Dean Cogell.

IFC Fall Clean-up

SUBMITTED BY IFC

The 11th annual IFC Fall Clean-Up on Oct. 30 was termed an overall success with over 300 Greeks participating in picking up litter around the business and residential areas of Rolla. The participation trophy, which is awarded to the house with the greatest percentage of participants, was shared between Delta

Tau Delta and Acacia, who both had 100% of their houses involved. The Little Sister participation award went to the Little Sigma's of Sigma Chi Mu. Special thanks are in order to Chris Farrell of the IFC and Mr. Ed Owsley of the Rolla Chamber of Commerce for organizing this event and to Fred Voss Enterprises for furnishing the refreshments

at Lions Club Park after the clean-up.

The next scheduled event sponsored by the IFC is the Dollar Night at the Movies at the Uptown Theatre this Thursday. The movie this year will be Animal House and will be preceded by

see Sidewalks
page 4

see Clean-up
page 4

CALENDAR OF EVENTS

Editor's Note: If your organization is having a meeting, turn in details to the MINER office in the Rolla Building before Monday at 9 p.m. and we will list it in the Activities Section of the paper. No articles submitted will be printed unless written in complete sentences with proper grammar. No schedule or flyers will be rewritten and published by the staff for the Activities Section.

If your organization is sponsoring a campus-wide event for the benefit of charity, get us details before Monday at 9:00 p.m. We will advertise the event free of charge in this space.

The MINER reserves the right to edit any notices or ads for this page before publication.

THURSDAY

IFC BENEFIT MOVIE

The UMR Interfraternity Council is sponsoring Dollar Night at the movies, Thursday, Nov. 18, featuring the movie "Animal House" and preceded by three Three Stooges Shorts. Shows are at 7 and 9:45 p.m. Tickets may be purchased from any IFC Junior rep or may be bought at the door for only \$1.

PSI CHI

Thursday, Nov. 18, at 7 p.m., the psychology faculty and counselors will speak on areas and opportunities within psychology. The meeting will be in H/SS 101.

ACM

ACM will hold its next meeting on Thursday, Nov. 18, 1982. The meeting will be held in G-5 H/SS and will begin at 7 p.m. Dr. Alex Hoffman, an ACM National Lecturer will be the guest speaker. Dr. Hoffman received his Ph.D. degree from the University of Texas at Austin in 1962. The topic of Dr. Hoffman's lecture will be "Software Package Selection." The decision to seek a software package instead of developing a system has political as well as financial implications. Finding and the comparison of packages often involves technical comparisons, determining the financial stability of the vendor, and a careful technique of interrogating users of prospective packages. Also, elections for the spring semester officers will take place.

MSM CLIMBING CLUB

The MSM Climbing Club will hold its regular meeting tonight at 6:30 p.m. The meeting will be moved to Room 305 Norwood Hall for this week only. The first series of the slide show will be shown. Possible changes to the constitution will be discussed. Everyone is welcome.

HKN

HKN will have a general business meeting Thursday, Nov. 18, at 6:30 p.m. in Room 105 EE. Nominations of officers will be opened.

Missouri Miner

The Missouri Miner is the official publication of the students of the University of Missouri at Rolla. It is published weekly at Rolla, Missouri. The Missouri Miner features activities of the student and faculty of UMR.

Editor-In-Chief	Ken Donnelly	364-4190
Business Manager	Cindy Farina	364-2245
Advertising Director	Laura Pagano	364-8110
	Gary Dusheke, Steve Frick, Kirk Lawson	
Managing Editor	Dave Stanfield	364-9792
Comments	Robin Thompson, Larry Beck	
News Editor	Karen Penney	
	Dave Donovan, Heraldeen Sprenger, Jennifer Barton, Greg Rinker, Amy Boyd	
Features Editor	Sherry Noonan	364-7561
	Pat Van Ryckeghem, Lisa Baganoff, Heidi Fluegel, Barb Thomas, Janet Jansen, Bart Bennet, Steve Penberthy, Mike Stroder, Rob Lippert	
Sports Editor	Larry Tipton	364-9783
	Greg Wehking, Bruce Baugman, Don Anselm, Scott White, Nancy Reiter, Mike Simms	
Photo Editor	Tim Farrell	364-8345
	Mark Vollmer, Rich Bee, Nancy Winkler, Tracy Gerhold, Rick Bennett, Bruce West	
Distribution	John Macke, Joe Deters	

Subscriptions are available to the general readership at a rate of \$7 per semester. Articles and photos for publication in the Miner must be in by 9:00 p.m. on Monday before distribution on Thursday.

THE MISSOURI MINER
303 Rolla Building
University of Missouri-Rolla
Rolla, MO 65401
341-4312

M-CLUB

Attention M-Club members and pledges: The pledge test, meeting and smoker will begin at 6:30 tonight at Sig Ep. Nominations for officer elections will be accepted. All members and pledges should attend!

WARGAMERS

There will be a meeting of the Wargamers Club on Thursday, Nov. 18, at 8 p.m. in Room 206 M-Cs. Election of officers will take place. All members should attend.

UMR FILM SERIES

"Persona," director Ingmar Bergman, 7:30 p.m., Miles Auditorium, Mechanical Engineering. Season ticket or \$2.50 at the door.

COUNCIL OF GRADUATE STUDENTS

There will be a meeting of the Council of Graduate Students tonight at 7 p.m. in Room 208 of the ME Building. All interested graduate students are encouraged to attend.

FRIDAY

FULL GOSPEL BUSINESSMEN

Would you like to become a dynamo? Go into partnership with God. The Full Gospel Businessmen's Fellowship will meet at 7:30 p.m., Nov. 19, in the UMR Student Union, Mark Twain Room, at 12th and Rolla streets. Hear Jim Scott and his steel guitar. It's the real thing! Everyone is welcome.

SUNDAY

SUB MOVIE

The SUB Indoor Recreation Committee will present the movie "Airplane" Sunday, Nov. 21, at 6 and 8:30 p.m. It will be in Centennial Hall, and it's free with UMR ID.

THANKSGIVING DINNER AND WORSHIP

A Thanksgiving worship service will be held on Sunday, Nov. 21, at 5 p.m. at the First Presbyterian Church. The worship service will be followed by a traditional Thanksgiving dinner at 6 p.m. in the Presbyterian Fellowship Hall. Tickets for the dinner are \$2.50 in advance and \$3 at the door. Children under 12 may eat for half price. The event is sponsored by Christian Campus House, Intervarsity, Joy and the Wesley Foundation. The general public is invited to attend.

WEDNESDAY

SENIOR PICTURES

ROLLAMO senior portraits will be taken Monday and Tuesday, Nov. 22-23, for those who have missed getting theirs taken during the previously scheduled dates. Meramec Room, University Center-West, 8 a.m.-4 p.m.

RADIO CLUB

There will be a meeting of the UMR Amateur Radio Club on Monday, Nov. 22, at 6:30 p.m. in Room 101 EE. Anyone interested in ham radio is welcome to attend.

AIAA

AIAA meeting and elections will be held Nov. 22 at 7 p.m. in the ME Auditorium. Several movies will be shown and refreshments will be served.

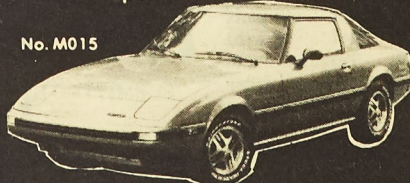
UMR-HANG GLIDING CLUB

The UMR-HGC will hold a general meeting Tuesday, Nov. 30, at 7 p.m. in the Chemical Engineering Building, G-3. Elections will be held.

mazda

1983 RX-7s NOW
AT SELLERS-SEXTON
Motor Trend's "Best Buy"
in Sports Car Performance

No. M015



INCREDIBLE
VALUE \$9895

Student Financing Available. Buy that new Mazda now, with full payments deferred. Subject to approved credit and job applications.

Sellers-Sexton
Hwy 63 S. Rolla
364-7300

NODAY

There will be an ASCE meeting on Dec. 1, 1982, in Room 114 CE at 7 p.m. Everyone is welcome.

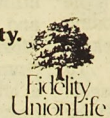
ASSOCIATION FOR BLACK STUDENTS

The resume brochure has been a major fund-raising project for members of the ABS over the last several years and because of the softening of the employment outlook the brochure will be of major importance to those students who are seeking summer, coop, or permanent employment. Once printed, the brochure will be distributed to major corporations that have the need and desire to hire engineers and scientists. Blank resume forms are in the M.E.P. office, placement office and from ABS officers.

The deadline for submitting your resume has been extended to Monday, Nov. 29. Resumes can be dropped off at the M.E.P. office or turned in to one of the ABS officers at the next meeting.

"Liberty means responsibility. That's why most men dread it."

—George Bernard Shaw



Next year it's up to you. Only you can decide. Find out how easy it is to begin our college plan, chosen by more seniors than any other. Call today, 364-5268.

Commonwealth Theatres of Rolla

UPTOWN
TELEPHONE 364-1857

STARTS FRIDAY
Evenings 7 & 9
Discount Matinee
Sat. & Sun. 2 p.m.

A Musical
Storybook Fantasy
Come to Life!

Heidi's Song

RITZ
TELEPHONE 364-1299

STARTS FRIDAY
Evenings 7 & 9
Discount Matinee
Sun. 2 p.m.

SYLVESTER STALLONE
FIRST BLOOD®

ADULT OWL SHOW
Fri.-Sat.
11:10 p.m.
All Seats \$3.50
No one under 18
admitted

"In Search Of The Perfect 2"
Titillation

The Garfield Treasury

By Jim Davis



Now, Garfield fans can see their favorite feline in his Sunday best, in full-color comic strips from the Sunday paper. In this oversized collection, Garfield bears a bath, sees a sunrise, and eats a pair of sweatsocks! Also available: Garfield Takes the Cake

Paper \$4.95

BOOKS & THINGS

1328 Forum Dr. Rolla 364-5432 9-9 Mon.-Sat.

Computer design course offered

SOURCE: OPI

UMR will offer a short course in computer-aided drafting/design and manufacturing on the Rolla campus Dec. 13-15.

The course is designed to provide draftsmen/designers with an opportunity to learn some of the newer techniques in computer assistance that may, in some instances, enable them to complete designs in 25 percent of the time required

by traditional methods. Participants will gain a realistic perspective of the advantages of using the computer with approximately 20 hours of "hands-on" work at the computer terminal.

Draftsmen/designers, foremen, machinists and others who are involved in product development and productivity improvement can benefit from the course. No prior computer experience is necessary. Participants should have suffi-

cient drafting/design experience to enable them to read and understand engineering drawings.

The course format is lecture-laboratory. Each day will begin with lecture periods, then participants will gain experience in the

laboratory which has 16 Tektronix 4014 terminals connected to the main frame computer.

This course is offered by the engineering graphics faculty of UMR's department of aerospace and mechanical engineering as a

continuing education activity.

Fee for the course is \$425 and includes 26 hours of instruction, all instructional materials, computer time, course notes and lunches. Registration is limited to 32 participants and registra-

tions will be accepted in the order received.

To register or for further information write or call: Walter Ries, program coordinator, 111 Engineering Research Laboratory, UMR, Rolla MO 65401.

Need \$1000?

Scholarships available

The Society for the Advancement of Material and Process Engineering is awarding scholarships.

Four \$1,000 awards will be given. The student must be formally recommended by his or her adviser or department head. Although the student must be matriculating in a subject related to materials and processes, this is considered to be "open." For example, in addition to chemical engineer-

ing, chemistry, metallurgy, metallurgical engineering, and materials sciences, students who are majoring in physics, bio-engineering, etc. would also be acceptable.

Since the scholarships are being awarded to assist the student in his or her educational endeavor, seniors are not eligible. The winner will be announced at the 28th SAMPE National Symposium and Exhibition in

California on April 12-14, 1983, and the awards will be presented at a meeting in the Rolla area in May or June 1983. The application forms are available in the Student Financial Aid Office, 106 Parker Hall.

Also, the Engineers' Wives Auxiliary of the St. Louis Chapter of MSPE is awarding scholarships.

One thousand dollar scholarships are to be given for the 1983-1984 academic year. The candidate, man or woman, must be a junior or senior engineering student at the beginning of the fall (1983) semester. The recipients should be good students, and their financial

need will heavily influence the selection. Special consideration will be given to applicants from Missouri and the St. Louis area.

The scholarship awards will be presented at the annual Engineers' Week dinner sponsored by the St. Louis MSPE Chapter, which is held in February. This offers the recipient an opportunity to meet and exchange ideas with people in their field of study. All applications must be turned in to the Student Financial Aid Office, 106 Parker Hall, no later than Dec. 7, 1982. The application forms are available in the Student Financial Aid Office, 106 Parker Hall.

Bond provides loans

Gov. Kit Bond recently announced that up to 20,000 college students in Missouri will be able to receive education loans as a result of revenue bonds to be issued early next month.

Speaking in St. Louis to the National Association of State Universities and Land-Grant Colleges, Bond said the newly created Missouri Higher Education Loan Authority will issue \$50 million to \$75 million in tax-exempt revenue bonds next month.

The proceeds from the first of such bonds to be issued will be used to purchase guaranteed student loans from banks and other private lenders, thus freeing more money for additional student loans. The December bond issue will cover loans purchased over the next 18 months.

Bond signed into law a measure creating the authority in 1981. He noted that the authority has been able to launch its programs in less than half the time required by similar authorities in other states.

Bond told college officials

that he hopes the student loans made available from the bond issue will help insure that all students, regardless of economic background, will have an opportunity to pursue an education.

"As state dollars have become more limited, our public higher education institutions have been forced to cut back and to seek additional non-state funding," Bond said. "Many of our institutions have raised their tuition and fees more than once during the past several months. In most cases, these increases were needed to reflect more accurately the actual cost of providing higher education services to students."

Bond added, however, that rising tuition should not restrict access to public schools. "In a recession, even modest increases can be difficult for some families," he said.

Bond estimated that between 15,000 and 20,000 students will benefit from the bond issue.

Talking with Jess Zink :

Candid interview

By GREG RINKER

Recently I had the opportunity to talk with Jess Zink, director of Auxiliary Services. Mr. Zink has been director of the department since its creation in 1972 when the University housing office and University Center operations were consolidated and called Auxiliary Enterprises. The department has grown, the name was changed to Auxiliary Services, and services now include University Housing, University Center, campus vending, Cedar Street Center, Golf course,

Food Services, Shuttle Bus, the message board and the computer terminals in the residence halls.

Q: Are all the operations required to make a profit?

A: Well, not a profit as you would think of somebody draining off the profits for individual use. The dimension of the financial arrangements is this. First we have to meet the daily operating costs. That's salaries, cost of goods, utilities and that kind of thing. Then once we meet those expenditures, we are faced with bonded indebtedness, payment back

for the buildings. They are all under bonds. A typical example is we had to borrow seven million dollars to build

see Interview page 15

BUICK OLDS AMC JEEP

'83 Models on Display
Oldsmobile • Buick • AMC • Jeep

Some '82 Models Left
at Tremendous Savings
Including 10.9% APR Interest

Special Deals and Financing Arrangements for
UMR Graduating Seniors.

SCHWEISS MOTOR CO., INC.

Open 500 Hwy. 63 South Sat. till
8-6 p.m. Rolla, MO 4 p.m.

BUICK OLDS AMC JEEP

X-mas parade

The Rolla Area Chamber of Commerce invites the students of UMR to attend the Rolla Annual Christmas Parade to be held Saturday, Dec. 4, at 10 a.m. in the downtown area.

Area high school bands will be participating in the High School Marching Band Competition. Three qualified judges will evaluate the Marching Band Competition using a rating sheet as adopted from the National Interscholastic Music Activities Commission. There will be first- and second-place winners in Class A, AA, AAA and AAAA. Other

bands will receive merit awards.

The parade theme is "The Joys of Christmas." The parade will feature marching bands from area communities, floats, decorated vehicles of every size and

description, walking entries from Scout troops, clowns and baton troops. If any club, organization, church group or business would like to enter, please contact the

Rolla Area Chamber of Commerce, 901 Elm St., Rolla, MO 65401, or call 364-3577 between 8:30 a.m. and 4:30 p.m. before Nov. 22.

Bruno's

Back by Popular Demand!
THE UPBEATS
Sat., Nov. 20 at Bruno's
9:30 p.m.

1435 Hauck Drive Rolla, MO 65559
Where Good Times and Good Friends Meet.

Stop by for

RUBY'S BIRTHDAY PARTY

5¢ Cones All Day
Thurs., Nov. 18



Forum Plaza
Shopping Center
Rolla, MO

m= Features

MISSOURI MINER

Thursday, Nov. 18, 1982

Page 5



Tonight

Second City

SOURCE:OPI

A touring company of the improvisational comedy group Second City will perform at 8 p.m. Thursday, Nov. 18 in Centennial Hall, University Center-East, at

UMR. The performance is free and the public is invited.

The group took its name from the title of a derisive profile of Chicago that the late A.J. Liebling wrote for the "New Yorker." Its alumni include Mike Nichols,

Elaine May, Shelley Berman, Alan Arkin, John Belushi and Bill Murray.

The group also has a television series of its own which is entitled "SCTV" ("Second City TV").

Guitarist to perform

SOURCE:OPI

Guitarist Nell Archer Roan, whose career has taken him from the high plains of Wyoming to New York's Carnegie Hall, will appear in concert at 8 p.m. Tuesday, Nov. 30, at the Cedar Street Center, 7th and Cedar streets, Rolla. This concert is the fifth event in the UMR's 1982-83 Campus Performing Arts Series.

Roan will present a program of classical guitar selections which includes works by John Dowland, Johann Sebastian Bach, Mauro Guillani, Manuel de Falla, Francisco Tarrega

and Agustin Barrios Mangore.

Roan is currently a member of the music faculty at the University of Nebraska at Omaha. He participates in the Nebraska Arts Council Touring Program and the Mid-America Arts Alliance Regional Touring Program.

In addition to his extensive solo recital appearances, he is frequently a guest artist with orchestras such as the Chicago String Ensemble, the Nebraska Sinfonia and the Nebraska Chamber Orchestra.

Notable engagements have included: Carnegie Hall, Wigmore Hall (London), National Theatre of Costa Rica, and the British Columbia International Festival. In December he will present his third Carnegie Hall recital.

Tickets for the UMR concert are \$3 for students and retirees and \$5 for all others. They are available from 8 a.m.-5 p.m. weekdays and after 7 p.m. on the evening of the performance at the Cedar Street Center Box Office. For further information, contact the Box Office at 314-364-8066.

Tomorrow's news

By MIKE STRODER

Good day, Here's tomorrow's news.

Many UMR students have been crippled by the cutbacks in financial aid. With part-time jobs and loans scarce, many students are now turning to a new source of supplemental income — criminal actions. It is now commonplace for entire

frats to loot banks or businesses to help their brothers in financial need. Actually, stripping cars is a fun way to make a fast buck," said an unidentified student as he removed the hubcaps from the chancellor's car. "I agree," added his friend while mugging a Physics professor. "This is quite therapeutic. Whoever said crime doesn't pay was an idiot!" Meanwhile, the fearless UMR Security force has been trying desperately to counteract this trend. "We are determined to stop this crime wave and we will use any means necessary," said the head of Campus Security moments before the discovery of the theft of his car, office furniture and trousers. He continued by

proclaiming, "We have ordered tactical nuclear weapons as a deterrent. We'll show those two-bit hoods who the real ... what happened to my desk?" If you would like to supplement your income by thievery, simply call the Local Order of Robbers and Thieves #107 (In your Yellow Pages), but hurry — tuition time is coming up soon!

Inspired by the proposed UMR Stonehenge, Auxillary Services has come up with a flurry of proposals for new monuments on campus. Two of the more popular proposals have been the Sir Isaac Newton Memorial, which would consist of a lifesize Newton sitting under an apple tree at the exact moment an apple hit his head, with an attached concrete thought balloon proclaiming "F³/ma!", and the Great Wall of Marchello, which would encircle the campus to separate it from the real world. Another proposal has been to honor the Leaning Tower of Pisa by building the proposed new Mineral Engineering building at a 6° angle. Watch

for further developments.

The UMR placement office has issued a leaflet to all graduating seniors entitled Interview Do's and Don't's. Here are some excerpts.

If you have a GPA of less than 2.1, manage to sidestep the issue of competence. If the subject arises, blame your performance on your environment.

In these hard times, it is acceptable to casually mention the affiliation of your rivals with the governments of Communist countries.

Never, no matter how great the temptation, fall to your knees and beg "PLEEEEEEASE give me a job!!"

Wear conservative clothing. Jeans, t-shirts, new wave sunglasses and hats with propellers on top are unacceptable.

Don't bring weapons of any kind to your interview. Nobody needs a job that badly.

Any graduating senior who hasn't picked up his or her copy should do so as soon as possible.

That's tomorrow's news for today. Good day.

SUB presents

Airplane!

The surprise smash hit of 1980, AIRPLANE!, will be shown Sunday at 6 and 8:30 in Centennial Hall. It was one of the wildest and most outrageous comedies to come out in years. Trans-American flight 209 carries the strangest collection of characters since the Marx Brothers. When the entire crew and most of the

passengers are affected with food poisoning, ex-fighter pilot Ted Striker, (Robert Hayes) who only boarded the flight to patch up a fight with his stewardess lady friend, reluctantly takes the controls. Will Stryker, who is terrified of planes be able to land with the assistance of an air controller who doesn't even like him?

Preceding the show will be three cartoons featuring the Pink Panther. He's cool, he's elegant, he's got style. You can't help but be amused by the adorably arrogant Panther in these excellent pantomime comedies.

The shows are free and are sponsored by the Student Union Board Indoor Recreation Committee.

G&D STEAK HOUSE

7 Oz. Top Sirloin Special \$3.58

8 Oz. Chuck	\$2.79	Chicken Fried Steak ...	\$2.30
6 Oz. Ribeye	3.07	Catfish Squares	3.03
7 Oz. Ham Steak	3.02	Chicken	3.35
8 Oz. Filet	3.65	Shrimp	3.95
10 Oz. Top Sirloin	5.00	Spaghetti	2.60
12 Oz. K.C. Strip	5.96	Ravioli	2.60
12 Oz. T-Bone	6.92	Hamburger & Fries	1.92
Includes Potato or French		Fish & French Fries	
Fries & Texas Toast		Ham Sandwich & Fries ..	

FREE ICE CREAM WITH EVERY MEAL.

G&D STEAK HOUSE

Open 7 days a week
11 a.m.-9 p.m.
Forum Plaza Shopping Center

Alex Pizza Palace

122 W. 8th Street Rolla

NOW OPEN FOR LUNCH 11 A.M.-2 P.M.

• SANDWICHES • SALADS

• SPAGHETTI

• BEER • GYROS SANDWICH

For FREE DELIVERY of Pizzas

364-2669 or 364-9878

Groundwaves

Great milestones in history

Milestone #1 — November 1621: It's been a hard year, but with the help of the local Indians, the Pilgrims at Plymouth Colony reap a bountiful harvest. We join Capt. Miles Standish and Chief Massasoit as they watch the last combine roll in.

"Well, my red friend, thanks for being so helpful. You know, we ought to get together and celebrate. I think I'll call Colonel Sanders and make reservations for a feast."

"Reservations? What that mean?"

"Never mind, you'll find out soon enough. But how about serving our own food? We have corn, and, uh, more corn ... I guess we need something else. Hey, what's that scrawny bird over there?"

Theater program

'Desk Set'

SOURCE:OPI

The UMR theater program will present the comedy "Desk Set" at 8 p.m. Thursday, Friday and Saturday, Nov. 18, 19 and 20 at the Cedar Street Center.

It will be directed by Margie Boston, UMR assistant professor of music and drama. She also will serve as producer and designer.

The play deals with a "desk set" — a group of women in the reference department of a television network. The desk set's

"You call-um my squaw scrawny, paleface?"

"No, that other scrawny bird, turkey."

And with that, the tradition began. We rejoin the story as Capt. Standish and Chief Massasoit squabble over who is to carve the turkey.

"It was my idea, so give me the knife, Chief."

"Careful, you pull-um out plug. Let go or I carve-um your scalp, paleface."

"Wait, you two! We have two knives, two turkeys, and two 110V outlets, so you can both get to carve."

"Why little Priscilla Mullins, that's a wonderful idea."

Soon both were carving away, and the electric hum of the two knives made a pleasing sound. Thus was born the first stereo

Thanksgiving.

Milestone #2 — November, 1972: Rolla celebrates its first stereo Thanksgiving, as Chuck the Duck, faithful mono mascot of KMSM, gives way to ultra-hip stereo signal of 300 Watts (about enough to power Miles Standish's carving knife).

Milestone #3 — Nov. 1982: KMSM celebrates 10 years of fine stereo service to Rolla. The hip-est party of all time takes place at Theta Xi from 8 till whenever. Pilgrims, Indians, ducks, turkeys ... were looking for everyone to come and share in the celebration.

Now for some of our upcoming STEREO programming, tonight at 7 p.m. on the New Wave show the Captain features side one of "Border Wave" by the Sir Douglas

Quintet. Then at 9 be sure to tune in for the Jack Flanders serial "Moon over Morocco." Monday on the artist feature at 6 p.m. O.D. brings you 3 hours of "Yes". At 11 p.m. Monday, the Rice

Krispie special features the Strawbs' album "Hero and Heroine." And on the Monday after Thanksgiving, yours truly brings you the talents of Mason Proffit on the artist feature.

Now for a question: If they'd made the turkey the national bird, would Grandma be serving bald eagle with stuffing and cranberry sauce? Keep in tune and find out.

UMR Jazz concert

SOURCE:OPI

UMR's three jazz ensembles will be presented in concert at 8 p.m. Monday, Nov. 22, in Cedar Street Center.

The public is invited and there is no admission charge.

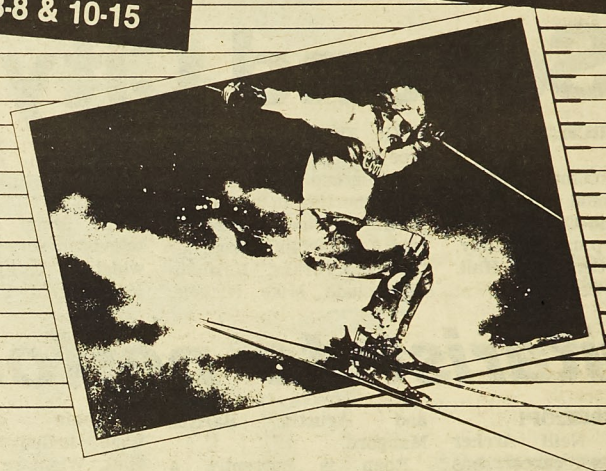
The program will open with four selections by Jazz II: "Groovin' Horn," "Once Pavan a Time," "Malaguena" and "Cantina Band."

Jazz III will play "Midnight Freight," "Don't Get Around Much Any More" and "Ease on Down the

Road." Jazz I will play "Greece," "Rock Odyssey," "Final Analysis" and "Win Machine." They accompany Lisa Hewitt who will sing "Teach Me Tonight." The jazz ensembles are directed by Tom Ruess, lecturer in music.

SKI STEAMBOAT-\$189!

JAN. 3-8 & 10-15



Steamboat is nestled in the heart of Colorado's old-fashioned West. Boasting 17 lifts, 59 ski trails and 650 acres of skiable terrain, "Ski Town, USA" has more than it takes to please every type of skier. But there's more to Steamboat than a mountain. Steamboat also has over 52 restaurants and lounges, many fine shops and plenty of live entertainment.

COMPLETE PACKAGE INCLUDES:

- * 6 days/5 nights lodging in a luxurious condominium just a short bus ride or 10 minute walk from the gondola and lifts. Each unit boasts a full kitchen, fireplace, TV and telephone.
- * 4 full days of lift tickets
- * Ski jamboree party with refreshments
- * Ski races with prizes
- * All taxes and service charges

MOUNTAIN FACTS:

- * Beginner 23%; Intermediate 49%; Advanced 28%
- * Average snowfall — 325 inches
- * Vertical drop — 3600 ft.

OPTIONS:

- * Group and Super Saver Air
- * Roundtrip Motorcoach
- * Low Cost Ski Rentals and Lessons

OTHER DESTINATIONS AVAILABLE:

- * Breckenridge
- * Aspen/Snowmass
- * Winter Park
- * Crested Butte
- * Vail
- * Switzerland

SKI WITH SUMMIT AND BECOME A MEMBER OF THE COORS SKI TEAM.

Coors
SKI TEAM

Contact Your Local Representative:

Linda Hardesty
364-6993 or
Cathy Mueller
341-2479 evenings
Or Call (800) 325-0439
(800) 392-2718 (MISSOURI ONLY)

SUMMIT
TOUR

Final step

Follow up

By BARB THOMAS

The final step needed for a successful job hunt is the follow-up. At the end of every interview, find out when a decision will be made. Before that decision is made, it is important for you to follow-up the interview with a thank-you letter. This letter is your way of letting employers know that you are still interested in the job as well as showing them that you have the initiative to bring activities in which you are involved to a close. Another way to follow-up an interview is to call later to discuss it. The effectiveness of your follow-through is determined by the quality

not the quantity of your contacts.

One of the strongest correlations, between those looking for positions and those who get offers has been found to be the thank you letter. The thank you letter, like the cover letter and the resume, has to be written in a professional tone. Avoid trite, stagnant openings and closings such as "Hoping to hear from you soon." Also, don't mask your feelings if they are positive, and you are excited about the potential job. Explain exactly why you still want the position and why you believe you are the perfect person for their company. If you can, expand on points made in the inter-

view, or give reasons for hiring you that didn't surface during the interview. Enclose, if available, an example of your work such as a report. This sample will provide yet another indicator of your abilities.

The more appropriate indicators you can provide, the greater the chance of being accepted for the position. You might be asked back for a second and even a third interview to meet personnel at higher management levels or co-workers. Approach each interviewing session with renewed vigor and enthusiasm. With each interview you will be a step closer to the job you want.

★ ★ ★ ★ ★ classifieds ★ ★ ★ ★ ★

To Wrongway Romeo Rakers:

Thanks for the great party and conversation. But when you buttered my rolls it was awesome. See you at ACUI! Fox from NACA.

P.S. Please mail my expensive scarf.

Dear PIKA Annex,
PREPARE FOR PLAN "B"!!

K.D.B.,

The dream has always existed. It just became a reality for each of us at a different time. Don't stop believing!! The sparkle is NOT gone. It has just been flickering. You have all my love and support.

I love you TLOETS,
Doll-ee

P.S. Without you who will I give my Butterfingers to?

★ ★ ★ ★ ★ classifieds ★ ★ ★ ★ ★

Will pay ALL GAS! If you will supply ride to Cincinnati, Ohio, for Thanksgiving vacation! And back! Phone: 364-7986. Live at: 9 Missouri Ave.

Little Bliss,
Happy 20th! Congratulations and I'm gonna miss ya!

ZLAN
JA

Student stress epidemic spreads

By DAVID GAEDE

College counselors report another epidemic of student stress this year as more and more students worry themselves into depression over the sluggish economy, depressed job market, and mounting academic pressure.

Counselors first noticed last year that money — and career-related worries were contributing to a dramatic increase in the numbers of students using campus counseling centers.

The same worries pushed campus fighting, drug and alcohol abuse, and even suicide statistics up to record levels.

While it's too early to assemble statistics for this year yet, counselors across the country say the pattern has continued into the fall of 1982. But the patterns are changing subtly, they say. Some even see hope that increasing student political activism may signal better campus mental health in the near future.

"We are indeed seeing more stress again this year," says Susan Bowling, president of the American Personnel and Guidance Association's college counseling division.

"With the continuing increase in unemployment and more and more competition both in school and in the job market, students are realizing that a college degree doesn't necessarily give them more stability in life," she explains.

"Students are seeing their friends, neighbors and even their parents out of work," she adds. "They see more and more that it can happen to them."

"Things are a little heavier and a little tougher this year," confirms Don Kees, director of the University of Idaho counseling center. "We've had funding cuts, raised student fees, and we have 600 more students."

"It's like jamming a few more pounds into the pressure cooker."

At Yale, counseling and placement Director Ed Noyes is seeing more "frantic" students, and thinks "this is going to be a particularly tough year for students."

And after a dramatic increase in counseling visits last year, University of Wisconsin-Madison Dean of Students Paul Ginsberg

doesn't "see any diminishing of student stress this year."

"Our services are being used to the max and taxed to their limits," he reports. "Tuition has gone up, jobs are very hard to get, and there are fewer student loans available."

At Arizona State, "we're seeing about 2,000 people a year, and we expect that to go up this term," says Thomas Cummings, counseling center director.

"We're seeing more depression and frustration. Students are waking up to the fact that just getting a degree isn't enough anymore. They see very clearly that they can't just go to class, but must come out knowing something."

UCLA counselors have "also seen a big increase in the numbers of students reporting physical side effects from stress: high blood pressure, headaches, stomach problems and a lot of psychosomatic problems," says counselor Bill Hessel.

Indeed, violence among students continues to increase as tempers shorten and anxiety builds, counselors report.

Bowling has even noted students show "a greater intolerance of diversity. The pressure and frustration seem to be causing some students to resent minorities, who they feel get special treatment through affirmative action pro-

grams."

On the other hand are students who Bowling says essentially deny stress.

"It's what's been called 'The Titanic Effect,'" she says. "We have some students saying, 'Yes, the world's gone to Hell, but I won't. I'll survive.' They under-react, which can be just as bad as over-reacting. In essence, they've built for themselves a first-class cabin on the Titanic."

Other students cope by staying at home longer, a phenomenon Bowling calls "extended adolescence." More students "are living with mom and dad all the way through college."

Student suicides have also increased dramatically in the last several years. Campus counselors worry that the stress epidemic could push the suicide rate higher.

"Changing family situations, pressures to achieve, increased mobility and a

lack of intimate contacts" all contribute to suicidal impulses, says Julie Perlman, head of the American Association of Suicidology in Denver. Therefore, college students make almost-perfect candidates.

"We haven't had a serious increase in suicides this year," reports Murray DeArmond, student health services director at Arizona, "but we're averaging about two or three a year."

An Arizona suicide early this fall, notes Dean of Students William Foster, "made everyone a little more sensitive to the problem, and caused us to be extra watchful for depressed and suicidal students."

Michigan State just had a student suicide, although officials there are still investigating the reasons the 22-year-old engineering sophomore took his own life after a drunk driving arrest.

And at Idaho, student suicides increased 30 percent last year. Counselor Kees sees "no change in the tempo this year."

The national average is two-to-four suicides per 10,000 students, with 15-to-20 attempts. Suicide is the second leading cause of death — behind accidents — in the college-age population.

"But we are seeing some hopeful things this year," Bowling cautions from the gloom. "Students are venting their frustrations and trying to get control of their lives by getting involved in issues again. We're slowly seeing the re-emergence of campus protests on things like nuclear energy, student aid cuts, and the draft."

see Stress
page 9

Party Line

The Missouri Miner will print free of charge any party announcement for campus organizations which are submitted before 9:00 p.m. Monday at the Miner box in the Rolla Building. Announcements should be submitted a week before. Hand in announcement in paragraph form with complete sentences (Read: no flyers). We cannot print prices for alcoholic beverages.

BULL PARTY

Kappa Sigma is having their 53rd annual Bull Party. The Kappa Sigmas will entertain all to a fine evening of music and drink. So everyone come join us and party by the pallet Thursday, Nov. 18, from 8:30 p.m.-1:30 a.m.

PRE-TURKEY DAY CELEBRATION

Theta Tau Ugly Man presents the Pre-Turkey Day Celebration at the TEKE House on Nov. 19 from 8 p.m.-1 a.m.

STEREO PARTY

KMNRR will have a 10th anniversary Stereo Party Friday, Nov. 19. This is for the students of UMR so we're gonna do it up right! Lowenbrau at regular beer price — champagne for everyone at midnight. You are a part of KMNRR, so come on down to Theta Xi Friday night. It starts at 8 p.m. Hope to see ya there.

Grimice

MICHELOB PARTY

On Saturday, Nov. 20, Beta Sigma Psi is having a Michelob Party to get ready for Thanksgiving. Starting at 8:00, and going until 1:00. So bag the books and go out and be thankful.

CALCULATOR PARTY

Your calculator works hard all week, give it a break on Saturday, Nov. 20. Show your calculator a GOOD time! Come to the Calculator Party at Tech-Engine from 6-1 on Saturday, Nov. 20, by GDI. Refreshments will be served. Come on by and be refreshed from a long week.

PINK & GREEN BALL & COURT

Saturday, Nov. 20, 1982 — The Ladies of Alpha Kappa Alpha Sorority Inc., Xi Delta Chapter, will host their first Pink and Green Ball and Court. This gala event will be held at the Holiday Inn here in Rolla from 8 p.m.-midnight. The attire for the evening will be semi-formal. A cash bar will be provided. We will also provide transportation. Tickets will be \$3 in advance and \$4 at the door. Tickets will be on sale at the Hockey Puck this week and next week.

This promises to be the event of the semester, so you don't want to miss it, do you? See any soror of Alpha Kappa Alpha for more information.

Christopher Jewelers
Diamonds and Watches
903 Pine Rolla, MO 364-2264

ROME PIZZA

1806 N. Bishop Rolla Open 7 Days

BUFFET

Monday-Friday

11:30 a.m.-2:00 p.m.	\$2.95
5:00 p.m.-9:00 p.m.	\$3.95

Saturday

5:00 p.m.-9:00 p.m.	\$3.95
---------------------	--------

Sunday & Holidays

11:30 a.m.-9:00 p.m.	\$3.95
----------------------	--------

Children under 3 years	FREE
3 Years to 10 Years	\$1.75

Large Selection of Pizza, Pasta,
Chinese Food and Much More!

Fast Carry out Service
Free Delivery 364-0977

★ ★ ★ ★ ★ classifieds ★ ★ ★ ★ ★

Happy Birthday Dan!!

Rots-a-Ruck
The Quarters Team

Hey T.V.,
How 'bout that birthday girl?! Happy 20th little sis!!!

ZLAM,
Y.B.S.

Found: Gray and white male cat with a flea collar. Call 364-7396.

Dear Traci W.,
Did you hear about the new class they're offering next semester?
They call it P.T.-10.
Are you teaching it?

Two roommates needed for next semester — Towne and Campus Apartments, across from C.E. Call Mark, 364-5467, after 4.

To My Secret Pal:
Thank you for the card ...
But who are you?
Have a nice Thanksgiving.

Donna

Chrysler offers 1983 Pentastar Challenge

A unique program challenging college students to unravel clues hidden in illustrated stories was announced by Chrysler Corp.

Awards of more than \$10,000 in scholarships, grants, and other prizes are offered to the winner.

The clues are embodied in a new 12 month calendar titled "The Pentastar Challenge." The Pentastar is the Chrysler Corp. sym-

bol.

The program offers academic challenge and economic support for students as well as colleges and universities across the country.

Five different disciplines of knowledge are included in the "Challenge": Math, Music, Literature, Chemistry and Computer Sciences. The Scholarships and Grants will be awarded

to each of the five deciphred riddles in these areas.

The "Pentastar Challenge" story follows two young people who find a star that has fallen to earth and they attempt to help return the star to its rightful place in the Universe. Through dialogue with the star and advice from "grown-ups" on ways to accomplish the return of the star to the

heavens, many intellectual and philosophical questions are raised and explored.

The 13 full color illustrations in the decorative calendar are executed in various media including oils, acrylics, and gouache. A surrealistic approach has been taken by a team of 10 nationally prominent artists to create fantasy images of story illustrations reminiscent of the "golden age" of book illustrations.

Chrysler Corp. has commissioned John Magel to write the story of the "Pentastar Challenge." Magel has authored several other works with hidden meanings and riddles including "The Golden Oak." For the "Challenge," Magel has employed the use of several sophisticated techniques for arranging the clues including a computer software program designed specifically for the task. The clues to the five different riddles appear both in the story and illustrations which are carefully woven into the fabric of the "Challenge."

The Pentastar Challenge calendars have been sold for \$4.98 at retail college bookstores across the country since September. Chrysler plans to liquidate some of the costs of the pro-

gram through proceeds of the sale.

Through an exclusive arrangement with the National Association of College Stores (NACS) and its distribution subsidiary, NACS CORP, college bookstores will be displaying and selling the calendars.

Special wholesale discounts to the stores are coupled with an incentive program developed by Chrysler which awards the use of Chrysler products to sales leaders, and represents a healthy sales promotion program for the "Challenge."

The calendars will be printed in full color on a premium paper stock. They will measure 11 inches by 14 inches. An illustration and accompanying story text is on the top half of the 12 monthly spreads with a traditional calendar "grid" on the lower half.

Consumer promotion and publicity for the calendar will focus on the college newspapers and radio stations culminating in a special address to the Annual Convention of the Associated Collegiate Press by Chrysler's Director of Merchandising, John B. Damoose in the Fall.

1983 PENTASTAR CHALLENGE



Adventure for many

Outward Bound

Over 8,000 men and women, both adults and students, will take part in a unique program called "Outward Bound" this year. Designed so that participants will meet challenging experiences in wilderness settings at all times of the year, Outward Bound courses take place in more than a dozen states. While many come to Outward Bound seeking a taste of high adventure — and they'll probably get it — most will leave with a new understanding of themselves after discovering they are capable of doing things they might previously have thought "impossible." Outward Bound believes many limits are self-imposed.

Backpacking, mountaineering, rock climbing, canoeing, skiing, snowshoeing, sailing, cycling, rafting, and even caving form the core of the Outward Bound experience, depending on the environment in which the

course takes place. Previous outdoor skills are unnecessary, as is special equipment other than personal clothing and boots. Each small group of students has one or more expert instructors and specialists who help them develop outdoor and in-

terpersonal skills, culminating in a "final expedition," with minimal instructor supervision, relying on what they have learned during the course. Academic credit is often available, as is financial aid based on need. In addition, several Outward Bound schools offer

no-interest tuition loan plans, some for up to three years.

Outward Bound courses are offered year-round and last from 5 to 26 days. For information, write Outward Bound Inc., 384 Field Point Road, Greenwich, CT 06830, or call toll free 800-243-8520

TELLE ROTOCRAFT

Experimental Rotorblades (10' long; 7" chord; 6061 T6; flush rivets). For gyrocopters and helicopters. Rotor hubs and Rotor heads for gyrocopters. Rotorblade info. pkg. \$3.00. Offset Gimble Head Plans \$8.00. Hwy. 63 N. Rolla, MO 65401



TELLE FOREIGN CAR

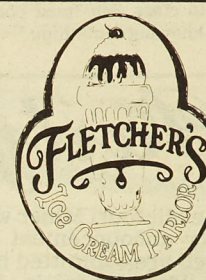
Machine Shop, Parts, Service, and Reman. VW air cooled engines for Auto, Airboats, Aircraft and Gyrocopters. Ferrous Metals magnafused (up to 700 amps) (314) 364-3376

Faulkner's Beverage & Mini Mart

Rolla's Coldest Beer
Ice • Gas • Snacks
DOMESTIC & IMPORTED WINES

364-6762

1808 N. Bishop (across from Sambos)



FLETCHER'S ICE CREAM PARLOR

1005 N. Pine
Mon.-Sat. 11 a.m.-10 p.m.
Sunday 2 p.m.-10 p.m.

SUBMARINE SANDWICHES



COUPON

COLOR PRINT FILM DEVELOPING SPECIALS

12 EXP. ROLL (110, 126 only)	1.99	15 EXPOSURE DISC	2.29	24 EXP. ROLL (110, 126 only)	3.79
---------------------------------	-------------	---------------------	-------------	---------------------------------	-------------

Receive a FREE album page coupon with every photo order.



For Creative Expression in 35mm Photography,
Generation 35 is the professional service that can
get the most out of your 35mm shots.

24 EXP. ROLL (35mm only)	4.19	36 EXP. ROLL (35mm only)	5.39
-----------------------------	-------------	-----------------------------	-------------

Offer good on single set of standard size prints only (C-41 process). Offer good from Nov. 24-Dec. 1, 1982
Hillcrest Drug Hillcrest Shopping Center Hwy. 72 Rolla, MO

To my very own "loser,"
Happy 21st a week late! Love ya!

Hey Sheila,
Happy Birthday!

Kitten

Experienced typist needed by busy, inexperienced typist whose resume-type letters are embarrassingly delinquent. All typing needs to be ready for the postman in two weeks. Only 30 letters/envelopes. Call Angela at 364-0813.

Mark

Becky, Cathy, Amy, Ann Marie, Laura and Elaine,
"It just doesn't matter!"

Dear Rodger Rapers,
Next time you sleep with her you're a dead man!

Jealous

For Sale: Blaupunkt AM-FM car stereo. Brand new, factory installation kit. \$80, call Preston at 364-6294.

Supplemental fee: a new angle

SUPPLEMENTAL FEE ANSWERS

The article "Supplemental Fee Findings" which appeared in the Nov. 11 issue of this paper, raised several important questions which cry out for answers. For example, "Is it not true that the current demand for entry into engineering schools came about due to society's need of engineers?" The conclusion was that since engineers are in demand, society should pay for engineering education.

Most students at UMR want to be engineers or they want high-paying, prestigious jobs; very few students are here because society told them to study engineering. Most of the students at UMR have chosen this school primarily on the basis of reputation. As a public institution this college should supply our basic educational needs, but UMR's high standard will be maintained only if the students take financial responsibility.

The proposed \$10 per credit hour supplemental fee can make a difference if it

stays in the department where the course is taught. Assuming that a professor teaches 15 credit hours with 35 students in each class, the increased revenue is \$5,250

per semester for each five professors teaching now. UMR could hire two new instructors at \$25,000 each. This is a reasonable estimate because most of the

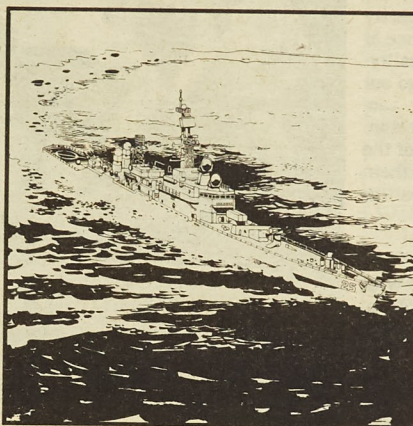
departments on campus are overcrowded now.

No one is trying to restrict admission to engineering schools; but as we all know, education is expensive.

Financial aid and scholarships are available — sometimes based on need, but increasingly more often based on scholarship. A sincere effort is being made

to ensure that capable students have the opportunity for higher education although these students may not be able to afford the education themselves.

The Most Sophisticated Training Ground For Nuclear Engineering Isn't On The Ground.



It's on a Navy ship.

The Navy has more than 1,900 reactor-years of nuclear power experience — more than anyone else in America. The Navy has the most sophisticated nuclear equipment in the world. And the Navy operates over half of the nuclear reactors in America.

With a nuclear program like that, you know the Navy also offers the most comprehensive and sophisticated nuclear training.

Every officer in the Nuclear Navy completes a full year of graduate level technical training. Outside the Navy, this kind of program would cost you thousands. In the Navy, you're paid while you learn.

Then, as a nuclear-trained officer, you supervise highly trained personnel in the operation of the most advanced nuclear propulsion plants ever developed. You get a level of technical and management experience unequalled anywhere else.

You get important responsibilities and you

get them fast. Because in the Navy, as your knowledge grows, so do your responsibilities.

Today's Nuclear Navy is one of the most challenging and rewarding career choices a man can make. And that choice can pay off

while you're still in school. Qualified juniors and seniors earn approximately \$1,000 per month while they finish school.

As a nuclear-trained officer, after 4 years with regular promotions and pay increases, you can be earning as much as \$37,400. That's on top of a full benefits package that includes medical and dental care, and 30 days' vacation earned each year.

As a nuclear-trained officer, you also earn a place among this nation's most qualified and respected professionals. So,

if you're majoring in math, engineering or the physical sciences, send in the coupon. Find out more about the most sophisticated training ground for nuclear engineering. Today's Nuclear Navy.

NAVY OPPORTUNITY
INFORMATION CENTER
P.O. Box 5000, Clifton, NJ 07015

☐ Please send me more information about becoming an officer in the Nuclear Navy. (ON)

Name _____ (Please Print) _____
First Last

Address _____ Apt. # _____
City _____ State _____ Zip _____

Age _____ College/University _____
Year in College _____ GPA _____

Major/Minor _____

Phone _____ (Area Code) _____ Best Time to Call _____

This is for general recruitment information. You do not have to furnish any of the information requested. Of course, the more we know, the more we can help to determine the kinds of Navy positions for which you qualify.

Navy Officers Get Responsibility Fast.

from page 7

Arizona's Foster also notes "more political activity. The stress and the problems have also galvanized the student body. This is the first year in a long time that I've seen a lot of political concern and involvement."

"More students are talking about their frustrations and problems," Bowling adds. "We have a very psychologically-aware generation of young people coming into college, and they aren't afraid to seek assistance."

"We're seeing much more acceptance of our counseling services," Foster agrees.

Ginsberg also notes "more and more young people are realizing it's OK to get depressed, anxious and even have suicidal thoughts, and that it's OK to get help for these things."

At UCLA, "students are seeing you don't have to be on the verge of suicide to come in," says Hessel. "They're coming in to deal with here-and-now practical realities. Maybe that's the only way we'll ever get this thing under control."

Hierholzer slowed by elements

By NANCY REITER

On Friday, Nov. 12, Coach Sarah Preston and UMR senior Jan Hierholzer departed for their north-bound flight to the Twin Cities of Minnesota into the results of a freak 8-inch snowfall, a temperature of 17 degrees, and 35 mph winds, which made the wind chill factor 35 degrees below zero. The 75 mile trip to St. Cloud State University took two hours on the packed snow and ice. Somewhere along the way, Jan decided not to take a practice run on the 3.1 miles of white, which she was to run tomorrow. Conditions would certainly have to improve before then. ...

Well, if a 2-degree drop in temperature, but greatly diminished windspeed is an improvement, then improve they did. While football officials made arrangements to move a scheduled game to softer-hit Fargo, N.D., cross country officials made arrangements for a snow-packer, used in cross country skiing, to at least mark their course. Coaches and athletes prepared mentally and physically to face the dreadful conditions.

The men ran first. Waiting

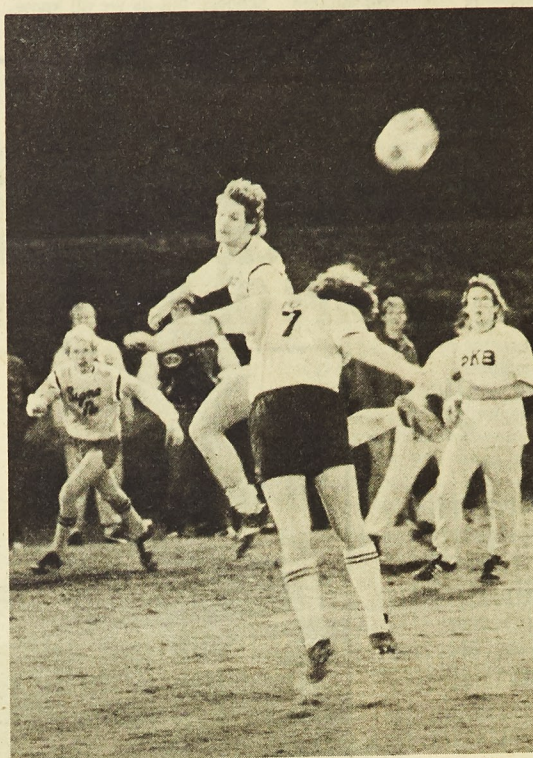
Men's

ambulances took 20 of them to the hospital. They were treated for problems such as hypothermia or even for eyelids frozen shut. Any efforts from the snow-packer were now long gone. It was Jan's turn — her's and 94 other women who qualified for this honor!

Jan removed the ski mask and sweatsuit she had warmed up in, bringing her down to the warmth of a pair of tights, a long-sleeve running shirt, a hat, shorts and her spikes. At the sound of the gun, the pack started out. Perhaps because of the snow, and maybe partly because of her experience of being tripped at the qualifying meet, she "didn't go out quite fast enough," according to Coach Preston. Jan was going for one of the top 25 positions. With them came the "All America" title.

At the 2-mile mark, she was in the No. 65 spot. With the snow ankle-to-knee deep, passing was not considered a realistic alternative. Jan didn't seem to care what was "realistic," for in the last mile she somehow passed 25 others for a final place of 40th. Her time was no speed

record at 22:29.8, but who was to know the winner, race. She had planned on a 16:30. The No. 40 spot was about



Rick Bennett

Two players go up for a head ball in the Sig Nu-Phi Kap Soccer game.

where Jan's qualifying time put her going into the race, but Coach Preston felt that "capability-wise, Jan should have been at least 10 places better." Jan was "kind of disappointed" with her 40th place.

"I think I could have handled the cold," she said, "but I don't want to see any more snow for a long time!" She plans to ease up for a while and work on her grades, then maybe train for a marathon next spring.

Women's Basketball

Starts friday

By NANCY REITER

stated in summary.

The seven returning players together with four newcomers to UMR will join forces to aim for a successful women's basketball season this year. The Miners are coming off of a 7-17 season last year, but head coach Cathie Schulte feels that the team has worked hard and has overcome two of its major handicaps — low confidence and slow adjustment to a new coaching style.

Now in her second year here in Rolla, Coach Schulte sees the higher level of self-assurance that her team only started to develop at the end of their last season.

Looking ahead to the coming season, the Miners are ranked in the No. 7 cellar position of the MIAA. "That doesn't bother me a bit," reports Schulte, who plans to catch some people off guard and surprise them.

The first part of the season should provide the squad with an opportunity to build their confidence. The pre-Christmas games may well serve as a warm-up for the tougher conference competition, which begins in January.

In the MIAA, two teams, CMSU and NWMSU, had to drop from Division I to Division II in order to join the league. These two teams are expected to provide the toughest competition on the UMR schedule.

See Basketball

page 11

Intramural Report

By LARRY TIPTON

Intramural action has been moving right along, with volleyball and soccer

both hitting the peaks of their seasons about now.

The regular season for soccer is just about over, with games left only tonight

and Monday. Currently, Sig Nu and GDI lead their respective leagues in Division I, while Delta Sig and Wesley are atop their

leagues in Division II.

See IM

page 11

Music Boxes Gift Items
Figurines Stuffed Animals

25% OFF

...with this ad. Cash & Carry

Take Thanksgiving Flowers Home To Mom.

Centerpiece with Turkey

from \$7.50

sunny wall

1107 Pine Rolla

364-3161

**A Night Out
with "The Bull"**
KΣ

Thursday, Nov. 18th

8:00-1:30

Get charged
by
"The Bull"

Have you ever
been Kicked by
"The Bull"

**BULL
PALLET PARTY**

Contests and Prizes
All Night Long

Women's

Intramural Update

By NANCY REITER

The past few weeks have presented a slack time, of

sorts, in women's intramurals. Volleyball, billiards and table tennis are all under way, but competi-

tion is still too young for any trends to have emerged. In volleyball, the schedule is full with two leagues

boasting five and six teams in the women's division. This should provide for a more exciting season than flag football, as a whole. After the completion of a round-robin tournament in each league, there will be play-off competition for the top four teams — two per league.

IM

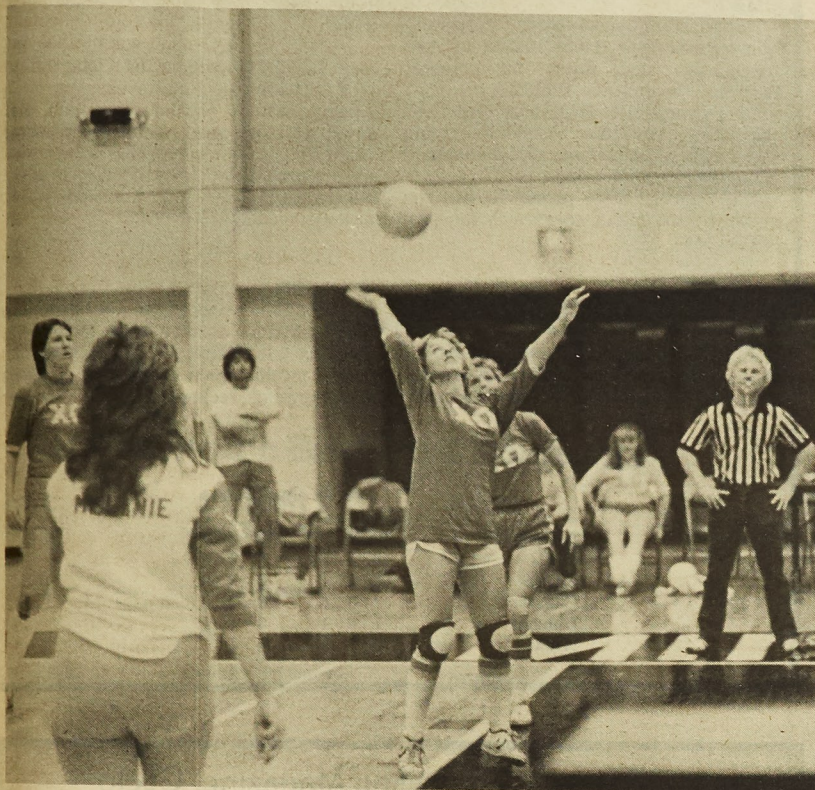
from page 10

Although it is still too close to call playoff spots in most leagues, everything will be decided by Monday night. Playoffs are to be played after Thanksgiving break.

In volleyball, GDI has opened a sizable lead in their league. The only undefeated team in Division I, GDI now has a 5-0 record. League 1 of Division I is still extremely close, with four teams having only one loss.

CSA leads League 1 of Division II with a 4-0 mark, while FECLA and Tech Engine lead the other league at 5-0 and 3-0, respectively. The regular season for volleyball ends Dec. 6.

IM NOTES: Table Tennis and Billiards tournaments continue. Check schedules and tourney ladders for game times.



Tracy Gerhold

Chi Omega works toward another victory. They currently lead their league in the women's division.

Basketball

Although the Miners have no seniors on their squad, they are not lacking in the experience necessary to meet the challenge. Returning for the Miners will be last year's five leading scorers and five of their six top rebounders.

Those coming back will be junior guards Laurie and Leslie Behm of Florissant, Mo.; juniors Gail Halsey (forward) from Fortuna, Mo., and Linda Hill (center) of Ferguson, Mo.; sophomore forwards Cecilia Gutierrez of Rolla and Kim Murphy from Hampton, Ill.; and sophomore center Stacey Stover of Camdenton Mo. Joining these veterans are sophomore transfer Susie Oberdick (forward) from St. Charles, Mo., and freshmen Terry Bond, a forward at the post position from Kansas City, Mo., Barb Howard, a quick forward

from Belleville, Ill., and guard Kelly Stewart of Bolivar, Mo.

Leslie Behm was last year's top scorer and also lead the team in assists. Gail Halsey is the team's "most intense player on defense," according to Schulte. Her hustle on the court really "makes things happen." Coach Schulte will be looking to the experience of juniors

such as these for leadership on and off the court.

"It looks good," commented Laurie Behm on the team's progress thus far. "We have a new offense this year and on defense we will make them rush their shots or keep them from shooting all together."

The season opener will be played at home against School of the Ozarks next Friday, Nov. 19, at 5:45 p.m.

from page 10

(The men's game will follow immediately after.) Other upcoming games are a 7:30 contest at Harris-Stowe College in St. Louis on Nov. 22 and the Evangel Tourney over Thanksgiving break. Other teams in the tournament will be Friends University, Mid-American Nazarene College, and Evangel College. UMR's first game will be at noon Friday against Friends.



Rick Bennett

M-Club Athlete of the week

The M-Club would like to shut out Northeast for present Rickie Caruthers as three full quarters. Rickie's UMR's outstanding athlete efforts included a season of this week. high 19 tackles, 11 which

Despite being defeated 28-7 by conference champions Northeast Mo. State, Rickie led the Miner defense in

were solo, and two quarter-back sacks. Congratulations Rickie!

Quality Cleaners

Expert cleaning Reasonably Priced
108 W. 7th Street Rolla, MO 65401

Godfather's Pizza



Forum Plaza Shopping Center 364-3214

STUDENT ROOMS FOR RENT

Private for Men

Across the street from the University Center East.

Rent Includes: •Water & Electric

•Air conditioning

•Electric heat

•Carpet

•Private entrance

•Jacks for telephone &

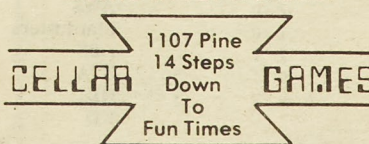
cable TV (optional)

Inquire at
1104 N. Rolla

Located at
1102 N. Rolla

PINBALL MACHINE TO BE GIVEN AWAY DURING NOVEMBER!

Come in for Details.



Roommate wanted to share two-person apartment for spring semester. Walking distance from UMR. \$115 plus electric. Call Jim or Carl 364-0776. No smokers, preferably drinkers please.

To House 5 and the House Fivettes, Congratulations on your championship in the inter-house football league. It was a job well done.

For Sale: Five piece drum set (blue), five symbols, bottom heads, good shape, ask for Tamim at 364-8577.

Dear Swimmers,
Love your new suits!! (Especially yours, Tim!!)

P.S. We want more money next time.

Your stat team,
Buzz and Tom

LOST: TI-55 near EE building. A reward will be offered. Cal 341-2622.

Intramural Soccer Standings

DIVISION I

League 1	W L	League 2	W L
Sig Nu	5 0	GDI	5 1
Phi Kap	3 2	Kappa Sig	4 1
Tech	3 2	MHA-East	3 1
TKE	3 3	Pi KA	3 2
Triangle	2 3	Sig Ep	2 2
FELA	2 3	Beta Sig	2 3
MHA-West	1 3	Lambda Chi	0 4
Sig Tau	1 4	TJHA	0 5

DIVISION II

League 1	W L	League 2	W L
Delta Sig	5 0	RHA	5 0
Sigma Chi Mu	4 1	Sigma Pi	4 1
Campus	4 2	Wesley	4 1
Newman	4 2	Delta Tau	2 3
CCH	4 2	Theta Xi	2 3
BSU	1 5	Acacia	1 3
Vets	0 5	AE Pi	1 4
Viet	*0-8	Pi K Phi	0 5

*Vietnamese Association has dropped out and forfeits all games.

Intramural Volleyball Standings

DIVISION I

League 1	W L	League 2	W L
Sig Pi	4 1	GDI	5 0
PIKA	4 1	Beta Sig	3 1
Sig Tau	4 1	Sig Nu	2 1
TKE	3 1	Lambda Chi	3 2
KA	1 3	Sig Ep	3 2
Triangle	1 4	RHA	2 2
TJHA	1 4	Phi Kap	1 4
Delta Sig	1 4	Kappa Sig	1 4
		Delta Tau	0 5

DIVISION II

League 1	W L	League 2	W L
CSA	4 0	FELA	5 0
Wesley	3 1	Tech	3 0
Newman	3 2	AE Pi	3 1
Viet	3 2	KA Psi	3 3
CCH	3 3	A Phi A	2 2
Sigma Chi Mu	2 3	ISC	2 3
Campus	2 3	MHA-East	1 3
BSU	1 4	Vets	1 3
ABS	0 5	Theta Xi	0 5

League I

	W	L
Chi O.	2	0
RHA	1	0
TJHA	1	1
Wesley	0	1
White Stars	0	2

League II

	W	L
AWS	1	0
Stardusters	1	0
ABS	1	1
ZTA	0	0
GDI	0	1
KD	0	1

around the miaa

By GREG WEHKING

NORTHEAST MISSOURI STATE 28, Central Missouri Saturday 38-36.
UMR 7

Northeast Missouri State University quarterback Tom Hayes rushed for two touchdowns and threw for another Saturday, leading the Bulldogs to a 28-7 victory over UMR. This victory clinched the MIAA crown for Northeast, giving them their second consecutive undisputed conference championship.

The Bulldogs were picked to win the crown by the MIAA coaches in the pre-season poll.

NORTHWEST MISSOURI 23, MOR-
NINGSIDE 20

Steve Sestak's third-quarter field goal broke a tie and gave Northwest Missouri State University a non conference victory over Morningside (Iowa). This win gave Northwest their second win of the season as they finished 2-7-1 overall.

SOUTHEAST MISSOURI 38, CENTRAL
MISSOURI 36

Southeast Missouri State pulled into a second place tie, in the MIAA, with Central Missouri and UMR when they defeated

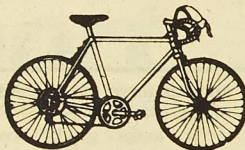
EVANGEL 23, LINCOLN 15

Jamie Wines passed for one touchdown and rushed for another to lift Evangel to only its third victory of the season and send Lincoln, which hasn't won since its opening game, reeling at 1-8-1.

FOOTBALL

	Overall Conference			
	W	L	T	W L T
NEMS	8	1	0	5 0 0
UMR	8	3	0	3 2 0
SEMS	5	5	1	3 2 0
CMSU	7	3	0	3 2 0
Lincoln	1	8	1	0 4 1
NWMS	2	7	1	0 4 1

Christmas
Ideas!



Bicycling Magazine, Cyclo
Computer, Touring Gear, Clothing

Complete line of bikes & accessories.
Bikes start at \$150
Completely assembled
and guaranteed.

Pedal Power

KHS

UNIVEGA
BIANCHI

310 E. 6th Rolla 364-2412
12-6 p.m. Sat. 10-6 p.m.

HAR BELL

ATHLETIC GOODS
904 Pine 341-2666

FOR ALL YOUR

Warm-Ups

By Adidas, Speedo, Winning
Ways & Bonnie Sportswear.

Wide Selection
of Sweaters &
Long Sleeved Tees

FALL & WINTER NEEDS

We carry

Adidas, Pony, Nike,
Converse & Tiger
Basketball Shoes
27 Models in All!

L5310

A rose for you,
So you wouldn't feel blue.
Fun and games this Saturday will bring,
And your presence there will make my heart sing.
But if you choose to go to Mizzou,
Instead you'll make my brown eyes blue.

Photon S.

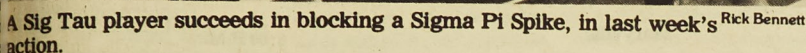
Roommate(s) wanted for spring semester. Five bedroom "Apartment" in downtown Rolla. We need one roommate or two who are willing to share a large bedroom. Non-smoker, preferably female. \$70 plus utilities (cheaper with two). "Furnished." Call 364-8393.

For Sale: TI59 calculator, brand new, never been used, ask for Tamim at 364-8577.

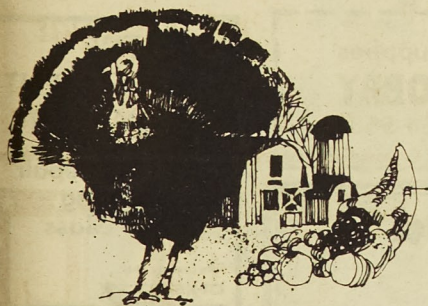
Lost: A size 5 ring. It is gold, heart-shaped, with a diamond chi
Reward offered. If found, please call 364-4248.

Laura,
STUDY hard over Thanksgiving!

The Karl Cl



DATE	OPPONENT	PLACE	TIME
Nov. 19	School of the Ozarks	Rolla	5:45 p.m.
Nov. 22	Harris-Stowe	St. Louis	7:30 p.m.
Nov. 26-27	Evangel Tourney	Springfield	TBA
Dec. 1	William Woods	Fulton	7:30 p.m.
Dec. 4	Lindenwood	St. Louis	5:30 p.m.
Dec. 7	Southwest Baptist	Rolla	7:00 p.m.



**DID YOU
KNOW THAT...**

We make the 2nd best
chili in the world—a
customer of ours
makes the best, but he
won't tell us how(?)

LA PUCA DA

Hwy. 63 S. Rolla

**Happy
Thanksgiving!**

Hwy. 63 & Olive
Phone 364-8661

Tim's Homestyle Pizza

Family Restaurant
Carry Out Orders 704 Pine Rolla, MO
Kenneth & Ruby Thorpe Call 364-6247

		COURT 1	COURT 2
Nov. 17	7:45	Beta Sig-Sig NU	KA Psi-AE Pi
	8:45	Phi Kap-GDI	CSA-ABS
	9:45	Wesley-CCH	A Phi A-MHA-East
	10:45	BSU-Sig Chi Mu	Delta Sig-Sig Tau
Nov. 18	7:45	*ABS-KD	*AWS-Stardusters
	8:45	*GDI-ZTA	*RHA-Chi O
	9:45	Phi Kap-Kappa Sig	RHA-Sig Nu
	10:45	FELA-Tech	Campus-Newman
Nov. 22	6:30	Campus-BSU	RHA-Lambda Chi
	7:30	Sig Pi-TKE	Kappa Sig-Delta Tau
	8:30	FELA-ISC	Beta Sig-GDI
	9:30	Sig Ep-Sig Nu	MHA-East-Tech
	10:45	A Phi A-AE Pi	Delta Sig-KA
Nov. 29	7:45	A Phi A-Tech	KA-Triangle
	8:45	Sig Chi Mu-Viet	RHA-Delta Tau
	9:45	CSA-CCH	ABS-Newman
	10:45	Pi KA-Sig Tau	MHA-East-ISC
Nov. 30	7:45	*Wesley-TJHA	*KD-ZTA
	8:45	*ABS-Stardusters	*AWS-GDI
	9:45	Campus-Viet	Vets-ISC
	10:45	TJHA-TKE	Sig Pi-Triangle
Dec. 1	6:30	Beta Sig-RHA	Student Union Board
	7:30	Tech-AE Pi	TJHA-Pi KA
	8:30	Lambda Chi-Sig Nu	Sig Ep-Delta Tau
	9:30	BSU-Wesley	CSA-Newman
	10:30	Vets-MHA-East	
Dec. 2	7:45	*RHA-TJHA	*ABS-ZTA
	8:45	*Wesley-White Stars	*Stardusters-GDI
	9:45	*KD-AWS	Beta Sig-Sig Ep
	10:45	Theta Xi-AE Pi	Vets-Tech
Dec. 6	7:45	Theta Xi-FELA	Vets-KA Psi
	8:45	ABS-Viet	Sig Nu-Kap Sig
	9:45		Weslev-Sig Chi Mu

		EAST	WEST
Nov. 17	6:00	Sig Chi Mu-Viet	Triangle-MHA West
	7:30	Theta Xi-Acacia	TJ-Lambda Chi
	9:00	Tech-Sig Nu	Kappa Sig-Sig Ep
	10:30	RHA-Sig Pi	KA-Campus
Nov. 18	6:00	TKE-FELA	GDI-MHA East
	7:30	Wesley-Pi Kappa Phi	Phi Kappa-MHA West
	9:00	Vets-Viet	CCH-Delta Sig
	10:30	Beta Sig-Lambda CHI	BSU-Sig Chi Mu
Nov. 22	6:00	KA-Delta Sig	CCH-Viet
	7:30	A E Pi-Acacia	Newman-Sig Chi Mu
	9:00	Sig Tau-Triangle	Pi KA-TJ
	10:30	Delta Tau-Theta Xi	Vets-BSU

364-7130

COUPON

Need: A roommate for a spring semester? Call Chris at 364-7607.

Barb,
I know Harvey W. didn't treat you very well this weekend, but how about doing something with Tom C. this weekend? I'll have to chaparone though.

An Insignificant Sig (temporarily)

Mammas, don't let your babies grow up to be GE's. Don't let 'em pick calcite and hammer on bluffs. Let 'em be ME's and Comp. Sci's and such.

Mammas, don't let your babies grow up to be GE's. They don't study at home and they do sleep alone and rank below talc on Moh's Scale.

P.S. N.G.N.G.

Roommate wanted to live in "A" frame with two other girls. Now and spring semester. \$100/month. Call 364-0997, Angi.

To Paul B. at TJ,
When was the last time you gazed upon the serene beauty of our algae infested swimming pool.

Disgusted T.J residents

Men's Basketball Schedule

DATE	OPPONENT	PLACE	TIME
Nov. 19	Missouri Valley	Rolla	8:00 P.M.
Nov. 20	Washington Univ.	St. Louis	7:30 P.M.
Nov. 25-27	Evangel Tourney	Springfield	TBA
Dec. 3	Lindenwood	Rolla	7:30 P.M.
Dec. 4	Illinois College	Rolla	7:30 P.M.
Dec. 11	Evangel	Springfield	7:30 P.M.
Dec. 29-30	Emporia Tourney	Emporia, KS	TBA
Jan. 4	Arkansas State	Jonesboro, AR	7:30 P.M.
Jan. 8	*NE Missouri	Kirkville	8:00 P.M.
Jan. 11	Evangel	Rolla	7:30 P.M.
Jan. 15	*Lincoln	Jefferson City	8:00 P.M.
Jan. 19	*U of MO-St. Louis	Rolla	8:00 P.M.
Jan. 22	*NW Missouri	Maryville	8:00 P.M.
Jan. 26	*SE Missouri	Rolla	8:00 P.M.
Jan. 29	Washington Univ.	Rolla	7:30 P.M.
Feb. 2	*Central Missouri	Rolla	8:00 P.M.
Feb. 5	*Lincoln	Rolla	8:00 P.M.
Feb. 9	*U of MO-St. Louis	St. Louis	8:00 P.M.
Feb. 12	*NW Missouri	Rolla	8:00 P.M.
Feb. 16	*SE Missouri	Cape Girardeau	8:00 P.M.
Feb. 19	Harris-Stowe	Rolla	7:30 P.M.
Feb. 23	*Central Missouri	Warrensburg	8:00 P.M.
Feb. 26	*NE Missouri	Rolla	8:00 P.M.

*Indicates MIAA game



Due to Thanksgiving
there will be no MINER
next week

SPI, AH Games • D & D Supplies
ROLLA CRAFT & HOBBY
1009 Pine Rolla, MO 364-5581

ZAK'S

Rear of the Manor Inn

Mon.—Recovery Night
Tues.—Men's Night
Wed.—College Night
Thurs.—Ladies' Night
Fri. & Sat.—Special Events
To Be Announced
Mon.-Sat. 7 p.m.-1 a.m.

Planned Parenthood Central Ozarks

SERVICES FOR ALL MEN & WOMEN

BIRTH CONTROL exams, supplies, instruction. NATURAL FAMILY PLANNING. PREGNANCY TESTING and exams. PROBLEM PREGNANCY COUNSELING on all options: parenthood, adoption, abortion. VENEREAL DISEASE TESTING. STERILIZATION COUNSELING & referrals. COUNSELING on problems related to sexuality and reproduction. EDUCATION, FILMS, PAMPHLETS.

SERVICES ARE CONFIDENTIAL

REPRODUCTIVE FREEDOM—the fundamental right of every individual to decide freely and responsibly when and whether to have children—is a reaffirmation of the principles of individual liberty upon which this country was founded.

ROLLA CLINIC

1032 B Kingshighway (314) 364-1509

THE INDEPENDENT BODY SHOP

Collision Repair
Painting
Auto Glass

We feature the
CHIEF
E-Z-LINE
Body and frame alignment system

24 Hour
Wrecker
Service

PHONE
364-3133

Hwy. 63 N. Rolla, MO

Sir Hajduk,

Your slavedriving tactics in Chem E 10 may warrant a talk with our beloved adviser, the head of the chemical engineering department. Unless you moderate your excessive demands in that mere introductory class, you may find yourself explaining this unnecessary excessiveness to Professor Johnson.

Smile Janet!!!

Mobile Freelance photographers with taste.

P.S. We also do weddings.

If you are going to The Who concert in St. Louis on Dec. 6 and have room in your car for another rider, please give me a call at 699-4231. Ask for Rob.

To the person who took my black UMR jacket from 209 Frick night: I'll assume it was a mistake but PLEASE return it to me soon it's cold without a coat. It can be identified. Call 341-3187 (ask Erik).

Wanted: Someone to rent room for spring semester. Room is furnished and close to campus for \$80 a month. Call Ginny at 341-2058.

classifieds

classifieds

Interview

the TJ addition. So we have to be concerned about generating monies to take care of the bonded indebtedness, the principle and interest we have to pay each year. Then we have to be concerned about meeting the reserve obligations, which means we have to have reserve accounts so if a roof blows off a building we've got some money that can cover that. If we didn't, we would have to borrow it somewhere because we do not have state appropriations coming into our operations. We have to generate our own dollars and we must be self-supporting.

Q: I've noticed that soda out of the machines is pretty cheap, so if you lost money on that, is that made up by something else?

A: Well, campus vending does not lose money, campus vending makes money and it helps us out on some operations that do not make money. For example, Cedar Street Center. Now up until this past year, the golf

course has been a loser for the University, but we now have it stabilized. The computer terminals are self supporting. Neither is the message board. Neither is the shuttle bus. Those operations are Auxiliary Services kinds of operations and campus vending helps pay for them. There is new dimension I have not told you about

Because the appropriations were not adequate to meet the budget requirements of the institution and the University system, two years ago they began to think about how we could generate some dollars by our capabilities of increasing sales and so on, to help make up some of those deficits. The University system administration adopted a philosophy that the auxiliary should be returning back to the campuses on institutional support cost which would help generate monies to meet the total budget. So I'm faced in my operation next year with not only meeting all the obligations

within our department but giving to the campus \$365,000 to help the general operating budget. So we are self supporting and we are beginning to look at subsidizing the campus, if you will.

Q: Is Auxillary Services then a state owned company?

A: We belong to the University just like anybody else. The only thing is we are a business operation that's funded by the services we perform.

Q: How do you decide what services you are going to get into, for example expanding the bookstore?

A: The University Center has a bonded indebtedness of about \$164,000 a year. Then on top of that we have operating costs. When they developed the perspective to build the building it was based primarily on student fee assessments and some revenue generated off the businesses. Well the only businesses in the building at that time were food service and an information desk.

Well these obviously did not meet these financial obligations. We talked about the bookstore which we know would be an income producer for the operations. When Chancellor Marchello got here, he endorsed it as a business operation that was ahead of the campus that would help us with the building. Well the bookstore has returned monies back to the operation. I think that last year it was about \$87,000. This year it will probably be about \$100,000 that it will generate toward this building. In other words it pays for the space it is in and it contributes toward the building program here. This means we don't have to look to students for higher fees. If we didn't have these operations in here, we would continue to look to the student activity fee as one of the sources to pay for the building.

Q: Was the University Center Board aware that the campus bookstore was expanding before construction

began on the old St. Pats Ballroom?

A: Yes, you can look in the University Center Board minutes and get all that information.

Q: Even knowing they were expanding over there they felt it would still be profitable to expand into the St. Pats Ballroom?

A: Well, I don't want to reflect the voices of all the University Center Board members, but whenever we do something of that nature, we present it to the University Center Board. Now that the board is a sounding board, it's a recommending board, I'm not saying that at all times do we take exactly what they recommend, but we certainly run it by them. We had several committees set up to study that and again, sometimes you get good student input and sometimes you don't, depending on the time of year and what have you. We had some opposition from the beginning on taking student space. We demon-

strated through our reservation log that the facilities at the time were running about 35% usage. We demonstrated after the bookstore expansion was put in this year that we better utilized Centennial Hall and Cedar Street Center and our data up to this point shows our building this year has increased its usage over last year 16% through the month of September, which means we have not displaced anything. They are better utilizing the remainder of the building, the meeting rooms, Centennial Hall, the lounges, and what have you. It proves that there was plenty of space here to put the bookstore in and not jeopardize any programs that we have.

Q: Do you know what the general feeling in the community is about competing with the University?

see Interview

page 16

**Make it with us and
the sky's the limit.**



Looking for a chance to move in the fast lane? Then check out Marine Corps Aviation. The training is superb. The challenges are unique. Your ticket to fly is your college

Capt. Jim Henderson
Suite 208, Federal Building
Fayetteville, AR 72701
(501) 443-7810

diploma and your drive to succeed.

If you've got what it takes, you could be at the controls of anything from a Cobra to a Harrier to the hottest thing flying, the F-18 Hornet.

See your Marine Corps Officer Selection Officer when he visits your campus or call him, at the number listed below, today.



Maybe you can be one of us.
The Few. The Proud. The Marines.

★ ★ ★ ★ ★ ★ ★ ★ ★ ★ class

Congratulations to our 1982 MIAKA (Men Interested in Alpha Kappa Alpha) Court: Mark Anderson, Frank Boykin, Craig Entz, Francois Faulkner, Charles Harris, Chris Joshua, Richard Truelove and Vernon Young. All of you are very outstanding young men. We are proud to have each and every one of you as a member of our court. Good luck in the final phases of the contest. Don't forget to schedule your interviews and push your votes! Again, "Good Luck!" and may

the best MIAKA win!

Luv,
The Ladies of Alpha Kappa Alpha
Xi Delta Chapter

Found: One TI calculator. If you can identify, call 364-1668.

Ride needed to Chicago or fairly close for Thanksgiving. Can leave around 12:30. Please call 364-9711, ask for Kathy H.

FOR RENT: Two bedroom mobile home, Highway 72, Huffman Trailer Park. Air conditioned, water is paid, \$175/month. Available 12/21/82 for occupancy. **CLEAN!!** If interested, please call 341-2268.

Interview

from page 15

A: Well, I can only give you a philosophy I've been in higher education since I started as a student in 1954. We're not selling used cars or pumping gas or anything like that. We're providing for the needs of students. There is no guarantee that a commercial venture would succeed where the students are involved. And there are certain services such as bookstore, food service, and some of these kinds of things, these are inherent with the fact that universities are made up of students who have basic needs. Now there are a number of things that go along with a bookstore that the University is committed to do that private enterprise may or may not do. We may run out of books once in a while but we are committed to make sure that we do our very best at getting the school supplies in here even if we end up with books that are not needed, which means we may have money tied up in inventory which may or may not be needed, but our commitment is to the student because after all that's what we're here for.

Q: How much did it cost to expand the bookstore?

A: We set up about \$25,000 on remodeling and about \$25,000 on fixtures and everything, knowing even with that we would come out this year with about \$50,000 or \$60,000 ahead so that that money would still be used for University Center operations. The money for that came right out of this year's bookstore operation.

Q: Is there a proposal to increase student activity fees next term for the golf course?

A: There is, just the inflationary percentage. The golf committee wants to do a little development out there to raise the standards of the course. To change the green configurations around a little, one or two of them, to keep the driving range open all day so that educational classes can use driving ranges for instructional purposes, and some plantings, beautification, hazards and traps, and these kinds of things.

Q: Did Auxiliary Services consider raising fees for outsiders?

A: Yes, that always occurs. The percentage of increases apply to all areas of income. Sales, food sales, greens fees, rental fees. We don't say leave the outside green fee the same every year and raise the students' up. No way. Look at them and you will see that all of those are increased on a yearly basis.

LITVRIGHT 1982
THE KROGER CO.



UMR Students

Let's Go Krogering

Ad effective thru Saturday Night
November 20, 1982.

For the Best of Everything
Including the Cost Cutter Price

LIGHT OR
Regular
Old Milwaukee
\$3.09
12-Oz. Cans (12 PACK)
6-12 Oz. Cans Busch \$1.89



ANY SIZE PKG.
Fresh Genuine
Ground Chuck
\$1.58
Lb.

Tab, Sprite or
Coca-Cola
8 \$1.19
16 Oz. Btls. PLUS DEPOSIT



BY THE PIECE
CHUNK
BRAUNSCHWEIGER
69¢
REGULAR OR JUMBO
KROGER
MEAT WIENERS
\$1.49
1-Lb. Pkg.

CUSTARD
Pet Ritz
Pumpkin Pie
99¢
26-Oz. Pkg.



FRESH BAKED
COOKIES
\$1.09
Dozen
CHOCOLATE CHIP, PEANUT BUTTER,
OATMEAL RAISIN OR SUGAR
2 DOZEN \$1.99
3 DOZEN \$2.98

The Best
of the Fresh
Just for You

FRESH FRIED
CINNAMON
SWIRL
DONUTS
DOZEN
\$1.99

ANY FLAVOR
CHEESE
BALL
LB.
\$3.29

FROZEN
KROGER
WHIPPED
TOPPING
59¢
8-Oz. Ctn.

Discover the Kroger Garden

WASHINGTON STATE ALL SIZES
GOLDEN
DELICIOUS
APPLES Lb. **39¢**
NEW CROP 113 SIZE
CALIFORNIA
NAVEL
ORANGES Each **14¢**
KING'S
RUBY RED
SEEDLESS GRAPES Lb. **99¢**

QUANTITY RIGHTS RESERVED
NONE SOLD TO DEALERS

KROGER THE FRIENDLY PLACE TO SHOP