



06 Sep 1979

The Missouri Miner, September 06, 1979

Follow this and additional works at: https://scholarsmine.mst.edu/missouri_miner

Comments: Issue published as Volume 66, pencilled correction to 68

These newspapers reflect the attitudes, perspectives, and beliefs of different times. Neither the library nor the university endorses the views expressed in these collections, some of which contain images and language which may be offensive to some readers.

Recommended Citation

"The Missouri Miner, September 06, 1979" (1979). *The Missouri Miner Newspaper*. 2223.
https://scholarsmine.mst.edu/missouri_miner/2223

This Newspaper is brought to you for free and open access by Scholars' Mine. It has been accepted for inclusion in The Missouri Miner Newspaper by an authorized administrator of Scholars' Mine. This work is protected by U. S. Copyright Law. Unauthorized use including reproduction for redistribution requires the permission of the copyright holder. For more information, please contact scholarsmine@mst.edu.

Missouri Miner

Official Publication of the Students of

University of Missouri-Rolla

Thursday, September 6, 1979

Volume 66 Number 3



Twelve Pages

Don't Go To Class-Stay Home

SOURCE: UMA

One of the activities of the University of Missouri that is not well-known is the University's participation in the University of Mid-America (UMA) program. UMA is a non-traditional study program administered by a consortium of eleven mid-western universities including the University of Missouri, University of Nebraska, University of Minnesota, University of South Dakota, South Dakota State University, University of Iowa, Iowa State University, University of Kansas, Kansas State University, North Dakota State University and University of North Dakota. The University of Missouri was one of seven universities that began the consortium in 1975.

Designed primarily for those individuals who cannot or would rather not attend classes on campus, UMA in Missouri provides UM college credit courses via television and videocassettes. Some course lessons are televised over KOMU-Channel 8 in Columbia, KETC-Channel 9 in St. Louis and KCPT-Channel 19 in Kansas City; and all course lessons are available on video cassettes for viewing at UMA Learning Centers located on the four UM campuses and in other areas across the state. Instructors are available by phone during evening hours at regularly

scheduled times to answer questions and discuss exams.

Although off-campus individuals comprise most of the student body for the UMA program, on-campus students have also taken advantage of the program. Scheduling problems are often indicated as the reason for full-time students enrolling in courses through UMA. One example is a senior who two days before classes began was informed she needed 22 hours of credit to graduate at the end of the semester instead of the 12 hours her advisor had indicated she needed. Scheduling 22 hours of classes on campus was just about impossible, so she enrolled in 6 hours of course work through the UMA program and 16 hours on campus. She was able to graduate on time and start her new job as planned.

Full-time students who can furnish proof of full-time status and payment of fees are not required to pay additional tuition fees when enrolling in UMA courses. Instructional materials such as textbooks, study guides, etc., are in addition to the tuition fee and must be paid by the student.

Students interested in finding out more about the University of Mid-America program should contact their local campus representative: Dottie Hargis, 341-4227, Room G2, Library, UMR;



EMA at UMR Chartered

The Engineering Management Association-American Institute of Industrial Engineers held their first meeting of the school year Wednesday night, August 29th. At this meeting the organization was presented their student chapter charter by Dr. Chet Brisley of the University of Wisconsin, Vice-President of Region 11 of the national AIIE. The affiliation with the national association is the culmination of several years effort by Dr. Omurtag of the Engineering Management Department. The Engineering Management Association has been in existence on campus for several years, and last January became affiliated with the St. Louis Chapter of AIIE, of which Dr.

Omurtag is a member.

Dr. Bernard Sarchet, Chairman of the Engineering Management Department also spoke at the meeting. Dr. Sarchet announced the long-awaited news of accreditation by the Engineers' Council for Professional Development. Rolla's program in Engineering Management is the only accredited program in the country. Engineering Management students may now take the E.I.T. exam, which is a first step towards registration as a Professional Engineer. Professor Sarchet also discussed plans and fund-raising efforts for an Engineering Management building here in Rolla.

After the meeting some 40

applications for membership were taken, and the group retired to Dr. Omurtag's home for refreshments. The next meeting of EMA-AIIE will be September 19th in G-5 of Humanities-Social Science at 7:00 p.m. The speaker will be Mr. Robert D. Bay of Black and Veach in St. Louis. A graduate of Rolla in Civil Engineering, Mr. Bay is President-Elect of the MSM-UMR Alumni Association, Vice-President of the Engineers Club of St. Louis, and is Major General of the United States Army Reserve. He is a past national director of the American Society of Civil Engineers, and is presently the state director of the Missouri Society of Professional Engineers.

Five Years Ago Today

Editor's note: Here's a glimpse at the past; like 1974. Times have changed a lot, or have they? Re-printed from "The Missouri Miner"

By SANDRA GALE

Hi, I'm Horney Henrietta, wanna be my friend? With a ratio of 10 men to every woman you'd hardly expect to find a horney woman at UMR, right? Well, sisters, I don't know about the rest of you, but I've had a look at my ten and — well, I'm still Horney Henrietta.

You know, they (they being public relations I guess) send out these cute brochures to all the girls' schools within a 5,000 mile radius expounding the beauty of Missouri hills and Missouri Miners' physiques. And the most often repeated asset of UMR is its ratio of 10:1.

I thought I had it pretty good

in Alaska with my 7:1 ratio and ruggedly beautiful men — not one of them under six feet tall or less handsome than Robert Redford or Jim Brown. But Alaska is damned cold and I got so tired of handing out these sweaty bearskin rugs! So, I checked the little yes box on the admission invitation card from UMR's registrar's office, and here I am.

Registration day I noticed a lot of funny looking people going through the lines, but they all had such short hair and gross looking clothes I assumed they were just misplaced rookies from Fort Wood. Anyway, I had only come to pick up my list of my very own personal ten UMR Miners.

Next day the infirmary issued my UMR Coed Kit, and I was ready to go down my list. In my first class all the females were huddled in a corner trading

names. But I kept my originals for fear I would trade away a real handful, if you know what I mean. How wrong can a person be? I doubt if there's more than two handfuls in my whole list.

I mean, my God, what can one do with a list like this? One ego-tripping football hero whose waist is slipping, and whose brain is even smaller than his, uh, warts. Two superb, superfly, superquicky dudes who are so in to Black Power they've forgotten the power of love. Three cutesy little grunt freshmen who, all put together, would probably be better off to stay that way. Four professional students who've been on this campus so long they can't get up the stairs anymore, much less get it up anywhere else.

That's my ten, anybody wanna trade? Maybe, with a great deal of patience and beer a woman could relax and have a

good time with one of these people. Maybe in time a woman could even get one of these males to grow some hair, take a shower, wear something besides cutoffs and outgrown sneakers, and even learn to talk instead of grunt. But, really, who needs it? I'm telling your girls, the real men are in Alaska, and besides, the universities there treat women just like real people.

Miner asked for a female columnist who would could represent the views of women on this campus. The above "view" is not for a real view of mine, and I doubt its validity for any female at UMR. The truth is most of us came here because we're from around here, or we heard it was a good, tough school and we wanted the challenge, or our parents are alumni and we're here to please them. Women just are not going to school to earn their M.R.S.

and, frankly, we're damned sick of hearing that tired, old joke.

Past issues of Miner have derided our looks, our measurements, and our reasons for being here. Male engineers in particular like to blame the so-called deterioration of education on the admission of women and humanities. S.W.E., how does your overall GPA compare with that of the males? A.W.S., how about yours?

Women currently make up at least 10 percent of total enrollment, and I think it's time we let our voices be heard on this campus. If we don't like the sexist remarks in and out of the classroom, let's say so! If we're tired of the UMR-inflicted image, let's shake it loose. And while horniness may be a facet of our lives, if that is not our driving force, let's let the Miner hear about it.

Activities

Automotive Engineering Highlights

Submitted by SAE

Which one of the dozens of professional societies on campus can boast that they are finding solutions to the energy crisis through better engines, that they look at engineering applications for land, sea, air, and space, that they placed second in booth competition at their national convention, and that they have one of the largest student sections in the nation? It is the Society of Automotive Engineers.

The organization holds monthly meetings with guest speakers talking on current topics in automotive engineering. SAE is not limited to cars and truck though, as farm machinery, off-road vehicles, aircraft, R-V equipment, and marine craft are also considered. Lloyd Reuss, now Director of Engineering for Chevrolet, spoke on the theme "Automotive Engineering in the 80's" at one of the eight meetings held last year.

Members sponsored a "tune-up" clinic on University Day last Spring. Also, SAE ran a "tool loan" program, loaning out tools and selling car parts at cost to members. Last Fall, they co-sponsored the Mechanical Engineering department picnic.

The highlight of the year was the SAE National Congress held in Detroit last February. Dr. Johnson and 12 UMR students competed against students from other colleges to take second place in the overall booth competition, receiving a cash award. The UMR booth used a drag simulator where spectators tried to beat the clock in the quarter mile, with a Hurst shifter going to the fastest time.

This year, SAE will again travel to Detroit and also take part in many campus activities. The first meeting is scheduled for September 12 at 7:00 p.m. in Room 204 of the Mechanical Engineering Building.

THURSDAY

CIRCLE "K" CLUB SMOKER

On Thursday, September 6, at 7:30 p.m. in the Old Student Union Circle "K" will hold a smoker for prospective members. Circle "K" club is an international service organization for college men and women that benefits the UMR Campus and Rolla community. This semester's schedule includes fund raising, service, and social events. All interested students are welcome.

M-CLUB

There will be an M-club meeting on Thursday, Sept. 6 at 7:00 in room 121 of the M.E. building.

KAPPA SIGMA

Kappa Sigma Stardusters invite all girls on campus to their annual barbecue-watermelon bash and softball game this Thursday, September 6, from 4 to 7 p.m., at the Kappa Sigma House, 1701 White Columns. Very informal — little sister rush.

CHI EPSILON SMOKER

On Thursday, September 13 at 7:00 p.m. in room 217 of the Civil Engineering Building, Chi Epsilon, National Civil Engineering Honor Society, will have a Smoker. All members are urged to attend and meet prospective pledges. Refreshments will be served.

SHOWCASE '80

Show case '80 will be held on September 13, from 8:00 a.m. to 5:00 p.m. in the St. Pat's Ballroom. This all day affair is designed to give the students of UMR an idea of the organizations and club represented on campus. Stop in between classes and browse a little. An old and new interest awaits you.

FRIDAY

COMPUTER SCIENCE CAREER DAY

The Computer Science National Honor Society, Upsilon Pi Epsilon (UPE), is sponsoring a career day for computer science students to be held from 9:00 a.m. to 4:00 p.m. Friday, September 21st.

Approximately 20 major corporations, including IBM, Burroughs, General Motors, Ford, Monsanto and Standard Oil, will present 20 minute seminars on their data processing operations. Each firm will also set up a booth, in St. Pat's ballroom, to distribute pamphlets and to supply additional information.

WESTERN PARTY

On Friday evening Pi Kappa Alpha's Little Sisters of the Shield and Diamond are holding a Little Sister Rush Party. Festivities start at 8:00 p.m. at NINTH and BISHOP. Favorite beverages will be served.

SATURDAY

PARTY

AEPI will be holding a party to help celebrate the "Miners" home opener. Your favorite beverage will be served, so come on out and join in the fun. Place: No. 4 Fraternity Dr. Time: 8:00-??

Softball Tournament

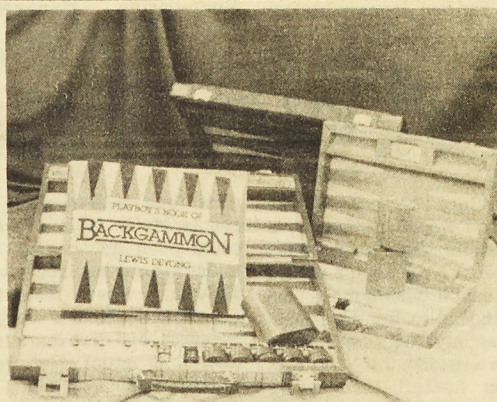
Kappa Alpha is sponsoring enjoy their favorite beverage their third Annual Muscular Sunday, after the final playoffs. Dystrophy Softball Tournament All teams are welcome to enter on Saturday, Sept. 22 and have a great time. For Sunday, Sept. 23. A trophy will more information, please be awarded to the winner. All contact Steve Flowers or Kevin participants will be invited to Fugate at 364-4841.

FOSTER'S BAKERY

100 Hwy. 63 S. Rolla, MO 65401 Phone 364-2210

COMPLETE BAKING LINE
CAKE DECORATING
OLD FASHIONED ICE CREAM
FRESH PASTRIES

Monday thru Saturday 5 a.m.-8 p.m.
Sundays only 6 a.m.-8 p.m.



JOIN US FOR
FUN AND GAMES!

Backgammon, Chess, Rummikub, Boston
Marathon Game, puzzles and more.

BOOKS & THINGS

Open 9 to 9 Forum Plaza 364-5432

MONDAY

UMR DAMES

The first meeting of the UMR Dames (an organization for student wives) will be held on Monday, September 10th, at 7:30 p.m. in 105 Electrical Engineering Bldg. All student wives are welcome to attend and an appetizer party will follow the business meeting. Babysitting will be provided.

TUESDAY

UMR TRAP & SKEET CLUB

The Organizational Meeting of the UMR Trap & Skeet Club will be 7 p.m.; Tuesday, Sept. 11 in Room 102 Electrical Engineering.

AIAA

The UMR student branch of the American Institute of Aeronautics and Astronautics will hold its first meeting of the semester on Tuesday evening, Sept. 11, at 7:00 p.m. in the Mechanical Engineering Building Auditorium, Room 104. The guest speaker will be Chester Miller from McDonnell Douglas and his subject will be the F-18. Refreshments will be served and memberships will be taken after the meeting.

"GIRLS"

AEPI will be having a "Little Sister Rush" Bar 'B' Que. Tuesday, Sept. 11, at 4:30 p.m. at No. 4 Frat. Drive. So come on out and have a good time and get to know the guys at AEPI. For info. call 364-7176 and ask for Jim Irwin.

WOMEN ENGINEERS

The Society of Women Engineers is publishing its sixth annual resume book this semester. This book is bought by corporations throughout the United States and referred to for job placements. The opportunity to place a resume in the book is being opened to all students. Resume forms may be picked up at the cardy counter or the first SWE meeting this year on Sept. 11 in Mark Twain Rm. at 6:15. Form must be completed by Sept. 25. Return information is on forms, including a \$2.00 publishing fee for non-members. Members resumes will be published free.

WEDNESDAY

VARSITY WRESTLING MEETING

Wednesday, Sept. 12, 1979 at 4 p.m. meet at Multi-Purpose Bldg. in the Wrestling Room. If you have any questions or are unable to attend, contact Bill Spencer at 341-4989.

ASCE

On Wednesday, September 12 at 7:00 p.m. in room 114 of the Civil Engineering Building, the American Society of Civil Engineers will have a meeting. The guest speaker will be Mr. W.G. Twyman who will be speaking on "Port Development." Refreshments will be served after the meeting, and a door prize will be given away. Everyone is invited to attend.

NODAY

NEED MONEY?

Any campus organization that is unable to support itself or is needing money to get started is eligible for financial assistance from the Student Council. Applications may be obtained now through September 21 at the Student Council office, Room 202, Old Student Union.

UPTOWN
TELEPHONE 364-1857

7 & 9:15

Matinee
Sun. 2 p.m.
Adult \$2.50

JAMES BROLIN
MARGOT KIDDER
ROD STEIGER

THE
AMITYVILLE
HORROR

RELEASED BY
AMERICAN INTERNATIONAL

ROLLA DRIVE IN
THEATRE
TELEPHONE 364-1502

Open 7:15

Starts at Dusk

Adult \$2.50

"A PLEASURE
DOING BUSINESS"

R

RITZ
TELEPHONE 364-1299

ENDS TUES!

7 & 9:25

No Matinee
Adults \$2.50

ROGER MOORE PG
JAMES BOND 007
MOONRAKER

FRI., SAT., SUN. ONLY

...TRY SEX WITH A
SMILE

A&W

COUPON

Fish Sandwich &
Medium Root Beer

Fish & Beer

99¢

With Coupon

Expires September 13, 1979

COUPON

1202 N. Bishop Rolla, MO
Hours: 6:30 a.m. to 11 p.m.
Open till 12 midnight Fri. & Sat.

News

Housing Solution Found

By KAREN DOWNER

According to Jess Zink, the University Housing shortage began 8 years ago when MacAnerny Hall was designated as a woman's dormitory. In 1976, the purchase of Thomas Jefferson Hall helped to alleviate the problem. For the past years, Auxilliary Enterprises has rented property around town to house students. Last year, Campus Inn, Rollamo Inn, and Miner Inn, were leased. This year, students are living at Manor Inn's north and east annexes,

Little Piney Motel, Rustic Motel, Interstate Motel, and Plaza Motel. Also university leased is Carnahan Hall — formerly Christian Campus House.

Manor Inn holds 116 students and has two resident assistants available for supervision and counseling. The other facilities hold approximately 30 students each and one RA. Manor Inn and Little Piney are coed; Interstate, Rustic, and Plaza are all men; Carnahan Hall is all women. These students only contract for rooms, obtaining meals at university cafeterias is

strictly optional.

Even though a "meal ticket" is not required, about 200 of the students have an eating arrangement. To facilitate transportation for the people at the far off-campus locations of Manor Inn, Interstate and Rustic, there are buses that make hourly stops at each motel. Then these buses make a tour from Manor Inn to TJ Hall to Interstate to Rustic to Rayl to the University Center. A survey has just been completed to improve this service. Carnahan Hall, Little Piney, Plaza, and Manor Inn eat at Thomas Jefferson; Interstate and Rustic eat at Rayl Cafeteria.

There are some special problems created by this

temporary housing situation. The rooms themselves don't have the traditional dorm furniture: There's only one desk. But having your own bathroom is a nice convenience, even though it doesn't improve your grades. Hopefully, the bus service will help overcome the problems of distances to campus and meals.

Another problem is trying to unify all the students that are in University leased housing. And without many upperclassmen around, it's hard to get any advice or tutoring. But, as the semester goes on, these problems are being dealt with by the Housing Office and the resident assistants.

University Faculty Salaries Rank Above Big 8 Average

By LINDA GRAHAM
Missourian Staff Writer

The University is in the middle of a three-year effort to raise faculty salaries to the top of the Big 8. But in total compensation — salary, pension and fringe benefits — the average faculty member at two of the four campuses already is better paid than the average at any other Big 8 school.

As a system, Missouri ranks behind Colorado and Kansas in total compensation. But Rolla faculty members are paid an average of \$800 more than Colorado faculty and Columbia faculty members are paid \$100 more, according to 1978-79 compensation figures from the University treasurer's office.

Faculty at the Kansas City campus rank just behind Colorado and Kansas, and those at the St. Louis campus rank fifth.

The University uses salary instead of total compensation figures in its budget presentations to the legislature, and James Buchholz, University system vice-president of administrative affairs, says that approach will not change.

"To present a new series of compensation figures to the General Assembly would just

confuse them," he said. "You never hear individuals comparing compensation figures. Instead, they compare salaries."

Comparing salary alone, the Rolla campus still leads the Big 8. Colorado and Kansas are second and third and the Columbia and Kansas City campuses are fourth and fifth. As a system, the University ranks third in the Big 8.

However, even the best-paying schools in the Big 8 rank below the worst-paying of the Big 10 schools. Average compensation at the University's Rolla campus is \$100 behind Iowa, the lowest-paying of the Big 10 schools.

University officials are trying to regain the top ranking in the Big 8, which its salaries held in 1972. In the first year of President James Olson's proposed catch-up program, salaries jumped from the bottom half in the conference to third. Last year, University faculty members received the highest percentage salary increase of any school in the Big 8 or Big 10 — 10.7 percent. Michigan, the highest paying of the Big 10 schools, gave the second highest percentage salary increase — 10.5 percent. Olson's program was

sidetracked for the 1979-80 academic year by President Jimmy Carter's 7 percent lid for wage and salary hikes. The 1980-81 University budget, which still must be approved by the General Assembly, would give 10.6 percent raises overall for University faculty, and start the second step of Olson's salary improvement program.

St. Louis campus salaries, however, are preventing the system from moving to the top of the Big 8. The campus is at the bottom of the Big 8 in salary.

AVERAGE SALARIES

Big 8-Big 10 public institutions,
University of Missouri By Campus
1978-79

School	Average salary 1978-1979
Michigan	\$27,400
Illinois	\$24,800
Wisconsin	\$24,400
Ohio State	\$24,000
Michigan State	\$24,000
Minnesota	\$23,500
Purdue	\$23,200
Indiana	\$23,000
UMR-Rolla	\$22,700
Colorado	\$22,600
Kansas	\$22,500
UM-Columbia	\$22,200
UM-Kansas City	\$21,700
Nebraska	\$20,600
Iowa State	\$20,600
Oklahoma	\$20,600
Kansas State	\$20,300
UM-St. Louis	\$20,200

UMR Pre-Nursing School Opens

By MIKE BUEL

The University of Missouri-Columbia School of Nursing has initiated a cooperative program to make the first two years of the four-year nursing curriculum available at the University of Missouri-Rolla.

There are fourteen students in the new curriculum already. When talking with Dr. Roger Brown, director of the program at UMR, he said the demand for nurses is high. With more emphasis among the students and the program, the enrollment should increase each year.

The courses offered in the first two years are already in the Life Science curriculum with the exception of one nursing class. A nursing professor from UMC will be here to teach the concepts of nursing during the fourth semester of the program at UMR. Upon successful completion of the first semester at UMR students will then apply for formal admission to the School of Nursing. Successful applicants will then continue their sophomore year in the program at UMR with

assurance of a position in the junior class in the School of Nursing at UMC.

UMR will also offer classes to the seniors who wish to return to the Rolla area. During the winter semester, 1980, a grant-funded project will begin to teach the UMC senior courses on the Rolla campus, with clinical practice at Phelps County Hospital.

Graduation will be from UMC with the degree of Bachelor of Science in Nursing (BSN). The BSN program of the University of Missouri-Columbia is fully accredited by the National League for Nursing. This means that the program is in an accredited university, has been approved by the State Board of Nursing and has met national standards of excellence set by the NLN. Students in the UMC-UMR cooperative nursing program will receive their degrees through UMC's fully accredited program. Attending a university baccalaureate nursing program accredited by the NLN is assurance of getting the best available education for professional nursing practice.

Opening Statement

Many Changes, Many Plans

By J. MARCHELLO

It is a pleasure to welcome you to the University of Missouri-Rolla this fall, whether you are a new or returning student.

As you have probably already noticed, the campus is a little crowded this year with an all-time high enrollment of almost 5,500 students. Included in this total are almost 1,000 women, a significant increase over last year's total of 840.

Because of this enrollment, we have experienced difficulties with housing. Many of you were inconvenienced in July, as well as this fall. I apologize for that and realize some of the arrangements are not as good as they might be, but it's the best we can do at this time. Please bear with us and, hopefully, we can find better solutions in the near future.

Another change since last May is that the food service in all the dormitories, as well as

the University Center, is now being provided by a private company. This should ultimately provide you with better food service. Let us know what you think of this change.

The campus also has a new Dean of Students, Ken Robertson. He is located in the Rolla Building, so if you should have problems or need assistance please call on Ken there. In addition, in the very near future we will move the Student Personnel office from its present location on State Street to the Rolla Building.

The old quarters for Student Personnel will then be remodeled for a new Student Infirmary. We hope to expand and improve the infirmary so that it can provide better service to you.

This year will also see work initiated on several of the undergraduate laboratories on campus in an effort to upgrade them. Other projects are being pursued, such as obtaining

better computers for student use, in an effort to improve the academic support services for our students.

In the extracurricular area, we have added softball to the intercollegiate women's program and soccer to the men's intercollegiate program. I hope all of you will attend as many athletic events as possible. Intercollegiate athletics is an important part of any University, but it can't succeed without student support.

In closing, let me say that my office is in room 206 of Parker Hall. If there is anything I can do to help you please contact me. My open office hours are from 8 to 9:00 a.m. and 4 to 5:00 p.m. each day.

For that matter, everyone on campus—whether faculty, staff, or administration—is here to help you. And we want to do just that—to make your time in Rolla as successful and enjoyable as possible.

MissouriMiner

The MISSOURI MINER is the official publication of the students of the University of Missouri at Rolla. It is published weekly at Rolla, Missouri. The MISSOURI MINER features activities of the students and faculty of UMR.

Editor	Bill Frank	364-8115
Business Manager	Maureen Murphy	341-2271
Managing Editor	Bob Burchett	364-5156
News Editor	Marilyn Kolbet	364-7416
Features Editor	Linda Ponzer	364-3150
Sports Editor	Chris Ransom	364-8115
Advertising Director	Steve Sontag	364-9769

Miner Office Phone: 341-4235

Subscriptions are available to the general readership at a rate of \$6 per semester.

Articles and photos for publication in the Miner must be in by 9 p.m. on Monday before printing on Thursday.

THE MISSOURI MINER
T-1
University of Missouri-Rolla
Rolla, Mo. 65401

Bookstores Adapting To Change

By MICHAEL DUNNERMANN

The new bookstore situation at UMR has settled into routine for the three concerned stores. The University bookstore's opening has caused the Campus and Scott's bookstores to adapt to the change.

Campus Bookstore is still serving the public, but under new management. It is in the process of reorganization. This includes a new shelving of books to allow the students to find texts easier and to serve themselves. The store is also going to stock a number of new items that include: A full supply of school supplies, posters, photo albums, greeting cards, paperback books, records, and a number of UMR souvenirs and T-shirts.

Scott's Bookstore is now carrying a new, larger stock of office supplies. They have also moved their greeting card store next door to their Pine Street location. While the variety of office supplies and Hallmark cards has increased, the textbook line has been dropped.

The University bookstore has on stock school supplies, greeting cards, calculators and UMR souvenirs and T-shirts.

Business ran smooth for the Campus and University bookstores except for the lack of textbooks. Both sold out of many texts on the first day of school. Some of the reasons were basically an increased enrollment. The stores are given lists concerning student enrollment to give the managers an idea for book orders, but this year's list was off by some 300 students.

Other problems occurred with delayed shipments and cancelled printings. An example would be the new Trigonometry books removed from print and it caused an under supply and delay in shipment of old Trig books.

Most supplies were sold on the first day of school. The University Bookstore required the use of six cash registers and total sales reached \$49,000 that day. Campus had three registers running and sales equalled that of last year's.

While the commercial bookstores did well, APO bookstore sales went down to only one-third of last year's volume. Some of the factors were that many new texts were needed for freshman courses. Also the purchase of used texts by the Campus and University bookstore removed many from circulation. APO expects to do much better with next semester's sales.

The sale of these used texts seems to be profitable for both the student and the store. The mark-up of a new text can be from 20-25 percent. This pays for all freight costs and other handling charges, employees salaries, overheads (such as phones, lights, equipment, etc...) and other hidden costs. A random comparison in the cost of texts sold at both stores

came to the result that there was no difference. Personal preference becomes a factor in which store receives the sale.

The University Bookstore is now running the candy counter that is located in the new Student Union. It has moved its check cashing service to the bookstore and also allows students to purchase books with

credit cards. Their hours are set from 8:00-7:00 on Monday-Thursday and 8:00-5:00 on Friday and 8:00-1:00 on Saturday. These hours are

subject to change to meet the students needs. The Campus Bookstore hours are 8:15-5:00 on Monday-Friday and 8:30-12:00 on Saturday.

LA POSADA

DELICIOUS MEXICAN FOOD	HWY. 63 S. ROLLA CLOSED MON.	MEXICO CITY STYLE
------------------------------	------------------------------------	-------------------------

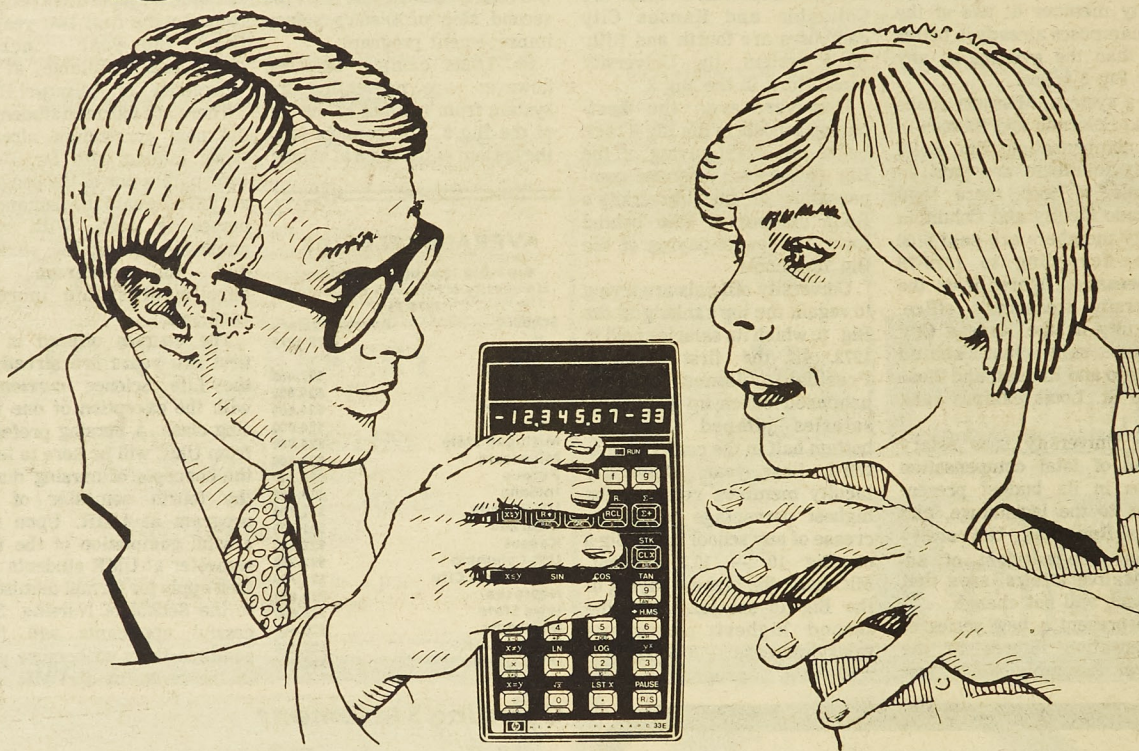
Christopher Jewelers
903 Pine Rolla, MO 364-2264

"HAIR IT IS" Hairstyling For Men & Women



Three Satisfied Customers (L-R) John Salts, Jeff Brumett, Larry Johnson.
We're experts in men's styling—cuts, perms, blow dry, coloring.
STUDENT DISCOUNTS AVAILABLE
Stop by and see Peggie Johnson, Cindy Simers, Shanarie Frisbie or Pat Watkins.
610 Kingshighway (Plaza Laundry Building) 364-7130

SURPRISE!



HP Makes professional calculators students can afford.

Now when you think "professional calculator," think "affordable." Specifically, think Hewlett-Packard Series E—a full line of professional scientific and business calculators designed for a student's needs and budget.

Easy for study. All Series E calculators feature a large, bright LED display with commas to separate thousands.

Self checking. Built-in diagnostic systems help you catch and correct errors. Saves time and worry.

Extra accuracy. New, improved algorithms give you more precise and complete answers—for greater confidence.

Extra features. Low battery warning light. Rechargeable batteries. Positive click keys.

For science and engineering students:
The HP-31E Scientific. \$50*
The HP-32E Advanced Scientific with Statistics. \$70*
The HP-33E Programmable Scientific. \$90*

For business and finance students:
The HP-37E Business Management. \$75*
The HP-38E Advanced Financial with Program-mability. \$120*

O.K. Looks like you can afford a professional calculator. But why do you need one? Glad you asked. The answer is in our booklet, "A buyer's guide to HP professional calculators." It's loaded with tips on buying the Series E calculator that's right for you. For your copy, stop by your nearest HP dealer. For the address, CALL TOLL-FREE, 800-648-4711 except from Alaska or Hawaii. In Nevada, call 800-992-5710.

HEWLETT  PACKARD

Dept. 658K, 1000 N.E. Circle Blvd., Corvallis, OR 97330

*Suggested retail price excluding applicable state and local taxes—Continental U.S.A., Alaska and Hawaii

619-15

ATTENTION SKIERS!

Part-time student sales representative position available for 1979-1980 school year. Job involves promoting high quality ski and sun trips on camps for commission plus free skiing. To qualify, individual must be highly motivated. Please call or write for an application.
Summit Travel, Inc.
Parkade Plaza
Suite 11
Columbia, MO 65201
341-874-6171



NOTICE

If any of the advertised items are not available during the period covered by this National Super Market, Inc. Advertisement, you are entitled to a similar product of equal or better quality as a substitute for the advertised price (or lower price) or at your option you may have a "Rain Check" to purchase the advertised product at a later time at the advertised price. The WAS Prices in this Advertisement Refer to the Last Regular Prices Before the Prices Show Became Effective. NOTE: Regular Prices Are Not "Specials" or "Super Specials".

THE MOVE IS ON TO NATIONAL!

NEW LOW PRICES ON GUARANTEED QUALITY MEATS

SUPER SPECIAL Round Steaks USDA GOV'T FIRST CUTS WAS \$2.39 \$1.89 Lb. CENTER CUT LB. \$1.99	SUPER SPECIAL Pork Sausage R.B. Rice's Whole Hog WAS \$1.59 \$1.39 1-Lb. Roll 24-OZ. PKG. \$2.39	NEW LOW EVERYDAY PRICE Wiener Mayrose All Meat WAS \$1.09 79¢ 12-oz. Pkg. ALL BEEF WIENERS 12-OZ. 89¢	SUPER SPECIAL Ground Beef FRESH REGULAR, UNITS OF 4 LBS. OR MORE WAS \$1.49 \$1.39 Lb. CHUCK QUALITY 2 LBS. OR MORE LB. \$1.59	SUPER SPECIAL Sliced Bacon R.B. RICE'S VACUUM PACKED WAS \$1.59 \$1.39 1-Lb. Pkg.
NEW LOW EVERYDAY PRICE Chuck Steaks USDA CHOICE BLADE CUT CHUCK ROAST OR WAS \$1.56 \$1.48 Lb. CENTER CUT LB. \$1.58	NEW LOW EVERYDAY PRICE Whole Fryers USDA GOV'T INSPECTED FARM FRESH WAS \$5.56 49¢ Lb. CUT UP & TRAY PACKED LB. 50¢	NEW LOW EVERYDAY PRICE Boneless Ham MAYROSE HICKORY HILL FULLY COOKED, WHOLE WAS \$1.69 \$1.39 Lb. HALF HAM LB. \$1.65	NEW LOW EVERYDAY PRICE Pork Chops MIXED RIB, LOIN, 1ST CUT AND 1/4 LOIN WAS \$1.59 \$1.49 Lb. COUNTRY STYLE RIBS LB. \$1.49	NEW LOW EVERYDAY PRICE Boneless Beef Stew USDA GOV'T GRADED CHOICE UNITS OF 2 LBS. OR MORE WAS \$1.89 \$1.79 Lb. UNDER 2 LBS. LB. \$1.89
NEW LOW EVERYDAY PRICE Legs & Thighs USDA GOV'T INSPECTED WHOLE FRESH FRYER WAS \$1.09 98¢ Lb. WHOLE FRYER BREAST LB. \$1.19	NEW LOW EVERYDAY PRICE Braunschweiger HYGRADE, BY THE PIECE WAS \$1.09 79¢ Lb. KREY, MAYROSE OR KAHN LB. 98¢	NEW LOW EVERYDAY PRICE Meat Entrées ALL VARIETIES, BANQUET WAS \$1.89 \$1.79 2-Lb. Pkg. EXCEPT BEEF & GRAY, VEAL, PARMIGIAN, STUFFED PEPPER OR CABBAGE	NEW LOW EVERYDAY PRICE Pork Steaks FRESH WHOLE PORK BUTTS CUT INTO WAS \$1.19 \$1.09 Lb. MAYROSE VAC PAK OR HUNTER SLICED BACON \$1.59 SURREY FARM LB. \$1.59	NEW LOW EVERYDAY PRICE Rump Roast USDA GOV'T GRADED CHOICE WHOLE BONE-IN, STANDING WAS \$1.79 \$1.59 Lb. CLUB STEAKS LB. \$2.09

SUPER SPECIAL
 10¢ OFF LABEL
Clorox
 WAS 79¢
69¢
 128-oz. Bottle
 WITH COUPON BELOW AND \$10.00 PURCHASE

National Coupon
TRIPLE EAGLE STAMPS
 With This Coupon and Purchase of \$15.00 or More Excluding Liquors and Tobacco, Redeemable at your National Super Market. Good Only Through Monday, Sept. 10, 1979. Limit One Coupon Per Family Per Order.

SUPER SPECIAL
Dr. Pepper
 Regular or Sugar Free
 WAS \$1.59
89¢
 16-oz. Bottles
 NO COUPON NEEDED PLUS DEPOSIT

Dawn Dew Fresh Produce!

Southern Peaches BURSTING WITH JUICE LARGE SIZE Lb. 59¢	Tokay Grapes RED FLAME Lb. 59¢	Prune Plums ITALIAN FROM MICHIGAN 3 Lbs. \$1.39	Red Potatoes SO FRESH, ALL PURPOSE 10# \$1.19
Barlett Pears BLAZING STAR 8 Pack 98¢ LARGE SIZE Lb. 49¢	Cauliflower Cutlets NO WASTE... EASY TO PREPARE LOUISIANA PREMIUM QUALITY Golden Yams 3 Lbs. 89¢ BUD OF CALIFORNIA WRAPPED Iceberg Lettuce Jumbo Size 69¢ 3 Lbs. \$1.29	Sweet Corn GOLDEN KERNELED 5 For 69¢ TRAYED & WRAPPED 5 For 79¢	Worth 10¢ When You Purchase One Head or More 69¢ 3-LB. BAG WAS 79¢

Wines & Liquors

Stag Beer
 6-Pack 12-oz. Cans **\$1.39**

Red, White & Blue Beer 12-Pack 12-oz. Cans **\$2.59**

RED LABEL Johnny Walker Scotch 25.4-oz. Bottle **\$7.98**

IMPORTED Riunite Lambrusco 25.4-oz. Bottle **\$2.39**

IMPORTED Canadian Mist 25.4-oz. Bottle **\$5.88**

FRUIT FLAVORED Mogen David Concord 50.7-oz. Bottle **\$3.49**

BAVARIAN CREAM Bardenheir Sherry 25.4-oz. Bottle **\$1.78**

GOOD AT OUR ROLLA STORE ONLY

DECORATED Teri Towels 3 Large Rolls **\$2.00**

NATIONAL'S Fruit Cocktail 2 16-oz. Cans **\$1.00**

NATIONAL'S HALVES OR Sliced Peaches 2 16-oz. Cans **\$1.00**

BUY ONE 25-COUNT PACKAGE HEFTY Food Storage Bags AT THE REGULAR PRICE **FREE!** GET THE SECOND PACKAGE

10¢ OFF LABEL ASSORTED COLORS KLEENEX Facial Tissue
 WAS 79¢
3 \$2
 200-ct. Boxes

THE IDEA FLOUR PILLSBURY FLOUR
 WAS \$1.29
99¢
 5-Lb. Bag
 WITH COUPON BELOW

National Coupon Worth 50¢ When You Purchase A 5-Pound Bag 88¢ WAS \$1.35	Vendor Coupon Worth 10¢ When You Purchase Any 12-oz. Can 99¢ WAS \$1.09	EXCEPT TUNA Banquet Pot Pies 4 \$1.00 8-oz. Pkgs. WAS 41¢ EA	Vendor Coupon Worth 10¢ When You Purchase Any 12-oz. Can 89¢ WAS \$1.09	National Coupon Worth 10¢ When You Purchase Any 12-oz. Can 99¢ WAS \$1.09
Vendor Coupon Worth \$1.00 When You Purchase A 16-ounce Bottle 89¢ WAS \$1.35	Vendor Coupon Worth 10¢ When You Purchase A 5-Pound Bag 99¢ WAS \$1.09	Vendor Coupon Worth 50¢ When You Purchase Two 16-oz. Pkgs. 89¢ WAS \$1.35	Vendor Coupon Worth 12¢ When You Purchase A 16-oz. Can 89¢ WAS \$1.09	Vendor Coupon Worth 10¢ When You Purchase A 16-oz. Can 89¢ WAS \$1.09
Vendor Coupon Worth 20¢ When You Purchase A 16-ounce Bottle 89¢ WAS \$1.09	Vendor Coupon Worth 75¢ When You Purchase A 25-Pound Bag 89¢ WAS \$1.09	Vendor Coupon Worth 10¢ When You Purchase A 16-ounce Jar 89¢ WAS \$1.09	Vendor Coupon Worth 10¢ When You Purchase A 16-ounce Jar 89¢ WAS \$1.09	Vendor Coupon Worth 20¢ When You Purchase A 24-ounce Bottle 89¢ WAS \$1.09
National Coupon Worth 25¢ When You Purchase A 1 1/2 Pound Loaf 89¢ WAS \$1.09	National Coupon Worth 10¢ When You Purchase A 4-oz. Tube 59¢ WAS \$1.09	National Coupon Worth 10¢ When You Purchase A 10-ct. Jar 98¢ WAS \$1.09	National Coupon Worth 10¢ When You Purchase A 60-ct. Bottle 89¢ WAS \$1.09	National Coupon Worth 10¢ When You Purchase A 16-ounce Bottle 89¢ WAS \$1.09

Features

The Miner Takes A Look

By R.E. STEVENS

The Wesley Foundation at UMR welcomes you to Rolla. While the Wesley house is owned by the Methodist Church, Wesley is supported by many different denominations. It does not require membership in a certain church, or membership in any church, for one to be involved.

Activities at Wesley are many and diversified. Over one hundred members were active last year; yet every one was an individual. The regular weekly schedule begins on Sunday at 9:45 a.m. with an informal chapel service. Leadership will be passed around, and topics covered will be varied. Tuesday mornings from 7:30 to 8:15 a.m. is the time when the prayer group meets. At 6 p.m. every Wednesday night, the program meetings will continue. Outside speakers run the gamut from technical to civic to religious to political. Thursday nights find a

group meeting for a Sharing Group. Emphasis is on sharing, singing, and praying. Currently being organized throughout the week are small group Bible studies. Interspersed are the intramural sports, parties, canoe trips, and deputation programs; as well as the spontaneous activities that always occur whenever a group of Wesleyites get together. Last year, it might be noted, Wesley's intramural football, basketball, and softball teams placed in the top four teams in its division.

Service projects to others play a key roll at Wesley. As well as being the place from which tools are checked out for Gamma Alpha Delta (GAD) service fraternity (to which most of the social fraternities on campus belong) projects and Newman Center projects, Wesley itself does many projects. Last fall a rural church in northeastern Missouri was re-roofed and repaired. Last spring, an inner-city day-care center was also repaired.

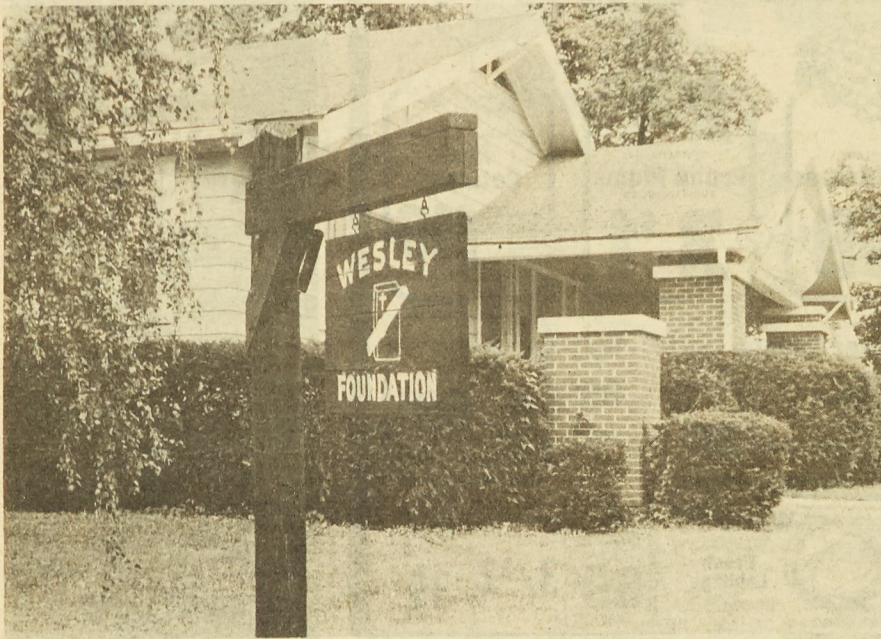
Throughout the year, Wesley continued to help the senior citizens and poor in the Rolla area; winterizing their homes, and supplying firewood to those who could neither afford it nor cut it themselves. During their Easter vacation, a group traveled to southeastern Kentucky, in the heart of Appalachia, to repair homes of the needy. Seven homes were repaired in five days of work.

This past spring, the Christian Technology Action Project (CTAP) was completed. This project, financed by several grants and donations, was funded through the United Ministries in High Education (UMHE). The project sent twenty-five students and staff to the San Blas Islands, off the coast of Panama. Over a three week

period, they assisted the inhabitants of these islands, the Kuna Indians, in building an earthen-dammed reservoir, by hand.

The Wesley house, located at 403 West 8th Street (across from the post office parking lot) is open from 8 a.m. until the last member leaves at night. We invite you to stop by. You will find Wesley is a good "home away from home". Our campus minister is the Reverend Clayton Smith. Assisting him, and the students, is Wesley's secretary, Mrs. Gentry.

The Wesley Foundation could be best summed up as a place for Christian college students to gather for fellowship, worship, and service to the Lord.



Campus Showcase

Know Your Organizations

Next Thursday, September 13, the Student Union Board will gather various organizations on campus together for the annual Campus Showcase. It will be all day long in St. Pat's Ballroom in the old Student Union. The Showcase is presented so you can browse from table to table and find out about any of the various clubs and organizations.

If you want to get high, you can join the Rock Climbing Club or to get even higher you can check out parachuting. If you want to get down, join the Spelunking Club (cave explorers for those who do not know) or take a dive with the Scuba Club. If you have a more artistic bent, the Photography Club or Theater Guild might be right for you. You could also ham it up with the Radio Club. You can talk with religious organizations if they are what you need. Some of the technical societies will be there so you can find out about their fields.

If you find an organization to your liking, join up! One of UMR's strengths is its wide variety of activities all available to students. You don't have to be a Laurence Olivier to join Theater Guild nor a Mario Andretti to join the Sports Car Club, just an interest in the organization and a big capacity for fun. The more effort and

enthusiasm you put into an activity the more fun you'll get out of it.

So come by St. Pat's Ballroom in the old Student Union (by the Bookstore) anytime next Thursday and look around. It will take only a few minutes and could result in more fun than you ever thought you could have in school.

Classified Ads

FOR SALE: Car stereo. Jet sound 8001 in-dash AM-FM cassette. \$100. Call Roger at 364-9792 or 364-9769.

I'm a transfer student from Florida and would like to meet people interested in art (painting, drawing, etc.), creative writing, and film. John Room No. 10, Campus Club.

Jimmy S. — May the force be with you this semester, my baby, study hard, and think of me. Bubbles

NEEDED — roommate, make for 2 bedroom house. Apply in person at 1401 Ozark. See Dan Binz.

FOR SALE: HP-19c (continuous memory) pocket and printing. Excellent condition. Call Al Diamant at 364-7176.



I was thinking the other day about hell and asked myself the question: "What the hell is hell?" I find it difficult to accept the idea that hell is a place where a bunch of naked men and women run around engulfed by flames. According to that definition, Nero's last orgy was hell.

A more realistic approach would define hell more explicitly for each of us. Hell for me may not necessarily be hell for you. And your hell might even be rather pleasant to someone else in a different set of circumstances.

Let us review a number of collegiate personalities and see what hell is to them.

HELL to a computer science major is having a roommate who thinks a computer language course is something offered on Berlitz records.

HELL to a business administration major is having to take a course entitled "The History of Typing."

HELL to a political science major is finding that the courses he took in ethics and logic do not apply toward his degree.

HELL to an electrical engineering major is having a circuit breaker in his lab...not in his experiment but as a lab partner.

HELL to a college senior is looking at his high school yearbook.

HELL to a student radical is hearing that his march on the administration building is going to receive press coverage...in the Newman Club Newsletter.

HELL to a civil engineering major is telling his boss he couldn't give a damn and then trying to convince him he meant that their proposed contractor would not accept his design for a water barrier at any price.

HELL to an English major is finding dangling modifiers, comma splices are also hell when an English major.

HELL to the president of the Student Council is receiving a letter from an elite Greek honorary fraternity inviting him to join and then finding the envelope is addressed to "Occupant."

HELL to a physics major is walking into his first laboratory class and being handed an apple and told to go sit under a tree in the quadrangle.

HELL to a physical education major is having biceps two inches larger than her boyfriend's.

HELL to a psychology major is meeting someone who thinks the auto-kinetic effect has to do with moving cars.

HELL to a Buildings and Grounds attendant is having to stand guard over the wet cement.

HELL to a biology major is finding a copy of "The Case of the Amorphous Amoeba" in the library to use for a term paper and discovering at home that it's a novel by Erle Stanley Gardner.

HELL to a philosophy major is being.

HELL to the Assistant to the Registrar is an infinite line of student waiting to change their class schedule.

HELL to a chemistry major is finally identifying the horrible smell that filled the lab as his lab partner and not his experiment.

HELL to a college alumnus is returning to the campus and being unable to find any of the buildings to which he has been contributing the past twenty years.

HELL to a college president is a bunch of naked men and women engulfed by flames.

Ediletters

Dear Editor,

My letter is in response to the student's letter on August 30 complaining of the new food management company in the quad.

I was president of the RHA during the 1978-79 school year and one of my many tasks was assisting in the decision for a new food program. Mr. Zink of Aux. Ent. was asked to look into alternate management companies to run the food program here at Rolla. This entailed a detailed study of various programs available and was finally narrowed down to 4 companies which submitted a lowest-best bid for the entire food service. Please make note of the BEST portion of the bid, which describes food quality.

Upon listening to presentations by each company, Mr. Zink, a university official, another student, and I traveled to a few neighboring schools to actually make 'surprise' visits on programs run by American Food Management. (They received the contract and now run the program). Each place we visited; Lincoln University, NMSU, and Columbia University, seemed to be run very efficiently and most of the students seemed satisfied with the service provided.

Now let me remind you that this program was adopted as a cost savings program not for Mr. Zink to pocket a profit, but to save you, the student, money. So, with the contract in their pocket AFM came to Rolla this summer and took over our whole contract food line and is trying to provide the students with acceptable service.

With this point in mind let me comment to the students and their gripes. Each house in the RHA has a food committee rep. that attends a meeting every 2 weeks to express dislikes of the students to the supervisor of Rayl Dining Hall. As in the past there is a lack of communications and these people

must get together to formulate specific gripes so the management will listen. The funny thing is they will listen! If you have problems in getting results from complaints have your food committee take written specific complaints to Mr. Zink himself. I have found

in the past that he is most willing to listen to intelligent complaints from the RHA. After all, he is paying big money to this management company to do a good job and if there's one thing he's concerned about...it's money.

Don Guenther

45240

Pat's Facts

By JERRY WEILAND

The UMR St. Pat's Board announces their second annual SEPTEMBERFEEST featuring the music of country and bluegrass guitarist Rodd Hogg. This year's festivities will be highlighted by a Frisbee contest with both distance and accuracy competition.

The event will be held out at Lions Club Park on September 21; beginning at 2:00 p.m. and lasting until 6:00 p.m. Admission for the day is a St.

Pat's SEPTEMBERFEEST button which may be purchased from any Board Rep. for \$1.50. The button entitles you to enjoy five different brands of your favorite beverage as well as the good time, get down music of Rodd Hogg. So get your button and we'll see you there. With only 189 days left, WHY WAIT TILL MARCH?

And don't forget to get your St. Pat's sweatshirt design contest entries in to a Board Rep. by this coming Monday, Sept. 10.

QUALITY CLEANERS

EXPERT CLEANING REASONABLY PRICED

108 W. 7th St. Rolla, Mo. 65401

Are You A Unitarian-Universalist Without Knowing It?

Do you feel out-of-step when it comes to religion? Do you have difficulty accepting those "absolute truths" and rigid dogmas you were told you had to believe? Are you tired of being made to feel guilty because you have honest doubts?

You could be a Unitarian-Universalist...and not even know it!

U-Us dislike having their philosophical and religious ideas spoon-fed to them.

U-Us stress the essential goodness in people, not some inherent sinfulness.

U-Us concentrate on the here-and-now, rather than a hereafter.

Unitarian-Universalists believe in a rational, reasonable approach to religion, utilizing scientific insights as well as the best ideas and ideals of past and present thinkers.

Would you like to know more about a religion that could attract:

Thomas Jefferson, Isaac Newton, Charles Darwin, Florence Nightingale, Oliver Wendell Holmes, Albert Schweitzer, Henry Thoreau, Susan B. Anthony, Ralph Waldo Emerson, Elliot Richardson, Adlai Stevenson, Linus Pauling and many others?

If you are interested, call 364-1610 or 364-7608.

"Coldest beer in town bar none"
Competitive prices on 1/2 bbl.

Beverage Mart

1021 Kingshighway-Next to Pizza Hut

7:00 a.m. to Midnight

Discount Prices on Party Booze

Open House

For Graduating Engineering and Science Majors*

September 11 — University Center
St. Pat's Ballroom

1-6 p.m. — Open House

7 p.m. — Presentation, Question & Answer Period

* Engineering — EE, IE, ME, ChemE, Civil, Architectural, Manufacturing. Other — Computer Science, Physics, Engineering Physics, Geophysics, Math, Engineering Science, Materials Science

Texas Instruments will host an open house on the above date and location for seniors and graduate students who are interested in learning more about opportunities in technical careers at TI.

Representatives from TI organizations, who will be recruiting here later this fall and spring, will be present to describe their organizations' activities and opportunities and answer questions you may have.

Students are invited to drop in any time from 1-6 p.m. for an informal discussion with our representatives.

A general presentation on TI will be given at 7 p.m. with representatives available for questions afterward.



TEXAS INSTRUMENTS
INCORPORATED

An equal opportunity employer M/F

Ground waves

Peace and love groovy people. And like welcome back, or like just plain welcome, for another really far out trip through the corridors of knowledge to the canyons of your mind. To help you along on your trip, KMNR will once again have the best progressive music wafting along on the breezes powered by the enormous 300 watts supplied by the transmitter.

Among special programming this year will be "Blues for Rolla" hosted by Scott Deranged and Randy Yakey on alternating Sundays at 6 p.m. Randy will also be bringing four hours of New Wave Music every Monday evening beginning at 7 p.m. Tuesdays at 10 p.m. will be an artist feature show with a different host and artist each week. Uncle Dave is back on Wednesday afternoons at 3 p.m. in the "Bluegrass Variety Show" and the Official Ward Silver is back, this year helped

(cont. on next page)

“Only Glass Big Enough”



Godfather's
got TWO offers
you can't refuse!



① This 32 oz.
Glass Filled
With COKE.

*WHEN YOU BUY A MEDIUM
OR LARGE GODFATHER'S PIZZA.

ONLY
99¢

② FREE COKE
FOR A YEAR.

Just bring in the 32 oz. glass and we'll fill it up FREE
everytime you order a Godfather's Pizza. Not once, but
all year long. But hurry. Quantities are limited. Offer
ends when supply of glasses is exhausted.

Godfather's Pizza
1140 FORUM PLAZA ROLLA 364-3214

Newman's Fr. Jim Breaks Foot

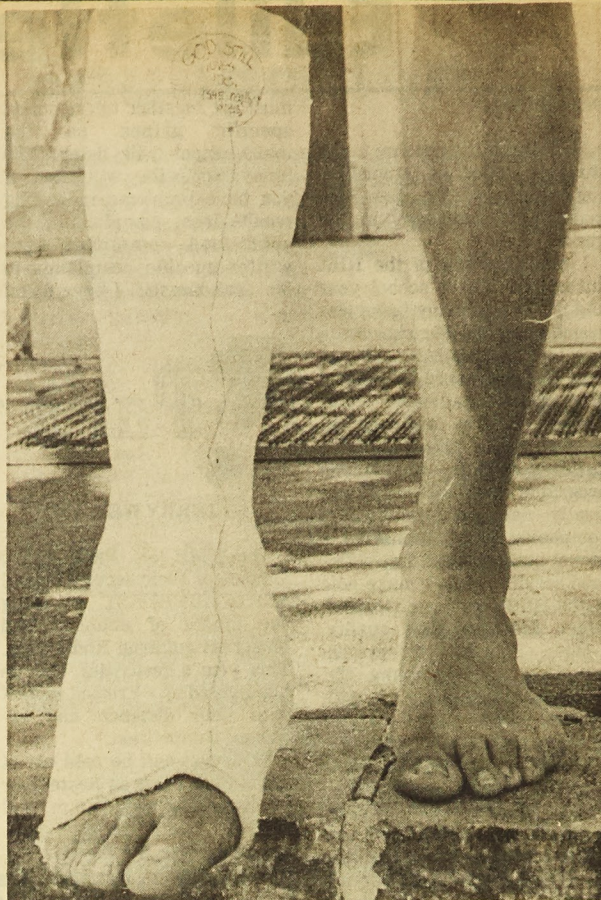
Father James Wieberg (just Jim to his friends) is a very busy fellow. Besides being the Newman chaplain, he is also associate pastor of the St. Patrick's Parish.

His responsibilities at Newman include counseling, overseeing student-directed programs, and celebrating Mass.

He is also co-director of United Ministries in Higher Education at UMR, a member of the Board of Missouri Catholic Campus Ministers Assn., and is the International Chaplain to the Phi Kappa Theta Fraternity.

Father Jim apparently became too aggressive in one of the volleyball matches a week ago and broke his foot.

Things really began to look up, however, after last week's Rolla-wide celebration of "Be Nice to Fr. Jim" day. The cast (shown to the right) will remain on his right leg for about four more weeks.



Your Legal Rights

Tom rented an apartment from Mr. Louis. The written lease made no reference to the right of the landlord to enter the premises during the term of the lease. Shortly before the lease was to expire, and while Tom was at work, Mr. Louis used his passkey to enter the apartment to show it to a prospective tenant. Tom had not given his permission for Louis to enter the apartment. This prospective tenant accidentally slipped and broke a vase owned by Tom. The vase was worth \$3,000. Tom sued Louis for the value of the broken vase.

Louis contended that there was no negligence on his part and that he had a right to enter the apartment since he owned it. Should Tom win the lawsuit?

DECISION

Yes. The court held that the entering of the apartment by Louis was illegal. In the ab-

sence of an agreement in the lease, the landlord warrants that the tenant will have exclusive possession of the premises for the lease period. Louis in this case was trespassing and is responsible for the broken vase.

Fall Film Series

Tonight at 7:30 p.m. in the ME Auditorium for Harold and Maude, starring Bud Card and Ruth Gordon. Cost is \$2.00 at the door. For additional information contact Norma Fleming at the UMR Extension Division.

Groundwaves

(cont. from page 7)

out by Dave Strayhorn, with "Improvisations." On Thursday night at 10 p.m. all of the special shows above, along with the "Rolling Bozo Revue Presents", which can be heard Monday night at midnight, will feature albums in their entirety. As things get back to normal we should know more than three hours in advance what the albums will be. So watch this column for upcoming events on KMNZ, 89.7 FM Stereo.

Finally, in an effort to introduce more of the folks from the station to you, "Groundwaves" will be written by someone different each week. We all think it is a good idea. We hope you'll agree.

The "Rolling Bozo Revue" on Monday will feature "Baron von Tollbooth and the Chrom Nun" by Grace Slick, Paul Kantner and Dave Frieberg.

Timothy Leary is not dead; he's just in jail...again.

J.R.

**SHOTOKAN
KARATE**
of Rolla
364-7428

G&D STEAK HOUSE		
Open 7 days	11 a.m.-9 p.m.	Forum Plaza
6 Oz. Ribeye STEAK	8 Oz. Chuck STEAK	8 Oz. Fillet STEAK
2.50	2.20	3.10
Includes Baked Potato or French Fries & Texas Toast. Free Ice Cream.		

Brighten up your pad
with a poster!

Buy 4 Get 1 FREE!

We also carry...books, cards, music, gifts
Tolkien T-shirts, Calendars

Our records on KCLU FM/AM
Sun. mornings 8:30

Logos
book store

708 Pine Rolla
364-1822

Open Mon.-Fri.
9 a.m.-5:30 p.m.
Sat. 9 a.m.-5 p.m.

Brano's
MONDAY NIGHT FOOTBALL
ON BIG SCREEN
Dancing Thurs. & Sat.
9:30 to 1:00 341-2110

3
Carnations
\$1.00

Cash & Carry With This Coupon

Sunny wall

1107 Pine
Rolla, MO
364-3161

WANTED
Part-time sales help
Sound Center
Apply in person

**1 HORSE
BOOK SHOP**

Used paper backs, comics, records & tapes
Bought, sold & traded

207 W. 11th
1/2 block east of Univ.
Center Parking Lot
364-2244

Alex Pizza Palace
122 W. 8th Street Rolla

NOW OPEN FOR LUNCH 11 A.M.-2 P.M.

•SANDWICHES •SALADS •SPAGHETTI
•BEER •GYROS SANDWICH

For FREE DELIVERY of Pizzas
364-2669 or 364-9878

BEER TALK

According to Chinese legend, its creation was decreed by heaven. Egyptian mythology credits the gods Isis and Osiris as having been the first to make it. An Assyrian tablet of 2000 B.C. relates that it was one of the provisions taken aboard the Ark. And in the University of Pennsylvania Museum, a slender golden straw on display is said to have been used by Queen Shubad of Mesopotamia to sip it in royal celebration.

The subject, of course, is beer — one of mankind's oldest occupations and enjoyments.

But what is this mysterious brew? What had Isis wrought? What goes into this (usually) amber liquid which today follows only coffee, soft drinks and milk in the taste preference of the American adult? The fact is that despite the popularity of this ancient beverage — more than 160 million barrels of beer were consumed in the United States in 1978 — few beer buffs know much about its origins or the art of brewing.

It is believed that contrary to the usual course of cultural migration, the consumption of beer and the knowledge of brewing were not transmitted from one race or nation to another. Brewing developed independently among several, separate agricultural peoples, beer being made from practically any grain but primarily barley.

By the time Alexander the Great was moving from Macedonia to the world, brewing had developed among most peoples on the continents of Europe, Asia and Africa. Brewing expanded even further through the Middle Ages, but beers of ancient times and even of the Middle Ages were not like beers of today. Generally a sweetish beverage then, beer was often mixed with pungent spices to make it more palatable.

But perhaps the biggest advance in the brewing process was the introduction into the brew of hops, an ingredient that added aroma to beer and also served as a preservative. Hops were used first in brewing by the Finns of ancient times, but were not used again until the ninth century.

Lagered (aged) beer, which originated in Germany in the eighth century, was a brew that was allowed to ferment, and ripen, at low temperatures, brought to a mellow maturity and enlivened with natural carbonation. Originally, because of the cold temperatures needed, it had to be brewed in the winter and stored in caves.

While Germans had been using hops in brewing seven centuries before most other nations, England followed suit in the 1500s. Enormous quantities of hopped English beer were exported to the continent, especially France.

Ale, however, which was believed to have originated in England, was still brewed without hops. This was at a time when approximately 13 million barrels of beer were consumed annually in England, which had a population of just over five million.

The colonization of America

developed new markets and gave marked increase to the production of beer in England but within a century, Germany and the Netherlands superseded England to a great extent as the prime producers of the world's beer.

Continued Next Week

Winter Shoes & Boots
NOW
ARRIVING

We have a large selection of famous name brand boots & shoes

\$1 OFF COUPON

Any Pr. of Shoes. J & L Shoe Outlet
Expires Sept. 13, 1979

Boots \$12-\$18; Shoes \$7-\$8

J & L SHOE OUTLET

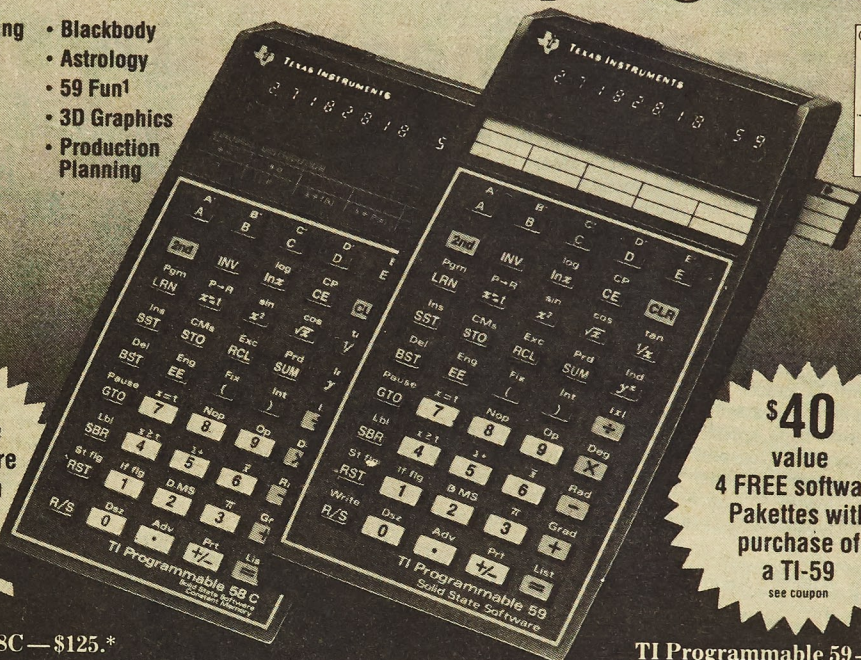
110 W. 7th St. Rolla 364-6340

Choose up to 4 of these software packages...FREE!

- Electronic Engineering
- Civil Engineering
- Mathematics
- Lab Chemistry¹
- Marketing/Sales
- Fluid Dynamics
- Statistical Testing
- Securities
- Oil/Gas/Energy
- Printer Utility²
- Programming Aids²
- Blackbody
- Astrology
- 59 Fun¹
- 3D Graphics
- Production Planning

\$20 value
2 FREE software
Pakettes with
purchase of
a TI-58C
see coupon

TI Programmable 58C — \$125.*



\$40 value
4 FREE software
Pakettes with
purchase of
a TI-59
see coupon

TI Programmable 59 — \$300.*

Free software from Texas Instruments can help make this semester a little easier.

A special offer if you act now! From August 15 to October 31, 1979... that's your special opportunity to purchase one of the world's most advanced programmable calculators... and get up to \$40* worth of free software Specialty Pakettes in your choice of 16 different application areas.

TI's Specialty Pakettes are a new way to expand the usefulness of your TI Programmable 58C or 59. The convenient notebook format includes complete step-by-step program listings, application notes, and sample programs. Just enter the program you need and you can put it to work right away.[†]

Four FREE SPECIALTY PAKETTES with the purchase of a TI Programmable 59. A \$40* value. Two FREE SPECIALTY PAKETTES with the purchase of a TI Programmable 58C. A \$20* value.

Both the TI Programmable 58C and 59 feature TI's exclusive Solid State Software™ plug-in library modules. Each 5,000-step module contains a wide selection of prerecorded programs. Optional library modules are available in a variety of fields, including engineering, science, statistics, and business.

The TI Programmable 59 has up to 960 program steps or up to 100 memories. Magnetic card read/write capability lets you record your own custom programs, or programs from your Specialty Pakettes. \$300.*

The TI Programmable 58C features up to 480 program steps or up to 60 memories.



* U.S. suggested retail price.
† Specialty Pakettes do not require plug-in module or magnetic cards.
‡ TI Programmable 59 required.
§ TI Programmable 59 with PC-100C or PC-100A printer/plotter required.

And it has TI's Constant Memory™ feature that retains data and program information even when the calculator is turned off. \$125*.

Act now!

Visit your college bookstore or other TI retailer for more information, and let him help you select the programmable that's right for you. Use the coupon below to take advantage of this special limited time offer.

Use this coupon to obtain your FREE Specialty Pakettes.

- ☐ I've bought my TI-58C, send me these 2 free Pakettes.
☐ I've bought my TI-59, send me these 4 free Pakettes.

1. _____
2. _____

Send to: Texas Instruments, PO Box 53,
Lubbock, TX 79408.

Texas Instruments will fulfill the offer you have selected above when you: (1) return this completed coupon, including serial number, (2) along with your completed customer information card (packed in box), and (3) a dated copy of proof of your purchase verifying purchase of a TI Programmable 58C or 59 (whichever is applicable) between August 15 and October 31, 1979. Items must be postmarked on or before November 7, 1979, to qualify for this special offer.

3. _____
4. _____
Name _____
Address _____
City _____ State _____ Zip _____
Calculator Serial Number (from back of calculator): _____

Please allow 30 days for delivery. Offer void where prohibited by law. Offer good in U.S. only.

Texas Instruments technology — bringing affordable electronics to your fingertips.

TEXAS INSTRUMENTS
INCORPORATED

Sports

Paris Ties UMR Record - Scores Three Touchdowns

Miner's Romp, 43-0

By Ed Randall

Jim Lee and Brian Paris teamed up for over 200 yards rushing and led the Miners to a 43-0 victory over William Penn. Paris scored on a 2 yard run the first time the Miners had possession of the ball. After this the pace was set and the Statesmen, a very young club, couldn't stay in stride with the Miners.

Paris tied a UMR record of scoring three touchdowns in a single game. He carried the ball 14 times for 93 yards. Jim Lee received the honors of gaining most yards in the game, he had

119 yards Lee scored two touchdowns.

Although the Miners offensive unit played well, Coach Finley feels there are a few rough edges that need to be worked on. Finley stated that the pass blocking was good, this gave Jeff Walthers time to set up to throw the pass. Walthers completed 5 of 14 passes for a total of 73 yards. There were a few routine catches that were missed which shouldn't have been dropped. Perry Harris had beaten his man and bobbled one in the end zone. It is one of those

things you expect in the first game.

All of the Miners second unit played some the first half. The Miners had a 15-0 lead at halftime. After halftime Lee ran 22 yards on the Miners second play to score. Later in the third quarter Lee ran 29 yards for another touchdown bringing the tally to 29-0.

During the fourth quarter Paris ran 30 yards for his third touchdown. Then Dennis Pirkle, freshman quarterback, bolted 8 yards to give the Miners a 43-0 victory score.

Saturday, Sept. 8 at 1:30 the Miners will play host to Missouri Valley. UMR has lost the last seven out of eight to Mo. Valley, but the two rivals are tied at eight a-piece since the series began.

Mo. Valley was ranked number nine in a pre-season NAIA poll. Coach Gibber with Mo. Valley has recorded better than an eighty percent win record, during his reign. They are the kind of team who plays even harder when the score is not in their favor. Mo. Valley beat the Miners last year 14-6 in a very tight game.

Soccer Becomes Varsity Sport

By GERRY SCHNITZLER

Soccer has become a varsity sport this year at UMR, and the possibility of a future MIAA Conference in soccer may soon be a reality. The International Soccer Club has been active at UMR the last several years, and many were pleasantly surprised to learn that UMR is an NCAA division II team this year. The step is but the start of a long walk (or perhaps, sprint) involving the organization and refinement of soccer at UMR.

The coach of the team this year is Lon Pearson. Professor Pearson is an associate prof. of Spanish at UMR. He played on a private soccer club's squad at UCLA while obtaining his Ph.D. and was commissioner of the American Youth Soccer Organization in Los Angeles. Coach Pearson has a lot of enthusiasm for his job and hopes to have, "at least a .500 season."

The team itself is comprised mainly of players from the St. Louis area, but there are

players from around the state as well. Coach Pearson has been impressed by the speed and ball control of his players thus far, and he hopes to have a fast, running attack. Right now there appears to be a good many sharp forwards and a solid defense but the goalie position is still in question. Tryouts for the team were August 20-21, and a final roster is not available as yet because cuts aren't over yet.

The contrast between the

previous Club Soccer and the NCAA rules is most obvious in the requirements concerning players and not the game itself. Players must be undergrads at UMR and have passed a minimum of 24 credit hours through the last two semesters. Transfer students must "sit out" a year before playing, but can play another year as a consequence. Practice has become a daily routine now, governed by training rules. Another consequence of NCAA affiliation is the fact the players no longer carry the financial burden because funding is made possible through UMR. Since this is the first year UMR has a varsity soccer team, scheduling has been difficult to say the least. Unless an MIAA soccer conference comes into being, NCAA competition in Division II will be hard to achieve. The teams are geographically too far away to play and understandably more skilled. These first years will be

(cont. on page 11)

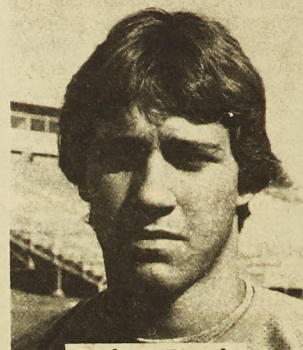


Some members of the Soccer team practice for their opener this Saturday against Missouri Southern at 1:30.

(Photo by Farley)

Miner Soccer Schedule

Sept. 8	Missouri Southern	Joplin	1:30
Sept. 18	NEMO	Rolla	4:30
Sept. 21	Logan College	St. Louis	4:00
Sept. 22	Belleville Area J.C.	Belleville	1:00
Sept. 29	SEMO	Rolla	1:00
Sept. 30	Forest Park C.C.	Rolla	2:30
Oct. 5	Central Mo. State	Rolla	5:00
Oct. 13	NEMO	Kirksville	1:30
Oct. 21	Florissant Valley C.C.	Flo. Valley	12:00
Oct. 27	Meramac C.C.	St. Louis	2:00
Nov. 11	Logan College	Rolla	12:00
Nov. 17	SEMO	Springfield	1:00



Brian Paris

M-Club Athlete

Brian Paris, a sophomore running back, was selected as the M-Club Athlete of the Week because of his excellent performance against the William Penn Statesmen. Brian scored three touchdowns in the Miners 43-0 victory. He rushed for 93 yards and caught a 38 yard touchdown pass.

The coaches also singled out Jim Lee for his fine offensive effort, rushing for 119 yards on 16 carries and Kevin Wolf who had a great night on defense.

11 a.m. to 1 p.m. Fri. & Sat.
11 a.m. to 12 p.m. Mon.-Thurs.
Pryor's Fresh Pizza
Hwy. 63 S. Rolla, MO
Carry out 15 min. 364-1293

WANTED
Part-time sales help
Sound Center
Apply in person

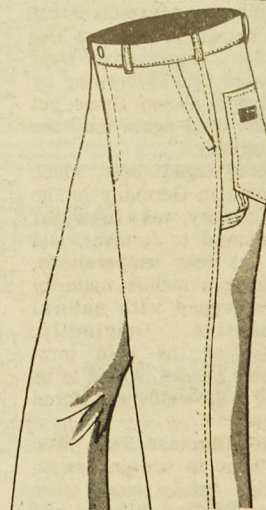
**PAINTERS
PANT**

...Bgosh

Bgosh

OshkoshBgosh.

Authentic workman's style
dungarees.
Hammer loop and plier
pocket.
Who could ask for more?



Russell's Town & College Shop 713 Pine • Rolla, Mo. • 364-2323

Russell's

Rugby Season Opens Sunday

By JERRY WIELAND

The UMR Rugby Football Club has begun practices for the 1979-80 season and they would like to encourage anyone interested, whether or not they have had any previous experience to come on out and try out. Practices are on Tuesday, Wednesday and Thursday at 4:30 p.m. at the Intramural Fields.

This coming Sunday the UMR R.F.C. open their 1979 Fall season when they take on one of

St. Louis' finest clubs, the Ramblers R.F.C. at 1:30 at Lions Club Park.

This year's newly elected officers are: President - Ed Latimer; Vice President - Bob Lyle; Treasurer - Joe Gabris and Secretary - Wayne V. Schmidt. This year's team captain will be Mike Drew, the scrum captain is Joe Gabris, and the backs captain is Ed Latimer. Everyone is invited to come out Sunday and have some liquid anesthesia and watch our leather balls.



1st Row: W. Schmidt, J. Schneider, F. Murphy, S. Emmendorfer, J. Swenson, M. Drew, M. Eversman, B. Lyle, E. Latimer. 2nd Row: J. Gabris, J. Trapani, D. Nadel, L. Kimmel, R. Harvath, L. Wetzel, J. Welland, M. Tille, G. Vermette, B. Mandey, Boumis, G. Wehking, M. Schafer, D. Roberts, Mo, B. Feh, D. Weaver.

Miner Rugby Schedule

September 9	Sunday	Ramblers RFC (St. Louis)	HOME	1:30
September 15	Saturday	University of Missouri- Columbia	HOME	1:30
September 29	Saturday	Black Sheep RFC (St. Louis)	HOME	1:00
October 6	Saturday	Southeast Missouri State University	Cape Girardeau	1:00
October 13	Saturday	Royals RFC (St. Louis)	HOME	1:00
October 20-21	Sat. & Sun.	HOARFU	Kansas City	10:00
October 27	Saturday	University of Missouri- Columbia	Columbia	1:00
November 3	Saturday	Rockhurst College	Kansas City	1:00
November 10	Saturday	Sunday Morning RFC (St. Louis)	HOME	1:00
November 17	Saturday	Norsemen RFC (St. Louis)	St. Louis	1:00
November 24	Saturday	Sunday Morning RFC (St. Louis)	St. Louis	1:30

Miner Football Schedule

+Conference Games				
Sept. 8	MO Valley	Rolla	1:30	
Sept. 15	OPEN			
Sept. 22	Kansas State College	Away	7:30	
Sept. 29	Evangel	Away	1:30	
Oct. 6	+Southeast MO State	Away	1:30	
Oct. 13	+Northeast MO State (HOMECOMING)	Home	1:30	
Oct. 20	+Southwest MO State	Away	1:30	
Oct. 27	+Northwest MO state	Rolla	1:30	
Nov. 3	Central Methodist	Rolla	1:30	
Nov. 10	+Lincoln	Away	1:30	
Nov. 17	+Central MO State	Rolla	1:30	

M-Club Will Present 12th Man Award

M-Club Release

The M-Club will again present the 12th Man Award this year. The award will be given to the club or organization that best supports the Miner football team at their home games.

This award was originated at Texas A & M University about 75 years ago. The star player was hurt and since they only had 11 men on the team a fan was brought in to play. The fans then started to really support the team and they went on to win the game in a come-from-behind victory.

After this incident the award was started at Texas A & M. It is to recognize the fans who are ready to support their team at any cost.

The award was started at UMR in 1975 to recognize the campus organization that shows the most spirit.

The clubs will be judged on the following points:

1. Percent attendance of the club and the group identification. This second point is very important.

2. Cheers which have been organized. It is better to have one cheer than 2 or 3 cheers

which are done all at once.

3. Noise makers and the originality of the cheers. Obscene cheers will cause a club to lose points.

4. Visual effects such as signs and banners or anything which shows enthusiasm for the team.

5. Finally, the percentage of Homecoming buttons bought. This is also done on a percentage basis.

There will be 6 judges who will be announced before the games.

The first home game will be this Saturday. Get your club out and support the Miners and show your enthusiasm.

Soccer

(cont. from page 10)

building and learning years for UMR varsity soccer, looking toward the future.

Coach Pearson, a former Club Soccer Advisor, has expressed

his appreciation for student support of UMR soccer in the past and hopes interest will grow. Attendance is free of charge and bleachers are at the field. The soccer team will play on the baseball outfield, corner of 63 and Kingshighway.

HOOK AUTO SUPPLY

Auto Parts-Accessories
Speed Equipment

Discount Prices to All

OPEN SUNDAYS 10 AM-3 PM

513 Hwy. 63 South Rolla 364-5252

FORUM II Hairstyling

Men's & Women's
Styling

Long or Short
We give the look you want
with complete control.

Missouri Hairstyling
Champion 1973, 1974, 1975,
and 1978



For Appointment
341-2668

Tues.-Fri. 9-5:30
Sat. 8-4:00

1431 Hauck Drive Rolla, MO



Sports Uniforms
& Equipment

OFFICIAL MINER T-SHIRTS
& JERSEYS

FRATERNITY JERSEYS

HOUSE JERSEYS

SILK SCREENED SHIRTS

TROPHIES & ENGRAVING
7¢ Per Letter

ALL SWIMWEAR 1/2 PRICE

SPORT SHOES

Jogging, Training, Basketball, Football,
Tennis

FRATERNITY PRICES

PONY SHOES 1/2 PRICE

Under New Ownership

KEY

SPORT
shop

1003 PINE
ROLLA
364-5495

Injury in UMR Intramurals

By MIKE BLANKE

With the start of a new Intramural Sports season here at UMR, the doctors and nurses serving the student body at the University Infirmary shall once again have to be on their toes to meet and treat a host of athletic injuries. Mrs. Jessie Nations, head RN at the treatment center on State Street (located between TKE fraternity and the Student Activities building), leads a band of five nurses and three rotating doctors and exclaims, "I wish we didn't have intramural sports — sometimes they just try to kill each other out there." The majority of injuries are of the mashed finger or sprained ankle type, but occasionally a classic appears. "A few years ago," reports Mrs. Nations, "one football contest got so rough that an innocent bystander watching the game from the sidelines was thrown against a parked automobile and (he) suffered a ruptured spleen."

Free medical treatment is available at the Infirmary for UMR students who have paid their student activities fees for the 1979 Fall semester. The Infirmary may be called (341-4284) or visited 24 hours a day, and a doctor is always on call. Beds are available for overnight stays and in extreme cases, and x-rays or physical therapy treatments can be enjoyed free of charge. John Belich, the athletic trainer who resides at the UMR multipurpose building, is the man who administers the physical therapy treatments. He is beginning his third year at that position, he's an "ice man," and he's doing a great job. John suggests running,

weightlifting, and flexibility exercises to combat athletic injuries. "Your attitude towards the intramural contest may be a factor in the occurrence of bodily damage," he says. He also believes that

intramurals should be a mixture of "fun and play and tough competition." The varsity squads are the real serious sports teams on campus — they're out there to win, and as one well-known varsity athlete

at UMR recently commented, "This school would be great, it would really be a lot tighter if varsity sports were supported as much as the intramural sports are." How true. We all need somebody to lean on.

WANTED
Part-time sales help
Sound Center
Apply in person

Sports Fans

**I Bet
You
Didn't
Know**



Brought to you by
Jim Wood, C.L.U.

Here's a baseball riddle you can have some fun with. How can a team get three triples and three singles in one inning, and still not score a run? Answer: First two men triple and are out at the plate trying for an inside-the-park homer. Next man triples and stays on third. Next two men get infield singles with the runner holding third. Last man smacks a ground ball that hits runner going from first to second. Batter gets credit for a hit, but runner is out, making three triples, three singles, three outs, and no runs!

Here's a quote we saw recently that shows a reason why sports are so great. Coach Homer Smith once said, "The poorest boy can earn stardom—but the richest boy can't buy it."

Do you know who was the very first player in history to sign a contract for a salary of 100-thousand dollars or more a year? The first 100-thousand dollar player was baseball star Joe DiMaggio, who signed for that amount in 1949.

I bet you didn't know...that the UMR College Life agents have served Miners for a total of 30 years, Don Gibson 17 and Jim Wood 13. This means good service. See...

JIM WOOD, C.L.U.
364-8888

DON GIBSON, C.L.U.
364-5386

COLLEGE LIFE INSURANCE
213 Ramsey Building
8th & Rolla Streets



Open 1 p.m.-1:30 a.m. daily

Ladies Night Wednesday

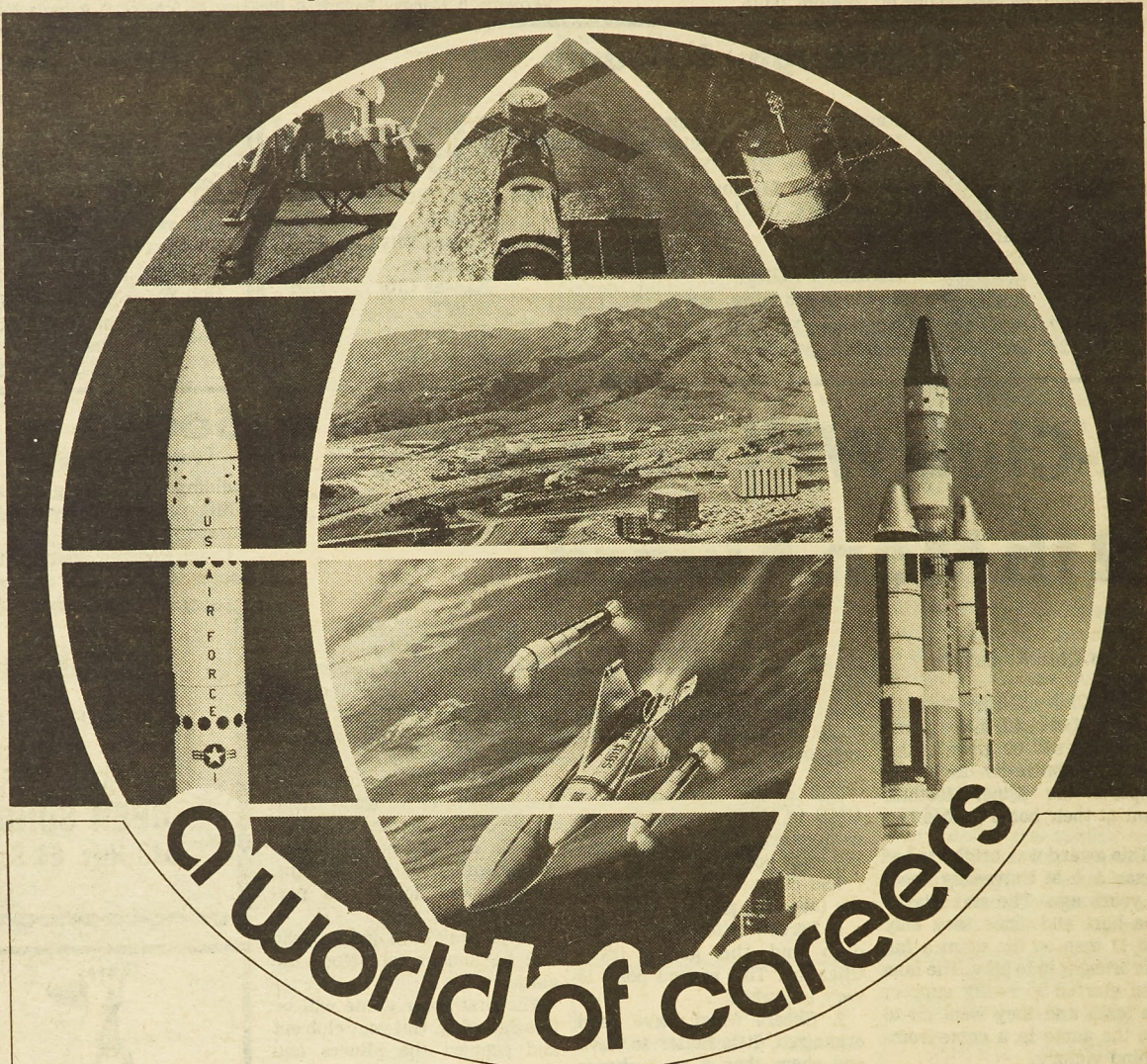
Busch on Tap

1107 Pine 364-4334

Rolla, Missouri

HOT SANDWICHES

1/2 PRICE DRAFT BEER



a world of careers

in aerospace awaits you at

MARTIN MARIETTA

**SEE OUR REPRESENTATIVE
ON CAMPUS Sept. 19**

Our Denver Division has many new opportunities awaiting recent college graduates. Major facilities are located at Denver, CO; New Orleans, LA; Santa Maria, CA. Currently there are 365 contracts that involve work in such exciting areas as Space Launch Systems, Defense Systems, Command and Information Systems, Payload Integration, Space Satellites, Solar Systems, Space Shuttle and the new generation Missile System.

Opportunities Now

Within these areas are many entry-level growth positions that offer practical experience in the advanced state of the engineering art. Such fields as •

Software • Test • Propulsion • Thermophysics • Structures • Mechanisms • Dynamics • Stress • Materials • Mission Analysis • Product Development • Industrial Engineering • Logistics • Integration • Systems • Guidance & Control • RF Systems • Communications • Data Handling • Power Systems • Payloads & Sensors • Quality • Safety and Manufacturing.

Careers Begin Here

If you're considering a career in aerospace, you won't find the challenge greater nor the work more rewarding than at Martin Marietta.

In addition to job opportunity the com-

pany's comprehensive program of employee benefits has a financial value equivalent to approximately forty percent of the employee's income. Included are: Company-paid insurance, performance sharing plan, retirement plan, vacation, education reimbursement and long term disability plan.

Interested graduates please contact Martin Marietta Aerospace. Attn: College Relations, P.O. Box 179 (#D6310) Denver, CO 80201.

Martin Marietta is an Affirmative Action Employer actively seeking the Handicapped and Veterans. National Security regulations require United States Citizenship.