



17 Nov 1977

The Missouri Miner, November 17, 1977

Follow this and additional works at: https://scholarsmine.mst.edu/missouri_miner

These newspapers reflect the attitudes, perspectives, and beliefs of different times. Neither the library nor the university endorses the views expressed in these collections, some of which contain images and language which may be offensive to some readers.

Recommended Citation

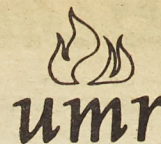
"The Missouri Miner, November 17, 1977" (1977). *The Missouri Miner Newspaper*. 2167.
https://scholarsmine.mst.edu/missouri_miner/2167

This Newspaper is brought to you for free and open access by Scholars' Mine. It has been accepted for inclusion in The Missouri Miner Newspaper by an authorized administrator of Scholars' Mine. This work is protected by U. S. Copyright Law. Unauthorized use including reproduction for redistribution requires the permission of the copyright holder. For more information, please contact scholarsmine@mst.edu.

The Missouri Miner

Official Publication of the Students of the

University of Missouri at Rolla



Thursday, November 17, 1977

Volume 64, Number 13

12 Pages

Crucial Game

Miners Go For MIAA Title

By BILL FRANK

This week, the final afternoon of action for regular season MIAA play, the only game of an interesting nature will be the clash between the 4-1-0 Bulldogs of Northeast Missouri State and the Miners of UMR at New Jackling Field at 1:30 p.m.

Saturday, in other action, Lincoln will host Southeast and Central will host SMS. Both home teams are expected to lose, so SMS and SEMO will finish tied in second place if the Miners lose. The Miners would then drop to third. If they win, the Miners would share the conference championship with

SMS and SEMO and Kirksville would drop to second place.

The Bulldogs bring with them the most devastating rushing attack in the MIAA. Led by Steve Powell, the number one rusher with over 1300 yards, Northeast has averaged over 250 yards per game in offense on the ground.

Last week the Bulldogs came back from a 19-14 deficit at halftime against Northwest to win big, 31-19.

Northeast's only visible weakness is their passing attack, which is less than awesome being second worse only to Southeast. However, their defense more than makes up for that.

The Miners are not to be intimidated, as they plan to rely on their league-leading passing attack. Mastered by the number one passer in the MIAA, Kenny Vaughn, and assisted by the best tight end in the conference, Andy Cox, the Miners have averaged 186 yards per game in the air. Terry Ryan has 1267 yards in 10 games, second only to Powell of Northeast, is an obvious threat also. Craig Heath is leading the league in interceptions, and he is third in punt returns and seventh in kickoff returns.

The big story this year with the Miners has got to be the defense. They have made the big plays when needed, and

done their share of scoring and helping to give the offense good field position.

In other action last week, Southwest came back from trailing early to crush Lincoln, 41-20. The Bears were led by Daniels on the ground and quarterback Mitch Ware in the air.

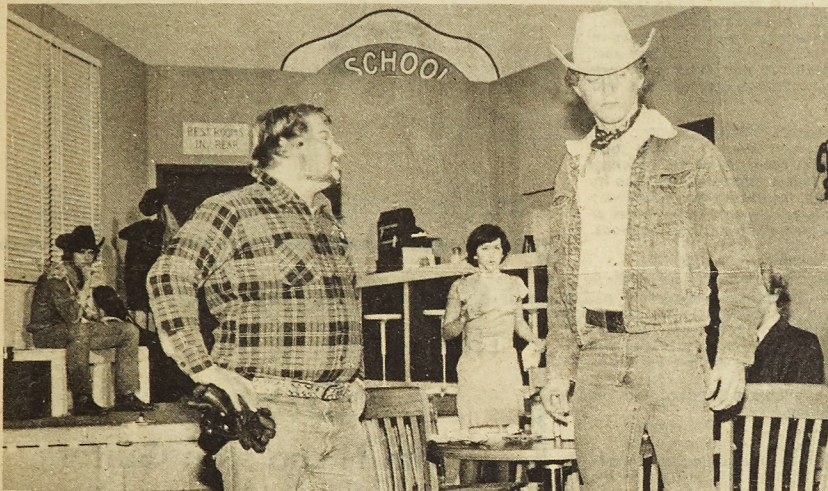
When the Miners battle Northeast for the conference championship Saturday, for the first time in 21 years, the standings will look like this:

CONFERENCE

Northeast	4	1	0
UMR	3	1	1
Southeast	3	1	1
Southwest	3	1	1
Northwest	2	3	1
Central	1	4	0
Lincoln	0	5	0

OVERALL

Northeast	8	2	0
UMR	6	3	1
Southeast	6	3	1
Southwest	5	2	1
Northwest	5	4	1
Central	2	7	0
Lincoln	0	10	0



UMR's Theater Guild performing "Bus Stop." The play will present its 3rd and 4th performances Friday and Saturday, November 18 and 19. Ticket's are available at the door.

(Photo by Burford).

"Bus Stop" A Success

By LINDA PONZER

Bus Stop, a three act Romance written by William Inge and directed by Duane Marble opened to a full audience last Friday night. The play, presented by UMR's Theatre Guild is held in St. Pat's Ballroom. The play will be presented again on November 18 and 19 at 8:00 p.m.

The play takes place in a street corner restaurant in a small town about thirty miles west of KC. The time is set at late evening sometime in the not so distant past.

The characters include Elma Duckworth; a waitress, Grace Hoyland; owner of the restaurant, Will Masters; the sheriff, Cherie; a chateause, Dr. Gerals Lyman; a former

college professor, Carl; a bus driver, Virgil Blessing; a ranch hand and Bo Decker; a young rancher and cowboy.

Act one opens on Elma and Grace (played by Sherri Hopkins and Renee Miller) talking over bad times and remarking about the extremely bad weather they are having. The sheriff, Will Masters (played by Richard B. McDonald) walks in carrying the news that tonight's bus out of KC will be held over at the restaurant till the road is cleared. From here the play takes off and the audience becomes wrapped up in the action of it.

The main reason for any trouble at all is the apparent kidnapping of Cherie (played by

Cindy Callahan) by the ram-bunctious rancher Bo Decker (played by Tom Briscoe). Cherie asks Will to protect her from Bo and to help her get away from him. Virgil, (played by Tom Tanner) is a good friend of Bo's, who helps keep Bo in line. Though it seems like nothing will stop Bo in his plans to marry Cherie, that is until Will comes along.

The main plot concerns Bo and Cherie, but there are other involvements in the play. Grace develops a headache at the end of Act One and Carl (played by Bob Ruzensky) decides to go for a walk, despite the sub-zero weather. They each reappear later smiling and sharing some very obvious secret. Their bubble is popped when Will asks why Carl's boots where seen beneath Graces window.

Also, the good Dr. Gerald Lyman (played by Stan Hadley) shows some interest in the pretty, young waitress-Elma. Come see what develops in this situation. Tickets will be available at the door.

The MISSOURI MINER will publish its First Annual Thanksgiving Issue. Coming out on Monday, November 21, it will be a dedication to the ideal of giving of thanks for that which we have received.

University Day

By ED LATIMER

This Saturday, November 19, the University of Missouri-Rolla will hold its annual University Day. On University Day, UMR invites prospective high school and junior college students, along with their parents, teachers, and counselors to come look at the campus to familiarize themselves with the various programs offered and to meet some of the faculty and students.

The day's activities begin at 8 a.m. with registration at the University Center. Faculty members and administrative department members, along with volunteering, students will answer general questions there about Rolla's educational opportunities, campus life, and extracurricular organizations on campus.

From 9 a.m.-1 p.m., all the

departments will hold an open house and present guided tours through the department. UMR faculty and students will answer specific questions about the types of programs offered. Most departments will set up exhibits using some of their instruments and machines to demonstrate engineering and or scientific principles involved in the curriculum. Some of the better exhibits are: computer games, metal casting demonstration, lasers, flight and driving stimulators, wind power display, solar energy display, various chemical reactions, etc.

Lunch will be served to visitors at the University Center between 11:30 and 1:00. The guests are also invited to watch the Miners take on the Northeast Missouri State Bulldogs in what will be the conference title game.

- 8 a.m.-noon.....Registration
- 8 a.m.-1 p.m.....Advisement (academic programs student activities, admissions, housing)
- 8 a.m.-1 p.m....Guided Campus Tours
- 9 a.m.-1 p.m....Campus Open House
- 11:30 a.m.-1 p.m....Lunch
- 1:30 p.m....Football Game — Miners vs. Northeast Missouri State University

Bullboard

Notices to appear in the Bullboard section should be typed and deposited in the north door of the Miner office by 9:00 p.m. Monday. This will assure publication in the next edition

MISSOURI MINER

Thursday, November 17, 1977

Page 2

SHORT BREAK

The next regular meeting of the MISSOURI MINER will be Monday, November 28. The next regular issue will be Thursday, December 1. All articles and photos for the 12-1-77 issue should be into the MINER office by 11-28-77.

MISSOURI GRANT CHECKS

Missouri Grant checks are still available in the Cashier's Office, basement of Parker Hall. All students having Missouri Grants are requested to pick them up prior to November 30, 1977. All unclaimed Grant checks will be returned to the State.

CAN YOU PLAY CELLO?

The University Orchestras are in great need of low string players, specifically cellists. If you have Mondays 2:30-4:00 p.m. or Thursdays 7:15-9:00 p.m. open. Please contact Joel Kramme, G-8 Harris Hall (341-4185) to make arrangements for participation in either or both ensembles.

SME

There will be a Society of Mining Engineers meeting Nov. 19, at 7:30 p.m. in Room 107 of the Mining Building. The speaker will be Leo Bradshaw, a safety man from Cominco American. Refreshments will follow the meeting. Let's try and have as good a turnout as we did at the last meeting.

ATTENTION GRADUATING STUDENTS

Commencement announcements are now available in the Registrar's Office for all graduating students. These announcements are provided by the University at no cost to students who will be graduating on December 18, 1977.

REFERENDUM

The Student Council is sponsoring a referendum the week of November 14-18. Questions on the referendum include those on Student Union Board activities, the Student Council Bitch Box and proposed increases in various parts of the Student Activity Fee. You may fill out a referendum, and thereby make your opinion felt, by obtaining a copy from your Student Council representative or in the New Student Union today only.

BETTER ERECTIONS

To get your Structural Engineers Make Better Erections shirt, call or stop by the AEPI House on Fraternity Dr. Prices range from \$4.50 to \$5.50.

NSPE

On Thursday November 17 the National Society of Professional Engineers will hold their third meeting of the fall year. The meeting will be held in the C.E. Auditorium, room 114 at 7:00 p.m. The guest speaker will be Dean J. Kent Roberts who will give a short presentation on the "Code of Ethics". Then all attending members will be part of an ethics review board and decide some sample cases. If you are interested in how the code of ethics affects the engineer in today's world then you should attend this meeting.

IFC SING

Remember, the Interfraternity Council will present their annual IFC Sing Friday, Dec. 2, at 7:00 p.m. choral and novelty arrangements will be performed by the fraternities and sororities while the houses' Little Sister organizations and the sing committee will handle brief fillers. Great Time for All!

ST. PAT'S...

Campus sales are now going on in the University Center from 8:30 till 3:30 every weekday.

STUDENT UNION BOARD

There will be a foosball tournament starting on Monday, Nov. 21. Sign-ups start on Nov. 7 in the University Center. It will be a best 2 out of 3 doubles competition.

SUB

SUB will present "The Caine Mutiny" Nov. 20, at 4:00 & 6:30. This one's free!

ALL ORGANIZATIONS

To get your picture in the Rollmo Yearbook you must set up an appointment with Kay Spauhurst, Organizations Editor. Phone 341-3851.

CO-OP STUDENTS

Co-op Students that are going to work in the Spring, 1978 semester, must come into the Co-op Office, 101 Buehler Bldg. and register for their work session. This will take place starting Dec. 5th and last until the end of the semester.

This is a must for all Co-op Students.

T-SHIRT DESIGN CONTEST

Get rich quick. The annual Independents Weekend T-Shirt Contest is here. Your design could be the winning design. 1st prize is \$25, 2nd prize is \$15. Also a \$10 prize will be awarded for the winning slogan (with or without a T-Shirt entry!). Turn in entries at T-26 Student Personnel with Ms. Todd. The deadline is November 22, so hurry.

REQUIEM

The date for the Spring semester performance of Brahms' Requiem by the UMR Music Section was incorrectly given as May 30. The date should have read: Sunday, April 30, 1978. Musicians who are interested in participating in this performance should contact Joel Kramme, G-8, Harris Hall. Of particular need are string players, bassoonists, French horn players, and singers of all kinds.

WARGAMERS ASSOCIATION AT UMR

Our club holds its meetings every first and third Thursday of each month at room 202 M-CS, to which everyone is invited. All people interested are also invited to our game session in the library every Saturday from 9 a.m.-5 p.m. in conference room 202, no games or experience necessary to participate in these sessions.

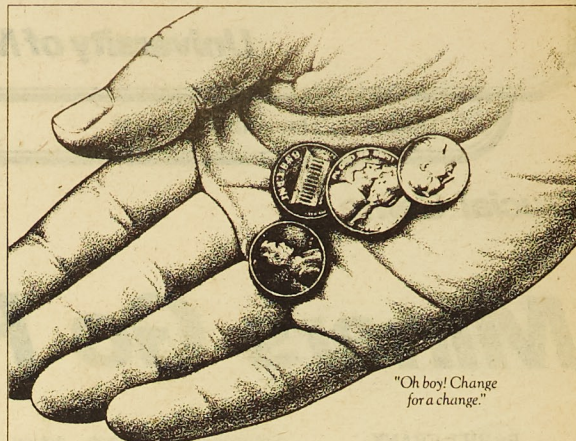
SGE

SIGMA GAMMA EPSILON (National Earth Science Honor Society) is now accepting membership applications. Any person in the Earth sciences (Geol., Geol. Engr., Mining, Metallurgy, Petroleum) who has at least 12 cr. hrs. in earth science type courses and an overall G.P.A. of 2.67 or better is eligible for membership.

Application forms are available in Norwood Hall, 2nd floor and in the Mining Bldg.

IK

There will be a meeting of the Intercollegiate Knights on Thursday, November 17, 1977 at 6:00 p.m. in the Mark Twain Room.



If you don't know what this is, you're not eating at McDonald's.

It's change. And you can still get it at McDonald's.

Our prices are still terrifically reasonable. And you can still get terrific things to eat for under a dollar.

So, why not eat at McDonald's soon? The change will do you good.

We do it all for you.



© 1975 McDonald's Corporation

CARRIAGE LOUNGE

Thurs., Fri. & Sat., 9:00-1:00

DISCO

Tom Nichols on Guitar

Wednesdays 10 p.m.-1 a.m.

SUB Workshops Over

By MICHELLE HALL

This semester's workshop series sponsored by SUB has come to a quiet end. The Student Union Board sponsored five workshops this semester for interested students and residents of Rolla.

The workshops sponsored this past semester included bicycle maintenance and repair, square dancing, oriental flower arranging, the art of bartending, and water painting. All were taught by top quality experienced demonstrators from the Rolla area.

Representatives of SUB have been disappointed this semester because of poor attendance at these workshops. On most nights there were more residents of Rolla attending than there were students.

Although they are free for everyone, they are primarily set up for the students. SUB can offer these free of charge because the instructors, in most cases, have donated their services.

The workshops are one night events and were normally held on Tuesday's or Thursday's. SUB tries to set them up during some of the lighter weeks of school in an effort to draw more

student attendance.

Next semester SUB will continue this program and in another attempt to boost attendance they are opening up for suggestions or ideas concerning topics. If you have an idea you can contact Ann Kristof or any of the other

members of the SUB Hospitality Board.

One of the five workshops to be offered next semester will be on Short Form Income Tax preparation. Other ideas are massage and spring shape-up clinics and another craft class.

Merit Scholars Invited To Rolla

SOURCE: OPI

National Merit Scholar finalists and semi-finalists, their parents and counselors have been invited to the University of Missouri-Rolla for a special introductory program Friday, Nov. 18.

From 8 to 10:30 a.m. guests register and attend an informal coffee-mixer in Room 104 Mechanical Engineering. Students will have the opportunity to visit classes and parents and counselors may take short campus tours and-or

talk with representatives from admissions, housing and the financial aid office.

A more formal program is presented to all visitors from 10 a.m. to 12:15 p.m. in the Mechanical Engineering Auditorium, followed by luncheon in University Center West. During the afternoon guests may visit departments, dormitories and other campus offices.

Dr. Don Askeland, associate professor of metallurgical engineering, is chairman of the event.

UPTOWN
TELEPHONE 364-1857

NOW!

Open 6:30
Shows 7:00 & 9:05

"Oh, God!"
PG

ROLLA
TELEPHONE 364-1299

NOW!

Open 6:45
Shows 7:00 & 9:00

Smoky
PG

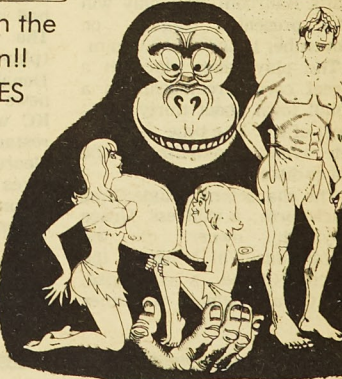
ROLLA
TELEPHONE 364-1299

11 P.M.
ID's Required

Friday & Saturday

Remember when the hero always won!!
OUR TARZ LOSES TO THE JAWS OF THE CROCODILE.

STARRING SILVER FOX & GEORGINA SPELVIN
PRODUCED BY DATSA FINE
DIRECTED BY ITSA FINE
ORIGINAL SCREENPLAY BY D. C. MOORE
IN COLOR/ADULTS ONLY
X RATED X



Tarz & Jane & Boy & Cheeta

A Pat On The Back...**Alpha Phi Alpha Awards Honor**

Mr. Virgil V. Work Jr. a member of Alpha Phi Alpha was recently awarded a one thousand dollar scholarship by the Education Foundation of Alpha Phi Alpha Fraternity to help finance his expenses for the 1977-78 academic year. The scholarship committee of the foundation recognized Virgil from the Midwest Region because of his scholarship, extra curricular involvement, engineering pursuits and fraternal activities.

Mr. Work is a senior majoring in engineering management from Kansas City, Missouri. (Photo by Burford)

More News On Search Committee

By MICHELLE HALL

The search for the Chancellor has begun once again with the restructuring of the Search Committee. The new committee, organized in early October, has sent out letters to various groups on campus asking for nominations, applications, and constructive advice on procedures and candidates. A nomination should include the name of the nominee and an accurate, current mailing address, plus any other brief information the nominator would like to submit. Previous nominations to the Search Committee remain under consideration and need not be resubmitted. The committee has adopted the spirit of the "Criteria for Selection of a Chancellor" statement used as a guideline by the previous Search Committee.

The new Committee is composed of selected individuals representing all of the different groups on campus. From the School of Mines and Metallurgy, Dr. Robert Davis and R. Don Warner; the School of Engineering, Dr. Ronald Howell and Professor Robert Wolf; the School of Liberal Arts, Dr. James Wise, and Dr. John Park; Dean Halligan and Dean Ponder represent the administration along with Dr. A.G. Unklesbay, a UMR central administrator, and Mrs. Berna Harvey, representing the non-academic university employees; Mr. Val Bates, graduate student; Mr. Micheal Bell, undergraduate student; and Mr. Richard Bauer, President of the Alumni Association.

The committee members were elected by their representative groups with the exception of Mrs. Berna Harvey. She was appointed after special consideration of President Olson. This was due to the fact that President Olson felt that the minorities and women should also be represented on this committee and all other university committees. Olson urged the electing bodies to elect representatives from these groups and when there was no woman elected he appointed Mrs. Harvey. (a minority had already been elected).

One of the main objectives of reconstructing the Search Committee is to improve on the mistakes made by the first committee. Dr. Davis, chairman of the committee, was asked what the previous committees mistakes had been. Unfortunately neither he nor any other of the administrators contacted knew exactly what the first committees mistakes had been.

Some people are of the expressed opinion that widespread publicity may have led to the failure of the first committee. It was felt that some of the prospective candidates who held jobs elsewhere feared their employers would hear of their nomination for chancellor. This caused many of them to back out as the final selection drew near. The idea of a committee whose action is kept secretive is also backed up by the success of earlier committees, and it is trend of thought that will be used by the present committee.

Blue Key Leadership

By ROBIN BECHTOLD

The UMR Chapter of Blue Key National Honor Fraternity sponsored a campus leadership forum Saturday, November 12, in the Humanities-Social Science Building. The objective of the forum was to help younger students develop leadership techniques and to become efficient, productive members of their organizations.

Two delegates were invited to attend from each fraternity and sorority on campus; five were invited each from the Quad and Thomas Jefferson. Approximately 45 participants attended.

Sessions were held from 8:00 to 4:00, focusing on problems

UMR organizations have encountered in the past. Discussion covered communications, organization, parliamentary procedures, problem solving, and confidence, followed by a question and answer period. Each session lasted approximately fifty-five minutes, each followed by a ten-minute break. After each topic was generally discussed, the participants broke off into seven smaller groups to exercise the ideas they had learned. Each person in the group was given a piece of information needed to solve a problem, and the group worked together in reaching a solution. A guest speaker from St. Louis, Bob Kottkamp, gave a talk on communications. The other

sessions were headed by active members of the Blue Key.

Participants were charged two dollars each, with the Blue Key covering the remainder of the expenses.

The Blue Key Leadership Committee, headed by Aaron Cook, included: Michael Bell, Ethen Chamberlin, Jackie DeThorne, Brenda Ellerbrake, Dave Holland, Michael Johnson, Michael Lackner, Gary Maxwell, Larry Shippers, and Larry Wetzel.

The University of Missouri-Rolla Chapter of Blue Key was established on March 22, 1933. It seeks to promote character, scholarship, student activity, service, and leadership. They will hold another leadership forum next spring.

Miner News**Dinners For Holidays**

SOURCE: OPI

This holiday season, the University of Missouri-Rolla Chamber Choir and Orchestra will present traditional Christmas music from Colonial America at the annual Madrigal Dinners held on campus Dec. 7, 9 and 10.

Social hour for the evening begins at 6 p.m. in the Miner Lounge of University Center East. Dinner will be served at 6:30 p.m. in Centennial Hall.

The menu, this year, is patterned on a typical Colonial America Christmas feast which combines dishes from both the "Old" and "New" worlds. It begins with the traditional Wassail Bowl for a grand toast. Philadelphia roast rib of beef follows with legendary Yorkshire pudding. New England potatoes boiled with freshly picked parsley, brussels sprouts aux marrons, bib lettuce salad, hot loaves of English bread with creamery butter and hot mince meat pie with West Indies rum sauce.

Music will be the highlight of the entire evening. From the arrival of the musicians and members of the choir, through the traditional welcome, dinner and a program of dances, to the climax of the evening, the madrigal singers' program, participants will be entertained by a variety of music appropriate to the period and the occasion.

Barbed in colonial costumes, members of the orchestra, dancers and vocalists will offer classical and traditional selections ranging from music by Haydn, Scarlatti and Vivaldi to a "Toast to General Washington" by Francis Hopkinson, "Hallelujah" by Hosiah Flagg and traditional and anonymous madrigal carols.

Various ensembles playing during dinner will feature the lute, harpsichord, classical guitar and the more conventional string instruments. An interval of four dances will be offered for the first time at the annual madrigal dinners.

Tickets for the dinner and evening of music are \$7.50 each.

Wednesday's event is open to the public. Friday and Saturday evenings, Dec. 9-10, have been reserved by various groups but a few individual tickets for both evenings may be available after Nov. 30.

Reservations must be in and paid by 5 p.m., Friday, Dec. 2.

For reservations, call University Center Reservations Desk, 341-4294 or 341-4295. Make checks payable to UMR and send (with stamped, self-addressed envelope) to Madrigal Dinner Reservations, University Center, UMR, Rolla, Mo. 65401.

IFC vs. St. Pat's

The second annual football game between the St. Pat's Board and the IFC will take place tomorrow out at Lion's Club Park at 3 p.m. In the first meeting between these two, the Board was victorious by the margin of 27-20. This year's game shows possibilities in being as exciting as last year's.

The only difference this year is that the referees will be the beer distributors. Each of the five distributors will be represented.

The game was set up last year to provide entertainment for the two groups. Since each is heavily involved in campus activities, they felt something was needed to get them closer together. After many weeks of discussion, the football game was chosen to be the event. Each team practiced until perfection was reached and game time rolled around. Well, it's that time again to see who is the "best" on campus — not only in football, but also in partying.

Missouri Miner Staff

The MISSOURI MINER is the official publication of the students of the University of Missouri at Rolla. It is published weekly at Rolla, Missouri. This MISSOURI MINER features activities of the students and faculty of UMR.

Paul D. Andrew (364-9885)
John Martine (364-9792)
John Stoddard (364-5598)
Katherine Kunkel (364-4910)
Brian Kavanaugh (364-9885)
Brian Edwards (364-8626)
Dave Thorn (364-8115)
Ed Burford (364-9769)
Jim Allen (364-8666)
Dr. Curt Adams
Lana Leitner-Jones

Editor
Business Manager
Advertising Director
News Editor
Feature Editor
Sports Staff
Sports Staff
Photo Editor
Managing Editor
Faculty Advisor
RDN Advisor

Miner Office Phone: 341-4235.

Staff: T. Ziegler, E. Latimer, D. Emily, K. Downer, L. Ponzer, H. Burford, C. Staley, L. Jost, C. Sullivan, S. Sontag, J. Upchurch, P. Pollack, M. Murphy, M. Kolbet, R. Eisele, D. Meister, M. Haslett, R. Burchett, R. Bechtold, B. Frank, J. Yuhas.

Articles and photos for publication in the MINER must be in by 5 p.m. on the Monday before printing on Thursday.

Subscriptions are available to the general readership at a rate of \$3.00 per semester.

THE MISSOURI MINER
T-1
University of Missouri-Rolla
Rolla, MO 65401

ACS Holds Regional Meeting

By ED LATIMER

On November 3-4, the 13th Midwest Regional Meeting of the American Chemical Society took place in the Chemistry Chemical Engineering building here at UMR.

The American Chemical Society (A.C.S.) is the largest Scientific Organization in the world with over 120,000 members spread throughout the world. Two nation-wide meetings are held each year (in March and August), and each region of A.C.S. organizes one meeting every year. The Midwest Region, one of several in the United States, decided to hold its meeting at the South Central Missouri Section (one of fifteen A.C.S. supporting sections in the region), which holds its headquarters at Rolla.

Over 400 people registered throughout the meeting on Thursday and Friday, some people coming from as far away as California, New York and Texas. Four symposia were held, along with fifteen technical sessions. The topics discussed in these gatherings ranged from Analytical and Environmental Biology, Inorganic Chemistry, Organic

Chemistry, Chemical Education and Physical Chemistry to Liquid Crystals and Nuclear-Geochemistry. Also there was a chemicals, books and instruments exposition in Centennial Hall Thursday and Friday, with displays from various chemical companies.

Thursday evening a banquet was held at the Manor Inn Banquet Room. At this banquet two awards were given: The 33rd Midwest Award in Chemistry to Dr. Paul A. Kuroda, and the Midwest Regional Award in High School Chemistry to Mr. Bill M. Brent. Dr. Kuroda, Professor of Chemistry at the University of Arkansas, Fayetteville, has led

a very diverse research career, ranging in such topics as nuclear, analytical, meteorology and geochemistry in addition to his active involvement in radiochemistry. Mr. Bill Brent, high school chemistry teacher at Rolla High School, has had tremendous success with his students, placing at least 75 students in chemistry professions and having many of his students win honors.

Dr. Somar B. Hanna and Dr. D. Vincent Roach of UMR were the General Chairmen of the conference. In addition to these two professors, Drs. Bertrand, Manuel and Friberg of UMR were chairmen for three of the four symposia.

Decorators Walk, Inc.

1425 Hauck Dr., Forum II
FIRST ANNIVERSARY CELEBRATION
BEGINS NOVEMBER 24

Great canvas gifts for college students—10% off back packs, etc.

Handsome GENSE stainless serving pieces—up to 34% off

Imported Christmas giftware

Register for drawing—

Framed Andrew Wyeth picture

Daily specials Dec. 1, 2, 3

Curt's Toggery

900 Pine Rolla, Mo. 364-1248

STUCO Gets Your Vote

By ROBERT BURCHETT

The UMR Student Council is holding a student referendum to determine student opinion on such subjects as the location of intramural fields, the qualifications for Homecoming queen candidates, and various Student Council and Student Union Board Services. According to Mike Priest, chairman of the Student Council referendum committee, only a few of the questions are actually concerned with the Student Council. The task of the committee was to solicit questions from various organizations which are in need of information.

The Student Council representatives have the responsibility of distributing referendum forms to their constituents. If you do not have a representative, or have not received a form, you can give your opinion at the times and locations given in the BULLBOARD section of today's MINER. A supplement to the original form has been made and will be distributed by the representatives.

The results of the referendum will be announced just before the end of the semester. In the past, participation in student referendums has been poor, with only about one third of the student body taking part. If this percentage were increased, the results would carry much more weight in the decisions made by the administration and student government. If you are interested in the quality of education and social life available at UMR, or if you just like to know what is being done with your money, the student referendum is one means of expressing your concern.

The challenge.

Your challenge is to spell a word, or words, using the letters shown below. Each word must contain the letter the indicated number of times.

1. A word containing 6 "i's":

2. A word containing 5 "a's":

3. Three words containing 5 "e's":

4. Four words containing 4 "o's":

5. Two words containing 4 "u's":

When there's a challenge, quality makes the difference.

We hope you have some fun with the challenge. Pabst Blue Ribbon is the Number 1 beer in Milwaukee, beer capital of the world.

That's why we have the confidence to issue another challenge—the Pabst challenge. Taste and compare Pabst Blue Ribbon to any other premium beer. You'll like Pabst because Blue Ribbon quality means the best-tasting beer you can get. Since 1844 it always has.

PABST. Since 1844. The quality has always come through.

PABST BREWING COMPANY, Milwaukee, Wis., Peoria Heights, Ill., Newark, N.J., Los Angeles, Calif., Pabst, Georgia

Answer: 1. Indismissibility 2. Abacabadaba 3. Effervescence, interdependence, beekeeper, 4. Footproof, foolproof, bookroom, schoolroom, 5. Unscrupulous, tumultuous





John Biggs (photo by Burford)

Phobia Phunnies

An astonishingly small amount of entries were received in reply to our "Phobia Phollies" article.

From Mark Marikos
Phobophobia — the fear of fear itself.

EEPhobia — The fear of flunking out.

Boardophobia — The fear of the color green.

Boredomphobia — The fear of a weekend in Rolla.

Raylophobia — The fear of artificial food.

Teejayphobia — The fear of sinking.

Parkerphobia — The fear of being the UMR Chancellor.

Scumophobia — The fear of Schuman Pond

From Mike Mertz:

Birrapphobia — Fear of not having enough beer.

Calcolarephobia — Fear of Calculus

From Anonymous:

The following is my entrance to the Phobia Phollies:

ANTROPHYPHOBIA: The fear of not getting it up, keeping it up, or ultimately scoring.

(I hope that I don't have to spell out to you the play on words with Trophy — the end goal — and Atrophy, the end result.)

Coffeehouse Review

From Lyra to Flattop John Biggs Brings it Home

By LINDA PONZER

When John was about thirteen he picked up an old cheapo Lyra guitar — "It was like trying to fret barbed wire" — and taught himself to play. He has since traded his Lyra for a Guild six string and a Mossman Flint Hills twelve string, both flat top guitars. He added the country banjo to his act in the Spring of 1973.

John made his first appearance at UMR back in 1972. It was one of his first gigs on his first college coffeehouse tour. Whatever there is about John that makes his performances so well-attended and received must have its roots in the deep honesty which John uses in presenting himself to the audience. Whether he is singing a touching love ballad, or whailing a drinking song, or telling a story, he holds the audience's attention and drives them to tears, laughter and applause.

His song, "It's all the Same in Time" is what's referred to as a road song. It tells of the oneness of all people as they travel life's road. It tells of the meeting of people on their way on the road. It goes something like this:

"The roads we travel all pass through the same town—all the roads we travel—all turn round."

While introducing a song written by a couple of his friends, John said "This song

has the basic element of a hit song. Basically, it's stupid!"

The song was about death and dying and how to economize on a burial plan. The chorus contained the awe filled line: "Send me to glory in a glad bag." The concluding verse made reference to going down into the pit after death, to which John replied, "in that case use an oven bag" to the delight of the audience.

John performed a ballad written by David Patton called "The TVA". It was a lowsome ballad about the hard working farmer who lost his land to the exploits of the Corp Engineers. John also did changes and "When I am Gone" written by Phil Oakes.

The most memorable, perhaps, part of the first half of his performance was his "stolen" skit about an Arkansas farmer and a city slicker. The city slicker would say such lines as "Would it matter which of the roads I take to town?" to which the farmer would reply, "Not to me it doesn't."

Changing the tempo to a soft ballad, John performed his song "Home's Just Another Day Away." This song is about the traveling life. About always moving on and to some other town, John's favorite verse of the song goes like this:

"The sun now is rising—the long night is done—but the roads

still amoving-could it be I've just begun."

The influence of Pete Seeger and Woody Guthrie were seen throughout John's performance. John did the song "Wasn't That A Party" and "Little Sadie," as well as Utah Philip's song-Moose Turd Pie.

Throughout his show, John entertained his audience. Whether it be by his guitar strumming, banjo picking, anecdotes or smooth easy going style. He has that rare quality that enables him to sincerely smile and joke with any audience.

John's musical versatility enables him to perform many types of music. He excels on the banjo, six and twelve string guitars. His voice—what can I say—but he is on the road to stardom. His encore performance of "This Land Is Your Land" had the whole audience singing along.

A bit of the humanness of John Biggs came through when he sang the song "Candles." This song was written by a dear friend of his named Cathy. The king of a friend that one can share all the ups and downs of life. It went something like this: "The hour is late and so am I—but if I touch the reason why—maybe then I will remember how to cry."

Big Business Patents Life

Who Should Play God?

The following article is reprinted from the October 7, 1977 issue of The Washington Post newspaper. It should astound and shock most of you as it is probably not general public knowledge. Watch future issues of the Miner for related subjects dealing with manipulations of life.

By Bill Richards
Washington Post Staff Writer

A federal patent appeals court ruled yesterday that an industry can patent and own certain forms of life it develops. The cautious decision could have sweeping effects on the scientific and business communities.

The ruling by the U.S. Court of Customs and Patent Appeals allows the Upjohn Co., the pharmaceutical manufacturer in Kalamazoo, Mich., to patent a type of microorganism known as streptomyces vellosus that the company uses to produce an antibiotic called lincomycin.

The court's 3-to-2 ruling in favor of Upjohn opens the way for a broad spectrum of food and drug manufacturers who work with microorganisms to

claim new forms of life they develop as their own.

The ruling could also affect scientists seeking to develop new types of life in the laboratory by tinkering with DNA (deoxyribonucleic acid), one of the basic building blocks of life. Some scientists and politicians have expressed fears that DNA research may create genetic monstrosities or new diseases, but others see the research as an opportunity to produce new forms of drugs and food plants.

Before yesterday's decision the only forms of life which could be patented were certain plants and seeds which fall under the federal Plant Patent Act of 1930.

All other requests by industries to patent life forms they develop had been rejected by patent officials as not conforming to the patent law categories. The categories are defined in the law as "any new and useful process, machine, manufacture or composition of matter, or any new and useful improvement thereof."

In its decision yesterday the appeals court rejected the argument of a lower patent board that since

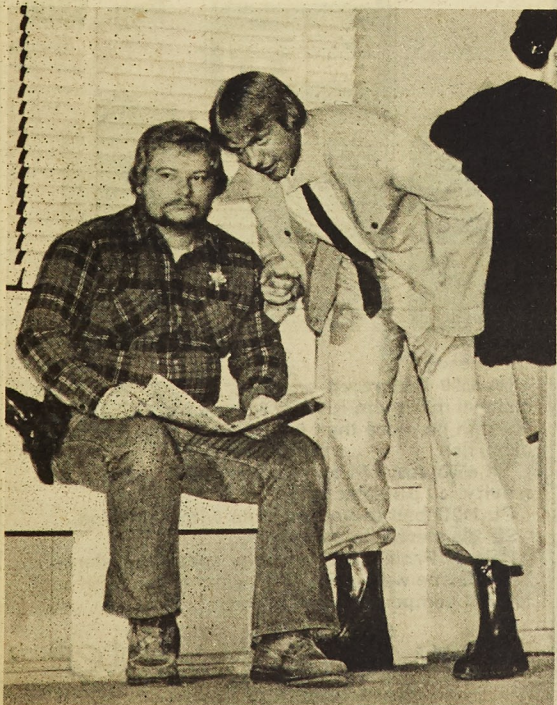
microorganisms are alive they cannot conform to the agency's legal categories.

At present Upjohn and other companies place newly developed strains of microorganisms into a "bank" where any other firm can withdraw them and use them if it wishes.

"Microorganisms have come to be important tools in the chemical industry, especially the pharmaceutical branch thereof," said the court. "And when a new and useful tangible industrial tool is invented...we do not see any reason to deprive it or its creator or owner of the protection and advantages of the patent system."

The court called "far-fetched" fears expressed by the lower patent board that its ruling could open up patent attempts for new and useful species of plants, animals and insects created by man. But the ruling did not totally rule out such patents.

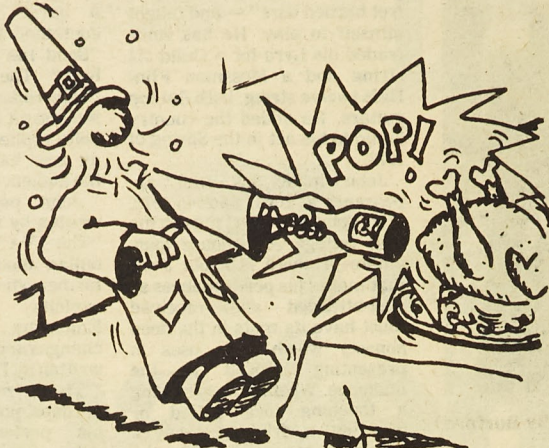
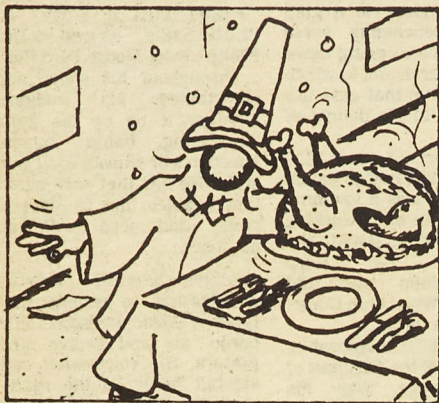
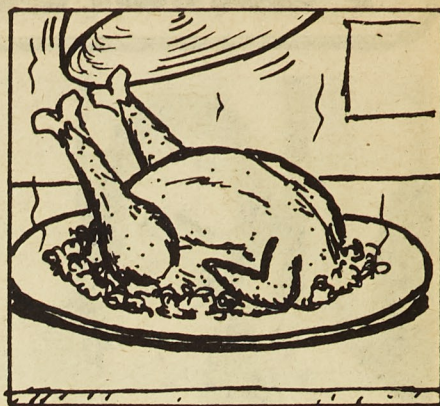
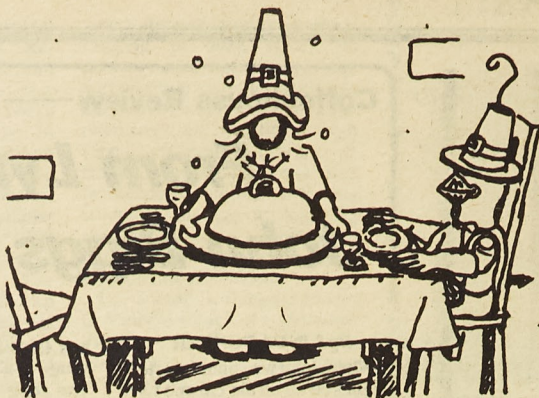
Patent law experts here yesterday declined to speculate on just how far the court's ruling throws open the door to private ownership of forms of



"See the guy in the white hat? He's the one who publicly made fun of my boots!" — Taken from the current Theater Guild production, Bus Stop. (Photo by Burford)

(continued on p. 6)

the Professor and Lancelittle - "Thanksgiving Dinner"



Comic Strip

Playing God

(cont. from p. 5)

life until they had a chance to study the ruling.

However, Upjohn officials were exultant, and said the effects of the ruling could be extremely far-reaching. "You are talking about some very big areas like foods and beverages and pharmaceuticals," said John Kekich, an Upjohn patent attorney, in a telephone interview from the firm's headquarters.

"If you can come up with new or different forms of life and they can be used in a manufacturing process, I think you could at least make a claim they fall within the statutory limits," Kekich said.

The Upjohn attorney noted, however, that the court took a deliberately cautious approach to its ruling. "It's a step in a whole new direction," said Kekich, "but I don't think there will be radical changes, at least for the present."

SHOTOKAN KARATE
364-7428 after
5:00 p.m.



LEVI'S BIG BELLS
Just Arrived—New Shipment
Get Your Size While They Last

- 1 Pair.....15.98
- 2 Pair.....14.98Ea.
- 3 Pair or more...13.98Ea.

All Cords & Colored

JEANS

13⁹⁸

Gabel's Jean Shop

701 Pine Rolla, Mo. 364-7611

G & D STEAKHOUSE

8 Oz.

FILLET STEAK

Baked Potato or Fries, Texas Toast

\$2²¹

FREE ICE CREAM WITH EACH DINNER

Forum Plaza Shopping Center

Rolla, Mo.

Open 11 a.m. to 9 p.m. Daily 7 Days A Week

HOOK AUTO SUPPLY

Auto Parts—Accessories—Speed Equipment

Discount Prices To All

513 Hwy. 63 S.

Rolla, Mo.

364-5252

LA POSADA

DELICIOUS
MEXICAN
FOOD

HWY. 63 S.
ROLLA
CLOSED MON.

MEXICO
CITY
STYLE

PIONEER

CE-1

COMPONENT ENSEMBLE

**GET A GREAT PIONEER
HIGH FIDELITY SYSTEM
COMPLETE WITH
A PLACE TO PUT IT.**



\$500

Reg. \$800

Includes:

- SA-6500 integrated amplifier with 25 watts per channel minimum RMS at 8 ohms from 20 to 20,000 Hz with no more than 0.1 per cent total harmonic distortion.
- TX-6500 AM-FM stereo tuner with 1.9 uV sensitivity, 60 dB selectivity.
- PL-112D belt-drive turntable with cartridge.
- SE-205 stereo headphones.
- Pair of Project 60A two-way speaker systems.
- Handsome walnut grained, vinyl finish shelf unit to hold components and records.

The Sound Center

"Go Ahead And Ask Us"

Financing Available

Hwy. 72 E. Rolla, Mo.

364-7715

Celluloid Cuts

By JOHANNA YUHAS

Lights, camera, action! These three words are film land's invitation to forget the real world and journey into other worlds. Bringing a bit of Hollywood's make-believe world onto the UMR campus is one of the jobs of the Student Union Board's Indoor Recreation Committee.

Headed by Frank Werner, this sixteen-members committee has the job of selecting movies suitable for aesthetic interests of the majority of UMR students. In choosing movies, they direct their efforts beyond the present school term. States director Frank Werner, "We are not responsible for any films shown during this school year. This committee chooses movies for the upcoming year."

Shown approximately once every two weeks, these Sunday evening presentations have something to suit just about everybody. To investigate the level of student satisfaction and to determine student film preferences, questionnaires are distributed at selected film showings. In addition, adds Frank Werner, "we are passing out questionnaires in conjunction with the Student Council referendum that will be distributed in December. This is to get student opinion and to see what they like. I am hoping that from the questionnaires we can get a real idea of the kinds of films that people want."

After the Indoor Recreations Committee chooses a film, they order it from one of two film distribution companies — Films, Inc. and Swank. "we book pretty far in advance to get what we want; and then, after we're done we have to mail it back to them," explains Frank Werner.

The postage required for the film's return, amounting to \$140.00 a year, is one of the smaller allotments of the committee's total annual film budget of \$4,165.00. With each movie costing between \$150.00 and \$300.00, the portion of the budget devoted to film procurement is the largest portion at \$2,545.00. In addition, summer films are purchased through a \$642.50 share of the \$4,165.00 total. In the event of equipment problems, \$137.50 covers necessary repair expenses incurred through labor and purchase of parts. The remaining portion, a surprising \$700.00 goes toward the labor cost of a projectionist.

This year a change in cost structure was inaugurated. UMR students will pay a \$.50 admission charge for three of the films shown this fall. For the remaining films, there is no charge. According to Frank Werner, this charge serves a three-fold purpose: "obtaining better quality films, attracting more people because of the better quality of films, and helping to pay for films for next semester."

As a result of increased publicity for spring semester films, Frank is hoping for an increase in attendance. Posters similar to those for Miner football and basketball schedules will be distributed on campus and in fraternities, sororities dormitories, and eating clubs.

If the reader has any complaints or ideas about the actions and-or decisions of the Indoor Recreations Committee, he is encouraged to consider joining the committee or any of

the other seven committees of the Student Union Board. Applications for the spring semester will be available at the Student Union. Any UMR student is eligible for membership.

Whether the reader is interested in a behind-the-scenes look at the UMR movie world or in a front-row seat at a UMR movie, he can substitute life in Rolla for life in front of the big screen. Popcorn anyone?

RECORD SALE!

All Albums

\$1.99 Ea.

Campus Book Store

205 W. 12th Rolla, Mo. 364-3710

Get The Spirit Of The Wild & Wooly West From

Rolla's Western & Sportsman Shop
WITH A NEW WESTERN HAT

Reg. Up To \$35.00.....NOW \$18.00

LEVI JEANS.....\$13.50

WESTERN FLANNEL SHIRTS.....\$12.00

Hwy. 63 South Phone 341-3020

Open Monday-Friday 9-7, Saturday 9-9



MADAM MARY

Palm Reader & Advisor Tells
Past, Present, and Future

Gives advice on all Affairs of Life, Business, marriage, and Courtship. No problem she cannot help you solve. You owe it to yourself and your family to see this gifted Palm Reader. You have seen the rest...Now Come See The Best!

Madam Mary is permanently located in her own home at 1110 Kingshighway, Rolla, Mo. See her sign (in front of her home) that shows a Large Red Palm.

Open 7 days every week. Hours 8 A.M. to 11 P.M.

No Appointment Necessary. All Are Welcome

Come In TODAY...You'll Be Glad!

1110 Kingshighway (2 Doors From McDonald's)

COME IN TODAY AND HAVE YOUR FORTUNE TOLD

FULL LIFE READING.....\$5 (With This Coupon)

QUALITY CLEANERS

EXPERT CLEANING REASONABLY PRICED

108 W. 7th St.

Rolla, Mo. 65401

**MINER
FOOTBALL
We're
No. 1**

KEY
SPORT shop

THE PLASTER KEY, INC.

1003 Pine

Rolla, Mo.

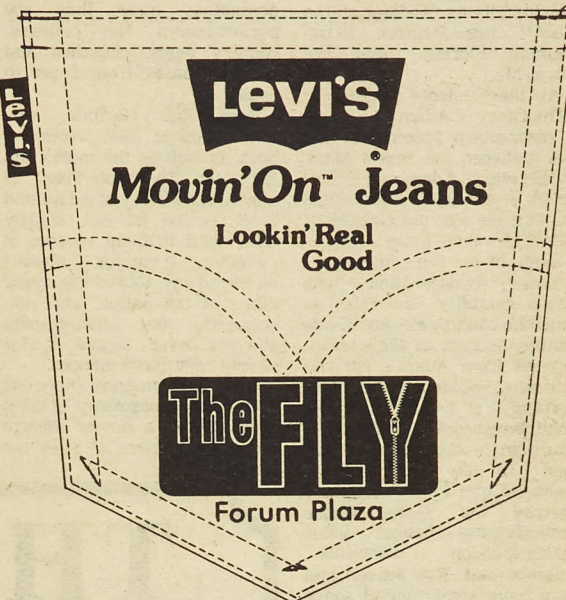
364-5495

Classified Ads

All Classified Ads must be accompanied by one dollar per week or it will not be printed.

WANTED: Female student to help share expenses of Apt. for Spring '78 Semester. Rent \$53.00-month, close to campus. Call 364-6242, Mon-Fri after 5:00 p.m.

Need Experienced Top 40 Guitarist or organist to form with a band. Must have own equipment. Call between 5:30-7:00 364-4882 or 364-2530.



BUSCH ON TAP

Hours: 5-1:30 Mon.-Sat.

Open Fri. Afternoon 1:30



1107 Pine

364-4334

COUPON



**SUPER PAPA &
ONION RINGS**



GOOD THRU NOV. 30, 1977

1202 N. BISHOP ROLLA, MO. 364-8998

COUPON

Alpha-Omega Players Strike Again

"The Diary of Adam and Eve"

Musical comedy in a new dimension will come to UMR on Nov. 29th. It is "The Diary of Adam and Eve," featuring the Alpha Omega Players, the wit of Mark Twain, and the genius of musical composers, Jerry Bock and Sheldon Harnick, who supplied the songs for such notable hits as "Fiddler on the Roof," the Pulitzer Prize-winning "Fiorello?" and "She Loves Me."

All these talents combine in "The Diary of Adam and Eve," a razor-sharp spoofing of the war between the sexes. Mark Twain allows Adam and Eve to speak in a modern idiom; thus making the age old Garden of Eden relevant to today's world.

Some of the fun comes from Adam's exasperation with Eve's garrulity (she talks so much he can't think) and Eve's vanity (as seen as she's transformed from Adam's rib she remarks "whatever I am, I'm certainly a beautiful one.") John Westbrook and Rosalind Huffman of the Alpha-Omega cast will play this couple in Paradise and Paul Pierce will portray the Snake whose seductiveness beings about their expulsion therefrom. Adam's fault, Eve insists) and they have eight tuneful songs between them with which to elaborate the mockery. The fourth member he cast is Cynthia Coleman, the musician, who also plays leading roles in the Alpha-Omega productions of "The Star-Spangled Girl"

Concerning You

The Student Personnel Department deals with anything that concerns students outside their academic life. The department supervises all the fraternities, sororities, eating clubs and all other organizations and their extracurricular activities. They try to work with dorms, etc. to correct problems before any action is necessary. They also keep in touch with parents of students.

But the Student Personnel Dept. won't concern you too much unless you belong to a campus recognized organization. To be recognized, a group has to draw up a constitution that states its purpose. Mr. Joe Ward then sends the constitution to Faculty Student affairs committee who in turn may or may not recommend the organization to the Academic Council. Without university recognition, groups can't meet on campus such as money-raising projects or membership campaigns.

Student Personnel also coordinates the administration of student disciplinary regulations. While the Registrar determines academic probation according to grades, Student Personnel determines disciplinary probation. It is defined as follows: "A status resulting from misconduct apart from academic performance. The student remains enrolled but under certain conditions." The student can accept or reject these condition.

Other important functions of Student Personnel are the publishing of the Weekly Bulletin, issuing room permits, and advising foreign students.

and "Waiting for Godot."

These four talented young performers are appearing at UMR on one leg of a national tour that will eventually cover 47 states and parts of Canada. They are one of two such groups, which will cover more than 100,000 miles this year, presenting more than 400 performances for colleges, country clubs, churches and military bases from coast to coast.

Bock and Harnick, who teamed up in 1958, wrote the book as well as the music and lyrics for "The Apple Tree," of which "The Diary of Adam and Eve" is the 1st Act, shortly after their brilliant success of "Fiddler." It ran for 13 months on Broadway, toured the larger cities of the nation, and subsequently, the Alpha-Omega Players have toured it for nearly 2,000 performances.

The performance here is under the sponsorship of SUB and will be a dinner theatre with ticket prices at \$4.00 per person.

Rolling Stone Press

Rolling Stone reports in its current issue that the Nuclear Regulatory Commission acknowledges that a staggering 8,000 pounds of uranium and plutonium are missing and unaccounted for in the U.S. That's enough to manufacture hundreds of atomic bombs.

What's more, according to confidential documents obtained by Rolling Stone, nine U.S. nuclear plants have been fined for violations of the NRC security code in recent months. One plant at Erwin, Tenn., which cannot account for 262 pounds of uranium, was cited for 36 separate violations. Three other plants were found with holes in their fences; another had groundlevel doors

unlocked and the burglar alarms turned off. Two allowed unauthorized visitors to penetrate high-security areas.

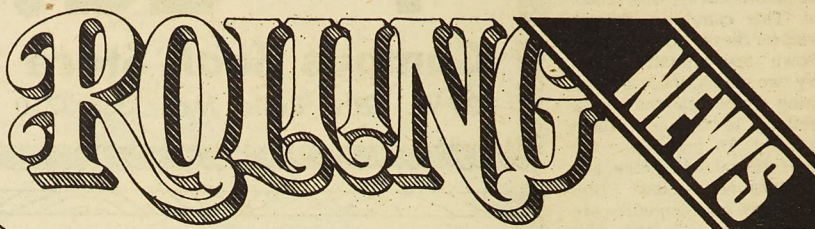
At a now-closed Kerr-McGee plutonium plant near Oklahoma City, where the late Karen Silkwood worked, a former department head, Jim Smith, told Rolling Stone last month that a company official once asked a fellow department head to help steal uranium from another Kerr-McGee plant.

Between January of 1975 and September 1976, according to a General Accounting Office study, there were 62 incidents at nuclear plants involving bomb threats, extortion attempts and security breaches.

As such incidents increase,

"The NRC may resort to police-state measures," writes author Howard Kohn in Rolling Stone. "A secret report commissioned by the NRC in 1975 raises the likelihood of a special nuclear police force empowered to conduct domestic surveillance without a court order, to detain nuclear critics and dissident scientists without filing formal charges, and, under certain circumstances, to torture suspected nuclear terrorists."

Kohn's article on nuclear safety accompanies his piece co-authored with Barbara Newman, "How Israel Got the Atomic Bomb." Kohn is available for interviews by contacting David Fenton at (212) 350-1283.

**THINK ENERGY CONSERVATION!!!**

The Blue Key Leadership Honorary is sponsoring a contest designed to get Miners to think of ways to save energy on campus. Monetary prizes will be awarded for the top four ideas. Individuals or groups may enter. The rules are:

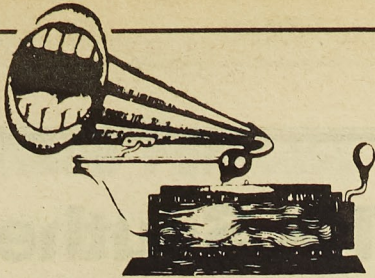
- 1.) All entrants must be part or full-time students enrolled at UMR.
- 2.) Contest officially begins on November 15, 1977 and ends on January 15, 1978.
- 3.) Ideas will be judged on originality, applicability, cost, effectiveness and clarity of presentation.
- 4.) All entries become the property of Blue Key and UMR. The decision of the judges will be final. Winners will be notified by February 15, 1978.

**PRIZES**

1ST Prize.....	\$200.00
2ND Prize.....	\$150.00
3RD Prize.....	\$100.00
4TH Prize.....	\$50.00

START THINKING UP IDEAS NOW. This could be a great way to pay for next semester's tuition plus make a valuable contribution to UMR. Mail entries to The Blue Key box on campus. For more information, Bob Schnell, 364-1490.

J. O. and D.



This week, it's statement! Yes, fans, the mystical, magical wanderer of the printed thought comes to you sandwiched betwixt the floating wood chips in the newprint courtesy of Monday night, co-starring a weekend of lethargy. Indeed!

So much for the gratuities, I begin this week with a double lament of error:

Three to four weeks ago, I petulantly zapped the unsuspecting Energy Conference with the thunder and lightning of the newly indignant. Alas, subsequent discussions with sources magnitudes better than my originals seem to have been leads to new and brighter pieces of info.

One; our U did not, for purposes unknown, purchase the "Energy Environment Simulator"; only receiving its custody on loan.

Two; no U funds were spent on the whole shebang. Apparently, the firms and organizations which appeared during the conference contributed funds, instead.

My fingertips this week are tinged a delicate shade of embarrassed pink. This, dear readers, was a showcase for the University, and not, as I had

thought, an intensively productive type of thing. Had it been, I perhaps would have been justified in my vindicism, however, it was not, and I am not.

I still take issue with "Energy Environment Simulators", and quite a number of the ideas presented to me during the course of the Conference, but they are different entirely from what I was chewing at before. I was wrong.

Thus, I timidly begin anew into the world of imaginative thinking. May I present to you a new book that I have just finished reading entitled, "The Autumn of the Patriarch", again, authored by Gabriel Garcia Marquez, whom I lauded last week. The text is written in a novel fashion, as a succession of extremely long sentences running entire pages, and frequently long. I didn't notice that right away, it took about fifty pages before the idea that something wasn't right struck me. The reading is just as good, flows very well, and, after the style sets a while, feels just as comfortable. The book is written as a series of flashbacks

into the history of another Caribbean country, similar to the one described in "One Hundred Years of Solitude". Essentially, the idea is that of the biography, while in power, of the dictator of this small country. One is given a clear picture of life in this bizarre land, spanning a great many years. To give you some idea of the capitivating power of this book; I picked up my new copy and was going to read only the first twenty or so to get an idea of what the book was like. Ha! Forty pages later, at 1:30...

Also, for those of you are into fantasy and good sci-fi, in general, check out a copy of Heavy Metal. Now that's a comic book! Tongue in cheek, of course, Excellent artwork throughout, in many different styles, in color, and black and white. The story lines are fairly palatable, for adventurous types, and are always carried through by the artwork, anyway. Really nice effort by the Nat'l Lampoon folks.

Guess I'll see you people again next week. Thanks for plowing through this stuff. Bye. Ward Silver

ZENO'S MOTEL STEAK HOUSE

HOME OF THE FAMOUS 12 OZ. STEAK

Box 70
Rolla, Mo.

Phone: 364-1301
Martin Spring Dr.

HILLCREST DRUG

364-3258

Hwy. 63 and Hwy. 72

1 HORSE BOOKSTORE



We Buy & Sell Used Books
207 W. 11th In The Thomas Building

Rolla Craft-Hobby

1009 Pine Rolla, Mo. 364-5581

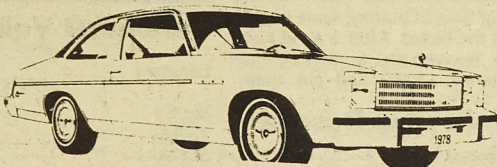
Christopher Jewelers

805 Pine Rolla, Mo. 364-2264

Russell's Town & College

713 Pine Street Rolla, Mo. 65401
Phone 364-2323

WOULDN'T YOU REALLY RATHER HAVE A BUICK??



Skylark Coupe

Tinted Glass, Air Cond., Auto Trans., Power Steering, Wheel Covers, Plus All Factory STD Equipment And Economy V-6 Engine

Full Delivered Price \$4,695⁰⁰ For A Buick

Service After The Sale

Special Terms For Graduating Seniors

ECK MOTOR CO., INC.

Since 1951

500 Hwy. 63 South Rolla, Mo.

Open 8 to 8—Sat. Till 4 p.m.

FORUM II HAIRSTYLING



Mo. Hairstyling Champion

1973, 1974 & 1975

Long
or
Short

We Give The
Look You Want
With Complete
Control

By App. 341-2668

Tues.-Fri. 9-5:30 Sat. 8-2

1431 Hauck Dr.



Groundwaves

Here's what is coming up on programming on KMNR:

Tonight on Flipped, Tom Waits' "Foreign Affairs" will be featured beginning at 8:00 p.m.

On the Sunday night Jazz slot, "Byablue" by Keith Darrett will be presented in its entirety.

Then on Monday night's In-somniac's Theater, Jean Pierre Jare and "Oxygene" will be featured.

Finally, Tuesday night's Flipped will be playing Spaced by Shawn Phillips.

Have a good and safe Thanksgiving Holiday!!

ediletters

Whom It May Concern

On November 30 and December 1, the Red Cross will once again be at the UMR campus. In the past blood drives, Pi Kappa Phi Fraternity has been awarded the trophy for the highest percentage of participation in donating blood. We now challenge any organization to either "capture our trophy" or have more than 50 per cent participation for this worthwhile cause. Have a heart, donate blood.

The Brothers of
Pi Kappa Phi

MINER'S DIG UP VALUE AT TACO TICO

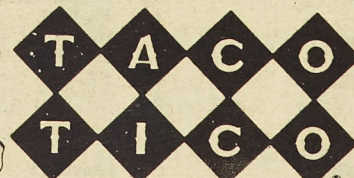
Bring this coupon in for

COMBINATION DINNER

\$1⁴⁵
Reg. \$1.59



Combination Dinner includes: 1 enchilada, refried beans, taco, tostada, cocktail chips & sauce
Expires November 23, 1977



1011 Kingshighway Rolla, Mo.

11:00 a.m. to 12:00 p.m.

364-5171

Always in season and seasoned to please!

Led by Tough Defense

Amazing Miners Tie Southeast, 14-14

By BILL FRANK

The Miners came from behind to score two touchdowns in the second half as they tied the Indians of Southeast Missouri State, 14-14. This puts UMR in a three-way tie for second place with Southeast and SMS, each with 3-1-1 conference records. In the final game of the season, the Miners will host 4-1-0 Northeast and a win would give them a share of the conference championship.

Neither team played true to form last Saturday, except for the always tough Miner defense that held SEMO to less than 100 yards passing and only 152 yards rushing. The Miner offense was unusually unstable, but totalled 230 yards on the ground against the Indian defense that had allowed only 90 yards per game so far in the season. Kenny Vaughn, the top passer in the MIAA by quite a margin, had a bad day, completing just six passes out of 22 for only 90 yards while throwing three interceptions. Ryan had 157 yards on the day to lead the Miner's offense, but fumbled three times. He dashed for 45 yards and the game tying TD early in the fourth quarter.

The game was determined by the kicking teams. The number one punter and field goal kicker in the conference, Mike Wood, was slightly off his average for the Indians, but it was the crucial field goals that allowed the Miners to tie. He missed a 61 yard attempt, a 47 yarder and what would have been a game-

winning 35 yarder late in the fourth period. The Miner defense forced SEMO to punt nine times and forced a bad punt on several occasions to give the offense good position.

Tom Rosenauer, who had been replaced by kickoff man Dave Weaver, was given the chance to win the game with 12 seconds left when the Miner offense finally put a drive together and advanced to the Southeast 18 yard line. Rosenauer's kick sailed wide on the 36 yard attempt however, and the game ended in a tie. The Miners were predicted to lose by 8 points and it was indeed a great effort by UMR to come up with the tie and remain right in the thick of the championship race.

It was costly turnovers that allowed the Indians to gain excellent field position in the first half and come up with their two TDs. On their first possession, the Miners marched to the Southeast 42 yard line after taking the opening kickoff, but Terry Ryan coughed up the ball and Cash of SEMO recovered to kill the threat. The Indians went nowhere as they fumbled twice, but managed to recover both of them. Mike Wood got them out of the hole with a 54 yard punt.

Vaughn tried to get something going from his own 6, but couldn't complete either of his first and third down passes. Fuqua had to punt from deep in his own zone, and only managed a 28 yard punt.

Taking over on the Miner 39,

it only took four plays for SEMO to take it in for the touchdown. SEMO quarterback Miller hit Taylor for 25 yards on the big play of the drive.

On their next series, Ryan fumbled again and the Indians took over. Neither team could put anything together during the next several minutes. The Indians got another big break, though, to score their second and final TD. Vaughn was intercepted by Williams and he returned it 31 yards to the UMR 14 yard line. Three plays later Miller slipped in from the one to score at the 12:56 mark in the second quarter. Wood converted and the Miners were down 14-0.

The rest of the first half was a defensive struggle with the punting teams determining the field position. Just before half, Vaughn hit David Hall for 43 yards to advance to the Southeast 10 yard line. Terry Ryan had two chances but couldn't advance. On fourth and 11, the Miners faked a field goal attempt. Holder Louie Greer passed to Rosenauer, but the play gained only five yards.

At the half, the Miners were down by two touchdowns, but only because of big turnovers by the Miner offense. UMR had outtrushed and outpassed SEMO, but statistics don't win football games.

The Miners roared back in the second half and didn't waste any time in putting some points on the board. After a good kick by Weaver and a clipping call against SEMO had put them

deep in their own zone, the Miner defense stood tall and forced them to punt. The punt was blocked and Gary Misak gobbled up the loose ball and ran it in for the TD. Rosenauer converted, and it was SEMO 14, UMR 7.

The rest of the third quarter, usually the big one for the Miners, was a circus with Backfish of SEMO fumbling, Ryan fumbled, Vaughn was intercepted, Wood shanked a punt out of bounds, and Weaver missed a 48 field goal attempt.

At the opening of the crucial fourth quarter, Mike Wood attempted a 47 yard field goal, but missed. After exchanging punts, the Miners took over on the Southeast 45 yard line. Wood had just flubbed another punt, this one an 11 yarder. Kenny Vaughn went to the air, but his pass fell incomplete. On the next play, Terry Ryan redeemed himself by dashing 45 yards for the game-tying touchdown. Rosenauer converted and

it was 14 all.

The Miner defense continued to stifle the Indian offense and forced them to punt. Kenny Vaughn was intercepted again on a 40 yard pass, and Southeast took over at their own 40. On the first play, Wieser dashed 15 yards. Two downs later, on third and ten, Backfish hit Tindall for 20 yards to advance to the Rolla 25 yard line. The defense came through again and allowed Southeast only seven yards on three runs by Wieser. On fourth and three, Mike Wood came on to attempt a 35 yard field goal. Fortunately, he missed and the Miners took over at their 20.

In eleven plays, every single one of them running plays, the Miners advanced 61 yards to the Southeast 19 yard line. Ryan carried four times for 30 yards in the drive. With just 12 seconds left, Rosenauer's 36 yard field goal attempt was no good.

The score by periods:

UMR	0	0	7	7-14
SEMO	7	7	0	0-14
Att-Comp-Int Yardage				
Vaughn	22-6-3	90		
Miller	13-5-1	71		
Backfish	6-2-0	28		
Leading Rushers:				
Ryan (UMR)	27	for 157		
White (SEMO)	12	for 73		
Wieser (SEMO)	15	for 65		

Team Statistics:

	SEMO	UMR
First downs	12	14
Rushing	47-152	46-230
Passing	99	95
Total Offense	251	325
Had intercepted	1	3
Fumbles Lost	0	3
Punting	9-36.0	6-38.8
Penalties	8-60	3-15

Individual Statistics:

Intramural League Races Tighten

By BRIAN EDWARDS

In League I of Intramural Soccer both Sig Ep and Sig Nu were victorious last week to maintain their perfect records. It was Sig Ep romping AEPi 4-1 and Sig Nu defeating TJ 3-1. In other League I action both TJ and AEPi won by forfeits over ABS.

TKE is the only undefeated team left in League II as they blanked Beta Sig 3-0. RHA came up with a big victory as they edged Delta Sig 3-2. Acacia won their first game as they won by forfeit over RHA. Triangle moved into a tie for second place with RHA as they overcame Beta Sig 2-1.

Intramural Soccer Standings

League I		League III	
Sig Ep	4-0	TEC	2-0
Sig Nu	3-0	Kappa Sig	2-1
TJHA	1-1	Phi Kap	2-1
Campus	1-1	GDI	2-1
AEPi	1-2	Pikers	0-2
Delta Tau	0-3	KA	0-3
ABS	0-3		
League II		League IV	
TKE	2-0	FLA	3-0
RHA	2-1	ASA	2-0
Triangle	2-1	Theta Xi	2-1
Delta Sig	1-1	Lambda Chi	2-1
Acacia	1-2	Sig Tau	2-2
Beta Sig	0-3	Sig Pi	0-3
		Wesley	0-4

Volleyball Results

League I

Sig Ep over ABS 15-4, 15-4
Sig Nu over AEPi, 15-4, 15-5
Sig Ep over Delta Tau 15-2, 15-4
AEPi over ABS 16-14, 15-12
Delta Tau over Campus 12-15, 15-8, 15-11
TJHA over Sig Nu 16-14, 10-15, 15-5

League II

Focus over Delta Sig 15-13, 13-15, 15-7
TKE over Delta Sig 15-5, 15-9
RHA over Pi K Phi 15-10, 9-15, 15-1
Beta Sig over Focus 15-3, 15-5
Beta Sig over RHA 15-2, 15-12

League III

Phi Kap over Kappa Sig 15-10, 17-15
GDI over Phi Kap 15-5, 15-6
Kappa Sig over BSU 15-13, 15-7
Pikers over TEC 15-13, 15-12
GDI over TEC 15-11, 15-7

League IV

Wesley over ASA 15-5, 15-5
Lambda Chi over Fela 15-12, 11-15, 15-6
Sig Pi over Mates 15-8, 3-15, 17-15
Sig Tau over Wesley 15-2, 15-2
Sig Pi over Fela 13-15, 15-9, 15-1
Sig Tau over Mates 15-12, 15-5

Women's

Crescents over KD 15-12, 15-12
AWS over GDI 16-14, 15-10
TJHA over ABS 15-9, 15-5
Zeta over Wesley 15-3, 16-14

Intramural Volleyball Standings

League I

Sig Ep 3-0
TJHA 2-0
Sig Nu 2-1
AEPi 1-1
Delta Tau 1-2
Campus Club 0-2
ABS 0-3

League III

Pi K A 4-0
GDI 3-1
Phi Kap 2-1
KA 1-2
TEC 1-2
Kappa Sig 1-3
BSU 0-3

League II

TKE 4-0
Beta Sig 3-0
Focus 2-2
RHS 2-2
Triangle 1-2
Delta Sig 0-3
Pi Kap Phi 0-3

League IV

Sig Tau 3-0
Sig Pi 2-0
Lambda Chi 2-0
FLA 1-2
Wesley 1-2
ASA 0-2
Mates 0-3

DISCO

Thursday Nite is Student Nite

9:30 to 1:30

THE GAS HOUSE

1435 Hauck Drive

Forum II



Reg. U.S. Pat. Off.,
Am. D.Q. Corp. (c) Copyright 1977
Am. D.Q. Corp.

COUPON

2 BBQ SANDWICHES

99¢

Expires 11-23-77
13th & Bishop
Rolla, Mo.

COUPON

The Bob Harmon Forecast

1—TEXAS	6—MICHIGAN	11—PENN STATE	16—BRIGHAM YOUNG
2—OKLAHOMA	7—PITTSBURGH	12—ARIZONA STATE	17—NORTH CAROLINA
3—ALABAMA	8—KENTUCKY	13—L.S.U.	18—CLEMSON
4—OHIO STATE	9—ARKANSAS	14—TEXAS A & M	19—FLORIDA STATE
5—NOTRE DAME	10—NEBRASKA	15—TEXAS TECH	20—U.C.L.A.

Saturday, Nov. 19 — Major Colleges

Arizona State	33	Colorado State	10
Arizona	35	U.T.E.P.	7
Arkansas	30	S.M.U.	7
Arlington	23	Lamar	10
Ball State	28	Eastern Michigan	14
Boston College	28	Massachusetts	20
Bowling Green	27	Hawaii	24
Brigham Young	40	Long Beach State	14
California	31	Stanford	17
Central Michigan	31	Western Michigan	24
Chattanooga	27	Marshall	7
Cincinnati	26	Vanderbilt	20
Clemson	22	South Carolina	10
Colgate	23	Delaware	20
Colorado	27	Kansas State	12
Connecticut	28	Holy Cross	27
Drake	22	Southern Illinois	21
Florida State	24	San Diego State	13
Florida	31	Utah	6
Fresno State	40	Santa Clara	0
Furman	21	The Citadel	16
Illinois	23	Northwestern	14
Iowa State	28	Oklahoma State	21
Kent State	24	Toledo	15
Kentucky	30	Tennessee	10
L.S.U.	35	Tulane	10
Louisville	34	Indiana State	10
Maryland	28	Virginia	7
Memphis State	28	Wichita	13
Michigan State	28	Iowa	17
Minnesota	27	Wisconsin	14
Mississippi	29	Mississippi State	21
Missouri	31	Kansas	13
New Mexico State	23	Idaho	16
North Carolina	26	Duke	17
North Texas	24	Louisiana Tech	20
NW Louisiana	21	SE Louisiana	17
Notre Dame	49	Air Force	7
Ohio State	24	Michigan	23
Ohio	26	Northern Illinois	21
Oregon State	27	Oregon	22
Pacific	25	Fullerton	14
Pittsburgh	24	Penn State	17
Purdue	24	Indiana	22
Rutgers	34	Boston U	6
Soth'n Mississippi	29	Arkansas State	14
SW Louisiana	26	McNeese	14
Syracuse	27	West Virginia	21
Texas A & M	38	T.C.U.	12
Texas Southern	27	Prairie View	8
Texas Tech	27	Houston	20
Texas	33	Baylor	14
Utah State	27	Idaho State	6
Villanova	28	Temple	23

Other Games—Midwest

Alabama A & M	23	Central State, Oh	14
Cameron	21	Central Oklahoma	7
Eastern Illinois	24	Evansville	20
Franklin	27	Indiana Central	21
Kearney	35	Northern State	0
Missouri Western	27	Benedictine	20
NE Missouri	28	Rolla	12
NE Oklahoma	23	SE Oklahoma	21
SE Missouri	37	Lincoln	6
SW Missouri	24	Central Missouri	12
Wittenberg	24	Baldwin-Wallace	17

Other Games—South and Southwest

Abilene Christian	33	Howard Payne	13
Albany State	24	Fort Valley	13
Austin Peay	24	East Tennessee	10
Central Arkansas	20	Harding	14
Concord	27	West Va Wesleyan	14
Delta State	21	Nicholls	17
East Texas	22	Angelo State	20
Eastern Kentucky	22	Morehead	10
Elon	24	Carson-Newman	8
Florida A & M	21	Bethune-Cookman	13
Henderson	21	Ouachita	10
Howard	21	Morgan	14
Jacksonville	24	North Alabama	14
Knoxville	21	Savannah	12
Lenoir-Rhyne	28	Catawba	17
Livingstone	30	Shaw	7
Martin	31	Livingston	6
Maryland E Shore	26	Bowie	13
Murray	21	Western Kentucky	16
Norfolk	27	St. Paul's	6
No Carolina A & T	37	No Carolina Central	6
Sam Houston	24	S F Austin	21
Southern State	20	Monticello	17
Tennessee Tech	26	Middle Tennessee	14
Texas A & I	28	SW Texas	15
Virginia Union	23	Hampton	7
Washington & Lee	19	Georgetown, DC	7
Western Maryland	20	Johns Hopkins	13
Wofford	25	Gardner-Webb	20

Other Games—Far West

Cal Lutheran	21	San Francisco St.	13
Cal Poly (S.L.O.)	31	Cal Poly (Pomona)	12
Davis	23	Chico	7
East'n New Mexico	25	Bishop	14
Fort Lewis	28	W'trn New Mexico	10
Hayward	23	Humboldt	20

INTRODUCING



OWN MINER BURGER

Especially For The Miners

NOW AVAILABE EVERY DAY

3 Patties 100% Beef, Bacon, Tomato,
Lettuce, Cheese, Special Sauce,
On A Sesame Bun

149

ONLY

"IT'S AT THE HAT"

Michelob On Tap Happy Hour

609 Rolla St. Rolla

Lady Miners Open Season

By MAUREEN MURPHY

Women's basketball season is here, and our team is ready to make their mark. This year's team consists of nine very talented co-eds. In no order what-so-ever, they are Karen Peacock, Tammy Fredenall, Peggy Taylor, Mila Wallace, Karen Williamson, Dallas Kirk, Terry Noelker, Geanette White, and Kate Fox. Who is playing what position, and who is in the starting line-up is still in question. Every member of the

team is very talented and versatile. Coach Caruso, is doing alot of switching around, trying several different combinations. She probably will not know the starting line-up until the night before the first game.

The first two games are this weekend. The team will be making an over night road trip. First to Canton on Friday November 18th, to play Culver-Stockton. Then on to Kirksville on Saturday to play Northeast

Missouri State. Northeast is the top team in our league at present. Both Coach Caruso, and manager Rosie Love, will be traveling with the team, keeping them in good spirits.

The women's intramural volleyball will not be over until December 1st. If you have been to any of the games you know there is fierce competition between the teams (coaches).

DIEHL MONTGOMERY FORD SALES

Rolla, Missouri

(The Originator Of The Student Finance Plan In This Area)

This plan allows the student upon approved credits and job, to buy a new car with nothing down and payments of \$25.00 per month UNTIL YOU ARE ON THE JOB. This plan is not new, Diehl Montgomery Ford has sold over 750 new cars and trucks to graduating students this way. See us for all the details. Also you can use your own insurance or ours.

FORD-LINCOLN-MERCURY

This allows the graduating students to have a new car before he graduates when he really needs it. "This is a special discount program for students. We will be glad to quote you a price on a Ford or Mercury product."

GET IN ON

THE RACQUETS

Racquetball racquets, that is. And

Kenmark's has got 'em. Wilson and

Leach starting at

\$13.95. We've also

got the balls. (After

all, what is racquet-

ball without the

balls?)

Kenmark Sporting Goods

900 Pine Street

364-3603

What to tell your folks when you decide to change your major.

Dear Mom and Dad—
No one was ever very successful at something
he didn't believe in.
I'm no different.
For some time now, I've been plugging away
at my major. My grades aren't bad. My teachers
aren't bad. Everything's not bad. But for me,
that's not good enough.
So I'm changing. I'm starting from scratch
in a field that does excite me. I believe in it.
And I know deep down, I'll be better at it.
And happier at it.
I hope you're not disappointed in me.
I rather hope you're proud of me.
Let's talk about it when I get home.

—Love

At Anheuser-Busch, we believe in brewing
Busch beer just one way. The natural way.

BUSCH

When you believe in what you're doing,
you just naturally do it better.

