



18 Nov 1976

The Missouri Miner, November 18, 1976

Follow this and additional works at: https://scholarsmine.mst.edu/missouri_miner

These newspapers reflect the attitudes, perspectives, and beliefs of different times. Neither the library nor the university endorses the views expressed in these collections, some of which contain images and language which may be offensive to some readers.

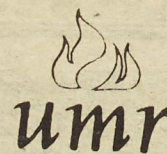
Recommended Citation

"The Missouri Miner, November 18, 1976" (1976). *The Missouri Miner Newspaper*. 2137.
https://scholarsmine.mst.edu/missouri_miner/2137

This Newspaper is brought to you for free and open access by Scholars' Mine. It has been accepted for inclusion in The Missouri Miner Newspaper by an authorized administrator of Scholars' Mine. This work is protected by U. S. Copyright Law. Unauthorized use including reproduction for redistribution requires the permission of the copyright holder. For more information, please contact scholarsmine@mst.edu.

Missouri Miner

University of Missouri at Rolla



Volume 63, Number 13

Thursday, November 18, 1976

Chancellor Resigns ...

By ALAN BENSON
Miner News Writer

UMR Chancellor Dr. Raymond L. Bisplinghoff, 59, announced last Friday morning that he will resign effective Jan. 1, 1977 to accept a job in industry.

Interim University President James C. Olsen accepted the resignation "With disappointment and regret." "Dr. Bisplinghoff is one of the nation's most distinguished authorities in science," President Olsen said. "The University has profited from his experience and wisdom during his two years as chancellor, and obviously I want to express my sincere appreciation to him for the leadership and expertise he has provided not only the Rolla campus but the total University as well."

Details of Bisplinghoff's new position will be announced later, the chancellor said, and he indicated his reason for leaving the university were "due to the attractiveness of the job offer and other personal factors."

Bisplinghoff was unavailable for comment Sunday night.

In the past few months

Bisplinghoff has been under pressure from the faculty to restructure the universities' administration. The academic council passed 10 resolutions calling for a narrowing of the salary gap between administrators and the faculty, and elimination of some administrative positions. Bisplinghoff agreed in principal with most of the resolutions, but had not promised quick action or early implementation. Bisplinghoff pointed out at an October 25 meeting to the faculty that most administrative positions are the result of U-wide policies and are not subject to local control.

Bisplinghoff was named chancellor July 17, 1974 and assumed the duties the following October 1. He succeeded Dr. Dudley Thompson, now vice chancellor, who had filled the position on an acting basis for one year after the resignation of Dr. Merl Baker.

Before his appointment there Bisplinghoff had served as deputy director of the National Science Foundation in Washington, D.C. in September of this year he was appointed to the governing board of that institution for a six-year term

by President Ford. The appointment was confirmed by the Senate.

Bisplinghoff was born in Hamilton, Ohio and earned his bachelor's and master's degrees from the University of Cincinnati. He received a Sc. D. degree from Eidgenossische Hochschule, Zurich, Switzerland.

Before he became deputy director of NSF in 1970, he had been a member of the faculty at MIT since 1946. He served there

as head of the department of aeronautics and astronautics and was dean of the School of Engineering for two years.

While on leave from MIT, Dr. Bisplinghoff held several positions with NASA, including director of the office of advanced research and technology, associate administrator for advanced research and technology, and special assistant to the NASA administrator.

Bisplinghoff was awarded the

NASA Distinguished Service Medal, 1967; the FAA Extraordinary Service Medal, 1969, the Distinguished Alumnus Award from the University of Cincinnati, 1969, and the Distinguished Service Award of NSF, 1973. He is the author of three books and several papers and articles. He is listed in Who's Who in America, American Men of Science, Who Who's in World Aviation, International Who Who's and Engineers of Distinction.

... Reaction Varies

By ALAN BENSON
Miner News Writer

Reaction to Dr. Bisplinghoff's resignation last Friday varied from the flippant to the serious. Some suggested that it was probably for the best, while others were disappointed. Dean Stuart J. Johnson, Dean of the School of Engineering, described faculty reaction as "disappointed, but not surprised." Dean Adrian Daane, Dean of the College of Arts and Sciences, characterized overall reaction as "sadness, regret, 'what'll we do now'." Some suggested that the yet-to-be-named chancellor search committee consider the rejected applicants for Johnson's post as Dean of Engineering.

With Bisplinghoff's resignation Dr. James C. Olsen, interim University President, will have to name an acting chancellor to fill the post until a new chancellor is found. Dr. Johnson suggested that the "logical" choice be current vice-chancellor Dr. Dudley Thompson. Dr. Johnson, who retires next August 31, said that he would stay past his retirement date if asked by Olsen to assume the chancellor's duties, adding that "if the President asks you to do something, you do it." Dean Daane thought that Thompson would be the likely choice, or possibly Dr. James Pogue, current Provost. Dr. Pogue when asked who he thought would be named said "logic says the Vice-Chancellor." one

of the three had been contacted by Dr. Olsen concerning the post.

Bisplinghoff's resignation leaves open yet another critical University position. The post of University president is currently vacant and is being filled on an acting basis by Dr. James C. Olsen, chancellor of the Kansas City campus. With the retirement of Dean Stuart J. Johnson, Dean of the School of Engineering, three positions will be vacant. In late 1973 and early 1974 it took a search committee a little more than a year to locate Dr. Bisplinghoff. Current speculation is that this time it could take a lot longer. Dean Daane suggested, however, that a new chancellor could be on the job as early as next September.

Engineering - A Proud Profession

What it means to you as an engineering student...

You are aware that the majority of today's technological developments can be traced directly to the engineer. You know that much of the world's progress depends on this profession. As a future member of this vital group, you should be giving some thought now as to how you can best serve your profession and nation in this time when engineering has taken on such vast importance. Since engineering is an honored profession, a great deal of consideration must be given as to how you can best equip yourself to serve in a professional manner. The earlier you set your professional goals, the better will be your opportunities of advancement — for yourself and the engineering field.

The undergraduate years are ideal for formulating a professional philosophy and taking steps to equip yourself for the future. This article

outlines the steps you can take up the ladder of professionalism.

First, let us look at the background of the professional engineers in the United States. The legal status of the profession of "Engineering" in the United States has been established through the passage of laws, in each of the states, regulating the practice of professional engineering in that state. While these laws vary somewhat from state to state their objectives are the same — "to safeguard life, health and property and to promote the public welfare." This is brought about by declaring that the practice of professional engineering shall be subject to regulation by the State in the public interest. And any person practicing or offering to practice the profession of engineering shall be required to submit evidence that he is of good character and qualified to practice and shall be registered in the State.

cont. on page 3



Members of Sigma Pi Fraternity show their jubilation at being awarded the 1976 Twelfth Man Award for cheering support at Miner football games. The award was presented by M-Club at the Miners last home game of the season last Saturday. The Miners lost the game.

Photo by H. Burford

Bullboard

MISSOURI MINER
Thursday, November 18, 1976
Page 2

Notices to appear in Bullboard should be typed and deposited in the North door of the Miner office in Bldg. T-1 by 10:00 p.m. Sunday. This will assure publication in the next edition of the Miner.

IFC SING

The UMR Interfraternity Council will hold its annual IFC SING on Friday, December 3, at 7 p.m. in Centennial Hall of the Student Union. Admission is free.

CHRISTMAS DECORATING CONTEST

The Student Union Board is sponsoring a Christmas Decorating Contest. Judging, based on originality and theme, will be Thurs. Dec. 2nd, starting at 5 p.m. Interior or exterior decorations are eligible. First prize, a plaque and traveling trophy, will be presented at 10 p.m. Dec. 4 during the SUB Dance. If your living unit is interested, contact Pat Mudd at 364-8968 by Sunday, November 21.

LOANS AVAILABLE

The Office of Student Financial Aid has a two-week deadline prior to regular registration for applying for short term loans to pay tuition and fees.

Any person wishing to obtain a short term loan for tuition and fees for spring 1977 registration must do so prior to December 27, 1976.

ACM

The Association for Computing Machinery will have a meeting this Thursday, Nov. 18, at 7:30 p.m. in G-5 H-SS. Our speaker will be Mr. Richard Pegis, who will teach us "How to win at Computer Blackjack." Everyone is welcome to attend; refreshments will be served after the meeting.

PHC SPONSORS MOVIE

The UMR Panhellenic is sponsoring a movie, "The Longest Yard" on December first at the Ritz Theater, at 6:30 and 9:00. Tickets are 50 cents and can be obtained from members of both sororities. Tickets will be on sale at the end of this week.

"BASKETBALL CHEERLEADERS INFORMATION"

All persons interested in being a '76-'77 basketball cheerleader, pick up an application at the Student Council Office between 2 and 4 p.m. The deadline for the return of the completed forms is Friday, Nov. 19.

FLU SHOTS

Students who need information concerning swine flu shots should contact the Public Health Office, 364-3381.

MO—GRANTS

Missouri grant checks are now available in the cashiers office.

ST. PAT'S SALES

Tomorrow will be the last day the St. Pat's board will be selling this semester. Selling will take place until 1:30 tomorrow afternoon, in the student union. Here's your last chance to buy all your favorite St. Pat's sweatshirts, buttons, garters, and bumper stickers before Christmas, so buy tomorrow and support St. Pat's.

INDEPENDENT'S WEEKEND

The Independent's Weekend Committee is holding a design and slogan contest for I.W. 1977. The best design will receive \$15 and the best slogan \$10. Entries must be turned in to the G.D.I. office, 201 old Student Union, by Friday, Nov. 19.

NEXUS

That is the name of the SF Fanzine. If you are interested in joining, please contact Ms. Liz Cogell of the Humanities Dept. or Gary Gadeker. Please submit any articles, stories, reviews or artwork for possible publication in the Fanzine to Ms. Cogell or to the General Meeting, Dec. 1, 7:30-9:30, Rm 103 Humanities.

If you've got time to kill... We can help kill it!
Rolla Craft & Hobby

Now at a new and larger location to serve your needs better.

1009A Pine (11th & Pine)

364-5581

UMR FASHION SHOW

To help bring in the cold winter season, the UMR SUB is sponsoring a winter apparel fashion show. Students, both male and female, from the UMR campus will be modeling a variety of sportswear and dress clothes from several of the Rolla Stores. The fashion show will be held in the St. Pat's Ballroom in the old student union on Sunday Nov. 21 from 2:00-3:00 p.m. There will be live entertainment and admission is free.

WHAT'S GOING ON

Thursday, Nov. 18 — Friday, Nov. 19 — 19th annual Missouri Asphalt Conference. Registration fee.

Thursday, Nov. 18 — "The Harder They Come," next to last of Great Films series, 7:30 p.m., Mechanical Engineering Auditorium. Anyone not registered for series may attend last two films by paying pro-rated fee.

Friday, Nov. 19 — Seminar on Death and Dying, sponsored by Phelps County Memorial Hospital in cooperation with UMR and the Meramec Area Extension Councils. Afternoon session, 2:30 to 5:45 p.m.; evening session, 7 p.m. to 10 p.m. St. Pat's Ballroom. Registration fee.

— Openhouse, UMR Observatory, 7 to 9 p.m. Free.
Saturday, Nov. 20 — Swimming, Miner Relays. (Eastern Illinois University, Southern Illinois University - Carbondale, St. Louis University, Southwest Missouri State University, University of Arkansas-Little Rock, Western Kentucky University, Western Illinois University, Florissant Valley Community College, William Jewell College, Drury College, University of Missouri-Columbia, University of Arkansas-Fayetteville, Southeast Missouri State University.) Ten meter diving competition 10 a.m., swimming events starting at noon. Multi-Purpose Building. Free.

COLLEGE REP WANTED

to distribute "Student Rate" subscription cards at this campus. Good income, no selling involved. For information and application send name and address to:

Mr. D. DeMuth,
Area Manager,
3223 Ernst St.,
Franklin Park, Ill. 60131

COMMONWEALTH THEATRES PRESENT
THE BEST FROM HOLLYWOOD!

UPTOWN
TELEPHONE 364-1857

"THE LION IN WINTER"
Thursday
7:00 & 9:30
PONY EXPRESS
Starts Friday
7:00 & 9:00

RUZZ
TELEPHONE 364-1299

NOW
7:00 & 9:10
IS HE THE BEGINNING OF THE END?
IS HE
THE
OMEN

Introducing Vision Center's

"Love 'em or Leave 'em" Plan

The original purchaser of this pair of contact lenses, if not completely satisfied within 30 days of purchase, is entitled to a refund of the cost of the lenses only. Refund will be made upon return of the lenses with this certificate to the Vision Center where purchased. This plan does not include damage or scratching, loss or theft of contact lenses. This certificate is not transferable.

Issued to _____
Issue Date _____ Expiration Date _____
Rx No. _____
Store No. _____
Manager _____

VISION center

It takes the indecision out of the decision to buy contacts.

If you wear eyeglasses, you've probably thought about getting contact lenses. You've probably also had second thoughts about whether you'll like them or not.

You owe it to yourself to see how you like contacts. And now Vision Center has a way for you to do that. Without owing anything to us.

That's why Vision Center now offers our "Love 'em or Leave 'em" Plan. Try contacts. Wear them. Live with them. And then, within 30 days of purchase, if you decide they're not for you, we'll refund the cost of the lenses.



Rolla — 702 Pine Street. Tel. 364-7311

Open daily 9-5, Fri. 'til 8:30

Locations in Columbia, Joplin, Rolla, and Springfield.

Miner News

Thursday, November 18, 1976

Page 3

Drive With Care

If your plans for the upcoming Thanksgiving Day weekend call for traveling by automobile, have your car safety checked and then drive with due care and caution, motorists were advised today by Colonel Sam S. Smith, Superintendent of the Missouri State Highway Patrol. "Don't be delayed on your holiday trip by a mechanical breakdown," Smith warned. "Check your car before starting your trip. It won't take a garageman or service station attendant long to inspect the tires, headlights, signals, battery, radiator, rear lights and windshield wipers and

blades. A failure of any of these items could spoil your plans."

The Patrol Superintendent reminded drivers of the need to be extra alert for changing weather conditions over the Thanksgiving Day weekend. He noted that this is the time of the year when sudden snow or sleet can quickly develop and turn a pleasant trip into a dangerous ordeal. Motorists were urged to prepare to adjust their driving to weather conditions.

Smith also recommended stopping for an occasional rest if the trip covers several hundred miles. Passengers and drivers can use the occasion for

a refreshment break and to stretch their legs. Then everyone, especially children, can resume the trip less tired.

"If friends and relatives back home are planning to see you this upcoming Thanksgiving Day weekend, make sure the car you drive is in top mechanical condition, and drive with prudence and extra care," he concluded.

Vaccine

ROLLA, Mo., Nov.—Mrs. Jessie Nations, head nurse, announces that University of Missouri-Rolla Student Health has been informed that swine flu vaccine may be made available to UMR in a form that can be dispensed at the infirmary.

If this is possible, students, faculty and staff members may receive immunization shots between 10 a.m. and 3 p.m. at the infirmary on designated dates before the Thanksgiving vacation.

Members of the University family are advised to listen and watch for announcements concerning availability of the vaccine as soon as it has been received.

HIP HIP HURRAY!!

Organized cheering is an essential part of a basketball game. The cheerleaders have the responsibility of keeping their fans under control during the game.

Cheerleaders are still needed for the basketball season coming up. Being a cheerleader is a lot of fun, good exercise, and a way to meet people. You also get a front row seat to all the games.

All students are encouraged to become a cheerleader, both male and female. This year's Miners are the defending MIAA champs and are promising an exciting season. Let's see if we can't cheer the Miners onto another MIAA Championship.

You can pick up an application at the Student Council Office between 2 and 4 p.m. The deadline for the return of the completed forms is Friday, Nov. 19.

Engineering - A Proud Profession

cont. from pg 1

You have the opportunity to become a part of this movement. This will result in your becoming a Registered Professional Engineer which will affiliate you with the nation's largest group of distinguished and progressive engineers. However, your degree from an engineering school will not automatically entitle you to this affiliation. In addition to meeting certain provisions of the law of your state, other activities are

essential to your becoming a Professional Engineer. As an engineering student you may start climbing now in order to reach your goal of professional service and dignity.

On the campus of this school there is a student chapter of your state society of professional engineers. The main purposes of this group are to further acquaint its members with the benefits and aims of the profession and to unify under one organization the students in the various technical

engineering curricula. Other purposes are to provide you with an opportunity to develop leadership ability, cultivate associations not otherwise available to the engineering student, and to participate in functions of interest and benefit to you. Your membership in this organization makes you a part of the nation-wide student membership and on a path leading to eventual full registration and membership in the National Society of Professional Engineers. As a student member, you are also entitled to receive 12 issues of the Professional Engineer magazine, 12 issues of the Missouri Engineer and a bi-weekly NSPE NEWS letter.

Show your concern for your profession by attending the next student chapter meeting on Tuesday, November 30 at 8:00 in the C.E. auditorium. The speaker will be Paul Doll, PE, past executive director of M.S.P.E., on the topic of ethics. New membership applications will be available.

ACADEMIC RESEARCH PAPERS

THOUSANDS ON FILE

Send \$1.00 for your up-to-date, 192-page, mail order catalog.

11926 Santa Monica Blvd.
Los Angeles, Ca. 90025

Original research also available.

Enclosed is \$1.00.
Please rush the catalog to:

Name _____
Address _____
City _____
State _____ Zip _____

BUSINESS OPPORTUNITY

Stuff Envelopes

\$25.00 PER HUNDRED
Immediate Earnings

Send \$1.00 To:
Envelopes Dept. 339A
310 Franklin Street
Boston, Mass. 02110

ZENO'S MOTEL STEAK HOUSE

"HOME OF THE FAMOUS 12 OZ. STEAK"

Box 70 Phone: 364-1301
Rolla, Mo. Martin Spring Dr.

EXAMS!!

Finals Schedule

The final exam period will begin Monday, December 13, 1976, at 7:30 a.m. and end at 5:30 p.m., Saturday, December 18, 1976. Common Finals are scheduled for those courses listed in Section II below. Room assignments for Common Finals will be announced by the instructor.

Courses not covered in Sections I, II, or III are to be arranged by the instructor in cooperation with the students in that course.

I. Evening-Course Finals are scheduled for the regular evening session during final week.

II. Common Finals (Rooms to be scheduled by Registrar)

Course	Final Exam Time
CSc73 (except evening)	Wednesday 7:30-9:30
CSc74	Tuesday 10:00-12:00
CSc163	Wednesday 7:30-9:30
CSc218	Monday 10:00-12:00
CSc253	Wednesday 7:30-9:30
EE61	Thursday 3:30-5:30
EM50, 100, 150	Tuesday 10:00-12:00
EM110	Monday 10:00-12:00
Math 2, 4, 8, 21, 22	Monday 10:00-12:00
Math 6	Wednesday 10:00-12:00
Physics 21, 23, 24, 25	Wednesday 10:00-12:00

III. Regular Finals (Meet in regular meeting room)

First Weekly Class Meeting Time	Final Exam Time
First Weekly Class Meeting Time	Final Exam Time
Monday 8:30	Wednesday 3:30-5:30
Monday 9:30	Tuesday 3:30-5:30
Monday 10:30	Thursday 10:00-12:00
Monday 11:30	Monday 3:30-5:30
Monday 12:30	Friday 10:00-12:00
Monday 1:30	Friday 7:30-9:30
Monday 2:30	Tuesday 7:30-9:30
Tuesday 8:05 or 8:30	Monday 7:30-9:30
Tuesday 9:30	Monday 1:00-3:00
Tuesday 10:30	Wednesday 1:00-3:00
Tuesday 11:05 or 11:30	Tuesday 1:00-3:00
Tuesday 12:30	Thursday 1:00-3:00
Tuesday 1:30 or 2:05	Thursday 7:30-9:00

Missouri Miner

The MISSOURI MINER is the official publication of the students of the University of Missouri-Rolla. It is published at Rolla, Missouri, every week during the school year. Entered as second class matter February 8, 1945, at the Post Office at Rolla, Mo., under the Act of March 3, 1879. The subscriptions are \$3.00 per semester. This MISSOURI MINER features activities of the students and faculty of UMR.

Miner Office (364-4235)

Sam Rucker (364-4006)
Bill Uding (364-5630)
Tom Calzone (364-6294)
Dan Shelledy (364-5630)
Richard Markey (364-5630)
Bruce Schaller (364-9885)
Paul Andrew (364-9769)
Dennis Gilliam (364-2331)
Ed Burford (364-9792)
Dr. Curt Adams



MEMBER

Lana Leitner-Jones

Staff: Katie Kunkel, Linda Ponzer, Ted Cottrell, John Martine

Gary Sandbothe, Gary Howorth, Brian W. Kavanaugh, Jim P. Hasty, Mark Lester, Kathy Sorrel, Carol A. Russell

Patty Klug Jim Allen Tim Smith

Articles and photos for publication in the Miner must be in by 9:00 p.m. on the Monday before printing on Thursday.

Mailing Address - Missouri Miner, University of Mo. Rolla

SPECIALS THIS WEEK

12 Oz. N.R. 6 Pk.	
OLD MILWAUKEE	1.21
7 Oz.	
MILLER	8 Pk. 1.49
12 Oz. Cans	
BUD	6 Pack 1.44

509

LIQUOR STORE

Free Parking In Rear

116 West 8th St. Phone 364-6131

Features

MISSOURI MINER
Thursday, November 18, 1976
Page 4

To Our Dear U ...

by PAUL ANDREW

Due to the huge amount of mail received lately, the MINER went to the great U for the solutions to some typical problems submitted.

Dear U...

I need help, dear U. I've been out with this one guy three times. Last date we went to an early show and then came back to my room at T.J. and now, six days after our date, he hasn't left my room! What can I do? I like his company but this is ridiculous.

Signed Claustrophobic.

Ms. Claustrophobic:

Just simply have him take over, your dorm contract. Then you can leave. Hurry!



Dear U...

After much thinking about the popular custom of couples sleeping together without being married I've finally come up with an appropriate name for them; newlybeds.

Signed
Cute

Dear Cute:
Cute, real cute!

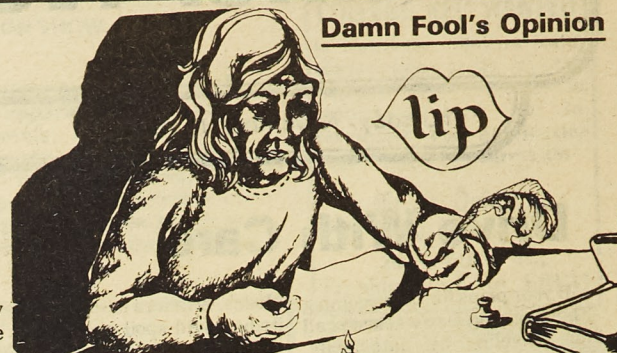
Dear U...

I've been married to my husband for thirteen years. We were wed before he got his Ph. D. Everything went fine until this year. He's been cutting class so much that he has to re-introduce himself to the students each time the class meets. What can I do to solve this problem, dear U?

Sincerely
Mrs. Doc

Mrs. Doc:

Have your professor-husband wear a name-tag next time he can make it to class.



Damn Fool's Opinion

Safety on Campus?

by BRIAN W. KAVANAUGH

The University here at Rolla was besieged by tragedy early last week. As you may or may not have known, a Rolla co-ed was the victim of a rape in her residence hall.

This is not the first time such an occurrence has occurred in Rolla. Last semester two Women's Residence Halls, Myers and Wallace, experienced numerous disturbances and attempted rapes to the point where entry into the halls and rooms was made by male intruders.

The University Police took action on this last year. They held a seminar telling women students what to do should they be raped, and how to possibly avoid the situation. However, no one did anything to prevent it themselves, such as increased lighting, or functional locks.

Now that it has happened again, this time more serious than all the rest, what is the University or Auxiliary Enterprises doing to prevent it from happening again? Granted, this last event did not happen on the University property. Are they waiting until it does before they take action?

The dormitory quad is not the large problem this year, though

it could stand some work on the subject. The big hazard now is the Thomas Jefferson Residence Halls. And the big problem with T.J. is their lighting and policies. If a person parks in the unlit back parking lot, she must walk around the side of the building through the bushes to the front of the building because the policy of the administration is to lock the back door after a certain time. The predominant light source along this route is the moon.

But I'm not giving credit to Auxiliary Enterprises where credit is due. They did install lights and they are planning sidewalks.

Before Alumni and money contributors came down to visit over homecoming, modernistic new lights were installed in the already lighted front parking lot. And sidewalks are being planned - from T.J. to the University.

Again I say, will Auxiliary Enterprises wait until another unfortunate happening occurs on their residence hall property and a suit is filed before they will take definitive action? For the benefit of the hundred and some-odd girls living in Thomas Jefferson, I sincerely hope not.

This week's article was written by John Golzy, News Director and Record Librarian at KMNK.

KMNK GROUNDWAVES



Being a member of KMNK, I have been asked the question several times, "What does progressive music mean?" You probably have been wondering, too, what type or what format the music has to have to be considered "progressive."

A simple answer to your question is this: If you are a KMNK listener, about 80 per cent of what you hear on the radio is progressive.

Generally speaking, progressive means a music which has a new form or shape that has not been presented before, but is basically derived from the classical form. Progressive rock and roll has, first of all, a regular rock and roll music format, plus some new ideas or modifications that may be a different way of presentation.

To me, progressive music should not be just the music, but

probably an expression of the feelings or thoughts of the artist as well. I'd like to give you some examples. Some groups started using electronic effects in their music to give more emphasis to the main parts of their music. And a few groups, like Strawbs or Baker Gurvitz Army, have really done a good job that way. They use echoes, feedbacks, and other effects which are produced through their electronic equipment and these effects easily express about half of the words, which couldn't be put in the music so easily.

Progressive music, or generally speaking, progressive art, is not acceptable by the majority of people. The reason is because it's a little difficult to comprehend. Sometimes it's so difficult that to understand a progressive presentation you need special studies.

A piece of progressive music

usually gets to a point where it can satisfy everybody! Then it changes its name to popular music. This does not mean that the progressive music has lost its quality, but it has educated people to the point that they can understand it. I heard they aired my movie again a few months ago, and this time it was very successful.

This is the nature of progressive music, or any other progressive art that educates the people. And that's why KMNK, as an educational radio station, plays progressive music.

On Monday, November 15, KMNK was experiencing some transmitter trouble. Hence, the silence from about 1:50 P.M. to 3:30 P.M. In the event that there is more trouble this week or the next, we ask that you please bear with us for the duration of the dead air.

APPROPRIATIONS 1976-77

Organization	Request	Committee Recommendation	Student Council Appropriation
1. India Association	\$150	\$50	\$50
2. Scuba Club	\$192	\$0	\$0
3. International Student Club	\$200	\$100	\$100
4. American Academy of Mechanics	\$250	\$0	\$0
5. Rock Climbing Club	\$290	\$100	\$100
6. Psychology Students Assoc.	\$400	\$0	\$0
7. Chinese Students Assoc.	\$400	\$50	\$50
8. Gymnastics Club	\$772	\$400	\$400
9. Theatre Guild	\$900	\$550	\$550
10. Pershing Rifles	\$900	\$0	\$0
11. Amateur Radio Club	\$1000	\$275	\$275
12. Photo Club	\$1300	\$275	\$275
13. Association for Black Students	\$1350	\$150	\$150
14. Sport Parachute Club	\$1694	\$300	\$300
TOTAL	\$9798	\$2250	\$2250

Non-Varsity Sport APPROPRIATIONS 1976-77

1. Student Target Pistol Club	\$300	\$0	\$0
2. Soccer Club	\$550	\$225	\$225
3. Trap and Skeet Club	\$600	\$100	\$100
4. Rugby Club	\$672.40	\$325	\$325
5. Water Polo Club	\$1109	\$520	\$520
TOTAL	\$3231.40	\$1170	\$1170

Free Lessons Daily
Mon.-Sat.
10:00 a.m. to 5:30 p.m.

Evening Classes
Wed. & Fri.
7:00 p.m. - 9:00 p.m.

Calico Corner Ceramics
7th & Rolla 341-2442

IS RACKETBALL YOUR RACKET?

If it is, then we've got everything you need. Rackets starting at \$18.00 and a wide selection of racket balls including the revolutionary new

Z-BALL.

COME ON IN AND CHECK IT OUT.

Kenmark Sporting Goods

904 Pine Street Rolla, Missouri 65401

364-3603

Ediletters

Thank You

To the Editor,

I would personally like to express my thanks to all UMR students for their support and help in making all the physical arrangements, lighting, set-up, ticket sales, etc., in connection with the appearance of the University of Iowa Collegium Musicum on campus Nov. 5 and 6.

Thanks also to all the faculty and staff who gave so generously of their time and money to support the concert presented by the group Saturday, Nov. 6.

Sincerely,
Joel Kramme

What to do when injured.

Dear Editor:

Recently, many complaints have been filed with the Student Council over the question why, when a student is injured on the Intramural Fields he has to be taken to the UMR Infirmary before he can be taken to Phelps County Hospital, if needed.

The main problem here is the lack of understanding on the students part.

When a person is injured on the fields, instead of one of his teammates deciding to take him to the hospital, the field supervisor should be shown the injury. This person is qualified enough in first-aid to diagnose

how serious the injury is. If he feels an ambulance is needed, he will call one. The ambulance driver is instructed to take the injured person to the hospital only if they feel the infirmary cannot treat the injury. Our infirmary has the facilities to treat just about any injury a person can sustain on the fields.

If the injured person is taken to the hospital, the field supervisor will call the infirmary and let them know what has happened. The school doctors, who are on constant call, will be at the hospital to treat the injury instead of the general admissions doctors in the emergency room.

When a student is injured anywhere, he should always go to the infirmary first. If he needs to be taken to the hospital, he will be admitted as a student. If he goes to the hospital first, he will be forfeiting all responsibility the school has on paying the bill. The infirmary operates on a limited budget and cannot pay for the students who take an ambulance to the hospital for something like a dislocated toe. The student insurance program, which the students get very cheap, is less expensive because the school can treat injuries better for a lesser amount of money at the infirmary. If the students want the program changed to where they can go directly to the hospital, the premium will be a lot higher.

continued on page 6

Faculty Should Be Red - Faced

By Stephen E. Sowers

© 1976 Rolla Daily News
Reprinted with permission

With the resignation of Chancellor Raymond Bisplinghoff, one wonders what UMR's intelligentsia will do for an encore.

After first having bad-mouthed Merl Baker all the way to the Columbia campus of the university, the faculty and staff can now credit their street fight over salaries for prompting Bisplinghoff's untimely departure.

While Baker, whose main asset was in the field of public relations, needed a change, (as did UMR), Bisplinghoff is the type of leader this campus can ill afford to lose.

When Baker resigned more than two years ago, it was the faculty which said UMR cried out for a chancellor who could straighten out the priorities and begin to develop the full potential on the Rolla campus. A highly-distinguished scientist who also has what it takes to be an effective administrator, Bisplinghoff was ideal for the UMR job.

Now, after harping over Baker's foulups for so many years, the faculty has only itself to blame for chasing Bisplinghoff into private business, where he won't have to deal with UMR's fickle faculty members who preach idealism in higher education while devoting every possible minute to advancing their individual interests. (Always before, Bisplinghoff has spurned comparable offers from private industry, preferring to stay in education.)

Despite claims of inadequate pay, UMR faculty members will find little sympathy for their cause outside the academic world. Paid an average of almost \$17,000 annually for teaching two or three hours of class for nine months out of 12, given the opportunity to make twice or three times their salary on the side and with the best time-off benefits anywhere, the faculty began fouling its own nest last spring when it got Bisplinghoff embroiled in a situation over which

he had almost no control.

The new chancellor bargained for a lot when he took the head job here in 1974, but he never intended to be a labor negotiator. For the past nine months the faculty has publicly clamored for elimination of several administrative positions at UMR and for closing the salary gap between the so-called professional staff and deans, actually faculty members themselves who have earned, in most cases, their higher status in life.

All along, Bisplinghoff has sympathized with his colleagues while trying to explain that it is the Board of Curators, governing body of the university, which sets the policies in question and the Missouri General Assembly which appropriates money for salaries. For the most part, the chancellor had no power to act as the faculty desired.

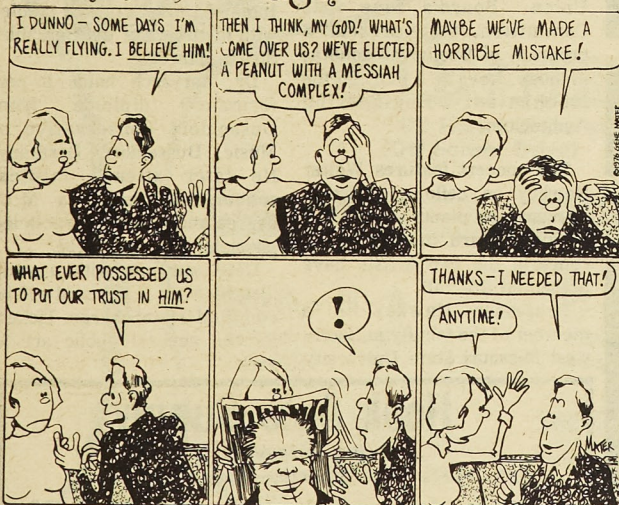
Yet they pressed their case and Bisplinghoff, who privately abhorred the union-style method the faculty chose to use, became increasingly fed up with it all. He correctly pointed out on several occasions that it is the faculty's job to teach; not to become involved in running the university.

In the months ahead, those faculty requests which seem most reasonable, such as trimming the fat from the administrative staff, will likely be met. In that respect, the faculty effort will have been a success.

This is not to blame the faculty entirely for Bisplinghoff's decision, but in attaining that goal, a larger problem has been created — one which has to be deeply embarrassing to every faculty member on campus.

Stephen E. Sowers is currently
Associate Publisher and Managing
Editor for the Rolla Daily News.

Gremlin Village



Christopher Jewelers

805 Pine Street
The Complete Service Jeweler

ALEX PIZZA PARLOR

FEATURES:

Greek Pizza Spaghetti
Salad Sandwiches 5% Beer

For Delivery Phone 364-2669

OPEN 7 DAYS A WEEK

MON.-SUN. 4:00 AM-2:00 PM

122 W. 8TH STREET

NOW SIRLOIN STOCKADE GIVES YOU

COMPLETE LUNCHES 1.69

Everyday Low Prices...Everyday

Monday Thru Friday 11AM 'til 4 PM

CHOPPED STEAK	1.69
FISH	1.69
CHICKEN FRY	1.69
GERMAN STYLE SAUSAGE	1.69
STOCKADE CLUB STEAK	1.69

Each lunch includes salad, toast, and potato
plus your choice of coffee or tea.

Prices shown available only at the following Sirloin Stockades:

**I-44 & Martin Springs Drive
Rolla, Mo.**

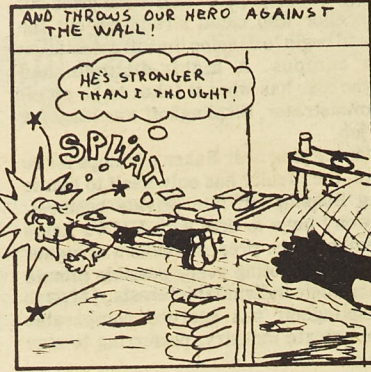
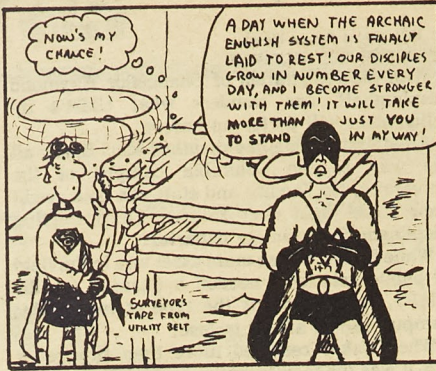
Open 11AM to 9PM Weekdays — 11AM to 10PM Weekends

**SIRLOIN
STOCKADE**
The Family Steakhouse



Come in NOW - Get your "PUNCH-A-LUNCH" Card - You buy 9 Lunches - Get one FREE

SUPERCIV



Bicentennial View of Phelps County

"A Bicentennial View of Phelps County, Missouri" by Drs. Donald B. Oster and Lawrence O. Christensen has been published by the University of Missouri-Rolla. It is available at the Rolla Area Chamber of Commerce, Rolla

Public Library, UMR Library, Lucy Wortham James Memorial Library in St. James, Newburg High School, John F. Hodge High School in St. James, Rolla High School and all banks in the county.

A total of 1,600 copies of the

booklet are offered to the citizens of Phelps County as part of UMR's observance of the American Revolution Bicentennial celebration. There is no charge.

"Material in the booklet looks at the land that is now Phelps County from 1776 to the present," says Dr. Oster. "It deals with events taking place here during the 200-year time period and ties them in with a view of the national and international scene of the period.

"It in no way competes with 'The Story of Rolla, Missouri' by Dr. and Mrs. Clair V. Mann which was published earlier this year by the Rolla Bicentennial Commission," he continues. "But is intended to complement the information in that publication. As a matter of fact, some of Dr. Mann's material was used as source information for this booklet."

Both authors teach American history in the UMR department of social sciences and both

continued from page 5

Most students don't realize it, but the service we get at our infirmary is a lot better than what there is at the other state schools. For example, UMR is one of the few schools left where all x-rays are free. It would seem as though the UMR Infirmary system is one of the few services this school offers that we cannot complain about.

Sincerely,
B. C.

Classifieds

Co-op student wants roommate living in Kansas City spring semester. Call 364-9988 ask for Dennis.

Dennis Chenoweth
1310 Bishop
364-9988

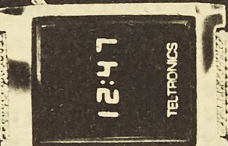
earned their doctorate degrees at the University of Missouri-Columbia. Dr. Oster, assistant professor of history, is a native of Raytown. His particular areas of interest are American ideas, Western and urban history. He has taught at UMR since 1967. Dr. Christensen, associate professor of history, was raised in Glasgow and his particular interests are Southern and black history. He has been teaching on the Rolla campus since 1969.

BUY DIRECT AND SAVE! 6-Function L.E.D. Watch

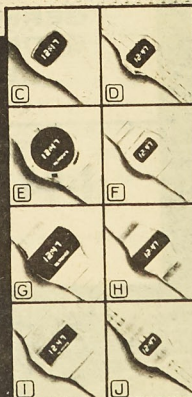
only
\$16⁹⁵
Silver rhodium finish
Yellow-gold plated, \$17.95



Jewelry-case gift box with each watch



MEN'S WOMEN'S



Teltronics manufactures and sells exclusively these quality-crafted solid state watches worldwide—over 1 million sold at much higher prices. Now, order direct and get tremendous savings, all these features:

- 6 functions controlled by a single button: hour, minutes, seconds, month, date, and day. Accurate within 2 minutes per year.
- Full year warranty against defects in materials or workmanship, except battery. We will repair or replace any Teltronics watch developing such defect within 1 year of purchase.
- 30-day home trial, if not completely satisfied with your watch, return it within 30 days for full refund of purchase price, no questions asked.
- Ultra-thin case, with stainless steel back. All watches have matching bracelets.

Orders received by Dec. 15, 1976 will be delivered before Christmas.
Mail check or money order to: TELTRONICS, 2400 E. Devon, Des Plaines, Ill. 60018

Please send the following watch(es). (Specify your choice of 10 styles: A thru J, followed by "S" for silver rhodium @ \$16.95 or "G" for gold @ \$17.95.) I understand that I will receive, free, a Teltronics calculator with every two watches I order.

QUANTITY	STYLE	FINISH	PRICE

Add \$1.00 shipping and handling cost for each watch. Illinois residents add 5% sales tax. I enclose my check or money order for the total \$
(No cash—no COD's accepted. Offer good in continental USA only.)

Name _____
Address _____
City _____ State _____ Zip _____

FREE!

Order any two Teltronics L.E.D. watches and get this 8-digit, 5-function electronic memory calculator, with battery and carry case, FREE!

advertised in TV GUIDE

Beethoven Sonatas Presented

ROLLA, Mo., Nov.—Springfield artists, sponsored by the University of Missouri-Rolla department of humanities music section and the Student Union Board's Fine Arts Committee, will present a program of Beethoven sonatas Monday, Nov. 29, 8 p.m., in the Mechanical Engineering Auditorium.

The concert features Walter Hawkey on cello and Ernest Tarrasch on piano.

This is third in a series of concerts the two artists have presented this fall.

Professor Hawkey is a member of the faculty at Southwest Missouri State University

and the Springfield Symphony orchestra. He teaches cello and double bass. He has appeared frequently in recitals and as a soloist in concerts. He attended Indiana University and studied with members of the Berkshire String Quartet.

Dr. Tarrasch holds a performance diploma from Dusseldorf Conservative of Music, Dusseldorf, Germany. He later attended medical school, obtained his M.D. degree and is now a practicing physician in Springfield.

UMR students with a valid identification (I.D.) card will be admitted free of charge. Tickets for the general public are \$1 each.

Hook Auto Supply

Big Discounts

Auto Parts—Accessories—Speed Equipment

513 Hwy. 63 S. Rolla, Mo. 364-5252

TRIPLE KNIT ACRYLIC WARM-UPS \$19⁹⁵

LARGE SELECTION OF JOGGING SHOES

VILLANOVA II & DRAKE BY BROOKS
MONTREAL BY PONY

KEY
SPORT shop
1003 Pine 364-5495 Rolla, Mo.

Sports

MISSOURI MINER
Thursday, November 18, 1976
Page 7

Indians Defeat Miners Behind Woods' Kicking

Last year's national punting champion Mike Wood completed his 12th, 13th, 14th and 15th field goals of the season to give SEMO a 20-12 victory over UMR. Wood rounded out his kicking game by averaging 41.5 yards for 8 punts in last week's game. This victory gave the SEMO Indians a 3-1-1 conference record which put them in a tie with Kirksville for the MIAA. SEMO must have a victory over winless Lincoln this week in order to have a chance for the MIAA cham-

pionship. While Kirksville must top UMR to remain in contention for the conference title.

Though the Miners were the underdogs on the scoreboard in last week's game against the Indians, the Miners came out on top statistically. Terry Ryan once again was the leading ground gainer of the game as he gained 118 yards on 28 carries. Ryan also nabbed 3 passes for a total of 25 yards. Ryan, who scored one of UMR's two touchdowns in last week's game, leads the MIAA in scoring with 9

touchdowns. Ryan's average of 4 yards per carry places him among the top two rushers in the league. Ryan needs but 21 yards to break the UMR single season rushing record of 884 yards set by Mike Keeler in 1974. With one game left Ryan should be able to break the record this weekend in the UMR vs. Kirksville game.

UMR quarterback Ken Vaughn out threw opposing quarterback, Backfish of SEMO in last week's battle. Vaughn completed 12 of 23 pass attempts for a total of 137 yards. Vaughn is the leading passer in the MIAA with a total of 1,040 yards and 8 touchdowns. Vaughn's primary receivers for the game were Franklin with 3 catches for 22 yards, Cox with 3 catches for 45 yards, and Ryan also with 3 catches for 25 yards. Other receivers were Vessel with 2 catches for 34 yards and Morse with 1 catch for 12 yards. This made a total of 12 completions for a total of 137 yards compared to SEMO's 6 completions for 84.

In the first half the Miners seemed unable to overcome the powerful Indian defense as they failed to score. Rolla's defense for the most part was able to contain SEMO but for the

powerful toe of Mike Wood. Wood completed 2 field goals in the first half, one in the first quarter from 33 yards, and again in the second quarter for 52 yards. The Indians were also able to go across once for 6 pts. on a quarterback keeper from 6 yards out. Cape then went for 2 points on a fake PAT and boosted the halftime score to 0-14 in favor of the Indians.

The third quarter the Miners attempted to get back into the game but were destroyed by turnovers. Twice the Miners offensive drive was brought to halt due to interceptions. Once quarterback Ken Vaughn was sacked for a 12 yard loss which forced the Miners to punt to the Indians. Wood of SEMO kicked 2 more field goals in the 3rd quarter, once for 49 yards and later for 43 yards to boost the Indians lead to 0-20.

Rolla finally put together a successful drive early in the 4th

quarter. Quarterback Ken Vaughn connected on 2 passes, the first to Andy Cox for 14 yards, then to Ryan for 13 yards. Vaughn then gained 13 yards on a quarterback keeper and finally completed a 19 yard touchdown pass to Andy Cox for the Miners first score of the game. Later in the quarter UMR scored again, this time on a 23 yard run by Terry Ryan. The long run by Ryan was the end of a long drive by the Miner offense as they moved the ball all the way from their own 13 to Cape's goal. On this last series Vaughn completed passes to Ryan for 13, Cox for 12, and Morse for 12 before handing off to Ryan. The Miners failed an attempted 2 point conversion which placed the final score at 12-20 for the Indians. With 1:45 left in the game SEMO ran the clock out as much as possible, drawing two penalties for too much time.

Kickers Defeat Lindenwood College

The UMR Soccer Club finished off its season with two shutout victories. They slipped past Lindenwood College by the score of 7-0 and they outlasted Maryville College to the tune of 1-0.

In the first game, the Miners slipped past highly-favored Lindenwood as 5 players got into the scoring act. John Royale had a hat trick, while Rich Kobylinski, Bob Hollywood, Dave Ortmann, and Mike Ludwig all scored single goals. UMR took a 3-0 lead into the locker room at half, and came away with a 7-0 victory. A last-second shot by Joe Abernathy, on a brilliant pass from Pete Telhorst, was nullified as the

officials claimed time had expired. Billy Dale preserved the shutout by making a number of fantastic saves.

Last Saturday, the Miners hosted Maryville College in the season finale. They turned out to be terrible hosts in Maryville's point of view as they won the game 1-0. Bob Hollywood scored for UMR, as December grad. Don Broekelmann recorded his second shutout in his last game for the Miners. He made a couple of nice saves in the second half to give UMR the win. Their final record was 5-8-1. Congratulations on a fine season.

Come On Down To
The Mine Shaft

Busch on Tap Popcorn

Hours: Mon.-Thurs. 5 p.m.-1:30 a.m.

Fri.-Sat. 3:00 p.m.-1:30 a.m.

364-4334 1107 Pine Rolla, Mo.

The CLOTHES TREE

1429 Hauck Drive In Forum II
(Off Forum Drive)

Newest, most exciting women's store in years. These exciting grand opening Fall & Holiday specials are just the beginning of a unique shopping experience for you. We have jeans, jumpsuits, separates and more. First quality fashions at saving prices. Stop in and take advantage of our Grand Opening specials:

SHIRTS — \$5 - \$6

Polyester or nylon prints and solids

JR. SKIRTS \$5 - \$6

Corduroy and blue denim

JR. PANTS & JEANS \$8 - \$10

Polyester, corduroy and brushed denim

SWEATERS 1/2 off original price.

Pullovers, cardigans, turtlenecks, solids and novelties

GRAND OPENING SALE

Sale Hours:

Thursday - Saturday

November 18 - 20 9 - 9

Regular Hours

Beginning November 22

Monday - Saturday 9 - 6

Friday 9 - 9

Grand Opening Drawing

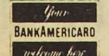
\$10 in Merchandise awarded each day, Thurs., Fri. and Sat.

Name _____

Address _____

Phone _____

No Purchase Necessary



Turquoise Jewelry Sale On Sculptured Candies

Michael's Gifts & Crafts

902 ROLLA ST. MON. - SAT. 10:00-6:00 PH: 364-3668

Clearance Sale

All '76 Models Must Go!

Selling ALL Remaining '76 AMC's

PACER HORNET GREMLIN MATADOR

Dealers Cost A new car as low as \$3,134

(Low or no down payment)

PLUS FREE 24 month-24,000 mile warranty delivered by American Motors.

— Drive A Deal Today —

Your AMC-JEEP Dealer

Eck Motor Co., Inc.

Open 8 to 8
Sat. till 4 p.m.

500 Hwy. 63 S.
Rolla, Mo.

Some
'76 JEEPS in
Stock also

Delicious Mexican Food

LA POSADA

Dining Room — Orders To Go — Open Daily 11 a.m.
Hwy. 63 S. Rolla, Mo. 364-1971 Closed Monday



Problems in literature? Get 'out the Cliffs Notes. Millions of students use them to study more efficiently...in less time. Cliffs Notes are written by experts who know how to help you understand and enjoy those difficult novels, plays and poems. So don't hesitate. Get Cliffs Notes. Your dealer has or can quickly obtain more than 200 titles.

X Check the popular candidates
...25 of the most-wanted titles

☐ Brave New World ☐ Canterbury Tales
☐ Catcher in the Rye ☐ A Farewell to Arms
☐ Grapes of Wrath ☐ Great Expectations
☐ Great Gatsby ☐ Gulliver's Travels ☐ Hamlet
☐ Huckleberry Finn ☐ The Iliad ☐ Julius Caesar
☐ King Lear ☐ Lord of the Flies ☐ Macbeth
☐ Moby Dick ☐ 1984 ☐ The Odyssey ☐ Oedipus
☐ One Flew Over the Cuckoo's Nest ☐ Othello
☐ Red Badge of Courage ☐ Romeo and Juliet
☐ Scarlet Letter ☐ Tale of Two Cities

Cliffs
NOTES

**CAMPUS
BOOK STORE**

205 W. 12th
Rolla, Mo.
364-3710

Swimmers Open Season With Intrasquad Meet

The UMR varsity swimming season has begun. With the annual Captain's intra squad meet the Miner tankmen started the new season. This year's teams were very evenly matched and yet four meet records were set.

The first event of the day saw both medley relay teams break the old standard. The winning

team consisted of returning lettermen Kevin Humphrey, Lee Ruppert, and Dana Witt, and freshman John Smith. Close behind was the team of Richard Erickson, Darrell Taylor, Mike Breenan, and Bill Orr.

Sophomores Erickson and Brad Schreiber swam neck to neck to a new record in the

backstroke, with Erickson just touching out Schreiber for the win. Both of these dorsal men qualified for the national championships last year and it looks like they're on their way again.

Another record was set in the 400 yard freestyle. Freshman Jon Tice took the early lead but another freshman Alan Fredrick finished strong and won that event. Tice was also

under the old record.

The final record was set in the free relay by the team of Witt, Smith, Fredrick and Steve Brown.

Sophomore diver John Dolan just missed the intra squad record on the one meter board and made a fine showing on the three meter. Mike Oclon also dove well on the high board.

Intramural News

With the completion of all but a few remaining soccer games, the teams qualifying for the playoffs have been determined. The big surprise of the season was Tech Eng being knocked out of the playoffs via losses to Kappa Sig and Pikers. Table tennis and billiards continue, but both are still (quite away) from being finished.

Volleyball action also continues, but due to the fact that complete records are not yet available, therefore the results cannot be printed.

Representing League I in the soccer finals are TKE and Sig Ep. TKE finished their league play last week by defeating both Sig Ep 2-0 and Phi Kap 1-0 to take first place. TKE has looked strong all season long and has a good chance to win their second consecutive soccer crown. They finished their season with a 5-0 record as they shutout all their opponents. In second place is Sig Ep with a 4-0 record. Sig Ep came back from their loss to TKE to easily defeat Campus 3-0. Sig Ep finished with a 4-1 record.

In other League I action third place Phi Kap demolished AE Pi 5-0. KA was a double victor last week and they shutout both Campus 4-0 and AE Pi 2-0.

In league II both T. J. and Sig Nu have finished the season with identical 4-1 records; however, due to a 2-1 victory over Sig Nu, T. J. qualifies as the first place team. T. J.'s only loss came at the hands of

MRHA a few weeks ago. In addition to their victory over Sig Nu last week T.J. trounced Acacia 4-2. Sig Nu blanked Lambda Chi 2-0. Lambda Chi came back from their loss to Sig Nu to overrun Beta Sig 5-0. In a close game it was Beta Sig 2, MRHA 1. In the only other League II game MRHA out-muscled Acacia 5-1.

Pikers clinched first place in League III this week by beating Kappa Sig 1-0. Meanwhile, Tech Eng was being eliminated by GDI 4-1. The loss to GDI was Tech Eng's third loss. This gives second place to Kappa Sig. These games were played this Monday. In last week's action Pikers shutout Triangle 2-0. Both Pikers and TKE finished the season without allowing the opposition a single goal. Kappa Sig came up with two big victories last week, both by the score of 2-1, as they defeated both Triangle and Tech Eng. In an important game it was Delta Sig edging Tech Eng 2-1. Delta Sig then turned around and lost to GDI by the score of 2-1. GDI was also victorious over Pi Kappa Pi.

FLA rushed to first place in League IV last week as they crushed both Theta Xi 4-1 and Sig Tau 4-0. FLA finished the season undefeated scoring with 29 goals in 5 games. Sig Tau completely dominated Delta Tau 7-0 to take second place. Wesley blanked Sig Pi 1-0 for their first win of the season. And in the only other game Theta Xi shutout Sig Pi 2-0.

Converse Coeds



Dear Male Miners—

Have you ever stumbled into the Student Union to take out your frustrations on a cue ball, and found your favorite table being used by two GIRLS? Have you ever picked out your favorite crooked cue stick and eyed smudges of mascara on it where it whisked past a fluttering female eyelash? Do you know the feeling of proudly displaying your brand new \$30 table tennis paddle, only to notice the gal at the next table has the \$60 model you couldn't quite afford? Have you had to wait in the wings with your 38-member volleyball team while some coed nursed a bruised knee for fifteen minutes on the court? Maybe you've even stomped over to argue with an official in the most vile language known to Miners, when your words died in your throat upon noticing the unusual curve in the referee's stripes? Welcome to life, friend, specifically intramural life at UMR. We're proud to be here with you, and we hope you're proud too.

With a record ten teams vying for points next semester, the

women's intramural program is growing in enthusiasm and skill, as well as numbers. Several teams held intra-organizational play-offs to choose participants for billiards and table tennis competition, which reflects the fact that more women students are playing with more skill. When table tennis and billiards are completed this week, points will have been tallied for five sports. In table tennis, AWS' team of Noelker and Hill were sitting in the top spot waiting for last night's challenge from ZTA's Haintl and Potzmann. TJHA (Durson and King) bowed to ZTA Tuesday night and placed third. In singles competition, Kim Morrill of ZTA triumphed over AWS' Yung Mi Yang to challenge Martha Heinze of WRHA for first place.

As billiards competition methodically eliminated player after player, participants from TJHA, Wesley, and ZTA finished in the top three places.

Each team was allowed two entries, and points are awarded for the first nine finishers, regardless of what organization they represent.

St. Pat's Board

UNIVERSITY OF MISSOURI - ROLLA
ROLLA, MISSOURI 65401

HERE YE, HERE YE, ye old gray slime holes of the IFC. Happy Thanksgiving to all you turkeys. We accept the challenge of you nimble minded preverts to a game of football on Saturday, November 20, 1976 at 3:00 p.m.

WE, the 'mean green machine' of the St. Pat's Board, refuse to play in the gravel pits of the intramural fields, but instead demand that the contest be played on the green turf of Jackling Field which is worthy of our quality of play.

THE rules of the game, at your insistence, and to prevent the possible death of any IFC players, shall be seven man flag football played under regulation intramural rules.

WE advise that you wear more than your sweet togas in order to protect your frail and freshly shaven legs. As a gesture of goodwill, the St. Pat's Board has taken the necessary steps to insure an adequate supply of beds at the infirmary for your disease-ridden bodies.

IN closing, our victory shall be celebrated in a manner befitting of a green god rather than a gray god.

THE ST. PAT'S BOARD

Chub & Jo's Restaurant

HOME COOKING!

OPEN

Mon.-Thurs. 5:30-8:00 Fri. till 9:00

RUGBY SHIRTS

7.95-8.25

CAMPUS BOOK STORE

**THE ATTIC
LOUNGE**

1000A Pine
Rolla, Mo.
364-1058

Ladies Admitted Free Thurs.

Live "Rock" Music
FEATURING "LIGHTNIN"

9:00-1:00 Thurs., Fri. & Sat.

BEER
35¢

Dancing

Open 6 Days

2 p.m. Till 1:30 a.m.

GAME
ROOM