



09 Sep 1976

The Missouri Miner, September 09, 1976

Follow this and additional works at: https://scholarsmine.mst.edu/missouri_miner

These newspapers reflect the attitudes, perspectives, and beliefs of different times. Neither the library nor the university endorses the views expressed in these collections, some of which contain images and language which may be offensive to some readers.

Recommended Citation

"The Missouri Miner, September 09, 1976" (1976). *The Missouri Miner Newspaper*. 2127.
https://scholarsmine.mst.edu/missouri_miner/2127

This Newspaper is brought to you for free and open access by Scholars' Mine. It has been accepted for inclusion in The Missouri Miner Newspaper by an authorized administrator of Scholars' Mine. This work is protected by U. S. Copyright Law. Unauthorized use including reproduction for redistribution requires the permission of the copyright holder. For more information, please contact scholarsmine@mst.edu.

audit ordered on corporation

Three Rolla Professors Implicated

ROLLA, MO. — A corporation headed by three senior researchers and professors at the University of Missouri-Rolla used school facilities and personnel to make an electronic compound that was sold on the private market, university officials have told a leading St. Louis newspaper.

The company, Mead Chemical Corp., was ordered off campus by Chancellor Raymond L. Bisplinghoff after complaints were raised about its activities.

ALTHOUGH A FACULTY committee investigated the affair, Bisplinghoff said he has also ordered an audit of the operation.

The audit is expected to be completed in two weeks.

Bisplinghoff said the audit will determine:

—Whether the university was properly compensated by Mead.

—Whether federal funds were involved in the corporation's activities.

—Whether Mead improperly took equipment from the university's laboratories when it moved off campus earlier this year.

IF THE AUDIT discloses possible criminal violations, Bisplinghoff said the proper authorities will be notified.

Dr. William J. James, treasurer of the corporation, acted as spokesman for the

three.

Mead's activities were conducted in the university's Graduate Center for Materials Research.

James said Mead Chemical was a spin-off of Mead Associates, Inc., a consulting firm made up of the three persons involved in Mead Chemical, plus other researchers at the university.

MEAD CHEMICAL was formed, James said, when it appeared that fullscale manufacturing of the compound was feasible. Records in the secretary of state's office show that Mead Chemical was incorporated Jan. 22, 1975.

James said Mead purchases equipment to process the

compound and that additional university equipment was used. He said that when the corporation moved off the campus to a manufacturing facility on the outskirts of Rolla, Mead, in addition to taking its own equipment, also took equipment belonging to the school. That equipment is now being leased from the university by Mead, he said.

Because different substances and dilutions are involved in Mead's production, the actual amount produced is in dispute.

James maintained that Mead's role was that of a developer trying to come up with a better compound.

Feedback came from buyers of the product, he said.

CRITICS WITHIN the university, however, contend Mead's role was more that of a producer. Bisplinghoff said the audit will reveal the extent of Mead's production.

Critics also have questioned the use of the university personnel on the Mead work.

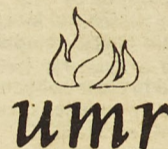
James said the work was performed primarily by Mrs. Anne Edwards and Mrs. Margaret Biolsi, who were employed by the university as research aides.

Mrs. Edwards said she worked for Mead an average of eight to 10 hours a week, with a

cont on p. 3

Missouri Miner

University of Missouri at Rolla



Volume 63, Number 3

Thursday, September 9, 1976

HEW requires changes in work-study program

HEW's Office of Education today announced new regulations for the College Work-Study (CW-S) Program, which creates job opportunities for students who must earn a part of their education expenses.

The regulations include a number of changes made in response to public comment on proposed rules published October 14, 1975. For example, the definition of academic "good standing" is expanded to require evidence of "measurable progress" toward completion of the course of study. Definitions of "graduate" and "half-time graduate" were added because institutions expressed concern that their individual requirements might preclude graduate students from meeting the original definition of half-time.

Several changes are concerned with determinations of financial need. For example, a student's entitlement to a Basic Educational Opportunity Grant will be taken into account when determining his or her need for employment under CW-S, whether or not the grant has been applied for.

Generally, while classes are in session employment will not average more than 20 hours a week. But if 20 hours of work will not earn enough to meet the student's needs, the financial aid office may permit employment of up to 40 hours a week. CW-S students may not be employed to replace regular employees who are out on strike.

Grants under the College Work-Study Program, authorized by the amended Higher Education Act of 1965, are awarded by the Office of Education to eligible post-secondary education institutions which, in turn, make job arrangements for students. Employment may be with the institutions (except in the case of proprietary schools) or it may be off-campus with a public or private nonprofit organization, such as a day care center or hospital. Eighty percent of the student's wages are paid out of Federal funds and employers make up the remainder.

Last year over 3200 universities, colleges, and vocational institutions participated in the program. More than 970,000 students, whose whose earnings averaged \$520, were employed.

september 21

industry day scheduled

Approximately 55 industries doing business in the state of Missouri will participate in Missouri Industry Day Tuesday, Sept. 21, at the University of Missouri-Rolla.

Companies will set up

displays demonstrating products or services they provide and indicate the employment opportunities they offer. These displays will be open to the public from 10 a.m. to 5 p.m. in the Multi-Purpose Building on the Rolla campus.

Representatives from each industry will be on hand to answer questions. Everyone is invited to attend and there is no admission charge.

Door prizes will be awarded periodically during the day.



This year's Pom Pom Girls are better than ever. Their first appearance will be this Saturday when the Miners play the Missouri Western Griffins here. From left are Pam Reppond, Beth Viessman, Tracy Butcher, Janet Rimey, Brenda Ellerbrake, Chris Lavino.

(Photo by Charles Staley)

Bullboard

MISSOURI MINER
Thursday, September 9, 1976
Page 2

Notices to appear in Bullboard should be typed and deposited in the North door of the Miner office in Bldg. T-1 by 10:00 p.m. Sunday. This will assure publication in the next edition of the Miner.

I.K. AUXILIARY

Intercollegiate Knights Girl's Auxiliary will hold a meeting on Thursday, September 9 at 6:00 p.m. The location will be posted on campus. All those interested in joining please attend!

SCIFI

Are you interested in SF? We are trying to start a science-fiction oriented fan magazine. If you are willing to help us, please send a self-addressed stamped envelope to Mz. Liz Cogell, Humanities, H & SS Bldg. We need artists, writers, patrons. We need you!

ST. PAT'S DESIGN CONTEST

The St. Pat's Board Annual Sweatshirt Design Contest is now being held. First prize is \$25, second prize is \$15, and third prize is \$10. All designs to be entered should be given to any St. Pat's Board rep. not later than Tuesday, September 21.

WOOEE EXTRAVAGANZA

The second annual WEEE Electronic Extravaganza will be held at noon this Saturday, Sept. 11, 1976, across from campus at 1107 State St.

Everyone is welcome to come and buy, sell, or trade electronic parts, equipment, or supplies. Come in and browse around for free, or rent all the table space you need to clear out your junk box for only \$1.00.

If you have any questions, contact Mark Call, Radio Club President, at 341-3256

RADIOGRAMS

The UMR Ham Radio Club WEEE is now delivering free messages to friends or family via the Missouri Single Sideband net (Mon-Thurs. 6:00 p.m.) in the club station (NW corner Rolla bldg.). Completed message forms should be placed in the WEEE box next to the rider board in the old Student Union.

NSPE MEETING

There will be an organizational meeting of the student chapter of the National Society of Professional Engineers on Wednesday, Sept. 15 in Room 114 of the C.E. Building. Speaker will be Prof. J. Kent Roberts and all engineering students are invited to attend with new membership applications available.

ASSOCIATION OF ENGINEERING GEOLOGISTS

The first AEG meeting this fall will be on September 16 at 7:00 p.m. in Min 107. Featured will be Dr. Jerome Eyer, Chairman of the Geology Department, speaking on the Geological Engineers role in the Petroleum Industry. All Geological Engineers and other interested parties take note!! Also, there will be refreshments served immediately following the meeting.

ANY STUDENT

Any student with a complaint against Varsity Engravers of Cleveland Tennessee should contact the Student Personnel Office.

BLUE KEY

Applications are now out for fall pledging into Blue Key National Honor Fraternity. Blue Key is looking for those students who are recognized as leaders on campus. The application forms may be picked up at the candy counter and must be returned by Sept. 14 to the candy counter or to Dan Shelledy at Phi Kappa Theta.

SCUBA CLUB

The UMR Scuba Club will have a general meeting Tuesday Sept. 14 at 8:00 p.m. in room 120 M.E. A presentation on Organizing and Managing a Dive — Becoming a Divemaster will be given. Anyone interested in learning to dive is also welcome.

GRADUATE STUDENT MEETING

Graduate Student Org. Meeting 7:00 September 20 in St. Pat's Ballroom. All Grad Students welcome. Refreshments will be served.

STUCO FUND APPROPRIATION

Every year Student Council is charged with the task of appropriating student funds to the various campus organizations. The purpose of these funds is to:

- 1.) Help new organizations get started.
- 2.) Lend help to organizations which have declined, and
- 3.) Assist organizations which are inherently unable to support themselves.

Any organization requesting funds should pick up the proper form at the Student Council office between 2 & 4 p.m. These forms should be completed and returned with all the proper information before Sept. 24.

KME MEETING

Kappa Mu Epsilon, Math Honor Society, will hold its first meeting Tuesday, September 14, at 7:00 p.m. in room 209 Math Computer Science. The meeting is open to all interested persons, and prospective KME pledges are urged to attend.

NEW STUDENT REGISTERS

Attention Freshman! The New Student Registers have arrived. Those who ordered a copy may pick theirs up Sept. 13-17 from 9:30 to 3:30 in the University Center.

ATTENTION JUNIORS AND SENIORS

Applications for "Who's Who Among Students in American Colleges and Universities" are now available at the Student Personnel Office or the University Center Information Desk.

S.U.B.

ALPHA-OMEGA PLAYERS

This weekend the Student Union Board presents the Alpha-Omega Players in "Heroes and Hard Cases" Friday, September 10, at 8:00 p.m. in St. Pat's Ballroom. On Saturday, September 11, John Biggs will be featured in the first coffeehouse in the snack bar at 8:00 p.m. Then on Sunday, September 12, "California Split" will be shown at 4:30 and 6:00 p.m. in Centennial Hall. Movie admission is 25 cents, and a valid ID is required for all.

Calendar of Events

Sept. 10	Play — HEROES AND HARD CASES
Sept. 11	Coffeehouse — JOHN BIGGS
Sept. 12	Movie — CALIFORNIA SPLIT
Sept. 15	BALL ROOM DANCING LESSONS

ore microscopy course offered

Rolla, Mo., Aug. — The 5th annual short course in Applied Ore Microscopy is being offered by the University of Missouri-Rolla Dec. 13-17. It is an extension activity of UMR's department of geology and geophysics.

Purpose of the course is to present the principles of the use of the reflecting ore microscope. Emphasis will be on applications to determine mineralogy and textures of ores of diverse types and the microscope's role as an aid to the metallurgist in selected ore dressing problems.

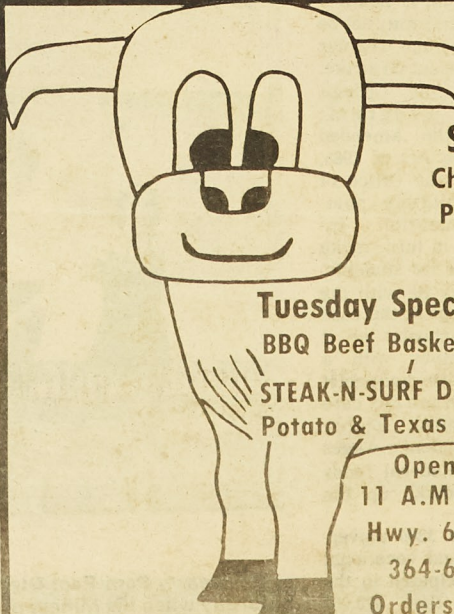
About one-third of the course will be devoted to lectures. The remaining time will emphasize laboratory ore microscopic study of polished sections of ores and mill products. Techniques of preparing polished sections will be demonstrated.

The course is designed for geologists, metallurgists, mining engineers and others who need a thorough knowledge of the fundamentals of the ore microscope or who desire to extend their capabilities in the reflecting microscope study of ores and selected mill products.

Dr. Richard Hagni, associate professor of geology at UMR, is course director.

Because of the number of microscopes available for laboratory study, enrollment is limited to the first 12 individuals making application. Registration fee is yet to be determined (will be around \$300 per person) and will include instruction and educational materials, polished section mounting materials, use of microscope and sectioning equipment, coffee breaks and a banquet ticket.

To register or for further information, write or call: Bill Kratzer, Extension Division, University of Missouri-Rolla, Rolla, Mo. 65401 (phone: 314-341-4200).



STEAK & BURGER CORRAL

Sunday Special
Chopped Steak Dinner \$1.29
Potato & Texas Toast \$1.29
SALAD BAR

Tuesday Special
BBQ Beef Basket \$1.39
STEAK-N-SURF Dinner \$2.99
Potato & Texas Toast

Open Daily
11 A.M.-10 p.m.
Hwy. 63 South
364-6979
Orders To Go

Blue Key Applications Deadline-September 14th (See Bullboard)

scholarship information

Non-attendance of scholarship recipients and related factors have resulted in a limited number of scholarship vacancies for 1976-77.

Some are restricted by curriculum, must be U.S. Citizen or permanent resident, etc. but interested students should contact Student Financial Aid to either submit

an application for consideration or update the application they already submitted for 1976-77 prior to September 30.

Parents financial information is not required for scholarship only applicants. For further details contact Student Financial Aid, 106 Parker Hall.



Alpha-Omega players in a scene from "Heroes and Hard Cases," being presented Friday, September 10 at 8:00 p.m. in Centennial Hall.

alpha-omega players appear in rolla

Did George Washington always tell Martha the Truth? How did Lincoln answer complaints about Grant's drinking? These and other questions concerning the lighter side of American history will be answered Friday, September 10 when the Student Union Board presents the Alpha-Omega Players in "HEROES AND HARD CASES — A Bicentennial Comedy."

In addition to original songs and sketches, extensive

research turned up a wealth of actual historical material that reflects the rich and delightful tradition of American humor. The production is not a satire, but it does poke gentle fun at some of our sacred cows, often in the exact words of famous historical figures.

"HEROES AND HARD CASES" will begin at 8:00 p.m. in Centennial Hall on Friday, September 10. Admission is free with a valid UMR ID.

Calico Corner Ceramics

7th and Rolla
10:00 — 5:30 Mon. — Sat.
Evenings: Wed. — Fri. 7:00 — 9:00

Chub & Jo's RESTAURANT

HOME
COOKING!
OPEN

Mon.-Thurs.
5:30-8:00
Fri. till 9:00

RACQUET BALL GET BACK INTO THE
HANDBALL SWING OF THINGS!
&
TENNIS

EQUIPMENT SHIRTS CUSTOM PRINTED
TO YOUR ORDER

KEY
SPORTshop

The Plaster Key, Inc. 1003 Pine 364-5495

Miner News

Thursday, September 9, 1976

Page 3

audit ordered

cont from p. 1

maximum of 20 hours a week. Usually, she said, she worked evenings and weekends and was paid for her extra work by Mead.

When the Mead project required her to work during her normal hours at the university, she said, she returned to campus to work on university projects in the evening.

MRS. BIOLSI refused to discuss her work.

James said he thought at least one of the women was working on federally financed projects for the university at the time.

"I demanded and believed I had more than assurances that this was done — that they did their work. They did more than their share," James said.

He said he personally saw those involved in the Mead operation "coming in to make up time."

After complaints of Mead's activities were raised, Bisplinghoff appointed a faculty committee to look into the affair. After closed hearing this summer, the three-man committee issued its report to the chancellor.

Bisplinghoff declined to make the report public.

But, he said, he did not feel that the report answered the question of whether the university has been properly reimbursed, so he ordered the audit.

James said Mead has paid the university \$4,287 and that this sum was determined before the faculty committee hearing.

But he declined to say whether the corporation is operating at a profit or loss.

James said he does not feel there was anything improper in setting up Mead on campus.

He also said that the chancellor's decision to move Mead off campus was proper.

On The World Front

FBI Director Clarence Kelley was under evaluation last week for possible misuse of government services and accepting gifts from subordinates. After reading a report from Attorney General Edward Levi, President Ford dismissed the allegations and voiced support for Kelley.

Secretary of Transportation William Coleman chose the Columbia-Waterloo area in Illinois as the new home of a \$500 million dollar airport needed to replace Lambert Field in St. Louis.

Jimmy Carter and President Ford agreed to three debates; the first, to be held September 23, will cover domestic and economic issues. The second topic will be foreign policy and defense, and the last will be open to all issues.

The Viking 2 robot lander touched down Friday on Mars, but a period of uncertainty followed due to a partial communications breakdown. Pictures have been sent back to Earth, and life-seeking instruments were reported operating well.

College campuses in the Midwest report a surge in fire protection and safety codes inspection following the fire two weeks ago that took the lives of five Kappa Sigmas from Baker University.

Missouri Miner

The MISSOURI MINER is the official publication of the students of the University of Missouri-Rolla. It is published at Rolla, Missouri, every week during the school year. Entered as second class matter February 8, 1945, at the Post Office at Rolla, Mo., under the Act of March 3, 1879. The subscriptions are \$3.00 per semester. This MISSOURI MINER features activities of the students and faculty of UMR.

Miner Office (341-4235)

Sam Rucker (364-4006)
Bill Uding (364-5630)
Steve Kovac (364-6294)
Dan Shelledy (364-5630)
Richard Markey (364-5630)
Bruce Schaller (364-9885)
Paul Andrew (364-9769)
Dennis Gilliam (341-2331)
Ed Burford (364-9792)
Dr. Curt Adams

Lana Leimer-Jones

Staff: Katie Kunkel, Linda Ponzer, Ted Cottrell, Mike McKean, Tom Galzone, Gary Sandbothe, Gary Howorth

Articles and photos for publication in the Miner must be in by 9:00 p.m. on the Monday before printing on Thursday.

Mailing Address - Missouri Miner, University of Mo. - Rolla



MEMBER

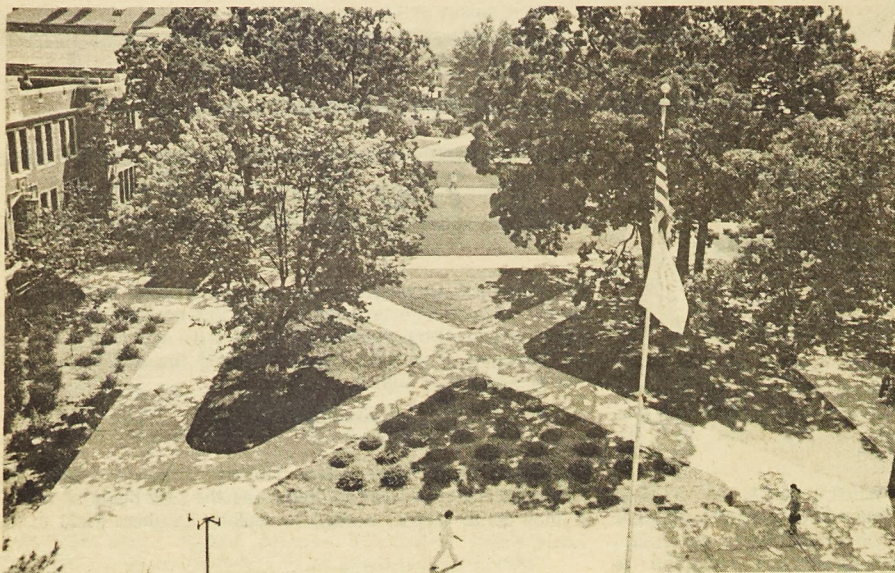
Editor
Business Manager
Advertising Director
Managing Editor
Graphics Editor
News Editor
Features Editor
Sports Editor
Photo Editor
Faculty Advisor
RDN Advisor

Paradise DONUTS

★ ★ SPECIAL ★ ★
ANY DOZEN GETS YOU
2 FREE ITEMS OF YOUR CHOICE

1 DOOR WEST OF
JIMS MOTORS ON
BUSINESS 44
341-2660

Call Ahead For Fast Service



What can we say? It's the beautiful UMR Quadrangle!

How To Take An Interview

The UMR Placement Office is sponsoring the Seventh Annual Career Seminar beginning on Tuesday, September 14th. The seminar is broken up into 4 sessions, each emphasizing a different facet of recruitment and placement of personnel. All the sessions will be held in the M. E. Auditorium, starting at 7 p.m. on their respective dates.

The first session features Mr. Stan Huff of Collins Radio, who has been recruiting for 12 years. His talk will be "What happens during a campus job interview", followed by a question and answer period. The next two sessions are designed to allow students to question recent graduates concerning career development and initial job placement. The final session is two demonstrations of job interviews, to help give you a feel for what your campus interviews might be like.

PLACEMENT POINTERS

CAREER SEMINAR — The Seminar's 4 sessions will be held on September 14th, 16th, 21st, and 23rd at 7 p.m. in the M. E. Auditorium.

INTERVIEW INFORMATION SHEETS — Information sheets on the curriculum companies are interested in and the locations available are located on the first floor of the Buehler Building and generally come out 2 weeks before the interview date. These sheets are also posted on the Placement Bulletin Board located across from the Hockey Puck.

SIGN-UPS — Sign-up dates are generally one week before the interview date, with priority sign-ups being a day earlier. Sign-up hours are from 9 a.m. to 12 noon and 1 p.m. to 4 p.m. Sign-up lists are on the first floor of the Buehler Building in the back. When signing up you should use the back entrance of the building. Summer sign-up hours are from 10 a.m. to 12 noon and 2 p.m. to 4 p.m.

PRIORITIES — December graduates get 6 priorities and May graduates get 4 each semester. Priority sign-ups are one day before the regular sign-up date.

S. U. B. Activity Calendar For Semester Announced

by Brian W. Kavanaugh

Once again this year the Student Union Board has a lively calendar of events for the appreciation of the U.M.R. student. The Board boasts three major concerts this fall semester. The to be here this term will be NEKTAR, CHRIS SWANSEN and MOOG SYNTHESIZER, and THE NITTY GRITTY DIRT BAND. These groups will be appearing on campus September 18, October 5, and October 23 respectively.

least as long as this writer has been here, our student oriented organization will show an impressive listing of first run greats, CALIFORNIA SPLIT, ON THE WATERFRONT, JESUS CHRIST SUPERSTAR, and JEREMIAH JOHNSON will be seen by many on September 12, September 26, October 10, and December 5 respectively.

These are the highlights of this semester's events. The Student Union Board will, however, continue with such usual activities as three dances, Ball Room dancing lessons, and a speaker on E.S.P.

The Coffee house will make itself known this year also under the sponsorship of the SUB. These sessions are scheduled on September 11, October 1, November 12, and November 20. If you have any talent, go try it out on the unsuspecting students first.

With all of these events going on in only one semester, those of you out there who think there is nothing to do in Rolla...well, you just might be wrong.

As per the last few years, at

KMNR GROUNDWAVES



Editor's Note: The Missouri Miner apologizes for the error in the September 2 issue concerning the deletion of part of the Groundwaves article. Below is the article reprinted in its entirety.

This semester KMNR listeners can look forward to many of the same great sounds as last year...plus more. Besides the usual montage of the best in progressive music (remember, on KMNR you can hear everything from Harry Chapin to Robin Trower, Grass Roots to Rush), we'll be bringing you special programming just for you.

On Sunday nights from 10 p.m. to 2 a.m., you can hear the best in jazz on "Improvisations." For those of you who enjoy living in the past, you can hear all your favorite Golden Oldies on Sundays from 7:30 to 9:30 p.m. Then at 9:30 stay tuned for "Hall of Fantasy" on Nostalgia Theatre. On Monday through Thursday listen to Nostalgia Theatre at

11:00 p.m. for the following flashes back to yesterday: Monday—"People are Funny", Tuesday—"Duffy's Tavern", Wednesday—"Barry Craig; Confidential Investigator", Thursday—"The Great Gildersleeve."

On the music side of special features, on Tuesday and Thursday at 8 p.m., listen to "Flipped", when a top album of the day will be played in its entirety, without interruption, and on Wednesday at 8 p.m. for the Alfredo Schwartz Music Hour, an hour-long presentation featuring the music of a selected artist. Next week (September 13-17), Tuesday's Flipped will bring you George Benson's "Breezin'" album; Alfredo Schwartz will host Nektar; and on Thursday, Bob Scaggs' "Silk Degrees" album will be featured.

Our Own Commandments

Thou Shalt...

by Paul D. Andrew

This article pertains particularly to the new students at UMR. In order to help all of you better assimilate the existing lifestyles here in Rolla, we, the upperclassmen, are passing on the Commandments to which all students partially adhere. They are:

1. Thou shalt not bear false witness against thy classmate, (i.e. ratting).

2. Thou shalt not carry more than three textbooks to classes at any one time, (Causes injury to soda, water, etc. drinking arm.)

3. Thou shalt not take a rain day in order to be excused from class when a snow day should be used, (We all get 13 of each per school year.)

4. Thou shalt not covet thy fellow miner's woman. (there aren't too many around yet).

5. Thou shalt not abuse thy privilege as a desirable female by wearing scents and costumes that would make eyes wander.

6. Thou shalt revel in and enjoy all party weekends during the school year, (you get to meet people that way).

7. Thou shalt learn to love and

cherish the nectar of thy gods (so holy is the name that it must be spelled b-r).

And so, new comers to the faith, these are the rules that we, as students, live by to the fullest of our capabilities. Learn them and love them because you could be around here a long time and as you know, "you can't change the system."

Come in and see our full line of leather coats, clothing, boots, and hats.

ROLLA WESTERN & SPORTSMAN SHOP
Hwy 63 South & Lanning Lane

Delicious Mexican Food LA POSADA

Dining Room — Orders To Go — Open Daily 11 a.m.
Hwy. 63 S. Rolla, Mo. 364-1971 Closed Monday

Brono's

Buy-Sell-Trade Stereos, Guitars, TV's etc.
207C W. 11th Next to Campus in Thomas Building

Deluxe Recreation

Billards
Snooker
& Pool

Serving Miners
For 20 Years

212 West 9th
Across from Buehler Bldg.
Come visit with Stan the Man!
NO DRINKING

this space Humanities Dept. Presents Seminar



completing
of
miner
not to

DON'S TRADERS DEN

The best in new and
used musical in-
struments.

Buy-Sell-Trade
Come on in

Mon. — Fri 10:00 — 5:30
110 W. 8th St. Rolla, Mo.

The Humanities Department at UMR is sponsoring a seminar on the Arts entitled, Nine Great Films. Running the entire length of the fall semester, the goal of the seminar is to promote interest and appreciation of various forms of the arts and to make professional works more accessible to the community.

Throughout the semester programs in theater, music, and film are offered which involve class discussions and

lectures as well as attendance at professional performances.

Nine Great Films is open to all persons interested in learning more about the art of cinema and attending the selection of movies. The fee required is \$10.00 and films will be shown in the M.E. Auditorium at 7:30 p.m. on the date of the event. For further information, contact Norma Fleming at the UMR Extension Division.

Christopher Jewelers

805 Pine Street
The Complete Service Jeweler

Public Notice

On Feb. 1, 1975 KMNR was granted a license by the Federal Communications Commission (FCC) to serve the public interest as a public trustee until Feb. 1, 1977. We must file to renew our license by Oct. 1, 1976

and projected programming for the next three years.

Persons wanting to obtain facts about our application renewal or whether we have served in the public interest may do so by contacting the FCC. Petitions must be filed by Jan. 1, 1977.

When filed, a copy of our application for renewal will be available at KMNR for public inspection. It contains information concerning our performance over the last 3 years

Further information on license renewal is available at KMNR, 203 A Mining Building, University of Mo. at Rolla or by contacting the FCC, Washington, D.C. 20554.

If you've got time to kill... We can help kill it!
Rolla Craft & Hobby

Now at a new and larger location to serve your needs better.

1009A Pine (11th & Pine) 364-5581

SR-56

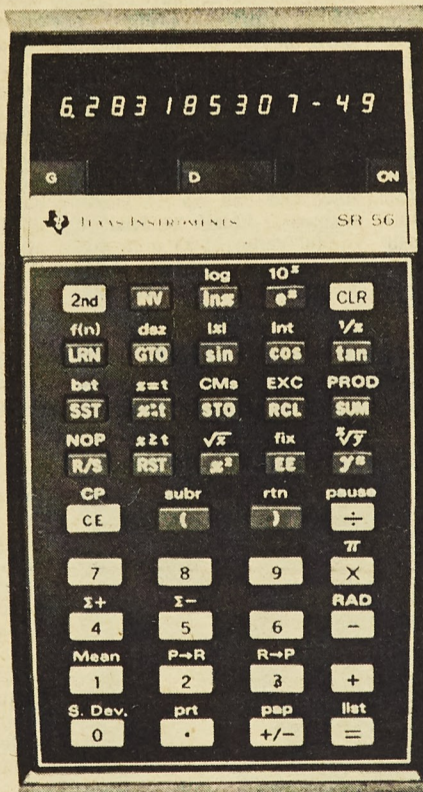
The super slide rule programmable powerhouse ...with 10 memories and 100 program steps.

\$109^{95*}

The SR-56 is a tremendously powerful slide rule calculator. Yet you can program it whenever you're ready.

There are 74 preprogrammed functions and operations. You can do arithmetic within all 10 memories†. It has AOS — a unique algebraic operating system that lets you handle problems with up to 9 levels of parentheses. There's also polar to rectangular conversion — built in. Mean. Standard deviation. Degrees, radians, grads. And, it works with TI's new printer — the PC-100.

Chances are, you'll be pro-



SPECIAL
SR-56
\$10⁰⁰

Rebate
Fill out coupon

gramming. That's what professionals in your field are doing — right now. And with an SR-56 you're ready. It has 100-merged prefix program steps. 6 logical decision functions. 4 levels of subroutines. You can decrement and skip on zero to iterate a loop as many times as you specify. There are 4 levels of subroutine to let you use your program steps to maximum advantage. And, you can even compare a test register with the display to make a conditional branch. So you can check an intermediate result for convergence, or a maximum.

The edge you need. Now. And in your career.

\$10⁰⁰
rebate
coupon

Texas Instruments will rebate \$10.00 of your original SR-56 purchase price when you return this coupon and your SR-56 customer information card postmarked no later than October 31, 1976. To apply:

1. Fill out this coupon
2. Fill out special serialized customer information card inside SR-56 box
3. Return completed coupon and information card to:
Special Campus Offer
P.O. Box 1210
Richardson, Texas 75080

Name

Address

City

State

Zip

University

Name of SR-56 Retailer

SR-56

Serial No. (from back of calculator)

Please allow 30 days for rebate

*Suggested retail price.
†11 with the T-register.

© 1976 Texas Instruments Incorporated

TEXAS INSTRUMENTS
INCORPORATED

65539

Miners Make Comeback, Then Fall In Season Opener At Marshall

by Jerry Smith

While most of the UMR students were home for the labor day weekend the Miner gridders were at Marshall Mo. battling it out against the Mo. Valley Vikings. Although Rolla came out on the bottom by a score of 42-30 they played a very tough and determined game. The Miners managed to effectively cut down on their number of mistakes throughout most of the game. It wasn't until about the last three minutes that Rolla began to pile up the mistakes which cost them the game.

The Miners did not play well at all the first half. The defense seemed to be the main cause for this, as they seemed unable to contain the powerful Vicking offense. Prior to the game the Miners had lost three defensive starters due to various reasons, they were; Gary Meshak, Kent Lewis, Terry Owens. The result was that Rolla's defensive starting line was almost entirely new people. The defensive secondary which comprised primarily returning letterman also made an unexplainably poor showing. The offense was held to seven points during the first half. Though the offense occasionally made successful drives they lost the ball each time before they could come within scoring distance.

Rolla finally got it all together in the third quarter, both offensively and defensively they dominated the game. While Mo. Valley completely controlled the game during the fourth

quarter. Throughout the game Mo. Valley actually made more mistakes than did the Miners. The difference was that the Miners were unable to capitalize on these mistakes as did the Vikings.

The Miners lost the coin toss and were forced to kickoff. Weaver kicked off to the 25 where Mo. Valley returned it 32 yards to the by the Rolla 43. Nine plays later on a successful drive by the Viking offense Mo. Valley made the first T.D. of the game with a 2 yard run around the left end. The Vikings completed the extra point kick to make the score 0-7. The Vikings kickoff deep into Rolla's territory onto the one yard line and Townsell returns the ball for 32 yards. After 7 plays the Miner offensive drive is halted and the Miners are forced to punt. Then comes UMR's first break. The Vikings fumble the ball and Miners recover it on the Viking's 19. Rolla's offense is unable to cover the short 19 yards and are forced to hand over the ball on the Viking 12. Then the Miner defense gets tough and the Vikings are forced to punt from their 8. UMR returns the ball up to the Viking 48. Then on the next play UMR quarterback Vaughn connects with Franklin on a pass who goes on to score. Rosenhauer kicks the extra point for Rolla to tie the score at 7-7. Weaver of UMR kicks off to the 15 but the Vikings are able to run the ball up to Rolla's 49. Here the Viking offensive drive

is halted by an interception by Wolfe of UMR. As the first quarter ends the Miners are in possession of the ball on their own 4.

In the first few seconds of the second quarter Rolla loses control of the ball as they punt the ball to the Vikings who return it up to the Rolla 34. This time Mo. Valley is able to produce a scoring drive which puts them in the lead. After missing the extra point the score stands at 7-13. The Vikings kick off and UMR returns it to their own 20. In a drive which last 10 plays the Miners are barely able to get the ball out of their own territory as they are forced to punt from the Viking 49. Two plays later the Vikings widen their lead with a 68 yard run by Steinle of Mo. Valley. Once again Mo. Valley failed to get their extra point making the score 7-19. The Vikings kick off goes deep into Rolla's territory but Townsell runs it back 24 yards. Again the Miner offense is unable to penetrate the Viking defense and have to punt the ball. The Vikings return the ball to their 31. The Mo. Valley's offense pushes the ball up to Rolla's 26. During this time Rolla committed its first serious penalty. The Miners are charged with pass interference and the Vikings move the ball up 44 yards. Stopped at Rolla's 26, Spallina of Mo. Valley kicks a 43 yard field goal to set the score at 7-22 with 0:43 left in the first half.

?:43 left in the first half.

Rolla returns in the second half looking revitalized both offensively and defensively. UMR returns the opening kick off and almost immediately scores a T.D. This time Vaughn connects with Waechter for 51 yards. Rosenhauer kicks the pat to make the score 13-22. Mo. Valley fumbles on the following kick off, is recovered by Mastroiani of Rolla. Now in control of the ball the Miners offense pushed the ball to the Viking three. A field goal is attempted but fails and Mo. Valley takes the ball on their own 20. The Miner defense hardens and sets the Vikings back for a 2 yard loss. The Vikings try to punt their way out but due to a bad center the Miners are able to score a safety making the score 16-22 with 8:00 left in the third, quarter. Townsell returned the following kick off for 25 yards to put Rolla on the Viking 47. Then in a short series of plays starting with a 15 yard pass from Vaughn to Waechter and ending with on 8 yard T.D. run by Ryan the score ties up at 22-22. The extra point by Rosenhauer put Rolla on top for the first time of the game 23-22. On the kick off the ball goes deep into the Vikings territory where the Miner defense is able to contain. Mo. Valley attempts to punt but is unable to do so. The third quarter ends with the Miners in control of the ball on the Viking's 6 with a first down.

On the second play into the fourth quarter Ryan scores from the 4 and Rosehauer completes the extra point to make the score 30-22. UMR kicks off and Mo. Valley returns it to their 25 where the Miner defense holds the Vikings and forces them to punt. Rolla does no better as they are also held four plays, on the last play Vaughn is sacked for 18 yards. This gives the Vikings the ball on their 45. Once again the UMR defense cuts off the Viking's offense before they can score. Rolla takes possession of the ball at their own 20. Then comes the turning point of the game as Ryan fumbles the ball and Mo. Valley recovers it. This proves to be only the first in a number

of costly mistakes which blow any chance of a victory for UMR. With the ball on a pass play to make the score 30-28. Jones returns the kickoff for UMR. The Miner offense tries to make a comeback but again fumble the ball. Again Mo. Valley recovered the fumble and scored a T.D. on the following play this time with a 23 yard pass play. The extra point puts Rolla behind with a score of 30-35. Again Rolla receives the kick off only to be hit by misfortune a few short plays later. This time in the form of an intercepted pass due to a desperation pass attempt. Sowell of Mo. Valley intercepts the pass and runs it 15 yards to the Miner's 5. The Vikings score with only 0:11 left on the clock. With the extra point kick the score is fixed at 30-42. The game ends with Rolla in possession of the ball on their own 27.

The statistics:

	UMR	MV
First Downs	11	15
Yards Rushing	141	120
Yards Passing	146	162
Total Yards	287	282
Passing	7-14	11-22
Interceptions Thrown	1	1
Fumbles Lost	2	2
Penalties	4-37	5-45
Punting	5-182	2-50

The score by periods:

UMR	7	0	16	7-30
MV	7	15	0	20-42

The individual statistics:

Rushing — UMR: Ryan 20 for 74, Townsell 11 for 39, Franklin 12 for 28, Vaughn 7 for -7, Waechter 3 for 14; MV: Steinle 15 for 89, Ragle 12 for 21, LaMura 4 for -5, Roetzer 5 for 28, Houston 4 for 13.

Passing — UMR: Vaughn 7-14-146-1; MV: LaMura 11-22-162-1.

Pass Receiving — UMR: Morse 3 for 24; Franklin 1 for 48, Waechter 2 for 67, Ryan 1 for 7; MV: Arimendi 5 for 93, Roetzer 2 for 37, Johnson 2 for 11, Steinle 1 for 8, Houston 1 for 3.



The Miners recover a fumble in Saturday night's opening game loss to Missouri Valley. The Miners are in action again Saturday against Missouri Western. (photo by H. Burford)

Coming...
**JOE MINER
WEEK**
GET PSYCHED!

**ZENO'S MOTEL
STEAK HOUSE**
"HOME OF THE FAMOUS 12 OZ. STEAK"
Box 70 Phone: 364-1301
Rolla, Mo. Martin Spring Dr.

Welcome UMR Students

to the

OZARK INN NIGHT CLUB

Recreation Center

Featuring one of Rolla's most popular
groups "Ozark Boogie Band" every Fri.,

Sat., & Sun. Night.

Open Sun. 9:30 a.m. - 12:30 a.m.

with carry-out service Sun.

3 1/2 miles West of Rolla (I-44)

Football Leagues

I

1. Sig Phi Ep
2. Pi KA
3. Beta Sig
4. Acacia
5. AE Pi
6. Wesley

II

1. TKE
2. Phi Kappa Theata
3. G.D.I.
4. Mates
5. Delta Sig
6. Campus
7. Focus

III

1. Tech-Eng
2. Kappa Sig
3. K.A.
4. A Phi A
5. Sig Pi
6. Triangle
7. OBS

IV

1. Sig Nu
2. Delta Tau
3. MRHA
4. Lambda Chi
5. Sig Tau
6. Theta Xi
7. T.J.

SPORTS BULLETIN

.. All persons interested in UMR varsity wrestling meet Thursday, September 9, at 6:00 p.m. in the varsity wrestling room in the multipurpose building.

ANNOUNCING: KENMARK'S IT'S NOT TOO LATE FOR TENNIS SALE

Rackets 20% Off, Shirts
And Shorts 10% Off, Ladies
Tennis Clothes 40% Off,
Tennis Balls \$2.50.

EVERYTHING FOR THE SERIOUS
TENNIS PLAYER AND IT'S ON

SALE

Sale Ends Sept. 14

Kenmark Sporting Goods

904 Pine Street Rolla, Missouri 65401

364-3603

**Welcome Back
Miners!**

**SPECIALS
THIS WEEK
OLD MILWAUKEE**

12 Oz. Non Return **1.21**
6 Pack-Bottles

12 Pack-Cans **2.55**

**509
LIQUOR
STORE**

116 W. 8th

Rolla, Mo.

Gridders Face Griffins

This weekend the UMR Miners will take on the Mo. Western Griffins. The Griffins are a very tough team with a lot of talented individuals. The Griffins have 26 transfers from the big 8 on their squad, including such people as 6' 3", 225 pound running back Buba Hopkins from M.U. Also from

M.U. they have 6' 1" 221 pound running back Chris Hoskins. From Kansas they have 6' 0" 197 pound slot back Jay Ran-

dall. The Griffins will be led by 6'3" 197 pound Bill Johnson at quarter back. Johnson is known for his excellent passing and option plays. The offensive line be averaging about 225 pounds, while the defense will be even larger. The Miners have played

the Griffins previously only 2 times, once tying them and once beating them. This will be the Griffins first game of the season. Hopefully this will give the Miners a slight edge and enable them to bring home a victory.

Hook Auto Supply

Big Discounts

Auto Parts—Accessories—Speed Equipment

513 Hwy. 63 S.

Rolla, Mo.

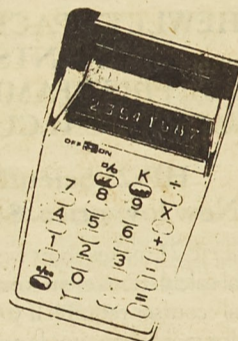
364-5252

WAL-MART

Attn: College Students



We now have Hytone college ruled notebook paper by Mead available in packages of 100, 200, and 300 ct. package, 11"x8½" size.



Engineering Students-Look!

What we have ordered for you at discount prices!

10 Millimeters to a Centimeter
20 Squares per Inch
5 Squares to inch Quadrille Pads
Green Computation Pads
Brown Fiberlic Cover
Regular-Metric Science Notebooks
Stiff Cover University Lab Books
Computation Notebook 4X4 Quad
Laboratory Research Notebooks 4X4 Quad
Made By Famous
National Blank Book
Co. Inc.
Science Fillers and Notebooks!
Made By famous National Blank Book Co. Inc.

Full Log 3X5
Full Log 3X3
Semi Log 3X10
Semi Log 4X10
Polar Coordinate

Compare Our Low
Discount Prices Before
You Buy! What We
Have Ordered For You
At Discount Prices!

Wal-Mart is open 9-9
6 DAYS A WEEK!

WE SELL
FOR LESS

WAL-MART

DISCOUNT CITY

**SATISFACTION
GUARANTEED**

By refund or
Exchange



your
BANKAMERICARD
welcome here

63 South (Across from Lion's Club Park)

WAL-MART DISCOUNT CITY

Hewlett-Packard wrote the book on advanced pocket calculators.

And it's yours free!

Hewlett-Packard built the world's first advanced pocket calculator back in 1972. And led the way ever since.

If you're about to invest in your first pocket calculator—one that will serve you through college and beyond—you'll need all the information you can get to make a wise decision. That's why Hewlett-Packard's put together an objective, informative 24-page guide entitled, "What To Look For Before You Buy An Advanced Calculator." And it's yours—Free!

In it you will find such helpful information as: A survey of types of calculators available; Programming; Logic systems; Applications; Functions; Features; Construction; Accessories; Memory; Service and much, much more.

Get your free copy of "What To Look For Before You Buy An Advanced Calculator," at your campus bookstore or telephone **800-538-7922 (in Calif. 800-662-9862)** toll-free for the name of your nearest dealer.

HEWLETT-PACKARD PRESENTS THE FIRST FAMILY OF ADVANCED CALCULATORS.

HP-21 Scientific.

New low price. \$80.00*

The HP-21 makes short work of the technical calculations even so-called "non-technical" courses require. If you need a calculator for more than simple arithmetic—this is it—especially at its new low price.

- ♦ 32 built-in functions and operations.
- ♦ Addressable memory.

- ♦ Performs all standard log and trig functions (in radians or degrees).
- ♦ Performs rectangular/polar conversion, register arithmetic and more.
- ♦ Two selectable display modes: Fixed point and scientific.
- ♦ Lowest-priced HP Scientific calculator.

HP-22 Business Management \$165.00*

The HP-22 easily handles the kinds of calculations you face in business courses today, in management tomorrow. Breeze through business math calculations. Build existing statistical data into reliable forecasts. If you're going into business administration, this is the calculator for you.

- ♦ Combines financial, mathematical and statistical capabilities.
- ♦ Performs complex time-value-of-money computations including interest rates.
- ♦ Performs rates of return and discounted cash flows for investment analysis.
- ♦ Performs extended percent calculations, accumulated interest, amortization, etc.
- ♦ Ten addressable memories.
- ♦ Full decimal display control.

HP-25C Scientific Programmable with Continuous Memory. \$200.00*

The HP-25C is our keystroke programmable. It can solve automatically the repetitive problems every science and engineering

student faces. What's more, its Continuous Memory capability lets you retain programs and data even when it's turned off.

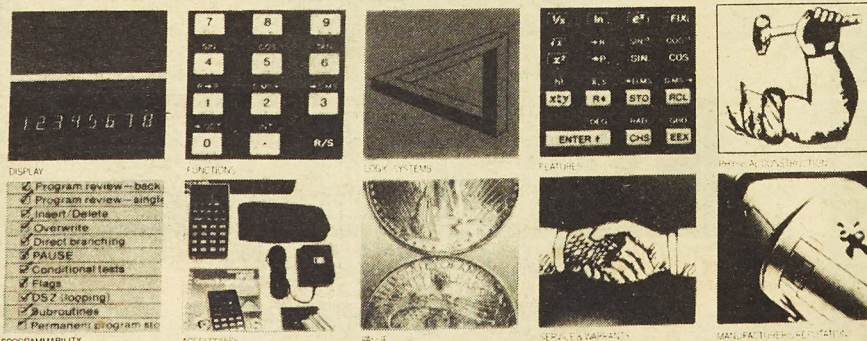
- ♦ Continuous memory capability.
- ♦ 72 built-in functions and operations.
- ♦ Keystroke programmability.
- ♦ Branching, conditional test and full editing capability.
- ♦ Eight addressable memories.
- ♦ We also offer the HP-25, (without the Continuous Memory feature) for \$145.00*.

HP-27 Scientific/Plus \$200.00*

The HP-27 is for the science or engineering student—whose course work extends into business administration. The reason: It features every pre-programmed scientific function we've ever offered, plus comprehensive stat and financial functions. That's why we've dubbed it our Scientific/Plus.

- ♦ 28 pre-programmed exponential, log and trig functions, 15 statistical functions, 10 financial functions—53 in all.
- ♦ 10 addressable memories—20 memories in all.
- ♦ 6 selective clearing options give you flexible use of memories.
- ♦ Fixed decimal, scientific or engineering display formats.

What to look for before you buy an advanced calculator.



HEWLETT  PACKARD

Sales and service from 172 offices in 65 countries.
Dept. 658G, 19310 Pruneridge Avenue, Cupertino, CA 95014.

*Suggested retail price, excluding applicable state and local taxes—Continental U.S., Alaska and Hawaii.
616/29