



25 Sep 1975

## The Missouri Miner, September 25, 1975

Follow this and additional works at: [https://scholarsmine.mst.edu/missouri\\_miner](https://scholarsmine.mst.edu/missouri_miner)

These newspapers reflect the attitudes, perspectives, and beliefs of different times. Neither the library nor the university endorses the views expressed in these collections, some of which contain images and language which may be offensive to some readers.

---

### Recommended Citation

"The Missouri Miner, September 25, 1975" (1975). *The Missouri Miner Newspaper*. 2101.  
[https://scholarsmine.mst.edu/missouri\\_miner/2101](https://scholarsmine.mst.edu/missouri_miner/2101)

This Newspaper is brought to you for free and open access by Scholars' Mine. It has been accepted for inclusion in The Missouri Miner Newspaper by an authorized administrator of Scholars' Mine. This work is protected by U. S. Copyright Law. Unauthorized use including reproduction for redistribution requires the permission of the copyright holder. For more information, please contact [scholarsmine@mst.edu](mailto:scholarsmine@mst.edu).

# missouri miner

the missouri miner

rolla, missouri



volume 62, number 5

thursday, september 25, 1975

## Olive Brown- All Star Jazz-Blues Singer

look for

a blazing

homecoming

With a classical soul, Olive Brown well deserves her title, "The New Empress of the Blues." In Toronto, Winnipeg, and in Detroit, Miss Brown has a band of devoted followers that rivals any singing artist performing today. Her album, "Olive Brown and Her Blues Chasers," has been praised by blues buffs and periodicals in this country and throughout Europe. Now, for the first time in her career, the remarkable Miss Brown, who has been a local favorite in the above-mentioned cities, will tour nationally to the nation's

colleges, universities, and festivals.

Olive Brown and Her Trio will appear in Centennial Hall on Sept. 26 at 8:00 p.m., sponsored by the Student Union.

UMR students and staff are all invited to attend.

The big, commanding voice and personality of Olive Brown catches Bessie Smith type inflections and remembrances of Billie Holiday, but is a style all her own. She began her singing and dancing at the age of 14 in

Detroit, appearing in clubs and lounges throughout the United States.

Twice chosen best singer in the Toronto All-Star Jazz Poll, Olive Brown performed extensively with such jazz greats as Henry Cuesta, Don Ewell, Buddy Tate, and Eubie Blake, to mention only a few.

Miss Brown has appeared in concert with the Toronto Symphony Orchestra, is a regular at the Memphis Blues Festival, the St. Louis Festival and at the Kerrville Jazz

Festival. She has sung on Mississippi Riverboats and performed with the Gabriel Brothers New Orleans Band as well as the New McKinney's Cotton Pickers.

Olive Brown isn't a blues singer in the narrow sense. Her songs are jazz and popular standards as well as blues tunes she heard from Bessie Smith and Lizzie Miles. She is a sterling singer with a superb personality, with the blues always at the foundations of everything she performs.

## Chancellor Speaks on Energy

Tuesday, September 23, Chancellor Raymond Bisplinghoff was the guest speaker at the meeting of the Society of Mining Engineers. His speech was on the energy situation in the United States.

The Chancellor first pointed out how valuable an institution such as UMR will be, particularly in the next few years. Engineers will be needed to develop our resources to meet our country's energy needs. He stated that this school is in "the right place at the right time."

Many people take for granted that the present energy crisis will eventually be taken care of. The feeling is that if we have the technology to put a man on the moon we can surely keep our lights burning. According to Bisplinghoff "things are going to get worse before they get better." He predicted two things; that the U.S. is entering into a period of declining standard of living and a period of hostile action from foreign countries.

Time is becoming a critical factor. Within the next ten years we will see a great shift in the economy. Areas such as New England, heavily dependent on foreign oil can already be seen slipping into a depression. Unemployment in Rhode Island is up to 15 per cent. These facts are a result of scarcity and higher fuel prices. Eventually the government will have to force people to lower their standard of living.

The period of hostile action from foreign countries (as predicted) should be something of concern. We have a heavy dependence on foreign oil now and use of this oil is increasing.

The Chancellor believes we should act now to meet our growing energy needs. People are not facing up to these facts. We must develop the will to face

the problems of an energy shortage. The present Congress is not taking the necessary steps to meet these problems.

Bisplinghoff said the future of this country will depend on its capacity to develop its energy resources. In the past it has been shown how growth of energy production parallels industrial growth. He stated the engineer is an important part of the industrial growth and necessary to meet the needs of society in energy.

## engineering- the rolla way

Engineering students from the University of Missouri-Rolla will tell about "Engineering—The Rolla Way" at "Rolla Night" Thursday, Oct. 2, at the Engineers' Club of St. Louis, 4359 Lindell Blvd.

St. Louis area high school and college students, their parents and teachers are invited to attend. Engineering exhibits will be on display at 7 p.m. with the program starting at 8:15 p.m.

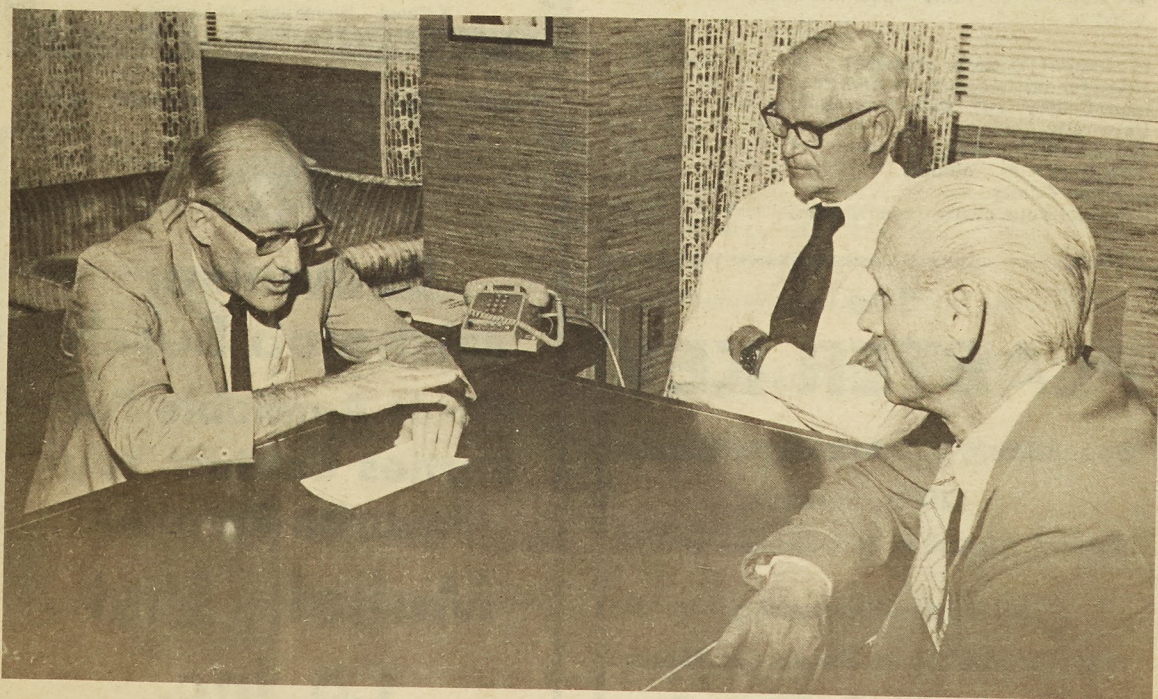
A panel of engineering student leaders from the St. Louis area will present a brief

slide show and discuss engineering and all facets of student life at UMR. They are: Dennis Leitterman senior in electrical engineering; Louann Ruyle sophomore in mechanical engineering; Curt Ingram sophomore in nuclear engineering, and John B. Farrell senior in mechanical engineering. There will be a question and answer period.

UMR alumni, faculty and administrators will be on hand to answer questions. An informal discussion period and social hour will follow the program.

This year's annual homecoming bonfire could be the big event for the homecoming weekend. The bonfire will take place Friday October 17, at 7:00 p.m. on the parking lot next to Jackling Field stadium. To get the bonfire going, each organization is encouraged to participate in a contest. The object is for each organization to collect as much trash (wood, cardboard, paper, etc.) as possible to make the bonfire a success. A travelling trophy will be presented to the organization that collects the most trash for the bonfire. The winning organization will also get to light the fire. Speeches will be given by the coaches and the captains of the football team. To start off this year's bonfire a snake dance will begin at 6:00 Friday on fraternity row and will proceed to the parking lot behind the stadium.

Homecoming is approaching fast, so start getting your trash together. M-Club will present a beautiful trophy to the winning organization. Final arrangements for picking up the trash will be made later. For more information contact any M-Club member.



National energy problems are discussed by Dr. Raymond L. Bisplinghoff, left, Dr. Robert Seamans, center, and Dr. T. J. Planje. The three met in Washington, D. C., Sept. 11. They discussed not only the nation's general energy situation, but also the roles of the U. S. Energy Research and Development Administration (ERDA) and the University of Missouri-Rolla in implementation of solutions to these problems. Dr. Bisplinghoff is UMR chancellor, Dr. Seamans is the ERDA director and Dr. Planje is dean of UMR's School of Mines and Metallurgy.

# bullboard

## FOLK-ROCK MUSIC

... Hey folk-rock music fans! Sunday afternoon, Sept. 28th, is your afternoon to get in on some good folk-rock music presented by the Contempos from Southwest Baptist College. The place is St. Pat's Ballroom and the time is 2:00. The Contempos have appeared at UMR before so some of you may remember their good sound. Be there Sunday afternoon for a good concert. There will be no admission charge.

## COFFEEHOUSE

... The first coffee house of the year will be this Saturday, Sept. 27, from 8 till 10 p.m. in the Snack Bar, Old Student Union. Music will be provided by Mark Berenson, who also appeared here during the summer. Come on out for some good music and a good time.

## CALCULATOR REGISTRATION

... The University Police will again be marking and registering calculators Tuesday, September 30th. They will be located in the lobby of the New Student Union from 8:30 a.m. to 3:00 p.m. It takes only a few minutes to help safeguard and protect your calculator.

## SUB COFFEEHOUSE

... Last year the Social Committee of SUB sponsored a student talent coffeehouse featuring student performers. Due to popular demand, a similar coffeehouse is being sponsored again this year. If you would like to perform, or just want more information, see Mrs. Harvey in Room 218, Old Student Union, on or before Oct. 17. You may also contact Tim McGraw in Room 204, Altman Hall, or call him at 364-9961. The coffeehouse will be on Saturday, November 1st in Centennial Hall East.

## PHI ETA SIGMA

Phi Eta Sigma, Freshman Honor Society, will have a mixer in 213-214, Old Student Union, at 7:30 p.m. Tuesday, Sept. 30. Old and prospective members are invited to attend. Prospective members are those students who were freshman in spring semester 1975, who achieved a 3.5 or better gpa.

## WRESTLING

Anyone interested in going out for varsity wrestling? There will be a meeting in the athletic office in the Multi-purpose Building on Thursday September 25 at 7:00 p.m. If you are unable to attend please contact Coach Keeton-UMR Multi-purpose Building; Ken Burris+Room 105 Kelly Hall-dorms 341-4991; Dan Roper-Holtman Hall-dorms 341-4990; Joe Clapp-206 E. 12th Street-Sigma Pi 364-9783.

## MSM ROCK CLIMBING CLUB

The MSM Rock Climbing Club will hold its next meeting tonight at 6:30 in room 305 of Norwood Hall. After business there will be a slide show and presentation on winter mountaineering. All are invited to attend.

Freshmen! Transfer students!  
New student Questionnaire and Contest!  
Mon.-Friday Sept. 29-Oct 3, 9:30 -3:30  
University Center  
Ten Prizes, including  
Your choice of albums  
a miner T-shirt  
6 pack of your choice (even jic-jac)

## The PLASTER KEY

"Specializing in Printed Sportswear"

T-Shirts, Jerseys,  
Sweat Clothing & Coaches Shirts

All Types-Screening,  
Heat Transfers & Sewn On Many  
Styles and Colors To Choose From

**KEY SPORTSWEAR** 1003 Pine 364-5495

## ST. PAT'S BENEFIT MOVIE

... The St. Pat's Benefit Movie this semester will be **THE MECHANIC** starring Charles Bronson. The movie will be shown on Tuesday, October 14 at 6:30 and 9:15. Tickets are available in the Quad or from any Jr. St. Pat's Board Rep. Tickets are 50 cents in advance and 75 cents at the door.

## BLUE KEY MEMBERSHIP

... Applications for membership into Blue Key, a National Honor Fraternity, are available at the Candy Counter and at Student Personnel. Blue Key chooses new members on a basis of character, scholarship, student activity, and service. It's membership is limited to definite number of graduate and undergraduate students. These applications must be returned by October 3.

## interviews

... All interview dates are dates that the companies shown will be here. Regular signups are approximately seven days earlier; priority signups are approximately eight days before the dates shown.

### OCTOBER 6

Naval Weapons-China Lake  
Caterpillar  
General Mills, Inc.  
Standard Oil of Calif. -Chevron  
Diamond Shamrock  
Dravo Corporation  
Butler Manufacturing  
Dowell  
Westinghouse Electric

Standard Oil of Calif-Chevron  
Deere & Company  
Resource Science  
Naval Weapons-China Lake  
Panhandle Eastern Pipeline  
Westinghouse Electric

### OCTOBER 8

Texas Eastman  
Texaco (s)  
Ford Motor  
Charmin Paper  
Standard Oil of Calif-Chevron  
Arkansas Best  
Sun Oil Company (s)  
NCR, Wichita  
Chevron Geophysical

### OCTOBER 7

Hercules, Inc.  
Texaco (s)  
Ford Motor  
Caterpillar  
Charmin Paper

### OCTOBER 9

Allen Bradley  
Mobil Oil Company (s)  
Grain Processing  
Garkansas Power and Light  
Illinois Dept. of Transportation  
Factory Mutual  
Arkansas Best  
Texas Eastman  
Schlumberger Well Services  
Sun Oil Company

### OCTOBER 10

Mobile Oil Company  
Pacific Gas & Electric  
Inland Steel Company  
SCM Corporation  
Republic Steel  
Sun Oil Company  
International Paper

(s) Denotes interviewing for summer employment also.

**TE SHOW LATE SHOW LATE SHOW LATE**

At the Newly Remodeled **RITZ** SAT. NITE ONLY!  
TELEPHONE 364-1299

**ADULT LATE SHOW!**

"X" "THE LAST TANGO" "X"  
Rated IN ACAPULCO" Rated

Open 11:15 p.m. Late Show at 11:45 p.m.  
X Rated — No one under 18 Admitted

**SHOW LATE SHOW LATE SHOW LATE SHOW LATE SHOW LATE SHOW LATE**



**Budweiser  
Michelob Busch  
Draft Available For  
Parties Contact Your  
Favorite Retailer  
Mullally Dist.  
Co. Inc.**

105 E. Margaret St.  
Cuba, Mo.  
885-3371

**UPTOWN**  
TELEPHONE 364-1857

**NOW!**

Matinee-Open 1:45  
Show 2:30  
Open 6:30  
Shows 7:30-9:30

**"GIVE 'EM  
HELL, HARRY"**

**RITZ**  
TELEPHONE 364-1299

open 6:30  
Shows 7:00-9:20

**THE TERRIFIC EXCITEMENT IS  
ROLLERBALL**

**ROLLA DRIVE IN THEATRE**  
TELEPHONE 364-1502

**NOW!**

**6 PACK ANNIE**  
—Plus 2nd Feature—

**"DAGMARS  
HOT PANTS"**

## film series

### the evolution of man

Area residents are invited to view a series of films produced by Dr. Jacob Bronowski entitled "Ascent of Man" which will be presented each Tuesday—through Dec. 9—from 12:30 to 1:30 p.m. in Room G-5 of the Humanities-Social Sciences Building at the University of Missouri-Rolla. The series is presented by UMR's humanities department and there is no admission charge.

Dr. Bronowski (who died in 1974) was a noted British critic and statesman as well as a scientist. Before his death he was with the Salk Institute for Biological Studies in California. The series, which depicts Bronowski's biological and sociological study of the evolution of man, was originally produced for the British Broadcasting Co. (BBC).

#### Title

Sept. 30,  
October 7,  
October 21,  
November 4,  
November 18,  
November 25,  
Undecided  
Undecided  
Undecided  
Undecided  
Undecided

"The Grain In The Stone"  
"The Hidden Structure"  
"Music of the Spheres"  
"The Starry Messenger"  
"The Majestic Clockwork"  
"The Drive For Power"  
"The Ladder of Creation"  
"World Within World"  
"Knowledge Or Certainty"  
"Generation Upon Generation"  
"The Long Childhood"

## cheerleaders still needed

Cheerleaders for the remaining football games are still being sought, and they need not be female. Male yell-leaders, cheerleaders or whatever they wish to be called are more than welcome to help keep spirit high during the games. The idea of male yell-leaders was brought up by the Student Council before last season's basketball season; however, when the clinics and

tryouts were held, no one showed any interest or willingness to try out for the positions. If there is anyone, either male or female, who is interested in displaying their spirit and instilling it in the Miner football or basketball fans, drop by the Student Council office in Rm. 202 of the Old Student Union as soon as possible.

## calendar of events

Sept. 26 — Openhouse, UMR Observatory, 8:30 to 10 p.m. Free.  
Sept. 27 — Women's Intercollegiate Volleyball, Lincoln University, Central Methodist College, William Woods College. 9 a.m. Multi-purpose Building. Free.  
Sept. 28 — Concert, Contempos, contemporary music group from Southwest Baptist College. 2 p.m. St. Pat's Ballroom, University Center. Free.  
Sept. 30 — "The Grain in the Stone," third in "Ascent of Man" film series, 12:30 p.m. G-5 Humanities Social Sciences Building. Free.  
Oct. 2 — Business products display, 3-M, St. Pat's East, University Center. Free.

## the missouri miner

The MISSOURI MINER is the official publication of the students of the University of Missouri-Rolla. It is published at Rolla, Missouri, every week during the school year. Entered as second class matter February 8, 1945, at the Post Office at Rolla, Mo., under the Act of March 3, 1879. The subscriptions are \$3.50 per semester. This MISSOURI MINER features activities of the students and faculty of UMR.

Miner Office (341-4235)

Dan Shelledy (364-9885)  
Dennis Rackers (364-9792)  
Ron Rembold (364-2626)  
Bob Born (364-9885)  
Richard Markey (364-9885)  
Sam Rucker (364-4006)  
Dennis Gilliam (364-9783)  
Art Stevenson (341-4971)  
Dr. Curt Adams  
Pegge Farrar



MEMBER

Editor  
Business Manager  
Advertising Director  
Managing Editor  
News Editor  
Features Editor  
Sports Editor  
Photo Editor  
Faculty Advisor  
RDN Advisor

Staff: Ed Burford, Bevan Collins, Ron Farley, Maria Duncan, Dan Rembold, Mike Salwasser, Bob Vallerio, Dave Lewis, Ted Cottrell, Dave Thorne, Bill Merten, Bill Uding, Joe Folta, Paul Andrew, Bruce Schaller.

Office Hours Are Monday and Tuesday, 1:00-3:00 in T-1.

Articles and photos for publication in the Miner must be in by 11:00 p.m. on the Monday before printing on Thursday.  
Mailing Address - Missouri Miner, University of Mo. - Rolla

## UMHE Plans Service Projects

Yard work, debris hauling, and minor home repair on a senior citizen's home in Newburg were the Saturday, September 20th projects of ten Theta Xi's and VISTA and other volunteers for UMHE.

Mike Sallwasser, Theta Xi and VISTA, Paul O. Kelly were the coordinators. UMHE provided the funds for supplies.

Mrs. Ada Lewis is over 70 and walks with the aid of a walker. Consequently, she has been unable to do yard work, nor was she able to find anyone to do it for her.

In addition to cutting the grass and hauling refuse, an area of the yard suitable for a garden was cleared. The volunteers also repaired loose guttering, a fire wood container and moved Mrs. Lewis's mailbox so that she could get to it more easily.

Assisting Sallwasser and Kelly were volunteers Fritz

Schulmeyer and Nibs Knights and Theta Xi's Philip Schicoineau, Andy Smith, Armand Brunker, Steve Sallwasser, Steve Kovac, Keith Schumacker, Mike Norton, Paul Roermann, and Jim Oursler.

Many other projects are planned this fall in the areas of minor home repair and home winterizing for Phelps County's elderly. Students are needed to help with storm window installation and may volunteer by calling Paul Kelly at 364-2133 for more information.

Besides the physical goals of helping senior people who are in need of assistance, there are advantages to the students, as well as to the elderly, in developing and experiencing intergenerational relationships, according to Campus Clergy Clayton Smith and Don Lamers who supervise the UMHE program.

## chamber of commerce to hold survey

The Rolla Chamber of Commerce is sponsoring a "Rolla Community Attitude Survey" next week. EVERYONE who is either a permanent or temporary resident of Rolla will be entitled to fill out the form. Now is the chance for all citizenry of this community to be represented in any future actions of the local government, including students. Anyone with any sort of civic duty will take fifteen minutes and fill out the survey.

The forms will be delivered to all residences within the city limits on Monday, September 29 between 5:45 p.m. and 7:30 p.m. by teams of volunteers, and will be picked up on Thursday, October 2 between 5:45 p.m. and 7:30 p.m. It by some chance you are missed distribution night, you can pick up the questionnaire at the Rolla Chamber Office. PLEASE COOPERATE — for everyone's benefit.

## miner news

Thursday, September 25, 1975

MISSOURI MINER

Page 3

## Funds for New Facilities Requested

This is the second of a series of articles presenting Chancellor Bisplinghoff's address to the General Faculty Meeting held August 26.

### MISSOURI STATE APPROPRIATION - PHYSICAL PLANT

You will recall that during the year 1974-75 Missouri State Appropriations for Physical Plant at UMR amounted to \$315,000. During the year 1975-76 that we are now entering, the figure approved by the legislature is \$200,000 which will be used for repairs and replacements, that is, maintenance of existing

facilities, such as painting, roof repairs, window and door replacements, utility distribution and safety items.

The Board of Curators has under review a UMR 1976-77 Physical Plant budget of \$450,000 which, if appropriated, will be used also for repairs and replacements.

During the past year, several changes were made in the priorities for long-range physical plant acquisitions. The Campus Capital Improvement Request for new facilities has been modified to reflect what I consider new priorities.

The expansion of the Heating Plant will, of necessity, remain the highest priority for support facilities. For first priority of new addition, a Mineral Engineering Building, Phase I and II, has been proposed. The

second priority is the Engineering Research Labs, has been proposed plus a repeat of our previous request for a student infirmary as a fourth priority.

The major rehabilitation projects have been evaluated and a number of changes made to that schedule. It now appears that lead time plus staging space will delay completion of these projects until after fiscal year 1985-86. It is anticipated at this time that Norwood Hall will be among the last facilities to be rehabilitated.

The schedule for demolition of structures on the campus has been revised to delay that activity until the latter half of the 1980's. The last structure to be demolished under the present schedule would be the old Mining Building.



rah, rah, rah;

sis, boom, bahl

Sept. 26

Play: W.C. Fields, 80 Proof

Sept. 26.. Concert: Olive Brown and Her Trio, Centennial Hall, 8:00 p.m.

Sept. 27.. Coffeehouse, Mark Berenson, SnackBar Old Student Union, 8-10 p.m.

Sept. 28.. Movie: Summer of 42, Centennial Hall, 4:00 and 6:30 p.m.

Oct. 1.. Student Union Board application deadline.

Oct. 1.. Ballroom dancing lessons, St. Pat's Ballroom.

Oct. 9-17cu-I Region XI Conference, University Center

Oct. 12.. Movie: In Cold Blood, Centennial Hall, 4:00 and 6:30 p.m.

How would you like to be recognized for displaying school spirit at Miner's football games? It's easy!!

This year, an award which has been absent from the UMR campus for 5 years, will once again be presented. This award, called the 12th Man Award, will be given to any club or organization which best exemplifies school spirit and shows the most support for the Miner's football team as they battle for the league championship.

The award is being sponsored by the M-Club.

More information concerning the award will appear in the next issue of the Miner.

## Androgynous Zone

BY  
KATHRYN LANCASTER

**Androgynous zone:** The equilibrium of a personality that lies adjusted evenly between the stereotyped aggressive, dominant male and the subservient, dependent female.

**Androgynous person:** A woman or man who has a healthy balance of assertiveness and compassion somewhere between Rock Hudson and Doris Day.

An androgynous male is a rarity. The old role expectations for a man in this society can be cruel and inhumane. The average male dies younger, often from a heart attack, than the female. Men who have internalized the cultural norms of conformist manliness are killing themselves off on the altar of Success which is measured essentially in such superficial terms as \$1,050 monthly salary to start, with regular promotions.

A man nobly sacrifices himself to commuter rushes, overtime, getting published, and ulcers "to protect the wife and kids." Those good intentions (besides being condescending and patronizing) are paving his way to a hell of isolation from real human communication, companionship, and warmth.

Here is a brief outline of the current male ideal, compared to the advantages of androgyny.

### Role Expectations of Men

1. To have the primary burden of financial responsibility not only for himself and the little woman, but for the dependent children as well.
2. To have a prestigious career with titles and status to confer upon his family.
3. To be assigned sexist household chores such as grass cutting, oil changing, painting, plumbing, and carpentry regardless of interest or ability.
4. To have a penis that measures up and stays up on command.
  - a. To "give" her a climax
  - b. To marry her as the honorable thing to do, or to pay for her abortion.
5. To have the pressure of a woman looking for all her happiness, identity, and meaning in life through him.
6. To ask her out (and risk rejection), to open her door, and pay for the tickets.
7. To have a wife who is youthful, intelligent, and educated (but less intelligent and less educated than he).

### Advantages of Androgyny

1. To have women and men share the financial responsibility for the family. He and she can each work 20 hours a week. To have the woman earn the income while he goes to school, writes, or takes a paternity leave and joins a little theatre group.
2. To spare her from being an appendage or an accessory to him-Mrs. Lieutenant. To raise children who win their own awards, instead of basking in the reflected glory of Dad's.
3. To let her pound in the toggle bolt and have him fix the spaghetti depending on who gets home first.
4. To relish making love with a woman.
  - a. To have her honestly tell him what she wants, instead of making a fool out of him by faking it.
  - b. That each accepts personal responsibility for birth control. Never, never accept "Let's forget it just this once. Nothing will happen."
5. To have women and men find their own identities as individuals, and share growth experiences.
6. To open his door if she's there first. To pay for his dinner if she makes more money. To go dutch.
7. To have mates who are intellectual equals. That he can be younger than she, if he prefers a self-assured woman instead of giggly adolescent.

This androgynous line sounds suspiciously like women's lib. And women's lib is scary and threatening. Because when women make noises about men's liberation, it's just offering a booby prize or a decoy to catch them off guard so women can rip off their vital male parts.

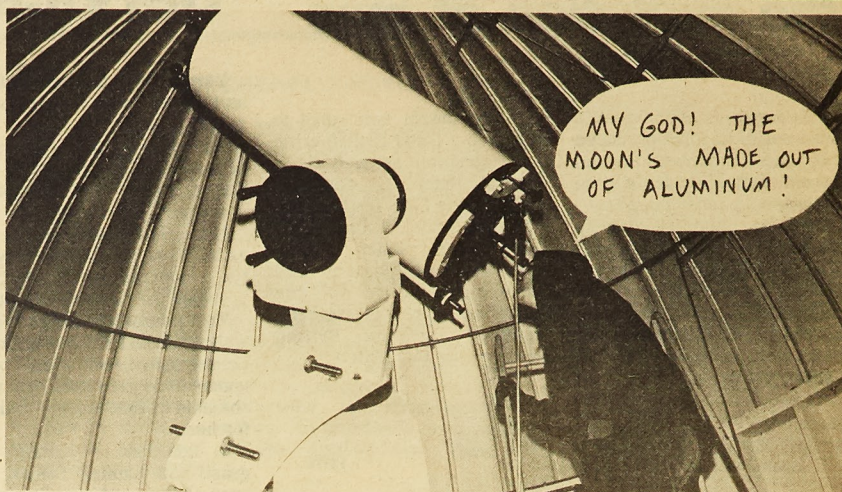
No so. Women's lib is scary because it means change. Change can be psychologically unbearable, and we cling to whatever islands of stability we can. We've thrown the old social order and role expectations up in the air and the chips haven't fallen yet.

Women's lib is also threatening because women are awakening at a different rate, and in different ways from men. Women's attacks are sometimes bitter. Men are put on the defensive as women shove all the blame on men.

Women's voices will become less shrill as they come to realize that their position is not entirely the fault of men; that women must be responsible for themselves.

And for those macho men who refuse to change because "She likes me this way," a word of caution: A stereotype sexless. The guy with the beer can opener on a chain around his neck, or the pseudo-liberal male who imagines he deserves a medal for "helping her" with the babysitting once a week is a drag.

The notion that the greater the polarization of the sexes, the greater the chemistry, is dated. We need to relate to each other as people instead of fragmented, isolated holes and poles. Androgyny offers flexibility and a wider range of options for women and men.



Come see what you can discover Friday night at UMR's own observatory!

## An Interview with Joe Wollard Concerning Nagogami Terrace

Nagogami Terrace was built in the mid-fifties by the University of Missouri, Rolla, who sold bonds to cover the costs of building. At the same time UMC built a terrace identical to Nagogami, which has not had any problems. Nagogami has been continuously occupied since it's completion.

Monthly rent money paid into UMR goes to pay the accrued interest due on the bonds. What money there is left then goes toward much needed repairs and improvements. If, after all repairs have been made, there is money left, then luxuries are made available to the tenants. Such things as a rock covered volleyball court, swings upon which the chains are un-even, small portable electric heaters,

(loaned free of charge, you pay the electric bill) and the list goes on.

Mr. Joseph D. Wollard, Business Officer and head of Housing, agreed that more student housing is needed, but he says that UMR is doing the best it can.

He commented that the water leakage problems could stem from when the gas line was fixed three years ago. It was dug up and replaced, it may not have been put back in the same spot as the other one. Resulting in water leaking into the apartments.

Mr. Wollard further commented saying, "To my knowledge no one has been fined for repairs on the apartments."

Recently there have been

numerous complaints of mildew, dampness, standing water, etc...in the apartments.

One case of mildew was reported, where it covered the entire wall of the apartment. Maintenance was called in to fix it they stripped the paint off the wall of the apartment. This was to keep the mildew in check. (needless to say, it didn't work)

A 'satisfactory' response to a complaint was voiced by a coed who wished to remain nameless. She said that after calling three times and reporting a problem with bugs, some people from maintenance came and sprayed the apartments. She also said even though the upstairs doesn't leak, "It's damn cold," and "the windows are warped."



## Groundwaves

KMNIR is new and improved this year. Every school year starts with a new board of executives, so that's not what I mean by new. Starting with a 8-channel McMartin board that was installed at the beginning of the summer session, KMNIR began to take on new dimensions. Technical improvements were followed by interior renovations until the sights and sounds of your student station really began to take shape. More improvements are still in the process, but we welcome anyone to stop by and see for yourself the improving quality of KMNIR.

In the area of programming the format remains basically the same except for a few minor changes. All progressive shows are now progressive, popular, maintaining a ratio of 3 to 1 or 4 to 1, progressive to popular songs. Once again Ace Trucking returns to the KMNIR station, Monday thru Thursday evenings at 7:00. National Lampoon will be aired every Monday evening at 8:00, followed by Feedback, a half-hour talk show on various topics, allowing the students to voice their opinions. Pacifica,

an informative and educational production, can be heard Monday, Wednesday, and Friday mornings at 10:30. Recording Session, because of technicalities, had to be replaced by Album of the Week. There will be two albums played, Tuesday and Thursday and old favorites on Thursdays. Tonight's selection will be a Blood, Sweat and Tears album entitled Blood, Sweat and Tears. The Alfredo Schwartz hour, an hour of solid music by a selected artist or group, has been moved to a later time, 8:00, on Wednesday evenings, 10-2. A new feature has been added that we hope you'll enjoy, Science Fiction Theatre, aired Sunday, evening at 8:00.

So now that you know what's new with us, we hope you'll continue to listen in and read Groundwaves to check upcoming events, albums and topics. Remember that your comments and requests are always welcome, just call us at

341-4272 or 341-4273.

For the week of Sept. 29 to Oct. 5:

Feedback: Marijuana: Decriminalization or legalization?

Tues. Album of the Week: The Marshal Tucker Band- 'Searchin' for a Rainbow'

Thurs. Album of the week: Elton John- 'Tumbleweed Connection'

Alfredo Schwartz: Emerson, Lake, & Palmer

## WANTED

Male help 2 or 3  
evenings per week.

Call

tim's PIZZA  
364-8661

### Delicious Mexican Food

## LA POSADA

Dining Room-Orders To Go-Open Daily 11 a.m.  
Hwy. 63 S. Rolla, Mo. 364-1971 Closed Monday

# ediletters

Editor  
Missouri Miner  
University of Missouri-Rolla  
Rolla, Missouri 65401

Dear Editor:

This is an open letter to the UMR Miners from a former cheerleader.

Your cooperation last year was overwhelming: Pitching bottles, obscene language, and gestures, "butt pinching", negative crowd response, as well as rough manhandling in general.

Until the Miner spectators at athletic events are able to control their barbaric conduct, do not question why there is a lack of Cheerleaders at the University. No coed is willing to subject herself to constant ridicule, harassment, and obscene jokes.

If student organizations had given their whole-hearted support, conditions might be different now.

the student who must complete his term paper within a semester.

An incident which occurred five years ago epitomizes the quality of health care at UMR. During flag football practice, a player fractured his collarbone. He was taken to the infirmary, where he was told to come back the next day for x-rays. Finally, the day after x-rays were taken, he was brought to the hospital, and the bone was set. It was two full days after the injury before he received the proper treatment! Having an x-ray machine and a full time doctor available would greatly improve the infirmary's service.

When the school's administrators plan for the future, these two facilities must be given top priority. If allowed to deteriorate further, the students will no longer be able to obtain the services they need.

Sincerely,  
Steve Schade

appointment to committees remain open and as a former undergraduate student member of the Academic Council I failed to see graduate student representation on a regular basis.

I am not on a campaign to have myself appointed to any committees as I (along with several other graduate students I know would like to finish my graduate work as soon as possible. My proposition is to incorporate the undergraduate Student Council with the GSA so that I would be represented in the various political arenas and on the many committees that exists on this campus. I realize that graduate students needs differ from undergraduates but I believe that through the coordination and planning of both student governments an organization could be conceived that would effect benefit for all those involved.

Sincerely,  
Terry Michnimer

Dear Sir:

It seems that one of our student organizations is not very active. I am referring to our Graduate Student Association (GSA). I have just entered graduate school here at UMR and it is my understanding that I am to be represented by this student government organization, in fact I believe that they receive 50 cents of every graduate student's activity fee. Yet I have not received any communication from them nor do I have any idea as to what plans they have for the graduate students' money.

Several graduate student

Dear Editor,

I noticed in the September 18, 1975 issue of the Missouri Miner that SWE (Society of Women Engineers) "is growing by leaps and bounds". This is good news and I for one, am interested in forming a parallel organization. SME (Society of Men Engineers).

If anyone is interested please have them contact me. I feel we have been discriminated against too long and need to do something about it.

Sincerely,  
Joseph Gritty

Editor, The Miner:

In the past few years two of the most important facilities on this campus, the library and the infirmary, have been allowed to deteriorate to the point where they can no longer fully meet the needs of the students.

Anyone who has used the Interlibrary Loan Service is aware that some technical journals not subscribed to here are available at Columbia. A browse through the periodical section reveals a number of magazines whose subscriptions have been cancelled within the last five years. Books are found laying on tables, chairs, and even the floor, because there are not enough personnel to shelve them. While many books can be obtained from other libraries, the amount of time required works a hardship on

## phi eta sigma

Phi Eta Sigma is a national freshman honor society composed only of freshmen and sophomores. It is known and recognized throughout the nation for promoting a higher standard of learning and encouraging high scholastic achievement. In addition to honoring the freshmen, Phi Eta Sigma offers the student excellent opportunity to hold a campus office and take an active part in running an organization. Membership also offers you, the student, a good chance to learn how to work with, and get along with other people—a thing you will have to do throughout the rest of your college and professional careers.

The requirements for membership are that: the student be a freshman man or woman; the student attains a grade point average for his first semester or for his first two semesters of not less than 3.50; and the student carries at least 14 hours per semester. In the past only about 5 per cent of the freshman class has attained membership in Phi Eta Sigma, thus making it quite and honor which is highly regarded by employers.

## future concerts

St. Louis

Bruce Springsteen	Sept. 27
Doobies Brothers	
The Outlaws	Sept. 28
Triumvirat	
Head East	Oct. 4
Micheal Murphy	Oct. 11
Labelle	Oct. 12
Rick Wakeman	Oct. 18
Loggins & Messina	Oct. 22
Papa John Creech	Oct. 23
Kiss	Oct. 31
Edgar Winter	Oct. 31
Climax Blues Band	
Eggar Winter	Oct. 31
Climax Band	
Foghart	Nov. 8
Dave Mason	Nov. 23
	Nov. 26

## Hook Auto Supply

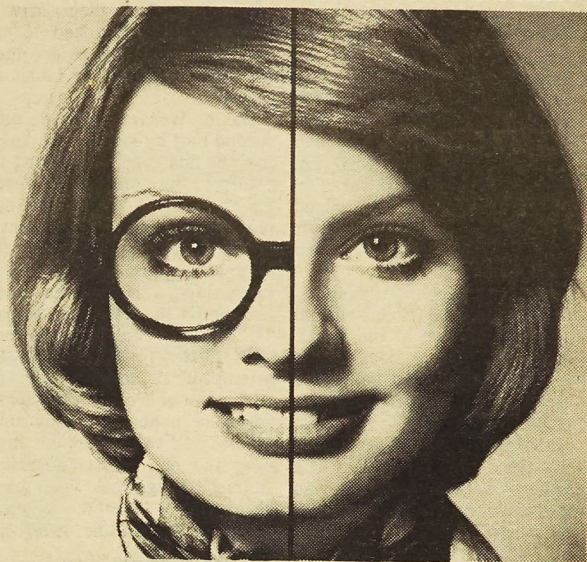
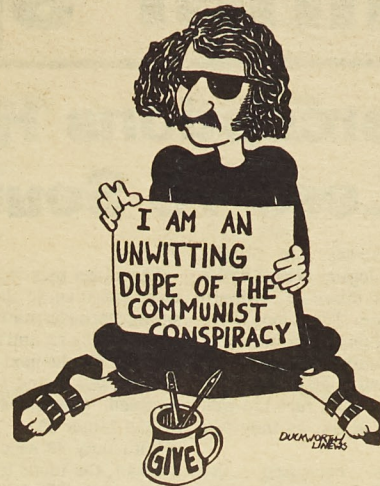
Big Discounts  
Auto Parts — Accessories — Speed Equipment

513 Hwy. 63 S. Rolla, Mo. 364-5252

## TOP HAT LOUNGE

Miners Hang Out  
Michelob & Bottle Beer

Above ABC Bowling Lanes  
Downtown Rolla



## I changed my looks at Vision Center.

Why walk around glassy-eyed? Vision Center makes it easy to get into contacts. Their selection is so complete, most people can quickly find a pair that is right for them. Yes—they've got all kinds of contact lenses. Soft lenses, hard lenses. Clear or tinted... over 20 different tints. Contacts sure make a difference in how you see the world... and how the world sees you.

## A great place for contact lenses.

PEARLE VISION  
center

Rolla, 702 Pine Street  
Tel. 364-7311

## Aquarian Book Shop

110-A West 7th-Rolla, Mo. 341-3758  
1976 Calendars now in Stock  
Tolkien, Star Trek, National Lampoon  
And Many More

## ZENO'S MOTEL STEAK HOUSE

"HOME OF THE FAMOUS 12 OZ. STEAK"

Box 70  
Rolla, Mo.

Phone: 364-1301  
Martin Spring Dr.

# miner sports

MISSOURI MINER  
Thursday, September 24, 1975  
Page 6

## Interceptions Hurt Miners In Loss To Southern

Last Saturday the Miners traveled to Joplin, Mo. to battle the Lions of Missouri Southern State College. The Lions were dedicating their brand new \$1.7 million stadium, which is complete with artificial turf. The Miners didn't fare too well on the fake grass, as they lost 26-6.

Southern returned the opening kickoff 70 yards to the Miner 22 yard line, only to have the play called back because of an offside penalty. On the replay kick, Southern ran the ball from 3 yards deep in the end zone out to the 25. On the first play from scrimmage, Lydell Williams broke through the Miner line for a 30 yard run. Williams picked up 12 yards on the next play, but he fumbled and Tom Meyer recovered for the Miners on the Miner 31 yard line.

After an exchange of punts, the Miners scored their first and only touchdown of the game, on a Grag Haug bootleg run from 18 yards out. The drive covered 49 yards and took only 5 plays. Two passes to tight end Jim Waechter provided most of the power for the drive. The Miners were unsuccessful on the extra point pass play, so they led 6-0.

After the Miners quick TD, the Lions came storming right back and drove 71 yards in 7 plays, to take the lead.

Lydell Williams started the drive with a 42 yard run. Two penalties on the Miners, an offside call and a pass interference penalty, helped the Lions along. They scored on a quick two yard pass to tightend Kenny Howard, and led 7-6.

Rodney Bullock returned the Lion kickoff 19 yards to the Miner 30, and then picked up 3 yards on the next play. Then Haug hit Stu Dunlop with a ten yard pass, moving the ball to the 43. After three running plays the Miners moved into Lion territory, but Haug was sacked for a ten yard loss, and the Miners had to punt.

Mo. Southern got the ball on their own 42, after a 15 yard penalty was called on the Miners for interfering on the punt when it hit a Rolla defensive man on the helmet. The Lions moved the ball to the Rolla 24, and then fumbled it away.

The Miners moved the ball out to their 43 yard line, on the running of Barry and Bullock, but the offense stalled and Ken Potempa was called on to punt again.

Southern got the ball deep in their own territory, on the 18, but Williams and Barnes ran the ball very well, and Southern marched 82 yards, to their second TD. Barnes ran the ball in from a yard out, and the Lions led 14-6.

Harvey Derrick kicked off for the Lions, and kicked the ball clear out of the end zone, as he did most of the day. Behind by a touchdown, Haug went to the air, and hit Waechter on two passes, but then the Lions intercepted a pass on the Miner

49.

The Lions picked up 8 yards on an end reverse play, but then safety Herb Hermann picked off a pass on the 12, and ran it to the Rolla 28. On the next play, Haug was sacked trying to pass and fumbled. The Lions recovered on the Miner 25.

With only 43 seconds left in the half, the Lions tried to pass for a quick TD, but a 15 yard penalty for an ineligible receiver stalled their drive. Harvey Derrick kicked a 35 yard field goal just before the half ended, giving the Lions a 17-6 lead.

David Weaver started the second half by kicking off deep into the end zone, preventing a return. The Miners defense gave up only 3 yards in three plays, so the Lions had to punt.

The Miners had the ball for only two plays. Tom Warren intercepted a Haug pass, and returned it 18 yards to the Rolla 38. The Lions couldn't move the ball, and they missed a field goal attempt of 37 yards.

The rest of 3rd quarter was a series of punts, three by the Miners and two by Joplin. But near the end of the quarter, Rolla got a big break when they recovered a fumble on the Southern 22 yard line. After an

incomplete pass and a no gain running play, Haug hit Dunlop with a 14 yard pass. Then on first down quarterback Haug rolled out around the right end—and appeared to have crossed the goal line, but he fumbled and the Lions recovered, so there was no TD.

During the 4th quarter the Miner offense had problems, the biggest of which was the Southern pass defense. The Lions intercepted 4 passes in the final quarter, killing any chance of a Rolla comeback.

Despite having good field position throughout the quarter, the Lions were unable to break the Miner defense for a TD. Harvey Derrick provided the only scoring in the quarter by kicking three field goals for the Lions, of 51, 42, and 41 yards.

Lydell Williams was the offensive star of the game. He ran for 112 yards, leading the Lion attack. Larry Barnes picked up 76 yards.

Rodney Bullock, who started in place of Steve Townsell after he twisted an ankle in pregame warmups, ran for 83 yards. Greg Haug passed for 174 yards, 86 to Waechter and 76 to Dunlop. Six interceptions and two fumbles hurt the Miner offense very much.

## jock shorts

BY THE MINERS SPORTS STAFF

The next opponents for the Rolla Miners will be the Gorillas from Kansas State College at Pittsburg. The Gorillas have had somewhat of a slow start this year. Last week they lost to the Southwest Missouri State Bears. The Gorillas have an experienced team, made up of mostly juniors and seniors. The Gorillas run a straight power offense, and an even defense. Players to watch for the Gorillas are Carl Hamilton a 6 foot, 180 pound junior quarterback, and Rex Garner a 6 foot, 202 pound junior running back.

This writer expects the Miners to break into the win column this week.

### MIAA Football

Defending Missouri Intercollegiate Athletic Association football champ in Northwest Missouri State is picking up where it left off last season.

The Gladden Dye-coached Bearcats from Maryville will be working on a six game victory streak, having won their three games in last year's 8-2 season and their opening pair in 1975.

Congratulations to Steve Townsell for being named MIAA offensive player of the week. Townsell, Starting his

Continued on page 8

## COLOR PRINTS

# 18¢

Plus Film Processing  
With Borders or  
Borderless

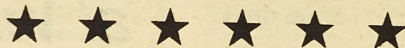
## BRADFORD & FITZSIMMONS

120 W. 8th

364-1588

## Christopher Jewelers

805 Pine Street



Catering To UMR

The Complete Service Jeweler

## Rolla Craft-Hobby

Crafts - Hobbies  
Artists Supplies

605 PINE ROLLA, MISSOURI PHONE 364-5581

## French Studios & Camera Store

### Camera Supplies

### Portraits

### Weddings

### 24 Hour Color

### Photo Finishing

813 Pine Street

Phone: 364-4579

## Diehl Montgomery Ford Sales

Rolla, Missouri

(The Originator Of The  
Student Finance Plan  
In This Area.)

This plan allows the students upon approved credits and job, to buy a new car with nothing down and payments of \$25.00 per month until you are on the job. This plan is not new, Diehl Montgomery Ford has sold over 750 new cars and trucks to graduating students this way. See us for all the details. Also you can use your own insurance or ours.

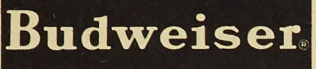
FORD LINCOLN MERCURY

This allows the graduating students to have a new car before he graduates when he really needs it. "This is a special discount program for students. We will be glad to quote you a price on and Ford or Mercury product."

# women begin play

Mark your calendars. Saturday, September 27, the UMR women's volleyball team will begin the 1975 season. Saturday, UMR will be hosting a four team round robin tournament consisting of teams from UMR, Lincoln, Central Methodist College, and William Woods. Other teams on UMR's schedule this year include Southwest Baptist, Drury College, Stephens College, and Evangel. Also there are tentative home and away matches with Columbia College, and Culver Stockton College. The State Tournament is being held November 7th and 8th at Southern Baptist College. Team members this year

include returning lettermen Joy Ewens, Debbie Cower, Carol Russell, Mitzi White, Peggy Cahill, Peggy Knapp, Brenda Langkofo, and Sally Schwager. Newcomers to the volleyball team include Debbie Bene, Paula Snyder, Rhonda Reid, Margaret Becker, and Debbie Ferner. The manager is Ronnie Durling. According to Coach Annette Caruso, this year's team should be much better than last year's. There is more depth, including some good freshman talent. The team's goal is to take the MAIAW State Tournament and there is an excellent chance to do it. Go on out to the Multipurpose Building this Saturday at 9:00 a.m. and give these girls some support.




**Budweiser**

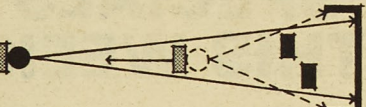
PRESENTS

HOW TO WIN AT

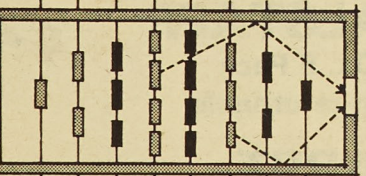
**fussball**



**1** For a very fast and deadly shooting method, set up the ball with the shooter in backswing position. Then, by positioning the ball along the foot of the shooter as shown, you can fire in any direction with only one wrist movement.



**2** Pass back occasionally and shoot quickly from the middle line. This surprises your opponent(s) and makes more of the goal visible.



**3** Practice bank shots from the middle and halfback positions using the shooting method described in #1. This is an unbelievably slick shot.


AND THEN

PRACTICE

UP WHERE

YOU SEE

THIS SIGN.



ANHEUSER-BUSCH, INC. • ST. LOUIS

## Volleyball Schedule

Sept. 27 — Sat. UMR Lincoln CMC William Woods	9 a.m. Home
Oct. 2 — Thurs. + Lincoln University	TBA Away
Oct. 7 — Tues. + William Woods	7 p.m. Home
Oct. 11 — Sat. + Central Methodist	TBA Away
Oct. 14 — Tues. Southwest Baptist	6:00 p.m. Away
Oct. 23 — Thurs. Drury College	TBA Away
Oct. 25 — Sat. + William Woods + Stephens College UMR Lincoln	TBA Away
Oct. 28 — Tues. + Stephens College + CMC UMR	7:00 p.m. Away
Nov. 1 — Sat. UMR Evangel + Lincoln William Woods Drury College	9 a.m. Home
State Tournament — Nov. 7th and 8th — Southwest Baptist College	H&A
Tentative — Columbia College Culver-Stockton College	H&A

Frank Smith Manager  
If it's electronic... We can repair it  
Ranco, Inc.  
Electronic Laboratories  
807 Rolla Street  
Rolla, Missouri 65401  
364-4332 or 364-4722

Larry Vance Our President  
Harrel Finn Field Technician

## M-Club athlete of the week

Dave Craycraft is M-Club's athlete of the week. In the cross-country meet this past weekend, Dave recorded a time of 26:39 for the five mile course to give the cross-country miners a victory over Lincoln University. Dave is a junior in petroleum engineering from Kansas City, Missouri. Because of his excellent performance, Dave Craycraft was voted M-Club athlete of the week.

## IM Football

### MONDAY

GDI-Sig Nu  
Mates-Sig Pi  
Tech, Engine+PiKA  
Sig Ep-Lambda Chi

### TUESDAY


Theta Xi-Sig Tau  
Delta Tau-Triangle  
Delta Sig-KA  
Newman A-Phi A

### WEDNESDAY

MRHA-Phi Kap  
Wesley-Beta Sig  
AEPi-Kappa Sig  
Acacia-TKE

### THURSDAY

Sig Nu-Sig Tau  
Sig P-Triangle  
Pi KA-KA  
Lambda Chi-A Phi A



when you want to chase a beer with a beer.

1973 CARLING BREWING COMPANY, BELLEVILLE, ILLINOIS

**Norm DeLeo, Dist.**  
Sponsors This Week's

**crossword puzzle**

Answer to Puzzle No. 137

**ACROSS**

1 Book of the New Testament

5 Book of the N.T.

9 Card game, for short

12 Extraordinary person — av/s

13 S-shaped curve

14 Suffix: something like

15 Part of a projector

17 Warrant Officer (ab.)

18 Red or Black, for example

19 Positive

21 Katmandu is the capital

23 Book of the N.T.

27 State (ab.)

28 Desert region of Israel

29 Recline

31 Limited (ab.)

34 Do — die!

35 Rotate

38 Royal Academician (ab.)

39 Disfigure

41 National Association of Manufacturers (ab.)

42 A certain poppy

44 — the ball

46 First sergeants (coll.)

48 Book of the N.T.

51 Negative responses

52 Feminine name

53 Book — the N.T.

55 Like the stars

59 Opera: — Juan

60 Record (var.)

62 "And the greatest of these is —"

63 Abstract being

64 Family man

65 Ancient garden

**DOWN**

1 Canine sound

2 Automobile

3 La — La's companion

4 Needlework show-piece

5 Large drinking bowl

6 Old German (ab.)

7 Hack

8 Kind of sign

9 Any of the first four books of the N.T.

10 Concept

11 Actress Patricia

16 Seven's partner

20 A king of Israel

22 Enlisted man (ab.)

23 — Penh

24 Wife of Zeus

25 Inspector General (ab.)

26 Nothing

30 Summons

32 Island group in the Carolines

33 Aswan and Boulder

36 Cask

37 New Testament letter

40 Book of the N.T.

43 Jesus Christ (ab.)

45 Compass point

47 Trespass

48 Book of the N.T.

49 The unknown poet, for short

50 Word used with fountain and jerk

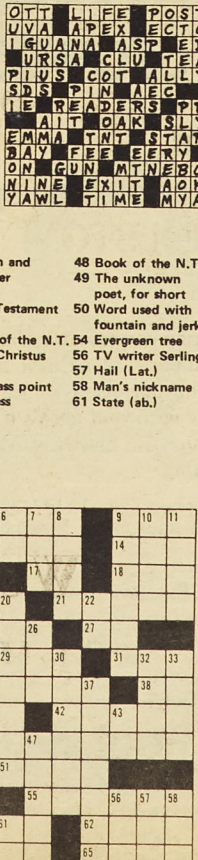
54 Evergreen tree

56 TV writer Serling

57 Hail (Lat.)

58 Man's nickname

61 State (ab.)



Distr. by Puzzles, Inc. No. 138

**WELCOME UMR STUDENTS**  
**OZARK INN**  
Rolla I-44 West  
3 Miles West Of  
.....  
Music by  
**Ozark Boogie Band**  
.....  
Fri., Sat., & Sun.  
Nights  
Carry-Out  
Service Sunday

# Jock Shorts

from page 6

first game for the Miners against Missouri Western, rushed for 134 yards, and caught a pair of passes for 31 yards.

## Mizzou football

The Missouri Tigers won their second game of the young

season with a 30-20 comeback win over Illinois Saturday.

Outstanding players for the Bengals were Tim Gibbons, who

kicked field goals of 36, 34, and 49 yards, Tony Galbreath, who rushed for 90 yards on 26 carries, Henry Marshall, who

gathered in a 54 yard pass from quarterback Steve Pisarkiewicz, and Pisarkiewicz who had 11 completions besides

the 51 yard strike to Marshall. Missouri's next challenge comes from the Wisconsin Badgers at Columbia.

## PiKA Captures IM Golf

The Intramural golf match was held last Saturday and Sunday. At the end of the 36 hole tournament, Pi Kappa Alpha came out on top. The Pikers first team shot a 149 and their second team shot a 148. Between the four, Ken Lueckenhoff, Mike Lueckenhoff, Dave Winter and Steve Bay, the winning score was 297. In second place was Lamoda Chi Alpha whose team was six strokes back from the leader. Their first and second teams shot 145 and 158 respectively for a final score of 303. Third place was taken by

M.R.H.A. with a total of 304 strokes.

Flag football is still going strong; some teams stronger than others, but everyone is still having a great time anyway.

Kappa Sig is the Dominant team in league one. They are the only undefeated team as they beat Delta Tau Delta 37-13. Kappa Sig looks as strong as it did last year and has a good chance of being in the finals again this year. In other league one action, Triangle squeaked by Mates 21-19. After being defeated by Kappa Sig, Delta Tau Delta came back to beat

AEPi 35-13. Mates defeated BSU in another close game 8-7.

There is still a close battle for first place in league two. Phi Kappa Theta, G.D.I., and M.R.H.A. are still undefeated. G.D.I. took their first two victories of 40-0. M.R.H.A. Theta Xi 8-7. Phi Kappa Theta also defeated Theta Xi with a score of 20-7.

In league three Sig Ep and TKE appear to be the strong contenders. Sig Ep shot out both Alpha Phi Alpha and Campus Club 41-0 and 33-0. TKE shut out Newman 49-0 and Acacia also beat Newman 34-14. There should be a good battle for first place in this league. There are several strong teams and the games between them should be fantastic.

League four action is close but it's still too early in the season to tell who is dominant. Tech-Engine Club took two victories this week as they shut out both KA and Liahona 22-0 and 35-0. Beta Sig looked strong as they defeated Delta Sig 45-0 but Delta Sig came back to put down Wesley.

The competition, as you can see, is quite strong so be sure to get out and get involved.



Intramural golf champs from PiKA: Dave Winters, Mike Lueckenhoff, Ken Lueckenhoff, Steve Bay.

Photo by Burford

## RESEARCH PAPERS

THOUSANDS ON FILE

Send for your up-to-date, 160-page, mail order catalog of 5,500 topics. Enclose \$1.00 to cover postage and handling.

### COLLEGIATE RESEARCH

1720 PONTIUS AVE., SUITE 201  
LOS ANGELES, CALIF. 90025

Name \_\_\_\_\_  
Address \_\_\_\_\_  
City \_\_\_\_\_  
State \_\_\_\_\_ Zip \_\_\_\_\_

## classified ads

To have your classified ad or message placed in the Miner, drop it by the office in building T-1 Monday or Tuesday 1:00-3:00, or mail it to the Missouri Miner, University of Missouri-Rolla. The cost is \$1.00 per week and payment must accompany ad. Ads must be limited to 30 words. Please have them typed or printed clearly. Get it to the Miner and we'll get it to the UMR students!

MUST SELL — Sansui  
Receiver, 2 mos old — \$125 —  
Panasonic Component System  
with 8-track, turntable, and  
Aux. Inputs; spks included —  
\$80. Greg Litty — No. 419  
Holtman — 341-2779  
—1-2t-18—

You're not one  
of the crowd!

You're special,  
and there is something special  
for you in HOUSTON!

A dynamic engineering-construction firm.  
Set your own limitations — don't have them imposed.  
Our work is expanding in all areas of heavy  
industrial design. We need your talents if you have  
a degree in Chemical, Civil, Electrical, Mechanical  
or Nuclear Engineering.

We plan to interview on campus Sept. 30

To arrange an interview . . .

See your Campus Placement Center. Now!

If you miss our representative, please send your resume to:  
Mr. M.P. Combs, Engineering Division

  
**Brown & Root, Inc.**  
And Associated Companies / Serving Progress the World Over  
P. O. Box 3, Houston, Texas 77001 / A HALLIBURTON Company

An Equal Opportunity Employer

## SPECIALS THIS WEEK

### OLD MILWAUKEE

12 Oz. 6 Pack **\$1.20**  
Non-returnable

**FALSTAFF** **\$1.20**  
12 Oz. 6 Pack  
Non-returnable

**PABST** **\$1.29**  
7 Oz. 8 Pack  
Non-returnable

**BUDWEISER** **\$1.44**  
12 Oz.  
6 Pack Cans

**509 LIQUOR  
STORE**

116 W. 8th Rolla, Mo. 65401