



18 Sep 1975

The Missouri Miner, September 18, 1975

Follow this and additional works at: https://scholarsmine.mst.edu/missouri_miner

These newspapers reflect the attitudes, perspectives, and beliefs of different times. Neither the library nor the university endorses the views expressed in these collections, some of which contain images and language which may be offensive to some readers.

Recommended Citation

"The Missouri Miner, September 18, 1975" (1975). *The Missouri Miner Newspaper*. 2100.
https://scholarsmine.mst.edu/missouri_miner/2100

This Newspaper is brought to you for free and open access by Scholars' Mine. It has been accepted for inclusion in The Missouri Miner Newspaper by an authorized administrator of Scholars' Mine. This work is protected by U. S. Copyright Law. Unauthorized use including reproduction for redistribution requires the permission of the copyright holder. For more information, please contact scholarsmine@mst.edu.

missouri miner

the missouri miner

rolla, missouri



volume 62, number 4

thursday, september 18, 1975

"UMR... its greatest opportunity..."

On August 26th of this year Chancellor Bisplinghoff addressed the faculty at the General Faculty Meeting. In his speech he touched on almost all of the subjects presently affecting UMR. His talk was extremely interesting, but rather long. Because of the length, the Chancellor's speech will be presented in a series of articles to be run in the coming weeks. This is the first of that series.

GENERAL FACULTY MEETING

August 26, 1975
Chancellor's Remarks

Since I reported to you last December, I continue to believe strongly that UMR, this particular institution and institutions like it, is going to be presented with its greatest opportunity in the next decade. By institutions like it, I mean those institutions that have a central core of science and technology and a commitment to apply science and technology to society's problems.

During the balance of the time today I will report to you on progress during the past year together with my assessment of the year ahead and beyond.

ENROLLMENT- At the present time it appears as though UMR's fall enrollment bottomed out in 1974. The present 1975 count is 4,245 compared with 4,006 reported in 1974. By close of late registration, it is very possible that our total 1975 fall count could exceed 4,300 with a graduate enrollment in the neighborhood of 475. We would thus be close to the 1973 fall figure and, hopefully, well on our way to achieving levels of enrollment of the early 1970's.

Following an apparent national trend, graduate enrollment is declining at UMR. A decrease of about 10 per cent is noted from 1974 to 1975. Last year there were 376 M.S. and 152 Ph.D. students enrolled for a total of 528. This fall it is estimated that 350 M.S. and 125 Ph.D. students will be enrolled for a total of 475.

STUDENT HOUSING - A nationwide trend in student housing has been reflected throughout the state of Missouri as well as on the UMR campus, that is, a return to on-campus housing. In April, 1975, available UMR housing was filled with a record 58 per cent renewal of contracts. Efforts were made to obtain the Thomas Jefferson Residence

Hall but legal complications did not permit timely arrangements. Seven facilities, housing 316 students, were obtained and provided for students, ranging in capacity from 21 to 95 students. These students will eat in Rayl Hall or the University Center. There is some evidence that a few students did not register at UMR this fall, or left after registering, because of inadequate housing.

As we reach for greater enrollment, student housing may become the Achilles' heel of UMR. As noted previously, a larger proportion of students throughout the country is opting for university housing. In addition, the elasticity of the Rolla community to absorb students seems to be decreasing, possibly due to federal discrimination laws. Finally, as the number of women students increases, high quality university housing becomes an increasingly important factor. It is for this reason that we must renew our efforts to obtain the Thomas Jefferson Residence Hall prior to registration next fall. I consider the acquisition of Thomas Jefferson one of our most important objectives.

PLACEMENT- Despite the recession in our national economy and a marked drop in the overall demand for new graduates, UMR job candidates in the 1974-75 classes enjoyed a strong although slightly weaker pace of recruiting activity than the 1973-74 classes. There was a drop in employer visitation during the spring semester with 223 separate campus visits as compared with 268 in the fall of 1974. A total of 53 previously arranged visits were cancelled during the spring semester, with only 15 visit cancellations in the fall.

Job offers to our spring graduates were sufficient in both volume and starting salary levels to place to within 5 per cent all of those graduates who were seeking full-time employment. The overall average starting salary for the May B.S. engineering graduates was

\$1,121 per month, with Petroleum Engineers topping the list of individual disciplines at \$1,308.

On the national scene, the College Placement Council (CPC), which annually conducts a national survey of starting salaries for new college graduates, reports that engineering accounted for 54 per cent of all jobs offered to 1974-75 graduates. This is down slightly from the 56 per cent figure reported for 1973-74. The 1974-75 starting salaries for new engineering graduates reported by CPC showed an increase of from 8.4 per cent to 14.8 per cent over 1973-74, depending upon the individual discipline. UMR salary statistics show about the same rate of increase from 1973-74 to 1974-75. At the present time, reservations for UMR campus interview facilities by employers are as heavy as we have seen at this time in any previous year. Barring an unexpected worsening of the national economy, the demand

for our 1975-76 graduates should match that of 1974-75.

MISSOURI STATE APPROPRIATIONS: OPERATIONS- You will recall that during the academic year 1974-75, Missouri State Appropriations for operations at UMR amounted to \$11,837,423. During the year 1975-76 that we are now entering, the comparable figure is \$12,452,414, an increase of \$614,991 or 5.10 per cent. The Board of Curators of the University of Missouri directed that this increase be applied entirely to salaries and staff benefits. As a result, it was possible to adjust UMR salaries upward for the coming year policy is, of course, that all other expenditures remain constant and we are therefore faced during the coming year with the following:

(a) Virtually all existing open positions will remain unfilled, and many of those that result from resignations during the

year will remain unfilled.

(b) Another delay in upgrading our laboratories—a delay which causes me much concern since the quality of education in science and engineering is determined by the quality of laboratories.

(c) Another delay in upgrading a badly deficient library which is in this condition because of continuing inability to fund acquisitions, specifically periodicals, even at a minimal level.

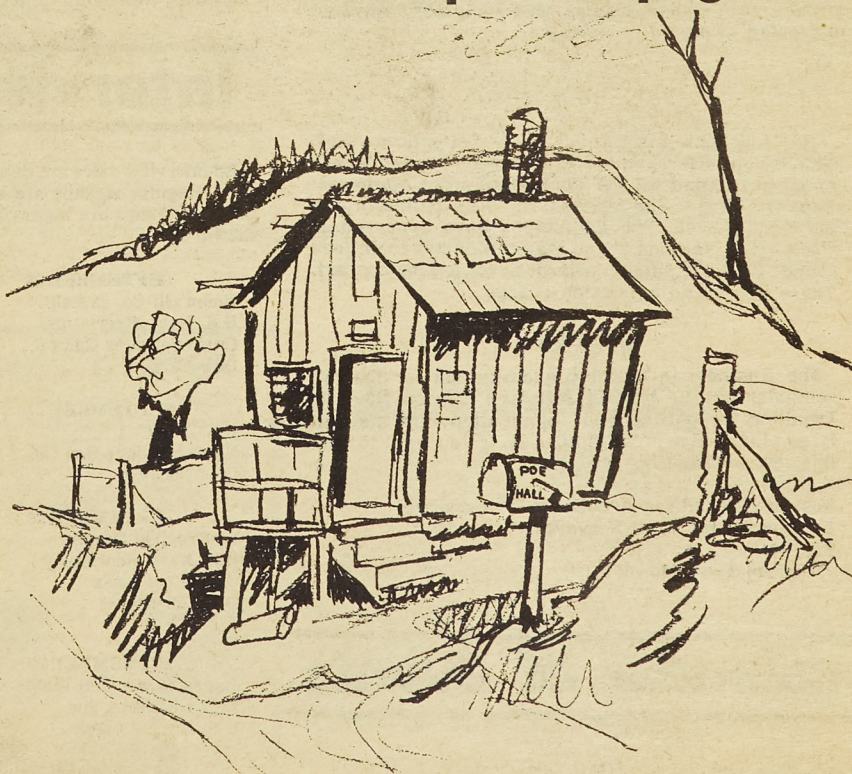
(d) Increased work loads at all levels and reductions in all services.

During the coming year, the increased cost of fuel and utilities alone will amount to \$80,000 and I have asked Mr. Wollard to absorb this increase by a reduction in Physical Plant services. The year 1975-76 will be another year of management by attrition and, as you all know, this will not be easy since it follows at least two years of

Cont. On Page 3

Housing

a features special - page 4



University of Missouri - Rolla

bullboard

MISSOURI MINER

Thursday, September 18, 1975

Page 2

GRAD SENIORS

All Students Graduating in December, who have not made application for Diploma, please do so with John Faucett in the Registrar's Office — 103 Parker Hall.

DIRECTORY INFORMATION NOTICE

The Blue Key organization at University of Missouri-Rolla will publish a student directory for all students attending courses on the UMR campus. Directory information will be provided by the University Director of Admissions and Registrar.

.. The student information which will be published in the directory is: name, classification (freshman, sophomore, etc.), major, local address, local telephone number and home address. Any student who does not wish to be listed in the directory must contact, in person, Mr. Lauren Peterson, Associate Director of Registration & Records (Parker Hall) on or before September 19, 1975. Students who elect to delete information from the directory must sign a statement to that effect.

GDI FLOAT TRIP

GDI is sponsoring a float trip on the Big Piney river on Saturday, September 20. The cost will be \$6 per person which will include the cost of canoe rental and food and refreshments after the float. For more information drop by the table in the quad near the old Student Union and sign up.

ST. PAT'S

The St. Pat's Sweat Shirt Design Contest is now underway. Draw A winning design and win \$25 for first prize and \$10 for second. Deadline is Sept. 22. Submit all entries to your St. Pat's Board Rep.

SME MEETING SPEAKER-CHANCELLOR BISPLINGHOFF ON "ENERGY"

.. The Society of Mining Engineers will hold their next meeting in room 107 of the Mining building at 7:30 Tuesday, Sept 23.
.. Chancellor Bisplinghoff will give a talk on "Energy." All students and faculty are invited to attend.

SCUBA CLUB

.. The UMR Scuba Club will have its second regular meeting Sept. 22 in Rm 118 ME at 7:30 p.m. Committees and chairmanships will be made. Anyone interested in diving is welcome.

FOLK-ROCK MUSIC

.. Hey folk-rock music fans! Sunday afternoon, Sept. 28th, is your afternoon to get in on some good folk-rock music presented by the Contempos from Southwest Baptist College. The place is St. Pat's Ballroom and the time is 2:00. The Contempos have appeared at UMR before so some of you may remember their good sound. Be there Sunday afternoon for a good concert. There will be no admission charge.

EIT EXAM

"The Engineer-in-Training examination for the fall semester will be held in Jefferson City on Nov. 10. Deadline for getting your application into the Jefferson City office is September 25. If you want to take this test at this time write to :

Missouri Board for Architects, Professional Engineers and Land Surveyors
Box 184
Jefferson City, Mo. 65101"

calendar of events

Sept. 19 — Openhouse, UMR Observatory, 8:30 to 10 p.m. Free.

Sept. 26—Openhouse, UMR Observatory, 8:30 to 10 p.m. Free.

Sept. 27—Women's Intercollegiate Volleyball, Lincoln University, Central Methodist College, William Woods, 9 A. M. Multi-Purpose Building. Free.

October 25 State Collegiate Trap and Skeet Tourney

ASME

The American Society of Mechanical Engineering will hold their first meeting of the year on Wednesday, September 24... Walter Trueblood, Regional Vice President of ASME, of Black & Veach, Kansas City, will speak about "Consulting Engineering".

The meeting is scheduled for 7:00 p.m. in the ME Auditorium (Room 104).

Refreshments will be served and memberships for the new year will be taken.

UMR TRAP & SKEET CLUB

.. The UMR Trap and Skeet Club will be starting the new semester by holding their first general meeting at 7:00 p.m. on September 25 in room G-5 at the Humanities and Social Sciences building. The purpose of this meeting besides welcoming new members, will be to show movies on trap and skeet shooting and to begin preparation for the state collegiate trap and skeet tournament being held on the 25 of October here in Rolla. A member sign-up sheet will be posted in the Student Union. Everyone is invited to attend this meeting.

PSYCHOLOGY STUDENTS ASSOCIATION

.. There will be a meeting of the Psychology Students Association Thursday September 25 at 7:00 p.m. in Room 213-214 of the Old Student Union. Your psychology professors will be in attendance so this is a good time to meet your prof's on a Social Basis. Memberships will be taken and refreshments served.

APPLICATIONS FOR THETA TAU FRESHMAN OF THE YEAR

Applications for Theta Tau Freshman of the Year may be picked up at the University candy counter. Applications must be returned to Theta Tau mailbox no later than September 26, 1975. Any questions call Ron Rembold at 364-2626.

SUB

Sept. 24	Ballroom Dancing Lessons
Sept. 26	Play: W.C. Fields, 80 Proof
Sept. 27	Coffeehouse, Mark Barenson, 8 p.m.-10 p.m.
Sept. 28	Movie; Summer of '42, 4:00 p.m. and 6:30 p.m.
Oct. 1	Ballroom Dancing Lessons
Oct. 9-12	S.U.B. AUC-I Region XI Conference
Oct. 12	Movie; In Cold Blood, 4:00 p.m. and 6:30 p.m.

interviews

.. All interview dates are dates that the companies shown will be here. Regular signups are approximately seven days earlier; priority signups are approximately eight days before the dates shown.

SEPTEMBER 23

Union Oil Co. of Calif.
U.S. Navy Recruiting
Cities Services Gas Co.
Dow Corning

SEPTEMBER 24

U.S. Navy
Cities Services Gas Co.
Dow Corning

SEPTEMBER 25

Chevron Oil-Denver
U.S. Navy Recruiting
City of St. Louis
Dow Corning

SEPTEMBER 29

Dallas Power and Light
Texas Utilities, Inc.
U.S. Marine Corps

SEPTEMBER 30

Standard Oil of Indiana
M.W. Kellogg
Brown & Root, Inc.
Illinois Power
Johns Manville
Oklahoma Gas & Electric
U.S. Marine Corps

OCTOBER 1

Standard Oil of Indiana
Gulf Oil Company
M.W. Kellogg
Bell Systems
Fluor-Los Angeles
Amex, Inc.
Hallmark Cards

OCTOBER 2

Standard Oil of Indiana
Gulf Oil Company
Procter & Gamble
MESA-Washington, D.C.
Atlantic Richfield
Rexnord, Inc.
Automatic Electric
Union Electric
Bell Systems
B.F. Goodrich
Hallmark Cards, Inc.

OCTOBER 3

Universal Oil Products
Central Soya, Inc.
Procter & Gamble
MESA, Washington, D.A.C.
Atlantic Richfield
Youngstown Steel
Union Electric
Bell Systems

COMMONWEALTH THEATRES MOVIE MARQUEE

UPTOWN
TELEPHONE 364-1857

NOW!

Open 6:30

Each Feature Shows
One Time!

"Dinosaurs" 7:15 Only
"Cinderella" 9:00 Only

No Passes Please



WALT DISNEY PRODUCTIONS
**One of our
Dinosaurs
is Missing**
TECHNICOLOR
©1975 Walt Disney Productions
Released by BUENA VISTA DISTRIBUTION CO., INC.

—Plus 2nd Feature—

"Cinderella"

ROLLA
TELEPHONE 364-1299

NOW!

POSITIVELY LAST
6 DAYS!

Open 6:30

Shows 7:00-9:00

Mat. Sat. & Sun. 2:00

No Passes Please

The terrifying motion
picture from the terrifying
No. 1 best seller.

JAWS
MAY BE TOO INTENSE
FOR YOUNGER CHILDREN

Coming Next Is...

ROLLERBALL
United Artists

ROLLA DRIVE IN
THEATRE
TELEPHONE 364-1502

TONITE!

OPEN 7:00

STARTS DUSK

IT'S A PANIC
IT'S AN EVENT
IT'S A HAPPENING

UNDA UNVLADE
FOR FREEDOM

A GENERAL FILM CORPORATION RELEASE

AND
"CENTERFOLD
GIRLS"

Chancellor's Remarks

Cont. From Page 1

similar management at UMR.

During the past month, the Board of Curators approved a budget figure for UMR in 1976-77 of \$14,237,097 or \$1,785,283 above the 1975-76 level. This 14.34 per cent increase in budget will provide 8 per cent for salary and associated staff benefits with another 8 per cent increases in the latter will be provided for in a separate budget being pulled together by U-wide for all campuses. In addition, some \$250,000 will be made available to UMR for forming an Institute of Non-Renewable Natural Resources.

This is, of course, an asking budget, and how it will fare with the Coordinating Board and the Legislature remains to be seen. The conjecture that I have heard so far has not been encouraging, but a long period lies ahead before this issue will be resolved. In the meantime, I have attempted to make it clear to the President and the Board that we cannot manage UMR by attrition through another year. If we are faced with another essentially level budget in 1976-77, it will be necessary to drop some discrete units from the campus.

MISSOURI STATE APPROPRIATIONS-PHYSICAL PLANT-You will recall that during the year 1974-75 Missouri State Appropriations for Physical Plant at UMR amounted to \$315,000. During the year 1975-76 that we are now

entering, the figure approved by the Legislature is \$200,000 which will be used for repairs and replacements, that is, maintenance of existing facilities, such as painting, roof repairs, window and door replacements, utility distribution and safety items.

The Board of Curators has under review a UMR 1976-77 Physical Plant budget of \$450,000 which, if appropriated, will be used also for repairs and replacements.

During the past year, several changes were made in the priorities for long-range physical plant acquisitions. The Campus Capital Improvement Request for new facilities has been modified to reflect what I consider new priorities.

The expansion of the Heating Plant will, of necessity, remain the highest priority for support facilities. For first priority of new additions, a Minerals Engineering Building, Phases I and II, has been proposed. The second priority is the Engineering Research Complex. The third, a new priority, the expansion of Engineering Research Labs, has been proposed plus a repeat of our previous request for a student infirmary as a fourth priority.

The major rehabilitation projects have been evaluated and a number of changes made to that schedule. It now appears that lead time plus staging space will delay completion of these projects.

Astronomy Club Schedules Weekly Open House

This semester student members of the University of Missouri-Rolla Astronomy Club will once again host an open-house at UMR's observatory each Friday evening when the weather is clear.

For the next few weeks the hours will be 8:30 to 10 p.m., but an earlier opening hour will be instituted later when it gets dark earlier.

Roger May, senior in physics and president of the Astronomy Club, says "There seems to be a great deal of local interest in astronomy. More than 1,000 people have visited the observatory since we first started holding open house early this year.

"Our observatory is pretty small," he continues. "Only five or six people can fit in at one time. But usually everyone gets a few minutes to look at the sky through our 16-inch cassegrain telescope.

"This fall we will also have a 4-inch refractor telescope and a 10-inch celestron telescope at the observatory each Friday. Anyone who has his own personal telescope is welcome to bring it along. It is interesting to compare the differences in what can be seen through the different instruments."

The weekly open house at the observatory are under the direction of Dr. John Schmitt,

visiting assistant professor of physics. The observatory is located in a parking lot at the northwest corner of the campus with the entrance on State Street.

There is no admission charge and the observatory is open to the public each Friday evening (except the Friday after Thanksgiving) this semester whenever the weather is clear. Children must be accompanied by an adult.



The St. Pat's Board donated new sweatshirts to the Boys' Town last week. Residents of Boys' Town choosing shirts are Chris Price, second from left, and Robbie Good, second from right. Board members present are Barry Baiotto, Mike Kirn, and Joe Grana. Also present is Boys' Town official Lilburn Mash.

Daily News Photo

miner news

Thursday, September 18, 1975

MISSOURI MINER

Page 3

You May Need A Rolla Sticker

The following paragraphs have been extracted verbatim from the Rolla City Ordinances (article VII, City Vehicle Licenses).

"Sec. 20-70. Licenses Required of Certain College Students.

Every student duly enrolled in the University of Missouri at Rolla and residing with his parents in the city shall be required to pay a city automobile license tax on any motor vehicle owned by such student and operated by such student upon the streets of the city.

Every married student duly enrolled in the University of Missouri at Rolla and residing with his spouse and family in the city shall be required to pay a city automobile license tax on any motor vehicle owned by

such student and operated by such student on the streets of the city.

Sec. 20-71. EXCEPTION AS TO Certain College Students.

No unmarried student duly enrolled in the University of Missouri at Rolla and no married student duly enrolled in the University of Missouri at Rolla, whose spouse may reside outside the city, shall be required to pay a city automobile license tax on any motor vehicle owned by such student and operated by such student upon the streets of the city.

Every student duly enrolled in the University of Missouri at Rolla who shall have paid a city automobile license tax for any current year in another municipality shall not be

required to pay to the city a city automobile license tax on any motor vehicle owned by such student and operated by such student upon the streets of the city.

(Rolla City Ordinances)

The cost of a city automobile license is \$3.50 per annum payable by January 15. The cost is pro-rated and after June 30 is \$1.75. The ordinances are vigorously enforced and substantial fines have been assessed against persons in violation. Any questions in regard to the city vehicle license can be answered by the City Clerk in the Rolla City Hall or by the University Police Department staff.

the missouri miner

The MISSOURI MINER is the official publication of the students of the University of Missouri-Rolla. It is published at Rolla, Missouri, every week during the school year. Entered as second class matter February 8, 1945, at the Post Office at Rolla, Mo., under the Act of March 3, 1879. The subscriptions are \$3.00 per semester. This MISSOURI MINER features activities of the students and faculty of UMR.

Miner Office (341-4235)

Dan Shelledy (364-9885)
Dennis Rackers (364-9792)
Ron Rembold (364-2626)
Bob Born (364-9885)
Richard Markey (364-9885)
Sam Rucker (364-4006)
Dennis Gilliam (364-9783)
Art Stevenson (341-4971)
Dr. Curt Adams
Peggie Farrar



MEMBER

Editor
Business Manager
Advertising Director
Managing Editor
News Editor
Features Editor
Sports Editor
Photo Editor
Faculty Advisor
RDN Advisor

Staff: Ed Burford, Bevan Collins, Ron Farley, Maria Duncan, Dan Rembold, Mike Salwasser, Bob Vallerio, Dave Lewis, Ted Cottrell, Dave Thorne, Bill Merten, Bill Uding, Bruce Schaller.

Office Hours Are Monday and Tuesday, 1:00-3:00 in T-1.

Articles and photos for publication in the Miner must be in by 11:00 p.m. on the Monday before printing on Thursday.

Mailing Address - Missouri Miner, University of Mo. - Rolla

Annual Student Council

Referendum Being Assembled

This year's Student Council Referendum is scheduled for the week of October 20-24, and the Council needs to find out what type of questions the students want asked.

The Student Council Referendum is held each year to find out the student body's opinion on any topic that directly affects students. Included in such topics could be questions on University policies or on the various campus organizations at UMR.

Suggestions for possible questions are wanted and

needed. Anyone having a question and wishing student reaction to it, can give the idea to any Student Council Representative, or can bring the question to the Student Council office. The council office is located in Room 202 of the Old Student Union with office hours of 11:30 a.m.-1:30 p.m. Monday through Friday. Deadline for turning in any question is October 7. Also needed are suggestions for possible lecture topics for Free University, which will be held later this year.

U. Housing 1975 An In-depth Look

..There has been much concern and controversy over the University housing facilities this year. There are some important questions that need to be asked; "Was the University prepared for the number of housing contracts they signed?"; "Did the University mislead students in the representation of available housing?" and "Is University housing worth its high cost?" The MISSOURI MINER feels this situation should be investigated and the facts exposed.

This letter originated as a reaction of many students to the temporary facilities provided this year by University Housing.

Mr. Joseph Wollard, Director
University Housing
212 University Center West
University of Missouri—Rolla
Rolla, MO 65401

Chancellor Bisplinghoff
210 Parker Hall
University of Missouri—Rolla
Rolla, MO 65401

Mr. Brice Ratchford, President
University of Missouri—Columbia
Columbia, MO 65201

Gentlemen:

I represent a group of University of Missouri—Rolla students, namely freshmen, who have just moved into the dormitories for the semester. Their representatives have explained what I feel to be something that should be brought to your attention and something which definitely needs action on behalf of the university. These students feel that they were misled by UMR housing brochures advertising the housing available and by the contract for application for housing they signed in order to become a student living in university housing.

When these students applied for university dorm facilities, they had been shown dorm complexes consisting of five buildings: Kelly, Holtman, Altman, Farrar and McAnerney surrounding the common cafeteria, Rayl. They filled out contracts that specified three room sizes; triple, double, and single and had another choice of three building preferences. They were told at the time the contract was offered to them for signature that they might not possibly receive any of their preferences, but that the facilities they did receive would be equal to or better than that which they preferred. And reference was made at that time to the possibility of using the Thomas Jefferson building.

Upon arriving at UMR this fall, these students found that they had been assigned to buildings formerly unused or a part of off-campus housing which was not part of their university residence halls at the time they signed the contract. Furthermore, most of these buildings were substandard to the permanent dorm system that they were shown, these being a few of the inferior areas: location, privacy, room size, room occupancy, toilet and shower facilities, closet space, and study facilities.

In the instance of Poe Hall, they were located approximately one mile from Rayl cafeteria, and were provided with no closet space, were given a room shared with as many as thirteen other beds, were given one shower and three toilets for all to share (35 scheduled to occupy Poe), and were given no clothes dressers, and no room doors.

In the instance of Myer Hall, they were located further from Rayl cafeteria than any of the permanent dorm facilities, were provided a much smaller double room than was shown previously and were told that extra study space would be located in the basement (which is now frequently flooded) along with the washing machine. They were provided with two showers and two toilets for all to share (22 living here), and were provided with two sinks which are in poor condition.

In the instance of Wallace Hall, the students eat at Rayl Cafeteria which is approximately eleven blocks from the location of the residence, were provided with two shower facilities, one of which cannot be used due to a severe leakage problem.

In the instance of Miner Inn, they were provided with a room only nine feet by ten feet square, were told that they would eat at the University Center Restaurant along with all of the occupants of Rollamo Inn, Campus Inn, and Carnahan Hall. Frequently, these students who were required to eat at the University Center for \$4.25 per day had to spend extra money out of their own pockets on food so that they can get a satisfactory meal. Frequently, the line at the Public University Restaurant is so long the students must wait in line as long as 30-45 minutes.

These students, of course, believed that they were going to have the facilities available at the university housing shown in the brochures and those rooms shown to them when they visited. If they had wished to live off-campus without contracting with the university, they could have lived in Rollamo Inn, Campus Inn, and Carnahan Hall in the rooms they now occupy for only \$450.00 a year, and in the Miner Inn for \$400.00 a year and could have eaten in the same cafeteria they now eat in or in an eating club providing satisfactory meals for approximately \$600.00 per year; totaling no more than \$1,050.00 per year. Instead, they were given the same facilities I have just described with little or no changes made with the dormitory rules imposed upon them for \$1,210.00.

These students realize that these conditions were caused mainly from things the university could not control. But now that this situation has arisen, the university should certainly take some action to rectify the inequities imposed on the students who had to live outside the regular university housing.

These students feel and I agree with them, that if the present total dorm costs were lowered and a rebate offered to them for those people who had to live off campus and suffer this inconvenience this would help equalized this situation. In other words, if they had not signed a contract, they could have independently gotten by on \$1,050.00 for the same facilities they are now provided through this contract with the university.

The students and I all feel sure that the university will take some positive action to rectify this deplorable situation. The students which are directly involved as freshmen students living in off-campus housing in the situation I have described above are listed by name and signature on Exhibit A which is attached hereto and made a part of this correspondence. Also attached to this letter is Exhibit B which is a list of students aware of the situation I have just described and in total agreement that the university should take some action to alleviate the inequities that have been imposed.

Yours very truly,
ROUTH, THOMAS & BIRDSONG

September 15, 1975

Dewey Routh
W. H. Thomas, Jr.
Dan L. Birdsong
James L. Hutton, Jr.
P. O. Box 248
620 Pine Street
Rolla, Missouri 65401
314-364-4097

An open letter to Jesse Zink;
Auxiliary Enterprises.
Editor; Missouri Miner.
Students; UMR

The main objective of a university is to offer a broad education to its students. One of the first concepts we are introduced to is the urgency to examine the data we are exposed to. It is impressed that during our daily routine we are submitted an enormous amount of information collected and distributed through our news agencies.

For the benefit of those students who have not been here long enough to have gained the knowledge of examination we feel it is our obligation to present them with a dreadful example of the occasional misconceptions printed by a portion of the news media.

In the August 28, 1975 issue of the Missouri Miner an article appeared on the front page in which Mr. Zink made a statement that it was cheaper to live in a university owned dormitory than to live in independent housing and eat at an eating club. It would be thought that a man of this position would be inclined to make careful public statements.

We have made studied calculation and find this statement somewhat invalid. We found that rent for a room comparable to a double occupancy dormitory room rented at \$25.00 to \$30.00 per month. The total board bill of the three eating clubs of the past year ranged from \$518.00 to \$575.00. The fee for a dormitory room is \$1,200.00 for the equivalent time period.

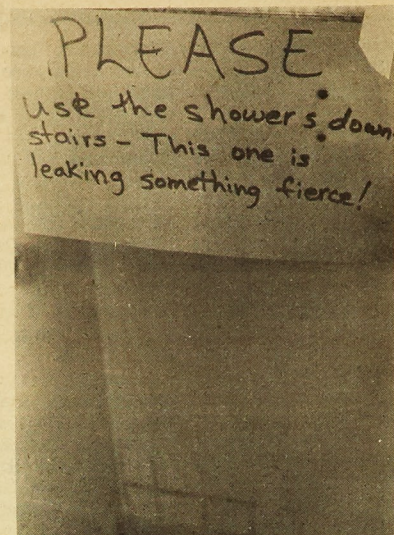
Let us compute:	
Rent \$25.00-month for 9 months	\$225.00
Board	518.00
Total	\$743.00

This hardly compares to \$1,200.00. Even with increased food costs and more luxurious dwellings a definite margin can be attained. These rooms are available close to campus and the eating clubs.

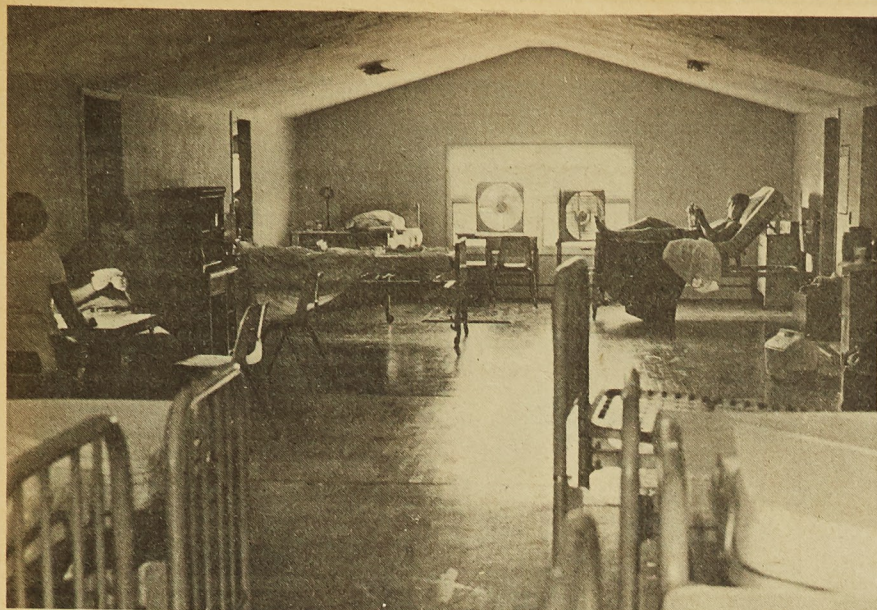
If anyone wished to question these figures we urge them to stop by Tech-Engine Club at 312 West Sixteenth Street to examine them. We have details of actual monthly expenditures.

We hope that this letter will help to inform the student body of this institution of their possible misguidance.

Sincerely yours,
The members of Tech-Engine Club
312 West Sixteenth Street



This sign is on one of the two showers provided for thirty girls occupying Wallace Hall this fall. Wallace is located approximately nine blocks from campus.



This is Poe hall, one of the temporary dorm facilities provided to incoming students who requested University approved housing. This room contains fourteen beds, supplemented with a long pole stretched the length of the building for use as "closet space" for occupants.

The University's View on Housing: 'A temporary solution'

An Interview with Jess Zink

Few people are happy with the new housing being provided for this year. Let's look at it from the University's viewpoint:

The housing office had two choices: either inform incoming students that no University housing was available, or try to find accommodations for the 300 person waiting list. Indications were that if University housing was not provided, many

students wouldn't come to school here. So, the search for accommodations began.

During freshmen orientation, new students were told that the dormitories were filled, but that every effort was being made to acquire housing. It was at this time that many students were led to believe that Thomas Jefferson Hall would be the new accommodation. Instead, however, seven buildings were

leased from private individuals to house students for the current year.

Mr. Jess Zink, of Auxiliary Enterprises, admits that the newly-acquired residence halls are, in some respects, not the same as the older residence halls; but feels that with improvements that are being made, they will soon be up to University standards says Mr. Zink, in regard to new housing:

"This is only a temporary solution."

Rolla Craft-Hobby

Crafts - Hobbies
Artists Supplies

605 PINE ROLLA, MISSOURI PHONE 364-5581

Delicious Mexican Food

LA POSADA

Dining Room-Orders To Go-Open Daily 11 a.m.

Hwy. 63 S. Rolla, Mo. 364-1971 Closed Monday

Every vet's completed half of Army ROTC. Now consider the last half. It's a better deal!

Your time in any of the services counts as constructive credit for the first 2 years of Army ROTC. That makes you eligible for the Advanced Course. There are several reasons why that can be a good deal.

For openers, you get \$100 a month (for up to 10 months a year) while you take Advanced ROTC. This is in addition to all your Veteran's benefits.

It keeps more options open. You earn your degree and a commission at the same time. You can apply for Active Duty to

enjoy the prestige, pay and challenge of an officer. (Your time in the service counts for longevity and retirement for either active or the Reserve.) Or, you can put the leadership skills learned in ROTC to work for you in civilian life.

Army ROTC's got a lot going for it. Particularly for veterans. It's worth checking into!

Army ROTC. The more you look at it, the better it looks.

Army ROTC Department-UMR Phone: 341-4741

our man hoppe

The Good Ford Plan

"Enjoying our regular Sunday drive in the country, honey?"

"I guess so, Daddy. Will we be here long?"

"Not long, honey. I think they're beginning to move up ahead. Meanwhile, let's enjoy the view. Now on our right over there about a mile, just beyond those oil derricks, is beautiful snow-capped Mount Colossus."

"I can't see it, Daddy."

"Well, you could on a clear day, honey."

"What's a clear day, Daddy?"

"Hey! See, there, we're beginning to move. Good Ford! We're up to five miles an hour. How about that?"

"Why do you always say, 'Good Ford, Daddy?'"

"Why honey, he was just about the most popular President this country ever had. He was the one who preserved our inalienable right to go for Sunday drives in the country."

"I think we studied about that, Daddy. Wasn't that when there was an energy crisis or a recession or something?"

"Both, honey. The automobile factories were closing down and things were in a mess—all because those sneaky Arabs raised the price of oil to \$11 a barrel. But Mr. Ford sure showed them."

"How, Daddy?"

"He raised the price to \$14 a barrel, honey."

"Why, Daddy?"

"So we wouldn't use as much gasoline, honey. Then, to help the poor auto factories, he decide to give us tax rebates—that's money—so we'd go out and buy new cars. But Congress haggled. They said some unpatriotic folks wouldn't buy new cars. That's when he came up with an even better idea—The Good Ford Plan."

"What was that, Daddy?"

"You remember, honey. Instead of giving everybody money to buy new cars—which maybe some selfish folks wouldn't do—he simply gave each and every American family a brand new car. More than a hundred million of them."

"But didn't that mean we'd use more gas, Daddy?"

"Well, it was the same whether we bought them or he gave them to us. And it sure was popular. Every good American loves a brand new car more than anything. And the factories were humming again and..."

"But where did Mr. Ford think he'd get all the gasoline for all those brand new cars, Daddy?"

"Why, he wasn't stupid, honey. He had lots of ways in The Good Ford Plan. Now you see that hillside over there? No, I guess you can't. But on a clear day you'd see it was one of the biggest open-pit coal mines around."

"Aren't they ugly, Daddy?"

"Well, maybe, honey. But we needed more coal to save on oil. It's a little smokey, I guess, but you can't have everything. And then Mr. Ford cut back on anti-pollution devices to save gas. And he encouraged off-shore oil drilling. And, anyway, in the end, everybody still got to go for Sunday drives on our fine highways. Everybody who can fit, that is. Aren't you enjoying it, honey?"

"I guess so, Daddy. But some day I'd kind of like to see that snow-capped Mount Colossus. And maybe some day walk on the beach without wearing my galoshes. And..."

"Hush, now, honey. Like I say, you can't have everything. You just relax and enjoy our Sunday drive. Hey! I think we're going to start moving again."



ediletters

More Nagogami Problems

Dear Editor,

I recently had dinner at a friend's house, the house happening to be located in Nagogami Terrace. After a while, the conversation turned to the living conditions of the apartment, and I couldn't believe what they were saying. Talking with several other tenants, however, and seeing some of the problems myself, confirmed the fact that the Housing Office has badly neglected this facet of student living.

The "Nagofungi Terrace" article in your first edition was only a scratch on the surface. Many of the apartments leak. This does not result in drips but in puddles—puddles so big that rugs have to be rolled up. Complaints have been answered by saying "We have to wait until it dries out." It seems it never does, because the problem still persists.

Another problem is that there is no insulation whatsoever in the units. This causes heating costs to be double of what they should be. In fact, several years ago, the university used to charge the upper apartments less for gas as those apartments had no roofing insulation, and were even more difficult than the lower apartments to heat. This situation has changed. Now everyone is charged the same, to the disadvantage of the upper dwellers!

Many complaints come from the fact that a maintenance man that was for the apartment complex only was removed. This action was for the good, they were told, as their problems could then be handled more efficiently by Buildings and Grounds. Needless to say, B & G has seldom found their way to Nagogami Terrace. The lawns weren't watered all summer, it took four days, two visits and three men to fix a refrigerator, it took three visits to fix a leaky hot water faucet

(the first two times the man turned down the temperature in the hot water heater so not as much hot water would be lost!), and exterior lights have gone unreplaced for a week or more. It is obvious the maintenance man should be returned, but even a petition signed by 46 of 48 renters did no good. Repairs that are made are useless. The grass volleyball court was covered with small, sharp rocks making it unplayable. The chain on a child's swing was replaced, resulting in the swing's seat being uneven. The list can go on.

One of the biggest rip-offs comes with the return of the \$25 deposit upon leaving. The university doesn't clean the apartment for the new couple, the old couple has to. And if they don't do a good enough job, they have some of their deposit withheld. Recently, a family was docked \$10 for having crumbs in the oven and some dirt on the floor! Unbelievable.

It seems a lot of the residents of Nagogami are foreign students and don't complain. Those that do however, have to go to the Housing Office secretary, who has been overheard saying she gets complaints and doesn't report them.

All in all, it seems Nagogami Terrace is not a nice place to live. But there aren't other places for married students as close to campus. So, the students there are stuck.

Auxiliary Enterprises, which has unfairly received a bad reputation, is in charge of Nagogami. I am sure when Mr. Zink is made aware of these problems he will take action. I expect a maintenance man will be on duty very soon, or am I dreaming.

Marvin Borgmeyer

The future will tell if you are dreaming. Meanwhile, all interested persons should read next week's feature article which will cover the present situation at Nagogami in depth.
S.D. Rucker



Men's Lib

Speaks Out!!!

In the past two "Miners" I've read articles about the problem of cheerleaders here at UMR. Last Week's "Miner" had one explanation. I have another. I know that two guys came to the cheerleader tryouts the first day. They were politely told to get lost, even though they can probably outperform any cheerleader UMR now has. It seems to me that since UMR is mostly male that guys should be allowed to try out too. "It hasn't been done before" is a terrible excuse for not starting; or is this just another case of "men's discrimination" which is so common on campus?



Hook Auto Supply

Big Discounts
Auto Parts — Accessories — Speed Equipment
513 Hw. 63 S. Rolla, Mo. 364-5252

ZENO'S MOTEL STEAK HOUSE

"HOME OF THE FAMOUS 12 OZ. STEAK"

Box 70
Rolla, Mo.

Phone: 364-1301
Martin Spring Dr.

Christopher Jewelers

805 Pine Street



Catering To UMR
The Complete Service Jeweler

DID YOU KNOW THAT AT KENMARK'S WE

Restring Tennis Rackets.....
Regrip Tennis Rackets.....
Engrave Trophies.....
Print Shirts.....
Special Order.....
Listen Sympathetically.....
And Bust Our Butts For You!.....

**KENMARK
SPORTING GOODS**

904 Pine

364-3603

SOUND CENTER

Meets Student Budgets

Records \$4.84 and UNDER

Located next to campus.

1107 Pine 364-7715

Rolla, Mo.

Come See Us!

Look For Grand Opening
New Sound Center Hwy. 72 E.



Brownsville Station in one of their "guitar battles" last Saturday night.

Photo by Ron Farley

Brownsville Station: A Crowd Pleaser

Last week the UMR student body was treated to one of the better concerts ever held in the Multi-Purpose building in this writer's opinion. Although Head East and Brownsville Station were more than plenty loud, they weren't too loud, and, considering the rotten acoustics of the gymnasium, put on a helluva show. Playing until past eleven, and getting progressively better with each number, Brownsville Station thoroughly delighted the persistent three or four hundred Miners that stayed.

Cub Koda, the lead singer, guitar man (and harmonica player) really stole the show. He is an exceptionally talented individual, and was chiefly responsible for establishing the rapport with the audience that separated this group from most

that have performed here. The band takes a different philosophy into a concert; they make pleasing the audience their number one motive, and leave stiff "recording session" styles for the studio. Though their language and philosophy might be disagreeable to some (they would certainly profit from the legalization of marijuana, to judge from their running commentary), still it was really hard not to like them.

The group had just finished a tour of the southwest and were heading back to Detroit, their home town, when they stopped for the concert at UMR. They introduced three new songs which will be on their second album; whether they will sound as good on record as they did in concert is questionable. The album should be out later this fall and will feature a new sound by the group, due to the addition of another guitarist and singer, Bruce Nazarian, who has teamed up with great success in the past three months with Koda, Michael Lutz, bass guitar, and Henry "H-Bomb" Weck, the drummer.

How to tell your friends you're taking Army ROTC.

First of all there's no reason to be defensive about it because Army ROTC has a lot of good things going for it. So you might start by telling your friends that you're under no military obligation your first two years of the program.

Then go on to mention that if you do decide to take the final two years, you'll be earning \$100 a month, up to ten months a year.

Tell them it only takes about 3 to 5

hours a week. And at most schools that's the only time you have to wear a uniform.

And tell them no matter what you decide, you'll have background in practical leadership that will give you a better chance at almost any career.

Tell them that maybe they ought to take a look at it themselves.

Because the more you look at it, the better it looks.

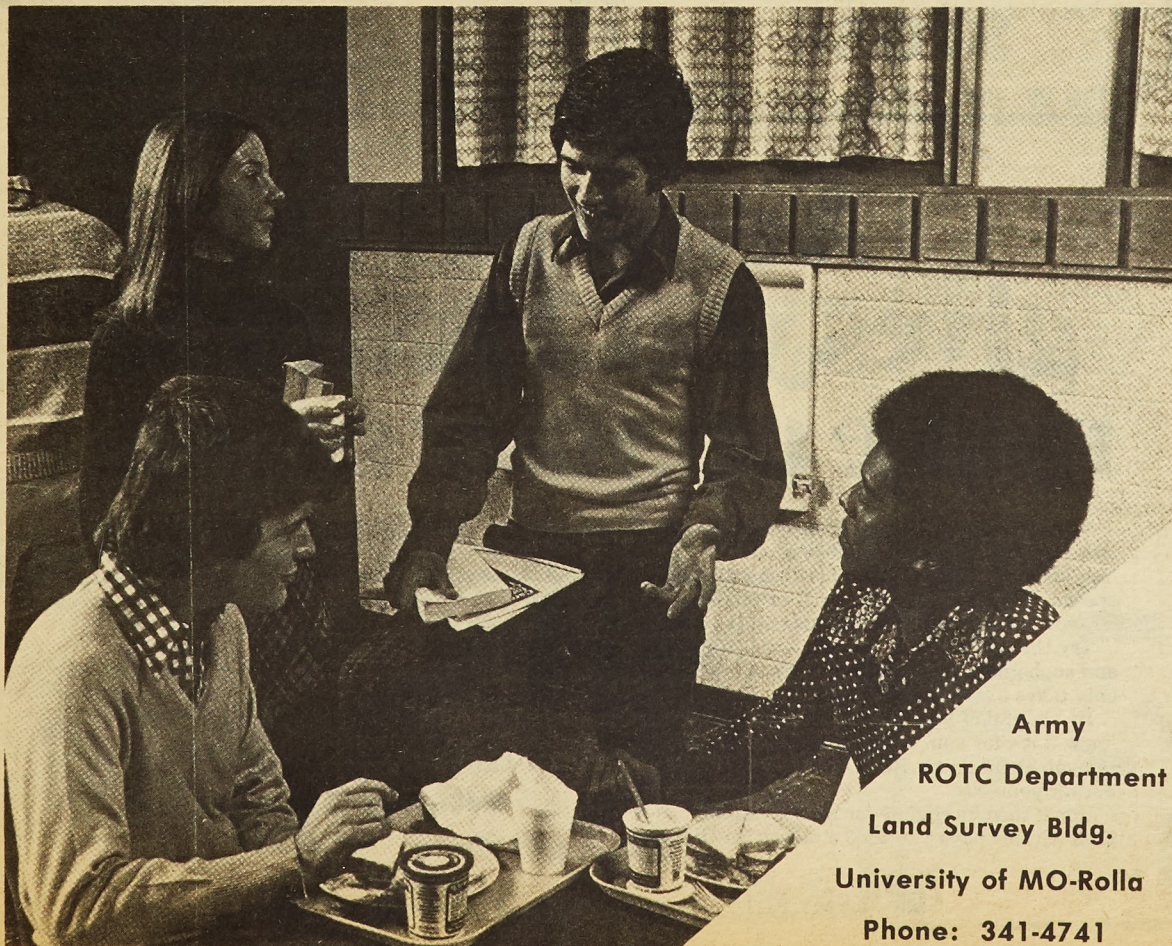
S.W.E. bigger and better than ever

The UMR student section of the Society of Women Engineers is growing by leaps and bounds. The membership tripled at the first meeting of the semester last Tuesday. The new members are not just new freshmen; more than a third are upperclassmen who have been at UMR for 2 or 3 years.

SWE is a professional society dedicated to encouraging young women to consider engineering as a career. The national society also aids professional women engineers in many ways. Our chapter engages in many activities to further this aim. Specifically, we talk to students in area schools to inform them about the opportunities open to them in engineering and applied science fields. Last March we hosted a seminar for Technical Women in the Midwest for other Chapters in our region. UMR-SWE published its first Resume book last year. We sold copies to approximately 120 companies.

At our monthly meetings our speakers have varied considerably — from working women engineers to recruiters, to faculty members. The topics ranged from "What goes on in a campus interview", to problems women engineers have in the work situation and how to solve them, to discussion on coal gasification and magneto hydrodynamics (MH-D).

We are planning to continue and improve on these programs this year. Anyone interested in SWE who has not yet done so should contact Lanna Bray at 364-3953 or come by room 214 Mac as soon as possible.



Army
ROTC Department
Land Survey Bldg.
University of MO-Rolla
Phone: 341-4741

pershing rifles explained

In this first month of school you have probably heard some mention of The National Society of Pershing Rifles, better known as simply Pershing Rifles. Our main purpose is to help train people to be better leaders through participation on any of our three teams. Those teams are, rifle, tactics, and drill teams.

The drill teams (basic and exhibition) participate in drill meets all through the mid-west, against other Pershing Rifle drill teams, constantly looking forward to attending Regimental Assembly and University of Illinois invitational drill meet. University of Illinois hosting the largest drill meet in the world.

The rifle team participates in many rifle matches throughout the year. However, due to the frequency of these meets, they are for the major part, held through the mail. The targets are mailed to us and we return them after firing them at our own range with our own weapons. The rifle team does however participate in the rifle match held at Regimental Assembly.

The tactics team goes out on field training exercises (FTX's) and simulates war time conditions in the field. The first FTX usually consists of the actives against the pledges. Sometimes they last of a couple of days, which gives the teams experience in night maneuvers while others are held only during the day. These outings turn out to be a lot of fun as well as an opportunity to develop everyone's leadership ability.

Besides these three teams and their activities, the organization holds various other service and social functions. We raise the flag and man the cannon at all home football

games, supply a color guard for various parades and functions including the bicentennial flag raising, graduating, and R.O.T.C. awards ceremony. We usually end up having a small party after each one of these events also.

Some upcoming events for the company in the fall are, a work-day September 20, providing a color guard for a bicentennial church service September 27, a field training exercise on bridging, rappelling, and orientation October 4, and planning is under way for a turkey shoot October 11. Most of our drill meets, tactics meets

and rifle matches are held in the spring, therefore most of our inter-company events are held in the fall.

Anyone interested in membership may still join by coming to the pledge classes on Monday Tuesday, and Thursday at 5:30 in the Land Survey building, room 207. Membership is strictly voluntary and no R.O.T.C. commitment is necessary. We feel this is a good opportunity to develop your leadership ability as well as get involved on campus while having fun. Any questions may be answered by calling Terry Coker at 341-2192.



SPECIALS THIS WEEK

OLD MILWAUKEE

12 Oz. 6 Pack \$1.20
Non-returnable

FALSTAFF \$1.20
12 Oz. 6 Pack

Non-returnable

PABST \$1.29
7 Oz. 8 Pack

Non-returnable

BUDWEISER \$1.44
12 Oz.
6 Pack Cans

509 LIQUOR STORE

116 W. 8th Rolla, Mo. 65401

Diehl Montgomery Ford Sales Rolla, Missouri

(The Originator Of The Student Finance Plan In This Area.)

This plan allows the students upon approved credits and job, to buy a new car with nothing down and payments of \$25.00 per month until you are on the job. This plan is not new, Diehl Montgomery Ford has sold over 750 new cars and trucks to graduating students this way. See us for all the details. Also you can use your own insurance or ours.

FORD LINCOLN MERCURY

This allows the graduating students to have a new car before he graduates when he really needs it. "This is a special discount program for students. We will be glad to quote you a price on and Ford or Mercury product."

Timing...

Al and Fred were identical twins, in almost every respect, except that Al usually did things first, while Fred tended to procrastinate. They scored equally on the IQ test, ran equally fast, and scored equally well with girls. When they came to the University they took a course together. During the first week Al worked extra hard and got a week ahead on his assignments. By working at the normal pace after that, he managed to stay a week ahead all semester. Fred goofed off the first week, and then worked at the normal pace for the rest of the semester. After the semester was over, they had both learned the same amount and mastered the subject equally well, as indicated by a nationally-standardized test they took the following year. However, during the semester, Al was well prepared for the exams, while Fred was always a week behind. The result was that Al got an A, and Fred got an F.

Army ROTC gives you 2 years to make up your mind.

Signing up for the Basic Course of Army ROTC is like most other college courses. You make no major commitment; there is no special obligation. You can ace it or flunk it. Or, you can drop it. That depends upon you.

Try the Basic Course during your freshman and sophomore years. See what it's all about. It only takes a few hours a week.

By the end of your sophomore year, you'll know if it's for you. After all, nobody can really tell you about Army ROTC. You have to find out for yourself.

You'll then be eligible for the Advanced Course. This pays you \$100 a month for the last

2 years of school. You'll earn a commission at the same time you earn your degree. The leadership and management skills you acquire will put you ahead in either civilian or military careers.

The point is this: You'll never know what Army ROTC can do for you until you give it a fair trial. It's at least worth checking into. Fair enough?

University of MO-Rolla
Land Survey Building
Rolla, MO 65401
Phone: 341-4741



ARMY ROTC. The more you look at it, the better it looks!

miner sports

MISSOURI MINER
Thursday, September 18, 1975
Page 9

Fail To Take Advantage Of Opportunities

Miners Play To 14-14 Tie With Missouri Western

The Miners hosted the Griffons from Missouri Western last Saturday in the second game of the season, and the teams played to a fumble plagued 14-14 tie. Mo. Western lost 5 fumbles, but the Miners lost only two, down from last week's four lost fumbles.

Missouri Western received the opening kick, and ran it to the 38. On the very next play, the Griffon quarterback pitched wide to his halfback, who couldn't handle it. The Miners recovered the fumble on the 35, and things looked great.

But the Griffons defense held firm, and the Miners missed a great scoring opportunity, because they couldn't move the ball. Mo. Western took over, and moved the ball well, until they fumbled again, on their 38.

It looked as if the Miners were going to take advantage of their second big break of the game, but they fumbled it away, after driving to the 22.

The Griffons took over again, and ran the ball with authority. They reeled off three first downs and moved into Miner territory. Then on a 3rd and 24 they completed the pass for the first down, only to have it called back on a holding penalty. After the penalty, they were unable to make the first down, and had to punt, which was another big break for the Miners.

The Miners took over on the 26, and Steve Townsell broke for a 26 yard gain on the next play. Then two plays later Jim Waechter broke for 12 yards, down to the 22, and it looked like the Miners were heading for their first TD. But the drive stalled after the Miners were called for holding, and Haug was sacked trying to pass. A 45 yard field goal attempt was wide.

Mo. Western took over on the 20 just before the end of the first quarter. They finally started passing, and moved the ball to the Miner 34, before they fumbled it away again.

The Miners moved the ball

to Henry, on a 4th and 9 play.

With two minutes left in the half, and trailing 7-0, the Miner offense got moving. Greg Haug went to the air and hit Steve Townsell for 22 yards on a screen play, and then hit Monte Morse at the one yard line. Townsell ran it in, and the score was 7-7 at half.

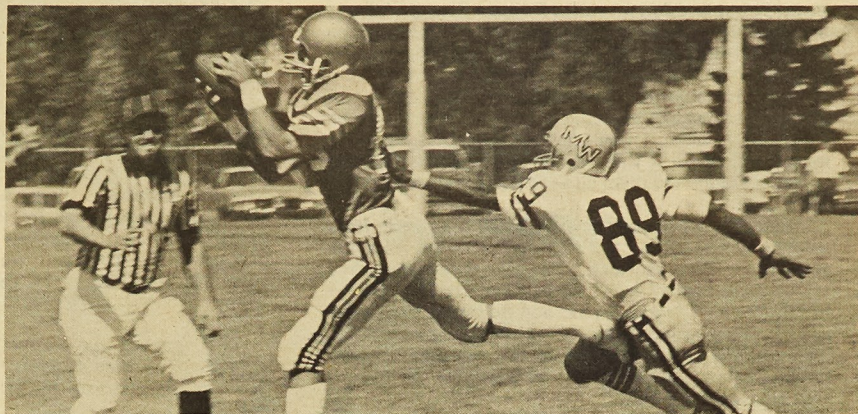
The Miners received the opening kick of the second half. They quickly moved into Griffon territory, but had to punt. Mo. Western didn't keep the ball long as Dennis Jones picked off a pass on the Miner 46. UMR couldn't make a first down, but after the punt, the Griffons fumbled the ball right back to the Miners.

With the ball on the Griffon 29, Steve Townsell broke around end for a TD, only to have it called back because of a holding penalty. After that the Griffons defense held, and the Miners could manage only another missed field goal.

At the end of the 3rd quarter it was still 7-7, and it looked as though neither team could hold onto the ball long enough to score.

The Miners received a punt at the start of the final quarter, and then put together a 67 yard scoring drive. Townsell ran in the TD, his second of the game, and the Miners were ahead 14-7.

Mo. Western needed only two and a half minutes to tie the score. They threw the ball well when they had to, and scored on



Stu Dunlop receives a pass from Greg Haug in Saturday's game against Missouri Western. The pass set up a touchdown in the closing minutes of the second quarter

Photo by Ed Burford

a 4th down screen play that went 20 yards.

The last 8 minutes of the 4th quarter were played just like the third quarter; neither team could hold onto the ball long enough to get a drive going. The game ended as a 14-14 tie.

Offensive stunts were about even for the two teams. Mo. Western led with 184 yards rushing, and 154 yards passing, while the Miners had 172 yards on the ground, and 140 in the air. Steve Townsell had a fine day for the Miners, rolling up 124 yards rushing on 30 carries, and 31 yards on two passes.

Next Saturday the Miners travel to Joplin, Mo. to battle the tough Lions of Missouri Southern, in a brand-new stadium that just opened two weeks ago.

The next Miner home game will be Oct. 18, Homecoming, against Northeast.

Alex Pizza Palace

Featuring

17 Steaming Varieties

Draft Beer, Greek Salad And
Shish Ke-bab Dinner
Dial 364-2669

For Take Outs And Free Delivery
(Inside City Limits)

Open Daily 4 p.m.-2 a.m.

7 Days A Week

122 W. 8th Street

Rolla, Mo.

across the 50, but were forced to punt. Mo. Western got the ball on their 3 yard line, and put their offense in high gear. They mixed plays well, and drove 97 yards for the games first touchdown. The drive was capped by a 35 yard pass from Heimbaugh



when you want
to chase a beer
with a beer.

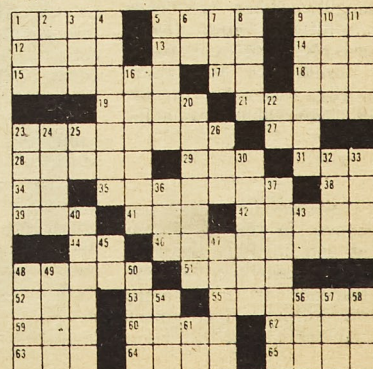
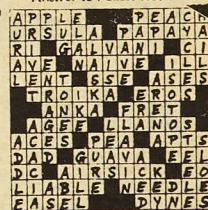
© 1973 CARLING BREWING COMPANY, BELLEVILLE, ILLINOIS

Norm DeLeo, Dist.
Sponsors This Week's

crossword puzzle

Answer to Puzzle No. 1

- ACROSS
- Book of the Old Testament
 - Gossip
 - O. J. Simpson, for one
 - Combining form: animals resembling higher order
 - Rough
 - Male child
 - Spanish seaport
 - Symbol: zirconium
 - Every
 - Mineral
 - Willy
 - Book of the Old Testament
 - Fathom (ab.)
 - Muse of lyric poetry
 - Prefix: bad
 - Klaus Fuchs, for example
 - Family
 - Symbol: radium
 - Inward nature
 - Open account (ab.)
 - Samuel's teacher
 - Ever (poetic)
 - Certain U.S. mountains
 - Yes in Acapulco
 - Flasks
 - Horses of a certain color
 - Salt deposit
 - News service (ab.)
 - Ancient city of the Sumerians
 - Civil War battle site
 - Spanish aunt
 - Terpsichore, for one
 - The "Old Sod"
 - Interjection
 - Combining form: all
 - Spare
- DOWN
- Book of the Old Testament
 - I hate (Lat.)
 - Lamprey
 - Lipped
 - Endure
 - Symbol: lutetium
 - Tool
 - Capital of Switzerland
 - Book of the Old Testament
 - List
 - Sole
 - Sandstone formed from granite
 - Twelve, for example
 - Poem by Kipling
 - In this place
 - Soviet Lake
 - Degree (ab.)
 - Stamp out
 - XXX
 - Prates (coll.)
 - Type of wine
 - Book of the Old Testament
 - Book of the Old Testament
 - Pseudonym of George Wm. Russell
 - A hole -- one
 - American of Japanese parentage
 - Book of the Old Testament
 - Combining form: eye defect
 - Japanese form of wrestling
 - "Demon --"
 - Golf term
 - Mouths
 - Rooster's mate
 - Symbol: tin



Distr. by Puzzles, Inc. No. 126

jock shorts

BY THE MINERS SPORTS STAFF

..The National Football League will begin a new season Sunday, September 21. Or will it? The opening of the new season now stands in doubt as several teams have voted to strike, or are on the verge of striking.

..The New England Patriots voted to strike on Saturday and not play their Sunday exhibition game with the New York Jets. Normally, the Patriots would report to camp following a Sunday game but, they were told they would be locked out unless a no-strike pact is agreed to.

..The Washington Redskins have voted to back the Patriots, but Redskin president Edward Bennet Williams had told the players to "play-or-else" in their season opener next Sunday, and even threatened to declare the corporation out of business if the strike continued.

..Carroll Rosenbloom, owner of the Los Angeles Rams was quoted as saying, "If my team is going to vote on a strike, I want to be there. I won't believe it unless I see it for myself. And if they vote to strike, I couldn't live with myself if I didn't tell them all to go home and forget about the season."

..Meanwhile, other early returns began to come in from training camps across the nation. The Dallas Cowboys voted 22-1 in favor of walking out if the Pats were locked out of their Sunday home opener against the Houston Oilers. The New Orleans Saints and Baltimore Colts have both agreed to strike if a collective bargaining agreement is not reached. On the other side of the coin, the Cleveland Browns, Miami Dolphins, and Philadelphia Eagles appear to oppose a strike.

..So as opening day draws nearer, in many cities across the nation, the question, "Will we play in the Super Bowl this year?", is not asked. Instead the question is asked, "Will we play this year?"

Sports Trivia

..The most successful pitching debut in history was recorded by Walter Johnson. In his first four days in the major leagues, the Senators' "Big Train" pitched all three games of a series against the Yankees—and shut them out each time, allowing a total of only twelve hits.

..The only major league games in which nobody got a hit in nine innings was played on May 2, 1917. Fred Toney was pitching for the Reds, and Jimmy Vaughan for the Chicago Cubs. In the top of the tenth, Toney "fell apart" and was reached for two hits and a run.

..Baseball's all time "hit parade" occurred on July 10, 1932, in an 18 inning game between the Cleveland Indians and the Philadelphia Athletics. The two teams batted out a total of 58 hits. The final score was 18-17, won by the Indians, and the winning pitcher was Ed Rommel who allowed—get this—29 hits.

..Taken from "Ripley's Believe It or Not"

kickers shut out by joplin

The UMR Soccer team traveled to Joplin last Saturday and is still looking for 1.) The first goal of the young season, in the opinion of this writer, once the Miners get on the boards, opposing goalies will be buried in black and white leather. The scoring potential is there — both Steve Schaeffler and Larry Oliver have the ability to put the ball in the net. The defense is there — anchored by Dave Ortmann at center fullback. The key to making the offense work lies in the midfield. Both teams Saturday left wide areas open in the middle of the field. Hopefully, this aspect of the UMR attack will improve in the next game.

If it weren't for superb performances in goal by Jimmy Amidi and Bill Dale, the score could have easily been 7-0. UMR roared out at the opening whistle, keeping Joplin pinned in their own end for the first 10

minutes. But lack of depth (due to injuries and the flu) caused the Miners to become bogged down, many rushes upfield being halted at the midfield line. The half ended with the green being down only one goal. Adjustments made at halftime proved to be ineffective, as Joplin had a high psychological edge, playing their home opener before approximately 150 fans. Play became extremely rough the second half, in many cases, pure farce, due to poor officiating. The referees failed to seize control of the game at the outset of the rough play. Joplin added a pair of insult goals and the final score was 3-0, Joplin.

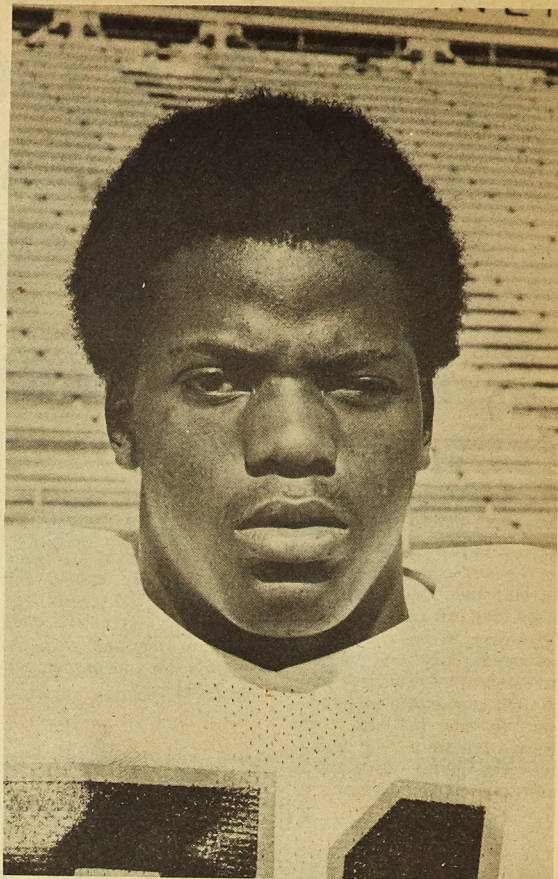
The Soccer team returns home this Saturday against Maryville College (St. Louis) at 2:00 p.m. As previously mentioned, a large, enthusiastic crowd adds to the momentum of the home club. So tear yourself away from the tube, get some fresh air and watch UMR vs. Maryville on the varsity practice field.

M-Club

athlete of the week

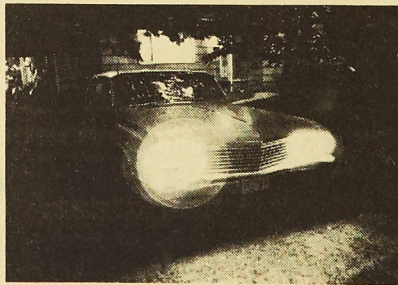
Steve Townsell is M-Club's athlete of the week. In his first starting role as a Miner, Steve carried the ball 30 times, picking up 134 yards and scoring both touchdowns in a 14-14 tie against Missouri Western. He also had another fine touchdown run called back because of a penalty. Steve is 5'9" 175 pound freshman from Jennings, Missouri. Besides leading both teams in rushing yardage, he also caught two passes for 31 yards. For his impressive performance, Townsell was voted M-Club Athlete of the Week.

Dave Craycroft of the UMR cross country team also turned in a fine performance this past weekend, taking first place in a dual meet. He ran the 5 mile course in an excellent time of 25 minutes, 57 seconds.



Steve Townsell

10 MINUTES OF YOUR TIME COULD SAVE A FRIEND'S LIFE.



In the time it takes to drive your friend home, you could save his life.

If your friend's been drinking too much, he shouldn't be driving.

The automobile crash is the number one cause of death of people your age. And the ironic thing is that the drunk drivers responsible

for killing young people are most often other young people.

Take ten minutes. Or twenty.

Or an hour. Drive your friend home. That's all. If you can't do that, call a cab. Or let him sleep on your couch.

We're not asking you to be a doctor or a cop. Just a friend.

DRUNK DRIVER, DEPT. Y*
BOX 2345
ROCKVILLE, MARYLAND 20852

I want to save a friend's life.
Tell me what else I can do.

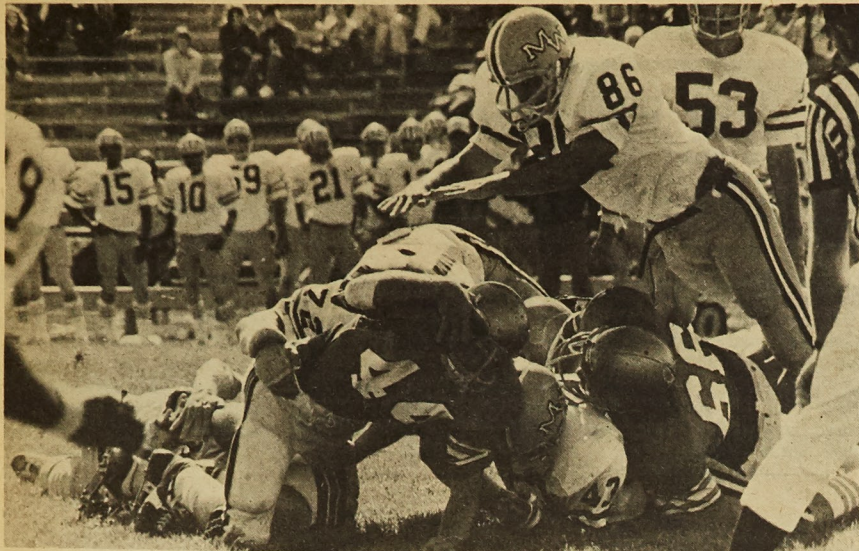
My name is _____

Address _____

City _____ State _____ Zip _____

IF YOU LET A FRIEND DRIVE DRUNK, YOU'RE NO FRIEND.





Miner halfback Jim Waechter goes down under a mass of Missouri Western tacklers. The Miners and Griffons played to a 14-14 tie

Photo by Farley

harriers tie in first meet

This past weekend the Miner cross country team met the School of the Ozark team from Point Lookout Missouri in a dual meet. The meet ended in a 28-28 tie. The winner of the meet was Dave Craycraft who ran the five mile course in a time of 25 minutes and 27 seconds. This was just two tenths of a second off the record time which he set last year. Finishing second for the Miners was Norman Haus, a transfer from Cody College in Ann Arbor, Michigan. Norman's

time was 27 minutes and 30 seconds. Dave Sorrell, a freshman from St. Louis finished third with a time of 27 minutes and 53 seconds. Joe Morales, a freshman from Kansas City finished fourth. Joe had a time of 28 minutes 14 seconds. These guys were followed by Craig Bowen with a time of 28 minutes 55 seconds, and Mike McCarthy, a transfer from Notre Dame, who finished with a time of 28 minutes 56 seconds.

The Miners meet Lincoln University this Saturday at 11:00 at the UMR golf course.

football starts in action

Flag football started last week with a bang. There was great action in all four leagues.

In league one, Kappa Sig again looks strong with an amazing 65 to 6 win over Baptist Student Union. Delta Tau Delta also looked strong in their victory over Sig Pi, 45-0. A E Pi beat both Triangle and Baptist Student Union 37-7 and 9-7 respectively.

In league two the action looks pretty close. Phi Kappa Theta shut out Pi Phi 37-0. MRHA also defeated Pi Phi with a score of 20-0. Theata Xi beat Sig Nu in a 21-18 game, and in a close game MRHA just managed to get by Sig Tau with a score of 7-6.

TKE again looks strong in league three, but Alpha Phi Alpha and Lambda Chi aren't far behind. TKE shut out Campus Club 37-0. Alpha Phi Alpha defeated Acacia 37-13, but Acacia came back to beat Campus Club 3-0.

In the league four action, Beta Sig shut out Liahona 38-0. KA beat Westley 26-9. Pikers shut out Delta Sig 14-0, and Liahona gave a forfeit to Wesley.

It appears that there is two or three dominate teams in each of the leagues but there is going to be a battle to the finish.

IM Football

MONDAY

Phi Kap-Sig Nu
Kappa Sig-Sig Pi
Beta Sig-Pika
TKE-Lambda Chi

TUESDAY

Theta Xi-GDI
Delta Sig-Tech Engine
Newman-Sig Ep

WEDNESDAY

MRHA-Sig Nu
AEPi-Sig Pi
Wesley-Pika
Acacia-Lambda Chi

THURSDAY

Phi Kappa Phi-Sig Nu
BSU-Triangle
Liahona-KA
Campus-A Phi A

CLIMB THE LETTERS TO SUCCESS.

An Air Force way to give more value to your college life and college diploma.

- Scholarships
- \$100 a month tax-free allowance
- Flying instruction
- An Air Force commission
- A responsible job in a challenging field, navigation... missiles... sciences... engineering
- Graduate degree programs
- Good pay... regular promotions... many tangible benefits
- Travel

Put it all together in Air Force ROTC.

Miner Applications

The Miner is now accepting applications for staff members and writers. Pick up application forms during office hours, Monday and Tuesday, 1:00 to 3:00 p.m. in building T-1.

classified ads

To have your classified ad or message placed in the Miner, drop it by the office in building T-1 Monday or Tuesday 1:00-3:00, or mail it to the Missouri Miner, University of Missouri-Rolla. The cost is \$1.00 per week and payment must accompany ad. Ads must be limited to 30 words. Please have them typed or printed clearly. Get it to the Miner and we'll get it to the UMR students!

Bogen CHB-100, 100 watt RMS TUBE P.A. amplifier; Marshall capability finally realized, \$75, Genuine Teisco Del-Ray guitar, \$35 (plays well), cabinet for above with 15" speakers, \$35 (three way), whole deal for \$130. Contact 341-2313.

9-1t-18

MUST SELL — Sansui Receiver, 2 mons old —, \$125 — Panasonic Componet System with 8-track, turntable, and Aux. Inputs; spks included — \$80. Greg Litty — No. 419 Holtman — 341-2479

1-2t-18

JESUS CHRIST — What were His claims? How about a 4 week investigative Bible study to find out? call Steve 364-7831.

9-1t-18

HONDA 500 — 4 cylinder low mileage, excellent condition. Extras. 364-1533 after 5:30.

f-230-6t

WANTED: Warm, affectionate coed to oversee care and rehabilitation of convalescing young student. Experience no factor. Will train. Contact Trog. 364-8920.

9-1t-18

Hewlett-Packard introduces a smaller uncompromising calculator: the HP-21 Scientific.

\$125.00*



Now \$125.00 buys:

More power than our HP-35. 32 pre-programmed functions and operations vs. 22 for our HP-35. The HP-21 performs all log and trig functions, the latter in radians or degrees. It's our only calculator short of the HP-45 that lets you:

- convert polar to rectangular coordinates, and back again ($\rightarrow P, \rightarrow R$);
- do full register arithmetic ($M+, M-, M \times, M \div$);
- calculate a common antilog (10^x) with a single keystroke.

The HP-21 also performs all basic data manipulations ($1/x, y^x, \sqrt{x}, \pi$) and executes all pre-programmed functions in one second or less. In sum, it's designed to solve tomorrow's problems as well as today's.

Smaller size. 6 ounces vs. 9 ounces for our HP-35.

Full display formatting. The display key (DSP) lets you choose between fixed decimal and scientific notation and lets you control the num-

ber of places displayed. (The HP-21 always uses all 10 digits internally.)

If a number is too large or small for fixed decimal display, the HP-21 switches automatically to scientific. It never confuses a smaller number with zero.

Finally, if you give the HP-21 an impossible instruction, the Display spells E-r-r-o-r.

RPN logic system. Here's what this unique logic system means for you:

- You can evaluate any expression without copying parentheses, worrying about hierarchies or re-structuring beforehand.
- You can solve all problems your way—the way you now use when you use a slide rule.
- You solve all problems—no matter how complex—one step at a time. You never work with more than two numbers at once.
- You see all intermediate answers immediately. The HP-21 executes each function immediately after you press the function key.
- You can easily backtrack when you err. The HP-21 performs all operations sequentially.

- You can re-use numbers without re-entering them. The HP-21 becomes your scratch pad.

HP quality craftsmanship. One reason Nobel Prize winners, astronauts, conquerors of Everest, America's Cup navigators and over 500,000 other professionals own H-P calculators.

Your bookstore will give you a demonstration today. Challenge our new HP-21 with your problems. See for yourself how much performance \$125.00* can buy. If your bookstore doesn't have the HP-21 yet, call us at 800-538-7922 (in Calif. 800-662-9862) for the name of a dealer who does.

HEWLETT  PACKARD

Sales and service from 172 offices in 65 countries.
Dept. 658, 19310 Pruneridge Avenue, Cupertino, CA 95014

*Suggested retail price excluding applicable state and local taxes—Continental U.S.A., Alaska & Hawaii.