



01 Nov 1972

The Missouri Miner, November 01, 1972

Follow this and additional works at: https://scholarsmine.mst.edu/missouri_miner

These newspapers reflect the attitudes, perspectives, and beliefs of different times. Neither the library nor the university endorses the views expressed in these collections, some of which contain images and language which may be offensive to some readers.

Recommended Citation

"The Missouri Miner, November 01, 1972" (1972). *The Missouri Miner Newspaper*. 2016.
https://scholarsmine.mst.edu/missouri_miner/2016

This Newspaper is brought to you for free and open access by Scholars' Mine. It has been accepted for inclusion in The Missouri Miner Newspaper by an authorized administrator of Scholars' Mine. This work is protected by U. S. Copyright Law. Unauthorized use including reproduction for redistribution requires the permission of the copyright holder. For more information, please contact scholarsmine@mst.edu.

University Day To Welcome Freshmen

ROLLA, Mo., Oct.—High school and junior college students interested in a medium-sized campus in the Ozarks are invited to University Day at the University of Missouri-Rolla Saturday (Nov. 18).

It's a special day for high school, community and junior college students, their parents, teachers guidance counselors and friends. Guides will be on hand for tours of classrooms,

laboratories and research facilities. UMR faculty, staff members and students will answer questions about enrolling, housing, student organizations and what courses are necessary for different degree areas. Registration will be from 8 a.m. to noon in the Student Union Ballroom. Faculty and students will be at the union to answer questions from 8 a.m. to 1 p.m. Guided campus tours will leave from

the union periodically from 8 a.m. to 1 p.m. Every department on campus will hold open house from 9 a.m. to 2 p.m. where students may see displays of the type of work being done in the department and talk with faculty members.

In addition to research facilities, classrooms, laboratories will be open in the departments of chemical, civil, electrical and mechanical and aerospace engineering, engineering

management, engineering mechanics, ceramic engineering, metallurgical and nuclear engineering, mining, petroleum and geological engineering, chemistry, computer science, geology and geophysics, mathematics, physics, humanities, social sciences, military science and physical education.

There will be a special program on the same day for National Merit Scholarship semifinalists.



Missouri Miner



University of Missouri - Rolla

VOL. 59, NO. 9

ROLLA, MISSOURI

WEDNESDAY, NOVEMBER 1, 1972

12 PAGES

Rain Chases Math-Computer Building Dedication Inside

The customary weekend rain has, again, hampered a special event on the UMR campus. Last Friday, October 27, the rain hindered the dedication of the Mathematics-Computer Science Building. The dedication was held in the Mechanical Engineering Auditorium.

The dedication ceremony began with the National Anthem played by the UMR Chamber Band under the direction of David Oakley. Mr. Kenneth Davidson, minister of the First Baptist Church, gave the invocation. Dr. Glen Haddock, chairman of the Mathematics Dept., welcomed all of the guests to the ceremony. He, also, gave a brief history of the building.

Chancellor Merl Baker then gave a synopsis of the Mathematics and Computer Science Departments. The Math Dept. has one-hundred and eight majors. It, also placed twenty-seven two out of three of the staff who devoted time to research had papers published in journals. One conference held on the campus last year will be published.

The Computer Science Dept. has almost three-hundred undergraduates and forty graduates majors. It is the largest department in the College of Arts and Sciences. Chancellor Baker said that the Department was "rated as one of the top ones in the mid-part of the country."

Chancellor Baker felt that the "building is well occupied. It is occupied by dedicated teachers and, also, faculty members interested in research." He, also, said that there is "no question about the quality of the students."

The dedicatory address was given by Dr. Wimberly C. Royster, dean of the Graduate School, University of Kentucky. Dr. Royster said that the building was a "culmination of efforts" which all should be proud of. He gave a brief history of the Mathematics and Computer Science Departments at UMR.

"There is a long way to go," said Prof. Royster, "to close the communication gap between the mathematical community and those who are actively working on societal problems. It is evident that reforms must come at all levels. In some way mathematical sciences must introduce methods in the secondary schools which will motivate students into the mathematical sciences."

Prof. Royster went on to say that "mathematics, computer science, and statistics have so much to offer in many fields of science and non-science that we can't afford not to do it."

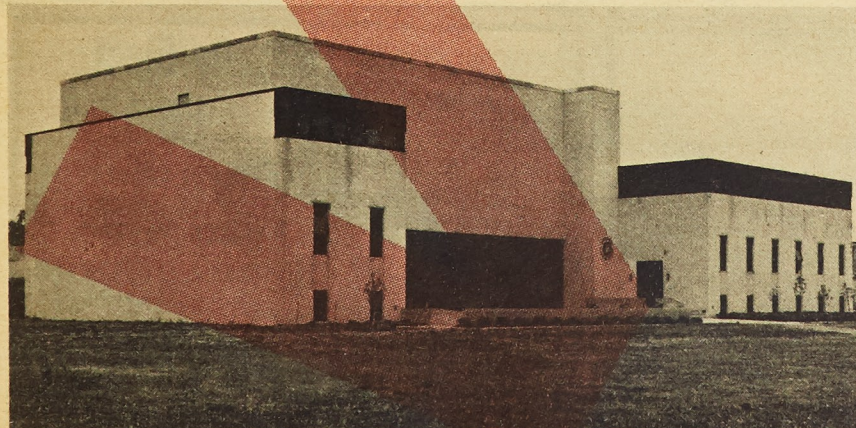
"Faculty such as the one that you have at this institution and a facility such as the one you have at this institution should be an encouragement to this university, the students, faculty, and administration."

Mr. Rex L. Becker of Froese, Maack and Becker, architects of the building handed the key to Robert Brady, President of the Board of Curators. Mr. Brady in turn quickly handed the key over to Chancellor Baker and then to Chairman Haddock.

After the Dedicatory program an open house was held at the Mathematics-Computer Building.



Modern labeling of buildings is exhibited on Math-Computer Building with Missouri University Seal. (Hardin Photo)



Math-Computer Building as viewed from the Humanities Building. (Blanc Photo)



Chancellor Merl Baker addressing dedication crowd in ME Auditorium.

SU Board News In the Movies

Student Union Board Calendar of Events

Student Union Board Meeting Nov. 2 6:30 p.m.

Movie "Rachel, Rachel" Sunday, Nov. 5
4 & 6:30 p.m. S.U. Ballroom

Fashion Show Friday, Nov. 10
8:00 p.m. S.U. Ballroom

Second Round Grad II Scheduled for Dec. 1

May and August graduates are reminded that the second in careful completion by the insertion for the Grad II student of a questionnaire computerized search program outlining his job interests on a is scheduled through the mathematical preference scale. placement office for December Approximately fifty major corporations who are scheduled

Grad II is a system whereby for a spring campus visit are any UMR student who expects participating in the Grad II to interview in the placement program. Instruction sheets office can quiz the computer and questionnaire forms are data bank for the best employer available now at the placement matches to his job interests office. Be sure to turn in your among those scheduled for completed questionnaire no campus interviews during the later than November 30, spring semester.



WELL, SON, AT LEAST WE SAVED THEM FROM THE TERRIBLE COMMUNIST BLOOD-BATH WHEN WE LEAVE."



PORTRAIT IN TERROR: The infamous Barker gang poses in full regalia for its wild spree of murder, kidnapping and robbery during the violent 30's in American International's high action drama, "Bloody Mama", coming to the Uptown Theatre on Wednesday. (L to r) are Don Stroud, Robert Walden, Shelley Winters as Ma Barker, Clint Kimbrough and Robert De Niro.

"The Godfather" will remain in Rolla for a second big week and will be moving from the Uptown to the Ritz.

In Memorium

ROLLA, Mo., Oct.—UMR student, Randy Johannes, 12824 Winchester, Grandview, died Thursday (Oct. 26) at Phelps County Memorial Hospital. He was the son of Mr. and Mrs. Darwin L. Johannes. A junior in chemical engineering, Johannes was swimming in the pool at the Multi-Purpose Building when a student saw that he was under water, but not swimming. Other students, the lifeguard and swimming coach Robert Pease removed him from the pool and administered artificial respiration. According to coach Pease, he was breathing again within a few minutes.

UMR student, Gregory S. Bothwell of Riverside, California, died early Saturday (Oct. 28) in an automobile accident. Greg, a senior in civil engineering, was returning from a trip to Kansas City when the car he was riding in struck a guardrail. The car overturned after destroying 40 feet of the railing on the Highway 63 bridge over the Gasconade River. Greg was a fifth year graduating senior, a member of the Theta Xi fraternity, and a Student Council Representative.

Services will be held early Wednesday in Breckenridge, Missouri.

UPTOWN
TELEPHONE 364-1857

Walt Disney's
DUMBO
© 1972 Walt Disney Production
TECHNICOLOR
AND
WALT DISNEY presents
LOBO
© 1962 Walt Disney Production

RITZ
TELEPHONE 364-1299

HELD OVER

The Godfather

Marlon Brando
Al Pacino James Caan
Richard Castellano Robert Duvall
Sterling Hayden John Marley
1-show nightly 7:30

ROLLA DRIVE IN THEATRE
TELEPHONE 364-1502

BARBARA HERSHEY



BOXCAR BERTHA
COLOR BY DE LUXE ★ PLUS ★
Bloody Mama Shelley WINTERS

Need A
New Or
Used Car?

SEE MARV

Gryder Motors, Inc.
Rolla, Mo., 65401,
Phone 364-3783

KING'S CHOICE
SANDWICH SHOP
YOUR CAMPUS GROCERY

1009 Pine 364-6463

CAMPUS CUE
Pool, Snooker, Billards
12 Tables
RATES - 60¢ HR. HOURS - NOON - 1 A.M.
Located In The Basement Of
Shamrock Club

CLIP AND SAVE
Research (term) Papers
Also

Book Reviews, Speeches, Tutoring Specialized Research etc.

We cover virtually all topics. All writers and instructors are certified personnel-specializing in your area. We are professionals

In

Educational Services

ORIGINAL PAPERS: \$3.50 per page TILE COPIES: \$2.00 per page
Other Prices Upon Request

EDUCATIONAL RESEARCH AND ASSISTANCE INC.

We have extensive files and resources being part of a National Corporation

We, therefore, guarantee satisfaction

LOCATIONS

1445 Collins
St. Louis, Mo. 63117
645-3522

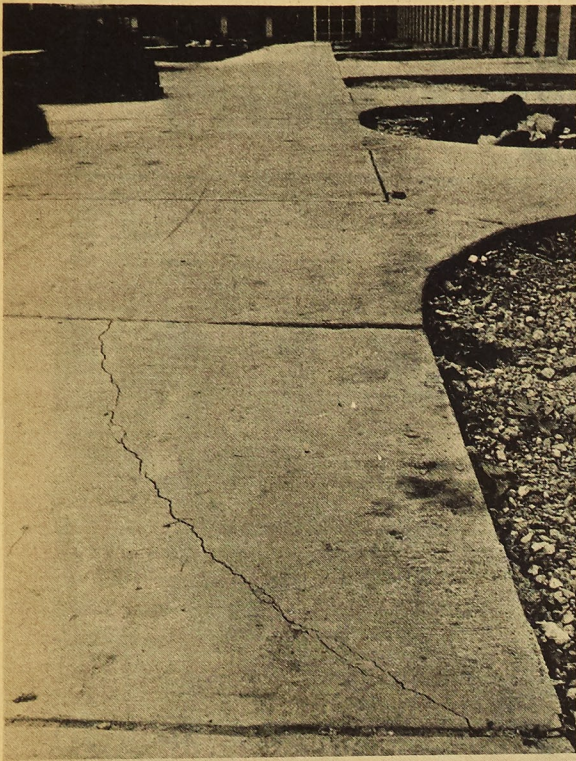
70 May Valley,
Fenton, Mo. 63026
343-5276

10109 Puttington,
Afton, Mo. 63123
638-2014



Re-Elect
LEO
Christopher
Democrat for Phelps Co.
ASSESSOR
8 Years on
UMR Coaching Staff

College Background at UMC and UMR
Paid for by Leo and Mary Christopher



The long-awaited beautification project on the quadrangle is already sporting cracks in the sidewalks. This crack is outside the Mining Building. (Photo by Paul Dalluge)

Student Council Takes Poll For Missouri Student Lobby

The first week of November will see the Student Council sampling the opinions of the Rolla campus for the Missouri Student Lobby. The Student Lobby represents the students of the state of Missouri in the General Assembly in Jefferson City. Their work is to voice the opinions and desires of the people they represent.

The UMR Student Council is conducting an opinion poll for the Student Lobby. This opinion poll is designed to find out what students think of issues con-

cerning them as citizens and as students. The results of this poll will help the Missouri Student Lobby plan their activities. The opinion poll will be distributed by Student Council reps in their respective organizations this week. For those students who do not belong to a represented organization, the opinion poll will be made available Thursday, November 2, between 9:30 a.m. and 3:00 p.m. in the Student Union foyer.

SAMPLE BALLOT

This referendum is designed to gauge student opinion on major state-wide issues. The results will determine what the Missouri Student Lobby will work on for the 1972-73 year.

1. Should the State Board of Education ("superboard") be approved for higher education?
Yes—No—Priority: High—Medium—Low—
2. Should 18-21 year olds have full majority (adult) rights?
Yes—No—Priority: High—Medium—Low—
3. Should abortion laws in Missouri be less strict?
Yes—No—Priority: High—Medium—Low—
4. Should direct state aid be given to parochial schools?
Yes—No—Priority: High—Medium—Low—
5. Should the patronage system be abolished in Missouri?
Yes—No—Priority: High—Medium—Low—
6. Should funding of state junior colleges and universities be increased?
Yes—No—Priority: High—Medium—Low—
7. Should the present penalty for marijuana in Missouri be lessened?
Yes—No—Priority: High—Medium—Low—
8. Should the Equal Rights Amendment be ratified in Missouri?
Yes—No—Priority: High—Medium—Low—
10. Should the property tax, as a basis of public education be eliminated in Missouri?
Yes—No—Priority: High—Medium—Low—
11. Should a State Environmental Board with full review powers of environmental problems be established?
Yes—No—Priority: High—Medium—Low—

Student Alternatives to Proposed Facilities Fee

In response to the recent Executive Order Number 8, student leaders representing various organizations have formulated an alternative to the proposed use fee for university facilities. They propose three alternatives.

The first alternative is that any recognized student organization should be able to use any of the university facilities without charge in carrying out their normal organizational activities as described in their constitution unless the said activities are profit making.

Any campus organization should be able to use the Student Union facilities for any approved activity without charge.

Another point to be made is that the Student Union soon to be opened is the product of student fees. It was held by the group that is an injustice for the students to pay for the operation of the building and then be forced to pay again each time they want to use the facilities. Whether a profit is made or not since the Student Union is financed solely from student fees and contributions. This was the group's second proposed

alternative. The third proposal was that any organization or group that is not recognized as a student organization or a university affiliated organization should be assessed a use fee for university facilities.

Small organizations barely break even and the imposition of a use fee whenever the group sponsors an event would discourage such events. It can not be argued that such student groups provide valuable opportunities to develop one's leadership abilities, social awareness, and educational background.

Missouri Miner

University of Missouri - Rolla

How to Stay in UMR-Gradewise & Coursewise

An informative rap session was conducted last Thurs. Oct. 26 in the S.U. Ballroom between UMR students and several representatives from the University's Office of the Registrar. Mr. Lauren Peterson, Mr. Paul Smith and Mr. Arthur Brooks were the main panel members with many points being discussed that were most helpful to the students.

Mr. Peterson began by telling the students that the Schedule of Classes guide should be ready for distribution all this week and along with this guide will be the students Credits Cards and data verification cards also. He went on to clarify an error by the Registrars office concerning the final date for the dropping of classes. The official deadline will be Nov. 7 for the course being dropped and no grade recorded. After this date, dropping a course will result in an automatic F for the student.

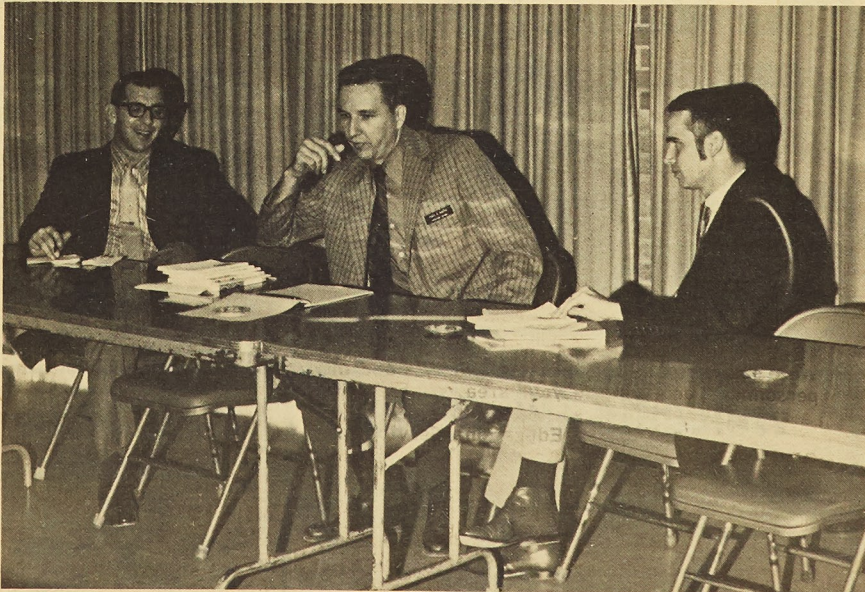
One of the first major topics of discussion was the present

Pass-Fail system at UMR for elective courses. First, to enter a course under this system, the student must notify the Registrar's office in the first 4 weeks of the semester. It was pointed out that many people thought the teacher just gave the student a regular grade for a course and that only the Registrar's office knew if the student was under Pass-Fail so therefore they would change the grade to a "S" or a "U". This is not the case. The prof does know if the student is on Pass-Fail and many students did not like this idea of giving the instructor the power to give a "U" on the basis that the student with a "D" average wasn't putting forth enough effort in his judgement.

Another point was brought up about the necessity of submitting a trial schedule when most often some students will not get the sections of courses that they request. Priority on trial schedules is given to varsity athletes, students that

have been here the longest and other reasons such as work and so forth which are indicated by the advisor on the schedule card. These will be run through the computer first and the students requested schedules will be given.

Several helpful suggestions were offered that would benefit the students and sometimes the Registrar's office as well. One was that if you were denied entrance into a section from pre-registration, to be able to specify an alternate selection on your schedule card. This could eliminate the trouble of returning for formal registration just for a conflict over one class. Another suggestion was that a method be installed so that students would select their desired instructors for classes. Mr. Smith then explained that the Registrar's office asks the departments to specify the instructors for their classes but some refuse to do so and others request that it not be published in the schedule book.



Representatives from the Registrar's Office answer questions at the Student Union Board's "rap session" on preregistration. Preregistration for the spring semester is next week, November 6 to 10.

(Photo by Dennis Demereckis)

Yours-Theirs - Ours

Editorial Opinion

VOTE

Critical questions confront the eleven million newly enfranchised voters approaching the ballot box. Has the man elected on a promise to end the war broken faith with the American people? Can the American people stomach the war now that the color of the bodies has changed? Has the sense of moral outrage over napalming and bombing been exhausted? Do the nominations of Carswell and Haynesworth to the highest court mark a planned retreat from the commitment to racial justice? Is the bugging of Democratic National Committee Headquarters symptomatic of an emerging Orwellian nightmare? Has the Nixon administration sold out to big business?

And what of the Senator from South Dakota? Will his economic proposals bankrupt the economy? Do the Eagleton fiasco and the "refining of the proposals of the primaries portend a presidency based on vacillation? Will McGovern, by reducing the military budget, diminish the diplomatic flexibility of the U.S.? Invite aggression? Pave the road to war?

The questions are, of course, loaded. There are few simple answers. But remove the vituperation and the inflated promises and four facts are clear:

First: The candidates vying for the Presidency differ widely in ideology and outlook. The potential voter cannot sit this one out on the grounds that the choice is between tweedle dum and tweedle dee.

Second: The new voter who refuses to cast a ballot is shirking the responsibility which he claimed he deserved. To refuse to vote or to vote casually is to solicit the disgust of those who demanded the 18 year old vote. It is also to invite the smuggest "I told you so" in history from the cynics and the sceptics.

Third: The college student cannot choose to remain unaffected by the direction of national leadership. If the President of the United States chooses to tolerate unemployment and underemployment, for example, the Ph.D. of today will continue to be the cab driver of tomorrow, and students with B.S.'s and B.A.'s will continue to pour into secretarial pools and factories.

Fourth: The establishment listens to numbers. History will record that the young rose up from the college campuses in search of a leader to end a war they judged immoral. History should record that the young also managed to sensitize the nation to the need for ecological balance, population control, equal rights for minorities. By refusing to vote, the student invites inattention and guarantees that the interests of the young will not be served.

The message is clear. An important choice must be made. Those who use the ballot November 7 will participate in making it. Those who boycott the ballot box will succeed only in ripping themselves off.

The message is simple. Vote.

Don't disenfranchise yourself in the critical Presidential election. Vote at the polls November 7. If you are registered away from campus, write for an absentee ballot. The federal deadline is October 31. If you don't know how to reach your board of elections, call your local McGovern, Nixon, or other campaign headquarters.

The Missouri Miner

The MISSOURI MINER is the official publication of the students of the University of Rolla. It is published at Rolla, Missouri every week during the school year. Entered as second class matter February 8, 1945, at the Post Office at Rolla, Mo., under the Act of March 3, 1879. The subscriptions are \$1.50 per semester. This MISSOURI MINER features activities of the students and faculty of UMR.

Rick Remley
Buddy Bruns
Steve Wunning
Jerry Davis
Dean LaBoube
Mike Chiles
Dave Hardin
Bill Horsford

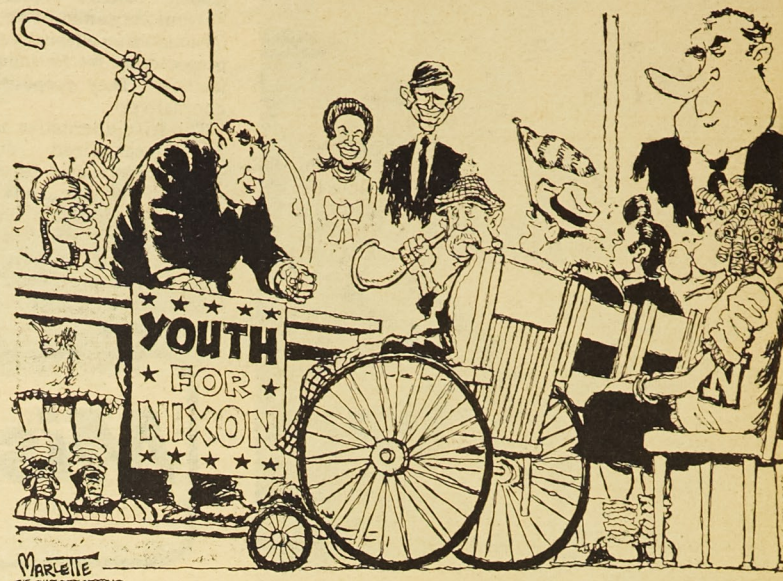
-Editor
-Business Manager
-Advertising Director
-Graphics Editor
-News Editor
-Features Editor
-Photo Editor
-Sports Editor

Welcome Ol' Winter

Stocking Caps ————— \$1.25 up

KENMARK

904 Pine



"WE'LL CANVASS THE MALT SHOPS, THE SOCK HOPS — MARK MY WORDS, RICHARD NIXON WILL HAVE THE 18-YEAR-OLD VOTE!"

Our Man Hoppe

Fit To Be President

Once upon a time there was a little boy named Burton Blatant. Like many little boys, he dreamed of running for President when he grew up.

"Do you think I can run for President when I grow up?" he asked his Sainted Mother.

"Certainly, dear," she replied. "But first, of course, you must prove you are fit to run for President."

"Then, first," said young Blatant thoughtfully, "I will become a rich and successful businessman. If I can run a rich and successful business, that will prove I am fit to run for President."

So he went to college and took courses like Double Entry Expense Accounting, Hand Shaking 31-A, and How to Eat a Four-Hour Lunch. And when he had graduated, he opened a firm called Blatant Products, which sold left-handed widgets to right-handed Eskimoes.

At first, Blatant Products was a tremendous success. This was due to young Blatant's amazing ability to make promises. He made some of the most wonderful promises anyone had ever heard.

"I promise you faithfully," he would faithfully promise a customer, "that if you buy 16 gross of our widgets, you will win the Irish Sweepstakes, the 1500 meter drag race in the Winter Olympics, and the hand

of Sophia Loren, along with all that goes with it."

Well, who could resist promises like that? So customers bought Blatant's widgets by the barrelsfull. Unfortunately, the wonderful promises didn't come true. And when they didn't, Blatant blamed his suppliers, the neap tides, the low price of frog's legs and the second Cleveland Administration.

But soon, nobody listened. For naturally, if you don't keep your promises in business, you go belly up. And Blatant did.

Next, he decided to become an accountant. "If I can handle vast sums of money," he said, "I will prove I am fit to run for President."

At first, he was a tremendous success. For he had an amazing ability to make his clients happy. Of course, to make them happy, he had to prevaricate a little. Like telling them they were making money hand over fist. When actually they were losing it donkey over teakettle. And naturally, the roof fell in On Blatant.

Then he decided to become a doctor. "If I can heal the ills of man," he said, "I will prove I am fit to run for President."

At first, he was a tremendous success. He made wondrous promises of cures, lied to patients about their condition, prescribed good-tasting, worthless medicine, took a kickback from the druggist and eventually left his address book in the left pancreas of a lady on the operating table.

After blaming everybody else in sight, Blatant announced that he wouldn't "dignify the charges with an answer." So, naturally, he lost his medical license.

Job followed job. He lost them all because he couldn't stop making promises he couldn't possibly keep, telling lies to make people happy, and ducking responsibility for his mistakes. So he told his Sainted Mother he was going to run for President.

"Do you really think, dear," she said, "you've proved you're fit to run for President?"

No, I've proved," said Blatant glumly, that I'm not fit for anything else.

Moral: To be a good American, do as your leaders say. But never, for heaven's sake, do as they do.

STEAK-N-BURGER CORRAL

ROLLA'S LOW COST
STEAK HOUSE

CHARBROILED STEAKS

CHILDREN DINNER \$1.68

24 FLAVORS ICE CREAM
SEAFOODS - CHICKEN - BURGERS - CIDER

Carry Out Orders In Insulated Containers

212 Hwy. 63 So.

364-6979

DOWNTOWN AUTO SALES

Call 364-8300 and
ask for

Ron OR Howard
Strawhun Riden

CLEAN USED CARS

Dear John...

Dear John,

I've been ripped off by the snack line in the Student Union. Last Wednesday I asked for three scoops of ice cream and as an afterthought I asked for a squirt of chocolate syrup on top, figuring it couldn't be any more than a quarter with 7 cents a scoop for the ice cream and 3 or 4 cents for chocolate.

Well, the lady at the cash register had a fit. She told the other lady that the rules didn't cover giving me three scoops of ice cream; not if I was going to get chocolate syrup on them. She ended up charging me 25 cents for a 2 scoop sundae plus 7 cents for the "extra" scoop plus tax.

What I'd like to see is redefinition of the standards for ice cream sundaes. At 25 cents a piece they should have three and not 2 scoops on their sundaes which would still leave 4 cents for chocolate. Last year you could get three scoops and free chocolate for 15 cents. So like a good engineer I figured out that we are paying 120 per cent more for ice cream and chocolate syrup this year.

Joe Sundae Miner

Dear Joe,

First of all I want you to know that I have had the same problem with saleswomen. But you've got to remember that all she does is follow the stupid rules that our new efficiency expert set up. You're right in

saying that the standards for what constitutes a sundae and what doesn't should be changed. What about it Student Union?

Dear John,

I'm worried about the large amount of hogwash one is expected to believe while one spends his time here at UMR. I've noticed this is especially true in Math classes 8 through 22. What I'm really griping about is delta's and epsilon's. Now these are fine for the names of Greek societies but no one is going to convince me that they are important in solving differential equations.

Tired of Hogwash

Dear Tired:

Don't you really realize the importance of swallowing all this BS that is passed out for your edification and appreciation. The importance lies in the fact that sooner or later you will have to swallow more of the same crap and if you haven't learned the first set of crap then you'll fall behind in crap learning. Then where will you be, huh?

Dear John,

I went to a debate a couple nights ago that concerned a couple of History profs debating about why we should vote for Nixon's administration or

McGovern's would-be administration. Let me tell you it was probably the most boring debate I've ever been to. I mean they didn't even argue, they just talked. What this school needs is a little less facts and a little more Bullshit.

Will Durant

Dear Will:

Sorry about that; sunshine, but that's the way this draggy school operates: out of pure boredom!

Loving John

Dear John,

I've had a lot of complaints about the trash you've been putting in my feature pages and I'm afraid that you have succeeded in reducing the entire moral level of these pages. Suggest you quit putting in those phony letters and go dig up some real letters for next.

THE BOSS

P.S. You can be replaced.

Dear Boss:

Get off my back you overated, underqualified dumbs—. The editor told me that if I really told you what I thought of you that I would probably be put in jail for defamation of character.

Readers: rally to my cause. Send me your gripes, your bitchies, your stale cookies and left-over beer and I'll promise you a quick reply.

EGG-Sucking John

The Only Guy In The Girl's Dorm

Have you ever wondered what it's like to be the residence hall supervisor in a girl's dormitory? It would appear that Bob Dollar's job is a very enviable one. After all, he's the only male in a dorm housing sixty-eight females. In a discussion with Bob we found that the job isn't what many think it is.



Bob and Karen Dollar

Bob, and his wife Karen, are from Hopkinsville, Kentucky. Music has always been one of Bob's special talents. He played in a rock group for six years. He and Karen still perform with a folk group. Bob received two music scholarships his senior year in high school. He attended the University of Kentucky on a two-year Citizenship and Scholarship Merit Award. While at the University of Kentucky he was the president of the Circle K.

Asked why he transferred to UMR he replied, "I like the small school atmosphere and unity here and the percentage of UMR Chemical Engineering graduates obtaining jobs is very high."

It seems his position at McAnerney Hall is often misunderstood. Contrary to some beliefs, he has no special privileges, such as walking through the halls. Besides, why would he want to 'haunt' the halls' when the prettiest girl in

the dorm is his wife? Bob mainly handles the disciplinary problems that arise at WRHA.

The girls have asked him to be their intramural coach. They obviously made a wise choice because under his supervision and guidance they won first place positions in swimming and volleyball.

Bob and Karen aren't really house parents, though the girls call them Dad and Mom. Instead they're friends to the girls. Being part of the same generation, they are able to understand most of the girls' problems. According to Bob "the door is always open to any girl that wants to talk to us".

The 'open-door' policy has been taken advantage of several times in the form of practical jokes. One night the Dollars found forty-four large balloons occupying their shower. Another time they found the entire apartment completely covered with thread. Bob and Karen don't really mind because they know it's all in fun.

Bob and his wife have made WRHA into one big family. Everyone is treated as an equal by them. Bob doesn't find it necessary to stress his authority. When discipline is necessary, which isn't often, it is administered but otherwise Bob's just another student.

Aside from his job and studies, Bob has found time to participate in men's intramurals. He is a member of AICHE and is pledging for Alpha Chi Sigma honorary fraternity. He will graduate in December, 1973 and hopes to go on to obtain his masters in Chemical Engineering. So 'Dad' will probably be with WRHA for a few more years.

Pot May Offer Cold Relief

OTTAWA (CPS) — Cold and flu sufferers might find some relief in marijuana and hashish according to a government report on canibis.

The five-member Canadian commission of inquiry into the non-medical use of drugs was introduced last week in Parliament by Health Minister John Munro.

Canabis, the name for the Plant from which marijuana and hashish are derived "has often been employed, and is currently used in North America, to reduce the symptoms and suffering caused by the flu and the common cold," the report said. It added that this phenomenon probably arises from the drug's reported ability to improve mood, reduce pain and lower fever.

The report said cannabis was used by doctors in the past to reduce anxiety, elevate moods, stimulate appetites, treat convulsions, reduce blood pressure, reduce pain, reduce insomnia, and as an anesthesia and diuretic. It also has been used for coughs, tetanus, burns, earache, migraines, corns, warts, hemorrhoids, to ease narcotic and alcohol withdrawal, and as an aid in birth

and mental treatment.

Pharmaceutical companies used to make more than 20 preparations containing cannabis, but production was discontinued in the early 1940's and 1950's, the report said.

However, "Many of the

alleged therapeutic properties of cannatinoids have not been thoroughly studied in a modern scientific and clinical context and their general medical potential still remain a matter of conjecture," the report added.

SAVE UP TO 50%—

Better than SAE discount

Auto Parts & Acc. Speed Equip.
HOOK AUTO SUPPLY

513 Hiway 63S

Rolla, Mo.

364-5252

PIZZA

ALEX PIZZA PALACE

17 STEAMING VARIETIES
SANDWICHES AND BEER

Hours (Open Daily)

From 4 p.m. To 2 a.m.

Seven Days A Week

DIAL 364-2669

FOR TAKEOUTS &
DELIVERY SERVICE

ESTEY JEWELRY

The Finest In Diamonds

And Jewelry

U.M.R. Class Rings

715 Pine St. 364-2142 Rolla, Mo.

AMERICAN EDUCATIONAL
RESEARCH CONSULTANTS
AREA DIRECTORS WANTED
2430 PENNSYLVANIA AVE.
NW WASHINGTON, D.C. 20037

Mon-Fri (202) Sat

9:30 - 5:30 781-4511 10-2

New & Used Discount

Paperbacks

Including

Complete Educational

Research Materials

AMERICAN

EDUCATIONAL

RESEARCH

CONSULTANTS

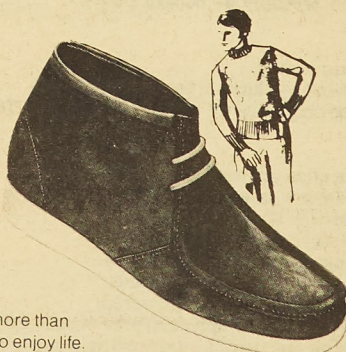
A
E
R
C

A
E
R
C

tie one on

In Jeanials...the jeans shoe

by Thom McAn



There's more than one way to enjoy life.

Take Thom McAn's new

Jeanials, for instance—shoes just for the fun of it. Jeanials are light on your feet and all done up in the latest lace-up styles, shapes and colors. And like the jeans you wear them with, they're rugged and funky and incredibly comfortable.

And just one more thing: when you tie one on with Thom McAn, you won't regret it in the morning. The only thing about Jeanials that might make you a little lightheaded is the price...

Only \$15⁹⁹

FAMILY SHOE STORE

701 Pine St.

Sensored

By ANDERSON and ELVEN

Shotgun ... With the semester more than half over, what could be more appropriate than a short quiz over some of the more important events during the past two months. So this is our midterm; work it in good health. This test is open book, open note, and open mind.

MULTIPLE CHOICE

- Who did the Homecoming concert?
 - Michael Jackson
 - B. J. Thomas
 - The Partridge Family
 - Anderson and Elven
 - None of the above
- Who do you wish did the Homecoming concert?
 - Michael Jackson
 - B. J. Thomas
 - The Partridge Family
 - Anderson and Elven
 - All of the above
- Two months ago, the quadrangle resembled
 - Dante's Inferno
 - Armageddon
 - The Everglades
 - A B+G job well done
- Upon completion, the quadrangle will resemble
 - The I-44 I-255 interchange
 - A Fischer-Spassky chessboard
 - Street map of Rolla
 - A network of very expensive cement
- The Student Center is not completed because
 - It changed into a university center
 - It will never be complete without a touch from KK
 - The windows are free art forms
 - It has to be fashionably late
- Life insurance in Waynesville recently went up due to
 - old men and young women
 - the boom in the bullet business
 - complications in the Military-Industrial Complex relationship
 - too many people wanted to be in the ballgame
- Pro draft numbers for UMR football players will
 - equal the reciprocal of their total scoring
 - equal their total game attendance
 - be too high for a Wang calculator
 - be randomly selected from a large metal drum
 - encourage them to become draft-dodgers
- Parking on the UMR campus
 - resembles the I-44 I-255 interchange
 - is the philosophical definition of nothingness
 - is the name of a new 3-hour course at the graduate level
 - or, "How to Succeed in Getting Tickets Without Really Trying"
 - is not half as much fun as at Lion's Club Park

TRUE-FALSE

The following questions are either true or false. Indicate which ones are neither.

- UMR has the newest computer science building in the state.
- UMC will have the only computer in the state.
- Computer cards will fit into a telephone.

ANSWERS

Multiple Choice

- You were too drunk to remember, right?
- You don't think anyone really cares do you?
- Does the mud caked on your shoes give you a clue?
- On second thought, Dante's Inferno might not be such a bad choice.
- That's the way the Kookie Krumbles.
- All of the above, but check your local agent for details.
- If at all, will probably be nonexistent.
- Get a horse.

True-False

- Also the most empty.
- Who knows what evil lurks in the hearts of UMC?
- That's not the only thing we'd like to shove up a UTS telephone.

SCORING

For each question answered, score as follows:

- An a answer is worth 10 points
- A b answer is worth 15 points
- A c answer is worth 20 points
- A d answer is worth -11.3 points
- An e answer is worth -23 points

For each true-false question answered:

- A true answer, multiply total previous score by -165.
- A false answer, divide total previous score by 73.
- A neither, subtract 358 from total score.

With a score of over 55 points you can see the assistant to the registrar for credit in a ¼ hour course. For each question you failed to answer, give yourself a pat on the back.

George, who was formerly at the Uptown, is now at GEORGE'S BARBER SALON

Phone 364-7270

COMPLETE BARBER SERVICE

+HAIR STYLING	+FREE HAIR ANALYSIS
+HAIR PIECES	+HAIR STRAIGHTENING
+RAZOR CUTS	+BLENDING SHEAR & REGULAR CUTS
+SCULPTUR CUTS	

213 W. 8th St., Rolla, Missouri 65401

Freshman Advisory Program

On May 22, last spring several people from many parts of the university met together to set up some more adequate form of helping and guiding Freshmen. This meeting was the beginning of the new Freshman Advisory Program.

Basically the Freshman Advising Program is set up with the idea that many freshmen need more than just the usual advice to make it through the first semester.

There now exists a program made up of two subprograms: better orientation and a better follow up program during the first two semesters.

Freshmen are encouraged early in the semester to set a desired level of GPA and then they are given hints and tips on how to go about obtaining this desired GPA. The hints are tips consist of information about how to study on the college level and how to budget one's time.

Secondly, there is also what has been named "the early warning system. This system gives the professors, instructors and Primary Freshmen Advisors a formatted way of keeping up with how well the Freshmen in their group are doing.

All instructors of Freshmen level courses send an information sheet about the students' progress in the course to his Primary Advisor. His advisor can then get in touch with the student (or the student gets in touch with the advisor). Then they can work together on what needs to be done to fulfill the student's goals.

Every department on campus is behind the new program and has a Primary Freshman Advisor to help the Freshman. The whole program is aimed at strengthening each department's advising program and not superceding it.

The Primary Advisor is the main link between the student and his department. Each Primary Advisor has taken a short course in how best to advise the Freshmen who are planning their academic futures.

The counseling department is involved as coordinator of the efforts of all departments to make the program a success. However, the success of each department's advising program is dependent upon that particular department.

If you don't know or don't have an advisor go to your department and see your Primary Advisor or go to the counseling center.

There are the names of the Freshmen Advisors and their departments:

ARTS & SCIENCE

Chemistry-Dr. J. Stoffer
Computer Science-Dr. A. Garver

Economics-Dr. D. Ethridge
Geology-Dr. T. Beveridge
History-Dr. L. Williams
Humanities-Mrs. G. Schwab
Mathematics-Prof. August Garver

Physics-Dr. C. McFarland
Psychology-Dr. R. Enzie

ENGINEERING

Chemical Engr.-Cr. H. Grice
Civil Engr.-Prof. J. Bayless
Electrical Engr.-Prof. C.J. Grimm

Engineering Mechanics-Dr. M. Parry

Engineering Management-Dr. H. Wiebe
Mechanical Engr.-Prof. C. Remington

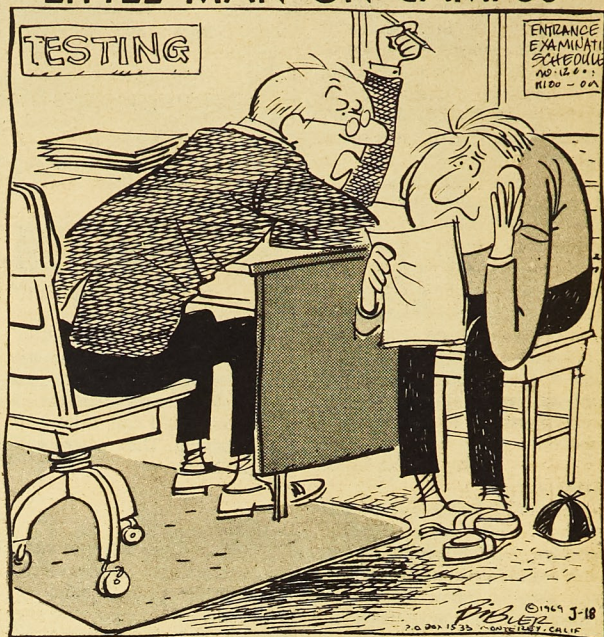
MINES & METALLURGY

Ceramic Engr.-Dr. G. Lewis
Geological Engr.-Dr. J. Rockaway

Metallurgical Engr.-Dr. F. Kisslinger
Mining Engr.-Dr. E.M. Spokes

Nuclear Engr.-Dr. N. Tsoulfonidis
Petroleum Engr.-Dr. T. Wilson

LITTLE MAN ON CAMPUS



"TRY TO THINK OF IT THIS WAY, DAWSON—IT TOOK MILLIONS OF HOURS OF STUDY AND RESEARCH IN COMBINATION WITH HIGHER EDUCATION'S MOST BRILLIANT MINDS TO DESIGN A TEST THAT WOULD KEEP YOU OUT OF THIS INSTITUTION."

Christopher Jewelers

805 Pine Street

★ ★ ★

Catering To UMR

The Complete Service Jeweler

Frederic's Colonial Village

TAVERN
NOW OPEN
10 A.M. to 1 A.M.

Frosted Mugs
Coldest Beer In Town
Sandwiches

Steak Shrimp Chicken

Served Upstairs
at

Frederic's Restaurant

364-1503
Hwy. 63 & Cedar

Rolla, Mo.

CHAMPION TERMPAPERS

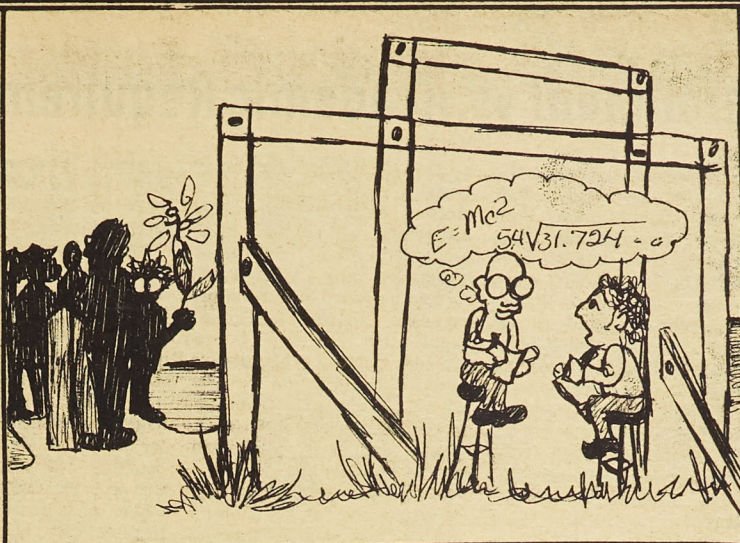
636 Beacon St. (No. 605)
Boston, Mass. 02215
617-536-9700

Research material for
Term Papers, Reports, Theses, etc.

For information
please write or call



Ladies and gentlemen, we are here today for the dedication of this fine, new building...



Sure wish there was a computer to work out these problems.

Bethlehem Steel

Campus Interviews

November 14 & 15



Steel is the backbone of American business and industry, and Bethlehem is our country's second-largest steel producer. And, when it comes to progressiveness, we're second to none.

If you're thinking *career*, think seriously about the Bethlehem Steel Loop Course. Ask your placement officer about it; see our specification sheet; pick up a copy of our booklet, "Bethlehem Steel's Loop Course," at the placement office. Most important of all, sign up for a campus interview.

Here's how you might fit in at Bethlehem Steel:

Engineering and Technical Degrees

Steel Plant Operations
Fabricated Steel Construction
Mining
Sales
Research
Shipbuilding

Business and Arts Degrees

Sales
Accounting

The Bethlehem Steel Loop Course—since 1922, our program for recruiting, orienting, and training college graduates for careers in management. Talk over your career prospects with our campus representative.



An equal opportunity employer

Note From The Chancellor

Enrollment vs. Academic Requirements

The trend today across the nation is for enrollment to drop in institutions with high academic requirements. This decreasing trend has affected engineering and science more adversely than other fields. This downward trend is unfortunate because this country has been built largely upon the productivity of people who have faced and met demanding tasks. Engineers and scientists have made profound contributions to the advancement of out singularity among nations.

Any student from high school or from community colleges who is average or above academically should not be afraid to enter UMR in engineering, the liberal arts or science. We point out to students considering engineering that a 4-year engineering or science degree is

a good foundation for many types of careers. In reality, a student entering engineering and science will not have to be concerned about his career preference until 4 years later. As a springboard for diversified career opportunities, engineering and science are probably the best programs for a student to pursue for 4 years. We all acknowledge that a 4-year engineering degree or science degree is demanding but the rewards are great.

The liberal arts in an environment such as UMR offers provide and unique training opportunity for the student. There are few institutions in the country in which liberal arts majors have the opportunity for such wide exposure to engineering and science. This is indeed an opportunity which will enable these liberal arts students not only to gain a rich

academic program but give them special insight to help guide the direction of science and engineering in the future.

UMR has every opportunity to achieve a very significant enrollment increase if students would take advantage of the special opportunities presented by the campus and also recognize the foundation for diversified careers which degrees from here will provide for the future. We feel that this potential will be realized and that our enrollment will soon begin to increase at a comfortable rate but not to the extent that we will become a large general university.

NOTICE

The UMR Theatre Guild is presenting in connection with the Rolla Theater Arts Players a night of one acts on Nov. 17 and 18.

College Editors Choose McGovern Questionnaire Results Revealed

More than six out of ten college editors chose Senator McGovern as their personal choice for President, but eight out of ten believe President Nixon will be re-elected.

This is a principal finding of a survey, made during the week of September 11, by Newsweek and the Associated Collegiate Press. Questionnaires were mailed to more than 800 college newspaper editors. More than 300 questionnaires were returned and the findings are based on this sample. The results were prepared by Beta Research, Inc., under the supervision of Newsweek.

In response to a question on whether the student editors planned to work actively for the candidate of their choice, 58.9 per cent said no. Despite the fact that six out of ten of the editors chose McGovern as their candidate, only 49.5 per cent of them believed that the majority of the student body of their campuses would vote for McGovern; 47 per cent said the majority of the student body would vote for Nixon; 2.4 per cent said it was a toss-up; and 1

per cent made no response.

On President Nixon's credibility, 46 per cent said that he is occasionally, usually or generally believable, whereas 76.6 per cent of the editors feel that George McGovern is generally, usually or occasionally believable.

The college editors chose as the top three domestic issues in the campaign, in this order: inflation and the economy, expenditures for defense, and tax reforms. The three most critical international issues in determining the election were, in this order: the war in Indochina, the Israeli-Arab conflict, and relations with China. Inflation and the economy, and the war in Indochina were the two most overriding issues.

On a scale of one to six, the following were ranked in order of importance in "swinging" the upcoming election: 1. labor, 2. big business, 3. youth, 4. Blacks, 5. ethnic groups, 6. women.

If only today's youth (college and non-college) voted the editors gave their opinions on

whether a Black, a woman or a member of any other minority could be elected. Nearly 45 per cent of the student editors said a Black could be elected President. Julian Bond was named most often as the candidate-elect. Only 36.9 said a member of any other minority could win and Cesar Chavez was the choice most frequently named. But 50.2 per cent said a woman could be elected and Shirley Chisholm was named more often than any other women.

Seventy-six per cent thought that there would be no truce called on the war in Vietnam before the election.

They predicted that an average total of 57.6 per cent of the student population on their campuses would vote.

And finally, they described themselves as "liberal Democrats" (25.4 per cent) more often than any other political description and their campuses' political position as "independent leaning toward Democrat" (22.6 per cent).

Police Patter

Lieutenant James P. Owens

UMR Police Department

On November 1, 1970, Mr. Frank C. Holloman was appointed as Coordinator of Security for the University of Missouri. In this role, his responsibilities include the coordination of security activities at the four campuses in the University system. His experience in the criminal justice system includes the practice of law in Columbus and Laurel, Mississippi, duty with the FBI for 25 years as Special Agent and Inspector and service as Director of Fire and Police for the city of Memphis, Tennessee.

The creation of this University-wide post and the appointment of Mr. Holloman to the position indicates a recognition, on the part of the University administration, of the importance of providing adequate police service to the campus citizen. The action also highlights an awareness that, to be truly effective, a University police force must be composed of educated, trained and dedicated professionals.

Shortly after taking his post, Mr. Holloman moved to professionalize the University Police. The first steps were an upgrading of educational requirements for beginning patrolmen from high school diploma to two years of college, the establishment of a 280 hour University Police Academy, which all officers are required to attend, and an increased emphasis on continued in-service training for officers at all campuses in the system.

With these actions, the University of Missouri has demonstrated its understanding that institutions of higher learning act, in our society, as leaders of change. American universities are and always have been the country's reservoir of logic, reason and critical evaluation. As such,

they have a large part in, and bear great responsibility for, bringing about positive change in society.

One of the most serious problems faced by our society is the increase in crime and violence which poses a direct threat to every family, every citizen. This problem, once considered strictly urban, has spread rapidly to smaller rural communities. This is borne out by the fact that, while the index of crimes known to the police nationwide increased 4.7 per cent from 1970 to 1971, the increase in crime in towns under 25,000 was almost 10 per cent. National concern with the problem of rising crime rates is reflected in the Law Enforcement Assistance Act and other legislation and action targeted to the crime problem.

The professionalization of the University Police Department undertaken by the University of Missouri should serve as a beacon not only to other universities but to American towns and cities. Mr. Frank Holloman in a recent address pointed this up when he said "The University of Missouri will be in the forefront to achieve this goal of police professionalism. The University intends to do this through its campus police departments, staffed with educated, highly trained, efficient, dedicated, and sophisticated police officers. The University of Missouri has set about on a goal of establishing a model professional law enforcement organization which will serve as a vital part of the educational experience of the youth of today, so that they, as future citizens of tomorrow, will support and assist in the establishment of a respected law enforcement profession in the towns and cities of America."

NOTICE
PREREGISTRATION
DETAILS

Preregistration for currently enrolled students who will be returning for the 1973 spring semester will begin November 6 and end November 10. Students should obtain their preregistration materials and schedule of classes from the Registrar's Office starting November 1. Detailed information regarding preregistration will be found in the front section of the spring schedule of classes. Students who preregister for the spring semester will be given an opportunity to pay fees by mail during the first two weeks in December.

Delicious Mexican Food

LA POSADA

Dining Room - Orders to go Open Daily 11 a.m.
Hwy. 63 So. Rolla, Mo. 364-1971 Closed Monday



Rolla Volkswagen



Old Hiway 66 East

At Northwye

364-5178

"Always A Fine Selection
Of New & Used Cars"

Merideth Motors

St. Roberts, Mo.
336-3416

THIS WEEK'S
SPECIALS

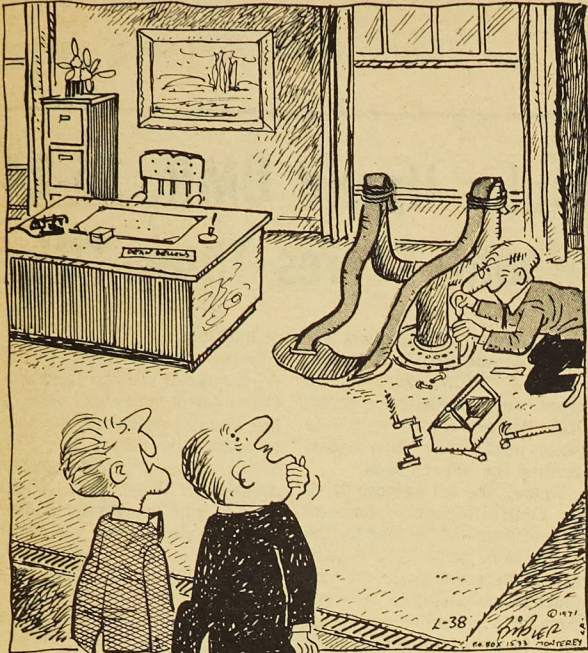
Busch 12 oz. cans.....	\$1.09
Budweiser Malt 12 oz. cans....	\$1.26
Miller Malt 12 oz. cans.....	\$1.31
Schlitz Malt 8 oz. cans.....	\$.88
Hamm's Quarts.....	\$.44
Malt Duck Quarts.....	\$.44

GET'EM WHILE THEY LAST AT

509

116 W. 8th Street

LITTLE MAN ON CAMPUS



"WE FINALLY GOT A DEAN OF STUDENTS WHO WON'T PUT UP WITH ANY OF THIS 'DISSIDENT STUDENT' NONSENSE."

Sig Ep Celebrates Silver Anniversary

Twenty-Five years of tradition and history surrounded the Homecoming festivities of the Missouri Gamma Chapter of Sigma Phi Epsilon as it celebrated its Silver Anniversary. Sig Ep was founded at UMR on May 10, 1947 as the 95th chapter of Sigma Phi Epsilon. This national fraternity has over 200 chapters with over 100,000 initiates. The celebration got off to a booming start with the active members defeating the house's 50th Pledge Class in the annual Active-Pledge Football game on Friday afternoon. Friday night, the band 'Faustus' played to an ever increasing crowd of Alumni and dates as Sig Eps poured in from States as far away as Connecticut, California, Louisiana, and Minnesota. More than 50 of over 400 Alumni made it to this weekend's festivities.

Saturday night began with a reception and a champagne fountain, after which a banquet was held at Holiday Inn where

Brother Paul Barker of Kansas Gamma helped with a truly superb banquet. Father Carlo, Rector of Christ Church Episcopal, gave the invocation. Past Presidents Steve Thies (1971) and Ron Eilers (1969) spoke of the bonds of friendship and fellowship that the Brotherhood of the Sacred Heart has left for them. Local Founder Bob Ray recreated the spirit about the early days of Sig Ep at UMR. Chapter Counselor Leroy Thompson tied the chapter's 25 year history together in a moving testimonial. President Gerry Wappelhorst then presented Leroy with a plaque honoring him for being the Chapter's most outstanding Alumni in its first 25 years. The festivities closed with a dance held at the house.

The foundation has been laid and the flame of brotherhood burns brighter than ever as Sig Ep looks eagerly toward a bright future at UMR.

Voting Procedure Clarified

Many Missourians may misunderstand the procedures for straight and split ticket voting, judged by an analysis of ballots from the student straw vote on the Columbia campus, according to David Leuthold, associate professor of political science at the University of Missouri-Columbia. Students voted in a mock election Oct. 11-12, using punch card ballots which were analyzed by computer.

Voters will have the opportunity, as did Columbia students, to vote with one punch mark a straight Democratic ticket, a straight Republican ticket, or a straight nonpartisan ticket. Prof. Leuthold explained. Many students apparently thought they were required to check on the straight tickets and picked the straight nonpartisan because they did not want to vote either the straight Democratic or Republican ticket.

Ordinarily this is a harmless mistake as there is no nonpartisan candidate running for most offices. However two candidates are running for statewide office on the nonpartisan ticket,—Paul Leonard running for governor and Edward Verburg running for lieutenant governor. In addition there are nonpartisan candidates in some congressional districts and probably for some local offices. If the voter does not cast a ballot in one of these races, such as for governor, his nonpartisan straight ticket vote will be counted for the nonpartisan gubernatorial candidate, in this case Paul Leonard.

On campus, 20 per cent of the students voted a straight nonpartisan ticket, compared to 9 per cent who voted a straight Republican ticket and 9 per cent who voted a straight Democratic ticket. However, of those who voted a nonpartisan

straight ticket, about 90 per cent voted for a candidate other than the nonpartisan candidate in the governor's race.

In contrast only about 7 per cent, on the average, of students who voted a straight Republican or straight Democratic ticket cast a specific vote for a candidate other than the candidate of the own party in the governor and lieutenant governor races. These contrasting figures, as well as conversations with students, suggested that many students assumed that they should vote the straight nonpartisan ballot if they wanted to vote a split ticket.

Leuthold noted that one reason for this misunderstanding is the instruction on the punch card booklet which suggests that voters who wish to vote a split ticket should vote for one party, then vote individually for other parties as they wish.

However as many citizens realize, voters may cast a split ticket simply by voting for individual candidates from both parties, without any need to mark a straight party or nonpartisan ticket. Voters should understand, Leuthold emphasized, that if they mark the straight ticket for one of the parties, their vote will be counted for the candidate of that party in every race in which they have not made any other mark.

Noting that the instruction on the punch card booklet is copied from state law, Leuthold speculated that the law may have been worded in that manner in order to provide assistance to local candidates who were relatively unknown, but were the candidates of the majority party in their region.

Another basis for misunderstanding, according to Leuthold, is that voters may not realize that nonpartisan candidates in Missouri are

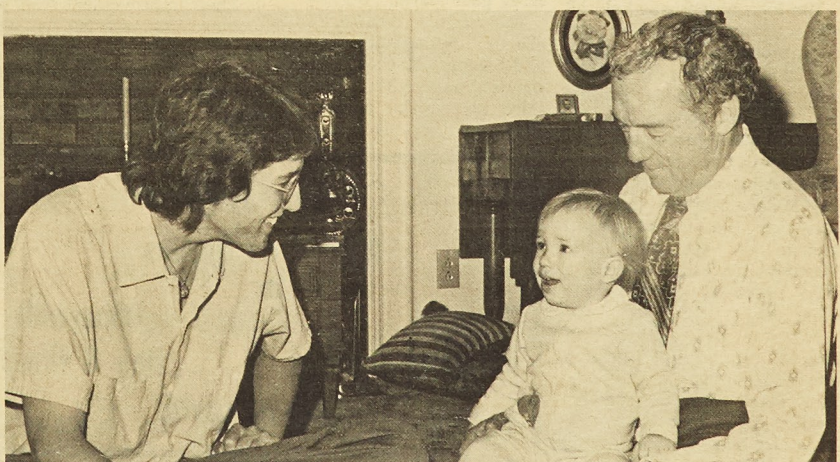
regarded not as independents, but as candidates on a ticket, in essence a third party. Nonpartisan candidates are nominated in a nonpartisan primary conducted on the same day as the Republican and Democratic primaries, and only the winner has his name entered on the general election ballot. In the general election, the nonpartisan ticket is treated the same as partisan tickets, so that each nonpartisan candidate receives credit for all straight nonpartisan ticket votes, unless the voter has specifically voted for another candidate in that race.

Given this combination of circumstances, Prof. Leuthold suggested that voters who wish to split their tickets in the general election do so by leaving the straight party votes blank, and simply voting for the candidates they prefer for each office.

An understanding of voting procedures takes on added importance, Leuthold said, because of the increasing number of persons preferring to vote a split ticket. A state wide survey prior to the 1968 election, conducted by the University's Public Opinion Survey Unit, indicated that about 60 per cent of Missouri's voters intended to split their tickets.

NOTICE

All graduate student representatives are requested and all interested graduate students are invited to attend the next meeting of the Association of Graduate Students on November 6, 1972, at 7 p.m. in Room 104 Physics.



A Concerned Grandfather,
Ready To Deal With The Problems
That Confront Our Youth.

TWITTY

REPRESENTATIVE

Send Him to Jeff City....
Let Him Work For Us There.



Rolla Craft-Hobby

605 PINE STREET
ROLLA, MISSOURI 65401
PHONE 364-5581

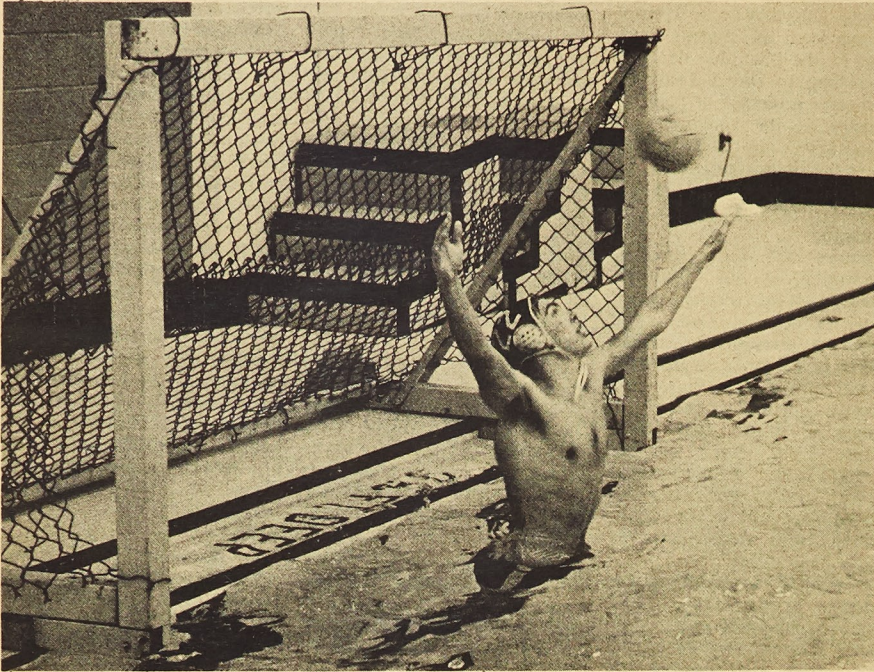
CRAFTS - HOBBIES -
ARTISTS' SUPPLIES

Phone: 364-5503



The
Best
in
Shakes
Burgers
Tacos
French
Fries
Chicken

sports



Larry Molina takes aim in recent water polo action against Westminster. Other players from left to right are: Westminster man, Dave Beem, Bill Kroeger, Jim Entwistle, Westminster man and Tom Kruezt.

Water Polo Team Fourth In All-Missouri Tourney

This past weekend UMR was the site of the Missouri Championships in water polo. The participating teams were Westminster College, Southeast Missouri State University (Cape), Central Missouri State University (Warrensburg), Meramec Community College and UMR.

The tournament was held all day Saturday, with the championship game being played at 5:00. The Miners had high hopes of winning the title or at least playing in the championship game against Cape. Well, Cape played in the championship game alright, but the Miners weren't their opponents. Cape met Westminster for the crown and Westminster came up with a mild upset as they downed Cape, 6-4.

From the Miners point of view everything went wrong. Westminster beat Cape in the first round game as expected. UMR, Cape and Meramec were all given byes. In the second round, UMR met Westminster and Cape took on Meramec. Meramec put up a tremendous fight, but went down to defeat, 9-8, before a powerful Cape team. Then came the first of two disasters. The Miners went against Westminster, a team

that had already played one game earlier in the day. But it was the Miners who didn't have a defense for the first few minutes and they suddenly found themselves behind, 3-0. From then on the play was about even; too even for the Miners, as they lost by that three goal margin, 8-5.

The second disaster came shortly thereafter. Meramec had beaten CMSU 21-5 to earn the right to meet the Miners for third place. The Miners just couldn't put their game

together, and wound up losing, 14-7. So all they could do when five o'clock rolled around was to watch Westminster beat Cape and claim the Missouri Championship.

This ended the first season of water polo at UMR. The team tried hard and played very well. Their improvement from when they first started is almost unbelievable. Now they look forward to the swimming season, they also might be looking to next year's polo meets.

French Studios & Camera Stores

Authorized Dealers
for

Polaroid
Eastman Kodak

Honeywell
Bell & Howell

815 Pine St. Hallmark Cards 364-4579

DIEHL MONTGOMERY FORD SALES Rolla, Missouri

(The Originator of the Student Finance Plan in this Area)

This plan allows the students upon approved credits and job, to buy a new car with nothing down and payments of \$25.00 per month until you are on the job. This plan is not new, Diehl Montgomery Ford has sold over 750 new cars and trucks to graduating students this way. See us for all the details. Also you can use your own insurance or ours.
FORD LINCOLN AND MERCURY
This allows the graduating students to have a new car before he graduates when he really needs it.

Mules Upend UMR, 35-24 Rhone Scores Three TD's

With hopes for their first win of the season the UMR Miners traveled to Warrensburg to meet Central Missouri State. But Walter Rhone and the Mules put an end to their hopes, beating the Miners 35-24.

Rhone, the all-purpose back for Central Missouri, shone on both offense and defense for the Mules as he compiled a 75 yard run from scrimmage for one touchdown, caught a 31 yard pass for a second score, reeled off a 50 yard punt return for a third TD and set up a fourth with a 40 yard pass completion.

The day wasn't completely without bright spots for the Miners. The 286 total yardage amassed by the team was the most for the Miners this season and running back Kenton Hupp had a really fine game for the second consecutive week, as he rushed for 171 yards in 34 carries.

Warrensburg opened their scoring with a 4-yard plunge by Ira Clemons with 16 seconds remaining in the first period. Rhone then made his touchdown reception and his breakaway run to give the Mules a 21-0 lead

at halftime.

In the opening minutes of the third quarter, Rhone fielded a Calvin Curdt punt at the 50-yard line and returned it all the way to make the score 28-0. The Miner offense then put together a 63-yard drive with Hupp scoring from two yards out. The Miner conversion attempt failed.

Dennis Doering made the score 28-12 as he picked off a Mule pass and ran it back 27 yards for a touchdown. Warrensburg then put the game out of reach with a fourth period score by Ron Umphenour.

Hupp wasn't finished however. He picked up his second score with 6:32 remaining in the ball game on a 32-yard run. Rick LaFollette closed the Miner scoring with a sneak from the one-yard line in the final minute of the game.

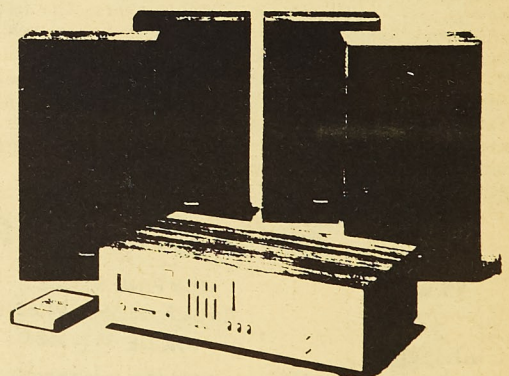
The Miners will get a break in their rugged conference schedule next week as they journey to St. Louis to meet the surprisingly tough Bears of Washington University. The game will be played at Francis Field.

ZENO'S MOTEL STEAK HOUSE

"HOME OF THE FAMOUS 12 OZ. STEAK"

BOX 70
ROLLA, MO.

PHONE: 364-1301
MARTIN SPRING DR.



PANASONIC RE-8420 QUADRAPLEX

Beautifully Designed
4 Channel 8 Track
Cartridge Player Has
Built-in FM/AM

FM Stereo Radio

DEMONSTRATED AT

SCOTT'S

Books & Music
717 Pine

\$279⁹⁵

TERM PAPERS

Send for your descriptive, up-to-date, 128-page, mail order catalog of 2,300 quality term papers. Enclose \$1.00 to cover postage and handling.

WE ALSO WRITE
CUSTOM MADE PAPERS.

Termpaper Arsenal, Inc.
519 GLENROCK AVE., SUITE 203
LOS ANGELES, CALIF. 90024
(213) 477-8474 • 477-5493

"We need a local salesman"

IM Basketball Underway; Kappa Sig, MRHA Win

With the intramural basketball season a week old, some of the leading contenders for championship laurels have begun to emerge. In league one, Kappa Sig looks to be strong, winning two games, one over Liahona, 53-20, and the other over Sig Tau, 64-13. Competition could come from T.J., however, as they also have won two games by lopsided scores.

In league two, Engine Club, and Lambda Chi should be strong although competition could come from Wesley, as they have won two games, surprising Sig Pi 35-33 in one. League three stacks up with TKE and Tech Club as the leading contenders, TKE coming off a 38-18 win over

Theta Xi, and Tech taking a 57-33 decision from the Mates. Delta Tau could be up there as they beat Acacia, 40-34. League four boasts MRHA, Beta Sig, and Phi Kap as its strong teams, with each of the three teams coming out with a win.

In some of the scores of the week, Alpha Phi beat Sig Nu, 41-32, Liahona over Pi Kappa Phi, 29-25, MRHA stomped BSU, 44-15. Kappa Alpha took Triangle 50-15, Beta Sig decisioned Sig Ep, 33-32, and Lambda Chi won over KA, 28-24. TJ beat Pi KA 59-39.

Besides basketball, the only intramural action is in table tennis, with match play in both singles and doubles beginning this week.



Alpha Phi Alpha gets two more in last week's win over Pi Kappa Phi.

Ruggers' Comeback Effort Upsets Mizzou Powerhouse

In a rough match Saturday against the University of Missouri at Columbia, the UMR ruggers came out on top, 15-10. The game featured close hard hitting action, as the lead changed hands 4 times.

Both teams started off slowly as it was a cold damp morning and the game was played on a slippery field. The first score came just six minutes into the first half when Mizzou went wide and cut back to get a score and 4 points. The conversion was short. This seemed to awaken the Miners, as they dominated the action for the remainder of the half.

UMR came back to score within minutes of the Mizzou try. Charley Weber kicked a penalty kick through from 30 yards out to make the score 4-3. Two other penalty kicks were missed from the 35 and 40 yard lines.

The Rolla Ruggers went ahead with 10 minutes remaining in the first half. Carl Schenke broke loose for 50 yards up the middle off a UMR

controlled line out. As the ball was moving out in the backfield, Schenke gave an outside fake and cut back to see only the MU fullback between him and the goal line. Schenke shed the attempted tackle and outran the pursuit to score. Charley Weber added the conversion to make the score 9-4.

MU became more aggressive in the opening minutes of the second half. The Tigers were playing more of a kicking game in an attempt to get a break on a wet field. The Miners stopped them until a couple of backs got caught in a loss maul after a tackle. MU got the ball out and on a fine effort by their backs worked the ball in for a score and also connected on the conversion for six points and took the lead with a score of 10-9.

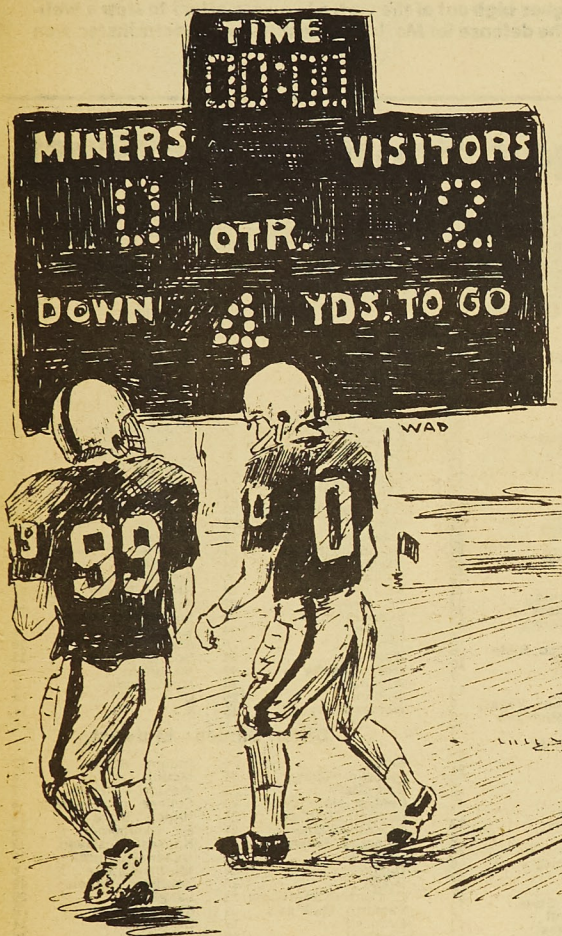
With 15 minutes left in the game UMR moved to a double fullback set. Mizzou again began to pressure the Miners but UMR did not yield a score. Rolla started moving the ball back up the field on the ex-

change of punts.

An offside penalty gave UMR a kick from the 50 yard line. The Miners decided to try and force a score. They punted high to the waiting Tigers. UMR had good coverage on the kick, and contained the ball within the area. A punt was blocked and the ball was forced back into MU's endzone. Jeff Mayfield fell on the ball for 4 points. Charley Weber then converted for 2 points and Rolla was ahead to stay 15-10.

The game was a very physical one as MU had several men shaken up and UMR had one man down from hard hits. UMR thus continued its reputation as a hard-hitting physical club.

In the second team game the Miners were overwhelmed by MU 26-0. The Miners had a lot of new players in the game as 5 of them had never played in a game before. The young players improved quickly though, as UMR allowed 19 points in the first half and only 7 in the second.



AND I THOUGHT WE HAD A CHANCE WHEN
THE OTHER TEAM DIDN'T SHOW UP.

**NOW OPEN
RUSS'S OTHER PLACE**

TOPS



AND BOTTOMS

PLUS OTHER GEAR at
RUSS'S OTHER PLACE
713 PINE

**A Record
You Know**

**A Name
You Trust!**

Re-Elect

James C.

KIRKPATRICK

DEMOCRAT

Secretary of State



Missouri College Students for Kirkpatrick
(a Bi-Partisan Committee)

Jay Johnson, UMC, Chairman; Sara Fidler, Stephens College, Treasurer

Wash U. Bears Next Miner Foe

This Saturday the UMR football team will be in St. Louis to take on the Washington University Bears. Game time will be 1:30 on Francis Field.

This game will add to the already long rivalry between the two schools. Truly one of football's oldest rivalries, the Miners and Bears have been going at it since 1898, with Washington University leading in the series, 36-10-1.

Don McCright is the Bears head coach, following such noted coaches as Jimmy Conzelman and Weeb Ewbank. Coach McCright joined the Bears staff under Dave Pudington in 1966 and was named head coach when last year's coach, Dick Martin resigned. He is the man directly responsible for the Bears' remarkable success in recruiting in recent years.

The Bears were plagued by injuries last year, and this made a 4-5 season seem longer than it really was. But if they can stay free of injuries this year, they will finally see what their most talented group of athletes in recent years can put together.

The team's best athlete is junior Stu Watkins, 5'11" 185, a wide receiver. Stu was the big man on last year's team, getting selected for the All-College Athletic Conference team, and in addition being named Honorable Mention on the Little All-American team. Stu set or tied four school records during the course of the year and figures to play an even more important role this season as the Battling Bears expand their wishbone-T into an even more sophisticated multiple offense.

Senior Jeff Daube is the offensive leader at the quarterback position. Daube is considered by the UMR coaching staff to be the best quarterback the Miners will face all season. He keys the wishbone and is such a fine passer that their passing game

is their strong point.

The Bear running game is also strong. Stan Gardner is their big name running back, being an All-Conference selection. But he is very ably backed up by Marvin Crider and Tim Robinson. The offensive line is a bit small in a couple positions, but seems more than adequate overall. It is hoped that the talented backfield will learn to play together soon enough so they can take full advantage of their speed.

The Bears play a pro-type defense, that makes up for its slight lack of size with quickness. The defensive secondary's development was the big surprise of last year's campaign. This was mainly due to the efforts of sophomore Marion Stallings and junior Ted Poelker. The pass-coverage crew totaled 17 interceptions last year and are back intact this year. If one area of the team had to be picked as the best, it would have to be the defensive secondary.

Opponents can always avoid the secondary by running the ball, but then they face a defensive line anchored by 6'7" 280 pound Shelby Jordan. Jordan poses an immense figure as either a defensive tackle or a middle linebacker. He was an All-Conference selection and with his surprising lateral movement he is a solid prospect. Last year he lead the team in tackles, even though he spent most of the season as a down lineman. The rest of the defensive line is solid and has good depth, thus posing a big problem for opposing teams' running games.

With a solid defense returning, the key to the WU future will be in the hands of the offense. If the attackers can gain confidence in themselves and avoid injuries, they have the talent to really have a fine season.



Miner goalie Mark Mateer goes high out of the water in a vain effort to stop a well-placed Westminster shot. The defense let Mark down early, and Westminster won the game, 8-5.

The Harmon Football Forecast

1—SOUTHERN CAL
2—NEBRASKA
3—OKLAHOMA
4—ALABAMA
5—MICHIGAN

6—TEXAS
7—L.S.U.
8—U.C.L.A.
9—OHIO STATE
10—IOWA STATE

11—TENNESSEE
12—NOTRE DAME
13—PENN STATE
14—FLORIDA
15—AUBURN

16—TEXAS TECH
17—COLORADO
18—STANFORD
19—GEORGIA TECH
20—MISSOURI

Saturday, Nov. 4—Major Colleges

Air Force	31	Army	6
Alabama	30	Mississippi State	7
Arizona State	45	El Paso	15
Arkansas	21	Texas A & M	15
Arlington	26	Abilene Christian	21
Bowling Green	22	Ohio U	13
Brigham Young	24	Wyoming	20
Cincinnati	25	North Texas	13
Citadel	21	Richmond	20
Colgate	20	Lehigh	16
Cornell	25	Columbia	17
Dartmouth	21	Yale	17
Dayton	17	Xavier	14
Delaware	27	Villanova	7
East Carolina	20	Chattanooga	14
Florida	23	Auburn	20
Fresno State	21	Long Beach	14
Furman	25	V.M.I.	22
Georgia Tech	20	Duke	10
Harvard	23	Pennsylvania	14
Houston	28	Florida State	23
Illinois	24	Northwestern	24
Kent State	28	Marshall	6
Lamar	21	New Mexico State	6
L.S.U.	24	Mississippi	10
Louisville	35	Tulsa	7
Memphis State	49	Wichita	13
Miami, Fla.	22	Nevada (Las Vegas)	10
Miami (Ohio)	22	Western Michigan	16
Michigan	38	Indiana	7
Missouri	17	Kansas State	7
Nebraska	38	Colorado	12
North Carolina	24	Clemson	21
No. Carolina State	26	Virginia	7
Notre Dame	28	Navy	10
Ohio State	28	Minnesota	7
Oklahoma	35	Iowa State	12
Oklahoma State	20	Kansas	8
Oregon	25	California	20
Pacific	42	Los Angeles	13
Penn State	34	Maryland	13
Princeton	21	Brown	13
Purdue	17	Michigan State	15
Rutgers	23	Connecticut	6
San Diego State	26	West Texas	17
San Jose State	22	New Mexico	12
South Carolina	31	Wake Forest	12
Southern Cal	41	Washington State	13
Syracuse	15	Boston College	14
Tampa	45	Florida A & M	6
Tennessee	24	Georgia	14
Texas	28	S.M.U.	21
T.C.U.	22	Baylor	14
Texas Tech	21	Rice	10
Toledo	23	Northern Illinois	21
Tulane	16	Kentucky	14
U.C.L.A.	24	Stanford	17
Utah	27	Arizona	13
Utah State	24	Idaho	0
V.P.I.	20	Southern Mississippi	9
Washington	21	Oregon State	7
West Virginia	20	Pittsburgh	7
William & Mary	36	Davidson	7
Wisconsin	25	Iowa	21

Other Games—South and Southwest

Ark-Monticello	17	Henderson	14
Arkansas State	22	NE Louisiana	20
Arkansas Tech	21	Ouachita	20
East Tennessee	23	Morehead	22
East Texas	30	Sul Ross	0
Elon	22	Newberry	13
Glenville	15	Concord	6
Hampton-Sydney	34	Towson	0
Jacksonville	20	Samford	7
Lenoir-Rhyne	16	Winston-Salem	6
Livingston	30	Nicholls State	7
Maryville	28	Millisaps	0
McNeese	21	NW Louisiana	13
Mississippi College	14	State College Ark.	7
Morgan State	14	Howard	7
Murray	21	Austin Peay	10
Presbyterian	28	Gardner-Webb	6
Randolph-Macon	21	Bridgewater	6
Shepherd	14	Salem	13
SW Texas	23	Howard Payne	14
Tennessee Tech	24	Eastern Kentucky	16
Texas A & I	26	Sam Houston	13
Texas Lutheran	15	Bishop	14
Trinity	35	McMurry	6
Troy	22	U.T.M.B.	10
Washington & Lee	14	Southwestern, Tenn.	6
West Liberty	18	Fairmont	7
Western Kentucky	23	Middle Tennessee	14
Wofford	24	Catawba	7

Other Games—East

Albright	25	Drexel	6
Alfred	24	Kings Point	14
Amherst	27	Tufts	7
**Boston U	21	Northeastern	20
Bridgeport	27	Southern Connecticut	20
C. W. Post	17	Ithaca	13
Central Connecticut	28	American Intern'l	6
Clarion	27	Shippensburg	15
Delaware Valley	20	Susquehanna	14
Edinboro	20	Cortland	17
Georgetown, D.C.	14	Fordham	7
Hobart	21	Colby	14
Johns Hopkins	26	Swarthmore	7
Juniata	14	Western Maryland	13
Lafayette	22	Gettysburg	20
Massachusetts	31	Bucknell	6
Middlebury	24	Norwich	6
Montclair	35	Trenton	0
New Hampshire	24	Rhode Island	22
St. Lawrence	22	Rochester	21
Slippery Rock	33	Lock Haven	7
Upsala	14	Lycoming	6
Vermont	20	Maine	16
Wagner	26	Springfield	13
West Chester	49	Mansfield	0
Widener	38	Muhlenberg	7
Williams	25	Union	14
Worcester Tech	15	R.P.I.	14

Other Games—Midwest

Akron	20	Indiana State	17
Baldwin-Wallace	31	Mount Union	6
Ball State	21	Western Illinois	7
Central Methodist	20	College of Emporia	6
Central Michigan	26	Illinois State	14
Central Oklahoma	24	SE Oklahoma	20
Colorado College	42	Kansas Wesleyan	12
DePauw	21	Indiana Central	13
Doane	56	Martin Luther	0
Drake	26	Southern Illinois	10
E. Central Oklahoma	21	Langston	20
Eastern Michigan	31	St. Norbert	0
Evansville	17	St. Joseph's	14
Findlay	15	Taylor	13
Franklin	35	Georgetown	7
Graceland	14	Missouri Valley	10
Gustavus	21	St. Thomas	14
Hamline	26	Macalester	7
Hanover	14	Anderson	13
Heidelberg	24	Wittenberg	23
Hillsdale	20	Northern Michigan	16
Hope	13	Adrian	9
Kalamazoo	20	Albion	14
Lincoln	20	Central Missouri	10
Midland	24	Hastings	13
Millikin	42	North Central	0
Millwaukee	21	Wayne, Mich.	15
Missouri Southern	42	Missouri Western	6
Muskingum	23	Ohio Wesleyan	21
Nebraska Wesleyan	22	Austin	13
North Dakota U	27	Mankato	7
NE Missouri	21	SW Missouri	7
Northland	18	Bethel, Minn.	14
Northwood	17	Bluffton	6
Ohio Northern	19	Defiance	17
Peru	19	Culver-Stockton	14
SE Missouri	23	NW Missouri	15
SW Oklahoma	10	NW Oklahoma	6
Southwestern, Kan.	13	Bethany, Kan.	12
Washburn	22	Pittsburg	20
Washington, Mo.	21	Rolla	6
William Jewell	38	Baker	0
Wooster	25	Capital	21
Youngstown	35	Central State	6

Other Games—Far West

Central Washington	21	Whitworth	17
Colorado Western	28	Colorado Mines	0
Davis	17	Sacramento	7
Eastern Washington	21	Eastern Oregon	10
Fullerton	14	Riverside	7
Hawaii	24	Grambling	23
Hayward	31	San Francisco State	20
Louisiana Tech	25	Northern Arizona	0
Nevada (Reno)	21	Chico	7
Northern Colorado	20	Eastern New Mexico	10
Oregon College	14	Western Washington	6
Pacific Lutheran	21	Lewis & Clark	7
Puget Sound	28	Simon Fraser	13
Redlands	20	Pomona	0
San Fernando	21	Cal Poly (Pomona)	6
SW Louisiana	28	Santa Clara	7
U.S.I.U.	22	Cal Lutheran	21
Whittier	25	Claremont	15

With the money you save on our clothes you could buy the new Stones album.

Wrangler Jeans 
Mr. Wrangler Sportswear

Remember the "W" is Silent.

Get your money's worth at

Darr's Dept. Store, Rolla
Mohr Value Center, Rolla
Carps, Inc., Rolla