



25 Oct 1972

The Missouri Miner, October 25, 1972

Follow this and additional works at: https://scholarsmine.mst.edu/missouri_miner

These newspapers reflect the attitudes, perspectives, and beliefs of different times. Neither the library nor the university endorses the views expressed in these collections, some of which contain images and language which may be offensive to some readers.

Recommended Citation

"The Missouri Miner, October 25, 1972" (1972). *The Missouri Miner Newspaper*. 2015.
https://scholarsmine.mst.edu/missouri_miner/2015

This Newspaper is brought to you for free and open access by Scholars' Mine. It has been accepted for inclusion in The Missouri Miner Newspaper by an authorized administrator of Scholars' Mine. This work is protected by U. S. Copyright Law. Unauthorized use including reproduction for redistribution requires the permission of the copyright holder. For more information, please contact scholarsmine@mst.edu.



Missouri Miner



University of Missouri - Rolla

VOL. 59, NO. 8

ROLLA, MISSOURI

WEDNESDAY, OCTOBER 25

12 PAGES



Actor Rob Inglis presents his one man show of "The Canterbury Tales" Tuesday at 7:30 p.m. in the SU Ballroom.

Australian Actor Inglis Presents Canterbury Tales

Rob Inglis, the Australian actor who presents his one man show "The Canterbury Tales" (in modern English) in the SU Ballroom on October 31 at 7:30 p.m., is a theatrical all rounder.

As well as thorough training as an actor (Royal Shakespeare Company's "Theatre of Cruelty", National Theatre and Royal Court Companies in London, "Oliver" and other West End shows), Inglis has written numerous plays ("The Hands", on B.B.C. and Canadian TV), "Voyage of the Endeavour", which he wrote and directed for the Commonwealth Festival, London, 1965; "A Rum Do!", a musical about early Australia which he wrote with the composer Robin Wood, and which was given a Royal Command Performance when Queen Elizabeth visited Brisbane in April, 1971. For over two years, Inglis worked as a minstrel in the Gore Elizabethan Rooms, Knightsbridge, where he sang Old English songs, and played the guitar.

His most recent work is "Erf", a one man show which he wrote and performs. A multi-media show, it's about man's domination of nature — "It takes a serious — but humorous — look at the way man has abused his environment".

Inglis was a stage hand for B.B.C. television for eighteen months, then took his first professional engagement as an actor in London, with "Summer of the Seventeenth Doll". Since then his roles have included Dr. Faustus, Falstaff, the Ghost in Hamlet, King of France in Henry V, Butler in Tiny Alice, Tobias in Delicate Balance; he also played the Miller in the musical version of "The Canterbury Tales".

Originally a journalist, Inglis enjoyed reviewing theatre, later became London theatre critic for the Canberra Times. He taught drama for a time in a high school at Bethnal Green, London, getting students to improvise, then to make their own shows. He has worked with Australian aborigines on a drama project. He frequently lectures in universities on theatre (as well as on Chaucer). Inglis has written a musical

"Don and the Rainmakers", which has been frequently performed by children.

The selections to be presented on Tuesday comprise the Prologue, the Wife of Bath's Prologue and her Tale, the Pardoner's, Nun's, Priest's, and Miller's Tales, and a section from the Knight's tale, and a small excerpt from the Monk's Tale, (this last in Middle English).

Geoffrey Chaucer, "the father of English poetry", and the first great story teller of the English language, had a rich sense of humour and a great sympathy with all ranks of people. His education and foreign travel in the service of Edward III and Richard II brought him closer to humanity than most of his contemporaries.

Written between 1386 and 1400, the tales were intended for recitation rather than reading. The varied characters who appear have as contrasting a range of stores — The Wife of Bath, five times married and waiting for a sixth husband; the Miller's Tale, of a young man's crazy plot to make love to the glamorous wife of a doddering old man; the Nun's Priest's Tale, of a fox and a cock who fool each other by flattery.

Mr. Inglis will wear a 14th century costume modelled on Chaucer's own clothing, and for props will use only a table and four chairs.

These will serve in turn as a fowl's perch, a bedroom, horses and most importantly, as the pub in Southwark where the company of 29 pilgrims rest on the way to the shrine of Thomas a Becket at Canterbury.

Here the host has an idea of a way in which to pass the time on pilgrimage — a story telling competition which becomes the Canterbury Tales.

Mr. Inglis is widely known on the British stage, not only for his Canterbury Tales performance, but for his work in the West End. He has played lead roles for the Royal Shakespeare Company, and the National Theatre, the Ghost in Hamlet; Falstaff; the King of France in Henry V. He also played the Beadle in the musical Oliver.

Preregistration Scheduled For Week of November 6-10

During the week of November 6-10, 1972 students returning for the 1973 spring semester are to meet with their advisors to select courses for that semester. All returning students are expected to preregister regardless of their fall mid-semester grades. Students who preregister for the spring semester will be permitted to pay fees by mail between December 1-15.

Complete instructions for preregistration, early registration and regular registration, may be found in the front section of the "Spring Schedule of Classes". Students may obtain preregistration materials and schedule of classes from the Registrar's Office starting November 1.

Each advisor will be furnished a schedule to be posted near his office the week before preregistration. This schedule will enable a student to reserve a date and time for arranging his preregistration schedule. Students are required to return their preregistration schedule and undergraduate credit card to the Registrar's Office before 4:00 p.m. November 10.

An attempt will be made to schedule students, whenever possible, into the sections preferred. Since it will not always be possible to honor request for certain sections, the students who are eligible and follow the instructions outlined in the front of the spring schedule of classes will be given first chance to select the sections they need. Since sections are often added to the schedule after preregistration, students who qualify for priority sectioning (as

outlined in the schedule of classes) should have their preregistration schedule noted accordingly, even though there are apparently no possible variations in their schedule. Assignment of remaining students into sections will be done by arranging student schedules in order by date of first enrollment at UMR and as long as possible requests for particular sections will be honored. Since all sections of all courses cannot be offered at popular times, it will be necessary to rearrange some schedules to balance sections.

This semester the faculty has changed the pass-fail rules and procedures. These rules now read as follows:

"The undergraduate student may elect the pass-fail grading option for courses that are being taken as free electives (courses selected by a student that are not being used to satisfy departmental requirements in a specific field of study). A student may enroll for no more than one of these courses per semester. Under this option, instructors report in the Registrar's records, a grade of "S" or "U" for the course taken. Credit for courses taken under the pass-fail option will not be used in calculating grade point averages. To register for a course under this option the student will enter pass-fail in the remarks column of the schedule card opposite the course and the advisor's approval must be entered along side the pass-fail entry. Once final enrollment has been completed, changes cannot be made in the grading option after the first day of class.

Bad Weather Blemishes Homecoming Weekend



A well dressed couple "twist the night away" at the KMSM Grease Ball (above). Beautiful Miss Paulette Thompson was crowned queen (page 3), as the football team got edged 3 to 0 (page 9). Neil Sedaka filled in for B. J. Thomas in a fine concert (picture page 8) Saturday evening. (Photo by Ray Blanc)

SU Board News

Student Union Board Calendar of Events

Rap Session

Mr. Paul Smith & Lauren Peterson
of registrar's office leading
Oct. 26 3:30 S.U. Ballroom

Movie: "House of Wax"
Oct. 29 4:00 & 6:30 S.U. Ballroom

Play: Rob Inglis Presents
"The Canterbury Tales"
Oct. 31 7:30 S.U. Ballroom

Student Union Board Meeting
Nov. 2 6:30

Movie: "Rachel, Rachel"

Nov. 5 4:00 & 6:30 S. U. Ballroom

All Student Union activities are free to UMR students except general lectures in M.P. Building. I.D.'s will be checked at movies.

Ticket refunds for the B. J. Thomas concert will be Wednesday, Oct. 25, thru Tuesday, Oct. 31, in the Foyer or Room 212, Student Union. Tickets may be used for the next General Lecture.



This fall the IFC, in cooperation with the Broyles Distributing Co., is sponsoring a project to rid Rolla of trash along the roadsides. The purpose of the project is twofold. First to actually get rid of the bottles, cans, etc. on our streets; and secondly and the most important aspect is to make the citizens of Rolla (students and townspeople) realize the litter problem and perhaps think twice before littering again. Most of the trash collected will be recycled with the help of the C.U.R.E. organization.

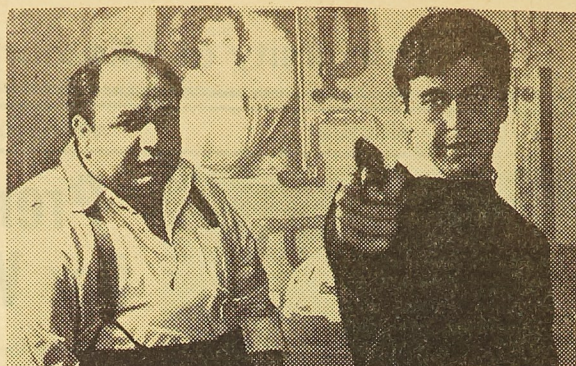
Litter prevention is more than just "cleaning-up". It also

means changing careless habits and attitudes which have developed over many years. Removal of litter itself is sometimes relatively simple, but the prevention of litter is a continuing educational task. Litter prevention, therefore, should be looked upon as a long-range proposition, one that demands persistent effort and continuing innovation.

The clean-up day is Saturday, October 28, beginning at 10:00 a.m. The support of all Greeks is needed to insure that this project is a success. The IFC asks you therefore to show some concern for your community and please PITCH IN.

In the Movies

by Jerry Davis



Richard Castellano (left) as Clemenza and Al Pacino as Michael in a scene from Paramount Pictures' "The Godfather," opening in Technicolor Wednesday at the Ritz Theatre. Based on Mario Puzo's best-selling novel, the film stars Marlon Brando in the pivotal role of Don Corleone.

THE GODFATHER

"The Godfather" presents a ruthless, dynamic exposure of organized crime at its peak in the United States. From the brutality of the "family" power struggles, to the smooth operating gang businesses flows an amazing style of life.

Already grossing millions of dollars and becoming one of the best movies ever, "The Godfather" may be seen this week at the Ritz. It is a movie that is well worth seeing.

PLAY IT AGAIN SAM

The film, "Play It Again Sam", concerns a timid movie buff who is deserted by his wife and turns to his dream hero "Bogey" to find success with other women. His obsession to adopt a Humphrey Bogart personality leads him to a succession of blind dates. The picture will be shown at the Uptown Theatre this week.

Registration Rap Session

The Student Union Board will sponsor a "rap session" on Oct. 26, with Mr. Pauren Petersen, Associate Director of Registration and Records and Scheduler Mr. Paul Smith, as panel members. It is of course open to all UMR students and the time is 3:30 p.m. in the Student Union Ballroom.

Mr. Smith and Mr. Peterson would like to discuss any questions from students on any subject pertinent to their duties and the Registrar's office to provide a forum for student comment on pre-registration,

what courses students want, dropping of 7:30 classes and dropping and adding courses.

They hope that this session will help them make out a preliminary master schedule. Knowledge of student interest for certain classes should help them to eliminate conflicting schedules next semester. Their general desire is to bridge the gap between the registrar's office and the student body, so if you're not doing anything on Wednesday at that time, it might be of your benefit to drop by.

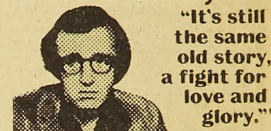
UPTOWN
TELEPHONE 364-1857

PARAMOUNT PICTURES PRESENTS
The Godfather

STARRING Marlon Brando
AND
Al Pacino James Caan
Richard Castellano Robert Duvall
Sterling Hayden John Marley
Richard Conte Diane Keaton

RITZ
TELEPHONE 364-1299

Ends Saturday



Paramount Pictures presents
"PLAY IT AGAIN, SAM"

WOODY ALLEN
DIANE KEATON
STARTS SUNDAY

Barney wanted women
in the worst way.

Alan Arkin
"Last of the
Red Hot Lovers"
Sally Kellerman
Paula Prentiss
Renee Taylor

ROLLA DRIVE IN
THEATRE
TELEPHONE 364-1502

Charles Bronson Ursula Andress
Toshiro Mifune Alain Delon



"RED SUN"

WILLIAM HOLDEN
ERNEST BORGNINE

"THE REVENGERS"

DOWNTOWN
AUTO SALES

Call 364-8300 and
ask for

Ron OR Howard
Strawhun Riden

CLEAN USED CARS

Welcome Ol' Winter

Stocking Caps ————— \$1.25 up

KENMARK

904 Pine

CAMPUS CUE

Pool, Snooker, Billards
12 Tables

RATES - 60¢ HR. HOURS - NOON - 1 A.M.

Located In The Basement Of
Shamrock Club

STEAK-N-BURGER CORRAL

ROLLA'S LOW COST

STEAK HOUSE

CHARBROILED STEAKS

CHILD DINNER \$1.68

24 FLAVORS ICE CREAM
SEAFOODS - CHICKEN - BURGERS - CIDER

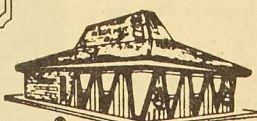
Carry Out Orders In Insulated Containers

212 Hwy. 63 So.

364-6979

PIZZA HUT UNRESERVED NOH

THE PIZZA HUTS OF MISSOURI



Limit 1 Pizza Hut
Dollar per family

Good in Rolla Only!



Redeemable with the purchase
of any LARGE-SIZE PIZZA

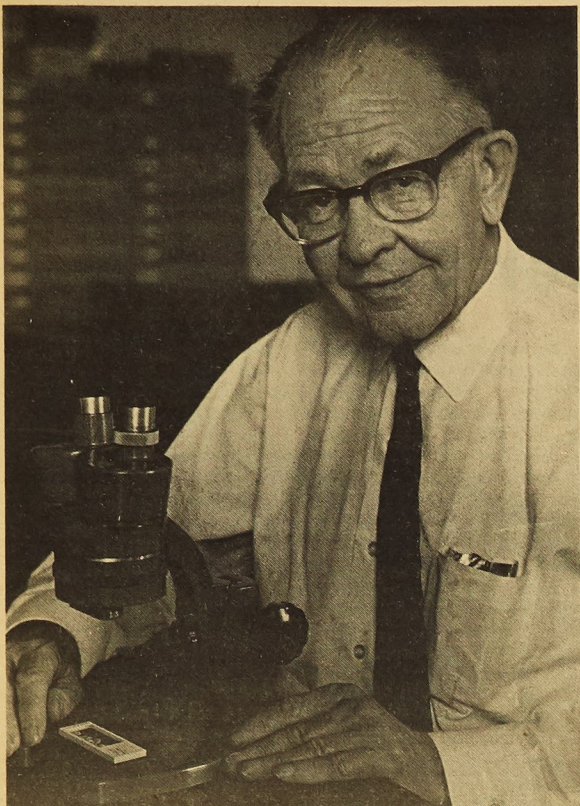
at
THE PIZZA HUT
of Columbia

Pizza Hut Pete

PIZZA HUT PETE
Expires Nov. 1

ONE PIZZA HUT BUCK

Expires Nov. 1



Prof. Frizzell Dies: Taught at UMR 25 Years

The Geology Department at UMR was struck by an untimely tragedy this past week. Prof. Donald L. Frizzell, a long time member of the faculty, died Tuesday morning, October 17, at Still Memorial Hospital in Jefferson City. Prof. Frizzell had been ill for a period of time and recently took leave from teaching. He had been moved to Jefferson City where he was receiving radiation treatments. He died from lung cancer.

Dr. Frizzell was born in Bellingham, Washington on October 19, 1906. He received a B.S. in Geology in 1930 and a M.S. in Zoology in 1931, both from the University of Washington. His Ph. D. was received from Stanford University in 1936.

Before teaching at UMR, Prof. Frizzell worked as a

paleontologist with Shell Oil Co. and as a geologist-paleontologist with International Petroleum Corp. in Peru and Ecuador. He worked as a consulting paleontologist in Washington D.C. Dr. Frizzell also taught at the University of Texas for three years before coming to UMR in 1948.

Prof. Frizzell published 66 papers and was working on another at the time of his death. Some of his more recent papers are: "Otoliths of Some Early Cenozoic Fishes of the Gulf Coast" (1965) and "Holothurians" (1966). His research interests included micropaleontology and otoliths (earstones) of fossil and recent fishes.

Funeral services were held on October 19 under the direction of Null and Son Funeral Home.



Jose Greco, the famed flamenco dance artist, performing for UMR students. The demonstration recital was held last Wednesday, Oct. 18 in the S.U. Ballroom. (Photo by Ray Blanc)

"Who's Who" at UMR for 1972

The candidates for Who's Who among Students in American Colleges and Universities from the University of Missouri-Rolla have been selected and approved after careful consideration.

The procedure for application and selection is quite extensive with information concerning "Who's Who" and application forms being available to the students in the late spring. These are collected at the end of the spring semester and the data is processed during the summer months with additional forms being left out during the first two weeks of fall semester in order to accommodate who may have forgotten or are returning to campus from co-op programs.

As part of the data gathering, two of the student's

organizational advisors are asked to comment on the student's overall effectiveness as a member of the organization. In addition the academic advisor is asked to comment on the student's progress, both in his major field and in allied fields of study. Upon receipt of this information, the student's organizational points and grade points are computed and the students are ranked in order.

The selection committee is made up of faculty, administrators and those students who were selected to Who's Who in the past year and who are still on campus. Each individual application is considered and organizational participation, grade points and comments by advisors are discussed fully. The committee does not set a quota (other than the one

established by "Who's Who") but rather tries to select those students they feel deserving of the honor.

Those selected this semester from UMR are as follows: Thomas Akers, Mark Armstrong, Dave Barczewski, Steve Bergtholdt, Bernard Bruns, Paul Burke, Russell Byars, Diane Dawson, Peter Dawson, Tom DePauw, John Dodge, Craig Fadem, Steve Goldammer, John Haley, James Hess, Terry Hill, Alard Kaplan, Dave Kroeter, Carol Langemach, Charles McGinty, Darryl Moore, James Mulligan, Carter Njus, Gary Pariani, Dave Puettmann, Rick Remley, Steve Robertson, Rosemary Rois, John Shucart and Gerry Wappelhorst. The banquet for these students will be held Sunday, Nov. 5, 6:30 p.m. at Zeno's Steak House.

Missouri Miner

University of Missouri - Rolla

New UMR Queen, Paulette Thompson

The coronation of Miss Paulette Alana Thompson, the Queen of UMR's Homecoming 1972, took place Saturday night, October 21, at 9:30 p.m. in the Student Union Ballroom. Miss Thompson represented brothers of Sigma Tau Gamma Fraternity in the queen candidacy. Selected to serve on the queen's court were Miss Pamela Ann Bakewell, first attendant, representing the brothers of Alpha Phi Alpha Fraternity, and Miss Margie Meyer, second attendant, representing the brothers of Delta Sigma Phi Fraternity.

The crowning of the queen was the highlight of the Coronation Ball in the Ballroom. The decorations for the dance were based on a

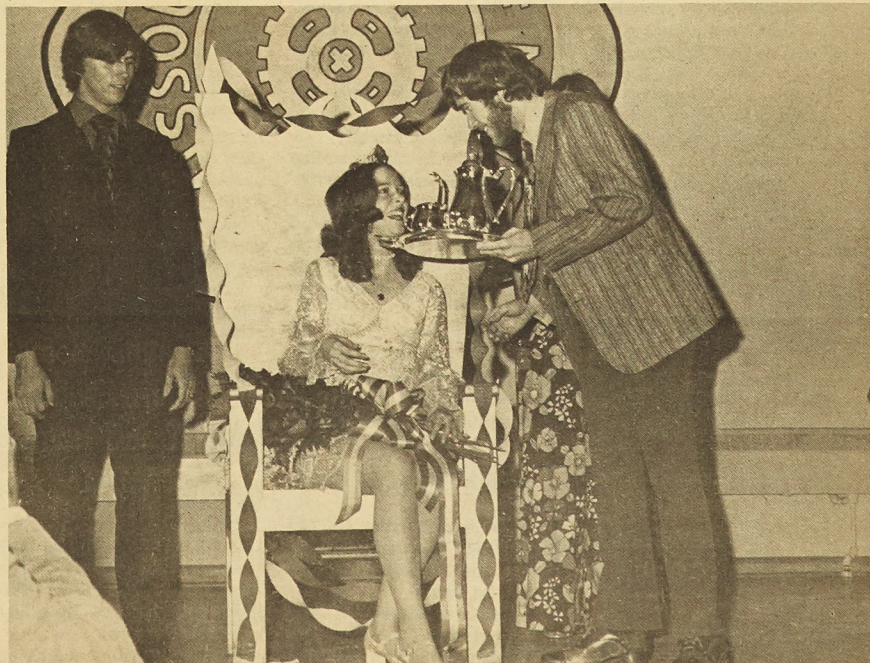
patriotic and political theme. Red, white and blue dominated the color scheme, with the walls decorated with elephants and donkeys, representing the parties of our political system. From the wall opposite the stage, a giant Joe Miner, clad in red, white, and blue, smiled down upon the dance and coronation. As a final, well detailed touch, the queen candidates were presented with nosegays of red, white and blue daisies.

Miss Maureen Daly, Queen of UMR's Homecoming 1971, was present to crown Miss Thompson with a glittering tiara, adorned with three red rosebuds. Along with the tiara, Paulette was presented with a dozen red roses and a silver

tea service. Miss Bakewell and Miss Meyer were each presented with bouquet of six red roses.

Following the coronation, Paulette was joined by John Lindstrom, President of the Student Union Board, in the Queen's Dance. Music for the ball was provided by UMR's own, The Drifters.

Arrangements for the presentation of the queen and her court was during halftime at the Miners' football game. Due to inclement weather, the usual parade of the candidates around the field in open cars was canceled, and the activities were limited to a brief appearance of the queen and her court.



Miss Paulette Thompson, 1972 Homecoming Queen, being presented a silver tea service by John Lindstrom, Student Union Board President. Paulette's escort is Michael Niehoff and she represented Sigma Tau Gamma.

Photo by Ray Blanc

Yours-Theirs - Ours

Editorial Opinion

The War

By MIKE CHILES

In 1964 the American voters elected a President who claimed he would keep them out of the war. In 1968 the voters elected a man who claimed that he would get them out of the war they had never wanted to be in. In running for the presidency that same candidate said: "Those who have had a chance for four years and could not produce peace should not be given another chance."

There are 150,000 American troops engaged in supporting the war effort in Southeast Asia at present. Since January 20, 1969, 20,000 Americans have died in South Vietnam. 90,000 South Vietnamese soldiers have died since Inauguration Day, January 20, 1969. An estimated 540,000 civilians have been killed or wounded in South Vietnam since January 20, 1969.

A total of 3,529 aircraft - fixed wing and helicopter - have been lost in Southeast Asia in the last four years. Using the executive branch's conservative criteria of "incremental costs" the American taxpayer will have spent more than \$4.5 billion dollars in the last four fiscal years. Each additional day the war lasts the cost increases the cost by more than 16 million dollars at the present rate.

President Eisenhower once said - "Every gun that is made, every warship launched, every rocket fired signifies, in the final sense, a theft from those who hunger and are not fed, those who are cold and are not clothed."

Despite the fact that we have a trillion dollar GNP many of our people go to bed hungry every night. It is a medical fact that children who are not properly fed during their childhood will suffer some degree of permanent mental retardation. It has been estimated that all our hungry citizens could be fed for 5 billion dollars a year. One low-cost home could be built for every television guided bomb that is dropped.

In 1969 the average American worker earned \$118.13 every week; in June of 1972 that average had dropped to \$108.31. (measured in 1967 dollars). Inflation, primarily war caused inflation, has taken its toll.

More importantly, the war continues to take its human toll. While American casualties are much lower than they were when the present administration took office - as many, if not more, people are being killed every day. One might question the worth of a policy which dictates the destruction of a people that they might be saved.

Before you vote on November 7th - look at the record, look at the candidates' policies. Think twice before you vote. The decision you are making is one of life and death.

Computer Cash Crisis

The UMR Computer Center is currently facing a grave situation. Due to the reduction in university support, it has become increasingly more evident that maintaining the 1971-72 level of computer services with this year's estimated computer income is totally impossible.

The original 1972-1973 estimated income for the Computer Center totaled \$631,000 and was more than sufficient to maintain adequate services. One week after this budget was drafted, it was learned that \$101,000 of a \$183,000 National Science Foundation grant to the center had to be returned because of the University's failure to meet its obligations under this grant.

In September, Professor Ralph Lee, chairman of the Computer Science Department, received a letter from University Vice-President Ardie Emmens stating that university allocations to UMR's computer had been reduced to \$50,000. After all reasonable avenues of additional computer income had been explored, the total funds available stood at \$500,000.

The UMR Computer Center budget dated October 10, 1972 stated, "The budget total of \$580,000 is considered the minimum amount necessary to continue with 1971-1972 level of computer services. The

reduction in university support and a more realistic estimate of computer income clearly indicates an anticipated deficit of about \$80,000 unless some substantial reductions in expenditures and computer services are put into effect immediately. A savings of approximately \$25,000 will result from not filling three vacant positions and the elimination of a fourth position. The remaining \$55,000 in savings can only be realized if there is a reduction in the lease of equipment or personnel that will result in a drastic reduction in services and income."

Equipment reductions being considered include such items as the CPS terminals, keypunch machines, disk drive units, tape drive units, and the communications control unit. Removal of such equipment would reduce the UMR computer to little more than a sophisticated mass of electronics with limited means of input and output, and half its memory missing. It would impose serious hardships on the faculty and Computer Science

majors.

All these drastic measures are being considered in light of a mysterious \$55,000 deficit that appeared when Professor Lee received an unofficial notice of a \$50,000 budget cut. Chancellor Baker has said that as far as he is concerned, UMR still has that \$50,000 until official notification is received at Parker Hall.

To date no official notification has been received and whether UMR's Computer Center still has the \$50,000 remains a big question.

Some immediate and concise communication should be conducted between Vice-President Emmens and the Computer Center to clear up the question of a \$50,000 cut in computer funds allocations. The \$50,000 is essential for the Computer Center to maintain adequate services at UMR. Vice-President Emmens should look into the situation at UMR and then try to justify his action before making the \$50,000 cut, and the Computer Center should be informed of exactly what its University appropriation amounts to.

Our Man Hoppe

The Democrats Are Really Buggy

Three or four Americans may still be somewhat confused by these revelations of political bugging that keep cropping up in the papers. Two or three may even care.

"Who was behind bugging the offices of Larry O'Brien until he cried out loudly?" they want to know. "Who was behind bugging Senator Muskie all through the New Hampshire campaign until he cried out loud?"

To get the answers, I dispatched my ace colleague, Andy Jackerson, to the White House, that being a randomly-selected place to start. His report follows.

Once in a White House, I follow the signs saying, "Office of Entomological Affairs," to a secret door in the attic, which is labeled, "Secret Door."

Behind the desk is our old friend, Tomer T. (Bugs) Pettibone, the former CIA masterspy, used car salesman and TV repairman.

"Take 20 gees," he says, holding out a bucketful of small bills without looking up. "Write a letter to Mayor Daley over McGovern's signature. Begin it, 'Dear Mick: I hope your shanty Irish vote will stay bought ...'"

"I'm an ace newsmen," I say with dignity.

"Oh, then only take ten gees," he says. "Go ahead, it's clean money. It just got back from a Mexican laundry."

"What I want to know," I say, "is whether..."

"Please speak directly into the daffodil," he says, sliding the vase on his desk toward me. "Our tape's getting scratchy."

"... is whether you are behind that phoney letter to a New Hampshire paper that so bugged Muskie he broke into tears."

"Muskie had to be eliminated," he says grimly, picking up a roll of micro-film and swallowing it. "He was the best candidate they had. Almost as good as Johnson would've been in '68."

"What happened to him?" says I.

"A cablegram from Ho Chi Minh in '65," he says, "which read, 'You Texans are too chicken to fight.'"

"I always wondered," I says, "who started the Vietnam war. So you wound up in '68 with Humphrey."

"An admirable choice," he says. "Of course, he might've won if those kids hadn't started

that riot at the Chicago Convention."

"Come to think of it," I says, "they did look like Young Republicans. And this year you wound up with McGovern."

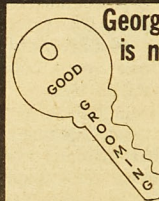
"Another admirable choice," he says rubbing his hands. "To be sure, he couldn't've gone all the way if Eagleton hadn't accepted a spot on the ticket." "Is it true, as charged," I says, "that you leaked Eagleton's medical history to the press?"

"That's shocking," he says indignantly. "We never double-cross our own agents."

"What a story!" I cry. "To think you Republicans have been running the Democratic Party for years - picking their leaders, setting their policies. I'll print it and the public will hail the brilliance of your tremendous coup."

"Take 50 gees and don't," he says, blanching. "If the voters ever get the idea we've been running the Democratic Party, they'll say we're obviously incompetent to run anything."

So herewith my resignation, boss. I'm convinced this administration is doing everything it can to create full employment.



George, who was formerly at the Uptown, is now at **GEORGE'S BARBER SALON**

Phone 364-7270

COMPLETE BARBER SERVICE

+ HAIR STYLING + FREE HAIR ANALYSIS
+ HAIR PIECES + HAIR STRAIGHTENING
+ RAZOR CUTS + BLENDING SHEAR &
+ SCULPTURE CUTS + REGULAR CUTS

213 W. 8th St., Rolla, Missouri 65401

Charles L. Durrwatcher

Phone 364-8489

123 Nagogami Terrace

Rolla, Mo. 65401

JUDO

INSTRUCTION

Sport-Personal

Defense



ZENO'S MOTEL STEAK HOUSE

"HOME OF THE FAMOUS 12 OZ. STEAK"

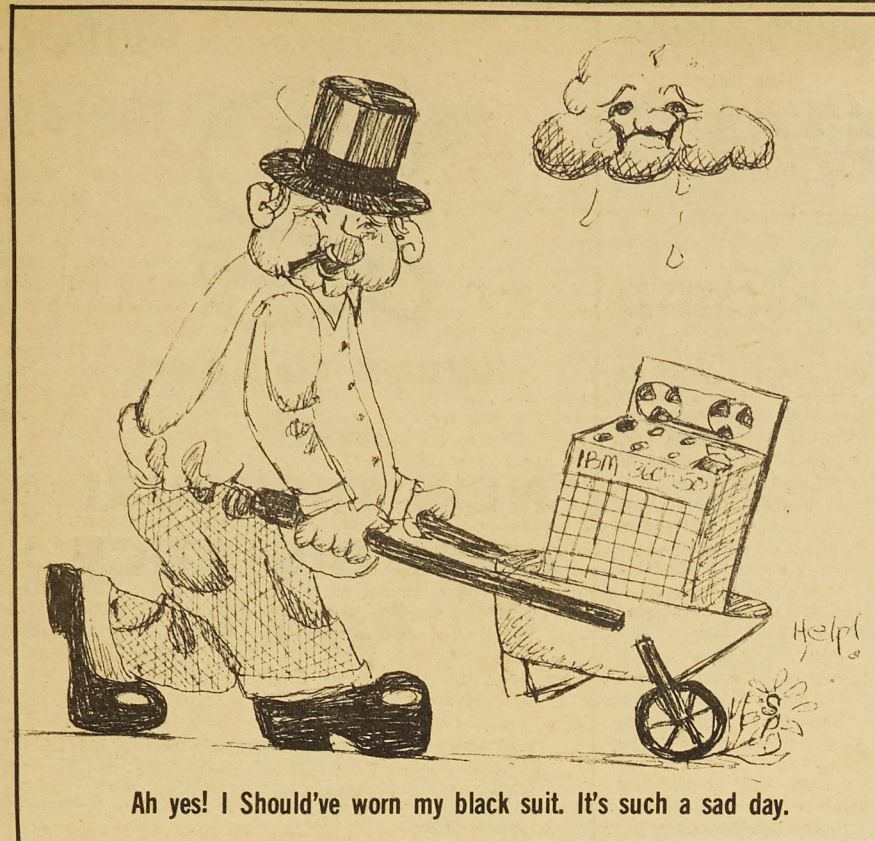
BOX 70
ROLLA, MO.

PHONE: 364-1301
MARTIN SPRING DR.

U.M.R. CLASS RINGS

by
John Roberts
and
Jostens

CAMPUS BOOK STORE



Dear John

Dear John,

I dare you to print this, knowing that you are a tool of the university system. I stood outside the multi-purpose building Saturday night for about an hour to see B.J. Thomas and when my date and I finally got into the gym wet and very drunk; we found out that there was to be no B.J. Thomas. Instead, some guy named Neil Sedaka performed. Although this Sedaka was good, I still want to know what happened and how to explain this to my date.

Unhappy and still Wet

Dear Unhappy and still Wet,

Tell your date and exgirlfriend what was told to me, (by way of grapevine), by Paul Erlandson, the social director of SUB. B.J. Thomas couldn't come at the last minute because of a car accident so the agent arranged to have Neil Sedaka come all the way from New York, and for some musicians to come from Manhattan, Kans.

Neil and the musicians hadn't ever practiced together and they wanted to rehearse for a while without the audience in front of them. So, when the doors opened 45 minutes late it was because it takes some time to fly from New York to St. Louis and then drive up from there to the middle of this wasteland.

Not only was this arrangement better than having no concert at all (but we were very lucky to get) Neil Sedaka, who doesn't perform very often. Besides, the SUB saved \$3,000 by getting Sedaka so that everyone who bought tickets will get a refund.

Dear John,

I came from a school in Kansas City with a bunch of my girl friends because I had heard that there was a good time to be had during a party weekend. Well, I came down here and didn't find as many free guys as I was led to believe and those that weren't free were either too drunk or they had their eyes on their own Miner girls.

Just enlightenment as to what happened to the old Miners that I used to know?

Good Time

Dear Good Time,

I usually don't answer this type of question but in your case I'll make an exception. I think more of our own Miner girls got more dates with the Miner males this party weekend because the males are more tolerant and so are our girls.

I look forward to even more of the girls getting dates next time, so let it be known girls, there's a lot of tough opposition from our local Miner Women.

UMR Simplified How to drop a class

Note: As always, the information given in this column is printed with the understanding that while it is believed to be accurate and reliable on all counts many rules and regulations are subject to differing interpretations. In particular the UMR Manual of Information is particularly confusing to anyone without legal training and a devious mind. Be Warned.

If you are thinking about dropping a class, think twice. In many cases it will probably be a required class which you will have to take sooner or later anyway. But if it is late in the

semester and you have done poorly on your mid-terms be advised that less than 10 per cent of all people raise their final grades from what they were at mid-semester.

The deadline for dropping a class (except under unusual circumstances) is two weeks after mid-semester, which falls on Tuesday the 31st of October this year.

To drop a course get an official drop-add form from the registrar's office in Parker Hall. Have your adviser sign it and then have your teacher sign

Continued On Page 6

The Missouri Miner

The MISSOURI MINER is the official publication of the students of the University of Rolla. It is published at Rolla, Missouri every week during the school year. Entered as second class matter February 8, 1945, at the Post Office at Rolla, Mo., under the Act of March 3, 1879. The subscriptions are \$1.50 per semester. This MISSOURI MINER features activities of the students and faculty of UMR.

Rick Remley
Buddy Bruns
Steve Wunning
Jerry Davis
Dean LaBoube
Mike Chiles
Dave Hardin
Bill Horsford

-Editor
-Business Manager
-Advertising Director
-Graphics Editor
-News Editor
-Features Editor
-Photo Editor
-Sports Editor

Rolla Volkswagen

Old Hiway 66 East

At Northwey

364-5178

"Always A Fine Selection
Of New & Used Cars"

Merideth Motors

St. Roberts, Mo.

336-3416

NOW OPEN RUSS'S OTHER PLACE

TOPS



AND BOTTOMS

PLUS OTHER GEAR at
RUSS'S OTHER PLACE
713 PINE

French Studios & Camera Stores

Authorized Dealers
for

Polaroid
Eastman Kodak

Honeywell
Bell & Howell

815 Pine St. Hallmark Cards

364-4579

Frederic's Colonial Village

**TAVERN
NOW OPEN
10 A.M. to 1 A.M.**

**Frosted Mugs
Coldest Beer In Town
Sandwiches**

**Steak Shrimp Chicken
Served Upstairs
at**

Frederic's Restaurant

364-1503

Hwy. 63 & Cedar

Rolla, Mo.

Sensored

By ANDERSON and ELVEN

Last Picture Show ... Click. Here's a picture of Darrell standing in front of the library during a rainstorm. Click. Here's a picture of Darrell from the waist up. Click. Here's a picture of Darrell's hat. Click. Here's Glenn, dragging the water-logged body of Darrell off to the infirmary. Click. Here you can see the cobwebs forming on Glenn and Darrell as they wait for someone to answer the door. Click. Here they are reporting to the emergency ward of Phelps County Hospital with multiple spider wounds. Click. Now they're leaving the County Hospital with multiple spider wounds. They told them to get it taken care of at the infirmary. Cluck.

BMOC ... Leaders must be molded. Too bad some of them around here came from silly putty.

Oh Where, oh where ... Once again UMR is being given the typical U of M shaft. With a shiny new Math-Computer Science building house our IBM stuff, what makes better sense than to move our IBM stuff out, and replace it all with a wonderful UTS telephone. Our Comp Sci building couldn't then become world famous in any number of ways. For example: Announcing - The First Hot Line Between UMR and UMC, housed in the spacious basement of the all new Comp Sci Building. Also included are a smoking lounge, a library, a TV room, a rec room, and a cocktail bar for your enjoyment while you wait to use the all new Hot Line. Use the Hot Line today. Or another example: Announcing - The World's Largest Phone Booth. In any case, with more than one-third of the U of M computer users on this campus, we think that our new building can be put to better use than this.

Impressions ... Last Saturday morning, as typical Missouri drizzle fell on a typical Rolla day, and the news that B. J. Thomas would not be appearing filled the air where the drizzle already wasn't, it looked as if Homecoming 1972 was an accident that had found a place to happen the night before. Brycecream stock had risen 10 points as that giant ball of grease known as the KMSM Grease Ball had twisted and jitterbugged to the memories of many a teenager-at-heart. But that success was history, and Saturday didn't look like it could duplicate that feat. At 2:00 p.m. Jackling Field hosted the annual umbrella manufacturers convention as the queen was crowned to reign over the remainder of the day. But the evening proved to be far from all wet, with 1200 people enjoying the music of B. J.'s last minute replacement, Neil Sedaka. Proving once again that UMR people will make the best out of any situation, the Student Union Board threw a replacement concern together that rivaled some of the past planned-in-advance activities. Hats should be tipped (or bottles raised) to a great guy for putting on a great performance.

A Loss ... This past weekend all of Rolla felt the loss of a great civic leader, Mayor Curtis Logan. The students of UMR have always been an integral part of this town, though they have not always agreed with its leaders. This town owes the students a debt of gratitude, but the student also should respect the town and its civic leaders. As much fun as we make of good old Rolla, we join the citizens in expressing our grief, and our hope that the town will ultimately grow stronger as a result of Mayor Logan's years of leadership.

Always Room ... Life is just a bowl of Jello. We're all overweight and we wiggle when we walk.

Bits and Pieces ... Student Union Board Homecoming Concert Poll Results: overwhelmingly in favor ... Election day is fast approaching — be more prepared than you were for yesterday's shotgun ... Friday night, November 17, a nightclub type set-up in ballroom with dancing and entertainment. Don't miss it!

Credits ... Last Picture Show appears courtesy B and G ... UMR computer disappears courtesy U of M ... Homecoming appears out of focus because you drank too much ... That's all.

Classifieds

Lost:

2 Female St. Bernards, Any information appreciated. Reward. Call collect 265-8798.

Lost: One Boy Scout pack with boy's clothing and Bible, including a Dan Cooley. Call Ace Cab or Rolla Police.

TERM PAPERS

Send for your descriptive, up-to-date, 128-page, mail order catalog of 2,300 quality term papers. Enclose \$1.00 to cover postage and handling.

WE ALSO WRITE
CUSTOM MADE PAPERS.

Termpaper Arsenal, Inc.
519 GLENROCK AVE., SUITE 203
LOS ANGELES, CALIF. 90024
(213) 477-8474 • 477-5493

"We need a local salesman"

UMR Simplified

from page 5

it. If it is a lab class you must have checked in all your equipment first. Some teachers are reluctant to sign drop slips; for various reasons—some teachers have reputations for half their students dropping their classes.

Talk to your teacher first though—you may be pleasantly surprised to find out that you're not doing as badly as you thought you were. If you still want to get out though, and your adviser has signed the drop slip, the teacher must sign it also.

They cannot make you stay in the class against your own will. This is important. There have been several instances reported of a teacher refusing to sign a drop slip or giving the student a very bad time about it.

After your drop slip has been signed you must then pay five dollars to the cashier in the basement of Parker Hall. You can drop more than one class and or add one or more classes all at the same time for five dollars.

You may also be dropped involuntarily by an instructor for "excessive absences or for unsatisfactory work". This will cost you five dollars too.

If you drop a course later than two weeks past mid-semester you will receive an F on your permanent record unless extenuating circumstances are certified by the instructor of the course. You may not drop a course after the start of finals week unless you are dropping an incomplete grade.

If you once took a class and got an incomplete in it you may drop it upon securing written permission from the chairman of the department in which you expect to receive a degree. This action must be done before the next regularly scheduled class of that same subject has completed that course. There is no fee for this but the written permission must be filed with the registrar's office.

PEACE AT LAST

A New England newspaper chose to take all those Pentagon body counts seriously around 1965, and started keeping a ledger.

Last month they were able to announce the end of the Vietnam war. According to the collected information dispensed the Department of Defense, the U.S. has killed every man, woman and child in North Vietnam.

A & M Cycle Sales

"Authorized Benelli Dealer"

Guaranteed Repair & Service
on All Makes of Bikes
Phone: 431-2000
1024 Kingshighway

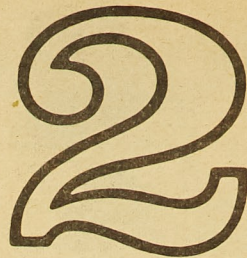


GABRIELE'S SANDWICH SHOP GRAND OPENING

FRIDAY, OCTOBER 27

Free Drink With Any Sandwich

• Steak Sandwiches • Meatball
• Hamburger • Hoagie
805 Rolla St. 341-3161



ways to save with NEW MISSOURI LONG DISTANCE RATES

You now have a choice of three types of Long Distance calls to other Missouri cities, and when you call the One-Plus way you pay our lowest rates.

- **One-Plus station-to-station** calls are most economical to provide. Therefore, lowest rates apply.
- **Operator assisted station-to-station credit card, coin, collect and calls charged to a third number** are more expensive services to provide. Therefore, intermediate rates apply.
- **Person-to-person** calls are the most expensive for us to provide. The rate for these calls is necessarily highest.

You save even more on One-Plus Long Distance calls by placing them during a low-rate calling period. Four One-Plus low-rate periods now are in effect.*

- **Day Rate:** Monday-Friday, 8 a.m.-5 p.m. Standard rate.
- **Evening Rate:** Sunday-Friday, 5 p.m.-11 p.m. Lower rate.
- **Weekend Rate:** Saturday, 8 a.m.-11 p.m. and Sunday, 8 a.m.-5 p.m. Lowest rate.
- **Night Rate:** Sunday-Saturday, 11 p.m.-8 a.m. Special one-minute rate.

*rates for operator assisted station-to-station and person-to-person calls remain the same during all calling periods.

LONG DISTANCE CALLS WITHIN MISSOURI

TYPE CALL CALLING PERIOD	ONE-PLUS STATION-TO- STATION	OPERATOR ASSISTED STATION-TO- STATION	PERSON -TO- PERSON
DAY Mon.-Fri. 8 am-5 pm	STANDARD RATE		
EVENING Sun.-Fri. 5 pm-11 pm	LOWER RATE	INTERMEDIATE RATES	HIGHEST RATES
WEEKEND Sat.-8 am-11 pm Sun.-8 am-5 pm	LOWEST RATE	ALL TIMES	ALL TIMES
NIGHT Sun.-Sat. 11 pm-8 am	SPECIAL 1-MINUTE RATE	ALL DAYS	ALL DAYS



Southwestern Bell

STL 72-28

School Facilities Subject to Use Fee

Executive Order 8 dated 10-1-70, amended 12-23-70, sets forth the rules and regulations of the Board of Curators of the University of Missouri covering the Use of University Facilities. This order designates the general conditions surrounding the administration of the procedures requiring a "Service Fee" and a "Use Fee". The "Service Fee" will be the subject of a future article and only the "Use Fee" will be discussed at this time.

There are two general headings considered to categorize potential users of University Facilities, they are "Student Groups" and "Non-student Groups". The "Non-student Groups" are further sub-categorized into affiliated, sponsored, non-affiliated and non-sponsored. Generally speaking, recognized student groups can use facilities without paying a "Use Fee" providing sales and or solicitations are not involved. Affiliated non-student groups are considered to be groups invited by an institutional or administrative department as a part of its educational program which, in most cases, do not pay a use fee. Sponsored non-student groups are considered to include learned, educational,

professional or scientific societies which, in most cases, do not pay a Use Fee. Both the non-affiliated and non-sponsored groups are considered to be groups not connected with the University and to whom the University may rent facilities and charge a "Use Fee" for their use. The sale and solicitation on University property is always considered in the determination of the appropriateness of the "Use Fee". The proposed use of the facility, the participants at the proposed use and the period of the use are other considerations that are evaluated before a determination is made.

It is the obvious intent that University facilities are made available to the students, faculty and staff first and foremost for the purpose of academic and student services pursuits. The facilities are not to be made available without charge to the many fringe activities of the students, faculty and staff which do not specifically and directly benefit the academic and student services programs. The facilities are available for rental to non-affiliated, non-sponsored groups, as a source of income to the University, if they have been so designated and during periods when school is not in session.

The administration of Executive Order 8 requires the good judgment of all concerned and every effort is being made by the campus officials to effectively and fairly administer the program. To assure the continued success of the program, a policy memorandum is forthcoming to explain the program in greater depth. The policy memorandum will become the campus written policy and will be available to all concerned for their individual guidance.

Central Computer Plan Requires Further Study

At the last meeting of the Board of Curators, a topic of particular interest to all UMR students was discussed—the concept of the centralization of the University computer facilities. A progress report was made by the Computer Centralization Committee, despite a request from the UMR Computer Committee that no plans be made regarding Rolla until it was made clear what our facilities for tie-in to the main computer would be.

The authorization to centralize was made some time ago and no official action was taken at this meeting. It was discovered however that the computer facilities on the Kansas City and St. Louis campuses have been tied into the Columbia system for some time. According to one source, the St. Louis campus has been connected for at least 10 months and the Kansas City campus has been tied in for several months. Computer facilities on both campuses have been previously described as relatively poor.

The requirements of the Kansas City campus are much different than from those at Rolla and it was because of facts like this that Curator McNeal voiced the opinion that the quality of the University's academic programs should not be lost for the sake of saving a few dollars. The general feeling is that if UMR is able to demonstrate that its needs will not be met by centralization, then it may not take place. However some feel that the new alignment will eventually take place and when it does, UMR will hopefully be assured of 95 per cent retention of the data contained in the computers here.

Math-Computer Building To Be Dedicated Friday

Guests at the dedication of the new Mathematics-Computer Science Building at the University of Missouri-Rolla will include two presidents of national professional associations, a graduate school dean, the director of a research center and distinguished industrial-academic mathematician.

In addition to attending the dedication ceremonies, 4:30 p.m., Friday (Oct. 27), these men will conduct a symposium commemorating the completion of the facility on Friday afternoon and Saturday morning (Oct. 27).

W.C. Royster, professor of mathematics and dean of the Graduate School at the University of Kentucky, will deliver the dedicatory address. He will speak "On Univalent Functions" at the first session of the symposium.

Other symposium participants and their topics are: H.O. Hartley, professor of statistics and director of the Institute of Statistics at Texas A&M University, "Monte Carlo Methods in Simulation;" Anthony Ralston, professor and chairman of computer science at State University of New York at Buffalo and president of Association for Computing Machinery, "Computer Languages for Teaching-Pundits and Pedants."

Conducting the Saturday morning sessions of the symposium will be: Victor Klee, professor of mathematics at the University of Washington and president of the Mathematical Association of America, "Unsolved Geometrical Problems in Physics, Chemistry and Botany, and Jerome Spainer, professor of mathematics at Claremont

Graduate School, "The Fractional Calculus."


The new building, completed earlier this year, houses the UMR department of mathematics, the computer science department and UMR's Computer Center. Architects for the facility are Froese, Maack and Becker of St. Louis and it was built by Minner Construction Co., also of St. Louis.

Both the symposium and the dedication ceremonies are open to the public. There is no charge.

NOTICE

All who plan to complete the requirements for a degree (Ph.D., M.S., B.S. or B.A.) by December 17, 1972, and have not signed an application for a diploma, PLEASE check with the Registrar's Office.

Ted Okamura, New Restaurant Owner
Invites You To -
Aloha.. Make A Short Trip To Hawaii
At
"TED'S WORLD"
Featuring: • Polynesian Food • Sea Food
Banquet Facilities Available • Steak n' Lobster • Prime Rib
For Receptions, Business Meetings
Come And See Us !
Ted's World
Under Recent New Management: Ted Okamura
Located I-44 & Hwy. 28
In the Sheraton Motor Inn



ESTEY JEWELRY

The Finest In Diamonds

And Jewelry

U.M.R. Class Rings

715 Pine St. 364-2142 Rolla, Mo.

Delicious Mexican Food

LA POSADA

Dining Room - Orders to go Open Daily 11 a.m.

Hwy. 63 So. Rolla, Mo. 364-1971 Closed Monday

DIEHL MONTGOMERY

FORD SALES

Rolla, Missouri

(The Originator of the Student Finance Plan in this Area)

This plan allows the students upon approved credits and job, to buy a new car with nothing down and payments of \$25.00 per month until you are on the job. This plan is not new, Diehl Montgomery Ford has sold over 750 new cars and trucks to graduating students this way. See us for all the details. Also you can use your own insurance or ours.

FORD LINCOLN AND MERCURY

This allows the graduating students to have a new car before he graduates when he really needs it.

tie one on

In Jeanials...the jeans shoe

by **Thom McAn**



There's more than one way to enjoy life. Take Thom McAn's new Jeanials, for instance - shoes just for the fun of it. Jeanials are light on your feet and all done up in the latest lace-up styles, shapes and colors. And like the jeans you wear them with, they're rugged and funky and incredibly comfortable.

And just one more thing, when you tie one on with Thom McAn, you won't regret it in the morning. The only thing about Jeanials that might make you a little lightheaded is the price.

Only **\$13.99**

Family Shoe Store

710 Pine

Ratchford Announces Tentative Completion of Role and Scope

University of Missouri President C. Brice Ratchford recently announced a "personal goal" to have a final Role and Scope document ready for

discussion by the Board of Curators by the end of the year. The Role and Scope paper will outline the basic educational philosophy of the University

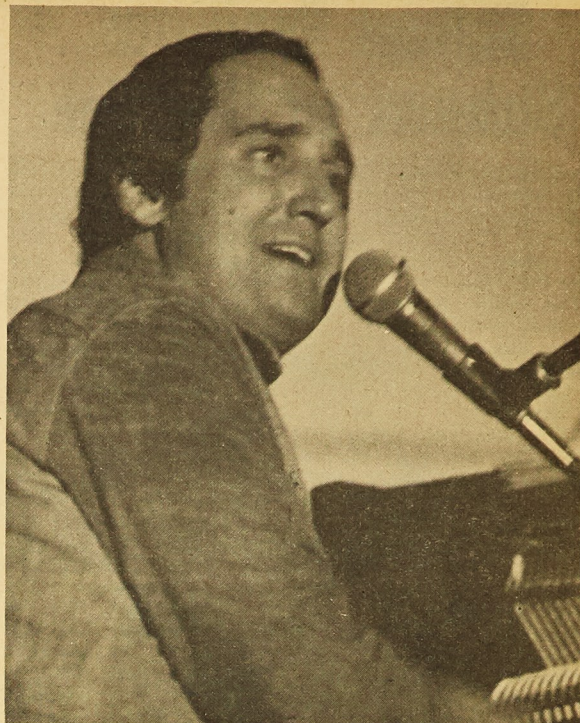
and present a plan for its academic reorganization.

Several members of the University faculty have expressed concern the Role and Scope is being formulated too quickly and should be delayed until the faculty can more fully respond to the proposal.

Since last May, Ratchford has been reviewing criticism of an early form of the document. Ratchford said he is not getting any new constructive comments from the faculty, hearing "the same thing I've heard before."

Robert G. Brady, president of the Board of Curators, said the Board "is not going to be rushed" into a decision on the proposal. He added that the Board would take adequate time to deliberate upon the proposal, adding that "deliberation is different from procrastination."

Neither Ratchford nor Brady would offer any comment on a statement released earlier this month which strongly criticized the Role and Scope program and said it had taken power out of the hands of the faculty.



Neil Sedaka performed at the 1972 Homecoming Concert. A last minute replacement for B. J. Thomas, Sedaka sang many of his hit songs. He was overwhelmingly received by a crowd of about 1200 Miners and their dates at the Multi-Purpose Bldg. Thomas was unable to appear after being involved in an automobile accident.

(Photo by Rick Cottrell)

Note From The Chancellor

Research Aids Education

Unlike some of the nation's universities, UMR maintains an integrated teaching and research staff, not separate ones. Our feeling is that this integration is important to the instruction process and also involves students in research activities as well as in the classroom instruction.

It is historical in both European and American universities that advancing the frontiers of knowledge is an integral part of the instruction process. Unfortunately, a few universities have given an over-emphasis to advancing the frontiers of knowledge without involving the students.

UMR is dedicated to an integrated program. A professor must be up to date in his field if he is to adequately meet the demands of today's well-qualified students. Students are highly motivated if they can share in some of the recent discoveries of their professors and even more so if facilities and time will permit their direct involvement with his research work. This direct and indirect involvement is important to the undergraduate student as well as to the graduate student.

Because of limited funds from regular University sources, it has been a long-standing tradition in the United States to take advantage of funding opportunities for research and related programs from government and industrial sources. These funds are gained on a competitive basis. The faculty member who can compete favorably with his peers across the nation for funds is justifiably complimented. The policy of this campus is to solicit only those funds which can enhance the instructional process and carry out the education mission of the campus. Faculty members are indeed discouraged from soliciting funds for the benefit of the money only, but they are encouraged to solicit funds that can help promote our academic mission.

Grant and contract funds are important to research and related programs. UMR received last year approximately \$3,200,000 in gifts and grants. This was for direct student aid, indirect student aid, equipment, and program expansion.

Although variations exist in the ability of faculty members to relate knowledge to students, it is clearly evident at UMR that those who are engaged in some form or research rate higher than average in their effectiveness to communicate with their students.

The policy of the campus for eligibility for tenure requires that a person must be a good teacher. With this stipulated minimum qualification, we feel that the students' interests are protected to the best judgment

of established faculty members, department chairmen and deans. To this base, plus factors occur when faculty members gain experience from innovative programs including research, conferences and other important efforts beyond the classroom. These efforts all add up to give teachers greater resources for effectiveness in the classroom.

If you feel that one of your teachers is less than adequate in the classroom because he spends too much time implementing his research, please invite him to share some of his recent findings with the class. I believe that you will agree that he has something extra to offer you.



A Governor should be a man we can trust.

He should be a man capable of leadership. A governor should be a man who would act in our behalf. After all, we elect him to represent us.

Kit Bond has no ties to the special interest groups. Kit Bond has no stake in, and will not continue, the patronage system. Kit Bond represents leadership which will put efficiency and responsiveness back in Missouri government.

If we truly want this type of government, there is only one choice Kit Bond.

Bond. Leadership for a change.

Pd. by Democratic Students Working for a Better Government
Jeff Wolfer, Pres., Central Missouri State University Young Democrats
Rich Gross, former Treasurer, Missouri Young Democrats

sports

Miners Lose Heartbreaker, 3-0

Bears' Late Field Goal Dampens Miner Spirits

A rain soaked Homecoming crowd saw the Miners lose their sixth consecutive football game of the season by the score of 3-0. The victory by the Springfield Bears gave them the Powderkeg, which had been held by the Miners for the last three years. The game was as sloppy as the field it was played on but neither team could take advantage of their opponent's miscues.

The game was decided by a 33 yard field goal, kicked with just 39 seconds remaining in the game. Tom Tucker of SMSU dramatically toed the ball through the uprights to give the Bears their second conference triumph versus only one loss.

The only scoring drive of the afternoon began with 2:47 left in the fourth quarter as the Bears got the ball on their own 45 yard line. The Bears offensive unit marched to the Miner 16 before Tom Tucker was called upon for his last minute heroics.

Defensively, the Miners forced four turnovers, but were unable to capitalize on any of

the opportunities. Terry Logan recovered a fumble early in the first quarter on the Bear 17, but the offense was unable to score. Also in the first quarter, Jim White recovered another Bear fumble in Bear territory.

White intercepted a Frank Miller aerial late in the first half and returned it to midfield, but the SMS defense held firm. Bruce Stone intercepted another Miller pass in the third quarter in the end zone to blunt a Bear scoring attempt.

Offensively, the Miners only bright spot for a dreary afternoon was the running of Kenton Hupp. Hupp, who came off the bench to replace Mike Joshua, was the first Miner back to gain more than 100 yards in a game.

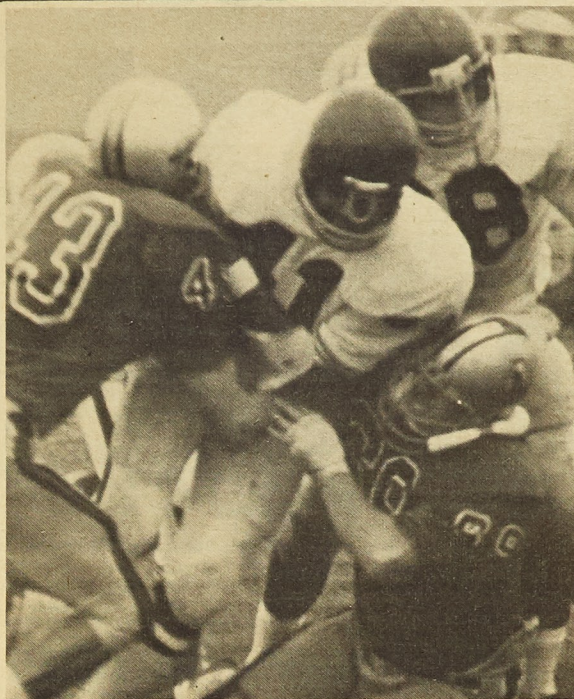
The heavy rain severely hampered the passing attacks of both teams. UMR gained just 20 yards passing as LaFollette was 3 of 11. SMS didn't fare much better, as Frank Miller completed 6 of 14, good for 36 yards.

Kenton Hupp accounted for

115 yards running, as the Miners mustered only 139 yards on the ground. Next week the Miners will face CMS in Warrensburg. The Mules are winless in conference play, but have tied powerful NEMS in a game played this weekend. So the Miners may have a great deal of difficulty notching their first victory of the season, unless the defense performs as it did Saturday, and the offense returns to last week's scoring pace.

Statistics

	UMR	SMS
First Downs	7	11
Yds. Rushing	139	134
Yds. Passing	20	35
Passing	3-11	6-14
Interceptions By	2	1
Fumbles Lost	1	2
Punting	10-290	8-293
Penalties	2	1
Yds. Penalized	20	15
The scoring:		
SMS — Tucker	33	field goal.
The score by quarters:		
SMS	0	0 0 3—3
UMR	0	0 0 0—0



Cornerback Calvin Curdt and linebacker John Key combine to stop the Bears' Fred Tabron.

Water Polo Team Drowns Tulsa, 25-2

This past Saturday the UMR water polo team played its first home game against Tulsa University and much to the delight of the crowd that managed to get up for the 9:30 game, they won by the convincing score of 25-2.

Although everyone was glad to win, it really wasn't too good to win like they did. The Miners could almost score at will. They didn't even need an offense. Tulsa couldn't pass at all; in fact, they probably passed to UMR players more than they did to their own. Even their goalie on his free passes in after UMR scored, couldn't seem to find an open man. In addition to their lack of passing, Tulsa didn't move. They just stood around waiting for something to happen. The Miners, on the other hand, were constantly moving, getting open and staying on the ball. As a result it looked as if Tulsa had no defense or offense and that the Miners were unbeatable. Even when Tulsa was in the easy-to-defend shallow end they hardly ever got the ball out of their half of the pool. You could sum up

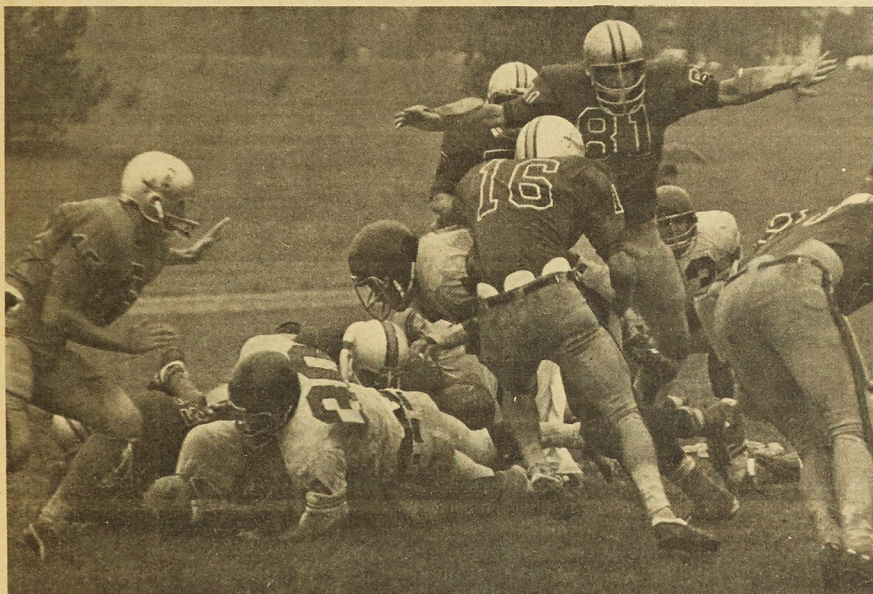
Tulsa's sickening, pathetic performance by saying they weren't even a water polo team.

UMR was made to look good, but they still played a good game. They played a tight defense, stopping Tulsa before they even got out of their end. They stole passes almost at will and made the transition from defense to offense very smoothly. The Miners never had to really work an offense as they had Tulsa pinned in their own end so much that they just stole the ball and threw it in the net. They had no competition.

The Miners did have a good shooting drill, though. Those who scored for the Miners were: Paul Vetter with 5, Tom Kreutz 5, Tim Blood 5, Larry Molina 3, Dave Beem 2, Phil Henry 2, Jim Entwistle 2 and Mark Mateer 1.

Coach Bob Pease was hoping that Tulsa would give UMR a good game to get them ready for this week's Missouri Championships. In this respect, he was sorely disappointed. But nevertheless, the Championships will be held this Saturday here at UMR. The participating

Continued on Page 11



Dennis Doering and safety Jim White team up to stop a Springfield runner as he powers his way through the line for a short gain. Safety Bruce Stone is waiting to make the final hit.

THE SOUND CENTER

will be moving by the end of October to the old Shamrock Club. We are now offering discounts on everything to keep down the cost of moving.

THE SOUND CENTER

6th & Elm

364-7715

CHAMPION TERMPAPERS
636 Beacon St. (No. 605)
Boston, Mass. 02215
617-536-9700
Research material for
Term Papers, Reports, Theses, etc.
For information
please write or call

Need A
New Or
Used Car?



SEE MARV

Gryder Motors, Inc.
Rolla, Mo., 65401,
Phone 364-3783



Re-Elect
**LEO
Christopher**
Democrat for Phelps Co.
ASSESSOR

8 Years on
UMR Coaching Staff

College Background at UMC and UMR
Paid for by Leo and Mary Christopher



The Rugby Club moves the ball very well in recent action against Florissant Valley Community College. The Blacks built up a 22-0 halftime lead, and the Golds held on for a 26-8 win.

UMR Ruggers Demolish Florissant Valley, 26-8

The Rugby Club rolled over Florissant Valley Community College 26-8, this weekend in a rain-soaked contest. The rematch with Flo Valley was scheduled due to a cancellation of a scheduled game.

The game opened up fast as in the first 5 minutes the Miners had a score. Dominic Grana picked the ball up and ran it 10 yards for 4 points and a score. Charlie Weber added the 2 point conversion. The next score came as Jeff Mayfield recovered a kick in the endzone. A good conversion by Charlie Weber brought the score to 12-0.

The UMR team then showed its muscle. With a penalty kick on the five, the ruggers decided to run it over. After scoring it on the first attempt, only to have it called back, UMR powered it over again with Tom Rahn carrying the ball. The conversion was kicked by Charlie Weber for two more points.

The Miners scored again off of a five yard scrum down to end the first half. The Miners got the hook on the throw in and controlled the ball as the scrum shoved the ball over the goal line. Dominic Grana fell on the

ball but the score goes to the Miner's scrum. The conversion was missed, but the Miners left the field at halftime leading by the score of 22-0.

The Miners put in the entire second team to open the second half. Midway through the second half, the Florissant Valley squad scored, as they blocked a UMR kick and fell on it. The conversion was missed.

UMR then moved to the other end of the field and started setting up for a score. After a near miss by John Northrup, the Miners kept the ball in position as they applied the pressure and Gene Meyer recovered a kick in the endzone. The conversion attempt was missed.

The Florissant Valley ruggers went wide to score their final four points. The final score was UMR 26, Florissant Valley 8.

The victory brought the UMR record to 3-1 for the year. Next week the Miners will face the University of Missouri-Columbia in Columbia on Saturday, and will oppose Westminster College Sunday afternoon in Joplin.

Water Polo Romps

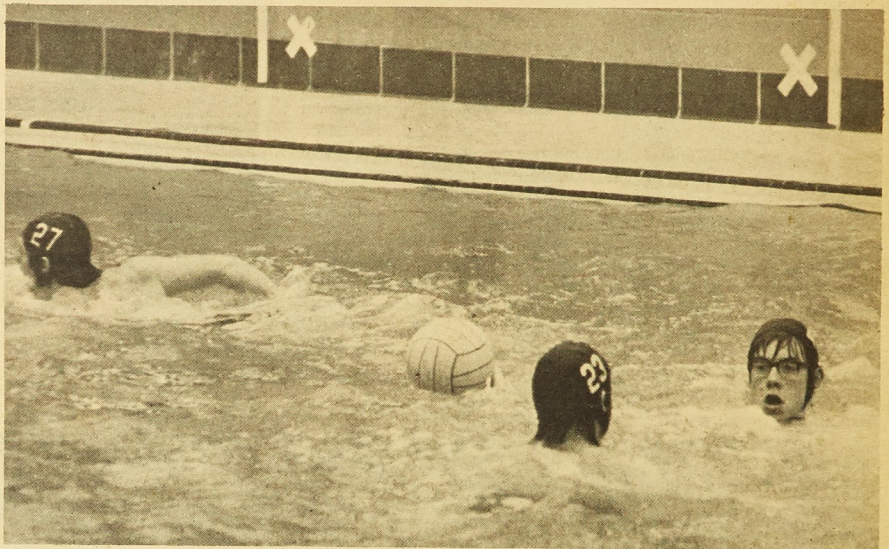
Continued From Page 9

teams will be UMR, Westminster, Meramec Community College, Southeast Missouri State University and Central Missouri State University. These teams will really show one what water polo is. Cape is the favorite as they are 6-0 on the year. Right behind them are UMR (6-2) and Westminster. Warrensburg poses no real threat and not much is known about Meramec.

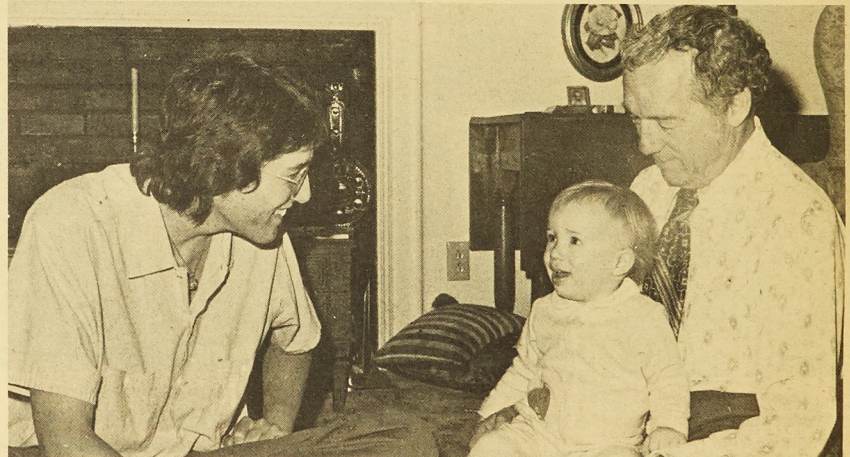
From UMR's point of view, they should win their first game against either Warrensburg or Westminster and thus will probably meet Cape in the championship game. A big crowd to cheer them on would be greatly appreciated. So, for anyone interested, there will be games on the hour from 11:00 to 5:00 except for 3:00. But be sure to make the 1:00 and 5:00 games, for that is when the Miners will be playing.

Schedule

- 11:00 Warrensburg vs. Westminster
- 12:00 Meramec vs. Cape
- 1:00 UMR vs. winner of 11:00 game
- 2:00 Loser of 11:00 game vs. loser of 12:00 game
- 4:00 Loser of 1:00 game vs. winner of 2:00 (3rd place)
- 5:00 Winner of 12:00 game vs. winner of 1:00 game (1st place)



A look at the action in the water polo game this past weekend against Tulsa. The Miners completely devastated Tulsa, 25-2. The Missouri championships are set for this weekend, here in Rolla.



A Concerned Grandfather,
Ready To Deal With The Problems
That Confront Our Youth.

TWITTY

REPRESENTATIVE

Send Him to Jeff City....

Let Him Work For Us There.

-SAVE UP TO 50%-

Better than SAE discount

Auto Parts & Acc. Speed Equip.

HOOK AUTO SUPPLY

513 Hiway 63S

Rolla, Mo.

364-5252

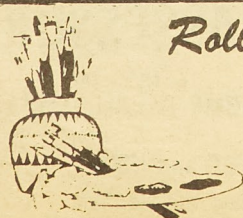
Christopher Jewelers

805 Pine Street

★ ★ ★

Catering To UMR

The Complete Service Jeweler



Rolla Craft-Hobby

605 PINE STREET
ROLLA, MISSOURI 65401
PHONE 364-5581

CRAFTS - HOBBIES -
ARTISTS' SUPPLIES

Miners Face Stubborn Mules; Both Teams Winless In MIAA

This weekend the UMR Miners visit Vernon Kennedy Stadium, the home of the Central Missouri State University Mules. The Mules are coached by Howard Mahanes, who hopes to guide the Mules back into the thick of the title race in the Missouri Intercollegiate Athletic Association after last season's sub-.500 showing.

The talent Coach Mahanes has to work with is 34 returning letterman, a number of transfers and a bunch of top freshmen. The Mules are mainly a young team. On offense, they have two seniors starting, two juniors and seven sophomores. The defense has three starting seniors, two juniors, three sophomores and three freshmen. Among the non-seniors are three transfer students and eight players who are starting their first collegiate varsity game.

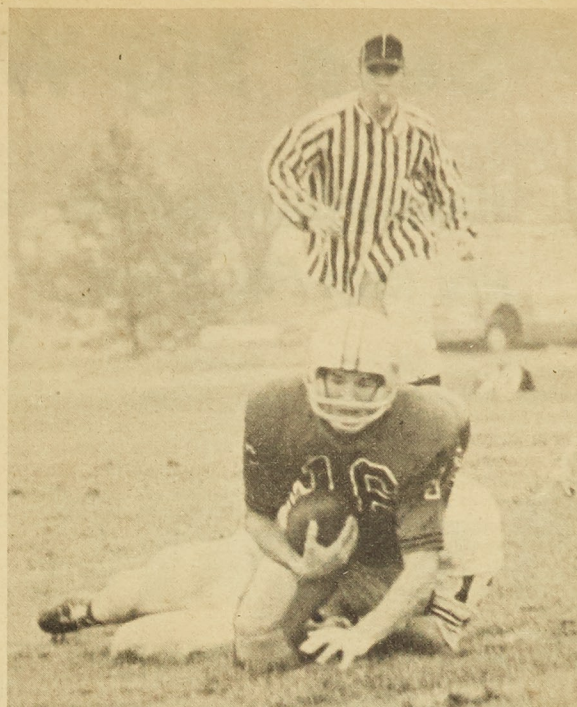
On offense, the Mules run a slot-I and a power-I. Their biggest offensive boost will be in the backfield where Ira Clemons and Walter Rhone

carry the load. Clemons is back after a year's layoff, when he lead the conference in rushing with 1,002 yards and scored nine touchdowns. Rhone, a senior, will be wingback. He was the Mules' leading rusher last year and was a big threat on returns, as he ranked second in the nation in kickoff returns.

The quarterback is Steve Howard, a sophomore. He took the job away from the regular late last season and has shown no signs of giving it up. His two main targets are Rhone and Raymond Bass. This size-up does seem to bear out Coach Mahanes when he says the

offense is ahead of itself when compared to last year. But defense is another question, and seems to be the main problem area of the Mules' team.

Defense has had the biggest rebuilding job as seven spots were vacated after last season. One spot is defensive end, three are in the Mules' four deep secondary and all three linebacker spots had to be filled. All-MIAA selection Gary Simpson and Jimmy Eskew are the only returnees to the defensive unit. Much hope is placed in the transfers and freshmen.



Jimmy White gets tackled after returning a short punt in Saturday's Homecoming game.

Lincoln Tigers Top MIAA With Perfect 1-0 Record

Three games were played in the MIAA this past weekend, and they left the league standings in a jumble. League leading Northwest fell to the Lincoln Tigers 12-0 in a surprising upset. The Bearcats' record fell to 2-1-0, while the Tigers notched their first conference victory against no losses. So Lincoln holds down the top spot in the conference with an unblemished 1-0-0 record.

In a game played at Warrensburg, the stubborn Mules played powerful Kirksville to a 7-7 standoff. The Mules' record now stands at 0-2-1, while Kirksville dropped to 2-0-1, and second place in the league.

The Bears of SWMS edged UMR in a 3-0 squeaker to boost their record to 2-1. The Miners are 0-2 at the bottom of the MIAA heap. The Cape Girardeau Indians were idle this past weekend, and their conference mark stands at 1-1.

MIAA Standings

TEAM	W	L	T
LU	1	0	0
NEMS	1	0	1
SWMS	2	1	0
NWMS	2	1	0
SEMS	1	1	0
CMS	0	2	1
UMR	0	2	0

Intramural Standings

Includes football

1. Lambda Chi	759.75
2. Kappa Sig	710.50
3. Pi KA	701.50
4. Sig Pi	684.25
5. TKE	665.25
6. Sig Ep	630.00
7. Beta Sig	626.50
8. Phi Kap	605.00
9. Sig Tau	598.75
10. Tech	514.25
11. KA	513.50
12. Sig Nu	505.50
13. MRHA	492.50
14. Engine	486.25
15. TJ	454.75
16. Delta Sig	449.75
17. Mates	445.50
18. Delta Tau	427.00
19. Campus	367.25
20. Acacia	343.00
21. Theta Xi	296.25
22. Wesley	249.50
23. Liahona	245.00
24. A Phi A	190.00
25. Newman	168.75
26. Triangle	130.50
27. AEPi	127.75
28. Pi Kappa Phi	125.00
29. BSU	93.75
30. Theta Chi	91.00

PIZZA

ALEX PIZZA PALACE

17 STEAMING VARIETIES
SANDWICHES AND BEER

Hours (Open Daily)

From 4 p.m. To 2 a.m.

Seven Days A Week

DIAL 364-2669

FOR TAKEOUTS &
DELIVERY SERVICE

THANK YOU FOR YOUR EXCELLENT PATRONAGE DON'T FORGET, WE'RE HERE TO SERVE YOU!

Busch 12 oz. cans... \$1.09

Budweiser Malt 12 oz. cans... \$1.26

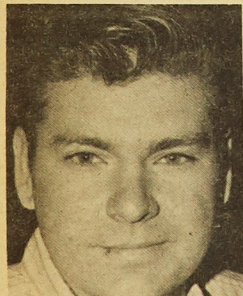
Schlitz Malt 8 oz. cans... \$.88

Hamm's Quarts... \$.44

Malt Duck Quarts... \$.88

509

THE JOB
NEEDS BOB



Bob Scott
For full-time

VOTE BOB SCOTT
FOR SHERIFF

5¢ / 50¢ Minimum
WORD

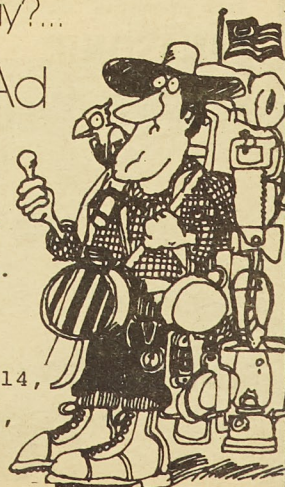
	5	
10		
		15
	20	
25		
		30

Got Sumthin' To Sell?
Buy? Give Away?...

Try A Miner Ad

All ads
must be paid
for in advance
of publication.

Bring ads
Miner office, T-14,
Monday-Thursday,
2:30-4:30.
Deadline for ads is
Thursday, 4:30p.m.



Beta Sig Wins Football Title

Kappa Sig Defeats Phi Kap For Third

With a powerful offense and a tough defense, surprising Beta Sigma Psi has captured the top spot in intramural flag football with a win over perennially strong Lambda Chi. Beta Sig had control of the game from the start, rolling to a 21-0 lead at halftime. The offense piled up 13 more points in the second half, while the defensive unit held the shutout until the closing minutes when a Cliff Felix to Steve Holcomb pass brought the final score to 34-7.

Quarterback Steve Brown led the Beta Sig offense, hitting on five touchdown passes, connecting with receiver Wayne Long for four of them. Don Schlechte pulled down the other TD aerial. Carl Haring intercepted one pass, and along with pass rusher Roger Goyins led the defensive unit.

In the third place game, Kappa Sig won on the strength of Jack Costello's four touchdown passes, with two each to Ken Arnsmeier and Pat Knoll. Stu Scott and Jim Devous led the defensive squad as they held off Phi Kap after a 21-0 halftime lead dwindled to 28-14.

In the semifinal games leading to the championships, the Lambda Chi team beat Kappa Sig in overtime after a 7-7 score in regulation time. John Hixon intercepted a pass on Kappa Sig's second play in overtime to seal the victory. Beta Sig reached the finals with a 20-7 victory over Phi Kap, as Steve Brown once again connected with Long for a TD and ran for two himself.

Intramural basketball is now in full swing, with all teams playing scheduled games. I.M. ping-pong is coming up, and the point totals are starting to take shape. Lambda Chi holds a commanding lead over Kappa Sig and PiKA. Sig Pi rounds out the top four.

Point Totals

1. Beta Sig	300
2. Lambda Chi	290
3. Kappa Sig	280
4. Phi Kap	260
5. PiKA	260
6. Mates	240
7. Sigma Pi	240
8. TKE	240
9. Delta Tau	220
10. KA	205
11. Sigma Ep	205
12. Sig Tau	190
13. Acacia	160
14. Delta Sig	160
15. MRHA	160
16. Sigma Nu	160
17. Tech Club	160
18. Wesley	130
19. Campus	110
20. TJ	110
21. Theta Xi	110
22. Engineers	90
23. APA	75
24. Triangle	75
25. Newman	60
26. Pi Kappa Phi	50
27. AEP	40
28. Liahona	30
29. Theta Chi	20



Beta Sig's quarterback Steve Brown fires a pass in intramural football action against Lambda Chi. Brown led Beta Sig to a victory and the intramural crown, beating Lambda Chi, 34-7.

The Harmon Football Forecast

1—SOUTHERN CAL
2—NEBRASKA
3—OKLAHOMA
4—ALABAMA
5—MICHIGAN

6—COLORADO
7—L.S.U.
8—OHIO STATE
9—U.C.L.A.
10—TEXAS

11—IOWA STATE
12—TENNESSEE
13—NOTRE DAME
14—PENN STATE
15—STANFORD

16—FLORIDA
17—AUBURN
18—ARIZONA STATE
19—S.M.U.
20—TEXAS TECH

Saturday, Oct. 28—Major Colleges

Alabama	34	Southern Mississippi	0
Arizona	26	El Paso	7
Arizona State	27	Air Force	20
Arkansas	38	North Texas	6
Auburn	25	Florida State	20
Baylor	20	Texas A & M	17
Bowling Green	33	Marshall	7
Brigham Young	21	Colorado State	6
Bucknell	24	Davidson	20
Citadel	25	Colgate	13
Clemson	31	Wake Forest	12
Colorado	30	Missouri	7
Dartmouth	21	Harvard	16
Dayton	23	V.M.I.	6
Delaware	28	Temple	7
Drake	31	New Mexico State	6
Duke	22	Navy	20
East Carolina	35	Furman	6
Georgia	17	Kentucky	7
Georgia Tech	26	Tulane	21
Houston	28	Mississippi State	20
Indiana	20	Northwestern	14
Iowa State	27	Kansas	7
Kent State	20	Northern Illinois	15
Louisville	40	Cincinnati	13
Maryland	21	Virginia	13
Memphis State	24	Tulsa	22
Miami, Fla.	28	Army	7
Miami (Ohio)	27	Toledo	14
Michigan	35	Minnesota	7
Michigan State	29	Iowa	6
Mississippi	22	Vanderbilt	10
Nebraska	45	Oklahoma State	7
No. Carolina State	21	South Carolina	10
Notre Dame	24	T.C.U.	7
Ohio State	31	Wisconsin	7
Oklahoma	45	Kansas State	0
Pacific	33	Idaho	13
Pennsylvania	25	Princeton	21
Penn State	21	West Virginia	14
Pittsburgh	22	Syracuse	21
Purdue	22	Illinois	10
Rutgers	22	Columbia	17
San Diego State	26	Fresno State	14
San Jose State	27	Long Beach	21
Southern Cal	42	Oregon	6
S.M.U.	21	Texas Tech	20
SW Louisiana	27	Arlington	6
Stanford	34	Oregon State	6
Tennessee	43	Hawaii	7
Texas	25	Rice	14
U.C.L.A.	28	Washington State	10
Utah	23	New Mexico	21
Utah State	20	Wyoming	9
Villanova	20	Holy Cross	16
V.P.I.	22	William & Mary	14
Washington	23	California	14
West Texas	15	Wichita	6
Western Michigan	28	Ohio U	22
Xavier	21	Youngstown	12
Yale	23	Cornell	17

Other Games—East

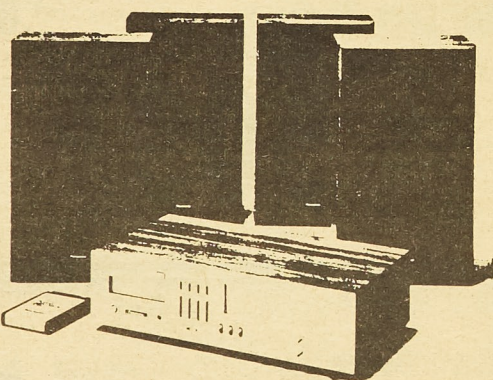
Albright	23	Moravian	6
Alfred	21	Cortland	13
Amherst	15	Wesleyan	6
**Boston U	21	Rhode Island	16
Bridgeport	22	Ithaca	7
Central Connecticut	21	Glassboro	13
Clarion	22	California State	13
Delaware Valley	20	Upsala	17
Drexel	23	Fordham	20
Hobart	14	Lebanon Valley	6
Franklin & Marshall	24	Union	13
**Jersey City	29	Trenton	12
Kings Point	21	Wagner	20
Lehigh	35	Gettysburg	0
Maine	22	Lafayette	14
Massachusetts	24	Connecticut	7
Middlebury	30	R.P.I.	0
Montclair	20	Southern Connecticut	14
Muhlenberg	20	Swarthmore	12
Northwestern	24	New Hampshire	21
Norwich	18	Bates	7
Rochester	22	Trinity	21
St Lawrence	19	Hamilton	7
Slippery Rock	33	Waynesburg	7
Springfield	21	American Intern'l	13
Vermont	13	Hofstra	13
West Chester	38	Kutztown	0
Williams	23	Tufts	7
Worcester Tech	16	Coast Guard	14

Other Games—Midwest

Adrian	14	Kalamazoo	8
Ashland	20	Hillsdale	15
Baldwin-Wallace	28	Capital	0
Butler	24	Evansville	12
Central Michigan	24	Akron	7
Central Missouri	21	Rolla	7
Central Oklahoma	30	Panhandle	7
Defiance	17	Anderson	14
Denison	26	Muskingum	14
Doane	21	Concordia, Neb.	20
Eastern Michigan	30	New Mexico Hi'lands	12
Graceland	20	Central Methodist	17
Gustavus	27	Hamline	13
Hastings	21	Dana	12
Heidelberg	24	Wooster	0
Indiana State	22	Western Illinois	20
Kearney	20	Missouri Western	0
Lincoln	26	SE Missouri	20
Mankato	33	Morningside	7
Maryville	20	Franklin	6
Middle Tennessee	24	Ball State	23
Midland	21	Nebraska Wesleyan	13
NE Missouri	20	NW Missouri	7
NE Oklahoma	21	NW Oklahoma	15
Northland	16	Mayville	13
Northwood	14	Ferris	7
Ohio Wesleyan	15	Marietta	12
Olivet	14	Albion	13
Ottawa	23	College of Emporia	6
St. Mary	21	Southwestern, Kan.	19
SE Oklahoma	23	Cameron	20
Southern Illinois	22	Illinois State	21
SW Missouri	21	Eastern Illinois	14
Valparaiso	21	DePauw	10
Wabash	20	Rose-Hulman	14
Wayne, Mich.	33	Chicago Circle	6
William Jewell	15	Missouri Valley	13
Wilmington	13	Findlay	12
Wittenberg	30	Mount Union	6

Other Games—Far West

Abilene Christian	30	Eastern New Mexico	7
Cal Lutheran	24	LaVerne	13
Cal Poly (S.L.O.)	32	Nevada (Reno)	6
Central Washington	20	Eastern Washington	7
Chico State	21	San Francisco State	12
Colorado College	21	Washington, Mo.	16
Colorado Mines	17	Ft. Lewis	13
Colorado Western	27	Westminster	7
Davis	28	Hayward	15
Fullerton	16	Cal Poly (Pomona)	10
Humboldt	26	Sacramento	10
Los Angeles	14	U.S.I.U.	13
Northern Colorado	17	Washburn	8
Occidental	14	Pomona	12
Pacific Lutheran	27	Idaho College	6
Puget Sound	24	Portland	6
Redlands	14	Claremont	7
Riverside	22	Whittier	14
San Fernando	26	Northern Arizona	17
Southern Oregon	21	Western Washington	14
Weber	29	Nevada (Las Vegas)	13
Whitworth	31	Oregon Tech	6



PANASONIC RE-8420 QUADRAPLEX

Beautifully Designed

4 Channel 8 Track

Cartridge Player Has

Built-in FM/AM

FM Stereo Radio

DEMONSTRATED AT

SCOTT'S

Books & Music
717 Pine

\$279⁹⁵