



07 Sep 1972

The Missouri Miner, September 07, 1972

Follow this and additional works at: https://scholarsmine.mst.edu/missouri_miner

These newspapers reflect the attitudes, perspectives, and beliefs of different times. Neither the library nor the university endorses the views expressed in these collections, some of which contain images and language which may be offensive to some readers.

Recommended Citation

"The Missouri Miner, September 07, 1972" (1972). *The Missouri Miner Newspaper*. 2008.
https://scholarsmine.mst.edu/missouri_miner/2008

This Newspaper is brought to you for free and open access by Scholars' Mine. It has been accepted for inclusion in The Missouri Miner Newspaper by an authorized administrator of Scholars' Mine. This work is protected by U. S. Copyright Law. Unauthorized use including reproduction for redistribution requires the permission of the copyright holder. For more information, please contact scholarsmine@mst.edu.



Missouri Miner



University of Missouri - Rolla

VOL. 59, NO. 1

ROLLA, MISSOURI

THURSDAY, SEPTEMBER 7, 1972

12 PAGES

Proposed Budget May Spell Student Refund

"Hopefully, the upcoming special session of the General Assembly will grant the University of Missouri the entire \$3.5 million emergency appropriation it is requesting. If the money is appropriated the university will be able to rescind and refund the student fee increases placed into effect this fall, and also correct some serious shortages in the operational budget," according to President C. Brice Ratchford.

President Ratchford has called the emergency appropriation request "the most vital since I have been at this institution."

Such were the words of the President of the Board of Curators in explaining the financial situation of the university system. These comments are from "News from the University of Missouri" released by the University to student newspapers. The release went on to say the following.

He said receipt of the entire \$3.5 million is essential for the University to prevent otherwise unavoidable cutbacks planned in University programs and to assure that the student fee increases will be rescinded.

Last May 26 the Board of Curators voted to increase the student incidental fee \$20 per semester, bringing it to \$250 for a full-time student. At the same time, tuition for non-resident students was raised \$40 per semester, bringing it to \$500, which with the incidental fee makes the per semester cost \$750.

"Student fee increases are contrary to the basic philosophy of public higher education that no qualified young person should be denied the opportunity of a University education due to high costs," said Dr. Ratchford. "It was with much reluctance and regret that these student fee increases were instituted, but the financial condition of the University left no alternative."

According to the president, the University needs an additional \$12 million for fiscal 1972-73 over its needs for the previous year. However, the General Assembly only provided a \$5 million increase in state appropriations. The University, therefore, was short about \$7 million in funds to support its 1972-73 operating budget.

"Faced with the dilemma of finding \$7 million in additional funds," said Dr. Ratchford, "the University was confronted with two alternatives: (1) raise student fees and tuition, or (2) cut back present programs and services and reassign those funds to more pressing needs."

"In order that neither of these would be forced to suffer the entire consequences, a compromise was reached and it was decided to acquire the needed funds through a combination of fee increases and cutbacks," he said.

The fee and tuition increases will bring in an additional \$1.6 million this year and, along with about \$400,000

Continued Page 7

Johnson Predicts Greater Engineering Employment

A severe shortage of engineers in the future is inevitable if the present national downward trend of engineering enrollments is not reversed. This is the opinion of Dean J. Stuart Johnson of the University of Missouri—Rolla School of Engineering.

Dean Johnson cites a recent report by the American Council on Education (ACE) on enrollments of college juniors in different fields. The survey shows that the number of third-year college students majoring in engineering has declined 7.3 per cent in the past year. Over all fields, junior-year enrollment increased 7.6 per cent.

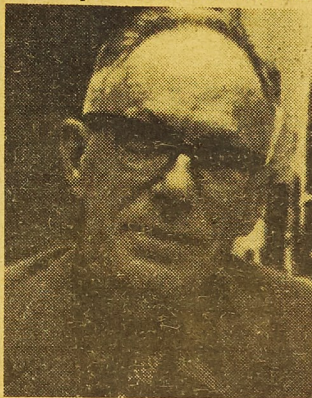
Statistics in the ACE survey show continuation of a nation-wide trend of the past few years. The UMR dean attributes part of the continuing drop in

engineering to misleading news stories about unemployed engineers. "When an engineer is out of work, it is news, because unemployment is so unusual for the engineer. At the present time, because of the condition of the economy, jobs are scarce in many fields. Actually, the engineer is far more likely to get a job upon graduation than students in many fields such as liberal arts or teaching."

Dr. Johnson says that the lower number of students enrolled in engineering now will make itself felt in the progression within the next few years. This shortage will come at a time when engineers will be needed more than ever. Because of technological advances and increased interest in avoiding and correcting environmental problems, the last quarter of the century should see an unprecedented demand for engineers.

Dean Johnson says there is evidence that the job market for engineers is already improving. A number of surveys, including a department of Labor prediction, points to increasing demands for engineers.

The improved picture nationally reflects the situation on the UMR campus according to L. R. Nuss, director of placement. "There is definitely an upturn in the job market," he says. "More employers were interviewing on campus this spring and offering more jobs. Also starting salaries were up. I would estimate that of the May graduates, at least 10 per cent more had jobs at commencement time than the mid-year groups."



DEAN JOHNSON

Mall Beautification Becomes Reality?

If any Miners have not noticed yet, the Mall Beautification Project is well underway here at the UMR campus. The mammoth plan, in the works as far back as 6 years ago, calls for major improvements in drainage, lighting and sprinkling systems on the UMR quadrangle.

Approximately as early as 6 years ago, University officials were contemplating the idea of extensive remodeling in the major area of the campus. At the same time, architects built a scale model of the plan which now sits in the lobby of Parker Hall. Then this past year adequate amount of money was appropriated by the state for construction. The approximate total cost of construction will be about \$150,000 and it must be emphasized that this had nothing to do with the increase of student fees. The students are related to the Operating Budget which has no connection whatsoever with the Capital Facilities Budget that received all necessary money for the Mall thru appropriations from the state legislature.

Back in January the Campus Planning Committee and the University decided to put the money into Quadrangle beautification. This decision was reached only after extensive probing was done and it was found that student, and faculty alike approved the idea.

The plan itself has a 90 day completion date and if it had begun on the scheduled date of July 1st, most of the sidewalks and ditches would have been completed. Rather there was a delay of about 3 weeks due to problems with insurance, mix up in delivery of drainage connections and also due to the steel strike.

The project calls for 2 major sidewalks extending the length of the Mall and positioned about 10 feet from the buildings on both sides. There will be an ample amount of crossovers to handle the flux of students across campus, but mostly the middle of the Quad will be covered with various shrubs and beautiful new sod. They are also frequent swamps alongside of Parker Hall, newer, more modern lights and a sprinkling system to keep the sod in shape. There will be plenty of space allotted for benches and a very attractive circular area will be constructed in front of the Student Union to provide some outdoor leisure in between classes.

Naturally the activity in the Mall is causing much inconvenience to the students here this semester. But most everyone would agree that these much needed improvements were a long time in coming and will considerably reform the appearance of our campus.



(DAVE HARDIN Photo)

Student Union

Campus Roundup

What's happening on campus? Come and find at the Campus Round-up on Tuesday, Tuesday, September 12. About forty-five campus organizations, including professional societies, honorary fraternities, and special-interest groups, will be represented at the Round-up. Each of these organizations will have a booth and members to answer any questions you might have. This would be an excellent time to find out about a group you might be interested in. The Campus Round-up will be in the Student Union Ballroom from 3:00 to 5:00 p.m. Don't miss it!

All Girl Mixer

Grils! This is for you. On September 13, there will be an All-Girl Mixer at 7:30 p.m. in rooms 213-214 in the Student Union.

Inmate Students Do Well At UMR

Six inmate students participating in an educational release program at the University of Missouri-Rolla continued to perform well academically during the summer session. Their grade point average was 2.92 out of a possible 4.0.

At the end of the summer session, one of the six prisoners completed his sentence and is continuing as a regular student at UMR.

When classes started for the fall semester Aug. 25, five new inmate students were added to the extension project of the UMR social sciences department, bringing the total to ten.

There are five inmate students majoring in psychology, two majoring in computer science and one each in English, history and life science.

NOTICE

Applications for 1972-73 Rollamo staff are available at the Student Union Candy Counter. This year staff members will have an active part in the layout and format of the book. They will not just be typists and distribution personnel.

TERM PAPERS

Send for your descriptive, up-to-date, 128-page, mail order catalog of 2,300 quality term papers. Enclose \$1.00 to cover postage and handling.

WE ALSO WRITE
CUSTOM MADE PAPERS.

Termpaper Arsenal, Inc.
519 GLENROCK AVE., SUITE 203
LOS ANGELES, CALIF. 90024
(213) 477-8474 • 477-5493

"We need a local salesman"

**MINERS
ARE WELCOME
AT
63 MOTEL**
HWY. 63 AT NORTHWYE
ROLLA

C. Brice Ratchford Installed As Missouri University President



C. BRICE RATCHFORD

reception will be in the Memorial Union.

Dr. Ratchford was named Interim President of the University in October, 1970. He was appointed President in June, 1971. A native of Gaston County, North Carolina, Dr. Ratchford received his undergraduate and graduate degrees in agricultural

economics from North Carolina State College. He received his Doctor of Philosophy degree in economics from Duke University in 1951.

Dr. Ratchford has been a member of the University's administrative staff for more than 13 years. He began in 1959 as Director of Cooperative Extension Services. In 1960 he was appointed Dean of the Extension Division and in 1965 was named Vice President for Extension. He is widely recognized for reorganizing and modernizing the University's Extension program, which has become a national model, and for his initiation in July, 1971, of institutional reappraisal, the most extensive and intensive self-evaluation in the University's history. The reappraisal project is still in process.

UMR students planning to attend the Presidential Investiture Ceremony should advise Mr. Ponder (341-4292) by Monday (Sept. 11).

COLUMBIA, MO.—1972—Dr. C. Brice Ratchford will be formally installed as the 15th President of the University of Missouri at 2 p.m. Friday, September 15 in Jesse Auditorium on the Columbia campus. The Presidential Investiture Ceremony is being arranged by the Board of Curators.

Judge Robert G. Brady of St. Louis, President of the Board of Curators, will preside at the ceremony. The program will include a nationally-known educator who will give the principal address. His name will be announced later on.

Representatives from all four University campuses will take part in the program, as well as representatives from state, government, the student body, the faculty, and the alumni.

Letters of invitation have been sent to educators and to state and national officials. The public is invited to the ceremony at 2 p.m. and the reception at 4 p.m. The

Word To The Wise... For Old And New

The following is a special to the MINER from the UMR Office of Public Information:

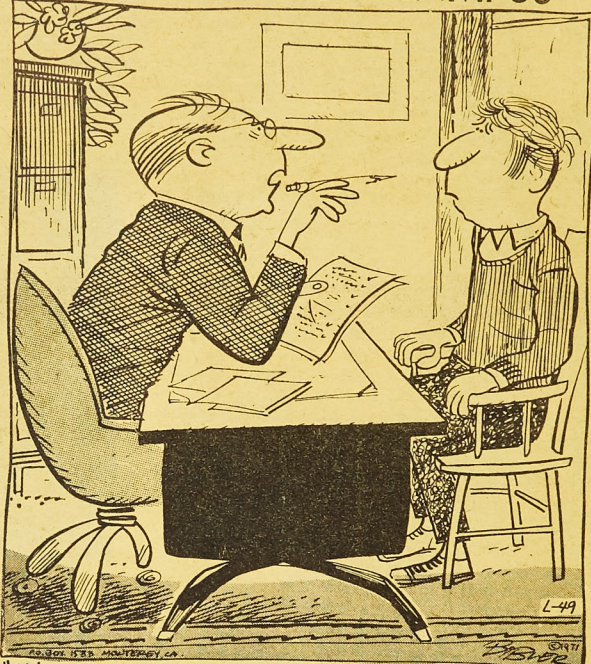
Within the first few days of the fall semester, UMR students shoplifted a forty-seven cent item from a discount store, a piece of plywood from a construction company and a \$2.57 steak from a grocery store.

Two of the students had to go to court and paid fines of \$50.47 and \$81. One student was sentenced to thirty days in jail, but fortunately, the sentence was suspended. Two of the students were placed on disciplinary probation.

Notice

Miner Office Hours
Monday - Thursday
2:30 - 4:00 p.m.

LITTLE MAN ON CAMPUS



"WE'VE EVALUATED YOUR ENTRANCE EXAMS & APTITUDE TEST SCORES BUT STATE LAW SAYS WE MUST ACCEPT YOU ANYWAY."

ZENO'S MOTEL STEAK HOUSE

"HOME OF THE FAMOUS 12 OZ. STEAK"

BOX 70
ROLLA, MO.

PHONE: 364-1301
MARTIN SPRING DR.

Rolla Craft-Hobby



605 PINE STREET
ROLLA, MISSOURI 65401
PHONE 364-5581

CRAFTS - HOBBIES -
ARTISTS' SUPPLIES

**DON'T WASTE YOUR
FRESHMAN FRIENDS COUPONS
THEY ARE WORTH MONEY AT
KENMARK**
904 PINE

UPTOWN

THE REVOLT OF THE APES!

20th Century-Fox

THE NEWEST AND BIGGEST YET!

CONQUEST OF THE PLANET OF THE APES

RODDY McDOWALL and DON MURRAY

RITZ

ENDS SATURDAY

JACK NICHOLSON
CANDICE BERGEN

"CARNAL KNOWLEDGE"
TECHNICOLOR

ADULT ONLY
Late Show
Fri., & Sat.
11:30

HARRY NOVAK PRESENTS

Erika's Hot Summer

COLOR ADMISSION RESTRICTED

Starring ERICA GAVIN - That "VIXEN" girl

No One Under 18
Admitted - All
Seats 1.25

ROLLA DRIVE IN THEATRE



★ PLUS ★
Ann-Margaret Michael
Margaret Connors

"STAGECOACH"

TOP QUALITY COMPONENTS

- Kenwood
- Panasonic
- Dual
- KLH

Check Our Prices!

SCOTTS Books & Music

717 Pine St.

DIEHL MONTGOMERY FORD SALES

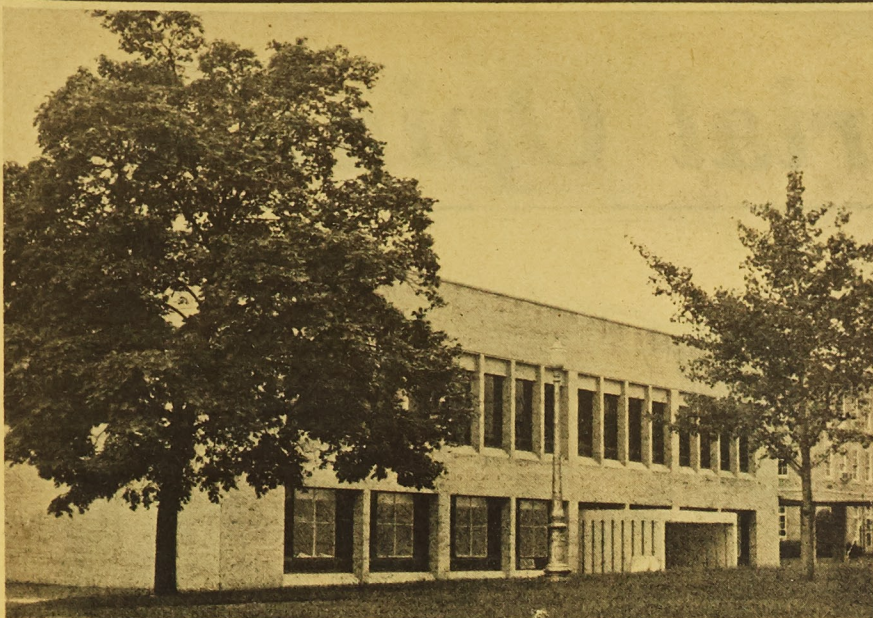
Rolla, Missouri

(The Originator of the Student Finance Plan in this Area)

This plan allows the students upon approved credits and job, to buy a new car with nothing down and payments of \$25.00 per month until you are on the job. This plan is not new, Diehl Montgomery Ford has sold over 750 new cars and trucks to graduating students this way. See us for all the details. Also you can use your own insurance or ours.

FORD LINCOLN AND MERCURY

This allows the graduating students to have a new car before he graduates when he really needs it.



UMR's new University Center awaiting completion sometime in the near future. (Dave Hardin photo)

4,335 Students

UMR's Enrollment Down

From an expected figure in mid August of forty-one hundred, enrollment for the fall semester here at UMR reached 4,335 students according to figures from Mr. Paul D. Smith in Parker Hall.

This figure compares to an enrollment of 4,649 students at the close of regular registration last fall, a decrease of 314. This fall's total of registered students includes 1021 freshmen, 840 sophomores, 840 juniors, 1100 seniors, 369 MS degree candidates, and 165 Ph. D. candidates.

A figure not known by the Registrar's Office last week was the number of incoming coeds to Rolla. One fact that might

point to a larger woman population on campus is that the women's dorm is now McAnerney Hall and not Stuart Apartments.

The number of out of state Miners is not as great as it has been in the past, particularly in the graduate school. One of many possible reasons for this, Mr. Smith suggested, might be the increased nonresident fees over the years.

Summer pre-registration sessions during the past months introduced about half the incoming freshmen to the Rolla campus. 516 freshmen and 138 transfer students attended the two day sessions.

Coeds Move To Dorm Complex

McAnerney Hall, one of the five men's dormitories at the University of Missouri-Rolla, has become a residence hall for women this fall.

According to UMR business officer, Joseph Wollard, "This change is necessary because of the increase in the number of women on campus. Utilizing McAnerney Hall as a women's dormitory will mean that we can provide suitable housing for 112 women rather than 46."

Both single and double rooms will be available to women in the new dormitory and there will be an apartment for the house supervisors.

The present Women's Residence Hall has been made into 18 apartments for married students—ten one-bedroom and eight efficiency units. "It is anticipated," concluded Wollard, "that because of the lack of playground facilities, these apartments will be more suitable for students who have no children."

New To UMR Campus

Mr. Jess Zink, former College Union director at Central Missouri State College, Warrensburg, joined the administrative staff of the University of Missouri-Rolla, Monday, Aug. 21.

Zink will hold the title director of auxiliary enterprises and will be in charge of the operation and maintenance of the University Center, Men's and Women's Residence Halls, Rayl Cafeteria and married-student apartments.

Born in Knob Noster, Zink, 35, was graduated from Leeton High School and obtained his B.S. and M.S. degrees in education at Central Missouri State. He has had a year of

graduate study at Indiana University.

DILLS APPOINTED

John J. Dills has joined the administrative staff of the University of Missouri-Rolla Monday, Aug. 7, as personnel officer.

Dills was graduated in 1966 with a B. A. Degree in psychology from Drury College in Springfield. Since that time he has been an assistant in the general administration of the personnel department of the city of Springfield.

Former UMR personnel officer, Jerry Custer, resigned in July to become a minister.

Date Uncertain

New Center Opens?

"Your guess is as good as mine." This is the latest statement concerning the date of the opening of UMR's new University Center. The possibility of the Center's dedication on the Student Union Board's tentative date (Friday of Homecoming Week-end, Oct. 20) seems very remote indeed.

Ironworkers Delay

The most immediate delay is the ironworkers' strike, leaving the stairs without railings. (One thing the safety inspectors say is a no-no!) Delays in shipping, breakage of glass, and human error have added to the post-

ponement in completion. The University Center cannot be accepted until all work is completed.

Snack Bar Hike

On the subject of increased prices at the snack bar, the MINER was told that the Student Union has been operating at a net loss for the past several years. Student Union activity funds were used to counteract this deficit. However, with the increased cost brought about by the University Center, the Student Union can no longer operate at a net loss. Hence, the increase in food prices.

Missouri Miner

University of Missouri - Rolla

Shamrock Closes After 34 Years

One of Rolla's oldest cooperative eating clubs, Shamrock Club, closed its doors over the summer. Financial difficulties with creditors and finance companies proved to be too much.

Shamrock Club began serving independents of the then School of Mines and Metallurgy in 1938, two years after the opening of Engineers Club.

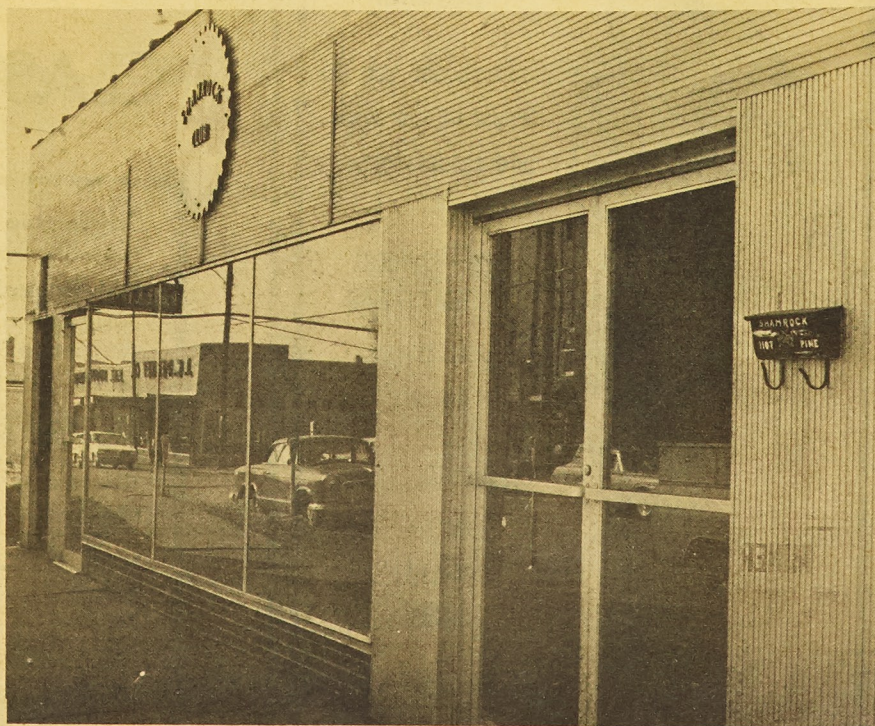
This summer Shamrock Club's new business manager, Mike Stelzleni, inherited the

past difficulties of other managers. Owning their building, Shamrock had both upkeep of the building expenses and finance company payments to meet. Also the level of membership could not support these costs and those related to operating the club.

The final decision to close Shamrock was made before the first week of school by the managing body of the club, led by President Larry Jenkins. The anticipated costs and the expected number of people

returning resulted in a projected minimum board bill that would have been far from competitive with the other eating clubs.

The three remaining cooperative eating clubs—Campus, Engineers, and Tech—now are serving independents of UMR. Both Campus Club and Engineers Club are serving about 170 to 180 members, while Tech Club is handling near 120. All three clubs are straining their facilities to serve this many members.



Shamrock Club, UMR's second oldest eating club, closed because of financial difficulties.

Yours-Theirs - Ours

Editorial Opinion

Editorial Policy

The staff of the MISSOURI MINER should be the voice of the students. There is room on the UMR campus for constructive change.

The staff would like to be a part of such a change. Any opinion or complaint will be weighed for its validity and acted upon. The staff will still reserve the right to choose what appears in print.

Articles written for the Missouri Miner will be, to the best of the staff's knowledge, fact, not just hearsay. Editorials appearing in the Missouri Miner will be the opinion of this paper, unless bylined.

The Staff is confident that this will be one of UMR's and The MISSOURI MINER's best years.

Letters to the Editor Policy

The MISSOURI MINER will attempt to print all letters and editorial materials received. All letters and material submitted must be typed, double spaced, and no more than one and a half pages long. All material must bear the name, address, and telephone number of the writer. Letters must be signed; but names will be withheld on request.

The MINER will print no material containing personal attacks, insults, or other libelous statements. The MINER also reserves the right to edit all submitted material in order to meet space requirements.

The opinions expressed are not necessarily those of the MISSOURI MINER or the University of Missouri-Rolla, its students, faculty, or administration.

NEW GRANDE MOTEL

"Great place to stay on party weekends"

364-1335

T.V. — AIR CONDITIONED
ONE BLOCK FROM CAMPUS



**WELCOME BACK
MINERS!**

Come in and see the
latest in sportwear
and casual dress
featuring

**BRENTWOOD
SPORTSWEAR**

**JANTZEN
ARROW**

Jeans by

**LEVI
WRIGHT
FARAH**

Curry's Toggery

816 PINE STREET
ROLLA, MISSOURI 65401

PHONE
314 364-1248



"IF I WASZ PRESIDENT, KNOW WHAT I'D DO? FIRSHT
I'D MINE HAIPHONG, THEN I'D GIVE THEM RUSSKIES
T'REE DAYSZ TO GET THE HELL OUT, THEN I'D. . ."

SPECIAL SCHOLARSHIP OFFER.

CLASS OF '75 ONLY.

Scholarship Includes: 2-year tuition...free! \$100 monthly. Book allowance, lab fees, etc.

How to qualify:

Just send in the coupon, or talk to the Professor of Aerospace Studies on your campus. (If you're class of '76, next year is your year.)

U.S. Air Force Recruiting Service
Directorate of Advertising (RSAV)
Randolph Air Force Base
Texas 78148

Please send me more information on your 2-year scholarship program.

Name _____ Birth Date _____
Address _____ Sex _____
City _____ County _____ State _____ Zip _____
Present College _____ Future College _____
Soc. Sec. # _____

**FIND YOURSELF A SCHOLARSHIP
IN AIR FORCE ROTC.**

2-NR-92

Campus Faces Violent Upheaval

The college scene has been a quiet one for the past few years. This calm can be considered nothing but the lull before a storm. Violence has been planned by this state's highest offices, determined to undermine the very foundations of this university.

Legions of helmeted mercenaries have literally torn the campus apart. They have thrown up the barricades and raised a hue and cry for immediate change. Hundreds of

clever booby traps have been laid for those few brave enough to face the rigorous onslaught of heavy-tracked vehicles and their brazen drivers. Several nearby homes have been destroyed, not in wanton fashion, but with a cold, deliberate action. There appears to be a thorough, professional plan, menacing Missouri far into the future. Efforts to search for the perpetrators of these actions have led such stalwarts as Zane

White to believe that these actions are being directed from Jefferson City. The state legislature, the governor, and even the Board of Curators are suspect for their complicity in this affair. The matter has gone too far to stop here but lessons must be learned before a skillful attempt can be made to halt the encroaching menace. It is time for all patriots to make a determined effort to stop the spread of the mall to the rest of this fair land from the insidiousness here at Rolla.

Lambda Chi Alpha Number One

Anyone traveling down Pine Street last Thursday night, might have noticed the Brothers of Lambda Chi Alpha having an unusually high spirited celebration.

The Thirty-Third International Assembly of the Lambda Chi Alpha Fraternity, in Portland, Oregon, had just drawn to a close. John Hixson and Mark Cavinder, proudly returned with news that the Alpha Delta Chapter, here at UMR, had taken top honors. They are the number one

chapter of Lambda Chi Alpha.

The honor was based on a rundown of all activities the 184 chapters of Lambda Chi Alpha participated in the last two years. The brothers here at Rolla were selected for such things as: their continued excellence in varsity athletics, their involvement in Student Council, the IFC, Rollamo, and other student organizations; and their willingness to aid the community through such projects as working with the

retarded, and individually donating eleven hundred dollars to Rolla Charities

Party Weekend 15-16

The plans for the first party weekend of the fall semester are well underway. Friday, September 15 from 7:30-11:30 p.m. at Lions Park pavilion number 4 will be a dance with "Progress". Free sodas, ice, and cups will be provided. Saturday, after the 2:00 p.m. football game here, there will be a concert at the Multi Purpose Building with "Ted Nugent and the Amboy Dukes". It starts about 4:30 p.m. and will go to about 6:30 p.m., tickets will be sold at the door for \$1.50 per student, a limit of 2 ID's and general admission is \$3.00. Tickets will be sold in advance September 14, and 15 (Thursday and Friday) in the Student Union cloak room from 11:00 a.m. to 3:00 p.m. For more information check with your organization or the following people:

I.F.C.- Tom Depauw

G.D.I.-Gordon Erichson

M.R.H.A.-Pete Grundler

I.C.C.- Gene Meyer

Student Council- Rosemary Rois

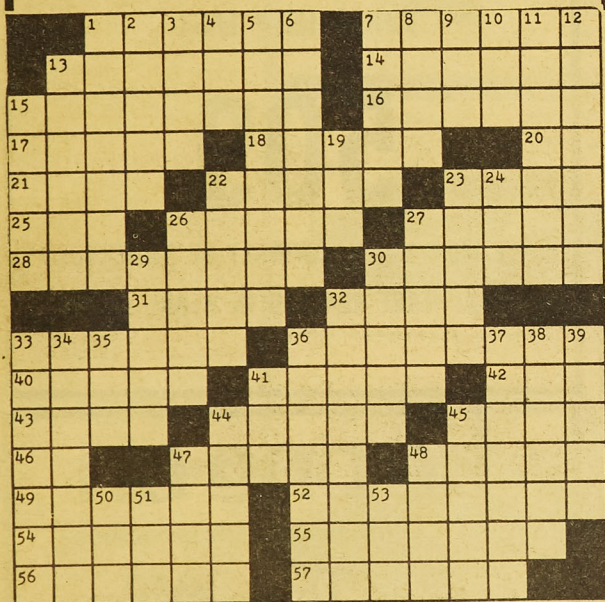
Mates- Dennis Laneman

S.U.B.- John Lindstrom

Chairman of Party Weekend Board- Jim Mulligan

Be sure to read next week's Miner for more information and be prepared to celebrate (Homecoming is still six weeks off so don't miss out on this one!).

targum crossword



ACROSS

1. Layers
7. Sullen
13. Protective Wall
14. Actress Merle
15. Swollen, as veins
16. Halo
17. Troop Encampment
18. Partly Frozen Rain
20. Hospital Employee
21. French City
22. God
23. Type Size
25. Individual
26. Paddled
27. Sword
28. Armed Naval Vessel
30. Rest
31. Fixe
32. Molten Rock
33. Market Places
36. French Satirist
40. British-Indian Soldier
41. Toxic Protein
42. Business Abbreviation
43. Branch of Accounting
44. Rescued
45. Bread: comb. form
46. "Monopoly" Property
47. Golfer George
48. Boys' Stories Writer
49. Philippine Head-hunter
52. Disinclined to Talk
54. Bathing Suit
55. Word Roots
56. Pennsylvanian City
57. Brief Suspension

DOWN

1. Moslem Enemy of Crusaders
2. Food Derived from Ox
3. Political Contest
4. Military Address
5. Mosaic Squares
6. Artist's Studio
7. Exchange Medium
8. Death Notice
9. Part of Sleep Cycle
10. Sphere
11. Places of Origin
12. Trap
13. Film on Copper Coins
15. Poisonous Secretion
19. Airport Info. (abbr.)
22. Coolidge's VP
23. Of the Church
24. African Tribe
26. Pass the Time
27. Hills of Rome
29. Siberian Region
30. Mad
32. Tear Jaggedly
33. Attribute
34. Southern State
35. Harvest Goddess
36. Construction Worker
37. Pneumatic Weapons
38. Burial
39. Hold in Contempt
41. Flatfish
44. Silk Fabric
45. Voice Parts
47. Cui
48. Loves: Fr.
50. Approves
51. Dye Brand
53. Reference Book (abbr.)

solution page 12

Continuation of this feature depends on the reaction of the student body. Address your comments to the Miner T-14.

Complete Rental Service

FLOOR SCRUBBERS

DRILLS

LAWNMOWERS

SEWER CLEANERS

TOOLS

HEDGE TRIMMERS

SANDERS



EQUIPMENT COMPANY

TORQUE WRENCH

LADDERS

JACKS

Hwy. 63 & Black, Rolla

364-2180

ENGINE HOISTS

SAWS

LITTLE KING SANDWICH SHOP

has changed its name to

Kings CHOICE SANDWICH SHOP

- 1) cooked salami-spiced ham-cheese
- 2) ham-salami-cheese
- 3) proscuitto-salami-cheese
- 4) salami-ham-cappacola-cheese
- 5) bologna-cheese
- 6) pepperoni-cheese
- 7) turkey
- 8) ham-cheese
- 9) roast beef
- 10) tuna fish
- 11) kings royal treat
- 12) braunschweiger-cheese
- 13) chicken salad

- 14) Monte christo
- 15) roast beef
- 16) corned beef
- 17) pastrami
- 18) Bavarian Beef
- 19) bar-b-que beef
- 20) reuben
- 21) beef dip
- 22) herkimer
- 23) kingburger
- 24) footlong hot dog
- 25) fish sandwich
- 26) bar-b-que Ham

and

We have added a grocery for your eating and snack needs

MEATS
BREAD
MILK
BUTTER
EGGS
COFFEE

CANNED GOODS
SNACK PACKS
SUGAR
FLOUR & CEREALS
CHEESE
COOKIES &
CRACKERS

CHIPS
SODA
PAPER PRODUCTS
PERSONAL AIDS
SOUPS
PICKLES & JELLIES

AND MANY MANY
MORE

WE SOON HOPE TO OFFER PACKAGE BEER FOR YOUR CONVENIENCE

Open daily Mon-Sat. 7 a.m. - 10 p.m.
Sunday 11 a.m. - 7 p.m.

kings choice sandwich shop and grocery
1009 pine

YOUR CAMPUS GROCERY

Police Patter

Lieutenant James P. Owens UMR Police Department
Parking Regulations

This column, which will appear as often as possible in the Miner, is designed to provide information of interest to the University student, faculty and staff member on police matters. Personal and property security, traffic regulations, parking problems, and other items of importance to campus citizens will be addressed as the need arises.

This week the subjects are motor vehicle registration, parking regulations and Rolla City Ordinances pertaining to motor vehicle licenses.

University Regulations require that all students enrolled in the University who operate motor vehicles register these vehicles with the UMR Police Department. The regulation applies to students regardless of the number of hours carried or other relationship with the University. As an example, a University staff member carrying 3 credit hours is required to register the vehicle he operates. The registration is free of charge and requires that the student complete the UMR Police Department Motor Vehicle and Emergency Locator card. Registration bumper stickers may be picked up at UMR Police Headquarters, Building T-27, sometime after October 1, 1972. Failure to register motor vehicles may lead to assessment of a fee for violation of University Regulations, so if you haven't already completed the registration card, come to Building T-27 at your earliest convenience.

The University parking regulations are spelled out in detail in the UMR Traffic Regulation Booklet which was mailed to those who pre-registered and handed to those who registered on August 22 and 23, 1972. If you did not receive a copy of these regulations, you may pick one up at Building T-27 at any time. There are some changes to the regulations and some parking problems which do require explanation.

Area 20B may be used without a parking permit anytime except for the hours between 7:30 A.M. and 11:30 A.M. Area 20B is the hard surface lot west of the Multipurpose Building. A

motor vehicle with a valid permit from any lot may use Lot 20B at anytime. The row of parking slots directly west of the Multipurpose Building along the curb are designated as Lot 20A and require a Lot 20A permit during all enforcement hours.

Bumper Stickers

Parking permit bumper stickers for school year 1972-73 will not be issued, except for some special cases such as handicapped students, etc., until applications are received and priorities assigned. The priority system is explained in Section 11.2 of the Traffic Regulation Booklet.

Parking Permits

Students who desire parking permits are urged to make application to the UMR Police Department, Building T-27, as soon as possible. The office is open from 8:00 A.M. to noon, 1:00 P.M. to 5:00 P.M., Monday through Friday.

Temporary Decals

Parking permits will be issued after September 25, 1972. Temporary window decals or temporary yellow bumper stickers will be used initially, but will be replaced by permanent parking bumper stickers during late September. Dates for pick up of permanent parking permits will be announced.

Section 20-70 and 20-71 of the Rolla City Ordinances require that students residing with their parents in the city and married students residing with their spouses in the city purchase and display on their motor vehicles a city automobile license. The following students are exempt from the requirement:

- (1) Unmarried students living away from home.
- (2) Married student whose spouse resides other than in Rolla.
- (3) Any student who has paid a city license tax in another city.

Cost of the city motor vehicle license is as follows:

- (1) For remainder of the calendar year, 1972 — \$1.25
- (2) For calendar year, 1973 (up to January 15) — \$2.25
- (3) For calendar year, 1973 (after January 15) — \$3.00

Students are urged to comply with the requirements of this ordinance for their own protection. The ordinances are enforced and the fines and costs assessed against violators are considerably more expensive than the cost of the city license.

As always, the Campus Police Department is here to assist you in any way possible. If you have questions, feel free to contact a uniformed policeman on the campus or call 341-4300 at any time, day or night, for information or police assistance.

The Missouri Miner

The MISSOURI MINER is the official publication of the students of the University of Rolla. It is published at Rolla, Missouri every week during the school year. Entered as second class matter February 8, 1945, at the Post Office at Rolla, Mo., under the Act of March 3, 1879. The subscriptions are \$1.50 per semester. This MISSOURI MINER features activities of the students and faculty of UMR.

Rick Remley
Buddy Bruns
Steve Wunning

- Editor
- Business Manager
- Advertising Director

A & M Cycle Sales

"Authorized Benelli Dealer"

Repairs and Service Guarantee

Phone 364-7317

Junction 72 & 63 at Lee's Mobile

ESTEY JEWELRY

The Finest In Diamonds

And Jewelry

U.M.R. Class Rings

715 Pine St. 364-2142 Rolla, Mo.

CAMPUS CUE

Pool, Snooker, Billiards

12 Tables

RATES — 60¢ HR.

HOURS — NOON — 1 A.M.

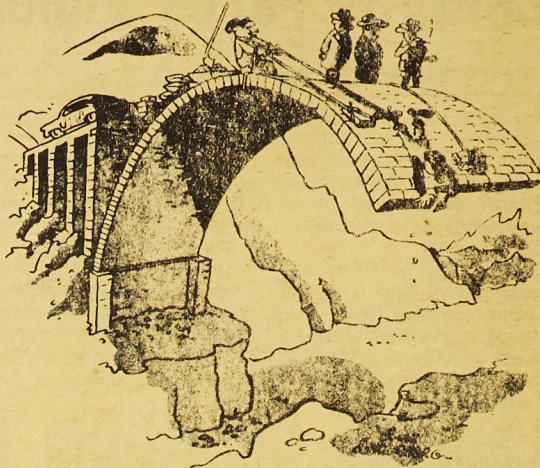
Located In The Basement Of
Shamrock Club

KENMARK SPORTING GOODS

WHERE WE
STILL HONOR

YOUR
FRESHMAN
FRIENDS
COUPONS

904 PINE



"May I ask where you studied engineering?"

WELCOME BACK MINERS!

8 oz. SCHLITZ MALT LIQUOR.....88¢

8 oz. COLT 45 MALT LIQUOR.....88¢

SCHLITZ MALT LIQUOR QUARTS....44¢

WHILE THEY LAST

509

WE WILL NOT KNOWINGLY BE UNDERSOLD

FREE PARKING IN REAR

tie one on

In Jeanials...the jeans shoe

by Thom McAn



There's more than one way to enjoy life. Take Thom McAn's new Jeanials. For instance — shoes just for the fun of it. Jeanials are light on your feet and all done up in the latest lace-up styles, shapes and colors. And like the jeans you wear with them, they're rugged and funky and incredibly comfortable. And just one more thing — when you tie one on with Thom McAn, you won't regret it in the morning. The only thing about Jeanials that might make you a little lightheaded is the price. Only \$12.99

FAMILY SHOE STORE
701 PINE

Our Man Hoppe

It's Always the Good Guys

"Why," a hard hat construction worker was quoted as saying angrily on hearing that Governor Wallace had been shot, "is it always the good guys?"

To many liberals, this must sound like a sick joke. During the past violent decade they have seen their heroes — the Kennedys, Martin Luther King, Medgar Evers — gunned down one by one.

Yet in the hours that followed that first bulletin, I kept thinking of what the man had said. And I think he's right. It is always the good guys.

For the good guys in this democracy we share are those who speak out, those who challenge the status quo, those who offer new ways out of the morass of mediocrity into which our republic is slowly settling.

For the old solutions aren't working, the old answers will no longer do. Yet the old politicians keep on seeking the middle ground and keep on carefully choosing each word to avoid giving offense. They rarely get shot.

It is, instead, those who say something, those who stimulate us to think, those who involve us in the political process. It is they who attract the "dedicated followers and, invariably, the dedicated enemies." It is those who are unafraid to speak out — the Martin Luther Kings, the George Wallaces.

It is always the good guys.

And now? I watched an editor quickly reading down the first story, looking for the identity of the gunman. He found what he wanted and his shoulders slumped in relief.

"Thank God," he said, "it was a white man."

What he feared, of course, was violence — the kind of violence that erupted after Martin Luther King was killed. But I don't fear that kind of violence so much. It soon burns itself out and our republic can survive it.

What frightened me far more was the reaction of a young secretary on hearing the news. "I just realized," she said, shaking her head dazedly, "that we've come to the point where one bullet is worth 70 million votes."

In her voice was a note of resignation, of defeat. Why go on trying to make the system work? What's the use of choosing the man you think best, of ringing doorbells in his behalf, of giving him money or even just your vote, when one bullet can erase in a split second, the whole laborious process? Why go on? What's the use?

So what I fear most is not violence, but apathy — apathy and fear itself.

Each time a good guy is shot, the fear grows. Our leaders must feel it, too.

Why take a strong stand on busing, either at a cocktail party or on the public platform? You know the passions and hatreds the issue arouses.

How quick will I be next time to write a column in favor of strong gun controls? You know the paranoia of some of these gun nuts. And they're all fully armed. Will Senator McGovern feel the same?

Why speak out at all? How much easier it is to keep your challenging opinions, if any, to yourself. How much safer it is, both for our leaders and ourselves, to go along with the tired old answers to the tired old problems and thereby fan no flames.

This, I think, is the tragedy in the shooting of George Wallace. For each time a good guy is shot, it destroys a little of the good guy in all of us.

And in these times, God knows, we need all the good guys we can get.

University Money Troubles

from page 1

These cutbacks, explained the President, will be accomplished by the following means: \$3,222,526 primarily through reductions in the number of positions; \$1,350,000 reduction in library acquisitions and special equipment funds; and a reduction of \$500,000 in computer operations.

According to Dr. Rachford, \$1,350,000 of the University's emergency request would be used for library acquisitions and special equipment needs. "Library funds already have suffered substantially in recent years, and it is disheartening that expenditures planned for next year will be less than those made last year."

A further \$300,000 would strengthen existing research and training capabilities in the environmental area and would provide a facility, staff and

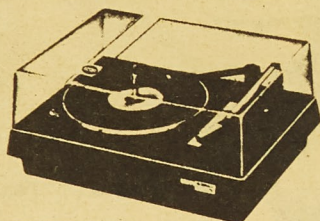
operational funds for securing additional funds from federal agencies, foundations and other sources to continue study of environmental problems.

**DON'T WASTE YOUR
FRESHMAN FRIENDS COUPONS
THEY ARE WORTH MONEY AT
KENMARK
904 PINE**

STEAK-N-BURGER CORRAL
ROLLA'S LOW COST
STEAK HOUSE
CHARBROILED STEAKS
CHILD DINNER \$1.68
24 FLAVORS ICE CREAM
SEAFOODS - CHICKEN - BURGERS - CIDER
Carry Out Orders In Insulated Containers
212 Hwy. 63 So. 364-6979



The
Best
in
Shakes
Burgers
Tacos
French
Fries
Chicken

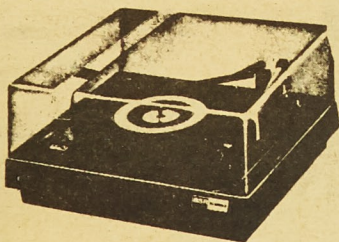


210/X MICRO MINICHANGER TOTAL TURNTABLE

Even if your customers don't have a lot of space, they can have a lot of turntable. Low mass, counter-weighted arm. Cue and pause. Complete with cartridge, base and dust cover. Just 5 1/2" high.

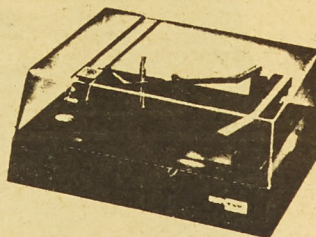
THE SOUND CENTER

6th & Elm
Mon.-Fri. 10a.m.-5p.m.
Sat. 9a.m.-3p.m.
364-7715



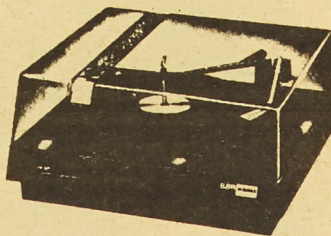
310/X MAGNETIC TOTAL TURNTABLE

Independent testing labs call it the best magnetic turntable value around. No wonder it's our best seller. Cue and pause. Anti-skate. Complete with Shure M-75 magnetic cartridge, base and dust cover.



2000/X MINICHANGER TOTAL TURNTABLE

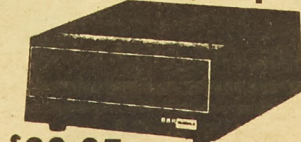
Here's a Minichanger that not only fits any place, it fits any budget. Perfect for the fledgling stereo enthusiast. Complete with cartridge, base and dust cover.



4800/X FULL-SIZE CERAMIC TOTAL TURNTABLE

For promotional ceramic systems featuring a full-size turntable, you couldn't do better. Low mass arm. Complete with cartridge, base and dust cover.

This Week's Special



\$39.95

TD8S 8-TRACK PLAYBACK DECK

Priced low enough to make it an indispensable addition to any system. Made by BSR in Great Britain. Unique tape head mounting prevents uneven output and wear and eliminates "cross-talk." 3-stage stereo pre-amp. Illuminated program indicator. Program selector. Synchronous motor.

WELCOME U.M.R. STUDENTS

Visit Our Store Register your name and student I.D. No Purchase Necessary A \$100 8 Track Player & speaker, Plus Gift Certificates will be awarded Sept. 22nd

8-Track Tapes & Cassettes
Priced from \$1.99 and Up

LARGEST STOCK IN CENTRAL MISSOURI

Also Disc & HiFi Accessories

KMSM is Back with Longer Hours, More Music, and New Programs

KMSM is now on the air all day Monday through Friday, 6:30 a.m. until 1:00 a.m. Saturday hours are 9:00 a.m. to 2:00 a.m., and Sunday from 11:00 a.m. to 1:00 a.m. The new morning hours are filled with great new educational shows and The Duck's Choice in music. KMSM is part of Pacifica Program Service which each week provides the best from Berkeley, California.

The Student oriented shows focus on current issues as well as off-beat topics, including TV newscasts, governmental satire and the forces behind the violence in such places as Northern Ireland. All the regular KMSM shows are back including Hitch Hiker News, The People, Miner Sports Review, and Politics '72.

In addition, two new shows have been added. Potpourrie will spend five minutes looking at anything, and Transition examines our changing world. All of these shows are heard Sunday through Thursday at 7:15 p.m.

Underground returns Saturday nights at 9:00 p.m. to bring you the best in current rock albums. On Friday nights, at 9:00 p.m. 88.5 looks at rock music from a different perspective. Be sure to hear The Last Hour, a real experience each Saturday night.

Also this semester there is plenty of KMSM Rock, Breakaway, Contemporary, Rolling Home, and Take 5. Remember Miner Requests Sunday through Friday from 7:30 until 9:00 p.m.

The 10:00 p.m. time slot takes on various musical programs through the week. Sunday, Tuesday, and Thursday brings you the Folk Music of Rolling Home. Monday, it's the sounds of jazz on Take Five, and Wednesday, the show tunes of Stage and Screen.

NOTICE

Iota chapter of Theta Tau Professional Engineering Fraternity is currently accepting applications for pledgeship. Applications may be picked up at the student union candy counter in the Theta Tau mail box. Applications must be turned back in at the mail box no later than Friday, September 15.

**MISSOURI STATE
HIGHWAY PATROL
REMINDS YOU:**



Watch for the new SCHOOL CROSSING traffic sign as you travel. It is pentagon-shaped and has a black legend on a yellow reflectorized background. Be extra alert for children when you see this sign.

This Friday night 88.5 will trace the musical history of Jethro Tull plus the usual progressive rock. Underground will bring you the latest in progressive releases with a new LP by a new group—Captain Beyond.

Coming Up next week from Pacifica:

Tuesday 9:30 a.m., "The Bolinas Scene," a look at the California seacoast town that has become the major community of poets in America. At 9:00 p.m. "Contemporary City Planning," The Politics of an asphalt jungle.

Thursday 9:30 a.m., "Mystery Train," The Bay area rapid transit system.

This week KMSM received the bid information on their new stereo equipment. The station will be stereo by Spring of 1973 for sure. They will be buying a new five-channel board, stereo monitors, and used Gate TE-1 Solid State Stereo Exciter. With this, a Spotmaster Limiter-Compressor, and a shure mike mixer, KMSM goes stereo this Spring.

NOTICE

Anyone interested in cheerleading for UMR should contact Nancy Less at 364-5662 for more information.

Absentee Ballots Mailed From Local Election Board

Do you know whether or not you need to vote by absentee ballot in the November election? You obviously do if you'll be traveling and unable to get to the polls on Election Day. But you also need an absentee ballot if you attend college in a state that requires students to vote where their parents live and you don't want to make a trip home just to vote.

In Missouri your local election board or precinct can give you any specifics regarding your eligibility to vote an absentee ballot. Generally, any person who qualifies to vote an absentee ballot may apply in person or by mail for an official

ballot for the election district or precinct in which he resides. The application shall be made to the election authority within thirty days prior to election day. The application made in person shall be made not later than four p.m. of the day before the election. The application made by mail shall be received not later than four p.m. on the fourth day before the election.

Check with your hometown elections board or League of Women Voters if you aren't sure whether or not you can vote in Rolla. (To doublecheck, you can call your Secretary of State or write to Youth Citizenship Fund, Inc. 2317 "M" Street, N.W., Washington, D.C. 20037.)

Welcome back Miners!



**Nobody makes Malt Liquor
like Schlitz. Nobody!**

Miners Show Progress in Scrimmage

QB LaFollette, Silver Studs Drive in for Three Scores

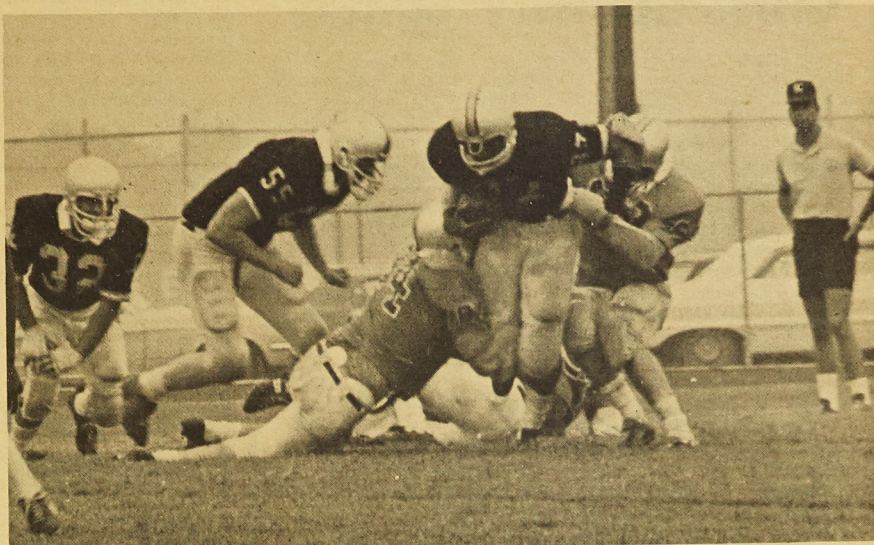
With the traditional intersquad game now out of the way, it is a good time to take a look at the 1972 edition of the Silver and Gold.

Coach Bud Mercier termed the team's overall performance during the Saturday scrimmage as good, but still not ready to start the season. He added there were still some rough edges to smooth out in these final two weeks before the first game.

Individual performances of significance included: Rick LaFollette taking his club the length of the field several times on scoring drives; Gary

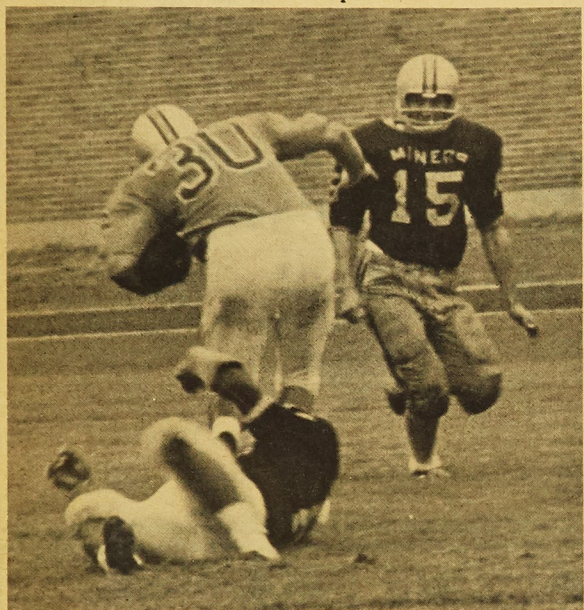
McAlpin and Mike Milland blocking well from their offensive guard positions; Jack Geveker doing real well at his new tight end position; defensive ends Frank Walsh and Dennis Doering leading the "Golden Horde" as they shut out the number two offense; and linebacker John Irving and defensive halfback Jim White who both played real well.

Looking ahead, Coach Mercier thought the squad was coming along as anticipated, not peaking too early, but still being ready for the first game against Kansas State College on Sept. 16.



Frank Walsh (84) lowers the boom on a hapless ball carrier. The first

string defense completely stymied the reserve offense throughout the scrimmage.



Kurt Killinger (15) and Bobby Irvin stop halfback Kenton Hupp in action during Saturday's scrimmage.

Miner Sports

Bill Horsford-Sports Editor

WELCOME BACK
TO ROLLA FROM



THE ALL TIME
HIGH SCORER!

TRAINER DISTRIBUTING CO., INC.
CUBA, MO.

WELCOME
BACK
MINERS



"We Make Good Things Happen"
FIRST STATE BANK

Main Bank, 7th & Pine; Drive-In, 6th & Park

ROLLA, MISSOURI

Member F.D.I.C.

Dewey Allgood New Cross-Country Coach

The biggest change in the cross country team this year is in the head coach. Former head football coach Dewey Allgood is bringing in a fresh outlook and a rigorous new training program. The new program requires each runner to accumulate 200 miles before the actual start of the season, which is a significant increase over last year's workouts. Coach Allgood is devoting a lot of time to the job, and his determined outlook often causes him to "wake up dreaming about the dang thing" at night.

With the departure of school record holder Bob Rice and Skip Brown, both of whom graduated, and the loss of Nick Drozdoff, who is on co-op, the Miners have lost three front-line runners.

Juniors Mike Schepflin and Denny Mertz have now

emerged as the new team leaders and are doing a tremendous job. Mike ran over 600 miles during the summer and has the conditioning and desire to break Rice's records. Mertz and sophomore Tom Wilcox are much improved over last year and should be solid performers.

Three new runners will join the squad this year. Sophomore Robin Harris, from Licking, Mo., and two freshmen John Herman and Gene Carney will also be counted on heavily. John from CBC high school in St. Louis ran over 600 miles during the summer and should be a very strong runner. Gene is a tall lanky runner from Rolla who is improving rapidly.

The UMR cross country team will open their season on September 19 at Lincoln University.

Club Water Polo Comes To Rolla Entwistle, Beem Driving Force

The University of Missouri-Rolla has added another sport to its already full schedule of athletic events. The sport is water polo and will be played on a club level only, in the same manner soccer and rugby are now being carried on.

The original idea and the driving force behind it are due to Jim Entwistle and Dave Beem, both members of the UMR Swim Team. In this respect, water polo will both be

taken as a separate sport but also as a warm up for the swimming season.

The tentative schedule includes teams from Westminster, Cape, Hendrix, Meramec Jr. College and Warrensburg. This will all hopefully lead up to an All-Missouri Championship October 28th here at Rolla.

Although the swimming team will again be strong, the water polo squad is starting out at the

bottom of the heap as far as the above mentioned teams are concerned. All the others have had previous experience, while only five members of the UMR squad that are not new to Rolla have had any previous experience.

So although the prospect of a winning season isn't very promising, it still will be very interesting to see how our converted swimmers do in a different type of competition....

SAVE UP TO 50 PER CENT
Better than SAE discount

HOOK AUTO SUPPLY

513 HIWAY 63S. Rolla, Mo. 364-5253

Christopher Jewelers

805 Pine Street

★ ★ ★

Catering To UMR

The Complete Service Jeweler

See Us For Your Reservations

RUSTIC MOTEL

26 NEW UNITS

ELECTRIC HEAT — AIR CONDITIONING

HWY. 63 SOUTH
ROLLA, MISSOURI

KENNETH L. JONES
MANAGER

Frederic's
Colonial Village
TAVERN
NOW OPEN
10 A.M. to 1 A.M.

Frosted Mugs
Coldest Beer In Town
Sandwiches

~~~~~  
Steak Shrimp Chicken  
Served Upstairs  
at

**Frederic's Restaurant**

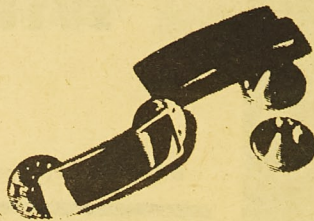
364-1503  
Hwy. 63 & Cedar

Rolla, Mo.

### Take your bar exam next summer

It's the Marine Corps' test for the man who wants responsibility and leadership from the start, not at some obscure point in his future. And there isn't a tougher test you could take—for the Marines don't choose their new

officers lightly. Two six week sessions at Quantico—or one ten week session—will tell them and you if you've got all it takes to lead some of the world's best fighting men. If you do, you'll pin on your lieutenant's bars after college graduation, and carry new weight on your shoulders from that moment on.



**Ask a Marine**

The Marine Corps Officer Selection Team will be located on the covered Arcade outside the Student Union from 9AM to 4PM on 7-8 September 1972.

The Marine Corps is Looking for a Few Good Men.....

## WELCOME BACK MINERS

FALSTAFF BREWING CORP., ST. LOUIS, MISSOURI 320-06



"Okay, Gabe, what are we celebrating this weekend?"

**FALSTAFF BEER.**

Because we're all in this together.

O'DONNELL DISTRIBUTING CO., INC. ROLLA  
364-1523



## Miners Win MIAA Baseball Title

While the rest of us went our separate ways last May, the UMR baseball squad was hard at work. Led by first-year coach Jerry Kirksey the Miners went on to win the MIAA championship. Winning both ends of a doubleheader from Northeast Missouri State on May 13, the Miners clinched the MIAA title. The Miners went into the twinbill one-half game out of first, trailing Northeast by one game on the lost side.

The Miners went on to play in the NCAA district V playoffs. They lost their first game to Northern Colorado, 11-0, and dropped a heartbreaker to Northern Iowa in 13 innings, 5-3.

The Miners fared well in post-season honors, nabbing four spots on the MIAA All-Star first team, and two spots on the second team. Leading the Miner vote-getters was Steve Biederman, the hardhitting third baseman. Steve hit a strong .383 and wound up second in the conference batting race. Winning the top spot at short-stop was UMR's Dale Walling. Dale hit .377, fourth in the conference. He was also chosen

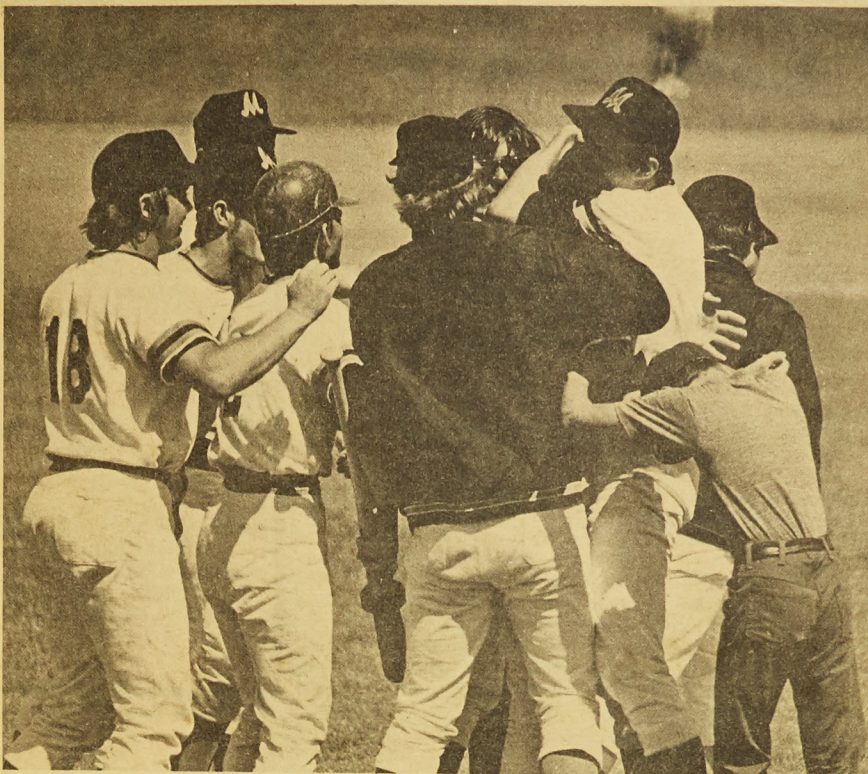
as the "Outstanding Freshman" in the conference.

UMR's Steve Munzert wound up in a tie for the honors at second base. Steve hit a respectable .303, and was one of the most stable defensive players in the league. Rounding out the Miner's selections to the first team was pitcher Bob Pledge. Bob led the Miner hurlers with a 6-2 record, and was the "stopper" on the Miner Staff.

The Miners pulled down two second team selections as Dennis Smith and Mark Smith both received the honor. Randy Heifner and David Kirn both received honorable mentions for their efforts. Kirn finished the season undefeated, 3-0.

The Miners took one more honor for the year, and it could well be the most important. Jerry Kirksey, in his first year as baseball coach here took the "Coach of the Year" award for the conference.

With most of the players returning, all the better for the experience, the Miners should repeat their performance this year.



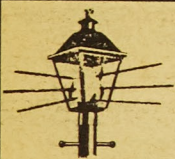
The 1972 Miner baseball squad exchanges congratulations moments after clinching the MIAA title. The Miners needed to win both games of the twinbill with

NEMS, and win they did, taking the first 6-5, and the second 9-6. The dual win put the Miners into the NCAA district playoffs.

### HANLY'S FOODS FOR HEALTH

113 W. 7th Street  
364-7860  
OPEN MON.-SAT.- 10-3

COME IN AND SEE US  
WE WILL HONOR YOUR  
FRESHMAN FRIENDS COUPONS  
**KENMARK**  
904 PINE



Colonial Lanes, Inc.

City 66 West  
ROLLA, MISSOURI

## BOWL

Join a bowling league  
Organized by U.M.R.  
Students

"Openings"

"For Teams or  
Individuals"

Meeting 7:30 p.m.,  
Sept. 11

PIZZA HUT UNRESERVED NOTE

### THE PIZZA HUTS OF MISSOURI

Redeemable with the purchase of any LARGE-SIZE PIZZA at THE PIZZA HUT

Limit 1 Pizza Hut Dollar per family

Good in Rolla Only!

ONE PIZZA HUT BUCK

Pizza Hut Pete  
PIZZA HUT PETE  
Expires Sept. 10

## Levi's® STA-PREST SLACKS

Note the "great outdoors" look in Levi's new **Virginian** model — keystone belt loops, western top pockets and a fully-flared leg. In white and an array of fine colors in fabrics that hold their crease for good, never need ironing.



**BISHOP'S**  
ROLLA, MO.  
ST. JAMES, MO.





# Mural Roundup

Two upsets marked the opening of intramural flag football this week. Last year's runner up Alpha Phi Alpha was surprised by a determined squad from Campus Club, 14-0. The team from Campus went through the entire season last year without registering a victory and then knocked off one of the pre-season favorites in this season's inaugural.

The other upset was scored by Thomas Jefferson who edged Delta Sig by the score of 6-0. In other opening night action, Pi Kappa Alpha crushed Newman Center 37-0 and TEKE demolished Triangle 47-0. The Pikers will be trying for their second successive title, as they edged Alpha Phi Alpha in the title game last year.

Taking an overall look at the leagues, it would seem that Pikers will dominate League One which also includes Delta Tau Delta and Beta Sigma Psi, both traditionally rugged grid foes. In League Two, the stunning loss of Alpha Phi Alpha leaves the field wide open

to any number of contenders including Sigma Pi, Phi Kap and surprising Campus.

League Three will be a struggle between TJ, Delta Sig and Lambda Chi for first place honors. In League Four TEKE will face the Big Green Machine of Kappa Sig in a showdown for first place honors.

Once again there will be a special league for the smaller organizations. The winner of this league will not participate in the playoffs determining the overall champion.

There will be a new entry in the intramural program this year as the Newman Center will be represented in competition this year.

In other intramural action, TEKE will defend its badminton crown, with first round action beginning on September 13. Teke's duo of Fisher and Long captured the doubles crown last year defeating Schell and Schroder of Sigma Nu. Shamrock Club was runner-up last year, paced by Tolani, who captured the singles title. He defeated Meier of TEKE.

Thursday, Sept. 7 — Kappa Sig over MRHA, Sig Pi over Acacia, Sig Nu over Tech, Delta Tau over Engine.

Monday, Sept. 11 — Sig Ep over Theta XI, Pi Kappa Phi over Liahona, Pikers over Wesley, Alpha Phi Alpha over KA.

Tuesday, Sept. 12 — Delta Sig over Mates, TEKE over MRHA, Engine over Sig Tau, Delta Tau over Beta Sig.

# Swim Lessons Offered, Student Teacher Needed

Again this year there will be several types of swim classes offered, with all that is required is any interested person's attendance.

There will be a senior life saving course offered on Tuesday and Thursday from 7:00-9:00 p.m. The course starts September 19th and runs until October 19th. All that is needed to take the course is to show up at the first meeting.

Also there will be a beginning swimming course offered. The times here are Tuesday and Thursday from 2:00-3:00 p.m., starting September 19th and going until there is no further need for the course.

The athletic department has need of a student with student health insurance to teach swimming this fall. Any qualified student should contact Coach Bob Pease in his office at the Multi-Purpose Building or call him at 341-4175.

## NOTICE

Anyone interested in writing sports for the Miner, particularly Women's Intramurals is, urged to contact Bill Horsford at the Miner office, in T-14 Sunday evening.

|   |   |   |   |   |   |   |   |   |   |   |   |
|---|---|---|---|---|---|---|---|---|---|---|---|
| S | T | R | A | T | A | M | O | R | O | S | E |
| P | A | R | A | P | E | T | O | B | E | R | O |
| V | A | R | I | C | O | S | E | N | I | M | B |
| E | T | A | P | E | S | L | E | E | T | R | N |
| N | I | C | E | D | E | I | T | Y | P | I | C |
| O | N | E | O | A | R | E | D | S | A | B | E |
| M | A | N | O | F | W | A | R | R | E | P | O |
| I | D | E | E | L | A | V | A |   |   |   |   |
| A | G | O | R | A | S | R | A | B | E | L | A |
| S | E | P | O | Y | R | I | C | I | N | I | N |
| C | O | S | T | S | A | V | E | D | A | R | T |
| R | R | B | A | Y | E | R | A | L | G | E | R |
| I | G | O | R | O | T | T | A | C | I | T | U |
| B | I | K | I | N | I | E | T | Y | M | O | N |
| E | A | S | T | O | N | R | E | C | E | S | S |

**YOUR  
FRESHMAN  
FRIENDS  
COUPONS  
ARE STILL GOOD  
AT  
KENMARK  
SPORTING  
GOODS  
904 PINE**

# Football Leagues

League One  
Pi K A  
Sig Tau  
Delta Tau  
Beta Sig  
Engine  
Wesley  
Newman

League Two  
A Phi A  
PKT  
Sig Pi  
Acacia  
KA  
Campus

League Five  
A E Pi  
Liahona  
Theta Chi  
Pi Kappa Phi  
BSU

League Three  
Delta Sig  
Lambda Chi  
Tech Club  
Sig Nu  
Mates  
TJ

League Four  
TEKE  
Kappa Sig  
Theta Xi  
Sig Ep  
MRHA  
Triangle

# The Harmon Football Forecast

## Saturday, Sept. 9th—Major Colleges

|                   |    |                    |    |
|-------------------|----|--------------------|----|
| Akron             | 17 | Kent State         | 14 |
| Alabama           | 38 | Duke               | 7  |
| Arizona           | 20 | Colorado State     | 14 |
| Arizona State     | 31 | Houston            | 26 |
| Cincinnati        | 24 | Indiana State      | 6  |
| Clemson           | 22 | The Citadel        | 7  |
| Colorado          | 31 | California         | 10 |
| Dayton            | 21 | Youngstown         | 7  |
| East Carolina     | 23 | V.M.I.             | 14 |
| Florida State     | 28 | Pittsburgh         | 7  |
| Kansas State      | 27 | Tulsa              | 10 |
| Maryland          | 22 | No. Carolina State | 20 |
| Morehead State    | 21 | Xavier             | 14 |
| Nebraska          | 41 | U.C.L.A.           | 7  |
| North Carolina    | 35 | Richmond           | 7  |
| Northern Illinois | 25 | Illinois State     | 7  |
| Ohio U            | 33 | Central Michigan   | 7  |
| Oregon            | 20 | Missouri           | 10 |
| **Oregon State    | 24 | San Diego State    | 13 |
| San Jose State    | 31 | Santa Clara        | 6  |
| South Carolina    | 23 | Virginia           | 13 |
| Southern Calif.   | 23 | Arkansas           | 21 |
| Southern Miss.    | 34 | UT at Arlington    | 7  |
| Syracuse          | 21 | Temple             | 17 |
| Texas A & M       | 39 | Wichita            | 13 |
| Toledo            | 28 | Tampa              | 20 |
| Utah State        | 22 | New Mexico State   | 13 |
| Wake Forest       | 45 | Davidson           | 6  |
| Washington        | 38 | Pacific            | 6  |
| Washington State  | 24 | Kansas             | 17 |
| West Virginia     | 23 | Villanova          | 20 |
| Western Michigan  | 20 | Long Beach         | 17 |
| William & Mary    | 28 | Furman             | 12 |
| Wyoming           | 27 | Idaho State        | 14 |

## Other Games—East

|              |    |            |   |
|--------------|----|------------|---|
| Lehigh       | 30 | Hofstra    | 7 |
| Rhode Island | 38 | Hampton    | 0 |
| Shippensburg | 22 | Bloomsburg | 6 |

## Other Games—Midwest

|                    |    |                    |    |
|--------------------|----|--------------------|----|
| Adrian             | 23 | Manchester         | 7  |
| Alma               | 20 | Ferris             | 14 |
| Arco Tech          | 45 | Hendricks A & M    | 3  |
| Arkansas Tech      | 37 | Emporia State      | 0  |
| Ashland            | 27 | Franklin           | 6  |
| Augsburg           | 14 | River Falls        | 13 |
| Bemidji            | 20 | Valley City        | 6  |
| Central Missouri   | 21 | Kearney            | 8  |
| Colorado College   | 30 | McPherson          | 6  |
| Concordia, Minn.   | 21 | Moorhead           | 14 |
| Dickinson          | 20 | Black Hills        | 19 |
| Duluth             | 17 | Superior           | 7  |
| Eastern Michigan   | 40 | Oshkosh            | 0  |
| Eau Claire         | 21 | Macalester         | 19 |
| Evansville         | 28 | Indiana Central    | 12 |
| Glenville          | 14 | Northwood          | 8  |
| Graceland          | 19 | Peru               | 7  |
| Gustavus           | 24 | Augustana, S.D.    | 14 |
| Hamline            | 42 | Bethel, Minn.      | 0  |
| Illinois B'dictine | 25 | College of Emporia | 6  |
| Kentucky State     | 25 | Langston           | 7  |
| Mankato            | 21 | St. Cloud          | 6  |
| Mayville           | 19 | Huron              | 12 |
| Milton             | 18 | Dubuque            | 7  |
| Milwaukee          | 34 | Northland          | 0  |
| Missouri Southern  | 21 | Fort Hays          | 15 |
| Montana            | 24 | South Dakota       | 20 |
| Nebraska Wesleyan  | 33 | Bethel, Kansas     | 13 |
| North Dakota       | 25 | Montana State      | 10 |
| NE Missouri        | 30 | Central Methodist  | 7  |

## Midwest (Continued)

|                   |    |                   |    |
|-------------------|----|-------------------|----|
| Northern Iowa     | 41 | Stevens Point     | 0  |
| Northern Michigan | 21 | Whitewater        | 17 |
| Northern State    | 21 | Morris            | 20 |
| Northwestern, Ia. | 22 | Dakota State      | 6  |
| NW Louisiana      | 14 | SW Oklahoma       | 7  |
| Omaha             | 21 | Wayne, Neb.       | 12 |
| Pittsburg         | 20 | Colorado Western  | 10 |
| Platteville       | 26 | Iowa Wesleyan     | 13 |
| St. John's        | 22 | LaCrosse          | 17 |
| St. Norbert       | 24 | Stout             | 6  |
| St. Thomas        | 30 | SW Minn. State    | 13 |
| South Dakota St.  | 20 | Eastern Montana   | 7  |
| Upper Iowa        | 15 | South Dakota Tech | 14 |
| Valparaiso        | 26 | Wabash            | 7  |
| Washburn          | 20 | Missouri Valley   | 15 |
| Westmar           | 27 | Midland           | 14 |
| William Jewell    | 19 | Culver-Stockton   | 15 |
| William Penn      | 38 | Missouri Western  | 7  |
| Yankton           | 14 | Doane             | 7  |

## Other Games—South & Southwest

|                    |    |                     |    |
|--------------------|----|---------------------|----|
| Alcorn A & M       | 47 | Norfolk State       | 0  |
| Angelo             | 38 | E. Central Okla.    | 14 |
| Arkansas AM & N    | 21 | State College Ark   | 7  |
| Bethune-Cookman    | 21 | So. Carolina State  | 19 |
| Bluefield          | 24 | Concord             | 7  |
| Delta State        | 22 | SE Missouri         | 14 |
| East Texas         | 21 | Abilene Christian   | 17 |
| Eastern Kentucky   | 26 | SE Louisiana        | 14 |
| Fairmont           | 26 | Waynesburg          | 6  |
| Fayetteville       | 17 | Federal City        | 7  |
| Grambling          | 28 | Morgan State        | 10 |
| Harding            | 28 | Austin              | 6  |
| Howard             | 21 | Virginia Union      | 14 |
| Howard Payne       | 28 | Texas Lutheran      | 7  |
| Jacksonville       | 31 | Nicholls State      | 7  |
| Lamar              | 27 | Sam Houston         | 20 |
| Livingston         | 33 | Mississippi College | 0  |
| Louisiana Tech     | 17 | SW Louisiana        | 6  |
| Mars Hill          | 24 | Millsaps            | 14 |
| McNeese            | 21 | Arkansas State      | 10 |
| Middle Tennessee   | 38 | Florence            | 7  |
| Mississippi Valley | 27 | Alabama A & M       | 7  |
| Murray             | 23 | Western Carolina    | 21 |
| Newberry           | 34 | Emory & Henry       | 12 |
| No. Carolina A & T | 20 | Elizabeth City      | 13 |
| No. Carolina Cent  | 21 | Winston-Salem       | 0  |
| NE Louisiana       | 22 | Quantico Marines    | 20 |
| Ouachita           | 17 | Bishop              | 13 |
| Samford            | 24 | Carson-Newman       | 21 |
| Shepherd           | 26 | West Va. Wesleyan   | 7  |
| Southern State     | 21 | SE Oklahoma         | 7  |
| Southwest Texas    | 24 | Trinity             | 22 |
| Sul Ross           | 24 | New Mex. Hi'lands   | 13 |
| Tarleton           | 20 | McMurry             | 15 |
| Tennessee Tech     | 40 | Morningside         | 7  |
| Texas A & I        | 22 | Texas Southern      | 13 |
| Troy               | 23 | Elon                | 13 |
| West Liberty       | 19 | Salem               | 6  |
| West Va. State     | 15 | West Virginia Tech  | 13 |
| Western Kentucky   | 20 | Appalachian         | 7  |

## Other Games—Far West

|                  |    |                   |    |
|------------------|----|-------------------|----|
| Chadron          | 38 | Rocky Mountain    | 6  |
| Eastern New Mex. | 20 | Panhandle         | 16 |
| Fresno State     | 45 | Sacramento        | 13 |
| Montana Tech     | 19 | Southern Utah     | 7  |
| Nevada (Reno)    | 25 | San Francisco St. | 7  |
| No. Dakota State | 27 | Northern Arizona  | 23 |

(\*\*Friday night game)