



14 Apr 1971

The Missouri Miner, April 14, 1971

Follow this and additional works at: https://scholarsmine.mst.edu/missouri_miner

These newspapers reflect the attitudes, perspectives, and beliefs of different times. Neither the library nor the university endorses the views expressed in these collections, some of which contain images and language which may be offensive to some readers.

Recommended Citation

"The Missouri Miner, April 14, 1971" (1971). *The Missouri Miner Newspaper*. 1975.
https://scholarsmine.mst.edu/missouri_miner/1975

This Newspaper is brought to you for free and open access by Scholars' Mine. It has been accepted for inclusion in The Missouri Miner Newspaper by an authorized administrator of Scholars' Mine. This work is protected by U. S. Copyright Law. Unauthorized use including reproduction for redistribution requires the permission of the copyright holder. For more information, please contact scholarsmine@mst.edu.



The Missouri MINER

UNIVERSITY OF MISSOURI - ROLLA



VOL. 57

WEDNESDAY, APRIL 14, 1971

ROLLA, MISSOURI

NO. 26

8 P.M. - Mult. Purp. Bldg.

Sugarloaf To Appear Tomorrow



Having just completed its second album, the exhausted group makes sure that each instrument, wife, child, and dog is accounted for in preparation for the long trip to a new concert and city.

No, it's not the re-creation of Joe Cocker's Mad Dogs & Englishmen or anything as temporary. Rather, it's one of the hottest new aggregations in the country -- Sugarloaf, arriving from Denver for an appearance at The Multi-Purpose Building, 8:00 p.m., Thursday, April 15.

Obviously pleased with the results of their studio sessions, Sugarloaf, whose most recent single, "Green Eyed Lady" ranked high among the charts, believes it has approached new material in a way which is both different and beneficial to the overall finished product.

"We experimented with new songs during our gigs," said pianist-organist-vocalist, Jerry Corbetta. "The crowd's

reaction, after 30 or 40 different experiences with these numbers, influenced our decision on what was to go into this new album."

"We like doing things that crowds respond to. It makes no sense to do new things and not know how the crowd will like it."

"People seem to be more ready for the music," added drummer, Bob MacVite. "Musicians have always been ahead of their listeners. The overall audiences have matured, however. We see, growing, a sort of large minority in music crowds who are beginning to appreciate more what's going down."

Like its first LP, simply entitled "Sugarloaf", the group's new lacquer, also for Liberty, will be highly diversified, using classical, spacey, hard-rock, and other contemporary elements.

With the addition of guitarist,

Bob Yezal, who joined Sugarloaf five months ago, just after the first album had been taped, the group feels a fuller sound can only enhance the already closely-knit band.

"We try to present the best music possible," commented bassist, Bob Raymond. "We don't believe in hyping audiences. We only do things in the studio, production-wise, that are tasteful."

Sugarloaf, above all, believes strongly in the philosophy of separating music from church and state. It, in fact, is also against doing shows where political overtones exist, regardless of the faction.

"We don't mind doing benefits," said lead guitarist Bob (yes, another Bob) Webber, "as long as we know where the money is going. We shy away from festivals and gatherings where people are supporting political things. It's just not cool for us." We would even like to do a free concert every now and

then. But it would have to be free to everybody."

"Speaking of concerts," MacVite offered, "we feel that bands lose certain audiences when their asking prices for performing are so high. Obviously, performing is a business like anything else, and you're trying to make a living. But I think if we ever get in that position, we will take a lesser amount of money so that the ticket prices will be lower. I think the masses will appreciate it."

Like Cocker's historic band, Sugarloaf is a traveling family. With the exception of bachelor Corbetta, all the members are married and have one child apiece.

But that's where similarities end. The family atmosphere has been present with some of the members for as much as ten years since they all grew up and lived around each other in Denver.

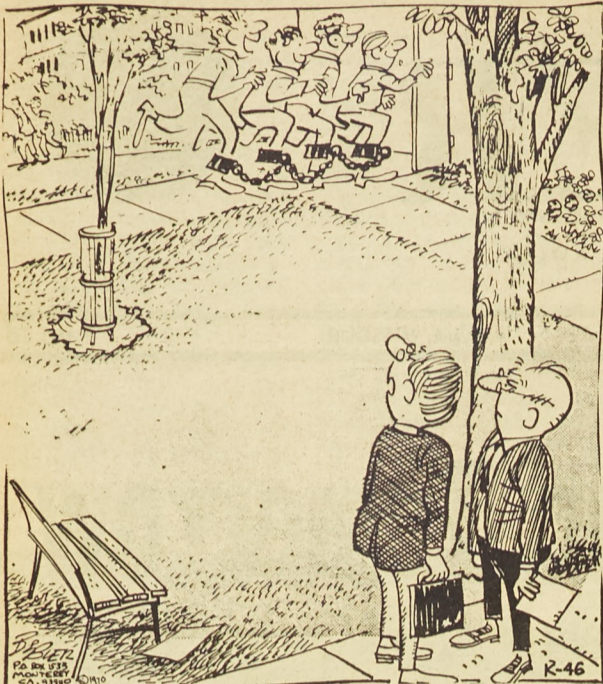
"Everybody is quite understanding about the problems of being on the road with each other's families," remarked Yezal. "We travel in a 37-passenger bus. And, sometimes, the room is tight. But everybody helps each other."

This has helped the group put together a sound which has made them nationally-known and a recognized ensemble in a relatively short time.

On The Inside

Outstanding Teacher	
Voting	Pg. 3
Infirmary Report	Pg. 3
Our Man Hoppe	Pg. 4
Fraternity News	Pg. 6
General Lectures	
Poll	Pg. 4

LITTLE MAN ON CAMPUS



"SAY, ISN'T THAT PART OF YOUR LAB ESCAPING INTO THE STUDENT UNION THERE?"

Student Union

The first UMR Talent Show is coming soon. It's now scheduled for Friday night of the Independent Party Weekend. That's April 23 at 8:00 p.m. in the Student Union Ballroom. If you haven't got your application in, you better get going.

Deadline is this Friday, April 16. By the way, the MC at the Talent Show will be Skip Matthews.

Board applications for the Summer Student Union Board are available until April 29. Any past or previous committee members of the Student Union

Board are eligible if they will be attending school this summer. Applications are available in the Student Union at the candy counter and room 212.

Second City is coming. They are a theatrical group that performs humorous satires on today's world. They will be appearing in the Student Union Ballroom on Friday, April 16.

One of the Chicago Seven is coming to Rolla. Presently, Dave Dillenger has a verbal contract to speak at the Multipurpose Building on Tuesday, April 20 at 7:30.

NOTICE!

Students may begin picking up their pre-registration materials and class schedules during the week of April 26. PRE-REGISTRATION for the 1971 Summer Session and/or the 1971-72 Fall Semester begins May 3 and ends May 7.

UPTOWN THEATRE

THURS., FRI., SAT.
APRIL 15-17
MATINEE SATURDAY
AT
1 p.m. & 2:55 p.m.
RATED M
"THE GOOD GUYS
AND
THE BAD GUYS"
Robert Mitchum &
George Kennedy

SUN. THRU SAT.
APRIL 18-24
Sunday Continuous
From 1 p.m.
RATED GP
"COLD TURKEY"
Dick Van Dyke &
Bob Newhart

RITZ THEATRE

THURS., FRI., SAT.
APRIL 15-17
MATINEE SATURDAY
At 2 p.m.
No One Admitted
Under 17 Unless
Accompanied By Parent
RATED R
"DORIAN GRAY"
Helmut Berger &
Richard Todd

SUN. THRU SAT.
APRIL 18-24
MATINEE SUNDAY
At 2 p.m.
EVENING FEATURE AT
7:00 p.m. & 9:00 p.m.
No One Admitted
Under 17 Unless
Accompanied By Parent
RATED R
"JOE"
Peter Boyle &
K. Callan

Christopher Jewelers

805 PINE STREET

★ ★ ★

CATERING TO UMR

The Complete Service Jeweler

WANT CONTRACEPTIVES privately?

We believe your private life should be your own. And when it comes to buying contraceptives, the hassle in a crowded drug-store isn't exactly private. So we've made it possible for you to get nonprescription contraceptives through the mail.

We specialize in men's contraceptives and we offer two of the most exciting ones available anywhere—Fetherlite and NuForm condoms. They're better than anything you can get in a drugstore. Imported from Britain, they're lighter, thinner, more exciting to use; and precision manufacturing and testing techniques make them as reliable as any condom anywhere. Made by LRI, world's largest manufacturer of men's contraceptives, Fetherlite (the best) and NuForm not only conform to exacting USFDA specifications, but are made to British Government Standard 3704 as well. We think you'll like them.

Our illustrated brochure tells you all about Fetherlite and NuForm. And about seven other American brands which we have carefully selected from the more than one hundred kinds available today. And we explain the differences.

We also have nonprescription foam for women and a wide variety of books and pamphlets on birth control, sex, population, and ecology.

Want more information? It's free. Just send us your name and address. Better still, for one dollar we'll send you all the information plus two Fetherlite samples and one NuForm. For four dollars you'll get the brochure plus three each of five different condom brands (including both Imports). All correspondence and merchandise is shipped in a plain cover to protect your privacy, and we guarantee your money back if you're not satisfied with our products. Why wait?

POPULATION PLANNING ASSOC.
Box 2556-G, Chapel Hill, N. C. 27514

Gentlemen: Please send me: _____ Your free brochure and price list at no obligation, _____ Three samples for \$1. _____ Deluxe sampler package for \$4.

Name _____
Address _____
City _____ State _____ Zip _____

LEVI DENIM BELLS ARE HERE

SIZES 28 thru 38

HURRY WHILE THEY LAST

O'MEARA'S

ROCK VILLA

RESTAURANT & BEER GARDEN

Hwy. 63 N At Olive St.

OPEN SUNDAY

11:00 AM - 8:00 PM

SPAGHETTI, CHAR BROILED, STEAKS, CHICKEN,

CHOPS, PIZZA, PLATE LUNCHES, SANDWICHES

SUPPORT THE
MISSOURI MINER!

El-Char-Eve STEAK HOUSE

"We Serve The Greatest Steaks In Town"

Hwy. 63 South
364-9900

BUSY BEE LAUNDRY-CLEANERS

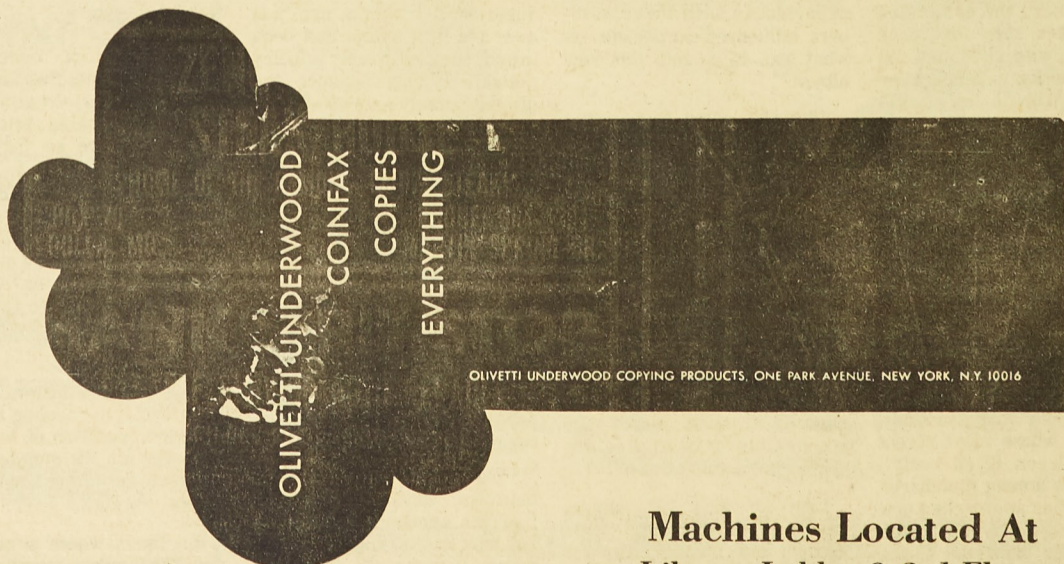
14th & OAK

2 Shirts Laundered FREE

(ON HANGERS ONLY)

WITH CLEANING ORDER

The 5¢ Copy Symbol



OLIVETTI-UNDERWOOD COPYING PRODUCTS, ONE PARK AVENUE, NEW YORK, N.Y. 10016

Machines Located At
Library Lobby & 3rd Floor;
Student Union

Outstanding Teacher Award Voting Next Week

Open Letter To All Students and Faculty

In each of the last four years, twenty UMR teachers were chosen to receive Outstanding Teacher Award Certificates. In addition, a few monetary prizes were distributed randomly to these winners. The selection was made through votes of both students and Faculty members in the ratio of about 100 to 1. Planning for this year's voting is almost complete. In an attached statement the general principles guiding the selection process are reviewed.

Voting days are planned to be Wednesday and Thursday, April 21-22, 1971. On Tuesday, April 20, the following materials will be distributed to every person who teaches or lectures a class:

- (1) Instructions to be read to each class.
- (2) Ballot cards for each class.
- (3) Alphabetical list of eligible teachers, each with a code number.
- (4) Addressed envelope for return of marked ballots to the Computer Center.

On the following two days the opportunity to vote will be presented to every class meeting. The computer will reject duplicate or ineligible votes.

Detailed procedures will be enclosed with each class packet and teachers are requested to comply with every given step.

Sincerely,
J. Kent Roberts
Faculty Awards Committee

P.S. The Faculty Awards Committee wants to thank THE MEN OF SIGMA PI FRATERNITY for the distribution of voting materials to the instructors.

Information on Outstanding Teacher Award Voting

1. **General.** This is an annual award in which the voter's choice must be made from the teachers on the eligible list and under whom either he received a grade last semester or he is currently enrolled. Thus teachers may win a Certificate in successive years; however, teachers who have received a monetary prize in the last two years are not eligible for this year's prize. Award of prize money among winners of Certificates is made randomly by computer.

2. **Philosophy.** It is assumed that there are no generally agreed upon quantitative measures of outstanding teaching. Each voter is free to use his own criteria of what constitutes effective teaching. A negative vote may be registered if none of your teachers this year qualify by your criteria. Class size is reduced as a factor in the voting by using a percent as datum. Differences in response of large classes and small classes are reduced by using several categories of class sizes and by selecting for each category that number of winners which is proportional to the number of classes of that size.

3. Eligibility.

(a) Teachers are eligible who lecture to organized classes on this campus at least three times per week throughout the current academic year. However, some have withdrawn their names and will not be eligible.

(b) Voters are eligible to cast a ballot for any teacher on the list if under that teacher he has completed this academic year a regular lecture course carrying more than zero credit hours, or he is currently enrolled in such a course. Excluded are laboratory courses, seminars, research, special problem or reading courses.

4. **Voting Procedure.** In addition to the procedures given in the attached letter, the teacher of each class will appoint a student monitor to collect the ballots, insert them into an official envelope, seal, and deliver the packet to the nearest Department office.

By Special Council Committee

Infirmary Report

PREFACE

The following report is the result of a comprehensive, in-depth study by the 1970-1971 Student Council of the University of Missouri-Rolla. The investigation was initiated on request by Chuck LaJeunesse, Student Council President. The original objective of the committee was to investigate reports of malpractice by the infirmary staff. Requests were made through the campus media to determine the validity of these complaints. Due to the small return of substantial complaints, we have now concluded that these reports are, for the most part, groundless. The two which were truly valid were

easily accounted for as necessary human error when stacked up against the total number of cases handled by the infirmary staff. We conclude then that the staff is as efficient as possible under the circumstances. Also several other complaints were traced to intramural injuries which are now being alleviated by the Infirmary-Athletic Department cooperation.

During the course of our investigations, we expanded our objectives to cover all facets of the Student Health Services which yielded more meaningful results. We were aided immeasurably in this research by the 1968 report, Survey of the Health Program at the

University of Missouri at Rolla, Recommendations for a Long Range Development of a University Health Program, submitted by Samuel I. Fuenning, M.D. Based on that report and our other sources, we now conclude that we are faced with a possibly catastrophic situation based on two causes:

1. The lack of adequate infirmary facilities on the UMR campus.

2. The lack of a coordinated University-wide health program.

Both of these conclusions were included in Dr. Fuenning's report which we fully endorse. We would like to recommend the immediate execution of the recommendations of both Dr. Fuenning's and this report.

We have divided this report into two parts: the first one contains the recommendations for a new facility on the

organizations and the objectives of these groups.

The first topic, Parliamentary procedure, is a subject which very few people on this campus know much about. The objective of this discussion will be to increase the knowledge of future leaders, thus increasing the efficiency of their meetings.

The second subject, the most effective use of committees led jointly by Dr. Al Bolon and Chuck LaJeunesse, is to instruct the participants on the fundamentals of appointing and running efficient committees where most of the work in an organization is done.

The third forum, various campus wide organizations and their objectives, will be done jointly by representatives of the St. Pat's Board, I.F.C., I.C.C., Student Council, Student Union Board, and the Interservice

Council. Also presented will be the many and varied special interest organizations on campus. This subject is being discussed mainly to expose the participants to the many organizations to which they may belong.

The date and rooms in which the forum will be held will be announced in the next Miner and on KMSM.

We, the members of Blue Key, would like to encourage all interested freshmen and sophomores to attend this seminar since the knowledge you gain may prove helpful in later years. We would especially like to encourage each living unit to send at least one representative since pamphlets will be handed out and these could prove to be helpful files throughout the coming years.

University of Missouri-Rolla campus; the second applies to the University-wide health program recommendations.

PART I

The recommendation for an immediate new infirmary facility for the UMR campus is based on the following data:

1. The present facility is an obsolete three-story fire hazard. It has no elevators and only one stairway, which makes it almost impossible to carry stretcher patients. Facilities are cramped and inadequate. The waiting room is extremely small, and the furniture only increases the discomfort of patients. The building is hard to heat and cool.

2. New facilities would allow for the increase in student enrollment and accompanying student needs especially for the increase in co-ed enrollment. Now there are no separate facilities for women and

inadequate facilities for any major outbreak of disease. Emergency facilities are limited. There is only one rest room.

3. New facilities could be stocked with equipment not now housed--namely X-Ray equipment, testing equipment, etc.

4. New facilities would enable the University to make better use of the staff it now employs.

After surveying the area and studying recommendations from several sources, it has been concluded that the most ideal location for the new facilities would be the site of the Rolla Clinic at 9th and State Street. (This agrees with the recommendation of Dr. Fuenning.) It was the most ideal site available because of its central location and its ease of remodeling. It is located between the men's and women's

(Continued on Page 5)

Miner of the Week



More News & Views



The Missouri
MINER
UNIVERSITY OF MISSOURI - ROLLA



SECOND FRONT PAGE

Blue Key Leadership Forum To Be Held



The Missouri MINER
UNIVERSITY OF MISSOURI - ROLLA

Editorials

Roger Ellis Editor

GENERAL LECTURES POLL

Pending the final approval of the transfer of all Student Council General Lecture funds to the Student Union Board, the Social Committee of the Student Union Board will use this poll in planning for next year's General Lectures. Your participation in this poll will be very helpful in making UMR's General Lectures more what Miners really want.

1. What type of music would you like to see brought to the UMR campus in the General Lectures Series? Please number in preferential order 1 to 5. (1: highest preference, 5: lowest preference)

- _____ "Bubblegum"
- _____ hard or heavy rock (i.e. Jimmi Hendrix)
- _____ folk or country rock (i.e. CCR)
- _____ pop (i.e. Three Dog Night)
- _____ soul (i.e. Motown Sound)
- _____ other _____

(please list type and example)

Note: Classical, jazz, folk, and or ethnic music is sponsored by the Fine Arts Committee and not included in the General Lecture Series.

2. List SPECIFIC groups you would like to have appear at Rolla.

3. If you have any other comments regarding General Lectures, attach them to this questionnaire and let us know.

Please return this questionnaire to the SUB GENERAL LECTURES box by the Student Union Candy Counter.



OUR MAN HOPPE

The Sensuous Grandfather

Being a little on the shorts, I decided to write a bestseller. It isn't difficult. You simply study the current literary tastes of America by reading the best-seller lists. Then you write one.

Mine was entitled, "The Son of Sensuous Woman and Sensuous Man." It was about this kid who was hung up on whipped cream. But my publisher, Grasper Grommet, rejected it.

"The American public doesn't want to read about the wages of sin," he explained. "Sin alone is good enough for them."

I changed the title to "The Sensuous Grandfather." It's about this older gentleman who turns young ladies on by squirting whipped cream in their ears.

"Great!" cried Grommet. But put in some technical information. People are embarrassed to buy a book that appeals solely to lust."

So I included some diagrams of ear lobes and Eustachian tubes and called it "All You Wanted to Know About Sensuous Grandfathers, but Were Afraid to Ask."

Grommet was happy. "You've nailed the lust

market," he said. "But what about gluttony? Cook books sell like crepe suzettes."

I had the grandfather squirt only half the whipped cream in the young lady's ear. With the other half, he created Meringue a la Peoria and other exciting recipes.

"Now," said Grommet, rubbing his hands, "if you can work in some fear. Look at 'Unsafe at Any Speed' or 'Future Shock.' Show me a book that scares you out of your wits and I'll show you a bestseller."

Again I rewrote. Now the grandfather squirted whipped cream from an aerosol can that could blow up at any minute while riding in a car with dangerously defective windshield wipers. He was a symbol of our decaying civilization, (cq) spelled with an S.

Grommet frowned. "But will the reader be better off financially for buying this book? No, he'll just be out \$6.95. You've got to tell him how to get rich while he's waiting for the end of the world. Greed, that's what sells."

"If I know how to get rich," I said glumly, "I wouldn't have to slave away at the typewriter telling people how to do it."

But the revisions were worth it. The grandfather's now a stockbroker who drops tips on how he turned \$3.98 into one of America's great fortunes.

I mailed the manuscript to Grommet and confidently dropped by later, expecting to pick up a fat check. He was scowling.

"Do you think we publishers cater only to lust, gluttony, fear and greed?" he said angrily. "The fact that 'Love Story' is the number one bestseller proves we appeal as well to the finer instincts in the reading public -- like mawkish sentimentality."

So I stole the best scene out of "Love Story." Grommet joyously says we've now got a runaway bestseller on our hands -- one that captures the essence of current American literary taste.

Watch for it. It's called, "Everything You Always Wanted to Know about Sensuous Grandfathers who Enjoy French Cooking in Their Unsafe Cars while Making a Million in the Stock Market in Their Spare Time as the World Goes to Pot but Were Afraid to Ask."

In the end, the girl dies.

Student Forum



God & Hell

To the Editor:

Referring to the "Signs of The Times" cartoon in the March 17 issue of the Miner; I would say that it is rather deceiving. Granted, a lot of people today are staking their life on the idea that God wouldn't send a "good guy" to hell, however, that doesn't make the idea true. The truth is that God doesn't have to send anyone to hell, because in mans own sin and rebellion he sends himself there. God doesn't want even one person to perish in hell.

Heaven is a place where there will be no rebellion against God, so the cartoon showing saints rebelling in heaven is a misconception.

If anyone is interested in a small group study of the Bible's view of heaven, it can be arranged by calling 364-8922.

Sincerely,

Gary E. Fenton

Red Commies On Campus?

Dear Mr. Ellis:

I feel it my Christian duty to bring to your attention another example of the continuing "Red Menace" in our sheltered mid-western town of Rolla. This is a concrete example of the persistent attempt to undermine the very "Foundations of the American Way."

On March 30 and 31, I observed with my own eyes a group of Long (and short) haired-Godless-Communist-Faggot-FRIEKS running around the campus wearing secret red-inspired badges. Even the lettering and symbol was red in color -- what further proof do you need!!! Even though these messages said,

"Be nice to me, I gave blood today," WE know what they REALLY MEANT!!! - FREE LOVE!!!

And even more MENACING was their blatant flaunting of visible needle marks where they had shot marijuana directly into their veins -- 386 -- by ACTUAL COUNT!!!

How long will we allow this to continue???? SOMETHING MUST be done!!!

I will do my thing by publicly expressing my deep pride in being allowed to associate with these types of young people.

RIGHT ON!!!!

-s- Bill Kratzer

KASRIA

Dear Sir:

Recently the campus was led to believe by a few Iranian

students that Kasria was not allowed to return to school because of prejudice against his political activities at UMR. The students in the Mining, Petroleum, and Geological Engineering Department are presenting the following facts.

1. Kasria has been on probation three semesters.

2. Kasria's grades are as follows: A - 0; B - 20; C - 40; D - 24; F - 20.

(No American would be allowed to remain in school with these grades.)

3. Kasria's G.P.A. is 1.95.

4. Kasria has missed over 50 per cent of his classes.

5. Kasria's last grade report included 2 F's and 3 In-completes.

6. According to the Petroleum, and Geological Engineering Department by the

(Continued on Page 5)



The Missouri MINER
UNIVERSITY OF MISSOURI - ROLLA

THE MISSOURI MINER is the official publication of the students of the University of Missouri - Rolla. It is published at Rolla, Mo., every Wednesday during the school year. Entered as second class matter February 8, 1945, at the Post Office at Rolla, Mo. 65401, under the Act of March 3, 1879. The subscription is \$1.25 per semester. This Missouri Miner features activities of the Students and Faculty of UMR.

ASSOCIATED COLLEGIATE PRESS RATING: First Class

STEVE THIES Business Manager 364-9818	ROGER ELLIS 341-4235 or 364-5616	DON REUTER News Editor
DEANN IWAN Features Editor	BRUCE GASTINEAU Associate Editor	GLENN JENSEN Sports Editor
RICHARD OVERTURE Photo Editor	BERNARD BRUNS Make-up Editor	LARRY VIDINHA Assistant News Editor
RICK REMLEY Lay-out Editor	KENT YOEST Copy Editor	JIM WROBLESKI Lay-out Editor
STEVE WUNNING Local Advertising Director 364-1490	BILL HORSFORD Proofreader	LARRY SCHUPBACH Local Advertising Director 364-1490
	TERRY HILL Advertising Director	
	BOB REYNOLDS Circulation Editor	

Looking For A Job?

The UMR Placement Office in conjunction with the UMR Student Council will present a four part Career Seminar beginning April 20.

This seminar will consist of such things as the availability of jobs in various fields, techniques of interviewing, including a demonstration interview and important tips in choosing a career.

For those who have not yet

interviewed for summer or permanent employment this will be an excellent opportunity for you to get ahead.

The times and places for the Seminars are as follows:

Tuesday, April 20, 7:00, 104 ME.

Thursday, April 22, 7:00, 104 ME.

Tuesday, April 27, 7:00, 114 CE.

Thursday, April 29, 7:00, 104 ME.

Infirmary Report

(Continued from Page 3)

dorms and the campus and is only one block from the athletic facilities. It is already a medical clinic and is now used for certain infirmary functions such as X-Raying and laboratory tests. Dr. Myers has suggested that this facility also house the school psychologist, psychiatrists, sanitary engineer, health education officer, and all other related employees. As this would aid in the overall coordination of these departments, we would recommend that this be done if at all possible. We will make no recommendation as to specific necessary additions or costs but will leave those matters to qualified experts. But whatever costs are involved, we feel that they are well worth allocating under the circumstances.

The only other specific campus recommendation we have is an improved emergency procedure which will insure access to a doctor at all times and will facilitate patient transfer to the Phelps County Hospital. Many complaints from students which we got stemmed from bitterness due to treatment in which a nurse sent an injured or ailing student home with orders to return in the morning when the doctor would be there. This, of course, could be prevented with a full-time doctor on duty. We will discuss this more fully under Part II.

PART II

Our second overall recommendation was the establishment of an overall University-wide health program. Such a program was described in Dr. Fuenning's report. We recommend immediate action to set up this program as follows:

University-wide Health Director, UMC H.D., UMR H.D., UMKC H.D., UMSL H.D.

Under each campus director would be the infirmary staff, the physical therapist-athletic trainer, safety, sanitation, radiological, and psychological counseling staffs, and any other departments which would be more efficient if coordinated into an over-all University-wide plan. This would induce more cooperation, more efficiency, and greater understanding of strengths and weaknesses of the departments involved if such a plan were executed. It is necessary to act as quickly as possible on this plan in order to cut down on the inefficiencies now seen. Part of the costs would be defrayed in increased efficiency also. Details other than those in our report and Dr. Fuenning should be left for the actual University-wide Health Council composed of the University-wide director and the four campus directors.

As stated in Part I, we would now like to suggest a proposal

that would give us a full time doctor at infirmaries on all campuses. We have pointed out the need for such a plan due to emergency cases, lack of authority for nurses' actions under emergency circumstances because of insurance company policy, and the long waiting lines at inconvenient times of day when the doctors make their twice daily stops at the infirmary. We would like to give a framework of a plan which would allow for twenty-four hour doctor services. Of course, it is impossible for us to work out specific details; but we see no reason that would keep the plan from becoming a reality. We recommend that a plan be generated which allows UMC medical students to serve for one or two semesters as infirmary doctors. Possibly a plan could be structured around loans and grants with a stipulation that service at a university system infirmary would cancel the interest or some variation on this idea. This would have several advantages not already listed. First, it would be an inexpensive way to obtain the needed services. Also, it would further intracampus relations and could also have a beneficial effect for a future doctor for several reasons. This would also answer our current problem as far as emergency procedures which has probably been the greatest source of conflict between students and the infirmary.

One final recommendation does not really fit either the first or second part of our report. But we feel it warrants consideration enough to be included here. We would like to recommend that all University-wide infirmaries be authorized to distribute free literature on drugs, venereal diseases, birth control, abortion, and all related topics of interest and importance to the students of the University of Missouri system. Many times particularly on campuses without courses dealing with these issues no general information is readily available. We feel that the infirmary is a logical place to distribute such information.

SUMMARY OF

RECOMMENDATIONS

PART I: That a new facility be built immediately utilizing the present Rolla Clinic at 9th and State Street.

PART II: That a University-wide Health Program be established immediately.

That a plan be initiated which would call for newly graduated doctors from the Columbia campus to serve as twenty-four hour infirmary staff members.

That free literature on current controversial subjects be distributed by the University infirmaries.

Signs Of The Times



CONCLUSION

We would like to thank the people who made this report possible—particularly Dr. Myers and Mrs. Nations of the UMR infirmary and countless others without whose help this project would have been impossible.

Support The
Missouri Miner!!

Student Forum

(Continued from Page 4)

Registrar's Office because he was on probation for the four semester. He was not allowed to return because of grade performance, not political activities.

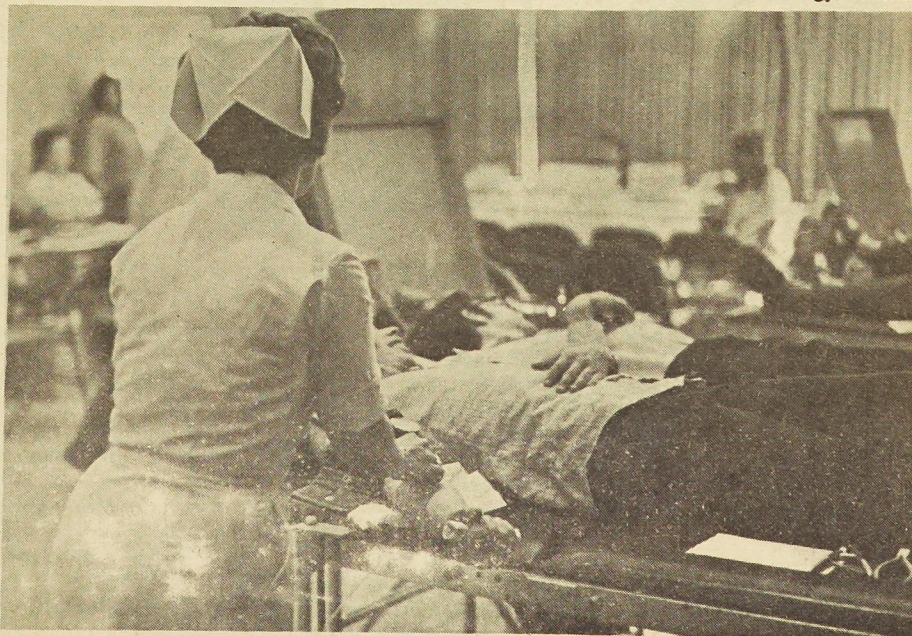
8. Kasria was a member of

the Petroleum Department, not the Mining Department.

include the entire semester.

7. Kasria was referred to the chairman of the Mining, Registrar's Office, (and not the Mining Department) the Incompletes had to be changed to F's. An incomplete can be given only if a student has been hindered the last two weeks of the semester.

-s- Petroleum &
Geology Students



This was the scene in the Student Union Ball Room March 30 and 31, as students volunteered their blood. Here, Nurse Betty Eubanks checks the blood pressure of Bob Hoffman. Next to Bob is Mike Greabes.

FRATERNITY NEWS

New House For Sigma Tau Gamma

On Saturday, March 20, Sigma Tau Gamma conducted a ground breaking ceremony at the site of their new house. Numerous alumni present who were quite instrumental in



obtaining the house included faculty advisor Prof. Richard Kerr, founders Walter Rothermel and Jerroy Frank, Doyle Ray Edwards, Ken Serfass, Terry Lee, Paul Radzom, Mike Kissing, Frank Doering, Mark Elfrink, John Bakula, and Tom Stefansky.

President Ron Markham gave a brief speech concerning the tremendous work done to acquire the new house. Following the speech, Professor Kerr added a few words and dug

up the first shovel of dirt. Each of the alumni took part in the ground breaking activity. Finally, the event was concluded with picture taking.

The house, which will be situated on Fraternity Row, is the only one which will be located on the west side of the street at present. It will be split-level and accommodate sixty-two men.

Plans for a "Goodbye 200 E. 12th Street" beer bust are scheduled for this spring.

Mrs. Leach To Speak To UMR Dames April 19

Mrs. Thomas Witt Leach of Tulsa, will speak on the social graces to members of the University of Missouri-Rolla Dames, student wives organization, at 7:30 p.m. Monday in the Episcopal Christ Church. A social hour will follow.

Last year, Mrs. Leach was chosen by the Tulsa chapter of Theta Sigma Phi, honorary journalism sorority as "newsmaker of the year" for her participation in civic, cultural and social events.

I.F.C. Banquet

As the 1971 Spring semester at the University of Missouri-Rolla draws near, the fraternities on campus are again preparing for the Annual Greek Week celebration. Since its origination by the Interfraternity Council some fifteen years ago, Greek Week has proven to be an exceptionally successful and entertaining party weekend and has achieved even stronger interfraternity relations and

cooperation. This year, as in the past, the interfraternity Council has devoted much time and effort in maintaining Greek Week as the top social event on the Fraternity calendar.

To kick off Greek Week, the ninth annual banquet is scheduled for Thursday, April 29, at 6:30 p.m. at the Student Union. We are presently engaging a speaker which will be interesting to all who come. The price is a nominal \$3.25 for

all you can eat, which includes ham, chicken and turkey and dressing. See your Junior Representative for tickets. It was traditional for Greeks to feast before a battle, so we are asking that all Greeks, for a successful Greek Week, to come out Thursday night and enjoy a feast.

Darryl Moore
Banquet Chairman
364-9968

Alpha Pi Alpha Attends Conference

On February 12 and 13 representatives of the Epsilon Psi chapter of Alpha Phi Alpha Fraternity attended a state conference held in Jefferson City. The major topics covered at the convention were: Alumni-College Brother Relationships, rush and ritual programs, and housing.

Epsilon Psi contributed greatly to all topics, and was the center of attraction during the housing discussion. Because of the financial and economic success we have had with housing here in Rolla, and the experience gained enroute to this success, E. Psi was honored by being asked to appoint a member to serve as the College Brothers' representative on the Fraternity's National Housing Board. We were also given the major responsibility in the

coordination and conduction of seminars with other chapters desiring and needing housing.

Presently, we are drafting plans to construct an expansion to our house, as well as making preparations to attend, in force, our regional convention, which is to be held in Chicago this April. We are also working in coordination with the Association of Black Students and the Government's "Upper Bounds" program with the goal of increasing the Black awareness of the fine engineering curriculum here in Rolla, and, thus, increasing the black enrollment here.

Recently, E. Psi added six new brothers to our roll. They are: John Erwin, Keith Battle, Harvey Randall, Myron Biddle, Albert Winston, and Samuel Brown.



That's fast thinking

Getting there can be half the fun... but not if it takes up half the time. Go by air, have more time there. And save up to 20% by using your Ozark Youth Fare card. The card costs just \$3.00, is good any time, provides confirmed reservations, and is interchangeable with other airlines' cards. For information call Ozark Air Lines or your helpful travel agent.

OZARK AIR LINES
Up there with the biggest

Thomas Jefferson Residence Hall



202 West 18th Street

Telephone 364-5766

SUMMER RESIDENCE CENTER

The THOMAS JEFFERSON Residence Hall for Men and Women adjacent to the Campus of the University of Missouri at Rolla is now taking reservations for summer term occupancy.

- Completely air conditioned — only completely air conditioned residence hall at the University of Missouri at Rolla.
- Carpeted, quiet hallways.
- Outdoor swimming pool.
- Fine food, available on premises.
- Recreational facilities (billiard room, lounges with television, card rooms).
- Meeting rooms.
- Ample parking on premises.
- Excellent accessibility.
- Maid service.



Missouri MINER SPORTS

GLENN JENSEN, SPORTS EDITOR

Golfers Ninth At St. Andrews

The Miner golf team journeyed to Scotland over the Easter vacation to play in the St. Andrews Intercollegiate Golf Tournament. This provided a fine opportunity for the Miner golfers to test themselves against a really excellent golf course, the famed Old Course at St. Andrews. In addition the UMR linksmen played Carnoustie, but the real

thrill was the round at the Old Course, the birthplace of golf. St. Andrews, the home of the British Open, provided quite a challenge to the collegiate teams representing every section of the United States, and in some cases the challenge proved to be too much for the golfer. Witness the seven foot putt dropped by UMR freshman Jim Greer. It gave him an 18 for

the par four second hole. After that disastrous beginning, Jim was able to come back with a fine 78 the following day.

By far the most troublesome aspect of the game for all the Miners was putting. If it's true that "You drive for show, and putt for dough" most of the Miners would have come away empty-handed as three and four putt greens were common. This

was due to the fact that the greens at St. Andrews are huge, many of them being double greens serving two holes, one on the back nine and one on the front. This necessitates greens that look as if they would bring in a tidy sum if sold by the acre. For example, playing the fourth hole, you could be 110 yards away from the pin and use a putter, probably several times since the fourth and thirteenth holes share the same green which is 110 yards across at its widest extent.

Despite the problems involved, the Miner golf team was able to finish ninth out of a field of twelve teams. The contest was won by Jacksonville University who finished with a team score of 1537. The Miners came into the clubhouse on the final round with a score of 1709 which was good enough to defeat St. Bonaventure and LaSalle of the United States and Strath Clyde of Scotland.

Miners Take NWMS Twinbill; Gain Second Place In MIAA

The Miner baseball team boosted their league record to 3-1 this past weekend with a sweep of the double header against Northwest Missouri State. The Miner league mark is good for second place, behind Warrensburg, who sports a perfect 4-0 ledger.

The Miners swept the two games through a combination of

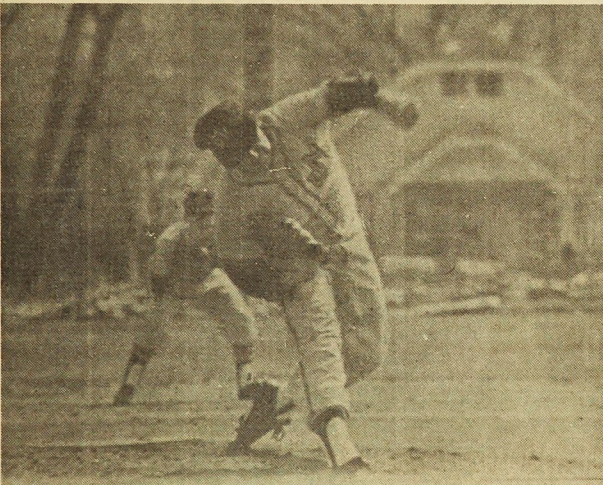
good pitching, tight defense and timely hitting. These three elements are all a coach could expect from a team, and Lyle Rhea was pleased with the performance of the team. "We really had everything going for us up there," he commented.

In the first half of the twinbill, the Miners shut out the Bearcats 3-0 on the strong armed

hurling of Dwight Stack. Although the Miner batsmen were only able to get two hits, they were well placed. Clarence McMahon got two RBI's on his third inning blow to center. The other Miner base knock was by Mark Schrader, in the second inning. The Insurance run was scored by Pete Colombatto, as the Miners brought home a 3-0 whitewash.

In the second game the Miners supplied a little more potent attack, and coupled it with the pitching of sophomore David Kirn. Kirn allowed only five hits, struck out five, and walked two enroute to the second game victory. Kirn has a streak of ten scoreless innings going for him, and has allowed only one unearned run.

The two victories raised the Miner record overall to 5-2. They will put their second place standing in the conference on the line Saturday as they will play Springfield. It will be a home game for the Miners.



Miner Southpaw Dwight Stack displays his winning form.

Tennis Squad Blanked In NEMS Indoor

The Miner tennis team journeyed to Kirksville over the weekend to compete in the Kirksville indoor invitational meet. They met with a notable lack of success and scored no points in the tournament. The defeat wasn't entirely unexpected as both Bradley and Kirksville recruit strongly for tennis, in contrast with the Miners who recruit not at all for the sport. Miner coach Ray Morgan was pleased with the spirit and effort of his team, who played their hearts out, but were simply outgunned. Bradley, the winner, finished with 26 points while runner-up Kirksville was not far behind with 22.

Student-Prof. Golf Tourney Set For April 24

Some students have asked that the Student-Faculty Golf Tournament be held April 24 even though it is Independents' Weekend.

If enough interest is shown, the Student Union Board will go ahead with the tournament with no intention of interfering or encroaching upon any other planned activities. A sign-up sheet will be on the bulletin board of the union.

Any questions? Call Tom Headington, 364-9901 or leave a message at 341-4295 in the afternoon.

NOTICE!

Students may begin picking up their pre-registration materials and class schedules during the week of April 26. PRE-REGISTRATION for the 1971 Summer Session and/or the 1971-72 Fall Semester begins May 3 and ends May 7.

NOTICE!

Join in the "Greek Feast". The 9th annual IFC Banquet will be held April 29 at 6:30. See any IFC Rep. for more details.

Happy Turkey Hunting
April 22 thru May 2!

KENMARK
SPORTING
GOODS

904 Pine

\$ \$ \$ SAVE \$ \$ \$
HOOK AUTO SUPPLY

STUDENT DISCOUNT PRICES

Open Mon - Fri 8:30 - 7PM and Sat 8:30 - 6PM

ZENO'S MOTEL
STEAK HOUSE

"HOME OF THE FAMOUS 12 OZ. STEAK"

BOX 70
ROLLA, MO.

PHONE: 364-1301
MARTIN SPRING DR.

HANK'S PIT STOP
SELF SERVICE AUTO REPAIR

- * Engine Rebuilding Equipment
- * Steam Cleaning & Tools Furnished
- * Open 10:00 A.M. To 10:00 P.M. 7 Days A Week
- * Come Down & Ask Us About Our Membership

Phone 364-7827

Northwe Old 66
Behind Rameys 6 Pack

Thinclads Take Fourth In Kansas State Relays

The Miner track team nabbed fourth place in the Kansas State Relays held this Saturday at Pittsburg, Kansas. The UMR squad finished behind Pittsburg, Maryville and Springfield with a total of 35 points. Coach Finley commented on the Miner finish, "Because we didn't run too well, we prevented ourselves from finishing any higher."

**SUPPORT THE
MISSOURI MINER!!**

NOTICE!

Students may begin picking up their pre-registration materials and class schedules during the week of April 26. PRE-REGISTRATION for the 1971 Summer Session and/or the 1971-72 Fall Semester begins May 3 and ends May 7.

The strongest event for the Miner was the 120 yard high hurdles. Don Hemenover finished second in that event, while Mark Erwin and Cliff Belcher finished fourth and fifth, respectively. The 880 yard relay team, paced by Eric Potts and Jim Wassilak, also took a second place. Potts also gained points for UMR as he placed in the hundred yard dash with a time of 10.4.

Other UMR point-getters included Curt Simmons and Ed Hanstein in the shot put. Hemenover in the 440, the mile relay team, and Ray Curby in the triple jump. The thing which really hurt the Miners was the fact that they were unable to garner any firsts. All 35 of their points came on third, fourth and fifth place finishes, which do not mount up nearly as rapidly as the first and seconds. The Miners are looking forward to improving on their excellent dual meet record when they take on Missouri Valley Wednesday. The meet will be at Marshall, Missouri.

SPORTS LINE-UP

VARSITY BASEBALL

April 17	Southwest Mo. State	Rolla
April 24	Central Mo. State	Warrensburg

VARSITY TRACK

April 21	Washington U.	St. Louis
April 23-24	Southwest Mo. Relays	Springfield

Fuller Jewelry

The Finest In Diamonds
And Jewelry
U.M.R. Class Rings

715 Pine St. 364-2142 Rolla, Mo.

FLOAT THE LITTLE PINEY IN A GRUMAN CANOE



OZARK EQUIPMENT CO.

Complete Rental Service (At A New Location)
Hwy. 63 - Across From Pryors Pizza
Phone: 364-2180

Alex Pizza Palace

Alex's Pizza Palace is a restaurant you will find very popular with the UMR student body. They feature Pizza that will appeal to the most discriminating appetite. Cleanliness prevails throughout the kitchen and dining area and every precaution is taken to see that you get food prepared under the most sanitary conditions.

Enjoy yourself, please your friends or entertain business connections at Alex's Pizza Palace.

Faultless service and excellent selection are yours when you dine at "ALEX's." We suggest that for a real dining pleasure you visit Alex's Pizza Palace often. The address is 122 W. 8th Street in Rolla. Open 4 p.m. till 2 a.m. seven days a week. Call 364-2669 for immediate delivery to your door.

Six Flags Comes To Mid-West

The final countdown has begun for opening day at Six Flags Over Mid-America.

After the better part of two years, the 200-acre family entertainment center is nearing completion. Final preparations for a June 5 grand opening include several "special days." The weekend of May 15-16 will be devoted to five-hour benefits for the St. Louis Symphony and St. Anthony's Hospital. The following two weekends Six Flags will be open a full 12 hours to school groups, companies and the like.

Nearly 1500 high school and college age hosts and hostesses will run the park during its six-month season.

The park boasts a 5000-car parking lot, one of the largest in the Midwest. But have no fear, the park comes complete with trams, manned by driver and hostess who will wheel you to and from the park's entrance and tell you a little of what to expect in the park.

Six Flags Over Mid-America anticipates nearly 1.6 million visitors this year. More than 50 rides, shows and attractions will entertain guests in the

park. Rides such as the now famous log flume, the runaway mine train and the skyway, head the list of Six Flags attractions. Favorites at Six

Flags Over Georgia and Six Flags Over Texas such as a live porpoise show and Sid and Marty Krofft's puppet theater are also featured attractions.



Jim Klug and Debbie Kallmeyer, Six Flags Over Mid-America's first host and hostess add a special touch to Miss Kitty's Saloon. Miss Kitty's located in the heart of Six Flags' Gateway to the West sector, will feature 16 live performances a day. The Six Flags park will begin operations June 5.

CLIP THIS COUPON

SPECIAL DISCOUNT To All Miners

With This Coupon You
Get 5 Pieces Chicken, Snowy
Whipped, Potato, Cole Slaw and 2 Rolls

SAVE
30c

On A Jumbo Box
Value \$1.95

For Only

\$1.65

**TWO LIMIT
NO SUBSTITUTIONS**



COL. SANDERS' RECIPE

MALCOM'S

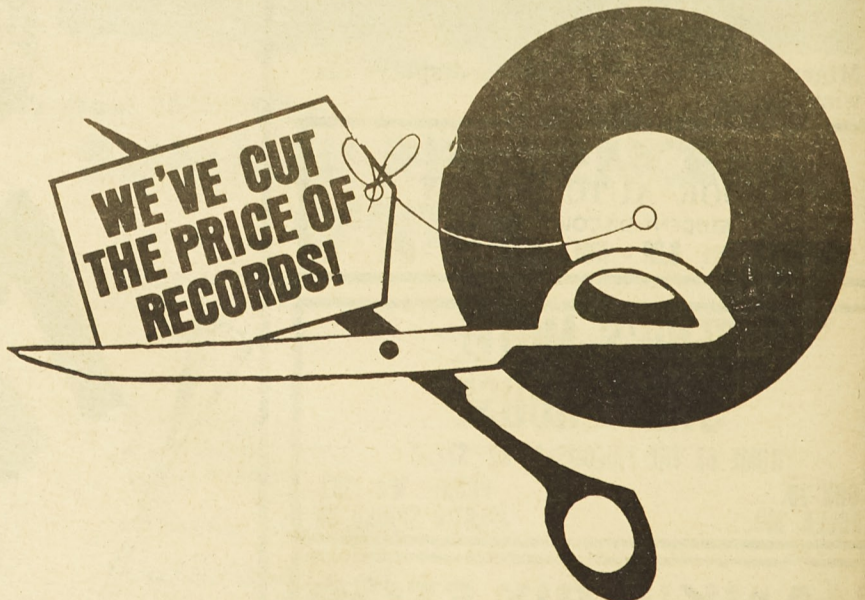
Kentucky Fried Chicken

101 S. Highway 63

ROLLA

Phone 364-6307

**WE'VE CUT
THE PRICE OF
RECORDS!**



SAVE UP TO \$3.00

Top Artists! Major Labels!

**Many, Many More! Classics Included!
Come Early for Best Selection.**

At

CAMPUS BOOK STORE

Get Your Favorites at Big Discounts!