



06 May 1970

The Missouri Miner, May 06, 1970

Follow this and additional works at: https://scholarsmine.mst.edu/missouri_miner

These newspapers reflect the attitudes, perspectives, and beliefs of different times. Neither the library nor the university endorses the views expressed in these collections, some of which contain images and language which may be offensive to some readers.

Recommended Citation

"The Missouri Miner, May 06, 1970" (1970). *The Missouri Miner Newspaper*. 1947.
https://scholarsmine.mst.edu/missouri_miner/1947

This Newspaper is brought to you for free and open access by Scholars' Mine. It has been accepted for inclusion in The Missouri Miner Newspaper by an authorized administrator of Scholars' Mine. This work is protected by U. S. Copyright Law. Unauthorized use including reproduction for redistribution requires the permission of the copyright holder. For more information, please contact scholarsmine@mst.edu.



The Missouri MINER

UNIVERSITY OF MISSOURI - ROLLA



VOL. 56

WEDNESDAY, MAY 6, 1970

ROLLA, MISSOURI

NO. 24

"UMR Day" By The St. Louis Cardinals

Merl Baker Makes His Debut In Baseball

University of Missouri-Rolla Chancellor Merl Baker will make his major league baseball debut May 16, when he takes the mound for the opening pitch of the St. Louis Cardinals-Chicago Cubs game in Busch Memorial Stadium. Dr. Baker's major league career will be short, however. His pitching duties will be limited to the ceremonial first pitch opening the game which has been designated "UMR Day" by the St. Louis Cardinals. The special day has been set aside to help the Rolla Campus celebrate its 100th birthday.

The 1:15 p.m. contest will be televised nationally with the

UMR pre-game ceremonies slated to begin at 12:30 p.m. The Cardinals will present an award to UMR recognizing its centennial celebration. Chancellor Baker will respond with an appropriate presentation to the St. Louis baseball organi-

zation.

The University of Missouri-Rolla was established in 1870 as the University of Missouri School of Mines and Metallurgy. In its first 100 years of operation, the Rolla campus established a world-wide reputation

of excellence in engineering and science education. For many years UMR has ranked among the top 10 producers of engineering graduates and several of its engineering departments are among the two or three largest in the world.

A special block of 1,000 tickets has been reserved in Busch Stadium for the May 16 game. Any student, faculty member or alumnus may purchase the tickets (\$3 each) by contacting the Centennial Events Office in Rolla.

Pollution Problem

New Lead Site In Southern Missouri

It's a typical Ozark wilderness area, with wooded hills and clear, sparkling rivers, unspoiled by pollution and rich with aquatic life.

It's also the site of one of the world's largest lead deposits, the Viburnum Trend or "New Lead Belt" of Southeastern Missouri. This deposit may yield as much as 350,000 short tons of finished lead metal annually, as much as is now produced in the entire state.

The influx of industry and population means changes. Will success spoil the Ozark environment? Not necessarily, say University of Missouri-Rolla researchers who have been working for almost three years on a "before, during and after" study of the area.

To find out what happens to virgin streams when waste water from mining and milling operations is fed into them, UMR engineers and scientists moved into the area after the lead discoveries were announced but before large scale mining operations had begun. Work is directed by Dr. Bobby G. Wixson, associate professor of environmental health on the staff of the Environmental Research Center, and Dr. Ernst Bolter, associate professor of geochemistry. Studies were funded in part by research grants from the U. S. Department of the Interior, Office of Water Resources Research.

According to Dr. Wixson, this was a unique setting for re-

search. "The rural sparsely populated area provided the opportunity, rarely available in our heavily industrialized society, to observe the transition from a rural to an industrial area and to evaluate the effects of this change on the ecological environment," he explained. (Ecological refers to the way living organisms and non-living environment function together as a whole).

According to Dr. Bolter, the natural geological features of the area provided another advantage. "The unusual topography of the area channels the mining and smelter wastes into separate stream tributaries so that pollution effects may be determined for individual mines, mills and smelters. Streams flowing into the area on the east are not affected by the mining or population increase and serve as controls for the study."

About 18 sampling stations were set up, and studies have been made on the streams over a three-year period. Lead and zinc are the main constituents in the ores mined and processed in the area and copper is also present as a co-product. Researchers quickly set to work collecting samples to determine the natural concentrations of these metals. Such "before" data exists rarely because of

heavy industrialization and population density in critical areas. This background data is irreplaceable, Dr. Bolter stresses.

Once mining started, research centered on how water quality and aquatic plant and animal life were affected by the heavy metals in the waste water from the mines and by the chemicals used in milling operations. Changes were watched closely and evaluated for initial shock and long-term cumulative effects.

Biological samples were collected at two to three-week intervals. These were tested to determine bacterial population and concentration of algae in the streams and stream ecology was observed through changes and variations in the aquatic population. Water quality was evaluated for changes in hardness, changes in acidity or alkalinity, dissolved oxygen and other determinations important in biological studies, Dr. Wixson said. Sediment samples were analyzed to determine the amount, if any, of metals or chemicals affecting the water quality.

After three years of study, both Drs. Wixson and Bolter are confident that industrial success need not spoil the Ozark environment. "All of the mining companies in the area are most interested in containing pollution and protecting the environment while carrying out effective mining procedures. Through continued cooperation between the mining industry, state agencies and UMR, present problems may be brought under control and future problems prevented," Professor Wixson said.

Faucett Elected A.S.M.E. Chairman

Dr. T.R. Faucett, chairman of the department of mechanical engineering at the University of Missouri-Rolla, has been elected chairman of mechanical engineering department heads for Region Seven of the American Society of Mechanical Engineers (ASME).

Region seven is made up of the states of Iowa, Missouri, Kansas, Nebraska, South Dakota, North Dakota and Minnesota. As chairman of the group, Dr. Faucett will represent this region in ASME national committee and will chair the regional meeting next spring. He served as vice chairman of the group last year.

Dunning; Man Of The Month

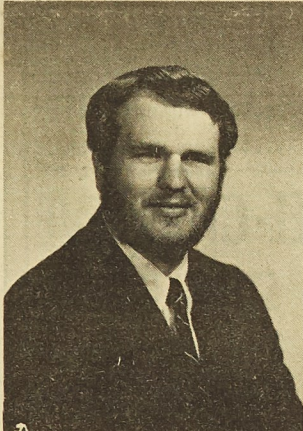
Congratulations are in order for Eric Dunning, Blue Key's Man of the Month for March. Eric is a graduate of Parkway High School in St. Louis County, and is currently an Engineering Management student at UMR.

Eric has been very active in his fraternity, Tau Kappa Epsilon, as well as in campus organizations. He has served TKE as Vice-President, Rush Chairman, Pledge Trainer, Treasurer, Secretary, and Sergeant-at-Arms.

Some of Eric's campus activities include: President of St. Pat's Board, Theta Tau Vice-President, Vice-President of American Management Association, President of Association for Systems Management, and Rugby Club Vice-President. He is also a member of Blue Key, Alpha Phi Omega, ASME, AIAA, and Student Union Board.

Among the honors Eric has received at UMR are; 1st and

2nd Dean's List, Guard of St. Pat's Court (1969), and he was elected St. Pat for 1970. Eric has been named to Who's Who Among Students in American Colleges and Universities in recognition of his efforts at UMR.



Eric Dunning

Election Procedures For Unaffiliated Students

Applications for election as representatives to the Student Council for unaffiliated students may be picked up at the Student Council office immediately. They must be returned no later than Monday, May 11, 1970. The names of all students seeking such a position will be posted in the Student Union.

Each of the required one hundred signatures for representation will be checked by the Student Council. The by-laws covering such an election are as follows:

ARTICLE I-ELECTION PROCEDURES FOR UNAFFILIATED STUDENTS

*SECTION 1. Any student who is not a member of any organization which is represented on the Student Council, may become an unaffiliated Student Council representative by obtaining the signatures of 100 students who are unaffiliated with organizations represented on the Student Council.

*SECTION 2. The above signatures must be obtained on an official Student Council ballot between February 15 and April 1. During this time the Executive Committee shall be responsible for registering and publicizing the names of the unaffiliated candidates.

*SECTION 3. The vote (signature) of any person signing the official ballot of more than one candidate shall not be counted for any candidate.

*SECTION 4. The Executive Committee of the Student Council shall determine the validity of the signatures on the ballots. If invalid signatures should be found, then the Executive Committee shall notify the candidate of a grace period in which he may replace those signatures that are invalid.

*SECTION 5. After one-hundred (100) valid signatures are

obtained the Executive Committee shall announce that the candidate is a Student Council member.

*SECTION 6. In the event that any candidates do not obtain one-hundred (100) signatures the signatures on the partially completed ballots shall be totaled and representatives shall be determined by the Executive Committee in the proportion of one representative per 100 signatures. The representatives shall be chosen from the list of candidates having partially completed ballots; the candidates having the most signatures being chosen first. The Executive Committee shall instruct the representative of his constituencies.

*SECTION 7. Any Student Council member elected under the procedure outlined above shall regard the persons whose signatures appear on his ballot as his constituencies and shall be responsible for informing them of activities, events and, insofar as possible, for representing their views in the Student Council.

*SECTION 8. Any unaffiliated representative can be removed from the Council by a petition with the signatures of a simple majority of those students who are designated as his constituents. His constituency may elect a representative to serve the remainder of his term.

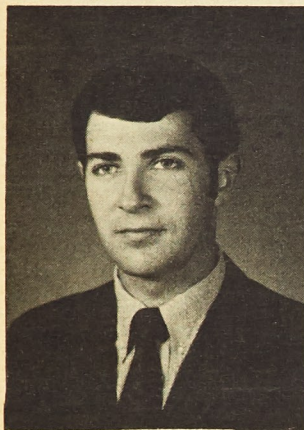
*SECTION 9. One week prior to and during the election time the Student Council shall publicize the contents of Article I of these By-Laws. Also, a copy of Article I of the by-laws shall be attached to the official Student Council ballot.

*SECTION 10. The Executive Committee of the Student Council shall conduct the above elections in accordance with the constitution and by-laws of the Council. Any interpretation of the election shall be done by the Executive Committee.

Vicente; IFC Man of the Year

This year's IFC Man of the Year Award was presented to Timothy M. Vicente at the IFC Banquet at the Student Union Ballroom on Monday night of Greek Week. This award goes to the man among the social fraternities who has done the most for the fraternity system on the UMR campus during the past year. Eight finalists were chosen from all applicants filing for this honor. The eight finalists were then judged according to the Blue Key honor point system. The other seven finalists for IFC Man of the Year were Jim McKelvey (Kappa Sigma); Eric Dunning (Tau Kappa Epsilon); John Lambert (Tau Kappa Epsilon); Keith Wedge (Pi Kappa Alpha); Jim Michel (Acacia); Terry Ward (Delta Sigma Phi); and Chuck Laderoute (Triangle).

Tim has indeed been very active on the UMR campus during the past four years. He has served as Rush Chairman and Grand Master of Ceremonies for his social fraternity, Kappa Sigma; Literary and Music Director and Vice-President for the Student Union Board; President of the IFC; Treasurer of Theta; Alumni Secretary of Blue Key; Sergeant-at-Arms



Tim Vicente

GISCO

A World Wide Single Source of Geophysical Instruments and Supplies

We have all of them—magnetometers, resistivity units, gravity meters, scintillators, seismographs, electromagnetic units. . . Everything. And not just one of each kind. We stock heavily at varying levels of sophistication to meet your need and your budget.

In magnetometers, for example, we offer several types. And each of these is available in a variety of models to make sure you get what you want.

If you want more than you can afford, we'll lease it to you. Reasonably. So you don't have to cancel, change, or postpone that big field project you've been planning.

Keep in mind, too, that we're equipped to offer complete and expert repair service on all types and makes of geophysical instruments.

For further information, write or call:

Geophysical Instrument & Supply Co.

A division of Soiltest, Inc.
900 Broadway
Denver, Colorado 80203 USA
(303) 825-8914. Cable: GISCO

Serving the geological, geophysical, engineering & teaching professions.

and Corresponding Secretary of Alpha Phi Omega; treasurer of NSPE; Treasurer of ASCE; Circulation Manager for the Miner; and President and Plledge Trainer for Circle-K. Tim's honors during the past four years include Runner-up for Kappa Sigma's Scholarship-Leadership Award; being chosen to represent Kappa Sigma at its 100th Anniversary Conclave at Richmond, Virginia; Missouri Curator's Scholarship during his freshman year; Blue Key Man of the Month; being on the First Dean's Honor Roll; and being a Knight for this year's St. Pat's Celebration.

This semester Tim was elected as the President of the Student Union Board. During Greek Week, Tim will be representing the second god, Dionosus. Tim is presently working on the student subcommittee for next year's Centennial Weekend.

St. Pat's Board Elects Its' New Officers For 1970-71

On April 23, 1970 the St. Pat's Board elected new officers for the 1970-71 school year.

The new president is Ken Hilterbrand who is a member of Pi Kappa Alpha Fraternity where he has served as assistant House Manager. St. Pat's Board felt Ken deserved the job of president because of his dedication to the Board and the fine job he did as Benefit Movie Chairman. Ken is also active in ISA where he has served as president, vice-president, and secretary. He has also been vice-president and secretary of the College Young Republicans. He is also pledging Theta Tau this semester.

Joe Witte of Sigma Tau Gamma Fraternity is the new Vice-President of the Board. He was Ceremonies Chairman

this year for the Board and did an outstanding job. Joe who is very active in intramurals also belongs to ASCE, ASME, and the Soccer Club.

The new Treasurer is Dick Graham from Engine Club. Dick was head of sweatshirt sales this year and the main reason for the record sales this year. He has also been starring in intramurals for Engine Club for the past two years.

Dave Krueger is the new secretary for the St. Pat's Board. Dave is from Kappa Sigma Fraternity where he has served as Inner Guard. He did an excellent job as Queen's Committee Chairman this past year. Other offices he has held are News Editor of the Missouri Miner and secretary of ASM. He is also a member of Theta Tau.

THE PUB

205 W. NINTH

SCHLITZ ON TAP

OPEN 10 TO 1:30

THE LISTEN DEN TAPE HOUSE & STEREO CENTER

211 W. 8th

364-7715

8 TRACK TAPES \$5.79

4 TRACK TAPES \$2.95

TAPE RECORDERS
HI FI COMPONENTS

Open Mon. thru Sat. 9:00 - 6:00

Closed Tues.

1,000 Titles Of Stereo Tape Selections

Diehl Montgomery, Inc.

ROLLA, MISSOURI

FORD - LINCOLN - MERCURY - T-BIRD - CONTINENTAL

DRIVE YOUR NEW CAR BEFORE YOU GRADUATE!

See Us for Your Special Student Pay Plan

on New or Used Cars.

Payments Tailored While You Are in School and Out.

Continental Recreation

813 PINE STREET

Play Pool, Billiards, Snooker or Golf

1 Player 60c per Hour

Each Additional Player 30c per Hour

Play Pinball Machines, Shoot Guns,
Shuffle Alley, Juke Box or Foot Ball

We Serve Sandwiches & Soft Drinks
Bring Your Wife or Girl Friend

WE ARE OPEN 10 A. M. UNTIL 11 P. M. OR ?????

UPTOWN THEATRE

THURS. FRI. SAT.
May 7-9
-RATED M-
"DOWNHILL RACER"
Robert Redford &
Camilla Sparv

SPECIAL SAT. MATINEE
May 9
For Entire Family - 2 p.m.
"THE SHERIFF OF
FRACTURED JAW"

SUN. MON.
May 10-11
Sunday Continuous From 1 p.m.
-RATED G-
"IF IT'S TUESDAY, THIS
MUST BE BELGIUM"
Suzanne Pleshette &
Ian McShane

TUES. THRU SAT.
May 12-16
-RATED M-
"THE MOLLY MAGUIRES"
Sean Connery &
Samantha Eggart

RITZ THEATRE

THURS. FRI. SAT.
May 7-9
Admission: Adults \$1.25
No One Admitted Under 16
-RATED X-
"MEDIUM COOL"
Robert Forster &
Verna Bloom

SUN. MON. TUES.
May 10-12
-RATED M-
"ME NATALIE"
Patty Duke &
James Farentino

WED. THURS. FRI. SAT.
May 13-16
-RATED M-
"PUSSYCAT PUSSYCAT
I LOVE YOU"
Ian McShane & Anna Calder

ROLLA DRIVE-IN

FRI., SAT., May 8 & 9
-RATED M-
"IMPASSE"
Burt Reynolds &
Anne Francis
-PLUS-
"FRANKENSTEIN
CONQUERS THE WORLD"
Nick Adams

SUN. MON. May 10-11
-RATED G-
"THE ITALIAN JOB"
Michael Caine &
Noel Coward

TUES. WED. May 12-13
DOLLAR A CARLOAD
-RATED G-
"HELLO DOWN THERE"
Tony Randall & Janet Leigh

El-Char-Eve

STEAK HOUSE

We serve the greatest
steaks in town.

Our barbecue is
real soul food.

Every Sunday
(11 to 4 p.m.)

½ Fried chicken,
a potatoe, gravy
and slaw for
only \$1.65

Why should we be
modest when we know
we top'em all?

EL-CHAR-EVE STEAK HOUSE

(ROLLA'S FINEST)

Hiway 63. South
364-9900

JACK'S CLEANERS

DRY CLEANING - SHIRT LAUNDRY
ALTERING AND MENDING

at

6th & Kingshighway - Next to Plaza Laundromat
and

Hillcrest Shopping Center - Rolla, Missouri

New Official UMR Class Rings

BY L. G. BALFOUR CO

BULOVA ACCUTRON

DIAMONDS and ENGRAVING

WATCH REPAIRING

Christopher Jewelers

805 Pine Street

Adults And Drugs

Middle Class Pot

From the ranks of Mid-America conservatism, a segment gathered again in the Rolla Municipal Auditorium last Thursday night. Again the battle cry arose as the war develops new fronts against the fiends of mind bending drugs. The verdict already weighed heavy in their grooved minds, middle class, out-of-class America listens intently as the incriminating evidence is brought against the docket of the accused. Beautiful educated metaphors come forth with brilliance as undisputed facts sweetly bubble to the agreement of those in attendance. Facts of Pharmacology, abstinence syndrome, sociological effects . . . What more need be said to convince these patriots. Drugs . . . Har-ken as you are forever declared guilty of ruining the youth of America. Guilty is your diabolical nature . . . Guilty! Guilty!! You are a menace and a threat to the honor of an affluent nation . . . a Modern Rome.

As we float down the hall, we observe the handout which says to include alcohol in this attack as not to turn off the kiddies . . . but of course, booze are our pleasure so shall we move to an area of bad that doesn't apply to us. Condemn alcohol but not to hard . . . adults need escape too.

Narcotics, those most dis-picable, and continually attacked . . . But lets also continue the inticing movies and suspense filled plots . . . affluent trash for affluent peo-

ple.

Well as the tone dies we throw a few barbituates down our throats and speak of tranquilizers, caffeine, and nicotine. One last cheer for the "Smoking is Hazardous to Your Health" and not do to much to harm Tobacco LTD.

At last. To the youth we shall charge. The pot and the LSD they are the worst of all. What exactly is being said by an educated person?

At present no rational judg-ement can be made. . .

Any drug has risk . . . Drugs cause apathy among the young. . .

Much of the reaction to drugs is mostly emotional. . .

Drugs represent the aliena-tion of the youth from society. . .

Should we say that apathy already infects our elders? Shall we say that the real concern is the fear of alienation from the new generation? Should we even think that our fathers generation has always been a drug culture, just on different substances? The real concern is not over people but that drugs represents a threat to your wealth, which you middle class america sogreedily seek. You care about property, not about people.

Drugs finds Society guilty of being sick, apathatic, corrupt, murderous and completely non-Christian. Our American fa-thers have been the cause of

creating a world so putred that the innocent young have been forced to escape from any way they could. All your damn lec-tures, seminars, and programs are in vain because you are as sounding brass. Your only re-course is a return to the faith of our founders (forefathers). Drugs will not in the least sink our nation. Apathy and lack of brotherly love will send Ameri-ca to Hell. The problem is not the effects of an unfortunate situation. The problem is soci-ety and the individuals that con-trol it and their children. The solution begins at home.

NOTICE!

Attention unaffiliated students, if you wish to run for a Student Council seat, representing unaffiliated students, pick up a ballot in Room 201 of the S.U. be-tween 3:30 - 5:00 p.m. Monday thru Friday. These must be returned to the Student Council Office no later than May 11.

More News & Views



The Missouri MINER
UNIVERSITY OF MISSOURI - ROLLA



SECOND FRONT PAGE

UMR Awareness

GAD; Service, Reward

Many students may be ig-norant of the name Gamma Alpha Delta, but few are un-knowledgeable of this organi-zation's fine work. GAD was founded five years ago as a multipurpose organization. It is now composed of 17 (800 men) fraternities and often works in conjunction with Wes-ley and other student groups. GAD's main goal is to awaken the UMR students to many of todays deep-rooted problems and to provide the students with an opportunity to work with these problems. The first goal is being realized by furnishing speakers, films, and programs, for UMR's fraternities, con-cerning various problems and interests. The second goal is met by providing worthwhile projects for the fraternities. These projects are designed so that the students can observe, learn, teach, and use their en-gineering expertise in coping with the ghetto (St. Louis) prob-lem.

GAD's main thrust has come in the past two years. During the 68-69 school year GAD sent over 500 men to work in the ghettos of St. Louis. Projects included working on poor churches, tutorial centers, and in ghetto homes.

This year GAD reached full maturity as it was awarded two grants. The first grant GAD received was awarded through HUD (Housing and Urban De-velopment). Under this grant Lambda Chi Alpha, and Phi Kappa Theta sent 100 men to St. Louis in order to demolish

condemned secondary struc-tures. This spring 200 stu-dents have worked on the con-struction of three neighborhood parks under the coordination of Steve Gardner (Lambda Chi Al-pha) and Dan Bokermann (Phi Kappa Theta). Fraternities participating in this effort were, Theta ZI, Beta Sigma Psi, Pi Kappa Phi, Acacia, Phi Kappa Theta, Triangle, Alpha Epsilon, Pi, and Pi Kappa Alpha.

GAD also received a grant from the Danforth Foun-dation for the purpose of bring-ing a model block of homes up to city building code standards. The emphasis on this project has been to help the residents so that they develop an interest and a know how in maintaining their own property. Partici-pating thus far in this program, which extends until January, 1971, have Kappa Alpha and Wesley, under the supervision of Dale Faerber (KA) and Rich-ard Herrin (Ind.).

This past winter an emer-gency developed in the Pruitt

Igoe housing complex when fro-zen pipes burst, cascading wa-ter through the halls and stair-ways. It was GAD who organ-ized the effort which sent 61 UMR students to help--only one week before finals. These men helped evacuate elderly people who were stranded without wa-ter, heat, or electricity. Their efforts were recognized by all St. Louis papers as well as by television.

GAD's efforts have been widely publicized the last two years. The program has al-ready involved nearly 1000 stu-dents and is sure to continue to flourish in the future. These programs were organized through the concerned efforts of Rev. Fred Lamarr, GAD's advisor, and Richard Fulton, Director of the Gateway Cen-ter in St. Louis. GAD's pro-grams have brought to the par-ticipating students and frater-nities an awareness of the ghetto problem. A problem which UMR's students, as fu-ture engineers, will be called upon to help solve.



NOTICE!

LET THE GREEN BE SEEN
STAY OFF THE GRASS

Miner of the Week



Nowick On Solids

Professor Arthur S. Nowick of the Henry Krumb School of Mines, Columbia University, will speak in the First Annual Frank Golick Lectures in Metallurgical Engineering at the University of Missouri-Rolla.

Professor Nowick will talk about "Amorphous Solids. Their Formation, Structure and properties," May 7 and "Study of Defects in Crystals by Ane-lastic and Dielectric Relaxa-tion" May 8. Both lectures are at 3 p.m. in Fulton Hall 217 and the public is invited.

Professor Nowick is an auth-ority in the field of defects in solids, and has taught and done research at John Hopkins, Yale and Chicago universities. He has had a 10-year career with IBM as manager of ma-terials research, during which he guided the solution of many materials problems in the de-velopment of modern solid-state electronic devices used in

communication and data pro-cessing.

The lectures were set up from the estate of the late A. Frank Golick, UMR alumnus and vice president of sales and advertising of the LaSalle Steel Company, Chicago. The gift of \$10,000 was presented to UMR last year by Mrs. Golick and her daughter, Mrs. Alfred L. Castle, both of Qui-nicy, Ill.

Golick received a bachelor of science degree in metallurgical engineering from UMR in 1918. During the 2-year engineering phase of his career, Golick developed an acute awareness of the importance relation between the findings of fundamen-tals metallurgical research and the solution of very partical problems. The principal aim of the Golick lectures is to de-monstrate the reality of this relation.

Rhe talks by Pro. Nowick will be held in further cele-bration of UMR's cenetennial year.

Campus Improvements Topic Of Coffee Chat

The Special Events Com-mittee of the Student Union sponsored a Coffee Chat con-cerning "Campus Improve-ments" on April 27 at 3:30 in the Student Union television room.

Chancellor Baker; Dr. Mc-Farland Dean of the Graduate School, and Chairman of the UMR Planning Committee; and Mr. Joseph Wollard, Business Officer were guests of the cof-fee chat. They gave apresenta-tion of the Improvements of the Campus in the future. The additions to the campus includ-ed expansion of the Chemical Engineering Building, expan-sion of the Physics Building, the

addition of a new portion to the Student Union building, the new Mathematics Building, the future use of the older build-ing on the campus, and the con-struction of multi-level parking levels.

Coffee, cake and Coke were served and then the guests were asked questions by the students present at the Coffee Chat.

NOTICE!

Missouri Miner Office Hours
1:00-3:30 Thursdays
Building T-14

© 1969 Jos. Schlitz Brewing Co., Milwaukee and other great cities.

U. M. F. LIBRARY



EL TORO BRAVO



FREE Parking In Rear

A lot of people who are now saying Schlitz Malt Liquor served on the rocks with a lemon twist is a spectacular, refreshing, neat, great, wonderful idea, used to say it was a lousy, stupid, bad, dumb idea.



Also very good straight.

© 1970 Jos. Schlitz Brewing Co., Milwaukee and other great cities.

Trackmen Topple Springfield, 75-70

By Pat Lyons

The Miner trackmen ran away from SMS 75-70 in one of the toughest matches so far this season. The victory over the Springfield team extended the Miner's unbeaten string in dual competition to 5 as they romped to a per- 5-0 mark in dual meets.

Dan Schaefer, who usually fills a pole vaulting slot produced some jumping heroics in the long jump and triple jump to ice the meet for the engineers. Dan personally scored 11 points, including firsts in both long jump and pole vault to go along with a third place finish in the triple jump.

The Miners did very well in the filled events. Highlights included a sweep in the javelin as Stout, Williams and Hanstein finished in the first three spots. Ed Hanstein also threw the shot 46' 11" to take first in that event.

One of the most pleasant surprises for the Miners was the superb performance of Larry Nelson. Larry won the 440 for the first time this year as he turned in an excellent time of 50.3 seconds. His usual mark is around 52 seconds, but he ran well under the pace to edge out Dave Larcker who came in second in the event. Nelson continued his fine day with a quarter-mile time of 50.1 in the first leg of the mile relay.

Golfers Top SLU, Wash. U.; Lewellen Medalist With 79

With only two regular season matches to play, the UMR golf team holds a 13-2 record. Their latest victory was over St. Louis University and Washington University at the tough but beautiful Forest Hill Golf Course in St. Louis. SIU at Carbondale was the only team to better Rolla's score.

Lynn Lewellen led UMR scoring with a 79. Al Carson and Gary Hamilton each posted an 80. Mike Sease lost some of his previous dazzle and shot an 81. Before this tournament Mike was two under par for his last 36 holes of golf. Chris Killian stroked his way to an 83 and Mike Mulvaney had an 85. SIU placed first with a six

He was followed by Terry Young who ran the second leg in 52.5 and Mike Kozacik who turned in a time of 51.8. Dave Larcker ran the anchor leg and turned in a fantastic time of 49.6 to assure victory for the relay team. This mile relay win was the clincher since it was the last event and the score was tied at 70 all before its running. The outstanding performance in a crucial event clinches the meet for the Miner runners.

Don Hemenover won the 120 yard high hurdles but was only able to place second in the other half of his specialty, the 440 yard intermediate hurdles. Don failed to gain a double victory in these events for the first time in quite a number of meets.

The Miners dept, especially in the field events provided the margin of victory over SMS in one of the most closely contested matches of the year. The next meet will be Friday, May 8, against School of the Ozarks.

Friday's summaries:
440-yard relay--1, SMS (Ron Johnson, Roger Fischer, Bob Curl, Ernie Johnson). 43.5 seconds.

Shotput--1, Ed Hanstein, Rolla; 2, Williams, Rolla; 3, Phillips, SMS. 46 feet 11 inches.

Mile run--1, Steve Liringis, SMS; 2, Herbert, SMS; 3, Browne, Rolla. 4:33.1 minutes.

man total of 377. Rolla followed with 403 strokes. St. Louis U. had 409 strokes while Washington U. hikes its score to 421.

Coach Mercier commented that he was well pleased with the team so far this year. There has been a battle for the last three positions on the team all year; this competition helped in rounding out the while team. He went on to say that the team had played great when they had to. At the beginning of the year I asked him what the golf season would be like. His answer was that it would be a rebuilding year. Today I again asked him about the year. His reply was, "For a rebuilding year--really amazing."

2-yard high hurdles--1, Don Hemenover Rolla; 2, Fletcher, Rolla; 3, Discher SMS. 14.8 seconds.

High jump--1, Ray Laramie, Rolla; 2, Greaves, Rolla; 3, Barnes, SMS. 5 feet 8 inches.

440-yard dash--1, Larry Nelson SMS; 2, Larcher, Rolla; 3, Massey, SMS. 50.3 seconds.

100 yard dash--1, Ernie Johnson SMS; 2, Curby, SMS; 3, Curby, Rolla. 9.8 seconds.

880-yard run--1, Jay Keal, SMS; 2, Liringis, SMS; 3, Ball-

man, Rolla, 1.50.8 minutes.

Long jump--1, Dan Schaefer, Rolla; 2, Curby, Rolla; 3, Stout SMS. 20 feet 11 inches.

440-yard intermediate hurdles--1, Bob Curl SMS; 2, Hemenover, Rolla; 3, Fletcher, Rolla. 56.4 seconds.

220-yard dash--1, Ernie Johnson, SMS; 2, Mueller, Rolla; 3, Curl, SMS. 22.3 seconds.

Javelin--1, Len Stout; Rolla; 2, Williams, Rolla; 3, Hanstein, Rolla. 189 feet 4 inches.

Discus--1, Bill Lamberson,

SMS; 2, Phillips, SMS; 3, Hanstein, Rolla. 163 feet 1 inch.

Pole vault--1, Dan Schaefer, Rolla; 2, Swope, SMS; 3, Graber, SMS. 12 feet.

3-mile run--1, John Herber, SMS; 2, Kroeger, SMS; 3, Rice, Rolla. 15.42.1 minutes.

Mile relay--1, Rolla (Larry Nelson, Terry Young, Mike Kozacik, Dave Larcher). 3:24 minutes.

Triple jump--1, Doug Barnes, SMS; 2, Curby, Rolla; 3, Schaefer, Rolla. 43 feet 3 3/4 inches.

Miners Take Three From SEMS, Retain Shot At Division Title

By Ken Geringer

The Miner baseballers played three games with SEMS this weekend, including a double-header on Monday and emerged with three victories to knock SEMS out of contention for the league title. If the Miners can pull out a double victory against SMS next weekend they will win the championship.

In the first game Friday, the Miners took a 2-0 lead in the fifth inning as third baseman Mike Windish was hit by a pitch. He was tripled home by light-hitting John Nolle. Pitcher Tom Frisbee then provided the winning run as he singled Nolle home. Frisbee ran into trouble in the seventh as a sacrifice fly scored a man to make the count 2-1 in favor of the Miners and leave a man on third with two outs. The Miner hopes seemed dim when Jim Long rocketed a line drive into the

hole between short and third. Miner third-baseman Windish came up the game saving play as he dove to spear the liner and the game. Frisbee ended the game with a three hit effort, including six-strikeouts.

In the nightcap, Miner pitcher Dwight Stack got behind early in the game as the Indians scored a run in the first. A bases empty home run by Steve Biederman evened the score at one apiece in the fifth inning. The game went into extra innings and was won by the alert, heads-up base-running of Biederman. He led off the inning with a double and took third on Windish's single. Nolle tried to squeeze home the run, and although the throw to the catcher beat Biederman to the plate, Steve evaded the tag to score the winning run. The extra-inning victory capped the sweep

of Friday's double-header, and paved the way for Saturday's crucial contest.

Tom Frisbee, the hero of Friday's victory shut the door on the Indians for the final four innings of Saturday's game to nail down a 3-2 victory for the series sweep. The Miners got behind early, and were trailing 2-0 when the staged a mild rally in the fifth inning. Biederman scored on a Mike Windish triple to make the score 2-1. In the seventh Bob Wilson pushed across the winning run with a single that scored Mike Windish from third. The starting pitcher for the Miners was Don Frankforter who left the last four innings of work to Frisbee after only allowing two runs in his five inning stint. The three victories raised the Miner record to 4-5 in the conference and 8-10 overall.

Miner Netmen Win Three; Boost Season Record To 6-3

By Carter Njus

During the past week the UMR tennis squad compiled a record of 3 wins and no losses boosting their overall record to 6 wins and 3 losses.

On Saturday, April 25, the UMR team met Evangel Col-

and Drury by scores of 5-4 and 7-0, respectively.

In singles play at Concordia, Joe Reynolds beat Don Hasse of Concordia 6-3, 1-6, 6-1, while UMR's Dan Mullen was defeated by his opponent John

Concordia's Jerry Castleman, was taken by Concordia.

In doubles competition Don Hasse and Dave Lieske of Concordia defeated Bob Varnon and Dick Herrin 7-5, 6-1. But coming through with the winning match for the Miners were Reynolds and Mullen, who defeated their opponents, 6-4, 6-1.

Finally, UMR's third doubles team of Njus and Rogge were beaten by Brogaard and Castleman 2-6, 6-2, 6-3 to bring the final match score to a narrow 5-4 Miner victory.

On the Saturday of Greek Week, Drury College was trounced by UMR here in Rolla by a score of 7-0.

Joe Reynolds gained some revenge for an earlier loss by downing Keith Campbell 6-1, 4-6, 7-5, while Dan Mullen narrowly defeated Steve Meyerkerd of Drury 6-4, 8-6. Then Bob Varnon playing third singles beat Eric Paulsen 6-3, 6-3 and Dick Herrin handled Bill Amburn 6-1, 2-6, 6-3. In the final singles match of the day, Cartz Njus narrowly zipped Mike Hutter 6-0, 6-0.

Playing first doubles, Herrin and Njus downed Campbell and Meyerkerd 6-4, 6-4. Reynolds and Mullen then followed by unloading a 6-0, 6-1 whipping to their Drury counterparts, Amburn and Paulsen.



Tennis Ace Joe Reynolds shows top serving form.

lege in Springfield, Missouri. Playing one man short, the Miners still managed to pull out a 5-2 victory. Then over Greek Week the netmen met and defeated both Concordia

Brogaard 6-4, 3-6, 6-4. Then UMR took 3 singles matches with victories by Bob Varnon, Dick Herrin, and Carter Njus. The final singles match, between Charles Rogge and

Sidelines

By Glen Jensen

Practically every UMR athletic squad was victorious this past weekend. The track team beat arch-rival Southwest Mis-

souri State, the baseball team swept by Cape in three games, the tennis squad posted a dual win, and the golf team showed well in St. Louis. As the spring season wears on, most of the athletic squads have been turning in better and better performances.

The baseball team meets Springfield in three games to decide divisional champions in the MIAA. The baseball squad lost three to SWMS in Springfield, but now have a shot at the title if they can knock off Springfield. Coach Rhea and his squad members would appreciate all the support they can get, so try to attend a game or two this weekend.

Possibly an apology is in order for Coach Finley's squad since we did not mention some of the stiff competition they faced at the SMS Relays. They did a fine job and have been having a tremendous year.

NOTICE!

Preregistration for students now enrolled in school who will be returning for the 1970 summer session and/or the 1970-71 fall semester will begin May 4 and end May 8. Students should obtain their preregistration materials and schedule of classes from the Registrar's Office during the week of April 27. Detailed information regarding preregistration will be found in the front section of the fall schedule of classes. Students who preregister from the fall semester will be given an opportunity to pay fees by mail before August 13, 1970.

NOTICE!

Missouri Miner Office Hours
1:00-3:30 Thursdays
Building T-14

By John Riege

Playing their last Rugby match for the Miners were Dave Ripley, Matt Rupp, Keith Austin, Balls Weiss, and retiring president John Reige, who completed his fifth year with the team.



SPORTS LINE-UP

RENT-RENT-RENT-RENT-RENT-RENT-

"WHY BUY, WE RENT"

CHAIN HOIST (1 TON) POST HOLE AUGER
EXTENSION CORDS (6' TO 100')

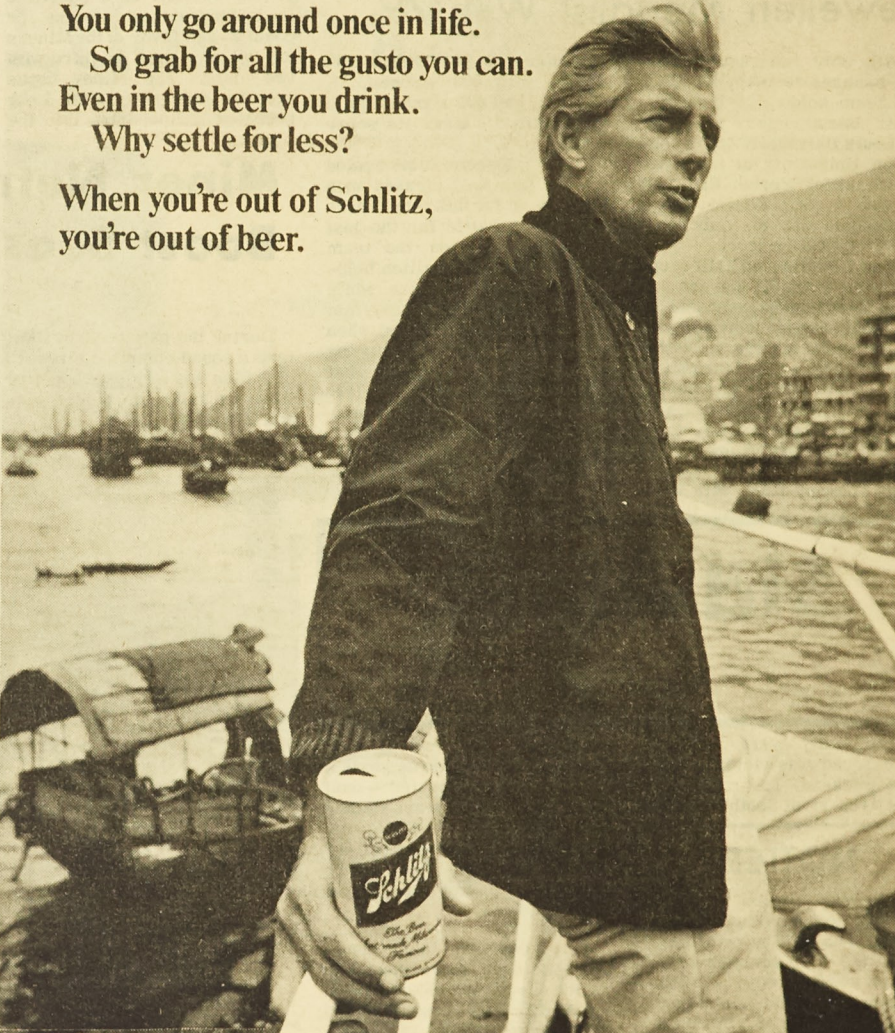
OZARK EQUIPMENT CO.

364-2180 (ACROSS FROM KROGER) 364-2180

RENT-RENT-RENT-RENT-RENT-RENT-

**You only go around once in life.
So grab for all the gusto you can.
Even in the beer you drink.
Why settle for less?**

**When you're out of Schlitz,
you're out of beer.**



© 1970 Jos. Schlitz Brewing Co., Milwaukee and other great cities.

Rolla, Missouri