



22 Oct 1969

The Missouri Miner, October 22, 1969

Follow this and additional works at: https://scholarsmine.mst.edu/missouri_miner

These newspapers reflect the attitudes, perspectives, and beliefs of different times. Neither the library nor the university endorses the views expressed in these collections, some of which contain images and language which may be offensive to some readers.

Recommended Citation

"The Missouri Miner, October 22, 1969" (1969). *The Missouri Miner Newspaper*. 1928.
https://scholarsmine.mst.edu/missouri_miner/1928

This Newspaper is brought to you for free and open access by Scholars' Mine. It has been accepted for inclusion in The Missouri Miner Newspaper by an authorized administrator of Scholars' Mine. This work is protected by U. S. Copyright Law. Unauthorized use including reproduction for redistribution requires the permission of the copyright holder. For more information, please contact scholarsmine@mst.edu.

Dedication Accompanies Homecoming

Ed Macauley, KTVI sports director in St. Louis, and Harry Kessler, world renowned boxing referee and president of the Meehanite Metal Corp., St. Louis, will give the keynote addresses at the dedication ceremonies of University of Missouri-Rolla's new Multi-Purpose Building October 24. Ceremonies will be held at 2 p.m. in the building.

Macauley, who is a former pro basketball player for the Boston Celtics and St. Louis Hawks, past coach of the Hawks and former All American in

basketball at St. Louis University, will speak on the values of intercollegiate athletics. Kessler, who will also speak on sports, is a UMR graduate in metallurgical engineering and holds an honorary doctor of engineering degree from here. In addition to being a leader in his profession, particularly in the areas of cast iron metallurgy and foundry design, he has refereed more than 3,500 fights, 120 of which were on national television.

The \$2.4 million Multi-Purpose Building, first opened for

use this summer, features an indoor swimming pool, varsity and intramural basketball courts with a bleacher seating capacity of 5,000. For cultural events the seating capacity is even greater.

The dedication ceremonies

begin at 1:30 p.m. with the UMR band directed by David Oakley. Next is the National Anthem followed by the Invocation by Minister Henry B. Pratt. In the Key Ceremony, Dwight Brown of Marshall and Brown architects, will present the Key

to the Board of Curators, President Weaver, and Chancellor Baker. Student Council President, Jack Leone, will deliver the student response. Immediately following Jack will be the dedication address by Macauley and Kessler.

Overflow Of Interested Students Support Vietman Moratorium

A forum type teach-in was held in the ME building on October 15, 1969, to discuss the policy of the United States in Vietnam. An overflow crowd of interested students and faculty members filled the ME lecture room to discuss the rights and wrongs of our government's commitments in Asia.

The moderator of the discussion was Professor Robert Oakes. He began the meeting by reading a letter in the St. Louis Post-Dispatch from Chancellor Thomas Elliot of Washington University, concerning the terrible effects which the war in Vietnam has had on higher education in America.

The first speaker was Dr. David Law, a professor of Russian here at UMR. Dr. Law talked mainly about the history of the war in Vietnam, beginning with the near century of French occupation from 1856 to 1954, interrupted by the Japanese during the second world war. During World War II two important phenomena occurred. First, a small urban minority was able to take over a great majority of the land from the peasants. Second, World War II enabled Ho Chi Minh to rise from being virtually unknown, to becoming a famous leader of the Vietnamese fight for freedom from the Japanese.

After World War II a boundary line, the seventeenth parallel, was drawn between the northern and southern regions of Vietnam at the peace conference at Potsdam after the war. The French, however, tried to win back North Vietnam, but were defeated by Ho

Chi Minh's forces at Dien-bienphu in 1954.

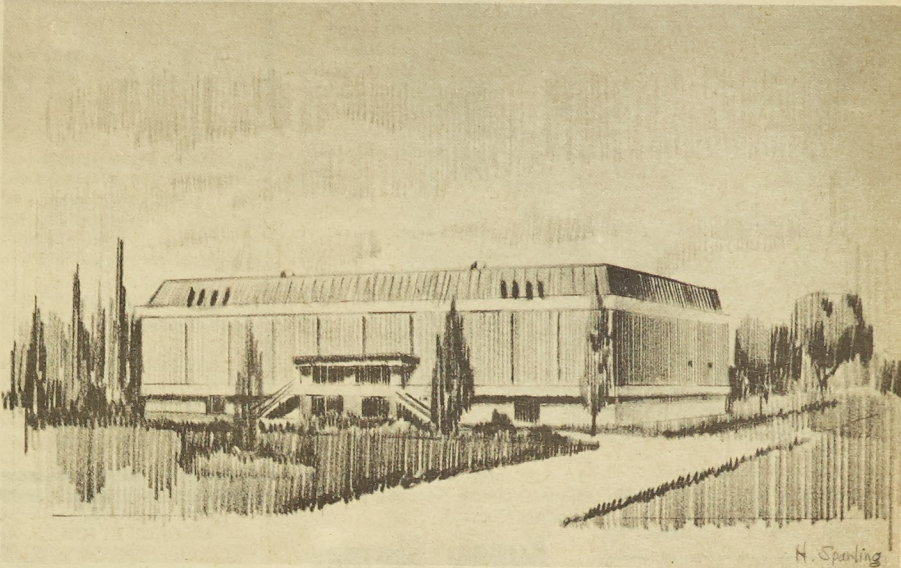
The Geneva Conference after Dienbienphu provided for general elections for the entire country after an interim period, in order to reunify the country. During this time, however, the corrupt Diem regime gained power in South Vietnam. Dr. Law emphasized that the people began to resist Diem, because of the corruption of his government and the religious persecution of the Buddhists. He also said that this is where the United States made its big mistake, by taking the side of the government against the people.

The second speaker was Dr. Robert Carlile of the Petroleum Engineering Department. Dr. Carlile's speech was for the most part about the purpose and results of the moratorium. He raised the question whether the moratorium would bring about any alternatives to relieve the situation in Vietnam, providing us with a way to get rid of the burden of peace-keeper of the world. In Dr. Carlile's opinion, it is a "withdrawal of support for the President, the government, and the principles of the United States, a tool for the good of propaganda for Hanoi, and a condemnation of the fighting man in Vietnam." He agreed with many of the views which students associated with the moratorium hold about Vietnam, but he asked them, "Are you using the correct vehicle to achieve-ment?"

Following Dr. Carlile to the podium was Professor Richard Miller of the Psychology Department. His statement was to the point that we in America have a problem realizing that other people's opinions and beliefs are as sincere as ours. There has been too much name calling, branding people, and collectivizing them into groups. He also held that this country must somehow make itself admit that it has been wrong. Professor Miller stated that through our democratic form of government and freedom of speech we must bring the country to admit its mistake to the world. He summed it all up in saying, "Cool off, calm down, talk rationally, quit calling names, and write your congressman."

The final speaker was Dr. Norman Levine of the Electrical Engineering Department. He began his talk with some of the good results which the moratorium could cause. It would be a source for people to air opinions, to show the government either satisfaction or dissatisfaction with its policies, and to illustrate to the world the American right of free speech. He also stated that human life is of the very highest value; and that in order to ask another person to risk

(Continued on Page 14)



Multipurpose Building

The Missouri MINER

UNIVERSITY OF MISSOURI - ROLLA

WEDNESDAY, OCTOBER 22, 1969 ROLLA, MISSOURI

Spirits Rise As Weekend Approaches Festivities To Begin Friday Evening

Miner spirits are on the rise with the approach of UMR's first party weekend. Due to the excellent planning by the Student Union Board and the Alumni Association, the 1969 UMR Homecoming gives all indications of being the best yet.

Festivities begin Friday at 6:00 p.m. with the annual Homecoming parade and pep rally. The parade will include such dignitaries as Mayor Curtis Logan of Rolla, Mr. James Murphy, President of the UMR Alumni Association, Mr. Peter Mattei, Vice-President of the UMR Alumni Association, Chancellor Baker, and Dr. John C. Weaver, President of the University of Missouri. Also participating in the parade are Head Coach, Dewey Algood, the other coaches, captains of UMR's football team, UMR cheerleaders, and the Queen candidates of the various campus organizations. Also included are several groups: The South-Central Shriner's Patrol, the Fort Leonard Wood Band, the UMR Band, and the Rolla Junior High School Band.

The parade will travel a route South from the Student Union on Rolla St., East on 6th St., North on Pine St., West on 11th St., one block on Main to 10th St. and then down to the intramural field.

A Bonfire Contest will be conducted earlier that afternoon

and the organization with the largest pile of combustible material will win a trophy.

After the pep rally, candidates for Homecoming Queen will return to the Student Union for an informal interview session till 9:00 p.m. Campus organizations will hold parties to complete the day's events.

Saturday activities will resume with formal interviews of Queen candidates by the Student Union Organization. At the completion of the interviews, all candidates will move to Jackling Field for pre-game activities.

Traditionally, all freshmen

will be decorated in their brightly colored pajamas. The annual pajama race will precede the game. Delta Tau Delta, who won the race last year, will be trying for their second victory.

Following the pre-game activity, the high point of the weekend will occur as the UMR Miners, who are boasting one of their best seasons, take on the Indians from SEMS. The Miners have a good chance of bringing victory to the 1969 UMR Homecoming.

The Homecoming Queen will be announced at half-time of the game, where Chancellor Baker

Campus Roundup Represented By Over Twenty Organizations

This afternoon, and evening, from 3:00 to 7:00 p.m., the Student Union Board will sponsor its second annual Campus Round-Up. Representatives from many of the various campus organizations will be on hand to answer questions and sign up members.

Begun last year as an effort to acquaint freshmen and new students with the diverse organizations and clubs at UMR, the Student Union Board was very pleased with the response and turnout last year. The purpose of this event was ac-

complished so well, that it was assured a permanent place in Student Union activities.

More than twenty organizations (Continued on Page 9)

PICTURES AND
STORY
ON OLD
CHEM BUILDING
BURNING INSIDE

Who's Who List For 1969-70

This year, thirteen UMR students were chosen for Who's Who among Students in American Universities and Colleges. They are: Martin G. Bowin, Eric D. Dunning, Ronald E. Eilers, John M. Harris, Fred J. Hohenberger, Kent M. Kopf, John E. Lambert, John P. Legsdin, John G. Leone, Wayne L. Quayle, Randall R. Richards, Leon H. Schellman, and Terrence R. Ward.

Students chosen for this honor are selected on the basis of grades, campus activities and offices and recommendation by faculty and administration. Students applying are screened by a committee of faculty and students, and by the staff of the publication itself.

"Who's Who among Students in American Universities and Colleges" is a nationally recognized publication. The students listed in this annual are student leaders on their respective campuses.

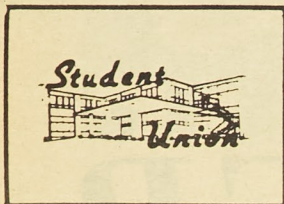
Candidates Add Excitement To Weekend

TEKE

The men of Tau Kappa Epsilon proudly introduce to you our Homecoming Queen candidate for 1969, Miss Gail Criswell. Gail is a striking young lady, standing 5'7" tall, with blue eyes and light brown hair. When not pursuing her studies as an Education major at Mizzou, this 21 year old senior makes her home in Maplewood, Mo.

Gail has been quite an achiever during her four years at Mizzou. Her activities include membership in Alpha Delta Pi sorority (for which she presently serves as activities chairman), Panhellenic Rush Counselor, and the Missouri Student Association. Miss Criswell was also honored by being chosen one of the "100 Outstanding Women on Campus" during her sophomore year, and by being selected for "Fanfare for Fifty" both her sophomore and junior years. Gail was also a competitor in a recent "Miss College Town, U.S.A." contest.

Gail will be escorted by



Murderer's Row

As a former counter espionage agent who worked for ICE, Matt Helm is summoned for a special assignment. Leaving his bachelor dream-world with all its (top secret) advantages, he tangles with Julian Wall who has kidnapped an international scientist. But more to Matt's liking, he discovers girls wherever he goes. Show times are at 4:30 and 6:00 p.m. in the Student Union ballroom.

Campus Round-Up 3-7 p.m. in the Student Union ballroom.

Carm Moehle, a senior in Civil Engineering. We feel that Gail's selection would result in an excellent queen for UMR's 1969 Homecoming festivities.

Pi K A

The brothers of Pi Kappa Alpha Fraternity are proud to announce as their candidate for the honor of Homecoming Queen, Miss Ann Marie Laramie.

Ann Marie is a lovely, 19 year-old, 5' 2 1/2" brunette from St. Louis, Mo. Her beauty, poise, and charm impressed many people while modeling for a year at Famous Barr. A pretty face is not all that Ann has to offer though; she currently ranks third in her class at Jewish Hospital School of Nursing. Although being a good nurse is her foremost goal, her interests are as varied as her personality. She has worked for the Human Development Corporation by tutoring at a Negro school in Meacham Park. Ann is currently a cheerleader and is running for Secretary of the Student Council.

Kappa Sigma

The men of Kappa Sigma this year are proud and honored to present as their Homecoming Queen candidate Miss Betsy Thompson.

This charming 5'4" red-head, is a graduate of Northwest Missouri State, and is currently employed by Berkely High School in North St. Louis, where she now resides.

While at Northwest Betsy was quite active in all aspects of college life. Being a member of the Alpha Sigma Alpha Sorority, Student Senate, and many honorary and professional organizations, all which led to her being chosen to Who's Who

in American Colleges and Universities.

Miss Thompson's charm, beauty, and personality were not always confined to the campus and classroom as she was Northwests Homecoming Queen

last year.

The men of Kappa Sigma feel that this pert young miss would more than adequately represent UMR as Homecoming Queen for the coming year.

(Continued on Page 6)

Alex Pizza Palace

Alex's Pizza Palace is a restaurant you will find very popular with the UMR student body. They feature Pizza that will appeal to the most discriminating appetite. Cleanliness prevails throughout the kitchen and dining area and every precaution is taken to see that you get food prepared under the most sanitary conditions.

Enjoy yourself, please your friends or entertain business connections at Alex's Pizza Palace.

Faultless service and excellent selection are yours when you dine at "ALEX's." We suggest that for a real dining pleasure you visit Alex's Pizza Palace often. The address is 122 W. 8th Street in Rolla. Open 4 p.m. till 2 a.m. seven days a week. Call 364-2669 for immediate delivery to your door.

JIM'S MOTORS "THE HOME OF THE YOUNGEST CAR DEALER IN ROLLA AND THE CLEANEST CARS"



JIM'S MOTORS OF ROLLA, INC.

Business Loop I-44 West

We Finance We Insure We Guarantee 364-5008

THE PUB

205 W. NINTH

SCHLITZ ON TAP

OPEN 10 TO 1:30

MARILYN MAYBERRY

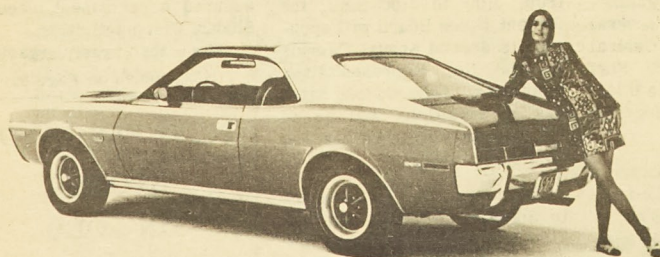
Invites You To

THE LISTEN DEN

Tape House
211 W. Eight St.
Rolla, Mo.

SPECIAL SELECTIONS.....\$3.99 - \$4.99
ALL BEATLE TAPES.....\$5.88

1,000 Titles of Stereo Tape Selection



"She's All Yours"

The

New



1970 JAVELIN

See It At

BROWN
BROS.
AUTO
SALES
City
Route 44W 364-3786



Little King

1009 Pine

"WHERE A SANDWICH IS A COMPLETE MEAL"

UPTOWN THEATRE

THURS. FRI. SAT.
OCT. 23-25

One Showing Nightly at 7 p.m.
Feature at 7:15 p.m.

Admission: Adults \$1.25

-RATED M-

"GONE WITH THE WIND"

Clark Gable & Vivian Leigh

SPECIAL SATURDAY
MATINEE OCT. 25

For Entire Family - 2 p.m.

"SEVEN FACES OF
DR. LAO"

SUN. Thru SAT.

OCT. 26--NOV. 1

Sunday Continuous
From 1 p.m.

-RATED M-

"CHARLY"

Cliff Robertson &

Claire Bloom

RITZ THEATRE

THURS. FRI. SAT.
OCT. 23-25

Admission: Adults \$1.00

-RATED M-

"THE WRECKING CREW"

Dean Martin & Elke Sommer

SUN. MON. TUES.
OCT. 26-28

Admission: Adults \$1.00

-RATED R-

None Admitted

Under 16 Unless

Accompanied by Parent

"CHASTITY"

Cher & Stephen Whittaker

WED. THURS. FRI. SAT.
OCT. 29--NOV. 1

Admission: Adults \$1.00

-RATED R-

None Admitted

Under 16 Unless

Accompanied by Parent

"THAT COLD DAY
IN THE PARK"

Sandy Dennis & Michael Burns

509 PACKAGE STORE

WHILE SUPPLY LAST

Full Qt. Sloe Gin \$3.50

HAIG & HAIG (5 Star) 5th \$4.85

Old Thompson 5th \$3.75

Fonto Chinuta (Grass Basket) Qt. \$1.26

509 Vodka (100 Proof) Qt. \$3.96

Red Currant Wine 5th \$1.00

Burgy Beer Qts. 97¢

WE WILL NOT KNOWINGLY BE UNDERSOLD

FREE PARKING IN REAR

New Organization Forms For Graduate Students

There is an organization for graduate students that should be functioning on the UMR campus within the next few weeks. It should serve a long-needed purpose for these students, who up until now have had no one to turn to that had the ability to help them. Bob Bruce, president of the Student Council last year, and therefore one of the most knowledgeable people available on this subject, had quite a bit to say about the background leading up to the present situation:

"Last year I received complaints from a number of students in graduate school about problems which directly affected them. At the time the Student Council had no means to deal with these problems. So I wrote to twenty-five universities to ask them about their graduate student organizations. The replies, from schools such as Michigan State, Harvard, and Kansas to name a few, were stimulating in their ideas about running a properly functioning organization. Late last spring I talked to several department chairmen, whose response has been excellent. There is one thing I want to point out: the sole purpose behind this is to benefit graduate students."

This new organization will have to have a certain role, a unique image, and an idea of the things it will want to accomplish. Several people had some solid ideas in this area. Howard Stine, '67 graduate of UMR and presently a candidate for a master's degree in engineering management, suggested what he thought should be the purpose of such an organization:

"Since re-entering UMR this fall, I found an ever-increasing number of graduate students. I feel that such a committee on a growing campus would be very beneficial in helping these students solve minor difficulties due to unfamiliarity with the rules and regulations of UMR. If this committee only helps a few students by explaining to them who to see on a problem it will be worthwhile. At least there would be an organization they could go to for assistance."

Bob Hebner and Don Schoonover, both in their third year as Ph.D. candidates in the physics department, gave their opinions on the proposed organization in a combined interview.

"This organization should assume an advisory role, and should not be a troubleshooter," said Mr. Schoonover. "Such problems as the paying of fees could be handled much more effectively by a group, which could possibly have them pro-rated so that it would not hit the graduates and their families quite as hard. If it is formed, it should not drive a wedge between the faculty and the grads, who up until now have worked together in a kind of fraternal atmosphere."

Mr. Hebner agreed and added a few points: "Right now there is no one to go to with your

problems except your advisor or your department chairman. It should be a rather loose organization, which deals with things as they come up. It should coordinate information among the departments, so that if something comes up that has been handled before, we will already know how to handle the situation. I think it should exist mainly to open lines of communication between students and faculty, students and students, and even people here and people on other campuses."

Bob Bruce wanted to dispell rumors floating around given circles and to clarify the role of the organization: "The idea of a 'Graduate Student Organization' is not new and is not being dicated by anyone. The reason this is being pursued is that last year the Student Council was powerless in both scope and method to help these students solve their problems". Thus the organization is not being formed to dictate or cause trouble, but only to help students. No one wants to harm the excellent rapoire that exists between students and faculty, but rather to enhance it.

How should this organization be structured? One idea was to have representatives from each department pro-rated by the number of people in the department. There would be a chairman to appoint committees to handle problems as they came up, and possibly a secretary to handle the paperwork. It could have a social role also, and it could sponsor interdepartmental mixers to get the students together. It would roughly be a graduate Student Council, without the power or the structural problems of that organization. It has to be formed so that it receives recognition from the necessary people, and so that if something comes up before the faculty, they will consider what the Graduate Student Organization thinks about it. It will not be a means by which a student can go over anyone's head, or a method of protest or of instigating trouble. Most of the people concerned are sure that its over-all existence will accomplish much, and they envision it to help out in many areas.

Bob Bruce described how he thought the procedure for setting up this organization should be handled: "There will be a formation of a committee appointed by Jack Leone, Student Council President, of interested graduate students with the immediate aim of solving problems and a long-range goal of forming a 'Graduate Association'. This will enable us to use Student Council facilities and their secretary, which they support. This will also aid in coordinating the efforts of the committees so there won't be duplication. One of the first goals of this committee will be to send an extensive questionnaire to each graduate student asking his viewpoint and giving each student an opportunity to help or criticize".

He also wishes to have a

three-fold purpose for the organization. The first is to solve the problems of the students. He would also like to see activities planned for the graduate students and their wives. Finally, it would provide a vital communication link for students and faculty alike.

The only disappointment is that many students think that others would not be interested. This does not appear to be the case, as there is an impressive number of graduates who are willing to give their time to this organization. "We certainly hope that they will take the opportunity to serve on this committee", Bruce emphasized. "It will be formed within the next two weeks, and anyone interested can get an application at the Student Union candy counter".

Applications for initial student committee position as outlined above are available at the Student Union candy counter for anyone in Graduate School who would be interested in joining.

More News & Views



The Missouri MINER
UNIVERSITY OF MISSOURI - ROLLA



SECOND FRONT PAGE

Calendar Changed For 71-72

By BOB BOSWELL

In a move to further unify and update UMR's changing school calendar, the University of Missouri Board of Curators had approved additional calendar changes for the 1971-72 school year. Using next year's revised calendar (published in a previous article) as a steppingstone, the University has made more modifications to bring the spring semester closer to the newly unified fall semester plan.

A group consisting of UMR faculty members and administration, headed by Dr. Robert Carlile, is conducting research on the calendar plans and have closely examined the advantages and disadvantages of the new changes. The main cry of disapproval by students over next year's fall change concerns the shortening of summer job periods necessitated by the early return to school on August 28th. However, as explained by Dr. Carlile, next year's schedule reflects a time of transition and a compromise decision reached by the University Board of Curators.

It was determined by rules governing the Board of Curators that only the fall semester could be initially changed, since the proposal was on a trial basis and UMR must still operate within the same limits as the other three Missouri University campuses. The large gap in

(Continued on Page 12)

Proposed 1971-1972 Calendar University of Missouri-Rolla

Fall Semester 1971

New Student orientation & registration.
Continue new student registration.
Upper classmen registration, 12:30 p.m..
Continue registration.
New student orientation & registration ends.
Classwork begins, 7:30 a.m..
Labor day holiday.
Mid-semester.
Thanksgiving vacation begins 7:30 a.m..
Thanksgiving vacation ends, 7:30 a.m..
Final examinations begin, 8:00 a.m..
Final examinations end, 5:00 p.m..
Christmas and semester break begins, 5:00 p.m..

Aug. 23 Monday
Aug. 24 Tuesday
Aug. 24 Tuesday
Aug. 25 Wednesday
Aug. 25 Wednesday
Aug. 27 Friday
Sept. 6 Monday
Oct. 19 Tuesday
Nov. 24 Wednesday
Nov. 29 Monday
Dec. 16 Thursday
Dec. 21 Tuesday
Dec. 21 Tuesday

Spring Semester 1972

Registration begins, 8:00 a.m..
Registration continues.
Classwork begins, 7:30 a.m..
Spring recess begins, 7:30 a.m..
Spring recess ends, 7:30 a.m..
Mid-semester.
Easter vacation begins 5:00 p.m..
Easter vacation ends, 7:30 a.m..
Final examinations begin, 8:00 a.m..
Second semester closes, 5:00 p.m..
Baccalaureate exercises, 10:00 a.m..
Annual Commencement, 5:00 p.m..
Summer Session 1972
Registration.
Classwork begins, 7:00 a.m..
Independence holiday.
Summer commencement, 10:00 a.m..
Summer session closes, 12:00 noon..

Jan. 10 Monday
Jan. 11 Tuesday
Jan. 13 Thursday
Mar. 16 Thursday
Mar. 20 Monday
Mar. 11 Saturday
Mar. 25 Saturday
April 3 Monday
May 4 Monday
May 13 Saturday
May 14 Sunday
May 14 Sunday

June 5 Monday
June 6 Tuesday
July 4 Tuesday
July 29 Saturday
July 29 Saturday

Class sessions.	M	T	W	Th	F	S
(excluding examinations)						
Fall	15	16	15	14	15	15
Spring	15	15	15	15	15	15
Summer	7	8	8	8	8	7

SPECIAL EVENTS AND PUBLIC OCCASIONS 1970-71 School Year

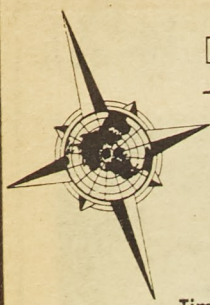
September 19, 1970 Parent's Day
September 22, 1970 Missouri Industry Day
October 23-24, 1970 Homecoming
November 14, 1970 University Day and National Merit Day Science Fair

April 2-3, 1971

1971-72 School Year

October 1-2, 1971 Homecoming
October 16, 1971 Parent's Day
September 21, 1971 Missouri Industry Day
November 20, 1971 University Day and National Merit Day Science Fair

April 7-8, 1972



MINER
The Missouri
UNIVERSITY OF MISSOURI - ROLLA

Editorials.

Tim Corbett Editor

Two weeks ago, the editorial and picture concerning the MSM symbol, the Iron Wheel, were published. Considerable activity has resulted, and prompt action has been taken.

The Iron Wheel which was removed from the front of Jackling Gym before the razing of the gym is being stored now, and The UMR Student Council is working on a suitable use for it. Some suggestions include putting it on the new Multipurpose Building or incorporating it in the fountain that will eventually go in the Quadrangle.

Anyone who has an opinion of the use of this Iron Wheel should contact their Student Council Representative, or drop in the Student Council Office in the Student Union.

Regarding the other Iron Wheel mentioned in the editorial, the seal of the University will, and should, be there rather than the Iron Wheel. We are now a part of the University of Missouri. It was the remark to "paint over" the Iron Wheel in the Student Union by Homecoming, even though there would not be time to replace it with the University seal, that prompted mentioning it in the editorial.

But the response proved one thing. The Miners of 1969 have a pride for their school that is very sincere. Their pride resulted in petitions, letters, and calls concerning the Iron Wheel. And this pride, in both the tradition of MSM and the UMR today, is a thing to be fostered and encouraged.

UMR today has much to be proud of. Our professional reputation is very high. UMR graduates are very often highly-prized by their employers. Our campus is still the largest engineering school west of the Mississippi. The campus is growing, both physically and academically. We are not content to sit on our past achievements and gloat, but rather, we seek to enlarge our facilities and enrollment, and to ever improve the quality of our graduates.

This is the Centennial year for our Campus. In our hundred years, our name has spread across this country and throughout the world. UMR and MSM graduates have seen to this.

But this is the past, and we cannot afford to rest. To retain our high reputation, we must continue to grow. Miners, be proud of your past. But make your future even more to be proud of.

FAULKNER'S STANDARD SERVICE

MARTIN SPRING DRIVE & I-44
Rolla, Missouri 65401 Discounts For Students

DELUXE RECREATION

212 West 9th Street
POOL, SNOOKER & BILLIARDS
RECORDS 35c EACH or 4 FOR \$1.00
Open: Weekdays 8 A. M. - Sunday 11 A. M.



MINER
The Missouri
UNIVERSITY OF MISSOURI - ROLLA

CPS
MEMBER

THE MISSOURI MINER is the official publication of the students of the University of Missouri - Rolla. It is published at Rolla, Mo., every Wednesday during the school year. Entered as second class matter February 8, 1945, at the Post Office at Rolla, Mo. 65401, under the Act of March 3, 1879. The subscription is \$1.25 per semester. This Missouri Miner features activities of the Students and Faculty of UMR.

ASSOCIATED COLLEGIATE PRESS RATING: First Class

TIM CORBETT
Editor
364-9769

DON RUETER
Feature Editor

DAVE KRUEGER
News Editor

ROGER ELLIS
Sports Editor

DeANN IWAN
Features Lay-Out

GREG THOMAS
Ind. News Editor
DAVE LOCK
Make-Up Editor

DAVE SCHELLMAN
Copy Editor

KEN SCHWEIGERT
Editorial Ass't.

JIM WROBLESKI
DWIGHT CARMICHAEL
Proofreaders

GLEN JENSEN
Sports Lay-Out

GARY FORSEE
Circulation Manager or
364-2314

RON EILERS
Business Manager
364-9998

JOHN HALEY
JIM PONCIROLI
Local Adv. Directors
364-1490

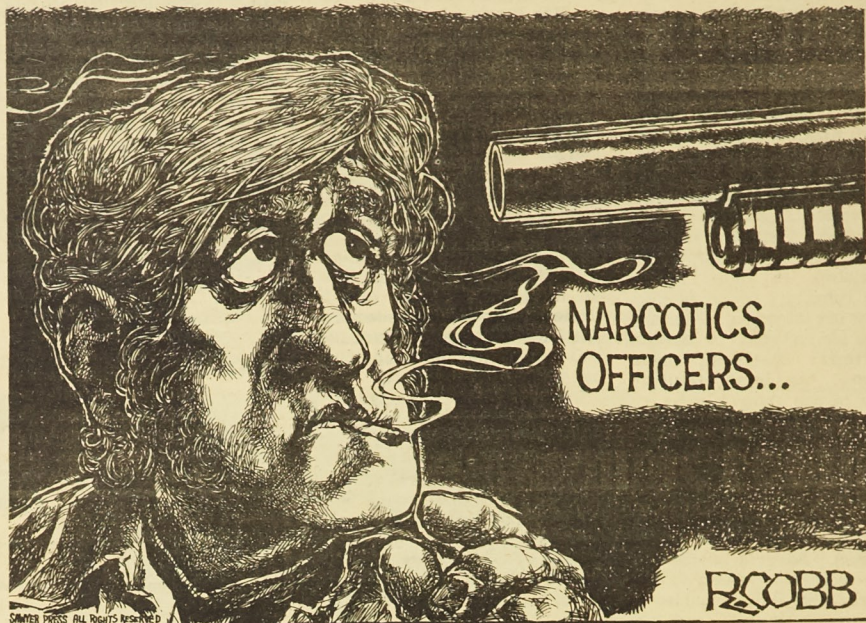
MAX ATTEBERRY
Adv. Director

MIKE ROOD
Nat. Adv. Director

JIM BEILSTEIN
Frat. News Editor

Signs of the Times

A RISING NEW CAUSE OF SEVERE BRAIN DAMAGE:



Campus Interviews

The following employers will be interviewing UMR applicants on campus from October 27 thru 31, 1969.

Johnson Wax Company	Oct. 27
Bailey Meter Company	Oct. 27
Union Carbide Corporation - Nuclear Division	Oct. 27, 28
Brown & Williamson Tobacco Corporation	Oct. 27
Los Angeles Division of North American Rockwell	Oct. 27
Autonetics Division of North American Rockwell	Oct. 27
Hawthorn Division of Kellwood Company	Oct. 27
U. S. Forest Service	Oct. 27
General Tire & Rubber Company	Oct. 27
Firestone Tire & Rubber Company	Oct. 28, 29
Dow Chemical Company	Oct. 28, 29
Granite City Steel Company	Oct. 28, 29
U. S. Army Corp of Engineers	Oct. 28, 29
Houston Chemical Corporation (Sub. of PPG)	Oct. 28, 29
PPG Industries (Corporate)	Oct. 28, 29
PPG Industries - Chemical Div.	Oct. 28, 29
General Dynamics - Electric Boat Division	Oct. 28
Florida Power Corporation	Oct. 28
Koppers Company, Inc. & Sinclair-Koppers Co. *	Oct. 29
Natural Gas Pipeline Company of America *	Oct. 29
U. S. Army Corp of Engineers, Kansas City, Mo.	Oct. 29
U. S. Army Corp of Engineers, Memphis, Tenn.	Oct. 29
Naval Ship Systems Command	Oct. 29
Atlantic Richfield Company *	Oct. 29, 30
Rohm & Haas Company	Oct. 29
Panhandle Eastern Pipe Line Company *	Oct. 30
Illinois Tool Works	Oct. 30
United States Steel Company	Oct. 30
Union Carbide Corp. - Mining & Metals Div.	Oct. 30
State Highway Commission of Kansas *	Oct. 30
Chrysler Corporation	Oct. 30
Grinnell Company	Oct. 30
General Dynamics - Ft. Worth Division	Oct. 30
Pittsburg & Midway Coal Mining Co. *	Oct. 30
Washington University - School of Business Adm.	Oct. 30
Business Adm.	Oct. 30
Union Carbide Corporation - Food Products Div.	Oct. 31
Mueller Company	Oct. 31
U. S. Navy Pacific Missile Range *	Oct. 31
Naval Ordnance Station *	Oct. 31
Stephenson-Adamson Mfg. Company	Oct. 31
Stanley Consultants, Inc.	Oct. 31
Alvey Conveyors	Oct. 31
Alton Bos Board Company	Oct. 31
Union Special Machine Company	Oct. 31
* Summer Employment	

TWITTY CITY

"WHERE YOUR DOLLAR BUYS SO MUCH MORE"

Located In The HILLCREST SHOPPING CENTER

El-Char-Eve

STEAK HOUSE

We serve the greatest steaks in town.

Our barbecue is real soul food.

Every Sunday (11 to 4 p.m.)
½ Fried chicken, a potatoe, gravy and slaw for only \$1.65

Why should we be modest when we know we top'em all?

EL-CHAR-EVE STEAK HOUSE

(ROLLA'S FINEST)

Hiway 63, South
364-9900

Our Man Hoppe

It's Good News Week

People are always saying, "Why can't the newspapers print more good news?" And why not?

It's a terrible thing to face each day over a cup of coffee and 64 pages of tragedies, disasters and catastrophes.

Therefore, as a public service of the highest order, we hereby present our Roundup of Good News so that readers may set forth on this day's journey through life with a sparkle in their eyes and a whistle on their lips.

* * *

Geneva -- The U. S. and Russia agreed on a treaty banning nuclear weapons from the ocean floor as well as outer space. This is certainly good news for all who only want to live in peace on the ocean floor or outer space.

Washington -- Unemployment jumped to four per cent and Treasury Secretary Kennedy held out hope that it may soar even higher. This evidence that the economy may be slowing down was hailed by Washington officials and others with job security.

Miami -- A Cuban pilot flew his heavily armed fighter plane to Florida unchallenged by America's multi-billion-dollar air defense system. He turned out to have friendly intentions.

That's good news.

The Pentagon -- Pentagon observers estimated that "at least" two million American soldiers were not engaged in crooked gambling activities, embezzlement, gun running and rubbing out stool pigeons.

Anchorage -- Despite grim forebodings by some scientists, the huge nuclear device set off under the Aleutians has not caused a disastrous earthquake, nor a catastrophic tidal wave. Yet.

Washington -- Unity was reached in Congress between Hawks and Doves on the need for a moratorium. The Doves agreed a moratorium was needed on killing people in Vietnam. The Hawks agreed a moratorium was needed on talking about it.

Los Angeles -- Professor Angela Davis, a Communist Party member, gave her first lecture at UCLA despite fears of the Regents that she would brainwash her students. But, thanks to the vigorous action of the Regents, the 2000 students who attended received no credit for being brainwashed.

Saigon -- The Green Beret murder case ended happily for all concerned with the payment of \$6472 to the victim's widow. "It, for a few lousy bucks, they are happy," said a top

U.S. spokesman happily, "we are happy."

Las Vegas -- Bloody Negro rioting in the west side ghetto had little effect on the glittering tourist industry.

Hollywood -- The film, "Myra Breckenridge," will be "dirtier than the novel." That's not the good news. The good news is that Governor Reagan said he doesn't go to dirty movies. He said he and Mrs. Reagan prefer watching television "from a horizontal position." This is good news to those who can't afford dirty movies.

The United Nations -- Many Biafran children have not yet starved to death in keeping with the fondest hopes expressed by U. N. debaters.

Flatbush, N. Y. -- The population of this small planet increased to an estimated 3,687,809,434 with the birth of a son to Mr. and Mrs. Herman Flang. Said Mr. Flang, "I never had such good news!"

* * *

But why go on? It's clear from this small sampling that each day's newspapers are chockful of good news.

So sally forth with a sparkle in your eye and a whistle on your lips. Remember that the best news about newspaper headlines is that you're still around to read them.

(Copyright Chronicle Publishing Co. 1969).

Windowshopping

WITH WALLY EDWARDS

Genesis 1:1-27 (edited)

In the beginning God created the heavens and the earth.

God said, "Let there be light," and there was light.

God said, "Let there be a firmament in the midst of the waters, and let it separate the waters from the waters." And so it was.

God said, "Let the waters under the heavens be gathered together into one place, and let the dry land appear." And so it was.

God said, "Let the earth put forth vegetation." And so it was.

God said, "Let there be lights in the firmament of the heavens to separate the day from the night." And so it was.

God said, "Let the waters bring forth swarms of living creatures, and let birds fly." And so it was.

God said, "Let the earth produce every kind of living creature." And so it was.

God said, "Let us make man in our own image." And so it was.

God saw all he had made, and indeed it was very good. But the generations of Eve soon frittered away their birthright of goodness and...

God said, "Let there be gluttony." And there was gluttony. Man slaughtered animals for his ravenous appetite. Man found that wine both stimulated and numbed his senses. Then he invented the restaurant where he could sophisticatedly gorge himself while his brothers a thousand miles away starved to death. And Webster's New Unabridged added words like connoisseur and gourmet.

God said, "Let there be lust." And there was lust. Sexual desire ran wild. Orgies flourished. Adultery and prostitution prospered. And Webster's New Unabridged grew fatter with words like nymphomaniac and fornication.

God said, "Let there be pride." And there was pride. One man felt that his ideas were good for all mankind. In his attempt to convert other people to his way of thinking, armies made of his ignorant followers sprang up. Those who agreed were permitted to live. Those who didn't were either killed or confined. And Webster's New Unabridged included words like dictatorship and communism and conscription.

God said, "Let there be anger." And there was anger. Man accused man. Country accused country. Murder and revenge came from man's hate. And Webster's New Unabridged entered words like retaliation and torture and prosecute and guillotine.

God said, "Let there be envy." And there was envy. Man sought another man's success. Man resented another man's success. And Webster's New Unabridged contained words like larceny and kidnapping and assassination.

God said, "Let there be covetousness." And there was covetousness. Man wanted that which he couldn't have. He wanted another man's money. He wanted another man's land. He wanted another man's woman. He wanted another man's life. And Webster's New Unabridged added greed.

God said, "Let there be sloth." And there was sloth. Man learned to become apathetic. He allowed minorities to rule his country. He allowed his streams to become polluted. He allowed slums to develop. And Webster's New Unabridged added words like welfare and television.

And in the year 2000 the Great War came and everyone and everything was destroyed.

Epilogue

Yes, God said the heavens, the earth, the light, the firmament, the dry land, the vegetation, and the living creatures were good. And they were good. But God said the gluttony, the lust, the pride, the anger, the envy, the covetousness, and the sloth were bad. And they were bad.

If we add it all up, we get seven good and seven bad. That's 50% good.

* * *

God, even the best undergraduate student would have trouble getting a B.S. degree with a 50 average. How do you expect us to get into graduate school?



Student Forum

Help Needed

It is my opinion, and the consensus of my associates, that we, the students of UMR, are here to be trained as functional, productive cogs in the machinery of industry. We are supposed to leave with a wealth of knowledge and exposure to the problems encountered in the industrial environment. And yet.....

Socrates, Plato, Jesus, and all great teachers had a common philosophy in that one of the strongest educational tools available is example. Now, let us consider just one of UMR's examples of planning, organizing, and operating a productive facility, the library.

If you have ever spent any time using the library, you have undoubtedly encountered a multitude of problems when trying to locate a book. The records show it is there but.....

The most common problem is the book has been checked out. The staff will recall it for you provided they can locate the holder. He may have gotten the book as a freshman and is now a junior. There are no time limits, fines, or current check lists on most books. If by some stroke of fate, he quit school, the book is gone. On the other hand, if he is among the minority and makes it to graduation, some 5 or 6 years later, the library puts a hold on his diploma. He then must either pay for the book or return it. Wonderful! The damned book has been out of circulation for years but they'll get it back.

The second problem and one which is totally beyond my comprehension, is that students or anyone else for that matter, walk out the door

not having checked it out. There are no provisions for checking people as they have leave other than random inspection.

Why? The age old excuses of no money or not enough staff immediately are thrown up in defense. The real tragedy is that they are true! The library building itself cost millions. Hundreds of thousands are spent on books, and yet the library cannot get the money to pay a guard at the door.

Let us assume for the sake of the argument, the library loses 5 books a day. (Sound unreasonable? Ask any library staff member). The average cost of a book, as you well know, exceeds \$10. That's \$50 a day that could be prevented for a maximum of \$29, based on an hourly rate of \$2. A savings of \$21 every day makes it sound like a reasonable investment. Further, I am certain students would be willing to work for \$1.50 an hour which multiplies the savings substantially. But then students are only permitted to work 10 hours a week...but that's another editorial.

James E. Schnarr #05446

"Iron Wheel"

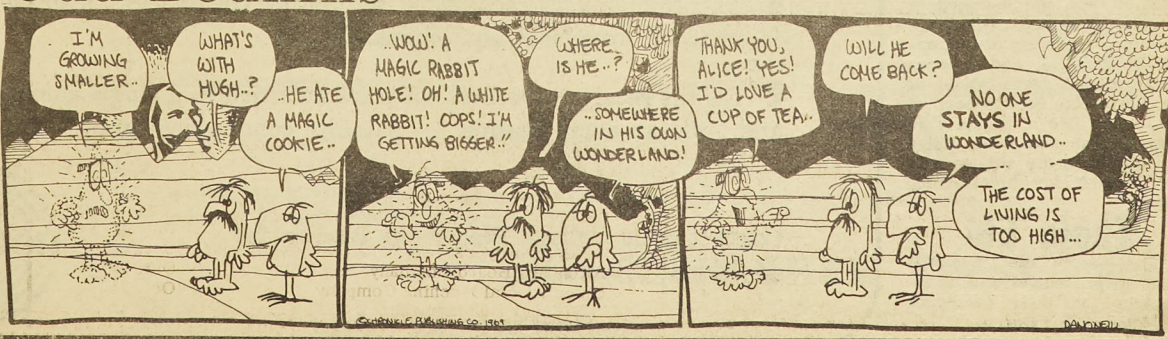
A recent editorial in the Missouri Miner stated that a ban had been placed on the use of the "iron wheel" symbol on this campus. Of course, such a statement did upset a great number of loyal Miners because it implied that "the school" was responsible for the "campaign to rid our campus of this symbol of MSM".

As a result, the Student Council felt that this matter should be investigated immediately and obtained further information about it. First of all, this stone "iron wheel" from the Jackling Gym was purchased by the Student Council in April, 1966 from the contractor who was removing the building. Their intent at that time was to store it and later incorporate it into the new athletic facilities.

In the interim, the stone "iron wheel" has been stored at the General Services Building. Recently I examined it and it is entirely intact and is now being crated and again

(Continued on Page 12)

Odd Bodkins...



Queen Candidates Are Presented

Sigma Nu

Gamma Xi chapter of the Sigma Nu fraternity is extremely honored and pleased to present Miss Joyce Bowlin as their representative in the 1969 Homecoming Queen contest.

Joyce, who will be escorted by Dennis Schlueter, is a 5'4", dark haired senior at Southwest Missouri State College where her major is Home Economics and her minor is English. She is a member of Alpha Delta Pi sorority. Her interests are in the areas of home interior and clothing design, which she would some day like to combine with journalism.

Due to her friendly smile and warm personality the men of Sigma Nu feel Joyce would be the perfect choice for 1969 Homecoming Queen.

Sigma Pi

The Brothers of Alpha Iota Chapter of Sigma Pi Fraternity are proud to present as their 1969 Homecoming Queen Candidate, Miss Mary Kay Bordner.

Mary Kay, presently a senior at Lindenwood College where she is studying Political Science and History, will be escorted by her pinmate, Brother Ron Barker. Mary Kay intends to attain her final degree in Law.

This brown-haired, blue-eyed beauty reigns from Clarinda, Iowa, where her very active high school schedule has continued into college. She is presently Vice President of Lindenwood's Academic Affairs and a member of her Dormitory House Staff and Young Republicans.

The Brothers wish Mary Kay the best of luck, and are proud to be represented by our lovely candidate.

Beta Sig

The men of Beta Sigma Psi are proud to present as their queen candidate for Homecoming, Miss Christy Lynne Goodrick. Christy is a beautiful brunette with a warm and outgoing personality. She is eighteen years old and lives in Ferguson Missouri where she graduated in June from McCluer High School.

Her activities included the editor-in-chief of the yearbook, many committees in the Student Council, and a member of the National Honor Society. She received three scholarships for college and is currently attending the University of Missouri at St. Louis, where she also works part time.

She will be escorted by her pinmate, David Lehenbauer.

Sig Tau Gamma

We of Sigma Tau Gamma are pleased to have Miss Barbara Ann Kempas our representative Miss Kemp, 19 years old, is a 5'6" brunette with brown eyes. She was born in St. Ann, Missouri and attended Ritenour High School. While at Ritenour she was a member of Junior Achievement, the National Honor Society, and the CYC. A graduate of 1968, she then went to secretarial school. Now Barbara is a secretary at McDonnell Douglas Co. and she presently attends night school at the University of Missouri at St. Louis. We of Sigma Tau Gamma feel that Miss Kemp will represent us well as our candidate for Homecoming Queen.

Theta Chi

The men of Theta Chi are proud to present Miss Debbie Sebastian as their candidate for Homecoming Queen.

Miss Sebastian is a charming 5'6" blond with blue eyes

from St. Louis. She is presently attending Central Missouri State College and is majoring in Business. Debbie has been active in intramurals and other activities. Among her other interests, she especially enjoys swimming and horseback riding.

Her warm personality and friendliness has won her many friends. The men of Theta Chi all agree that they are well represented with Debbie as their Queen Candidate.

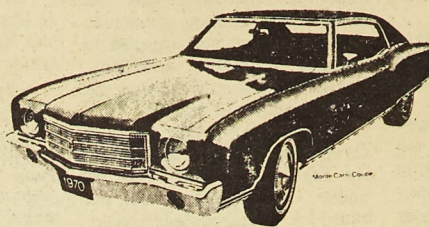
Miss Sebastian will be escorted by Bruce Herzog.

Delta Tau

The brothers of Epsilon Nu Chapter of Delta Tau Delta are proud to present Miss Bernadette McClarney as their Homecoming Queen Candidate. Miss McClarney is a brown haired, brown eyed school teacher residing in High Ridge, Missouri. She attended the University of Missouri at Columbia and graduated.

(Continued on Page 7)

WE TREAT YOU
ROYALLY



CHEVROLET
On The Move.

"Come Drive With Us" At

KING COYNE
CHEVROLET

Hwy. 66 West and Fairgrounds Road, Rolla — 364-1002

campus interviews

Individuals majoring in Computer Science, Engineering (Electrical, Mechanical or Industrial), Mathematics, and Physics will be interviewed by Collins Radio Company.

NOVEMBER 4 & 5, 1969

Some facts about Collins:

1. Collins pioneered many of today's data techniques and recently announced a computer-controlled design and manufacturing service for customers.
2. The company ranks as the largest independent producer of microwave systems.
3. More than 75% of the commercial airlines use navigation/communication equipment supplied by Collins.
4. The company designs and installs computer systems for the military and for railroads, airlines and many other industrial organizations.
5. Collins serves as the prime contractor on NASA's worldwide Apollo tracking network.
6. The company is recognized as one of the world's leading manufacturers of commercial broadcast equipment.
7. Collins received the first contract awarded to a single company to design, equip and build an earth station for satellite communications.

Contact your College Placement Bureau for additional information.

an equal opportunity employer



Homecoming Candidates Presented

(Continued from Page 6)
 duated in 1968. While at Columbia "Bernie" was an active member in the drama club. While acting was one of her favorite pastimes, it has given way to furthering the education of the 9th graders at North Jefferson Junior High School.

Independents

The Independent's have proudly selected Miss Carol Flach as their 1969 Homecoming Queen candidate.

Carol graduated from Granite City High School in 1968, and belonged to a number of organizations from the National Honor Society to the Gymnastics Club. Her charm and pleasant personality have made her an extremely popular young lady.

Deciding not to enter college, Carol is presently employed at the Granite Army Depot where she works as a smile and poise also accounts for the fact that she works part-time as a model.

We feel that Carol would make a wonderful Queen to reign over the festivities as the Miners mop up Cape.

She will be escorted by Jim Tutka, a Senior in Mechanical Engineering.

Sig Ep

Sigma Phi Epsilon is proud to announce the choice of Miss Sally Laws as their 1969 Homecoming Queen Candidate.

Miss Laws, a native of East St. Louis Illinois, is presently a senior at Jewish Hospital School of Nursing in St. Louis. After graduation in January, Sally plans on working at Jewish Hospital on a Surgical Division, and hopes to attend Southern Illinois University to obtain her B.S. degree in nursing.

Though she works part-time in the hospital, Sally maintains a B plus average. Her favorite activities include reading, sewing, tennis and bicycle riding. Miss Laws will be escorted by Bob Andrews.

International House

Born in exotic, charming and rich atmosphere of the Orient on the island of Java (Indonesia) Miss Rose Koerniawidjaya is a true blend of intercontinental culture and life. She acquired her bachelor's degree from University of Djakarta. During that period her activities extended far beyond academic work. Since she has made the field of Education as her area of work, she was successfully engaged in teaching the English language to various staff members of the different embassies located in Djakarta. This work brought her in contact with people from all over the world.

Her charm and organizational abilities were recognized at the highest level in the form of her authoritative involvement in setting up and maintaining protocol in diplomatic circles in Djakarta, the capital of the nation.

Currently Miss Rose is pursuing graduate studies in Education at the University of St. Louis.

Phi Kap

The brothers of Phi Kappa Theta wish to present Miss Sandra Siebert as their Queen candidate for the 1969 Homecoming Festivities. Sandra is a Senior at Fontbonne College in St. Louis, where she is active

(Continued on Page 8)



Come as you are!

NOVEMBER 18, 19, 1969

Now's the time to sign up at your placement office for an interview with the Bethlehem Steel Loop Course recruiter. This could be the start of something big!

And just what IS the Bethlehem Steel Loop Course? Glad you asked! It's our *management development program* for graduates with bachelors' or advanced degrees.

Bethlehem loopers (150 to 200 every year) spend four swinging weeks at our home offices in Bethlehem, Pa. Then, primed with information about the entire corporation and rarin' to go, they report to the appropriate plants or departments for their first assignments. Then, onward and upward! Where would YOU fit into the Loop Course? Check your degree or the one most similar to it:

MECHANICAL ENGINEERING—Engineering or mechanical maintenance departments of steel plants, fabricating works, mining operations, and shipyards. Fuel and combustion departments. Supervision of production operations. Marine engineering assignments in Shipbuilding Department. Also: Sales or Research.

METALLURGICAL ENGINEERING—Metallurgical departments of steel plants and manufacturing operations. Engineering and service divisions. Technical and supervisory positions in steelmaking departments and rolling mills. Also: Research or Sales.

CHEMICAL ENGINEERS—Technical and supervisory positions in coke works, including production of by-product chemicals. Fuel and combustion departments, including responsibility for operation and maintenance of air and water pollution control equipment. Engineering and metallurgical departments. Steelmaking operations. Also: Research or Sales.

INDUSTRIAL ENGINEERING—Positions in steel plants, fabricating works, shipyards, and mines. Engineering and maintenance departments. Supervision of steelmaking, rolling, manufacturing, and fabricating operations. Also: Sales.

CIVIL ENGINEERING—Fabricated Steel Construction assignments in engineering, field erection, or works management. Steel plant, mine, or shipyard assignments in engineering, construction, and maintenance. Supervision of production operations. Sales Department assignments as line salesman or sales engineer (technical service to architects and engineers).

ELECTRICAL ENGINEERING—Steel plant, fabricating works, mining operations, and shipyard electrical engineering, construction, and maintenance departments. Technical and supervisory positions in large production operations involving sophisticated electrical and electronic equipment. Also: Research or Sales.

MINING ENGINEERING—Our Mining Department operates coal and iron ore mining operations and limestone quarries, many of which are among the most modern and efficient in the industry. This 10,000-man activity offers unlimited opportunities to mining engineers. Also: Research.

NAVAL ARCHITECTS AND MARINE ENGINEERS—Graduates are urged to inquire about opportunities in our Shipbuilding Department, including the Central Technical Division, our design and engineering organization. Also: Traffic.

OTHER TECHNICAL DEGREES—Every year we recruit loopers with technical degrees other than those listed above. Seniors enrolled in such curricula are encouraged to sign up for an interview.

ACCOUNTANTS—Graduates in accounting or business administration (24 hours of accounting are preferred) are recruited for training for supervisory assignments in our 3,000-man Accounting Department.

OTHER NON-TECHNICAL DEGREES—Graduates with degrees in liberal arts, business, and the humanities are invited to discuss opportunities in the Sales Department. Some non-technical graduates may be chosen to fill openings in steel plant operations and other departments.

WHEN YOU SIGN UP be sure to pick up a copy of our booklet, "Careers with Bethlehem Steel and the Loop Course." It tells it like it is.

BETHLEHEM STEEL

An Equal Opportunity Employer



Homecoming Queen To Be Selected

(Continued from Page 7)
in the Student Senate, the Fontbonne Athletic Association and the committee on Academic Affairs.

Sandy is active in varsity basketball and volleyball, a member of the Honorary Service Sorority Fluer De Lis, and has been elected to "Who's Who Among Students in American Colleges and Universities." The brothers of Phi Kappa Theta feel they will be well represented by Miss Siebert as Queen Candidate.

Sandy will be escorted by her pinmate, Jack Grawe, a Senior in Civil Engineering.

Engine Club

Engineers Club proudly presents the attractive Miss Donna Jean Dickson. Miss Dickson is the eighteen year old daughter of Mr. and Mrs. James H. Dickson formerly of Sikeston, Missouri. She is a 1969 graduate of Rolla High School and was a candidate for their 1969 Homecoming Queen. Among her past activities were: member of the Yearbook staff, 3 years of pep squad, member of Future Medics of America, and one year as a member of the House of Representatives at Rolla High School. She is presently employed with United Telephone and she has no definite plans for the future.

M.R.H.A.

M. R. H. A. proudly presents Miss Mary Elaine White as our 1969 Homecoming Queen Candidate. Mary, who is from Fredericktown, Missouri, is presently a freshman at Southeast Missouri State College.

During high school Mary was active in a number of activities including the National Honor Society, the Drama club, pep club and planned progress. She attended Girls State, was a Voice of Democracy Winner and was elected vice-president of her junior class.

Mary, who stands above five feet tall, is a lovely ash blonde with hazel blue eyes. Her hobbies consist of swimming, bowling and photographic painting. Miss White, majoring in elementary education, enjoys working with children.

She will be escorted by Stan Gilliam, a Sophomore in Engineering Management.

Triangle

Representing Triangle Fraternity as our Homecoming Queen Candidate is Miss Sandra Russell.

Sandra is 19 years old, 5 feet 5 inches tall, and has long brown hair. She resides at St. Joseph, Missouri where she works during the day as a Transporting Aide at the Missouri Methodist Hospital and attends night school, as a freshman, at Missouri Webster College. Her interests range from swimming and playing softball to drag racing.

The men of Triangle feel that she is a very capable candidate to reign over the Homecoming Festivities.

Delta Sig

The brothers of the Delta Sigma Phi Fraternity proudly present the charming Miss Sally Shunk as their candidate for the 1969 Homecoming Queen Competition.

Miss Shunk is an elementary education major at Southwest Missouri State College and is active in several of the teachers' professional organizations there, such as S.N.E.A., A.C.E., and Kappa Delta Pi. As well as fulfilling her position on the S.M.S. College Union Board and

Judicial Board, she is first vice-president of Sigma Kappa Sorority.

Sally will be escorted by her pinmate, John Riley.

Theta Xi

Theta Xi takes pride in presenting Miss Jean Bisantz as its candidate for Homecoming Queen. Miss Bisantz, a lovely brown eyed brunette, is a permanent resident of Buffalo, New York; but at present she is employed in Rochester.

Miss Bisantz is a graduate of the Erie County Technical Institute, and has recently become a licensed optician.

Kappa Alpha

The brothers of Kappa Alpha are very proud to present,
(Continued on Page 9)

ATTENTION GRADUATING SENIORS "WOULD YOU BELIEVE IT?"



FOR ONLY \$25 A MONTH THIS 1970 CHARGER CAN BE YOURS,
STOP BY AND CHECK OUT THIS FABULOUS DEAL AT

AL WEST CHRYSLER HIWAY 66 WEST

364-1233

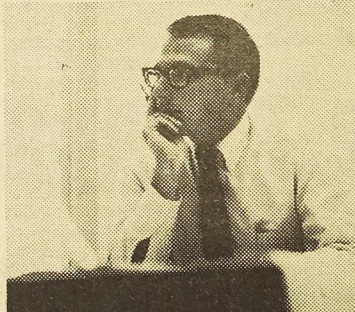
Do you think
a bright young engineer
should spend
his most imaginative years on
the same assignment?

Neither do we.

That's why we have a two-year Rotation Program for graduating engineers who would prefer to explore several technical areas. And that's why many of our areas are organized by function—rather than by project.

At Hughes, you might work on spacecraft, communications satellites and/or tactical missiles during your first two years.

All you need is an EE, ME or Physics degree and talent.



If you qualify, we'll arrange for you to work on several different assignments... and you can help pick them.

You may select specialized jobs, or broad systems-type jobs. Or you can choose not to change assignments if you'd rather develop in-depth skills in one area.

Either way, we think you'll like the Hughes approach.

It means you'll become more versatile in a shorter time.

(And your salary will show it.)

HUGHES

HUGHES AIRCRAFT COMPANY
AEROSPACE DIVISIONS

CAMPUS INTERVIEWS: November 10, 1969

Representatives of several activities of Hughes Aircraft Company (each with highly-specialized personnel requirements and separate interview schedules) will visit your campus. If your career interests lie in one or more of the following fields of aerospace/electronics, contact your Placement Office TODAY to make sure your name gets on the interviewing schedule for HUGHES AEROSPACE DIVISIONS:

Microwave & Antenna Engineering
Guidance & Controls Engineering
Spacecraft Design Engineering
Components & Materials Engineering
Weapon Systems Engineering

Electro-Optical Engineering
Microcircuit Engineering
Space Systems Engineering
Missile Systems Engineering
Circuit Design Engineering

U.S. Citizenship required/An equal opportunity employer.

Starts at 9:00 P.M.

Queen's Coronation To Be Held In Student Union Ballroom

(Continued from Page 1)

will make the presentation and President Weaver will give a small speech. Twenty-four campus organizations will be represented at the activity. After the game, the Queen and her court will return to the Student Union.

Starting at 8:00 p.m., Bob Kuban and the In Men will provide evening entertainment at the Student Union Ballroom. The Coronation Ceremony takes place at 9:00 p.m. with the retiring Homecoming Queen, Miss Tony Ann Rath who represented Shamrock Club last year, crowning the 1969 Homecoming Queen.

Registration for all alumni takes place at the Student Union and the Carney Manor Inn from 9:00 a.m. to 5:00 p.m. on Friday and again on Saturday from 9:00 a.m. to 1:00 p.m. At 7:00 p.m. on Friday night, there is a Welcoming and Early Arrivals' Dinner for alumni at the Crystal Ballroom, Carney Manor Inn.

The Alumni also have a full day planned for Saturday. At 12:00 noon, class reunion lunches from classes of '24, '29, '34, '39, '44, '49, '54, '59, and '64 will take place. Then later that

NOTICE

The Blue Key Directory will be out approximately two weeks from now as we just received the IBM list from the registrar's office.

Homecoming Candidates Presented

(Continued from Page 8)

as their candidate for Homecoming Queen, Miss Barb Pratte.

Barb is a sophomore at the University of Missouri where she is majoring in Psychology and upon graduation she plans to go into special education. She also is a member of Alpha Chi Omega social sorority.

Barb is interested in skiing, swimming, camping, and other outdoor sports. Her fine sense of humor, contagious smile, and warm personality make her the perfect candidate from the men of Kappa Alpha Order.

T. J.

Miss Elaine Annette Menke, representing Thomas Jefferson Hall, is currently enrolled at UMR as a freshman in nuclear engineering. A member of the American Nuclear Society here on campus, she comes to us from Granite City, Illinois, with an activity background in drama, band, and German club. In the summer of 1966 she was selected to study the finer arts in Europe for a month with the American International Academy. Her interests include scuba diving, speleology, swimming, and sewing.

Shamrock

Representing Shamrock Club is Miss Barbara Belz. Miss Belz is a 1966 graduate of Le Blond High School. She attended Missouri Western College for two years and is currently in a special education curriculum at the University of Missouri. Among her present activities are: volunteer work at Mid-Missouri Mental Health

(Continued on Page 13)

Round-Up Held In Ballroom

(Continued from Page 1)

tions will be represented this year. The range of interest is very broad. Military and departmental organizations predominate.

The organizations that will be represented this year at

Campus Round-up are: Met Society; American Foundry Society; A.S.C.E.; A.C.M.; U.M.R. Amateur Radio Club; Esperanto Association of U.M.R.; American Institute of Chemical Engineers; American Nuclear Society; S.A.E.; I.E.E.E.; A.S.T.M.E.; Scabbard and

Blade; Young Republicans; U.M.R. Band; U.M.R. Vocal Groups; Kappa Kappa Psi; Raiders; K.M.S.M.; Society of Petroleum Engineers; A.I.A.A.; American Ceramic Society; National Society of Pershing Rifles; and the U.M.R. Forensic Society.

INTERFACE.

It's what's shaping engineering courses of the future.

Gifted students are the ones most likely to get frustrated by the nitty-gritty detail of second-year engineering. Sometimes they just give up.

We're helping finance an experimental program to let sophomore engineers apply their ingenuity to large, challenging problems that require blue-sky thinking. It makes detail work exciting. And it could be the prototype of a new kind of engineering curriculum.

Of all our college aid programs, this one is most closely related to what happens in the interface of companies affiliated with Standard Oil Company (New Jersey).

Because each "Jersey" affiliate, whether its main business is research,

petroleum, chemicals, plastics or management, is concerned with the total problem. In all its relationships to man and society.

Our interface helps people think beyond the limits of their discipline. And experience challenges and insights beyond those of a single company.

A curious thing, our interface. It makes almost any discipline more interesting.

HUMBLE OIL & REFINING COMPANY
ESSO RESEARCH AND
ENGINEERING COMPANY
ENJAY CHEMICAL COMPANY
AND OTHER AFFILIATES OF
STANDARD OIL COMPANY
(NEW JERSEY)
EQUAL OPPORTUNITY EMPLOYERS

INTERVIEWING ON CAMPUS
OCT. 23-24: ENGINEERING, SCIENCE
DEGREE CANDIDATES



1969 UMR HOMECOMING QUEEN CANDIDATES

H
O
M
E
C
O
M
I
N
G



CAROL FLACH
Independents



SANDRA SIEBERT
Phi Kappa Theta



BERNADETTE McCLARNEY
Delta Tau Delta



BARBARA BELZ
Shamrock Club



BARB ANN KEMP
Sigma Tau Gamma



MARY ELAINE WHITE
MRHA

1
9
6
9

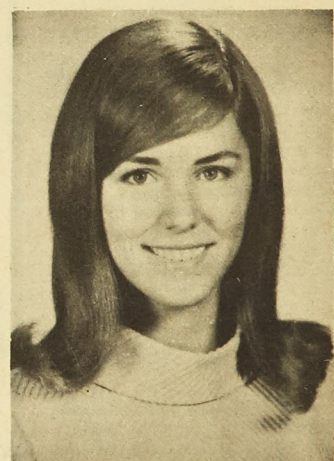
C
E
N
T
E
N
N
I
A
L



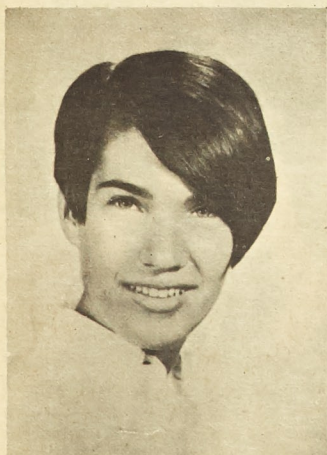
JOYCE BOWLIN
Sigma Nu



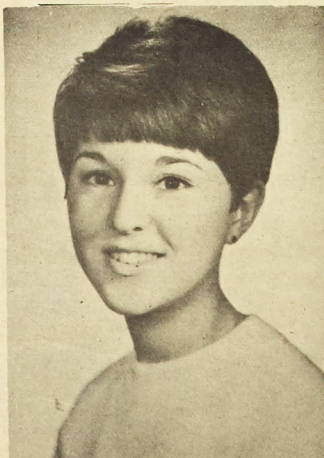
JEAN BISANTZ
Theta Xi



CHRISTY GOODRICK
Beta Sigma Psi



SUSAN ROSENBERG
Alpha Epsilon Pi



ELAINE MENKE
Thomas Jefferson Hall



SANDRA RUSSELL
Triangle

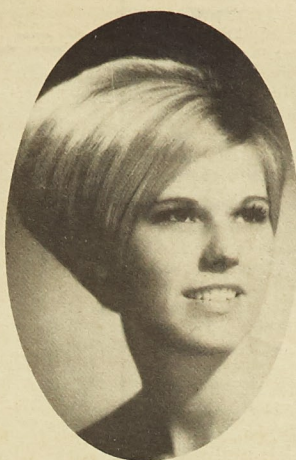
1
8
6
9
1
9
6
9

1969 UMR HOMECOMING QUEEN CANDIDATES

H
O
M
E
C
O
M
I
N
G



NANCY ARNOLD
50'ers Club



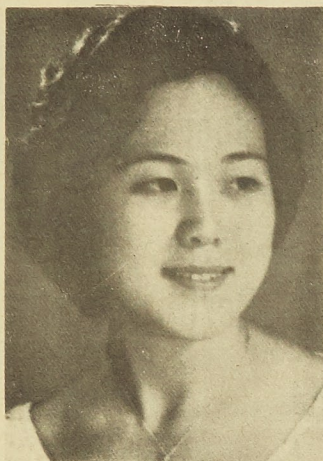
BARB PRATTE
Kappa Alpha



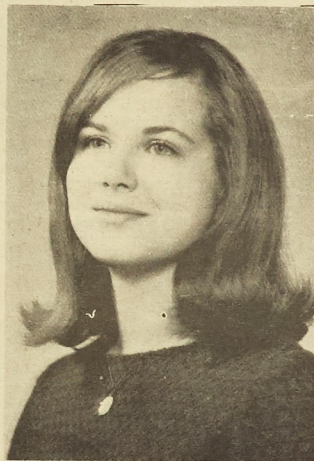
MARILYN WILLIAMS
Alpha Phi Alpha



SALLY ANN LAWS
Sigma Phi Epsilon



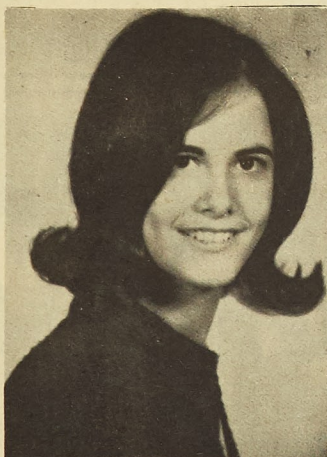
ROSE KOERNIAWIDJAYA
International House



MARY KAY BORDNER
Sigma Pi

1
9
6
9

C
E
N
T
E
N
N
I
A
L



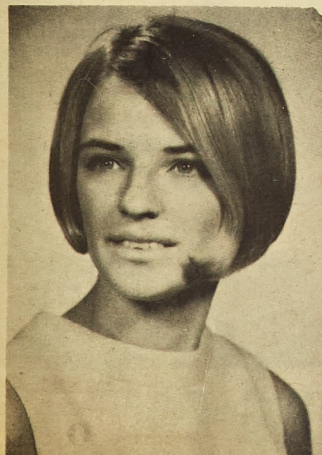
ANN MARIE LARAMIE
Pi Kappa Alpha



SALLY SHUNK
Delta Sigma Phi



BETSY THOMPSON
Kappa Sigma



GAIL CRISWELL
Tau Kappa Epsilon



SUE WEEKS
Lambda Chi Alpha



DEBORAH SEBASTIAN
Theta Chi

1
8
6
9
1
9
6
9



Student Forum

"Iron Wheel"

(Continued from Page 5)

temporarily stored.

The "iron wheel" is not discarded.

Instead the Student Council Campus Improvement Committee is studying proposals for incorporating the stone "iron wheel" into a permanent commemorative marker to be placed in the vicinity of the UMR Multipurpose Building. Plans to this point have included mounting the stone "iron wheel" and a bronze plaque in a brick support of some type. The plaque would relate the history of the symbol and its previous position in the Jackling Gym to the present UMR. (These plans have not been finalized. We will gladly welcome all suggestions.)

As a result of the Miner editorial, several persons have been circulating petitions to the effect that the "iron wheel" be accepted as the symbol of UMR. Let me make this point very clear; the University seal is now the symbol of UMR and the present Board of Curators policy is to retain this one symbol for the entire University system.

However, this policy does not restrict student organizations in their choice of a symbol. Therefore, the Student Council has adopted the "IRON WHEEL" AS THE SYMBOL OF THE STUDENT COUNCIL AND THE STUDENT BODY AT UMR.

I feel that the Missouri Miner's position that the "iron wheel" was being destroyed or forbidden was based on incomplete information and is not correct. In fact, the emblem will soon assume a prominent position on campus in the form of the Student Council's commemorative marker.

Sincerely,
Jack Leone, President
UMR Student Council

Moratorium

Sir:
October 15, 1969 was Moratorium Day across the U. S. as students and interested people made known their opposition to the war in Viet Nam. On the UMR campus the College

Young Democrats circulated a petition expressing dissatisfaction with the war and calling for a rapid termination of hostilities. Black armbands were passed out, identifying protesting students and adding a sense of solidarity to the movement. Plans were made for an open forum discussion of issues pertinent to the war. A great deal of the necessary arrangements were made by Dr. Oakes in the presentation of the forum.

Both actions, the petition and the forum, were hearteningly successful. A counter-petition was circulated by the Republican organization; naturally, an animated, but intellectual discussion arose between the two groups. This debate was highly accentuated and enhanced by the forum discussion that followed at 4:00 in the M. E. Auditorium. At this convocation, five faculty members addressed the interested people in attendance. Opinions expressed by these speakers ranged over the political spectrum. After their speeches, they took questions, provoking lively exchanges of opinion.

We of the College Young Democrats were most encouraged by the response we received from Miners and faculty members. Our primary aim was an assessment of views held by the academic community—indeed, if there were any views. But, quite to the contrary of some pessimistic prophecies, we found that there is a considerable anti-war sentiment on campus, and, what is more important, we saw that all Miners are not apathetic to events vital to the contemporary scene. We are most grateful for this revelation, and we wish to thank all who, in spite of The Missouri Miner's silence, participated in making the day a success. We look forward to working with you again.

Sincerely,
Stephen P. Schuber
Publicity, UMR Chapter, College Young Democrats

EDITOR'S NOTE

Any letters written for the student forum must include the name of the person who has written the letter).

RUDY'S PACKAGE STORE

604 ELM STREET

MINERS	STERLING
Beer Mugs	5% Beer
Special \$1.00	6 For \$1.07
CONRAD	Schlitz
Vodka	Throw-A-Ways
5th \$3.15	6 For \$1.16
Falstaff	Budweiser
Throw-A-Ways	Throw-A-Ways
6 For \$1.12	6 For \$1.16

REWARD

The following students are offering rewards for the return of their slide rules:

Paul Konieczny
709 W. 12th St.
Bill Lewis
Day 364-1135
Night 265-8218
J. North
364-9862
Gerald Hardy
102 W. 13th St.

TOP HAT LOUNGE

T.G.I.F. HEADQUARTERS

MICHELOB ON TOP

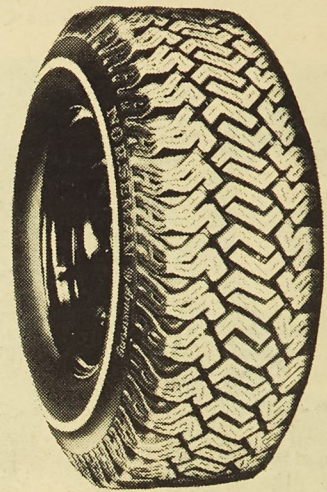
609 ROLLA STREET

ABOVE A.B.C. BOWLING LANES

DIG/GRIP/GO!

with

ARMSTRONG'S NORSEMAN



The
Snow Tire
with
Year-Round
Performance

BUY NOW AND RECEIVE A 10% DISCOUNT AT

ROLLA TIRE CENTER

City Rt. 66 and 63 Highway

Rolla, Missouri

364-5099

EL TORO BRAVO



BROYLES DISTRIBUTING CO.

Rolla, Missouri

Homecoming Candidates Presented

(Continued from Page 9)

Clinic, Newman Club, and a program aiding culturally different children in Columbia. After graduation Miss Belz hopes to work in a diagnostic clinic as a special education teacher.

Alpha Phi Alpha

The men of Alpha Phi Alpha have elected Marilyn Williams to be their Homecoming Queen Candidate this year. Miss Williams, who is twenty years old and stands five feet four inches will be escorted by Kenneth Williams. She lives in Saint Louis and works at Famous-Barr. Some of the activities which she enjoys, are bowling, tennis, and horseback riding.

59'ers

Representing '59'ers Club is Miss Nancy Arnold from St. Louis, Mo. She is currently a Speech Pathology major at the University of Missouri at Columbia. Her outside interests include theatrical activities in the Missouri Workshop Theatre, swimming and enjoying leisure activities. Her escort will be Steven Brixey.

Lambda Chi

Lambda Chi Alpha Fraternity is pleased to present Miss Sue Weeks of Creve Couer, Missouri, as their 1969 Homecoming Candidate. Active in school politics, Sue is a Junior at the University of Missouri where she is majoring in "Education".

Graduating from Pattonville High School, Sue has kept active interest in outdoor sports of all kinds at Missouri University.

Her escort is Charlie Schroeder, also from Creve Couer.

A E Pi

The men of Alpha Epsilon Pi have selected as their Homecoming Queen Candidate, the lovely and charming Miss Susan Terri Rosenberg.

Susan is a sophomore at the University of Missouri at Columbia, majoring in Physical Education. Upon graduation she aspires to organize recreational activities in underprivileged areas. Her college activities include active participation in dormitory projects and the big sister program. She hopes to become a member of the Brigadiers (Women's Auxiliary to Army ROTC) as well as a member of Spirit Committee, Downtown for Homecoming, and a member of Gamma Sigma Gamma Sorority.

In high school Miss Rosen-

Traffic Safety

Students who have not registered an automobile may have autos over Homecoming. Violation notices will not be given.

Violation notices are being given out to students who park on campus lots without a parking permit. Registering a car does not mean that it has a parking permit for campus lots.

If you have registered your car and have not yet picked up your sticker, please pick it up at Traffic Safety because the stickers will not be mailed to students. Stickers are to be placed on the left side of the rear bumper this year.

There are two free lots this year. Lot 26 is at 14th and State. Students using this lot are asked to have the courtesy not to block in another

berg's activities included four years in Rep Club, Member of Ladettes Pom Pom Drill Team for three years (Captain third year), and a member of both the

Tutor and Big Sister programs. For her participation in these

projects she received the award of Merit and Leadership.

\$ \$ \$ SAVE \$ \$ \$

HOOK AUTO SUPPLY

STUDENT DISCOUNT PRICES

Open 9 to 8 Monday Thru Friday - 8 to 6 Saturdays



Venture: Use a love call to count bacteria.

The *lampyridae* beetle family. Delight of small boys. Biological light bulb. And prime source of raw material for another Du Pont innovation.

Luciferase, an enzymatic protein with intriguing properties, obtainable only from fireflies. *Luciferin*, an organic molecule also found in fireflies, but synthesizable. *Adenosine triphosphate* (ATP), a common energy-yielding substance found in all living cells.

Those are the three main ingredients in *lampyridae's* love light. And because ATP is common to all living cells, university researchers discovered they could produce an

artificial glow by mixing luciferin and luciferase wherever life is present.

Noting that phenomenon, Du Pont scientists and engineers went on to develop it into a practical analytical system. Correlating the intensity of the artificial "glow" with the amount of ATP present in bacteria, they designed a means of measuring the reaction.

The result is the luminescence biometer—the first really basic improvement in bacteria-counting methods since the time of Louis Pasteur. Rather than waiting days for a culture to demonstrate growth density, a doctor or technician can

now get a digital readout of bacteria concentration in a matter of minutes.

Other potentially lifesaving uses for the biometer are being suggested every day—such as diagnosing metabolic rates, enzyme deficiencies and nerve damage.

Innovation—applying the known to discover the unknown, inventing new materials and putting them to work, using research and engineering to create the ideas and products of the future—this is the venture Du Pont people are engaged in.

You can become one of them, and advance professionally in your chosen field. See your Du Pont Recruiter. Or send us the coupon.

Du Pont Company
Room 7890, Wilmington, DE 19898
I'd like your latest information on opportunities at
Du Pont for graduates with degrees in _____

Name _____

University _____

Degree _____ Graduation Date _____

Address _____

City _____ State _____ Zip _____

An Equal Opportunity Employer (M/F)



Ventures for better living.

Cellar Door Coffeehouse Open Over Homecoming

The coffeehouse at the Cellar Door, Episcopal Parish House, 10th and Main Streets will present its Homecoming entertainment Friday, Oct. 24th and Saturday, Oct. 25th. Among those on the program will be Mrs. Jeri Azarewicz, who will lead some discussion after the film showing "Chromphobia". Others to entertain will include John Condon, Warren Rutledge and more. Saturday night, the "Chris-Tones" will be performing. There are 17 in this excellent group, including 7 or 8

guitars, a banjo, a tambourine and others. They come to us from Hazelwood, Mo. A variety of entertainment will also appear.

Doors open at 9 p.m. and close at 1:00 a.m. both nights.

NOTICE

Homecoming 1969 begins at 6 p.m. with the parade. Immediately afterwards is the bon fire and the rally.

Support the Miners.

TOP HAT LOUNGE

T.G.I.F. HEADQUARTERS
MICHELOB ON TOP

609 ROLLA STREET
ABOVE A.B.C. BOWLING LANES

Moratorium Teach-In Draws Crowd

(Continued from Page 1)

losing his life for a purpose, one must be willing to risk losing his own for the same purpose.

The discussions in the question and answer periods which followed each talk were a useful instrument for the students to express their feelings. For those students present, the forum brought not only a broader viewpoint of our Asian commitment but also a closer contact with the faculty members at the meeting.

NOTICE

The Blue Key Directory will be out approximately two weeks from now as we just received the I B M list from the registrar's office.

NOTICE

Wesley program will be October 22 with Dr. Kenneth Mace on "Compulsory Birth Control by 1975", 6:00 p.m. at the Wesley House.

El-Char-Eve

STEAK HOUSE

We serve the greatest steaks in town.

Our barbecue is real soul food.

Every Sunday (11 to 4 p.m.)

½ Fried chicken, a potatoe, gravy and slaw for only \$1.65

Why should we be modest when we know we top'em all?

EL-CHAR-EVE

STEAK HOUSE

(ROLLA'S FINEST)

Hiway 63, South
364-9900



Equal opportunity employer.

Maybe our name gives you the wrong impression.

You might think that if you come to work for us we'll stick you behind a desk making phones for the rest of your life.

Uh-uh.

Don't be misled by the word *Telephone* in our name.

Actually we're a group of over 60 companies and some of them happen to be in the telephone business. They're in our General Telephone group and are involved in developing new ways for man to communicate.

So if you want to work for our phone group, you can.

But if your interest lies in other things, you might prefer working for another of our com-

panies, like Sylvania.

Sylvania manufactures over 10,000 products alone, knocking out everything from Micro-Electronic Semi-Conductor Devices to Educational Communications Systems.

The communications field is one of the fastest-growing industries around. The more it grows, the more we grow and the more room you have to stretch within us.

We're looking for Scientists and Engineers with ambition and ideas.

Together we can discover new worlds.

Or make an old one easier to live in.

General Telephone & Electronics

Sylvania Electric Products • Lenkurt Electric • Automatic Electric • Telephone Companies in 34 States • General Telephone Directory Company • General Telephone & Electronics Laboratories
General Telephone & Electronics International • GT&E Data Services • GT&E Communications

Marriage and Family Seminars Sponsored By The UMR Dames

The first in a series of six Marriage and Family Living Seminars aimed at the needs and specific problems of married students will be held at 7 p.m. Tuesday, October 21, in the Episcopal Church Fellowship Hall, 10th and Main.

The seminars are sponsored by the UMR University Dames, student wives organization. Dr. Robert Barefield, assistant director of the UMR Counseling Center and assist-

ant professor of psychology, is coordinator of the program. Speakers will be experts in various fields from the community and the University.

Tuesday evening's discussion will be "A Physician and the Intimate Problems of Marriage," by Dr. Ted Smith, Rolla physician. Others will be: Oct. 28, "What Neurosis Can Do to a Marriage," Dr. Lynn Martin, UMR director of institutional studies; Nov. 4,

"Being Adequate Parents in a Difficult Situation," Dr. Barefield; Nov. 18, "A Lawyer Views the Young Family in Rolla," Phillip Moomaw, Rolla attorney; Nov. 25, "Money and Marriage - Today and Tomorrow," Mrs. Doris Grieg, Phelps County home economist, and Robert Douglas, investment counselor; Dec. 2, "Religion and the Young Family," with Dr. J. R. McDonald, UMR counselor and assistant professor of psychology, as moderator of a panel including the Rev. Fred Lamar, Methodist campus minister, the Rev. Charles Prass, director of the Newman Center, and the Rev. Howard Helsabeck, Lutheran minister.

Lectures will last approximately 45 minutes to one hour, followed by a 30-minute discussion period. Refreshments will be served.

All married students and their wives are invited to attend, whether or not the wife is a member of Dames. A baby-sitting service will be provided.

LITTLE MAN ON CAMPUS



"PERHAPS WE SHOULD HAVE YIELDED TO DISSIDENT STUDENTS' DEMANDS TO PLACE A JUKE BOX IN TH' LIBRARY, DEAN WILSON."

New Official UMR Class Rings

BY L. G. BALFOUR CO.

BULOVA ACCUTRON

DIAMONDS and ENGRAVING

WATCH REPAIRING

Christopher Jewelers

805 Pine Street



VOLKSWAGEN
Sales and Service

BILL SOWERS MOTORS

PHONE 364-5178

HWY. 66 EAST IN NORTHWY

Special Financing for Graduating Seniors

ROUGH STUFF!



Career
claustrophobia
can be
the worst kind.



Conoco hates closed rooms
and narrow spaces as much as you do.
So we give you room enough to stretch. To show
your talent and develop it.

Stretch with Conoco in three important ways. • First, in 34 countries and six continents. • Second, in these seven primary industries: petroleum, natural gas, coal, plant foods, chemicals, plastics, and atomic energy. • Third, in problem solving. Becoming productive and responsible from the first day on the job. As one of our VP's recently wrote in a supervisor's letter, "Give your people head room and let them run." That's when you really start growing — as an individual and as a member of the Conoco group.

We encourage you to look over our 32-page booklet entitled "Where do you go from here . . . ?" It shows typical assignments of our young scientists, engineers, analysts, accountants and administrative trainees . . . assignments planned to prevent that deadly confinement of mind — Career Claustrophobia.

CONOCO

Seeking Graduates all degrees

☐ ENGINEERING

☐ SCIENTIFIC

☐ BUSINESS

Continental Oil Company

COAL / CHEMICALS / PLANT FOODS / PETROLEUM / NUCLEAR

AN EQUAL OPPORTUNITY EMPLOYER

"Where do you go from here?"

See your
placement
officer.

Recruiting

**NOVEMBER
12-13**

"Mighty Muddy Miners" Maul Mules

by Pat Davidson

The University of Missouri-Rolla Miners upset the highly rated Central Missouri State Mules on a rain drenched Vernon Kennedy field 24-0. The Miners, with about as much top-notch personnel as it has desire, were paced by a stalwart defense and a fast moving offense.

Jack Grawe hit eight of fourteen passes for 86 yards and a touchdown while tailback Les Clark raced for 79 yards on 21 carries. Joe Passantino and

a 7-0 lead.

The Horde held a strong Mule offense on three plays and gave the ball back to the offense on the Mule 48-yard stripe. Jack Grawe promptly hit Larry Oliver for 14 yards to the Mule 34 and a first down. The offense was held by a rough Mule defense led by Charles Ashley, All-Conference linebacker, but Larry Oliver booted his first field goal of the 1969 season to give Head Coach Dewey Allgood's squad a 10-0 lead at half-

ger pass and bulled his way into the end zone. The interception was the Monster Man's sixth of the half-completed season and when Larry Oliver split the up-rights the Rolla squad had a decisive 24-0 score. Passantino continued to move in on the record for pass thefts as the team record is eight, held by safety Ed Lane.

The victory marked the first time since 1914 that a UMR team has gone undefeated in its first five games. The Miners will take another giant step in their quest for an undefeated season as they entertain the Cape Girardeau Indians during Homecoming activities. The Indians have lost only one game and that to perennial power Murray State of Kentucky. Cape, however, looked unimpressive in a one-touchdown win over usually weak Maryville. The Tribe is the reigning conference champion and will be a big test for the psyched-up "Mighty Miners".

STATISTICS

	CMS	UMR
Rushing yards	52	144
Passing yards	49	79
Passing	16-8-1	15-9-0
Punting	6-34.0	6-34.0
First downs	8	13
Fumbles lost	2	3



MIAA scoring leader Bob Berry bulls his way into the CMS defensive line as the mud takes its toll in the offensive line.

Ed Hanstein led the "Golden Horde" as the defense held the Mules to 13 yards total offense in the first half and 101 yards for the contest. The Horde was rated eleventh in the nation in total defense before the game and should move up a few spots this week.

The Miners won the toss and elected to receive and from that moment on it was all "Black and Gold." Les Clark dove over from the one-yard line to give the Miners a 6-0 start and Larry Oliver kicked the placement to give the UMR brigade

time.

The second half brought on the same rugged Engineer squad as the Miners' continually stymied the Mules' offense and defense. Mike Hearst recovered a Mule miscue on the home team's 20-yard line. A few plays later, Larry Oliver hit paydirt on a ten yard Jack Grawe aerial. The senior split end converted, giving the Miners a comfortable 17-0 lead.

The final tally of the game came when Joe Passantino put the defense on the scoreboard as he picked off a Steve Eckin-

NOTICE

The Blue Key Directory will be out approximately two weeks from now as we just received the I B M list from the registrar's office.

Sidelines

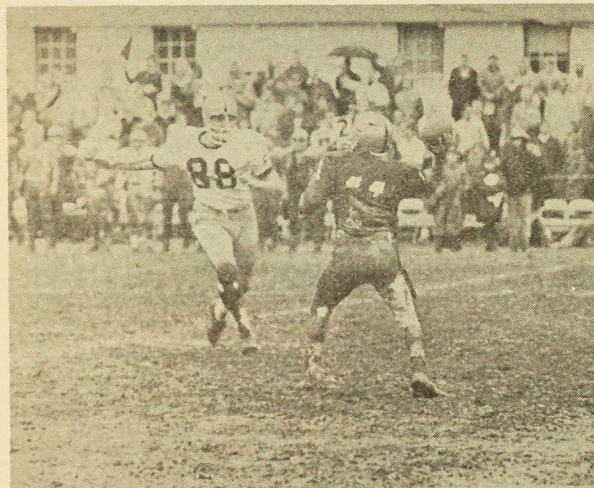
By Roger Ellis

Once again the Miners had to play in the mire of a rain-soaked field as they defeated the Central Missouri State Mules 24-0. The game was completely dominated by UMR in the statistics, on the field, and most importantly, on the scoreboard.

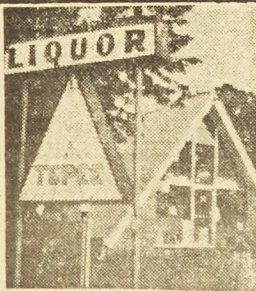
Little All-American candidate Larry Oliver added to his list of laurels as he caught a 10-yard touchdown pass from Jack Grawe, kicked his first field goal of the season, and added three extra point conversions. Larry played an outstanding game as he was double-teamed throughout the majority of the game. He also handled the punting chores after Les Clark was injured. Before running back Clark had to leave the game he picked up 70 yards rushing and added a touchdown to the Miner offensive attack. Jack Grawe, who took over for starting quarterback Pat Godwin when he was injured, completed eight of fourteen passes, one for a touchdown. The entire offensive line deserves credit for their excellent play as the Miners totaled 144 yards rushing for the afternoon.

Defensively the "Golden Horde" was tremendous. The front line of Stout, Milfelt, Moore, McAlester, and Williams played one of their finest games. Along with linebackers Hanstein and Stroud they stopped one of the finest running attacks in the MIAA--All-Conference stars Larry Roberts and Ernie White of CMS. In the first half the Mules were limited to 17 yards rushing in 17 attempts. The secondary put the "Golden Horde" on the scoreboard for the first time this year as monster man Joe Passantino intercepted a Steve Eckinger pass and headed for a touchdown. This was the only pass that All-Conference quarterback Eckinger has had picked off thus far this season. Monster man Passantino leads the team with six interceptions in five games. The quartet of White, Lane, Hearst, and Passantino gave up only 49 yards in the air as eight passes were completed against them.

The game had been called the one that would decide the MIAA and it certainly looks as though the statement was true. Now the only undefeated team remaining in the conference--the University of Missouri-Rolla--is the team to beat. Can anyone do it????



Reserve defensive End Jim Jensen puts pressure on CMS quarterback, Steve Williams.



TEPEE

203 W. 18th — 364-5451

FREE DELIVERY

On orders of \$10 or more

FREE GLASSWARE Lending Service — NO CHARGE —

Now Under New Management:

H. Karl Kost & "Pistol" McKinley

Use your CDC

Card and Save

Cash at



TEPEE

We Specialize In Party Beverage Needs For Any Occasion

FREE — Off-Street Parking

Welcome Alumni

Try our good beer.



You'll see. The Falstaff family brews beer better.

O'DONNELL DISTRIBUTING CO., INC.

ROLLA, MISSOURI

Miners To Oppose SEMS; Injuries May Slow Indians

October 25, the day of homecoming, will see the clash between the Miners and the Southeast Missouri State Indians. The Indians have won three out of their four games, but all three that they won could have easily gone the other way.

In the Indians opener, which they won 7-6 over Delta State College of Cleveland, Mississippi, the game came to an abrupt end with the Statesman's quarterback being chased out-of-bounds on the Indians 22-yard line.

In the second game against Jacksonville, Alabama, State University, with the Gamecocks trailing 19-13, Indian safety Leslie Young intercepted a pass on his own 39 to halt last minute Gamecock effort. Young, a freshman from Webster Groves, was man-of-the-hour again during the third game against the University of Evansville, Indiana, intercepting a pass in his own end zone in the last play of the game to deny the Purple Aces a chance for a win or tie. The final score was 31-24.

Head coach, Tom Thrower, has tapped a bunch of youngsters for starting defensive assignments in two freshmen, five sophomores, two juniors and two seniors. However, all but

the freshmen lettered last year and eight of them have been starters at some time in the past.

On offense, Thrower expects to start six seniors, two juniors, and three sophomores, ten of whom lettered and six of whom started at least part of the time last season.

The Indians have been hurt by injuries to a couple of their top players. Al Holmes sustained a knee injury during the State University game. Holmes is filling the spot vacated by Walt Smallwood, who made honorable mention last season in one College Division All-American poll. The 160 pound running back, although according to Thrower, is as much of a break-away threat as Smallwood was, is actually a more elusive runner than Smallwood, but is not as good an inside runner.

Freshman defensive back Jim Powell, a 168-pounder from Webster Groves, received an injured kidney during the same game as Holmes received his injury. Powell's loss was felt by the Indians since he had good speed, was a hitter, and a good punt returner.

Although the young Indians have had some problems and close games, they have gone into each game knowing that they'd have to really fight to win.

Keeton Joins UMR Athletic Staff; To Coach Wrestling, Football Teams

by Rick Remley

If you chance to meet a new face in the coaches' huddle on Saturday afternoons, it is probably that of Coach Joe Keeton, the newest member of the UMR athletic staff.

Coach Keeton is a 1958 graduate of William Christman High School at Independence and a 1962 graduate of Central Missouri State College at Warrensburg. At CMS, he won 4 varsity football letters, the first at the age of 17. In 1961, he was selected as MIAA conference tackle and in those days he probably wreaked havoc on some unfortunate Miners.

After coaching three years at Fort Osage High School at Independence, he spent three years at Grandview High School. At Grandview, his team won three conference titles without a single league loss. Coach Keeton then moved to Kansas State, where he served as assistant line coach while working on his doctorate.

Here at UMR, Coach Keeton will serve as the first head wrestling coach in the school's history. It is too early to tell how the matmen will do, the main problem now is finding

enough personnel who are interested in varsity wrestling.

Coach Keeton is also a vital member of Coach Allgood's football staff. Through his efforts as offensive line coach, he has gained the respect of his fellow coaches and the Miners. Besides serving as line coach, he scouts other teams when the Miners are not in action. His job on days of games is in the press box. From this position, he and Coach Murser help direct

the offensive plays and defensive formations.

Looking at the 1969 football season, Coach Keeton believes that the MIAA is enjoying one of its most competitive years. He feels that any MIAA team is capable of defeating any other team on a given Saturday. When asked how the '69 Miners fit into the picture, Coach Keeton replied that the MIAA conference title is the Miners "immediate goal".

SPORTS LINE-UP

VARSITY FOOTBALL

Sat. Oct. 25 (Homecoming) SEMS, Cape Girardeau Home
Sat. Nov. 1 NEMS, Kirksville Away
Sat. Nov. 8 NWMS, Maryville Away

VARSITY CROSS COUNTRY

Sat. Oct. 25 Evanger College Home
Sat. Nov. 1 Lincoln University Home

INTRAMURALS

Cross Country Run Oct. 27 5:00 p.m.
Hand Ball - Basketball Nov. 3

The Harmon Football Forecast

TOP 20 TEAMS (Forecasting Average: 813 Right, 253 Wrong, 26 Ties, 763)

- | | | | |
|--------------|----------------|---------------|-----------------|
| 1—Ohio State | 6—Arkansas | 11—Georgia | 16—Mississippi |
| 2—Texas | 7—Southern Cal | 12—Oklahoma | 17—Stanford |
| 3—Tennessee | 8—Notre Dame | 13—Penn State | 18—Purdue |
| 4—L.S.U. | 9—U.C.L.A. | 14—Florida | 19—Air Force |
| 5—Missouri | 10—Auburn | 15—Wyoming | 20—Kansas State |

Saturday, Oct. 25—Major Colleges

- | | | | |
|----------------------|----|---------------------|----|
| Air Force | 28 | Colorado State | 16 |
| Akron | 33 | Dayton | 15 |
| Alabama | 23 | Clemson | 14 |
| Arizona | 21 | New Mexico | 6 |
| Arkansas | 45 | Wichita | 0 |
| Boston College | 17 | Army | 14 |
| Brigham Young | 20 | El Paso | 14 |
| California | 28 | Washington State | 7 |
| Colgate | 20 | Brown | 14 |
| Dartmouth | 28 | Harvard | 14 |
| Davidson | 30 | The Citadel | 16 |
| Florida | 27 | Vanderbilt | 7 |
| Florida State | 27 | Mississippi State | 20 |
| Georgia | 34 | Kentucky | 7 |
| Indiana | 31 | Wisconsin | 14 |
| Kansas | 25 | Iowa State | 20 |
| L.S.U. | 27 | Auburn | 25 |
| Memphis State | 33 | Utah State | 14 |
| *Miami, Fla. | 22 | T.C.U. | 21 |
| Miami (Ohio) | 20 | Bowling Green | 17 |
| Michigan | 31 | Minnesota | 17 |
| Michigan State | 30 | Iowa | 21 |
| Mississippi | 35 | Houston | 20 |
| Missouri | 26 | Colorado | 14 |
| Nebraska | 23 | Oklahoma State | 15 |
| North Carolina | 21 | Wake Forest | 20 |
| North Carolina State | 22 | Duke | 7 |
| North Texas | 26 | Louisville | 10 |
| Notre Dame | 38 | Tulane | 13 |
| Ohio State | 49 | Illinois | 0 |
| Oklahoma | 28 | Kansas State | 23 |
| Oregon State | 22 | Utah | 7 |
| Penn State | 28 | Ohio U | 14 |
| Princeton | 15 | Pennsylvania | 14 |
| Purdue | 35 | Northwestern | 13 |
| Richmond | 21 | South'n Mississippi | 13 |
| Rutgers | 31 | Columbia | 0 |
| South Carolina | 21 | Maryland | 14 |
| Southern California | 24 | Georgia Tech | 13 |
| Southern Illinois | 26 | East Carolina | 21 |
| S.M.U. | 28 | Texas Tech | 27 |
| Stanford | 45 | U.C.L.A. | 7 |
| Texas | 21 | Baylor | 15 |
| Texas A & M | 20 | Kent State | 7 |
| Toledo | 38 | Cincinnati | 24 |
| Tulsa | 31 | Xavier | 7 |
| Villanova | 22 | Navy | 13 |
| Virginia | 21 | Buffalo | 10 |
| V.P.I. | 20 | Oregon | 7 |
| Washington | 23 | New Mexico State | 21 |
| West Texas | 27 | Pittsburgh | 13 |
| West Virginia | 27 | Marshall | 7 |
| Western Michigan | 20 | M.I.L. | 6 |
| William & Mary | 44 | San Jose State | 0 |
| Wyoming | 27 | Cornell | 22 |

Other Games — South and Southwest

- | | | | |
|----------------------|----|---------------------|----|
| Alcorn A & M | 24 | Southern U | 17 |
| Appalachian | 27 | Carson-Newman | 17 |
| Arkansas St. College | 20 | Southern State | 15 |
| Arkansas Tech | 27 | Trinity | 10 |
| Arlington | 28 | Middle Tennessee | 24 |
| Austin Peay | 15 | Maryville | 14 |
| Centre | 24 | Martin | 23 |
| Delta State | 22 | Murray | 16 |
| East Tennessee | 20 | Sul Ross | 6 |
| East Texas | 30 | Catawba | 17 |
| Elon | 37 | Concord | 0 |
| Fairmont | 26 | Franklin | 13 |
| Georgetown | 22 | Presbyterian | 15 |
| Guilford | 21 | Arkansas A & M | 6 |
| Henderson | 21 | Hampden-Sydney | 16 |
| Johns Hopkins | 22 | SW Louisiana | 21 |
| Lamar Tech | 31 | Western Carolina | 20 |
| Lenoir-Rhyne | 26 | Chattanooga | 14 |
| Louisiana Tech | 26 | Tennessee Tech | 13 |
| Morehead | 26 | Jacksonville | 16 |
| NW Louisiana | 14 | Harding | 7 |
| Ouachita | 26 | Shepherd | 0 |
| Randolph-Macon | 24 | Howard Payne | 22 |
| S F Austin | 30 | Southwest Texas | 21 |
| Sam Houston | 20 | Mississippi College | 10 |
| Samford | 17 | Sewanee | 15 |
| Southwestern, Tenn. | 25 | Florida A & M | 24 |
| Texas A & I | 34 | McMurry | 7 |
| Texas Lutheran | 20 | Austin | 14 |
| Troy | 20 | Florence | 13 |
| Washington & Lee | 26 | Bridgewater | 0 |
| West Liberty | 27 | Glenville | 19 |
| Western Kentucky | 27 | Eastern Kentucky | 22 |
| Wofford | 35 | Emory & Henry | 7 |

Other Games — East

- | | | | |
|----------------------|----|---------------------|----|
| Amherst | 24 | Wesleyan | 7 |
| Boston U | 25 | Maine | 6 |
| Bowdoin | 28 | Colby | 13 |
| Central Connecticut | 21 | Glassboro | 7 |
| Clarion | 24 | California State | 13 |
| Connecticut | 28 | Massachusetts | 23 |
| Delaware | 31 | Temple | 25 |
| Delaware Valley | 27 | Western Maryland | 14 |
| Indiana U | 38 | Slippery Rock | 13 |
| Lafayette | 24 | Bucknell | 21 |
| Lehigh | 27 | Gettysburg | 17 |
| Montclair | 21 | Upsala | 15 |
| New Hampshire | 28 | Northeastern | 20 |
| Norwich | 21 | Bates | 6 |
| R.P.I. | 21 | Middlebury | 19 |
| Rochester | 30 | Alfred | 14 |
| Southern Connecticut | 18 | Adelphi | 13 |
| Springfield | 26 | American Internat'l | 20 |
| Vermont | 21 | Wilkes | 20 |
| West Chester | 35 | Kutztown | 24 |
| Williams | 27 | Tufts | 24 |
| Worcester Tech | 23 | Coast Guard | 13 |

Other Games — Midwest

- | | | | |
|--------------------|----|-------------------|----|
| Albion | 31 | Hope | 0 |
| Alma | 30 | Adrian | 7 |
| Ashland | 22 | Ohio Northern | 7 |
| Augustana, Ill. | 19 | North Park | 14 |
| Baldwin-Wallace | 22 | Wittenberg | 14 |
| Ball State | 24 | Northern Illinois | 22 |
| Carroll | 21 | North Central | 6 |
| Central College | 33 | Dubuque | 6 |
| Central Michigan | 28 | Eastern Illinois | 0 |
| Central Missouri | 24 | NE Missouri | 21 |
| Central Oklahoma | 27 | NW Oklahoma | 15 |
| Coe | 21 | Grinnell | 8 |
| Concordia, Neb. | 20 | Westmar | 14 |
| Cornell (Iowa) | 22 | Carleton | 14 |
| Culver-Stockton | 24 | Eureka | 0 |
| Defiance | 31 | Bluffton | 0 |
| E. Cent. Oklahoma | 23 | Panhandle | 13 |
| Eastern Michigan | 26 | Tampa | 25 |
| Emporia State | 28 | Pittsburg | 14 |
| Evansville | 28 | DePaul | 12 |
| Hamline | 23 | Duluth | 7 |
| Hanover | 14 | Earlham | 13 |
| Hillsdale | 27 | Northwood | 16 |
| Kansas Wesleyan | 28 | McPherson | 0 |
| Macalester | 24 | Augsburg | 6 |
| Michigan Tech | 21 | Moorhead | 19 |
| Missouri Valley | 21 | Chicago Circle | 7 |
| Muskingum | 23 | Capital | 22 |
| NE Oklahoma | 30 | Langston | 0 |
| Northern Michigan | 28 | St. Norbert | 13 |
| Olivet | 15 | Kalamazoo | 13 |
| Ohio Wesleyan | 42 | Wabash | 6 |
| Omaha | 25 | Washburn | 17 |
| St. Joseph's | 21 | Illinois Wesleyan | 10 |
| St. Olaf | 21 | Lawrence | 25 |
| South Dakota State | 27 | Youngstown | 20 |
| SE Missouri | 28 | Rolla | 12 |
| SW Oklahoma | 38 | SE Oklahoma | 6 |
| Tarkio | 23 | Central Methodist | 0 |
| Valparaiso | 28 | Washington U | 0 |
| Western Illinois | 24 | Drake | 23 |
| Wheaton | 27 | Bradley | 20 |
| William Jewell | 20 | Nebraska Wesleyan | 0 |
| Wooster | 16 | Kenyon | 13 |

Other Games — Far West

- | | | | |
|---------------------|----|---------------------|----|
| Angelo State | 27 | Eastern New Mexico | 24 |
| Cal Poly (Pomona) | 21 | Riverside | 8 |
| Cal Poly (S.L.O.) | 29 | San Fernando | 12 |
| Colorado State | 63 | Fort Lewis | 0 |
| Colorado Western | 27 | Colorado Mines | 14 |
| Davis | 21 | San Francisco State | 7 |
| Eastern Washington | 20 | Central Washington | 19 |
| Fresno State | 31 | Los Angeles | 14 |
| Hawaii | 27 | Las Vegas | 0 |
| Hayward | 30 | San Francisco U | 0 |
| Humboldt | 29 | Nevada | 14 |
| Idaho | 26 | Montana State | 7 |
| Lewis & Clark | 20 | Willamette | 7 |
| Linfield | 21 | Whitman | 16 |
| **Long Beach | 30 | Santa Clara | 15 |
| Montana | 33 | Portland | 0 |
| New Mexico Hi'lands | 49 | West'n New Mexico | 6 |
| Pacific Lutheran | 27 | Pacific | 7 |
| Redlands | 30 | Pomona | 7 |
| Sacramento | 26 | Chico | 17 |
| San Diego State | 48 | Santa Barbara | 7 |
| Whittier | 24 | Occidental | 0 |

(**Friday Games)

MINER SPECIAL

With This Coupon You Will Receive A
RANCH STEAK
FRENCH FRIES and a ROOT BEER

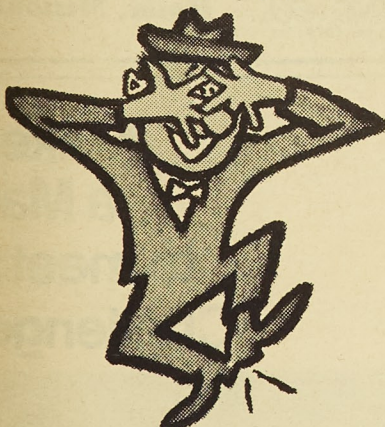
For Only **65¢** At

A&W DRIVE IN

(Highway 72 At Rolla Street) Hurry! This Coupon

Expires Sunday, Oct. 29

Just peeked at the new girls and their pictures...
new "Kitty" pictures.....



Wa-Hoooooo, Oboy, Oboy, Oboy, Oboy.....some
gals!!!! Whoopeeeeeee!!!!!!!



KENMARK
SPORTING GOODS

Miners Top MIAA Poll; Defense Holds Ground

by Bill Horsford

The Missouri Miners boast the only unbeaten and untied record in the MIAA. This dominance of the conference is strongly reflected in the statistical charts. The Miners placed three men among the top ten in scoring. Bob Berry leads the conference with 42 points and Pat Godwin and Larry Oliver are sixth and ninth, respectively. Leslie Clark, the workhorse of the team, has carried the ball 112 times for 3.1 yards average. The runner-up in this category is Steve Roberts of CMSC with only 81 carries. The Miners are ranked third in the league in composite statistics, which include all aspects of offensive and defensive play. They trail CMSC and SEMS. The only area where the Miners are not ranked is receivers, where Coates of CMSC leads in both receptions and yards gained.

Defensively, the Miners boast an incredible 42 yard per game defense against the rush. In four games, the opposition has rushed for a total of only 150 yards. This figure leads the league by a wide margin. UMR has allowed only 616 total yards in four games. This is 200 yards better than NEMS, the second ranked team. The UMR specialty teams have fared equally well. Leslie Clark is the fourth ranked punter in the league with a 36.5 yard average. Bobby Ajar is second in the league with a 14.7 yard per return average on punts.

The Miners received individual as well as team recognition this week. Larry Oliver, who played both ways, was selected MIAA lineman of the week for his outstanding performance against U. of I. Chicago.

Westminster's 1-2-3 Finish Dooms UMR Harriers, 21-34

by Bill Horsford

The UMR cross-country team was defeated Friday by Westminster College as Westminster swept the top three spots. The meet was run over a four mile asphalt track, which may have slowed times slightly.

Finnell, a runner with an unorthodox style, turned in the fastest time of the day at 20:29. Finnell's method calls for running with a transistor radio glued to his ear. Keith Browne of UMR, running without benefit of radio, was able to finish fourth with a time of 20:52.

Bob Rice placed sixth and was clocked at 21:01. The Miners took seventh, eighth and ninth places as Kurt Kologa, Jim Hellwege, and Mike Kozacik clustered around the 21 and 1/2 minute mark. The score of the meet was 21-34. The defeat was the third of the season to go with two wins for the UMR squad. Westminster's margin of victory was provided largely by the sweep of the three top spots. Next action for Coach Bullman's squad is Saturday, October 25th against Evangel College.

Meet The Miners

by Rick Remley

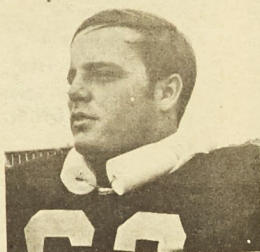
This week's "Miner of the Week" is Joel Stroud, defensive linebacker of the Miners. A six feet tall, 215 pound senior, Joel has been a big factor in UMR's defensive success this season.

Since coming to UMR, Joel has been engaged in several activities. He is a senior in mechanical engineering and is a member of the American Society of Mechanical Engineers and the American Society of Tool Manufacturing Engineers. He is also an active member of Kappa Alpha fraternity.

Much of Joel's time is taken by sports. He plays on the Kappa Alpha softball, basketball, and volleyball teams. Joel is a 1966 graduate of Tilghman High School in Paducah, Kentucky. He won three varsity football letters in high school and was selected to the teams. He also won three varsity letters in baseball and served as vice-president of Key Club.

This season, Joel will earn his fourth varsity letter at UMR. He believes that this year's team has experience, size, and depth. He gave credit for much of the Miner's success to Coach Allgood and his staff, especially with the way they have improved the offensive line.

Joel thinks the '69 Miners are "by far the best" UMR team he has played on. He believes the reason the Miners are having such a successful season is that the team has something new this year; a "winning attitude."



Linebacker Joel Stroud

UMR Riflemen Blast Polytech

by Rick Remley

On Saturday, October 11, the UMR Varsity Rifle Club journeyed to Terre Haute, Indiana to defeat Rose Polytechnical Institute by a 389 point margin.

UMR scored 2, 151 points out of a possible 2,400; while

Rose Poly scored only 1,762.

Taking first place honors for UMR was Kent Gastreich with 556 out of a possible 600 points. Second was Jon Howell with 549; followed by Jeff Hackmeyer with 535 and Dennis Frauenhoffer with 511.

Gene Bracy, coach of the rifle squad announced the next meet would be with Wichita State College. The meet was held at 8:00 a.m. Saturday, October 18, in the basement of building T-2. Scores were not available for this week's MINER.

When you're out of Schlitz, punt.

Of course, you'd never get your signals that mixed up. Out of Schlitz? Ridiculous. Schlitz is

the beer that's golden aged. When you're out of Schlitz, you're out of beer—kick that around

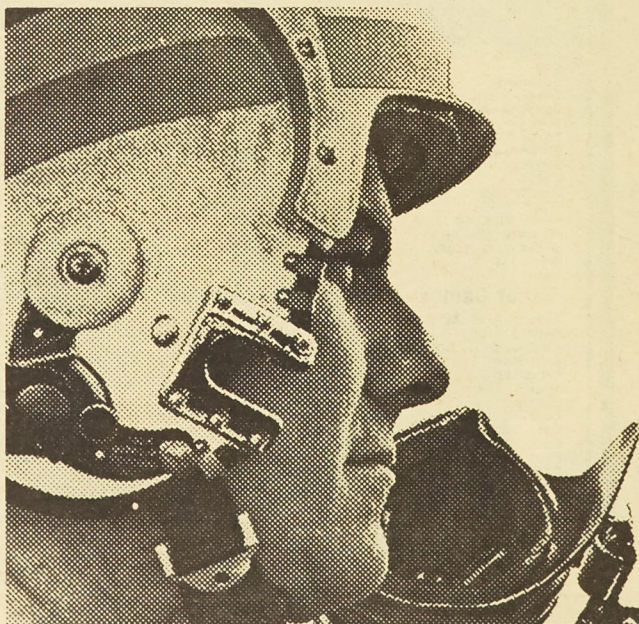


© 1969 Jos. Schlitz Brewing Co., Milwaukee and other great cities.

BROYLES DISTRIBUTING CO. Rolla, Missouri

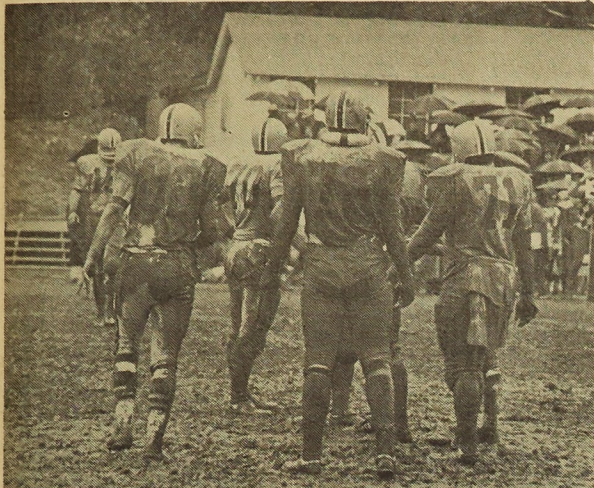
It takes
a Man
to meet a
Challenge.

AT
UMR CAMPUS
OCT. 22, 23 & 24



FLY NAVY

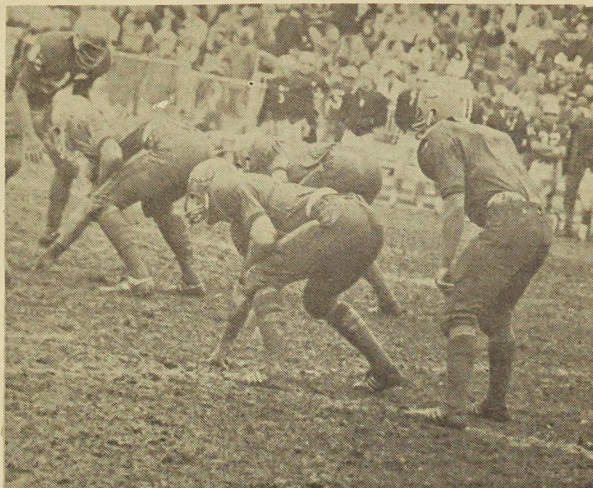
Miners Dampen CMS Homecoming, 24-0



The offensive line shows the result of the slippery field conditions.



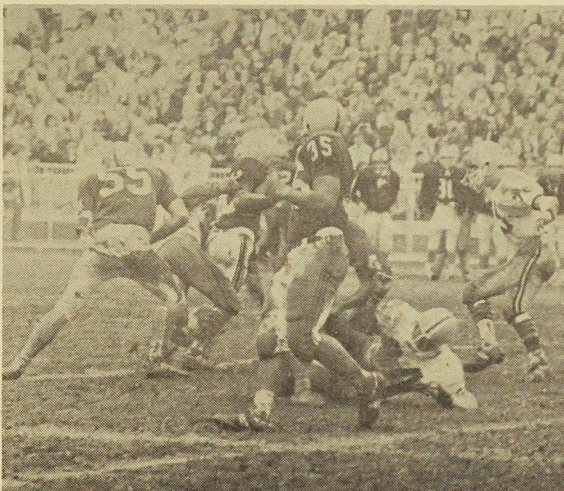
The clock tells the whole story as the Miners easily handled the Mules.



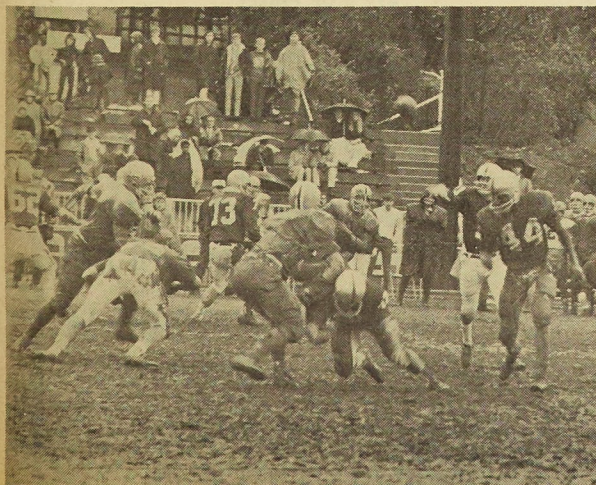
Two of the top running backs in the MIAA, Les Clark and Bob Berry are practically indistinguishable due to the mud.



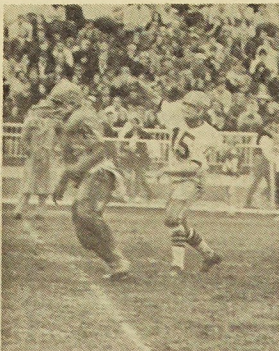
Fumbles occurred frequently and the results shown here are that everyone involved gets a mouthful of mud.



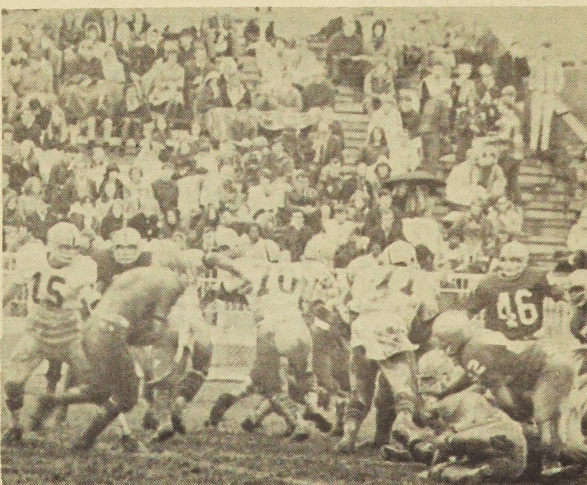
The "Golden Horde" dropped the CMS quarterback numerous times as he attempted to pass.



CMS Reserve quarterback Steve Williams attempts to pass against the excellent UMR defense.



Jack Grawe shows his passing form under the protection of Frankie Winfield.



Jack Grawe hands off to Bob Berry as the offensive line does its job.

Old Chemistry Building Destroyed Firemen Fight Blaze For Seven Hours

Last Sunday evening, October 18, the Old Chemistry Building was damaged extensively by a fire which broke out in a storeroom in its basement. The fire, which started about 8:00 P.M., was first spotted by photographers from the Rolla who were developing pictures in the basement of the Rolla Building. They called the Rolla Fire Dept. after they

gathered, the Rolla Police Dept. and the Missouri Highway Patrol were called to the scene to keep the crowd away from the burning building.

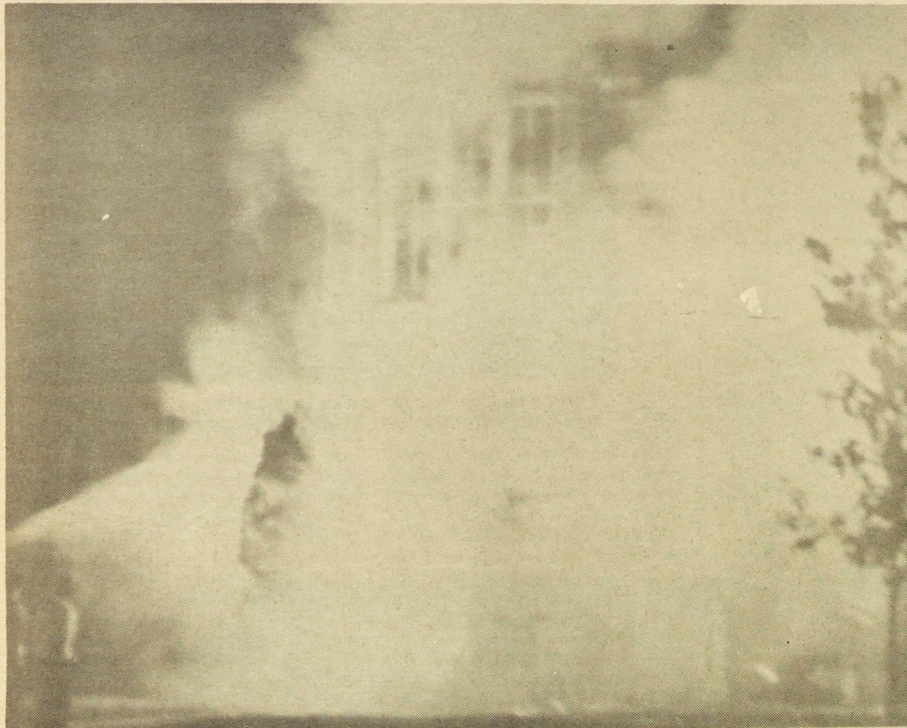
As the fire grew worse, the Rolla Fire Chief called in the St. James Fire Dept. After the St. James Fire Dept. had been there a short time it seemed that the fire might be under control. While the fire was still

door and the first floor windows. The flames were so intense that they began shooting to the top of the building. Some of the shrubbery that was in front of the building also caught on fire. At this point in the evening, the firefighters had to fight the fire feverishly in order to keep it from blowing out of control. The main reason for the fire breaking out again was that an

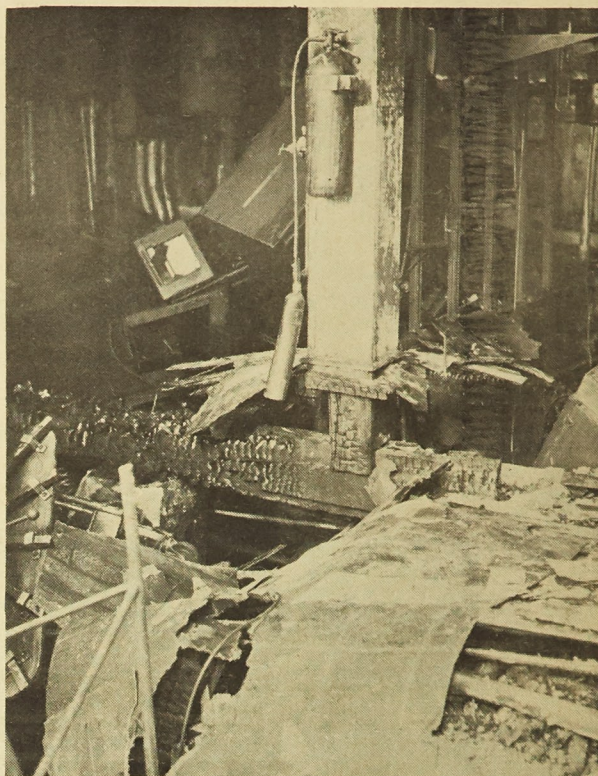
Welders Supply was on the scene to refill their tanks so they could continue fighting the fire. All during the fire many students helped the firefighters in many different ways. They helped carry the oxygen tanks for the fireman, helped pull the hoses, and supplied coffee and sandwiches for the firefighters. The Highway Patrol said the student body was well behaved and a tremendous help during the entire fire.

It was reported that one fireman suffered smoke inhalation. He was given oxygen at Phelps County Hospital, and released.

The fire destroyed most of the offices of the different professors in the building. Also, Dr. Siehr of the Chemistry Dept. had his entire research project destroyed. In his research project he had some very expensive equipment that was completely ruined.



At height of fire, after airline broke, bystanders watch the dense smoke and flames of the Old Chem Building.



Extensive damage was done to first floor. Firefighters had to chop through the floor to reach the blaze.

had spotted smoke coming from a tunnel which connects the Rolla Building with the Old Chem Building.

When the Fire Department first got to the fire they had to carry explosives from the building. They were assisted by several UMR students. The fire raged fiercely through the entire basement. The smoke that poured out the back door was so thick that it slowed the firefighters progress in fighting the fire. As a large crowd

burning in the basement of the building some students got into the offices on the first floor and helped remove some of the office equipment and file cabinets. All during the fire there was fear of an explosion due to the many chemicals and gas lines that were in the building.

At 11:00 P.M., when the fire seemed to be under control, flames started on the first floor. The fire spread quickly through the rest of the building. Flames started shooting out the front

open air pipe line broke and was feeding the fire. After this pipe line broke, the St. James Fire Chief said that it was impossible to keep the fire from spreading. It wasn't until 3:00 A.M. that the fire was brought completely under control. At 3:30 A.M. the fire was finally dead. The Rolla Fire Dept. stayed on the scene until morning to make sure that there was no further out break of fire.

When the firefighters began to run out of oxygen, Rolla

UMR Fight Song Introduced

The University of Missouri - Rolla has a new fight song which will be introduced in the pre-game show at the Homecoming game between the UMR Miners and the Cape Girardeau Indians this weekend.

"Fight, Miners," composed by Harold W. Cleveland, Rolla High School orchestra director, was chosen as the best in a competition sponsored by the UMR football team. Cleveland will receive a \$100 award and will conduct the UMR band in their first public performance of the new song in pre-game activities, Saturday.

According to Music Professor David Oakley, who coordinated the contest for the team, 11 entries were received before the deadline of October 1. These included entries by a few students and townspeople and others from as far away as New Orleans. He selected the best five on the basis of singability and originality, and the winner was chosen by the football team.

"Fight, Miners" has catchy, singable lyrics and melody, and is completely original, Oakley

said. It will be recorded by the UMR band and chorus and distributed to area radio stations. Full band arrangements will be sent to all colleges whose athletic teams compete with the Miners and to nearby high schools.

The old fight song, "Fight, Missouri Miners, Fight," was

written in the 1930's by Fred Waring as one of a series he wrote to feature on his radio program. Because it had an extreme range and was difficult to sing, it was never very popular with students and a number of different tunes have been used as fight songs over the years, Oakley said.

OLDS BUICK

442's - Cutlass S - GS-400 - Skylark

SPECIAL STUDENT TERMS

ORDER NOW!

ECK MOTOR CO.

SINCE 1951

ROBERT A. ECK
MSM - '43

NORMAN SCHWEISS

Tau Beta Pi, Blue Key, Theta Tau, Pi Kappa Alpha

**509
Package Store**

PARTY WEEKEND BOOZE CENTER

WE WILL NOT KNOWINGLY BE UNDERSOLD

FREE PARKING IN REAR

Continental Recreation

813 PINE STREET

Play Pool, Billiards, Snooker or Golf

1 Player 60c per Hour

Each Additional Player 30c per Hour

Play Pinball Machines, Shoot Guns,
Shuffle Alley, Juke Box or Foot Ball

We Serve Sandwiches & Soft Drinks
Bring Your Wife or Girl Friend

WE ARE OPEN 10 A. M. UNTIL 11 P. M. OR ?????