



15 Nov 1968

The Missouri Miner, November 15, 1968

Follow this and additional works at: https://scholarsmine.mst.edu/missouri_miner

These newspapers reflect the attitudes, perspectives, and beliefs of different times. Neither the library nor the university endorses the views expressed in these collections, some of which contain images and language which may be offensive to some readers.

Recommended Citation

"The Missouri Miner, November 15, 1968" (1968). *The Missouri Miner Newspaper*. 1903.
https://scholarsmine.mst.edu/missouri_miner/1903

This Newspaper is brought to you for free and open access by Scholars' Mine. It has been accepted for inclusion in The Missouri Miner Newspaper by an authorized administrator of Scholars' Mine. This work is protected by U. S. Copyright Law. Unauthorized use including reproduction for redistribution requires the permission of the copyright holder. For more information, please contact scholarsmine@mst.edu.

Special
Issue

The Missouri MINER

UNIVERSITY OF MISSOURI - ROLLA

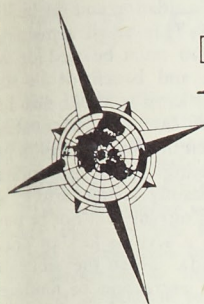
Special
Issue

SPECIAL EDITION

FRIDAY, NOVEMBER 15, 1968, ROLLA, MISSOURI

SPECIAL EDITION

Activity Fee Increase Approved



The Missouri
MINER
UNIVERSITY OF MISSOURI - ROLLA

Editorials.

Bob Mildenstein Editor

AN EDITORIAL

A Hidden Point ...

The announcement this morning by the University of Missouri Board of Curators approving the student fee increase marks the culmination of countless hours of work by many interested students in an effort to provide the maximum in student services at a minimum in cost to the individual student. There is, however, a more important point to be made which has become more evident in the course of events leading to the fee increase approval.

Throughout the country, in recent years, college and university students have been restless over a desire to control their destiny in the University community. This goal is noble and cannot be questioned. It is, however, the methods of achieving this goal that must be examined.

Riots, sit-ins, radical organizations, and violent leaders have arisen out of this student unrest in many universities. Violence and rash judgment have replaced discussion and common sense as a means of accomplishing goals.

The recent student fee increase is, however, a magnificent return to the latter.

The idea for a hike in student fees originated from a group of students concerned about the quality of student services.

The idea was transmitted to Rolla administrators by the use of carefully planned discussions and several well written reports. The idea was received with open minds by the administration as a solution to a problem — the extent of which they had not realized before.

The decisive emphasis was put on the proposal by the overwhelming support of the student body as illustrated in the spring referendum, and the proposal went to the board of Curators with the highest recommendations of the UMR administration.

After careful consideration and more discussions with representatives of the students at UMR, the University of Missouri Curators have approved the proposal.

The UMR fee increase proposal, through its history and its final approval, is a tribute to the value of the old ideas of discussion and common sense in accomplishing goals and will serve as a landmark in the course on student-faculty relations on the UMR campus.

Student Services to Improve With Spring Activity Funds

(Editor's Note: The following is the official release of the University of Missouri Board of Curators announcing the approval of the proposed fee increases for certain UMR student services. The initial ideas for a

Columbia, Mo., Nov. 15 — Student Activities fees increases were given final approval for Columbia and Rolla campuses of the University of Missouri by the executive committee of the Board of Curators today.

tion asking that the student activities fee be raised \$10 a semester. The resolution asked that \$4 of the increase be allocated to the student activities program; that \$1 go to support division student government, and \$5 for the capitalization of additional physical facilities which would be for the purpose of educational, social and recreational activities for students.

The Board, in approving the Columbia campus fee increase, allocated \$3 for the student activities program, \$1 for divisional Student Council programs, \$4 for capital improvements for educational, social and recreational facilities, and \$2 to help finance construction of the proposed multi-purpose auditorium on the Columbia campus.

The additional funds for the student activities program will enable expansion of cultural, recreational and social programs for students. That will also increase the intellectual cultural environment of the campus and extra-class activities.

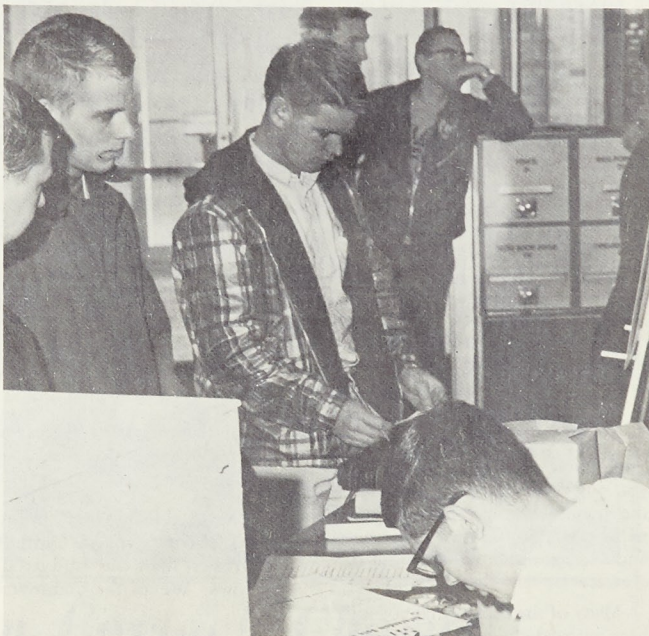
The fund for divisional Student Council programs will allow establishment of student councils in all of the degree granting divisions of the Columbia Campus, which the students believe will help improve student-faculty communication and further the education programs of the respective degree granting faculties.

Funds for improvement for facilities, such as additions to Memorial Union and Brady Commons, were approved to provide for student education, social and recreational activities.

In addition to the \$2 allocated for the multi-purpose auditorium another \$2 in the student fees now being used for debt service on the swimming pool will be made available for the auditorium, by paying off existing bonds on the pool.

Some student fees will be used to help finance the auditorium because the cost of the facility will exceed the \$7.65 million in state funds appropriated for it by the General Assembly. Plans for the building have been revised to trim cost for new bids being sought on the structure. Bids taken in September indicate that the cost will exceed available funds by about \$3 million.

The multi-purpose auditorium is considered a vitally needed building for the Columbia campus to serve the cultural, social and athletic needs. Presently the campus has more than 20,000 students enrolled but has no auditorium to accommodate them adequately. Existing facilities are Jesse Hall Auditorium (seating 2,000) and Brewer Field House (seating 5,000).



UMR students showed their overwhelming support of the fee increase in voting last spring.

fee increase originated last fall over concern for financial limitations on vital student services. Considerable discussion was held in the Student Council concerning the proposal. Last spring a student vote was conducted which polled student opinion and found it to be highly in favor of the proposal. The proposal went to the Board in late spring and the following article announced the results of our proposal as well as a similar proposal by the UMC student body.)

SPRING STUDENT REFERENDUM VOTE RESULTS

Athletics	73% For
General Lectures ..	85% For
MINER	76% For
KMSM-FM	69% For
Student Union	73% For

The increase at the Columbia campus will be \$10 a semester and is effective in the fall of 1969. The present fee is \$10 a semester. At Rolla the increase will be \$6 a semester, effective the second semester of the present academic year. The fee at Rolla is now \$35 for the fall semester and \$28 for the spring semester. Purposes for which student fees are used, vary among the University campuses.

Students at both the Columbia and Rolla campuses asked that the fees be raised to provide for various campus activities. Students as well as administrators appeared before the board during consideration of these fee increases. David Thomas, Columbia campus student government president, joined with Chancellor John W. Schwada and Bob Bruce, Rolla campus student president, joined with Chancellor Merl Baker in supporting the proposals before the board.

The student body at Rolla voted by a two-thirds majority to seek a \$6 fee increase for the following purposes: \$3 athletics; \$.75 general lectures; \$.50 for the Missouri Miner (student newspaper); \$.75 for support of KMSM-FM (the campus radio station), and \$1 for social and recreational programs.

At Columbia the Missouri Student Association passed a resolu-

WHAT WILL IT BRING?

Expansion of Activities Outlined

(Editor's Note: The following articles are reprints of a series of articles appearing last spring in the MINER. They outlined the basic areas in which the increased activity funds will be used.)

Athletics

The Athletic budget includes the operation of the intercollegiate and intramural program, plus any deficit that the golf course may incur. This deficit was approximately \$3000 in 1967-68. If a high degree program is to be maintained we will need more money for operation purposes.

The expenses for the intercollegiate program have been steadily increasing. Besides higher cost of equipment, lodging, travel and officials the addition of wrestling and swimming upon completion of the multi-purpose building mean additional costs to the athletic budget. The increased cost on utilities and maintenance adds another burden on the present budget. These cost hikes, deem that monetary support by raising fees is mandatory.

The intramural program is desperately in need of additional funds. Besides the rise in costs for equipment, the possibility of light helmets for flag football necessitates considerable amount of money. The intramural sports of swimming and handball will be put back into the program. Additional sports will be added when facilities become available. The projected future means building new fields and playing areas as well as an enlarged program making possible more participation by the student. Plans are made to have an intramural check-out room in the new field house for better service for the student at all times.

These reasons demonstrate that the additional money, given by the student through the raise in the activity fee, will simply come directly back to him in a better intramural program and indirectly through a broader intercollegiate program.

board for school events?

The answer is no. A college newspaper must serve many functions, one of these is certainly to serve as a campus bulletin board. But the newspaper should not stop there. It serves as a source of enjoyment and interest to the student as well as source of information on the events and happenings in the modern world.

The newspaper for many years has existed as a campus bulletin board. To grow into these many other areas which naturally come with a growing and modernizing campus takes money. This is why a \$.50 increase in the *Miner* allotment is needed.

This proposed increase would go into such direct and immediate benefits as:

- 1) Increased size and circulation.
- 2) Distribution to area high schools and colleges throughout the country.
- 3) Increased features such as contemporary cartoons, feature columnists, feature articles, national news, and contemporary comic strips.
- 4) Feature layouts such as the present page 10.
- 5) More and better photography (including *Miner* of the Week).
- 6) More and better writers resulting in more and better news, sports, and feature coverage.
- 7) More and better student opinion columns such as Student Forum.

A newspaper is like a UMR "tea." It's only as good as what you put into it. And to maintain the quality and the level of journalism which the Miners deserve and enjoy we must have the increase.

Many of the things that you may have enjoyed since the beginning of the semester can not continue without this fee increase.

KMSM

KMSM has been caught in a vice between rising costs and fixed income and as a result is experiencing financial difficulties.

As most students know, enroll-

ment at UMR is staying fairly constant and not increasing as would be predicted. Because KMSM obtains its money solely from student fees, its income has remained fixed over the past two years. This along with the rising cost of materials and labor has forced KMSM to ask for a 75¢ per student per semester increase, bringing the total income (if approved) to \$1.50 per student per semester.

If the increase is passed, the following is a list of changes or additions that will be made at KMSM:

1. The musical library will be expanded.
2. KMSM will begin to purchase and program rock music.
3. A teletype will be purchased to provide better news service.
4. Educational programming will be updated and improved.

It should be noted that none of the increase will go to salaries but will all go to expanding KMSM's services.

If KMSM is to continue its quality programming, it needs your support.

General Lectures

Why should the General Lectures Committee receive a \$.75 increase per man per semester from the proposed increase of \$.50 in the Student Activity fee?

1. No longer are the days when you could catch an entertainer on a pass-through.
2. Popular entertainers' fees are rapidly increasing, as are agents fees.
3. The need for "good" popular shows here at UMR is greater than our budget allows. We of the committee

feel that six shows should be slated for a school year.

5. Student fees this year amounted to only 3900 (\$1.50 - sem/man) or roughly \$11,700 and this just isn't enough when the prices run like this: (Using GAC, Chicago) approximate figures.

5th Dimension \$4,000 + (when available)
Johnny Rivers \$5,200 + (when available)
Lou Rauls \$6,500 + (when available)
The Four Seasons \$7,500 + (when available)
Sergio Mendes & Brazil '66 \$6,000 + (when available)
The Righteous Brothers \$7,000 + (when available)

These are prices that other schools are able and willing and able to pay. The problem is obvious. The increase of \$.75 will certainly help increase the *Miner* entertainment quality and quantity. (\$2.25/sem./man vs. \$1.50/sem./man provides a difference of \$6,000 using a base of 4000 paid fees.)

I am sure each person here at UMR would like to see 6 shows a year and of better quality - the answer is in supporting the increase in fees which is a step in the right direction.

Student Union

With ever increasing operating costs and demands the Student Union can no longer be run efficiently on its present budget. Two alternatives are offered. Either a number of activities could be curtailed to prevent a deficit in the proposed budget or there can be

a slight increase in fees. Since this increase is minimal it appears the most logical solution to this pressing problem. The present Student Union fee is \$10.00 per student/semester. The proposed increase of \$1.00 would boost this to a nominal \$11.00, the absolute minimum.

It must be explained that very little of this \$10.00 goes directly to the student. \$8.00 is allotted for debt liquidation and the building fund. This small remaining fee of \$2.00 must be used for the recreation and benefit of the student. Also keep in mind that his \$2.00 has been the same since 1860 when the Student Union began operating. In the near future, with constantly rising prices, an efficient program will not be possible with a serious lack of operating funds. Must the students' source of recreation be hindered by this shortage of funds?

Such social functions as Homecoming and the All-School Mixer are sponsored entirely by the Student Union's efforts. The weekly movie is also put on by the Student Union. With an increase in the cost of features and also better quality shows an increase is mandatory. For instance the rental price of "The Hustler" has increased from \$27.00 to \$85.00; "Alfie" from \$35.00 to \$125.00; and "A Patch of Blue" from \$30.00 to \$85.00. Also at most college and university student unions a small fee of 25¢ to 50¢ is charged for viewing these.

Use for the increased funds is the much needed equipment. At the present replacements are needed for the inadequate projector and stereo system.

UNIVERSITY OF MISSOURI - ROLLA STUDENT ACTIVITY FEE

	Present Fee			Proposed Increase			Proposed New Fee		
	Fall	Spring	Summer	Fall	Spring	Summer	Fall	Spring	Summer
Athletics	\$12.50	\$12.50	\$3.00	\$3.00	\$3.00	\$0.75	\$15.50	\$15.50	\$3.75
General Lectures	1.50	1.50		0.75	0.75		2.25	2.25	
Student Council	1.00	1.00					1.00	1.00	
Missouri Miner	1.25	1.25		0.50	0.50		1.75	1.75	
Golf Course	0.50	0.50	3.00				0.50	0.50	3.00
St. Pat's	0.50	0.50					0.50	0.50	
Radio Station									
KMSM-FM	0.75	0.75		0.75	0.75		1.50	1.50	
Rollamo	7.00						7.00		
Total	\$25.00	\$18.00	\$6.00	\$5.00	\$5.00	\$0.75	\$30.00	\$23.00	\$6.75


UNIVERSITY OF MISSOURI - ROLLA STUDENT UNION FEE

BREAK-DOWN OF FEE IN ACCORDANCE WITH PROPOSED INCREASE

	10 or More Hours	9 Hrs	8 Hrs	7 Hrs	6 Hrs	5 Hrs	4 Hrs	3 Hrs	2 Hrs	1 Hr
Unearned Revenue										
Student Union	\$ 5.50	\$4.95	\$4.40	\$3.85	\$3.30	\$2.75	\$2.20	\$1.65	\$1.10	\$0.55
Student Social & Rec. Program	3.00	2.70	2.40	2.10	1.80	1.50	1.20	0.90	0.60	0.30
Reserve for Future Student Union Building Addition	2.50	2.25	2.00	1.75	1.50	1.25	1.00	0.75	0.50	0.25
Total Student Union Building Fee	\$11.00	\$9.90	\$8.80	\$7.70	\$6.60	\$5.50	\$4.40	\$3.30	\$2.20	\$1.10

Missouri Miner


The question is often brought up - "Just what is the purpose of a campus newspaper." Should a newspaper only be a bulletin



MEMBER

The Missouri MINER

UNIVERSITY OF MISSOURI - ROLLA



MEMBER

THE MISSOURI MINER is the official publication of the students of the University of Missouri - Rolla. It is published at Rolla, Mo., every Wednesday during the school year. Entered as second class matter February 8, 1945, at the Post Office at Rolla, Mo. 65401, under the Act of March 3, 1879. The subscription is \$1.25 per semester. This Missouri Miner features activities of the Students and Faculty of UMR.

ASSOCIATED COLLEGIATE PRESS RATING: First Class

<p>BOB MILDENSTEIN Editor 364-7867</p> <p>KEITH TROUTMAN Business Manager 364-9993</p> <p>GARY BURKS Feature Editor</p> <p>BOB WARD Circulation Manager</p> <p>RON EILERS Nat. Adv. Director</p> <p>TIM FRY Features Lay-Out</p>	<p>JIM MCKELVEY News Editor</p> <p>RAY KALBAC Make-Up Editor</p> <p>MAX ATTEBERRY Local Adv. Director</p> <p>STEVE KISSEL Photographer</p>	<p>ROGER ELLIS Sports Editor</p> <p>JIM WEBER Copy Editor</p> <p>DON RUETER Proofreader</p> <p>GREG JULIAN Sports Lay-Out</p>
--	--	---