



10 Nov 1967

## The Missouri Miner, November 10, 1967

Follow this and additional works at: [https://scholarsmine.mst.edu/missouri\\_miner](https://scholarsmine.mst.edu/missouri_miner)

These newspapers reflect the attitudes, perspectives, and beliefs of different times. Neither the library nor the university endorses the views expressed in these collections, some of which contain images and language which may be offensive to some readers.

---

### Recommended Citation

"The Missouri Miner, November 10, 1967" (1967). *The Missouri Miner Newspaper*. 1873.  
[https://scholarsmine.mst.edu/missouri\\_miner/1873](https://scholarsmine.mst.edu/missouri_miner/1873)

This Newspaper is brought to you for free and open access by Scholars' Mine. It has been accepted for inclusion in The Missouri Miner Newspaper by an authorized administrator of Scholars' Mine. This work is protected by U. S. Copyright Law. Unauthorized use including reproduction for redistribution requires the permission of the copyright holder. For more information, please contact [scholarsmine@mst.edu](mailto:scholarsmine@mst.edu).



Proceeds from the movie will be used to finance a band for this year's St. Pat's celebration.



## Federal Supported Education Proposed by Howard R. Bowen

The rising cost of a college education at a time when college is increasingly necessary for more and more young people has led to many proposals for easing the financial burden. One of the most promising is the plan recently advanced by President Howard R. Bowen of the University of Iowa.

Bowen proposes a federally-supported system of grants and loans that would enable anyone to go to any college that accepted him, regardless of his financial situation. The grants would be enough in each case to bridge the gap between the price of a low-cost college education and what the student and his family could reasonably be expected to provide. The loans would enable a student to broaden his horizons further.

This program would require a means test similar to the one that thousands of families — many

of them middle- and upper-income — already take to qualify their children for scholarships or college-financed grants. They list in detail their income, assets, debts, size of family, etc., for an agency that analyzes the figures and then advises each college to which the student has applied as to the amount of aid he deserves.

The difficulty is, of course, that the aid is not always forthcoming because of limited scholarship funds. Under Bowen's system, if the cost of a basic college year were figured at, say, \$1,500 and the means test showed that the student and his family could pay only \$300, the federal government would automatically supply the \$1,200 balance.

We have mentioned "low-cost," "basic" and tentative figure of \$1,500. Bowen does not propose that everyone is entitled to a free

ride through Harvard, or that a student from Iowa be given aid to attend college in New York or California. The grants would be tailored to enable a student to get a college education near home, probably in a public institution, perhaps in a low-cost private college while living at home. If he wants to go to Harvard (and is accepted there), this is where the loans come in.

Bowen proposes a variety of loan programs, both federal and private but federally-guaranteed, with many kinds of repayment options. These would not be tied to need. They would be available as supplements to grants for students who could justify more costly education. They also would be available to students whose family income was too high to justify a grant but not high enough to cover cost at an expensive college.

This seems to be a practical proposal for financing the student's share of the cost of higher education — about 75 per cent of the total, largely in earnings foregone during the years in college, according to Bowen. The plan is flexible, so it would fit in with, but not disrupt, the present systems, public and private, of financing higher education.

## New Professor Gives Feelings On UMR Campus

One of the recent additions to the UMR faculty is Orlo McNary, an assistant professor in the Mechanical Engineering Department.

Professor McNary received his Bachelor of Science degree from Kansas State and his Masters and Ph.D. degrees at Illinois University. His thesis was on the research of "thermo contact resistance or the resistance of heat flow at the inter phase between two solids." He is originally from Sabetha, Kansas and feels very much at home here.

His feelings about UMR were made in a comparison to Illinois University. Dr. McNary thinks UMR students are "much the same as at Illinois," but that the attitude here is different and a little better because of UMR being primarily an engineering school. Students at Illinois are "interested in different things than engineering," because of the varied courses there.

He goes on to say there are a "lot of opportunities for new staff members at UMR" because the student-faculty ratio is higher. He feels more M.E. undergraduates should consider advanced degrees mainly in fluid flow and heat transfer rather than tool design. With seven new faculty members, and a changing of the fluid flow course he feels more undergraduates will go on for Masters and Ph.D. degrees in fluid flow and heat transfer.

## UPTOWN THEATRE MOVIES IN CINEMASCOPE

Thurs. Fri. Sat. Nov. 9-11  
"The St. Valentine's Day Massacre"  
Jason Robards & George Segal

Sun. Mon. Tues. Nov. 12-14  
Sunday Continuous from 1 p.m.  
"The Caper of the Golden Bulls"

Stephen Boyd & Yvette Mimieux

Wednesday Nov. 15  
St. Pat's Benefit Movie

"The World of Suzie Wong"

William Holden & Nancy Kwan

RITZ THEATRE  
MOVIE IN WIDE SCREEN

Thurs. Fri. Sat. Nov. 9-11  
Saturday Continuous from 1 p.m.

"Barefoot in the Park"

Jane Fonda & Robert Redford

Sun. Mon. Nov. 12-13  
"The Big Mouth"

Jerry Lewis & Harold Stone

Tues. Thru Sat. Nov. 14-18  
Admission: Adults 75c

"Banning"

Robert Wagner & Anjanette Comer

## Rolla and UMR Leaders Honor General Walker

Maj. Gen. George H. Walker, new commanding general at Fort Leonard Wood, was honored by a group of Rolla civic leaders and UMR faculty and administrative officials at a welcome luncheon Thursday (Nov. 9). The luncheon was held at 12 noon in the East Ballroom of the UMR student Union.

About 35 city leaders and 20 UMR representatives attended. Following the luncheon, Gen. Walker toured the UMR campus and the city of Rolla.

Gen. Walker assumed command of Fort Leonard Wood in September, after an assignment as South Atlantic Division Engineer at Atlanta, Ga. Previously he had occupied positions as division engineer of the Missouri River Division at Omaha, Neb.; director of topography and military engineering in the office of the chief of engineers at Washington, D.C., and assistant commandant of the

U.S. Army Engineer School at Fort Belvoir, Va.

His civic works duty includes service as district engineer in San Francisco and deputy to the assistant chief of engineers for civil works at Washington, D.C.

The General served in both the Southwest Pacific and European theaters in World War II and later in Korea. He has been staff officer with the War Department General Staff and has been an engineer with the U.S. Continental Army Command at Fort Monroe, Va.

Gen. Walker is a native of Muskogee, Okla. He was graduated from the U.S. Military Academy, West Point, and received his master's degree in civil engineering from the University of California. He also attended the Army War College.

Gen. Walker is a registered professional engineer in Nebraska.

**\$ \$ \$ SAVE \$ \$ \$**  
**HOOK AUTO SUPPLY**  
**DISCOUNT PRICES**

Open 9 to 8 Monday Thru Friday — 8 to 6 Saturdays

**GO WIDE TRACKING**  
**AT**  
**CENTRAL PONTIAC**

**Le Mans and G. T. O.**  
**TREMENDOUS DISCOUNTS !!**

- Small or No Down Payment
- Deferred Payments as low as \$25 monthly until on the job
- Service After the Sale

If Central Pontiac Doesn't Have a Tiger

for you . . .

**TRY THE ZOO !!!**

## 509 PACKAGE STORE

— PARKING IN REAR —

116 WEST 8TH STREET

PHONE 364-6131

— EVERYDAY LOW PRICES —

### BEER

#### THROW-AWAY SIX PACK

Throw Away	6 Pack	Case
PABST	\$ .92	\$3.60
SCHLITZ DRAFT	1.08	4.25
MILLERS	1.08	4.25
STAG	1.02	4.03
BUDWEISER	1.20	4.75

#### 12 OZ CANS

FALSTAFF	1.02	3.99
HAMMS DRAFT	1.08	4.25
OLD MILWAUKEE	.92	3.60
FOX DELUXE	.75	2.95
1/2 BARREL BUDWEISER		\$19.42

### SODA

#### OK PREMIUM 10c OFF

12 - 12 OZ BOTTLES 59c Plus Deposit

#### COKE - PEPSI - TEEM

6 - 10 Oz. Bottles 45c Plus Deposit

CANADA DRY 28 Oz. 29c

### CIGARETTES

REGULAR	Carton	\$2.48
KING	Carton	2.52
100 MM	Carton	2.62

### LIQUORS

	1/2 Pint	Pint	5th
1843 BOND	1.97	3.93	5.88
DANIEL BLACK	1.94	3.81	5.84
OLD TAYLOR	1.49	2.91	4.59
OLD CROW	1.35	2.70	4.10
GLENMORE	1.33	2.59	3.92
TEN HIGH	1.17	2.30	3.43
HEART OF KENTUCKY	1.99	3.06	
VAT 69 GOLD	1.74	2.93	4.95
HAIG & HAIG	1.73	2.80	5.05
ROYAL SCOTT			3.69
SOUTHERN COMFORT	1.73	3.38	5.21
WALKERS GIN	1.09	2.11	3.13
GORDONS GIN	1.20	2.36	3.39
CONRADS VODKA	.93	1.82	2.69
SMIRNOFF 86	1.27	2.49	3.74
MOVQVIN BRANDY	1.35	2.21	4.09
RON MERITO RUM	1.20	1.99	3.66
BACARDI RUM	1.36	2.21	4.10
TAYLOR CHAMPAGNE			3.45

#### SPECIAL 10c OFF

16 Oz. INSULATED BUDWEISER  
BEER MUGS \$1.10



## Dr. George Schweitzer to Lead Science-Religion Symposium

Dr. George K. Schweitzer, well-known as a lecturer on college campuses throughout the nation, will lead a symposium following the theme "Science Ponders Religion" on the University of Missouri at Rolla campus November 15, 16, and 17. The symposium is being sponsored by the campus ministries of the UCCF, Methodist, Baptist, Episcopal, and Catholic Churches.

Dr. Schweitzer, a native of Poplar Bluff, Missouri, is at present Professor of Chemistry at the University of Tennessee in Knoxville. His duties include teaching and directing research in the fields of inorganic and nuclear chemistry

both on the main campus and at Oak Ridge division of the University.

Professor Schweitzer received a B.A. in chemistry from Central College, an M.S. in geochemistry from the University of Illinois, an M.A. in religion from Columbia University and Union Theological Seminary, a Ph.D. in inorganic chemistry from the University of Illinois, a second Ph.D. in philosophy of religion from New York University, and an ScD. for work in the history of science from Central College.

He is author of over 80 papers in inorganic and nuclear chemistry, a textbook on radioactivity, numer-

ous papers in the intersecting spheres of science, philosophy, and religion, and is contributor of essays to a number of books. He is a member of Phi Beta Kappa, Sigma Xi, the American Chemical Society, and the History of Science Society. He has acted as scientific consultant for the Atomic Energy Commission, Monsanto, Proctor and Gamble, American Cyanamid, the Army Radiological Defense Laboratories, and other companies and agencies.

The following is an outline of the three-day symposium:

WEDNESDAY - 12:30 p.m. - Presentation and discussion in Philosophy of Science class. Topic: "Clues and World Views"

7:00 p.m. - Address and discussion at the Student Union Ballroom. Topic: "A Clue to the Cosmos"

THURSDAY - 4:30 p.m. - Chemistry Seminar. Topic: "The Solvent Extraction of Metal Chelates"

6:00 p.m. - Faculty dinner. Topic: "Religious Values and Academic Activity"

FRIDAY - 12:30 p.m. - Philosophy of Science class. Topic: "The Christian Clue"

7:30 p.m. - Address and discussion at the Student Union Ballroom. Topic: "Modern Science and the Planetary Crisis"

9:00 p.m. - Cellar Door Coffee House. Open discussion with Dr. Schweitzer.

## UMR Rifle Team Unbeaten



THE UMR RIFLE TEAM

The UMR Varsity Rifle Team emerged victorious in the shoulder to shoulder matches held at the UMR ROTC indoor rifle range on Saturday, November 4, 1967, with a total score of 2064 out of a possible 2400 points.

The University of Missouri at

Columbia captured 2nd place honors in the six team match with a score of 2039.

The UMR Rifle Team will journey to Stillwater, Oklahoma on November 17, to participate in the Oklahoma State University Invitational Meet.

## UMR's Spelunker's Club Begins Eighteenth Year

The Spelunkers Club has been an active organization on campus since the early 1930's. It is the oldest organized club of its kind in Missouri and has been an official school organization since 1949.

The club has a membership of about seventy students and has various objectives, some of which are: mapping caves, geology, photography, conservation, biology, and scientific research, which includes hydrology. Conservation is very strongly stressed. The club tries to leave all caves in the same condition or in better condition than when they entered. They also stress the conservation of the property around the location of the cave.

The Spelunker's Club also has a rescue committee. They usually receive several calls a year from the highway patrol to rescue people who are lost or who have had their lights fail.

The activities of the club include weekly, open business meetings, slide shows, various talks, member's experiences, and outings. The meetings are held every Wednesday, at 6:15, in Room 305 of Norwood hall. Officers of the club are: Dave Butherus, president; Ed Garrison, vice-president; and Dave Webster, secretary-treasurer.

## THE CELLAR DOOR


The Cellar Door Coffee House will be open Friday, November 17, at its usual location - the parish house of Christ Episcopal Church at Tenth and Main Streets.

The "Door" will feature the usual and the unusual at this November opening. The early part of the evening will be given over to an open discussion on science and religion led by Dr. George Schweitzer who will be also speaking on campus on the same theme during the week.

Later the "Door" will present both its traditional folk-singers - the Brothers and Others, Jan Vickers, Debbie Sparkman and others. A first in the way of "happenings" for Rolla will be a color movie entitled, "Help! My Snowman is Burning Down!"

UMR's campus ministers invite all students and faculty to visit the Cellar Door.

The club is affiliated with the Missouri Speological Survey, which coordinates the efforts of all the spelunking clubs in the state. This club at UMR can make a statement that very few other clubs can make, and that is, "No member has ever been seriously injured while caving." The Spelunkers Club is a very active, prudent, and adventurous organization.




### VOLKSWAGEN

#### Sales and Service

## BILL SOWERS MOTORS

Phone 364-5178 Hwy. 66 E. in Northwye

"USED CARS HWY. 66 W. BY BIEDERMAN'S"



### THE COLLEGE MASTER

IS NO. 1 IN SALES & SERVICE TO COLLEGE MEN  
IN THE NATION AND HERE AT UMR

Find out why more seniors and graduate students choose the College Master as their means of guaranteeing their future financial security than all other plans combined.

Jim Piatchek and Paul Pfeifer are your College Master representatives. They are trained professionals to help you now and throughout your entire career with a specialized, exclusive financial portfolio.

BE SURE AND SEE THE COLLEGE MASTER BEFORE  
YOU LEAVE SCHOOL TO SEE  
IF YOU CAN QUALIFY?

MEET

**Jim Piatchek, G. A. or Paul Pfeifer**


LIFE INSURANCE - FINANCIAL PLANNING

364-5268

**FIDELITY UNION LIFE INS. CO.**

211 SO. HWY. 63 - P. O. BOX 912 - ROLLA, MISSOURI

## CAREERS IN STEEL



Our representative will be on campus

NOVEMBER 28, 29

to interview candidates for Bethlehem's 1968 Loop Course training program.

**THE LOOP COURSE** trains selected college graduates with management potential for careers with Bethlehem Steel. The Course begins in early July and consists of three phases: (1) orientation at our headquarters in Bethlehem, Pa.; (2) specialized training in the activity or field for which the Looper was selected; and (3) on-the-job training which prepares him for more important responsibilities.

**OPPORTUNITIES** are available for men interested in steel plant operations, sales, research, mining, accounting, finance, and other activities.

**DEGREES** required are mechanical, metallurgical, electrical, chemical, industrial, civil, mining, and other engineering specialties; also chemistry, physics, mathematics, business administration, and liberal arts.

If you expect to be graduated before July, 1968, and would like to discuss your career interests with a Bethlehem representative, see your placement officer to arrange for an interview appointment—and be sure to pick up a copy of our booklet "Careers with Bethlehem Steel and the Loop Course." Further information can be obtained by writing to our Manager of Personnel, Bethlehem, Pa. 18016.

## BETHLEHEM STEEL

*An Equal Opportunity Employer  
in the Plans for Progress Program*





## Miner Editorials, Letters, and Features



### Specific Steps Taken to Improve Student Faculty Communications

#### On UMR Campus . . .

The University of Missouri at Rolla, in keeping up with the country's ever changing colleges and universities, has formed over one hundred committees and boards made up of both faculty and students. These committees are responsible for the harmony and order with which the problems on the UMR campus are settled.

Each committee reports to one of the following people: The Chancellor, Dean of Faculties, Business Office, Graduate Dean, Director of Student Personnel, or Director of Student Services. Each committee meets at least once during the year and has to submit an annual report to Mr. Robert B. Lewis, Director of Admissions and Registrar.

The Assemblies Committee, which reports to the Director of Student Personnel, recommends convocations, arranges programs for all convocations, and prepares the annual honor publications. The chairman is Mr. Melvin L. Garner and the student member is Dennis Fesler.

The Athletics Committee reports to the Director of Student Services, and is concerned both with intramural and intercollegiate sports. The chairman is Mr. Rodney A. Schaefer with Charles Andrews as a student committeeman.

The Campus Faculty Planning Committee answers directly to Chancellor Baker and investigates and advises on the pattern and progress of the development of the physical facilities on the campus. Mr. Joseph D. Wollard is the chairman and Bill Wolf is the student representative.

The General Lectures Committee reports to the Director of Student Services with Mr. David L. Oakley as chairman, and Bob Bruce and Jerry Vaughn as student representatives. They are to cooperate with the Student Council in proposing and scheduling programs for the educational and cultural advancement of students.

The Housing Committee advises on policies for student housing on and off campus and serves as an appeal board for students and householders on decisions of the manager under the provisions of the University housing regulations. Mr. L. L. Francis is chairman and Dennis Chasten is one of the student representatives. The Housing Committee reports to the Business Office.

The Student Advising Committee proposes procedures for reducing the failure and dropout rate of undergraduates. The chairman is Mr. Wilbur Tappmeyer and the student committeeman is Tom Pokrefke.

The Student Union Expansion Committee studies needs for student recreation, cultural programs and other activities normally associated with University Student Unions. Mr. John P. Govier is the chairman and Al Behring, Mike Clayton, and Bill Wolf are the student representatives.

### THE MINER

UNIVERSITY OF MISSOURI AT ROLLA



THE MISSOURI MINER is the official publication of the students of the University of Missouri at Rolla. It is published at Rolla, Mo., every Friday during the school year. Entered as second class matter February 8, 1945, at the Post Office at Rolla, Mo. 65401, under the Act of March 3, 1879.

The subscription is \$1.25 per semester. This Missouri Miner features activities of the Students and Faculty of U. M. R.

Editor-in-Chief: Frank Fix  
Business Manager: Charles Painter  
Managing Editor: Gary Burks  
Make Up Editor: Bob Mildenstein  
Copy Editor: Tim Corbett  
Secretary: Keith Trautman  
Features Editor: Jim McKelvey  
Advertising Manager: Max Atteberry  
Circulation Manager: Tim Vincenti  
Ass't Managing Editor: Tim Fry  
Ass't Make up Editor: Ray Kalbac  
Sports Editor: Greg Julian  
Proofreader: Don Rueter

#### Across the Nation . . .

The nation's state colleges and universities have taken specific steps this fall to deal with such student complaints as lack of communication with faculty and administration, insufficient participation in setting school policy, and feelings of alienation because of campus "bigness," according to a survey made by the Association of State Colleges and Universities.

The pervading focus of concern among the country's state colleges and universities, which educate one out of every five college and university students, has been to search out ways of dealing with student frustration and unrest. In many cases, this has taken the form of giving students representation on key faculty and administrative committees.

At Radford College in Virginia, for example, students will begin to serve on nine faculty committees and at the State College at Westfield in Massachusetts there will be student representatives on the school's three standing committees - Executive, Curriculum and Discipline. Two Montana Colleges - Eastern and Northern - are increasing existing student representation on faculty and administrative committees.

Pennsylvania's Shippensburg State College will put students on its Curriculum Committee. Louisiana Polytechnic Institute will place students on all committees within the Division of Student Affairs, plans to group all student organization presidents into a council to meet monthly with the Dean of Students, and has adopted a procedure for the release of student personnel records.

West Texas State University has set up a new committee, consisting of five students, five administrators and five faculty members, "to give greater visibility to student views." At California State College at Fullerton, student and faculty representatives will meet at a two-day retreat in an effort "to improve communications."

A good number of schools have turned to a re-appraisal of student codes and guidelines as one way of approaching student problems. At the State University of New York at Buffalo, for example, a task force produced a detailed academic charter - including a students' Bill of Rights - which is now in the process of being implemented.

The Traffic Safety Committee supervises the administration of traffic regulations and hears appeals from assessed penalties, and has authority to change penalties. They can also make changes in the University Traffic Regulations. Mr. Vernon Gevecker is the chairman and Bill Wolf is the student representative.

There is also a committee that selects *Who's Who Among Students in American Colleges and Universities*. This committee is headed by Mr. Hector McDonald and the student representatives are Bob Mueller, John Munns, and Bill Wolf.

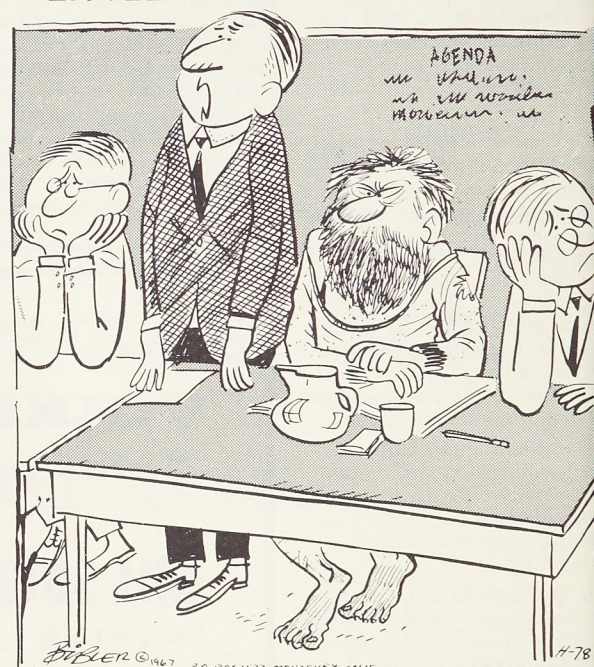
### Administration Commends Student Body Conduct

On behalf of the Administration and Faculty we want to commend the student body for its efforts to improve the "Miner image" during recent weeks. Student response to request for improved conduct at athletic events, the improvement in dress, and display of gentlemanly conduct at off campus social functions is commendable. The cooperation with student leadership during Halloween activities has convinced us that UMR students are proud of the reputation of this campus and will continue to be among the most sought after college graduates in the nation.

During recent weeks UMR staff members have received many favorable comments relative to the positive approach of our students towards responsible conduct. We are proud of our student body and pledge our support toward helping them further enhance the good image of this institution.

Merl Baker  
Chancellor

### LITTLE MAN ON CAMPUS



"NOW THE FACULTY SENATE WILL HEAR A WORD FROM THE CHAIRMAN OF THE STUDENTS RIGHTS COMMITTEE."

### NEW... JADE EAST GOLDEN LIME



AFTER SHAVE from \$2.50  
COLOGNE from \$3.00  
SWANK Inc. - Sole Distributor  
As an alternate fragrance,  
try JADE EAST or Jade East CORAL

### Diehl Montgomery, Inc.

ROLLA, MISSOURI

FORD - LINCOLN - MERCURY - T-BIRD - CONTINENTAL

DRIVE YOUR NEW CAR BEFORE YOU GRADUATE!

See Us for Your Special Student Pay Plan

on New or Used Cars.

Payments Tailored While You Are in School and Out.



## ROTC Department Offers Monetary Student Rewards

Colonel John M. Frassrand, Professor of Military Science at UMR has announced that UMR is one of the 247 colleges and universities in the United States which will offer students the opportunity to participate in the U.S. Army Reserve Officers Training Corps (ROTC) Scholarship Program.

"The number of scholarships to be awarded to both prospective and college students during the 1968-69 school year should exceed 1600," Colonel Frassrand stated. In addition he indicated, "there are 14 scholarship students currently enrolled at the University of Missouri at Rolla, which is a high percentage in relation to other colleges and universities throughout the United States."

Army scholarships were authorized by the ROTC Vitalization Act of 1964 to provide financial assistance to the students interested in obtaining a Regular Army Commission through the ROTC Program. Each recipient will receive

his tuition, text books and lab fees.

The high caliber of the young men who have received previous four-year scholarships is indicated by the high school records of those entering college in fall of 1967. Of the 800 four-year scholarships awarded in 1967, 798 students ranked in the upper 20 percent scholastically of their high school graduating class.

The high leadership potential of the 1967 awardees is indicated by the fact that 572 were presidents of their student bodies or were class officers, 472 were National Honor Society Members, and 458 were Varsity Letter Winners.

## Dr. Hansen Assists IFC As Faculty Advisor

This year, the Interfraternity Council is pleased to have Dr. Peter G. Hansen, Professor of Engineering Mechanics, as an Assistant Faculty Advisor.

Dr. Hansen was first appointed to the University in 1953 after receiving his B.S. in Civil Engineering from the Missouri School of Mines and Metallurgy. In 1957, he obtained his Masters Degree in Civil Engineering, also here at the University. He received his Doctorate in Applied Mechanics from Washington U. in St. Louis in 1963.

Besides acting as an advisor to the IFC, Dr. Hansen is Chairman of the Library Committee, a member of the Advisory Board of

Graduate Students, and serves on the Chancellor's Faculty Liaison Committee. He is also very active in community affairs, being a member of the local Kiwanis Club and serving on the Board of Directors for Rolla Community Development.

A member of Sigma Phi Epsilon social fraternity, Dr. Hansen is Treasurer of the Alumni Corporation for the Rolla chapter of Sig Ep. He is married and has three children.

The Interfraternity Council is fortunate to have men like Professor Bob Wolf and Dr. Pete Hansen serving as advisors. Their knowledge of campus affairs helps to guide the IFC in all its undertakings.

## Baha'i Faith In Anniversary

On Sunday, November 12, at 3:00 P.M., in the Parish House of Christ Church Episcopal, many UMR students and faculty will join Baha'i students of UMR in celebrating the 150th Anniversary of the birth of Baha'u'llah, prophet-founder of the Baha'i Faith, who declared that His Mission was to unite the people of the earth, regardless of color, creed, or nationality. He said, "Ye are the fruits of one tree and the leaves of one branch." He invited all the people to unity, peace, and justice and furthermore, He promised universal peace.

### NOTICE!

The M-Club requests that all students remove their high school letters from their school jackets. It is felt that only UMR letters should be worn on campus.

### NOTICE!

Taking of senior portraits for the yearbook will begin next week at the Del Valle Studios and will continue until Christmas. Seniors will receive a postcard in the mail giving the date and time when the picture will be taken. After the start of Christmas vacation NO MORE SENIOR PORTRAITS WILL BE TAKEN.

## RUDY'S Package Stores

Two Locations

604 Elm St.

703 Pine St.

CUT RATE

EVERYDAY PRICE

### BEER SPECIALS

Throw-A-Ways

Pabst 12 oz. .... 6 pk. 97c

Falstaff 12 oz. .... 6 pk. \$1.16

Millers 12 oz. .... 6 pk. \$1.21

### CANS

Falstaff 12 oz. .... 6 pk. \$1.21

Pabst 12 oz. .... 6 pk. \$1.21

Hamm's 12 oz. .... 6 pk. \$1.21

### LIQUORS

Wild Turkey ..... 5th \$7.65

Imperial ..... 5th \$3.75

Bond & Lillard .... qts. \$4.13

Mattingly & Moore qts \$4.08

100 Pipers ..... 5th \$6.53

Beefeater's ..... 5th \$5.29

### ICE CUBES

AT BOTH STORES

Cold Wine & Chapagne

At 604 Elm St.

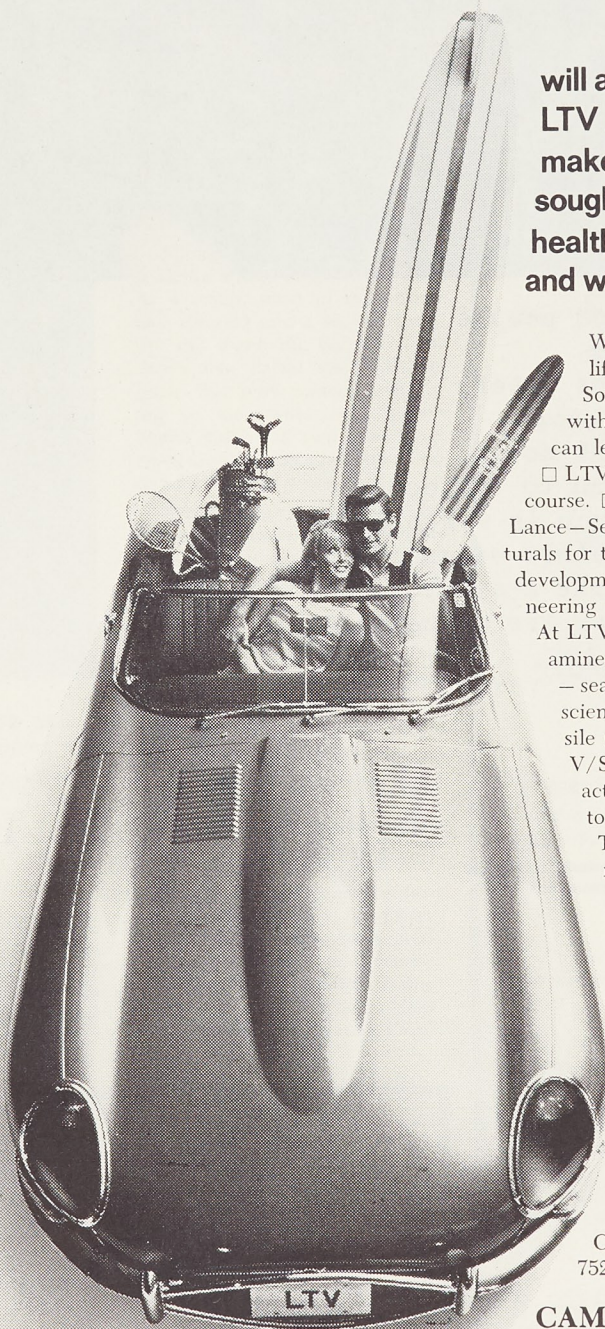
will a job with  
LTV Aerospace  
make you more exciting,  
sought after,  
healthy, wealthy  
and wise?

Why shouldn't you enjoy the good things of life when you're out to conquer the universe? Sound far fetched? It's not. ☐ Your first job with LTV Aerospace sets you on a path that can lead you almost anywhere you want to go. ☐ LTV Aerospace Corporation makes products, of course. ☐ The A-7 - F-8 - Gama Goat - MACV - Lance - Sea Lance - Scout - prime subcontract structural for the 747 and the SST. That's a few. Design, development and production require systems engineering with enormously diversified capabilities. ☐ At LTV Aerospace those capabilities are being examined in terms of the total environmental picture - sea, land, air, space and outer space - in ocean sciences - high mobility ground vehicles - missile systems - military and commercial aircraft, V/STOL - launch vehicles - extra vehicular activity research and development. These are today's spheres of action at LTV Aerospace. They are the frontiers of tomorrow. ☐ A representative of LTV Aerospace Corporation will visit your campus soon. Talk to him. Talk specifics about programs, assignments, duties, salaries. Then, talk futures. Ask questions about where your first job can take you. ☐ He'll have answers for you, and they won't be vague generalities. He'll show you where LTV Aerospace Corporation is heading in the total environmental adventure, and how you fit in. ☐ You could find yourself getting pretty excited about it. And that's a darned good way to feel about your first job.

College Relations Office, LTV Aerospace Corporation, P. O. Box 5907, Dallas, Texas 75222. An equal opportunity employer.

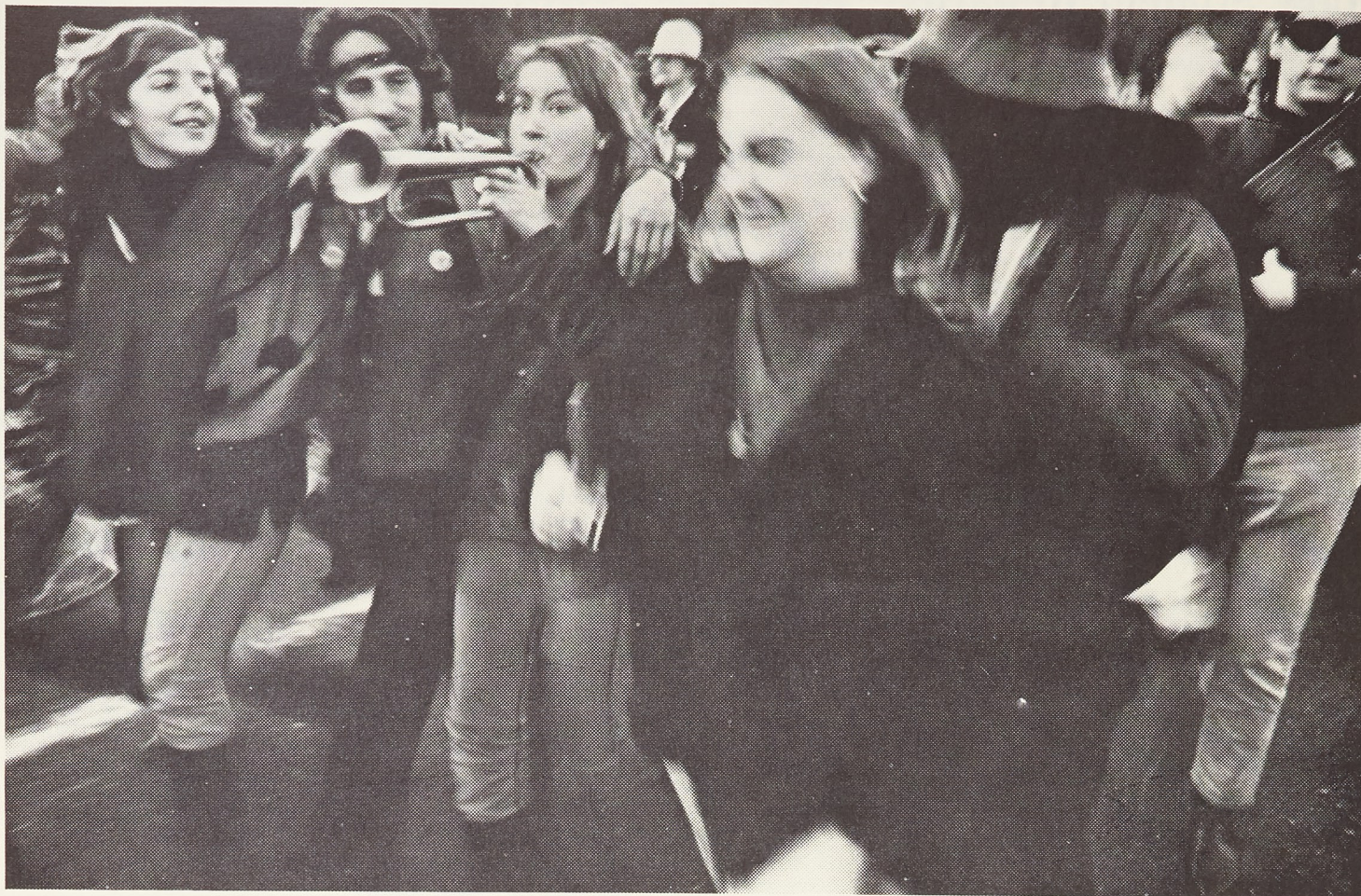
### CAMPUS INTERVIEWS

November 17, 1967



LTV AEROSPACE CORPORATION  
A SUBSIDIARY OF LING-TENCO-VOUGHT, INC. DALLAS  
MISSILES AND SPACE DIVISION • VOUGHT AERONAUTICS DIVISION • KENTRON HAWAII, LTD. • RANGE SYSTEMS DIVISION





Come gather 'round people  
Wherever you roam  
And admit that the waters  
Around you have grown.  
And accept it that soon  
You'll be drenched to the bone,  
If your time to you is worth savin'  
Then you better start swimmin'  
Or you'll sink like a stone,  
For the times they are a-changin'!

© 1963 (Unp) by M. Witmark & Son in the U.S.A.  
© 1964 by M. Witmark & Son under Universal Copyright Convention.  
Used by Permission.

Bob Dylan

To communicate is the beginning of understanding



**AT&T**  
and Associated Companies

TO PASS

Tech Club's  
end Mel Toxtine  
Sigma Nu.

Cape G  
In MIA

Southeast Miss  
Gardeau clinch  
for the MIAA fo  
whipping Sou  
State College 31  
three MIAA ma  
red.

The Mules of  
State downed Mar  
Northeast Misso  
the Miners 13-7.

The Cape G  
kept in line with  
ven and now bo  
as they go into  
race match. A bi  
success is due to  
Brune. Brune hit  
passes for 154 y  
one pass for a  
d for another.

Southeast Miss  
was a standout  
With Smallwood  
yards against  
The Mules, w



# MINER SPORTS

FRIDAY, NOVEMBER 10, 1967

THE MISSOURI MINER

PAGE 7

## Tech Claims Football Crown; Squeezes by Sigma Nu 14-13

Led by the powerful passing of quarterback Bill "Duck" Chesus, Tech Club scored somewhat of an upset championship victory over Sigma Nu 14-13 in the finals of intramural flag football. Tech Club stormed to a 14-0 lead and then slacked off as the "Snakes" tried to catch up.

"The ballgame was tough all the way, but we seemed to get the critical plays to go our way," said the Duck. "We had no set game plan. I just called the plays the way I saw them and now I'm going to drink some beer."

Tech Club was constant in gaining short yardage on passes and sweeps early in the game. About halfway through the first half Duck faded back and hit end Mel Toxtine in the end zone for the first score of the game.

With time running out in the first half, Tech Club rallied again and this time scored on a 2 yard roll out pass. Kicker Jim Slapak booted both extra points and the score stood at 14-0.

As the second quarter came to a close Sigma Nu threw the long bomb and scored on a 40 yard pass to end Larry Schall from

quarterback Gary Turner. The extra point failed however, and later cost Sigma Nu the game. The half-time score thus stood at 14-6.



**POWER PLAY**

Quarterback Bill Chesus of Tech Club drives for five yards.

(Photo by John Hawkins)

Sigma Nu was never able to launch a sustained passing attack. As a result, most of the second half reverted into a see-saw battle up and down the field as Tech drives also stalled short of their goal. But with minutes remaining in the contest, a desperate Snake bid for a score payed off when Gary Turner again connected to Schall for six points.

Even though LeRoy Wheatley booted the extra point this time, Tech still maintained that one point margin as the waning minutes of the game elapsed.

This championship was only the second in Tech history as they burned up the intramural gridiron with an 8-0 record this season.

Sigma Nu finished their season with a 7-1 mark, this last loss being only their second in the past four years.



**TD PASS**

Tech Club's quarterback Bill Chesus completes a TD pass to end Mel Toxtine in the first half of the championship game with Sigma Nu.

(Photo by John Hawkins)

## Cape Girardeau Favored In MIAA Conference

Southeast Missouri State at Cape Girardeau clinched at least a tie for the MIAA football crown by whipping Southwest Missouri State College 31-0 in one of the three MIAA matches last weekend.

The Mules of Central Missouri State downed Maryville 24-14, and Northeast Missouri State edged the Miners 13-7.

The Cape Girardeau Indians kept in line with their perfect season and now boast a 4-0 record as they go into their last conference match. A big part of Cape's success is due to quarterback Greg Brune. Brune hit on six of twelve passes for 154 yards. He flipped one pass for a TD and ran the ball for another.

Southeast Missouri State also has a standout in the form of Walt Smallwood who rushed for 86 yards against the SWMS Bears.

The Mules, with a 3-1 mark,

have a single game remaining. Their spark is named Ken Brumley who scored 12 points last Saturday on a TD, a Field Goal and three conversion points.

### NOTICE!

Traffic Safety announces a new service for students. The Office is now prepared to fingerprint students for applications, security clearances, etc. Contact Traffic Safety between the hours from 3:30 to 5:30 p.m. Tuesdays and Thursdays.

### New Official UMR Class Rings

BY L. G. BALFOUR CO.

**BULOVA ACCUTRON**

DIAMONDS and ENGRAVING  
WATCH REPAIRING

**Christopher Jewelers**

805 Pine Street

## UMR Faces Bearcats

This Saturday the Miners will have their last chance to pull themselves out of the MIAA cellar as they face the Bearcats of Northwest Missouri State College. The Bearcats meet the Miners after posting a single win in the MIAA league over Kirksville.

Theoretically it should be a close match and Head Coach Dewey Allgood feels that the Miners should take the game. Even though the Miners lost to Kirksville last weekend, it was a close bout and the Miners topped the Bulldogs in everything but the scoreboard.

Most of the regular Miner starters will see action this Saturday except for defensive tackle Leonard Stout who received a neck injury in last Saturday's game with Kirksville.

According to Head Coach Dewey Allgood Miner noseguard Kent Florence and tackles Allen Zaborac and Tom Owens showed outstanding defensive work and will definitely start Saturday.

Northwest Missouri State's Head Coach Ivan Schottel plans on running an 'I' formation this Saturday with several variations. According to scouting reports the Bearcats ran about 15 different offensive sets while working with a Wing-I and a Power-I.

The man that the Miners will

have to stop is fullback Tom Owen, the leading ground gainer in the MIAA conference. Between him and the combination of quarterback Don Orlewski and end Barry Monaghan the Miners will have their hands full.

### COACH KEY'S FIVE START PRACTICE

The Miners started practicing for the coming basketball season October 16. Returning from last year's squad are eight lettermen. They are Len Bornemann 6-6 center, Bob Brown 6-4 forward, John Head 6-4 forward, Bob Hurt 6-5 guard, Wayne Lewis 6-5 center, Loris Piepho 6-3 forward, Randy Vessell 5-10 guard, Mike Windish 5-11 guard.

Randy Vessell from Farmington who made All Conference, will be expected to carry out the brunt of the attack. All the lettermen are sure to see a great deal of action this year.

Gary Merseal a freshman guard from Farmington has looked good in practice. Other squad members are: Randy Deaver 6-4 forward, King City; Chuck Perry 6-6 forward, St. Louis, (Cleveland); Ken Mueller 6-0 guard St. Louis (Afton); Lawrence Young 5-11, Kansas City (Paseo); and Jim Perry 6-3 forward from Palmyra.

## OLDSMOBILE

### 442's Cutlass S

SPECIAL STUDENT TERMS  
ORDER NOW!

## ECK MOTOR CO.

SINCE 1951

ROBERT A. ECK  
MSM - '43

NORMAN SCHWEISS

Tau Beta Pi, Blue Key, Theta Tau, Pi Kappa Alpha

"I sure get a lot for my money from College Life's **BENEFACTOR'S**"

**HERE'S WHY:**



**DON GIBSON**

College Life insures only college trained men and women and they are preferred risks.

**MORE-FOR-YOUR-MONEY** is only one of the nine big benefits you get from:

**"THE BENEFACTOR"**

Ask your local College Life representative for the full story.

**JIM WOOD**  
364-1016

**DON GIBSON**  
364-2354

**Rolla, Mo.**  
702 Pine St.

**THE COLLEGE LIFE INSURANCE CO. OF AMERICA**  
Indianapolis, Ind.

The original and **ONLY** life insurance company serving college trained men and women **ONLY**



## Blacks Tie Bloomington 6-6; St. Louis Blanks Golds 9-0

Last Saturday the UMR Rugby Blacks traveled to Bloomington where they took on the Hoosiers in a tough battle that ended in a 6-6 tie. Even though the Hoosiers downed Wisconsin in a Big 10 Homecoming game beforehand they didn't fare as well against the Miners in a hotly contested game.

The Blacks had not played Indiana since the spring of 1966 when they met in Chicago during a tournament and were defeated 8-3 in a game that was taped and televised in the Chicago area. Indiana, who has defeated Notre Dame, Illinois, and Palmer College since then, presented an ominous challenge to the Miners who traveled 350 miles for a chance to even the score.

The game began at 4:30 p.m. and only a few spectators braved the cold wind. The spectators, however, found it hard to follow the game since it was played in an old stadium in which the lights had been removed.

The Miners jumped to an early lead after a conversion by Bart

Burke. This was preceded by a penalty kick awarded to the Miners as Indiana was offside. Later in the first half the game was tied 3-3 after a similar penalty was awarded to Indiana and the conversion attempt was successful in tying the score as the first half ended.

Midway through the second forty-minute half, the referee ruled a try for Indiana which was contested by the Miner squad to no avail. The conversion attempt failed and Indiana led 6-3 until the final two minutes of play when the ball was passed to fly-back Charlie Jerabek who then pitched to Miner halfback Ray Behrens. Behrens plunged ten yards through Indiana defenders to score and tie the game. The conversion attempt by the Miners failed and the final whistle sounded with a 6-6 tie.

Indiana had previously played 6 games this season and their record now stands at 4-2-1. This was only the Miner's second game of the season and their record stands at two ties. Although the

Blacks have yet to enter the winning column, they feel that playing better teams like Rockhurst and Indiana will increase interest and strengthen the team.

Indiana played without three starters Saturday as they were playing in a regional all-star game at Palmer College. To offset this, George Friens, Miner scrum-half, was unable to make the trip along with fullback Tim Handlan who had an ankle injury. The Black's experienced hooker, Ed Sloan, may not see action again this season due to a shoulder injury. John Riege, Dave Krueger, and Roy Chrisman did admirable jobs in filling these vacancies.

On the home front, the Golds were defeated 9-0 by the North St. Louis Rugby Club. This too was only their second game and the majority of these players are just beginning to learn the game of rugby in the only way possible - by playing.

## Bullman's Runners Rank Fifth, Notestine Places Sixth in MIAA

The UMR Cross Country squad brought their 1967 season to a close last Saturday at Warrensburg where they placed fifth in the MIAA conference. Taking the crown were the Southeast Missouri State Indians with 49 points, while Northeast Missouri State and Southwest Missouri State placed second and third, respectively, as their team totals ran a close 63-65.

Heading the list for the Miner runners was Stan Notestine, a junior, who has lettered the last two years in both Cross Country and Track and who holds the school record for all the distance runs of one mile and above. Stan broke his own record for the four mile run at Warrensburg last week as he paced the course in 20:45 to rank sixth in the MIAA league.

Other Miners who placed in the Warrensburg meet were Don Duren, with 21:31; Keith Browne, with 22:00; Mike Render, with 22:17; and Rex Kenyon hit the 22:31 mark.

Nine of this year's runners were awarded varsity letters and among those nine, five were freshmen. Let-terms were: Stan Notestine, Don Duren, Keith Browne, Mike Render, Rex Kenyon, Ron Tracy, Jim Hellewege, Glenn Jensen, and Jerry Coleman.

Taking first place at the MIAA finals was Ron Werling of second place NEMS, with 20:22 while Jim Stovernik and Bill Wirtz of SEMS placed second and third, respectively, to take a tight hold on the crown for the second year in a row.

Coach Bullman feels that this year's squad really shaped up since the first of the season. As the year came to a close the top men started cutting down their four mile run with astonishing speed. He feels that most of this year's let-terms will return next fall and that UMR has a good chance of moving up a notch in the MIAA finals next year.

## MEET THE MINERS

Highlighting the meet the Miner column this week are Charles Weniger and Fred White. Fred is a defensive halfback, while Charles plays offensive guard.

Weniger, a 210-pound junior from St. Louis, is in his third year of action for the Miner gridiron squad. Last year a knee injury kept him out of the playing field. Charles is a good blocker and is seeking his third letter this season.

His other activities include being a member of the Kappa Sigma fraternity, Theta Tau where he is past secretary, M-Club treasurer for three semesters and an active

member of the Rolla Rugby Club. Charles is working toward a degree in the M.E. department.

Fred White, a sophomore, is in his second year of playing defensive halfback. Although he didn't letter last year, his performance on the gridiron this year should put him on the lettering squad. Fred has been extremely constant on the defensive end of ball games this season and has hit hard on many tackles.

Fred's other activities consist of pledging Alpha Phi Alpha fraternity. He is from central High School in Kansas City where he played for four years.

**The  
Old Pro  
Wants to  
Know...**



If you are a regularly enrolled student of UMR; if, since July 1, 1966 you became 21 years old; if you have a Missouri State Liquor Control ID Card; then the Old Pro has a birthday gift for you at Mueller Distributing Company, 217 West 6th Street.

**FALSTAFF Old Pro CLUB**

Distributed by  
**MUELLER DISTRIBUTING CO.**  
217 W. 6th St. Rolla, Mo.

## The Harmon Football Forecast

### TOP 20 TEAMS

(Forecasting Average: 1,161 Right, 368 Wrong, 48 Ties .... 759)

- 1—SOUTHERN CAL.
- 2—TENNESSEE
- 3—N. CAROLINA ST.
- 4—PURDUE
- 5—NOTRE DAME
- 6—TEXAS
- 7—OKLAHOMA
- 8—MIAMI, FLA.
- 9—AUBURN
- 10—U.C.L.A.
- 11—L.S.U.
- 12—MISSISSIPPI
- 13—HOUSTON
- 14—GEORGIA
- 15—FLORIDA STATE
- 16—ALABAMA
- 17—WYOMING
- 18—OREGON STATE
- 19—MINNESOTA
- 20—INDIANA

### Saturday, Nov. 11

- |                    |    |
|--------------------|----|
| Army               | 14 |
| Auburn             | 28 |
| Boston College     | 15 |
| Boston U.          | 17 |
| Brigham Young      | 23 |
| Bureau             | 20 |
| California         | 28 |
| Citadel            | 19 |
| Clemson            | 22 |
| Colgate            | 14 |
| Colorado           | 20 |
| Cornell            | 24 |
| Dartmouth          | 24 |
| Davidson           | 30 |
| Duke               | 22 |
| El Paso            | 30 |
| Florida State      | 21 |
| Georgia            | 23 |
| Harvard            | 30 |
| Houston            | 27 |
| Kent State         | 24 |
| L.S.U.             | 20 |
| Louisville         | 14 |
| Massachusetts      | 14 |
| *Miami, Fla.       | 20 |
| Miami (Ohio)       | 14 |
| Michigan           | 17 |
| Michigan State     | 21 |
| Missouri           | 27 |
| Nebraska           | 17 |
| New Mexico State   | 27 |
| North Carolina St. | 20 |
| North Texas        | 20 |
| Northwestern       | 18 |
| Notre Dame         | 49 |
| Ohio State         | 22 |
| Ohio U.            | 17 |
| Oklahoma           | 33 |
| Pacific            | 20 |
| Purdue             | 21 |
| Rice               | 21 |
| Southern Cal.      | 28 |
| Stanford           | 21 |
| Syracuse           | 27 |
| Tennessee          | 27 |
| Texas              | 31 |
| Texas Tech         | 30 |
| Toledo             | 28 |
| Tulsa              | 17 |
| U.C.L.A.           | 14 |
| Utah State         | 33 |
| Vanderbilt         | 16 |
| Virginia           | 16 |
| Washington State   | 27 |
| West Texas         | 21 |
| Western Michigan   | 15 |
| William & Mary     | 20 |
| Wyoming            | 42 |
| Yale               | 28 |

### Other Games — South & Southwest

- |                     |    |
|---------------------|----|
| Abilene Christian   | 22 |
| Arkansas Tech.      | 18 |
| Arlington           | 14 |
| Bridgewater         | 14 |
| Carson-Newman       | 32 |
| Centre              | 14 |
| Chattanooga         | 21 |
| East Central Okla.  | 24 |
| Eastern Kentucky    | 28 |
| Emory & Henry       | 19 |
| Franklin            | 16 |
| Guilford            | 23 |
| Henderson           | 21 |
| Howard Payne        | 17 |
| Jacksonville        | 14 |
| Lamar Tech          | 21 |
| Lenoir-Rhyne        | 30 |
| Martin              | 26 |
| Middle Tennessee    | 30 |
| NE Louisiana        | 8  |
| NW Louisiana        | 8  |
| Ouachita            | 20 |
| *Salem              | 15 |
| Samford             | 21 |
| Southwest Texas     | 24 |
| Southwestern, Tenn. | 14 |
| Tennessee Tech      | 22 |
| Texas A & I         | 31 |
| Texas Lutheran      | 20 |
| Washington, Mo.     | 14 |
| West Va. Tech       | 20 |
| Western Carolina    | 22 |

### Major Colleges

- |                   |    |
|-------------------|----|
| Utah              | 8  |
| Mississippi State | 10 |
| V.M.I.            | 13 |
| Connecticut       | 6  |
| Arizona           | 21 |
| Villanova         | 13 |
| San Jose State    | 13 |
| Richmond          | 14 |
| Maryland          | 0  |
| Bucknell          | 13 |
| Kansas            | 10 |
| Brown             | 7  |
| Columbia          | 7  |
| Wofford           | 13 |
| Navy              | 20 |
| Colorado State    | 7  |
| V.P.I.            | 9  |
| Florida           | 14 |
| Princeton         | 14 |
| Memphis State     | 8  |
| Marshall          | 0  |
| Alabama           | 7  |
| Cincinnati        | 6  |
| Rutgers           | 7  |
| Georgia Tech      | 7  |
| Illinois          | 13 |
| Indiana           | 16 |
| Kansas State      | 6  |
| Oklahoma State    | 15 |
| Northern Arizona  | 0  |
| Penn State        | 15 |
| Wichita           | 7  |
| Iowa              | 14 |
| Pittsburgh        | 6  |
| Wisconsin         | 7  |
| Bowling Green     | 8  |
| Iowa State        | 0  |
| Fresno State      | 13 |
| Minnesota         | 10 |
| Arkansas          | 20 |
| Oregon State      | 13 |
| Oregon            | 8  |
| Holy Cross        | 13 |
| Tulane            | 7  |
| Baylor            | 6  |
| T.C.U.            | 12 |
| Northern Illinois | 6  |
| Wake Forest       | 7  |
| Washington        | 10 |
| Montana           | 7  |
| Kentucky          | 14 |
| North Carolina    | 13 |
| Idaho             | 14 |
| Fast Carolina     | 15 |
| Xavier            | 14 |
| West Virginia     | 19 |
| New Mexico        | 6  |
| Pennsylvania      | 0  |

### Other Games — East

- |                     |    |
|---------------------|----|
| Albright            | 13 |
| Alfred              | 20 |
| American Int'l      | 15 |
| Amherst             | 17 |
| Bates               | 24 |
| Clarion             | 30 |
| Delaware            | 21 |
| Franklin & Marshall | 17 |
| Grove City          | 27 |
| Indiana State       | 13 |
| Junata              | 27 |
| Montclair           | 22 |
| New Hampshire       | 28 |
| Northeastern        | 30 |
| Norwich             | 13 |
| R.P.I.              | 20 |
| Rhode Island        | 25 |
| South'n Conn.       | 20 |
| Temple              | 14 |
| Tufts               | 19 |
| Vermont             | 22 |
| Wagner              | 23 |
| West Chester        | 41 |
| Wilkes              | 19 |
| Williams            | 17 |

### Other Games — East

- |                |    |
|----------------|----|
| Upsala         | 7  |
| Union          | 12 |
| Ithaca         | 7  |
| Trinity        | 7  |
| Colby          | 13 |
| Slippery Rock  | 7  |
| Lehigh         | 7  |
| Muhlenberg     | 14 |
| Adrian         | 0  |
| Lock Haven     | 0  |
| Moravian       | 0  |
| Glassboro      | 14 |
| Springfield    | 12 |
| Cortland       | 6  |
| Worcester Tech | 7  |
| Hobart         | 8  |
| Maine          | 0  |
| Bridgeport     | 10 |
| Gettysburg     | 0  |
| Bowdoin        | 13 |
| Middlebury     | 6  |
| Cusquehanna    | 0  |
| Lebanon Valley | 8  |
| Wesleyan       | 7  |

### Other Games — Midwest

- |                    |    |
|--------------------|----|
| Augustana, Ill.    | 14 |
| Ball State         | 20 |
| Bethany            | 19 |
| Central Missouri   | 20 |
| Central Oklahoma   | 24 |
| Grinnell           | 12 |
| Cornell (Iowa)     | 13 |
| Defiance           | 30 |
| DePauw             | 35 |
| Graceland          | 0  |
| Emporia State      | 39 |
| Hiram Scott        | 20 |
| Hofstra            | 22 |
| Iowa Wesleyan      | 15 |
| Kansas Wesleyan    | 15 |
| Kearney            | 28 |
| Lawrence           | 25 |
| Missouri Valley    | 21 |
| Morehead           | 20 |
| Nebraska Wesleyan  | 18 |
| Northern Michigan  | 28 |
| NW Missouri        | 14 |
| Olivet             | 14 |
| *Ottawa            | 22 |
| Pittsburg          | 20 |
| Platteville        | 15 |
| Principia          | 21 |
| St. Norbert        | 17 |
| SE Missouri        | 26 |
| SE Oklahoma        | 21 |
| SW Oklahoma        | 16 |
| Southwestern, Kan. | 14 |
| *Starling          | 21 |
| Taylor             | 7  |
| Western Kentucky   | 41 |
| Wheaton            | 29 |
| Whitewater         | 20 |
| William Jewell     | 31 |
| Wilmington         | 19 |
| Wittenberg         | 18 |

### Other Games — Far West

- |                    |    |
|--------------------|----|
| Arkansas A & M     | 31 |
| Cal Lutheran       | 15 |
| Central Washington | 24 |
| Chadron            | 14 |
| Eastern Washington | 24 |
| Hayward            | 26 |
| Long Beach         | 26 |
| Nevada             | 20 |
| New Mexico H'lands | 27 |
| *Occidental        | 20 |
| Pacific Lutheran   | 21 |
| Puget Sound        | 26 |
| Redlands           | 15 |
| Sacramento         | 24 |
| San Diego          | 33 |
| San Francisco St.  | 41 |
| Santa Barbara      | 13 |
| Santa Clara        | 28 |
| Western New Mexico | 18 |
| Whittier           | 41 |

(\*\*Friday Games)