



13 Jan 1967

## The Missouri Miner, January 13, 1967

Follow this and additional works at: [https://scholarsmine.mst.edu/missouri\\_miner](https://scholarsmine.mst.edu/missouri_miner)

These newspapers reflect the attitudes, perspectives, and beliefs of different times. Neither the library nor the university endorses the views expressed in these collections, some of which contain images and language which may be offensive to some readers.

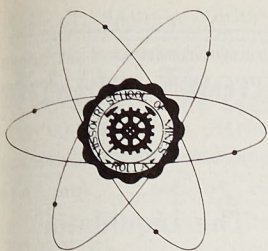
---

### Recommended Citation

"The Missouri Miner, January 13, 1967" (1967). *The Missouri Miner Newspaper*. 1850.  
[https://scholarsmine.mst.edu/missouri\\_miner/1850](https://scholarsmine.mst.edu/missouri_miner/1850)

This Newspaper is brought to you for free and open access by Scholars' Mine. It has been accepted for inclusion in The Missouri Miner Newspaper by an authorized administrator of Scholars' Mine. This work is protected by U. S. Copyright Law. Unauthorized use including reproduction for redistribution requires the permission of the copyright holder. For more information, please contact [scholarsmine@mst.edu](mailto:scholarsmine@mst.edu).





# The Missouri MINER

UNIVERSITY OF MISSOURI AT ROLLA



VOLUME 53

FRIDAY, JANUARY 13, 1967, ROLLA, MISSOURI

NUMBER 14

## Retiring Union Board Selects 1967 Successors

Members of next semester's Student Union Board were recently chosen. Elected to the Board were: Michael Woodruff, President; Mike Clayton, Vice-President; Clem Drag, Secretary; William Grenard, Treasurer; Bob Fick, Director of Literary Music; Ken Westray, Director of Publicity; Bob Choun, Director of Recreation; Ted Warren, Director of Special Events; and Glen Larsen, Director of Social Events.

President Michael Woodruff is a junior from St. Louis majoring in Mechanical Engineering. Mike is a member of Kappa Alpha fraternity and of ASME, MSPE, SAE, ASTME, of which he was recently elected president, and Theta Tau.

Mike Clayton, Vice-President, also has Student Union committee and board experience. Mike, a senior in C.E., is a member of 59ers, Scabbard and Blade, and Pershing Rifles.

Secretary Clem Drag is a member of Phi Kappa Theta fraternity, Blue Key, Keramos, and Theta Tau. Clem, a junior, has committee experience with the Student Union.

William Grenard, Treasurer,

has also served in committee capacity with the Student Union.

The new directors of the committees will have to work hard to maintain the fine standards the Student Union has set for itself. Glen Larsen is the Social Committee Director. He has to schedule all mixers and dances. He also has to be sure there are no conflicts when departmental mixers need room. Bob Choun is the Recreation Committee Director. He has the not-so-easy job of planning all tournaments so they break up the school year. He must also keep the present equipment in good repair. Ted Warren is the Special Events Committee Director. He will be busy planning all upcoming special events, while trying to think of some new and different ideas to enlarge the program. Bob Fick is the Literary and Music Committee Director. He will be busy arranging assemblies ranging from a lecture from a news correspondent to a jazz workshop. Ken Westray is the Publicity Committee Director. He has to bring the knowledge of all Student Union activities to the students of UMR.

## IFC Officers for Spring Chosen at January Meeting

Ray Doerr is secretary of Kappa Alpha fraternity. He was formerly president of the American Society of Automotive Engineers and is a member of the American Institute of Aeronautics and Astronautics.

John Abram is treasurer of Alpha Phi Alpha fraternity. He is a member of the Society of Automotive Engineers and the American Society of Mechanical Engineers.

Bob Feugate is a member of Triangle fraternity. He has held the offices of treasurer, assistant treasurer, and corresponding secretary and was formerly president of Phi Eta Sigma, freshman honor society. He is a member of Eta Kappa Nu, Tau Beta Pi, and is the business manager of the Hermes, the IFC newspaper.

This semester, five new officers

were elected to posts in the Interfraternity Council. They were: Don Lambert, president; Wayne Filichowski, vice president; Ray Doerr, secretary; John Abrams, treasurer; and Bob Feugate, judicial board chairman.

Don Lambert is vice president of Sigma Nu fraternity. He is also a member of Blue Key, Theta Tau, and the American Foundryman Society.

Wayne Filichowski is president of Tau Kappa Epsilon fraternity. Previously he held the offices of treasurer and historian in his house. He was the former Judicial Board Chairman and held the posts of president and vice-president of the American Institute of Aeronautics and Astronautics. He is a member of Blue Key, Society of Automotive Engineers, Theta Tau, and Alpha Phi Omega.

## St. Louis Symphony Orchestra To Perform at General Lecture

The General Lectures Committee, with the approval of the Student Council, is co-sponsoring the St. Louis Symphony Orchestra in a performance to be in Rolla on February 3rd, a Friday evening. Concert time is set for 8:15 p.m. The appearance of the Orchestra is being made available by the Rolla Arts Association and the Missouri Council on the Arts. The General Lectures Committee has purchased a block of tickets for UMR students. This is the first time that the world-famed St. Louis Orchestra has performed in Rolla, and it is also the first time that the General Lectures Committee has been able to offer such a performance to interested UMR students.

The concert will be held in the Rolla High Gymnasium, and interested UMR students should obtain their tickets in advance by presenting themselves with their identification cards in the Music Office at Building T-1, on January 30, 31, or February 1 and 2 between 1:30 and 4:30 p.m. No UMR student tickets will be issued after 4:30 p.m. on February 2nd, the day before the con-

cert. There is no charge, provided the tickets are picked up before this deadline. After that time no more student tickets can

will present a concert for Rolla public school children, and the longer evening performance will be for the adult audience includ-



ST. LOUIS SYMPHONY PERFORMANCE

The St. Louis Symphony is shown in one of its world renowned performances. They will appear in Rolla, February 3.

be issued. The student should show both his ticket and ID card for admission on the evening of the performance. These tickets are general admission tickets and seats are on a first come, first served basis. A few reserved seats will be available for the concert, and these may be purchased if the student desires.

The St. Louis Symphony Orchestra, ninety members strong, is the second oldest professional orchestra in America. It has achieved reknown throughout the world for its excellence. The Rolla performance will be conducted by Edward Murphy, who has been associate conductor of the group for many years. The program will include standard favorite symphonic selections.

In the afternoon the orchestra

ing UMR students.

If any UMR student wishes to take a guest, who is not a UMR student, he may purchase a general admission ticket for his guest for \$1.50 at the time he picks up his own ticket. It should be noted that more than one-half of the cost of bringing the orchestra to Rolla is being paid for by the Missouri Council on the Arts. The remainder of the cost is being paid jointly by UMR's General Lectures Committee and the Rolla Arts Association. Such an opportunity is rare, and it is hoped that the Missouri Council on the Arts can continue in its aim of providing professional talent from the arts world to all parts of Missouri at extremely low cost.

### THREE OUTSTANDING LEADERS NAMED

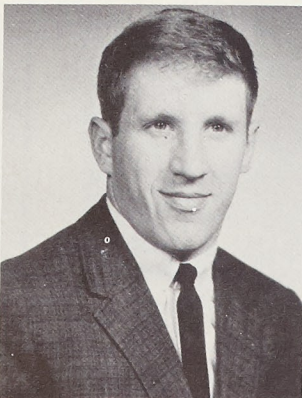
## Blue Key Chooses Fall Men of the Month

### OCTOBER

Blue Key's selection for the October Man of the Month is George Gasparovic. George, who hails from Mehlville, Missouri, is a senior in Mechanical Engineering.

George has distinguished himself on campus and has received many notable honors. Some of his activities include: president and vice-president of Lambda Chi Alpha, president and vice-president of the M-Club, treasurer of the Interfraternity Council, inner guard and corresponding secretary of Theta Tau, treasurer of Blue Key, Dean's List, co-captain and four year lettermen in varsity football, Society of Automotive Engineers, Society of American Military Engineers, and Who's Who in American Colleges and Universities.

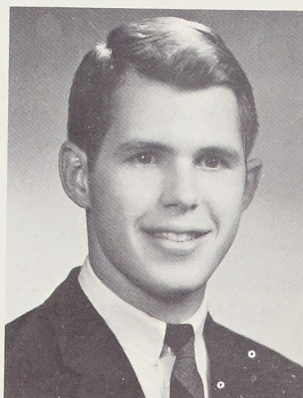
George is truly deserving of this distinction — Man of the Month.



GEORGE GASPAROVIC

### NOVEMBER

Gary Graham has been selected by Blue Key as its November



GARY GRAHAM

Man of the Month. Gary, a senior in Chemical Engineering from Mexico, Missouri, has been very active on campus during his years at UMR and has compiled a quite enviable record.

Gary is a member of Pi Kappa Alpha, where he has served as vice-president and treasurer. His other campus organizations include: president and recorder of the American Institute of Chemical Engineers, the Student Council, Alpha Phi Omega, Alpha Chi Sigma, Tau Beta Pi, Phi Kappa Phi, and secretary of Blue Key. He also has been named as the Outstanding Junior in Chemical Engineering and he has been elected to Who's Who in American Colleges and Universities. While being actively engaged in these activities, Gary has also been able to maintain a 3.51

(Continued on Page 3)

### NOTICE!

Students who pre-registered and are paying fees early are required to pick up their fee slips at the Traffic Safety Office, corner of 12th and Rolla St. After completing applicable parts of fee slip and traffic safety emergency locator card, the student is to proceed to cashier's office to complete processing.

Please Note: Do not pick up your fee slip until you have received a copy of your schedule from the Registrar's Office.



## Professional Engineer Society Becomes Nationally Recognized

The UMR Student Chapter of the Missouri Society of Professional Engineers became the National Society of Professional Engineers last December 8, when the UMR chapter was awarded a national charter with full privileges. Thomas M. Linville, President of the National Society of Professional Engineers, presented the charter to Student Chapter President Paul Miller.

Other highlights of the Thursday meeting were addresses by Mr. Linville and Mr. Jerry Rush, reporter for the *Arkansas Democrat*. The topic of Mr. Linville's speech was "Who Speaks for the Engineer?" Mr. Rush, who is the recipient of the \$1000 Annual NSPE Journalism Award, spoke on "Engineering and the Public."

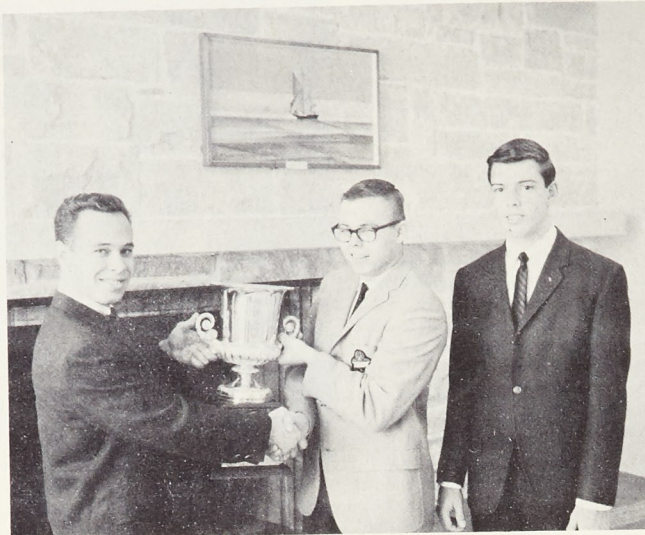
The Student Chapter meeting was held in conjunction with NSPE's Annual Journalists' Day. A number of visiting national and state dignitaries were present for the award. The meeting was preceded by informal campus tours for the visitors and followed by an Award Banquet at the Carney Manor Inn. Walter F. Burke, Vice President of the McDonnell

Company of St. Louis and Ray Noonan, President of the St. Louis Chapter of Sigma Delta Chi, spoke to the guests following the dinner.

The National Society of Professional Engineers is dedicated to the protection and the promotion of the profession of engineering as a social and economic influence vital to the affairs of men and of the United States. It is organized on a three-level basis—local, community, state, and national.

The National Society, at each of its three levels of operation, serves the engineering profession, industry, and the public. The National Society is made up of more than 65,000 professional engineers in all technical branches who are registered to practice engineering with the laws of their states and territories. They are consulting engineers in private practice, and engineers in industry, education, and government service.

## Acacia Wins Council Award



Each semester the Student Council awards a traveling scholarship trophy to the organization on campus with the highest scholastic average. For the spring semester of 1965-66, the trophy was won by Acacia Fraternity with a 2.77 grade point. Houses five (2.68) and six (2.60) of the dorms were second and third respectively among organizations.

Bernard Schweigert presents trophy to Lester Roth, president of Acacia. Looking on is Allan Liescheidt, representing the trophy committee.

## Elections Held As UMR Raiders Are Recognized

At the November faculty meeting, the constitution of the Raiders was approved and the Raiders were officially recognized as a campus organization.

The Raiders' new recognition now makes them eligible to receive money from the Student Council. The Raiders were formerly wholly financed and administered by the Military Department.

Provided for in the new constitution were unit officers, known as staff officers. The officers are: Floyd Jennings, Commanding Officer; Peter Pulis, Executive Officer; Harold Wagner, Adjutant S-1; John Davis, Operations Officer S-3; Len Ross, Assistant S-3; and Danny Pellegrino, Supply Officer S-4. They will now be responsible for Raider administration.

Two new staff officers were elected in December to replace Mr. Davis and Mr. Wagner who will be co-opting next semester. They are George Estill, S-1 and Phil Glema, Assistant S-3. The S-3 position was filled by Mr. Ross, the former Assistant S-3.

The Raiders are looking forward to an active second semester with at least three field training exercises planned which are to be held at Fort Leonard Wood. In addition, they will participate in the annual field problem in which the Raiders act as guerrilla aggressors against the ROTC junior class.

### NOTICE!

Registration for new and returning students at UMR will be held from 8 a.m. to 5 p.m., Jan. 26, in the Electrical Engineering Building and from 8 to 11 a.m., Jan. 27, in that building.

Second semester classes will start at 7:30 a.m., Jan. 30.

## Extension Division To Sponsor Course In Rapid Reading

A course in the enhancement and retention of reading will be held from Feb. 14 to April 11 at UMR.

The class, sponsored by the UMR Extension Division in co-operation with the UMR department of English, will meet two hours one night a week for a total of 20 instruction hours. Meetings will be held at 7 p.m. in Room 102 of the Rolla Building. A fee of \$37 covers the cost of the course.

The study is designed for adults, high school and college students, who wish to learn how to read faster and retain more. Emphasis will be placed on perceptual accuracy, visual efficiency, word knowledge, study habits, comprehension, and interpretive, analytical, critical, appreciative, and selective reading.

Instructor for the course will be Dr. Charles F. Ernst, who practices optometry in Houston, Mo. and Rolla. Dr. Ernst, who studies under Dr. Sam Renshaw of the Ohio State University in the optometric extension program, has had 16 years practice in optometry and 7 years experience in giving reading instruction. He holds A.B., B.S., and O.D. degrees.

## UPTOWN THEATRE

MOVIES IN CINEMASCOPE

Thurs., Fri., Sat. Jan. 12-14

### 'The Liquidator'

Rod Taylor & Jill St. John

Sun., Mon., Tues., Wed.  
Jan. 15-18

Sunday Continuous from 1 p.m.  
Advance Mid-West Showing

### 'Penelope'

Natalie Wood & Ian Bannen

## RITZ THEATRE

MOVIES IN WIDE SCREEN

Thurs. Thru Mon. Jan. 12-16

Saturday & Sunday

Continuous from 1 p.m.

Admission: Adults 90c

Not Recommended for Children

### 'Alfie'

Michael Caine &  
Millicent Martin

Tues., Thru Sat. Jan. 17-21

Saturday Continuous from 1 p.m.

Admission: Adults 75c

Not Recommended for Children

### 'The Wild Angels'

Peter Fonda & Nancy Sinatra

**\$ \$ \$ \$ SAVE \$ \$ \$ \$**  
**WE SELL EVERYBODY WHOLESALE**  
Open 8 to 8 Monday thru Thursday and till 9 on  
Friday and Saturday — Open 9 to 1 on Sunday  
**HOOK AUTO SUPPLY**

## TAKE OUT SPECIALS

4 Oz. CHARBURGER — Taste the Meat,	
Not the Bun Only .....	35c
With Cheese or Tomato .....	40c
½ FRIED CHICKEN — French Fries and Cole Slaw .....	97c
SLOPPY JOE - BARBECUE .....	40c
FISH SANDWICH — Tartar Sauce .....	35c

THEY'RE CHEAPER BY THE DOZEN

BUY 12, GET ONE FREE!

## DINING ROOM SPECIALS

EVERY SUNDAY AND WEDNESDAY

A Heaping Platter of SPAGHETTI

With Meat Sauce and Italian Bread ..... 97c |

½ FRIED CHICKEN — Potato and Cole Slaw ..... 97c |

EVERY FRIDAY

All the FISH You Can Eat —

With Hush Puppies and Cole Slaw ..... 97c |

HAVING A BANQUET? — GET OUR PRICES —

THEY CAN'T BE BEAT — ANYWHERE!

## EL CHAREV

Highway 63 South

Phone 364-9900

## MIDGET MART

Convenience Store

U. S. 63 & Vichy Road

SHELL STATION & WATER TANKS

GROCERIES • 5% BEER • COLD CUTS

DRUGS • SODAS • SUNDRIES

OPEN 7 A. M. - 11 P. M.

7 Days a Week

PHONE 364-4783

One HOUR

**"MARTINIZING"**

THE MOST IN DRY CLEANING

As advertised in Life, Holiday, Glamour, Business Weekly,  
Esquire Magazines, and ABC Television and Radio.

ONE HOUR DRY CLEANING DAILY FROM 8 A. M. - 3 P. M.  
INCLUDING SATURDAY

LAUNDRY SERVICE — EXPERT ALTERATIONS

121 West 8th St.

Telephone 364-6063



# LSD, Drug Abuse Proves Big Problem

Last week's Friday Night Forum was concerned with the topic, "Drug Abuse and LSD. How Big a Problem?" Speaking on this subject was Mr. Evert L. Atkinson, former employee of the U.S. Food and Drug Administration,

and presently Director of the Kansas City Field Office of the Bureau of Drug Abuse and Control.

During his speech Mr. Atkinson touched not only on the specific problem of LSD, but also

use in his territory, though he did provide some interesting information on LSD. He said that it is a dangerous drug, producing a state not unlike some forms of mental illness, and could produce dangerous after effects. He revealed that

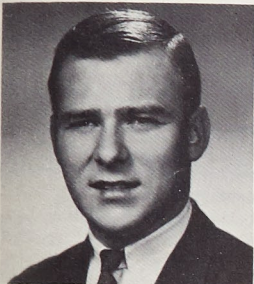
## Blue Key

(Continued From Page 1)

grade point. Congratulations to a true leader and a deserving recipient of the Blue Key Man of the Month award.

### DECEMBER

For the month of December, the members of Blue Key have selected Gary Kincaid as the Man of the Month. Gary, who is a native of St. Louis, is a senior in Mechanical Engineering. He has not only contributed time



GARY KINCAID

and energy for the improvement of the organizations to which he belongs, but also has demonstrated a great many leadership qualities.

Gary is a member of Sigma Phi Epsilon, for which he has served as president, recorder, and rush chairman. He has also been active as the president, vice-president, and alumni secretary of Blue Key; vice president of the Interfraternity Council; president of Intercollegiate Knights; scribe and corresponding secretary of Theta Tau; Pi Tau Sigma, American Society of Mechanical Engineers, Missouri Miner, Alpha Phi Omega, the Student Union Social Committee, and the Dean's List. He has been honored by being elected to both Who's Who in American Colleges and Universities and Who's Who in American College Fraternities.

Blue Key is proud to have as one of its members a man such as Gary and we are confident that the campus will join us in a salute to Gary Kincaid, December Man of the Month.



ATKINSON ON LSD

Mr. Evert Atkinson discusses drug abuse at Friday Night Forum. New federal law will help control its uses.

on the problem of drug control in general. Though his Bureau is operating under Federal Statutes passed only last year, Mr. Atkinson cited numerous instances of persons who had been arrested for drug abuses. In the seven state region that his field office covers, Mr. Atkinson said that one of the most popular forms of drug abuse was the selling of so-called "pep pills" to truckers, enabling them to drive long distances at a stretch. He also said that all forms of drug abuse appeared to be rising. For this reason the Federal Drug Abuse Act was passed, providing stringent curbs on drug manufacturing and distribution, and providing heavy penalties for their misuse and illegal sale.

On the specific topic of LSD, Mr. Atkinson said that there had been only one reported case of its

there appears to be a religious cult, called the Neo-American Church, whose services are built around LSD, induced 'trips,' and who claim that use of the drug is a vital part of their religion. Regardless of their claim LSD remains a drug which is illegal to possess, except by licensed researchers.

The next Friday Night Forum will be held on Feb. 3.

## UMR ROTC Band To Be Featured On Statewide TV

The University of Missouri at Rolla ROTC Marching Band and its majorette Miss Myra Jane Wilson, will appear on statewide television in January as part of the Campus Talent '67 Television show.

The band and Miss Wilson, (Continued on Page 6)

## Student



### "Hud"

Paul Newman is the hard-driving, hard-drinking, woman-chasing Hud, whose life is a revolt against the principles of his father, a man of strong character and gentleness. Young Lon, Hud's nephew is torn between love for both. Patricia Neal is the worldly-wise housekeeper, old enough to be disillusioned but young enough to be desirable.

## Student Union Applications

Application for Student Union Committees will be accepted after January 9 for the spring semester. They can be picked up and turned in at the Student Union Candy Counter. The committees are: Special Events, Publicity, Social, Recreational and Literary-Music. By being on a committee you can become a leader in helping run your Student Union.

## New Official UMR Class Rings

BY L. G. BALFOUR CO.

## BULOVA ACCUTRON

DIAMONDS and ENGRAVING  
WATCH REPAIRING

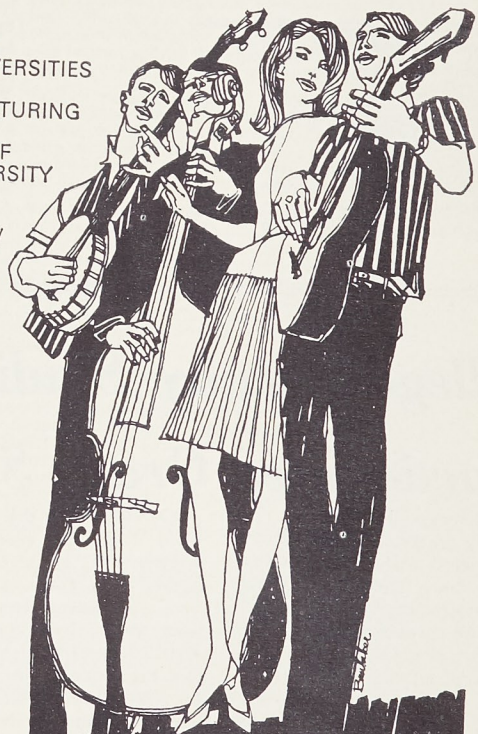
## Christopher Jewelers

805 Pine Street

### LET THEM ENTERTAIN YOU!

DISCOVER THE NEW BREED OF ENTERTAINERS FROM THE UNIVERSITIES AND COLLEGES OF MISSOURI. VIDEO-TAPED ON CAMPUS. FEATURING STUDENTS FROM: SOUTHWEST MISSOURI STATE/UNIVERSITY OF MISSOURI AT ST. LOUIS/UNIVERSITY OF MISSOURI AT COLUMBIA/WEBSTER COLLEGE/UNIVERSITY OF MISSOURI AT KANSAS CITY/STEPHENS COLLEGE/ST. LOUIS UNIVERSITY/NORTHEAST MISSOURI STATE TEACHERS COLLEGE/WASHINGTON UNIVERSITY/DRURY COLLEGE/UNIVERSITY OF MISSOURI AT ROLLA

**FRIDAY**  
**JANUARY 20**  
**6:30-7:30 P.M.**  
**KRCG-TV**  
**CHANNEL 13**



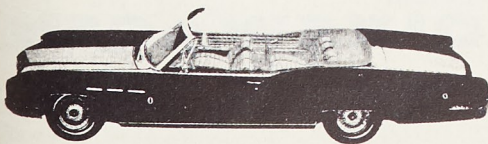
Southwestern Bell

**CAMPUS**  
**TALENT '67**  
A TELEVISION SPECIAL BROUGHT TO YOU BY SOUTHWESTERN BELL

WE'VE GOT THE

**"IN"**  
CAR FOR YOU.

**1967**  
**BUICK.**



LE SABRE CONVERTIBLE

A Finance Plan With GMAC to Fit Your Needs

**OVERHOFF BUICK CO.**

4th & Elm Streets

Rolla, Mo.





# Miner Editorials, Letters, and Features



## Student Union Food Service To Undergo Price Adjustment

Item	Present Price	Proposed Price	Change
Fountain Products	0	No Charge	0
Beverages	0	No Charge	0
Pie	.15	.15	0
Bacon or Sausage, Hash Browns, two Eggs and Toast	.50	.60	.10
Two (2) Eggs and Toast	.30	.40	.10
Ham, Hash Browns, two Eggs and Toast	.55	.65	.10
Bacon or Sausage	.20	.25	.05
Ham	.25	.30	.05
French Toast	.30	.40	.10
Toast and Jelly	.10	.15	.05
Donut	.05	.05	0
Short Stack	.25	.35	.10
Hotcakes (3)	.30	.40	.10
Cereal	.20	.30	.10
Hotcakes and Sausage	.45	Elim.	Elim.
Juice	.15 & .25	.15 & .30	0 & .05

### Plate Lunches (Includes Potato, Vegetable and Bread)

Roast Beef	.80	.85	.05
Roast Pork	.80	.85	.05
Fried Ham	.85	.90	.05
Fried Shrimp	.80	.90	.10
Beef Tenderloin	.75	Elim.	Elim.
Salads	.15 & .50	.15 & .50	0 & 0

### Plate Lunches (Specials) Includes Potato, Vegetable and Bread

Turkey & Cranberry Sauce	.85	.90	.05
Baked Ham	.80	.90	.10
Others	.70	.80	.10
Macaroni and Cheese, Salad and Bread	.60	.70	.10
Spaghetti and Meat Sauce and Bread	.70	.80	.10
Vegetables	.15	.15	0
Whipped Potatoes	.10	.15	.05

Item	Present Price	Proposed Price	Change
Catered Buffet (includes Dessert)	2.25	2.75	.50
5 oz. Ribeye Steak (includes Dessert)	2.00	2.50	.50
12 oz. Strip Steak (includes Dessert)	2.25	3.00	.75
Roast Beef (Plate Lunch) (includes Dessert)	2.00	2.25	.25
Cold Plate	2.00	2.25	.25
Coffee, Cups, Cream & Sugar Per Gal.	1.00	1.50	.50

### Catered Refreshments

Coffee and Donuts or Cake	.15	.20	.05
Punch and Cookies or Cake	.25	.30	.05

### Sandwiches

Cheese	.15	.20	.05
Grilled Cheese	.20	.25	.05
Hamburger	.20	.20	0
Cheeseburger	.25	.25	0
Hot Dog	.20	.25	.05
Fried Egg	.20	.30	.10
Tuna, Ham and Chicken	.25	.30	.05
Salad	.25	.30	.05
Juicyburger	.25	.30	.05
Bar-B-Q Beef and Pork	.35	.35	0
Roast Beef, Pork	.35	.40	.05
Ham	.35	.40	.05
Ham and Cheese	.40	.45	.05
Bacon, Lettuce & Tomato	.40	.45	.05
Beef Tenderloin	.40	Elim.	Elim.
Hamburger DeLuxe	.40	.40	0
Hot Beef and Pork	.60	.70	.10
Fish	.35	.40	.05
Fish with Slaw	.45	Elim.	Elim.
Fish and French Fries	.60	Elim.	Elim.
Chile Dog	.30	.40	.10
Soup	.20	.25	.05
French Fries	.15	.15	0
Chile	.25	.30	.05

## Our Man Hoppe

Once upon a time there were two brothers named Damon and Pythias Smecher, who shared a deep love of learning. The only difference between them was that Damon loved to acquire learning and Pythias loved to give it away.

Loving learning as they did, they naturally joined the faculty of the University of Megapolis, which was the greatest treasure trove of learning in the whole wide world.

Damon decided to become a scholar of ancient Etruscan funeral orations because he loved dead languages and things like that. Pythias decided to become a teacher of life, because he loved life and things like that.

\* \* \* \*

In hardly any time at all, Damon became the greatest scholar of ancient Etruscan funeral orations in the whole wide world. He wrote papers and books and was universally recognized as a leading authority in his field by both other authorities in his field.

The only cross he had to bear was the university regulation requiring him to lecture to students from 1 p. m. to 1:40 p. m. on alternate Wednesdays.

With a great effort, he would team himself away from his beloved Etruscan funeral orations, scurry to the lecture hall and rattle off his lecture without once looking up from his notes. Actually, he delivered the exact same lecture every alternate Wednesday for 32 years. But as he delivered it entirely in ancient Etruscan, which nobody understood, there were few complaints.

So grants poured in to Damon from the Ford, Rockefeller and Maidenform Foundations. He was made a full professor at 27, head of his department at 31 and was always described at faculty teas as "a jewel in the diadem of this great university."

\* \* \* \*

Meanwhile, his brother Pythias became the greatest teacher of Life in the whole wide world.

His students loved him. They would flock to sit at his feet as he taught them how the stars wheel in their courses, why a cowslip blooms and what goodness was. He poured out everything he knew about everything and a generation of students grew up wiser and kinder, instilled with a love of learning and a love of life.

Of course, this kind of teaching took a lot of time and Pythias never did finish his paper entitled "What Life Is All About." But, as he said to himself, "No scholarly journal would publish a paper like that anyway."

At the age of 62, Pythias was called into the Dean's office. "Look here, Smecher," said the Dean, "I noticed your name on the faculty roster. What do you do around here anyway?"

"I guess I just teach, sir," said Pythias apologetically.

"Good heavens, Smecher," cried the Dean, canceling his contract on the spot, "how can we go on being the greatest treasure trove of learning in the world, if you keep giving the stuff away?"

\* \* \* \*

Moral: The modern university is a perfect place to get an education. If you're a member of the faculty.

## Choral Program Expanded

The Glee Club will expand its activities to two rehearsals per week next semester. The group has functioned for many years as a pops singing group. Any student with a desire to sing is welcome.

A new singing activity which will begin on January 30th has been made available by an arrangement with the famed Fort Leonard Wood Oratorio Society. The outstanding group of sixty singers was formed in 1961 and has presented major choral works in concert every six weeks since that time. Membership has consisted, not only of singers from

Fort Leonard Wood, but of singers from a number of central Missouri communities. Two concerts are set for the spring semester, and rehearsals are one each week. Transportation to and from Fort Leonard Wood for the rehearsals will be provided without charge for interested students. The Oratorio Society will conclude activities before the UMR spring semester ends so that there are no schedule conflicts for those interested.

Information is available in the Music Office in Building T-1 for interested persons.

## College Faculty Studies Fractionated Grade Scale

Ellensburg, Wash. — (I.P.) Expressing regret that the Central Washington State College faculty turned down the proposed fractionated grading system, Dr. Maurice Pettit, professor of education and psychology, said "the faculty's first responsibility is to the students, and the fractionated scale is one way of fulfilling that responsibility."

The title of the study done by Dr. Pettit and Dr. Jack Crawford, associate professor of psychology, is "Some Effects of a Refined Grading Scale." These two men spent four years compiling information for this study. Recently the U.S. Office of Education sent their approval of the study to Drs. Pettit and Crawford.

The fractionated scale, in Dr. Pettit's opinion, is a more precise measurement of student achievement than the present scale of A-B-C-D-E. A check of classes taken for the report found that "only one out of three students receive the benefit of the doubt when they are on the border line between grades under the present system," according to Dr. Pettit.

Dr. Pettit says that there is an error in grading when a student is given a 'C' grade when he just missed a 'B' grade by a point or two. "Rounding these errors is what we are doing with this new scale," he continued, pointing out that the student who just missed the 'B' grade would receive his 2.8 or 2.9 and not just a straight 'C' grade.

Asked why he thought the faculty voted against the new scale (114 to 77) Dr. Pettit was not sure but he did say that "fifty-one new faculty members voted on this issue who never had any

(Continued on Page 6)

## THE MISSOURI MINER

THE MISSOURI MINER is the official publication of the students of the University of Missouri at Rolla. It is published at Rolla, Mo., every Friday during the school year. Entered as second class matter February 8, 1945, at the Post Office at Rolla, Mo., under the Act of March 3, 1879.

The subscription is \$1.25 per semester. This Missouri Miner features activities of the Students and Faculty of U. M. R.

Editor-in-Chief ..... Don Flugrad  
706 B E. 12th — 364-6423  
Business Manager ..... Charles Hansen  
500 W. 8th Street — 364-9993  
Managing Editor ..... Darrell Pepper  
Make Up Editor ..... Frank Fix  
Copy Editor ..... Bob Mildenstein  
Secretary ..... Charles Painter  
Features Editor ..... Jerry Vaughn  
Advertising Manager ..... Tom Sauer  
Circulation Manager ..... Jerry Adams  
Ass't Managing Editor ..... Steve Tacke  
Ass't Make up Editor ..... Bob Fick  
Sports Editor ..... Jim Weinert  
Proofreader ..... Gary Burks

### BAXTER'S CUT RATE LIQUOR

LIQUOR — WINE — BEER

CHAMPAGNE

Special Prices on Case Buying!

Telephone 364-2004

Highway 63 East

Rolla, Missouri



**VOLKSWAGEN**  
Sales and Service

**BILL SOWERS MOTORS**

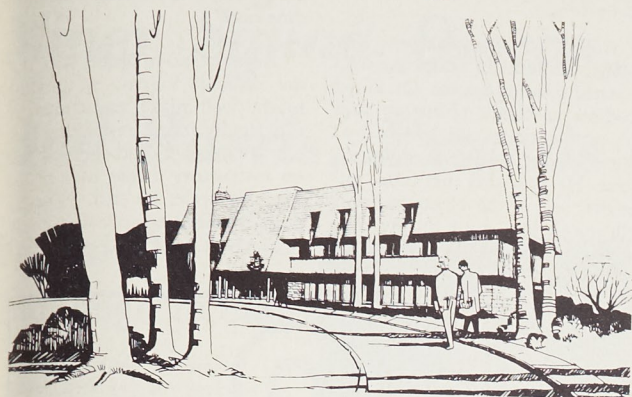
Phone 364-5178 Hwy. 66 E. in Northwe

"USED CARS HWY. 66 W. BY BIEDERMAN'S"



## Construction Started On New Beta Sig House

## Chancellor to Speak At First NSPE Meeting



Construction was started on a new chapter house for Beta Sigma Psi on January 4, 1967. The house, designed by Burks and Landburg, is a modern Scandinavian design with the emphasis on wood and rough-hewn materials to lend an air of masculinity to the structure. A progressive and growing membership will dedicate the house in September of this year in honor of the alumni who made it possible.

### UMR Professor Named Committee Vice-Chairman

A UMR professor has been appointed recently to the Engineering Technology Council for Professional Development.

Lyman L. Francis, associate professor of mechanical engineering will serve on the committee which evaluates engineering technology curricula for accreditation in the technical schools throughout the United States.

Francis will serve as vice chairman of Region VI which includes the states of Missouri, Arkansas, Kansas, Louisiana, Oklahoma, and Texas.

### New Initiates Of Eta Kappa Nu Are Announced

Members of Eta Kappa Nu were recently elected at UMR. They are as follows: John Brand, Robert Burkett, Thomas Campbell, Bill DuBois, Charles Eidson, Kenneth Farris, Bob Feugate, Orville Finnigan, Donald Johnstone, Fred Kuchenig, Timothy Luce, Bill McCarty, Robert McCrae, Steven Miltenberger, Steven Musterman, Wendell Neumeyer, John Oelger, Richard Olsen, Se-Jung Park, Robert Roos, Lester Roth, Richard Schoeffel, Faramarz Semnani, Kenneth Shuey, Ronald Sipes, David Slagle, Billy Smithson, James Spence, Kent Ulrich, Noel Bell, Benjamin Mason, Thomas Brown, Van Weissflug, James Wiseman and Francis Nixon.

Eta Kappa Nu is a national honor society for the professional field of electrical engineering. The purpose of the organization is to recognize high scholastic ability and to stimulate interest in school and community activities. Established nationally in 1904, Eta Kappa Nu was activated at UMR in 1952.

The UMR Student Chapter of the National Society of Professional Engineers (formerly MSPE, and now NSPE) will hold its first meeting of the new year Thursday, February 2. The meeting will begin at 7:30 p.m. in Room 114 of the Civil Engineering Building.

Featured speaker for the evening will be UMR Chancellor Merl Baker, who will discuss the relationship of an engineer's technical interests to his professional interests. Chancellor Baker holds a Ph.D. from Purdue in Mechanical Engineering and has long been a Registered Professional Engineer.

The UMR Student Chapter of NSPE has three primary objectives of service to the student. They are to develop and maintain the beginning student's interest in the engineering profession, to

develop the student's understanding of the professional aspects of engineering, and to direct the graduating senior toward definite steps to obtain professional status through certification and registration.

All students enrolled at UMR in a curriculum leading to an engineering degree are eligible for membership in NSPE and are invited to attend the February meeting.

### Dr. Aughenbaugh Signs Contract To Write Book

A UMR professor has signed with McGraw Hill Publishing Co. to write a textbook on "Basic Geology for Civil Engineers."

Dr. Nolan B. Aughenbaugh, associate professor of geological engineering, senior author of the book, says he hopes to have the first draft completed by next fall.

The book is expected to be used as an undergraduate text by universities across the country.

### MALO'S ITALIAN RESTAURANT

SPECIALIZING IN ITALIAN FOOD,

STEAKS AND CHICKEN

STUDENT SPECIAL:

PIZZA AND COKE — \$1.00

DINE AND DANCE NIGHTLY

Hwy. 66 West

Phone 364-9907

## Ten reasons She will want you to take a job at MCDONNELL



1. McDonnell is a "name" in aerospace . . . a name earned by solid engineering achievement in the current decade. The engineering leadership exemplified by successes in Gemini Spacecraft and the Phantom Fighters lifts your career and shoves it toward success.

2. Stability and security sometimes seem unimportant to young engineers just starting a career. But they are essential and you would be unwise to ignore them. McDonnell has never had a major decline in engineering and professional employment. The Company has grown rapidly in every one of its product areas. It presently has a backlog of more than a billion dollars in production contracts, and yet research is one of the fastest growing activities in the Company.

3. St. Louis is America's "City on the Go". In civic progress, in entertainment, in stores and homes, in industry, in sports and recreation, in education, in construction, in human involvement, St. Louis is the city with a "future" in the center of America.

4. You can best "change the world" by living in a world of change. The climate of St. Louis offers the mental and physical stimulation of four distinct seasons. How can you enjoy a warm fire without a new snowfall for comparison? What other natural phenomena than spring brings such a lift to your spirits? Who has failed to enjoy the comfort of a summer morning or the crisp smell of an autumn afternoon?

5. McDonnell's suburban location allows you to choose from the total spectrum of living locations. You may like the pace of apartment life at the heart of this 2½ million person metropolis. Or you might like the nearby suburbs with small city atmosphere and tree-lined streets. Just as convenient are rural areas, where you can live apart from the hustle yet be close enough to enjoy city-living advantages.

6. Naturally you want to earn your way and you want all you can earn. McDonnell wages are competitive with that of other industries. But being competitive isn't enough after you begin to show your mettle. Then, it is corporate policy to recognize the unique and individual efforts of those who strive for and achieve engineering excellence. Success will stem from a combination of inspiration and perspiration . . . probably 10% of the former and 90% of the latter. But if you're willing to work, you'll never need to worry about your economic and organizational progress at McDonnell.

7. Facilities at McDonnell are second to none in space, advanced aircraft and automation. You'll find organizational and physical working conditions that complement your skills and education. McDonnell testing and development facilities range from man-rated space chambers to Mach 28 wind tunnels, laboratories from microbiology to optics, computers from analog through hybrid to digital. You will find McDonnell is a team organization and nowhere is teamwork as essential as in the aerospace industry. Team organizations keep you from becoming a desk-bound engineer and stimulate the exchange of experience and knowledge so necessary to the development of wisdom.

8. The Gateway to Space is in St. Louis. You'll be working with the experienced men at McDonnell who designed the aircraft and spacecraft that have, for a decade, dominated aerospace technology. McDonnell is strongly oriented toward government contracting. It has demonstrated the talent that provides exceptional national service while returning worthwhile earnings to investors. As the fastest growing segment of our national economy, the Government provides a stable and continuing marketplace for those companies whose organization is oriented toward effectively serving the Nation's needs.

9. You may feel you've had enough education, but you'll soon decide to seek more. The McDonnell College Study Plan encourages self development and offers economic assistance plus adjusted work week benefits for advanced degree studies directly related to your job responsibilities. Many private and public colleges and universities in the area offer applicable programs.

10. Nowhere in industry can a young engineer find more job satisfaction than in contributing to national advancements in air and space. At McDonnell, pride in workmanship is a habit nurtured by the national acclaim that is the reward for success.

See your placement director for a personal interview or mail this form to:  
J. T. Snyder, McDonnell Employment Office, Box 516, St. Louis, Missouri 63166

Name \_\_\_\_\_ Phone \_\_\_\_\_ Age \_\_\_\_\_  
Home Address \_\_\_\_\_ City & State \_\_\_\_\_ Zip \_\_\_\_\_  
Education: BS \_\_\_\_\_ MS \_\_\_\_\_ PhD \_\_\_\_\_ Major Field: \_\_\_\_\_  
Date \_\_\_\_\_ Date \_\_\_\_\_ Date \_\_\_\_\_  
College: \_\_\_\_\_

I would like to receive application form ☐

**MCDONNELL**

An Equal Opportunity Employer



## Varsity Rifle Team Captures Victory Over Columbia Team

The UMR Varsity Rifle Team defeated the Firers from the University of Missouri at Columbia in two team matches held at the UMR Rifle Range last Saturday, 7 January 1967. The two team victories over Mizzou by scores of 1066 to 1018 and 999 to 990 enabled the Miners to remain undefeated in shoulder-to-shoulder matches this season. Wilford Pomeroy paced the UMR First Team to victory with a 279 total, followed by George Crandell, 267; Robert Hill 262 and Richard Whelove, 258. Top Spot on the UMC First Team was shared by Jim Porter and Bill Houston with 261 scores. In the Second Team Match, Richard Vogeler led the way for

UMR with a 265 score followed by Carl Duffner, 257; John Peery, 241; and William Westray, 236. The top firer for UMC Second Team was Len Mackler with a 255 score.

In an individual match following the team events, John Peery of UMR captured top shot in the

sixteen firer competition with a 260 score followed by two other UMR firers with 259 scores. However, Wilford Pomeroy captured second place by firing one point higher in prone position than Richard Vogeler who was awarded third place in the individual event.

## Fractionated Grade Scale

(Continued From Page 4)

association with the study conducted here."

Citing several reasons why CWSC should not adopt the fractionated grading system, Dr. Floyd Rodine, professor of history, said the new scale would lead to machine graded, objective examinations. He also said that more extensive use of the objective exam will result in a poor quality education. I think the addition of

plus and minus to grades would give us sufficient variation for those that want change, Dr. Rodine said.

Another point made was that the difficult scheme of grading might well make recruitment of top faculty more impossible than ever. Pressure would come to bear on instructors if they have to use the new scale, he said. "The ten point fractionated scale would really be chaotic.

## Forms Available For Student Aid At Parker Hall

Applications for loans and scholarships are now being accepted for the 1967-68 school year. Interested students should obtain application forms at the office of Mr. Ray L. Pendergrass, Director of Student Aids and Awards, Room 101, Parker Hall.

All students with 3.00 grade averages or above are urged to apply for scholarships. Loan applicants should have a 2.00 average and show definite evidence of financial need.

## Campus Talent '67 Features UMR Band

(Continued From Page 3)

will be among 11 college acts from Missouri on the hour-long show sponsored by Southwestern Bell Telephone Co. The act was chosen in auditions this fall by the Corinthian Special Productions Co., producer of the show.

The show will be televised on the following channels in Missouri: Kansas City, KMBC, Channel 9, from 8:30 to 9:30 p.m., Jan. 14; Springfield, KYTV, Channel 3, from 6:30 to 7:30 p.m., Jan. 16; St. Joseph, KFEQ, Channel 2, from 9 to 10 p.m., Jan. 16.

Joplin, KODE, Channel 12, from 9 to 10 p.m., Jan. 17; St. Louis, KSD, Channel 5, from 7:30 to 8:30 p.m., Jan. 19; Hannibal, WGEM, Channel 10, from 7:30 to 8:30 p.m., Jan. 19; Jefferson City, KRCG, Channel 13, from 6:30 to 7:30 p.m., Jan. 20; Sedalia, KMOS, Channel 6, from 6:30 to 7:30 p.m., Jan. 20.

### NOTICE!

The ROLLAMO BOARD requests that upperclassmen hold off growing beards for St. Pat's until after they have had their portrait taken for the yearbook. Those wishing to grow a beard may make an appointment to have their picture taken earlier by calling 364-3413. Graduating seniors may also make special appointments for their picture.

# NEWS for ENGINEERING GRADUATES

Continued expansion of our military and commercial business provides openings for virtually every technical talent.

As you contemplate one of the most important decisions of your life, we suggest you consider career opportunities at Pratt & Whitney Aircraft. Like most everyone else, we offer all of the usual "fringe" benefits, including our Corporation-financed Graduate Education Program. But, far more important to you and your future, is the wide-open opportunity for professional growth with a company that enjoys an enviable record of stability in the dynamic atmosphere of aerospace technology.

And make no mistake about it . . . you'll get a solid feeling of satisfaction from your contribution to our nation's economic growth and to its national defense as well.

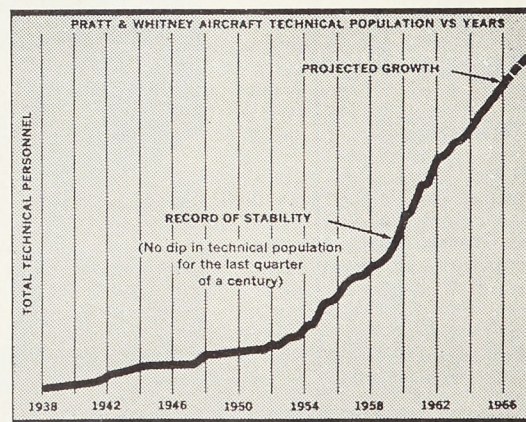
Your degree can be a B.S., M.S. or Ph.D. in: **MECHANICAL, AERONAUTICAL, CHEMICAL, CIVIL (structures oriented), ELECTRICAL, MARINE, and METALLURGICAL ENGINEERING • ENGINEERING MECHANICS, APPLIED MATHEMATICS, CERAMICS, PHYSICS and ENGINEERING PHYSICS.**

For further information concerning a career with Pratt & Whitney Aircraft, consult your college placement officer—or write Mr. William L. Stoner, Engineering Department, Pratt & Whitney Aircraft, East Hartford, Connecticut 06108.



## Pratt & Whitney Aircraft

CONNECTICUT OPERATIONS EAST HARTFORD, CONNECTICUT  
FLORIDA OPERATIONS WEST PALM BEACH, FLORIDA



Take a look at the above chart; then a good long look at Pratt & Whitney Aircraft—where technical careers offer exciting growth, continuing challenge, and lasting stability—where engineers and scientists are recognized as the major reason for the Company's continued success.

**SPECIALISTS IN POWER . . . POWER FOR PROPULSION—POWER FOR AUXILIARY SYSTEMS. CURRENT UTILIZATIONS INCLUDE MILITARY AND COMMERCIAL AIRCRAFT, MISSILES, SPACE VEHICLES, MARINE AND INDUSTRIAL APPLICATIONS.**

# U A

DIVISION OF UNITED AIRCRAFT CORP.

An Equal Opportunity Employer



# MINER SPORTS

FRIDAY, JANUARY 13, 1967

THE MISSOURI MINER

PAGE 7

## Miner Squad Downs Maryville And Harris, Extends Mark to 6-5

### Bearcats No Challenge to UMR

By Greg Julian

Even without the services of regular 6' 5" starter Wayne Lewis, who was out on illness, the Miners defeated Northwest Missouri State, 87-62, last Friday night in the Rolla High School Gym.

The Miners ran a tight man-to-man full court press most of the game which really paid off. From the initial sound of the buzzer the Miners took the lead which was never once challenged. With 11:54 remaining in the first half, the Miners led 23-8.

An even bigger gap opened with 5:48 left in the half when the score was 45-15 in the Miners' favor. After that the Bearcats took up a little slack and made the half-time score 49-29. The largest lead that the Miners held was with 7:08 remaining in the game when the score read 81-50.

Charles Andrew, 5-11" senior guard, turned in a fine performance with several full court drive ay-ups. He also took game honors with 28 points. Randy Vessell, also a guard, set up several good plays on fast breaks which scored repeatedly.

Tom Borgmeyer 6' 8" freshman center, was really popping the net early in the game as he



Tom Borgmeyer led the list of UMR rebounders with his total of 9. Head, Brown, and Andrew each had 7.

tallied 12 of the first 28 points for the Miners. The entire Miner team was successful under the basket as they out-rebounded the Bearcats 54-42.

Percentage-wise the Miners still came out on top. In field goal attempts they hit 51% and 70% of their free throws. Northwest Missouri State hit only a measly 36% on the floor and 50% on the line.

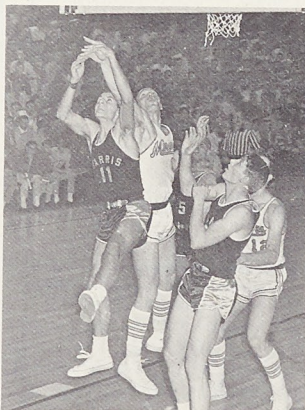
UMR	NWMS
49	First Half 29
38	Second Half 33
87	Final 62

### Head Scores 21 To Lead Squad

With five men scoring in double figures, the Missouri Miners overcame first half difficulties to whip the Harris Teachers Hornets, 89-77, in St. Louis last Wednesday night. The victory broke a three game losing streak and was the Miners' second win over Harris this season.

Billy Key's group trailed as much as nine points in that faltering first half, and the Miners left the court at intermission with a slim one-point lead. Well balanced scoring enabled UMR to increase the edge, finally winning the contest, 89-77.

Junior forward John Head, from Carlyle, Illinois, scored 21 points to lead the Miners in that field. Head had been averaging 8.2 points per game previous to the Harris contest. Mackie Andrew popped in eight field goals and three free throws for a total of 19 points, and freshman forward Bob Brown continued his excellent performances with 17 points and 11 rebounds.



The Miners outrebounded Harris 56-38, in a game which found UMR trailing as much as nine points.

Wayne Lewis swept 12 from the boards as well as scoring 16 points. Randy Vessell once again found the opposition doubling-up on him and was held to 13 points.

Dave Kiel took the scoring honors for Harris and the game with his tally of 29 points. Guard John Beeks totaled 19 for the game.

### MIAA REPORT

## Springfield Unbeaten in Conference Standing

By Bill Conner

The Bears of Southwest Missouri State came back from a scoring spurt staged by Prairie View A & M at the start of the second half to rip the Texas team 78-66. Springfield led at the half, 43-34 but Prairie View pulled to within three points at 47-44 after three minutes of the second half. Jim Gummersbach led the Bears from there to bring his tally for the evening to twenty points. Springfield defeated Jackson State 83-78 and Lewis and Clark 91-76.

The Bears then went on to defeat Sacramento St. 90-82 and Central Washington St. 75-74. In the only conference game the Bears played this past week, they defeated Central Missouri State's Mules 76-55.

Cape Girardeau's Indians defeated the Kirksville Bulldogs in MIAA action 60-76. Southeast State's five then defeated Martin (Tenn.) Branch in non conference action 75-71.

William Jewell was lifted over Northwest Missouri State 76-75 by Mike Davis' basket with one second left in the game. The Cardinals were led by Tom

Sponcil with 24 points and the Bearcats were paced by Ralph Gifford and Jim Vollmuth with 20 and 19 points respectively. Maryville's Bearcats also defeated Midland 77-66 and Peru (Ind.) St. 77-74. In MIAA action the Kirksville Bulldogs defeated the Bearcats 86-69.

Northeast Missouri State triumphed over Bellarmine 75-67  
(Continued on Page 8)

### St. Louis Rivermen To Host Miners

Billy Key's Missouri Miners will travel to St. Louis tonight, as the University of Missouri Rolla and St. Louis campuses battle it out on the hardwood. The Miners are 6-5 overall, following Monday night's MIAA loss to the Kirksville Bulldogs, and Chuck Smith's Rivermen are currently 9-3.

The Rivermen downed Sanford-Brown 88-72, last week, in a contest which found the score tied at 34-all at halftime. Ron Woods scored 28 points for St. Louis. Reiter followed with 17.

## SIDELINES

BY JIM WEINEL



The Missouri Intercollegiate Athletic Association, of which UMR is a member, may admit a seventh team in the not-too-distant future. Lincoln University of Jefferson City was recently brought up as a possible addition, and the vote of conference representatives was favorable for a study of the possibility. Organized in 1914, the conference became known as the MIAA in the winter of 1923 and remained a five-member group until 1935. At that time, the Missouri School of Mines and Metallurgy (UMR) joined. For several years the league has been one of the most powerful small college conferences in the country, and the addition of Lincoln would help further its reputation in athletic circles.

Two UMR faculty members and a Rolla businessman have combined their ideas and efforts to form The Rolla Handball Association, an organization owning the community's only handball court. The razing of Jackling Gym seemingly erased the thought of handball participation (at least until the new "multi-purpose building" is a reality), but Coach Leo Christopher, Prof. J. Bobbitt, and Mr. Harold Gaddy conceived this idea of a dues-paying membership to support a private court. Additional memberships are still available to faculty and students. For more information, interested individuals may get in touch with any of the three men mentioned above.

Address questions and comments to "Sidelines," c/o THE MISSOURI MINER, UMR, Rolla, Missouri.

## Bulldogs Beat UMR In Close Overtime Game

The University of Missouri at Rolla suffered its second MIAA defeat of the season Monday night, as the Kirksville Bulldogs eked out a 65-64 overtime victory. The Miners are now 6-5 overall and 2-2 in the conference.

Strong defensive play in the first half provided nip-and-tuck play resulting in a 27-27 intermission score. Both squads totaled 11 field goals and scored on 11 shots from the free throw line in that half.

The Bulldogs jumped to a four-point lead in the opening seconds of the second half, but rapidly responding Miner squad tied it once again. UMR took the lead and held it most of the period. Then with 2:30 left in the game, Mackie Andrew and freshman Bob Brown of the Miner team were called out on fouls.

Kirksville had narrowed their lead to a single field goal at this point, and NEMO forward Dave Wild scored on the one-and-one to tie the game at 60-60. The ball changed hands twice on two violations, and the Miners regained control with less than a minute left. Stalling for time, UMR played for one shot but failed as the regulation time ran out.

As the six-minute overtime period began, the Miners got the tip-off, and Loris Piepho scored on a layup at the 4:30 mark. Leonard Butler sank two field goals successively, putting Kirksville ahead, but UMR's John Head dropped in a pair of free throws to tie the score at 64-64. After unsuccessful attempts to score by both teams, Kirksville controlled the ball and stalled. With one second remaining, Randy Vessell fouled NEMO's Bob Brown, who won the game on the free throw, 65-64.

Tom Borgmeyer scored 22 to pace both squads. Wayne Lewis followed with 16.

Want a Good Place to Eat?

TRY

**Whitey's Restaurant**

Located on Highway 63 North at the Crescent

FEATURING FINE FOODS

Open 7 Days a Week — 5:30 A. M. to 10 P. M. Sun. Thru Thurs.

Open 5:30 A. M. to 11 P. M. Friday and Saturday

## TIGER TOWN AT CENTRAL PONTIAC

Le Mans and G. T. O.

TREMENDOUS DISCOUNTS!!

- Small or No Down Payment
- Deferred Payments as low as \$25 monthly until on the job
- 5% Interest
- Service After the Sale

If Central Pontiac Doesn't Have a Tiger  
for You . . .

TRY THE ZOO!!



## Intramural Wrestling Program To Be at National Guard Armory

by Lil' David

Intramural wrestling, one of the most popular contact sports, will get underway February 21, at 5:30 p.m. in the National Guard Armory Building.

Each entry in wrestling should sign the workout board at the Holtman Hall room. Include: Full name, organization and approximate weight. You will not be given credit for a workout unless your name is on this board. In addition to this you will be checked individually while actually working out. Workouts should start now! The workout room will be located in the basement of Holtman Hall, it will be ready January 9.

### Ten Workout Minimum

A minimum of 10 workouts is required. Also, all wrestlers must have a physical examination

signed by a doctor that was taken within two weeks prior to your wrestling date. A schedule for physicals at the UMR hospital will be from 4-6 p.m. February 15-16, 1967. All workouts must be completed by Friday, February 17. If you do not have 10 workouts by this time (including Friday) you are disqualified.

Each organization is limited to one entry in each weight. There will be nine wrestling weights: 118, 126, 135, 145, 155, 165, 175, 185, and heavyweight. All contestants will be weighed Wednesday, February 1, between 4 and 6 p.m. At this time wrestlers will be checked individually on the weight expected to be lost. You will be weighed at the UMR Athletic Office Building Training Room.

**No overweight or underweight will be permitted. All contestants must have final weigh in Monday, February 20, from 8 to 5:30 p.m. Failure to weigh in at this time will disqualify you for competition. Weigh in will be held in Butler Building adjacent to old Jackling Field in Training Room.**

### Bouts to Be February 21-24

The preliminary bouts in wrestling will be held Tuesday, Wednesday, and Thursday, February 21, 22, 23, at 5:30 p.m. Wrestling will be run off alternately starting with the 118 lb. class — the 118 lb. wrestling bout will start at 5:30 p.m. Each bout will be three, two minute rounds. The referee will be the sole judge as to the winner.

The final bouts will start Friday, February 24, at 5:30 p.m. and will be run off in the same manner as the preliminaries.

Remember: Wrestling workout room is in Holtman Hall. Enter by West door, workout room is in the basement.

Please watch the intramural bulletin board for further information and a time schedule for each bout.

## MEET THE MINERS

By Mike Stiefman

Loris Piepho, a junior studying Mechanical Engineering, is a returning letterman from last year who hails from Hobart, Indiana. Loris played guard and forward for Hobart Senior High before coming to UMR. Playing the same position for the Miners, Loris has averaged ten points per game for the past two seasons.

He feels this year's team will out-perform last years team and has an excellent chance of taking the conference championship.

Loris is a member of Tech Club and is their representative to the student council. He is also a member of ASME as well as the "M" Club.

Bob Brown is a newcomer to the UMR basketball team who also feels that the cagers have the ability and desire to take the conference championship as well as improve on last years winning season.

Bob played for McBride High School in St. Louis before entering UMR this fall. This season he has shown he has the ability to play college ball by averaging ten points per game playing forward, the same position he played in high school.

### MIAA REPORT

(Continued From Page 7)

and then eased past Quincy 89-86. The Bulldogs were in turn beaten by North Texas State University 80-54 and by St. Benedict's 97-68.

Warrensburg went 2 for 4 as they beat Lamar Tech. 80-69 and Pittsburg State 77-59. The Mules were edged by St. Mary's 67-66 and were soundly defeated by Southwest Texas St. 85-73.

The leading scorers in the MIAA are Pettit of CMSC and Bolden of SWMS in first and second place respectively. Pettit and Bolden are also 1 and 2 in field goals, free throws and rebounds. Pettit has 135 rebounds to Bolden's 110.

**INTRAMURAL  
WRESTLERS:  
TEN WORKOUTS MUST  
BE COMPLETED BY  
FRIDAY, FEBRUARY 17**

## Diehl Montgomery, Inc.

ROLLA, MISSOURI

FORD — LINCOLN — MERCURY — T-BIRD — CONTINENTAL

DRIVE YOUR NEW CAR BEFORE YOU GRADUATE!

See Us for Your Special Student Pay Plan

on New or Used Cars.

Payments Tailored While You Are in School and Out.

**The  
Old Pro  
Wants to  
Know...**



If you are a regularly enrolled student at UMR; if, since July 1, 1966, you are 21 years old; if you have a Missouri State Liquor Control ID Card; then the Old Pro has a birthday gift for you at Mueller Distributing Company, 217 West 6th Street.

**FALSTAFF Old Pro CLUB**

## Sports Calendar

### VARSITY BASKETBALL

January 13	University of Missouri at St. Louis
January 24	Missouri Valley, at Marshall
January 28	Northwest Missouri, at Maryville
January 30	Northeast Missouri, at Kirksville
February 4	Cape Girardeau, at UMR

### INTRAMURAL SPORTS

February 1	Wrestling Weigh-in
February 17	Minimum Work-out Deadline
February 20	Final Wrestling Weigh-in
February 21-24	Wrestling Preliminaries and Finals



**Here's 25¢  
to help get you  
through  
mid-year exams**  
(When you can't afford to be dull)

Twenty-five cents is what you get back on the purchase of any size package of NoDoz Keep Alert Tablets or new Chewable Mints. Safe as coffee, NoDoz helps restore your mental vitality at a time when you really can't afford to be dull.

NoDoz won't make you a genius. But it will help bring you back to your

mental best... it will aid your concentration and intellectual effort through hours of studying.

So go ahead, sharpen your wits with NoDoz. Help restore your mental vitality, pass your exams, then mail us the front panel or label from any size package of NoDoz\* with this coupon. And we'll mail you a quarter (25¢) in return. (A little extra cash for your post-exams party)



Tablets or new Chewable Mints

When you can't afford to be dull, sharpen your wits with NoDoz... mail us the front panel from package of 15 or 36 NoDoz Tablets, or Front label from bottle of 60 NoDoz Tablets.

Please return 25 cents (one quarter) to:

Name \_\_\_\_\_  
Address \_\_\_\_\_  
City \_\_\_\_\_ State \_\_\_\_\_ Zip Code \_\_\_\_\_  
Offer void without this coupon.

But hurry, offer ends Feb. 28. No refunds after March 7, 1967. Mail coupon today!

Bristol-Myers/Grove Division, P.O. Box 4808, Clinton, Iowa 52732

\*Enclosed is (check one): ☐ Wrapper from NoDoz Mints, or ☐ Front panel from package of 15 or 36 NoDoz Tablets, or ☐ Front label from bottle of 60 NoDoz Tablets.

Please return 25 cents (one quarter) to:

Name \_\_\_\_\_  
Address \_\_\_\_\_  
City \_\_\_\_\_ State \_\_\_\_\_ Zip Code \_\_\_\_\_  
Offer void without this coupon.