



11 Nov 1966

The Missouri Miner, November 11, 1966

Follow this and additional works at: https://scholarsmine.mst.edu/missouri_miner

These newspapers reflect the attitudes, perspectives, and beliefs of different times. Neither the library nor the university endorses the views expressed in these collections, some of which contain images and language which may be offensive to some readers.

Recommended Citation

"The Missouri Miner, November 11, 1966" (1966). *The Missouri Miner Newspaper*. 1845.
https://scholarsmine.mst.edu/missouri_miner/1845

This Newspaper is brought to you for free and open access by Scholars' Mine. It has been accepted for inclusion in The Missouri Miner Newspaper by an authorized administrator of Scholars' Mine. This work is protected by U. S. Copyright Law. Unauthorized use including reproduction for redistribution requires the permission of the copyright holder. For more information, please contact scholarsmine@mst.edu.

Serendipity Singers Appear in General Lecture

The Rolla High School Auditorium was the scene of the first general lecture of the year: performance by the nationally famous Serendipity Singers.

British writer Horace Walpole once said "serendipity is an unexpected discovery of a new and happy event." By their performance Monday night, the group certainly lived up their chosen name. Playing to an enthusiastic and spirited audience of Miners, the Serendips played so well that they were given a standing ovation by the audience. Included in their program were comedy sketches, dramatic black-outs, tender and inspiring ballad renditions, and forceful musical arrangements, together with

their new sound in Folk-Pop.

The Serendips have combined electric guitars to their banjo and other "folk" instruments in order to get their new sound. The result is a self-contained act that makes the group more than just a folk-singing group. They have a selection of songs which are jazz and instrument, plus a blend of songs combining folk, jazz, and sophisticated pop styles. This creativity and imagination has led to their quick rise in the musical world.

The group is composed of seven young men and two young women. The men are: Mike Browsky, Bob Young, Gamble Rogers, John Perry, Tony Per-

ry, Jon Arbenz, and Pat Cicchetti. The two girls are Lana Shaw, a striking brunette, and JoAnn Carey, a very lovely blonde. The whole group felt that the Miners were a "great audience."

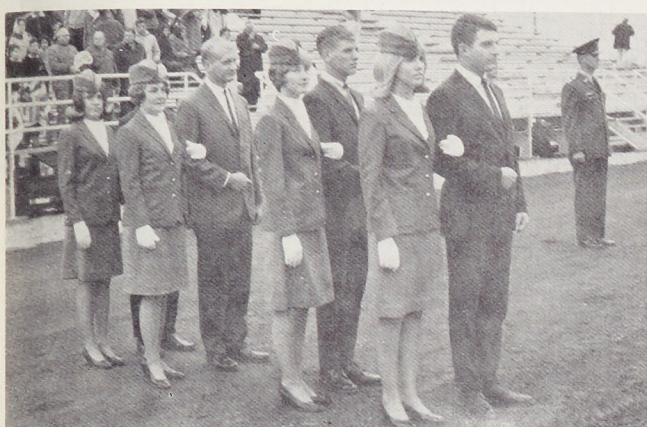
Mike Browsky, Jon Arbenz, and Bob Young are the only members who were with the original Serendipity Singers who began at the University of Colorado. The group made its first big national impact while playing at "The Bitter End," a Greenwich Village niteroy owned by Fred Weintraub. Mr. Weintraub is responsible for the discovery of such names as Bill Cosby, Woody Allen and Peter, Paul, and Mary. The Serendips' first album produced a national hit, "Don't Let the

Rain Come Down." From then on their path was only up.

They appeared on "The Jack Paar Show" and their success in recordings, night clubs, concerts, television, and personal appearances is indicative of their talent. They have made numerous foreign tours, including a trip made for the State Department to Russia, where they showed creative talents for Uncle Sam's camp. They were the first singing group chosen for such a prestigious assignment.

The Serendipity Singers are one of the most popular singing groups to emerge on the national scene in recent years, and they give every sign of staying at the top for many more.

ROTC Misses Presented At Miner Football Game



NEW ROTC SPONSORS

UMR campus leaders escort ROTC sponsors in coronation ceremonies held before Parents Day football game.

Last Saturday afternoon proved victorious not only for UMR's football Miners, but also for pretty blonde-haired Judy Haynes, University of Missouri at Rolla coed of St. James, Missouri. Prior to the Parent's Day Rolla-Kirksville clash, Miss Haynes was formally presented as "Miss ROTC of 1966-67," with Miss Joyce Linda Day of St. Louis County, Miss Barbara Thompson of Newburg, and Miss Judy Davidson of Rolla serving as her "Maids of Honor."

In reigning in their unprecedented capacities, these young ladies become Honorary Colonel and Lieutenant Colonels, respectively, and serve as sponsors to the three ROTC battalions of UMR's Cadet Brigade.

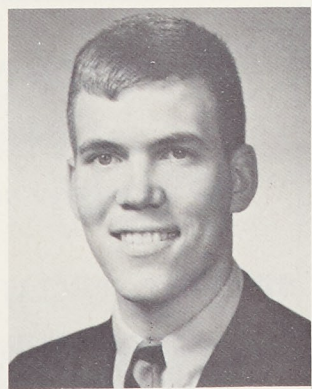
Noteworthy is the enthusiasm with which the four petite misses were received by the Miner crowd, illustrating, perhaps, the student body's general approval of UMR's trend toward becoming a true coeducational institution.

M.E. Senior Honored by Blue Key

Gene Kalhorn, a senior in Mechanical Engineering, has been elected Blue Key Man of the Month for September, 1966. Gene has been very active on the U.M.R. campus ever since he entered here as a Freshman in the Fall of 1962.

Among his many activities, he has served as President and Vice

President of the American Society of Mechanical Engineers, and Vice President and Treasurer of the



GENE KALHORN

Student Union Board. He is also a member of Theta Tau Professional Engineering Fraternity, where he served as Vice President.

His greatest honors came through his election to President of the Interfraternity Council, and to President of Kappa Sigma So-

cial Fraternity.

Gene plans to graduate in January, 1967. He is engaged to Miss Susan Keim, a senior at the University of Missouri at St. Louis.

1200 Parents Visit UMR Campus

About 1,200 parents of University of Missouri at Rolla students participated in the Parents' Day activities on campus Nov. 5.

Parents and students toured the campus, visited with faculty and administrators and watched the Miners beat the Kirksville Bulldogs with a score of 16 to 0.

Parents met Chancellor Merl Baker at his reception in the Student Union Saturday morning and attended the annual banquet Saturday evening in the Rolla High School Cafeteria. James Stephens, vice president of Community Service, Missouri Public Service Co., Kansas City and past president of the MSM Alumni Association addressed the guests at the banquet.



Registration for Parents Day takes place in Student Union lobby.

The Missouri MINER

UNIVERSITY OF MISSOURI AT ROLLA

VOLUME 53

FRIDAY, NOVEMBER 11, 1966, ROLLA, MISSOURI

NUMBER 9

Celebrated Baseball Magnate To Be Featured in S.U. Series

Baseball's "incorrigible maverick," Bill Veeck, the former owner of three major league teams, comes to Student Union on Wednesday, Nov. 16 under the auspices of Student Union Board.

Fans will never forget the day a midget came up to bat in an American League game. In fact, Bill Veeck may well go down in history merely for that moment in 1951 when he sent in Eddie Gaedel for the St. Louis Browns in a surprise move that rocked the park.

Sets Many Records

But Bill Veeck's team-winning record stands a good chance of being remembered, too. When he

took over the Cleveland Indians, they went on to win the American League pennant and the World Series in 1948, setting an all-time baseball attendance record of over 2½ million. He also achieved an American League "first" by hiring a Negro outfielder, Larry Doby. Later he brought in the oldest rookie in baseball history, the 48-year old Negro pitcher LeRoy (Satchel) Paige.

After selling the Indians and the Browns, Veeck bought into the Chicago White Sox, another team that won the American League pennant for him in 1959. The Chicago Cubs and Milwaukee Brewers are two other clubs with which he has been associated.

Becomes a Writer

A promoter with a flair for entertaining the fans (he introduced the exploding scoreboard), Bill Veeck now devotes much of his time to writing. An injury received as a marine in World War II cost him a leg but dampened none of his enthusiasm and energy. He makes frequent appearances on

ABC-TV's "Wide World of Sports." His syndicated columns and book reviews appear in newspapers throughout the country in such cities as Chicago, Denver, Detroit, Cleveland and Baltimore. The Saturday Evening Post, Esquire, Sports Illustrated and Reader's Digest are but a few of the magazines that have carried his by-line.

The Phillips Academy (Andover), Los Alamos School and Kenyon College-educated author has also published an autobiography, "Veeck - As in Wreck," and (with Ed Linn) "The Hustler's Handbook," a colorful and entertaining book on baseball and promotion. He has a well-earned reputation as an outspoken critic of "stodgy" baseball management.

A native of Illinois who now resides in Maryland, Bill Veeck is married to a former publicity director of Ice Capades. They have a large family and have traveled so much around the country that each of their children was born in a different State!

Future Students To Tour University

Careers in engineering and science will be highlighted for high school students who attend Engineers Day at UMR Nov. 19.

Students, guidance counselors, teachers, and parents will be given the opportunity to visit U.M.R.'s 16 departments and confer with faculty and administrative staff.

Registration will open at 8 a.m. in the Student Union with guided tours of the campus from 8 a.m. to 3 p.m. Exhibits explain-

(Continued on Page 4)

Rev. R. McNeur To Be Featured At UMR Workshop

On November 11 and 12 M.S. P.E., TBPI, and the Interfaith council will sponsor a workshop entitled, "Science, Engineering, and Society; Impact and Responsibility" in the Student Union ballroom. It will consist of a Friday night talk by Rev. Ronald W. McNeur, Ph. D., and a Saturday panel discussion.

Friday night Rev. McNeur will speak on "Science, Engineering, and Society; Impact and Responsibility" beginning at 7:30. This will be open to the general public. Rev. McNeur, a native of New Zealand, has served pastorates in the United States, Scotland, and New Zealand. He has a M.A. in Mathematics from Otago University, New Zealand and a Ph.D. from Edinburgh University. Also to his credit is his book: *Space-Time-God* published in 1961 by Westminster Press.

The purpose of the workshop Saturday is to raise those questions (Continued on Page 5)

College Broadcasters Hold Convention at UMR

The Midwest Region of the Intercollegiate Broadcasting system held its first convention on Saturday, November 5, on the UMR campus, with radio station

souri, and Kansas.

Highlighting the evening was the 7 p.m. buffet dinner, which was served in the Student Union Ballroom. Climaxing the eve-



Steven B. Stevens addresses annual broadcasters convention in the S. U. Ballroom.

KMSM-FM serving as the host.

Registration started at 12 noon for the 90 station operators, announcers, and directors who attended. These students represented some 20 college-affiliated radio stations from Iowa, Illinois, Mis-

ning's activities was an address by Steven B. Stevens, popular news broadcaster for radio station KXOK in St. Louis. Mr. Stevens spoke about radio as a career and the rewards received from putting effort and energy into radio work.

C. E. Department To Sponsor Annual Asphalt Conclave

Reports and discussions on the latest developments in the manufacture and use of asphalt will be featured at the annual Asphalt Conference at UMR Nov. 17 and 18.

The meeting is sponsored by the U.M.R. civil engineering department and extension division, in cooperation with the Missouri Bituminous Contractors Association, Missouri State Highway Commission and the Asphalt Institute. The clinic is expected to attract representatives of public agencies, industries and educational institutions from all over the country.

Five papers and two panel discussions will be presented during five technical sessions which will be held in the Civil Engineering Auditorium.

Registration opens at 8:30 a.m. Nov. 17 in the lobby of the Civil Engineering Building, and the first technical session is scheduled for 9:15 a.m.

NOTICE!

The Traffic Safety has announced that the ROTC drill field will be open for parking commencing November 16, 1966. No parking permit is required for this area.

Enrollment at UMR Increases, M. E. Department Retains Lead

The official enrollment for the fall semester at UMR is 4,847 Chancellor Merl Baker announced Wednesday.

The figure, which combines the enrollment on the Rolla campus with approximately 400 enrolled at the St. Louis Graduate Engineering Center, shows an increase from 4,668 a year ago.

The Rolla enrollment combined with enrollments from the other three University of Missouri campuses, totals 37,210 overall for the University. This is a 10.4 per cent increase from 33,683 enrolled a year ago. The "head count" on students was made at the end of four weeks of classes on the four campuses.

Enrollments on other campuses include the University of Missouri, Columbia, 18,669, an increase from 17,582 a year ago; the University of Missouri at Kansas City, 7,891, an increase from 6,775 a year ago; and the University of Missouri at St. Louis, 5,803, an increase from 4,658 a year ago.

The department of mechanical engineering leads all other departments on the Rolla campus with an enrollment of 972. The departments with the second and third largest enrollments are elec-

trical engineering with 944 civil engineering with 781.

Freshmen outnumber the other classes with 1,329 enrolled. Eight hundred nineteen students are in

the graduate school with 71 candidates for the Ph.D. degree.

An ever-increasing number of women enroll at U.M.R. with 121 enrolled for the fall semester.

BAXTER'S

CUT RATE LIQUOR

LIQUOR — WINE — BEER

CHAMPAGNE

Special Prices on Case Buying!

Telephone 364-2004

Highway 63 East

Rolla, Missouri



VOLKSWAGEN Sales and Service BILL SOWERS MOTORS

Phone 364-5178 Hwy. 66 E. in Northwye

"USED CARS HWY. 66 W. BY BIEDERMAN'S"

1967 ENGINEERING AND MATH GRADUATES

FOR

SYSTEMS

PRODUCTION

RESEARCH

QUALITY CONTROL

INDUSTRIAL ENGINEERING

TEST ENGINEERING

FIELD ENGINEERING

DESIGN

SALES

The Inland Steel Company, East Chicago, Indiana, invites you to investigate our many career opportunities. Consult the specific job descriptions in the pocket of our brochure. Our representatives will be on your campus on Thursday, November 17th. Contact Mr. Leon Herschkowitz for an appointment.

INLAND STEEL COMPANY

EAST CHICAGO, INDIANA

An Equal Opportunity Employer — In the Plans for Progress Program

UPTOWN THEATRE

MOVIES IN CINEMASCOPE

Thurs., Fri., Sat. Nov. 10-12

'Assault on a Queen'

Frank Sinatra & Virna Lisi

Sun., Mon., Tues. Nov. 13-15

Feature Showing 3 Times Daily

2:00, 6:00, 8:30 p.m.

BILLY GRAHAM EVANGELISTIC FILMS PRESENTS:

'The Restless Ones'

Wednesday Nov. 16

ST. PAT'S BENEFIT

'A Shot in the Dark'

RITZ THEATRE

MOVIES IN WIDE SCREEN

Thurs. Thru Mon. Nov. 10-14

Continuous From 1 p.m.

Sat. & Sun.

Admission:

Adults 75c — Children 35c

'Seconds'

Rock Hudson & Salome Jens

Tues., Wed., Thurs. Nov. 15-17

Admission:

Adults 60c — Children 35c

'Boy Did I Get a

Wrong Number'

Bob Hope & Phyllis Diller

\$\$\$ SAVE \$\$\$

WE SELL TO EVERYBODY WHOLESALE

Open 8 to 8 Monday thru Saturday — 9 to 1 on Sunday

HOOK AUTO SUPPLY

PHONE 364-5252

New Official UMR Class Rings

BY L. G. BALFOUR CO.

BULOVA ACCUTRON

DIAMONDS and ENGRAVING

WATCH REPAIRING

Christopher Jewelers

805 Pine Street

4,500 MINERS

Can't Be Wrong

THEY SAY WE HAVE THE BEST FOOD IN ROLLA!

* * * * *

STUDENT SPECIALS EVERY SUNDAY

1/2 Pan Fried Chicken \$1.35
with French Fries and Cole Slaw

Spaghetti With Meat Sauce \$1.10

EL CHAREVE HICKORY HOUSE

Hwy 63 South

364-9900

UMR Independents Aid Council In Campus Improvement Program

On Saturdays of the 17th and 4th of October, several members of the Independents Organization were busily engaged in the erection of three new campus signs.

These signs were purchased by the Student Council under the Campus Beautification Program and placed under the supervision of the Traffic Safety Office. The signs were placed at three points in the campus. One is near the Old Metallurgy Building; another at the Civil Engineering Building and the third one is at the entrance of Nagogami Terrace.

The addition of these attractive signs to our campus is indeed helpful and the men of the Independents Organization who participated in the project are to be commended on the fine job that they did and the high spirit with which they carried out the project.



CAMPUS BEAUTIFICATION PROGRAM:

Members of the UMR Independents organization are shown installing new signs recently purchased by the Student Council. The project is part of the campus beautification program.

Engineering Administration Added to Expanding Curriculum

One of the newest fields of graduate study at UMR is that of Engineering Administration. The Master of Engineering program is interdepartmental, requiring courses in management, social studies, humanities, and engineering. The purpose of the required courses is to give the student a sufficient understanding of basic management skills to provide a sound orientation toward further development through either experience or additional education.

One of the problems of modern industry is the identification and education of management personnel. But, the technical side of modern management has become so complex that a man with a broad general education finds that he often does not have an understanding of the technical language of modern business. Similarly, the person with extensive training in management may find that he is deficient of knowledge of the society and culture of which his business is a part, as well as the technical side of production. The engineer, with a superb knowledge of technical skills is deficient in

the general knowledge of the social and cultural composition and basic management skills.

The demand for management personnel with an aggregate all of these abilities is tremendous. The purpose of the Engineering Administration program is to educate engineers in such a manner.

Courses required of the program are:

| | Sem. | Hrs. |
|-----------------|------|------|
| Mathematics 318 | 3 | |
| Mathematics 426 | 3 | |
| Psychology 453 | 3 | |
| Economics 440 | 3 | |
| Economics 441 | 3 | |

| | |
|-----------------------|----|
| Humanities and Social | 15 |
| Electives: | 15 |
| General Electives: | 6 |
| | 36 |

Other new fields of graduate study at UMR are: Master's in applied math, energy conversion, computer science, engineering mechanics, geophysical engineering, geophysics, nuclear engineering and propulsion and space engineering; and Doctorates of Sci-

ence in civil engineering, geophysical engineering, geophysics, mechanical engineering, nuclear engineering and chemistry.

In all there are 866 students enrolled in graduate school at UMR. This figure includes 346 candidates for the masters degree, 412 doctorate students, and 108 additional candidates for the masters degree at the St. Louis Engineering center.

Modern Engineer's Role in Society To Be MSPE Topic

The UMR Student Chapter of the Missouri Society of Professional Engineers (MSPE) will hold its third meeting of the year, November 17. The meeting is scheduled to begin at 7:30 p.m. in Room 114 of the Civil Engineering Building.

Guest speaker for the evening will be Mr. Carl H. Niewoehner, P.E. Mr. Niewoehner, who is a registered professional engineer, is currently Boone County's delegate to the Missouri House of Representatives. He will address the chapter on "The Responsibility of Professional Men to Society."

The UMR Student Chapter of MSPE has three primary objectives of service to the student. They are to develop and maintain the beginning student's interest in the engineering profession, to develop the student's understanding of the professional aspect of engineering, and to direct the graduating senior toward definite steps to obtain professional status through certification and registration.

NOTICE!

Traffic Safety Office has announced that there are still decals available for students who have registered automobiles. Any student who has registered a motor vehicle and has not picked up a decal is advised to do so immediately.

CAREERS IN STEEL



Our representative
will be on campus

NOV. 29, 30

to interview undergraduate
and graduate candidates for
Bethlehem's '67 Loop Course
—our highly regarded
management training
program

OPPORTUNITIES are
available in steel plant operations, sales, research, mining, accounting, and other activities.

DEGREES required are mechanical, metallurgical, electrical, chemical, industrial, civil, mining, and other engineering specialties; also chemistry, physics, mathematics, business administration, accounting and liberal arts.

If you would like to discuss your career interest with a Bethlehem representative, see your placement officer to arrange for an interview appointment.

An Equal Opportunity
Employer in the Plans for
Progress Program

**BETHLEHEM
STEEL**

Presenting . . .

FRONTIER TOWER LIFE INSURANCE COMPANY'S "Keystone College Plan"



NOW ESTABLISHED with an office and sales force in Rolla (101 Carney Manor), Frontier Tower Life Insurance Company, Jefferson City, Mo., is presenting its "college plan" of life insurance to students here. Pictured in their office here, the Rolla staff: from left, Bob Morrow, district manager; Ron Lewis, student representative (364-5029); Wes Myers (seated), student representative (364-1490); and Al Ponnwitz, student representative (364-5766).

Let one of These Leading, Active, Student
Representatives Show the "College Plan" to You!

ROLLA OFFICE: 101 Carney Manor

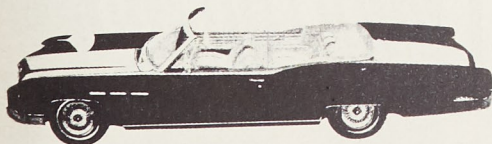
Phone 364-6573

FRONTIER TOWER LIFE INSURANCE CO.
HOME OFFICE, JEFFERSON CITY, MO.

WE'VE GOT THE

"IN"
CAR
FOR
YOU.

**1967
BUICK.**



LE SABRE CONVERTIBLE

A Finance Plan With GMAC to Fit Your Needs

OVERHOFF BUICK CO.

4th & Elm Streets

Rolla, Mo.



Miner Editorials, Letters, and Features



Humanities Assume Important Role Drop Dilemma...

In a recent *Time* magazine article, the statement was made that 20 percent of MIT graduates become company presidents or vice presidents. At first glance, this seems strange since one usually thinks of an MIT graduate as a technically educated young man who would probably be found in front of a computer or in a laboratory or somewhere in the vicinity of a transit or slide rule. Looking a little further, we find that because of a society which is becoming more and more technical, the demand for engineers and scientists in the fields of management, sales, and even economics has greatly increased. This de-

mand has caused a growing emphasis on the humanities and our own school has not been unaffected.

During the last two years the UMR departments of Humanities and Social Studies have added 23 new members to the faculty. There are now thirteen Ph.D.'s in the two departments. Other improvements include the addition of courses in philosophy, music appreciation, literature, Russian, economics, history, and literature in the languages. Freshmen English has been completely restructured and a course for Honors Freshmen in English is now offered.

Also, a General Studies program has been added through which local students pursuing a degree in non-engineering fields may attend school here for two years and take a basic group of courses which are required by most universities. The majority of these courses are in the Humanities and the social Studies departments.

The future outlook for these two departments must include a new building. It is common knowledge that the Rolla Building with its few classrooms is entirely too small. As it now stands, almost all humanities courses are "farmed out" in other buildings across the campus. The request for funds for a new building will be made in the next state budget and, since it has a high priority, the desperately needed humanities building may soon be a reality.

The growth of the two departments in the next few years will be in the more specialized courses. There will be more 300-level history and economics courses. Courses will be added in philosophy, as well as two new courses; one in art, one in architecture appreciation.

Thus, after taking the basic courses in English, history, economics, and literature during the freshman and sophomore years, the engineering student will be able to take more specialized courses in these subjects or, for a broader background, elect to take philosophy, music, art, language, psychology, or sociology. These courses are presently offered and, according to Dr. Jim C. Pogue, Chairman of the Department of Humanities, "We intend to improve both their quality and quantity."

MINER

THE MISSOURI MINER is the official publication of the students of the University of Missouri at Rolla. It is published at Rolla, Mo., every Friday during the school year. Entered as second class matter February 8, 1945, at the Post Office at Rolla, Mo., under the Act of March 3, 1879.

The subscription is \$1.25 per semester. This Missouri Miner features activities of the Students and Faculty of U. M. R.

Editor-in-Chief Don Flugrad
706 B E. 12th — 364-6423
Business Manager Charles Hansen
500 W. 8th Street — 364-9993
Managing Editor Darrell Pepper
Make Up Editor Frank Fix
Copy Editor Bob Mildenstein
Secretary Charles Painter
Features Editor Jerry Vaughn
Advertising Manager Tom Sauer
Circulation Manager Jerry Adams
Ass't Managing Editor Steve Tacke
Ass't Make up Editor Bob Fick
Sports Editor Jim Weinle
Proofreader Gary Burks

Want a Good Place to Eat?

TRY

Whitey's Restaurant

Located on Highway 63 North at the Crescent

FEATURING FINE FOODS

Open 7 Days a Week — 5:30 A. M. to 10 P. M. Sun. Thru Thurs.
Open 5:30 A. M. to 11 P. M. Friday and Saturday

"If a student officially drops a course after six weeks from the beginning of classes, a grade of 'F' will be recorded by the registrar unless extenuating circumstances are certified by the instructor of the course."

This rule, taken from the current Manual of Information, went into effect with the start of this semester. Students who formerly had a half semester plus two weeks in which to decide if they could successfully pass a particular course now have only six weeks.

The rule presupposes, however, that the student will have some basis for a decision at the end of the first six weeks of the semester. If the instructor doesn't give a quiz before the deadline, though, how can a logical choice be made? Perhaps certain instructors would certify the necessary extenuating circumstances in these cases, but can this be counted on? Shouldn't there be a universally accepted agreement that quizzes will be administered before the end of the first six weeks in all classes?

The MINER would be happy to publish ideas on this topic, both pro and con, from both students and faculty.

Our Man Hoppe

Once upon a time in the Beautiful Green Valley where the wildflowers grew an argument developed over who should be allowed to join The Club.

There were lots of members. But The Club was really run by the Goodguys (cq), who believed in Wonderfulism (cq), and the Badguys (cq), who believed in Awfulism. That's because they were the only members who bred Psnxgls (cq) — those voracious monsters with gobbly jaws and poisonous breaths rightly feared by one and all.

Indeed, they were so frightening that even the Goodguys and Badguys wouldn't take their Psnxtls out for walks, for fear their breath would poison the air, or they would get loose and eat everybody up. So the Beautiful Green Valley dwelt in peace, the wildflowers flourished and all were happy.

All that is, except for the Terribly Badguys, who believed in the Awfullest Awfulism. They were so awful the Goodguys refused to nod when they passed on the street. And even the Badguys would only snide and nasty things to them. Which was safe, for the Terribly Badguys didn't have a single Psnxtl to their name.

The Terribly Badguys stamped their feet in rage and said, "We're going to breed our own Psnxtls and when we do, we're going to turn them loose to eat up everybody in your stuffy old Club!"

Some members were afraid. But the Goodguys said, "Hmmm! Psnxtl breeding is a rare art form. Don't worry, it will be 20 years before such backward people as the Terribly Badguys can breed a Psnxtl."

In five years, the Terribly Badguys proudly showed off their first Psnxtl.

More members were afraid. But the Goodguys said, "Hmmm! It's only a crude little Psnxtl. Besides, they don't have any way to send it anywhere. What good's a Psnxtl you've got to keep at home? Don't worry, it will be ten years before such a backward people can perfect a delivery system." And everybody felt much better.

The following year, the Terribly Badguys triumphantly showed off their delivery system, complete with Psnxtl.

Just about every member was afraid. But the Goodguys said, "Hmmm! It's only a cheap, local delivery system, barely good for sending a Psnxtl next door. Are you going to let those Terribly Badguys force their way into our Club? Don't worry, it will be five years before they can put together a long-distance delivery system and send Psnxtls all the way across the Beautiful Green Valley to eat everybody up."

So everybody felt much better.

Moreover, this time, lo and behold, the Goodguys' prediction proved absolutely right. Almost to the minute.

* * *

Moral: Better dead right than dead wrong. But not much.

ENGINEER'S DAY

(Continued From Page 1)

ing engineering and science will be on display in all departments, and teaching and administrative personnel will be on hand for consultation on questions of interest to the college bound student.

The University of Missouri at Rolla, formerly the Missouri School of Mines and Metallurgy, specializes in engineering and science education with bachelor degree programs in 16 areas of science and engineering.

The Rolla campus has the ninth largest engineering enrollment in the country and the largest in this area. All engineering departments are among the nation's largest, with two, civil engineering and metallurgical engineering, ranking first.

One HOUR
"MARTINIZING"
CERTIFIED
THE MOST IN DRY CLEANING

As advertised in Life, Holiday, Glamour, Business Weekly, Esquire Magazines, and ABC Television and Radio.

ONE HOUR DRY CLEANING DAILY FROM 8 A. M. - 3 P. M.
INCLUDING SATURDAY

LAUNDRY SERVICE — EXPERT ALTERATIONS

121 West 8th St.

Telephone 364-6063

UMR Acquires New Psyche Teacher Workshop Held on Campus

Instructors are frequently asked for advice or counsel and Dr. W. J. "Bill" Ketcherside, new instructor in psychology is no exception. Many students have come to Dr. Ketcherside asking his advice which leads him to say, "A counseling center where students could obtain vocational and academic guidance, as well as help with personal problems, would alleviate a substantial need at UMR."

Dr. Ketcherside, who began his education at Flat River Junior

College, would not have had the opportunity to attend college if it had not been just two miles from his home of Desloge, Missouri. This is why he says "by adding more humanities and social science courses a greater number of

students from the areas surrounding Rolla will have the opportunity to attend college." Dr. Ketcherside came to UMR because he sees opportunity for institutional as well as personal growth.

(Continued From Page 2)

tions which are seldom dealt with in technically orientated schools, even though the work pursued at these schools has had a tremendous effect on the structure and style of society. Topics to be discussed include: (1) Prob-

lems of Urbanization, (2) Automation, (3) Air and water Pollution, (4) Uses of Nuclear Energy, (5) Communications, and (6) Mass Transportation. Each person registering will list first and second discussion group preferences. The panel discussions will begin at 9 A.M. and end at 3:45 P.M.

Reading Course Offered

An evening short course in reading techniques designed to help students read faster and re-

tain more will be offered Nov. 22 to Jan. 24 by the UMR Extension Division in cooperation with the U.M.R. department of humanities.

Classes of two hours each will be held one night a week for 10 weeks. The first class will be held at 7 p.m. Nov. 22 in Room 102, Rolla Building, on the U.M.R. campus. Registration fee is \$37.

The course is expected to be of value to adults interested in more efficient reading as well as to upper level high school and college students.

Russian Tour Arranged

An organizational meeting for a tour of 11 foreign cities will be held at 7:30 p.m. Nov. 14 in Room 117 of the Civil Engineering Building of the University of Missouri at Rolla. All interested in going on the summer tour of Rome, Athens, Moscow, Vienna, Paris, London, and several other Russian cities are invited to attend the meeting.

The trip is sponsored and directed by Dr. David A. Law, assistant professor of Russian at U.M.R., who has directed two previous such tours.

The group of approximately 25 people will leave St. Louis on June 19, and return to St. Louis on July 20. The cost is estimated at \$1,200 maximum for transportation, lodging and meals. Those applying for membership of this tour group must join the U.M.R. Russian Club (\$2.00 per year) and must pay a \$100 deposit by Nov. 15 in order to have applications accepted. The deposit will be refunded if the tour is cancelled or if the applicant requests

a refund in writing before April 1, 1967.

The tour is designed as a means by which students at UMR may collectively travel and visit Europe.

Featured in the tour will be visits to many Russian cities not normally on the well beaten European tourist trail.

Diehl Montgomery, Inc.

ROLLA, MISSOURI

FORD — LINCOLN — MERCURY — T-BIRD — CONTINENTAL

DRIVE YOUR NEW CAR BEFORE YOU GRADUATE!

See Us for Your Special Student Pay Plan

on New or Used Cars.

Payments Tailored While You Are in School and Out.

Get with the action in your long, lean, tapered TRIMZ jeans. Be tough with the "in crowd." Free-fall comfort that sets a record for long play without wrinkles... never need ironing. Capers cord brushed bedfords, terrific twills, durable denims, crazy cords. Strengthened with 50% polyester for rugged appearance and fast action. Colors to match your mood. \$5.95 and \$6.95.

ready
when you
are...

TRIMZ
JEANS by **CARR**

Casuals

LOCK
prest



Smith Brothers Mfg. Co., Carthage, Mo.



The Kingston Trio appears through the courtesy of Trident Productions and Decca Records.



I cannot conclude this column without saying a few words about Personna Super Stainless Steel Blades. The reason I cannot is that this column is sponsored by the makers of Personna Super Stainless Steel Blades, and they are inclined to get peckish if I omit to mention their product.

Not, mind you, that it is a chore for me to plug Personna. Or, for the matter of that, to shave with Personna. No sir: no chore. Personna takes the pain out of shaving, scraps the scrape, negates the nick, repudiates the rasp, peels the pull, boycotts the burn, blackballs the bite, ousts the ouch. Furthermore, Personna endures and abides, gives you luxury shave after luxury shave, day after day after day. And further furthermore, Personna is available both in double-edge style and Injector style. And as if all this were not bounty enough, Personna is now offering you a chance to grab a fistful of \$100 bills! Stop at your Personna dealer and get an entry blank for the new Personna Super Stainless Steel Sweepstakes. But hurry! Time is limited.

* * *

© 1966, Max Shulman

The makers of Personna who bring you this column all through the school year also bring you the ultimate in luxury shaving with Personna and Personna's partner in shaving comfort—Burma Shave, regular or menthol.

Recognition Day Planned For Merit Semifinalists

National Merit Semifinalists in a 250-mile radius of UMR have been invited to visit the campus Nov. 12 for National Merit Recognition Day. It is the first time this event has been held at U.M.R.

The scholars, their parents, and friends interested in attending the University, will hear talks by University faculty and students, tour the campus, have lunch at the Student Union, and see a Miner football game.

UMR Newman Club Elects Officers For School Year

Officers for the Newman Club at the University of Missouri at Rolla have recently been elected. They are Jim Gruenloh, president; Darrel Wortman, secretary-treasurer; Gene O'Neill, religious chairman; Steve Albrecht, social chairman and Paul Schaefer, membership chairman.

Organized nationally in 1893, the Newman Club is the organization for college and university students of the Catholic faith. The chapter at the University of Missouri at Rolla was established in 1953.

The club strives to enrich and deepen the spiritual lives of its members thru a balanced program of religious, intellectual and social activities.



BILL OLDAKOWSKI

(B.S. Industrial Admin.) of the Bethlehem Steel Loop Course knows where the action is. He's on the move at our big, bustling Lackawanna Plant, near Buffalo, N.Y.

Join the action. First step: pick up a copy of "Careers with Bethlehem Steel and the Loop Course" at your placement office. Then sign up for a campus interview. Our 1967 Loop Class has openings for technical and non-technical graduates (and post-grads) for careers in steel operations, research, sales, mining, accounting, and other activities.

An Equal Opportunity Employer in the Plans for Progress Program

BETHLEHEM STEEL



Scholars, their parents and friends will be guests at a luncheon at 12:20 p.m. in the Student Union and at the U.M.R.-Northwest Missouri State College football game at 1:30 p.m. on Jackling Field, West 10th Street.

Registration will be held at 9:30 a.m. in Room 104 of the Physics Building. The group will hear a welcome address from the chancellor, Dr. Merl Baker, and talks on "Experiences as a Student at UMR" by John Kieffer, National Merit Scholar from Crestwood and Gleen Hollenberg, winner of the \$1,000 International Minerals Scholarship Award from Hazelwood.

KAPPA SIGMA

The Beta Chi Chapter of the Kappa Sigma Fraternity held groundbreaking ceremonies for its new chapter house during homecoming activities.

Dr. Robert E. Carlile, chapter faculty advisor, addressed members and the alumni before the ground was broken by William Hackel, Alumni House Fund Association chairman. Designed by St. Louis architect Charles E. King, the house is expected to be completed by the fall semester of 1967.

Several other prominent alumni were present including Horton F. Early, member of the Supreme executive Committee; Louis Merz, District President; and John Smith, Chapter Alumnus Advisor.

Greek Columns

It was a very busy weekend for the brothers, including very hard work on decorations which resulted in a 2nd place. We were also very proud of our queen candidate, Kathy Taylor, who made a very fine showing.

TAU KAPPA EPSILON

The men at Tau Kappa Epsilon announced the loss of their friend and mascot King Bruno of Liechtenstein, or more commonly known around the Teke house and campus as Chomper, last week. After being Teke's mascot for six years, Chomper died Tuesday morning of shock caused by acute pancreatitis. Many people will remember him at his position at the head of the Teke bell carriage pulling it to the Miner football games, a tradition initiated

this fall. He was also an aid to the TKE cheering section at all intramural contests, and in helping to collect for the March of Dimes. Chomper was the second of the two St. Bernard mascots at the Teke house, and TKE's hope to find a third St. Bernard to take over for faithful Chomper.

NOTICE!

The St. Pat's Board Benefit Movie, "A Shot in the Dark," starring Peter Sellers and Elke Sommers, plus three Road Runner cartoons, will be shown Wednesday, November 16, in the Uptown Theater at 6:30 and 9:00 P. M. Tickets are 50c in advance and 60c at the door.

Are you
discontented
enough
to work for
G.E.?

Does water pollution bug you? Or smog? Does it concern you that some places in the country never have enough teachers? Or nurses? And when you read about the growing pains of a developing nation, do you wish you could do something?

You can. Thousands of General Electric people are helping to solve the problems of a growing, changing world.

Generating more (and cheaper) electricity with nuclear reactors. Controlling smog in our cities and pollution in our streams. Using electronics to bring the teaching skills of an expert into many classrooms at once, the trained eyes of a nurse into many hospital rooms at once.

If you're not content with the world as it is . . . and if you have the brains, imagination and drive to help build a better one, we'd like to talk to you.

See the man from G.E. during his next campus visit. Come to General Electric, where the young men are important men.

Progress Is Our Most Important Product

GENERAL ELECTRIC



MINERS BLANK KIRKSVILLE 16-0

MINER SPORTS

Shutout Over Bulldogs

The First Since 1941

FRIDAY, NOVEMBER 11, 1966

THE MISSOURI MINER

PAGE 7

Allgood's Group to Host NWMS; Win Could Mean Tie for Third

Missouri Miner coach Dewey Allgood will be shooting for his second straight league win this Saturday, as the University of Missouri at Rolla hosts North-

west Missouri State of Maryville. On this final day of MIAA football activity, a UMR victory coupled with a Warrensburg loss

would put the Miners in a three-way tie for third place. Allgood's UMR squad will be without the services of sophomore halfback Rich Erxleben, who was sidelined with a shoulder injury in the Kirksville game this past weekend. Starting in Erxleben's spot on the offensive line-up will be freshman back Tom Schomehel from Malden, Missouri. Schomehel scored six of 16 total points in the shutout against Kirksville.

Whether or not Gene Ricker will see much action is still undecided. At one time this season, the junior halfback ranked seventh in the nation's leading pass receivers, but a recurring injury has kept him limited for the past three games. Freshman end Ron Boyer caught eight passes Saturday, good for 134 yards.

UMR's aerial ace Ron Lewis will be calling the signals, trying

to better his national rating of 11th in the NCAA's list of pass completions. The 170-pound jun-

(Continued on Page 8)



Photo by Greg Julian

MINERS KICK OFF — Glen Adrian kicks off for the Miners in a game which resulted in the season's third win. Kirksville was stopped cold, 16-0.

By Mike Stiefferman

Saturday, in honor of the parents, the Miners did what they hadn't achieved in twenty-five years; they shut out the Kirksville Bulldogs 16-0. It was a game that was scoreless until Art Verdi kicked a field goal in the remaining minute of the first half.

After stopping the Bulldogs on the opening kickoff, the Miners

Ron Boyer. Four plays later Verdi kicked a 24-yard field goal to put the Miners ahead at the half, 3 to 0.

The third quarter was a comedy of errors by both sides, as neither one could get anything going. In the first ten minutes of the quarter there were three fumbles and one interception.

The Miners finally got going when Glen Adrain pounced on a Kirksville fumble on the Bulldog 40-yard line. Ron Lewis completed a 29-yard pass to -Ron Boyer. Lewis then quick pitched to halfback Tom Schomehel going around left end, and Tom scampered fifteen yards for the touchdown. Verdi's PAT was good and the score was 10 to 0.

In the fourth quarter the Bulldogs finally got their offense going and drove to the Miner 12-yard line. On the next play Gorzynski was pushed back to the twenty-five yard line but a "pulling the face mask" penalty put the ball back on the Miner four yard line with a first and goal situation. Sharron Washington, Kirksville's all conference halfback, carried four times, and the Miner defense rose to the occasion as they stopped the Bulldogs on the Miner one.

Ron Lewis then directed a drive that covered 99-yards for the final score of the game. Passes of 29-yards to Boyer and 21-yards to Starnes and the fine running of Nicodemus, Taylor, and Schomehel brought the football to the one yard line where Lewis sneaked over for the score. Verdi's kick was blocked and the final score was 16 to 0.

Freshman Eddie Lane intercepted two Kirksville passes in the game. That brought his season total to seven which is a new UMR season record.

Ron Boyer also played a whale of a game by catching eight passes for 134 yards.

Cape Cinches Share of Title; Maryville Wins

By Bill Conner

Northwest Missouri State College put together two touchdown drives in the second quarter to surmount a 105-yard kickoff return by the Central Missouri State College Mules. The Bearcats then went on to a 21-14 Homecoming victory. Warrensburg's deep return specialist, Bill Green, scored the touchdown on that opening kickoff return.

Maryville's two second quarter touchdowns came in the last six minutes of the period. Dave Bussjaeg took one over on a six yard run. The other TD came on an 18-yard run by quarterback Don Orlovski.

The Mules tied the score in the third quarter on a one yard plunge by fullback Doug Morlok. The winning touchdown came with 10 minutes left in the game on a 23-yard run by Maryville fullback Mickey Thompson. Thompson also kicked all three extra points.

The Southwest Missouri State Bears cinched a tie for first place in the MIAA by trouncing Southeast Missouri State's Indians 20-7. Both teams came into the game with 3-0 conference records.

The Bear defense came up with four interceptions and a recovered fumble. One interception and the fumble led to Bear scores and one of the interceptions broke an Indian scoring drive. Sam McDowell, defensive guard, set up the first Bear TD when a Greg Bruney pass was batted into the air. Three plays later Jerry Howell scored the first of his two touchdowns. Howell scored again with 1:05 left in the first half and Ardie McCoy's 10-yard run in

the fourth quarter wrapped up the Bears' scoring. McCoy was the leading rusher for Southwest with 110-yards on 22 carries.

Southeast's single score came in the third quarter when Steve Jerebek blocked a Bear punt and Ron Jack recovered on the Southwest 11. Walt Smallwood then dived over from the one for the tally.

MIAA STANDINGS

| Team | W | L | % |
|----------------|---|---|------|
| Springfield | 4 | 0 | 1000 |
| Cape Girardeau | 3 | 1 | 750 |
| Warrensburg | 2 | 2 | 500 |
| Maryville | 2 | 2 | 500 |
| UMR | 1 | 3 | 250 |
| Kirksville | 0 | 4 | 000 |

(Continued on Page 8)

Intramural Grid Crown Goes To Sigma Nu

By Ed Wilson

As the dust lifted from the old gridiron, the 1966 intramural football champions walked off the field. Sigma Nu rolled over the Shamrock Club in the finals to capture first place in the football division. A similar battle took place between Kappa Sigma and Lambda Chi Alpha which resulted in the capture of third place by Kappa Sigma.

The top four teams finished within 10 points of each other, the highest being Sigma Nu with

TIGER TOWN AT CENTRAL PONTIAC

Le Mans and G. T. O.

TREMENDOUS DISCOUNTS!!

- Small or No Down Payment
- Deferred Payments as low as \$25 monthly until on the job
- 5% Interest
- Service After the Sale

If Central Pontiac Doesn't Have a Tiger

for You . . .

TRY THE ZOO!!

RUDY'S PACKAGE STORE

LIQUOR — BEER — WINE
DRAFT BEER

703 Pine Street

RUDY'S BAR

BUDWEISER DRAFT
BIG HAMBURGERS

MIDGET MART

Convenience Store

U. S. 63 & Vichy Road

SHELL STATION & WATER TANKS

GROCERIES • 5% BEER • COLD CUTS

DRUGS • SODAS • SUNDRIES

OPEN 7 A. M. - 11 P. M.
7 Days a Week

PHONE 364-4783

FIFTH IN MIAA MEET

Varsity Runners Finish Season With Four Wins

By Dave Kaufmann

The UMR Varsity Cross Country runners ran their overall conference record to 4 wins and 3 losses as they trounced the Harris Teacher College runners, 15 to 49, here on November first.

The Miners completely dominated the meet taking the first 6 places. Sophomore, Stan Notestine, led the way as he finished the four-mile course in the best time of 22 minutes 43 seconds. Following him were Ken Tracy, Keith Browne, and Don Duren finishing second, third, and fourth, respectively.

In other competition, the Lincoln Varsity runners edged the Miners, 32 to 24 last week. The Miners ran on a shortened course this time, with Notestine finishing second with a time of 19 minutes, 45 seconds, just a few seconds behind Lincoln's first place time.

Over 50 runners participated in the Greenville Dual Invitational meet as the University of Indiana runners captured first place. Following Indiana were Culver-Stockton, Washington University, who won last year, Greenville, and UMR runners. Jerry Schmidt of Westminster College took first place honors with a winning time of 20 minutes, 27 seconds, for the four-mile course. Stan Notestine, running in his typical form, placed high only half a minute behind Schmidt.

As UMR celebrated Parents Day on November 5th, the MIAA Cross Country Championship was run. The final statistics found Southeast Missouri State in first place followed by NEMS, CMS, SEMS, UMR, and N.W.M.S. Southeast Missouri State College put on a fine show as they totaled only 32 points taking 2nd, 3rd, and 4th places, but NEMS's Ron Werling took first place honors with a winning time of 20 minutes 46.5 seconds. Once again Stan Notestine placed first among the UMR runners while taking fifth in the meet with a time of 21 minutes and 23 seconds.

Coach Ted Moore feels that

this was, undoubtedly the best UMR team in a decade with some of the finest runners the school has ever had. At the top of the list is Stan Notestine, who has by far proven himself to be UMR's finest runner ever and with the running ability of Ken Tracy, Keith Browne, Don Duren, and freshman Mike Render, Ted is confident that next year's team will be even better.

MEET THE MINERS

By Lloyd Lazarus

Jim Key, a junior, six foot, two hundred and five pound tackle has been one of the defensive stalwarts of the year's Miner team.

Jim is a resident of Rolla and played for the Rolla High School Bulldogs before entering UMR. In high school, Jim played offensive tackle and defensive end.

Besides playing football, Jim is a brother of the Gamma Delta, a Lutheran fraternity, and the M Club.

As a winner of a football scholarship he feels that we can look forward to a "five hundred season." He feels the offensive team has done a great job in protecting the passer, and that the freshmen have performed well even though they lack experience.

Jim is looking forward to next season. He feels with the way the team has improved from week to week that the outlook is bright for next year's edition of the Miner football team.

UMR TO HOST MARYVILLE

(Continued From Page 7)

ior hit his mark 13 out of 27 tries against the Bulldogs.

Game Time will be 1:30 p.m. Saturday, at the new UMR Jackling Field in Rolla, Missouri.



m-m-m-m-m!

Distributed by
MUELLER DISTRIBUTING CO.
217 W. 6th St. Rolla, Mo.

INTRAMURALS

(Continued From Page 7)

290 points in the intramural standings. Two teams tied for fifth place while seven more tied for seventh place. This signifies a good season with many close games. Last year Sigma Nu also won first with Kappa Sigma coming in second.

With the close of the football season comes the start of the basketball season. This year's rules are the same as the Official Intercollegiate Basketball Rules used last year except for a few minor changes. Due to the fact that we no longer possess a gymnasium, the games will be held in the high school gymnasium.

The schedule is subject to change due to conflict with the Rolla Public Schools. There will be no smoking in the building at any time. Students are asked to dress before coming over to play and to enter by the east door. Managers are responsible for each organization's conduct at all times.

Sports Calendar

VARSITY FOOTBALL

November 12 Maryville, at UMR
November 19 Bradley University, at Peoria, Ill.

INTRAMURAL SPORTS

November Basketball play continues

which began just this past week will be worth some 300 points to the champion.

Address questions and comments to "Sidelines," c/o THE MISSOURI MINER, UMR, Rolla, Missouri.

SIDELINES

BY JIM WEINEL



This past Saturday, the UMR cross country team finished up one of the best seasons in recent years. Wholehearted participation and all-important team spirit helped lead the Miners to 4 wins and 3 losses. Recent meets saw the group running closer together with improved times. For example, in the Greenville Invitational, four Miners ran under 22:30 with Stan Notestine running his best time of the season (21:01 for four miles).

Notestine ran the first two miles at Greenville in 10 minutes and 22 seconds. This is just 12 seconds off the school mark for two-mile track. Many of the squad members are now preparing for spring track and the recent change of the MIAA two-mile run to three miles, which will go into effect next year.

With the completion of intramural flag football, Kappa Sigma has moved into the lead of the overall standings with 505.5 points. Sigma Nu, winner of the pigskin title, stands a close second with 593.25, and Lambda Chi Alpha is third. The weight of a major sport such as football (300 intramural points) can do much to sway the listings at this point, however, one will find that the top teams in these sports are usually the overall leaders. Intramural basketball

The Harmon Football Forecast

TOP 20 TEAMS (Forecasting Average: 1,145 right, 374 wrong, 39 Ties754)

| | | | |
|-----------------|------------------|------------------|-----------------|
| 1 - NOTRE DAME | 6 - GEORGIA TECH | 11 - PURDUE | 16 - SYRACUSE |
| 2 - MICH. STATE | 7 - TENNESSEE | 12 - S.M.U. | 17 - COLORADO |
| 3 - ALABAMA | 8 - SOUTHERN CAL | 13 - MISSISSIPPI | 18 - WYOMING |
| 4 - ARKANSAS | 9 - U.C.L.A. | 14 - FLORIDA | 19 - WASHINGTON |
| 5 - GEORGIA | 10 - NEBRASKA | 15 - HOUSTON | 20 - OKLAHOMA |

Saturday, Nov. 12 — Major Collages

| | | | |
|--------------------|----|---------------------|----|
| Alabama | 27 | South Carolina | 0 |
| Arkansas | 21 | St. Louis | 15 |
| Baylor | 17 | Texas Tech | 14 |
| Boston College | 14 | Villanova | 9 |
| Boston U. | 21 | Delaware | 20 |
| Brigham Young | 25 | Utah | 20 |
| Buffalo | 24 | Tampa | 7 |
| California | 17 | Army | 15 |
| Clemson | 22 | Maryland | 21 |
| Colgate | 14 | Lafayette | 0 |
| Colorado | 20 | Kansas | 0 |
| Colorado State | 20 | West Texas | 17 |
| Dartmouth | 28 | Cornell | 15 |
| East Carolina | 22 | Richmond | 12 |
| Florida | 31 | Tulane | 14 |
| Georgia | 21 | Auburn | 9 |
| Georgia Tech | 21 | Pittsburgh | 6 |
| Harvard | 33 | Brown | 6 |
| Houston | 23 | Kentucky | 7 |
| Idaho | 28 | Montana | 0 |
| Illinois | 24 | Wisconsin | 6 |
| Iowa State | 20 | Duke | 6 |
| Kent State | 20 | Marshall | 6 |
| L.S.U. | 16 | Miss. State | 7 |
| Louisville | 20 | Cincinnati | 14 |
| Memphis | 24 | Wake Forest | 12 |
| Miami, Fla. | 24 | Fresno | 0 |
| Miami (Ohio) | 24 | Dayton | 7 |
| Michigan | 27 | Northwestern | 7 |
| Michigan State | 31 | Indiana | 0 |
| Navy | 20 | Vanderbilt | 10 |
| Nebraska | 26 | Oklahoma State | 14 |
| New Mexico State | 22 | New Mexico | 0 |
| North Carolina | 15 | Air Force | 14 |
| North Carolina St. | 14 | South'n Mississippi | 8 |
| North Texas | 33 | Wichita | 7 |
| Notre Dame | 24 | Brigham Young | 7 |
| Ohio State | 25 | Iowa | 7 |
| Ohio U. | 14 | Bowling Green | 13 |
| Oklahoma | 17 | Missouri | 7 |
| Oregon | 24 | Arizona State | 13 |
| Pacific | 14 | Columbia | 13 |
| Pennsylvania | 24 | Yale | 17 |
| Princeton | 20 | Minnesota | 13 |
| Purdue | 28 | Holy Cross | 13 |
| Rutgers | 15 | Florida State | 20 |
| Santa Clara | 14 | Mississippi | 14 |
| Syracuse | 21 | T.C.U. | 7 |
| Tennessee | 15 | Rice | 15 |
| Texas | 20 | Montana State | 7 |
| Texas A & M | 21 | Stanford | 19 |
| Tulsa | 21 | San Jose | 13 |
| U.C.L.A. | 21 | The Citadel | 13 |
| Utah State | 20 | William & Mary | 0 |
| V.M.I. | 18 | Oregon State | 7 |
| V.P.I. | 19 | Arizona | 15 |
| Washington | 17 | George Washington | 13 |
| Washington State | 20 | Xavier | 13 |
| West Virginia | 21 | Texas Western | 10 |
| Western Michigan | 14 | | |
| Wyoming | 14 | | |

Other Games — East

| | | | |
|------------------|----|-------------------|----|
| Albright | 18 | Upsala | 14 |
| Amherst | 20 | Williams | 6 |
| Bridgeport | 21 | American Int'l | 6 |
| Bucknell | 28 | Lehigh | 13 |
| California State | 24 | Edinboro | 7 |
| Clarion | 28 | Slippery Rock | 0 |
| Connecticut | 24 | Rhode Island | 13 |
| Drexel Tech | 20 | Western Maryland | 12 |
| Hobart | 16 | Susquehanna | 19 |
| Junia | 19 | Moravian | 0 |
| Massachusetts | 22 | New Hampshire | 0 |
| Montclair | 23 | Glassboro | 6 |
| Rochester | 20 | R.P.I. | 6 |
| Shippensburg | 20 | Brookport | 0 |
| Southern Conn. | 20 | Cent. Connecticut | 14 |
| Springfield | 21 | Tufts | 0 |
| Temple | 10 | Gettysburg | 0 |
| Vermont | 14 | Maine | 10 |
| Wesleyan | 28 | Trinity | 15 |
| **West Chester | 28 | Cheney | 0 |

Other Games — Midwest

| | | | |
|-----------------|----|----------------|----|
| Alma | 13 | Wayne | 7 |
| Augustana, Ill. | 18 | Carroll | 7 |
| Bethany, Kansas | 26 | Bethel, Kansas | 0 |
| Bluffton | 14 | Ohio Northern | 13 |
| Carthage | 24 | Elmhurst | 0 |
| Colorado Mines | 31 | Chadron | 0 |

Midwest (continued)

| | | | |
|-------------------|----|----------------------|----|
| Defiance | 36 | Anderson | 6 |
| Doane | 28 | Graceland | 0 |
| Dubuque | 26 | N'west'n College, W. | 7 |
| E. Cent. Oklahoma | 40 | Midwestern | 0 |
| Eastern Michigan | 21 | Eastern Illinois | 13 |
| Emporia College | 14 | Southwestern, Kan. | 6 |
| Evansville | 24 | Murray | 20 |
| Fort Hays | 18 | Omaha | 7 |
| Friends | 20 | Kansas Wesleyan | 13 |
| Hanover | 20 | Earlham | 14 |
| Illinois State | 19 | Mankato | 14 |
| Illinois Wesleyan | 22 | Millikin | 0 |
| Manchester | 27 | Indiana Central | 0 |
| McPherson | 24 | Sterling | 13 |
| Nebraska Wesleyan | 20 | Concordia, Neb. | 7 |
| Northern Illinois | 34 | Western Illinois | 7 |
| NW Missouri | 21 | Rolla (U. of Mo.) | 12 |
| NW Oklahoma | 28 | Hastings | 6 |
| **Ottawa | 21 | Baker | 7 |
| Pittsburg | 21 | NE Oklahoma | 19 |
| River Falls | 16 | Stout | 19 |
| St. Norbert | 21 | Hillsdale | 20 |
| SE Missouri | 26 | NE Missouri | 13 |
| SE Oklahoma | 13 | Panhandle A & M | 0 |
| Southern Illinois | 21 | Ball State | 20 |
| SW Missouri | 21 | Central Missouri | 7 |
| SW Oklahoma | 14 | Langston | 13 |
| Stevens Point | 22 | Platteville | 12 |
| Valparaiso | 18 | Wheaton | 14 |
| Wabash | 14 | DePauw | 12 |
| Whiteaker | 27 | Oskosh | 0 |
| Wittenberg | 44 | Kalamazoo | 0 |

Other Games — South and Southwest

| | | | |
|----------------------|----|--------------------|----|
| Arkansas State | 21 | Arlington | 20 |
| Austin Peay | 21 | Tennessee Tech | 19 |
| Bridgewater | 18 | Shepherd | 14 |
| Carson-Newman | 28 | Maryville | 6 |
| Concord | 36 | West Va. State | 0 |
| Conway | 20 | Henderson | 7 |
| Davidson | 10 | Wofford | 0 |
| Eastern Kentucky | 12 | Morehead | 9 |
| Emory & Henry | 10 | Appalachian | 7 |
| Franklin | 14 | Georgetown | 13 |
| Guilford | 13 | Catawba | 0 |
| Hampden-Sydney | 12 | Centre | 13 |
| Harding | 12 | Arkansas Tech | 8 |
| Jacksonville | 27 | Livingston | 0 |
| Lamar Tech | 20 | Louisiana Tech | 14 |
| Lenoir-Rhyne | 24 | Elon | 0 |
| Martin (U. of Tenn.) | 17 | Florence | 6 |
| McNeese | 15 | SE Louisiana | 14 |
| Middle Tennessee | 21 | East Tennessee | 9 |
| Mississippi College | 14 | Southern State | 13 |
| NE Louisiana | 17 | Delta | 15 |
| NW Louisiana | 22 | SW Louisiana | 20 |
| Ouachita | 15 | Millisaps | 6 |
| S. F. Austin | 23 | McMurry | 7 |
| South West Texas | 17 | East Texas | 14 |
| Sul Ross | 8 | Howard Payne | 7 |
| Tarleton | 21 | Angelo | 13 |
| Texas A & I | 17 | Sam Houston | 0 |
| Trinity | 23 | Abilene Christian | 14 |
| Troy | 25 | Louisiana College | 0 |
| Washington & Lee | 14 | Southwestern, Tenn | 12 |
| West Va. Wesleyan | 17 | Bethany, W. Va. | 7 |
| Western Carolina | 20 | Newberry | 15 |
| Western Kentucky | 14 | Butler | 10 |

Other Games — Far West

| | | | |
|--------------------|----|--------------------|----|
| Cal Lutheran | 19 | Pomona | 14 |
| Cal Poly (Pomona) | 21 | Davis | 13 |
| Central Washington | 16 | West'n Washington | 6 |
| Chico | 13 | Hayward | 7 |
| Fort Lewis | 20 | Western N. Mexico | 18 |
| Long Beach | 20 | Los Angeles | 10 |
| New Mexico H'lands | 28 | Colorado State | 0 |
| Northern Arizona | 25 | East'n New Mexico | 7 |
| **Occidental | 56 | Cal Tech | 0 |
| Puget Sound | 19 | Whitworth | 7 |
| Redlands | 28 | LaVerne | 6 |
| Sacramento | 22 | Nevada | 20 |
| San Diego | 46 | San Fernando | 0 |
| San Francisco St. | 25 | Humboldt | 7 |
| Santa Barbara | 26 | Cal. Western | 7 |
| Santa Clara | 20 | Cal. Poly (S.L.O.) | 17 |
| Weber | 34 | Portland | 0 |
| Whittier | 40 | Claremont | 0 |
| Willamette | 18 | Pacific Lutheran | 7 |

**FRIDAY GAMES