



23 Sep 1966

The Missouri Miner, September 23, 1966

Follow this and additional works at: https://scholarsmine.mst.edu/missouri_miner

These newspapers reflect the attitudes, perspectives, and beliefs of different times. Neither the library nor the university endorses the views expressed in these collections, some of which contain images and language which may be offensive to some readers.

Recommended Citation

"The Missouri Miner, September 23, 1966" (1966). *The Missouri Miner Newspaper*. 1838.
https://scholarsmine.mst.edu/missouri_miner/1838

This Newspaper is brought to you for free and open access by Scholars' Mine. It has been accepted for inclusion in The Missouri Miner Newspaper by an authorized administrator of Scholars' Mine. This work is protected by U. S. Copyright Law. Unauthorized use including reproduction for redistribution requires the permission of the copyright holder. For more information, please contact scholarsmine@mst.edu.

wcomers to the
ent who intend
erested and all
of Missouri a
th isn't exactl
n certainly fi
Of course th
you can be sur
very day of th
ward to seein

rowing rapid
nsion is show
n to the list
I have success
they will se

that the coun
standards. Th
sisting of fo
ntry course w
tend to partic
r with the ne

nes," c/o Th

VOLUME 53

Searcy, Ark.
ttsburg, Kan.

In University
rksville, and
eld, at UMR

tennis singles
tennis begin.

STAFF

STAFF

STAFF

STAFF

STAFF

STAFF

STAFF

STAFF

STAFF

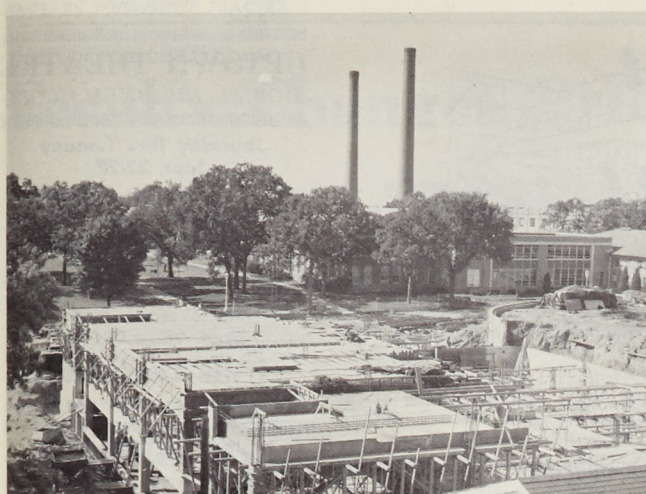
STAFF

STAFF

STAFF

STAFF

STAFF



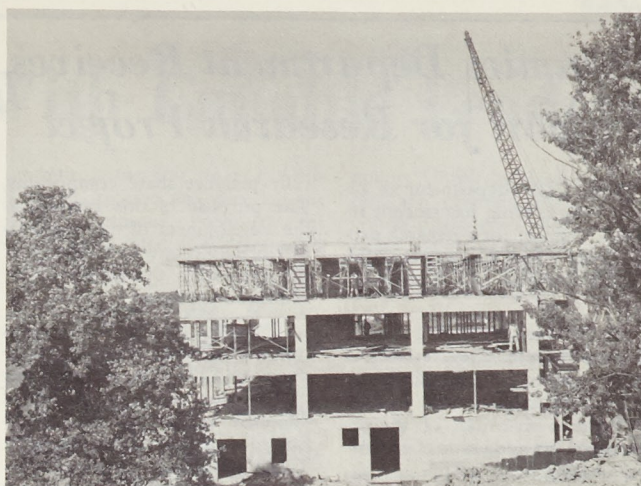
LIBRARY

Expansion Begins On Campus Scene

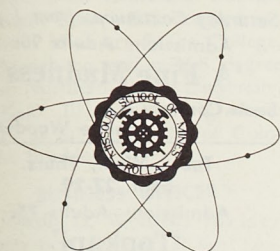
Students returning to UMR this fall found the campus undergoing major changes. As part of the school's Centennial Challenge Program, three new buildings are presently under construction with more planned for the near future.

Shown here are the new library, situated on the former site of Jackling Gymnasium, and the materials research center at the east end of the ROTC field.

In the weeks to come, the MINER will feature various aspects of the expansion program in an effort to keep students fully informed.



MATERIALS RESEARCH CENTER



The Missouri MINER

UNIVERSITY OF MISSOURI AT ROLLA



VOLUME 53

FRIDAY, SEPTEMBER 23, 1966, ROLLA, MISSOURI

NUMBER 2

Holtman Hall Dedication Scheduled for Tomorrow

Tomorrow, Sat. Sept. 24, the dedication of the new dormitory, Holtman Hall, will take place. This recent addition to the badly needed dormitory, will be dedicated to honor a naval hero and a former graduate of U.M.R., Lt. Orvid J. Holtman.

The dedication will be made by Richard J. King, Missouri Representative from St. Louis County. Dr. John C. Weaver, President of the University and other University officials will be present at the unveiling.

This brick structure will stand and be a working symbol of the bravery and valor put forth by

Lt. Holtman in the support of his country. He died doing the job he was assigned without complaint. This building will be a memorial, not only to the man, but to the idea of duty and honor.

Fraudulent Companies Hit Campus

During the past few years several organizations and fraternities on this campus have been taken in by illegitimate companies and salesmen. In fact, last spring one fraternity almost lost over two hundred dollars.

Sam Burton, Director of Student Personnel, feels very strongly about fraudulent orders and recommends that before any group places an order with a company that they have not done business with before, that they contact him. If the Personnel office has no

record of the company, they will have it checked by the Better Business Bureau, the Credit Bureau and will contact the firm personally.

All salesmen must be cleared through the personnel office before organizations see them. It is up to each individual group as to whether or not they see a salesman.

Before signing any contracts they should be read. When a fraternity requests shipment by a specified time the contract should con-

currently registered.

This figure is expected to increase with late registration still in progress. The final enrollment figures will be announced at the

end of the fourth week of school.

The figure of 4,435 on-campus students includes 471 graduate students.

With registration continuing at the St. Louis Graduate Engineering Center, conducted by U.M.R., about 300 students are enrolled. These are in addition to the on-campus enrollment at Rolla.

One hundred fourteen women are enrolled on the U.M.R. campus, the largest female enrollment for the school.

The increased enrollment at U.M.R. is particularly significant in view of the special demand of military and industry for students with engineering and science backgrounds.

Two Faculty Members Honored for Outstanding Work

Recently, two UMR faculty members were bestowed awards for their excellent work in the area of higher education. These awards illustrate the excellence of the UMR faculty and its high status in the academic world.

Dr. Paul Dean Proctor, dean of the School of Science and professor of geology at UMR will take a year's leave of absence Sept. 2 to serve the United Nations in inaugurating programs in geology and mineral resources research at the Mid-East Technological University in Ankara, Turkey. The appointment was announced by Dr. Merl Baker, chancellor of U.M.R.

Dr. Proctor will return as dean of the School of Science Sept. 1, 1967. In his absence, Dr. Harold Q. Fuller, chairman of the department of physics at U.M.R. will serve as acting dean.

Dr. Proctor holds a Ph.D. degree from Indiana University, an M.S. degree from Cornell University and a B.S. degree from the University of Utah. He joined the U.M.R. faculty in 1957 as professor of geology and chairman of that department. In 1964, he accepted the position of director of the School of Science and later was named dean of that School.

Author of more than 20 research publications, he is a member and fellow of several scientific and professional organizations including Sigma Xi, Phi Kappa Phi, the Geological Society of America, the American Institute of Mining, Metallurgical and Petroleum Engineers, the American Association for the Advancement of Science, the Society of Economic Geologists. He is also a member of Rotary International and is active in church affairs. He has served as national editor and historian for Sigma Gamma Epsilon,

a national honorary Earth Science fraternity.

Dr. Roger E. Nolte, chairman of the department of electrical engineering at the University of Missouri at Rolla has received a citation from the American Society for Engineering Education for his devoted and effective service as vice president of that organization.

Dr. Nolte, who has served as vice chairman and chairman of the Missouri-Arkansas section and as a member of the executive board for the Council of Sections West, was vice president of the national society from 1964 to 1966. The award was presented at the annual national meeting June 23 at Pullman, Washington. Dr. Curtis L. Wilson, dean emeritus of U.M.R., was vice president of the organization from 1961 to 1963.

Dr. Nolte, who joined the faculty of U.M.R. in 1949 as assistant

and associate professor of electronics, became professor of electrical engineering in 1955 and chairman of the department in 1960. He is also acting director of the newly formed Graduate Center for Electronics Research. From 1954 to 1955 he was employed in research at Iowa State College. In the summer of 1957, he was employed as consultant in the evaluation of electronic countermeasures equipment of McDonnell Aircraft Co., St. Louis.

Prior to coming to U.M.R. Dr. Nolte was instructor in the department of electrical engineering at Iowa State College; research engineer in electronics at Martin Aircraft Co., Baltimore, Md.; midshipman and electronic engineering at Iowa State College.

He holds the degrees of Ph.D., M.S. and B.S. from Iowa State College, Ames, Iowa.

Dr. Nolte is a member of Tau

Beta Pi, Eta Kappa Nu, Sigma Pi Sigma, Sigma Xi, Phi Eta Sigma, the Missouri Society of Professional Engineers and the National Society of Professional Engineers. He is listed in Who's Who in America and Who's Who in American Education. Dr. Nolte is a senior member of the Institute of Electrical and Electronic Engineers, is an editorial consultant for the IEEE Student Journal, and is presently vice chairman of the IEEE Student Branches Committee.

He was a senior member of the Institute of Radio Engineers for which he was vice chairman of the education committee, institute representative of M.S.M., on the region 6 sub-committee on education, professional group on education, administrative committee, editorial committee, student quarterly board of consultants, and the ad-hoc committee for joint operation with AIEE.

Ceramics Department Receives Support for Research Project

The UMR department of ceramic engineering has recently received support for a research project from CENTRALAB, the Electronics Division of Globe-Union Inc.

The project, concerned with the thermal reaction characteristics of ceramic dielectric materials is under the direction of Dr. Robert E. Moore, chairman of the department and professor of ceramic engineering.

According to Dr. Moore, the use of ceramic materials in electrical systems is a rapidly expanding field. Many electrical components are inadequate to meet the requirements of space applications, particularly when severe temperatures are encountered. Ceramic materials, however, can generally withstand these severe environments and, consequently, are finding wide utilization. As the demand for these materials grows, new ways must be found to rapidly and economi-

cally produce these components. The purpose of this research is the development of new methods of fabrication and an evaluation of the properties the electronic ceramics so produced.

One of the nation's leading manufacturers of electronic components, CENTRALAB was one of the pioneers in utilization of dielectric ceramics in the manufacture of many of these products. The Milwaukee-based manufacturing division fabricates all ceramic materials used in its products, and in addition, markets an extensive line of technical ceramics for electrical insulation and mechanical applications. The company operates six manufacturing installations in the U.S. and also has facilities in Canada, Hong Kong, and Northern Ireland.

Coordination of this research between the Electronics Division of Globe-Union and U.M.R. is being handled by the Industrial Research Center. The Center was established to maintain close liaison with industrial organizations and seeks to match the research capabilities of the University with the research needs of industry.

Dr. Robert Wellek Presents Article

A paper co-authored by a UMR professor appears in the September issue of the Journal of the American Institute of Chemical Engineers.

Authored by Dr. Robert M. Wellek, associate professor of chemical engineering at UMR, A. K. Agrawal, who received his M.S. degree in chemical engineering from UMR in 1965, and A. H. P. Skelland, professor of chemical engineering at the University of Notre Dame, the paper was presented by Dr. Wellek at the 60th national meeting of AIChE Sept. 19 in Atlantic City.

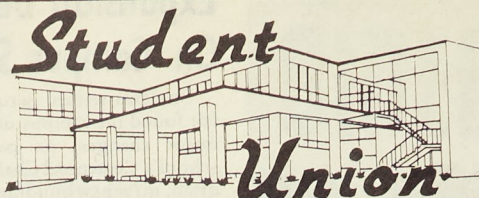
The work, which is entitled "Shape of Liquid Drops Moving in Liquid Media," presents a method for predicting the effects on drop shape of various physical properties, drop size and drop velocity. The relations developed in this study will aid in the design of industrial liquid extraction columns.

Rolla Citizens Supply Works for UMR Art Display

Currently appearing in the UMR Student Union Lobby is an Art Display provided by the Visual Arts Division of the Rolla Arts Association. These works were drawn by citizens of the Rolla community.

The Visual Arts Division is one of Rolla's most active organizations. Worthwhile events of the Arts schedule include: The current Art Display in the Union Lobby, monthly meetings, and most important, classes in basic sketching and drawing. Anyone interested in the sketching and drawing course should contact Mrs. Wells Leitner at 364-5545 by September 30.

The next business meeting of the organization will be September 26 at 7:30 P.M. in the Rolla Community Hall. All interested persons are cordially invited to attend.



Sign up for the Match Play Golf Tournament by Saturday, September 24 in the Student Union Lobby. Play begins September 26.

The Student Union Sunday Movie is "Goodbye Charlie," starring Tony Curtis. Show times in the Student Union Ballroom are 2:30, 5:00, and 7:30 p.m.

The Coffee Chats with Chancellor Baker will be coming to the Union soon. Watch for dates and times.

Applications for Student Union Committees are due September 30.

Applications to Be Taken For Danforth Fellowships

Inquiries about the Danforth Graduate Fellowships, to be awarded in March, 1967, are invited, according to Dr. Lynn W. Martin, Dir. of Institutional Research, 204A Rolla Bldg. at UMR.

The fellowships, offered by the Danforth Foundation of St. Louis, are open to men and women who are seniors or recent graduates of accredited colleges in the United States, who have serious interest in college teaching as a career,

and who plan to study for a Ph.D. in a field common to the undergraduate college. Applicants may be single or married, must be less than thirty years of age at the time of application, and may not have undertaken any graduate or professional study beyond the baccalaureate.

Approximately 120 Fellowships will be awarded in March, 1967. Candidates must be nominated by Liaison Officers of their undergraduate institutions by Nov. 1, 1966. The Foundation does not accept direct applications for the Fellowships.

Danforth Graduate Fellows are eligible for four years of financial assistance, with a maximum annual living stipend of \$2400 for a single Fellows and \$2950 for married Fellows, plus tuition and fees. Dependency allowances are available. Financial need is not a condition for consideration.

Danforth Fellows may hold other fellowships such as Ford, Fulbright, National Science, Rhodes, Woodrow Wilson, etc. concurrently and will be Danforth Fellows without stipend until the other awards lapse.



SAVE \$\$\$\$ \$\$\$\$ \$\$\$\$ \$\$\$\$
WE SELL EVERYBODY WHOLESALE

Open 8 to 8 Monday thru Thursday and till 9 on Friday and Saturday — Open 9 to 1 on Sunday

HOOK AUTO SUPPLY

ORDER YOUR RING NOW!



JOHN ROBERTS
SCHOOL
RINGS

The Most Respected
Symbol of Your
Educational
Achievement

CAMPUS
BOOK STORE

FRIDAY, SEPTEMBER 23, 1966

UPTOWN THEATRE

MOVIES IN CINEMASCOPE

Thursday Thru Tuesday
Sept. 22-27

Sunday Feature
1:30, 4:00, 6:50, 9:25

'Torn Curtain'

Paul Newman & Julie Andrews

Starts Wednesday,
Sept. 28 — Oct. 4

'Walk Don't Run'

Cary Grant & Samantha Eggar

RITZ THEATRE

MOVIES IN WIDE SCREEN

Thursday Thru Monday
Sept. 22-26

Saturday Continuous from 1 p.m.

Admission: Adults 90c

'A Fine Madness'

Sean Connery & Joanne Woodward

Tues., Wed., Thurs.
Sept. 27-29

Admission: Adults 75c

'Topkapi'

Melina Mercouri & Peter Ustinov

ROLLA DRIVE IN

SHOWS START AT DUSK

Fri., Sat. Sept. 23-24

'Beach Ball'

Ed Byrnes & the Supremes

—PLUS—

'Operation Snafu'

Sean Connery & Alfred Lynch

Sun., Mon. Sept. 25-26

'Crack in the World'

Dana Andrews & Janette Scott

—PLUS—

'Voyage to the End of the Universe'

Dennis Stephens & Francis Smoler

BAXTER'S

CUT RATE LIQUOR

LIQUOR — WINE — BEER

CHAMPAGNE

Special Prices on Case Buying!

Telephone 354-2004

Highway 63 East

Rolla, Missouri

4,500 MINERS
Can't Be Wrong

THEY SAY WE HAVE THE BEST FOOD IN ROLLA!

STUDENT SPECIALS EVERY SUNDAY

1/2 Pan Fried Chicken \$1.35
with French Fries and Cole Slaw

Spaghetti With Meat Sauce \$1.10

EL CHAREVE HICKORY HOUSE

Hiway 63 South

364-9900

Appointments Approved

Faculty Changes Provide UMR With Capable Leaders

With the coming school year at UMR, several changes were made in the UMR faculty. Many new officers and administrative officials took office for the first time this year. The total result of these new appointments has been to further upgrade the UMR staff and add to its effectiveness.

ASSISTANT DIRECTOR

New assistant director of admissions at UMR is Charles A. Thompson, Jr., who was previous instructor of history at U.M.R.

Thompson, who holds an A.A. degree from Graceland College, Lamoni, Iowa, a B.S. degree from Central Missouri State College, Warrensburg, and an M.S. degree from Northern Illinois University, DeKalb, Ill., has done graduate work at the University of Colorado, Boulder.

BUSINESS OFFICER

Joseph D. Wollard, former deputy post engineer at Fort Leonard Wood, has been appointed business officer of the University of Missouri at Rolla, Chancellor Merl Baker has announced.

Wollard assumed his duties Sept. 1, succeeding Emmett Klinkerman, who is now business officer at the University of Missouri, Columbia.

Wollard received the B.S. in mechanical engineering from Oklahoma State University. He is a native of Kansas.

STUDENT AIDS DIRECTOR

New director of student aids and awards at UMR is Raymond L. Pendergrass, former instructor of history at U.M.R.

The job, which was formerly a duty of assistant to the chancellor, Paul Ponder, is established as a separate post with the appointment of Pendergrass.

Ponder, who is on sabbatical leave, working toward a Ph.D. degree at the University of Missouri, Columbia, will resume his position as assistant to the chancellor of U.M.R. in July, 1967.

As director of student aids and awards, Pendergrass will direct financial assistance to students in the form of scholarships and employment with the University.

Pendergrass, who holds a bachelor of science in education degree from Arkansas State Teachers College and a master of education degree from the University of Arkansas.

UMR to Utilize Computer System In Emergencies

This year the Traffic Safety Office of U.M.R. found it necessary to have students fill out emergency locator cards along with other I.B.M. cards at the time of registration. This change was brought about by the Office of Traffic Safety as a result of difficulties experienced in locating students in emergencies. In the past it sometimes took traffic officers several days to locate students living in outlying parts of town. With this new card system it should be possible to locate a student within a matter of minutes in case of extreme emergency.

ACTING SERVICE DEAN

Dr. Harold Q. Fuller, chairman of the department of physics at UMR will serve as acting dean of the School of Science at U.M.R. in the absence of Dr. Paul Dean Proctor, dean of the School. Dr. Merl Baker, chancellor of the University, announced the appointment.

Dr. Proctor, who will take a year's leave of absence Sept. 2 to serve the United Nations in inaugurating programs of geology and mineral resources research at the Mid-East Technological University in Ankara, Turkey, will return Sept. 1, 1967 as dean of the School of Science.

Dr. Fuller, who will continue in his position as chairman of the department of physics, holds Ph.D. and A.M. degrees from the University of Illinois, and an A.B. degree from Wabash College. In 1948, he was appointed chairman of the department of physics at U.M.R. after coming here in 1947 as professor of physics.

MATH CHAIRMAN

Newly appointed chairman of the department of mathematics at UMR is Dr. Charles Edward Antle, Dr. Merl Baker, chancellor of the University has announced.

Dr. Antle succeeds Dr. Charles Hatfield who will devote full time teaching and research in the department at U.M.R. with special emphasis on the graduate program.

Dr. Antle, who is a professor of mathematics at U.M.R. holds a Ph.D. degree from Oklahoma State University; and an A.M. and

B.S. degree from Eastern Kentucky State College.

Dr. Hatfield, professor of mathematics, holds a Ph.D. degree from Cornell University, an A.M. degree from the University of Kentucky and an A.B. degree from Georgetown College.

EXTENSION DIRECTOR

Rolla is the new home of the South Central District Extension Director of the University of Missouri.

Dr. Leonard C. Douglas, who was appointed to the post this

month, is the first director of this district to have an office on the U.M.R. campus. Previously, the post was located on the Columbia campus.

As district director of a 20-county area, Dr. Douglas will help coordinate the activities of University staff members located in University Extension Centers in each county in the district. These extension centers represent each of the four campuses of the University. According to Douglas, the

county University Extension Centers are generally staffed with a county director, a home economist, youth agent, and some area staff in the field of community development and agriculture.

Dr. Douglas, who is also assistant professor of extension education, holds a B.S. degree in agriculture from the University of Missouri; an M.S. degree in extension education from M.U.; and an Ed. D. degree from Cornell University.

Registrar's Office Releases Revised Classification System

Many students on the UMR campus are being misled by false rumors that our school has changed over to a four and one half year program. Contrary to these rumors, we are still on a four year program. The only definite change that has taken place is the new classification system which is presently being used in all of the branches of the University of Missouri. The required amount of credit hours needed to be a sophomore are thirty as opposed to the thirty-six hours in the past. A junior must complete sixty credit hours and a senior ninety. In the past a junior needed seventy-two credit hours and a senior needed one hundred and eight.

The only effect that the new classification system has on our students is that a student may be classified as a senior for three to four semesters before his graduation.

tend approximately 4.7 years to earn a Bachelor of Science degree.

Students on the co-operative program are expected to take a minimum of five years to complete their degree. During the five years they will spend approximately fifty-two weeks within this period under a sponsored and supervised program with the co-operating industry.

One HOUR
"MARTINIZING"
CERTIFIED
THE MOST IN DRY CLEANING

As advertised in Life, Holiday, Glamour, Business Weekly, Esquire Magazines, and ABC Television and Radio.

ONE HOUR DRY CLEANING DAILY FROM 8 A.M. - 3 P.M.
INCLUDING SATURDAY

LAUNDRY SERVICE — EXPERT ALTERATIONS

121 West 8th St.

Telephone 364-6063

New Official UMR Class Rings

BY L. G. BALFOUR CO.

BULOVA ACCUTRON

DIAMONDS and ENGRAVING
WATCH REPAIRING

Christopher Jewelers

805 Pine Street

TIGER TOWN AT CENTRAL PONTIAC

Le Mans and G. T. O.

TREMENDOUS DISCOUNTS!!

- Small or No Down Payment
- Deferred Payments as low as \$25 monthly until on the job
- 5% Interest
- Service After the Sale

If Central Pontiac Doesn't Have a Tiger

for You . . .

TRY THE ZOO!!

Degree Candidates in:
Engineering, Chemistry, Applied
Mathematics . . .

Meet the Man from Monsanto Oct. 11, 12 & 13

Sign up now for an interview at your placement office. This year Monsanto will have many openings for graduates at all degree levels. Fine positions are open all over the country with America's 3rd largest chemical company. And we're still growing. Sales have quadrupled in the last 10 years . . . in everything from plasticizers to farm chemicals; from nuclear sources and chemical fibers to electronic instruments. Meet the Man from Monsanto—he has the facts about a fine future.



An Equal Opportunity Employer



Miner Editorials, Letters, and Features



Extracurricular

Diversion for Weary Scholars

With the influx of students on the UMR campus this fall and a larger than average freshman class, the various organizations and clubs on campus are seeking to increase their membership and acquaint the freshman class with the advantages and benefits of belonging to their respective organizations. Belonging to various clubs and organizations on campus, if for no other reason, is an excellent means of increasing your acquaintances and gaining a new set of friends on what seems to be, at first, an unfriendly, overwhelming campus.

In addition, there are very few school administrators, professors, or upperclassmen who would not recommend that you take part in extracurricular activities. In a university such as UMR, it is almost necessary to pick an outside activity to add relaxation, encourage leadership, and develop the knack of getting along with classmates outside of the actual class sessions. In effect, an organization should be something to divert your attention and give a much needed breather from the scholastic requirements of this university, but by no means, should become the center of your efforts.

An organization is not designed to take the place of your scholastic endeavors but to supplement your education and broaden the student's outlook on life. It is indeed a suggestion to all incoming freshmen that they choose only one or two outside activities that they are interested in and become active, participating members. Very little is accomplished by joining organizations just for the sake of joining them and it is certainly much better to only be a good member in one or two than just a name on the books of several.

It is a commonly known fact that next to grade average and personality, the interviewers who interview graduating seniors on this campus, who represent the business world, are looking for the diversified, well-rounded engineering graduate and an interviewer's judgement of your potential will in every case include your ability to get along with people and fit in with the future fellow workers.

THE MISSOURI MINER
UNIVERSITY OF MISSOURI AT ROLLA



THE MISSOURI MINER is the official publication of the students of the University of Missouri at Rolla. It is published at Rolla, Mo., every Friday during the school year. Entered as second class matter February 8, 1945, at the Post Office at Rolla, Mo., under the Act of March 3, 1879.

The subscription is \$1.25 per semester. This Missouri Miner features activities of the Students and Faculty of U. M. R.

Editor-in-Chief Don Flugrad
706-B E. 12th — 364-6182
Business Manager Charles Hansen
500 W. 8th Street — 364-9993
Managing Editor Larry Yates
Make Up Editor Frank Fick
Copy Editor Bob Fick
Secretary Charles Painter
Features Editor Ray Behrens
Photographer Ron Altman
Advertising Manager Tom Sauer
Circulation Manager Jerry Adams
Ass't Managing Editor Darrell Pepper
Ass't Make Up Editor Bob Mildenstein
Sports Editor Jim Weinle
Proofreader Steve Tacke

In the next few weeks the Missouri Miner will seek to explain these various campus organizations by first outlining them and then by presenting brief sketches of their activities.

To begin with, it would be extremely valuable to the individual to affiliate with the departmental organization in the course of study you are enrolled. Every department on the UMR campus has several organizations designed to broaden classroom knowledge in the individual fields. These organizations meet once a month at least and many hold meeting more frequently, guest speakers from industry, professors, and films highlight most programs which result in a very entertaining and informative evening. Many of these departments are sponsoring mixers which you may attend within the next two weeks or so and at that time the members will be on hand to explain their organizations and accept your membership applications.

These are the organizations available to freshmen in their departments:

Chemistry

W. T. Schrenk Society — Designed to acquaint the chemistry major with the chemical profession and provide contact with men who do different types of work in research and industry.

Chemical Engineering

American Institute of Chemical Engineers — Open to all students who are enrolled in chemical engineering.

Ceramics

American Ceramic Society — Open to all ceramic majors.

Civil Engineering

American Society of Civil Engineers — Open to all Civil Engineering students highlighting guest speakers, field trips, etc.

Electrical Engineering

Institute of Electrical and Elec-

tronic Engineers — Open to all Electrical Engineering students. Sponsors field trips, programs, and lab insurance.

Computer Science

Association for Computing Machinery — Open to Computer Science majors and all other interested students.

Mechanical Engineering

American Society of Tool Manufacturing Engineers — Of special interest to mechanical, metallurgical, and mining engineers.

American Society of Mechanical Engineers — Open to all Mechanical Engineering students.

American Institute of Aeronautics and Astronautics — Concerned with advance in space technology and open to all interested students.

Society of Automotive Engineers — Primarily concerned with recent developments in the automotive industry and open to all students.

Metallurgical Engineering

American Foundrymen's Society — Concerned with present advancements in metal casting and generally open to metallurgy students.

American Society for Metals — Student chapter of national organization open to metallurgy students.

American Institute of Metallurgical, Mining, and Petroleum Engineering — Organization is subdivided into three fields of study with separate meetings.

Nuclear Engineering Society — Open to all students enrolled in the nuclear engineering options.

Geology

Society of Exploration Geophysics and C. L. Dake Society — Both open to all geology majors.

Physics

American Institute of Physics — Local chapter of national society of physics students.

Miners Receive Awards From State Contractors

Two students at UMR have been selected to receive scholarships from the Associated General Contractors of Missouri.

Donald R. Dressler and Samuel P. Miller of Rolla and Springfield will hold the award for the 1966-67 school year. Both are on the Dean's Honor list and carry plus 3.0 grade point averages.

Dressler, who is a recipient of the Phi Kappa Phi Book Plate Award, is a member of Chi Epsilon honor fraternity, Sigma Pi professional fraternity and the student chapter of the American Society of Civil Engineers. During the summer he was employed as a student assistant in the department of civil engineering. He is the son of Mr. and Mrs. Roman W. Dressler of St. Louis.

Miller enrolled at U.M.R. on a Joe B. Butler Alumni Scholarship, which was renewed his second year. He is a member of Chi Epsilon honor fraternity, the Engineers Club and the student chap-

ter of the A.S.C.E. He is the son of Linn Miller, Springfield.

President of the Associated General Contractors of Missouri is Joseph L. Pohl, owner of a Nevada construction firm bearing his name and president of Gampco, Inc., St. Louis.

NOTICE!

Following is a list of scholarship openings for which students may apply at this time.

3 Lucy Wortham James Scholarships — Value \$200. Any full-time undergraduate student may apply.

2 Caterpillar Tractor Co. Scholarships — Value \$500 for junior or senior students in Mechanical Engineering.

1 Caterpillar Tractor Co. Scholarship — Value \$500 for junior or senior student in Metallurgical Engineering.

Interested students should obtain an application form in Room 101, Parker Hall.

Comic Books Capture Fancy Of Nation's College Crowd

According to a magazine article, comic books are becoming so popular with college students that over 50,000 of them now pay a dollar each month to belong to a comic book "society" with chapters on more than a hundred campuses.

Quoted in the article in Esquire, William David Sherman, an English teacher at the State University at Buffalo, explains that he uses certain comic books in his course on contemporary American Literature:

"I know the classes will dig them, and I hope that in them they will see various... patterns at work which would give them better insight to where things are today."

The editors of Esquire magazine acknowledge that it is not yet clear whether the profound impact of comics on the campus reveals more about the comics or the campus. Whatever the case, the students are serious about them.

David Stone, a student at Cornell University quoted in the article, says: The books "often stretch pseudoscientific imagination far into the phantasmagoria of other dimensions, problems of time and space, and even the semitheological concept of creation."

Other students quoted are less scholarly but no less enthusiastic in their praise of comic books.

Stan Lee, who created for Marvel Comics many of the heroes currently popular with college students, has lectured on the subject at New York University, Bard College, Columbia University, and Princeton University.

At Bard he drew a bigger audience than President Eisenhower.

At Princeton he spoke in a guest series that included Vice President Hubert Humphrey, Governor William Scranton and Senator Wayne Morse.

One Ivy League student recently told Mr. Lee that "We think of Marvel Comics as the twentieth-century mythology and you as this generation's Homer."

According to Mr. Lee, mail comes into Marvel's New York office every day from more than 225 colleges.

This fall, at least forty television stations will carry for the first time a series of animated Marvel cartoons.

Marvel heroes include The Mighty Thor, Iron Man, Captain America, The Amazing Spider-Man, and Dr. Strange.

LITTLE MAN ON CAMPUS



"WHY OF COURSE I'D BE HAPPY TO ALLOW YOU TO TAKE THE FINAL YOU DIDN'T SHOW UP FOR—I'LL BE GIVING IT AGAIN NEXT TERM."

Diehl Montgomery, Inc.

ROLLA, MISSOURI

FORD — LINCOLN — MERCURY — T-BIRD — CONTINENTAL

DRIVE YOUR NEW CAR BEFORE YOU GRADUATE!

See Us for Your Special Student Pay Plan

on New or Used Cars.

Payments Tailored While You Are in School and Out.

Greek Columns

With the coming of the present school year the many fraternities of UMR have been extremely busy settling down to the daily routine of campus life and again making their respective houses livable after the summer months. Leading each fraternity in its endeavors are many capable officers.

KAPPA ALPHA

Kappa Alpha social fraternity has recently selected its officers for the fall semester. They are as follows: John Wolf, president; Doyle Powell, vice-president; Raymond Doerr, recording secretary; Charles J. Rhea, corresponding secretary; Bill Litzinger, treasurer; R. Bruce VanDover, historian; Ed McCullah, parliamentarian; Tom Wells, chapter doorkeeper; and Roger Gemeinhardt, sergeant-at-arms.

ALPHA EPSILON PI

Officers have recently been elected at Alpha Epsilon Pi social fraternity for the fall semester. They are as follows: Howard D. Markus, master; Kenneth J. Colbert, Lt. master; Marshall B. Faintich, scribe; Steven L. Feder, treasurer; and Jules H. Subow, member-at-large.

On Friday, September 9, 1966, the Nu Deuteron Chapter of Alpha Epsilon Pi Fraternity pledged its fall class of 1966. The eight men, all from the St. Louis area, are: Stephen Schwedt, president; Harvey Baer, secretary; Israel Denlow, treasurer; David Eckert, Bryan Pearl, Gerhard Kirk, Michael Finkelstein, Neil Portnoff.

The men of AEPI are also happy and proud to welcome to the fold of Brotherhood their new advisor, Dr. Robert Oakes, Assistant Professor of Philosophy. The initiation occurred Sunday night, September 18.

BETA SIGMA PSI

Beta Sigma Psi social fraternity has chosen its officers for the fall semester. They are as follows: Richard C. Vedder, president; Donald N. Fleming, first vice president; Dennis W. Hartman, second vice president; Gary R. Koenig, rush chairman; Richard P. Bergsierer, commissary; Carl A. Rowold, treasurer; Edward A. Mueller, athletic manager; and Edwin E. Stevens, secretary.

THETA XI

Officers have recently been elected at Theta Xi social fraternity for the fall semester. They are as follows: William J. McFadden, president; Bradley H. Hornburg, vice president; Richard Caldwell, treasurer; James J. Levens, Jr. secretary; Eris D. Babb, steward; Roger L. Can-

nady, house manager; and Charles S. Nichols, scholarship officer.

THETA CHI

The brothers of Epsilon Chi of Theta Chi Fraternity have recently settled into their newly acquired Chapter House at 1202 Bishop Street.

The new home is capable of housing 12 men and a temporary annex at 118A West 8th Street has been obtained to house the remainder of the chapter until further building plans are initiated.

The brothers of Theta Chi are all looking forward to a good school year and would like to give special thanks to the two men who made it so; Father Joseph Carlo and Prof. Jack Scrivner. These two men have worked diligently for Theta Chi.

On the night of Sept. 12, 1966 Epsilon Chi installed 8 men as

pledges of Theta Chi. These men are as follows: Joe Kramer, Jerry Ladany, Terry Phillips, Don Shanahan, Gay Smith, John Tyler, Dave Scoville, and Hank Kumpf.

SIGMA PI

Sigma Pi at Rolla is on the move. Last month at our national convocation, the local chapter was chosen to receive the Grand Sage's Award as the most improved Sigma Pi chapter in the nation.

Joining us at Sigma Pi this semester are 25 new pledges, gained following a rush week in which our future pledges were welcomed by the active chapter and everyone got to know one another. The pledge class now numbers 32.

The pledges are: Bob Beasley, John Finch, Dave Lucio, Joe Osterman, Jim Ranier, Bactasar Weiss, Bill Alexander, Ben Altheimer, Dave Ballantyne, Len Bunk, Len Di Anni, Dave Disher,

Alpha Chi Sigma Officers Elected; Events Planned

Alpha Chi Sigma has recently selected its officers for the coming year at the University of Missouri at Rolla. They are as follows: James W. Moore, president; Michael L. Keller, vice president; Lawrence M. Young, historian; James J. Beeson, master of ceremonies; Harley D.

Hickenbotham, treasurer; Lawrence J. Mikelionis, reporter; and Michael Savage, alumni secretary. All are seniors majoring in chemical engineering.

Alpha Chi Sigma is a national chemical engineering honor fraternity intended to bind its members together in order to achieve a common goal: the advancement of chemistry and chemical engineering and the attainment of its members' ambitions.

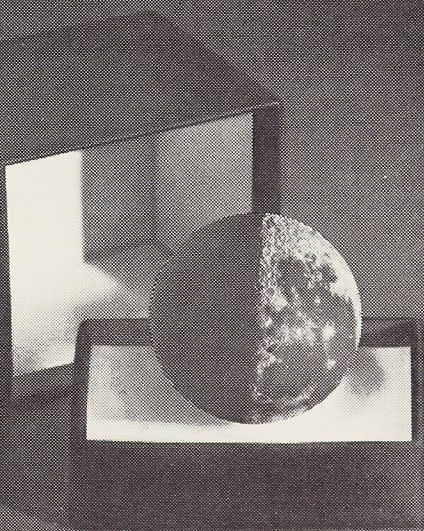
The University's Beta Delta Chapter, in addition to meetings and departmental service projects, brings in guest speakers from the chemical industry and presents awards for academic excellence.

CAL-MO CAFE

FREE COKE

With Each Pizza or Chicken Dinner
OPEN: 7 A.M. to 12 MIDNIGHT
11th and Bishop Street

We promise
you the moon
at AC Electronics...
but that's only part
of the story.



Want to help land men on the moon? Fine. We're building the guidance/navigation system for the Apollo and LEM spacecraft that will put them there. But that's only a sample of the challenging and rewarding career opportunities waiting for you at AC Electronics... specialists in research, development and production of guidance, navigation and control systems for military, space and commercial applications.

You'll work in research, design and development on such advanced projects as the new Self-Aligning Boost and Reentry system for missiles (SABRE); Manned Orbiting Laboratory (MOL); a self-contained Navigation System for naval ships (SSCNS); Titan III-C Space Booster; on avionics systems for supersonic aircraft; and on a fire-control system for the new Main Battle Tank, a joint U.S.-Federal Republic of Germany program, and advanced digital computer development.

Your opportunities for growth and advancement in a career at AC are limited only by your own ability and initiative. Our Career Acceleration Program covering both technical and management preparation helps

pave your way. Our Tuition Plan pays your tuition costs when you complete college-level courses. In addition, you enjoy full General Motors benefits.

If you are completing your B.S. or M.S. degree in EE, ME, Math or Physics, we invite you to inquire about opportunities at any of our three locations: AC in MILWAUKEE — our Main Research, Development and Manufacturing Facility; AC in BOSTON — our Research and Development Laboratory specializing in Advanced Inertial Components and Avionics Navigation/Guidance Systems; AC in LOS ANGELES — our Research and Development Laboratory specializing in Advanced Airborne Computers and Ballistic Missile and Space Booster Guidance/Navigation Systems.

PhDs, please note: Positions are available in all three AC locations for PhDs, depending upon concentration of study and area of interest.

For further information, see your college placement office about a General Motors/AC on-campus interview, or write directly to Mr. R. C. Schroeder, Director of Scientific & Professional Employment, Dept. 5753, General Motors Corporation, Milwaukee, Wis. 53201.

ASME Holds First Meeting for the New School Year

The first meeting of the UMR chapter of ASME of the new school year will be held September 27 in Room 107 of the Mining Building at 7:00 P.M. The guest speaker for the meeting will be Robert Strain of Emerson Electric. His presentation will be entitled "The Role of the Engineer in Industry." All members and M.E. students interested in joining ASME are urged to attend. Refreshments will be served after the program.

CAMPUS INTERVIEWS
Friday, October 7, 1966



AC ELECTRONICS
DIVISION OF GENERAL MOTORS
An Equal Opportunity Employer



UMR Approves Thomas Jefferson For Use as Constitutional Housing

Women students at UMR will be allowed to live in the Thomas Jefferson Residence Hall at 200 W. 18th Street this semester.

Originally for all-male housing, the dormitory was approved for co-educational housing by the University due to the rising enrollment of women students at U.M.R. According to housing manager, Gerald Hedgepeth, allowing women to live in the Thomas Jefferson Dormitory will not only help eliminate the housing shortage for women students but will encourage the already rising female enrollment.

Applications are being taken now in the seven story building. About 522 students may live in the dormitory for \$525 per semester. Featured conveniences include air-conditioning, acoustically quiet double rooms with extra large beds and closets. Rooms are furnished with built-in bookcases and desks. Private phones may be installed. On each floor are two lounges each opening on to a balcony, one to be used for study and the other for television and recreation. Two community bathrooms and seven phones serve each floor. Seminar rooms, typing rooms, intercom paging systems, carpeted halls, and weekly maid ser-

vice add to the luxury. Each room has its own mailbox in the lounge.

For entertaining, co-eds may use the 30 by 60 foot terrace surrounding the large heated pool with high dive. A sunken pit fireplace in the main lounge and movable barbecue grills may be used for picnics. Rules for use of the recreation facilities will be set up by a governing board made up of student residents.

Recreation and billiard rooms, which can be rented for parties, exercise rooms, hobby work rooms, and a snack bar will provide entertainment for the residents and their guests.

Twenty meals a week will be served in a cafeteria-dining room. A parking lot will be provided for a nominal fee set up in conjunction with University parking.

Applications may be made at the dormitory from 8 a.m. to 5 p.m. daily or for information, call Mr. Edward Turk, 364-5766. Individual contracts may be signed for a year or for a nine-month school year, under University regulations. The Hall requires a \$25 deposit which will be returned at the expiration of the contract if there have been no damages caused by the student. Payments may be arranged either two or three times a year.

MU Board of Curators Purchases New Property

The University of Missouri Board of Curators has authorized the purchase of the property at the corner of 11th and Bishop Streets in Rolla to be used for the U.M.R. Extension Division and other faculty offices.

The 65 by 116 foot lot and house was owned by Mrs. Bertha Richardson.

The area is part of the master plan of the University and will eventually be the site of permanent facilities.

NOTICE!

Openings are still available for those interested in attending a "School on Mass Cooking" sponsored by the UMR Extension Division. Classes will include planning, preparation and serving. The courses are especially designed for fraternity, restaurant and eating club cooks and stewards. Sessions will begin later in the month. For further information inquire at the Extension Division, Department C, 900-A Rolla Street, Rolla, Missouri.

You don't have to be a genius to work at G.E.

Near genius is okay.

A near genius with drive, stamina and imagination, that is.

And it doesn't really matter what subject you're a near genius in. General Electric is looking for top scientists — and for top graduates in economics, business, law, accounting and the liberal arts.

Nobody who joins G.E. is going to feel cramped. This is a worldwide

company, and it makes over 200,000 different products. So there's plenty of room to feel your strength — and in some of today's most challenging fields: transit design, urban lighting, jet propulsion, computers, electronics, aerospace, you name it.

Challenges like these have raised a new generation of idea men at G.E. If you're good enough to join

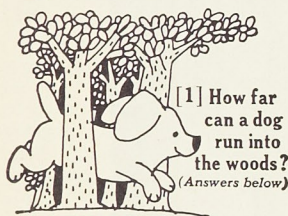
them, you'll find responsibilities come to you early. Your talents are recognized, your work is rewarded — in money and in opportunity.

This time next year, you could be on your way. Talk to the man from G.E. next time he visits your campus. And don't be surprised if he's young, too. At General Electric, the young men are important men.

Progress Is Our Most Important Product

GENERAL  ELECTRIC

Swingline PUZZLEMENTS

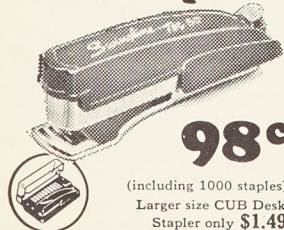


[1] How far can a dog run into the woods?
(Answers below)

[2] A storekeeper had 17 TOT Staplers. All but 3 were sold. How many did he have left?



This is the
Swingline Tot Stapler



98¢

(including 1000 staples)
Larger size CUB Desk Stapler only \$1.49

No bigger than a pack of gum—but packs the punch of a big deal! Refills available everywhere. Unconditionally guaranteed. Made in U.S.A. Get it at any stationery, variety, book store!

Swingline INC.

Long Island City, N.Y. 11101

ANSWERS 1. Halfway. After that, he is running out of the woods! 2. Three! And, that's just about the story of the popularity of TOT Staplers. Students are buying them like crazy, because next to a notebook and a pencil, they're the handiest little school item you can own!

MINER SPORTS

FRIDAY, SEPTEMBER 23, 1966

THE MISSOURI MINER

PAGE 7

Defense Troubles Allgood in Opener; Miners Lose 31-13

Lack of experience caused defensive troubles in the second half of the UMR-Harding contest last Saturday night, and the Missouri Miners came out on the short end of a 31-13 decision.

UMR coach Dewey Allgood found himself facing a seasoned Bison ball club which is now rated tops in their conference. Allgood noted however, that the game was much closer than the final score indicates.

John Prock's Bisons were the first to register a touchdown when they picked-up their fourth first down and moved to the UMR two-yard line. On a second attempt, Howard gained the margin and the TD. With the clock stopped at 6:19, Street kicked the point-after-touchdown.

The Miners' first tally came as the clock ticked-away the final seconds of the first quarter. Ron Lewis, Bob Nicodemus, and Rich Erxleben combined to push the ball to the Harding one-yard line, then Lewis rushed the line and scored. Verdi's PAT was good, and the score stood at 7-7.

Harding scored again in the

second quarter due to the efforts of Howard and Dixon. Street's PAT was good. Early in the second half, Dixon once again edged to the UMR ten-yard line but was taken for a ten-yard loss. Street then kicked a 32-yard field goal, and the Bisons led 17-7.

It appeared as if the Miners might score in the first few minutes of the final quarter, however, Lewis lost 14 yards on a bad throw. On the following fourth down, Harding's Broderhausen intercepted. With seven minutes remaining in the game Dixon crossed the goal for another TD, and Street picked-up the extra point.

Three minutes later, Dixon passed to Howard for the Bisons' final six-pointer. As before, Street's PAT was good.

The Miners weren't through yet, and with 11 seconds left in the battle, Nicodemus crossed two yards to the goal for a touchdown. Verdi's PAT was no good, and the final tally read Harding 31, UMR 13.

Defensively, honorable mention should go to Miners Jim

Key, Charles Jerabek, and Joe Stroud. Key had 13 tackles and 2 assists, while Stroud downed 8 and had 5 assists. Jerabek played one of the best games of his career and totaled 10 hits and 7 assists.

On the offense, both Lewis and Bensko directed touchdown plays. Lewis completed 9 of 16 attempted passes, and Bensko hit his mark 4 out of 5 times.

Coach Allgood commented that his men "have very good potential, but they lack the needed experience." There were as many as six freshmen in the field at one time.

The Miners have three more non-conference games before league action begins on October 12.

MISSOURI PICKED OVER ILLINI

Michigan State, Nebraska, And UCLA Favored Tomorrow

Take a quick peek at the games on tap for this weekend and you'll see that the good old schedule-makers didn't let any grass grow under their feet. They've uncorked some early season meannies for the weak at heart. So hang on tight, and we'll crawl out on that ever-lovin' limb with our ever-lovin' crystal ball.

Michigan State, No. 1, is going to puncture Penn State by 21 points . . . Nebraska, No. 14, will "eliminate" Utah State by four touchdowns . . . UCLA, No. 2, should singe Syracuse by 25 . . . and Arkansas, No. 10, is favored to trip 15th-ranked Tulsa by just two points.

In a warmer-upper Saturday, Alabama will come out of summer seclusion at the expense of Louisiana Tech. The Crimson Tide will hold about a 35-point better hand.

And for the contrast — real heat — look at Notre Dame - Purdue. The Riveters, rated 12th after a 39-point romp over Ohio U., tackle the Irish in South Bend. The winner: Notre Dame by 12 points. (Is that our ever-lovin' limb that's cracking?)

Tennessee, fifth last fall, and Ohio State, No. 10 in '65, make 1966 debuts Saturday. The Vols are 15-point favorites over Auburn, and the Buckeyes should be in the driver's seat against TCU. The difference, seven points.

And how about these little Southern scraps! Florida, an early number 4 in the rankings, should slither over Mississippi State by 20, and Miami, Florida,

Pittsburg Gorillas Host Gridders Tomorrow Night

Dewey Allgood's Missouri Miners will have their hands full this Saturday as they take on the Pittsburg, Kansas Gorillas on the latter team's field. After viewing scouting reports from the past weekend's Gorilla victory over Central Missouri State (20-19), the Miner mentor reports that

they'll be up against a typical Pittsburg ball club; big and strong.

The man to stop on the Kansas team is ace fullback Gaylan McGibbin, who carries the ball half the time for his squad. This year's defensive line is big tackle to tackle, and the Gorilla's sport four interior men who will be hard to run against: Lee at 230 pounds, Kalm (222), Just (230), and Dudley (245 pounds).

Although the Miners won 19-7 in last years battle on Jackling Field, they will be opposing a tougher squad this year.

Tomorrow's game is under the lights, with game time in Pittsburg set for 8 p. m.

Conference Preview at UMR Saturday

Ted Moore's Miner harriers will host three of the Missouri Intercollegiate Athletic Association's six member teams tomorrow in a preview of what may result at the conference meet in November. Central Missouri State, Springfield, UMR, and Kirksville will participate in the meet scheduled to start at 11:00 a. m.

All league members were invited to join in the competition, however, these were the only schools to accept because of scheduling difficulties.

Since the MIAA Conference meet will be held on the new UMR cross country course later this season, it is to the advantage of the conference teams to have run on the unfamiliar route.

NOTICE!

Those students who plan to participate in the high jump, broad jump, triple jump, pole vault, and javelin for spring track should contact the athletic office soon. Leave your name, address, and telephone number.

MEET THE MINERS

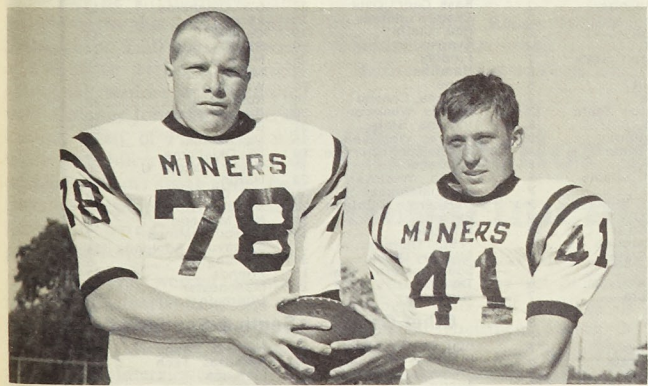
By Lloyd J. Lazarus

This week the Meet the Miner spotlight is placed on the co-captains of the 1966 edition of the Miner football team.

Charles Jerabek, 5'-10", 160

After Charlie's fine performance Saturday night against Harding College, we are looking for another great season from him.

No finer choice could have



Co-Captains Tom Owens and Charles Jerabek.

pound senior defensive halfback, is a graduate of Cleveland High School in St. Louis where he played offensive halfback. Upon entering UMR he was switched to defensive halfback. In the last three years, he has shown his ability in the Miner secondary and is very deserving of the honor of being named Defensive Captain.

Last season Charlie also returned punts and kickoffs and averaged fifteen yards per return. He also picked off two passes during season play.

Besides receiving a football scholarship since his first year in school, he also received the annual Rolla Lions Club Award to incoming freshman football players.

Charlie's other activities include being a member in the Rugby and M. Clubs. He is a brother of the Kappa Sigma social and Theta Tau service fraternities.

been made this year than naming Tom Owens Offensive Captain. Tom, a 6-3, 235 pound junior, was the winner of last year's annual Outstanding Lineman of the Year award. It can easily be seen how essential he is to our offensive attack.

Tom attended McBride High School in St. Louis and received an athletic scholarship upon en-

(Continued on Page 8)

Want a Good Place to Eat?

TRY

Whitey's Restaurant

Located on Highway 63 North at the Crescent

FEATURING FINE FOODS

Open 7 Days a Week — 5:30 A. M. to 10 P. M. Sun. Thru Thurs.

Open 5:30 A. M. to 11 P. M. Friday and Saturday

Sports Calendar

VARSITY FOOTBALL

September 24 Kansas College, at Pittsburg, Kan.
October 1 Missouri Valley College, at UMR

VARSITY CROSS COUNTRY

September 24 Warrensburg, Springfield, and Kirksville, at UMR
October 1 Washington University, at UMR

INTRAMURAL SPORTS

September Flag football, table tennis, and tennis singles continue



VOLKSWAGEN
Sales and Service
BILL SOWERS MOTORS

Phone 364-5178 Hwy. 66 E. in Northwey

"USED CARS HWY. 66 W. BY BIEDERMAN'S"

INTRAMURAL FLAG FOOTBALL

Rules and Regulations Provide For Safer Football Competition

By Lloyd Lazarus

Many students and faculty of UMR enjoy the action and suspense produced by intramural flag football, however, few can say that they have actually read the rules and regulations of the sport. The official Intercollegiate Football Rules apply, with the exceptions mentioned below.

Seven men constitute a team, although the squad number is unlimited. Failure to meet the seven-man minimum will result in a forfeit after a ten-minute delay. In addition each team must furnish one timer and one scorer.

All players must wear a flag belt which has three flags. The belts must be worn so that one flag is over each hip and one behind. Team captains or managers are responsible for the belts and flags from "Red." After each game they will be responsible for seeing that they are returned immediately. No cleated shoes of any kind may be worn, basketball or gym shoes being regulation. Any player not complying with these rules will be banished from the game for its duration.

20 Minute Halves

The game will be played in 20 minute halves, with a 5 minute rest period between each half. Each team is allowed 3 one minute time-outs during each half. There is no restriction as to the number of times a player may re-enter the game, the ball must be declared dead by the officials.

In scoring flag football, a touchdown is worth 6 points, a safety 2 points, and the point after touchdown is good for one. The PAT must be a free kick from the ten yard line. After a safety, the ball will be put in play by a free kick (punt or place), from the 10-yard line after a touchback. A kick-off out of bounds will be put in play on the twenty yard line, of the receiving team has the option of bringing it into play at the point

where it goes out of bounds.

The offensive team must place three men on the line of scrimmage or else suffer a five yard penalty. The field will be marked off in ten yard zones, and the offensive team must advance the ball from one zone to the other in three downs or lose possession of the ball. All players are eligible for forward passes.

Shoulder Block Permitted

The shoulder block is the only block permitted, and the blockers must have at least one foot on the ground at the moment of contact. Flying, rolling, and cross-body blocks are strictly prohibited. The penalty for illegal blocking will be ten yards from the line of scrimmage regardless of where the foul is committed.

When a player is tackled, his forward progress stops at the spot on the field where he loses one or all of his flags while the ball is still in his possession. Progress is also halted when any part of his body except his feet or hands come in contact with the ground.

The ball carrier may not use a stiff arm! He may not run with his head down, since the defense must play for the flag and cannot hold or grab the ball carrier to get the flag. If a man loses a flag while running with the ball, play ends at the spot where the flag dropped.

Tie Games Decided

In case of a tie game, each team will be given three downs to advance the ball from their own 40-yard line. If no score results, the team gaining the most yardage wins. Loss of the ball due to an interception results in loss of other downs, and the team's advancement is measured from where the ball was put in play. This procedure will be followed until a winner is declared.

The officials are charged to strictly enforce all playing rules,

particularly those concerned with the safety of the players. Penalties of 10-yards will be charged to those committing (1) unnecessary roughness, (2) offensive holding, (3) defensive holding, (4) illegal blocking, (5) unsportsmanlike conduct. 1-4-5 (above) called twice vs. the same player shall disqualify him for the duration of the game.

MEET THE MINERS

(Continued From Page 7)

tering UMR. His campus activities include being a member of Tech Club and he is their representative to the Student Council. He is also a member of the ASCE, Intercoop Council, and secretary of the M Club. To top it all off, he can boast about his 2.6 overall grade point.

Tom's main hope for the forthcoming season is to see the Miners do well. Fans can rest assured that with Tom heading the offensive line they will give their upmost.

SIDELINES

BY JIM WEINEL



For those students who are unfamiliar with the Miner athletic teams, UMR belongs to the Missouri Intercollegiate Athletic Association, along with five other Missouri colleges. The Miners compete with Kirksville, Maryville, Cape Girardeau, Warrensburg, and Springfield in several sports including football, basketball, indoor and outdoor track, cross country, golf, baseball, and tennis. It is thought that swimming will be added as soon as all member schools have the facilities.

Cross country coach Ted Moore is requesting that all those interested in varsity track report in to the athletic office as soon as possible. He is particularly looking for men who can high jump, pole vault, broad and triple jump, and toss the javelin. The scheduling of spring meets is about to begin, and Ted would like to know just what events he will be able to fill when the time comes. If you plan to participate in these varsity events this spring, give your name and phone number to the athletic department.

Swimming and handball have been dropped from this year's intramural sport schedule for obvious reasons, and the fate of wrestling has not yet been decided. At the intramural managers' meeting last Wednesday, it was announced that golf would be played in early October this year instead of during the spring semester. The use of the old Rolla High School gymnasium has been obtained for basketball and volleyball, but certain rules and restrictions must be adhered to during those games. I'll have a report on these rules when those seasons begin.

Address questions and comments to "Sidelines," c/o THE MISSOURI MINER, UMR, Rolla, Missouri.

The Harmon Football Forecast

TOP 20 TEAMS (Forecasting Average: 158 right, 48 wrong767)

1 - Mich. State	6 - Missouri	11 - S.M.U.	16 - Baylor
2 - U.C.L.A.	7 - Georgia Tech	12 - Purdue	17 - Washington
3 - Michigan	8 - Miami, Fla.	13 - Mississippi	18 - Navy
4 - Florida	9 - L.S.U.	14 - Nebraska	19 - Houston
5 - Southern Cal	10 - Arkansas	15 - Tulsa	20 - Georgia

Saturday, Sept. 24 — Major Colleges

Alabama	42	Louisiana Tech	7
Arkansas	17	Tulsa	15
Army	27	Holy Cross	7
Baylor	14	Colorado	0
Boston College	28	Ohio U.	13
Bowling Green	21	Tampa	13
Brigham Young	19	San Jose State	14
Brown	27	Rhode Island	6
Buffalo	21	Cornell	20
Cincinnati	13	Dayton	10
Citadel	25	Richmond	6
Colgate	19	Columbia	9
Colorado State	42	South Dakota St.	0
Dartmouth	16	Massachusetts	7
Davidson	23	Furman	7
Duke	27	Pittsburgh	8
Eastern Kentucky	14	Marshall	13
Florida	35	Mississippi State	7
Georgia	35	V.M.I.	6
Georgia Tech	25	Vanderbilt	6
Harvard	33	Lafayette	7
**Houston	26	Washington State	13
Idaho	28	Montana	6
Indiana	40	Northwestern	20
Iowa	17	Oregon State	14
Kansas	17	Arizona	8
Kent State	20	Northern Illinois	15
L. S. U.	30	Rice	7
Louisville	20	Southern Illinois	9
Maine	20	Boston U.	0
Maryland	20	Wake Forest	10
Memphis State	17	South Carolina	13
Miami, Fla.	21	Florida State	8
Miami, Ohio	28	Xavier	6
Michigan	24	California	6
Michigan State	20	Penn State	7
Minnesota	14	Stanford	17
Mississippi	14	Kentucky	8
Missouri	30	Illinois	7
Nebraska	21	Utah State	7
New Mexico	14	Kansas State	7
New Mexico State	14	Arlington	12
North Carolina St.	21	North Carolina	13
Notre Dame	26	Purdue	14
Ohio State	14	T.C.U.	7
Oklahoma	21	Iowa State	6
Pennsylvania	21	Lehigh	6
Princeton	40	Rutgers	13
Southern Cal	35	Wisconsin	7
S.M.U.	14	Navy	9
South'n Miss	26	SE Louisiana	7
Tennessee	21	Auburn	6
Texas	10	Texas Tech	6
Texas Western	20	Villanova	13
Toledo	19	Texas A & M	14
Tulane	19	Syracuse	14
U.C. L.A.	39	Oregon	10
Utah	14	Clemson	14
Virginia	15	George Washington	7
V.P.I.	12	Air Force	7
Washington	22	Pacific	0
West Texas	33	Central Michigan	7
Western Michigan	21	West Virginia	13
William & Mary	15	Arizona State	7
Wyoming	16	Connecticut	14
Yale	20		

Other Games — East

Alfred	27	Springfield	7
Amherst	20	Worcester Tech	7
Bowdoin	20	Gettysburg	14
Bucknell	23	West Va. Wesleyan	13
California State	14	American Int'l	8
Coast Guard	25	Hofstra	14
Delaware	20	Montclair	0
**East Stroudsburg	10	Rochester	0
Hamilton	14	Geneva	6
Indiana State	30	Tufts	6
Ithaca	20	Glassboro	6
Millersville	20	Colby	6
New Hampshire	13	Bridgeport	14
Northwestern	13	Bates	13
Norwich	14	Trenton	0
South'n Conn.	32	Mulhennberg	7
Upsala	25	Susquehanna	6
Waynesburg	35	Middlebury	6
Wesleyan	28	Shippensburg	7
West Chester	32	Lebanon Valley	13
Wilkes	18	Trinity	13
Williams	15		

Other Games — Midwest

Anderson	18	Hanover	14
Baker	25	Sterling	0
Bemidji	16	Michigan Tech	13
Bethany, Kansas	19	Emporia College	14
Bluffton	25	Alma	7
Carthage	27	Lake Forest	12
Central Missouri	12	Washburn	8
Chicago Illini	13	Northland	6
Defiance	21	Adrian	6
DePauw	21	St. Joseph	14
Doane	14	Tarkio	7
Dubuque	21	Upper Iowa	12
Earlham	13	Franklin	6
East Cent. Okla	23	SW Oklahoma	13
Eastern Illinois	15	Ferris	6
Eau Claire	19	Oshkosh	15
East Texas	20	SE Missouri	0
Findlay	25	Hillsdale	20
Hamline	19	Macalester	6
Hope	24	Wheaton	7
Indiana Central	14	Rose Poly	12
Illinois Wesleyan	30	Illinois State	0
Indiana State	21	Butler	0
Kansas Wesleyan	15	McPherson	0
Mississippi College	20	SE Oklahoma	16
Montana	17	South Dakota U.	0
NEb. Wesleyan	20	Huron	6
NE Oklahoma	21	NW Oklahoma	10
Northern Michigan	9	Bradley	7
Parsons	14	NE Missouri	10
Pittsburg	18	Missouri Mines	7
*St. Thomas	21	Gustavus Adolphus	14
Slippery Rock	30	Wilmington	6
Southwestern, Kan.	15	Friends	13
Taylor	19	Manchester	13
Wittenberg	38	Otterbein	0

Other Games — South & Southwest

Abilene Christian	14	Howard Payne	0
Arkansas A & M	20	Arkansas Tech	15
Arkansas State	23	Florence	6
Austin Peay	27	Murray	6
Carson-Newman	17	Emory & Henry	7
Catawba	25	Newberry	13
Centre	25	Kenyon	0
Chattanooga	21	Tennessee Tech	13
Concord	13	West Va. Tech	7
Conway	20	Ouachita	13
East Carolina	33	NE Louisiana	0
East Tennessee	21	Western Kentucky	17
East Texas	20	Texas Lutheran	8
Fairmont	33	Glenville	0
Georgetown	18	Maryville	7
Guilford	28	Elon	12
Jacksonville	20	Samford	19
Lamar Tech	26	SW Missouri	9
Lenoir Rhyne	21	Presbyterian	10
Livingston	14	Troy	6
McMurry	20	Clarleton	17
Middle Tennessee	31	U. T. M.B.	7
NW Louisiana	31	Louisiana College	8
Randolph-Macon	20	Washington & Lee	18
S. F. Austin	40	Angelo State	7
SW Louisiana	14	Delta	8
SW Texas	21	Trinity	6
West Liberty	20	West Va. State	0
Western Carolina	23	Appalachian	14
Wofford	26	Frederick	6

Other Games — Far West

Cal Lutheran	19	LaVerne	15
Cal Poly (Pomona)	20	Whittier	7
Central Washington	16	Puget Sound	12
Colorado Western	47	Western N. Mexico	0
Davis	24	Riverside	0
Eastern Washington	31	Western Washington	13
Fresno State	19	Northern Arizona	6
Long Beach	17	San Francisco State	8
Los Angeles	21	Texas A & I	13
Nevada	14	Williamette	13
N. Mexico Highlands	18	Colorado Mines	14
Occidental	20	San Fernando	6
Redlands	18	Chico State	7
San Diego	21	Weber	15
Santa Barbara	21	Hawaii	12
Santa Clara	19	Sacramento	0
Southern Colorado	27	Colorado State	12
Whitworth	16	Pacific Lutheran	6

(**Friday Games)

Big Thirst?

BIG PLEASURE
MAN-SIZE
PLEASUREFALSTAFF
QUARTS

Distributed by
MUELLER DISTRIBUTING CO.
217 W. 6th St. Rolla, Mo.