



16 Sep 1966

The Missouri Miner, September 16, 1966

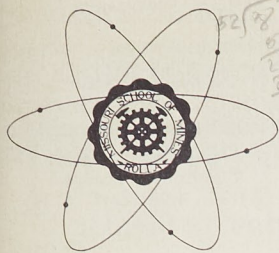
Follow this and additional works at: https://scholarsmine.mst.edu/missouri_miner

These newspapers reflect the attitudes, perspectives, and beliefs of different times. Neither the library nor the university endorses the views expressed in these collections, some of which contain images and language which may be offensive to some readers.

Recommended Citation

"The Missouri Miner, September 16, 1966" (1966). *The Missouri Miner Newspaper*. 1837.
https://scholarsmine.mst.edu/missouri_miner/1837

This Newspaper is brought to you for free and open access by Scholars' Mine. It has been accepted for inclusion in The Missouri Miner Newspaper by an authorized administrator of Scholars' Mine. This work is protected by U. S. Copyright Law. Unauthorized use including reproduction for redistribution requires the permission of the copyright holder. For more information, please contact scholarsmine@mst.edu.



The Missouri MINER

UNIVERSITY OF MISSOURI AT ROLLA



VOLUME 53

FRIDAY, SEPTEMBER 16, 1966, ROLLA, MISSOURI

NUMBER 1

Corinthian Studio Renews New Registration Procedures Search for Campus Talent Expedite Enrollment Problems

Tryouts for a statewide television program, "Campus Talent '66," starring performers from Missouri Colleges, will be held for University of Missouri at Rolla students at 7 p.m. Sept. 21 in the Music Building, T-1.

The program, to be presented later in the year, is the second of a series sponsored in Missouri by Southwestern Bell Telephone Co. Talent will be filmed on tape in early fall with cameramen as background. Those who perform will be paid a professional fee.

Singers, dancers, musicians, variety or specialty acts, such as comics, monologists, gymnasts, magicians, are invited to audition. Students are asked to provide their own accompaniment. A public address system and turntable will be available for dancers or those needing to have records played. All talented students are urged to audition. Interested persons should contact Howard Stine at 364-6172 or 364-1195.

Two of the 14 groups appearing on the first Missouri Campus Talent '66 show last May were UMR's own Jaguars and the Kappa Alpha Singers, a jazz ensemble and a folk singing group.

The series is produced by Corinthian Productions of Houston, Tex.

Many new changes in UMR's registration procedure highlighted a very successful orientation period for the university's over 1000 new freshmen. The freshman week program was much the same as in past years. Several school sponsored activities added

to the Freshmen's orientation schedule. Tuesday opened the week with welcoming speeches by Chancellor Baker, Dr. Thompson, and Sam Burton. Wednesday was taken up in freshman registration while an assembly in the Uptown Theater and the Chancellor's Reception were on Thursday. Students and parents were given an excellent chance to meet the Chancellor and the Deans at a reception in the Student Union Ballroom on Sunday afternoon.

Registrar R. B. Lewis made several interesting observations on the success of the school's new registration procedure. He stated that the school is growing rapidly. This is shown by the over 4400 students in the college and the increase in the number of girls and area students as a result of the expansion of the university's general studies division. There are also over 300 students in the St. Louis extension service. Surprising as it may seem Mr. Lewis said that he expected even more students than are enrolled. He

cited three reasons for this occurrence. First of all, the increased manpower call up due to the Viet Nam crisis has taken many college age men away from the University. Expansion of junior colleges in the state of Missouri has also drawn many people from UMR. The airline and sheet metal workers strike in St. Louis and throughout the state has also forced many students who would otherwise be returning to college to remain at work another semester to finance their education.

Summer registration was valuable to over 530 freshmen who took advantage of the opportunity. Mr. Lewis is hoping that many more students will use this plan next summer. Next year will also see the beginning of a two-day orientation period for transfer students. All this and the use of the facilities of the Electrical Engineering building for registration are part of the plan to better prepare UMR students for their college years.

Salaries Increase

Salaries offered to June graduates of UMR were higher than the national average in five major areas: chemical engineering, electrical engineering, mechanical engineering, metallurgical engineering, and physics, chemistry and mathematics.

These figures, shown for holders of B.S. degrees, were compiled by the UMR placement office. In these five areas, receiving the highest average starting salaries of \$770 were prospective employees in the merchandising field of chemical engineering. This was followed by \$715 offered to the food and beverage processing field of electrical engineering; \$691 offered the petroleum and allied products of chemical engineering; and \$688 to the research and consulting organizations of metallurgical engineering.

Of all U.M.R. graduates in June, B.S. degree holders averaged \$670 starting salaries while M.S. degree holders averaged \$850.

New Dormitory to Be Dedicated, World War II Veteran Honored

A new dormitory at UMR will be dedicated Sept. 24 to Lt. Orvid J. Holtman, (j.g.) U.S. Navy, graduate of U.M.R., who was killed in duty June 6, 1944 at Omaha Beach.

The honorable Richard J. (Bus) King, Missouri representative from St. Louis County, will make the dedication speech. Dr. John C.

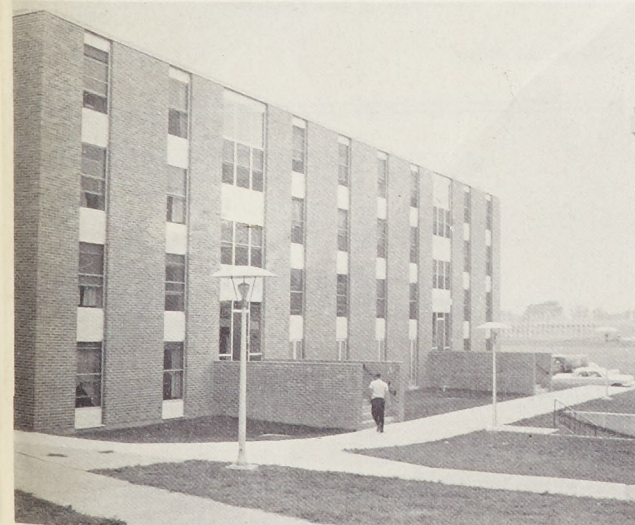
ness the unveiling of the plaque in Holtman's honor.

Lt. Holtman, son of Mr. and Mrs. O. J. Holtman of Mexico, Mo., was posthumously awarded the Purple Heart by the War Department on Sept. 12, 1944 for his service in the demolition unit, the Seabees, at Omaha Beach, where he was killed. He was also award-

morializing names of men who died in the invasion of Normandy at Ft. Pierce, Fla.

Lt. Holtman was graduated from the University of Missouri at Rolla in 1938 with a B.S. degree in civil engineering. While at U.M.R., he was a member of Pi Kappa Alpha social fraternity of which he was president; business manager of the Miner and member of the American Society of Civil Engineers. He was graduated from Mexico High School in 1933 and attended Central Methodist College in Fayette. He served as city and county surveyor in Mexico, Audrain County.

The dormitory, which will be named Holtman Hall, is a four-story red brick building with a capacity of 118 students. Construction of the dorm was started in 1964 to help meet the rising U.M.R. student enrollment. Built for modern college living, the hall features spacious rooms, lounges and laundry facilities.



IN MEMORY OF AN HONORED ALUMNUS

A new UMR dormitory will be dedicated to Lt. O. J. Holtman an alumnus who gave his life for his country.

Weaver, president of the University, other University officials, State dignitaries and members of the immediate family are expected to wit-

ed the Presidential Unit citation for Navy Combat Demolition Unit of Force O for services on D Day, and is named on a plaque me-

Requirements for GI Bill Outlined by VA Center

Veterans returning to school under the GI bill should be prepared to pay their expenses for at least two months, cautions Dr. Robert N. Sawyer of the Veteran's Administration Counseling Center at UMR.

Since monthly certificates of school attendance are required before payment is made, payments cannot be made until after the first month's certificate is received. Checks will be mailed by the Veteran's Administration on the 20th of the following month. Proper and prompt sending of these certificates will eliminate delay, Dr. Sawyer said.

Dr. Sawyer pointed out that the new Veteran's Administration VA Counseling Center at Rolla will assist any veteran or war orphan eligible for the educational program under the new Cold War GI Bill. This bill offers on a permanent basis educational loan guarantees educational and vocational counseling and other benefits to veterans who have served more than 180 days in the military since Jan. 31, 1955, and who were discharged under conditions other than dishonorable.

Veterans who meet these qualifications are entitled to educational assistance for a period of one month for each month of active duty service. The maximum entitlement is 36 months (four college years) and education must be completed within eight years from the date of last discharge.

War orphans eligible for educational assistance are those children whose fathers have served their country honorably in the armed forces and are deceased or are 100 per cent disabled.

Full time veteran students may receive \$100 per month, with an additional \$25 per dependent up to two dependents. War orphans may receive \$130 for full-time attendance. A minimum of 14 hours per semester is required for full-time status.

The VA will also pay the cost of correspondence courses for those eligible.

Faculty Expands

Forty-four new teachers join the faculty of UMR this fall bringing the overall number of faculty members to about 277.

Included in this figure are about 143 holders of the Ph.D. degree. About 233 hold the rank of professor.

NOTICE!

The six week drop rule is in effect. Only 5 weeks remain to drop a course without it becoming an "F" on your record.

NOTICE!

APO BLOOD DRIVE
WILL BE HELD ON
SEPTEMBER 21-22

KMSM-FM Expands Services and Announces Schedule for New Year

KMSM-FM, student-operated non-commercial radio station at the University of Missouri at Rolla, signed on the air at 3:00 P.M. Monday, Sept. 12.

The station, which is licensed as an educational station operating on 88.5 megacycles, went on the air Jan. 2, 1964, and has

since expanded its program offerings and facilities.

Broadcast hours this year will be from 3 to 12 P.M. on week days, and from 1 to 12 P.M. on Saturdays and Sundays.

Programming will include music, news and current events, commentaries, and sports reports.

The managing staff includes Kenneth Bowles, Bowen, Ill., station manager; Eugene Cummins, Normandy, Chief Engineer; Tom Braeckel, Joplin, educational program director; Walter Jarrett, Brentwood, musical program director; and Jim Thomas, Willow Springs, chief announcer.

KMSM Programming Schedule

SUNDAY
1:00 p.m. Sunday Show
4:30 p.m. Voices of Vista
5:00 p.m. Swing Easy
6:00 p.m. News
6:10 p.m. Swing Easy
7:00 p.m. Overseas
7:30 p.m. Assignment
7:30 p.m. Masterworks from France
8:00 p.m. Miner Melodies
9:00 p.m. Heritage Hour
10:00 p.m. News
10:10 p.m. The Band and the Ballad
11:00 p.m. Uncle Smiley's Worthless Hour
12:00 p.m. Sign Off
MONDAY
3:00 p.m. PM Show
4:30 p.m. NASA
4:35 p.m. Point of Interest
4:40 p.m. Navy Band Showcase
5:00 p.m. Swing Easy
6:00 p.m. News
6:10 p.m. Swing Easy
7:00 p.m. Sassafras

8:00 p.m. Miner Melodies
9:00 p.m. Sounds of Broadway
10:00 p.m. News
10:10 p.m. The Band and the Ballad
11:00 p.m. Solitude
12:00 p.m. Sign Off
TUESDAY
3:00 p.m. PM Show
4:30 p.m. Men and Molecules
5:00 p.m. Swing Easy
6:00 p.m. News
6:10 p.m. Swing Easy
7:00 p.m. Take Five
8:00 p.m. Miner Melodies
9:00 p.m. Heritage Hour
9:55 p.m. On Campus
10:00 p.m. News
10:10 p.m. The Band and the Ballad
11:00 p.m. Solitude
12:00 p.m. Sign Off
WEDNESDAY
3:00 p.m. PM Show
4:30 p.m. UN Report
4:40 p.m. The Navy Presents

5:00 p.m. Swing Easy
6:00 p.m. News
6:10 p.m. Swing Easy
7:00 p.m. Sassafras
8:00 p.m. Miner Melodies
9:00 p.m. The Miners Ask
9:55 p.m. Music in the Air
10:00 p.m. News
10:10 p.m. The Band and the Ballad
11:00 p.m. Solitude
12:00 p.m. Sign Off
THURSDAY
3:00 p.m. PM Show
4:30 p.m. NASA Space Story
5:00 p.m. Swing Easy
6:00 p.m. News
6:10 p.m. Swing Easy
7:00 p.m. Take Five
8:00 p.m. Miner Melodies
9:00 p.m. Heritage Hour
9:55 p.m. On Campus
10:00 p.m. News
10:10 p.m. The Band and the Ballad
11:00 p.m. Solitude
12:00 p.m. Sign Off

FRIDAY
3:00 p.m. T.G.I.F.
4:30 p.m. Spotlight on Miner Sports
4:40 p.m. Road to Freedom
5:00 p.m. Swing Easy
6:00 p.m. News
6:10 p.m. Swing Easy
8:00 p.m. Miner Melodies
9:00 p.m. Sounds of Broadway
10:00 p.m. News
10:10 p.m. The Band and the Ballad
11:00 p.m. Solitude
12:00 p.m. Sign Off
SATURDAY
1:00 p.m. Perspective
4:30 p.m. USAF Band
5:00 p.m. Swing Easy
6:00 p.m. News
6:10 p.m. Swing Easy
7:00 p.m. Bourbon Street
8:00 p.m. Miner Melodies
10:00 p.m. News
10:10 p.m. The Band and the Ballad
11:00 p.m. Solitude

Foreign Group Offers Students Cultural Union

A unique opportunity to learn more about other countries, their customs, and their culture is available to students and residents of Rolla in the form of the International Fellowship of U.M.R. The first meeting of the current school year will take place on Fri., Sept. 16, in Room 107 of Mining Bldg. This meeting will take place at 7 P.M. and will include the election of officers, refreshments, and a social period to encourage personal discussion. Future meetings will include a Faculty - International Student Mixer in the Student Union on Wednesday, Sept. 21, at 7 P.M., to which all faculty, foreign students, members of International Fellowship, and other interested persons are cordially invited.

International Fellowship activities are generally open to all interested persons, and all UMR students are eligible for membership. American students are particularly encouraged to participate in these activities since the opportunities to meet and talk with people from other countries will probably be much less after leaving UMR. Foreign students can also benefit from membership because the International Fellowship provides the opportunity to learn about other countries besides their own and the U.S.A. Those who are sincerely interested in the cultural, social, and political aspects of international relations should give serious consideration to the opportunities offered by the International Fellowship at UMR.

UPTOWN THEATRE

MOVIES IN CINEMASCOPE

Starts Thursday Sept. 15-20

Sunday Feature:
1:30, 4:00, 6:45, 9:30

'How to Steal a Million'
Peter O'Toole & Audrey Hepburn

Starts Wednesday Sept. 21-27

'Torn Curtain'

Paul Newman & Julie Andrews

RITZ THEATRE

MOVIES IN WIDE SCREEN

Fri., Sat. Sept. 16-17

Saturday Continuous from 1 p.m.

'Dr. Goldfoot and the Bikini Machine'

Vincent Price & Frankie Avalon

Sun., Mon. Sept. 18-19

Sunday Continuous from 1 p.m.

'The Heroes of Telemark'

Kirk Douglas & Richard Harris

Starts Tuesday Sept. 20-26

Admission: Adults 90c

'A Fine Madness'

Sean Connery & Joanne Woodward

ROLLA DRIVE IN

SHOWS START AT DUSK

Fri., Sat. Sept. 16-17

'Paradise Hawaiian Style'

Elvis Presley & Suzanna Leigh

—PLUS—

'Gunfighters of Casa Grande'

Alex Nicol & Jorge Mistrall

Sun., Mon. Sept. 18-19

'Boeing Boeing'

Tony Curtis & Jerry Lewis

UMR Announces New Loan Fund

Establishment of the Richard L. Cooper Scholarship Loan Fund to assist students attending UMR was announced today by Chancellor Merl Baker. The Fund was established in memory of Cooper by his parents, Sidney and Evelyn Cooper, 1160 Wilshire, University City, and the Alpha Epsilon Pi Fraternity.

Cooper was a founding brother of the Nu Deuteron Chapter of AEPI and a student at U.M.R. in 1965. He was killed in an automobile accident on March 14, 1965.

While at U.M.R., Cooper served on the Interfraternity Council and on the Student Union Publications Committee.

The Richard L. Cooper Scholarship Loan Fund will be administered by a faculty committee. Loans will be granted to students during the current school year on the basis of financial need and related criteria.

Flight Course Offered at UMR

A short course of instruction for the Federal Aviation Agency private pilot written examination will be given Oct. 13 through Jan 12 at UMR.

The 32 hours of study will be directed by Dr. Aaron J. Miles, dean of the School of Engineering at U.M.R. Dr. Miles is a qualified flight and ground school instructor with 38 years experience and 3,500 hours flying time.

The two-hour meetings will be held at 7:30 p.m. in Room 107 Norwood Hall. Registration may be made by writing Dwight Hafeli, Extension Division, 900A Rolla Street, University of Missouri at Rolla, Rolla, Mo., or by calling 364-3417.

Drs. Baker and Faucett Visit ROTC Cadets

UMR Chancellor Merl Baker and Dr. Thomas R. Faucett, Mechanical Engineering Department Chairman met with some of the 71 ROTC cadets from the UMR Campus following an Artillery Firepower Demonstration at Fort Sill on Saturday, July 16.

The demonstration was only one of the many training highlights observed during a three-day program established by the Army for visiting dignitaries from 48 universities and colleges

where the cadets receive their classroom military instruction. Captain Paul P. Chapman of the UMR ROTC Instructor's Staff served as escort officer for the Chancellor and Dr. Faucett during their visit.

STUDENTS
WE SELL TO YOU WHOLESALE
HOOK AUTO SUPPLY
513 Hiway 63 South Rolla, Mo.



VOLKSWAGEN
Sales and Service

BILL SOWERS MOTORS

Phone 364-5178 Hwy. 66 E. in Northwye

One HOUR
"MARTINIZING"
CERTIFIES
THE MOST IN DRY CLEANING

As advertised in Life, Holiday, Glamour, Business Weekly, Esquire Magazines, and ABC Television and Radio.

ONE HOUR DRY CLEANING DAILY FROM 9 A.M. - 4 P.M. INCLUDING SATURDAY

LAUNDRY SERVICE — EXPERT ALTERATIONS

121 West 8th St.

Telephone 364-6063

CLARK'S CYCLE SALES & RENTAL

LOWEST PRICES IN TOWN

Phone 364-5144

City Rt. 66 West

Rolla, Mo.

4,500 MINERS
Can't Be Wrong

FINE FOOD THE 5TH AMENDMENT!
THEY SAY WE HAVE THE BEST FOOD IN ROLLA!

* * * * *

STUDENT SPECIALS EVERY SUNDAY

1/2 Pan Fried Chicken ----- \$1.25
with French Fries and Cole Slaw

Take It Out for ----- 97c

Spaghetti With Meat Sauce ----- \$1.10

EL CHAREVE HICKORY HOUSE

Hiway 63 South

364-9900

Unique Steakfries Sponsored By University Graduate Dean

Most people hold a family steakfry once each summer. Dr. and Mrs. Wouter Bosch of UMR have held five, each for 100 guests, every summer for the last 18 years.

Dean of the U.M.R. Graduate School and director of the short courses on paints and polymers, Dr. Bosch not only educates his students, but entertains them. Each year, in the eight years he has been at U.M.R., he has invited each of five groups of 60 students and their families to his home and has entertained them with a steakfry at Maramec Springs Park at St. James. Before coming to U.M.R., he feted his students at the University of North Dakota, where he was chairman of the paint chemistry department for 10 years.

Early in the morning of the picnic, a member of the University maintenance crew goes to the shelter and holds it - consisting of about a 12-hour sit. Later in the day, two other members of the crew accompany Mrs. Bosch to the shelter armed with about 100 steaks, buns, baked beans, potato salad, and much enthusiasm for another successful cookout. The students consist of employees of industry and the armed forces from all over the world who are interested in the science and applica-

tion of paints and polymers. The steakfry is held at the end of one week's condensed yet thorough course on paints and polymers. Five courses offered each summer are taught by Dean Bosch with the assistance of about thirty guest lecturers. The courses, Basic Paint Short Course, Fundamental Polymer Courses I and II, Advanced Paint Refresher Course, and Coatings Course are held at the university with students and their families living in the residence halls or in many cases, camping out in the nearby scenic parks.

In appreciation of the Bosch's hospitality, students of the Coatings Course presented Mrs. Bosch with a check to apply toward a

ticket to accompany Dr. Bosch to a Paint Forum August 14-19 in Washington, D. C. This conference sponsored by the National Paint, Varnish and Lacquer Association, the Federation of Societies for Paint Technology, the Paint Research Institute and the A.C.S. Division of Organic Coatings and Plastics Chemistry invited 50 to participate in the session.

Dean Bosch's students return to their respective homes all over the world not only with an enhanced education in painting and polymers, but with a fondness for Dean and Mrs. Bosch, an appreciation of the Ozark countryside, and a belief in the superiority of Missouri beef.

Extension Division Offers Four Courses

The Extension Division of the University of Missouri at Rolla is offering four courses at UMR this semester. "Commercial and Industrial Wiring," "Preparation for FAA Private Pilot Written Examination," "Fundamentals of Art and Sketching," and "A Cooking School Conference," are the four programs being offered.

Mr. H. Ramon Sparling, M.A. Washington University, will be the instructor for "Fundamentals of

Art and Sketching." The course will cover the basics of drawing, color, composition, and a social history of art. Class will start September 29 in Room 202, Mining Building, and will meet once a week for 12 weeks at 7:30 P.M. The registration fee is \$25.00.

Registration fees for the above courses should be mailed to the Extension Division, Department C, 900-A Rolla Street, Rolla, Missouri 65401.

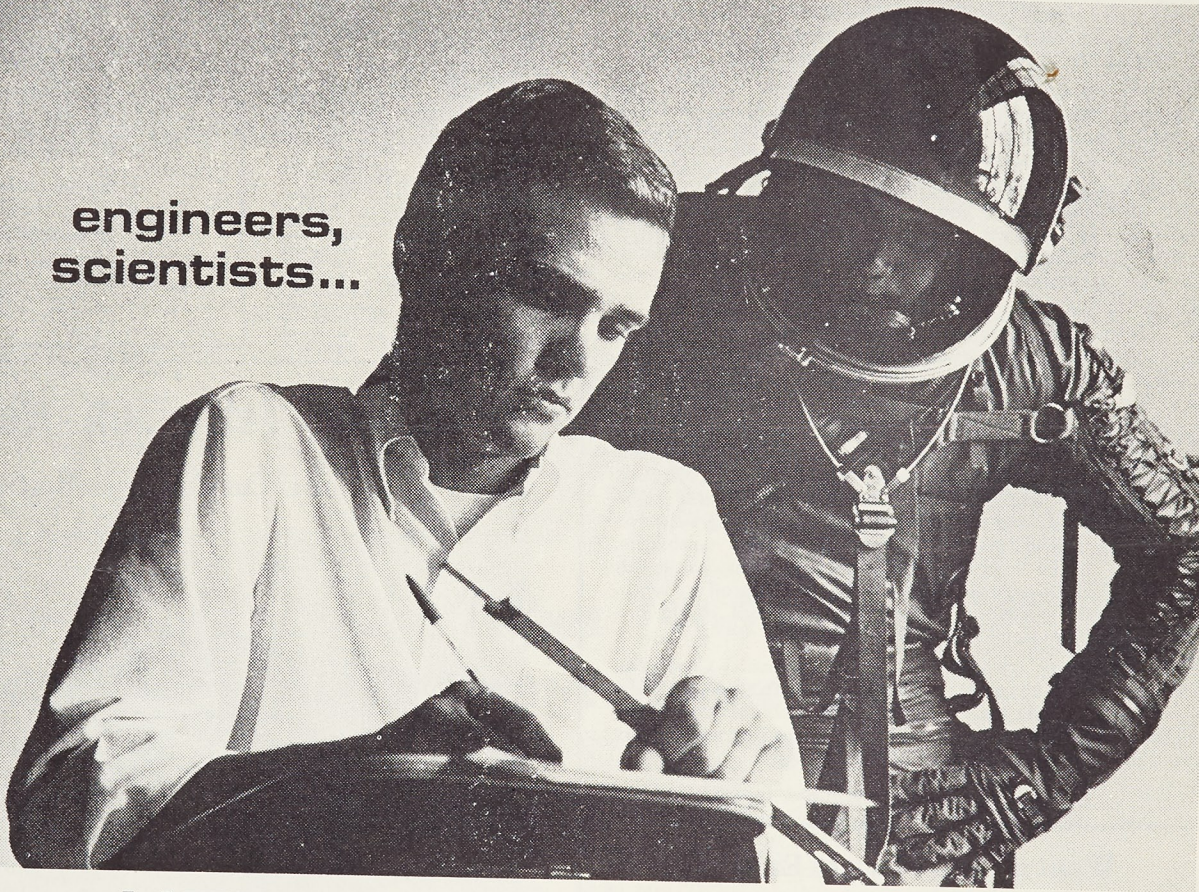
NOTICE!

The Cellar Door will be open this Saturday, Sept. 17, from 9:00 p.m. to 1:00 a.m. at the Episcopal Church, 10th and Main. The Rev. Martin Bell of the University of Michigan will be the featured folk singer. There will be a cover charge of 25 cents for refreshments.

NOTICE!

Articles submitted for publication by all campus organizations must be put in the MINER box on the 1st floor of the Rolla Bldg. by noon on Friday to be considered for the following week's edition of the MINER.

engineers,
scientists...



HE'S WATCHING

That man over your shoulder may one day have to depend on your calculation of liquid-propellant slosh characteristics or your design for a piece of life-support equipment.

Aerospace is a big-league ball park. There is no room for errors.

We at Convair are depending on you too. You are the future of our company.

In turn, you can depend on us to help you build your technical reputation—the pillar of your career.

And your reputation will grow rapidly in this company where things are happening.

Now you are properly prepared for your career.

Make your next step Convair, where you can open the doors to a lifetime of job-satisfaction.

Our representative will be visiting your campus soon. Contact your College Placement Officer to arrange an interview appointment, or write to Mr. J. J. Tannone, Supervisor, Professional Placement and Personnel, GENERAL DYNAMICS CONVAIR DIVISION, 5567 Kearny Villa Road, San Diego, California 92112.

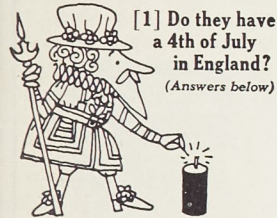
GENERAL DYNAMICS

Convair Division

San Diego, California
An Equal Opportunity Employer

COME TO CONVAIR
Where the Magic
of Aerospace Unfolds

Swingline PIZZLEMENTS



[2] Take two TOT Staplers from three TOT Staplers, and what do you have?



This is the Swingline Tot Stapler



98¢

(Including 1000 staples)
Larger size CUB Desk Stapler only \$1.49

No bigger than a pack of gum—but packs the punch of a big deal! Refills available everywhere. Unconditionally guaranteed. Made in U.S.A. Get it at any stationery, variety, book store!

Swingline® INC.
Long Island City, N.Y. 11101

ANSWERS 1. Sure, But they don't celebrate Independence Day. 2. The two bad ideas, because if there is one thing TOT Staplers you look—which is not a bad idea, because if there is one thing better than having one TOT Stapler, it's having two of them! They're so handy and useful!

Welcome Freshmen!

From the Chancellor's Desk

I am grateful for the privilege of welcoming you to the University of Missouri at Rolla as new students. The 96 years of history of this well-known technological university has established a reputation of quality throughout the nation and the world. The reputation has been built by highly qualified faculty members, capable, industrious and deserving students, and very successful alumni. This reputation will assure you, upon your graduation, many offers of impressive positions in various fields of engineering and science. The alumni, the faculty and the upper-class students want to retain this enviable reputation.

Its retention must demand high standards and these standards will require much of you. Almost 90 percent of you ranked in the top half of your high school graduating class and you are capable of meeting performance standards here. We know from past records that too many students become discouraged and drop out or fail to meet the minimum performance level, which is necessary for high quality.

Why do students with ability fail? The answer is different, probably, for every student and is not often the lack of ability nor the fault of the professor. Our professors are selected on the basis of their knowledge of the subject which they teach and their general aptitude for working with people. They are well-qualified, but each one employs his own techniques for teaching and motivating his students. You will undoubtedly like the techniques of some better than others. If you will do your best to "phase in" with the ones who do not appeal to you at first, you will likely find these equally well qualified. It is your loss if you are not able to position your receiver to the wave length of the professor - whatever this may be.

A technological university has uniformly difficult curricula, and this is good in that all of your associates are as busy as you. You should not be tempted often to neglect study. Rolla is no different than other good universities of its type in this respect.

Don't drop courses if the going seems rough. Talk with the professor and your advisor and you will learn that they do have a personal interest in your success. Your advisor can best judge when you should drop a course to enable you to concentrate on others to achieve a passing grade. Don't panic and drop too soon, as far too many students do.

Take advantage of leadership opportunities. A specialized engineering and science university provides many leadership jobs for you. This experience is a valuable supplement to the formal courses. Participate in the intercollegiate and intramural sports activities which are designed and operated for your relaxation and enjoyment.

You, as engineering and science students, should early in your college life develop an attitude of dignity and cooperation which is characteristic of the profession which you will follow after graduation. This attitude will be very helpful to you in making better academic progress and developing important leadership capabilities. Don't be afraid of the "coat and tie" on frequent occasions, as this will be your uniform as engineers and scientists. Don't scoff at polish, as most engineering students did when I was in school, but be prepared if your boss in industry is from Princeton.

The 1966 freshmen are members of the Centennial Class. You have much to look forward to in school and out, but your senior year is a special one. As the Centennial Class, your success is engineering and science will be followed very extensively and you are encouraged to make the most of your opportunities.

MERL BAKER
Chancellor

Want a Good Place to Eat?

TRY

Whitey's Restaurant

Located on Highway 63 North at the Crescent

FEATURING FINE FOODS

Open 7 Days a Week — 4:30 A. M. to 10 P. M. Week Days
Open All Night Friday and Saturday Nights

M. S. M. Class Rings

BY L. G. BALFOUR CO.
Both Old and New Style

BULOVA ACCUTRON



OMEGA WATCHES

DIAMONDS and ENGRAVING
WATCH REPAIRING

Christopher Jewelers

805 Pine Street

Fort Wood Will Serve as Site For High Holy Day Services

High Holy Day services will again be conducted under the auspices of the Jewish Chaplain at Fort Leonard Wood, 1st Lt. David J. Radinsky, on September 14 and 15th and Saturday, September 24th.

All Jewish residents of Rolla and vicinity have been invited to attend these Rosh Ha-Shana and Yom Kippur services. Known as the "Days of Awe," these holy

days mark the beginning of the Jewish year and tradition holds that they herald the time of judgment, when the deeds of man are judged by the Judge of judges. The call to repentance is symbolized by the wailing cry of the "Shofar," ram's horn. The congregation prays to be inscribed in the Book of Life for blessing, health, happiness and peace.

Anyone interested in further de-

tails can call 364-3964 or 364-5598 in Rolla for full information on the time of the services, transportation arrangements, the Rosh Ha-Shana luncheon and the community "Break the Fast" after Yom Kippur.

Services are conducted weekly on Friday evenings and Saturday mornings at Fort Leonard Wood, and Rolla residents are always welcome to attend.

THE MISSOURI MINER

THE MISSOURI MINER is the official publication of the students of the University of Missouri at Rolla. It is published at Rolla, Mo., every Friday during the school year. Entered as second class matter February 8, 1945, at the Post Office at Rolla, Mo., under the Act of March 3, 1879.

The subscription is \$1.25 per semester. This Missouri Miner features activities of the Students and Faculty of U. M. R.

Editor-in-Chief Don Flugrad
706-B E. 12th — 364-6182
Business Manager Charles Hansen
500 W. 8th Street — 364-9993
Managing Editor Larry Yates
Make Up Editor Frank Fick
Copy Editor Bob Fick
Secretary Charles Painter
Features Editor Ray Behrens
Photographer Ron Altman
Advertising Manager Tom Sauer
Circulation Manager Jerry Adams
Ass't Managing Editor Darrell Pepper
Ass't Make Up Editor Bob Mildenstein
Sports Editor Jim Weiner
Proofreader Steve Tacke

TIGER TOWN AT CENTRAL PONTIAC

Le Mans and G. T. O.
TREMENDOUS DISCOUNTS!!

- Small or No Down Payment
- Deferred Payments as low as \$25 monthly until on the job
- 5% Interest
- Service After the Sale

If Central Pontiac Doesn't Have a Tiger for You . . .
TRY THE ZOO!!

Thomas Jefferson Residence Hall

All the Comforts of Home and More —



Check These Outstanding Features

- Acoustically Quiet Study-Bed Rooms
- Carpeted, Quiet Hallways
- Specially Designed Study & Typing Rooms
- Completely Air Conditioned
- Spacious Main Floor Lounge and Individual Floor Lounges with Television
- Fine Quality Food with Unlimited Seconds
- Outdoor Swimming Pool
- Billiard Room and Exercise Room
- A Very Active Social Program
- Evening Snack Bar
- Weekly Maid Service
- Automatic Washers and Dryers and Ironing Facilities

Fee \$1050/Year Financial Arrangements Can Be Made

Food Contracts Are Now Being Taken

MINER SPORTS

Allgood's Squad Ready for Ten-Game Card; Opener Tomorrow

Three long weeks of exhaustive preseason football practice came to a close this week for the Missouri Miners, and starting tomorrow night at Searcy, Arkansas, the long-awaited results will begin to unfold. University of Missouri at Rolla Head Football Coach Dewey Allgood eyes an aggressive ten game schedule with high hopes that his scrappy Miners can catapult into contention with the MIAA title favorites.

Chances are excellent for a winning season, at least bettering last year's mark of 2-7. Although thirteen lettermen were lost through graduation and grades, the sixteen returning men will provide a solid nucleus for those obtained in the freshmen recruiting program.

Jerabek Only Senior

The 1966 roster has only a single senior to its list, that being Charles Jerabek from Cleveland High School in St. Louis. Jerabek, a 160-pound halfback, will team up with Tom Owens as co-captains of the squad. Owens is a 250-pound tackle with good speed and agility.

In quarterback position for the starting line-up, Ron Lewis will be putting in his third year as the UMR signal-caller. Lewis topped the season record for touchdown passes thrown with 11 last season, and he is on the verge of setting UMR career marks in four categories.

Eugene Ricker is out to rewrite the record books also, and the 138-pound split back from Mt. Airy, Iowa, is the one to do it. Sophomore halfback Rich Erxleben rushed a total of 502 yards last year for the Miners and will be back again this season.

Jim Key, 220-pound guard from Rolla will be on the line along with sophomore Bruce Starnes. Mike Fridley, 220-

pound center and a great blocker with good speed, will be adding additional touches to the team morale with his outstanding sense of humor. Halfback Bob Nico-

and Winfield (Kansas City Central) are all top contenders for the starting tackle positions. Stroud from Paducah, Kentucky,

(Continued on Page 6)



MINER GRIDDERS AT WORK.

demus is expected to see a lot of action this season.

Allgood expects to have three real fine defensive lettermen at end, namely Glen Adrian, Larry Carpenter, and Tom Kemp. Ken Blazek, from E. St. Louis, Illinois, will be a starting tackle.

Outstanding Freshmen

Four of the most outstanding freshmen displaying their talents during practice are Steve Lampe, Charles Sharp, Joe Stroud, and Frank Winfield. Lampe (Jeff City), Sharp (Cahokia, Illinois),

Whites Down Blacks In Full-Scale Scrimmage

UMR football fans got a preview of the Missouri Miners in full dress action last Saturday, as the White and Black squads participated in an intrasquad scrimmage. Starting quarterback Ronnie Lewis led the Whites to a 23-6 win over the Blacks before some 150 spectators.

Although Coach Dewey Allgood was not overly enthusiastic about the results of Saturday's play, the Miners did display talents which can definitely be utilized in this season's tough league action.

Lewis, a junior from Aurora, Missouri, completed 10 out of 22 passes for the White squad, totaling 144 yards. His teammates ran out 22 rushing plays for total gains of 95 yards (4.3 per rush).

Black quarterback Jim Bensko threw 17 passes, 5 of them complete. The average gain was 8 yards per completed pass, as compared to 14.4 for Lewis. Nineteen rushing attempts for the Blacks yielded 100 yards (5.3 per rush).

One of the most outstanding scoring feats of the game came as Cecil Taylor sprinted 52 yards to

set up a three-yard touchdown play midway in the contest. Bill Henehan carried the ball across for the six points.

Miners to Open Schedule at Harding College

The Missouri Miner pigskin squad will open the 1966 season in Searcy, Arkansas, tomorrow night, as the Harding College Bisons host Dewey Allgood and his UMR charges. Harding is one of several schools new to the Miner football card this season.

PROBABLE STARTERS

Miners vs. Harding College

Ron Boyer	Left End
Ed Lampe	Left Tackle
Ken Blazek	Left Guard
Mike Fridley	Center
Jim Key	Right Guard
Tom Owens	Right Tackle
Bruce Starnes	Right End
Ron Lewis	Quarterback
R. Erxleben	Left Halfback
E. Ricker	Right Halfback
Bob Nicodemus	Fullback

Game time at Searcy, Ark.
7:30 p.m.

UNIVERSITY OF MISSOURI AT ROLLA VARSITY FOOTBALL SCHEDULE

1966

Sat. Sept. 17	Harding College—Searcy Arkansas	7:30 p.m.
Sat. Sept. 24	Kansas (Pittsburg) —Pittsburg, Kan.	8:00 p.m.
Sat. Oct. 1	Missouri Valley College—Rolla, Mo.	1:30 p.m.
Sat. Oct. 8	William Jewell College—Liberty, Mo.	7:30 p.m.
Sat. Oct. 15	SMS, Springfield—Springfield, Mo.	7:30 p.m.
*Sat. Oct. 22	CMS, Warrensburg—Rolla, Mo.	1:30 p.m.
Sat. Oct. 29	SEMS, Cape Girardeau—Cape Girardeau	2:00 p.m.
*Sat. Nov. 5	NEMS, Kirksville—Rolla, Mo.	1:30 p.m.
Sat. Nov. 12	NWMS, Maryville—Rolla, Mo.	1:30 p.m.
Sat. Nov. 19	Bradley University—Peoria, Ill.	2:00 p.m.
*Homecoming		**Parent's Day

Lambda Chi Alpha Takes 1965-66 Intramural Crown; Sigma Nu Second

Fraternities took the top three positions in overall UMR intramural competition last year, Lambda Chi Alpha totaling just over two thousand points for the number one spot. Sigma Nu with 1839.5 was second in the list of thirty teams, and Kappa Alpha took third with a total of 1777 points.

Lambda Chi's Championship total of 2027.5 was the largest accumulation of intramural points in the history of the program.

Three sports were completed in the week just prior to final exam time last semester. Sigma Pi topped the big trophy in the softball competition for the second straight year while Kappa Alpha picked-up 150 points for the track championship and Tech Club won the horseshoes crown.

Under the tremendous pitching

efforts of Intramural Athlete of the Year Chuck Luke, Sigma Pi lengthened a two-season winning streak to 18 games. Having downed their seven league opponents in regular play, the men from Sigma Pi went on to defeat Sigma Nu and the Shamrock Club in the finals.

Sigma Nu won the consolation final over Triangle in the final evening of play.

Larry Faust and Charles Donald topped and matched two intramural track records to lead Kappa Alpha to the championship. KA totaled 33½ points to edge out Lambda Chi and Sigma Nu with 25 and 20 points, respectively.

Donald ran the mile in 4:57.7, bettering a mark set by Paul of Phi Kappa Theta set the year before. Faust's time of 10.1 sec-

onds tied that of Tau Kappa Epsilon's Karr set in 1942.

Tech Club finished fourth with 15 points, and Kappa Sigma took fifth place with a total of 10.

The finals of intramural horseshoes gave Tech Club first place honors and 90 'mural points. KA took second, and the Fifty-Niners and Sigma Phi Epsilon tied for third.

Chapman of the Fifty-Niners was the singles champion, and the team of Oliver-Andrews from Sig Ep won the doubles trophy.

Bison coach John Prock will be directing a winged-T ball club that is reported to have good size and fairly good speed. Since this will be the season premiere for both squads, last year's films of Harding are the only source of scouting information available to the UMR coaching staff.

The Miners' second game of the ten game schedule will be at Pittsburg, Kansas, next Saturday night.

University students will get their first crack at intramural competition next week as the 1966-67 UMR 'mural sports program begins in full swing. Hailed as one of the most outstanding programs in the country, Intramurals take a major role in the Physical Education Program at the University of Missouri at Rolla.

As of this writing, the first meeting of the intramural managers has not been held, however, it is expected that flag football, tennis singles, and table tennis will be scheduled to begin Tuesday, September 20.

Results of the managers' meeting will be featured in next Friday's MINER SPORTS.

1965-66 FINAL INTRAMURAL STANDINGS

Plc	Organization	Pts.
1	Lambda Chi Alpha	2027.50
2	Sigma Nu	1839.50
3	Kappa Alpha	1777.00
4	Tech Club	1742.75
5	Sigma Phi Epsilon	1692.75
6	Kappa Sigma	1685.25
7	Fifty-Niners	1584.50
8	Engineers Club	1564.00
9	Sigma Pi	1487.50
10	MRHA	1470.75
11	Phi Kappa Theta	1425.25
12	Pi Kappa Alpha	1373.00
13	Beta Sigma Psi	1337.75
14	Shamrock Club	1311.50
15	Prospector's Club	1255.25
16	Tau Kappa Epsilon	1170.25
17	Sigma Tau Gamma	1151.75
18	Triangle	984.25
19	Delta Sigma Psi	982.50
20	Theta Xi	926.75
21	Baptist Student U.	849.00
22	Kappa Phi	735.50
23	Wesley	628.00
24	Theta Chi	623.50
25	Campus Club	602.25
26	Alpha Phi Alpha	555.00
27	Alpha Epsilon Pi	488.00
28	Army Association	420.50
29	Phi Beta Iota	394.75
30	Acacia	363.25

BAXTER'S

CUT RATE LIQUOR

LIQUOR — WINE — BEER

CHAMPAGNE

Special Prices on Quantity Buying!

Telephone 364-2004

Highway 63 East

Rolla, Missouri

Diehl Montgomery, Inc.

ROLLA, MISSOURI

FORD — LINCOLN — MERCURY — T-BIRD — CONTINENTAL

See Us for Your Special Student Pay Plan

on New or Used Cars.

Payments Tailored While You Are in School and Out.

Cross Country Squad to Open Season at Lincoln University

"We plan to pick up a few more wins this season and along with them, some team spirit!" This was what UMR Cross Country coach Ted Moore has to say about their rapidly approaching fall schedule, which gets underway at Lincoln University Tuesday, September 20.

Sporting a squad consisting of all freshmen and sophomores (save one lone junior), Moore has attempted to schedule several teams which would seem to be in the same rank as the Miners.

It seems that there has been a lack of devoted men who will stick with the squad for their four year stay at UMR. This loss or absence of experienced athletes has continually resulted in team weakness, low spirit, and lost meets.

"If we can just get a few wins under our belts, the increased team spirit alone can do wonders for us," continued Coach Moore. Three returning lettermen plus a couple of outstanding freshmen could add up to victory for the Miners in his estimation.

Stan Notestine, Larry Schiebel,

and Ron Tracy will be returning to the squad. Upperclassmen may remember that Notestine was just five seconds off the school mark for the two-mile run last year.

Don Arney and Don Duren, both regulars from last spring's varsity track squad, will be on Moore's team this fall. Both men

ALLGOOD READY

(Continued From Page 5)

ranks with John Wiggins of Rolla at the top of the prospective guard list.

Aiding Allgood in his duties as mentor will be line coach Burr Van Nostrand, backfield coach Bud Glazier, and end coach Charles Finley. Taking the title of assistant line coach will be Charley Riggs, outstanding Miner center of a few years back. Graduation and a year in Viet Nam has brought Charley back for graduate work and a few coaching duties.

Practice sessions this week put the final polish on the 1966 Missouri Miners after a rather ragged all-out scrimmage last Saturday.

The only previous glimpse of the

were on that mile relay squad which broke the UMR record last season.

Central Missouri State, Kirksville, and Springfield will be in Rolla on September 24 for conference action, and the Miners will meet Washington University on October 1.

squad in full dress came at Fort Leonard Wood two weeks ago when 1000 spectators watched evenly matched teams battle to a close 9-7 finish.

NOTICE!

The Traffic Safety Office has announced the following schedule for the ROTC drill field. This area will be utilized for ROTC drill Wednesday thru Friday during the hours from 7:30 a.m. to 2:30 p.m. commencing the 21st of September thru the 20th of October. No parking permit is required for parking Monday and Tuesday. Entrance to the drill field must be made from the State Street side (West).

SIDELINES



The athletic welcome mat is out to the many newcomers to the UMR campus this semester. Whether you are the student who intends to keep physically fit throughout the year or the interested and all-important spectator, the sports world at the University of Missouri at Rolla is wide open and at your feet. If a varsity berth isn't exactly in your hopes, the University Intramural program can certainly fill your needs as far as active participation is concerned. Of course the spirited fan support is invaluable to every coach, and you can be sure that an event of some type will be scheduled almost every day of the semester. If these are your interests, I'll be looking forward to seeing you in MINER SPORTS every Friday afternoon.

Interest in the intramural program has been growing rapidly with the passing of each semester, and this expansion is shown once again by the addition of another organization to the list of thirty. Men at the Thomas Jefferson Residence Hall have successfully petitioned for admission to the program, and they will see action this fall.

Varsity cross country coach Ted Moore informs me that the course has been changed to better meet MIAA Conference standards. The length has been increased from 3.86 to 4 miles, consisting of four separate one mile loops. Since the intramural cross country course will be changed from 1.86 to 2 miles in length, those who intend to participate in this race (October 21) should become familiar with the new route.

Address questions and comments to "Sidelines," c/o THE MISSOURI MINER, UMR, Rolla, Missouri.

Sports Calendar

VARSITY FOOTBALL

September 17 Harding College, at Searcy, Ark.
September 24 Kansas State, at Pittsburg, Kan.

VARSITY CROSS COUNTRY

September 20 Lincoln University
September 24 Warrensburg, Kirksville, and Springfield, at UMR

INTRAMURAL SPORTS

September 20 Flag football, tennis singles, and table tennis begin.

— MINERS —
Come to Loaf & Play
AT
FISHER'S DRIVE-INN
AND
Golf Driving Range
HIWAY 63 SOUTH
NOW OPEN FOR BUSINESS

The Harmon Football Forecast

Saturday, Sept. 17 — Major Colleges

Air Force	20	Wyoming	15
Arkansas	33	Oklahoma State	6
Army	31	Kansas State	7
Auburn	28	Chattanooga	0
Buffalo	15	Kent State	13
California	21	Washington State	20
Colgate	20	Boston U.	14
Dayton	24	Richmond	6
Duke	21	West Virginia	10
East Carolina	14	William & Mary	7
Florida	17	Northwestern	14
Florida State	14	Houston	7
George Washington	21	Davidson	6
Georgia	21	Mississippi State	14
Georgia Tech	28	Texas A & M	13
Illinois	27	S. M. U.	14
Indiana	20	Miami, Ohio	7
Iowa	20	Arizona	8
Iowa State	20	Wisconsin	13
Kentucky	24	North Carolina	14
Lamar Tech	19	Western Michigan	14
Los Angeles	32	Pacific	7
L. S. U.	27	South Carolina	14
Marshall	13	Morehead	10
Miami, Fla.	23	Colorado	14
Michigan	21	Oregon State	14
Michigan State	28	North Carolina St.	9
Mississippi	20	Memphis State	9
Missouri	20	Minnesota	14
Navy	17	Boston College	15
Nebraska	23	T. C. U.	13
New Mexico State	23	North Texas	13
Oklahoma	14	Oregon	13
Parsons, Iowa	18	Furman	14
Penn State	17	Maryland	7
Purdue	45	Ohio U.	7
Southern Miss	15	Louisiana Tech	6
Stanford	20	San Jose State	6
Texas	21	Southern Cal	10
Texas Tech	25	Kansas	8
Texas Western	17	Arizona State	18
Toledo	8	Xavier	7
Tulsa	22	Tampa	0
U. C. L. A.	28	Pittsburgh	7
Utah State	24	New Mexico	6
Vanderbilt	25	The Citadel	14
Villanova	20	V. M. I.	19
Virginia	21	Wake Forest	12
V. P. I.	15	Tulane	7
Washington	23	Idaho	7
West Texas	20	Angleton	17
Wichita	27	Southern Illinois	7

Other Games — East

Bates	13	St. Lawrence	7
*Bloombsburg	19	Shippensburg	14
Bridgeport	26	Trenton	7
California State	20	West Va. Wesleyan	19
Central Connecticut	30	Glassboro	0
Clarion	25	Millersville	7
Colby	14	Norwich	12
Cortland	20	Alfred	13
East Stroudsburg	27	Wilkes	8
Hofstra	21	Gettysburg	20
Ithaca	17	West Chester	14
Lycoming	30	Delaware Valley	7
Mansfield	14	Geneva	14
Massachusetts	26	Maine	13
Middlebury	19	R. P. I.	17
Northeastern	21	C. W. Post	12
Springfield	32	Coast Guard	7
Vermont	28	American Int'l	0
Waynesburg	18	Slippery Rock	14
*Westminster	19	Salem	7

Other Games — Midwest

Akron	21	Northern Michigan	20
Albion	28	Wheaton	6
Augsburg	18	Eau Claire	7
Baker	39	Bethel, Kansas	0
Bail State	14	Indiana State	6
Bethany, Kansas	31	Sterling	7
Bradley	24	Evansville	13
Buena Vista	18	Westmar	7
Carroll, Wis.	21	Milton	6
Central College	14	North Central	6
Concordia, Neb.	15	Hastings	6
Dana	15	Tarkio	12
Defiance	17	Kenyon	7
Denison	20	Rochester	13
DePauw	30	Macalester	6
Drake	22	Northwest Missouri	0
Duluth (U of Minn)	21	S. Dakota State	19
Elmhurst	18	North Park	14
*Emporia College	16	McPherson	6
Findlay	35	Eastern Michigan	6
Hamline	39	Northland	0
Heidelberg	13	Bluffton	7

Midwest (continued)

Hillsdale	36	Marietta	0
Hope	14	Augustana, Ill.	13
Indiana State	20	Eastern Illinois	6
Iowa Wesleyan	14	Central Methodist	7
Kearney	17	Washburn	7
LaCrosse	16	Oshkosh	13
Lakeland	27	St. Procopius	6
Manchester	14	Adrian	12
Michigan Tech	27	Alma	6
Midland	18	Nebraska Wesleyan	15
Millikin	28	Culver-Stockton	6
Milwaukee (U of W)	21	Illinois State	12
Missouri Valley	24	William Penn	14
Morningside	25	Central Oklahoma	7
North Dakota State	33	St. Thomas	6
Northeast Missouri	25	Western Illinois	13
Northern Illinois	20	Butler	13
Ohio Northern	33	Ferris	12
Olivet	13	Franklin	0
Ottawa	31	Friends	14
Otterbein	18	Indiana Central	0
Ouachita	20	SE Oklahoma	7
Peru	38	St. Mary	12
Pittsburg	21	Central Missouri	18
Platteville	20	River Falls	18
St. John's	33	Bemidji	6
St. Norbert	21	St. Cloud	0
Simpson	21	Graceland	0
Emporia Missouri	26	Emporia State	0
Southwestern, Kan.	12	Kansas Wesleyan	0
Stout	25	Superior	8
Taylor	19	Wilmington	7
Wabash	19	Valparaiso	13
Whitewater	21	Stevens Point	12
William Jewell	22	Wartburg	0
Winona	14	Dubuque	7
Youngstown	19	Central Michigan	14

Other Games — South & Southwest

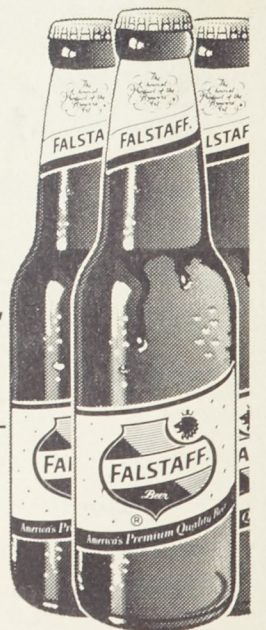
Abilene Christian	21	East Texas	14
Appalachian	18	Tennessee Tech	18
Arkansas State	20	Eastern Kentucky	14
Austin Peay	25	Mars Hill	0
Catawba	40	Bluefield	7
Concord	12	U. T. M. B.	14
Conway	15	Arkansas A & M	7
*Delta	24	S. F. Austin	14
East Central Okla.	26	Emory & Henry	13
Elon	40	Shepherd	0
Fairmont	20	Hanover	0
Georgetown	26	Hampden-Sydney	0
Guilford	19	Missouri Mines	6
Harding	14	Florence	12
Jacksonville	20	Wofford	13
Lenoir-Rhyne	14	Southern State	6
Livingston	21	Angelo State	10
McMurray	21	Texas A & I	14
McNeese	18	Henderson	15
Mississippi College	15	East Tennessee	12
Murry	23	Southeast Missouri	13
Northeast Louisiana	20	Arkansas Tech	7
Northeast Oklahoma	17	Frederick	7
Presbyterian	20	Northwest Oklahoma	0
Sam Houston	19	Troy	7
Samford	27	Louisiana College	7
Southeast Louisiana	31	Texas Lutheran	6
Southwest Texas	38	Maryville	14
Southwestern, Tenn	20	Howard Payne	19
Tarleton	21	Glenville	7
West Liberty	17	West Va. State	7
West Va. Tech	20	Carson-Newman	10
Western Carolina	14	St. Joseph	8
Western Kentucky	26		

Other Games — Far West

Adams State	34	Western New Mexico	0
Cal Lutheran	18	Lewis & Clark	14
Cal Poly (Pomona)	25	Pomona	7
Chico State	28	San Francisco U.	6
Colorado Mines	20	Eastern Montana	7
Colorado State	26	Fort Lewis	0
Colorado Western	41	Southern Utah	0
Doane	6	Colorado College	6
Eastern Washington	14	Williamette	7
Fresno State	28	Hawaii	7
Humboldt	12	Central Washington	12
Linfield	21	Whitworth	0
Montana State	30	Portland State	0
North Dakota U.	20	Montana	7
Omaha	21	Idaho State	19
Pacific Lutheran	19	Puget Sound	13
San Francisco State	20	Cal Poly (S.L.O.)	8
Santa Barbara	20	Sacramento	0
Santa Clara	20	Davis	0
Sul Ross	33	Eastern New Mexico	7
Weber	25	Northern Arizona	8
Western Washington	18	British Columbia	13
Whittier	20	San Fernando	13

(**Friday Games)

MAN-SIZE
PLEASURE
FOR YOUR
MAN-SIZE
THIRST
FALSTAFF



Distributed by
MUELLER DISTRIBUTING CO.
217 W. 6th St. Rolla, Mo.