



05 Nov 1965

The Missouri Miner, November 05, 1965

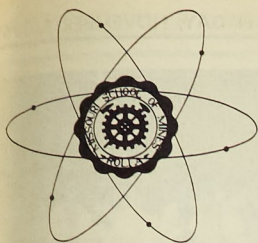
Follow this and additional works at: https://scholarsmine.mst.edu/missouri_miner

These newspapers reflect the attitudes, perspectives, and beliefs of different times. Neither the library nor the university endorses the views expressed in these collections, some of which contain images and language which may be offensive to some readers.

Recommended Citation

"The Missouri Miner, November 05, 1965" (1965). *The Missouri Miner Newspaper*. 1814.
https://scholarsmine.mst.edu/missouri_miner/1814

This Newspaper is brought to you for free and open access by Scholars' Mine. It has been accepted for inclusion in The Missouri Miner Newspaper by an authorized administrator of Scholars' Mine. This work is protected by U. S. Copyright Law. Unauthorized use including reproduction for redistribution requires the permission of the copyright holder. For more information, please contact scholarsmine@mst.edu.



The Missouri MINER

UNIVERSITY OF MISSOURI AT ROLLA

VOLUME 52

FRIDAY, NOVEMBER 5, 1965, ROLLA, MISSOURI

NUMBER 8

WELCOME
FUTURE
ENGINEERS

Faculty Proposes Scholastic Changes

Students Urged to Express Opinions To Student Council Representatives

In a series of recent presentations before the UMR Student Council, Professor Charles Remington, representing the faculty committee on scholarship, submitted for the Council's consideration proposed rule changes developed for the updating of the UMR Student Catalog and Manual of Information.

The committee suggested the following changes in the Student Catalog:

1) No transfer student from a junior college or other college who is on probation is allowed to enter a department on the UMR campus without the consent of that department.

2) The following are new credit requirements for a B.S. degree from UMR. 143 total credit hours are required in the school of engineering and in the school of mines and metallurgy, while 136 total credit hours are required in the school of science.

3) The normal schedule shall consist of not more than 19 hours per semester in the school of engineering and the school of mines and metallurgy, and 18 hours in the school of science. The normal schedule for first semester freshmen is considered to be 17 hours. A student with a 2.75 grade point or better may include 3 additional hours in his normal schedule. The normal schedule may be increased by the number of hours required for military science.

4) No student, transfer or otherwise, shall be permitted to enroll in a course unless he has at least a grade of C in those prerequisite courses determined by his major department.

Professor Remington also presented the following revisions in the UMR Manual of Information:

a) If a student drops a course after six weeks, a grade of F shall

be recorded unless extenuating circumstances are stated by the department.

b) If a student receives an F, the F shall remain in the figuring of the cumulative and semester grade point until removed.

c) Instructors are to report absences to the Director of Student Personnel.

d) An instructor may drop any student from his class for excessive absences, unsatisfactory work, or misconduct by a written request to the registrar.

e) If a student received mid-semester grades of F in courses amounting to 40 percent of the total number of hours in which he

is registered, his schedule must be reduced to not more than 15 hours.

f) Any first semester freshman who has less than a 1.75 grade point shall be put on scholastic probation. In addition, any other student who has not achieved a 2.00 grade point, both for the semester and cumulative, shall be put on scholastic probation.

g) Any student on scholastic probation at the end of the semester shall be limited to a maximum of 15 hours for the next semester in school (6 hours for summer session).

h) If any student's semester

(Continued on Page 5)

Open House to Be Held For Future Engineers

An invitation to visit the MSM campus Nov. 6, has been extended to all high school and college students interested in science and engineering, and to their parents and teachers. November 6 is "Engineer's Day" at the University, which was founded in 1870.

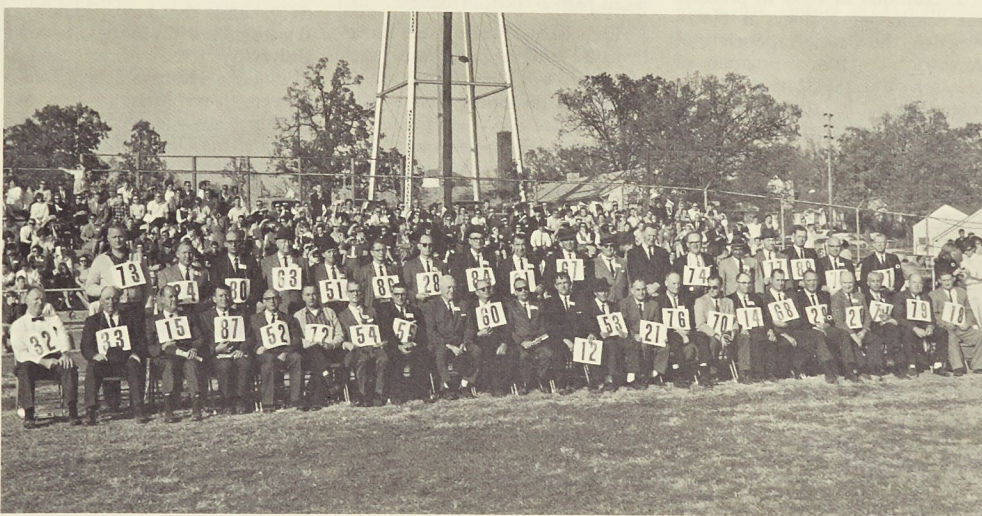
"Engineer's Day" registration begins at the Rolla Student Union at 8 a.m. Also beginning at 8 a.m., tours of the campus will be offered until 3 p.m. In the Student Union, University faculty will be available for academic ad-

vising and counseling for prospective students.

On campus, visitors will see specially-prepared exhibits in science, engineering and general studies. Laboratories and buildings in all departments will be open to visitors, as well as Missouri's only nuclear reactor.

MSM offers degrees in 22 specialized fields of engineering and science. In 1964, the Rolla campus was given full university status and incorporated into the four campus university system.

Fathers Honored During Halftime



Fathers of 40 "Miner" football squad members were greeted at a coffee Saturday morning at Jackling Gymnasium. Wearing the same number as their football playing sons, the fathers were introduced at half-time ceremonies at the Saturday afternoon football game between the "Miners" and the Southwest Missouri State "Bears." A record number attended Parents' Day, with over 1300 registering. The Hon. J. F. Patterson, Missouri state senator from the 25th District, spoke at the Annual Parents' Day Dinner. Other events scheduled included campus tours, reception by administrators and faculty, and the football game.

Asphalt Clinic To Be Presented On UMR Campus

Reports and discussions on the latest developments in the manufacture and use of asphalt will be featured at the annual Asphalt Conference at MSM Nov. 18 and 19.

The Conference is sponsored by the civil engineering department in cooperation with the Missouri Bituminous Contractors Association, the Missouri State Highway Commission and the Asphalt Institute. The two-day clinic is expected to attract approximately 225 representatives of public agencies, industries and educational institutions from all over the country.

Eight papers and two panel discussions will be presented in five

(Continued on Page 3)

Two Professors Attend AMC

Two mining professors at UMR are working with the American Mining Congress to establish improved relations between the industry and mining education. Dr. J. J. Scott and C. R. Christiansen, UMR professors of mining engineering, have recently returned from a convention in Las Vegas, Nevada. An estimated 8,000 were gathered for the convention-exposition representing all branches of the mining industry.

Dr. Scott appeared on a special panel on education in mineral industries, in which Prof. Christiansen also participated. Discussions resulted in a recommendation to the AMC that a permanent Committee on Educational Problems be established.

Dr. Scott summarizes current educational problems in this way. "Less than 200 mining engineers were graduated in the United States and Canada in 1964. Most important to the growth of any country is a strong raw materials industry. We couldn't begin to satisfy personnel needs in the mining industry even if enrollment doubled or tripled."

Dr. Scott's concern is prompted by the fact that some schools have dropped their mining engineering curricula. However, enrollment in mining engineering at UMR continues to grow each year.

Studying educational problems was only a small part of the huge Mining Congress. Featured in the main exhibit hall of the Las Vegas Convention Center was an exposi-

tion of 250 exhibits of modern mining machinery and equipment. Much of the convention was aimed at discussing policy and legislative matters for the industry. Several U.S. Congressmen appeared on panel discussions concerning everything from gold and monetary policies to taxes and public lands.

NOTICE!
THE UMR-WARRENSBURG
FOOTBALL GAME
WILL BE BROADCAST
ON KMSM
AT 1:30 TOMORROW
AFTERNOON

Mechanical Engineering Has Largest Enrollment

Final fall semester enrollment figures for UMR show the department of mechanical engineering to be the largest on campus. The civil and electrical engineering department enrollments were also high.

Robert B. Lewis, registrar and director of admissions for the University, reports an on-campus enrollment of 4,288. Including Rolla's St. Louis Graduate Engineering Center, students enrolled in the cooperative engineering program, general studies students and extension registrants, the complete enrollment figure for UMR is 4,740.

Members of the student body

represent 45 states and 41 foreign countries. This fall, 118 women enrolled, more than doubling last year's female representation.

A break-down of enrollment statistics by department show the following: mechanical engineering, 964; electrical engineering, 907; civil engineering, 797; chemical engineering, 319; physics, 212; metallurgical engineering, 202; mathematics, 160; chemistry, 113; ceramic engineering, 89; geology, 85; mining engineering, 55; petroleum engineering, 41; computer science, 39; geological engineering, 34; nuclear engineering, 6; engineering administration 6; engineering mechanics, 5.

Dr. Beveridge Aids in Annual Geological Meeting

Dr. T. R. Beveridge, chairman of the Department of Geological Engineering and Geology at UMR, will be one of the leaders in activities at the 77th annual meeting of the Geological Society of America in Kansas City, Nov. 4, 5 and 6.

Dr. Beveridge was co-chairman of the Area Geology Section on Thursday, Nov. 4, and helped lead one of eight field trips scheduled for geologists before and after the convention. He was in charge of the western part of a two-day trip from St. Louis to Kansas City Nov. 2 and 3. Those who took part in this trip stopped in south central Missouri to view some disturbed structures that may have outer-space origin.

Seven other UMR professors will attend sessions of the meet-

ing. They are Dr. Paul D. Proctor, Dr. Hughes Zenor, Dr. A. C. Spreng, Dr. James Maxwell, Dr. R. D. Hagni, Dr. Ernst Bolter, and Geza Kisvarsanyi, instructor in geology.

Approximately 3,000 geologists and scientists in related fields are attending the meeting. A major attraction of the 1965 meeting is the symposium "Aspects of Extraterrestrial Geology" on Friday, Nov. 5. Five top scientists of the United States Geological Survey and the California Institute of Technology will discuss Mariner IV photograph of Mars, the lunar surface, meteorite impact, and other outer-space phenomena that have geologic implications or applications.

The role of geology in outer space is a theme that will recur in many of the 41 technical sessions, at which about 450 papers will be presented. The papers, however, will cover all fields of geology and related sciences. They will encompass a subject-matter range that reaches from the core of the earth to the dark side of the moon.

Technical sessions will be supplemented by special events, including presidential addresses, dinner and luncheons, educational and commercial exhibits, and a ladies' program including local excursions.

Established in 1888 to promote the science of geology in North America, the Geological Society of America now has a program of research and publication that is international in scope. Current membership exceeds 6,000 persons, including those engaged in geologic work, those teaching geology or doing graduate study, those who have contributed to the advancement of the science, and non-residents of North America distinguished for their attainments in geological science.

Met. Professor Will Present First "Forum"

A UMR professor will present the first of the "Friday Night Forum" Series at 8 p. m., Nov. 12, in the East Ballroom, Student Union. Dr. H. P. Leighly, Jr., who has just returned from an international meeting of scientists and engineers in East Germany, will present "A Journey Into the Past."

Associate professor of metallurgical engineering, Dr. Leighly, will discuss his impressions of the Iron Curtain country and its people.

"Friday Night Forum" is planned by a University faculty committee of which Dr. Leighly is chairman. Students, faculty and Rolla citizens are invited to attend.

UMR Cheerleaders Aid in Promoting School Spirit

Recently, UMR acquired its first cheerleader squad. The is composed of six members. Janie Canfield, Linda Williams, both from Rolla, and Becca Matlock from St. James, are sophomores majoring in humanities.

The freshman cheerleaders are Lou Gladden, Houston, Mo.; Way Carney, Rolla; and Cindi Davis, St. James; all likewise enrolled in the humanities department.

The cheerleaders fashioned their own skirts and presently have sweaters ordered. In addition, the girls will be supplied with letters, pom-poms, and megaphones.

The Student Council and M Club together chose the girls on the basis of tryout sessions. Finances for supplies are also contributed by the Student Council and M Club.

As yet, the unit has not designated a captain. The girls spend considerable time each week practicing formation and sideline cheers. They plan to supply the Miners with copies of the cheers specifically for basketball season. With the help of the school, pep rallies for the games will also be held. The cheerleaders feel that

this will prove to be a considerable help for both the team and the student spirit.

Finally the girls want to express their sincere thanks for the support given them at the games. They all feel UMR is a great and consider it a privilege to lead the Miners in cheers.



DEMONSTRATION . . . that outhouses burn the same as they have before. Miners celebrate Halloween by burning outhouse before the Chancellor's Residence.

Debate Team to Participate in Annual Debate

Members of the debate squad will participate in an all-day tournament tomorrow, November 6, at the University of Missouri at Columbia. It is the annual novice tournament sponsored by the University for debaters with less than one year of experience. This will be the second year that UMR has taken part in the tournament.

Each school will enter an affirmative and negative team, each of which will debate four times. UMR will be represented by Bob Wolfsberger and Ted Warren debating the affirmative, and Franz Brown and Clem Drag debating the negative. They will be accompanied by their coach, Professor Charles E. Bess, who will also serve as judge of debates in which UMR is not participating.

All teams will debate the national intercollegiate question: "Resolved that law enforcement agencies in the United States should be given greater freedom in the investigation and prosecution of crime."

NOTICE!

MID-SEMESTER

ENDS SATURDAY,

NOVEMBER 13.

Carlton Represents County at Conference

E. W. Carlton, professor emeritus of civil engineering at MSM, represented Phelps County at the Citizen's Conference on Missouri Courts in Jefferson City Oct. 20, 21 and 22.

Prof. Carlton was one of 108 of Missouri's leading citizens selected to attend the conference. It was sponsored by the Missouri Bar, the American Judicature Society, and the Law Schools of Washington University, St. Louis University, the University of Missouri at Kansas City. Twelve lawyers from Missouri and surrounding states served as consultants, and the Deans of the four law

schools acted as reporters for the meeting.

Topics studied included: selection and tenure of judges, judicial retirement, discipline and removal; court organization and administration, and courts of limited and special jurisdiction.

The citizen's group endorsed a number of reforms for the court system, these included extension of the non-partisan court plan, unification of Missouri courts, mandatory retirement age for judges, creation of a new method of removing or disciplining unfit judges, and improvement of judicial retirement benefits.

STUDENTS
WE SELL TO YOU WHOLESALE
HOOK AUTO SUPPLY
513 Hiway 63 South Rolla, Mo.

IT'S HERE!
CONTINENTAL
FAMILY HOBBY CENTER
Featuring
MODEL CAR RACING
2 TRACKS — 16 LANES — ALSO DRAGSTRIP
813 Pine Street (Downtown) Rolla, Missouri

One HOUR
"MARTINIZING"
CERTIFIES
THE MOST IN DRY CLEANING

As advertised in Life, Holiday, Glamour, Business Weekly, Esquire Magazines, and ABC Television and Radio.

ONE HOUR DRY CLEANING DAILY FROM 9 A. M. - 4 P. M.
INCLUDING SATURDAY

LAUNDRY SERVICE — EXPERT ALTERATIONS

121 West 8th St.

Telephone 364-6063

Former Congressman Suggests Action Is Only Way to Confront Communism

"Since the end of World War II, we have stood firm against communist aggression on eleven separate occasions. In each, the communists loudly threatened war if we took the action which in fact we did take. Each confrontation led not to war but to peace. In each case, the communists backed down."

These observations are made by a noted former United States Congressman who concludes from them that the only way to preserve liberty is to meet all threats with firm and determined action.

The ex-congressman is Walter Judd, who was a U.S. Representative from Minnesota from 1943 to 1962 and before World War II served as a medical missionary in China for ten years. Writing in the November Reader's Digest, Dr. Judd traces each of the eleven confrontations. They began in 1945-46 in Iran when we refused

to let the U.S.S.R. keep her troops in Azerbaijan, continued through the famous Berlin blockade in 1948 and the Formosa crisis in 1954, and built up to the most dramatic of all, the Cuban missile crisis of 1962.

The outcome of the twelfth conflict, the Vietnamese war, is not yet determined. But the implication is clear that we must continue to stand firm if we mean to hold on to our liberties.

In his article, "Communism vs. the Free Individual," Dr. Judd says that contrary to communist claims, history is actually on the side of freedom. He asserts that self-reliance, initiative and competitiveness are basic components of man's nature. He says that the communists have already been forced to recognize this truth by imposing a system of incentives in order to spur production.

"In the normal course of events," he says, "man's inherent nature and love of freedom will doubtless compel communism to evolve into something resembling our own system."

The ex-congressman warns, however, that communist failures have not persuaded them to alter their system, but have merely heightened their determination to destroy ours. Knowing this, the free world must "stand firm and meet all threats, not with counter threats or empty belligerence, but with steady and determined action in support of free peoples."

"GT-4" Film Shown in Student Union

On Wednesday, Oct. 27, at 7:30 P. M., the film "GT-4" was shown in the Student Union Ballroom. This concise and detailed report on the United States' second manned flight in the Gemini-Titan series was presented by McDonnell Aircraft Corporation of St. Louis, Missouri.

The flight is remembered by the fantastic walk in space performed by Astronaut Edward White.

ASPHALT CONFERENCE (Continued From Page 1)

technical sessions which will be held in the Civil Engineering Auditorium. Appearing on the program will be engineers from several states.

Registration opens at 8:30 a. m., Nov. 18, in the lobby of the Civil Engineering Building, and the first technical session is scheduled for 9:15 a. m. The meeting will adjourn after the Friday morning technical session.

At the Thursday luncheon session, Chancellor Merl Baker will welcome guests and Henry Danuser, Fulton, president of the Missouri Good Roads Association, will be the principal speaker. E. W. Carlton, professor emeritus of civil engineering and former civil engineering department chairman, will speak at the banquet that evening.

Information concerning registration for the conference can be obtained by contacting the Extension Division, University of Missouri at Rolla.

University President Attends IAU Meeting

President Elmer Ellis was one of over 300 university presidents that met in Tokyo last month to discuss problems of university autonomy, access to higher education, to economic and cultural development.

Fifty-five American universities were represented, making the second largest delegation to the fourth quinquennial conference of the International Association of Universities. Organized in 1950 by UNESCO, the Association has a membership of 500 institutions of higher education in every area of the world and serves as an

apolitical forum for discussion.

Politics were not entirely absent from the Tokyo meeting, however, for Communist China boycotted the gathering because of the attendance of Nationalist Chinese universities.

One of the American observers at the meeting, Charles McCurdy, executive secretary of the Association of American Universities, said that the "common theme" of the conference was the universal problem of "how to provide access to the large numbers of students seeking higher education."

International Fellowship Promotes Understanding

The International Fellowship of UMR is set up for the purpose of promoting fellowship and understanding between people of all nations. It should be pointed out that "people of all nations" includes U.S. citizens. A mem-

bership, and local residents.

The next meeting will be held tonight in Rm. 107 of the Mining Bldg. At this meeting Dr. M.E. Findley will show slides on Ancient and Modern Egypt. Meetings



International Fellowship encourages student-faculty relations among its members.

ber of this organization is exposed to the beliefs and viewpoints of people from many lands. This exposure tends to develop, within the individual, a better understanding of other peoples. Membership is open to all students, faculty

are held every two weeks and each features a speaker and program of general interest. All persons interested in becoming members should attend this meeting.

The Annual International Banquet will be held on Dec. 5.

M. S. M. Class Rings

BY L. G. BALFOUR CO.
Both Old and New Style

BULOVA ACCUTRON



OMEGA WATCHES

DIAMONDS and ENGRAVING
WATCH REPAIRING

Christopher Jewelers

805 Pine Street

FRATERNITIES NEED BANDS ??

GENERAL AMERICAN

ENTERTAINMENT AGENCY

406 Turner Street

Phone: GI 9-7226 - Extension No. 415

Columbia, Missouri

Attention Graduates

Special Student Terms

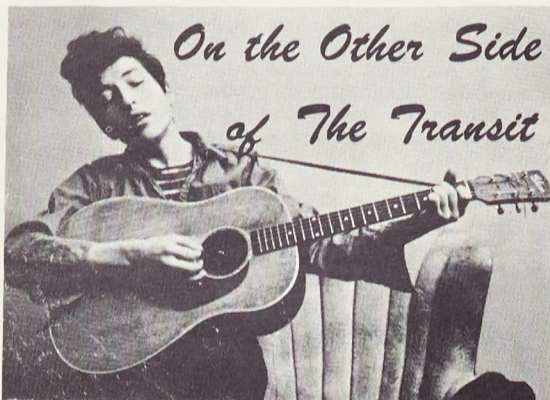
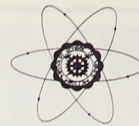
New -- Oldsmobiles

New -- Dodges

R.A. Eck Motor Co., Inc.



Miner Editorials and Letters



Bob Dylan has become 'the' name in folk music during the past several months. His songs have found their way into the top tens around the country and into almost every new folk album. But what type of person is this Bob Dylan, anyhow? I offer this following letter of his for you to draw your own conclusion.

—FOR DAVE GLOVER

Yuh ask in the last letter how come I ain't wrote lately —
 Yuh say that writin' t me's like blowin words at a stone wall —
 An I know how yuh mus' feel —
 Dave Glover — harmonica sidekick an guitar partner —
 Dave Glover — best friend in the highest form —
 Dave Glover — true rebel and unconscious outlaw —
 An I don even answer a letter from 'm —
 An I ask m'self am I crazy —
 This is Dave writin t you, man —
 This's somebody you love —
 Hey man — I'm sorry —// I mean I'm really sorry —
 I wrote many lines in the past few years but there aint no letters
 in none a the words t spell out how sorry I am —
 It's a complicated day —
 It's the time a the flag wavin shotgun carryin John Birchers —
 It's the time a the killer dogs an killer sprays —
 It's the time a the billboard sign super flyin highway —
 It's the time a the white collar shirt and the white sheeted hood
 and the white man's suntan lotion —
 It's the time a guns an grenades an bombs bigger'n any time's
 ever seen
 It's the time a Liz Taylor fans — sports fans an electric fans —
 It's the time when a twenty year ol colored boy with his head
 bloody don get too much thought from the seventy year ol
 senator who wants t bomb Cuba —
 I don pretend t know what happened man but somehow folks
 forgot about other folks —
 I don know who the people were man that let it get this way but
 they got what they wanted out a their lives an left me an you
 facin a scared raped world —
 Yuh ask how I'm doin Dave —
 I'm still singin — I'm still writin —
 I'm still doin all the things I used t do I guess —
 But the difference is probably that now I really aint thinkin in
 front a my eyes —
 I don worry no more bout the no-talent criticizers an know-nothin
 philosophers —
 I don worry no more bout the crossed-legged corner sitters who
 try an make rules for the ones traveln in the middle a the room —
 I'm singin and writin what's on my own mind now —
 Now's a complicated day —
 An all I'm sayin is 'at I gotta make my own statement bout this
 day —
 I gotta write my own feelins down the same way they did it be-
 fore me in that used to be day —
 An I'm doin what I'm doin for me —
 An I'm Doin what I'm doin for you —
 I'm writin an singin for me —
 An I'm writin an singin for you —
 I'm writin an singin for me cause I'm human and I'm breathin
 In a world that was made for me —
 I'm writin an singin for you cause yer a part a me an everythin
 I stand for —

See yuh when I get there
 yer friend
 Bob Dylan

MINER

UNIVERSITY OF MISSOURI AT ROLLA



THE MISSOURI MINER is the official publication of the students of the University of Missouri at Rolla. It is published at Rolla, Mo., every Friday during the school year. Entered as second class matter February 8, 1945, at the Post Office at Rolla, Mo., under the Act of March 3, 1879.

The subscription is \$1.25 per semester. This Missouri Miner features activities of the Students and Faculty of U.M.R.

Editor-in-Chief Ken Kuebler
 707 State — 364-2731
 Business Manager Charles Hansen
 500 W. 8th Street — 364-9993
 Managing Editor Gene Albrecht
 Make Up Editor Don Flugrad
 Copy Editor Frank Fix
 Secretary Charles Painter
 Features Editor Jim Kochs
 Photographer Ron Altman
 Advertising Manager Dave Riley
 Circulation Manager Tim Handlan
 Sports Editor Jim Weinle
 Technical Advisors Steve Neusel, Larry Yates

Common Tests Good or Bad?

At UMR, the value of good grades takes second place to nothing. The usual UMR student is fanatically mark-conscious and the academic atmosphere is extremely competitive.

One of the foremost reasons for this attitude is the widespread belief that in future technical careers, grades are predominant criteria. Good marks are indeed the pinnacle of achievement at UMR.

Under the existing conditions this is the attitude which naturally and justly prevails. But we cannot honestly set grades up as our final criteria nor can we make deities out of them under the unfair conditions that exist in the present determination of our marks.

The most obvious failure in our marking system is the vastly different standards among instructors. Is it fair that individual teacher's opinions concerning marking procedures should be imposed on a grading system which does not take into account such deviations? Is there honestly no way by which we can establish uniformity in such a system.

One of the most intelligent measures proposed in the establishment of a course test hour. This suggestion represents the first concrete step to be taken in the solution of the grading system inadequacy.

No longer will the students affected be subjected to the laws of chance in the determination of the relative difficulty of separate tests. It is a step in the right direction. We can see no practical reason why this policy, a uniform test hour for all sections could not be extended throughout the academic program. The resulting decrease in friction between faculty and students would alone greatly offset the inconvenience involved.

NOTICE!

GIVE TO THE
 APO BLOOD DRIVE
 TODAY!
 LOCATION IS
 8TH & MAIN STREETS

Student Council Asks "Help"

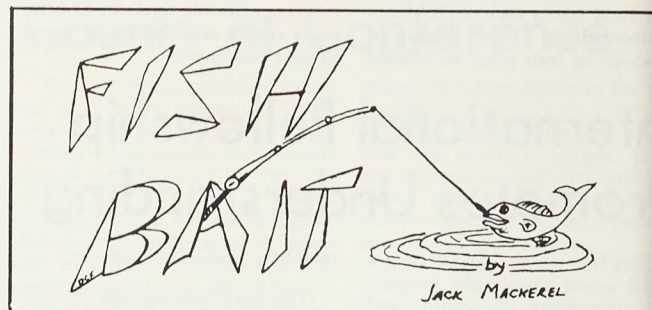
Your Student Council, in cooperation with the Registrar's Office is conducting a program devised to inform high school counselors of the opportunities existing at U.M.R. This program consists primarily of distributing packets of informative pamphlets to high school counselors during the Christmas vacation.

As might be expected, we need YOUR help, Miners. Anyone interested in this worthy program is asked to sign up in the Registrar's Office before 12:30 P.M., November 24, so that we may have a better idea of how many packets will be needed. In case of any duplication of high schools, one man will be selected. Then, the selected men will be notified, and the packets are to be picked up in the Registrar's Office between December 13 and 17.

Participation in this program is definitely a worthy contribution to U.M.R., and the success of this program depends on YOUR cooperation.

Dave Kissel

Student Council



There either is or will be in the near future several new measures adopted by the faculty for the purpose of aiding students in their quest for knowledge.

There is, I understand a measure proposing that all students who receive a grade of D in a pre-requisite course such as Math 21, must take the course again and again until they successfully slither up to a shade of C or better!

There is of course the six week drop rule designed with the students' best interest at heart. Naturally, if he somehow falls behind or has some beginning difficulty with the course, why give him ample time to pick himself up. And you can't say that six weeks is ample time, either . . . it may be ample if the student were only taking that one course, but with approximately 18 or 19 hours per semester there is just too much to do to concentrate your every effort on one subject.

While we're at it why not raise the drop fee to twenty dollars, after all its only fair to make a student pay for his mistakes in every way possible. Since it must cost the Registrar's Office at least twenty cents to process each drop, I think the school should be taxed as a profit making organization.

So far the students of this school have been fairly cooperative in accepting all of the progressive legislation being forced upon them by the faculty. I, for one, do not think they will be so cooperative in the future. Granted, the school can not stand still, but maybe it should let the gears slip until they have a chance to mesh properly.

The way the situation is right now, or will be as soon as this dreaded legislation passes the approval of the rest of the "progressive" faculty, the school will be graduating some of the best engineers in the country. They will have, however one slight disadvantage . . . what company wants to hire someone straight out of college who is already eligible for social security benefits. I have visions of this school eventually becoming a five year school . . . for freshmen; another five for sophomores, etc. At least we now have the satisfaction of knowing that we can successfully work our way up the ladder to the plateau of seniors and not be able to graduate until our cumulative is a two point or better.

Diehl Montgomery, Inc.

ROLLA, MISSOURI

FORD — LINCOLN — MERCURY — T-BIRD — CONTINENTAL

See Us for Your Special Student Pay Plan
 on New or Used Cars.

Payments Tailored While You Are in School and Out.

Spring Scholarship Award



The Student Union's Scholarship Award for the Spring Semester of 1965 was won by Altman Hall. Altman Hall has 79 mem-

bers and their grade-point was an excellent 2.62. The award was accepted by Doug Brockhaus, House Governor of House 6, and Charles McCormic, House Governor of House 5. The presentation was made by Wayne Guelbert, chairman of the Student Union Scholarship Committee, and Al Ponwitz, president of the Student Council. Shamrock Club was second in the running for this award. Their 202 members had a grade-point of 2.57.

Dennison Speaks At Electronics Research Seminar

A speaker from the National Aeronautics and Space Administration will appear on the campus of the University of Missouri at Rolla, Nov. 10, for a Space Research Center Seminar. NASA's director of technology utilization, James T. Dennison will speak at 2:30, Nov. 10, at the Civil Engineering Auditorium in one of a series of seminars sponsored by the Electronics Research Center, which is part of the Space Sciences Research Center at Rolla.

The speaker comes to Rolla from NASA's Electronics Research Center in Cambridge, Mass., and will talk about Center activities there.

The Technology Utilization Division at NASA which Dennison directs, was established for the purpose of identifying, evaluating and disseminating space science and technology for commerce and industry.

All interested students, faculty and townspeople are invited to attend the Seminar, Nov. 10.

Campus Comedy

The coach at a midwestern university was discussing the loss of a key football player with a group of Monday-morning quarterbacks. "He'll be a tough one to replace," said one alumnus. "What happened?"

"Well," the coach replied, "he could do absolutely everything with a football — except autograph it."

TBPI Initiation Prof. Baumgartner Receives Shaft

The Tau Lambda chapter of Pi Tau Sigma held its initiation Sunday evening, Oct. 31, 1965. Those initiated were: Richard D. Baumann, Tim Bodell, Billie W. Book, Bob W. Brewer, Samuel C. Buck, Dan Castrodale, David M. Fallert, Lloyd J. Fortner, John M. Killoran, John Klug, Glenn E. Miller, Gary F. Mueller, Bill Murry, J. Larry Parks, A.U. Patel, Bal Poddar, Ken Ragsdell, Harold Schelin, Brij B. Seth, and Bill Stewart.

A banquet was held following the initiation at Holiday Inn. The guest speaker was Professor J.M. Brewer. His topic was, "How to travel 10,000 miles for \$50." The new initiates presented hilarious skits and the evening was concluded by the presentation of the "Purple Shaft" to Professor Baumgartner.

INTERVIEWERS REVEAL

Importance of Grades, Activities on Salary

At this time of year, many companies are sending their interviewers out to the vast number of colleges in the United States. During this period, many students are wondering just what the companies are looking for. Are scholastic averages most important or is it participation in extra-curricular activities?

The most important considerations seem to be the following; the academic record, faculty opinion, extracurricular activities, and the interview itself. The most important factor is the academic record. In a study made by the American Telephone and Telegraph Company of their employees records showed conclusively that those men with good college scholastic records also did well in business and vice-versa. Of course, not everyone can be in the upper third of his class, so the question naturally arises about the chances of a student with an average or below-average academic record.

That the academic record is the most important single consideration does not mean that a combination of other factors cannot compensate for a poor scholastic average. In the AT & T study it mentioned that two other considerations were significant in a man's business success: the quality of the college from which the student graduated and his extra-curricular achievement. The following table shows the relationship as the percent of men in each category achieving top third salary.

This table must be qualified, because it has been found that participation in campus activities alone is not a sufficient indicator of future business success. Mr.

Frederick P. Kappel, Chairman of the Board of A T & T, said of his company, "It is only real campus achievement that seems to have any real significance. Mere

indicator of the leadership ability, personality, and character of the student.

Thus, it is evident, that only a general statement as to the nature

College Quality:

Top Third of Colleges			Middle Third		Bottom Third				
Above Avg.	Below Avg.	Avg.	Above Avg.	Below Avg.	Above Avg.	Below Avg.	Above Avg.	Below Avg.	Avg.

Campus Achievement:

Substantial:	67%	47%	50%	52%	38%	34%	37%	25%	26%
Some:	61	44	37	42	33	24	32	24	18
None:	47	37	37	35	28	25	31	24	20

participation in extracurricular goings-on does not."

The reason that faculty opinion and the interview are important is that companies also want an in-

of an employer's consideration is that it depends on a number of factors, each with more or less weight, and that no factor, not even grades, is entirely dominant.



VOLKSWAGEN

Sales and Service

BILL SOWERS MOTORS

PHONE 364-5178

HWY. 66 E. IN NORTHWE

1966 ENGINEERING GRADUATES

The Inland Steel Company, East Chicago, Indiana, and the Inland Steel Products Company, Milwaukee, Wisconsin, invite you to investigate the many career opportunities. Consult the specific job descriptions in the pocket of our brochure. Our representatives will be on your campus on Friday, November 12. Contact Mr. Leon Hershkowitz for an appointment.

INLAND STEEL COMPANY
East Chicago, Indiana

INLAND STEEL PRODUCTS COMPANY
Milwaukee, Wisconsin

Equal Opportunity Employers

— MINERS —
Come to Loaf & Play
AT
FISHER'S DRIVE-INN
AND
Golf Driving Range
HIWAY 63 SOUTH

Delta Sigma Phi Receives National Award

Campus

Comedy

Reader's Digest Reprint

On the weekend of October 23, Bob Bruce, Rick Cox, Marty Judlowe and John Thompson were initiated into Delta Sigma Phi. The chapter is proud to welcome these four men into our brotherhood. At the banquet which was held Sunday afternoon, Marty Judlowe was given the award for outstanding pledge. Doctor G. E. Lorey, Director of the University Extension Program, presented a very interesting talk on the extension program. He also spoke about some of the many building programs such as the auditorium-gymnasium complex which will be changing the face of the campus in the near future.

Delta Sig is also proud to announce the acquisition of fifteen top men for its fall pledge class. For this semester the pledge class has selected the following men for its officers: Jerry Fuller, Kansas City, Mo., president; Charlie Allen, Ozark, Mo., vice-president; Ed Card, Caseyville, Ill., secretary; Marty Snow, Kansas City, Mo., treasurer. In addition, the pledge class includes Bill Alleman, Washington, Mo.; Skip Blandford, Cedar Hill, Mo.; Mike Hiedmann, Washington, Mo.; Brian McCall, East Brunswick, New Jersey; Bob Nocodemus,

Nevada, Mo.; Mike Nelson, Vienna, Mo.; Randy Richards, El Dorado Springs, Mo.; Wayne Smith, E. St. Louis, Ill.; Dennis Starke, Gasconade, Mo.; Glen Seitz, St. Louis, Mo.; and Rick Uebel, St. Louis, Mo. Of these fine men, four hold scholarships, two are currently pledging Alpha Phi Omega, and one is on the starting lineup of the varsity football team.

Recently, Delta Epsilon chapter here at MSM has gained recognition as being one of the most outstanding chapters in the Delta Sigma Phi National Fraternity. They have received the Sigma Award for outstanding leadership on campus in the past year. At the same time they have also won

the Scholarship Award for having the highest grade average of the 101 chapters in the national fraternity.

With such a fine group of young men recently pledged and

initiated, the brothers of Delta Sigma Phi are confident of maintaining the high standards of scholarship and leadership, characteristic of past years.

Lambda Chi Holds Party

Lambda Chi held its annual Halloween party for the children of Rolla, this past Sunday evening, October 31, 1965. About 40 children were in attendance and thoroughly enjoyed themselves, as did the brothers who entertained them. An "Apple Bob" and other games were enjoyed by all the children.

Lambda Chi won 5th in intermural tennis with Joe Moore and Carl Rydberg performing the honors in doubles. Moore and Barry Basden represented us in singles.

Lambda Chi won their league in Football and tied for 6th in Cross Country.

In explaining a genetics problem at the State University of Iowa, our instructor wrote "fruit fly" on the blackboard as one of the materials that we would be using. Ripples of laughter brought this error to his attention, whereupon he changed the spelling to read "friut fly" — which quickly engendered more laughter. "Oh, nuts!" he said, erasing the board one again and writing, with precision: "*Drosophila melanogaster*."

Pi Kappa Alpha Elects President For Fall Semester

With the coming marriage of their president, Tony Kirm to Kathryn Thomas on Saturday, November 6, the Pikers had to elect a new president. The men of Pi Kappa Alpha chose Larry Littlefield to be their President. Larry was serving as vice-president this semester. Mike Sullivan was then elected to the office of vice-president. Good luck to Tony and Katy and to the new leaders of Pi Kappa Alpha.

Warren Needels to Be Guest Speaker For AICHE Meeting

At the coming meeting of AICHE, to be held Wednesday night, November 10, Warren R. Needels, a graduate of UMR, will speak on "The Experiences of a Young Chemical Engineer in the Petrochemical Industry." Mr. Needels, who graduated in 1964 with a B.S. in chemical engineering, is now working for the Enjay Chemical Co., a division of Humble Oil and Refining Co., in Baton Rouge, Louisiana. During the presentation, Mr. Needels will make use of various slides. Refreshments will be served after the meeting.

At the last regular meeting of AICHE, held on October 27, Dr. Robert Leininger, from the Battelle Memorial Institute in Columbus, Ohio, spoke on the problems encountered while working on a research project. The specific project in mind was Battelle's development of plastic pipe, a project which was started ten years ago. It was felt that all benefited from attending this meeting.



**Want to be a big hero?
Then look for big challenges!**

Come to General Electric, where the young men are important men.

Important responsibilities come to you early at G.E.

You could find yourself on the team responsible for marketing a new appliance. Or you could be in India, installing a nuclear power plant. Or in a laboratory, looking for applications for a remarkable

new "artificial gill" that lets mammals breathe under water.

This is a worldwide company that makes over 200,000 different products, from jet engines and weather satellites to computers and color TV. In this kind of company, you have to be very good to get very far.

If you are good, you'll be rewarded. With money, of course. But with responsibility, too.

The most important job you'll ever have is your first job.

And the most important job interview you may ever have is with the man from G.E.

Progress Is Our Most Important Product

GENERAL ELECTRIC



Wolf and Kasten Attend Metals Show in Detroit

Several MSM students and staff members attended the Metals Show, sponsored by the American Society for Metals. Over 3,000 engineers, scientists and industrialists attended the meeting held Oct. 17 through 22 in Detroit, Mich.

In conjunction with the Metals Show, the annual meetings of several professional societies were held. New officers were elected at the meeting of Alpha Sigma Mu, metallurgical and materials engineering honor society, Oct. 18.

Past president of Alpha Sigma Mu, who remains on this year's board, is former MSM professor, Dr. A. W. Schlechten, who is now at Colorado School of Mines. Newly-elected secretary of the honor society is Robert V. Wolf, associate professor of metallurgical engineering, MSM.

Director of the MSM St. Louis Graduate Engineering Center, Dr. Anton deS Brasunas, will serve Alpha Sigma Mu as one of the

organization's four trustees. Representing the University's student chapter in Detroit was President Joe Kasten, Raytown.

The Metals Show was also attended by Dr. H. W. Weart, department chairman in metallurgical engineering, Dr. W. A. Frad and Dr. H. P. Leighly, associate professors for the department.

University student, Ken Riggs, Scott City, presented a research paper at the AIMME session on transformations and textures. Riggs' paper, "Quench-Induced Textures of Uranium in the Beta to Alpha Transformation," was researched at Mallinckrodt Chemical Works, Weldon Springs.

At Cobo Convention Hall, Detroit, where all meetings in connection with the Metals Show were held, alumni of the University from all over the United States held a reunion and meeting.

Award Given to Burkhalter at AICHE Convention

Richard Burkhalter, a senior enrolled at UMR in chemical engineering, won first prize with a paper presented at the regional convention of the American Institute of Chemical Engineers, held on October 23 at Columbia, Mo. The title of the paper was "The Optimization of Steam Tube Dryers for the Corn Germ Service," the subject taken from industrial experience Richard gained while working on the co-op program for the A. E. Staley Co., in Decatur, Ill. Richard was awarded \$10.00 for his contribution.

Receiving an honorable mention in the competition was Alfredo Acosta, a senior at UMR in the petroleum refining option of chemical engineering. Alfredo entered a paper entitled "A Re-



Winners of the Student Paper Contest, which was a part of the program of the regional meeting of the American Institute of Chemical Engineers: Left to right, Erno Ivan Paulinyi, Washington University, second prize; Richard L. Burkhalter, University of Missouri at Rolla, first place winner, and Alfredo L. Acosta, UMR and Thomas Wayne Sanders, University of Arkansas, each received honorable mention.

port on Haze Analyzers for Heavy Pour Distillates."

Both Richard and Alfredo will receive AICHE certificates and free subscriptions to Chemical Engineering Progress.

Others in attendance at the convention were AICHE chapters from the University of Arkansas, the University of Missouri, UMR, and Washington University in St. Louis.

NOTICE!

STUDENT UNION
TABLE TENNIS
TOURNAMENT
STARTS MONDAY,
NOVEMBER 15
SIGN UP TODAY!

Rolla Residents Offered New Course

Short course instruction in basic electricity is being offered to Rolla area people by the Extension Division of UMR. Registration, limited to 25 students, will close Dec. 1 for the beginning electricity class. Instructions begin Jan. 6, 1966, at 7:30 p. m., on Thursday, for 12 weeks.

Prospective students may enroll by writing the Extension Division, University of Missouri at Rolla, 900A Rolla St., or calling 364-3417. Registration fees for the course, which covers 30 instruction hours, will be \$33.00. The fee includes acquisition of an 8-dollar text book, *Fundamentals of Basic Electricity*.

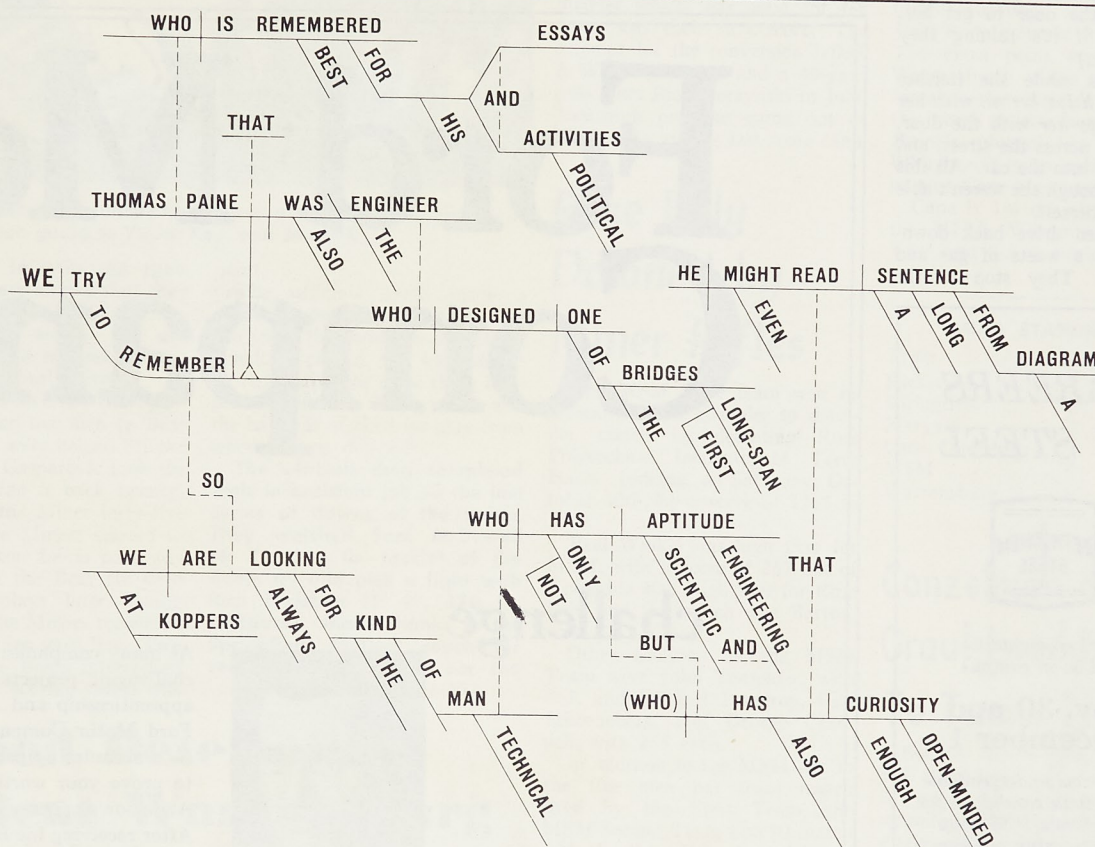
Extension Division representative for the course is Dwight Hafeli, coordinator, short courses and conferences.



Sunday Movie

"A Gathering of Eagles"

The Student Union's Sunday Movie for November 7 will be "A Gathering of Eagles." This movie stars Rock Hudson, Rod Taylor, Mary Peach, and Barry Sullivan. "A Gathering of Eagles" strikes the screen with the dramatic impact of a Titan blast-off. It is the taut, tense drama of the lives and loves of the men who keep a night by night vigil of our national arsenals. Personal tensions burn like a slow fuse in the underground Command Post of the Strategic Air Command when a B-52 is disabled in flight. Rock Hudson provides a powerful performance as the Base Commanding Officer whose fierce dedication to duty brings him in conflict with his fellow officers and the woman he loves. This technicolor production will be shown at 2:30, 5:00, and 7:30 p. m.



1966

ENGINEERING GRADUATES

The Inland Steel Company, East Chicago, Indiana, and the Inland Steel Products Company, Milwaukee, Wisconsin, invite you to investigate the many career opportunities. Consult the specific job descriptions in the pocket of our brochure. Our representatives will be on your campus on Friday, November 12. Contact Mr. Leon Hershkovitz for an appointment.

INLAND STEEL COMPANY
East Chicago, Indiana

INLAND STEEL PRODUCTS COMPANY
Milwaukee, Wisconsin

Equal Opportunity Employers



NEEDS

Chemists and chemical engineers for work in plastics and chemical synthesis for basic research, product development, process engineering, manufacturing and sales. Mechanical engineers for product development, manufacturing engineering, sales and design. Metallurgical engineers for development and operations. Electrical engineers for design and product development; civil engineers for design and construction.
☐ Interested? Check your placement office for Koppers day on campus, or write to the Personnel Manager, Koppers Company, Inc., Room 200, Koppers Building, Pittsburgh, Pa. 15219. We're an equal opportunity employer.

MINER SPORTS

FRIDAY, NOVEMBER 5, 1965

THE MISSOURI MINER

PAGE 9

Springfield Bears Disappoint Miner Parents With 14-0 Shut-Out

By Lloyd Jay Lazarus

It was a disappointing day for the parents as the Bears of South-west Missouri State beat the Miners of the University of Missouri at Rolla 14 to 0. The game was played before a jammed-packed Parents' Day crowd at Jackling Field, and was one of the most hard fought games of the season. The officials almost lost control of the game twice in the final quarter and had to eject two men.

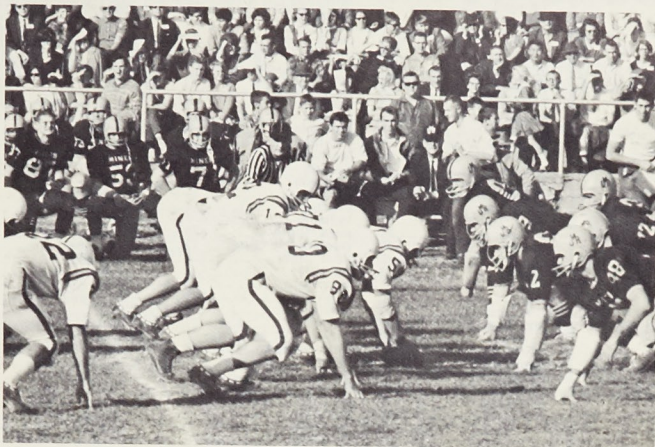
The Bears took the opening kick-off and started to march down field. Nine plays later, Perry, Bear's halfback, fumbled on the Miner thirty-two yard line. The Miners couldn't move the football and had to punt. The Bears started to drive again this time from their own seventeen yard line. Fourteen plays later Hogan bulled his way two yards for the touchdown. His extra point was also good and the score was Bears 7, Miners 0.

The remaining part of the first quarter and all of the second quarter was a defensive battle. The Miner defense stopped the Bears at the Rolla eighteen yard line and the Bears did the same thing in stopping the Miners on their thirty-six yard line. Tackles were vicious, tempers started to reach the breaking point, and the officials started to become confused.

Scott of the Bears intercepted a Lewis pass on the five yard line. During the play a personal foul

was called on a Bear lineman. Even though the penalty was accepted the Bears were never penalized. Three minutes later the half ended with the score Bears 7, Miners 0.

The Miner Cheerleaders really added a lot to the game.



Miner defensive unit played one of its better games, with special mention going to Yates, Key, and Jerabek.

Their ability to unite the spectators in cheers shows that they are doing a great job and deserve a lot of credit. We are looking forward to seeing them again at our final game.

The Miners received the opening kick-off and two men (a Bear and a Miner) were helped off the field. George Gasparovic took the kick-off and ran it back twenty-five yards to the Miner forty-five yard line. The Miners started to drive but a Ron Lewis pass was intercepted on the Bear six yard line. Three plays later Young fumbled and the Miners recovered it on the Bear ten yard line. Two plays later the Bears intercepted and the Miner scoring threat was

over. For the rest of the quarter neither side was able to move the ball.

The Bears when they received control of the football drove forty-nine yards for a touchdown. Hogan scored on a five yard run and he again kicked the extra

point.

The officials again made a questionable call in this quarter. Earlier in the game two off setting penalties caused the kick-off to be repeated. The same thing happened again in this quarter and the ball was marked for play from where it was downed.

The officials then completed their inconsistent job on the last series of downs of the game. They watched Sam McDowell (6' 7", 330 lb. tackle) of the Bears try and pick a fight with Rich Erxleben (5' 9", 170 lb. halfback). Many thanks to the Springfield football coach for removing McDowell from the

(Continued on Page 10)

Allgood Determined To Beat Warrensburg

Dewey Allgood's Miner eleven will have their second-to-last chance to pull out of the MIAA basement tomorrow, as they invade Vernon Kennedy Field at Warrensburg to oppose Central Missouri State. Both teams are seeking their first victory in the Missouri Intercollegiate Athletic Association, but the Miners hold a slight edge in the overall standings having won two and lost five (the CMS mark is 1-5).

Kenneth Robb's Mules employ a tail-back offense, or being more explicit, an I-T slot with a flip-flop offense. CMS was dealt a 16-14 defeat by the Cape Girardeau Indians last week, and the most outstanding Mule proved to be a 215-pound junior named Ed Green. Green, who is incidentally from Warrensburg, led both teams in the rushing category with 93 yards on 25 carries.

In the CMS-Cape contest, the next leading rusher for the Mules was senior half-back Bob Park, who totaled only 12 yards. Central is expected to start junior

John Repp in the quarterback position.

Some possible changes in the MSM starting line-ups would include Ralph Ozorkiewicz as left

PROBABLE STARTING LINE-UPS

University of Missouri at Rolla versus Central Missouri State.

MSM		CMS	
Starnes	LE	Hendrix	
Blazek	LT	Zvirgzdens	
Fix	LG	Larsh	
Fridley	C	Stephens	
Dressin	RG	Williams	
Owens	RT	Emison	
Smith	RE	Browne	
Lewis	QB	Repp	
Price	FB	Green, Ed	
Erxleben	LH	Villars	
Gasparovic	RH	Park	

tackle, replacing Mike Lutzenberger. Ozorkiewicz is expected to be removed from the injured list before Saturday's contest. In the right halfback spot it may be George Gasparovic in place of Eugene Ricker.

(Continued on Page 10)

MINERS WINLESS

Kirkville and Springfield

Lead MIAA With 3-0 Marks

By Phil Eatherton

The MIAA conference picture cleared slightly over the weekend as Kirkville defeated Maryville 20-14, while the Miners were losers to Springfield. In other conference action Cape Girardeau won their first game of the season, defeating Warrensburg 16-14. Warrensburg and MSM are tied for last, both being winless in conference play.

At Kirkville there was no stopping Sharron Washington as the elusive halfback rolled for 230 yards in 19 carries and scored two touchdowns on runs of 80 and 49 yards as Maryville went down 20-14. Washington, one of the leading small college scorers in the nation, now has 78 points in seven games. Maryville never led throughout the whole game with a 7-6 halftime margin as close as they could come. A Leo Pappas pass to Leon Muff in the second quarter which was good for ten yards was their first score. The attempt for the conversion failed. A Washington run and a 49-yard pass from Rich Gorzynski to John Newcomb put the game out of reach. Maryville's last score came

on an 85-yard run by Jim Redd with the two point conversion being good again from Leo Pappas to Leon Muff.

Kirkville is 6-1 overall and 3-0 in conference play. Maryville is 5-2 and now has a 2-1 conference mark.

Cape Girardeau in winning its first game of the year upset Warrensburg's homecoming 16-14 in a game which saw two of the conference's winless teams in a see-saw game. Whitehead, Cape quarterback, scored the first touchdown to go ahead 6-0. When Warrensburg came to score after a fumble on a one-yard plunge by Ed Green with the extra point good, Warrensburg went ahead 7-6. Later in the period once again Whitehead placed Cape ahead this time with a 31-yard field goal to make the score 9-7 at the half. In the third quarter Warrensburg scored again after a fumble recovery, this time with John Repp going in from the one. The extra point made it 14-9, Warrensburg. Cape managed to forge another touchdown drive in the fourth quarter capped by Greg Brune's plunge for touchdown. Whitehead's extra point was good putting Cape ahead to stay 16-14.

Cape is 1-6 overall and 1-2 in the MIAA. Warrensburg is now 1-1-5 and 0-3 in conference competition.

MIAA STANDINGS

Team	W	L	Pct.
Kirkville	3	0	1000
Springfield	3	0	1000
Maryville	2	1	667
Cape Girardeau	1	2	333
MSM	0	3	000
Warrensburg	0	3	000

Rose Poly Downed by Miner Rifles

The MSM Rifle team won its second straight shoulder to shoulder match by defeating Rose Polytechnic Institute at Terre Haute, Indiana, on Saturday, October 30th, by a score of 1295 to 1270.

Paul Winkel was high firer for MSM, with a score of 267 out of a possible 300. High firer for Rose Poly and the match was Barton, with 274 points.

Other shooters on the MSM Team were John Tenfelder, with 263, and Wilford Pomeroy, Carl Schoeneberg, and George Crandell, with 255 each.

In addition to the MSM win in the five men per team match fired by the First Team, the MSM Second Team won its match with the Rose Poly Second Team by a score of 974 to 912. Only four competitors fired on these second teams. Ranny McDonough, with a score of 249, was high firer on MSM's Second Team.

Lt Col John R. Short, Jr., Coach, and SFC William Merideth, Assistant Coach, accompanied the MSM rifle teams for the matches at Rose Poly.

The MSM rifle team will travel to Oklahoma State University at Stillwater this coming weekend, Nov. 6th and 7th, to fire in the OSU invitational matches. Over 50 other college or university rifle teams will participate in this invitational at OSU.

Conzelman and Graul Lead KA To Tennis Title

Behind the winning team of Bob Conzelman and Barry Graul, Kappa Alpha Fraternity has wound-up the intramural tennis singles championship for this season. A total of 45 intramural points was awarded to KA for the title, with Tau Kappa Epsilon and Kappa Sigma tying for second with 42.75 points.

TEKE's John Link was the actual winner of the tournament, with Hubbard of Kappa Sigma taking the runner-up position. Overall runner-ups were of course Tau Kappa Epsilon with the team of Link-Winget, and Kappa Sigma with the team of Hubbard-Van Rhein.

The Campus Club took fourth place for 40.75 IM points, and Lambda Chi Alpha tallied 39 points in taking fifth place.

(Continued on Page 10)

Sports Calendar

VARSITY FOOTBALL

November 6 Warrensburg, at CMS (MIAA)

VARSITY CROSS COUNTRY

November 6 Conference Meet at Warrensburg

INTRAMURAL SPORTS

November 4 Entries due for Basketball and Handball

November 8 Play Begins in Basketball and Handball

Intramural Basketball Next on Fall Schedule

The sounds of cheering spectators and lively action will be pouring forth from Jackling Gym almost nightly starting Monday, as intramural basketball begins for nearly thirty campus organizations. Practice schedules have been continuing throughout this past week, with league play beginning November 8.

Intramural basketball is played in two 15-minute halves, with a 5 minute rest period between each half. Three separate contests on each night of play provides plenty of action for the interested fans.

The Official Intercollegiate Basketball Rules shall apply, with the exceptions noted in this article. Each team is permitted to take five one-minute time-outs during the entire game, and they must provide one man for scoring and also one man for timing.

Each player will be allowed six personal fouls. In case of a tie, there will be one two-minute overtime period. If the tie still exists at the end of this period, sudden death will be in effect with the first team to score two points being declared the winner.

Near the end of the semester, the playoffs will begin in a single round robin type tournament. The teams are drawn up for four leagues, and at the end of the regular season, the single elimination tournament will be held between the top team of each league.

Last year's team champion was the Tech Club, with runner-up Phi Kappa Theta taking the second place crown.

Also beginning play on Monday, November 8, is handball. Last season's singles champion

was Weeks of the Army Association, with Link of Sigma Tau Gamma following in the runner-up position. The team of Graham-Leone from Sigma Nu took the doubles title; Sigma Tau Gamma was second (Greek-Zimmer). As a result, Sigma Tau was the team champion, and the Shamrock Club was the runner-up.

League I

Fifty-Niners
Pi Kappa Alpha
Sigma Pi
Prospectors
Triangle
Beta Sigma Psi
Alpha Epsilon Pi
Campus Club

League II

Engineer's Club
Phi Kappa Theta
Kappa Alpha
Army Association
Baptist Student Union
Delta Sigma Phi
Theta Chi
Alpha Phi Alpha

League III

Teach Club
Kappa Sigma
Tau Kappa Epsilon
Theta Xi
Acacia
Sigma Phi Epsilon
Phi Beta Iota

League IV

Lambda Chi Alpha
Sigma Nu
Wesley
Shamrock Club
MRHA
Sigma Tau Gamma
Kappa Phi

ALLGOOD TO BEAT CMS

(Continued From Page 9)

Bob Smith, 180-pound, junior end, will go instead of Paul Pfeifer, and Pfeifer will replace Larry Carpenter as left end defensive unit. Ron Lewis will quarterback for MSM tomorrow.

Saturday's game is expected to be rough, as is typical of most MIAA league games. The MSM coaching staff feels that confidence and determination will bring home the first league victory against the CMS Mules.

MINERS VS. SPRINGFIELD

(Continued From Page 9)

game.

A few plays later Ron Lewis went around end and ran out of bounds after he had picked up the first down to stop the clock. When he was out of bounds a Bear safety man tackled Ron viciously and threw him toward the stands. Rich Erxleben in an effort to protect Ron from the whole Springfield team got into a fight. Both Rich and his adversary were thrown out of the game. The officials then decided to penalize the Bears fifteen yards. This moved the ball to the Bear twenty-one yard line. Ron Lewis then tried unsuccessfully to pass for a touchdown. The game ended with the final score Bears 14 and the Miners 0.

SCORING

Springfield	7	0	0	7	14
MSM	0	0	0	0	0

STATISTICS

MSM Bears	
First Downs	10 18
Yards Rushing	63 228
Passes Attempted	28 12
Passes Completed	8 5
Passing Yardage	74 74
Passes Intercepted by	0 4
Fumbles Recovered by	3 0
Punting Aver.	6/33 4/51
Yards Penalized	20 15

KA TAKES TENNIS TITLE

(Continued From Page 9)

With the intramural program set up as it is, tennis singles are run-off in the fall semester of each school year. Tennis doubles are a part of the spring MSM intramural program.

The Harmon Football Forecast

TOP 20 TEAMS (Forecasting Average: 901 Right, 299 Wrong .751)

1 - MICH. STATE
2 - ARKANSAS
3 - NOTRE DAME
4 - NEBRASKA
5 - SOUTHERN CAL

6 - ALABAMA
7 - U. C. L. A.
8 - GEORGIA TECH
9 - SYRACUSE
10 - FLORIDA

11 - OHIO STATE
12 - KENTUCKY
13 - MISSOURI
14 - MISSISSIPPI
15 - ILLINOIS

16 - TENNESSEE
17 - GEORGIA
18 - PURDUE
19 - L. S. U.
20 - PRINCETON

Saturday, Nov. 6 — Major Colleges

Air Force	20	Army	14
Alabama	8	L. S. U.	14
Arizona	31	Texas Western	19
Arkansas	35	Rice	6
Boston U.	21	Connecticut	12
Bowling Green	17	Marshall	13
Buffalo	17	Delaware	15
Cincinnati	14	Kansas State	7
Colgate	20	Bucknell	17
Colorado State U.	33	South Dakota State	0
Cornell	23	Brown	14
Dartmouth	24	Columbia	7
Duke	20	North Carolina State	19
Florida	20	Georgia	15
Florida State	21	Wake Forest	6
George Washington	28	Furman	6
Georgia Tech	14	Tennessee	9
Idaho	35	Clemson	7
Illinois	17	Michigan	15
Kentucky	17	Vanderbilt	7
Massachusetts	17	Holy Cross	6
Memphis State	20	Utah State	17
**Miami, Florida	21	Boston College	15
Miami, Ohio	19	Toledo	0
Michigan State	27	Iowa	0
Minnesota	18	Northwestern	7
Mississippi State	27	Houston	8
Missouri	14	Colorado	14
Montana State	14	Montana	13
Navy	24	Maryland	13
Nebraska	31	Kansas	6
North Carolina	15	Webster	21
North Texas	26	Pittsburgh	6
Notre Dame	38	Indiana	7
Ohio State	20	Iowa State	13
Oklahoma	21	Washington State	13
Oregon	15	Kent State	7
Penn State	32	Harvard	6
Princeton	28	Wisconsin	7
Purdue	21	Lafayette	7
Rutgers	20	San Jose State	0
San Jose State	27	Pacific	0
Southern Cal	27	California	8
S. M. U.	20	Texas A & M	10
Southern Miss	20	Chattanooga	0
Stanford	20	Tulane	0
Syracuse	17	Oregon State	7
Texas	14	New Mexico State	10
Texas Tech	27	Louisville	7
Tulsa	28	Washington	8
U. C. L. A.	14	Brigham Young	14
Utah	18	South Carolina	19
Virginia	25	Richmond	7
V. M. I.	25	West Virginia	13
V. P. I.	20	Ohio U.	15
Western Michigan	17	The Citadel	7
William & Mary	28	New Mexico	7
Wyoming	31	Dayton	13
Xavier	31	Pennsylvania	10
Yale	16		

EAST (small colleges)

Alfred	20	C. W. Post	18
Amherst	24	Trinity	7
Bloomsburg	13	Kutztown	7
Brockport	13	Bridgewater State	0
East Stroudsburg	21	Cortland	20
Geneva	19	Susquehanna	7
Ithaca	28	Amn. International	12
Lock Haven	14	Slippery Rock	8
Lycoming	26	Muhlenberg	8
Montclair	27	Trenton	0
Northeastern	22	Tufts	6
Norwich	13	Worcester Tech	7
St. Lawrence	21	Hobart	12
Springfield	21	New Hampshire	13
Temple	23	Rhode Island	14
Upsala	19	Moravian	13
**West Chester	25	Mansfield	7
Williams	18	Wesleyan	15

MIDWEST (small colleges)

Albion	20	Adrian	0
Ashland	18	Northwood	14
Ball State	23	St. Joseph	0
Bradley	21	Wheaton	0
Carroll	21	North Park	0
Central Methodist	25	Eureka	7
Central Michigan	23	Eastern Illinois	6

MIDWEST (continued)

Central Oklahoma	30	SE Oklahoma	7
Colorado State	15	Kearney	13
Concordia, Neb.	28	Dana	12
Earlham	19	Kalamazoo	14
Eastern New Mexico	23	SW Oklahoma	20
Elmhurst	12	Concordia, Ill.	7
Emporia College	16	Kansas Wesleyan	7
Findlay	17	Hillsdale	7
Hope	20	Bluffton	18
Illinois College	19	Chicago Illini	15
Illinois Wesleyan	19	Carthage	15
McPherson	20	Bethel	6
*Michigan Tech	19	Superior	0
Missouri Mines	12	Central Missouri	8
Missouri Valley	28	Culver-Stockton	0
Nebraska Wesleyan	15	Hastings	6
North Central	18	Millikin	13
NE Missouri	21	SW Missouri	15
NE Oklahoma	20	Panhandle A & M	0
Northern Illinois	33	Illinois	7
Northern Michigan	17	Southern Illinois	8
NW Missouri	14	SE Missouri	7
Ohio Northern	27	Ferris	6
Oklahoma	23	Emporia State	0
Ottawa	20	Bethany	7
Peru	13	Washburn	7
Southwestern, Kan.	26	Sterling	6
Taylor	28	Defiance	13
Whitewater	28	Stout	6
Wittenberg	21	Wabash	0

SOUTH (small colleges)

Appalachian	20	Presbyterian	17
Arkansas Tech	14	Ouachita	7
Arlington	19	Abilene Christian	14
Austin Peay	26	East Tennessee	8
Catawba	14	Wofford	13
Davidson	25	Lehigh	7
Delta	22	Jacksonville	10
East Carolina	32	Lenoir-Rhye	7
Edinboro	27	Bridgewater	0
Elon	15	Newberry	10
Emory & Henry	15	Concord	6
Frederick	20	Hampden-Sydney	13
Georgetown	25	Anderson	6
Guilford	25	Randolph-Macon	13
Harding	14	Henderson	13
Howard	14	Carson-Newman	0
Lamar Tech	26	Trinity	7
Livingston	26	Missaps	14
Louisiana College	20	Florence	17
Louisiana Tech	14	SE Louisiana	9
Martin (U of Tenn.)	28	Troy	12
Maryville	13	Mars Hill	6
McMurry	17	Texas Lutheran	0
McNeese	30	NW Louisiana	8
Middle Tennessee	30	Murray	13
Miss. College	20	Conway State	19
Morehead	20	Western Kentucky	7
Salem	21	West Va. State	12
Sam Houston	21	East Texas	9
Sewanee	23	Washington & Lee	13
SW Louisiana	21	NE Louisiana	7
SW Texas	24	S F Austin	7
Sul Ross	28	Angelo State	10
Tennessee Tech	20	Eastern Kentucky	13
Texas A & I	28	Howard Payne	0
Washington (Mo.)	25	Centre	7
West Va. Tech.	14	Glenville	6

FAR WEST (small colleges)

Cal Lutheran	25	Hayward State	0
Cal Poly (Pomona)	21	San Fernando	6
Central Washington	21	Western Washington	19
Colorado Mines	15	Adams State	14
Eastern Washington	21	Whitworth	13
Fresno State	22	Long Beach	21
Humboldt	21	Chico State	6
LaVerne	30	Ciaramonte	7
Los Angeles	35	Cal Poly (S.L.O.)	0
Occidental	26	Redlands	0
Pacific Lutheran	20	Puget Sound	14
Riverside	20	Cal Tech	6
*Sacramento	14	Davis	7
San Francisco	28	Nevada	13
Santa Barbara	21	Cal Western	14
Western New Mexico	25	St. Mary	7
Whittier	19	Pomona	6

(**Friday Games)

SIDELINES

BY JIM WEINEL



Of the two teams in the MIAA who still remain winless in conference starts, one will leave the cellar with at least a single victory to their credit before the final game of the season on November 13. Miner Coach Dewey Allgood is confident that his Silver and Gold gridders will down Central Missouri Saturday and the Cape Girardeau Indians on the 13th as well. CMS Coach Ken Robb is experiencing his third year as head football coach of the Mules. Robb brought a wealth of experience to the Central staff, having served as head coach at Texas A & I College, Corpus Christi, and Culver-Stockton College. Since assuming the duties of head mentor at Warrensburg, Robb has seen his men fall twice to the Miners by the identical score 10-0. Dewey Allgood intends to see that tradition continued.

November is upon us, along with intramural basketball and handball, and Jackling Gym has not yet given way to the tools of modern redevelopment. Don't be too certain, however, that construction of the new library will hold off until the end of the round ball circuit (latter part of January.) Should the razing of the relic become necessary before the basketball finale, it will be necessary to revamp the schedule of intramural contests.

Saturday's Miner-Bear duel lacked two essential items: the MSM offense and officials. The Miner offense was minus its usual staggering punch, although the defensive unit performed quite a bit better than the week before. As for officials, well, the "trick-or-treaters" masquerading in their zebra costumes did well to promote the spirit of the occasion — it's too bad someone neglected to tell them that Halloween was the following day.

Address questions and comments to "Sidelines." c/o THE MISSOURI MINER, MSM, Rolla, Missouri.

FOR MAN-SIZE PLEASURE

THIS IS
THE ONE



In handy
no-deposit,
no-return
glass cans

FALSTAFF

Distributed by
MUELLER DISTRIBUTING CO.
217 W. 6th St. Rolla, Mo.