



15 Oct 1965

## The Missouri Miner, October 15, 1965

Follow this and additional works at: [https://scholarsmine.mst.edu/missouri\\_miner](https://scholarsmine.mst.edu/missouri_miner)

These newspapers reflect the attitudes, perspectives, and beliefs of different times. Neither the library nor the university endorses the views expressed in these collections, some of which contain images and language which may be offensive to some readers.

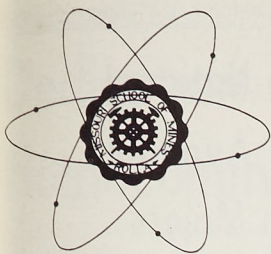
---

### Recommended Citation

"The Missouri Miner, October 15, 1965" (1965). *The Missouri Miner Newspaper*. 1811.  
[https://scholarsmine.mst.edu/missouri\\_miner/1811](https://scholarsmine.mst.edu/missouri_miner/1811)

This Newspaper is brought to you for free and open access by Scholars' Mine. It has been accepted for inclusion in The Missouri Miner Newspaper by an authorized administrator of Scholars' Mine. This work is protected by U. S. Copyright Law. Unauthorized use including reproduction for redistribution requires the permission of the copyright holder. For more information, please contact [scholarsmine@mst.edu](mailto:scholarsmine@mst.edu).





# The Missouri MINER

UNIVERSITY OF MISSOURI AT ROLLA

VOLUME 52

FRIDAY, OCTOBER 15, 1965, ROLLA, MISSOURI

NUMBER 5

HOMECOMING

IN

REVIEW

See Page 5



## Ike and Tina to Perform At First General Lecture

The first General Lecture Series for this year will be featuring the rocking Ike and Tina Turner show. This has been a favorite show for millions across the country. They have appeared on radio and many television network shows, such as "American Bandstand," "The Lloyd Thaxton Show," and the new "Shindig" show.

This husband and wife team have their own definite style of presenting a show. They use a unique method of telling a story in precise, well-planned, well-executed arrangements that display considerable technical ability.

Appearing with Ike and Tina will be: Bobby John, Stacy Johnson, Vanetta Fields, Jimmy Thomas, Vernon Guy, Robbie Montgomery, The Ikettes, and The Kings of Rhythm band.

The first General Lecture will be held at the Rolla High School

gymnasium on October 19 from 7:00 to 9:00 p.m. There will be only one show. The Student Council urges everyone to attend this school function. Student I.D. cards are required for admittance.

## MSM Registrar's Office Changes Titles of Staff

Three staff members of the registrar's office at MSM have new titles this year.

Lauren Peterson has been promoted from assistant registrar to associate registrar; Mrs. Louise Tucker has been promoted from chief clerk to assistant to the registrar, and David Taylor's title has been changed from assistant registrar to assistant director of admissions.

Associate Registrar Peterson came to the Rolla campus as as-

Assistant Dean Hershkowitz, who received the B.S., M.S. and professional degree of Civil Engineer from MSM, has been on the faculty here for 19 years. He retired this year as secretary-treasurer of the Alumni Association after serving 12 years.

Dr. Muilenburg was former professor of economic geology and was chairman of the geology department at MSM from 1932 to

1960 after graduating with honors from Southwest Missouri State College. Peterson is secretary-treasurer of the Optimist Club of Rolla, and president of the advisory board to the United Campus Christian Fellowship. He is a member of the American Association of College Registrars and Admissions Officers and the ASEE.

Mrs. Tucker joined the staff of the Registrar's office in 1949 as senior clerk, and became chief

(Continued on Page 6)

## Outstanding Alumni Honored At Homecoming Convocation

Four outstanding alumni were honored by the MSM Alumni Association at Homecoming Convocation Saturday morning.

They were Dean Leon Hershkowitz and Dr. Garrett A. Muilenburg, both of Rolla; James Stephens, Lee's Summit, and Gilbert F. Metz, Vero Beach, Fla. All except Metz were present for the ceremony.

The four received citations of merit "in recognition of outstanding service to MSM — service which represents loyal devotion to the program of an educational ideal and which has been rendered freely and unselfishly."

1944. He received the professional degree of Engineer of Mines in 1925. After leaving the University in 1948, he was assistant state geologist until his retirement in 1958. Since then he has been doing consulting work.

James W. Stephens retired as president of the Alumni Association this year. He has been associated with the board of directors of the Association since it was incorporated in 1946, was executive vice president for three years

before becoming president, and an area director for many years. He is vice president, Community Services, Missouri Public Service, Raytown, Mo.

Gilbert F. Metz, Sr., received the B.S. in mining engineering in 1914 and the professional degree of Engineer of Mines in 1919. He has for many years been a member of the Board of Directors of the Alumni Association and a friend of the school. He retired in 1956 after many years with Hardinge Co.

## Missouri's First Lady Advises Campus Wives

Mrs. Warren E. Hearn, Missouri's First Lady, addressed the University Dames Monday evening, October 11, in the MSM Student Union Ballroom. Her humorous observations on adjusting to life in the Governor's mansion and her straightforward advice to wives of college students made her informal speech entertaining and enlightening.

Mrs. Hearn stressed that it is a great challenge to be the first

law school at the University of Missouri at Columbia, Mrs. Hearn belonged to an organization similar to University Dames. As a student's wife she shared many of the same experiences now encountered by the women in her audience. Mrs. Hearn urged the student wives to take advantage of the opportunities available to one living in a college atmosphere. She advised her audience to be interested in the world around



Mrs. Ernest W. Scott, president of the University Dames of MSM, serves punch to Missouri's First Lady, Mrs. Warren E. Hearn, at Monday evening's meeting of the student wives group. Looking on is Mrs. David L. Fenton, vice-president of the Dames, who introduced Mrs. Hearn, the speaker of the evening.

family of the state. In addition to managing the nearly century old, twenty-seven room mansion, there are numerous speaking engagements to keep. The Hearn's busy schedule includes a large amount of entertaining. Between March and June 30, 1965, six thousand visitors toured the Governor's historic home, even viewing some of the rooms currently occupied by Hearn family.

When Governor Hearn was in

them, to be alert to the needs of others, to continue to learn daily, and to set a goal and steer toward it undistracted.

Certainly the visit of Mrs. Warren E. Hearn to the MSM chapter of University Dames will be remembered as a highlight of the year's programs. She inspired all who heard her with her true friendliness, wit, and understanding.

## General Power to Present Lecture

MSM will host a new voice in the rising dialogue on nuclear strategy and the preservation of peace on Oct. 21. The voice belongs to the author of a new book, "Design for Survival." He is General Thomas S. Power, recently retired Commander-in-Chief of the Strategic Air Command. In that capacity for the last seven years, he has been the custodian of 90% of the free world's explosive fire power. Since his retirement, General Power has been fulfilling coast to coast appearances on TV and radio in conjunction with the long-awaited publication of his book.

General Power's career in the Air Force had its beginning in

a ten dollar ride with a stick-and-string flyer. He passed stringent Army Air Force entrance exams after months of solitary study in the New York Public Library because he had not attended college. At the age of 39, Power won the star of a Brigadier General and the rest is history — a lifetime of military service culminating with authorship of his crucially important book about our nuclear strength and its role.

Next to his many military awards, General Power especially values a National Recognition Award from the Freedoms Foundation at Valley Forge. He received this award in February 1964 for outstanding leadership in teaching

the fundamentals of the American Credo and for his scholarly efforts on behalf of the virtues of courage, reverence and patriotism. He was also awarded a Citation from the National Conference of Christians and Jews in 1964 for his service to peace and the brotherhood of man. He subsequently received the high honor of investment as a Knight of St. Sylvester with the Grand Cross. His military decorations include: the Distinguished Service Medal, Silver Star, Legion of Merit with one cluster, Distinguished Flying Cross, Bronze Star Medal, Air Medal with one oak leaf cluster, Commendation Ribbon with one oak leaf cluster and the French Croix de Guerre, with one palm.



## Prof. Bobbitt's Literary Work Is Being Published in Book Form

The writings of a professor of English at MSM will appear soon in book form.

Prof. J. Bobbitt of the MSM department of humanities will be represented in the forthcoming *Promising Poets of the Midwest: Selections and Critical Commentary*, edited by the critic and anthologist J.R. Le Master.

A number of Bobbitt's published poems as well as some unpublished poems will be included in the anthology, which is to have national distribution. His poetry has appeared in *The Saturday Review*, *The Midwest Quarterly*, *The Beloit Poetry Journal*, *Cairn*, *The London Times Literary Supplement*, and other magazines and quarterlies.

In addition, a number of his short stories have been anthologized previously. A freshman English workbook, of which he is co-author, has been in use for some time at the University of Missouri in Columbia and at other colleges and universities.

Working on a classified project for General Electric, Schenectady, N.Y., and Electric Boat Corp., Groton, Conn., he has also edited and rewritten the instruction ann-

uals for the electromagnetic pumps in the U.S. atomic submarines.

The editorial comment in the forthcoming anthology not only identifies him as a member of the MSM humanities faculty but also notes that his range of interests and experience can be found in his poetry. The poems chosen for the anthology concern such subjects as flying in World War II, mountain climbing, playing tournament handball, training horses, and teaching on the college level. "The value of Bobbitt's poetry," the editor writes, "lies in his effort to be understood on the colloquial level while he is in ac-

tuality commenting in depth on matters of significance."

The anthology, which is now in final preparation, is scheduled to appear this coming spring and will be available in bookstores throughout the country.

Prof. Bobbitt, who joined the Rolla faculty in 1962, taught English at the University of Missouri, Columbia, and at the University of Montana at Billings before coming to Rolla. He received his B.A. in English at Wooster College and M.A. in English at the University of Missouri, Columbia, where he is now doing work toward his Ph. D. degree.

## St. Louis Graduate Engineering Center Makes Impressive Start

The St. Louis Graduate Engineering Center of MSM, which was established just a year ago, is the fastest growing activity of the University.

Enrollment at the Center, which uses facilities on the campus of the University of Missouri at St. Louis, has grown from 84 last year to 322 for the fall semester.

"The rapid growth of Rolla's St. Louis activities demonstrates the need in the St. Louis area for this type of program," according to Dr. Merl Baker. The Center was established to meet a definite need indicated by industrial organizations and their employees. It provides a means whereby engineers may advance their professional education while pursuing their professions, Dr. Baker said. Started as somewhat of an experiment, the Center has met with immediate success.

Courses at the Graduate Engineering Center are taught during the evening hours by regular faculty members from Rolla and qualified teachers from St. Louis area industries.

Five graduate degree programs are now available to St. Louis area engineers through the Center, which is directed by Dr. Anton Brasunas, Clayton. Master of science degrees may be earned in civil engineering, metallurgical engineering, engineering mechanics, and two area studies, energy conversion engineering and propulsion and space engineering. Two additional graduate programs, electrical engineering and mechanical engineering, will be offered starting in the winter semester, Dr. Brasunas said.

Dr. Irving Rozalsku, group leader in charge of materials research at the Shell Oil Company Research Laboratory, Wood River, Ill., has recently been appointed extension associate professor of metallurgical engineering. Prior to joining Shell Oil in 1954, Dr. Rozalsky taught at Fenn College and was special lecturer and research associate at Case Institute of Technology, Cleveland, Ohio. He is the author of technical publications both in the fields of metallurgy and lubrication engineering.

## The Woodrow Wilson National Fellowships Are Now Available For Science and Math Majors

Science and mathematics majors at MSM who are interested in a teaching career are eligible for nomination for Woodrow Wilson National Fellowships for first year graduate study. Dr. H. Q. Fuller, chairman of the physics department and campus representative of the Woodrow Wilson National Fellowship Foundation, made the announcement.

Nominations which are made by faculty members, must be submitted before October 31, Dr. Fuller said.

To attract men and women to the profession of college teaching, the Foundation annually awards fellowships to 1,000 prospective first-year graduate students and honorable mention to another 1,500. These are chosen from about 11,000 candidates nominated by college faculty members in the United States and Canada. Through funds granted by the Ford Foundation, recipients are

fully supported for one academic year at a United States or Canadian graduate school.

Although the Foundation primarily supports candidates in the humanities and social sciences, science and mathematics majors with a clear interest in a teaching career may be nominated. Nominees must also apply for National Science Foundation Fellowships, and must accept that award if it is offered.

### UPTOWN THEATRE

MOVIES IN CINEMASCOPE

Starts Thursday Oct. 14-19

Sunday Continuous From 1 p.m.

'Shenandoah'

James Stewart & Katharine Ross

Wed., Thurs., Fri., Sat.

Oct. 20-23

'How to Stuff a Wild Bikini'

Annette Funicello & Dwayne Hickman

RITZ THEATRE

MOVIES ON WIDE SCREEN

Fri., Sat. Oct. 15-16

Saturday Continuous From 1 p.m.

'The Naked Brigade'

Ken Scott & Shirley Eaton

— PLUS —

'Black Spurs'

Rory Calhoun & Linda Darnell

Sun., Mon. Oct. 17-18

Sunday Continuous From 1 p.m.

'The Train'

Burt Lancaster & Jeanne Moreau

Tues., Wed., Thurs. Oct. 19-21

This Picture Is for Adult Viewing

Admission: 90c

'Fanny Hill'

Miriam Hopkins & Letitia Roman

## More Companies Coming to MSM For Interviews

The following companies have given an interviewing date and were not included in the first printing in the Miner.

American Oil Co., Nov. 15, 1965; Baxter Laboratories, Nov. 5, 1965 and Feb. 1, 1966; Brown Engineering Co., Nov. 22, 1965; Butler Manufacturing Co., Jan. 31, 1966; Cities Service Gas Co., March 10, 1966; General Dynamics, Nov. 22, 1965 and Feb. 4, 1966; Guy F. Atkinson, March 3-4, 1966; Kawneer Co., Nov. 19, 1965; Laclede Gas Co., Nov. 5, 1965 and Feb. 4, 1966; Missouri Public Service, Nov. 23, 1965; Pure Oil Co. (Div. Union Oil), Nov. 23, 1965; Rohr Corp., March 24, 1966; U.S. Geological Survey (Topographic), Nov. 15, 1965; U.S. Forestry Service (Dept. of Agriculture), Nov. 8, 1965 and Feb. 28, 1966; Western Union, Nov. 15, 1965.

## "Hell Below Zero" Is Sunday Movie At Student Union

The Student Union's Sunday movie for October 17th will be "Hell Below Zero." Alan Ladd and Joan Tetzl star in this technicolor production. "Hell Below Zero" is an exciting story of an Antarctic whale hunt at fifty degrees below zero. You will not soon forget the breathtaking chase through icy seas, the thrill packed scenes of the actual harpooning of nature's giants, and the feverish activity aboard the factory ship. This movie is a story of high adventure that rises to a dramatic climax. Show times will be 2:30, 5:00, and 7:30.

— MINERS —  
Come to Loaf & Play  
AT  
FISHER'S DRIVE-INN  
AND  
Golf Driving Range  
HIWAY 63 SOUTH

## Diehl Montgomery, Inc.

ROLLA, MISSOURI

FORD — LINCOLN — MERCURY — T-BIRD — CONTINENTAL

See Us for Your Special Student Pay Plan

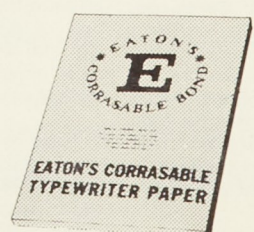
on New or Used Cars.

Payments Tailored While You Are in School and Out.

Anyone can  
**GOOF.**

With Eaton's Corrasable Bond Typewriter Paper, you can erase that goof without a trace.

Not a telltale smudge remains. A special surface permits quick and easy erasing with an ordinary pencil eraser. For perfect papers every time, get Corrasable. In light, medium, heavy weights and Onion Skin. In handy 100-sheet packets and 500-sheet ream boxes. At Stationery Departments.



Only Eaton makes Corrasable®

EATON PAPER CORPORATION, PITTSFIELD, MASSACHUSETTS



# Dedication of House Highlites Homecoming Events at "Phi Kap"

Homecoming party weekend was more than just a party weekend for the men of Phi Kappa Theta. On Saturday afternoon, October 9th, formal dedication of their new house was held.

The invocation for the dedication program was given by Father Sullivan, pastor of St. Patrick Catholic Church. Mayor Northern of Rolla then gave a short speech of congratulations on behalf of the community to the men of Phi Kappa Theta. Robert Wolf, faculty advisor for the Interfraternity Council, spoke next on behalf of the IFC. He expressed pride in the accomplishments of Phi Kappa Theta and its contributions to the Fraternity system at MSM. Next on the program was Chancellor Baker. The Chancellor pointed out what a great aid fraternities were in tak-

ing care of the housing problem on campus. He noted that here at MSM fraternity membership comprises about one-third of the total school enrollment.

The main speaker of the program was Dr. Earl Reynolds. Dr. Reynolds is presently Chairman of the Board of Trustees of the Phi Kappa Theta National Fraternity. Dr. Reynolds opened his speech with these words: "When you have been to Missouri Mu of Phi Kappa Theta, you've been to the best." He went on to compliment the men of Phi Kappa Theta on their leadership in the fraternity world and extended congratulations on behalf of the National.

Dr. Reynolds also noted the accomplishments of the fraternity system and hoped that the men of Phi Kappa Theta could carry on in grand style.

After Dr. Reynolds' speech, Mr. Loughridge, contractor for the new house, presented the keys of the house to Ken Kuebler, President of Phi Kappa Theta. Ken Kuebler was also presented the St. Louis Alumni Award for the most outstanding active member in the chapter last year. The ceremonies were concluded with the presentation of tokens of appreciation to the alumni who were most responsible for the construction of the new house.

## ACP Feature

### From Other Campuses

A former chancellor of the University of California, Berkeley, predicts future turmoil on the Berkeley campus, reports the *Daily Californian*.

Edward Strong, who was chancellor during the Free Speech Movement sit-in last December, foresees a struggle "for dominance in and over the University... under the banner of educational reform."

Making his first speech since resigning as chancellor, Strong said student rebels "demand a voice in academic matters exceeding their qualifications and competence, and consider their demands to be not arrogant but democratic."

During the summer, a new chancellor, Roger Heyns, was appointed. This month Heyns issued new student conduct rules, some of which have already come under fire.

Criticism centered on the provisions concerning students' manning tables, the keeping of financial records, and procedures for student hearings.

After the rules were announced, a member of the Young Socialist League said, "If they try to enforce them, they'll have a fight."

Earl Cheit, vice chancellor, and John D. Searle, newly-appointed special assistant on student organizations, said they believed the overall response of the campus to the new rules has been favorable.

## Sigma Phi Epsilon Elects Officers

Sig Ep has begun what promises to be a very successful semester with two new officers and a thirty one man pledge class. The new recorder Tom Cadwell and Jr. marshal Frank Nauman are joining veteran officers; president, Gary Kincaid; vice president, Dave Wolfersberger; secretary, Tom Hennenhoefler; Sr. marshal, George Panages; guard, Don Vogt; and Chaplain, Denton Leaming.

The new pledges are: Bob Andrews, Bob Barrett, Danny Bennett, Larry Carr, Jeff Chamber, Les Daly, Mark Doering, Jim Fox, Dennis Gerdel, Ron Griesenauer, Joe Grim, Bruce Hachman, Mike Knenlein, Ollie Krage, Rich Krumery, Dave Lovell, Mike Mallory, John Mundwiller, Larry Oliver, Danny Powers, John Roberts, Ron Sanders, Mike Sheary, Jim Schipper, Bob Schmidt, John Schmacker, Keith Troutman, Ron Turner, Dan Uhlhorn, Tom Vossburgh, and Dave Ward.

## Phi Kappa Theta Pledges Forty-four

The active chapter of Phi Kappa Theta is proud to announce its 1965 pledge class. They are: James Bensko, John Carter, Ronald Crecelius, William Dubois, Phillip Duckworth, Joe Goedde, Kenneth Grams, Gregory Greminger, James Jones, Stephen Kaiser, Daniel Keuss, John Kilper, William Kimball, Raymond Klosek, William Knapp, Richard Klaz, Patrick McElfresh, Robert Mildenstein, Robert Morfi, James Naeger, Andrew Nolfo, Ronald Pagan, Raymond Posch, Dennis Prenger, Robert Reynolds, Terry Rhodes, Daniel Ritter, Frederick Rocchio, Matthew Rupp, Gordon Schade, Robert Schmidt, Kenny Shelor, William Shinn, Robert Shoup, David Slaughter, Vernon Spaunhorst, Robert Struckhoff, Thomas Throneberry, Richard Tiburzi, Donald Vela, Richard Viera, James Waldron, Alvin Wansing.

On September 27, the pledge class elected the following officers: Matt Rupp, President; Steve Kaiser, Vice-President; Dennis Prenger, Treasurer; Fred Rocchio, Sergeant-at-Arms.

## Building Program Marks Alpha Epsilon Pi's Success

Alpha Epsilon Pi was founded nationally on November 7, 1913 at New York University on the Washington Square Campus. On May 14, 1947 Alpha Epsilon Pi moved to MSM. During the Korean War, the Nu Deuteron Chapter was deactivated because of the loss of men to enlistment. On May 5, 1963, the chapter was reactivated.

The founding members were Rick Cooper, Jerry Kipper, Dave Faintich, Greg Goldbogen, and Jules Subon. Last year the fraternity suffered a great loss when Brother Richard Cooper was killed in an automobile accident following the St. Pat weekend. A scholarship fund in his name is now being started.

Alpha Epsilon Pi alumni, Larry Spanier, is on the MSM alumni board. Other important members include Les Blumberg, the faculty advisor, and Dean Hersh-

kowitz, the faculty sponsor.

Although Alpha Epsilon Pi is new on the campus and as yet small, it has several brothers in positions of importance on the campus. In athletics both Marshall Faintich and David Faintich have lettered in track as shot putters. Alan Spector started at first base on the baseball team last year.

Most important, the fraternity has achieved a high standard of scholarship. Last semester the house grade point was 2.56. For this grade point, the fraternity received the scholarship improvement trophy from the IFC.

The present house is no longer large enough to house the fraternity. Plans are being made for building in the near future. It is hoped that progress in building will be indicative of progress and growth in the Nu Deuteron chapter of Alpha Epsilon Pi.

## Mayor Northern Speaks at Kappa Phi

On October 7, 1965, the brothers of Kappa Phi were honored to have Mayor Northern as a dinner guest. Mayor Northern spoke after the meal on the relationship and responsibilities of the town people toward the students and also the students' responsibilities to the towns people. We all enjoyed the Mayor's talk and we thank

him for his visit to our Shelter.

We had a very enjoyable party weekend with a band at the house Friday night. This is just the first of many to be enjoyed this year.

We are all competing in the various sports as the intramural season gets rolling. The brothers are looking forward to a prosperous year in this endeavor.

### STUDENTS WE SELL TO YOU WHOLESALE HOOK AUTO SUPPLY

513 Hiway 63 South

Rolla, Mo.

READY when you are in "DACRON" and cotton. Caper Casuals of easy care 65% Dacron\* polyester, 35% combed cotton are ready when you are because they're permanently pressed for you! Wear 'em, wash 'em, dry 'em... then wear 'em again. They never need ironing. We guarantee it in writing. Caper Casuals with LOCK-prest Koratron finish return to their original pressed, crisp, neat appearance the moment they're dry. And "Dacron" makes these textured fabrics rich and long-wearing! About \$7.95.



Please don't press our Caper Casuals ever! in "DACRON"

SMITH BROTHERS MFG. COMPANY  
CARTHAGE, MISSOURI

\*DuPont's Reg. T.M.



GUARANTEED never to need ironing or your money back.

### IT'S HERE! CONTINENTAL FAMILY HOBBY CENTER

Featuring  
MODEL CAR RACING  
2 TRACKS — 16 LANES — ALSO DRAGSTRIP

813 Pine Street (Downtown)

Rolla, Missouri

### One HOUR "MARTINIZING" CERTIFIES THE MOST IN DRY CLEANING

As advertised in Life, Holiday, Glamour, Business Weekly, Esquire Magazines, and ABC Television and Radio.

ONE HOUR DRY CLEANING DAILY FROM 9 A.M. - 4 P.M.  
INCLUDING SATURDAY

LAUNDRY SERVICE — EXPERT ALTERATIONS

121 West 8th St.

Telephone 364-6063



## Associated Collegiate Press

### ALL-AMERICAN NEWSPAPER CRITICAL SERVICE



THE MISSOURI MINER

In recognition of its merit is awarded

**First Class Honor Rating**

in the Seventy-third National Newspaper Critical Service of the Associated Collegiate Press at the University of Minnesota, School of Journalism, this Tenth day of September, 1965.

Approved by

*John P. Fiedler*  
Director

## "Miner" Receives First Class Rating

The above citation was awarded to the Miner for papers printed the second semester of last year.

Each semester Associated Collegiate Press evaluates student newspapers from the entire country.

Newspapers are ranked according to size of school. Judging

is based on a point evaluation system with certain amount of points for each section of the paper.

Ratings are All American, First Class, Second Class, Third Class and fourth class. While All American is for several outstanding, First Class represents excellence.



THE MISSOURI MINER is the official publication of the students of the University of Missouri at Rolla. It is published at Rolla, Mo., every Friday during the school year. Entered as second class matter February 8, 1945, at the Post Office at Rolla, Mo., under the Act of March 3, 1879.

The subscription is \$1.25 per semester. This Missouri Miner features activities of the Students and Faculty of U. M. R.

Editor-in-Chief ..... Ken Kuebler  
707 State — 364-2731  
Business Manager ..... Charles Hansen  
500 W. 8th Street — 364-9993  
Managing Editor ..... Gene Albrecht  
Make Up Editor ..... Don Flugrad  
Copy Editor ..... Frank Fix  
Secretary ..... Charles Painter  
Features Editor ..... Jim Kochs  
Photographer ..... Ron Altman  
Advertising Manager ..... Dave Riley  
Circulation Manager ..... Tim Handlan  
Sports Editor ..... Jim Weiner  
Technical Advisors ..... Steve Neusel, Larry Yates

## S.U. Board Says "Thanks"

The Student Union Board owes its sincere thanks and appreciation to everyone involved in making the 1965 Homecoming so successful. We would like to personally recognize the faculty, alumni, organizations, friends of the school, and especially the students whose individual efforts attributed to the enjoyable Homecoming activities. Through such interest and participation, our school spirit and traditions will continue to grow.



**VOLKSWAGEN**  
Sales and Service

**BILL SOWERS MOTORS**

PHONE 364-5178

HWY. 66 E. IN NORTHWYE

## Miner Editorials & Features

### CRYING OUT LOUD

BY JOHN TENFELDER

After talking to several alumni last weekend, I learned of their growing concern over our disappearing traditions. I immediately thought of the attempt to shorten St. Pat's, the extra day added to Easter, and the non-occurrence of the annual spring riot. However these things did not seem to bother the alumni, they were worried about our greatest tradition, the one that is slipping away unnoticed to our eyes; mainly our grubbiness and grossness.

To us, it is hard to see the continual undermining of this great tradition by the campus radicals. Yet to an alumnus who has not seen the campus in 25 years, it is horrifying indeed. One alumnus pointed out that most of the Miners now wore shirts and shoes to classes. I sadly nodded in agreement and then asked him what we could do to preserve this great heritage of ours. He said it is up to all civic-minded Miners to track down the radicals who are subtly undermining this tradition and kill them.

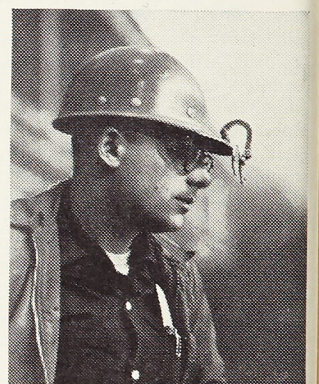
A radical is easily identified. He is the guy who does not have on the traditional torn blue jeans with slide rule flapping at his side. He shaves more than twice a week and clips his fingernails instead of biting them off and spitting them disdainfully into the street. He gets a haircut more than twice a semester and some even go so far as to wear SOCKS. Some radicals have been known to remain sober, for more than two whole days (the shame of it all).

On the positive side, all civic-minded Miners can drool at the girls in Rolla and shout the usual clever obscenities at them while they are still in hearing range. Barking and panting is especially well received. We must not treat them like girls from home but like freaks in a sideshow. (I noticed one radical smiled and said "Hi!" to a girl he did not know — worse still she smiled and said "Hi!" back to him. The situation is sad indeed when even the girls in Rolla start losing their disrespect for us.) So, fellow spirited Miners, we have a lot of well-doing ahead of us to shatter. For the sake of your country and school get out and be grubby, gross out those girls, and kill all the radicals that would have it otherwise.

## Col. Waggoner Urges Safety

Other traffic safety laws that went into effect on October 13 were: Require a vision examination on renewal of drivers license every three years; Allow Missouri to enter into the vehicle equipment safety compact with other states; Establish a minimum speed limit of 40 miles per hour on interstate highways; Provide a model traffic ordinance which cities can adopt by reference; Require two operable taillights on motor vehicles; Require drivers to dim their headlights when following another vehicle within 300 feet; Clarify the duties of drivers with respect to stopping for a school bus loading and unloading children.

Colonel Hugh H. Waggoner, the Superintendent of the Missouri Highway Patrol, commented on the new traffic legislation. He said, "Last year Missouri set a new record high for traffic fatalities and injuries. So far in 1965 we are well on the way of establishing a new record."



**DON YOUNG**  
(Met. E.) of the '62 Bethlehem "Loop" Course is top man in one of our electric-furnace departments. He's typical of young men on the move at Bethlehem Steel.

Seniors and graduate students in engineering and non-technical curricula will soon be interviewed for the 1966 Bethlehem Loop Course. We offer splendid career opportunities in steel plant operations, research, sales, mining, accounting, and other activities. For detailed information, pick up a copy of our booklet, "Careers with Bethlehem Steel and the Loop Course," at your Placement Office.

An Equal Opportunity Employer in the Plans for Progress Program

**BETHLEHEM STEEL**



## On the Other Side of The Transit

BY DON WARD

There is always so much throwing around of terms and periods and styles in field of art and painting that I thought it a good idea to spend this article and next weeks covering briefly the major styles in art and describing them a little. With this simple background a person will not find himself lost in jungle of terms that surround artist-talk today.

Baroque (pronounced Buh-ROOK) developed in the Roman Catholic countries of Italy, Spain and Flanders and centered itself around the exaltation of religion and the glorification of the new monarchies of this Counter Reformation and seventeenth century period. Artists produced works to bolster the faith of waverers and to bring new people into the fold to compensate for those lost to the Reformation. Works of this period possess an openness of composition where there is more than meets the eye, where we are literally carried out into some far-off, distant realm. The result is a feeling of restlessness and excitement and a sensation of endlessness. Man is made to feel the vastness of his universe and his smallness as compared to his creator. Ruben's *Descent From the Cross* and del Pozzo's *Saint Ignatius Carried to Heaven* are prime examples of Baroque art.

But the eighteenth century brought Rococo painting into prominence. The Rococo painter encircled his chief figures by dark areas so that they did not project into infinity. The emotions projected are tender, soft and sentimental. Works of this period have a quality of make believe and differ greatly from the projected, harsh and realistic works of the Baroque. Rococo is an art of pleasure while Baroque is an art of seriousness and strength. The Rococo is attributed to the growing importance of France and its cultural effects on all Europe. *Embarkation for the Isle of Cythera* is this periods best product.

Neo-Classicism developed at the end of the eighteenth century as a reaction against the casualness and charm of Rococo. It developed as a response to the more severe and moral attitudes of the rising middle classes. This style used ancient material for its elegance and prestige. A work of the period is cold in color, hard and precise in form and static in its forms lacking any physical movement. The *Oath of the Horatii* by David displays all of these qualities excellently.

Romanticism became a reaction against the Neo-Classic movement. Its works were warm in color, diffused in form and de-emphasized the traditional Classical use of line. Where Classicism was stately and reserve in its deliberate lack of movement, the Romantic work is filled with physical excitement. But this 'excitement' and emotion are very personal things in definite environments that are usually far off and interesting. Delacroix's *Massacre at Scio* is just such a work.

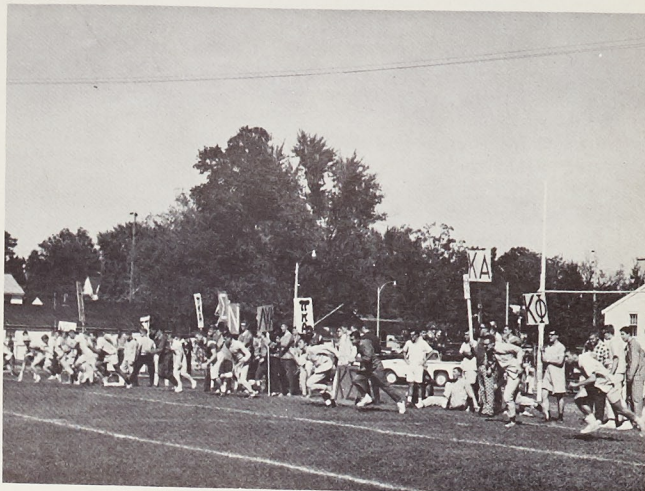
(NEXT WEEK: IMPRESSIONISM, EXPRESSIONISM, CUBISM AND FAUVISM)



# '65 Homecoming in Review



Linda Steffen, representing Sig Tau, receives her crown from retiring queen, Anita Macko.



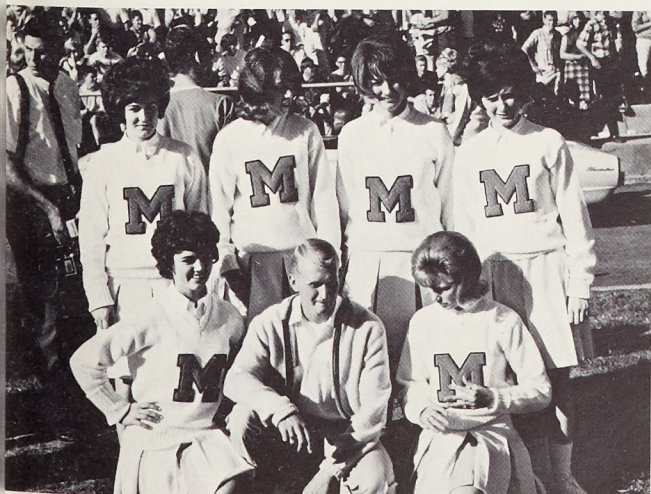
Pledges compete in pre-game pajama race.

## FRIDAY

The University of Missouri at Rolla kicked off its 1965 Homecoming activities on Friday evening, October 8, with a parade which started at 6:15 p.m. The MSM ROTC Band led the procession, followed by the Pershing Rifle's Precision Drill Team, the Shriner's motorcycle brigade, Chancellor Merl Baker, Mayor Eugene Northern, Mr. Ray Kasten, President of the MSM Alumni Association, the MSM football coaching staff, Miner co-captains George Gasparovic and Jim DeBold, and all twenty-two Homecoming Queen candidates.

The parade was followed by a bonfire and a pep rally at the MSM Intramural Athletic Field. The newest attraction on the campus scene, namely girl cheerleaders, made their initial appearance at the rally, which was attended by many enthusiastic Miners and their dates. The cheerleaders are Cindy Davis and Beca Matlock, both of St. James, Mo., Glenda Williams and Jamie Canfield, both of Rolla, and Lou Gladden, from Houston, Mo. Chancellor Baker and Head Football Coach Dewey Allgood presented short speeches and expressed their optimism for the Homecoming game Saturday afternoon against St. Mary of the Plains College.

Friday's festivities came to a close with the 1965 Homecoming Dance, which was held in the Student Union Ballroom. A large crowd enjoyed the music of Bob Kuban and his group. The dance, sponsored by the St. Pat's Board, was termed a huge success by all present.



Cheerleaders, once a thing of the past, were a welcome sight at the clash with St. Mary of the Plains.

Kappa Sig's prize-winning display accurately depicts the Cavaliers' plight in Saturday's game.



Miss Linda Steffen, University of Missouri coed, 1965 Homecoming Queen at MSM, receives the traditional bouquet of roses from Chancellor Merl Baker during half-time ceremonies at Saturday's football game. Her escort is Jim Murphy, MSM junior in mechanical engineering. Miss Steffen, a blue-eyed brunette, is a junior at MU, where she is majoring in elementary education. One of 22 candidates, Miss Steffen represented Sigma Tau Gamma fraternity in the queen's race.

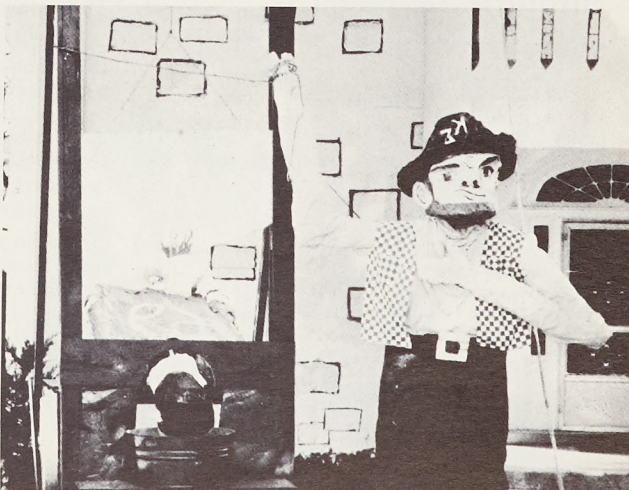
## SATURDAY

This year's Homecoming will go down as one of the finest in Rolla's history. The decorations were unique and colorful. The Queen was enchanting, and best of all, the Miners frustrated their Homecoming opponents, St. Mary's Cavaliers, 41-0.

The awards for the decorations were announced before the Pajama Race. The first place trophy went to Kappa Sigma. Lambda Chi Alpha received second place, and Kappa Alpha was awarded the third place trophy. The judges were congratulated on their selections.

The day's activities were continued with the Pajama Race. The Pajama Race, a highly competitive event, is held annually between the pledge classes of all the fraternities. The pledge classes lined up behind their respective banners and cheered their teams to victory. Sigma Nu captured the traveling trophy, followed closely by Delta Sigma Phi and Kappa Alpha respectively.

Half time was highlighted by the introduction of the queen candidates and the 1965 Homecoming Queen, Miss Linda Steffen of Sigma Tau Gamma. The first runner-up was Diane Lovelace of Kappa Sigma and the second runner-up was Marilyn Galbraith of Tech Club. Chancellor Merl Baker presented flowers to Miss Steffen. Following the presentation of the flowers the queen presented the first place trophy for the Pajama Race to Sigma Nu. The festivities were brought to an end when the newly elected president of the Alumni Association, Mr. Ray O. Kasten, welcomed the alumni.





## Orientation Highlights ASCE Meeting

President Truett DeGeare opened the first ASCE meeting of the semester on Sept. 22, by welcoming returning students and freshmen to a program designed to give undergraduates and especially freshmen an insight into the phases of civil engineering.

John R. Ruser, Jr. was presented the Frank L. Flynt award by Dr. A. J. Miles, Dean of the School of Engineering.

Professor J. Kent Roberts, chapter advisor, introduced the faculty and gave their specific areas of instruction.

Student speakers presented brief talks on the areas of specialization in civil engineering. These topics and speakers were, Jim Steele, Fluid Mechanics; Kenneth Bell, Transportation; Keith Patterson, Structural Analysis and Design; Bill Ford, Sanitation; and Marvin Byington, Soil Mechanics.

New officers serving with President DeGeare included John

Ruser, Vice-President; John Andesilich, Secretary; William Godfrey, treasurer; William Graham, Corresponding Secretary.

Mr. Arthur Meenen of Sverdrup and Parcel, Inc. presented the program for the Oct. 6, meeting. Mr. Meenen outlined the design program for the St. Louis Stadium Project now under construction. He pointed out the reasons behind the design and explained the many engineering

problems encountered and their solutions. Slides of models, engineering drawings, and actual construction accompanied the program.

On Wednesday, Oct. 20, Commander Kenneth A. MacDonald of the U.S. Coast and Geodetic Survey will speak on the International Indian Ocean Expedition 1964. This meeting will be held in Room 114 Civil Engineering, beginning at 7:30 p.m.

### REGISTRAR CHANGES (Continued From Page 1)

clerk in 1955. A graduate of Central Methodist College, Fayette, Mrs. Tucker has been a high school teacher in the Waynesville and Rolla high schools. She has been active in many civic and church organizations, including White Shrine, Eastern Star, American Association of University Women and Methodist Church groups.

Taylor joined the registrar's office staff in 1962 after graduation from the University of Mis-

souri, Columbia. He is scholarship advisor for Lambda Chi Alpha fraternity and member of the American Association of College Registrars and Admissions Officers.

### NOTICE!

STUDENT UNION BILLIARDS  
TOURNAMENT  
OCTOBER 18  
STUDENT UNION BLDG.

## India Association Elects Officers

The India Association of MSM held its fall semester elections on October 9, 1965. The following persons were chosen to lead the organization: Niazahmad Shaikh, president; Kishor Bhutta, vice-president; Ashwin Ghatalia, secretary; Vinu Patel, treasurer; Kanwal Prasher, executive member.

The motives of this committee are to create a better understanding among members of the India Association and other student organizations on campus.



**When you can't  
afford to be dull,  
sharpen your wits  
with NoDoz™**

NoDoz Keep Alert Tablets fight off the hazy, lazy feelings of mental sluggishness. NoDoz helps restore your natural mental vitality... helps quicken physical reactions. You become more naturally alert to people and conditions around you. Yet NoDoz is as safe as coffee. Anytime... when you can't afford to be dull, sharpen your wits with NoDoz.

**SAFE AS COFFEE**



# Here's the shortest line between graduation and a "go-places" career.

Your name: \_\_\_\_\_

**It's the one you sign on at your  
placement office for an interview with IBM  
November 3-4**

Want growth—with a difference? Career excitement—with stability? New frontiers in all technologies—with the leader in the nation's fastest-growing major industry?

IBM can offer you extraordinary growth opportunities in Research, Development, Manufacturing, Programing and Administration—throughout its network of labs, plants and technical centers.

If you want the facts about these careers, you'll want to talk to the IBM interviewer.

Certainly, he wants to talk to you about these key jobs. They're jobs with technical responsibility. Where you can

put your ideas to work and earn superior rewards.

In a growth company like IBM, responsibility and advancement come rapidly. In fact, during the next five years IBM expects to appoint approximately 6,000 new managers. A wide range of training and education programs will help you meet the challenge of growth.

So visit your placement office now for a line on IBM. Sign on it for your interview. If for any reason you can't arrange an interview, visit your nearest IBM branch office. Or write: Manager of College Relations, IBM Corporate Headquarters, Armonk, New York 10504.

IBM is going places. Why not come along?

Whatever your area of study, ask us how you might use your particular talents at IBM. Job opportunities at IBM lie in eight major career fields: (1) Research and Development, (2) Engineering, (3) Manufacturing, (4) Finance and Administration, (5) Marketing, (6) Field Engineering, (7) Systems Engineering, (8) Programing. IBM is an Equal Opportunity Employer.

# IBM

### STATISTICS

MSM	
19	First Downs
299	Yards Rushing
157	Yards Passing
19	Passes Attempted
7	Passes Completed
0	Interceptions
1	Fumbles Recovered
60	Yards Penalties
438.1	Punting Average
SCORE BY QUARTER	
MSM	7
St. Marys	0

George Gasparovic who performed outstandingly caught two passes for yards and one touchdown. He also carried six times for two yards and another touchdown.

### Lewis Scores

Ron Lewis called the game as he completed passes two for touchdowns. He was replaced in the huddle by his able assistant who passed for one touchdown.

The downfield block by the Miner offensive team was effective. This has been a point in the last three offensive drives. Lewis knew how to play and as they opened up



OCTOBER 15, 1965  
He is sch...  
for Lambd...  
ity and mem...  
Association of...  
rs and Admis...  
TICE!  
NION BILLIARD...  
RNAMENT  
OBER 18  
UNION BLDG

# MINER SPORTS

FRIDAY, OCTOBER 15, 1965 THE MISSOURI MINER PAGE 7

## Miners Drub St. Mary 41-0

### Cavaliers Fall Before Capacity Homecoming Crowd

By Lloyd J. Lazarus

The Alumni who returned this year for Homecoming left with the warm feeling that the Missouri School of Mines has a football team that can win and win big. The Miners routed the "Cavaliers" of St. Mary of the Plains 41-0.

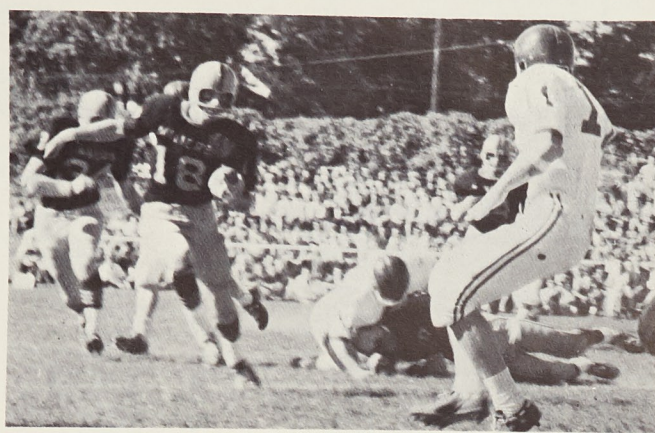
The Cavaliers only managed to fight their way into Miner territory four times during the game. Their deepest penetration was to the fifteen yard line in the first quarter. This is quite remarkable when you realize that during most of the second half, the Miner reserves were playing defense.

#### Last Week's Loss Beneficial

The Miners proved that they learned their lesson of a week ago. They hit hard and tackled hard, causing the Cavaliers to fumble four times and recover three of them.

The Miner offense was at its best all year. Eugene Ricker tied a Miner record by scoring three touchdowns in one game. He returned one punt fifty-six yards to end the second quarter. On another punt return he ran with the ball twenty-eight yards for a 42 yard punt return average. Ricker also caught two passes for seventy-three yards, both for touchdowns.

Richard Erxleben was another whose performance was outstanding. He carried the ball ten times from the line of scrimmage for 112 yards. He scored one touchdown on a seven yard run.



Eugene Ricker (No. 18) moves through Cavalier line. Ricker tied an MSM record by scoring three touchdowns Saturday.

Cavalier line. They also showed they know how to block downfield in springing Ricker loose on the final touchdown play of the game.

The game also was highlighted by the appearance of Miner Cheerleaders. The six coeds who make up the squad are Lou Gladden, Jamie Canfield, Becka Matlock, Kay Carney, Glenda Williams, and Cindy Davis. They will appear at all Miner home games.

In the first quarter George Gasparovic took a handoff from Ron Lewis and ran thirty-one yards and a touchdown. The Arthur Verdi PAT was good.

During the second quarter the Miners exploited for three touchdowns. Eugene Ricker pulled in a Ron Lewis pass in the end zone for a touchdown. Verdi's PAT was good. Rich Erxleben then fought his way seven yards and a touchdown. Verdi's PAT was again good. Eugene Ricker then electrified the crowd with a fifty-six yard punt return as he scored his second touchdown of the game. The PAT was good. As the Miners left the field for half time they led 28 to 0.

(Continued on Page 8)

### Four League Teams Lose, MIAA Swings Into Action

By Phil Eatherton

The MIAA had a dismal time last Saturday as Springfield and the Miners were the only teams to pull out victories; Kirksville and Maryville lost squeakers, and Warrensburg and Cape Girardeau lost by big scores.

Springfield beat Pittsburg State 13-0 in a tight defensive game, a second quarter run by fullback Pat Hogan and a 22 yard run by quarterback Dan Young in the fourth quarter. Springfield is now 3-1.

Cape Girardeau was beaten through the air by two Richard Drawdy Jr. touchdown passes one for 80 yards in the first quarter and one for 14 in the final quarter as Cape went down 24-13. Cape scored on two short runs of 5 and 3 yards by Irv Whitehead and John Dipenbrooks respectively. Cape is now 0-4.

### MSM Harriers Close Home Stand With Third Defeat

Although Miner cross country veteran Skip Damotte chalked up a first place honor to his credit, two Greenville College men racked up second and third to lead their school to a 26-31 victory over MSM. The Miners took fourth and fifth places, however Greenville racked-up places six through nine.

It was hoped that Damotte could smash the MSM course mark at this the final home bout, but the time of 21:50 was enough to insure first. Arvin and Jenkins were clocked at 22:45 and 22:50, respectively. Stan Notestine and Ron Tracy came in fourth and fifth for MSM.

Saturday, October 16, Southwest Missouri State will host the third annual Springfield Invitational, scheduled to get underway at 11 a.m. The SMS Department of Athletics feels that the number of entries for the meet constitutes an outstanding field. The list of entered schools is headed by runner-up champion NEMO of Kirksville.

Other schools entered in the competition include Arkansas A, M, & N, Arkansas State College, Central Missouri State, Harding College, Kansas State of Pittsburg, Lincoln University, MSM, Oklahoma Christian College, and Westminster College.

Probably most disappointed at the most recent loss is student coach Ted Moore. Commenting on the defeat, Moore mentioned that Nolstine and Tracy ran a good race. "Four out of the top seven men are freshmen, and as can be expected, they are not very experienced yet," continued Moore. "These men do well in practice, but when it comes to the actual race, they choke up." He also talked of Ken Shelor who shows good prospects and the qualities of a good runner.

Following the Springfield Invitational, the Miner squad will travel to Fulton, Missouri, for a meet with Westminster College. The two teams are slated to meet next Tuesday, October 19.

STATISTICS	
MSM	St. Mary
19 First Downs	14
299 Yards Rushing	244
157 Yards Passing	22
19 Passes Attempted	3
7 Passes Completed	1
0 Interceptions	0
1 Fumbles Recovered	0
60 Yards Penalized	28
4/38.1 Punting Average	6/33.2
SCORE BY QUARTERS	
MSM	7 21 7 6—41
St. Marys	0 0 0 0—0

## SIDELINES

BY JIM WEINEL



Blue and White trimmed with black crepe adorned the headstone at Jackling Field last Saturday, and the inscription read, "In memory of the Cavaliers, shot down by Eugene Ricker and the Missouri Miners, October 9, 1965." The boys from Dodge City were sent to boot hill as Coach Allgood's men soared to a 41-0 shut-out, and Ricker tied an MSM record with his three touchdowns! All statistics took a big jump as a result of the Miners' second triumph, and in most cases the totals are just about even with those of the opposition. One notable exception: the Miners have totaled 1622 yards rushing and passing, as compared to the sum of 1500 yards for the four opponents.

Had the intramural cross country meet been run on Saturday instead of last Friday, Homecoming festivities might have been a justifiable reason for the time lag of this year's results over last season's!! Kappa Alpha took both top positions with times in the 10:50's, but Chuck Donald (the KA who took second this year) ran the course in ten minutes, 34.8 seconds during last Year's action. The turn-out this time around was good, with 48 men finishing (or is the word "finished") at the end of the race!

The Kirksville Bulldogs will be expected to take to the air tomorrow, as the MIAA's leading passer goes into action against the Miners. The man's name is Gorzynski, and he has completed 26 of 40 attempted passes in three games this season. By the way, Gorzynski was a second-string quarterback for Illinois two years ago!!!

Address questions and comments to "Sidelines," c/o THE MISSOURI MINER, MSM, Rolla, Missouri.

## Sports Calendar

### VARSITY FOOTBALL

October 16 ..... Kirksville, there (MIAA)

### VARSITY CROSS COUNTRY

October 16 ..... Springfield Invitational  
October 19 ..... Westminster, at Fulton

### INTRAMURAL SPORTS

October ..... Flag football, table tennis, and tennis singles continue

I WISH I HAD MY SMOKIES WITH ME.

TRY SOMETHING BETTER. TAKE THIS COPENHAGEN ALONG.

HMM, HE WAS RIGHT. THAT'S REAL TOBACCO TASTE. LEAVES MY HANDS FREE, TOO.

DATED FOR FRESHNESS

Copenhagen

TRY A PINCH OF REAL TOBACCO TASTE

Enjoy Copenhagen: Place a small pinch between cheek and gum. No chewing.





## Kappa Alpha Sweeps 'Mural Cross Country

Behind the efforts of Lynn Shafer and Chuck Donald, Kappa Alpha has copped the 1965 intramural cross country crown. In the annual run, held Friday on the MSM golf course, Shafer and Donald crossed the finish line one-two respectively with times of 10:50.2 and 10:56.3. Tom McDermotte of Kappa Sigma came in third, and Tom Feger of the Campus Club was fourth.

McDermotte's third place mark combined with Jerry Siemens' fifth, gave Kappa Sigma the second place honor in overall competition. Sigma Tau Gamma and the MRHA tied for third. The Fifty-Niners came in fifth, and Sigma Nu took sixth place.

### Donald Last Year's Champ

Last year's competition was topped by the winning team of Warren-Ingram from Lambda Chi Alpha. Kappa Alpha's Chuck Donald was the champion this

season, and the runner-up was Brewer from the Fifty-Niners. Tech Club's team of Beckel-Begord were named second in 1964.



Donald crosses finish.

The cross country run marks the completion of the first intramural sport this season. Continuing to be played through October are flag football, table tennis, and tennis singles.

### FIRST MIAA CONTEST

## Prospects Good for Win Over Top-Ranked Bulldogs

"We've got a good chance to beat the Bulldogs Saturday, the best chance in many years." Head coach Dewey Allgood had this to say about the prospects for victory against the Northeast Missouri State Bulldogs, who will be hosting the Miners tomorrow afternoon. Allgood's group will be trying to break a Kirkville string of six straight wins over MSM.

As it stands now, the Bulldogs are 3-1 in games so far this season. That single loss came at the hands of Northern Illinois in a contest this past weekend. In previous play this year, NEMO downed Kansas State of Pittsburg by the score of 20-19.

The Bulldogs are a real strong ball club as usual, boasting several outstanding men in their ranks, including Villars, Jackson, and Gorzynski. Villars is a 240 pound strongman, Jackson a good running back and linebacker on defense, and Gorzynski is the conference's leading quarterback.

Kirkville will be running a Winged-T formation, and the Bulldogs will be throwing more because of their talented quarterback.

### MIAA ACTION BEGINS (Continued From Page 7)

27 to Emporia State; with 2:32 left in the game Earl Hurst tossed an 86 yard pass to Lew Lane with the extra point winning the game. Maryville's scores came on three Leo Papas touchdown passes and Mickey Thompson's 8 yard run. Maryville is now 3-1.

### MINERS DRUB ST. MARY (Continued From Page 7)

The first time the Miners received control of the ball in the third quarter they marched 69 yards. The drive was culminated on a thirty-three yard touchdown pass from Lewis to Gasparovic. Verdi's PAT was good. Late in the period Verdi attempted a field goal from the Cavalier twenty-three yard line. It was short and the score remained 35 to 0.

The fourth quarter opened with the Cavaliers deep in Miner territory. A bone crushing tackle by half of the Miner team caused Sunnenburg to fumble. The

Miners recovered and three plays later Wrinkle passed to Ricker, who ran for the touchdown. The play covered fifty-five yards. Verdi's PAT was wide. Later on in the period Wrinkle on a Quarterback keeper ran thirty yards and had apparently scored a touchdown, but a clipping penalty nullified the play.

In their best showing of the year, the Miners beat the Cavaliers of St. Mary of the Plains 41 to 0. It will be a game that the alumni will remember for a long, long time.

### M. S. M. Class Rings

BY L. G. BALFOUR CO.  
Both Old and New Style  
BULOVA ACCUTRON



### OMEGA WATCHES

DIAMONDS and ENGRAVING  
WATCH REPAIRING

## Christopher Jewelers

805 Pine Street

# The Harmon Football Forecast

TOP 20 TEAMS (Forecasting Average: 529 Right, 173 Wrong .....754)

- 1 - ARKANSAS
- 2 - MICH. STATE
- 3 - TEXAS
- 4 - NOTRE DAME
- 5 - SOUTHERN CAL

- 6 - NEBRASKA
- 7 - MISS. STATE
- 8 - FLORIDA
- 9 - GEORGIA
- 10 - ALABAMA

- 11 - L. S. U.
- 12 - PURDUE
- 13 - OHIO STATE
- 14 - TENNESSEE
- 15 - KENTUCKY

- 16 - AUBURN
- 17 - MISSOURI
- 18 - MICHIGAN
- 19 - WEST VIRGINIA
- 20 - DUKE

### Saturday, October 16 — Major Colleges

Alabama	20	Tennessee	14
Arizona State	14	San Jose State	10
Arkansas	17	Texas	15
Army	26	Rutgers	0
Bucknell	24	Pennsylvania	13
Buffalo	25	Richmond	8
California	16	Washington	10
Citadel	18	Arkansas State	14
Colorado	26	Maryland	14
Cornell	17	Harvard	13
Dartmouth	21	Brown	0
Duke	20	Clemson	7
East Carolina	20	Louisville	17
Florida	26	North Carolina State	0
Furman	17	Presbyterian	0
**Geo. Washington	19	Cincinnati	7
Georgia	21	Florida State	14
Georgia Tech	15	Auburn	14
Holy Cross	10	Boston U.	7
Illinois	20	Western Michigan	6
Kent State	20	Kentucky	9
L. S. U.	14	Miami, Ohio	13
Marshall	16	Houston	7
Miami, Florida	14	Ohio State	7
Michigan State	17	Iowa	14
Minnesota	17	Tulane	14
Mississippi	21	Memphis State	7
Mississippi State	28	U. C. L. A.	15
Missouri	17	Pittsburgh	14
Navy	21	Kansas State	0
Nebraska	40	Wisconsin	14
North Carolina	16	Kansas	6
Northwestern	21	Air Force	8
Oklahoma	21	Idaho	10
Oregon	20	Syracuse	15
Oregon State	13	Colgate	8
Penn State	21	Michigan	14
Princeton	20	Stanford	13
Purdue	16	Rice	14
Southern Cal	28	V. M. I.	12
S. M. U.	19	T. C. U.	19
Southern Miss	27	Oklahoma State	10
Texas A & M	20	Bowling Green	15
Texas Tech	20	North Texas	8
Toledo	18	New Mexico	6
Tulsa	27	Montana	0
Utah	25	V. P. I.	10
Utah State	31	Delaware	13
Vanderbilt	14	South Carolina	9
Villanova	21	Arizona	10
Wake Forest	12	Colorado State U.	12
Washington State	21	Virginia	7
West Texas	20	New Mexico State	9
West Virginia	21	Davidson	14
Wichita	14	Texas Western	14
William & Mary	15	Ohio U.	7
Wyoming	30	Columbia	8
Xavier	20		
Yale	17		

### EAST (small colleges)

Alfred	26	Hobart	13
Amherst	32	Rochester	0
Bowdoin	18	Williams	14
Bridgeport	19	American Intern'l	7
Brookport	15	Trenton	12
Clarion	17	Edinboro	7
Cortland	19	C. W. Post	13
Gettysburg	14	Lehigh	7
Ithaca	29	Susquehanna	0
Kutztown	30	Glassboro	7
Lock Haven	25	Shippensburg	13
Maine	26	Connecticut	14
Massachusetts	27	Rhode Island	6
**Montclair	20	Southern Conn.	19
Muhlenberg	14	Lebanon Valley	12
St. Lawrence	20	Norwich	18
Slippery Rock	18	California State	14
Springfield	21	Northeastern	12
Temple	19	Lafayette	7
Upsala	13	Lycoming	7
Vermont	30	New Hampshire	6
Wesleyan	19	Worcester Tech	0
West Chester	31	Bloomsburg	7

### MIDWEST (small colleges)

Albion	19	Hope	7
Bethany, Kan.	20	McPherson	0
Bluffton	20	Otterbein	13
Carthage	20	Millikin	14

### MIDWEST (continued)

Central Methodist	18	Culver-Stockton	14
Central Michigan	20	Hillsdale	17
Centre	20	Hanover	8
Concordia, Ill.	16	Rose Poly	12
Drake	27	Southern Illinois	7
East Central Okla.	27	Central Oklahoma	13
Eastern Illinois	16	Northwood	7
Elmhurst	26	Illinois College	7
Findlay	25	Ohio Northern	8
Illinois Wesleyan	26	Carroll	7
Kalamazoo	27	Adrian	6
Lakeland	13	Northland	6
Langston	20	SE Oklahoma	12
Michigan Tech	21	Mankato	10
Missouri Valley	25	Tarkio	7
Nebraska Wesleyan	31	Doane	0
North Central	20	Anderson	7
NE Missouri	20	Missouri Mines	0
NE Oklahoma	28	SW Oklahoma	12
Northern Illinois	20	Bradley	15
Olivet	21	Alma	12
Omaha	21	Pittsburg	8
Oskosh	27	Superior	7
Ottawa	26	Kansas Wesleyan	12
Peru	15	Hastings	7
St. Joseph	19	Defiance	12
St. Norbert	21	Northern Michigan	14
SW Missouri	20	SE Missouri	8
Taylor	18	Friends	12
Tufts	21	Indiana Central	19
Wabash	19	Franklin	0
Washington, Mo.	21	Wheaton	6
Whitewater	16	Stevens Point	7

### SOUTH (small colleges)

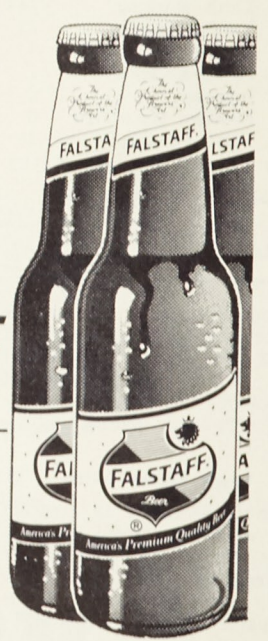
Appalachian	20	Catawba	19
Arkansas A & M	21	Harding	6
Arkansas Tech	15	Conway State	13
Arlington	14	Trinity Texas	7
Austin Peay	26	Morehead	7
Chattanooga	21	Middle Tennessee	20
Concord	14	West Liberty	13
Concordia	21	East Tennessee	14
Eastern Kentucky	17	Carson-Newman	13
Elon	14	Salem	7
Fairmont	20	Henderson	7
Florence	18	Principia	7
Georgetown	14	Washington & Lee	7
Guilford	30	Delta State	14
Howard	15	Bilene Christian	13
Lamar Tech	20	Frederick	6
Lenoir-Rhyne	21	Maryville	0
Livingston	20	NE Louisiana	6
McNeese	28	Troy State	8
Mississippi College	12	U. T. M. B.	13
Murray	27	Bridgewater	12
Randolph-Macon	23	Texas Lutheran	12
Sam Houston	21	Austin	6
Sewanee	15	Louisiana College	0
SE Louisiana	25	Howard Payne	0
SW Texas	31	Millsaps	14
Southwestern, Tenn.	18	S. Austin	15
Sui Ross	20	SW Louisiana	19
Tampa	21	Corpus Christi	7
Tarleton	31	Western Kentucky	14
Tennessee Tech	21	East Texas	14
Texas A & M	19	Glenville	7
West Va. Wesleyan	25	Mars Hill	0
Western Carolina	36	Newberry	6
Wofford	17		

### FAR WEST (small colleges)

Arizona State	20	Cal Poly (Pomona)	14
Cal Lutheran	13	Colorado College	7
Colorado Mines	33	Western New Mexico	0
Eastern New Mexico	26	Colorado State	14
Fresno State	42	Cal Poly (S.L.O.)	7
Lewis & Clark	16	Pacific Lutheran	19
Long Beach	26	Santa Barbara	0
**Occidental	30	Claremont	0
Pomona	44	Cal Tech	0
Redlands	13	Riverside	6
Sacramento	20	San Fernando	6
San Diego	23	Los Angeles	14
Santa Clara	14	San Francisco	7
Western Washington	18	Portland	15
Whittier	12	Cal Western	8
Williamette	14	Puget Sound	0

(\*\*Friday Games)

## MAN-SIZE PLEASURE FOR YOUR MAN-SIZE THIRST FALSTAFF



Distributed by  
**MUELLER DISTRIBUTING CO.**  
217 W. 6th St. Rolla, Mo.

VOLUME 52  
Chance To Be  
The University  
Rolla's annual P  
held this year  
October 30th. As  
day will afford  
MSM students th  
come better acqu  
workings of the  
the faculty which  
The schedule for  
formulated f  
Public Occasion C  
ed by Professor J  
E. R. Department  
Department unde  
Bullman; and the  
Board.  
Beginning Satur  
a clock, parents  
the Student Unio  
registration perio  
guided tours of t  
also be held. At  
Baker will h  
in the Student U  
This reception wil  
to meet with the  
discuss the differ  
school life with hi  
Saturday afterno  
invited to atten  
Springfield footba  
will begin at 2 o'c  
West Missouri Sta  
ed for the top  
league with a 4-1  
will be a vital gam  
standings. The  
company and the  
ing Band will pe  
time.  
At 6 o'clock the  
Parents Day Banq  
at the Rolla High  
teria. The Honora  
person from the N  
Representatives

Doctor  
Sympos  
MSM professor  
legibly, has just  
an international me  
toss and engineers  
many, where he p  
search paper. Dr.  
associate professor of  
engineering at th  
New to Berlin. He  
by automobile to  
Germany, for the S  
tional Symposium o  
Materials in Scien  
ceering.  
The Symposium,  
NOTI  
CHANCELL  
COFFEE C  
TUESDAY, O  
3:00 P. M.  
IN STUDENT  
TELEVISION  
CHANCELLOR  
AND DR. THO  
WILL DISCU  
"CHANGES IN  
RULES"