



25 Sep 1964

## The Missouri Miner, September 25, 1964

Follow this and additional works at: [https://scholarsmine.mst.edu/missouri\\_miner](https://scholarsmine.mst.edu/missouri_miner)

These newspapers reflect the attitudes, perspectives, and beliefs of different times. Neither the library nor the university endorses the views expressed in these collections, some of which contain images and language which may be offensive to some readers.

---

### Recommended Citation

"The Missouri Miner, September 25, 1964" (1964). *The Missouri Miner Newspaper*. 1778.  
[https://scholarsmine.mst.edu/missouri\\_miner/1778](https://scholarsmine.mst.edu/missouri_miner/1778)

This Newspaper is brought to you for free and open access by Scholars' Mine. It has been accepted for inclusion in The Missouri Miner Newspaper by an authorized administrator of Scholars' Mine. This work is protected by U. S. Copyright Law. Unauthorized use including reproduction for redistribution requires the permission of the copyright holder. For more information, please contact [scholarsmine@mst.edu](mailto:scholarsmine@mst.edu).



## Colonel D. L. Gundling To Head MSM ROTC

In the Military Science department MSM cadets will find themselves under the leadership of a new P. M. S., Colonel David L. Gundling.

Colonel Gundling, a man of diversified experience and back-



COLONEL GUNDLING

ground, was stationed in Saudi Arabia prior to taking over as P. M. S. at Rolla. In Saudi Arabia Colonel Gundling was con-

cerned with the building of a massive housing development.

In his twenty-one years of service with the Army, this is Colonel Gundling's first experience with the Reserve Officers Training program. Colonel Gundling has a deep interest in the R. O. T. C. program, which is evident in that he specifically requested this assignment.

Colonel Gundling has attended the University of West Virginia, the University of Maryland, and George Washington University. He holds a degree in Chemical Engineering, and has done considerable research and testing for a large steel corporation.

Colonel Gundling succeeded retired Colonel Glenn R. Taylor, P. M. S. at Rolla for the past four years.

Colonel Taylor, who retired June 30, 1964, is now teaching in the Civil Engineering department here at MSM.

# The Missouri MINER

UNIVERSITY OF MISSOURI AT ROLLA

VOLUME 51

ROLLA, MO., FRIDAY, SEPTEMBER 25, 1964

NUMBER 2

## Dr. Baker Makes Appointment Of New Department Chairmen

The appointments of three new department chairmen for the academic year 1964-65 have been announced by Dr. Merl Baker, chancellor of the University of Missouri at Rolla.

Dr. William H. Webb, professor of chemistry, has been named chairman of the department of chemistry; Dr. Mailand R. Strunk, professor of chemical en-

gineering, will head the department of chemical engineering; and Dr. Harry W. Weart, Assistant professor of metallurgical engineering at Cornell University, has been appointed professor of physical metallurgy and will serve as chairman of the department of metallurgical engineering. The appointments were effective September 1.

Dr. Webb joined the faculty here in 1938. A native of Mississippi, he holds a B. S. degree from Mississippi State University, M. S. degree from the University of Missouri School of Mines and Metallurgy, and the Ph. D. degree in Chemistry from the University of Wisconsin. Prior to coming to Rolla, he was an instructor in chemistry at Mississippi State University for one year. He has also been employed as research chemist and physicist by the Atomic Energy Commission at Oak Ridge National Laboratory, Oak Ridge, Tenn.

Dr. Webb's professional affiliations include membership in Sigma Xi and Alpha Chi Sigma honor societies, American Society for Engineering Education and the American Chemical Society, which he has served as vice-chairman of the local section. He is listed in "Who's Who in Engineering," "Leaders of American Science," and "Who's Who in Atoms," Great Britain.

Dr. Strunk has been on the fac-

ulty here since 1957. He received his B. S. degree in chemical engineering from Kansas State University, his M. S. degree from the University of Missouri School of Mines and Metallurgy, and the Doctor of Science degree from Washington University, where he was an instructor in chemical engineering.

Dr. Strunk is a member of the American Institute of Chemical Engineers, the American Society for Engineering Education, the American Association for the Advancement of Science, and the Missouri and National Societies of Professional Engineers. Membership in other honorary and professional societies include Tau Beta Pi, Sigma Xi, and Alpha Chi Sigma. Dr. Strunk is listed in "Who's Who in Engineering Education," "Who's Who in American Education," "Leaders in American Science," and "American Men of Science." He is a past president of the Rolla Chapter of the Missouri Society of Professional Engineers.

Dr. Weart, a native of New York, received his Bachelor of Metallurgical Engineering degree at Rensselaer Polytechnic Institute in 1951. He received his master's and Ph. D. degrees at the University of Wisconsin, where he served as instructor and

(Continued on Page 9)

## Recent Increase in Fees Divided Among Varied Campus Organizations

One of the many changes in the University that has occurred since last year has been the change in student fees. One year ago the student fees for the first semester totaled \$137.50 with military deposit. This year that total has been raised to \$160.00, an increase of \$22.50.

One change occurred in the incidental fee. This increased from \$100.00 per semester last year to \$115.00 per semester this year. Another change was the increase in the fee for non-residents. An additional \$25.00 enlarged this fee to \$175.00 per semester. The main reason behind these increases was to help meet the rising expenses of the university. Although the legislature of the state of Missouri appropriates money for the operation of the university, the costs always outweigh the state government's support. More money has to be supplied, therefore, by the student fees.

There is another reason for this increase. The university has two sources of income; student fees and state appropriated finances. When the legislature receives a request for more financial support, they observe the student fees of

schools in other states. According to Chancellor Baker, Missouri has one of the lowest state university fees for its residents as compared to states such as Illinois and Iowa. If in the opinion of the legislature the University has kept its student fees in proportion with those of other colleges, financial aid will be further considered. The increase in incidental and non-residential fees has had, therefore, a twofold purpose: to help meet the expenses of the university, and to maintain a fee proportional to those of other schools so that state support may be enlarged.

Another increase came in the

Student Union Building fee. This grew from \$7.50 to \$10.00. In May, 1962, the Student Council requested a \$5.00 increase in this fee to start a building fund for additions to the Student Union. The Board of Curators and the president of the University, Dr. Elmer Ellis, decided, however, that an increase of \$2.50 would be sufficient until definite plans for the new building could be made.

The final change in fees was a \$5.00 per semester increase in the Student Activity fee, also requested by the Student Council. This raised the fee to \$25.00 for the

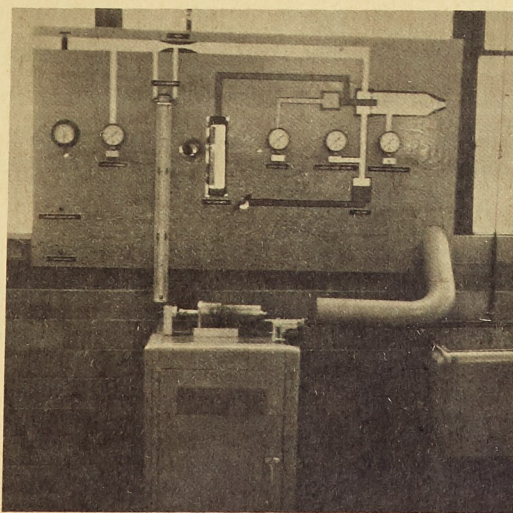
(Continued on Page 5)

## Two Professors Devise Experimental Rocket Jet

A laboratory demonstration rocket engine similar in design to the Atlas engine has been built at MSM by Prof. R. G. Murray and Prof. A. V. Kilpatrick of the mechanical engineering faculty.

The device is a liquid propellant rocket engine similar in de-

high pressure air for propellants. Under these conditions, it generates 25 pounds thrust, using about one-half pint of gasoline per minute at an operating temperature of 1600 degrees F. For graduate work exotic fuel can be used which will increase the thrust capability.



sign (although much smaller) to those used in operational missiles. For laboratory use, this rocket has to be kept extremely small for noise level control and exhaust energy dissipation.

For low thrust experimental work, the rocket uses gasoline and

The rocket engine is expected to be used in both undergraduate and graduate classes. It will be used as an undergraduate laboratory experiment to emphasize basic liquid and solid propellant rocket engine theory, and can also

(Continued on Page 4)

## Centennial Committee Plans MSM's Expansion

With an ever-increasing number of science and engineering students seeking admission into specialized universities, plans are already being formulated for the vast renovation and expansion of the present campus of MSM. It is hoped that the construction of the new buildings will be completed in time for the 1970 Centennial.

The first meeting of the Centennial Committee was called to order by Dr. Merl Baker at 10:00 A. M. on May 30, 1964. Among those present were faculty members, representatives from different student organizations, and distinguished alumni and outside associates. Officers for the committee were chosen and work was immediately begun in outlining the needs and necessary innovations on campus.

Dr. Baker briefly outlined some of the needs of the campus. He stated that by 1970 the undergraduate enrollment would be an estimated 6000 and that there may possibly be 2000 graduate students. Dr. Baker went on to say that at least 11 new buildings will be urgently needed by 1970. The location of the future buildings will be west and northwest, to-

wards the present Kappa Alpha house, and their estimated cost is between \$15 and \$20 million. Beyond these building needs, additional funds would be required for faculty fellowships and faculty salary supplements.

The Centennial Committee will reconvene on Oct. 17 to report on the work done by the subcommittees during the summer. It is felt that increasing development will be made towards the completion of the 1970 expansion program.

## Fall Enrollment Draws to a Close

Enrollment figures at UMR had risen to 3842 at 10:30 a. m., September 15, Lauren Peterson, assistant registrar said.

Enrollment is tapering off rapidly, Peterson said, with the bulk of the late registrants processed and in their classes today. However, additional international students are expected to arrive on campus this weekend, and will be enrolling next week, Peterson said.

## GIRLS!!

The Student Union will present its annual all-school mixer Saturday, October 3. There will be girls coming here from five different colleges: Cotter, Fontbonne, Lindenwood, Monticello, and Stephens. Two different bands will be presenting an afternoon and evening of music to the parties. Goldilocks and the Three Bears will be playing from 2 to 5 in the afternoon. This four piece band was formally known as The Roadrunners when they played down here last year.

After the band finishes, the fellows will have time to take the girls to dinner and keep them entertained until the next band starts. The Spectors will provide the music from 8 until midnight when the girls will board their busses and head back to their schools.



## CAMPAIGN COMMENTS

By Mike Evans

What is Goldwaterism? For what does it stand? What are its policies? These questions can best be answered by analyzing a statement made by Goldwater at the '64 Republican Convention. In this acceptance speech, Goldwater said: "Extremism in the defense of liberty is no vice; moderation in the pursuit of justice is no virtue!" The words best typify the Goldwater doctrine, and by examining them the above questions can be answered.

To begin with, "Goldwaterism" does not recognize extremism as such, but rather as the accepted course of action. In his right-wing theory, Goldwater envisions extremism as the using of all means possible to effect his ends. Yet, the Arizona Senator has never said what the *limits* are to which he will use "all means possible." In the same manner, he has never defined the *means* he will use to defend liberty. Will the Arizonian work through the executive branch? legislative? judicial? Will personal diplomacy mark a Goldwater administration? *What will he do?*

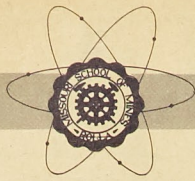
A basic issue upon which "Goldwaterism" hinges is that of "states' rights" and removal of "governmental meddling" in certain areas (especially farming). On the issue of civil rights, Goldwater firmly believes that the states should decide for themselves the extent to which laws should insure equality. Yet, the state have been deciding this largely by themselves for over 90 years, and during this same space of time portions of the South have refused to grant basic liberties to the Negro. In agriculture Goldwater advocates removing governmental controls and subsidies and leaving the farmer dependent upon his own resources. While this idea seems perfect in itself, history has

## The Reviewer's Stand

Frank Sinatra's recent production efforts seem to be in the direction of spoofing on a grand scale as in this satiric comedy with music. The idea of transposing the idea of the Robin Hood of merry England to a Roaring Twenties Chicago gangster is sure to be a box office sensation. Sinatra portrays a slick Chicago gangster of the bootleg generation, Robbo, a decidedly urban type of Robin Hood. Other big name stars such as Dean Martin, Sammy Davis, Jr., and Bing Crosby lend added interest to the film.

Barbara Rush plays the role of Edward G. Robinson's (alias Big Jim) daughter who with her Vassar degree and Sorbonne polish is out to avenge her father's death and replace him in the hoodlum empire he built. Gags fly throughout the picture, one instance being that potential bribe money is "dumped" on an orphanage, hence the Robin Hood angle.

Gordon Douglas directed this David R. Schwartz script so it will surely be top entertainment. The musical scores were written by Sammy Cahn and James Van Hensen. This hilarious motion picture will be shown September 25-29 at the Uptown Theatre.



## Miner Editorial

The school radio station, KMSM has recently petitioned the Student Council for money to help the station defray the expenses of broadcasting out of town football games. Originally, it was thought that the athletic department would pay part of the cost of broadcasting these games. However, as can be seen by viewing the facilities of Jackling Gymnasium, the athletic department has many other things to do with their money.

The Student Council has not yet decided whether to help finance these broadcasts or not. The main point of discussion seems to be that a local station, KCLU, is willing to broadcast these games. Therefore, it is unreasonable for the Council to spend money when the matter can be handled by a private concern.

KCLU, however, will not be able to broadcast out of town games for several weeks or months pending delivery and construction of certain necessary equipment. The school station, on the other hand, would like to see every game broadcasted.

Since increased interest and participation in our athletic program is needed, it is necessary for these out of town games to be made available to the students.

shown that the elements opposing the farmer are too great for him to cope with without outside assistance. Could it be that Goldwater has forgotten what happened in the thirties when the great "dust bowl" was created? During this time, the "bottom" dropped out of the wheat market, and farmers, unable to sell their bunker wheat crops, were forced into bankruptcy. This was an era when farming was free of "governmental meddling" and the entire agricultural system was in chaos.

In the second part of the now famous Goldwater acceptance statement, he struck out at moderation saying: "Moderation in the pursuit of justice is no virtue." Yet, the key words of this statement, "moderation" and "justice" are so ambiguous that it is nearly impossible to clearly define either. What of the Cuban situation? When Russian missiles were moved into Cuba, Kennedy's decision to blockade the island was much more moderate than certain proposals to invade the mainland of Cuba itself. What if moderation hadn't been used on Cuba? Is anyone so foolhardy to believe that Russia would allow an invasion of Cuba anymore than the U. S. would allow Russia to seize West Berlin? If moderation hadn't been used, war would certainly have resulted and the society which remained after that war would be unable to even define the word "extremism."

In the same manner, our very system of laws and justice is a moderate balance between majority and minorities, large and small states, liberals and conservatives, right and left-wing elements. By not defining what he considers as "moderation", Goldwater has criticized a whole span of issues which he probably never intended to criticize. This, again, is Goldwater—the "man who explains on Monday what he said on Saturday."

As a summation, Goldwaterites desire civil rights, but refuse to approve the very legislation that will guarantee it. This new party promises to use every means possible to gain liberty, but refuses to define these means. They criticize the administration by accusing it of moderation, but offer only the blind hope of extremism as an answer. In other words, "Goldwaterism" criticizes everything, yet refuses to show a clear path towards anything.

(Next Week: LBJ; the Shadow of Kennedy.)

The MINER suggests that the Student Council subsidize KMSM's game broadcasts until KCLU is equipped to assume this job. An alternate suggestion would be for the school station to obtain local sponsors.

## On the Other Side of The Transit

By Steve Neusel

What little respect I had ever held for the opinion of reviewers, I have completely lost after reading a recent "review" of the motion picture "The Night of the Iguana." It appears from that review that the modern critic is more concerned with achieving a clever witticism than with informing a reading audience.

The "review" was rather wittily subtitled "The Night of Anticlimax." The most of such cleverness was that the reader was required to ramble laboriously through half an article that covered material on backgrounds — both personal and historical.

At last, Mr. Critic seemed to find the right road as he tossed the word *theme* onto the paper. As a matter of fact, he seemed to imply that the theme of the movie was in reality many themes and, like rabbits, would multiply with each viewing. What Mr. Critic has done was to confuse the word *theme* with the word *idea*. True, the picture is filled with ideas. But there is only one dominant theme — that same theme that Tennessee Williams has used in each of his works. Williams writes of a malignant world which has destroyed a way of life and a tradition that once meant civilization and has evolved a society that is grasping and repressive — a society that warps, frustrates, and finally destroys anyone that tries to cling to these codes. This, then, is the plight of Shannon, the major character.

Mr. Critic then proceeded to mention the names of the leading characters and nothing more. He mentioned nothing of a powerful Deborah Kerr or of the excellent portrayal of Charlotte by Sue Lyon (who seems to characterize the 20th century world filled with anxieties and neuroses). Of the lead Richard Burton, Mr. Critic cried "Mistake." What I saw was a fine actor, a difficult part, and a superb performance. But Mr. Critic's worst fault was in the complete ignoring of one of the best screen performances of the year — that of the brassy nymphomaniac by Ava Gardner.

Of the talents of Williams in writing the play — the conflict of realistic and "fantastic" in Shannon, the poetic language, the blending of theme and imagery — Mr. Critic said nothing. Of the excellent direction by John Huston and the graphic artistic photography, he said nothing. I conclude that what Mr. Critic did say in his "review" was only one thing — nothing!

His only recognition of beautiful usage of symbolism by Williams was to end as all good critics must — with a witty finale. "There is an iguana. It seems to be something of a symbol. It stands for hours, tied to a post." Bravo, Mr. Critic.

Wake up, sir! Leave the witticisms to the toastmasters and to the politicians. Quit robbing the American public of the privilege of seeing a good film — we have so few as it is.

## A Message From Doctor Baker



Now that our students have returned, I feel that my second year at Rolla has really begun. The University exists for the students, and the faculty is responsible to set high standards of scholarships so that the student-scholar may gain the most from his four year stay here.

I am increasingly aware of the high capabilities possessed by most of our students, and this is an ever growing challenge to the faculty to adequately motivate and inspire students to greater achievement.

You are the first group under the reorganized University of Missouri at Rolla and you are charged with carrying on the great tradition of MSM, yet simultaneously accepting the larger challenge of our greatly expanded opportunity. We are now a full-fledged university with four separate Schools, each headed by a Director who is ready to help you receive the best education possible. The Directors are:

Dr. Dudley Thompson, Director  
School of Engineering  
Dr. T. J. Planje, Director  
School of Mines and Metallurgy  
Dr. Paul Dean Proctor, Director  
School of Science  
Dr. Wouter Bosch, Director  
Graduate School

The University has gained much national stature in this elevated status, which should be of great importance to us in obtaining better facilities, which are urgently needed. This new status will enable an intensification of our specialization in engineering and science. Our already good reputation will become even better and you can share in the gains from this image in that MSM graduates will be even more in demand than at present.

Each of the four campuses of the University of Missouri is headed by a Chancellor who reports to President Elmer Ellis in an organization which closely parallels the systems of the University of California and the University of North Carolina. Ninety-four years ago, this campus was established as the University of Missouri School of Mines

and Metallurgy, which was one of several divisions of the University of Missouri. No change in structure occurred until this July 1, at which time the University of Missouri System was fully implemented, and our status was elevated from a division to one of the four University members of the System. The high quality of our faculty, their achievements, and the success of our alumni earned this promotion for us. The present student body has the responsibility to further anchor the previous gains.

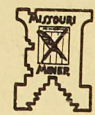
You will be among the last group of students to graduate within our first century. The freshman class of 1966 will be the centennial class and its graduation will start the University's second century. You are charged with helping top off the first century to a high point of excellence.

I urge you to take advantage of the numerous leadership opportunities which are afforded you. Engineers are increasingly taking a more active part in varied leadership posts and this is beneficial to the individual, the profession and to the nation. You can learn much from your social and cultural contacts while here and make the best

(Continued on Page 6)

## THE MISSOURI MINER

UNIVERSITY OF MISSOURI AT ROLLA



THE MISSOURI MINER is the official publication of the students of the University of Missouri at Rolla. It is published at Rolla, Mo., every Friday during the school year. Entered as second class matter February 8, 1945, at the Post Office at Rolla, Mo., under the Act of March 3, 1879.

The subscription is \$1.00 per semester. This Missouri Miner features activities of the Students and Faculty of U. M. R.

Editor-in-Chief ..... Greg Junge  
707 State Street-364-2731  
Business Manager ..... Charles Hansen  
500 W. 8th Street-364-3787  
Managing Editor ..... Gary Rueter  
Make Up Editor ..... Ken Kuebler  
Copy Editor ..... Don Flugrad  
Features Editor ..... Bill Treibed  
Advertising Manager ..... Dave Riley  
Circulation Manager ..... Jim Chase  
Sports Editor ..... Jim Weiner  
Technical Advisors ..... Bob Fick, Larry Yates  
Secretary ..... Tom Hennenhofer



# Teaching Staff Boosted As UMR Enrollment Grows

Due to the recent reorganization of MSM the student enrollment has skyrocketed. As a result, the teaching staff has been greatly supplemented to meet the rising demands.

The school has acquired four new department chairmen and a large number of professors and instructors.

Dr. Charles Hatfield, successor to Prof. D. H. Erkiletian has taken the role of Professor and Department Chairman of the Mathematics Department. Dr. Hatfield, prior to 1960, served on the faculty of the University of Minnesota in the Mathematics Department for 15 years. He has a very competent staff in the math department of which the following are recent additions:

## Senne, Brasunas To Head UMR Extension Service

Plans for expansion of MSM extension services which include establishment of an evening engineering graduate program in St. Louis have been announced by Dr. Merl Baker, dean of the faculty.

Dr. Baker also announced the appointment, effective September 1, of two new faculty members who will head the school's extension operations. J. E. Senne, Orange, Calif., former assistant dean of the school of Engineering at Washington University, has been appointed director of Conferences and Off-Campus Programs. Dr. Anton de Sales Brasunas, Novelty, Ohio, director of the Metals Engineering Institute of the American Society for Metals, will be the resident director of the St. Louis Graduate Resident Center. The Center will be concerned with late afternoon and evening graduate programs in engineering.

The new extension program will be under way at the beginning of the fall semester, 1964, and will be a joint effort of MSM and the extension services of the University of Missouri System. Promotional and financial arrangements will be handled by the University Extension Service and the School of Mines will direct all academic activities.

Evening courses will be offered this fall both on and off campus, with masters degree programs in two fields, metallurgical engineering and engineering mechanics, beginning this fall in St. Louis. The School of Mines extension classes in St. Louis will be held on the campus of the University of Missouri at St. Louis. Extension courses will be set up in other Missouri cities in the future.

Senne, who will administer the Extension Service and will also hold the rank of associate professor of mechanical engineering, was chief mechanical engineer of Truesdail Laboratories, Inc., Los Angeles. He pioneered in the field of low cost teaching films and improvement of instruction by use of education television and has been active in engineering education organizations.

Dr. Brasunas, who will direct the St. Louis Graduate Resident Center, will hold the rank of associate professor of metallurgical engineering.

(Continued on Page 6)

## MINER

THE MISSOURI MINER is the official publication of the students of the University of Missouri at Rolla. It is published at Rolla, Mo., every Friday during the school year. Entered as second class mail, February 8, 1945, at the Post Office at Rolla, Mo., under the name of The Missouri Miner, Inc. Postmaster: This publication is \$1.00 per semester. Subscriptions are available at a special rate to members of the Faculty of U.M.S. R.

Greene  
107 State Street—364-2731  
10 W. 8th Street—364-3787

Editor: Gary Webster  
Editor: Ken Grady  
Editor: Dan Ebbel  
Editor: Bill Riley  
Editor: Dale Chase  
Manager: Jim Hines  
Manager: Jim Hines  
Manager: Bob Fick, Larry Hines  
Advisors: Tom Hines

# NEWS of the Week

**Athens, Greece:** King Constantine of Greece wed Denmark's Princess Anne-Marie on September 18 amid the Byzantine magnificence of the Greek Orthodox cathedral in Athens. Anne-Marie, 18 years old, becomes the Queen of Greece and the world's youngest queen. At 24, her husband is the world's youngest monarch. The wedding brought together the largest gathering of royalty in years — seven kings, six queens, two former rulers, 48 princesses and 50 princes.

**Viet Nam:** Secretary of Defense Robert S. McNamara issued a statement saying that two United States destroyers on routine patrol in the Gulf of Tonkin were menaced by four unidentified vessels early Saturday morning, September 19. He said that the American ships fired warning shots and the approaching craft disappeared. President Johnson stated that no retaliatory strike against the North Viet Nam mainland was planned, but that he has ordered U. S. Forces to maintain a close air and sea surveillance in the area where the incident took place.

**Walnut Ridge, Arkansas:** John R. Harrell, religious and anti-communist sect leader, for whom the FBI has been looking for 17 months was found in a rural Ozark area near Walnut Ridge, Ark. Harrell was wanted for failing to appear in court on charges of harboring a marine deserter. He was also wanted in connection with the disappearance of four girls, two teenage, from Success, Mo., last October. The religious leader was reported by members of his sect to have been carrying between \$15,000 and \$20,000 when he disappeared.

**Moscow, Russia:** Soviet Premier Nikita Khrushchev wants a summit meeting with the United States as soon as possible after the November election, diplomatic sources revealed. Informants said that Khrushchev is motivated by the ideological conflict with Communist China. The Kremlin is reported to believe that Communist China may be preparing a deal with the U.S. that would tend to isolate the Soviet Union diplomatically and ideologically. The Russians suspect that Peking may be using periodic meetings with U.S. officials in Warsaw to make some sort of deal that would leave them out in the cold (war, that is).

**NOTICE!**

Those students who have not picked up their 1964 Rollamo may do so on Thursday, October 1st, from 8:30 to 4:30 at the Rollamo office. Have your Student I. D. Card.

**"STUDENTS"**

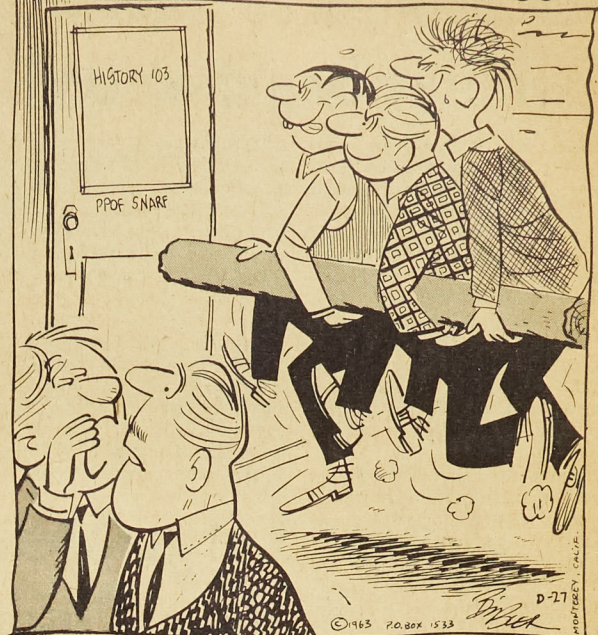
WE SELL YOU WHOLESALE

**HOOK AUTO SUPPLY**

513 Highway 63 South  
ROLLA, MISSOURI

"Our Prices Are Right"

# LITTLE MAN ON CAMPUS



"I WONDER IF THAT ISN'T THE PROFESSOR WITH THE REPUTATION FOR LOCKING THE DOOR AFTER THE TARDY BELL?"

## Carson Presents Technical Paper At Penn. AIAA

Dr. Ralph S. Carson, a new member of the Electrical Engineering Faculty at MSM, has returned from the Conference of the American Institute of Aeronautics and Astronautics at Philadelphia, Pennsylvania, where he presented a technical paper on his most recent research. The paper was entitled: "Natural Pulsations in Electrical Spraying of Liquids," and was co-authored by Dr. Charles D. Hendricks, of the University of Illinois.

All of Professor Carson's degrees are in Electrical Engineering, with the B. S. from Indiana Institute of Technology, Fort Wayne, Indiana, 1945, the M. S. from the University of Michigan, Ann Arbor, Michigan, 1952, and the Ph. D. degree from the University of Illinois, Urbana, Illinois, January, 1964. He has had considerable experience teaching, having been an Instructor and Professor at the Indiana Institute of Technology, where he served as Electrical Engineering Department Chairman from 1952 until 1960. While in this position he was author of the textbook entitled: "Principles of Applied Electronics," published by the McGraw Hill Company in 1961.

He has had wide experience in research in the use of vacuum equipment. He was also responsible for the design and construction of the electronic and mechanical components used with research on the general topic of electrical spraying of liquids.

Dr. Carson will teach undergraduate and graduate courses in electronics and direct graduate research in the Electrical Engineering Department.

## UPTOWN THEATRE

MOVIES IN CINEMASCOPE  
Starts Friday Sept. 25-29  
Sunday Feature at  
1:30, 4:15, 6:50, 9:30  
Admission:  
Adults .75 — Children .35  
**'Robin and the 7 Hoods'**  
Frank Sinatra & Dean Martin

Wed., Thurs., Fri., Sat.  
Sept. 30 - Oct. 3  
One Showing Nightly at 7:00  
Feature at 7:30  
Admission:  
Adults .75 — Children .35

**'The Fall of the Roman Empire'**  
Sophia Loren & Stephen Boyd

**RITZ THEATRE**  
MOVIES ON WIDE SCREEN  
Thurs., Fri., Sat. Sept. 24-26  
Saturday Continuous from 1 p.m.  
Admission:  
Adults .50 — Children .20  
**'Move Over Darling'**  
Doris Day & James Garner

Sun., Mon., Tues. Sept. 27-29  
Sunday Continuous from 1 p.m.  
**'The Bridges at Toko-Ri'**

William Holden & Grace Kelly  
—PLUS—  
**'Off Limits'**  
Bob Hope & Marilyn Maxwell

Wed., Thurs. Sept. 30-Oct. 1  
No Recommended for Children  
**'Of Love and Desire'**  
Merle Oberon & Steve Cochran

**ROLLA DRIVE IN**  
SHOWS START AT DUSK  
Thurs., Fri., Sat. Sept. 24-26

**'Hud'**  
Paul Newman & Patricia Neal  
—PLUS—  
**'Night Creatures'**  
Peter Cushing & Yvonne Romain  
Sun., Mon. Sept. 27-28  
**'Cimarron'**  
Glenn Ford & Maria Schell

**CLOSED**  
Tues., Wed., Thurs.  
Sept. 29 - Oct. 1



## NSF Sponsored Teaching Institutes Begin at UMR

Classes at two In-Service Institutes for high school teachers of mathematics and science will begin at MSM on Monday, September 21. The Institutes are sponsored by the National Science Foundation.

The Institutes are in Modern Computational Methods, directed by Prof. Ralph Lee, director of the computer science center, and Earth Sciences and Mathematics, directed by Dr. H. Q. Fuller, chairman of the Department of Physics.

Participants are being selected from the faculties of high schools in the area surrounding Rolla. The grant provides for an allowance for travel and books, and no tuition or fees will be charged N.S.F. participants. However, persons who aren't eligible for N.S.F. support may be permitted to enroll as regular students if they have the necessary prerequisites, Institute directors said.

The first meeting of all classes is scheduled for 7 p.m. Monday. Regular meeting dates will be set at the first class meeting. They may be set on different nights making it possible for some students to take more than one course.

Twenty high school teachers of mathematics and physical science will participate in the computation methods course, which is entitled "Introduction to the Theory and Application of Modern Computational Methods in Mathematics."

Participants will earn four semester hours of graduate credit

which may be applied to the master of science for teachers degree or other M.S. degrees. Prof. Lee said that the institute is designed to train high school teachers in the theory and techniques of modern computational mathematics, which could be included in present mathematics and science courses, and to provide training in digital computing techniques, which might be introduced into the high school curricula. Two IBM 1620 digital computer systems and other data processing equipment will be available to the participants, and

may also be used by the students of the participants, Prof. Lee said.

Thirty-five junior and senior high school teachers will attend the Institute in Earth Sciences and mathematics under N.S.F. sponsorship, Dr. H. Q. Fuller said. Two courses, "Earth Science" and "Theory of Equations," each evaluated at four semester hours credit, will be offered. Credit earned in the mathematics course may be applied toward the degree of master of science for teachers.

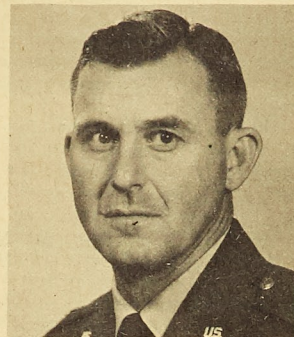
The courses, which are designed to carry out the objective of improving the preparation of teachers in the general sciences and mathematics, are offered as the result of a survey of junior and senior high school teachers showing that these were the courses most desired.

## Large Showing of EE's Hear Major Allen Speak

Major LeDewey E. Allen of the Atlas Space Division presented a very interesting talk and film on aero-space activities at Cape Kennedy at the first meeting of the Institute of Electrical and Electronic Engineers held September 16, in the Student Union Ballroom.

During World War II, Major Allen served in England and France. In the late fifties he was stationed in French Morocco, and later at Eniwetok Island and at Christmas Island for the nuclear tests. Among his awards and decorations are the European-African-Middle Eastern Campaign Medal with one Battle Star, the American Defense Service Medal, the American Campaign Medal, and the World War II Victory Medal. The major is now assigned to the 6555th Aerospace Test Wing at the Air Force Missile Test Center, Patrick Air Force Base, Florida, as Chief of the Atlas Space Division.

Also at this meeting, which was attended by over 400 people, applications for 84 new members were received. The IEEE would



MAJOR LEDEWEY E. ALLEN

urge all Electrical Engineering students to join and attend the interesting and informative meetings of its professional society.

Membership applications are available in the E. E. office.

## Theta Xi Agrees to Merger With Kappa Sigma Kappa at Convention

From August 30 to September 2 the Theta Xi Fraternity held its Centennial Convention in Albany, New York, at the Shine Ten-Eyck Hotel. The main order of business was the settlement of the merger agreement between Kappa Sigma Kappa and Theta Xi which added twenty-one chapters to our fraternity on August 20, 1962. Presently, Theta Xi has a total of seventy chapters.

The first address was given by Nelson Rockefeller, Governor of the State of New York. Speeches were given by such Theta Xi's as Dr. Allan B. Dumont, the father

of television.

Bus trips were taken to the General Electric Research Laboratory and to the Rensselaer Polytechnic Institute where Theta Xi was founded. All the delegates assembled at the Theta Xi Memorial Seat on campus to watch the re-enactment of the founding. The Alpha Psi chapter's president, Dave Henard, was an official delegate to the convention.

On September 3 the second leadership school was held by the fraternity where solutions of problems in all fraternities were offered by delegates from all chapters.

### LONG INSURANCE AGENCY

A. E. Long, M. S. M., Ex '22  
810 Pine St. ROLLA, MO. Phone 364-1414  
"Service Is Our Business"

### RUDY'S PACKAGE STORE

LIQUOR — BEER — WINE  
DRAFT BEER  
703 Pine Street

### RUDY'S BAR

BUDWEISER DRAFT  
BIG HAMBURGERS

## Boosted Teaching Staff

(Continued From Page 3)

half as Assistant Prof. of M. E. The Chemistry Dept. also has two new-comers: Dr. Oliver K. Manuel, Assistant Professor; and Dr. Raymond L. Venable, Assistant Professor.

Glenn R. Taylor, Associate Professor; and Jimmy D. Hahs, Instructor are going to help out in the Civil Engineering Dept.

The Computer Science Center has acquired Dr. Billy E. Gillett as an Assistant Professor.

Our Electrical Engineering Dept. has also become part of the expansion with the acquisition of Dr. Ralph S. Carson, Associate Professor; Frederick W. Lynch, Instructor; Raymond F. Pohl, Instructor; and Giles C. Sinkewiz, Instructor.

The Extension Center has one new member: John E. Senne, Associate Professor of Mechanical Engineering.

Geological Engineering has received Dr. Thomas R. Beveridge as a professor.

Our various research groups have also been granted new personnel: Industrial Research, Brigadier General David W. Heiman, Associate Director; Materials Research; and Dr. Gordon Lewis, Associate Professor of Ceramic Engineering and Materials Research. The Rock Mechanics Group has received two Assistant Professors: Charles J. Haas and Dr. Ronald R. Rollins.

The Mechanical Engineering Department has also been considerably strengthened by the addition of: Dr. Mehdi N. Bahadori, Assistant Professor; Dr. Robert B. Oetting, Associate Professor; and Dr. John E. Francis, Assistant Professor.

The Mechanics group has acquired four new instructors: Lee W. Burford, Joseph V. Cusamano, Edward M. Raney, and David M. Schaeffer.

The Military Department has been granted some very distinguished officers: David L. Gundling (Col.), Professor; Edward C.

Fike (Maj.), Associate Professor; J. L. Park (Lt. Col.), Associate Professor.

In Mining Engineering we have two new members: Dr. Robert E. Carlile, Assistant Professor; and Christopher Haycocks, Instructor.

The Physical Education Department also has two recent additions: Bud J. Glazier as an Instructor, and Billy A. Key as an Associate Professor.

In Physics, there are two new Assistant Professors: Dr. John T. Park and Dr. James P. Wesley.

The school has also gained the services of a new Assistant Registrar: George C. Cowgill.

Last but definitely not least is our Director of Student Personnel: Arthur S. Burton.

## Where Are You Going?

"Where Are You Going?" is the title of a Christian Science lecture here on Friday, September 25 at 7:00 P.M. in First Church of Christ Scientist, 612 State Street, Rolla, Mo.

Elbert R. Slaughter will be the speaker. He says that everyone is on a mental journey somewhere, and his lecture is described as an exploration of the journey to "spiritual reality" which must take place within the consciousness of every individual. It's being sponsored by the campus Christian Science Organization.

Mr. Slaughter is currently on a tour of the continent as a member of the Board of Lectureship of The First Church of Christ, Scientist, in Boston, Massachusetts. He is a native of Texas, and attended Southern Methodist University. Once a lumberman and vice president of a savings and loan association, he resigned from business in 1945 to devote full time to the Christian Science healing practice. He resides in Dallas.

### M. S. M. Class Rings

BY L. G. BALFOUR CO.  
Both Old and New Style

BULOVA ACCUTRON



### OMEGA WATCHES

DIAMONDS & ENGRAVING  
WATCH REPAIRING

## Christopher Jewelers

805 Pine Street

## IT'S FUN TO ROLLER SKATE!



Open Every Night  
Except Monday  
at 7:30

\*\*\*

Sunday Matinee  
at 1:30

\*\*\*

ROLLA ROLLER  
RINK

City Hwy. 66 West

## Acacia Receives Trophy for Tops In Scholarship

Acacia climaxed a successful '63-'64 year by placing first on campus in scholarship for the spring semester.

As a recognition of this accomplishment, the MSM chapter was awarded the Walter E. Dahl award for scholarship improvement by the Acacia National Fraternity at the biannual conclave in Memphis this summer.

Romance was prevalent this summer as brother Herb Spindler married Carol Jean Lau and brother Chuck Miller became pinned to Betsy Talley.

### ROCKET ENGINE

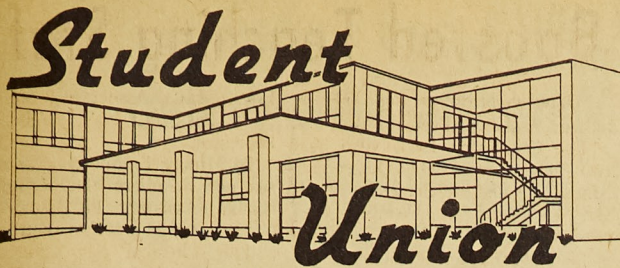
(Continued From Page 1)

be used for several graduate research projects in the fields of rocket design, gas dynamics and propulsion.

The basic design of this rocket engine was performed by Rohm and Haas Company at Red Stone Arsenal, Ala. Final engineering, modifications and construction was done by Prof. Murray and Prof. Kilpatrick. Through the cooperation of the mechanical engineering staff, the cost to the taxpayers for this device was held to less than \$400. Similar commercially manufactured equipment would have cost the school about \$3,800.

GOOD FOR ONE FREE DRINK  
AT THE TATER PATCH  
—One per Customer—  
Have I. D. Card with you.





## Interview Panel to Be Set up by Student Union

The Student Union is sponsoring an interview panel at 7:30 p.m., September 29, designed to acquaint the student with the aspects of interviewing for a job. It will be held in the Student Union ballroom with chancellor Baker attending. The gentlemen on the panel are as follows: Mr. Paul T. Dowling, vice-president and general sales manager of Nooter Corporation, St. Louis; Mr. Warren Hargraves, personnel manager

of Fruin Colon Contracting Co., St. Louis; Mr. M. D. MacLean, manager of college recruiting and relations for Caterpillar Tractor Co., Peoria; and Mr. M. B. Tracy, manager of engineering and recruiting service in the midwestern region of General Electric Co.

Two topics which will be discussed by the panel will be "Long Range of Selecting an Employer" and "What Employers are Seeking in Employees." It should be very interesting and informative especially for juniors and seniors.

## S. U. Committee Applications Due

The Student Union Board of Directors will be accepting applications for membership on the various committees of the Student Union organization. Five committees (publicity, literary and music, special events, social and recreation) perform the functions necessary for the operation of an efficient organization. Applications can be obtained at the Student Union Candy Counter, and can be returned to the attendant when completed.

### NOTICE!

The Traffic Safety Office has announced the following schedule for Parking Lot No. 7 (Drill Field). This lot will be utilized for ROTC drill Monday through Friday during the morning hours from 8:30 to 11:30 A. M. commencing the 28th of September through the 17th of November. Free parking is available after 11:30 A. M.. Read the sign at each entrance.

## Sigma Xi Installs New Officers and Members

New officers, full members and associate members were installed in MSM's chapter of the Society of Sigma Xi in ceremonies held during May 1964. The purpose of the National Society is the encouragement of original investigation in pure and applied science. This research fraternity has chapters throughout the nation.

A special feature of the Chapter at MSM has been the presentation of guest lecturers to the membership throughout the school year. During the 1963-64 school year, seven lecturers were presented, including Dr. J. Hoover Mackin of the University of Texas. Dr. Merl Baker of MSM, Dr. Joseph Senne of MSM, Mr. Richard Marshall of the University of Missouri at Columbia, Dr. Cedric L. Chernick of the Argonne National Laboratory, Dr. Robert Gerson of MSM, and Dr. Franklin Zabriskie of Wesleyan University.

Officers elected for the coming

year are Dr. H. P. Leighly of MSM, president; Dr. S. G. Grigoropoulos of MSM, vice-president; Mr. Howard E. Powell of the U. S. Bureau of Mines, secretary; and Dr. Robert Gerson of MSM, treasurer.

## Dr. Senne Acts as Consultant for Navy

Dr. Joe H. Senne, professor of civil engineering at UMR, was a consultant in optics and satellite tracking in the Radio Physics division of the U. S. Navy Electronics Laboratory in San Diego, Calif., during the past summer.

Dr. Senne, who returned to the Rolla faculty in 1963 after nine years on the Iowa State University faculty, holds a B. S. degree in civil engineering from Washington University, an M. S. degree from UMR, and a Ph.D. from Iowa State University. In addition to teaching civil engineering courses Dr. Senne teaches a course in engineering astronomy and is active in the satellite-tracking field. Dr. Senne had previously been on the civil engineering staff from 1948 to 1954.

## Officer Team to Interview Miners For Navy Program

A Navy Officer Information Team will be on campus from 9:00 a.m. to 4:00 p.m., at the Student Union, September 29 through October 1, 1964.

The team will interview persons interested in the opportunities offered through Navy Officer Programs.

Applications are being sought from juniors and seniors for officer training after graduation in the following fields: Aviation (pilot and non-pilot), Air Intelligence, General Line, Supply Corps, Civil Engineer Corps and other specialized and professional fields.

Applications are also desired for WAVE officer training and for the Navy Nurse Corps. In addition to meeting technical requirements the training given emphasizes leadership, management and administrative techniques.

## Frosh Receive Tau Bet Coupon

As a means of acquainting freshmen and the businessmen of Rolla, Tau Beta Pi annually sponsors a freshmen friends project. Each incoming freshman receives a book of coupons entitling him to a discount of free gift from the participating business firms. Merchants participating this year are: Scott's Book Store,

Campus Book Store, Rolla Drugs, Randy's Shoe Store, Hillcrest Variety Store, Hillcrest Drugs, Hillcrest Big Star Super Market, Colonial Lanes, Rolla State Bank, First State Bank, Phelps County Bank, O'Mearas, St. Louis News Agency, Rolla Roller Rink, Russells Town and College Shop, Busy Bee Laundry and Dry Cleaners, Modern Dry Cleaners, Vern's, Williams Shoe Store, Ben Franklin Store, and May Printing Company.

Holiday Inn regrets to announce that, resulting from a misunderstanding as to the nature and scope of the program, they will be unable to honor their coupon for a free night's lodging.

Missouri Beta chapter of Tau Beta Pi, national engineering honor fraternity whose purpose it is to bestow recognition upon outstanding members of the Engineering profession as well as deserving college students, and to uphold the standards and ethics of the profession, takes this opportunity to thank those participating merchants, and to extend a cordial and sincere welcome to the enrolling class of 1968.

### INCREASED FEES

(Continued From Page 1)

first semester and \$18.00 for the second semester. Of this \$5.00, \$3.50 will be used in the athletic program to provide better facilities, to expand both intercollegiate and intramural sports, and to help the recently started Athletic Grant In-Aid program! \$.50 will go to the General Lectures program; \$.25 will go to the *Miner*; \$.50 will be used by the St. Pat's Board; and \$.25 will go to the KMSM Radio Station.

## it staples

term papers and class notes, photographs, news items, themes, reports.



## it tacks

notes to bulletin board, pennants to wall, shelf paper, drawer linings.



## it fastens

party costumes, prom decorations, school projects, posters, stage sets.



It's the "Tot 50"

## Swingline Stapler

UNCONDITIONALLY GUARANTEED



98¢

(Including 1000 staples) Larger size CUB Desk Stapler only \$1.49

No bigger than a pack of gum. Refills available everywhere. Made in U.S.A. At any stationery, variety, book store!

Swingline INC.  
LONG ISLAND CITY 1, NEW YORK.

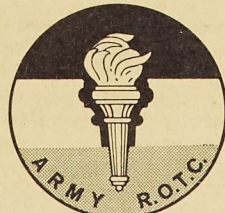
## LITTLE MAN ON CAMPUS



SCHLITZ — OLD MILWAUKEE  
SCHLITZ MALT LIQUOR  
DRAFT BEER

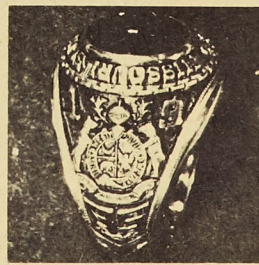
Broyles Distributing Co.  
ROLLA, MO.

ARE YOU GOOD  
ENOUGH TO BE  
AN ARMY OFFICER?  
IF YOU ARE, DON'T  
SETTLE FOR LESS!



JOIN  
THE  
ARMY  
R.O.T.C.

ORDER  
YOUR  
RING  
NOW!



JOHN ROBERTS  
SCHOOL  
RINGS

The Most Respected  
Symbol of Your  
Educational  
Achievement

\*\*\*

CAMPUS  
BOOK STORE



## Chancellor Tells of Engineering Advances

(Continued From Page 2)  
of them. Each of you, whatever your major field of study, will be competing on an equal basis for major leadership posts at Rolla. This is a unique advantage of a specialized curriculum such as ours because in a broader university, students pursuing less demanding fields than engineering and science often have a decided advantage in gaining leading campus posts.

You have chosen wisely the field of engineering and science. This is an explosive field affording the graduates an unlimited future. Many of you will take jobs after four years, but others will continue on for a master's or doctorate. The higher the level, the greater the professional competence, and a proportionate higher rate of pay. By graduation time the four-year graduate will find that his beginning pay and responsibility, is at the top of the pyramid of other professions of equal training time. The master-level engineer should find himself at or near the top, and the doctoral graduate will be ahead of all except the M.D., but the rate of growth now favors the engineer.

The next 25 years will be golden years for the engineer and you will be at your prime then. I want to share with you words of wisdom from Dr. Neil W. Chamberlain, Professor of Economics at Yale University, appearing in the September *Atlantic* under the title "Retooling the Mind."

"The most spectacular developments have occurred in engineering and the physical sciences, but these are only indicative of what has been going on in all fields. Gordon Brown of the M.I.T. School of Engineering has pointed out that an engineer taking his graduate degree in the years prior to 1950 would have had at best only a slight brush with nuclear physics and engineering, feedback control and inertial guidance, information theory, computer technology and its applications, solid-state physics and electronics, plasma physics, and half a dozen other subject areas which have joined older subject matters or displaced them in importance. Yet a high proportion of our practicing engineers date from that pre-1950 period.

"A. C. Monteith, an official of Westinghouse Corporation, has picturesquely described the consequence of such rapid growth of new knowledge by saying that a graduate engineer now has a half-life of about ten years. That is, about half of what he has learned will be obsolete in a decade. Monteith adds that half of what that same engineer will need to know ten years from now is not available to him today. Modify the proportions however you will, depending on the field, and the general conclusion remains the same.

"The most immediate impact is felt in the professions. The older a man grows the less professionally adequate he becomes. For a period, perhaps an extended period, he may compensate for this obsolescence of his professional capital by the experience he acquires on his job. As a specialized researcher in a laboratory, he may come to know more and more about his subject. As an administrator, he may acquire skills in dealing with other professionals. As a teacher, he may develop competence in imparting knowledge to

students. But the odds are yearly becoming greater that at some point in his career, while he is still in his prime, the subject he has researched, or the functions which he administers, or the body of knowledge he has to teach will have changed so greatly that his lack of current professional competence will stand revealed.

"The new knowledge will be in the possession of a younger man who will have just come through a period of instruction that had winnowed out the older, less useful knowledge and substituted for it the new, more relevant knowledge. And then that younger man, once on a job, will himself begin the process of professional deterioration."

Two different, but equally stimulating articles appeared in St. Louis newspapers recently, one entitled "U.S. Holds Lead but

## McDonnell Representative Speaks on Space

Mr. Walter Burke of McDonnell Aircraft Company will give a talk on the U. S. space program at the first meeting of Gamma Delta, International Association of Lutheran College Students.

Mr. Burke, vice-president of McDonnell Aircraft and general manager of the company's space program, will give his speech Sunday, September 27, 7:00 p.m. in the basement of Immanuel Lutheran Church, 11th and Spring.

A special invitation is extended to all students and faculty members to attend the informative meeting. Immediately following interested guests will be given an opportunity to ask questions to learn more about Gamma Delta.

Russia Gaining in Scientific Fields," and other "Value of College Now in Question."

(Continued Next Issue)

## UMR Coed Receives Minerals Scholarship

Nancy Jean Hoffman of Maumee, Ohio has been awarded a \$1,000 senior-year scholarship to continue her studies in metallurgical engineering at Missouri School of Mines, Rolla, Mo.

Miss Hoffman's grade average for three years is 3.38 of a possible 4.00. She is the first female recipient of a Louis Ware Scholarship in the five years the program has been in effect. She is a member of a number of honorary societies and also plays in the school's concert and ROTC bands.

The scholarship, which makes Miss Hoffman eligible to compete for a \$9,000 fellowship, is sponsored by International Minerals & Chemical Corporation, the world's largest independent miner and processor of fertilizers and fertilizer materials.

The IMC awards are made annually to 16 seniors majoring in

agricultural or mineral sciences. Students are chosen by special faculty committees at 16 leading colleges in the United States and Canada.

Winners compete in their senior years for \$3,000-a-year, three-year fellowships, one in agriculture and one in mining. Called the Louis Ware Scholarship program, it honors IMC's board chairman who was president of the company for 20 years.

### NEW DEPARTMENT CHAIRMEN

(Continued From Page 1)  
research assistant in the department of mining and metallurgical engineering.

Dr. Weart is a member of the American Society for Metals; the American Institute of Mining, Metallurgical and Petroleum Engineers, and is on the publications committee of the Society.



## What every graduating engineer (and his professors) should know about AC-MILWAUKEE

Sure, everybody's got a career program. But we think you'll find ours a little more stimulating, more rewarding, and at least intriguing enough to spend the next minute or so reading about it.

We call it our "Career Acceleration Program." In it, you'll work on such advanced projects as an avionics system for supersonic aircraft, a guidance/navigation system for the Apollo Command Module and LEM, and a new guidance system for the Titan III space launch vehicle.

Seven hours a day you'll work on a specific project. You'll spend one hour each day in formal class work. These classes include courses in Inertial Instruments, Inertial Guidance, Digital Computers, Advanced Transistors, Advanced Servomechanisms, Integrated Circuits, Space Mechanics, plus other mathematics and undergraduate disciplines as required.

We also have a Tuition Refund Plan that pays all of your tuition costs upon satisfactorily completing college-level courses of study undertaken voluntarily. Our "in-plant" evening educational program offers additional opportunities for technical improvement.

If you are completing your BS or MS degree in EE, ME, Math or

Physics, we invite you to inquire about the opportunities at any of our three locations. AC in MILWAUKEE—our main research, development and manufacturing facility. AC in BOSTON—our Research and Development Laboratory specializing in advanced inertial components; spacecraft and avionics guidance/navigation systems. AC in LOS ANGELES—our Research and Development Laboratory specializing in advanced airborne computers; ballistic missile and space booster guidance/navigation systems. For further information, see your college placement office regarding a General Motors/AC on-campus interview, or write directly to Mr. G. F. Raasch, Director of Scientific and Professional Employment, Dept. #5753, General Motors Corporation, Milwaukee, Wisconsin 53201. PhDs, please note: Positions are available in all three AC locations for PhDs, depending on concentration of study and area of interest. You are invited to contact Mr. Raasch for additional information.



**AC SPARK PLUG**  
The Electronics Division  
of General Motors  
An Equal Opportunity Employer

CAMPUS INTERVIEWS — Wednesday, October, 7, 1964 — MR. DONALD GOODE



# MINER SPORTS

FRIDAY, SEPTEMBER 25, 1964

THE MISSOURI MINER

PAGE 7

## Gasparovic Scores Only TD as Bears Topple Miner Defense

By Tom L. Joslin

The Miner football team dropped its opener to the Bears of Washington University at Francis Field in St. Louis by the score of 27-7. The Bruins allowed only one touchdown by the MSM team as it displayed excellent speed and short passing.

and made a spectacular 62 yard sprint for Rolla's only touchdown. MSM guard Bob Leone converted for the extra point to bring the score to 7-0.

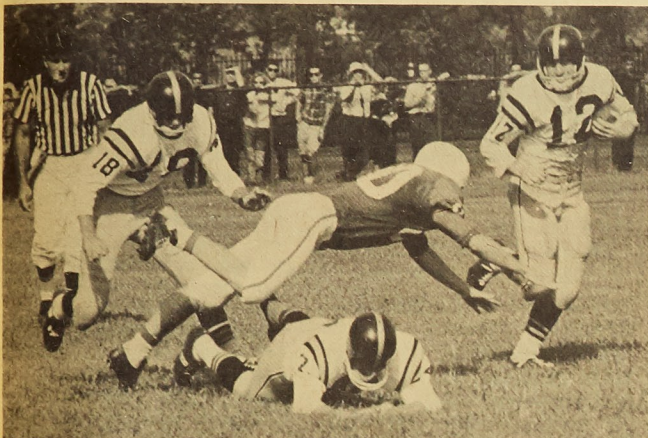
The Miner lead was shortlived, however, as Bear quarterback Claude Frazier led his team down the field with a series of short

in the backfield (178-171 lb.), the Miners still failed to hold the WU move throughout most of the game.

Played on a hot 84-degree day before a crowd of 7500, the game proved to be a test of stamina for the Miner squad. Although about half of this year's MSM team are freshmen, they showed considerable talent, along with the mistakes which came from their inexperience. Potential was especially well displayed in quarterbacks Ron Lewis and Don Ussleman, halfback Ray Kucenas and end Bob Smith, a sophomore.

The team statistics for the game pretty well summarize the scoring of the game. Miners had 4 first downs to WU's 22. MSM gained 138 yards in rushing while the Bears had a total of 241. Of the 15 passes attempted by Rolla, 4 were completed and 3 were intercepted by the Bears. In contrast WU attempted 21 passes, completed 15, and only 2 were intercepted by MSM. The statistics point out very well Coach Dewey Allgood's preference for position football and the Bear's Coach Puddington's preference for a wide open, speculating variety of ball.

The Miner team will now concentrate its efforts on the defeat of the Kansas (Pittsburg) State College Gorillas at Pittsburg tomorrow night at 8:00 p.m.

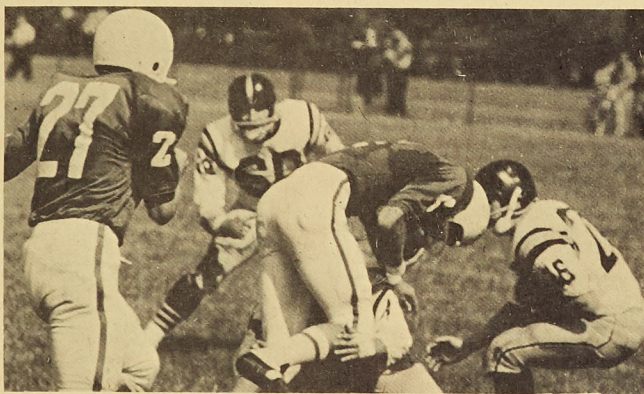


George Gasparovic (No. 12) threatened by flying Bear.

The single Miner TD came after less than five minutes in the opening quarter of the game. With the Miners holding the ball, a WU linebacker, Jerry Maher, attempted to rush the Miner quarterback, Bob Wheeler, who handed off to halfback George Gasparovic. Gasparovic took advantage of the space left in the Bear line

passes, scoring himself from the one yard line. A two-point pass to his teammate, Skip Wells, put the score at 8-7.

Bear halfback Bill Goodman displayed a 15 yard scoring run late in the second period. In the third, halfback Bob Proost gave the Bruins their third TD from



Miners battle it out with Bears in their 42nd encounter.

the Miner 4 yard line. Fullback Jerry Maher completed the Bears' scoring in the fourth quarter with a one yard run.

Holding a six pound advantage in the line (206-200 lb.) and a seven-pound per man advantage

Pittsburg has usually always had a good team in past years. Last year the Gorillas defeated MSM by a score of 31-7 and the team has been in the top ten small college rankings more than once in the past six years.

## Intramural Program Starts Fall Schedule

The 1964-65 UMR Intramural Program started off full steam ahead Tuesday with the opening of the flag football, table tennis, and tennis singles schedules. The going will be rough once again, as the leagues now contain two additional organizations, Alpha Epsilon Pi and the Campus Eating Club.

Two hundred and sixty intramural points will be awarded to the champion in flag football. Sigma Nu Fraternity picked up the crown last season, with Tri-angel coming in second, and Kappa Sigma third.

The Prospectors Club wrapped up tennis singles with the team of Montrey-Gordon taking the team championship. This combined with the singles runner-up position going to Montrey gave Prospectors the title. Hansen of Tau Kappa Epsilon was the singles champion.

Table tennis competition ended in a two-way tie for first between the International Fellowship and the Prospectors Club. Both organizations received 76.5 intramural points, and the Engineers Club bagged 72 points for third place. Singles champion was Winshone of the International Fellowship, and the team of Schroer-Morhans of the Prospectors took the doubles championship.

## Intercollegiate Athletics At UMR Date Back to 1893

By James Strzelec

MSM is a member of the National Collegiate Athletic Association and the Missouri Intercollegiate Athletic Association. Non-conference and conference competition in sports include football, basketball, track, tennis, golf, swimming, cross country and rifle marksmanship.

MSM has been competing in Intercollegiate Athletics since 1893 when it played its first football game with Drury College of Springfield. Some three years later on November 5, 1895, the Missouri School of Mines started one of the longest rivalries in inter-school competition in the history of the state of Missouri, when they played Washington University.

### First Full Schedule: 1900

In the fall of 1900 the first full schedule of football games was played. Baseball and track also became competitive intercollegiate sports during this period. Intercollegiate competition in basketball started in 1908. Since that time many more sports were added and an intramural program was

set up. Today MSM is conducting one of the finest Intramural Programs in the country. More than 1200 men compete in some sixteen sports.

### MSM 540, Opponents 0

MSM has had its good years and bad years in sports. However, not too many people know the Miners once won national acclaim in football. The year was 1914 and coach Thomas Kelly who came to Rolla in 1909 fielded the greatest powerhouse MSM has ever known. The record of the 1914 team was:

Rolla 19—Washington U. 0  
Rolla 40—Arkansas U. 0  
Rolla 87—Kansas School of Mines 0  
Rolla 104—Pittsburg Normal 0  
Rolla 150—Kirkville  
Osteopaths 0  
Rolla 9—Missouri U. 0  
Rolla 63—St. Louis U. 0

The Miners finished the 1914 season with a 7-0 record. They scored 540 points while holding

(Continued on Page 9)

## Sports Calendar

### FOOTBALL

September 26 ..... Kansas State College, at Pittsburg, Kan.  
October 3 ..... University of Tennessee (Martin Branch) at Rolla

### CROSS COUNTRY

September 25 ..... Washington University, at Rolla  
September 30 ..... Kansas State College, at Rolla  
October 3 ..... Southwest Missouri State at Rolla

### INTRAMURALS

September ..... Flag Football, Table Tennis, and Tennis Doubles

## Shop KENMARKS

SCHOOL		VALUE
SPORTS		
GYM	SUPPLIES	QUALITY
HOBBY		

## Kenmark Sporting Goods

904 Pine

Rolla, Mo.



Distributed by

MUELLER DISTRIBUTING CO.

217 W. 6th St.

Rolla, Mo.



**VOLKSWAGEN**  
Sales and Service

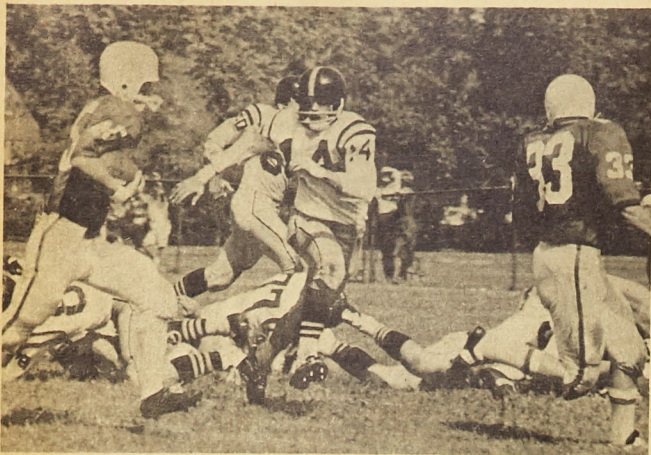
**BILL SOWERS MOTORS**

Phone 364-5178

Hwy. 66 E. in Northwy



## COLLISION COURSE



Miner Tom Miller closes in on ball-carrying Bruin.

## Cross Country Squad To Meet Kansas State

The UMR campus will provide the setting for the first cross country encounter for the Miners this year. The Washington University Bears will attempt to out-run Coach Kenneth Spencer's group at 4:15 p.m. tomorrow, but the opposition from UMR may have a surprise in store for the visitors.

Coach Spencer can expect fine results from lettermen Ed Tharp, Emil Damotte, and Ted Moore, as well as from Bob Carter and Charles Dakin, also veterans on the cross country squad. The four freshmen which complement the team have been shaping-up with each practice session, and are all prospects for varsity letters.

Kansas State College at Pittsburg will oppose the Miners in a contest next Wednesday, September 30. The two clubs will run at UMR at 4:15 p.m. on that day.

### INTERCOLLEGIATE ATHLETICS

(Continued From Page 7)  
their opponents to ZERO points. What a defense!

In 1934 MSM joined the MIAA as it is known today. The first conference competition for the School of Mines in this group took place in the fall of 1935. Since joining the conference the School of Mines has won the MIAA championship four times: 1942, 1947, 1949 and 1950. In 1956 with a 6-3-0 record MSM shared the crown with Central Missouri State College.

## Registrar Asks Lost Students For Addresses

The following students have not yet reported their local addresses to the Registrar's Office. These students are requested to notify the Registrar as soon as possible.

Borton, James Albert—08504  
Chien, Ing-Shing—09861  
Fancher, Gary Lane—07708  
Fingado, Noel S.—08730  
Giraud, Charles M.—01126  
Miller, E. Fred, Jr.—10348  
O'Connell, James J.—02602  
Pott, Jan Douglas—09231  
Purohit, Radha K.—10308  
Raja, Tahir, M. F.—10085  
Schepp, Frederick W.—09327  
Simms, Bernard Alcus—06260  
Thomas, James Erwin—09441  
Uthe, Ralph John—09466  
Walker, Lonnie Rex—05475

also. Saturday, October 3, Southwest Missouri State at Springfield will visit Rolla for an 11:30 a.m. match.

## SIDELINES

by BRUCE T. GREGG



Last Tuesday commencement of competition in the first three intramural sports of this season was started in Flag Football, Table Tennis, and Tennis Singles. Intramural Basketball will be scheduled to start sometime in November.

In the past few years the first week or so of Flag Football has brought about numerous injuries. These were caused primarily by carelessness and unsportsmanlike conduct. If we wish to keep this intramural sport in the schedule in years to come, players must abide by the rules set up by the Athletic Dept. Each year the Athletic Dept. has to go out of its way in order to keep this sport on the roster. Let's all play safe and reduce MAJOR CASUALTIES.

For the intramural "Pig Skin" fans the teams to be watching this season are Sigma Nu and Triangle. These teams came in first and second respectively last year. Lambda Chi Alpha and Phi Kappa Theta are also leading contenders based on past performances.

Quite a few of Missouri's MINERS were present last weekend at the annual Washington University Football Game. Although our team met defeat it was apparent that their potential has increased. It shouldn't be long before our new athletic program pays off in victories.

## FULLER JEWELRY

THE FINEST IN DIAMONDS

AND

JEWELRY

— MSM CLASS RINGS —

715 Pine

Rolla, Mo.

## Diehl Montgomery, Inc.

625 WEST 7th STREET

ROLLA, MO.

Your Ford, Mercury, Continental Dealer

Special Prices to All Students

### GRADUATING STUDENTS

We will sell you any Ford product at no money down.

We will pay sales tax and license. You will have \$25.00 per month payments until you are on the job for one month.

## MEET THE MINERS

(Editor's Note: "Meet the Miners" will be an attempt to familiarize the students with the various athletes participating in the University of Missouri at Rolla Athletic Program. It is thought that these students who

It is undoubtedly true that without the athletic director and the various coaches, the Varsity Sports Program could not function. Therefore, an introduction of the members of the UMR Athletic Department is most appropriate at this time.



Coaches Van Nostrand, Allgood, and Glazier.

Professor Gale Bullman served the Missouri School of Mines as head football coach from 1937, through the 1963 season. Now the Athletic Director of UMR, Professor Bullman has also served as the head track coach, and holds that position on the present staff. He was a nationally known football player at West Virginia Wesleyan where he graduated in 1925. Professor Bullman also holds

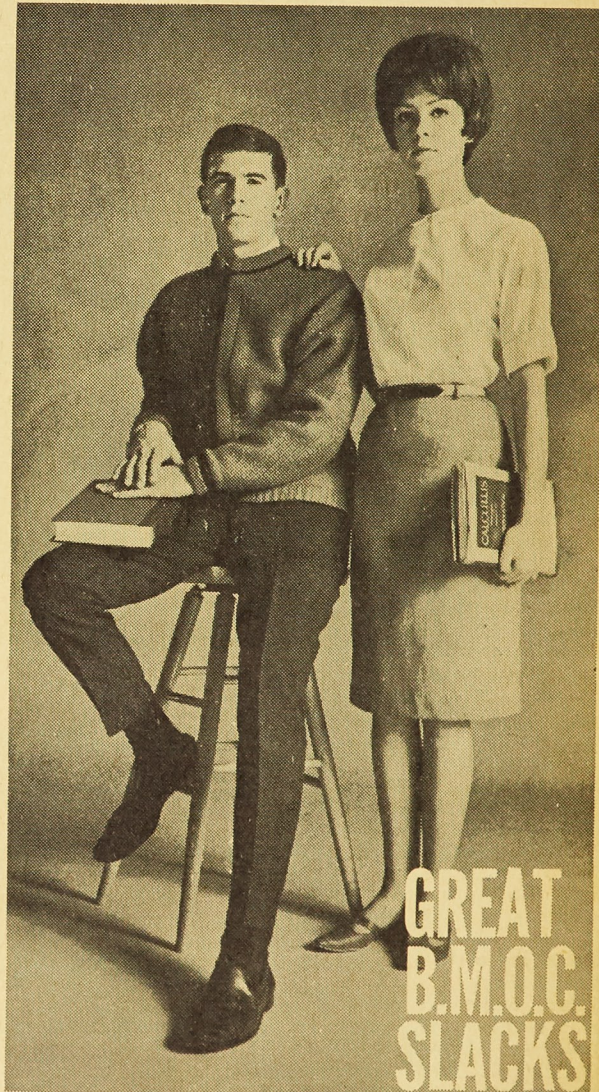
a law degree from Washington University and is a member of the Missouri Bar Association. After coaching for ten years at Washington University, the veteran mentor came to the MSM campus.

Among the changes in the athletic program in 1964, is the placing of Dewey Allgood in charge of the varsity football squad. Dewey had previously been the head basketball coach and go coach as well as being line coach for the football team. He came to the Miners in the fall of 1958 after coaching at North West Missouri State College at Maryville.

A completely new face on the campus this fall will be that of Billy Allen Key, the head basketball coach selected by the school last winter. Key, former basketball and baseball coach of Hannibal Teachers College in St. Louis, assumes the title of Associate Professor of Physical Education, instructing classes in P.E.

Assisting Allgood with the football squad is Bud J. Glazier, who was the head football coach at Rolla High School for the previous two years. He also holds the rank of instructor in the physical education department at UMR. Last year, Glazier led his RHS squad to their most successful season since they joined the General Missouri Conference.

Burr Van Nostrand is the Head Swimming Coach at UMR, and he also assists in football. Burr attended Ohio University and Southwest Missouri State where he played football and baseball. Coach Van Nostrand holds a Masters Degree from the University of Missouri at Columbia.



Before any Organization . . . on a Date . . . in Class . . . your appearance speaks with crisp authority in these trim-tailored slacks. Many Autumn shades to select from in fabrics of 65% "DACRON" polyester and 35% combed cotton . . . the proven performance blend. \*DuPont's Reg. T.M. From 5.95



**CAPERS** Casuals of "DACRON®" and Cotton

SMITH BROTHERS MANUFACTURING COMPANY □ CARTHAGE, MO.