



18 Sep 1964

## The Missouri Miner, September 18, 1964

Follow this and additional works at: [https://scholarsmine.mst.edu/missouri\\_miner](https://scholarsmine.mst.edu/missouri_miner)

These newspapers reflect the attitudes, perspectives, and beliefs of different times. Neither the library nor the university endorses the views expressed in these collections, some of which contain images and language which may be offensive to some readers.

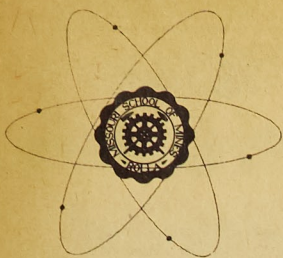
---

### Recommended Citation

"The Missouri Miner, September 18, 1964" (1964). *The Missouri Miner Newspaper*. 1777.  
[https://scholarsmine.mst.edu/missouri\\_miner/1777](https://scholarsmine.mst.edu/missouri_miner/1777)

This Newspaper is brought to you for free and open access by Scholars' Mine. It has been accepted for inclusion in The Missouri Miner Newspaper by an authorized administrator of Scholars' Mine. This work is protected by U. S. Copyright Law. Unauthorized use including reproduction for redistribution requires the permission of the copyright holder. For more information, please contact [scholarsmine@mst.edu](mailto:scholarsmine@mst.edu).





# The Missouri MINER

UNIVERSITY OF MISSOURI AT ROLLA

See  
Campaign  
Comments  
Page 2

VOLUME 51

ROLLA, MO., FRIDAY, SEPTEMBER 18, 1964

NUMBER 1

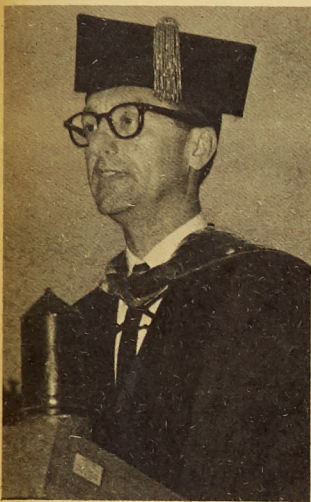
## Dr. Mueller Addresses Spring Graduation Class

Commencement exercises were held for last year's graduates on Sunday afternoon May 31, 1964. Composed of almost 600 students, this was the last class to receive degrees from the Missouri School of Mines as such. The afternoon commencement was preceded by baccalaureate exercises at 10:00 A. M. The Rev W. Clinton Henderson, Director of Youth Work and Campus Christian Life of the Missouri Association of

Administration, key speaker of the afternoon.

A native of St. Louis, Dr. Mueller graduated from the School of Mines in 1939 with a B. S. in electrical engineering. He received his M. S. from Purdue University and his Ph. D. in physics from Ohio State University. He spent six years as a researcher with Bell Telephone Laboratories, ten years on the electrical engineering faculty of Ohio State University, and five years with Space Technology Laboratories, Inc. He has performed extensive research in electromagnetic theory and application, television, microwave and

(Continued on Page 4)



Dr. George E. Mueller '39, addressing the class of 1964, their relatives and guests at the 91st Commencement exercises.

Christian Churches delivered the address to the graduates, who were assembled on Jackling Field. Members of the faculty and the Dean were also on hand.

The commencement followed at 5:00 P. M., beginning with the procession of the graduates according to degree and department. After the invocation and seating of the graduates, Dean Baker (now Chancellor Baker) introduced Dr. George E. Mueller, associate administrator for manned space flight of the National Aeronautics and Space

## Fall Semester Begins Under University System

July 1 marked an important date in history for the University of Missouri at Rolla, when this new official name became effective and Dr. Merl Baker became the first Chancellor of the University. At the same time, the first Directors of the three new Schools took office. The new Directors are: Dr. T. J. Planje, School of Mines and Metallurgy; Dr. Engin Dudley Thompson, School of Engineering; Dr. Paul Dean Proctor, School of Science. The Graduate School is headed by Dr. Wouter Bosch who began his second year on July 1.

The University of Missouri at Rolla was founded at Rolla 94 years ago and has developed an international reputation as a specialized institution for engineering and science. The popular name has long been the "Missouri School of Mines" and this will continue to be used as it is not tied to the official name of the institution.

The reorganization into four schools is timely because of the rapid growth of the program and

## Enrollment Reaches New High As Freshmen Arrive on Campus

This year's registration period at U. M. R. began at 4 a. m., September 9, for some enterprising freshmen, although the gymnasium did not open until 8 a. m. By 7 a. m. the line had stretched to the Mining Building, and at 7:30 it had reached the Student Union. With the hardest task out of the way, that of registering the freshmen, the Registrar finished the registration of the upper classmen Thursday and Friday, September 10 and 11. Long lines, longer waiting periods in the hot sun, and shortest tempers seemed to typify registration for the 3771 U. M. R. students.

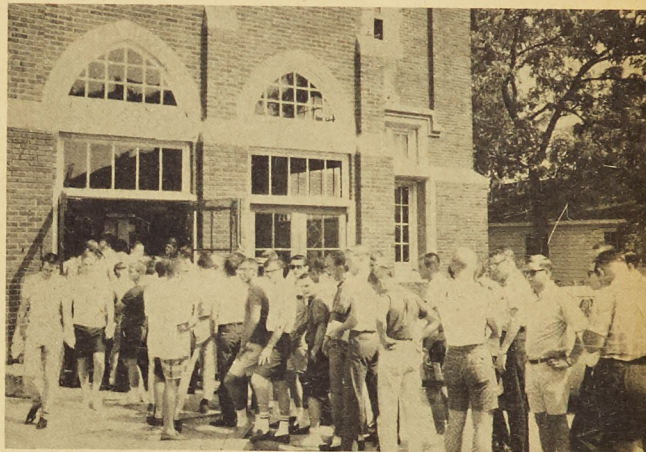
It might be interesting to take the total number of students and

further divide it among the classes. This year's freshman class had the largest enrollment with 1293 students. The sophomore class was next with 819. The juniors had 696 members and the senior class was the smallest with 564. There are 347 graduate students this year. Figures are not available on women students as yet.

This year's freshman class is

That could account for the fact that they are the largest department, having 890 members. The geological engineering department is the smallest with only 29 members. The other departments rank as follows:

Chemical Engineering	314
Civil Engineering	696
Mechanical Engineering	861
Ceramics	65



Freshman registration scene at Jackling Gymnasium.

17.9% larger than last year's class and compares favorably with a 20% increase nationally, as taken from a recent issue of *Look Magazine*. According to the same article, the class of '68 is almost four times larger than the class of 1938.

Surely there are a lot of electrical engineers around campus!

Metallurgical Engineering	216
Mining Engineering	84
Math	143
Chemistry	87
Geology	63
Physics	187
Unclassified	50
Special	9

## M. E. Department Receives NSF Matching Fund Grant

The mechanical engineering department at the University of Missouri at Rolla has been awarded an \$8000 matching fund grant from the National Science Foundation, Dr. A. J. Miles, chairman of the department, has announced.

The grant was made under the NSF Undergraduate Instructional Scientific Equipment Program, and is to be used to provide instrumentation and equipment for increasing the effectiveness of the undergraduate laboratory program. Instruments and apparatus will be provided for instrumentation studies, for dynamic analysis of thermal and mechanical systems and for special research projects in mechanical engineering.

The proposal to NSF was initiated and prepared by Dr. Harry J. Sauer, Jr., and Professor Gordon Scofield. Dr. Sauer has been designated as liaison official for the program and with Professor George Baumgartner, chairman of the mechanical engineering laboratory committee, will direct this continuing effort by the department in providing a modern laboratory program with a comprehensive

scope which can be realized to the fullest extent for each student.

The objectives of the National Science Foundation program, under which his grant was obtained, is to assist colleges and universities "in the crucial task of meeting the nation's requirements for competent scientists and engineers" by making grants on a matching basis for the purchase of scientific equipment for undergraduate instruction.

### NOTICE

Several sources have incorrectly confused Homecoming and Parents' Day in various calendars and schedules.

Homecoming is slated for October 17, and Parents' Day is set for October 24.

## KMSM-FM Commences Full Slate of Broadcasting

KMSM-FM, student-operated radio station at the University of Missouri at Rolla, signed on the air at 6 p. m. Monday night, September 14, for their first full school year of broadcasting.

The station, which is licensed as an educational station, went on the air January 2, 1964, but has not been operating during the summer months.

Broadcast hours will be from 6 p. m. to 12 p. m. week nights, and from 1 p. m. to 12 p. m. Saturday and Sunday. The station operates on 88.5 megacycles.

Programming includes educational broadcasts, news, current events commentaries, music and sports broadcasts. The station will cover Miner athletic events, including home football games.

Members of the staff are Dale Marshall, station manager; Jerry Kettler, educational director; Wayne Huckabee, music director, and the following announcers: Jim O'Bryant, John Wheeling, Nick Manning, Glenn Lytle, Ken Bowles, Pete Smith, and Ken Whites. Prof. W. N. Leitner is faculty adviser and John Tryon is program advisor.



## A Message From Doctor Baker



We cordially welcome both old and new students to the University of Missouri at Rolla, to carry on the solid traditions of the School of Mines and Metallurgy. You are the first classes under the reorganized structure of the University, and you will have a great part to play in expanding the old traditions of the past into the new opportunities of the future.

We now have all the advantages of the university, yet we have the distinct privilege of emphasizing science and engineering. The reputation of this institution over its 94-year history is highly respected throughout the world, and you, upon graduation, will benefit from the achievements of School of Mines faculty and alumni.

You have chosen wisely the field of engineering and science. This is an explosive field affording the graduate an unlimited future. The next 25 years will be golden years for the engineer, and you will be at your prime then. The growth of new knowledge is so rapid that it has been estimated that about half of what a graduate engineer of today has learned will be obsolete in a decade, and about half of what the same engineer will need to know ten years from now is not available to him today. Such is the challenge of the world of engineering and science you are preparing to enter.

Yes, your opportunity is bright and unlimited. We will help you achieve this, but your destiny in engineering will be determined by your attitudes, efforts and achievements of your college years. Do your best: take advantage of the opportunity for broadening yourself academically, culturally, and spiritually, so that you may take your place as a leader in the golden age of tomorrow.



By Steve Neugel

"The destiny of art in our time is to transmit from the realm of reason to the realm of feeling certain truths, so that we may later take that realm of feeling and go back to the realm of reason." It is this ability to communicate ideas that drives certain producers to the front in the field of art filming. These are the artists — individualistic in theme and in style, but commonly excelling in their perceptive use of the camera lense.

Federico Fellini is one of the outstanding Italian products. His themes center around a bitter criticism of modern society and the search for a non-existing happiness in the chaos and insecurity of modern culture. His better films include the circus story "La Strada," a rather deep "8½," and his best work "La Dolce Vita."

Japan's best is represented in Akira Kurosawa who is for his land a recorder of the times. "High and Low," a detective masterpiece, is a representation of a modern Japan. But his best film is an earlier "Rashomon" whose theme preaches that people see things only as they want them to be. It is in this work that we see Kurosawa's capabilities in usage of visual images and bold stylization.

Michelangelo Antonioni's films deal with discovery — discovery of an emotional predicament that encircles the characters until they are stifled and must do something hideous to escape. Antonioni's greatness lies in his ability to convey thoughts without having recourse to verbose dialogue. All three of his better works, "L'Eclipse," "L'Notte," and "L'Evventura," preach a common theme of the uselessness and the fragility of love in modern society and that fear of the world can be suppressed only by mutual dependence.

Alain Resnais is noted for his superb usage of ironic musical backgrounds, comparisons, and graphic symbolisms. At times, this Frenchman deals with the opaqueness of life's moments as in his best "Last Year in Marienbad." At other times, as in "Night and Fog" and "Hiroshima Mon Amour," he preaches warning and loneliness.

Detailedness, symbolism, and the close-ups of the human face are the traits of Swedish producer Ingmar Bergman. His earlier works, such as "Virgin Spring" and "Wild Strawberries," teach of an attempt to find and understand God. This theme, however, disappears in his later works to a seeking of values in human relationships. "Winter Light" and "Silence" are fine examples of Bergman's later films.

Renior, De Sica, Eisenstein, Huston, Brunel or "Ashes and Diamonds," "L-Shaped Room," "Sundays and Cybelle" — all fine representatives of an art form worth trying. Take a taste and I guarantee you will be a frequent feaster.

## CAMPAIGN COMMENTS

(This is a weekly column analyzing the '64 political campaign and its candidates. This column welcomes criticism, and would appreciate the comments of interested students.)

Now that the grandeur and ceremony of the '64 national conventions has subsided, both parties' candidates have settled down to the hard job of political campaigning. Through all of the charges and countercharges, a strange phenomena seems to be taking place. For the first time in recent years, a movement has begun in the Democratic and Republican parties which could split both organizations at their very roots.

The substance of this movement is centered around Senator Barry Goldwater, Republican nominee for president. Through his right wing tactics, Goldwater has advocated giving the American people a "clear choice" instead of a "me also" candidate. Yet, in doing so, the Arizona Senator has gathered around him a strange (and fearsome) array of radicals who are forming the core of a new Republican party. Not only has the Ku Klux Klan and John Birch Society been closely associated with Goldwater, but also the right wing Republicans and elements of the Dixiecrat movement in the Democratic party. Thus for the first time in American history, a major presidential candidate has united all the major radical right-wing elements in American politics in a drive, not only to assist in his campaign for president, but also to destroy the strong liberal movement so prevalent in politics. Yet, in doing so, Goldwater could place the entire American political situation in serious jeopardy.

The danger in "Goldwaterism" is the very fact that he has united behind him the entire right-wing movement, excluding liberals and moderates. Thus, those who do

## THE MISSOURI MINER



THE MISSOURI MINER is the official publication of the students of the University of Missouri at Rolla. It is published at Rolla, Mo., every Friday during the school year. Entered as second class matter February 8, 1945, at the Post Office at Rolla, Mo., under the Act of March 3, 1879.

The subscription is \$1.00 per semester. This Missouri Miner features activities of the Students and Faculty of U. M. R.

Editor-in-Chief ..... Greg Junge  
707 State Street—364-2731  
Business Manager ..... Charles Hansen  
500 W. 8th Street—364-3787

Managing Editor ..... Gary Rueter  
Make Up Editor ..... Ken Kuebler  
Copy Editor ..... Don Flugrad  
Features Editor ..... Bill Trejbal  
Advertising Manager ..... Dave Riley  
Circulation Manager ..... Jim Chase  
Sports Editor ..... Tom Johnson  
Technical Advisors ..... Bob Fick, Larry Yates  
Secretary ..... Tom Hennenhofer

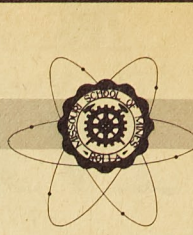
## "STUDENTS"

WE SELL YOU WHOLESALE

## HOOK AUTO SUPPLY

513 Highway 63 South  
ROLLA, MISSOURI

"Our Prices Are Right"



Miner

## Editorial

### UNREASONABLE BOOK PRICES!

Books are a prime source of knowledge to every student on our campus. However, books are also a prime source of financial havoc to every student on our campus. It is unfortunate that Miners must spend a seemingly unnecessarily large amount of money on books.

The large amount of money spent on books seems unnecessary for several reasons. First, text books for courses are changed all too frequently. This, of course, makes it impossible for the student to buy inexpensive used books. It also makes it impossible for students to sell their used books, and make a little money to defray the cost of new books. It is hard to believe that a text book is no longer useful when just a year before, that book was adopted because it brought new innovations and insight to the class. Perhaps it is easier to teach a course when a new book elucidates one or two principles more clearly, but it is not easier on the student's budget. It is doubtful that a class using this year's text learns any more than the class which used a previous book.

Another point which causes speculation is the manner in which new books are sold to Miners. There are only two privately owned book stores in Rolla. Although price fixing is not implied, it does seem strange that these stores never offer competitive prices. Both book stores maintain the same high prices. Certainly, a FAIR profit is not begrudged the local merchants.

The administration and faculty could help to relieve the student's problem of high book prices by regulating the frequency with which text books are changed. Another solution was offered by a disgusted student when he said, "I think I'll quit school and open a Book Store."

## The Reviewer's Stand

Producer Robert Cohn has again employed the surefire "doctors and nurses" story formula, currently riding high in popularity on three TV series for his follow-up to the successful "The Intern" of 1962. As well directed

not agree with Goldwater are forced into the Democratic party, leaving two widely separated camps. The Republican and Democratic organizations have always differed on a few points, but both have had the same basic desires in American government. Now, "Goldwaterism" presents a challenge to this time tested system, by advocating an entire reversal to the recent liberal trend. What this challenge is, and how the ideology of Goldwater is explained, will be looked into next week.

by John Rich, much of it against hospital backgrounds, this, too, deals with student physicians and attractive nurses as they realistically deal with everyday events in their lives, including operations and an actual child birth. Written by Wilton Schiller, based upon some of the characters in Richard Frede's first novel with Michael Callen playing a frolicsome intern who even poses as a pretty nurse to get laughs. Along with Michael Callen are a host of other talented young performers, including Barbara Eden, Dean Jones, Stefanie Powers, Inger Stevens, and George Segal. This production delves into the professional and private lives of young people who are witnessing and feeling many of life's lessons and tragedies. It covers everything from the domestic life of a newlywed doctor to a baby shower which turns into an orgy.

This film has an interesting mixture of suspense, comedy, and realism which results in an excellent film, which will be appreciated by all viewers. It will be shown September 18 to 22 at the Uptown Theatre.

### LONG INSURANCE AGENCY

A. E. Long, M. S. M., Ex '22  
810 Pine St. ROLLA, MO. Phone 364-1414  
"Service Is Our Business"

### M. S. M. Class Rings

BY L. G. BALFOUR CO.  
Both Old and New Style

BULOVA ACCUTRON



### OMEGA WATCHES

DIAMONDS & ENGRAVING  
WATCH REPAIRING

## Christopher Jewelers

805 Pine Street



# Fraternities Move, Remodel, Renovate and Build to Provide Better Accommodations

Fraternity houses are constantly in need of repair and sometimes expansion because of the increasing membership. It is often much better just to change houses and get a new one. Two of the fraternities on campus have permanent new houses this year.

Kappa Phi, the newest fraternity on campus, just bought a house off Vichy Road. The house has two floors and will accommodate thirty-six men. It has the kitchen, dining room, and storeroom downstairs with a living room also downstairs. There is also a living room upstairs with the study rooms and a sleeping area occupying the same floor. The Kappa Phi's have eight acres of land with a pond located on their land. They also have a patio with barbecue and a carport.

Another new fraternity, Alpha Epsilon Pi, leased a new house at 401 East Seventh. They have three floors and a basement. The seven study rooms will accommodate twenty-two men. They have a living room and chapter room with a dining room, recreational room, and kitchen in the basement.

Because of an unfortunate accident that happened during the

summer, Phi Kappa Theta had to find a temporary house to use until their new house is built. The house has two floors and a basement with the kitchen, dining room, and chapter room downstairs. It has study rooms and a living room on the first floor, and also study rooms on the second floor. Fifty men in all live there, and although the conditions are a little crowded everything is going along smoothly. Their annex in back of the old house is still in use.

Instead of getting new houses, a couple of the fraternities added on to or made repairs on their houses. Lambda Chi Alpha did extensive work on their house. They added fourteen two-man rooms plus a dining area, living room, chapter room, and storeroom onto their old house. They also had two eight-man rooms each changed to three two-man rooms. The house is now sufficiently large enough to hold sixty-four men.

Kappa Sigma also had considerable repair work done on their house over the summer. Three study rooms and the shower room were torn apart and rebuilt in a much better fashion. There was

extensive tile work done on both ceilings and floors at different spots throughout the house. The sleeping porch will now have heat for those cold winter months.

Most of the fraternities do some sort of repair work each year. If this work each year was compared after a number of years, the change would be appreciably noticeable. The big changes over a summer everyone notices, but the small ones are still quite important.

## Fire Destroys Phi Kappa Theta Chapter House

The house which had served Phi Kappa Theta for more than 38 years was badly damaged by fire early this summer.

The fire took place early on the morning of June 23. Seven members, who were attending summer school, were sleeping in the house

ing is presumed to have been the cause.

Local firemen battled the flames during the early hours of the morning, and managed to confine the fire to the top two floors.

Fire officials estimated the damage at \$50,000. The entire third floor was burned away, and although the brick structure of the second floor was not damaged, the insides of the study rooms on this floor were completely gutted. The newer addition on the rear of the house was not damaged.

Insurance assessors, have allowed \$43,300 to add to the \$7,000 which the fraternity has put away for a new house.

Officers of the house and of the Alumni Association have decided that the damage is too extensive to make repairing the house practical. It has been decided that the front portion of the remaining structure will be torn down, and the newer rear portion will remain.

For the coming year, the fraternity has rented a house at First and Walnut Streets. This, together with the present annex, should provide adequate study, ing, dining, and living facilities for the active and pledge members.

The fire didn't noticeably hamper rushing. The house recently pledged a class of 33 members.



Phi Kappa Theta house after being gutted by fire this summer.

when the fire began; but fortunately no one was injured.

The blaze appears to have started in the ceiling of the second floor. Faulty electrical wiring

### NOTICE!

### KMSM

WILL BROADCAST

THE MISSOURI MINER

VS. WASHINGTON U.

FOOTBALL GAME

LIVE

SATURDAY

STARTING AT

12:30 ROLLA TIME



A U.S. co-ed serves ice cream in Europe

## PAYING JOBS IN EUROPE

Grand Duchy of Luxembourg, Sept. 9—Students are urged to apply early for summer jobs in Europe. Thousands of jobs (office, resort, factory, farm, etc.) are available. Wages range to \$400 monthly and the American Student Information Service awards travel grants to registered students. Those interested should send \$2 to Dept. T, ASIS, 22 Ave. de la Liberte, Luxembourg City, Grand Duchy of Luxembourg and request the ASIS 36-page booklet listing and describing every available job, and a travel grant and job application.

## Beta Sigs Have Successful Rush

This summer, Beta Sig got out and worked hard on rush. The result of this work is 28 pledges. They are: Jerry Adlersflugel, Rich Bergsieker, Rich Breitenbach, Gary Cobb, Tom Dickson, Jerry Fehlig, Dennis Hartman, Lyle Hill, Rick Hoenerhoff, Gary Koenig, Steve Mueller, Jim Rosenkoetter, Gene Ross, Carl Rowold, Pete Sauer, Jim Spinner, Gerry Werner and Niel Wiese, all from St. Louis, Mo.; Gary Hoffman and Allan Liescheidt, from Jefferson City, Mo.; Gene Burrows from Kansas City, Mo.; Chuck Ericson from Springfield, Ill.; Ken Harmes from St. Joseph, Mo.; Bill Knauf from Virginia; Kent Leslie from Marshfield, Mo.; Ronnie Niehoff from Lockwood, Mo.; Barry Pace from Salem, Mo.; and Art Wilson from Fort Wayne, Indiana.

### UPTOWN THEATRE

MOVIES IN CINEMASCOPE

Starts Friday Sept. 18-22

Sunday Feature at 1:30, 4:10, 6:45, 9:25

'The New Interns'

Michael Callan & Dean Jones

Wed., Thurs. Sept. 23-24

'Dead Ringer'

Bette Davis & Karl Malden

### RITZ THEATRE

MOVIES ON WIDE SCREEN

Fri., Sat. Sept. 18-19

Saturday Continuous from 1 p.m.

'King Creole'

Elvis Presley & Carolyn Jones

—PLUS—

'The Young Swingers'

Rod Lauren & Molly Bee

Sun., Mon. Sept. 20-21

Sunday Continuous from 1 p.m.

'Strategic Air Command'

James Stewart & June Allyson

Tues., Wed. Sept. 22-23

Not Recommended for Children

'The Naked Kiss'

Constance Towers &

Anthony Eisley

### ROLLA DRIVE IN

SHOWS START AT DUSK

Thurs., Fri., Sat. Sept. 17-19

'North to Alaska'

John Wayne & Stewart Granger

—PLUS—

'Erik the Conqueror'

Cameron Mitchell &

Kessler Twins

Sun., Mon. Sept. 20-21

'The Ladies Man'

Jerry Lewis & Helen Traubel

—PLUS—

'The Secret of the Purple Reef'

Jeff Richards & Margia Dean

CLOSED Tues. & Wed.

Sept. 22-23

## Dr. Roger Nolte Elected Vice-Pres. Of ASEE Board of Directors

Roger E. Nolte was elected Vice-President and member of the Board of Directors of the American Society for Engineering Education at the annual meeting held from June 21 through June 26, 1964 at Orono, Maine. The purpose of the society is the advancement of education in all its functions which pertain to engineering and allied branches of science and technology, including the processes of teaching and learning, research, extension services and public relations. The society is an organization of individual and institutional members which coordinates the activities of the engineering educators, interested industrial groups and government agencies. In addition to his duties on the Board of Directors, his specific duties will include visiting and supervising the branch and section activities for all engineering colleges in the western half of the United States.

Dr. Nolte is presently Professor and Chairman of Electrical Engineering, University of Missouri

at Rolla. His previous ASEE activities include serving on the ASEE Councils of Sections and Branches West for two years and also as chairman and vice-chairman of the Missouri-Arkansas Section of ASEE. He is a native of Iowa, and received the BS, MS, and PhD in Electrical Engineering from Iowa State University at Ames, Iowa. He also attended graduate school at the University of Illinois. During World War II he served with the Navy and attended Columbia University, Bowdoin College, and MIT where he received training in Naval Engineering, Pre-radar, Radar, Radio, Sonar and Countermeasures. Before coming to the University of Missouri at Rolla he was an instructor in Electrical Engineering at Iowa State University for three years. He joined the faculty at Rolla as an assistant professor in 1949 and was promoted to associate professor in 1952, professor in 1955 and Chairman of the Electrical Engineering Department in 1960. During this time he has been active in campus activities including many committee assignments, advisor to the joint student branch of AIEE-IRE, the Gamma Theta Chapter of Eta Kappa Nu and served on the Board of Directors of that Electrical Engineering Honor Society from 1957 to 1959. He is a senior member of the Institute of Electrical and Electronic Engineers, has served as vice-chairman of the education committee and is presently on the student branches committee of that organization. He is a member of Tau Beta Pi, Eta Kappa Nu, Sigma Pi Sigma, Sigma Xi, and the Missouri Society of Professional Engineers. He is active in civic and community affairs through Cub Scouting, the Methodist Church, Rolla Rotary Club, and the Oak Meadow Country Club.

## Wolfarth Named Service Manager

Theodore R. Wolfarth, 1948 mechanical engineering graduate of the University of Missouri School of Mines and Metallurgy has been named service manager of the Central Division of the Caterpillar Tractor Company, Peoria, Ill.

Wolfarth joined the company in 1948. After completing the College Graduate Training Program, he held various positions in the service department. In 1957 he was appointed service manager of Caterpillar Tractor Co., Ltd., in Great Britain.



## UMR Offers Courses At Normandy Jr. High

The first classes at the St. Louis Graduate Resident Center of the University of Missouri at Rolla will get under way September 21, with four graduate engineering courses being offered the first semester, Dr. Anton Brasunas, Director, has announced.

Classes will be held at Normandy Junior High School, 7855 Natural Bridge. Each class will meet from 7 to 9:45 p.m. once a week.

The Resident Center's initial offering includes graduate courses in welding metallurgy, physical metallurgy, advanced mechanics of materials and mechanical vibrations, all at graduate levels. Two other non-graduate courses in industrial testing are also being offered.

Additional courses to be scheduled in succeeding semesters will increase the number of courses available to the total necessary for completing requirements for the

Master of Science degrees in Metallurgical Engineering and in Engineering Mechanics. Other degree programs are presently under consideration.

Pre-registration was September 8 and 9; however, registrants will be taken without penalty until September 25, Dr. Brasunas said. First class meeting will be held at 7 p. m. September 21.

The Graduate Resident Center has been established this fall as a joint effort of the University of Missouri at Rolla and the Extension Division of the University System. Classes will be taught by Dr. Brasunas, faculty members from the University of Missouri at Rolla, and qualified teachers from St. Louis industries.

Dr. Brasunas joined the University faculty this fall after nine years as director of the Metals Engineering Institute of the American Society of Metals. Previously he had been on the faculty of the University of Tennessee and had been employed as research engineer at Battelle Memorial Institute and at Oak Ridge National Laboratories as metallurgist on nuclear reactor problems.

Students wishing to enroll in this program must be accepted by the Admissions Office, Rolla Campus. Applications may be secured from the University of Missouri Extension Division, 7520 Natural Bridge, St. Louis (Telephone, EV-ergreen 3-7661); the University of Missouri Extension Center, 230 South Meramec, Clayton (Telephone, PArkview 6-1688), or the Admissions Office of the University of Missouri at Rolla.

## Capt. Adsit Fills Asst. PMS Post At Marquette

Captain John M. Adsit, who received his B. S. in Civil Engineering in 1963 from the University of Missouri School of Mines and Metallurgy, has been assigned as assistant professor of military science with the United States Army Reserve Officers

Training Corps (ROTC) detachment at Marquette University, Milwaukee, Wis.

He will serve on the university faculty as an instructor in military science and tactics.

A native of Wisconsin, Captain Adsit was commissioned a second lieutenant in 1956 after participating in the ROTC program at the University of Wisconsin. He served in airborne and tank companies in Europe from 1956 to 1959, and in Korea for the past year as commanding officer of an engineer battalion.

Captain Adsit has been awarded the Army Commendation Medal. He and his wife, Nancy, have two children. They live at 3375 North 45th Street, Milwaukee.

## NEWS of the Week

**St. Augustine, Florida:** Hurricane Dora hit St. Augustine and other cities and towns in Florida, Georgia, and South Carolina last week. The hurricane brought 100 mile-an-hour winds and heavy rains to the area. Many rivers and streams were flooded. Jacksonville and St. Augustine were particularly hard hit by the storm. Very few deaths have been reported, but damage has been estimated in tens of millions of dollars.

**Detroit, Michigan:** The United Auto Workers Union reached agreement on a three-year contract less than an hour before a nation-wide strike was to have taken place against Chrysler. The new contract amounts to a 54 cent an hour raise, two new holidays, and increased rest time.

**Nicosia, Cyprus:** Fifteen hundred Turkish Cypriots are reported to be starving at Kokkina, Cyprus because of a siege by Greek Cypriots. Turkey threatened to break the blockade with a shipment of food and warned that any interference with the shipment would be considered an attack and treated as such.

**Congo:** A rebel regime dedicated to overthrowing Premier Moise Tshombe reigned in the provincial Congolese capital of Stanleyville. The regime is Communist and backed by Red China. The regime is led by former Lumumbist party chief Christophe Gbenye.

## LITTLE MAN ON CAMPUS



"THAT'S PROF SNARF'S CLASS — HE'S ALWAYS DROPPING SOMEBODY."

## Dr. Harry Sauer Co-authors Papers for Technical Societies

Dr. Harry J. Sauer, Jr., associate professor of mechanical engineering at the University of Missouri at Rolla, is co-author of papers presented at the annual meetings of two technical societies during the past summer.

A paper entitled "Thermal Characteristics of Honeycomb-Core Panels" was presented by Dr. Sauer at the first annual meeting and technical display of the American Institute of Aeronautics and Astronautics in Washington, D. C. Dr. Ralph G. Nevins of Kansas State University is co-author. The AIAA was formed in 1963 as a consolidation of the American Rocket Society and the Institute of Aerospace Sciences.

Dr. Sauer is also co-author of a paper presented by Joseph C. Kroutil, a graduate of the University of Missouri at Rolla, at the 71st annual meeting of the American Society of Heating, Refrigerating and Air Conditioning Engineers in Cleveland, Ohio. The paper, which is to be published in

the 1964 ASHRAE Transactions, was entitled "Convective Heat Transfer in Small Enclosed Air Spaces."

Dr. Sauer received his B. S. and M. S. degrees from the University of Missouri School of Mines and Metallurgy, and his Ph.D. degree in 1963 from Kansas State University.

Mr. Kroutil, who is employed by McDonnell Aircraft Corporation as a research associate in the plasma physics research department, received his B. S. and M. S. degrees in mechanical engineering from the School of Mines in 1959 and 1963 respectively.

**THE TRAFFIC SAFETY OFFICE HAS ANNOUNCED THAT MOTOR VEHICLE DECALS MUST BE APPLIED BY SEPTEMBER 21, 1964!**

# WELCOME STUDENTS

We Appreciate Your Business

IF YOU STILL NEED A TEXT PLEASE PLACE AN ORDER

# Campus Book Store

The Rev. G. Scott Porter, pastor of the First Presbyterian Church in Rolla, gave the invocation and benediction. Raymond O. Kasten, executive vice-president of the MSM alumni association, welcomed the graduates into the association.

Principal speaker at the exercises was Mr. M. T. Jones, President of the Empire District Electric Co., who delivered an address entitled *The Engineer's Responsibility in the Development of the Economy of Missouri*.

As in the Spring commencement, students from all parts of the country and the world received degrees from the school.

Al...  
Mi...  
FRIDAY, SEPT...  
Battl...  
n Tra...  
Every establish...  
traditions and...  
kept and conti...  
years until th...  
the institution i...  
the University...  
olla is no differ...  
trastic changes w...  
place in the past...  
or wiped-out a p...  
which has existed...  
398 — the Was...  
ty football game...  
Francis Field, o...  
m U. campus...  
ene of the battle...  
use will be w...  
were again Satur...  
ntest between...  
old and the Bat...  
ke place.  
Although the E...  
ight edge on...  
liners have won...  
ne results from...  
vent just may p...  
the Miner win...  
ports from St. Lou...  
ave Puddington's...  
e ready for the ea...  
ne Miners. Wash...  
s do not begin...  
ther week.  
Actually the last...  
MR squad can...  
ars ago during th...  
the fighting Mine...  
-0 sweep over...  
ears, and many...  
ard to a repeat...  
be revamped club...  
ms plague the S...  
hile the Miners'...  
en running smoo...  
Washington's 21...  
t with injuries a...





ALWAYS

rs

Societies

HRAE Transactions  
"Convective Heat  
Small Enclosed Air

received his B. S.  
degrees from the Uni-  
versity of Missouri School of  
Metallurgy, and his  
in 1963 from Kansas  
State.

who is employed  
Aircraft Corpora-  
tion associate in the  
research depart-  
ment of his B. S. and M. S.  
degrees in chemical engineering  
from the University of Missouri  
School of Mines in 1959  
and 1961, respectively.

SAFETY  
AS ANNOUNCED  
OTOR VEHICLE  
S MUST BE  
PLIED BY  
BER 21, 1964!

# Allgood Ready for Gridiron Opener

## MINER SPORTS

FRIDAY, SEPTEMBER 18, 1964

THE MISSOURI MINER

PAGE 5

### Battlin' Bears to Face Miners In Traditional Duel at Wash. U.

Every established college has its traditions and customs which are kept and continued throughout the years until the very spirit of the institution itself disappears. The University of Missouri at Rolla is no different, and even the drastic changes which have taken place in the past few months have not wiped-out a popular tradition which has existed since the year 1898 — the Washington University football game.

Francis Field, on the Washington U. campus, is always the scene of the battle, and the Miner cause will be well represented there again Saturday, when the contest between the Silver and Gold and the Battlin' Bears will take place.

Although the Bears do have a slight edge on the series (the Miners have won 8 and lost 33), the results from this season's event just may put another tally in the Miner win column. Reports from St. Louis indicate that Dave Puddington's Bears may not be ready for the early contest with the Miners. Washington U. classes do not begin for at least another week.

Actually the last victory for the UMR squad came only three years ago during the 1961 season. The fighting Miners rolled up a 19-0 sweep over the surprised Bears, and many fans look forward to a repeat performance by the revamped club. Defense problems plague the St. Louis team, while the Miners' practices have been running smoothly. Five of Washington's 21 lettermen were out with injuries as of their last

workout, and other problems dampened spirits. At this time, though, the only serious injury on the Miner squad is Rich Erxleben's fractured ankle.

One unusual feature of Saturday's game will be the use of NCAA rules during the first half, and the use of the free substitution rule as the MIAA Conference specifies, however Washington University follows the regulations of the National Collegiate Athletic Association. Under NCAA rules, the clock must be stopped in order for three or more substitutes to go into play.

Men to watch on the Washing-

#### PROBABLE STARTERS Miners vs. Washington U.

Dalton Welsh	Tackle
Paul Pfeifer	Tackle
Don Bacich	Guard
Raymond Fix	Guard
Bob Leone	End
Bob Riley	End
Mike Fridley	Center
Bob Wheeler	Quarterback
George Gasparovic	Halfback
Eugene Ricker	Halfback
John Henry	Fullback

#### University of Missouri at Rolla Varsity Football Team



ton U. team will be Bill Hovland, Bob Kolbrener, Jerry Maher, and Hank Getter. It has been predicted that Getter may become one of the best guards in small college football.

Spectators will be assured of plenty of action tomorrow in any case, and who knows, this may be the beginning of a Miner winning streak to over-take the bears' 33-8 advantage.

#### UNIVERSITY OF MISSOURI AT ROLLA VARSITY FOOTBALL SCHEDULE

Sat. Sept. 19	Washington University	St. Louis
Sat. Sept. 26	Kansas (Pittsburg) State College	Pittsburg, Kan.
Sat. Oct. 3	University of Tennessee (Martin Branch)	Rolla
Sat. Oct. 10	Lincoln University	Jefferson City
*Sat. Oct. 17	NEMS, Kirksville	Rolla
**Sat. Oct. 24	NWMS, Maryville	Rolla
Sat. Oct. 31	SWMS, Springfield	Springfield
Sat. Nov. 7	CMS, Warrensburg	Rolla
Sat. Nov. 14	SEMS, Cape Girardeau	Cape Girardeau
*Homecoming		
**Parent's Day		

Home games will start at 2:00 p. m.



**VOLKSWAGEN**  
Sales and Service

**BILL SOWERS MOTORS**

Phone 364-5178 Hwy. 66 E. in Northwye

### Extensive Recruiting Gives New Life to UMR

Students returning to Rolla this fall will find not only a change in the name of the institution, but also tremendous changes in the Athletic Department. Undoubtedly the most welcome difference is that of the new life injected into the fighting Silver and Gold football squad. Under the new direction of Coach Dewey Allgood (former head basketball coach of MSM), the Miner pigskin roster for 1964 has been increased to 58 players and is prepared to embark on what could possibly be one of the best seasons in history. The results of an extensive recruiting program started last fall will begin to be shown Saturday, as the University of Missouri at Rolla opposes the Washington University Bears at Francis Field in St. Louis.

This year's Miner squad is blessed with four quarterbacks, led by veteran letterman Bob

Wheeler. Wheeler, a junior from Harrison, Arkansas, was tops in Miner passing last season, as he attempted 109, completing 40 for a total yardage of 443. The three men who complement Wheeler in the quarterback line-up are, Ronnie Lewis of Aurora, Missouri; Tom Miller from Nashville, Illinois, and Don Usselman, a freshman who just graduated from St. Louis CBC (unbeaten in last year's competition).

#### Tri-Captains Chosen

Tri-captains Don Bacich, Bob Keiser, and Dalton Welch will head the list of team members. All three are lettermen, and each can be considered prospects for MIAA All-Conference Teams. Bacich, a 220-pound senior from Mercy High School in St. Louis, and Keiser, a good blocker and deadly tackler from Mount Olive, Illinois, are teamed-up as guards on the first squad, while Welch is positioned as a guard. Other returning lettermen include Ray Fix, the 210-pound tackle from Detroit, Michigan; William Bischof, halfback from Webster Groves, Missouri; Jim DeBold, senior fullback from St. Louis; George Gasparovic, junior halfback from Mehlville; Garry January, 200-pound sophomore from St. Louis (Roosevelt); and Bob Leone, senior guard from Benld, Illinois.

Among those freshmen who made a fine performance during some of the pre-season squad scrimmages are John Hedrick from Mercy High in St. Louis; Eugene Ricker, from Mount Ayr, Iowa; and Jim Key, a tackle from Rolla High. Twenty-nine freshmen are currently on the Miner roster.

Coach Allgood's plans suffered  
(Continued on Page 6)

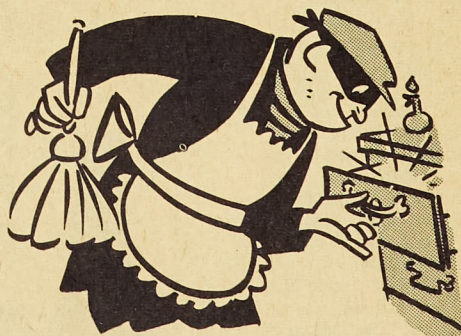
### Cross Country Schedule to Begin

Having experienced a building year in 1963, Kenneth Spencer's cross country squad could well be in store for an eventful season. The 1964 schedule commences on Friday, September 25, when the starting gun will signal the beginning of a duel between UMR and the Washington U. Bears, at Rolla.

Five lettermen will be returning for action this season, and four freshmen will round-out the team. Running for the first time for the Miners will be Richard Shemk, Larry Scheible, Lewis Westfall, and Robert Rands, while the lettermen include Bob Carter, Charles Dakin, Emil Damotte, Ted Moore, and Ed Tharp.

Experience and skill gained from last season's circuit will aid the young squad in their quest for victory. The Springfield Invitational Meet in which the Miners placed fifth out of six, will be held on October 17, and the MIAA Conference Meet takes place at the UMR campus on November 7, 1964.

Most expensive  
"housecleaner" on record!



Police record, that is. He can clean you out in minutes.

Inexpensive answer: A steel box in our Safe Deposit vault for all your valuables. Costs just pennies a week!

**Rolla State Bank**

Downtown  
210 West 8th St.

Hillcrest  
Hwy. 72 & Rucker  
The Drive In Bank With Parking



# Intra-Squad Scrimmage Proves Miners Have Bench Strength

Miner gridiron coach Dewey Allgood took a chance last Saturday that most of the Big Ten coaches (even Pete Elliott and his Rose Bowl Champs) wouldn't even dare: an intra-squad scrimmage between two evenly divided groups. The usual method is to have four units, alternating the two strongest and the two weakest. Units one and four compose one squad and units two and three make up the other, providing "evenly matched" teams. Few coaches take the chance of breaking an entire team right down the middle, hoping to produce two squads of equal calibre. Anyone attending Saturday's battle between the Gold and White units can say that he saw some of the best football action played on Jackling Field.

A 6-6 tie resulted from the clash between Burr Van Nostrand's White squad and Bud Glazier's Gold unit, with some

of the new crop of freshmen displaying talents previously found only in the lettermen. Coach Van Nostrand mentioned several newcomers who made fine performances, including Jim Key, a graduate of RHS here in Rolla.

George Gasparovic scored the touchdown for the Gold squad,

and Eugene Ricker caught a 28-yard pass for the White. Coach Allgood commented that he is rather pleased with the way the freshmen are coming around, and he is anxious to see some of them in action against the Miners' first opposition of the season, Washington University.

## SIDELINES

by BRUCE T. GREGG



First a word of introduction to the incoming freshmen: you will find in this weekly column an attempt to bring you the latest news concerning campus sports activities. Short but concise items will keep you informed on present and future intramural events, sports policies, varsity plays, and key figures in the athletic world. Therefore this presents to the campus minded student a chance to keep up with the school's sports functions.

With the increased athletic facilities that are being offered here at UMR the number of MIAA conference tournaments held here at Rolla will become more frequent.

Two new intramural teams have been added to the program this year. They are Kappa Phi and Campus Eating Club. This will make a total of 28 teams. Because of these additions, the present leagues will have to be revised and a new system set up.

### UNIVERSITY OF MISSOURI AT ROLLA CROSS COUNTRY SCHEDULE

Fri., September 25	— Washington University	4:15 p. m.—Rolla
Wed., September 30	— Kansas State (Pittsburg)	4:15 p. m.—Rolla
Sat., October 3	— SMS, Springfield	11:30 a. m.—Rolla
Wed., October 7	— Westminster College	4:15 p. m.—Rolla
Tues., October 13	— Greenville College (Ill.)	4:15 p. m.—Rolla
Sat., October 17	— Invitational Meet	10:00 a. m.—Springfield
*Sat., October 24	— SEMS, Cape Girardeau, CMS, Warrensburg, Triangular Meet	11:30 a. m.—Rolla
Sat., October 31	— Lincoln University	11:30 a. m.—Jefferson City
Sat., November 7	— MIAA Conference Meet	11:30 a. m.—Rolla

\*Parents' Day

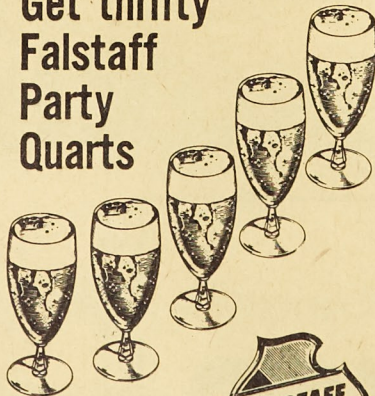
### ALLGOOD READY (Continued From Page 5)

a setback with the sidelining of one of his most promising freshmen, Rich Exleben. Rich, who is the brother of former MSM letterman Bob Exleben, received a broken ankle during one of the intra-squad scrimmages and is expected to be out of action for most of the season. The St. Louis Cleveland High School graduate was to do a great deal of the punting for the Miner cause.

For those who are unfamiliar with the Miner athletic teams, UMR belongs to the Missouri Intercollegiate Athletic Association, along with five other Missouri Colleges (NEMS, Kirksville; NWMS, Maryville; SWMS, Springfield; SEMS, Cape Girardeau; Central Missouri State, Warrensburg). All MIAA schools participate in football, basketball, indoor and outdoor track, cross country, golf, and tennis, and it is thought that baseball, swimming, and wrestling may soon be added to the conference program. The Miners haven't had a first place football squad since 1950, but you can be sure that Dewey Allgood and the new Miner gridiron group will be striving to change those statistics.

## PARTY TIME IS FALSTAFF TIME

Get thrifty  
Falstaff  
Party  
Quarts



Each One Serves  
5 Full Glasses of

AMERICA'S PREMIUM QUALITY BEER

Distributed by  
**MUELLER DISTRIBUTING CO.**  
217 W. 6th St. Rolla, Mo.

## LITTLE MAN ON CAMPUS



## Sports Calendar

### FOOTBALL

September 19	..... Washington University, at St. Louis
September 26	..... Kansas State College, at Pittsburg, Kansas

### CROSS COUNTRY

September 25	..... Washington University, at Rolla
September 30	..... Kansas State (Pittsburg), at Rolla

## SUPPORT THE SILVER & GOLD

ORDER  
YOUR  
RING  
NOW!



JOHN ROBERTS  
SCHOOL  
RINGS

The Most Respected  
Symbol of Your  
Educational  
Achievement

\*\*\*

CAMPUS  
BOOK STORE

## it staples

term papers and class notes, photographs, news items, themes, reports



## it tacks

notes to bulletin board, pennants to wall, shelf paper, drawer linings.



## it fastens

party costumes, prom decorations, school projects, posters, stage sets



It's the "Tot 50"

## Swingline Stapler

UNCONDITIONALLY  
GUARANTEED



98¢  
(Including 1000 staples  
Larger size CUB Desk Stapler  
only \$1.49)

No bigger than a pack of gum. Refills available everywhere. Made in U.S.A. At any stationery, variety, book store!

Swingline INC.  
LONG ISLAND CITY 1, NEW YORK