



13 Mar 1964

The Missouri Miner, March 13, 1964 – Special St. Pat's Edition, St. Pat's '64

Follow this and additional works at: https://scholarsmine.mst.edu/missouri_miner

These newspapers reflect the attitudes, perspectives, and beliefs of different times. Neither the library nor the university endorses the views expressed in these collections, some of which contain images and language which may be offensive to some readers.

Recommended Citation

"The Missouri Miner, March 13, 1964 – Special St. Pat's Edition, St. Pat's '64" (1964). *The Missouri Miner Newspaper*. 1767.

https://scholarsmine.mst.edu/missouri_miner/1767

This Newspaper is brought to you for free and open access by Scholars' Mine. It has been accepted for inclusion in The Missouri Miner Newspaper by an authorized administrator of Scholars' Mine. This work is protected by U. S. Copyright Law. Unauthorized use including reproduction for redistribution requires the permission of the copyright holder. For more information, please contact scholarsmine@mst.edu.

MARCH 6, 1964

Professor
ure on
East

nas C. Barrow
or of History
ssouri, will pre
"The Far East
he Present and
P.M. on Tues
in the States

one of a spec
airs being spor
ary Department
entation to th
V Class by pro
University c
ne hour lectur
y a question an
members of th
and the genera
to attend.
Professor Barrow
programs bein
unist China an
to infuse the
epts into th
illions of peop
He will outlin
ditions develop
ith emphasis o
nces which ma
United State
free govern
preservation o
also cover th
requirement fo
s of the enti

w received in
d in 1961 an
at the Unive
in Septemb
ork in Histor
Harvard. H
on is America

INTER
SHIRTS
ervice

Laundry

P

RED

Special St. Pat's Edition

ST. PAT'S '64

VOLUME 50

THE MISSOURI MINER, ROLLA, MISSOURI, FRIDAY, MARCH 13, 1964

NUMBER 20



1964

Welcome Visitors

At last it is our privilege to extend to you the heartiest of all greetings: Welcome to St. Pats. We have waited impatiently, and longed for this day since the sound of your laughter and the brightness of your smiles faded away into echoes and memories.

Your coming is the event of the year. Stanford has its Tournament of Roses, New Orleans, its Mardi Gras, Paris achieves its whoopee days and Rolla has St. Pats. From experience, we know what mystic changes your presence brings about in the village, and what happiness you cause in us. Without you, our celebration could not be a success. Therefore we appreciate you, our guests, and we hope to please you.

We have worked hard to prepare a celebration worthy of your visit. If you have not been here before, we believe you will take pleasure in participating in a party such as you have never seen before. To those who have participated in previous celebration, we promise more happiness than ever.

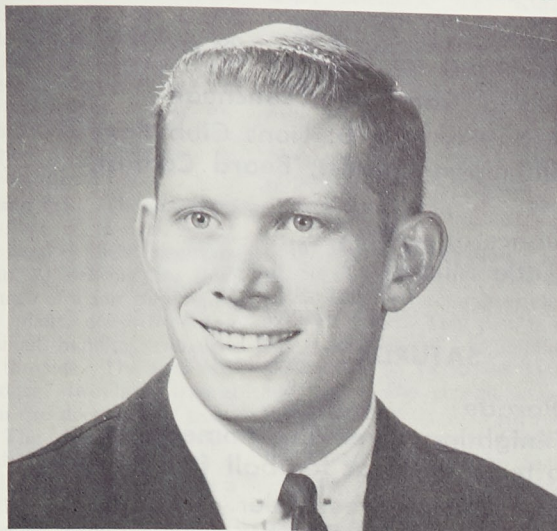
That your sojourn here will be filled with fun, frolic, and the utmost in enjoyment that will remain in your memory forever, is our sincere wish.

Again we say, welcome, happy days, and here's looking at you!

St. Pat's Board

Keith
As
Keith E. B.
Pat's Board
ley, presen
as elected a
uesday after
ows this ho
done mor
make this y
the best "St.
ever seen.
Keith typi
and will keep
the festivities.
ward last year
erience and c
capacity need
rem.
Keith first
nton, Missou
90, and em
ngineering D
mentor and wil
Beside hold
the St. Pat's I
and impressiv
various other
member of T
ices of pres
is also a n
a member
president,
y of ASME
day, March

Keith Bailey Will Reign As St. Patrick of 1964



KEITH BAILEY

Keith E. Bailey was chosen by the St. Pat's Board as St. Patrick of 1964. Bailey, present president of the board, was elected at a special meeting held Tuesday afternoon. He especially deserves this honor since, as president, he has done more than any other person to make this year's St. Pat's celebration the best "St. Patrick's favorite school" has ever seen.

Keith typifies St. Patrick perfectly and will keep spirits high throughout the festivities. By serving as St. Pat's guard last year he has gained the experience and cultivated the talents and capacity necessary for a successful reign.

Keith first came to MSM from Carrollton, Missouri in the fall semester of 1960, and enrolled in the Mechanical Engineering Department. He is now a senior and will graduate in June.

Beside holding the major office on the St. Pat's Board he has a very long and impressive list of offices held in various other campus organizations. As a member of Theta Tau he has held the offices of president and vice president. He is also a member of Blue Key. He is a member of SAE, held the offices of president, vice-president, and secretary of ASME, was vice president of

Friday, March 13, 1964

the "M" Club, and has served on the Student Traffic Council. As a member of Lambda Chi Alpha he has held the office of secretary. Keith is listed in Who's Who in American Colleges and Universities, and has received the Curator's Award and the Rolla Lions Club Scholarship.

In the athletic field he has lettered three of his four years in varsity football, and played varsity basketball for three years.

With all of these achievements Keith should well be able to fill the shoes of a long line of outstanding St. Pats and should help to make this year's celebration one of the best the school has seen.

INDEX

St. Pat & Guard	1
Schedule of Events	2
Highlights of 1963	2
Floats and Festivities	3
Picture Pages	4, 5
Bands	6
Interview	6
Queen Candidates	7, 8, 9
Party Schedule	11

St. Pat to Be Accompanied by Guards and Pages

Accompanying St. Patrick on his visit to Rolla will be the members of his esteemed court. Included in this court are four guards and two pages. These men are members of the St. Pat's Board who have been elected to escort their Patron Saint through town and make sure that his visit is enjoyable.

The guards see to it that St. Patrick's subjects pay him the respect and honor that is due to him. They also assist him at the knighting ceremony by making sure that none of the over-anxious applicants for knightship fall in while attempting to kiss the Blarney Stone.



St. Pat's guards assisting at
knighting ceremony.

The guards this year and the organizations which they represent are: Don Bacich, Kappa Sigma; Steve Ombalski, Sigma Nu; Bill Hagen, Prospectors; and Fred Herrmann, Theta Chi. Al Buescher of Phi Kappa Theta was elected as alternate.

The boys who have been chosen as St. Pat's pages are: Owen Lasker, Pi Kappa Alpha; and Pete Pulis, Theta Chi. Porter Taylor of Kappa Alpha is the alternate page.

Knights of St. Pat	12, 13
Court of Love & Beauty	14, 15
Wrestling	17
History of St. Pat's	18
Basketball	24
Shillelagh	25
St. Pat's Board	28

Schedule of Events

FRIDAY

- 9:00 A. M. Queen Candidate Interview
- 10:00 A. M. Coronation Practice
- 11:00 A. M. Balloting for Queen
- 12:00 Noon Queen Candidates Luncheon
- 2:00 P. M. Activities start at Lions Club Park
Shillelagh Contest, Beard Contest,
etc.
- 9:00 P. M. Dance at Armory
(Little Milton)

SATURDAY

- 10:00 A. M. Parade
(Knighting ceremony immediately
after parade at football field.)
- 1:00 P. M. St. Pat taps green beer at Ramey's
- 9:00 P. M. Coronation Dance at Armory
(The Drifters & Irma Thomas)
- 10:00 P. M. Coronation of Queen of Love &
Beauty

St. Pat's Highlights - 1963



QUEEN AND COURT

St. Pat's, 1963, met with its usual success at MSM. Despite threatening weather, a large crowd assembled in downtown Rolla to watch the annual parade held on Saturday morning. With "St. Pat Tours the World" as

last year's theme, nine floats graced the progression down pine street, depicting St. Patrick in settings from around the world. Phi Kappa Theta won first place for their float, entitled "Oriental Holiday." Sigma Phi Ep-

silon captured second with "Better Green Than Red," followed by the G. D. I's. Beta Sigma Psi, who won the contest in 1962, had the honor of building the Queen's float.

On Saturday evening, March 16 Miss Mary Martin, representing the Shamrock Club, was crowned Queen of Love and Beauty. Miss Kathy Fedar, Miss Marilyn Leigh Cole, Miss Eleanor Thoene, and Miss Glenna Thorpe complimented Miss Martin's beauty, serving, respectively, as the first four Maids of Honor.

Charles Becker did his job well last year, reigning over the festivities as St. Patrick.

Rounding out the long weekend's events, beards and shillelaghs were judged with prizes going to the best. Music for Saturday night's entertainment was provided by Les Elgart and his well-known band.

FLOATS and FESTIVITIES

For the last several years, it has been the custom to have a parade, complete with floats and all the trimmings, during the gala St. Pat's celebration. The 1964 St. Pat's celebration will not deviate from this tradition. This year a total of twelve floats will be entered in the parade, counting the Queen's float. Let's now take a brief rundown of the enterprising organizations, mostly fraternities, which are taking much time, trouble, and money to make this St. Pat's the best one of all.

(1) Beta Sigma Psi. The theme of the Beta Sig float is "Detroit City" and, under the hand of their float committee chairman, Al Behring, the float will take the shape of a sort of automobile producing plant, consisting of a large and a small building, complete with gears on the side. The auto factory will "produce" two large lemons alternately from two doors on the smaller building. The doors are labeled "Compact" and "Sedan."

On Friday nite, Beta Sig will have a joint party with Kappa Alpha, featuring the "Renegades" band.

(2) Kappa Alpha. Under the direction of Jim Nielsen the Kappa Alpha float will materialize as a shamrock with a bottle (certainly not a liquor bottle) sitting on it, and good ole St. Pat sitting on the neck of the bottle partaking in some season's cheer. The theme of their float will be "Beethoven's Fifth."

Saturday afternoon the Kappa Alpha's will have the Sammy Gardner Band from Gaslight Square in St. Louis from 1:00 to 5:00.

(3) Lambda Chi Alpha. The theme of the Lambda Chi float is "Somewhere Over the Rainbow," and the chairman is John Paul. Towards the front will be a map of the United States with a rainbow springing from Rolla to Ireland, and St. Pat swinging back and forth between Rolla and Ireland. The country of Ireland is set on the backdrop of a large shamrock.

The band of Johnny Floyd Smith will entertain Friday from 10:00 to ? Saturday night will feature the "Blue Knights" from St. Louis.

(4) Kappa Sigma. The theme of the Kappa Sig float is "Puff, the Magic Dragon." The men in charge are Gary Vallat and Mike Curran. The float, sponsored by Mueller Distributing Co., features a large green dragon, Puff, sitting on an island by the sea, with

little Jackie Peepers riding on the dragon. In the background is a cave.

Friday night will see a Playboy Party, with Chuck Tillman, and Saturday afternoon, the "Krazy Kats" will entertain.

(5) Pi Kappa Alpha. The theme of the Pikers' float, under the hand of Dan Goodman, is "Down By the Old Mill Stream." Their float will have an old time mill, complete with paddle wheel and water running over it (weather permitting).

Saturday morning the "Rebel Rousers" will play.

(6) Sigma Phi Epsilon. The theme of Sig Ep's float is "The Wizard of Oz." The float committee chairman is William Logel. This year the Sig Eps are really going all out building a huge float, some 25 to 30 feet long and 15 feet wide. The general scene will be one taken directly from the motion picture of the same name, featuring Judy, the Cowardly Lion, the Scare Crow, and the Tin Man. The scene on the front part, which gently slopes towards the ground, will be complete in detail down to the dog that appeared in the original picture. The group of figures will be seen approaching the Emerald City, while walking through a field of brilliant red poppies, along the yellow brick road. A large, multicolored rainbow surmounts the Emerald City, which is towards the rear of the float. The city will be a shimmering green.

(7) Sigma Nu. The theme of the Sig Nu float is "Inn of the Sixth Happiness." The project is headed up by Charles Riggs. Their float will be done in Oriental style, being propelled by six coolies. The main part of the float will feature an Oriental house, surrounded by trees with an Oriental garden in front. Colors are red, green, and yellow.

Saturday afternoon Buddy Hughes will entertain at a tea dance, and that night will feature the "Pacers" from 11:00 to ?

(8) Sigma Pi. The Sig Pi float theme is "Sixteen Tons." The committee is headed by Bob Wagner. Their float will have a rather large, hand sculptured mountain, with a train, pulling a coal car, coming down the mountain. The train will extend the entire length of the float.

Saturday night the Sig Pi's are having Jimmy Hoff and the Mo Jos for musical entertainment.

(9) Tau Kappa Epsilon. The TKE

float theme is "Little Deuce Coupe." The man in charge of the float is Jim Peck. The TKE float will feature a large hill, sloping toward the front, with a grey highway coming down the hill, and the full-scale little deuce coupe, driven by Joe Miner, descending the incline. St. Pat will be seen standing at the bottom, trying to flag down Joe.

TKE and Sig Tau are combining forces this year in the entertainment line. Saturday afternoon will have a band at Lions Hall, and that night will see another band, playing from 10:00 to ?

(10) Theta Chi. The Theta Chi float will enter with the theme of "How Dry I Am." The man in charge is Pete Pulis. The Theta Chi float will be about nine feet long, mounted on a rather low platform affair, featuring a huge German beer stein, complete with hinged lid. As the Theta Chi float rolls along, the top of the stein will swing open, and none other than St. Pat will pop out and then back again.

Friday night, the Theta Chi's are having the "Fender Benders" band for swinging entertainment. The band will play from 10:00 to ? Friday and from 12:00 to ? Saturday.

(11) Intercoop Council. The theme of the Intercoop Council's float this year will be that of "Surfin' U. S. A." No other information was available at this writing.

(12) Phi Kappa Theta. Under the direction of John Koeper, Phi Kap will build the Queen's float this year. This honorable position is theirs due to the fact that Phi Kappa Theta won the award for the best float last year. It is tradition that one year's winner always builds next year's Queen float. The Queen's lower court will be seated in a semi-circle, convex toward the front. The attendants will be seated one level above, and to the rear of the lower court. The Queen will fill a dominating position above the attendants and lower court. A large shamrock will set off the backdrop, immediately behind the Queen.

The "Rain Drops" will provide the music for Phi Kap's St. Pat's festivities from 11:00 until ? Saturday nite.

As the reader has probably already noticed, the themes this year are all taken from song titles. This stipulation was handed down from the committee on floats entering the St. Pat's parade.

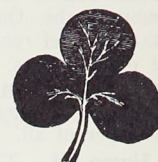


WINNERS
OF 1963
SHILLELAGH CONTEST.



ST. PAT GETS A FREE RIDE.

ST. PA



13

MISS MARY MARTIN



**H
E
R

M
A
J
E
S
T
Y

1
9
6
3**

T. PAT'S

13



NO!
IT'S NOT
THE UGLY MAN
CONTEST — IT'S
THE BEARD CONTEST.



SIG EP'S ST. PAT IN BERLIN.

Friday, March 13, 1964

Several Well Known Bands To Play at St. Pat's Ball



IRMA THOMAS

The St. Pat's Board of 1964 will present an all star review of popular recording stars for its Coronation Ball on Saturday, March 14. The feature group of the night will be the "Drifters" whose top hits include "On Broadway," "Up on the Roof," "Stranger on the Shore," and "Let the Music Play." Their most recent record, which has reached the top 40 in St. Louis and Little Rock, is "Vaya Con Dias."

Another singing group will be Garnet Mimms and the Enchanters. Their most recent hit was "For Your Precious Love." Other recordings include "Tell

Me Baby" and "Cry Baby." This group will be accompanied by a rock and roll band which should relocate the roof of the Armory.

Also coming for the Coronation Ball will be Little Johnny Taylor, whose records include "Since I Found a New Love," "Somewhere Down the Line," and "Part Time Love."

Those Miners who have been to Bourbon Street, New Orleans, should recognize the name of Irma Thomas. This noted singer will appear as vocalist for Ernie Kadow's Band.



LITTLE JOHNNY TAYLOR

CELEBRATE ST. PAT'S

WITH A MINER SWEATSHIRT

HAVE FUN



CAMPUS BOOK STORE

"Just Across the Campus"

Prof. Gevecker Recalls Many Past St. Pat's

The *Miner*, always in step with the prevailing spirit on campus, talks this week to Professor V. A. C. Gevecker, Professor of Civil Engineering, on the subject of, you guessed it, St. Pat's!

How long have you been at MSM and how many St. Pat's celebrations have you participated in?

I entered MSM as a transfer student in September, 1929, and received my B. S. in 1931. I received my M.S. from Cal Tech, and my C.E. from MSM in 1950. I have taught here since 1938, except for five years in the Army. So, as you can see, I have attended quite a few St. Pat's.

Which St. Pat's do you recall as the most eventful?

There are several I recall as being full of surprises. St. Pat's in 1930 was the last put on by the Junior class, which was my class. We did a good job, but for various reasons the St. Pat's board was formed that year to take over responsibility for this holiday. This helped to make it more of an all-school function. 1931 was the first St. Pat's administered by the St. Pat's board.

In 1930 entertainment was furnished by Jan Garber, who was enroute from Kansas City to Chicago, where he played regularly at the Aragon Ballroom. At this time he had a weekly radio show in conjunction with Wayne King, who then played at the Trianon.

Interestingly enough, my wife and I were at Catalina in 1936 when he was playing there and were recognized by the drummer as being from MSM. We talked with him and with Jan Garber, who remembered St. Pat's of 1930 as being as enjoyable for the entertainers as for the students.

Another unusual St. Pat's was in 1935. It was scheduled to begin on Thursday, and Wednesday night the town's water supply failed. Of the three wells then in use, two were not functioning, and that evening the pump broke down on the third. So all water had to be brought in in huge milk trailers. These would stop in the middle of the street and everyone would rush

(Continued on Page 10)

The Missouri Miner

St. Pat's Court of Love and Beauty

JENNIE MINTO STENHOUSE

Alpha Epsilon Pi

Alpha Epsilon Pi Fraternity has selected the lovely Miss Jennie Minto Stenhouse as its candidate for St. Pat's Queen of Love and Beauty.



"Mintie" is a resident of Sturgis, Michigan. She attended Lindenwood College, and is now a nurse's aide at Sturgis Memorial Hospital. Miss Stenhouse plans to enter nurse's training at Cook County Hospital in

Chicago this fall.

Miss Stenhouse is 21 years old and is a stately 5' 8" tall. Her Scottish ancestry is recognizable in her facial features and her coloration. Her engaging personality and charming appearance make her an outstanding candidate for St. Pat's Queen.

CAROL ANN BECK

Tau Kappa Epsilon

Tau Kappa Epsilon has chosen Miss Carol Ann Beck as its candidate for St. Pat's Queen. Carol is an eighteen year old, 5' 8", brown eyed, brunette beauty from St. Louis, Mo.



Miss Beck, who is currently employed as a teller at Columbia Federal Savings and Loan Association in St. Louis, has a disarming smile and an outgoing personality that radiate her charms to strangers as well as friends. Her manifest qualifications make Carol an ideal candidate for Queen of Love and Beauty.

Carol will be escorted by Brother Woley.

SANDRA ESKRIDGE

Theta Chi

Theta Chi Fraternity presents Miss Sandra Eskridge as its candidate for Friday, March 13, 1964

St. Pat's Queen. Miss Eskridge's home is in Berkeley, Mo., where she attended



Berkeley High School. During her senior year Sandy represented the school as homecoming queen. While in high school Sandy was also a varsity cheerleader, and was chosen the most outstanding student in the Department of Dramatics.

She is a 5' 5" dark haired, dark eyed beauty. Her favorite sport is swimming, and she is currently an A. A. U. swimmer.

Sandy is presently attending school at Missouri University, St. Louis campus, where she was recently chosen Honorary Cadet Colonel by the Air Force ROTC unit of the school.

SUE BRADSHER

Kappa Sigma

The brothers of Kappa Sigma have elected Miss Sue Bradsher as their candidate for St. Pat's Queen of Love and Beauty. This green-eyed blond graduated from Rite-nour High School in 1961 and is presently employed by the Overland Loan and Finance Company. Her hobbies include fencing, bowling, and water skiing.



Miss Bradsher's charm and delightful personality would make her an excellent complement to St. Pat as his Queen of Love and Beauty.

She will be escorted by Gary Vallat, a sophomore majoring in Physics.

MARY CHRISTIAN

Theta Xi

Miss Mary Christian has been selected as Theta Xi's St. Pat's Queen

candidate. Mary was a member of the Masque and Gavel Speech Society, an honor student, and a senior class officer of Granite City Senior High, where she graduated in January, 1962.



Miss Christian has been in the spotlight before as first attendant to the Homecoming Queen and a past honored Queen of Job's Daughters.

Mary presently works as a secretary at Laclede Steel Co. in St. Louis. She is a 5' 2", blue eyed, blonde haired belle with a warm and engaging personality. Her natural charm and beauty make her an excellent choice to grace St. Pat's court.

LINDA JOHNSON

Triangle

Triangle presented Miss Linda Johnson as its candidate for St. Pat's Queen of Love and Beauty. Miss Johnson attended Lebanon Senior High School in Lebanon, Mo., where she was drum majorette in Lebanon High's band, and vice-president of her class. Miss Johnson plans to attend Missouri University this fall as an education major.



Linda is a pert 5' 4" platinum blond with soft hazel eyes. She plays a variety of musical instruments including the oboe, clarinet, and saxophone, and she excels in both water skiing, and dancing.

JANET PIENKTA

Acacia

Acacia Fraternity is proud to present Miss Janet Pientka as it's candidate for

St. Pat's Queen of Love and Beauty of 1964. This shapely 5' 4" brown eyed beauty hails from Independence, Mo.



Janet does part time modeling in her home town and was one of the top exhibit models at the Kodak Camera Company's National Sales Convention in Kansas City. She also has won several modeling scholarships to local schools.

Miss Pientka is a rabid football fan and an avid participant in all types of water sports. Janet is generally known for her conviviality and charm; her diverse talents make her one of the most versatile queen candidates.

JEANIE WILMES

Sigma Phi Epsilon

Sigma Phi Epsilon takes pleasure in presenting Miss Jeanie Wilmes of St. Charles, Missouri, as its charming candidate for St. Pat's Queen. Jeanie is a 1961 graduate of School and is currently treasurer of that school's alumni association.



Miss Wilmes attended Webster College in St. Louis and is presently teaching school at St. William's Grade School in St. Louis County.

Jeanie, a 5' 4", brown eyed brunette, has been attending parties at Sig Ep for the past 3 years. Besides parties she lists bowling and golf as her favorite sports.

Miss Wilmes' escort for the weekend will be her pin-mate, Mr. David Schaeffer, a senior in Civil Engineering.

MARY NINA PFEFFER

Phi Kappa Theta

Miss Mary Nina Pfeffer has been chosen as Phi Kappa Theta's 1964 St. Pat's Queen candidate. Miss Pfeffer at-

tended the Academy of the Visitation in St. Louis, and now attends St. John's School of Nursing; she will graduate from St. John's in September.



On Friday, March 13, of St. Pat's, the five-foot beauty will celebrate her 21st birthday. Better known as "Nina" or "Little One," this pert and perky lass with a bubbling personality finds pleasure in a great many pastimes, particularly painting, swimming, and sewing.

Nina, with her flashing eyes and personality, is the perfect candidate for an ultra-cute, vivacious Queen of St. Pat's Court of Love and Beauty.

Her escort is Mr. Clarence Wagner, a senior in Mechanical Engineering.

SHARON MARIE ADAMS

Pi Kappa Alpha

Representing Pi Kappa Alpha for the 1964 St. Pat's Queen Contest is Miss Sharon Marie Adams. With a ready smile and pleasant personality, Sharon is a petite, blue-eyed, 5' 3" brunette.



Presently residing in Centralia, Mo., "Shads" is employed as an IBM operator. Her hobbies include reading short stories, dancing, sunbathing, and her keen enthusiasm in sports cars is indicative of her spirit.

The "Pride of the Pikes" has the beauty and charm necessary to become St. Pat's Queen of 1964.

JERRI RODDEN

Sigma Tau Gamma

Sigma Tau Gamma has chosen Miss Jerri Rodden as its candidate for St.

Pat's Queen of Love and Beauty. Jerri, a five-foot seven-inch, brown-



eyed blond, is studying speech and drama under a four year scholarship at Valparaiso University. As a freshman at Valparaiso, she participates in many extracurricular activities; she has also taken part in college plays. Jerri's favorite hobbies include acting and painting. Her home is in St. Louis, Mo., where she attended Lutheran Central High.

This lovely 19-year-old will be escorted by Dave Reynolds, a junior majoring in Mechanical Engineering, and a member of the St. Pat's Board.

KATHY O'REILLY

Beta Sigma Psi

Representing Beta Sigma Psi as its candidate for St. Pat's Queen of Love and Beauty is Miss Kathleen O'Reilly, daughter of Mr. and Mrs. Myles O'Reilly of Hazelwood, Mo.



Miss O'Reilly, a captivating young lady with brown hair and blue eyes, compacts a fascinating combination of vivacity, mischief, and benevolence into a delicate 5' 2" frame.

Kathy, has been a cheerleader and an industrious participant in high school activities; she currently works as a secretary for Trans World Airlines. Her other interests include dancing, boating, skiing, dressmaking, and social work.

Miss O'Reilly will be escorted by her pinmate, Mr. Al Behring, a junior in Mechanical Engineering.

JO ANN GRISSOME

Sigma Pi

Sigma Pi's candidate for the court of St. Patrick for 1964 is Miss Jo Ann

Attend the Coronation

The Missouri Mines

Grissome of St. Louis. Miss Grissome is currently a senior at Ritenour High



School where she is a member of the Student Council. Jo Ann plans to attend Missouri University and study business administration.

Miss Grissome, an eighteen year old beauty, is 5' 6" tall, has brown eyes, black

hair, and a sparkling personality. Her favorite interests include boating, archery, fishing, and golf. Her beauty plus her charm add up to a winning combination for Sigma Pi.

Jo Ann's escort will be Donald Houser, a sophomore in Electrical Engineering.

MARGARET HEY

Sigma Nu

Sigma Nu's candidate for St. Patrick's Queen of Love and Beauty is Miss Margaret Hey. Miss Hey's home is in Kansas City, Mo.



Before attending Kansas State University, Miss Hey went to Southeast High where she was a cheerleader. During her high school years she was a model for the Jones Stores of Kansas City.

Margie is now employed as an assistant accountant for Wishbone Restaurants Inc.

Her favorite pastime is horseback riding, and she spends much of her spare time with her bay mare, "Poco."

Second to "Poco" comes Bill Ward, her fiancé, and escort, a junior in Metallurgy.

ROBERTA BUGG

Men's Residence Hall Ass'n

The Men's Residence Halls Association has selected as their candidate for

1964 St. Pat's Queen, the lovely Miss Roberta Bugg.



This petite and ravishing brunette has blue eyes and stands 5' 6" tall. "Bertie," who is 18 years old, graduated with honors from Affton High School last June.

She presently is a secretary for a firm in St. Louis. Miss Bugg hopes

to be employed by the F. B. I.

In her spare time, "Bertie" enjoys dancing and swimming. Her favorite participation sport is bowling, where she has won many league trophies.

Miss Bugg will be escorted by Samuel Scheer, a Mechanical Engineering major.

LESLIE DREHER

Shamrock

Leslie Dreher, a former resident of Kirkwood, Mo., will represent the Shamrock Club as its candidate for St. Pat's Queen of Love and beauty. Leslie



is a graduate of Webster Groves High School; she has attended SEMS at Cape Girardeau and St. Louis Business School.

Leslie is a pert, 5' 2" brown-haired, brown-eyed, 21 year old beauty. She enjoys

water skiing, ice skating, sewing, and ceramics; Leslie is also a good artist.

She works in the Chemical Engineering Department as Dr. Thompson's administrative assistant.

Leslie will be escorted by her husband, Tom Dreher.

DOROTHY PORTER

Kappa Alpha

Miss Dorothy Porter will represent Kappa Alpha as its Queen of Love and

Beauty candidate. Dorothy is from Bartow, Florida, and is a graduate of



Southwest Missouri State College where she majored in elementary education. Miss Porter is presently teaching in the Pattonville school district in St. Louis. She was a member of Sigma Sigma Sigma social

sorority and has held the offices of treasurer and social chairman.

Dorothy was also a member of the SMS cheerleading squad, the Student National Educational Association, a a synchronized swim squad. While in college she was elected Miss Springfield and the following summer was the first runner up in the Miss Missouri Pageant.

BARBARA SCHMIDT

Lambda Chi Alpha

Miss Barbara Schmidt, Lambda Chi Alpha's candidate for St. Pat's Queen is a product of Webster College in St. Louis, where she is a



freshman. Miss Schmidt, a history major, is active in campus organizations; she belongs to both the National Education Association and the Student Government Association.

Barbara is a girl who has every qualification for queenship. Miss Schmidt is both attractive and personable, and she is familiar with the St. Pat's traditions and ceremonies at MSM.

She will be escorted by her pinmate, Bob Schlutow, a senior majoring in Civil Engineering.

onon Ball-Saturday Night-9:00

Friday, March 13, 1964

VICKIE HARWELL
Kappa Phi

Kappa Phi, MSM's newest fraternity, announced the selection of its candidate for St. Pat's Queen of Love and Beauty; she is Vickie Harwell.



Vickie, from Poplar Bluff, Mo., stands five feet, three inches tall, has brown hair and green eyes, and will be escorted by her husband, Bill Harwell.

Some of Vickie's interests include swimming, hunting and camping, and horses.

She has modeled clothing and hair styles for a number of fashion centers in her home town and she placed as first attendant to Miss Poplar Bluff in 1961.

Her personality and charm would bring her top honors among the candidates.

INTERVIEW

(Continued from Page 6)

out and pick up the water they needed in buckets, pans, and the like. This state of affairs lasted until Sunday night! People were even using out of town motels and hotels simply for bathing. I must say, however, that the lack of water certainly didn't dampen the Miners' spirit!

What were the earlier St. Pat's like?

Earlier St. Pat's began Thursday at noon. There was usually a play given Thursday afternoon, and Thursday night were the "house dances" put on by the eight fraternities. Two of the houses would hold dances from 7 p. m. to 11 p. m. Three would then take over for dances from 11 p. m. to 2 a. m. and three more from 2 a. m. to 5 a. m. It was customary that if you were still dancing at 5, the house where you were served you breakfast. Friday afternoon was the parade and also the knighting ceremony, and Friday night a masked or costume ball was held. The formal dance was held Saturday night, and it was strictly formal, as you were not allowed on the floor unless you were dressed in a tux.

How has St. Pat's changed in recent years, in your opinion? Which traditions seem to have been dropped? Added?

One change is in the quality of the parade. In the past, there was not a lot of work done on the floats, and the parades were not very spectacular. In the last fifteen or twenty years, there have been many man-hours spent in producing elaborate and colorful floats. Thus the parades are made more meaningful and much more enjoyable for all the spectators.

The dances are less formal, but I think this is true on college campuses over the nation. The tradition of the costume ball has been dropped.

One tradition recently revived is the carrying of shillelaghs. Originally every Miner was to carry one. Then the custom waned until only the freshmen carried them. Now it seems to be more popular to carry a shillelagh regardless of the class you're in.

I think it is fortunate that fewer groups are making freshmen carry enormous logs. I have seen students made to carry shillelaghs weighing as much as eighty pounds! It seems to me this is rather dangerous, and I am glad to say that I have not seen evidence of this yet this year.

Do you think St. Pat's tradition should be continued at MSM? How do you think it could be improved?

Yes, I definitely think St. Pat's should be continued. It gives the students a break from studying, and I am completely in favor of a spring break. I do think that perhaps the two breaks we now have could be consolidated into one, not at Easter or at St. Pat's. This would shorten the St. Pat's holidays to a weekend, which would probably be an improvement.

I say this because it seems to me that social conditions on campus have changed, largely because of the automobile. Now, when students are given a fourday holiday, many of them go home. If St. Pat's were a weekend holiday, many more would stay here

and participate in the activities. And students could still go home over the long spring break.

Do you think there is less all-campus participation than in years past?

Of course there are more students participating numerically, but I think the percentage is less. As I stated above, this is not connected with St. Pat's being less entertaining, but simply because of the opportunity to leave.

The spirit of St. Pat's is much the same. It is still a time when a good portion of the student body takes off and enjoys themselves, augmented by the leavening influence of a profusion of girls coming into an all-male campus.



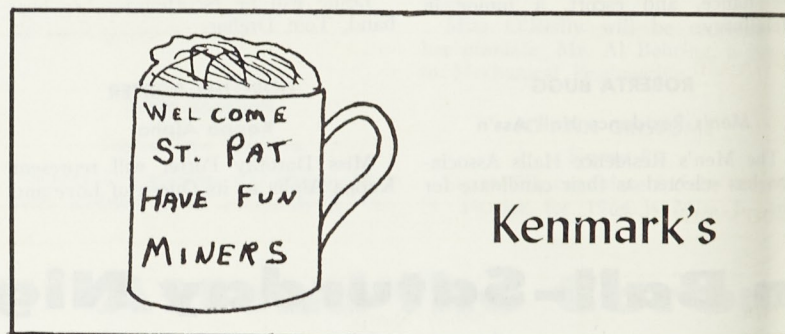
"HAPPY ST. PAT'S"

PARADE STARTS

AT

10:00 A. M.

SATURDAY



Kenmark's

St. Pat's "Party Schedule" - 1964

	Friday Night	Saturday Afternoon	Saturday Night
ACACIA	Records — Casual	"The Mauraders" (2-5) Casual	"The Mauraders" Coat & Tie
ALPHA EPSILON PI	Records — Casual		"The Cyclones" Casual
BETA SIGMA PSI	At K. A. — Joint Party K. A. & Beta Sigma Psi "Patti McCoy" & "The Renegades" Casual		Records — Casual
DELTA SIGMA PHI	Band — Casual		"The Dawn-Crashers" Coat & Tie
KAPPA ALPHA	Joint Party K. A. & Beta Sigma Psi "Patti McCoy" & "The Renegades" Casual	"Sammy Gardner" (1-5) Casual	"Rebel Rousers" Coat & Tie
KAPPA SIGMA	Song Fest—Guitars & Casual "Chuck Tillman"	"The Krazy-Kats" (1:30-5:00)	Records — Casual
LAMBDA CHI ALPHA	"Johnny Floyd Smith" Costume		"The Blue Knights" Casual
PHI KAPPA THETA	Records — Casual		"The Rain Drops" Coat & Tie
PI KAPPA ALHA	"The Rebel Rousers" Casual		Records — Casual
SIGMA NU	Records — Costume	"Buddy Hughes" and the "Versatile Swingtones" (1-5)	"The Pacers" Coat & Tie
SIGMA PHI EPSILON	Records — Casual		Records — Casual
SIGMA PI	Records — Casual		"Jimmi Hoff" and "The Mojos" Coat & Tie
SIGMA TAU GAMMA	"The Echo-Tones" Casual	At Lions Den — Joint Party Sig Tau Gamma — TKE "The Ecco-Tones" (2-6)	"The Ecco-Tones" Casual
TAU KAPPA EPSILON	Records — Casual	At Lions Den — Joint Party Sig Tau Gamma — TKE "The Ecco-Tones" (2-6)	Band — Casual
THETA CHI	"Fender Benders" Casual		"Fender Benders" Coat & Tie
THETA XI	"Kipper's Band" Casual		"Kipper's Band" Coat & Tie
TRIANGLE	Records — Casual		"Dukes of Rhythm" Coat & Tie
INDEPENDENTS	Lions Den		
I. C. C.			Lions Den
MRHA	Rayl Cafeteria "Benny Sharp"		

Friday, March 13, 1964

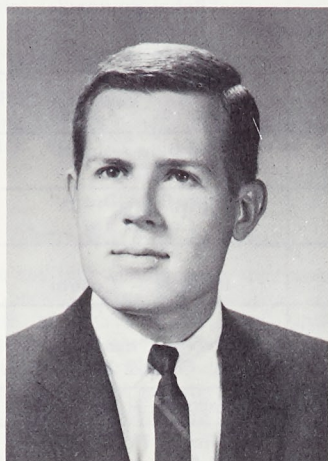
Knights of St. Patrick

The knighting of certain men as Knights of St. Patrick is a long and honored tradition. These men are picked because they possess special qualities which make them outstanding.

The ceremony includes a short speech by St. Pat and the kissing of the Blarney Stone by the applicants. The knighting will take place on the football field after the parade Saturday.

The men not listed in the following article did not turn in the material requested.

KAPPA ALPHA



DAVE JONES

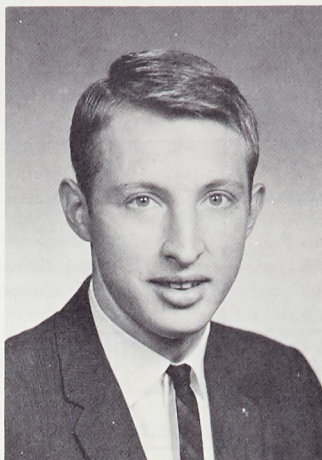
Dave Jones, K. A.'s man of distinction, will receive St. Pat's baptismal as a Knight of St. Patrick. Dave, a graduating C. E., lives in University City, Missouri. He has held numerous positions, such as Managing Editor of the Miner and treasurer and recording secretary of Kappa Alpha. So as a final honor, brother Dave will succumb to the annointment of St. Pat and join a long list of illustrious smelling knights of old.

DELTA SIGMA PHI

This year Rich Terry will represent Delta Sigma Phi as a St. Pat's Knight. Rich is currently president of Delta Sig and is a senior majoring in Metallurgical Engineering. He expects to be graduated in January, 1965.

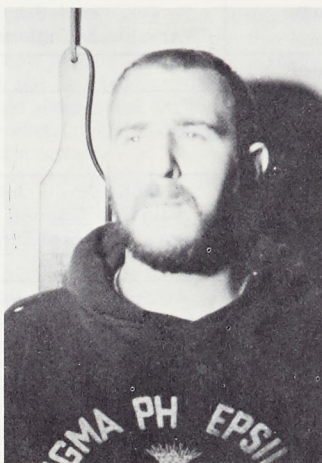
SIGMA PI

Sigma Pi has chosen Mark W. Morris as its knight of St. Pat's for 1964. Mark is a senior physics major from Kansas City, Mo.



MARK MORRIS

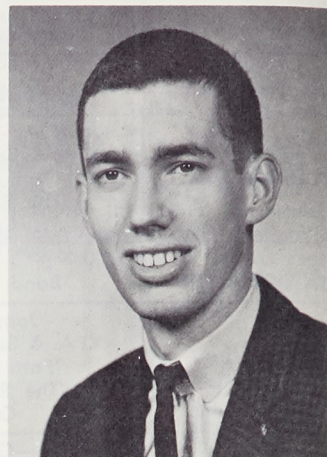
SIGMA PHI EPSILON



MARTY McGRATH

Marty "The Hook" McGrath, a four semester senior in the Metallurgy Department, has been elected to represent Sigma Phi Epsilon as a Knight of St. Patrick. Marty has served on the Student Union Board, on the St. Pat's Board, as vice president of Sig Ep, and is currently pledging Theta Tau.

PI KAPPA ALPHA

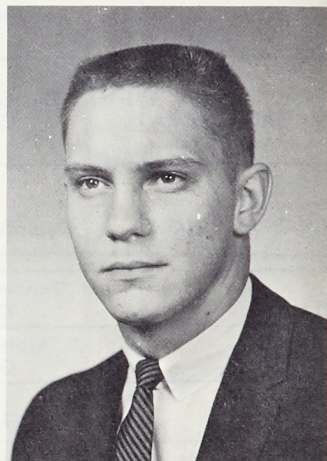


RON MILLER

Ron Miller is Pi Kappa Alpha's contribution to the elite corps of St. Pat's Knights. Ron is a senior in Chemical Engineering from Benton, Kentucky.

PHI KAPPA THETA

Phi Kappa Theta has chosen for their Knight, Gerry Bersett, a senior in Metallurgical Engineering. He started at MSM in the fall of 1958 and in



GERRY BERSETT

the meantime has dropped out to work for two years. He plans to receive his B. S. in January, 1965.

TRIANGLE

Triangle's candidate for knighthood is Jerry Murphy, a C. E. senior. Jerry is married and the father of two chil-

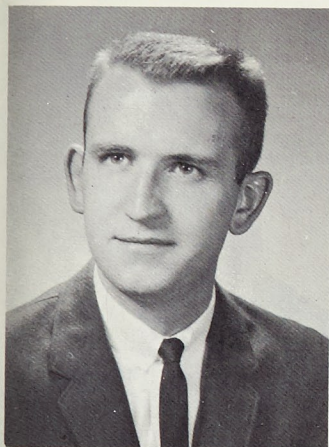


JERRY MURPHY

dren. He started at MSM in 1958 and dropped out of school for two years to work and get married. Jerry will graduate in June.

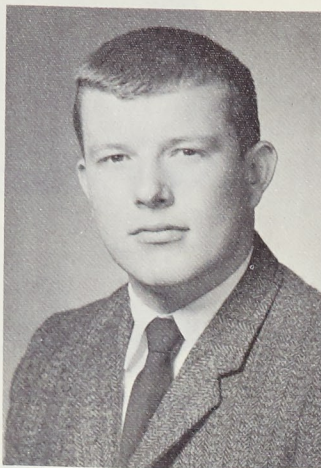
THETA CHI

The candidate to be knighted from Theta Chi is Sam Turrall. After four long years, Sam has finally become a senior in the Metallurgical Engineering Department of MSM. He was a founder of Phi Alpha Local Fraternity, a charter member of Theta Chi Social Fraternity, and is a member of Theta Tau Professional Engineering Fraternity.



SAM TURRALL

SIGMA NU



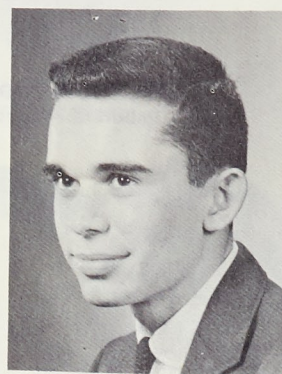
CHARLES RIGGS

Sigma Nu's knight, Charles Riggs, has participated actively on campus as well as in his own fraternity. He has been a member of the varsity football and golf teams and is a past member of the St. Pat's board. He has held many offices in his fraternity including Commander, Lieutenant Commander, and Pledge Marshal.

Charles is presently a senior in the Civil Engineering department and will graduate this spring.

LAMBDA CHI ALPHA

Lambda Chi Alpha's candidate for knighthood is Jim McHugh. A senior in Math, Jim hails from Hannibal, Mo. While maintaining a 3.73 grade point average, he has been active in campus organizations. Jim is a member of Phi Kappa Phi, Tau Beta Pi and is past vice president of his social fraternity. Truly a deserving knight of St. Patrick.



JIM McHUGH

(Continued on Page 27)

The Finest in.....
DRY CLEANING

**Pressing While You Wait.
One Day Service if Requested.
Pick Up and Delivery Service.**



MODERN
Dry Cleaners
9th and Pine

Dial
EM 4
2509



BARBARA SCHMIDT
Lambda Chi Alpha



MARY CHRISTIAN
Theta Xi



KATHY O'REILLY
Beta Sigma Psi



SANDRA ESKRIDGE
Theta Chi



LINDA JOHNSON
Triangle



SHARON MARIE ADAMS
Pi Kappa Alpha



JO ANN GRISSOME
Sigma Pi



DOROTHY PORTER
Kappa Alpha



MARGARET HEY
Sigma Nu



MARY NINA
Phi Kappa



JANET PIE
Acacia



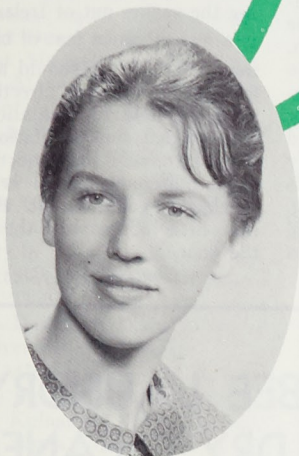
MARY NINA PFEFFER
Phi Kappa Theta



ROBERTA BUGG
Men's Residence Hall Ass'n



SUE BRADSHER
Kappa Sigma



JENNIE MINTO STENHOUSE
Alpha Epsilon Pi



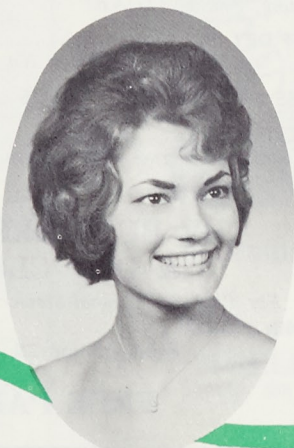
JEANIE WILMES
Sigma Phi Epsilon



LESLIE PREHER
Shamrock



JANET PIENKA
Acacia



CAROL ANN BECK
Tau Kappa Epsilon



VICKIE HARWELL
Kappa Phi

St. Pat. an Engineer

Dear Sir,

With St. Pat's on the threshold of today, and really to become a reality tomorrow, quite naturally the topic of discussion is St. Pat's here at MSM. But of times the conversation turns to the venerable St. Pat himself; then someone usually asks the question "Well just what did the old boy do that qualifies him as an engineer?" The number of times the question has gone unanswered has given us an inspiration and a determination to settle this question once and for all.

So after months of research, pencil pushing and gathering of three stacks of notecards we are able to present the whole story of just why St. Pat was an engineer.

In the year 600 A. D. (or was it B. C.) in the village of Braugh, country, Killarney, we find a young man much sought after by surrounding villages because of his remarkable mechanical ingenuity and inventive powers.

Now Pat (he was still plain Patrick Timothy Michael Francis O'Toole in those days) lived with Mrs. O'Shaunessey who according to our present day measurement would be considered quite ample in girth, in fact to put it mildly her diameter was in the neighborhood of six feet. Consequently Mrs. O'Shaunessey had quite a time getting through doors, having particularly rough going whenever she had to open the door toward her and step back before she passed through. It is in the solution of Mrs. O'Shaunessey's difficulty that we first find evidence of St. Pat's mechanical ability, for he inventend a particular kind of door for her convenience. This type of door is still in existance today and is known as the "Swinging Door" and should be well known to all miners by usage, and if not by usage, then through that well known and well worn phrase, "Stay away from those swinging doors." Thus we find that St. Pat made his contribution to Mechanical Engineering.

It is in the field of chemistry that we next find evidence of St. Pat's Engineering ability; for it seems that the old boy had a knack for fractional distillation and its products. Now he had quite a collection of pipes and coils

and at various times he used them in various combinations. He was never satisfied with the results, however, for none of them had any of the effects which he thought a good solid liquor should posses. Finally by dint of hard labor and much distilling he hit upon a product which had all the qualities he was searching for. This particular native type of liquor was quite appropriately called "Irish Whiskey" and is still sold and enjoyed by Irishmen today.

Thus we see that the venerable saint left future engineers a valuable heritage. Due to the widespread popularity of this drink there was an increasing demand for equipment to manufacture it, so St. Pat found himself the victim of necessity forced into the role of combined Metallurgist and Miner. Mining in those days was very primitive and St. Pat was faced with the problem of speeding up production. Having no mechanical equipment to aid him he solved the problem by having the men sing a rhythmic ditty while they worked. You have heard the number he composed, literally translated from the Gaelic the words run something like this: "Dig, dig, dig, well alright; chop, chop, chop, well alright!" Also in the capacity as a

Metallurgist he naturally wanted to keep his methods a secret so he invented the square pipe so it wouldn't get around.

Edison, Faraday, or Franklin had nothing on St. Pat when it came to pioneering in electricity for he devised the first artificial source of electrical energy, a simple gravity cell. He was not aware of its possibilities, however, for one day he wired the plus and minus poles of his cell together and set them down on his work bench momentarily forgetting them; he then turned and leaned against the bench and against the wires. He received only a slight shock, but from that time on he was known as the first man to have amps in his pants.

You've all doubtless heard of the story of his engineering feat of driving the snakes out of Ireland, but there is a lesser known feat of civil engineering for which we should all be deeply grateful. It is more directly concerned with the field of Sanitation Engineering. At that time sanitation conditions were extremely bad and, more especially, odiferous. So in order to help check this condition St. Pat built the first little house with the crescent on the door.

(Continued to Page 25)

THE BUSY BEE LAUNDRY & SANITONE DRY CLEANERS

ARTHUR GODFREY SAYS: "for more than just dry-cleaning, go SANITONE!"

FLUFF DRY 11c lb.
1 Day Service No Extra Charge

DRESS SHIRTS & SPORT SHIRTS 25c

SLACKS 55c SUITS \$1.10
(Cash and Carry—Small Extra for Pickup and Delivery)

CALL

THE BUSY BEE LAUNDRY & DRY CLEANERS

For That Professional Service, "It's the Place to Go."

14th and Oak

Phone: EM 4-2830
Faulkner and 72 — EM 4-1124

FREE PARKING

Tibbles Tumbles, But Sig Ep Still Manages to Win 1964 Wrestling Crown

By James Strzelec

In a tournament which found teams more closely matched than in previous years, Sigma Phi Epsilon scored a total of 41 points to repeat as the intramural wrestling champions. Sig Ep led their nearest rival, Tech Club, by 11 points as the Club finished with 30 points.

In the semi-finals, following two nights of preliminaries, Stine of Lambda Chi Alpha wrestled Warren of Prospectors in the 118 lb. class. Stine used control tactics and won over Warren, 4-0. The other match in this weight class pitched Dunn of Sigma Phi Epsilon against Maxwell of TKE. In a close match Maxwell came out on top by a score of 3-2.

The 126 lb. class found Shimamoto of Engineers gaining a forfeit over Steinbruck of Beta Sigma Psi. In the other match Contelzou of Tech Club pinned Serrati of Sigma Phi Epsilon.

In the 135 lb. class Houchin of Prospectors looked very strong as he pinned Wilson of Theta Xi. In the same weight class Dowdy of Sigma Pi scored a 4-1 win over Miller of Acacia.

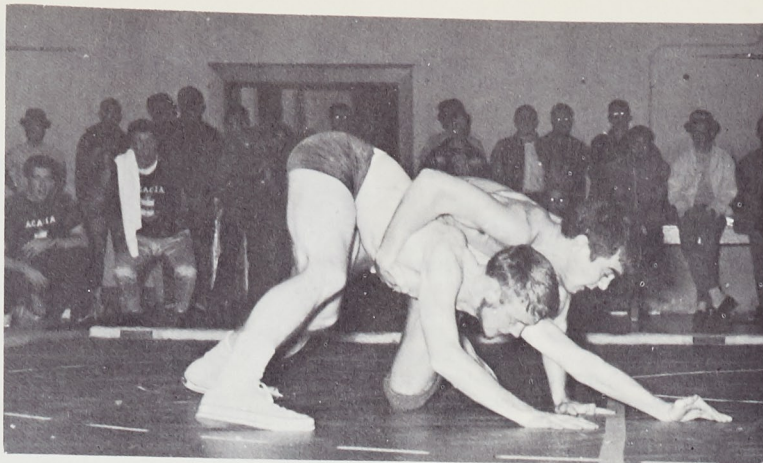
Smith of MRHA in the 145 lb. class came out on top of Bleiler of Pi Kappa Alpha, 9-8. Kulham of Tech Club held Moxham of Sigma Nu pointless to win 5-0.

In the 155 lb. class Sutherland of Sigma Phi Epsilon moved fast and pinned Stiefferman of Sigma Pi. Doerr of Kappa Alpha took a close match over Perry of Sigma Nu, 3-2.

The 165 lb. class found Sommerkamp of Sigma Phi Epsilon pinning Slapak of Tech Club. Verdi of Sigma Nu pulled out a 3-2 victory on riding time over last year's runner-up Thrash of Phi Kappa Theta.

In the 175 lb. class Hagen of Prospectors beat Ombalski of Sigma Nu, 2-1, on riding time. Delmain of Sigma Phi Epsilon beat Bischoff of Kappa Sigma, 5-1.

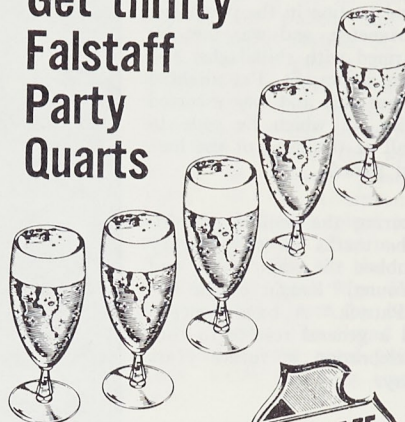
The 185 lb. class found Leone of Sigma Nu the victor over Buecher of Tech Club, 5-0. Kuebler of Phi Kappa Theta looked impressive as he overcame Panages of Sigma Phi Epsilon, 8-2.



MSM GRAPPLERS IN ACTION.

PARTY TIME IS FALSTAFF TIME

Get thrifty
Falstaff
Party
Quarts



Each One Serves
5 Full Glasses of



★ AMERICA'S PREMIUM QUALITY BEER

FALSTAFF BREWING CORPORATION, ST. LOUIS, MO.

Distributed by
MUELLER DISTRIBUTING CO.
217 W. 6th St. Rolla, Mo.

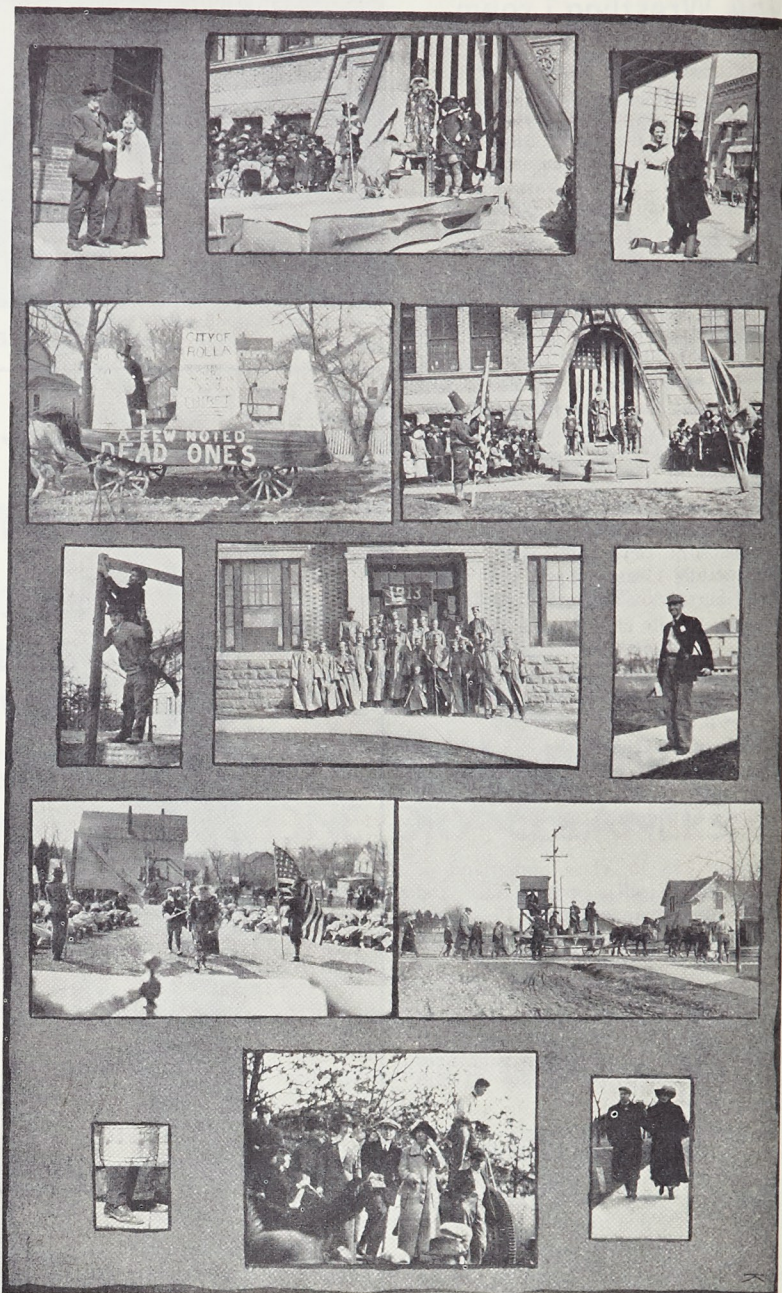
First St. Pat's Celebration Held in 1908

Three Men Arrange First Celebration

In the spring of 1908 the University of Missouri extended an invitation to the School of Mines to send a delegate to Columbia to witness their ceremonies. As a result, a mass meeting was held in front of the post office, where all important questions of state were settled, and J. H. Bowles was elected delegate to the ceremonies at Columbia. The Miners, however, were not contented to let the situation stop at that. A committee consisting of G. A. Easley, '09, Clay Gregory, '10, and D. L. Forester, '11, was appointed to arrange a celebration in Rolla. Considerable difficulty was encountered, as many of the students were skeptical, and the faculty was opposed to the deal. Nevertheless, March 17, 1908, was declared a holiday by popular vote of the student body, and on the morning of the 17th, St. Pat arrived at the Grand Central Station in the personage of George Menefee, and was met by the crowd armed with shillalaghs, and wearing green sashes. St. Pat alighted from his palace car, and was escorted to his chariot, in which he rode to Norwood Hall at the head of the hastily arranged parade.

After lecturing the seniors and interpreting the marks on the Blarney Stone, he dubbed the class of '08 and Dr. L. E. Young, "Knight of the Order of St. Patrick." A band concert, hilarity, and a general resolve to continue the celebration in future years ended the day.

The following year, 1909, saw March 17th scheduled as a regular school holiday. It also marked the beginning of the features, such as the parade, which characterize the present celebration. W. M. Holmes impersonated the Patron Saint this year. The morning program was not altered, but the afternoon program had athletic sports regularly scheduled. The unscheduled hilarity which emanated from eighth street, however, did much to vary the program and add pep to the crowd. It is reported by old timers that, although the Sainted Snake Cha-



ser himself was in Rolla, multi-colored snakes with violent contortionist powers appeared at intervals.

FIRST SHILLALAGH DAY

In 1910 Shillalagh Day was instituted by sending Freshmen into the woods to cut the necessary arms for the occasion. "Red" Forester acted as St. Patrick. He rode on a water wagon drawn by six big mules at the head of the parade, and used his customary transit to locate the Blarney Stone, after considerable anxiety had been manifested as to its whereabouts. No afternoon program had been arranged.

In 1911 the celebration took the form of those of the preceding years. W. A. Hackwood impersonated St. Pat, and had the honor of knighting Miss Eva Endurance Hirdler, the only woman mining engineer to graduate from M. S. M.

In 1912 was the first year in which the evening of the great day was used. The program for the day, with Harry H. Nolan as St. Patrick, was much the same as in former years. In the evening the Athletic Association gave an entertainment in Mechanical Hall. The new feature was noteworthy, for it was the germ of what is now the most elaborate part of the celebration.

In 1913 A. F. Truex took the part of the Patron Saint. The campus that day took on the appearance of a carnival ground. The afternoon was most enjoyably spent. In the evening the first St. Patrick's Day Masque Ball was held in Mechanical Hall. Another move had been made toward a greater St. Pats.

Frank L. Johnson officiated at the knighting ceremonies in 1914. The day was marred by a heavy downpour of rain, but by this time the spirit of the celebration had such a firm root that the ceremonies were carried out as usual.

FIRST QUEEN

The year 1915 is remembered for two reasons. First J. J. Doyle, true son of Erin, took the part of St. Pat in a way that has never before or since been equaled; and second, because this year the first Queen of St. Patrick was crowned at the grand ball. This signal honor went to Miss Helen Baysinger, of Rolla. She was not only the first queen here, but as far as can

be ascertained, was the first queen of any St. Patrick's Day celebration of its kind.

In 1916 St. Pat was impersonated by J. G. (Pat) Reilly. One of the Quo Vads, J. J. Allen, had the termity to "bum" in on the Saint's private car. In the afternoon "The Follies of 1915," a humorous dramatization of life at M. S. M., by Lucien Erkskine, were presented. The new gymnasium furnished an ideal place for the Masque Ball. Miss Mary McCrae was crowned Queen.

H. Smith Clark had a cold blustery day for his impersonation of St Pat in 1917. The morning program had to be postponed until the afternoon, and so everyone was rushed. The ball in the evening, however, ranks as one of the most brilliant ever given. Miss Olive Scott was Queen.

FIRST LADY

On the whole, the celebration of 1918 was the most successful of any hitherto given. Maryl McCarthy ruled as St. Pat. The parade and the afternoon minstrel show were both very good, and the evening was made noteworthy by the fact that Mrs. Frederick D. Gardner, then the first lady of the state, reigned as Queen.

In 1919 the weather was ideal, and E. (Toots) Schuman had many spectators to see him dub the seniors Knights of St. Patrick. At the ball that year the Queen's pin was introduced, and the newly crowned Queen, Miss Edna Kiel, of St. Louis, as well as her predecessors, was presented with the emblem at the end of an impressive ceremony.

Adverse weather again interfered in 1920, but the followers and admirers of St. Pat were out in large numbers to see and hear "Squeak" Needham as St. Patrick. The Parade this year was marked by the introduction of several floats tending towards the arctic. Heretofore the ridiculous had reigned supreme. In other years the Blarney Stone had been brought forth by the Civil Engineers with his transit, and by the Mining Engineers with explosives. This year an Indian magician produced it out of nothingness. Miss Nancy Love reigned as Queen of Grace and Beauty.

In 1921 J. E. Jewell took the part of St. Patrick. The celebration was elaborate in every detail. The Blarney

Stone was found by a famous Irish geologist, Mr. O'Hallahan. The ball in the evening left nothing to be desired, and was ably yet gently presided over by Miss Hazel Dent, the Queen.

The class of '23, who were in charge of the 1922 celebration of the Saint's day, introduced one noteworthy feature. The "Follies" first introduced in 1916, had been on the decline, both as to quality and drawing power, for several years. Accordingly, in '22 the M. S. M. Players had the stage for the presentation of some of their amateur dramatic art. This was very well received by both the students and their guests and the substitution was repeated this year. The parade was exceptionally good, due to the superabundance of pep of the Vocates. The gymnasium had been decorated by professionals, and presented a very pleasing background for the Masque all. Miss Margaret Sally was crowned Queen by David F. Walsh as St. Pat.

The weather man had prepared a nice spring morning for March 17, 1923, but the order was misplaced and a crisp breeze welcomed St. Pat, impersonated by C. E. Stover, as the palatial car pulled into the Rolla Grand Central Station. St. Pat was escorted by his waiting motor car, and headed the parade, which marched to Parker Hall. The knighting ceremonies took place in the auditorium of Parker Hall, due to the weather. The M. S. M. Players presented "Just Jones" in the afternoon and the Masque Ball took place in the gymnasium that night. Due to the work of P. L. Blake, '24, the decorations were exceptionally good. Mrs. Helen Stover was crowned Queen by her husband, C. E. Stover. The Grand March was reviewed by the royal pair from the castle, which had been erected in one corner.

"SICK ABED"

1924 witnessed one of the most elaborate St. Pats celebrations that had been held at M. S. M. for several years. The morning of St. Pat's arrival came with a cold wet rain, which later in the day turned to sleet and snow. St. Pat, impersonated by W. S. Stack, was welcomed in true Irish style, and was conducted to Parker Hall, where the knighting of the class of '24 took place. In the afternoon a play, "Sick Abed," was presented by

the M. S. M. players. The Masque Ball that evening, when St. Pat crowned Miss Eva Underwood Queen of the festivities, was up to the standards of all previous balls. The formal dance, which was held on Saturday night, wound up the celebration.

In 1925 the celebration took the form of those of preceding years. St. Pat was impersonated by Ray Kollar. The usual parade, with its many floats was eliminated this year. The knight- ing ceremonies took place in the auditorium of Parker Hall. In the afternoon the M. S. M. players presented "Dulcy," and the masque ball took place in the gymnasium that night. Miss Helen Underwood was crowned by Ray Kollar.

The weather man had prepared another nice spring morning for March 17, 1926, but the order was misplaced, and a little rain welcomed St. Pat, impersonated by Ralph Hilpert, as the Grand Central Station. St. Pat was escorted to his waiting motor car, and headed the parade, which marched to Parker Hall. The knight- ing ceremonies took place in the auditorium of Parker Hall. The M. S. M. Players presented "Thirty Days" in the afternoon, and the masque ball took place in the gym that night. Miss Dorothy Keisler was crowned Queen of Love and Beauty for the 1926 St. Pat's celebration. On the evening of March 19, the very formal Junior Prom was given.

JUNIOR PROM

In 1927, St. Pat, impersonated by Gerald Roberts, was greeted by a beautiful spring morning, and was conducted to Parker Hall where the knight- ing ceremonies took place. At the masque ball Friday evening, Miss Lorraine Love was crowned as queen of the festivities, and the weekend was topped by Saturday night's Junior Prom which proved to be the perfect end to a wonderful St. Pat's.

In 1928, St. Pat arrived in a blind- ing snowstorm. Undaunted by the weather, however, he gaily proceeded to Parker Hall where he once again gave his annual speech and admitted the seniors to knighthood. Friday evening's masque ball took on the atmosphere of a gay carnival in fairyland. At midnight, St. Pat, portrayed by B. L. Ballard, arrived to crown Miss Lucy Kiesler as his queen. After that

everyone danced till the wee hours of the morning to the music of Irving from St. Louis.

No matter how hard Mother Nature tried, she could not stop the 1929 St. Pat's celebration. Due to unusually heavy rainfall, the parade had to be held Saturday instead of Friday morning. The rest of the program, though, went according to schedule. Friday morning saw St. Pat, played by Jim Richardson. The celebration was ended with the Junior Prom held Saturday night.

The sixteenth St. Pat's celebration in 1930 was held under sunny skies. Friday afternoon a three act play "On the Hiring Line" was presented, and at the beautiful and elaborate masque ball that night, A. J. Tiefenbaum as St. Pat crowned Miss Madge Lenox his queen. All present enjoyed themselves tremendously, and after the Junior Prom, Saturday night, agreed that it had been another successful St. Pat's.

SLATS RANDALL

In 1931 bad weather once again greeted St. Pat. With spirits undamp- ened, however, everyone proceeded to have a really great time. A really out- standing performance was turned in by Slat's Randall's orchestra, which played for both the masque ball, where Marion McKinley was crowned queen by James Offuth who took the part of St. Pat, and for Saturday night's formal ball.

The year 1932 saw St. Pat's as MSM go pretty much as it should have, very much unlike the occurrence at Mizzou that year which saw a group of law students trying to kidnap the Miners' St. Pat Queen. One of the law students even went so far as to shoot one of M. U's engineers in the stomach with a pistol, seriously injuring him. The Rolla Miners, however, managed to keep better track of their queen, Miss Emily McCaw, and everyone thoroughly enjoyed themselves, both at Friday night's masquerade ball and the formal ball Saturday night.

St. Pat's of 1933 was officially opened Thursday night by a dance given by the Independents in Jack- ling Gymnasium. At two p. m. Friday afternoon St. Pat arrived and that evening at eleven the masque ball began to the music of Paul Sells Orchestra.

Beautiful, raven-haired Miss Sybil Powell was chosen queen, and after the masque ball Friday night and Saturday night's formal ball, the curtain was rung down on another wonderful St. Pat's celebration.

1934 saw the twenty-sixth renewal of the traditional St. Patrick's festivities. Thursday night, open house dances were held by the fraternities, and Friday afternoon, under a clear sky, St. Pat, impersonated by John Cooper Settle, arrived via his traditional hand- car. At the masque ball that evening, he crowned his queen in the gym which was elaborately decorated in green and silver. The festivities were brought to a close with the formal ball Saturday night.

Beautiful weather once again greet- ed St. Pat in 1935. His annual speech was delivered at Parker Hall and the knight- ing of the seniors also took place there. His queen that year was Miss Dorothy Fort, and St. Pat him- self was played by Frederick Arnold.

HORSES AND ELEPHANTS

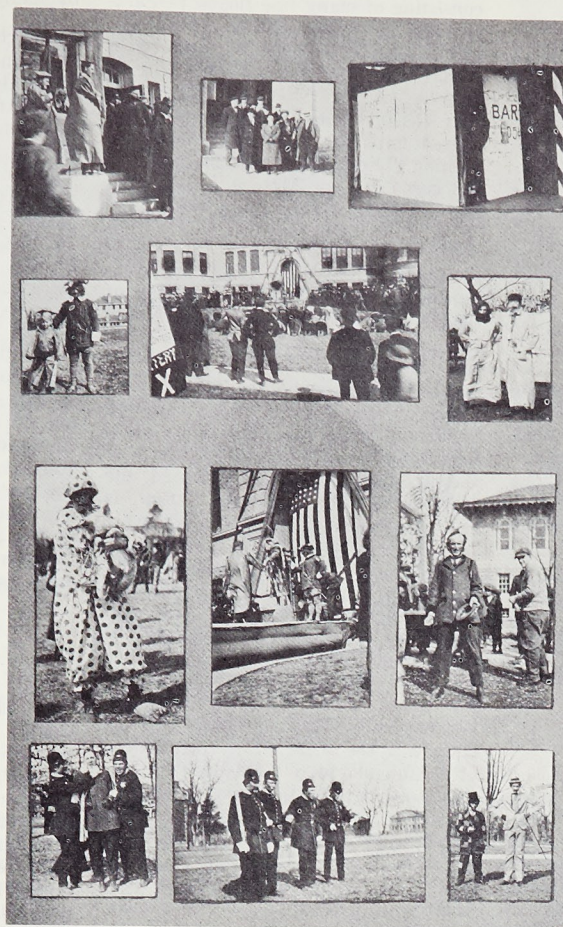
The St. Pat's parade in 1936 proved to be something really different. It contained horses and even elephants borrowed from a circus which was stationed in Rolla. St. Pat himself was pulled through the streets on a manure spreader, and then was conveyed to Parker Hall for the knight- ing of the seniors. A slight delay was experienced here due to the fact that the Blarney Stone could not be found. Finally, however, it was located, and things proceeded according to schedule. Friday night at the masque ball the queen was crowned, and a very successful St. Pat's was brought to a close at the formal ball Saturday night.

In 1937, St. Pat arrived under blue skies with beautiful spring weather. Friday night Miss Mildred Brown was crowned queen, and the music of Dick Judgens' orchestra proved perfect for the occasion. Saturday afternoon a tea dance was held at the Sigma Nu house, and then that evening the formal ball was held. When the celebra- tion finally ended there was no doubt in anyone's mind that St. Pat's had been a success.

March 17, 1938—A big gathering met John R. Post, in the guise of St. Pat, as he rolled into Frisco station on the handcar Friday afternoon. A

parade follo
to Parke
speech, mac
stone, and
Order of S
into the or
Saturday n
other big
Frankie Ma
tom, sever
ball captai
Mary Louis
engagement
March 17
Kurtz, esco
guards first
jects on F
arrived at
car. The h

Friday, Mar



parade followed him through town and to Parker Hall where he made his speech, made seniors kiss the blarney stone, and initiated them into the Order of St. Patrick. Also initiated into the order was Director Chedsey. Saturday night's formal ball was another big affair presided over by Frankie Masters. As has been the custom, several couples, including football captain Mel Nickel and Queen Mary Louise Breuer, announced their engagement at that time.

March 17, 1939—St. Pat, alias Sam Kurtz, escorted by two pages and two guards first appeared before his subjects on Friday afternoon when he arrived at Frisco Station on his handcar. The high spot of the Missouri

School of Mines thirty-first St. Pat's was the Costume Ball and Coronation Friday night in Jackling Gymnasium. The gym was lavishly decorated with a star-sprinkled blue ceiling and red-draped walls with silver trimming. The dance floor was crowded with gayly costumed patrons of St. Patrick dancing to the music of Lou Breese and his orchestra. Miss Lida Mae Coy and Billy Leach, as vocalists, were additional attractions. The new Queen of Love and Beauty, Miss Mary McCrae, was crowned that evening.

March 17, 1940 — St. Pat came steaming into town on his handcar to lead the parade for the twenty-seventh consecutive year. Miss Rosemary Sue Crumpler, a Rolla High School grad-

uate was crowned the Queen of Love and Beauty at the Coronation Ball. The merrymakers were entertained by the old Tom Cat of the Keys, Bob Zurke.

March 17, 1941—Friday afternoon at exactly one-thirty St. Pat and his guards arrived on the traditional handcar at the railroad depot. That evening Miss Lucille Stimson was crowned Queen of Love and Beauty to reign over the Miners for the ensuing year. Music was supplied by Henry Busse, his hot trumpet, and his orchestra.

March 17, 1942—Miss Agnes Houlahan, of Rolla, Mo. reigned as Queen of Love and Beauty for the St. Pat's celebration of 1942. John Mazzoni reigned as St. Pat. Scat Davis and his

Friday, March 13, 1964

orchestra provided the entertainment for the formal dance.

WAR YEARS

March 17, 1943—World War II.

March 17, 1944—World War II.

March 17, 1945—World War II.

March 17, 1946—St. Pat of 1946 was portrayed by Bob White of Tri-angle. The Queen was Miss Lenore Jones. The 35th St. Pat's celebration was highlighted by the formal ball on Saturday evening in which Miss Jones was crowned by St. Pat. Thirty-five seniors were knighted.

March 17, 1947—Miss Louise Freeman and Harold Brehe reigned as Queen of Love and Beauty and St. Pat, respectively. The winning float in the parade was entered by Pi Kappa Alpha. The coronation ceremony on Saturday evening was a beautiful occasion.

March 17, 1948—A brief recap of the St. Pat's holidays of 1948 include: The arrival of St. Pat, was the usual occasion. Ted Weems and his Variety Stars provided the entertainment for the St. Pat's Dances. James Byrnes McGrath was St. Pat and Miss Sue Gleason was Queen of Love and Beauty.

March 17, 1949—St. Pat was escorted by his two guards and pages on Friday afternoon in the usual manner. Miss Paula Fite was The Queen of the Miners for this year. Benny Strong and his orchestra entertained the people that evening by playing novelty numbers.

March 17, 1950—The Patron Saint of Engineers made his momentous entry into Rolla via Frisco Railroad flat car on the day of the annual celebration of St. Pat's. Enveloped by the largest and most boisterous crowd of Miners ever to witness his arrival, St. Pat mounted his traditional conveyance and led the parade through the town and to Parker Hall on the MSM campus. There the vociferous throng was entertained by His Majesty's annual message and the knighting ceremony, Bob Schuchardt, St. Pat of 1950, crowned his Queen of Love and Beauty, Miss Marilee Drake.

March 17, 1951—Amidst snow and mud, St. Patrick made his illustrious entry into Rolla for the annual celebration in his behalf. Transferring from the flat car on which he arrived to a hand-drawn, diamond-studded

manure spreader he led the parade, consisting of many fine floats, to Parker Hall for the knighting of the seniors. There he held the audience spell-bound by his golden oratory and ever present guards. After this ceremony, Joe Geers, Saint Patrick of 1951, retired until the Costume Ball in the evening. The highlight of this ball was the coronation of Miss Alice Walthall as the Queen of Love and Beauty.

March 17, 1952—Gayer and more exciting than ever, the St. Pat's celebration upheld all the expectations of the event. Rick Hamble reigned over the proceedings as St. Pat of 1952. The knighting ceremony, carried on in the usual rowdy atmosphere, was enlivened by Dick's ready wit and jovial dissertation. The Friday night formal, with the rhythmic capers of Ralph Marterie's band, featured the crowning of Miss Barbara Barner as St. Pat's Queen of Love and Beauty.

March 17, 1953—This was the day on which St. Patrick, Jim Garard, made his annual trip from the Emerald Isle to Rolla. Arriving on the usual hand car at Frisco Station, he was then drawn at the head of the parade of gaily decorated floats to Parker Hall. That evening, Jackling Gym was the scene of the coronation of beautiful Joan Christian as the Queen of Love and Beauty. Surrounded by her Maids, Joan reigned over the holidays for 1953. Following the coronation the annual Costume Ball was held. The tremendous band of Ray Anthony provided the mellow notes, and provided the most enjoyable St. Pat's ever.

RALPH FLANNIGAN

March 17, 1954—Having arrived safely from the Emerald Isle to pay his yearly visit to the school of his choice, St. Pat led his parade in traditional fashion through the streets of Rolla to Parker Hall, where he addressed his loyal followers, and then conferred the honor of knighthood upon his faithful seniors. That night at the costume ball, Fred Smith, St. Pat of 1954, crowned lovely June Lange his Queen of Love and Beauty. The many fraternity parties, the dancing to the music of Ralph Flannigan, The Sigma Nu Tea Dance and Saturday afternoon picnics and that tired, partyed out feeling on Sunday morning will make the 1954 St. Pat's Celebra-

tion long remembered and treasured by many a Miner and his date.

March 17, 1955—The Patron Saint of engineers' arrival was heralded with a fabulous procession of floats and pageantry. The regal procession carried Jim Murphy, St. Pat of 1955, to Parker Hall where he completed the knighting ceremony of his loyal subjects. Friday evening saw Miss Shirley Marie Brueggeman crowned by St. Pat as Queen of the Court of Love and Beauty. The costume ball followed to the strains of "Music in the Morgan Manner."

March 17, 1956—A big gathering met Don McGovern, in the guise of St. Pat, as he rolled into Frisco Station on the hand car Friday afternoon. A parade followed him through town and to Parker Hall where he made his speech, made seniors kiss the blarney stone, and initiated them into the Order of St. Patrick. Mrs. Virginia Graham was crowned Queen of Love and Beauty at the Coronation Ball.

RALPH MARTERIE

March 17, 1957—In 1957 the festivities began Friday afternoon with the arrival of Warren Carroll, St. Pat of 1957, at Frisco Station. St. Pat then led a colorful parade of floats down Pine St. to the edge of the campus where he gave his annual message and presented the trophies for the winning floats. Friday evening the Miners and their dates danced to the music of Ralph Marterie and his orchestra at the costume ball in Jackling Gym. The evening was climaxed by the annual knighting ceremony. The celebration was closed Saturday evening at Jackling Gym with the coronation of Miss Marilyn Goodnight as Queen of Love and Beauty.

50th ANNIVERSARY

March 17, 1958—1958 marked the 50th Anniversary of the St. Pat's celebration. After fifty years of carrying on this tradition the celebration had become the biggest event of the school year. Ron Huesman, St. Pat of 1958, arrived Friday afternoon on the usual hand car. Woody Herman and his Third Herd provided the music for the costume dance in Jackling Gym Friday night. The crowning of Miss Joline See at the coronation ball Saturday

The Missouri Miner

night brought the celebration to the conclusion.

March 17, 1959—Friday the 13th,

1959, was indeed a lucky day for all miners as Mr. Brud Murphy, 1959 St. Pat, arrived in Rolla to begin the festivities which marked the 51st St. Pat's celebration. Led by St. Pat up Pine Street, one of the finest displays of floats ever assembled at MSM pleased the thousands of spectators. The Masquerade Ball Friday evening was highlighted by the nighting Ceremony of many campus leaders. The Coronation Ball Saturday evening was climaxed by crowning the 1959 Queen of Love and Beauty, Miss Linda Fitzgerald.

From a humble beginning St. Pat's has grown to be not only the most elaborate and most noteworthy occasion at M. S. M., but also to be a festive occasion in many of the engineering schools in the United States. Each year the obligations and demands become greater and more exacting in order to meet the magnitude of the occasion. This is both logical and necessary. It is logical, because St. Pat's should continue to grow and become better each year. It is necessary in order to maintain the prestige of the school with the alumni and with other colleges.

In 1961, Mr. Harvey Martin was elected by the St. Pats Board to be St. Pat. As St. Pat, Harvey led the St. Patrick's Day Parade. On the float following him was Sharon Anstedt, the new St. Pats Queen, and her attendants. Pi Kappa Alpha had the honor of building the queen's float as a reward for winning first place in the float contest the preceding year. The parade was a huge success with many marvelous floats. Phi Kappa Theta received the first place trophy, with Theta Xi and Tau Kappa Epsilon winning second and third places respectively.

The highlight of the 1960-61 St. Pats was the Coronation Ball with Miss Anstedt, Phi Alpha's candidate being crowned the new Queen of Love and Beauty. Providing music for the ball was Jimmy Cook and his Orchestra.

Once you have sold a customer, make sure he is satisfied with your goods. Stay with him until the goods are worn out or used up. Your product may be of such long life that you will never sell him again, but he will sell you and your product to his friends.

Friday, March 13, 1964

WRESTLING

(Continued From Page 17)

In the battle of the giants, the heavyweight division, Smith of Tech Club pinned January of Lambda Chi. Price of Sigma Nu was pinned by Tibbles of Sigma Phi Epsilon.

With the semi-finals over and the big matches yet to come, Friday night, found the gym packed with spectators. Many questions were in the minds of the spectators. Would any of last year's champions be able to hold their titles? Could Sigma Phi Epsilon be stopped in its drive for another wrestling championship?

The opening match of the evening found Howard Stine of Lambda Chi Alpha, runner-up last year, pitted against Claude Maxwell of TKE. Both men wrestled hard and fast but Maxwell was able to control the match for a 6-1 win.

In the 126 lb. class Shimamoto of Engineers was matched against Contelzou of Tech Club. Shimamoto could not do anything wrong and he coasted to a 12-0 victory.

In the 135 lb. class Larry Houchin, last years champion, was matched against Jim Dowdy of Sigma Pi. Both men wrestled hard and at the end of the match they were tied 2-2. The referee checked with the official timer and

awarded Jim Dowdy a point and the victory on riding time, 3-2.

In the 145 lb. class Allen Smith of MRHA proved himself champion for the second year as he defeated Bob Kulham of Tech Club, 2-1. In 1963 Smith gained the 145 lb. championship by beating Robert Harting of Triangle.

In the 155 lb. class Graham Sutherland of Sigma Phi Epsilon, last year's runner-up, gained the championship by defeating Ray Doerr of Kappa Alpha, 5-2.

The 165 lb class found Bob Sommerkamp of Sigma Phi Epsilon taking a close match on riding time over Art Verdi of Sigma Nu, 2-1. Bob Sommerkamp was last year's champion after he defeated Bob Thrash of Phi Kappa Theta.

The 175 lb. class was a strange match as it pitched the same two men against each other as last year. Bill Hagen of Prospectors wrestled Ken Delmain of Sigma Phi Epsilon and Hagen won 3-2 on riding time. Bill Hagen was last year's champion and Ken Delmain was last year's runner-up.

In the 185 lb. class Bob Leone of Sigma Nu proved to be real tough as he defeated Ken Kuebler of Phi Kappa Theta, 4-1. Ken Smith of Tech Club moved fast for a big man in the heavyweight division and pinned Jay Tibbles of Sigma Phi Epsilon.

LONG INSURANCE AGENCY

A. E. Long, M. S. M., Ex '22

810 Pine St.

ROLLA, MO.

Phone 364-1414

"Service Is Our Business"

BISHOP'S

"The Campus Clothing Center"
ROLLA'S FINEST MEN'S STORE

We Feature

Nationally Advertised Lines

Hart Schafner & Marx Suits
Curlee Clothes
Samsonite Luggage
Jarman Shoes
Haggar Slacks

Van Heusen Shirts
McGregor Sportswear
Campus Sportswear
Stetson Hats
Hickok Jewelry

PHONE 364-1419

124 W. 8th

J. C. ALEXANDER, Mgr.

Rolla, Mo.

Open Friday 'til 8:00 p. m.

Miners Close With 5 - 18 Mark; Hopes Up for Future

The 1963-1964 basketball schedule is now history at MSM, with the Miners posting an over all won and lost record of 5-18. Under the direction of coach Dewey Allgood, the Miners undertook one of the most difficult schedules of the past few years, as they added to their schedule of opponents some very highly rated teams.

Among the brighter spots of the long campaign was the impressive playing of Ralph Farber and Marty Howard. Both came through with consistent rebounding and scoring punch.

Farber copped the top spot in team scoring for the Miners with a 20.9 points per game average. In the MIAA Conference the spots of recognition he held were; being voted to the 1963 All Tournament team of the MIAA Christmas Tournament, most free throws made, second leading conference scorer, third in field goals made, and ninth in rebounds. With this impressive list of honors it is felt that he is almost certain to make the All Conference squad.

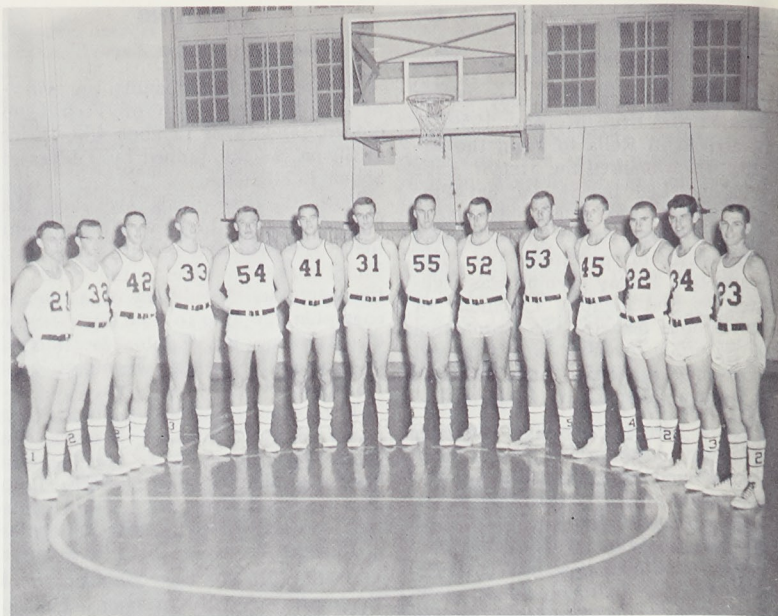
Howard led the Miners in rebounds with 228 and gained one of the top ten spots in each of the statistical departments of the MIAA Conference.

Among the Freshmen members of the team, Hale looked to be the most impressive and made a fine showing for himself in the latter stages of the season, proving that he will be an asset in the upcoming years.

Looking to next season, which will be Coach Key's debut at MSM, it can be seen that the Miners will be vastly improved. There will be no graduation losses from the squad of this past year and competition for a spot on the team will be increased because of intensive recruiting.

MSM—78 vs Evangel College	66
MSM—66 vs Washington U.	107
MSM—97 vs Principia	68
MSM—71 vs John Brown U.	82
MSM—91 vs Harris Teachers	86
MIAA Christmas Tournament	
MSM—63 vs SEMS, Cape	74
MSM—66 vs CMS, Warrensburg ..	88
MSM—72 vs NWMS, Maryville ..	71
MSM—87 vs NEMS, Kirksville ..	103
MSM—59 vs Southern Illinois	103

(Continued to Page 25)



MSM's 1963-64 BASKETBALL SQUAD.

HAVE FUN THIS

ST. PAT'S

Hafeli Rexall Drugs

NEW FORDS \$25.00 PER MONTH

FORDS — FALCON — SPRINT

MERCURY — COMETS — CYCLONE

\$25.00 PER MONTH TILL JULY 1964

Regular Payments After July

(Easy to Qualify)

NOW!! Let's Discuss Your Car

See Me or Call 364-1211

BILL CRUME

DIEHL MONTGOMERY FORD — ROLLA, MO.

The Story Behind The Shillelagh

The shillelagh, as carried by many of our freshmen, reminds us that it was St. Patrick who drove the snakes from the Emerald Island. But there is a story behind this, and this tale when unfolded reveals many of the exploits of St. Patrick over 1500 years ago.

The great mountain of St. Patrick in Ireland was the refuge of our patron saint for many years. One day, while St. Patrick was inside the cave praying for the welfare of his people, all the demons of Eire came down and gathered at the base of the mountain. In great droves and swarms they came, some as serpents crawling on the rock, others as monstrous birds of prey, filling the air and darkening the sky. St. Patrick, reaching for his golden bell, rang it

lustily. The bell was a symbol of his gospel, and the sound of it was heard throughout Ireland, bringing peace and joy to all. Hearing the bell, the demons scattered, and were so frightened they fell into the sea and were drowned. From that time on until seven years later, there was not an evil creature in the whole of Ireland.

The life of St. Patrick was spent in freeing his people from the dreaded cult of devil-worshippers, the Druids. He was born in Scotland in the year 387, of a Roman father and a French mother. At the age of 16, young Patrick was sent into slavery. Later he was taken into Ireland, and there sold to a Druidical high priest named Milchu, whose evil ways Patrick was later to fight.

After six years a shepherd for Milchu, Patrick returned to Scotland. He believed that it was divine providence that had protected him while a slave, and he then decided to make a tour of the monasteries, intent on be-

coming a priest. Later he was sent to England to fight the pagan hordes.

In 433, Pope St. Celestine I commissioned him to work as a missionary among the Irish folk. He first planned to return to the castle of Milchu and impart him with the blessings of the Children of God.

Our patron saint found it no easy matter to convert the Irish people to Christianity, but he eventually succeeded in turning some of the powerful Irish kings to the Christian way, and from then on the people were easily led.

St. Patrick was usually equipped with a large staff, topped with a cross and wearing a rough skirt and sandals. His sleeping places were usually caves and rocks, his favorite being the mountain named after him. He spent the last years of his life in visiting the churches he had founded, and on March 17, 493, he left the world in death. He had reached the age of one hundred and six.

BASKETBALL

(Continued From Page 24)

MSM—63 vs CMS, Warrensburg	93
MSM—72 vs Southern Illinois	110
MSM—62 vs SEMS, Cape	105
MSM—76 vs NWMS, Maryville	83
MSM—85 vs NEMS, Kirksville	112
MSM—78 vs NWMS, Maryville	89
MSM—70 vs Harris Teachers	82
MSM—80 vs SWMS, Springfield	113
MSM—76 vs Evangel College	88
MSM—78 vs CMS, Warrensburg	86
MSM—63 vs SWMS, Springfield	87
MSM—94 vs Principia	86
MSM—73 vs SEMS, Cape	91

ST. PAT ENGINEER

(Continued From Page 16)

Thus we see that St. Pat has rightfully earned the respect and admiration of his fellow engineers for his particular contributions in the various engineering fields and so we hope that this little discussion has cleared up any doubts that may have existed as to whether St. Pat was an engineer.

Yours truly,
Joe Miner

RUDY'S PACKAGE STORE

LIQUOR — BEER — WINE
DRAFT BEER

703 Pine Street

RUDY'S BAR

BUDWEISER DRAFT
BIG HAMBURGERS

THE BIGGEST TUBS IN TOWN!!

14 — 12 Pound Washers

5 — Large Dryers

TRY US SOON

THOMAS Self Service Laundry

207 West 11th Street

Rolla, Mo.

WRESTLING

(Continued From Page 23)

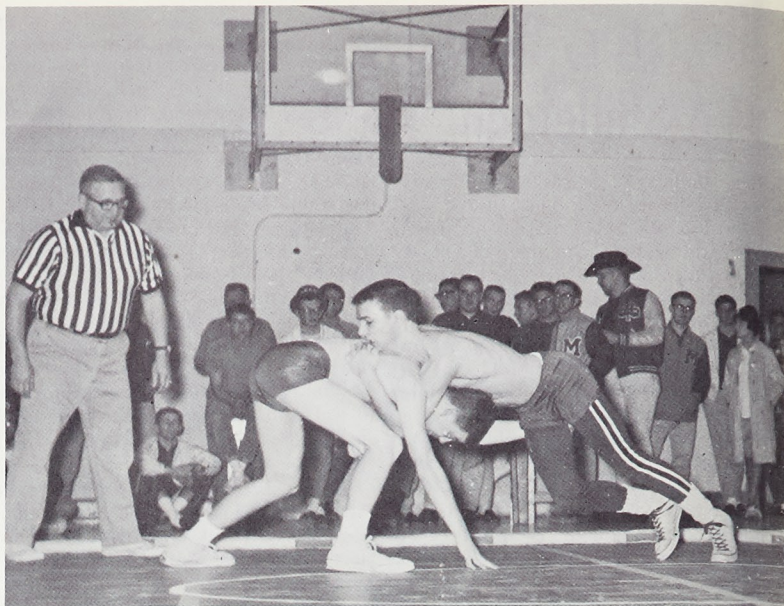
After the finals had ended and the points had been totaled Sigma Phi Epsilon proved to be the champion with 41 points. Tech Club finished second with a total of 30 points and Sigma Nu finished third with 27 points. Prospectors finished fourth with 19 points while coming up fifth, hot on the heels of the Prospectors, was Sigma Pi with 17 points.

In comparison to last year there were a few teams which finished surprisingly strong. Tech Club was seventh last year as compared to a second place finish this year. Sigma Nu moved from fifth last year to third and Prospectors dropped from second last year to fourth. Perhaps the biggest surprise of all was Sigma Pi's strong fifth place finish; last year Sigma Pi did not even get a point.

The final over-all standings in wrestling were: Sigma Phi Epsilon, 41; Tech Club, 30; Sigma Nu, 27; Prospectors, 19; Sigma Pi, 17; Kappa Alpha, 12; MRHA, 11; Lambda Chi Alpha, 10; Engineers, 10; Phi Kappa Theta, 9; Tau Kappa Epsilon, 9; Pi Kappa Alpha, 7; Kappa Sigma, 6; Theta Xi, 6; 50'ers, 3; Beta Sigma Psi, 3; Acacia, 3; Sigma Tau Gamma, 2; Army, 1; Delta Sigma Phi and Theta Chi, 0. Sigma Phi Epsilon received 130 intramural points; Tech Club, 125; Sigma Nu, 120; Prospectors, 115; Sigma Pi, 110; Kappa Alpha, 105.

The support of intramural wrestling was very good. There were no major injuries to any of the contestants. All those who wrestled either losing or winning put on a fine show for the spectators. The competition was keen and heated yet no outbreak of bad sportsmanship ever marred the matches. Everyone involved in the matches should be congratulated for a fine job.

**ATTEND THE
JUDGING
AT
LIONS PARK
FRIDAY**



WRESTLERS IN THE SPOTLIGHT.

**... STUDENTS ...
WE SELL TO YOU WHOLESALE
Stretch Those Sheckles
HOOK AUTO SUPPLY**

513 Hiway 63 South

Rolla, Mo.

PHONE 364-5252

HOURS: 8 to 8 Weekdays — 8 to 6 Saturday — 9 to 3 Sunday

M. S. M. Class Rings

BY L. G. BALFOUR CO.
Both Old and New Style

BULOVA ACCUTRON



OMEGA WATCHES

DIAMONDS & ENGRAVING
WATCH REPAIRING

Christopher Jewelers

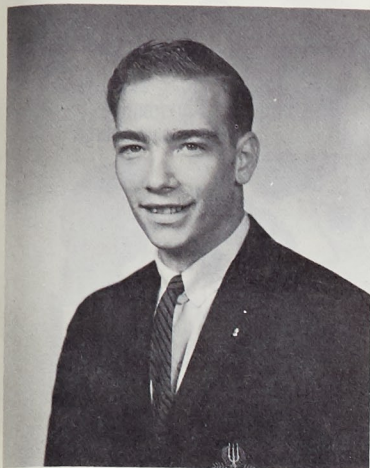
805 Pine Street

KNIGHTS

(Continued From Page 13)

ACACIA

Acacia's candidate for knighthood is Bill Burchill. Bill is a senior in Metal-



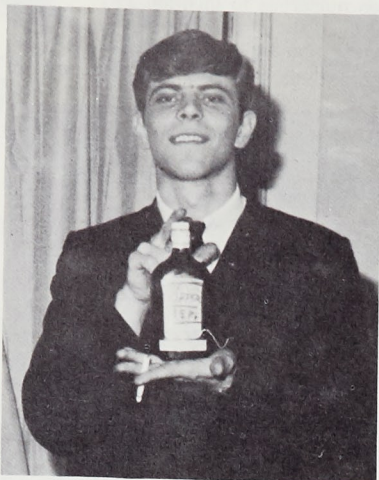
BILL BURCHILL

lurgical Engineering and which at MSM

has built up a strong grade point to go with his activities. He is a past president of Acacia.

ALPHA EPSILON PI

Jerry is an upperclassman from Binghamton, New York, majoring in M. E.



JERRY

He is one of the 1963 charter members of the Nu Deuteron chapter of Alpha Epsilon Pi, and is also a member of the I. F. C. and Student Council.

ATTEND THE CORONATION BALL

COLLEGE SENIORS ONLY



Telephone 364-5417



Russell's Town & College Shoppe

"MEN'S CLOTHING EXCLUSIVELY"

713 PINE ST.

ROLLA, MO.

364-2323



SUITS

GANT
SHIRTMAKERS

h.i.s
SPORTSWEAR

The MSM St. Pat's Board - the Group Behind the Celebration

The group of men responsible for the arrangements and financing that go into St. Pat's is the St. Pat's Board. This body is composed of forty men elected by the students themselves, thirty-two

ing the beard contest, and many others too numerous to mention.

The St. Pat's Board finances the celebration by sponsoring benefit movies, selling hats and buttons, and by



THE 1963-64 ST. PAT'S BOARD.

from the sixteen fraternities, and eight from the independents.

The St. Pat's Board had its beginning on Thursday, Dec. 11, 1930, when the Student Body voted for the first St. Pat's Board in the history of MSM. Ever since then its size has been increasing.

Among the many jobs performed by the St. Pat's Board are the organization of the dances, the arranging of the parade, the running of the knighting ceremony, picking the orchestra, judg-

selling tickets for the Homecoming and St. Pat's Dances. Besides this the funds are supplemented by the Student Council.

The most important functions of the St. Pat's Board are the choosing of the Queen and St. Pat himself. The Queen is chosen from the candidates put up by the fraternities and independent organizations.

The Miner salutes the St. Pat's Board's efforts in making this dance weekend the biggest event of the year.

The LAUNDRY CENTER LAUNDRY - DRY CLEANING - SHIRTS Complete Bachelor Laundry Service

Corner 7th and Rolla Streets

•
ALSO FEATURING

New Coin-Operated Self-Service Laundry

UPTOWN THEATRE MOVIES IN CINEMASCOPE

Starts Friday

Mar. 13-19

Sunday Continuous From 1 P. M.

Admission: Adults 75c — Children 35c

The Professor's Apprentice
gets a positive charge



Starring TOMMY KIRK · ANNETTE
Released by BUENA VISTA

—PLUS—

'Arizona Sheep Dog'

RITZ THEATRE

MOVIES ON WIDE SCREEN

Thurs., Fri., Sat.

Mar. 12-14

Saturday Continuous From 1 P. M.

'Come Blow Your Horn'

Frank Sinatra & Molly Picon

Sun., Mon., Tues.

Mar. 15-17

Sunday Continuous From 1 P. M.

'Rome Adventure'

Troy Donahue & Angie Dickinson

Wed., Thurs.

Mar. 18-19

One Showing of Each Feature

'The Hook'

Kirk Douglas & Nick Adams

—PLUS—

'Guns of Darkness'

David Niven & Leslie Caron

The Missouri Miner



HAPPY ST. PAT'S

—THE MINER STAFF

MINER
The Missouri
MISSOURI SCHOOL OF MINES AND METALLURGY



THE MISSOURI MINER is the official publication of the students of the Missouri School of Mines and Metallurgy. It is published at Rolla, Mo., every Friday during the school year. Entered as second class matter February 8, 1945, at the Post Office at Rolla, Mo., under the Act of March 3, 1879.



The subscription is \$1.00 per semester. This Missouri Miner features activities of the Students and Faculty of M. S. M.

Editor-in-Chief Dave Blume
707 State Street—364-2731

Business Manager John Minton
500 W. 8th Street—364-3787

Managing Editor D. F. John
Make Up Editor Greg Jung
Copy Editor Ken Kuebler
Features Editor Dale Brown
Advertising Manager Dave Riley
Circulation Manager Bill Farrell
Sports Editor Tom Johnson
Technical Advisors Gary Rueter, Dan Kasper
Secretary Charles Hansen

THANK YOU

As my term of office as editor of the MINER draws rapidly to a close, I would like to take this opportunity to thank everyone concerned for the cooperation given to the MINER and its staff.

A debt of gratitude is due the many who have assisted me in my task. The staff members have spent many hours of dedicated labor for this cause — their reward, like mine, is in seeing the finished product and hearing the comments of the readers.

Happy St. Pat's

David J. Blume,

Editor-in-Chief



DAVID J. BLUME



St. P
Apo

The St.
Monday's S
would woul
discov
mail.

The age
St. Louis
thousand dol
bands
ance to th

E.T. E
Offere
And C

Saturd
Missouri
for Arch
Engineers
for all
ents. Thi
mination
mining and
and in t

To emph
test, it
need a qu
pers, presi
ity of Pr
—All ser
ents en
concerning c
examina
later be
personal engi

As previous
will be
in the
biding on
a time whi

Vick
As C

Chosen as
and B
well, repr
formally
at the
well, from
was es
Bill Ha