



29 Sep 1961

The Missouri Miner, September 29, 1961

Follow this and additional works at: https://scholarsmine.mst.edu/missouri_miner

These newspapers reflect the attitudes, perspectives, and beliefs of different times. Neither the library nor the university endorses the views expressed in these collections, some of which contain images and language which may be offensive to some readers.

Recommended Citation

"The Missouri Miner, September 29, 1961" (1961). *The Missouri Miner Newspaper*. 1719.
https://scholarsmine.mst.edu/missouri_miner/1719

This Newspaper is brought to you for free and open access by Scholars' Mine. It has been accepted for inclusion in The Missouri Miner Newspaper by an authorized administrator of Scholars' Mine. This work is protected by U. S. Copyright Law. Unauthorized use including reproduction for redistribution requires the permission of the copyright holder. For more information, please contact scholarsmine@mst.edu.

Students Requested to Submit Rolla Addresses

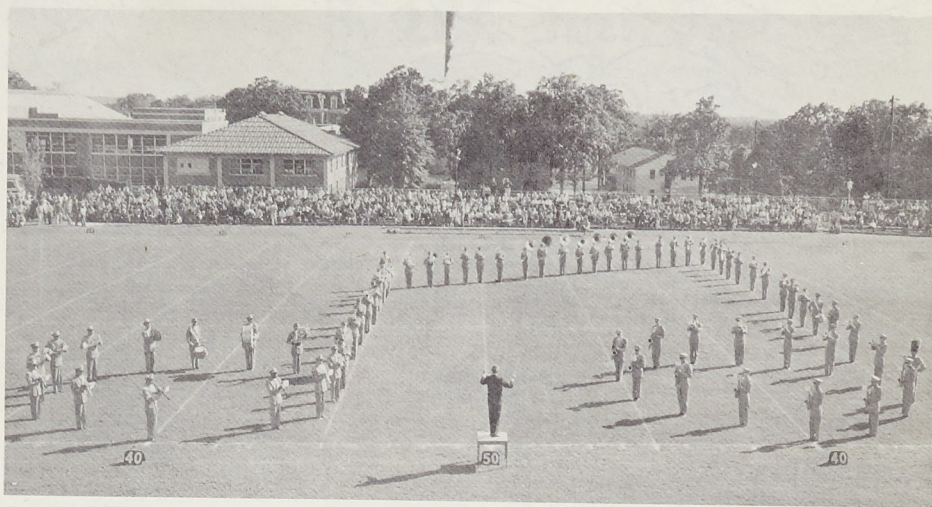
The following students are requested to turn in their Rolla addresses at the information desk in the Registrar's office.

Abbott, Rohn D.
Bel, Dan Leon
Bel, Don Cleon
Bokemeier, Kenneth Anthony
Brya, Narendrakumar Amritlal
Canderson, Theodore George
Coprill, Paul Phillip
Cyan, Ghazi Abdul-Rauf
Haley, Carl Gary
Howard, Andrew Thomas
Hiley, David Eugene
Kasch, Walter Edward
Kutten, Earl R., Jr.
Kozold, John Robert
Kratia, Kanaya Lal
Kerman, Sheldon Leon
Kermann, William Walter
Kaylock, Larry Wayne
Kandt, Lewis Frederick
Kaur, Charles William, Jr.
Kock, Larry Gene
Kuns, Myron Duane

Buhr, Lynn Frederick
Byrd, Thomas James
Camara, Edward
Carrizo, Ruben A.
Carter, Larry L.
Chervitz, Jerrold Irving
Christen, Jimmie Duane
Chronister, Thomas Granville
Cissell, Donald Edwin
Cline, Larry Gene
Cornell, William Alan
Cruce, Alan Ray
Dewey, George Charles
Desai, Yadvendra Viranchiprasad
Diemer, Charles Eugene
Dunn, Stuart Thomas
Erwin, Ivan Alson
Esther, Joseph Lamberth
Fields, Edwin Hugh
Fitzgerald, Dennis Michael
Franklin, Willie Lee
Frauenhoffer, John Matthew, Jr.
Gardner, Donald Myles
Goehman, Marvin Conway
Goldammer, Albert Henry

(Continued on page 3)

MSM STUDENT BAND IN ACTION



Shown above, the MSM-ROTC Band in the formation of two music notes during the half-time show at the MSM-SIU game. The 15 minute show was a salute to Vaudeville band leader Ted Lewis and Singer Al Jolson.

The Missouri School of Mines and Metallurgy ROTC Band, now in its second year of reorganization, will present the half-time show to the televised audience of the St. Louis Cardinals-Detroit Lions professional football game on November 12th. The band numbers 70 members and is featured at all Miner home games.

Co-sponsored by the School and the ROTC, the band is under the direction of Mr. David L. Oakley, MSM's first full-time band director. In 1960 the band program was expanded to full-time status and the MSM-ROTC Band units include a football unit, concert unit, military unit, and small bands including two dance bands and brass and woodwind ensembles.

In the school year 1960-61 the bands performed at home and away football games, presented on-campus concerts and toured high school assemblies as a goodwill gesture of the school. This latter activity was sponsored by the Student Council. The brass ensemble was selected to perform before the Missouri Music Educators Association, the first time that an MSM musical unit has done so. In 1960 the MSM-

ROTC dance band, the "Drifters" played for the Military Ball, and for numerous other dances at Fort Wood and on campus.

The MSM-ROTC Band program is a charter member of the National Band Association, which links all college, school and professional bands across the nation and the National ROTC Band Association, which serves to encourage the betterment of the military band in the colleges. As a member of the National ROTC Band Association the MSM-ROTC Band is also the headquarters command band for the 5th Army area.

Participation in the band units is generally open to all students. Membership in the football unit is open to all persons with musical experience on an instrument. Participation in concert band is by audition to the director only, and participation in military band is limited to members of the ROTC. The brass and woodwind ensembles are selected from the concert band by the director and the dance units are by competitive audition.

Director David L. Oakley came to MSM in August 1960 to assume duties as MSM's first full-

(Continued on page 3)

MINER

The Missouri

MISSOURI SCHOOL OF MINES AND METALLURGY

VOLUME 48

ROLLA, MO., SEPTEMBER 29, 1961

NUMBER 3

Electrical Engineers Have Top Average Salary for 1961 Graduates of MSM

Listed below are the starting salaries for the 1961 graduates of the Missouri School of Mines with a Bachelor of Science degree. All salaries are based on a four hour work week. Certain starting salaries are omitted in computing averages as not being indicative of present rates. These salaries are for Army Officers, civil service, teaching, graduate studies and foreign employment. The electrical engineers again had the top average salary of \$30.66 per month as well as the individual salary of \$652.00 per month. The average starting salary of all 1961 graduates of Missouri School of Mines was \$24.84 per month.

Electrical Engineering: Low \$20.00, Average \$550.66, High \$52.00.

Ceramic Engineering: Low

\$535.00, Average \$546.00, High \$560.00.

Chemical Engineering: Low \$515.00, Average \$538.00, High \$565.00.

Metallurgical Engineering (Nuclear Option): Low \$533.00, Average \$533.00, High \$533.00.

Mining Engineering: Low \$500.00, Average \$531.00, High \$585.00.

Metallurgical Engineering: Low \$490.00, Average \$530.00, High \$570.00.

Mechanical Engineering: Low

\$465.00, Average \$526.54, High \$600.00.

Petroleum Engineering (Geology Option): Low \$525.00, Average \$525.00, High \$525.00.

Physics: Low \$487.00, Average \$517.00, High \$540.00.

Civil Engineering: Low \$460.00, Average \$502.00, High \$570.00.

Science-Geology: Low \$500.00, Average \$500.00, High \$500.00.

Petroleum Engineering: Low \$450.00, Average \$499.00, High \$525.00.

Enrollment Increases to Record High of 3,309

The Missouri School of Mines and Metallurgy has for the 5th consecutive year experienced an enrollment increase, as figures released by Registrar Robert B. Lewis indicate that the school has a fall semester enrollment of 3,309 students. These figures include 40 female and 3,262 male students. Enrolled are 777 freshmen, 669 sophomores, 841 juniors, 751 seniors, 223 seniors, 223 graduate students and the rest are unclassified students.

The Missouri School of Mines and Metallurgy with campus located in Rolla, Missouri is a division of the University of Missouri. The School serves as the technological institution of higher learning for the State of Missouri. Degrees are offered on all levels in 17 fields of science and engineering and students are enrolled from more than 40 states other than Missouri and from more than 30 nations other than the United States.

These enrollment figures com-

pare with less than 3100 last school year. By departments the enrollment figures include Mining Engineering 121, Metallurgical Engineering 277, Civil Engineering 657, Mathematics 40, Chemistry 77, Geology 59, Physics 193, Mechanical Engineering 666, Electrical Engineering 710, Chemical Engineering 297, Ceramic Engineering 67, Geological Engineering 2, Nuclear Engineering 5, and General Engineering 48. The balance are unclassified students.

James E. Kennedy Promoted to Rank of Major

James E. Kennedy, 37 year old M. S. M. Military Instructor, was elevated to the position of Major on August 23, 1961. Ma-

(Continued on page 2)

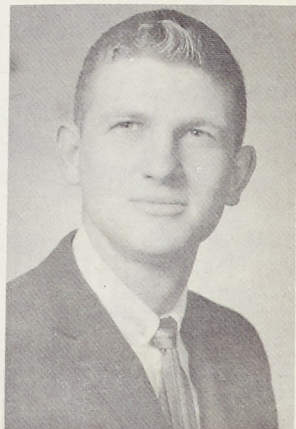
Gary Havener Chosen as "Man of the Month"

Each month Blue Key Honor Fraternity elects a man they consider most outstanding in campus organizations.

At the first meeting this fall of the Blue Key National Honor Fraternity Gary Havener was elected "Man of the Month" for September. Gary, the son of Mr. and Mrs. Calvin C. Havener of Mexico, Missouri, graduated from Mexico High in June 1958 and started at MSM the following September.

In addition to the offices he has held in Blue Key, Treasurer and now President, Gary has been very active in other campus organizations. He has served as Secretary of his social fraternity, Delta Sigma Phi, and is now Vice-President. Gary has served for two years on the Student Council and Student Union Board and is now serving as Vice President of the Student Union Board. He has also been elected to Theta Tau Professional Fraternity and was the charter president of Kappa Mu Epsilon, the honorary Mathematics fraternity.

Gary is a senior in the Mathematics Department and has maintained a 3.5 grade point along



GARY HAVENER

with his many campus activities. We of Blue Key feel that Gary has well earned the honor of being named "Man of the Month."

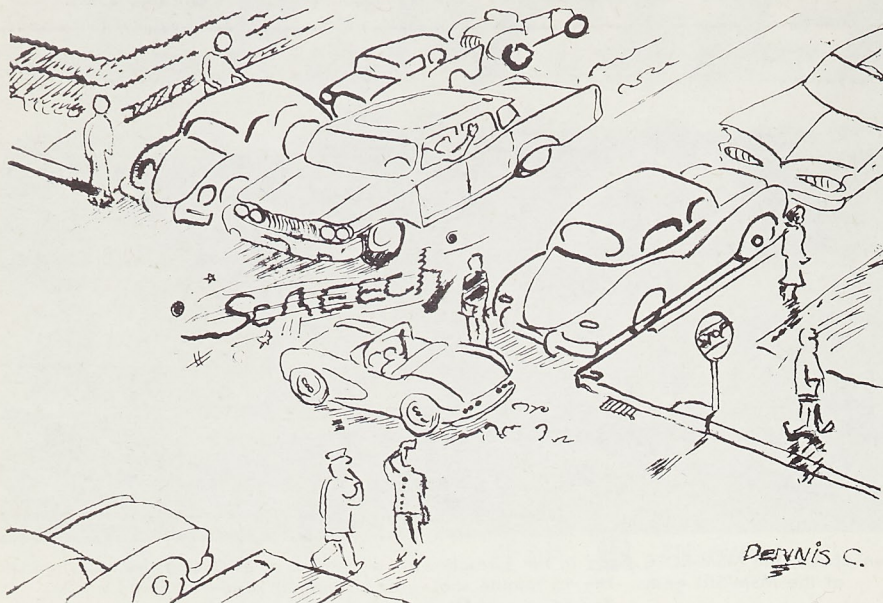
WANTED!

Typist to work part time for the ROLLAMO BOARD. If interested contact Bill Hallerberg at EMerson 4-1490 or EMerson 4-9981 after 7:00 p. m., or in the afternoon at the ROLLAMO office, basement of the Rolla Building.

NOTICE!

Anyone interested in auditioning for the ROLLAMO Photography Staff contact George Schillinger either at the ROLLAMO office in the basement of the Rolla Building from 3:00 to 4:30 in the afternoon, or at EMerson 4-2731 after 7:00 p. m.

Who Needs Stop Signs? Miners Are Expendable!



CORNER OF 11TH & STATE

Does Housing Affect Ones Gradepoint?

"What's his gradepoint?" This has become the all-important question on America's college campuses. And all the things that seem to effect a person's gradepoint are widely discussed. But of all things that effect grades, housing is considered by many to be the most important.

Last spring the University of Illinois studied housing's effect on grades and found that, contrary to popular belief, grades remained nearly constant in all the different types of housing the University offered. The all men's average at the U. of I. was a 3.475 on a 5 pt. system. The fraternities averaged a 3.483. The dorms averaged a 3.458. The independents averaged 3.445 and the remainder (mostly married students) averaged a 3.544.

A similar survey was made up here at MSM by Mr. Lewis, the Registrar. The all men's average was 2.34. The fraternities averaged a 2.35. The dorms averaged a 2.39 and the independents averaged a 2.34. Here again the various housing averages fell within a very small range of one another.

Despite what these figures prove, students will probably never cease to think that their particular type of housing is the best for getting work done.

Kennedy Promoted

(Continued from page 1)

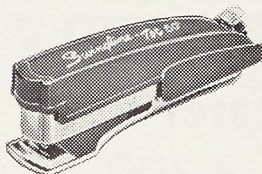
Major Kennedy, a graduate of the University of California where he obtained a B. S. in Mechanical Engineering, is an O. C. S. graduate. He served in the Korean War, where among other medals

he was awarded the purple heart.

Major Kennedy is an active member of the Rangers, an organization of the Army noted for its guerilla type tactics, and is also a qualified pilot. Many students will remember last year when Major Kennedy took a short leave to attend the CONUS Jungle Warfare Classes in Panama. Major Kennedy is in charge of the freshman office. He is married and has two young sons.



Medusa was once heard to rave:
"A new hair-do is just what I crave,
With my Swingline I'll tack
All these snakes front to back,
And invent the first permanent wave!"



SWINGLINE STAPLER

no bigger than
a pack of gum!



98¢

(including 1000 staples)

Unconditionally Guaranteed

- Made in America!
- Tot 50 refills always available!
- Buy it at your stationery, variety or bookstore dealer!

Swingline INC.

Long Island City 1, New York
WORLD'S LARGEST MANUFACTURER
OF STAPLERS FOR HOME AND OFFICE

MEN'S SHOES

By

RAND

SHIRTS

By

VAN HEUSEN

TUXEDO RENTALS

RANDY'S

Family Shoe Store-Young Men's Clothing

"NAVIGATION IS OUR BUSINESS"

at

AC SPARK PLUG

The Electronics Division
of General Motors

Our current projects include development and production of Inertial Guidance Systems for the TITAN II, THOR and MACE missiles. We are also the Systems Integration Manager for the modified B-52C&D Bombing Navigation System. In the commercial field, AC has developed and is now producing a new mobile radiotelephone. Research and development programs include navigation systems for mobile ICBMs, space vehicles, supersonic aircraft and ocean-going vessels.

AC is seeking qualified engineers and physicists to fill permanent positions in Milwaukee, Boston and Los Angeles. You may qualify for employment if you have a BS or MS degree in Electrical Engineering, Mechanical Engineering or Physics. Advanced positions are also available for men who are completing their doctorates with specialization in navigation and related fields.

To provide a transition from academic learning to practical career development AC offers the following training programs:

MILWAUKEE

Career Acceleration Program — A twelve-month program with formalized classroom instruction given in conjunction with rotating job assignments in Manufacturing, Reliability and Engineering. Courses include:

- | | |
|--|---------------------------------------|
| Ballistic and Cruise Missile Laboratory Sessions | Basic Principles of Inertial Guidance |
| Advanced Servomechanisms | Semi-conductor Technology |
| Principles of Airborne Digital Computers | Probability and Statistics |
| | Philosophy of Reliability |

Field Service Program — Two- to four-month classroom and laboratory training on inertial guidance systems or bombing navigation systems. Domestic and foreign assignments follow completion of program.

BOSTON

Advanced Concepts Research and Development On-the-Job Training Program — AC's Boston Laboratory is engaged in developing advanced inertial guidance equipment primarily for application in earth-bound vehicles.

LOS ANGELES

Advanced Concepts Research and Development On-the-Job Training Program — AC's Los Angeles Laboratory is occupied with advanced guidance research for space vehicles and ballistic missiles, plus advanced research in special purpose digital computers.

See your College Placement Office regarding an appointment for a personal interview with the General Motors and AC Representative.

CAMPUS INTERVIEWS

Monday and Tuesday, October 2 and 3

If unable to apply in person send résumé to Mr. G. F. Raasch, Director of Scientific and Professional Employment, Dept. 5753, 7929 South Howell, Milwaukee 1, Wisconsin.

An Equal Opportunity Employer

Ask your Placement Officer for AC's new Employment Brochure.

AC SPARK PLUG

The Electronics Division of General Motors

MILWAUKEE • LOS ANGELES • BOSTON

Achiever Inertial Guidance Systems for Titan II, Thor and Mace. Bombing Navigation Systems for the B-52C&D and B-47. Achieverfone Mobile Radiotelephone Systems.

You Are Invited...

to Be Present

at 8:30 a. m. or 11:00 a. m.

Sunday, October 1, 1961

for

The Sacrament of the Lord's Supper

on

World-Wide Communion Sunday



Communion Meditation:

"He Is Coming Again"

G. SCOTT PORTER, M. TH., MINISTER

FIRST PRESBYTERIAN CHURCH

SIXTH & OLIVE STREETS

ROLLA, MISSOURI

Lawrence Felice, U. C. C. F. Campus Minister

Addresses

(Continued from Page 1)

Good, James Harold
Goodrum, Donald Lee
Iahn, Floyd Herbert
Hamilton, James Franklin
Iaury, James Edward
Iaen, Timothy Parrish
Iecht, Robert William
Ierberger, Ronald Wayne
Ierron, Conny Arlene
Ioepner, Douglas Eugene
Iani, Keikhosrow
Iayesimi, Sameul Olatunde
Iaquay, Richard LeRoy
Iarrard, John David
Iolly, Gary William
Iolly, Gerald Lee
Ialin, John Charles
Iamdar, Niranjan Prabhudas
Iempe, Allen Charles
Iettler, Gerald Joseph
Iilloran, John Marvin, Jr.
Iinaust, Jesse Wayne
Iodel, Keith Alan
Ioelling, Jerry John
Iahmeyer, Charles Ray
Ialante, Allan Harvey
Iarsen, Clifford Keith
Iassley, Richard H.
Iazaras, Peter Joseph
Iira, Richard Eugene
Iyons, Charles Gene
Ickinley, Jay Hayden
Iahmgren, Edwin Keith
Iarshall, Victor Ray
Ieador, George C.
Ieyers, Dennis Melven
Iiddleton, Carol Ann
Iiller, David Lee
Iiller, Joseph Richard
Iiller, Thomas Charles
Iitchell, David Arthur
I Moore, Theodore Eugene
Iorton, Glen Amos
Iueller, James Dennis
Iueller, William Ernest
Iack, Thomas Paul
Iorthcutt, Maurice L.
I Neal, William Martin
I Patel, Chimanlal Punjabhai
I Patel, Vinayakrao K.
Iatty, Ottis Jr.
Ieirson, Robert Charles
Iena, Elmer Agustin
Iarko, Richard Alvin
Ihillips, Jerry Ellison
Ihillips, Rudy Meldon
Iohl, Richard Francis
Iowell, John Keith
Iand, Stanley Eugene
Ieeves, Bob Dewayne
Ienken, Richard Kenneth
Iiley, Ronald Kenneth
Ionzo, Robert Joseph
Iosenberger, Richard Rolf
Iaca, Jose Mario
Ianer, Kenneth Lee
Ichierding, Royce Gene
Ichmidt, Richard Ludwig
Ichmutzler, Kenneth George
Icholle, William Allen
Ichroer, James Henry
Icott, Richard Russell
Iedovic, John Thomas
Iahdle, Larry George
Iah, Dinesh K.
Ihanks, Ronald Charles
Ihanley, Patrick Michael
Ihermer, William Duane
Iifers, Phillip Leslie
Iic, Edward Allison
Ikarecky, James Michael
Imashey, Russell Wayne
Ismith, David Eugene
Ismith, Roy Ashley
Iprenkle, Elmer L.
Isteiner, Robert B.
Istepp, Edward Earl
Istruckhoff, John Joseph
Istuder, Jim Joe
Iukow, Dale Edward
Izabo, William L.
Iaylor, Charles Tyra
Ierry, James William
Ithurman, Lowell Edward
Iownsend, Dean Ray
Iurk, Matthew
Iurhan, Erdogan
Iunternaehrer, Robert Udell
Iuthe, Floyd Henry
Ivaughan, Bob Jan
Iwagner, Clifford Glennon
Iweinrich, Harold Richard

West, Lawrence William
Whitmer, Jack Allen
Wille, Gerald William
Williams, Donald R.
Winn, Robert Harrison
Woten, George Tillman
Young, Thomas

MSM BAND

(Continued from Page 1)

time band director. He is a member of the College Band Director's National Association, the National Band Association and other professional organizations. He has served as judge and clinician to high school and junior high school groups, and has directed groups since 1951.

MSM's ROTC Band program sponsors Delta Gamma Chapter of Kappa Kappa Psi, the National Honorary-Recognition Band Fraternity. Every two years the Fraternity sponsors the national intercollegiate band. During the past summer it was to the school's honor that Greg Miller, junior physics major from St. Louis, was selected to play baritone horn in the All-American Band.

Cornelia Otis Skinner was interviewed by the late Dr. Kinsey and said there was only one question to which she answered: "Oh my God, no!" Asked what the question was, she answered: "He asked me if I was ever any good at athletics."

Dr. Planje to Attend Meeting October 5-7

Dr. Theodore J. M. Planje, professor and chairman of the Department of Ceramic Engineering at Missouri School of Mines, is planning to attend a national meeting of the American Ceramic Society's Refractories Division. Dr. Planje, who lives at 4 Summit Ave., Rolla, is a member of the meeting's program committee.

This year's annual fall meeting of the Refractories Division will be held at the Bedford Springs Hotel, Bedford, Pa., from October 5-7. Ceramic engineers, educators, and plant owners and operators concerned with high-temperature and nuclear ceramics will attend the meeting.

The American Ceramic Society is an international organization devoted to the advancement of ceramic research and production through its publications and large technical meetings. The Ceramic industry includes such essential products as glass, electrical insulators and semi-conductors, porcelain enamels, cements, limes, plasters, abrasives, rocket components, and of course, brick and tile.

Pledge Mixer Held By I.F.C. Tues. Sept. 19

On Tuesday, Sept. 19, the I. F. C. sponsored a Pledge Mixer in the Student Union. The meeting was held in order to give the pledges a chance to meet each other and compare views on their new life at MSM. During the mixer Mr. Karl Moulder addressed the group and welcomed them to MSM and more specifically into MSM's Fraternity System. Later Tom Gresham, the

President of the I. F. C., said a few words about the Interfraternity Council. After the talks donuts and coffee were served.

Beginning this fall the IFC has decided to sponsor meetings of all the different fraternities' officers. At these meetings the officers are going to discuss their common problems and see if they can't solve some of them.

LONG INSURANCE AGENCY

A. E. Long, M. S. M., Ex '22
810 Pine St. ROLLA, MO. Phone EM 4-1414
"Service Is Our Business"

The LAUNDRY CENTER LAUNDRY - DRY CLEANING - SHIRTS Complete Bachelor Laundry Service

Corner 7th and Rolla Streets

ALSO FEATURING

New Coin-Operated Self-Service Laundry



It's what's up front that counts

FILTER-BLEND is yours in Winston and only Winston. Up front you get rich golden tobaccos specially selected and specially processed for filter smoking. Smoke Winston.

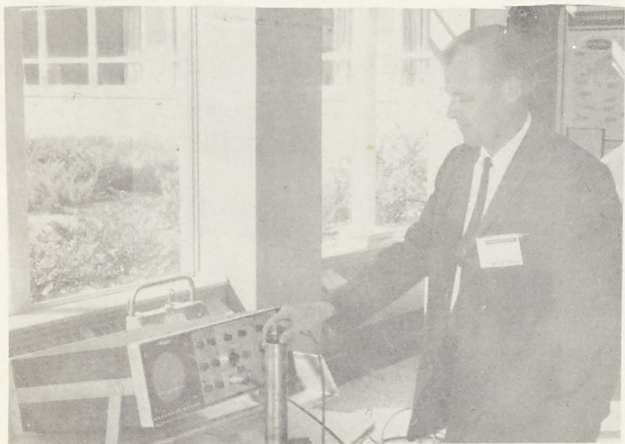
B. J. Reynolds Tobacco Co., Winston-Salem, N. C.

WINSTON TASTES GOOD like a cigarette should!

Miners and Dates Support MSM Football Team at Washington U. Game

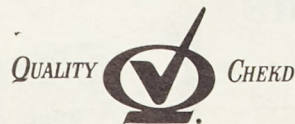


Scenes From Last Week's MSM Foundrymen's Conference



J. V. Dowling of Dowling Industrials Co. demonstrates non-destructive testing by ultrasonic methods.

Tucker Dairy Company, Inc.



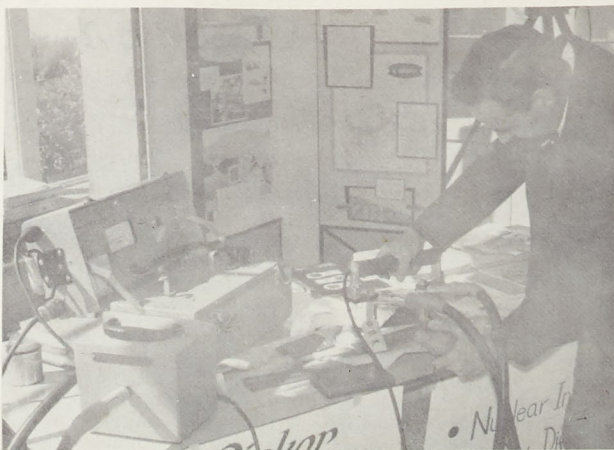
DAIRY PRODUCTS

103 W. 10th St.

Rolla, Missouri

Phone EM 4-3700

Electromagnetic Testing



Chas. E. Evans from Picker X-Ray shows Electromagnetic Testing for defects in metals.

A short nap now and then is enjoyed by the best of us, especially when we are supposed to be reading, or listening to high-class music.

Once in spoofing the Florida weather reports Jack Paar read: "It's a beautiful day in Miami. The sun is shining, the temperature is 87 and the wind is out of the west at 175 miles per hour."

There's no thrill like kissing a girl and dropping an ice cube down her back at the same time.

The last words of Eli Whitney: "Keep your cotton picking hands off my gin!"

Three Scholarships of \$200 to Be Awarded This Semester

Three Lucy Wortham James Scholarships valued at \$200 each will be awarded during the current semester. These scholarships are provided by the James Foundation from the estate of Lucy Wortham James in memory of her family. The James family were pioneer iron smelters and operators of the Meramec Iron Works near St. James, Missouri.

Recipients of the scholarship will be selected by a Faculty Committee on the basis of scholarship, integrity, engineering promise and need. Students from any of the four undergraduate classes may apply. Application blanks are available in DePonder's office, Room G6, Parker Hall.

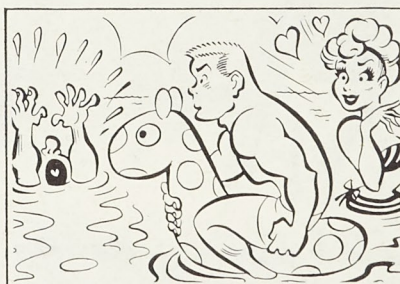
It is suggested that all applications be filed no later than October 13, 1961. Selection of recipients will be made as soon as possible after that date.

A press agent for the Copacabana night club insists that a lady accosted another in the powder room, inquiring, "Haven't we met in Cannes?" "Which one?" said the other. "This one—or the one at the Colony?"

MIKE MENNEN and the UNLIKED-LIFEGUARD CAPER



WENT SOUTH FOR REST. BEACH SO CROWDED I COULDN'T GET ANY. HEARD SCREAM. THEN ANOTHER. AFTER THIRD SCREAM I GOT SUSPICIOUS. STARTED TO INVESTIGATE.



IT WAS LIFEGUARD. HE'D TRIED TO RESCUE DROWNING WOMAN. BUT SHE STUCK A HATPIN IN HIS INNER TUBE.



LIFEGUARD TOLD ME THIS WAS 10th ATTEMPT TO KILL HIM. FROM THIS EVIDENCE I CONCLUDED HE WASN'T VERY POPULAR. STARTED LOOKING FOR CLUES. FOUND A WOMAN'S ROLL-ON DEODORANT IN HIS BEACH BAG.



IT WAS HIS. NO WONDER HE WAS UNPOPULAR. GAVE HIM BOTTLE OF MENNEN SPRAY DEODORANT... HARDEST-WORKING, LONGEST-LASTING SPRAY A MAN CAN USE. GETS THROUGH TO THE SKIN. WORKS ALL DAY. AFTER THAT, I GOT PLENTY OF REST.



BACK IN OFFICE. PHONE RANG. IT WAS LIFEGUARD. SINCE USING MENNEN SPRAY HE'D HAD TO RESCUE 407 DROWNING WOMEN. WANTED TO COME NORTH FOR A REST.

American Rocket Society Plans Field Trip to Rocketdyne Plant

The student chapter of the American Rocket Society will hold its first meeting of the school year on October 4th at 7:00 p. m. See the Bulletin for meeting place. The program will feature a speaker from a well known company in the field of rocketry. The coming year's activities will feature field trips through the Rocketdyne plant in Neosho, Missouri, and McDonnell Aircraft in St. Louis, Mo. There will also be well known speakers in the field

of rocketry at the monthly meetings.

Membership in the American Rocket Society is open to all MSM students. The scope of subjects covered by A. R. S. includes propulsion, instrumentation, guidance, materials, astrophysics, space vehicle structures, hypersonic flight problems, and other related fields. Student membership dues are \$5.00 for the year and include a subscription to one of the Society's publications.

ATTENTION ALL FOREIGN STUDENTS:

Foreign Students Asked to Complete Census Cards

If you did not complete the yellow cards for the Annual Census of Foreign Students on registration day, please drop by the Registrar's Office and do so at your earliest convenience.

We agree with the judge who said that nasty books are not a factor in the corruption of delinquent youth; delinquents don't read anything.

FILM • CAMERAS • PHOTO SUPPLIES • FAST FINISHING

O'NEAL CAMERA SHOP

120 W. 8th St.

KENMARK SPORTING GOODS

908 Pine  EM 4-3603

Greetings Miners —
It's nice to have you back

THE MISSOURI MINER

THE MISSOURI MINER is the official publication of the students of the Missouri School of Mines and Metallurgy. It is published at Rolla, Mo., every Friday during the school year. Entered as second class matter February 8, 1945, at the Post Office at Rolla, Mo., under the Act of March 3, 1879.

The subscription is \$1.00 per semester. This Missouri Miner features activities of the Students and Faculty of M. S. M.

Editor-in-Chief H. Patrick Duvall
707 State St.—EM 4-2731
Business Manager John Minton
500 W. 8th St.—EM 4-3787
Managing Editor Don Reiss
Make Up Editor Doug Schellman
Copy Editor Dave Blume
Features Editor Charles Becker
Advertising Manager Scott Carriere
Circulation Manager Tom Gresham
Sports Editor Gary Strebel
Technical Advisor Ray Hamill
Secretary J. R. Wyatt

Interested in Stocks?

Investors Stock Fund, Inc., offers an open end mutual fund with professional supervision of diversified securities, emphasizing common stocks. The securities for this fund are chosen with objectives of long-term capital appreciation possibilities and reasonable income.

A practical approach to Life Insurance needs?

Your financial plan for your family's needs should include sufficient life insurance. Talk to your "Investors man" about life insurance designed to fit in the family financial program.

For insurance information or fund prospectus-booklet, call:

KENNETH K. ASHER
Zone Manager
908 W. 13th St.
EM 4-3085

Investors
Diversified Services, Inc.
FOUNDED 1894

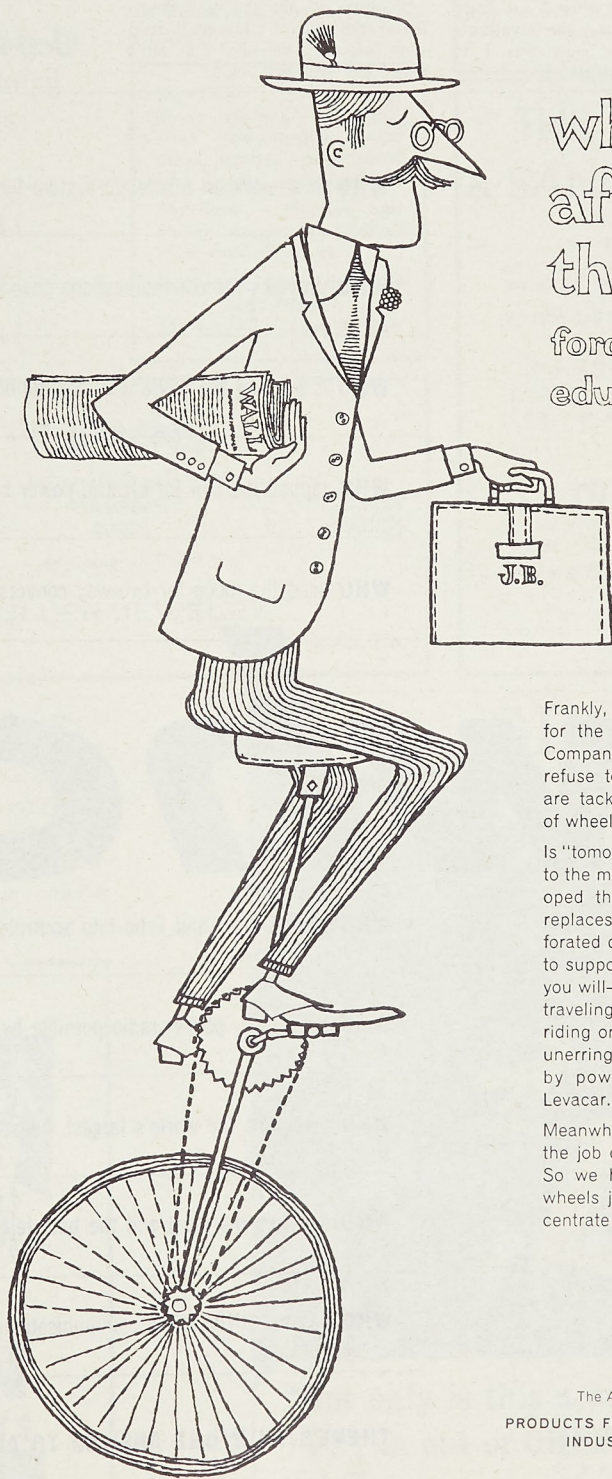
and
Investors
Syndicate Life
INSURANCE & ANNUITY CO.



OR, MAIL THIS COUPON

Please send me:
☐ Investors Stock Fund Prospectus
☐ Insurance information

Name _____
Address _____
City _____ Zone _____ State _____



what comes
after
the wheel?
ford motor company's
educated guess

Frankly, there is no practical substitute for the wheel today. But at Ford Motor Company, our scientists and engineers refuse to give "no" for an answer. They are tackling, among others, the problem of wheelless vehicles for tomorrow.

Is "tomorrow" really far off? Not according to the men at Ford. Already they've developed the Levacar as one possibility. It replaces the wheel with levapads, perforated discs which emit powerful air jets to support the vehicle. Air suspension—if you will—of an advanced degree. Imagine traveling swiftly, safely at up to 500 mph, riding on a tissue-thin film of air. Guided unerringly by a system of rails. Propelled by powerful turboprops. This is the Levacar.

Meanwhile we've still got the wheel. And the job of building better cars for today. So we hope you won't mind riding on wheels just a little longer while we concentrate on both tasks.



MOTOR COMPANY

The American Road, Dearborn, Michigan.

PRODUCTS FOR THE AMERICAN ROAD • THE FARM INDUSTRY • AND THE AGE OF SPACE

Greeks Celebrate Weekend With St. Louis Parties

SIGMA NU

The past weekend the Sigma Nu chapters of Rolla and Wash. U. held the second annual Saturday night party in St. Louis. A group called the Imperials provided background noise.

The pledges elected Rick Rimrack as president of the pledge class. Bob Leon was elected Vice-President and Tom Gaylord Secretary-Treasurer. The new office of social chairman is presently held by (V. O.) Kircher.

PI KAPPA ALPHA

The "Pikes" started off this semester with twenty new men, seventeen pledges and three transfer students. Bob Markland, a Junior C. E., came from the University of Cincinnati, Ron Miller is a Ch. E. from Murray State and Cliff Crossnoe, a Junior C. E., from Cape Girardeau. The chapter welcomes these men, as they have already been put to use in the years activities.

Last weekend, after the Wash. U. football game a party was held at Ron Candido's home where, for those who don't remember, everyone had a swell time. Plans are now made for the pledge dance weekend, Sept. 29, 30 and 31, which includes a hayride Friday night and a dance at the house on Saturday night. Greeks with dates are welcome to attend the Saturday night dance.

SIG EP

Miners beat Wash. U.—this provided a novel twist to the annual party between the MSM and Wash. U. chapters of Sig. Ep. The party generated out on South Jefferson Ave. in Druid's Hall. Everyone showed up — pledges, actives, alumni — everyone except the bass player in the six piece Rock and Roll band. He was in jail for a spell.

We are well pleased with the large turn-out of alumni, which demonstrates that a fraternity lasts longer than just college years.

PHI KAPPA THETA

With last Saturday declared a school holiday, almost all of the Phi Kaps took advantage of it to go into St. Louis for the football game against Washington U. Saturday afternoon and for the party which the Kaps held that night. Almost all the active members turned out, as well as a good number of alumni. When the dancing and singing were finally over, and it was time to go home, it was the opinion of everyone there that this party had truly been one of the best ever.

TAU KAPPA EPSILON

Intramural flag football has always proved to be one of the more popular sports with the Tekes. So far the Tekes have defeated Pi Kappa Alpha 19-14 and massacred Theta Xi 62-0 with the three top scorers being Larry Bauer, 24 points; Joe Dean, 19 points; and Bill Beck, 18 points.

The Washington U. party this past weekend proved to be a great success with everyone celebrating MSM's victory.

Our best friends are those who take us as we are, with no disparaging remarks.

TRIANGLE

The active membership of Triangle was increased by two this semester as brother Max Nelson from the University of Cincinnati transferred to MSM, and brother John Weyand from South Dakota Mines came to Rolla as a graduate student in Ceramic Engineering.

This weekend after the Washington University football game, Triangle had its annual party at Collinsville Park in Collinsville, Illinois. Many of the brothers and their dates attended and a good time was had by all.

Triangle is also looking forward to a very successful football season after the first two triumphs over Theta Xi 89 to 6, and Tech Club 26 to 0.

"She laughed when I sat down to play," reported the inveterate ad reader, "but how was I to know she was ticklish?"

Personality Column

Dale Cornell was pinned to Miss Donna Kennedy.

Three Pikes starred in summer weddings. Doyné Chartrau married Donna Summers shortly after the close of spring semester. Carol Johnson became Mrs. Jim Noble and Rollie Johnson married Lois Riley.

Bob Smith was pinned to Miss Emily Smith over the weekend.

The past summer Lonnie Shalton married Miss Sharon Harris of Kansas. Miss Harris was formerly a sophomore at Warrensburg.

Jerry Britton also took a chance with the opposite sex by pinning Miss Jina Ramsey, a former Sophomore of Lindenwood College.

"Guilty or not guilty?" thundered the judge. "Dunno," said the prisoner meekly. "I ain't heard the evidence yet."

Wonderful, Wonderful, Weekend



JOE HASN'T MISSED A GAME IN SIX YEARS!

WHO is at work on a satellite system for global telephone and TV transmission?

WHO provides the communications channels for America's missile defenses?

WHO is girdling the globe with communications for America's first man into space?

WHO tapped the sun for electric power by inventing the Solar Battery?

WHO used the moon for two-way conversations across the country?

who?

WHO guided Tiros and Echo into accurate orbit?

WHO made your pocket radio possible by inventing the Transistor?

WHO maintains the world's largest, finest industrial research facilities?

WHO supplies the most and the best telephone service in the world?

WHO has the UNIVERSAL communications organization?

THERE'S ONLY ONE ANSWER TO ALL TEN QUESTIONS

BELL TELEPHONE SYSTEM

Pioneering in outer space to improve communications on earth



UPTOWN THEATRE
MOVIES IN CINEMASCOPE
Starts Friday Sept. 29-Oct. 3
Sunday Continuous from 1 p. m.
'Ocean's 11'
Frank Sinatra & Dean Martin

Ved., Thurs., Fri. & Sat. Oct. 4-7
'One-Eyed Jacks'
Aarlon Brando & Karl Malden

RITZ THEATRE
MOVIES ON WIDE SCREEN
Thurs., Fri. & Sat. Sept. 28-30
Saturday Continuous from 1 p. m.
'All Hands on Deck'
Pat Boone & Barbara Eden
—PLUS—
'Blast of Silence'
Allen Baron & Molly McCarthy

Sun., Mon. & Tues. Oct. 1-3
Sunday Continuous from 1 p. m.
'The Trapp Family'
Ruth Leuwerik & Hans Holt
—PLUS—
'For the Love of Mike'
Richard Basehart & Stu Erwin

Ved. & Thurs. Oct. 4-5
'Circle of Deception'
Bradford Dillman & Suzy Parker
—PLUS—
'Return of the Fly'
Vincent Price & Brett Halsey

Drive-In Theatre
SHOWS START AT DUSK
Fri. & Sat. Sept. 29-30
'Cry Tough'
John Saxon & Linda Cristal
—PLUS—
'The Tall Stranger'
Joel McCrea & Virginia Mayo

Sun. & Mon. Oct. 1-2
'The Wayward Bus'
Wayne Mansfield & Dan Dailey
—PLUS—
'Ain't Misbehavin'
Rory Calhoun & Piper Laurie

Tuesday Oct. 3
'DOLLAR A CARLOAD—'
'Fraulein'
Dana Wynter & Mel Ferrer
—PLUS—
'3 Came to Kill'
Cameron Mitchell & John Lupton

Ved. & Thurs. Oct. 4-5
A Nice Little Bank That Should Be Robbed'
Mickey Rooney & Tom Ewell
—PLUS—
'A Time to Love'
John Gavin & Lisa Pulver

MINER PREVIEWS

Watch for these
Features
In
Future
Publications

Math Gems

Prize Winning Photos
Sponsored by
MSM Photo Club

Minutes of 1945-50
Student Council
Meetings

GIRLS!
GIRLS!
GIRLS!



LARRY HOLLOWAY

Larry Joe Holloway, who received his BS in chemical engineering from the Missouri School of Mines in 1961, has joined Ethyl Corporation at Baton Rouge as a chemical engineer in the Research & Development department.

For Sale — 1961 model house trailers — various sizes and makes. Also used trailers and parts and accessories for sale.

For Rent — Trailers and trailer spaces in Rolla's most modern court.

HUFFMAN TRAILER SALES AND COURT
EM 4-4242 Hwy. 72 East

PAWNS

WE LOAN CASH ON
CAMERAS
RINGS

Anything of Value

FULLER JEWELRY

711 Pine

JEWELRY
RADIOS

Rolla, Mo.

A Hollywood ham, witness in an accident case, described himself as "the greatest actor since Booth." "Modest, aren't you," laughed the judge. "Ordinarily yes," said the ham without blinking an eye, "but please remember that I am now under oath."

IT'S FUN TO ROLLER SKATE!



Open Every Night
Except
Sunday & Monday
at 7:30
* * *

Sunday Matinee
at 1:30
* * *

**ROLLA ROLLER
RINK**
City Hwy. 66 West

WELCOME STUDENTS

MEAL TICKETS
GOOD DISCOUNT

Choice of Menu Served Anytime

C & B CAFE

OPEN 7 DAYS A WEEK

THE BUSY BEE LAUNRY & SANITONE DRY CLEANERS

SAY: "It pays to have your Wash 'n Wear Suits Sanitone Dry Cleaned." They give better appearance — Like New Finish — Professional Press.

FLUFF DRY 11c lb.
1 Day Service No Extra Charge

DRESS SHIRTS & SPORT SHIRTS 25c

SLACKS 55c SUITS \$1.10
(Cash and Carry—Small Extra for Pickup and Delivery)

CALL

THE BUSY BEE LAUNDRY & DRY CLEANERS

For That Professional Service, "It's the Place to Go."

14th and Oak Phone: EM 4-2830

Faulkner and 72—EM 4-1124

FREE PARKING

SIC FLICS



"Not only is this a dull party, but I've run out of CHESTERFIELDS!"



21 GREAT TOBACCOS MAKE 20 WONDERFUL SMOKES!
AGED MILD, BLENDED MILD—NOT FILTERED MILD—THEY SATISFY

The Finest in..... DRY CLEANING

Pressing While You Wait.
One Day Service if Requested.
Pick Up and Delivery Service.



MODERN
Dry Cleaners
9th and Pine
EM 4 2509

MINER SPORTS

PAGE 8

THE MISSOURI MINER

FRIDAY, SEPTEMBER 29, 1961

Miners Break Spell by Upsetting Washington University by 19-0



By Dave Woodward

A fine combination of Miner spirit, blocking, passing and definite out-manuevering brought home the first victory of the season last Saturday when they defeated Washington University at Francis Field in Saint Louis. One pair of Miners showed exceptional skill and coordination throughout the game — quarterback Jay Alford and left half Pat O'Mealy. These two men completely baffled the Bear defense for the first time on their return of a 50 yd. punt by Washington's Jim Swain. Alford received the ball at the 10 and started his drive across the field, the quarterback drew off many would-be tacklers and O'Mealy was able to go on for 43 yards and a first down on the Bear's 36. This punt return system was used four times throughout the game and each time the play sent defensive Bears all over the field.

The first quarter displayed both teams pulling hard and neither were able to gain any ground in excess. Control of the ball see-sawed back and forth throughout this period and both defensive teams held up. The second quarter showed a decisive change. The Bears seemed to lack power to gain a first down and keep going, while on the other hand, the Miners were gaining ground. Alford was continually finding his necessary pass receiver downfield and was hitting him, while at the same time gaining almost equal yardage on the ground.

It was during the second quarter that the Bears were penalized deep in their own territory and forced to kick. MSM took advantage of this opening and put out more power to move on down into Bear territory. An interception on the 15 seemed to give the home team some hope but it was all lost when they fumbled the ball on their first play and Miner offense came in. Larry Martin picked up the remaining fifteen yards on a double reverse and gave the Miners their first TD. O'Mealy converted and MSM was on the move.

The Miners checked any more advances and the Bears never saw another chance to equal the one they had when end Don Fitzgerald dropped a pass in the end

zone sixteen yards out earlier in the period.

The first half showed a continually advancing Miner team with exceptional vigor advance seven points to the good above a drooping Washington eleven.

Going into the second half, the Miners kicked off and Wash U. took off from their 20, showing a sudden burst of steam that took them into Miner territory. They failed to advance any further and punted. It was at this time that Alford and O'Mealy ran the reverse punt return good to the Bear 35; again MSM was in touchdown position. An attempted pitch-out was fumbled and Washington gained possession, but again they failed to move and had to punt. This time Alford faked the handoff to O'Mealy, and with good blocking all the way, moved within twenty yards of the second TD. An eight yard pass from Glen Usher to Ted Deranja gave the Miners another first down and on the fourth play Deranja covered the remaining two yards for the touchdown. Although O'Mealy's kick was blocked, the Miners were 13 points up on Washington. The Bears made one more attempt to move in the third quarter, but the Miner defense was holding and they were stopped once more.

The last period was dominated more or less by a highly-spirited team of Missouri Miners who wanted that third insurance touchdown. After a few minutes of play Washington was trapped again on her own 30 yd. line in punt position. The kick was deep and O'Mealy was downed on his own 18. Miner hopes of advancement seemed worse when a 15 yd. penalty set them back even more. Nevertheless, the team was still alive and on the third down with 25 to go, Alford threw a pass good for 56 yards to Paul Pfeifer, that pulled the Miners out of their own backyard and on the Bear's 28. A pitch-out to the left was next in order and Wiegard went around the left side for six more points. The first attempt for the conversion was nullified because the Miner team was offside and the second went wide. With 2:34 left in the game and 19 points up, the Miners once again kicked off. Soon a weak Bear offense was forced back again and the Miners,

due to a blocked punt, were in position once more on Washington's 12 yd. line. A fumble lost the ball for the Miners and this time the Bear kick was good, and time ran out on the Miners as they advanced steadily down the field.

Saturday's game was considered a definite upset putting an end to the 10-game losing streak held by MSM. All in all the Miners showed real strength, spirit and vigor in altogether blanking the Washington University Bears in the sweltering heat of last Saturday. The entire Miner team seemed to be pulling together in an effort to win.

At a farm auction, bidding was very brisk on an old hand-blown whiskey bottle. Finally a collector bought it for \$7.50. When his purchase was handed over to him, an aged but sharp eyed farmer standing nearby leaned over and took a good look at the bottle. "My God," he gasped to his friend, "It's empty."

At the peak of the cold and virus season a family doctor was giving a record number of penicillin injections. In desperation he finally tacked this notice on his office door: "To save time . . . please back into the office."

When someone asked Tonto, the Lone Ranger's friend, why he had married an Italian, Tonto answered, "I had to find some way to get even with Columbus."

SIDELINES

by Gary Strebel

The big upset was last week in the defeat of the Washington University rivals by the Miners. The Miners, the underdogs as usual stomped the Bears with a score of 19 to 0. The Miners surprised everyone and probably themselves. The bright side of the story is that the Miners have broken their 10 game losing streak. Washington University beat the Miners last year 34 to 12.

As a team this year, it is obvious the Miners are small in number (38) but are high in spirits. The individual records of the players are very good. We find Usher and Alford leading passers in the MIAA standings. Alford also listed as second best punter in the standing with a 38.5 average. Leading pass receivers show Wiegard having received with an average of 18 yards, and Kauffman with 3 passes received averaging 30 yards. Martin is one of the top rushers with an average of 4.67 yards so far this year.

MSM lost 16 of its players last year due to graduation, of which 13 were lettermen. Also, 13 of the 16 were in the starting line-up either defensively or offensively. This loss undoubtedly hurt the team but let's hope the team continues on the winning trend.

Coach Bullman's starting line-up was as follows.

Scoggins	LE
Troke	LT
Riggs	C
Ombalski	RG
Smith	RT
Cage	RE
O'Mealy	LH
Wiegard	RH
Deranja	FB
Usher	QB

Well, we have the Kansas State Teachers from Pittsburg coming here tomorrow. The Miners lost to Pittsburg last year 52-6. So with the knowledge of playing on our home field plus the triumph over Wash. U. as initiative, let's hope the Miners show their spirit again tomorrow.

Co-ed to druggist. "You heard me. I want a green lipstick. I'm entertaining a railroad man this evening."

805 Pine
Authorized Agent
Jeweler
G. L. Christopher
WATCHES
OMEGA



Are you a nosy
note-poacher?

Let's hope not! But we'll wager you know one. The nosy note-poacher's distinguishing characteristics are empty hands, a free-loading nature and a lack of friends. Why? Because this character relies on borrowing other people's notes. Never has a notebook, filler paper or pen to take notes himself. Now isn't that silly? Somebody ought to tell him how easy it is to drop in for supplies. We've stacks and stacks of everything from ring binders to typewriter erasers. So make sure you never have to abuse your friends. Come in and stock up today.



CAMPUS BOOK STORE
"Just Across the Campus"

FALSTAFF WINS

at refreshment time

Any good time
is Falstaff time

AMERICA'S PREMIUM QUALITY BEER
FALSTAFF BREWING CORPORATION, ST. LOUIS, MO.

MUELLER DISTRIBUTING CO.
Rolla, Mo.