



09 Nov 1962

The Missouri Miner, November 09, 1962

Follow this and additional works at: https://scholarsmine.mst.edu/missouri_miner

These newspapers reflect the attitudes, perspectives, and beliefs of different times. Neither the library nor the university endorses the views expressed in these collections, some of which contain images and language which may be offensive to some readers.

Recommended Citation

"The Missouri Miner, November 09, 1962" (1962). *The Missouri Miner Newspaper*. 1695.
https://scholarsmine.mst.edu/missouri_miner/1695

This Newspaper is brought to you for free and open access by Scholars' Mine. It has been accepted for inclusion in The Missouri Miner Newspaper by an authorized administrator of Scholars' Mine. This work is protected by U. S. Copyright Law. Unauthorized use including reproduction for redistribution requires the permission of the copyright holder. For more information, please contact scholarsmine@mst.edu.

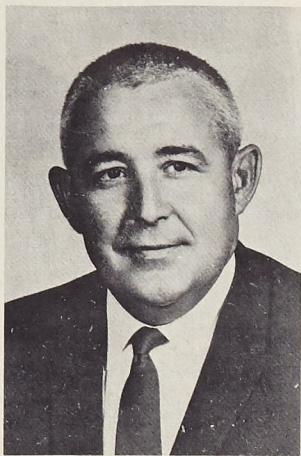
MSM Graduate of 1947 Elected Alumni President

Mr. James W. Stephens, Assistant to the president, Missouri Public Service Company, Kansas City, Missouri, has been elected President of the Missouri School of Mines Alumni Association for a term of three years. Mr. Stephens just completed a three-year term as Executive Vice President of the Association. He has been very active in alumni affairs since his graduation from the School of Mines in 1947, with a B. S. degree in Electrical Engineering. He was awarded his professional degree Electrical Engineer in 1957.

Mr. Stephens was born at Pleasant Green, Missouri, and graduated from the Smith-Cotton High School, Sedalia, Missouri, in 1937. He is a veteran of World War II serving two years in the U. S. Navy. Most of his professional career has been with the Missouri Public Service Company beginning as early as 1940.

Mr. Stephens is very active in

community and church affairs and is a member of many professional societies and fraternal organizations. He is a member of Blue Key Honor Fraternity, Eta Kappa Nu (Professional), A.F. & A.M., Scottish Rite and Ararat Shrine, Kansas City, Mo. His membership in professional societies are: Missouri Society of



MR. J. W. STEPHENS

Professional Engineers, Board of Directors 1961-62; National Society of Professional Engineers, Engineers; Engineer's Club of Kansas City; Secretary-Treasurer; Kansas City Electric Association; American Industrial Development Council and Society of Industrial Realtors.

Alumni Elect Vice-President

Raymond O. Kasten, Manager, Engineering Union Wire Rope Company, Kansas City, Mo., has been elected Executive Vice President of the Missouri School of Mines Alumni Association, Rolla. Mr. Kasten has been an Area Vice President of the Association for the past three years. Prior to this he has served in various offices of the Association and of the Kansas City Section. He graduated from the Missouri School of Mines in 1943, with a B. S. degree in Civil Engineering.

Mr. Kasten was born in Appleton, Missouri, and graduated from the Oak Ridge, (Mo.) High School. Mr. Kasten also has a Master of Science degree in Applied Mechanics from Washington University, St. Louis, Mo.

He has been employed by Union Wire Rope since 1944. He is a member of two honor fraternities Tau Beta Pi and Sigma Xi, and is a member of the American Society of Civil Engineers Club of Kansas City.

**ENGINEERS
DAY--NOV. 17**

NOTICE!

All of the writers for the Miner are required to attend a meeting at 7:00 P. M., Wednesday, November 14, 1962, in room 202 & 203 in the Student Union building.

The MINER

MISSOURI SCHOOL OF MINES AND METALLURGY

VOLUME 49

FRIDAY, NOVEMBER 9, 1962

NUMBER 10

Dr. Elmer Ellis Among New Initiates Into Phi Kappa Phi

The president of the University of Missouri, Dr. Elmer Ellis, was initiated by Phi Kappa Phi as an honorary member on Saturday November 3 during the fall initiation ceremony and banquet of the Missouri School of Mines Chapter in the MSM Student Union.

Dr. Ellis holds A. B., M. A., and LL. D. degrees from a number of colleges and universities, including an LL. D. from Washington University. He began teaching in the field of history in 1925 and joined the faculty of Missouri in 1930, advancing to Professor of History, the title he still holds. From 1946 to 1955 he served as Dean of Faculty of the College of Arts and Sciences following which he has appointed to his present position. Dr. Ellis participated in educational conferences in England in 1956, 1958, and 1961. He spent six weeks in India, 1959-1960, as an advisor to the Indian government in agriculture and the establishment of a land-grant type of university. Dr. Ellis is active in a number of civic and educational organizations and is a member of Phi Beta Kappa.

Also receiving the esteemed honorary membership, with unanimous consent of the National Society Executive Council of Phi Kappa Phi, was Mrs. Elizabeth S. Nau for her creative endeavors in education and public address since receiving her masters degree at the University of Oregon in 1949 and Ph. D. study at the University of Illinois in 1949-1951. She has lectured widely in New Jersey, Pennsylvania, Ohio, Illinois, Missouri, California, Oregon, Utah and Washington. Mrs. Nau's address, "National Security is Your Business," which she presented at the Chapter's Initiation Banquet (6 January 1962) was published in the Spring 1962 issue of the Phi Kappa Phi Journal.

Dr. Daniel S. Epplesheimer, Professor of Metallurgy at MSM, addressed the banquet on "Chal-

lenges of the Common Market to American Engineering." Dr. Epplesheimer spent the last three summers in Europe visiting France, Switzerland, Germany, Russia, and England. He spent last summer completing his acquaintance with steel plants in

steel industry as related to future international industrial developments between the USA, Russia, and the other European nations. This presents a great challenge to American Engineers. In speaking of Europe, Dr. Epplesheimer said, "No longer is technical com-



Western Europe, studying in detail their new iron and steel-making processes, getting to know better their people in industry, and learning first hand about the common market and its possible effect on our iron and steel economy. He discussed the coal and

petence enough. Development of imagination is the most vital part of their training. They must have an awareness of the world around them."

The occasion was enhanced by presentation to the chapter of a

(Continued on Page 4)

Engineering Graduates Needed by Peace Corps

The Peace Corps was established to help countries less blessed than our own. Teachers and engineers are in great demand and people in these fields should consider the pros and cons of joining before they graduate from school and begin their life's work.

A few of the facts of interest to a graduate engineer are listed below.

1. The Peace Corps gives most engineers two years of practical experience in their field.
2. It gives you \$1800 cash when you leave.
3. While you are working for the Peace Corps you are paid a salary equal to the salary that natives doing the same work receive.
4. The Peace Corps gives, any engineer that wants it, language training which gives a proficiency in at least one language.
5. The Peace Corps offers travel experience at the expense of the government.
6. The Peace Corps has job placement facilities for men who are about to get out.
7. An engineer after serving in the Peace Corps will receive 25 to 40 percent more than he could have gotten as a college grad.
8. The Peace Corps defers all engineers until they leave the Peace Corps.

NOTICE!

The Traffic Safety Office wishes to announce that if any change of automobile or ownership occurs, the student must bring the remnants of his old registration decal to the Traffic Safety Office before this office will issue the student a new registration decal.

NOTICE!

"Miners" are delivered to the dormitories, eating clubs, and social fraternities by 1:30 on Friday.

For more efficient circulation, the "Miner" staff requests that students affiliated with these organizations obtain their copy of the "Miner" from these places. All other students can pick up their copy from the Student Union.

ANYONE INTERESTED IN THE PEACE CORPS

CAN GET INFORMATION OR

APPLICATION BLANKS

FROM DEAN PONDER'S OFFICE.

Miner Editorials

Intramurals — Room for Improvement

Now that the intramural football season has come to another successful conclusion, we would like to offer some improvements that could be made concerning the refereeing in intramurals in general, and in football in particular.

The intramural program is excellent, one of the best in the state, and many benefits are derived by those who participate and act as fans. But since the spirit is high, so nerves and tension are also, this requires some tact upon the part of the umpires, which is often lacking. Expulsions from the game are becoming far too frequent, and a period of rest, as in hockey, could, in some cases, be used instead, in order that one team not be penalized to the point of losing a game because of a careless word spoken in the heat of the game.

It is difficult to find the number of "refs" required, let alone screen them for ability. This could perhaps be improved by raising the pay and permitting the intramural managers from the various organizations, as a body, to have home power to rid the program of what they all consider inadequate referees. Also, some of the "refs" could be better instructed as to what the rules are and where to look for infractions, particularly since the new rule is in effect which prohibits protesting the outcome of a game. Furthermore, some equipment is needed to aid the referees, particularly in football, where a downs marker and a marker to signify the progress needed for a first down would let them keep their eyes on the play itself.

A good majority of these suggestions are probably doomed because of the financial situation. We would like to recommend to the Student Council that they try to allot some money to the intramural program, for it is a school function that a good percentage of the students participate in and merits the Council's wholehearted support.

Serving MSM? — Traffic Safety Committee

In Section VII of the Traffic Regulations, it is stated that . . . "it shall be the duty of the Traffic Safety Committee to study traffic conditions at the School of Mines and Metallurgy and from time to time make suggestions relating to the improvement thereof to the Dean of the School of Mines and Metallurgy . . ." We would like to take the opportunity to offer some suggestions and criticisms about the current regulations.

The purpose of the traffic regulations, according to the pamphlet presented to students, is to discourage the students from operating automobiles while attending MSM, in order that the health and safety of the students be protected and that their academic work will not be materially affected. This is a very honorable purpose, which the Traffic Safety Committee has very effectively fulfilled, but we take issue with their means.

One of the rules states: Failure to display registration certificate or parking permit as required — first violation \$10.00 fine and second violation \$10 fine and cancellation of the certificate of registration and possible report to the Committee on Scholarship and Conduct. Furthermore, each day the registration certificate or parking permit is not displayed may be considered a separate violation! This is indeed harsh action to take against a student who is qualified to register, so does, and simply forgets to attach his sticker to the car or it is stolen or lost without him noticing it! It is hard to reconcile such drastic measures with the purpose of the committee. Granted such a rule is needed for enforcement of the other rules, but such stiff penalties are neither needed nor warranted.

There is also a rule against possessing or operating a vehicle in or about Rolla without a valid registration certificate and operator's permit, with a first offense drawing a \$25 fine and second offense punishable by a referral to the Committee on Scholarship and Conduct. This rule is particularly hard-nosed, in that the student may be driving his date for a dance-weekend, or his parents, about the town because it is safer for a person to drive who is familiar with the streets and traffic conditions of the town! Also, it is hardly proper or safe for a student's date to drive alone to the hotel where she is staying when the student could do so.

One of the frequent complaints that the students offer is that the Traffic Safety Committee is usually stiff and unyielding when considering an appeal for a reduction in the amount of the fine or the complete vindication of the offender. Also, the Committee has come under fire for lacking even-tempered judgment and treating the offender as a child, when in actuality he is a fully-qualified owner of a valid driver's license, presented after state examiners have attested to the person's ability to safely operate such a vehicle.

In summation, we would like to encourage the committee to re-examine the penalties, and in some cases the rules themselves, and to use a greater amount of restraint and discretion in the future when ruling upon individual cases.

Pledging 42 Men, APO's Here Rank First Nationally

This semester Beta Omicron Chapter of Alpha Phi Omega pledged the following 42 men:

Robert B. Asher, Paul F. Becher, Wayne Benitz, Thomas E. Bersett, Bruce H. Bradford, Gary

strong on our campus to the point where our local chapter has become recognized as the number one chapter in colleges of this size. Through the past years APO has grown tremendously and is con-



Brunn, Frank Buchmeier, Richard Dagley, Harry W. Elliott III, Kenneth Ferguson, Bill Feuchter, Gerald Fisher, Paul Gerhardt, William F. Gildehaus, Bob Graham, William R. Grantham, Robert L. Hall, C. Barry Hayden, Fred Herrmann Jr., William David Hollander, Roger Hudson, Donald Hurst, Richard Hydzyk, Michael P. Keef, James J. Klingner, William D. Loth, Terence Martin, John McGrath, Charles W. Morris, Edward S. Muehl, Dale Munn, Wallace C. Oppel, Lowell B. Patterson, Stephen L. Redington, T. F. Scanlan, Richard L. Schneider, Gary G. Shippy, David A. Spencer, Robert F. Thrash, John Tippet, James Warner, and Dave Weinrich.

Alpha Phi Omega is a national service fraternity which in the past few years has grown very

continuing to do so as is evidenced by this large pledge class.

One of the big services which Beta Omicron offers to the students of MSM is its book exchange which is open the first part of every semester for their convenience. The chapter also has desk blotters printed which are given out at this time.

Another major undertaking of the chapter is the Blood Drive, which requires the support of the students themselves.

MINER

THE MISSOURI MINER is the official publication of the students of the Missouri School of Mines and Metallurgy. It is published at Rolla, Mo., every Friday during the school year. Entered as second class matter February 8, 1945, at the Post Office at Rolla, Mo., under the Act of March 3, 1879.

The subscription is \$1.00 per semester. This Missouri Miner features activities of the students and Faculty of M. S. M.
Editor-in-Chief: Hugh Murray
707 State St.—EM 4-2731
Business Manager: John Gladysiewicz
500 W. 8th St.—EM 4-3787
Managing Editor: D. F. John
Make Up Editor: David Blume
Copy Editor: Greg Jung
Features Editor: Charles Becker
Advertising Manager: Scott Carriere
Circulation Manager: Paul Gerhardt
Sports Editor: Ed Schwarz
Technical Advisors: Mike Devaney, Gary Turner
Secretary: John Minton

Two Dept. Heads Recovering Illness

Professors Rolfe M. Rankin, Chairman of the Department of Mathematics and E. W. Carlton, Chairman of the Department of Civil Engineering are experiencing the misfortune of being hospitalized. Both have been patients in the Phelps County Hospital, Rolla, and we are most happy to report both are making satisfactory progress and will be out of the hospital by the time you are reading this item.

Student Union and Faculty Teaming to Present Enlightening Afternoon "Breaks"

For the past few weeks the Student Union Literary Committee has been sponsoring some informal discussions at the Student Union. These discussions or coffee hours as they have become called lately, because free coffee is offered to anyone who partakes in the conversation, are designed to give the student a break in his day of school and studies. They are held in the ballroom of the Student Union, during the week at about 3:30 in the afternoon.

The literary committee has been trying to get a member of the faculty or some other interested person to lead one of these discussions every week. So far they have gotten Mr. Murphy to talk on "The psychology of taking a test," Mr. Boyd to talk on Hemingway, and Dr. James to speak on "Education in other countries, especially France, as compared to ours." Many other coffee hours are planned for the future so watch the daily bulletin and bulletin board in the Student Union and give yourself a stimulating break in your academic day.



It's greasy, by George! But Vitalis with V-7 keeps your hair neat all day without grease. Naturally, V-7® is the greaseless grooming discovery. Vitalis® with V-7 fights embarrassing dandruff, prevents dryness, keeps your hair neat all day without grease. Try it today!



Tucker Dairy Company, Inc.

QUALITY  CHECKD

DAIRY PRODUCTS

103 W. 10th St.

Rolla, Missouri

Phone EM 4-3700

**SUPPORT THE
MINERS!**



SPELUNKERS CLUB

Early History

The origin of the M.S.M. Speleologists Club dates back to the very early 1930's when Mr. Noel Hubbard took a group of students to Millers Cave Among the students present on the cave trip were: Mr. Andrew Kassay, Mr. Joe Butler, and Mr. Farrar.

Professor here at school. It is interesting to note that in 1957, Mr. Andrew Kassay's son, Robert Kassay, became President of the Speleologists Club.

Mr. Hubbard went caving at that time because he was writing a series of articles for the St. Louis Post-Dispatch. Besides writ-

to the entrance of Millers Cave. Not only did Mr. Hubbard explore caves to get material for his articles, but also because he found it very fascinating to explore the underground grottos of our state.

Became an Official School Organization

On November 8, 1949, the Speleologists Club had their constitution approved by the faculty; thus becoming an official school organization. Mr. Rex Williams, who taught in the Mechanics Department at the time, and who later became the first Assistant Dean of the school, helped the club get their constitution approved by the faculty. Mr. Williams is now President of the Rolla State Bank. The first official President of the Speleologists Club was Mr. Wayne Hahne.

Joined a National Caving Organization

On April 2, 1953, the M.S.M. Speleologists Club joined a national caving organization known as the National Speleological Society, and changed their name to "The Missouri School of Mines Grotto of the National Speleological So-

ciety". The President at this time was Mr. John Moritz, and the Faculty Advisor was Mr. Jay Dotson.

During 1953 and 1955, the club published several bulletins describing the caves of the Ozark Region, and other items of speleological interest. Around this time, Professor Rostron took over as Faculty Advisor for the Club.

Withdraws From the National Speleological Society

In 1956, the Speleologists Club decided to discontinue their affiliation with the National Speleological Society due to differences between the two organizations concerning matters of speleological interest. Even though the club withdrew in 1956, the National Speleological Society did not officially consider them an inactive grotto until 1957.

During 1957, the Speleologists Club started a gradual reorganization to serve a larger membership. Professor James C. Maxwell, who became the Club's Faculty Advisor at that time, is still serving actively.

Professor Maxwell, a Geology Professor here at school, is now

amateur when it comes to exploring caves. He has done quite a bit of work dealing with cave science. Among his other interests, he is an expert when it comes to mountain climbing; having climbed mountains in British Columbia, Peru, and the United States.

In 1958, the Speleologists Club made its first appearance in the school year book, the *Rollamo*. From this time forward, weekly meetings were held, and cave trips were scheduled almost every weekend.

National Speleological Society

The National Speleological Society, commonly known as the N.S.S., was formed in 1939 by Mr. William J. Stephenson. The N.S.S. is composed of caving organizations across the country known as Grottos. At present, there are 63 Grottos and 2,200 members in the N.S.S. Their aim is to further speleological sciences in the United States.

Missouri Speleological Survey

The Missouri Speleological Survey, commonly known as the M.S.S., was formed in 1956 by

(Continued on Page 6)

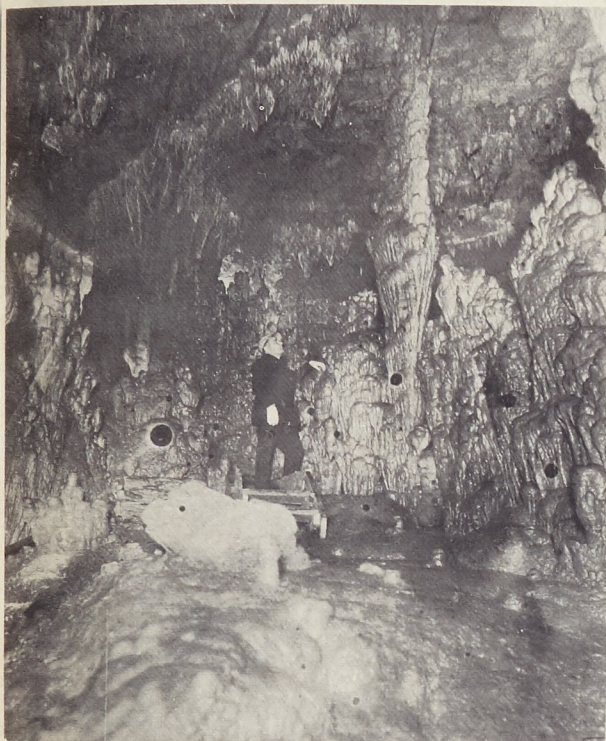
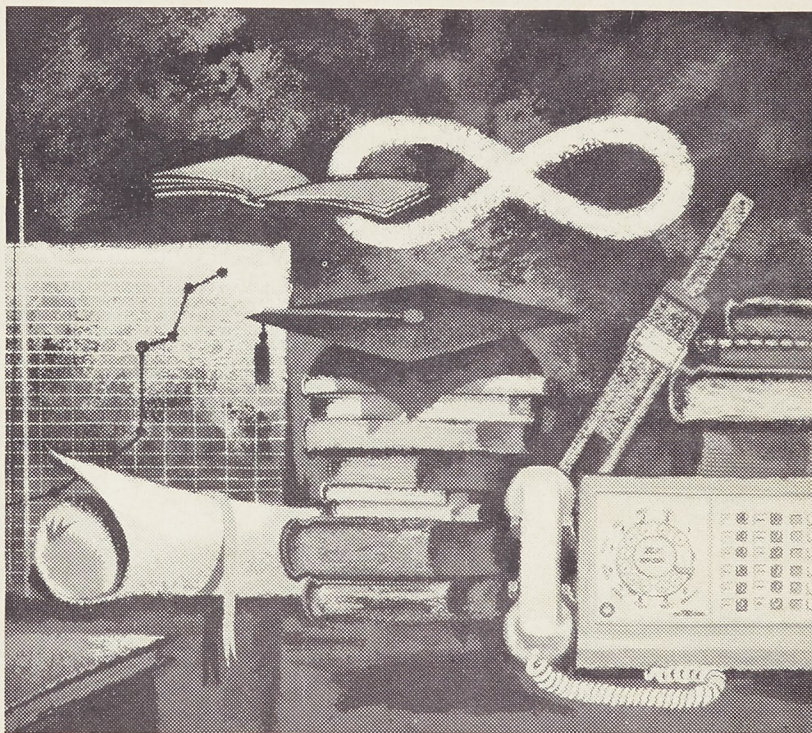


Photo taken by Mr. Noel Hubbard on a club cave trip in early '30's.

Mr. Hubbard was at that time Assistant Registrar at the Missouri School of Mines. Mr. Farrar was killed in the war, and one of the dormitories at school is named after him. Mr. Joe Butler later became a Civil Engineering

ing articles on caves, he also took some very fine photographs that were used in conjunction with his articles. He relates that it was no easy task lugging his 8" x 10" view camera and tripod up the steep forty-foot slope that leads



Learning never stops for engineers at Western Electric

There's no place at Western Electric for engineers who feel that college diplomas signify the end of their education. However, if a man can meet our quality standards and feels that he is really just beginning to learn... and if he is ready to launch his career where learning is an important part of the job and where graduate-level training on and off the job is encouraged — we want and need him.

At Western Electric, in addition to the normal learning-while-doing, engineers are encouraged to move ahead in their fields by several types of educational programs. Western maintains its own full-time graduate engineering training program, seven formal management courses, and a tuition refund plan for out-of-hours college study.

This learning atmosphere is just one reason why a career at Western Electric is so stimulating. Of equal importance, however, is the nature of the work we do. Our new engineers are taking part in projects that implement the whole art of modern telephony, from high-speed sound transmission and solar cells to electronic telephone offices and computer-controlled production techniques.

Should you join us now, you will be coming

to Western Electric at one of the best times in the company's history. In the management area alone, several thousand supervisory jobs are expected to open up to W.E. people within the next 10 years. And our work of building communications equipment and systems becomes increasingly challenging and important as the communications needs of our nation and the world continue to increase.

Challenging opportunities exist now at Western Electric for electrical, mechanical, industrial, and chemical engineers, as well as physical science, liberal arts, and business majors. All qualified applicants will receive careful consideration for employment without regard to race, creed, color or national origin. For more information about Western Electric, write College Relations, Western Electric Company, Room 6206, 222 Broadway, New York 38, New York. And be sure to arrange for a Western Electric interview when our college representatives visit your campus.

Western Electric
MANUFACTURING AND SUPPLY UNIT OF THE BELL SYSTEM

Principal manufacturing locations at Chicago, Ill.; Kearny, N. J.; Baltimore, Md.; Indianapolis, Ind.; Allentown and Laureldale, Pa.; Winston-Salem, N. C.; Buffalo, N. Y.; North Andover, Mass.; Omaha, Neb.; Kansas City, Mo.; Columbus, Ohio; Oklahoma City, Okla.; Engineering Research Center, Princeton, N. J.; Teletype Corporation, Skokie, Ill.; and Little Rock, Ark. Also Western Electric distribution centers in 33 cities and installation headquarters in 16 cities. General headquarters: 195 Broadway, New York 7, N. Y.

BETTER BUY THE CASE



Party time is
FALSTAFF time

★ AMERICA'S PREMIUM QUALITY BEER

FALSTAFF BREWING CORPORATION, ST. LOUIS, MO.

MUELLER DISTRIBUTING CO.
Rolla, Mo.

ELMER ELLIS

(Continued From Page 1)

lovely new three-foot golden key or Badge of the Society by Dr. Paul Dean Proctor, vice president of the MSM chapter. He also presented to the Chapter a beautiful silk embroidered banner containing on it an enlarged replica of the seal of the society and the greek letters. Mrs. Proctor made the banner herself. The golden key and silk banner will be used by Phi Kappa Phi at all of its future initiation ceremonies and banquets.

The National Honor Society of Phi Kappa Phi elects only the highest ranking juniors and seniors to its membership. The scholastic requirement for a junior to be considered for election is 3.50 average and 96 completed semester hours. Graduating seniors have been considered with grade-point averages of 3.12 and above.

At its fall semester initiation ceremony and banquet held in the Student Union on Saturday, November 3, the following students were made members: Juniors — John G. Hemmann, EE; Jerry G. Johnson, Phys.; Raymond A. Fournelle, Met.; James H. Boeger, ME; Graham G. Sutherland, CE; Thomas A. Hamilton, ME; John R. Glaese, Phys.; Forman N. Hardwick, CE; Barbara Lynn Burchard, Math; Gerald L. Arnold, Met.-Nucl. Seniors — Louis B. Allen, Phys.; Maynard L. Arment, Met.; James J. Baremore, EE; Jerome A. Denzil, Chem.; Howard L. Dockery, Phys.; Hugh B. Gardner, EE; H. Housmand, CE; James H. Jensen, Geology; Robert D. Koester, Met.; Larry D. Porter, Ch E; John A. Reagan, Phys.; John L. Rice, CE; V. V. Risser, EE; William E. Saunders, Ch. E; John W. Schattyn, ME; Lonnie Shalton, Met.; Orin A. Stemler, CE; and John J. Zenor, Math.

Dr. Dudley Thompson, president of Phi Kappa Phi, presided over the initiation ceremonies and the banquet.

M. E. Department Adds Four Profs

Four new full time instructors have been added to the staff of the Mechanics Department. They are Richard Wallace '62, Richard Pendleton '57, Richard Johnson '62 and Jerry Gilmore '60.

Mr. Wallace graduated from MSM this past summer and is currently doing graduate work in mathematics. He is a member of Delta Sigma Phi and Tau Beta Pi.

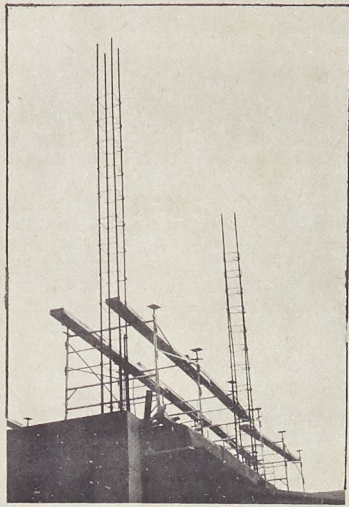
Mr. Pendleton received his B.S. degree in Mechanical Engineering, in 1957, and has worked until now in the petroleum industry in Oklahoma. He is doing work toward a M. S. degree. He is married and has three children.

Mr. Johnson joined the Mechanics Department this past summer and is doing work on a Master's degree in Mechanical Engineering. He is a member of Tau Beta Pi, and Pi Tau Sigma honor fraternities.

Mr. Gilmore, a Mechanical Engineering graduate, is in his first year teaching. He has been employed by Western Electric Company and he also is working toward his M. S. degree in Mechanical Engineering.

(Reprinted From MSM
Alumnus)

Why Don't You Enter The Photographic Contest?



Do you like the above picture? One of the members of the MSM Photographic Club thinks it is good enough that he might enter it in the MSM Photographic Contest this fall. How about you? Don't you have a picture which you have taken and think is better

than the above one? If you do why don't you enter it in the Fall MSM Photographic Contest?

Entry blanks and complete rules will soon be available at the candy counter in the Student Union.

LITTLE MAN ON CAMPUS



"AN' DON'T TAKE A CLASS FROM PROF SNARF THERE HE LECTURES SO LOUD YOU CAN HARDLY SLEEP."

Springtime softness in every puff

Salem refreshes your taste

Take a puff... it's springtime

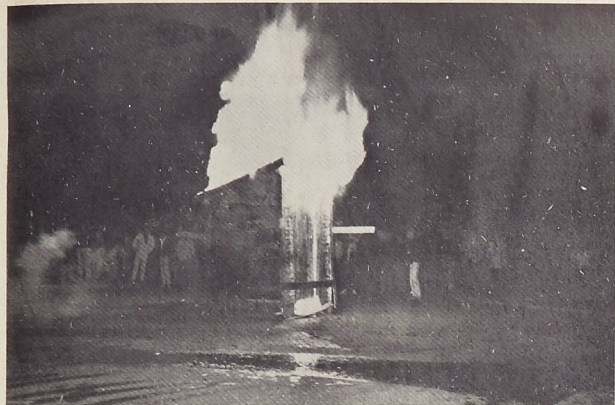
© 1962 R. J. Reynolds Tobacco Company, Winston-Salem, N. C.

You'll smoke with a fresh enthusiasm

when you discover the cool "air-softened" taste of Salem

● menthol fresh ● rich tobacco taste ● modern filter, too

Old Halloween Tradition Revived; Miners Burn Outhouse In Street



Halloween at MSM this year was sparked by the reviving of the old tradition of burning an outhouse in front of the Dean's residence. At 8:15 p.m. on Wednesday, October 31, the pledge class of Kappa Sigma carried a huge kerosene soaked outhouse to the intersection of State and Eleventh Streets. They then proceeded to ignite it, inducing a fairly large crowd from the surrounding proximity.

Dean Ponder spoke briefly voicing approval of the tradition so

long as it remains under control. The annual burning was discontinued two years ago because of the extreme disturbance it caused to the city of Rolla.

With the success of the burning this year, it is hoped that the tradition will last for many years to come.

UCCF to Have Noted Speaker On Marriage

"What are all of the details involved in getting married?" This is a question that many college students today are asking. Whether you are presently planning marriage or not, it happens to most of us sooner or later, so why not be informed beforehand?

Starting this Sunday, Nov. 11, the UCCF will discuss the "Origins of Marriage." This will be a general review of the past on up to the present day institution of marriage. The following three programs will be: "A Minister's Views of Marriage" (Nov. 18), "Sex in Marriage" (Dec. 2), and "Responsibilities of Marriage" (Dec. 9). Each of these discussions will be factual presentations by prominent professionals in their respective areas. The discussions will be held at the UCCF Center, 1608 Pine Street, at 7:00 p.m. We urge all students, re-

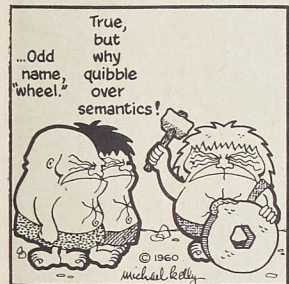
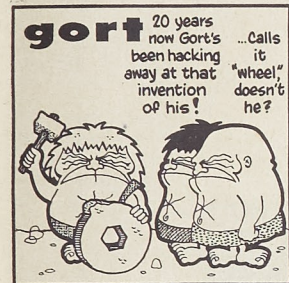
gardless of religious affiliation, to attend these meetings, for they should be most interesting and informative.

SUPPORT THE MINERS!

The Finest in.....
DRY CLEANING

**Pressing While You Wait.
One Day Service if Requested.
Pick Up and Delivery Service.**

MODERN
Dry Cleaners
9th and Pine



**NOTICE!
ENGINEERS'
DAY
NOV. 17**



It happens at Du Pont. Frequently. That's because 1350 technically trained employees are engaged solely in pioneering research. They're in the business of discovery, development and follow-through. Sometimes the newly discovered chemical poses the question, what to do with it?

For instance, Dr. Thomas J. Swoboda, a member of the Central Research Department staff, and his associates recently discovered a new family of metallic compounds, chromium manganese antimonides. They're unusual materials. Over a specific temperature range they are magnetic. As temperature drops, the magnetism does too.

The chart, pictured with Dr. Swoboda, shows the sharp magnetic transition. To the right, the material is ferromagnetic, to the left (at low temperatures), anti-ferromagnetic.

So we have a solution. Now to find the problem it will solve. This situation was largely true when nylon was discovered. Only later did we find the many problems which its unique characteristics would solve—from cord for airplane tires to plastics for gears.

New products, new jobs

There's opportunity here for men of virtually every technical skill. For further information about chromium manganese

antimonides, and about working for Du Pont, just fill out and mail the coupon.



Better Things for Better Living... through Chemistry

E. I. du Pont de Nemours & Co. (Inc.)
Nemours Building, Room 2531-11, Wilmington 98, Delaware

Please send me the literature indicated below.

- ☐ Du Pont and the College Graduate
- ☐ Mechanical Engineers at Du Pont
- ☐ Your Engineering Opportunities at Du Pont
- ☐ Chemical Engineers at Du Pont
- ☐ Chromium Manganese Antimonides Information

Name _____
Class _____ Major _____ Degree expected _____
College _____
My address _____
City _____ Zone _____ State _____

SPELUNKERS

(Continued From Page 3)

Mr. Jerry Vineyard, Mr. Oz Hawksley, and Mr. Frank Dahlgren. The M.S.S. is a state-wide organization composed of the seven caving clubs in the state. It was formed so that Missouri could gain representation with the N.S.S. The purpose of the M.S.S. is to study and record the speleological features in the state of Missouri. Each caving organization in the state has one member who represents them in the M.S.S. *Activities of the Spelunker Club*

Cave Density in Missouri

Within a 50-mile radius of Rolla, there are over 350 caves. The Phelps and Pulaski county alone, there are over 160 caves. The total number of caves in Missouri is well over the 1,100 mark. With statistics like these, members of the club have no trouble at all trying to find a cave to visit.

In 1956, the Missouri Geological Survey published a book called *Caves of Missouri*, which was written by Mr. J. Harlen Bretz. This book, which lists about 500 caves, gives the Spelunkers many of their cave locations. Another source of information concerning the location of caves is obtained by talking with the land owners directly.

Why Go Caving

You may ask yourself just why do people do things like this. Wouldn't it be just as easy sitting by an open fireplace watching the cold winter winds blow outside while the fire casts an erie glow of warmth and security about you. Just why are some people wading thru sticky, guano-infested mud just to see how long their energy can hold out as they traverse through the winding hallways of a huge underground grotto.

The answer is not a simple one. Why do people do anything that is risky. Each person must seek out an answer for himself. But from my own experience, nothing can top the satisfaction of being the first one to explore a virgin passage and see the wonders that God has made.

SUPPORT OUR ADVERTISERS



Earl Chappell

Says . . .

“Stands to reason that a life insurance policy designed expressly for college men—and sold only to college men—gives you the most benefits for your money when you consider that college men are preferred insurance risks. Call me and I'll fill you in on THE BENEFACITOR, College Life's famous policy, exclusively for college men.”

GEN. DELIVERY

ROLLA, MO.

TEL. EM 4-2698

OUTLINES

Schaum's and College Series

PAPERBACKS

REFERENCE BOOKS

CAMPUS Book Store

Just Across the Campus

IT'S FUN TO ROLLER SKATE!



Open Every Night
Except
Sunday & Monday
at 7:30

Sunday Matinee
at 1:30

ROLLA ROLLER

RINK

City Hwy. 66 West

LONG INSURANCE AGENCY

A. E. Long, M. S. M., Ex '22

810 Pine St.

ROLLA, MO.

Phone EM 4-1414

"Service Is Our Business"

HELP WANTED

WOMEN

MEN

PART TIME — EVENINGS & WEEKENDS

Minimum of 20 Hours Weekly

AUTOMOBILE NECESSARY

NO DOOR TO DOOR CANVASSING

Call EM 4-9924

Between 7:00 and 8:00 P. M.

Monday Evenings Only

SCOUT RESEARCH ROCKET...VOUGHT ASTRONAUTICS

XC-142 V/STOL TRANSPORT...VOUGHT AERONAUTICS

VOICE OF POLARIS STATION
CONTINENTAL ELECTRONICS

GYRO EARTH RATE COMPENSATOR LABORATORY
TEMCO AEROSYSTEMS

DALLAS...
HOME OF LING-TEMCO-VOUGHT

SUPER CLEAN ROOM FACILITY
TEMCO ELECTRONICS

**LING-TEMCO-VOUGHT...
BRINGING TOMORROW
CLOSER TO TODAY**

Beneath the sea, beyond the sky or anywhere in between — this is the domain of vehicles, weapons and systems produced by Ling-Temco-Vought. While LTV is a relatively new name to industry, the company is comprised of experienced organizations with far-reaching technical talents. Together these elements are meeting the advanced challenges of military electronics, communications, space, aircraft and missiles and have placed LTV in the enviable position of one of the nation's top ten defense contractors.

Today, LTV's activities include such programs as V/STOL, CRUSADER, SCOUT, SATURN, DYNA-SOAR and a supersonic, low-altitude missile. In addition, the company is supplying specialized military electronic equipment, super-power transmitters for the "Voice of Polaris" radio station, special purpose computers, actuators for MINUTEMAN and scores of other complex products and systems.

Because of this continuing expansion, LTV's

divisions have ground-floor growth opportunities for graduates holding degrees in Aeronautical, Mechanical, Industrial, Electrical and Civil Engineering and Math, Physics or Metallurgy.

Before selecting your industrial home, consider engineering climate, on-the-job orientation, professional development and location... consider LTV and Dallas — the social, intellectual and cultural center of the Southwest. We invite you to plan your future with us. For further information on career positions, contact your Placement Office or write College Relations Office, Ling-Temco-Vought, Inc., P. O. Box 5907, Dallas 22, Texas. Dallas Area Divisions:

CHANCE VOUGHT CORP./TEMCO ELECTRONICS
TEMCO AEROSYSTEMS/CONTINENTAL ELECTRONICS

LING-TEMCO-VOUGHT, INC.

P. O. BOX 5907 • DALLAS 22, TEXAS • AN EQUAL OPPORTUNITY EMPLOYER

LTV

Greek News

DELTA SIGMA PHI

The pledge-active outing of last weekend was a most welcome break at Delta Sig from the pressure of mid-term exams. One of the highlights of the event, which was held at Lions Park, was the annual pledge-active football game. The score won't be mentioned in order not to embarrass the pledges, but let it be said that in the years since the Chapter's founding the pledges have never won this particular contest.

The game in the brisk autumn air really whetted the appetites of brothers and pledges alike as they enjoyed a picnic supper prepared by their excellent cook. The memorable evening ended on a happy note as actives and pledges alike joined to sing some of the "old favorite" fraternity and school songs around a roaring log fire.

Already some of the men are looking forward to the spring semester's outing when "certain contests" will be held between the pledges and their "big brothers." It is sure that this outing too will be a big S-P-L-A-S-H!!

SIGMA PHI EPSILON

This last week Sig Ep celebrated founders day. It was sixty-one years ago, Nov. 1, 1901 at Richmond College, Richmond, Virginia, that the national fraternity of Sigma Phi Epsilon was born.

Since then it has grown to represent one of the largest national fraternities in the country in both men and chapters.

In honor of this day a formal dinner was held with many of the alumni and honorary members attending.

Wallace Tucker, one of the first

UPTOWN THEATRE

MOVIES IN CINEMASCOPE

Thurs., Fri., Sat. Nov. 8-10

'Tales of Terror'

Vincent Price & Peter Lorre

Sun., Mon., Tues. Nov. 11-13

Sunday Continuous from 1 p.m.

'The 300 Spartans'

Richard Egan & Diane Baker

Wed., Thurs. Nov. 14-15

'All Fall Down'

Eva Marie Saint & Warren Beatty

RITZ THEATRE

MOVIES ON WIDE SCREEN

Fri., Sat. Nov. 9-10

Saturday Continuous from 1 p.m.

'Samar'

George Montgomery & Ziva Rodann

—PLUS—

'The Lonely Man'

Jack Palance & Elaine Aiken

Sun., Mon., Tues. Nov. 11-13

Sunday Continuous from 1 p.m.

'Lover Come Back'

Rock Hudson & Doris Day

—PLUS—

'Desert Attack'

John Mills & Sylvia Syms

Wed., Thurs. Nov. 14-15

'Tender Is the Night'

Jennifer Jones & Jason Robards, Jr.

—PLUS—

'The Firebrand'

Kent Taylor & Lisa Montell

men to become an honorary member of this chapter, was the speaker for the night and proceeded to reminisce about the good times had by the Sig Eps when the chapter of Mo. Gamma was first founded back in 1947.

The pledges had their annual outing with the Phi Kap pledges last Saturday and have since been busy preparing for the pledge dance this weekend. The theme is the "Peppermint Lounge," so a twisting atmosphere and a lot of twisting records should help make another moving Sig Ep party weekend.

KAPPA SIGMA

Murray Sisk, who was severely injured in an accident which occurred on U. S. 66 near Cuba, is making rapid progress in his recovery. Tom Barber, injured in the same accident, is also coming along fine.

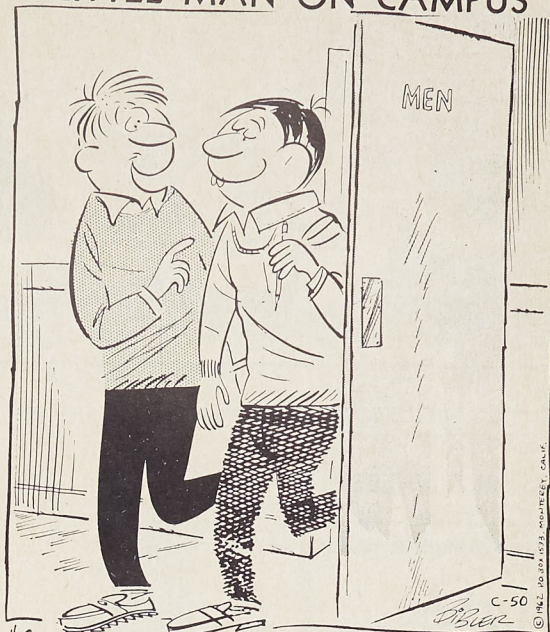
A minor rebellion occurred at the Kappa Sig house early Saturday morning, November 3. The

pledges revolted and "walked out," taking with them a few actives, front and back doors, and other items of no great interest. The rebellion, however, should be quelled and things back to normal by the time of this printing.

The brothers of Kappa Sigma were grieved to learn of the death of Miss Joan Fiedler in an automobile accident which occurred Sunday, October 28. Miss Fiedler was the sister of brother Ted Fiedler. She was seventeen years old. Three others were killed and three injured in the crash which took place on U. S. 61 in St. Louis. All were students of Cleveland High School in St. Louis.

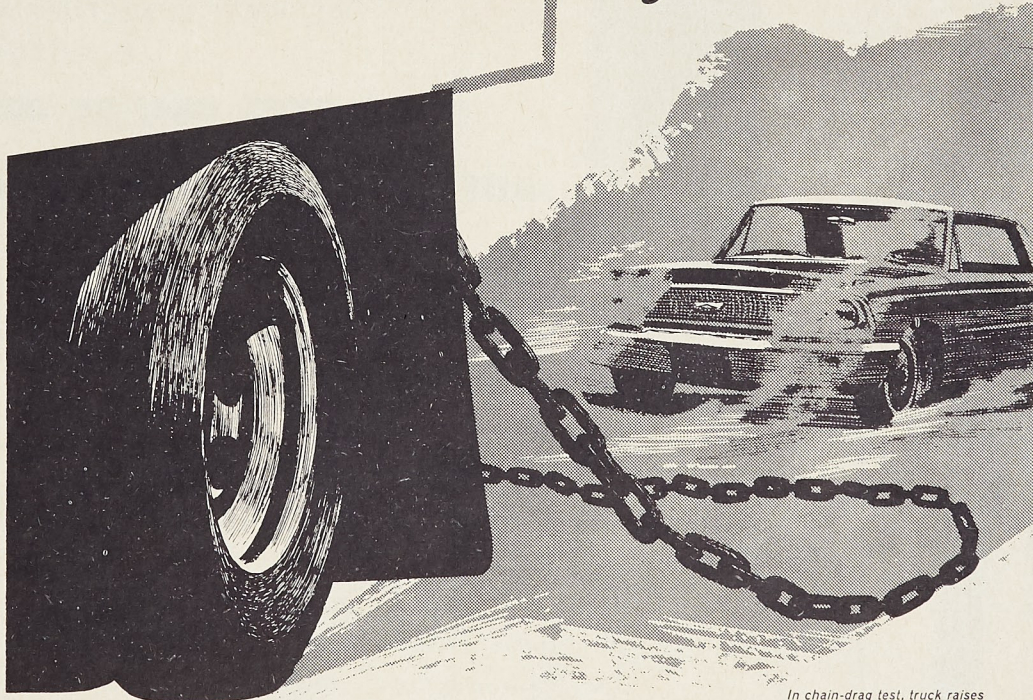
Support
the Miners!

LITTLE MAN ON CAMPUS



"SAY YOU CAN DRAW REAL GOOD, WORTHAL — EVER THOUGHT OF TAKING AN ART COURSE?"

Assignment: find a filter paper that works harder the dirtier it gets



In chain-drag test, truck raises heavy dust clouds to check air filter efficiency.

Results: Up to 30,000 miles between filter changes in Ford-built cars for '63!

The 1963 Ford-built cars you see on the road these days can eat dust and keep coming back for more, thanks to improved carburetor air filters.

In our continuing quest to build total quality and service-saving features into Ford-built cars, our engineering research staff explored the entire field of physical chemistry for new air-purifying properties in materials.

The result: a filtering material made of chemically treated wood pulp and paper that permits Ford-built cars under normal operation to go from 24,000 to 30,000 miles before carburetor air filter replacement is required.

The new, tougher filter paper is accordion folded to increase surface area four-fold, permitting higher filtration in a smaller package. The more matter it accumulates, the better it filters right up to its full rated service life. It saves owners time and money. It keeps Ford-built engines livelier longer.

Another assignment completed—and another example of how Ford Motor Company provides engineering leadership for the American Road.



MOTOR COMPANY

The American Road, Dearborn, Michigan

PRODUCTS FOR THE AMERICAN ROAD • THE HOME
THE FARM • INDUSTRY • AND THE AGE OF SPACE



SUPPORT OUR
ADVERTISERS

Ω
OMEGA
WATCHES
G. L. Christopher
Jeweler
Authorized Agent
805 Pine Rolla, Mo.



CAPER Casuals
Young sportswear ideas...

You can be sure of top styling and the newest fabrics when you buy Caper Casuals. Three popular models to select from in these distinctive slacks. Traditional model has belt loops. Continental and Taper models are beltless.

ADVERTISED IN
LIFE

\$5.00
TO
\$5.95

RANDY'S
Men's & Boys'

a
message
to
graduating
engineers
and
scientists

AT PRATT & WHITNEY AIRCRAFT...

YOUR EYES CAN BE ON THE STARS BUT YOUR FEET MUST BE ON THE GROUND

The glamour and excitement of space age programs often obscure a fundamental fact. It is simply that farsightedness must be coupled with sound, practical, down-to-earth engineering if goals are to be attained. This is the philosophy upon which Pratt & Whitney Aircraft's position as a world leader in flight propulsion systems has been built.

Almost four decades of solid engineering achievement at Pratt & Whitney Aircraft can be credited to management's conviction that basic and applied research is essential to healthy progress. In addition to concentrated research and development efforts on advanced gas turbine and rocket engines, new and exciting effects are being explored in every field of aerospace, marine and industrial power application.

The challenge of the future is indicated by current programs. Presently Pratt & Whitney Aircraft is exploring the areas of technical knowledge in *magnetohydrodynamics . . . thermionic and thermoelectric conversions . . . hypersonic propulsion . . . fuel cells and nuclear power.*

If you have interests in common with us, if you look to the future but desire to take a down-to-earth approach to get there, investigate career opportunities at Pratt & Whitney Aircraft.

To help move tomorrow closer to today, we continually seek ambitious young engineers and scientists. Your degree? It can be a B.S., M.S. or Ph.D. in: **MECHANICAL • AERONAUTICAL • ELECTRICAL • CHEMICAL and NUCLEAR ENGINEERING • PHYSICS • CHEMISTRY • METALLURGY • CERAMICS • MATHEMATICS • ENGINEERING SCIENCE or APPLIED MECHANICS.** The field still broadens. The challenge grows greater. And a future of recognition and advancement may be here for you.

For further information regarding an engineering career at Pratt & Whitney Aircraft, consult your college placement officer or write to Mr. William L. Stoner, Engineering Department, Pratt & Whitney Aircraft, East Hartford 8, Connecticut.

Pratt & Whitney Aircraft

CONNECTICUT OPERATIONS EAST HARTFORD, CONNECTICUT
FLORIDA OPERATIONS WEST PALM BEACH, FLORIDA

**U
A**
DIVISION OF UNITED AIRCRAFT CORP.

An Equal Opportunity Employer

SPECIALISTS IN POWER . . . POWER FOR PROPULSION—POWER FOR AUXILIARY SYSTEMS.
CURRENT UTILIZATIONS INCLUDE AIRCRAFT, MISSILES, SPACE VEHICLES, MARINE AND INDUSTRIAL APPLICATIONS.

FRIDAY, NOV
Ole
Posi
Well, there's
the top—and
how—just bea
already there!
L.S.U., top-
has a real bree
Rebels will roll
by about seven
L.S.U., dropped
scramble over
16 points.
The Crimson
is still at it—
opposition. In
sition this week
its 8th game of
won't be easy!
ami is 20th, a
point under-dog
Another cor
the Big Ten n
No. 4, and t
western, in fift
Harmon power
rod to the Bad
by 2 points.
In the No. 6
winning win over
defeated South

1 - MIS
2 - ALA
3 - L. S
4 - WIS
5 - N'W

Cincinnati
Emporia
Hillsdale
Missouri
Occidental
Southwest

Saturday

Alabama
Arizona
Arkansas
Arlington
Army
Auburn
Boston Co
Boston U
Brigham
Clemson
Colgate
Cornell
Dartmouth
Delaware
Duke
Florida
Fresno S
Georgia S
Georgia T
Harvard
Holy Cross
Houston
Kansas
Kentucky
L. S. U.
Louisville
Memphis
Miami, O
Michigan
Minnesota
Mississippi
Missouri
Montana
Navy
New Mexi
New Mexi
North Ca
Notre Dar
Ohio State
Ohio Univ
Oklahoma
Oregon
Oregon St
Pacific
Penn State
Richmond
South Car
Southern
Temple
Tennessee
Texas A
U. C. L.
Utah State
Villanova
V. P. I.
Washington
West Texa
Wisconsin
Xavier
Yale

Alfred
Ambert
Bridgeport
Buffalo
East Gu
East Stron
Lafayette
Lehigh
Mahlenberg

Oh, I guess
it's good,
Gort...
It just ain't
realism!



Ole Miss Battles Back to No. 1 Position by Downing L. S. U.

Well, there's one way to get to the top—and Ole Miss found out how—just beat the team that's already there! After bouncing L. S. U., top-ranked Mississippi has a real breeze this week. The Rebels will roll over Chattanooga by about seven touchdowns. And L.S.U., dropped back to 3rd, will scramble over Texas Christian by 16 points.

The Crimson Tide of Alabama is still at it—chomping up all opposition. In the runnerup position this week, the Tide will win its 8th game of the season—but it won't be easy! Pass-minded Miami is 20th, and is only an 11-point under-dog in this clash.

Another coronary-provoker in the Big Ten matches Wisconsin, No. 4, and undefeated Northwestern, in fifth this week. Two Harmon power quotients give the nod to the Badgers in a big upset by 2 points.

In the No. 6 slot after a convincing win over Washington, undefeated Southern California will

notch another one, this one by 17 over Stanford. And the Southwest Conference leader, 7th-rated Texas, is favored over Baylor by eleven points.

Just a little attention here to a small college conference, but to a pretty powerful one—the Mid-American Conference in Ohio. Bowling Green and Ohio University, tied for the lead, knock heads in the game that will probably

determine the champion. The crystal ball please... the winner: O. U. by just five points.

In the picking department last week, the "rights" rather outdid the "wrongs," 114 to 34 with three ties, for a percentage of .770. So—with just three weeks to go, the totals are 835 games correct and 252 incorrect for a continuing .768 batting average.

"Just - in - case - you're - inter-

ested - department." Looking ahead to the Army-Navy game—if it were played this Saturday, the Cadets would be favored by just one point.

Returning to the present, Georgia Tech climbed another rung on the national ladder, and is now 8th. And the Rambling Wreck will slip the needle to Florida State by 12 points.

Speaking of returning—the Oklahoma Sooners are doing just

that—and returning higher and higher each week. Ranked 9th this week, Oklahoma will clip Iowa State by 17 points. And completing the top 19 teams, "upsetter" Minnesota is favored over "upsetter" Iowa by a touchdown.

18th-rated Kansas will husk Nebraska by 8 points in a Big Eight barn-burner, and Florida, back in 14th, will trip Georgia by 16 points.



On Campus with Max Shulman

(Author of "I Was a Teen-age Dwarf", "The Many Loves of Dobie Gillis", etc.)

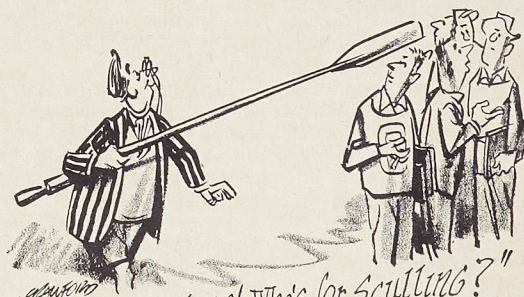
GLOOM AT THE TOP

Oh, sure, you've been busy, what with going to classes, doing your homework, catching night crawlers, getting married—but can't you pause for just a moment and give thought to that dear, dedicated, lonely man in the big white house on the hill? I refer, of course, to the Prexy.

(It is interesting to note here that college presidents are always called "Prexy." Similarly, trustees are called "Trixie." Associate professors are called "Axy-Pixy." Bursars are called "Foxy-Woxy." Students are called "Algae.")

But I digress. We were speaking of the Prexy, a personage at once august and pathetic. Why pathetic? Well sir, consider how Prexy spends his days. He is busy, busy, busy. He talks to deans, he talks to professors, he talks to trustees, he talks to alumni. In fact, he talks to everybody except the one group who could lift his heart and rally his spirits. I mean, of course, the appealing, endearing, winsomest group in the entire college—you, the students.

It is the Prexy's sad fate to be forever a stranger to your laughing, golden selves. He can only gaze wistfully out the window of his big white house on the hill and watch you at your games and sports and yearn with all his tormented heart to bask in your warmth. But how? It would hardly be fitting for Prexy to appear one day at the Union, clad in an old rowing blazer, and cry gaily, "Heigh-ho, chaps! Who's for sculling?"



"Heigh-ho, chaps! Who's for sculling?"

No, friends, Prexy can't get to you. It is up to you to get to him. Call on him at home. Just drop in unannounced. He will naturally be a little shy at first, so you must put him at his ease. Shout, "Howdy-doo, sir! I have come to bring a little sunshine into your drear and blighted life!" Then yank his necktie out of his vest and scamper goatlike around him until he is laughing merrily along with you.

Then hand him a package and say, "A little gift for you, sir." "For me?" he will say, lowering his lids. "You shouldn't have."

"Yes, I should," you will say, "because this package is a carton of Marlboro Cigarettes, and whenever I think of Marlboro, I think of you."

"Why, hey?" he will say curiously.

"Because Marlboros have taste, and so do you," you will reply.

"Aw, go on," he will say, blushing furiously.

"It's true," you will say. "Moreover, Marlboro has a filter, and so do you."

"In my swimming pool, you mean," he will say.

"Yes," you will say. "Moreover, Marlboro has a soft pack, and so do you."

"My limp leather brief case, you mean," he will say.

"Yes," you will say. "Moreover, the Marlboro box has a flip-top, and so do you."

"But I don't have a flip-top," he will say.

"But you will," you will say. "Just light a Marlboro, and taste that tasty taste, and you will surely flip your top."

Well sir, you will have many a good chuckle about that, you may be sure. Then you will say, "Goodbye, sir, I will return soon again to brighten your lorn and desperate life."

"Please do," he will say. "But next time, if you can possibly manage it, try not to come at four in the morning."

© 1962 Max Shulman

* * *

Prexy and undergrad, male and female, late and soon, fair weather and foul—all times and climes and conditions are right for Marlboro, the filter cigarette with the unfiltered taste.

The Harmon Football Forecast

TOP 20 TEAMS

- | | | | |
|-----------------|------------------|------------------|------------------|
| 1 - MISSISSIPPI | 6 - SOUTH'RN CAL | 11 - MICH. STATE | 16 - PENN STATE |
| 2 - ALABAMA | 7 - TEXAS | 12 - ARKANSAS | 17 - PURDUE |
| 3 - L. S. U. | 8 - GA. TECH | 13 - OHIO STATE | 18 - KANSAS |
| 4 - WISCONSIN | 9 - OKLAHOMA | 14 - FLORIDA | 19 - MISSOURI |
| 5 - N'WESTERN | 10 - MINNESOTA | 15 - OREGON | 20 - MIAMI, FLA. |

Friday, Nov. 9

Cincinnati	18	Detroit	13
Emporia College	32	Ohio Northern	8
Hillsdale	19	Culver-Stockton	0
Missouri Valley	44	California Tech	0
Occidental	59	Southern, Kan.	18
Southwestern, Kan.	18	Sterling	6

Saturday, Nov. 10 — Major Colleges

Alabama	21	Miami, Fla.	10
Arizona	18	Kansas State	7
Arizona State	25	Utah	8
Arkansas	10	Rice	0
Arlington State	14	Hardin-Simmons	13
Army	25	Oklahoma State	10
Auburn	15	Mississippi State	9
Boston College	17	Texas Tech	6
Boston University	20	Connecticut	8
Brigham Young	13	Western Michigan	8
Clemson	22	Furman	0
Colgate	15	Bucknell	14
Cornell	20	Brown	15
Dartmouth	30	Columbia	14
Delaware	20	Rutgers	14
Duke	21	Maryland	14
Florida	22	Georgia	19
Fresno State	23	San Jose State	13
George Washington	14	William & Mary	8
Georgia Tech	21	Florida State	9
Harvard	19	Princeton	14
Holy Cross	16	V. M. I.	6
Houston	17	Tulsa	7
Kansas	15	Nabaska	7
Kentucky	17	Vanderbilt	0
L. S. U.	23	T. C. U.	7
Louisville	15	Kent State	6
Memphis State	32	The Citadel	0
Miami, Ohio	27	Dayton	8
Michigan	21	Indiana	20
Michigan State	17	Purdue	14
Minnesota	14	Iowa	8
Mississippi	47	Chattanooga	0
Missouri	35	Colorado	0
Montana	19	Montana	13
Navy	21	Syracuse	20
New Mexico	24	Colorado State U.	8
New Mexico State	23	Texas Western	13
North Carolina	20	Virginia	15
Notre Dame	22	Pittsburgh	20
Ohio State	21	Indiana	10
Ohio University	15	Bowling Green	10
Oklahoma	25	Iowa State	8
Oregon	19	Washington State	7
Oregon State	34	Idaho	0
Pacific	15	San Diego State	14
Penn State	25	West Virginia	7
Richmond	20	Davidson	10
South Carolina	21	North Carolina State	15
Southern California	24	Stanford	7
Southern Mississippi	33	Trinity, Texas	0
Temple	15	Toledo	13
Tennessee	16	Tulane	0
Texas	21	Baylor	10
Texas A. & M.	20	S. M. U.	19
U. C. L. A.	25	Air Force	14
Utah State	21	Wyoming	0
Villanova	26	Massachusetts	7
V. P. I.	13	Wake Forest	7
Washington	13	California	0
West Texas	27	North Texas	0
Wisconsin	23	Northwestern	21
Xavier	24	Marshall	6
Yale	18	Pennsylvania	7

EAST (small colleges)

Alfred	18	Upsala	8
Amherst	21	Trinity, Conn.	6
Bridgeport	20	American Int'l	19
Buffalo	22	Gettysburg	0
Coast Guard	12	Central Connecticut	0
East Stroudsburg	29	Bloomsburg	6
Lafayette	20	Waynesburg	14
Lehigh	15	King's Point	6
Muhlenberg	19	Franklin & Marshall	7

EAST (continued)

New Hampshire	25	Springfield	12
St. Lawrence	28	Hobart	6
St. Vincent	13	Ball State	12
Southern Connecticut	21	Ithaca	20
Susquehanna	34	Union	0
Wagner	18	Northwestern	7
Wilkes	19	Hamilton	14
Williams	27	Haverford	0
Worcester Tech	14	Wesleyan	6
		Norwich	13

MIDWEST (small colleges)

Akron	20	Wittenberg	14
Albion	20	Hope	8
Anderson	13	DePue	7
Bradley	13	Ball State	12
Cent. College, Iowa	19	Upper Iowa	13
Central Michigan	31	Eastern Illinois	0
Drake	29	N. Dakota State	0
E. Central Oklahoma	27	SE Oklahoma	7
Eastern Michigan	27	Alma	0
E. New Mexico	26	NW Oklahoma	7
Indiana State	19	St. Joseph	14
Iowa State College	20	Augustana, S.D.	8
Kalamazoo	23	Olivet	7
Millikin	30	Lake Forest	0
Missouri Mines	15	Northwestern	12
Nebraska Wesleyan	14	Colorado College	8
Northern Illinois	29	LaCrosse	0
Northern Michigan	18	Findlay	0
Northern State (S.D.)	23	Kearney	14
Omaha	19	Pittsburg	14
Ottawa	29	Bethany, Kansas	0
S. Dakota State	23	Northside	0
SW Oklahoma	14	Langston	0
Taylor	20	Wilmington	6
Western Illinois	14	Illinois State	6
Wheaton	23	North Central	7

SOUTH (small colleges)

Ablene Christian	21	McMurray	16
Arkansas State	13	Tennessee Tech	0
Catawba	21	Gulford	6
Central State, Ohio	36	West Va. State	0
East Tennessee	14	Middle Tennessee	13
Eastern Kentucky	14	Lamar Tech	10
Emory & Henry	14	Morehead	14
Florence	19	Concord	6
Hampden-Sydney	14	Austin Peay	7
Howard	20	Centre	0
Lenoir-Rhyne	26	Wofford	7
Louisiana College	21	Elon	8
Marion Branch	20	Jacksonville	6
Newberry	12	Troy State	0
Presbyterian	15	Western Carolina	6
San Houston	21	Appalachian	12
SW Texas	14	St. F. Austin	7
Washington & Lee	22	Howard Payne	0
Western Kentucky	13	Sewanee	20
Western Reserve	16	Murray	6
		Bethany, W. Va.	6

FAR WEST (small colleges)

Adams State	21	Colorado Mines	6
Cal Poly (Pomona)	20	Nevada	9
Cal Poly (S.L.O.)	18	Santa Clara	15
Cal Western	12	Riverside	0
Davis (U of Cal.)	15	Chico State	7
Humboldt	45	Whitman	0
Idaho State	23	Colorado Western	6
LaVerne	20	Claremont	18
Long Beach	20	Los Angeles	19
Pacific	15	Idaho College	12
San Francisco	19	Sacramento	7
Santa Barbara	19	Redlands	13
Western Washington	14	Central Washington	13
Whittier	20	Arizona State	7
Whitworth	30	Eastern Washington	0

Lambda Chi Gains Intramural Football Crown; Phi Kap 2nd

by Jim Peck

Well, another intramural football season is over and to the victor goes a hardy cheer.

To start the playoff games this season, Lambda Chi Alpha outlasted Kappa Sigma to capture their individual league title.

The toss of the coin then pitted Sigma Tau Gamma against Lambda Chi Alpha, and Phi Kappa Theta opposing the Engineers Club in the semi-finals. After the two rough-and-tough games were over, Lambda Chi and Phi Kap emerged as contenders for the championship, and Sig Tau and the Engineers Club being opponents in the consolation game.

After a brief rest, the stage was set for the final conflicts. Two of the best headbanging battles ever waged on the intramural fields were to take place.

The quest for third place started off with a bang. Sig Tau jumped off to a 3 touchdown advantage in the first few minutes which caught the Engineer's Club completely off guard. However, to the surprise of the Sig Tau's excellent defense, the Engineers Club kept grinding away, and before the first half ended, they had narrowed the score to 21-19. As the second half got under way, the play looked as if it would be another "right down to the wire" finish for both clubs. Neither offense could get rolling, as penalties were numerous. Sig Tau finally belted

in for a score and from then on the game was dominated completely by Sig Tau.

The Engineer's Club was seldom able to get out of their own territory during the second half because of the superb kickoffs by Bill Becker of Sig Tau, several of which ended up in the end zone. The game ended with Sig Tau rolling to a 42-19 victory over the Engineers Club. This is the largest score made by any one team all season.

Sigma Tau Gamma, third place; the Engineer's Club, fourth place.

The championship game was one of untold score. Lambda Chi got off to an early 7-0 lead, but was then stalled in their tracks by the Phi Kap defense. Meanwhile, the Phi Kaps kept pounding away and managed to smash across for a touchdown in

the final minutes of the first half, to make the score 7-6, in favor of Lambda Chi.

The second half told a different story, however. Phi Kap had the ball on numerous occasions, but were unable to push across a score. Lambda Chi took over and marched down the field for a touchdown.

Twice Phi Kap reached the Lambda Chi ten yard line, but were stopped in their tracks by an excellent defense. What made the game unusual was the fact that Phi Kap controlled the ball during most of the contest, but fine punting by Lambda Chi kept the Phi Kappers down in their own territory.

The game ended with a final score of 35-6, and the Championship goes to Lambda Chi Alpha.

Congratulations to all who participated.

SIDELINES

By Robert Fogler

The varsity program at MSM offers to its students almost any team sport in which they might want to participate in. The teams usually make a fairly good showing, even though they are handicapped by the fact that there is simply not enough student participation in these sports.

One thing obvious to all concerned is the fact that the intramural program is never at a loss for talent. This is due to the fact that students can not find the time for varsity participation, with the load of studies they are forced to carry. Intramurals are the only answer for most students who want to participate in sports, for intramurals do not take too much of the student's time.

The problem that the varsity coaching staff faces is obviously the securing of more players for the teams. One way would be to publicize the teams more, and offer more encouragement to try out for the team. This would obviously increase participation somewhat.

Another method of securing more players would be to hold some sort of campaign in which the various organizations on campus would participate. An award could be given to the organization which had the most varsity athletes, regulars or scrubs, and one could also be given to the organization which showed the best improvement over last year's participation. This, of course, would have to be run on a percentage basis.

This award, if given, would undoubtedly not only do a great deal for varsity participation, but also carry honor to the organization who would be the recipient of the award.

Ragland Moves to Top in Contest

One more week remains in the football prediction contest, sponsored by Bishop's. In the past few weeks, there has been quite a bit of see-sawing for the lead. The various participants, and their respective scores, are as follows:

Ron Ragland	27
George Gress	29
Robert Ronnelman	34
Charles Difiglia	35
John Counce	35
David Yoest	35
John Brown	38
Mick Hahn	39
Dick Willard	43
Glenn Murphy	45
Carl Gales	46
Kent Ulrich	46
Frank Buchmeier	48
Dave Busch	51
Albert Lammers	51
Kenneth Eaves	51
James Duvall	52
Dave Cox	53
Glenn Ragland	54
Ron Mitchell	55
Jim Bainter	57
Glenn Starwalt	61
Joe McMahan	63
Dave Munn	70
Art Nickless	79
Boni A. Hrtzhikhanavala	95

It can be noticed that there is a bunching of the scores at the bottom end. With only one more game left, it still would be easy to have the standing completely switched around, so put on your thinking caps for the Warrensburg game.

Springfield Bears Win; Miners Meet CMSC Sat.

Southwest Missouri showed an unexpected burst of power last Saturday at Springfield, when they racked up three touchdowns in the final quarter to defeat the Missouri Miners 28 to 3.

From the first kickoff by Springfield, it was evident that the somewhat cold and windy weather would hamper any team's trial for a gain.

Throughout the first quarter little critical action was observed by the homecoming crowd.

Scoring action was first seen in the second quarter when quarterback Jerry Milton of Springfield hurled the pigskin 40 yards to complete a pass to Bill Hall. From the 6 yard line Frank Fodcell plunged across the SMS goal line to set the halftime score at 6 to 0.

The third quarter found the Miners offense slowly strengthening. After several short but efficient passes the Miners tallied 3 points through the completion of freshman Richard Jones 28 yard field goal. No other scoring by either team followed.

With the Missouri Miners behind 6 to 3 the game proceeded into the fourth quarter, the Bears attempting to increase their narrow lead, the Miners urgently hoping for victory.

The final march began when Bear fullback Jack Steiger re-

covered a Miner fumble across the goal line to score 6 points.

Blocking the Miners next punt attempt Southwestern then travelled to the 3 yard line with little resistance. George Sample, Bear fullback, then shot across the goal line for another touchdown.

The Bears, charging forward with seemingly endless energy, ceased their tactics for one moment.

Utilizing quarterback Mike Wolford to complete a 52 yard pass to fullback Sam Claxton the Bears managed to score one last touchdown in the remaining 15 seconds of the game.

Extra points tallied by the Bears were two by Wolford's kicking and two by completion of Melton's pass to Ron Young.

The games statistics tell of another defeat, Springfield's 257 rushing yards surpassed our low of 52 yards. In acquiring first downs, SMS again led with 17 to the Miners 9. In the air the Bears completed 50% of their passes while reaching for 150 yards. The Miners completing 45% totalled 75 yards.

The Miners defense proved to be fairly strong allowing only one Springfield touchdown the first three quarters of the game. The Bears forever took advantage of the Miner's mistakes in the last quarter to pull far ahead and end the battle 28 to 3.

The LAUNDRY CENTER

LAUNDRY - DRY CLEANING - SHIRTS
Complete Bachelor Laundry Service

Corner 7th and Rolla Streets

ALSO FEATURING

New Coin-Operated Self-Service Laundry



IN THE COLLEGE BRAND ROUND-UP

CONTEST CLOSES

November 9th, 1962

Empty packs to be turned in at ROLLA DRUG between the hours of 1:00 P.M. and 3:00 P.M. No entries will be accepted after 3:00 P.M.

Get on the BRANDWAGON ... it's lots of fun!
SAVE YOUR PACKS



THE LOUNGE

1005 PINE ST.

PIZZA

PIZZA

LARGE & SMALL PIZZAS

MINERS WELCOME

CHEESE
ONION
HAMBURGER
SAUSAGE
MUSHROOM
PEPPERONI
HALF & HALF
COMBINATION

Also the LOUNGE SPECIAL

FREE DELIVERY

Monday Thru Friday 6 to 1 A.M.

Saturday 5 to 12

EM 4-1583