



02 Nov 1962

The Missouri Miner, November 02, 1962

Follow this and additional works at: https://scholarsmine.mst.edu/missouri_miner

These newspapers reflect the attitudes, perspectives, and beliefs of different times. Neither the library nor the university endorses the views expressed in these collections, some of which contain images and language which may be offensive to some readers.

Recommended Citation

"The Missouri Miner, November 02, 1962" (1962). *The Missouri Miner Newspaper*. 1694.
https://scholarsmine.mst.edu/missouri_miner/1694

This Newspaper is brought to you for free and open access by Scholars' Mine. It has been accepted for inclusion in The Missouri Miner Newspaper by an authorized administrator of Scholars' Mine. This work is protected by U. S. Copyright Law. Unauthorized use including reproduction for redistribution requires the permission of the copyright holder. For more information, please contact scholarsmine@mst.edu.

New Cooperative In the Planning

Plans for a new cooperative boarding house were discussed at a meeting held in the Registrar's office last Friday, October 19. School officials met with the presidents of the five present cooperatives on campus and details were discussed. All of the five cooperatives reported that they had turned away students in September who desired eating accommodations; one club turned away 170 students.

A good house is available at the present time, and a Co-op could be opened on February 1, 1963, providing there is sufficient interest among the students.

The office of Registrar, Robert B. Lewis, is acting as a clearing house for names. Those interested and not presently eating in a Co-op house should leave their names, addresses, and phone numbers in Mr. Lewis's office.

Your Student Union's Functions and Services

The expressed purpose of the Student Union Organization is: (a) to plan and administer the activities of the Student Union so as to contribute to a more well-rounded social, recreational, and cultural life for all School of Mines students; (b) to help plan the most judicious possible use, for the benefit of all students, of the activities and facilities of the Student Union building.

The Student Union Organization is composed of the Student Union Board and the Student Union Council.

The Student Union Board is the governing board of the organization. It is composed of seven student members: Richard Miller, president; Clint Clark, vice-president; Ron Henson, secretary; Rodger Perl, treasurer; Joe Bogard, social director; Paul Ray, recreational director; and Ken Hoelscher, director of promotions.

The duty of the Student Union Council is to execute the policies of the board. It is composed of the board members and the committee heads of the nine major committees in the organization. The committee heads are: Jerry Kettler, budget; Graham Sutherland, dance-mixer; Bob Eliot, special events; Bill Crede, games and tournaments; Larry Pieman, literary and lecture; Tom Gardner, music and films; Mark Martin, news service; Wilhelm Gerhardt, publicity; and Marty McGrath, research. These committees are all under the supervision of one of the members of the board.

Under the direction of the treasurer is the budget committee. It is the duty of this committee to

MINER

The Missouri

MISSOURI SCHOOL OF MINES AND METALLURGY

VOLUME 49 FRIDAY, NOVEMBER 2, 1962 NUMBER 9

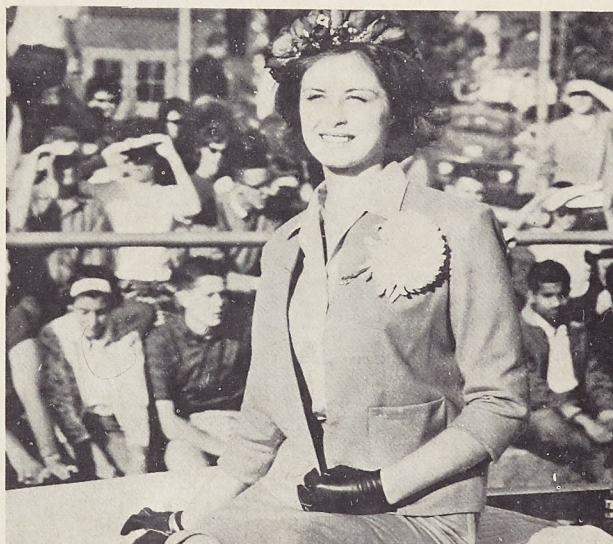
Miss Gail Loughridge Crowned Homecoming Queen at Game

This past weekend has proved once again to be a very successful homecoming. Among all the different phases of homecoming, there still remains as an integral part of the day the halftime ceremonies during the football game. And this year, as in the past, proved to be no exception to that rule.

As the half closed with the Miners commanding a 20 to 0 score, the groups and enterages began to form preparing for their part in the program. As is the highlight of a homecoming, our queen was officially crowned. After all the candidates had been introduced and paraded before the audience via 63 Oldsmobiles, the Queen and her three special maids paraded to the center of the field with the escorts. There the co-captains of the Miner football team crowned Miss Gail Loughridge, the candidate representing Kappa Alpha fraternity as the 1962 Homecoming Queen of Mis-

souri Mines. The three special maids were Emily Flowers, Kappa Sigma; Judy Schmutzler, Sigma Nu and Pat LaBrier.

Also during the half time, the traditional Pajama Race was held by the fraternities with Kappa Sigma coming out on top. Topping the fraternities and receiving the award for the homecoming decorations was Lambda Chi Alpha. Their theme centered around the grinding of a Maryville Bear through an enlarged meat grinder. Closing the half-time ceremonies was the MSM-ROTC Band in their usual adept and able manner.



Miss Gail Loughridge, MSM 1962 Homecoming Queen.

Miss Carol Henderson Only Girl in Her Class

The distinction of being the only girl on the engineering staff at IBM Rochester doesn't cause vivacious red-haired Carol Henderson to bat an eye lash.

And small wonder. Last June she received a Bachelor of Science degree in physics from the University of Missouri School of Mines and Metallurgy—the only girl to graduate with 511 men.

Carol has been with IBM since early this summer as a member of the applied mathematics department in the new computation laboratory.

How does it feel to be the only girl in your class? Carol recalls it was a pretty jarring experience at first and wouldn't recommend that a girl just out of high school go away to engineering school.

"I became somewhat emotionally conditioned to being the only girl in my classes while still at home in Danville, Ill. There I took a pre-engineering course at the Junior College the year after I graduated from high school to

make sure I really wanted to pursue an engineering degree."

During her first year in college she was aware that the boys in her classes were trying to decide whether she was there to "catch a man or to get an education." By the end of the first year, there was no doubt that she was serious about earning an engineering degree and from then on she says she was accepted "as one of the boys."

Throughout her four years at Missouri, Carol gave "the boys a good bit of competition. She consistently placed on the honor roll and was awarded the women's badge by Tau Beta Pi, national engineering honorary fraternity. She also held campus offices in the American Institute of Physics and the Society of Women Engineers.

Carol credits her high school counselor for steering her into the engineering field. "Believe it or not," she relates, "I had already

(Continued on Page 7)

Professor Hanley Tours World

Professor H. R. Hanley, former Chairman of the Department of Metallurgical Engineering, and new Professor Emeritus, is taking a short vacation which includes a trip around the world. Professor Hanley, who graduated from MSM in 1901 and then returned to teach at MSM, celebrated his 88th birthday on September 18. Later that same week he flew to the west coast and then to New Zealand. He is now in Australia and reports that he is receiving "the red carpet treatment." The mining and metallurgical industries of Australia have arranged to supply all housing, transportation, and planning of Professor Hanley's visit to all of the prominent metallurgical plants in Australia and Tasmania.

Following his tour of Australia, Professor Hanley plans to fly to Vienna, where he will stay for a week, and then proceed to England, where he particularly wishes to visit the famous Druid monuments at Stonehenge. He will then fly back to the United States and is expected to return to Rolla about the middle of November.

A View of Space Craft for Alumni, Miners, Citizens

October 25-28, the pilot model of the mercury capsule was on display here at the Missouri School of Mines.

There was much interest shown by everyone who saw the capsule. Approximately three thousand people came to view this display.

Interest was shown by Alumni as some of them remarked that this was a great advancement in education. Some of the local grade schools brought their students to observe this model mercury capsule and the local newspaper had an article on the capsule.

In the picture above is shown a group of observers including two children who were interested in this display.

We extend our thanks to the Student Union Organization and the Public Relations Dept. of McDonnell Aircraft Corporation for enabling this model mercury capsule to be displayed here at MSM.

Top-Billed Trio Join Band Singer At Military Ball

The Cassidy Sisters, pretty and popular trio on Ron Terry's Dancing Party via WGN-TV from the Aragon Ballroom, will perform with Ron Terry and his orchestra on December 1 at the 1962 Military Ball. Critics across the country have acclaimed them, "The fastest rising trio that the Windy City has ever produced." Furthermore, the fabulous voice of the beautiful Elaine Rodgers will add to the beauty of the ball.

Tickets may be purchased from Advanced Corp cadets or members of the Ball Board. Any organization that did not receive an application for the Queen Contest should contact Ron Henson.

MID GRADES
ARE DUE
NOV. 10

PICK UP YOUR
BLUE KEY
DIRECTORY AT
STUDENT UNION

Letters to the Editor

Sibley Hall
Lindenwood College
St. Charles, Missouri
October 28, 1962

Dear Editor:

We would be very grateful if the following article could be printed in the next edition of the MINER. It would mean a lot to us.

The Sibley Hall girls from Lindenwood that attended Homecoming would like to thank everyone concerned for such a marvelous weekend. The hayride and street dance started everything off wonderfully, the game was exciting, the Homecoming Dance and the fraternity parties were loads of fun, and the GDI party was especially great! Again thanks for a grand time, and about those lolli-pops!!

Thank you for considering our letter, we hope to see it in a coming MINER.

Sincerely,
Barb Jenkins
Judy Baker
Lindenwood College

Newman Club Now Holding a Drive For New Members

An excellent talk on the Eastern Rite of the Catholic Church was received by a large number at the bi-monthly meeting of the Newman Club. The talk, given by Father Basil Benyo, explained how the various rites evolved from the different traditions, heritages, and cultural elements of the different nationalities. It was made clear that although the external worship and elaborate ceremonies may differ, the dogma, morals, and canon law of all the rites is the same, being united under the guidance of the Pope.

An active effort has been made to increase the membership of the Newman Club. An organized system of contacting those eligible for membership has been arranged, and added incentive being a transistor radio offered as one of the three prizes for those bring-

ing in the most members.

One of the topics creating great enthusiasm is the annual retreat sponsored by the Newman Club. This year's retreat will be held on December 7, 8, and 9, at our Lady's Retreat House at Warrenton. The retreat, conducted by the Passionist Fathers, is always looked forward to.

The speaker for the next Newman Club meeting to be held on November 8th, will be the Reverend James O'Brien, a Redemptorist Father.

MINER



THE MISSOURI MINER is the official publication of the students of the Missouri School of Mines and Metallurgy. It is published at Rolla, Mo., every Friday during the school year. Entered as second class matter February 8, 1945, at the Post Office at Rolla, Mo., under the Act of March 3, 1879.

The subscription is \$1.00 per semester. This Missouri Miner features activities of the Students and Faculty of M. S. M.

Editor-in-Chief Hugh Murray
707 State St.—EM 4-2731

Business Manager John Gladysiewicz
500 W. 8th St.—EM 4-3787

Managing Editor D. F. John

Make Up Editor David Blume

Copy Editor Greg Junge

Features Editor Charles Becker

Advertising Manager Scott Carriere

Circulation Manager Paul Gerhardt

Sports Editor Ed Schwarz

Technical Advisors Mike Devaney, Gary Turner

Secretary John Minton

Student Council Minutes

Mark Martin reported cost of sign advertising school will be approximately (\$78) seventy-eight dollars.

Clark reporting on traffic committee stated drapes are placed over "permit required" signs on ROTC Drill Field when parking is required. Motorcycle parking lots are being marked.

Burchill reported faculty approval of flying Missouri State flag on football field.

Ebert stated further research is being done on Thermo-fax machine prices.

T. Wilson moved the proposed budget for fall semester—Marshall seconded. Motion passed.

Christen made a motion, seconded by Wilson, to appropriate (\$525) five hundred and twenty-five dollars for the MSM Glee Club. The motion was tabled on Kettler's motion.

Mark Martin moved (\$78) seventy-eight dollars, estimated cost of sign advertising school on Highway 66. Seconded by Kettler. Motion carried.

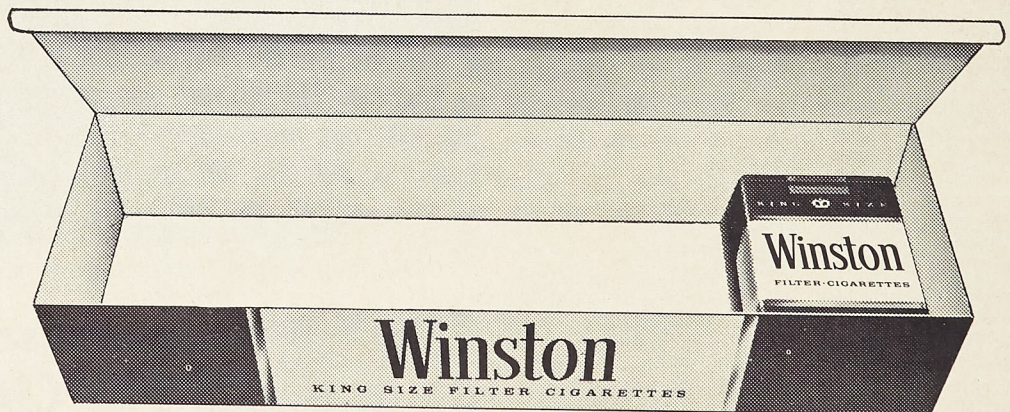
The motion was made by Jauer and second by Marshall to appropriate one-hundred dollars for MSM model railroad club. Motion defeated.

There being no further business the meeting was adjourned.

805 Pine
Rolla, Mo.
Authorized Agent
Jeweler
G. L. Christopher
WATCHES
OMEGA

Tucker Dairy Company, Inc.
QUALITY CHECKD
DAIRY PRODUCTS
103 W. 10th St. Rolla, Missouri Phone EM 4-3700

...AND THEN THERE WAS ONE



Start with a carton and you'll end up knowing why Winston is America's number one filter cigarette...first in sales because it's first in flavor. The next time you buy cigarettes, buy pleasure by the carton...Winston!

PURE WHITE,
MODERN FILTER



PLUS FILTER - BLEND UP FRONT

Winston tastes good like a cigarette should!

© 1962 R. J. Reynolds Tobacco Company, Winston-Salem, N. C.

UPTOWN THEATRE

MOVIES IN CINEMASCOPE

Thurs., Fri., Sat. Nov. 1-3

'Hell Is for Heroes'

Steve McQueen & Bobby Darin

Sun., Mon., Tues. Nov. 4-6

Sunday Continuous from 1 p.m.

'Five Weeks in a

Balloon'

Red Buttons, Fabian,
Barbara Eden

Wed., Thurs., Fri., Sat.

Nov. 7-10

'Tales of Terror'

Vincent Price & Peter Lorre

RITZ THEATRE

MOVIES ON WIDE SCREEN

Fri., Sat. Nov. 2-3

Saturday Continuous from 1 p.m.

'Incident in an Alley'

Chris Warfield & Erin O'Donnell

—PLUS—

'Mardi Gras'

Pat Boone & Tommy Sands

Sun., Mon., Tues. Nov. 4-6

Sunday Continuous from 1 p.m.

'Sweet Bird of Youth'

Paul Newman & Geraldine Page

—PLUS—

'Confessions of an
Opium Eater'

Vincent Price & Linda Ho

Wed., Thurs. Nov. 7-8

'Season of Passion'

Ernest Borgnine & Anne Baxter

—PLUS—

'The Killer Shrews'

James Best & Ingrid Goude

Organizational News

St. Louis Engineer Speaks on the Responsibilities of The Profession

On Wednesday night October 17, the MSM chapter of the American Society of Civil Engineers was fortunate to have as its guest speaker Mr. Peter Matai, a past graduate of MSM. Mr. Matai is at present the Executive Director of the Metropolitan St. Louis Sewer District. Before entering into discussion of his topic for the night, "The Engineer in His Community," Mr. Matai outlined some of the features and works of the Metropolitan Sewer District which are of interest to the engineer. He noted that each year MSD hired from fifteen to twenty civil engineering graduates to work on their multi million dollar projects. He mentioned that the main project now being considered is construction of two of the largest treatment plants in the country.

In his talk on "The Engineer in His Community" Mr. Matai stressed the fact that a more liberal education for engineers should be offered, in his opinion, even to the extent that the curriculum become a five year instead of four year course. The Engineer must sell his ideas to the public and to do so it is necessary that he have an insight into many professions, including law, financing, and administration. The engineer must be a leader in the world of today and to do so he must be able to talk on par with lawyers, financiers, and administrators as well as be a good engineer. To accomplish this in four years, Mr. Matai asserts, is not possible to the proper degree.

Mr. Matai referred to the fact

Space Systems and Foundry Equipment In AFS Meeting

The main item on the program of the American Foundrymen's Society is the purchase of a piece of foundry equipment to supplement MSM's foundry in the Old Metallurgy Building. During its meetings, the AFS teaches its members foundry practices.

ASME

Last night, at the November meeting of the American Society of Mechanical Engineers, Floyd Fuels of McDonnell Aircraft Corporation lectured on space dynamics. His speech was entitled "An Evaluation of Space Systems and Assimilated Orbit Environment." Mr. Fuels is a graduate of Purdue University and works in the Testing Department at McDonnell.

At the December meeting of the ASME, a representative from the Caterpillar Company will entertain a joint meeting of the ASME and the Society of Automotive Engineers.

Any Mechanical Engineering major may join the ASME at any time by seeing Professor Graham for an application blank.

**SUPPORT OUR
ADVERTISERS**

Plutonium Reactors Are Topic as Baird Addresses NES

The problems involved in Plutonium Fuel Fabrication were highlighted at the October 25th meeting of the Nuclear Engineering Society. Mr. Jerry Baird of the International Institute of Nuclear Science and Engineering, located at Argonne National Laboratory, discussed the fabrication problems. After the talk a movie showed Argonne's facilities for fabricating Plutonium Fuel Rods. Special precautions must be taken because Plutonium emits alpha radiation which can penetrate the skin and damage the bones. Therefore all fabrication is carried out with rubber gloves enclosed in a work area supplied with a helium atmosphere. The rubber will stop alpha radiation while the helium reduces the risk of fire from the plutonium.

Mr. Baird said that the study of Plutonium is about three or four years ahead of the overall Reactor Program. At the present time research is being conducted with Experimental Breeder Re-

actors. These reactors are expected to produce more fuel than they use.

The new fast (high energy) neutron reactors will use Plutonium and many other metals, rather than oxides, because of their greater density.

The enclosed picture was taken after the meeting. Those included are: left to right, Gerald Purcell, secretary; Harry Leamy,

treasurer; Mr. Jerry Baird, speaker; Ed Benn, vice-president; Bob Osborne, president.

The Society's next meeting will be in early December. The program will highlight the starting of the first nuclear reactor on December 2, twenty years ago, at the University of Chicago. A member of the original Manhattan Project is expected to speak.

IT'S FUN TO ROLLER SKATE!



Open Every Night
Except
Sunday & Monday
at 7:30

Sunday Matinee
at 1:30

**ROLLA ROLLER
RINK**
City Hwy. 66 West

*Assignment: build
the "grease gun"
into our cars*



**We went to the mountain to
make 1963 Ford-built cars
go 30,000 to 100,000
miles between major
chassis lubrications**

Quite a task faced Ford Motor Company engineers when they set out to eliminate the traditional trip to the grease rack every 1,000 miles.

Like Mohammed, they went to the mountain—Bartlett Mountain on the Continental Divide in Colorado. More molybdenite is mined there than in the rest of the world combined. And from molybdenite ore comes the amazing "moly" grease that helps extend the chassis lubrication intervals for Ford-built cars. This grease sticks tenaciously to metal, stands up under extreme pressures and resists moisture, pounding and squeezing. It is slicker than skates on ice!

New, improved seals were developed. Bushings, bearings and washers of many materials were investigated. Slippery synthetics, like nylon and teflon, were used a number of new ways.

The search for means to extend chassis lubrication also led to New Orleans—where experimental suspension ball joints tested in taxicabs in regular service went two years without relubrication.

It took time. And ingenuity. But the effort paid off when Ford-built cars were the first to build in chassis lubrication good for 30,000 miles or two years—whichever came first.

Another assignment completed—another "Ford First" and another example of how Ford Motor Company provides engineering leadership for the American Road.



MOTOR COMPANY

The American Road, Dearborn, Michigan

PRODUCTS FOR THE AMERICAN ROAD • THE HOME
THE FARM • INDUSTRY • AND THE AGE OF SPACE



Greek News

TAU KAPPA EPSILON

Tau Kappa Epsilon boasts a good Fall pledge class, fifteen men strong. They are: Larry Beal, Michael Boone, Paul Cook, Max Harding, Benny Heuser, Jeff Zelms, David Hill, Tony Timbrell, Bob McKay, Tom Mier, Don Warner, Jerry Wilkinson, Larry Winters, Bob Darr, and Jim Metler. Thanks to their concerted efforts, the Teke Pledge Dance held on October 13th, and featuring the Spartans, was quite a successful event. They tell us that even the front porch of the Teke house was turned into a dancing floor.

The following new initiates, Jim Peck, Richard Otto, John Schneider, Colin MacCrimble, Jerry Triplett, John Henry, Oliver Von Behren, and Bob Ryce, have swelled their ranks, and are proving themselves in campus and chapter service.

Last weekend, Prytanis Tim Brown presented International Teke Sweetheart Gail Stiefel with an engraved silver tray, symbol of the chapter's gratitude and appreciation. Following this ceremony, an alumni meeting was held. John Reagan, chairman of the building committee drew solid backing from all present on the chapter's proposed new house; the project is now being launched, actual construction being scheduled to start sometime this summer.

SIGMA PHI EPSILON

Homecoming weekend is gone but the memories linger. Sig Ep started the weekend off with a "welcome alumni", and a bang as Brother Dunn won his second straight cross country championship, to keep the title and record at Sig Ep for another year. From the cross country field the merry band of Sig Eps ran back to the house to complete their part of the preparations for the street dance, which needless to say was quite a success, enjoyed by all who attended.

Come Saturday it was football time and announcements of homecoming decorations, in which Sig Ep found itself with a tie for third. Good work decorations committee. That night it was everybody to the Student Union and later back to the house for a real foot stomper that lasted till everyone was exhausted.

Then the day came. Roast beef for dinner and sad goodbyes for dessert. As the last of the girls left everyone crawled back to their books for tomorrow is another day and school. But a happy thought to close on, only 7 more days till pledge dance.

PI KAPPA ALPHA

The newly remodeled PiKA house really got a "shake down" cruise. Saturday night, and as far as is known, all the walls are still intact. Bennie Sharpe and his boys put forth with the wailing music from 9:00 until 1:00, and during these four hours, there wasn't even standing room left. It can truthfully be said that the party Saturday night gave our returning alumni something to talk about for a long time.

For the alumni, brothers, and pledges of Pi Kappa Alpha, even the tremendous success of the party couldn't outshine the events of Saturday afternoon. At 5:00 p. m. on October the 27th the newly remodeled and expanded home was dedicated. The program consisted of remarks by Dean Curtis L. Wilson, and Charles Freeman, PiKA's National Vice-President. The dedicatory address was delivered by the National President, Joe Scott. The ceremony was concluded by the presentation of the chapter house to SMC Carriere by Brother Dick Bills, who represented the architectural firm. The program was followed by a buffet supper inside the newly dedicated chapter house.

This weekend Cliff Crosnoe pinned Miss Sally Sickles of Sikeston, Mo., and Kent Bell pinned Miss Sue Engler of Mountain Home, Arkansas.

LAMBDA CHI ALPHA

The past weekend was a busy one for the brothers of Lambda Chi. They had a very successful party and had added excitement in that they won the trophy for the best homecoming display. Their Polynesian Party Saturday was the social highlight of the year, starting with the evening meal which was served in the true Hawain Luau fashion.

Their intramural teams have been giving a good account of themselves so far. Their flag football team has advanced to the finals. Their cross country team finished eight overall and our tennis team fifth. They are now in the midst of lining up a basketball team with practice starting next week.

Personalities Pinned: Brother Jim Clippard to Miss Nina Stephens. Brother John Farmer to Miss Pat Cowan. Brother Ralph Hecht to Miss Kathy Henry. Brother Malcolm to Norma.

New Instructors Join Staff of Mechanics Dept.

Four new full time instructors have been added to the staff of the Mechanics Department here at MSM. They are Richard Wallace, Richard Pendleton, Richard Johnson, and Jerry Gilmorr. All four of these men are MSM graduates.

Mr. Wallace is originally from St. Louis. He graduated from MSM this summer and is currently doing graduate work in mathematics. Rich is a member of Delta Sigma Phi social fraternity and Tau Beta Pi honor fraternity.

Richard Pendleton graduated from MSM in 1957 with a B. S. in mechanical engineering and has worked until now in the petroleum industry in Oklahoma. He is working on his master's degree now and plans to stay in the teaching profession. He is married and has three children.

Mr. Johnson started teaching last summer when he graduated from MSM. He is working on his master's degree in mechanical engineering and is especially interested in automobile mechanics. He is a member of Tau Beta Pi, and Pi Tau Sigma honor fraternities.

This is Mr. Gilmorr's first teaching position also. He graduated from MSM in June, 1960, with a B. S. degree in mechanical engineering and has been employed by Western Electric Company until now. He is currently working toward a master's in mechanical engineering and hopes to complete it this semester.

PHI ALPHA

Phi Alpha was proud to be a part of the very successful Street Dance last Friday during the Homecoming celebration.

Saturday Phi Alpha supported the Miners at the football game and displayed our banner "Phi Alpha Supports the Miners." Phi Alpha extends congratulations to the Miner football team for a game well played.

A banquet was held Saturday, Oct. 27 at the Phi Alpha house in honor of brother Sherman Brady and his bride. Sherman was married Oct. 26 to Miss Willma Bailey of Independence, Mo.

Baptist Student Union Holds Annual Convention

This year the 38th annual state convention of Baptist Students of Missouri will be held at Maryville, November 9-11. These sessions will be open to any student from any campus in the state.

The convention theme is, "God's Redemptive Love."

Student participation will be and is always at a maximum during the conventions. Discussion groups, study sessions, and Bible Study groups are very active and are deeply inspiring. Special music will be furnished by choirs from Maryville, William Jewell, Hannibal LaGrange, and other outstanding B. S. U. choirs from over the state.

The featured speakers are Mr. William Hall Preston, Mr. Millard J. Berquist, Mr. Bill B. Cody, and Mr. William A. Lawson.

Mr. Preston has attended several colleges and universities and has written two books and numerous pamphlets.

Mr. Berquist is a former president of Midwestern Baptist Theological Seminary and has two hon-

orary Doctor's degrees from William Jewell and the John B. Stetson University. He is a former pastor, writer for the Sunday School Board, and has participated in several preaching missions to Jamaica and Central America.

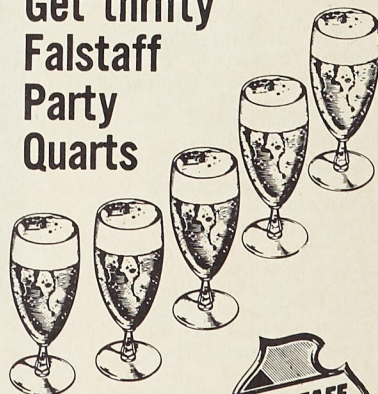
Mr. Cody is a graduate of Baylor University and has done graduate work in Southern Seminary. In 1958, he went to the orient to improve the ministry to the students there.

Mr. Lawson, an outstanding Negro leader, is a director teacher of the B. S. U. at Texas Southern University in Houston. He has been twice in the orient on preaching-mission tours. He has also made several appearances at Student Week at Glorieta.

One of the features of the Saturday morning program will be a panel of International Students, one of which will be Mr. B. T. Dave, an Indian student from the MSM campus. Several car loads of students from MSM will be in attendance. The convention this year should be bigger and better than ever.

PARTY TIME IS FALSTAFF TIME

Get thrifty
Falstaff
Party
Quarts



Each One Serves
5 Full Glasses of



AMERICA'S PREMIUM QUALITY BEER

FALSTAFF BREWING CORPORATION, ST. LOUIS, MO.

MUELLER DISTRIBUTING CO.
Rolla, Mo.

Annual Homecoming Better Than Ever



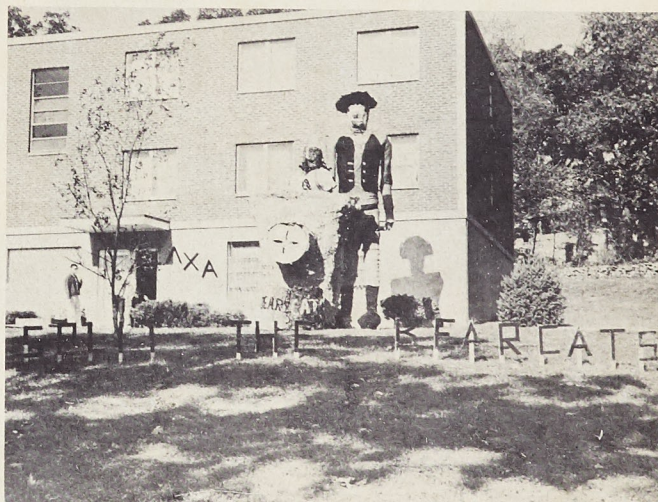
Queen Gail and her date, Toby Hafeli.



Homecoming Queen Candidates.



Lambda Chi Alpha's first place Homecoming display.



Chuck Tillman's band play for the Street Dance Friday night.



Earl Chappell

Says . . .

“Stands to reason that a life insurance policy designed expressly for college men—and sold only to college men—gives you the most benefits for your money when you consider that college men are preferred insurance risks. Call me and I'll fill you in on THE BENEFACITOR, College Life's famous policy, exclusively for college men.”

GEN. DELIVERY
ROLLA, MO.
TEL. EM 4-2698

THE LOUNGE

1005 PINE ST.

PIZZA

PIZZA

LARGE & SMALL PIZZAS

MINERS WELCOME

CHEESE
ONION
HAMBURGER
SAUSAGE
MUSHROOM
PEPPERONI
HALF & HALF
COMBINATION

Also the LOUNGE SPECIAL

FREE DELIVERY

Monday Thru Friday 6 to 1 A.M.

Saturday 5 to 12

EM 4-1583

Let Checks RUN INTERFERENCE FOR YOU

against

- standing in line
- waiting for change
- looking for parking space
- trudging from place to place



AT MONTHLY BILL-PAYING TIME, YOU SCORE WITH CHECKS: JUST WRITE 'EM; THEN MAIL 'EM! WHY NOT OPEN YOUR VERY OWN CHECKING ACCOUNT WITH US THIS MONTH?

ROLLA STATE BANK

Main Office:
210 West 8th

Drive-In:
Rucker Ave. & Hwy. 72

Graduate Gets Fellowship for Research Work

Lawrence Dale Green, a graduate student in the Department of Civil Engineering of the Missouri School of Mines and Metallurgy, has received a National Science Foundation Cooperative Graduate Fellowship it was announced by Professor E. W. Carlton, Chairman of the Department. This fellowship was awarded for a period of twelve months and provides fees, tuition, a stipend of \$2,400, and a cost-of-education allowance to the University of Missouri.

Green received his Bachelor of Science Degree in Civil Engineering from the Missouri School of Mines and Metallurgy in June 1962. He is a graduate of Thayer, Missouri High School. As an undergraduate student, Green participated in an undergraduate research training program in structural mechanics sponsored by the National Science Foundation. He has also been continuously on the Dean's Honor List and he has received the Gold Key Award and the Enoch R. Needles Scholarship in Civil Engineering. Green is a member of Phi Kappa Phi, Tau Beta Pi, Chi Epsilon, the student chapter of the American Society of Civil Engineers, and the Society of the Sigma Xi.

Green began his program of graduate work and research in June 1962 and he expects to receive the degree of Master of Science in Civil Engineering in June 1962. He is specializing in the areas of structural mechanics and materials.

The National Science Foundation plans to award approximately 3000 graduate fellowships in science for the 1963-64 academic year, as one means of promoting the progress of science.

SAE Increases Membership at First Meeting

At their first meeting in September, the Society of Automotive Engineers had a membership run. Many new members were accepted and a lecture on "Engine Rebuilding" was given.

On November 5, the SAE is going to have a meeting in the afternoon in order to plan for a field trip to McDonnell Aircraft Corporation in St. Louis. This trip is going to be made on November 13. A tour of the plant and a luncheon are on the program for the trip. Any member of the SAE desiring to go on the field trip should attend the meeting November 5th.

In December, the SAE is planning a joint meeting with the American Society of Mechanical Engineers.

The annual Papers Contest of the SAE will be held in February. These technical papers, written by students, will be judged first on a local level and then the winners from MSM will compete with the St. Louis and Parks College Branches of the SAE in March.

EIS Offers Scholarship For 63-64

Scholarship applications for undergraduate study in Europe during the academic year 1963-64 will be accepted by the Institute of European Studies beginning Thursday, Nov. 1.

Seven scholarships are being offered for study at the Institute's centers in Vienna, Paris, and Freiburg, West Germany. Included are three full scholarships which cover all basic costs such as tuition, fees, field-study trips, room, most meals, and round-trip ocean transportation from the United States.

Each program embraces formal classes, lectures, seminars and field-study, and is designed to fulfill usual course requirements at its academic level, officials of the Institute said. The programs in Vienna and Paris are open to college sophomores and juniors,

while the Freiburg program is limited to juniors.

A full scholarship valued at \$2,230 and partial scholarships valued at \$500 and \$1,000 are available for the Institute's program at the University of Vienna.

The program there combines English-taught liberal arts and general studies courses, intensive German language instruction, regular university courses taught in German for those competent in that language, and supplementary lectures and seminars. Previous knowledge of German is not required.

For its program at the University of Freiburg, the Institute is offering a full scholarship worth \$2,125 and a partial scholarship valued at \$1,000. The program stresses political science. German language study, German philosophy and literature, and European history, with all classes taught in German.

Scholarships offered for study in Paris include one covering all basic costs, equivalent to \$2,475, and a partial scholarship valued at \$500. Intended for superior students, the program encompasses

liberal arts and general studies combined with opportunities for independent study at the University of Paris and other institutes of higher learning in Paris.

The Institute's announcement said scholarships will be granted on the basis of academic achievement, financial need, and recommendation by the applicant's "home" college or university. Applicants must be aged 18 to 24 and unmarried.

Completed applications must be submitted no later than Feb. 15, 1963. Forms and descriptive literature are available from the Institute of European Studies, 35 E. Wacker Drive, Chicago 1.

Awards will be announced about May 1, 1963. Enrollees bound for Paris and Vienna will sail for Europe late in August, followed in mid-September by those bound for the Freiburg program.

The Institute, a nonprofit organization described as the largest institution conducting foreign study programs, is currently accepting non-scholarship applications for its spring semester, 1963, programs at the universities of

Vienna and Freiburg. The application deadline for those programs is Dec. 10, with sailings scheduled for early February.

SU Sponsors Tournament

Beginning on November 5, the Student Union Board will sponsor its annual billiards tournament. All those interested in competing are requested to put their name on the sign-up list on the Student Union Bulletin Board. A schedule of when you are to play will be posted later. Here is the chance for all of you pool sharks to show your stuff.

For those of you who may not know it, especially freshmen, pool, snooker, and ping pong equipment may be checked out at the Student Union candy counter. You may also check out playing cards, checker and chess equipment, and records. These things are there for your enjoyment, use them!

THE BELL TELEPHONE COMPANIES SALUTE: ROY MOORE

Roy Moore (B.B.A., 1958) is responsible for 51,000 telephone customers served from Southwestern Bell's San Antonio office. To efficiently keep tabs on the nearly \$700,000 monthly billing, Roy has a staff of 24 people including four supervisors.

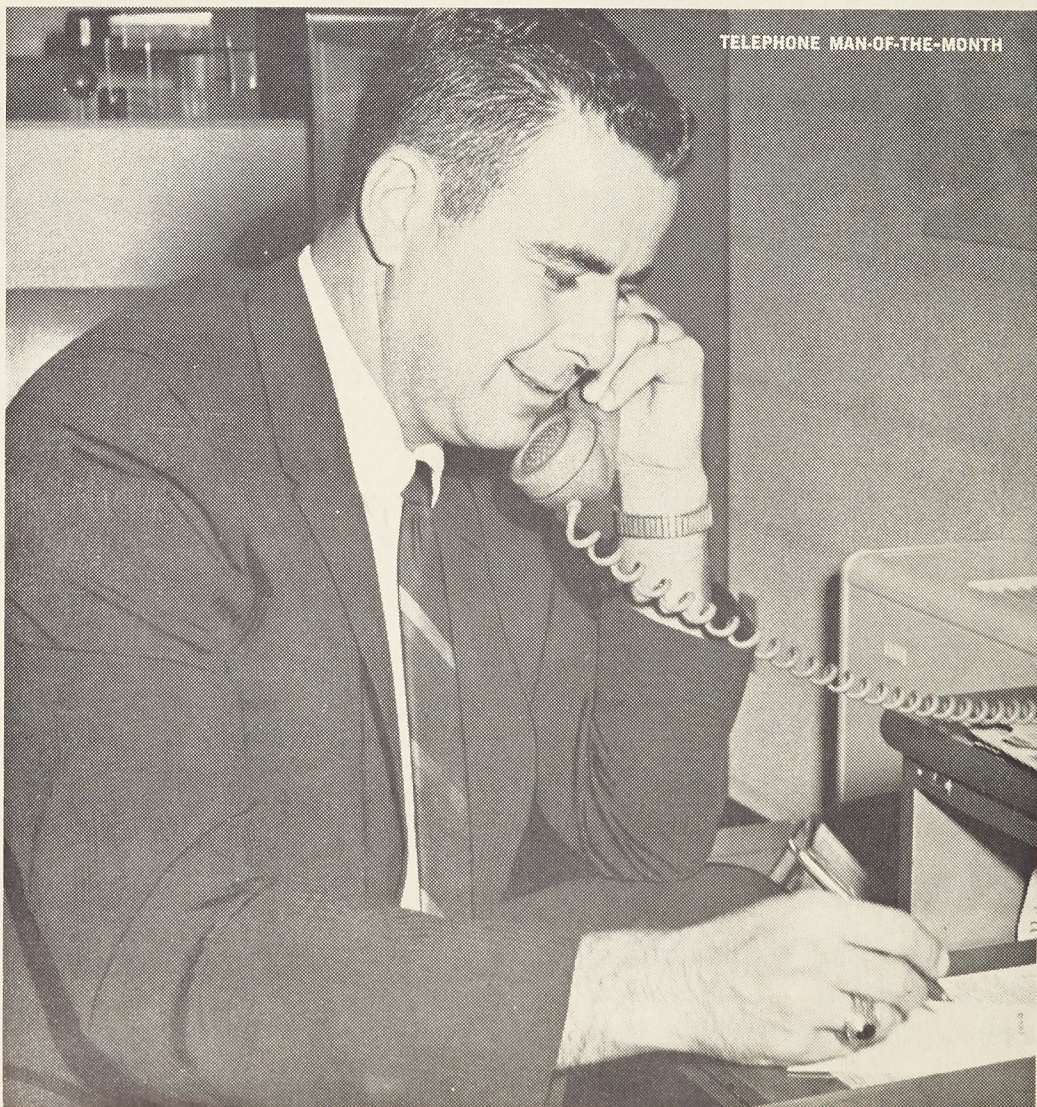
A lot of responsibility, but Roy showed he could handle it right from his first assignment as a Staff Assistant in

the Houston Sales Department. From there, he progressed to Commercial Assistant, and then to Group Manager for ten exchanges around Cuero, Texas.

Roy Moore and other young men like him in Bell Telephone Companies throughout the country help bring the finest communications service in the world to the homes and businesses of a growing America.



BELL TELEPHONE COMPANIES



MISS H
(Continued)
registered for
then my couns
consider a care
science." (C
gentle, softspok
could've made
urse, too.)
(Until her ap
sowed she had
grades in ma
dired by a gi
schools, Carol
and unusual m
the modestly
that she had re
high school
science.
Does she rec
engineering
flair for math
Her answer
Yes." In a field
tured by men
great promise ar
en, she believe
After all," s
to there were
ctors. As time
ore women we
fields."
As a case in p
ct that next
x women gradu
g and science
the past the
ore than one
Here at IBM
programming
injunction with
character recog
tes to machine

Organ
N
SA

On Tuesday
udent post o
merican Milita
s monthly mee
fred J. D'Ar
neer, U. S. Ar
ict, St. Louis,
Colonel D'Ar
ustrated pres
object "The C
ering and C
ram of the St
istrict." The c
ram showed ho
rogram of the
fords an unus
ry revealing
emendous nat
ources develop
e nation in the
This program
rms of the car
perience, and
ford the young
Another featu
as a look at th
object which is
the people of
Many citizens
students and
school of Mine
meeting that wa
JPW radio sta
le and KTTR

CERAMIC
The American
as formed in
e student with
e Ceramics in
me by having
sary at meeting
tips to various
s in the area.
ve the student
assroom work
tual industrial
The ACS is p
P. Green in S
is semester as
ip program.

REMBER 2, 19
reburg. The
ne for those
10, with sail
arly February.

nsors
ent

November 5,
Board will sp
billiards tou
interested in
ested to put
gn-up list on
Bulletin Board
n you are to
ater. Here is
f you pool sha
uff.
you who may
ly freshmen, p
ing pong eq
checked out at
candy coun
check out play
and chess eq
ds. These thi
ur enjoyment.

sed
for

le-
the
nes

S

MISS HENDERSON

(Continued From Page 1)

registered for nurses' training when my counselor advised me to consider a career in mathematics or science." (Judging from her gentle, softspoken manner, she would've made a mighty fine nurse, too.)

Until her aptitude test scores showed she had received the highest grades in mathematics ever attained by a girl in the Danville schools, Carol did not realize she had unusual mathematical ability. She modestly admits, however, that she had received good grades in high school mathematics and science.

Does she recommend a career in engineering to other girls with a flair for mathematics and science? Her answer is an emphatic "Yes." In a field populated almost entirely by men, engineering holds great promise and rewards for women, she believes.

"After all," she says, "50 years ago there were few, if any, women doctors. As time goes on, more and more women will enter the scientific fields."

As a case in point, she cites the fact that next year there will be six women graduating in engineering and science at Missouri, while in the past there never has been more than one a year.

Here at IBM, Carol is working on programming for the 709 in conjunction with the new field of character recognition, which relates to machine recognition of the

written word. Programming in her area requires an engineering or scientific degree. She has minors in mathematics and electrical engineering.

Away from work, Carol is busy these days redecorating her apartment or reading science fiction. This fall she plans to get back into Girl Scout work, a long-standing interest, and to try her hand at pottery at the Rochester Art Center.

She enjoys writing and hopes one day to write a book recounting her experiences as a lone girl pursuing an engineering degree.

As one would suspect, she can recite many humorous incidents. One which she particularly likes to tell is about the little girl who exclaimed as Carol walked by in the long line of graduates at commencement exercises, "Look mommy, there's a girl one!"

YOUR REXALL STORES

Hafeli & County Rexall

Downtown Rolla

The LAUNDRY CENTER

LAUNDRY - DRY CLEANING - SHIRTS

Complete Bachelor Laundry Service

Corner 7th and Rolla Streets

ALSO FEATURING

New Coin-Operated Self-Service Laundry

For the Finest in Jewelry

Class Rings

Diamonds

FULLER JEWELRY

715 Pine

Ph. EM 4-2142

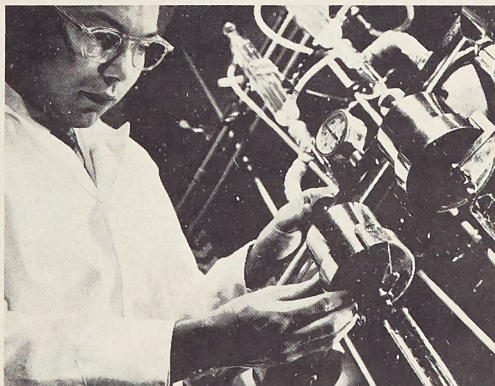
these Dowell acidizing advancements help wells produce more oil & gas

Inhibitors

Dowell developed the first effective inhibitor for oil well acidizing in 1932. Today's improved versions are being used in wells with temperatures as high as 350° F., holding metal loss to a minimum.

Addition Agents/Special Acids

Dowell developed and offers the industry's greatest variety of acid additives — more than 40 — to meet special problems. Examples: intensifying, retarding, stabilizing, surface tension reducing, demulsifying and silicate control.



Fluid loss testing is one of hundreds of continuing research studies at the Dowell laboratories.

Selective Acidizing

For the effective acidizing of multiple zone wells, Dowell has developed a complete line of diverting agents, both mechanical and chemical, as well as advanced methods for using them efficiently.

Jet Gun Acidizing

This service was introduced by Dowell and used for treating tight wells and cleanup work. More recently, Abrasijet* abrasive jetting service has broadened jet gun work to include perforating and fracture initiation.

High Injection Rate Acidizing

These large volume treatments have increased production and slowed decline rates on both new and previously treated wells.



Dowell's remote-controlled, Allison-powered pumper is especially suited to high-injection-rate treatments.

Acid Fracturing

One of the most promising stimulation services today, the combination of acidizing and fracturing in one operation, is giving operators better production increases and flatter decline curves.

Friction Reducing Agents for Acid

These new agents have made it possible to more than double injection rates with the same horsepower. In some cases a given injection rate has been achieved with only one pump instead of three formerly needed.

Acid Guide

Originally introduced in 1958, the Dowell-developed Acid Guide* provides an engineering basis for determining size and type of treatment and expected results. The Acid Guide is being continuously improved.

COMING!

Now in the final stages of testing are several new additives and techniques designed to improve oil well acidizing results. Dowell continually searches for new and better ways to acidize oil and gas wells. You can be sure that when more profitable methods of acidizing can be designed, Dowell will be the first to provide them. Dowell services and products are offered in North and South America, Europe, North Africa and Iran. Dowell, Tulsa 14, Oklahoma.

SERVICES FOR THE OIL & GAS INDUSTRY



DIVISION OF THE DOW CHEMICAL COMPANY

Organization News

SAME

On Tuesday October 23, the student post of the Society of American Military Engineers held its monthly meeting with Colonel Alfred J. D'Arezzo, District Engineer, U. S. Army Engineer District, St. Louis, as guest speaker.

Colonel D'Arezzo gave a slide-illustrated presentation on the subject "The Civil Works Engineering and Construction Program of the St. Louis Engineer District." The concept of the program showed how the civil works program of the St. Louis District affords an unusually compact, but very revealing panorama of the tremendous national water resources development job facing the nation in the next 20 years.

This program was translated in terms of the career opportunities, experience, and benefits it will afford the young engineer.

Another feature of the night was a look at the Meramec River Project which is of great interest to the people of this area.

Many citizens of Rolla as well as students and faculty of the School of Mines, attended the meeting that was also covered by KJPW radio station at Waynesville and KTTR of Rolla.

CERAMIC SOCIETY

The American Ceramics Society was formed in order to acquaint the student with various phases of the Ceramics industry. This is done by having speakers from industry at meetings and having field trips to various Ceramics companies in the area. It also strives to give the student a look at how classroom work can be applied to actual industrial conditions.

The ACS is planning a trip to A. P. Green in St. Louis sometime this semester as a part of its field trip program.



SPELUNKERS CLUB

The purpose of the Spelunkers Club is to bring together students who are interested in the exploration of caves. Most of the cave trips consist of exploring new caves and trying to find virgin passage. The locations of these caves may come from any one of several sources.

caves. One group of members went into the one cave, while the second group went into the other cave. Upon reaching the six inch diameter connecting hole between the two caves, one member from each party crawled up to the hole. Anybody seeing them shake hands through the con-



Mapping crew in action.

Exploration

Since the M.S.M. Spelunkers Club is composed mostly of young men in their prime of life, the club is known for their endurance in going on even when the going gets tough. For example:

Members of the Club were the first ones to reach the end of the largest and longest cave in Missouri in 1960. Having set up a base camp several miles back in the cave, they were able to push on to the end after a night's rest. What made the cave very difficult was the fact that most of the time, the group was wading in waist deep water and knee deep mud.

Arkansas Trips

Several times a year during school holidays, members of the Club take a trip to Northern Arkansas, where they explore one of the largest and most beautiful caves in the country. What makes this cave outstanding is the size of some of the rooms and the variety of crystalline formations. Members of the Club were the first to explore some of the more extensive areas of the cave. In fact, some of the passages are named after early explorers who were members of the Club.

Cave Mapping

The Spelunkers Club also does a good deal of cave mapping. All the maps are turned into the Missouri Speleological Survey, and are published in a periodical called *Missouri Speleology*. The importance of cave mapping can be illustrated by the following examples:

After finishing one map which totaled about three miles in length, the Club mapped another cave near this area. After plotting both maps on the same sheet, it was found that there should be a connection between the two

climbing gear. Carbide for lamps is furnished for members on all caving trips. The Club also maintains a file of cave reports which are filled out by members of the Club whenever they explore a cave. Bulletins and periodicals from other caving organizations are also maintained in this file.

Joint Trips and Social Life

A joint weekend caving trip is held about once a year with a caving group from St. Louis known as "The Middle-Mississippi Valley Grotto of the National Speleological Society".

The Missouri Speleological Survey holds two conventions a year, in which cave explorers from all over the state are present. Much information concerning caves is exchanged at these meetings in an effort to co-ordinate the activities of the various clubs.

The annual Engineers Day exhibit sponsored by the Club gives prospective students a glimpse of what they may expect in the form of social life if they enroll here at M.S.M.

Mixers and joint caving trips are being planned with several of the Girls Colleges in St. Louis.

Various Fields in the Club

Among the different fields represented in the Club are: Archaeology, Photography, Cave Science, Mapping, Exploration, and Writing.

The Club publishes periodical bulletins which contain articles written by members concerning the various aspects of caving and the techniques associated therein.

Occasionally, an article entitled *Carbide Corner*, appears in the school newspaper which explains the current activities of the Club.

Cave Conservation

One of the main things the club stresses is cave conservation. When you plan to visit a cave, always ask the owners permission. While you are in the cave remember that you don't own the cave and that you have no right to break off or smear mud on the formations. It takes nature thousands of years to make these formations, but it takes a careless individual one second to ruin them. Bury your used carbide in the ground. Leaving it out in the open spoils the beauty of the cave. God made the caves beautiful for man to enjoy; let's keep them that way.

The Finest in.....
DRY CLEANING

Pressing While You Wait.
One Day Service if Requested.
Pick Up and Delivery Service.

MODERN
Dry Cleaners
9th and Pine

Dist.
EM 4
2509



FACULTY SPOTLIGHT

Professor G. E. Lorey was born in Brooklyn, New York. However, his family didn't stay there long. They moved to Freeport, Long Island, where he attended grade school and Freeport High School. He became interested in ceramics in high school through his science instructor, who was a Ceramic Engineer.

In 1941 Professor Lorey enrolled at Alford University in Alford, New York. However, in 1942 his education was halted when he went into the Army as a member of the U. S. Signal Corps. During the war he saw action in the South Pacific, after which he was stationed in Japan.

He went back to Alford University in 1946 to go to work on the books once more. Professor Lorey received his Bachelor of Science degree in ceramics in 1950 and then went to work for the Office of Naval Reserve.

During the next two years he worked and studied, then in 1952 he received his Masters degree at Alford. In 1953 he married Mrs. Lorey, whom he met dur-

ing his years at Alford. Afterwards, he went to work for the Office of Air Reserve as a Cermet (a combination of Ceramist and Metallurgist). He then joined the staff at Rutgers University in 1954 to teach Ceramic Engineering.

He taught there for two years and in 1956 Professor Lorey came to MSM where he is now professor in the Ceramic Department. On campus he is very active in college organizations. He is Vice-President of the Ceramic Educational Society, a branch of the American Ceramic Society. He is also a member of the American Society of Engineering Education and advisor of Keromos.

He is president of the Rolla chapter of Sigma Xi, the ceramic fraternity.

Off campus, Professor Lorey is also very active. He is a Lay-leader of the Episcopal Church and a member of the choir. He and his wife like to square dance a great deal. His main hobbies are fishing, hunting, and horse-back riding.



Large enough to hold your future,
small enough to know you

ENGINEERS: American Air Filter Company, Louisville, Kentucky, is the world's largest manufacturer of air filters, dust control, heating, ventilating and air conditioning equipment. Yet AAF is small enough for you to know well.

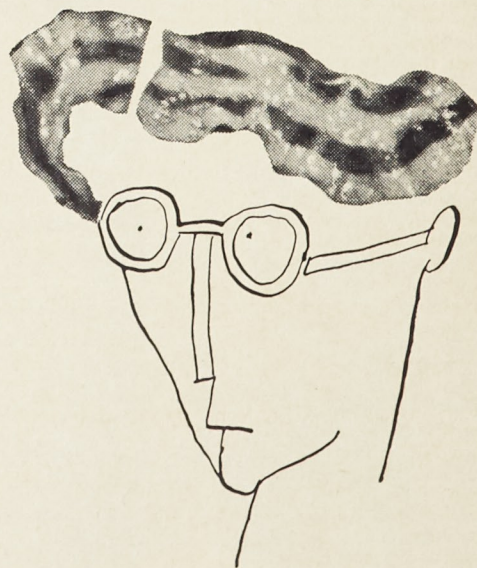
AAF needs graduate engineers to fill responsible jobs in sales, product engineering, research and industrial engineering. Eventual location might be in any of AAF's six plant cities or one of the more than 150 sales offices throughout the U. S.

Men who join AAF will be enrolled in the Company's full-time formal Training Program. Interested seniors should make an appointment now through the Placement Office. An AAF representative will visit the Campus on

November 7



American Air Filter
COMPANY, INC., LOUISVILLE, KENTUCKY



Nothing rasher for your hair than grease. Let Vitalis with V-7 keep your hair neat all day without grease. Naturally, V-7 is the greaseless grooming discovery. Vitalis® with V-7® fights embarrassing dandruff, prevents dryness, keeps your hair neat all day without grease. Try Vitalis today. You'll like it!



Football Predictions: Week of November 2nd

It doesn't happen often, but this week there are two Number One college football teams. With identical Harmon power quotients of 110.7, Northwestern and L.S.U. share the No. 1 spot. And this Saturday—on paper—only one of them will be in real difficulty.

The Northwestern Wildcats should have no trouble drumming up a 20-point win over Indiana. However, the Baton Rouge Tigers run smack-dab into 4th-ranked Mississippi. This is always a college death-struggle, but the corpse will not be L.S.U.—the Tigers by 1.

3rd-ranked Michigan State has an old nemesis to contend with this week in the 20th-rated Gophers of Minnesota. However, the jinx won't stand in the way this year—the Spartans will win by two touchdowns.

And Alabama—in the No. 5

spot—should remain undefeated by turning back Mississippi State by 17 points. Ohio State moved from 10th to 6th after upsetting Wisconsin. They'll also be 17-point winners this Saturday; the victim, Iowa.

Dropped to 7th after its first loss of the season, the Badgers of Wisconsin will return to the plus side by spanking Michigan by 27 points.

A little horn-tooting will now be in order! The forecasting average hit a season high with an even 79 percent, while in just the major games, the crystal ball battered .804. There were 113 games picked right, 30 wrong and 8 games ended in a tie to make the season's totals read 721 correct and 218 incorrect. Season's average: .768.

On the West Coast, the chips will be down. Having had more

trouble with the Illini than was expected, the undefeated and untied Trojans of Southern Cal dropped all the way from 8th to 15th in the ratings. They meet the undefeated — twice-tied — Washington Huskies. The difference will be just one point as the Trojans remain undefeated.

Looking at another conference game that will go a long way toward deciding a champion, the Big 8 has Missouri and Nebraska at each other's throats. The Corn huskers are undefeated, and the Tigers—tied by Minnesota—are in the No. 19 position in the national ratings. Missouri will nip Nebraska by a touchdown, and take a big step toward the championship.

Ivy League action centers on undefeated Dartmouth as the Indians will be heavy favorites to continue their march to the conference title by scalping Yale by 21 points.

Quickies: 8th ranked Purdue will sack Illinois by 30; Georgia Tech, No. 9, will whip Duke by 12 points; and Texas looking up from 10th, will return to normal beating S.M.U. by 20.

The Harmon Forecast

NATIONAL FOOTBALL LEAGUE

Sunday, November 4

BALTIMORE	24	San Francisco	23
CLEVELAND	21	Philadelphia	10
DALLAS	21	Washington	20
DETROIT	28	Los Angeles	7
GREEN BAY	35	Chicago	17
MINNESOTA	17	Pittsburgh	14
NEW YORK	31	St. Louis	14

AMERICAN FOOTBALL LEAGUE

Saturday, November 3

BOSTON	27	Buffalo	21
--------	----	---------	----

Sunday, November 4

DALLAS	34	Houston	28
DENVER	31	San Diego	17
NEW YORK	26	Oakland	21

Dunn Sets Intramural Cross Country Record

by Don Sobczak

It was a chilly afternoon when the intramural cross-country race was held Friday, October 26. However, the coolness of the air did not seem to phase the winner from Sigma Phi Epsilon as Craig Dunn set a new record with the time of 10:32.8.

Jerry Siemens of Kappa Sigma finished second in the race. Jerry teamed up with Tom Van Rhein to give Kappa Sigma the team championship; while Robert Horting and Ken Irwin provided Triangle with the second spot in the team standings.

For all those who came out to cheer their favorites, I am quite sure the runners appreciated the support; this was an exciting start to a great Homecoming weekend.

Below are the combined statistics for the race.

Place	Organization	Pts.	Team Int. Pts.
1.	Kappa Sigma	8	72
2.	Triangle	15	68
3.	Sigma Nu	21	66
4.	Phi Kappa Theta	24	63
5.	Sigma Pi	30	60
6.	Kappa Alpha	36	55.5
7.	Tau Kappa Epsilon	36	55.5
8.	Lambda Chi Alpha	38	51
9.	Sigma Phi Epsilon	39	48
10.	Pi Kappa Alpha	40	45
11.	Phi Alpha	42	42
12.	Engineers Club	45	39
13.	Delta Sigma Phi	47	36
14.	Tech Club	49	33
15.	Beta Sigma Psi	55	30
16.	Wesley	59	27
17.	Sigma Tau Gamma	61	24
18.	Acacia	74	19.5
19.	Theta Xi	74	19.5
20.	Shamrock Club	17	15
21.	Prospectors Club	21	12
22.	Fifty-Niners Club	30	9

Rodney Schaefer Elected M-Club Faculty Advisor

Rodney A. Schaefer of the Mechanics Department, has been elected faculty advisor of the M-Club for this semester. Mr. Schaefer was selected because of his avid support of varsity sports on this campus. He can be seen at almost every home varsity contest, helping out with the judging or taking statistics. Mr. Schaefer also travels to all of

the away football games, which is quite an accomplishment, because of the distance he travels to some of the games.

We, of the M-Club, think Mr. Schaefer will be a great inspiration and guide for the athletes, because of his great drive and faith in us. We believe he will be of great help and assistance to us in his position of faculty advisor.

Conference News

Team	W	L	T	Pct.	Pts.	Opp. Pts.
Kirksville	5	1	0	833	225	62
Cape	4	2	0	667	98	70
Springfield	3	2	1	583	102	75
Warrensburg	1	3	1	300	20	79
Rolla	1	5	0	167	69	150
Maryville	0	6	0	000	12	115

NOTICE!

FOOTBALL CONTEST IS DRAWING TO A CLOSE.
DON'T DROP OUT NOW.

The Harmon Football Forecast

TOP 20 TEAMS

1 - L.S.U. and N'WESTERN	6 - OHIO STATE	11 - ARKANSAS	16 - WASHINGTON
3 - MICH. STATE	7 - WISCONSIN	12 - OKLAHOMA	17 - PENN. STATE
4 - MISSISSIPPI	8 - PURDUE	13 - AUBURN	18 - KANSAS
5 - ALABAMA	9 - GA. TECH	14 - OREGON	19 - MISSOURI
	10 - TEXAS	15 - SOUTH'N CAL.	20 - MINNESOTA

Friday, November 2

Baker	30	Bethany, Kan.	0
Cent. Oklahoma	34	SE. Oklahoma	7
George Washington	14	Richmond	6
Miami, Florida	14	Kentucky	7
Omaha	21	Washington	0
Salem, W. Va.	20	West Va. State	7
Santa Clara	27	Riverside	6

East (Small Colleges contd.)

St. Lawrence	10	Ro-hester	6
South'n Conn.	26	Cent. Conn.	0
Trinity	12	Const. Guard	0
Tufts	19	Amherst	14
Williams	34	Union	0
Wittenberg	21	Gettysburg	6
Worcester Tech	40	R. P. I.	6

Midwest (Small Colleges)

Albion	27	Olivet	12
Augustana	15	Morningside	14
Ball State	15	Evansville	7
Bradley	33	Milwaukee Branch	0
Dana	14	Nebraska Wesleyan	13
Drake	14	Idaho State	0
Earlham	23	Wilmington	0
Graceland	32	Central Methodist	9
Hastings	29	Chadron	7
Hillsdale	21	Central Michigan	20
Hope	20	Alma	6
Kansas Wesleyan	15	Sterling	6
Kalamazoo	14	Adrian	0
Langston	14	NE Oklahoma	6
Midland	23	Concordia, Neb.	13
Missouri Valley	20	Tarkio	8
North Central	23	North Park	7
Panhandle A & M	21	NE Oklahoma	13
South Dakota State	19	Iowa State College	14
SE. Missouri	25	Central Missouri	0
Southern Illinois	23	Northern Michigan	14
SW Missouri	14	Missouri Mines	0
Wayne State, Neb.	12	Duane	0
Western Illinois	21	Peru	8
Whetston	20	Eastern Illinois	7
Wooster	22	St. Joseph	15
		Hobart	12

South (Small Colleges)

Abilene Christian	15	Arlington	14
Appalachian	23	Guilford	8
Chattanooga	20	Presbyterian	8
Delta State	21	Florence	13
East Tennessee	26	Austin Peay	0
East Texas	22	SW Texas	17
Eastern Kentucky	21	Tennessee Tech	13
Howard	29	Mississippi College	13
Howard Payne	14	S. F. Austin	8
Lenoir-Rhyne	21	East Carolina	8
Middle Tennessee	17	Murray	8
Mississippi	14	Maryville	12
Morehead	18	Western Kentucky	15
Newberry	21	Elon	19
Sam Houston	16	Sul Ross	8
Shepherd	24	Bridgewater	7
Tampa	27	Troy	0
Texas A & I	20	Lamar Tech	17
Washington & Lee	33	Centre	0
West Liberty	15	West Va. Tech	6
West Va. Wesleyan	23	Fairmont	7
Worford	16	Catawba	7

Far West (Small Colleges)

Adams State	35	Colorado College	0
Cal Poly (Pomona)	19	Arizona St. (Flag)	14
Cal Poly (S.L.O.)	20	Los Angeles	19
Cal Western	13	Claremont	7
Cent. Washington	12	Pacific Lutheran	0
Colorado Western	20	Colorado Mines	18
Davis (U. of Cal.)	20	Santa Barbara	7
Long Beach	39	Fresno State	7
Humboldt	25	Chico State	13
Idaho College	18	Whitman	7
Nevada	20	Sacramento	14
Occidental	18	Redlands	0
San Diego State	45	San Fernando	0
West Washington	19	East Washington	7
Whittier	29	Pomona	0

East (Small Colleges)

Bloomsburg	18	Kutztown	14
Bucknell	14	Buffalo	7
Connecticut	15	New Hampshire	12
Delaware	18	Temple	0
East Stroudsburg	21	Cortland	6
Edinboro	19	Brookport	9
Hamilton	18	Wesleyan	15
Hofstra	24	Lycorning	6
Ithaca	19	Alfred	8
Massachusetts	27	Vermont	0
Muhlenberg	18	King's College	8
Northeastern	20	King's Point	19
Rhode Island	18	Springfield	14

Miners End Losing Streak by Defeating Bearcats, 23-12

Last Saturday, before a tremendous homecoming crowd, Coach Gale Bullman's Miners broke out of a four game losing streak with a 6-12 triumph over the Maryville Bearcats. A perfect afternoon of blue skies and warm temperatures topped off this victory which set the MSM football record at 2 wins and 4 losses. Spectators jammed Jack-

ville 0, the half-time activities began. The twenty minute program included the crowning of the homecoming queen, Miss Gail Loughridge, the annual IFC Pledge Pajama Race (won for the third consecutive year by Kappa Sigma), and an exhibition by the MSM-ROTC Marching Band.

During the second half of the game, the MSM squad pushed

will soon approach the pass-caught record at MSM.

The entire team played very well in this battle. During the previous week's game with Kirksville, the Miner defensive was in action most of the time. In this duel, however, the story was quite different. The offensive squad was found to be on the field for the greater part of the time, and several players saw action on both the offensive and defensive sides. The Miner offense for Saturday included Mullen, Smith, Bacich, Riggs, Welsh, Alford, Gasparovic, and Kauffmann. The defensive men were DeBold, Turner, Hoover, Ombalski, Handshy, Lutzenberger, Knussmann, and Wallace. Keiser, Bailey, and Voorhis played dual roles.

A MINER STOPS A BEARCAT



ling Field and overflowed onto the grass surrounding the playing area, on this the 93rd annual homecoming of Missouri School of Mines and Metallurgy.

Within a few minutes after the first kickoff, the Miner Eleven tallied their first touchdown of the afternoon. A short time later the score was 12-0. An extra point by Richard Jones made it 13-0. Jones again came through after the Miners crossed the Bearcat end zone once more before half-time. With the scoreboard showing Miners 20, Mary-

over another 6-pointer. The Bearcats scored twice, making the final score 26-12.

Gary Voorhis completed two of the four Miner touchdowns, both of them being rather short runs. George Gasparovic charged 6 yards to score another and Terry Wargo was given credit for one on a forward pass. Both Maryville TD's were the results of long runs.

Jay Alford completed 16 out of 30 attempted passes, totaling 261 yards on the series. If he continues at his present rate, Alford

Ragland, Yoeast 1st In Football Contest

In the football prediction contest, two men have put in their bid for top prize. These men, Ron Ragland and David Yoeast, came up with excellent predictions of the Maryville score, enabling them to claim a tie for first place. Last week's leader, Charles Difiglia, has fallen to second place, to tie with John Counce. Both Difiglia and Counce have scores of 24 points.

Two more games remain on the Miner schedule, so that the contest is still a toss-up. With the predictions that are coming in, it is hard to tell how the final standings will look. One thing for sure it is still anybody's race, so that everyone in it thus far should stay in.

Cross Country Team Is Stopped by Warrensburg

The luck often associated with the number seven didn't materialize for MSM's cross country squad. The Miners, after winning a triangular meet for their sixth straight victory of the year, tried to make it seven in a row against a strong Warrensburg squad, but came out second best.

The Miners began the week successfully, outrunning Westminster College and Culver-Stockton on a wintery Wednesday afternoon at Fulton. Showing particular improvement for the Miners were Mike Norman, a first year man, and Les Sheets, a veteran who saves his best performances for the coldest weather. The point totals for MSM, Westminster, and Culver-Stockton, respectively, were 64-45-23.

The order of finish:

Runner	School	Time (3.5 miles)
1. Arnold	W	19:17.1
2. Damotte	MSM	19:19
3. Brown	MSM	19:26
4. Sheets	MSM	19:37
5. Poppe	MSM	20:15
6. Franke	W	20:24
7. Drew	C-S	20:25
8. Hansmeier	C-S	20:30
9. Godfrey	MSM	20:30.1
10. Williams	W	
11. Norman	MSM	
12. Waring	MSM	
13. Bell	MSM	
14. Michel	W	
15. Zumwalt	C-S	
16. Allen	MSM	
17. Wellans	W	
18. Burwell	W	
19. Voss	C-S	
20. Walker	C-S	
21. Largent	W	
22. Forrest	W	

The Miners did a complete turnabout on the following Saturday, however, and were overpowered by Warrensburg, 40-15. Bill Silverburg of the CMS squad missed equaling the course record by only 5.5 seconds, and finished almost two minutes ahead of his closest pursuer.

Below are the results of the meet:

Runner	School	Time (3.86 Miles)
1. Silverberg, B.	CM	20:32.1
2. Poteet	CM	22:15
3. Davis	CM	
4. Silverberg, S.	CM	
5. Welsh	CM	
6. Brown	MSM	
7. Damotte	MSM	
8. Poppe	MSM	
9. Godfrey	MSM	
10. Bell	MSM	
11. Sheets	MSM	
12. King	CM	
13. Norman	MSM	
14. Waring	MSM	
15. Grooves	CM	
16. Harsen	CM	
17. Allen	MSM	
18. Hyder	CM	

The Miners will continue to face tough competition in the coming weeks, entertaining Cape Girardeau on Wednesday, October 31, and traveling to St. Louis on the following Wednesday for a triangular meet with St. Louis University and MacMurray College. But the squad should be well tuned up for the MIAA conference meet, which they will host on Saturday, November 10.

Six Man Football Teams Still Exist In Missouri

Did you know that a six-man football conference still exists in the state of Missouri? Six-man football, which once shared the spotlight with the standard game, has fallen victim to the trend of consolidating and enlarging schools.

Five small high schools make up the Platte Valley Conference which is located in Northwest Missouri, north and east of St.

Joseph. They seem to be satisfied with the present setup because they voted down the motion to make an 8 or 11 man system.

Except for the uniforms and the shape of the ball, it's almost a different sport.

In six-man ball, played on an 80 by 40 yd. field, every player is eligible for a pass, every running play has to start with a lateral or backward pass in the backfield, and a team must make 15 yards in four downs.

However, one of the strangest differences lies in picking up the conversion following the touchdowns. Completely opposite from college ball, the run or pass for the conversion is worth one point while a kick is worth two.

The teams work out of three basic formations, the standard T, spread, and short punt. In the T and short punt the "2" ends are in close to the center, but in the spread, as one would guess, the ends go out about 15 yards. Many other formations can be developed from these three.

The backfield takes on a completely different complexion when the team changes from the T to spread and short punt.

In the former the signal caller lines up directly behind the center whereas in the other two formations he drops back into a position behind the halfbacks and becomes a fullback.

All this points toward a track-meet type of football with the long end run and pass an every play affair.

SUPPORT THE MINERS!

SIDELINES

By Robert Fogler

This year, as Intramural football draws to a close, we again ask ourselves what we could do to make the sport better. In the past years, such improvements as stick-on flags in favor of the outmoded flags used previously and the addition of a fourth league to ease the burden of the player, have been added.

Now it is time to take a serious look at the personal safety of the players. This year, as in previous years, the MSM infirmary reports scores of injuries, such as pulled muscles, sprains, broken bones, and a host of others, some serious.

The way the program is set up, anyone may play for the organization he represents. This puts out on the field many players who are not fit to play in the game. A player who is out of condition (and many players are out of condition) is taking a chance on injuring himself seriously. Other players have no concern for the safety of others, and in a hard fought game, an injury is the sure result.

Players should, before being allowed to play in this game, be required to pass a physical examination. They should also be encouraged to keep themselves in top physical condition when participating in this sport.

In the game itself, the rules state that no man can be tackled. Nevertheless, it still happens, along with a lot of other punishment that a player must take. It seems that some protection could be afforded to the players in the form of pads of some sort. This would make it reasonably safe to play IM football, and would also cut down on the list of injuries.

BISHOP'S

FOOTBALL PREDICTION CONTEST

LIST OF PRIZES TO BE AWARDED

1st Prize any \$55.00 Suit

2nd Prize any \$15.98 Shoes

3rd Prize any \$5.00 Set of Jewelry

BISHOP'S

124 W. 8th

J. C. ALEXANDER, Manager

Rolla, Mo.

"The Campus Clothing Center"

FOOTBALL PREDICTION NO. 5

MINERS WARRENSBURG
(Please Print)

Your Name

Address Phone