



26 Oct 1962

## The Missouri Miner, October 26, 1962

Follow this and additional works at: [https://scholarsmine.mst.edu/missouri\\_miner](https://scholarsmine.mst.edu/missouri_miner)

These newspapers reflect the attitudes, perspectives, and beliefs of different times. Neither the library nor the university endorses the views expressed in these collections, some of which contain images and language which may be offensive to some readers.

---

### Recommended Citation

"The Missouri Miner, October 26, 1962" (1962). *The Missouri Miner Newspaper*. 1693.  
[https://scholarsmine.mst.edu/missouri\\_miner/1693](https://scholarsmine.mst.edu/missouri_miner/1693)

This Newspaper is brought to you for free and open access by Scholars' Mine. It has been accepted for inclusion in The Missouri Miner Newspaper by an authorized administrator of Scholars' Mine. This work is protected by U. S. Copyright Law. Unauthorized use including reproduction for redistribution requires the permission of the copyright holder. For more information, please contact [scholarsmine@mst.edu](mailto:scholarsmine@mst.edu).

# WELCOME ALUMNI

## The Missouri MINER

MISSOURI SCHOOL OF MINES AND METALLURGY

VOLUME 49

FRIDAY, OCTOBER 26, 1962

NUMBER 8

### Engineers' Day Will Be Held at MSM November 17

The Missouri School of Mines and Metallurgy will again play host to the State of Missouri and visitors from area states at it observes Engineers' Day on November 17th. Parents, and High School juniors and seniors are invited, as well as junior college sophomores, and school counselors and administrators. These guests will, through guided tours, be acquainted with all phases of campus life, including academic, social, and other aspects of the college community. The School is a division of the

University of Missouri and offers degree programs in many fields of science and engineering. Areas of the School that plan displays and tours for the visitors include: Mining and Petroleum Engineering, Metallurgical Engineering, Nuclear Engineering, Chemical Engineering, Ceramic Engineering, Electrical Engineering, Mechanical Engineering, Geological Engineering, Petroleum Refining, Chemistry, Physics, Geological, Applied Mathematics and Military Science. Tours to these departments will be conducted in small and informative groups. The schools has more than 100 professional, honorary, musical and athletic groups to round out the students' educational plans. Now experiencing its largest enrollment in history, the School's nearly 3500 students are from 47 states and 42 nations. At the time of the visit the parents can obtain full information about housing, costs, scholarships and loans available to entering freshmen. In 1961 more than 1100 parents visited the campus from a radius of 350 miles from the School.

### Woodrow Wilson Foundation Names Regional Chairman

CHAIRMAN of the Region XI Selection Committee of the Woodrow Wilson National Fellowship Foundation is Dean Walter Wright of the University of Nebraska.

A graduate of Miami University, Dean Wright holds advanced degrees in English literature from the University of Illinois. He taught at North Dakota State College, Doane College and Washington State University before joining the University of Nebraska faculty in 1945. Literature of the Nineteenth and

### MSM Hosts South Central Missouri Science Fair

The Faculty Committee on Science Fair at the Missouri School of Mines and Metallurgy at Rolla, Missouri, met recently to lay plans for the 1963 Science Fair. The committee added another exhibit area to the next years Science Fair. The new area is Space Science. The committee chose Friday and Saturday, April 5-6, 1963 as the date of the 1963 Science Fair. The fair will be open to the general public 8:00 a. m. to 2:30 p. m., April 6. With this arrangement more teachers and parents can view the fair. The fair is sponsored by the Missouri School of Mines and Metallurgy, and the Rolla Daily News.

The South Central Missouri Science Fair is open to any high school boy or girl in public, private or parochial schools in the 10-12 grades and whose school is in the South Central Missouri region which consists of the following counties: Phelps, Maries, Dent, Crawford, Pulaski, Osage, Gasconade, Camden, Franklin, Washington, Laclede, Texas, Wright, Shannon, Oregon, Howell, Douglas, and Ozark.

Individually constructed exhibits only will be accepted this year. The areas of exhibits are Biology, Chemistry, Mathematics, Physics, Earth Sciences and Space Science.

The program for the coming fair is as follows:

Friday, April 5, 1963

8 a. m. to 2 p. m.—Exhibits will be set up.

2 p. m. to 5 p. m.—Judging.

6 p. m. to 9 p. m.—Exhibits open to public.

Saturday, April 6, 1963

8 a. m. to 2:30 p. m.—Exhibits open to public.

2:30 p. m.—Awards program.

More detailed information will be sent to the high schools in the above mentioned counties after Nov. 1, 1962.

Two winners of the South Cen-

tral Missouri Science Fair will be sent to the National Science Fair to be held in Albuquerque, New Mexico.

The members of the Science Fair Committee are G. G. Skitek, Chairman, R. A. Anderson, J. L. Best, C. A. Johnson, R. R. Kennedy, H. P. Leighly, G. E. Lorey, and G. E. Vaughn.

### Student Union Is to Display Mercury Capsule

The pilot model of the Mercury capsule will be on display here at the Missouri School of Mines.

The actual Mercury capsule was built from this pilot model which is therefore like the actual working model except for its size. This model is exactly one third the size of the functioning mercury capsule.

This display will be in the Student Union Ballroom October 25-26 and if the weather permits, the capsule will be on display outside the Student Union, October 27-28.

The appearance of the Mercury capsule on the MSM campus is being sponsored by the Student Union Organization in co-operation with the Public Relations Dept. of McDonnell Aircraft Corp.

It is hoped that everyone will make a special effort to see this important part of the space program which the United States is now undertaking.

### Homecoming Highlighted By Reunions, Crowning, and Game

The Missouri School of Mines and Metallurgy plans for its 93rd annual homecoming on October 26 and 27. Events slated for the homecoming include alumni reunions, crowning of the homecoming queen, the football game between the Miners of MSM and the Maryville Bearcats and the homecoming dance to be held in the ballroom of the Student Union. For alumni returning to the campus there will be tours of new buildings and facilities on the campus and special reunions for the classes of 1917, 1922, 1927, 1932, 1937, 1942, 1947, 1952, and 1957. For the second

year the Student Union Board of the School will sponsor a homecoming queen, to be selected from candidates provided by the fraternities and student groups. The queen will be crowned at the half-time of the football game. A half-time and pre-game show will be

presented by the crack MSM-ROTC Band.

Alumni will be honored at banquets and receptions scheduled by the MSM Alumni Association.

Traditional activities include competition among fraternities houses for the best display.

#### 1962 HOMECOMING PROGRAM

Friday, October 26

MORNING

- 9:00 a. m. Registration, Ballroom, Student Union
- 9:00 a. m. Guided Tour of Campus and New Buildings
- 10:30 a. m. Open Meeting for All Alumni — Ballroom, Student Union

AFTERNOON

- 1:30 p. m. Annual Meeting of the Board of Directors, MSM Alumni Association, Student Union
- 1:30 p. m. Guided Tour of the Campus and New Buildings

EVENING

- 6:30 p. m. Kick-off — Welcoming Buffet Dinner — Alumni and Guests — College Inn, Hotel Edwin Long

Saturday, October 27

MORNING

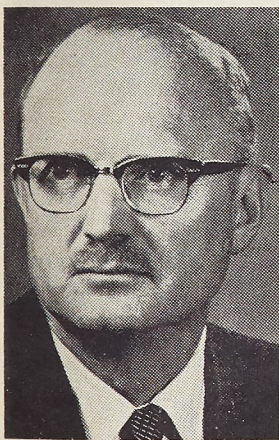
- 9:00 a. m. Registration — Ballroom, Student Union
- 10:30 a. m. Annual Meeting of the MSM Alumni Association and Convocation, Ballroom, Student Union.

AFTERNOON

- 12:15 p. m. Class Reunions Luncheons — Classes of 1917, 1922, 1927, 1932, 1937, 1942, 1947, 1952, 1957. All luncheons will be at the College Inn, Hotel Edwin Long. Separate tables for each group. St. Louis St. Louis Section's Open House at Pennant Hotel.
- 2:00 p. m. Football Game — Miners vs. Maryville Bearcats — Jackling Field

EVENING

- 6:30 p. m. Annual Alumni Banquet — Ballroom, Student Union
- 9:00 p. m. Reception — College Inn, Hotel Edwin Long
- 9:00 p. m. Homecoming Dance — Ballroom, Student Union



DEAN WALTER WRIGHT

Twentieth Centuries is his field of special interest.

Competition for the 1000 Woodrow Wilson Fellowship for 1963-64 is now under way. Any faculty member at any college or university in Kansas, Missouri, Nebraska, Oklahoma or South Dakota may send nominations to Dean Wright between now and October 31.

#### NOTICE!

A. P. O. BOOK EXCHANGE  
OPEN FOR REFUND  
WED. & THURS.  
OCT. 31 & NOV. 1  
LAST TIME THIS  
SEMESTER

#### NOTICE!

APO BLOOD DRIVE  
MONDAY & TUESDAY  
ST. PATRICK SCHOOL

### Nationwide Teacher's Examination To Be Given

The National Teacher Examinations, prepared and administered annually by Educational Testing Service, will be given at more than 300 testing centers throughout the United States on Saturday, February 16, 1963.

At the one-day testing session a candidate may take the Common Examinations, which include tests in Professional Information, General Culture, English Expression, and Nonverbal Reasoning, as well as one or two of thirteen Optional Examinations designed to demonstrate mastery of subject matter to be taught. The college which a candidate is attending, or the school system in which he is seeking employment, will advise him whether he should take the National Teacher Examinations and which of the Optional Examinations to select.

A Bulletin of Information, containing an application and describing registration procedures, may be obtained from college officials, school superintendents, or directly from the National Teacher Examinations, Educational Testing Service, Princeton, New Jersey. Completed applications, accompanied by proper examination fees, will be accepted by Educational Testing Service from November 1, 1962, but in any case must be received at Educational Testing Service not later than January 18, 1963.

#### ALUMNI!

REMEMBER  
TO REGISTER  
AT  
STUDENT UNION

#### SEE PAGES

FIVE, SIX AND SEVEN  
FOR QUEEN  
CANDIDATES

## Miner Editorials

### Welcome Back

We would like to take this opportunity to welcome the alumni back this year. The continued interest shown in MSM by the alumni is gratifying, for the school's respect in the business and professional world is due mainly to their accomplishments. The school itself can profit immensely from the suggestions and constructive criticism which they can provide, concerning the qualities that industry demands from MSM graduate. Each year they bring back information which the school's administration can use to guide them in their production of an engineer that is indemand for his ability.

But the alumni come back year after year mainly because they are shown the hospitality which they deserve. We hope that many of the students and faculty take advantage of this opportunity to thank them personally for the respect they have gained for MSM. We know they will enjoy seeing their classmates of the past and to see their Alma Mater. And we hope that they have as good a time as we will entertaining them.

### The Future of Peace

Small groups were surrounding the radios and TV sets, but the atmosphere was heavy, not with the tension of a world series game, but with the thoughts of young men watching modern history in the making, history which they would perhaps help to form. They were remembering how their fathers had related a similar story, one which had changed the world, which began with the words, "Today was a day of infamy . . . ."

The plans for marriage, for the start of a career, for that interview trip, they were all dependent on the words of the man with the Boston accent. It's ironic, but with all the condemnation of "this modern generation," their thoughts were practically identical to those of their fathers on that day many years ago.

The world would probably be interested in how they felt, and it was obvious: they were scared, yet confident. They were, in a great majority, fully behind that young man on the screen, for they could see the weight of responsibility on his young shoulders, and they could appreciate and approve his belief that we were a nation proud of our history in liberty and ready to protect its heritage.

Amid all the political hassals, amidst the claims back and forth between nations, they had deduced one thought, and it alone made the lesser issues pale into insignificance: that this country, founded for the preservation of peace and liberty, had its back to the wall; that the great communist progress of domination had to be met head-on; and that this was the time and the place and they were the people upon which this country based its strength; and that they were ready.

## MINER

THE MISSOURI MINER is the official publication of the students of the Missouri School of Mines and Metallurgy. It is published at Rolla, Mo., every Friday during the school year. Entered as second class matter February 8, 1945, at the Post Office at Rolla, Mo., under the Act of March 3, 1879.

The subscription is \$1.00 per semester. This Missouri Miner features activities of the Students and Faculty of M. S. M.

Editor-in-Chief: Hugh Murray  
707 State St.—EM 4-2731  
Business Manager: John Gladysiewicz  
500 W. 8th St.—EM 4-3787  
Managing Editor: D. F. John  
Make Up Editor: David Blume  
Copy Editor: Greg Junge  
Features Editor: Charles Becker  
Advertising Manager: Scott Carriere  
Circulation Manager: Paul Gerhardt  
Sports Editor: Ed Schwarz  
Technical Advisors: Mike Devaney, Gary Turner  
Secretary: John Minton

## Three Foreign Students Get Scholarships

Three Foreign Student Scholarships have been granted for the 1962-63 academic year by the Missouri School of Mines and Metallurgy. These scholarships are provided by the Board of Curators of the University of Missouri, of which the School of Mines and Metallurgy is a division, to assist worthy foreign students with the expense of their education here.

Recipients for this school year are Ahmet Ali Arzan, Onurcan Egemen, and Javad Vakil. Arzan, in particular, is an outstanding student, having made a perfect 4.00 grade record during the 1962 spring semester.

Arzan, son of Mrs. Nihat Algan, Namarot Sok 5-1 Ayazpasa,

## Letters to the Editor

In the October 19, 1962 MINER, there was an article from the N. Y. TIMES on how the constitution is taught in the South. The situation which arose in the South and still exists in some areas of the country is in a way "sick." At the same time the article in the New York Times is also "sick."

Many people are going to level their judgment at this statement as being from a southern segregationist. Let me state that segregation is a viewpoint that I do not believe in, and this is not in support of segregation, but an attempt to bring a more realistic perspective before you.

The situation in the South concerning the racial situation is a reflection of the prejudices that exist everywhere. At least the problem in the South is in the open where everyone can see it. In the North and even here in Missouri the racial situation is much more subtle and hidden, the same way cancer can stay hidden. In the South the Negro's role is more clearly defined than it is in this area. A Negro never knows if he will be accepted or rejected when he enters a business establishment.

The article in the Times is hypocritical and judgmental, as if the north has no faults. This is one of the most bizarre examples of the pot calling the kettle "black" ever seen in this area of concern. The accusing finger which is leveled and aimed by the Times article has to point not one direction, but to every part of the United States. All one has to do is to recognize that when you point your finger at someone there are three fingers pointing back at yourself.

The article is not satire as it pretends, but outright sarcasm. This is a common tendency in areas other than the deep south, to say that we have solved the racial problem. But here at MSM where we live in an academic, liberal atmosphere there is discrimination in the surrounding community which we indifferently tolerate. Discrimination is exhibited by 82% of the barber shops in Rolla alone. Hotels in Missouri as well as many restaurants are still discriminating in their service.

The only point that needs to be made is that a serious evaluation of the problems that exist in Missouri, especially since that is the home state of many of us, ought to be made rather than saying bravo for smacking the hand of the South for being a naughty child.

—Jon D. Mastin

Istanbul, Turkey, is a junior in Chemical Engineering. He has received the Foreign Student Scholarship during each year he has been in attendance at Missouri School of Mines and Metallurgy.

Onurcan Egemen, son of Mr. and Mrs. Ali Egemen, Pasalimani cad., No. 2/2, Istanbul, Turkey, entered Missouri School of Mines and Metallurgy this fall semester as a sophomore in Mining Engi-

neering, Petroleum Option. He was graduate "Cum Laude" from Robert College, Istanbul. His activities there included membership on the school yearbook staff, member of the Classical Music Club, and he also served as Assistant to the Registrar.

Javad Vakil, Arak, Iran, a senior in Nuclear Engineering, has received the Foreign Student Scholarship during each year he (Continued on Page 8)

### IT'S FUN TO ROLLER SKATE!



Open Every Night  
Except  
Sunday & Monday  
at 7:30  
\* \* \*

Sunday Matinee  
at 1:30  
\* \* \*

ROLLA ROLLER  
RINK

City Hwy. 66 West

MAN, I'D SURE LIKE A SMOKE.

YOU DON'T NEED TO SMOKE TO ENJOY REAL TOBACCO. TRY THIS COPENHAGEN.

MMM. REAL TOBACCO TASTE.

AND IT GIVES YOU A MAN-SIZE TOBACCO LIFT, TOO.

NO SMOKING

DATED FOR FRESHNESS

TRY A PINCH OF REAL TOBACCO TASTE

COPENHAGEN SNUFF

## SPACE, MISSILE & JET PROJECTS AT DOUGLAS

have created outstanding career opportunities for

## SCIENTISTS and ENGINEERS

B.S. degrees or better

Assignments include the following areas:

**Servo-Mechanisms**—relating to all types of control problems

**Electronic Systems**—relating to all types of guidance, detection, control and communications

**Propulsion**—relating to fluid-mechanics, thermodynamics, dynamics, internal aerodynamics

**Environmental**—relating to air conditioning, pressurization and oxygen systems

**Human Factors**—analysis of environment affecting pilot and space crews, design of cockpit consoles, instrument panels and pilot equipment

**Heat Transfer**—relating to missile and space vehicle structures

**Structures**—relating to cyclic loads, temperature effects, and the investigation of new materials, methods, products, etc.

**Aerodynamics**—relating to wind tunnel, research, stability and control

**Solid State Physics**—relating to metal surfaces and fatigue

**Space vehicle and weapon system studies**—of all types, involving a vast range of scientific and engineering skills

Get full information at  
**INDIVIDUAL ON CAMPUS INTERVIEWS**

with a Douglas representative

Tuesday & Wednesday, Oct. 30 & 31

We urge you to make an appointment with Professor Leon Hershkowitz, Assistant Dean of Faculty. If you cannot, please write to  
S. A. Amestoy, Staff Assistant to VP Engineering

**DOUGLAS AIRCRAFT COMPANY, INC.**  
3000 Ocean Park Blvd., Santa Monica, California

An equal opportunity employer

## Miner-Bearcat Game An Old MSM Tradition

1951

The Miners started the game off with a touchdown early in the first quarter against Cape Girardeau. We held them scoreless until early in the third quarter when they made their first and only T.D. Throughout the rest of the second half the Miners had possession of the ball a large majority of the time. The game ended Miners 19-Cape 6. We finished the season with a record of 3-2 to take 3rd place in the conference.

1952

Kirksville suffered a great defeat at the hands of the Miners by losing 52-19. We once again finished with a record of 3-2 to take 3rd place.

1953

The Warrensburg Mules were the target for the Miners before a large Homecoming crowd. Everyone but the Mules were pleased when the Miners won 20-0. The Mules never had possession of the ball any farther than their own 15 yard line. The Miners finished the year with a 2-3 record to take 4th place.

1954

The Miners were behind the Bearcats from Maryville 13-6 going into the last quarter when we showed a sudden spark of energy and life and scored two quick T.D.'s to win the game by a score of 19-13.

1955

The Mules came back seeking revenge for the loss the Miners had handed them in the 1953 Homecoming game. After a long hard well-fought game by both teams the Mules came out with a 25-19 victory. We finished the season with a 2-3 record to tie for second place.

1956

There is no record available of who we played for Homecoming, but we tied with Warrensburg for first place with a 4-1 record.

1957

The game was scheduled against Cape, but they asked it to be postponed because several of their players were out with the Asian flu. We played them at the end of the season and they won 32-0.

1958

The Maryville Bearcats fell prey to the Miners by the score of 20-7. We finished second with a record of 4-1.

1959

By half time the Miners had rolled over SMS and tallied up a score of 26-0. The second half went a little slower. When the final whistle blew we were out front by 32-8.

1960

The Miners were scheduled to play a much superior team, the Maryville Bearcats, and lost 53-22. Even though we were behind at half time there was a gay air on the field as the MSM band played and the fraternities had their pledges compete in a pajama race.

1961

Last year the Miners defeated the SMS Bears 13-6 and took the conference lead. They ended the season tied for second place with Cape.

## MSM Professors To Attend Off- Campus Activities

Prof. C. W. Grate of the Mechanical Engineering Department has gone to the George C. Marshall Space Flight Center at Huntsville, Alabama at the request of their personnel offices. They are interested, at the center, in fifteen or twenty additional engineering co-op trainees. They have opportunities there for most of the engineering disciplines offered on this campus.

The tenth annual Midwest Solid State Conference is being held October 19 and 20 at the Midwest Research Institute. Three staff members of the Physics Department, Dr. Stettler, Dr. Hopkins, and Dr. Gerson and a few graduate students are attending.

On Saturday, October 20, there is to be a meeting of the Missouri (Continued on Page 8)



Large enough to hold your future,  
small enough to know you

**ENGINEERS:** American Air Filter Company, Louisville, Kentucky, is the world's largest manufacturer of air filters, dust control, heating, ventilating and air conditioning equipment. Yet AAF is small enough for you to know well.

AAF needs graduate engineers to fill responsible jobs in sales, product engineering, research and industrial engineering. Eventual location might be in any of AAF's six plant cities or one of the more than 150 sales offices throughout the U. S.

Men who join AAF will be enrolled in the Company's full-time formal Training Program. Interested seniors should make an appointment now through the Placement Office. An AAF representative will visit the Campus on

Nov. 7



**American Air Filter**  
COMPANY, INC., LOUISVILLE, KENTUCKY

## THE BELL TELEPHONE COMPANIES SALUTE: BILL TYLER

Bill Tyler (B.S.E.E. 1958) is an Engineer with Southern Bell in Louisville. His specialty is telephone power equipment. Recently he engineered power plant replacements valued at nearly \$300,000.

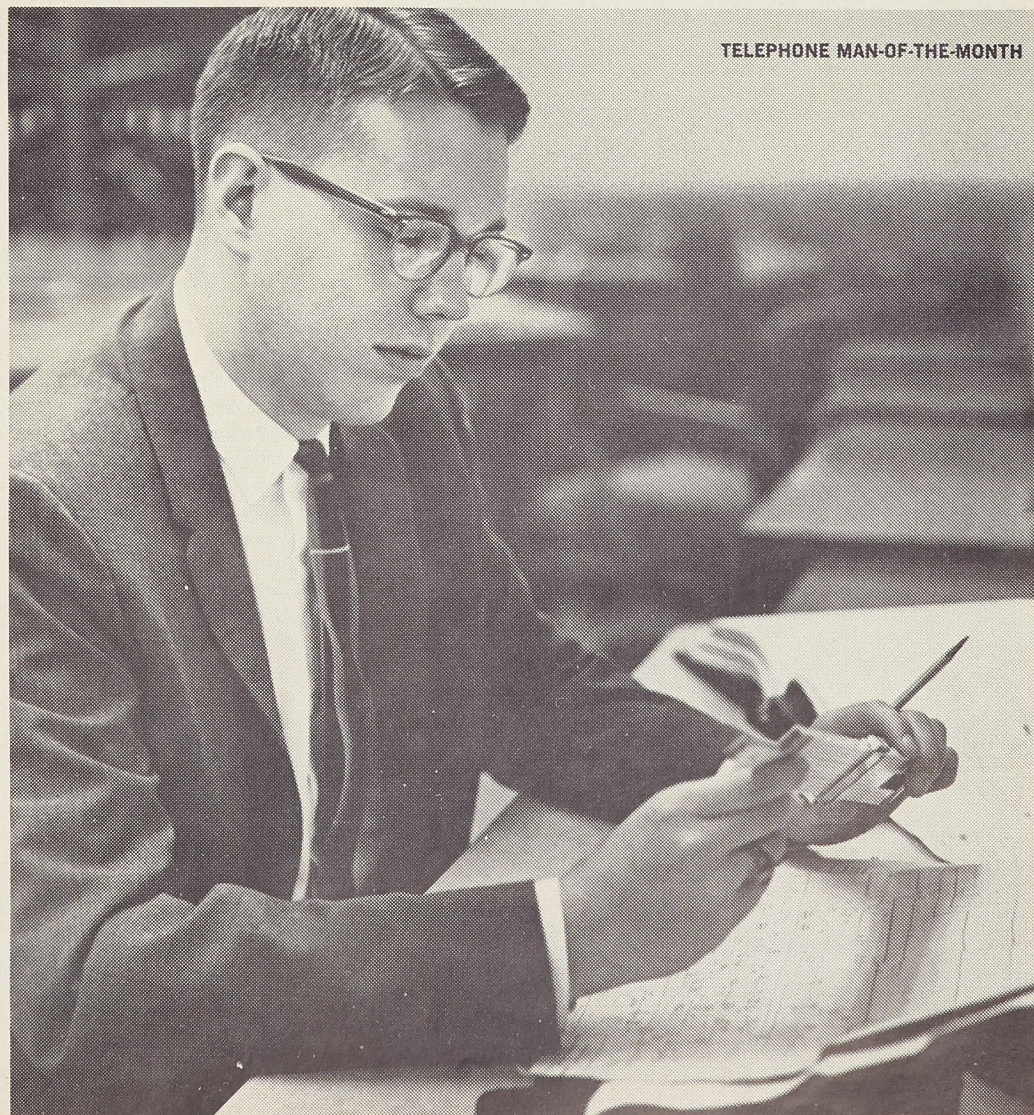
Previously, Bill was an Equipment Engineer. In that job he prepared specs for power, carrier and repeater, teletypewriter and other equipment. On a special assignment,

he taught a magnetics theory course to high school science teachers. After hours, Bill joins other telephone people in fixing "Talking Machines" for the blind.

Bill Tyler and other young engineers like him in Bell Telephone Companies throughout the country help bring the finest communications service in the world to the homes and businesses of a growing America.



**BELL TELEPHONE COMPANIES**



TELEPHONE MAN-OF-THE-MONTH

## UCCF Discusses Henry Miller's Works

Since Henry Miller wrote, "Topic of Cancer" and "Topic of Capricorn", serious questions concerning obscenity in literature in this country have been raised. Originally banned in the United States, all of Miller's works are presently available at bookstores. Henry Miller has been called everything from a religious genius to a common pornographer.

The works of Henry Miller will be reviewed and discussed this Sunday evening Oct. 28th, at 6:30 p.m. at the UCCF Center, 1608 Pine St. Faculty and students welcome.

805 Pine  
Authorized Agent  
Jeweler  
G. L. Christopher  
WATCHES  
OMEGA

## Greek News

### KAPPA ALPHA

This weekend the K.A.'s will again highlight their homecoming festivities with their second annual New Year's Eve Party. The party will be climaxed by the twelve midnight confetti and confusion, at 2:00 o'clock Sunday morning. Entertaining will be the Charles Beech Orchestra.

The homecoming display was constructed by the pledges and active chapter, we're hoping it will be an award-winning presentation.

Our pledge class is being led this semester under the able training of Jim Philpott, pledge trainer. The pledge class officers are:

(Continued on Page 5)

### SIGMA NU

The men of Sigma Nu are looking forward to this Homecoming with great anticipation. Friday night the chapter house will turn into a barnyard for our "Seed Party." Atmosphere and local color will be provided by brother Tom Bryson. The decorations will be rustic and extremely seedy. Saturday night the "Esquires" will provide the music for an evening of good cheer and reminiscing with returning alumni. The younger men of our chapter are looking forward to meeting some of the older "grads" who will be spending this weekend in their old stamping grounds.

Last week our pledges diligently went in search of the "Great

Pumpkin." They finally found it somewhere far out of town in the wee hours of the morning. When they started back to the chapter house, they discovered a definite lack of transportation and were forced to return afoot. However, the mission was a complete success because we are now in possession of the "Great Pumpkin."

### BETA SIGMA PSI

Last Sunday, October 21, Beta Sig's initiated four new members; John Nolle, Al Kroeter, Al Panhorst, and Gerry Tesson.

Beta Sigma Psi activated a new chapter, Theta, at Michigan Tech in Houghton, Michigan, on October 6. Iota chapter will be activated later this semester at Missouri U.

Locally, the men of Eta Chapter are still working away at the mountain of work left from the

(Continued on Page 5)

### THE STUDENT UNION

POPULAR FILM CLASSICS presented every Sunday.  
Three Show Times — 2:30 P. M. - 5:00 P. M. - 7:30 P. M.

COMEDY SHOW CASE presented every third Wednesday of each month.

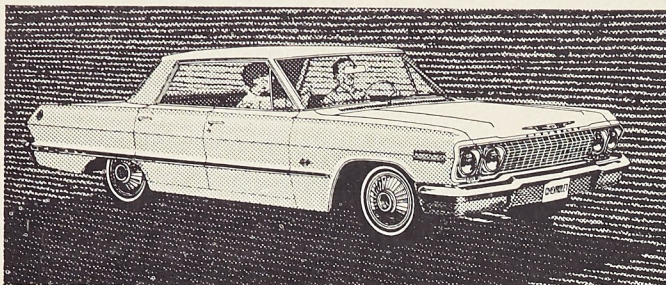
FOREIGN FILM CLASSICS presented every second and fourth Wednesday of each month.

HOLIDAY FILMS shown on dates around Halloween, Thanksgiving, Christmas, Valentine's Day, and Easter.

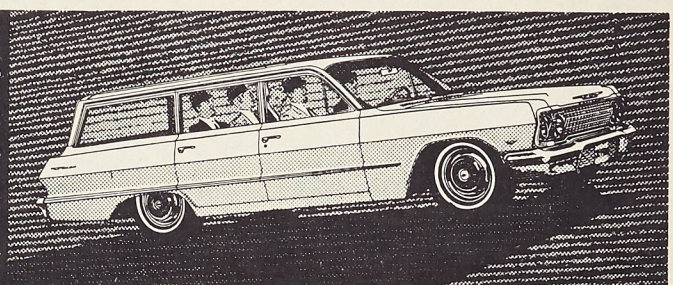
FILM AND LECTURE SERIES on noteworthy and interesting topics every Friday night.

At the STUDENT UNION BALLROOM

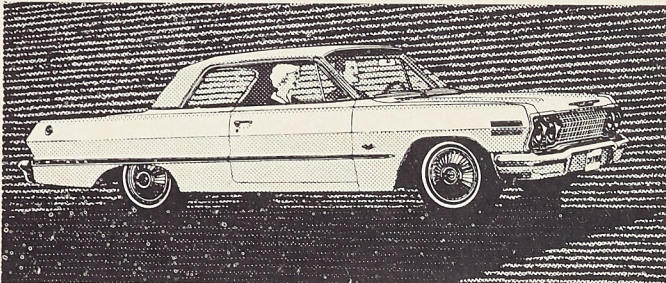
"A Student Union by the Students for the Students"



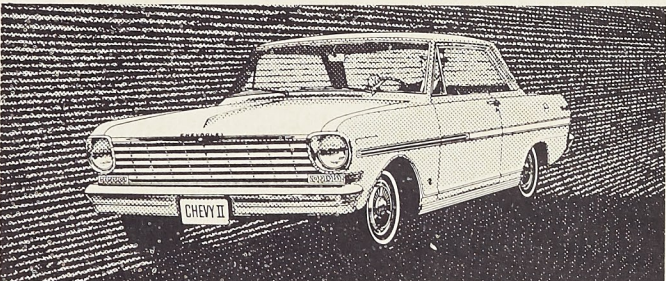
'63 CHEVROLET IMPALA SPORT SEDAN



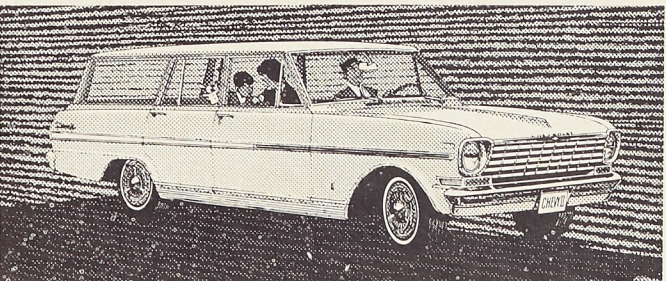
'63 CHEVROLET BEL AIR STATION WAGON



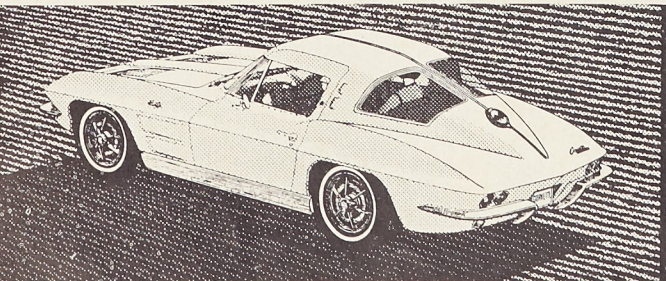
'63 CHEVROLET IMPALA SPORT COUPE



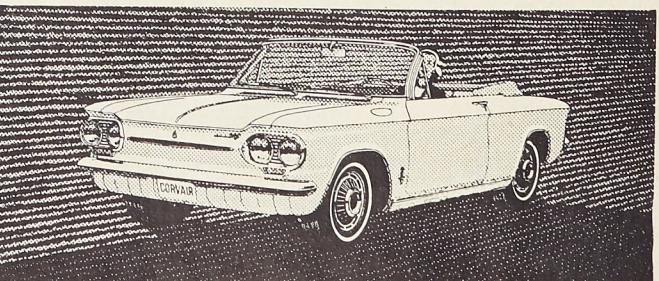
'63 CHEVY II NOVA 400 SPORT COUPE



'63 CHEVY II NOVA 400 STATION WAGON



NEW CORVETTE STING RAY SPORT COUPE



'63 CORVAIR MONZA CONVERTIBLE



# NOW...GO CHEVROLET FOR ONE-STOP SHOPPING IN '63 IT'S EXCITING!

This is about the best thing that's happened to buying cars since Chevrolet started building them—**four entirely different kinds of cars to choose from at your Chevrolet dealer's One-Stop Shopping Center.** If you're a luxury-lover, you'll probably want to go no further than those 13 plush new Jet-smooth '63 Chevrolets. Want to give your budget an even bigger break? Step over and see what's new with those 10 nifty models of the '63 Chevy II. Or maybe you've been eyeing sports-car caps, in which case have a go at a sporty new '63 Corvair (8 of them, including three snazzy bucket-seat Monzas and those big Greenbrier Sports Wagons). There's even something for the all-out sports-car set—the daring Corvette Sting Ray. Picking a new car has never been easier. (Unless you'd like to own them all!)

*It's Chevy Showtime '63!—See four entirely different kinds of cars at your Chevrolet Dealer's Showroom*

## U. Florida, Navy Missiles, In Doctor Harden's Story

Doctor Richard C. Harden, Associate Professor in the Electrical Engineering department of MSM, came to us last year from the University of Florida after many



DR. RICHARD C. HARDEN  
years of experience and education.

Mr. Harden received his vast college education from the U. of Florida, Gainesville, and like many students received his earlier

education while on co-op, co-oping with the Florida Power Corporation at Orlando.

In 1942 while a junior seeking a BS, he married and now has a 17-year-old daughter attending Rolla High School. But Uncle Sam didn't seem to want Mr. Harden to go right through with his education and deviated his path of learning with a "we want you." And so it was we find Navy Ensign Harden, rocket and guided missile range officer, stationed at the United States Naval Ordnance Test Station, China Lake, California. Upon being discharged in June of 1946, he then took a slight change in title, but not in job and stayed at China Lake as rocket and guided missile range engineer until 1950.

Deciding to leave the Navy in California Doctor Harden went to Cape Canaveral where he was chief engineer for the Air Force Missile Test Center for a two year period.

From here still staying in his home state, Florida, and with the Air Force he went to Patrick Air Force base and was employed as  
(Continued on Page 8)

## MSM's Muelbauer To Attend National Tau Beta Pi Group

The annual national convention of Tau Beta Pi is being held October 16 through 20 at Long Beach, California this year. Richard Gilbert, chapter president, and Prof. Karl Muelbauer of the Mechanics Dept. will be in attendance. Prof. Muelbauer is the chapter's faculty advisor. Gilbert will be representing the MSM chapter at the convention. They will meet with convention officials to make arrangements for next years convention which is going to be held here on the Missouri School of Mines campus.

### KAPPA ALPHA

(Continued From Page 4)

Lloyd Schattyn, president; Gary Lemberger, vice-president; Cal Willis, treasurer; Joe Wooldridge, secretary; Bill Bennett, PIFC representative. Their pledge dance was held on September 29th, had the theme of "Freedom Riders," and was a huge success. The Esquires were the entertainment for that night.

### DELTA SIGMA PHI

On the weekend of October 19 through the 21, the Delta Sigma Phi fraternity held their initiation for the Fall semester. The informal initiation was held on Saturday night and was followed by formal initiation on Sunday morning. After the formal ceremony had been completed, everyone attended church services at St. Patrick's church. Later Sunday evening the newly initiated brothers were honored at the annual initia-

tion banquet, which was held at the Houston House in Newburg. The guest speaker for the banquet was Dewey Allgood of the MSM Athletic Department. Mr. Allgood's topic was: Fraternities—their role in college life.

The men initiated into the Brotherhood of the Delta Sigma Phi fraternity are: Don Barrett, Bob Bray, Dave Cruze, Jerry Hartenberger, Roger Huston, Bill Kruse, Tom Leslie, Dave Parker, and Gene Thomas.

At Sigma Pi they are anxiously awaiting this evening and the start of an exciting party weekend. Many Alumni are returning to help them celebrate this annual Homecoming.

Tonight a hayride is planned for both the Alumni and the active chapter, which should be fun for all. Tomorrow they will support their queen candidate, LaDenna McMunn, at the School dance, and later back at the house a trio of Sigma Pi brothers will be honored at a pinning ceremony; Paul Becher to Miss Shirley Scott, Ken Masters to Miss Mary Reynolds, and Gary Herman to Miss Gwen Graham.

Last Saturday the actives and pledges started working on the outside decorations. On Sunday the actives worked while the pledges played a challenge football game against the Lambda Chi pledges.

## NOTICE!

### SPACE ALLOTTED FOR CYCLES, MOTOR SCOOTERS . . .

The Traffic Safety Committee has announced the location of three parking places on campus that may be used by motor scooters, cycles, and bikes. The above parking places are located at:

1. In lot No. 2 at the south end of the Mining Building by old granite block.
2. In lot No. 6 at the southeast corner by the entrance.
3. At the north side of the old Met. Building in the old coke bin.

No parking permit is required but owners are cautioned not to utilize parking spaces restricted to automobiles.

### BETA SIG

(Continued From Page 4)

building of our new annex. The two work weekends held already this year have accomplished much improving the Chapter House and Annex. Their House has received a new floor in the den and ceiling in the lounge. The Annex has received two coats of paint and the shower room put into operation.

All the Beta Sigs are naturally looking forward to Homecoming and have planned an "Intern Party" for Friday night. The parties should be a rousing success with twelve Alumni already planning to attend.

## SUPPORT THE MINERS!

### LONG INSURANCE AGENCY

A. E. Long, M. S. M., Ex '22  
810 Pine St. ROLLA, MO. Phone EM 4-1414  
"Service Is Our Business"

## Acacia's Candidate For Homecoming Queen



SUE SHECKELLS

Acacia's candidate for Homecoming Queen is Miss Sue Sheckells. Sue is a very pretty blonde from Webb City, Missouri.

Very active in high school, Sue's honors were well deserved. She was queen of the school yearbook and a cheerleader. Sue's other activities were many, but she always found time for the studies as she was on the honor roll many semesters.

Presently, Sue is a freshman at Missouri University. There she also shows her enthusiasm by being a member of the Pep Club and the Missouri Student Association.

Her interests in sports is shown by the fact that she is an excellent tennis player and a very good swimmer.

The Brothers of Acacia wish the best of luck to their candidate, a very sweet girl.

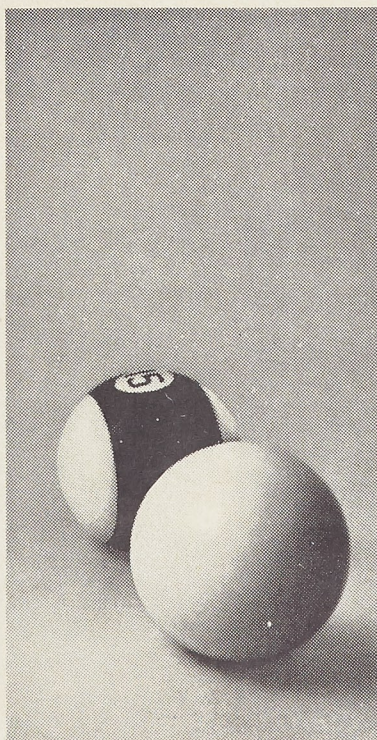
## The Finest in..... DRY CLEANING

Pressing While You Wait.  
One Day Service if Requested.  
Pick Up and Delivery Service.



**MODERN**  
Dry Cleaners  
9th and Pine

Dial  
EM 4  
2509



## A man with Alopecia Universalis\* doesn't need this deodorant

He could use a woman's roll-on with impunity. Mennen Spray was made for the man who wants a deodorant he knows will get through to the skin . . . where perspiration starts.

Mennen Spray Deodorant does just that. It gets through to the skin. And it works. All day. More men use Mennen Spray than any other deodorant. Have you tried it yet? 64¢ and \$1.00 plus tax

\*Complete lack of body hair, including that of the scalp, legs, armpits, face, etc.

# HOMEcoming QUEEN CONST

## Independents

The Independents have outdone themselves this year by selecting Miss JoAnn Wojcicki as their choice for Homecoming Queen.



**JOANN WOJCICKI**

Lovely JoAnn was born in St. Louis nineteen years ago. She is a well turned five foot five inch blond with lovely blue eyes. Her friendly personality is accentuated by her pleasing smile and mild manner. A graduate of St. Alphonsus (Rock) High School in St. Louis, she is now working as a beautician. She is not one to remain at home while others enjoy the more active sports like ice skating, golf, tennis, and horseback riding. JoAnn's other interests include dancing and most kinds of music.

Miss Wojcicki will be escorted by Dave Lindsay. Dave is a senior in Mechanical Engineering and a member of Tech Club.

## Theta Xi

This year Theta Xi Fraternity is presenting as its candidate for Homecoming Queen, Miss Mary Eveta Hughes, daughter of Mr. and Mrs. Frederick E. Hughes of Kirkwood, Missouri. Mary is at present a day student at Lindenwood College in St. Charles, Mo., where she is majoring in Spanish. The Homecoming Queen com-



**MARY EVETA HUGHES**

petition is not a new experience for this attractive, 5' 6" brunette. Early last month she was crowned Queen of the Annual Fall and Grape Festival which is held in St. James, Mo. Mary is well acquainted with MSM, as she has attended several parties here. Among her interests are tennis and bowling, and she has been active in band and in church organizations.

Miss Hughes will be escorted to the Homecoming Dance by Jerry Johnson, her pin-mate.

## Sigma Phi Epsilon

Miss Francis A. Rathgeb is Sigma Phi Epsilon Fraternity's candidate for MSM's 1962 Homecoming Queen. Fran's home is Alton, Illinois. She is presently a junior at Fontbonne College in St. Louis, where she is majoring in French. This summer she attended Laval University in Quebec, Canada, to further her studies.

Fran is engaged in many activities at Fontbonne, some of which



**FRANCES RATHGEB**

include Student Council, Social Advisor, Glee Club, and Language Club. Her outside interests are dancing, social and stage, and the various outdoor activities she participates in; like swimming, tennis, golf, and water skiing.

At the beginning of her Freshman year at Fontbonne she was elected Freshman Maid to Fontbonne's Homecoming Queen. Last February she was Maid of Honor to Sig Ep's 1962 Sweetheart.

Fran is pinned to Richard Skinner, a junior EE who is a member of Sigma Phi Epsilon Fraternity.

## Kappa Sigma

Miss Emily Flowers is Kappa Sigma's candidate this year for Homecoming Queen. Miss Flowers, or Em, as she is called, is a senior at Cleveland High School in St. Louis, Missouri.

Upon graduation from high school in June, she plans to enter Harris Teachers College in St. Louis for a degree in Elementary



**EMILY FLOWERS**

Education. Miss Flowers is seventeen years old, 5' 2" tall, brown hair, blue eyes, and a warm pleasing smile—all of which adds up to a candidate which Kappa Sigma is proud to have as their representative.

## Lambda Chi Alpha

Lambda Chi's candidate for Homecoming Queen is a 1943 vintage of one of the best models made in that year, and each year



**DONNA JENNINGS**

is adding to her endowments.

Donna Jennings graduated from Cleveland High School and in her senior year was candidate for the best dressed and best looking of the senior class.

She is presently working for Southwestern Bell Telephone Company in St. Louis and her picture has appeared in the company's publications many times.

Donna is not only a personal friend of nature, but she has a personality that would make "Manners" jealous. The Brothers of Lambda Chi think she is a very worthy candidate.

## Engineers Club

The Engineers Club's candidate for Homecoming Queen is Kathy Wilkerson, a five foot, blue eyed blond from St. Louis, Missouri. With her flashing smile and sparkling eyes, she can make anyone feel better just by being around her.

Kathy is 19 years old and works as an information operator



**KATHY WILKERSON**

at Southwestern Bell Telephone. She graduated from Lutheran High School Central in St. Louis two years ago. She was very active in High School with GAA, prom committee, and many other organizations. In her church she was a member of the Junior Walther League and she is a Sunday School Teacher.

Kathy likes to be with people which is the main reason why her ambition is to be an airline stewardess.

## Tau Kappa Epsilon

Judith Gay Herrman is the 20-year-old daughter of Mr. and Mrs. Fred Herrman of Rolla, Mo. She is a petite brunette, with dark hair and brown eyes.

A graduate of the Rolla High School in 1960, Judy was cheerleader for four years and a member of the French Club, Modern Music Masters, and the A-Choir. In her Junior year, she was an attendant to the Growler Queen.



**JUDITH HERRMAN**

As a Senior, she was a candidate for Homecoming Queen. She held the office of Worthy Advisor of the Rolla Rainbow Girls during her senior year.

Judy graduated from Christian College, junior college for women, at Columbia, Mo., in June of this year. At Christian she was a member of the the Student Government Association, associate editor of the college yearbook, and was elected to Delta Eta Chi, honorary science society. She was a candidate for yearbook queen her senior year. Judy was on the Dean's honor roll for the four semesters she attended.

## Phi Kappa Theta

Cathie Snelson, who is representing Phi Kappa Theta Fraternity, is a 5' 5" brunette with sparkling brown eyes. A natural personality, friendly smile and great desire to party, complement her beauty. She is a resident of St. Louis, Mo., where she attended high school at Nerinx Hall and graduated in 1958. Now 22 years



**CATHIE SNELSON**

of age she is employed as a private secretary by an attorney.

Cathie's hobbies include modern dancing, sports, and teaching sewing in her spare time. Her escort for the Homecoming festivities will be Ken Abkemeier.

## Kappa Alpha

Kappa Alpha's Homecoming Queen candidate for this year is auburn-haired, blue-eyed beauty, Miss Gail Ruth Loughridge.



**GAIL LOUGHRIDGE**

Pleasingly arranged 5' 6" and 118 pounds, she was Miss South Central Missouri of 1962 and represented this area at St. Joseph in the Miss Missouri contest. Her talent entry in the contest and her major interest is dress designing and sewing. Gail attended Southwest Missouri State last year, where she pledged Sigma Sigma Sigma. At the present time she is a student here at MSM, but her plans for the future include transferring to Lindenwood this coming semester, where she will major in Home Economics.

## Triangle

Marti Kay, as she is called by her classmates at Eastern Illinois University, is a sophomore majoring in Elementary Education. She plans to administer her reading, writing, and arithmetic to children of kindergarten or first grade level.

Marti has a deep interest in vocal music, has appeared in



**MARLEEN KAY ROBERTS**

several vocal concerts, and also plays a respectable piano. Dramatics has also been a favorite plaything of Marti's and when time permits, it is not at all unusual to find her running through a comedy skit. Athletically she caters to softball, volleyball, and golf. "Although Sam Sneed may shoot a better game than I, he'll have to prove it to me first," quotes the pert 5' 9½", blue-eyed, brown-haired beauty.

Best of luck from each of us at Triangle Fraternity to Marleen Kay Roberts, a real sweetie.

# CONTEST CANDIDATES FOR 1962

## Sigma Pi

The Alpha Iota Chapter of Sigma Pi Fraternity has chosen Miss LaDenna McMunn as their Homecoming Queen candidate.

Miss McMunn is 21 years of age, 5' 4" in height, has dark brown hair and hazel eyes.

While in Malden High School, Malden, Missouri, LaDenna was active in the music club, pep squad, mixed chorus, and bowling. She is presently employed as a secretary for the McMunn Tele-



LaDENNA McMUNN

vision Service in Malden. Miss McMunn was chosen second alternate in the Miss Malden Beauty Contest of 1962.

Her escort will be William W. Biemann, a Junior in Civil Engineering.

Sigma Pi is proud of its candidate for the Homecoming Queen contest and wishes her the best of luck in this and any other pursuits.

## Phi Alpha

Phi Alpha Fraternity is proud to present Miss Carolyn Miller as our candidate for Homecoming Queen. The 5' 5" brown haired Miss Miller is presently a senior at Lutheran Hospital school of nursing in St. Louis, Mo. During the past two years she has been co-editor of the hospital newspaper, member of the year book staff, co-chairman of social activities, and a member of the student council. She is also a member of the National Student Nurse Assn. and the Missouri State Student Nurse Assn.



CAROLYN MILLER

The 20-year-old Miss Miller is originally from Del City, Okla., where she graduated from high school in June of 1960. While she attended high school she played a clarinet in the high school band and was elected Del City High School Band Queen of 1960.

## Tech Club

The Tech Club's candidate for Homecoming Queen is Miss Louise Shippert. Louise is a very lively 5' 5" natural blonde from Dixon, Illinois.

An active participant in high school activities, Louise's accom-



LOUISE SHIPPERT

plishments have been many. First in the field of music, she has been active in the Robed Choir and choral ensembles. She is an active member and secretary of the Thespian Honorary Dramatic Society. As well as all this she has excelled in both ballet and dancing. Louise has represented her class as attendant for the Valentine Ball. She has been active as a cheerleader which proves her enthusiasm for sports.

Her interests are many and varied; they include horseback riding, swimming (of which she is a picturesque addition to any beach) and dancing, even to the winning of twist contests!

Louise's charm and poise plus her physical attributes all add up to a mighty sweet girl!

Upon graduation from high school next spring, Louise plans to attend Moser Secretarial School for girls in Chicago, Illinois.

Louise will be escorted by Pete Balser a sophomore majoring in Metallurgy.

## MRHA

The Men's Residence Hall Association presents Carolyn Coon,



CAROLYN COON

an astute five foot four inch tall, blue-eyed blonde, who resides in Kirkwood, Missouri, where she is a senior attending the Kirkwood High School. Carolyn is intently interested in music, mainly the choral variations, as represented by the capella choir, for which she has tried out. She intends to follow a career in professional nursing, to coincide with her present interest in the field.

## Sigma Tau Gamma

Sigma Tau Gamma is indeed proud to announce their candidate for Homecoming Queen, Miss Patricia LaBrier. Pat's home is in Berkeley, Mo., where she attended Berkeley Senior High School.

Presently, this bright-eyed twenty year old beauty is a senior at Northeast Missouri State Teachers College where she is majoring in Social Science. During her college career at Kirksville



PAT LaBRIER

she has belonged to numerous organizations and honor societies, including Sigma Sigma Sigma (Social Sorority), Alpha Phi Sigma, Cardinal Key, SNEA, Historical Society, participated as a Majorette for three years, Student Mentor and has served on the school's social committee. Last year Pat represented the junior class in the school's annual Echo Queen Pageant. Among Pat's many attributes she displays a wonderful personality and Sigma Tau is extremely proud she is our candidate.

Pat is pinned to Ron Ragland who is a senior E. E.

## Pi Kappa Alpha

The lovely lady representing Pi Kappa Alpha for Homecoming Queen, 1962, is Miss Marian Moore. She is presently attending school in Mexico, Mo., and



MARIAN MOORE

plans to major in language at the University of Missouri.

This petite little brunette has brown eyes and stands 5' 4". Marian's main interests are music, swimming, and dancing. Her escort will be Maury Green.

## Beta Sigma Psi

Beta Sigma Psi's candidate for Homecoming Queen of 1962 will be Miss Ruth Anne Fuelle. A resident of St. Louis, Ruth is en-



RUTH ANNE FUELLE

rolled as a senior at Deaconess Hospital, School of Nursing.

Ruth graduated from Lutheran High Central in St. Louis in 1960, where she actively participated in the TIM club (those interested in medicine), the GAA (Girl's Athletic Association) and other organizations.

Though Nurses' Training takes up a good deal of her time at Deaconess, she is presently wholeheartedly engaged in the Young Womens Athletic League of St. Louis, where she is proving to be quite a volleyball star. Quite a politician, Ruth was elected treasurer of the senior class, having served as secretary for her junior year.

A lively, pretty, blue-eyed gal, Ruth is by no means a stranger at the Beta Sig parties, being the pinmate of one of our seniors, Wil Gerhardt.

## Sigma Nu

Miss Judy Schmutzler, Sigma Nu's candidate for homecoming queen is currently a sophomore



JUDY SCHMUTZLER

at Missouri University. Judy is a graduate of West Plains High School. Miss Schmutzler has

## Delta Sigma Phi

Delta Sigma Phi takes pride in Queen candidate, Miss Mary Davis. Mary is now a freshman at Central Missouri State College at Warrensburg. Her home town is Boonville, Missouri. She is a graduate and former Homecoming Queen of Boonville High School. Mary's hobbies include dancing, swimming, golfing, and many other athletic activities. While in high school, Mary's academic record was high enough to merit her membership in the National



MARY DAVIS

Honor Society. We at Delta Sigma Phi hopes that her impending college career will be every bit as successful as her high school career was. It also feels that she is the best candidate for Homecoming Queen of MSM and would like to wish her the best of luck. Mary will be escorted by Brother John Million.

## Pledge Pajama Race Between Game Halves

Between halves of the Miner's Homecoming game with Maryville, Saturday, the third annual IFC-sponsored Pledge Pajama Race will be run. This race, participated in by all the fraternities on campus, has been won by the pledges of Kappa Sigma both of its first two years on the MSM Homecoming scene.

The IFC Pajama Race trophy is a traveling trophy that must be won by the same fraternity three years in succession in order to be retired.

As the name indicates, the pledges running in the race wear pajamas and run the relay along four lengths of the football field. This year as always, the race will do much to add to Homecoming at MSM.

brown hair, blue eyes, and is 5 feet 5 inches tall. Judy is currently majoring in elementary education, and hopes to attain her masters before leaving school. Miss Schmutzler is a resident of Johnston Hall and represents Johnston Hall in many ways on campus.

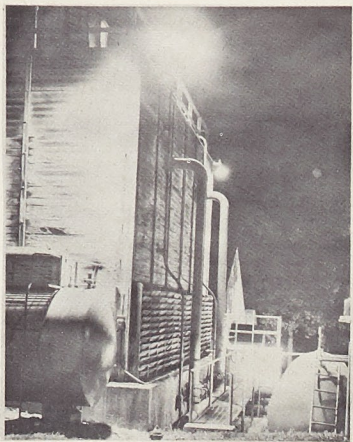
## NOTICE

In the event of bad weather on the afternoon of Oct. 27 the Homecoming Queen will be crowned in the Student Union Ballroom during the Homecoming Dance, rather than at the half time ceremonies.

## MSM Photo Club Offers Enjoyment to Members

The MSM Photo Club is one of the oldest organizations on campus. It started in the mid-30's and has been functioning in varying degrees of enthusiasm ever since. It is resently very act-

ideas of photography among its own members, the club tries to reach the entire student body by having a photo contest every year which every student and instructor is invited to enter. This years



ive with its membership growing at a steady rate. Membership has increased five fold in the last three years; from five members in 1959 to twenty-five this year.

The purpose of the club is to further an interest in photography at MSM and to present the members with helpful information and new ideas about phases of photography in which they are interested. Information about new ideas in photography are presented to the members at regular meetings. After the business portion of the meeting is dispensed with, a talk on some phase of photography is given to keep the members abreast of new developments. Sometimes a movie by one of the large camera companies is shown.

Besides just talking about photography, a lot of work is done in trying out and becoming proficient in new methods. Special outings are held where a certain type of photography is tried out by all the members. The photograph on this page was made by a tricky "light available" process on one of these outings.

The club also provides its members with a complete dark room and photo lab in the basement of the Rolla Building. This lab can be used for developing and all types of processing of pictures. This is a good service to be offered by a club which has its dues set at only one dollar a semester.

Besides trying to advance the

### FOREIGN STUDENTS

(Continued From Page 2)  
has been in attendance at Missouri School of Mines and Metallurgy, is a member of the International Fellowship and Nuclear Engineering Society.

### OFF-CAMPUS ACTIVITIES

(Continued From Page 3)  
section of the American Association of Physics Teachers at William Jewell College, Liberty, Missouri. Several members of the Physics Dept. are planning to attend this meeting. Dr. Fuller, who is secretary of the organization, is going to present a short discussion on the research facilities of the Physics Department here. The spring meeting is going to be held here at MSM.

### HARDEN

(Continued From Page 5)  
deputy chief and later manager of the Optics-Mechanical Branch, Technical Systems Laboratory, Air Force Missile Test Center.

It was now after wide experience in both industry and supervision that Doctor Harden went back to the University of Florida and received his Bachelor and Master's degrees in 1956 and 1957 respectively. Not yet satisfied though, he went on to acquire his Ph. D. in June of 1961.

Dr. Harden and family now make their home here in Rolla at 909 East 9th Street. Last summer, to keep up with things, Dr. Harden went back to Florida and worked for R. C. A. at Cape Canaveral in the Systems Analysis Branch.

Now back at MSM for the beginning of his second year we find Doctor Harden teaching network sytensic, analysis and communication theory in both the graduate and undergraduate level. Doctor Harden also serves as a freshman and sophomore advisor willing always to give able assistance when needed.

### SUPPORT OUR ADVERTISERS

Handsome  
**Buckaroo**  
**BULL DENIM**  
WESTERN PANTS  
AND JACKETS

Dress-up westerns you'll wear with pride. Slim and trim styling in heavy weight, Sanforized BULL DENIM for men and boys. They're long on wear and easy care.

### VAT-DYED

These authentic western BUCKAROO pants and jackets will never change shade or shape.



**RANDY'S MEN'S and BOYS'**



WELCOME  
OLD GRADS

★  
Have a Wonderful  
Week-End  
★

**CAMPUS Book Store**

Just Across the Campus

## BETTER BUY THE CASE



**MUELLER DISTRIBUTING CO.**  
Rolla, Mo.

## THE LOUNGE

1005 PINE ST.

PIZZA

PIZZA

### LARGE & SMALL PIZZAS

MINERS WELCOME

CHEESE  
ONION  
HAMBURGER  
SAUSAGE  
MUSHROOM  
PEPPERONI  
HALF & HALF  
COMBINATION

Also the LOUNGE SPECIAL

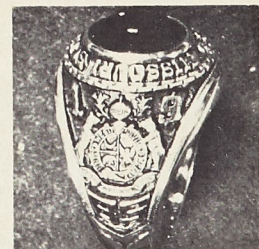
### FREE DELIVERY

Monday Thru Friday 6 to 1 A. M.

Saturday 5 to 12

EM 4-1583

## THE JOHN ROBERTS CLASS RING



- Preference of weights, stones, and precious metals.
- Deeply modeled die work with all lettering precisely cut and individually polished.
- Extremely thick shanks for perfect balance and rugged wear.
- Heat treated finish for permanence.
- 3rd Dimensional Greek Letter Encrusting (Inlay Process).
- Fully guaranteed, with a gold hardness of over 200 Brinell.
- Choice of Degree and Curriculum.
- Fastest delivery in the industry (6 weeks).

Campus Representative:  
**CAMPUS BOOK STORE**

EM 4-3710

Rolla, Mo.

## JOE MINER

I FOUND OUT HOW THEY GRADE THE TEST IN THE MECHANICS DEPARTMENT...

HOW?

THEY THROW THEM ALL UP IN AIR. THOSE THAT STICK TO THE CEILING GET "A"'S, THOSE THAT LAND ON EDGE ON THE FLOOR GET "B"'S,

THE REST, GET "D"'S AND "F"'S.

I GUESS THAT'S WHY "OLD ED" FLUNKED US!

YES, HE "WEIGHTS" THE TEST TOO!

KRIEGER

### MSM Cheerleaders, Volunteering Time, Deserve Our Help

MSM is again fortunate to have six interested girls to be its cheerleaders. They are at every home game and have also travelled to the games at Washington University in St. Louis and Southeast Missouri State at Cape Girardeau.

The captain of the cheerleaders is Sandy Stack, a sophomore from St. James High School. The other girls are Joanne Smith, Junior from Westport High School in Kansas City; Carol Middleton, Freshman from St. Clair High School; Stephanie Leicht, Junior from Cleveland High in St. Louis; Jan Talbot, Freshman; and Connie Watson, Sophomore, a local girl from Rolla High School.

The girls spend a great deal of time practicing and preparing for the games and rallies. The Miners could easily show their appreciation by getting in the spirit of things and backing the cheers. The girls would like to see more school spirit at the Miners' athletic contests because they believe that it truly helps the team perform better. They also believe backing by organized groups on campus for pep rallies and cheering sections would be a great boost.

To aid them in their work, the cheerleaders would like to have the use of a portable public address system for games and pep rallies. They would also appreciate suggestions for new uniforms.

The cheerleaders want to remind the Miners that there is a school fight song. Most schools take pride in their school song, but it is doubtful that most Miners even know that there is one, much less the words. As a matter of fact, it was written by Fred Waring and is often played by the MSM band at the football games and pep rallies.

Get out and back the cheerleaders by learning the school song and cheers. Show these girls that the Miners appreciate the spirit and work they are giving this school.

### Personality Column

James Verdi, Commander of Sigma Nu, was recently engaged to Miss Emily Simmons, of Lindenwood College.

During the summer Nick Alonge, Sigma Pi, became engaged to Miss JoAnne Marinola.

### Tucker Dairy Company, Inc.



DAIRY PRODUCTS

103 W. 10th St.

Rolla, Missouri

Phone EM 4-3700

### The LAUNDRY CENTER LAUNDRY - DRY CLEANING - SHIRTS Complete Bachelor Laundry Service

Corner 7th and Rolla Streets

ALSO FEATURING

New Coin-Operated Self-Service Laundry

## Have a real cigarette—have a CAMEL

"For real taste, nothing like a Camel"

*Orin Murray*  
FIELD SURVEY ENGINEER,  
GLEN CANYON DAM, ARIZONA

The best tobacco makes the best smoke!

© 1962 R. J. Reynolds Tobacco Company, Winston-Salem, N. C.

# Archimedes: Scientist and Mathematician in Ancient Age

To truly appreciate today's highly advanced mathematical system, we should keep in mind those inquisitive men whose simple, guiding ideas paved the way for the great proficiency of today's mathematics and physical science.

"Modern minds in an ancient age" is certainly descriptive of the many Greek mathematicians and scientists who attained such a high level of mathematical knowledge with so very little fore-knowledge to guide them.

Archimedes, the topic of this week's article, is considered the greatest intellect of antiquity. He and Newton would have understood each other perfectly. Of all the ancients, Archimedes is the only one who habitually thought with the unfettered freedom which today's mathematicians allow themselves, for he alone had sufficient stature to rise above the obstacles thrown in the path of progress by frightened geometers who listened to the whims of philosophers.

In body and mind Archimedes (287-212 B. C.) was an aristocrat. The son of the astronomer Pheidias, he was born at Syracuse, Sicily, and reputed to be related to Hieron II, King of Syracuse. As a result of his aristocratic temperament, he maintained a contempt for his own mechanical inventions, a product

of the greatest mechanical genius of all ages. His contributions to pure mathematics completely overshadow his work in applied mechanics.

The legend of his personality paints a perfect picture of the popular conception of what a great mathematician should be. He left his meals untouched when deep in mathematics. On making his famous discovery that a floating body loses in weight an amount equal to that of the liquid displaced, he leaped from the bath in which he had made the discovery by observing his own floating body, and dashed through the streets of Syracuse stark naked, shouting "Eureka, Eureka." (I have found it, I have found it.) He had discovered the first law of hydrostatics.

Another exclamation of Archimedes that has come down through the centuries is "Give me a place to stand on and I will

move the earth". He was deeply intrigued with the workings of levers and their governing laws.

In one of his eccentricities, Archimedes resembled many of the more modern mathematicians. Anything within sight that had a clean surface was victim for his drawings or calculations, blackboards, sand, walls, or his body when anointed with oil after a bath (he would work calculations with his fingernails on the oily surface).

Like many of those obsessed with science or mathematics, Archimedes was a lonely sort of eagle throughout his life. As a young man he had studied for a short time at Alexandria, Egypt, where he made two life-long friends in Conon and Eratosthenes. Only with these two did Archimedes feel that he could share his thoughts and experiences.

In the realm of pure and ap-

plied mathematics, Archimedes uncovered an almost infinite number of new concepts and methods of calculation. Space allows only a bare and inadequate summary of his principal additions.

He invented general methods for finding the areas of curvilinear plane figures and volumes bounded by curved surfaces, and applied these methods to many special instances, including the circle, sphere, any segment of a parabola, the area enclosed between two radii and two successive whorls of a spiral, and segments of surfaces generated by the revolution of all the geometric shapes about their principal axes. He calculated pi, invented a number system capable of handling numbers as large as desired (unknown up to that time); in mechanics he laid down some of the fundamental postulates, discovered the laws of levers, and created the entire science of hydrostatics and its application.

The key to his enormous success lay chiefly in his method, the use of his mechanics to advance his mathematics. In short, he used anything and everything that

suggested itself as a weapon to attack his problems.

Another area of mathematics which Archimedes "invented" was the Calculus. He created the integral calculus and made great strides in laying the foundation of the differential calculus. This entire calculus system has been described as the most powerful instrument ever invented for the mathematical exploration of the physical universe.

Archimedes' life was as tranquil as a mathematician's should be, but tragedy and action were crowded into the last years of his life. During the second Punic War (212 B. C.) the Romans decided to raid Syracuse as a "warm-up" to Carthage. After driving the Romans back the first time with his ingenious war devices, Archimedes saw them return and massacre his city. And while working out a problem in the dust he was cut down by a wounded Roman soldier.

Thus died the seventy-five year old mathematician. And with him died a fragile civilization, shattered by a crassly practical civilization, imperial Rome.

## RITZ THEATRE

MOVIES ON WIDE SCREEN

Fri., Sat. Oct. 26-27

Saturday Continuous from 1 p. m.

'Beyond the Time Barrier'

Robert Clarke & Darlene Tompkins

—PLUS—

'The Bravados'

Gregory Peck & Joan Collins

Sun., Mon., Tues. Oct. 28-31

Sunday Continuous from 1 p. m.

'Splendor in the Grass'

Natalie Wood & Warren Beatty

—PLUS—

'Womanhunt'

Steven Piccaro & Lisa Lu

Wed., Thurs. Oct. 31-Nov. 1

'House of Fright'

Paul Massie & Dawn Addams

—PLUS—

'Anatomy of a Psycho'

Ronnie Burns & Pamela Lincoln

## UPTOWN THEATRE

MOVIES IN CINEMASCOPE

Fri., Sat. Oct. 26-27

'The George Raft Story'

Jayne Mansfield & Barrie Chase

Sun., Mon., Tues., Wed.

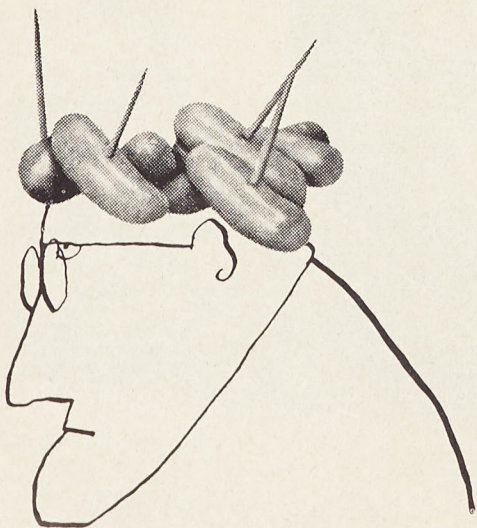
Oct. 28-31

Sunday Feature Shown:

1:15, 4:00, 6:45, 9:25

'Adventures of a Young Man'

Richard Beymer & Diane Baker



Frank talk about your hair: Vitalis with V-7 keeps your hair neat all day without grease. Naturally, V-7 is the greaseless grooming discovery. Vitalis® with V-7® fights embarrassing dandruff, prevents dryness, keeps your hair neat all day without grease. Try it!



## ...for a life of pride and purpose

Among the young people being graduated from college in these times, there are some who think and feel—perhaps a little more deeply than the others—about the world we live in, the future we face. They ask, "How can I make my career really meaningful? More than just personally rewarding?"

And many of today's most successful young people are finding a fulfilling answer to these questions as officers on the Aerospace Team... the United States Air Force. They can tell you that no career could better combine the opportunity for achievement—and the deep inner

satisfaction of knowing that they are helping preserve the very future of America.

How can you become an Air Force Officer?

If you are a college senior and not currently enrolled in ROTC, Air Force Officer Training School provides an opportunity to qualify for a wide variety of career fields. The graduate of this three-month course receives a commission as a second lieutenant. As the Air Force continues its technological advance, officers with college training will move into positions of increasing importance.

For full information—including the opportunity to earn graduate degrees at Air Force expense—see the Air Force Selection Team when it visits your college, visit your local Air Force Recruiting Office, or write: Air Force Officer Career Information, Dept. SC210, Box 805, New York 1, New York.

## U.S. Air Force

FOR AMERICA'S FUTURE AND YOUR OWN... JOIN THE AEROSPACE TEAM.



# Football Predictions: Week of October 27th

There's just no rest for the wicked. And some of the powers who squeezed through last week will run into more of the same this Saturday: L.S.U., Wisconsin, Northwestern, and Oregon to name a few.

A few ho-hums continue, however, as Mississippi, down in the No. 3 spot this week, will roll over Vanderbilt by 39 points. 4th-ranked Alabama will rock Tulsa by twenty-five.

Southern California, No. 8, should add about 31 more points to the miseries of Illinois, and Arkansas, in 11th, is a massacre-level 52-point favorite over Hardin-Simmons.

Getting back to the wicked, however, three of the toppers will be the Wisconsin-Ohio State, LSU-Florida, and Oregon-Washington. The Badgers of Wisconsin, new occupants of the Number One position in the country, will get their toughest test against twice-beaten, but still 10th-ranked Ohio State. The Harmon ratings say Wisconsin by seven points.

On the 6th rung of the ladder, L.S.U. faces a fast-climbing Florida team that is in 16th this

week. The Gators are a 7-point underdog in the Southeast Conference headliner.

On the West Coast, 15th-ranked Oregon will be a slight 2-point

favorite over the Huskies of Washington, No. 19.

And speaking of ladder-climbing, the Spartans of Michigan State zoomed from their spot in 9th last week to the No. 2 position this week. And if the Badgers should slip, Michigan State could move to the top with a three-touchdown win over Indiana.

Ye Olde Crystal Ball received

a polishing during the week and performed rather delightfully as 114 games were picked correctly, 32 were missed, and there were just 3 ties for a .781 average. The season's totals are 608 right and 188 wrong — average: .764

Elsewhere among the elite, undefeated Northwestern, ranked 5th, should hand Notre Dame another defeat — this one by 15 points. And Texas, in 7th, should

clip Rice by three Touchdowns.

Also undefeated - and "moving" (from 13th to 9th in the Top 20) - the Auburn Tiger tackles Clemson Saturday. The pick here is Auburn to remain undefeated with a 19-point win over Clemson.

Finally, there's a sleeping giant showing signs of really coming alive. The Sooners of Oklahoma slipped into the No. 18 position this week, and are strong 32-point favorites over Kansas State.

## The Harmon Forecasts

### NATIONAL FOOTBALL LEAGUE

Sunday, October 28

CLEVELAND	21	Pittsburgh	17
DALLAS	20	St. Louis	10
DETROIT	24	Chicago	14
GREEN BAY	30	Baltimore	7
MINNESOTA	21	Philadelphia	20
NEW YORK	17	Washington	7
SAN FRANCISCO	21	Los Angeles	14

### AMERICAN FOOTBALL LEAGUE

Friday, October 26

BOSTON	34	Oakland	14
--------	----	---------	----

Sunday, October 28

DENVER	31	Buffalo	20
HOUSTON	24	Dallas	21
SAN DIEGO	30	New York	21

## The Harmon Football Forecast

### TOP 20 TEAMS

1 - WISCONSIN	6 - L. S. U.	11 - ARKANSAS	16 - FLORIDA
2 - MICH. STATE	7 - TEXAS	12 - GA. TECH	17 - FLA. STATE
3 - MISSISSIPPI	8 - SOUTH'N CAL.	13 - PURDUE	18 - OKLAHOMA
4 - ALABAMA	9 - AUBURN	14 - PENN STATE	19 - WASHINGTON
5 - N'WESTERN	10 - OHIO STATE	15 - OREGON	20 - MISSOURI

Thursday and Friday, Oct. 25 and 26

Arkansas Tech	18	SE Oklahoma	13
Central Oklahoma	35	NE Oklahoma	6
Detroit	14	Hardin-Simmons	0
E. Cent. Oklahoma	32	George Washington	7
Hillsdale	15	Clemson	10
Occidental	25	Texas A & M	13
San Francisco	21	Massachusetts	12
		Miami, Ohio	14
		Rhode Island	12
		Richmond	13
		Purdue	7
		Lehigh	13
		Harvard	8
		North Carolina St.	0
		Wake Forest	14
		Tulane	0
		Boston College	0
		Oklahoma State	7
		Georgia	9
		Florida	3
		South Carolina	8
		Air Force	14
		Indiana	0
		Michigan	8
		Vanderbilt	6
		Memphis State	17
		Iowa State	14
		Idaho State	6
		Pittsburgh	13
		William	10
		Colorado	6
		San Jose State	6
		North Texas	13
		Wake Forest	14
		Notre Dame	8
		Buffalo	7
		Kansas State	0
		Washington	14
		West Virginia	10
		California	6
		Cornell	6
		Iowa	7
		Pennsylvania	8
		Illinois	0
		Texas Tech	10
		Auburn Christian	0
		Holy Cross	7
		Chattanooga	0
		Rice	9
		Kent State	13
		Stanford	6
		Idaho	6
		Brigham Young	7
		Xavier	0
		Davidson	8
		William & Mary	0
		Pacific	0
		Arizona	7
		Marshall	0
		Montana State	10
		Ohio State	14
		Colorado State U.	0
		Colgate	18

Saturday, Oct. 27 — Major Colleges

Alabama	25	Tulsa	0
Arizona State	41	Texas Western	13
Arkansas	52	Hardin-Simmons	0
Army	28	George Washington	7
Auburn	29	Clemson	10
Baylor	21	Texas A & M	13
Boston University	20	Massachusetts	12
Bowling Green	15	Miami, Ohio	14
Brown	27	Rhode Island	12
Cincinnati	16	Richmond	13
Citadel	19	Purdue	7
Columbia	19	Lehigh	13
Dartmouth	20	Harvard	8
Duke	17	North Carolina St.	0
Florida State	25	Wake Forest	14
Georgia Tech	27	Tulane	0
Houston	7	Boston College	0
Kansas	19	Oklahoma State	7
Kentucky	17	Georgia	9
L. S. U.	10	Florida	3
Maryland	17	South Carolina	8
Miami, Fla.	25	Air Force	14
Michigan State	21	Indiana	0
Minnesota	31	Michigan	8
Mississippi	28	Vanderbilt	6
Mississippi State	22	Memphis State	17
Missouri	26	Iowa State	14
Montana	14	Idaho State	6
Navy	19	Pittsburgh	13
Nebraska	30	William	10
New Mexico	22	Colorado	6
New Mexico State	16	San Jose State	6
North Carolina	10	North Texas	13
Northwestern	23	Wake Forest	14
Ohio University	19	Notre Dame	8
Oklahoma	32	Buffalo	7
Oregon	16	Kansas State	0
Oregon State	19	Washington	14
Penn State	28	West Virginia	10
Purdue	27	California	6
Rutgers	17	Cornell	6
Southern Cal	31	Iowa	7
S. M. U.	13	Pennsylvania	8
Southern Miss.	35	Illinois	0
Syracuse	23	Texas Tech	10
Tennessee	28	Auburn Christian	0
Texas	26	Holy Cross	7
Toledo	14	Chattanooga	0
U. C. L. A.	14	Rice	9
Utah State	32	Kent State	13
Villanova	18	Stanford	6
Virginia	24	Idaho	6
Y. M. I.	22	Brigham Young	7
Washington State	33	Xavier	0
West Texas	26	Davidson	8
Western Michigan	21	William & Mary	0
Wichita	20	Pacific	0
Wisconsin	21	Arizona	7
Wyoming	28	Marshall	0
Yale	19	Montana State	10
		Ohio State	14
		Colorado State U.	0
		Colgate	18

### East (Small Colleges)

Amherst	33	Wesleyan	0
Bloomburg	40	Cheyney State	0
Bucknell	37	Muhlenberg	6
Cent. Connecticut	19	Trenton	13
Coast Guard	14	Worcester	7
Cortland	30	Brockport	12
Delaware	22	Connecticut	6
East Stroudsburg	37	Millersville	13
Grove City	28	Alfred	20
Hamilton	31	Haverford	6

### Midwest (Small Colleges)

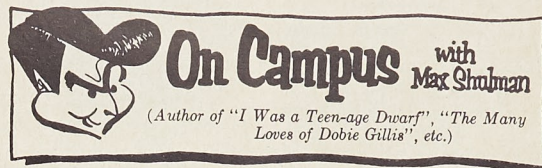
Adrian	14	Hope	6
Albion	29	Wayne, Mich.	0
Baker	31	McPherson	0
Bellevue, Kansas	27	Friends	6
Carthage	21	Illinois Wesleyan	6
Cent. Coll., Iowa	29	Dubuque	12
Cent. State, Ohio	20	Lincoln	7
Concordia, Neb.	14	Dana	12
Defiance	27	Wilmington	13
Drake	21	Bradley	13
Eastern Illinois	28	Eastern Michigan	15
Hastings	29	St. Benedict	8
Kalamazoo	35	Michigan Tech	6
Kearney	35	Chadron	0
Missouri Mines	19	NW Missouri	7
Missouri Valley	14	Graceland	6
Northern Illinois	20	Central Michigan	10
Northern Michigan	32	Penn State	0
St. Cloud	16	St. Benedict	7
St. Joseph	16	Michigan Tech	6
Southern Illinois	22	DePauw	14
St. Louis	20	Illinois State	0
Taylor	14	Central Missouri	7
Valparaiso	20	Hanover	0
Wheaton	18	Ball State	19
Whitnberg	31	Wabash	14
		Ohio Wesleyan	6

### South (Small Colleges)

Arkansas State	20	Murray	9
Arlington	21	Trinity	14
Concord	12	West Va. Wesleyan	7
Delta State	22	Martin Branch	13
East Carolina	19	Appalachian	14
East Tennessee	24	Morehead	12
East Texas	17	Sul Ross	6
Eastern Kentucky	22	Western Kentucky	14
Elon	13	Western Carolina	6
Emory & Henry	32	West Va. Tech	0
Howard College	14	Carson-Newman	0
Lenoir Rhyne	29	Lamar Payne	0
Louisiana Tech	19	Frederick	6
Millaps	18	Tennessee Tech	8
Mississippi State	22	Georgetown	15
Randolph-Macon	20	Newberry	0
SW Texas	23	Bridgewater	6
Texas A & I	34	Sam Houston	15
Washington & Lee	33	S. F. Austin	6
West Liberty	40	Franklin & Marshall	0
Wofford	28	West Va. State	7
		Presbyterian	18

### Far West (Small Colleges)

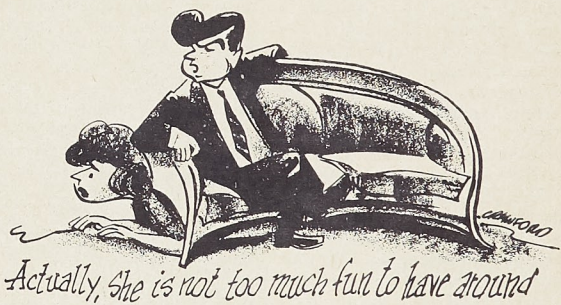
Adams State	19	Colo. State College	7
Arl. State (Flag)	35	New Mexico West'n	0
Cal Poly (Pomona)	31	California West'n	12
Cal Poly (S.L.O.)	21	Long Beach	30
Cent. Washington	17	East Washington	7
Colorado Western	15	Colorado College	0
Fresno State	21	San Diego State	10
Humboldt	20	Nevada	8
Redlands	18	Claremont	8
Riverside	15	Pomona	12
Santa Barbara	22	San Fernando	0
Santa Clara	28	Chico State	30



### HIGH TEST, LOW TEST, NO TEST

Just the other night I was saying to the little woman, "Do you think the importance of tests in American colleges is being overemphasized?" (The little woman, incidentally, is not, as you might think, my wife. My wife is far from a little woman. She is, in fact, almost seven feet high and heavily muscled. She is a full-blooded Chiricahua Apache and holds the world's hammer-throw record. The little woman I referred to is someone we found crouching under the sofa when we moved into our apartment several years ago, and there she has remained ever since. She never speaks, except to make a kind of guttural clicking sound when she is hungry. Actually, she is not too much fun to have around, but with my wife away at track meets most of the time, at least it gives me somebody to talk to.)

But I digress. "Do you think the importance of tests in American colleges is being overemphasized?" I said the other night to the little woman, and then I said, "Yes, Max, I do think the importance of tests in American colleges is being overemphasized." (As I have explained, the little woman does not speak, so when we have conversations, I am forced to do both parts.)



To get back to tests—sure, they're important, but let's not allow them to get too important. There are, after all, many qualities and talents that simply can't be measured by quizzes. Is it right to penalize a gifted student whose gifts don't happen to be of the academic variety? Like, for instance, Gregor Sigafos?

Gregor, a freshman at the New Hampshire College of Tanning and Belles Lettres, has never passed a single test; yet all who know him agree that he is studded with talent like a ham with cloves. He can, for example, sleep standing up. He can do a perfect imitation of a scarlet tanager. (I don't mean just do the bird calls; I mean he can fly South in the winter.) He can pick up B-B's with his toes. He can say "Toy boat" three times fast. He can build a rude telephone out of two empty Marlboro packs and 100 yards of butcher's twine. (Of all his impressive accomplishments, this last is the one Gregor likes to do best—not building the telephone, but emptying the Marlboro packs. Gregor doesn't just dump the Marlboros out of the pack. He smokes them one at a time—settling back, getting comfortable, savoring each tasty puff. As Gregor often says with a winsome smile, "By George, the makers of Marlboro took their time finding this fine flavor, this great filter, and by George, I'm going to take my time enjoying 'em!'")

Well, sir, there you have Gregor Sigafos—artist, humanist, philosopher, Marlboro smoker, and freshman since 1939. Will the world—so desperately in need of talent—ever benefit from Gregor's great gifts? Alas, no. He is in college to stay.

But even more tragic for mankind is the case of Anna Livia Plurabelle. Anna Livia, a classmate of Gregor's, had no talent, no gifts, no brains, no personality. All she had was a knack for taking tests. She would cram like crazy before a test, always get a perfect score, and then promptly forget everything she had learned. Naturally, she graduated with highest honors and degrees by the dozen, but the sad fact is that she left college no more educated, no more prepared to cope with the world, than when she entered. Today, a broken woman, she crouches under my sofa.

© 1962 Max Shulman

And speaking of tests, we makers of Marlboro put our cigarette through an impressive number before we send it to the market. But ultimately, there is only one test that counts: Do YOU like it? We think you will.

## MSM Trampled By Kirksville For Fourth Straight Defeat

By John Schnieder

Kirksville, the eleventh ranked small college team in the nation, romped and stomped through Jackling field leaving a 40-0 victory in their wake. The Miners put up a good battle, but the odds were against them from the first kickoff of the game. The Miners co-captains for the game were Gary Couse and Keith Bailey.

The Miners were without the help of David Murrell and Gary Koch who were out of the lineup with injuries. Bill Kauffmann, the starting fullback, was injured during the course of the game.

The Miners kicked off to begin the contest and held their opponents scoreless for the first six minutes before the ice was broken. Quarterback, Shane Cavanah carried the ball for the first Kirksville score, while fullback Joe Minton plunged three yards for the second tally. The first quarter closed with the score standing at 14-0.

The second quarter found the Bulldogs taking the aerial route for three more touchdowns. The first was a pass from Cavanah to Jones covering 55 yards. The second found Ray on the receiving end of Cavanah's toss for a total of 60 yards. The conversion was missed leaving the score 27-0. Olinger carried the pigskin over the tally line from the 5 yard line for the last score of the first half.

Kirksville kicked off to begin the second half. The Miners dug in with outstanding defense during the third period and held their opponents scoreless. A sustained drive by MSM covered fifty yards but ended with a fumble.

Dattilo intercepted an Alford pass in the fourth quarter, and rambled 40 yards to pay dirt which chalked up the final score of the game, 40-0.

The Bulldogs used a total of 17 ball carriers throughout the game.

Statistics for the contest tell the sad tale. Kirksville accumulated 21 first downs to the Miners 7. Yardage rushing amounted to 294, while MSM rolled only for 124. The aerial route found Kirksville

with 127 yards and the Miners with 23 yards. In comparison to last weeks 215 yard passing attack against Cape Girardeau, the Miners 23 yard effort is far below par.

Jay Alford turned in another good performance but the opposition was too overwhelming. John "Harb" Henry and Art Handshy made bruising tackles on defense, as did the entire defensive squad, but the Bulldogs were really rolling in Rolla that day.

## Flag Football Playoffs Will Determine Champion

By Jim Wienel

As the final days of October draw near, so does the season of intramural football come to a close. Although some of the activities of nature slow to a halt toward the end of this month (the falling of leaves, the disappearance of flowers, and the grass becoming dormant), the action in the program of MSM intramural football speeds up. The final decisive league games are completed and the most successful ball club of each six-team league is allowed to advance to the semi-finals. The two contests composing the semi-finals pit the top four squads in the entire twenty-four team program against each other. (The parings being decided by an official coin toss.) The results of these battles produce two opponents for the championship round and two for the consolation final. The victor of the latter is rewarded with third place. The first

place winner is, of course, the school champion having the distinction of being the best team out of 24 campus organizations.

As this article goes to press, the situation stands with three league champions already determined, and one playoff remaining (this will decide the other group victor). The Engineers' Club, Phi Kappa Theta, and Sigma Tau Gamma triumphed in the first, second, and fourth leagues, respectively, while in league number three, Lambda Chi Alpha and Kappa Sigma are tied with win-loss records of 4-1.

The overall standings of the leagues are as follows:

### LEAGUE I

Organization	Won—Lost
Engineers' Club	5 0
Triangle	4 1
Phi Alpha	3 2
Wesley Foundation	2 3
Prospectors Club	1 4
Fifty-Niners Club	0 5

### LEAGUE II

Phi Kappa Theta	5 0
Tech Club	4 1
Sigma Phi Epsilon	3 2
Acacia	2 3
Theta Xi	1 4
Shamrock Club	0 5

### LEAGUE III

Lambda Chi Alpha	4 1
Kappa Sigma	4 1
Sigma Nu	3 2
Beta Sigma Psi	3 2
Sigma Pi	1 4
Delta Sigma Phi	0 5

### LEAGUE IV

Sigma Tau Gamma	5 0
Pi Kappa Alpha	4 1
Kappa Alpha	3 2
Dorms	2 3
Tau Kappa Epsilon	1 4
Baptist Student Union	0 5

Of the three teams already in the semi-finals, one of them is a holdover from the previous two years. Phi Kappa Theta racked up second place last year, and in the season of 1960, that fraternity went all the way to the top.

Lambda Chi also figured in the top three of the last two seasons and if they are successful against Kappa Sigma, they too will be in there again.

The semifinals started Thursday night and the finals will be run off next Tuesday night at the intramural fields. These final, decisive battles could be the most interesting, as closely matched as these teams are. Only time will tell who will be the new intramural gridiron champion of MSM.

## Cross Country Team Runs Seasons Wins to Five

MSM's cross country squad ran their season's record to five wins and no losses with victories over Kansas State Teachers' College and Lincoln University last week. The Miners now have a winning streak of eight dual meets, extending over a two year period.

Tuesday, October 16, the Miners outclassed the team from Pittsburg, Kansas, 20-41. It was the first Miner win since 1958 in the annual meeting between the two schools.

Martin Morford, a native Rolla boy running for the Pittsburg team, pulled away from Damotte of MSM in the final quarter mile to finish first. But the Miner's fine team balance was never more evident, as they swept the next five places, and picked up seven of the first nine places.

Results of the meet:

Runner	School	Time
	(3.86 miles)	
1. Morford	P	21:58.7
2. Damotte	MSM	22:11.5
3. Brown	MSM	22:33
4. Sheets	MSM	22:44
5. Poppe	MSM	23:18
6. Godfrey	MSM	23:29
7. Schell	P	23:29.1
8. Norman	MSM	
9. Bell	MSM	
10. Tague	P	
11. Montgomery	P	
12. Malcolm	P	
13. Allen	MSM	
14. Marshall	P	
15. Norman, J.	P	

On the following Saturday, the squad beat Lincoln University for the second time this season, winning 25-34 on a hilly, rain soaked course at Jefferson City. Again, the opposition took individual

honors, as Milan of Lincoln finished first. But second, third, fifth, and seventh, and eighth place finishes by the Miners were enough for a win.

Results of the meet:

Runner	School	Time
	(3 3/8 miles)	
1. Milan	L	19:08
2. Damotte	MSM	19:12
3. Brown	MSM	19:16
4. Harris	L	19:43
5. Sheets	MSM	19:53
6. Price	L	20:24
7. Godfrey	MSM	20:30
8. Waring	MSM	20:45
9. Bell	MSM	21:09
10. Norman	MSM	21:13
11. Williams	L	
12. Gooley	L	
13. Wilbers	L	
14. Allen	MSM	
15. Greggs	L	

The Miners will face their sternest test yet on Homecoming Saturday, October 27, entertaining Warrensburg. The Mules are led by Bill Silverberg, probably the finest distance runner in the state. The meet is scheduled to start at 11:00 a.m.

## Difiglia Leading Football Contest

This year, something has been added to the following of Miner football games. Bishop's, a clothing establishment in Rolla is sponsoring a football prediction contest, and is awarding three very handsome prizes to the best football prophet on the campus.

The idea of the contest is to write down the score you believe the two teams will accumulate in the next week's games. Your predicted score is then put in a ballot box in Bishop's store. The results are then tabulated by adding the score deviations, each point of deviation from the actual score counting against the player. The player who has accumulated the fewest number of points at the end of the contest is declared the winner.

Since the contest started with the Cape game, Charles Difiglia is leading with a low score of 11 points, while Kent Ulrich is second with 14, and Mick Hahn and Jim Bainter are fighting it out for third with identical scores of 15.

Even though a player might have accumulated a large number of points, the game is not over until football is over, so everyone still has a chance, so don't drop out now.

## Rifle Team Downs Pittsburg & Wash. U.

The MSM Rifle Team won the first shoulder-to-shoulder match of the season by defeating Washington University and Kansas State College of Pittsburg last Saturday on the MSM Range. The Miners scored 1399 points out of a possible 1500. Pittsburg was second with a 1373, while Washington trailed with a 1354.

Gash of Pittsburg was high man with a 285 out of 300. High men for the Miners were Lloyd Bingham with a 283; Fred Shaw, 280; Carl Steib and Jim O'Neal, 279; and Robert Hall, 278.

The Rifle Team has selected Carl Steib as Captain for the coming year.

## SIDELINES

By Robert Fogler

Now that the football season is all but over on the intramural scene, another sport is quick to take its place. This sport, of course, is basketball.

Intramural basketball, like football, is a major sport on the MSM campus, and a very hotly contested one at that. Each game promises to be exciting down to the last play, and the team that captures the IM crown well deserves it.

As in football, there will be four leagues to handle the 24 teams represented.

Last year, the final standings showed Sigma Nu in first place, Tech Club in second, and Phi Kappa Theta third. Sigma Nu was also the 1960 winner. The playoffs for the championship last year were hard fought with very close games. During the season the top teams averaged 60 points or better per game.

One disadvantage the IM teams have is a lack of playing space on which to practice. Each team is given a certain time to practice, and at this time no one else is allowed on the court, but because of the number of teams, this time is limited. Another thing is the fact that the Varsity has to work out during the day.

This year again promises to be a close race, for most of the top teams have a good percentage of their players returning.

## BISHOP'S

### FOOTBALL PREDICTION CONTEST

#### LIST OF PRIZES TO BE AWARDED

- 1st Prize any \$55.00 Suit
- 2nd Prize any \$15.98 Shoes
- 3rd Prize any \$5.00 Set of Jewelry

## BISHOP'S

124 W. 8th

J. C. ALEXANDER, Manager

Rolla, Mo.

"The Campus Clothing Center"

### FOOTBALL PREDICTION NO. 4

MINERS ..... SPRINGFIELD  
(Please Print)

Your Name .....

Address ..... Phone .....