



03 Feb 1961

The Missouri Miner, February 03, 1961

Follow this and additional works at: https://scholarsmine.mst.edu/missouri_miner

These newspapers reflect the attitudes, perspectives, and beliefs of different times. Neither the library nor the university endorses the views expressed in these collections, some of which contain images and language which may be offensive to some readers.

Recommended Citation

"The Missouri Miner, February 03, 1961" (1961). *The Missouri Miner Newspaper*. 1671.
https://scholarsmine.mst.edu/missouri_miner/1671

This Newspaper is brought to you for free and open access by Scholars' Mine. It has been accepted for inclusion in The Missouri Miner Newspaper by an authorized administrator of Scholars' Mine. This work is protected by U. S. Copyright Law. Unauthorized use including reproduction for redistribution requires the permission of the copyright holder. For more information, please contact scholarsmine@mst.edu.

DAMES GRADUATE

Thirty Two Dames Receive Their PHT'S

About fifty members attended the annual January Banquet held by the MSM Chapter of the National Organization of University Dames at the Lutheran Church on Thursday, January 12, at 7:00 p.m.

Turkey with trimmings was served to those present.

The high point of the evening was the informative talk given by Dr. and Mrs. G. D. Amstutz on their native country, Switzerland. The program was divided into three parts, the first of which included Dr. Amstutz's talk on the history, religion, politics, and language of the country. His home is in Bern, the capitol of Switzerland.

Mrs. Amstutz, attired in a traditional Swiss costume particular of her community, informed the group on the social customs of the tiny nation. She is a psychiatric social worker in Switzerland and has done work of that nature in this country. One of the interesting points she brought out in her lecture was that the National Red Cross as we know it was originally founded in Switzerland; and that the Swiss flag, which is red with a white cross, is a reverse of the Red Cross emblem. She also presented a display of arts and crafts from her country.

The final portion of the program was the showing of colored slides. Members of the organization commented upon the fact that the country is abounding in flowers, which are even potted

along the city streets.

Mrs. Marge Stelloh headed the committee in charge of decorations, which were in the Swiss theme. Adorning the walls were multi-colored Swiss travel posters depicting resort scenes. From the ceiling hung colorful paper lanterns with Swiss national and state flags and pictures of winter sporting activities attached to them. On each table was individually wrapped wedges of cheese in which were placed state and national flags of the country. Cards showing eight varieties of Alpine flowers were also on the tables. A floral arrangement of red and white carnations and the emblem of the organization was the center piece for the head table.

Thirty-two members of the organization were awarded Ph

T awards for "Putting Hubby Through." They were: Gale Aufderheide, Gola Borcharding, Annette Brunkhorst, Pat Classe, Margaret Brown, Edna DeFord, Mary Ann Fulcher, Helen Glucksmann, Mary Harting, Joan Horton, Betty King, Crystal Lawler, Billie Lemon, Betty Mannbeck, Shirley Markway, Betty McGillian, Judy McKee, Jackie Nelson, Donna Odom, Beth Paschke, Dorothy Patterson, Marilyn Perry, Dottie Piekarz, Darol Roberts, Elaine Rupp, Linda Saxer, Kay Strobel, Donna Sturm, Norma Swier, Dixie Woelf, Reva Wrozier, and Joann Barnes.

Morris T. Worley wins AIME Paper Contest

Five students have been named by the American Institute of Mining, Metallurgical, and Petroleum Engineers, as winners, in their respective groupings, of the 1960 national prize paper contest. Awards will be presented February 27 in St. Louis at the Welcoming Luncheon of AIME's 90th Annual Meeting.

Papers were submitted by Local Sections. The winners are: Society of Mining Engineers: Graduate Division, Morris T. Worley, Missouri School of Mines, sponsored by AIME's St. Louis Section. Undergraduate Division, William G. Pariseau, University of Washington, sponsored by the North Pacific Section.

The Metallurgical Society: Undergraduate Division, Edward G. Dubrawka, Carnegie Institute of Technology, sponsored by

Pittsburgh Section.

Society of Petroleum Engineers: Graduate Division, John J. Day, University of Oklahoma sponsored by Mid-Continent Section. Undergraduate Division, Terry Lee Loucks, University of Tulsa, sponsored by Mid-Continent Section.

Ken Schader New President of IFC

At the last Interfraternity Council Meeting, the following new officers were elected: President, Ken Schader from Pi K A. Vice President, Bill Zorunski from Sigma Tau Gamma; Treasurer, Bob Powers from T. K. E. And rounding out the new administration is Don Ostman, secretary, who represents Sigma Phi Epsilon.

Red Cross Encourages Help in Blood Work

Did you know that in addition to the blood donors themselves, it requires a staff of twenty-seven volunteer workers from Rolla for each day of the two day Red Cross Bloodmobile operation? This does not count the staff of four trained Nurses and one blood custodian supplied by the Springfield Blood Center, nor

does it count the many local women who make and donate all the sandwiches used during the visit of the Bloodmobile. But, most important of all, are the one hundred and forty-five blood donors who responded during the recent Bloodmobile visit.

The Phelps County Chapter

(Continued on page 2)

The Missouri MINER

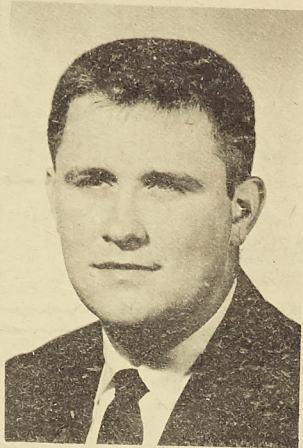
MISSOURI SCHOOL OF MINES AND METALLURGY

VOLUME 47

ROLLA, MO., FRIDAY, JANUARY 3, 1961

NUMBER 15

St. Pat's Board Elects New Pres.



HARVEY MARTIN
NEW ST. PAT'S BOARD PRES.

Kappa Kappa Psi Initiates 2 Men

Two members of the Missouri School of Mines and their director were initiated into Kappa Kappa Psi, the national honorary band fraternity. Richard C. Porter of 1917 Montgomery, Cape Girardeau, and Allen G. Miller of 9208 Hale Drive, Afton, were initiated into Delta Gamma chapter at a special ceremony held at MSM on January 10. Also received as an honorary member was David L. Oakley, director of bands at MSM.

Kappa Kappa Psi was organized in 1919 nationally and MSM's Delta Gamma chapter was activated in 1958. The purpose of the organization is to encourage improvement of college bands as well as provide liaison between college and university bands. Miller is a sophomore physics major and plays baritone horn. Porter is a sophomore Chemical Engineering major and plays French Horn. Both are active in marching, concert and ensemble units.

AICE Elects New Officers Jan. 12

Election of officers for the spring semester was one of the two major items on the agenda at the meeting of the American Institute of Chemical Engineers on Wednesday, January 12. Richard Swanson, vice president last semester and past treasurer, was elected president. The remaining elected officers are as follows: vice president, Rudy Phillips; secretary, Richard Miller; treasurer, Gary Achenbach; reporter, William Scholle.

Following the elections Mr. Jack Thompson of Monsanto Chemical Company spoke on "Responsibilities of a Young Engineer." He explained what is

(Continued on page 2)

ONE SCHOLARSHIP AWARDED THIS FALL

St. Joe Lead Announces \$600 a Year Scholarship

Announcement of competition for the St. Joseph Lead Company Freshman Scholarship at the Missouri School of Mines and Metallurgy at Rolla, Missouri, has been made by Dean Curtis L. Wilson of the school. This scholarship is open to graduates of the high schools of St. Francois County and the towns of Fredericktown, Herculaneum, and Potosi where the St. Joseph Lead Company has its principal operations.

The value of the award is \$600.00 per academic year, the funds being made available by the St. Joseph Lead Company through Elmer A. Jones, General Manager.

The competition is open to any high school graduate of these schools who is interested in any field of engineering. Those interested in degrees in the science courses in physics, geology, and chemistry as offered by the school are not enough. All applications are to be submitted by March 1, 1961.

The principal of each of the high schools in the area may nominate not more than two

candidates for the award. These candidates will be interviewed by the faculty committee of the School of Mines. Nominees will be given certain tests to determine their qualifications for the award.

One scholarship will be awarded to an incoming freshman for the academic year September 6, 1961. The one receiving the award, if satisfactory academic progress is made, may be nominated to continue the award each year for three more years.

Dean Wilson stated that the holder of this scholarship could, with what he earned during the summer, and with limited help from his parents, complete his education through the benefits received from this scholarship.

The present holders of the scholarship are: Freshman Scholarship, Richard Linn Terry, Bonne Terre; Sophomore, Frank Cummings, Rivermines; Barry Wade House, Bonne Terre, Junior Scholarship; and Donald William Burlage, Herculaneum, Senior Scholarship.

FELLOWSHIP

\$4000 Award to Attend Cornell to Be Awarded

A \$4,000 Fellowship for the first year of graduate study at Cornell University will be awarded this spring to some outstanding young man from one of America's colleges or universities. It is the Hannibal C. Ford fellowship and is open to American citizens of sound character and of scholastic standing and initiative.

The Hannibal C. Ford Fellowship for advanced study in the Graduate School at Cornell University has been established by the Ford Instrument Company to provide an annual fund to enable an outstanding graduate from an engineering college to pursue full-time study in mechanical engineering, electrical engineering, engineering physics, or mechanics and materials to proceed toward a higher degree.

The \$4,000 Fellowship will pay the university expenses for tuition, fees and similar cost and give the recipient a cash stipend of \$2,500. He will have complete freedom of investigation into any branch of these fields of study in the Graduate School of Cornell. It is hoped by this Fellowship to encourage, in the first year of study at graduate level, talents and abilities in original scientific work so well exemplified by Hannibal C. Ford, Cornell, 1903,

inventor, scientist, designer and electro-mechanical genius, one of the nation's pioneers in the development of ordinance and navigational controls and computers, and founder of the company which bears his name.

Ford Instrument Company, Division of Sperry Rand Corporation, which set up the Hannibal C. Ford Fellowship in 1953, is one of the foremost companies in missile guidance, digital and analog computers, electronics, thermionics and similar work in aerospace and other government activities. Winners of the Fellowship are not obligated in any way to work for the company.

Previous winners of the Hannibal C. Ford Fellowship were graduates from Rutgers, Brown, Purdue and Cornell Universities and the Missouri School of Mines and Metallurgy. Applicants for the Fellowship should write to the Dean of Graduate School, Cornell University, Ithaca, N. Y. for application forms and full instructions as to what information the University requires concerning their qualifications. Applications should be filed with the University by February 10 of this year.

FUN FOR ALL!

Program Tonight At Wesley House

Wesley Foundation is beginning the second semester with a frolic night tonight. The program will begin at 6:30 with a short worship program and continue with a full round of games and fun for all. We would like to invite everyone to come and join us for a while. The real clincher is the free refreshments (sandwiches and soda.)

There has been some misunderstanding on campus about the Foundation. Because we have access to a house and compete with the fraternities on campus some students think we are a fraternity. This point should be clarified for anyone who is in doubt as to what our official stand is. We are a religious organization attempting to join the two greatest parts of your education so you may come away from college a better person.

Blood Drive

(Continued from Page 1)

takes this opportunity to thank all of the wonderful volunteers who helped to accomplish this great humanitarian work.

A village cop came home very late and tried to slide into bed without waking his wife. She sat up, however, and said, "Dooley, would ye be runnin' to the drugstore and buyin' me an aspirin? Me head is splittin'." The cop got dressed in the dark and stumbled into the drugstore. While the druggist was wrapping up his purchase he said, "Say, aren't you Constable Dooley?" "That I am," said Dooley. "Sure now," said the clerk, "and what are you doing in that fireman's uniform?"

We encourage fraternity men to attend Wesley any time. We do not demand to be first and foremost in your mind at all times, but we would like to be a part of your activities. We have some fraternity men who are active in W.F., and would like to have more.

This Sunday evening will be the second time for one of our deputation teams to function this year. We are ready and willing to help any of the local churches at any time in presenting programs. Let's hope that things will change in the near future.

A. I. Chem. E.

(Continued from Page 1)

expected of a young engineer just out of college. He related his subject to the training program at Monsanto and to his own personal experience.

Door prizes were awarded, the meeting was adjourned, and refreshments were served.

A wedding license is a certificate that gives a woman the legal right to drive a man.

Confession may be good for the soul but it's bad for the reputation.

"One Hollywood starlet has been married so often she had a drip and dry wedding dress."

Playboy Features New Play Boy Tours to Europe, Jamaica, etc.

A new approach to group travel will be introduced early in 1961 when PLAYBOY MAGAZINE launches the first of its "Playboy Tours," a new activity of the famed national men's magazine. According to Tracy Boyer, Playboy Campus Representative, Playboy tours will feature tours to Europe, Hawaii, Mexico, Jamaica, the Pacific and specially tailored individual itineraries.

Designed to appeal to the

sophisticated urban Playboy reader, these escorted tours are being offered to college students 21 years of age and over.

The tours will de-emphasize regimentation. Instead travelers will be encouraged to take part in activities that appeal to them.

Prices begin at \$1220 for 16 days for New York to New York trips to Europe. Anyone interested contact Tracy Boyer, KA House.

A. E. Long, M. S. M., Ex '22
LONG INSURANCE AGENCY
810 Pine St. ROLLA, MO. Phone EM 4-1414
"Service Is Our Business"

THE BUSY BEE LAUNDRY AND DRY CLEANERS

SAY: "It pays to have your Wash 'n Wear Suits Sanitone Dry Cleaned." They give better appearance — Like New Finish — Professional Press.

THE BUSY BEE LAUNDRY & DRY CLEANING
SERVICE IS SUPREME IN ROLLA.

FLUFF DRY 11c lb.
1 Day Service No Extra Charge
DRESS SHIRTS & SPORT SHIRTS 25c
SLACKS 55c SUITS \$1.10
(Cash and Carry—Small Extra for Pickup and Delivery)

CALL

**THE BUSY BEE LAUNDRY
& DRY CLEANERS**

For That Professional Service, "It's the Place to Go."

14th and Oak Phone: EM 4-2830
Faulkner and 72—EM 4-1124

FREE PARKING

FILM • CAMERAS • PHOTO SUPPLIES • FAST FINISHING
O'NEAL CAMERA SHOP
120 W. 8th St.

NOTICE

Drawing Every Night for
Free Steak Dinner

Open to Students & Faculty
of MSM only
at the

CRESCENT CAFE

RFD 3

EM 4-9999

Open "Round the Clock" to serve you better

MINER
The Missouri
MISSOURI SCHOOL OF MINES AND METALLURGY



THE MISSOURI MINER is the official publication of the students of the Missouri School of Mines and Metallurgy. It is published at Rolla, Mo., every Friday during the school year. Entered as second class matter February 8, 1945, at the Post Office at Rolla, Mo., under the Act of March 3, 1879.

The subscription is \$1.00 per semester. This Missouri Miner features activities of the Students and Faculty of M. S. M.

Editor-in-Chief Dennis Camp
707 State St.—EM 4-2731

Business Manager Terry Johnson
500 W. 8th St.—EM 4-3787

Managing Editor Don Reiss
Make Up Editor Henry Duvall
Copy Editor Hugh Murray
Features Editor Jerry Misemer
Advertising Manager Ron Pfeiffer
Circulation Manager Bill Ricketts
Sports Editor Ed Schwarze
Technical Adviser John True
Secretary Robert Anyon

805 Pine Jewelers
G. L. Christopher
Authorized Agent
WATCHES
OMEGA

**BETTER BUY
THE CASE**



Party time is
FALSTAFF time

★ AMERICA'S PREMIUM QUALITY BEER

MUELLER DISTRIBUTING CO.
Rolla, Mo.

Memo for opportunity

Ingersoll-Rand
will interview
Graduating Engineers
(B.S., M.S., Ph.D.)

February 17

I-R offers attractive opportunities in research and development, design, production and sales engineering. Our machinery products include pumps, compressors, engines, vacuum equipment, power tools, and mining and construction equipment.

Story of a Little Non-existent Place in Rolla

by Craig Valentine

In a little town far, far, away was a little cloistered college called Rolla School of Mines. It resided in that picturesque town of Rolla in the grand state of Missouri. Unfortunately this college was constantly being confused with another, somewhere, someplace, for it was always being referred to as Missouri School of Mines.

In this town lived a student by the name of Charles McCollie who was in a sad predicament. He was a graduating senior. But Charley did not want to leave the ivory towers even though he had been here for six years.

There was only one thing to do! See the kindly administrator. So Charley went to the big friendly Ass't. Dean whose only thought was for his students. The Ass't. Dean waved his big, fat, friendly, cigar over Charley's head and Charley smiled. Now he could stay here forever.

To this day one may see a mongrel collie who wanders around Rolla School of Mines and answers to the name of Charley.

LITTLE MAN ON CAMPUS



"I WOULDN'T WORRY ABOUT GETTING AN 'F' ON TH' POEM YOU WROTE AN' RECITED, RUGRAB—MAYBE YOUR JAZZ COMBO PLAYED TOO LOUD."

LITTLE MAN ON CAMPUS



"NO WONDER TH' RUSSIANS ARE AHEAD OF US—BOTH OF YOU SHOULD BE IN THE LIBRARY STUDYING."

UPTOWN THEATRE

MOVIES IN CINEMASCOPE

FRI. Thru TUES. FEB. 3-7
Sunday Continuous from 1 p.m.

'CINDERFELLA'

Jerry Lewis & Judith Anderson

WEDNESDAY FEB. 8
ST. PAT'S BENEFIT

'The Teahouse of the August Moon'

Marlon Brando & Glenn Ford

THURS. Thru TUES. FEB. 9-14

'The Wackiest Ship in the Army'

Jack Lemmon & Ricky Nelson

RITZ THEATRE

MOVIES ON WIDE SCREEN

FRI. & SAT. FEB. 3-4
Saturday Continuous from 1 p.m.

'Zarak'

Victor Mature & Anita Ekberg

— PLUS —

Chicago Confidential

Brian Keith & Beverly Garland

SUN. MON. & TUES. FEB. 5-7
Sunday Continuous from 1 p.m.

'Strangers When We Met'

Kirk Douglas & Kim Novak

— PLUS —

'Paratroop Command'

Richard Bakalyan & Jack Hogan

WED. & THURS. FEB. 8-9

'The Night Fighter'

Robert Mitchum-Anne Heywood

— PLUS —

'The Mouse That Roared'

Peter Sellers & Jean Seberg



"GIVE A MAN A TOUGH JOB AND A CHANCE TO GO SOMEWHERE
...AND HE'LL BREAK HIS NECK TO DO IT"

In 1958 when Bill Ebben was only a few months away from his engineering degree at the University of Detroit, he was in touch with 15 prospective employers.

He chose the Michigan Bell Telephone Company because: "This company offered the kind of engineering management opportunity I wanted—and they weren't kidding."

One of Bill's first assignments was a survey of Michigan Bell's big Central District to find out how long available building space could accommodate the switching equipment required by rapid telephone growth. "I wasn't given any instruction," Bill says, "I was just told to do the job."

So Bill did it. His report became the guide for planning and budgeting future construction.

On his next move, Bill proved he could handle supervisory responsibility. He was sent to head up

a group of seven engineers to design a new long distance switching center for Saginaw, Michigan—a \$4,000,000 engineering project.

Today, Bill is on the staff of Michigan Bell's Program Engineer. He's working on a system for mechanized control of telephone construction costs.

How does Bill feel about his job? "Give a man a tough job and a chance to go somewhere—and he'll break his neck to do it. Of course, I don't think I'm going to be running the business next year—but I'm getting every opportunity to hit the top. You don't worry about opportunity here—you worry about whether you're as big as the job."

If you're a man like Bill Ebben, a man who can size up a job, figure out what needs to be done, and then do it—then you should get in touch with one of the Bell Companies. Visit your Placement Office for literature and additional information.



"Our number one aim is to have in all management jobs the most vital, intelligent, positive and imaginative men we can possibly find."

FREDERICK R. KAPPEL, President
American Telephone & Telegraph Co.



BELL TELEPHONE COMPANIES

Phi Kappa Theta Elects St. Pat's Candidate Queen

Phi Kappa Theta's 1961 St. Pats Queen candidate is Miss Glenda Ross of Washington, Mo. Miss Ross was recently pinned by James Wunderlich, PKT's new pledgemaster.

Other positions filled by new men are as follows:

Assistant Steward—Mike McDonald.

I. F. C. Representative—Hugh Murray.

St. Pats Board Representative—Warren Forness.

Sergeant at Arms—Ray Hamtil.

Ed Croci has been chosen as Phi Kappa Theta's ugly man candidate for 1961.

Chapter President Jim Klierthermes was PKT's choice for knighthood in the court of St. Patrick.

Work is almost completed on a new ceiling in the Phi Kappa Theta dining room. Work on the new ceiling began during the recent semester break.

LITTLE MAN ON CAMPUS



"I KNOW HOW ANXIOUS YOU ARE TO SEE ME, FLOYD, BUT I DIDN'T THINK YOUR FRAT WOULD LET YOU PLEDGES OUT ON WEEK NITES!"

AUTOMATIC LAUNDRY

FAST SERVICE—INDIVIDUAL WASHERS
COMPLETE BACHELOR LAUNDRY SERVICE

Freshman Friendship Coupons Redeemed

Laundry - Dry Cleaning - Shirts

Corner 7th and Rolla Sts.

Open 7:30 to 6

Personality Column

ACACIA

Ed Crow pinned Miss Shirley Arnhart.

BETA SIGMA PSI

Ronald Anderson married Miss Carol McCoy.

KAPPA ALPHA

Milt Burford became engaged to Miss Jane Barnard.

John Shenchuk pinned Miss Susan Heather.

Rudy Phillips pinned Miss Bluetie Ziebell.

LAMBDA CHI ALPHA

Rich Campbell married Miss Sue Gregg.

PI KAPPA ALPHA

Doug Pinner pinned Miss Fran Hunter.

Dick Porter pinned Miss Joan Vanderfeltz.

SIGMA PHI EPSILON

Dick Musgrove pinned Miss Linda Galliher.

TAU KAPPA ALPHA

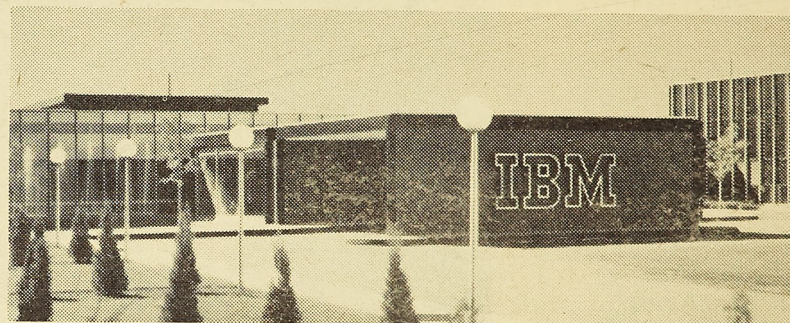
Tim Brown pinned Miss Heather Halkyard.

OVERHEARD AT A SUPERMARKET:

"A pack of cigarettes, please."
"What kind?" asked the clerk.
The customer named his regular brand.
"King size or regular?"
"King."
"Filter-tip or plain?"
"Plain."
"Mentholated or straight?"
"Crush-proof box or soft pack?"
"Never mind," was the grim answer, "I've just broken the habit."

You can carry a pack if it's strapped to your back;
You can carry a weight in your hands.
You can carry a bundle on top of your head;
As they do in other lands.
A load is light if you carry it right,
Though it weighs as much as a boulder;
But a tiny chip is too heavy to bear
If you have a chip on your shoulder.

IBM WILL INTERVIEW FEBRUARY 7-8



Candidates for Bachelors or Masters Degrees are invited to discuss opportunities in:

Marketing and Sales Engineering and Science

This is a unique opportunity to find out about the many career opportunities at IBM. The IBM representative can discuss with you typical jobs, various training programs, chances for advanced education, financial rewards, and company benefits—all important factors that affect your future.

SOME FACTS ABOUT IBM

An Unusual Growth Story: IBM has had one of the exceptional growth rates in industry. It has been a planned growth, based on ideas and products having an almost infinite application in our modern economy.

Diverse and Important Products: IBM develops, manufactures and markets a wide range of products in the data processing field. IBM computers and allied products play a vital

role in the operations of business, industry, science, and government.

Across-the-Country Operations: Laboratory and manufacturing facilities are located in Endicott, Kingston, Owego, Poughkeepsie and Yorktown, N. Y.; Burlington, Vermont; Lexington, Ky.; San Jose, Calif.; Bethesda, Md.; and Rochester, Minn. Headquarters is located in New York City with sales and service offices in 198 major cities throughout the United States.

The Accent is on the Individual: No matter what type of work a person does at IBM, he is given all the responsibility he is able to handle, and all the support he needs to do his job. Advancement is by merit.

The areas in which IBM is engaged have an unlimited future. This is your opportunity to find out what that future has to offer you.

Call or stop in at your placement office to arrange an appointment with the IBM representative for the date above. If you cannot attend an interview, write or call the manager of the nearest IBM office:

Mr. H. Strait, Branch Manager
IBM Corporation, Dept. 882
314 E. Capitol Avenue
Jefferson City, Mo.
JEfferson City 6-8186

IBM

You naturally have a better chance to grow with a growth company.

MEN'S SHOES

By
RAND

SHIRTS

By
VAN HEUSEN

TUXEDO RENTALS

RANDY'S

Family Shoe Store-Young Men's Clothing

The Finest in..... DRY CLEANING

Pressing While You Wait.
One Day Service if Requested.
Pick Up and Delivery Service.

MODERN
Dry Cleaners
9th and Pine

INTRAMURALS

Sigma Nu, Lambda Chi, Pi KA Win Top Spots in Basketball

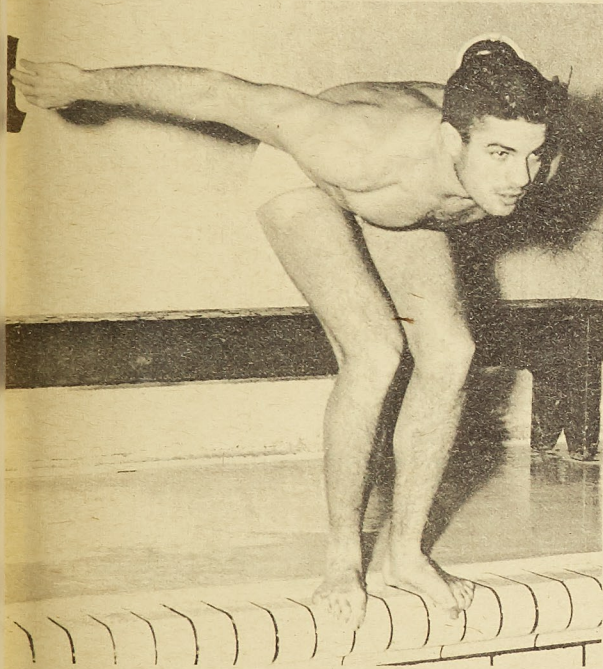
By Ed Schwarze

Sigma Nu went on to defeat both Lambda Chi and Pi K A in the Intramural basketball competition. Sigma Nu now lags Lambda Chi by only approximately 40 points in the total standings tied for fourth in the basketball phase of the intramural program.

The standings were as follows:

1st Place				3rd Place				K. A.			
Organization	W	L	Pts.	Organization	W	L	Pts.	Organization	W	L	Pts.
Sigma Nu	240			Pi K A	220			Beta Sig	3	4	110
2nd Place				4th-5th Place				16-18th Place			
Lambda Chi	230			Phi Kappa Theta	6	1	205	Acacia	2	5	80
				Tech Club	6	1	205	Prospects	2	5	80
				6-10th Place				Delta Sig	2	5	80
				Shamrock	5	2	170	19-22nd Place			
				Triangle	5	2	170	Sig Pi	1	6	45
				Kappa Sig	5	2	170	Phi Alpha	1	6	45
				59'ers	5	2	170	BSU	1	6	45
				Engineers	5	2	170	Wesley	1	6	45
				11-12th Place				23-24th Place			
				T. K. E.	4	3	135	Sig Tau	0	7	15
				Dorm.	4	3	135	Theta Xi	0	7	15
				13-15th Place							
				Sig Ep	3	4	110				

Miners Lose to Washington, 61-33 in Swimming Jan. 31



Roy Smith who competes in 220 Yard Free Style and 400 Yard Free Style Relay.

Broyles and Meitz Only Miners to Win Top Honors

The Miner swimming team dropped a 61-33 meet to the Washington University Bears January 13. The Miners took only two first places when Gary Broyles did the 100 yard free-style in 55.6 and Meitz held top honors in the 200 yard back-stroke with 2:36.0.

The biggest downfall of the MSM swimmers was in the 400 yard medley relay, the 440 yard freestyle and the 400 yard freestyle relay. They managed only one point for all three events.

Although the Miners individually took six second places and seven third places they couldn't overcome the powerful Washington team.

Shakespeare on the political campaigner:
His promises fly so beyond his state.
That what he speaks is all in debt; he owes
For every word.

There's a magic moment at every summer resort. It comes at dusk in that tiny interval when the flies have knocked off for the day and the mosquitoes haven't taken over.

Customer: "Give me some of that prepared monoaceticacidester of salicylic."

Druggist: "You mean aspirin?"
Customer: "Yeah! I never can think of that name."

"Frankie, what are you doing?"
"Nothing" much. With you and Jesus and Santa Claus watching all the time, there's just not much I can do."

He just happened to marry into a family where every day is Halloween.

In a sea of romance, he has ceased to be a menace to navigation.

"She laughed when I sat down to play," reported the inveterate ad reader, "but how was I to know she was ticklish?"

Steve Allen knows of a poor girl who has a perfect Supreme Court figure: no appeal!

711 Pine

FULLER JEWELRY

Anything of Value

JEWELRY


RINGS

CAMERAS

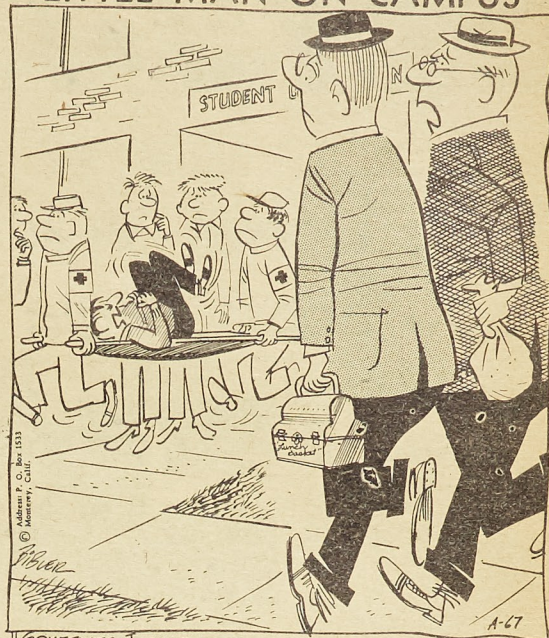
WE LOAN CASH ON

PAWNS

Tucker

QUALITY  CHECKD

LITTLE MAN ON CAMPUS



"SOMETIMES I SUSPECT THE CAFETERIA FOOD ISN'T ALL IT'S CRACKED-UP TO BE."

ATTENTION, SMOKERS

See Our Complete Line of
Pipes • Tobaccos • Accessories

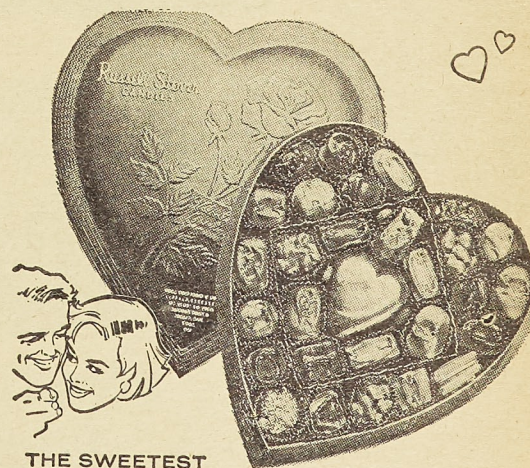
—AT—

TUCKER'S DRUG

SPECIAL

Wrapped for Mailing

(NO EXTRA CHARGE)



THE SWEETEST WAY TO SAY

"Be My Valentine"

Red Foil Heart
filled with a pound of the finest chocolates **\$1.95**
Other heart boxes **85¢ to \$10.00**

Russell Stover
CANDIES

Hurry! Select Yours Now!

Exclusively at

SCOTT'S DRUGS

Since 1905 at 8th and Pine Sts.

MINER SPORTS

PAGE 6

THE MISSOURI MINER

FRIDAY, FEBRUARY 3, 1961

Miners Defeat Warrensburg In Low Score Battle 49-48

The Miners scored a 49 to 48 come-from-behind victory here January 21 over the Warrensburg Mules. The win evened the Miners' overall record at seven wins and seven losses and their conference mark at one victory against one defeat. The Mules defeated the Miners 67 to 52 earlier in the season in the MIAA Christmas Tournament.

The Miners continued their fine ball handling, shooting, and rebounding that has been prevalent all season. The fighting spirit of the team and also of the crowd contributed heavily to the victory over a much taller Warrensburg five. Warrensburg led at half-time 27 to 23.

The 49 points scored by the Miners was the fewest points they have scored this year. The victory was primarily a team effort with pivotman Jim Good of the Miners leading all scorers with 15 points. Tom Lampe scored 12, Jim Lemon 11, and Wayne Lucas 5 points. Gene Brenning played his final game for the Miners and scored 6 points. At half-time Gene received a hatchet from Coach Dewey Allgood to remind him of his nickname, "hatchet man." Dennis led the Warrensburg scorers with 14 points.

The scoring is as follows:

MINERS			
	fg	ft	pts.
Brenning	3	0	6
Lucas	2	1	5
Wiegand	0	0	0
Lampe	4	4	12
Lemon	4	3	11
Good	5	5	15

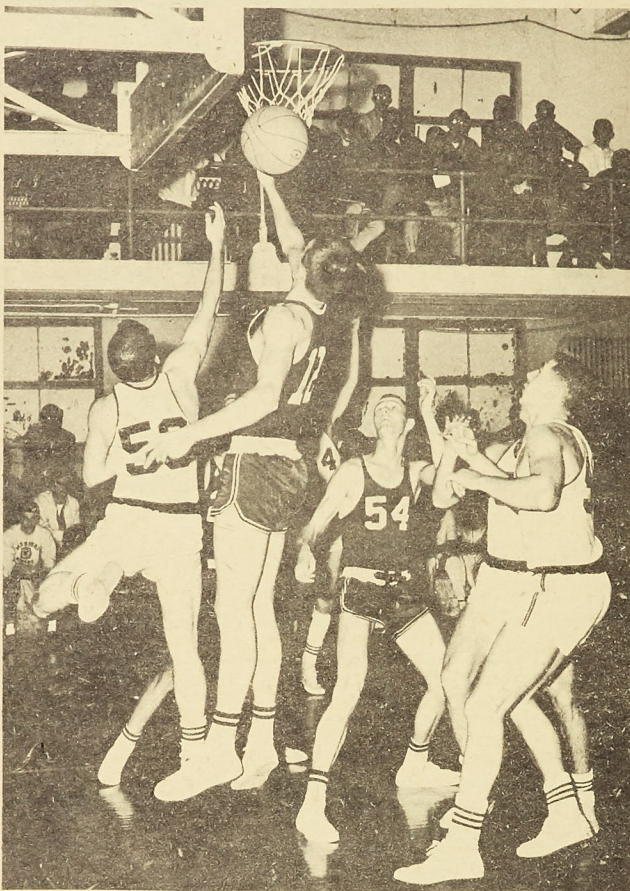
WARRENSBURG			
	fg	ft	pts.
Vallino	2	4	8
Walters	2	0	4
Childress	4	1	9
Dennis	5	4	14
Marshall	0	0	0
McFarland	6	1	13

NOTICE

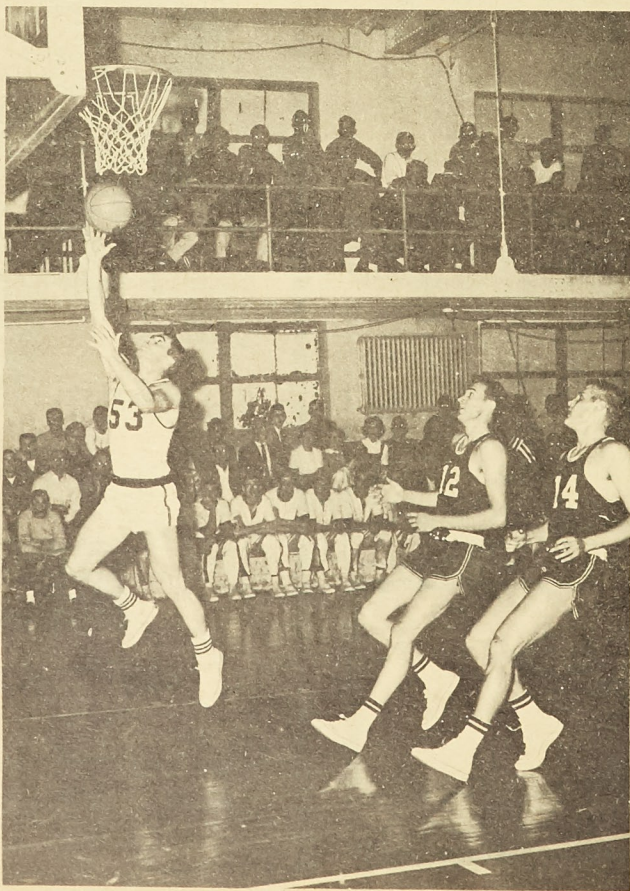
In order to have complete and accurate coverage of all sports events around campus, it is asked that all organizations competing in intramurals prepare a summary of all games of the past week along with scores, opponents and any comments that may seem important. These should be turned in either to Rolla Building addressed to Sports Editor, Missouri Miner or to the Teke House at 1107 State by Saturday of each week.

Rog Kleinpeter
Sports Editor

Gypsy Rose Lee was shopping in a department store when a woman came up and inquired, hesitantly, "Aren't you Gypsy Rose Lee?" "Yes I am," Gypsy admitted. "But why did you hesitate?" "Well," the woman answered, "imagine how terrible it would have been if I'd been mistaken."



Scramble for rebound in Warrensburg game.



Tom Lampe adds two points against Mules in Miner win.

INTRAMURAL SPORTS

Boxing and Wrestling Beginning Next Month

Intramural boxing and wrestling matches are going to be held on March 8, 9, and 10. With these dates so close, participants should be getting started with their workouts. Eighteen workouts are required before the matches begin.

The matches will consist of three, two-minute periods for both boxing and wrestling. In any of the preliminary bouts where the winner is unable to continue the tournament, the contestant that he defeated in the last bout moves up to take his place. Any forfeit match counts as a match won. There are no points awarded for a bye.

BOXING

Points for team championship:

	points
Each entrant (competing)	1
Each match won	1
Runner-up	3
Winner	5

Any intentional foul will disqualify the offender and the bout will be given to the incapacitated contestant.

WRESTLING

Points for team championship as a result of each match:

	points
Each entrant (competing)	1
Each match won	1
Runner-up	3
Winner	5

Scoring of wrestling matches will be as follows:

	points
Escape	1
Predicament	1
Time Advantage	1
Take Down	2
Reversal	2
Near-fall	3

An extra point will be awarded for each fall throughout the

tournament.

NEAR-FALL

A near fall is a situation in which the offensive wrestler has control of his opponent in a pinning combination with both shoulders or the scapula held continuously within 2 inches (three finger widths) of the mat for two full seconds. When these provisions are complied with, two points shall be awarded for a near-fall. In situation where the above provisions are complied with, and both shoulders or the scapula area are held in continuous contact with the mat for one full second, three points shall be awarded for the near-fall.

PREDICAMENT

A predicament is a situation in which the offensive wrestler has control of his opponent in a pinning combination and a fall or near-fall is imminent.

When both shoulders of the defensive wrestler are held in contact with the mat for too short a time to award a near-fall, a predicament shall be awarded.

When both shoulders of the defensive wrestler are held continuously within approximately 4 inches off the mat, or less, but not close enough to award a near-fall, for the two full seconds or more, a predicament shall be scored.

When one shoulder of the defensive wrestler is touching the mat, and the other shoulder is held within an angle of 45 degrees or less with the mat, but not sufficiently close enough to award a near-fall, for two seconds or more, a predicament shall be scored.

SIDELINES

Rog Kleinpeter

With MIAA Conference play at about the halfway mark of the 1960-61 basketball season, the Cape Girardeau Indians and the Maryville Bearcats are fighting it out for first place. Cape has a 4-0 record while Maryville holds a 4-1 record as of January 28.

The Indians have been averaging 79.60 points per game for the 15 games played this season. Their overall record is 14 wins and 1 loss. The loss being to Western Kentucky 80-70.

The Bearcats have averaged 69.25 points per game and boast an overall record of 13 wins and 3 losses. They were beaten this month by Springfield 70-64 in two overtimes. Cape and Maryville meet tonight at Cape for a very important game. The Indians won in the last meeting of the two clubs when they took the Christmas Tournament Championship game from the

Bearcats 80-70.

Tomorrow night the Bearcats come to the Miner court trying to duplicate their 82-65 win over the MSM five last week. The Miners have been averaging 68 points per game while their opponents have the edge in averages with 71.88.

Marion Moss's Bearcats lost six lettermen from last year's squad but have come back even stronger led by 6'5" Jerry Menarich who is leading the league with 20.6 points per game. DeWayne Bond a transfer from Houston University called the best prospect ever to enroll at that school, has been averaging 18 points and will be a boy to watch. With these and 14 new men, all over 6'1", the Miners should have all they can handle.

The per game averages for the Miners in the top twenty scorers for all games are: Lampe 14.7, Good 13.7, Lemon 11.3, Lucas 10.6.

St. Pat's Benefit Movie
'Teahouse of the August Moon'
Wednesday, Feb. 8