



13 Jan 1961

## The Missouri Miner, January 13, 1961

Follow this and additional works at: [https://scholarsmine.mst.edu/missouri\\_miner](https://scholarsmine.mst.edu/missouri_miner)

These newspapers reflect the attitudes, perspectives, and beliefs of different times. Neither the library nor the university endorses the views expressed in these collections, some of which contain images and language which may be offensive to some readers.

---

### Recommended Citation

"The Missouri Miner, January 13, 1961" (1961). *The Missouri Miner Newspaper*. 1670.  
[https://scholarsmine.mst.edu/missouri\\_miner/1670](https://scholarsmine.mst.edu/missouri_miner/1670)

This Newspaper is brought to you for free and open access by Scholars' Mine. It has been accepted for inclusion in The Missouri Miner Newspaper by an authorized administrator of Scholars' Mine. This work is protected by U. S. Copyright Law. Unauthorized use including reproduction for redistribution requires the permission of the copyright holder. For more information, please contact [scholarsmine@mst.edu](mailto:scholarsmine@mst.edu).



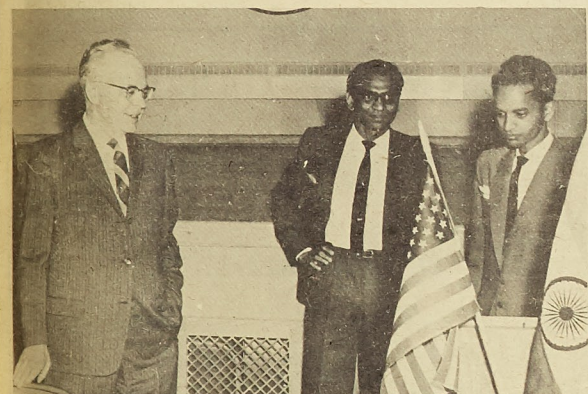
150 GUESTS

# India Association Holds Large Banquet

The India Association, which took its shape only two months ago, got a big start last Saturday when President Elmer Ellis inaugurated it. Among the gathering of about 150 guests from democratic country and India was great potential in the form of brain manpower and otherwise, which if properly put to use, shall positively carry the country at the top one day. His



A Scene From the Indian Association Banquet in the Student Union Ballroom



Missouri University President Elmer Ellis With Members of Indian Association

the school and the town, President Ellis gave a very brilliant and honest evaluation of Indian Agricultural Economy, Higher Education and the society. He emphasized that from what he saw and knew in his 38 day's stay in the eastern four states of India, namely Assam, Bengal, Bihar, and Orissa, he firmly believes that India is practicing an ideal Democracy and is an ideal

views about certain drawbacks in the Indian Education system were well palced.

Those present amongst the guests were Dean and Mrs. Wilson, Mr. and Mrs. Paul E. Ponder, Mr. and Mrs. Robert Lewis, Dr. and Mrs. Oliver R. Grawe, Mayor Hudgins, President Rotary Club and many other distinguished people from the town. Several of the Departmental Chairmen from the school were present as guests.

The Indian Tea and Indian "Chewra" prepared by Mr. Jayanti Patel and his friends were highly appreciated. The program ended with the Indian National Anthem which was followed by the U. S. A. National Anthem.

## NOTICE

The next publication of the "Miner" will be Friday February 3rd.

The Editor

## NOTICE

As a result of a suggestion by the Student Council the Director of Traffic Safety has agreed to open the ROTC drill field as a student parking lot. This lot may be entered from its east side. The drill field will be available for student parking until the ROTC resumes its drill in the spring. Students are encouraged to use this lot.

STUDENT COUNCIL

## Phi Kappa Theta Wins Christmas Display Prize

In the Christmas display competition this semester Phi Kappa Theta Fraternity captured first place. The winning theme was the lifelike scene featuring the Christchild laying in his manger.

Credit for the second place display went to eta Sigma Psi with the theme "The Mystreies of Christmas."

# The Missouri MINER

MISSOURI SCHOOL OF MINES AND METALLURGY

VOLUME 47

ROLLA, MO., FRIDAY JANUARY 13, 1961

NUMBER 14

## Wayne Johner Is Man-of-Month

Wayne Johner, Editor in chief of the Rollamo, has been chosen Blue Key man of the month for January. Wayne's outstanding character and service to MSM has made him very worthy of this honor.

Wayne, who attended Lind-



WAYNE JOHNER

bergh High in St. Louis County, entered MSM in the fall semester of 1957 and will graduate this May with a B. S. in Mechanical Engineering.

Not only this year as editor in chief, but in previous years as associate editor and literary editor of our Rollamo, Wayne has put much time and effort into our year book. In 1958-59 as literary editor, he was awarded the Gold Key for writing. This year, as editor in chief, Wayne is breaking tradition in his changing the structure of the Rollamo. This change, although it is more expensive and means a great deal more work for Wayne and his staff, is necessary due to the increase in campus organizations.

Although it may appear so, Wayne has not limited his capabilities to our yearbook alone, but has served as president of ASME and the Student Board of Publications. He is also a member of the Student Council, SAE, AFS, and APO. His leadership in these organizations and his excellent grade average, which he has maintained despite his endless list of activities, has won him membership in the Blue Key National Honor Fraternity and Who's Who in American Colleges.

Wayne, a member of the Southern Yacht Club of New Orleans, is quite a boating and sailing enthusiast. Recently he placed sixth in the unlimited class race in the Sugar Bowl Regatta.

Mr. Johner, planning to continue his education, will work for a masters in business next year while working under an assistantship.

This outstanding student and campus leader has well deserved the honor of Blue Key Man of the Month for January.

## GENERAL LECTURE

## Skitch Henderson Will Perform Tonight at 7:00

by Charles Becker

Skitch Henderson, famous composer, conductor, pianist and one of the country's outstanding radio and television personalities, will perform tonight at 7:00 and



SKITCH HENDERSON

9:00 p. m. in Parker Hall as our first general lecture of 1961.

Henderson's career is certain-

ly a success story. After his start in a theater tour with Judy Garland and later with his work with the National Broadcasting Company, Skitch worked with Metro-Goldwyn-Mayer and other film companies and as a pianist arranged for such stars as Bing Crosby and Frank Sinatra. After his war-time service as a B-29 pilot, he formed his own orches-

(Continued on Page 5)

## St. Pat's Beards --Time to Start

As the date of the arrival of our patron saint, St. Patrick, is only three months away, the beards of all loyal Miners should be starting to grow a little more lengthy than normal. The purpose of this article is to inform the freshmen and remind the upperclassmen that there will be another contest this year. Judging in the St. Pat's Beard Contest is on four types of beard.

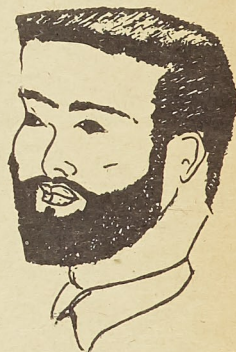
## Harvey Martin St. Pat's Board Pres.

The St. Pat's Board at its last meeting elected Harvey S. Martin, a junior, in Metallurgical Engineering, to the office of President. Martin will complete the term of Kenneth A. Abke-meier, who resigned because he will leave school next semester.

Martin, a graduate of St. Mary's High School in St. Louis, came to the School of Mines after spending six months in the Air Force. He has twice been awarded the Foundry Educational Foundation scholarship, which he holds at the present time. He is a member of the American Foundry Society, the American Society of Metals, and the Newman Club, and represents his fraternity, Kappa Alpha, on the St. Pat's Board.

Martin has been chairman of the decorations committee for the St. Pat's dances, and has planned a set of permanent decorations for the occasions.

It was also decided at this time that the tentative bands for St. Pat's would be Lionel Hampton for Saturday night and Ike Turner for Friday night. To help round out the St. Pat's weekend the St. Pat's Board, with the backing of the Student Council, is looking into the possibility of having Ray, Charles for the Wednesday night General Lecture.



Smith Brothers

The first type of beard is the full beard or the Smith Brothers beard. This beard is a full beard with a mustache. The full beard may be trimmed around the neck.



Soup Strainer

The Soup Strainer is the second type of beard eligible for competition. The Soup Strainer must be trimmed around the neck and on the side of the face as shown in the illustration. The Soup (Continued on page 4)



## Tau Beta Pi Elects New Officers Dec. 13

Missouri Beta Chapter of Tau Beta Pi, national engineering honor society, held its election meeting on December 13. Before the election of officers took place, President Richard Boller and Treasurer John Wolf gave a report on the Seventy-fifth Annual Tau Beta Pi Convention which they attended as delegates from October 13 through October 15 at Lehigh University in Bethlehem, Penn., birthplace of the society.

The election of officers for the spring semester followed the convention reports. For President, the chapter chose a junior physics major, Dan Payton. Besides Tau Beta Pi, Dan is a member of Sigma Pi Sigma, the Math Society and the Pershing Rifles. His several awards include a National Merit Scholarship, Phi Kappa Phi Book Plate Award, and several military PMS awards.

Richard Kapfer, E. E. senior, was selected as vice president. He is a member of Blue Key, Theta Tau, Eta Kappa Nu, the MSM Glee Club, and Sigma Phi Epsilon Fraternity and participates in several intramural sports. His awards include a Curators Award and a Special Education Scholarship.

Missouri Beta's new recording secretary is Ken Henry, an E. E. senior. Ken is also a member of Eta Kappa Nu, AIEE and Blue Key Fraternity.

Ken Cocke was chosen as the

new treasurer. Ken is a senior in Mechanical Engineering.

The position of corresponding secretary will be filled by Jim Kallmeyer, a junior in electrical engineering. His other memberships include Eta Kappa Nu, MSM Glee Club, and the MSM Concert Band; and he was the recipient of a Hertz Scholarship award.

Chapter cataloger for the spring semester is Harvey Dewing, a junior chemistry major. Harvey also is a member of Sigma Pi Fraternity, Alpha Chi Sigma, and the W. T. Schrenk Chemical Society.

With the leadership of these new officers, Missouri Beta Chapter looks forward to another successful semester.

## Ousley, President of Eta Kappa Nu

At the last Eta Kappa Nu meeting held in December, the officers for the coming spring semester were elected. The officers and their new occupants are, President Russell Ousley, Vice President John Holman, Corresponding Secretary John Grindon, Recording Secretary Walter Kern, Treasurer Dwayne Brixey, and Bridge Correspondent Bill Slocum.

Three of the above officers are holding positions for the second consecutive semester. Fall semester officers leaving due to graduation are President Lloyd Brunkhorst, Vice President Ed Wright, and Corresponding Secretary Miss Martha Schultz.

Thanks go to the retiring officers along with congratulations and best wishes to the new and incumbent officers.

### MATH ACES:

## Gary W. Havener Elected President of Math Society

Gary W. Havener was elected to the presidency of the Missouri School of Mines Mathematics Society in the election of the spring semester's officers which was held December 15. Havener is well known on campus; he is Delta Sigma Phi's representative on the Student Council, is on the Student Union Board, is active in Blue Key and was named to Who's Who in American Colleges.

In addition to his extracurricular activities, Gary is a member of Sigma Pi Sigma, and has an outstanding scholastic record, especially in mathematics.

The new president and the other officers, Raymond F. Smith, vice president; Roger A. Barney, secretary; Arthur A. Duke, treasurer; and Terry L. Mills, historian, have already expressed their intentions to further strengthen the young society and possibly petition for a chapter of Kappa Mu Epsilon to be established.

Previous to the business meeting Dr. W. Roy Utz, professor of Mathematics at Missouri University, spoke on "Euler's Contributions to Topology." Although his talk covered a different class of math than that which the audience was accustomed, nevertheless it was enjoyed. Dr. Utz proved the "five color theorem", which is stated as follows: Every map on a sphere, or plane, can be colored with five colors, no matter what. The proof involved one of Euler's 815 formulae. Dr. P. Bircham, chairman of the M. U. mathematics department, accompanied Dr. Utz and attended the meeting as a guest.

## Student Union Elects Seven Board Members

A new semester is approaching and with the graduation of many students and other factors several positions will be open in the various committees of the Student Union Organization. Jobs on such committees as the Mixer Committee which planned our successful all school mixer, the Dance Committee which organized the Sock Hop last fall, the Tournaments Committee which promotes the pool, chess and bridge tournaments and many others are open.

Applications will be taken in the lobby of the Student Union and interested persons will be interviewed by the committee heads during the afternoons of the first week of next semester.

In the way of elections the Student Union Board elected next semester's Board. The following people were elected to the

board: Bob Linville, Rolla Smith, Gary Havener, Tom Gresham, Milt Odegard, Bill Butcher, and Bill Erickson. These men are the officers of the Student Union Organization and at their next meeting in February they will be elected to specific positions on the Board.

The Student Union is also taking a little break, that is to say that they have no big projects planned for the month of January. However, Sunday the Student Union will feature the movie "Frogmen" starring Richard Wilmark, Dana Andrews, and Gary Merrill. It is a thrilling story of the U. S. Navy's UDT's Underwater Demolition Teams, points up bravery and daring of those men who work under water, unarmed, and handle high explosives.

It's a sure sign a boy is growing up when he'd rather steal a kiss than second base.

Her blond hair reminds me of the sunset, because soon it will be dark.

Dear Abby: I'm 19 years old and not very experienced, but my mother told me to be careful of men with mustaches. Is there any truth in this?

Dear Anita: Yes . . . and also be careful of men without them.

### MEN'S SHOES

By  
RAND

### SHIRTS

By  
VAN HEUSEN

### TUXEDO RENTALS

## RANDY'S

Family Shoe Store-Young Men's Clothing

## Alpha Sigma Mu Elects Officers

Alpha Sigma Mu, honorary metallurgical engineering fraternity, held its monthly meeting Thursday, January 5, at 4:30 in room 103 Fulton Hall. The meeting was called to order by president Garland Grechus. The major item on the agenda was the election of officers for the spring semester. Elected as officers were Dave Furnish, president, Thomas Theobald, vice-president; Gary Welch, secretary; and Bradford Schwartz, treasurer. After a brief discussion of plans for next semester the meeting was adjourned by president Grechus.

It's better to give than to lend—and it costs about the same.

**THE MISSOURI MINER**  
MISSOURI SCHOOL OF MINES AND METALLURGY

THE MISSOURI MINER is the official publication of the students of the Missouri School of Mines and Metallurgy. It is published at Rolla, Mo., every Friday during the school year. Entered as second class matter February 8, 1945, at the Post Office at Rolla, Mo., under the Act of March 3, 1879.

The subscription is \$1.00 per semester. This Missouri Miner features activities of the Students and Faculty of M. S. M.

Editor-in-Chief ..... Dennis Camp  
707 State St.—EM 4-2731  
Business Manager ..... Terry Johnson  
500 W. 8th St.—EM 4-3787

Managing Editor ..... Don Reis  
Make Up Editor ..... Henry Duvall  
Copy Editor ..... Hugh Murray  
Features Editor ..... Jerry Misner  
Advertising Manager ..... Ron Pfeuffer  
Circulation Manager ..... Bill Ricketts  
Sports Editor ..... Ed Schwarze  
Technical Adviser ..... John True  
Secretary ..... Robert Anyan

## The Finest in..... DRY CLEANING

Pressing While You Wait.  
One Day Service if Requested  
Pick Up and Delivery Service.

**MODERN**  
Dry Cleaners  
9th and Pine

## 1,850 PAYING SUMMER JOBS EARN YOUR TRIP AND EXPENSES IN EUROPE

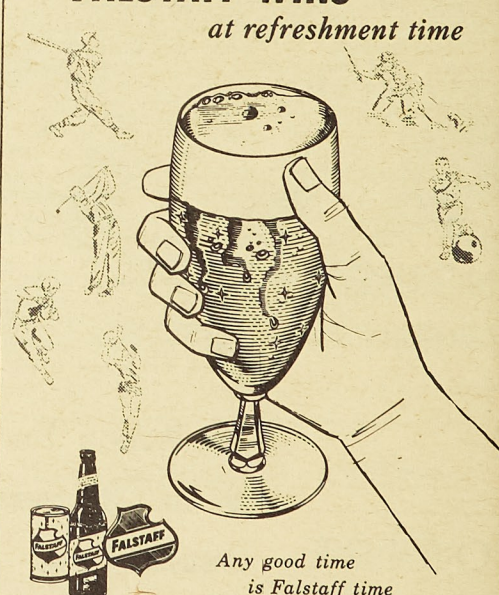
COMPLETE TOUR INCLUDING  
ROUND-TRIP TRANSPORTATION \$345

FOR FREE INFORMATION WRITE TO:

AMERICAN STUDENT INFORMATION SERVICE  
JAHNSTRASSE 56a • FRANKFURT/MAIN • GERMANY

## FALSTAFF WINS

at refreshment time



Any good time  
is Falstaff time

AMERICA'S PREMIUM QUALITY BEER  
FALSTAFF BREWING CORPORATION, ST. LOUIS, MO.

MUELLER DISTRIBUTING CO.  
Rolla, Mo.



MSM PROFESSOR SPEAKS

# Blue Key Convention Was Held in Kansas City

The thirteenth Biennial Convention of the Blue Key National Honor Fraternity was held in Kansas City, Missouri at the Uehlbach Hotel, December 29, 1960. Representing the Missouri School of Mines and Metallurgy were Prof. Robert Wolf, faculty advisor, Wayne Resenop, official delegate, and Gary Havener.

The opening address, "Welcome to Missouri" was given by Prof. Robert Wolf. He ended his address with the presentation of an aluminum replica of the Blue Key to B. C. Riley,

the founder of Blue Key.

The workshop sessions on Membership, Programs and Projects, Publications, Public Relations, and Alumni Recognitions and Awards that were held on the afternoon of December twenty-eight gave the delegates a great opportunity to exchange ideas on how the chapters should function in these various fields.

The highlight of the convention was a series of four lectures on leadership, given by Dr. Frank Goodwin, Professor in Business Administration at University of Florida.

## Personality Column

(Engagements)

SIGMA PI  
Chuck Heilig Ray Williamson

PHI KAPPA THETA

Jim Klein

PI KAPPA ALPHA

Bob Kallemair Richard Johnson

(Pinned)

PHI KAPPA THETA

Jim Wunderlich Warren Forness

Jim Tegethoff

## IRE Plans Contest For Student Papers

The 1961 Student Paper Contest for Region 6, Institute of Radio Engineers, has been announced by Sam T. Lanham, of Arlington State College, Arlington, Texas, student paper coordinator.

Student papers will be judged the 13th annual Southwestern IRE Conference and Electronics Show, in Dallas April 19-20-21, according to Tom Wright, Jr. of Dallas, student activities chairman for the Conference.

Awards will consist of \$100, 0 and \$25 cash prizes as well as plaques for the top three technical papers.

Most schools will conduct elimination contests early in 1961 to determine which engineering students will present technical papers in Dallas.

Faculty representative from MSM will be James G. Smith of the Electrical Engineering Dept.

More than 3,500 engineers and scientists will attend the SWIRE meeting, to be held in Dallas Memorial Auditorium and the Uehlbach Hotel. SWIRECO is also Region 6 IRE meeting. R. Olson of Texas Instruments, Inc., is general chairman.

An American general reports at an Army unit near NATO headquarters is out to get a famous Parisian glamour girl. She's been contributing to the delinquency of a major.

A. E. Long, M. S. M., Ex '22  
**LONG INSURANCE AGENCY**  
810 Pine St. ROLLA, MO. Phone EM 4-1414  
"Service Is Our Business"

# Tucker



**AUTOMATIC LAUNDRY**  
FAST SERVICE—INDIVIDUAL WASHERS  
COMPLETE BACHELOR LAUNDRY SERVICE  
Freshman Friendship Coupons Redeemed  
**Laundry - Dry Cleaning - Shirts**

Corner 7th and Rolla Sts.

Open 7:30 to 6

805 Pine  
Jeweler  
G. L. Christopher  
Authorized Agent  
WATCHES  
**OMEGA**

## NOTICE

Drawing Every Night for  
**Free Steak Dinner**

Open to Students & Faculty  
of MSM only  
at the

# CRESCENT CAFE

RFD 3

EM 4-9999

Open "Round the Clock" to serve you better

711 Pine  
**FULLER JEWELRY**  
Anything of Value  
JEWELRY  
RINGS  
CAMERAS  
RADIO  
WE LOAN CASH ON  
**PAWNS**

## ATTENTION, SMOKERS

See Our Complete Line of  
Pipes • Tobaccos • Accessories

—AT—

### TUCKER'S DRUG

## THE BUSY BEE LAUNDRY AND DRY CLEANERS

SAY: "It pays to have your Wash 'n Wear Suits Sanitoned Dry Cleaned." They give better appearance — Like New Finish — Professional Press.

THE BUSY BEE LAUNDRY & DRY CLEANING  
SERVICE IS SUPREME IN ROLLA.

FLUFF DRY 1 Day Service No Extra Charge . . . 11c lb.  
DRESS SHIRTS & SPORT SHIRTS . . . 25c  
SLACKS . . . 55c SUITS . . . \$1.10  
(Cash and Carry—Small Extra for Pickup and Delivery)

CALL

### THE BUSY BEE LAUNDRY & DRY CLEANERS

For That Professional Service, "It's the Place to Go."

14th and Oak

Phone: EM 4-2830

Faulkner and 72—EM 4-1124

### FREE PARKING

## Have a real cigarette—have a CAMEL

Jack and Mary Lamber  
WEST COAST SAILPLANE ENTHUSIASTS

**CAMEL**  
CHOICE QUALITY  
TURKISH & DOMESTIC BLEND  
CIGARETTES

The best tobacco makes the best smoke!

R. J. Reynolds Tobacco Co., Winston-Salem, N. C.

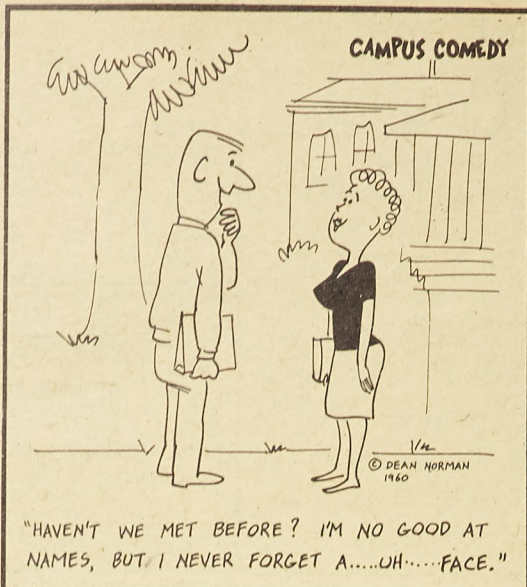


(Continued from Page 1)  
Strainer does not have a mustache.

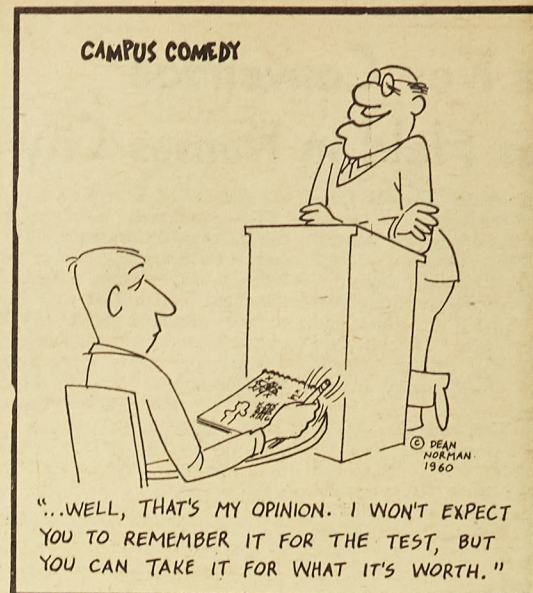


Van Dyke

The third type of beard is the Van Dyke. This beard is just a mustache and goatee and is similar to the beard illustrated on the Sir Walter Raleigh tobacco can.



"HAVEN'T WE MET BEFORE? I'M NO GOOD AT NAMES, BUT I NEVER FORGET A.....UH.....FACE."



"...WELL, THAT'S MY OPINION. I WON'T EXPECT YOU TO REMEMBER IT FOR THE TEST, BUT YOU CAN TAKE IT FOR WHAT IT'S WORTH."



Novelty

The fourth type, the novelty beard, can be just about anything. It may be colored.

### UPTOWN THEATRE MOVIES IN CINEMASCOPE

FRI. & SAT. JAN. 13-14

**'All the Young Men'**

Alan Ladd & Sidney Poitier

SUN. Thru WED. JAN. 15-18

Sunday continuous from 1 p. m.

**'The Facts of Life'**

Bob Hope & Lucille Ball

THURS. FRI. & SAT.

JAN. 19-21

**'Under Ten Flags'**

Van Heflin & Charles Laughton

### RITZ THEATRE MOVIES ON WIDE SCREEN

FRI. & SAT. JJAN. 13-14

Saturday continuous from 1 p. m.

**'Diary of a**

**Highschool Bride'**

Anita Sands & Ronald Foster

PLUS

**'Ghost of**

**Dragstrip Hollow'**

Jody Fair & Martin Braddock

SUN. MON. & TUES. Jan. 15-17

Sunday continuous from 1 p. m.

**'The Devil's Hairpin'**

Cornel Wilde & Jean Wallace

PLUS

**'Jet Attack'**

John Agar & Audrey Totter

WED. & THURS. JAN. 18-19

**'The Joker Is Wild'**

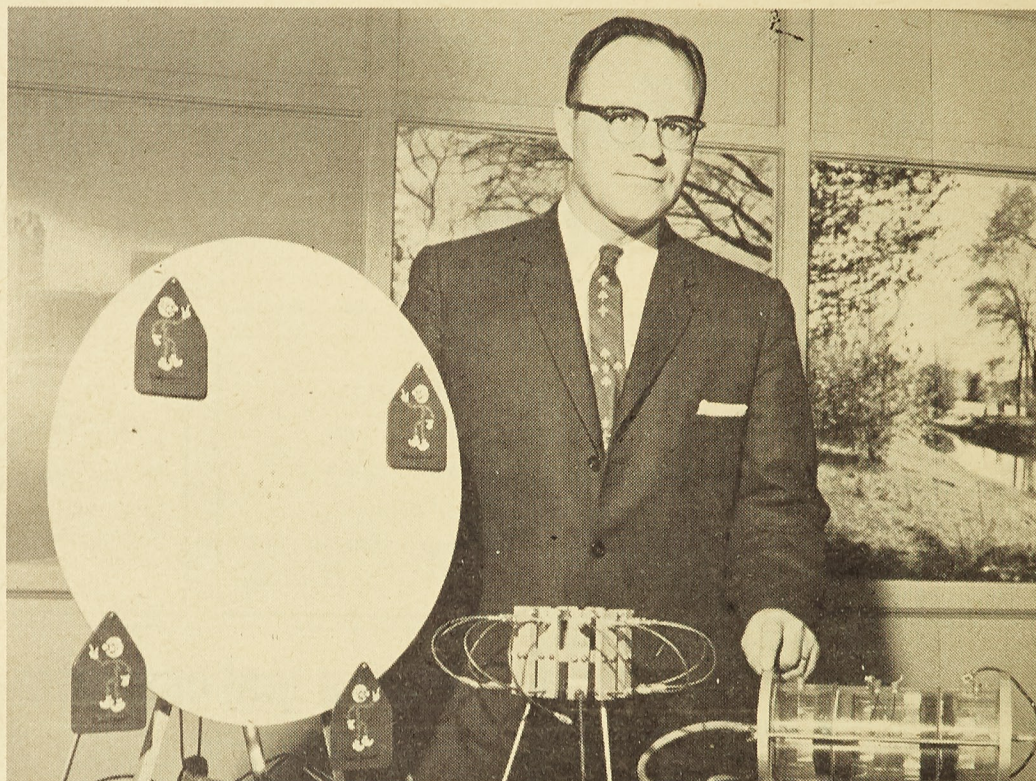
Frank Sinatra & Mitzi Gaynor

PLUS

**The Monster That**

**Challenged the World**

Tim Holt & Audrey Dalton



Detroit Edison's Director of Research, William G. Meese, a Purdue graduate, demonstrates laboratory models of direct conversion devices for generating electricity.

## UPGRADING ENERGY

—OUR MOST IMPORTANT JOB

FOR EIGHTY YEARS, America's electric power industry has been advancing the science of upgrading energy resources into the most usable, flexible and economical of all the forms of energy—electricity. The progress of our abundant industrial society has depended very largely on the refinement of "crude" energy—either in the form of heat from fossil fuels like coal, or in the form of falling water—into infinitely versatile electric power. □ Today the development of atomic electric power offers another means for even more efficient upgrading of our energy sources. In the near future this new development may lead to large scale *direct conversion* machines—enabling us to produce electricity directly from heat without steam generators and turbines. □ At Detroit Edison, research and development of new power sources through *fission, fuel cells, thermoelectric* and *thermionic generation* is being continuously appraised. Applications of this research for energy upgrading offer a challenge to young engineers coming into the electric power industry. □ You might like to find out more about us. Drop us a note and we will send you a copy of Detroit Edison Engineering—it tells about the challenges and opportunities you can expect. Write to Detroit Edison Employment Department, Detroit 26, Michigan or check with our representative when he visits your campus.

THE DETROIT EDISON COMPANY  
AN INVESTOR-OWNED BUSINESS



# Miner Basketball Team Places Sixth in Christmas Tournament at Warrensburg

By Kleinpeter

The Missouri Miners ran into tough competition in their first contest of the 1960 MIAA Christmas Tournament. The Kirksville Bulldogs proved to have too much height and swamped the Miners 93-71. Kirksville's Larry Swift was the big man in the Bulldog victory with 23 points in the first half. Coach Boyd King's cagers had a perfect record with 8 wins and no losses and the Miners were not going to spoil it as the Bulldogs kept out in front all the way. The half time score found the Miners already down under 45-28.

Tom Lampe was high point man for the Miners with 15 points, followed by Wayne Lucas with 12 points. The Miners had two other men in double figures but none to match the shooting of Kirksville's Swift and McPike who had 18 contributions. Free throw points were about equal, Miners had 21 and the Bulldogs managed 19. The big difference came in the field goals as the Kirksville five had the edge 37-23 and a good margin in field

goal per centage.

## BOX SCORE

Miners	FG	FT	TP
Brenning	3	3	9
Lucas	5	2	12
Wiegand	1	6	8
Lampe	6	3	15
Lemon	4	3	11
Good	4	3	11
Others	2	1	5
TOTALS	25	21	71

Kirksville	FG	FT	TP
Brown	1	2	4
Chadwick	4	0	8
Henderson	3	2	8
McPike	6	6	18
Samuel	3	0	6
Sterrett	5	4	14
Swift	11	4	26
Others	4	1	10
TOTALS	37	19	93

The loss to Kirksville put the Miners in the loser's bracket, but our squad came back to down N. E. Oklahoma State the following night. By edging out the Redmen, our Miners were able to hold down the sixth place spot

for the Tournament. Throughout the game neither team led by more than 5 points and the MSM men had to come from behind to gain the 76-70 decision. The Oklahomans jumped out to a narrow lead which they kept until with two minutes left in the half the Miners overtook them by a one point margin 29-28.

The second half started with the Redmen again pulling out in front until Jim Lemon sunk a two pointer with 4:40 left in the half and put the Miners in front 58-57. Jim Good took over and added six more points. MSM kept their margin until the buzzer sounded and they gained their only victory in the Tournament.

Good was high scorer with 22 points, 20 in the second half. Tom Lampe and Wayne Lucas added 18 points for the Miners. Rebounds were at an even 41 for each team, but Good was again in there for 14 grabs and Lucas pulled in 10.

The Miners, again cool on shooting, hit only 36 per cent while Oklahoma dumped 38 per cent. The free throw line was the Redmen's downfall as the Miners outscored them at the line 28-12.

Central Missouri State College scored 12 straight points in the closing minutes of the game to show a 67-52 win. Warrensburg started off fast and were leading 34-23 at the half as 6-foot, 2-inch Gordon McFarland hit 11 straight points.

The Miners started narrowing the lead until they drew within 3 points as the scoreboard showed 51-48 and 7:30 left in the game. Then the Mules came back with their burst of baskets, led by Boy Walters, with just over six minutes left and pulled out of range of the Miners.

McFarland led the Mules with 20 points, 17 of them coming in the first half. Lampe led the Miner five with 17 points while Lemon and Wiegand managed 10 each.

The Mules were accurate with the field goals as they sank 23 out of 50 attempts for 46 per cent. The Miners were a bit cold with only 22 of 61 finding the mark giving a 36 percent showing.

Jim Good was at his usual on the rebounds hauling in eleven against the four inch taller Bert Valino's 13 grabs from the boards.

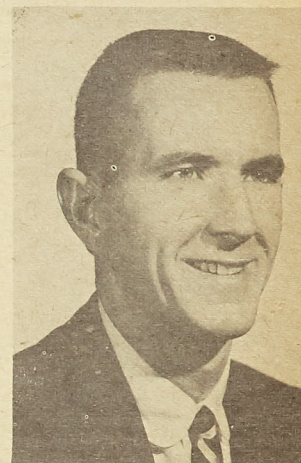
## WHO'S WHO in Intramurals

by Bill Haag

Well known around the campus for his work in intramural sports is Sigma Nu's Roy Sharp.

Roy came to MSM from Harrison, Arkansas, and selected electrical engineering as a major. He has become very active in both intramural and varsity athletics. For Sigma Nu, he participated in handball, football, volleyball and track. Along with these, Roy also lettered three times playing basketball for the MSM Cagers.

During the 1958 handball season, Roy took second and during the 1959 season he and



Roy Sharp

Tom Cooper captured first in the doubles competition. Also last year Roy pitched Sigma Nu's softball team into second place.

Being a married man, Roy is still active in the intramural program but in a different phase, one of the all important referees.

Now a senior Roy plans to graduate in August.

## DEAR JOHN'S

## Advice to Miners

Dear John,

I read your column every week, and enjoy it very much. I have a question to ask you. What is a journalist(?) like yourself doing at MSM?

Signed, Curious

Dear Curious,

I don't know whether you remember that fatal day in '57 when SHOWME was banned. Well, I was a member of the J-School at M. U. and a writer at the time. When the Dean asked for my resignation from school as well as the staff of SHOWME, I grew a beard and enrolled at MSM and tried to lose myself in vectors, differentials, and ROTC Summer Camp.

John

Dear John,

My problem concerns my roommate. He has a pet cat that is about to drive me out of my mind. First, this cat eats out of the same dishes we do. Second, he has free run of our apartment. And to top it all off, he likes to sleep (among other things) on my bed. I'm allergic to cat fur, and this keeps me sneezing the whole night. What can I do?

Signed, AAAACHOOOO

Dear A—

My boy, you have a serious problem indeed. You might try getting another cat of the opposite sex. This might eliminate your problem for awhile. However, you might end up with more cats. Second, try getting a dog or a new roommate.

John

Dear John,

Why wasn't your column in last week's MINER?

Signed, Curious

Dear Curious,

Well, it was a toss between my column and final schedules. Knowing how important a complete knowledge of final exams is to all students, I graciously consented to allow the final schedule to be printed in place of Dear John.

John

Dear John,

I am a member of the USAFR, and attended this past Military Ball. While I was dancing with my date, some fellow asked me what time the Greyhound left for St. Louis. Tell me what I should have done instead of poking him in the nose.

Signed, 985476239046

Dear 985476239046,

Is this number your serial number or cell number? I would have given this fellow the time and continued dancing.

John

## THE BOX SCORE

MSM-76	G	FT	F
Brenning	2	1	2
Good	8	6	4
Lampe	5	8	2
Lemon	3	1	1
Lucas	3	12	4
Wiegand	3	0	1
N. E. Oklahoma—70	G	FT	F
Lefler	5	1	5
Mizell	2	2	1
Nick	1	0	4
Odle	1	0	0
Rains	4	0	4
Rice	7	4	2

## WARRENSBURG STRIKES

The Miners were knocked out of fifth place when the Mules of

## BOX SCORE

CMSC-67	G	FT	F
Childress	1	1	1
Dennis	0	3	2
Hewitt	2	0	2
Marshall	1	3	3
McFarland	7	6	2
Walters	7	5	2
Totals	23	21	12
MSM-52	G	FT	F
Brenning	3	1	4
Good	0	4	2
Lampe	8	1	5
Lemon	4	2	1
Wiegand	5	0	3
Lucas	2	0	4
Totals	22	8	19

## SKITCH HENDERSON COMING TONIGHT

(Continued from Page 1)

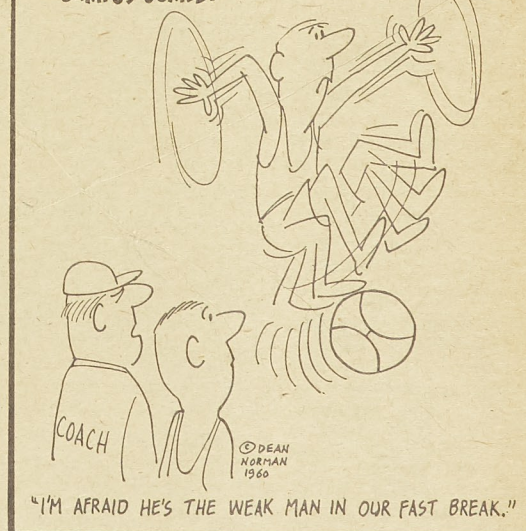
tra and soon took over the musical leadership of the then biggest program on radio, Bing Crosby's Philco Hour.

At the present time, Mr. Henderson, in addition to his active TV and radio musical work, is musical director of the National Broadcasting Company. This post, in addition to artistic activities, involves him in administration and business affairs and as such carries a great deal of responsibility. The job is a proper one for him to be in at this time, since his career has been one of steadily increasing importance and continues to develop in an effective and artistic way.

There are reports that the Navy is working on an atomic submarine which will stay under water for four solid years—coming up just long enough to allow the crew to re-enlist.

The mind is a wonderful thing. It starts working the minute you're born and never stops until you stand up to speak in public.

## CAMPUS COMEDY



FILM • CAMERAS • PHOTO SUPPLIES • FAST FINISHING

O'NEAL CAMERA SHOP

120 W. 8th St.



# MINER SPORTS

PAGE 6

THE MISSOURI MINER

FRIDAY JANUARY 13, 1961

## Varsity Basketball Record Stands at 6 Wins 7 Losses

### UPSET HARRIS

The Miners, in their best showing of the season, set back the red-hot Harris Hornets on December 15 by the decisive score of 80-64. Harris, up to this time, had the best won-loss record in the area but the MSM five determined not to be another Hornet victim quickly jumped out to a 10-3 lead. MSM held this lead for most of the half, until with 2:30 left in the first half, the Teachers from St. Louis took over for the first time, 31-29. Liking the feel of the lead they started hitting fast and managed 10 more points before the half ended. The score at the mid-way point was Harris 41; Miners 35.

Lemon sparked the Miners with 5 field goals while the team sunk 9 out of 15 free throws. Vanderford of the Hornets hit 4 field goals and 7 out of 7 free throws. Boedeker also took advantage of the charity shots and fired 8 out of 8 through the hoop.

The second half got under way when Miner guard, Terry Wiegand, tipped in two points. From there the Miners closed in and tied it up at 47-47 with 16 minutes left. Lampe came back with a counter to put the Miners again out in front 49-47. Another free throw by the Hornets tied the game until Jim Lemon hit a 30 footer to put the Miners back in the lead. From then on the Miners kept on top to the finish and recorded an upset 80-64 win.

### BOX SCORE

MSM	FG	FT	TP
Lucas	3	10	16
Brenning	0	1	1
Wiegand	6	0	12
Lampe	6	6	18
Lemon	7	2	16
Good	6	2	14
Others	1	1	3
Totals	29	22	80

Harris	FG	FT	TP
Boedeker	1	11	13
Collins	3	6	12
Leonard, G.	5	1	11
Landerford	5	8	18
Bilbrey	1	0	2
Kwiklik	2	0	4
Others	2	0	4
Totals	19	26	64

### MOP UP VOLS

Coach Allgood's cagers were full of steam for the Tennessee Martin Branch after their upset win over Harris Teachers College. Again the game was played on the home court only two days after the Harris game and the Miners again emerged victorious, 81-71. Lucas, Lemon, Lampe and Good were the hot shooters for the Miners with 20, 18, 16 and 15 points respectively for a four man total of 69 points. G. Brenning hit four field goals for 8 points along with his outstanding defensive play. Terry Wiegand, although adding only one field goal and two free throws was right in there on the

### assists.

Walker was high man for Tennessee with 19 points while Hawser scored 16.

Fouls again harassed the Miners as the Martin Branch added 23 points from the charity line while the Miners collected only 13. But the MSM five were deadly from the court as they hit 34 field goals and held the Vols to 24. This win gave MSM a 4 win, 2 loss record and a 0.667 average.

### BOX SCORE

MSM	FG	FT	TP
Brenning	4	0	8
Lucas	8	4	20
Wiegand	1	2	4
Lampe	8	0	16
Lemon	8	2	18
Good	5	5	15
Totals	34	13	81

Tennessee	FG	FT	TP
Gher	3	1	7
Hudson	3	0	6
Pritchett	5	1	11
Swape	2	1	8
Viniard	1	5	7
Hawser	2	12	16
Walker	8	3	19
Totals	24	23	71

### NO MERCY FROM MEMPHIS

Thursday, December 22, the Miners took a trip to Memphis for a game with Memphis State University and ended up wishing they would have stayed home. The Memphis five showed no hospitality at all as they ran over our cagers 111-50. As the score indicates, the Miners weren't even in the game as Memphis held them to only 16 field goals while scoring 44 of their own. Jim Good was the only man in double figures for the Miners although he hit only two field shots. The other 9 of his 13 points came from free throws. Tom Lampe was held to 8 points and Lemon and Lucas to only 5. The Miners had trouble throughout the entire game stopping the excellent shooting and ball handling of the Memphis team.

Memphis had four men in double figures, Wolfe being the high man of the game with 24 points and Wilfong was second with 18. The Memphis cagers had the advantage of height and depth and used both well in showing a high field goal percentage and control of the boards.

### BOX SCORE

MSM	FG	FT	TP
Brenning	3	0	6
Wiggin	2	2	6
Lucas	2	1	5
Lampe	4	0	8
Lemon	1	3	5
Good	2	9	13
Mitchell	0	2	2
Jones	1	0	2
Bosnak	1	1	3
Totals	16	18	50

Memphis	FG	FT	TP
Snyder	7	1	15
Jackson	1	1	3
Kibbly	1	0	2

Beckman	1	3	5
Yates	4	0	8
Ingold	0	2	2
Lowe	1	0	2
Wollfe	11	2	24
Wilfong	9	0	18
Mangum	3	2	8
Horton	2	4	8
Kirk	4	8	16
Totals	44	23	111

### HARRIS REVENGE

The Miners traveled to St. Louis and this time felt the sting of the Harris Hornets in the form of a 82-50 swamping. Shooting per centage tells the tale as Harris hit a tremendous 58 per cent of their field shots while MSM could hit only a very poor 16 per cent during the first half. The results were obvious when the half time score showed a towering 42-18 Hornet lead.

Coach Allgood's only excuse was that the Miners had been playing too much lately and just weren't up to it, as they were in the first meeting with Harris.

This did have some bearing and the fact that this was Harris' first game in 18 days made the boys full of pep. Coach Key of the Hornets gives much credit to Don Reed who has been out much of the season, including the MSM-Harris game here, with a broken bone in his foot. Reed sank 17 points and led both teams in scoring. Lampe was high for the Miners with 12 points. Both teams played their entire squads but none of the Miners were hot enough to stop the Harris squad.

### BOX SCORE

Miners	FG	FT	TP
Brenning	0	0	0
Lucas	3	5	11
Wiegand	1	4	6
Lampe	4	4	12
Lemon	1	0	2
Good	1	5	7
Mitchell	0	3	3
Harpers	0	0	0
Jones	1	0	2
Bosnak	0	1	1
Tesson	3	0	6
Totals	14	22	50

Harris	FG	FT	TP
Boedeker	7	0	14
Collins	2	3	7
R. Leonard	4	3	11
Eydman	2	2	6
G. Leonard	3	5	17
Reed	6	5	17
Bilbrey	1	0	2
Vanderford	4	3	11
Thames	1	0	2
Belleville	0	0	0
Kaney	0	0	0
Kulik	0	0	0
Williams	0	1	1
Johnson	0	0	0
Totals	30	22	82

Score at half; Harris 42, Missouri Miners 18.

### HOME COURT BEST

MSM, who hasn't lost a game this season at home, continued having their ups and downs in their see-saw season as they ran over John Brown University of

## Western Illinois Downs Miners in 1st Swim Meet

by L. Bails

The Miner swimming squad bowed out to Western Illinois University Saturday, December 17, by a score of 37 to 54.

Gary Broyles was high point man for the Miners with 11.75 points. He placed first in the 220 yard Freestyle with a time of 2:32.2 minutes, first in the 440 yard Freestyle with 5:44.2 minutes, and was anchorman on the 400 yard Freestyle relay team which had a winning time of 3:59 minutes.

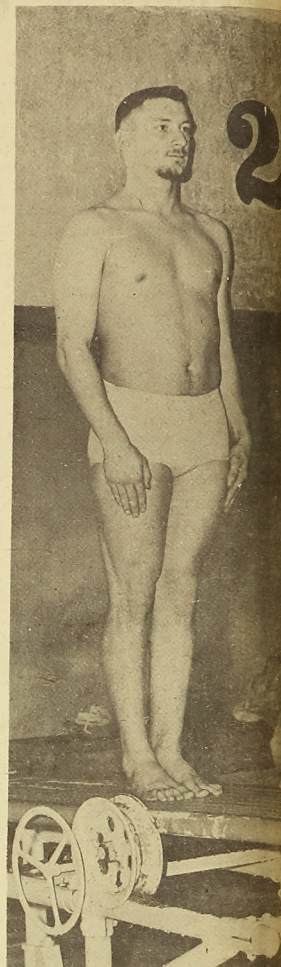
The Miners swim against Washington University tonight at St. Louis, at 7:00 p.m.

Arkansas 96-57.

John Brown—57	FG	FT	F
Bailey	2	4	3
Hair	0	0	1
Spears	8	0	3
Winkle	3	4	5
Netherson	3	0	1
Beaty	2	0	1
Barnes	0	0	2
Castlemen	1	1	5
Branstetter	2	2	2
Miller	2	0	4
TOTALS	23	11	27

### MINERS

MSM—96	FG	FT	F
Brenning	3	2	5
Lucas	1	2	0
Weigands	1	1	1
Lampe	6	5	3
Lemon	10	6	1
Good	7	4	1
Mitchell	1	0	0
Jones	0	2	0
Bosnak	0	3	0
Tesson	5	0	4
Zimmerman	0	3	0
TOTALS	34	28	15



## SIDELINES

Rog Kleinpeter

The MIAA Basketball Tournament showed promise to be quite exciting and interesting as the Conference teams, MSM, Kirksville, Maryville, Springfield, Cape Girardeau and Warrensburg went into the tournament with an overall record of 19 wins out of 25 games against rugged competition. The guests invited to take part, were Northeast Oklahoma State and Arkansas State (Conway).

### CAPE ICTORIOUS

Cape, the defending champions of the tournament, again came out victorious with a 80-70 win over Maryville in the championship game. This gave the Indians a 8-1 record and broke the 9-game winning streak of the Bearcats (9-2). The top scorer of the game was the Indians' 6-foot, 2-inch guard, Carl Ritter with 26 points. Dwayne Bond, 6-foot, 8-inch center and Don Drake, 6-foot, 4 inch forward led the Bearcats with 16 points each.

Kirksville, who was upset by Maryville, ended up in third place when they beat the Arkansas State Teachers 81-73. Warrensburg took fifth place with their win over the Miners 67-52. Springfield took seventh place in a 79-74 overtime win against Oklahoma State.

### TOP SCORING

The game that unveiled the stars was the Cape-Arkansas State contest. John Robinson, 6-foot, 1-inch guard for the Teachers, hit 11 of the 17 field goals and 12 points from the free

throw line for a tournament record of 34 points. He also set a three game scoring record with 85 points giving an average of 28.3 points per game. But he couldn't compete with the Indians' Carl Ritter, Les Hemmer and Bill Giessing who shot for 29, 25 and 23 points respectively. Ritter also set a tournament record by hitting 18 free throws in a game against Maryville.

Both teams hit 50 per cent of their shots but Cape held a 45-32 rebound margin. The Indians fell only 4 points short of the tournament record of 104 points scored in one game (set by Eastern Illinois, 1959) as they trounced the Teachers 100-78.

### LAMPE AND GOOD STAR

Jim Good and Tom Lampe were the big guns for the Miners as Good pulled down 35 rebounds, only 5 short of the record mark set by Cape's Les Hemmer last year. Lampe was sixth in scoring with 50 points in the three games, an average of 16.7 points per game.

### CONFERENCE PLAY START

The Miners entered their first conference game of the season last Monday, January 9, against the top contending Kirksville Bulldogs. As of December 30, the MIAA teams stand as follows: Kirksville (9-1), Cape (8-1), Maryville (9-2), Warrensburg (6-2), MSM (5-5), Springfield (4-7).

The Miners have averaged 69.5 points per game while opponents have averaged 72.7.