



15 Jan 1960

## The Missouri Miner, January 15, 1960

Follow this and additional works at: [https://scholarsmine.mst.edu/missouri\\_miner](https://scholarsmine.mst.edu/missouri_miner)

These newspapers reflect the attitudes, perspectives, and beliefs of different times. Neither the library nor the university endorses the views expressed in these collections, some of which contain images and language which may be offensive to some readers.

---

### Recommended Citation

"The Missouri Miner, January 15, 1960" (1960). *The Missouri Miner Newspaper*. 1641.  
[https://scholarsmine.mst.edu/missouri\\_miner/1641](https://scholarsmine.mst.edu/missouri_miner/1641)

This Newspaper is brought to you for free and open access by Scholars' Mine. It has been accepted for inclusion in The Missouri Miner Newspaper by an authorized administrator of Scholars' Mine. This work is protected by U. S. Copyright Law. Unauthorized use including reproduction for redistribution requires the permission of the copyright holder. For more information, please contact [scholarsmine@mst.edu](mailto:scholarsmine@mst.edu).



# THE MISSOURI MINER

VOLUME 46

ROLLA, MO., FRIDAY, JANUARY 15, 1960

NUMBER 15

## Computer System Expected Late This Spring Semester

The School of Mines and Metallurgy of the University of Missouri has been awarded a grant of \$30,000 by the National Science Foundation to aid in the establishment and support of a computer center on the Rolla campus, it has been announced by Prof. Ralph E. Lee, Chairman of the Faculty Committee which developed the program. The grant is one of those made by the Foundation to Schools doing basic research in the sciences and engineering and having an extensive program in computing.

This grant will be applied toward the purchase of a medium-sized electronic digital computer system capable of thousands of mathematical and logical operations per minute. This facility will greatly enhance the educational program at the School of Mines in two important respects, Prof. Lee said. It will enable faculty members and graduate students to solve complex research problems previously ex-

cluded because of their immense time consumption, and it will make possible an expansion in the undergraduate and graduate program of studies in the mathematics of computing and the programming, operation, and design of computers. It will also provide the School with means of processing data in minutes which previously required days by desk calculator methods. The techniques of computing taught will be applicable to the largest type of digital computer and therefore provide engineering graduates with the type of experience often required for positions in industry.

Bids for the purchase of the computer system are to be opened January 19, and it is expected that the system will be installed on the campus sometime during the spring semester of 1960.

In the fall of 1957, Dean Curtis L. Wilson appointed a Special Committee of the Faculty to study the growing need of the faculty for a computer center on the

campus at Rolla. This committee spent two years studying the problems involved in establishing, equipping and operating a campus computer center. This study resulted in a recommendation to the faculty that an electronic digital computer system be installed on the campus as soon as possible.

This report was favorably received by the faculty and the committee then prepared a budget for the purchase of the necessary equipment. The grant from the National Science Foundation was the result of a proposal drawn up and presented by the committee for receiving supplemental funds.

The general policy of operation  
(Continued on Page 3)

## MSM ROTC Engineer Unit No. 1 of 28 Schools

Enrollment figures for Corps of Engineers ROTC units have been released for the 1959 fall term and show that the Reserve Officers Training Corps at the Missouri School of Mines and Metallurgy is once more the largest Engineer unit in the country.

There are 28 schools with Corps of Engineers units. In many of these schools, as at MSM, only Engineer instruction is offered. In other larger schools more than one training unit is available on the same campus; for example at the University of Illinois students

## New BSU Center Opening Day Set for February 1



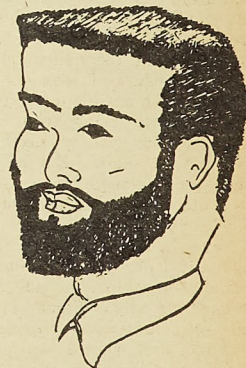
February 1 is the official opening day for the new Baptist Student Center. The big white house on the corner of 11th and State, directly across from the Dean's residence, was purchased by the Missouri Baptist Convention for the students of the School of Mines. It will not only provide recreational facilities and a place of study, but also a home for the regular BSU functions. Vesper services lasting for half of an hour will continue to be held at 6 o'clock Monday through Friday, and will be supplemented by a Bible discussion session every Friday evening at 6:30. In addition, the center will provide a place to hold parties and other activities which are a regular part of the

Baptist Student Union program. All students, regardless of religion, are cordially invited to visit the center.

(Continued on Page 3)

## Four Categories In Beard Contest

As the date of the arrival of our patron saint, St. Patrick, is only three months away, the beards of all loyal Miners should be starting to grow a little more lengthy than normal. The purpose of this article is to inform the freshmen and remind the upperclassmen that there will be another contest this year. Judging in the St. Pat's Beard Contest is on four types of beard.



Smith Brothers

The first type of beard is the full beard or the Smith Brothers beard. This beard is a full beard with a mustache. The full beard may be trimmed around the neck.



Soup Strainer

The Soup Strainer is the second type of beard eligible for competition. The Soup Strainer must be trimmed around the neck and on the side of the face as shown in

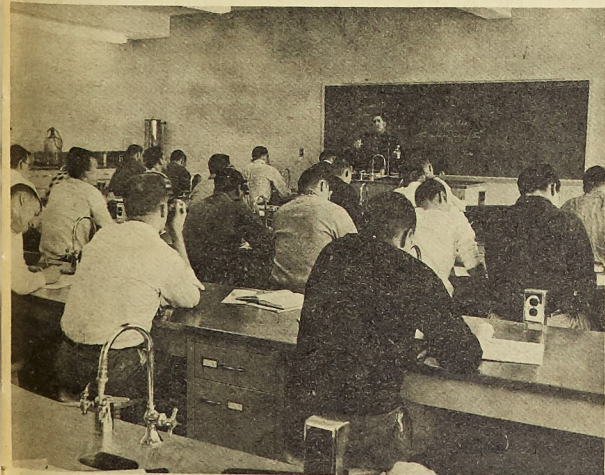
(Continued on Page 8)

## New Civil Building Has Latest in Equipment

Early in the 20th century, engineers were few and far between. The majority of those who were fortunate enough to obtain an engineering degree became civil engineers. During the great land rushes and settlements of sparsely populated areas of the U. S.,

necessity took their place next to surveying. To handle these problems and meet other engineering challenges accordingly, the U. S. Army established an Army Engineers Corps.

Now, in 1960, many other branches of engineering have



Bacteriology Lab

the civil engineer applied his terrestrial knowledge chiefly in the art of surveying. Then with the coming of the World Wars, military bridge-building and other army engineering feats out of ne-

emanated from diversified fields. The discovery of Atomic Energy, the space age and all of its consequential scientific achievements have expanded the engineers' (Continued on Page 3)

## Student Union Board and Council Governing Body of New Building

This semester at MSM has ushered in a completely new student organization, the Student Union Board and Council. It is the duty of this council to plan and administer the activities of the Student Union so as to contribute to a more well-rounded social, recreational, and cultural life for all School of Mines students and to plan the most judicious possible use, for the benefit of all students, of the activities and facilities of the Student Union Building.

The members of the board for this semester are as follows: Joe Lewis, president; Jake Tims, secretary; Bill O'Neal, assistant secretary; Ken Pendleton, director of activities; Wayne Siesennop, assistant director of activities and vice-president; Jim Berthold, director of promotions; Roger Echmeir, assistant director of pro-

motions; Ron Featherston, director of personnel; Jim Pool, assistant director of personnel; Rolla Smith, director of finance; and Larry Boston, assistant director of finance.

The chairman of the committees are as follows: Jay Hunze, publicity; Jerry Butler, news service; David Cox, bulletins; Jim (Tex) Beslame, yearbook; Bud Cook, research; Milton Odegard, recreation; Gary Baumgarten, social; Charles Heilig, budget; and Larry Dix, fund raising.

The staff of the union is: Bill Kratzer, director; Mrs. Emory Jackson, secretary; J. O. Wilson, food supervisor; and Ike Edwards, alumni representative.

These various groups, together, are known as The Student Union Council, the governing body of the Student Union Building.



## THE MISSOURI MINER

THE MISSOURI MINER is the official publication of the students



of the Missouri School of Mines and Metallurgy. It is published at Rolla, Mo., every Friday during the school year. Entered as second class matter February 8, 1945, at the Post Office at Rolla, Mo., under the Act of March 3, 1879.



The subscription is \$1.00 per semester. This Missouri Miner features activities of the Students and Faculty of M.S.M.

Editor-in-Chief..... Jim Walther  
707 State St. — EM 4-2731  
Business Manager..... Mike Swoboda  
500 W. 8th St. — EM 4-3787  
Managing Editor..... Terry K. Smith  
Make-up Editor..... George Hall  
Features Editor..... Jerry Misemer  
Advertising Manager..... Jerry Alyea  
Circulation Manager..... Bill Ricketts  
Sports Editor..... John McKeone  
Technical Advisor..... Bill May  
Secretary..... Bob Elrod  
Assistant Editor..... Henry Duval

## Letters to the Editor

Dear Editor:

As you know, the school has a policy that students eating at the Cafeteria are required to wear dress clothes for the Sunday noon meal. A notice to that effect is posted on the bulletin board in the cafeteria. It states that a person should wear a shirt, dress pants, suit coat and a tie.

But last Sunday when I went for my noon meal, I was stopped because I didn't have on the proper color of shirt. I wore dress pants with a good quality brown shirt, suit coat and a matching tie. Upon entering the cafeteria, I was stopped by some young men who call themselves "Personnel Assistants" (perhaps a better name should be "secret police"). They notified me that I did not have on the proper color shirt. They said that the notice called for a white shirt. I took one of the young men outside to the bulletin board to show them the notice. It did not say anything about a white shirt. But he informed me that there was a notice in the dormitories stating that a white shirt was required. I do not live in the dorms (thank God), and I had no way of knowing about the white shirt rule. But he asked me why I didn't have a white shirt down here. I explained to him that when I was home for Christmas vacation, I did not pack a white shirt because I was coming home in three weeks. When I attend church, I often go without a white shirt and a tie. But he suggested that I get a white shirt for next Sunday. If this poor, disillusioned kid thinks I am going to buy a white shirt just to eat at the cafeteria next Sunday, he has a surprise in store for him.

If I had known about the white shirt notice, I would have brought one along from home. But since


Comedian: "The quiz show I was on wasn't exactly fixed—but you were allowed to bring your own questions."

805 Pine  
Rolla, Mo.  
Jeweler  
G. L. Christopher  
Authorized Agent  
WATCHES  
OMEGA

it was neglect on their part to post the notice on the cafeteria bulletin board where everyone could see it, I do not intend to wear a white shirt when I go to the cafeteria next Sunday. After all, not all the students who eat at the cafeteria live in the dorms. How should we know about this notice? I don't know what will happen to me next Sunday for not wearing a white shirt. I may be crucified on a burning cross by the Personnel Assistants, but at least I will be standing up for my rights. I wonder if I have any rights at all under this dictatorship rule, but at least I will find out. The students in the dorms have a representative to whom they can take their problems. Since I am not represented by anyone (provision was not made for this), I must take my problem to you; the students at MSM. Please let me know what you think about this.

A disgusted Miner,  
Eugene Degenhardt

**"It Pays to Look Well"**  
CREW CUTS - FLAT TOPS - HOLLYWOODS  
**SANITARY BARBER SHOP**  
705 Pine St.

**Tucker**  
QUALITY  CHECKD

**Tuxedo Rental**  
NOW AVAILABLE

\* For Any Formal Occasion  
\* Discount to Groups

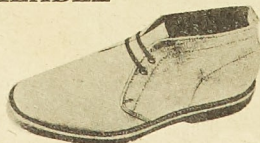
Ask About Our  
Student Credit Plan

Shoe Sizes 6 to 14 — Widths A to EEE

**RANDY'S SHOE**

Opposite Post Office

EM 4-4111



## New Student Union Opens Early for January Graduates

That's right, Miners—you're not in Heaven yet. Those bright lights you've been seeing at 7:00 in the morning are just those from the Student Union Building and if they don't wake you up a breakfast at the Student Union will.

As of January 4, the Student Union will be serving breakfast, lunch and dinner, every day, and if you're not hungry enough for a full meal, then try a sandwich from their "Complete Sandwich Service and Refreshment Counter." Included in the list of food services and specialties is the Catering Service for banquets or meetings which can accommodate up to 325 people. For banquet

arrangements in the Student Union Building contact Mrs. J. O. Wilson, the Food Service Supervisor.

Another service of the Student Union is that any student or faculty organization recognized by MSM may schedule meetings in the building by contacting Mrs. Emory Jackson, Secretary of the Student Union.

The hours for the coming semester are:

7:00-10:00 Monday through Thursday  
7:00-11:00 Friday  
8:30-11:00 Saturday  
9:30-11:00 Sunday

Recreation facilities available for the students at present are pool, billiards, and table tennis. Later second semester these will be extended to cover chess, check-

A famous author said it: "After seven months in Europe, I decided to come home when I heard Eisenhower on the radio and he sounded like a foreigner."

Women like the strong, silent type of man. They think he's listening.

Glasses can change your personality completely; especially if you empty them too often.

They say a fool and his money are soon parted, but how did they get together in the first place.



Parties are  
better  
than ever!  
with



AMERICA'S  
PREMIUM QUALITY  
BEER

FALSTAFF BREWING CORPORATION,  
ST. LOUIS, MO.

MUELLER  
Distributing Co.  
Rolla, Mo.

ers and playing cards. Also included is a Magnavox Stereo Set for which records are available, and a TV set which should be in operation as soon as a small coupling is made.

With second semester rolling around with all the hot weather toward the end, it will really be a welcomed change to go to the completely air-conditioned Student Union Building, but don't come alone—bring a guest. For the Student Union is for the students, alumni, faculty, the staffs of the various departments, and their guests.

As you can see, Bill Kratzer and his staff have done a fine job during the first two opening weeks even though there is still more equipment to be installed. The building was originally scheduled to open second semester, but was opened for the benefit of the January graduates of MSM.



yours?

These are the silver wings of a U. S. Air Force Navigator. As a flying officer on the Aerospace team, he has chosen a career of leadership, a career that has meaning, rewards and executive opportunity.

The Aviation Cadet Program is the gateway to this career. To qualify for this rigorous and professional training, a high school diploma is required; however, two or more years of college are highly desirable. Upon completion of the program the Air Force encourages the new officer to earn his degree so he can better handle the responsibilities of his position. This includes full pay and allowances while taking off-duty courses under the Bootstrap education program. The Air Force will pay a substantial part of all tuition costs. After having attained enough credits so that he can complete course work and residence requirements for a college degree in 6 months or less, he is eligible to apply for temporary duty at the school of his choice.

If you think you have what it takes to earn the silver wings of an Air Force Navigator, see your local Air Force Recruiter. Ask him about Aviation Cadet Navigator training and the benefits which are available to a flying officer in the Air Force. Or fill in and mail this coupon.

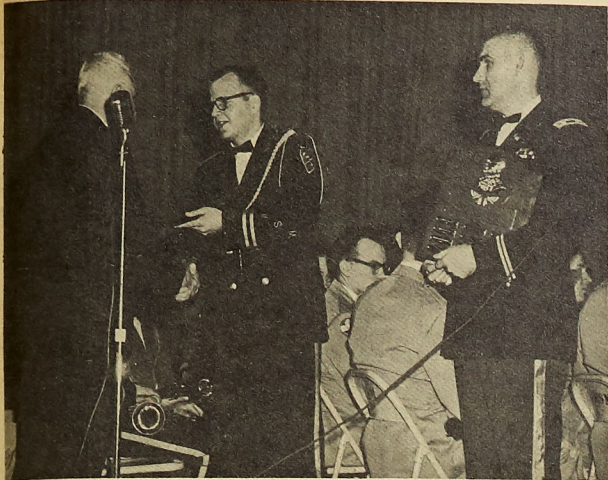
There's a place for tomorrow's leaders on the Aerospace Team.

**U.S. Air Force**

MAIL THIS COUPON TODAY  
AVIATION CADET INFORMATION  
DEPT. SC01  
BOX 7608, WASHINGTON 4, D. C.  
I am between 19 and 26½, a citizen of the U. S. and a high school graduate with \_\_\_\_\_ years of college. Please send me detailed information on the Air Force Aviation Cadet program.

NAME \_\_\_\_\_  
STREET \_\_\_\_\_  
CITY \_\_\_\_\_  
COUNTY \_\_\_\_\_ STATE \_\_\_\_\_





Left to right: Dr. W. T. Schrenk, Acting Dean; Millard K. Underwood, Student Director and recipient of the John Philip Sousa Band Award; and Captain Ralph M. Leighty, Director MSM-ROTC Band.

## Sousa Award Made At ROTC Concert

The highlight of the recent concert by the MSM-ROTC Band in Parker Hall, under the direction of Captain Ralph M. Leighty, was the presentation of the "John Philip Sousa Band Award" to Cadet Captain Millard K. Underwood, Student Director, by Dr. W. T. Schrenk, Acting Dean.

This award is given each year to the outstanding senior in the MSM-ROTC Band in recognition for his outstanding achievement and excellence in instrumental music, together with loyalty and cooperation, and high quality of conduct and leadership. John Philip Sousa is world-famous and internationally accepted as "The March King." It is quite an honor to be presented the John Philip Sousa Award, which includes a desk piece, lapel pin, and a certificate, all of which carry a replica of Sousa. The plaque shown in the picture has Cadet Underwood's name engraved on it, and is maintained in the band room. This is the third year this award has been made to the most outstanding bandsman. Previous recipients were: Edward L. Elliott, student director and trumpeter; and Harold D. Ege, trombonist.

The concert included marches, "pop" selections, a jazz trumpet solo, a Broadway musical, and a singing session of Yuletide favorites. The encore, "King Cotton" by John Philip Sousa was dedicated to Dr. W. T. Schrenk for his presentation of the Award.

On the campus they told of the employee who retired after 30 years—they gave him the water cooler, instead of a gold watch.

John Jones tells of the kid who walked around the block 50 times, and explained: "I'm runnin' away from home, but I'm not allowed to cross the street."

## Recent Feats of Civils

(Continued from Page 1)  
scope to the realm of specialization.

However, a concomitant development of all these scientific revolutions has been the tremendous extension of our nation's communicative powers. Colossal super highways, tremendous bridges spanning vast straits and rivers, and magnificent dams furnishing unlimited electric power, are only a few of the many projects completed by the civil engineers.

New revolutions in housing and building structures have given the civil engineer the task of designing and directing the ever-increasing suburban housing projects and rebuilding of old dilapidated sections of our numerous cities.

Population has more than held its own during these changing periods; towns and cities have sprung up spontaneously with the establishment of new air and missile bases. Here the Civil Engineer has a twofold purpose; he not only lays out and builds towns, but he also constructs the massive

airfields occupied by these masters of the air.

Recently a tremendous missile base has been built on the West Coast north of Los Angeles. It has been named Vandenberg Air Force Base, and is approximately 500 miles in length.

What has MSM to do in regard with all these new accomplishments? Just this: MSM is considered one of the top engineering schools in the U. S. and always has ranked among the highest rated schools in technology. She has continued to progress steadily and now has a new and important additive featured on campus, in the form of a new Civil Engineering Building. CE being one of the larger curriculums on campus, is under the competent direction of Dr. Carlton, and measures its worth by its products, the many fine Civil Engineers which graduate from MSM every semester.

The local weather forecaster's kid has a new toy—a sled with wheels on it.

## B. S. U.

(Continued from Page 7)

The building will offer an assembly room seating 50 persons, a lounge (with TV), a kitchen for light snacks, an office for the BSU director, a recreational area (with both indoor and outdoor sports—ping pong, badminton, volleyball, horseshoes, etc.), a prayer room, a library and study room, a guest room, and an apartment for the custodian. Mr. and Mrs. Charles White, a student couple, will be the caretakers.

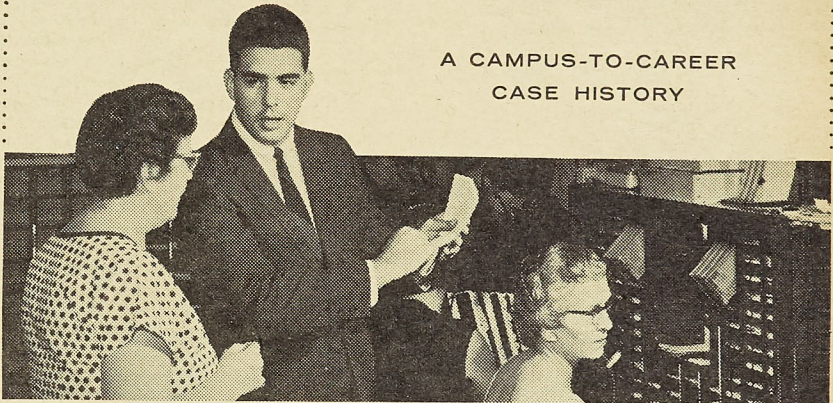
The BSU extends an open invitation to every student of MSM, not only to make use of the center's facilities, but also to participate in its activities.

## Computing System

(Continued from Page 7)

of the Computer Center will be determined by this committee. The committee includes: Prof. Rodney D. Caudle, Dr. Charles A. Johnson, Prof. James C. Maxwell, Dr. Roger E. Nolte, Paul E. Ponder, Dr. David E. Troutner, with Prof. Ralph E. Lee as chairman.

## A CAMPUS-TO-CAREER CASE HISTORY



Bob Allen and his Chief Operator, Mrs. Julia Chipman, discuss Long Distance records which will soon be converted to automatic processing.

## Meet Bob Allen—he's growing fast with a fast-growing company

Robert E. Allen got his B.A. degree from Wabash College in June, 1957, and went to work with Indiana Bell Telephone Company at Indianapolis. "It looked like a growing company where I could grow, too," he says.

It was. Today he is an Assistant Traffic Supervisor there. He's in charge of six other supervisory people and about 100 telephone operators.

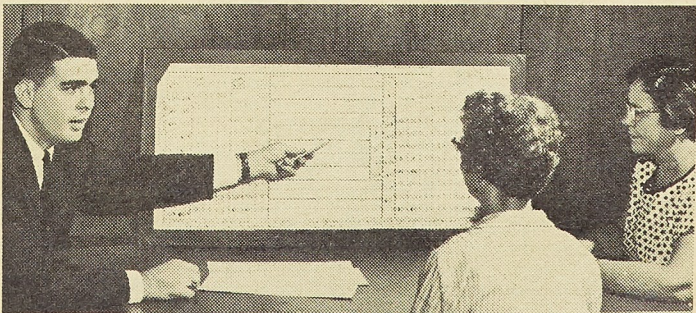
Bob attributes his rapid progress to two main factors: the thorough training he received and the steady growth of the telephone business.

"I was trained to be a telephone man-

ager, not just a traffic specialist," he points out. "I've also had practical, on-the-job experience in the plant, commercial and engineering phases of the business. So I'm equipped to handle new responsibilities all the time. And in this fast-growing communications field, that means I have more chances to keep moving ahead."

\* \* \*

What about a Bell Telephone Company career for you? Talk with the Bell interviewer when he visits your campus—and read the Bell Telephone booklet in your Placement Office.



With Mrs. Chipman and Miss Gee, Group Chief Operator, Bob reviews a blow-up of the automatic processing card which will mechanize Indiana Bell's Long Distance billing.

BELL TELEPHONE COMPANIES



## AUTOMATIC LAUNDRY

FAST SERVICE—INDIVIDUAL WASHERS

COMPLETE BACHELOR LAUNDRY SERVICE

Freshman Friendship Coupons Redeemed

Laundry - Dry Cleaning - Shirts

Corner 7th and Rolla Sts.

Open 7:30 to 6

## The Finest in..... DRY CLEANING

Pressing While You Wait.  
One Day Service if Requested.  
Pick Up and Delivery Service.



**MODERN**  
Dry Cleaners  
9th and Pine

Dial  
EM 4  
2509



## Warrensburg Mules Defeat Miners 77-53

This past Tuesday night, Jan., 12th, the MSM Miners met with the Central Missouri State Mules at Warrensburg only to be defeated by them for the second time this season by a score of 77-53. The first time these two teams met was at the Christmas Tournament held at Kirksville, Missouri when the Miners were edged out by one point in a 56-55 thriller. This loss drops the Miners to a five won-eight lose record for the season.

The MSM squad, playing in a new gym that was just a little over a month old, seemed to have troubles from the beginning. Just shortly after the first quarter started Bob Lewis, one of Dewey Allgood's best players hurt his arm while reaching for the ball and being fouled at the same time. X-rays later showed that Lewis' arm was just a pulled muscle.

Another contributing factor to our loss was that Jim Lemon, who is usually a high ace on the totem pole of points, scored only one field goal.

The half time score was 35 to 27 in favor of Warrensburg. As the second half started Sturm timed his jump perfectly to out tip his opponent. Lemon then hit for two points to raise the Miners hopes for victory. It wasn't long though before Goldberg, who had twelve points in the first half, began to use his sure eye to rack up a bigger lead for the Mules. This ace forward, who was absent from the previous Miner-Mule game hit for a total of ten field goals and scored on all three of his free throws.

John Sturm brought his overall total points scored for the Miners to 979 by tossing in 19 points. As high man on the team Sturm scored with eight field goals and three of his four free shots

The season is now half over, but we still have most of our league games yet to play. With a little luck the Miner squad can have a winning record for this season so let's all support our team at our next home game.

### BOX SCORE

Miners—53	FG	FT	F	P
Lewis	1	1	1	3
Brenning	3	1	5	7
Sturm	8	3	3	19
Lemon	1	0	0	2
Martin	0	0	4	0
Dix	0	4	1	4
Lampe	1	5	1	7
Lucas	1	2	4	4
Sharp	2	2	2	6
Wiegard	0	1	0	1
TOTALS	17	19	21	53

Warrensburg—77	FG	FT	F	P
Childress	3	2	5	8
Goldberg	10	3	2	23
Sandbothe	2	1	5	5
Thornberry	6	2	2	14
Mudd	2	2	1	6
Bickham	5	1	5	11
Sahn	1	1	0	3
Shehane	2	1	1	5
Magness	0	0	0	0
McFarland	1	0	0	2
TOTALS	32	13	21	77

The Errol Flynn legend grows. After paying for four suits at a haberdashery (which he never claimed), he said, "If I don't come back for them, send them to my fan club in Youngstown, Ohio."

A contestant on a quiz show was asked about the advantages of being married to a French girl. He said, "Well, for one thing, my mother-in-law's in Paris."

Those new small cars are great—you can now squeeze twice as many cars into a traffic jam.

## Miner Fishmen Down WU 55-40 in 1960 Contest

by John Woodward

Friday, January 9, the MSM swimming team met one of their old rivals at the MSM pool and defeated the Washington University Bears by the decisive margin of 55-40. It was a great team victory because all the members of the team scored points. Richard Greeley led the Miners with 9.75 points. The Miners won 7 events to 4 events for Wash. U.

Before the meet the Miners had high respect for the Wash. U. team and it was a great swimming meet from the first event to the finish. In the first event, the Miners 400 yard medley relay team won as the Wash. U. team was disqualified giving the Miners an early lead which they never surrendered. Jerry Catron, Daley, Miller, and Scott composed the Miners' relay team.

Gary Broyles, a local boy, won the 200 yard freestyle event after a hard battle with Alix Ireda of Wash. U. Russ Cox of MSM came in a close third.

In the 60 yard freestyle John Woodward, MSM team captain, won the event, defeating an All American high school sprinter by a decisive margin. Greeley of MSM took second. At this point the Miners led by a 24-10 score. In the 100 individual medley it

was a close battle all the way between Jim Phillips of MSM and Wade Auld of Wash. U. Auld won the event, but Phillips set a new varsity record.

Next came the fancy diving, and Art Farnham of MSM won this event very easily. Myron Bruns of MSM who has been running into hard luck, lost second place by 0.9 points.

In the 200 yard butterfly, Hawkins of Wash. U. and Jim Staley of MSM fought down to the finish, with Hawkins winning.

In the 100 yard freestyle MSM received a great surprise when Richard Greeley won this event. Coming from behind in the last length, Greeley poured on the pressure to take this event.

In the 200 yard backstroke Phillips of MSM won after a terrific struggle, barely nosing out Lever of Wash. U. Catron of MSM took third in this event.

In the 400 yard freestyle Gary Broyles, after a slow start, almost caught Alix Ireda of Wash. U. but he was edged out at the finish. Lynch of Wash. U. was third.

Needing only one more point to win the meet, Jim Staley came through after swimming a tremendous 200 yard breaststroke, taking third and giving us the

(Continued on Page 5)

## Conference Contests Reviewed

To realize the significance of the Miner-Bearcat game headlined above, it might help to take a look at some of the other cage contests of that week. Cape Girardeau, champion of the Christmas tourney, was defeated by Maryville by the margin of Gene Jordan's free throw in the last two seconds of play. Although Cape lost by only one point, it was on her home court—and Springfield, whom the Indians trimmed in the Christmas Tourney, was ranked eighth in the nation! The victorious Bearcats were promptly clipped by a last-place Miner squad who was fresh from a swamping by second place Springfield. Other games put Kirksville over Warrensburg 77-66 and indicate that Maryville should be able to whip them both. This doesn't mean that the Miners have the eighth best small college cage squad in the United States, but it does mean that she and Maryville have succeeded in pulling off the most amazing setback that their conference has seen in quite a while. If either the Bearcats or the Miners can reverse their last few defeats, one of them may replace Cape and Springfield in the title contention and national standings. The two key games in which Maryville played were both decided by only one point, too slim a difference to predestinate any of the three teams involved, but the margin is in a direction to stir the imagination of even the least visionary follower of the sport. Springfield, with her eighth in the nation ranking cannot be neglected either. Her rout of the Miners marked the first hundred-point conference game of the year, although she had only a slim four-point edge in the third period. That leaves us with four teams who are already aspiring to the M. I. A. A. title, any one of which could theoretically go into and beyond the regionals.

## Miners to Take On Henderson Tomorrow; Kirksville Next Week

by Robert Putz

Tomorrow night, Saturday the sixteenth, the Miners take on Henderson State Teachers College of Arkadelphia, Ark., at 8:00 o'clock in Jackling gym.

Henderson, a Baptist school, plays a brand of basketball known as "run and shoot." The Henderson men like to run, and their game is played at a very fast pace.

Before the Warrensburg game last Tuesday, the Miners had a 5-7 record and were second in the conference with 1-1, trailing unbeaten Kirksville. John Sturm, who is averaging 16.3 points per game, and Jim Lemon, 14.5 per game, will be ready to go to work and rack up another MSM victory.

The Miners will play two away games over the semester break. The first is against Maryville, Friday, January 29. MSM beat Maryville by one point last Saturday in a double overtime. January 30, a Saturday night, we will

(Continued on Page 8)

## Miners Edge M'ville In Double Overtime

In a tremendous double overtime battle, the Missouri School of Mines upset Northwest Missouri State 54-53. Maryville, third seated contender for the M. I. A. A. conference title, fell before the Miners in what certainly was the most exciting contest of the season. M. S. M., ranked last in the standings, achieved her greatest moral victory since last fall's gridiron triumph over Washington University. The Bearcats, however, could find only heartbreak and a narrow miss that may haunt them all the more when the title race tightens.

The Miners, fresh from their defeat at the hands of Springfield, sprang into high gear when Sturm took the tip and Lemon sank a 30-foot set shot. Maryville, with a two-point deficit after only four seconds of play, quickly tossed in and converged upon her basket. Jim Lemon promptly stole the show and the ball, forcing the Bearcats to wait and claim a rebound before getting their first basket. Lemon tried his marksmanship again and netted two more points from 35 feet out. When the hard-pressed foe retaliated, Sturm fouled Esch's perfect lay-up into oblivion. Both of the ensuing free throws missed. Jordan and Jackson bore the brunt of the Bearcat attack and closed the gap. After ruining a beautiful lay-up attempt by stealing the ball off the fingertips of the charging Jordan, the Miners took control and reversed the field. Lemon launched a 40-foot basket attempt and missed for the first and only time in the entire first half. Maryville took the lead but Sturm leveled it to a tie by sinking the first good hook shot of the evening. The Miners fell back into the red when Jackson sank two, retaliating with Lemon's successful 25-foot tally. Cramer sank a charity shot for the visitors and tied it up again. Sturm returned the lead to the defenders, who held it for the rest of the period. Lemon closed the half by launching another goal, bringing the score to 35-29.

With the beginning of the third period the defenders put up a furious attack, only to stall and see their advantage ebb away. Wiegard continued to steal the ball from the opposition, with Sturm doing the rebound work, but even the masterful touches of Lewis and Lemon failed. Maryville, spurred by some unprintables from her bench, squared off the game at 39-39. Sturm tipped in Lewis' rim-shot, moments before Jordan renewed the tie at 41-41. Developments became even more interesting when Sturm stole the ball from between the legs of a very surprised Bearcat. When Lemon drove through the entire Maryville line in an unsuccessful tie-breaker shot, a familiar voice from the enemy bench again blued the air. This time, however, the technique failed and the Miners edged away. Lewis carried the attack to the Bearcat basket repeatedly, but the final buzzer found the game tied with Lemon's 40-footer descending rapidly upon the basket. It missed and the game went into overtime. at 49 all.

For Maryville, the future brightened quickly as she took the jump and was fouled. Meznarich muffed the charity and Lewis cleared. Sturm was fouled most

completely after he regained his feet, missed the shot also. The game stalled, with incessant charges and retreats. The Miners cut in and out until Meznarich fouled out and it became Lewis' turn to miss a free throw. The Bearcats kept the ball within inches of their basket during a flurry of fingertip tip-in attempts. Jordan and Jackson both failed, the Miners taking possession at the 50-second mark. They stalled down to 19, when two Bearcats tied up Lewis. He took the jump and the next few seconds found the court a chaos. A hapless Miner regained possession only a moment before disappearing beneath a mass of tacklers. Two seconds later, the buzzer signaled the end of a scoreless overtime.

With the crowd in a fury, Sturm began the second overtime by tipping to a teammate who fumbled successfully to Lemon. Time passed, as did the Miners, and the invader swept it away only a moment before Esch was awarded a free try. He missed and Sturm cleared amidst a storm of defenders. The Miners, except for an instantaneous loss, held possession for nearly a minute. One of the defenders barely missed the steal of the century, but the ball slipped from his grasp back to the Miners, who held possession for another half-minute. When Lewis was fouled, the crowd screamed as no crowd had ever screamed before. He missed. Sturm cleared and disappeared from sight. A jump. Lemon took Sturm's tip and was fouled. He made both. The Miners eased out to a 52-49 advantage when the referee called a foul on No. 25. As no 25 existed, this disturbed the fans no end. Jordan, the recipient, made the most of the situation by sinking both. Time out. Lemon tossed in to Martin, who juggled the ball like Bob Cousy. Creamer managed the inevitable foul with a minute to go. Martin making one. The second was mobbed by both teams, who fumbled it back to Martin. He lost the ball when besieged by a storm of tacklers. A moment later Sturm cleared a Bearcat miss and was fouled. His first shot sank in without even hitting the rim. His second missed, Jackson cleared, and time was called with the score 54-51 Miners. The attack came to a quick close. Cramer's shot finished it at 54, 53 when the following tip-in sank with the buzzer.

## Intramural Sports

### SN Takes Handball; Basketball Closes

**HANDBALL:** This year's handball competition ended with Sigma Nu capturing first place and chalking up 300 intramural points. Phi Kappa Theta and Tech Club took second and third places, respectively. Parker of Sigma Nu was singles champion, with Gunther of Phi Kappa Theta as runner up. The Cooper-Sharpe duet also from Sigma Nu were doubles champions. Benz and Burke of Phi Kappa Theta were runners up.

**BASKETBALL:** This year's basketball season will go into its

(Continued on Page 5)



# Miners Fall Before Strong Springfield

by Tom Dunn

Miners dropped a home game to the Springfield "Bears" Wednesday, Jan. 6. Their sad 103-75 loss came three days before their tremendous upset over Maryville (see Maryville game story).

The Miners seemed to be cold as they were unable to field a winning combination against a prolific and excellent Springfield team that has going for it the best guard combination in the history of the conference in Kinser and Kirksey—these two men put together a 49 point attack that literally won the game for the Bears. After Kinser missed his first five field goal attempts he succeeded in being successful seven successive times with jump shots, fast breaks and set shots as he displayed overall ability in passing and ball handling. Kirksey, his prototype, was in on all major plays of the game and was continually the set-up man for Kinser, while scoring 21 points himself.

The Miners failed to take the victory for many reasons that, at least, seemed apparent to the capacity crowd—Sturm was cold scoring 4 points and netting 8 rebounds. The team in general lacked the desire or conviction to win and seemed to be at a standstill during the crucial moments when there was a flicker of hope. It also was apparent that the so-called "bench warmers(?)" who saw action after the game was hopelessly lost were more determined, spirited, and energetic than those players who gave the ball game to the Bears.

The game, however, was not without its highlights as the Miners saw Lewis net 19 points, and Lemon (who was deadly with the 30 footers as in the Maryville game) gain 14 points. Brenning broke into double figures with 10 points.

The McCarter Twins were only in the game together a little over a minute as the coaches played them alternately—the Miners' McCarter scored four points and no fouls, as opposed to his Bears Brother with four fouls and no points.

Even though the Miners advanced to within four points only once after the opening moments—the crowd was spirited and even indulged in personal disputes with the referees as they attempted to get a fair shake for the Miners.

In looking toward the future, it is necessary that Miners not repeat such a cold performance if they have any intentions of "busting" out of the cellar for good this season.

It is the opinion of this sports writer that the Miners have one of the best potentials in their history, as evidenced in an excellent display of play at the Washington U. game and the astounding upset on the homecourt over third seated Maryville. It is hoped that the Miners have gained the necessary confidence, desire, spirit, and experience from their hard won Maryville victory to give them impetus to continue to win and to avoid another cold string like the four-game Christmas streak.

The Springfield game—which this story was originally intended to cover—found the Bears with four players in the double figures. The first half was exciting as the Miners kept in close (within 10 points) and were kept busy chas-

ing Kinser and Kirksey.

The second half told a different story as Kinser, Kirksey and company ran away with the ball and the game. The bright spot in the second half came when the Miners sneaked to within four points during the opening minutes of the half.

Watch future sports pages for added attractions as your sports department swings into high gear in an effort to please you, the reader.

## MSM Downs Washout In Swimming Meet

(Continued from Page 4)

needed point. The Miner 400 yard freestyle relay team won the last event. Miller, Cox, Greeley and Woodward won this last event, bringing the time down to the best for the relay this year. The next home meet will be against a strong St. Louis University team on January 16, tomorrow, at 2 p. m. St. Louis is bolstered by some of the nation's outstanding freshmen. They have a strong nucleus of returning lettermen, plus the freshmen, making them a favorite over the Miners.

It's easy to recognize a modern painting. It's the one you can't recognize.

## Intramurals — Boxing and Wrestling

(Continued from Page 4)

final week as this paper goes to press with Shamrock of league I, Tech Club of league II, and Phi Kappa Theta of league III playing off for the crown. These play-off games were to be held Monday through Thursday evenings in a double elimination series.

Last weekend Shamrock, Sig Ep and Triangle were each tied for first place in league I. The playoffs showed Shamrock the strongest as they beat out the other two contenders.

### BOXING and WRESTLING:

March 9, 10 and 11 will be the dates of the forthcoming intramural boxing and wrestling meet. There will be eight weights in each sport. These weights are as follows: 118, 126, 135, 145, 155, 165, 175 and heavy-weight. Each organization is allowed one entry per weight class. All organizations are encouraged to enter the maximum number of contestants. Also all contestants must weigh workouts and a physical examination prior to his fighting date. Also all contestants must weigh in Monday, March 7, between 8 o'clock a. m. and 5:30 p. m., or they will be disqualified.

For further information see the bulletin board in the gym.

After Congress gets through investigating quiz shows, it might look into the way TV commercials are fixed so that Brand X always loses.

## ROTC

(Continued from Page 1)

Military Science" units, as at Washington University, where students receive general ROTC training which prepares them for a commission in any branch of the Army as the need exists at the time of their graduation.

The Missouri School of Mines and Metallurgy is an Engineer school with an Engineer ROTC, and has been a very important source of officers for the Corps of Engineers ever since the ROTC was established as an Engineer unit in 1919. In 1959 an even

100 Reserve Officers were commissioned in the Corps of Engineers; in addition, 14 other graduates, most of whom were not physically qualified for the Corps of Engineers, received commissions in other branches.

The 1959 fall term enrollment in the ROTC Advanced Course at MSM was 347; the second largest Engineer unit was at Drexel Institute of Technology in Philadelphia with an enrollment of 240; and the third, Northeastern University in Boston with an enrollment of 236.

### ROLLA'S DOMINANT DEPT. STORE

812-14 Pine



EM 4-3606

Personal Checks Cashed  
Charge Accounts Welcomed

### FOR THE FINEST— FULLER JEWELRY

MSM JEWELRY  
WATCH REPAIRING  
ELECTRIC RAZORS and  
REPAIRS

WATCHES  
PRISCILLA DIAMONDS  
GIFTS

711 Pine

EM 4-2142

## '60 CHEVY! ONLY WAY YOU CAN BUY A CAR FOR LESS IS TO BUY A LOT LESS CAR!

**THRIFTIEST 6 IN ANY FULL-SIZE CAR**—Chevy's Hi-Thrift 6 is the '60 version of the engine that got 22.38 miles per gallon in the latest Mobilgas Economy Run—more than any other full-size car.

**NEW ECONOMY TURBO-FIRE V8**—Here's a V8 with the "git" Chevy's famous for—plus a new economy-contoured camshaft and other refinements that get up to 10% more miles on a gallon of regular.

**EASIER-TO-LOAD LUGGAGE COMPARTMENT**—The trunk sill is lower and the lid opening is more than a foot and a half wider than Chevy's nearest competitor's. There's over 20% more usable space!\*

**MORE ROOM WHERE YOU WANT MORE ROOM**—Chevy's trimmed down transmission tunnel (25% smaller) gives you more foot room. You also get more head and hip room than in any other 2- or 4-door sedans in the field.

**WIDEST CHOICE OF POWER TEAMS**—A choice of 24 engine-transmission teams in all—to satisfy the most finicky driving foot. There are seven engines with output all the way up to 335 h.p. and five silk-smooth transmissions.

**EXTRA CONVENIENCES OF BODY BY FISHER**—No other car in Chevy's field gives you crank-operated ventipanes, Safety Plate Glass all around and dozens of other Fisher Body refinements.

**CHEVY SETS THE PACE WITH LOWER PRICES**—All Bel Air and Impala V8's are lower priced, as are many options. Example: a Bel Air V8 sedan with Turboglide, de luxe heater and push-button radio lists at \$65.30 less for '60.

**QUICKER STOPPING BRAKES**—Long-lived bonded-lining brakes with larger front-wheel cylinders for '60 give you quicker, surer stops with less pedal pressure.

**SOFTER, MORE SILENT RIDE**—Chevy's the only leading low-priced car that gentles the bumps with coil springs at all four wheels. Noise and vibration are filtered to the vanishing point by new body mounts.

**NOT CHANGE FOR CHANGE'S SAKE, BUT FOR YOURS**—There's only one person we consider when we make a change—and that's you. That's why we don't think you'll find anything more to your liking at anything like the price.

The more you look around the more you'll find to convince you that no other low-priced car has so much to show for your money as this new Chevrolet. Here's the kind of styling sophistication and subtle detail that only Fisher Body craftsmanship can create. Here's the kind of Full Coil comfort that neither of the other two leading low-priced cars—and only some of the smoothest riding higher priced ones—build into their suspension systems. Here's more room inside (where you want it) without an inch more outside (where you don't want it). And with all these advances Chevy has managed to hold the price line! Your dealer will be delighted to fill you in on all the facts.

See The Dinah Shore Chevy Show in color Sundays NBC-TV—the Pat Boone Chevy Showroom weekly ABC-TV.

Now—fast delivery, favorable deals! See your local authorized Chevrolet dealer.



## Sig Ep Finishes Second In Basketball League

This past weekend was somewhat of a milestone for the Sig Eps at Rollie, all of the weekend travelers and lovers spent their time in town. No, the house wasn't quarantined; it's just that the guys are busy boning up for finals and quizzes this week. Actually this wasn't the real reason, but it sure sounds good. Saturday night the pledges were given an oral examination on all phases of fraternal life. This is somewhat new for our chapter, and being tried for the first time. If successful this would surely lead to higher chapter ideals, along with the existing 2.2 grade point average required for initiation.

Along the sport scene the men behind the red door finished in a three-way tie for their league title in BB, although losing in the play-offs to a good team from Shamrock, thus finishing second in their league. The bowling team

once again got back into championship form by winning the first half of their league. Congratulations, Bowlers Beckman, Chapell, Fisher, Landers, Lobaugh and Nolfo.

A recent pin survey taken in the house reveals that Brothers Swoboda and Nolfo are the only souls surviving in the large class of 60. With the recent pinning of Bill Byrne to Miss Connie Lamb attending M. U., and "Boda" well on his way to being, pardon the expression "hung up," that would seem to leave "The Old Pro," Nolfo, as the only eligible bachelor. Wonder why Jim has the title "Old Pro?" My, he must get around. While on the topic of slavery, Butch Laurenson took another step down that long road. Butch recently became engaged to Miss Ann Scroggins, also of M. U. Congratulations, men; you too, Jim.

## Jerry Alyea is New President Of Pi K A Fraternity

Classes are over but those lovely sweet finals are here. For three Pike seniors these finals will be their last. Ralph Shepard, better known as Shep, is making a big day of January 23 when he plans to graduate and become the husband of Miss Carol Meise. After graduation, Shep will work for Olin-Mathieson. Ed Carlstrom, who transferred long ago from Arkansas State, also is hoping to graduate. Things sure will be different without the old Army reservist. Kent Weisenstein, also will make this his last semester. Kent, the father of two children, Rick and Debra Lynn, is planning to work for a ceramics company. One other Pike is leaving us. Wayne Boswell, following his marriage to Miss Marilyn Pratte over semester break, plans to transfer to Cape. We're going to miss you fellows but our congratulations and best wishes go with you.

The other big difference around the Pike house will be the new officers. Jerry Alyea will be the new president with Herm Vacca as his vice-president and Doyne Chartrau as secretary. Al Powell will be treasurer with Ken Schader as assistant treasurer. The new house manager and his assistant will be Roger Stammer and Doug

zer will be steward, with Bob Brockhaus as his assistant.

To be congratulated for a fine job as officers this past semester are Bob Piekarz, Don Janning, Bob Tooke, Jerry Alyea, Al Powell, Rich Schneider, Roger Stammer, Herm Vacca and John Latzer.

As long as we're talking about offices, Jerry Alyea is to be congratulated on becoming president of the IFC, Myron Bruns for being reelected vice-president of the APO, and Jim Teske for his election as treasurer of the APO.

Besides the ordinary trips to St. Louis and Mexico, there was one last-minute trip to Kennett, Mo. Everyone has a date, however, one Pike decided it best to be bird-dogged by a local boy. Brother Reeves lost something on the trip. It was his fraternity pin and the girl who is wearing it is Miss Barbara Garrett. Congrats, Bob.

So the boys who spent the weekend at Rolla wouldn't feel so bad about not going, Reeves and company brought home a pig—a real, live pig, that is. However, within a few hours the little runt disappeared, mysteriously. Perhaps Whale spirited it away after the pig—under his desk.

## Marty Bowers New Theta Xi President

The Theta Xis have returned to their Big White House on the Hill after a wonderfully-spent Christmas vacation. After taking several days to settle down to the tasks ahead, everyone is busy writing to their newly-found friends and crossing off the old ones from their files. As a matter of fact, Triple "M" has permanently retired his file.

This past weekend was a social one, even though it wasn't a party weekend. The TX's were visited by the Alpha Phi's from Drury College, along with the Lindenwood Ladies. Typically exemplified was the song titles, "There Is Nothing Like a Dame."

Congratulatory words and Christmas cheer are still to be found at TX. Congratulations are extended from Alpha Psi chapter to Ed Stigall upon his engage-

ment to Miss Judy Feind, and to Harry Schneider upon his Christmas engagement to Miss Sandra Huning. Cigars were enjoyed by all, due to the fact that Peter Melsch pinned Miss Sylvia Waltz.

Officers were elected for the coming semester with Marty Bowers acquiring the top slot of presidency. Harry Schneider was elected vice-president. Peter Lazaras, steward; Ned Hutchins, house manager; Karl Leonard, treasurer; and Douglas Gaertner, corresponding secretary. As junior officers who will take over their respective offices in September, 1960, Ed Stigall, as treasurer, and Paul Lazaras, as steward.

Congratulations are also extended to Michael Brymac upon his pledgship into Theta Xi fraternity.

## Bob Schwaig Speaks At AICHE Meeting

Robert H. Schwaig, a 1951 chemical engineering graduate of MSM, spoke on the topic, "Tough—But Not Invincible," at the January 13 meeting of the American Institute of Chemical Engineers. Mr. Schwaig is the St. Louis area representative for the Pfaudler Co., a manufacturer of glass-lined chemical equipment.

A good attendance was enjoyed by Mr. Schwaig who gave a very interesting talk in his field.

Being a bachelor is better than being a bachelor's son.

## New President for Beta Sig

For the first time elections were held outside the "Old White House" on Ninth Street. Rich Schmelig takes over the reins as President with Dave Sandler as First Vice-President. Bill Roth is now in charge of house repairs as Second Vice-President. If we can get Wayne Siesennop to sit still for a minute or two he shall be in charge of the job of Secretary. Gary Hoech is money man in charge of making ends meet the next semester. Helping Gary will be some lucky individual yet to be named.

With Bob Hecht in charge of

the kitchen all members are going on a forced diet as we toughen up our stomachs. Bob Kramer is going to give his "touch" to the kitchen as he helps Hecht prepare those wondrous meals with MDR as his bible.

One of the more serious and responsible positions, maybe even more so than that of president, will be handled by John Sedovic as he undertakes the position of Rushing Chairman. It will be with John's guidance that future men of Beta Sig will be chosen.

Cultivate Your Whiskers!

## Do You Think for Yourself?

(BUZZ THIS QUIZ AND SEE WHERE YOU LAND!\*)



"A little learning is a dangerous thing" means (A) it's better to leave your mind alone; (B) people who act on half-knowledge often make mistakes; (C) beware of sophomores.

A ☐ B ☐ C ☐



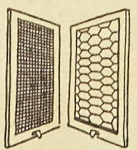
"Never look a gift horse in the mouth" is good advice because (A) he'll bite; (B) even if his teeth show he's old, what can you do about it? (C) there's nothing in there anyway.

A ☐ B ☐ C ☐



Assuming the starting salary is the same, would you rather have (A) a job with an assured income for life, but with no chance to increase it? (B) a job where you'll always be paid according to your abilities? (C) a job where you have to advance rapidly or be fired?

A ☐ B ☐ C ☐



"The finer the filter strands, the finer the filter action" is a way of saying (A) don't use chicken wire in a window screen; (B) Viceroy gives you finest filter action because it has the finest filter strands; (C) the finer the filters, the finer the smoking.

A ☐ B ☐ C ☐

When you depend on judgment, not chance, in your choice of cigarettes, you're apt to be a Viceroy smoker. You



Familiar pack or crush-proof box.

**The Man Who Thinks for Himself Knows— ONLY VICEROY HAS A THINKING MAN'S FILTER...A SMOKING MAN'S TASTE!**

©1959, Brown & Williamson Tobacco Corp.



## Sig Pi Rush Party At 7:30 Tonight

Well, finals are now approaching and most activities are over with, thus giving everyone more study time. The basketball team started fast, winning its first three games, but lost its last three. Giving them a mediocre season of three wins and three losses. The defending champions of the bowling league of last year had a disappointing season and finished in eighth place.

Congratulations are due to Larry Becker, who came back from Christmas vacation engaged. Congratulations also to Pat Skow, who no longer has indian troubles,

ha, ha.

The chapter would like to take this chance to bid farewell to the six graduating seniors: Walter Steinmann, Douglas Dalmer, Don Stih, David Boring, David Price and Don Bartosik. May they be as happy and successful in their careers as they were at MSM.

That's all for now. We'll be talking to you next semester. Good luck on your finals. By the way, we are having a rush party tonight at 7:30. If you would like to know about fraternity life, we invite you all to attend. "Refreshments" will be served.

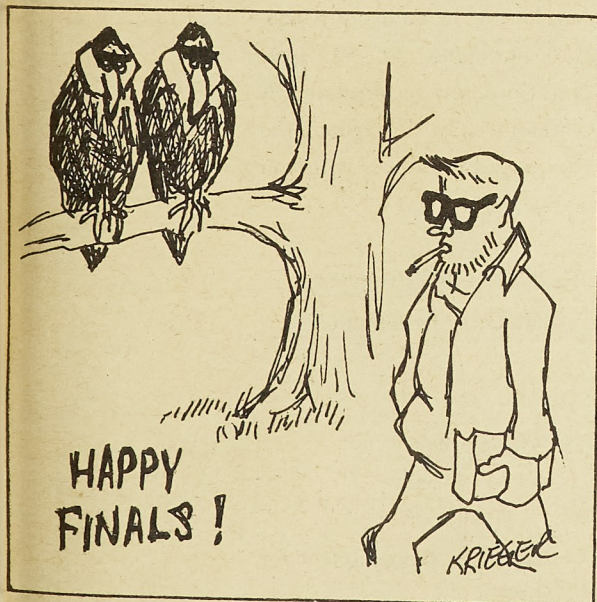
## Kappa Kappa Psi's Hold an Initiation

Millard K. Underwood, President of Kappa Kappa Psi Band Honorary Fraternity, recently announced that an initiation was held in the band room of the Rolla Building on the evening of December 16, 1959. Initiated into the organization were four members and one honorary member. Joseph H. Grotzinger, trombonist; Robert L. Miers, Eb clarinetist; Wayne W. Richardson, trombonist; Lyle R. Williams, drums; and Colonel Lloyd L. Rall, Professor of Military Science and Tactics, initiated as an honorary member.

Officiating at the impressive ceremony were Millard K. Under-

wood, F. William Lynch, William E. Matthews, Donald W. Burlage, and Gary J. Peck, as active members; Charles R. Remington, Jr., Associate Professor of Mechanical Engineering, and Captain Ralph M. Leighty, Assistant PMST and Director of the MSM-ROTC Band, honorary members. Also assisting in the initiation was George F. Wright, Instructor in Mechanical Engineering, a member of Kappa Kappa Psi at Drury College in Springfield, Mo.

Kappa Kappa Psi serves primarily to promote band activities and develop a closer fellowship among musicians on the campus.



## FRESH PIZZA

-- PIZZA HOUSE No. 4 --

Rolla, Mo.

Highway 63

● 1 Block West of Greyhound Bus Depot

● TAKEOUT SERVICE

5 or More — Free Delivery

EM 4-1293

## Kappa Sigma Elects Officers for Spring

Things around the Kappa Sigma house are rather quiet as everyone starts the long haul for finals.

Election of second term officers was held last Monday night and officers are as follows: Paul Kemper, president; Don Mueller, G. M. C.; Gerald Misemer, treasurer; Bill Ricketts, pledge trainer; and Tom Scott and Harold Brady, guards. Paul Kemper performed his first official act of welcoming people to the house in his usual enthusiastic and efficient manner. How about, Paul? Mo Odegard, last semester's

## Phi Kappa Basketmen Put Down by Strong Tech Club

The PKT B-ballers lost a close one to Tech Club, 55-52, in overtime, last Saturday night. This was the first game of the league playoffs.

Plans are under way for the next party weekend which will be held Valentine's Day weekend, February 12 and 13.

At the Dorm one described a bachelor apartment as a place where you'll find a lot of unmatched earrings.

Brother Jasper became engaged over the holidays to Miss Iola Allen. The wedding is set for June 11.

Brother Holtzman is now a member of the "I Am Pinned Club." He gave his pin to Miss Midgie Lyan over the holidays.

### AC SPARK PLUG, THE ELECTRONICS DIVISION OF GENERAL MOTORS, has

IMMEDIATE openings for permanent positions in MILWAUKEE and FLINT for engineers and designers on Thor and Mace missiles as well as other advanced projects. If you have a BS, MS or Ph.D. degree in EE, Physics, Math, or ME, you may qualify for one of the positions listed below.

You can exploit your talents to the fullest degree at AC. For every AC engineer has access to the finest equipment . . . at all AC facilities.

AC and GM gladly assist your career progress through financial assistance for graduate study at first class engineering schools in nearby locations. In addition, you will have the opportunity to take exclusive on-the-job course work on the advanced state of the art.

**DIGITAL COMPUTER ENGINEERS**—Logic design of special purpose computers . . . Pulse Circuit Design . . . Airborne Digital Computers . . . Memory Design . . . Analog-to-digital and digital-to-analog conversion. **Milwaukee**

**TRANSISTOR APPLICATION ENGINEERS**—Applied development in the field of transistor circuitry. **Flint and Milwaukee**

**GYRO ENGINEERS**—Work on floated, integrating gyroscopes and gyro-accelerometers for inertial guidance systems for missiles. **Milwaukee**

**INFRA-RED DEVELOPMENT**—Development of the theoretical concepts that will advance the state of the art of infra-red system applications. **Flint**

**SYSTEMS ENGINEERS**—Systems design, analysis and instrumentation of inertial guidance. **MILWAUKEE**

**OPTICS**—The development of optics and optical instrumentation. A general knowledge of military optical systems and commonly used optical and mechanical components is required. **Flint**

**PRODUCT DESIGN ENGINEERS**—Design, development and test of electronic components, servos and circuits. **Flint and Milwaukee**

**TEST ENGINEERS**—Design and development of production test equipment . . . environmental test instrumentation and data reduction . . . ground support equipment. **Flint and Milwaukee**

**FIELD ENGINEERS FOR FOREIGN AND DOMESTIC ASSIGNMENTS**—Electronics technicians or recent technical graduates may qualify for top training on inertial guidance, bombing navigational systems, gyro computers, etc.

**TECHNICAL WRITERS**—Electro-mechanical or electronic writing experience. Must be able to work with engineers in the writing of service manuals. **Flint and Milwaukee**

SEE YOUR  
PLACEMENT OFFICER  
TO SCHEDULE  
GENERAL MOTORS  
INTERVIEW

February 5, 1960



Spark Plug   
the Electronics Division  
of General Motors  
Milwaukee 1, Wisconsin  
Flint 2, Michigan





## Categories in Beard Contest

(Continued from Page 1)

the illustration. The Soup Strainer does not have a mustache.



Van Dyke

The third type of beard is the Van Dyke. This beard is just a mustache and goatee and is similar to the beard illustrated on the Sir Walter Raleigh tobacco can.

Joan described her new boy friend, a dull character: "He's about as exciting as one wrestler."

Comment about Frank Sinatra's big audiences: "And when I played the same places, you could get all the customers in a Nash Rambler."

A New York babe says it's really not as difficult as people say to cross the street in N. Y. C. "Why, I know somebody who did it once."

## UPTOWN THEATRE

MOVIES IN CINEMASCOPE

Thursday, Friday and Saturday, Jan. 14-16

### 'Edge of Eternity'

Cornel Wilde and Victoria Shaw

Sunday, Monday and Tuesday, Jan. 17-19

Sunday Continuous from 1 p. m.

### 'Happy Anniversary'

David Niven and Mitzi Gaynor

Wednesday-Thursday, Jan. 20-21

### 'That Kind of Woman'

Sophia Loren and Tab Hunter

## RITZ THEATRE

MOVIES ON WIDE SCREEN

Friday and Saturday, Jan. 15-16

Saturday continuous from 1 p. m.

### 'The H-Man'

Yumi Sgurajawa, Kenji Sahara

— PLUS —

### 'Face of a Fugitive'

Fred MacMurray, Dorothy Green

Sunday, Monday and Tuesday, Jan. 17-19

Sunday Continuous from 1 p. m.

### 'The Hanging Tree'

Gary Cooper and Maria Schell

— PLUS —

### 'Tarantula'

John Agar and Mara Corday

Wednesday-Thursday, Jan. 20-21

### 'The Devil's Disciple'

Burt Lancaster and Kirk Douglas

— PLUS —

### 'Run for Cover'

James Cagney, Viveca Lindfors



Novelty

The fourth type, the novelty beard, can be just about anything. It may be colored.

Now is the time to start growing beards for St. Pat's. It is never too early to start! With finals approaching, there is no need to waste time or blades shav-

ing! Start thinking about St. Pat's now!

## Miners to Play Henderson College

(Continued from Page 4)

play Kirksville, the only unbeaten team in the conference. Because of finals and semester break, the game tomorrow night will be the last home game until February 3, when the Miners play Harris Teachers College, so come on up. It ought to be a good one.

"Marriage," claims a Miner, "is a period during which a man finds out what sort of fellow his wife would have preferred."

A married Miner tells of the new fruit that's half orange, half garlic: "It's not only healthful, but it makes it easy to find the baby in the dark."

## IBM WILL INTERVIEW

### Feb. 10

IBM invites candidates for Bachelor's or Master's Degrees to discuss opportunities in Applied Science, Business Administration, Marketing, Product Development and Programming . . . positions throughout the United States.

Laboratories and manufacturing facilities are located in Endicott, Kingston, Owego, Poughkeepsie, Yorktown, N. Y.; Burlington, Vt.; San Jose, Calif.; Lexington, Ky.; and Rochester, Minn. Corporate headquarters is located in New York, with 192 branch offices in cities throughout the United States. The IBM representative will be glad to discuss with you the type of career of particular interest to you. IBM offers:

- Leadership in the development of information-handling systems.
- New applications for data processing and advances in computer technology.
- Favorable climate for continued career growth.
- Opportunities for a wide range of academic backgrounds and talents.

Contact your College Placement Officer to arrange an appointment for a personal interview with the IBM representative.

If you cannot attend the interview, call or write:

MR. H. STRAIT, Branch Manager  
IBM Corporation, Dept. 868  
P. O. Box 565  
Jefferson City, Mo.  
Jefferson City 6-8186

**IBM**  
INTERNATIONAL BUSINESS MACHINES CORPORATION

A. E. Long, M. S. M., Ex '22  
**LONG INSURANCE AGENCY**  
810 Pine St. ROLLA, MO. Phone EM 4-1414  
"Service Is Our Business"

COLD BEER **DON BOCKHURST** LIQUORS  
**EAST SIDE GROCERY & BEVERAGE**  
904 Elm St. FREE PARKING Phone EM 4-3218

LIQUOR, WINES, COLD BEER, MAGAZINES, TOBACCO  
**GALE'S PACKAGE STORE**  
703 Pine  
Parking Lot in Rear of Store for Customers

**PIZZA**  
MEAL TICKETS AND SPECIAL RATES FOR MINERS  
**CAL-MO CAFE**  
11th and Highway 63 Open 7 Days a Week