



25 Sep 1959

## The Missouri Miner, September 25, 1959

Follow this and additional works at: [https://scholarsmine.mst.edu/missouri\\_miner](https://scholarsmine.mst.edu/missouri_miner)

These newspapers reflect the attitudes, perspectives, and beliefs of different times. Neither the library nor the university endorses the views expressed in these collections, some of which contain images and language which may be offensive to some readers.

---

### Recommended Citation

"The Missouri Miner, September 25, 1959" (1959). *The Missouri Miner Newspaper*. 1628.  
[https://scholarsmine.mst.edu/missouri\\_miner/1628](https://scholarsmine.mst.edu/missouri_miner/1628)

This Newspaper is brought to you for free and open access by Scholars' Mine. It has been accepted for inclusion in The Missouri Miner Newspaper by an authorized administrator of Scholars' Mine. This work is protected by U. S. Copyright Law. Unauthorized use including reproduction for redistribution requires the permission of the copyright holder. For more information, please contact [scholarsmine@mst.edu](mailto:scholarsmine@mst.edu).



# The MISSOURI MINER

NUMBER 2

VOLUME 46

ROLLA, MO., FRIDAY, SEPT. 25, 1959

## Former Head of Met. Dept. Has Birthday 3028 Students Begin Fall Semester At MSM; Record Enrollment

\*\*\*

\*\*\*

\*\*\*

### Campus Becomes 16 per Cent More Co-Educational

At the end of office hours Friday, Sept. 18, 1959, there was a total enrollment of 3028 students ready to start classes. This is an increase of 3.4 per cent over last year's enrollment of 2929 students.

This year there are 816 freshmen, an increase of 79 over the freshman class of 1958.

As for the other classes, there are 594 sophomores, 787 juniors, 668 seniors, and 140 graduate students. At the end of registration last year the sophomore class consisted of 581, the junior class of 784, the senior class of 626, and there were 135 graduate students.

A breakdown by departments find that the ME's are the largest group. They are still slightly ahead of the EE's, even though more freshmen enrolled as EE students than ME students.

A complete breakdown shows:

ME	685
EE	632
CE	574
Chem. E.	274
Met.	230
Mining	204
Science	200
Geology	66
Ceramic	43

Physics is preferred by 165 of the Science majors.

Good news is in store for the campus Casanovas. The latest figures show that the campus has become 16% more co-educational. There is now a grand total of 30 females on campus. This makes the odds only 100 men to every girl. This is definitely the best news since MSM went Co-ed.

As a warning to freshmen, there were approximately 250 of the 737 freshmen enrolled last fall that did not make it back for the registration this fall. This is about 33%. Think about this figure before you go to bed at night. It might help your grade point.



Professor Hanley Receiving Letters of Congratulations

Former students, fellow metallurgists, and other old friends gathered Friday evening, September 18, to celebrate the 85th birthday of Professor H. R. Hanley, Professor-Emeritus of Metallurgy and former head of the department of MSM. A highlight of the gathering was the presentation of a large volume of letters and telegrams carrying greetings from former students and friends in all parts of the United States and from many foreign countries. Of great interest to everyone was the letter of congratulation from a former President of the United States, Herbert Hoover, who was also a mining and metallurgical engineer in former years. Mr. Hoover is six weeks older than Professor Hanley and so was able to welcome him into the ranks of those who have celebrated their 85th birthday.

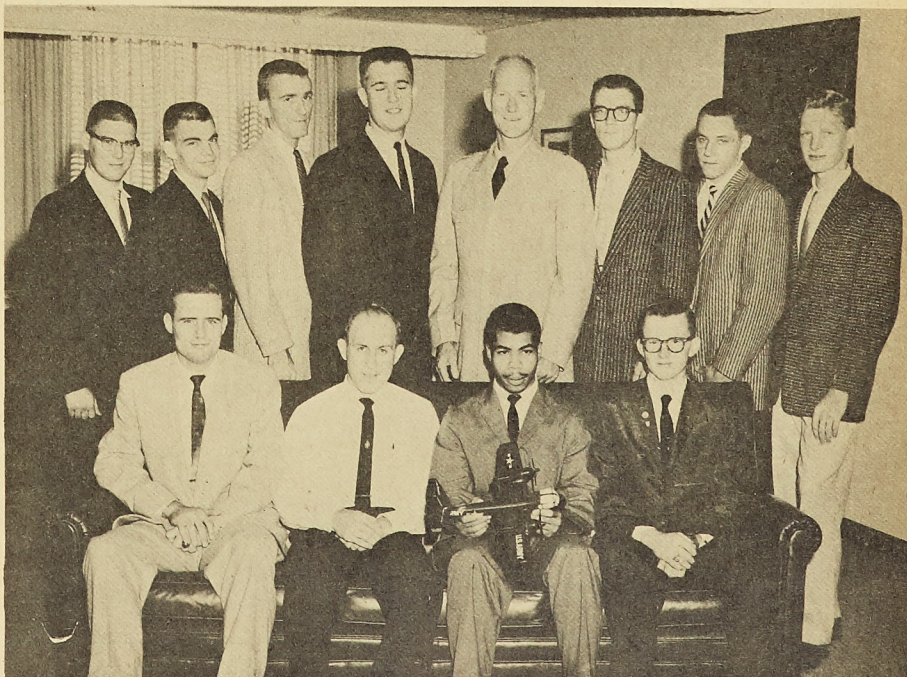
Greetings from the metallurgical industry were given by Dr.

G. K. Williams of Melbourne, Australia, who stopped in Rolla for the birthday celebration en route to England. Dr. Williams is widely known for his work in the metallurgy of lead and zinc, a field in which Professor Hanley has been particularly active. Greetings from the School and the State were given by Dean Curtis L. Wilson, who is also a metallurgist by profession, and who is a long time personal friend of the Hanleys.

Dr. Walter E. Remmers, president of the Pittsburgh Metallurgical Company and a graduate of MSM in 1923 gave a talk in which he conveyed the greetings from all of the former students of Professor Hanley, and in which he described vividly the classes taught by Professor Hanley in 1923 when he first became a member of the MSM faculty. Dr. Rem-

(Continued on Page 5)

### Long Range Training Program Available For Interested University Students



The group of engineering students shown represent eight major universities and colleges in the country. This summer they were assigned to work with the Engineering Project Offices of the U S Army Transportation Supply and Maintenance Command, St. Louis Missouri.

The command is the main activity in the Ninth Civil Service Commission Region for the newly developed on-the-job engineering student training program. Interested students from universities and colleges throughout the country apply for this training through the Ninth Civil Service Region. College recruiters of the Civil Ser-

vice Commission give examinations to the students. Those passing the exams are assigned to the command headquarters and work on projects involving basic principles and fundamentals of engineering.

Brig. Gen. William B. Bunker, Commanding General of the command, shown with students, stated that, because of the interest and excellent work of the students, they will return next year. Returning students will engage in more advanced projects in the command which is responsible for the support of the Army's global aviation, marine and rail programs. Some of the students will

be assigned to logistical test projects of the command conducted at Fort Rucker, Alabama.

The long range training program is scheduled for three summers, with the hope that students will join-up professionally with the command after their graduations.

### NOTICE

All those interested in writing for the MINER, for the new fall semester, contact Jim Walther at 707 State St. or Ken Baxter 1311 State St. for an immediate tryout.

—the Editor

### All-Fraternity Average Above All-Men's Grades

Now that the new semester has begun, and all the figures from last semester are in, we are happy to report that our fraternities have done quite well with their grade points. We are exceptionally proud of our two fraternities with the highest grade points: Lambda Chi Alpha with its 2.48 and Delta Sigma Phi with its 2.47. But even discounting the top two, our fraternities did a fine job. It was so fine that the all-fraternity average was higher than the all-men's average.

We are very glad to see that with all of their extra activities, our fraternities still have the time

to achieve this worthy goal. But of course, a strong reason for this is that on this campus, the fraternities have enforced quiet and study hours. Not only do these hours promote better grades for fraternity men, they also destroy the adage that you can't make good grades and belong to a fraternity. That old myth may be true on other campuses, but it most certainly is not on this one.

Our only hope is that the fraternities will continue to rise in grade points and thereby induce the atmosphere of friendly competition between fraternities and independents to raise the grade point campus wide as well.



## THE MISSOURI MINER

THE MISSOURI MINER is the official publication of the students



of the Missouri School of Mines and Metallurgy. It is published at Rolla, Mo., every Friday during the school year. Entered as second class matter February 8, 1945, at the Post Office at Rolla, Mo., under the Act of March 3, 1879.



The subscription is \$1.00 per semester. This Missouri Miner features activities of the Students and Faculty of M.S.M.

Editor-in-Chief..... Jim Walther  
707 State St. — EM 4-2731  
Business Manager..... Mike Swoboda  
500 W. 8th St. — EM 4-3787  
Managing Editor..... Terry K. Smith  
Features Editor..... Jerry Misemer  
Advertising Manager..... Jerry Alyea  
Circulation Manager..... Bill Ricketts  
Sports Editor..... John McKeone  
Technical Advisor..... Bill May  
Secretary..... Bob Elrod  
Assistant Editor..... Henry Duvall

## Meeting of Foundrymen's Society Held on Campus

The Missouri Valley Regional Conference of the American Foundrymen's Society, working in co-operation with the MSM Student Chapter of the Society, was held on the campus of Missouri School of Mines and Metallurgy on September 24 and 25, according to Dr. D. S. Eppelsheimer, Professor of Metallurgy, and chairman of the local committee. This biennial meeting is held on alternate years on the campus of MSM, and attracted some 200 foundry engineers from Missouri and adjoining states.

The conference started on Thursday, September 24 with registration from 8 a.m. to 10 a.m. in the lobby of Parker Hall. The first morning sessions began at 10 a.m. with Dan A. Mitchel of the progressive Brass Mfg. Co., Tulsa, Oklahoma presiding. Dean Curtis L. Wilson delivered the address of welcome with the response from National Office American Foundrymen's Society by Webb L. Kammerer, President of Midvale Mining and Mfg. Co., St. Louis, Missouri, Regional Vice President of American Foundrymen's Society.

The noonday luncheon at 12:15 p.m. on the 24th at the Lutheran Church was addressed by Harry H. Kessler, partner and manager of the Foundry Operations, Sorbo-Mat Process Engineers and also President of Foundry Design Co., in St. Louis, Missouri. Kessler is a graduate of MSM, he was a-

warded an honorary professional degree in Metallurgical Engineering at the School's 1959 Commencement. He is widely known as a boxing referee, and is seen frequently on National Television. His subject was "Rear of the Crowd".

The afternoon was devoted to further papers and discussion with an Ozark Jamboree and Barbecue at the Forest Spring Lodge at Newburg, Missouri beginning at 5:30 p.m.

Today's sessions are again of a professional nature with a noonday luncheon at the Lutheran Church where A. Carl Weber, Director of Research Engineering, Laclede Steel Co., St. Louis will deliver an address, his subject being "The Engineer Meets His Foreign Friends".

## Dizzy's Corner

Since the recent arrival of the peoples choice (by acclamation no less) N. Crewchief has been the basic topic of conversation these days. My spies were sent out into the various realms of the underworld to gather information. In the wastebasket of a humanities professor the following outline was found:

### SOCIALISM

You have two cows: keep one, government takes the other for the poorer people.

### COMMUNISM

Have two cows: Government takes both, gives you three quarts

## Alumni Association Of Missouri Mines Welcomes Miners

The Missouri School of Mines Alumni Association welcomes the Miner student body to the campus.

The Alumni Association is an organization of graduates and former students of MSM and it was organized in 1921. The Alumni Office is located in Room 102, Old Metallurgy Building. Here the records are kept on alumni and it is the headquarters for the administration of the national organization.

The purpose of the organization is to cultivate friendships and foster mutual aid among the alumni and to advance the interests and standards of MSM in technical science and the engineering profession in general.

The Association has many activities. A few of them are: the publication of a bi-monthly magazine the "MSM ALUMNUS," the underwriting of six freshman scholarships each year amounting to \$500.00 each; it encourages individuals, companies and groups to sponsor freshmen scholarships through the Alumni Fund. This year there are four such scholarships made available for freshmen; the organization of alumni groups throughout the United States where a large number of alumni reside. At present there are twenty-two such groups called Alumni Sections. The purpose of these groups is to assist the national organization in carrying out its objectives. And many other activities which the Association will relate in future issues of The MSM MINER. We want all students to become familiar with the MSM Alumni Association, its operation and activities, for someday you will be in that illustrious group, MSM alumni.

Onward to the Washington U. game.



Several members of the Missouri Gamma Chapter of Sigma Phi Epsilon who traveled to Washington, D. C., for the National Conclave

## Sig Ep Holds Conclave

During the last week of summer the Missouri Gamma Chapter of Sigma Phi Epsilon traveled to Washington D. C. for its 26th Grand Chapter National Conclave. Delegates for the convention were Mike Kearney, and Mike Swoboda, the present Sig Ep president here at MSM. Although attendance was compulsory only for the two chapter delegates, a large percentage of the chapter also attended.

Sigma Phi Epsilon presently has 148 local chapters, and is the second largest fraternity in the country. At the Conclave the National Grand Chapter awards trophies for outstanding achievements in different fields of fraternity life. At this Conclave the MSM chapter of Sig Ep won the Man-Mile trophy, a trophy awarded to the chapter which has the most points totaled by the number of men attending the conclave times the miles from the chapter to the Conclave. They also won the attendance trophy, having the largest attendance of any chapter in the nation. This was the first time in the history of the fraternity that both trophies had been won simultaneously by a single chapter. The Rolla Sig Eps beat the 147 other chapters largely by the individual efforts of the men in the chapter. Each man who went had a desire to help the chapter, and wanted to learn more about his nationwide fraternity. With such a large percentage attending, the Sig Eps here at Rolla gained the title of "The Most Active Sig Ep Chapter in the Nation".

The MSM chapter also received a national trophy for 100% contribution for five years to Sig Ep camp for underprivileged children.



When you're ready for a beer... cold, flavorful, clear... THIS IS THE ONE!



AMERICA'S PREMIUM QUALITY BEER

FALSTAFF BREWING CORPORATION, ST. LOUIS, MO.

MUELLER Distributing Co. Rolla, Mo.

## BRAINS ONLY!

Hanging over a pulley there is a rope with a weight at one end; at the other end hangs a monkey of equal weight. The rope weighs 4 oz. per foot. The combined ages of the monkey and its mother are four years and the weight of the monkey is as many pounds as its mother is years old. The mother is twice as old as the monkey was when the mother was half as old as the monkey will be when the monkey is three times as old as its mother was when she was three times as old as the monkey was. The weight of the rope and weight is half as much again as the difference between the weight of the weight and the weight of the monkey.

What is the length of the rope? (Answer next week.) (From Mathematical Nuts by S. I. Jones.)

of milk on the next five year plan.

### FACISM

Government takes both cows, shoots you.

### UNIONISM

The two cows go on strike for more hay and less milking hours.

### CAPITALISM

Sell one cow to buy a bull.

### De Profundis Dept.

One of our local preachers recently announced that there are 862 sins. He is being beset with request for the list mostly by Miners who think they're missing something.

## Tuxedo Rental NOW AVAILABLE

- \* For Any Formal Occasion
- \* Discount to Groups

Ask About Our Student Credit Plan

Shoe Sizes 6 to 14 — Widths A to EEE

## RANDY'S SHOES

Opposite Post Office

EM 4-4111



## FOR THE FINEST—FULLER JEWELRY

MSM JEWELRY  
WATCH REPAIRING  
ELECTRIC RAZORS and  
REPAIRS

WATCHES  
PRISCILLA DIAMONDS  
GIFTS

711 Pine

EM 4-2142

## Tucker

QUALITY CHECKD



## American Ceramic Society Holds Annual Meeting

At the 61st annual meeting of the American Ceramic Society, which was held in Chicago this year, Mr. John F. Mitchell, a Senior in Ceramic Engineering at MSM, received the second place award in the 13th Annual Student Speaking Contest. In presenting his subject "A Mechanism for the Bloating of Clays and Shales", Mr. Mitchell was competing with fifteen other undergraduate stu-

tional contest which is sponsored by the Ferro Corporation of Cleveland, Ohio. This contest is open to undergraduate and graduate students from the United States and Canada, who have undertaken original research in the field of porcelain enameling. Mr. Rusert's field of investigation was the effect of particle size distribution of oxide colorants upon the resultant color of porcelain enamels.

Mr. Mitchell is now employed by General Refractories Company in St. Louis and Mrs. Rusert is a member of the ceramic staff of McDonnell Aircraft Company in the same city.

During the annual meeting Dr. T. J. Planjc, Chairman of the Department of Ceramic Engineering, was elected President of the Ceramic Educational Council for the years 1959-60. He was also appointed chairman of the Research Committee of the Basic Science Section and member of the Society's Committee on Education for a three year term.



Dr. T. J. Planjc  
Chairman of Ceramic Engineering

dents from the Schools and Departments of ceramic engineering throughout the country.

This is the second consecutive second place award to entries from the Missouri School of Mines. Last year's second place winner was Mr. Delbert E. Day, who is currently a graduate student at Pennsylvania State University.

This was the first year the Department has had a successful entry in the Annual Ferro Enamels Student Paper Contest. Mr. Eugene L. Rusert, also a senior, received the fourth prize in this na-

## ENGINEERING INFORMATION . . .

**Graham's Law:** The number of crackers eaten during any coffee break is inversely proportional to the square root of the density of the coffee.

**Maxwell's Rule:** Every person on a production shift is acted upon by a force tending to move him in such a direction as to enclose the maximum amount of coffee per unit time.

**Hooke's Law:** If it can fit into a briefcase, it will be missing from the lab within a week.

**Lissajous Figures:** The appearance on TV screens of pretty figures showing a variety of characteristic curves.

**Moment of Inertia:** The time

between 8:30 a.m. and 5 p.m.

**Reluctance:** The time of day prior to 8:30 a.m.

**Doppler Effect:** Difference between velocity of shift appearing for work, and velocity of shift leaving for home.

**Pinch Effect:** Expected result when you sneak up behind the office typist.

**Seebeck Effect:** Knowing intuitively that the boss is about to open his door to see if you are working. Corollary to the Seebeck Effect—the act of working during such intervals.

**Replacement Series:** The arrangement of employees in order of their efficiency in conforming

to the Seebeck Effect.

**Twaddell Scale:** The percentage of necessary discussion in proportion to the total volume of conversation. Also measured as "small Torque" or "big Torque" depending upon who is doing it.

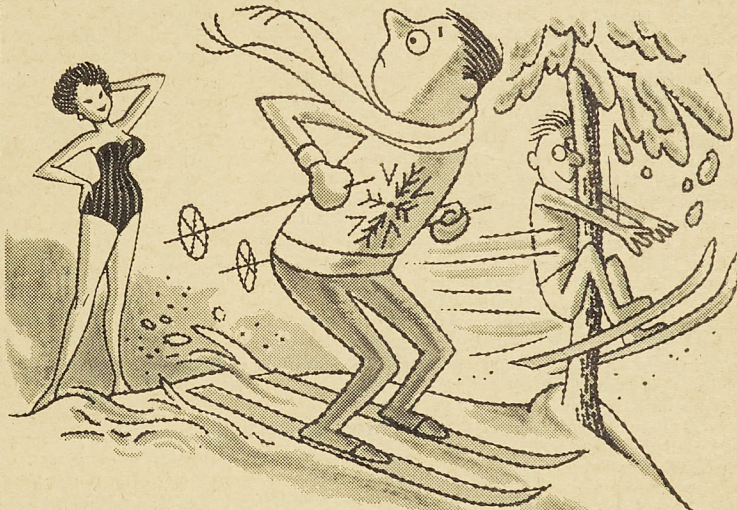
**Coefficient of Restitution:** The chances of getting your dime back even though the machine is out of cokes.

**Pascal's Law:** Pressure exerted at any point upon a confirmed goldbricker is dissipated undiminished in all directions.

**Newton's First Law of Motion:** Everybody continues in his state of rest except insofar as he may be compelled to change by the action of some outside force.

## Do You Think for Yourself?

(SHARPEN YOUR WITS ON THIS!\*)



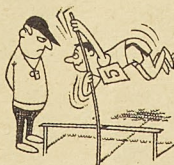
If you saw a girl in a bathing suit on a ski slope, would you say, (A) "What—no skis?" or (B) "Cold?" or (C) "The pool closed three months ago," or (D) "Stay right here—I'll get the guard!"

A ☐ B ☐ C ☐ D ☐



Do you think the statement "It's always darkest before the dawn" is (A) an astronomical truism? (B) a good reason for getting home early? (C) a piece of hopeful philosophy? (D) an argument for night watchmen?

A ☐ B ☐ C ☐ D ☐



Do you think that a man who can pole-vault 16 feet but doesn't like to, should (A) go out and do it anyway? (B) keep the whole thing to himself? (C) do a bit of self-analysis on why he doesn't like to go so high? (D) have the bar set lower?

A ☐ B ☐ C ☐ D ☐



When you choose a filter cigarette, do you (A) ask all your friends, and take their word for what's best? (B) take the one that makes the loudest claim? (C) investigate the facts, then use your own judgment? (D) go for the filter that gives you taste plus filtering?

A ☐ B ☐ C ☐ D ☐

It's a wise smoker who depends on his own judgment, not opinions of others, in his choice of cigarettes. That is why men and women who think for themselves usually

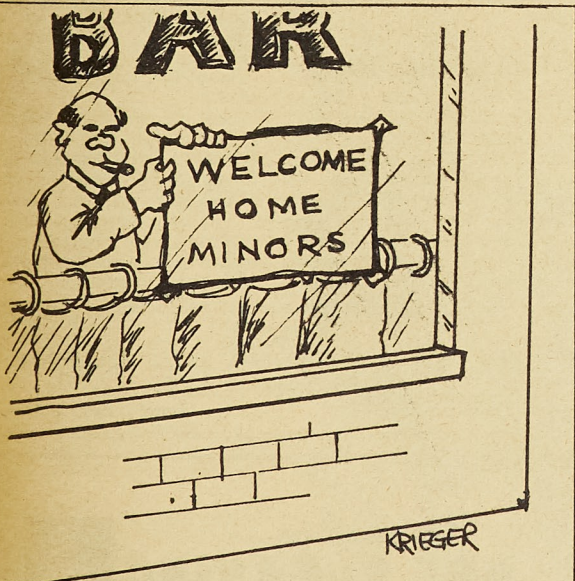
smoke VICEROY. They know only VICEROY has a *thinking man's filter*—the filter with more research behind it than any other . . . the filter that changed America's smoking habits. And only VICEROY has a *smoking man's taste*.

\*If you have checked (D) in three out of four questions, you're pretty sharp . . . but if you picked (C)—man, you think for yourself!



**The Man Who Thinks for Himself Knows—  
ONLY VICEROY HAS A THINKING MAN'S FILTER . . . A SMOKING MAN'S TASTE!**

©1959, Brown & Williamson Tobacco Corp.



## FRESH PIZZA

-- PIZZA HOUSE No. 4 --

Rolla, Mo.

Highway 63

● 1 Block West of Greyhound Bus Depot

● TAKEOUT SERVICE

5 or More — Free Delivery

EM 4-1293



## Campus News

# Tau Beta Pi Begins Fifty-Third Year

Again this year, Tau Beta Pi has handed out to the incoming freshmen the Freshman Friends Booklet. This booklet is made up of coupons which are good for discounts at local stores and businesses. The booklet has the purpose of acquainting the student with local businessmen who are interested in the students of the MSM campus. These businessmen, through their generosity, are giving the students reduced rates and also furnishing Tau Beta Pi with the money which they use to award the Freshman Tau Beta Pi Scholarship each spring.

Tau Beta Pi is the national engineering fraternity which is striving to both foster a liberal culture and encourage scholarship. To be a member of Tau Beta Pi requires junior school standing, outstanding scholarship, and exemplary character. Members of Tau Beta Pi are to be found in every important engineering and science project in the United States. This organization has never deviated from its basic intent to mark with honor those who have shown outstanding scholarship, character, and desire to further the interests of engineering and science.

Tau Beta Pi has been on the MSM campus since 1906. Since that time hundreds of students have entered this organization. Today's membership consists of students who have at least an over-all scholastic average of 3.00. The symbols of Tau Beta Pi are to be found on campus near the Old Met Building, Jackling Gym, and in front of Kelly Hall. The bent, as the symbol is called, symbolizes the engineering strength and ability of Tau Beta Pi members.

In 1958 our local chapter was selected as the outstanding chapter of the national organization beating out such formidable opponents as MIT, California Institute of Technology, and Carnegie Tech. This year's members, with the help of our adviser, Mr. Carl Muhlbauer of the Mechanics Department, hope to duplicate this record.

## Sig Pi Activates Four

For once school started off on the right foot, at least for the majority of us here at Sigma Pi. The house has finally gotten a much needed fresh coat of paint; after much work and little (?) horseplay.

The Chapter welcomed four new members; George Francis Berry, Herman Harvey Dewing Jr., Salvatore Anthony Fasone, and Allen Kent Thoeni. Nine new men were pledged; Ross Pfeffer, Ed Rutledge, Rich Clement, Doug Gracey, Roger Woley, Gary Herman, Jim Gronomeyer, Bob Brown, Chuck Williams. From the sound of the splashing (actives) in Frisco Pond, seem to be a very wild group. Perhaps the school hasn't gotten to them yet.

Two active members were lost to the bonds of matrimony during the summer, Gary Woley and David Price. Dale Pluhar became engaged. This seems to be a going fad at Sigma Pi. Fifty percent of the active members are pinned, engaged, or married.

After a hard fought battle, we lost our first football game to Sigma Nu, 21-6. But our outlook for this season is very good.

## Blue Key Lays Plans

Blue Key members met Thursday night to lay plans for the coming semester.

Again this year, Blue Key is making the student directory which contains the names, addresses and telephone numbers of all MSM students. This booklet is made as a service to the students in keeping with the basic ideal of Blue Key as a service organization. The directory this year will be smaller, approximately the size of phone directories. The cover will feature the Blue Key emblem. On the first page will be found an explanation of the Blue Key organization, its aims and ideals. The directory is paid for through selling ads to local businessmen. This enables the organization to pass on to the student this handy booklet free of charge.

Blue Key was founded as and is still an honorary organization, striving to serve the school, the community and all mankind. Blue Key selects its members from the regularly enrolled students who are very active in campus affairs. So Blue Key can rightfully be called the "organization for leaders of other organizations." It brings together these leaders into a common bond to further serve.

Blue Key carries on other activities besides the directory; notable among these is furnishing ushers for school events.

## Delta Sig Guns Hard

The halls of Delta Sig were dimmed this weekend for the initiation of four new brothers. They are David Hatfield, St. Joseph, Mo.; John Jarrard, Springfield, Mo.; Jimmy Lemon, Poplar Bluff, Mo.; and Jack Nickerson, Bethany, Mo. Congratulations, men.

Much studying has been going on lately. It seems that several profs want to thin their classes early this semester. This could have a serious effect on the economic situation in the greater Rolla area. Already Bear is feeling the bind. "TGIF" has been replaced by that new-founded edict, "OGFSMC" (Oh God, Four Saturday Morning Classes). About this time you hear from a buddy at M. U. who is complaining about his 13 hours of Phys. Ed. and advanced Psychology of Finger Painting. It's a great life.

The football team is progressing nicely, under the guidance of Rog Schild. A winning season appears imminent.

## Good Football Team

With the first week of school finally over, most of the PKT's are heading for St. Louis to support our dear Alma Mater at the Co-ed invested jungle of Washington University. We will all be there with our cheer—I mean to cheer the team on to victory.

We would like to congratulate and welcome the following men into pledgeship of Phi Kappa Theta:

David Schwaller — Jefferson City.

Joseph Dieterman—Springfield  
Kenneth Varady — East St. Louis, Illinois

William Zimmermann—St. Louis  
Rene Leonard—Havana, Cuba  
James Kohnen—Florissant

Edward Klages—St. Louis  
Clarence Wagner—St. Louis  
Matteo Coco—Affton

Jim Trares—Brentwood  
Hugh Murray — Centralia, Illinois

Stephen Salisbury — Kansas City

Daniel McCarthy—St. Louis

George Hoffman—Lemay

Paul Droll—St. Louis

Lawrence Mattler—Lemay

George Schillinger—Lemay

James Moeller, Kennett

Speaking of football, PKT's intramural chances look pretty good. The first game will be Tuesday against Kelly Hall.

We would like to welcome Brother Chuck Hollenbeck and Brother Mel Checkett back to Rolla. Both men had been away for a year. Mel went to Harris Teachers College and Chuck worked in California during his absence.

## Colossal Rush Week

### ACACIA

We would like to take this opportunity to congratulate our ten new pledges. They are:

Ronald Ray Urton—Trenton

David Allen Floyd — Granite City, Illinois

Ted Krueger Jester — Webb City

Wayne G. Benz—Maplewood

Edward Lee Sumpter — Webb City

David R. Hackett—Sikeston

Fred Wayne Gerullis—Lemay

Robert Rex Moran—Carthage

David A. Mitchell—Trenton

Hadley Stacey—Mexico

After a tremendous rush week, planned by Mike Ford, we pledged the above men on 16 September. Already the men of Acacia are planning activities for the coming semester. Among them are a pledge dance on 3 October and the festivities surrounding homecoming.

Our football team has been diligently practicing every day and the prospects look great. The team is backed by many of last year's stalwarts and the pledges round out the squad.

We would like to extend our best wishes to Brother Don Traube and Miss Eva Lee Steen, who were married during the summer. Also during the summer we added "Beast" Childress to the roll of young bachelors.

## Story Tellers Back

With the return of the crew of "The House on the Highway," came the hairy stories of "How I Spent My Summer". The first session of said stories nearly filled the entire sewerage system of Rolla. Even though the battle rages on, no one contender has outdistanced the others, so as to be worthy of having his name engraved in compressed B. S. or published in our grand and glorious newspaper.

Settling down to business, Alpha Kappa Chapter of Pi Kappa Alpha is proud to announce its officers for the present semester. They are President, Bob Piekarz; Vice-president, Don Janning; Treasurer Jerry Alyea; Assistant Treasurer, Al Powell; Secretary Bob Tooke; House Manager, Rich Schneider; Assistant House Manager, Roger Stammer; Steward Herm Vacca, and last but not least Assistant Steward John Latzer.

To replace the recent seniors (now called alumni), we have selected seventeen pledges. Although it will try our patience to the utmost, we will try to educate these poor innocent boys in the ways of college life.

P. S. Beware: Tonto has returned.

## PI KAPPA ALPHA PLEDGES

Doyle Chartrau, Bud Campbell, Scott Carriere, Roger Fannetti, Greg Miller, Ken Nelson, Floyd Stamps, John Galvin, Chuck Guimbarda, Jim Edwards, Paul Dormeyer, Bob Sieckhaus, Dick Porter, Bill Mitchem, Paul Cobb, Glen Harrison, Gary Hogan.

## Hail to Slide Rules

Hello to all slipsticks! Here we are, back again, this time under the capable leadership of President Harry Wilson, who promises to do a good a job as D. Tims did.

Helping Harry will be Mike Bertorello with good food and menus and banker Joe Charleson with the price is right. In accordance with custom, the menu next

week (Mon. thru Sun.) will be tortellini, salami, ravioli, palenta anchovie pizza, San Sicily quail and bonyacolda. With such courses we'll try to take another unmentioned first place in Intramurals. Let's see all 120 Tech men at the football games.

## Twenty-five Pledges

We trust everyone in Sigma Phi Epsilon enjoyed a welcomed summer vacation. The summer months were highlighted by a successfully rush program along with our National Convention held in Washington D. C. The Sig Ep's from Missouri Gamma literally walked away with all the honors at our conclave held early in September winning trophies for having the most men present along with one for man-miles traveled from our chapter to D. C.

This semester Sig Ep welcome twenty five new men to their "halls of learning", along with three men continuing in their pledgeship. The new men recently pledged are: Robert Badgley, Thomas Beckmann, Kenneth Delmain, Thomas Dunn, John Gladysiewicz, Richard Hallahan, Paul Hatcher, Reynolds Hayden, Edwin Horan, William Kester, Edward Kozeny, Walter Kunkel, Martin McGrath, Richard Miller, John Minton, Richard Musgrove, William O'Haren, John Parks, Larry Peery, Roger Perl, Robert Putz, Richard Raddatz, Jerry Schappe, Anthony Sotta, and Robert Wallace. We also welcome brothers Loftman and Merryman from Cape, and brother Frangle who is returning after a brief absence from our chapter and MSM.

## LOST AND FOUND DEPT.

One goatie - if found please contact that fine gentleman from the southern part of St. Louis, Co. Swank. (\*Xfi-2o\*fiz\*6\$) pledged are at it again.)

One house dog - Answers to the name of Flash, Gimp, etc and censored. This black and white dalmatian was last seen in the vicinity of St. Louis. Sorry No Reward.

One fraternity pin - by Mel Fisher. Rumor has, it was last seen on a lovely young lady named Jo Ann Meyer. Congratulations.

A certain young man named J. C. Villegas, answering to the name of "Corky". He must be lost, last weekend Corky was seen in Rolla. Sorry nothing found.

**PIZZA**  
MEAL TICKETS AND SPECIAL RATES FOR MINERS  
**CAL - MO CAFE**  
11th and Highway 63 Open 7 Days a Week

The Finest in.....  
**DRY CLEANING**

Pressing While You Wait.  
One Day Service if Requested.  
Pick Up and Delivery Service.

**MODERN**  
Dry Cleaners  
9th and Pine

## IT'S FUN TO ROLLER SKATE!



Skating Every Night  
Except Mondays

at 7:30

\*\*\*

Sunday Matinee  
at 1:30

\*\*\*

**ROLLA ROLLER  
RINK**

City Hwy. 66 West



# Pledges Hoped to Be Valuable Assets

1959 should be one of the biggest years for fraternities on the MSM campus. Rush parties were at an all-time high as fraternities competed for the top freshmen. About 800 freshmen flooded the campus for freshman orientation and rush week. The rushing programs of many fraternities seemed to be paying off as in some houses as many as 125 to 150 freshmen could be found passing through in one night.

Pledging ceremonies for most fraternities were held on Tuesday or Wednesday night, due to school rules and found about 320 out of 800 joining fraternities. The breakdown was as follows: Kappa Sigma acquired the largest pledge class of 33 with Sigma Nu close behind with 30. Next found Sigma Phi Epsilon with 29 and Tau Kappa Epsilon with 27. Triangle had 26, Theta Kappa Phi 24, Kappa Alpha 23, Delta Sigma Phi 20, Lambda Chi Alpha 18, Pi Kappa Alpha 17, Theta Xi 14, Sigma Pi 10, Beta Sigma Psi 10, and Sigma Tau Gamma with seven.

The new pledges should help to advance the quality of fraternity men on the campus and all the fraternities are hoping that the new men will be a great asset to their respective houses.

## The Champs Return

Things are starting to get back to normal here at the "Rock House" after having the place extended and remodeled. We have a lot of new things this semester, such as: A new cook, a new kitchen, and a larger dining room. We have pledged 27 men and they look as if they are going to make a fine pledge class.

Oliver Harris and Al Gregson are walking around up in the clouds, as both of them lost their pins this summer. It wouldn't surprise us one bit to see a double wedding after the end of the semester.

Our football team has been working out lately and we're hoping to defend our championship of last year. Jim Sidwell and John Askey are back to head the team. John says the team might "jell" into something after all.

We're all planning our weekend for the "Wash. U. Game." It looks as though it's going to be quite an affair. Next time you'll hear all about it—if we make it back.

We're all backing George Hess who was elected as our new president—congratulations, George!

## BSU Attends Retreat

The Baptist Student Union began the year's activities with a pre-school retreat, Sept. 12 and 13, at Windermere. Most of the executive council and several

freshmen attended this meeting. Plans were made for the coming year along with some recreation and fun. Chaplain Brown gave a very inspiring talk Saturday night.

Following the retreat a social was held Monday night at the First Baptist Church. The main purpose of this social was to meet and get acquainted with the freshmen. A good crowd turned out and everyone seemed to have a good time.

Vespers are held again this year every day, Monday through Friday at 6 p.m. in the basement of the Rolla Clinic located at 10th and State. Everyone, especially freshmen are invited to attend.

## Annual Freshie Daze

One week has scurried by and everyone is returning to the old grind once again. The Freshmen as usual are walking around in a daze and mumbling how will I ever get caught up?

This semester our pledges include quite a number from across the border in Illinois. Our pledges for this semester are as follows: E. Adam, R. Campbell, P. DeMay, R. Garthe, J. Guest, R. Habere, R. Hight, R. Hoffstetlev, A. La Plante, F. Sischer, A. Purmont, D. Nuernberger, T. Sunkel, L. Thurman, J. York, J. Yost, and J. Walford. Congratulations to you all and may your many years in Lambda Chi be enjoyable ones.

This weekend we had initiation for our last semester pledge class. The following men were initiated into Lambda Chi: D. Beech, T. DeWitt, J. Farmer, A. Hager, R. Johnson, E. Perry, Wheeler, M. Congratulations. Oh, one thing, Brother Onn wants to know where the cigars are.

That's all for now—see you at the Washington University game.

## To Set Date Record

This week found everyone getting back into the swing of school work. During the week we pledged 11 men. They are: Jim Harle, Wayne Sheer, Jim Stadelman, Harold Warner, Gus Mauller, Chuck Rothwell, Larry Peiman, Gary Laneman, Will Gerhardt, Dave Decker, and Dave Bruegge.

Our football team is looking very good. Under the controlling hand of "Big Bob" we should have a very fine season.

We would like to extend our congratulations to Ron Anderson who was elected First Vice President. Ron has served us well in the past and we are certain he will continue to do so.

The Wash. U. game will be a big event for the Beta Sigs. We should set a record for dates. With the party dolls, namely Leo and Ray, fixing everyone up it should be a weekend to remember. Our biggest joy will come when the Miners leave the field VICTORIOUS.

## BETA SIGMA PSI

September 12 found most of the Beta Sigs back in Rolla, ready to tear into the books.

A lot has happened in the last two weeks. The members came down two weeks early in order to move from the Old White House. We have moved to a beautiful, spacious resort on the corner of 10th and Rolla streets. Everyone is overwhelmed with the spaciousness of the pit. Actually, we are stuffed in like sardines and can hardly wait for the move to our newly-acquired house.

Last weekend almost everyone migrated home. It seems one week in Rolla was enough. During that week Spig became an expert on installing basins and radiators. If anyone is in need of this type of assistance, he will be more than glad to lend a hand.

Everyone seemed to enjoy the last free weekend in St. Louis. Everyone has been trying to get Wilbert to talk about his experiences but so far he has remained silent.

# Prof. Hanley Honored

(Continued from Page 1)

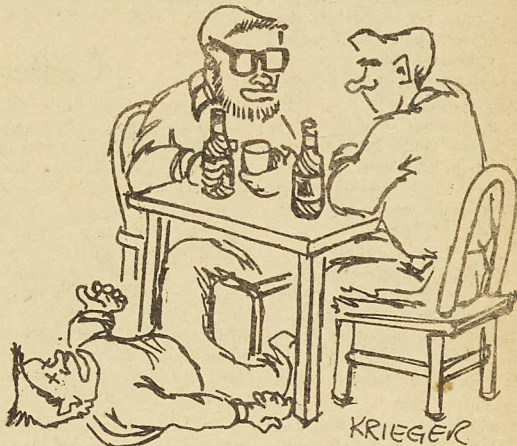
names of all the European metallurgists who took part in this trip.

Other gifts included a sterling silver bowl properly inscribed, and a perpetual clock. The final presentation was the letter from President Hoover described above. In addition to Dr. Remmers, who flew in from Niagara Falls, and Dr. Williams, out of town guests included Mr. Jim Smith, MSM 1927, of Columbia Falls, Montana, Mr. M. L. Frey of Milwaukee, Wisconsin, Mr. and Mrs. John Hanley of Omaha, Nebraska, Mr. and Mrs. Bram Lewin of St. Louis, Mr. and Mrs. L. P. Davidson of St. Louis.

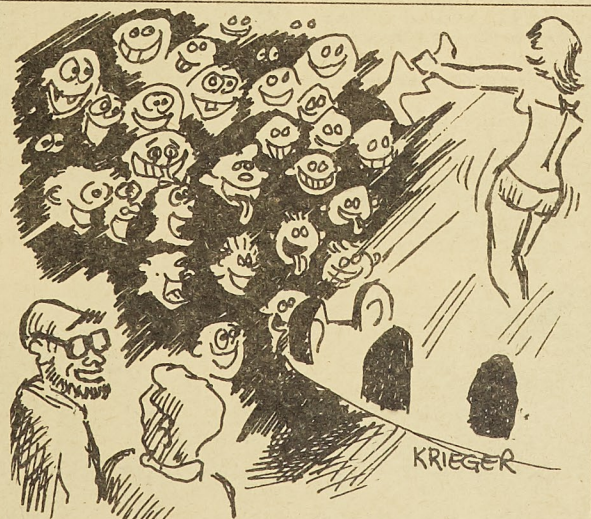
In replying to the many speeches of congratulation, Professor Hanley suggested that perhaps there was some mix-up in the figures and that instead of this being his 85th birthday it was really only his 58th birthday and that he expected to enjoy many more such birthday celebrations.

A tape recording was played to convey greetings to Professor from many of his friends connected with the Cheng Kung University on the island of Formosa. Professor and Mrs. Hanley spent almost three years in Formosa during which time Professor Hanley established a department of metallurgical engineering for the Nationalist Government of China.

Gifts presented to Professor and Mrs. Hanley included a beautiful engraved silver box on which was depicted a scene of metallurgical operations as conducted during medieval times. This box was sent by a group of European metallurgists who had been conducted through a number of lead and zinc plants on a six week tour led by Professor Hanley in 1951. Around the edge of the box is engraved the



FIRST COKE JACK HAD ALL SUMMER LONG.



BEST RUSH PARTY WE EVER HAD!

COLD BEER DON BOCKHURST LIQUORS  
EAST SIDE GROCERY & BEVERAGE  
904 Elm St. FREE PARKING Phone EM 4-3218

A. E. Long, M. S. M., Ex '22  
LONG INSURANCE AGENCY  
810 Pine St. ROLLA, MO. Phone EM 4-1414  
"Service Is Our Business"

AUTOMATIC LAUNDRY  
FAST SERVICE—INDIVIDUAL WASHERS  
COMPLETE BACHELOR LAUNDRY SERVICE  
Freshman Friendship Coupons Redeemed  
Laundry - Dry Cleaning - Shirts  
Corner 7th and Rolla Sts. Open 7:30 to 6

C & B CAFE  
OPEN 7 DAYS A WEEK  
Monthly and Weekly Meal Tickets  
Located at  
205 West 9th (at Pine)

LIQUOR, WINES, COLD BEER, MAGAZINES, TOBACCO  
GALE'S PACKAGE STORE  
703 Pine  
Parking Lot in Rear of Store for Customers

"It Pays to Look Well"  
CREW CUTS - FLAT TOPS - HOLLYWOODS  
SANITARY BARBER SHOP  
705 Pine St.

805 Pine Rolla, Mo.  
G. L. Christopher  
Authorized Agent  
WATCHES  
OMEGA



# Miners Lose Opener by a Discouraging 30-to-14 Score

A near capacity crowd saw the Miners drop their opening game of the season last Saturday, September 19th, as Lincoln out-scored the Miners 30-14. This victory gave Lincoln its second victory over the Miners versus no defeats in the interschool competition which was initiated last year.

Even though the Miners were defeated, it was evident throughout the game that they have the nucleus (Tom Cooper, Bill Wheeler, Ted Deranja and a good offensive and defensive line) of an outstanding football squad. The main fault displayed by the Miners seemed to be a marked lack of speed as the Lincoln backs ran around us all afternoon to score four (4) TD's and on three out of four extra point tries.

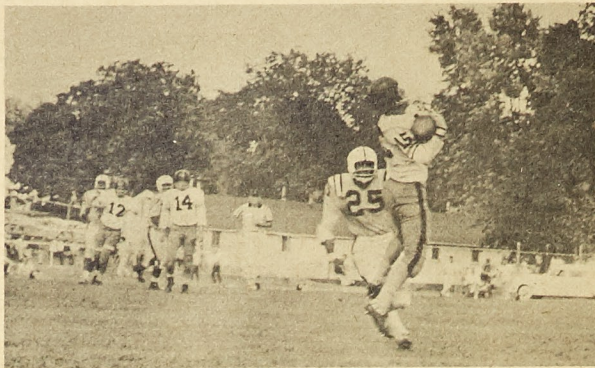
The scoring for the Miners was accomplished by Cooper in the first quarter on a one yard plunge and the extra point was ran by Deranja, Paul Wiegard received a 43 yard pass for a TD in the fourth quarter, and O'Mealy missed the extra point kick.

The four TD's for Lincoln were scored by Herman Adams on a 26 yard run, Thomas Whitten on a 13 yard drive, Willie Phillips on a 23 yard sprint, and Lewis Heffner on a 37 yard run. The extra points were scored on runs by Carl Lee, Heffner and Phillips.

The game itself was characterized by fumbles, interceptions and penalties. The Miners were guilty of several fumbles and allowed 3 interceptions. On the other hand, Lincoln acquired 160 yards in penalties to the Miners 45 yards.

During the first half of the game the Miners' passer, Wheeler, working primarily with split ends (each end played about ten yards out from his normal position), was able to complete 7 passes in 16 tries. The second half found Lincoln's pass defense much improved as the Miners were able to complete only two passes in eight attempts.

The Miners were way ahead in the first downs department with twenty-four first downs to Lincoln's seventeen.



Last Chance Reception

In general the Miners looked good last Saturday, there was a good defensive line and the offensive moved good on the ground and in the air. Speed is one factor that will hold the Miner's down and necessitate a game centered on passing and short line drives

and plunges. With a game's experience under their belt the Miner's will look a lot sharper tomorrow against MSM's traditional rival. See "you all" tomorrow to root and cheer our team to VICTORY over the Washington University Bears.

## Conference Survey

After the usual cluster of pre-conference games which are intended to sharpen up the team for the grueling conference bouts ahead, the Miners will settle down to the serious task of wresting away the conference crown from the defending champs Cape Girardeau. Though the boys from Cape will undoubtedly prove to be the biggest test for the Miner Grid men, the conference has four other teams who on a given day could derail any conference crown hopes of the Miners.

The Warrensburg Mules under coach Hal Yinger could be a thorn in the Miners' side this season, as they lost but four seniors and can count on All-Conference fullback Norman Patrick and fifteen other returning monogram winners to be the core of their team. Warrensburg must replace all-conference center Frank Freeman, and find more backfield material to become a real threat in conference circles.

The Springfield Bears are considered to be the real dark-horse

of this year's MIAA race. The surprising Bears have already hung up two games on the winning side of the ledger this season, as they upset a highly regarded St. Benedict's squad 19-7 in the season opener and last week end clipped Pittsburg Kansas 18-7. The Bears have the entire backfield unit returning plus four of last season's starting linemen. The Bears have an adequate passing attack, and a pair of experienced ends and might be real trouble for the rest of the conference.

Losing only three men from last year's starting eleven, Coach Paul Turner of the Maryville Bearcats feels that his squad should not only improve on last year's 0-8 record but should vacate the MIAA cellar, though many of the conference coaches tend to doubt this occurring. Last weekend the Bearcats, who are trying to dispose of their weak sister label, held Bemidji, Minnesota to a scoreless tie 0-0.

The Kirksville Bulldogs are to be considered a real conference threat if they can solve their line problems. Coach Red Wade will be trying to gain depth with a number of inexperienced but promising freshmen linemen. Return-

# Miner Hopes Are High in Regard to Wash. U. Game

by L. E. Schwarze

Tomorrow, September 26, the Miners will meet with the Washington University Bears to play off the traditional Miners-Bears football contest.

This annual event, which has reached its thirty-eighth tally, is

ing will be the nation's leading small college rusher, Dale Mills. Teaming up with Mills in the Bulldog backfield will be Rufus Davis who was sidelined last year with injuries. If Wade can line up a decent line, Davis and Mills should run wild and could possibly carry the Bulldogs to the top of the MIAA heap.

Aiming their sights for a third straight conference title, the Cape Girardeau Indians of Coach Kenney Knox will have capable manpower to defend the crown. Although Knox lost nine lettermen from the '58 crew and has a small team, he has excellent speed in the line and backfield. All-Conference guards Glennon Schott and Edward McWilliams will lead the forward wall, which will also include '58 starters Ken Iman and Ryland Meyr at center and tackle. Gary Nichols, quarterback, Tom Thrower and Ken Weakly, halfbacks and Charles Matthews, fullback, will give the Tribe a powerful attack through the air and on the ground.

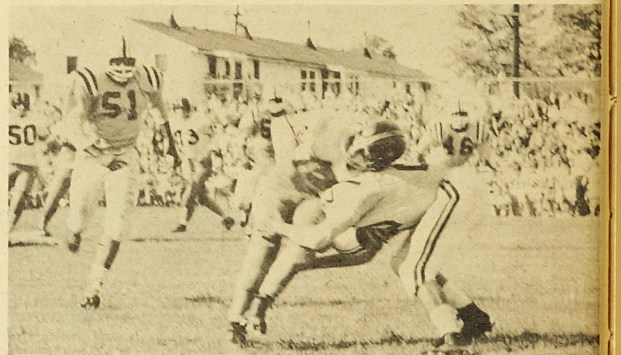
All in all, MIAA conference fans should be rewarded with some fine football this autumn. On paper this year's conference race should prove to be a real dogfight, with the Miners, we hope, coming out on top of the heap.

scheduled for 2:00 p. m., daylight savings time, at the St. Louis field.

The MSM squad has a good chance to win this playoff tomorrow, for they will be one game ahead of Washington U., as this is the Bears' first game. Although the Miners had tough competition with Lincoln University in their 30-14 loss, they now should be in good shape to meet the St. Louis team.

In the past, the MSM-Wash. U. games have been quite close and exciting playoffs. In 1955 the Miners won by a TD, 20-13; in 1956 the Miners lost a heartbreaker 14-13; in 1957 Washington U. came out ahead in a 14-7 score, and again last year, with only one minute to go and the score 13-12 in our favor, one of the Washington University eleven stole the ball from our quarterback and ran it for a touchdown. Although Wash. U. has won thirty games to our six games (one tied) our enthusiasm of the contest has not been dempened.

With Co-captains Louis Meisenheimer and Tom Cooper and the other fifteen returning lettermen sparking the team, the game tomorrow should spell victory for the Miners. The faculty has been kind enough to suspend Saturday's classes this week, so that a big crowd as possible could attend the game. Our team needs everyone's support, because, when they know there are people in the stands rooting for them, they are bound to do their best, and play to win. So... let's go Miners... beat Washington U.!



Top:

STONE WALLS DON'T BUDGE

Bottom:

ONE DOWN! ? TO GO

## Intramurals

by Ray Strebler

With the intramural season now underway, all of the teams are battling for top honors. Last Monday was the opening day for football, table tennis, and tennis singles.

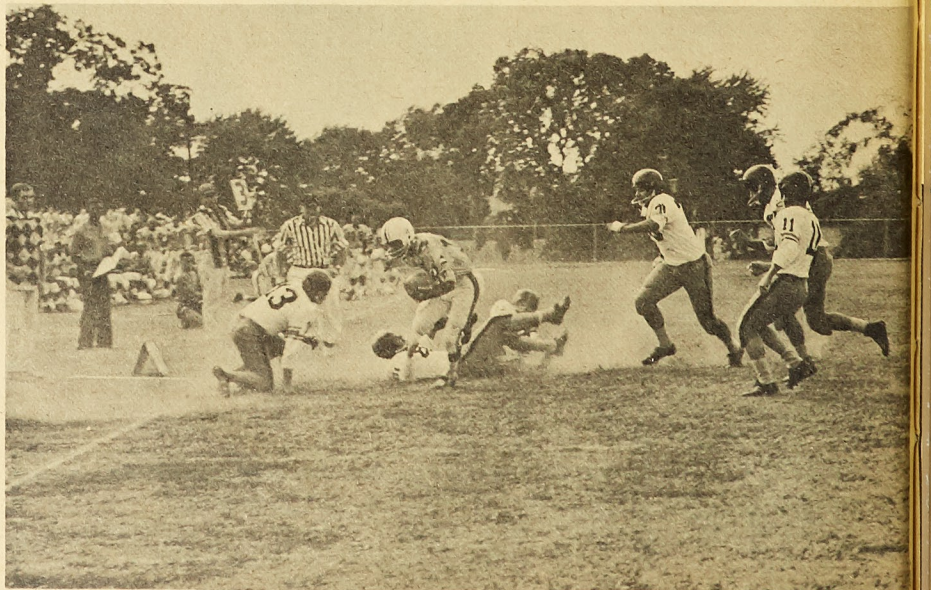
Football, the most popular of the three sports, was won last year by Triangle, but fierce competition promises a number of contenders for this year's trophy. Played with nine-man teams rather than the usual eleven, and with all players eligible for a forward pass, this type of football produces faster action with less time lapse. The regular schedule ends October 16, with playoffs between the three league champions following. Sig Ep, Teke, Beta Sig, Shamrock, Prospectors Club, Theta Xi, and Triangle comprise the first league; Tech Club, Kappa Sig, Engineers Club, Phi Kappa Theta, Pi Kappa Alpha, Sigma Tau, Baptist Student Union, and Kelly Hall the second league; with Sigma Nu, Lambda Chi, Delta Sig, Kappa Alpha, Sigma Pi, Acacia, Dormi-

tory and Wesley rounding out league number three.

Intramural table tennis consists of a double elimination series of twenty-one point matches. Both singles and doubles are played, but no player is permitted to compete in both. Don Gunther, singles winner last year, returns to pace Theta Kappa in this year's tournament, which will last through October 26.

Tennis singles, like ping pong, are also elimination contests rather than league actions. Entries consist of three-men teams with one alternate. Mister Gunther also won this event last year, but several contenders have high hopes of capturing the title this year.

In the over-all totals for '58-'59, Tech Club led the intramural competition with 5111.2 points, followed by Triangle with 5004.0 and Sigma Nu with 4870.8. Indications are that this year's race may be even closer. The intramural sports program continues the year around, and the schedules of these events are posted in Jackling Gymnasium.





# Fraternity Pledges for Fall Semester

(To Be Continued Next Week)

## SIGMA PHI EPSILON

Dick Hallahan — Webster Groves  
 Dick Musgrove — Alton, Illinois  
 Ed Horan — Kirkwood  
 Walt Mueller — Clifton, New Jersey  
 John Gladysiewicz — Oneida, New York  
 Sal Barreca — Brooklyn, New York  
 Bob Badgely — Overland  
 Tom Beckman — Overland  
 Walter Kunkel — Overland  
 Ken Delmain — St. Charles  
 Tom Dunn — Florissant  
 David Kester — Paducah, Kentucky  
 R. C. Hayden — Overland  
 Pete Hatcher — Kirkwood  
 Ed Kozney — Olivette, St. Louis County  
 Dick Miller — Kirkwood  
 John Minton — Normandy  
 Marty McGrath — Webster Groves  
 Bill O'Haren — Glascoe Village, St. Louis County  
 John Parks — Padgedale  
 Larry Peery — St. Charles  
 Roger Perl — St. Louis  
 Bob Putz — Berkley, St. Louis  
 Rick Raddatz — Bellfountain Neighbors, St. Louis County  
 Jerry Schappe — St. Peters  
 Tony Sotta — St. Charles  
 Bob Wallace — Town & Country, St. Louis County  
 Dale Cornell — St. Louis

## BETA SIGMA PSI

Harvey D. Decker — Jackson  
 Jim Stadelman — St. Louis  
 Wayne A. Scheer — St. Louis  
 Larry Peimann — Florissant  
 Gostav A. Mauller III — University City  
 Gary D. Laneman — St. Louis  
 James Charles Harle — St. Louis  
 Charles Edward Rothwell, Jr. — Decatur, Illinois  
 Harold Ernest Warner — St. Louis  
 Wilhelm Gerhardt, Jr. — St. Louis  
 David Charles Bruegge — Wellston

## SIGMA PI

Ross Herbert Pfeffer — Hazelwood  
 James Lyle Gronemeyer — St. Louis  
 William Douglas Gracey — Ferguson  
 Robert Simpson Brown — Hazelwood  
 Edward Anthony Rutledge — Ferguson  
 Gary Maurice Herman — Kansas City  
 Charles Edward Williams —



Licking  
 Roger Dee Woley — Jennings  
 Charles Richard Clement — Overland

## PI KAPPA ALPHA

Floyd Stamps — St. Louis  
 Charles Guimbarda — St. Louis  
 Robert Siekhaus — St. Charles  
 Richard Porter — Cape Girardeau  
 Gary Hogan — Kennett  
 Lloyd Campbell — St. Louis  
 Gregg Miller — St. Louis  
 Ken Nelson — Webster Groves  
 Roger Fanetti — St. Louis  
 Paul Dormeyer — Cape Girardeau  
 Jim Edwards — Berkeley  
 Scott Carriere — St. Louis  
 Paul Cobb — Brentwood  
 Bill Mitchem — Lilbourn  
 Glenn Harrison — Centralia  
 John Galvin — Chicago  
 \*Doyne Chartrou — Sikeston  
 \*To be activated this Fall.

## KAPPA ALPHA

Harold Beardslee — Detroit  
 Tracy Boyer — Ferguson  
 Raymond Bretthaur — Texarkana, Texas  
 William Bryant — Beatrice, Nebraska  
 Roger Chaplin — Kirkwood  
 James DeLong — Jefferson City  
 Roger Gardner — St. Joseph  
 Clyde Gudermuth — Webster Groves  
 Dwight Hafeli — Rolla  
 James Hammock — Jennings  
 Jack Heller — Clarksville  
 John Kinney — Webster Groves

Burton Kinsworthy — Texarkana, Arkansas  
 William Kircher — St. Louis  
 Donald Mason — Ferguson  
 Thomas Mayfield — Clinton  
 Edger Mercer — Farmington  
 Glenn Miller — Lincoln, Illinois  
 Wayne Nelson — Nebo  
 Thomas Payne — Mt. Carmel, Illinois  
 John Shewchuk — New York City, New York  
 Jim Temple — Elsberry  
 Steven Wheeler — Willow Springs

## THETA XI

Arthur G. Adasse — Central Islip, N. Y.  
 James Barger — Waldwick, N. Y.  
 Robert B. Coulter, Schenectady, N. Y.  
 Theodore J. Garrett — Schenectady, N. Y.  
 Roger W. Shatzer — Paris.



- \* Brown Mix
- \* Oxford Mix
- \* Grey Mix
- \* Black Mix

\$3.50

**BISHOP'S**

J. C. Alexander, Mgr.  
 124 W. 8th - Rolla, Mo.

John R. Sturgis — Springfield.  
 Harry P. Hashmall — Flushing, N. Y.  
 Thomas E. Kreichelt — Brentwood.  
 Joseph M. Myslinsky — Perth Amboy, N. J.  
 Peter J. Szaranowski — Perth Amboy, N. J.

## UPTOWN THEATRE

MOVIES IN CINEMASCOPE

Wednesday through Tuesday, Sept. 23-29

Shows 7 and 9 p. m. each evening  
 Sunday Continuous from 1 p. m.

Regular Admission Prices

### 'The Big Circus'

Victor Mature, Red Buttons, Rhonda Fleming, Kathryn Grant

Wednesday Only, Sept. 30  
 This Ad plus One Paid Adult Admission Admits Two

### 'The Black Widow'

Ginger Rogers and Van Heflin

## RITZ THEATRE

MOVIES ON WIDE SCREEN

Friday and Saturday, Sept. 25-26  
 Saturday continuous from 1 p. m.

### 'My Pal Gus'

Richard Widmark, Joanne Dru — PLUS —

### 'Bull Whip'

Guy Madison, Rhonda Fleming

Sunday, Monday and Tuesday, Sept. 27-28-29

Sunday Continuous from 1 p. m.

### 'The Mating Game'

Debbie Reynolds, Tony Randall — PLUS —

### 'The Little Savage'

Pedro Armendariz, Rodolfo Hovos

Wednesday-Thursday, Sept. 30-Oct. 1

### Count Your Blessings

Deborah Kerr, Rossano Brazzi — PLUS —

### 'The Secret of Convict Lake'

Glenn Ford and Gene Tierney

## ROLLA DRIVE IN

SHOW STARTS AT 7:00 P. M.

Friday and Saturday, Sept. 25-26

### 'Bhowani Junction'

Ava Gardner, Stewart Granger — PLUS —

### 'Gun Battle At Monterey'

Sterling Hayden, Pamela Duncan

Sunday and Monday, Sept. 27-28

### 'Battle Hymn'

Rock Hudson and Martha Hyer

Tues., Sept. 29 — Dollar a Carload

### 'The Night People'

Gregory Peck and Rita Gam

Wednesday-Thursday, Sept. 30, Oct. 1

### 'The Last Frontier'

Victor Mature and Guy Madison

Ike H. Williams — Paragould, Ark.

(Continued on Page 8)

BEAT WASHINGTON U.!

Are Your Clothes  
 Campus - Ready?  
 Have Them  
**SANITONE**  
 Cleaned Now



**SANITONE**  
 Dry Cleaning

assures you that  
 just right look always

You'll be delighted when you see how much more than just perfect cleaning Sanitone gives you. That crisp, longer lasting press-like-new colors, textures and patterns—all add up to that ideally casual (but not crumpled) look so essential in sports wear. Let us serve you.



- Professional finish for perfect fit
- Missing or broken buttons replaced
- Starch "As you like it"

Try it now — you'll be glad you did!

Complete Laundry  
 Service  
**BUSY BEE**  
**LAUNDRY**  
 and  
**DRY CLEANERS**  
 Phones  
 Plant — 14th & Oak  
 EM 4-2830  
 Drive - In —  
 Faulkner & 72  
 EM 4-1124

**Bill's**  
 Burger  
 Basket

WITH THIS COUPON  
**BURGER BASKET & MALT 59c**  
 (REG. 75c)

Good Until September 30th

CALL EM 4-9929 FOR ORDERS TO GO

OPEN 10:30 a.m. Bishop and 14th Closed Monday CLOSE 11 p.m.



# Fraternity Pledges

(Continued from Page 7)

## KAPPA SIGMA

Paul Albrecht—Chesterfield.  
Charles Becker—Fenton.  
Wayne Bender—St. Louis.  
Joseph Bogard—St. Louis.  
George Borgstede—Ellisville.  
Charles Boster—St. Louis.  
Clinton Clark—Ellisville.  
Wayne Corder—San Francisco, Calif.  
Russell Cox—St. Louis.  
Robert Elliott—Ridgefield, Conn.  
James Gebhart—Miamisburg, Ohio.  
John Gianquinto—Rockford, Ill.  
Timothy Holland—Fenton.  
Bryan Hutchings—Ballwin.  
Michael Johnson—Joplin.  
Bill Kerchoff—Creve Coeur.  
Bernard Kopaskie—Wallkill, N. Y.  
Dwaine McKinney, Cabool.  
Richard Martin—Oakland, Calif.  
Michael Messerla—Valley Park.  
Eric Norman—University City.  
Gary Lee Overleas—Rolla.  
William Parker—Rolla.  
John Pearson—Harrisburg, Ill.  
Eugene Roeder—Creve Coeur.  
Murray Sisk—Joplin.  
Richard Smith—Memphis, Tenn.  
Jim Stratton—Joplin.  
June Thomason—Memphis, Tenn.  
Ralph Twigg—Springfield.  
James Webb—Joplin.  
Michael Woldman—St. Louis.

## TRIANGLE

John Dwane Baumgardner—Fairmount City, Ill.  
Nicholas Marvich—Fairmount City, Ill.  
William Arthur Koenig—Fairmount City, Ill.  
Daniel Walter True—New Florence.  
Russell Charles Solomon, Jr.—Edwardsville, Ill.  
Michael Frederick Schuette—Granite City, Ill.  
Gerald Ronald Magurany—Wood River, Ill.  
Ladimar Joseph Aubrecht, Jr.—Edwardsville, Ill.  
Paul Kenneth DeGoma—Granite City, Ill.  
Ronald Lee Deutschman—Granite City, Ill.  
David Francis Domanowski—Edwardsville, Ill.  
Cyril Alan Ferguson—Wood River, Ill.  
Kraig George Kreikmeier—St. Louis.  
Jerry Julius Eckhoff—St. Louis.  
Manuel Joseph Melchor—St. Louis.  
William Roy Ligon—Edwardsville, Ill.  
Bruce Anthony Shymanski—St. Louis.  
Robert Francis Stewart—Wood River, Ill.  
Douglas Thomas Taylor—Wood River, Ill.  
Raymond Russell Todd—Wood River, Ill.  
Ervin Ira Pietsch—Rolla.  
James Charles Phillips—St. Louis.  
Dennis Randolph Reeder—Wood River, Ill.  
Donald Nicholas Overall—St. Louis.  
John Ramond McManamee—St. Louis.  
Walter Schuyler Schamel—Glendale, Calif.  
Larry Joseph Wooldridge—Benton.  
Ronald Albert Koenig—Fairmount City, Ill.

## LAMBDA CHI ALPHA

E. Adam—Rolla.  
R. Campbell—Centralia, Ill.  
P. DeMay—St. Louis.  
R. Garthe—St. Louis.  
J. Guest—Kingdom City.  
R. Haben—Neosho.  
R. Hight—Centralia, Ill.  
R. Hoffstetter—St. Louis.  
A. LaPlante—East Prairie.  
A. Lischer—St. Louis.  
A. Turmont—St. Louis.  
D. Nuernberger—Centralia, Ill.  
T. Sunkel—St. Louis.

## SIGMA PI

Ain't we got fun? School's started again. And the dull, hot, girl-less summer is over with and we may again feast our eyes upon a world renowned creature, the M. S. M. Co-ed.  
Two of our brothers took the vows this summer—Dave Price and our president, Gary Woley. In November, Art Jacobsmeier will take his.  
Summer Camp called upon seven of our brothers: Dave Bor-

ing, Gene O'Gorman, Dave Krasser, Gaylen Staples, Doug Dallmer, Harve Wiethop and Dale Pluhar.

For the first semester this year our new officers will be: President, Walter Steinman; Vice-President, Doug Dallmer; Secretary, Bod Randolph; Treasurer, Rich Swanson; Alumni Secretary, Dale Pluhar; and Herald, Bob Watson.

Thanks to the Mothers Club, we have a new runner on the stairs. But the most noticeable change on the house is the Spic and Span coat of paint. The Chem. Engins at the Sigma Pi House have formulated a unique

mixture—one part paint to even two parts of sweat.

One wedding guest to another "Her 'something borrowed' is my boy friend!"

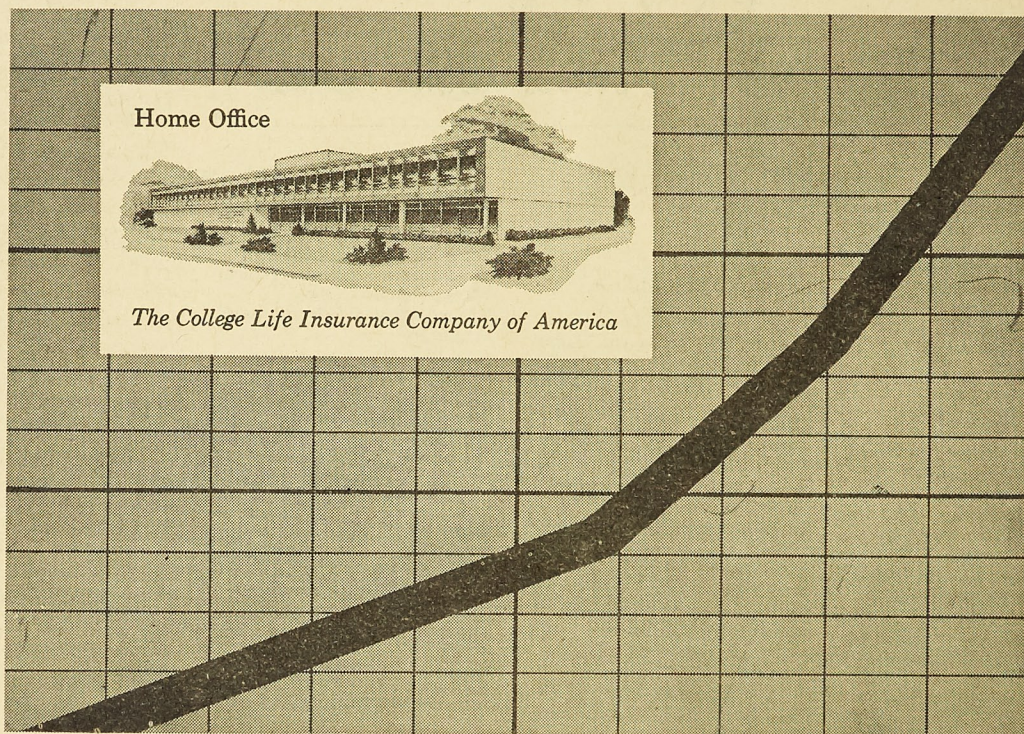
Man to family climbing out of car: "Well, we finally found parking place. Does anybody remember why we're here?"

As I was going to St Ives I met a man with seven wives. Each wife had seven bags. Each bag had seven cats. Each cat had seven kittens.

How many were going to St Ives.

Answer—One

## A Decade of Spectacular Growth



### One of The Nation's Fastest Growing Life Insurance Companies

The College Life Insurance Company of America's spectacular growth, during the last ten years, has made life insurance history from coast to coast.

The company was conceived to serve the specialized insurance needs of college men throughout the nation. This service has earned recognition of The College Life Insurance Company of America by important groups in the industry. For example, Best's Life Insurance Reporting Service, the recognized authority, gives The College Life Insurance Com-

pany of America its "Recommended" rating.

Founded in Indiana, where insurance laws are among the most stringent in the nation, The College Life Insurance Company of America has now extended its services to states from Canada to Mexico, and the Atlantic to the Pacific.

To fulfill your insurance needs investigate The College Life Insurance Company of America—and ask their representative about their BENEFACITOR policy and its 7 unique benefits, designed especially for college men.

## V. Dale Cozad

Representative  
925 E. 7th St.  
Phone EM 4-4577



Member: American Life Convention  
Life Insurance Agency Management Association

Original and Only Life Insurance Company Serving College Men Exclusively