



24 Apr 1959

The Missouri Miner, April 24, 1959

Follow this and additional works at: https://scholarsmine.mst.edu/missouri_miner

These newspapers reflect the attitudes, perspectives, and beliefs of different times. Neither the library nor the university endorses the views expressed in these collections, some of which contain images and language which may be offensive to some readers.

Recommended Citation

"The Missouri Miner, April 24, 1959" (1959). *The Missouri Miner Newspaper*. 1622.
https://scholarsmine.mst.edu/missouri_miner/1622

This Newspaper is brought to you for free and open access by Scholars' Mine. It has been accepted for inclusion in The Missouri Miner Newspaper by an authorized administrator of Scholars' Mine. This work is protected by U. S. Copyright Law. Unauthorized use including reproduction for redistribution requires the permission of the copyright holder. For more information, please contact scholarsmine@mst.edu.

FRIDAY, APRIL 17, 1959

men are naturally dainty
me so few stay as shape
canary to which they gail
e themselves when food
hed?

EN DIGS

e purchasing some plant
in consulted a nurseryma
the particular spot whe
seemed to grow. "Wh
suggest," she asked, "for
at gets very little rain b
of overhanging eaves, th
much hot afternoon su
s clay soil and that's on
edge?"
y," he said, "how about
gpole?"

711 Pine St.
Jewelry
Fuller
at
Jewelry
and
Watch Repair
EXPERT

H

H

eat generation,
cracks a book,
Favorite sport:
ies, what else?
ed as Punch. If
ou!

CLEANING

TO
\$25

ION

TO
\$25

n, for example,
a football rally
ridge party (telle
shellebration).
it's that easy!
Thinkish words
is itching to go!
cky Strike, Box
Enclose your
and class.

our middle name

The MISSOURI MINER



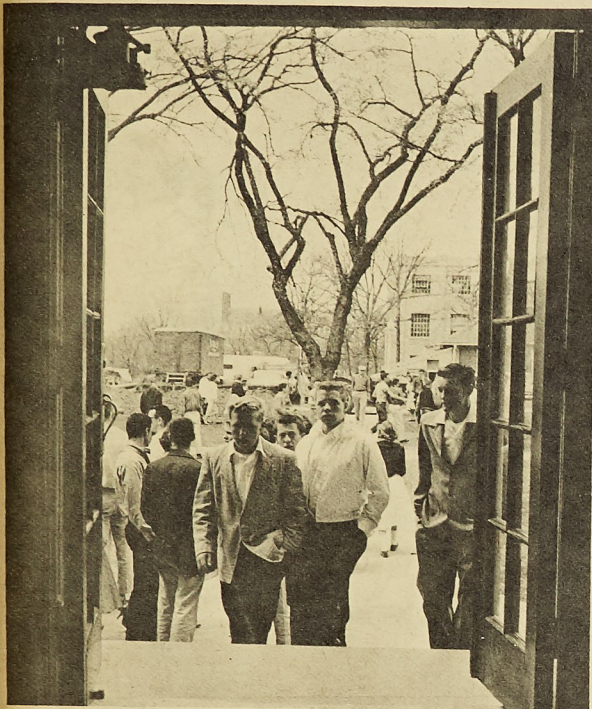
NUMBER 26

VOLUME 45

ROLLA, MO., FRIDAY, APRIL 24, 1959

Engineers' Day Activities

(See Page 3)



View of campus from Parker Hall during Engineers Day activities last Thursday.

MSM Graduate Receives Honorary Doctor's Degree

J. Bruce Clemmer received his Master of Science degree at MSM in 1928, and is now Chief of the Metal Division, Region III, U. S. Bureau of Mines in Salt Lake City, Utah, was awarded an honorary Doctor of Engineering degree at the eighth annual Honors Day convocation, South Dakota School of Mines and Technology, April 13, 1959. He holds numerous patents on concentration of various ores and nonmetallics. And he was presented a distinguished service award by the U. S. Bureau of Mines in 1956 in recognition of his "outstanding scientific and technical service in the Bureau of Mines."

Mr. Clemmer gave the Honors Day address speaking on the subject, "Research as a Career," stressing the need for students to consider the three fields in industrial, private and governmental laboratories, and warning them that the work may be exasperating or exhilarating, often naggingly frustrating, seldom simple or easy, and seemingly endless. Mr. Clemmer told the students to examine the work of research technologists and research scientists, pointing out that the technologists are chiefly concerned with applied research, the scientists are concerned with basic or fundamental research. "The important and rewarding careers in research belong to the exceptional person and a

balanced imagination, and appreciation and understanding for the abstract as well as the concrete, the ability to reason logically and form mature judgments, and an inclination toward extrapolation rather than interpolation," he added. "Far from being a recluse in an ivory tower from which he communicates in Sanskrit," Clemmer told the students, "the researcher is likely to be more 'normal than blueberry pie.'" Research, according to Clemmer, cannot move backward, nor stand still.

Dr. M. J. Kelly Awarded John Fritz Medal of Four Engineering Societies

Dr. Mervin J. Kelly, a distinguished graduate of the Missouri School of Mines and Metallurgy, has been awarded the John Fritz Medal of the four national engineering societies—the American Institute of Electrical Engineers, the American Society of Mechanical Engineers, the American Institute of Mining, Metallurgical and Petroleum Engineers, and the American Society of Civil Engineers. The award was made for notable scientific and industrial achievements. It is open to one in any field of pure or applied science. It is considered the greatest honor offered by the engineer-

Master Sergeant Richard Schafer Receives Grade Promotion

Announcement has been made of the promotion of Master Sergeant Richard L. Schafer of the ROTC Detachment at the Missouri School of Mines and Metallurgy. MSgt. Schafer is one of the first in the State of Missouri to be promoted to the Army's new "super-grade" of Master Sergeant.

(Where the Army formerly had seven enlisted grades, there are now nine. Highly qualified Master Sergeants in the 7th grade are eligible for promotion to the new 8th grade of Master Sergeant or First Sergeant, and later promotion to the 9th grade or Sergeant Major.)

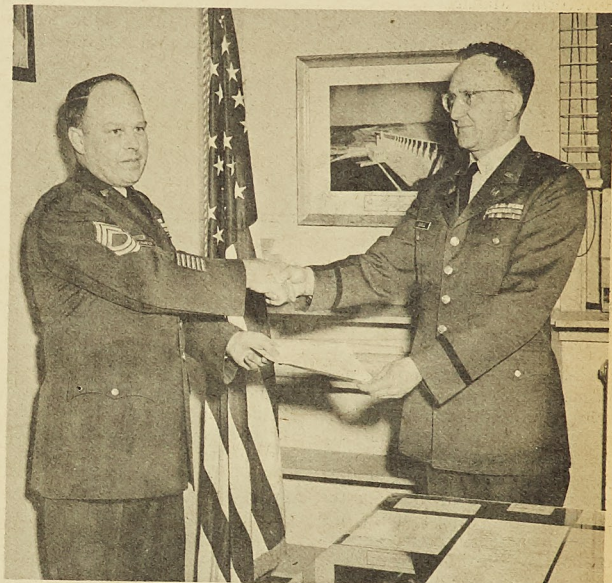
Since there is no position in the MSM Military Department for a non-commissioned officer of the new 8th or 9th grades, MSgt. Schafer is being reassigned to the XI Corps Headquarters in St. Louis. He will move with his family to St. Louis about the 15th of April.

In addition to his assignment to the ROTC Detachment, MSgt. Schafer has been employed in the Business Office of Missouri School of Mines and Metallurgy as assistant to the Military Property custodian.

A native of Cunningham, Kansas, MSgt. Schafer has been in the Army since October 1939. He served two years in the South Pacific during World War II and over a year in Korea during the Korean War. In the course of this service he has been awarded the Bronze Star and the Commendation Ribbon with Medal Pendant. still. Graduates of today and tomorrow will be as capable of attacking and solving their problems as the graduate of yesterday was prepared to contribute to the science of his day.

Graduates of today and tomorrow will be as capable of attacking and solving their problems as the graduate of yesterday was prepared to contribute to the science of his day.

Senator Francis Case, of South Dakota, was awarded an honorary Degree of Humane Letters at this Honors Day convocation.



Colonel Lloyd L. Rall, Professor of Military Science and Tactics, Missouri School of Mines and Metallurgy, congratulates Master Sergeant Richard L. Schafer on his promotion.

Omicron Pi Sigma Is New Honorary Fraternity Here

Those Eligible to Be Contacted

For many years it has been felt that a society should be established to give recognition and encouragement for scholarship in all fields of engineering and business. It was found that many organizations, because of their high scholastic requirements, were not fulfilling the needs of a vast majority of students. Not only scholarship, but character and dimensional integrity are fostered in its membership.

The requirements for membership are basically the same as for many of the other student organizations. The two of interest to most of us are: (1) Students on scholastic probation may not hold office in the organization and may

not pledge, join, or be initiated into the organization; and (2) Students on disciplinary probation may not participate in any student activity during the period of probation.

The organization, however, is highly selective although there is no discrimination as to race, creed or sex. The membership is made up of those who have not only demonstrated scholarship, but have shown an ability to adapt to other points of view, to co-operate, and to further democratic principles.

Those considered for membership will be personally contacted in the near future.

Summer School Blanks

A survey is being made to determine the number of students who want to go to summer school this year and the courses in which they are interested.

If you want to go to summer school, it is important that you fill in the form below. Bring it to the Information Desk in the Registrar's Office as soon as possible.

Dept.	Course No.	Name of Course	Sem. Hours
1.			
2.			
4.			
5.			
NAME			
Department in which majoring			

(Continued on Page 4)

THE MISSOURI MINER

THE MISSOURI MINER is the official publication of the students of the Missouri School of Mines and Metallurgy. It is published at Rolla, Mo., every Friday during the school year. Entered as second class matter February 8, 1945, at the Post Office at Rolla, Mo., under the Act of March 3, 1879.



The subscription is \$1.00 per semester. This Missouri Miner features activities of the Students and Faculty of M.S.M.

Senior Board

Editor-in-Chief	James J. Walther
Business Manager	Mike Swoboda
500 W. 8th St.—EM 4-3787	
Managing Editor	J. Dale Taliaferro
Features Editor	Jerry Misemer
Advertising Manager	Jerrold M. Alyea
Circulation Manager	Mike Burns
Art and Make-up Director	Dennis Camp
Assistant Editor	Henry Duvall
Technical Advisor	Bill May
Secretary	Ronald E. Sander

EDITORIALS

More than 2,800,000 Americans were drafted into the Luckless Legion of automobile casualties in 1958.

In its annual highway safety booklet entitled "The Luckless Legion," The Travelers Insurance Companies pointed out "This is an army of suffering humanity which grows more rapidly each year. It is made up of the injured and the dead, the heedless and the innocent, the young and the old. Since the automobile first appeared on the American scene, these ranks of the crippled and the dead have included more than 60,000,000 of us."

The Luckless Legion is a silent, haunted army. We erect no monuments to it. No grim reminders mar the sleek beauty of the roads and highways which are its field of battle. A newspaper headline, perhaps, marks the induction of the latest recruit. Then silence. Silent suffering. A lifetime of pain. Or the silent memories of those who mourn when the dead are laid to rest.

There were 36,700 men, women and children numbered among the dead of the Luckless Legion during the past year. For every fatality there were 77 people who suf-

fered painful injuries. Hour by hour and day by day, this total climbed until it reached the staggering total of 2,825,000.

Injuries during the past year rose 12 per cent—twice the rate of increase for the previous year. In the rising curve of injuries lies the greatest waste of property and human resources in our nation. Behind the lines of our efforts toward national progress, the Luckless Legion stands as a vast fifth column.

Statistics, pledges and slogans do not seem to change us. Something more is needed. During 1959, the Luckless Legion will be meeting in our community . . . on a stretch of highway, in a hospital room, in the morgue.

You alone will know when the meeting time is near. In the temptation to bear down a little harder on the gas, to beat the darkness home, to test your reflexes when they are dulled by sleep or alcohol, to jay-walk on crowded streets, to forget caution when weather and road conditions are bad. During 1959, every time you are behind the wheel of a car, remember that the Luckless Legion is looking for recruits. Don't be one.

Dizzy's Corner

A long time ago, there was a Greek by the name of Shafro, who taught a progressive kindergarten in Athens. Year after year his salary remained the same; sixteen pieces of silver, lodging in the local house of ill-repute and a year long subscription to *Playboy*. Unhappy, broke, bored with his progressive students, and tired of kicking little dogs, he devised civilization's most noteworthy accomplishment . . . the final examination.

The world's first reaction to this new, exciting revelation was rather encouraging, one thousand glorious years called the dark ages. Hope springs eternal and the people of the civilized world soon answered the challenge with an even more clever innovation: the multiple guess question.

No longer was it necessary to think about things as they really are, or for that matter, even logically. One simply answered his problems by saying a, b, c, or

none of these. A new era had been formed. Now we have rock and roll, whiffle ball, hydrogen bombs, 1.462x10⁻⁶ coulombs, and none of these in abundance. The world owes a great deal to the great pioneer in confusion, Shafro.

Each night before sleeping one should count his blessings; finals is one of these. How fortunate the engineering student! Only we can brag that we are able to switch out an entire vein of thought from the flow rate of a "v" notch weir to that of the cultural value of Geology in the last one hundred years, in a matter of seconds, or to how Teddy Roosevelt whopped the Spanish at San Juan. Such is the basis for cultural attainment in our society.

It seems each department has its own process of examining. Some consider the exam just another hour test, some the method of separating the men from the boys, some just don't care, they are in a definite minority.

To the Editor:

I would like to know why none of the Independents' Student Council representatives are from the Dorms. It seems like the only Independents represented are the 440 members of eating clubs.

This means that less than one-third of all Independents are actually represented on the council. This should not be.

Dorm-dwelling Independent.

ATTEND THE NEXT MEETING OF THE COUNCIL. YOU HAVE A RIGHT FOR RECOGNITION. —The Editor.

Take for instance the good ol' geologist (you can keep him). When preparing for the final DO NOT, I repeat, DO NOT make an attempt to understand any broad concept; however, search the book diligently for the minutest point (do you know the full ramifications and importance of the Yazoo effect?). Here is what that chap was really aiming at all semester long. That Yazoo effect may some day win the 64,000 clam prize.

On the other hand are the mutated humanitarians (as they refer to themselves). Question No. 356½. Mark Twain was (a) a writer (b) the author of Huckleberry Finn (c) a song by Beethoven (d) pen-name of Sam Clemens (e) none of these. The correct answer is NONE OF THESE, as Mark Twain was Sam Looyydd in his youth (way back there in '93).

"Cram, Sweat and No-Doz," the famous statement made by a certain Prof Grin of the E. E. department has been the cry of his students ever since the black day it was uttered. Isn't it perfectly normal for the layman to be aware that the bright student can quickly see that the voltage must be impressed on the exciting coil and calculated by considering the vector diagram in Figure 13-12. Why is it that the same quizzes are given to the seniors as to the freshmen? It seems that way at least, I haven't passed one yet.

After four, or more likely, five years of intensified cramming and beer guzzling we will be prepared to face the hard, cruel world.

"So, you is a engineer, huh, bub? How's about engineering dis mop down in dat latreen, ON DE DUBBLE, an' make it snappy cuz youse go P. T. in 5 minnits." (This is the executive type sergeant.)

Or—
"Yes, Mr. Ziltch, I know the reputation of M. S. M.; however, one must start from the bottom, heh, heh! (He picks his nose to emphasize this great TRUISM.) In a few years as our blue-print machine operator you'll be ready to step into a POSITION OF RESPONSIBILITY. By the way, can you print?"

Surely if one looks hard enough into the philosophy of finals he can find the answer to the simple question, "Why are all my finals on Wednesday, June third?" Ah-hah! The answer is of course (d) NONE OF THESE.

As to those problem courses, after years of experience there is only one way to prepare for them. Practice rolling your eyeballs exactly 90 degrees out of phase so that you appear to be looking at your own paper and not at the smart one next to you. Telescopic lenses have not been found too successful as they fog quite easily.

Undoubtedly finals do serve a great purpose, but try as I may I can't seem to find just one reason.

Student Council Contest to Change Name of Rollamo

For some time the Student Council has felt the need for a new name for our year book. So many of our students feel that our school should be advertised as the engineering school of the state of Missouri, rather than to be identified as the Rolla School of Mines. It is for this reason that the student council is sponsoring a contest to find a more general name for our yearbook.

An award of \$25.00 will be given to the student who submits the most desirable name for the year book. Students may enter the contest by dropping their selections into the box which will be available in the lobby of Parker Hall. The name of the person who is submitting the entry should be included with the selections. No more than one selection may be included on any one entry.

The contest will start Monday,

April 27, 1959, and will close at 4:30 p. m. Friday, May 8, 1959. All entries will be stamped with the date of the day when they are received, and in case of duplicate entries the entry bearing the earliest date will have preference.

The winner will be selected by the Student Council and the Rollamo Board and the decision of the two organizations will be final.



When you're ready for a beer... cold, flavorful, clear... THIS IS THE ONE!



AMERICA'S PREMIUM QUALITY BEER

FALSTAFF BREWING CORPORATION, ST. LOUIS, MO.

MUELLER Distributing Co. Rolla, Mo.

The Finest in..... DRY CLEANING

Pressing While You Wait. One Day Service if Requested. Pick Up and Delivery Service.

MODERN Dry Cleaners 9th and Pine



Science Fair and Engineering Day Draw 3 Thousand

Continued from Page 1

The annual Engineers Day held at the Missouri School of Mines on April 16, 1959, proved to be an overwhelming success. High school students and their parents could be found all day looking over the campus and the various departments. There were about 1000 visitors from all over the state and a few from out of state visiting the school to find out information on the different engineering departments.

Guides were furnished by the fraternities and there were tours of the campus and the various departments every few minutes. The average number in a group was about 20 and the tour took about one and a half hours.

The construction of the new buildings on campus seemed to be

one of the main points of interest to the visitors, as well as the many excavations that can be found everywhere one walks these days. Many visitors were surprised to find such a vast construction program under way and were pleased to hear that they would be ready for use in the near future.

One of the main points of interest was the Science Fair that was set up in the gym on the third floor. There was a wide range of interests to be found and was always a good crowd on hand. A great many Miners could be found at the exhibits as well as many area high school students. A program for the presentation of the science exhibits took place at Parker Hall at 2:30 and was attended by a large crowd.

EXAM SCHEDULE

Spring, 1959

May 28, 1959—Free Day

May 29, 1959, 8:00 a. m. through June 3, 1959—Final Exam Period

Theses (1st copy) will be due in the Library May 13, 1959.

Theses (final copy) will be due in the Library May 27, 1959.

Grades for graduating seniors and Master's degree candidates will be due at 12:00 noon on May 21, 1959.

Reports on oral examinations will be due at 5:00 p. m., May 27, 1959.

All other grades will be due at 8:00 a. m. on June 4, 1959.

Grades for Ph. D. candidates are due in Columbia by 8:00 a. m. June 1, 1959.

Course No.	Time of Examinations	Rooms
------------	----------------------	-------

CERAMICS

54	Monday, June 1, 1:00 p. m.	106 Ful
202	Tuesday, June 2, 8:00 a. m.	106 Ful
251	Friday, May 29, 3:10 p. m.	106 Ful
264	Saturday, May 30, 10:10 a. m.	106 Ful
308	Tuesday, June 2, 1:00 p. m.	106 Ful
315	Tuesday, June 2, 8:00 a. m.	103 Ful
345	Wednesday, June 3, 8:00 a. m.	106 Ful
361	Friday, May 29, 1:00 p. m.	106 Ful
403	Monday, June 1, 3:10 p. m.	106 Ful

CHEMISTRY

1	Friday, May 29, 1:00 p. m.	G 6 Ch.E.
3A	Friday, May 29, 10:10 a. m.	G 6 Ch.E.
3B	Friday, May 29, 3:10 p. m.	G 6 Ch.E.
3C	Tuesday, June 2, 1:00 p. m.	G 6 Ch.E.
3D	Monday, June 1, 8:00 a. m.	107-213 Min.
7A	Friday, May 29, 10:10 a. m.	G 3 Ch.E.
7B	Wednesday, June 3, 8:00 a. m.	G 3 Ch.E.
9	Tuesday, June 2, 8:00 a. m.	102 Ch.E.
221	Friday, May 29, 3:10 p. m.	102 Ch.E.
223	Saturday, May 30, 10:10 a. m.	G 3 Ch.E.
241	Friday, May 29, 10:10 a. m.	204 Ch.E.
243A	Monday, June 1, 1:00 p. m.	G 3 Ch.E.
243B	Tuesday, June 2, 8:00 a. m.	G 3 Ch.E.
345	Friday, May 29, 10:10 a. m.	202 Ch.E.
437	Saturday, May 30, 10:10 a. m.	110 Ch.E.

CHEMICAL ENGINEERING

11	Monday, June 1, 3:10 a. m.	310 Ch.E.
51	Friday, May 29, 1:00 p. m.	204, G 3 Ch.E.
55	Monday, June 1, 1:00 p. m.	204 Ch.E.
169	Saturday, May 30, 10:10 p. m.	204 Ch.E.
261	Friday, May 29, 1:00 p. m.	102 Ch.E.
263A	Monday, June 1, 1:00 p. m.	110 Ch.E.
263B	Friday, May 29, 3:10 p. m.	202 Ch.E.
265	Friday, May 29, 3:10 p. m.	110 Ch.E.
267	Friday, May 29, 10:10 a. m.	102 Ch.E.
383	Tuesday, June 2, 8:00 a. m.	110 Ch.E.
387	Wednesday, June 3, 8:00 a. m.	102 Ch.E.
389	Saturday, May 30, 1:00 p. m.	110 Ch.E.
453	Friday, May 29, 10:10 a. m.	211 Ch.E.
455	Tuesday, June 2, 1:00 p. m.	202 Ch.E.
483	Saturday, May 30, 10:10 a. m.	102 Ch.E.

LIQUOR, WINES, COLD BEER, MAGAZINES, TOBACCO

GALE'S PACKAGE STORE

703 Pine

Parking Lot in Rear of Store for Customers

Course No.	Time of Examinations	Rooms
------------	----------------------	-------

CIVIL ENGINEERING

1A	Tuesday, June 2, 3:10 p. m.	302 Harris
1B	Wednesday, June 3, 3:10 p. m.	302 Harris
1C	Tuesday, June 2, 10:10 a. m.	201 T-1
1D	Saturday, May 30, 8:00 a. m.	302 Harris
6B	Tuesday, June 2, 3:10 p. m.	201 T-1
6C	Tuesday, June 2, 10:10 a. m.	102 Harris
6D	Monday, June 1, 10:10 a. m.	107 Harris
49	Saturday, May 30, 1:00 p. m.	See Instructor
102B	Tuesday, June 2, 8:00 a. m.	102 Harris
102C	Wednesday, June 3, 3:10 p. m.	103 T-1
111A	Tuesday, June 2, 8:00 a. m.	302 Harris
111B	Wednesday, June 3, 8:00 a. m.	302 Harris
114A	Tuesday, June 2, 3:10 p. m.	102 Harris
114B	Wednesday, June 3, 3:10 p. m.	213 Min.
114C	Tuesday, June 2, 10:10 a. m.	107 Harris
121A	Saturday, May 30, 10:10 a. m.	102 Harris
121B	Wednesday, June 3, 8:00 a. m.	201 T-1
131A	Friday, May 29, 1:00 p. m.	302 Harris
131B	Saturday, May 30, 10:10 a. m.	302 Harris
131C	Friday, May 29, 3:10 p. m.	302 Harris
211A	Tuesday, June 2, 3:10 p. m.	213 Min.
211B	Wednesday, June 3, 3:10 p. m.	107 Min.
221	Wednesday, June 3, 8:00 a. m.	301 Harris
225A	Friday, May 29, 1:00 p. m.	107 Harris
225B	Tuesday, June 2, 1:00 p. m.	102 Harris
231A	Monday, June 1, 3:10 p. m.	201 T-1
231B	Friday, May 29, 3:10 p. m.	102 Harris
243A	Monday, June 1, 3:10 p. m.	302 Harris
243B	Tuesday, June 2, 8:00 a. m.	107 Harris
315	Monday, June 1, 10:10 a. m.	102 Harris

Speed was blamed for more than 40 per cent of the traffic deaths and injuries in the U. S. during 1958.

Drivers under 25 years of age were involved in 27 per cent of the fatal accidents in 1958.

In 1958, more than 49 per cent of the traffic injuries resulted from weekend accidents.

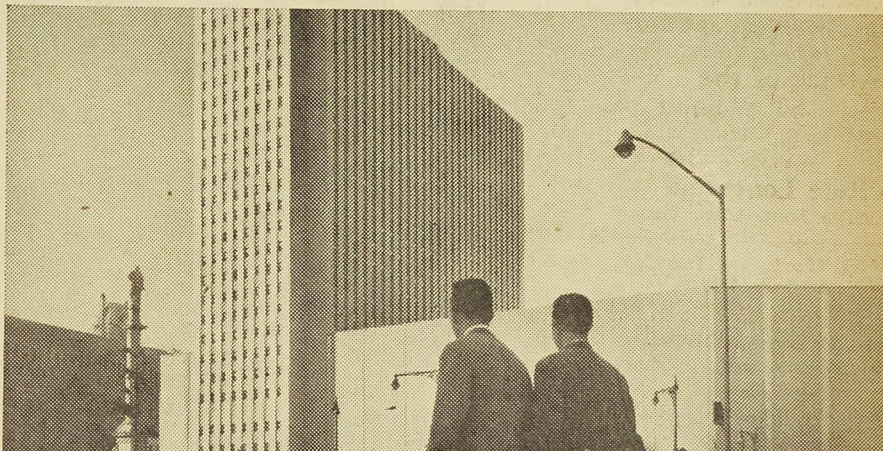
When trying to sell them something they can't afford, the television salesman tells the ladies that they owe it to themselves, a sales pitch I have often used myself in moments of hesitation.

In a Photo Lab: "All orders for delivery yesterday must be placed before noon tomorrow."

Some married men are as docile as elephants, so I am told by the girls who are married to them.

If an organization with a hundred or more members survives its second year, you can be fairly sure that somebody's being paid to keep it alive.

New "post-grad" program helps engineers move ahead at Western Electric



MANHATTAN'S COLISEUM TOWER building houses Western Electric's New York training center. Here, as in Chicago and Winston-Salem, N. C., Western Electric engineers participate in a training program that closely resembles a university graduate school.

Careers get off to a fast start — and keep on growing — at Western Electric.

One big help is our new Graduate Engineering Training Program. This unique full-time, off-the-job study program starts soon after you join Western Electric... continues throughout your career. Students are offered courses in various fields including semiconductors, computers, feedback control systems, and problem solving techniques. What's more, they study methods for improving skills in communicating technical information and the art of getting ideas across.

You'll find the work at Western Electric stimulating, too. As manufacturing and supply unit of the Bell System, we pioneered in the production of the transistor, repeatered submarine cable, and the provision of microwave telephone and television facilities spanning the country. Engineering skills can't help developing—careers can't help prospering—in the lively, exciting technical climate at Western Electric.

Western Electric technical fields include mechanical, electrical, chemical, civil and industrial engineering, plus the physical sciences. For more information pick up a copy of "Consider a Career at Western Electric" from your Placement Officer. Or write College Relations, Room 200E, Western Electric Company, 195 Broadway, New York 7, N. Y. And sign up for a W. E. interview when the Bell System Interviewing Team visits your campus.

Western Electric

MANUFACTURING AND SUPPLY UNIT OF THE BELL SYSTEM

Western Electric Graduate Engineering Training Centers located at Chicago, Winston-Salem, N. C., and New York. Principal manufacturing locations at Chicago, Ill.; Kearny, N. J.; Baltimore, Md.; Indianapolis, Ind.; Allentown and Laureldale, Pa.; Burlington, Greensboro and Winston-Salem, N. C.; Buffalo, N. Y.; North Andover, Mass.; Lincoln and Omaha, Neb.; Kansas City, Mo.; Columbus, Ohio; Oklahoma City, Okla.; Teletype Corporation, Chicago, Ill. and Little Rock, Ark. Also Western Electric Distribution Centers in 32 cities and installation headquarters in 16 cities. General headquarters: 195 Broadway, New York 7, New York.



CLASSROOM SESSION at one of the centers takes up the first part of the three-phase program, Introduction to Western Electric Engineering. During this initial nine-week training period, new engineers are provided with a better understanding of Western Electric engineering methods and technical practices.



TECHNICAL TALK often continues after class. The free and easy informality of the new Western Electric training program offers plenty of opportunity for the stimulating exchange of ideas.

JOHN FRITZ MEDAL

(Continued from Page 1)

Dr. Kelly graduated from Missouri School of Mines and Metallurgy in 1914. His wife is the former Katharine Milsted whom he met while in school here and who has numerous relatives still living in the vicinity of Rolla.

Dr. Kelly, according to the biography appearing in the Electrical Engineering Magazine for April, 1959, is considered as one of the outstanding living scientists of today.

UPTOWN THEATRE
MOVIES IN CINEMASCOPE

Friday and Saturday, April 24-25

'Up Periscope'

James Garner, Edmond O'Brien

Sunday, Monday, Tuesday, Wednesday, Thursday, April 26-30
Admission 75c and 25c

Winner of Nine Academy Awards
Sunday Continuous from 1 p. m.

'Gigi'

Leslie Caron, Louis Jourdan and Maurice Chevalier

RITZ THEATRE**MOVIES ON WIDE SCREEN**

Friday and Saturday, April 24-25

Saturday continuous from 1 p. m.

'Attack of the 50' Woman'

Allison Hayes, William Hudson — PLUS —

'Ride Lonesome'

Randolph Scott, Karen Steele

Sunday, Monday and Tuesday,
April 26-27-28

Sunday Continuous from 1 p. m.

'Tarawa Beachhead'

Kerwin Mathews and Julie Adams
— PLUS —

'The Restless Years'

John Saxon and Sandra Dee

Wednesday-Thursday, April 29-30
Admission 15c and 35c

'Frankenstein 1970'

Boris Karloff and Tom Duggan
— PLUS —

'The Mugger'

Kent Smith and Nan Martin

ROLLA DRIVE IN
SHOW STARTS AT DUSK

The Rolla Drive-In Re-opens
for the Season with a Mid-
night Show FREE to Every-
one, Saturday Night, April 25

'Curucu, Beast Of the Amazon'

Open at 11:30 p. m.—Bring the
Family

Sunday and Monday, April 26-27
'Written on the Wind'
Rock Hudson and Lauren Beca

Tues., Apr. 28—Dollar a Carload
'Kelly and Me'

Piper Laurie and Van Johnson

Wednesday-Thursday, April 29-30
'Pillars of the Sky'
Jeff Chandler, Dorothy Malone

Course No.	Time of Examinations	Rooms
ELECTRICAL ENGINEERING		
51	Monday, June 1, 1:00 p. m.	201 T-1
53A	Friday, May 29, 1:00 p. m.	102 T-3
53B	Friday, May 29, 10:10 a. m.	201 T-1
53C	Tuesday, June 2, 1:00 p. m.	107 Nor
53D	Wednesday, June 3, 1:00 p. m.	107 Nor
101A	Friday, May 29, 1:00 p. m.	102 Old Cafe
101B	Wednesday, June 3, 10:10 a. m.	107 Nor
103A	Friday, May 29, 10:10 a. m.	206 Nor
103B	Tuesday, June 2, 1:00 p. m.	102 Nor
103C	Wednesday, June 3, 1:00 p. m.	104 T-4
105A	Friday, May 29, 3:10 p. m.	102 Nor
105B	Wednesday, June 3, 10:10 a. m.	102 Nor
121A	Monday, June 1, 1:00 p. m.	102 T-3
121B	Monday, June 1, 3:10 p. m.	104 T-3
121C	Tuesday, June 2, 8:00 a. m.	206 Nor
121D	Wednesday, June 3, 8:00 a. m.	102 Nor
123A	Monday, June 1, 1:00 p. m.	206 Nor
123B	Monday, June 1, 3:10 p. m.	102 Nor
123C	Wednesday, June 3, 8:00 a. m.	104 T-3
123D	Saturday, May 30, 1:00 p. m.	206 Nor
131A	Saturday, May 30, 10:10 a. m.	206 Nor
131B	Tuesday, June 2, 1:00 p. m.	305 Nor
133A	Friday, May 29, 1:00 p. m.	201 T-1
133B	Monday, June 1, 1:00 p. m.	107 Nor
133C	Wednesday, June 3, 10:10 a. m.	102 T-3
135	Friday, May 29, 1:00 p. m.	102 Nor
141A	Friday, May 29, 10:10 a. m.	102 T-3
141B	Monday, June 1, 1:00 p. m.	102 Nor
241	Friday, May 29, 3:10 p. m.	206 Nor
251A	Friday, May 29, 10:10 a. m.	104 T-3
251B	Friday, May 29, 3:10 p. m.	107 Nor
251C	Monday, June 1, 1:00 p. m.	104 T-3

Course No.	Time of Examinations	Rooms
261A	Friday, May 29, 1:00 p. m.	104 T-3
261B	Friday, May 29, 10:10 a. m.	102 Old Cafe
263A	Friday, May 29, 10:10 a. m.	102 Nor
263B	Tuesday, June 2, 1:00 p. m.	102 T-3
275A	Tuesday, June 2, 1:00 p. m.	104 T-3
275B	Saturday, May 30, 10:10 a. m.	102 T-3
275C	Friday, May 29, 3:10 p. m.	102 T-3
277A	Saturday, May 30, 10:10 a. m.	102 Nor
277B	Tuesday, June 2, 1:00 p. m.	206 Nor
277C	Friday, May 29, 10:10 a. m.	107 Nor

MECHANICS

51	Friday, May 29, 8:00 a. m.	See Instructor
102	Friday, May 29, 8:00 a. m.	See Instructor
103	Monday, June 1, 8:00 a. m.	See Instructor
105A	Monday, June 1, 1:00 p. m.	202 Old Met
105B	Saturday, May 30, 10:10 a. m.	202 Old Met
203	Friday, May 29, 3:10 p. m.	105 Old Met
302	Friday, May 29, 3:10 p. m.	206 Old Met
303	Wednesday, June 3, 8:00 a. m.	206 Old Met
403	Wednesday, June 3, 8:00 a. m.	201 Old Met
406	Friday, May 29, 3:10 p. m.	207 Old Met

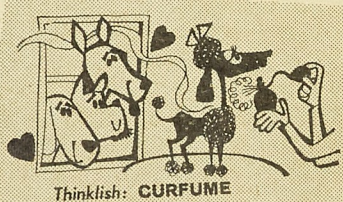
METALLURGY

101	Friday, May 29, 10:10 a. m.	G 10, 103 Ful
113A	Monday, June 1, 1:00 p. m.	G 6 Ch.E.
113B	Wednesday, June 3, 8:00 a. m.	G 6 Ch.E.
205	Friday, May 29, 3:10 p. m.	G 10, 103 Ful
207	Monday, June 1, 3:10 p. m.	G 10, 103 Ful
255	Friday, May 29, 1:00 p. m.	G 10, 103 Ful
302	Monday, June 1, 1:00 p. m.	G 10, Ful
343	Monday, June 1, 3:10 p. m.	212 Ful

(Continued on Page 5)

THINKLISH

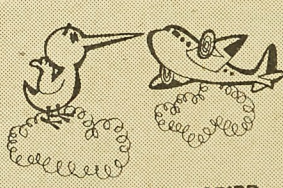
English: CANINE COLOGNE



Thinklish: CURFUME

NANCY ANN LYON, INDIANA STATE TEACHERS

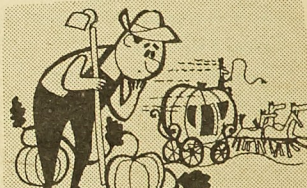
English: FLYING HITCHHIKER



Thinklish: THUMBINGBIRD

TOMMY DERCOLA, MARYLAND U.

English: FAT VEGETABLE



Thinklish: PLUMPKIN

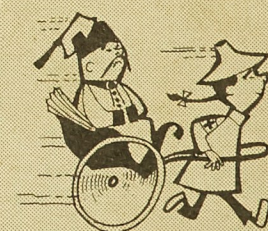
DAVID HAMMETT, U. OF NEW MEXICO

English: HIP SINGING GROUP



Thinklish translation: These guys are so far out, they wear space helmets. They never ask, "How High the Moon?" They know. When there were seven of them, they were a heptet. But since they've added a man, simple arithmetic makes them a rocket! Naturally, when they take ten, they take Luckies. Like anyone else (square, round or what-have-you), they know all about the honest taste of fine tobacco. Consensus: flipsville!

English: ORIENTAL AMBULANCE



Thinklish: SICKSHAW

RICHARD HARRISON, THE CITADEL

HOW TO MAKE \$25

Take a word—*garbage*, for example. With it, you can make the contents of an auto junk yard (*carb*age), Hollywood refuse (*st*arbage), incinerator dust (*char*bage) or glass-factory rejects (*jar*bage). That's Thinklish—and it's that easy! We're paying \$25 for the Thinklish words judged best—your check is itching to go! Send your words to Lucky Strike, Box 67A, Mt. Vernon, N.Y. Enclose your name, address, university and class.

Get the genuine article

Get the honest taste
of a **LUCKY STRIKE**

Product of The American Tobacco Company—"Tobacco is our middle name"



© A. T. CO

FRIDAY, APRIL 24, 1959
OPEN 10 A. M.
Television
"Where All the Miners Meet"
T. G. I. F. F.
Schultz
AIR CONDITIONED
EM 4-2030
ALLEYS RESERVED FOR OPEN PLAY
on Monday Nites
4
12 FULLY AUTOMATIC BOWLING ALLEYS
A. B. C. BOWLING

Rooms
104 T-3
102 Old Cafe
102 Nor
102 T-3
104 T-3
102 T-3
102 T-3
102 Nor
206 Nor
107 Nor
See Instructor
See Instructor
See Instructor
202 Old Met
202 Old Met
105 Old Met
206 Old Met
206 Old Met
201 Old Met
207 Old Met
G 10, 103 Ful
G 6 Ch.E.
G 6 Ch.E.
G 10, 103 Ful
G 10, 103 Ful
G 10, 103 Ful
G 10, 103 Ful
212 Ful

TOP HAT LOUNGE
Hanns Blatz
Budweiser Stag
Television
T. G. Falstaff
I. F. Miller's High Life
Schultz
"Where All the Miners Meet"
AIR CONDITIONED
EM 4-2030

ALLEYS RESERVED FOR OPEN PLAY
on Monday Nites
EVERY DAY
Also After 9 p. m. Week Days
OPEN BOWLING FROM 9:30 A. M. ON

A. B. C. BOWLING
12 FULLY AUTOMATIC BOWLING ALLEYS
OPEN 9:30 A. M. EVERY DAY
Convenient Snack Bar, Ho-Made Chili—Sandwiches
Midnite Snacks
Phone Orders Accepted
PHONE EM 4-2121

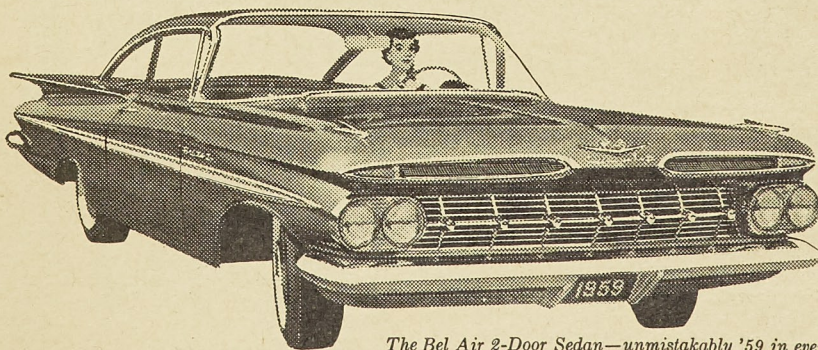
METALLURGY (Continued from Page 4)		
Course No.	Time of Examinations	Rooms
357	Friday, May 29, 10:10 a. m.	211 Ful
361	Tuesday, June 2, 8:00 a. m.	G 10 Ful
363	Friday, May 29, 3:10 p. m.	201 T-1
403	See Instructor	See Instructor
409	See Instructor	See Instructor
MILITARY		
20	Saturday, May 30, 3:10 p. m.	See Instructor
40	Saturday, May 30, 3:10 p. m.	See Instructor
106	Saturday, May 30, 3:10 p. m.	See Instructor
MINING		
100	Friday, May 29, 1:00 p. m.	117 Min
102	Monday, June 1, 1:00 p. m.	117 Min
141	Friday, May 29, 10:10 a. m.	107 Min
214	Wednesday, June 3, 8:00 a. m.	106 Min
219	Tuesday, June 2, 1:00 p. m.	111 Min
231	Friday, May 29, 10:10 a. m.	122 Min
246	Tuesday, June 2, 1:00 p. m.	107 Min
247	Tuesday, June 2, 8:00 a. m.	106 Min
257	Wednesday, June 3, 8:00 a. m.	107 Min
270	Friday, May 29, 3:10 p. m.	111 Min
285	Monday, June 1, 1:00 p. m.	107 Min
307	Tuesday, June 2, 1:00 p. m.	213 Min
322	Tuesday, June 2, 8:00 a. m.	111 Min
327	Saturday, May 30, 10:10 a. m.	111 Min
330	Monday, June 1, 3:10 p. m.	125 Min
432	See Instructor	See Instructor
PHYSICS		
21	Saturday, May 30, 8:00 a. m.	See Instructor
25	Saturday, May 30, 8:00 a. m.	See Instructor
141	Friday, May 29, 1:00 p. m.	122 Min
251	Saturday, May 30, 8:00 a. m.	See Instructor
311	Saturday, May 30, 10:10 a. m.	107 Nor
321	Tuesday, June 2, 8:00 a. m.	107 Nor
339	Tuesday, June 2, 1:00 p. m.	207 Nor
341	Friday, May 29, 1:00 p. m.	207 Nor
357	Friday, May 29, 10:10 a. m.	305 Nor
361	Friday, May 29, 3:10 p. m.	302 Nor
371	Saturday, May 30, 10:10 a. m.	217 Ful
401	Tuesday, June 2, 8:00 a. m.	207 Nor
423	Monday, June 1, 3:10 p. m.	302 Nor
471	See Instructor	See Instructor

Course No.	Time of Examinations	Rooms
GEOLOGY		
51	Friday, May 29, 1:00 p. m.	305 Nor
52	Friday, May 29, 1:00 p. m.	206 Nor
111	Saturday, May 30, 10:10 a. m.	305 Nor
114	Monday, June 1, 3:10 p. m.	209 Nor
130	Tuesday, June 2, 3:10 p. m.	305 Nor
141	Tuesday, June 2, 8:00 a. m.	302 Nor
170	Saturday, May 30, 1:00 p. m.	305 Nor
220	Friday, May 29, 3:10 p. m.	305 Nor
224	Saturday, May 30, 10:10 a. m.	302 Nor
228	Wednesday, June 3, 8:00 a. m.	302 Nor
234	Monday, June 1, 1:00 p. m.	302 Nor
285	Monday, June 1, 1:00 p. m.	107 Min
292	Friday, May 29, 10:10 a. m.	207 Nor
394	Wednesday, June 3, 8:00 a. m.	207 Nor
401	Saturday, May 30, 10:10 a. m.	207 Nor
424	Tuesday, June 2, 1:00 p. m.	302 Nor
430	See Instructor	See Instructor
431	Friday, May 29, 10:10 a. m.	302 Nor
435	Wednesday, June 3, 8:00 a. m.	107 Nor
ENGLISH		
1A	Tuesday, June 2, 1:00 p. m.	See Instructor
1B	Tuesday, June 2, 3:10 p. m.	See Instructor
2	Monday, June 1, 10:10 a. m.	See Instructor
51A	Friday, May 29, 10:10 a. m.	See Instructor
51B	Friday, May 29, 3:10 p. m.	See Instructor
75A	Saturday, May 30, 10:10 a. m.	See Instructor
75B	Tuesday, June 2, 1:00 p. m.	See Instructor
102A	Friday, May 29, 1:00 p. m.	See Instructor
102B	Monday, June 1, 1:00 p. m.	See Instructor
105A	Monday, June 1, 3:10 p. m.	See Instructor
105B	Wednesday, June 3, 8:00 a. m.	See Instructor
105C	Tuesday, June 2, 3:10 p. m.	See Instructor
125	Saturday, May 30, 10:10 a. m.	See Instructor
150	Wednesday, June 3, 10:10 a. m.	See Instructor
170A	Tuesday, June 2, 1:00 p. m.	See Instructor
170B	Tuesday, June 2, 8:00 a. m.	See Instructor
170C	Wednesday, June 3, 1:00 p. m.	See Instructor
FRENCH		
2	Monday, June 1, 3:10 p. m.	See Instructor
4	Tuesday, June 2, 8:00 a. m.	See Instructor

(Continued on Page 6)

COME ON IN!
It's Your Chevrolet Dealer's 2nd Annual

SPRING SALES SPECTACULAR!

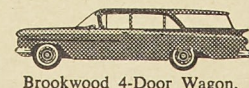


The Bel Air 2-Door Sedan—unmistakably '59 in every modern line.

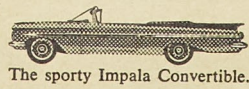
SPECTACULAR DEALS NOW!
SPECTACULAR SELECTION NOW!
FAST APPRAISAL AND DELIVERY NOW!
TRADE AND SAVE NOW!

The happiest part of the Sales Spectacular is the kind of car your money buys. Every Chevy—sedan, sport model, wagon—shares a lean and lively Slimline look, with plenty of room and a ride that's right for the roads you drive. Come in and take a close look at all of Chevrolet's features, right away.

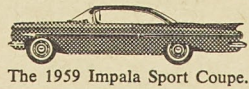
come in and pick your favorite Chevy!



Brookwood 4-Door Wagon.



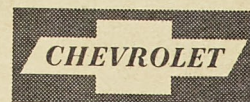
The sporty Impala Convertible.



The 1959 Impala Sport Coupe.



Save on this El Camino, too.



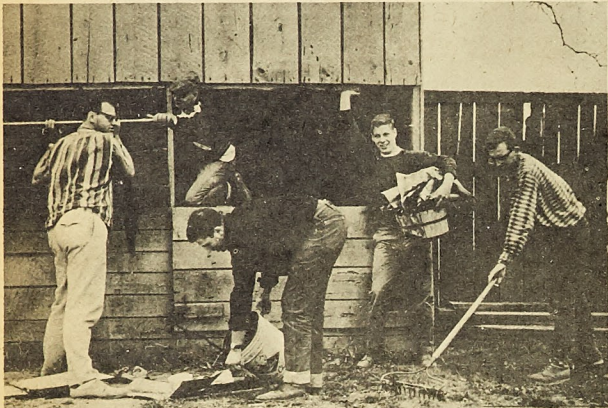
The car that's wanted for all its worth.

For a "Spring Sales Spectacular" deal see your local authorized Chevrolet dealer!

Campus News

Sig Eps Clean Up Local Park During Help Week

Sigma Phi Epsilon fraternity, 500 West Eighth Street, organized a cleanup at Buehler Park last Saturday afternoon. Thirty members and all of the pledges were present and the work was accomplished in quick order. The cleanup consisted of repairing the bleachers and dressing rooms, as well as clearing the drainage ditches to control the water flow. The appearance of the diamond was also greatly improved by the removal of all trash and rubble. The members of the fraternity sincerely hope that the townspeople approve of our gesture and that the reconditioning of the field will promote athletics in this area.



The original idea for this cleanup was suggested at one of Sig Ep's formal banquets a few months ago. We had as our guest speaker, Mr. Wilbert Burton, more commonly known around campus and town as "Bear." Mr. Burton, as most of us know, has been one of the most eager promoters of Little League Baseball in southern Missouri. The idea of cleaning up the park stemmed from this enthusiasm concerning the youth of the Rolla district. His ardent campaigning has also been seen in numerous other worthwhile community projects.

Work week at the Sig Ep house is a traditional mark of pledge-ship. It is a week of constructive effort rather than a week of haz-

ing, which has been the policy on several college campuses before World War II. It was established when the veterans realized the advantage of a beneficial goal for the pledge activities. The present work week consists of repairs, maintenance of the building and grounds and community projects. All the members work on such projects, not just the pledges.

Several fraternities on the M. S. M. campus are hard at work helping to improve the community. An outstanding example of this is the annual Tri-Sig Christmas Party for underprivileged children, sponsored by Sigma Phi Epsilon, Sigma Tau Gamma and Sigma Pi.

We hope to see many more civic improvements in the future.

The most outstanding job to be done at the present is the completion of the improvements on the ball diamond at Buehler Park. There is still much work to be done such as fence repairs, painting, sodding the infield and sowing grass.

Jim Linn, as publicity chairman of the house, got the ball rolling on the Buehler Park project. It is through the efforts of Jim and fraternity men like him that the relationship between the community and fraternities in general are cemented.

Congratulations to Sigma Phi Epsilon!

Sig Taus Enjoy St. Pat's Benefit Movie

Howdy dawg! Sure is nice to see you all again. Yes sir, ole Duke survived Rolla's anti-dog campaign and is back to plague us all with the excitement he brings. We hope all his lady friends are as happy to see him as we are.

All is quiet at the passion pit; suddenly a small, smothered sound breaks the stillness. Lady love looks at Leo and says, "Excuse me, my love..." Don't worry about it Leo, we are all human. It just seems that you don't pick them too wisely.

Well, the boys from Jelly Bean school have returned to tell their tantalizing tales to the unfortunate who had to stay in Rolla. It seems they experienced an event known as Sheekoun at Illini U. Their tales tell of adventure, romance, and, oh yes, someone was having a convention. If you want to hear a lecture on the beauty of co-eds get an appointment with "Huge." He may even explain his latest quotation. "A roach is

a roach is a roach."

Who said they didn't enjoy the St. Pat's movie? If it hadn't been for fast-flying Fried telling Julie which lever to pull, which knob to twist, and for heaven's sake don't let it get below 120 knots, there may have been no survivors at all.

KEEP CAMPUS SHARP

With

BISHOPS

HART, SHAFFNER & MARX SUITS
CURLEE SPORT COATS
BOSTONIAN and JARMAN SHOES
MCGREGOR SPORTS WEAR
HAGGAR SLACKS
VAN HEUSEN DRESS and
SPORT SHIRTS

BISHOPS

J. C. ALEXANDER, Mgr.

124 W. 8th St.



Rolla, Mo.

Plans for Hi Fi or TV Set in New Union

The major part of business at the last Student Council meeting on April 14 was discussion of the possibility of purchasing a TV set and Hi Fi facilities for the new student building.

There are no plans at present for a television set or a hi fi system in the new union which should be in full use this fall.

More Elections Held At Theta Kap House

The final house elections were held this week for the 1959-60 school year. The elections were as follows: Assistant Steward, Frank Fitzgibbons; Assistant Treasurer, Andy Alward; St. Pat's Board, Ken Abkemeir; Student Council Representative, Ed Croci; and I. F. C. Representative, Mike Twele. Our congratulations to these men and our thanks to the men who previously held these positions and did a fine job.

No, it's not a garden, it's going to be a basketball court, or at least that is what Don Jasper claimed as he began digging up the yard in back of the TKP house. Everyone is pitching in to

Our tennis doubles team of Don Gunther and Paul Benz took second place in tennis this week as they lost to Sig Ep in the finals.

Almost everyone from the house is going to St. Louis this weekend for Brother McCarthy's wedding. Tom graduated from MSM in June of last year.

Scholarship Trophy To Delta Sigma Phi

Another week has passed in our eternal march toward June 3. This year might end, after all.

The big news this week is the winning of the IFC Scholarship Trophy. This is the second time we have won it and this time we should keep it. The only trouble, we have had to restrain some of the younger fellows from wearing off the finish. They are so proud of that trophy that they fight to see who gets to polish it.

The Delta Sig softball team is rolling right along. We picked up two more lop-sided victories last week end should be on our way now. Surprisingly, the team is sparked by the play of several married men.

Congratulations are in order for Brother Jim Martin. Jim married Shirley Whites April 10. The entire chapter extends their best wishes.

This coming weekend, many members of Delta Epsilon chapter will journey to Columbia. Beta Beta chapter will be host to a conclave on rushing methods. All Missouri chapters will be represented.

Course No.	Time of Examinations	Rooms
GERMAN		
2A	Saturday, May 30, 10:10 a. m.	See Instructor
2B	Friday, May 29, 1:00 p. m.	See Instructor
4	Friday, May 29, 3:10 p. m.	See Instructor
SPANISH		
2	Saturday, May 30, 10:10 a. m.	See Instructor
4	Tuesday, June 2, 1:00 p. m.	See Instructor
ECONOMICS		
100A	Friday, May 29, 1:00 p. m.	See Instructor
100B	Monday, June 1, 1:00 p. m.	See Instructor
100C	Friday, May 29, 10:10 a. m.	See Instructor
100D	Saturday, May 30, 10:10 a. m.	See Instructor
100E	Tuesday, June 2, 3:10 p. m.	See Instructor
201A	Friday, May 29, 10:10 a. m.	See Instructor
201B	Friday, May 29, 3:10 p. m.	See Instructor
201C	Tuesday, June 2, 1:00 p. m.	See Instructor
314	Monday, June 1, 3:10 p. m.	See Instructor
315	Friday, May 29, 3:10 p. m.	See Instructor
356	Friday, May 29, 1:00 p. m.	See Instructor
HISTORY		
160A	Friday, May 29, 1:00 p. m.	See Instructor
160B	Monday, June 1, 3:10 p. m.	See Instructor
160D	Friday, May 29, 3:10 p. m.	See Instructor
160E	Wednesday, June 3, 10:10 a. m.	See Instructor
160F	Wednesday, June 3, 1:00 p. m.	See Instructor
160G	Tuesday, June 2, 3:10 p. m.	See Instructor
160H	Tuesday, June 2, 1:00 p. m.	See Instructor
PSYCHOLOGY		
153	Wednesday, June 3, 8:00 a. m.	See Instructor
SOCIOLOGY		
181	Monday, June 1, 10:10 a. m.	See Instructor
MATHEMATICS		
1	Friday, May 29, 3:10 p. m.	See Instructor
3	Friday, May 29, 10:10 a. m.	See Instructor
4	Monday, June 1, 3:10 p. m.	See Instructor
5	Friday, May 29, 8:00 a. m.	See Instructor
8	Friday, May 29, 8:00 a. m.	See Instructor
21	Monday, June 1, 8:00 a. m.	See Instructor
22	Monday, June 1, 8:00 a. m.	See Instructor
115	Monday, June 1, 1:00 p. m.	See Instructor
201A	Friday, May 29, 1:00 p. m.	See Instructor
201B	Friday, May 29, 10:10 a. m.	See Instructor
201C	Saturday, May 30, 10:10 a. m.	See Instructor
201D	Friday, May 29, 3:10 p. m.	See Instructor
201E	Tuesday, June 2, 3:10 p. m.	See Instructor
302	Friday, May 29, 3:10 p. m.	See Instructor
304	Tuesday, June 2, 1:00 p. m.	See Instructor
310	Wednesday, June 3, 8:00 a. m.	See Instructor
311	Monday, June 1, 1:00 p. m.	See Instructor
322	Friday, May 29, 10:10 a. m.	See Instructor
325	Saturday, May 30, 10:10 a. m.	See Instructor
358	Tuesday, June 2, 8:00 a. m.	See Instructor
383	Friday, May 29, 10:10 a. m.	See Instructor
400	See Instructor	
401	Monday, June 1, 3:10 p. m.	See Instructor
408	See Instructor	
MECHANICAL ENGINEERING		
103A	Friday, May 29, 1:00 p. m.	M 1 ME Bldg
103B	Tuesday, June 2, 1:00 p. m.	201 T-1
103D	Monday, June 1, 3:10 p. m.	201 ME Bldg
105	Friday, May 29, 3:10 p. m.	104 T-3
109A	Tuesday, June 2, 3:10 p. m.	104 T-3
109B	Saturday, May 30, 1:00 p. m.	102 T-3
109C	Monday, June 1, 1:00 p. m.	201 ME Bldg
111A	Tuesday, June 2, 3:10 p. m.	201 ME Bldg
111B	Wednesday, June 3, 3:10 p. m.	201 ME Bldg
121A	Friday, May 29, 10:10 a. m.	213 Min
121B	Saturday, May 30, 10:10 a. m.	213 Min
121C	Friday, May 29, 3:10 p. m.	213 Min
121D	Tuesday, June 2, 3:10 p. m.	122 Min
121F	Monday, June 1, 3:10 p. m.	217 Ful
123	Friday, May 29, 1:00 p. m.	111 Min
151A	Monday, June 1, 1:00 p. m.	213 Min
151B	Saturday, May 30, 10:10 a. m.	102 Old Cafe
171A	Friday, May 29, 10:10 a. m.	201, 203 ME Bldg
171B	Friday, May 29, 3:10 p. m.	201 ME Bldg
175	Monday, June 1, 1:00 p. m.	111 Min
195	Monday, June 1, 3:10 p. m.	111 Min
201A	Saturday, May 30, 10:10 a. m.	201 T-1
201B	Tuesday, June 2, 3:10 p. m.	102 T-3
211	Friday, May 29, 1:00 p. m.	201 ME Bldg
221A	Monday, June 1, 3:10 p. m.	213 Min
221B	Tuesday, June 2, 8:00 a. m.	102 Old Cafe
221C	Wednesday, June 3, 3:10 p. m.	203 ME Bldg
305	Wednesday, June 3, 10:10 a. m.	M 4 ME Bldg
411	Friday, May 29, 10:10 a. m.	M 1 ME Bldg

Tucker's

Quality Checkd
DAIRY PRODUCTS



Joe Gay, plus one discus, equals first place with a toss of 132' 9" against Harris Teachers.

Harris Teachers

Cindermen Outclass Harris, 73½ to 57½

Houseman, Irwin
And Vancil Star

by Tom Dunn

Last Saturday at Rolla was the scene of a Miner 73½ to 57½ victory over Harris Teachers College. The Miners didn't overwhelm a well trained Harris squad, but they did show their superiority by taking 9 first places out of the 15 events. Houseman, of Rolla, led the field in individual scoring as he totaled 13 points with first places in broad jump and the 100 yard dash and a second place in the 220. Close on his heels were Doug Irwin and Mike Vancil with 12 and 10 points, respectively.

Mike Vancil placed first in both the mile run and the two mile run as he continued to close in on the school records in both events. Vancil presently holds the two-mile record with a time of 10:12.6. With warmer weather and more seasoning Vancil has a sure shot at both records. Vancil efforts during the meet gave a 4:43.7 mile and a 10:36.9 two-mile time.

Doug Irwin, a freshman, captured first place in the 120 high hurdles with a time of 16.3 and in pole vault with a 12' 0" effort. He also tied for second in the high jump.

Lucas won the high jump with 6' 0" jump, while Joe Gay hurled

the discus 132' 9" to capture a first. Bob Rose completed the Miner first place winners as he hurled the javelin 157' 10".

This afternoon Southern Illinois University will meet the MSM track men on the Rolla field. Let's get out and support our track team—who knows, a record might topple this afternoon.

Next Wednesday, the 29th, will find the Miners traveling to Fulton, Missouri, to meet the Westminster cinder men.

Place	Man	School	Point
1	Houseman	MSM	13
2	Irwin	MSM	12
3	Vancil	MSM	10
4	Turner	Harris	9½
5	Sweskosky	Harris	8
6	Thompson	Harris	8
7	Credi	MSM	6
8	Zenson	Harris	6
9	Smith	Harris	5½
10	Lucas	MSM	5
10	Gay	MSM	5
10	Rose	MSM	5

NOTICE

A Senior Red Cross Lifesaving course will be taught at the Jackling Gym Pool the first week in May. It is open to all students desiring to take lifesaving and water safety. Watch the daily Bulletin for information.

Morgan's Net Men Fall to Concordia; Overpower Harris

Last Friday and Saturday the Miner tennis team journeyed to St. Louis for a weekend of tennis with the Concordia Seminary Preachers and Harris Teachers College. In the Friday night contest with the Preachers, the Miners came out on the short end of a close 5-4 score. This loss brought the Miners won-lost record to 2-2. Saturday, however, was a different story as the Miners brought their mark over the .500 again with a rain abbreviated 3-1 victory over Harris Teachers.

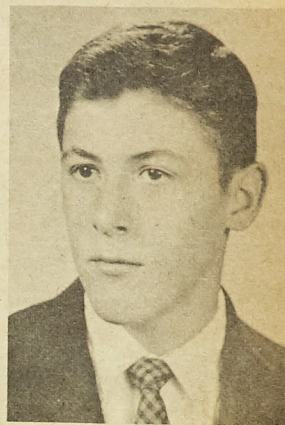
In the Concordia match, the Miners jumped quickly to a 2-0 lead as Jan Coester defeated Dan Clinton 8-6, 6-2, and Dave Stahlschmidt ripped his opponent 6-1, 6-4. Following those first two victories, the Miner singles men, Rich Hampe, Paul Sisk, Jerry Hegelson and Wayne Seisenopp, all were defeated by their Concordia rivals to make the score 4-2 Concordia, going into the doubles competition.

To win the meet, the Miners had to sweep the three doubles matches. The Miners came within a fraction of doing just that as they won two of the matches, but couldn't come through with the third win necessary for the meet victory.

Saturday the Miners ripped through the Harris singles crew for three victories and a single defeat before a downpour halted the remaining singles and doubles matches. Before the rain started, Jan Coester defeated Fred Vaner 7-5, 6-4, Dave Stahlschmidt lost to Art Eidner 6-4, 6-2, Rich Hampe eased by Gene Zierbogel 6-2, 6-2, and Paul Sisk clipped Jordan Link 6-3, 6-0. The Miners didn't need any help from the weather as they were well on their way to winning the meet, but the rain stopped any further play to give the Miners a 3-1 victory.

Tomorrow the Miners will play St. Louis University in an attempt to gain their fourth victory of the season.

Sports Spotlight



Gary Broyles

The first competitive swimming he entered was as a member of the MSM swimming team.

Gary is a member of the AIME, and his outside interests include hunting and fishing.

Both John and Gary received wall plaques for being Co-athlete of the Month. Congratulations to both on their selection as Athletes of the Month.

MIKE VANCIL

Ever wonder what inspired M. S. M. to the MIAA cross country championships last fall? It might be a puzzle to the freshmen, but the upperclassmen know who it was—Mike Vancil.

Mike, a handsome red-head, came to M. S. M. three years ago after attending Springfield (Ill.) Junior College. Though he didn't compete in track in junior college Mike had some track experience at Springfield High School from which he graduated in 1953. He was first noticed when he took second in the intramural cross country.

Realizing his potential, the athletic department encouraged Mike to try out for track the following spring. He went out and made the team easily. He climaxed his first season here in 1957 by setting a new school record at the MIAA outdoor championships in the 2-mile run.

Last fall M. S. M. renewed competition in cross country, and led by Mike, the Miners won the MIAA cross country championships. This is the first running

trophy M. S. M. has won in 25 years. At the dual meet against Westminster, Mike achieved another personal triumph by setting a new record for the three and a quarter mile course.

This spring Mike has already broken his old two-mile record of 10:12.6, posting a new time of 10:11.5 against Washington U. He is also only a few seconds away from the school record in the mile run. He hopes to break the record in one of the three upcoming meets.

Besides being a great track man, Mike also excels in boxing. He has won the intramural boxing championship in the 135-lb. class each of the years he's been here. He claims that his great boxing ability is due mainly to his father's being an amateur boxer.

He is also a member of the Engineers Club, "M" Club, and A. C. S. A ceramics major, Mike expects to graduate this August. Already the father of a 10-month old girl, Mike is expecting a graduation gift from the stork in August.

Carp's

Attention, Fraternities
School Award Jackets

100% Wool Melton Body
Leather Sleeves

Knit Trim Cuff, Collar and Waistband.
Any Color Combination.

Raglan or Set-in Sleeves. Sizes 34 to 46

Special Discount to Fraternities

\$16.95

**Ω
OMEGA
WATCHES**

Authorized Agent

**G. L. Christopher
Jeweler**

805 Pine Rolla, Mo.

**The
RAND
Shoe**

**RANDY'S SHOE
STORE**

Opposite Postoffice
Rolla, Mo.

AUTOMATIC LAUNDRY

FAST SERVICE—INDIVIDUAL WASHERS

COMPLETE BACHELOR LAUNDRY SERVICE

Freshman Friendship Coupons Redeemed

Laundry - Dry Cleaning - Shirts

Corner 7th and Rolla Sts.

Open 7:30 to 6

SORRY

WE HAD NO AD
TO FIT IN
THIS SPACE.

—The Editors.

COLD BEER

DON BOCKHORST

LIQUORS

EAST SIDE GROCERY & BEVERAGE

904 Elm St.

Phone EM 4-3218

A. E. Long, M.S.M., Ex '22, Lois S. Long, William S. Jenks, Jr.

LONG INSURANCE AGENCY

810 Pine St.

ROLLA, MO.

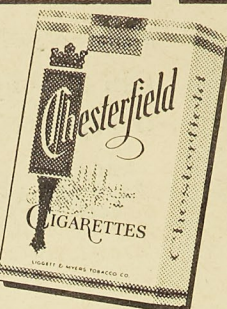
Phone EM 4-1414

"Service Is Our Business"

WIN
with



WIN
with



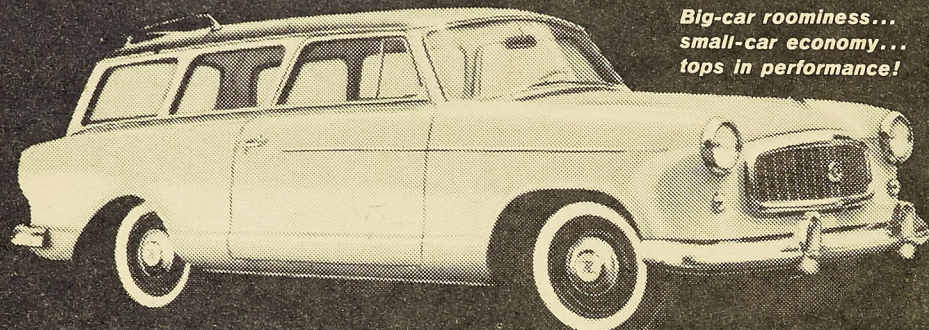
WIN
with



COLLEGE PUZZLE CONTEST

FOR STUDENTS AND FACULTY MEMBERS

2 GRAND PRIZES



Rambler "American"!
Big-car roominess...
small-car economy...
tops in performance!

WIN A RAMBLER STATION WAGON!

LIGHT UP AND LIVE IT UP! 3 great cigarettes offer you 627 chances to win! So pick your pack—save the six wrappers—and get going! It's crossword puzzle fun and real smoking pleasure all the way!

ENTER OFTEN—HAVE FUN—AND WIN! But think carefully! This puzzle is not as easy as it looks. At first the DOWN and ACROSS clues may appear simple. There may appear to be more than one "right" answer. For example, the clue might read: "Many a coed will be given her best date's P-N." Either "T" (PIN) or "E" (PEN) would seem to fit. But only one answer is apt and logical as decided by the judging staff, and therefore correct. Read the rules carefully. ENTER AS OFTEN AS YOU WISH. Good luck!

RULES—PLEASE READ CAREFULLY

- The College Puzzle Contest is open to college students and college faculty members except employees and their immediate families of Liggett & Myers and its advertising agencies.
- Fill in all missing letters . . . print clearly. Use of obsolete, archaic, variant or foreign words prohibited. After you have completed the puzzle, send it along with six empty package wrappers of the same brand from L&M, Chesterfield or Oasis cigarettes (or one reasonable hand-drawn facsimile of a complete package wrapper of any one of the three brands) to: Liggett & Myers, P. O. Box 271, New York 46, N. Y. Enter as often as you wish, but be sure to enclose six package wrappers (or a facsimile) with each entry. Illegible entries will not be considered.
- Entries must be postmarked by midnight, Friday, May 29, 1959 and received by midnight, Friday, June 5, 1959.
- Entries will be judged by the Bruce-Richards Corporation, an independent judging organization, on the basis of logic and aptness of thought of solutions. In the event of ties, contestants will be required to complete in 25 words or less the following statement: "My favorite cigarette is (Chesterfield) (L&M) or (Oasis) because . . .". Entries will be judged on originality, aptness of thought and interest by the Bruce-Richards Corporation. Duplicate prizes will be awarded in event of final ties. Illegible entries will not be considered. By entering all entrants agree that the decision of the judges shall be final and binding.
- Solutions must be the original work of the contestants submitting them. All entries become the property of Liggett & Myers and none will be returned.
- Winners will be notified by mail as soon as possible after completion of the contest.
- This contest is subject to all Federal, State and local laws and regulations.

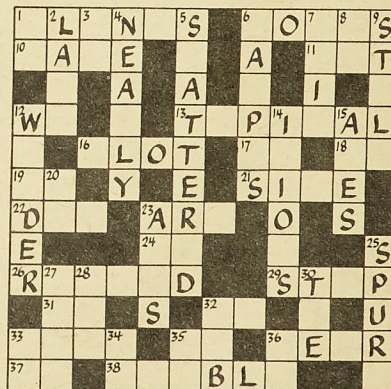
HURRY! ENTER NOW! CONTEST CLOSES MAY 29, 1959

CLUES ACROSS:

- These may indicate that a nation is prepared to wage war in the air.
- Some college students.
- When at Light up an Oasis.
- Sinking ship deserter.
- Plural pronoun.
- One expects discussions in a sociology class.
- A student's careless might annoy a short-story instructor.
- Initials of Uruguay and Denmark.
- Germanium (Chem.)
- Nova Scotia (Abbr.)
- It probably would count when you pick a horse to bet on.
- Sometimes a girl on a date must into her pocketbook to help pay the tab.
- The muscle-builder's may fascinate a poorly developed man.
- Chemical Engineer (Abbr.)
- Campers will probably be by a forest fire.
- When starting a trip, tourists usually look forward to the first
- At home.
- Literate in Arts (Abbr.)
- Familiar for faculty member.
- Associate in Arts (Abbr.)
- One could appear quite harmless at times.
- Reverse the first part of "L&M".
- What will soon appear in a bombed-out city.

CLUES DOWN:

- The beginning and end of pleasure.
- A rural can be inviting to a vacationist.
- Second and third letters of OASIS.
- When one is packed, it could be exasperating to remember a few articles that should be included.
- It would pay to be careful when glass is
- Grounds to relax on with a mild CHESTERFIELD.
- Author Ambler.
- District Attorney (Abbr.)
- A from Paris should please the average woman.
- An inveterate traveler will about distant lands.
- are hard to study.
- Stone, Bronze and Iron
- How Mexicans say, "Yes".
- All L&M cigarettes are high in smoking pleasure.
- May be a decisive factor in winning a horse race.
- Initials of Oglethorpe, Iona, Rutgers and Emerson.
- United Nations Organization (Abbr.)
- Golf mound.
- Colloquial for place where the finest tobaccos are tested for L&M.
- Poet Laureate (Abbr.)
- Filter ends.
- What Abner might be called.
- Bachelor of Education degree.



PRINT CLEARLY! ENTER AS OFTEN AS YOU WISH

Mail to Liggett & Myers, P. O. Box 271, New York 46, New York. Be sure to attach six empty package wrappers of the same brand (or facsimile) from Chesterfield, L&M, or Oasis cigarettes.

Name _____

Address _____

College _____

This entry must be postmarked before midnight, May 29, 1959, and received at P. O. Box 271, New York 46, New York, by midnight, June 5, 1959.

© Liggett & Myers Tobacco Co.