



17 Sep 1948

The Missouri Miner, September 17, 1948

Follow this and additional works at: https://scholarsmine.mst.edu/missouri_miner

These newspapers reflect the attitudes, perspectives, and beliefs of different times. Neither the library nor the university endorses the views expressed in these collections, some of which contain images and language which may be offensive to some readers.

Recommended Citation

"The Missouri Miner, September 17, 1948" (1948). *The Missouri Miner Newspaper*. 1300.
https://scholarsmine.mst.edu/missouri_miner/1300

This Newspaper is brought to you for free and open access by Scholars' Mine. It has been accepted for inclusion in The Missouri Miner Newspaper by an authorized administrator of Scholars' Mine. This work is protected by U. S. Copyright Law. Unauthorized use including reproduction for redistribution requires the permission of the copyright holder. For more information, please contact scholarsmine@mst.edu.

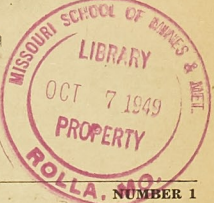
EDITORIAL
Let's Start
Out Right
See Page 2

THE MISSOURI MINER

Missouri School of



Mines & Metallurgy



VOLUME 35

ROLLA, MO., FRIDAY, SEPTEMBER 17, 1948

Pep Rally Tonight; Also Free Movie

BLUE KEY TO SPONSOR MOVIE AND MEETING FOR FRESHMEN TONIGHT

Bob Peppers, president of the Student Council announced Wednesday that the Student Council will sponsor a Pep Rally for "Beat Memphis" night. All organizations and students participating in the Rally are requested to meet in front of Jackling Gym at 9:30 o'clock P. M. and bring plenty of banners and torches.

Fred Springer will lead the band and parade which will proceed from the Gym down Pine Street to Sixth, over Sixth to State Street, and up State to the Hospital, where the MSM Pep Band will lead the usual Miner songs. Plenty of wood will be provided on the lot for the big bonfire.

The Student Council is expecting a large turnout of students for the Rally to show the new students the real school spirit of the Miners.

There will be an important meeting of all Freshmen at 7:30 P. M. in Jackling Gymnasium. The Blue Key Honor Fraternity is sponsoring this meeting and they have announced that all regularly registered freshmen must attend. Upper classmen are also invited to attend.

The meeting will begin promptly at 7:30 P. M. at which time Coach Gale Bullman will show a color motion picture of school life and activities during a school year at Missouri School of Mines. Included in this film will be scenes from many of our teams football and basketball games, a complete review of the St. Pat's Parade, and shots of many other student activities held during the year. This film will also be of interest to upper classmen, whom Blue Key cordially invites to attend the meeting. Following the movie, the Co-Captains of the football team, Jim McGrath and Bob Kemper, will give a short talk on the MSM sports program. Clarence Isbell is going to tell about the Missouri Miner and the Rolla, the school newspaper and yearbook, and how a freshman may become eligible for membership on their staffs. The honorary organizations on the campus will be covered briefly by Mike Rielly. In addition, refreshments will be served to all members of the freshman class.

Immediately following the Pep Rally and Bon Fire, the Blue Key Fraternity will sponsor a Free Movie at the Uptown Theater, which will begin at 11:15. Don't forget, ALL FRESHMEN MUST ATTEND THESE FUNCTIONS!

MSM Is Selected for Two Scholarships

The American Smelting and Refining Company and the Kennecott Copper Co. have selected Missouri School of Mines to receive scholarships.

The American Smelting and Refining Company, with headquarters at Salt Lake City, Utah, has given \$500 to the school to be used as a scholarship award to a student in Metallurgy. The school has complete responsibility for the selection of the young man to receive the scholarship. The company prefers that it be given to a student in his junior or senior year.

Charles A. Peek now completing his junior year in Mining Engineering has been awarded the Kennecott Copper Corp. scholarship of \$750 for 1948 to 1949. Mr. E. T. Stannard, president of Kennecott Copper Corporation, has advised Dean Wilson that Kennecott will contribute this scholarship for the next three years and probably will continue it after that.

DORMITORY PLANS DELAYED DUE TO INSUFFICIENT FUNDS

Students of the Missouri School of Mines and Metallurgy who have been looking forward to living in the M.S.M. Dormitory must wait a while longer before realizing their wish according to the latest reports.

At a recent meeting of the Board of Curators it was found necessary to reject the lowest construction firm bid due to the fact that the monthly bond service charge which each student occupying the dormitory would be forced to pay is excessive. The bond service charge would be due to the fact that the amount of money on hand for the construction is far short of the required amount.

At the meeting the Board decided to seek additional funds from the State if a plan cannot be worked out to construct the dormitory with the \$262,500 which has been appropriated by the General Assembly.

According to reports the lowest bid submitted by any building firm was \$554,440, which was considered too high in view of the money available. With the addition of other costs such as, contractors fees, furniture and other expendables to the firms bid the total amount necessary would reach \$660,092. This would necessitate a bond issue service charge of \$27 per month to each student occupying the dormitory, in addition to room and board costs.

The present appropriation for the M.S.M. Dormitory expires Dec. 31, 1949, but it is expected that the Board of Curators will seek an additional appropriation before that time, from the Missouri General Assembly.

While the dormitory project is being delayed, however, work is progressing on the Chemistry Building addition and the Engineering Laboratory Building. Architects and University officials are working out the interior arrangements for the Engineering Laboratory Building and the drawing up of plans and specifications will start soon.

It is hoped by all concerned that construction can start this fall.

Prof. D. R. Schooler Rejoins MSM Faculty

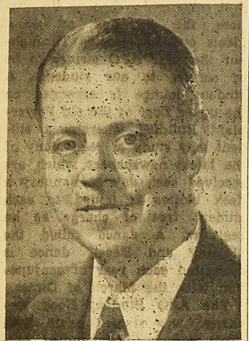
D. R. Schooler, '26, former associate professor of Mining Engineering, will return to MSM next September 1, according to an announcement by Dean Curtis L. Wilson. Professor Schooler was a member of the faculty of MSM from 1942 to 1946. For three years he was assistant professor of engineering drawing and then transferred to the department of Mining Engineering. He has had valuable practice and experience and served for many years as superintendent of coal mines in Centralia, Ill.

A year ago he resigned to accept a position with a group of consulting engineers in Chicago. During the past year he has had additional valuable experience in mine operation and states that he is now happy to return to MSM with his background of experience.

Dr. J. D. Forrester, chairman of the department of Mining Engineering and Dean Curtis L. Wilson have expressed pleasure at the return of Professor Schooler, who has proved himself to be a capable engineer and an outstanding professor.

"To The Students of MSM"

For the third consecutive year (1946, 1947 and 1948), student enrollment at MSM has broken all previous records. Such record enrollments are naturally



DEAN CURTIS L. WILSON

gratifying to the faculty and staff of your college. We are glad that you recognize the value of an engineering education. We are confident that industry will continue to seek assiduously the services of MSM graduates and we feel sure that a bright future awaits all who successfully complete their courses of study at this institution.

Your faculty again this year is the largest in the history of this college. There are 171 full-ranking members of the faculty. I do not hesitate to claim that it is

the best engineering faculty in the country. These men have dedicated themselves to your service. They are anxious to help you and they want to be proud of your future success and accomplishments.

The building program is making progress, even though that progress may seem slow at the present time. Before another year it is hoped that the Chemical Engineering Building may be well on the way to completion, at least the laboratory sections so urgently needed for Mechanical Engineering and Electrical Engineering. Other improvements, enlargements and additions are definitely planned or under way for the very near future. I want you to know that we are constantly striving to secure more and more adequate facilities for the big job in which we are all participating.

Missouri School of Mines and Metallurgy is characterized by its engineering atmosphere and its college loyalty. Students, faculty and staff work together toward the ultimate objective, which is service to the students future.

On behalf of the faculty I extend a cordial welcome to you all, to new students and to those returning. May this year be the finest you have ever known. I pledge my own best efforts to make it so.

CURTIS L. WILSON
Dean

VA OFFICE ISSUES NEW REGULATIONS ON TUITION

Any veteran who drops out of school or college before the end of the period for which tuition has to be paid must refund the tuition that Veterans Administration must pay for the time he did not attend or lose the training time covered by these payments.

Affected are all those veterans enrolling under the G-I Bill in institutions that:

- (1) Collect their tuition and other charges in advance, and,
- (2) Limit refunds of tuition charges that can be made to any student—veteran or non-veteran—discontinuing his work before the end of the term or semester.

Most of the veterans are enrolled in schools of this type.

VA's ruling holds the veteran legally responsible for tuition payments. VA must make to these schools for the instruction periods the veterans do not attend.

VA explained that tuition charges must be paid for the full term or semester if a student—veteran or non-veteran—remains in school after the refund period is over. These periods generally end four to six weeks after the start of a term or semester. As a result, any student who drops out loses that much of his tuition payment.

Since no refunds to VA for veterans dropping out of school after that time are possible, the veteran must refund the balance of the tuition paid for him.

Veterans who do not want to refund payment to VA will lose the training time covered by that payment.

When student-veterans have to interrupt their courses before VA is obligated to pay tuition for the full period, VA will pay the institution only the normal charges for the time the veterans attended.

In the latter case, the veterans' entitlement will be reduced only by the length of their attendance for which the institution will be paid, VA said.

"Daddy, if you will give me a dime I will tell you what the ice man said to mamma."

"OK, son, here's your dime."

"Do you want any ice today, lady?"

Football Holiday

Classes will be dismissed on Saturday morning, September 25, to afford opportunity to see the Miners vs. Washington University football game in St. Louis that afternoon, according to action taken by the Faculty at its first meeting this fall.

The Faculty voted also to dismiss classes on Saturday morning, November 20. The Miners play St. Louis University at Walsh stadium on that afternoon.

FOOTBALL PROGRAMS TO BE SOLD AT MSM GAMES BY ROLLA BOY SCOUTS

The 1948 football programs of the School of Mines are to be bigger and better, promises Jerry Berry, program manager, who says they are among the finest in national collegiate circles.

The programs will be sold at all five home games by Rolla's Boy Scout Troop No. 81. The Scouts will use their profits for troop improvements and needs.

Sixty-eight pictures will be featured each week, with some changes for each program. Each visiting team is allocated four full pages, and the Memphis team which plays here Saturday, is well represented in the first program.

The programs have new cartoons and other features each week. Two football quizzes are in the program this week.

Every player on both teams is listed alphabetically and numerically, to facilitate spectator identification. Starting lineups are also listed.

Rolla merchants, through generous donations, are making the five programs possible, and some are also contributing prizes to be given away each week.

Prizes will be awarded at half time during each game. Some of them are: Two free chicken dinners at the Houston House in Newburg; free neckties, cases of beer and soda, newspaper subscriptions and theater tickets.

Each program will have forty pages. All students are urged to buy them at each game, to help back the team.

2664 Register For School; New All Time Record Set

NEW BUILDINGS AND IMPROVEMENTS ON MSM CAMPUS

(Picture on Page 4)

Thoughtful planning as well as steel, brick, stone, and glass will be represented in the new permanent buildings the University of Missouri plans to erect on the campus of the School of Mines and Metallurgy this year and next.

And according to Vice-President Leslie Cowan, much thought and effort have gone into the building, remodeling, and equipment program which has been underway on the Rolla campus during the last several years.

Mr. Cowan, who is also secretary of the Board of Curators and the man upon whom the main responsibility for the planning and equipping of the University's physical plant rests, says that the Engineering Laboratories Building and the Chemical Engineering Building have been designed and located to make maximum use of the structures and of the campus. The recent and current building program at Rolla, he says, has been closely integrated with the educational, research, and student housing needs of the School of Mines and Metallurgy.

"For a number of years, especially during the last six," Mr. Cowan said, "We have been improving the physical plant at the School of Mines and Metallurgy as rapidly as we could with the amount of funds we had available. The Board of Curators has realized for a long time that there was a need for increasing the facilities of the Mechanical Engineering Department of the School and of other teaching and research departments as well. The Curators, therefore, have continued to ask the State to appropriate funds for this purpose. While it has not been possible for the University to obtain all of the funds required to carry out an adequate building and equipment program, the State Legislature has made appropriations for several of the structures requested."

The whole building, remodeling, and equipment program being carried out by the University on the Rolla campus is designed to provide tools and equipment for use in the instruction and research program.

One of the most essential recent physical plant improvements has been the completion of the new Power Plant at a cost of \$346,896, which has given the School of Mines and Metallurgy for the first time a plant of the required capacity. The electrical energy needed on the campus is now assured, and it will no longer be necessary to shut down any of the buildings because of an inadequate supply of power or steam. There is need, however, for two additional boilers and other equipment, and space has been provided in the new building to take care of these additions.

Chemical Engineering Building

Among the new buildings which are in the process of being erected is the addition to the Chemical Engineering Building. The north end of this building was completed in 1941. The addition will be 87 feet long and have a 24-foot extension to the west at the south end of the building. It will be approximately the same size as the part of the four-story building already completed.

The addition, which will also be of four stories, will contain laboratories, office space, and a lecture room which will seat about 250. Expected to be completed sometime in 1949, the addition will be constructed of

(Continued on Page 4)

IMPORTANT Freshman Meeting

Jackling Gym at 7:30 P. M.
Friday Night

TORCH PARADE and BONFIRE

Gym to Hospital Lot
About 9:30 P. M.

Free Show
UPTOWN AT 11:15 P. M.

ALL FRESHMEN MUST
ATTEND
THESE FUNCTIONS

INTERFRAT BOOK COMES OUT DURING FALL REGISTRATION

This month the Interfraternity Council came out with the long awaited book on the fraternities of Missouri School of Mines. This book was distributed to freshmen last week, at which time they were given a slip to fill out which showed whether they were interested in fraternities and if they were interested in any particular chapter. The information received on these forms was then made available to the various fraternities on the campus.

This booklet was one of several projects which the Interfraternity Council has planned to help the campus fraternities in their rushing programs. The editors of the book were L. D. Marcus of Alpha Epsilon Pi; Art Weber and Billy Brownard of Kappa Alpha.

Bill Magruder of Kappa Alpha, president of the Interfraternity Council said he believes the book will be a big help to fraternities on this campus and hopes to see the book revised and published at the beginning of each year. A similar book was published prior to the last war, but was not continued due to the low enrollment at the time.

Other plans for this year include the annual Interfraternity Sing which is held every fall in Parker Hall.

SATURDAY OCT. 16 NAMED PARENTS DAY

Parents Day and Engineers Day have been set this fall on Saturday, October 16, it was announced by Professor E. W. Carlton, who is chairman of the Parents' Day Committee, and Professor L. H. Lovett, chairman of the Engineers' Day committee. Letters announcing the events will go out to all parents of MSM students in the next few days from Dean Wilson's office.

Laboratories will be open for inspection and special demonstrations will be arranged by the various departments. The football game on Jackling Field that afternoon will be Miners vs. Maryville. In the evening the Parents' Day banquet, so successful last year, will be held again in Jackling Gymnasium. Mr. O. K. Armstrong, eminent writer and entertaining lecturer of Springfield, Missouri, will be the principal speaker.

Banquet reservations unfortunately must be held to 525 because of the limited seating capacity of the gym. It is hoped that a large number of parents will find it possible to visit the campus on October 16, to meet members of the faculty and to see something of the type of engineering instruction given at MSM.

991 STUDENTS IN JUNIOR CLASS; 543 REGISTERED IN M. E.

Last Monday found Jackling Gymnasium and the surrounding campus the usual scene of mad confusion always attending registration. The only people who seemed to have maintained at least part of their equilibrium were those volunteers who aided the faculty with this thankless task. From the early hour of 8 a. m. to the closing hour at 5, faculty members and their student helpers watched a never-ending stream of upper classmen proceed through the rites of beginning another year of studies.

Registrar Noel Hubbard announced Tuesday noon that enrollment had reached an all time high of 2664, an increase of 26 over last year's record of 2635. He explained, however, that there is still a trickle of late registrants each day, being balanced by duplications of people registering as graduates and undergraduates.

"This is the third straight year our enrollment has shown an increase," he said, "but the curve is flattening now, and a drop-off may be expected next year. Actually the rise was unexpected, as we thought we were over the peak last year."

The new high was not reached through enrollment of freshman students, as this year's frosh roster amount to 448, a drop of 144 from last year's 592. Rather, it was boosted by upper classmen transferred from various other colleges and universities.

Mr. Hubbard explained the drop in freshman entrants with the fact that in the new frosh ranks the ratio of veterans entering under the G. I. Bill to those not doing so has dropped to one in four.

Repeating its leadership established last year, the Mechanical department remained at the head of the list with a total of 543 students enrolled, followed by the Electrical Engineering department with 477 and Mining showing 419 registrants. Other department enrollments included 397 in the Civil Engineering department, 290 in Chemical Engineering, 225 in Metallurgy, Ceramics with 88, 86 in the science major field, and 38 unclassified students, the majority of which are women students enrolled mainly in humanities courses. All departments showed an increase over last year's figures except the Chemical, Ceramics and Electrical departments.

Last year's sophomore class, now juniors, still remains the largest single class in M. S. M.'s history, rising from 782 to its present 991. With a slight decrease from 682 to 631, the senior group holds second place, followed by the sophomores whose ranks were depleted from 592 to 448.

Asked the reason for the increase in upper classmen transfers to this school, Dean Curtis L. Wilson explained, "Many students who originally started their education in liberal arts schools such as our state teachers' colleges here in Missouri, and decided to pursue an engineering course instead, complete two years at the previous schools, then transfer here. This fall, we have an outstandingly large number of transfers from Wisconsin and other eastern universities which offer pre-engineering, but haven't the proper facilities or location such as we have to teach mining and metallurgy."

"Although we have graduated unusually large classes the last few years," he continued, "our bright star is our low loss of students through failures. Obviously, students here have come to work."

THE MISSOURI MINER



THE MISSOURI MINER is the official publication of the students of the Missouri School of Mines and Metallurgy. It is published at Rolla, Mo., every Friday during the school year. Entered as second class matter February 8, 1945 at the Post Office at Rolla, Mo., under the Act of March 3, 1879. Subscription Price 75¢ per semester. Single copy 5¢ (Featuring Activities of Students and Faculty of M. S. M.)

Bob Buel Editor-in-Chief
707 State St. Phone 449

Joe Reiss Business Manager
1007 N. Main St. Phone 185

Senior Board

BILL BENNETT 1007 N. Main St. 1007 N. Main St.	MANAGING EDITOR Phone 185
JOE STRUBERT 707 State 800 Olive	ASSOCIATE EDITOR Phone 449 Phone 136
VAL STIEGLITZ 800 Olive	SPORTS EDS. Phone 136
HARRY CHAPMAN 800 Olive	ADVERTISING MANAGER Phone 136
ROGER JENKINS 1007 N. Main St.	CIRCULATION MANAGER Phone 136
CLARENCE ISBELL 800 Olive St.	EXCHANGE EDITOR Phone 449
LYMAN VAN BUSKIRK 707 State St.	FEATURES EDITOR Phone 427
HARRY FUNK 206 East 12th St.	BOARD SECRETARY Phone 13
FRED SPRINGER 1311 State St.	

Staff Members

News Staff
Odus McCallister, Ed Aubuchon, Ralph Padfield, Bill Main, J. McCarthy, R. Starkweather, Tom Wirts, J. Warsing, Art Franks, Bob Peppers, George Eadie, Stan Rafalowski.

Editorial Board
Frank Weber, Don Dampf, Charlie Mace

Business and Advertising Staff
Jim Chaney, Ivor Pounds, L. E. Greco, J. Herder, Harry Cowan.

Circulation Staff
L. Frank, Jim Fisher, W. Bachman, L. M. Cardetti.

Photographers
Bob Hansen, Gerry McCall

Member Represented for National Advertising by—
Associated Collegiate Press
Distributor of
Collegiate Digest
National Advertising Service, Inc.
College Publishers Representative
420 Madison Av., New York, N. Y.

Let's Start Out Right

With the pledging of promises to ourselves to be more diligent in our studies at the onset of this new school year, let us consider one very important characteristic which has been sadly lacking among the Miners during the past year . . . Sportsmanship. Sportsmanship in athletics and sportsmanship toward our fellow man.

On several occasions last year the conduct of the students of the School of Mines at pep rallies, football games, and especially basketball games was such that it not only injured the reputation of the school, but also caused disciplinary action to be taken against several members of the student body.

Remember this is your school, and upon you rests the responsibility of giving the School of Mines its character. Wherever you go, and whatever you do, you are a "Student of the School of Mines."

The freshmen class starting this fall, more freshmen than we have ever had before, are looking up to the upperclassmen for guidance at all the school functions. Let's not start them out on the wrong track by destroying property at pep rallies and booing the referees when things don't go our way at football and basketball games. Rather, let's keep the thing honest, and show these new students the real school spirit of the Miners.

The "Beat Memphis" Pep Rally sponsored by the Student Council tonight will present the first opportunity of the school year for all of the students to participate in an organized school function. The student Council is expecting all of the students, and especially the freshmen, to take part in this rally and give our first football game a real sendoff. We are proud of our 1948 MIAA Champions, so show them we mean it with a clean "Beat Memphis" campaign.

"Letters to The Editor" Policy

All letters to the Editor of the Missouri Miner intended for publication must be typewritten and signed. Names of the persons writing the letters will not be withheld upon request.

Address all letters to:
Editor, The Missouri Miner
Missouri School of Mines
Rolla, Missouri

Music Notes

MUSIC CLUB

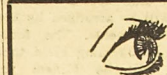
The MSM music club will hold its initial meeting of this semester at Jack Sorbes' residence, 808 State street across the street from Triangle this Sunday at 7:30 p. m.

Any student who is interested in classical recorded music is very welcome to spend a pleasant evening with the masters.

The program this week will include:
Auber—Overture to Sra Diavolo
Mozart—Symphony No. 41 in C Major, "Jupiter"

Beethoven—Overture, "Consecration of the House"
Mozart—Serenade in G, "Eine Kleine Nachtmusik"

At a medical conference, an ambitious doctor leaned close to an older one and asked, "Where did Dr. Alger make his fortune?"
"Stork market, I've heard."



DR. BAKER, O. D.
715 Pine St., Rolla, Mo.
Phones: Office 569, Res. 620-R

GADDY DRUGS

PRESCRIPTION SPECIALISTS

Phone 159 — 9th & Pine Sts.

Off The Campus

Kappa Alpha

With the beginning of the fall term, Kappa Alpha is well on its way of organizing for another year of activity on the MSM campus. The returning members were greeted with a number of new innovations which everyone seems to like, except for the few who keep trying to go through the door which isn't there. An old hallway was blocked off and is now converted to a downstairs rest room and powder room for use when dances and drop ins are held at the house. The porch on the south side of the house is now in the process of being converted into a card room. This room is really bringing in the modern touch as it will be completely walled in glass brick and will have two large doors going to the back yard.

The officers heading the chapter this year are John Ehrler, President; Dick Ballman, Vice-President; Doug Castleberry, Secretary; and Dick Driscoll, Treasurer. The sadness of the new school year comes in noticing the missing faces of brothers who are no longer in school. Don Schmidt, Frank Beyer, Bill Ellis, Bill Parkinson, and George Ramsey were the Seniors who are now part of our growing alumni list. Erv Schowengerdt has decided to go to Columbia (MU, that it), while Frank Johnson and Joe Ryan are remaining in the windy city of Chicago this year. Johnson is attending the Illinois Institute of Technology in that city.

Several of the chapter members heard wedding bells, and are now members of our growing group of married men. Those brothers are George Anderson, Bill Siegel, Jack Fuqua, and Art Weber.

With the beginning of the school year, all the KA's want to remind every Miner that Kappa Alpha stands for southern hospitality and its doors are always open to guests.

Sigma Phi Epsilon

The House with the Red Door shelters a much smaller group these days, but a big pledge class will soon swell our members to a new high. Seven graduates, two enlistments, and one death have left many vacancies to be filled.

Three members reported back wearing a ball and chain. Don Telthorst took the fatal step in July, while Irwin Scheunemeyer and Gene "I'm Agin' It" Warren were added to the list in August. Jim Miller, who graduated in June, middle aisled it with Betty Dressler, Sig Ep Sweetheart of 1948, on September 11.

The summer was not inactive, as the boys kept in practice with boat rides and several other informal parties in St. Louis. At present Babe Danz and the social committee have their heads together cooking up another Sig Ep wingding—for October we think. Big talk now is the trip to St. Louis for the Washington U. Game—and the usual Miner celebration afterwards.

Word has been drifting in from the old grads. B. J. "Dusty" Rhoads is now a proud poppa.

Don Reinert reports three raises and no work so far on his new job (wonder if he needs a helper). Jim Snyder is moving ahead as a field geologist with the Armenda Oil Company. Tom Burke is working for Phillips 66 at Bartlesville, Illinois; and returned to school at Colorado A. & M.

Art Heyl has joined the Air Corps and will not be in school this fall. He pinned Marilyn Miller of St. Louis during the summer. Congratulations Art, but we'll be looking for those cigars the next time you pass through Rolla. Galen "Cap" Hesler is another Sig Ep who felt the call of duty. He has traded his slide rule for a set railroad tracks with the Infantry—extended duty we hear.

Kappa Sigma

The Kap-Sigs got off to a roaring start this semester as most of the members came tottering back to the old home—stead a week early to put the house in A-1 condition. A new asphalt tile floor and tile walls in our bathroom, newly painted study rooms, and a general cleanup campaign are the accomplishments of a week's hard work. We are now anxiously awaiting additional material for our new front porch in hopes it will be completed before old man winter greets us.

During the turmoil of last week, we found time to formally pledge 12 fellows into the fraternity behind the able leadership of our rushing chairman, George Mabie. Those pledged are:

Anderson, Charles A.
Burford, Robert D.
Cartier, Urban A.
Geers, Joseph H.
Hirsh, Robert A.
Jones, Robert A.
Morse, Robert A.
Rafferty, James B.
Romine, Charles F.
Rafferty, Raymond F.
Ruppert, Theodore A.
Sciuto, Joseph S.

We are happy to welcome back Ray Heilich, who, after serving in the army for 1½ years, has returned to complete his pledge which he started in 1946.

Oou 51 actives and 15 pledges are ready for another year in true Kappa Sigma form. We are looking forward to a year of high scholastic standing and another year of championships in intra-mural competition.

Gamma Delta

The members of Gamma Delta have for the past week been busily engaged in redecorating and cleaning our new house, the old Taney Hotel at 206 W. 9th st. The face lifting was begun in the dining room and branched out from there. Some of the boys have been uncovering hidden talents. Sam Gerler and Bill Evans have proven to be capable carpenters. Bill Beumer has been leading the painters in a splash party that has been interrupted only by registration and classes.

There are thirty-nine fellows living in the house and meals are being served for about forty-five members and pledges.

The following house officers

have been temporarily appointed until permanent officers can be elected at chapter meeting: Sam Gerler, house manager; Karl Eiesinger, business manager; and Bill Evans, secretary.

The first chapter meeting will be held in the Lutheran Church basement on Sunday, September 19, at 5:30 P.M. All Lutheran students are invited to attend. A meal will be served by the ladies of the congregation. A full schedule of events have been planned for this year. A good attendance at our weekly meetings at the church will help to make this our most successful year.

Alpha Phi Omega

Alpha Phi Omega is a service fraternity which has as its purpose the fostering of Scout ideals on the campus. Throughout the year APO strives to be of service to our students. A student lounge is arranged on the upper floor of the old Powerplant Building whereby a student may study or read many of the latest newspapers which are received each day. In January a desk blotter is issued to each student free of charge as he registers. A dance called the "Beauty and Beast" dance is sponsored each year in conjunction with the March of Dimes.

The APO Student Book Exchange was started again with great success. We handled several hundred books with over forty per cent of them being sold before registration day. This service will be at each student's disposal at the beginning and end of each semester.

Since all former Boy Scouts are potential members of APO, we draw your attention to the Scout census cards which may be procured in the vestibule of Parker Hall any time between Monday and Friday of next week. Belonging to this organization does not prevent you from joining any other fraternity on the campus, so you are cordially invited to join if you have at any time been a registered Boy Scout of America.

Sigma Pi

Sigma Pi can well be proud as they review the past year and their excellent standing in house activities, campus activities, scholarship, and sports. Let us hope that the coming year will be just as stellar in every respect.

During the past year, Sigma Pi was very busy making improvements on their house. They have painted the house, inside and out, rebuilt and reseeded the front lawn, and have three lounge chairs and two sofas rebuilt and upholstered with a

PARADY TO—

The Snows of Killimanjaro

This Is It! Or, Hemingway Missed A Bet

by Jack R. Harlan

"The crew of a freighter passing through southern waters sighted a large iceberg approaching from the direction of the South Pole. On the iceberg lay the dried and frozen carcass of a lovely timmouse. None of the crew seemed to know what a lovely timmouse was doing on the iceberg."

His hand brushed the snow from the clear, cold ice. All around him was snow and ice. Snow and ice. Ice and snow. He sat on the clear, cold ice—thinking. Clear thoughts ran through his mind. His cold mind. He could remember the terrible scene. The engines of his plane spluttering out one by one. Splutter. Splutter. Splutter. The blind leap into the darkness below. The sign. Only two words on it. "South Pole" printed in Old English. It was hard to believe, but he could read couldn't he? He pulled a copy of "Reader's Digest" from his pocket and read an article on sex. He could read. This was the South Pole.

What to do now? Admiral Byrd would know what to do. He wasn't Admiral Byrd. He was Joe Gilk. Cold Joe Gilk. Was this the end? He was a fatalist. He couldn't die until his number was up. He looked at his number. It wasn't up. This wasn't the end.

His fingers were like icicles. He broke one off and tasted it. Yes, fingers like icicles.

A downcast penguin walked by. It was shivering. Cold penguin.

"What the hell are you doing at the South Pole?" Joe Gilk asked.

The penguin pointed mutely at his white front. No studs. Born a social outcast. Born with no studs. Freezing at the South Pole with Joe Gilk. Snow. Ice. Him. He felt his bones. They

were cold. He was chilled to the bone. A hopeless feeling passed over him. He raced across the ice and intercepted the pass. He lateraled to a grinning polar bear.

Hans would know what to do in a situation like this. Good old Hans! Hans would never see the South Pole now. Not after that fight with Leonard's tiger. If he only hadn't agreed to tie one hand behind his back. He should have known that he had just one hand left after trimming his fingernails with the lawn mower. Joe Gilk could count. He counted his hands a few times to make sure.

Things really looked black now. He put on his sun glasses, and things looked green again. "Goah, it's cold!" he muttered. "Yeah, it is," muttered God.

Pangs of hunger began to know at his stomach. He watched disinterestedly as they consumed it, and then he brought forth and distributed the last of his toothpicks. He knew this was the end. His body slumped back on the clear, cold ice. His eyelids closed.

He was back in his hot little shack in Antigua. His hot little wife was burning her fingers on hot pennies he had planted in her purse. Hot shack. Hot pennies. Hot wife. Hot damn. Hot. Hot. Life was suddenly wonderful.

The next day two seals stumbled on Joe Gilk, lying on the snow with a smile on his lips. One of them stole his watch, while the other playfully threw snow in his face. Then they moved on across the clear ice and cold snow.

Ed's Note: The above article written by Jack R. Harlan was reprinted from the April, 1947, issue of "Three Quarters", a magazine of Freshman writings of the Iowa State College.

Mitchell Insurance

Agency

Representing

Travelers Insurance Co.

Life — Fire — Auto

Burglary

803 Pine Phone 342



MINERS

We have the largest jewelry stock in South Central Missouri

Expert Watch Repairing Guaranteed
J. J. FULLER, Jeweler

711 Pine St.

Dealer in Watches

Hamilton — Elgin — Bulova

Gruen — Helbus — Westfield

Also Keepsake Diamonds

CAMPUS SODA SHOP

WHERE THE STUDENTS

1107 Pine MEET TO EAT Phone 689

WITT CLEANERS

110 W. Eighth St.

Cleaning and Pressing

Pressing While You Wait

Alterations

Dyeing

PICKUP AND DELIVERY SERVICE

110 W. Eighth St. Phone 76

C & B CAFE

205 W. 9th St.

—OPEN EVERY DAY—

6:30 A. M. to 7 P. M.

MINERS WELCOME

SPORTS

THE MISSOURI MINER

HARRY CHAPMAN

Eds.

VAL STIEGLITZ

Page 3

Fri., Sept. 17, 1948

Junior - Seniors Take Summer Intramural Crown

KAPPA SIGMA SECOND IN SUMMER PLAY

By Val Stieglitz

The intramural program here at the School of Mines this past summer went off without a single hitch, as the teams from the Junior-Senior organization placed high enough in every event to win the total points honors. They were hard-pressed by the boys from Kappa Sigma though, beating them out by only 12½ points. The remainder of the field was headed by the Engineers club, followed by Sig Ep, Chi Sigma, Lambda Chi, Sigma Nu, Triangle, Kappa Alpha, PKA, TKE, Jackling Terrace, and the West 10th Independents in that order.

The softball tournament was the most successful of all the summer sports, what with a hot race all the way down to the wire. Kappa Sigma finally came out on top, but they had their troubles with the Engineers Club and the Junior-Seniors before they copped the lead. The Engineers and Junior-Seniors were tied for second place, with the rest of the field made up of Sig Ep, Chi Sigma, Triangle, Lambda Chi, Kappa Alpha, PKA, and Sigma Nu. The team from Kappa Sigma had a very impressive final record, showing eight wins against one loss. None of their games were runaways, however. On numerous occasions they were forced to come from behind and win by one or two runs. The Engineers and Junior-Seniors both ended up with records of seven wins and two losses. After Kappa Sigma's triumph in the softball tournament, it looked as if the 700 intramural points they picked up there would be enough to put them out ahead at the end of the season.

The softball tournament soon gave way to the tennis courts, as the team representing the Junior-Senior organization came through with all the glory. However, the race was still in doubt, as Kappa Sigma had placed second to the Junior-Seniors. There was possibly less interest in the tennis play than in any other one of the summer intramurals, but the matches nevertheless were full of thrills and upsets. Roth and Menzel from the Junior-Seniors showed very good form in defeating all comers. The rest of the field was Sig Ep, TKE, Engineers Club, West 10th Independents, Kappa Alpha, Chi Sigma, Lambda Chi, PKA, and Sigma Nu.

Moving away from the tennis courts, the action then shifted for a short time to the golf course, but not for long, as the tournament was rained out, and scheduled for a later date in the summer.

Swimming then copped the spotlight, as Chi Sigma, after a poor start, swept the remaining events to take the swimming crown. At the first of the tournament, it looked as if Lambda Chi might have had the edge on the rest of the comers, but Chi Sigma, and then Sigma Nu passed them up. The final results were Chi Sigma, Sigma Nu, Lambda Chi, Kappa Sigma, Engineers Club, Junior-Seniors, and Sig Ep. Schmidt (Lambda Chi) took the 90-yard free style, Milburn (Engineers) walked away with the diving honors, Chi Sigma raced to a win in the 90 yard medley relay, Fleher (Sigma Nu) took the 90 yard individual medley, and Sigma Nu took the 120 yard free style relay. Chi Sigma picked up 400 points for their efforts in the swimming tournament.

Finally, the golfers had a chance to show their stuff, as they picked a fine sunny day on which to hold their contest. When the long afternoon was over the winner(s) were PKA and the Junior-Seniors. The issue was in

doubt until the two golfers for Lambda Chi came in with cards showing they had beaten out the Kappa Sigs. The two leaders were followed by the Engineers, Jackling Terrace, Sig Ep, Lambda Chi, Kappa Sigma, Kappa Alpha, Triangle, TKE (one man), and Sigma Nu (one man). The low score for the day was shot by Bob Morlock of TKE, who came in with a 78 gross. Bock and Ruenbeck of PKA, with respective scores of 79 and 85, finished with a total gross of 164, as did Collier and Ryan of the Junior-Seniors, with respective scores of 84 and 80.

Thus ended what was in some opinions the best intramural summer program that MSM has ever seen. Although none of the teams entered in any of the events were of regular semester caliber, it can be said that a good time was had by all, and that everyone hopes that the following summer intramural programs will be as successful.

Summer Intramural Sports Resume

Intramural softball results:

Organization	Won	Lost	Pts.
Kappa Sigma	8	1	700
Eng. Club	7	2	600
Jun.Sr.	7	2	600
Sig Ep	6	3	500
Chi Sigma	5	4	550
Triangle	5	4	500
Lambda Chi	3	6	450
Kappa Alpha	2	7	325
PKA	1	8	287½
Sigma Nu	1	8	287½

Intramural golf results:

Organization	Score
PKA	164
Junior-Seniors	164
Engineers Club	168
Jackling Terrace	168
Sig Ep	171
Lambda Chi	178
Kappa Sigma	184
Chi Sigma	184
Kappa Alpha	191
Triangle	202

TKP (one man)

Sigma Nu (one man)

Intramural swimming:

90-yard Free Style

- Schmidt (Lambda Chi)
- Dickson (Chi Sigma)
- Mann (Sigma Nu)

Time: 1:11.6.

60-yard Free Style

- Toomey (Chi Sigma)
- Reilly (Lambda Chi)
- Kennedy (Sigma Nu)

120-yard Free Style Relay

- Sigma Nu
- Chi Sigma
- Lambda Chi

60-yard Breast Stroke

- Fleher (Sigma Nu)
- Moline (Lambda Chi)
- Kaller (Kappa Sig)

60-yard Breast Stroke

- Williams (Chi Sigma)
- Denboer (Engineers)
- Fleher (Sigma Nu)

Diving

- Milburn (Engineers)
- McGowan (Kappa Sigma)
- Gregory (Chi Sigma)

90-yard Medley Relay

- Chi Sigma
- Lambda Chi
- Sigma Nu

90-yard Individual Medley

- Fleher (Sigma Nu)
- Tothill (Jr.-Sr.)
- McGowan (Kappa Sigma)

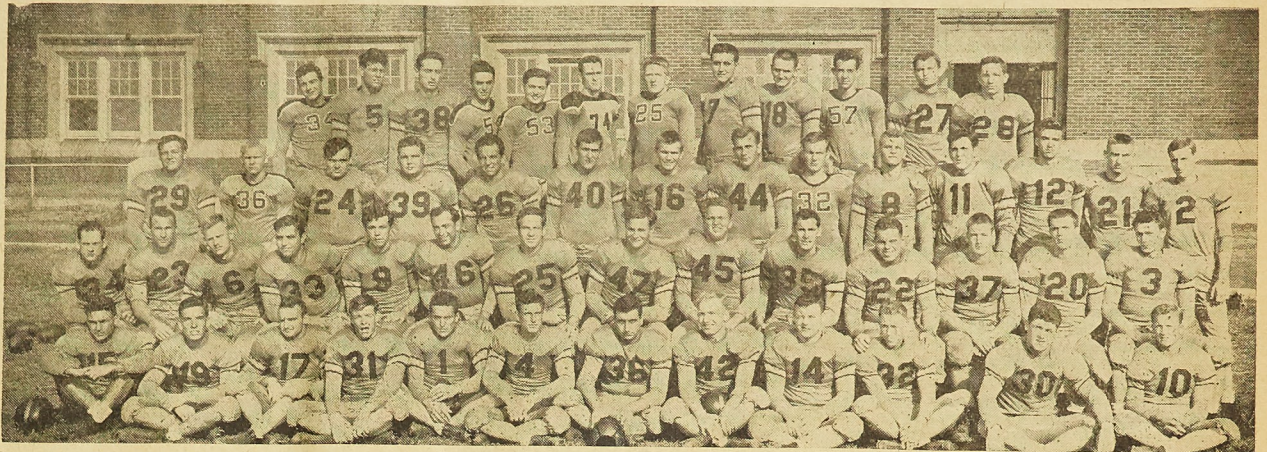
Final Tennis Points

Chi Sigma	400
Sigma Nu	350
Lambda Chi	325
Kappa Sigma	300
Engineers Club	275
Junior-Seniors	250
Sig Ep	225

Intramural tennis results:

Organization	Points
Junior-Seniors	300
Kappa Sigma	275
Sig Ep	250
TKP	225
Engineers Club	187
West 10th Ind.	187
Kappa Alpha	150
Chi Sigma	150
Lambda Chi	150
PKA	90
Sigma Nu	90

Miners Open With Memphis State Here



First Row: Hoehn, Blank, Roerman, Coolbaugh, Meyer, Williams, Gammon, Schmidt, Wilson, Hession, Beverage, Dougherty. Second Row: Kemper, Whitney, Kwadas, Pelska, Matson, Duke, Bock, Eckert, Svejkosky, Dowling, Chew, Wohler, Tschannen, Reichelt. Third Row: Steele, Unidentified, Heitman, Harter, Rausch, Huffman, Henson. Fourth Row: Unidentified, Cox, Sexton, Unidentified, Dempsey, Warner, Unidentified, Shourd, Teas, Maurer, Kennedy, Theiss.

Missouri School of Mines 1948 Football Schedule

Sept. 18	Memphis State College	Here
Sept. 25	Washington University	There
Oct. 2	Shurtleff College	Here
Oct. 8	*Warrensburg	There
Oct. 16	*Maryville (Parents Day)	Here
Oct. 30	*Springfield (Homecoming)	Here
Nov. 5	*Cape Girardeau	There
Nov. 13	*Kirksville	Here
Nov. 20	St. Louis University	There
	*MIAA Conference Games	

FALL INTRAMURALS OPEN SEPTEMBER 27TH

With the forth coming intramural manager's meeting tonight, intramural competition will soon be under way. The outlook for this season of '48-'49 is inspiring and the "Battle of the Fraternities" will be something to watch. From the grapevine we find every fraternity boasting as to their own strength and abilities.

Intramural Football will open on September 27. Sigma Nu will again be out to defend their championship against such strong teams as the Kappa Sigs, Theta Kaps, and Pi K A's. The Triangle's, and Lambda Chi's are hinting at undetermined power, but we have yet to see them produce a strong team which will hold to the end.

At the same time Intramural Table Tennis will open. We haven't heard any comments on who's who in this field, but hope to dig up something for you by the next issue.

Coch Haeffl urges all Fraternities and Independent organizations to send representatives

1947 RESULTS	
Miners 0, St. Louis Univer.	61
Miners 0, Memphis 13	
Miners 12, Maryville 13	
Miners 14, Warrensburg 7	
Miners 25, Kirksville 6	
Miners 7, Springfield 14	
Miners 47, Cape Girardeau 19	
Won 4, Lost 3, Pct. .571	

Freshman Football

All Freshmen and transfer students interested in playing football, please report to Bill Speece or Ralph Stallman at the athletic office, Monday, Sept. 20.

to the Intramural Managers meeting tonight. In the past decisions have been made without full representation by all organizations. There are several important changes to be made on the whole intramural set-up and it is important that each and everyone concerned be on hand to voice an opinion.

Changes to be made in intramural rules will be published in a near issue of the Miner.

MINERS

1948 ROSTER

NO.	NAME	POS.	AGE	WT.	HT.	HOME	YEAR
26	Allen, Tom	E	17	140	5'10"	Rolla, Mo.	2
26	Anderson, David	G	23	185	5'11"	Downey, Calif.	2
30	Beverage, Leland	T	17	205	6'1"	Belleville, Ill.	1
19	Blackie, Dudley	C	22	185	5'11"	Rochester, Minn.	2
25	Bock, George	G	22	195	5'10"	Perryville, Mo.	3
22	Chew, Bill	G	24	200	5'11"	Godfrey, Ill.	4
31	Coolbaugh, Bill	C	22	173	6"	Edwardsville, Ill.	2
24	Davis, Robert	C	22	182	6'3"	Weatherford, Tex.	2
10	Dougherty, Ed	T	20	205	5'11"	Greenville, Ohio	2
35	Dowling, Don	G	23	175	5'9"	Kansas City, Kan.	3
16	Duerr, Sid	H	19	178	6'2"	St. Louis, Mo.	2
46	Duke, Calvin	E	21	175	6'1"	Webster Groves, Mo.	2
47	Eckert, Fred	E	22	190	6"	Belleville, Ill.	3
36	Gammon, Bill	E	25	194	5'10"	St. Louis, Mo.	4
11	Harter, Ray	T	18	215	6'2"	St. Louis, Mo.	2
32	Hession, Vincent	H	18	175	6"	Roselle, N. J.	2
2	Henson, Jerry	H	22	158	5'10"	Hackettstown, N.J.	2
15	Hoehn, Earl	H	18	155	5'11"	Alton, Ill.	2
21	Huffman, Gene	H	20	170	5'11"	Perryville, Mo.	4
43	Jorcke, Oliver	T	23	200	5'10"	St. Louis, Mo.	3
34	Kemper, Bob	QB	24	170	5'11"	Johnston City, Ill.	4
27	Kennedy, Gene	E	20	181	6'1"	St. Louis, Mo.	3
44	Kimball, Chas.	E	23	186	6'1"	Texarkana, Tex.	2
6	Kraus, Karl	FB	23	175	5'8"	St. Louis, Mo.	2
6	Kwadas, Ed	HB	21	165	5'10"	Landover Hills, Md.	2
1	Lodwick, L.	C	21	185	6"	Benld, Ill.	2
13	Matson, Don	HB	19	162	5'11"	Columbiana, Ohio	2
19	McGowan, Monte	HB	23	193	5'11"	St. Louis, Mo.	2
40	McGrath, Jim	FB	24	195	6'1"	St. Louis, Mo.	4
1	Meyer, Harlan	C	25	177	6'1"	St. Louis, Mo.	4
7	Moscar, John	G	23	165	5'9"	Rahway, N. J.	2
4	Murphy, Tom	T	20	181	6"	St. Louis, Mo.	2
33	Pennotti, Victor	H	22	160	5'9"	Paterson, N. J.	2
33	Pelska, Al	G	25	212	5'10"	Marceline, Mo.	2
12	Rausch, M. K.	E	21	185	6'2"	St. Louis, Mo.	4
3	Reichelt, Bob	QB	24	165	5'10"	Monett, Mo.	2
17	Roerman, Richard	G	21	185	5'8"	St. Louis, Mo.	4
42	Schmidt, Art	QB	20	168	5'11"	Webster Groves, Mo.	4
38	Sexton, Ed	E	22	184	6'1"	St. Louis, Mo.	2
7	Shourd, Roy	T	22	205	6'3"	E. St. Louis, Ill.	3
29	Svejkosky, Al	T	23	225	5'11"	Springfield, Mo.	4
45	Teas, Bill	T	19	210	6'1"	St. Louis, Mo.	2
28	Theiss, Jack	G	19	194	6'1"	Freepport, L. I.	4
20	Tschannen, Jim	HB	20	179	6"	St. Louis, Mo.	2
39	Weinel, Bob	T	21	210	5'10"	Webster Groves, Mo.	2
23	Whitney, Dick	H	23	170	5'11"	Roodhouse, Ill.	3
4	Williams, Alden	QB	22	150	5'10"	St. Louis, Mo.	2
14	Wilson, Jerry	G	19	195	5'10"	Crane, Mo.	2
37	Wohler, Bill	HB	19	170	5'11"	Alton, Ill.	2

Prospects Good For '48 Season; MIAA Championship in Sight Again

SCHOOLS IN MIAA

Conference

Southwest Missouri	Teacher's College at Springfield.
Northwest Missouri	Teacher's College at Maryville.
Southeast Missouri	Teacher's College at Cape Girardeau.
Northeast Missouri	Teacher's College at Kirksville.
Central Missouri	Teacher's College at Warrensburg.

FOR FRESHMEN ONLY

General Information:

Colors: Silver and Gold.

Name of Athletic Teams: "Miners."

Football Facilities: Games played at Jackling Field, seating 5,000.

Co-Captains: Jim McGrath and Bob Kemper.

Member of Missouri Intercollegiate Athletic Association.

Football Coaching Staff

Head Coach: Gale Bullman

Assistant Coach: Dwight Haffel

Assistant Coach: Chester Barnard

Freshman Coach: William Speece

Trainer and Equipment Manager: Al Wilkins.

Administrative Staff

Sports Publicity Director: Jerry Berry.

By Tom Whits

It will be T-formation deception against single wingback power tomorrow afternoon when the Tigers of Memphis State try their claws on tough Miner hides. Rated as the best team ever to come to Rolla, the Memphis group brings an impressive array of former high school All-Stars, now playing their second year of college football with the team. The Memphians are coached by Ralph Hatley, former tackle and captain of the University of Tennessee team. They are expected to employ the Tennessee system of play, with minor variations.

With over forty men from last year's squad returning, it is certain that the Memphians will place a veteran team on the field. And it may be remembered that last year this same team outtrushed the Miners 225 yards to -24 yards in inflicting a 13-0 defeat on the Rolla team. Last year, however, the game was played in a steady rain and on ground that more resembled a swamp than a football field, thus nullifying all advantages of the Miner's T-formation style of play.

In the line the two teams are about in equal in weight, but in the backfield the southerners are lighter by almost ten pounds a man. The Memphis backfield is particularly noted for its speed. Paul Haynes, at wingback, is the fastest man on the Tiger team and will be dangerous on reverses and lateral passes. Keith White, whom the Miners found particularly slippery last year, will start at the tailback position for the invaders. Miners will also remember Stumpy Kirk, who was the source of much trouble and one touchdown last year. Another man to watch is Ben "Bull" Durham at left end. Bull stands 6 ft. 5 inches and tips the scales at 205 pounds.

In spite of the loss of ten key lettermen of whom were All-Conference last year, the Miner team should improve this year. Twenty-four lettermen and several dozen experienced aspirants reported on the first day of practice. They have had several

Cross Country

All men interested in trying out for the varsity cross country team, report to Charlie Tothill, at the athletic office, Monday, Sept. 20.

In the dark of night two safe-breakers entered a bank. One approached the safe, sat down on the floor, took off his shoes and socks, and started to turn the dial of the safe with his toes. "What's the matter," said his pal, "let's open this thing and get out of here."

Intramural Mgrs.

Meeting at the athletic office in Jackling Gym tonight, Friday Sept. 20, at 7:00 P.M.

weeks of intense training.

At the end position, four lettermen are struggling for starting berths. Bill Teas, Fred Eckert, Sid Duerr, and Gene Kennedy are back from last year's squad. In addition Bill Gammon, out last year because of a service disability, is being moved from halfback to the end position. Al Svejkoski, and Bob Weinle. The guard position looks good with Al Pelska, Bill Chew, Oliver Jorcke, Dick Roerman, Ed Dougherty, and Jack Theiss. Theiss, however, may be out of the Memphis game due to an injury.

Filling All-Conference Ralph Stallman's shoes at center will be big Jack Cox, who gives promise of following Ralph to conference honors. Harlan Meyer, counted on to sub for Jack, is out of action with a broken jaw suffered in the intra-squad game last week. However, Dud Blackie and Bill Coolbaugh are up from the "B" squad and will form adequate reserves for this position.

The backfield is strong with ten lettermen returning, including two All-Conference men. Bob Kemper and Bob Reichelt will man the quarterback position; Jim McGrath and Don Dowling make a formidable team at fullback; while Earl Hoehn, Ed Kwadas, Dick Whitney, Cal Duke, and Monte Cord round off the team at half.

Three new men have looked exceptionally good in practice, and will probably see much action against Memphis. Gene Huffman at halfback, Dave Anderson at guard, and Leland Beverage at tackle are making the "old" hands sweat for their starting positions.

Gale Bullman, chief coach, refused to make any predictions on the 1948 season. He pointed out that although the team will probably be improved over last year, the Miners face their toughest schedule in recent years. All advance reports point to an improved brand of football throughout the conference.

Reports from around Jackling Gym, however, are that the old master has cooked up a new series of tactics designed to bewilder the opposition and give another lesson in football strategy to conference members.

The game tomorrow afternoon will be a crucial test of Miner strength. Memphis State is rated somewhere between Washington U. and St. Louis U. in strength. Fans may expect a fast, free scoring ball game with all the tricks in the book.

The starting lineup for the Miners will be in doubt until the minute. Alternate starting members have been picked for many positions, depending upon whether we kick off or receive. Probable lineups follow below.

M. S. M.	Memphis
Teas	L. E. Durham
Steele	L. T. Settles
Anderson	L. G. W. George
Cox	C. Poag
Roerman	R. G. Cain
Shourd	R. T. Regina
Kennedy	R. E. Cromer
Kemper	Q. B. Coles
Kwadas	L. H. White
Hoehn	R. H. Haynes
McGrath	F. B. Scott

A Short History of the MISSOURI MINER

On Friday, January 28, 1915, the first issue of the Miner appeared on the campus, or rather on the street of Rolla, as G. E. Johnson peddled them out to the students with the paper in one hand and "fifty cents, please" in the other. From that time on the paper experienced a rapid growth. Practically every student subscribed, and the alumni were also very desirous of obtaining the paper, (writer's comment: "Times have changed") as was shown by the first business manager. Assured of future success the 1915 Miner board composed of Messrs. Grotts, Johnson and Head elected the 1916 staff. By October 1915 the Miner had grown to a regular eight page edition, eliminating the original four page edition, and was enjoying the good will of students, faculty and alumni (?) alike.

By 1919 the Missouri Miner was enjoying a prosperity seldom equalled by college publications in colleges the size of MSM, due to the wonderful support again from the Alumni (?) students and advertisers.

Even through the war years it progressed immensely although some of the main figures were forced to leave school. The early 1920's found the Miner not a eight page edition but increased to that of ten pages.

Two feature events then took the spotlight throughout the publishing year, that of the Anniversary edition (which by the way is lacking today) and as it still is a large feature of this day and age the unforgettable St. Pat's Celebration.

Today we find the Miner at its peak. Covering everything that is possible to be covered and offering to the student body a moments pleasure and entertainment. These things have only been made possible through the undying efforts of those who have passed before us.

Student Council Minutes

Meeting called to order at 7:35 in new infirmary building, Sept. 14, 1948.

The proposed Student Council constitution that was voted on by the students last spring was turned down by the faculty. They pointed out that several sections would be in direct conflict with faculty rules. A constitution committee of Schweder, Frank, Thielkier and Wisdom was appointed.

Schweder, the Kappa Alpha representative, reported on the subject of the replacement of the drinking fountain plaque.

A discussion was held concerning an appropriate memorial for K. Goodenough and the means of obtaining funds.

Koziboski was appointed to the Miner-Rollamo board of control. It was decided to discuss the Student Council's financial condition with the Dean.

The dance date committee reported and is still functioning.

A pep rally was discussed for the football game this Saturday and Schweder mentioned that Fred Springer would have available a pep band and the Student Council would back his efforts. The rally is to be held after the Blue Key smoker at 9:30 and before the free movie at the Uptown at 11 p. m. The Student Council agreed that each organi-

NEW BUILDINGS

(Continued from Page 1)

buff brick and will be of modern design. The contracts, which were let on Jan. 15, 1948, call for an expenditure of \$252,968.

The State appropriated \$270,000 for construction and equipment purposes. The University will ask the Legislature for additional funds to complete the equipping of the building.

Laboratories Building

The Engineering Laboratories Building will be erected on the site now occupied by the old power plant. It is expected that construction will start at the south end of the building and be extended as far north as funds will permit. Being in the center of student traffic, the Laboratories Building will be excellently located and will help to complete the quadrangle. The front side will be two stories high, of brick and concrete construction, with a corridor running lengthwise, and the rear part will have one story and will be of factory-type construction. There will be a corridor running through the building connecting with the walk-on the campus leading from Parker Hall to Harris Hall.

The University hopes to have enough funds to connect the Laboratories Building with Mechanical Hall, to recondition the first floor of that hall, and to attach the north end of Mechanical Hall to the south end of the Mining Laboratory Building, which is the converted warehouse near Jackling Field.

The University plans to house the Mechanical Engineering Department and as much of the Electrical Engineering Department as possible in this new building. When the building is completed according to plan, it will be used for the remaining offices and laboratories of the Electrical Department and will also house the Departments of Geology and Mining. Bids will be let so that construction can be started on this building during the latter part of this year. The State has appropriated \$500,000 for this purpose.

The east part of the Engineering Experiment Station Building is to be remodeled and part of the Department of Metallurgy will use the building for laboratory work. A small extension will be added to the completed structure.

zation would be responsible for some sort of banner for the rally, which would be tossed into the vire at the end of the rally. A committee of Seelig and Mallon was formed to obtain wood. Student Council representatives will keep the rally organized. The suggestion was made that the coach be present at the rally.

It was pointed out, that not enough school songs and popular songs for the pep rally were available. Seelig made a motion to form a committee to promote, do research work for, and publicize school songs. Seconded by Crites and approved. Castelli, chairman, Williams, Crites, Foster and Timlin appointed to this committee.

The radio was suggested as a means of publicizing the coming pep rally. Wundrack asked to contact KTRR.

Meeting adjourned at 8:40.

"Are you a self-made man?" "No, I'm the revised work of a wife, mother-in-law, daughter, and granddaughter."

Engineering Laboratories Building



Pictured above is the Architect's drawing of the proposed Engineering Laboratories Building. The building will extend from the present Mechanical Hall to the site now occupied by the Old Power Plants Building. Construction on the new building, which is to be built in parts, is expected to begin soon.

OFF THE CAMPUS

(Continued from Page 2)

Club; 21 per cent belong to Alpha Chi Sigma; 18 per cent are members of honor and service fraternities; approximately 20 per cent belong to technical societies; and over 80 per cent of the Sigma Pi members participate in intramural sports program.

The actives of Sigma Pi welcome Leland Beverage, Joe Bushko, Lauren Choate, Robert Davis, Howard Freshman, Bill Greer, John Gallagher, Charles Kimball, Ward Heitman, Alfred Losco, Henry Sheeley, and Dean Shopper as new pledges.

Harry Funk, Fred Eckert, Bob Isringhaus, and Don Kelly made the nuptial vows this summer, and from all indications more martial knots will be tied in the near future.

Sigma Pi is very happy to report that Joe Coffman is back this semester. Joe was forced to leave school last semester and enter the veterans hospital at Jefferson Barracks.

Lambda Chi
The little Red Playhouse has once again opened its doors for the business of trying to teach a few more bottle-washers, ditch-diggers, and happy little electrons how to pass for engineers.

After dusting off our slide rules and exchanging a few exaggerated stories concerning various summer successes, we look around us to see some conspicuously vacant spaces representing the fellows that we had gotten to know so well, and who have passed into the professional world. You probably remember Gordon Moline (Moe) who has seemed like a permanent fixture on the campus off and on since 1938. Moe went to work for Seagrams Distillery, although he wanted to stay two more weeks to celebrate his tenth anniversary on the campus—we are seriously considering MOLINE DAY.

Dixie Walker is applying his engineering talents in Chicago and is grooming himself for an executive position—he's learning how to play golf. Jim Bowman indicates the possibility of writing a book based on his experience at Ironton, Mo., "How to Become a Successful Engineer in Four Months." Everybody remembers Chris Butterbaugh, who holds some sort of a record in

being a Senior longer than anyone else—he stopped counting after five semesters. Chris is now working for the Frisco. Willie Stoecker, after a summer with Batelle Institute, is planning to pick up a masters degree at Illinois University.

We seriously hope to be able to replace the fine fellows who have graduated this past year with men to take their place in three or four years, and we have every confidence in our new members.

AMERICAN FOUNDRYMEN MEET NEXT WEDNESDAY

The American Foundrymen's Society will hold their first meeting of the semester next Wednesday, September 22, at 7:30 P. M. in the basement of the Experiment Station. Guest speaker for the meeting will be Mr. Walter E. Illig, vice-president of the Banner Iron Works of St. Louis. The topic of discussion will be "Foundry Mechanization and Incentive System as Employed in a Jobbing Foundry."

A door prize of a Cast Metals Handbook will be awarded to the lucky winner. All students are invited to attend.

A housewife picked out six apples and handed them to the grocery clerk. "That'll be 65 cents," he said.

She handed the clerk a dollar and started to walk out. "Wait. You forgot your change."

"That's all right," she said sweetly. "I stepped on a grape on the way in."

ROLLAMO THEATRE

BIG PICTURES—LITTLE PRICES

Rolla, Mo.

Fri.-Sat. Sept. 17-18
Admission—10c and 25c
DOUBLE FEATURE PROGRAM
Sat. Continuous from 1 P. M.



and
Charles Starrett,
Smiley Burnette
TRAIL TO LAREDO

Sun.-Mon. Sept. 19-20
Sun. Continuous from 1 P. M.
Admission—10c and 25c
June Allyson, Peter Lawford
GOOD NEWS

Tues.-Wed. Sept. 21-22
Admission 10c - 25c
Johnny Weissmuller,
Brenda Joyce
TARZAN'S SECRET TREASURE

Thursday Sept. 23
Admission 10c and 25c
I WOULDN'T BE IN YOUR SHOES!
DON CASTLE - ELYSE KROX

SCOVELL'S ROLLAMO SODA SHOP

"Visit the Coal Hole"
Next to Rollamo Theatre

"FOR BETTER VALUES"

CARPS DEPT. STORE

VETERANS—We'll Gladly Cash Your Checks

COME SEE US
at

TRAV - L - ODGE COFFEE SHOP

Highway 66 East
Phone 840

John, formerly of John's Cafe

SCOTT'S TEXTBOOKS & DRAWING SUPPLIES

61 YEARS AT 8TH & PINE

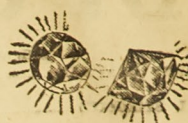
TRY OUR FRIENDLY SERVICE

New & Used Textbooks
Engineering Supplies
Imprinted Stationery
College Jewelry
Imprinted T Shirts

CAMPUS BOOK STORE

Just Across the Campus

New resident: How long must a man live here before he can vote?
Town clerk: What ticket?



Guaranteed
Repairing
by
Expert
Watchmakers

All Work Checked
by Electronic Timer

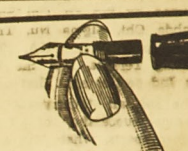
YOUR ACCURATE

TIME HEADQUARTERS

CHRISTOPHER

JEWELER

805 Pine St.



BACK TO SCHOOL

with

Esterbrook

America's favorite

school pen

Complete assortment

of school point styles.

Complete pen \$1.50 and up

Complete Pen \$1.75



TUCKER'S

11th and Pine—Rolla, Mo.—Phone 840

THE RITZ ROLLA

Always
70 Degrees Cool!

WELCOME
MINERS

—On the Screen—
Sun.-Mon.-Tues. / Sept. 19-20-21
Continuous SUN. from 1 P. M.

—FIRST RUN IN ROLLA—

Walt Disney's
"MELODY
TIME"

—In Technicolor—

NEWS and CARTOON

Admission
10-40c
INCL. TAX

STUDENTS WELCOME Capps Clothiers

to
Friendly, Courteous Service
8th Just West of Pine

WAYNE HANCOCK'S

All Popular Brand Liquors

- WINES
- SODA FOUNTAIN
- DRUGS
- COSMETICS

1005 PINE — PHONE 109