



05 Nov 1947

## The Missouri Miner, November 05, 1947

Follow this and additional works at: [https://scholarsmine.mst.edu/missouri\\_miner](https://scholarsmine.mst.edu/missouri_miner)

These newspapers reflect the attitudes, perspectives, and beliefs of different times. Neither the library nor the university endorses the views expressed in these collections, some of which contain images and language which may be offensive to some readers.

---

### Recommended Citation

"The Missouri Miner, November 05, 1947" (1947). *The Missouri Miner Newspaper*. 1277.  
[https://scholarsmine.mst.edu/missouri\\_miner/1277](https://scholarsmine.mst.edu/missouri_miner/1277)

This Newspaper is brought to you for free and open access by Scholars' Mine. It has been accepted for inclusion in The Missouri Miner Newspaper by an authorized administrator of Scholars' Mine. This work is protected by U. S. Copyright Law. Unauthorized use including reproduction for redistribution requires the permission of the copyright holder. For more information, please contact [scholarsmine@mst.edu](mailto:scholarsmine@mst.edu).



Welcome  
Alumni!

# THE MISSOURI MINER

Missouri School of  Mines & Metallurgy

VOLUME 34

ROLLA, MO., WEDNESDAY, NOV. 5, 1947

NUMBER 7

## ANNUAL HOMECOMING DAY SATURDAY

### WHAT WHERE & WHEN

Thursday, November 6  
Alpha Chi Sigma Meeting at 7:30 P. M. in room 8, Chem. Bldg.

Alpha Phi Omega Meeting at 7:30 P. M. in chapter room, old power plant.

Glee Club Practice at 7:00 P. M. in room 104 Norwood Hall.  
American Society of Mechanical Engineers Meeting at 7:30 P. M. in room 103 Old Chem. Bldg.  
Radio Club Meeting at 7:30 P. M. in room 106 Norwood Hall.

Friday, November 7  
Photo Club Meeting at 7:00 P. M. in room 104 Norwood Hall.

Pep Rally at 10:15 P. M. on Hospital Lot—Free Show at Uptown Theatre at 11:30. In case of rain, pep rally will be held in Uptown prior to free show.

Kappa Sigma Dance, Chapter House. Admission by bid only.

Saturday, November 8  
Homecoming Football Game—Miners vs. Cape Girardeau on Jackling Field at 2:15 P. M.

Homecoming Dance—gymnasium—sponsored by St. Pat's Board—9 to 1.

Tau Kappa Epsilon Dance—Pennant Tavern—admission by bid only.

### INDEPENDENTS, MEETING FEATURES CO-OP TALK; CLOCK POSTPONEMENT

A short business meeting was held by the Independents October 27, at 7:00 P. M. in Room 103 Old Chem. Building. One of the features of the meeting was a speech by Henry Bixby, Secretary of the Student Co-Op, outlining the purpose and progress of the Co-Op.

Bixby stated that the purpose of the Co-Op is to provide groceries and meats at prices slightly above wholesale cost to members of the student body, faculty members and employees of MSM. The fact must be stressed that in order to reap the benefit of the reduced prices, membership in the Co-Op is a pre-requisite. Membership can be secured by the purchase of one share of stock, by the ordinary family.

It is anticipated that a saving of about 24% on the monthly cost of food will be realized. Some of the approximate costs of food such as 50 cents per pound for steak sound good to most.

The committee working on the procurement of an electric time clock for the football field reported that a new clock would cost about 1,500 dollars. Since this price makes the acquisition of a new clock out of the question, it was decided that the committee would design a mechanism for the working parts and use a standard clock face. It is expected that the clock will be ready by next football season.

Bob Tarnow was elevated to the position of Sophomore representative on the Student Council and Jerry Shelton was elected as his alternate.

The meeting was adjourned after the members present voted to purchase two shares of stock in the Co-Op as a gesture of confidence in the new business.

### APO MEETING THURSDAY

Alpha Phi Omega, the National Service Fraternity, will meet this Thursday in the chapter room of the old power plant at 7:30 P. M. The meeting will be open and any student who has been associated with scouting is invited to attend. Those scouts who were present at the smoker several weeks ago are especially invited to return. Many plans for the year will be made, along with announcements about the fall pledge program. All active members are also urged to attend.

### Co-op "Over The Hump" With A Small Reserve

#### STOCK STILL FOR SALE TO STUDENTS, STAFF

By George R. Eadie

The Co-op treasurer, Fred Schenck, reports that enough money is now in the treasury to assure the opening of the store and any more cash received from the sale of stock will go into reserve until further action by the Board of Directors. The original goal of \$10,000 was estimated on the assumption that \$5,000 would be needed to equip the store with furnishings, but Mr. Klug, the store manager, has been able to cut this expense to \$4,000 and consequently reduce the capital needed to \$9,000. Since there has been more than this amount received from the sale of stock, the opening of the store tentatively set as November 15th, depends only on the amount of cooperation given in the form of tools and "carpenters" from the existing stockholders.

Stock, which may be purchased by any student, will not have to be turned in upon the graduation of the stockholder. Your share of stock represents an investment in a sound organization and should be treated as such.

It was decided at the last meeting of the Board of Directors that any employee of the school is eligible to buy stock. "Employee" refers to any person on the School of Mines payroll. The subscription blanks for the purchase of stock are on a table in Parker Hall to the right of the steps going up to the library. If your stock is bought with a check then don't expect a receipt since your cancelled check is a good one and postage is saved by not returning the bottom half of your subscription form.

The walk-in meat box is getting the finishing touches put on it this week and although many shelves are constructed there must be more. Anyone having free time from 8 to 5 during the week or on Saturday is requested to come to the store to help with the painting and building which must be completed before one week from today.

The store will be operated on the serve yourself plan with five people permanently employed; manager (Mr. Klug), bookkeeper and part-time cashier, full time cashier, butcher, and a stock clerk.

The Co-op is over the hump financially and no more money is needed, but the present stockholders are doing you the great service of letting you buy stock at \$12.50 so you can get in on the ground floor even though you didn't want to "risk" your money when the business was being formed. Plans are now under way to increase the price per share of stock so you had better buy now at \$12.50, unless, of course, you don't want about a 20% savings on your food bill.

### PLAYERS NEED MEN

With production beginning this week, the M.S.M. Players are making an urgent call for stage hands. A great deal of work in the departments of makeup, costumes, scenery, and properties has to be done, and at the present time the players are short handed in those branches. Anyone interested in any of these phases of college dramatics is urged to attend the regular meeting of the M.S.M. Players this Wednesday evening at 7:00 P. M. in room 102 Rolla Building.

FOR SALE—Collapsible weather-resistant drill cloth baby carriage. Single action foot brake. \$12.00. F. A. Bayer, MSM Apts. Q2.

### CERAMIC BANSHEES WAIL AS GHOULS HAVE HELL NIGHT HIGH-JINX

It was a wet and dreary night, a perfect night for murder. Death took a holiday, however, because all the spirits good and true were too busy drinking cider and eating hot dogs.

Yes, the ceramic department's Halloween party was definitely a success. There must have been a few demented spirits present, because on several occasions during the evening, long soulful wails were heard drifting in from an open window. It is strong and perhaps interesting to note, that at these times Spook McClelland and Brush Mush Bixby were absent from the party. Dancing was possible through the artful renderings of Tex Benek's orchestra who was present through the courtesy of the McClelland Theatrical Agency. (Entertainment for ALL occasions—we specialize in stag parties.)

Lee Michael showed much promise for becoming a prof. in the ceramic department. His lecture on the determination of Shrdlu Egypt Absolute to calculate the age of Nero in Roman numerals, using pyramidal units, was quite interesting.

A unique kiln was designed to boil the hot dogs. It consisted of two Fischer burners surrounded with refractory brick. The cider was delicious (hic). At least Michael thought so. He didn't leave the cider jugs for one second. Dr. Herold was presented a gift of the largest onion I have ever seen. It seems he can't eat hot dogs without them. Other constituents for stomach ulcers were provided in the form of apples, cake, and sweet rolls.

### MUSIC CLUB TO GIVE H. M. S. PINAFORE

Featured at the Music Club's coming Sunday evening meeting (November 9th), is an all Gilbert and Sullivan program. The ever-popular H. M. S. Pinafore will be given in complete performance, and many of the most delightful and best loved songs, culled from all the operettas, will be included. A cordial invitation to attend the meeting, is extended to everyone.

Meeting every Sunday at 7:30 p. m. in Norwood Hall, the Music Club offers its patrons good music ranging from Palestrina to Boogie-woogie. Listeners are invited to enter into impromptu discussion of music, and to encourage the club's two genial musicologists, J. C. Forbes of the Drawing Department, and William Lynn of the U. S. Geological Survey, to air their views. Listeners are also invited to suggest the selections to be included on coming programs.

It is planned to devote an evening in the near future to jazz classics, and if sufficient interest is shown to repeat a similar program periodically. Notice of the date of this program will be published in next week's MINER.

Works by Schubert, Sibelius, and Wagner filled the two hour program heard last Sunday night.

### ASME WINS PRAISE FROM NEC SECRETARY GEORGE H. AMBURG

It is possible that some of the students on the campus do not realize the excellence of the ASME program scheduled for past and future meetings. A number of specialists in their field have addressed meetings of the society and others are due at later dates.

Some idea of the opinion of experts in the Engineering Field have of the program may be obtained from a letter received recently by Professor Glenn C. Boyer, of the Mechanical Engineering Dept. The letter comes from George H. Amburg, Secretary of the National Education Committee, who visited the campus recently. Mr. Amburg visited the MSM campus while making an inspection trip to colleges all over the United States. The purpose of the trip was to check the curricula and laboratory facilities for the study of internal combustion engines.

The following quotation is from Mr. Amburg's letter, "Everywhere I go, I am showing the people I talk to the program you have lined up for your ASME meetings. So far I have gathered nothing but 'Oh' and 'Ah' reactions and everyone is unanimous in the opinion that you have done a wonderful job on the program."

The quotation is an indication that considerable effort has been expended to work up a program of interest to the students. It is up to the students to show their appreciation for this effort by coming out for the lectures.

### NEW SUPPLY OF FLU VACCINE AT HOSPITAL

With the close of this week the last of the scheduled influenza shots, arranged through Dean Williams' office and given at the MSM hospital, will be given to the last 400 of the students receiving letters to report this week. Up until last Monday, November 3, 2200 letters had been sent out to the students scheduling these shots with approximately 1450 reporting to the infirmary to receive them. Dean Williams, Dr. Feind, and other school authorities connected with the "flu" campaign are quite gratified with the results so far.

The hospital now has a number of additional supplies of the vaccine on hand to take care of those who may not have been able to receive the inoculation before, and will take care of any student so desiring who will present himself at the hospital at his own opportunity. The school wishes for every student to have these shots.

### MECHANICAL'S BOYER AIDS TRADE HISTORIAN

A recent visitor to the Mechanical Engineering Dept. was Mr. John W. Anderson who is in charge of the publication of "Diesel Progress," a National publication.

Diesel Progress is a national trade publication devoted to improvements in the diesel engineering field, and is the outstanding magazine of the field.

Mr. Anderson was here to secure material for the 50th Anniversary Commemorative issue which will come out next May. While here he spent two days perusing the collection of notes owned by Professor Glenn C. Boyer, of the M. E. Dept., for material to be used in the historical issue.

Professor Boyer's collection of notes includes many of historical importance in the diesel engineering field secured from pioneers in the field.

Gent: I want a pair of pajamas. Clerk: Broadcloth? Gent: Er, Er,—no for myself.

## Registration and Convocation Saturday Morning; Head of Bell Labs To Be Principal Speaker

### ALUMNI EXPECTED IN GREAT NUMBERS FOR 76TH ANNUAL EVENT

HOMECOMING—Once again that time of the year is getting close. People from all over the world are getting ready for that annual trip to their old alma mammy. It is the really big event of the year for both the student and the alumni. Comparisons will be made, memories recalled, just as we, the Miners of today, will do when we take our places in the industry of the world tomorrow.

The big day is going to be a full one as in the past. There will, in all probabilities, be a pep rally Friday night; registration Saturday morning followed by the Convocation in Parker Hall with Dr. Kelly being the principal speaker. The pre-game parade starts at 1:30 and the big football game with the Cape elevens at 2:00. The annual banquet will be given early in the evening and then the climax. Ah, yes—that big Homecoming Ball sponsored by the St. Pat's Board.

Jackling Gymnasium will be dressed up again but good. That Veiled Prophet swingster, Benny Rader, and his eight masters of swing will have those mellow tones flowing freely from 9 to 1. As you all know, Benny is known throughout St. Louis and the surrounding area for really "laying it down" at the recent Veiled Prophet's Ball.

Contrary to all announcements, tickets will be available to all the students, not just the Juniors and Seniors for only \$1.50 stag (poor souls) or drag (um-m-m). However, a large number of tickets have been reserved for the Alumni so, consequently, that leaves only a limited number for the students. These tickets may be purchased from any member of the St. Pat's Board or at the door. Let's hurry and get them now and help make this Ball THE affair of the year.

### GRADUATE INTERVIEWS

January graduates continue to find a full schedule of interviews with representatives of companies employing engineers concerning their future employment. Requests from these representatives for these interviews are coming into Dean Williams' office regularly, and full advantages of these are being taken by many of the grads.

Last Monday and Tuesday, Nov. 3 and 4, interviews were being held by men from the Shell Oil Company. A representative from the Production Division was here to see Miners from the C. E., E. E., Met., and Mining curriculums, as was another Shell man from the Refining Department to interview the E. E.'s, and the Mets.

Today, Wednesday, Nov. 5, the Eagle Picher Lead Company is sending one of their personnel to interview the Chemical Engineering grads, and next Friday, Nov. 14, a representative of the Carnegie Illinois Steel Company has arranged to see the Mechanical, Electrical, Civil, Chemical, Metallurgy, and Ceramic seniors. Also the M. E., E. E., and Mining Dept. members will be interviewed by a man from the Tennessee Coal, Iron, and Railroad company, Monday night, Nov. 10, and all day Tuesday, the 11th.

The Eastman Kodak Company has requested that they be sent applications from which arrangements for interviews will be made from M. E.'s, Chem.s, Civils, and E. E.'s.

### Attention Juniors and Seniors!

If you are one of the three hundred juniors and seniors who did not show up for his ROLLAMO portrait, you may get another appointment by phoning Esquire Photo Studio, 708 Pine St., Phone 535. Cost to the individual is fifty cents, for which he is given four prints, suitable for applications, etc. These pictures must be taken by November 15.

### FRISCO TESTING CHIEF ASME GUEST SPEAKER

Next Thursday, November 6, members and guests of the MSM branch of the American Society of Mechanical Engineers will meet in Room 103 Old Chem. Building. The guest speaker of the evening will be Mr. Max Herzog, Chief Chemical Engineer of the Frisco Railroad system.

Mr. Herzog has charge of the testing of all of the equipment used by the Frisco system. He will speak on the general testing of railroad equipment including wheel, rails and boilers, with special interest on fatigue failures. His lecture will cover the causes of fatigue failure and their elimination, and methods of removing strain by annealing.

Mr. Herzog, in an interview with an MSM Mechanical Engineering student, last week, stated that Mechanical Engineers do not know enough about fatigue failures and do not fully realize its importance.

Mr. Herzog is a graduate of Georgia Tech. and has been with Frisco Railroad since 1920 in the capacity of Chief of the Materials Testing Division.

The meeting will start promptly at 7:30 P. M. and last for one hour. At the end of that time the meeting will be thrown open to a question and answer period and students will be free to leave if they so desire.

All students, especially M. E.'s, are urged to attend the meeting and see how some of the subjects that they are studying are put to use in industry.

### ESPERANTO MEETING

The organizational meeting of the MSM Esperanto Association held Thursday, Oct. 28th, Room 104, Norwood Hall, was received with unexpected fervor by the students. The large group in attendance at the first meeting showed an intense interest in better understanding among the people of the world, and are willing to do something about it.

Mr. John M. Brewer gave a most informative and interesting discourse on the fundamentals, usefulness, and purpose of the language after which he answered the many questions asked him by the students. The name chosen for the organization was MQSA-AMO, after which a proposed Constitution was presented and ratified unanimously. An election of officers followed resulting in the appointment of: Mr. John M. Brewer, Sponsor; Floyd Hoffman, President; Harvey Spindle, Vice-President; Edward Stark, Treasurer; Daniel Rodriguez, Charles Neal, Gerald Wilson, Associate Directors. All the Esperanto dictionaries and lesson books available were quickly purchased. A new shipment is forthcoming.

Weekly meetings are to be held in Room 104, Norwood Hall, Tuesday evenings at 7:00 p. m. Meetings will be of short duration, 30 to 40 minutes each, but seething with activity.

### BANQUET FOR ALUMNI THAT EVENING; DANCE AT JACKLING GYM

Climaxing a year of activity and preparation on the part of MSM Alumni Association, one of the largest Homecoming celebrations in the 76-year history of the Missouri School of Mines will be held Saturday, November 8th. Although the date for the event has been designated as Saturday, actual operations will begin Friday when the Board of Directors of the Alumni Association will meet with the MSM Department Chairmen to discuss plans for the improvement of the school and to conduct the regular business of the Alumni Association.

Registration for all visiting alumni will commence at 8:00 a. m. in the lobby of Parker Hall and will continue throughout the morning. Although exact figures are not yet available on the number of alumni who are planning to attend Homecoming, a large attendance is expected.

#### Convocation

At 10:30 a. m., a Convocation service will be held in Parker Hall Auditorium to which all seniors are invited. Mr. Karl Haselman, President of the MSM Alumni Association will preside and will present his President's report. Brief welcoming addresses will be made by Dr. Frederick A. Middlebush, President of the University of Missouri, and by Dean Curtis L. Wilson. Mr. Howard M. Katz, Treasurer of the Association will present a financial report.

#### Principal Speaker

The principal speaker of the morning will be Dr. Mervin J. Kelly, Executive Vice-President and Director of Research of Bell Laboratories, Inc., who will speak on the subject, "Science Technology and the Good Engineer." Dr. Kelly, a graduate of MSM in 1914, has long been outstanding in the engineering profession as a physicist. In addition to the degree he holds from MSM, he received an MS at the University of Kentucky, an honorary Dr. of Engr. from the University of Chicago, and a Ph. D. from the University of Missouri. While at MSM Dr. Kelly was a member of Sigma Nu Fraternity, Tau Beta Pi, and Sigma Xi. Before attaining his present position with Bell Laboratories, he was Research Physicist for Western Electric and Director of Vacuum Tube Development for Bell Laboratories.

In addition to the speakers at the convocation service, awards of life membership in the Alumni Association will be made to non-members who have been of special assistance to the Alumni Association and the school. Citations of Merit will also be given to members of the Alumni Association who have been of special service to the Association.

During the afternoon there will be class reunions for the classes ending in '2 to '7. Most of the social fraternities have planned luncheons and additional entertainment for their alumni which should consume the time until 2:15 p. m. when the Miners meet Cape Girardeau on the gridiron at Jackling Field.

At 6:30 p. m. the Association will present a Homecoming Dinner at the College Inn of Hotel Edwin Long. Mr. Harry S. Pence, MSM '25, has been designated as Toastmaster for the dinner and will introduce the various speakers, Alumni Association officers and section chairmen.



## THE MISSOURI MINER

THE MISSOURI MINER is the official publication of the students of the Missouri School of Mines and Metallurgy. It is published at Rolla, Mo., every Tuesday during the school year. Entered as second class matter February 8, 1945 at the Post Office at Rolla, Mo., under the Act of March 3, 1879.

Subscription Price 75¢ per semester. Single copy 5¢ (Featuring Activities of Students and Faculty of M. S. M.)



## Senior Board

MIKE DELANY	707 State St.	Phone 449	EDITOR IN CHIEF
ED AUBUCHON	712 W. 11th St.	Phone 653-W	MANAGING EDITOR
TOM WIRFS	401 E. 7th St.	Phone 1090	SPORTS EDITOR
JAMES B. CHANEY	1007 N. Main St.	Phone 185	BUSINESS MANAGER
IVOR POUNDS	1007 N. Main St.	Phone 185	ADVERTISING MANAGER
FRED SPRINGER	1311 State St.	Phone 13	EXCHANGE EDITOR
JACK MCCARTHY	1608 Cedar St.	Phone 1141-R	FEATURE EDITOR
R. J. JUERGENS	708 W. 12th St.	Phone 659-J	SECRETARY

## Staff Members

**NEWS STAFF**  
Odis McCallister, Ralph Padfield, Joe Hepp, Bob Rock, Bill Main, Gordon Raymer, Bill Murney, A. Prosky, R. Starkweather, Harry Funk, Bill Bennett, Bill Downey.

**Editorial Board**  
Frank Weber, Larry Casey, Joe Strubert, Charles Boschert, Gordon Young, Bob Buel.

**Photographers**  
Jack Rother—302 Rolla St., Phone 329-R  
Bob Niewoehner—800 Olive St., Phone 993 or 136

## Business and Advertising Staff

Vogenthaler, Cady, Hoelscher, Fleher, Frank, Mann, Sullivan, Fisher, Bachman.

## Reporters

Deeken, Greco, Damph, Rafalowski, Aldag, Chapman, Dunn, Isbell, Gould, Ransom, Mace, Wisch, Graser, Herder, Deghues, Dowling, Webster, Born, Becker, Cardett, Bossert, Spackler, Jenkins, Cowan, Suren, Meiners, Warner, Fitzgibbon, Reiss, Reed, Peppers, Florita, McCombs, Sarazin, Brooks, Green, Steeglit, Bach, Braver.

## Member

Associated Collegiate Press  
Distributor of  
Collegiate Digest

Represented for National Advertising by—  
National Advertising Service, Inc.  
College Publishers Representative  
420 Madison Av., New York, N. Y.

## Many Errors, But No Comedy

Disagreements of fans and players with the decisions of officials is an everyday occurrence in any type of sports event. On most occasions the disagreement stems from the excitement of the moment and is forgotten soon afterward. However, partisan tactics and plain stupidity on the part of officials can also be found and, for no apparent reason, must be tolerated.

Last Friday night, at the Springfield-MSM game played in Springfield, there was staged the most disgusting and non-partisan exhibition of officiating by supposedly capable and non-partisan officials that was ever witnessed by Rolla fans. The game was the most important in the MIAA to date, and could very easily be the deciding game in the league play. Officials for the game were: Roy Robertson (McPherson), Head Linesman; Ted O'Sullivan (Missouri), Referee; and Lawrence Ely (Nebraska), Umpire. To say that the officials turned in a capable job would be an insult to the intelligence of any of the spectators.

The most objectional of the trio was Mr. Robertson. In the MIAA a list of the officials for conference games is sent to the coaches of conference schools, who have the right to reject any man they deem unfavorable. Robertson's name never appeared on the list, and the only information on this man that Coach Bullman had was of the school that he attended. Information was never offered by SMS officials that he was a resident of Springfield.

Mr. Robertson displayed an amazing ability as Head Linesman—he was able to maintain a careful watch on both lines and at the same time detect various faults in the Miner backfield, even to the very technical point of how a Miner blocking back held his arms in relation to his body. It was not too surprising that these "faults" were almost exclusively confined to the Miner backfield, and were discovered at times when the Miners were moving towards the Springfield goal-line.

The biggest single blow to Miner hopes came near the end of the first quarter, when a Springfield try for point after touchdown was declared good by Referee Ted O'Sullivan. The decision was contrary to the opinion of every Miner player on the field, every spectator in the vicinity, and to at least one member of the Springfield team. As the kick went above and to the left of the goalposts, the Springfield place-kicker himself made visible motion of disgust at an unsuccessful kick. We sincerely hope that this was just a case of poor perspective or waning eye-sight on the part of Mr. O'Sullivan, since he is one of the accepted MIAA referees.

Mr. Ely was not to be excluded from the comedy of "errors." For the first three quarters, Jim McGrath, Miner fullback, wore an uncovered shingard taped on at the top and bottom, protecting an injured leg. It was not until this point in the game, with Springfield at the Miner goal line, that Ely noticed this violation and ordered McGrath out of the game over the vigorous protests of Coach Gale Bullman. The action, taken at that particular moment, could very easily have been damaging to the Miner defense. Such sudden enforcement of the rules was surprising since the condition had existed for the greater part of the game.

Again in the third quarter, Mr. Robertson delighted the hometown crowd with his vigorous manipulation of the line chain as he prepared to measure the Miners' try for a first down deep in Springfield territory. Mr. O'Sullivan, not to be outdone, cooperated to the fullest extent in placing the ball out of range of a Miner first down. After these various delicate maneuvers, the measurement showed the ball to be inches short of a first down, and Springfield took over. O'Sullivan explained to Captain Neal Wood that the ball-carrier, McGrath, was guilty of crawling.

There were too many instances like these to make this an alibi for a losing team. But why, in such an important game between such evenly matched teams, is such a situation permitted? Why was such an official as Robertson ever approved for the job? His Springfield ties alone would seem sufficient to eliminate him from the game. And finally, why was so little information obtainable before the game by the visiting coach? Unfortunately, it all seems to point to the MIAA Commissioner's office. Much was to be desired in the choice of officials for the game. And the same thing can occur in every MIAA sport in the future if some type of preventive action is not taken. Complete information on all officials should be provided to the coaches. Circumstances indicating any possibility of partiality towards any school should immediately eliminate a man from officiating in a conference game. And above all, these officials must be competent! It would be a sad sight if every school in the conference would square away in their home stadiums with their own hand-picked set of referees. MIAA conference competition is tough enough without bringing in three more men for the home teams!

## Off The Campus

**Sigma Nu**  
"Open House" will be held at the Chapter House, Gamma Xi of Sigma Nu, 1007 Main Street, beginning with an informal party Friday night and continuing until the departure of the last Alumni. The chapter wishes to extend a hearty welcome to all the Alumni and will do its best to make Homecoming its usual success.

Since Sigma Nu Alumni are playing a large part in the preparation and procedure of this homecoming, a large number will undoubtedly be present. Those who have written their intention to attend include the following: Bane Boyd, Iowa State Mutual Life Liability Insurance Company; James G. Miller, Vanadium Alloys Steel Company; Karl F. Haselmann, President of the MSM Alumni Association, and President of the Salt Dome Oil Company; Dr. M. J. Kelly, principal Homecoming Speaker; James L. Head '16, Vice President of the MM Alumni Association, founder and first Editor of THE MISSOURI MINER, first initiate and first President of the MSM Iota Chapter of Theta Tau, Phi Kappa Phi, now a resident engineer with the Anaconda Copper Co.; Robert S. Green, President of the A. P. Green Fire Brick Company, Mexico, Mo.; and Alan J. Hoener, '36, President of the St. Louis Section of the MSM Alumni Association.

## Kappa Alpha

With Homecoming just around the corner, the members of Kappa Alpha are busily engaged in making plans for the welcoming of their alumni. A buffet dinner is planned for Friday evening at the chapter house. Immediately following, a stag get-together has been arranged so that everyone will have a chance to renew old acquaintances and to make new ones.

A banquet for the alumni, their families, and members' dates will be held Saturday at noon. That afternoon most of the chapter guests will attend the football game on Jackling field. Many will probably attend the alumni banquet and dance later in the day. During homecoming week-end, the chapter house will be the headquarters for all chapter alumni activities.

Among the alumni expected, are George Easley, John R. Kenney, George Mellow, M. P. Brazill, William Taggart, and many others.

## Tau Kappa Epsilon

Beta-Eta chapter of Tau Kappa Epsilon has been very busy the past week initiating new members and nominating new pledges. The TEKES, in the secret rites of the initiating ceremonies, took three new members into their organization last week. The TEKES are very proud to announce the entering of Monell Needham, Roland Niederstadt, and Jack West into active membership in the Chapter. These three men passed all tests (some of them in the pouring rain Friday night) with flying colors and are now full-fledged members. Monday night marked a big

step forward for the future of the TEKES with the nomination of the largest class of pledges in the history of the chapter. Thirteen men were nominated to undergo training to become an active undergraduate TEKE. These men were: William Faulkner, Dave Heacock, Jack Babbitt, Robert Martin, Julius Sarzin, George Schmidt, Bill Lundby, Dave Witmer, Robert Meier, Keith Short, Douglas Greer, Ted Daniels, and Ray Romo. All TEKES are rooting for these men and are certain that they will all make the grade.

All members of local TEKE-dom are looking forward to their first annual Homecoming Dance. Charlie Faulkner and his orchestra will furnish the entertainment and the dance has all the earmarks of being a huge social success. Bob Armstrong, social committee chairman, has really gone all out for this shindig. Admission will be by bid only.

## Theta Kappa Phi

During the past weekend, Theta Kap was quest to brothers Ben Gross, Bill Hermann and Bill Henne from the St. Louis Alumni.

Combining business with pleasure, our visitors, who are the newly elected members of the Board of Control, were looking over the house with an eye to our Homecoming and the future. Along this same line many a member is working overtime with their letter writing this weekend, preparing for the gala occasion.

If everything turns our right, we should have many beautiful "dates" from St. Louis and Jeff City. Brother Markway has made arrangements for most of the party-eager gang from our last dance to come and watch "Big Jim" McGrath, Jack Theiss and himself turn on the Miner spirit at the football game.

The alumni of course will be well represented, Brothers Christman, Klorer, Murphy, Gross, Goetman, Hermann, Greco and Henne having already sent notice of their coming, and more are expected.

## Lambda Chi Alpha

Fraternity takes this opportunity to announce the date of its annual whoop-de-doo, the Hahvest Dahnce (as Jackie would say it), which will be the evening of 22, November 1947. Since the house is not as large as the Gymnasium, the Chapter reluctantly limits the attendance to those couples with bids. Next Saturday night, the eighth, a drop-in will be held at Social: The Lambda Chi Alpha the house in honor of the Alumni.

Intramurals: In Ping Pong, Jack Stadelhofer and Roger Knopp took second place in the tournament to garner 250 points toward the Intramural championship. The Lambda Chi touch football squad won its first game, 13 to 6 in the drenching rain of last Friday afternoon. Touchdowns

## DR. BAKER

715 Pine St., Rolla, Mo.  
Phones: Office 560, Res. 620-R

## PINE STREET MARKET

903 PINE ST.

PHONE 77

## WELCOME MINERS

To Our Fountain  
GADDY'S DRUGS  
9TH & PINE  
Drugs & Sundries

## "FOR BETTER VALUES"

CARPS DEPT. STORE

VETERANS—We'll Gladly Cash Your Checks

## The Marriage Ring

Dick and Mary Williams entertained Mary's folks, Mr. and Mrs. Bob Wilson from Breckenridge, Texas. They were guests of honor at a weiner roast held last Thursday night.

Twenty girls were present at a surprise shower given for Iva Balstead last Monday night at home of Jean Penman. Virginia Plummer and Zella Held acted as co-hostesses with Jean. Appropriate games were played and cookies and ice cream was served.

The whole gang of MSM Apartment R gathered on Halloween for a cider and do-nut party in the Garrad and Boeckman abodes. Various games were played.

Fran and Stan Brady held a costume Halloween party at their home Saturday evening. Everyone was buzzing with the goblin and witch spirit.

Gloria and Carroll Smith planned a big fat weeney roast for Halloween, but were rained out. Tough Luck!

Louella Garrod with Vicki and

Glen spent a few days in St. Louis with Louella's aunt.

Marge Bennett, Agnes Van Hoop, Wanda Russell, and Betty Schrafford had a luncheon bridge tother day . . . Lunch was at the Pennant, bridge at Marge Bennett's.

Gloria and George Parmenter are spending "sleepless nights" with their 6 mos. old Topsy. Topsy is painfully losing his first teeth. I guess all puppies go through this stage.

Ginger Smith is keeping quite busy these days telling tiny tots stories at the Public Library every Thursday at 3:45. Usually 60 children attend to hear famous fables. Ginger says she could use some help . . . if you have spare time on Thursday afternoons call her at 279-J.

Marge Bennett's folks, Mr. and Mrs. John Watkins from St. Louis, visited her last weekend.

Agnes Van Hoop has gone home to Alton, Illinois 'til after her baby is born . . . sometime in December.

She: "Did you ever get pinched for going to fast?"  
He: "No, but I've been slapped a few times."

## WHITE WAY BARBER SHOP

CY GRAY, Proprietor  
607 Pine Street

## Hair Cuts of Individuality

EXPERT HAND MASSAGE  
SOFT WATER SHAMPOO

## Mitchell Insurance Agency

Representing

Travelers Insurance Co.

Life — Fire — Auto

Burglary

803 Pine Phone 342

## ESQUIRE PHOTO STUDIO

Ray Grass, Prop.

## Photographer to the Miners

708 Pine

Phone 535

## FAULKNER'S DRUG STORE

## THE REXALL STORE

Stationery, Candy, Fountain Service

## QUALITY CLEANERS

108 East Seventh Street

7 a. m. to 6 p. m. — Saturdays till 8 p. m.

- Dying
- Pressing While You Wait
- Alterations
- Cleaning and Pressing

24 HOUR SERVICE

Phone 946—Free Pick-Up and Delivery

"DON'T TELL ME  
HER GOOD GRADES  
COME FROM READING  
"THE PSYCHOLOGY  
OF  
GETTING GRADES!"



Almost everyone can benefit by reading this helpful little book, which might have been titled: "How to make grades by influencing professors", or "Gold-

bricking your way through College." In ninety pointed pages it tells the student how to get better grades with less work. Price . . . 75¢.

## TYPICAL CHAPTER HEADINGS:

Choosing Professors: Impress the "Profs"; How to avoid being called on for what you don't know; Getting an Unfair Grade Corrected.

BOOKS OF ALL SUBJECTS AND PUBLISHERS  
TEXTBOOKS A SPECIALTY...NEW AND USED



## THE CAMPUS BOOK STORE

—Just Across The Campus—



## Special Lectures Series Continues Next Week

### SUSAN REED TO SING HERE NEXT WEDNESDAY

Miss Susan Reed from South Carolina, only girl among the group of star ballad singers who have lately captured American fancy, will come to MSM on Wednesday, November 12, to sing under auspices of the General Lectures Committee.

Columbia Concerts has booked Miss Reed on a coast to coast recital tour that coincides with the release of her newest album of recordings.

Like Burl Ives, Dyer-Bennett, Tom Scott, John Niles and Josh White, pretty red-haired Susie Reed has helped to popularize the Appalachian mountain songs and bring about their present vogue. She has also gone further afield, and sings sweet lyrics from England, Scotland and Ireland.

Susan—it will be hard to call her Miss Reed even in the formal precincts of the concert hall—brings an enchanting personality and a voice "pure as spring water" to the recital platform. She plays her own accompaniment, alternating on "several instruments, the Irish harp, the zither and the "ever-lovin'."

She is the discovery of Barney Josephson, proprietor of the famous New York night club, Cafe Society, where she has been starred with the public's approval for the past two seasons.

Susan Reed's recent Town Hall recital on Alan Lomax's "People's Songs" series was paid this tribute by a New York Herald-Tribune writer: "Miss Reed enchanted a capacity house by singing in her captivating way a number of English, American and Irish folk songs of familiar kind. Her voice is of the sweetly uncultivated variety that has a delicate charm and is entirely suited to her bemused stage manner. That she can play well so many instruments of accompaniment is a joy, for she makes it possible to hear these songs with separately appropriate backgrounds, and manages her tuning and transfer of instruments with wit and finesse."

The exact hour of Susan Reed's performance is yet to be decided but announcements of the event will be posted within the week.

### "HAMMER THROWERS" IN FULL FLIGHT NOW

The M. S. M. Hammer Throwers model airplane club is zooming into stride with regular Sunday afternoon flight sessions, Friday evening meetings, and vigorous model building.

At the special meeting last Friday evening, election of officers was held. Parnell Shoenky was elected president; Bill Netzeband, vice-president; Larry Spanier, treasurer; and Lyman Van-Buskirk, secretary.

Besides the election of officers, the constitution and by-laws were discussed, re-read, and discussed.

Planes, engines, and control systems were discussed during the bull-session that followed the meeting proper.

Probably the most interesting model on the future flying list is the big radio controlled plane being completed by George Hess.

Model enthusiasts, especially those with engines, are urged to get in touch with any member and find out more details about the club. Memberships are still open.

Regular meetings are held the second Friday of each month. The next one will be November 14.

### WITH APOLOGIES TO THE 23RD PSALM

My Prof is my master; he makes me quake,  
He maketh me work my tail off;  
He leadeth me into mad quizzes,  
He lowerth my grade; he leadeth me in the way of probation for my Dean's sake.

Yea, though I walk through the valley of F's, I will fear no evil; for he is with me; his rod and his shaft they prod me.  
He sneaketh my grades to my parents, they anoint my head with blackjacks; my blood runneth over.

Surely F's will follow me all the days of my life;  
And I will dwell in this Salt Mine forever.

This space reserved for a censored joke.



Susan Reed

### WOLFARTH REPRESENTS MSM AT TAU BETA PI CONVENTION IN N. Y. C.

Ted Wolfarth returned to Rolla early last week after representing the MSM chapter of Tau Beta Pi at the annual Tau Beta Pi National Convention held in the Hotel New Yorker, New York City, on October 9, 10 and 11.

In addition to student representatives of Tau Beta Pi chapters from almost every section of the U. S., a great number of prominent men from all fields of engineering attended as active members and as initiates. Among the group of eminent engineers accepted into the brotherhood of Tau Beta Pi at the Thursday evening initiation were C. E. Wilson, President General Electric Co.; Carl Whitmore, President New York Telephone Co.; H. R. Searing, Vice President Consolidated Edison Co.; K. S. McHugh, Vice President American Telegraph and Telephone Co.; H. S. Osborne, Chief engineer, A T & T J. W. Morden, Manager Western Electric; S. Bracken, President Western Electric; R. M. Burns, Chem director Bell Telephone Lab.

A resolution to incorporate the brotherhood of Tau Beta Pi was adopted at the convention. Application for the corporation will be submitted to the State of Tennessee as soon as possible. Legal unification will enable Tau Beta Pi to receive donations and own property in its name and will also limit the liability of the organization's officers.

Tau Beta Pi adopted a miniature Bent recognition button to be worn on the lapel. Previously, the Bents were swung from the clasps or attached to key chains. Permission was granted at the convention for the erection of a new national office building to be located at Knoxville, Tenn. It will be named Matthews Hall after Tau Beta Pi's Secretary Emeritus R. C. Matthews. Construction of the new building will be financed by the subscription of donations. This method will eliminate assessments on Tau Beta Pi chapters or individual members.

Prospective Tau Beta Pi chapters at Duke University, Bucknell University, and the University of Rochester were accepted by the delegates at the national convention. Prior to the convention, each of these prospective chapters had filed petitions at the national headquarters and sent copies to each active chapter for approval. The attending delegates voted as they had been instructed by the particular chapter they represented.

Tau Beta Pi delegates' abilities were not limited to only business, however. The men discarded their methodical ways and thoroughly enjoyed themselves at a formal dance held at Columbia University on the Friday night of the convention. All delegates were provided with dates for the occasion by the Barnard College for Women.

The University of Texas at Austin will play host to the Tau Beta Pi's when they hold their next national convention next year.

**CARL'S CAFE**  
603 Pine

PLATE LUNCHES	50c
Includes Coffee	
CHOW MEIN	35c
Home Made	20c
CHILI	

—MEAL TICKETS—

### Student Council Minutes

October 28, 1947

The regular meeting of the Student Council was called to order at 7:10 P. M. by President Harvey Leaver with the following members in attendance:

Kappa Sigma—Robert Yockum  
Lambda Chi Alpha—Jack Stadelhofer

Pi Kappa Alpha—Bernard Wagner

Sigma Nu—Harvey Leaver

Sigma Pi—Joe T. Hepp

Theta Kappa Phi—William B. Murney

Sigma Phi Epsilon—William Sheppard

Tau Kappa Epsilon—Robert Shroyer

Alpha Epsilon Pi—Larry Spanier

Independents—Comer C. Haley

Independents—Fred C. Todd

Independents—Don Mathews

Independents—James Kelley

Independents—W. Wundrack

Independents—Leonard Dieckman

Independents—Robert C. Hensen

Independents—Tarnow

Independents—Murphy

Independents—Edward Koziarski

Independents—Robert Kahtz

Bernard Wagner gave report of his Committee on arranging dance dates. It was decided that there should be no more than five dances per week-end which includes Friday and Saturday night; also, that there be no more than three fraternity or three campus organization dances on one week-end. All dance dates are to be published in the Miner as they are scheduled.

Jack Stadelhofer of Lambda Chi Alpha was appointed to handle the scheduling of all dance dates from now on.

All Council members will contact their organizations at noon on Wednesday, October 29th, to see how many from their organization intend going to the Springfield football game Friday, October 31st. They are to leave their report in Dean Williams' office that afternoon so arrangements can be made for seating accommodations.

Robert Shroyer volunteered to see Coach Bullman and Dean Wilson about transportation for cheer leaders to Springfield football game October 31st.

Robert Yockum was appointed to arrange pep rally for the Homecoming football game.

Bill Murney made motion that we buy two books of "Robert's Rules of Orders Revised" for Student Council use. Motion was seconded and approved.

President Leaver appointed Joe Hepp as our parliamentarian to serve for the remainder of the school year.

James Kelley discussed the election of the Rolla-Miner board of control officers including their duties and term of office. It was decided to complete this business at the next regular Student Council meeting.

Don Mathews gave his report of discussion with Dean Williams on the possibility of obtaining a holiday for the student body on Friday, October 31st, so that they may attend the football game at Springfield, Missouri.

Robert Hansen made motion we elect a Student Council member to the Rolla City Council for a period of one school semester at which time he could be reelected or replaced. Motion was seconded and approved unanimously.

Joe Hepp made motion that Jack Stadelhofer be elected by acclamation as our regular Rolla City Council member and that Bill Murney be elected as his alternate. Motion seconded and approved unanimously.

Bernie Wagner made motion the meeting adjourn at 8:30 P. M. Motion seconded and approved.

Secretary-Treasurer Donald J. Mathews,

### THIS MUST STOP!

By Turman

The following letter is said to have been directed by the Dean of an eastern Liberal Arts College to his students.

To All Students:  
It has been brought to the attention of this office that students are dying and refusing to fall over after they are dead. This must stop!

After this date any student found guilty of an infraction of the previously mentioned ruling will be dropped from School immediately, i. e. a sufficient amount of time will be allowed for the student to prove he is not dead, but that he is a victim of an eventful (lost) weekend. Where it can be proven that death came as a direct result of boredom, and this boredom was brought about by a professor or instructor in the employ of this institution, an additional 90 days will be allowed.

The following procedure will be followed in all cases where a violation of the rule is noted. If, after several hours, it is noticed that a student has not moved or changed position, the instructor will investigate. Due to the sensitive nature of the students of this school, and the close resemblance between their natural class attitude and death, the investigation is to be made quietly in order not to disturb the student if he is sleeping. If doubt exists a test should be made. The following is recommended: a glass of beer or any other alcoholic beverage should be extended under the students nose, if this produces no reaction, he may be considered dead. No deviation from the above procedure will be allowed, for the results might be misleading; for example, a member of the opposite sex was substituted in one case and a spasmodic clutch was noted. The instinct was so strongly developed during lifetime that the above noted reflex action occurred. Don't let this fool you!

As soon as death is verified, the student will be sent to the Dean's office immediately, where he will be required to fill out a form describing cause of death, i. e. wine, women and song. If the student is incapable of writing, which is true in many cases, his (X) must be witnessed by two fellow students, both living.

Due to the crowded conditions, no student proven dead will be allowed to remain in school over 90 days.

### KETCHUP

Lil ketchup ina bottle  
Oh how hate chu—I cud throttle  
When shake and jerk and thump  
and spin  
The ketchup coming iut—is staying in.

It has me mad, when see you not  
They shoulda put you in a pot.  
I try again and bottle busted  
Now I gotta use some must'd.

### Baptist Student Union

Three weeks ago fourteen represented M. S. M. at the B. S. U. state convention. Those attending were: Jack Absolm and wife, Larson Wile and wife, Art Edmunds and wife, Jim Hughes, Warren Harter, Jim Powell, Dick Nielsen, Milton Pavalakes, Olive Whitaker, Jim Calhoun, and Vernon Schmidt. Art, the M.S.M. president, presided Saturday afternoon at the convention. Dr. Oscar Johnson and Dr. Leavell were among the speakers.

Some thought the stage curtains were gone when Milton lighted some magnesium powder in the M. S. M. act. . . wonder what the Stephens girls thought of Jack's portrayal of a Stephens deb. . . ask Dick Nielsen what happened to Bonnie when she leaned over the gas tank.

Over thirty-five attended the last B. S. U. meeting. Big things are planned for the next meeting in November.

### NEW MSM TRANSMITTER MAKES FIRST CONTACT

Last Saturday night will be an epic date in the annals of MSM for it is the date that Edward L. Hughes, operating the MSM Radio Club's Transmitter broke through to the outside world. It was the first postwar contact and the ice finally has been broken for an active season of the Radio Club. This first contact was Rock Island, Ill., and Hughes, spreading the gospel of the Radio Club will not know until next term whether he succeeded in bringing another student to MSM.

The theory classes are doing fine according to Prof. Harold Koontz. There is still plenty of time to join the class—so if you're interested in learning enough theory to get a radio amateur's license drop in this Mon. to Room 106 Norwood at 4 PM and pick up the knowledge.

The regular meeting of the Radio Club will take place Thursday (tomorrow night) at 7:30 in Room 106 Norwood. This is in accordance with the rule agreed upon two weeks ago for the club to meet every other Thursday—rain or shine—except for school holidays.

### SIXTY YEARS WITH MEN AND MACHINES

(Book Review)

Mr. Fred H. Colvin, an eminent mechanical engineer, has given the experiences of a long and active life in his autobiography, "60 Years with Men and Machines." In his own words his purpose is "to write a detailed, definitive history of machine tools and their relation to the development of modern mass production in industry." How well he has done this I shall leave the reader to decide.

Among his many activities, perhaps he is best known as the editor of the magazine "Locomotive Engineer", which post he held from 1907-1939. However, in addition to this, he has found time to write and edit many books including such important technical ones as: "American Machinist Handbook", "Aircraft Handbook", "Jigs and Fixtures", "Gages and Their Use in Inspection" and others.

In his long and varied experience with machine tools, Mr. Colvin has seen them develop from simple hand tools to where they are indispensable in the making of machines. This book contains not only factual information, but also details about well-known people with whom he has come in contact, and accounts of his travels in connection with his engineering work. This includes his experiences in World War II. During this time and since, he has served as a consultant to the Navy Bureau of Aeronautics, Washington, D. C.

### STUDENT TAXI

For The Cab With

"RIDING APPEAL"

Phone 750

—24-HOUR SERVICE—

9th & Elm, 1 Block E. of P. O.



### CORSAGES

- Large Selection
- Best Quality
- Expertly Designed

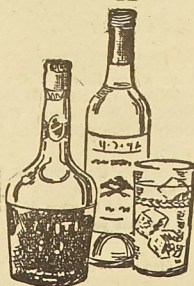
### ED'S FLORIST

1007 Pine Phone 106

### WAYNE HANCOCKS

All Popular Brand Liquors

- Wines
- Soda Fountain
- Drugs
- Cosmetics



1005 Pine Phone 109

## Question Of The Week IS SHE ADEQUATE?

First of all, don't let your date see this. Look it over quickly and then turn the page immediately; wait until she goes to the bathroom, lock her in securely, then return and answer the questions.

Under each heading no more than two answers may be checked. If more than two answers are checked, you are invalid.

Now begin. Pay no attention to screams from the bathroom. The test requires complete concentration.

Name of Date .....

Age .....

Sex—masculine

feminine

yes

Species—homo sapiens

canis

hyacinthus americanus

1. Drinking Habits

When you offer her a drink does she—

a. bark gratefully

b. continue to ignore you

c. pour it on a potted plant

d. gargle

e. gurgle

f. giggle

g. knock it out of your hand

h. drool on the carpet

How do you know when she's drunk?

a. wants to lie down

b. talks with mouth closed

c. shrinks to half size

d. removes outer garments

f. gets hot and cold flashes

g. flashes

Next morning does she—

a. hate herself

b. hate you

c. hate Mrs. Hunt

d. want to go for a bird walk

e. wag her tail feebly

2. Conversational Habits

When talked to she—

a. rolls over on back and want to be tickled

b. walks away

c. pretends to understand

d. replies "You Tarzan-me Jane."

e. bites lip nervously

When not talked to she—

a. tries to attract attention by picking teeth loudly

b. tries not to attract attention by picking teeth quietly

c. raises skirt

d. removes skirt

e. keens

f. chews gum to maintain dignity

She laughs whenever—

a. you open your mouth

b. you close your mouth

c. you sit down to play

d. someone goes to the bathroom

e. she goes to bathroom

3. Sexual Habits

How does she respond to your advances?

a. doesn't know they are advances

b. lectures on sex

c. makes it a lab course

d. wants to go for a bird walk

e. makes sexual noises

f. burns you with a cigarette

When you dance with her she—

a. wiggles

b. wants to ride pick-a-back

c. sings in your ear

d. gives nearest couple the hip

e. gives you dandruff

f. gives you a head start

4. Interests

Athletic

a. likes to trip old ladies

b. likes to spear dead fish

c. falls down continually

d. likes to wrestle impersonally

e. hates effeminate girls

Intellectual

a. thinks Orozco is O. Henry character

b. loves to sublimate impulses

c. discusses art without laughing

d. collects stamps

Economic

a. thinks money is cute

b. thinks money is not cute

Note: With apologies to the author and the Rensselaer Polytechnic, this is being reprinted from the October 9, 1945 issue of the Missouri Miner.

**Uregas**  
(YOUR GAS)

FOR

- COOKING
- WATER HEATING
- REFRIGERATION
- HOME HEATING

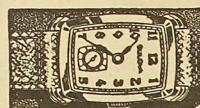
**UREGAS  
SERVICE STORE**

122 W. 8TH

PHONE 826

### Miners

We have the  
largest jewelry  
stock in South  
Central Missouri



Expert Watch Repairing Guaranteed

J. J. FULLER, JEWELER

711 Pine Street

Dealer in Watches

Hamilton — Elgin — Bulova

Gruen — Helbus — Westfield

Also Keep Sake Diamonds

**SCOTT'S**

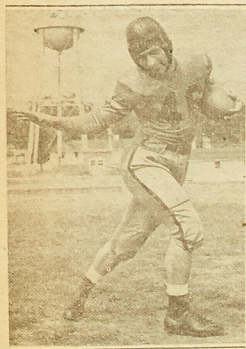
DRUGS  
BOOKS  
MUSIC

JNO. W. SCOTT MSM EX '87  
60 YEARS AT 8TH & PINE



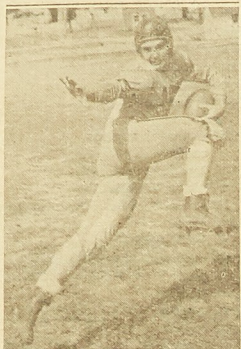
# MEET THE 1947 MINERS

-the SPORTS EYE-  
by CHAPMAN



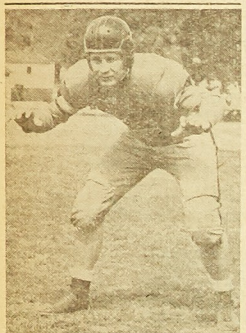
CAL DUKE

Calvin Duke is another returning letterman of the Miner squad. A product of South West High in St. Louis, Cal is a hardworking half-back, gunning for a permanent berth in the backfield. He is a junior in the E. E. department with the intention of being a sales engineer. Cal is a Kappa Sig and a member of the "M" club.



EARL HOEHN

An outstanding "back" on this year's squad, Earl Hoehn has been a major factor in keeping the Miners on the top. Coming to us from Perryville, Mo., Earl is a Chem Engineer with a 1.9 grade point. He is a member of Alpha Chi Sigma, AICHE, and the "M" club.



LEO MARKWAY

Leroy Markway, Miner right end, claims that most of his success on the football field this year has been "luck". Well, it would seem that Gale Bullman will be very contented to have Markway and his luck start at right end as long as the combination is around.

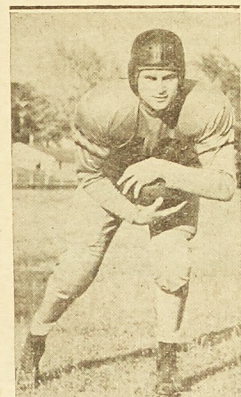
He played his high school football at guard for St. Peter's High in Jefferson City, Missouri, lettering two years. St. Peter's won 13 out of 18 during those two years. From this team there were at least three team mates who went on to play college football. John Deeken and John Crevelt are in the starting backfield at St. Benedict's College in Kansas, and Bob Wortzech played fullback for St. Louis University a year or two back. Leroy came here and lettered at tackle in 1943.

During school hours the Metallurgy Department claims all of Markway's time. He is scheduled to receive his B. S. in Metallurgy in January. He is an active member of both the "M" Club and the Miner Board. The boys are all proud of him down at the Theta Kappa Phi house, his social fraternity, where he has served as Treasurer and house manager. He was also Vice President of the Freshman Class here in 1943.



BILL CHEW

Football is second nature to Bill Chew. Bill had played at Drexel in '41, lettered at Shurtleff last year and is doing well for MSM this year. He comes from Alton, Ill.; is a Junior in the E. E. department.

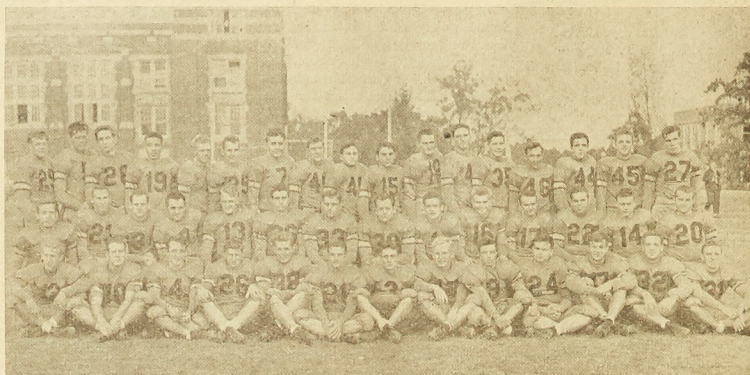


AL SHWARTZ

Al Schwartz gained football experience at Iowa State; came down here to MSM last year and is working hard for the Miners. A senior "Met", he is active on the campus being a member of the "M" Club, ASM, APO, and CVA. Al is well-known for participating in Track here, having won his letter in the shot-put. Al's hometown is New Bedford, Mass.

A generous tipper at a hotel came to breakfast one morning and found a new waiter serving him. "Where's my man Charlie?" he asked. "Charlie ain't servin' you no mo, boss," said the new waiter. "Lase night ah done won you in a crap game."

## MSM'S ENTIRE FOOTBALL SQUAD THIS YEAR

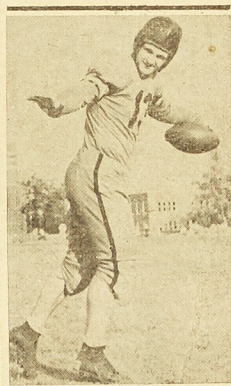


MSM SQUAD ROSTER

Name	Jersey No.	Wt.	Ht.	Age	Pos.	Home
Meyer, Harlan *	1	170	6-1	24	C	St. Louis, Mo.
Reichelt, Bob *	3	155	5-10	23	QB	St. Louis, Mo.
Volz, Robert *	4	170	5-8	22	RG	St. Louis, Mo.
Cox, Jack *	5	182	6-3	21	C	Weatherford, Tex.
Kwadas, Edward J.	6	174	5-11	20	QB	Benld, Ill.
Shourd, Roy *	7	212	6-3	21	LT	East St. Louis, Ill.
Fullop, Paul * Capt.	8	175	5-10	26	LH	Mt. Carmel, Ill.
Pennotti, Vick *	9	158	5-9	21	LH	Paterson, N. J.
Stallman, Ralph *	10	175	5-9	29	C	St. Louis, Mo.
Smith, M. E.	12	168	6-1	20	LE	St. Louis, Mo.
McCord, Monte	13	185	5-11	22	RH	Ziegler, Ill.
Wilson, Gerald	14	194	5-10	18	FB	Crane, Mo.
Hoehn, Earl *	15	168	5-11	22	RH	Perryville, Mo.
Duerr, Sid	16	175	6-1	20	RE	Webster Groves, Mo.
Roerman, Richard	17	185	5-8	20	LG	St. Louis, Mo.
Teas, Wm. C.	18	180	6-2	24	LE	Freeport, L. I.
Jones, Paul	20	210	6-1	22	RT	St. Louis, Mo.
Chew, Bill	22	200	5-11	23	LG	Godfrey, Ill.
Whitney, Dick *	23	165	5-11	22	RH	Roodhouse, Ill.
Davis, Robert	24	205	5-11	19	RT	Greenville, Ohio
Gaureke, R. C. *	25	182	6	26	LG	Rolla, Mo.
Theiss, Jack	28	184	6-1	18	RG	St. Louis, Mo.
Steele, Luther *	29	210	5-11	22	RT	Rolla, Mo.
Woods, Neal * Capt.	30	222	6	25	LT	Christopher, Ill.
Petska, Al *	33	200	5-10	24	RG	Marceline, Mo.
Kemper, Bob *	34	165	5-11	23	QB	Johnson City, Ill.
Dowling, Don	35	172	6-2	18	LH	St. Louis, Mo.
Markway, Leroy H. *	38	195	6-1	23	LE	Jefferson City, Mo.
Weinel, Bob	39	205	5-11	20	G	East St. Louis, Ill.
McGrath, Jim *	40	194	6-1	23	FB	St. Louis, Mo.
Reinhardt, Dave *	41	205	6-4	18	RT	St. Louis, Mo.
Schmidt, Art	42	162	5-11	19	QB	Webster Groves, Mo.
Harter, Ray	44	215	6-2	17	LT	St. Louis, Mo.
Svejkosky, Al	45	200	6-1	18	LG	St. Louis, Mo.
Duke, Calvin	46	165	5-9	24	RH	St. Louis, Mo.
Eckert, Fred	47	188	6	21	LE	Belleville, Ill.
Shwartz, Al	48	190	5-11	23	FB	New Bedford, Mass.

\* Denotes Lettermen

Monte McCord, a Junior Civil Engineer, from Herrin, Ill., is playing his first year of football at MSM. He is married and at present lists his main ambition as "getting out of school." Miners will be happy to know, however, that he will be around to carry the ball again next year.



MONTE MCCORD

## SPRINGFIELD GAME HAS MSM BANDOBTICS

The Missouri School of Mines Band under the direction of Mr. John Scott journeyed to Springfield last weekend to play at the Miner-Springfield football game. The Band went through numerous formations during the half-time period under the leadership of the Drum Major, Cecil Branson. The Band did a double cartwheel formation, and then went to the Miner stands and made a large "M" for the Miners. They then marched to the other side of the stadium and made a large "S" for Springfield.

This is the second time the band has journeyed with the football team, having done so at the St. Louis game last month. It is hoped that next year the band will be able to travel to more of the out of town football games.

## AL LOSCO SUPERVISES BRUISE REPAIR FOR MINER GRIDDERS

By Bill Downey

This is to introduce to the students of M. S. M. the "twelfth man" on their football squad, Al Losco, the trainer. Although never in the spotlight, Al performs his necessary duties with efficiency and dispatch. His headquarters is the training room in Jackling gymnasium which is equipped with a diathermy machine, heat lamps, and rest tables for tired footballers.

During the games Al is at his post on the bench to take care of minor Miner cuts and bruises, while during the week he supervises the repair of the casualties incurred in the previous game. Al's most conspicuous work this season was probably his professional repair job on the rear of Svejkosky's uniform, torn in a most embarrassing spot during the Miner-Warrensburg tussle. Losco is well qualified for his present position by reason of his past experience, having been assistant trainer for two years on a professional football eleven, and a lifeguard for three years in 'Joisey.'

Home sweet home to Al is a place called Paterson, New Jersey. Another person that calls Paterson home is Miss Little Ann Allen, but Al knows more about that, ask him.

The proofreader on a certain small southern newspaper happened to be a woman of great precision and extreme propriety. One day a reporter succeeded in getting into type an item about "Willie Brown, the boy who was burned in the West End by a live wire."

On the following day he found on his desk a frigid note from the proofreader. "Which is the West End of a boy?" It took him only an instant to reply: "The end the son sets on, of course."

The field general of the Miners is Bob Kemper. His on-the-ball strategy and playing should earn him a berth on the All-American Conference team. Bob is married and hails from Johnson City, Ill. He expects to leave us this year, being a senior Civil engineer.



BOB KEMPER

Nurse: Every time I listen to this miner's heart, his blood pressure goes up. What should I do? Doctor: Button your blouse.

Joe: I hear that some of the Profs. here lead a fast life. Dope: I doubt it, none of them passed me last year.

Our idea of a go-getter is one who finds a worm in an apple in the morning and comes in with fish for supper.

## Around The MIAA

With Val H. Stieglitz

The conference race has tumbled into a real free-for-all, what with Springfield's win over the Miners last Friday night. The Miners, who have led the conference from its outset, have been pushed down into second place by the Bears, while the same Bears have taken over the first position. Its just possible that Maryville could slip into second spot, if they win the remainder of their games, and the Miners should lose to Cape Girardeau this week. Kirkville and Warrensburg are fighting it out for fourth place, while of either of them should falter, Cape Girardeau could possibly sneak up from the last spot.

The two leaders, Springfield and the Miners, battled it out in a very hard-fought game Friday night, and Springfield emerged the victor, 14-7. It was a game that could have gone either way, and the opinion seems to be that it was merely a case of one team's getting the breaks. The Bears fielded a far better team than the one that tied Maryville, and unless they are upset by Cape Girardeau or Warrensburg, should walk into the title.

Cape Stops Maryville  
Maryville and Cape Girardeau fought to a 0-0 tie Saturday. Cape has developed into a far better team than they were at the start of the season, and if they play the type of ball which they are capable, they should be able to win the remainder of their games. The Maryville team that they tied Saturday held a decided advantage over them in both weight and depth, but the Cape squad showed some unexpected speed and deception that balked the Maryville team. Maryville seems to be slipping, but it is the writer's opinion that they are only running up against stiffer opposition than they expected this season. They are yet capable of pulling a couple out of the hat, and unless the Miners watch their step Friday, Maryville could very easily step into the second spot.

Warrensburg Upset

Warrensburg, stiff and sore from their defeat at the hands of Missouri Valley the week before, dropped their game Friday to Kirkville, 7-6. It was a well-matched game all the way, and as in the case of Springfield and the Miners, the breaks just happened to go the other way. These two teams, Warrensburg, and Kirkville, are at the present in a dog-eat-dog battle for fourth place. They are about equally balanced, and it would be no surprise to see them end up in a tie for fourth. Kirkville has showed unexpected power this year, having at present a .500 average. No team has beat them without a fight, and the games they won have been well-deserved. Warrensburg has dropped two conference games in a row since their opening win over Cape, but the games they lost have not been easy games for the winners. Both of these teams should hit their prime next season, and they will in all probability be very strong at that time.

In this week's games, I am going to go out on a limb and try to pick the winners. The only games are the Miner-Cape Girardeau game, and the Warrensburg-Springfield. I pick the Miners by 13 points, and Springfield by 6 points.

Team	W	L	T	Points
Springfield	2	0	1	.800
MISSOURI MINES	3	1	0	.750
Kirkville	2	2	0	.500
Maryville	0	1	2	.400
Warrensburg	1	2	0	.333
Cape Girardeau	0	2	1	.250

Results of games played Friday, October 31, and Saturday, November 1.

Springfield 14, MISSOURI MINES 7

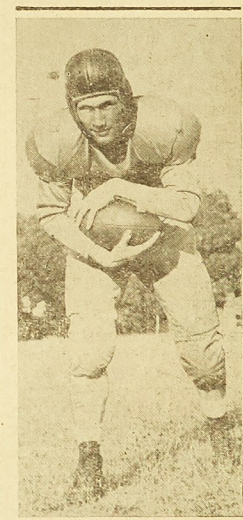
Kirkville 7, Warrensburg 6

Maryville 0, Cape Girardeau 0

Games of Friday, November 7, and Saturday, November 8.

Cape Girardeau at MISSOURI MINES

Warrensburg at Springfield



DICK WHITNEY

A half-back having lettered here last year, is Dick Whitney. Hailing from Roodhouse, Ill., Dick is married and has a daughter. A Pi K A and a member of the "M" club, he is a sophomore in the Ceramics Department. We should see more of Dick next year.



AL PETSKA

Al Petska lettered in '46 and returns again to the Miners this year. Another married man, he has a daughter one year old. A sophomore in Geology, he comes from Marceline, Mo. Al and his wife, who, incidentally, is from England, intends to go to South Africa one of these days. We hope not for a while, Al.

Ralph Stallman is well qualified to be center for the Miners. He has twice lettered in football while at MSM. Ralph, a junior in Mining-Geology, belongs to the "M" club. Married life takes up most of his time in raising his 1 1/2 year old boy. Ralph hails from St. Louis. His ambition: to be a Physical Education instructor! What are you doing here???



RALPH STALLMAN



# - MINERS WAR INDIANS AT HOMECOMING -

## Cape Girardeau Here For Game Saturday

By Val H. Stieglitz

A crest-fallen Miner team plays its last game of the 1947 season here at Rolla Saturday against the Indians from Cape Girardeau. This game should be quite a gala affair, as the weekend is being given over to the Homecoming festivities.

The Miners go into the game with a 3-1 record. The only possible way they can stay in the flag race is to win Saturday. After the loss to SMS Friday, the chances for the championship look pretty slim, but if the Miners take the game this week, and the Springfield club should lose any of the rest of their games, the Miners would climb back up to first place.

Cape Girardeau will bring with them to Rolla an unimpressive record of two losses and a tie. Last year's champions bogged down somewhere along the line, and haven't quite been able to present a reasonable facsimile of last year's team.

### Cape Gaining Power

However, the Cape tie of Maryville last week shows that they are to be reckoned with. They have been coming along, getting just a little better every game, until they have become a decided threat to the Miners. Maryville has a strong team, and the tie with them should be sufficient warning to the Miners that this team is going to be no pushover.

Although last week's game with Springfield was heralded as the most important game of the year, it may well prove otherwise. If the Miners are able to bounce back from their defeat and down the Indians, they will be sitting pretty for any mishaps that may occur in the Springfield plans.

The Miners will go into the Homecoming game with four regulars missing from the starting lineup. Co-captain Paul Fullop, who appeared briefly in the Kirkville game, is again on the inactive list due to an eye infection that kept him out of the crucial Springfield game Friday. Bill Chew is still suffering from a leg injury which allowed him to play only a short time last week, and Luther Steele is still on the in-

active list due to a bad ankle. Earl Hoehn, speedy right half-back of the Miner squad, suffered a badly battered nose at Springfield and will probably give way to Ed Kwadas, who has shifted over from the quarterback position.

The Miners will be playing their last game of the season Friday. The fact that the last conference game is several weeks earlier than usual makes any possibility of a post-season game very remote. It would be necessary to keep the squad in training for several inactive weeks before any other team would be available, and with mid-semester exams approaching this would be too much to ask of the team.

By winning Saturday the Miners could be sure of at least a second place standing in the conference, with a possible chance of the championship if Springfield should be upset in either of their last two games.

### The Lineups:

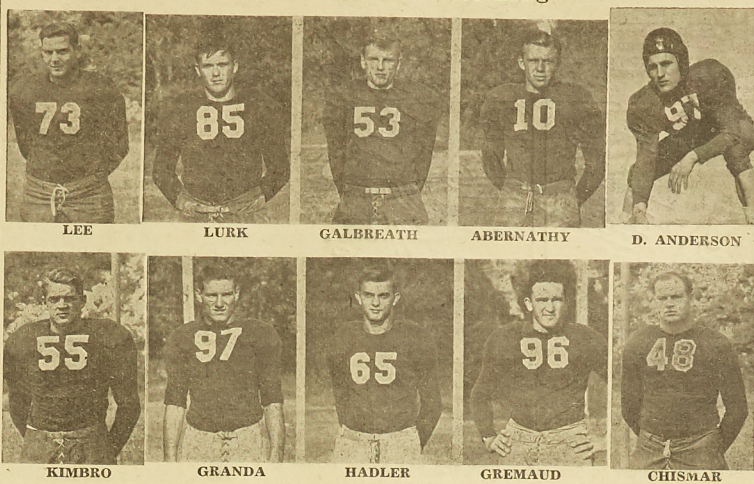
Miners	Cape Girardeau
Teas	LE Kimbro
Woods	LT Lee
Petska	LG Little
Stallman	C D. Anderson
Gaukerke	RG Vogel
Shourd	RT Cristman
Markway	RE Duiley
Kemper	QB Abernathy
Whitney	HB Young
Kwadas	RHB J. Anderson
McGrath	FB Galbreath

### E. E.'s Take Lead in Faculty Pin Lead

Standings in the faculty bowling league were announced Monday by D. W. Breuer, league secretary.

E. E. leads the league in total points with four; M. E. next with three points; C. E., Military, Mechanics, Humanities followed with two points; Metallurgy managed for one, while Drawing, bowling against E.E., received none. The highest single team score for the evening was by C. E. with 717. The highest total score for the evening was made by C. E. with 2049 pins. High individual singles: Col. Harding, 208; high three individual: Col. Harding, 603.

### Visitors For '47 Homecoming



### BEAR BEES AND MINER BEES BUZZ IN MUD TO MINERS' BAFFLEMENT

The Miner B-team lost for the second time to the Washington Bears B-team last Saturday afternoon, this time by the tight score of 7 to 6. In many respects the game was similar to the one played in St. Louis the previous week. The muddy condition of the field slowed the backfields of both sides.

The Miner B's, coached by Bill Speice, got off to a promising start with a touchdown in the first four minutes of play. Taking the ball on their own 30, the Miners completed a 20-yard pass after which Henson romped around his own left end to gain 35 yards. The Miners pushed to within seven yards of the end-zone only to lose the ball on downs after a penalty. After Washington in turn lost the ball on downs, Williams passed 28 yards to Henson in the end-zone for the touchdown. The kick for the extra point was low.

For the remainder of the first half the Miners held the opposition at bay, and the Bears did not

threaten seriously at any time. However, the second quarter was played entirely within Rolla's territory. In that fateful third quarter the Bears drive to the Miner one-yard line, hit the stonewall and bounced back. A beautiful tackle by Mengel caused the Bears to lose six yards at this crucial point. Rolla gained possession of the pigskin on downs only to lose it on a fumble. The Bears were more successful this second time and on a fourth down play completed a 20-yard touchdown pass, and converted for the winning seventh point. The contest ended without further scoring. An interesting feature of the game was the fact that the play was limited entirely to the west 70 yards of the field.

### Score by Quarters

	1	2	3	4	Final
Miner B	6	0	0	0	6
Washington B	0	0	7	0	7

### Statistics:

	Rolla	Wash.
First Downs	10	6
Yds. gained rushing	81	102
Yds. gained passing	72	77
Fumbles	1	4
Avg. yards kicks	33	42
Yds. lost penalties	30	25
Passes Intercepted	2	5

### Startings Lineups:

Miners	Washington
Sexton	LE Ebinger
Murphy	LT Deutch
Brown	LG Bea
Coolbaugh	C Buck
Dougherty	RG Ower
Skalka	RT Steenrod
Kimball	RE Myers
Williams	QB Samel
Tschannen	LH Houson
Krause	RH Votora
Wohlert	FB Glick

Substitutes: Rolla — Hansen, Matson, Kruger, Beffa, Mangle, Givens, Warsing, Gilmore, Mascari, Simmons, Ryan.

### BASKETBALL SCHEDULE

Home Games
Dec. 6—Harris Teachers
Jan. 9—Cape
Jan. 10—Principia College
Jan. 17—Parks
Jan. 22—Westminster
Jan. 24—Kirkville
Feb. 7—Maryville
Feb. 13—Springfield
Feb. 14—Warrensburg
Feb. 17—Drury

### Games Away

Dec. 12—Drury
Dec. 17—Westminster
Jan. 13—Warrensburg
Jan. 30—Kirkville
Jan. 31—Maryville
Feb. 21—Cape
Feb. 28—Springfield

## Miners Drop Conference Lead To Springfield 14-7

by Tom Wirfs

The Bears of Southwest Missouri State moved into top position in the M. I. A. A. Conference last Friday, when they tripped a hard-fighting team from Rolla, 14 to 7. A capacity crowd of 6,000 including more than 300 Miners saw a brilliant game as two evenly matched teams used every trick in the books in trying to gain the upper hand. Had the Miners won this game, they would have been mathematically sure of the Conference championship, as Warrensburg, the only other team in the running was upset by Kirksville Friday night. As the race stands now Springfield must get by Warrensburg and Cape Girardeau in order to seal the championship.

### Miners Score First

The Miners lost little time in picking up their first and only score of the game. McGrath's kick-off was returned by Clopton to the Springfield 28. After two plays gained only two yards, Hoehn took the punt and returned it to the Miner 48. Whitney, Hoehn and McGrath slashed through the Springfield line for two first downs, but the drive was halted when Whitney's fumble was recovered by Clopton on the Springfield 18. A 15-yard penalty put the ball on the five yard line, and Kerin punted on the first down. A pass from Kemper to Markway was good from the 40 to the 29. Three line plays by McGrath, Hoehn and Whitney took the ball to the 6-yard marker and Earl Hoehn went over for the touchdown on the next play. Don Dowling, Miner place-kick specialist came in to toe the extra point, but a penalty nullified his first try and set the ball back five yards. Just to prove the first one was no accident, Dowling placed the second kick squarely between the posts, making the score Miners 7, Bears 0.

### Fumbles Costly

Three crucial fumbles, each recovered by Springfield got the Miners in trouble in the latter part of the first half and set up the first Springfield touchdown. The first, recovered by May of Springfield on the Miner 23, came after a punt into the Miner end-zone was taken out to the 20. Four plays gained only four yards, however, and the Miners soon

had the ball back in mid-field. The second came when a fumbled punt was recovered by Johnson, Springfield tackle, on the Miner 18. The Springfield drive was stopped one yard short of a first down on the Miner 9-yard line. A minute later, with only 42 seconds left of the first half, the third Miner fumble was captured by Springfield on the Rolla team's 22-yard line. After one line play from the spread formation, quarterback Forsythe passed to Chaffin for the touchdown. Lore kicked the extra point making the score Miners 7, Springfield 7 at the half.

### Bears Do It Again

The Miners started the second half with a drive that ended only when a pass from Reichelt to Markway on the Springfield 32 was nullified by a holding penalty. After an exchange of punts, featuring a 29-yard return by fleet-footed Ray Forsythe, and a weak 18-yard punt by the Miners, Chaffin sprinted 39 yards around end to the Miner 18-yard line. Four plays later Chaffin carried the ball over for the winning score. Ed Lore again converted, making the score 14 to 7 in favor of the Bears.

Receiving the kick-off on the Miner 2-yard line, 155 pound quarterback Bob Reichelt dashed to the Miner 43 before he was hauled down by the last Bruin in his path. Kwadas, Whitney and Reichelt drove to the Bear 26 before McGrath's plunge on the fourth down was stopped inches short of a first and ten.

### Passing Attack Fails

After a series of line plays failed to click, Kemper opened up the vaunted Miner passing attack, but failed to gain against the alert Springfield defense. In the closing minutes of the game, Bob Reichelt completed passes to McGrath and Eckert, but the passing attack failed and the game ended with the ball in the Bear's possession on the Miner 42-yard line. Final score Miners 7, Springfield 14. The Miner fans were unanimous in their opinion of Roy Robertson (listed as being from McPherson), who is reputedly seeking a job on the Bear's coaching staff. He proved that he is well qualified for something. However nothing could detract from (Continued on Page 6)

**It Really Helps...**  
when you're Hungry, Thirsty, Tired

**DRINK A BITE TO EAT**

**ROLLA LIQUOR**  
(ALEX'S)

Champagne — Scotch — Bourbon  
COLD BEER FREE DELIVERY

601 PINE CALL 62

**CRUMPLERS**

HIGHLIGHTING THE ANKLE ZONE

Hole-Proof Crew Socks Gym Socks  
Dress Hose

702 PINE ST.

On the Air  
**ROLLA MINERS**  
VS.  
**CAPE GIRARDEAU**  
Saturday, November 8  
2 P. M.  
through  
**K.T.T.R.**  
1490 on your dial  
Sponsored by  
The  
**Frank B. Powell Lumber Co.**

**MONTGOMERY'S CAFE**  
— RENDEZVOUS —  
The Place to Meet and Eat

Save with our—  
CASH AND CARRY SERVICE  
**MODERN DRY CLEANERS**  
Handy Location—  
Across from Postoffice

**BUSY BEE LAUNDRY**  
Announces  
**8 HOUR** Dry Cleaning Service  
GARMENTS IN BY 10 A. M. READY BY 5 P. M.

**65¢**

Bring in your SUITS and DRESSES for this Better Kind of Cleaning Service

- More Dirt Removed
- Stubborn Spots Gone
- 8 Hour Courteous Service
- Careful Attention to Details

Plain Garments, Suits, Top Coats, Dresses CASH'N CARRY

We give your clothes our special attention—make them look and fit like new! Spots come out, true color is restored.

Nationally advertised in MACLEAN'S • MADEMOISELLE SATURDAY EVENING POST • VOGUE WOMAN'S HOME COMPANION LADIES' HOME JOURNAL

**SANITONE** CLEANERS

Plant, Elm St. at 14th St.



# Cherry Sundae. By Wally Tucker



## Off the Campus

(Continued from Page 2)

the kitchen stove. We'd like them back; honest we've gotta eat! From the number of guests who passed through the turnstiles, it may be assumed that the party was a great success, and the Sig Eps are looking forward to trying again soon. After we recover, please!

### Sigma Pi

Things during the past week have been moving mighty slow at the Big Little White House on Twelfth Street. The weather has interfered with the painting project as well as with football practice, with the only thing seeming to gain headway is pinocle and chess.

Progress is being made to make better the "Gay Nineties" dance to be held November 15. Remember it's open to all with a date and gay nineties costume. Be sure to set aside Saturday, November 15 for a time not soon to be forgotten.

With Homecoming just around the corner the fellows are beginning to bolt the house to the foundation so that we will have a little something left after it is all over. With the old gang back in full force and the boys that are on hand now anything is liable to happen.

### Triangle

Having recovered sufficiently from our dance of the 25th to relate the facts well enough to make sense, this writer will endeavor to give with the scoop, both past and future.

The weekend proved to be very eventful for three men, namely Charlie Boschert who pinned Miss Mary Martineau of St. Louis, Fred Crossman who pinned Miss Betty Barrett of Festus, Mo., and Tuck Commerford, the most successful of the three, who pinned Miss Shirley Fallert and set the wedding date for Dec. 27, 1947.

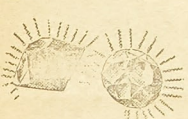
Sunday the 26th was a big day with the more eager and adventuresome of the couples, ten in number, taking a jaunt out to Saltwater Cave where they indulged in an afternoon of back-breaking crawling, and an evening of quiet relaxation. We have been wondering ever since that enjoyable picnic just how Glenn Maddox and date managed to stay so far out in front of the rest of the crowd while in the cave. How about that Glenn?

## C & B CAFE

205 W. 19th St.

Open Every Day  
6:00 A. M. to 8:00 P. M.

Try Our—  
MINERS SPECIAL



G. L. CHRISTOPHER  
JEWELER

Fine Jewelry  
Guaranteed  
Repairing

805 Pine St.

For Homecoming the customary arrangements have been made with the buffet meals, and a drop-in Saturday night. We expect many alumni to make the Ole Rock House their headquarters for the weekend and know a rowdy time is in the offing.

We are happy to announce that a band has been signed to play for our Christmas Dance. The dance will take place on Dec. 6th and will be semi-formal.

### Kappa Sigma

The Beta Chi Chapter of Kappa Sigma is looking forward to a very enjoyable weekend, with its annual Pledge Dance, the Homecoming football game, and the Homecoming Dance scheduled.

Work has already started quite some time ago to get the house in shape for guests and alumni whom the chapter hopes to impress with the fact that the current chapter of Kappa Sigma is upholding the ideals of the fraternity.

So far, the following alumni have sent word that they will be here for Homecoming: Walter Richards '07, Neal Ham '23, Harry Birchard '26, L. A. Cutter '27, J. H. Galloway Jr. '34, Carl Von Wehrden '39, J. C. Myrick '41, Neil Stueck '43, D. C. Brand '44, Don Koch '47, and Bob Bruns '47.

Kappa Sigma's annual Pledge Dance will be held Friday night at the fraternity house in honor of pledges Cecil McGillan, Donald Horton, Kenneth Wilman, Phil Bolanovich, Tom Smith, Lane Schumacher, Jack Koch, Kenneth Thaller, Tony DiPrimo, John Smith, Elmer Wildt, George Redwine Jr., and Raymond St. Germain. The affair will be semi-formal with music provided by the band of Jim Katz.

When a lawyer makes his bed he should lie in it. Unfortunately he seems more inclined to make up his bunk and lie out of it.

Many a girl will scream at the sight of a mouse, but think nothing of stepping into a car with a wolf.

## Springfield Game

(Continued from Page 5)

the performance of a brilliant Bear team, who were playing wide-awake football, and playing to win. The Miners made a total of twelve first downs during the game to a total of seven for the Bears, but came out a few yards behind on the total yardage gained, due mainly to fine swivel-hopping by Dan Clifton, Fred Chaffin, Ray Forsythe and all-conference contender Cliff Haley, all of whom made a number of fine long runs during the game.

### Score by Quarters

	1	2	3	4	Final
Miners	7	0	0	0	7
Springfield	0	7	7	0	14

### Statistics

	Bears	Miners
Yards Gained	198	190
Yards Gained Passing	45	41
Yards Lost	16	14
First Downs	7	12
Passes Completed	3	4
Passes Incomplete	7	8
Passes Intercepted	1	0
Fumbles	1	4
Opp. Fumbles Recovered	4	0
Number of Punts	8	6
Av. Yards, Punts	26	32
Yards Lost, Penalties	35	35

### Starting Lineups

Miners	Bears
Teas	Fletcher
Woods	McCallister
Petska	LG Summers
Stallman	C May
Gauerke	RG Kerin
Shourd	RT Gordon
Markway	RE Provance
Kemper	QB Forsythe
Hoehn	LH Chaffin
Whitney	RH Clifton
McGrath	FB Haley

Substitutions: Rolla: Dowling HB, Kwadas HB, McCord HB, Schwartz FB, Reichelt QB, Duerr, E, Eckert E, Cox C, Steele T, Svejkoskey T.  
Bears: Keys E, Crase B, Lore B, Glazier B, Johnson T, Neeley G, Hutsell B, Holden B.

## INDEPENDENTS DEFY WEATHER TO CELEBRATE

The Independents hayride and dance held last Saturday was a success despite the inclement weather and the obstacles which had to be overcome. Everyone who attended had a very good time and had plenty to eat and drink. The weather did not hold down that good old Miner spirit.

The Independents wish to thank Dean Wilson, Linn Paulsell for the use of his farm, and John Waring of Guarantee Electric Co. for the use of his recording system and records. It was only through the help of these men that the evening was a success.

For the next Independent function, all you Independents turn out for a swell time. Don't forget, it is the growing organization on the M.S.M. Campus.

## Open Letter

On behalf of several campus organizations who have helped in the planning of the recent pep rallies, we would like to thank the management of the Uptown Theatre, "Doc" Carney, for the free shows staged for Miners. For the school band especially, we would like to thank Dean Wilson, Dean Williams, Coach Bullman, Col. Harding, Sgt. Edwards, Bus. Man. Harry Fields and Mr. Todd and Mr. Scott. The cooperation extended the band by these men toward sending the MSM Band and cheerleaders to the away from home football games and in obtaining the new uniforms for the band has been indeed gratifying. Thank you.

Signed,  
Cecil Branson and  
Fred Springer

### Prairie Pranks

Joe: Why do you wear your socks wrong side out?  
Eo: My feet were hot so I turned the hose on them.

## UPTOWN THEATRE

—Always First Run—

Wed.-Thurs. Nov. 5-6  
Shows 7 and 9 P. M.  
James Mason, Kathleen Ryan  
"ODD MAN OUT"

Fri.-Sat. Nov. 7-8  
Shows 7 and 9 P. M.  
Jon Hall, Margaret Lindsay  
"VIGILANTES RETURN"

Sun.-Mon. Nov. 9-10  
Sun. Continuous from 1 P. M.  
Brian Donlevy, Yvonne De Carlo  
"SONG OF SCHEHERAZADE"  
—Filmed in Technicolor—

## ROLLAMO THEATRE

Last Times Wed. Nov. 5  
Ronald Reagan, Alexis Smith  
"STALLION ROAD"

Thursday Nov. 6  
BARGAIN NIGHT  
Admission—10¢ and 13¢  
Veronica Lake, Sonny Tufts  
"MISS SUSIE SLAGLE"

Fri.-Sat. Nov. 7-8  
Double Feature Program  
Sat. Continuous from 1 P. M.  
Admission 10¢-13¢  
Allen Jenkins, Pam Blake  
CASE OF THE BABY  
"SITTER"

Sun.-Mon. Nov. 9-10  
Admission 10¢ - 25¢  
Sun. Continuous from 1 PM  
Dennis Morgan, Jane Wyman  
"CHEYENNE"

## LETTERS TO THE EDITOR

Dear Editor:

The "answer" by an unidentified Student Council member to the question raised in last week's MINER regarding Independent representation on the Council is insufficient and misleading, to my viewpoint. The requirement that a non-fraternity man belong to the Independents' organization (and fork over a buck or so "dues") before he is accorded the privilege of voting for Student Council candidates is the same sort of "white primary" and "poll tax" disenfranchisement as they get away with in many of the Southern states. I earnestly do not believe that any M. S. M. student should be required to belong to the Independents, a fraternity, the third-ward Republican Club, or any other organization in order to be eligible to vote for his representatives on the Student Council.

How about the MINER taking a poll on this?

Parnell Schoenky

The question of the manner of representation on the Student Council will be the subject of a student canvass in the next few weeks. All suggestions concerning this matter should be delivered to the Student Council, which is now in the process of re-organization, and is anxious to have the views of all students.

The Editor

On the beach, they say, the lady wins who gets there fustest with the leastest.

## WITT CLEANERS

½ Block East of 8th & Pine

- Cleaning
- Pressing
- Alterations

24 HOUR SERVICE — — PHONE 76

Free Pick-up and Delivery



EAT  
at  
EARL'S

Earl's Sandwich  
Shop

Across from Kroger's

## THE RITZ THEATRE IS ALWAYS COMFORTABLE

Sunday - Monday - Tuesday  
Nov. 9 - 10 - 11

—FIRST RUN IN ROLLA—

Margaret O'BRIEN

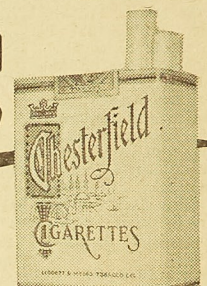
Danny THOMAS in

"The Unfinished  
Dance"  
—in Technicolor—

NEWS and CARTOON

ADM. 10-40c INCL. TAX

Again it's ABC



VOTED TOPS! - CHESTERFIELD  
THE LARGEST SELLING CIGARETTE  
IN AMERICA'S COLLEGES

(BY NATION-WIDE SURVEY)

COCA-COLA COOLERS  
MAKE IT SO EASY TO  
PAUSE AND REFRESH



PLEASE return  
empty bottles promptly

BOTTLED UNDER AUTHORITY OF THE COCA-COLA COMPANY BY  
CUBA COCA-COLA BOTTLING COMPANY

© 1947, The Coca-Cola Company



The Sum-Total of Smoking Pleasure

ALWAYS BUY CHESTERFIELD

Copyright 1947, LORETT & MYERS TOBACCO CO.